

**Sunday's Weather**

HIGH  
47

LOW  
29

See expanded weather on Page 2

**DOUG BOYD MOTOR CO.**

Open 9 am - 6 pm Monday - Saturday • Hwy 60 • Hwy 70 • Pampa TX • 669-6062 • www.DougBoydMotors.com

**BUY HERE • PAY HERE • NO CREDIT CHECK**

**WTL**

POWER EQUIPMENT

SALES & RENTAL

103 S. HOBART  
665-2366

# THE PAMPA NEWS

Volume 83 • No. 277      50¢ Daily • Sunday \$1.50

**We're Small But Good!**  
Friendly Faces and Competitive Prices

**36+ Years Experience**

Ceramics • Laminate  
Hard Wood • Carpet

**The Floor Store**  
2100 Perryton Parkway  
665-4455

Floor Care Essentials by Mohawk  
Professional Carpet & Upholstery Cleaning System

FREE PROFESSIONAL ESTIMATES

**CHILDERS BROTHERS INC.**  
**HOUSE LEVELING**

Uneven Floors  
Floor Bracing  
Cracks In Bricks  
Sinking Doors & Windows  
Interior Wall Cracking

FREE ESTIMATES

**1-800-299-9563**  
WWW.CHILDERSLEVELING.COM

WE CARRY THE LARGEST SELECTION AND THE LATEST STYLES OF FLOORING IN STOCK WITH THE BEST PRICES!

**One STOP Flooring**

1533 N. HOBART  
MONDAY-FRIDAY 9-5  
SATURDAY 10-1

**24HR WATER EXTRACTION**

**RUG RATS**

Professional Carpet & Air Duct Cleaning

FREE ESTIMATES

Ronnie Harvill Owner  
665-1976 or 662-9219

**Texas FURNITURE**

PROUDLY SERVING PAMPA SINCE 1932

1415 N. HOBART • 806-665-1623  
MONDAY-SATURDAY 9:00-5:30

**Ashtmore & Associates**

INSURANCE AGENCY, LLC

1224 North Hobart  
NBC Plaza 2, Suite 111  
Pampa, TX • 806-688-7081  
www.ashtmoreassociates.com

For All Your Business & Personal Needs

**JIM BRUTON**

**Rebecca McCall**  
Sales - Associate

PAMPA REALTY INC.

372 N. Hwy  
Pampa, TX 79065  
665-0507

See 665-0508  
cell 665-8990

**Thomas Automotive Inc.**

Premier Auto Service and Repair

**665-4851**  
**217 E. ATCHISON**

Monday - Friday • 8am - 6pm

Still Time To Plant Trees!  
Come by for a great selection!

**West Texas Landscape**

120 S Hobart St • 669-0158 • Mon-Sat • 9am - 6pm

**TOP OF TEXAS**

YOUR COMPLETE ICE COMPANY

(806) 665-2061

1945 N. Hobart  
Pampa, TX 79065

Sales • Service • Lease Ice Equipment  
Merchandisers • Package Ice • We Deliver!

**79TH ANNUAL BANQUET OF THE PAMPA AREA CHAMBER OF COMMERCE & 2007 CITIZEN OF THE YEAR AWARD**

FEBRUARY 21ST AT 7PM IN THE HERITAGE ROOM AT THE MK BROWN AUDITORIUM. FEATURED SPEAKER RICHARD "BUZZ" DAVID, PRESIDENT & CEO OF THE AMARILLO EDC. MEAL WILL BE CATERED BY THE TEXAS ROSE RESTAURANT. TICKETS ARE \$25 PER PERSON. AVAILABLE AT THE CHAMBER OFFICE LOCATED AT 200 N BALLARD. ADVANCE SALES ONLY

## Rural dumping apparently problem in county

By **MARILYN POWERS**  
Staff Writer

Dumping of household trash and other discarded items in rural locations in Gray County presents a problem for landowners and others, according to Precinct 2 Commissioner Gary Willoughby.

Willoughby addressed Gray County commissioners concerning the topic at their 9 a.m. meeting Friday in the second-floor courtroom at Gray County courthouse, 205 N. Russell.

"Junkyards have been popping up in Gray County. We picked up over 60 refrigerators out of a canyon off a rural road this past week," Willoughby said. "We have picked up over 300 refrigerators, washers, dryers and stoves from rural areas."

He showed photos of current dumping areas to members of the commissioners' court. Locations included East Tyng Street under the

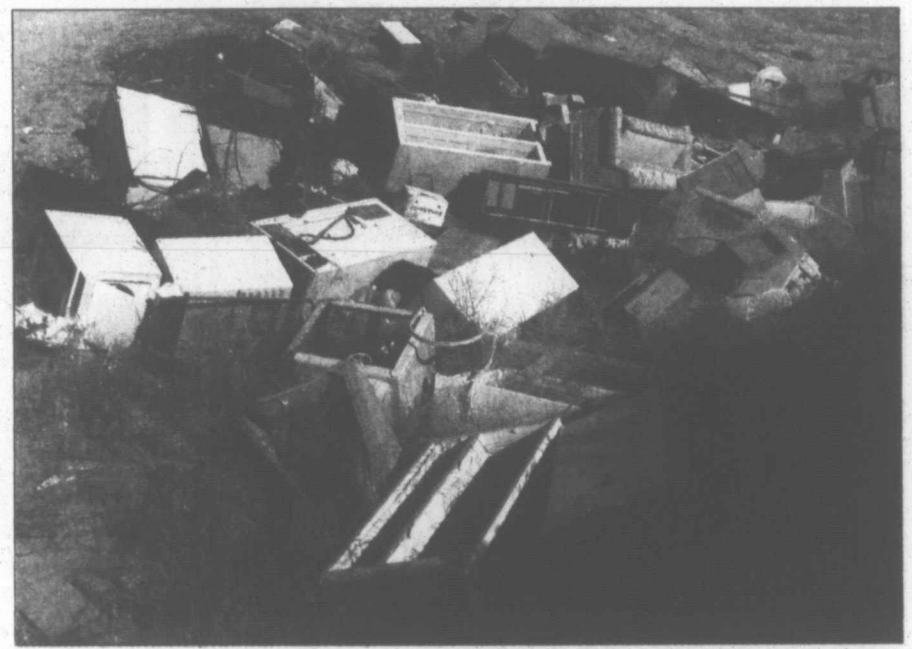
Loop 171 overpass, Price Road, the Cole Addition, Kentucky Acres, the corner of Malone and Henry streets in Pampa, and County Roads 11 and 2 1/2.

"One problem we have is junked cards being deposited out in the county on land the dumper doesn't even own," Willoughby said.

A collection of laws provided in book form by the State Attorney Generals' office lists those which apply to counties' powers and duties and which counties may adopt and enforce.

These laws are listed in the states land use regulations and include the following:

- Chapter 683, Subchapter E, Transportation Code: "Counties may adopt procedures that provide for the abatement and removal from private or public property or a public right-of-way of a junked vehicle or part of



Pampa News photo by MARILYN POWERS

The household appliances, furniture and other discarded items beside County Road 11 are an example of dumping activity in the county. Junked vehicles are also being abandoned at rural sites on land not owned by the vehicles' owners.

See TRASH, Page 6

## POLITICS

### Early voting begins Feb. 19

EDITOR'S NOTE: See sample ballots on pages 11 and 12.

By **MARILYN POWERS**  
Staff Writer

Early voting in the March 4 presidential primary begins Feb. 19 and continues through Feb. 29, with the polls open from 8:30 a.m. to 5 p.m. weekdays in the second-floor courtroom of Gray County Courthouse, 205 N. Russell, for Gray County residents.

Persons wishing to vote in the election must be registered voters and must present either their voter registration card or a valid Texas driver's license or other valid Texas photo identification card.

Presidential candidates as well as other national, state and local candidates will be on the ballot. Included will be all 32 U.S. representatives from Texas, the U.S. Senate office currently held by John Cornyn, 15 state senators and all 150 state representatives.

There are only two local candidates facing an opponent. All local candidates are Republicans.

Incumbent Gray County Sheriff Don

Copeland faces Vincent M. "Sonny" Marasco, while Don Fletcher and Curtis Broadus are both vying for the office of Precinct 4 constable.

Precinct 1 County Commissioner Gerald Wright is not running for re-election. The only candidate who has filed for his position is John Mark Baggerman.

Incumbents running unopposed for re-election in county-wide races are 31st District Attorney Lynn Switzer, County Tax Assessor-Collector Gage Whitehead, County Attorney Josh Seabourn, Precinct 1 Commissioner Joe Wheeley, Precincts 1 and 3 Constable James Lewis, Precinct 2 Constable Chris Lockridge and Republican Party Chairman Doug Ware.

State and U.S. officeholders up for re-election who represent Gray County in their respective positions include State Rep. Warren Chisum (R - Pampa), for District 88; Cornyn; U.S. Rep. Mac Thornberry and State Sen. Robert Duncan.

April 8 is scheduled as the runoff date if any runoff elections are required.

See VOTE, Page 6

## Public candidates' forum scheduled

By **MARILYN POWERS**  
Staff Writer

A candidates' forum sponsored by Gray County Republican Women will begin at 6:30 p.m. Tuesday in the Knights of Columbus Hall. The meeting is open to the public.

All local candidates, both opposed and unopposed, who are on the March 4 primary ballot are eligible to participate in the forum, said Kerrick Horton of the Republican Women.

Each candidate will be allotted five minutes to address the audience. After all candidates have spoken, a moderator will ask questions of the candidates which have been submitted by members of the audience.

Those attending may write out their questions upon their arrival or may bring their written questions with them, Horton said. Questions should include the candidate for whom they are intended.

Races with more than one candidate on the March 4 primary ballots are those for Gray County sheriff and Gray County Precinct 4 constable. Incumbent Don Copeland and Vincent M. "Sonny" Marasco are vying for the sheriff's office, while Don Fletcher and Curtis Broadus are in a race for Precinct 4 constable.

Those unopposed in local primary races are Gage Whitehead, county tax assessor-collector; Joshua M. Seabourn, county attorney; Joe Wheeley, Precinct 1 county commissioner; John Mark Baggerman, Precinct 3 county commissioner; James H. Lewis, Precincts 1 and 3 constable; Chris Lockridge, Precinct 2 constable; and Doug Ware, county chairman for the Republican Party.

All local candidates are Republicans.

## King and queen



Pampa News Photo by KERRI SMITH

Saundra Norton, left, and Carl Bradford were voted as Valentine King and Queen on Feb. 14 at Coronado Healthcare. They both received crowns and candy.

## County continues burn ban, sets special election

By **MARILYN POWERS**  
Staff Writer

A burn ban currently in effect for Gray County was continued on Friday when county commissioners declined to take action concerning the issue during their 9 a.m. meeting in the second-floor courtroom at Gray County Courthouse, 205 N. Russell.

The ban prohibits outdoor burning anywhere in the county, including burning of rural residents' household trash.


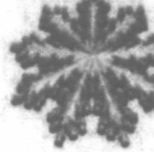

"It prohibits any open fire or flame," said County Judge Richard Peet. "It does not impact backyard barbecuing or businesses that are welding."

"We've had two fires from that very thing," said Precinct 4 Commissioner James Hesley concerning the issue of outdoor welding.

"We can't ask businesses to shut down their business, but we can ask that they take every precaution,"

See COUNTY, Page 3

**NEXT DAY FORECAST**

|  |   |   |
|--|---|---|
| <b>Sunday</b><br><br>Mostly sunny | <b>Monday</b><br><br>Partly cloudy | <b>Tuesday</b><br><br>Mostly sunny |
|--|---|---|

Sunday: Partly sunny, with a high near 45. Wind chill values between 14 and 24 early. Windy, with a north-northwest wind between 15 and 25 mph, with gusts as high as 35 mph.

Sunday Night: Mostly cloudy, with a low around 21. Wind chill values between 13 and 18. North-northwest wind between 10 and 20 mph, with gusts as high as 25 mph.

© This information brought to you by...

**PRESTIGE**  
**AUTOBODY & ACCESSORIES**  
101 S. HOBART 806-665-3500  
**DON'T FORGET HIM ON VALENTINE'S DAY!**  
VORTEX BEDLINER • RANCHHAND • XM • MORE

**Fairview Cemetery**  
**The Only Pampa Cemetery that**

- Has paved Roads
- Offers upright Monuments
- Is a non-profit organization
- Is regulated by a Board of directors for perpetuity

**"Your Best Cemetery Choice"**

Fairview Cemetery Association  
1500 Duncan • 665-2412  
[www.fairviewcemetery.org](http://www.fairviewcemetery.org)

Preneed Arrangements Available Including Caskets  
Special Veterans Garden  
**Memory Gardens**  
Cemetery & Mausoleum of Pampa  
665-8921  
23rd St and Price Rd  
[www.memory-gardens.tripod.com](http://www.memory-gardens.tripod.com)

# Obituaries

## Services tomorrow

**Services MONDAY**

**CARTER, Bertha** — 10 a.m., Carmichael-Whatley Funeral Directors Colonial Chapel, Pampa.

### Bertha Carter, 80

Bertha Carter, 80, of Pampa, died Thursday, Feb. 14, 2008, in Pampa.

Services are scheduled at 10 a.m. Monday in Carmichael-Whatley Colonial Chapel with Paul Nachtigall, pastor of Highland Baptist Church, officiating.

Burial will be in Fairview Cemetery under the direction

of Carmichael-Whatley Funeral Directors.

Mrs. Carter was born Jan. 15, 1928, at Anson, to Cora and William Dalbert. She came to Pampa in 1939 from Paducah. She married Robert Lee Carter on Jan. 17, 1959, at Lubbock; he died in 1970.

Mrs. Carter was a former member of Macedonia

Baptist Church and currently belonged to Highland Baptist Church.

She was preceded in death by her parents; two sisters, Annie Ivy and Dorothy Dinkins; and two brothers, Johnnie Woods and Bennie Brown.

Survivors include three stepsons, Bobbie Carter of Dallas, Don Carter of

Sacramento, Calif., and Eddie Lee Carter of Chattanooga, Tenn.; and several nieces and nephews.

MEMORIALS: Annie Ivy Ministry, P.O. Box 1641, Lynnwood, CA 90262.

—Sign the on-line register book at [www.carmichael-whatley.com](http://www.carmichael-whatley.com).

**See page 7-A**  
**for additional obituaries ...**

## CITY BRIEFS

The Pampa News is not responsible for the content of paid advertisement

**AMERICAN HEART** Association Gala, Feb. 23, for tickets call 570-0979.

**BOLTON INSURANCE**—Serving your needs since 1970. Specializing in Medicare supplements and Life Insurance for all needs. Al Bolton 665-5652, 662-0449.

**COMPUTER SICK?** Call Mike, 665-2760. On-site repair. Custom built computer with Win XP or Vista.

**CAREGIVERS HAS** Openings. No weekends. Please call for more info. 665-4541.

**COTTONWOOD SPRINGS** is now booking receptions, reunions, rehearsal dinners and parties! 665-8217

**DIAMONDS & Door-knobs** Gifts, Decor, and much more!! Jewelry repairs done in house. 1508 N. Hobart, 665-5090.

**FILL DIRT** for sale. 5000 yards. 806-663-3124.

**FREE TO Loving Home.** 11 yr. old Dachshund & 4 yr. old Chaweenie. Must stay together. Please call Cathy, 440-6366

**I WILL** clean your house. References. 665-1848.

**KNOTS N Kneads** Massage Therapy, newest therapist in town, Kristi Gray, LMT. Call for appt. 663-0721

**NOW BOOKING** 120 N. Cuyler Str. for weddings, reunions, parties or meetings. 665-3943 or 662-9007

## Emergency Services

Gray County Sheriff's Office recorded the following arrests before 8 a.m. Saturday.

**Friday, Feb. 15**

Zachary Dean Malone, 21, of Pampa was arrested by GCSO on capias pro fines for no seat belt-driver and for failure to maintain financial responsibility.

Veronica Paige Villarreal, 28, of Pampa was arrested by Pampa Police Department on a capias pro fine for speeding and on a charge of no valid driver's license.

Barbara Robbins, no age listed, of Pampa was arrested by Pampa PD and charged with possession of drug paraphernalia and failure to appear.

Kimberly Sue Smith, 47, of Pampa was arrested by Pampa PD and charged with theft of property, public intoxication, and fugitive from justice out of California.

**Saturday, Feb. 16**

Cody Matthew Ashton, 18, of Pampa was arrested by Pampa PD and charged with driving while intoxicated.

William David Wortham Jr., 48, of Pampa was arrested by Pampa PD on a capias pro fine for possession of drug paraphernalia and on a charge of failure to identify/giving false information.

Pampa Fire Department reported the following calls during the 24-hour period ending at 7 a.m. Saturday.

**Friday, Feb. 15**

7:36 a.m. — One unit and one personnel responded to the 700 block of Gray on a fire investigation.

7:42 a.m. — One unit and one personnel responded to the 1600 block of North Faulkner on a fire investigation.

9:52 p.m. — One unit and three personnel responded to the 1400 block of North Hobart on a hazardous materials call.

**Saturday, Feb. 16**

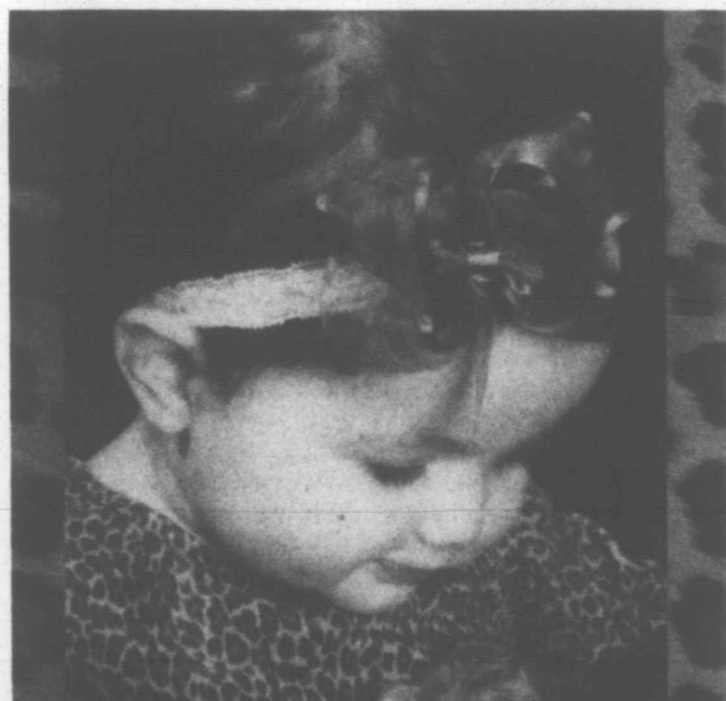
1:57 a.m. — One unit and two personnel responded to the 500 block of Lefors on a hazardous materials call.

### Rapper found shot to death in Houston

PORTLAND, Ore. (AP) — An Oregon rap artist who went by the names Blu Crush and Dozieloc was found shot to death in a motel room in Houston.

Houston police say the 29-year-old rapper, whose real name was Mark Stenberg, was shot several times in the torso.

His sister, Julia Rose, said Stenberg had been on a promotional trip that included stops in Phoenix and Houston in an effort to try to get radio stations to play his music.



**Happy 1st Birthday**  
**Zoe Kathryn!**  
**I Love You,**  
**Gram Khaki**

*Spring Break*  
*Mini-Vacation Special at*

**Ashmore Inn**  
& Suites

2301 I-40

East, Exit 72-A • 877-374-3344

(Behind Cracker Barrel Restaurant)

**Family of 4 Package**

- 2 Night stay
- 1 Night of Laser golf
- 4 Movie Passes
- 1 Mr. Gatti's Buffet for (2 Adult & 2 Children)
- Plus Free tokens
- Indoor Heated Pool
- Deluxe Continental Breakfast

**\$249.00**

Offer good Feb. 17 - March 31 Must be 21 Reservations Must be made in advance & guaranteed with a valid major credit card 48 hour cancellation required based on availability.

**HOMESTYLE BBQ SPECIALS**

**Special Full Slab BBQ Ribs**  
1 pt. cole slaw, ranch beans, homemade potato salad  
**\$22.99**

Get 1 lb. BBQ Brisket or Polish Suasage **FREE!**

Valid Only when Presented with Order. NOT VALID WITH ANY OTHER OFFER.

**DYER'S**  
BBQ  
Hwy 60 W  
Pampa, TX  
806-665-4401

**PUBLIC SAFETY**

**Man accused of impersonating trooper**

WICHITA FALLS, Texas (AP) — A former reserve peace officer is accused of posing as a state trooper and pulling several drivers over last year, according to the Texas Department of Public Safety.

Monte Jack Duwe, 51, of Wichita Falls, was charged with impersonating a public servant in connection with a December incident. He was free from jail Thursday after posting a \$20,000 bond.

It was not immediately clear if Duwe had an attorney, and a telephone number for him could not be immediately found.

Duwe last worked as a reserve peace officer for the Wichita County Sheriff's Office, according to the DPS. Authorities said he never worked as a state trooper.

Authorities said Duwe pulled over drivers three times between January and April. It's unclear what kind of car he drove or if it had flashing or colored lights.

After stopping a woman one afternoon in December, the man approached her car, said he was a highway patrol officer and showed her a badge, according to an affidavit. He said that she had cut him off, but after talking to her for about 20 minutes, he said he would not arrest her or issue a citation.

Last month, investigators searched Duwe's home and found three law enforcement badges, according to the DPS.

**County**

Continued from Page 1

Peet said concerning businesses in the county which perform welding.

A special election was approved to give Gray County voters a choice of whether or not to authorize a maintenance tax for Clarendon College - Pampa Center. The election will be held May 10, the same date as City of Pampa and Pampa Independent School District elections.

The tax would not exceed five cents per \$100 valuation of taxable property within the county, and all proceeds from the tax would be spent at the Pampa center. Its uses might include reducing tuition, providing new programs and/or maintaining the facility.

"Everyone on the committee believes education is the key to our success," said Lee Porter of the steering committee for Pampa Area Foundation which has been working to get the proposed tax on the ballots. Pampa Area Foundation was established in 1995 to support the junior college's Pampa campus.

County commissioners would examine the Pampa center's budget and set the tax rate according to need, within the maximum allowed, Peet said. Commissioners would also decide how the collected taxes were spent each year, Porter said.

If passed, the maintenance tax would thereafter appear on property taxpayers' tax statements as a separate line item.

Early voting for the May 10 elections will be April 28 through May 6. The polls will be open each weekday from 8:30 a.m. to 5 p.m. during that time period, except

for April 29 and 30, when they will be open from 7 a.m. to 7 p.m., Peet said.

Commissioners approved an emergency budget amendment granting \$30,000 to Gray County Juvenile Probation Office.

"They have already spent \$28,000 this year, and we need to look at the fund balance," Peet said. "We have noticed an increase in felony juvenile cases."

"We're out of money," said Felipe Chavez of the juvenile probation office. "We have over 25 felony cases right now, with 75 on probation. We have one female in detention in Lubbock."

*Costs for having a juvenile in detention are \$112 per day at the Randall County facility and \$85 per day in Lubbock.*

Costs for having a juvenile in detention are \$112 per day at the Randall County facility and \$85 per day in Lubbock, Chavez cited as examples.

"This is the first time they've ever come to court and asked for money," Peet said. "They've given money back before."

Any available state and other funds will be used first to meet the office's expenses, and any leftover funds at the end of the office's fiscal year on Aug. 31 will be returned to the county.

The emergency budget amendment was not included in the original agenda for Friday's meeting but was added as a supplemental item.

Commissioners accepted

a bid by Crawford Roofing Co. of \$73,000 to repair a roof at Perry LeFors Airport. The material to be used is one inch thick, with a triple top coat, and is the same material used on the New Orleans Superdome, according to a Crawford Roofing representative.

The agreement with Crawford Roofing includes a five-year warranty.

Action on possible purchase of a group ID program was deferred until commissioners could further study the system. The system is available at several capabilities and costs, ranging from \$2,350 up to \$7,900. The item will be included on commissioners' March 17 agenda.

A 1992 Chevrolet Blazer in Precinct 4 was declared surplus property, and bids for it will be accepted until 10 a.m. March 17.

Bids on tax-delinquent property, all of which are vacant lots, were approved. They are: Brandonn Young, \$200, lot on Clark Street; Robert Mack, \$300, lot on Gillespie Street; and Harold Chester, two bids of \$100 each for two lots on Malone Avenue.

A racial profiling report by Precinct 2 Constable Christ Lockridge was accepted. Lockridge reported that in 2007, he stopped 155 whites, 20 blacks and 26 Hispanics for traffic and/or vehicle violations. Of those, citations were issued to 23 whites, one black and one Hispanic, with the remainder being given verbal warnings. Lockridge conducted two searches, both involving whites.

Precinct 2 Commissioner Gary Willoughby addressed the commissioners' court concerning dumping of discarded items on rural property. The item may be included on the March 17 agenda.

**Pampa ISD Events for the week of February 18-23**

**Pampa High School**

February 18 - Open Gym Cheerleading • 7:00pm • MPAC  
February 21 - Report Card Day  
February 21 - 8th Grade parent Meeting • 7:00pm • Auditorium  
February 22&23 - All Region Jazz Band Clinic

**Pampa Jr. High**

February 19 - TAKS - 8th Grade Reading  
February 19 - TAKS - 7th Grade Writing  
February 21 - Report Card Day  
February 22 - Academic Pep-Rally • 2:30pm • Auditorium

**Austin Elementary**

February 20 - Report Card Day

**Lamar Elementary**

February 19 & 21 - Kid's Cafe 5:30 - 6:30pm

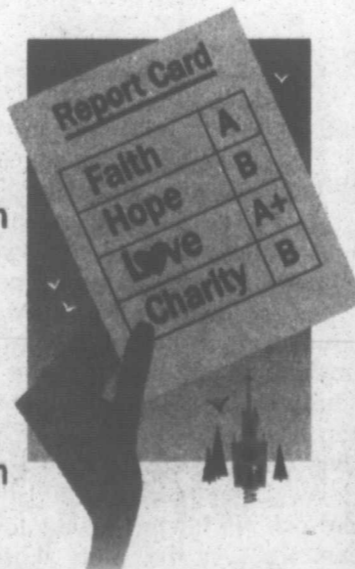
**Travis Elementary**

February 20 - Report Card Day

**Wilson**

February 19 & 21 - Kid's Cafe 5:30 - 6:30pm  
February 19 - ESL 1:30 - 2:30pm  
February 20 - Power Hour 2:00pm

**February 21 - School Board Meeting 6:00pm**



**TEXAS FURNITURE**

**TWO FOR ONE LA-Z-BOY RECLINER SAVINGS**  
TWICE THE COMFORT FOR HALF THE PRICE.  
QUALITY CRAFTED LA-Z-BOY RECLINERS



**TWO FOR ONLY \$599**

**TWO FOR ONLY \$699**

**TWO FOR ONLY \$799**

**ASHLEY**  
FURNITURE INDUSTRIES, INC.  
**FACTORY DIRECT PRICES**  
IN STOCK FOR IMMEDIATE DELIVERY

**DUAL RECLINING SOFAS**  
NOW AS LOW AS

**5 PIECE DINETTES \$399**  
DROP LEAF TABLE WITH 4 CHAIRS

**\$699**

**•QUEEN SLEIGH BED •DRESSER •MIRROR \$999**



**NIGHT STAND \$199**

**SAVE NOW ON BEDROOMS**

**ASHLEY SOFAS**



AS LOW AS  
**\$499**  
**\$599**  
**\$699**

**IN STOCK ... IMMEDIATE DELIVERY!**

**TEMPUR-PEDIC**  
PRESSURE RELIEVING SWEDISH MATTRESSES AND PILLOWS

**DEEP REJUVENATING SLEEP, WAKE UP FEELING MORE RESTED**

Better Sleep On A



**SEALY POSTUREPREMIER**

TWIN 2 PC SET **\$249** FULL SET **\$349** QUEEN SET **\$399**

**SEALY PLUSH**

TWIN SET **\$349** FULL SET **\$449** QUEEN SET **\$499**

**SEALY PILLOW-TOP**

TWIN SET **\$449** FULL SET **\$549** QUEEN SET **\$599** KING SET **\$799**

**TEXAS FURNITURE**

MON - SAT 9:00 AM TO 5:30PM

1415 N. HOBART • 665-1623

6 MONTHS NO INTEREST FINANCING WITH APPROVED CREDIT

# Viewpoints

## Lunch with three polar bears ...

Who's our congressman?" asked mama polar bear during a light lunch on an ice floe somewhere off Alaska.

"Beats me," said papa polar bear. "Pass the walrus calf."

"I want to send a letter complaining about Joey being attacked again by those government wildlife scientists," said mama polar bear.

"Let it go," said papa polar bear. "Your brother still stinks of humans. But at least the sedation's taking longer to wear off this time, so he hasn't been his usual testy, cranky self."

"You'd be stressed too if you were chased by a helicopter, shot with a tranquilizer dart and had 'X19788'

tattooed on the inside of your mouth when you were only 5 years old," said mama polar bear.

"At least now he can no longer claim that first encounter was an alien abduction," said papa polar bear.

"Cool it, kids," said grandpa polar bear. "Those scientists are just doing their job—like the ones we saw on '60 Minutes' two weeks ago."

"If it weren't for their longitudinal studies, we wouldn't know how many of us live up here or that anthropomorphic global warming is a threat to our iconic existence."

"Well, I'm sick of being harassed," said mama polar

bear. "For my entire life they've been drugging us, weighing us, checking our fat content—poking into our sex lives. Now they've got Scott Pelley of CBS flying around with them."

"At least they're not putting radio collars on us or painting numbers on our backs," said papa polar bear.

"Or shooting us anymore," reminded grandpa polar bear. "In my day, we had a lot more than mad scientists, biased TV reporters and melting pack ice to worry about. We were daily

target practice for sports hunters or bored sailors."

"I bet there weren't 8,000 of us left in the whole Arctic in 1970. Now that we're protected, the U.S. Fish & Wildlife Service estimates we're up to 25,000—though 60 percent of us live in Canada, those hosers."

"I'd rather take my chances with hunters than put up with this darn population explosion," said papa polar bear. "You can't go 20 miles without bumping into a mother and her spoiled cubs. Go into town for a little Dumpster

diving, and it's so crowded you gotta take a number."

"Quit griping, son," said grandpa polar bear. "Our species has finally hit the jackpot. Humans were our only enemy. Now we're the official mascots of the climate-change industrial complex. We're as charismatic as whales. We've got lobbyists all over Washington."

"It won't last," said papa polar bear. "Wait till everyone finds out the ice cap naturally gets thinner or thicker all the time. Wait till they all realize we can swim 30 miles before breakfast. Wait till they see two-thirds of us haven't died by 2050 because of a little global warming."

"And what if '60 Minutes'

turns on us and catches us eating baby seals?" fretted mama polar bear.

"Don't be such alarmists," said grandpa polar bear. "Al Gore will never let it happen."

"The mainstream media, politicians and school kids have been completely suckered. We're apex victims of modern mankind. Senators from New Jersey are working to put us on the Endangered Species list. Congress is talking about doing a study to make sure we won't be hurt before they allow those new oil and gas leases to be auctioned in the Chuckchi Sea. It's only a matter of time before we get

See BEARS, Page 7

**Bill Steigerwald**  
Columnist



## Today in History

By The Associated Press

Today is Sunday, Feb. 17, the 48th day of 2008. There are 318 days left in the year.

Today's Highlight in History:

On Feb. 17, 1801, the House of Representatives broke an electoral tie between Thomas Jefferson and Aaron Burr, electing Jefferson president; Burr became vice president.

On this date:

In 1864, during the Civil War, the Union ship USS Housatonic was rammed and sunk in Charleston Harbor, S.C., by the Confederate hand-cranked submarine HL Hunley, which also sank.

In 1865, Columbia, S.C., burned as the Confederates evacuated and Union forces moved in. (It's not clear which side set the blaze.)

In 1897, the forerunner of the National PTA, the National Congress of Mothers, convened its first meeting, in Washington.

In 1904, the original two-act version of Giacomo Puccini's opera "Madama Butterfly" was poorly received at its premiere at La Scala in Milan, Italy.

In 1908, sportscaster Walter Lanier "Red" Barber was born in Columbus, Miss.

In 1933, Newsweek was first published by Thomas J.C. Martyn under the title "News-Week."

## Our readers write

### Does free enterprise exist anymore?

In the 1800's, Bill was a pack peddler who pulled a two-wheel cart from house to house and farm to farm to sell dry goods, needles and thread, pots and pans or whatever people needed. He worked hard and saved his money.

After a while, he opened up a general store and did well. He married, had sons who helped him build up the business and eventually owned a large department store. After Bill died, his sons and grandsons branched out to become wealthy and powerful.

Then in 1929, the stock market crashed. Overnight, small businesses failed and 30 percent of workers were

out of jobs. My brother Charles said, "If you get hungry enough, you will find some way to survive." Some people would steal in order to feed their families, while others of us became pack peddlers like Bill.

One day I saw that the A&P store had kitchen matches on sale three boxes for a dime. I just happened to have a dime, so I bought three boxes, walked from house to house knocking on doors until I sold all three boxes for five cents each. That gave me a nickel profit.

I went back and bought three more boxes, sold them and kept doing that until I

See LETTER, Page 7

## RULES FOR CARTOONISTS...



## Idle American: Knightless basketball ...

Colorful collegiate basketball faded by several shades with the sudden retirement of Texas Tech Coach Bobby Knight. (Someone said he waked on Groundhog Day, saw his shadow and figured it meant six more weeks of basketball.)

Assuring his successor, son Pat, and other coaches that he will still be around, it will be interesting to see how he handles the transition from coach to fan.

This could result in an attendance boost. There may be "new" fans attending now just to watch Bob, or, as he is aptly nicknamed, "The General"....

\*\*\*\*\*  
Millions marvel at Knight's NCAA record of 902 collegiate victories. The meter started at age 24 when he was named basketball boss at West Point. He

remains the youngest hire in history for a Division I head coaching assignment in a major sport.

Knight claims baseball to be his favorite sport, and my faulty memory linked him to a golf-coaching position in his early years. It wasn't he.

Maybe it was veteran basketball Coach Jim Boheim of Syracuse. He was indeed golf coach there almost a half-century ago. Anyway, whoever it was realized that collegiate golf was rarely headlined on the sports page. So, he called in tournament results to the newspaper only when the team won.

"At season's end, what few fans we had thought we had made it through the sea-

son undefeated," the coach laughed....

\*\*\*\*\*

Much has been made of Super Bowl TV numbers that rubbed against the 100 million mark. But on the same weekend, 200 million fans watched the Houston Rockets beat the Milwaukee Bucks, 91-

83, in what was called the "Chinese Super Bowl." The basketball game was beamed to China for fans there to see two of their "favorite sons," the Rockets' Yao Ming and Milwaukee's Yi Jianlian.

'Course, those 200 million Chinese didn't get to see the Dalmations, Clydesdales and assorted other animals featured in Super Bowl XLII

commercials. ....

\*\*\*\*\*

Uncle Mort called from the thicket, talking about nothing but the parking prices proposed for the Dallas Cowboys' new stadium. "I can't believe they can make ends meet just charging 75-cents," he blurted.

I suggested that he re-read the newspaper. I told him that I feared that a decimal point had been overlooked.

I heard papers shuffling, then came a long pause. Then, his voice stiffened....

\*\*\*\*\*

"Seventy-five dollars to park is an outrage," Mort fumed, launching his litany about what it would take to get him to a game.

First off, he'd have to be the winner of a free ticket or luck into one from a friend.

Then he would deal with

See NEWBURY, Page 7

**Don Newbury**  
Columnist



**THE PAMPA NEWS**  
403 W. Atchison • Pampa, TX 79065  
806-669-2525 • 800-687-3348  
Fax: 806-669-2520  
email: editor1@thepampanews.com

**Publisher: Sean Smith**  
Managing Editor: Kerri Smith  
Advertising Director: ReDonn Woods

This newspaper (UPS 781-540) is published daily, except Saturdays, Thanksgiving and Christmas Day, by The Pampa News. Periodicals postage, paid at Pampa, Texas. Postmaster: Send address changes to The Pampa News, P.O. Drawer 2198, Pampa, TX 79066-2198.

All carriers are independent contractors and The Pampa News is not responsible for advance payments of two or more months made to the carrier. Please pay directly to the Pampa News any payment that exceeds the current collection period. There are no mail subscriptions available within the city limits of Pampa. Mail subscriptions must be paid three months in advance.

© 2005 The Pampa News

## Texas Thoughts

By The Associated Press

A sample of editorial opinion around Texas:

■ Feb. 11

The Dallas Morning News on the need for good teachers:

Moving the needle on student achievement in Texas requires making sure the most disadvantaged students get the best possible instruction. But that combination isn't showing up enough in Texas.

In the state's 50 largest school districts, poor and minority students are likely to get the least experienced and less successful instructors, according to the Education Trust, a Washington-based group that monitors student achievement.

Even within Dallas schools, which say they are aggressively tackling this disparity, about 14 percent of teachers in the highest-poverty schools have fewer than three years of experience, compared with 9 percent of teachers in the lowest-poverty schools.

Statewide, similar gaps exist on teacher credentials. About 32 percent of teachers assigned to high-poverty middle schools in Texas aren't fully certified in the subjects they teach. That compares with 19 percent in schools with the fewest low-income students. At the high school level, the gap widens. About 37 percent of teachers in high-poverty schools lack subject certification, compared with 16.1 percent in the most affluent high schools.

These disparities compound achieve-

ment deficiencies that many low-income and minority students bring to the classroom. In the next few weeks, school districts will submit plans to the Texas Education Agency on how to use \$148 million in teacher incentive pay to improve classroom performance. Those plans must allocate significantly additional dollars to match talented teachers with disadvantaged students. Moreover, the TEA, which is responsible for reviewing all proposals, must hold the districts to that statewide objective.

Assigning less-experienced teachers to academically struggling students year after year perpetuates a cycle of poor academic achievement. And that's

See TEACHERS, Page 7

# THRIFTWAY

FORMERLY FRANKS THRIFTWAY

300 E. BROWN • 665-5451  
7 DAYS A WEEK • 8AM-8PM

Still Delivering Groceries Tuesday & Thursday

LONESTAR CARDS ARE NOW AVAILABLE  
& WIC WILL BE HERE SOON!

**2 \$5** for  
KELLOGG'S CEREAL MIX OR MATCH  
3.5 OZ. BAKED BARS, 11 OZ. CORN FLAKES, 15 OZ. RICE KRISPIES, 15 OZ. CRACKERS, 15 OZ. CRACKERS, 15 OZ. CRACKERS, 15 OZ. CRACKERS

**2 \$5** for  
WHEAT BREAD  
24 OZ. LOAF  
TENDER CRUST SPLIT TOP

**2 \$4** for  
XTRA LIQUID DETERGENT  
40-50 LOAD BOTTLE  
ASSORTED SCENTED

**3 for \$10**  
COKE, SPRITE, DR PEPPER  
12 PACK CANS

**2 \$5** for  
WESSON OIL  
48 OZ. 2 FOR \$5

**2 \$3** for  
LONG GRAIN RICE  
41 OZ. 2 FOR \$3

**59¢**  
CHUNK LIGHT TUNA  
ONCE IN THE SEA, WATER OR OIL PACK, ON 3 1/2 OZ. CANS

**89¢**  
PEDIGREE MEATTIME  
SMALL BITES - DRY DOG FOOD  
3.5 OZ. 2 FOR \$8.99

**99¢**  
VALENTINE CANDY  
RUSSELL STOVER - RED FOIL, HEART  
16 OZ.

**499**  
VALENTINE CANDY  
RUSSELL STOVER - RED ROSE FOIL, HEART  
7 OZ.

**5 \$5** for  
VALENTINE CANDY  
BRACH'S ASSORTED  
3-12 OZ. 5 FOR \$5

**449**  
HARINA PREPARADA  
QUAKER  
5 L.B.

**2 \$5** for  
HOME STYLE BAKES  
BANKET ASSORTED  
21-21.5 OZ.

**10 \$10** for  
HUNT'S SNACK PACK  
ASSORTED PUDDING OR GEL CUPS  
4 PACK

**3 \$2** for  
REFRIED BEANS  
GERBARDT'S ORIGINAL OR WITH JALAPENOS  
15.5-16 OZ. 3 FOR \$2

**2 \$4** for  
PAPER TOWELS  
5 ROLL PKG.  
SHURFINE STRONG & ABSORBENT

**2 \$4** for  
ENCHILADA SAUCE  
LAS PALMAS ASSORTED  
19 OZ. 2 FOR \$4

**2 \$4** for  
MOLE  
DOÑA MARIA  
8.1 OZ. 2 FOR \$4

**99¢**  
NOPALITOS  
DOÑA MARIA  
15 OZ.

**89¢**  
CANNED DOG FOOD  
BENLINGTON, CYCLE OR BEBOP SELECT GROUP  
13.2 OZ. 2 FOR \$8.99

**499**  
BATHROOM TISSUE  
SHURFINE VALUE  
24 ROLL

**2 \$99**  
BOLILLOS  
BAKED ROLLS  
12 CT.

**499**  
CHERRY PIE  
BONART PREPARED 8 INCH SOLID TOP  
14 OZ.

**899**  
FUDGE CAKE  
BILL'S 8 INCH DOUBLE LAYER  
48 OZ.

**2 \$5** for  
BROWNIE MIX  
BETTY CROCKER ASSORTED SUPREME  
13.2-13.5 OZ. 2 FOR \$5

**1 \$19**  
HUNT'S KETCHUP  
PERFECT SQUEEZE  
28 OZ.

**3 \$3** for  
COCKTAIL SAUCE  
KRAFT TARTAR SAUCE OR SEAFOOD  
18 OZ. 2 FOR \$3

**79¢**  
ICEBERG LETTUCE  
PREMIUM CELLO WRAPPED  
EACH

**99¢**  
BABY CARROTS  
FEELED  
1 L.B.

**2 \$5**  
DOLE SALAD BLENDS  
AMERICAN, EUROPEAN OR ITALIAN  
19 OZ. 2 FOR \$5

**4 \$1**  
JUMBO GARLIC  
FRESH  
4 FOR \$1

**2 \$6**  
PORTABELLA MUSHROOMS  
WHOLE OR SLICED  
4 OZ. 2 FOR \$6

**99¢**  
CHAYOTE SQUASH  
FRESH  
L.B.

**99¢**  
PEPPERS  
AMERICAN OR SERRANO  
L.B.

**99¢**  
CARA CARA ORANGES  
FRESH  
L.B.

**4 \$1**  
GRAPEFRUIT  
BREAKFAST SIZE  
4 FOR \$1

**2 \$3**  
SEEDLESS GRAPES  
RED OR GREEN  
2 LBS.

**2 \$5**  
VEGETABLE MEDLEYS  
EASTMAY ASSORTED  
19 OZ. 2 FOR \$5

**2 \$6** FOR  
BLUE BUNNY ASSORTED FLAVORS ICE CREAM  
HALF GAL. 50% FAT

**2 \$4** FOR  
PLAIN BUTTER - MILK HALF GAL.

**99¢**  
SORICREAM  
PLAIN  
1 OZ.

**10 \$1**  
ROMA TOMATOES  
FRESH RED RIPE  
10 FOR \$1

**3 \$1**  
GREEN BELL PEPPERS  
LARGE  
3 FOR \$1

**2 \$1**  
YELLOW ONIONS  
MEXICAN 1015 SWEET  
2 FOR \$1

**2 \$99**  
NOPALLES  
THORNLESS WHOLE CACTUS LEAVES  
L.B.

**2 \$99**  
NOPALITOS  
DICED CACTUS LEAVES  
L.B.

**99¢**  
FRESH GREENS  
COLLARD, MUSTARD OR TURNIP  
BLUNCH  
L.B.

**99¢**  
FRESH APPLES  
BALEMIN, GARD, GALA, RED OR GOLDEN DELICIOUS  
L.B.

**99¢**  
D'ANJOU PEARS  
NORTHWEST  
L.B.

**3 \$1**  
WATERMELONS  
PERSONAL  
3 LBS.

**2 \$1**  
BAKING POTATOES  
COLORADO  
2 LBS.

**99¢**  
PORK SPARERIBS  
FRESH  
L.B.

**1 \$99**  
PORK ROAST  
FRESH SIRLOIN END  
L.B.

**99¢**  
TOP ROUND ROAST  
PREFERRED TRIM BILLS, BEEF "LONDON BROIL"  
L.B.

**1 \$99**  
SHORT RIBS  
HEAVY BEEF  
L.B.

**2 \$39**  
TOP ROUND STEAK  
PREFERRED TRIM BONELESS BEEF  
L.B.

**3 \$29**  
TOP SIRLOIN STEAK  
PREFERRED TRIM BONELESS BEEF  
L.B.

**1 \$99**  
CHICKEN BREAST  
BONELESS SKINLESS - PREVIOUSLY FROZEN  
L.B.

**2 \$99**  
CATFISH FILLETS  
FARM RAISED - PRODUCT OF U.S.A.  
L.B.

**8 \$99**  
COOKED SHRIMP  
NORTHERN KING FEELED AND DEVEINED  
THIN COIN CUT  
2 LBS.

**3 \$49**  
CHEDDAR CHEESE  
WISCONSIN MARKET CUT LONGHORN  
L.B.

**2 \$6**  
SMOKED SAUSAGE  
PETTON'S REGULAR OR POLISH  
14 OZ.

**1 \$99**  
SMOKED HAM  
PETTON'S  
18 OZ.

**2 \$39**  
COOKED HAM  
PETTON'S  
18 OZ.

**3 \$99**  
RED WIENERS  
RANCH BRAND FAMILY PACK  
48 OZ.

**2 \$5**  
SMOKED SAUSAGE  
HILLSHIRE FARM SELECT GROUP  
1 L.B. 2 FOR \$5

**2 \$6**  
BEEF SMOKED SAUSAGE  
HILLSHIRE FARM  
14 OZ. 2 FOR \$6

**2 \$5**  
CHEDDAR WURST  
HILLSHIRE FARM  
1 L.B. 2 FOR \$5

MEAT DEPARTMENT SPECIALS

FAMILY PACK BONE IN SIRLOIN CUT  
**Pork Chops**

**99¢** LB.

ALWAYS FRESH, ALWAYS DELICIOUS

**10 \$10** FOR  
CHORIZO  
PETTON'S VACUUM PACK  
8 OZ.

**79¢**  
MEAT FRANKS  
PETTON'S  
12 OZ.

**99¢**  
MEAT BOLOGNA  
PETTON'S  
12 OZ.

**1 \$99**  
SMOKED BACON  
PETTON'S REGULAR OR THICK SLICED  
12 OZ.

**2 \$5**  
HAM & CHEESE LOAF  
OSCAR HAYER REG. OR HONEY CUPPED HAM OR  
1 L.B. 2 FOR \$5

**2 \$4**  
FUN PACK LUNCHEABLES  
OSCAR HAYER SELECT VARIETIES  
10.5-12.5 OZ. 2 FOR \$4

**2 \$79**  
SHAVED LUNCH MEATS  
OSCAR HAYER SELECT VARIETIES DELI STYLE  
7 OZ.

**2 \$5**  
SLICED TURKEY  
OSCAR HAYER SELECT VARIETIES  
1 L.B. 2 FOR \$5

**2 \$3**  
MEAT COTTO SALAMI  
OSCAR HAYER RED RIND MEAT BOLOGNA OR  
1 L.B. 2 FOR \$3

**2 \$5**  
COMBO PAK  
OSCAR HAYER BOLONNA/MIAMI/TURKEY  
1 L.B. 2 FOR \$5

Heard-Jones

**PRICES GOOD THRU SATURDAY FEBRUARY 24TH!**  
**MONDAY-FRIDAY 8AM-6PM • SATURDAY 8AM-4PM • CLOSED SUNDAY**

**114 N CUYLER**  
**669-7478**

**BILL HITE**  
**PHARMACIST**

**HEARD-JONES PHARMACY PRESENTS**  
**SENIOR GROUP SOLUTIONS**  
**A WORKSHOP ON NEW MEDICARE PLANS**  
**FEBRUARY 26TH AT 10 AM**  
**PAMPA SENIOR CITIZENS CENTER**

Come hear about the new Medicare plans available this year, including the changes for Part D plans. If you have Medicare Parts A & B and are paying for your supplement, you'll want to hear more. There will be special information for people with diabetes, COPD, and/or heart problems. Let us help you with your Part D donut hole.

**DAWN**  
**DISH DETERGENT**  
**89¢** 16 OZ

**GEISA**  
**PINEAPPLE**  
**3/\$1**  
BEST TYPES 6 OZ CAN

**KLEENEX**  
**FACIAL TISSUE**  
**2/\$3**  
104-200 CT BOX

**BRAWNY**  
**PAPER TOWELS**  
**79¢**  
CASE PRICE \$23.70

**CHARMIN ULTRA**  
**DIG ROLL BATH TISSUE**  
**\$1.99** 4 PACK

**ALUMINUM**  
**FOIL**  
**2/\$1**  
25 FT ROLL

**SATURDAY DINE IN**  
**FOUNTAIN SPECIAL**  
**HAMBURGER & CHIPS...99¢**  
**CHEESEBURGER & CHIPS...\$1.49**  
CALL IN ORDERS WELCOME • CHIPS 30¢ PER BAG

## Blood drive scheduled

Coffee Memorial Blood Center will be in Pampa once again to hold a blood drive. This event will be from 11 a.m. to 4 p.m. Monday at Community Christian School, which is located at Briarwood Church, 1800 W. Harvester.

All students who have a life saving friend or relative who donates blood will receive a "study buddy," which is a stuffed figure.

To make an appointment, call 1-877-574-8800, or you can just stop by any time during the blood drive to give a donation.

## Texas democrats plan for record voter turnout

AUSTIN (AP) — The Texas Democratic Party says it's making plans to handle what it predicts will be a record voter turnout in the March 4 primary.

Party chairman Boyd Richie said Friday he believes Democratic turnout to vote for Hillary Clinton or Barack Obama will exceed the modern record of 1.8 million Democratic voters in the 1988 presidential primary.

The past two presidential primaries in Texas have each attracted fewer than 1 million Democrats.

The Secretary of State's office is working with the party to make sure there are plenty of ballots and voting equipment.

### ENVIRONMENTAL

## Water could threaten old Colo. mining town

DENVER (AP) — More than 1 billion gallons of contaminated water — enough to fill 1,500 Olympic-sized swimming pools — is trapped in a tunnel in the mountains above the historic town of Leadville and threatening to blow.

Lake County Commissioners have declared a local state of emergency for fear that this winter's above-average snowpack will melt and cause a catastrophic tidal wave.

The water is backed up in abandoned mine shafts and a 2.1-mile drainage tunnel that is partially collapsed, creating the pooling of water contaminated with heavy metals.

County officials have been nervously monitoring the rising water pressure inside the mine shafts for about two years. An explosion could inundate Leadville and contaminate the Arkansas River.

"It could come out, we just don't know where," county Commissioner Carl Schaefer

said. "We're seeing changes and we're very concerned. We're not crying 'Chicken Little' here."

State and federal officials agreed Thursday to conduct a risk assessment before taking any action. Critics said something should be done immediately to ease the pressure.

Peter Soeth, a spokesman for the Bureau of Reclamation, which acquired the drainage tunnel in 1959, said there was no immediate threat to Leadville's 2,700 residents.

Officials point out that a speaker system to broadcast evacuation notices has already been installed near a mobile home park that has 300 residents near the tunnel's portal.

The tunnel normally drains water that seeps into some of the hundreds of abandoned mine shafts and other mine workings in the mountains east and south of Leadville and deposits it into the East Fork of the Arkansas River about a mile north of town.

## Trash

Cont. from Page 1

a junked vehicle as a public nuisance."

• Section 341.012, Health and Safety Code: "A county health authority may order a person to abate a public nuisance. If the public nuisance is not abated within the time specified in the order, the local prosecutor shall bring abatement proceedings or may ask the Attorney General to institute the proceedings or to assist him or her in the proceedings."

• Chapter 396, Subchapter C, Transportation Code: "A county may require a junkyard or automotive wrecking and salvage yard to be licensed by the county. The commissioners court must hold a public hearing before adopting a resolution requiring licensing of junkyards or automotive wrecking and salvage yards."

• Section 365.034, Health and Safety Code:

"The commissioners court of a county may by order prohibit the accumulation of litter for more than 30 days on a person's property within 50 feet of a public highway in the county; provide for the removal and disposition of the accumulated litter; and provide for the assessment against the property owner from which litter is removed of the costs incurred by the county in removing and disposing of the litter. The commissioners court shall send a notice by certified mail to the record property owners before the commissioners court can take action to remove or dispose of the litter."

County commissioners have the authority to vote to adopt the state statutes and enforce them, Willoughby said.

"If we have the ability to do that, then we need to look at it," said County Judge Richard Peet at Friday's meeting concerning dumping.

"I will find out the details of enforcement and punishment and present it at the next county commissioners' meeting," Willoughby said.

## Vote

Continued from Page 1

according to the secretary of state's office. The general election will be held Nov. 4.

Elections for Pampa city and school board officials will be May 10. Persons wishing to be on the city and/or school board ballots have through March 4 to file for a city position, according to City Secretary Karen Price, and through March 10 for a school board position, according to a school district spokeswoman.

Two seats on the city commission will be decided in the city race, those of Wards 2 and 4. Current commissioners are Bill Allison,

Ward 2, and Neil Fulton, Ward 4.

Three board positions will be listed on the school board ballot for Pampa Independent School District. Those whose terms are expiring and will appear on the ballot are Derrell DeLoach, Place 1; Lance DeFever, Place 2; and Dana Terry, Place 3.

A special county-wide election concerning a maintenance tax for Clarendon College - Pampa Campus will also be held May 10. The tax would be no more than five cents per \$100 valuation of taxable property and would be used exclusively for the Pampa campus. Its uses might include reducing tuition, providing new programs and/or maintaining the facility.

**Get unlimited free calling to any 5, 10 or 20 numbers on any network.**

Optional faceplates available in many fun colors.

**BUY ONE GET ONE FREE**

**Airtel HUE™**

**ONLY \$29.99**

The Airtel Hue by Samsung includes blue & red faceplates. After \$50 mail-in rebates with 2-yr. service agreement on both lines. See below for details.

come and get your love

**Choose the circle that's right for you.**

**5 my circle numbers**   **10 my circle numbers**   **20 my circle numbers**

shopalltel.com  
1-800-alltel-1

|   |  |  |  |
|---|--|--|--|
| <p><b>Airtel Retail Stores</b></p> <p><b>Borger</b><br/>1303 W. Wilson   (806) 273-2042</p> <p><b>Childress</b><br/>2004 Ave. G N.W.   (940) 837-8550</p> <p><b>Dumas</b><br/>1526 Guyane Plaza   (806) 935-5307</p> <p><b>Hereford</b><br/>701 N. 25th Hwy   (806) 364-1055</p> <p><b>For Business &amp; Government Accounts call 1-866-WLS-BIZZ or visit alltelbusiness.com</b></p> | <p><b>Pampa</b><br/>1325 N. Hobart   (806) 689-3435</p> <p><b>Shop at a participating retailer:</b><br/>Equipment &amp; promotional offers at these locations may vary.</p> <p><b>Borger</b><br/>All About Wireless   (806) 274-7452<br/>Comm. Connection   (806) 274-9444</p> <p><b>Canadian</b><br/>Canadian Parts &amp; Supply   (806) 323-8556</p> | <p><b>Clarendon</b><br/>Clarendon Outpost Co.   (806) 874-5202</p> <p><b>Dalhart</b><br/>Comm. Connection   (806) 249-8411</p> <p><b>Dumas</b><br/>Access Wireless   (806) 935-9197</p> <p><b>Hereford</b><br/>Whiteface Cellular   (806) 363-2740</p> <p><b>Pampa</b><br/>Comm. Connection   (806) 669-1551<br/>RadioShack   (806) 669-2253</p> | <p><b>Perryton</b><br/>Perryton Office Supply   (806) 435-4812</p> <p><b>Shamrock</b><br/>Mahnken Drug   (806) 256-2782</p> <p><b>Spearman</b><br/>Country Cellular   (806) 659-2541</p> <p><b>Proud Sponsor of:</b></p> |
|---|--|--|--|

Federal, state & local taxes apply. In addition, Alltel charges a monthly connectivity, regulatory & administrative surcharge up to \$1.70, federal & state Universal Service Fund fees (both vary by customer usage); & a \$11 fee of up to \$1.94 (where 911 service is available). These additional fees may not be taxes or government-required charges & are subject to change. My Circle: Available to new & existing customers on current select rate plans. Minimum rate plan of \$49.99 for 5 Circle Plan numbers; \$59.99 for 10 numbers; \$69.99 for 20 numbers. For Smart Choice Pack customers, minimum rate plan of \$69.99 for 5 Circle Plan numbers; \$89.99 for 10 numbers; \$139.99 for 20 numbers. My Circle numbers must be shared among all lines on the primary account. Not available on prepaid plans. Customer may not designate own wireless or voice mail number. Directory Assistance or 800 numbers as any of the available numbers. Calls must begin & end in your plan's calling area. Designated numbers must be within the U.S. Program may be discontinued at the discretion of Alltel. Allow 24 hours for changes to Your Circle number to become effective. **Phone Details:** Phone includes blue and red faceplates. Optional faceplates available. Phones & applicable rebates available for a limited time, while supplies last, with activation of a qualifying rate plan. Limit 1 rebate per qualifying purchase. Phone cannot be returned once mail-in rebate certificate has been submitted. Customer pays applicable taxes. See rebate certificate for details. **Additional Information:** Limited-time offer at participating locations. While supplies last. Qualifying Alltel rate plan, credit approval & approved handset required. \$25 non-refundable activation fee applies per line. \$200 early termination fee may apply per line. Offers are subject to the Alltel Terms & Conditions for Communications Services available at any Alltel store or alltel.com. All product & service marks referenced are the names, trade names, trademarks & logos of their respective owners. Screen images are simulated. ©2008 Alltel. All rights reserved.

*The future of women's health care is here...*

**Texas Plains Women's Center**

3023 N. Perryton Parkway, Suite 205  
Pampa, TX 79065

**Helping women with:**

- Excessive Menstrual Bleeding
- Urinary Incontinence
- Tubal Sterilization Without Incision in Our Office
- Routine and Advanced Gynecology
- Latest Surgical Techniques to Reduce Hospitalization
- 3D/4D Ultrasound (Gift Certificates Available)
- Aesthetic laser skin treatments available (free consult)

**We continue to strive for excellence and for offering the best and the latest treatments to meet the needs of today's women.**

**Only the Best — No Compromise**

**2008 will be GREAT!**

**806-665-9900**

### Mildred Marie Vickery, 80

Mildred Marie Vickery, 80, of Pampa, Texas, was called home by her Lord and Savior on Friday, Feb. 15, 2008, in Amarillo, Texas.

Graveside services will be at 2 p.m. Tuesday, Feb. 19, 2008, at Memory Gardens Cemetery with Paul Nachtigall, pastor of Highland Baptist Church, officiating.

Arrangements are by Carmichael-Whitley

Funeral Directors.

Mrs. Vickery was born Nov. 17, 1927, in Twitty, Texas, and had lived in Pampa most of her life. She married Allan Vickery on April 28, 1946.

She was a member of Highland Baptist Church for 52 years.



Vickery

Survivors include her husband, Allan Vickery, of the home; two daughters, Sharon Day and Barbara Vickery, both of Amarillo; one son, Michael Vickery of Lubbock; one brother, Charles Smith of Pampa; one sister, Inez Willingham

of Pampa; three grandchildren; and three great-grandchildren.

MEMORIALS: Highland Baptist Church, 1301 N. Banks, Pampa, TX 79065.

SPECIAL NOTICE: The family will receive friends from 6-8 p.m. Monday at the funeral home.

—Sign the on-line register book at [www.carmichael-whitley.com](http://www.carmichael-whitley.com).

### Anna Jo Weidler, 87

MIDLAND, Texas — Anna Jo Weidler, 87, died Feb. 14, 2008, at Midland. Services are pending with Carmichael-Whitley Funeral Directors of Pampa.

Mrs. Weidler was born May 15, 1920, in Williamstown, Mo. She came to Pampa in 1939 and married Harold Weidler on Sept. 4, 1948, in Miami. He preceded her in death in 1993.

Anna was a member of the Highland General Hospital

Auxiliary in Pampa, a co-leader of the Girl Scouts and a former member of the First Christian Church of Pampa.

She moved to Amarillo in 1993 where she was a member of the First Christian Church, and then moved to Midland in 2002.

Survivors include one son, Ronald C. Weidler of



Weidler

Amarillo; one daughter, Deborah L. Sharp and husband Jimmy of Midland; three brothers, Robert T. Smith of Pampa, Carroll Smith of Topeka, Kan., and Harold Smith of Kansas City, Kan.; four grandchildren, Sandahl Weidler of Texas, Matthew Sharp of Brownwood, Angela Jenkins of Rankin, and Jeremy Sharp

of Midland; and eight great-grandchildren.

She was preceded in death by two brothers, Bill Smith and Milton Smith; and a sister, Juanita Menn.

MEMORIALS: Alzheimer's Association, 1400 Wallace Blvd., Amarillo, TX 79106.

—Sign the on-line register book at [www.carmichael-whitley.com](http://www.carmichael-whitley.com).

## Newbury

Continued from Page 4

the parking. "If mineral rights come with the parking, fine," he added, "If not, they'll have to give me a pass up to my doctor's suite. I'm sure he would validate the parking. ..."

Retired NFL official and career educator Jim Tunney is busy on the speaking circuit.

One of his claims is that he made the highest score in history on the football officials' entrance exam. He says he got 98 out of 100 right.

"The only two things I failed were eyesight and judgment," he jokes. ...

A long-time big-time coach is Joe Paterno at Penn State. Pressure groups there finally dislodged his annual salary info: \$512,000 and change. "I'm well-paid, not overpaid, and it's more than

I need," he said.

Responding to whether he felt son Jay, now an assistant at Penn State, is ready for a head-coaching assignment, Paterno answered: "He has the ability to be a head coach, but it would be tough to take over at Penn State because it would be as if I programmed the whole thing."

Refreshing. ...

Two of my favorite pets are "peeves." Before TV came along,

radio broadcasters at football games told me nothing when they mentioned teams "moving left to right on your radio dial." What if my radio happened to be configured vertically, or I happened to be upside down?

During the Super Bowl, analyst Troy Aikman spoke of uncharted waters. Aren't such waters "uncharted?" ...

—Dr. Newbury is a speaker and author in the Metroplex.

## Teachers

Continued from Page 4

to teachers to move to the lowest-performing schools.

Texas has made student achievement gains at the elementary school level but will not be able to sustain improvement

why a portion of Dallas Achieves provides bonuses to district's

unless this teacher-student mismatch gap narrows. To accomplish that, districts have to fundamentally change the way they reward teachers and bolster underachieving students. The time for change is here.

—Arlington ISD, -\$3,070

—Austin ISD, -\$3,010

—Dallas ISD, -\$424

—Fort Worth ISD, -\$1,666

—Houston ISD, -\$1,074 (negative numbers indicate that the average teacher salary is less in the highest-minority schools.) SOURCE: The Education Trust URL: <http://www.dallasnews.com>

## Letter

Continued from Page 4

had enough money to buy from the wholesale house. I did that for several weeks, making about \$1 a day.

Then, one day a policeman stopped me and said, "You can't sell house to house because there is a city ordinance against it." So, there goes my free enterprise.

The freedom Bill had to build up a business empire was denied to me. Why?

They said I was a public nuisance. Or, was it really because Bill's descendants and others, fearing competition, had laws passed to stop me and others like me?

What is free enterprise? I think it is a man setting up a card table on a street corner to sell gadgets to passers-by. It is the Mexican with a health permit selling hot tamales from his push cart and the itinerant evangelist preaching on a downtown street corner being supported by the pocket change folks throw into his tambourine. What do you think?

Sam Godwin  
Pampa

## Events calendar

- Carl Williamson of Miami, past president of Gray County Genealogy Society, will be guest speaker at the Texas-Oklahoma Panhandle Genealogy Society meeting at 6 p.m. Feb. 18 in the Gramstorff Room of Perryton Memorial Library in Perryton. Williamson will discuss his new book, "Battle of Buffalo Wallow," which includes the story of Billy Dixon as an army scout, Amos Chapman, and a small group of soldiers who defended the area near Canadian. The meeting is open to the public.
- Friends of Aeolian-Skinner will

present two concerts St. Andrew's Episcopal Church, 1601 S. Georgia, in Amarillo on Feb. 18 and 19. Both concerts will begin at 7 p.m. Organist Gerre Hancock will perform Feb. 18 at the church and "The King's Singers," a cappella ensemble, will perform Feb. 19.

- The Red Hat Dollies Society of Pampa will meet at 11 a.m. Feb. 21 at Pampa Senior Citizens Center and for coffee at 9:30 a.m. March 4 at Harvester Donuts. For more information, call Rita at 669-9916, Vivian at 669-9297 or Emilie at 669-3580.

## Bears

Continued from Page 4

Pell Grants for polar bears. "So stop worrying, kids," said grandpa polar bear, slipping off the ice floe for a little five mile swim. "We've never had it so good."

—Bill Steigerwald is a columnist at the Pittsburgh Tribune-Review.

**DON'T LET MONEY GET IN THE WAY OF YOUR DREAMS!**



**COME TALK TO OUR EXPERIENCED LOAN OFFICERS AND LETS MAKE YOUR DREAMS REALITY! WE HAVE A LOAN FOR EVERYONE!**

**NATIONAL BANK OF COMMERCE**

An Office Of First National Bank Waupaca, Wisconsin

PAMPA • 1224 N. HOBART • 665-0022

Member FDIC SHAMROCK • 305 N. MAIN • 256-2181

CHILDRESS • 501 COMMERCE • 940-937-2514



**ATTENTION FARMERS AND RANCHERS DO YOU HAVE QUESTIONS ABOUT CROP INSURANCE?**

AGRO NATIONAL HAS THE ANSWERS.

WE WOULD LIKE TO WELCOME YOU TO A FREE CASUAL MEAL AND SEMINAR WHERE YOU CAN MEET REPRESENTATIVES AND SEE WHAT AGRO NATIONAL CAN DO FOR YOUR OPERATION. WE WILL PROVIDE YOU WITH INFORMATION ON INSURING YOUR CROP, PASTURE/RANGELAND, FARM, RANCH, HOME, EQUIPMENT AND LIVESTOCK.

**TUESDAY, FEBRUARY 19TH AT 6PM PLAZA III RESTAURANT**

IN PAMPA AT THE CORONADO CENTER IF YOU ARE UNABLE TO ATTEND BUT NEED MORE INFORMATION ABOUT OUR SERVICES PLEASE CONTACT JIM BRUTON AT THE ASHMORE AGENCY LISTED BELOW:

**Ashmore & Associates**  
INSURANCE AGENCY, LLC

1224 N HOBART  
NBC PLAZA 2 • SUITE 11  
PAMPA, TEXAS  
1-877-588-7081 TOLL FREE  
806-688-7081  
JIM BRUTON • AGENT

"FOR ALL YOUR BUSINESS AND PERSONAL NEEDS"  
[www.ashmoreassociates.com](http://www.ashmoreassociates.com)

**REMODELER?**

Remodeler Late Fees Start March 1, 2008!



STATE LAW REQUIRES ANY BUILDER/REMODELER THAT DOES INTERIOR RENOVATIONS, MATERIAL IMPROVEMENTS, OR NEW CONSTRUCTION OF \$10,000 OR MORE TO REGISTER IN ORDER TO WORK LEGALLY IN TEXAS.



IF YOU'VE NEVER WORKED ON INTERIOR REMODELING PROJECTS OF \$20,000 OR MORE, REGISTER BEFORE MARCH 1 TO AVOID PAYING A LATE FEE.

CALL TOLL-FREE 877-651-TRCC (8722) FOR MORE INFORMATION OR VISIT US ON THE WEB AT [WWW.TEXASRCC.ORG](http://WWW.TEXASRCC.ORG)

**NEWSMAKERS**

**LUBBOCK** — Urvis of Ellen J. and stepdaughter S. Trivedi, son of Don and Cheri VanHouten, was recently named to the Dean's Honor List for the 2007 fall semester at Texas Tech University.



Trivedi, a 2007 Pampa High School graduate, is pursuing a degree in biochemistry at TTU.

During the eight-week training program, Ivey completed a vigorous training schedule consisting of academics and practical instruction on water safety and survival, military customs and courtesies, seamanship skills, first aid, fire fighting and marksmanship.

A major emphasis is placed on physical fitness, health and wellness. Ivey and other recruits received instruction on the Coast Guard's core values — honor, respect and devotion to duty. Ivey will join 36,000 other men and women who comprise Coast Guard's force.

**BORGER** — Kenzi Lea Nickell, a 2007 Pampa High School graduate, was recently named to the Dean's Honor Roll for the 2007 fall semester at Frank Phillips College in Borger.



To be eligible for the list, Nickell maintained a 3.5 or higher grade point average for the semester. As a student athlete at FPC, Nickell also earned the All-American Scholar Award for her participation in softball.

Ivey is a 2002 graduate of Roscoe High School in Roscoe.

Coast Guard Seaman Heather J. Ivey, daughter

# Drilling Intentions

**Intentions to Drill**  
**HEMPHILL (BUFFALO WAL-LOW Granite Wash) Cimarex Energy Co., #5 Washita Liberty '59', 610' from North & 467' from West line, Sec. 59,A-1,H&GN, PD 13300'.**

**HEMPHILL (BUFFALO WAL-LOW Granite Wash) Forest Oil Corp., #1645 Meek, 990' from South & East line, Sec. 45,M-1,H&GN, PD 13700'.**

**HEMPHILL (HEMPHILL Granite Wash) Chevron U.S.A., Inc., #214 Isaacs '2', 1000' from North & 1050' from West line, Sec. —, G&MMB&A, PD 12000'.**

**HEMPHILL (WILDCAT & HEMPHILL Granite Wash) Cimarex Energy Co., Hobart Ranch, PD 12800', for the following wells:**

#1769, 2320' from South & 1298' from West line, Sec. 69,A-2,H&GN.  
 #1869, 1630' from South & 1700' from West line, Sec. 69,A-2,H&GN.  
 #2668, 2435' from South & 1644' from West line, Sec. 68,A-2,H&GN.  
 #2868, 1287' from South & 2039' from West line, Sec. 68,A-2,H&GN.

**HEMPHILL (WILDCAT & HEMPHILL Granite Wash) Mewbourne Oil Co., #2235 J.T. Brown, et al 'D', 1440' from South & 660' from West line, Sec. 223,C,G&MMB&A, PS 11000'.**

**HEMPHILL (WILDCAT & N.W. MENDOTA Granite Wash) Chesapeake Operating Co., #2 Mendota '33' NW, 1108' from North & 957' from West line, Sec. 33,1,I&GN, PD 14000' (BHL: 467' from North & West Sec. line) Directional well**

**HEMPHILL (WILDCAT & N.W. MENDOTA Granite Wash) Cimarex Energy Co., #8H Campbell '53', 2350' from South & 2000' from West line, Sec. 53,B-1,I&GN, PD 12000' (BHL: 467' from North & 2450' from East Sec. line) Directional well**

**HEMPHILL (WILDCAT & SHREIKEY Morrow) Range Production Co., #9 Make Believe,**

2279' from South & 1016' from West line, Sec. 78,A-2,H&GN, PD 12500'.

**HUTCHINSON (PANHANDLE) Linn Operating, Inc., #29 Crosby & Hatcher 'A', 1950' from most Northerly North line & 2100' from most Westerly West line, Sec. 5,M-24,TCRR, PD 3700'.**

**ROBERTS (ALPAR-LIPS St. Louis) Range Production Co., #11 Courson ranch, 1769' from North & 467' from West line, Sec. 1,—,BBB&C, PD 10000'. Re-Entry**

**ROBERTS (WILDCAT & RED DEER CREEK Granite Wash) Cimarex Energy Co. of Colorado, #23 Marian Osborne '26', 958' from North & 1287' from East line, Sec. 26,B-1,H&GN, PD 12000'.**

**WHEELER (BUFFALO WAL-LOW Granite Wash) Forest Oil Corp., #1260A Helton, 1750' from South & 990' from West line, Sec. 60,M-1,H&GN, PD 13900'.**

**WHEELER (WILDCAT & BUFFALO WALLOW Granite Wash) Samson Lone Star, L.L.C., #6050 Sophia, 2645' from North & 566' from West line, Sec. 50,M-1,H&GN, PD 14000' (BHL: 2200' from North & 467' from West Sec. line) Directional well**

**WHEELER (WILDCAT & FRYE RANCH Consolidated) Apache Corp., #101 R. Moore, 660' from North & East line, Sec. 1,L, J.M. Lindsey, PD 18000'.**

**WHEELER (WILDCAT & MILLS RANCH Granite Wash) Sanguine Gas Exploration, L.L.C., #1039A Davidson, 1320' from South & 1370' from West line, Sec. 39,A-7,H&GN, PD 16500'.**

**WHEELER (WILDCAT & STILES RANCH Atoka) Chesapeake Operating, Inc., #7 Atherton '69', 2360' from North & 1225' from East line, Sec. 69,A-7,H&GN, PD 18000'.**

**WHEELER (WILDCAT & STILES RANCH Atoka) JMA Energy Co. of Texas, L.L.C., #104 Burrell, 467' from North & 1930' from West line, Sec. 4,L, J.M. Lindsey, PD 16500'.**

**WHEELER (WILDCAT & STILES RANCH Atoka) Pogo Panhandle 2004, L.P., #204 Wiley, 768' from South & 331' from East line, Sec. 4,—,AB&M, PD 17000' (BHL: 467' from South & 138' from East Sec. line) Directional well**

**Oil Well Completions**  
**WHEELER (PANHANDLE) Viking Ventures, L.L.C., #4 Pike, Sec. 34,13,H&GN, spud 7-1-06, drlg. compl 7-8-06, tested 9-18-06, pumped 10 bbl. of 36 grav. oil + 32 bbl. water on 24 hour test, GOR 6000/1, TD 2567', PBD 2260' —**

**Gas Well Completions**  
**HEMPHILL (BUFFALO WAL-LOW Granite Wash) Linn Operating, Inc., #28 Hemphill-Walser '11', Sec. 11,4,AB&M, spud 9-17-07, drlg. compl 10-5-07, tested 11-13-07, TD 13256', PBD 13109' — Form 1 filed in Dominion Oklahoma Texas E&P**

**HEMPHILL (BUFFALO WAL-LOW Granite Wash) Linn Operating, Inc., #38 Lola '235', Sec. 235,C,G&MMB&A, spud 9-15-07, drlg. compl 10-4-07, tested 11-3-07, TD 13328', PBD 13253' — Form 1 filed in Dominion Oklahoma Texas E&P**

**HEMPHILL (HEMPHILL Douglas) Samson Lone Star, L.L.C., #2 Walker Ranch '10', Sec. 10,41,H&TC, spud 11-3-07, drlg. compl 11-12-07, tested 1-13-07, TD 8300', PBD 8216' —**

**HEMPHILL (HEMPHILL Granite Wash) Cimarex Energy Co., #1768 Hobart Ranch, Sec. 68,A-2,H&GN, spud 11-1-07, drlg. compl 11-20-07, tested 1-14-08, potential 14526 MCF, TD 12800', PBD 12708' —**

**HEMPHILL (N.W. MENDOTA Granite Wash) Samson Contour Energy E&P, L.L.C., #6 Wiggins '9', Sec. 9,1,I&GN, spud 8-11-07, drlg. compl 9-10-07, tested 1-19-08, TD 11900', PBD 11836' — Form 1 in Dominion Oklahoma Texas E&P**

See INTENTS, Page 9

**AMERICAN EQUIPMENT & TRAILER**  
 Since 1953  
 www.aet.us

610 N. Grand Amarillo, TX 800-687-8831  
 3707 MLK Blvd. Lubbock, TX 800-530-4775

**Truck Trailers**  
 Wilson • Clement • Lufkin • Eager Beaver • MuVall  
 Cattle • Grain • Dump • Flat • Machinery • Lowboy

## We Dare You to Find a Better Deal With DISH Network our prices start low and stay that way.

America's Top 100 over 100 favorite channels

1 - Free Spanish audio feed  
 2 - Available at no cost to all DISH Network customers. Requires single-dish antenna configuration. Additional fees may apply for existing DISH Network customers to upgrade their dish antenna.  
 3 - Available at no additional cost to DISH Network customers with subscription to qualifying programming. Requires DISH 500+ or DISH 1000+ antenna. Additional fees may apply for existing DISH Network customers to upgrade their dish antenna.  
 4 - Limited 4 weeks per contract. Monthly package price includes an equipment rental fee of \$5.00 or \$6.00 for first receiver, based on selected model. A monthly equipment rental fee of \$5.00 or \$6.00 will be charged for each receiver beyond the first, based on selected model. A \$5.00/mo. additional outlet programming access fee applies for each dual-tuner receiver; fee will be waived monthly for each such receiver continuously connected to Customer's prime line. Lines upgrade fee may apply for a second DISH receiver shared on network.  
 All prices, packages and programming subject to change without notice. Programming payments are not refundable.

Only DISH Network offers all of these options:

- 100% all-digital packages and picture
- Free DVR or HD DVR Receiver Upgrade (monthly \$5.98 DVR fee)
- Free Standard Professional Installation
- Free 3 months of HBO® and Cinemax®

**\$29.99 MONTH**

Local Channels Add to any package \$5.00/mo

**PAMPA COMMUNICATIONS INC.**  
 641 N. HOBART  
 806-665-1663

**dish NETWORK AUTHORIZED RETAILER**

## Lions Club Sweetheart

Stephanie Polasek, daughter of Eugene and Deanna Polasek, was recently named Pampa Lions Club's January Sweetheart of the Month. Her honors, activities and accomplishments include volleyball (one year); basketball (two years); track (three years); mixed choir (one year); concert choir (two years); choir solo & ensemble contest; Challenge Day participant and leader; Peer Tutor; D-FY-IT (two years); SADD (two years); elementary school mentor volunteer; and the Riot. In addition, Polasek performed in several musical productions including "Cinderella," "Beauty & The Beast," "Bugsy Malone," "King & I," "Wizard of Oz," and the "Nutcracker." She is a member of First Baptist Church and First Baptist Church Youth Group and has participated in choir European Studies Tour to Paris, London, Wales, Scotland and Ireland. Her work experience includes office assistant/receptionist at Memory Gardens Cemetery and Mausoleum and personal assistant. After high school, she plans to pursue bachelor's and master's degrees in psychology.

▲ Stephanie Polasek

## Panhandle-Plains Land Bank

Fixed Rate 6.40%

Compare our rate and service for the best deal around.

2008 Cash Patronage Checks to be delivered in early March!  
 Farm • Ranch • Rural Recreational Tracts

Come See J. Alan Eubank for details  
 2526 Perryton Pkwy/ Pampa, Tx/ 806-669-1126

**Panhandle-Plains LAND BANK**

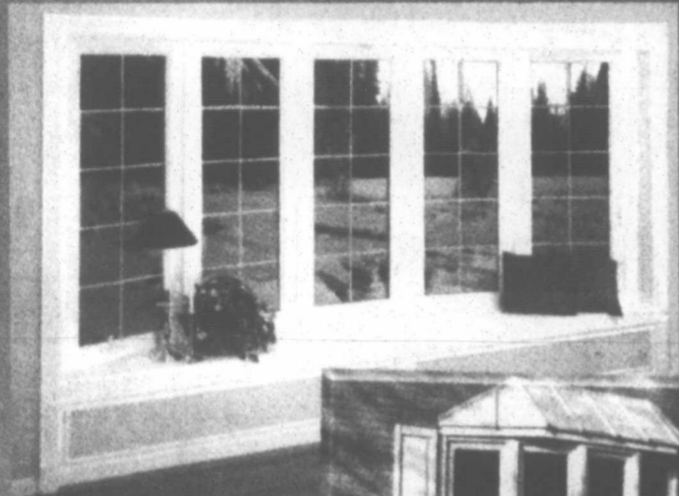
**EQUAL HOUSING LENDER**

Current 15 year Fixed Rate. Call for a quote.  
 APR FPR 15 Year Rate is 6.68%.





# Start Saving This Year With Energy Efficient Windows!



Windows

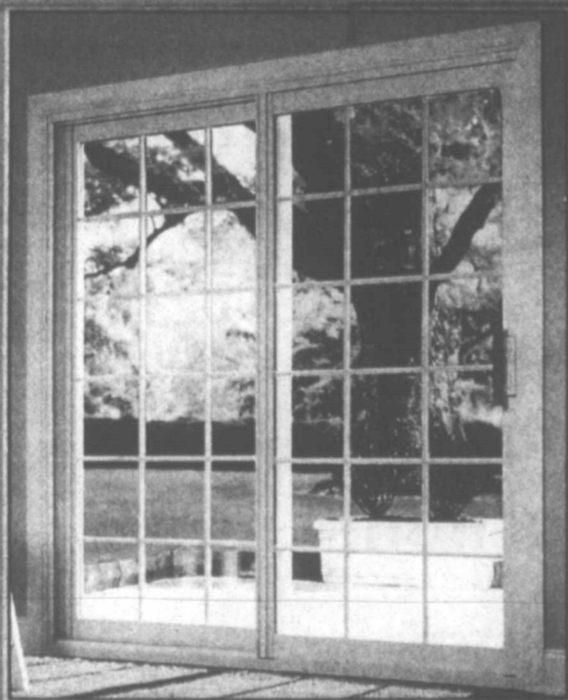


Internal Grids  
And Tilt-In  
Sashes Allow  
You To Clean  
Both Glass  
Surfaces Inside  
Your Home!

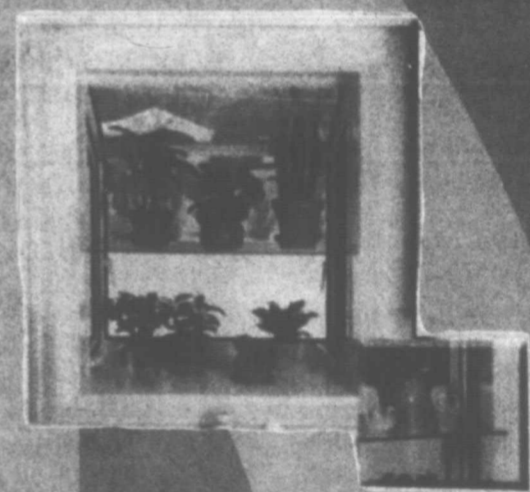


No Maintenance • Superior Insulation  
A Multitude Of Styles And Colors  
Foam Filled Frames Give You  
Superior Protection From Heat Loss!

**Call For A FREE In-Home Estimate  
or Stop By Our Showroom Located  
At 2800 Hobbs Rd.**



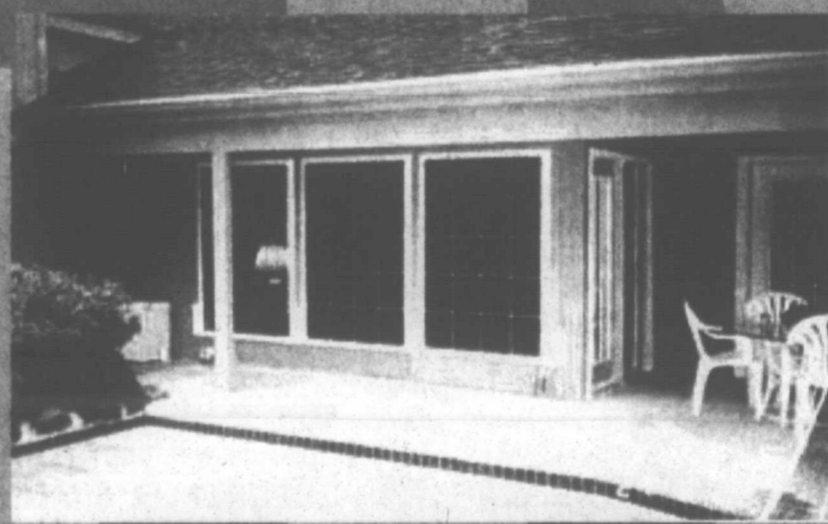
**\$75 off  
Per Window**  
Offer Valid Thru  
March 15, 2008



New! Garden Windows!

Doors

Reduce noise and block out drafts.



**BIG STATE  
REMODELING**

Serving the Texas &  
Oklahoma Panhandles

**806.358.7418**

**888.711.6303**

**2800 HOBBS RD.**

100% FINANCING AVAILABLE (WAO)  
[www.bigstateremodeling.com](http://www.bigstateremodeling.com)

**Sample ballots  
for  
Gray County  
March 4  
election**

**Democratic  
Ballot**

**same for all  
precincts**

|  |   |
|--|---|
| <b>DEMOCRATIC PARTY    PARTIDO DEMOCRATA</b><br><b>PRIMARY ELECTION    OFFICIAL BALLOT</b><br><b>ELECCION PRIMARIA    BOLETA OFICIAL</b><br>Gray County, Texas<br><i>Condado de Gray, Texas</i><br><b>March 04, 2008 - 4 de marzo de 2008</b>  |   |
| Precinct <i>Precinto</i> 1   |   |
| <b>Instruction Text:</b><br>Please use a black or blue pen to mark your ballot. To vote for your choice in each contest, completely fill in the box provided to the left of your choice.<br><i>Nota de Instrucción:</i><br>Por favor use una pluma de tinta negra o azul para marcar su boleta. Para votar por su selección en cada carrera, llene completamente el espacio cuadrado a la izquierda de su selección. | <b>United States Representative, District 13</b><br><i>Representante de los Estados Unidos, Distrito Núm. 13</i><br><input type="checkbox"/> Roger James Waun                             |
| I am a Democrat and understand that I am ineligible to vote or participate in another political party's primary election or convention during this voting year.<br><i>Yo soy Demócrata y comprendo que no estoy elegible para votar o participar en la elección primaria o la convención de algún otro partido político durante este año electoral.</i>  | <b>Railroad Commissioner</b><br><i>Comisionado de Ferrocarriles</i><br><input type="checkbox"/> Mark Thompson<br><input type="checkbox"/> Art Hall<br><input type="checkbox"/> Dale Henry |
| <b>Preference for Presidential Nominee</b><br>You may vote for one presidential candidate whose name appears on the ballot by choosing the option to the left of the name of your choice.<br><i>Preferencia para un Candidato Nombrado para Presidente</i><br>Usted puede votar por un candidato para presidente cuyo nombre aparece en la boleta escogiendo la opción al lado izquierdo del nombre que usted elija. | <b>Chief Justice, Supreme Court</b><br><i>Juez Presidente, Corte Suprema</i><br><input type="checkbox"/> Jim Jordan   |
| <input type="checkbox"/> Joe Biden<br><input type="checkbox"/> Barack Obama<br><input type="checkbox"/> Bill Richardson<br><input type="checkbox"/> Christopher J. Dodd<br><input type="checkbox"/> Hillary Clinton<br><input type="checkbox"/> John Edwards   | <b>Justice, Supreme Court, Place 7</b><br><i>Juez, Corte Suprema, Lugar Núm. 7</i><br><input type="checkbox"/> Baltasar D. Cruz<br><input type="checkbox"/> Sam Houston                   |
| <b>United States Senator</b><br><i>Senador de los Estados Unidos</i><br><input type="checkbox"/> Richard J. (Rick) Noriega<br><input type="checkbox"/> Rhett R. Smith<br><input type="checkbox"/> Gene Kelly<br><input type="checkbox"/> Ray McMurrey  | <b>Justice, Supreme Court, Place 8</b><br><i>Juez, Corte Suprema, Lugar Núm. 8</i><br><input type="checkbox"/> Linda Reyna Yañez<br><input type="checkbox"/> Susan Criss                  |
|  | <b>Judge, Court of Criminal Appeals, Place 3</b><br><i>Juez, Corte de Apelaciones Criminales, Lugar Núm. 3</i><br><input type="checkbox"/> Susan Strawn                                   |
|  | <b>Judge, Court of Criminal Appeals, Place 4</b><br><i>Juez, Corte de Apelaciones Criminales, Lugar Núm. 4</i><br><input type="checkbox"/> J.R. Molina                                    |

|  |   |
|--|---|
| <b>REPUBLICAN PARTY    PARTIDO REPUBLICANO</b><br><b>PRIMARY ELECTION    OFFICIAL BALLOT</b><br><b>ELECCION PRIMARIA    BOLETA OFICIAL</b><br>Gray County, Texas<br><i>Condado de Gray, Texas</i><br><b>March 04, 2008 - 4 de marzo de 2008</b>  |   |
| Precinct <i>Precinto</i> 7   |   |
| <b>Instruction Text:</b><br>Please use a black or blue pen to mark your ballot. To vote for your choice in each contest, completely fill in the box provided to the left of your choice.<br><i>Nota de Instrucción:</i><br>Por favor use una pluma de tinta negra o azul para marcar su boleta. Para votar por su selección en cada carrera, llene completamente el espacio cuadrado a la izquierda de su selección.   | <b>United States Senator</b><br><i>Senador de los Estados Unidos</i><br><input type="checkbox"/> Larry Kilgore<br><input type="checkbox"/> John Cornyn  |
| I am a Republican and understand that I am ineligible to vote or participate in another political party's primary election or convention during this voting year.<br><i>Yo soy Republicano y comprendo que no estoy elegible para votar o participar en la elección primaria o la convención de algún otro partido político durante este año electoral.</i>  | <b>United States Representative, District 13</b><br><i>Representante de los Estados Unidos, Distrito Núm. 13</i><br><input type="checkbox"/> Mac Thornberry                                       |
| <b>Preference for Presidential Nominee</b><br>You may vote for one presidential candidate whose name appears on the ballot by choosing the option to the left of the name of your choice or you may vote as uncommitted by choosing the option to the left of the choice "Uncommitted." Make only one choice.<br><i>Preferencia para un Candidato Nombrado para Presidente</i><br>Usted puede votar por un candidato para presidente cuyo nombre aparece en la boleta escogiendo la opción al lado izquierdo del nombre que usted elija o usted puede votar como votante no comprometido escogiendo la opción al lado izquierdo de las palabras "no comprometido". Haga solamente una selección. | <b>Railroad Commissioner</b><br><i>Comisionado de Ferrocarriles</i><br><input type="checkbox"/> Michael L. Williams   |
| <input type="checkbox"/> Rudy Giuliani<br><input type="checkbox"/> Fred Thompson<br><input type="checkbox"/> Mike Huckabee<br><input type="checkbox"/> Hoa Tran<br><input type="checkbox"/> Hugh Cort<br><input type="checkbox"/> Alan Keyes<br><input type="checkbox"/> Duncan Hunter<br><input type="checkbox"/> Ron Paul<br><input type="checkbox"/> John McCain<br><input type="checkbox"/> Mitt Romney<br><input type="checkbox"/> Uncommitted  | <b>Chief Justice, Supreme Court</b><br><i>Juez Presidente, Corte Suprema</i><br><input type="checkbox"/> Wallace B. Jefferson   |
|  | <b>Justice, Supreme Court, Place 7</b><br><i>Juez, Corte Suprema, Lugar Núm. 7</i><br><input type="checkbox"/> Dale Wainwright  |
|  | <b>Justice, Supreme Court, Place 8</b><br><i>Juez, Corte Suprema, Lugar Núm. 8</i><br><input type="checkbox"/> Phil Johnson   |
|  | <b>Judge, Court of Criminal Appeals, Place 3</b><br><i>Juez, Corte de Apelaciones Criminales, Lugar Núm. 3</i><br><input type="checkbox"/> Tom Price  |
|  | <b>Judge, Court of Criminal Appeals, Place 4</b><br><i>Juez, Corte de Apelaciones Criminales, Lugar Núm. 4</i><br><input type="checkbox"/> Robert Francis<br><input type="checkbox"/> Paul Womack |
|  | <b>Judge, Court of Criminal Appeals, Place 9</b><br><i>Juez, Corte de Apelaciones Criminales, Lugar Núm. 9</i><br><input type="checkbox"/> Cathy Cochran  |
|  | <b>State Senator, District 28</b><br><i>Senador Estatal, Distrito Núm. 28</i><br><input type="checkbox"/> Robert Duncan   |

**Republican  
Ballot**

**front side same  
for all precincts**







## Hard to find a bathroom when you need one?

*If you suffer from an enlarged prostate, also known as Benign Prostatic Hyperplasia (BPH), you know just how dramatically it can affect your quality of life. During the day, you're probably always on the lookout for the nearest restroom. You may be waking several times during the night to urinate. Fortunately, there's a simple and safe solution to this common condition – Cooled ThermoTherapy™.*

*Cooled ThermoTherapy is a single, non-surgical treatment that can be performed in the comfort of your urologist's office. With more than 200,000 patients treated, Cooled ThermoTherapy is designed to solve the problem of enlarged prostate without the side-effects caused by medications and surgery.*

*Why wait? For more information call  
Rene P. Grabato, M.D. at 806.665.6511.  
Do it today – your life is waiting!*



Indications, contraindications, warnings and instructions for use can be found with the product labeling packaged with this device. Federal (U.S.A.) law restricts this device by or on the order of a physician trained and/or experienced in the use of this device. This treatment is contraindicated for patients with urethral stricture, peripheral arterial disease with intermittent claudication or Leriche's Syndrome; patients who have undergone pelvic radiation therapy or have implanted active devices within 2.6 inches of the prostatic urethra. For more complete information about the benefits, risks and contraindications associated with this procedure, please contact your Urologist.

Cooled ThermoTherapy is a trademark of Urologix, Inc.  
© 2005 Urologix, Inc. All rights reserved. MCXXXX Rev B 12/06



# Clemens pressed by Congress, denies accusations

WASHINGTON (AP) — Roger Clemens struggled to find the right words under questioning during a congressional hearing Wednesday and denied new accounts of drug use made against him by former teammate and close friend Andy Pettitte.

Using words like "misremembered" and mispronouncing the last name of his chief accuser, Brian McNamee, Clemens stumbled and stumbled during his early remarks on Capitol

Hill.

Clemens' reputation and legacy were on the line, and there was the possibility that criminal charges could follow after the seven-time Cy Young Award winner testified.

"I have never taken steroids or HGH," Clemens said under oath, his voice rising. "No matter what we discuss here today, I am never going to have my name restored."

It seemed clear nearly from the start of the nearly

three-hour morning session that the committee would not treat Clemens with kid gloves, despite all the face-to-face sit-downs he did with representatives in recent days — sometimes posing for photos or signing autographs for staff members.

Exactly two months after the report was released, Clemens and McNamee were separated by one seat in the same wood-paneled room where Mark McGwire and Rafael Palmeiro saw their careers tarnished during a hearing in March 2005. In a reference to McGwire's evasions that day, Rep. Mark Souder, R-Ind., admonished Wednesday's witnesses by saying: "It's better not to talk about the past than to lie about the past."

Clemens briefly stared at McNamee, his former employee, during his accuser's opening statement and later pointed several times at his former personal trainer. For the most part, they did not look at each other.

Members of Congress questioned the credibility of both.

Committee chairman Henry Waxman pointed out

inconsistencies in Clemens' comments and accused him of possibly attempting to influence statements to the committee by the pitcher's former nanny.

Rep. Dan Burton repeatedly read remarks McNamee had made, and each time the former trainer was forced to admit they were untrue.

"This is really disgusting. You're here as a sworn witness. You're here to tell the truth," the Indiana Republican said. "You're here under oath, and yet we have lie after lie after lie after lie, of where you've told this committee and the people of this country that Roger Clemens did things — I don't know what to believe. I know one thing I don't believe and that's you."

Even this hearing seemed to split the committee along party lines, with the Democrats reserving their most pointed queries for Clemens, and the Republicans giving McNamee a rougher time.

Rep. Elijah Cummings, D-Md., set the tone within minutes, repeatedly reminding Clemens he was under oath and admonishing the pitcher to "keep your voice

up." McNamee also was asked to pull his microphone closer.

The hearing started about an hour after several teams opened spring training. This was far from the sunny settings of Florida and Arizona.

Debbie Clemens, the pitcher's wife, sat behind her husband and listened as Waxman implicated her in HGH use, citing statements by Pettitte. Later, Clemens read a statement from his wife and said she "has been broken up over this."

IRS Special Agent Jeff Novitzky, a key member of the federal prosecution team against Barry Bonds, watched from a second-row seat. Asked why by a reporter, he declined comment.

Bonds, baseball's home run king, was indicted in November on charges of perjury and obstruction of justice stemming from his 2003 testimony to a grand jury in which he denied knowingly using performance-enhancing drugs.

Because of his denials under oath, Clemens could be subjected to a similar criminal probe.

Pettitte, who was excused from testifying, said in a

statement to the committee that Clemens admitted to him as long as 10 years ago that he used HGH. Waxman read from affidavits by Pettitte and Pettitte's wife, Laura, supporting the accusations.

"Andy Pettitte is my friend. He was my friend before this. He will be my friend after this and again. I think Andy has misheard," Clemens said. "I think he misremembers."

McNamee told Mitchell that he injected Clemens 16 to 21 times with steroids and human growth hormone from 1998-01, and that Pettitte and Chuck Knoblauch used HGH. In his opening statement, McNamee said he might have injected Clemens and Knoblauch more than that.

"I have helped taint our national pastime," McNamee said. "Make no mistake: When I told Sen. Mitchell that I injected Roger Clemens with performance-enhancing drugs, I told the truth."

Waxman said McNamee, a former New York City police officer, lied to police seven years ago during an investigation of a possible rape.

**Online registration begins Feb. 11th**

|                       |         |
|-----------------------|---------|
| <b>Fees:</b>          |         |
| T-Ball 6 & under      | \$40.00 |
| Coach Pitch 8 & under | \$60.00 |
| 10-18 & under         | \$70.00 |

**For more information call 683-5150 or visit [www.highplainsfastpitch.com](http://www.highplainsfastpitch.com)**



**T-Shirts & More DAYTONA 500 SPECIAL SALE ALL NASCAR MERCHANDISE**



**50% OFF**  
IN STOCK ITEMS ONLY  
EXPIRES 2-16-08

"EXCLUDES CERTAIN ITEMS. SEE STORE ASSOCIATE FOR DETAILS.  
LET US CUSTOMIZE YOUR SHIRT FOR YOU, TEAMS, CLUBS, ORGANIZATIONS. GUARANTEED TO BE THE LOWEST PRICE YOU WILL PAY.....PERIOD."

111 W. KINGSMILL AVE PAMPA TEXAS  
[www.towerproductsinc.com/tshirts-more](http://www.towerproductsinc.com/tshirts-more)  
**GOOD LUCK HARVESTERS**

## Goodell says he has no regrets about destroying spy tapes

WASHINGTON (AP) — NFL commissioner Roger Goodell told Sen. Arlen Specter face-to-face that he doesn't regret destroying the Spygate tapes.

"I think it was the right thing to do," Goodell said Wednesday after meeting for more than an hour with Specter, the ranking Republican on the Senate Judiciary committee.

Goodell noted that "we were the ones that disclosed" the New England Patriots' illegal taping of the New York Jets' defensive signals.

"I have nothing to hide," Goodell said.

Specter, R-Pa., requested the meeting so Goodell could explain his decision to destroy the tapes and notes from the case, which go back to 2002. Patriots coach Bill Belichick was fined \$500,000 and the team was fined \$250,000. The Patriots also forfeited a first-round draft pick.

Goodell said that Belichick, New England's coach since 2000, told him that he believed the taping was legal, implying that he's been doing it since he has been the head coach.

Goodell said he did not concur.

"He said that's always been his interpretation since he's been the head coach," the commissioner said. "We are going to agree to disagree on the facts."

Specter later said: "There was confirmation that there has been taping since 2000, when coach Belichick took over."

Specter has questioned the quality of the NFL's investigation into the matter and has raised the possibility of congressional hearings if he wasn't satisfied with Goodell's answers. Specter

also raised the threat of Congress canceling the league's antitrust exemption and reiterated that in the meeting with Goodell.

Goodell also said he has not heard from Matt Walsh, the former Patriots employee who performed some videotaping duties for the team. Goodell said he has offered Walsh a deal whereby "he has to tell the truth and he has to return anything he took improperly."

Goodell also said he reserves the right to reopen the investigation if more information is uncovered.

## WINTERIZE SPECIAL

LET US FINE TUNE YOUR LAWN TOOLS!



**LAWN MOWERS**  
**18.95** +TAX

Sharpen Blades, Change Oil, Change Spark Plugs, Add Fuel Stabilizer, Clean Air Filter (New Air Filter & Oil Filter Extra)



**TRIMMERS**  
**14.95** +TAX

Clean Air Filter, Change Spark Plugs, Add Fuel Stabilizer

Briggs & Stratton Authorized Dealer

### SALE EXTENDED

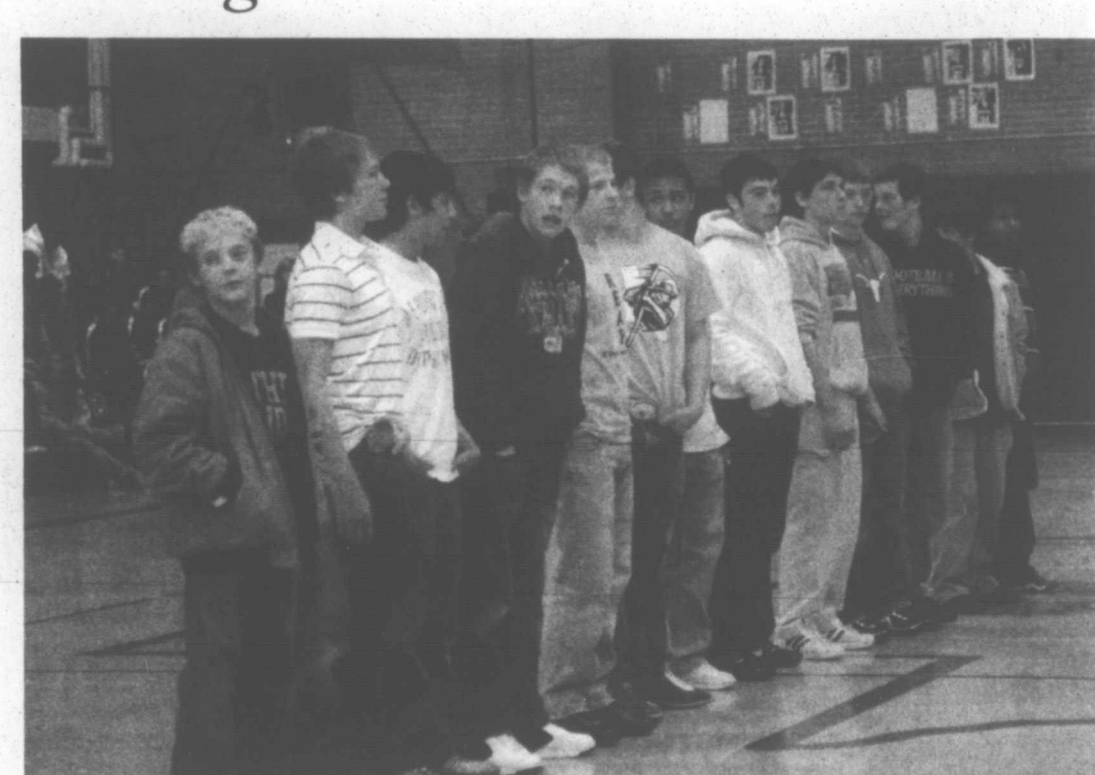
Hurry.... offer ends soon!

# WTL

POWER EQUIPMENT SALES & RENTAL

806-665-2366 • 103 S. HOBART  
MONDAY-SATURDAY 7:00AM-6:00PM  
CLOSED SUNDAY

### Wrestling



The Harvesters wrestling team line up at the pep rally Friday. They are going to the State Championships Feb. 22 and 23 at Austin's Delco Center.

Pampa News Photo by Katherine Flanary

Quality Replacement Double Pane Windows  
Lifetime Warranty  
Compare & Save  
1-800-323-7067



Beat the high cost of energy and make your home more comfortable, beautiful & valuable

Save up to 40% or more on your Energy bills

- Drastically Reduced Energy Bills
- Reduce Dust
- Free Estimates

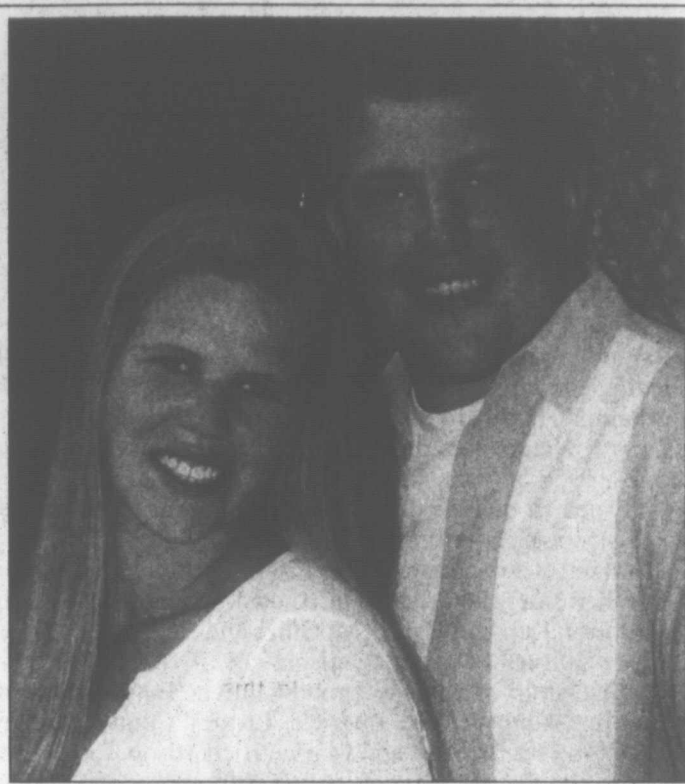
**America's Best Improvement**  
Lubbock, Texas





### Garcia/Bailey

Luzann Garcia and Mark Edward Bailey, both of Amarillo, plan to wed March 15 at First Christian Church in Pampa. The bride-to-be is the daughter of Alfonso and Paula Garcia of Pampa. She is a 2003 graduate of Pampa High School and is currently attending Milan Institute of Cosmetology in Amarillo. The future groom is the son of John and Deborah Bailey of Pampa. He graduated from PHS in 2002 and holds an associate's degree from Amarillo College. He is currently employed with Silver Star Supply in Amarillo.



### Engel/Welch

Destiny Nichole Engel of Pampa and William Bryan Welch of Austin plan to wed April 19 on a yacht the Star Gazer with Star Fleet Entertainment Yachts at Kemah, Texas. The bride-to-be is the daughter of Jim and Cherie Maxwell of Lake Arthur, N.M., and the late Joe Engel of Pampa. She graduated from Pampa High School 2001 and holds a degree from Texas A&M Galveston. She is an environmental chemist at ARI Environmental Inc., in Pasadena. The future groom is the son of Terry and Melody Welch of Austin. He graduated from Anderson High School 1999 and holds a degree from Galveston College. He is a wine representative for Glazers Distribution.

### Lifestyles Policy

1. The Pampa News will not be responsible for photographs used in announcing births, weddings, engagements or anniversaries. We also reserve the right to refuse publication of photographs of poor quality. Photographs cannot be returned unless they are accompanied by a self-addressed, stamped envelope. They may be picked up in the office after appearing in the paper.

2. All information must be submitted by 5 p.m. Wednesday (12 noon Tuesday before a holiday such as Thanksgiving or Christmas), prior to Sunday insertion.

3. Engagement, wedding and anniversary news only will be printed on Sunday.

4. Engagement announcements will be published if

See POLICY, Page 4-B

### Bridal Selection

Tonya Jewett & Jeremy Chronister  
Angela Huckins & Jim Chaney  
Kristen Bell & Isaiah Nolte  
Amy Robbins & Ian May  
Cassie Gibson & Jacob Willis

### On Eagle's Wings

113 N. Cuyler 665-0614

## Club news

Club news is published strictly on a first come, first serve basis due to space limitations. The deadline each week for Sunday's paper is Wednesday at 5 p.m., (Tuesday at 12 noon on holidays such as Thanksgiving and Christmas.) The deadline does not guarantee publication that week. Thank you.

#### Red Hat Attitude

Red Hat Attitude Royalty Red Hat Club in Pampa met Jan. 10 in the Parish Hall of Saint Matthew's Episcopal Church with Gina Albus acting as hostess. Seven members ate and then played Farkel.

The Club met again Feb. 7 at First Methodist Church with hostesses Patti Pfitzner and Jane Jacobs. Nine members and one guest, Kathy Leever, met for dinner and a game of Uno.

The club held a Reduation Ceremony for member Cindy Loughmiller who turns 50 this month.

The next meeting will be at 6:30 p.m. March 6 at The Coffee Shop with hostesses Kathy White and Donna Reynolds. To RSVP, call Reynolds at 665-4718. For more information, call Jacobs at 665-3878.

#### 20th Century

Twentieth Century Study Club of Pampa met Feb. 12 at the home of Nancy Coffee with President Vonna Wolf presiding. Eleven members

and one guest, Billy Collingsworth, were present.

The following business was conducted and announcements made:

—Phyllis White led the group in the club collect and salute to the flags.

—Myrna Orr took roll and delivered the secretary's report.

—Minutes from the previous meeting were approved as read.

—Correspondence was read by Coffee.

—Fay Harvey presented the treasurer's report.

—Committee reports were heard.

—Gail Cole was temporarily placed on the associate list.

—Harvey volunteered to be club reporter.

—Orr presented the program.

The next meeting will be Feb. 26 at the home of hostess Louise Bailey, 2617 Fir. Dot Stowers will be in

charge of the program.

#### Beta Sigma Phi

Beta Sigma Phi of Pampa met for its annual Sweetheart Banquet Feb. 9 at Pampa Country Club.

Melody Grace of Amarillo entertained.

Theresa Hines was honored as Preceptor Chi sweetheart. She was escorted by Roy Morris and crowned by Irvine Riphahn.

The late Carol Carpenter was Preceptor Theta Iota's sweetheart. Her crown and pin were presented by Carolyn Smith to her husband Don Carpenter and their daughter Kathy Bell.

#### Preceptor Theta Iota

Preceptor Theta Iota Chapter of Beta Sigma Phi in Pampa met Feb. 11 at the home of hostess Nancy Broggin with President Carolyn Smith presiding.

The following business was conducted and

announcements made:

—Vice President Pat Kindle delivered the treasurer's report in the absence of Barbara Benyshek.

—Broggin, chapter secretary, read a letter from John Warner thanking the chapter for its donation to the Children's Shopping Tour and presented a report on the

See CLUB, Page 4-B

### BEAUTY CONNECTION Gifts & More

113 W Foster m-f • 11-6 sat • 11-2

JEWELRY • CANDLES • AVON  
BELTS • PURSES • CURVES PRODUCTS  
MARK PRODUCTS • CLEARANCE CLOTHES  
& MORE • LAYAWAY & FREE GIFT WRAP

Beverly

806.664.6385

806.669.1241

Tonya

806.595.0793

806.665.0346

### VIJAY K. MOHAN, M.D., F.A.C.S., MEMBER S.A.G.E.S.

(SOCIETY OF THE AMERICAN GASTRO-INTESTINAL ENDOSCOPIC SURGEONS)

BOARD CERTIFIED GENERAL SURGEON  
SERVING PAMPA FOR 28 YEARS



SPECIALIZING IN HERNIA REPAIR, GALLBLADDER SURGERY, HEMORRHOIDECTOMY, BREAST SURGERY, LAPAROSCOPIC AND ENDOSCOPIC PROCEDURES (EGD & COLONOSCOPY) AS WELL AS MANY OTHER GENERAL SURGICAL PROCEDURES.

WE ALSO OFFER THE FOLLOWING IN OUR OFFICE BASED SURGICAL SUITE:

INFRARED COAGULATION OF HEMORRHOIDS • HEMORRHOID BANDING  
BREAST EXAMS • BREAST SONOGRAMS/ULTRASOUND • VASECTOMIES  
TREATMENT OF SPIDER BITES • SKIN LESION REMOVAL INCLUDING:  
MOLES, SKIN TAGS, SKIN CANCERS, WARTS & OTHER MINOR SURGERIES  
AND SKIN GRAFTING

104 E. 30TH • PAMPA TX • (806) • 669 • 3303

## Women caring



## for Women

### MELINDA J. HISCOCK, M.D., P.A.

Board Certified in Obstetrics and Gynecology

- ADOLESCENT GYNECOLOGY
- ROUTINE AND HIGH RISK PREGNANCY AND DELIVERY
- PREVENTATIVE WOMEN'S HEALTH CARE
- MENOPAUSAL MANAGEMENT AND HORMONE THERAPY

Serving Pampa and the Surrounding Area Since 2005

806.665.1500

3023 PERRYTON PARKWAY SUITE 202



# Dear Abby...

By Pauline & Jeanne Phillips

**DEAR ABBY:** I am a 14-year-old girl. Lately I have been dealing with overwhelming feelings of sadness and depression. Just recently I found out that my sister's ex had physically abused her and her daughter. When my sister told me, she made me swear I wouldn't tell our parents. Not only do our parents not know, but she refuses to take it to court or to report it. When I confronted her, she told me she would rather put it behind her and forget about it. I don't understand how she can let this man get away with what he did. I don't know who to turn to. If I tell my parents, my sister will never trust me again. But if I don't tell, he might come back and hurt them. Please tell me what to do. — **TERRIFIED FOR MY SISTER**

**DEAR TERRIFIED:** Your sister, like many victims of domestic violence, may blame herself for what happened to her and feel too embarrassed to report it. It is also not uncommon for men who beat up their partners to also abuse their children. For her daughter's sake, the crime(s) should have been reported when they occurred and there was solid proof. However, because she didn't do that, I can only hope that she will keep the child away from her father -- who obviously hasn't enough impulse control to safely act as a responsible parent. Some secrets are meant to be kept, but this isn't one of them. There is no reason you should carry this burden alone. Tell your parents and don't feel guilty about it. I have been advised that depression is anger turned inward. You are sad because you feel helpless to do anything about your sister's circumstances. Once your parents know what happened, they can help your sister ensure her safety and that of her daughter.

**DEAR ABBY:** Marrying one's high school sweetheart is common in my family. My parents, both of my aunts and two cousins are happily married to the people they began dating exclusively when they were teenagers. Now my older brother, "Aiden," has joined their ranks. He recently married a girl he had dated since eighth grade. They are only 23, but blissfully happy. I'm glad for my brother, but now my relatives are wondering why I haven't followed suit. There is no going back to high school for me, so I find myself trapped in awkward blind dates as loving family members -- especially my mother -- desperately try to find someone for me. How can I make them understand that I really don't want to go out with the neighbor boy who is three years younger than I am? Also, is there something wrong with me because I haven't found "the one," as my other family members have? — **OLD MAID OF THE FAMILY, MANSFIELD, TEXAS**

**DEAR OLD MAID:** The surest way to make your family understand is to keep your sense of humor about their attempts at matchmaking and not to become defensive. There is nothing wrong with being single -- people are remaining single longer now than ever before. Some men -- and women -- remain single their entire lives, and happily so. So please don't allow yourself to be made to feel time is running out because you haven't rushed to the altar. It takes some people longer than others to find that perfect match, but in most cases, "there's a pot for every lid."

## For Better Or For Worse



## Zits



## Garfield



## Beetle Bailey



## Marvin



## B.C.



## Haggar The Horrible



## Peanuts



## Blondie



## Crossword Puzzle

### CROSSWORD

By THOMAS JOSEPH

- |                               |                    |
|-------------------------------|--------------------|
| <b>ACROSS</b>                 | <b>DOWN</b>        |
| 1 Charts anew                 | 1 Sieved           |
| 7 Designer Boss               | 2 Recital piece    |
| 11 Torino's land              | 3 Homer's wife     |
| 12 De-crease?                 | 4 Sneeze cause     |
| 13 Drawn up into a ball       | 5 Pizzeria output  |
| 14 Young ones                 | 6 Blue             |
| 15 Bounds                     | 7 Make passes at   |
| 16 *12 Angry Men* star        | 8 Heavy metal      |
| 17 Glade grazer               | 9 Nemesis, for one |
| 18 Lion's helper              | 10 Re-duced        |
| 19 Incite                     | 16 Grows dim       |
| 21 Apply                      |                    |
| 22 Fancies                    |                    |
| 25 Pen point                  |                    |
| 26 Lucille's co-star          |                    |
| 27 Ducks                      |                    |
| 29 Fleckless                  |                    |
| 33 Shade                      |                    |
| 34 Pack carrier               |                    |
| 35 Easy run                   |                    |
| 36 *Death on the Nile* sleuth |                    |
| 37 Skin woe                   |                    |
| 38 Snub                       |                    |
| 39 Bassoon part               |                    |
| 40 Adolescent                 |                    |

**SMASH CANTO**  
**CLOVE**  
**CARET**  
**ERA**  
**SEC**  
**STEERS**  
**GASPING**  
**TART**  
**OLE**  
**ABE**  
**SELMA**  
**TREAT**  
**STYLE**

**Yesterday's answer**

- |                     |                      |
|---------------------|----------------------|
| 18 Chal-lenges      | 28 Was over-ly fond  |
| 20 More             | 30 Braves legend     |
| 22 Split            | 31 Campout treat     |
| 23 Ear-shaped shell | 32 Misan-thrope      |
| 24 Pilot's employer | 34 Theater box       |
| 25 Sweet drink      | 36 Orchestra setting |

## Marmaduke



"He finally did it. He dug a hole so deep he can't get out."

## The Family Circus

THE FAMILY CIRCUS, By Bil Keane



"This is the kind of bad weather I like!"

## Flo & Friends



FEBRUARY 17, 2008

SUNDAY AFTERNOON / EVENING

Table with columns for time slots (12pm to 10pm) and rows for various TV channels (KACV, KAMR, KCIT, etc.) listing programs and their descriptions.

MONDAY AFTERNOON / EVENING

FEBRUARY 18, 2008

Table with columns for time slots (12pm to 10pm) and rows for various TV channels (KACV, KAMR, KCIT, etc.) listing programs and their descriptions.

TUESDAY AFTERNOON / EVENING

FEBRUARY 19, 2008

Table with columns for time slots (12pm to 10pm) and rows for various TV channels (KACV, KAMR, KCIT, etc.) listing programs and their descriptions.

WEDNESDAY AFTERNOON / EVENING

FEBRUARY 20, 2008

Table with columns for time slots (12pm to 10pm) and rows for various TV channels (KACV, KAMR, KCIT, etc.) listing programs and their descriptions.

THURSDAY AFTERNOON / EVENING

FEBRUARY 21, 2008

Table of TV listings for Thursday afternoon/evening. Columns include network, time, and program details. Shows include 'World's Funniest Videos', 'The Sopranos', 'The Bachelor', and various news programs.

FRIDAY AFTERNOON / EVENING

FEBRUARY 22, 2008

Table of TV listings for Friday afternoon/evening. Columns include network, time, and program details. Shows include 'Days of Our Lives', 'The People's Court', 'The Simpsons', and various news programs.

SATURDAY AFTERNOON / EVENING

FEBRUARY 23, 2008

Table of TV listings for Saturday afternoon/evening. Columns include network, time, and program details. Shows include 'The Price Is Right', 'Jeopardy!', 'The Simpsons', and various news programs.

MEETINGS & PSAs

MEDICAL, SUPPORT GROUPS, ETC. MS SOCIETY. The Multiple Sclerosis Society offers a monthly program for people with MS every third Thursday of each month...

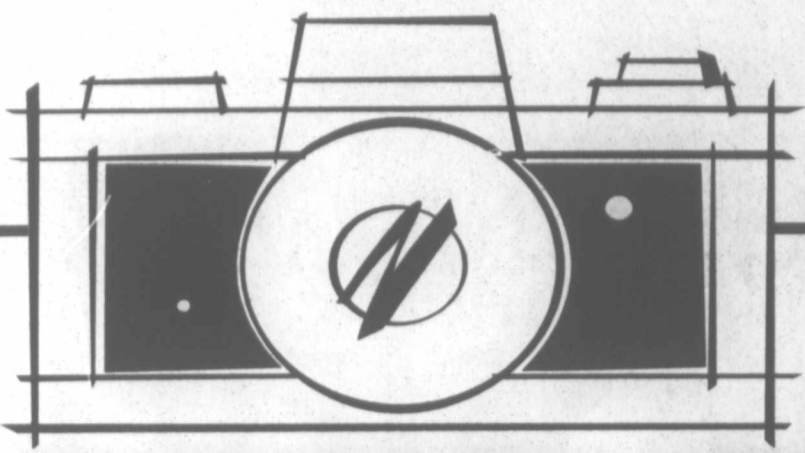
referral services to internationally recognized alternative and traditional facilities via its hotline and website, 1-800-468-6933 or www.stopaddiction.com...

PANHANDLE ALLIANCE FOR THE MENTALLY ILL. A support group for the mentally ill and family members meet the second Tuesday of the month at 7 p.m. at 218 N. Russell...

on Wheels is offering Power Wheelchairs to non-ambulatory senior citizens (65 years and up) usually at no out-of-pocket expense if they qualify...







# FOCUS ON PAMPA

With A  
**COMMUNITY CAMERA**

From  
**THE PAMPA NEWS**

We want to share with our readers events throughout the community ...so come by to borrow a camera for Church Socials, Family Reunions, School Activities or Any Other Ideas You Have!

**THE PAMPA NEWS**

**403 W. ATCHISON • 669-2525**

**21 Help Wanted**

WE need an Exp. Pulling Unit Operator. 401K, vacation, lots of hours. Call 669-3947 & leave msg.

NEEDED drivers, pay up to \$8-\$12 hr. ins. avail., 401K, 1 wk. paid vac. after 1 yr. Apply in person, Pizza Hut Delivery, 1500 N. Banks, Pampa.

CDL Driver needed, pulling Belly Dumps. Drug test required. Call 662-5005 or 663-0528.

IMMEDIATE Openings! Roustabout Company now hiring for valid CDL Drivers, Backhoe Operators and Experienced Roustabouts in the East Texas area. We offer competitive pay and a monthly performance bonus. Please call 580-819-1073 for more info.

PART-TIME Provider needed for Panhandle patients. Above average pay & trip fee. Nurses By Prescription, 806-355-1899.

**21 Help Wanted**

TEXAS Rose Steakhouse is now hiring servers & hostesses. Apply in person! No Phone Calls.

\$300 SIGN-ON BONUS Cook / Dietary Aide positions open. Exp. preferred, but will train. Apply in person, 1000 S. Kiowa, Wheeler Nursing & Rehabilitation. See Dietary Mgr. Peggy Newman.

NIGHT Hostess needed at Pampa Moose Lodge. Apply in person only, 401 E. Brown, after 5pm., Wed. thru Sat.

NEED A Career? Become a licensed Vocational Nurse! Frank Phillips College is now accepting applications for the next 12-month program beginning May 15th. THEA waived. Financial Aid to those who qualify. Background check and drug screening. Application deadline is April 1st. 806-457-4200 ext. 746

**21 Help Wanted**

WANTED Floorhand for pulling unit. Must have current Texas Driver License. Apply at 2601 W. Kentucky. No phone calls please.

MAINTENANCE Courtyard Apts. Exp. in painting, drywall & plumbing. 817-909-4766.

CUSTOMER SERVICE REP. Individual needed who is organized, professional, a good communicator and can multi-task for a fast paced job dealing with customers.

This job includes processing orders, developing relationships with customers and being an important part of the office team. Bilingual is a plus. Good Benefits. Job located in Pampa. Send resume to e-fax#: 360-838-8549 by Feb. 22.

FULL-TIME Cook wanted. Paid vacations & holidays, 401K, health & dental insurance +. St. Ann's Nursing Home in Panhandle. 537-3194.

**21 Help Wanted**

Immediately Hiring Janitorial Staff Immediate opening for P/T, evening (M-F), janitors in Pampa area. Competitive wages. Background check, drug test or ID card req. Call Molly, 806-517-6207. EOE!

THERAPIST TECHNICIAN I FIR / PAMPA \$8.14 per hour

Texas Panhandle MHMR is in need of applicants who have a high school diploma / GED. Must have a minimum of eighth grade reading-comprehension level as evidenced by score on the Adult Basic Learning Examination (ABLE) test and a valid Texas Drivers License and be insurable under the agency vehicle policy. Prefer experience working with individuals in therapeutic activities and would be interested in assisting persons with mental retardation in day program and residential settings. (3 positions available).

Apply at Texas Panhandle MHMR 901 Wallace Amarillo, TX 79106 806-358-1681

An Equal Opportunity Employer Drug Free & Smoke Free Workplace Pre-Employment Drug Screening Req.

**POTTER TRUCKING, INC.**  
DUMAS, BORGER, PAMPA, TEXAS  
AREAS  
Equal Opportunity Employer  
Call 806-935-6385 for Application

- \*\*\$14 / hr Plus for Experienced Qualified Drivers
- \*\*Retirement
- \*\*Vacations
- \*\*Health Ins., Dental, Vision, Disability, Life, Partial Insurance Paid on Wife and Children
- \*\*DOT Medical, Uniforms
- \*\*Home Every Night
- \*\*YOU MUST HAVE
- \*\*CDL W/ Hazmat and Tanker
- \*\*Good Driving Record
- \*\*Previous Employment Record
- \*\*Clear Drug & Alcohol Record
- \*\*DOT Physical

Unarmed Security Officers needed for local post. Must pass: FBI background check, Texas DPS fingerprint check & drug test. Apply in person at  
National Oilwell Guard Shack Hwy. 60, Pampa

**Wal-Mart**  
**COME GROW WITH US!**  
Wal-Mart is looking for driven people. At Wal-Mart, you will explore new opportunities and learn in a supportive and challenging work environment. As a member of the Wal-Mart team, you'll receive competitive wages and a generous benefits package including: health, 401(k), stock purchase plan, profit sharing, merchandise discounts, and career advancement opportunities. Please apply at the hiring kiosk located at your Pampa Wal-Mart or online at [WWW.walmartstores.com](http://WWW.walmartstores.com)

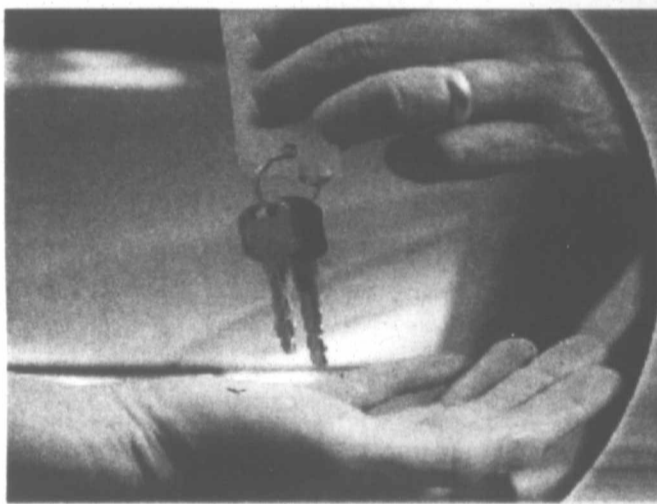
**NOW HIRING ALL POSITIONS!**

Wal-Mart will not tolerate discrimination of employment on the basis of race, color, age, sex, sexual orientation, religion, disability, ethnicity, national origin, marital status, veteran status or any other legally protected status.

**NOW HIRING:**  
CDL Driver Needed.  
General Laborers.  
Diesel Mechanic/Assistant.

Must be at least 18 years of age and submit to a drug test.

Apply in person at:  
West Texas Landscape  
120 S. Hobart  
Please No Phone Calls!!!



**EVERY VEHICLE PRICED TO MOVE!**  
**WOW!!!!!!** No credit check. Doug Boyd Motor Co.  
Over 150 vehicles to choose from.  
If you have a job and a down payment we say yes!

|  |  |  |  |  |   |
|--|--|--|--|--|---|
|  | 1998 Chevy Silverado Shortbed White, 350 automatic, 20" rims<br><b>\$5,995</b> |  | 2003 Chevy Impala Vanilla white, sunroof, loaded<br><b>\$9,850</b> |  | 2005 Chevy Monte Carlo White, Clean, Sporty<br><b>\$9,995</b>                 |
|  | 1998 Chevy Silverado X Cab Red, Stepside, Z-71<br><b>\$7,995</b>               |  | 2003 Ford F150 White, Super cab, off road roody<br><b>\$11,995</b> |  | 2005 Chrysler Town & Country Gold, 7 passenger, stop-n-go<br><b>\$12,995</b>  |
|  | 1999 Chevy S-10 X-Cab White, Blue, low miles, gas saver<br><b>\$6,995</b>      |  | 2004 Ford Explorer Sport Trac Tan, 4X4, Hurry<br><b>\$16,995</b>   |  | 2005 Jeep Liberty Silver, 4x4, Clean<br><b>\$12,995</b>                       |
|  | 2000 Ford Focus Red, Automatic, 30 mpg<br><b>\$5,995</b>                       |  | 2004 Ford F150 Red, super nice, super price<br><b>\$11,995</b>     |  | 2007 Chrysler Sebring Silver, almost new, factory warranty<br><b>\$15,995</b> |
|  | 2001 Chevy Tahoe Pewter, leather, loaded<br><b>\$15,995</b>                    |  | 2004 Ford Taurus White, loaded, drive it home<br><b>\$8,995</b>    |  | 2007 Chevy Silverado Blue graphite, 3k, factory warranty<br><b>\$19,995</b>   |

**DOUG BOYD MOTOR CO.** BUY HERE • PAY HERE • NO CREDIT CHECK  
Hwy. 70 at 60 • Pampa • 669-6062  
Monday - Saturday • 9:00 a.m. to 6:00 p.m.  
[www.dougboymotors.com](http://www.dougboymotors.com)





# WOW! NO CREDIT CHECK. DOUG BOYD MOTOR CO. OVER 150 VEHICLES TO CHOOSE FROM. IF YOU HAVE A JOB AND A DOWN PAYMENT WE SAY *YES!*



|   |  |   |
|---|--|---|
| 2002 BUICK LE SABRE<br>WHITE • STK # 5031<br><b>\$8,995</b>         | 2001 CHEVROLET SILVERADO<br>RED • STK # P1400<br><b>\$14,995</b>           | 2004 DODGE STRATUS<br>WHITE • STK # P1275<br><b>\$8,995</b>                 |
| 2002 BUICK RENDEZVOUS<br>MAROON • STK # P1062A<br><b>\$12,995</b>   | 2004 CHEVROLET AVALANCHE<br>BLUE • STK # P1406<br><b>\$19,995</b>          | 2003 DODGE CARAVAN<br>MAROON • STK # P1345<br><b>\$7,995</b>                |
| 2003 BUICK CENTURY<br>SILVER • STK # P1516<br><b>\$7,995</b>        | 2004 CHEVROLET TAHOE<br>MAROON • STK # P1421<br><b>\$19,995</b>            | 2002 DODGE RAM PICKUP<br>RED • STK # P1415<br><b>\$13,995</b>               |
| 2000 BUICK CENTURY<br>WHITE • STK # P1497<br><b>\$4,995</b>         | 2003 CHEVROLET IMPALA<br>WHITE • STK # P1447<br><b>\$9,850</b>             | 2002 DODGE RAM PICKUP<br>RED • STK # P1507A<br><b>\$13,995</b>              |
| 2003 BUICK PARK AVENUE<br>WHITE • STK # P1490<br><b>\$10,995</b>    | 2002 CHEVROLET AVALANCHE<br>PEWTER • STK # P1438<br><b>\$18,995</b>        | 2003 DODGE CARAVAN<br>WHITE • STK # P1466B<br><b>\$6,995</b>                |
| 1998 CADILLAC DEVILLE<br>WHITE • STK # P1274<br><b>\$9,850</b>      | 2004 CHEVROLET SILVERADO<br>GREEN • STK # P1458<br><b>\$15,995</b>         | 2004 DODGE INTREPID<br>WHITE • STK # P1511<br><b>\$5,995</b>                |
| 2003 CADILLAC DEVILLE<br>RED • STK # P1431<br><b>\$16,995</b>       | 2003 CHEVROLET HHR<br>PURPLE • STK # P1459<br><b>\$15,995</b>              | 1999 DODGE RAM PICKUP<br>PURPLE • STK # R1423<br><b>\$10,995</b>            |
| 1994 CADILLAC SEVILLE<br>WHITE • STK # P1450A<br><b>\$4,995</b>     | 2004 CHEVROLET IMPALA<br>RED • STK # P1495<br><b>\$10,900</b>              | 1997 DODGE RAM PICKUP<br>• STK # 4965A<br><b>\$5,000</b>                    |
| 2000 CADILLAC SEVILLE<br>PEWTER • STK # P1498<br><b>\$10,995</b>    | 1988 CHEVROLET C1500<br>WHITE • STK # P1520A<br><b>\$5,995</b>             | 2002 FORD F150<br>GREY • STK # 4640<br><b>\$14,995</b>                      |
| 1994 CADILLAC DEVILLE<br>WHITE/BLUE • STK # P1498<br><b>\$5,995</b> | 1999 CHEVROLET S10<br>BLUE • STK # P1517A<br><b>\$6,995</b>                | 2003 FORD FOCUS<br>BLACK • STK # 5010<br><b>\$6,995</b>                     |
| 1994 CHEVROLET SUBURBAN<br>MAROON • STK # 4659B<br><b>\$4,995</b>   | 2003 CHEVROLET AVALANCHE<br>CHARCOAL • STK # P1486<br><b>\$18,995</b>      | 2000 FORD F250<br>GOLD • STK # 4993<br><b>\$14,995</b>                      |
| 1999 CHEVROLET TAHOE<br>GREY • STK # P1032<br><b>\$10,995</b>       | 1999 CHEVROLET BLAZER<br>RED • STK # P1506<br><b>\$5,995</b>               | 2005 FORD EXPLORER SPORT TRAC<br>CHARCOAL • STK # P1049<br><b>\$17,995</b>  |
| 1996 CHEVROLET TAHOE<br>GREEN • STK # P1068A<br><b>\$5,995</b>      | 1998 CHEVROLET K1500<br>RED • STK # P1500A<br><b>\$7,995</b>               | 1995 FORD WINDSTAR<br>MINT • STK # P1080A<br><b>\$4,995</b>                 |
| 2000 CHEVROLET VENTURE<br>BLUE • STK # P1082A<br><b>\$5,995</b>     | 2001 CHEVROLET SUBURBAN<br>BLACK • STK # P1503<br><b>\$11,995</b>          | 2001 FORD F150<br>GOLD • STK # P1463<br><b>\$14,995</b>                     |
| 2007 CHEVROLET MONTE CARLO<br>RED • STK # P1465<br><b>\$15,995</b>  | 1995 CHEVROLET S10<br>WHITE • STK # P1504<br><b>\$5,995</b>                | 2001 FORD F150<br>WHITE • STK # R1377A<br><b>\$10,995</b>                   |
| 1999 CHEVROLET EXPRESS<br>GREEN • STK # R1203<br><b>\$6,995</b>     | 2007 CHEVROLET SILVERADO<br>BLUE GRAPHITE • STK # P1462<br><b>\$19,995</b> | 2001 FORD EXPEDITION<br>BLACK • STK # R1387<br><b>\$12,995</b>              |
| 2003 CHEVROLET AVALANCHE<br>WHITE • STK # R1320<br><b>\$21,995</b>  | 1999 CHEVROLET SUBURBAN<br>PEWTER • STK # P1176<br><b>\$7,995</b>          | 2000 FORD F150<br>RED • STK # R1408<br><b>\$6,995</b>                       |
| 2002 CHEVROLET SILVERADO<br>WHITE • STK # R1376<br><b>\$13,995</b>  | 2004 CHEVROLET IMPALA<br>GRAY • STK # P1281<br><b>\$6,995</b>              | 2002 FORD FOCUS<br>SILVER • STK # P1085A<br><b>\$6,995</b>                  |
| 2003 CHEVROLET SUBURBAN<br>SILVER • STK # R1422<br><b>\$17,995</b>  | 2007 CHRYSLER TOWN & COUNTRY<br>BLUE • STK # P1035<br><b>\$18,995</b>      | 2002 FORD F250<br>WHITE • STK # P1095A<br><b>\$14,995</b>                   |
| 2002 CHEVROLET SILVERADO<br>WHITE • STK # R1474<br><b>\$14,995</b>  | 2005 CHRYSLER TOWN & COUNTRY<br>GOLD • STK # P1036<br><b>\$12,995</b>      | 2004 FORD EXPLORER SPORT TRAC<br>TAN • STK # P1105<br><b>\$16,995</b>       |
| 1997 CHEVROLET C3500<br>WHITE • STK # P1166B<br><b>\$7,995</b>      | 2007 CHRYSLER SEBRING<br>SILVER • STK # P1464<br><b>\$15,995</b>           | 2004 FORD F150<br>MAROON • STK # P1123<br><b>\$18,995</b>                   |
| 2003 CHEVROLET SUBURBAN<br>GREEN • STK # R1474<br><b>\$17,995</b>   | 2001 CHRYSLER PT CRUISER<br>SILVER • STK # P1446<br><b>\$7,995</b>         | 2005 FORD EXPEDITION<br>GREY • STK # P1130<br><b>\$17,995</b>               |
| 2005 CHEVROLET EQUINOX<br>SILVER • STK # P1214<br><b>\$15,995</b>   | 1999 CHRYSLER SEBRING<br>WHITE • STK # P1494<br><b>\$5,995</b>             | 2002 FORD F150<br>MAROON • STK # P1221<br><b>\$15,995</b>                   |
| 2000 CHEVROLET C2500<br>WHITE • STK # P1228<br><b>\$10,995</b>      | 1999 CHRYSLER CONCORDE<br>CHAR COAL • STK # P1413<br><b>\$6,995</b>        | 2003 FORD F150<br>GREY • STK # P1230<br><b>\$15,995</b>                     |
| 1993 CHEVROLET SUBURBAN<br>SILVER • STK # P1113<br><b>\$4,995</b>   | 2000 DAEWOO LEGANZA<br>GOLD • STK # P1148A<br><b>\$4,995</b>               | 2003 FORD F150<br>MAROON • STK # P1231<br><b>\$12,995</b>                   |
| 1995 CHEVROLET SUBURBAN<br>BROWN • STK # P1139<br><b>\$4,995</b>    | 2002 DAEWOO LEGANZA<br>BLUE • STK # R1303<br><b>\$4,995</b>                | 2000 FORD WINDSTAR<br>MAROON • STK # P1249<br><b>\$9,850</b>                |
| 1995 CHEVROLET SUBURBAN<br>BROWN • STK # P1139<br><b>\$4,995</b>    | 2000 DODGE CARAVAN<br>SILVER • STK # P1015<br><b>\$7,995</b>               | 1999 FORD EXPEDITION<br>WHITE • STK # P1256<br><b>\$10,995</b>              |
| 2004 CHEVROLET SILVERADO<br>WHITE • STK # P1290<br><b>\$13,995</b>  | 2002 DODGE RAM PICKUP<br>SILVER/BLUE • STK # R1476<br><b>\$13,995</b>      | 1998 FORD F150<br>TAN • STK # P1257<br><b>\$7,995</b>                       |
| 2000 CHEVROLET TAHOE<br>RED • STK # P1321<br><b>\$14,995</b>        | 1999 DODGE RAM PICKUP<br>WHITE • STK # P1489<br><b>\$8,995</b>             | 2001 FORD F150<br>WHITE • STK # P1288<br><b>\$10,995</b>                    |
| 2001 CHEVROLET SILVERADO<br>RED • STK # P1322<br><b>\$10,995</b>    | 2005 DODGE RAM PICKUP<br>BURGUNDY • STK # P1136A<br><b>\$19,995</b>        | 2000 FORD FOCUS<br>RED • STK # P1308<br><b>\$5,995</b>                      |
| 2001 CHEVROLET TAHOE<br>PEWTER • STK # P1326<br><b>\$15,995</b>     | 2001 DODGE RAM PICKUP<br>WHITE • STK # P1195<br><b>\$12,995</b>            | 2006 FORD F150/KING RANCH<br>COPPER/PEWTER • STK # P1398<br><b>\$29,995</b> |
| 2002 CHEVROLET SUBURBAN<br>BLUE • STK # P1331<br><b>\$13,995</b>    | 2003 DODGE RAM PICKUP<br>SILVER • STK # P1197<br><b>\$15,995</b>           | 1998 FORD F150<br>BLUE • STK # P1181<br><b>\$7,995</b>                      |
| 2005 CHEVROLET SILVERADO<br>WHITE • STK # P1341<br><b>\$17,995</b>  | 2003 DODGE RAM PICKUP<br>WHITE • STK # P1215<br><b>\$15,995</b>            | 2005 FORD TAURUS<br>MAROON • STK # P1237<br><b>\$10,995</b>                 |
| 2004 CHEVROLET SILVERADO<br>WHITE • STK # P1383<br><b>\$18,995</b>  | 2005 DODGE RAM PICKUP<br>BLACK • STK # P1225A<br><b>\$19,995</b>           | 2003 FORD TAURUS<br>SLATE • STK # P1250<br><b>\$6,995</b>                   |
| 2003 CHEVROLET CAVALIER<br>BLACK • STK # P1401<br><b>\$8,995</b>    | 2006 DODGE RAM PICKUP<br>TAN • STK # P1245<br><b>\$21,995</b>              | 1999 FORD F250<br>WHITE • STK # P1342<br><b>\$13,995</b>                    |
| 2003 CHEVROLET MALIBU<br>TAN • STK # P1402<br><b>\$8,995</b>        | 2003 DODGE RAM PICKUP<br>BLUE • STK # P1267<br><b>\$17,995</b>             | 2001 FORD ESCAPE<br>RED • STK # P1453<br><b>\$9,995</b>                     |
| 1997 CHEVROLET C2500<br>WHITE • STK # P1404<br><b>\$5,995</b>       | 2006 DODGE NEON<br>GREY • STK # P1156A<br><b>\$5,995</b>                   | 2000 FORD EXPLORER<br>BLACK • STK # P1499A<br><b>\$0</b>                    |
| 2002 CHEVROLET CAVALIER<br>WHITE • STK # P1414<br><b>\$4,995</b>    | 2002 DODGE RAM VAN<br>HUNTER GREEN • STK # P1380<br><b>\$7,995</b>         | 2001 FORD F150<br>GOLD • STK # P1519<br><b>\$10,995</b>                     |

## DOUG BOYD MOTOR CO.

Open 9:00 am - 6:00 pm • Monday-Saturday

Hwy 60 @ Hwy 70 • Pampa • 669-6062

WWW.DOUGBOYDMOTORS.COM





# PRESIDENTS' DAY SALES DRIVE

**NEW 2007 BUICK LUCERNE CXL**  
 MSRP \$34,010  
 C/S DISC. \$2,000  
 REBATE \$2,500  
 PRES DAY REBATE \$1,000  
**Sell Price \$28,510**  
 stk# B06016



**NEW 2008 MALIBU LS**  
 MSRP \$20,225  
 C/S DISC. \$411  
**Sell Price \$19,814**  
 stk# C08011



**NEW 2008 CHEVROLET AVALANCHE LT - 2WD**  
 MSRP \$34,565  
 C/S DISC. \$2,000  
 REBATE \$2,000  
 PRES DAY REBATE \$1,000  
**Sell Price \$29,565**  
 stk# C07264



**NEW 2008 CHEVROLET SILVERADO 2WD - REG CAB - SWB - V8**  
 MSRP \$20,915  
 C/S DISC. \$924  
 REBATE \$1,500  
 PRES DAY REBATE \$1,000  
**Sell Price \$17,491**  
 stk# C08020




GEORGE BULLARD



JAY HOLMES

**NEW 2008 CHEVROLET SILVERADO 1500 2WD - EXT CAB**  
 MSRP \$30,230  
 C/S DISC. \$2,000  
 REBATE \$2,000  
 PRES DAY REBATE \$1,000  
**Sell Price \$25,230**  
 stk# C07264




PAT WALSH



TOM BIBLE

**NEW 2008 CHEVROLET SILVERADO 1500 4WD - EXT CAB**  
 MSRP \$31,910  
 C/S DISC. \$2,000  
 REBATE \$2,000  
 PRES DAY REBATE \$1,000  
**Sell Price \$26,910**  
 stk# C07261




STEVE BUSSE

**NEW 2008 GMC SIERRA 2WD - CREW CAB**  
 MSRP \$29,915  
 C/S DISC. \$1,960  
 REBATE \$2,000  
 PRES DAY REBATE \$1,000  
**Sell Price \$24,995**  
 stk# C07011



**NEW 2008 GMC SIERRA 1500 4WD - CREW CAB**  
 MSRP \$35,535  
 C/S DISC. \$2,000  
 REBATE \$2,000  
 PRES DAY REBATE \$1,000  
**Sell Price \$30,535**  
 stk# G07092



**NEW 2008 GMC YUKON 2WD**  
 MSRP \$37,125  
 C/S DISC. \$2,200  
 REBATE \$2,000  
 PRES DAY REBATE \$1,000  
**Sell Price \$31,925**  
 stk# G07114



**NEW 2008 GMC ACADIA FWD SLE**  
 MSRP \$30,905  
 C/S DISC. \$300  
 REBATE \$500  
**Sell Price \$30,105**  
 stk# G08011



**SALE ENDS  
 FEBRUARY 29TH, 2008**



## CULBERSON-STOWERS, INC.



805 N Hobart • 665-1665 • www.culbersonautos.com



# Study: Older men may delay prostate cancer treatment

By **MARILYNN MARCHIONE**  
AP Medical Writer

Older men with early-stage prostate cancer are not taking a big risk if they keep an eye on the disease instead of treating it right away, suggests the largest study to look at this issue since PSA tests became popular.

Only 10 percent of the 9,000 men in the study who chose to delay or skip treatment had died of prostate cancer a decade later. The vast majority were alive without significantly worsening symptoms or had died of other causes.

Even the 30 percent who eventually sought treatment were able to delay it for an average of 11 years.

"It is important news," said Dr. Otis Brawley, chief medical officer of the American Cancer Society. "It may persuade some middle-of-the-roaders that we are overtreating this disease," and that PSA testing may be amplifying the problem, he said. The PSA blood test to help detect tumors has been widely used since the 1990s.

Grace Lu-Yao of Robert Wood Johnson Medical School in New Jersey led the study and reported results at

a cancer conference in San Francisco.

Whether to treat prostate cancer is one of the biggest medical dilemmas today. The disease is the most common cancer in American men — about 220,000 cases will be diagnosed this year — but most tumors grow so slowly they never threaten lives. There is no sure way to tell which tumors will.

PSA tests can help find tumors many years before they cause symptoms, but routine screening of men at average risk of the disease is not recommended, because there is no proof it saves lives.

Prostate cancer treatments are tough, especially on older men. Many men are left with sexual or bladder control problems. Some doctors instead recommend "watchful waiting" to monitor signs of the disease and treat only if they worsen, but smaller studies have given conflicting views of the safety of that approach.

The new study looked at the natural course of the disease in men who chose that option. It is the first involving so many older men — half were over 75 — and so many whose tumors were found through PSA tests.

Using the federal government's cancer database, researchers studied 9,018 men diagnosed from 1992-2002 with early-stage prostate cancer who did not get surgery, radiation or hormone therapy for at least six months. Most never got any treatment at all.

A decade later, 3 percent to 7 percent of those with low- or moderate-grade tumors (rated by how aggressive the cells appear) had died of prostate cancer, versus 23 percent of those with high-grade tumors. Overall, prostate cancer killed 10 percent of them.

"The great majority of patients ... are going to die of something else," so most older men with early-stage tumors could delay treatment, Lu-Yao said.

"If people are younger or have more advanced disease, I wouldn't say this is a safe option," but most cases are diagnosed in men 68 or older, and most are early stage, she noted.

The National Cancer Institute paid for the study. It is not the final word — that usually comes from studies where similar groups of patients are randomly assigned to get one treatment

or another, and the results compared. But absent that kind of evidence, this large study "does show that a large number of men do well with no initial treatment and indeed with no treatment long term," Brawley said.

Dr. Howard Sandler, a radiation and prostate spe-

cialist at the University of Michigan, agreed, but cautioned, "there are exceptions to every rule," and some very active, healthy older men may do better having treatment right away, along with older men who have higher-grade tumors.

## 'Bee Mine'



COURTESY PHOTO

Danielle Savoie, an eighth grader at Pampa Junior High School, poses here with a recent school art project she titled "Bee mine."

## Food

Continued from Page 4-B

Beltsville Human Nutrition Research Center (BHNRC) at Beltsville, Md.

ARS is the U.S. Department of Agriculture's (USDA) chief scientific research agency.

CNMap is part of the BHNRC's Community Nutrition Initiative coordinated by Ellen Harris, assistant center director. CNMap provides user-friendly information on food and nutrition indicators by state — compared to national levels — for nutritionists, researchers, educators and consumers.

Easy-to-read customized tables and color-coded maps can be accessed by anyone on the Internet. Indicators include data on estimated nutrient intakes, eating patterns, physical activity, body weight, demographics and food security. Food security is defined as an individual's ability to access enough food to lead an active, healthy life. Policy makers and public health workers can use these pro-

files to investigate diet and health issues that may be of concern both at the local and state level.

Indicators are obtained from a variety of sources. The primary source of data for Version 2 is "What We Eat in America," the BHNRC-managed dietary intake interview component of the National Health and Nutrition Examination Survey. These data are combined with data from the U.S. Bureau of the Census, USDA Agricultural Marketing Service and USDA Food and Nutrition Service.

The Map Gallery provides percentages of individuals, state-by-state, who meet MyPyramid.gov food group recommendations, which include specified amounts of vegetables, grains, fruits, meats and dairy. Users can also look up percentages of individuals, state-by-state, who are at risk of nutrient inadequacy, or excess, for specific nutrients from food sources.

To access the Community Nutrition Map, Version 2, go to: <http://www.ars.usda.gov/Services/docs.htm?docid=15656>

Then, click on any state to begin viewing data.



## FORD FAMILY CHIROPRACTIC WELCOMES DR. SAMANTHA FORD



In a continuing effort to accommodate our patients, FORD FAMILY CHIROPRACTIC is pleased to welcome Samantha A. Ford, D.C. to our practice.

Dr. Samantha graduated Summa Cum Laude and Valedictorian of her class with a Doctor of Chiropractic degree from Texas Chiropractic College in Pasadena, TX. She completed her pre-med studies at Texas Tech University and holds a B.S. degree in Human Biology.

Of special note, Dr. Samantha is certified in Activator technique and Kinesiotaping and brings to our practice a wealth of knowledge about rehab and soft tissue work.

Dr. Samantha is licensed by the Texas Board of Chiropractic and is a member of the American Chiropractic Association and the Texas Chiropractic Association.

Welcome home, Dr. Samantha!

Call to set up an appointment to discuss a care program for you that may include specific spinal adjustments, exercise recommendations, nutritional advice or other conservative methods of care based on your health history, age, current condition and lifestyle.

FORD FAMILY CHIROPRACTIC  
Rehabilitation & Wellness Center  
791 N. P...

OFFICE HOURS BY APPOINTMENT  
RENE P. GRABER, D.C.

# The Urology Clinic

KIDNEY STONES • SHOCK WAVE LITHOTRIPSY • LASER TREATMENT  
URINARY INCONTINENCE • VOIDING DYSFUNCTION  
PROSTATIC DISEASE • CRYOTHERAPY FOR PROSTATE  
MALE SEXUAL DYSFUNCTION • MALE INFERTILITY  
URINARY TRACT • PEDIATRIC  
OFFICE PROCEDURES INCLUDE:  
URODYNAMICS • ULTRASOUND • URASECTOMY  
PROSTATE BIOPSY • COOL THERAPY

2931 PERRYTON PARKWAY • PAMPA, TEXAS 79065  
806-665-6511 • 800-642-2146