

THE

VOLUME XXVIII

BORDEN

STAR

Garza

Lynn

Scurry

Dawson

Howard

August 12, 1998

Serving the Counties of Borden, Dawson, Garza, Howard, Lynn & Scurry

Borden County ISD To Begin 1998-99 School Year . . .

Dear Students, Parents, and Borden County School Community,

The 1998-99 school year will begin on Monday, August 17th. The length of the school day will be identical to last year, beginning at 8:00 a.m. and conclude at 3:50 p.m. each day.

New employees for the 1998-99 school year are as follows: Mr. Darin Ardteacher, Mrs. Mary Airhart-counselor, Mr. Nathan Gutschke-teacher/band director, Mr. Allan Wootan-teacher/coach, Mrs. Judy Wootan-teacher, Mrs. Tracy Cooley-food service, and Mrs. Dawn Gutschke-instructional aide.

The new learning resource center is almost complete, and the carpet has finally been replaced in the junior high and high school locker areas of the school. Borden County students will have access to a wealth of educational resources and information in the near future as the final equipment is being installed and connections made for a direct connection to the internet. Students in grades 9-12 will also have the option to take new courses that will be offered this year in art, speech, advanced placement English IV, and ad-

vanced placement Biology. The Borden County School Community will need to monitor the upcoming legislative session that will take place later during the school year extremely close. The hold-harmless portion of the school finance system that was developed to equalize school wealth will most likely be attacked by the legislature. Please be advised that the district's fund balance is the only thing that will give the Borden County School any type of security or longevity if the legislature ever does away with the hold-harmless clause of the School Finance Bill. Therefore, it is highly possible that your efforts will be needed this year as we request your help in writing letters and contacting our state legislators.

The Borden County School District received an Exemplary Accreditation Rating from the Texas Education Agency for the 1997-98 school year. This is the highest accreditation rating that can be achieved by a school district in the State. Therefore, we are extremely proud of our

students and faculty members for this outstanding accomplishment. We are looking forward to another successful year academically as well as in the extracurricular areas.

Your normal tremendous support of the Borden County School will be greatly appreciated for the 1998-99 school year. Parents are encouraged to be involved in their child's educational process in order to maximize their respective successes and achievements. We encourage you to contact your child's teachers or the school administration if your child is having problems in classes or extracurricular activities. Please remember that early intervention is the key to preventing a serious problem as related to all aspects of your child's educational experience.

Please call the central office or the principal's office at the following phone numbers if you have questions concerning the 1998-99 school year at 806/756-4313 or 806/7856-43314.

Jimmy Thomas,
Superintendent



Getting Ready for Football: Borden County Jr. High cheerleaders attended a one-day camp conducted by Mrs. Richey last week. Pictured are top row, (L. to R.) Michele Bond and Micah Hensley; bottom row, (L. to R.) Shayla Gass and Tabitha Grant.

The high school cheerleaders also attended a camp held last week in preparation of the 1998-99 Coyote football season. High school cheerleaders are: Erica Schooler; Kaci Poole; Crystal Dye; Holly Thomas; Krystle Lee and Rebekah Hensley. This years Coyote mascot is Sr. Brande Wells.



Still Enjoying Summer . . . Kate and Tyler Wallace along with "Sweetie" and "Scarlett" are making the most of the last days of summer vacation while taking their morning walk.

Borden County ISD To Begin 1998-99 School Year

Information Items That Pertain To The School Year Are as Follows

1. High school students and new students will be allowed to continue early registration from now until the end of the day on Thursday, August 14. Early registration hours will be from 9:00 a.m. to 5:00 p.m. each day at the school principal's office.
2. Classes will begin at 8:00 a.m. and dismiss at 3:50 p.m. each day. Please note that students are not to arrive at school prior to 7:50 a.m. unless arrangements have been made with the school principal.
3. Buses will run according to the above schedule. Bus transportation will be provided for students living east of Highway 669 and south of Highway 180 for students living within the 2 mile radius of the Borden County School. Bus routes will be modified or not traveled when weather conditions warrant or the safety of a child has the potential to be compromised according to the discretion of the school administration or bus driver. Buses will not arrive at school prior to 7:50 a.m. unless circumstances create a situation that causes a bus to arrive earlier than this specified time.
4. Season tickets for home athletic events may be purchased beginning August 17, 1998, in the superintendent's office or at the first home football game. The price for season tickets will be \$20.00.
5. School annuals may be purchased in the superintendent's office for \$20.00.
6. An official school calendar, an official dress code, a tentative class schedule for grades K-12, and a list of recommended school supplies for grades K-5 are listed in this week's paper. You will be notified of changes in the school calendar during the school year as a result of inclement weather or other unforeseen circumstances.
7. Delays in the start of school, early dismissals, and school cancellations that take place as a result of inclement weather will be reported as early as possible to the following area televisions and radio stations: KAMC TV Channel 28 in Lubbock, KLBK TV-Channel 13 in Lubbock, KCBD TV-Channel 11 in Lubbock, KBYG Radio Station-1400 AM in Big Spring, KPET Radio Station-690 in Lamesa, KSNY Radio Station-1450 AM and FM in Snyder, KPOS Radio Station-1370 AM and 107.3 FM in Post and KLLL Radio Station-1590 AM and 96.3 FM in Lubbock.
8. Breakfast Service will begin at 7:50 a.m. each morning. Prices for cafeteria meals for the 1997-98 school year are as follows:

<u>Breakfast</u>	<u>Lunch</u>
Regular K-12 .50c	Regular K-6th \$1.00
Reduced K-12 .30c	Regular 7th-12th \$1.25
	Reduced K-12th 40c

Borden County ISD Dress Code

Borden County School's dress code is established to teach grooming and hygiene, instill discipline, prevent disruption, avoid safety hazards, and teach respect for authority.

Borden County students shall be dressed and groomed in a manner that is clean and neat and that will not be a health and safety hazard to themselves or others. Clothing and grooming that in the principal's judgment may reasonably be expected to cause disruption of or

interference with normal school operation is prohibited.

Borden County School prohibits pictures, emblems, or writing on clothing that is lewd, offensive, vulgar, or obscene language advertises or depicts tobacco products, alcoholic beverages, drugs, or any other substance prohibited by the school refers to satanic, cult, or gang activities.

The following guidelines will be used to determine appropriate dress:

1. Dresses, skirts, split skirts and shorts should not be shorter than two inches above the knee. A student will lose the privilege of wearing shorts for the school year upon a third offense. Parents will be notified when the second offense occurs.

2. No Bicycle shorts or spandex shorts
3. No flip-flop or bathroom type footwear
4. No shirts with cut out sleeves, tank tops or muscle shirts.

5. A bare midriff is not acceptable
6. No slashed, torn or cut off jeans.
7. Boys will not wear piercing jewelry.
8. Hair shall be clean and well groomed. The following extremes should be avoided:

Color variations in the hair
Pony tails, rat tail or braids for boys

9. No beards
10. Side burns must be trimmed and not extreme
11. No hats, caps, or hoods should be worn inside the building by boys or girls

Violations of the Borden County Dress Code may be handled through the Student Code of Conduct.

BACK TO SCHOOL Supply List

Kindergarten: round edged scissors, box of 16 primary color crayons, supply box, Elmer's School Glue (NO paste), 2-#2 pencils, big eraser, gym shoes, towel for naps, large box of baby wipes or wet ones.

First Grade: 2 boxes of 16 primary color crayons, 4 or 5 - #2 pencils, supply box, scissors, hard rubber eraser, 2 medium sized Elmer's School Glue, 1-1 subject spiral notebook, (wide ruled), gym shoes, large box of baby wipes or wet ones.

Second Grade: 2 - #2 pencils, crayons, Elmer's School Glue, red grading pencil, notebook paper (wide ruled), scissors, eraser, gym shoes, ruler, large box of baby wipes or wet ones.

Third Grade: loose-leaf notebook, note-book paper

(wide ruled), spiral (wide ruled), 4-#2 pencils, 2-red pens or 4-red pencils, 12 inch ruler (metric & standard), small bottle of glue, crayons, 2 folders, gym shoes, large box of baby wipes or wet ones.

Fourth Grade: map colors, crayons, scissors, glue, notebook paper (Wide rule), solar powered calculator, 4-#2 pencils, 2-red pens, 8 folders w/pockets, ruler (metric & standard), gym shoes, large box of baby wipes or wet ones.

Fifth Grade: Wide ruled notebook paper, scissors, ruler (metric & standard), 4-red pens, blue or black pens (no rolling balls), 12 pencils (Not Mechanical), 3-77oz. glue sticks, map colors (24 count), set of 12 crayola washable formula BROAD line

Borden County School Calendar 1998-99

Semesters:

1st Semester 86 days
Aug. 17th - Dec. 18th
2nd Semester 91 days
Jan. 5th - May 28th

Holidays:

Sept. 7 - Labor Day
Nov. 25, 26, & 27
Thanksgiving
Dec. 21 - 31 - Christmas
Jan. 1 - New Year
Jan. 15 - Stock Show
Feb. 18 & 19
TEA Waiver Days
March 4th
TEA Waiver Days
March 5 - Ski Day
March 8 - 12
Spring Break
April 2 - Good Friday

Bad Weather Days:

March 26th
May 14th

Teachers Workdays:

August 12 & 13
Staff Development
August 14 - Work Day
November 25th
Staff Development
January 4 - Work Day
February 18 & 19
Staff Development
March 4
Staff Development
May 29 - Work Day
Workday

markers, set of 12 crayola washable formula FINE line markers, assignment book, spirals 179 count WIDE rule, a). 5 different colors, b). 5 matching colored folders with pockets, 24 county crayons, set of divers, 1 highlighter, large box of baby wipes or wet ones.

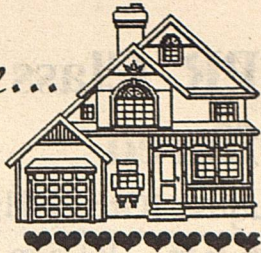
Parents Club Meeting

There will be a Parents Club meeting on Monday, August 17th beginning at 8:15 a.m. in the School Conference Room.

Be sure to attend this first meeting of 1998-99 school year and help get the Parents Club ready to assist the classes and activities of the students. Your presents will be greatly appreciated.

Heart and home...

By Julie D. Mumme
Borden County Extension Agent -
Family and Consumer Sciences



Extension programs serve people of all ages regardless of socioeconomic level, race, color, sex, religion, disability, or national origin. the Texas A&M University System, U.S. Department of Agriculture, and the County Commissioners Courts of Texas Cooperating.

Make it with Denim Contest

Along with *Demin Fest* comes an opportunity to participate in the *Make it with Denim* contest. This is an event that was developed to encourage promotion and use of denim fabrics and recognize individuals that construct garments, ensembles, or accessories that contain 100% cotton denim. Entries are judged based on quality of construction, appearance and fit, fashionable for age of model, and appropriate use of fabric. The *Make it with Denim* contest is open to all individuals regardless of age, socioeconomic level, race, color, religion, sex, disability or national origin. The contest will take place on Thursday, September 3, 1998 at the Littlefield Junior High School Auditorium. For entry information contact the county extension office at 756-4336.

School Bus Safety for Motorists

With school starting next Monday in Borden County, it is important to remember that the school buses will be out picking up children and dropping them off from their homes and at school. As motorists, we should definitely take some precautions in order to provide a safe ride for out county's youth. Here are a few tips to remember:

☺ On county roads or rural highways, watch for

school bus loading and unloading signs, as well as for children traveling to and from school (waiting for the bus at the end of a driveway, etc.)

☺ Drive slowly, especially if you know children live in the area.

☺ Watch for children playing or gathering near school bus stops.

☺ Be alert, children sometimes dart into the street or road without looking for traffic.

☺ Learn the flashing light system that alerts motorists that the bus will be stopping.

☐ **YELLOW** flashing lights mean the bus is preparing to stop and load or unload children. Motorists need to slow down and prepare to stop.

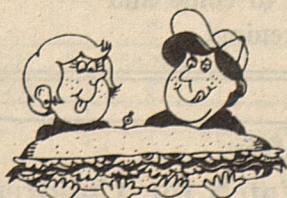
☐ **RED** flashing lights and extended stop arm mean the bus has stopped and children are boarding or exiting the bus. Motorists must come to a complete stop a safe distance from the bus and wait until the red lights stop flashing, the arm is retracted and the bus begins moving before they start driving again.

School Lunch Menu

Lunch: \$1.00 K - 6th.
\$1.25 7th - 12th.
Breakfast: - .50c

August 17th - 22nd.

MONDAY: Pizza, Corn, Okra, Cake & Milk
Breakfast: Waffles, Fruit, Juice & Milk
TUESDAY: Chicken Fried Steak, Mashed Potatoes, green Beans, Hot Rolls, Jello & Milk
Breakfast: Sausage, Biscuit, Juice & Milk
WEDNESDAY: Chili Mac, Beans, Spinach, Garlic Toast, Juice Bar & Milk
Breakfast: Muffin, Fruit, Juice & Milk
THURSDAY: Chicken Nuggets, Potatoes, Green Peas, Hot Rolls, Fruit & Milk
Breakfast: Cereal, Toast, Juice & Milk
FRIDAY: Cheeseburgers, French Salad Cup, Cookies, & Milk
Breakfast: Pancake Pups, Fruit, Juice & Milk



1998 Coyote Football Schedules - Varsity -

Aug. 20 (Scrimmage)	Dawson	There	6:00
Aug. 28 (Scrimmage)	Jayton	Here	6:00
Sept. 4	Wilson	Here	7:30
Sept. 11	Newhome	There	7:30
Sept. 18	Highland	Here	7:30
Sept. 25	Balmorhea	Here	7:30
Oct. 2	Whitharral	There	7:30
*Oct. 9	Westbrook	There	7:30
*Oct. 16	Sands	Here	7:30
*Oct. 23	Grady	There	7:30
*Oct. 30	Ira	Here	7:30
*Nov. 6	Hermleigh	There	7:30

* Denotes District Games

Junior Varsity and Junior High Schedule

Sept. 10	Jr. High	New Home	Here	6:00
	Jr. Varsity	New Home	Here	7:30
Sept. 17	Jr. High	Sands	Here	6:00
	Jr. Varsity	TBA		
Sept. 24	Jr. High	OPEN		
	Jr. Varsity	Blackwell	There	6:00
Oct. 1	Jr. High	Hermleigh	Here	6:00
	Jr. Varsity	Ira	Here	7:30
Oct. 8	Jr. High	Westbrook	Here	6:00
	Jr. Varsity	Westbrook	Here	7:30
Oct. 15	Jr. High	Sands	There	6:00
	Jr. Varsity	Highland	Here	6:00
Oct. 22	Jr. High	Grady	Here	6:00
	Jr. Varsity	Highland	There	7:30
Oct. 29	Jr. High	Ira	There	6:00
	Jr. Varsity	Ira	There	7:30

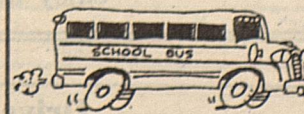
PUBLIC SERVICE ANNOUNCEMENT

Who exactly is a child with "special needs?" We know that all children have needs and that every child is special. However, the needs of some children are greater than or different from those of the "typical" child. The special need might be in the area of mental, social, emotional, physical or language development. If you are the parent or friend of a child, who lives in Borden County ISD, who might qualify for individual services, call Johnnye Smith, director, Bi-County Shared Services Arrangement, 806/756-4315. Services are available when the child turns three years of age. It is not necessary to wait until the following school year.

School Starting...

Watch Out for The Children!

A Important Reminder from:



BACK TO SCHOOL


Moore-Rains Insurance
Frances Rains Stephens
701 8th Street O'Donnell, TX
806/428-3335

PUBLIC NOTIFICATION OF NONDISCRIMINATION IN CAREER AND TECHNOLOGY EDUCATION PROGRAMS

Borden County Independent School District offers career and technology education programs in Agriculture Science, Home Economics, and Micro-Computer Applications. Admission to these programs is based on the needs of the students in the Borden County Independent School District.

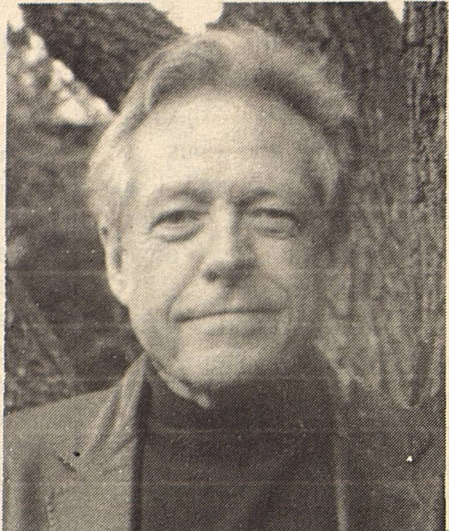
It is the policy of The Borden County School District not to discriminate on the basis of race, color, national origin, sex, or handicap in its vocational programs, services, or activities as required by Title VI of the Civil Rights Act of 1964, as amended; Title IX of the Education Amendments of 1972; and Section 504 of the Rehabilitation Act of 1973, as amended.

The Borden County Independent School District will take steps to assure that lack of English language skills will not be a barrier to admission and participation in all educational and vocational programs.



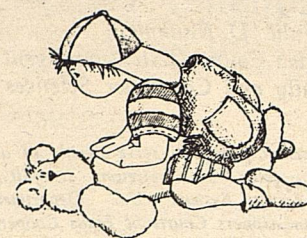
Texas Stories
A showcase of the Texas Spirit

Tumbleweed Smith
Part owner of Texas



CPR Class for the Public Offered

August 10th & 11th
 6 p.m. - 10 p.m.
 Borden County ISD
 Conference Room



Annual Meeting and Ice Cream Supper Planned

The Plains Community annual Meeting and Ice Cream Supper is planned for Thurs., August 13th at the Plains Community Center at 7:30 p.m.

Everyone is asked to bring ice cream or a dessert. Also it will be time for the annual dues to be collected.

See You There!



Bahamas, Florida, Ruidoso, Ira

What do these places have in common? Nothing. Except that perhaps you took a vacation this summer to one of them. So remember that *The Borden Star* is going to have a special edition "vacation issue" coming in August. Please send us a photo or just a note about some place--any place--that you and your family visited along with a short who?, what?, when? where? and we will include your journey in the paper. Photos will be returned--please send to *The Borden Star*, P.O. Box 137, Gail, TX 79738.

HOCKEY: The fastest Growing Sport

Hockey is the fastest growing sport of the 1990's. Ice hockey, roller hockey and in-line skating have experienced phenomenal growth in the past five years. the growth of hockey in non traditional markets, those hot weather areas with little or no hockey history, has been dramatic in recent years.

The Southwest began to discover the joys and thrills of ice hockey in 1996 when the Western Professional Hockey League began its inaugural season.

The sport, which had its start in Montreal, Canada, combines the elements of football, basketball and rodeo. It is probably the fastest sport being played today. Fans of hockey are increasing daily.

In 1995, league officials took numerous surveys to determine which cities in the Southwest lacked a winter identity and could support a professional sports team. They thought that hockey could fill the void, just as it had in places like Oklahoma City, Tulsa, Wichita, Charleston, Charlotte and Greensboro, all successful franchises in the Central and East Coast Hockey Leagues.

In most cases, the WPHL discovered pre-existing rivalries through high school football or minor league baseball. Most have a population base of

100,000 to 1,000,000 people and have modern facilities with a minimum of 6,000 seats. All the target cities were extremely supportive to the possibility of bringing professional ice hockey to their communities. For most of the cities, it would be their first professional team of any sport.

In early 1996, a press conference was held in Austin to announce the league would begin play in October of 1996. The six franchises playing that first season were the Austin Ice Bats, the Waco Wizards, the Central Texas Stampede, the Amarillo Rattlers, the El Paso Buzzards and the New Mexico Scorpions.

Now the league has three divisions: Western, Central and Eastern. The Western division teams are the Abilene Aviators, the Amarillo Rattlers, the El Paso Buzzards, the new Mexico Scorpions, the Odessa Jackalopes (1998

WPHL Franchise of the Year) and the San Angelo Outlaws.

The Central division teams include the Austin Ice Bats, the Corpus Christi Ice Rays, the Central Texas Stampede, the Fort Worth Brahmas and the Waco Wizards.

The Eastern division has the Alexandria Warthogs, the Arkansas Glacier Cats, the Lake Charles Ice Pirates, the Monroe Moccasins, the Shreveport Mudbugs and the Tupelo T-Rex.

The latest team to join is the Alexandria Warthogs. The team's unique logo features a snarling, stick-wielding warthog. It was crated by a firm in Alaska and was released to the media at a press conference held at the Alexandria Museum of Art.

The name Warthog was chosen from over 1,000 names as part of a "Name the Team Contest."

Laredo Supper and Bake Sale

The Fluvanna Volunteer Fire Department will have its annual Laredo Supper and Bake Sale Saturday, August 22nd, at 7:00 p.m. at the Fluvanna Community Center. Everyone is invited to come and enjoy the evening!

Drive Safely
 School Starting . . . Watch for Children

LEGAL NOTICE

The Commissioners' Court of Borden County will hold a public hearing on the proposed budget for Borden County for 1999, beginning at 10:00 a.m. on Monday, August 24, 1998, at the Courthouse in Gail, Texas.

A summary of the proposed Borden County budget is as follows:

- Jury Fund -- \$850.00
- General Fund -- \$672,066.00
- Road & Bridge Fund -- \$537,465.00
- Permanent Improvement Fund -- \$15,000.00

This proposed budget does not include a salary or wage increase for County employees and elected officials.

Any interested persons is invited to attend and present oral or written comments. The proposed budget may be examined at the office of the County Clerk or the County Judge.

The proposed tax rate for 1998 is .385 per \$100.00. The tax rate for 1997 was .385 per \$100.00.

BY ORDER OF THE BORDEN COUNTY COMMISSIONERS' COURT

Van L. York
 County Judge
 Borden County

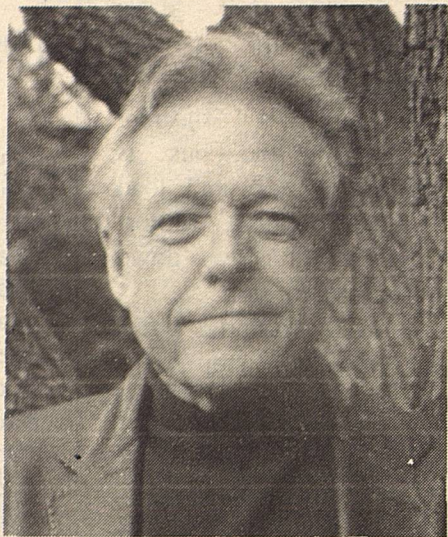
The Borden Star (USPS or PUBLICATION NO. 895-520) is published weekly except Christmas and New Year's week for \$12.00 per year by the Borden Star, P.O. Box 137, Gail, Texas 79738. Second-class Postage paid at Gail, Texas. POSTMASTER: Send Change of Address to the Borden Star, P.O. Box 137, Gail, Texas 79738.



Texas Stories

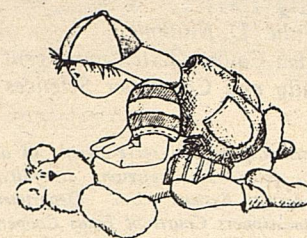
A showcase of the Texas Spirit

Tumbleweed Smith
Part owner of Texas



CPR Class for the Public Offered

August 10th & 11th
6 p.m. - 10 p.m.
Borden County ISD
Conference Room



Annual Meeting and Ice Cream Supper Planned

The Plains Community annual Meeting and Ice Cream Supper is planned for Thurs., August 13th at the Plains Community Center at 7:30 p.m.

Everyone is asked to bring ice cream or a dessert. Also it will be time for the annual dues to be collected.

See You There!



Bahamas, Florida, Ruidoso, Ira

What do these places have in common? Nothing. Except that perhaps you took a vacation this summer to one of them. So remember that *The Borden Star* is going to have a special edition "vacation issue" coming in August. Please send us a photo or just a note about some place--any place--that you and your family visited along with a short who?, what?, when? where? and we will include your journey in the paper. Photos will be returned--please send to *The Borden Star*, P.O. Box 137, Gail, TX 79738.

HOCKEY: The fastest Growing Sport

Hockey is the fastest growing sport of the 1990's. Ice hockey, roller hockey and in-line skating have experienced phenomenal growth in the past five years. The growth of hockey in non traditional markets, those hot weather areas with little or no hockey history, has been dramatic in recent years.

The Southwest began to discover the joys and thrills of ice hockey in 1996 when the Western Professional Hockey League began its inaugural season.

The sport, which had its start in Montreal, Canada, combines the elements of football, basketball and rodeo. It is probably the fastest sport being played today. Fans of hockey are increasing daily.

In 1995, league officials took numerous surveys to determine which cities in the Southwest lacked a winter identity and could support a professional sports team. They thought that hockey could fill the void, just as it had in places like Oklahoma City, Tulsa, Wichita, Charleston, Charlotte and Greensboro, all successful franchises in the Central and East Coast Hockey Leagues.

In most cases, the WPHL discovered pre-existing rivalries through high school football or minor league baseball. Most have a population base of

100,000 to 1,000,000 people and have modern facilities with a minimum of 6,000 seats. All the target cities were extremely supportive to the possibility of bringing professional ice hockey to their communities. For most of the cities, it would be their first professional team of any sport.

In early 1996, a press conference was held in Austin to announce the league would begin play in October of 1996. The six franchises playing that first season were the Austin Ice Bats, the Waco Wizards, the Central Texas Stampede, the Amarillo Rattlers, the El Paso Buzzards and the New Mexico Scorpions.

Now the league has three divisions: Western, Central and Eastern. The Western division teams are the Abilene Aviators, the Amarillo Rattlers, the El Paso Buzzards, the new Mexico Scorpions, the Odessa Jackalopes (1998

WPHL Franchise of the Year) and the San Angelo Outlaws.

The Central division teams include the Austin Ice Bats, the Corpus Christi Ice Rays, the Central Texas Stampede, the Fort Worth Brahmas and the Waco Wizards.

The Eastern division has the Alexandria Warthogs, the Arkansas Glacier Cats, the Lake Charles Ice Pirates, the Monroe Moccasins, the Shreveport Mudbugs and the Tupelo T-Rex.

The latest team to join is the Alexandria Warthogs. The team's unique logo features a snarling, stick-wielding warthog. It was crated by a firm in Alaska and was released to the media at a press conference held at the Alexandria Museum of Art.

The name Warthog was chosen from over 1,000 names as part of a "Name the Team Contest."

Laredo Supper and Bake Sale

The Fluvanna Volunteer Fire Department will have its annual Laredo Supper and Bake Sale Saturday, August 22nd, at 7:00 p.m. at the Fluvanna Community Center. Everyone is invited to come and enjoy the evening!

Drive Safely
School Starting . . . Watch for Children

LEGAL NOTICE

The Commissioners' Court of Borden County will hold a public hearing on the proposed budget for Borden County for 1999, beginning at 10:00 a.m. on Monday, August 24, 1998, at the Courthouse in Gail, Texas.

A summary of the proposed Borden County budget is as follows:

Jury Fund -- \$850.00
General Fund -- \$672,066.00
Road & Bridge Fund -- \$537,465.00
Permanent Improvement Fund -- \$15,000.00

This proposed budget does not include a salary or wage increase for County employees and elected officials.

Any interested persons is invited to attend and present oral or written comments. The proposed budget may be examined at the office of the County Clerk or the County Judge.

The proposed tax rate for 1998 is .385 per \$100.00. The tax rate for 1997 was .385 per \$100.00.

BY ORDER OF THE BORDEN COUNTY COMMISSIONERS' COURT

Van L. York
County Judge
Borden County

The Borden Star (USPS or PUBLICATION NO. 895-520) is published weekly except Christmas and New Year's week for \$12.00 per year by the Borden Star, P.O. Box 137, Gail, Texas 79738. Second-class Postage paid at Gail, Texas. POSTMASTER: Send Change of Address to the Borden Star, P.O. Box 137, Gail, Texas 79738.



LUBBOCK, Aug. 7, 1998
By Shawn Wade

As much as 1.5 million acres of dryland cotton has been lost out of projected dryland plantings of 1.8 million acres on the Texas High Plains. Of the remaining 300,000 or so acres very few are showing any signs that harvestable crops will result.

With this in mind Plains Cotton Growers, Inc. (PCG) officials have requested that the USDA Risk Management Agency (RMA) authorize the switch from appraisals based on stand counts to a boll count methodology as quickly as possible.

In order to give pro-

ducers a fairer estimation of their crop's yield potential PCG's letter to RMA Administrator Ken Ackerman included requests for two specific deviations.

The first is to modify the boll count appraisal system to better reflect the reduced boll sizes that are being documented across the area in 1998. Normally Federal Crop Insurance uses a standard of 250 green and unopened bolls per pound of lint to estimate yield potential. PCG has requested that a factor of 500 bolls per pound be used to account for the reduced boll size this year.

The second PCG request is for a deviation for

Safe grilling temperatures for meat and poultry

The United States Department of Agriculture recommends grilling the following foods to the shown temperatures to kill food-borne illness. For more information, call the USDA hotline at (800)535-4555 or log on to <<http://www.fsis.usda.gov>>.

Steaks,

3/4 inch thick, medium rare, 145 degrees Fahrenheit
medium, 160 degrees Fahrenheit

Kebabs,

1-inch cubes, 145 to 160 degrees Fahrenheit

Ground meat patties,

1/2 inch thick, med., 160 degrees F

Roast,

4-6 pounds, 145-160 degrees F

Ribs,

med., 160 degrees

Pork,

Chops, medium, 160 degrees F
Tenderloin, medium 160 degrees F
Ribs, fork tender

Venison,

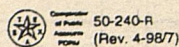
Roast, saddle leg, 145-160 degrees F
Steak, 3/4 inch thick med. rare 145 degrees Fahrenheit
med., 160 degrees F

Chicken,

whole -- not stuffed, measured in thigh, 180 degrees F

Breast halves, 170 degrees F
other parts, wings, thighs, etc., 180 degrees F

drought affected cotton that stalks are only 7-10 inches in height; and (3) plant produces only 1 or 2 blossoms on top. RMA officials have pledged to investigate the need for and to act on these requests as quickly as possible. PCG, in cooperation with the Texas Agricultural Extension Service, is in the process of providing supporting data for these requests.



Notice Of Effective Tax Rate

1998 Property Tax Rates in Borden County ISD

This notice concerns 1998 property tax rates for Borden County ISD. It presents information about three tax rates. Last year's tax rate is the actual rate the school district used to determine property taxes last year. This year's effective tax rate would impose the same total taxes as last year if you compare properties taxed in both years. This year's rollback tax rate is the highest tax rate the school district can set before it must hold a rollback election. In each case these rates are found by dividing the total amount of taxes by the tax base (the total value of taxable property) with adjustments as required by state law. The rates are given per \$100 of property value.

Last year's tax rate:

Last year's operating taxes	\$ 4,133,529
Last year's debt taxes	\$ 0
Last year's total taxes	\$ 4,133,529
Last year's tax base	\$ 290,592,857
Last year's total tax rate	\$ 1.45 /\$100

This year's effective tax rate:

Last year's adjusted taxes (after subtracting taxes on lost property)	\$ 4,230,621
+ This year's adjusted tax base (after subtracting value of new property)	\$ 268,865,453
= This year's effective tax rate	\$ 1.57 /\$100

This year's rollback tax rate:

Amount of local taxes needed based on state funding formulas and 1998-99 student enrollment	\$ 3,520,370
+ This year's adjusted tax base	\$ 268,876,753
= This year's local maintenance and operation rate OR adopted 1996 maintenance and operation rate	\$ 1.31 /\$100
= This year's maintenance and operation rate (use greater of 2 rates above)	\$ 1.45 /\$100
+ \$0.08	\$ 1.53 /\$100
+ Rate increase adopted for 1997-98 school year	\$ 0 /\$100
+ This year's debt rate	\$ 0 /\$100
+ Rate to recoup loss certified by commissioner of education	\$ 0 /\$100
= This year's rollback rate	\$ 1.53 /\$100

Schedule A

Unencumbered Fund Balances

The following estimated balances will be left in the unit's property tax accounts at the end of the fiscal year. These balances are not encumbered by a corresponding debt obligation.

Type of Property Tax Fund	Balance
MAINTENANCE AND OPERATIONS	\$ 6,500,000

This notice contains a summary of actual effective and rollback tax rates' calculations. You can inspect a copy of the full calculations at Borden County ISD, 240 West Kincaid, Gail, Texas 79738

Name of person preparing this notice R.D. Lewis

Title Borden County Tax Assessor/Collector

Date prepared 8-10-98

Let Me Get My Hat!

By Dennis Poole,
Borden County CEA-Ag.

Extension programs serve people of all ages regardless of socioeconomic level, race, color, sex, religion, disability or national origin. The Texas A&M University System, U.S. Department of Agriculture, and the County Commissioners Court of Texas Cooperating.

Marketing Club Teleconference Meeting

Producers and marketing clubs in Texas have been invited to join with selected locations in other states to participate in a Marketing Club Teleconference Network. The Network will have a nationally recognized speaker each month to discuss cotton, corn and soybean market information.

Borden/Dawson meeting will start at 7:30 a.m. and run for about 45 minutes (a presentation followed by questions) on Friday, August 14th, at the Lamesa National Bank Meeting Room, 602 South 1st in Lamesa.

The purpose of the Marketing Club is to provide, through a conference call network, a hands-on educational experience. The clubs will emphasize not only marketing education, but also stress applying this knowledge to their everyday farm operations.

Each month, through a conference call, two to three speakers will discuss current market develop-

ments and the application of specific marketing strategies. The farmers at each location will also be encouraged to exchange ideas and share experiences to help expand the learning experience. Research has shown that this interaction among participants is one of the most effective ways of learning.

Speakers for our August 14th meeting will be Billy Dunavant from Dunavant Enterprises, Inc. to talk about "Cotton Conditions and Price Outlook".

Future speakers will be Willard Sparks, President, Sparks Commodities on September 15th and Joe O'Neill, New York Cotton Exchange (now New York Board of Trade) on October 13th. Producer interest will dictate the need for future meetings of this type to be held September 15th and October 13th.

Hope you will be able to meet with us on August 14th.

Knowing Nutritional Quality of Forage Important

Knowing the nutritional quality of forage is important, especially during times of drought. The Grazingland Animal Nutrition (GAN) Lab on the Texas A&M University campus can analyze livestock fecal samples to help ranchers determine the nutritional quality of what their animals are eating, according to Doug Tolleson, assistant director

for the lab.

Using Near Infrared Reflectance Spectroscopy (NIRS), the lab can evaluate dietary protein and digestibility, Tolleson said.

All molecules have different light wavelengths they will absorb, he explained. Infrared light is projected into the sample and the amount of light not absorbed is measured to determine the com-

pounds in the sample.

If desired, a producer can not only find out the nutritional quality of forage, they also can request feeding recommendations from the GAN lab, Extension specialists or Natural Resources Conservation Service personnel. More than 1,000 ranchers in 42 states already have taken advantage of this service nationwide.

"As the drought continues and forage resources decline and/or become cost-prohibitive, many livestock producers will be faced with either culling animals or buying supplemental feed this summer," he said.

"Winter feeding is traditional for most Texas ranchers and is the large input cost of livestock production. Adding the cost of summer feeding to hold

animals in adequate condition going into winter only complicates an already difficult situation."

Many farmers apply fertilizer based on a detailed soil analysis, only supplementing nutrients as needed. Most livestock producers, however, are forced to feed based on their best guess of the nutritional quality of forage available

Cont. to pg. 8



Denim Jean Specials

Men's:
13MWZ • Slim Fit • Bootcut
\$20.95

Student: 13MWZ
\$19.95

Boys': Sizes 8-14
\$18.95



Ladies Spring & Summer
1/2 Price Sale!

-H-
Family Outfitters



Store Hours:
M-F 9-6;
Sat. 9-5:30
3219
College Ave.
Snyder,
Texas
Phone
573-6763

Knowing Nutritional Quality

Cont. from pg. 7

to free-ranging animals, he said. In the past, information on the quality of that forage has been difficult to obtain or not determined rapidly enough to be meaningful.

two-day priority service and a fax machine or e-mail, ranchers may receive results four to five days after collecting the sample.

Further information is available from the GAN lab, telephone (409)845-5838, fax 845-2542, or e-mail ganlab@rasc-spac.tamu.edu or tolleson@cnrit.tamu.edu.

With NIRS, lab workers can make the determination of dietary protein and digestibility within 48-72 hours of receiving a fresh, chilled fecal sample. With

NOTICE OF APPLICATION

Notice of Surface Production Commingling Application (Statewide Rule 26) for the Eicke Ranch No. 1 and Eicke Ranch No. 2, both located in the north half of the north east quarter of Section 24, Block 30, T-6-N, T&P RR Co. Survey, Borden County, Texas. Fasken Oil & Ranch, Ltd. has filed an Application to surface commingle the Eicke Rance No. 1 and 2 wells. This notice will run four consecutive weeks. Any protest must be filed in writing within 21 days from the date of last publication. Protests to the Surface Commingle Application should be filed with the Texas Railroad Commission of Texas, Oil and Gas Division - Permitting Services, P.O. Box 12967, Austin, Texas 78711-2967 (Ph. 512-463-6873).

Branon Funeral Home

Serving in this area since 1922

Phone: 806/872-8335 403 N. Austin Lamesa, Texas

Going Away To College?

Keep up with Borden County area and school news by subscribing to the Borden Star.

If you send your new address before September 1, you will receive a year's subscription for \$10.00!

That's \$2.00 off the regular price! Give us a call at 806-756-4402 or send your check to

Borden Star
P.O. Box 137
Gail, Texas 79738

THE BORDEN STAR

1998-99 National School Lunch Program Borden County Independent School District

The Borden County Independent School District serves meals each school day. Children may buy lunch for \$1.00 and \$1.25 and breakfast for 50 cents. Meals are also available free or at a reduced price.

If you now receive food stamps or Aid to Families with Dependent Children (AFDC/TANF) for your child, that child may have free meals or reduced-price meals. If your total household income is the same or less than the amounts on the Income Chart below, your child may obtain free meals or reduced-price meals. A foster child may have free or reduced-price meals regardless of your income. The reduced price is 40 cents for lunch and 30 cents for breakfast.

TO OBTAIN FREE OR REDUCED-PRICE MEALS FOR YOUR CHILD, YOU MUST COMPLETE AN APPLICATION AND RETURN IT TO THE SCHOOL. WE CANNOT APPROVE AN APPLICATION THAT IS NOT COMPLETE.

HOW TO APPLY

If you now get food stamps or AFDC/TANF for a child you are applying for, the application must have the child's name, a food stamp or AFDC/TANF case number for that child, and the signature of an adult household member. If you are applying for a foster child, the application must have the child's name, the child's "personal use" income, and an adult signature. If you do not list a food stamp or AFDC/TANF case number for a child you are applying for, then the application must have the child's name, the names of all household members, the amount of income each person got last month and where it came from, the signature of an adult household member, and that adult's social security number or the word "none" if the adult does not have a social security number.

INCOME CHART

Household Size	Annual	Monthly	Weekly
1	14,893	1,242	287
2	20,073	1,673	387
3	25,253	2,105	486
4	30,433	2,537	586
5	35,613	2,968	685
6	40,793	3,400	785
7	45,973	3,832	885
8	51,153	4,263	984
For each add'l member	+5,180	+432	+100

Verification: Your eligibility may be checked at any time during the school year. School officials may ask you to send papers showing that your child should receive free or reduced-price meals.

Fair Hearing: You may talk to school officials if you do not agree with the school's decision on your application or the results of verification. You may also ask for a fair hearing. You may do this by calling or writing:

JIMMY THOMAS
P. O. BOX 95
GAIL, TEXAS 79738
(806) 756-4313

Reporting Changes: If your child gets free or reduced-price meals because of your income, you must tell the school if your household size decreases or your income increases by more than \$50 per month or \$600 per year. If your child gets meals because of food stamps or AFDC/TANF you must tell the school when you are not getting AFDC/TANF or food stamps for them. You may then fill out another application giving income information.

Confidentiality: School officials use the information on the application only to decide if your child should get free or reduced-price meals. This information may also be released to federal, state or local education, health or means-tested programs. Some programs already identified are the National Assessment of Educational Progress and officials collecting data for Title I allocation and evaluation purposes.

Reapplication: You may apply for meals anytime during the school year. If you are not eligible now but have a change in status, like a decrease in household income, an increase in household size, become unemployed or get food stamps or AFDC/TANF for your child, you may then complete an application.

Handicapped: Meal substitutions at no additional cost for your children who meet the definition of "handicapped" will be served, provided a physician has submitted a statement attesting to this fact and prescribing a substitute.

IN THE OPERATION OF THE CHILD FEEDING PROGRAMS, NO CHILD WILL BE DISCRIMINATED AGAINST BECAUSE OF RACE, SEX, COLOR, NATIONAL ORIGIN, AGE OR HANDICAP. IF YOU BELIEVE YOU HAVE BEEN DISCRIMINATED AGAINST, WRITE IMMEDIATELY TO THE SECRETARY OF AGRICULTURE, WASHINGTON, D.C. 20250.

We will let you know when your application is approved or denied.

Every child will receive an application the first day of school

APPLICATION FOR FREE AND REDUCED-PRICE MEALS

To apply for free and reduced-price meals, complete this application, sign your name and return the application to the school. Call the school if you need help. # 806/756-4313

1 Print STUDENT INFORMATION.

NAME GRADE

2 List the child's FOOD STAMP or TANF case number, if any.

NAME OF SCHOOL FOOD STAMP NUMBER OR TANF NUMBER

3 FOSTER CHILD: List the child's monthly personal use income. Write "O" if the child has no personal use income. \$

4 HOUSEHOLD MEMBERS AND MONTHLY INCOME: If you gave a food stamp or TANF case number for the child, skip to PART 5.

NAMES OF HOUSEHOLD MEMBERS	Gross MONTHLY Earnings		MONTHLY Welfare Payments, Child Support, Alimony	MONTHLY Payments from Pensions, Retirement, Social Security	MONTHLY Any Other Income
	(Before Deductions)				
	Job 1	Job 2			
	\$	\$	\$	\$	\$
	\$	\$	\$	\$	\$
	\$	\$	\$	\$	\$
	\$	\$	\$	\$	\$
	\$	\$	\$	\$	\$

5 SIGNATURE AND SOCIAL SECURITY NUMBER: I certify that all of the above is true and correct and that all income is reported. I understand that this information is being given for the receipt of federal funds; that school officials may verify the information on the application; and that deliberate misrepresentation of the information may subject me to prosecution under applicable state and federal laws.

X _____ X _____
Signature of Adult Household Member Social Security Number*

HOME TELEPHONE NO. _____ WORK TELEPHONE NO. _____ PRINTED NAME _____

STREET/APT. NO. _____ CITY/STATE/ZIP _____ DATE _____

6 RACE: Please check the racial or ethnic identity of your child(ren). You are not required to answer this question.
White, not Hispanic Black, not Hispanic Hispanic Asian/Pacific Islander American Indian/Alaskan Native