





## Obituaries

### Services tomorrow

**GRAY, Marvin Leroy** — 10 a.m., Carmichael-Whitley Funeral Directors Colonial Chapel, Pampa.  
**HERNANDEZ, Filomena Valdez** — Funeral Mass, 2 p.m., St. Vincent de Paul Catholic Church, Pampa.

#### Thomas Earl Chumbley, 71

Thomas Earl Chumbley, 71, of Pampa, died Monday, March 27, 2006, in Pampa. Services are pending with Carmichael-Whitley Funeral Directors.

Mr. Chumbley was born on Sept. 23, 1934, in Canadian. He married Reta Beth Cook on April 28, 1956, in Hemphill County. He worked for Halliburton for 21 years, working for five years in Alaska and several weeks in Oman in the Middle East.

He was a cross country truck driver for 10 years, and he loved being behind the wheel of a truck. But most of all, he was a very thoughtful, loving husband, dad, and grandparent. He was very grateful to the Lord for what he had been allowed to be a part of in life.

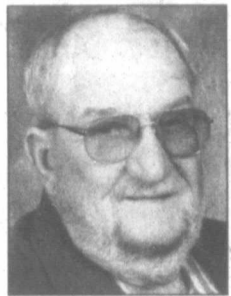
He loved to fish, not so much to catch fish but the calm of being outdoors and visiting with fellow fishermen. He was a member of Barrett Baptist Church which later became Cornerstone Baptist Church, and he was a veteran of the U.S. Navy.

He was preceded in death by a sister, Myrtle Mae Ortega, on Oct. 14, 1994.

Survivors include his wife, Reta Chumbley, of the home; two sons, Terry Wayne Chumbley and wife Dana and Todd Allen Chumbley, all of Pampa; a daughter, Deena Gayle Hart and husband Jim of Pampa; his mother, Doris Chumbley of Canadian; a brother, Billy D. Chumbley of Canyon; a sister, LoEtta Killgore of Kingman, Ariz.; seven granddaughters, Traci Wood of Lakenheath, England, Tara Terry of Modesto, Calif., Kira Chumbley and Tori Chumbley, both of Lubbock, Annie Chumbley of College Station, Emily Hart and Kaitlyn Hart, both of Pampa; two grandsons, Chase Chumbley and Cole Chumbley, both of Lubbock; and two great-granddaughters, Ashley Wood and Gracie Wood, both of Lakenheath, England.

The family requests memorials be to BSA Hospice, 800 N. Sumner, Pampa, TX 79065; or Cornerstone Vision Fund, 1304 N. Banks, Pampa, TX 79065.

—Sign the online register book at [www.carmichael-whatley.com](http://www.carmichael-whatley.com).



Chumbley

#### Marvin Leroy Gray, 82

LEFORS — Marvin Leroy Gray, 82, of Lefors, died March 26, 2006, in Lefors.

Services will be at 10 a.m. Wednesday in Carmichael-Whitley Colonial Chapel in Pampa with the Rev. C.W. Parker, chaplain of Odyssey Healthcare, officiating. Entombment will be in Memory Gardens Mausoleum with military honors provided by the U.S. Army out of Fort Hood.

Mr. Gray was born Sept. 24, 1923, at Enid, Okla. He married Virginia "Billie" Tillman on Dec. 31, 1948, at Pampa. He was a maintenance supervisor for Cabot Carbon Black for more than 20 years and belonged to Pampa Veterans of Foreign Wars. He was a Baptist and a resident of Corsicana for many years.

Mr. Gray was a veteran of the U.S. Army,

serving in five campaigns during World War II. He was inducted into Freedom Museum USA Veteran's Hall of Fame in 2001.



Gray

He was preceded in death by a sister, Sylvia Beede; and a brother, Donald Gray.

Survivors include his wife, Virginia, of the home; two sons, Everett Leon Gray of Fort Worth and Ronald Elbert Gray of Graham; six grandchildren; and two great-grandchildren.

The family requests memorials be to Odyssey Healthcare, 6900 W. Interstate 40, Suite 150, Amarillo, TX 79106; or to Lefors Volunteer Fire Department.

—Sign the online register book at [www.carmichael-whatley.com](http://www.carmichael-whatley.com).

#### Filomena Valdez Hernandez, 62

Filomena Valdez Hernandez, 62, of Pampa, died March 25, 2006, at Pampa.

Vigil will be at 5 p.m. today in St. Vincent de Paul Catholic Church. Funeral Mass is scheduled at 2 p.m. Wednesday at the church with the Rev. Juan Carlos Barragan, pastor of Sacred Heart Catholic Church of Canadian, officiating.

Burial will be in Fairview Cemetery under the direction of Carmichael-Whitley Funeral Directors of Pampa.

Born March 21, 1944, at Big Spring, Mrs. Hernandez had been a Pampa resident since 1990, moving from Stanton. She married Espirdion Torrez Hernandez; he died in 1997.

Mrs. Hernandez was a member of St. Vincent de Paul Catholic Church.

She was preceded in death by her parents;

three children; a grandchild; and a brother. Survivors include two sons, Jose Martin Hernandez and Joel Hernandez, both of Pampa; five daughters, Romona Hernandez Perez, Rosario Hernandez Anguiano and Sofia Hernandez Rodriguez, all of Pampa, Maria Octavia Bay of Amarillo and Rosalinda Hernandez Saenz of Stanton; two brothers, Domingo Villa of Midland and Felipe Villa of Big Spring; a sister, Rosa Bustamante of Big Spring; 16 grandchildren; and two great-grandchildren.

The family requests memorials be to BSA Hospice, 800 N. Sumner, Pampa, TX 79065.

—Sign the online register book at [www.carmichael-whatley.com](http://www.carmichael-whatley.com).



Hernandez

## Gray County Weather

Today: Mostly cloudy, with a high near 66. South wind between 10 and 20 mph.

Tonight: A 30 percent chance of showers and thunderstorms. Mostly cloudy, with a low around 49. South wind around 20 mph.

Wednesday: A 20 percent chance of showers and thunderstorms. Partly cloudy, with a high around 74. Windy, with a south-southwest wind between 15 and 25 mph, with gusts as high as 35 mph.

Wednesday Night: Partly cloudy, with a low near 51. Windy, with a south wind between 20 and 25 mph, with gusts as high as 35 mph.

Thursday: Mostly sunny, with a high near 69. Windy, with a west-southwest wind between 15 and 25 mph, with gusts as high as 35 mph.

Thursday Night: Mostly clear, with a low around 44. Northwest wind between 10 and 15 mph.

Friday: Mostly sunny, with a high near 72. North-northwest wind around 10 mph.

Friday Night: Partly cloudy, with a low around 47. North wind around 15 mph becoming east-southeast.

Saturday: A 20 percent chance of showers and thun-

derstorms in the afternoon. Partly cloudy, with a high near 73. South-southeast wind between 15 and 20 mph, with gusts as high as 35 mph.

Saturday Night: A 20 percent chance of showers and thunderstorms. Partly cloudy and windy, with a low near 51.

Sunday: Mostly cloudy and windy, with a high near 70.

Sunday Night: Partly cloudy, with a low around 44.

Monday: Mostly sunny and windy, with a high around 70.

## Stocks

The following grain quotations are provided by Atchafalaya Grain of White Deer:

Wheat	3.53
Milo	2.98
Corn	4.99
Soybeans	4.62

The following 9:30 a.m. N.Y. Stock Market quotations are furnished by Edward Jones & Co. of Pampa:

OXY	94.95	+0.88
BP PLCADR	69.70	+0.17
Cabot Corp	33.88	+0.04

Celanese	20.91	+0.11
Cabot Oil Gas	48.47	+0.41
Coca Cola	42.38	-0.01
VLO	60.24	+0.82
HAL	72.76	+1.17
TRI	42.67	-0.05
KML	91.68	+0.19
XCEL	18.09	-0.09
Kerr McGee	96.40	+1.35
XOM	61.65	+0.36
Nat'l Oilwell	62.61	+0.84
Limited	24.36	-0.16
Williams	20.97	+0.20
MCD	34.42	-0.13
Atmos	25.99	-0.29

Pioneer Nat.	42.86	+0.23
JCP	60.60	-0.40
COP	64.20	+1.10
SLB	124.61	+1.66
Tenneco	21.74	-0.03
CVX	58.72	+0.51
Wal-Mart	47.88	-0.07
OKE	31.12	-0.09
NS Grp	44.88	+0.29
New York Gold	567.00	
Silver	10.89	
West Texas Crude	64.16	

## Family sues funeral companies over dropped casket

WACO, Texas (AP) — The family of a woman whose casket fell and broke open during her burial service is seeking at least \$650,000 in damages from a Waco funeral home and a vault company.

As workers lowered the casket holding Pam Pickens'

body during her 2003 funeral, the casket fell abruptly and banged against the concrete vault, exposing her body.

"This family has a memory and it's an everlasting memory, but it's a nightmare memory," Michael Scanes, a lawyer for Pickens' family, said Monday during the first day of a trial.

Pickens' family claims the companies negligently breached a contract to provide funeral services. Named in the suit are Connally-Compton Funeral Directors of Waco and its parent company, SCI Texas

Funeral Services Inc., and Wilbert Vault Co. of North Texas and its parent company, A&W Industries Inc. of Fort Worth.

Pickens was a 40-year-old nursing student in Victoria when she died unexpectedly in February 2003 after suffering seizures.

Jimmy Gilmore, Pickens' stepfather, said the casket's loud fall sent 150 mourners scattering "like a covey of quail."

"You can't imagine, and I can't tell you what it sounded like because there really are no words to describe it," he said.

## CITY BRIEFS

The Pampa News is not responsible for the content of paid advertisement

**CREATE-A-BEAT NEEDS**  
Piano & Guitar instructors for beginning students, Hours Flexible. 665-7474

**DONATIONS ACCEPTED** for 3 injured firefighters & the Howardwick Volunteer Fire Dept. Send to 238 Rosemarie c/o JJ's Canteen, Howardwick, Tx. 79226 or call 874-1742. Please indicate which fund you want your donation to benefit. Thanks!

**GUARANTEED FUN** At Mixed Ups. Watch for details.

**LOST!! MCLEAN**, Lefors Area, special made wide gold ring w/ diamonds. Please Return! Reward, 669-2217.

*So precious you were all dimples and curls  
Cinnamon and spice like all little girls.  
We watched you grow, dance and whirl  
What happened to that little girl?  
Time flew by and here you are  
Sweet sixteen and driving a car.  
Sweet little Carrie*

Sweet  
**16**  
Happy Birthday  
From all  
your friends  
and family

## Emergency Services

### Pampa PD

Pampa Police Department reported the following incidents for the 24-hour period ending at 7 a.m. today.

Six traffic stops were made. Vehicle accidents were reported in the 100 block of West 30th and the 1300 block of Duncan.

An animal complaint was received from the 600 block of East Kingsmill.

A welfare check was made in the 900 block of South Banks.

One burglar alarm was reported.

Found property was reported in the 1900 block of North Christy.

A civil matter was reported in the police department lobby.

A suspicious vehicle call was received from the intersection of Harvester and Deane streets.

Violation of a city ordinance was reported in the 2100 block of North Hobart.

Disorderly conduct was reported in the 200 block of North Cuyler and the 1100 block of Varnon.

Criminal trespass was reported in the police department lobby and twice in the 600 block of North Wynne.

Disturbances were reported in the 3000 block of Perryton Parkway, the 1000 block of Sirroco and the 700 block of North Russell.

Theft was reported twice in the police department lobby. One incident occurred at Frank's True Value, 401 N. Ballard.

Taken were an electric stapler, 3/8" staples, 1/8" heavy duty split point cobalt bit and 7/64" heavy duty split point cobalt

bit, for an estimated loss of \$200.

A gas drive-off was reported at Allsup's, 1900 N. Hobart. Fuel valued at \$35.21 and a Conoco Phillips 76 gas card were taken.

Stalking was reported in the 1900 block of North Christy.

Evading arrest/detention with a vehicle was reported in the 200 block of North Naida.

### Sheriff

Gray County Sheriff's Office reported the following arrest today.

#### Tuesday, March 28

Steven Allen Matthews, 36, of Durham, N.C., was arrested by GCSO on a warrant for a bond surrender for possession of marijuana.

### Fire

Pampa Fire Department reported the following calls during the 24-hour period ending at 7 a.m. today.

#### Monday, March 27

9:08 a.m. — One unit and four personnel responded to the 900 block of Barnard on a medical assist.

10:45 a.m. — One unit and three personnel responded to the 2200 block of Dogwood on a lifting assist.

1:53 p.m. — One unit and four personnel responded to the 1800 block of Alcock on a medical assist.

10:26 p.m. — One unit and two personnel responded to the 700 block North Magnolia on a Dumpster fire.

## ECONOMY

### Consumer confidence rebounds

By ANNE D'INNOCENZIO  
AP Business Writer

NEW YORK (AP) — Americans' optimism in the economy rebounded in March, sending a widely followed barometer of the consumer sentiment to a near four-year high, a private research group said Tuesday.

The Conference Board said that its consumer index shot up 4.5 points to 107.2, the highest level since May 2002, when the reading was 110.3. Analysts had expected a reading of 102.

The latest measure was up from a revised 102.7 in February, which saw confidence fall 4.1 points from the previous month after

enjoying a rebound that began in November following the Gulf Coast hurricanes.

"The improvement in consumers' assessment of present-day conditions is yet another sign that the economy gained steam in early 2006," Lynn Franco, director of The Conference Board Consumer Research Center, said in a statement. "Consumer expectations, while improved, remain subdued and still suggest a cooling in activity in the latter half of this year."

The component of the consumer confidence index that assesses views of current economic conditions rose to 133.3 from 130.3. Another component, which measures con-

sumers' outlook over the next six months, improved to 89.9 from 84.2 in February.

The Conference Board index is derived from responses received through March 21 to a survey mailed to 5,000 households in a consumer research panel. The figures released Tuesday include responses from at least 2,500 households.

The improved outlook is an encouraging sign for retailers, whose sales of spring fashions have been uneven amid cool temperatures. Economists closely track consumer confidence because consumer spending accounts for two thirds of all U.S. economic activity.



# Cornyn

Continued from Page 1

Bonilla said there is a need for a guest worker program although the U.S. House of Representatives has passed an immigration bill that does not contain a guest worker provision.

U.S. Rep. Lamar Smith, R-Texas, also told TSCRA members that the immigration issue had no easy answers, but he said the current process does not work. Smith said there is neither the

political will nor the resources to enforce current laws. He also pointed out that 23 percent of all inmates in federal prisons are illegal aliens.

Smith said he wanted the leg-

islative process to slow down, and he wanted Congress to thoroughly look at the issue on an industry-by-industry basis.

He said he did not expect a new immigration law this year.

# Horses

Continued from Page 1

halters, lead ropes, medical supplies." Tara and her family lost their home, barn, fences, cattle, several vehicles, and two horses in the fire. Six horses that survived were severely burned.

"It takes all day to just feed and doctor animals," said Susie Thomas, Tara's mother, "and I mean long days. By the time we finish, it's dark again."

Rebecca Simmons, a fifth generation resident of the area, was luckier than the Thomas family, but she is worried.

"The fields are blowing a fine black soot," said Simmons, who has a degree in equine science. "The vet will tell you that what we are facing next is animals dying of respiratory problems and weakened immune systems."

Recent winter-like weather in the Panhandle has created a need for horse blankets. Ranch horses that are not normally blanketed now lack the shelter of trees or barns. Smoke inhalation coupled with cold and winds have put horses at further risk.

Donations of urgently needed supplies are being coordinated through the Habitat for Horses/Lone Star Equine Rescue member's network and Dr. Leanne Hillhouse, a Panhandle veterinarian.

Tax-deductible cash donations may be sent directly to Habitat for Horses at [www.habitat-forhorses.org](http://www.habitat-forhorses.org) and [www.lser.org](http://www.lser.org) or mailed to Habitat for Horses/LSER, P.O. Box 213, Hitchcock, TX 77563. Further inquiries may be made at 866-434-5737.

"There's not a lot of time for some of these horses," Finch said. "If people want to help, they really have to

do it now."

Habitat for Horses/Lone Star Equine Rescue is a 501.c.3 nonprofit covering Texas, Louisiana and Oklahoma with around 1,000 dedicated members. They provide equine rescue services to law enforcement agencies throughout the state of Texas, an active equine adoption program, an equine education center and equine-assisted services to youths and adults. For more information, contact HH/LSER at 866-434-5737.

Medical supplies may be sent to Dr. Leanne Hillhouse, Wheeler Vet Clinic, Rt. 1, Box 245A, Wheeler, TX 79096.

Hay and feed deliveries may be taken to South Main Street, McLean, TX 79057 or call 866-434-5737.

Donated tack may be sent to Val Taylor, R.R. 1, Box 35, Forgan, OK 73938, or to Rebecca Simmons, 14011 E. Business I-40 West, McLean, TX 79057.

# White House chief of staff resigns, budget director to take over spot

WASHINGTON (AP) — White House chief of staff Andy Card has resigned and will be replaced by budget director Joshua Bolten, President Bush announced today amid growing calls for a White House shakeup and Republican concern about Bush's tumbling poll ratings.

Bush announced the changes in a nationally broadcast appearance in the Oval Office.

"I have relied on Andy's wise counsel, his calm in crisis, his absolute integrity and his tireless commitment to public service," Bush said. "The next three years will demand much of those who serve our country. We have a global war to fight and win."

Card, 58, stood stoically with his hands by his sides as Bush lauded his years of service through the Sept. 11 attacks, war and legislative and economic challenges. Gripping the podium, Card said in his farewell: "You're a good man, Mr. President." Card's eyes were watery. Card said he looks forward to just being Bush's friend. Bush then gave him five quick slaps on the back and the two walked out of the Oval Office together.

The president called Bolten, 51, a man with broad experience, both on Wall Street and in Washington, including the last three years as director of the Office of Management and Budget.

Alarmed by Bush's declining approval ratings and unhappiness about the war in Iraq, Republicans have been urging the president to bring in new advisers with fresh ideas and energy. Bolten has been with Bush since his first campaign for the White House. There was no immediate indication of other changes afoot.

"The good news is the administration has finally realized it needs to change

its ways, but the problems go far deeper than one staffer," said Sen. Charles Schumer, D-N.Y. "Simply rearranging the deck chairs on the Titanic by replacing Andy Card with Josh Bolten without a dramatic change in policy will not right this ship."

Bush gathered with members of his Cabinet in the Rose Garden at mid-morning after discussions about the war on terror. He ignored shouted questions from reporters about why he made the staff changes. Bush said he would deliver a speech on Wednesday about Iraq.

"We had a chance to honor two members of my Cabinet who won't be with us much longer — Secretary of the Interior Gale Norton, Chief of Staff Andy Card," Bush said. "These two folks have served our country with distinction and honor. I'm proud to work side-by-side with them, and I'm proud to call them friend."

Just Monday night, Card had given what participants described as a stirring speech to the Butler County Republican Party in Ohio.

"When I heard this morning, I said 'What?'" said Scott Owens, executive director of the party. Owens said that Card gave no indication of his imminent resignation announcement.

To the public, Card may be best known as the aide who calmly walked into a Florida school room and

whispered into Bush's ear that America was under attack on Sept. 11, 2001. He was known for keeping his cool under pressure. When Bush's father, then President George H.W. Bush, got sick at a banquet in Tokyo, aides and security officials ran toward the president. Card ran in the opposite direction, out the door to make sure the motorcade was ready to rush Bush away.

"Josh is a creative policy thinker," Bush said. "He is an expert on the budget and our economy. He is a man of candor and humor and directness. No person is better prepared for this important position."

"I'm deeply honored now by the opportunity to succeed Andy Card as White House chief of staff," Bolten responded. "I said, 'Succeed Andy Card, not replace him,' because he cannot be replaced."

The move came as Bush is buffeted by increasing criticism of the drawn-out war in Iraq and as fellow Republicans have suggested pointedly that the president bring in new aides with fresh ideas and new energy.

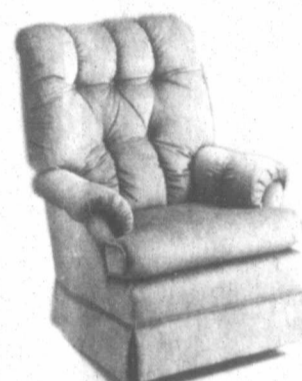
Card came to Bush recently and suggested that he should step down from the job that he has held from the first day of Bush's presidency, said an administration official earlier.

# TEXAS FURNITURE MARCH MARKDOWNS



LANE MICRO-FIBER CHAISE RECLINER

NOW ONLY \$349



REG. \$399.00 SWIVEL ROCKERS \$199



TEMPUR-PEDIC PRESSURE RELIEVING SWEDISH MATTRESSES AND PILLOWS

PRESSURE RELIEVING SWEDISH MATTRESS "CHANGING THE WAY THE WORLD SLEEPS" IN STOCK NOW ... READY FOR IMMEDIATE DELIVERY



FACTORY DIRECT PRICES IN STOCK FOR IMMEDIATE DELIVERY



EVERY BEDROOM ON SALE CHOOSE THIS CLASSIC OAK COLLECTION

- DRESSER
- MIRROR
- QUEEN BED
- NIGHT STAND

\$1299

5 PC. DINETTES DROP LEAF TABLE 4 SIDE CHAIRS \$399

DUAL RECLINING SOFAS \$599

LEATHER MATCH RECLINERS \$399

12 MONTHS NO INTEREST FINANCING WAC

# MATTRESS SAVINGS

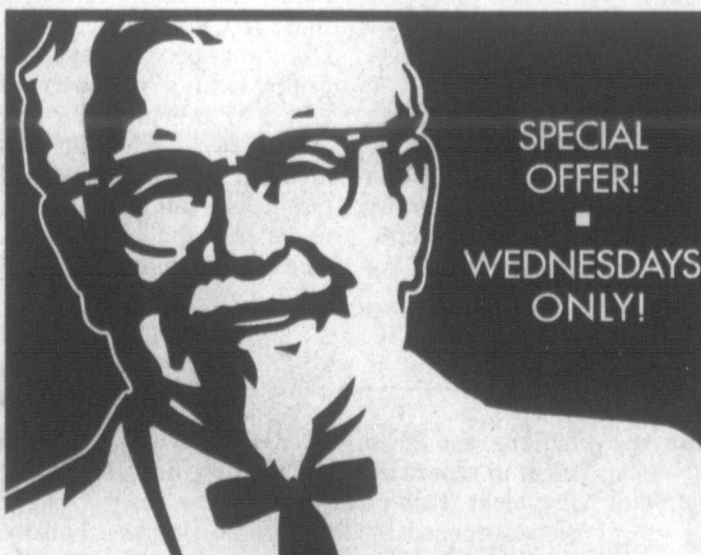
SLEEP BETTER NOW...AND SAVE!



SEALY FIRM TWIN 2 PC SET \$249 FULL SET \$349 QUEEN SET \$399

SEALY PLUSH TWIN SET \$349 FULL SET \$449 QUEEN SET \$499 KING SET \$699

SEALY PILLOW TOP TWIN SET \$499 FULL SET \$549 QUEEN SET \$599 KING SET \$899



SPECIAL OFFER! WEDNESDAYS ONLY!

Chicken Fried Steak Dinner

- Chicken Fried Steak with white gravy
- Individual mashed potatoes with gravy
- Individual cole slaw
- 1 baked biscuit

\$1.99

plus tax no substitutions

PAMPA 2201 N. Hobart St. ■ 665-2766

# Copter

Continued from Page 1

vehicles currently on display at the museum, including a B-25D bomber, Bell UH-1F "Huey" helicopter, M110A2 Howitzer, 6x6 military truck, M5 and M2A1 halftrack.

"The board of directors are sure our vehicle exhibits have amazed, educated and perhaps brought back some memories," Miller said.

MON - SAT 9:00 AM TO 5:30 PM

# Texas FURNITURE

1415 N. HOBART • 665-1623 PROUDLY SERVING PAMPA SINCE 1932

12 MONTHS NO INTEREST FINANCING WITH APPROVED CREDIT



# Viewpoints

## Handwriting is like any other skill

Is handwriting about to go the way of shorthand?

As technology advances and spreads, changes develop in the way people work, communicate, calculate and do just about everything else.

Calculators are one example. They are wonderful gadgets that make math easy for many people. But there are symptoms that the little hand-held devices are replacing mathematical skills for at least some students.

Before calculators became so widespread and small enough to carry around in a pocket, high school science students were often seen

with slide rules.

For those unfamiliar with them, slide rules look like wide rulers that have been split into lengthwise pieces that slide to right and left. A plastic sleeve with a red vertical line allows the user to line up the numbers used for the calculation being performed and to see the answer.

Slide rules were once the indispensable tool for performing complicated scientific and mathematical calculations. Before slide rules, I imagine a lot of pencil lead, paper, chalk and blackboard space was needed for each problem to be solved.

Now, calculators are

everywhere. It has become easier than ever to add, subtract, multiply, divide, find percentages and square roots, and do lots of mathematical equations by using calculators.

I may have already told in a previous column about the high school student who said she couldn't figure out the price of a \$2 item that was on sale at 75 percent off the original price.

Finding the answer to such a relatively simple problem should be some-

thing learned in elementary school and used since then to solve ever-more-complicated problems.

But punching the numbers into a calculator in the proper sequence, along with hitting the right function buttons, is easy to do and doesn't require knowledge of how to figure the answer for oneself. The only problem is, relying on the calculator allows one to forget how to do it for oneself and to forget even such things as multiplication tables.

Shorthand skills are about as common as slide rules these days. Shorthand used to be taught in many high schools as a secretarial course, along with typing. But computers and the latest recording devices have changed the way some communication is handled.

Typing skills are still considered important because computers still require the use of keyboards. Typewriters and word processors are still in use, also.

Eventually, voice recognition ability, already available, will be commonplace in such devices and may replace keyboards and typ-

ing skills.

The widespread use of computers these days has taken the place of handwriting as a way to do homework assignments, send and receive messages, perform tasks at work, take notes and store information.

Handwriting is like any other skill. If one does not keep in practice, one's skill level suffers.

The almost universal scribbling doctors use in writing prescriptions has long been a source of jokes and anecdotes.

That scribbling may become the best penmanship around.

**Marilyn Powers**  
Staff Writer



## Today in History

By The Associated Press

Today is Tuesday, March 28, the 87th day of 2006. There are 278 days left in the year.

Today's Highlight in History:

On March 28, 1979, America's worst commercial nuclear accident occurred inside the Unit 2 reactor at the Three Mile Island plant near Middletown, Pa.

On this date:

In 1834, the U.S. Senate voted to censure President Jackson for the removal of federal deposits from the Bank of the United States.

In 1854, during the Crimean War, Britain and France declared war on Russia.

In 1898, the Supreme Court ruled that a child born in the United States to Chinese immigrants was a U.S. citizen.

In 1930, the names of the Turkish cities of Constantinople and Angora were changed to Istanbul and Ankara.

In 1939, the Spanish Civil War ended as Madrid fell to the forces of Francisco Franco.

In 1941, novelist and critic Virginia Woolf died in Lewes, England.

In 1942, during World War II, British naval forces raided the Nazi-occupied French port of St. Nazaire.

In 1953, athlete Jim Thorpe died in Lomita, Calif.

In 1969, the 34th president of the United States, Dwight D. Eisenhower, died in Washington at age 78.

In 1994, absurdist playwright Eugene Ionesco died in Paris at age 81.

Ten years ago: Congress passed the line-item veto, giving the president power to cut government spending by scrapping specific programs. The space shuttle Atlantis' astronauts said goodbye to the crew of Russia's space station Mir and then flew off, leaving Shannon Lucid behind for a five-month stay in orbit.

Five years ago: The authors of a book on the Oklahoma City bombing revealed that during prison interviews, Timothy McVeigh had shown no remorse for what happened, and called the 19 children who died "collateral damage."

One year ago: The Colorado Supreme Court threw out the death penalty in a rape-and-murder case because five of the jurors had consulted the Bible and quoted Scripture during deliberations. A major earthquake off the west coast of Indonesia killed up to 1,000 people.

Today's Birthdays: Former White House national security adviser Zbigniew Brzezinski is 78. Alaska Gov. Frank Murkowski is 73. Country musician Charlie McCoy is 65. Movie director Mike Newell is 64. Actress Conchata Ferrell is 63. Actor Ken Howard is 62. Actress Dianne Wiest is 58. Rhythm-and-blues musician Milan Williams is 58.

## THE PAMPA NEWS

403 W. Atchison • Pampa, TX 79065

806-669-2525 • 800-687-3348

Fax: 806-669-2520

email: editor@thepampanews.com

**Publisher: Sean Smith**

Editor: Dennis Spies

Advertising Director: ReDonn Woods

Composing Supervisor: Brenda Cook

This newspaper (UPS 781-540) is published daily, except Saturdays, Thanksgiving and Christmas Day, by The Pampa News. Periodicals postage paid at Pampa, Texas. Postmaster: Send address changes to The Pampa News, P.O. Drawer 2198, Pampa, TX 79066-2198.

All carriers are independent contractors and The Pampa News is not responsible for advance payments of two or more months made to the carrier. Please pay directly to the Pampa News any payment that exceeds the current collection period. There are no mail subscriptions available within the city limits of Pampa. Mail subscriptions must be paid three months in advance.

© 2005 The Pampa News



## CSPI consumer control agenda offensive

Some call the people behind the Washington, D.C.-based Center for Science in the Public Interest (CSPI) busybodies, but I call them wannabe tyrants. Let's look at their agenda, which seeks greater control over our lives.

Last year, CSPI filed a lawsuit against the Food and Drug Administration (FDA) to reduce the amount of salt in packaged foods. They also called for the FDA to mandate warning labels on non-diet soft drinks that consumption increases the risk of obesity, tooth decay and osteoporosis. Earlier this year, CSPI announced its intent to sue Viacom Inc., and Kellogg Company for marketing junk food to children.

CSPI has long called for excise taxes on fatty foods, cars and TV sets. Their justification is that obesity adds to Medicare and Medicaid health costs. They want

some of the tax revenue used to fund exercise facilities and government fitness campaigns.

There's no end to CSPI's consumer control agenda. They say, "Caffeine is the only drug that is widely added to the food supply." Therefore, they've called for caffeine warning labels. To deal with teenage and adult overconsumption of alcohol, they've called for doubling the tax on beer. According to them, "The last thing the world needs is more drinkers, even moderate ones."

To fight obesity among young people, CSPI calls for a fast-food advertising ban on TV programs seen by children. CSPI's director, Michael Jacobson, said, "We

could envision taxes on butter, potato chips, whole milk, cheeses, [and] meat," adding that "CSPI is proud about finding something wrong with practically everything."

I'm guessing that most Americans, except politicians, find this control agenda offensive. Politicians might not find it offensive because

controlling lives is their stock in trade, plus there's the promise of the higher revenues from food taxes. Most Americans who might find the CSPI agenda offensive are not motivated by principle. It's a matter of whose ox is being gored.

You say, "What do you mean, Williams?" CSPI tyrants are following almost to the letter the template created by the nation's anti-

smoking zealots. Their fellow traveler, New York University professor Marion Nestle, says that the food industry "can't behave like cigarette companies. ... Yet there's a lot of people who benefit from people being fat and sick, and the whole setup is designed to make people eat more. So the response to the food industry should be very similar to what happened with the tobacco companies."

The anti-smoking zealots started out with "reasonable" demands, such as warning labels on cigarette packs and no smoking sections on airplanes. They made exaggerated claims about the cost that smokers were imposing on the health care system. Then cigarette manufacturers faced multimillion-dollar lawsuits and multibillion-dollar local, state and federal extortion, not to mention confiscatory taxes, all of

See WILLIAMS, Page 10

**Walter Williams**  
Columnist



## Texas Thoughts

By The Associated Press

A sample of editorial opinion around Texas:

■ **March 19**

Houston Chronicle on the U.S. deficit:

When President Bush took office in 2001, the federal government had a budget surplus and an opportunity to pay down the national debt. The government could then save its excess revenue to pay the Social Security and Medicare benefits of retiring baby boomers.

That opportunity was squandered. Last week, the Senate voted to raise the national debt limit to \$9 trillion.

Several unavoidable factors contributed to the large annual budget

deficits that have forced the government to repeatedly raise the debt limit. President Bush inherited a mild recession deepened by the terrorist attacks on 9/11. The movement of jobs offshore and the failure to create enough new ones raised the cost of government unemployment benefits. The war on terror and homeland security measures add tens of billions annually to federal spending.

The principal cause of the deficits and rising national debt, however, is the package of tax cuts Bush sought in his first term. Administration officials argue that the tax cuts were and remain necessary to keep the economy strong and growing. However, Congress forgot or declined to limit its spending to the government's total revenue, and

Bush has vetoed no expenditure, no matter how egregious.

Aggravating the need to borrow and borrow to spend and spend, the preemptive war in Iraq costs U.S. taxpayers several billion dollars per month just in military costs. None of those dollars is included in the federal budget for the next fiscal year.

The high spending and huge deficits during a time of conservative dominance in Washington have inverted stereotypes. Democrats, recalling the Clinton years, now call themselves the party of fiscal discipline.

The truth is that both parties have preferred hurling insults while passing the pork to responsible, bipartisan government in the public interest.



# Dear Abby...

By Pauline & Jeanne Phillips

**DEAR ABBY:** In America today, there are 20.8 million people living with diabetes. Because there are often no symptoms, nearly one-third of them -- 6.2 million of those people -- don't even know they have diabetes and won't find out until one of its devastating complications develops. An additional 41 million people are at risk for developing type 2 diabetes. The good news is that diabetes and its complications can be prevented or delayed, but awareness is vital. Left untreated, the complications of diabetes include heart disease, stroke, kidney disease, blindness and amputation. But they are not inevitable. Early diagnosis and treatment are crucial to preventing or delaying these complications. Please help us to spread the word to the millions of Americans who are living with this disease and don't know it, or who are at risk. Thanks for sharing this information with your readers, Abby. It can help to improve the lives of millions of Americans who might already have diabetes and not know it, and prevent the disease in millions more. — **ROBERT A. RIZZA, M.D., AMERICAN DIABETES ASSOCIATION**

**DEAR DR. RIZZA:** I'm pleased to pass the word along. I had a conversation recently with David Boyer, M.D., a respected retinal specialist here in Los Angeles, in which he confided that one of the most difficult things he has to do in his practice is to inform a patient that his or her eyesight cannot be restored, and that the cause was previously undiagnosed diabetes. Today, March 28, is the American Diabetes Association's 18th Annual Diabetes Alert Day. Readers, go to [www.diabetes.org/risk-test](http://www.diabetes.org/risk-test) to take the ADA's online assessment, or call toll-free (800) 342-2383 for more information. Do it for yourselves, for your family and for me.

**DEAR ABBY:** I'm a junior in high school, starting to seriously consider and contrast colleges. I live in a Chicago suburb and I love city life. The University of Illinois at Chicago seems like a reasonable option for me. However, I have fallen in love with the University of Tampa in Florida. There are so many factors to consider that I feel like crying when thinking about choosing between these schools. I enjoy trying new things, and I think I'd like Tampa. My family doesn't have a lot of money, so visits home would be limited to Christmas and possibly spring break. At UIC I would only have a 20-minute train ride to get home. I could do that every day if I wanted to. My mom worries that I'll get homesick, and so do I. Is it better to stay with the comfortable, or try to expand my horizons -- even if there's a possibility I might hate it? Please give me your opinion. — **NICKY IN ITASCA, ILL.**

**DEAR NICKY:** If your only reason for staying home is the fear that you "might" be homesick, then I think you should gather up your courage and leap from the nest. That's how fledglings learn to fly. It takes courage to leave the familiar and strike out on your own, but it's a great part of growing up. However, there may be more things to take into consideration than you mentioned in your letter. Do you have the grades to get into both of these schools? And can the finances be managed? These should also be factors in your decision.

## For Better Or For Worse



## Zits



## Garfield



## Beetle Bailey



## Marvin



## Crossword Puzzle

### CROSSWORD

By THOMAS JOSEPH

**ACROSS**

4 Annoying  
1 Presides over plants  
7 Book part  
11 "Little Shop of Horrors" heroine  
12 Track shape  
13 Arthur Miller play  
15 Perfect  
16 Rooters  
18 Need to  
21 Town  
22 Posh quality  
24 Mine yield  
25 Sopping  
26 Pod unit  
27 Dwarf tree  
29 League member  
30 Foray  
31 Grime  
32 Conical home  
34 Arthur Miller play  
40 Lot sight  
41 More madcap  
42 Rafter  
43 Pearl producer

**DOWN**

1 Truck part  
2 Half a Heston title  
3 Brouhaha

**YESTERDAY'S ANSWER**

22 Hawaii  
23 Sweet potato  
25 High boot  
28 "Friends" or "Frasier" vowel  
29 Promotional offering items  
31 Wear down  
33 "The Godfather" writer  
34 Bar bill  
35 Color  
36 Greek vowel  
37 Comic's offering  
38 Director Ang  
39 Go wrong

**NEW CROSSWORD BOOK!** Send \$4.75 (check/m.o.) to Thomas Joseph Book 2, P.O. Box 536475, Orlando, FL 32853-9475

1	2	3	4	5	6	7	8	9	10
11									12
13									14
									15
16	17					18	19	20	
21						22			23
24						25			26
27						28			29
30						31			
32						33			
34	35	36					37	38	39
40							41		
42							43		

## Marmaduke



## The Family Circus

By Bil Keane



## B.C.



## Haggar The Horrible



## Peanuts



## Flo & Friends



## Blondie







**Catfish  
ELECTRIC**  
• Industrial Contractor

Oilfield • Industrial • Commercial • Residential

Shane "Catfish" Kennedy  
TECL23243 **663-0360**

Providing Electrical Service For Over Fifteen Years



DON'T FORGET TO HAVE  
YOUR PRESCRIPTIONS FILLED

**B&B PHARMACY**

300 N. BALLARD • 665-5788 • 800-273-927  
EMERGENCY 665-2892

• ACCEPT MOST INSURANCE • OSTOMY SUPPLIES  
• OVER THE COUNTER MEDICATION

**Pampa Realty Inc.**  
**669-0007**



Real Estate For The Real World

Jim Davidson (BKR) ..... 662-9021  
Robert Anderwald ..... 665-3357  
Marie Eastham ..... 665-5436  
Katrina Bigham ..... 665-4678  
Twila Fisher (BKR) ..... 665-3560  
Melba Musgrave ..... 669-6292  
Brandi Morphis ..... 440-6548

Visit CENTURY 21 COMMUNITIES™ on AOL@Keyword:CENTURY 21

**Consuelo's**  
Lunch and Dinner 11 a.m. - 9 p.m.  
Take-Out Available      Ask About Our Sr. Citizen Discount  
1328 North Hobart      (806) 665-6105

**BATH FITTER®**  
of Amarillo

**WHAT A DIFFERENCE A DAY MAKES!**  
In just **ONE DAY** Bath Fitter will install a beautiful acrylic tub and wall right over the old ones!

- Custom-formed tubs, walls and showers.
- Premium quality acrylic with 25-30 year life expectancy.
- Wide choice of colors and styles.
- Thousands of satisfied customers since 1964.

Call Now For More Information  
Or A Free In Home Estimate  
**1-888-465-4978** Toll Free

**WINK'S U-HAUL**  
228 W Brown • 665-5710  
or 665-1360

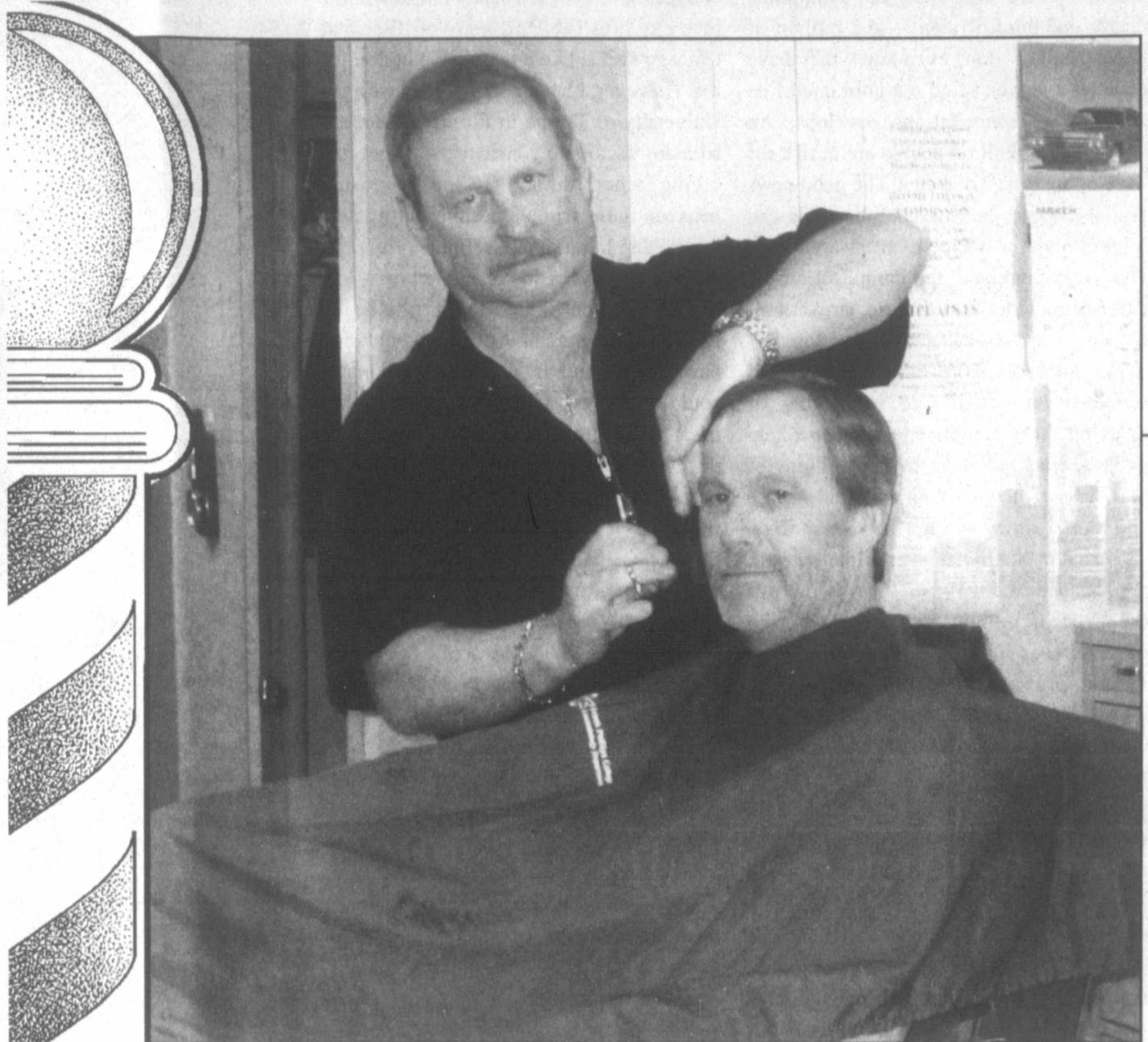
• Automatics • A/C • Power Steering • AM/FM Radio  
• Low Cost Moving Protection Plan  
• One-Way Rentals U.S. & Canada Mileage Included  
• FREE 24-Hour Road Service • Auto Transports & Tow Dollies  
• Complete Line of Moving Supplies & Towing Accessories  
• Prices as Low as \*\$9.95 Per Day (\* plus mileage)

www.uhaul.com  
Eagle Carports Sold Here! starting at \$699

COMBS WORLEY  
**BARBER SHOP**  
120 WEST KINGSMILL      806-595-0280  
TUESDAY - FRIDAY 8:00 AM - 5:00 PM  
SATURDAY 7:00 AM - 12:00 NOON  
WALK INS ALWAYS WELCOMED  
BOB JEFFERS ... "KEEPING A MALE TRADITION"

**PAT GULLEY**  
**STEEL CONSTRUCTION**  
BARNS • HOUSES • SHEDS  
CARPORTS • ETC...  
PAT 806.447.9705  
cell 806.205.0770  
fax 806.447.1385  
SCOOTER 806.447.1122  
cell 806.930.9201

# BUSINESS REVIEW



**BOB JEFFERS ...**  
"KEEPING A MALE TRADITION"  
COMBS WORLEY  
**BARBER SHOP**

TUESDAY - FRIDAY 8:00 AM - 5:00 PM  
SATURDAY 7:00 AM - 12:00 NOON  
WALK INS ALWAYS WELCOMED

120 WEST KINGSMILL  
806-595-0280

Looking for affordable health insurance?

**COMPARE & SAVE**  
with Clinton Grange  
120 W Kingsmill Suite 101  
806-3400

Look at us on the Web at  
[www.valuedhealthinsurance.com](http://www.valuedhealthinsurance.com)  
or call 1-866-856-3762



**THAI NOODLE RESTAURANT**  
THAI & CHINESE CUISINE  
1201 N HOBART • 665-0006

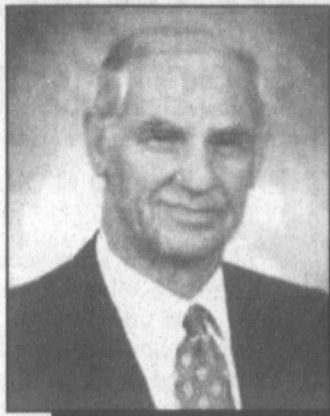
**10% OFF**  
with this Ad (per table)

• NEW OWNERSHIP  
• EXPERIENCED COOK  
FORMERLY OF THE MAI THAI RESTAURANT

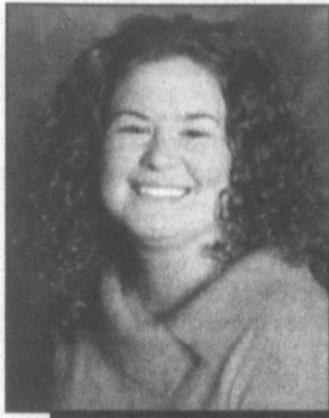




# BUSINESS REVIEW



**Jim Davidson**  
Broker  
806-662-9021



**Emily Trennepohl**  
806-664-0881



**Donna Courter**  
806-595-0779



**Katrina Bigham**  
806-665-4678



**Brandi Barnett**  
806-440-6548



**Melba Musgrave**  
806-669-6292



**Marie Eastham**  
806-665-5436



**Twila Fisher**  
Broker  
806-665-3560

**Pictures Not Available**

Larry Hadley  
806-662-2779

Robert Anderwald  
806-665-3357

**CORONADO HEALTHCARE CENTER**  
1504 W. KENTUCKY  
PAMPA TEXAS  
806.665.5746  
Let Our Family ...  
Take Care Of Your Family

**INNOVATIVE STAFFING SOLUTIONS, LLC**  
1224 N. Hobart St.  
NBC Plaza II, Ste. 11  
Pampa, Texas 79065  
Office 806 665-2991  
WWW.ISSLLC.COM  
TEMPORARY TEMP-PERM PERMANENT WE CAN DO IT! PANHANDLE OWNED GIVE US A CALL!  
**For Any Employment or Human Resource Need**

**The Vicary House Tea Room**  
Open to the Public Wednesday and Thursday 11:00 am to 2:00pm  
303 N Frost  
Pampa Tx  
806-669-0122  
Luncheons and Dinner parties by reservation.

**Rasco Construction**  
Overhead Doors Office: 1000 S. Price Rd. (806) 665-0042  
Steel Frame Carports  
Remodeling Gerald Rasco (806) 440-1185  
Landscaping/Water Features  
Custom Storage Buildings Gary Higgins (806) 440-1076  
We Accept Visa And Mastercard

**WE BUY INVOICES!**  
ARE YOU INTERESTED IN:  
•Working Capital  
•Substantial Accounts Receivable  
•Rapid Sales Growth  
•Reduced Overhead  
Managing your cash flow just got easier.  
Call Us!  
**DIVERSIFIED LENDERS, INC.**  
806.795.7782 • 800.288.3024  
diversifiedlenders.com

**HIGH PLAINS HEARING AID CENTER**  
AUDIOPROSTHOLOGIST • HEARING INSTRUMENT SPECIALISTS  
•In Office Repair Service Lab •In Home SERVICE  
•30 Day Return Privilege •100% Digital Hearing Aids  
PAMPA OFFICE 665-6246 TOLL FREE 800-753-1446  
OPEN WEDNESDAY 9:30AM - 4:30PM  
100 N CUYLER SUITE 103  
IN BANK OF AMERICA BUILDING

**Competitive Prices? Yes.**  
**Faster, Easier approvals? Yes.**  
**Individualized Solutions? Yes.**

**Century 21 Pampa Realty**  
669-0007  
Toll Free 1-888-669-0007  
Phone In • Move In 888-883-2086  
RESIDENTIAL • COMMERCIAL INDUSTRIAL • FARM • RANCH  
RELOCATION MANAGEMENT MARKET ANALYSIS  
pamparealtor.com  
"Selling Pampa One Home At A Time"  
Buyers or Sellers

**FRANK McCULLOUGH INSURANCE**  
1224 N. HOBART SUITE 105 NBC PLAZA  
OFFICE 806-669-3311 CELL 806-440-3030  
**SPECIALIZING IN LIFE INSURANCE**  
YOU CAN SAY "I DON'T NEED IT," BUT CAN YOU SAY, "MY FAMILY WON'T NEED IT?"  
I CAN ALSO HELP YOU WITH YOUR INDIVIDUAL HEALTH INSURANCE NEEDS  
NO ONE PLANS TO FAIL ... THEY JUST FAIL TO PLAN!

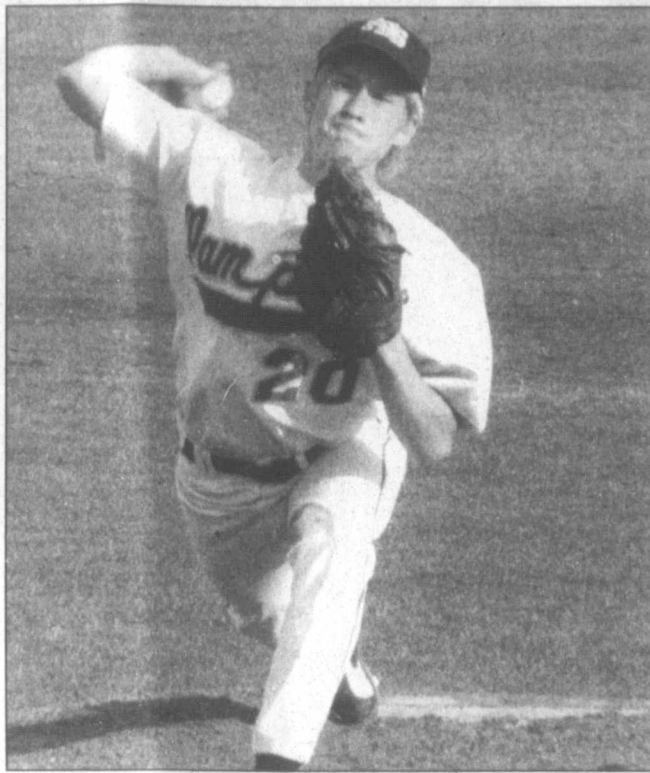
**GEL-US NAILS**  
11746 W. Hwy 152 • 669-6245  
Korger Hwy - Inside Pampa Machine Office  
**NANCY JACOBY**  
has joined our team doing hair  
Call And Set Up Your Appointment Today  
**669-6245**  
Holiday Gift Certificates Available

**Feature Your Business Here**  
Call 669-2525

Tanning Specials  
1 month unlimited \$25.00  
1 month unlimited (with Lotion) \$50.00  
40% off all Lotion! Come In & Save!  
Sign up for tanning & get 2 weeks of Shapes free!  
**Safari Tans & Shapes**  
fitness for women  
Join Shapes this month & get 60 minutes tanning free!



# Sports Day



Pampa News photos by MICHAEL J. STEVENS

◀ Pampa freshman Jonathon Anguiano just misses a Raider pitch, topping the ball which bounces off the dirt at his feet. ▶ Teammate Jeremy Busse serves up some heat early in Monday's meeting between the Pampa and Randall freshman teams.

## Pampa's defense of district title begins today

By MICHAEL J. STEVENS  
Sports Editor

The Pampa Harvester varsity baseball team will open the District 3-4A season on the road at Randall this afternoon. First pitch will be at 4:30.

The Green Team will be marked men throughout the district season after going undefeated (10-0) last year en route to the district crown.

Replacing the Harvesters this year is Clay Wilson, replacing Coach Dennis Doughty who stepped down following last season after 13 years. Coach Wilson, in his first year at Pampa, has his team 9-6 entering today's game.

"I am really excited to start the district season," said Wilson. "These kids have done a great job this year preparing for the challenges of the district season and they are going to be a lot of fun to watch."

James Coffee will call the game from behind the plate. The Pampa junior is a rock at catcher and just as strong at bat. Coffee will catch starter Tyson Hickman this afternoon. Hickman is 2-2 this season with a 2.10 ERA with 41 strike outs in 23 innings.

## JV, freshman boys fall to Randall

By MICHAEL J. STEVENS  
Sports Editor

The JV and freshman teams each lost to Randall Monday by identical 4-2 scores.

The Pampa JV squad fell to 5-6 (0-1), while the freshman team dropped to 2-4.

### Junior Varsity

JV hurler Dakota Gowin pitched a compete game for Pampa (7 innings), giving up eight hits, two walks, and three strikeouts. Said Coach Clint Allen afterward, "Dakota really pitched well. I was pleased with the way he kept the ball down." Gowin is now 2-1 for the season.

Allen notes his team's defensive play Monday. "Madison Wilson made a diving catch in center field to rob a Randall batter of a base hit," said Allen. "Ryan Funderburg did a great job behind the plate. There were good plays made all over the field."

Coach Allen added, "I was very pleased with what I saw defensively. It was a great team effort."

The Harvester JV team travels to Hereford Friday.

### Freshman

Pitcher Jeremy Busse had a good outing for the Pampa

freshman, but a 3-run second inning and one in the fourth was enough for Randall to hold off the Harvesters 4-2.

Busse (1-1) gave up four runs in five innings while striking out 4 and walking five. The Raiders only managed three hits, but three walks and two hits in the second was enough of a rally to get the win.

Pampa had several chances to put runs on the board. The Harvesters had the bases loaded in the second with one out, but consecutive strikeouts held Pampa scoreless.

"We played a good game against a tough opponent," said Coach Tim Davis. "This game gave us some much needed experience in several situations. The effort our players gave was a win in my book, and our defense was an indication that these guys have been working to improve their skills."

Davis continued, "I anticipate the bats will be more active as the season continues and we should be tough every time we take the field."

Pampa (2-4) will host Hereford Friday afternoon at Harvester Field. First pitch is scheduled for 4:30.

John Luke Covalt will take the mound for the Harvesters. Pampa won the previous meeting against the Herd, 6-4 on March 11.

### DISTRICT 3-4A

## Other games of interest

By MICHAEL J. STEVENS  
Sports Editor

### Baseball

Pampa @ Randall  
Hereford @ Caprock  
Dumas @ Palo Duro

### Softball

Pampa @ Palo Duro  
Randall @ Caprock  
Dumas @ Hereford

## Astros' claim denied

HOUSTON (AP) - An insurance claim filed by the Houston Astros to recoup more than \$15 million owed to injured first baseman Jeff Bagwell has been denied.

The National League champions filed the claim in January to recoup about \$15.6 million of the \$17 million Bagwell is guaranteed this season in the final year of his contract, arguing he is too hurt to play because of a chronically injured right shoulder.

The 37-year-old Bagwell will begin the season on the disabled list and acknowledged Saturday he might never play again.

## Cajun dinner tickets will not be sold at door

By MICHAEL J. STEVENS  
Sports Editor

If Creole cuisine is what you crave, then you better get your tickets now for Friday night's PHS Baseball Booster Club Cajun Dinner.

Tickets for the feast must be purchased in advance and will not be available at the door.

To purchase tickets, call 665-6689, 662-9714 or 663-1365.

## WT's Coach Lathrop to be laid to rest today

CANYON - West Texas A&M University men's cross country coach Eric Lathrop passed away Sunday.

Funeral services are scheduled for 4 p.m. today at St. David's Episcopal Church in Topeka.

Local services are expected to be held Saturday. Lathrop, who would have been 49 in May, had two passions in life: working with disabled students while serving as Coordinator of Student Disability Services and coaching cross country at WTAMU.

Lathrop always had a way of getting the most out of the people he worked with, influencing them not just in running but in life as well. "Eric had a passion for helping students. He got a great deal of joy out of seeing students succeed, not just academically, but in whatever they were doing in life," Senior Director for Life Services Jon Davis said.

As Coordinator of Student Disability Services at WTAMU, a post he held since 1994, Lathrop made academic accommodations for students with disabilities. Lathrop was always eager to work with the students to create a positive and effective learning environment, while maintaining a high level of academic quality in the classroom.

## CHL playoff schedule

THE ASSOCIATED PRESS

### Northern Conference

Oklahoma City at Colorado

Sunday, April 2

Oklahoma City at Colorado

Tuesday, April 4

Colorado at Oklahoma City

Thursday, April 6

Colorado at Oklahoma City

Friday, April 7

Oklahoma City at Colorado,

if necessary

Tuesday, April 11

Colorado at Oklahoma City,

if necessary

Wednesday, April 12

Oklahoma City at Colorado,

if necessary

Bossier-Shreveport vs. Wichita

Friday, March 31

Bossier-Shreveport at Wichita

Saturday, April 1

Bossier-Shreveport at Wichita

Thursday, April 6

Wichita at Bossier-Shreveport

Friday, April 7

Wichita at Bossier-Shreveport

Sunday, April 9

Wichita at Bossier-Shreveport,

if necessary

Tuesday, April 11

Bossier-Shreveport at Wichita,

if necessary

Wednesday, April 12

Wichita at Bossier-Shreveport,

if necessary

### Southern Conference

Laredo vs. Rio Grande Valley

### Friday, March 31

Rio Grande Valley at Laredo

Saturday, April 1

Rio Grande Valley at Laredo

Tuesday, April 4

Laredo at Rio Grande Valley

Friday, April 7

Laredo at Rio Grande Valley

Sunday, April 9

Rio Grande Valley at Laredo,

if necessary

Tuesday, April 11

Laredo at Rio Grande Valley,

if necessary

Wednesday, April 12

Rio Grande Valley at Laredo,

if necessary

Odessa vs. Amarillo

Friday, March 31

Odessa at Amarillo

Saturday, April 1

Odessa at Amarillo

Wednesday, April 5

Amarillo at Odessa

Friday, April 7

Amarillo at Odessa

Saturday, April 8

Amarillo at Odessa,

if necessary

Tuesday, April 11

Odessa at Amarillo,

if necessary

Wednesday, April 12

Amarillo at Odessa,

if necessary

## Getting their kicks



Pampa News photo by SEAN SMITH

The Pampa Soccer Association complex was abuzz Saturday as local kids took to the fields for plenty of run-and-gun. Among them, Micaela King (left to right), Avery Smith, Taylor Ramming, MacKenzie Gordon, and Danielle White who played in the Under 6 division.

I Publi  
PU  
C  
A  
T  
E  
Notice  
that  
equipm  
used  
Electio  
11, 20  
on ma  
11:00  
County  
ascerta  
curatel  
cast fe  
on all r  
Si  
AV  
E  
EL I  
AUTC  
Por lo  
avisio q  
tabular  
mente  
Over  
aband  
ing wo  
We are  
we no  
connec  
\$50 to  
You'll  
but we  
setting  
pipe re  
You st  
pass a  
alchoh  
Import  
SEND  
BU  
CO  
806  
HAI  
Mar  
You  
stor  
hera  
ic. Y  
inde  
conn  
for  
I coul  
year.  
chan  
migl  
men  
your  
you.  
that  
coul  
too s  
The  
Hav  
3-Av  
ARI  
★★  
depl  
focu  
succ  
you.  
sion  
new  
prov  
TAU  
★★  
be o  
Noc  
necc  
migl  
in fr  
it.  
GEM  
★★



# THE PAMPA NEWS CLASSIFIED

IT'S EASY ... PLACE YOUR AD BY TELEPHONE

669-2525 OR 800-687-3348

VISA AND MASTERCARD ACCEPTED

**POLICIES...** We ask that you check your ad after its first insertion for mistakes. THE PAMPA NEWS is not responsible for more than ONE incorrect insertion or omission on any ad ordered for more than one insertion. Requests for corrections should be made within 24 hours of the first publication. The publisher reserves the right to edit, reject or properly classify any copy.

**NOTICE...** All Real Estate advertised herein is subject to the Federal Fair Housing Act, which makes it illegal to advertise "any preference, limitation, or discrimination because of race, color, religion, sex, handicap, familial status or national origin, or intention to make any such preference, limitation or discrimination." State law also forbids discrimination based on these factors. We will not knowingly accept any advertising for real estate which is in violation of the law. All persons are hereby informed that all dwellings advertised are available on an equal opportunity basis.



FOR RATES AND ADDITIONAL INFORMATION CALL 669-2525

## SPRING SPECIAL

4 LINES FOR 5 DAYS

\$15.00

6 LINES FOR 6 DAYS

\$18.00

DAYS MUST BE CONSECUTIVE

PAID IN ADVANCE • VISA & MASTERCARD ACCEPTED

## THE PAMPA NEWS

806-669-2525 • 800-687-3348

FAX 806-669-2520

### 1 Public Notice

**PUBLIC NOTICE OF TEST OF AUTOMATIC TABULATING EQUIPMENT**  
Notice is hereby given that the tabulating equipment that will be used in the Run Off Election held on April 11, 2006 will be tested on March 29, 2006 at 11:00 a.m. at Gray County Courthouse to ascertain that it will accurately count the votes cast for all offices and on all measures.  
Susan Winborne  
Signature of Officer

**AVISO PUBLICO DE PROBAR EL EQUIPO PARA TABULAR AUTOMATICAMENTE**  
Por lo presente se da aviso que el equipo para tabular automaticamente que se usara en la

### 1 Public Notice

**Eleccion Run Off que se llevara a cabo el 11 de abril de 2006 se probara el de 29 marzo de 2006 ablas 11:00 am. en County Courthouse para determinar si el equipo contara con exactitud los votos para todos los puestos oficiales y sobre todos los proyectos de ley.**  
Susan Winborne  
Firma del/la Oficial E-13 Mar. 28, 2006

### 5 Special Notices

**ADVERTISING Material to be placed in the Pampa News, MUST be placed through the Pampa News Office Only.**

### 10 Lost/Found

LOST Fawn Colored Chihuahua. 1800 bl. Beech area. Needs medicine. 665-1083. Reward.

### 10 Lost/Found

FOUND 2 small male dogs, fawn / tan color. 662-6777.

LOST Wed. 22nd, Mother's Ring with 4 stones. Reward. Call 665-5081.

### 14d Carpentry

Carpentry, Roofing, Replacement windows, steel siding & trim Jerry Nicholas 669-9991, 662-8169

**OVERHEAD DOOR REPAIR** Kidwell Construction. Call 669-6347.

### 14e Carpet Serv.

NU-WAY Cleaning service, carpets, upholstery, walls, ceilings. Quality doesn't cost...It pays! No steam used. Bob Marx owner-operator. 665-3541, or from out of town, 800-536-5341.

### 14g Elec. Contr.

CATFISH Electric & Industrial Contractor. Serving oilfield, industrial, commercial, & residential, with over 15 years experience. Call Shane Kennedy at 663-0360.

### 14h Gen. Serv.

COX Fence Company. Repair old fence or build new. Free estimates. Call 669-7769.

IS your House or Foundation Settling? Cracks in bricks or walls? Door won't close? Call Childers Brothers, Inc. Stabilizing & Foundation Leveling. 1-800-299-9563 or 806-352-9563 Amarillo.

### HANDYMAN

Landscaping, Carpentry, Painting, Tree Trimming, Clean Up, Fencing, Most Odd Jobs. Call for Free Estimates. (806)662-7692

### 14h Gen. Serv.

D. R. Shelton  
Sheet rock, carpentry, painting, ceramic tile, free estimates, 806-664-4056.

You Got A Problem??  
Call J & G Repair  
We Do It All!!  
Call  
806-595-0992  
24/7

**HANDYMAN:** Painting, carpentry, fencing, welding, hauling, cleanup. No job too small!! 662-2566.

### 14r Plowing/Yard

ALL types of yard, plowing, haul off and landscaping. Clean up, tear down, flowerbeds, install fencing. Free estimates. Call 806-665-5529.

### 14s Plumbing/Heat

JACK'S Plumbing & Faucet Shop, 715 W. Foster, 665-7115- faucets, plumbing supplies, new constr., repair, remodeling, sewer / drain cleaning, septic systems installed. Visa/MC

### Larry Baker Plumbing

Heating/ Air Conditioning  
Borger Hwy. 665-4392

### 19 Situations

EXP. male caregiver / personal care prov. seeking in private home situation. Ref. avail. 848-2284

BABYSITTING in my home, 7 days a week. Call Nina, 669-2327.

### 21 Help Wanted

**NOTICE**  
Readers are urged to fully investigate advertisements which require payment in advance for information, services or goods.

**Immediate Openings LVNS & CNAs Needed For All Shifts**  
McLean Care Center  
Call 806-779-2469  
Ask for Administrator  
Billy Ray Johnston

**CRALL PRODUCTS**  
Immediate Openings  
•Welders  
•Painter/Sandblaster  
40hrs + wk.  
Salary based on exp.  
Apply in Person:  
W. Hwy 152, Pampa

**CRALL PRODUCTS**  
2930 W. Hwy. 152  
ASME Code Welder-Fabricators for Pressure Vessels Needed.  
Apply in person or Fax  
return to:  
665-9736

**W&W FIBERGLASS IMMEDIATE OPENINGS FOR**  
Fiberglass Manufacturing  
Field Personnel  
Swampers  
with and without CDL  
+40 + hrs./wk  
Apply in person:  
100 N. Price Rd.  
Pampa

**W&W FIBERGLASS IMMEDIATE OPENINGS FOR**  
Fiberglass Manufacturing  
Field Personnel  
Swampers  
with and without CDL  
+40 + hrs./wk  
Apply in person:  
100 N. Price Rd.  
Pampa

**EXP. Maintenance person**  
needed. Must have own tools. Call to apply 665-4274 or 806-433-6939

**ZELCO Trucking** is needing Class A CDL truck drivers. Apply in person 100 N. Price Rd., or call 662-0841.

**Heritage Feeders, L.P.**  
P.O. Box 370  
Wheeler, TX. 79096

**FULL & Part-Time. Janitorial Serv.** taking appli. Dr. license req. Will train. 669-9186, 665-2667.

**INSTRUMENT FITTERS & TECHS ELECTRICAL INDUSTRIAL JOURNEYMEN & HELPERS**  
Drug free & dedicated to safety. EOE.  
Email resume to  
cxtx@netzero.com  
or fax to 361-242-2678

Create a Beat needs a HS graduate to work in a Christian environment to act as a supervisor and role model for elementary age children. hrs. 2:45-5:45 M-F  
665-7474

**HOSTESS, wait staff, full-time, part-time cooks & kitchen help needed.** Apply Dixie Cafe, before 11 am. & aft. 2 pm.

**AXYDLBAAXR is LONGFELLOW**  
One letter stands for another. In this sample, A is used for the three L's, X for the two O's, etc. Single letters, apostrophes, the length and formation of the words are all hints. Each day the code letters are different.

**3-28 CRYPTOQUOTE**  
JY MIJGDIO MDID RFFW  
QPOJXDOOVDX, GTDZ'W THKD  
GFF VPST ODXOD GF QD

**MIJGDIO. — JIKJX O. SFQQ**  
Yesterday's Cryptoquote: I'D WORSHIP THE GROUND YOU WALKED ON IF ONLY YOU LIVED IN A BETTER NEIGHBORHOOD. — BILLY WILDER

**BORN TODAY**  
Actress Lucy Lawless (1968), singer Pearl Bailey (1918), actor Eric Idle (1943)

\*\*\*  
Jacqueline Bigar is on the Internet at  
http://www.jacquelinebigar.com.

© 2006 by King Features Syndicate Inc.

### 21 Help Wanted

**Full-Time Employment!! Must be 18 Insurance Vacation Sick Leave Retirement Offered**  
Bartlett Lumber  
500 W. Brown  
Pampa

SIVALLS Inc. is looking for welder fabricators, and paint test service tech. Welding and drug tests req. Benefits: health ins., profit sharing, 401K, 8 paid holidays and 10 days vacation per year. 806-665-7111, Pampa.

**W&W FIBERGLASS IMMEDIATE OPENINGS FOR**  
Fiberglass Manufacturing  
General Labor  
+40 + hrs./wk  
Apply in person:  
100 N. Price Rd.  
Pampa

**DRIVERS NEEDED**  
EXP. full-time Truck Drivers needed to haul crude oil. Must have a good driving record & at least 2 yrs. exp. on tractor trailer rigs; CDL req. Tanker and HazMat endorsements will be required. Must be able to pass a DOT physical & drug screen. Local hauls and exc. benefits. Day Shift. \$500 sign-on bonus. Openings in the Pampa area. For an appli., phone: 1-800-451-1931 or 1-806-659-2571. Plains Marketing, L.P. An Equal Opportunity Employer, M/F.

**Feed Yard Office Manager**  
Heritage Feeders L.P., in Wheeler, TX is accepting applications for the position of Office Accounting Manager. This position will be responsible for general office and accounting management. Applicants should be able to demonstrate a strong work history and/or education in accounting. Cattle, Turkey and Excel exp. a plus. Applicants should send resume to:  
P.O. Box 370  
Wheeler, TX. 79096

**FULL & Part-Time. Janitorial Serv.** taking appli. Dr. license req. Will train. 669-9186, 665-2667.

**INSTRUMENT FITTERS & TECHS ELECTRICAL INDUSTRIAL JOURNEYMEN & HELPERS**  
Drug free & dedicated to safety. EOE.  
Email resume to  
cxtx@netzero.com  
or fax to 361-242-2678

Create a Beat needs a HS graduate to work in a Christian environment to act as a supervisor and role model for elementary age children. hrs. 2:45-5:45 M-F  
665-7474

**HOSTESS, wait staff, full-time, part-time cooks & kitchen help needed.** Apply Dixie Cafe, before 11 am. & aft. 2 pm.

**AXYDLBAAXR is LONGFELLOW**  
One letter stands for another. In this sample, A is used for the three L's, X for the two O's, etc. Single letters, apostrophes, the length and formation of the words are all hints. Each day the code letters are different.

**3-28 CRYPTOQUOTE**  
JY MIJGDIO MDID RFFW  
QPOJXDOOVDX, GTDZ'W THKD  
GFF VPST ODXOD GF QD

**MIJGDIO. — JIKJX O. SFQQ**  
Yesterday's Cryptoquote: I'D WORSHIP THE GROUND YOU WALKED ON IF ONLY YOU LIVED IN A BETTER NEIGHBORHOOD. — BILLY WILDER

**BORN TODAY**  
Actress Lucy Lawless (1968), singer Pearl Bailey (1918), actor Eric Idle (1943)

\*\*\*  
Jacqueline Bigar is on the Internet at  
http://www.jacquelinebigar.com.

© 2006 by King Features Syndicate Inc.

### 21 Help Wanted

**PART-time maintenance** for sm. apt. complex. Maint. backgr. helpful. 806-665-2828 for appt.

**WHITE Deer ISD** is now accepting applications for custodian / transportation position until filled. CDL not required. interested individuals please call Danny Ferrell, 806-883-2311, Ext. 103. Applications may be obtained from Administration Building, 601 Omohundro St., White Deer, Tx. White Deer ISD is an equal opportunity employer.

**NOW HIRING FULL-TIME TRUCK DRIVERS**, preferably with a Class A CDL and must be able to pass drug test. Competitive wages plus bonus, paid weekly, health ins. after 90 days, vacation after 1 year. Call Kindra at Turner Energy Services at (806)323-8844, Mon.-Fri. 8am.-5pm.

**TNT Fireworks stand operator** needed. Camper needed. Call Frank at 806-676-8739

**DISTRIBUTION** Tech needed for the City of Pampa's Water Distribution Dept. Must have High Sch. Diploma or GED, must have or obtain a Class CDL within 90 days of employment. Basic plumbing, pipefitting and general mechanical exp. Appli. may be picked at City Hall, Room 205.

**ACCOUNTS PAYABLE CLERK** needed. 2+ yrs. exp. Fill out application at Panhandle Worksource, 1224 N. Hobart, Ste. 101.

**Feed Yard Office Manager**  
Heritage Feeders L.P., in Wheeler, TX is accepting applications for the position of Office Accounting Manager. This position will be responsible for general office and accounting management. Applicants should be able to demonstrate a strong work history and/or education in accounting. Cattle, Turkey and Excel exp. a plus. Applicants should send resume to:  
P.O. Box 370  
Wheeler, TX. 79096

**FULL & Part-Time. Janitorial Serv.** taking appli. Dr. license req. Will train. 669-9186, 665-2667.

**INSTRUMENT FITTERS & TECHS ELECTRICAL INDUSTRIAL JOURNEYMEN & HELPERS**  
Drug free & dedicated to safety. EOE.  
Email resume to  
cxtx@netzero.com  
or fax to 361-242-2678

Create a Beat needs a HS graduate to work in a Christian environment to act as a supervisor and role model for elementary age children. hrs. 2:45-5:45 M-F  
665-7474

**HOSTESS, wait staff, full-time, part-time cooks & kitchen help needed.** Apply Dixie Cafe, before 11 am. & aft. 2 pm.

**AXYDLBAAXR is LONGFELLOW**  
One letter stands for another. In this sample, A is used for the three L's, X for the two O's, etc. Single letters, apostrophes, the length and formation of the words are all hints. Each day the code letters are different.

**3-28 CRYPTOQUOTE**  
JY MIJGDIO MDID RFFW  
QPOJXDOOVDX, GTDZ'W THKD  
GFF VPST ODXOD GF QD

**MIJGDIO. — JIKJX O. SFQQ**  
Yesterday's Cryptoquote: I'D WORSHIP THE GROUND YOU WALKED ON IF ONLY YOU LIVED IN A BETTER NEIGHBORHOOD. — BILLY WILDER

**BORN TODAY**  
Actress Lucy Lawless (1968), singer Pearl Bailey (1918), actor Eric Idle (1943)

\*\*\*  
Jacqueline Bigar is on the Internet at  
http://www.jacquelinebigar.com.

© 2006 by King Features Syndicate Inc.

### 21 Help Wanted

**FT opening Assembly** Work. Must be trustworthy & reliable. Will train. Tx. drivers lic. & background check required. Call Jim 665-5010.

**TAKING applications** for truck driver. Must be 21 & have Class B CDL. Apply in person at Pampa Concrete. 220 Tyng. No phone calls please.

**FULL-TIME CNA** positions avail. 11-7 & 3-11. Good benefit package. St. Ann's Nursing Home, Panhandle, 537-3194.

**NIGHT Audit, long term.** Apply in person. No phone calls, Best Western Northgate Inn.

**DRIVERS & Owner Operators:** Top Earnings! Lease Purchase Program Available! Great Benefits & Home-Time! CDL-A. 2 years experience. 800-445-9133.

**DRESSER-RAND** Field Services, is looking for full-time exp. Compressor Mechanics. Fax resume to 806-853-9035.

**48 Trees/Shrubs**  
PUTMAN'S Quality Serv. Tree trim, custom carports, stor. bldgs., decks. Msg. 662-4583

**WE Do Tree & Lawn Service, Shrubs, Flowerbeds, etc.** David Jenkins, 2100 N. Banks, Pampa, Tx. 806-665-0480. Free Estimates, Sr. Discounts.

**50 Building Suppl.**  
White House Lumber  
101 S. Ballard  
669-3291

**60 Household**  
Mattress Sets  
IN STOCK  
Extra Thick Pillow Top,  
T. \$190.00  
F. \$230.00  
Q. \$360.00  
K. \$450.00  
5 yr. Warr.  
Elite Furniture  
806-677-0400

**HOT TUB Beautiful 2006**  
w/Lounger Never used. Waterfall 6.5 hp, 43 jets, Aroma therapy, cover, startup kit \$4,000  
806-670-9337

**Distributor Overstock**  
Brand name mattress sets, orthopedic & chiropractic endorsed. All brand new w/ factory warr. 40-80% off retail. Can deliver. Pillow tops: Tw. \$176, Full \$227, Qu. \$241, Kg \$371. Flush tops: Tw. \$87, Full \$115, Qu. \$151, Kg \$243. 806-517-1050.

**69 Misc.**  
**ADVERTISING Material to be placed in the Pampa News MUST be placed through the Pampa News Office Only.**

**CHERRY wood TV cabinet** and 4 unfinished bar stools for sale. 662-8525 or 665-1758.

**RACHEL SOTO is Back!**  
Tammy's Cut-ups  
665-6558  
Walk-ins Welcome!!

**3 Beautiful Prom Dresses,** worn 1 time. Sizes 11, 12 & 13. Paid \$200-\$400 oring. Call 665-4941.

**GWENDOLEN Plaza**  
Apts., 1&2 bdr. Gas / water pr. 3, 6 mo.-1yr. lease. 800 N. Nelson, 665-1875.

**MOVE-IN Special \$275 + dep.** Fresh paint, appliances inc. Come check out the New Coffee St. Duplexes \$300 1st mo. ("Gom-ing Fast") Candy or Tim 433-6939 or 665-4274.

**Beautifully furn. 1 bdr. starting at \$375.** We pay gas & water, you pay elec. 6 mo. leases, pool & laundry on site.  
Caprock Apts.  
1601 W. Somerville  
665-7149  
Mon.-Fri. 8:30-5:30  
Sat 10-4

**96 Unfurn. Apts.**  
**CAPROCK APARTMENTS**  
1, 2, & 3 bdrm. Starting at only \$335. 6 mo. lease available.  
\* Pool  
\* Laundry  
\* Wash/ dryer hook-ups  
\* Club room  
\* On-site management  
\* SOFTENED WATER  
M-F 8:30-5:30, Sat. 10-4  
1601 W. Somerville  
806-665-7149

**HOME Sites-Price Acres-**  
\$30,000, 10 Acre plats. 5 Acres Bowers City Hwy., \$10,000. Chaumont Bldg Sites. Century 21, Pampa Realty 669-0007.

**I BUY HOUSES CASH DEAL ANY CONDITION**  
663-6120  
MAD? Banks don't give house loans due to credit problems, I do! LD Kirk Homeland Mortgages (254)947-4475

**MARIE EASTHAM Realtor**  
665-4180, 440-3044  
Pampa Realty Century 21

**104 Lots**  
2 Mausoleum Crypts Side by Side \$3995.00 Call 440-2449

**105 Acreage**  
DBLE. wide, 80 acres, rv garage, pole barn, horse barn. 17 mi. south on Hwy. 70. 806-665-3049

**115 Trailer Parks**  
TUMBLEWEED Acres, Storm Shelters, fenced, stor. bldg. avail. 665-0079, 665-2450.

**120 Autos**  
1997 Old Cutlass. 1 owner. Good condition! New tires, new brakes. Call 669-7518.

1997 Buick LeSabre Limited. Senior owned, Gared. Extra clean. \$4000. Call 665-4973.

**121 Trucks**  
2004 Pwr. Stroke Diesel ext. cab XLT. 21,800 mi. Extras. Like new. \$26,000. Fritch 857-2529

### 69 Misc.

**SEASONED Oak Firewood,** delivered and stacked. 779-3284.

**FOR Sale:** 669-0735, lv. msg. PS2-\$90; 2 controllers \$25; 6-XBOX games-\$15 ea., washer-\$100, dryer-\$100; refrig./freezer-\$250, chaise lounge-\$450, Packard Bell computer-\$150; dining table w/4 chairs-\$200.

**69a Garage Sales**  
DEBBIE'S Used Furniture. We buy & sell 1 piece or complete house. 903 S. Main, Borger, 273-2905, 886-0268 Tues-Sat.

**75 Feeds/Seeds**  
FERTILIZED Grass Hay for sale. Gary Hall, 806-663-0740.

**95 Furn. Apts.**  
DAVIS HOUSE  
116 1/2 W. Foster  
440-1066  
Rooms \$80 wk., bills paid

**102 Bus. Rent. Prop.**  
OFFICE Space for rent, ask about 3 months free rent. 669-6841.

**LOWEST Rents in City!**  
Downtown locations-stores, warehouses, rec. facilities. Call 665-4274.

**OFFICE at 707 N. Hobart.** 7 rooms, bath, c/h/a. 665-3458, Jannie Lewis, Broker.

**103 Homes For Sale**  
Twila Fisher  
Century 21 Pampa Realty  
665-3560, 440-2314  
669-0007

2 houses for sale. Reasonable. 531 N. Wells & 608 N. Banks, Pampa. Call 785-766-6623.

8610 PEAR RD.  
3800 sq.ft. 4 bd, 3 car gar.  
Keller Estates Home  
on 10.5 acres  
w/ 2900 sq. ft. horse barn  
Call 669-4327

**For sale By Owner**  
1212 DARBY  
3/1/1  
OWNER WILL NOT FINANCE  
665-3379

**96 Unfurn. Apts.**  
**CAPROCK APARTMENTS**  
1, 2, & 3 bdrm. Starting at only \$335. 6 mo. lease available.  
\* Pool  
\* Laundry  
\* Wash/ dryer hook-ups  
\* Club room  
\* On-site management  
\* SOFTENED WATER  
M-F 8:30-5:30, Sat. 10-4  
1601 W. Somerville  
806-665-7149

**HOME Sites-Price Acres-**  
\$30,000, 10 Acre plats. 5 Acres B



# Rodeo Day



McKenzie O'Neal, from left, Miss Rodeo Top O' Texas Jamie Schroeder and Avery Smith during Rodeo Day recently at St. Matthew's Episcopal Day School.

## GM lays off several hundred

DETROIT (AP) — General Motors Corp., pummeled by falling U.S. sales and billions in losses, said Tuesday it is laying off hundreds of U.S. salaried workers as part of a plan to bring its North American operations back to profitability.

GM spokesman Robert Herta said he couldn't give an exact figure, but said the cuts involve fewer than 500 workers at 30 locations across the United States, including factories and engineering centers.

A cut of just under 500 jobs would represent about 1.3 percent of GM's U.S. salaried work force of 36,000. The world's biggest automaker has said it plans to cut 7 percent of its salaried work force this year, so more cuts are on the way.

GM shares slipped 2 cents to \$22.91 in early trading on the New York Stock Exchange.

Detroit-based GM announced a restructuring plan last fall in the face of mounting losses. GM wants to cut 30,000 U.S. hourly

workers and close 12 facilities by 2008. GM lost \$10.6 billion in 2005, largely because of declining sales and rising costs in North America.

The layoffs are GM's second major jobs-related announcement in a week. GM on Wednesday said it would offer buyouts to its U.S. hourly workers of between \$35,000 and \$140,000 as part of the plan to cut its hourly work force. GM currently has 113,000 hourly workers. Salaried workers aren't eligible for those buyouts.

GM's severance packages for salaried workers vary by position and level of experience, but employees generally receive one month of severance pay for each year of service at the automaker up to a maximum of 15 months. They also will continue to receive health benefits and will be eligible for outplacement assistance during that time, Herta said. Salaried workers with company vehicles will be able to keep those vehicles for a period of time.

## Williams

Continued from Page 4

which are passed on to smokers in the form of higher prices.

Just recently, the City of Calabasas, Calif., adopted an ordinance that bans smoking in virtually all outdoor areas. Partial justification is to protect children from bad influences — seeing adults smoking. Had the anti-smoking zealots revealed their entire agenda back in the '60s and '70s, they wouldn't have gotten much. By using the piecemeal approach, they've been successful beyond their dreams, and the food zealots are following their example.

I'd be interested to know just how

many Americans would like to see done to our food industry what was done to the tobacco industry: massive multibillion-dollar lawsuits against food companies; massive suits against restaurants that serve too large a serving, and confiscatory taxes levied on foods and snacks deemed non-nutritious.

Consumers will pay for all of this in the form of higher food prices and fewer choices. There's also the possibility that food zealots in some cities, emboldened by the success of the anti-smoking zealots in Calabasas, who are concerned about smokers passing on bad habits to our youth, might call for an ordinance banning public appearance of obese people so as not to pass bad eating habits on to our children.

## N.H. flight attendant dies in Texas crash

FREMONT, N.H. (AP) — A New Hampshire woman whose life was spared from the Sept. 11 terrorist attacks by a chance scheduling of a family medical appointment has died from injuries suffered in a Texas car crash.

Relatives said flight attendant Marilyn Gates, 52, was in Texas to attend a weekend wedding when a sport utility vehicle hit the car in which she was riding Saturday at a suburban intersection north of Dallas.

Texas Department of Safety officials identified the SUV driver as Stephen Mole, of Keller, Texas. Spokeswoman Lisa Block said speed was a factor in the crash. She said Keller ran a traffic light and struck the other car.

Gates' husband, Fremont Selectman Don Gates, a retired state trooper, was hurt in the crash and was released after hospital treatment.

Fremont Selectman Eugene Cordes was driving. He and two other passengers, Beverly Brooks, a real estate agent, and Griffin

Cordes, 17, both of Fremont, also were injured.

On Sept. 11 Marilyn Gates was supposed to be working aboard American Airlines Flight 11, which was crashed into the World Trade Center. She missed the flight to be with her father that day for a doctor's appointment.

**401(K) ROLLOVER HEADQUARTERS**

**Duane Harp**  
1921 N. Hobart  
Pampa, Tx. 79065  
665-6753

**Edward Jones**  
Serving Individual Investors Since 1871  
Member SIPC

**Absolute Connections, LLC.**

Now Open!  
**Answering Services**  
24/7 • 365 Days

Messaging • Patching  
Dispatch • Monitoring Services  
Live • Email & Faxing

Fast, Friendly, Professional Service With  
the Best Technology on the Market Today!

**Bus: 806.669.1322**  
**Fax: 806.665.4055**

Locally Owned, Nance Wills-Owner  
120 W. Kingsmill Ave., Suite 403 • Pampa, Texas 79065

A Newspaper Activity Page for Young People

**Kid Scoop.com**

This Week: **Beetles**

© 2006 by Vicki Whiting, Editor Jeff Schirral, Graphics Vol. 22 No. 14

A Nellie Fly Exclusive

**Beetle-Mania!**

There are more than 250,000 kinds of beetles that have been named! Scientists believe there are actually many more that are not yet named.

In fact, of all the animals in the world, it's the beetle that has the largest number of varieties.

**Big Beetles**

The Hercules and the Goliath beetles are often regarded as the largest beetles in the world. The male Hercules beetle can grow to be eight inches in length, including its horns!

The Goliath beetle from Africa is often called the largest beetle in the world because it weighs the most. It can grow to be four and a half inches long and weigh three and a half ounces.

**Itty-Bitty Beetles**

Imagine dividing one inch into a thousand equal parts. Then try to imagine the size of just one of those parts. That is the size of the smallest beetle—1/1000 of an inch.

This itty-bitty beetle is called the feather-winged beetle because of the long fringes of hair on its long, narrow hind wings. Most grow to be between 0.25 and 1 millimetre (0.01 to 0.04 inch) in length.

Feather-winged beetles live in rotting wood, fungi, manure, under bark, or in ant nests.

Standards Link: Life Science: Students know there is a variation among individuals of one kind within a population.

**Poison Pals**

In southern Africa, Bushmen use the pupae of a poisonous leaf-eating beetle to make poison for hunting.

**Clean-Up Crew**

Beetles perform an important job in the natural world. They clean up after others. They eat plants and \_\_\_\_\_ (sometimes known as poop). Sound gross? It might be even more \_\_\_\_\_ if none of this was cleaned up at all!

Whoops! This beetle moved some words. Can you find where each one belongs?

DUNG  
ARROWS  
GROSS  
DEAD!

**Growing Up With Beetles**

Beetles change as they grow. They grow in stages and look different at each stage. In fact, baby beetles look more like worms than beetles. They hatch from eggs and are called larvae or grubs. When grubs are fully grown, they become pupae. Finally the pupae turn into the adults that we call beetles.

Number the pictures from 1 to 4 to show how a beetle grows and changes.

Standards Link: Life Science: Students know the sequential stages of life cycles are different for different animals.

**Beetle Boo-Boos**

Our artist has made a scientific error in these drawings of beetles. Can you figure out what it is?

Hmmm... something is bugging me about these drawings.

Check your answers at [www.kidscoop.com/kids/index.html](http://www.kidscoop.com/kids/index.html)

Standards Link: Visual Discrimination: Find similarities and differences in common objects.

**Double Double Word Search**

Find the words in the puzzle, then in this week's Kid Scoop stories and activities.

HERCULES  
GOLIATH  
PUPAE  
LARVAE  
ELYTRA  
SKELETON  
WINGS  
AFRICA  
HAIR  
FACTS  
POISON  
GROSS  
TRAP  
STAGE  
CREW

E G A T S T C A F H  
H B T E A E E F E N  
S T R H R A T R A O  
S L A E T P C I V T  
O I P I Y U M C R E  
R A N W L P I A A L  
G A E E E O W G L E  
Y R S W I N G S C K  
C Y B N O S I O P S

Standards Link: Letter sequencing. Recognized identical words. Skim and scan reading. Recall spelling patterns.

**TRUE OR FALSE**

Three of the pieces of information below are true and one is false. Can you figure out which is which?

1. The strongest animal, relative to body size, is the Rhinoceros beetle. It can support 850 times its own body weight on its back. Consider, that in human terms, it would be as if a 150-pound man could carry 127,000 pounds.
2. A cockroach is a kind of beetle, and it can live for up to one week without its head.
3. Scientists hoping to build a better airplane engine, studied the Bombardier beetle, which can fire liquid at its enemies from its rear end at up to 300 squirts per second.
4. Dung beetles feed on and reproduce in the dung of herbivores, removing millions of tons of dung that would destroy valuable pastureland and natural areas.

**FROM THE LESSON LIBRARY**

**Nature vs. Nurture**

Find an article about a person. Read the article and list three traits or characteristics that the person inherited or was born with. List three traits or conditions that are probably the result of the person's environment.

Standards Link: Life Science: Students know many characteristics of an organism are inherited.

**Write On!**

**Talking Beetle**

What if beetles could talk? What would they say? Write an imaginary conversation between you and a beetle.

**Kid Scoop VOCABULARY BUILDERS**

This week's word: **Pupae**

The noun pupae means insects in the middle stages of development, after they are larvae and before they become adult insects.

Many kinds of insects, including butterflies, spend their time as pupae inside cocoons.

Try to use the word pupae in a sentence today when talking with your friends and family.

**Beetle Bodies**

Beetles have a special body part that makes them, well, beetles. This special body part is a hard exo-skeleton that covers their wings. Called elytra (El-ih-truh), these hard "wings" provide protection and more. Some beetles trap moisture on their wings, allowing them to survive in the desert. Other kinds of beetles are able to live under water because they trap air in their wings and keep it under the elytra.

Standards Link: Life Science: Students know animals have structures that serve different functions in survival.

Draw a line connecting each pair of beetles that match.

**Extra! Extra!**

**Facts and Opinions**

Look at today's front page for facts and opinions. Underline the opinions in red. Underline the facts in green. Repeat with another page of today's newspaper.

Standards Link: Reading Comprehension: Students identify facts and opinions in text.