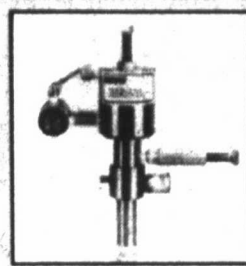


JOHN T. KINGS & SONS
OILFIELD SPECIALTY ... UNITS • PARTS • SERVICES
918 S. BARNES • 806-669-3711



THE PAMPAN

THURSDAY, FEBRUARY 5, 2004

***** ALL FOR ADC 780
 *01 BV04227 12/31/14
 SOUTHWEST MICRO PUBLISHING
 2627 E YANDELL DR
 EL PASO TX 79903-3743

Vol. 99 No. 864 • Pampa, Texas
 50 cents Daily • Sunday \$1



WEATHER WEATHER



HIGH 38 LOW 20

DEATHS

Genevieve J. Barrett, 83, alterations store owner.
Monrow Finney, 76, oil-field pump.
Connie Ruffus Lockhart, 92, businessman.

INSIDE...

Classified9
Comics6
Editorial4
Sports7

Tree Planting Season Is Here

WEST TEXAS LANDSCAPE
 120 S. HOBART 669-0158

CHILDERS BROTHERS INC. HOUSE REPAIRING
 Uneven Floors
 Floor Bracing
 Cracks In Bricks
 Sticking Doors & Windows
 Interior Wall Cracking
FREE ESTIMATES
1-800-299-9563
 WWW.CHILDERSLEVLEING.COM

FRED BROWN TREE AND TURF

Tree & Yard Spraying
 Insect & Weed Control
 Deep Root Feeding
CELL 806-662-3141 PAMPA, TX.

STODWALL CONST.
 For all your repair or remodeling needs
 "Satisfaction Guaranteed"
 Dustin Studdard 884-7928
 Brian Wall 898-0555

403 (b) with local service!

Duane Harp
 1921 N. Hobart
 Pampa, TX 79065
 665-6753
Edward Jones
 Serving Individual Investors Since 1871
 Member SIPC

LENTZ CONOCO

300 N. Hobart 665-3281

Complete Auto Service

PENNZOIL Stop. Go. Pennzoil.

Unknown murder victim buried

Authorities continue search for killer

By **MARILYN POWERS**
 STAFF WRITER

Graveside services were held at 9 a.m. today in Fairview Cemetery for the unidentified woman found dead Oct. 16, 2003 near mile marker 132 just off Interstate 40 in Gray County.

Lonny Robbins, pastor of Trinity Fellowship Church, officiated at the service, which was attended by about a dozen individuals, including Precinct 1 Justice of the Peace Joe Martinez and representatives of Tralee Crisis Center.

"The lady here is someone's daughter, someone's child. There are probably parents alive today who wonder where their daughter is. They may never know. But she had a name," Robbins said during the service. He also quoted the first three verses of Psalms 139.

The woman's nude body was found

near the Johnson Ranch Road exit off I-40 at about 7:45 a.m. last Oct. 16, on the westbound side of the highway. Autopsy results from Texas Tech Health Sciences Center's Division of Forensic Pathology in Lubbock indicate that cause of death was "homicidal violence of variable etiology."

Martinez explained that in this instance, "homicidal" means that someone caused the woman's death, whether it was accidental, intentional, or incidental to another event. "Etiology" means "cause" or "origin".

The woman appeared to be a Native American female, 5'8" tall, weighing about 134 pounds, and between 35 and late 40s in age. She had dark hair, 12" to 14" long, long fingernails, and a healed 13-centimeter, or about five-inch, scar at mid-abdomen.

She was last seen at the Flying J (See VICTIM, Page 3)



(Pampa News photo by Marilyn Powers)

Lonny Robbins, pastor of Trinity Fellowship Church, officiated this morning at the graveside services of the unidentified woman found dead Oct. 16, 2003 near mile marker 132 on Interstate 40 westbound. About a dozen people attended the brief service at Fairview Cemetery.

PGWCD early voting ends

By **MARILYN POWERS**
 STAFF WRITER

A total of 425 voters cast their ballots in early voting for two seats on the Panhandle Ground Water Conservation District board of directors, according to staff members at the conservation district office in White Deer.

Up for election are the Precincts 3 and 7 board seats. In Precinct 3, which covers parts of Gray, Wheeler and Roberts Counties, including Pampa, incumbent John R. Spearman Jr. is opposed by Stephen Smith, both of Pampa.

In Precinct 7, which is in Roberts County, incumbent Robert A. Clark is challenged by Kim Flowers, both of Miami.

Early voting began Jan. 21 and ended Feb. 3. The election will be Saturday, Feb. 7. All registered voters living in either of the water conservation district precincts may vote in the election. Precinct boundaries in the water con-

servation district are not the same as those for regular voting precincts, and do not match precinct numbers on voter registration cards.

Water Board Precinct 3 covers the northern third of Gray County, the southwest quarter of Roberts County and about one-eighth of Wheeler County in the northwest section. Water Board Precinct 7 is entirely in Roberts County.

Voters in Saturday's election for the Precinct 7 candidate will cast their ballots at Miami Community Center, 103 S. Main in Miami.

Gray and Wheeler County residents eligible to vote in the Precinct 3 election will vote at the Gray County Annex, 1215 E. Frederic, in Pampa. Precinct 3 voters living in Roberts County will vote at the Little Red School House, Texas Highway 70 and FM 282.

For more information, contact the Panhandle Ground Water Conservation District office at 883-2501.

Search of mail room yields no new clues

WASHINGTON (AP)—A thorough search of Senate Majority Leader Bill Frist's personal mailroom has turned up no additional traces of ricin and no threatening letters or messages, law enforcement officials said Thursday.

Hazardous materials teams from the FBI, Capitol Police Department and Postal Service finished examination and testing of all the mail that had been isolated after ricin was found on a mail-opening machine on Monday.

Nothing suspicious was found, including no message from a mysterious "Fallen Angel" who has sent two

threatening letters containing ricin to government agencies, said two federal law enforcement officials speaking on condition of anonymity.

Still, they said, the possibility that the ricin had arrived in the mail has not been ruled out.

The earlier typewritten "Fallen Angel" letters, addressed to the White House and

Transportation Department, warned that more ricin would be used unless some trucking regulations that went into effect Jan. 4 were scrapped.

Three Senate buildings (See SEARCH, Page 3)

Clark seeks to conserve and preserve

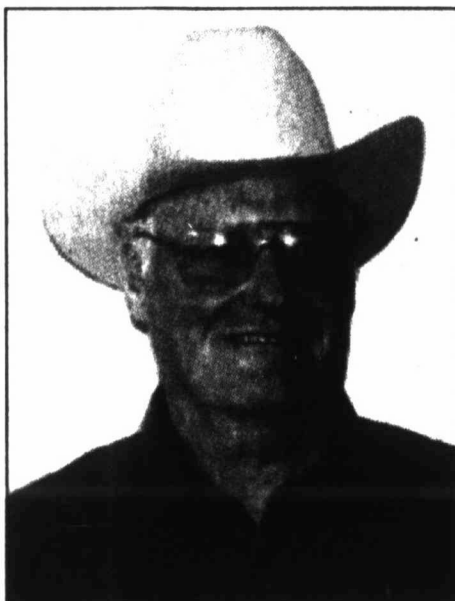
By **MARILYN POWERS**
 STAFF WRITER

Robert A. Clark of Miami is a candidate for re-election to the Panhandle Ground Water Conservation District because he wants to "continue my efforts to conserve, preserve and help the quality of our water in the region for future generations."

Clark has represented the water conservation district's Precinct 7, in Roberts County, for over 10 years. He said he has missed six meetings during that time. He is opposed in the election by Kim Flowers. Both are ranchers in the county.

Clark plans to achieve his goals as a water conservation district board member by "working as a team member of the Panhandle Ground Water Conservation District, taking all the issues of people wanting to sell water, and working out a balance of users and conservation."

Mesa Water Inc.'s controversial plan to sell Texas Panhandle ground water downstate "goes back to the private rights of the water owner. The water has to be sold to a Texas municipality



Robert Clark

as the end user," Clark said. Mesa Water Inc., which was founded by T. Boone Pickens, a Roberts County rancher and Dallas businessman, holds more than 150,000 acres of water rights in the Panhandle.

"We are not hindering the sale of people's water," Clark said of the water conservation district. "We are trying to reach a balance between water use and conservation of water in the region. The

private rights of the people have to be recognized, and they have to abide by the rules, such as the 50/50 rule and also how many acre feet their permits allow to be pumped."

The 50/50 rule requires that 50 percent of the Ogallala Aquifer, which is the ground water formation for the Panhandle, must remain 50 years from now.

"We have the authority to regulate the amount of water production from the aquifer," Clark said. "I was instrumental in decisions reached by the water conservation district" concerning the sale of area ground water, he said.

The ground water conservation district has about 900 monitor wells by which they can monitor water pumping and other factors, Clark said.

Clark has been attending meetings of the Texas Commission on Environmental Quality, Texas Water Conservation Association and other conferences and seminars to further his knowledge on the subject of ground water.

"I've always been a watchdog for contamination in the aquifer, especially adjacent to the Pantex plant, where con-

tamination has been found," Clark said. He said the ground water conservation district has a plugging procedure for plugging abandoned wells, and anyone who has an unused or abandoned well should contact the district.

Clark supports the ground water district's cloud seeding study.

"I see it as one more way for us to keep down depletion of the aquifer by increasing rainfall from cloud seeding. I have been in favor of cloud seeding because even if we get only 15 percent more rain, that's that much water that will not have to come from the aquifer," he said.

Clark earned a Bachelor of Science degree in agriculture from Texas Tech University in Lubbock, where he majored in agronomy. He has lived in Roberts County all his life, where his father arrived in 1930 to establish a ranch.

"We don't need someone tough and demanding. We need someone who has knowledge of the issues to function with other members of the water district board to deal with the issues. I care about the future of Roberts County and what's left for future generations," he said.

F E B

0 5

2 0 0 4

UNDER NEW MANAGEMENT
 Come In And Meet Joel To Receive
10% Off With This Coupon

Brown's Shoe Warehouse

Open 7 Days A Week
 Monday-Saturday 9-7
 Sunday 1-5
 1500 North Hobart
 Pampa • 665-5691

BEST AVAILABLE COPY

KELLER WILLIAMS REALTY

301 W. Kingsmill • 669-2799

<p>11931 Ragsdale ... \$165,000 104 S. Price Rd. - Office Warehouse ... \$200,000 2133 Williston ... \$28,000 2216 Dogwood ... \$37,000</p>	<p>820 N. Gray ... \$49,000 1914 N. Faulkner ... \$38,500 304 N. West ... \$48,500 504 West 2nd, White Deer ... \$120,000 2300 Beech ... \$175,000</p>	<p>2000 Christine ... \$70,000 1301 Starkweather ... \$26,000 2211 Dogwood ... \$61,900</p>
---	--	---

Sharon McKee

Tax Return Refunds Will Make A Great Down Payment On Your New Home

Sandra Schuneman

OBITUARIES

SERVICES TOMORROW

BARRETT, Genevieve J. — Rosary services, 6 p.m., Carmichael-Whately Funeral Directors Colonial Chapel, Pampa.

FINNEY, Monrow — 2 p.m., Trinity Fellowship Church, Pampa.

LOCKHART, Connie Ruffus — Graveside services, 2 p.m., Memory Gardens Cemetery, Pampa.

GENEVIEVE J. BARRETT 1920-2004

WHITE DEER — Genevieve J. Barrett, 83, of White Deer, Texas, died Tuesday, Feb. 3, 2004, at Wichita, Kan. Rosary services will be at 6 p.m. Friday, Feb. 6, 2004, at Carmichael-Whately Colonial Chapel in Pampa, and funeral mass will be at 10 a.m. Saturday, Feb. 7, 2004, at Sacred Heart Catholic Church in White Deer, with Msgr. Kevin Hand, pastor, officiating. Burial will be in Sacred Heart Cemetery under the direction of Carmichael-Whately Funeral Directors of Pampa.

Mrs. Barrett was born June 19, 1920, on a large farm near Canute, Okla., to George O. and Ursula Orf Toelle. She married Edward L. Barrett, Sr., on May 18, 1938. He preceded her in death on April 10, 1992, after 54 years of marriage.

She had been a resident of Alva, Okla., for most of her life, working at Safeway Grocery and making custom draperies. She later resided in Perryton for a number of years where she did alterations for a dry cleaner, and later opening her own alterations store.

She had been a resident of White Deer for several years, moving to Wichita, Kan., for the past five years.

She was a loving and wonderful mother who was always there for her children when they needed her. Survivors include three sons, Edward L. Barrett, Jr., of Rowlett, Randy Barrett of White Deer, and George Barrett of Aurora, Colo.; three daughters, Yvonne Stearns of Guys Mill, Pa., Shirley Whisman of Wichita, Kan., and Carolyn Snyder of Panhandle; 14 grandchildren; four great-grandchildren; one brother, Charles Toelle; one sister, Sr. Mary Clotilda, Sister of Mercy; three daughters-in-law; and three sons-in-law. She was preceded in death by her parents, one brother and four sisters.

—Sign the on-line register book at www.carmichael-whatley.com.



MONROW FINNEY 1927-2004

Monrow Finney, 76, of Pampa, Texas, died Tuesday, Feb. 3, 2004, at Pampa, Texas. Services will be at 2 p.m. Friday, Feb. 6, 2004, at Trinity Fellowship Church with Pastor Lonny Robbins officiating. Burial will be in Fairview Cemetery under the direction of Carmichael-Whately Funeral Directors.

Mr. Finney was born March 15, 1927, at Shamrock, Okla. He was a veteran of the U.S. Navy, serving from 1945 until 1946 during World War II. He later joined the U.S. Army, serving from 1948 until 1949.

He married Pat Hatcher on Aug. 18, 1970, at Oklahoma City, Okla.

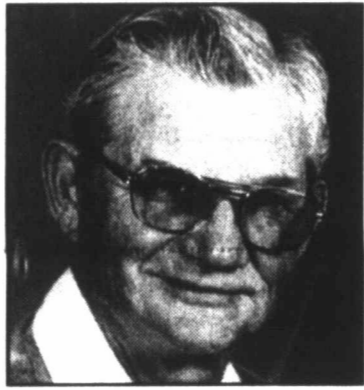
He was a pumper for Cabot Oil & Gas Division for 36 years. He was a lifetime member of the VFW, and the I.O.O.F. Lodge. He was a member of Trinity Fellowship Church.

Survivors include his wife, Pat, of the home; two daughters, Connie Hicks of Rogers and DeAnna Helton of Allison; three sons, Marvin Finney, Jr., and Jerry Finney, both of Pampa, and F. Dale Finney of Amarillo; one sister, Rosetta Hoffman of Fremont, Calif.; two brothers, Armal Finney and Olan Finney,

both of Pampa; 11 grandchildren, Trae Finney, Jamey Finney, Matthew Finney, Nathan Hicks, Erin Hicks, Mark Thomas Lamar, II and wife Robin, Jennifer Lamar, Justin Wade Helton, Jessica Helton, Jessie Finney, and Samantha Finney; and five great-grandchildren. He was preceded in death by his parents, Alford and Sibble Finney; two sisters, Ila Marker and Anna Belle Upton; and three brothers, Delmus Finney, Woodrow Finney and Laymon Finney.

The family requests memorials be to BSA Hospice, 800 N. Sumner, Pampa, TX 79065.

—Sign the on-line register book at www.carmichael-whatley.com.



CONNIE RUFFUS LOCKHART 1911-2004

Connie Ruffus Lockhart, 92, of Pampa, Texas, died Monday, Feb. 2, 2004, at Pampa. Graveside services will be at 2 p.m. Friday, Feb. 6, 2004, at Memory Gardens Cemetery with the Rev. Carl Novian, associate pastor of the First Baptist Church, officiating. Arrangements are under the direction of Carmichael-Whately Funeral Directors.

Mr. Lockhart was born Nov. 12, 1911, in Cisco, Texas. He had been a resident of Pampa since 1914, moving from Stamford. He married Hazell Campbell on Jan. 8, 1938, in Miami. She preceded him in death on July 19, 1994.

He owned and operated several cafes in Pampa, and also ran the Yellow Cab Company at one time. He did custom mowing in the oilfield for over 30 years.

He was a member of First Baptist Church. He was a member of the I.O.O.F., and a former member of the Texas National Guard.

Survivors include one sister, Sandra

Maloney of Albuquerque, N.M.; four grandchildren, Pam Lockhart-Highfill of Tulsa, Calif., Jeannie Smith of Phoenix, Ariz., Heather Fisher of Pampa, and Joshua Campbell of Bryan; and 11 great-grandchildren. He was preceded in death by three sons, Charles Ralph Lockhart, Roy Wayne Lockhart and Ronnie B. Campbell; and one sister, Claudia Calvert.

The family requests memorials be to First Baptist Church, P.O. Box 621, Pampa, TX 79066-0621.

—Sign the on-line register book at www.carmichael-whatley.com.



ON RECORD

POLICE

Pampa Police Department today reported the following arrests and incidents.

Tuesday, Feb. 3

Criminal mischief was reported at Pampa High School. A bicycle was reportedly damaged on Jan. 30.

Wednesday, Feb. 4

Forgery was reported to have occurred in the 600 block of North West. Suspects have been identified and the case turned over to the Criminal Investigation Division.

Pampa Police Department officers responded to a report of an attempted suicide

in the 2200 block of West Alcock. Investigation of the incident continues.

Burglary of a motor vehicle was reported to the police department. A Motorola cell phone valued at \$250 was reported stolen.

Mark Raymond Hazen, 22, Amarillo, was arrested on a bond surrender, failure to control speed, failure to change address, no insurance and two counts of issuing bad checks.

Sixto Felipe Albear, 21, 1119 W. Ripley, was arrested on a violation of probation for intoxication assault.

SHERIFF

Gray County Sheriff's Office today reported the following arrests.

Wednesday, Feb. 4

Jeremy Glenn Goode, 22, 1313 Duncan, was arrested on three outstanding warrants and possession of drug paraphernalia

Amanda Jo Landis, 21, Canyon was arrested on two outstanding warrants, failure to identify, and possession of drug paraphernalia.

AMBULANCE

Rural/Metro Ambulance reported the following calls during the 24-hour period ending at 7 a.m. today.

Wednesday, Feb. 4

7:51 a.m. — A mobile ICU responded to the 1000 block of Farley and transported a patient to Pampa Regional Medical Center.

12:27 p.m. — A mobile ICU responded nine miles south on Highway 70. The call was disregarded.

2:32 p.m. — A mobile ICU responded to the 700 block of Lowry and transported a patient to PRMC.

5:15 p.m. — A mobile ICU responded to the 100 block of North Faulkner and transported a patient to PRMC.

5:46 p.m. — A mobile ICU responded to Hobart and Somerville streets and transported a patient to PRMC.

10:41 p.m. — A mobile ICU responded to the 1200 block of Aspen on a call for lifting assistance.

10:49 p.m. — A mobile ICU responded to the 2200 block of Alcock and transported a patient to PRMC.

FIRE

Pampa Fire Department responded to the following calls during the 24-hour period ending at 7 a.m. today.

Wednesday, Feb. 4

10:17 a.m. — One unit and three firefighters responded to a false alarm at Meredith House, 812 W. 25th.

12:30 p.m. — One unit and two firefighters responded to a good intent call, nine miles south of Texas Highway 70. The nature of the call was not listed on the report.

5:32 p.m. — One unit and three firefighters responded to a motor vehicle collision at Hobart and Somerville streets.

10:52 p.m. — One unit and three firefighters responded to a medical assist in the 2200 block of Alcock.

ACCIDENTS

Pampa Police Department today reported the following accidents.

Sunday, Jan. 25

1:07 a.m. — A 1999 Pontiac Grand Am driven by Jessica Kay Knipp, 20, 1601 W. Somerville #505, and a 1993 Lincoln Towncar driven by Howard E. Harden, 35, of Amarillo, collided in a parking lot at Wilks and Faulkner. Knipp was cited for failure to leave information at the accident. Harden and his passenger Lonnie Remond Mills both reported possible injury.

Wednesday, Feb. 4

5:25 p.m. — A 1998 Chevrolet Prism driven by Mark Raymond Hazen, 22, of Amarillo, and a 1999 Chevrolet C1500 Silverado pickup driven by Joel Mauricio Ortega, 26, of Canyon, collided in the 1200 block of North Hobart. Hazen was cited for failure to control speed, failure to report change of address, following too close and no proof of financial responsibility. Hazen and one of his four passengers, Chris Ryan Woodward, reported noninapacitating injuries at the scene. Hazen was transported by Rural/Metro Ambulance to Pampa Regional Medical-Center. Woodward was transported to PRMC by private vehicle.

6:40 p.m. — A 1991 GMC Blazer driven by James Arthur Dunn, 21, 424 Doyle St., and a 2002 Pontiac Grand Prix driven by Lawaine Hughett Soukup, 49, 2629 Fir St., collided in the 1500 block of Hobart. Dunn was cited for making an improper turn from the turning lane.

7:38 p.m. — A 1982 Chevrolet pickup driven by David Mikel Hartley, 21, 928 S. Sumner, and a 2001 Chevrolet Suburban driven by Nanette Ann Flaten, 48, 2632 Evergreen St., collided in the 1700 block of West 23rd. Hartley was cited for unsafe speed.

STOCKS

The following grain quotations are provided by Antebury Grain of Pampa:

Wheat	3.44	Kerr McGee	47.84	-0.31
Milo	4.50	Limited	19.00	-0.06
Corn	5.06	Williams	10.14	-0.06
Soybeans	7.30	MCD	26.48	+0.07
		XOM	40.37	+0.02
		Atmos	25.03	+0.11
		Pioneer Nat.	30.44	-0.43
		JCP	27.16	+0.16
		COP	65.03	-0.23
		SLB	61.60	-0.08
		Tenneco	10.55	+0.01
		CVX	84.93	-0.22
		Wal-Mart	56.25	+0.86
		OKE	22.02	+0.02
		NS Grp	8.85	-0.06

The following 9:30 a.m. N.Y. Stock Market quotations are furnished by Edward Jones & Co. of Pampa:

QXY	43.12	-0.23	New York Gold	400.75
BP	47.39	-0.19	Silver	6.14
Celanese	41.07	+0.48	West Texas Crude	33.10
Cabot Corp.	31.45	+0.86		
Cabot Oil Gas	29.91	+0.06		
VLO	49.90	+0.15		
HAL	54.70	+1.74		
HAL	30.05	-0.05		
Triad	34.71	-0.54		
NOI	25.75	+0.06		

WEATHER FOCUS

PAMPA

The forecast today is calling for cloudy skies, a 20 percent chance of snow showers, highs near 40 and north winds around 10 mph. Tonight should fall on mostly cloudy skies with lows around 20 and north winds 5 to 15 mph. Friday should see partly cloudy skies. Highs in the upper 30s. North winds 10 to 20 mph. Friday night, mostly clear. Lows around 17. Northwest winds around 10 mph. Saturday, partly cloudy. Highs in the lower 40s. West winds around 5

mph shifting to the south around 10 mph in the afternoon. Saturday night, mostly cloudy. Lows around 20. Sunday, mostly cloudy. Highs in the lower 40s. Sunday night, mostly cloudy. Lows in the upper 20s. Monday, mostly cloudy. Highs in the upper 30s. Monday night, partly cloudy. Lows in the lower 20s. Tuesday, partly cloudy. Highs around 40. Tuesday night, partly cloudy. Lows in the mid 20s. Wednesday, partly cloudy. Highs in the upper 30s.

Small water leak shuts down nuclear reactor

PHOENIX (AP) — One of three reactors at the Palo Verde Nuclear Generating Station has been shut down after radioactive water was discovered dripping from a drain line, a plant official said.

The problem posed no danger to the public or workers at the plant located 55 west of

downtown Phoenix in Wintersburg, said Jim McDonald, a spokesman for the utility company that operates Palo Verde.

McDonald said Wednesday that the small leak of about 10 drops per minute in the reactor cooling system of the Unit 1 generator ceased once the reactor was shut down late Tuesday.

The water was leaking onto the floor of the containment area that encloses that reactor, according to McDonald.

It's unclear when the leak in the drain line began but McDonald said plant officials didn't believe it was for a long period of time.

City Briefs

The Pampa News is not responsible for the content of paid advertisement

DOTTIE'S PLACE Grand Opening, Sat. Feb. 7th. Join us for food & fun. 2122 Alcock 669-9181.

ESTATE SALE for Archie's Aluminum Fab & Lil' Ol' Paintin' Corner. See classified ad for details.

IRENE'S GIFTS is moving to 1506 N. Hobart in Taylor Tans. Take advantage of Sidewalk Clearance Sale, Fri. 6th & Sat. 7th 11 a.m.-6 p.m., 30-40-50% Off Select Items.

50% OFF, 1 day only-Fri. at All Its Charm!!

JJ'S AMUSEMENTS now open! 1201 N. Hobart Coronado Center. 665-0929

KISMET EMPORIUM Now Open For Business, 106 S. Cuyler, 665-0055.

ROLANDA'S VALENTINE'S Specials, 20-50% Off most items. 665-9682.

SHE'LL CALL you Sweet-heart with a lasting gift of jewelry from Twice is Nice—from one of a kind designer pieces to fun fashion jewelry!

VOTE FOR John Spearman Jr. for Panhandle Ground Conservation Board Sat. Feb. 7th at Gray County Annex See ad in this Paper for details. pol. ad pd. for by John Spearman Jr. Tres. 8822 FM 2391, Pampa, Tx 79065

This artist fled murder by Gray

SEARCH

... were close day Wednesday being reopened Friday and the ing — where found — is reopen on Mo Capitol Terrace Gair gators have fo direct connec the Frist case signed by " Those letters

Missi

FORT WO accused of abx Christian Uni wrapped duct a grocery store arrest warrant Edward Bt 39, both of Fo ital murder W Lee Crane. T bond in Okl arrested Sunc Crane's car. Crane's bo off Interstate showed she abducted Frid Busby said the lot before so that Crane to capital mur by the Fort W Busby said Ardmore, wh Crane was de next morning Authority confessed, s Dixon, a det to a question t Crane's b embankment Dixon said.

PANH

"I strom make underg without continu and wc

"Fu

If you include Febua House 60, or Little R

CONTINUED FROM PAGE ONE



This artist rendering of the unidentified murder victim's face was provided by Gray County Sheriff's Office.

VICTIM

Truck Stop at Sayre, Okla., at approximately 2 a.m. on Oct. 16, according to a press release from Gray County Sheriff's Department. She was known to be carrying a black and tan backpack and also a small, soft-sided bright blue Igloo cooler. She is also believed to have been wearing pants, a shirt and some type of overshirt, resembling men's clothing.

Investigators believe the woman caught a ride traveling west from the truck stop. Three trucks were seen at about 6 a.m. Oct. 16, pulled off of I-40 near the location where the woman's body was found less than two hours later.

Autopsy results on the woman's body listed massive crush injuries, broken bones, dislocations, hemorrhages and abulsions, which are torn away or separated areas of bodily structure. The autopsy also mentioned a tire pattern injury on the woman's back.

Gray County Sheriff Don Copeland said this morning that "we have someone working on it full-time, but there is no new information" concerning the case.

Anyone with information concerning the woman or her death is asked to call Gray County Sheriff's Department at 669-8022 or Crime Stoppers at 669-2222.

CONTINUED FROM PAGE ONE

SEARCH

were closed for a second day Wednesday, but one was being reopened Thursday, one Friday and the Dirksen building — where the ricin was found — is scheduled to reopen on Monday.

Capitol Police Chief Terrance Gainer said investigators have found "no obvious direct connection" between the Frist case and the letters signed by "Fallen Angel." Those letters were discovered

in mail facilities that serve the Greenville-Spartanburg International Airport in South Carolina and the White House.

They were found Oct. 15 and Nov. 6, respectively, but the existence of the White House letter was not disclosed by the Bush administration until Tuesday.

The letters, described as nearly identical, claimed that the author owned a tanker truck fleet company and demanded that rules governing the numbers of hours truckers

can drive remain unchanged, according to the FBI.

The FBI said the South Carolina letter was in an envelope with a typewritten warning "Caution RICIN POISON." The letter included claims that the author could make much more ricin and would "start dumping" if the new regulations weren't abolished. There was no delivery address and no postmark.

No one has fallen ill in any of the incidents.

Report: PGWCD's cloud-seeding program doubled '03 productivity

WHITE DEER — Panhandle Groundwater Conservation District's cloud seeding program produced more rainfall in 2003 than the previous year at a lower cost and with fewer clouds, according to the district's annual report.

The Precipitation Enhancement Program cost the district \$88,228 or \$0.02 per acre in the year ended Sept. 30, 2003, according to the report, 36 percent less than the \$0.03 per acre reported in 2002. The report states that PGWCD doubled its return on its investment to \$67 per dollar from \$33.66.

"We are pleased with the performance of our cloud seeding program," said C.E. Williams, general manager of the PGWCD. "This is only one tool we use to prudently conserve groundwater in the Panhandle. We must use all the tools at our disposal."

The district issues well permits, monitors production, measures water levels, models aquifer depletion and samples

water quality in its role of managing groundwater for nine counties, including Gray, Roberts and Wheeler.

During 2003, the tax rate was lowered from \$0.0156 to \$0.0154 per \$100 valuation.

The district administers an agricultural loan program, funded entirely by the Texas Water Development Board, to encourage farmers to use more efficient irrigation methods.

In 2003, 28 irrigation well permits were approved, up from 24 in 2002. The district registered 65 domestic wells, up from 35 issued the previous year. Also in 2003, 20 observation and monitoring wells were registered, four more than in 2002. PGWCD arranged the location and paid for three of the monitoring wells using export fees collected from producers in the district who export water outside the district.

Areas in the district showing significant decline included western Carson County, northwest and northeast

Armstrong County, west central Roberts County and in Donley and Potter counties, the report stated. Actual rates water level changed ranged from down 12 feet to up 10 feet. The average water level change for the entire district registered at 1/10th of a foot.

One information hearing was conducted for landowners who applied for High Impact Production Permits, according to the report. Approximately 178 applications for HIP permits are pending and will be decided after submission of required information and/or adoption of the District's update rules, officials said.

Nine informational meetings and one public hearing were held on the PGWCD's draft rules, which are intended to update the current operating rules. A final draft is to be presented to the PGWCD board in the first quarter of 2004.

The annual report is available on the PGWCD's website at www.panhandlegroundwater.org.

Teachers fault governor's math

AUSTIN (AP) — Gov. Rick Perry, as he has proposed financial incentives for public school achievement, has cited a figure of \$10,400 a year per student as Texas' rate of spending on education.

He attributes the statistic to the National Education Association, the nation's largest teacher group. Perry argues that Texas already puts a lot of money into education, despite what critics say.

But a spokesman for the NEA's affiliate in the state, the Texas State Teachers Association, said the \$10,400 figure does not appear in any NEA report and is actually a result of creative computing by the governor's aides, The Dallas Morning News reported Thursday.

"That is at best a disingenuous use of the statistics," said Richard Kouri of the state teachers association. He did not deny there were numbers in the NEA's annual report on school statistics that were used by Perry aides to arrive at the figure.

Financial records of the Texas Education Agency, the usual source of such numbers, showed that schools spent an

average of \$7,088 per student in 2002-03. The TEA showed average revenues of \$6,919 per pupil, 34 percent lower than the governor's estimate.

"With their figures, they're trying to say that schools already have enough money," said Wayne Pierce, executive director of the Equity Center, an association of several hundred

low- and medium-property-wealth school districts.

"I wish that were the case, but it's not," Pierce told the Morning News. "If school districts are getting \$10,400 per student, then there are a lot of superintendents out there who want to know where the rest of their money is, because they need it desperately."

Missing professor's body discovered

FORT WORTH (AP) — One of two people accused of abducting and killing a retired Texas Christian University professor told police he wrapped duct tape around her face after leaving a grocery store parking lot, according to an arrest warrant affidavit.

Edward Busby, 31, and Kathleen Latimer, 39, both of Fort Worth, were charged with capital murder Wednesday in the death of Laura Lee Crane. They were jailed on \$1 million bond in Oklahoma City, where they were arrested Sunday after being stopped driving Crane's car.

Crane's body was found Tuesday afternoon off Interstate 35 near Davis, Okla. An autopsy showed she was asphyxiated. She had been abducted Friday.

Busby said that he drove Crane away from the lot before putting duct tape around her face so that Crane was unable to breathe, according to capital murder warrants obtained Wednesday by the Fort Worth Star-Telegram.

Busby said that he and Latimer drove to Ardmore, where they spent the night, and that Crane was dead when he checked on her the next morning, according to the affidavits.

Authorities were led to the body after Busby confessed, said Fort Worth police Lt. Roger Dixon, a detective who went to Oklahoma City to question the suspects.

Crane's body was found at the bottom of an embankment with duct tape across her face, Dixon said. Her death was ruled homicide by

asphyxiation, and she also had suffered blunt force trauma, he said.

Dixon would not say when or in which state Crane was killed. Dixon said robbery was a motive and that she appeared to be a random target.

According to the affidavits, Busby initially told an FBI agent that he had purchased the car for \$200 and that there was no body in the trunk when they left for Oklahoma City. But police said in the affidavit that Busby later said another man took the car and killed Crane and offered him the car if he would dispose of the body.

Crane's daughter, Allen Walker, said the family was grieving but would put faith in the judicial system.

She thanked the authorities and volunteers who had searched for her mother for four days.

"To Mrs. Crane's students, past and present, we want to say that you are her life and you are the hope of the future," Walker said. "She knows what you are capable of and she expects the best from you. Your success will keep her memory alive, and remember that each of you now has your very own special guardian angel."

Crane left her southwest Fort Worth home for the grocery store about 11 a.m. Friday. Her family later said that two ATM withdrawals were made from her account, and charges had been made to her gas card that she ordinary didn't use.

NEED A NEW HOME APPLIANCE !!

Refrigerators (14 Cu.Ft. to 21 Cu.Ft.)
Washers and Dryers
Electric and Gas Ranges

Serving
Pampa • Borger •
Miami • Mobeetie • Lefors
White Deer • Panhandle and McLean

BEST SALES AND RENTALS
201 N. CUYLER 669-0558

GoldKraft Jewelers
1334 N. Hobart
Pampa, Texas 79065
(806) 669-1244

40% OFF **50% OFF**

DUE TO DIVORCE
Entire Inventory Liquidation Sale
February 5 to February 14

60% OFF **Everything must GO!** **70% OFF**

NO REASONABLE OFFER WILL BE REFUSED

GoldKraft Jewelers wants all of our loyal customers to know that we will continue serving you as always.
We are NOT closing.
All Inventory needs to be Sold Due to Divorce.
We will continue to serve all your jewelry needs.

VOTE TO RE-ELECT JOHN SPEARMAN JR. TO THE PRECINCT 3 PANHANDLE GROUNDWATER CONSERVATION DISTRICT BOARD OF DIRECTORS

"I strongly support using our water locally and am working to make sure that no one person or group depletes the underground water at a rate that would leave the Panhandle without adequate water for our future. If re-elected, I will continue to work to achieve a balance between water usage and water conservation."

"Future Generations Are Counting On Us"

If you are a registered voter in this PGCD precinct, which includes all of Pampa, you are eligible to vote. Election Day is February 7th, 7:00am - 7:00pm, at the Gray County Court House Annex across from the John Deere Dealer on Highway 60, or for Robert's County voters in this PGCD precinct, at the Little Red School House.

FEB 05 2004

VIEWPOINTS

Man's adventure into space

This past weekend, the space community commemorated the first anniversary of the loss of the shuttle Columbia and its crew of seven. Among the observances was the unveiling of a monument at Arlington National Cemetery and a ceremony at the National Space Museum in Washington.

I was privileged to speak at the museum. The children of the Columbia crew, along with spouses and other family members, were there, and this, in brief, is what I told them:

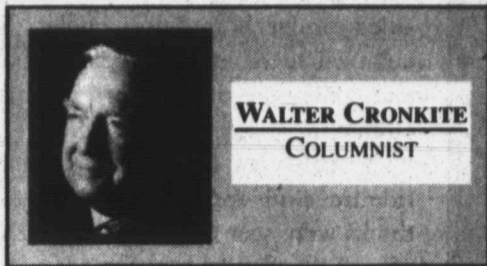
The world grieved with you as we all recalled those bright, happy faces of the Columbia crew when they boarded their spacecraft with such anticipation — inspiring the world again with enthusiasm for the great adventure that was — and is — our conquest of space.

You Columbia families observed later that your loved ones flew into space with "hearts full of enthusiasm, pride in country, faith in their God, and a willingness to accept risk in the pursuit of knowledge — knowledge that might improve the quality of life for all mankind."

That was a lovely eulogy, but I would take the liberty of just a little editing. I would remove the word "might" from the sentence, so it would read that they sought knowledge that they knew would improve the quality of life in the future.

For this is the certainty that inspires all those who contribute to our nation's space exploration, from NASA's office employees to those courageous astronauts who accept the ultimate risk to serve science and their country.

The names of the Columbia crew will



WALTER CRONKITE
COLUMNIST

be perpetuated forever in the history of the conquest of space. "Forever," of course, is a long time, but we can have absolute confidence that this is no exaggeration.

Of all the great inventions and achievements in science and technology in the past hundred years — and that includes the perfection of the automobile, the electric light bulb, the telephone, television and those incredible medical discoveries like X-rays and the transplants of human parts — the one achievement that will be celebrated 500 years from now will be man's first landing on the moon — Americans landing on the moon. The conquest of space, of which Columbia was a part.

Why can we be so confident in that prediction? Well, look at it this way: Of all the events of the busy Renaissance years in Europe, and the great discoveries since that time, what is the one date that we all were taught in school and remember through our lifetime?

Oct. 12, 1492!

That date will be eternally significant because it marked the opening of the New World, the expansion of the world to previously unknown continents. Five hundred years from now, when there will be cities in space and, not improbably,

humans will be inhabiting distant planets, the young folks living out there will be learning the date of July 20, 1969, the day that man landed on the moon; the day that humans first escaped their earthly environment — the day that the exploration of the universe began.

And they, five centuries from now, will be reading the names of those who gave their lives in the great exploration of space — the heroes of Apollo One, Challenger and Columbia, and perhaps, sadly, more to come, making the greatest sacrifice for progress in the great adventure.

There will be rivalry among the nations as there was among those nations of the 16th and 17th centuries as they explored the New World discovered by Columbus. It will be a matter of pride and economic — possibly even military — advantage that the United States maintain its leadership in space exploration.

We are celebrating now the successful landing of those incredible robots we recently sent to Mars. Robots will play an important role in preparing us for the manned flights that surely will follow.

This is our future. This is our destiny.

The Columbia crew knew this and dedicated their lives to humankind's future. All of us alive today will never forget their sacrifice, and they shall be forever remembered in the history books of tomorrow for their courageous dedication to the future of space.

(Write to Walter Cronkite c/o King Features Syndicate, 888 Seventh Ave., New York, NY 10019, or e-mail him at mail@cronkitecolumn.com.)

THE Pampa NEWS
 403 W. Atchison • Pampa, Texas
 Telephone: 806-669-2525
 1-800-667-3348 • Fax: 669-2520
 Email: doodee@pan-tex.net

This newspaper (UPS 781-540) is published daily except Saturdays, Thanksgiving and Christmas Day, by The Pampa News, 403 W. Atchison, Pampa, Tx. 79065. Periodicals postage paid at Pampa, Texas. Postmaster: Send address changes to the Pampa news, P.O. Drawer 2198, Pampa, Texas 79066-2198.

Publisher: L.W. McCall
Editor: Dee Dee Laramore
Circulation Manager: Dean Lynch
Advertising Director: ReDonn Woods
Composition Supervisor: Brenda Cook

Single Copies
 Daily 50¢ / Sunday \$1.00
 Member: Associated Press

Subscription Rates
 Carrier Home Delivery
 1 yr \$84.00 6 mos. \$42.00
 3 mos. \$22.00 1 mo. \$8.00
 Mail in Roberts, Gray, Carson, Wheeler and Hemphill Counties in Texas
 1 yr \$102.00 6 mos. \$51.00
 3 mos. \$25.50
 Mail All Other Areas in U.S.
 1 yr \$114.00 6 mos. \$57.00
 3 mos. \$28.50
Single Copy Mail
 Daily \$1.50 Sunday \$2.50
 No mail subscriptions are available within the city limits of Pampa. Mail subscriptions must be paid 3 months in advance.

Copyright Notice
 The entire contents of The Pampa News, including its logotype, are fully protected by copyright and registry and cannot be reproduced in any form for any purpose without written permission from The Pampa News.

Home Delivery
 All carriers are independent contractors and The Pampa News is not responsible for advance payments of two or more months made to the carrier. Please pay directly to the News Office any payment that exceeds the current collection period.

Opinions expressed on this page do not necessarily reflect the views of *The Pampa News*.

TEXAS EDITORIAL

Should crime be federalized?

From Feb. 2 Fort Worth Star-Telegram:
 When Laci Peterson's remains and those of her unborn son washed up on a California beach, it was understandable for many to respond with an indignant sense that both deaths had to be against the law.

In fact, California does make it a crime to kill an unborn child older than seven weeks. That's why suspect Scott Peterson is charged with two counts of murder.

More than half the states, including Texas, have enacted laws making it a crime to kill a fetus that the mother has every intention of carrying to term. But those statutes vary in their scope, as state laws often do. Other states, like North Carolina, have opted to enhance penalties for attacking pregnant women without making fetal homicide a separate crime.

Some members of Congress, driven perhaps by outrage or a misplaced belief that federal law can solve all ills, are playing off the Peterson case to push a national fetal homicide statute.

But the measure, which recently won approval from the House Judiciary Committee, continues a disturbing trend of federalizing a slew of crimes that traditionally have been addressed by the states.

Not to mention that calling the bill "Laci and Conner's Law" is a total misnomer. HR 1997 would make it a crime to kill a fetus only during the commission of other federal crimes, such as kidnapping across state lines, a drug-related drive-by shooting or the robbery of a federally insured bank.

Not only would the federal law be limited, but states already punish bank robbery, kidnapping, assault and drug-related violence. In reality, the bill will make little practical difference in states that already have fetal homicide laws, and it would give false hope to those living in states that don't.

Whenever Congress wants to step into an area already governed by state law, it's important to ask whether there is a clear federal interest at stake and whether the U.S. government can do a better job of handling the problem.

The federal government traditionally has let the states exercise their police power to protect public safety. That has prevented the development of a national police force and has allowed the federal system to focus on core responsibilities, such as protecting national security, safeguarding the monetary system and securing the borders.

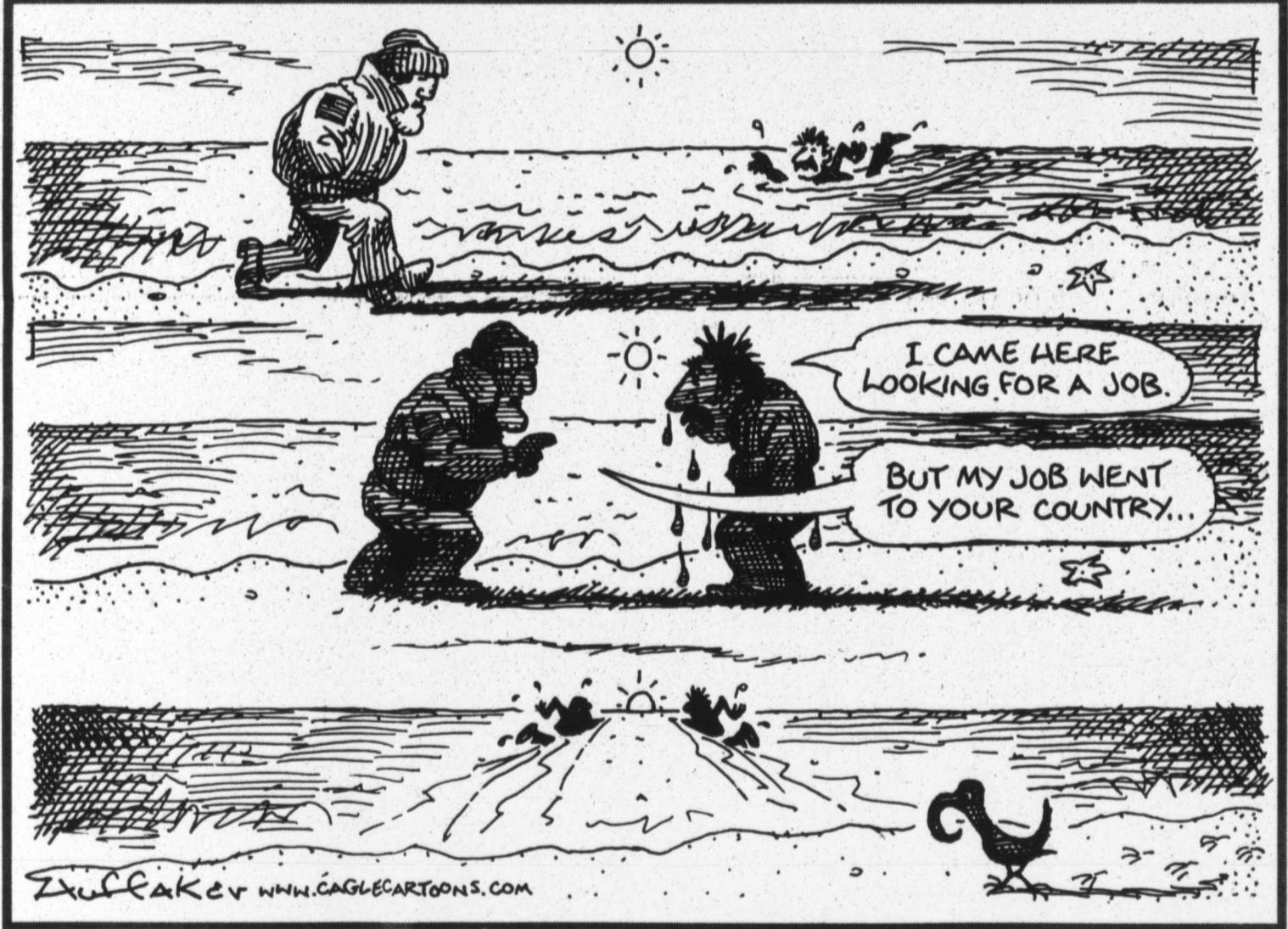
But during the past three decades, Congress has greatly expanded the list of federal offenses. The American Bar Association estimates that it now includes 4,000 crimes. Some — mail fraud, organized crime, corporate corruption, computer hijinks — make sense because of the national reach of transactions.

Even federal law governing child support payments may be necessary when parents may skip a state to avoid financial responsibilities. An influx of federal expertise and support may bolster local law enforcement. But turning every outrage into a federal violation also overburdens federal courts, diverts resources that should be spent elsewhere and misleads the public into believing that crime will quickly go down.

Chief Justice William Rehnquist, no softy on crime, has repeatedly warned against turning every tragedy into a federal case. "The pressure in Congress to appear responsive to every highly publicized societal ill or sensational crime needs to be balanced with an inquiry into whether states are doing an adequate job in these particular areas and, ultimately, whether we want most of our legal relationships decided at the national rather than local level," he said in his 1998 year-end report. A 1998 ABA task force also called the over-federalization of crime "a serious danger to self-government, individual liberty and effective law enforcement."

Certainly government has an interest in protecting pregnant women from deliberate harm as well as negligent injury from, for instance, a drunken driver. Although fetal homicide laws have gotten tangled in the contentious debate over abortion, there is a separate interest at stake that should not be overshadowed.

When someone's wrongdoing deprives a woman of giving birth to a child who is wanted, anticipated and planned for, that is not just an injury to the mother — it is a very real loss to both parents. And the states, not the federal government, are in a better position to decide how to hold accountable those responsible.



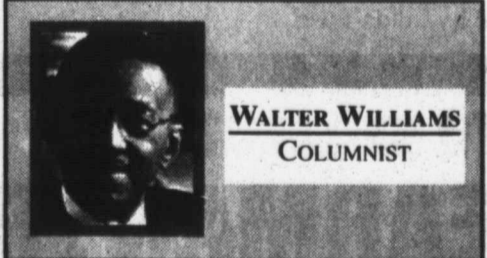
The anti-free trader's true enemy

There's the "Free Trade but Fair Trade" crowd, and the "Level Playing Field" crowd, and the "America First" crowd, all calling for tariffs and other international trade restrictions. Their supposed adversary is corporate America, seeking to boost profits by either importing goods made by cheaper foreign labor or relocating plants in foreign lands to directly take advantage of cheaper labor. They claim that this accounts for the loss of U.S. manufacturing jobs and other economic woes. Their argument has considerable emotional appeal, but they've misidentified the true villain in the piece. Let's look at it.

Suppose U-Needa Shirt Co. relocated its production facilities to India in order to take advantage of cheaper labor. This is America, the land of the free. There is absolutely nothing that prevents a group of Americans as investors and workers from setting up Made in America Shirt Co. to sell shirts to the American people. This same opportunity exists for just about anything once manufactured in America but now made overseas.

At this juncture, let's take a thinking pause and ask: Is what Williams said in the previous paragraph true or false?

Let's proceed. You might ask, "How in the world can Made in America Shirt Co. compete with U-Needa Shirt Co., who has much lower labor costs?" That's a different question, but it has nothing to do with the rights of American investors and



WALTER WILLIAMS
COLUMNIST

workers to set up American-based manufacturing facilities. But let's answer the question anyway. American consumers are free to purchase from whomever they choose. Made in America Shirt Co. would survive and prosper if American consumers chose to purchase shirts from it, rather than U-Needa Shirt Company.

Let's take another thinking break and ask: Is what Williams said in the previous paragraph true or false?

Here's where the crunch comes. It's probable that U-Needa Shirt Co., because of its lower costs, will be able to undercut prices charged by Made in America Shirt Co. Thus, we encounter that troubling consumer characteristic of preferring lower prices to higher prices.

So what to do? Made in America Shirt Co. might try to change American consumer preferences so that they're indifferent between high and low prices. I predict that's a strategy doomed to failure, except maybe for a few diehard customers. There're no two ways about it. The true enemy of Made in America Shirt Co. and its workers is not U-Needa Shirt Co. but the American consumer and his prefer-

ence for lower prices coupled with his freedom to purchase from whomever he pleases.

What to do? One strategy for Made in America Shirt Co. and its workers is to get Washington to enact measures restricting consumer choices. But you have to be slick about it. You just can't ask President Bush and Congress to criminalize purchases from U-Needa Shirt Co. You must make a pretense of selflessness and speak of national defense concerns like, "What if there were war and we had no shirts for our soldiers?" You must talk of being for free trade but fair trade and level playing fields.

There's another strategy. Suppose Made in America Shirt Co. could cover all of its cost with a \$20 shirt price, while U-Needa Shirt could do so by charging \$15? Made in America Shirt might ask Congress to enact an Aid to Dependent American Shirt Manufacturers law, whereby it would receive a \$5 per shirt handout — then it could meet U-Needa Shirt Co.'s price.

That might not be politically viable because the handout is too visible. Congress might propose, "Rather than giving you a \$5 per shirt handout, how about if we impose a \$5 per shirt import tax on U-Needa Shirt Co.'s shirts? Then they'll have to charge \$20. That way, you get what you want — a level playing field — we get more tax dollars, and nobody's the wiser."

Intention
 HEMPHIL
 WALLOW
 Dominion O
 E&P, Inc., F
 '11', Sec. 1
 12200', for
 wells:
 #7, 1600'
 467' from East
 #8, 2300'
 1600' from East
 HEMPHIL
 WALLOW
 Kaiser-Franzi
 Fillingim-Tea
 South & West
 I,H&GN, PD
 HEMPHIL
 & BUFFAL
 Granite Wash
 Gas Corp., #4
 1650' from No
 Sec. 43,M-
 13500'.
 HEMPHIL
 & BUFFAL
 Granite Wash
 Star Ltd. P
 Fillingim '4
 North & West
 I,H&GN, PD
 HEMPHIL
 & HEMPHIL
 Patina Oil &
 Flowers, 467
 4350' from
 226,C,G&MN
 12000'.
 HEMPHIL
 & HEMPHIL
 Samson Lo
 Partnership, #
 '20', Sec. 20,
 12500', for
 wells:
 #9, 2008'
 2228' from East
 #10, 625'
 1390' from East
 HEMPHIL
 & HEMP
 Wash) Sams
 Partnership, #
 '50', 2200'
 West line,
 2,H&GN, PD
 HEMPHIL
 & MAJOR
 Morrow) W.C
 Young, 467'
 1875' from
 66,A-2,H&G
 HEMPHIL
 & N.E. RAM
 Samson Lo
 Partnership, #
 '10', 660'
 1780' from
 10,41,H&TC
 HEMPHIL
 & N.E. RAM
 Samson Lo
 Partnership,
 '30', Sec. 30
 14000', for
 wells:
 #1, 467' fr
 from East Se
 Court r
 not res
 for pipe
 HOUSTO
 eral appeals
 Port of Hous
 to pay for th
 ing or lower
 connection v
 ing of the
 Channel.
 Two ye
 District Judg
 had ruled the
 pipeline co
 foot the bill,
 \$100 million
 pipelines, wh
 ety of produ
 cals to crude
 But late
 three-membe
 U.S. Circuit
 ruled the pip
 not the Port
 U.S. Arm
 Engineers, a
 in the lawsu
 ble for the e
 The court
 sion in the R
 Act of 189
 "pipelines a
 beneath nav
 to be reloca
 to the United
 by federal n
 or projects."

DRILLING INTENTIONS

Intentions to Drill
HEMPHILL (BUFFALO WALLOW Granite Wash) Dominion Oklahoma Texas E&P, Inc., Hemphill-Walser '11', Sec. 11.4, AB&M, PD 12200', for the following wells:
 #7, 1600' from North & 467' from East line of Sec.
 #8, 2300' from North & 1600' from East line of Sec.
HEMPHILL (BUFFALO WALLOW Granite Wash) Kaiser-Francis Oil Co., #3 Fillingim-Teas, 467' from South & West line, Sec. 87, M-1, H&GN, PD 11800'.
HEMPHILL (WILDCAT & BUFFALO WALLOW Granite Wash) Patina Oil & Gas Corp., #4307P Teas '43', 1650' from North & East line, Sec. 43, M-1, H&GN, PD 13500'.
HEMPHILL (WILDCAT & BUFFALO WALLOW Granite Wash) Samson Lone Star Ltd. Partnership, #3 Fillingim '40', 467' from North & West line, Sec. 40, M-1, H&GN, PD 14000'.
HEMPHILL (WILDCAT & HEMPILL Granite Wash) Patina Oil & Gas Corp., #15 Flowers, 467' from North & 4350' from East line, Sec. 226, C, G&MMB&A, PD 12000'.
HEMPHILL (WILDCAT & HEMPILL Granite Wash) Samson Lone Star Ltd. Partnership, Hobart Ranch '20', Sec. 20, A-1, H&GN, PD 12500', for the following wells:
 #9, 2008' from North & 2228' from East Sec. line.
 #10, 625' from North & 1390' from East Sec. line.
HEMPHILL (WILDCAT & HEMPILL Granite Wash) Samson Lone Star Ltd. Partnership, #9 Hobart Ranch '50', 2200' from North & West line, Sec. 50, A-2, H&GN, PD 12500'.
**HEMPHILL (WILDCAT & MAJOR CREEK Upper Morrow) W.C. Payne, #2-66 Young, 467' from North & 1875' from West line, Sec. 66, A-2, H&GN, PD 13600'.
HEMPHILL (WILDCAT & N.E. RAMP Granite Wash) Samson Lone Star Ltd., Partnership, #1 Walker Ranch '10', 660' from North & 1780' from East line, Sec. 10, 41, H&TC, PD 14000'.
HEMPHILL (WILDCAT & N.E. RAMP Granite Wash) Samson Lone Star Ltd. Partnership, Walker Ranch '30', Sec. 30, A-1, H&TC, PD 14000', for the following wells:
 #1, 467' from North & 600' from East Sec. line.**

#2, 467' from North & 1750' from West Sec. line.
ROBERTS (WILDCAT & ST. CLAIR Granite Wash) Questar E&P Co., #3070 Christie Tipps 'A', 467' from North & 2400' from East line, Sec. 70, B-1, H&GN, PD 10200'.
WHEELER (WILDCAT & MO-TEX Meisner) Cambridge Production, Inc., #1 Craddock, 2140' from North & 1685' from East line, Sec. 23, A-5, H&GN, PD 13700'.
WHEELER (WILDCAT & STILES RANCH Morrow) Apache Corp., #9068 Stiles Ranch, 467' from North & 1320' from West line, Sec. 68, A-7, H&GN, PD 18500'.
Amended
Intentions to Drill
HEMPHILL (N.W. MEN-DOTA Granite Wash) Mewbourne Oil Co., #1 Abraham '40', 660' from South & 1980' from West line, Sec. 40, 1, I&GN, PD 11600'. Amended to change Operator name, well number & add a Field (was Bravo Natural Resources, #1040 Abraham)
HEMPHILL (WILDCAT & BUFFALO WALLOW Granite Wash) Peak Operating of Texas, L.L.C., #3059 L.A. Johnson, 837' from North & 2402' from East line, Sec. 59, M-1, H&GN, PD 13500'. Amended to change well location

Oil Well Completions
CARSON (PANHANDLE) WO Operating Co., #172R Fee '244', Sec. 89, 4, I&GN, spud 10-13-03, drlg. compl 10-18-03, tested 1-13-04, pumped 5.6 bbl. of 36.6 grav. oil + 23 bbls. water, GOR 357, TD 3200', PBTD 3171' —
HEMPHILL (FELDMAN Tonkawa) EOG Resources, Inc., #2 Hunter '39', 42, H&TC, spud 9-15-03, drlg. compl 9-29-03, tested 12-29-03, flowed 62 bbl. of 43.9 grav. oil + 2 bbls. water thru 28/64" choke on 24 hour test, GOR 7565, TD 7850', PBTD 7805' —
ROBERTS (SHREIKEY Brown Dolomite) J.M. Huber Corp., #2015 Locke Cattle, Sec. 15, M-2, H&GN, spud 11-2-03, drlg. compl 11-8-03, tested 1-23-04, pumped 7 bbl. of 54 grav. oil + 103 bbls. water, GOR 2286, TD 4730', PBTD 4636' —
Gas Well Completions
CARSON (WEST PANHANDLE) Luxor Oil & Gas, Inc., #21-A Deahl, Sec. 21, Y-1, AB&M, spud 10-12-03, drlg. compl 10-18-03, tested 12-13-03, TD 2860' —
HEMPHILL (BIG TIMBER CREEK Douglas) MER Resources, #2-87 Wayne Cleveland, Sec. 87, 41, H&TC, spud 12-2-03, drlg. compl 12-26-03, tested 12-26-03, potential 265 MCF, TD 1100', PBTD 7980' — Plug-Back
HEMPHILL (BUFFALO WALLOW Granite Wash) Dominion Oklahoma Texas

E&P, Inc., #1 Grant Meek '236', Sec. 236, C, G&MMB&A, spud 10-26-03, drlg. compl 11-13-03, tested 12-16-03, potential 3184 MCF, TD 11810', PBTD 1171' —
HEMPHILL (BUFFALO WALLOW Granite Wash) Dominion Oklahoma Texas E&P, Inc., #11 Zybach '66', Sec. 66, M-1, H&GN, spud 10-19-03, drlg. compl 11-1-03, tested 12-15-03, potential 10386 MCF, TD 11600', PBTD 11545' —
HEMPHILL (BUFFALO WALLOW Granite Wash) Newfield Exploration Mid-Continent, #7069 J.P. Meek, Sec. 69, M-1, H&GN, spud 9-15-03, drlg. compl 10-4-03, tested 12-3-03, potential 709 MCF, TD 11875', PBTD 11770' —
HEMPHILL (S.E. CANADIAN Douglas) Devon Louisiana Corp., #3036 Humphreys, Sec. 36, 1, G&M, spud 9-12-03, drlg. compl 10-7-03, tested 10-30-03, potential 435 MCF, TD 7328', PBTD 7260' —
HEMPHILL (S.E. CANADIAN Douglas) Devon Louisiana Corp., #5036

Humphreys, Sec. 36, 1, G&M, spud 9-23-03, drlg. compl 10-5-03, tested 10-30-03, potential 2055 MCF, TD 7322', PBTD 7231' —
HEMPHILL (HEMPHILL Granite Wash) Samson Lone Star Ltd. Partnership, #9072 Howell, Sec. 72, A-2, H&GN, spud 5-30-03, drlg. compl 6-13-03, tested 7-13-03, potential 2162 MCF, TD 13050', PBTD 10990' — Plug-Back
HUTCHINSON (WEST PANHANDLE) J.M. Huber Corp., #A40 Herring 'A&B', E. Almaguie Survey, spud 9-30-03, drlg. compl 10-6-03, tested 11-10-03, TD 3600', PBTD 3234' —
ROBERTS (PARSELL Lower Morrow) Range Production Co., #4 Pioneer, Sec. 31, 43, H&TC, spud 9-12-03, drlg. compl 10-20-03, tested 12-3-03, potential 3554 MCF, TX 11410', PBTD 11260' —
Plugged Wells
HEMPHILL (S.E. CANADIAN Douglas) Canyon Exploration Co., #1 Webb, 660' from North & East Lease line, Sec. 175, 41, H&TC, spud

10-18-94, plugged 12-22-03, TD 7800' (gas) —
HUTCHINSON (PANHANDLE) Nistrol, Inc., #707W Brian Mayfield Unit, 1650' from North & 330' from East Lease line, Sec. 21, A, DL&C, spud 1-5-46, plugged 12-22-03, TD 3305' (injection) — Form 1 in Herrmann Bros.
HUTCHINSON (PANHANDLE) Nistrol, Inc., #903W Brian Mayfield Unit, 6270' from South & 660' from West Lease line, Sec. 2, M-24, TCRR, spud unknown, plugged 12-24-03, TD 3215' (injection) — Form 1 in J.M. Huber
HUTCHINSON (PANHANDLE) Nistrol, Inc., #6011W Brian Mayfield Unit, 330' from North & 990' from East Lease line, Sec. 3, R-2, D&P, spud unknown, plugged 12-18-03, TD 3275' (inj) — Form 1 in Gayden & Cree
ROBERTS (LIPPS Cleveland) BP America Petroleum Co., #16 Courson 'B', Sec. 22, A, H&GN, spud unknown, plugged 9-30-03, TD 8950' (gas) — Form 1 in Pan American Petroleum

ROBERTS (PARSELL Lower Morrow) BP America Production Co., #7 W.B. Parsell 'H', 1420' from North & 1320' from West Lease line, Sec. 165, 42, H&TC, spud 1-24-77, plugged 8-11-03, TD 11145' (oil) — Form 1 in Diamond Shamrock
ROBERTS (R.D. PRICE Brown Dolomite) Corgray Energy, Inc., #1 Price SWD, 990' from South & 4380' from West Lease line, Sec. 194, 2, I&GN, spud 12-59, plugged 11-18-03, TD 5250' (injection) — Form 1 in Pitman & Anderson
WHEELER (GAGEBY CREEK Osage) ConocoPhillips Co., #5 Carwile 'A', 720' from North & 1500' from East Lease line, Sec. 99, A-5, H&GN, spud 4-6-03, plugged 6-10-03, TD 12678' (junked)
WHEELER (WEST PARK Upper Morrow) BP America Production Co., #1024 Hall-McCoy, 660' from South & 2250' from East Lease line, Sec. 24, 4, C&CSL, spud 12-20-97, plugged 8-18-03, TD 15284' (gas) — Form 1 in Crescendo Resources

Court rules Port not responsible for pipeline costs
 HOUSTON (AP) — A federal appeals court says the Port of Houston does not have to pay for the cost of relocating or lowering pipelines in connection with the deepening of the Houston Ship Channel.
 Two years ago, U.S. District Judge Lynn Hughes had ruled the port and not the pipeline companies should foot the bill, estimated to be \$100 million for 100 or so pipelines, which carry a variety of products from chemicals to crude oil to natural gas.
 But late last month, a three-member panel of the 5th U.S. Circuit Court of Appeals ruled the pipeline owners and not the Port of Houston, or the U.S. Army Corps of Engineers, another defendant in the lawsuit, were responsible for the expense.
 The court said that a provision in the Rivers and Harbors Act of 1899 requires that "pipelines and other structures beneath navigable waters are to be relocated at no expense to the United States if required by federal navigation interests or projects."

After maintaining a rate freeze for the past two years, Cable One is introducing changes to its 2004 pricing. Adjustments will become effective March 1 in various television programming packaging, ranging from a \$2 increase for limited service to 50-cents more each month for the Digital Value Pak. Most premium packages will increase \$1 to \$2 per month, with increases of \$4 to \$5 monthly on the digital bundled service.
 "Because we understand that no one wants to see increases, we've worked hard to keep changes at a minimum and lessen the impact of rising network programming costs for our customers," said Terry Harris, general manager. "We've taken extraordinary steps to be proactive and cost effective."
 "During 2003, not only did we freeze our rates, Cable One absorbed programming increases that were about \$1.50 per subscriber per month," Harris said. "Our customers need to know that we're up against huge increases from some of the most popular networks, such as ESPN, which has raised its annual rates 149 percent over the last five years."
 Since Cable One rates haven't been adjusted since 2002, its annual increase to customers averages out to just 2 1/2 percent, well below the industry average, Harris said.
 To meet the needs of customers who have requested packages at a lower price, Cable One has introduced Lifeline Digital, available at \$23.90 per month. The new

Cable One to increase rates following two-year freeze

Lifeline Digital includes 45 music channels, Pay-Per-View access and 22 digital networks as well as local broadcast networks.
 "We value our customers' business and will continue to provide innovations that carry the quality programming and service that our customers demand and deserve at the best available cost," Harris said. "That includes our long-standing practice of free service calls and our on-time guarantee that means our service technicians arrive when they say they'll be there, or the customer gets a \$20 credit."
 Cable One also has intro-

duced cost-saving bundles of its most popular digital programming and fastest high-speed Internet service at significant cost savings. Cable One has introduced high-definition television (HDTV) capabilities, launched Cable One Espanol and expanded the STARZ channels over the last year.
 Harris said other innovations coming this year include the introduction of Digital Video Recorders (DVR) that will allow customers to record programming without a VCR.
 Cable One, the cable division of The Washington Post Co., operates 52 cable systems serving 720,000 subscribers in 19 states.

John Mann
 Lawyer
 115 W. Foster
 "Across From The Concy"
 806-665-2555
Not Certified by the Texas Board of Legal Specialization

INDOOR CRAZY DAYS at Brown's

•Men's, Women's & Kids
 •Lots Of Crazy Bargains!

CRAZY SAVINGS
SAVE NOW THRU SUNDAY, FEBRUARY 8TH

Winter's driving us crazy ... we've lost our mind when we marked down some of these bargains.

Brown's Shoe Warehouse

Open 7 Days A Week
 Mon.-Sat. 9-7
 Sunday 1-5
 1500 N. Hobart
 Pampa • 665-5691

Elect Stephen Smith Director Precinct 3
 Panhandle Groundwater Conservation District

I will support the interest of all citizens and taxpayers in the Precinct 3 District.

Everyone's vote is important!

Please vote Saturday, February 7th at the Gray County Annex in Pampa.

Paid Advertising by Stephen Smith, 1939 Fir, Pampa, Tx. 79065.

FEBRUARY 5, 2004

THURSDAY • February 5, 2004

DEAR ABBY

written by Pauline Phillips and daughter, Jeanne Phillips

Mother-In-Law's Disregard Doesn't Bode Well for Future

DEAR ABBY: I am upset about what my mother-in-law did at my wedding last Saturday. This is my second marriage and my husband, "Sherman," first. Instead of eloping, we chose to have a wedding with family, close friends and only my children, who are 8 and 11. No other children were invited.

We made arrangements at a hotel to provide supervised activities and snacks for the children. One of my brothers refused to attend because he was unwilling to leave his son with someone he didn't know. My other brother went to great lengths to find a sitter of his own choosing.

My mother-in-law informed us before the wedding that she wanted to bring her daughter's 3- and 4-year-old children. We clearly stated that no children other than my own were invited and offered to include her grandchildren at the hotel with the other children. She declined the offer and assured us that the little ones would be taken care of by a friend of her father's.

Fifteen minutes before the ceremony, those little ones were out of control, waving plastic machine guns and running wild through the church. I asked that they be driven to the hotel immediately. They disappeared, and I assumed that's where they went. When the ceremony began, they were in the second row with Sherman's parents.

During the 30-minute service, they sat on various people's laps, kicked the back of the pew in front of them, shrieked, and loudly asked questions about what was going on. They turned an intimate, private affair into a circus.

Now my two brothers and sisters-in-law won't speak to me because they think I favored Sherman's family over my own. Other guests with older and better-behaved children are also upset because I told them only my children would be there.

I haven't slept a full night since because of this. Today Sherman confronted his mother. She said her grandchildren are family, and

she wasn't about to exclude them, and if my brothers were upset, they should have brought their children, too.

I am at my wit's end. Sherman fully supports me in this. I don't want a fractured relationship with Sherman's mother, but I have never had anyone disregard my wishes with such effortless aplomb in my life. I no longer want to visit her, spend holidays with her or do anything with her at all. It bothers me that she has set a precedent of what she says, goes.

What can I reasonably do other than pack up my family and move to another state or country?
MAD AS A HORNET IN N.C.

DEAR MAD AS A HORNET: Tell your siblings and their spouses — in writing if necessary — that what your mother-in-law did was against your expressed wishes.

Your mother-in-law was determined to get her way regardless of whom it offended. I don't blame you for wanting to distance yourself. Under the circumstances, your feelings are understandable. Unless you live in a very small town, you don't have to move to another community to avoid your husband's mother. See her only when absolutely necessary. That rude, self-centered woman is nothing but trouble.

Dear Abby is written by Abigail Van Buren, also known as Jeanne Phillips, and was founded by her mother, Pauline Phillips. Write Dear Abby at www.DearAbby.com or P.O. Box 69440, Los Angeles, CA 90069.

For an excellent guide to becoming a better conversationalist and a more attractive person, order "How to Be Popular." Send a business-size, self-addressed envelope, plus check or money order for \$5 (U.S. funds only) to: Dear Abby Popularity Booklet, P.O. Box 447, Mount Morris, IL 61054-0447. (Postage is included.)

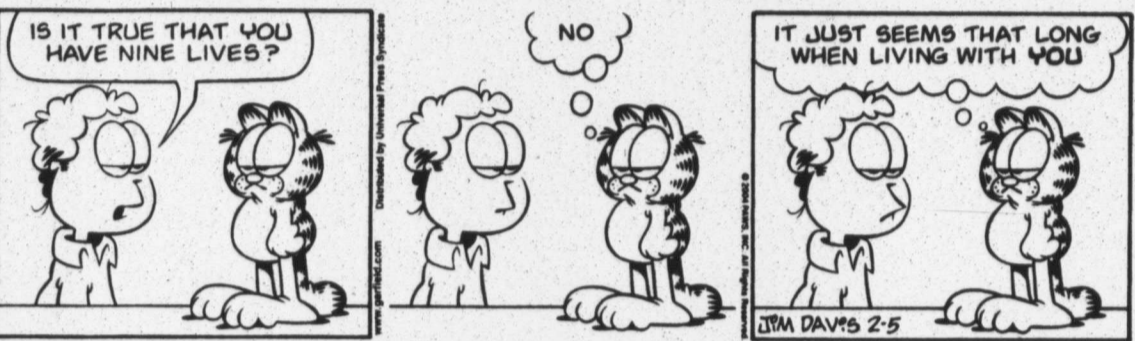
For Better or For Worse



Zits



Garfield



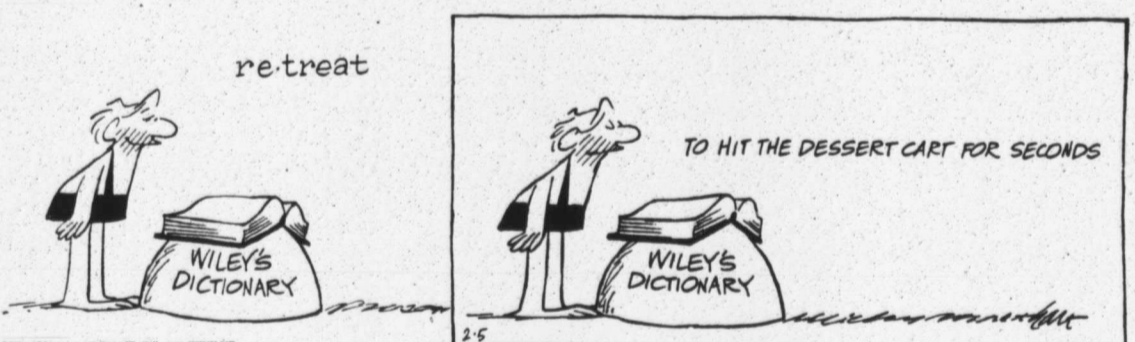
Beetle Bailey



Marvin



B.C.



Hagar The Horrible



Peanuts



Blondie



Crossword Puzzle

CROSSWORD

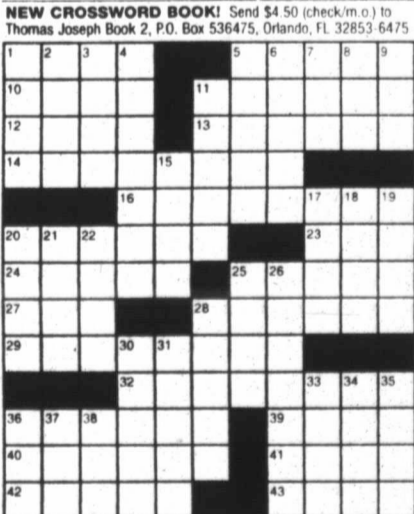
By THOMAS JOSEPH

ACROSS

- 1 Winter glider
- 5 Safe
- 10 Not recorded
- 11 Infamous Borden
- 12 Guinness of film
- 13 Busy
- 14 Scooter's kin
- 16 Digital filmers
- 20 Secret
- 23 Stage signal
- 24 Tarnishes
- 25 Beam
- 27 Oklahoma city
- 28 Made forays
- 29 Hotel room features
- 32 Recording medium
- 36 Trinidad's partner
- 39 Jacob's twin
- 40 Salem setting
- 41 Money for the poor
- 42 Conviction
- 43 Noted Virginia family

DOWN

- 1 Bridge feat
- 2 Taylor of movies
- 3 Flat
- 4 Number with a point
- 5 Lewis of "News-Radio"
- 6 Tenochtitlan resident
- 7 Israeli gun
- 8 Steven Tyler's daughter
- 9 Golf need
- 11 Singer
- 15 Storage sites
- 17 Corrosive stuff
- 18 Team animal
- 19 Garden starter
- 20 First name
- 21 Designer, Gernreich
- 22 Highlands group
- 25 Indian gown
- 26 Poker mistake
- 28 Talked and talked
- 29 Mirror sight
- 31 Biased fellow
- 33 Man, for one
- 34 Identical
- 35 Swear
- 36 Young one
- 37 Metal source
- 38 Ponderosa name

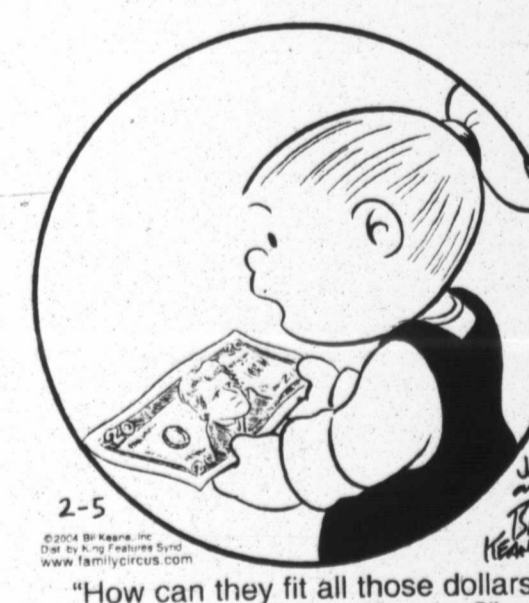


NEW CROSSWORD BOOK! Send \$4.50 (check/m.o.) to Thomas Joseph Book 2, P.O. Box 536475, Orlando, FL 32853-6475

Marmaduke



The Family Circus



Flo & Friends



FOOTBALL

HONOLULU

After the loss of the Super Bowl, a nine-hour defensive strategy was just a defensive strategy. It might be the best defensive strategy ever. It might be the best defensive strategy ever. It might be the best defensive strategy ever.

IT MIGHT BE THE BEST

sad ending. It might be the best defensive strategy ever. It might be the best defensive strategy ever. It might be the best defensive strategy ever.

BASKETBALL

SILVERTON

McLean Silverton action ear.

PHYTON

17 points in scoring. Jay Walker to lead.

HANGS AD

Silverton the girls' Kelly.

SILVERTON

with 18 points. Keisha Sandi A.

POINTS EA

WRESTLING

PAMPA

hosts Wrestling which st. Friday Fieldhouse Team.

BOYS

Borger, Pampa.

HOCKEY

DALLAS

Modano injury a when he for the N. And Stars cer.

STARS CER

having the They we of the standing many lo.

SEASON.

NEARLY

Stars ar unbeate healthy lot bette mates B.

TURCO

Sunday "The deserve mine v. able." Stars' leader.

CAREER

the tea 1993. you're of hav obligat hadn't enough.

WHEN

All-Sta ond str was on a groin eight g 40 gam rating his car.

SPORTS

OU again has top haul; OSU has big year

NORMAN, Okla. (AP) — All those wins in the annual Red River Shootout seem to be translating into victories on the recruiting trail for the Oklahoma Sooners.

For the second-straight year, Oklahoma rustled away some of the best prospects in Texas to fill out what's expected to be one of the nation's top recruiting classes.

The best of Oklahoma coach Bob Stoops' latest bumper crop were also the top two recruits in the Lone Star State, positioning the Sooners to bring in a top-10 bunch Wednesday, the first day high school seniors sign letters of intent and fax them to the college of their choice.

"Stoops and his staff did a great job recruiting this year," said Tom Lemming, editor of

the Prep Football Report and an analyst with ESPN.com. "I think (the four consecutive wins over Texas) have especially meant a lot."

Oklahoma State and Tulsa also capitalized on rare winning seasons to bring in banner recruiting classes, something that's been in short supply at both schools in recent years. But the Sooners' haul of 18 players was ranked no lower than seventh in most recruiting reports, mostly on the strength of landing the nation's best quarterback in Rhet Bomar and the best running back in Adrian Peterson.

"When you look at the quality of the class, it's pretty special group," Stoops said. "If the experts have any idea what they're doing ... if you look at ours per recruit, then we're up

there in the top two in the country."

The 6-foot-2, 210-pound Peterson was the jewel of the class, evoking comparisons to past greats such as Eric Dickerson, Herschel Walker and Bo Jackson. He ran for 5,011 yards and 54 touchdowns — averaging more than a first down a carry — in two years at Palestine High School in East Texas.

"He's the best to come out of Texas in a long, long time," said recruiting analyst Jeremy Crabtree of Rivals100.com. "That's saying a lot."

Peterson and Bomar both grew up in Texas dreaming of wearing burnt orange and were recruited hard by the Longhorns, but they ultimately decided to go to school north of the Red River.

Peterson, in particular, noted that in recent years Texas seemed to get the best of Oklahoma in the recruiting rankings but never on the field.

"I felt like Oklahoma fit me the best," Peterson said Wednesday morning at a signing ceremony at his high school. "I like how they develop players."

For example, Stoops' first recruiting class at Oklahoma in 1999 was generally considered one of the weakest classes in the Big 12 by most recruiting services.

From that group came a Heisman Trophy winner (quarterback Jason White), a Heisman runnerup (quarterback Josh Heupel), a Thorpe Award winner (cornerback Derrick Strait) and the fourth-leading rusher in school history

(tailback Quentin Griffin).

With those players, Stoops won a national title in 2000, played for another last season and won two Big 12 championships.

By comparison, Texas coach Mack Brown reeled in the nation's top-rated recruiting classes in 1999 and 2002 and has no title to show for it.

"(Oklahoma's) ability to coach good players into great players is something that people notice," Lemming said. "If great players come, then who knows what will happen?"

The Sooners also signed two of the top three players in Oklahoma — shifty running back D.J. Wolfe of Lawton and 6-foot-6 receiver Quentin Chaney of Tulsa. Those were the only players Stoops signed from within the state.

NOTEBOOK

FOOTBALL

HONOLULU (AP) —

After the Carolina Panthers lost the Super Bowl, taking a nine-hour flight to Hawaii was just about the last thing defensive end Mike Rucker wanted to do.

It might turn out to be the best way to forget the sad ending to the Panthers' outstanding season. Rucker joined teammates Kris Jenkins, Stephen Davis and Todd Sauerbrun at the Pro Bowl, where they'll compete against New England's Richard Seymour, Ty Law and Willie McGinest in the laid-back anticlimax to the NFL season.

BASKETBALL

SILVERTON

McLean was defeated by Silverton 62-52 in district action earlier this week.

Phyton Ester tossed in 17 points to lead Silverton in scoring.

Jay Wallis had 22 points to lead McLean. Tiler Hangs added 15 points.

Silverton won 75-30 in the girls' contest.

Kelly Simpson was Silverton's scoring leader with 18 points.

Keisha Menefield and Sandi Anderson had 8 points each for McLean.

WRESTLING

PAMPA — Pampa hosts the District 6 Wrestling Tournament, which starts at 3:30 p.m. Friday in McNeely Fieldhouse.

Teams entered include Boys Ranch, Dumas, Borger, River Road and Pampa.

HOCKEY

DALLAS (AP) — Mike Modano was out with an injury and not deserving when he was named a starter for the NHL All-Star game.

And the struggling Dallas Stars certainly didn't warrant having three All-Star starters. They were in the bottom half of the Western Conference standings already with as many losses as the previous season.

Nearly a month later, the Stars are on a seven-game unbeaten streak. And a healthy Modano is feeling a lot better about joining teammates Bill Guerin and Marty Turco for the All-Star game Sunday in Minnesota.

"Those two certainly deserved to go. I think mine was kind of questionable," said Modano, the Stars' all-time scoring leader who started his career in Minnesota before the team moved south in 1993. "But certainly when you're voted in, you kind of have a little bit of an obligation to go. I really hadn't been playing well enough to go."

When he was named an All-Star starter for the second straight year, Modano was on the injured list with a groin injury. He had just eight goals and 17 assists in 40 games, with a minus-19 rating that was the worst in his career.

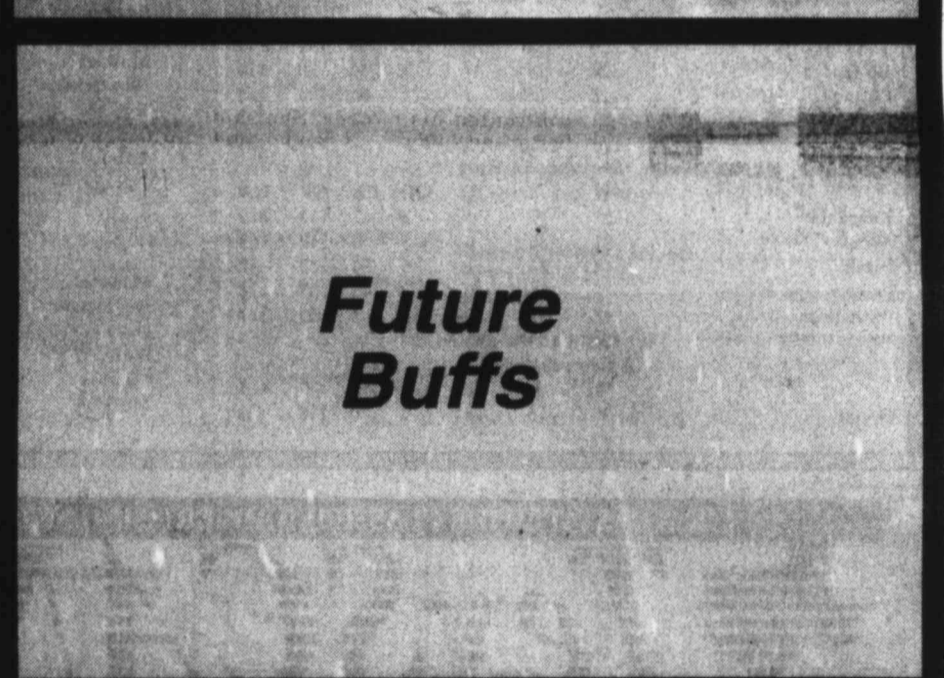
Harvesters sign with West Texas A&M

Quarterback Johnny Moore and wide receiver Jesse Tarango will be teaming up again, only this time it will be at the college level. The Harvester seniors signed letters-of-intent Wednesday to play for West Texas A&M University in Canyon. Moore (bottom photo) is flanked by his parents, Johnny Moore IV and Irene Moore; (standing, l-r) Pampa head coach Heath Parker and Athletic Director Dick Dunham. Tarango (right photo) is with his parents, Armando Tarango and Ernestina Tarango; (standing, l-r) Pampa head coach Heath Parker, assistant coach Del Smith and Athletic Director Dick Dunham. Moore and Tarango helped lead Pampa to an 11-2 record and as far as the third round of the playoffs. Moore rushed for 1,597 yards and 20 touchdowns, and threw for 1,453 yards and 10 TDs. Tarango made 63 receptions for 855 yards and 7 TDs. From his cornerback position on defense, Tarango had 55 total tackles with 4 interceptions. The WT Buffs open the 2004 season at home Aug. 28 against Western New Mexico.

EAT VICTOR



EAT VICTOR



After upset of Kansas, Iowa State suffers a letdown

By The Associated Press

In its first outing since last weekend's 68-61 upset of then No. 15 Kansas before an enthusiastic home crowd, Iowa State cooled down on the road and took a 75-48 drubbing from 22nd-ranked Oklahoma Wednesday night.

The Cyclones struggled all night at Norman, committing 19 turnovers and making only 34 percent of their shots, compared to just 10 turnovers and 41 percent shooting against Kansas.

Oklahoma, the worst-shooting team in the Big 12, won its fourth straight behind 17 points from De'Angelo Alexander, who was 5-for-7 from 3-point range, and 16 from freshman Lawrence McKenzie.

"I tell you what, they weren't the worst shooting team in the Big 12 tonight," Iowa State coach Wayne Morgan said. "Our defense could have played better, but at the same time, those kids made some deep 3-point shots."

In other Big 12 games Wednesday, No. 11 Texas hit 11 shots from beyond the arc in beating Colorado 75-63, and Jeremiah Massey scored a career high 24 points in leading Kansas State over

Nebraska 78-61.

Offensively-challenged Oklahoma got its most lopsided victory in almost two months, and for a defensive-minded coach such as Kelvin Sampson, few wins could be more satisfying.

"You can tell that we were due for this," Sampson said. "We've made a lot of progress. We're turning into a team and a team is hard to beat."

Freshman guard Drew Lavender, the team's leading scorer this season, battled a fever and failed to score, trying only two shots and getting three assists.

McKenzie, also a guard, hit a couple of 3s on back-to-back possessions early in the second half to spark a 21-5 run, turning the game into a rout for the Sooners (14-4, 4-3 Big 12).

Oklahoma has finally climbed over .500 in conference play since losing four straight, the last defeat a 67-47 setback at Texas Tech.

"Not very many teams can lose four games and turn around and win four games in a row," Sampson said. "That's what makes me so proud of our team — our toughness."

Iowa State (13-5, 4-3) got off to a rough start and never

was able to recover against the hot-shooting Sooners, who hit 12 of 25 3-pointers.

The Cyclones didn't score a point in the final 6:14 of the first half, with Oklahoma finishing on a 13-2 run en route to a 31-17 lead at the break.

Oklahoma broke the game open early in the second with a barrage of 3-pointers, the first by McKenzie. Then Alexander hit a 3-pointer, Jason Detrick scored on a dunk and Brandon Foust nailed a 3 to give the Sooners a 60-36 lead with 9:36 left.

Curtis Stinson led Iowa State with 13 points.

No. 11 Texas 76, Colorado 63

Sydmill Harris and Kenton Paulino each scored 13 points in the Texas victory at Austin. The Longhorns (15-3, 6-1 Big 12) won their first game back in the Frank Erwin Center since their 25-game home winning streak was snapped in a Jan. 24 loss to Oklahoma State.

A key role player in last season's Final Four run, Harris had seen his playing time drop dramatically through the course of this season. He had not scored in eight of the 10 previous games but went 4-of-5 from the floor and hit his only two free throws against Colorado

(12-7, 4-4).

Brandon Mouton added 11 points and a team high seven rebounds for Texas, which used its outside shooting to neutralize the defensive presence of Colorado's 7-foot

center David Harrison.

Harrison scored 18 points to lead the Buffaloes, who outrebounded Texas 38-31 but committed 18 turnovers which the Longhorns converted into 19 points.

Hot Shots



Fourth graders who placed at the annual Lamar Hot Shot event are as follows: Girls (standing) 1. Andra Cortez; 2. Elizabeth Terry; 3. Jade Pena; Boys (kneeling) 1. Collin Killgo, Jose Granados; 3. (tie) Skylar Estes and Spencer Estes. The basketball shooting contest is used to raise funds for Lamar Elementary.

FEB

05

2004

SCOREBOARD

COLLEGE BASKETBALL

Wednesday's College Basketball Major Scores

By The Associated Press

EAST

Albany, N.Y. 64, UMBC 60
 Boston College 76, Notre Dame 69
 Boston U. 70, New Hampshire 50
 E. Michigan 77, Buffalo 66
 George Mason 74, Towson 57
 George Washington 102, St. Bonaventure 78
 Hofstra 63, Delaware 61
 La Salle 58, Rhode Island 54
 Maine 54, Hartford 52
 Manhattan 91, Loyola, Md. 54
 Pittsburgh 71, St. John's 51
 Purdue 62, Penn St. 47
 Rutgers 72, Miami 70, OT
 Temple 57, Fordham 47
 West Virginia 69, Seton Hall 64

SOUTH

Drexel 66, Va. Commonwealth 57
 Georgia 64, Mississippi 51
 James Madison 83, William & Mary 76
 LSU 84, Tennessee 67
 Liberty 82, N.C.-Asheville 68
 Maryland 71, Virginia 67
 Memphis 62, Louisville 58
 N.C. State 73, Wake Forest 68
 Old Dominion 68, N.C.-Wilmington 58
 Radford 63, VMI 46
 South Carolina 90, Alabama 82, OT
 Virginia Tech 69, Providence 57
 Winthrop 51, Coastal Carolina 50

MIDWEST

Ball St. 77, Akron 71, OT
 Bradley 68, Evansville 60
 Butler 72, Ind.-Pur.-Fl. Wayne 55
 Creighton 58, N. Iowa 47
 Dayton 62, Richmond 57, OT
 Drake 69, Indiana St. 66
 Kansas St. 78, Nebraska 61
 Kent St. 69, N. Illinois 67
 Miami (Ohio) 66, Bowling Green 60
 Michigan St. 89, Iowa 72
 Ohio St. 72, Northwestern 64
 W. Michigan 79, Cent. Michigan 63
 Wichita St. 70, Illinois St.-50
 Wisconsin 80, Minnesota 66
 Wright St. 83, Loyola of Chicago 71

SOUTHWEST

Arkansas 74, Auburn 52
 Arkansas St. 94, New Orleans 74
 Oklahoma 75, Iowa St. 48
 Stephen F. Austin 69, Texas-San Antonio 60
 Texas 76, Colorado 63
 Texas-Pan American 90, Lamar 78

FAR WEST

No major team scores reported from the FAR WEST.

HOCKEY

National Hockey League

At A Glance

By The Associated Press

All Times EST

EASTERN CONFERENCE

Atlantic Division

	W	L	T	OL	Pts	GF	GA
Philadelphia	27	12	11	5	70	153	122
New Jersey	28	13	10	1	67	123	96
N.Y. Islanders	26	20	5	2	59	152	133
N.Y. Rangers	20	24	7	4	51	143	157
Pittsburgh	11	36	5	3	30	109	207

Northeast Division

	W	L	T	OL	Pts	GF	GA
Toronto	29	14	8	3	69	147	127
Boston	26	14	11	4	67	136	126
Ottawa	28	15	7	3	66	176	115
Montreal	27	20	6	2	62	137	122
Buffalo	23	25	5	1	52	130	135

Southeast Division

	W	L	T	OL	Pts	GF	GA
Tampa Bay	27	17	6	3	63	142	117
Atlanta	21	26	6	2	50	149	165
Florida	18	23	11	3	50	122	150
Carolina	17	26	10	2	46	105	138
Washington	17	31	5	2	41	129	173

WESTERN CONFERENCE

Central Division

	W	L	T	OL	Pts	GF	GA
Detroit	30	15	8	2	70	178	129

	W	L	T	OL	Pts	GF	GA
Nashville	26	19	6	2	60	128	137
St. Louis	25	20	7	1	58	127	133
Columbus	15	28	8	3	41	112	153
Chicago	14	29	7	5	40	125	163

Northwest Division

	W	L	T	OL	Pts	GF	GA
Colorado	30	11	9	3	72	165	120
Vancouver	30	15	7	3	70	164	127
Calgary	26	19	5	3	60	131	121
Minnesota	19	20	15	2	55	123	125
Edmonton	22	24	8	1	53	141	144

Pacific Division

	W	L	T	OL	Pts	GF	GA
San Jose	25	13	11	5	66	133	111
Dallas	27	20	9	0	63	118	122
Los Angeles	21	15	13	5	60	145	139
Phoenix	18	18	14	3	53	136	143
Anaheim	17	23	8	7	49	119	148

Two points for a win, one point for a tie and overtime loss.

Tuesday's Games

Boston 5, Atlanta 4
 Washington 2, Tampa Bay 1
 N.Y. Islanders 5, Vancouver 4, OT
 Chicago 4, Toronto 1
 Montreal 4, Pittsburgh 3
 New Jersey 2, Ottawa 1
 Detroit 4, Nashville 1
 Los Angeles 4, Calgary 4, tie
 Colorado 3, Carolina 1
 San Jose 3, Florida 0

Wednesday's Games

Philadelphia 5, Washington 1
 Minnesota 4, N.Y. Rangers 1
 Dallas 1, Columbus 0
 Florida 5, Phoenix 4, OT
 Edmonton 5, St. Louis 3
 Anaheim 3, Carolina 2

Thursday's Games

Boston at Buffalo, 7 p.m.
 Toronto at Ottawa, 7:30 p.m.
 Philadelphia at Atlanta, 7:30 p.m.
 N.Y. Islanders at Montreal, 7:30 p.m.
 Vancouver at New Jersey, 7:30 p.m.
 Detroit at Colorado, 8 p.m.
 Tampa Bay at Nashville, 8 p.m.
 St. Louis at Calgary, 9 p.m.
 Phoenix at San Jose, 10:30 p.m.

Friday's Games

No games scheduled
Saturday's Games
 No games scheduled
Sunday's Game
 All-Star Game at St. Paul, Minn., 3 p.m.

PRO BASKETBALL

National Basketball Association

At A Glance

By The Associated Press

All Times EST

EASTERN CONFERENCE

Atlantic Division

	W	L	Pct	GB
New Jersey	27	20	.574	—
New York	23	27	.460	5 1/2
Boston	22	28	.440	6 1/2
Miami	21	29	.420	7 1/2
Philadelphia	20	29	.408	8
Washington	14	33	.298	13
Orlando	13	38	.255	16

Central Division

	W	L	Pct	GB
Indiana	36	14	.720	—
Detroit	33	17	.660	3
Milwaukee	26	22	.542	9
New Orleans	26	23	.531	9 1/2
Toronto	23	24	.489	11 1/2
Cleveland	19	30	.388	16 1/2
Atlanta	16	34	.320	20
Chicago	14	36	.280	22

WESTERN CONFERENCE

Midwest Division

	W	L	Pct	GB
Minnesota	34	14	.708	—
San Antonio	32	18	.640	3
Dallas	31	18	.633	3 1/2
Denver	29	21	.580	6
Houston	27	21	.563	7
Memphis	27	21	.563	7

	W	L	Pct	GB
Utah	24	25	.490	10 1/2

Pacific Division

	W	L	Pct	GB
Sacramento	34	12	.739	—
L.A. Lakers	29	17	.630	5
Seattle	23	24	.489	11 1/2
L.A. Clippers	22	25	.468	12 1/2
Portland	22	25	.468	12 1/2
Golden State	20	27	.426	14 1/2
Phoenix	18	33	.353	18 1/2

Tuesday's Games

Toronto 93, Philadelphia 80
 New York 97, Indiana 90
 Cleveland 85, Detroit 82
 Minnesota 113, Orlando 100
 Dallas 107, Golden State 93
 Sacramento 117, Seattle 101

Wednesday's Games

Toronto 110, Orlando 90
 Memphis 103, Washington 101
 L.A. Clippers 95, Boston 86
 Atlanta 97, Minnesota 89
 New Jersey 99, Miami 88
 L.A. Lakers 111, Cleveland 106, OT
 Dallas 113, New Orleans 104
 Houston 103, Milwaukee 89
 Chicago 95, Utah 79
 Portland 104, Phoenix 97

Thursday's Games

L.A. Lakers at Philadelphia, 7:30 p.m.
 San Antonio at Seattle, 10 p.m.

Friday's Games

L.A. Clippers at Washington, 7 p.m.
 Atlanta at Boston, 7:30 p.m.
 Indiana at Toronto, 7:30 p.m.
 Milwaukee at Memphis, 8 p.m.
 Detroit at New Orleans, 8 p.m.
 Cleveland at Minnesota, 8 p.m.
 Orlando at New Jersey, 8 p.m.
 Chicago at Houston, 8:30 p.m.
 Portland at Utah, 9 p.m.
 Seattle at Phoenix, 9 p.m.
 San Antonio at Sacramento, 10:30 p.m.
 Denver at Golden State, 10:30 p.m.

TRANSACTIONS

Wednesday's Sports Transactions

BASEBALL

American League

BALTIMORE ORIOLES—Agreed to terms with INF-OF Mark McLemore on a minor league contract.
 BOSTON RED SOX—Named Dale Sveum third base coach.
 KANSAS CITY ROYALS—Named Robert Rice vice president of ballpark operations and development.

NEW YORK YANKEES—Agreed to terms with C Joe Girardi, INF Homer Bush, INF Erick Almonte, OF Darren Bragg, INF Jeff Deardorff, INF Felix Escalona, C Sal Fasano, C Omar Fuentes, INF Tyler Houston, RHP Jim Mann, C Dioner Navarro, LHP Donovan Osborne, OF John Rodriguez, RHP David Shepard, C Jon-Mark Sprol and C Steve Torrealba on minor league contracts.

National League

CINCINNATI REDS—Agreed to terms with RHP Scott MacRae on a minor league contract. Named Gary Allenson minor league catching coordinator.
 PITTSBURGH PIRATES—Named Tony Beasley manager of Altoona of the EL.

BASKETBALL

National Basketball Association

NBA—Fined Chicago Bulls coach Scott Skiles \$7,500 for criticizing the officiating after a Feb. 2 loss to Seattle.
 PORTLAND TRAIL BLAZERS—Placed F Travis Outlaw on the injured list.
 WASHINGTON WIZARDS—Activated G Gilbert Arenas from the injured list. Released F Torraye Braggs.

FOOTBALL

National Football League

ARIZONA CARDINALS—Released QB Jeff Blake.
 BALTIMORE RAVENS—Named Jim Fassel senior consultant.
 HOUSTON TEXANS—Signed WR Jermaine Lewis.
 SAN FRANCISCO 49ERS—Signed DT Josh Shaw.

SEATTLE SEAHAWKS—Signed DT LaWaylon Brown, DT Nate Dwyer, CB Brad Franklin, T Isaac Herring, G Joey Hollenbeck, CB Tony Lukins, QB David Priestley, DT Rod Smith, S Walter Bernard, WR Antoine Burns, G Dustin Kroeker, WR Jason Willis and TE Casey Poppinga.

HOCKEY

National Hockey League

ANAHEIM MIGHTY DUCKS—Traded D Todd Simpson to Ottawa for LW Petr Sastliiv.
 ATLANTA THRASHERS—Activated G Gamet Exelby from injured reserve. Assigned G Frederic Cassivi and D Kurtius Foster to Chicago of the AHL.
 LOS ANGELES KINGS—Assigned RW John Triggs and D Tomas Zizka to Manchester of the AHL.

5 Special Notic

ADVERTISING al to be placed Pampa News, M placed through pa News Office

14d Carpentry

CUSTOM home tions, remodeling dental / comm Construction, 665-

OVERHEAD

ing, roofing, painting, all type Mike Albus, 665-

ADDITIONS,

ing, roofing, painting, all type Mike Albus, 665-

14e Carpet Ser

NU-WAY Clean ice, carpets, up walls, ceilings, doesn't cost...! steam used. No owner-operator. 3541, or from town, 800-536-53

14h Gen. Serv

COX Fence C Repair old fence new. Free estimat 669-7769.

IS your House or

tion Settling? C bricks or walls won't close? Car ers Brothers, Inc. ing & Foundatio ing. 1-800-299-806-352-9563 Ar

SUPERIOR Qual

sington replacem downs and doors. teed 30% fuel. Shawn Deaver 662-2977 or 665-

♦ Taylor

Ceramic Tile Handicap Conver Shower Installation Floor Tile & Regr Keith 665-0328 or

One le

for the th apostroph hints. Ea 2-5

O W Z

DC O

W R M

A B D

R X Z

Yeste

INSTAN

AND M

JAMES

Horos

HAPPY BIR

2004:

Defer to othe allow them to key to your f lishing bound ally loving a drawing man to sell yourse how talented that could ma single, suito door, but pi might take so ing in the fall person. If you tionship might as to who doe but often cha

The Stars S

You'll Have:

3-Average; 2

ARIES (Mar

★★★★ O have what th like a rubber down, and re accordingly, with a friend Play away... TAURUS (A ★★★★★ You d the air with feeling. One go out of h Express your way. He or s ference. Toni GEMINI (M ★★★★★ N need to get not work on different stat

TEXAS STATEWIDE CLASSIFIED ADVERTISING NETWORK

TexSCAN

<p>TexSCAN Week of February 1, 2004</p> <p>ADOPTION Note: It is illegal to be paid for anything beyond medical and legal expenses in Texas adoption.</p> <p>PREGNANT AND ALONE? Adoption Wise specializes in you, the birthmother. Call toll free 1-800-361-9333. Relocation and financial assistance is available.</p> <p>PREGNANT? CONSIDERING ADOPTION? We can help. We specialize in matching families with birthmothers nationwide. Toll Free 24 hours a day, 1-866-921-0565. One True Gift Adoptions.</p> <p>AUCTION AUCTION FEB. 12TH, Marshall, TX. Fenced Hunting Ranch and Home. 911+/- acres in parcels, some absolute. J.P. King Auction Co. 1-80</p>

PAMPA NEWS CLASSIFIEDS

5 Special Notices

ADVERTISING Material to be placed in the Pampa News, MUST be placed through the Pampa News Office Only.

14d Carpentry

CUSTOM homes, additions, remodeling, residential / comm. Deaver Construction, 665-0447.

OVERHEAD DOOR REPAIR Kidwell Construction, Call 669-6347.

ADDITIONS, remodeling, roofing, cabinets, painting, all types repairs. Mike Albus, 665-4774.

14e Carpet Serv.

NU-WAY Cleaning service, carpets, upholstery, walls, ceilings. Quality doesn't cost...It pays! No steam used. Bob Marx owner-operator. 665-3541, or from out of town, 800-536-5341.

14h Gen. Serv.

COX Fence Company. Repair old fence or build new. Free estimates. Call 669-7769.

IS your House or Foundation Settling? Cracks in bricks or walls? Door won't close? Call Childers Brothers, Inc. Stabilizing & Foundation Leveling. 1-800-299-9563 or 806-352-9563 Amarillo.

SUPERIOR Quality Kensington replacement windows and doors. Guaranteed 30% fuel savings! Shawn Deaver Const. 662-2977 or 665-0354.

♦ Taylor Ceramic Tile Works♦ Handicap Conversions Shower Installation Floor Tile & Regrouting Keith 665-0328 or lv. msg

14h Gen. Serv.

HUSBAND for Hire. Will do most household repairs. References. Milton Brown, 664-0171 (cell#).

THE Floor Store, 2100A Perryton Parkway, Pampa. All types flooring avail. & Jerry's Installation, all types flooring installed. Restretching & repairs. 665-4455, 664-7959

14n Painting

INT./EXT. painting, mud tape. 35 yr. exp. References. Call Gene Calder 665-4840.

CERAMIC Tile Works. Floor, kitchen & shower repair or remodeling. Call Jesus Barraza, 665-3453.

14s Plumbing/Heat

COME see our increasing inventory of plumbing supplies, tools & specialty items! Chief Plastics, 1237 S. Barnes, Pampa, 665-6716 or toll free 800-649-6716. V/ MC/ Disc/ AmEx/ Debit.

JACK'S Plumbing & Faucet Shop, 715 W. Foster, 665-7115. Faucets, plumbing supplies, new constr., repair, remodeling, sewer / drain cleaning, septic systems installed. Visa/MC

Larry Baker Plumbing Heating/ Air Conditioning Borger Hwy. 665-4392

NOW stocking a large collection of Harley Davidson Knives! Chief Plastics, 1237 S. Barnes, Pampa, 665-6716 or toll free 800-649-6716, V/MC/Disc/AmEx/Debit.

21 Help Wanted

WANT exp. truck mechanic. Will consider trainee. Prefer current CDL license. Tools and equip. provided. Competitive pay and benefits. Interview at G.P. Guinn, Inc. 101 Carolina, Borger or call Don 806-273-2362

EARN \$1200-\$1500 per month, part-time, working from home. Six-figure income possible within two years. Bonus car program and travel benefits. Call 806-323-5869 ask for Ray.

21 Help Wanted

EXP. Oil Field Tank Truck Drivers w/ current Class A CDL. Competitive pay and benefits. Interview at Hwy. 60 & 83 South, Canadian, Tx. at G.P. Guinn, Inc. or call Tonnie 806-273-2362.

NEEDED Part Time Pharmacy Clerk. Please send resume to P.O. Box 2314, Pampa.

TEXAS DEPARTMENT OF Family and Protective Services Specialist II-IV Job Posting # C-01-04-023

Responsible for providing child Protective Services for a large rural area and to work with various child welfare boards. The position interacts routinely with TDPRS staff, law enforcement agents; juvenile and adult probation staff, various community agents from schools and other community members, therapist, Court Appointed Special Advocates volunteers, foster parents and all types of clientele from rural communities. Minimum Qualifications: Graduation from an accredited four-year college or university. Preferred Qualifications: Travel 40 percent of time. Salary: \$2409.75-\$2718.46. Vacancy locations: Dalhart, Pampa and Wellington, Tx. For a copy of the complete job announcement for an employment application you may visit our web site at www.tdprs.state.tx.us/interest/jobs.asp or call (512)719-6136. Interested applicants should submit a State of Texas Application for Employment to the address below or fax the application to (512)719-6157.

The Texas Department of Family and Protective Services Human Resources Office, Suite 450 8100 Cameron Rd. Austin, TX 78754

Now Hiring Pampa/Canadian

Road Construction: Canadian

*Heavy Equipment Operators *Laborers

Part-Time or (as needed basis) Positions: Pampa

*Lifeguards *Auditorium Workers *Crossing Guards *Animal control Attendant

Oilfield Experience Canadian

*Oilfield Water Hauling *Diesel Mechanic

1224 N. Hobart NBC Plaza II, Ste. 11 Pampa, Texas 79065 806-665-2991 866-665-2991

WANTED exp. truck mechanic. Will consider trainee. Prefer current CDL license. Tools and equip. provided. Competitive pay and benefits. Interview at G.P. Guinn, Inc. 101 Carolina, Borger or call Don 806-273-2362

WANTED exp. truck mechanic. Will consider trainee. Prefer current CDL license. Tools and equip. provided. Competitive pay and benefits. Interview at G.P. Guinn, Inc. 101 Carolina, Borger or call Don 806-273-2362

WANTED exp. truck mechanic. Will consider trainee. Prefer current CDL license. Tools and equip. provided. Competitive pay and benefits. Interview at G.P. Guinn, Inc. 101 Carolina, Borger or call Don 806-273-2362

WANTED exp. truck mechanic. Will consider trainee. Prefer current CDL license. Tools and equip. provided. Competitive pay and benefits. Interview at G.P. Guinn, Inc. 101 Carolina, Borger or call Don 806-273-2362

WANTED exp. truck mechanic. Will consider trainee. Prefer current CDL license. Tools and equip. provided. Competitive pay and benefits. Interview at G.P. Guinn, Inc. 101 Carolina, Borger or call Don 806-273-2362

21 Help Wanted

OPENING for mature, dependable cashier, hours 6pm-10pm daily. Apply at 1020 E. Frederic.

SONIC is now taking applications. Apply in person, 1418 N. Hobart, Pampa.

NEEDED Part Time Pharmacy Clerk. Please send resume to P.O. Box 2314, Pampa.

TEXAS DEPARTMENT OF Family and Protective Services Specialist II-IV Job Posting # C-01-04-023

Responsible for providing child Protective Services for a large rural area and to work with various child welfare boards. The position interacts routinely with TDPRS staff, law enforcement agents; juvenile and adult probation staff, various community agents from schools and other community members, therapist, Court Appointed Special Advocates volunteers, foster parents and all types of clientele from rural communities. Minimum Qualifications: Graduation from an accredited four-year college or university. Preferred Qualifications: Travel 40 percent of time. Salary: \$2409.75-\$2718.46. Vacancy locations: Dalhart, Pampa and Wellington, Tx. For a copy of the complete job announcement for an employment application you may visit our web site at www.tdprs.state.tx.us/interest/jobs.asp or call (512)719-6136. Interested applicants should submit a State of Texas Application for Employment to the address below or fax the application to (512)719-6157.

The Texas Department of Family and Protective Services Human Resources Office, Suite 450 8100 Cameron Rd. Austin, TX 78754

Now Hiring Pampa/Canadian

Road Construction: Canadian

*Heavy Equipment Operators *Laborers

Part-Time or (as needed basis) Positions: Pampa

*Lifeguards *Auditorium Workers *Crossing Guards *Animal control Attendant

Oilfield Experience Canadian

*Oilfield Water Hauling *Diesel Mechanic

1224 N. Hobart NBC Plaza II, Ste. 11 Pampa, Texas 79065 806-665-2991 866-665-2991

WANTED exp. truck mechanic. Will consider trainee. Prefer current CDL license. Tools and equip. provided. Competitive pay and benefits. Interview at G.P. Guinn, Inc. 101 Carolina, Borger or call Don 806-273-2362

WANTED exp. truck mechanic. Will consider trainee. Prefer current CDL license. Tools and equip. provided. Competitive pay and benefits. Interview at G.P. Guinn, Inc. 101 Carolina, Borger or call Don 806-273-2362

WANTED exp. truck mechanic. Will consider trainee. Prefer current CDL license. Tools and equip. provided. Competitive pay and benefits. Interview at G.P. Guinn, Inc. 101 Carolina, Borger or call Don 806-273-2362

WANTED exp. truck mechanic. Will consider trainee. Prefer current CDL license. Tools and equip. provided. Competitive pay and benefits. Interview at G.P. Guinn, Inc. 101 Carolina, Borger or call Don 806-273-2362

WANTED exp. truck mechanic. Will consider trainee. Prefer current CDL license. Tools and equip. provided. Competitive pay and benefits. Interview at G.P. Guinn, Inc. 101 Carolina, Borger or call Don 806-273-2362

21 Help Wanted

A NEW YEAR 2004 As this year begins Anf you look at your Income, are you happy with what you see? If you really want to Earn \$35,000+, you can make 2004 your best year yet!

Our company has served the Pampa Area for over 50 years. Leads, Benefits and Training provided. For a Personal and Confidential Interview call 669-0672 (M-F 10am-4pm) Or fax resume to 806-665-4376

TEXAS DEPARTMENT OF Family and Protective Services Specialist II-IV Job Posting # C-01-04-023

Responsible for providing child Protective Services for a large rural area and to work with various child welfare boards. The position interacts routinely with TDPRS staff, law enforcement agents; juvenile and adult probation staff, various community agents from schools and other community members, therapist, Court Appointed Special Advocates volunteers, foster parents and all types of clientele from rural communities. Minimum Qualifications: Graduation from an accredited four-year college or university. Preferred Qualifications: Travel 40 percent of time. Salary: \$2409.75-\$2718.46. Vacancy locations: Dalhart, Pampa and Wellington, Tx. For a copy of the complete job announcement for an employment application you may visit our web site at www.tdprs.state.tx.us/interest/jobs.asp or call (512)719-6136. Interested applicants should submit a State of Texas Application for Employment to the address below or fax the application to (512)719-6157.

The Texas Department of Family and Protective Services Human Resources Office, Suite 450 8100 Cameron Rd. Austin, TX 78754

Now Hiring Pampa/Canadian

Road Construction: Canadian

*Heavy Equipment Operators *Laborers

Part-Time or (as needed basis) Positions: Pampa

*Lifeguards *Auditorium Workers *Crossing Guards *Animal control Attendant

Oilfield Experience Canadian

*Oilfield Water Hauling *Diesel Mechanic

1224 N. Hobart NBC Plaza II, Ste. 11 Pampa, Texas 79065 806-665-2991 866-665-2991

WANTED exp. truck mechanic. Will consider trainee. Prefer current CDL license. Tools and equip. provided. Competitive pay and benefits. Interview at G.P. Guinn, Inc. 101 Carolina, Borger or call Don 806-273-2362

WANTED exp. truck mechanic. Will consider trainee. Prefer current CDL license. Tools and equip. provided. Competitive pay and benefits. Interview at G.P. Guinn, Inc. 101 Carolina, Borger or call Don 806-273-2362

WANTED exp. truck mechanic. Will consider trainee. Prefer current CDL license. Tools and equip. provided. Competitive pay and benefits. Interview at G.P. Guinn, Inc. 101 Carolina, Borger or call Don 806-273-2362

WANTED exp. truck mechanic. Will consider trainee. Prefer current CDL license. Tools and equip. provided. Competitive pay and benefits. Interview at G.P. Guinn, Inc. 101 Carolina, Borger or call Don 806-273-2362

WANTED exp. truck mechanic. Will consider trainee. Prefer current CDL license. Tools and equip. provided. Competitive pay and benefits. Interview at G.P. Guinn, Inc. 101 Carolina, Borger or call Don 806-273-2362

21 Help Wanted

NOTICE Readers are urged to fully investigate advertisements which require payment in advance for information, services or goods.

NABORS DRILLING USA, LP The Technology leader in the industry is looking for EXPERIENCED career minded rig employees for our operations in the Western part of Oklahoma and border areas of Texas Panhandle. If you are an experienced rig hand please stop by and apply for a position at our Elk City office at:

1501 S. Merritt Ph. 580-225-0029 See David Guzman Pay Scale: Drillers \$18.55 Derrickman \$17.05 Fir/Mtr. \$16.00 Benefits include: Group Health Insurance 401K Safety Incentives Physical & Drug Screen Required Need Valid State issued I.D. and Social Security Card Nabors Drilling USA, LP. EEOC Employer

EXPERIENCED Compressor Mechanic. Call Doug Estes with Panhandle Compression, Inc. in Perryton, 806-435-2628.

EXPERIENCED Pumpers. Call Panhandle Pumping in Perryton, Call Doug at (806)435-2628.

RN or LVN needed for Pampa. 40-60 hrs. per week. Exc. pay with benefits. Please call 355-1899.

DRIVERS needed. CDL & DOT Hazmat req. No license violations. Inquire 129 S. Price Rd., Pampa.

BE Your Own Boss! Avon / \$10 / earn 50% / benefits / MLM. Judy ISR, 665-3905, 664-5742.

49 Pools/Hot Tubs 6 person spa slightly damaged. Full mechanical warranty. Has redwood enclosure. Nice. Must sell. Call 358-9597.

50 Building Suppl. White House Lumber 101 S. Ballard 669-3291

HOUSTON LUMBER 420 W. Foster 669-6881

60 Household \$202 QN mattress set, brand new never used with warranty, QN Pillow top double sided mattress set new, still pkgd, warr, list \$550, sell \$236. Full Pillow top Double sided mattress set new, still pkgd, warr, List \$400, sell \$208. Full size mattress set new, never used \$180, \$230 King mattress set, brand new, still pkgd, warranty, \$268 King Pillow top mattress set, brand new, still pkgd, warranty, Queen Cherry sleigh bed, new, still

60 Household boxed, List \$750 sell \$399, new 7 pc QN cherry wood bdrm set w/sleigh bed, still boxed, sell \$999, new 7 pc QN Pinewood bdrm set w/4 poster bed, still boxed, \$999. Call 806-517-1050.

SOLID OAK DINETTE SET FOR SALE, 669-6287

69 Misc. ADVERTISING Material to be placed in the Pampa News MUST be placed through the Pampa News Office Only.

CASH for old gold jewelry at Rheams Diamond Shop 11 N. Cuyler

I am looking for some people with allergies, asthma, breathing difficulties, pets, odors and smoke to evaluate or field test a life changing product. No obligations to purchase. Call 806-323-5869 ask for Ray.

SEASONED Oak Firewood, delivered and stacked, \$175 cord. 779-3284, 662-6161.

10x12 Portable Barn, has slight roof damage. Cheap. Will deliver. Call 358-9597.

LARGE woodburning stove with pipe, great shape \$175. Call 665-0055.

69a Garage Sales SALE! Booth 121 Through March 1st Trash & Treasure Flea Market, 1431 N. Hobart.

77 Livest./Equip. NEED pasture for 200-400 head of mother cows, year round. Call 806-423-1008.

3 yr. old Registered Palomino Filly, green broke. \$600. Call 662-0983.

80 Pets & Suppl. FREE brown female puppy, to give to good home. Call 669-9949.

CUTE fluffy puppies to give away. Call 665-1716.

MALE English Pointer, 2 years old. Free to good home. 662-8576.

95 Furn. Apts. PICK UP rental list from Gray Box on front porch of Lakeview Apartments. Update each Fri.

NEW Mgmt! N&L Investments, 1, 2 & 3 brm., apts., duplexes, homes & commer. prop. 665-4274.

3 bdr., just remodeled, near Travis. \$500 mo. 665-4842, 662-3572.

2 bedroom, brick, detached garage, old but nice. \$350. Call 665-4842.

3 bdr., c/h/a, 1109 Crane, 313 N. Faulkner, 428 N. Cuyler, 2 bdr., 506 N. Dwight. HUD. 669-2080.

3 bedroom, 2 bath, double car garage, home for rent. Call 665-3570.

60 Household

boxed, List \$750 sell \$399, new 7 pc QN cherry wood bdrm set w/sleigh bed, still boxed, sell \$999, new 7 pc QN Pinewood bdrm set w/4 poster bed, still boxed, \$999. Call 806-517-1050.

SOLID OAK DINETTE SET FOR SALE, 669-6287

69 Misc.

ADVERTISING Material to be placed in the Pampa News MUST be placed through the Pampa News Office Only.

CASH for old gold jewelry at Rheams Diamond Shop 11 N. Cuyler

I am looking for some people with allergies, asthma, breathing difficulties, pets, odors and smoke to evaluate or field test a life changing product. No obligations to purchase. Call 806-323-5869 ask for Ray.

SEASONED Oak Firewood, delivered and stacked, \$175 cord. 779-3284, 662-6161.

10x12 Portable Barn, has slight roof damage. Cheap. Will deliver. Call 358-9597.

LARGE woodburning stove with pipe, great shape \$175. Call 665-0055.

69a Garage Sales SALE! Booth 121 Through March 1st Trash & Treasure Flea Market, 1431 N. Hobart.

77 Livest./Equip. NEED pasture for 200-400 head of mother cows, year round. Call 806-423-1008.

3 yr. old Registered Palomino Filly, green broke. \$600. Call 662-0983.

80 Pets & Suppl. FREE brown female puppy, to give to good home. Call 669-9949.

CUTE fluffy puppies to give away. Call 665-1716.

MALE English Pointer, 2 years old. Free to good home. 662-8576.

95 Furn. Apts. PICK UP rental list from Gray Box on front porch of Lakeview Apartments. Update each Fri.

NEW Mgmt! N&L Investments, 1, 2 & 3 brm., apts., duplexes, homes & commer. prop. 665-4274.

3 bdr., just remodeled, near Travis. \$500 mo. 665-4842, 662-3572.

2 bedroom, brick, detached garage, old but nice. \$350. Call 665-4842.

3 bdr., c/h/a, 1109 Crane, 313 N. Faulkner, 428 N. Cuyler, 2 bdr., 506 N. Dwight. HUD. 669-2080.

3 bedroom, 2 bath, double car garage, home for rent. Call 665-3570.

99 Stor. Bldgs. TUMBLEWEED Acres, self storage units. Various sizes. 665-0079, 665-2450.

PORTABLE Buildings. Display models slightly damaged. 8' wide, 10' wide and 14' wide. Must sell. Will deliver and finance (WAC). 358-9597.

Beautifully furn. 1 bdr. starting at \$350. We pay gas & water, you pay elec. 3&6 mo. leases. Pool & laundry on site.

Caprock Apts. 1601 W. Somerville 665-7149 Mon.-Fri. 8:30-5:30 Sat 10-4

DOGWOOD Apts. 1 bedroom, furnished. References & dep. required. 669-9817 or 669-2981.

EFFL apt. \$300 mo., bills pd. Rooms \$24.50 day. \$100 wk. & up, air, tv, cable, phone. 669-3221.

96 Unfurn. Apts. CAPROCK Apartments Has incredible specials on 1, 2, & 3 bdrm. Starting at only \$290. 3-12 mo. lease available.

* Pool * Laundry * Wash/dryer hook-ups * Club room * On-site management * SOFTENED WATER M-F 8:30-5:30, Sat. 10-4 1601 W. Somerville 806-665-7149

CLEAN 1 bdr., stove, re-frig., completely renovated, new carpet. All bills paid. 669-3672, 665-5900

GWENDOLEN Plaza Apts., 1&2 bdr. Gas / water pd. 3, 6 mo.-1yr. lease. 800 N. Nelson, 665-1875. 1/2 Off Deposit Special.

LARGE 1 bedroom apt., carpeted, appliances, bills paid. \$350. 665-4842.

VERY clean 1 br., appli. Water/gas paid. Washer & dryer connections. HUD approved. 665-1346.

98 Unfurn. Houses PICK UP rental list from Gray Box on front porch of Lakeview Apartments. Update each Fri.

NEW Mgmt! N&L Investments, 1, 2 & 3 brm., apts., duplexes, homes & commer. prop. 665-4274.

3 bdr., just remodeled, near Travis. \$500 mo. 665-4842, 662-3572.

2 bedroom, brick, detached garage, old but nice. \$350. Call 665-4842.

3 bdr., c/h/a, 1109 Crane, 313 N. Faulkner, 428 N. Cuyler, 2 bdr., 506 N. Dwight. HUD. 669-2080.

3 bedroom, 2 bath, double car garage, home for rent. Call 665-3570.

95 Furn. Apts.

1 bdr. apt. furn. or unfurn. Starting at \$275. All utilities pd. Courtyard Apts., 1031 N. Sumner, 669-9712.

Beautifully furn. 1 bdr. starting at \$350. We pay gas & water, you pay elec. 3&6 mo. leases. Pool & laundry on site.

Caprock Apts. 1601 W. Somerville 665-7149 Mon.-Fri. 8:30-5:30 Sat 10-4

DOGWOOD Apts. 1 bedroom, furnished. References & dep. required. 669-9817 or 669-2981.

Massachusetts lawmakers grapple with latest ruling on gay marriages

BY STEVE LEBLANC
ASSOCIATED PRESS WRITER

BOSTON (AP) — Despite Massachusetts' highest court allowing same-sex marriages by summer, legislators opposed to the concept were weighing options to try to circumvent the ruling — either through a law or a constitutional amendment.

"The court has overstepped its boundary and has not let the legislative process to unfold the way it has on other issues," said Rep. Eugene O'Flaherty.

The 4-3 advisory ruling Wednesday by the Supreme Judicial Court creates a legislative dilemma that could force many uneasy lawmakers to choose sides on a contentious social issue.

The court Wednesday doused one compromise option, ruling that gay couples were entitled to all the benefits of marriage and that Vermont-style civil unions don't go far enough.

But some gay marriage oppo-

nents, including powerful House Speaker Thomas Finneran, said they haven't closed the door on other legislative responses.

"I intend to closely study today's advisory opinion," said Finneran. "I will refrain from any comment until I have thought through the options which remain for the people of Massachusetts and their elected representatives."

Opponents of gay marriage pin their hopes on part of the court's original ruling that said state law provided no "rational" basis for prohibiting same-sex couples from the benefits of marriage.

Some lawmakers, including Rep. Eugene O'Flaherty, hope to craft a bill providing a rational basis for the exclusion of gay couples from marriage while conveying some new benefits to same-sex couples.

"The court has overstepped its boundary and has not let the legislative process to unfold the way it has on other issues," O'Flaherty said.

The much-anticipated opinion

came a week before next Wednesday's Constitutional Convention, where the Legislature will consider an amendment backed by Gov. Mitt Romney that would define marriage as a union between a man and a woman.

"The spotlight is now shining brightly on the Constitutional Convention. I can't believe any lawmaker would want to run from this," said Rep. Philip Travis, who sponsored the amendment.

The soonest a constitutional amendment could end up on the ballot would be 2006, meaning that the nation's first gay marriage could take place in Massachusetts as soon as May.

"We've heard from the court, but not from the people," Romney said in a statement. "The people of Massachusetts should not be excluded from a decision as fundamental to our society as the definition of marriage."

Senate President Robert Travaglini, who will preside over the

Constitutional Convention, said he needed time to talk with fellow senators before deciding what to do next.

"I want to have everyone stay in an objective and calm state as we plan and define what's the appropriate way to proceed," said Travaglini. "There is a lot of anxiety out there obviously surrounding the issue but I don't want to have it cloud or distort the discussion."

The advisory opinion was issued about three months after the court's original ruling that same-sex couples were entitled to all the benefits of marriage. That ruling prompted the Senate to ask if civil unions would satisfy the court.

Wednesday's opinion left no doubt.

"The history of our nation has demonstrated that separate is seldom, if ever, equal," four justices wrote in Wednesday's opinion. "For no rational reason the marriage laws of the Commonwealth discriminate against a defined class; no amount of

tinkering with language will eradicate that stain."

Lawmakers who cheered the ruling said they welcomed the chance to stand up and be counted. Sen. Jarrett Barrios, a supporter of gay marriage, said the opinion treats gay and straight couples equally.

"Whatever your view is of marriage, it's my belief that fair-minded people oppose writing discrimination into the constitution," said Barrios, who is gay.

A marriage amendment will require the support of at least 101 members of the 200-member Legislature during the current legislative session and the same number in the new, two-year session that begins in January before going on the ballot.

There's no guarantee the question will even come up next week. The question is eighth on a list of 11 proposed amendments. Ahead of it are other controversial proposals, including one lengthening the term of lawmakers from two to four years.

THE BIG RED TAG

SALE



La-Z-Boy And Lane
SAVE UP TO 60%
RECLINERS

Retail \$499 • \$599 • \$699

\$249
\$269
\$299

BIG SELECTION!



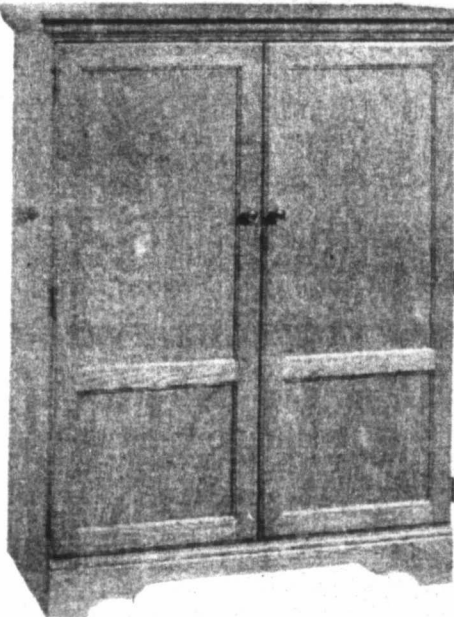
This Lush **LEATHER CHAISE RECLINER** Has It All. Big, Bold Ultra-Cushioned Comfort And A Style That's Laid Back. Retail \$1099.00

RED TAG SALE
\$499

LEATHER SOFAS
\$799 • \$999

SAVE UP TO 60%

12 MONTHS NO INTEREST FINANCING
WITH APPROVED CREDIT



ENTERTAINMENT CABINETS SALE

\$499

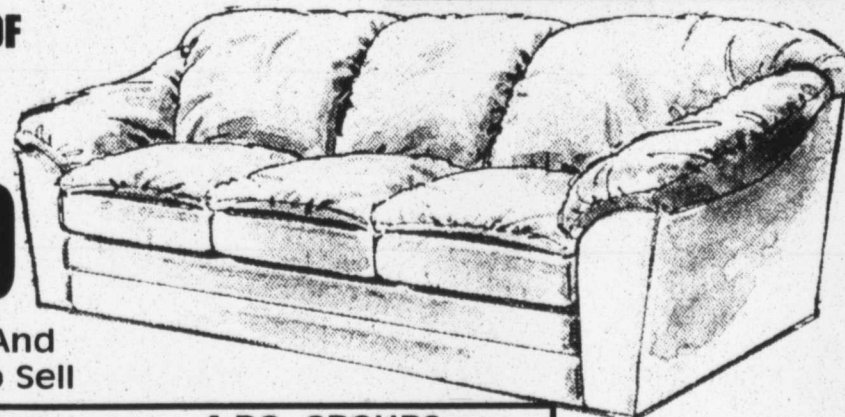
- Holds Most 36" TV
- Doors Open Flush
- Wiring Ports In Back Panel
- Choice Of Finishes
- 41w x 54H

SAVE UP TO 600.00 ON A GROUP OF

SOFAS

\$499 • \$599 • \$699

Big Selection Of Styles And Fabrics ... All Reduced To Sell



BEDROOM GROUPS 4 PC. GROUPS
\$599 • \$699
• DRESSER • MIRROR • HEADBOARD • NIGHTSTAND

SEALY MATTRESS SALE

SEALY PREMIER

Twin Set **\$249**
Full Set **\$299**
Queen Set **\$349**

SEALY PLUSH

Queen Set **\$399**
Twin Set **\$299**
Full Set **\$349**
King Set **\$649**



FREE 24 HOUR DELIVERY ON EVERY IN-STOCK ITEM!

FREE REMOVAL OF YOUR OLD BEDDING!

FREE IN-HOME SET-UP OF YOUR NEW BEDDING!

GLIDING ROCKER WITH GLIDE OTTOMAN
Both Only
\$399

MONDAY-SATURDAY 9:00 TO 5:30
PHONE 665-1623

90 DAYS NO INTEREST
Financing With Approved Credit

Texas

FURNITURE

210 N. Cuyler In Downtown Pampa

QUEEN 2 PC. SET
MATTRESS \$299