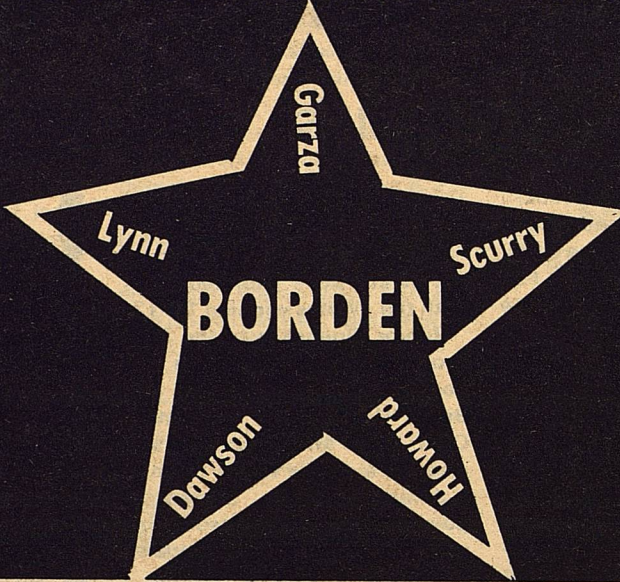


# THE

Volume XII



# STAR

April 10 1985

Serving the Counties of Borden, Dawson, Garza, Howard, Lynn & Scurry

## RECOUNT SEEMS LIKELY

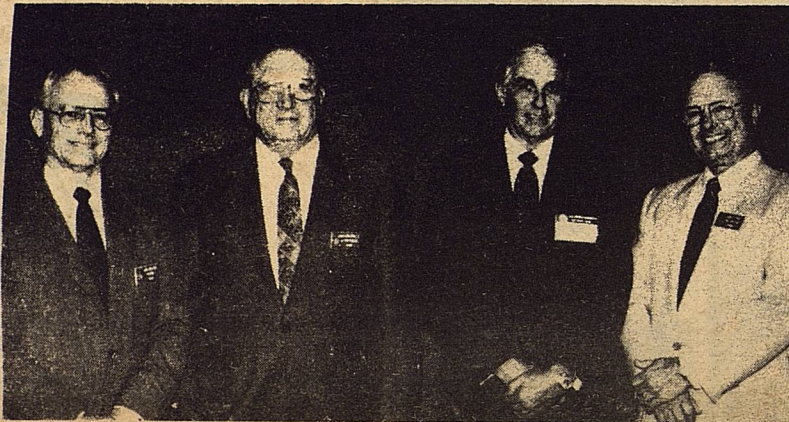
Gail... Tuesday April 9, Borden County voters turned out heavily Saturday for the 1985 School Board election with 278 going to the polls. Incumbent Bob Dyess and newcomer Kent Holmes drew a tie with each receiving 145 votes. Bill Phinzy, the other incumbent was re-elected with 186 votes. One write in vote was recorded in the South Gail box for Brent Murphy. Five write-in votes were cast for Guy Zant in the Vealmoor box.

At the time of this release it was expected that Kent Holmes would file for a recount. If that is the case, clerks will be appointed by the Board of Regents as decreed by the Secretary of State. If the tie holds after a re-count, a run-off election will be held as soon as legally possible, according to James McLeroy.

Bill Phinzy carried Boxes 1, 2B, 4A, and 4B, tying 2A. Bob Dyess carried 2B, 4A, and 4B. Kent Holmes carried Box 1, 3A and 3B, tying in 2A.



April 19 21, 1985



TSCRA officers for 1985, re-elected at the March 17-20 convention, are, from left, President John M. "Jack" Shelton III of Amarillo, First Vice President J.E. Birdwell II of Lubbock, Second Vice President James L. Powell of Fort McKavett and Secretary-General Manager Don C. King of Fort Worth

## AGRICULTURE BILLS INTRODUCED

Washington, D.C.---Two agriculture-related bills have been introduced in the U.S. House of Representatives by Congressman Charles W. Stenholm (D-Texas).

Congressman Stenholm, a member of the Agriculture Committee, has introduced a "Bases and Yields" bill and "Clear Title" legislation. The Subcommittee on Conservation, Credit and Rural Development scheduled a hearing to discuss Stenholm's Clear Title legislation for Tuesday, March 26, in Washington, D.C.

Under the first proposal, Bases and Yields, it would simplify and standardize the way acreage

bases and yields are assigned to producers. Eight Members of Congress have already signed as co-sponsors of the proposed legislation, which bases yields on actual records, and gives farmers more flexibility than they now have in deciding how much of a given crop they will plant.

The second piece introduced by the Stamford Congressman is House Resolution 1591, or Clear Title. This bill would remove farm products' exceptions from Uniform Commercial Codes and extend clear title to agricultural commodities. Presently, if the seller of that commodity fails to repay the lender, the buyer can

## LOW LEVEL NUCLEAR WASTE AUTHORITY REEVALUATING

Housebill 449 by Berlanga, recently passed out of the House. This bill requires the Authority to reevaluate state-owned property and give preference to any suitable site on that land over other equally suitable sites. It also prohibits the licensing of a disposal site prior to July 6, 1987. Four amendments to HB 449 were approved: (1) allowing the leasing of state land to the Authority if allowed by the Congress of the United States; (2) prohibiting the siting of a disposal site within 20 miles upstream or up drainage of a reservoir that has been constructed, is under the construction; (3) and (4) instructing the Authority to evaluate aboveground disposal technologies.

In addition to this legislative activity, Governor White

expressed his concern to the Board of Directors about the possible selection of a site in South Texas. The Governor requested that the Authority reevaluate state-owned lands and alternate technologies of disposal. On February 21, letters from the Governor were sent to State Land Commissioner Garry Mauro and University of Texas Board of Regents Chairman Jess Hay requesting that they assist the Authority in its efforts to locate suitable stateowned land for a low-level radioactive waste disposal site.

As a result of this activity, the Board directed the staff to begin a reevaluation of state lands and continue to study available disposal technologies, according to Tom Blackburn.

be held responsible by the banker, effectively forcing the buyer to pay twice for the same goods. This bill would establish a process through which the liability would be equitably distributed between the three parties.

"I believe these two basic reforms are long overdue," Congressman Stenholm said. "They will serve to rectify injustices inherent in both systems."

## Fund Raising Supper

The Plains Community Center will host a fund raising supper for Stella Cooley.

It will be held April 13th, at 6:30 p.m. at the Center.

This will be a covered dish supper, bring main dish and salad or dessert.

Plates, cups and drinks will be furnished.

Donations accepted.

## IT'S THAT TIME AGAIN

MARK YOUR CALENDAR FOR THE BORDEN COUNTY CANCER SOCIETY'S ANNUAL



## BARN DANCE

Prime Beef will be ready for the freezer when the drawing is held during the dance.

for a Chance on The Drawing send \$1.00 to

APRIL 12, 1985 9:00 PM

LISA LUDECKE  
Box 153  
Gail, Texas 79738

MUSIC BY BOYLE NIX &  
THE WEST TEXAS COWBOYS

ALSO DON'T MISS A "CHANCE" ON THE STEER RAFFLE

# BORDEN SCHOOL NEWS

## PEE WEE'S PLAY FAST GAMES

The Borden County Pee Wee Basketball teams played last week in the High School Gym.

In the first game, the Red team beat the White team 4-0. Scoring for the Reds were Jennifer Trussel 2 and Pam Gruis 2. Other members of the winning team were Stormy Gas, Jacquelyn McPhaul, Misty Gammons. Members of the opposing team were Tammy Kinney, Mindy Hensley, Geneva Tolivarez and Claudell Munoz, and Amelda Duenes.

The best that I can tell by my records, the second game ended in a tie ballgame, between the white team and red team. Scoring for the Whites was Keith Monger, 2, Richard Buchanan, 2, Chris Olivares 2, and Dennis Gonzales. 2. Jamie Olivarez played a very defensive ballgame.

Scoring for the Reds, Jim Evans 2, Seth Vestal, 4, Brandon Adcock 2. Also defentnding the Reds were Brandon Trussell and Lance Clayborn.

The third game was a real high scorer. The White team beat the Reds 20 to 2.

Scoring for the Whites were Guy Zant, 2, Clint Anderson 8, Pat Duenes, 4; Fred Olivarez 4, and Shawn Lewis 2.

Scoring for the Red team was Klint Kemper with 2 points. Other team members were Joe Acosta, Clay Miller, Jeremy

Mize and Brandon Adcock, Dennis Gonzales and Keith Monger also subed for the Reds.

The fourth game of the Pee Wee Tourney was won by the Girls White Team. by a score of 10-8.

Scoring for the Whites was Shara Woodward with 10 points. Also helping here were Jennifer Trussell, Angela Evans, Cathy Munoz, Alise Lloyd, Kelly Ogden and Kristen Kilmer.

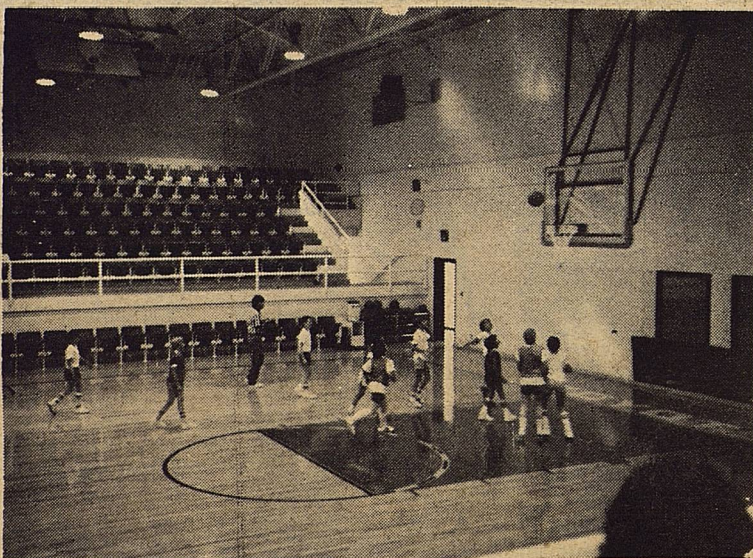
The Girls Red team members scoring were Amanda Anderson 4 points and Shanyne Hess 4 points. jAlso playing were Beverly Copeland, M'Lys Lloyd,

Tammy Voss, Patsy Underwood and Kristin Monger.

The Final Game was played by the White Boys and Red Boys with the Whites winning 18-12.

Junior Duenes was the high scorer for the Whites with 10 points. Wacey Parks had 6 and Bruce Harris made 2 points. Clint Wills and Allen Pearson also were on the White Team.

Junior Balague scored 8 points for the Reds. Jason Mize made 2 points and Mariano Granadas scored 2 points. David Buchanan, and Keith Gammons made up the rest of the Red Team.



"Truth is rarely pure and never simple." Oscar Wilde

### Students Invited to Rodeo

Snyder--Borden County students are invited to be guests for the April 13 afternoon performance of the Western Texas College NIRA rodeo in the Scurry County coliseum.

The Saturday rodeo will get underway at 2 o'clock.

Students may pick up tickets in the office of their school principal before April 13. The tree tickets will not be available at the box office.

The rodeo will start on April 11 and Iron through April 14. Performances will be at 8 p.m. on April 11, 12, and 13 and at 2 p.m. on April 13 and 14. Tickets are \$4 for adults, \$3 for students and \$6 for box seats.

About 250 contestants from colleges and universities in the Southwest Region of the National Intercollegiate Rodeo Association are expected to compete in the WTC rodeo. Additional information about the rodeo can be obtained by calling Bob Doty, WTC rodeo coach, at 573-8511.

The Borden Star  
Publication No. 895520  
(USPS 895-520)  
Publication No. 895520

Editor  
Barbara Anderson

Published weekly, except for Christmas and New Years, on Wednesday at Gail, Borden County, Texas 79738, Box 137, Kincaid Street, Second Class postage paid at Gail, Texas.

Any errors that we make reflecting on the reputation or standing of any Firm, Corporation, or individual that may appear in the columns of the Borden Star will be gladly corrected when called to the attention of the staff.

Subscription Rates:  
\$8.00 per year

Borden Star Owners  
James McLeroy, Barbara Anderson, Doris Rudd, Pat Porter, Bob Dyess, Edna Miller, Ruth Weathers, Mrs. Nathan Zant, Sonny Tucker, Eddie Simer, Loreen Jones, Martin Parks, Dan Turner, Lela Porter, and Marge Toombs.

Carol PRODUCTIONS

MUSIC

NEW LOCATION

302 N. AUSTIN

TOP RECORDS - TAPES  
TEN ROCK - COUNTRY

INSTRUMENTS NOW  
IN STOCK

PHONE 872-7933

MUSIC OF YOUR CHOICE

Lamesa, Texas

**Claiborne's**  
THRIFTWAY

Visit Our Deli

Party Trays Pastries Custom Cakes

710 N. 4th

Lamesa

*The Forgotten Few*

Custom Apparel for Tall & Large Women

LAMESA, TEXAS 79331

806-8727961

April Special  
25 Percent Off

All Tribute Dresses  
sizes 12½ - 26½

-New Arrivals

'Orvieta Falls'

Jackets - Pants - Skirts - Blouses - jumpsuits  
size 7-20



**THE FIRST NATIONAL BANK**

The Symbol of Banking in Big Spring



FULL SERVICE BANKING

Member F.D.I.C.

400 Main Street

267-5513

BIG SPRING, TEXAS

### JUNIOR HIGH

Borden County's Junior High tennis team traveled to Forsan for a tri-meet with the host school and Garden City, and came away with 10 wins in 12 matches. Kate Phinizy defeated Forsan in her first match by a score of 6-4 and then defeated a girl from Garden City, who at the time, was 15-0 on the year. Kate won that set 6-3. Christy Holmes also won two singles matches by defeating Forsan 6-4 and Garden City 6-3. In doubles play, Susan Gwinn and Elvira Balague won 6-2 over Forsan and Amy and Rachel won their doubles match by an identical 6-2 score over Forsan. D'Lyn Lloyd and Kandy Belew won 6-5 over Forsan. Borden's boys also had success with Chad Williams and Lance Telchik winning over Forsan 6-3 and Jon Herring and Cody Stone beat Forsan 6-4 and then defeated Garden City 6-0. Cole Vestal and d'Arcey Lemons, both 6th graders, each lost close matches by 6-4 scores, but played well in that they were matched against 8th graders. Congratulations to the tennis team for their fine showing at Forsan.

### HIGH SCHOOL TENNIS NEWS

Borden played Post, Forsan and Greenwood, these past two weeks and came away with many wins. Kelli Williams and Shawna Vaughn went to Post and Kelli defeated one of last years Class AAA regional qualifiers by a score of 7-6, 6-2. Kelli and Shawna then teamed to win in doubles by a score of 6-2, 6-1. The team then traveled to

Forsan for a tri-meet with Forsan and Greenwood. Kelli won her singles match over Forsan by a score of 8-1. Shawna Vaughn and Becky Massingill won over Greenwood 8-3. Mindy Williams defeated Forsan 9-8. Teri Billington and Kristi Stone defeated Forsan in one set 6-2. David Holmes won his singles match over the number one player from Forsan 9-7. Also playing at Forsan were Mickey Burkett, Brice Key, and Monty Floyd and Bric Turner.

### CROP INSURANCE

**& Bottom Line Analysis**  
Crop Insurance--All Risk--Multi-Perial Crop Hail



### JEANNA LOVE-AGENCY

Lamesa, Texas - 806-497-6395  
497-6335 - Office

### COX QUALITY MEAT

Custom Processing

Wholesale and Retail



102 Oak Street  
Colorado City, Texas

Phone (915) 728 3671  
Phone (915) 728 2501

Robert Cox  
(Res) 915 728-3881

Marcelene Cox  
(Res) 915 728 2356



Some say it is good luck to own a moonstone.

### NAMES 'N' NOTES

Personalized Stationery- Imprinted Napkins

Reasonable Prices

One-Day Service

STEPHANIE SCHNEIDER  
(806) 872-6655

213 NORTH 24TH  
LAMESA, TEXAS 79331

**BEDDING PLANTS**  
Vegetables & flowers

**TREES, SHRUBS,**  
**POTS,**  
**FERTILIZERS**

HOURS-Monday-Saturday  
9-5:30  
Sunday 1-5

700 E. 17th Debra Lusk-Owner

**Green Acres**  
**Nursery**

*Everybody's*  
**THRIFTWAY**

A FRIENDLY Supermarket serving West Texans with Quality Foods at Competitive Prices.

We give S&H Green Stamps Double on Tuesday after 1 p.m. All Day Wednesday.

35th and College Ave.  
Snyder, Texas

**ALL RISK CROP INSURANCE**

Service Where You Need It!  
Service When You Need It!

**We Put Freedom Back in Agriculture**

Specializing In Crop Insurance  
HEALTH LIFE

**SHERRY WEGNER AGENCY**

2121 Lamesa Hwy.  
Big Spring, Texas 79721  
(915) 267-2555

*Your Personal Invitation*

*... to a year round, beautiful tan!*

Our SunTana SunSystem guarantees you a glorious, radiant tan that you can keep all year long. A tan you achieve with soft, comfortable and SAFE U.V.A. light and without all the burning, peeling and flaking you get in natural sunlight. Our SunSystem is GUARANTEED to tan anyone who tans in the sun while you relax in cool comfort.

*We'd like to tell you more about this exciting new way to tan*

*Call us or come by today...*

**THE HIDDEN SUN**

(Next door to Fitness Warehouse)

Mon. - Fri. - 8:30 AM - 9:30 PM 872-6220

**872-6220**                      **10 Sessions - \$50**

**Cooking Corner**

April 15-19, 1985

Monday	Frito Pie with Cheese Vegetable Salad Fruit Milk	Salad Bar
Tuesday	Hamburger Steak Mashed Potatoes English Peas Honey Butter Hot Rolls Milk	Salad Bar
Wednesday	Turkey and Dressing Green Beans Mashed Potatoes Jello Salad Hot Rolls Milk	Salad Bar
Thursday	Barbecued Frank Cheese Wedge Vegetable Salad Pinto Beans Fruit Hot Rolls Milk	Salad Bar
Friday	Hamburgers French Fries Eggplant and Tomato Coleslaw Milk	Salad Bar

## NEW ARRIVAL

Marc Tanner was born to Bob and Julie McLeroy on April 2, 1985 at 12:30 p.m. in Greenville, Texas. He weighed 8 lb. 9 oz and was 21 inches long.

Proud grandparents are Mr. and Mrs. Doug Munn of Louisville, Mr. and Mrs. Jerry Boyd of Decator, and Mr. and Mrs. James McLeroy of Gail. Marc also has a proud sister at home, Meridith Kate, who is 17 months of age.

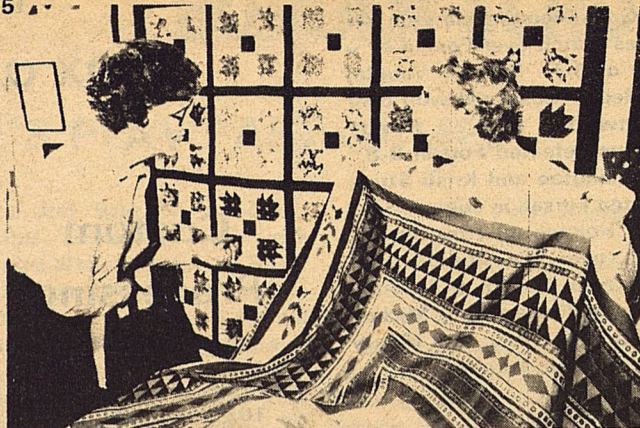
## THANK YOU

I sincerely appreciate the votes and support of the people who help me in the school board election. I ask for your continued support in the weeks ahead

s-s Kent Holmes

## LOCAL NEWS

Melita Kiem Sporke, an exchange student at BH in 1975-76 from Chili gave birth to a baby girl on March 13th. The baby is named Daniela. She weighed 8 lbs. 9 oz. Melita is a translator, fluent in Spanish, German and English. Her husband is a veterinarian. She now lives in Santiago, Chile. Melita lived with Jarrell and Nancy Edwards of the Plains community.



Billed as "A Celebration of the Arts," the 7th Annual Lubbock Arts Festival offers a diverse view of the arts and crafts of West Texas. Traditional crafts, such as these quilts, cultural and performing arts, culinary arts, and creative activities for children are but part of the program prepared for this year's event. The Festival will be held April 19-21 at the Lubbock Memorial Civic Center. TTDA photo by Mike Murphy.

## JANA EDWARDS FINISHED BASKETBALL CAREER

Borden County ex-student Jana Edwards has finished her basketball career with another Conference Championship and a selection to the All-Lone Star Conference second team. The Abilene Christian womens basketball team finished the regular season with their third consecutive Lone Star Conference championship. For the second time in three years they also won the post-conference tournament by beating Howard Payne University 80 to 60.

Winning the conference championship led to a bid to the NCAA II regional playoff tournament. In the first game they defeated the U.S. Air Force Academy in the semifinal game by a score of 82-61. The final

game was against Central Missouri State, defending national champion and ranked first in the nation. The Wildcats lost this game 76-57 and finished the season with a 21-10 record, their third 20 win season.

Jana has been a four year starter and is the only senior on the team. She is a nutrition major and will graduate May 5th in Abilene. She is the daughter of Jarrell and Nancy Edwards of the Plains community and a 1981 graduate of Borden High



JANA EDWARDS

### State Farm's Farm/Ranch Insurance

Protects your home, farm buildings, equipment, and livestock.

Call: MIKE STEPHENS AGENT

PHONE (806) 872-5865  
BUS. PHONE (806) 872-6030  
RES. PHONE (806) 872-6305

BOX 1125  
205 N. HOUSTON  
LAMESA, TX 79331

Like a good neighbor,  
State Farm is there.



State Farm Fire and Casualty Company  
Home Office: Bloomington, Illinois

## KING AND QUEEN TO HELP TEXANS TO CELEBRATE SESQUICENTENNIAL

Austin--People across the globe are being invited to help Texans celebrate their Sesquicentennial--including the King and Queen of Spain!

The Spain and Texas Sesquicentennial Committee along with the Texas Sesquicentennial Commission and Governor Mark White will issue a personal invitation to the royal family of Spain to highlight Spanish-Texan activities planned for the 1986 celebration.

To promote the cultural, educational, scientific, commercial and social interests shared by the people of Spain and Texas, the international committee, chaired by Mrs. Jessie Lee Klanke of Houston, will host a variety of events that will include a horse exchange program, an historical exhibit of medicine and numerous other programs to retrace and update the history of Spaniards in Texas.

Dance and food groups from Spain will also be invited to the Sesquicentennial along with wine experts for a wine

exchange program.

And, the committee has organized a series of Royal Moon Waltz Balls in different cities to feature U.S. astronauts and link Spain with our space exploration program.

A Spanish opera group has been invited to kick off the 1986 events with a performance of "Carmen" at the opening of a new opera house in Houston.

The Spain and Texas Committee is one of the most active international groups we have working with us on the anniversary celebration," said Richard Franck, program manager of the Texas 1986 Sesquicentennial Commission.

The events they are hosting will promote a better understanding of the Spanish culture and its impact on Texas history and culture.

Other international committees for France, South Australia, Britain and Germany have been working energetically on events and programs to take place around the world during the Texas 1986 Sesquicentennial.

## WESTERN SEED & DELINTING, Inc.

Lamesa  
Ron Butler  
872-5388

Tahoka  
Lynn Cook  
998-4966

COTTON-PEA-WHEAT  
GRAIN SORGHUMS  
LIVESTOCK FORAGE

RILCOT  
GSSA  
FUNKS  
CONLEE  
RICHARDSON

CASCOT  
DUNN  
PAYMASTER  
TERRA  
COKER

## BILL GERBER INSURANCE

213 N. AUSTIN, P.O. BOX 1306  
LAMESA, TEXAS 79331

## Home-Auto-Crop Insurance

OFFICE  
806-872-6248

BILL GERBER

RESIDENCE  
806-872-5317

Vestal Meat Co. - The freshest cut meat in West Texas. All beef is grain fed, locally grown and guaranteed

to your satisfaction.

Beef processed for the freezer:

Halves & quarters cut to your order (corn fed beef)

We double wrap all freezer beef for your best freezer results

(Longer freezer life, locked in tenderness, locked in juiciness, and quality in wrapping)

Pork processed for freezer:

Call anytime, we buy all our pork from Shofner Bros.

Hogs are slaughtered by appointment only.

I will buy your hog for you and process it for the freezer.

Hogs are bought at market price for that day.



**VESTAL MEAT COMPANY**  
RICK & TERI VESTAL

1501 N. DALLAS RT. B  
LAMESA, TEXAS 79331  
PHONE 806/872-3436

- Family Paks -

25 LBS. - \$56    50 LBS. - \$100

50 LBS. - Assortment - \$100

Try it you'll like it —

Quality & Service Guaranteed!

# The Kandy Express

By Kandy McWhorter

## PIZZA: A SLICE OF NUTRITION

Pizza has an undeserved reputation as "junk food." Yet, nutritional analysis of fast-food and frozen pizza shows it can be a nutritional part of a balanced diet.

Differences in pizza recipes can, of course, have a substantial impact on nutrient content. But in general, pizza contains substantial amounts of eight key nutrients. The only thing it's lacking is vitamin C.

If you're a typical adult woman who consumes about 2000 calories each day, one serving of pizza represents between 12.5 and 20 percent of your daily calorie intake. For good nutrition, a food that takes up that much of your calorie allotment should also contribute a similar proportion of your daily nutrient needs.

Pizza meets this requirement. Most pizzas contribute at least 15 to 20 percent of the U.S. RDA of protein, calcium, riboflavin and several other nutrients.

The cheese provides protein and calcium. Both the cheese and the crust contain riboflavin. The pizza crust also contributes thiamin, niacin and iron. Vitamin A is in the cheese and tomato sauce. If any vitamin C is present, it comes from the tomato sauce.

When you add toppings to pizza you add calories, but you can also add substantial amounts of nutrients. For example, red or green peppers supply vitamin C that isn't present in a basic cheese pizza.

People on low-calorie diets can enjoy pizza too. One slice of cheese pizza, at about 145 calories, makes it a good alternative to other low-calorie lunches.

Pizza's one significant nutritional limitation is the amount of sodium it contains. It isn't a good food for low-sodium diets because both mozzarella cheese and tomato sauce contain substantial amounts of sodium, and some pizzas contain added salt or other sodium-containing seasonings.

## SEARCH FOR PRE-TEENS

Search is on for the Miss Northwest Texas National Pre-Teen 1985. The annual Miss Northwest Texas National Pre-Teen Pageant will be held on Saturday, June 29, 1985 at the Texas Tech Auditorium in Lubbock, Texas at 7:30 p.m. Girls ages 8 through 12 are eligible to participate. The winner will receive a Cash Award, Banner, Tiara, Trophy and her sponsorship paid to compete in the Miss Texas National Pre-Teen Pageant which will be held in Dallas in July.

Regional Director, Claire Apicella, said "The Miss National Pre-Teen Pageant emphasis is on Youth". She

further added, Young girls during these sensitive years are learning all the time and are highly impressionable, so we stress the importance of family unity.

Girls will be judged on Talent 1/4, Appearance 1/4, Poise-Personality 1/4 and Personal Interview with the Judges 1/4. There is no bathing suit competition.

The Miss National Pre-Teen Pageant has just completed its fourth year and is syndicated for national television.

If interested, request more information and application (s) from: Claire Apicella, Dept. PR, P.O. Box 1196, Lehigh Acres, FL. 33970-1196.

## Your County Agent Says

### RANGE AND LIVESTOCK COMMITTEE NOTES

The Borden County Range and Livestock Program Area Committee met Monday, April 1st at 7:00 p.m. in the 4-H exhibit building. Chairman of the Committee is Mr. Van York. Seven Committee members were present for the meeting.

After the meeting was called to order, members were treated to a steak supper. Following the meal, the committee reviewed the 1984 Result Demonstration Handbook. Particular attention was paid to the section concerning range weed and brush control. Several new demonstrations have been started in Borden County over the past 3 years.

The item of discussion was the establishment of new demonstrations in 1985. Several ideas were presented. These included possible demonstrations using Ivomec (a new injectable cattle wormer and parasite control compound) and Lutalyse (hormone compound used to synchroize estrus in beef cattle). Lengthy discussion on these two items indicated a possible need for demonstration works in these areas.

General planning for a Livestock Production Field Day to be held in mid-September was done. More detailed planning will be done at a later date. Members present suggested that subjects such as beef cattle palpation and animal health be handled on an individual basis and as the need arises.

With no further business, the meeting adjourned at 9:05 p.m.

**NOW OPEN**


**WATCH FOR THE GRAND OPENING**

**OF COYOTE COUNTRY STORE**

**GAS GROCERIES COKES**



Terry ★★★★★ Pee Wee  
Open 7 days 6-9



**SAVE \$100**


Retail \$180.00

**NOW \$79<sup>95</sup>**

Calf Leather  
Tan  
U Toe

**WOODS BOOTS**

Colorado City  
E. I-20  
728-3722



TREE AND LAWN SPRAYING      7 MONTH GUARANTEE ON HOUSES

**C & C PEST CONTROL**

PHONE 806 872-5575

1808 NORTH FOURTEENTH  
LAMESA, TEXAS 79331

CHARLES CAMPBELL



NO MILEAGE      24 HOUR SERVICE

HEATING & A-C  
Free Estimates      JON CHEATHUM-Owner  
Call before you buy

Service on all Models of Heating & A-C Equipment

Installs Payne & RReed Equipment  
Also Carrier

-State Hot Water Heaters  
-G.E. & Jenin-Air Appliances

Bus. 915-573-1356      Home 915-7330



## Security State Bank

1411 Gregg      Big Spring, Texas      Member F.D.I.C.

# ASCS NEWS

by Jerry Stone

## CROP INSURANCE

Big Spring.--April 15 is the last day to apply for Crop Insurance for Cotton, and Grain Sorghum in Borden County, Texas, according to DOTTIE SAMPLEY, a representative of the Federal Crop Insurance Corporation (FCIC).

Crop Insurance covers unavoidable loss of production resulting from adverse weather conditions, wildlife, earthquake, or fire.

"Three coverage levels (50, 65, or 75 percent) are available for insurance protection. Additionally, FCIC offers three optional price elections for valuing production lost or damaged," says Sampley.

A new Crop Insurance plan, called Actual Production History (APH), is available this year to producers of corn, grain sorghum, peanuts, cotton, and rice. Producers of these crops may now qualify for higher yield guarantees by proving their yield history. Rates have been developed to offer reduced premium for producers with above-average yields. "This change could sharply reduce the cost of carrying Crop Insurance," says Sampley.

To find out more about the APH plan, producers should contact a local, authorized agent. To select an agent, producers may check the list of agents at their local ASCS

office. April 15 is the final deadline for applications.

## SMALL GRAIN CERTIFICATION

All small grains, whatever the use, harvest, ACR, diversion acreage, hay, grazing, etc. MUST be reported by May 1st in Borden County. Measure your acreage now and certify early. Avoid the last minute rush and mistakes that are made in haste.

Acreage will be certified in fields or plots or blocks-etc. just as we have in the past year. Measurement Service is available at the producers request.

NOTE: Acreage that is allowed to reach hard dough stage will be considered acreage for harvest, i.e., do not let your ACR acreage mature and cause you to lose program benefits.

## 1985 APPROVED COVER OR PRACTICES FOR ACR

ACR acreage must have been planted or considered planted two of the last three years to be eligible this year.

Cotton diversion acreage must have been planted to cotton one of the last three years to qualify for diversion acreage.

Minimum acreage size is a chain wide and must contain five

## Notice of Application

### NOTICE OF APPLICATION FOR OIL AND GAS WASTE DISPOSAL WELL PERMIT

Williams Oil Field Disposal System has applied to the Railroad Commission of Texas for a permit to dispose of produced salt water or other oil and gas waste by well injection into a porous formation not productive of oil or gas.

The applicant proposes to dispose of oil and gas waste into the Wolfcamp Williams "B", Well Number 2D. The proposed disposal well is located 10 miles East of Gail in the Lucy (Penn) Field, in Borden County. The waste water will be injected into strata in the subsurface depth interval from 6741 to 6761 feet.

LEGAL AUTHORITY: Chapter 27 of the Texas Water Code, as amended, Title 3 of the Natural Resources Code, as amended, and the Statewide Rules of the Oil and Gas Division of the Railroad Commission of Texas.

Requests for a public hearing from persons who can show they are adversely affected, or requests for further information concerning any aspect of the application should be submitted in writing, within fifteen days of publication, to the Underground Injection Control Section, Oil and Gas Division, Railroad Commission of Texas, Drawer 12967, Capitol Station, Austin, Texas 78711 (Telephone 512-445-1373).



Western Wear  
College Heights Shopping Center

## ROPERS

\$49<sup>95</sup> - \$59<sup>95</sup>

Sizes 4 to 13  
**ALL LEATHER!**  
**NO SECONDS**  
Calf Mule  
Brown-Black-Grey  
Blue-Red

## ELEPHANT ROPERS

\$99<sup>95</sup>

Reg. '175"



## Briggs Welding & Muffler Service

267-1488  
267-1380  
Big Spring, TX 79720

501 N. Birdwell  
Across From  
Auction Barn

*Sew What* FABRICS

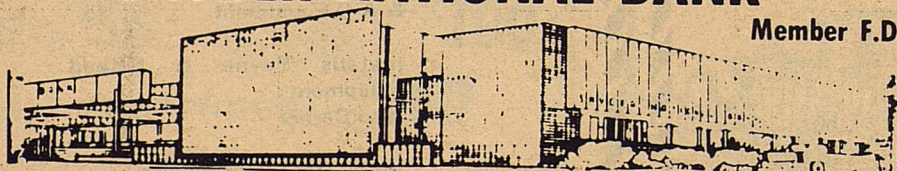
HIGHLAND CENTER  
BIG SPRING, TEXAS 79720

1985

	SUNDAY	MONDAY	TUESDAY	WEDNESDAY	THURSDAY	FRIDAY	SATURDAY
<b>BERNINA</b>	1	2		4	5	6	
				Quilting I \$40.00	Great Finishes	Finishes Begins	
 Demonstrators & Sewing Class Machine Sale Save as much as \$000 <sup>400</sup>	8	9 10 a.m. to 5 p.m.	10 Quilting II	11 10-5 My Guide I & II Bernina	12	13	
	15 1-5 Ribbon or Yarn Hand Knitting	16 10-5 Machine Embroidery \$30.00	17	18 My Guide III	19	20 1-5 Lingerie \$15.00	
21	22 1-5 Hand Knitting	23 1-5 Applique	24	25 My Guide IV	26		
28	29 1-5 Hand Knitting	30 10-5 Blooming Vest \$20.00	<b>CLASSES ARE TAUGHT BY KATHY BLAGRAVE REGISTER EARLY!!!!!!</b>				

## SNYDER NATIONAL BANK

Member F.D.I.C.

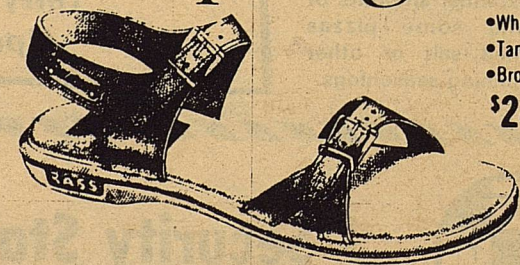


1715 25th

Snyder, Texas

573-2681

Bass.  
In step with  
spring.



•White  
•Tan  
•Brown  
\$24.95

## WOODS SHOES

E 1-20

Colorado City

## SBA: WHO DOES IT SERVE

The Borden Star, Wed. April 10, 1985...7

By Edwin Feulner

Strong concern has been raised in Washington over a recent proposal by the Office of Management and Budget (OMB) to abolish the government agency intended to assist small business -- the Small Business Administration (SBA).

SBA supporters insist that the agency's primary function -- providing loans and loan guarantees to small businesses

-- is essential to the health of the small-business sector, which creates most of the new jobs in the economy, and is responsible as well for a wealth of technological innovation. But in Fiscal Year 1984, the ASBA's \$3.6 billion in loan commitments went to just a handful of companies -- less than two-tenths of one percent of the nation's small businesses, a mere 21,461 out of 14 million.

As a matter of fact, nearly 80 percent of SBA's loan beneficiaries were receiving assistance for the second time, meaning that the gravy really isn't getting around very far. And if it isn't getting to the 99 plus percent of America's small business, it can't be given credit for their success.

That raises another issue. SBA also has a poor loan record. For example, in 1984, the default rate on SBA loans was 18 percent. These loans cost U.S. taxpayers \$544 million. In 1983 it was higher -- 26.8 percent, and in 1982 it was 39.9 percent.

Instead of allowing the SBA to

continue gambling with the money Uncle Sam pulls from our paychecks each week, as has been the case, the public would be better served if the SBA got out of the loan business and left this function to banks and other institutions.

Moreover, it's time for Washington to pay more attention to the dynamics of small business. According to a survey by the National Federation of Independent Business (NFIB), start-up funds for nearly 60 percent of America's small businesses come from personal savings, not from banks or the SBA. Of the 3 percent of such firms that have

received government aid, less than half relied on it as a primary source of capital.

Small business, though it doesn't receive the attention of a G.M. or IBM, is extremely important to the U.S. economy. Currently, businesses with fewer than twenty workers are responsible for providing two-thirds of all net new jobs in the United States and generate a substantial portion of the gross national products. Most of this happens not because the government has been generous with our tax money, but because people have been willing to take risks.

con't to 8



### That's us!

We're proud to announce that our dealership has been selected to represent the newly combined forces of J I Case and International Harvester.

That means we can now offer you the widest range of quality agricultural equipment. Everything to farm more efficiently: tractors, combines, implements ... and all from one dependable source. That's us!

We will provide parts and service, and honor all warranties, for both Case and IH agricultural equipment.

Our fresh new team of qualified personnel is committed to servicing your needs. We know that our most valuable asset is you, our customer.

Stop by and let us show you why we're part of this fresh and vital team for today's farmer!

A fresh team for today's farmer



Feagins Implement

GIBSON S. FEAGINS  
OWNER

Lamesa Highway  
Big Spring, Texas  
Bus. (915) 263-8348  
Res. (915) 267-1953

Mailing Address  
P. O. Box 2354  
Big Spring, Texas 79721

### BRASWELL'S SADDLE & BOOT REPAIR

On Lubbock Hwy, across from Mesa Irrigation  
872-3146

Specializing in custom-made saddles, belts, billfolds, chaps, gun holsters, all types of leather repair, plus all types of boot repair on any repairable boot.

Saddles Cleaned

### ARE YOU TIRED OF BEING FAT?

IF YOU'VE DECIDED TO GET BACK INTO SHAPE, YOU NEED A PLAN THAT WORKS.

Find out how thousands of people just like you have been successful losing 10 to 29 excess pounds per month the fast, safe, easy way.

Call Billy or Debbie at 872-3146

## IMPORTANT NEWS FOR FARMERS !!!

### 1985 MULTI-PERIL, ALL RISK INSURANCE

from

## ADAMS INSURANCE

211 North 22nd  
Lamesa, Texas 79331

806-872-9324  
(Office)

*Planting time is just around the corner...so take time **NOW** to visit Jerry and Dennis Adams and John Wheat about your Multi-Peril, All Risk Insurance Program for 1985. There are so many advantages to having this protection...actually it's a **MUST** with today's farming situation. Strengthen your collateral and borrowing power...while you protect your major farm dollar investment.*

**WE KNOW OUR BUSINESS...AND WE WANT TO HELP PROTECT YOURS!**

**"OUR BUSINESS IS TO INSURE YOUR BUSINESS!"**

Nights and week Weekends...Call

Dennis Adams 872-6667 or 489-7719

Jerry Adams - 872-3261 or 489-7729

John Wheat - 872-2280

**BETTER GET  
ON AROUND  
TO IT!**

**Omaha  
Indemnity**

A Mutual of Omaha Company

### SBA

Con't from 7

The best way to help small businesses is not by having the SBA underwrite loans, but by enacting measures that encourage saving and investment. This could be done

by reducing capital-gains taxes, cutting personal income taxes, and shielding interest on savings from taxation.

The bottom line is that the SBA generally has been ineffective in supporting new business. Continuing the costly existence of the SBA would be more money down the bureaucratic drain.

### Classified

FOR SALE:

Double Wide Mobile Home  
3 bedroom, 2 bath.  
Financing Available  
Call 806 - 98332459  
Flydoudado, Texas

FOR SALE

15,000 BTU window  
refrigerated Air Conditioner

FOR SALE

For Sale, Windmill with tank in  
good condition.  
Call 439-6669



It is often considered lucky to see a white horse.

## PUBLIC NOTICE

Texas Utilities Electric Company (TUEC), in accordance with the rules of the Public Utility Commission of Texas, hereby gives notice that the Company has filed a Notice of Intent to file an Application for Certification of approximately 960 megawatts of new generating capacity to be comprised of three multi-unit combustion turbine installations to be located at the following existing TUEC power plants: the Permian Basin Steam Electric Station located in Ward County approximately four miles west of Monahans, the Morgan Creek Steam Electric Station located in Mitchell County approximately five miles southwest of Colorado City, and the Decordova Steam Electric Station located in Hood County approximately six miles southeast of Granbury. The estimated expense associated with the total project is \$488,600,000 (including Allowance for Funds Used During Construction).

Persons who wish to intervene in the proceeding or comment upon action sought, should contact the Public Utility Commission of Texas, at 7800 Shoal Creek Boulevard, Suite 400N, Austin, Texas 78757, or call the Public Utility Commission Consumer Affairs Division at (512) 458-0223 or (512) 458-0227, or (512) 458-1221 for teletypewriter for the deaf within 15 days of this notice.

A complete copy of the Notice of Intent is on file with the Public Utility Commission of Texas at Austin, Texas.

TEXAS UTILITIES ELECTRIC COMPANY



202 SOUTH THIRD  
LAMESA, TEXAS 79331  
(806) 872-2144

## Public Notice

Southwestern Bell Telephone Company, in accordance with the rules of the Public Utility Commission of Texas, hereby gives notice of the Company's intent to implement a new schedule of telephone rates in Texas, effective May 6, 1985, unless otherwise determined by the Commission. The Public Utility Commission of Texas has received the application as Docket 6200.

While proposals as to specific rates vary, it is expected that the requested rate schedule will furnish a 10.5 percent increase in the Company's unadjusted test year intrastate revenues or a 9.7% increase in test year revenues as adjusted for test year customer growth and annualization of test year rate increases. The rate application seeks an annual increase of \$323.9 million in revenues. All customers and classes of customers of Southwestern Bell Telephone Company within Texas will be affected by the proposed changes.

Most rates proposed for increase would increase by about 18.5 percent, including local exchange rates. However, there are some exceptions. For example, those customers residing in cities that will be reclassified into larger rate groups will experience local exchange rate increases greater than 18.5 percent. Also, the rate increases proposed for private line services in El Paso, due to a proposal to restructure such rates, are greater than 18.5 percent.

A complete copy of the new rate schedule is on file with the Public Utility Commission at Austin, Texas and with each affected incorporated municipality served by Southwestern Bell Telephone Company. The Commission staff has contended in the past that all rates are subject to change as a result of Southwestern Bell Telephone Company's rate application. This filing includes, but is not limited to, proposals to increase rates for local exchange service, intraLATA long distance, intra-LATA interexchange private line service (which includes foreign exchange service) and to decrease certain access service rates.

### Notice to Customers of Other Telephone Companies

This filing includes, but is not limited to, proposals to increase rates for intraLATA long distance and for intraLATA, interexchange private line service (which includes foreign exchange service) and to decrease certain access service rates. Changes in such rates would also affect customers of other telephone companies because such companies provide certain services in accordance with rates specified in Southwestern Bell Telephone Company's tariffs.

### Notice to All Customers Concerning Access Charges and Certain New Service Charges

Southwestern Bell Telephone Company, as a part of this filing, is also proposing to reduce certain access rates charged such customers as AT&T Communications, Inc., MCI and other carriers. The resulting reduction in revenues is proposed to be offset by revenues from two new service charges, late payment charges applicable to business customers only and for certain operator services such as busy line verification, plus stimulation of access service charge revenues. Since this portion of the filing, if granted, would have essentially a zero net revenue effect on Southwestern Bell Telephone Company, Southwestern Bell Telephone Company is proposing that this portion of the filing be expeditiously handled by the Commission and not await Final Order.

Persons who wish to intervene or otherwise participate in these proceedings should notify the Commission as soon as possible. A request to intervene, participate, or for further information should be mailed to the Public Utility Commission of Texas, 7800 Shoal Creek Boulevard, Suite 400N, Austin, Texas 78757. Further information may also be obtained by calling the Public Utility Commission Consumer Affairs Division at (512) 458-0223 or (512) 458-0227, or (512) 458-0221 teletypewriter for the deaf.

## Aviso Público

En conformidad con las disposiciones de la Comisión de Servicios Públicos de Texas, Southwestern Bell Telephone Company anuncia mediante el presente aviso su intención de establecer un nuevo arancel de tarifas telefónicas en Texas, con vigencia a partir del 6 de mayo de 1985, salvo disposición en contrario de la Comisión. La Comisión de Servicios Públicos de Texas a registrado esta solicitud bajo el Docket 6200.

Si bien existe variación entre las propuestas en cuanto a las tarifas precisas, se anticipa que el arancel tarifario solicitado aumentará en un 10.5% los ingresos intraestatales no ajustados de Southwestern Bell Telephone Company durante el año de prueba, o sea, un aumento del 9.7 por ciento en los ingresos del año de prueba, después de realizar el ajuste por la expansión de los usuarios y por la anualización del aumento de tarifas para el año de prueba. El objeto de esta solicitud de tarifas es lograr un aumento anual en los ingresos de \$323.9 millones. Los cambios propuestos afectarán a todos los usuarios y grupos de usuarios de Southwestern Bell Telephone Company en el estado de Texas.

La mayoría de las tarifas que resultarían afectadas por el propuesto aumento aumentarían aproximadamente en un 18.5 por ciento, incluyendo las tarifas de centrales locales. Sin embargo, existen algunas excepciones. Por ejemplo, los usuarios que residen en ciudades que se reclasificarán para formar parte de grupos tarifarios mayores experimentarán aumentos más elevados del 18.5 por ciento. Por otra parte, los aumentos de las tarifas propuestas para servicios de línea privada en El Paso aumentarían en más de 18.5 por ciento, como resultado de una propuesta para reestructurar tales tarifas.

Una copia completa del nuevo arancel de tarifas se halla archivada en las oficinas de la Comisión de Servicios Públicos en Austin, Texas, así como en cada municipalidad incorporada afectada que tenga servicio de Southwestern Bell Telephone Company. En el pasado, la Comisión ha sostenido que toda tarifa se halla sujeta a cambio toda vez que Southwestern Bell Telephone Company solicite nuevas tarifas. El registro de esta tarifa incluye, pero no en forma limitativa, las propuestas de aumentar las tarifas por servicios de centrales locales, de larga distancia intraLATA y por servicios de línea privada interLATA entre centrales (incluyendo servicios de centrales externas) así como las propuestas de reducir ciertas tarifas de servicio de acceso.

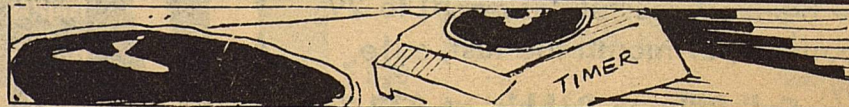
### Aviso a los clientes de otras compañías de teléfono

El registro de esta tarifa incluye, pero no en forma limitativa, las propuestas de aumentar las tarifas por servicios de larga distancia intraLATA y por servicios de línea privada intraLATA entre centrales (incluyendo servicios de centrales externas) así como las propuestas de reducir ciertas tarifas de servicio de acceso. Los cambios en dichas tarifas también afectarían a los clientes de otras compañías de teléfono, puesto que dichas compañías proporcionan ciertos servicios de acuerdo con las tarifas especificadas en los aranceles tarifarios de Southwestern Bell Telephone Company.

### Aviso a todos los clientes con respecto a los cargos de acceso y a determinados cargos nuevos de servicio

Al registrar esta tarifa, Southwestern Bell Telephone Company también propone reducir ciertas tarifas de acceso que se les cobran a clientes como AT&T Communications, Inc., MCI y otras compañías de larga distancia. La consecuente reducción de ingresos se piensa compensar por medio de dos cargos nuevos de servicio (cargos por pago atrasado que se aplicarían solamente a usuarios comerciales, y cargos por ciertos servicios de operadora, tales como verificación de línea ocupada) además de la estimulación de los ingresos por cargos por servicios de acceso. En vista de que, en caso de otorgarse esta parte del arancel tarifario registrado, su efecto real en los ingresos de Southwestern Bell Telephone Company sería igual a cero, ésta propone que la Comisión tramite dicha parte de la tarifa en forma expeditiva sin esperar la Orden Definitiva.

Toda persona que desee intervenir o participar en el presente proceso debe notificar a la Comisión lo antes posible. Las solicitudes de intervención, participación o información deben dirigirse a: Public Utility Commission of Texas, 7800 Shoal Creek Boulevard, Suite 400N, Austin, Texas 78757. Para obtener mayor información debe llamar a Public Utility Commission Consumer Affairs Division, (512) 458-0223, o (512) 458-0227, o al (512) 458-0221 si requiere teletipo para personas con impedimentos de audición.



Meat will generally cook better and faster if you remove it from the refrigerator and let it warm at room temperature 1 1/2 to 2 hours.