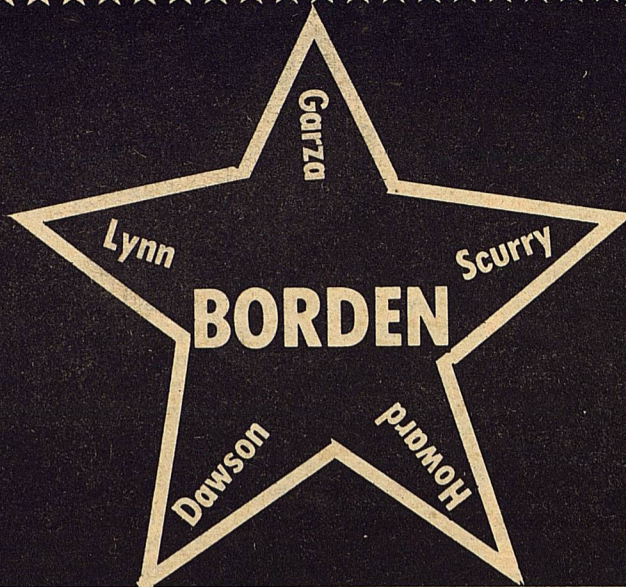


# THE

Volume XII



# STAR

February 13 1985

Serving the Counties of Borden, Dawson, Garza, Howard, Lynn & Scurry

## MEETING FOR COTTON PRODUCERS IN GAIL

Borden County cotton producers and agricusinessmen will elect a Producer Director to Plains Cotton Growers, Inc. at a

7:00 ap.m. meeting on Thursday, February 21 in the Conference Room of Borden County High School in Gail.

Dr. Jackie Smith, Area Extension Economist at Lubbock's Texas A&M Research and Extension Center, will present a program on producer use of cotton commodity options.

Announcement of the election comes from Jarrell Edwards of Route 1, O'Donnell, current Borden County Producer Director and Secretary-Treasurer of the 25-county cotton organization, and Dan Turner, also of Route 1, O'Donnell, Businessman Director.

Each of the counties in PCG territory has two directors, one a businessman and the other a cotton producer. They are elected on alternate years for two-year terms. Each is eligible for reelection each second year.

All producers and businessmen are invited to the meeting. However, under PCG By-Laws, only current dues-paying members of PCG will be eligible to be elected a director or to vote in the election. This provision of the by-laws will be fully explained at the meeting.

A PCG staff member will conduct the election, review and answer questions about recent and planned PCG activities.

## Letters to the Editor

Dear Fellow Texans:  
Every state agency and department from the university system to Public Safety has been asked to submit ideas for cost saving measures to be applied within their agencies as well as expanded and used in other areas of state government.

You may be aware of the Comptroller's report, "Productivity Ideas and Cost-Cutting Alternatives to Control State Budget Growth." In that report the Comptroller suggests ideas such as a "ride-sharing program" and "requiring one license plate per vehicle" as cost saving measures.

The Governor, in his State of the State Address, gave us food for thought by suggesting the application of user fees in areas that are heavily subsidized by taxpayers. I applaud his ideas and believe these are issues that the Legislature can work with.

The State's budget dilemma affects everyone...senior citizens, teachers, legislators, farmers, etc. There is not a person who will not be affected by measures uabvodunavoidably implemented as a result of reducing the \$900 million budget gap.

The Governor, Speaker and I have asked our staffs for suggestions that cuould bring in additional revenue for the state or measures that would save money. Members of the Senate have been asked for their ideas. This is a time when cooperation is important.

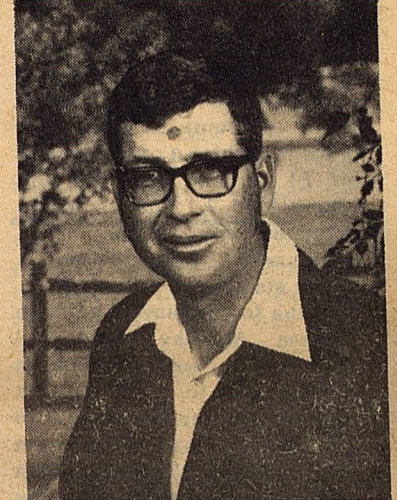
If you have any ideas that could result in a cost savings, to



Bill Phinizy



Bob Dyess



Kent Holmes

## THREE FILE FOR PLACE ON SCHOOL BOARD

Three Borden County residents have filed for a place on the ballot for the Borden County School Board Election. Bob Dyess and Bill Phinizy are seeking re-election, while Kent Holmes has filed for a place on the Board. Phinizy and Dyess both served two terms.

Bob Dyess has been a resident of Borden County for the past 15 years. He was a coach in the Borden Independent School System for seven years. Bob and

his wife, Clara, live in the Plains Community. Bob is a ctive in many community activities.

Bill Phinizy has lived in Borden County since 19785. He is active in school and civic af affairs. He and his wife, Mary John, have two children., Kate and Will, who attend Borden County Schools. Bill operates the Phinizy ranch in the south central part of the county.

Kent Holmes has been a resident of Borden County most of his life. He and his wife, Ollie,

are both graduates of Borden High School. They have two children, David and Dawn. David is a Freshman at Borden High School and Dawn is a Freshman at Texas Tech. Kent owns and operates a 2 section farm in eastern Borden County. He is also active in cvmany community activities.

The school board election will be Saturday, April 6, 1985. Absentee voting will begin March 18 at the Borden County Schools.

## GULF COAST GOVERNORS DECRY DRUG SMUGGLING

Austin--The governors of five Gulf Coast states met recently in New Orleans and adopted a resolution calling for a greater U.S. Defense Department role in protecting national borders against drug trafficking.

I called the meeting because the Gulf Coast states are losing the war against dugtrnarcotics, and the casualties are as staggering as anything recorded since the Vietnam War.

In Texas today, 700,000 people need drug abuse

treatment, and 14,000 young people become drug abusers each year. Texas prions are filled with inmates who abused drugs before they abused the law. An alarming 45 percent of all Texas bank robberies are committed by durug users...and that is not surprising considering that narcotics adidicts may need \$50,000 a year to support their habbit.

Texas' lengthy coastline and 1,200 miles of shared intrernational border with

Mexico make it a prime target for drug smugglers. The Texas Department of Public Safety seized more than \$300 million worth of drugs in 1984...a six-fold increase over the previous year.

Over the past several years, the multi-agency drug enforcement efforts in South Florida have caused the cocaine distribution routes to shift westward along the Gulf Coast. Last August, DPS officers in

Cont. P. 3



# BORDEN SCHOOL NEWS

## LADY COYOTES VS O-'DONNELL Win One Lose One

The Borden County Lady Coyotes played O'Donnell twice in a four day span and came away with a win and a loss. This puts them into bi-district play Thursday against Meadow.

In the first game against the Eagles, Borden took a 38-37 win as Borden almost let a 6 point vanish towards the end. The game was close throughout with Borden leading most of the way. Kelli Williams was the only person in double figures but her 16 points was high for both teams. Shawna Vaughn had 7 points followed by Teri Billington and Becky Massingill with 6 each. Jeanette Massingill had 2 points and Kim Turner had 1. Jeanette hit 100 percent, making 1 of 1 to lead in field goal percentage followed by Kelli with 60 percent. Kelli led in free throw percentage with 100 percent, making 4 of 4. Shawna hit 71 percent from the line hitting 5 of 7. Shawna led in rebounds with 14 and led in assists with 7. Kelli and Shawna tied in steals with 3 each.

In the forced playoff game in Lamesa Monday night, all started out well as Borden jumped out to a 17-10 first quarter lead and increased it to 10, 28-18 at half. But in the third quarter, O'Donnell began to connect from the field and the Eagle defense forced Borden out of shooting range. Borden was hurt also when leading scorer Teri Billington picked up her fourth foul early in the 3rd period

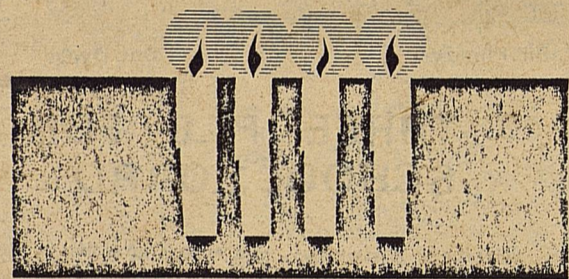
and her fifth one minute into the 4th quarter. O'Donnell then came back to win the game 43-41. Leading scorer for Borden was Teri with 11 followed by Shawna and Kelli with 10 each. Becky had 6 and Jeanette had 4. Shawna led in field goal percentage with 57 percent and Teri was second with 56 percent. Kelli led in free throw percentage with 80 percent and Shawna hit 67 percent. Shawna and Jeanette

tied for honors in rebounds with 6 each. Kelli led in steals with 4 followed by Shawna with 3. Shawna led in assists with 3. Borden's record now stands at 23-3 on the year. They enter bi-district play against District 9-A winner, Meadow, in Lamesa. Game is set for Thursday at 7:00. It will be followed by the O'Donnell-Ropes game at 8:30. Congratulations go out to the playoff bound Lady Coyotes!



### Future Homemakers of America FHA-HERO CHAPTERS

CELEBRATES  
**40**  
YEARS  
of real learning 1945-1985



## GAIL CHAPTER OF FHA CELEBRATES FHA-HERO WEEK

This year, Future Homemakers of America members will observe FHA-HERO Week from February 10-16, 1985. Members of the Gail chapter are planning events around the week's theme. Future Homemakers of America: 40 Years of Real Learning. Our chapter, one of over 12,000 nationwide, is organizing several activities that will showcase how our background in home economics, along with our participation in Future Homemakers of America, prepares us for our future.

We observe National FHA-HERO Week because we are proud of our organization and wish to develop a public awareness of its value to young people. As part of the home economics education program. Future Homemakers of America makes learning tangible and affords us opportunities to make direct contributions to society.

Our chapter's projects focus on a variety of societal concerns, such as nutrition and fitness, handicap awareness, drunk driving, teen pregnancy and the elderly.

Our chapter's success is due to the combined efforts of many people. As we celebrate this 40th Anniversary year of Future Homemakers of America and the years of "real learning" that have taken place in our community, we invite those special people who have so willingly lent us their time, expertise and support to share the spotlight.

Sincerely,  
Lesly Hicks  
Future Homemakers of America  
Cham

Gail Chapter Reporter

The Borden Star  
Publication No. 895520  
(USPS 895-520)  
Publication No. 895520

Editor  
Barbara Anderson

Published weekly, except for Christmas and New Years, on Wednesday at Gail, Borden County, Texas 79738, Box 137, Kincaid Street, Second Class postage paid at Gail, Texas.

Any errors that we make reflecting on the reputation or standing of any Firm, Corporation, or individual that may appear in the columns of the Borden Star will be gladly corrected when called to the attention of the staff.

Subscription Rates:  
\$8.00 per year

Borden Star Owners  
James McLeroy, Barbara Anderson, Doris Rudd, Pat Porter, Bob Dyess, Edna Miller, Ruth Weathers, Mrs. Nathan Zant, Sonny Tucker, Eddie Simer, Loreen Jones, Martin Parks, Dan Turner, Lela Porter, and Marge Toombs.

## O'DONNELL TOPS BORDEN BOYS 81 to 57

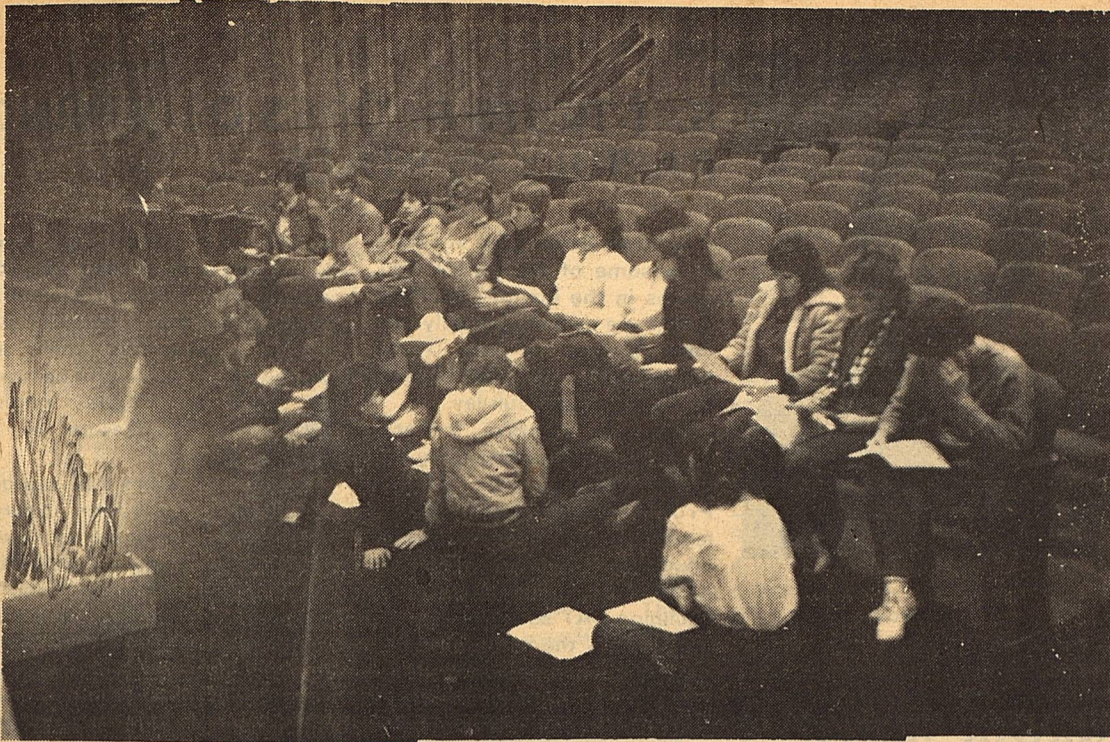
The Borden County boys closed out their season with a 57-81 loss to the Eagles of O'Donnell. Robin Hood led the scoring with 25 points followed by Chris Cooley with 13. Bric Turner added 8 and Mickey Burkett tossed in four. Brice Key came in from the bench and completed the scoring with five points.

Robin Hood and Cam Stone played their last game for the Coyotes and will certainly be missed next year, but the team will return Chris Cooley, Bric Turner, Mickey Burkett, Brice Key, Will Phinizy, David Holmes, Michael Murphy, and Montie Floyd.

### FEBRUARY 1985

Sunday	Monday	Tuesday	Wednesday	Thursday	Friday	Saturday
JANUARY 1985 S M T W T F S 1 2 3 4 5 6 7 8 9 10 11 12 13 14 15 16 17 18 19 20 21 22 23 24 25 26 27 28 29 30 31	MARCH 1985 S M T W T F S 1 2 3 4 5 6 7 8 9 10 11 12 13 14 15 16 17 18 19 20 21 22 23 24 25 26 27 28 29 30 31				1 5:00 p.m. H.S. Basketball Girls & Boys *Southland - There	2
3	4 6:00 p.m. Jr. Hi. Basketball Girls & Boys New Home - Here	5 5:00 p.m. H.S. Basketball Girls & Boys *New Home - Here	6	7	8	9
10	11	12 LINCOLN'S BIRTHDAY	13	14 VALENTINE'S DAY	15	16
17	18	19	20	21	22 End Fourth Six Weeks	23
24	25	26	27	28		





Tryouts for the Borden High School U.I.L. One Act Play, Trojan Women by Euripides, were held last week. The play is a Greek tragedy written around 5460 B.C. One Act Play Coach is Mrs. Jan McCathern.

## Gulf Coast Governors Decry Drug Smuggling

Houston seized approximately 1,000 pounds of cocaine with an estimated street value of \$210 million...making that bust the largest in the state's history.

In the first nine months of 1984, DPS seized 12 times more cocaine than in all of 1983 and reported a 30 percent increase in marijuana seizures. Only a few weeks ago, the Mexican government found and destroyed 11,000 tons of marijuana in a small town across the border from Presidio...all of which was targeted for trafficking in Texas.

The governors of Texas, Louisiana, Mississippi, Alabama, and Florida agree that a coordinated regional strategy is needed to combat the drug problem. We also agree that the federal government needs to do more to protect the Gulf Coast states' borders against narcotics trafficking.

Our resolution to Congress calls on the federal government to channel the swized assets of drug smugglers into a new fund to underwrite the cost of drug

control efforts.

Gulf coast governors are also insisting the military take a more role in using sophisticated equipment to apprehend smugglers.

The United States is spending an unprecedented amount of taxpayers' dollars on a national defense, but our lack of defense against an invasion of drugs raises serious questions about our contry's ability to stave off any kind of military attack.

How can we ever hope to stop sophisticated aircraft from entering this country, when we cannot pick up a single-engine plane making a nightly run of cocaine into Texas? We need to apply our most advanced military technology to combat the drug invasion.

States have a major responsibility in this area, and my budget proposal calls for spending \$1.5 million over the next two years to hire 20 additional narcotics investigators and support staff. I also support adopting a srngsttetrong state

anti-racketietering statute to take the profits out of drug trafficking.

With greater federal assistance in policing our borders, the Gulf Coast states can win the war on drugs.



When tea was first introduced in the American colonies, many housewives served the tea leaves with sugar or syrup after throwing away the water in which they had been boiled.



Mrs. Ogden was the winner of the basketball cake raffled off by the senior class recently. Shown with Mrs. Ogden are seniors Samantha Porter and Cam Stone. Robin Hood sold the rwinning raffle ticket. The cake was baked and donated by Reta Graham of Hermligh.

## LADY COYOTES POUND NEW HOME

Borden jumped out to a 37-9 halftime lead on the New Home Leopards, and increased their district record to 4-0 in the second half, in a 56-15 win Tuesday night. Eight players scored, three in double figures, in the win.

Becky Massingill led all scorers with 12 points followed by Shawna Vaughn and Teri Billington with 10 each. Jeanette Massingill had 7 points, Kelli Williams hit 6, Kim

Turner had 5, Sherry Vaughn made 4, and Nancy Martinez hit 2. Nancy led in field goal percentage making 1 of 1 for 100 percent followed by Teri with 83 percent and Jeanette with 75 percent. Kim led in free throw percentage hitting 75 percent. Leading rebounder for the Lady Coyotes was Jeanette with 6 and Sherry had 5. Shawna led in steals with 8 and led in assists with 12.

FUTURE HOMEMAKERS OF AMERICA . . .

Touching the lives of members for 40 years.



## Cooking Corner

February 18-22, 1985

Monday	Burritos with Cheese Pinto Beans Vegetable Salad Fruit Milk	Salad Bar
Tuesday	Barbecued Beef Scalloped Potatoes English Peas Pudding Hot Bread Milk	Salad Bar
Wednesday	Pizza Squares Vegetable Salad Green Beans Fruit Cobbler Milk	Salad Bar
Thursday	Beans and Franks Vegetable Salad Fruit Cake Hot Bread Milk	Salad Bar
Friday	Hamburgers French Fries Lettuce and Tomatoes Cookies Milk	Salad Bar

Thank you for shopping with us.

We appreciate  
your business

**FORD**  
**MERCURY**  
**INCOLN** **BOB BROCK FORD**

500 W. 4th BIG SPRING 267-7424

Everybody's  
**THRIFTWAY**

A FRIENDLY Supermarket serving West Texans with Quality Foods at Competitive Prices.

We give S&H Green Stamps Double on Tuesday after 1 p.m. All Day Wednesday.

35th and College Ave.  
Snyder, Texas.



## ROY BEANS BEAR

### Mike Blakely's Lone Star Legacy

Bill James should have known he was in for a strange afternoon when he spotted the pet bear on the front gallery of the Jersey Lilly Saloon. Any bear with a name like Sarsaparilla was unusual enough, but this particular specimen was drinking a bottle of beer.

James, a San Antonio lawyer on his way to El Paso, passed the time over a couple of beers in Roy Bean's saloon until the train whistle signaled that his journey would soon resume. The lawyer presented a \$20 bill to pay for the two beers and asked for his change. Roy Bean informed him that his saloon didn't give change.

When James loudly protested such a policy, he discovered that Roy Bean not only tended bar in Langtry, Texas, but also held the titles of peace officer, prosecuting attorney, judge and jury. Judge Bean arrested, indicted and convicted the lawyer for disturbing the peace and fined him \$20 all in one breath. The beer, he added, was on the house.

Judge Roy Bean never returned the 20 bucks, but James spouted such a colorful combination of profanity and legal terminology that the judge could not help but like him. Fast friends though they became, Bill James made a silent vow to even the score with Judge Bean and patiently awaited the opportunity to do so.

On one of his many visits to Langtry, James stopped by the Jersey Lilly to visit with Judge Bean. Oscar Sweeden, Bean's employee of unquestionable

loyalty, explained that the judge had gone to San Antonio for a visit.

James grinned and treated Sarsaparilla to a bottle of beer. He knew well Judge Bean's devotion to the burly pet. Bean had traded a dozen bottles of beer for the bear as a cub. The brauin provided great advertising, slept at Roy Bean's bedside and could out-drink any man north, south, east or west of the Pecos.

James hastened back to San Antonio, pretended to casually cross paths with Judge Bean and offered his condolences for the recent death of Sarsaparilla. Judge Bean scoffed at such rumor, but James insisted that he had just come from Langtry and had seen the bear's carcass.

With Bean convinced of Sarsaparilla's demise, James began to express his love and admiration for the poor departed beast. In fact, he beseeched the distraught judge, he would like to have the bear's hide displayed in his home to remind him of his many pleasant hours at the Jersey Lilly. Judge Bean was so touched that he agreed.

James suggested the necessity for an immediate telegraph message which he quickly penned and had Judge Bean sign. Back in Langtry, Oscar Sweeden received the puzzling telegraph from his boss: "Skin Sarsaparilla and ship the hide to Bill James, San Antonio." The devoted Sweeden shot the bear and followed his instructions to the letter.

Revenge, to Bill James, was sweeter than Sarsaparilla.



Heather McPhaul

### MCPHAUL NAMED TO WHOS WHO

Heather McPhaul, daughter of Mr. and Mrs. Jack McPhaul of Borden County, has been selected for inclusion in Texas Tech University's Who's Who Among Students in American Universities and Colleges for 1984. This selection, made by a distinguished group of faculty, staff and students, is based upon outstanding achievement in the areas of leadership, scholarship and service according to Mr. Larry Ludwewig, associate Vice President for Student Affairs and EDean of Students, it is one of the highest honors which a student can receive at Texas Tech.

Heather is a senior majoring in advertising and public relation with a minor in business. She will receive her degree in May.

### Classified

Work from home \$60 per 100 inserting envelopes information send stamp to K.S. Enterprises P. O. Box 1501-B Bloomfield NJ 07003

#### FOR SALE

For Sale, Windmill with tank in good condition. Call 439-6669

#### HELP WANTED

Federal, State & Civil Service Jobs available. Call 1-(619) 569-8304 for info. 24 hrs.

## SAT TESTS SCORES DECLINING RAPIDLY IN STATE

Austin---Texas' best students have some of the lowest SAT scores in the country, and the scores are declining rapidly, the commissioner of the Texas Education Agency told a group of teachers here Sunday.

Speaking before several hundred teachers attending the Association of Texas Professional Educators' legislative workshop, interim education commissioner W. N. Kirby said that Texas' rapidly declining SAT scores belong to some of the state's best students.

"The ones that are coming down the fastest are our best and brightest students," Kirby said of the state's SAT scores. He added that when a team of Harvard University researchers adjusted the scores to account for the large number of students and the high percentage of minority members taking the exam, "they found out we were worse off than we were before they adjusted them."

Kirby's speech to ATPE was part of the association's two-day workshop to prepare members for the current legislative session. To date, ATPE has endorsed four pieces of proposed legislation, including bills dealing with teacher competency testing, paperwork reduction and the operation of tutorial and discipline management programs.

Kirby told the group that the state is examining the possibility of using advanced test scores as proof of teacher literacy, thereby satisfying a portion of the new teacher competency requirements.

New laws require all teachers to pass a competency exam by 1986. Teachers must prove that

they are literate and knowledgeable in their subject area in order to pass the exam. Kirby added that a panel of six testing experts will meet in Austin Feb. 1 to determine how advanced test scores might relate to a measure of a teacher's literacy.

A bill filed earlier this session by State Sen. John Sharp (D-Victoria), proposes to allow substitution of scores from tests such as the Graduate Record Exam and National Teacher Exam as proof of literacy. It also would require that only those teachers judged to be deficient in either subject area knowledge or basic literacy to be required to take a competency exam. The bill has been endorsed by ATPE.

ATPE has always supported accountability as professional educators and we should lead the charge to rid our ranks of incompetents," said ATPE State President Mike Harldin. "However, we cannot support the competency testing in the reform bill as its reads now. It is an indictment of every teacher in the state. Only a small percentage are incompetent and they're the ones who make headlines."

Several hundred teachers from throughout Texas attended the two-day legislative workshop to meet with their state legislators and voice concerns over the recent education legislation.

ATPE is Texas' second-largest and fastest-growing teacher association with 42,000 members statewide. Its members include classroom teachers, principals, superintendents and paraprofessionals.

### CARY HALL

Cary Hall, son of Mr. and Mrs. Vic Hall has died in Ft Worth as result of injuries received in a one-car accident.

Funeral services were held Monday at 11:00 at Mt Olive.

## QUILTERS INVITED TO PARTICIPATE AT FORT CONCHO

Texas quilters are invited to participate in the 4th Annual West Texas Quilt Show to be held at Fort Concho National Historic Landmark in San Angelo on Saturday, April 27, from 10 a.m. 5 p.m. and Sunday, April 28, from 1 - 5 p.m.

Table space will be available for rent on both days for what has become the largest sale and display of quilts and quilting techniques in West Texas. The cost will be \$15.00 per table (6 by 1 1/2 feet) for one day and \$20.00 per table for two days. Rental space will be limited and quilters are advised to contact

Fort Concho early to reserve space.

A quilt contest will also be held during the event. Prizes and ribbons will be awarded to four outstanding quilts made within the last 2 years. Quilt collectors are also encouraged to display their antique and award winning quilts in the special collection display in the officer's quarters buildings. For details, forms, and information, please contact Frances Schneider Mertz, Fort Concho, m 213 East Avenue D, San Angelo, Texas 76903 (915) 655-9121, ext. 441.



Some people believed that their lives were bound up with that of a tree—if it flourished, so would they.



Johann Sebastian Bach was so fond of coffee that he wrote the Coffee Cantata, a humorous one-act operetta about a stern father's attempt to check his daughter's indulgence in the coffee habit.



## THE FIRST NATIONAL BANK

The Symbol of Banking in Big Spring



**FULL SERVICE BANKING**

400 Main Street

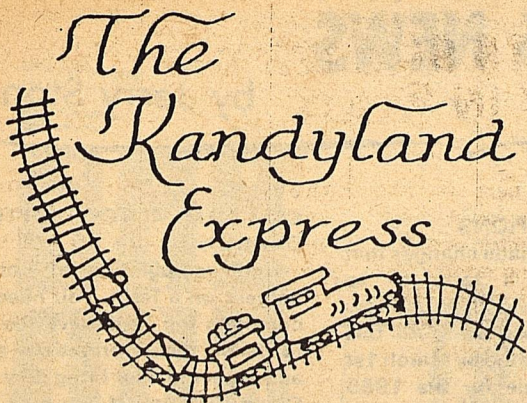
**267-5513**

**Member F.D.I.C.**

**BIG SPRING, TEXAS**



# The Kandyland Express



## RECYCLING GARMENTS PROGRAM

A program on recycling garments with little or no sewing will be held Tuesday, February 19, 1985 at 5:15 p.m. in the conference room of the Borden County Schools in Gail.

Major emphasis will be on making last year's fashions into this year's with little time or money invested.

This program is being sponsored by the Borden County Family Living Committee of the Texas Agricultural Extension Service and is open to all people regardless of race, color, religion, sex, national origin, socio-economic level, age or handicap.

Looking forward to seeing you on the 19th.

## HOW TO IRON SILKS

When ironing silks, there are three general rules: (1) iron while the fabric is still damp; (2) iron at the correct temperature; and (3) iron on the wrong side of the garment.

It is always better to iron silk when it is damp. Some people think it won't hurt to dry iron the smooth silks such as broadcloths and the Tussah Silks such as Pongee. However, even with these fabrics, ironing the silk while it is damp is a better idea and more effective in getting out wrinkles.

Your silk garment is just about ready to be ironed after you have pressed out the excess water with a towel. If you must wait to iron the garment, consider storing it inside a towel or in a plastic bag in the refrigerator. Or hang your dry garment in the bathroom while taking a shower, to get it damp enough for

ironing. Be careful no drops of water get on your silk, as that may cause water spotting.

Be sure to iron silks at the correct temperature. The setting for silk is usually marked on your iron, between 250 and 300 degrees Fahrenheit, higher than wool but lower than cotton and rayon. High temperatures are bad for silks. Indeed, temperatures above 330 degrees Fahrenheit will disintegrate silk garments. Do not use the steam setting on your iron because it can cause water spots. Do not use a steamer to remove wrinkles, for the same reason.

Always iron your garments on the wrong side. Silk is a strong fiber, but needs to be handled gently. This is just one more way of ensuring a long and beautiful life for your silk garments.

A bonus: Some silks need little or no ironing if hung on a padded or plastic hangers after the garments have been rolled in towels to remove excess water. Be sure to hang the garment straight and smooth out the seams.

A warning: Never iron silk velvet, or the pile will be permanently damaged.



The world record for hamburger consumption was set back in 1979 by Alan Peterson of Longview, Washington. In half an hour, he managed to wolf down 20 3/4 hamburgers, (weighing 3-1/2 ounces each, for a total of 4-1/2 pounds of meat) plus buns.

\*\*\*

If you would like to receive my monthly newsletter, please fill out the following form and return it to:

Kandy K. McWhorter  
CEA-HE  
Box 155  
Gail, Texas 79738

NAME \_\_\_\_\_

MAILING ADDRESS \_\_\_\_\_

CITY, STATE, ZIP \_\_\_\_\_

If you are already receiving the newsletter, please do nothing.



Static cling can be prevented in dresses if they are hung in a bathroom filled with steam.

## YOUR COUNTY AGENT SAYS

### FARM FINANCING POLICY GETS CONFERENCE SPOTLIGHT

Lubbock---Agricultural financing and national farm policy will share the spotlight here February 19 at the annual meeting of the South Plains Development Program. U.S. Rep. Charles Stenholm, D-Tex., a leading spokesman for agriculture in Congress, will be the keynote speaker.

The theme of this year's educational conference for area producers will be "Planning for Profit," said Billy C. Gunter, district director for the Texas Agricultural Extension Service. In addition to farm policy and financing, it will provide economic outlook predictions for area crops, agronomic considerations for improving profitability, and the views of an agricultural economist and a farmer on the keys to farm survival.

The program will begin at 9:30 a.m. at the KoKo Palace, 50th Street at Avenue Q, in Lubbock. A registration fee of \$7.25 will include lunch. The conference will close at 3 p.m.

The current turmoil in financing agriculture, both nationally and across the South Plains, will be addressed by Dr. Dean Hughes of Texas Tech University. He is director of the Thornton Agricultural Finance Institute in Tech's department of agricultural economics.

The outlook for the area's agriculture will be presented by Dr. Carl Anderson, Extension agricultural economist and cotton marketing specialist, from College Station. The changing structure of agriculture in a changing policy environment will be explored by Dr. Ed Smith, Extension economist.

Dr. James R. Supak, Extension agronomist and cotton specialist at Lubbock, will discuss critical agronomic considerations which area producers will face this year.

A farmer's view of keys to survival in 1985 will be offered by Stan Shockley, Levelland producer. Dr. Jackie Smith, Extension agricultural economist and marketing specialist at Lubbock, will

present an economist's view.

The program will be moderated by Dr. Milo Shult of College Station, associate director of the state Extension Service, and Gunter.

The SPD Program is a coordinated regional effort to promote economic development in agriculture and improved family life in 21 counties. It is sponsored by the Extension Service, working through county Extension program building committees and special SPD task forces which identify educational needs and coordinate educational activities.

### LOCAL YOUNGSTERS COMPETE IN HOUSTON

Houston....14 FFA members and 19 4-H members from Gail will be participating in the 1985 Houston Livestock Show, held Feb. 16-March 3. Animals exhibited by these competitors are a part of the 16,313 junior show entries expected for this year's show. Additionally, 8,960 open show entries and 3,011 horse show entries are expected for exhibition at the 1985 Show.

The Houston Livestock Show, considered the world's largest, holds competition on two levels: for professional breeders and ranchers throughout the world and for FFA and 4-H members,

### SAN ANTONIO STOCK SHOW RESULTS

#### Gail Youth Places 1st

Several Borden County youth are participating in the San Antonio Stock Show this week. At press time the following Borden County 4-H and FFA students have placed well enough to make the sale. Cathy York, 1st place, Med. Weight South Down

"He who does not know the force of words cannot know man."

"If you utter insults you will also hear them." Plautus

The Borden Star, Wed. Feb. 13, 1985...5 representing 788 clubs and chapters, from throughout Texas.

exhibitors from Gail are Andy Belew, Dana Gray, Patrick Herridge, Jon Herring, Shayne Hess, Brice Key, Ralynn Key, Kate Phinzy, Will Phinzy, Felicia Romero, Rachel Romero, James Smith, DCody Stone, Kristi Stone, Lance Telchik, Patsy Underwood, Tammy Voss, Cathy York, Guy Will Zant. FFA members will be Doug Adams, Glen Bacon, Simona Benavidez, Mickey Burkett, Jeff Covington, Jerry Green, Darrell Hodnet, Robin Hood, Michael Murphy, Shon Parker, Gerry Smith, John Stephens, Cam, Stone and Doyce Taylor.

"We take a tremendous amount of pride in knowing that the Houston Livestock Show attracts entries in the junior show that are more than just animals," noted Don Jobs, Jr., assistant general manager.

"They represent continuous, hard work by a Texas youngster who's committed himself or herself to a livestock project. These junior show exhibitors are a rare breed in themselves," he added.

Premium monies available for open and junior show exhibitors top more than half a million dollars in prize money and in premium auction prices paid in excess of market value. Prior to the Show, volunteer committee members contact auction buyers to guarantee that each market animal sold in the four junior auctions brings a price above the current market value of the animal.

Junior livestock competition includes beef heifers, dairy cattle, breeding sheep, goats, commercial steers, breeding rabbits, market lambs, poultry, swine and steers. For the second year, there will be carcass contests for the market lamb, swine and steer shows.

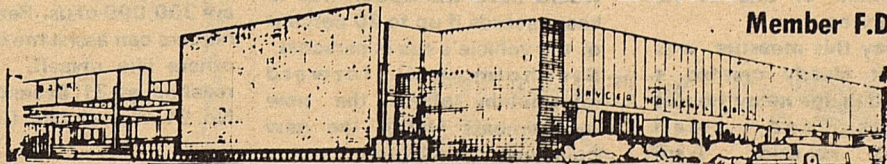
Tammy Voss, 17 place Heavy Weight Med. Wool

Mickey Burkett, 18th place Light Weight Finewool.

Congratulations to these winners and we will have more stock show results next week.

## SNYDER NATIONAL BANK

Member F.D.I.C.



1715 25th

Snyder, Texas

573-2681



# LETTERS

the State, I encourage you to write your legislator or me. Your response will be greatly appreciated.

### LAND RETIREMENT

The way to a market oriented agriculture

The market orientation theory would be desirable to all farmers, only if agriculture could be returned to a supply and demand price base without financially strangling America's farm families during the transition. I suggest that a land retirement program could be the cheapest and most effective mode of transition.

One of the major problems with recent farm programs is that their design stimulates over-production. Because of government payments, lands that are otherwise unprofitable to farm are being operated. A land retirement program would redirect government spending from current subsidies to funding the seeding of these acres to grass. This reduction of

lands being cropped would decrease the products available for sale. This would cause an increase in prices and the return of profits to farming again.

It should be noted that retirement of more than marginal lands may be required to accomplish the price and profit goals. In order to retain the desired goal of market orientation, retired lands must be kept out of production long enough for the balance of supply and demand to be restored. Retired lands would be returned to production only if farming is profitable. Consistency in this direction would allow the agriculture industry to recover from its depression, and return to a supply and demand market.

Land retirement is clearly the solution that offers the most for the farmer and the consumer alike and is also the least expensive for the government. If you agree please call or write your congressman immediately.

-s- Larry Jeffus, Box 1281, Guymon, Oklahoma 73942

## STENHOLM PUSHES REVISION OF RECORD KEEPING BILL

Washington, D.C.---The sounds of confusion and complaints concerning the Internal Revenue Service's automobile record keeping requirement have been heard in the nation's capitol. Cong. Charles Stenholm of the 17th District reports that the recent regulations are already undergoing a facelift.

Although some major changes have already been made in the legislation, the ruling is being revised even now, said the Stamford Congressman. "The intent of this statute was to discourage abuse of vehicles and other personal property tax write offs," Stenholm said. "But the intentions were misinterpreted when the law was written, and the regulation resulted in unnecessarily strict requirements. As so often happens in Congress, instead of taking a rifle and shooting the target, we took a shotgun and shot everything in sight."

Cong. Stenholm, who co-sponsored three bills to repeal the law, said a hearing has been scheduled on Thursday, Feb. 7 to discuss a revision of the law. The hearing in Washington, D.C. was called at the request of the Small Business Committee, of which Stenholm is a member and chairman of one of its subcommittees.

"The way this measure was written, it clearly created a heavy burden for many honest taxpayers and small businesses," he said. "I am confident that we can make the

appropriate changes, those that will not force honest taxpayers to keep needless detailed logs, and still arrive at a workable law to crack down on this abuse."

The IRS regulation, which became effective Jan. 1, originally required strict bookkeeping measures from every citizen with a vehicle used for business. This included a log, journal, diary or similar record that had the dates, names, mileage and purpose of each use of the vehicle. A new version has been temporarily adopted until a final revision results from the hearings.

Congressman Stenholm said the law now reduces the bookkeeping burden on the citizen. The IRS will not require taxpayers to keep logs if the vehicle is kept on business premises during non-business hours and is not used for personal purposes. When it is used for personal purposes, taxpayers could make a single entry, rather than several. Regulations are also being proposed that would allow most citizens not to keep records if they meet certain conditions, which have not been announced. Farmers who receive more than 70 percent of their gross income from farming would have the option not to keep records if up to 20 percent of the vehicle's use is personal. Stenholm will forward information about the new requirements faster the new guidelines are adopted.

### 1985 FARM PROGRAM

Do you plan to participate in the 1985 Farm Program????? Please remember that the contracts must be signed by March 1st. If you are participating in the cotton and - or wheat program, you must devote 10 percent of the farm's acreage base to ACR (lay-out) for paid diversion acreage aetoplus you must devote to ACR an acreage of eligible cropland equal to: 328.57 percent of the 1985 planted cotton and - or wheat acreage and 11.11 percent of the 1985 planted feed grain acreage. The maximum acreage to be harvested will be limited to no more than:

70 percent of the farm's acreage base for cotton and wheat, and

90 percent of the farm's acreage base for feed grains.

Advance deficiency payments are authorized for wheat, cotton and grain sorghum at 50 percent of the projected rate, if requested. You may also request 50 percent of the cash land diversion payment at signup for cotton and wheat.

### FCIC INSURANCE DATE

April 15th is the final date a producer may request crop insurance for cotton and grain sorghum, from Federal Crop Insurance Corporation. Producers who request crop insurance will need to request that a yield be computed for FCIC purposes at their local ASCS Office. Once a yield has been computed for the farm, you will then need to contact an FCIC Agent to obtain the insurance.

## LETTER TO THE EDITOR

As a scleroderma patient who has suffered alone for too many years with a disease that few people have ever even heard of, I am attempting to locate others who suffer from scleroderma (systemic sclerosis).

My New Year's resolution is to correspond with as many scleroderma patients as possible. Doctors tell me there are 300,000 of us. Perhaps your readers can assist me in locating others like myself. I can be reached at 21 Brennan Street, No. 21, Watsonville, CA 95076.

Thank you,  
Diane Williams

# ASCS NEWS

by Jerry Stone

### RECONSTITUTIONS

If you have made changes that would cause a farm to be combined or divided, let us know as soon as possible. All this must be completed by March 1st to be applicable for the 1985 year.

### INTEREST RATE

The regular loan interest rate on commodity loans disbursed during February 1985 is 9.125 percent per annum subject to adjustment each succeeding January 1.

## USDA ANNOUNCES 1984 CROP UPLAND COTTON DEFICIENCY PAYMENT

Eligible upland cotton farmers will receive deficiency payments at the rate of 18.6 cents per pound on their 1984 production.

The 1984 deficiency payment rate is equal to the difference between the target price of 81 cents per pound and the national average price of 62.4 cents per pound received by farmers during calendar year 1984.

Producers who participated in

### COTTON PRODUCTION CARDS

Upon completion of cotton harvest on a farm, you need to complete the card, have the gin to verify the information, sign and either mail or bring it by the County Office. If you mail the card to the County Office, please remember to read the certification on the bottom of the card and check the appropriate box and sign.

If you did not harvest cotton on a farm, enter zero and return it to this office for our records.

The 1984 upland cotton acreage reduction program are eligible to receive deficiency payments on the number of pounds equal to their cotton planted acres times their farm program yields.

The Agricultural Stabilization and Conservation Service will begin making the 1984 deficiency payments during the latter part of February.

## BID NOTICES

### COUNTY OF BORDEN STATE OF TEXAS

The Borden County Commissioners' Court will accept bids for the Sale of one (1) used Galion 3 steel wheel roller until 10:00 a.m., February 25, 1985.

For more information contact the County Judges Office in Gail, 915 856-4391.

The Commissioners' Court reserves the right to reject any or all bids.

### BY ORDER OF THE COMMISSIONERS' COURT OF BORDEN COUNTY, TEXAS

Van L. York  
County Judge  
Borden County

### COUNTY OF BORDEN STATE OF TEXAS

The Borden County Commissioners' Court will receive bids until 10:00 a.m., February 25, 1985 for the purchase of a Vibrating Compactor to be used by Borden County.

For more information contact the County Judges Office in Gail, 915 856-4391.

The Commissioners' Court reserves the right to reject any or all bids.

### BY ORDER OF THE COMMISSIONERS' COURT OF BORDEN COUNTY, TEXAS

Van L. York  
County Judge  
Borden County



### Visit Our Deli

Party Trays Pastries Custom Cakes

710 N. 4th

Lamesa



## Obituary DOCK HOWELL

Services for Dock Howell, 93, were held Monday, February 11 in the First Baptist Church at Gail with Rev. Pat Ray, pastor, officiating.

Burial was in the Gail Cemetery under the direction of Branon Funeral Home.

He died at 8:55 a.m. Friday in the Veterans Administration Medical Center Hospital in Big Spring after a lengthy illness.

He was a native of Lampasas County and moved to Gail in 1902. He moved to O'Donnell in 1904 where he lived until 1976 when he returned to Gail. He married Lena McGuire on Dec. 7, 1921 in Tupelo, Oklahoma. He was in the Army during World War I. He was a member of the American Legion and the DAV Post 34 in Lamesa. He was a Baptist.

Survivors include his wife; three sons, Henry of O'Donnell, Alvis of San Angelo and Martin B. of Yukon, Okla.; four daughters, Frances Owens of Ballinger, Opal Smith of Gail, Lavada Flood of Odessa and Linda Crutcher of Hobbs; a brother, Lee of Hobbs; 22 grandchildren; and 13 great-grandchildren.

## WASTE AUTHORITY POSTPONES BOARD MEETING

John Simek, Chairman of the Board of Directors of the Texas Low-Level Radioactive Waste Disposal Authority, announced today that he is postponing the Board meeting originally scheduled for February 11, 1985. "The meeting has been rescheduled for February 22, 1985 so that we can evaluate the effects of the proposed legislation on our site selection efforts," said Simek.

Simek's decision came after the Texas Senate adopted a resolution calling for a moratorium on site selection for a low-level radioactive waste disposal facility until new legislation is passed or until September 1, 1985. Another bill to delay the site license for 2½ years has been introduced by Senator John Traeger.



## New Jump Rope Package Introduced By American Heart Assoc.

Austin---During February and March, over 100,000 students throughout Texas will discover that jumping rope is one of the most fun and beneficial ways to exercise. They will participate in Jump Rope For Heart, an educational program for youth, benefitting the American Heart Association.

Jump Rope For Heart coordinators in many of the 1,500 host schools will be aided by a new educational package titled "Let's Get Jumping!" The package contains cassette tapes and instructions for performing six choreographed jump rope routines, ranging from the "Ghostbusters" theme to the "Cotton-Eyed Joe."

Teams of jumpers will enlist sponsors who pledge donations for each minute their team jumps rope. Some sixteen jump rope "tricks" will be used by team members, making the effort both challenging and fun to participate in.

Jump Rope For Heart has been conducted Texas for over five years, raising over \$2.5 million in 1984. The most far-reaching benefit of the event is that the dollars raised will support the medical research, education and community service programs of the American Heart Association in Texas.

According to James M. Atkins, M. D., President of the AHA in Texas, "the Heart Association has developed the Jump Rope For Heart program not only as a fund raising tool, but also to educate youth to the importance of regular exercise for cardiovascular fitness." According to research

conducted at Arizona State University, a 10-minute daily program of jump rope is as efficient as a 30-minute daily program of jogging. Jump Rope For Heart is one of many youth-oriented programs designed to fulfill the mission of the American Heart Association: the prevention of death and disability caused by heart and blood vessel disease.

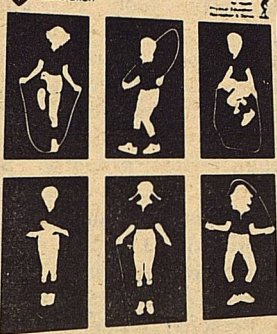
Both schools and students receive a number of side-benefits from the Jump Rope For Heart program. Teachers have reported an increased sense of teamwork on the part of the students, who are learning how to work together for a common goal. A growing number of physical education programs now include rope jumping in their curriculum, due to the fact that Jump Rope For Heart fits virtually every Physical Fitness Education essential element for elementary school curriculum.

Schools hosting a Jump Rope For Heart event receive all instructional materials free of charge. When pledge money is turned in, schools receive prizes in the form of gift certificates for physical education equipment, based on the amount of dollars raised.

Schools may still enroll in the Jump Rope for Heart program by contacting their local American Heart Association office.

Let's Get Jumping!  
Jump Rope Routines Set to Music

American Heart  
Association



## Security State Bank

1411 Gregg

Big Spring, Texas

Member F.D.I.C.

## WELCOME VALENTINE'S DAY WITH POP CORN SWEETS



The custom of celebrating Valentine's Day with the exchange of sweets and other tokens of affection began during an ancient Roman festival. The first Valentine's greeting card, made of raised paper, dates back to the 1790's.

To continue this loving tradition, celebrate February 14 with family and friends by exchanging special cards and sharing sweets made from pop corn.

A folder featuring a variety of pop corn recipes plus a "how-to" holiday and party crafts section may be obtained by sending the pennant from any JOLLY TIME product or 25¢ along with your name, address and zip to JOLLY TIME, P.O. Box 178, Sioux City, Iowa 51102.

A pop corn ball maker, made of durable molded plastic, also is available by sending \$1.00 to the JOLLY TIME address.

### POP CORN HEART

2 quarts popped Jolly Time Pop Corn  
4 tablespoons butter  
6 cups miniature marshmallows (1-pkg.)  
red cherries for decoration

Preheat oven to 250 degrees. Place popped corn in a large, 4-inch deep buttered baking pan. Keep warm in oven. Butter a 6-cup heart-shaped cake pan. In a double boiler or large saucepan, melt butter over low heat. Stir in and melt marshmallows. Remove pop corn from oven. Pour butter mixture over pop corn, stirring to coat evenly. Pack the pop corn mixture into the heart-shaped pan. Chill. To remove the cake from the pan, place the pan in a shallow dish of warm water and loosen edges with a spatula. Decorate with cherries.

### POP CORN BALLS

2 quarts popped Jolly Time Pop Corn  
1 cup granulated sugar or firmly packed brown sugar  
½ cup light or dark corn syrup  
½ cup water  
¼ cup (½ stick) butter or margarine  
½ teaspoon salt  
1 teaspoon vanilla

Keep popped corn warm in a 250 degree oven. In a 2-quart saucepan, stir together sugar, corn syrup, water, butter and salt. Cook over medium heat, stirring constantly until mixture comes to a boil. Attach candy thermometer to pan. Continue without stirring until mixture reaches 270 degrees F. or until a small amount dropped into very cold water separates into hard, but not brittle, threads. Remove from heat. Add vanilla and stir only enough to mix it through hot syrup. Pour syrup slowly over popped corn, mixing with a fork. Shape into balls with pop corn ball maker. Makes about 8.



The first permanent wave was introduced by Karl Ludwig, in Germany, in 1872. He beat out Parisian stylist Marcel Grateau, father of the famed Marcel Wave, by a short time for the honor.





# HERITAGE NEWS FORUM

FROM HERITAGE FEATURES SYNDICATE

WASHINGTON, D.C.

## TREASURY TAX PLAN: PLUS AND MINUSES

By Edwin Feulner

While the much-talked-about tax reform proposals put forth by former Treasury Secretary Donald Regan signal that the administration intends to keep its campaign promise not to chase the federal deficit with individual tax increases, the Treasury plan is not without fault.

Among the good news for taxpayers is that the Treasury proposal would increase the personal exemption for taxpayers and their dependents to \$2,000, from the current \$1,000. In addition, the proposal would increase to \$2,500-per-year, the maximum amount each of us could invest in an Individual Retirement Account (IRA), and allow non-working spouses to contribute an equal amount to an IRA, instead of the present \$250. The current maximum for a working person is \$2,000.

The bad news is that by shifting the tax burden onto business — a big lie if there ever was one, since businesses will just pass on these increases to consumers — the tax plan could slow down economic growth.

The reason for this is that the increases are aimed directly at those provisions of the tax code which stimulate job-creating investment in small and growing businesses.

Under the proposed tax plan, all U.S. corporations would be taxed a flat 33 percent of income. However, the Treasury tax plan also calls for the elimination of the Investment Tax Credit and Accelerated Cost Recovery System (ACRS) — features of the tax code enacted in 1981, which many have credited with creating the investment boom that led to the 1983 recovery. The Treasury proposal also calls for an increase in capital gains taxes — which would help dry up investment capital.

The corporate income-tax changes pose several problems. First, there is the matter of truthfulness. Because no matter how you fudge it, the business tax really amounts to a "hidden" tax on consumers, since businesses will be forced to raise their prices.

Also, by increasing the capital gains tax and eliminating the ACRS and Investment Tax Credit, the proposal will tend to undermine the Treasury's goal of designing a "pro-growth" tax bill.

Another questionable change is the proposal to limit the deductibility of charitable contributions. This directly conflicts with the administration's support for the privatization of federal activities — a goal which can only be accomplished by greater reliance on charitable organizations.

The bottom line is that the Treasury proposal encourages economic growth less than most of the other tax reform proposals now before Congress. It should be examined and judged not only as an alternative to present tax law, but in contrast with the several "flat-tax" proposals before Congress.

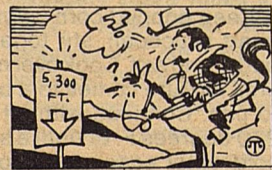
While the Treasury proposal takes a few tentative steps in the right direction, it is far from being the best alternative available.

(Feulner is president of The Heritage Foundation, a Washington-based public policy research institute.)

## FACTS & FIGURES

The largest land gorge is the Grand Canyon on the Colorado River in north-central Arizona. It extends from Marble Gorge to the Grand Wash Cliffs, over a distance of 217 miles, varies in width from four to 13 miles and is up to 5,300 feet deep.

The U. S. Government's most recent report on tar and nicotine listed 207 cigarette styles. Carlton was listed lowest in three categories. The lowest tar king was Carlton Box (less than 0.5 mg. tar, 0.05 mg. nicotine—nobody tested lower). The other lowest were lowest tar menthol (king size Carlton menthol at 1 mg. tar, 0.1 mg. nicotine) and lowest tar 120's (6 mg.



tar, 0.6 mg. nicotine—filter, and 6 mg. tar, 0.5 mg. nicotine—Menthol). The manufacturer of the brand reports even lower numbers on the Carlton Box package, listing tar at less than 0.01 mg. and nicotine at 0.002 mg. per cigarette.

The deepest land gorge is the Colca River Canyon in southern Peru. The sides rise to 14,339 feet on one side and about 10,000 feet on the other.

## Modify Diet And Still Eat Meat

(AUSTIN)—Three ounces of very lean cubed steak equal 166 calories. But dip the steak in flour, fry it in shortening and top it with cream gravy, and the calories shoot to 420.

"The culprit in this case isn't the beef," said Texas Department of Agriculture (TDA) home economist Carol Ware. "It's all those extras that increase fat and calories, and eventually a person's weight."

Bombarded with the news that they eat the wrong things, don't exercise enough and have too many health-threatening habits, Americans are doing one of two things. "They are either tuning out," said Ware, "or they are making changes in their life styles, including changes in diet."

In some instances, these changes are creating a healthier populace. The American Heart Association, which observes National Heart Month in February, reports that deaths from heart disease dropped to 44.8 percent in Texas, lower than the national average and the lowest for Texas since 1952.

"A healthier life style simply means modifying the way you live, not changing it completely," said Ware. "That's what many people don't realize. You don't have to give up all your favorite foods to change the way you eat. There's no need, for example, to eliminate meat. It is our major source of protein, the basic substance of every cell in the body. Health-conscious consumers, however, are shopping for leaner cuts, and they are reducing the amount of fat they cook with."

Ware said poultry and dairy products may also be eaten regularly, but that fat content should be monitored. Low-fat dairy products are preferable for people reducing fat intake.

Modifying cooking methods will reduce calories and the percentage of fat consumed. This will sometimes mean cooking ahead, but the added time will benefit you and your family's health. For example:

- Cook stews, soup stock, boiled meat and other dishes in which fat cooks into the liquid a day ahead of time. After the food has been refrigerated, the hardened fat can be removed from the top.
- Use a rack to drain off fat when broiling, roasting or baking. Instead of basting with drippings, keep meat moist by pouring wine, tomato juice or bouillon over it.
- Make gravies after the fat has hardened and can be removed from the liquid.
- Broil meat rather than pan-fry it.
- When a recipe calls for browning meat, brown it under the broiler instead of in a pan.

Foods that contain no cholesterol should be eaten frequently. These include leafy green vegetables, carrots, cantaloupes, broccoli, cabbage, tomatoes, fruits, beans, legumes and unsweetened fruit juice.

"Texas is in the middle of winter vegetable harvest," said Ware. "Plenty of high-quality produce is available now. It's a good time to increase the vegetables in your diet and to try new ways of cooking them."

"Sit loose in the saddle of fate."

Francis Yeats Brown

## SURVEY SHOWS \$810 MILLION IN DELINQUENT PROPERTY TAXES STATEWIDE

Austin—Delinquent taxpayers owe counties, cities, school districts and other taxing units across Texas at least \$810 million, according to a report to the legislature made this week by the state Property Tax Board (SPTB).

The \$810 million in reported delinquencies equals almost 14 percent of the 1983 property taxes levied statewide. These delinquent taxes are contained in 12.1 million accounts, which represents a very large recordkeeping burden for local taxing units.

The \$810 million figure may not be completely reliable. Throughout the survey, many taxing units indicated their delinquent tax records were in such poor shape that they could not answer many of the survey questions with confidence.

The report concludes that the condition of tax records is perhaps the most significant obstacle to delinquent tax collections. Only in recent years have some taxing units engaged in a serious effort to organize and automate tax records.

Almost a third of the unpaid taxes reported.. \$255

million involve personal property such as business inventories, business equipment, mobile homes, boats and automobiles.

The delinquency rate on personal property is far higher than on real property. School districts, for example, reported that personal property taxes represent 29 percent of all their delinquencies, but only 11 percent of their 1983 tax levies.

Personal property taxes are inherently difficult to collect. Since both the property and its owners are highly mobile, tax collectors find it hard either to seize the property or to sue the owners. Personal property also depreciates in value much faster than real property. Thus, if a taxing unit were to seize personal property for tax delinquency, it might not be able to sell the property for the amount of taxes due.

Taxing units reported \$46 million in delinquent taxes over 20 years old. The statute of limitations on tax suits, which is 20 years for real property and four years for personal property, can hinder collection of these old taxes if the taxpayer claims it as a defense.

## PUBLIC NOTICE

AT&T Communications of the Southwest, Inc. ("AT&T Communications"), in accordance with the Public Utility Regulatory Act and the rules of the Public Utility Commission of Texas ("PUC") hereby gives notice of its intent to implement a new schedule of rates for its services. The new rates will be effective February 22, 1985, unless otherwise determined by the PUC. All customers and classes of customers would be affected by the proposed rates.

AT&T Communications has filed restructured tariffs designed to more closely recover access and other costs for private line, DATAPHONE\* Digital Service, OCC Facilities, WATS and 800 services.

Also proposed is the institution of a charge for directory assistance to begin to recover access costs incurred for such service, and increases in rates for operator assisted AT&T Long Distance calls.

AT&T Communications is proposing to restructure its AT&T Long Distance Service and to reduce its overall revenues from basic long distance approximately \$25 million.

While long distance rates will, in most instances, be reduced, certain AT&T Long Distance rates are proposed to be increased to more nearly recover the access charges approved by the PUC for such service.

The proposed new rates for all services would result in an increase in adjusted test period revenues of \$123.4 million, or 11.3 percent.

A complete copy of the proposed tariffs are on file with the Texas Public Utility Commission.

Persons who wish to intervene or otherwise participate in these proceedings should notify the Commission as soon as possible. A request to intervene or participate or for further information should be mailed to the Public Utility Commission of Texas, 7800 Shoal Creek Blvd., Suite 400N, Austin, Texas 78757. Further information also may be obtained by calling the Public Utility Commission Consumer Affairs Division at (512) 458-0223 or (512) 458-0227 or (512) 458-0221 teletypewriter for the deaf.



AT&T Communications