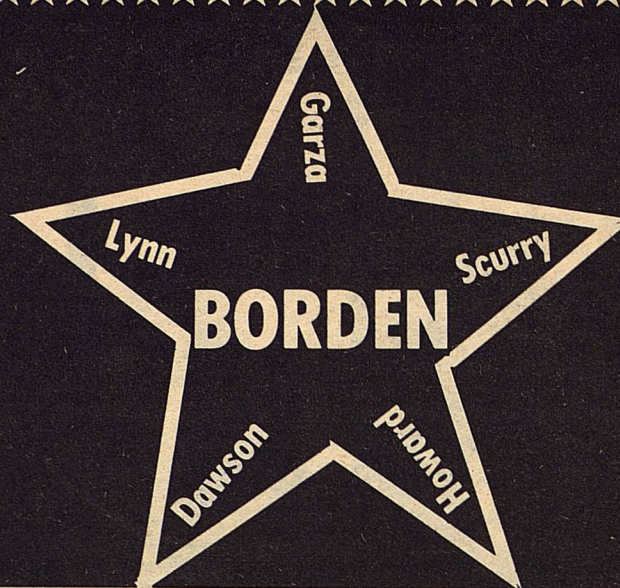


THE

Volume XII



STAR

November 21, 1984

Serving the Counties of Borden, Dawson, Garza, Howard, Lynn & Scurry

TWENTY YEARS OF BAD LUCK

By Richard A. Viguerie

WASHINGTON, D. C. ---Snake-eyes again!

Since 1964, unabashed liberals have won the Democratic nomination for President four times, and four times they have gone down to defeat. They have a simple explanation for their 4-0 record: bad luck.

In 1968, it was the Vietnam War (which, they say, was not their fault) that did their candidate in. In 1972, their candidate was too much of an outsider, he was the victim of Watergate-style "dirty tricks," and he happened to pick a bad running-mate. In 1980, as Walter Mondale put it, "Events just sort of ganged up on us...Economics, inflation, the prime rate, unemployment, the hostage issue, the frustration of U.S. Soviet relations...none of these made people feel good about what was going on. We happened to be in office and we took the blame."

When Ronald Reagan won more electoral votes than any President in history, the explanation was that Americans were voting for the man who looked the best on television, and that .. by an incredible coincidence! ...1984 just happened to be a year of peace and prosperity.

The liberals are kidding themselves. For 20 years, Ronald Reagan has been the nation's leading proponent for the conservative philosophy. He made a national television address for Barry Goldwater in 1964. He was the choice of most conservatives for the GOP presidential nomination in 1968. Since 1974, he has been the keynote speaker at the annual Conservative Political Action Conference nine times. In 1976, he led a conservative revolt against an incumbent president and nearly succeeded. In 1978, he led conservatives in

the fight against the Panama Canal treaties. By 1980, when he was elected president, Ronald Reagan was Mr. Conservative in American politics.

On the other hand, Walter Mondale was the first youth leader of the nation's premier liberal organization, the Americans for Democratic Action. He was Hubert Humphrey's campaign manager. In the early 1970s, he was "Mr. Busing," ranked as the most liberal member of the U. S. Senate, and he was the arch-rival of the most conservative Senator, Jim Allen (D-Alabama).

The voters knew what this election was all about: a choice between two philosophies, two ways of looking at the world, two ideas of the proper role of government in our lives. They did not choose on the basis of which candidate looked more wrinkled, or which had bags under his eyes. Einstein, explaining that nothing really happens by chance, said, "God does not play dice." Neither do the American people.

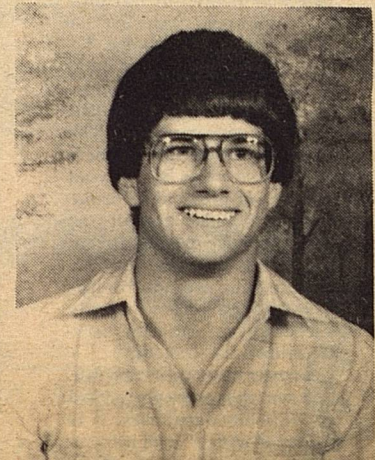
President Reagan's landslide reelection reveals a fundamental change in the way people look at government, at America's role in the world, and at themselves. His showing among traditionally Democratic groups such as urban Catholics, blue-collar workers, Southerners, and Hispanics proves that his philosophy appeals to people of diverse backgrounds. During the next four years, he can use his office as "a bully pulpit", and he can make millions more converts in the never-ending battle between Reaganism and Mondale-ism.

As President, he has it in his power to appoint people to positions of power, to propose legislation, to reorganize the

con't to 4



SHAWNA VAUGHN Most Beautiful



KIRBY WILLIAMS Most Handsome

MOST HANDSOME AND MOST BEAUTIFUL PRESENTED

Shawna Vaughn received the coveted title of "Most Beautiful" and Kirby Williams was presented as "Most Handsome" of BHS during the annual Beauty Pageant last week. Shawna was chosen from 14 lovely girls for the title. She is the daughter of Mr. and Mrs. Charles Vaughn of the Plains Community. Kirby is the son of Mr. and Mrs. Kenneth Williams, also of the Plains. Mickey Burkett, son of Mr. and Mrs. Jim Burkett was the other candidate for "Most Handsome".

The competitors modeled in day wear and long dresses during the hour long pageant.

The top eight contestants were Shawna, Nancy Martinez, Kim Turner, Samantha Porter, Mindy Williams, Charla Buchanan, Jeanette Massingill and Cathy York.

After much studying by judges, Mr. and Mrs. Dean Andress of Plains, the top five beauties were chosen. Shawna was picked as the blonde, slender winner for the number

one spot. Nancy Martinez was first runner-up, Kim Turner was chosen for the second-runner up spot. Samantha Porter, who competed on crutches, due to basketball injuries, was 3rd runner-up. Mindy Williams claimed the 4th runner-up spot.

The girls did a lovely job...which is not easy. The annual staff sponsors the event each year under direction of Mrs. Netta Jarrett. The purpose is to help the high school girls to learn poise and have the experience of performing before an audience.

LETTER TO THE EDITOR

DEAR EDITOR

This letter represents my own opinion, but the article in the Star November 13th under the headline, "Farm Crises Depicted in 'Country'" gave our distinguished Commissioner of agriculture, Jim Hightower, a forum to express his own one-sided opinion, under the disguise of a "news" story.

It would be nice if problems in life were as black and white as our distinguished Ag.

Commissioner believes the farm economic situation to be.

An opinion poll taken by Farm Journal shows farmers to be split 43 percent against any kind of government "bail out" program for farmers, 41 percent in favor, and 16 percent gave no opinion.

The farmers opposed to a "bail out" gave as reasons;

1. Over half the farmers in the nation are not in financial

difficulty, they are fairly liquid and have little or no debt.2. Some farmers are in trouble of their own making. They gobbled up high priced land and equipment during the 70's as if farming would never see another bad day, and now that the lean times are here, the government should not bail them out.

3. Any kind of a "bail out" program whether it is principle

con't to 6

BORDEN SCHOOL NEWS

THEN NOW!

The National Library of Medicine (NLM), founded in 1836 in a virtual cubbyhole in the Surgeon General's Washington office, is now in a most healthy state.

It is the world's largest health science library and runs on an annual budget of \$46 million. Its collection, unrivaled in the world, contains more than three million books, journals and related non-print materials.



The world's largest and finest medical library not only stores information but has been used to save lives.

Twenty years ago the library pioneered in harnessing computers in the service of medical bibliography. Today, modern communications technology has been introduced into all areas of the library's responsibility. The result is, thousands of users of NLM services have a vast amount of medical information available, literally at their fingertips. Computer terminals in 2200 medical institutions provide on-line access to the library's highly successful information service known as MEDLARS.

Last year more than two million searches were performed on MEDLARS databases. It is the most widely used information resource in bio-medicine and has even been credited with saving human lives by providing rapid access to published information needed to treat patients.

The Borden Star
Publication No. 895520
(USPS 895-520)
Publication No. 895520

Editor
Barbara Anderson

Published weekly, except for Christmas and New Years, on Wednesday at Gail, Borden County, Texas 79738, Box 137, Kincaid Street, Second Class postage paid at Gail, Texas.

Any errors that we make reflecting on the reputation or standing of any Firm, Corporation, or individual that may appear in the columns of the Borden Star will be gladly corrected when called to the attention of the staff.

Subscription Rates:
\$8.00 per year

Borden Star Owners
James McLeroy, Barbara Anderson, Doris Rudd, Pat Porter, Bob Dyess, Edna Miller, Ruth Weathers, Mrs. Nathan Zant, Sonny Tucker, Eddie Simer, Loreen Jones, Martin Parks, Dan Turner, Lela Porter, and Marge Toombs.



HIGH SCHOOL BETA ACHIEVEMENT
Will Phinizy, Charla Buchanan, Shelly Lewis and Jeanette Massingill.



JUNIOR HIGH BETA ACHIEVEMENT
Front-Kate Phinizy, Cody Stone, Eric Lusk, Shayne Hess, Shara Woodward. Center-Jim Ridenour, Chad Williams, Pat Underwood, Amanda Anderson. Back-Kristy Adcock, Kristy Holmes, Amy Lewis, Rachael Romero, James Smith and Randall Hollis.



ELEMENTARY AND JR HIGH HONOR ROLL
Seated-Randi Woodward, A'Lise Lloyd, Kristen Monger, Kelly Ogden, M'Lys Lloyd. Center-Shane Kemper, Kristin Kilmer, Monika Hicks. Back-Elvira Balague, David Buchanan, Alex Lemons, D'Lyn Lloyd, and d'Arceyanne Lemons. Not pictured Lance Telchik.

"A skeptic is not one who doubts, but one who examines."
Charles-Augustin Sainte-Beuve



HIGH SCHOOL HONOR ROLL
Seated-Cam Stone, Mickey Burkett, Dana Gray. Back-Samantha Porter, Kelli Williams. Not pictured Becky Massingill

HIGH SCHOOL HONORS

The below named students have achieved honors for the second six-weeks period. These students achieved an academic evaluation of 90 or above in each subject.

BETA ACHIEVEMENT

Jeanette Massingill	12
Charla Buchanan	11
Shelly Lewis	9
Will Phinizy	9

The following students achieved an academic average of 90, with no evaluation less than 85 in a subject.

HONOR ROLL

Becky Massingill	12
Samantha Porter	12
Cam Stone	11
Dana Gray	10
Mickey Burkett	10
Kelli Williams	

ELEM AND JR HIGH HONORS

The following students have achieved honors for the second six-weeks period. These students achieved an academic evaluation of 90 or above in each subject.

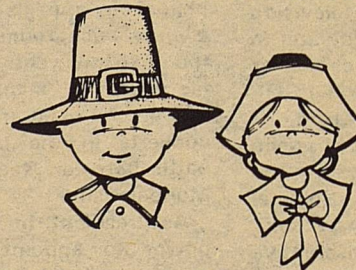
BETA ACHIEVEMENT

Kate Phinizy	8
Randell Hollis	8
Kristi Adcock	7
Christy Holmes	7
Amy Lewis	7
Jim Ridenour	7
Rachel Romero	7
James Smith	7
Cody Stone	7
Chad Williams	7
Eric Lusk	6
Amanda Anderson	5
Shane Hess	5
Shara Woodward	5
Patsy Underwood	5

The following students achieved an academic average of 90, with no evaluation less than 85 in a subject.

HONOR ROLL

Elvira Balague	8
Alex Lemons	8
D Lyn Lloyd	8
Randi Woodward	7
Lance Telchik	7
Shane Kemper	6
Monika Hicks	6
d Arcey Lemons	6
David Buchanan	5
M Lys Lloyd	5
A Lise Lloyd	5
Kristin Kilmer	5
Kristin Monger	5
Kelly Ogden	5



Giving thanks

SCHOOL BOARD MEETING

The Board of Trustees of the Borden County Independent School District met in regular session on Monday, November 19 at 8:00 p.m.

After routine business of minutes, bills, and reports; the Board heard the Superintendent's report of the financial status of the district and also the personnel report. The district was reported to be operating well within the budget of the new fiscal year. The attendance was reported to be 152 in elementary school and 65 in high school for a total of 217.

In other business, the Board looked at preliminary plans for 2 racket ball courts to be housed at the back of the school between the new gym and rootball dressing room. It was decided that Larry Donham,

architect in Andrews, be contacted to draw up plans.

The Board appointed the following Textbook Committee to serve for the 1984-1985 school year:

- James McLeroy, Chairman
- Mickey McMeans
- Ben Jarrett
- Doris Steadman
- Ann McLeroy
- Shirley McMeans
- Dorothy Gray
- Dolores Wolf
- Fred Ridenour
- Carol Lewis
- Bill May
- Dave Briggs
- Rita Kilmer
- Joe Copeland

There being no further business, the meeting was adjourned



TOP FIVE BEAUTIES

L to R-Mindy Williams, 4th Runner-up, Samantha Porter, 3rd Runner-Up, Kim Turner, 2nd Runner-Up and Nancy Martinez, 1st Runner-Up and The Winner and "Most Beautiful of BHS, Shawna Vaughn.

THANK YOU

I would like to express my thanks to everyone who has supported me over the past few years in my position as Commissioner Precinct 1. I appreciate the confidence and trust that you showed me over so many years.

I have been honored to have served you in this capacity.

Sincerely,
Herman Ledbetter



The Roman numerals at the base of the pyramid on the back of a dollar bill signify 1776 when the Declaration of Independence was signed.

Christmas
in November

presented by the Clayhouse

showing Christmas ornaments, decorations,
gifts for all occasions.

Tuesday, November 27th.
4-6 P.M. Come & go.
at Jim Smith's old house
in Crail.

(915)

for more information 399-4583



Security State Bank

PARENTS CLUB MEETING

Big Spring, Texas

Member F.D.I.C.

1411 Gregg

NOVEMBER 1984

Sunday	Monday	Tuesday	Wednesday	Thursday	Friday	Saturday
<small>OCTOBER 1984 S M T W T F S 1 2 3 4 5 6 7 8 9 10 11 12 13 14 15 16 17 18 19 20 21 22 23 24 25 26 27 28 29 30 31</small>	<small>DECEMBER 1984 S M T W T F S 1 2 3 4 5 6 7 8 9 10 11 12 13 14 15 16 17 18 19 20 21 22 23 24 25 26 27 28 29 30 31</small>			1	2	3
4	5	6 <small>4:00 p.m. H.S. Scrimmage Girls Only Forsan - There</small>	7	8	9 <small>End 2nd 7:30 p.m. H.S. Football Grady - There</small>	10 <small>Six Weeks</small>
11 <small>VETERANS DAY</small>	12 <small>4:00 p.m. H.S. Scrimmage Girls Only Grady - There</small>	13	14	15	16	17
18	19	20 <small>5:00 p.m. H.S. Basketball Girls & Boys Roby - Here</small>	← THANKSGIVING HOLIDAYS →			24
25	26 <small>6:00 p.m. Jr. Hi Basketball Girls & Boys Klondike - There</small>	27 <small>6:30 p.m. H.S. Basketball Girls & Boys Loop - Here</small>	28	29 <small>SANDS BASKETBALL TOURNAMENT High School A Girls-A Boys</small>	30	

Cooking Corner

November 26-30, 1984

Monday	Barbecued Franks Ranch Style Beans Cabbage Slaw Fruit Hot Rolls Milk	Salad Bar
Tuesday	Green Enchiladas Vegetable Salad Corn Fruit Cobbler Milk	Salad Bar
Wednesday	Chicken Bits Mashed Potatoes Green Beans Mixed Fruit Hot Rolls Milk	Salad Bar
Thursday	Lasagna Vegetable Salad Scalloped Potatoes Hot Bread Pudding Milk	Salad Bar
Friday	Hamburgers French Fries Lettuce & Tomatoes Brownies Milk	Salad Bar

The Kandyland Express

The Borden Star, Wed. Oct. 31, 1984....5

By Kandy McWhorter

BORDEN COUNTY 4-H FOOD SHOW

Jim Evans, Mendy Hensley, Shayne Hess, Angela Evans, A'Lise Lloyd, Cody Stone, Lance Telchik and D'Lyn Lloyd will represent Borden County 4-H in the District 4-H Food Show at Texas Tech University on December 1.

These 4-H'ers earned this right by placing first in their age division and food category at the Borden County 4-H Food Show held Saturday, November 17, 1984 in the 4-H Exhibit Building in Gail.

The results of the food show were as follows:

Junior 1 Division-Jim Evans, blue award, fruits and vegetables; Mendy Hensley,

blue award, nutritious snacks and desserts; Shayne Hess, blue award, main dish.

Junior 2 Division-Angela Evans, blue award, main dish; Kristen Kilmer, blue award, main dish; A'Lise Lloyd, blue award, breads and cereals; Cody Stone, blue award, nutritious snacks and desserts; M'Lys Lloyd, blue award, nutritious snacks and desserts; Lance Telchik, blue award, fruits and vegetables.

Senior Division-D'Lyn Lloyd, blue award, main dish.

These 4-H'ers are congratulated on a job well done.



4-H Craft Day- A'Lise Lloyd, D'Lyn Lloyd, Cody Stone, Lance Telchik, and Angela Evans



Food Show Participants-Kristin Kilmer, Shayne Hess, Cody Stone, Lance Telchik, M'Lys Lloyd, Jim Evans, D'Lyn Lloyd, A'Lise Lloyd, Mendy Hensley, and Angela Evans.



The world's first known zoo was kept by Queen Hatshepsut of Egypt about 1500 B.C. Giraffes, monkeys and leopards were part of the collection.

COMMISSIONERS COURT

The Borden County Commissioners Court met October 22 for the regular monthly meeting with all members present.

Minutes were read and approved. The current accounts were examined and the decision was made to pay them.

Billy Flint met with the Court to request the alleys in Block 26, Gail Townsite, be closed. No

action was taken because utilities are located in the alleys.

A new car to be used by the Sheriff was discussed. Any action was tabled until specifications are ready.

The motion was made to join the Texas Association of Counties for Worker's Compensation Insurance to start November 1st. The motion was seconded and approved.



Food Show Winners-Shayne Hess, Jim Evans, Lance Telchik, Cody Stone, Mendy Hensley, A'Lise Lloyd, D'Lyn Lloyd and Angela Evans.



4-H Craft Day-Angela Evans, Kristin Kilmer, Ty Parks, Denise Parks, Connie Voss, Jason Sharp and D'Lyn Lloyd

"Put all your eggs in one basket and watch that basket."
Mark Twain

OBITUARY Leroy Summer

Services for Leroy Summer, 68, iiof Carlsbad Oklahoma was held recently at a Denton Funeral Home. He died at a local hospital. Cremation was at Elfoso Creamatorium.

Leroy Summer was born in Ft. Stockton, Texas, and was a cowboy working on area ranches in the southwest. He lived in Big Springs and Gail, Texas, and moved to Carlsbad from Wilcox, Ariz., 10 years ago. He married Betty (Julia E.) Gardenhire in Lordsburg in 1962.

Survivors include his wife, Betty, Carlsbad; two sons, Elwin Summers, Ojai, Calif., and Maj. Thomas Michael Summers, El Paso, Texas; two brothers, Waldon Summers, Woodville Mississippi, and A. C. Summers, Wichita, Kan.; three sisters, Wilma Belle Clarkson, Refugio, Texas, May Gardenhire, Junction, Texas, and Marceline Whitcomb, Columbus, Texas; and four grandchildren.

Leroy always stopped by to visit some of his friends when he was in Gail. He stopped by in October and had breakfast at the cafe. His grandfather, Grandpa Smoot, laid the stone for the old Jail here. He also gave dances at the old barn that burned recently.

BAD LUCK

con't from 1

government. But Ronald Reagan has an even greater power: the ability to change people's minds.

That is why so many liberals put their careers on the line for Walter Mondale. When Fritz said the future of this country was at stake in the election, he meant it, and he was right. You can be sure, though, that the 1984 election will be written off as yet another in a series of flukes denying liberals their rightful place in the White House.

How long can they keep blaming their electoral defeats on bad luck? Maybe forever. After all, the Soviets blame poor harvests on bad weather...and the weather in the Soviet Union has been bad for 67 consecutive years.

Classified

HELP WANTED
\$60.00 PER HUNDRED PAID
for processing mail at home!
Information, send
self-addressed, stamped
envelope. Associates, Box 95,
Roselle, New Jersey 07203

Help Wanted

Federal, State & Civil Service
Jobs available. Call 11-(619)
569-8304 for info. 24 hours.



Visit Our Deli

Party Trays Pastries Custom Cakes

710 N. 4th

Lamesa

ASCS NEWS

by Jerry Stone

4-H'ers PLACE AT RINGMASTERS SHOW

ALAN DAY

Five Borden County 4-H members competed at the 1984 Ringmasters Lamb Futurity and MGM Lamb Show November 17th and 18th in Seminole.

406 lambs were on hand for the show. Shane Hess Showed 3 lambs in the MGM show placing 1st in the Griffin part of the show. She was then eligible to show in the top 15 which was comprised of the best lambs from Jim Miller, Richard Miller and Monty Griffin, all sheep breeders. Shane placed 5th overall and won a black face ewe. Tammy Voss also competed in the MGM placing 10th with a Jim Miller lamb.

In the Ringmasters Futurity on Sunday, Tammy Voss placed 3rd in the lightweight crossbred class in very stiff competition. Dana Gray showed her middleweight cross bred to a 7th place finish and Brice Key placed 12th with his light weight cross.

Tammy also placed her Hampshire lamb 8th in the heavy weight class. Ralynn Key showed her heavyweight suffolk

to a 14th place finish. Shane Hess placed 10th and 21st in the lightweight Suffolk class and Tammy placed 20th with her middle weight suffolk lamb.

All in all, the kids did an excellent job and gained an untold amount of experience in the process.



Wood Burning Safety Checklist

Using wood for home heating is helping many Americans save energy dollars these days. September is Wood Energy Month, but any month is a good time to find out more about the value of using wood fuel and the safety precautions you should take.

You may already be heating with wood or considering the purchase of a wood stove, fireplace, or fireplace insert. Before you make a selection or start that first fire, use this safety checklist from the Wood Heating Alliance.

three years. Otherwise, diversion payments will be based on a yield lower than the established yield unless the county committee can determine these acres have the same yield capability as the rest of the farm.

COTTON LOANS

The 1984 cotton loan rate is 55.00 cents per pound for SLM 1-16. The loan interest rate for November is 11.25 percent.

All gins operating in the county have signed agreements to use specification bagging and ties.

Deer Need Better Supplemental Feed

By Ricky Linex
Range Conservationist

This time of year a lot of people are visiting deer leases and filling deer feeders. Most supplementation by feeding is done to attract deer to areas for ease in hunting. Sometimes it is an attempt to hold them within a general area to prevent their harvest somewhere else. Generally, feeding begins prior to and during the hunting season. Few hunters continue this feeding program after the season closes. Supplemental feeding can be used to boost antler growth if fed from late winter until the end of August.

Corn is used more than any other feed, but is low in protein and high in carbohydrates. Protein is required to produce body tissue and carbohydrates produce energy for functioning of the body. The best feed would be a balanced ration which would include both carbohydrates and protein. An effective ration is one that contains 15-18 percent protein and is in three-sixteenths inch pellets. The reason for pelletization is that in a loosely mixed feed, deer will pick out and eat only what they want, leaving the remainder. I have copies of two formulas for rations that fit these

BID NOTICE

Borden County Commissioners Court will receive bids until 10:00 a.m., December 10, 1984 for the purchase of one new 1985 automobile for use by the Borden County Sheriff's Department.

Information and specifications may be obtained at the offices of the County Judge, 915-856 4391 or the Sheriff's Office, 915 856 4311.

BY ORDER OF THE BORDEN COUNTY COMMISSIONERS' COURT

Van L. York
County Judge
Borden County

Also, cotton production cards have been mailed to producers. If additional cards are needed, they can be obtained here at the ASCS office.

WOOL PROGRAM

Now is the time to bring in 1984 sales receipts for wool or unshorn lamb purchases. The deadline for signing the application for the 1984 incentive payments is January 31, 1985.

HOLIDAY

This office will be closed on November 11 for Thanksgiving.

requirements. Contact me if you would like more information about these rations. Our address is 3423 Ave. 1 or you may call 573-0171.

ACP SIGNUP

Beginning on November 26th we will accept applications for cost-sharing of conservation work to be done on farms and ranches. The signup will be for both the annual program and the long term agreement (LTA) program. Annual practices are cost-shared at 50 percent while LTAs are cost-shared at 65 percent. Applications will be accepted through December.

COMMITTEE ELECTION

The slate of nominees for the 1984 committee elections has been developed and ballots mailed to all eligible voters on November 21st. All voted ballots must be returned to this office or postmarked by December 3rd to be counted. Please take time to vote for your representative to serve on the committee for the next 3 years.

1985 PROGRAM

Signup continues for participation in the 1985 wheat, cotton, and feed grain programs until March 1, 1985. Base acreage reductions have been announced at 10 percent for feed grains and 20 percent for cotton and wheat. Cotton and wheat participants must also reduce an additional 10 percent of the base for paid land diversion. Making an overall reduction of 30 percent for these two crops. Advance payments are authorized at 50 percent of the projected rates. Advances may be made as soon as all required signatures are obtained on the contract. The contract to participate becomes binding and liquidated damages apply for non compliance on March 1, 1985.

1985 ACR

Reduced crop acres designated as Acreage Conservation Reserve (ACR) must have been planted or considered planted at least two of the last three years. A protective cover on these acres will be required. A small grain cover on ACR is excellent for several reasons:

1. protects ACR during principal blowing months
2. can be grazed until April 1, 1985
3. can be allowed to stand and mature if small fee is paid
4. will guarantee that planted low lying area will qualify as ACR

Of course, there are several other covers acceptable for ACR.

Cotton paid diversion acres have an additional requirement to receive payment at the full established farm yield. These 10 percent of base acres actually must have been planted to cotton at least one of the last

Public Notice

Pursuant to an order of the Public Utility Commission of Texas in Docket No. 5926, notice is hereby given that Southwestern Bell Telephone has filed a Feature Group "E" (FGE) Access Service as a new tariff offering to meet the needs of Cellular Mobile Radiotelephone Common Carriers.

The new tariff offering will also be available, on an optional basis, to Radio Common Carriers authorized to provide domestic public land mobile radiotelephone and paging services.

FGE Access Service will be provided as trunk side switching with line treatment at suitably equipped Telephone Company electronic end offices and other end offices where equipment is available. The proposed rates for FGE Access Service are on a minutes of use basis.

A number of common switching optional features will be available with FGE Access Service, including Class of Call Screening, up to 7-digit outpulsing of called party telephone number of customer, delay dial start-pulsing signaling and dial pulse address signaling. Certain additional optional features will be offered in connection with FGE Access Service under other tariffs of the Telephone Company, including blocks of telephone numbers and Billed Number Screening.

Southwestern Bell Telephone Company customers interested in participating in this hearing or needing additional information, should write to the Public Utility Commission of Texas, 7800 Shoal Creek Blvd., Suite 400N, Austin, Texas 78757. Further information may also be obtained by calling the Commission's Consumer Affairs Division at 512/458-0223, 512/458-0227 or teletypewriter for the deaf at 512/458-0221.

Aviso Público

En conformidad con una orden de la Comisión de Servicios Públicos de Texas bajo el Docket No. 5926, se anuncia mediante el presente aviso que Southwestern Bell Telephone ha registrado un Servicio de Acceso para el Grupo de Clasificación "E" (o sea Feature Group "E", o FGE) en una nueva opción tarifaria destinada a responder a las necesidades de las Empresas de Telecomunicaciones Radiotelefónicas Celulares Móviles.

La nueva tarifa estará disponible también, en forma opcional, para las Empresas de Radiocomunicaciones autorizadas para proporcionar servicios nacionales públicos de radiotelefonía móvil terrestre y de altavoces.

El Servicio de Acceso FGE se proporcionará mediante conmutación de cable troncal con tratamiento especial de la línea telefónica en centrales terminales electrónicas de la compañía de teléfonos que estén debidamente equipadas, y en otras centrales terminales que tengan disponible el equipo. Las tarifas propuestas para el Servicio de Acceso FGE se computan por minutos de uso.

Junto con el Servicio de Acceso FGE se ofrecerán varias opciones de conmutación central, incluyendo Investigación de la Clase de Llamada (Class of Call Screening), representación visual de hasta 7 dígitos del número telefónico llamado por el usuario, retardo de la señal para transmitir y señalización de la dirección para marcar. También se ofrecerán algunas opciones adicionales en relación con el Servicio de Acceso FGE bajo otros sistemas tarifarios de la Empresa Telefónica, incluyendo restricciones a bloques de números telefónicos e Investigación del número al que se carga la cuenta (Billed Number Screening).

Los usuarios de Southwestern Bell Telephone Company que estén interesados en participar en esta audiencia, o que requieran mayor información, deben dirigirse por escrito a: Public Utility Commission of Texas, 7800 Shoal Creek Blvd., Suite 400N, Austin, Texas 78757. También puede obtenerse información adicional llamando a Public Utility Commission Consumer Affairs Division al 512 458-0223, al 512/458-0227, o al 512 458-0221 si requiere teletipo para personas con impedimentos de audición.



Southwestern Bell Telephone



State Treasurer Ann Richards and Texas Land Commissioner Garry Mauro examine a sampling of monthly payments for the Veterans Land Program that are part of a new Rapid Deposit Program started by the Treasurer's office.

RAPID DEPOSIT SYSTEM PART OF COOPERATIVE EFFORT TO SAVE TAXPAYERS MONEY

Austin-Land Commissioner Garry Mauro and State Treasurer Ann Richards have begun a rapid deposit program for the Veterans Land Board that will save the state more than \$100,000 in expenses and in additional earned interest.

The cooperative effort is part of the Treasurer's Rapid Deposit Program started last year in an effort to place state money in interest bearing accounts as quickly as possible.

Each day lost in depositing state receipts is a loss of interest

income. Ms. Richards explained. "In the case of the Veterans Land Board, each day saved in getting money to the bank is an additional \$11,000 per year earned by the state."

Today's fiscal reality demands that government use cost-efficient modern cash management techniques to squeeze the most out of every state tax dollar," Mauro stressed.

A rapid deposit system will enable us to increase state revenue," Mauro said, "while at the same time substantially reducing administrative and clerical costs."

The system, called a "lockbox system," is widely used by large corporations to efficiently handle large volumes of standardized receipts.

In the case of the Veterans Land Board, which receives about \$50 million annually from Texas veterans participating in the Texas Veterans Land Program, the payments will come to a central post office box. That box will be emptied daily and receipts deposited in an interest bearing account the same day of delivery.

In 1985, the Veterans Land Board is expected to receive 140,000 individual payments.

The lockbox system will cut about two days off the former method of handling Texas Veterans Land Program payments, resulting in increased interest earnings of about \$22,000 per year.

In addition, the General Land Office will save \$72,000 in clerical expenses because of the use of automated equipment to handle the payments.

The Land Office will achieve additional savings because it will not need to purchase such

automated equipment, which will be supplied by the depository bank. The purchase price and installation of that equipment would have cost \$77,700 and would have required an annual maintenance cost of \$3,000.

Letter to Editor

con't from 1

buy down or reduced interest loans, costs the taxpayer. The successful farmer is paying taxes to help finance the farmer in trouble, so that all can raise more surplus crops and drive prices down further, and can all go to the financial market competing for credit and pushing interest rates up.

The farmers in favor of a "bail out" program stated these reasons:

1. Approximately 10 percent of farmers in some states are in danger of going out of business in 1985. If this much land is dumped on the market all at once, it will cause real estate prices to be further depressed and erode the equity of some other borderline farmers.

2. Only "good managers" would be eligible for "bail out" programs.

3. The security of smaller agriculture banks is threatened unless a government program can guarantee some of their loans.

As to our distinguished Commissioner of Agriculture's parting shot, that a "handful of

big conglomerates will dictate the price of food when they take over agriculture", this is always the scare tactic the radicals use when they run out of facts. The fact is, "corporate agriculture" has been a miserable failure in this nation. The average size farm is still around 1000 acres and although many medium size farmers (360-480 acres) cannot make a living from farming, the prospects for 1000 acre and larger farmers is good and there will be more small part-time farmers who will work in town and raise their families in the country.

I appreciate how a person even someone as distinguished as our Commissioner of Agriculture, can be fearful of changes in rural Texas. But I wish he would get back to Austin and stop his Department of Agriculture from trying to change the pesticide regulations in a way that will load more unnecessary red tape on Texas farmers.

Sincerely,
Jack McPhaul

THANK YOU

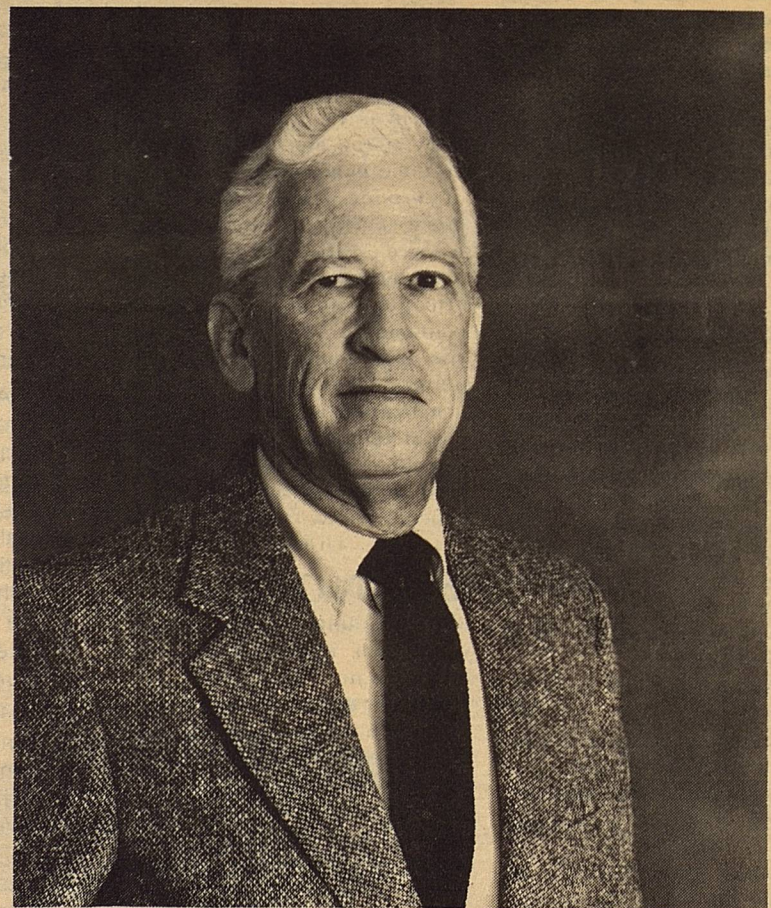
I WISH TO THANK ALL OF YOU

WHO SHOWED YOUR
CONFIDENCE IN ME
AT THE POLLS

I WILL STRIVE TO BE
DESERVING OF THAT
CONFIDENCE
AS A FAIR AND IMPARTIAL
DISTRICT JUDGE

SINCERELY,

Gene Dulaney



GENE DULANEY



Her Great Danes Dixie and Deacon escort Virginia Jackson of Lubbock on an early morning jaunt in Burns Park at 24th Street and Avenue K.

(Staff Photo By David Johnson)

EVEN PETS CAN'T ESCAPE SOCIAL REVOLUTION

This year, according to reports from the American Kennel Club, although poodles and cocker spaniels are still the two most popular dogs, the third to sixth places have been snagged by labrador retrievers, Doberman pinchers, German shepherds, and golden retrievers, all dogs with a great deal of bulk.

You wouldn't think much changes in the way of pet products, meaning leashes, leads, treats and toys for the family pooch, kitty or parakeet. After all, pets are rarely influenced by fashions, the latest films or a new TV campaign for treats.

Pet products can and do change, however, according to Patrick K. Stewart. He's president of the ConAgra Pet Products Company, which makes the Geisler "Snoopy" products you find in supermarket pet centers, and a man who knows that the social revolution in this country has touched his industry too, and in interesting ways.

Products change as people's preferences in pets change, says

Stewart. These preferences shift, he believes, as people's lifestyles and their reasons for owning pets change.

Stewart attributes the changes in breed preferences to the new social patterns in this country. He specifically refers to the shift from the nuclear family to the single-person household.

When the American family consisted of a husband, wife and two children, parents purchased a dog to fulfill a responsibility to their children, he feels. Their choice was usually a beagle, terrier, scottie or another kind of mid-size pup the grammar school textbooks called "Spot."

In today's world, however, with the nuclear family all but shattered, the result has been a greater desire for large dogs. Nowadays, single adults get "Killer" for protection or at least a larger "Spot" for companionship, says Stewart.

"If you told people back in the 40's that half of all marriages would end in divorce and a sizable adult population would be living alone, people would have thought you were crazy,"

he comments. "In our industry, we haven't seen the change reflected in peoples' desire for pets, but in their reasons for wanting them and in the pets they buy."

ConAgra Pet Products Company sees these changes evidenced in greater sales of heavy duty leashes, chain chokers, larger toys and more substantial treats. "Our sales confirm the AKC reports," says Stewart.

"There's been speculation as to why large dogs have become popular, but the social facts indicate that they're primarily bought for protection," affirms Stewart. "It's almost like medieval days, when people needed dogs to protect them from robbers."

People living alone also want companionship, and in addition, Stewart cites a third reason certain pets are popular today. "Dog-walking has become the new way for singles to meet," he explains.

Stewart also says that, unlike the pattern of past decades, women are now significant pet

purchasers. Up until recently, pet ownership fell almost exclusively into the male dominion.

"The new young professionals, people living alone, and couples without children have more money to spend on their pets," says Stewart. He believes people feel good about bringing an appealing product home to their pets.

Pet changes are dramatic, says Stewart, and more far reaching than merely changes in breed preferences for dogs. Entire categories of pets move up and down in popularity, he says.

Birds, for example, are more popular now than in recent years. The reason: Working people need easy care pets.

"You only have to feed a bird and change the paper," he says. "You can also leave it alone for

long periods of time."

Fish, on the other hand, have declined in popularity in recent years. Today's population hasn't got time to clean out the tanks, Stewart says.

If Stewart has a prediction for the pets of the future, it's based on the lifestyles of today.

"We'll see more large dogs as the number of single person households continues to grow," says Stewart. "We'll also see more easy care pets as today's young professional continues his active lifestyle," he adds.

If there's a pet of the future, Stewart predicts that it could be the rabbit, a quiet, gentle, easy care pet that even learns to use a litter pan the same way a cat learns to use one.

How soon will it catch on?

Says Stewart: "We've already seen sales of rabbit food on the rise."

ALZHEIMERS DISEASE INCURABLE

Alzheimer's Disease claims a dark distinction in an age when medical science has eradicated most of the classical dread diseases: It is incurable, and its cause is still unknown.

But while 1.5 million Americans today are afflicted with this progressive, deteriorating nerve disease that claims at least 120,000 lives a year, few people even know what it is until it strikes in their family.

Alzheimer's Disease is the major cause of senile dementia and results in gradual loss of the ability to reason, remember and feel emotion. Death usually comes within seven to 10 years, but it can take as long as 20 years. The slow, protracted course of the disease makes it one of the most heartbreaking a family can endure.

Governor Mark White, recognizing that the extent and severity of Alzheimer's ravages are still unknown to most of the general public, has designated November as Alzheimer's Disease Public Awareness Month in Texas.

"I...urge all citizens to learn more about this affliction and to support the search for its causes and possible cure," White said in his official proclamation.

Thanks to diligent research, some hope now exists for the 1.5 million Americans who have Alzheimer's Disease. Scientist at Dartmouth University last month announced encouraging results from a treatment that uses chemicals to improve the brain's ability to carry neural "messages."

The researchers stressed, however, that no final cure is being claimed.

While that cure is being sought, Alzheimer's Disease remains the fourth leading cause of death in the United States and occurs in two to three percent of the total population. It is the most frequent cause of institutionalization of the aged in long-term care facilities. In 1983, the United States spent more than \$27 billion in public funds for nursing home care, of which about 60 percent supports the care of Alzheimer's patients.

These figures will more than triple by 1990.

Organizations such as the Alzheimer's Disease and Related Disorders Association (ADDA) and the Texas Department on Aging have committed all available resources to promoting knowledge of Alzheimer's Disease--



Mr. and Mrs. Harvin Moore welcome you to The Stagecoach Inn in Chappell Hill, Texas, 60 miles west of Houston. The restored Greek Revival structure, built in 1850, was a favorite stopping place for many Texans traveling from Houston to Austin or Waco by stagecoach. The 14-room Inn is listed in the National Register of Historic Places and is open to tours by appointment. TDA photo by Richard Reynolds.

'85 TEXAS STATE 4-H HORSE SHOW GOES TO ABILENE

College Station...The Expo Center on the West Texas Fair Grounds in Abilene will be the site of the 1985 Texas State 4-H Horse Show. The event is slated for next July 22-26.

The show, largest of its kind in the nation, had its beginnings on the campus of Texas A&M University in 1963, with some 200 4-H youth from throughout Texas participating, points out Preston Sides, 4-H specialist with the Texas Agricultural Extension Service, Texas A&M University System.

The Texas 4-H Horse Show began a tradition of rotation around the state in 1965 when it went to Dallas. It has also been held in San Antonio, Fort Worth,

Houston, Odessa, Sweetwater, Amarillo and Waco over the years, notes Sides.

The annual horse show consists of a series of events and classes ranging from stately showmanship at halter to the speed and excitement of pole bending and barrel racing, Sides points out. Precision riding skills are displayed by drill teams and both English and Western riders. Calf roping, cutting and all the "old west" skills are on display as some 600 youth, ages 9-19, compete in more than 30 different classes for the coveted title of State Champion.

"The city of Waco and the Heart O' Texas Fair have been the gracious hosts to this event

for the past three years," says Sides. "They have been responsible for some of the finest and most successful shows in the history of 4-H."

By moving the show to Abilene, 4-H families in western Texas will have better access to the facilities until it is time to move again, explains the 4-H specialist. Moving the show around enables folks to travel shorter distances when the show is held in their area. It also gives communities a chance to rally around this fine event and to use it to promote 4-H in their area of the state, adds Sides.

"The city of Abilene and the West Texas Fair and Rodeo have extended a most gracious invitation to the 4-H members of Texas to come to the Expo Center next July, and we all look forward to this twenty-second annual show," says Sides.

RICE AND COTTON EXCHANGE TO REINTRODUCE FUTURES CONTRACT

Immediately following CFTC approval, the Chicago Rice & Cotton Exchange will reintroduce its revised short staple cotton futures contract. It will be traded on the floor of the MidAmerica Commodity Exchange in Chicago. A unique agreement between the two Exchanges permits the CRCE to lease floor space, clearing services and other support activities from the Mid Am. The CRCE rough rice contract has traded under this agreement for more than a year.

When the cotton contract was traded in New Orleans, it enjoyed some success, but Exchange and industry leaders expect the recent contract

revisions to significantly increase the viability of the contract.

Bert Kyle, Vice President of Plains Cotton Cooperative stated, "It's been a long time coming, but the contract is now properly designed and will serve the cotton industry well."

Scott Minton, Stotler & Company's floor trader explained, "The short staple contract offers the cotton industry the opportunity to more precisely hedge short staple cotton and will offer the short staple producer a daily visible price for his production. This will allow "basis" trading at the local level."

"Experiment is a hard teacher because she gives the test first, the lesson afterwards."
Vernon Law

REYE SYNDROME

Reye syndrome is a rare but dangerous condition that can develop from flu or chicken pox. It occurs mainly in children under 16, usually when they appear to be recovering. Watch for these signs:

- Persistent vomiting
- Fatigue
- Confusion and belligerence.

If your child displays any of these symptoms, **consult a doctor immediately.**

Some studies indicate that there may be an association between the use of **aspirin** for flu and chicken pox and the development of Reye syndrome. Further studies are being conducted on this possibility. In the meantime, the **U.S. Surgeon General** suggests that you check with your doctor before using aspirin or any medication when your child has flu or chicken pox.

—A message from the Food and Drug Administration.

7, 1984

Win A Brand New 1984 Dodge Charger

SANTA ARRIVES

on
Christmas Day,
but look what you can have
Dec. 22 and
only in
Snyder!!



Yes, you can win
this new car or
one of 39 other
great prizes--

Register with the
Snyder Merchants
listed in this ad

SHOP SNYDER FIRST

Register at these progressive
Snyder Merchants for
the Gift of a Lifetime!

Margaret's
West Texas State Bank
The Carriage Wheel
Hoyt's Furniture
Merle Norman
Snyder Bookstore and
Gift Shop

Special Moments
Burgess-McWilliams Pharmacy
Joe Brown Carpet
Hinshaw's
B&D Restaurant
Strickland TV
Keaton Kolor
Snyder Pawn Shop
Friendly Flower Shop
Everybody's Thriftway
The Shack
Bar-H-Bar Western Wear
Snyder Athletic Center
Bed-Bath, Etc.

Haney's Jewelry
Snyder Drug
Roe's Furniture
Nancy's Art Style
Beauty Salon
Thompson's Shoes
Four Seasons
Kid's Duds
Snyder National Bank
Tot-2-Teen
Rags 'N Riches
White's Auto
Dryden's Shoes
Penney's
Anthony's
Snyder Savings and Loan
Interiors Etc.
and Gifts Unique
McLeod's Jewelry
American State Bank
Cox Jewelry

Complete Rules Available At Participating Merchants