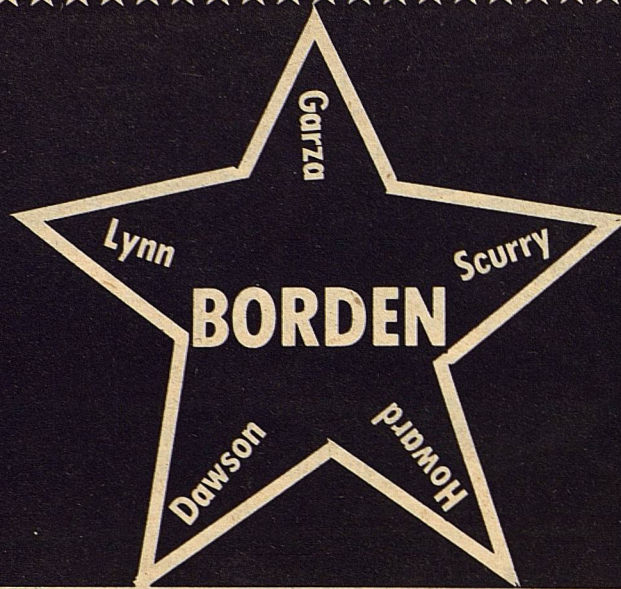


THE

Volume XI No. 46



STAR

August 15, 1984

Serving the Counties of Borden, Dawson, Garza, Howard, Lynn & Scurry



Winning smiles match the winning outfits worn by these junior division champions in the South Plains District 4-H Fashion Show at Lubbock. From left are: Nancy Beck, Dawson, active sportswear; Tammy Voss, Borden, non-tailored daywear; d'Arceyanne Lemons, Borden, evening and specialty wear, and Layne Young, Swisher, tailored daytime apparel.

VOSS, LEMONS TAKE TOP HONORS AT DISTRICT REVIEW

Tammy Voss and d'Arceyanne Lemons took top honors in the junior daytime non-tailored and junior evening and specialty wear categories, respectively, at the District 2 4-H Fashion Show on August 7, 1984. Tammy Voss also received the Cotton Award for her garment of 65 percent cotton. This award is presented to the highest scoring garment in each division in which the fabric content is at least 50 percent cotton. This

special recognition comes from Jo Ann Mock of Post representing the National Cotton Council.

Tammy and d'Arceyanne received a free McCalls pattern of their choice, a pair of Gingher thread snips and a \$25. gift certificate from Chance's Country Collection in Lubbock.

Other 4-H'ers participating from Borden County and their awards are as follows: M'Lys Lloyd, junior daytime tailored,

blue award; Kandy Belew, junior active sportswear, red award; Kristi Stone, senior daytime non-tailored, blue award; and Cathy York, senior active sportswear, red award.

These 4-H'ers competed against other 4-H'ers from the South Plains District which consists of the 20 counties surrounding Lubbock County.

Congratulations to these girls on a job well done.

SCHOOL REGISTRATION TO BEGIN FRIDAY

Students in all four grades at Borden County High School will begin advance registration Friday morning at 9 a.m.

The registration process will take place in stages, with each student assigned a registration time by his or her grade.

Seniors will register from 9 a.m. to 10:30 a.m. Juniors will follow them from 10:30 a.m. to noon.

Sophomores will register from 1 p.m. to 2:30 p.m. The freshman class will register from 2:30 p.m. to 4:30 p.m.

All books will be issued to the students when they register for classes.

Classes will start for all students at Borden County on August 20 at 8:10 a.m.

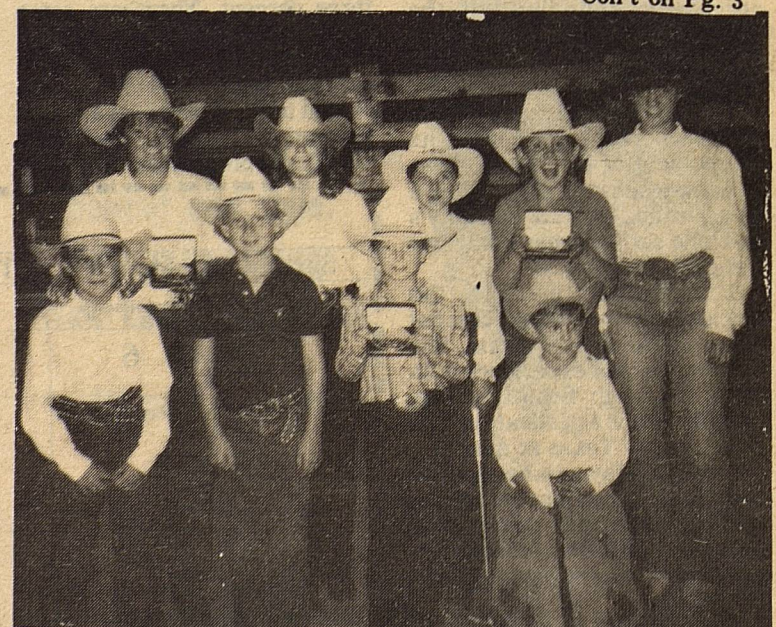
BORDEN COUNTY 4-H HORSE SHOW RESULTS

The annual Borden County 4-H horse show was held in conjunction with the third mock horse show point night, Monday night in the Gail arena. Marvin Ensor, County Extension Agent from Scurry County judged the show.

All-around winners in each age group for the county show are as follows: Pee wee, Jill Voss; Junior, Shayne Hess and Senior B. g. Kropp. Event results

are as follows: Pee wee showmanship, 1st Stormy Gass; 2nd Jill Voss; 3rd Kurt Hess. Pee wee Western Pleasure 1st Kurt Hess; 2nd Jill Voss; 3rd Stormy Gass; 4th Quentin Gass. Pee wee western riding 1st Kurt Hess; 2nd Stormy Gass; 4th Quentin Gass. Pee wee western riding 1st Kurt Hess; 2nd Stormy Gass. Pee wee pole bending 1st Jill Voss; 2nd Stormy Gass; 3rd Kurt Hess; 4th Quentin Gass.

Con't on Pg. 3



Borden County 4-H Horseclub members during the awards presentation of the County horse show. Backrow, B. G. Kropp, Kandy Belew, Tammy

Voss, Shayne Hess and Kathy Kropp. Front row, Stormy Gass, Kurt Hess, Jill Voss, and Quentin Gass.



9:00 a.m.

FLASH!!

Attend Steer - Lamb Feeding Clinic

sponsored by:

Ezell-Key Feed Mill

Western Texas College

Speakers:

Dr. Steve Hammack - Tarleton State

Tommy Stewman - Steers

Joe Ed Wise - Lambs

August 25





GAIL CAMPUS — Seen from the caprock, the Borden County High School and all the support buildings appears to be almost a community in itself. The school is located near Gail.

(Staff Photo)

Borden County stability continues

LAMESA PRESS REPORTER, LAMESA, TEXAS, SUNDAY, AUGUST 12, 1984.

It's been a long time since the residents of Gail have seen a change in the administration at the Borden County School District. They won't notice any change this year, either.

In fact, the newest member of the top administration at the school has held his position for the past 10 years. The top three administrators have a total of 41 years experience between them.

James McLeroy has been superintendent of the rural school system for the past 19 years. Mickey McMeans, the high school principal, has 26 years experience in the system, 12 of those years as principal.

Elementary principal Ben Jarrett has 23 years experience in the system, and has been principal for the past 10 years.

"We have a community that wants quality education," McLeroy said in explaining why the system has such a low turnover rate. "We are doing our utmost to provide a quality education for our students. We all want the same things."

The school board for the Borden school system is also unchanged from one year ago. Ralph Miller serves as president, Jack McPhaul is vice president, and Doyle Newton is secretary. Rounding out the board are Bob Dyess, Kenny Hensley, Bill Phinizy and Jon Monger.

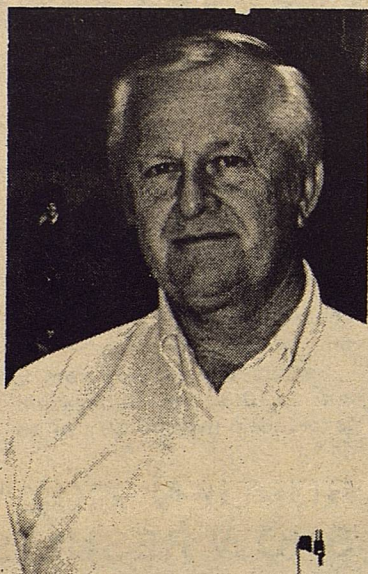
The system will have only two new teachers this year, out of its compliment of 25. One of those two new teachers will be filling a new position, so Borden County's teaching staff will have only one turnover this year.

Rita Kilmer will be the teacher for the newly created computer science program. She has two years of experience with John Jay High School in San Antonio. She is a graduate of The University of Texas at Austin.

Tamalah May will be the new special education teacher for the system. She has one year experience in Hermleigh and is a graduate of Angelo State University.

There is also little change in the student body. McLeroy said he expects the enrollment to average around 220 students this year about the same as it has been for the past 19 years.

The school draws the majority



JAMES McLEROY

of its students from the farms and ranches surrounding Gail. The school runs approximately 1,500 miles in bus routes each day to pick up students in the all areas of the district which covers approximately 921 square miles.

Although McLeroy said that Borden County is not the largest school district in the state, it is near the top of the scale. "I'd say that we rank at least in the top three percent. There are some larger than us but not many."

The district tries to offer a well-balanced curriculum accented toward the college-bound student. "We don't offer many vocational programs," McLeroy

said. "Our curriculum is directed toward the college-bound student. That's why we weren't affected by the new curriculum guidelines approved by the state legislature."

The system operates on an annual budget of approximately \$2 million. The biggest chunk of that budget goes for staff salaries and benefits. They are also forced to spend a large part of their budget on fuel to bus their students to school.

The school generates its revenue with a tax rate of 34 cents on an evaluated tax base of approximately \$600 million. The property valuations are up from last year, when the total value was \$581 million. Over 96 percent of the tax base is mineral and industrial values, with the rest made up of real estate values.

McLeroy says the solid tax base enables the school to pay above average salaries for their teachers, in addition to other benefits such as housing and insurance.

"Continuity is important for the students and we want our teachers to stay here," McLeroy said. "Our above average pay and fringe benefits help with that."

There have been few changes in the buildings at the school over the summer. Maintenance workers have concentrated on painting and cleaning.

School administrators are looking forward to a good year. "We think that we have a great

bunch of kids and we think things are going to go well," McLeroy said.

Borden County school calendar

- Aug. 16 & 17 — Teacher Inservice Workdays
- Aug. 20 — First Day of School
- Sept. 3 — Labor Day Holiday
- Sept. 28 — End First Six Weeks
- Nov. 9 — End Second Six Weeks
- Nov. 22-23 — Thanksgiving Holidays
- Dec. 19-Jan. 1 — Christmas Holidays
- Jan. 10 — End First Semester
- Jan. 11 — Teacher Workday
- Jan. 25 — Bad Weather Make-up Day
- Feb. 22 — End Fourth Six Weeks
- March 11-15 — Spring Break
- April 5-8 — Easter Holiday
- April 12 — End Fifth Six Weeks
- May 6 — Bad Weather Make-up Day
- May 19 — Baccalaureate Services
- May 23 — High School Graduation
- May 24 — Teacher Workday

PRO JUDGES CLINIC SCHEDULED

Western Texas College will be hosting a Wrangler Pro Judges Clinic Sept. 8-9 Bob Doty, WTC rodeo coach, has announced.

Instructors for the clinic will be Hugh Chambqiss and Jade Robinson. Chambiss is the PRCA pro judges coordinator and Robinson is NIRA rodeo administrator. Doty will detail the differences in the PRCA and NIRA rules from the AJRA, Tri-State and high school rodeo associations.

Anyone interested in judging NIRA rodeos must attend a Wrangler seminar, Doty said. The clinic at WTC will be helpful to anyone who wants to judge any type of rodeo and also to contestants as they learn what judges are looking for.

In addition to classroom lecture, the seminar will include video tape and actual arena experience in all events.

There will be a registration fee of \$10. for NIRA, AJRA, Tri-State and high school members and a \$25. fee for all others. Persons wishing to pre-register or obtain more information about the clinic are invited to contact the continuing Education office at WTC, 915-573-8511, extension 240, or Doty.



The Borden Star
Publication No. 895520
(USPS 895-520)
Publication No. 895520

Editor
Barbara Anderson

Published weekly, except for Christmas and New Years, on Wednesday at Gail, Borden County, Texas 79738, Box 137, Kincaid Street, Second Class postage paid at Gail, Texas.

Any errors that we make reflecting on the reputation or standing of any Firm, Corporation, or individual that may appear in the columns of the Borden Star will be gladly corrected when called to the attention of the staff.

Subscription Rates:
\$8.00 per year

Borden Star Owners
James McLeroy, Barbara Anderson, Doris Rudd, Pat Porter, Bob Dyess, Edna Miller, Ruth Weathers, Mrs. Nathan Zant, Sonny Tucker, Eddie Simer, Loreen Jones, Martin Parks, Dan Turner, Lela Porter, and Marge Toombs.

AUGUST 1984

Sunday	Monday	Tuesday	Wednesday	Thursday	Friday	Saturday
JULY 1984 S U T W T F S	SEPTMBER 1984 S M T W T F S		1	2	3	4
5	6	7	8	9	10	11
12	13	14	15	16 Teacher Workday	17 Teacher Workday	18
19	20 First Day of School	21	22	23	24 6:00 p.m. (H.S.) Football Scrimmage Whitharral - Here	25
26	27	28	29	30 6:00 p.m. (H.S.) Football Scrimmage Loop - There	31	

BORDEN COUNTY SCHOOLS FREE AND REDUCED LUNCH PROGRAM

The Borden County School serves nutritious meals every school day. Students may buy lunch for 30 and 35 cents and breakfast for 25 cents.

Children from families whose income is at or below the level shown on the scale below may be eligible for either free meals or meals at a reduced price of 20 cents for lunch and 10 cents for breakfast.

To apply for free or reduced-price meals, please fill out an application as soon as possible, sign it, and return it to the school. Please answer all questions on the form. An application which does not contain the total household income, the names of all household members, social security numbers of all household members 21 years or

older or a statement that the household member does not have one, and the signature of an adult household member cannot be processed by the school.

VERIFICATION: The information on the application may be checked by the school or other officials at any time during the school year.

REPORTING CHANGES: If your child is approved for meal benefits, you must tell the school when your household income increases by more than \$50 per month (\$600 per year) or when your household size decreases.

REAPPLICATION: You may apply for benefits at any time during the school year. If you are not eligible now, but have a decrease in household income, become unemployed, or have an

increase in family size, fill out an application at that time.

FOSTER CHILDREN: If you have foster children living with you, they may be eligible for these benefits. If you wish to apply for these benefits for them, please contact the school and they will help you complete the application.

NONDISCRIMINATION: Children who receive free or reduced-price meal benefits are treated the same as children who pay for meals. In the operation of child feeding programs, no child will be discriminated against because of race, sex, color, national origin, age, or handicap. If you believe you have been discriminated against, write immediately to the Secretary of Agriculture, Washington, D. C. 20250.

FAIR HEARING: If you do not agree with the school's decision on your application or the result of verification, you may wish to discuss it with the school. You also have the right to a fair hearing. This can be done by calling or writing the following official: James McLeroy, P.O. Box 95, Gail, Texas 79738 (915) 856-4313.

CONFIDENTIALITY: The information you provide will be treated confidentially and will be used only for eligibility determinations and verification of data.

HELP WITH APPLICATION: If you have any questions or need help in filling out the application form, please call Joan Briggs at (915) 856-4313. You will be notified when the application is approved or denied.

EXTENSION CAMPS OFFER FUN FOR OLDER TEXANS

Where can a person of 55 "get away" to for three days and nights of fun-filled activities, learning opportunities, other lively, life-loving people, fantastic food and special events in natural lakeside surroundings with all the modern conveniences?

There may be many places in Texas that offer such fare but not many can match "October-fest", an extension camp at Lake Brownwood for people 55 and over, says Peggy Robertson, Dawson County Extension Agent (Home Economics). Five sessions are scheduled for this fall: October 2-5, October 9-12, October 16-19, October 23-26, and October 30-November 2.

Some of the featured educational presentations will include: cooking demonstrations, fishing tips, grandparenting, and plant survival tips.

A variety of learning centers will offer "hands-on" experiences in areas such as oil painting, wind chime making, archery, needlecrafts, and chair caning.

Participants will also have an opportunity to go for a boat ride or fish on the waters of Lake Brownwood.

Card and table games, tennis, horseshoes and volleyball will be available at all times.

Evenings will be filled with such special social events as dances, "Dinner on a Cruise Ship", and a big talent show.

Each camp is limited to the first 100 participants and cost is only \$72. per person for the three days of activity. Contact Peggy Robertson for details.

INCOME ELIGIBILITY GUIDELINES 1984-85

Family Size	Annual		Monthly		Weekly	
	Free Meals	Reduced-Price Meals	Free Meals	Reduced-Price Meals	Free Meals	Reduced-Price Meals
1	\$0 - 6,474	\$ 6,474 - 9,213	\$0 - 540	\$ 540 - 768	\$0 - 125	\$ 125 - 178
2	0 - 8,736	8,736 - 12,432	0 - 728	728 - 1,036	0 - 168	168 - 240
3	0 - 10,998	10,998 - 15,651	0 - 917	917 - 1,305	0 - 212	212 - 301
4	0 - 13,260	13,260 - 18,870	0 - 1,105	1,105 - 1,573	0 - 255	255 - 363
5	0 - 15,522	15,522 - 22,089	0 - 1,294	1,294 - 1,841	0 - 299	299 - 425
6	0 - 17,784	17,784 - 25,308	0 - 1,482	1,482 - 2,109	0 - 342	342 - 487
7	0 - 20,046	20,046 - 28,527	0 - 1,671	1,671 - 2,378	0 - 386	386 - 549
8	0 - 22,308	22,308 - 31,746	0 - 1,859	1,859 - 2,646	0 - 429	429 - 611
Each Additional Family Member	\$ 2,262	\$ 3,219	\$ 189	\$ 269	\$ 44	\$ 62

Each school district may determine the price charged for reduced-price meals, but in no case may the charge for a reduced-price lunch exceed 40¢ or a reduced-price breakfast exceed 30¢.

Income Eligibility Guidelines for free and reduced-price meals must be provided to the media for the public release.

HORSESHOW

Continued from Page 1

Pee wee barrel race 1st Jill Voss, 2nd Stormy Gass, 3rd Kurt Hess, 4th Quentin Gass. Pee wee stake race 1st Jill Voss, 2nd Stormy Gass and 3rd Kurt Hess.

Junior results are Junior showmanship 1st Kandy Belew; 2nd Shayne Hess, 3rd Tammy Voss. Western Pleasure 1st Shayne Hess, 2nd Kandy Belew, 3rd Tammy Voss; western riding, 1st Kandy Belew, 2nd Shayne Hess, 3rd Tammy Voss; pole bending 1st Kathy Kropp,

2nd Shayne Hess, 3rd Kandy 4th Tammy Voss; barrel race 1st Shayne Hess, 2nd Tammy Voss, 3rd Kandy Belew and 4th Kathy Kropp; stake race 1st Kandy Belew, 2nd Shayne Hess, 3rd Tammy Voss.

Senior division showmanship, Western Pleasure, Western riding and Western pleasure B. G. Kropp; pole bending 1st Dana Gray, 2nd B. G. Kropp; barrel race 1st Dana Gray, 2nd B. G. Kropp, and stake race 1st B. G. Kropp.

Mock horeshow winners with total accumulated points for each event are as follows: in the

pee wee division Stormy Gass was the high point performance event winner and Jill Voss was the high point timed event winner. Junior division Shayne Hess was the high point winner in the performance and timed events and senior division winner B. G. Kropp winner of the performance and timed events.

All around winners and total point winners for the year are pee wee, Jill Voss; Junior Shayne Hess and Senior B. G. Kropp. These girls received belt buckles for their achievements.



Security State Bank

1411 Gregg

Big Spring, Texas

Member F.D.I.C.

"Back to School Special"

Free conditioning with a haircut and style.

Also introducing:
New La Form Mousse Perms.

All perms Special

\$32⁵⁰



Men's Cuts \$10⁰⁰

MERLE NORMAN®

The Place for the Custom Face®

2513 College SNEYDER, TEXAS 573-6512

LOCAL DONORS GIVE GREAT SUPPORT FOR AJRA NATIONAL FINALS

There are numerous ways the local people of Snyder make it possible for the AJRA National Finals to be held in our city. The generosity of Snyder businesses, individuals, merchants, committeemen, the city, the county and a dedicated Chamber and BCD have made it all successfully happen in Snyder for nine consecutive years.

1984 Saddle Donors are: Snyder National Bank, West Texas State Band, Great Western Motel, Chamber of Commerce and BCD, City of Snyder, Ezell Key Feed and Seed, and C.E. NATCO. These saddles are awarded to the All Around Champions of each age group of the National Finals Rodeo.

1984 Co-Sponsors: The Shack, K-Bob's, Dairy Queen, Fort Justice, Kings Highway, and Patterson Drilling Co. These six firms sponsor the bucking chutes.

Mini Sponsors: York Transports Co. Mini Sponsors are new in 1984. They are AJRA supporters and have banners displayed in coliseum.

Bronze Donors: Sareta Fenton and Dr. Robert Taylor. These artists have donated bronzes for a number of years in

roping and bull riding events.

Awards Jackets: Walls Industries of Cleburne, Texas. Walls have donated these jackets for nine consecutive years.

Announcers Vehicle: Furnished by Snyder Motor Co. Inc.

Officials Badges: Bar-H-Bar Western Wear

Merchants: Ad's in Rodeo Program

Individual Donors: See Special Donor pages of Rodeo Program.



Fred Ridenour and Bill Huddleston have come out with a AJRA Rodeo Cartoon Book, WHOA. This book will be available at the AJRA Finals Rodeo in Snyder, Texas this week.



Wrangler Sale

AJRA NATIONALLY SPONSORED

The 1984 AJRA National Finals will be nationally sponsored by Barq's Root Beer and Wrangler. Barq's joined with the American Junior Rodeo Association in Sponsorship 1981 and this will be the second year of Wrangler Sponsorship.

Locally, the Finals have been sponsored by the Snyder Chamber of Commerce and Board of County Development for nine consecutive years.

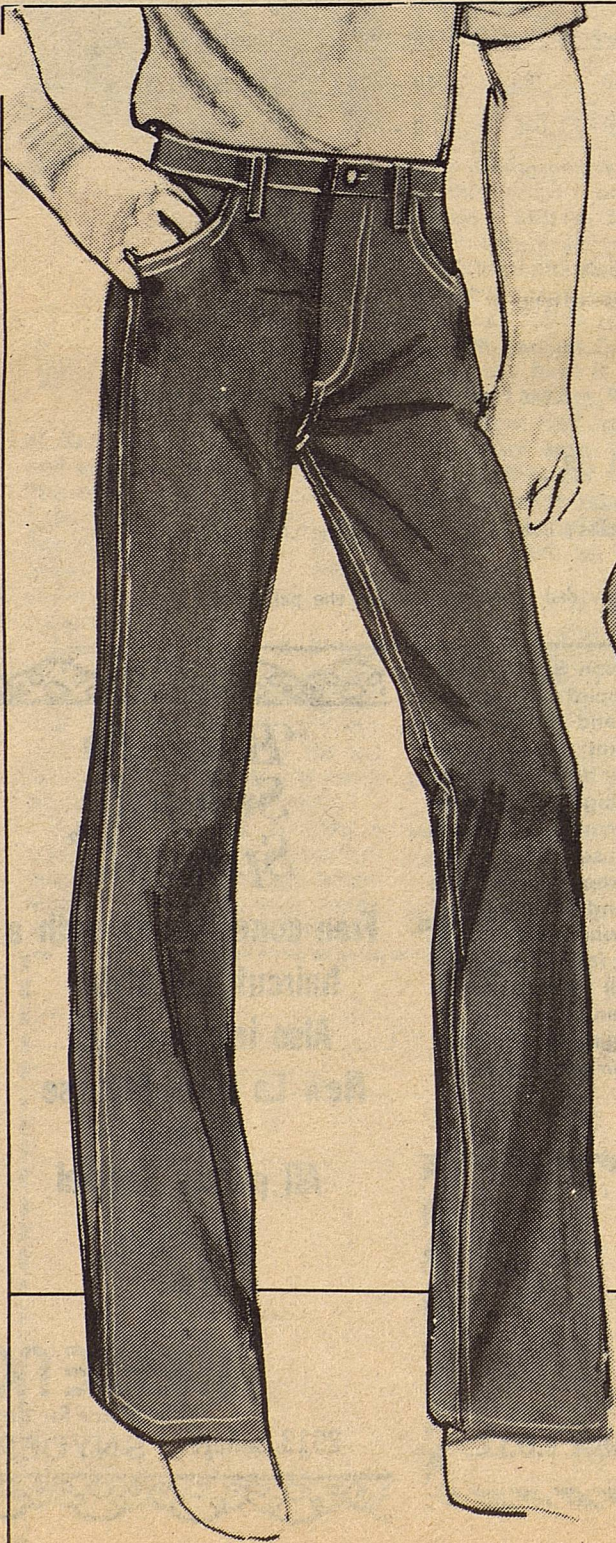
Barq's Root Beer is the official soft drink of the AJRA Association and Wrangler is the official "jean." Both help support the organization throughout the year at all AJRA sanctioned rodeo's across the country.

AJRA was founded in 1953 and had operated independently until 1981. The addition of the national sponsors have been a great asset to the organization. AJRA is a non-profit organization.

The 1984 AJRA motto is "Drink Barq's and dress WRANGLER".

**DRIVE
SLOW
DRIVE
SURE**

It's
Back-to-School
Time



Students' and
Boys' Wrangler®
Denim Jeans!

sale **8⁹⁷**₁₋₇

10⁹⁷₈₋₁₄

12⁹⁷_{Students'}

Sizes 1-7, reg. 10.99. Sizes 8-14, reg. 12.99. Students' 25-30, reg. 14.99. Tough Wrangler® jeans are made for tough guys! Sizes 1-7 are 12 oz. all-cotton denim, while sizes 8-14 slim and regular and students' 25-30 are 14 oz. cotton denim. All with Wrangler's® famous fit, quality, and long lasting wear!

We Accept



3210 College Ave.

SNYDER, TEXAS

ANTHONY'S

PUBLIC NOTICE

The Commissioners' Court of Borden County will hold a public hearing on the proposed County Budget and Revenue Sharing Fund for the year of 1985 at 10:00 A.M. on August 27, 1981 in the Commissioners'

Courtroom at the Courthouse in Gail, Texas. Suggestions for use of Revenue Sharing money will be heard at this time.

A summary of the proposed Borden County budget is as follows:

Jury Fund	\$ 1,150.00
Road & Bridge Funds	630,633.00
General Fund	487,315.00
Permanent Improvement Fund	55,000.00
Revenue Sharing Fund	40,000.00
Total Budget	\$1,214,000.00

Any interested person is invited to attend and present oral or written comments.

The proposed tax rate for 1985 is \$.16-\$100. Same as in

the past year.

The proposed budget may be examined at the offices of the County Judge or the County Clerk

BY ORDER OF BORDEN COUNTY COMMISSIONERS' COURT

Van L. York
County Judge
Borden County

NOTICE OF APPLICATION FOR AND GAS WASTE DISPOSAL

Kaiser-Francis Oil Company, P. O. Box 21468, Tulsa, Oklahoma 74121-1468 has applied to the Railroad Commission of Texas for a permit to dispose of produced salt water or other oil and gas waste by well injection into a porous formation not productive of oil or gas.

The applicant proposes to dispose of oil and gas waste into the Glorieta, Chilton Well Number 21-3. The proposed disposal well is located 4.5 miles SE of Gail in the Wicker (Strawn) in Borden County.

The waste water will be injected into strata in the subsurface depth interval from 2550 to 3550 feet.

LEGAL AUTHORITY: Chapter

27 of the Texas Water Code, as amended, Title 3 of the Natural Resources Code, as amended, and the Statewide Rules of the Oil and Gas Division of the Railroad Commission of Texas.

Requests for a public hearing from persons who can show they are adversely affected, or requests for further information

Obituary

William C. Kountz

Services for William C. Kountz, 79 of 6905 Fremont Ave. Lubbock were held at 9 a.m. Tuesday in Sanders Memorial Chapel with Rev. Rick Magee of Klondike Baptist Church officiating.

Burial was at 5:30 p.m. Tuesday in Fort Davis Cemetery in Fort Davis.

He died at 11:45 p.m. Sunday in St. Mary's Hospital.

He was a native of Balmorhea and was a rancher. He had lived in Lubbock for the past 20 years. He was a member of Highland Baptist Church.

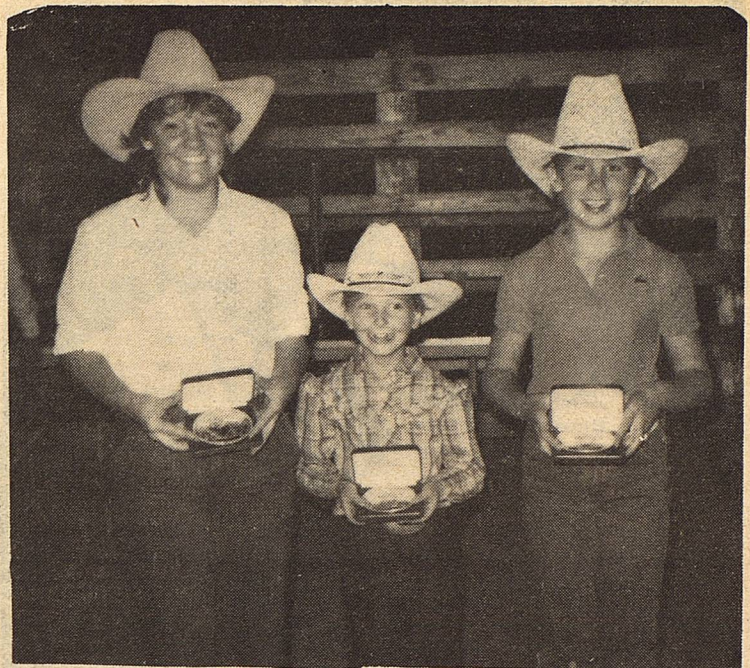
Survivors include his wife, Kathleen; two sons, Chris of Lubbock and Van of Klondike; a sister, Mrs. H. M. Birth of El Paso and three grand-daughters.

HAPPY 1st ANNIVERSARY, BLANE

I LOVE YOU DONNA

OIL

concerning any aspect of the application should be submitted in writing, within fifteen days of publication, to the Underground Injection Control Section, Oil and Gas Division, Railroad Commission of Texas, Drawer 12967, Capitol Station, Austin, Texas 78711 (Telephone 512-445-1373).



Lots of smiles as B. G. Kropp, Jill Voss and Shayne Hess received as the end of year high point individuals during the Borden County horse show. display their belt buckles they

unlock your savings THE PRICE IS RIGHT AT OUR NEW STORE

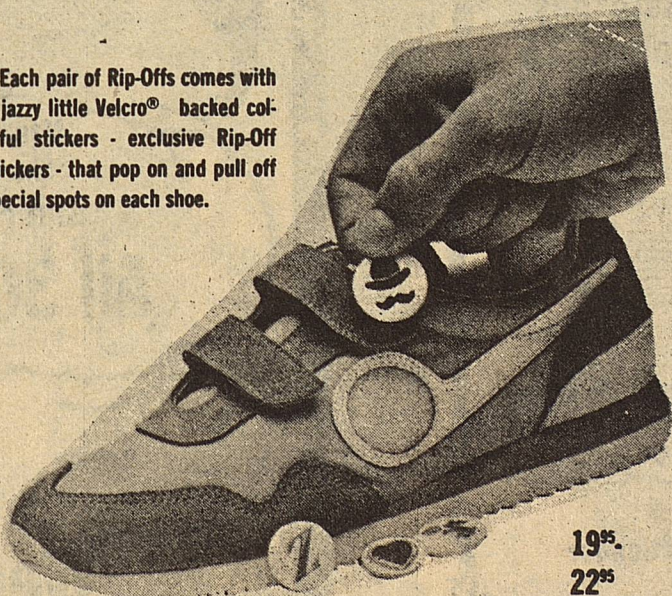
Men's Leisure Jumpsuits Reg. 16.99 Polyester & Cotton Asst. Colors 11⁹⁷	Men's OP T-SHIRTS Long Sleeve 11⁹⁷ Short Sleeve 8⁹⁷	Ladies' Levi Bendover Slacks Select Group Reg. 23.95 14⁸⁸
Irregular Bath Towels Asst Colors & Styles Reg. 2.97 5 For 9⁸⁸	From Arrowhead 14Kt GOLD CHAIN & BRACELETS Values to 500.00 1/2 Price	Junior Levi California Straight Jeans Reg. 24.88 13⁹⁷
One Group of Men's Marona Casual Pants Reg. 15.99 10⁹⁷	Men's NoFade Long Sleeve Dress Shirt Asst. Colors & Styles Values to 14.00 11⁹⁷	PILLOWS 100% Polyester Filled Reg. 5.99 2/9⁰⁰
Young Men's Dress Slacks by Angel Flight Reg. 21.00 12⁸⁸	Men's Corduroy Blazers Two Styles to Choose Reg. 45.00 39⁹⁷	Don Mart Select Group Of Men's Two & Three Pc. Suits Reg. 120.00 77⁰⁰

ANTHONY'S
SNYDER, 3210 College TEXAS

Rip-Off's

Watch Out For This Notorious Rip-Off Artist!

Each pair of Rip-Offs comes with 4 jazzy little Velcro® backed colorful stickers - exclusive Rip-Off Stickers - that pop on and pull off special spots on each shoe.



19⁹⁵
22⁹⁵

SNYDER, TEXAS

According To Size

DRYDEN'S SHOES

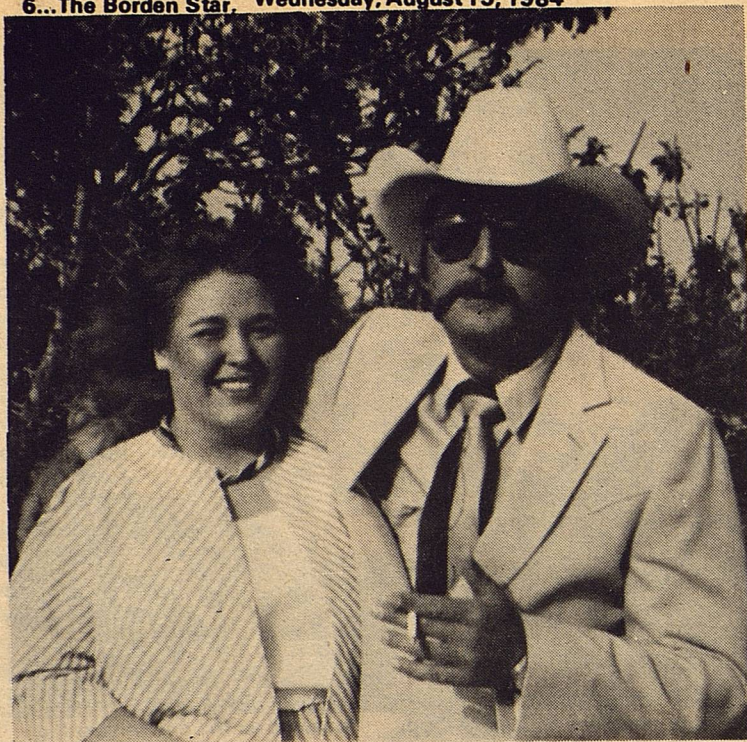
East Side of Square

Everybody's
THRIFTWAY

A FRIENDLY Supermarket serving West Texans with Quality Foods at Competitive Prices.

We give S&H Green Stamps Double on Tuesday after 1 p.m. All Day Wednesday.

35th and College Ave.
Snyder, Texas



Engagement Announced

Mr. and Mrs. Alex Fincher announce the engagement and approaching marriage of their daughter, Alana to Richard A. Smith, son of Mr. and Mrs. Rube

Smith of Gail. The couple plan to be married September 29 in the First United Methodist Church, O'Donnell, Texas.

LABOR DAY TEAM ROPING IN GAIL

Rex Cox of Gail has announced a Labor Day team roping to be held in Gail Monday, September 3.

Books open at 12:00, roping starts at 1:00 p.m. sharp and books will close after first 40 teams run with no exceptions. This is strictly a "B" roping, 3 for \$30, progressive after 1 and a father and son or daughter, and mixed roping (must be a man and

a women) 3 for \$16.

Buckles will be given to Champion Header and Heeler in both ropings.

There will be a break between ropings for a picnic style supper. Everyone is asked to bring enough food for their family, it will be served buffet style. Cups, ice, plates, tea and bread will be furnished.

For more information call Rex Cox 915-856-4415.

The regular monthly meeting of the Borden County Emergency Medical Service was held Monday, August 6, 1984, at 7:00 P.M. in the home of Lisa Ludecke. After the business meeting, those present enjoyed ice cream, cookies and swimming. EMT's present were Gerald Boyd, Dorothy Browne, Pat Ray, Randy Hensley, James Aaron, Nelva Jones, Carol Lewis, Barbara Miller and Lisa Ludecke. Guests present were Connie Boyd, Glen Bacon, Bryan Bacon, Cam Stone, Gwen Ray, Rachel Ray, Melissa Ray, Donelle dHensley, Rebekah Hensley, Don Jones, R.D. Lewis, Shelly Lewis, Amy Lewis and Shon Lewis.

The next meeting will be Monday, September 10, 1984, at 7:00 P.M. Please add Buddy Wallace's phone number to your list of emergency numbers (915-856-4478).

MEMORIALS

In Memory of Ella Barfield: Bess Smith

In Memory of Jerry Clayton: Gae Ludecke
Lela Porter
Bess Smith

In Memory of Euna Conner: Bess Smith

In Memory of Charlie Creighton: Lela Porter

In Memory of Opal Hale: Mr. and Mrs. Bob Dyess
Mr. and Mrs. Blane Dyess and Family

BORDEN COUNTY EMS NEWS

In Memory of Preston Sharp: Mr. and Mrs. C.V. Pearce
Bess Smith

In Memory of Blain Turner: Bess Smith

Thank you for your generous contributions. Donations and memorials may be made payable to Borden County EMS and mailed to Lisa Ludecke, Box 153, Gail, Texas 79738

BACK-TO-SCHOOLERS stop here first

Wrangler Big Bells Boys' Reg. \$14.00 Boys Reg. \$14.00 Size 7-14 **\$4.95**

Tall & Slim Jeans Reg. \$12.95 NOW **\$9.95** Sizes 2-12



Over 300 Pair Children & Boys Boots on Sale

\$17.95 to \$24.95



Men's Boot Sale

Men's Boots Adam's TO Stanley Rio's Mercedes Barlow

Starting at **\$89.95**

All Ladies Summer Clothing **1/2 Price**



Men's & Boys' Short Sleeve Knit Pullovers

All 30% Off



SNYDER, TEXAS
Western Wear

College Heights Shopping Center

EVERETT RANCH Club Lamb Sale

Saturday August 25

1:30 P.M. GAIL, TEXAS
Borden Co. Fairgrounds



SELLING 120 HEAD
Finewools
Finewool Crosses
Mediumwools
Southdowns

GUEST CONSIGNERS:
Beck & Sons
Bob Ballard Southdowns
Etheridge Club Lambs

Catfish Dinner On Grounds



For More Information:

Donny Everett
915/573-5015

Kenneth Gregg, Auctioneer
806/293-2830

Clinic: Jerry Baird
915/573-8511

Your County Agent Says... by Alan Day

CHECK TAXES ON DROUGHT CAUSED LIVESTOCK SALES

A lot of livestock has gone to market in recent weeks due to the persistent drought. If you have had any such sales, there are certain income tax implications.

Income from drought sales may be treated two ways for tax purposes, depending on whether the livestock is considered inventory or breeding stock. Both types of sales are outlined in the Farmer's Tax Guide.

Income from the sale of inventory stock steers, heifers and calves may be deferred for up to one year. However, this election does not apply to livestock used for breeding, draft, dairy or sporting purposes.

If, because of drought, a farmer or rancher sells livestock in excess of the number that would normally be sold, he may elect to include the proceeds in the next year's income provided that: the cash method of accounting is used; it can be established that under usual business circumstances the number sold would not have occurred; and, the drought has resulted in the area being designated as eligible for federal assistance.

Purchased livestock, such as stocker steers or heifers, as well as "raised livestock" will qualify. In addition, sales made prior to an area being declared eligible for federal assistance may qualify.

To determine the amount of income to be deferred, a producer must first calculate the average amount received per head sold during the year and multiply this figure by the excess number of head sold due to drought.

When livestock kept for breeding, draft or dairy purposes are sold or exchanged solely because of drought, the sale or exchange is considered an involuntary conversion. In such cases a taxpayer may elect to postpone for two years taxes on the gain from sales of breeding livestock if replaced with like stock within two years from the close of the year in which the gain was realized.

Also, with an involuntary conversion, a taxpayer's principal business does not have to be farming or ranching and the area does not have to be officially declared eligible for federal assistance.

Tax on gain from involuntary conversions may be postponed two years on the number sold in excess of the usual practice while a loss is deductible in the year it is sustained.

In either situation, direct losses may be reported either on IRS Form 4797, Supplemental Schedule of Gains and Losses, or

on Schedule F, Farm Income and Expenses, if livestock were purchased and died or were sold at a loss.

However, basic information covering tax deferral should be reported on IRS Form 4797, Supplemental Schedule of Gains and Losses. The tax return for the year of sale should include: evidence of drought; amount of gain realized; number of kind sold or replaced; and number and kind replaced.

Tax returns for the replacement year should include: replacement purchase price; number and kind of replacements; and cost of replacement.

The cost of replacement livestock must equal or exceed the proceeds from livestock sold due to drought.



4-Hers representing Borden County at the District 2 4-H Fashion Show in Lubbock. Kristi Stone, Cathey York, Tammy

SPC SEEKING INFORMATION

Have you attended South Plains College since 1957? Do you know someone who has?

Information update cards are now available at the Lamesa Area Chamber of Commerce. All former students of South Plains College are encouraged to complete a card and send it to the college. The school will provide alumni with information on Homecoming, reunions, and other special events.

"Many exciting things have happened at the college since it was founded in 1957, and we would like to share this information with our ex-students," said Fred Harris, director of development.

For more information on SPC's alumni program, contact the Development Office at South Plains College, 1401 College Avenue, Box 148, Levelland, 79336 or at 806-894-9611, ext. 215.

BACK TO SCHOOL WELCOME PLANNED

The Borden County Parent's Club will host a Back-to-school welcome for all parents of elementary and junior high students, Monday, August 20 at 9:00 a.m. in the school conference room.

Parents are invited to attend a club business meeting in which 83-84 school year room mothers will be elected and carnival plans will be discussed. Refreshments will be served.

Voss, M'Lys Lloyd, d'Arceyanne Lemons and Kandy Belew (not pictured).

The Kandyland Express

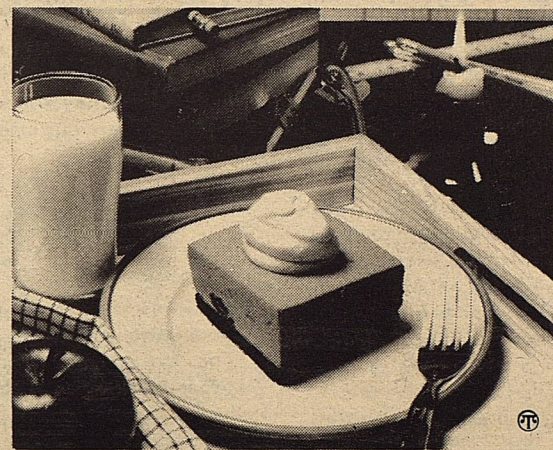
By Kandy McWhorth

Back to school doesn't always mean cool, crisp fall weather. Sometimes warm fall nights need cool, refreshing desserts like the Creamy Raspberry Squares featured here, to make the task of doing homework a little sweeter.

This delicious no-bake dessert is made simple with the help of Royal Raspberry Gelatin. The Royal Gelatin is combined with evaporated milk, cream cheese

and raspberries, then chilled in an Oreo Cookie Crust. The creamy, light melt in your mouth taste is sensational.

Hungry students will find these Creamy Raspberry Squares a perfect accompaniment to calculus, French, science or whatever. You will find them an easy treat to prepare and a delicious way to reward diligent students.



Cool Dessert Goes Well With Homework

CREAMY RASPBERRY SQUARES Makes 8 servings

- 18 Oreo Chocolate Sandwich Cookies, finely rolled
- 1/4 cup margarine, melted
- 2 (3-ounce) packages or 1 (6-ounce) package Royal Raspberry or Strawberry Gelatin
- 1-3/4 cups boiling water
- 1 (13-ounce) can evaporated milk, chilled
- 1 (8-ounce) package cream cheese, softened
- 1 (10-ounce) package frozen raspberries in light syrup, thawed or 1 (9-ounce) package frozen sliced strawberries, thawed
- Prepared whipped topping for garnish, optional

In medium bowl, combine cookie crumbs and margarine; mix well. Press into bottom of 8 x 8-inch baking pan. Chill.

In large bowl, dissolve raspberry gelatin in boiling water. Stir in chilled evaporated milk. Pour half of mixture into blender container or food processor, add half of cream cheese. Process until smooth and creamy; pour into large bowl. Repeat with remaining gelatin mixture and cream cheese. Fold in raspberries and syrup. Chill until slightly thickened; pour into prepared crust. Chill until firm, about 3 hours.

Cut into squares to serve. If desired, garnish with prepared topping.

Claiborne's THRIFTWAY

Visit Our Deli

Party Trays Pastries Custom Cakes

710 N. 4th

Lamesa

ASCS NEWS

by Jerry Stone

1985 WHEAT PROGRAM

Provisions of the 1985 wheat program have been announced as follows:

1. Signup will be October 15 thru March 1
2. Cash diversion payment of \$ 2.70 per bushel on 10 percent of the farm base. Half of the payment can be requested at signup.
3. National loan rate of \$ 3.30 per bushel and a \$ 4.38 per bushel target price.
4. To be eligible for program benefits, producers must limit their 1985 wheat acreage to no more than 70 percent of the farm's wheat base.
5. The acreage conservation reserve (ACR or set-aside) will be at least 28.57 percent of the farm's 1985 planted wheat acreage plus 10 percent of the farm's wheat base.
6. Land designated for ACR must have been devoted to a row crop or small grains in two of the last three years.
7. The 1985 acreage base will be the average of the acreage planted and considered planted to wheat in 1983 and 1984.
8. Haying will not be permitted on ACR land. However, the acreage may be grazed except during the six principal growing months.
9. Offsetting and cross compliance will not apply.
10. Program contracts signed by participants will be binding and will provide for liquidated damages for failure to comply with program regulations.

EMERGENCY FEED ASSISTANCE PROGRAM

Producers may continue to sign a request for assistance thru the EFAP to purchase low grade corn from Commodity Credit

POLITICAL CALENDAR

The following individuals have authorized the Borden Star to list them as candidates for election to the respective offices shown as follows in the November 6, 1984 Borden County Democratic Primary Election. (Paid political advertising by candidates listed below.)

FOR SHERIFF
Slick Sneed

FOR COMMISSIONER PRE-CINCT NO. 1
Frank Currey

FOR COMMISSIONER PRE-CINCT NO. 3
Vernon Wolf

FOR DISTRICT JUDGE
Gene Delaney R

FOR DISTRICT ATTORNEY
Borden and Scurry Counties
Ernie Armstrong D

Corporation.

The corn is located in Lubbock, Texas, and will cost \$2.07 per bushel. The producer will be responsible for the transportation cost from Lubbock to the farm.

FARM CHANGES

Anyone that has picked up a new farm or lost a farm should report these changes to us so we can update our records.

EMERGENCY HAYING AND GRAZING OF ACR

If anyone has anything to hay or graze on your ACR (set-aside) acres, you should first sign a request here at the office before you start grazing or baling. This hay or grazing may not be leased out or sold to anyone else (wheat

haying and grazing was an exception).

ACR MAINTENANCE

Due to the drought, it has been nearly impossible to establish a cover crop in many cases on our ACR (set-aside) acres. Where a cover is not established, you must maintain these acres the best you can under the circumstances by controlling the weeds and erosion.

This ACR must be maintained thru December 31, 1984. If this land is going to be planted in wheat this fall, it may be prepared and seeded just as you do your other wheat land.

Spotchecks are being made throughout the county. Failure to keep your ACR maintained could cause loss of program benefits.

DROUGHT PLAN BENEFITS RANCHERS

By Ricky Linex-Range Conservationist

For the ranching industry, Mother Nature deals the cards which a rancher has to play. In times such as these, most ranchers would like to ask for the deck to be re-shuffled.

A "Drought plan" is one of the many tools a rancher must implement in order to survive these periods of low forage production. Fluctuation in the total production of forage must be anticipated when developing a conservation plan. Seventy (70) percent of the total annual production of grasses is made by July 1st each year. Adjustments in livestock numbers, periods of grazing, or use of reserve forage supplies during unfavorable years should be made as quickly as practical after it becomes apparent that forage will be in short supply. The tendency to delay decision-making while "Hoping for another rain" often results in long term damage to

millions of acres of grazing land and in severe economic losses to many ranchers.

The plant resource and grazing animals must be in balance at all times. If there is an unbalance, it should be in favor of the plant, rather than the animals, if long-term production is the manager's goal. Usually 65 to 80 percent of the average forage production is a safe base for calculating your grazing capacity. Under no plan of stocking at a constant level will it be possible to prevent excess use of forage in poor years and underuse in above average years.

The following are typical of the kind of adjustments that ranchers can make during periods of drought to help keep the number of livestock in balance with available forage. Most ranchers in the Upper Colorado Soil and Water Conservation District have taken the first two adjustments and are now having to consider the remaining alternatives:

- (a) Market calves, lambs, steers, and stocker animals early in the season or as soon as the probability of a feed shortage becomes apparent.
- (b) Cull the breeding herd more closely and heavily than normally. Market dry cows, slow breeders, poor milkers, and older cows.
- (c) Improve grazing distribution in pastures to increase efficiency in use of available forage.
- (d) Lease additional pasture if available, or purchase forage.
- (e) Regraze pastures. If stocking rates are kept at a conservative level, generally one or more pastures will be either ungrazed or lightly grazed. An occasional close grazing for a short period normally will not cause serious damage to the range plants.

Classified

BABYSITTING IN MY HOME
Monday thru Friday. Any age. Contact Susan Marquez, P.O. Box 315, Gail.

GENERAL SHELTERS OF TEXAS, INC., the fastest growing manufacturer of portable buildings, is seeking a dealer in Gail area for retail sales of portable buildings. Lot and small investment required. Excellent opportunity to expand existing business with low risk. Contact Mike Wulf, General Manager, at 817-422-4548.

Federal, State & Civil Service jobs now available in your area. Call 1-619-8304 for info. 24 hrs.


(1) Use the flexibility built into properly planned grazing systems.

Using one or several of these adjustments will help to ease the strain of drought felt by area ranchers.

The Snyder SCS field office, working through the local Soil and Water Conservation District, offers technical assistance to livestock producers interested in improving their operations and developing a basic conservation

plan. For more information come by our office at 3423 Ave. T or call 573-0171. If it is more convenient, producers can call the Borden County ASCS office at 856-4301. I schedule Monday-Wednesday of each week to be in Borden County and would appreciate the opportunity to work with all producers and their conservation needs.

Mother Nature, let's have a re-shuffle of those cards!



SKYWATCH SATELLITE SYSTEMS, INC.

LEASE - cars & pickups as low as \$140 per mo. 48 month lease with approved credit plus deposit.

SATELLITE SYSTEMS
Lease Purchase \$500
Down As Low As \$50 per month

Bob Dyess (806) 439-6624

Advanced design gives you top performance, productivity and reliability

International®
5088 - 136.1 PTO hp*
5288 - 162.6 PTO hp*
5488 - 187.2 PTO hp*

International 50 Series tractors, offer you advanced engineering and design concepts... give you a level of performance and reliability that's probably higher than you've ever known before.

Just look at some of the outstanding features you get with 50 Series tractors. Proven, high-torque, turbocharged diesel engines... a totally new drive train... fully synchronized transmission, with Synchro Tri-Six shifting, provides 18 uniformly spaced forward speeds... hydraulic-powered mid-mount master clutch... exclusive Forward Air Flow cooling... Power Priority hydraulics... right-hand command controls... and a high level of operator comfort and convenience—all of which add up to more acres per hour... top fuel economy... plus reliability that's backed by a 3-year or 2500-hour extended warranty on the engine and drive train.

So why wait? Stop in, see them now. Drive the International tractor that's power matched to your acreage.





INTERNATIONAL HARVESTER
BROUGHTON & WISE IMPLEMENT CO.
P. O. Box 2197
Lamesa Highway
Big Spring, Texas 79721-2197
(915) 267-5284
Res.: 263-3527

Finance plans available.

Now In Our New Location:

4608 College

Bill Early Agency

Please Note Our New Phone Number

SNYDER, 573-1941 TEXAS

For All Your Insurance Needs