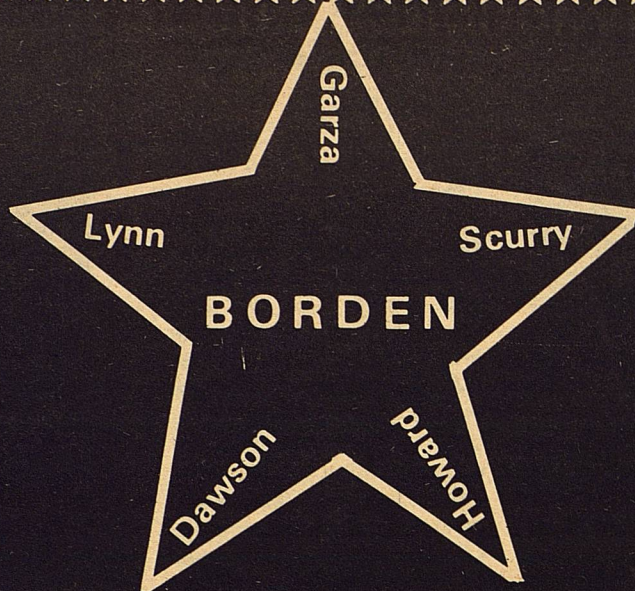


THE

Volume XI No. 38



STAR

June 20, 1984

Serving the Counties of Borden, Dawson, Garza, Howard, Lynn & Scurry



U.S. Rep. Kent Hance and State Sen. Lloyd Doggett at the Democratic state convention. Doggett and Hance were opponents in a bitter democratic primary runoff for the nomination to oppose Republican U.S. Rep. Phil Gramm for a seat in the U.S. Senate.

PRICE & EVANS ATTEND TEXAS DEMOCRATIC CONVENTION

The Texas Democratic Convention meeting in Houston June 15-16 at the Sam Houston Convention Center pulled the plug on a potentially explosive convention by many concessions and compromises, to unify the Texas Democratic Party of more than 5500 delegates.

Walter Mondale came out with 119 delegates to Gary Hart's 41, Jackson's 35 and 5 uncommitted out of 200 delegates to the Democratic National convention in San Francisco in July.

At one time it appeared some of Jackson's delegates were ready to walk out but several concessions were made between black delegates over a seat on the Democratic National Committee when John Wiley Price, Dallas County Commissioner-elect, withdrew his nomination in favor of state Rep. Al Edwards of Houston, who was Jackson's campaign Chairman. The convention was led by the State Democratic chairman Bob Slagle who is a strong supporter of Mondale but

worked hard to be fair to Hart and Jackson in their bid for obtaining additional delegates.

The session opened Saturday with a speech from Bob Krueger followed by Kent Hance of Lubbock. In Hance's speech it appeared to be his concession to the convention and to Lloyd Doggett after his lose to Doggett in the run-off June 2. Hance told the convention "Lloyd Doggett ran a tough campaign and his supporters ran a tough campaign but I'm here today to grant amnesty to all of them" in addressing himself to both Krueger and Doggett. The past is behind us, you have to look to the future," Hance said as he gave his full support to Lloyd Doggett for the November race against Phil Gramm. Hance introduced Lloyd Doggett to the convention body which brought the delegates to their feet in a rousing applause to both Hance and Doggett. Doggett spoke of Hance as a person of integrity and grace who is vital to the party's efforts to

keep conservative West Texans in the Democratic fold.

The often heated arguments on the convention floor often led to a humorous comment by the speakers such as Gov. Mark White in referring to the Senate campaign when he said "There's nothing quite like a close election to check the pulse and see how long we can hold our breath. Of course yellow dog Democrats never turn blue". Jim Hightower, Agriculture Commissioner also added a comment in his speech that "Republicans may have the "fat cats" but Democrats have the "Alley cats" and alley cats are fighters."

Kent Hance was greeted on the floor of the convention by delegates of the 28th Senatorial District and Lloyd Doggett had representatives from his staff circulating among the delegates, according to Helen Price, the Borden County Delegate.

The 28th Senatorial Caucus held Friday
con't to pg 4

Gail Junior Rodeo set for June 22 & 23

The Gail Junior Rodeo has been scheduled for June 22 and 23 at 8:00 p.m. in the Borden County arena. Mr. Runt Sloan of New Castle, Texas will be the stock producer.

Events will include Barrel Racing, Pole Bending, Flag Racing, Goat Tying, Breakaway, Ribbon,

Tiedown and Team Roping, Steer Riding, Bareback Bronc Riding and Bull Riding. There will be four age groups 8 & under, 12 & under, 13-15, and 16-19.

Anyone wishing to enter the rodeo may call Dorothy Browne, Rodeo Secretary at 915-856-4438 from 6:00 to 10:00 p.m.



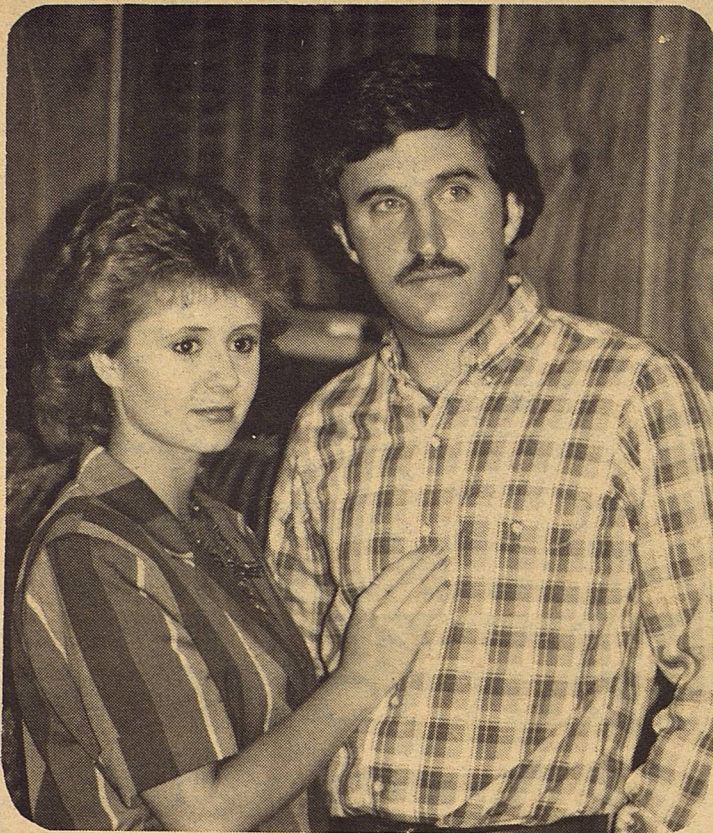
JUDGES ATTEND SEMINAR--Eighty justices of the peace attended a 20-hour Texas Justice of the Peace Training Center seminar May 22-25 in San Angelo. The training center is based at Southwest Texas State University in San Marcos. The seminars are held in compliance with Article 5972, Section B, of the Texas Revised Civil Statutes. Among the judges attending were, left to right, Carolyn Stone of Gail, Borden County, Precinct 2; Lanette Patterson of Fluvanna, Scurry County, Precinct 2; and R. C. Nixon of Snyder, Scurry County, Precinct 4. Other Borden County officials attending mandatory schools are Judge Van York and County Treasurer, Lesa Ludecke. (SWT News Service Photo).

Rodeo

June 22

& 23






Teresa Cartmill and Steve McMeans

Cartmill and McMeans Plan July Wedding


Rev. and Mrs. Troy Cartmill, Bridgeport, Texas announce the engagement of their daughter, Teresa Diane to Steve McMeans of Post, Texas. Steve is the son of Mr. and Mrs. Mickey McMeans of Gail and Post. The couple will be wed July 21st, in First Baptist Church, Post, Texas. Diane is a graduate of Bridgeport High School and attends Texas Tech. Steve is a graduate of Borden High School, Texas Tech, and Southwestern Theological Seminary, Fort Worth, Texas.

T&E's ELECTRIC CO
 EXPERT ELECTRICAL WORK
 Residential Commercial Industrial
 Elizabeth Musgrove Christeen Ledbetter
 (915) 263-8568 (806) 439-6653

LEASE OR BUY

 **SATELLITE SYSTEMS-\$500 Down-
As Low as \$50.00 per month**

**LEASE-Cars & Pickups as low as
\$140.00 per month
48 month lease with
approved credit
plus deposit**

 **BOB DYESS (806) 439-6624**

 **Security State Bank**

1411 Gregg BIG SPRING, TEXAS 79720 Member F.D.I.C.

Queen Contestants Wanted

The Lamesa Rodeo will be held August 2nd 3rd and 4th. Girls are wanted now for the queen contest. Girls are need to compete in 12 and under, 13-17, and 18-24 age groups. Anyone interested should call (806) 872-7952-Squeekie Todd or 872-8435-Jo Reed. To qualify the contestant should exhibit poise, be a good character, and wear western attire, have a knowledge of horsemanship and be willing to sale tickets to the rodeo.

Special Thanks

We wish to express our appreciation and thanks to our dear friends and neighbors for the kindness shown, the cards, donations, and floral offerings extended to us in the loss of our beloved one.

Lonnie, Kay, Kim Doyle and Family of Ida Baldwin

POLITICAL CALENDAR

The following individuals have authorized the Borden Star to list them as candidates for election to the respective offices shown as follows in the November 6, 1984, Borden County Democratic Primary Election. (Paid political advertising by candidates listed below.

FOR SHERIFF
Slick Sneed

FOR COMMISSIONER
PRECINCT No. 1
Frank Currey

FOR COMMISSIONER
PRECINCT No. 3
Vernon Wolf

FOR DISTRICT JUDGE
Gene Delaney R

FOR DISTRICT ATTORNEY
- Borden & Scurry Counties
Ernie Armstrong D

For Sale

Upright piano \$400.00
Pam Hess
806-439-6371



BRANDI KELLEY AND GUY BROOKS

Kelley to wed Brooks in Crestview Baptist

Mr. and Mrs. Jackie Kelley have announced the engagement and approaching marriage of their daughter, Brandi Lea to Guy Scott Brooks, son of Mrs. Jan Brooks.

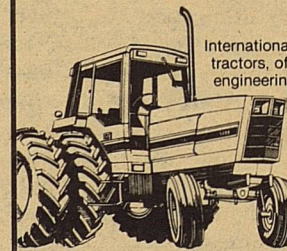
Miss Kelley is a 1984 graduate of Lamesa High School and is employed at Margie's Flowers. Brooks attended Borden High School and is a GED graduate. He is the owner and operator of Rainbow International Carpet Cleaning.

An August 25 wedding is set in the Crestview Baptist Church.

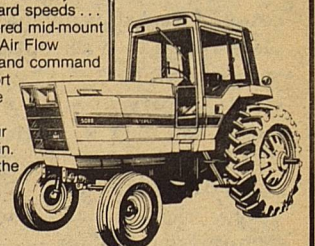
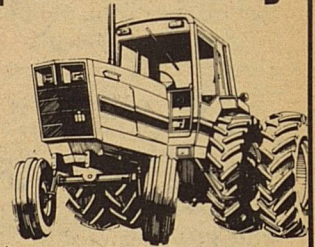
Advanced design gives you top performance, productivity and reliability

International®

5088 - 136.1 PTO hp*
5288 - 162.6 PTO hp*
5488 - 187.2 PTO hp*



International 50 Series tractors, offer you advanced engineering and design concepts... give you a level of performance and reliability that's probably higher than you've ever known before. Just look at some of the outstanding features you get with 50 Series tractors. Proven, high-torque, turbocharged diesel engines... a totally new drive train... fully synchronized transmission, with Synchro Tri-Six shifting, provides 18 uniformly spaced forward speeds... hydraulic-powered mid-mount master clutch... exclusive Forward Air Flow cooling... Power Priority hydraulics... right-hand command controls... and a high level of operator comfort and convenience—all of which add up to more acres per hour... top fuel economy... plus reliability that's backed by a 3-year or 2500-hour extended warranty on the engine and drive train. So why wait? Stop in, see them now. Drive the International tractor that's power matched to your acreage.



INTERNATIONAL HARVESTER

**BROUGHTON & WISE
IMPLEMENT CO.**

P. O. Box 2197
Lamesa Highway
Big Spring, Texas 79721-2197
(915) 267-5284
Res.: 263-3527

*Official test
Finance plans available.

The Kandyland Express

KANDY MCWORTER

MAKING JELLY

The "secret" to making good jelly is no secret at all--it's a combination of pectin, acid and sugar in the right amounts. Whether you make your own jelly each year or you're trying it for the first time, it pays to know how these ingredients work together.

Pectin determines the firmness of the jelly. Too little pectin can produce a jelly too soft to hold its form. But good homemade jellies don't have to have as much pectin as commercial jellies, which must be firm enough to withstand shipment.

Different kinds of pectins produce jellies with various degrees of firmness. For example, cranberry pectins yield jellies that break easily into small clumps, while apple pectins create more elastic jellies.

The acidity of the fruit also has something to do with firmness. Juices from higher acid fruits yield firmer jellies than juices from lower acid fruits, even where the pectin content is the same. Fruits actually have a mixture of acids in them. But tartaric acid, which is plentiful in grapes and currants, is more efficient for jelly-making than citric or acetic acid.

Perhaps the biggest question in jelly-making is how much sugar to add, since that can vary from fruit to fruit. Most of the time, it's better to use too little rather than too much sugar if you want a jelly that will hold its form.

Experiments show that three-fourths cup of sugar per cup of fruit extraction works better than a cup or more of sugar. Partly ripe currants, gooseberries and

CLASSIFIED

General Shelters of Texas, Inc. is seeking a dealer in Gail area for retail sales of portable buildings. Lot and small investment required. Excellent opportunity to expand existing business with low risk. Contact Mike Wulf, General Manager 817-422-4548.

★★★

PROCESS MAIL AT HOME!
\$75.00 per hundred! No Experience. Part or full time. Start immediately. Detail-send self-addressed stamped envelope to C.R.I.-6522, P. O. Box 3149, Stuart, Fl. 33495

grapes may need one or more cups of sugar, but that depends on their stage of ripeness and the amount of water used to cook them.

Having low acid or low pectin fruits does not mean you have to give up on making jelly. Low pectin fruits can be made into excellent jelly if commercial pectin is added. And acid can be increased in a fruit juice simply by adding lemon juice or combining it with other acid fruits.

Commercial pectin is a by-product of the frozen and canned citrus and apple industries. It's available in either liquid or powder form.

Powdered pectin has a long shelf-life, but the liquid must be used promptly after opening. Both types of pectin have good gelling ability, although there is some variation among brands. Commercial pectins also have no pronounced flavor to mar the fruit flavors with which they are combined.

The pectin you can buy in the supermarket is a high-sugar product requiring about 50-65 percent sugar to form a gel. A low-sugar, or low-methoxyl, pectin is used commercially to make dessert mixes, canned salads and sugarless jellies. But these low-sugar pectins cannot currently be purchased on the retail market.

LOCAL NEWS

Tammy Voss and Shayne Hess will be competing in the District Horse Show in Lubbock Tuesday, June 26.

Glenn Swann is scheduled for surgery in the Lamesa Hospital this week.

Terry Voss is suffering from an unknown illness in the Lamesa Hospital. Terry was admitted Sunday.

Vocalist of the Year To Appear in Panhandle-So. Plains Fair

Lubbock-Lee Greenwood, the Country Music Association's male vocalist of the year in 1983 and again this year, has been signed to appear at the 67th annual Panhandle-South Plains Fair on Sept. 25, general manager Steve L. Lewis has announced.

Greenwood will be on stage in Fair Park Coliseum for one show only--at 7 p.m.--Lewis said. He captured his second straight vocalist of the year honor last week in Nashville.

He follows by one day the appearance of George Strait. Other stars already booked for the Jubilee 75 edition include Ricky Skaggs, Sept. 27; the Statler Brothers, Sept. 28 and David Frizzell and Shelly West, Sept. 29.

The son of half-Cherokee parents who split up when he was just a year old, Greenwood was reared by his grandparents on a chicken farm near Sacramento, Calif. There he acquired a love of the outdoors, athletics and music.

At 15, he had his own television program as a country-gospel entertainer in the Modesto-Fresno area. Later, he joined Chester Smith's band.

An accomplished songwriter, Greenwood has toured extensively in recent months with the Oak Ridge Boys, Alabama, Barbara Mandrell, Don Williams, Conway Twitty, Ronnie Milsap and Loretta Lynn.

His distinctive voice also can be heard for several nationwide television commercials.

In the past several months, he has guested on numerous television shows.

His first single, "It Turns me Inside Out," holds the distinction of remaining on the Bill board country music charter for a record-breaking 22 weeks in 1981.

His second album, produced by Jerry Cutchfield, "Somebody's Gonna Love You," also was a big hit.

Tickets for the Strait, Greenwood, Skaggs and Frizzell-West shows are \$7

and \$9. Tickets for the Statlers are \$8 and \$10.

Mail order requests for tickets may be sent to Show Tickets, P.O. Box 208, Lubbock, Texas 79408, and must be accompanied by a

stamped, self-addressed envelope.

Requests will be processed in the order in which received but tickets will not be mailed until after August 1, Lewis said.

Search On For Texas Needleworkers

Austin--Women and Their Work, a multi-disciplinary arts organization based in Austin, is looking for women who do traditional needlework to participate in an exhibit of handwork to be presented at the Diamond M Museum in Snyder this fall.

The needleworkers should be persons who learned their craft from their mothers or other older traditional crafters in their regions. The exhibition will focus on the textile arts of ethnic communities of Texas--Czech, German, Hispanic, Black, Scandinavian, etc. These crafts include tatting, lacemaking, crochet, embroidery, quilting and other fine handwork. Selected crafters will be asked to participate in the exhibition by demonstrating for school children or by

loaning selected pieces to the exhibition.

A representative from Women and Their Work will be in the area conducting interviews with people who do handwork from June 18 through the 22nd. If you are skilled in any of these crafts, or if you know someone who is, please call the Scurry Co. Museum in Snyder at 573-6107 and leave your name and telephone number. A fieldworker will return your call.

Women & Their Work is a nonprofit organization which presents innovative and varied arts exhibitions and performances. HandWork is funded in part by the National Endowment for the Arts, the City of Austin and the Texas Commission on the Arts.

SCHOOL BOARD MEETING

The Board of Trustees of the Borden County Independent School District met in regular session on June 18, 1984 at 8:00 p.m.

The meeting was called to order by Ralph Miller, President.

The minutes of May 21 were read and approved. June bills were read and approved for payment.

President Miller called on Superintendent McLeroy to present the preliminary budget for the 1984-85 school year. The preliminary budget was approved as presented.

A year-to-date financial report was given by the Superintendent. It was reported that the district is in good financial condition.


It was recommended that a computer science and math teacher be hired to comply with Chapter 25 of House Bill 246. The Board granted permission to hire a

computer science--math teacher.

The Board appointed Kenny Hensley as delegate and Jon Monger as alternate to the Texas Association of School Boards Convention.

Permission was given to the Superintendent to check on and review insurance plans from the Texas Association of School Boards.

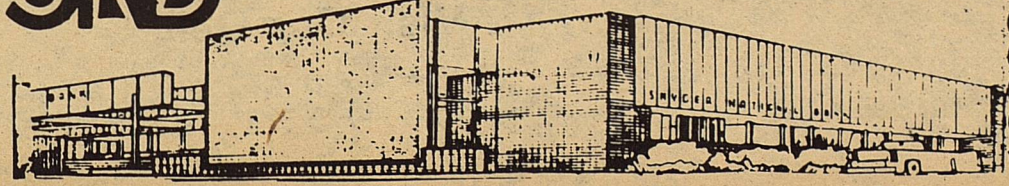
There being no further business, the meeting was adjourned at 9:45 p.m.



SNB

SNYDER NATIONAL BANK

SNYDER, TEXAS 79549



1715 25th Member FDIC 573-2681



Somebody's

THRIFTWAY

A FRIENDLY Supermarket serving West Texans with Quality Foods at Competitive Prices. We give S&H Green Stamps - Double on Tuesday after 1 p.m. - All Day Wednesday.

35th & College Avenue
Snyder, Texas 79549

ASCS

News

by Jerry Stone

USDA REQUESTS COMMENTS ON 1985 UPLAND COTTON PROGRAM

The U.S. Department of Agriculture is seeking public comments on some aspects of the 1985 upland cotton program prior to making decisions on the program.

Decisions on 1985 program provisions will be based on the public's recommendations, the most current data on U.S. and world crop conditions and supply and demand.

Specifically, USDA is asking for comments on the following:

--the loan rate for the basic grade of upland cotton (strict low middling 1-1-16 inch, micronaire 3.5 through 4.9) at average U.S. location. This base loan rate--which by law cannot be less than 55 cents per pound--will be determined according to a statutory formula using domestic and world price date.

--the established target price, which by law cannot be less than 81 cents per pound.

--whether USDA should establish an acreage reduction program would be established.

--the appropriate national program acreage and voluntary reduction percentage if no acreage reduction program is announced.

--whether USDA should establish a paid land diversion program and if so, the percentage of the diversion and level of payment.

---whether to require offsetting compliance if an acreage reduction program is established.

---whether to permit haying and grazing of acreage conservation reserve land if an acreage reduction program is established.

---whether binding contracts should be required for producers participating in any acreage reduction program.

---the loan rate for seed cotton.

Current law requires USDA to implement at least a 5 percent land diversion program if U.S. cotton stocks on July 31, 1985 are projected to exceed 3.7 million bales. If a land diversion program is in effect, an acreage reduction program of not more than 20 percent may be established.

If a combined diversion program and acreage reduction program is implemented, any reduction above 25 percent must be under the land diversion program.

Further details concerning the 1985 upland cotton program are scheduled to appear in the June 6 Federal Register.

Comments should be sent to director, Analysis Division, room 3741-S, ASCS-USDA, P. O. Box 2415, Washington, D. C. 20013.

The comments, which must be received no later

than August 6, will be available for public inspection in that room during regular working hours.

Expensive Fund-Raiser

Midland--Declaring it will be the first ant-free, air-conditioned picnic in Midland's history, the Permian Basin Center for Battered Women and Their Children announced today that preparations have begun for their first fundraiser, "The Most Expensive Little Picnic in Texas". The event will be held at the Midland Center, July 3, 1984, from 8 until midnight. Over 2,000 people in a 17 county area have been invited to put on their most comfortable duds, come in out of the heat, and join them for a night of fun and celebration.

Highlights of the evening include the foot-tapping music of the popular "Levee Band", and an Americana Auction featuring tons of Antiques, and the bidding on the "Oil Patch, Cabbage Patch" dolls.

There will also be many arts and crafts booths, games, and surprises as we celebrate life, liberty, and the restoration of the human spirit.

Nowadays, in too many families, happiness is being overshadowed by domestic violence. In Texas, it is estimated that one of two persons are affected by family violence. In 1983, we served 191 women and 267 children. In 1984, our numbers are up. On our property we need an additional full-facilities dormitory that will serve fragmented families as a temporary haven of hope.

DEMOCRATIC CONVENTION

con't from pg 1

afternoon at the Whitehall Hotel, selected Joe Rankin of Crosby County as Permanent Chairman, Karen McLeash, Secretary; Elsie Vasquez, Lubbock, on the Credentials committee; Mary Nell Mathis, At-Large delegate; Mr. Adams, Ector County, Democratic National Nominating Committee; T. A. Brazel, Big Spring, Resolutions committee; Lynn Hughes, Rules Committee; Arnold Dangerfield, Ector County, Presidential Electoral Committee. These were elected to represent the 28th Senatorial District.

A heated race for National Delegate between Lubbock County and Ector County erupted when Kathy Halford of Ector and Debbie Delhaunty of Lubbock took the lead in a caucus where 7 was nominated from delegates representing the 28th District. In the first go round, Debbie Delhaunty won by majority but Ector County felt they had been treated unfairly and called for a revote, but the majority was still in favor of Debbie Delhaunty.

The Resolutions committee presented 63 Resolutions for the conventions consideration. For the most part, delegates Helen Price and Alternate delegate, Sandra Evans agreed with the out-come of the voting on the resolutions. Some of the resolutions brought before the convention were presidential preference primary elections, passed; government workers to participate in political affairs, passed; homestead act, passed; raising the drinking age to 21, vetoed; teachers payraise, passed; increase in welfare aid and dependant children, passed; electing state school board officials, passed; farm workers compensation, passed; national health care for catastrophic illness, passed; retaining death penalty, passed. Often

discussion pro and con came from the floor and the issues contested by having a standing vote of delegates following voice vote where the decision could not be determined.

The convention proved to be a very educational experience according to Helen Price and Sandra Evans in the political process of our county. It was a very tiring session but they felt that the presence of the delegates to the convention was very important to the people of Borden County and representing our interest and conveying some of our concerns to our elected officials as was done in the Blue Star Breakfast on Saturday morning where they met Mark White, Ann Richards, Jim Hightower and visited with other delegates of the state.

The predominating theme to come from the convention as a whole seem to be the unifying of Texas Democratic Party to work together and put the back in the leadership of the country.

Another highlight of the convention was Sandra Evans shaking hands with Gary Hart as he was brought through the convention hall.

Earlier in the day, the Hart and Mondale forces met to greet their respective candidate but the Borden County delegates were enroute to Houston at the time, accorden to Mrs. Price.

Helen was interviewed by Channel 2, Houston. A newsman asked her how her trip was funded and who was her presidential preference. Helen told him, on camera, that the trip was funded partially by herself and by individuals of Borden County. Her presidential Preference--Gary Hart.

"The Delegate Convention System is a vital part of the Democratic Process to this country and it was a priviledge to be able to attend the convention in Houston and become a part of this process," stated Helen Price, delegate of Borden County.

"Whenever It Rains"

Whenever It Rains will be on stage at the Globe Theatre on June 29, 30 and July 6 and 7 at 8:00 p.m. Friday and Saturday. Sunday, July 8 the show will be at 2:30 p.m.

Adult tickets are \$7, students and senior citizens are \$4. For reservations call 332-1586

Public Notice

Southwestern Bell Telephone Company has filed a tariff with the Public Utility Commission of Texas to make end user common line charges associated with Centrex CO service equal to those to be billed to Private Branch Exchange service. The Commission has suspended the proposed tariff until October 1, 1984, or before, and assigned the matter to Docket No. 5686.

The equalization of end user common line charges for Centrex CO service is to be accomplished by a reduction in Centrex service charges. The net effect of the Centrex service charge adjustment and an interstate end user common line charge will be an increase in total billing.

Persons who wish to intervene or otherwise participate in these proceedings should notify the Commission as soon as possible. A request to intervene, participate, or for further information should be mailed to the Public Utility Commission of Texas, 7800 Shoal Creek Boulevard, Suite 400N, Austin, Texas 78757. Further information may also be obtained by calling the Public Utility Commission Consumer Affairs Division at (512) 458-0223 or (512) 458-0227, or (512) 458-0221 teletypewriter for the deaf.



Southwestern Bell Telephone



Visit Our Deli

Party trays

Custom cakes

Pastries

710 N. 4th

Lamesa