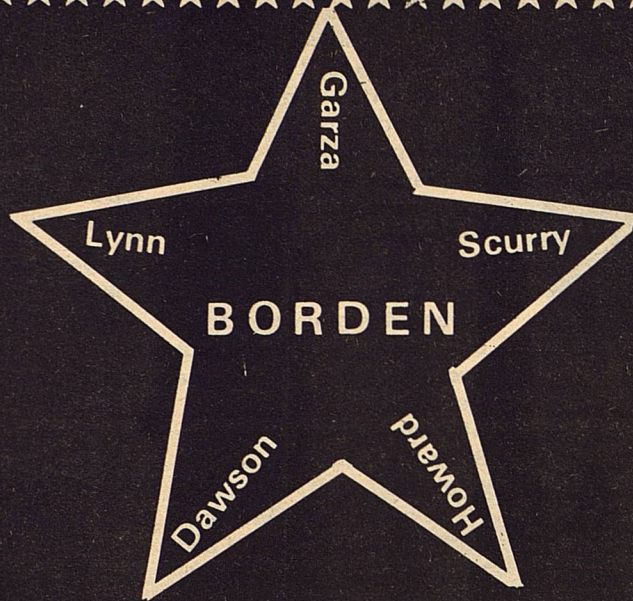


THE



STAR

Volume XI No. 36

June 6, 1984

Serving the Counties of Borden, Dawson, Garza, Howard, Lynn & Scurry



Judge Van York signs proclamation declaring May 27-June 3 as Soil Stewardship week in Borden County in conjunction with the National observance of Soil Stewardship week. Burl Belew, Upper Colorado Soil & Water Conservation District director for Northern Borden County witnesses the signing.

Borden County election results

A total of 230 Borden County voters cast their ballots in the Second Democratic Primary Saturday in Gail.

Unlike the statewide results, Borden County went heavily for Kent Hance giving him 221 votes and Loyd Doggett 8 votes in the U. S. Senator race.

Judge, Court of Criminal Appeals Place 2, Borden County gave W. C. (Bill)

Davis 102 votes and Roy E. Greenwood 79 votes.

Judge, Court of Criminal Appeals Place 3 Borden voters chose Bill White with 100 votes and Thomas B. "Tom" Thorpe with 82 votes.

In one of the more local races, Borden County voters chose Ernie B. Armstrong with 124 votes and Michael Scott Line with 94 votes for District Attorney 132nd Judicial District.

Gail Junior Rodeo June 22 & 23

The Gail Junior Rodeo has been scheduled for June 22 and 23 at 8:00 p.m. in the Borden County arena. Mr. Runt Joan of New Castle, Texas will be the stock producer.

Events will include Barrel Racing, Pole Bending, Flag Racing, Goat Tying, Breakaway, Ribbon,

Tiedown and Team Roping, Steer Riding, Bareback Bronc Riding and Bull Riding. There will be four age groups 8 & under, 12 & under, 13-15, and 16-19.

Anyone wishing to enter the rodeo may call Dorothy Browne, Rodeo Secretary at 915-856-4438 from 6:00 to 10:00 p.m.

Lubbock County youth wins horseshow

Lubbock County 4-H Horsemen walked away from the annual Borden County 4-H Horseshow Saturday with the highpoint visiting county award. Lubbock youth tallied 91 points for the day with Lynn County 85 points and Scurry County 79 points.

All around winners in each age group were Pee Wae division, Jill Voss of Borden County with 32 points followed by Melissa Brillhart of Lubbock County with 29 points. Junior division winner, Jason Spence from Lynn County with 34 points followed by Phillip Johnson of Lubbock with 19 points. All around senior was Kristi Hancock of Terry County with 33 points and Dana

Douglass of Borden County with 31 points.

Results of the individual classes are as follows: REGISTERED

MARES

Kristi Hancock, Terry; Dusty Greaves, Lubbock; Kevin Arnold, Dickens; Stephanie Weaver, Scurry; Eddie Roby, Kent; Jennie Wells, Lynn.

GRADE MARES

Michael Isbell, Lynn; Kurt Hess, Borden; Angela Spence, Gaines; Debra Schwarz, Scurry; Melody Schwarz, Scurry; Jody Woodard, Lynn.

REGISTERED GELDINGS

Heather Helbert, Andrews; Kristi Hancock, Terry; Melissa Brillhart, Lubbock; Dana Douglass, Borden; John Key, Lubbock; Kelly Jo Ogden, Borden.

GRADE GELDINGS

Summer Helbert,

Andrews; Casey Smith, Dickens; Deann Roby, Kent; Steven Cooper, Lubbock; Stormy Gass, Borden; Dana Douglass, Borden.

PEEWEE SHOWMANSHIP

Angela Spence, Gaines; Jill Voss, Borden; Carrie West, Scurry; Kurt Hess, Borden; Melissa Brillhart, Lubbock; Clayton West, Scurry.

JUNIOR SHOWMANSHIP

Phillip Johnson, Lubbock; Jason Spence, Lynn; Casey Smith, Dickens; Chris Cooper, Lubbock; Heather Helbert, Andrews; Dusty Greaves, Lubbock.

SENIOR SHOWMANSHIP

Kristi Hancock, Terry; Stephanie Weaver, Scurry; Dana Douglass, Borden; Sandra Stice, Lynn.

PEEWEE WESTERN PLEASURE

Melissa Brillhart, Con't on Pg. 3

County garage sale slated

Looking for a bargain? Come to Gail Saturday and you are guaranteed to find a little bit of everything. Borden Countians will be sitting up their individual tables on the Courthouse parking lot around 8:00 a.m. Saturday, June 9.

Items will range from books, clothes, furniture, toys, bed spreads and many miscellaneous; just about what ever you are looking for can be found in Gail Saturday.

The Gail Cafe will be open for lunch with a tasty menu to choose from. They also sell snocones, so whether your buying, selling or looking come to Gail Saturday, June 9 for a good time.

In the event of rain or bad weather the garage sale will be held in the County Barn.



ALL AROUND WINNERS - Kristi Hancock, Lubbock County Jason Spence, Lynn County and Jill Voss, Borden County.



RHESA WOLF LANG

Vows Exchanged

The Vincent Baptist Church was the setting for the Saturday evening wedding ceremony of Rhesa Lynn Wolf and Carl Robert Lang. The Rev. Dale Dozier, pastor of the Second Baptist Church in Andrews, officiated the double ring rite.

The bride is the daughter of Mr. and Mrs. Vernon Wolf of Vincent. The bridegroom is the son of Mr. and Mrs. Gus Dabney of McKinney and Mr. and Mrs. Robert Lang of Baytown.

Pink and burgundy floral arrangements with cascading spiral candles stood at the altar.

Mrs. Chesley Wilson was pianist. Vocalists Darrell Collins and Kay Hopper were accompanied by Carla Thompson. Musical selections were "Looking Through the Eyes of Love", "Endless Love", and "The Lord's Prayer".

Given in marriage by her father, the bride wore a white Schiffler embroidery gown by Bianchi. It featured a fitted bodice with a matching long-sleeved jacket. The A-line embroidered skirt fell from the waist into a sweep train. She wore a wide picture hat embellished in Schiffler lace and satin streamers. She

carried a cascade of pink and burgundy flowers.

Roxie Wolf, sister of the bride, was maid of honor. She wore a burgundy gown and carried a pink bouquet. Bridesmaids were Danielle Lang of McKinney, sister of the groom, Lisa McLeroy of Gail, and Trilece Ham of Sweetwater. They wore pink gowns and carried burgundy bouquets.

Jay Campbell of Memphis was best man. Troyce Wolf, brother of the bride, Les Reynolds, and Jim Harmon were groomsmen. Ushers were Denzil Tevis, Gaylon Rice, and Randy Sledge. Billie Harding registered guests as they entered the church.

Following the ceremony, the couple was feted with a reception in the home of the bride. A white tablecloth covered the bride's table. The three-tiered heart shaped cake had a cascade of pink roses and miniature burgundy flowers and was topped with the same arrangement and burgundy streamers of ribbon. Tami Hill, Julie Nelson, and Angeline Stovall served guests.

The groom's table was covered with a burgundy cloth. A heart shaped chocolate cake inscribed

with the names "Carl and Rhesa" was served. Debbie Herring presided.

Waylin and Lorin Wolf, Natalie Hill, and Segan Shafer distributed bag of rice from decorated baskets to guests.

Following a wedding trip to Sardina, Italy, the couple will live in Oklahoma City, Oklahoma.

The bride graduated from Borden High School in 1979 and received a B.S. degree from Texas Tech in 1982. She has been employed by Brad Bennett Oil Co. in Midland.

The groom is a graduate of McKinney High School and holds a B.S. degree in civil engineering and a M.S. degree in business administration from Texas Tech. He is employed by Sabine Oil Co.

The couple was honored with a rehearsal dinner at the Brandin Iron Inn in Big Spring Friday evening. Mr. and Mrs. Gus Dabney parents of the groom, hosted the dinner.

High School Honors

Borden County High School Principal, Mickey McMeans announced High School honors.

BETA ACHIEVEMENT

6th Six Weeks

Keith Martin	12
Tammy Miller	12
Roxie Wolf	12
Jeanette Massingill	11
Cam Stone	11
Dana Gray	10
Mickey Burkett	9
Kelli Williams	9

2nd SEMESTER

Kim Wills	12
Tammy Miller	12
Roxie Wolf	12
Jeanette Massingill	11
Dana Gray	10
Mickey Burkett	9
Kelli Williams	9

HONOR ROLL

6th Six Weeks

Kelli McPhaul	12
Gerry Smith	9

2nd SEMESTER

Kelli McPhaul	12
Keith Martin	12
Cam Stone	11
Gerry Smith	9
John Stephens	9

Rodeo June 22 & 23

The Kandyland Express

BE A SELECTIVE SEWING SHOPPER

Sewing takes a personal investment of money, time, effort and creativity. That's why it pays to shop selectively before you begin to sew. Some advance planning can help eliminate problems and keep the fun in sewing the "perfect" garment.

Start your selective shopping by going through the fashion and sewing magazines to see what's fashionable and right for you.

Then go to the ready to wear departments of your favorite stores and look at the fashions you like. See how they are influenced by the fabrics that they're made from and how they drape and tailor. Observe how different print designs affect the total look and how textures add interest. Try on different looks to observe their appearance.

Now check the labels and hangtags attached to the garments. Find out whose fabric is used, what it's made of and the care it requires. After this, you begin to know what to look for when you get to the fabric store.

Select a pattern similar to the design you prefer.

Having selected a pattern and shopped the stores and magazines, you should already have some idea of the type of fabrics you'll need. Read both ends of the fabric bolts or hangtags for information that can help you choose among different fabrics. The labels will tell you such important things as:

-Brand name. A recognized name is often a clue to quality.

-Fabric name. Consider what you know about it and try to remember if you have seen it on ready to wear tags.

-Fiber contents. Consider whether you want a care demanding fiber or those that are more likely to be easy care. Also consider the look and feel that different types of fiber will give you.

-Required care. Read the manufacturer's claim carefully. Look for performance finishes like permanent press or soil release.

Finally, before you buy any fabric, take it in hand and face the mirror. Make sure that it flatters you. With just a little extra care in selection you can get the fabric that's just right for you and the garment you plan to sew.

ADDING LACE INSERTS TO CLOTHING

Contrasting or matching lace inserts can add feminine appeal to clothes you make. Even if your pattern doesn't call for lace, you might want to add it as an interesting design detail for a plain pattern or fabric.

Lace trim can be added horizontally or vertically on a blouse or the bodice of a dress. The same is true for sleeves. On full skirts, the lace is usually placed horizontally, but it can be lengthwise on straighter skirts.

After cutting the garment, decide where to place the lace inserts. Pin and baste them in place on the garment's right side. At this point, hold the cut sections up to your body to check the placement of the lace and observe the look created.

Then machine stitch the lace to the fabric, sewing close to the edge of the lace and from the right side of the garment. Turn the garment section to the wrong side and carefully cut the fabric away between the two rows of stitching, leaving a 1/4 inch seam allowance. Press the cut edge of the fabric toward the garment, exposing the lace.

Working from the garment's right side, restitch the lace so that the cut edge will be fastened down. Use a small zigzag stitch or straight stitch. Trim the excess fabric away close to the machine stitching on the wrong side.

Garage Sale June 9

T&E's ELECTRIC CO

EXPERT ELECTRICAL WORK

Residential Commercial Industrial

Elizabeth Musgrove

(915) 263-8568

Christeen Ledbetter

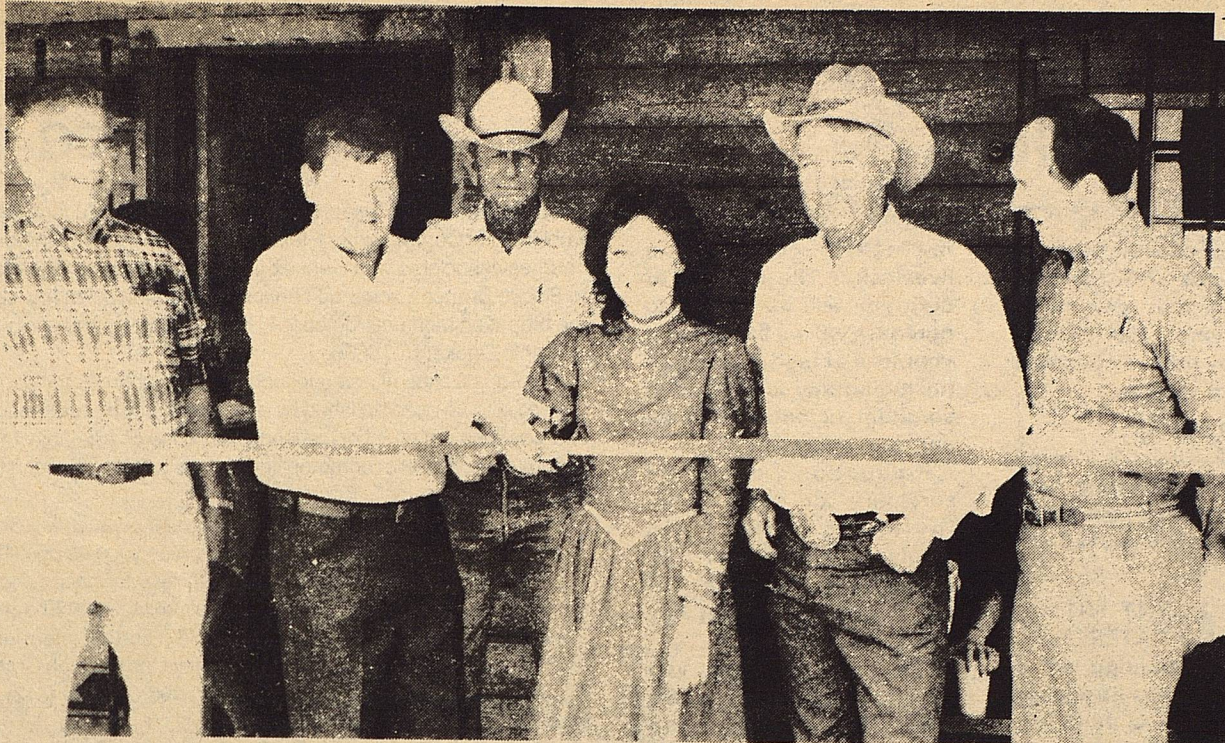
(806) 439-6653



Security State Bank

1411 Gregg BIG SPRING, TEXAS 79720

Member F.D.I.C.



FORT JUSTICE OPENING - Chamber of Commerce directors (left to right) Bill Terpening, Bryan Williams, Jr Wilks, owner Jenifer Knight, owner Riley Miller and

director Wes Burnett celebrate the opening of Fort Justice last Monday. The store, located on a bluff overlooking the Brazos River near Justiceburg. (Photo by Tim Burnett)

Borden; Melissa Brillhart, Lubbock; Angela Spence, Gaines.

JUNIOR POLES

Cody Smith, Lynn; Jason Spence, Lynn; Deanna Schwartz, Scurry; Tammy Voss, Borden; Phillip Johnson, Lubbock; Shea Lee, Lubbock.

SENIOR POLES

Melody Schwartz, Scurry; Dana Douglas, Borden; Sandra Stice, Lynn; Kristi Hancock, Terry; Mendy Trotter, Dawson; Stephanie Weaver, Scurry.

PEEWEE BARRELS

Jill Voss, Borden; Jana Kincheloe, Scurry; Kurt Hess, Borden; Melissa Brillhart, Lubbock; Stormy Gass, Borden; Angela Spence, Gaines.

JUNIOR BARRELS

Jason Spence, Lynn; Phillip Johnson, Lubbock; Cody Smith, Lynn; Jody Woodard, Lynn; Shea Lee, Lubbock; Deana Schwartz, Scurry.

SENIOR BARRELS

Dana Douglas, Borden; Darlene Draper, Gaines; Melody Schwartz, Scurry; Kristi Hancock, Terry; Mendy Trotter, Dawson; Sandra Stice, Lynn.

PEEWEE FLAGS

Jill Voss Borden; Kurt Hess, Borden; Stormy Gass, Borden; Melissa Brillhart, Lubbock; Angela Spence, Gaines; Jana Kincheloe, Scurry.

Con't on Pg. 4

HorseShow Results

Con't from Pg. 1

Lubbock; Carrie West, Scurry; Stormy Gass, Borden; Clayton West, Scurry; Angela Spence, Gaines; Jana Kincheloe, Scurry.

JUNIOR WESTERN PLEASURE

Dusty Greeves, Lubbock; John Key, Lubbock; Jason Spence, Lynn; Summer Helbert, Andrews; Phillip Johnson; Heather Helbert, Andrews.

SENIOR WESTERN PLEASURE

Kristi Hancock, Terry; Eddy Roby, Kent; Dana Douglass, Borden; Deann Roby, Kent; Sandra Stice, Lynn; Stephanie Weaver, Scurry.

PEEWEE WESTERN RIDING

Melissa Brillhart, Lubbock; Jill Voss, Borden; Stormy Gass, Borden; Carrie West, Scurry; Angela Spence, Gaines; Clayton West, Scurry.

JUNIOR WESTERN RIDING

Shea Lee, Lubbock; Shayne Hess, Borden; Jason Spence, Lynn; Tammy Voss, Borden; Jody Woodard, Lynn; J.P. Stice, Lynn.

SENIOR WESTERN RIDING

Dana Douglass, Borden; Eddy Roby, Kent; Stephanie Weaver, Scurry; Kristi Hancock, Terry; Sandra Stice, Lynn.

PEEWEE REINING

Jill Voss, Borden; Melissa Brillhart, Lubbock; Carrie West, Scurry; Angela Spence, Gaines.

Your County Agent Says
by Alan Day

TIME TO TREAT FOR CATTLE GRUBS

Cattle grubs are usually found on the backs of infested animals during the winter months but that's not the time for control measures since the pests have already done their damage.

Grubs are the larvae or worm stage of heel flies, and adult heel flies are currently active in our area.

The time to control grubs is during the period of May through August when they are small and before infested animals suffer stress, weight loss and decreased feed efficiency.

Heel flies cannot sting, have no mouth parts and cause no pain to cattle. Yet, they frighten animals, making them difficult to manage.

Heel flies lay their eggs on an animal's hairs in the stomach and leg region, glued in position. Tiny larvae hatch in a few days,

crawl down to the base of the hair and burrow into the animal's skin.

Then they begin a migratory course through the animal's body, congregating in the throat after a few months, and after six to eight months, appear in the grub stage in the animal's back.

If you have a history of grubs in our cattle we recommend treating cattle over three months of age with one application of an approved systemic insecticide during the May through August period.

Systemic insecticides are absorbed directly through the animal's skin, circulate throughout the body, and kill grubs while they are small.

These insecticides come in various forms--dips, pour-ons, injections and spot-on-treatments. A listing of approved insecticides and methods for controlling cattle grubs is available in my office.

Gifts for all occasions!

Father's Day

Weddings

Birthdays

the clay house

gift wrapping

delivery to Gail

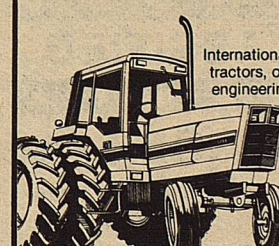
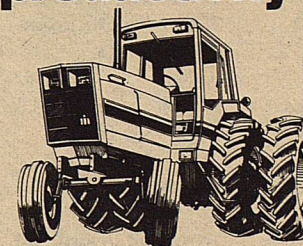
kevva anderson
deidre smith

knott rt. box 88
big spring, tx 79720
(915) 399-4583
(915) 399-4425

Advanced design gives you top performance, productivity and reliability

International®

5088 - 136.1 PTO hp*
5288 - 162.6 PTO hp*
5488 - 187.2 PTO hp*



International 50 Series tractors, offer you advanced engineering and design concepts... give you a level of performance and reliability that's probably higher than you've ever known before.

Just look at some of the outstanding features you get with 50 Series tractors. Proven, high-torque, turbocharged diesel engines... a totally new drive train... fully synchronized transmission, with Synchro Tri-Six shifting, provides 18 uniformly spaced forward speeds... hydraulic-powered mid-mount master clutch... exclusive Forward Air Flow cooling... Power Priority hydraulics... right-hand command controls... and a high level of operator comfort and convenience—all of which add up to more acres per hour... top fuel economy... plus reliability that's backed by a 3-year or 2500-hour extended warranty on the engine and drive train.

So why wait? Stop in, see them now. Drive the International tractor that's power matched to your acreage.



INTERNATIONAL HARVESTER

BROUGHTON & WISE IMPLEMENT CO.

P. O. Box 2197
Lamesa Highway
Big Spring, Texas 79721-2197
(915) 267-5284
Res.: 263-3527

*Official test
Finance plans available.

ASCS

News

by Jerry Stone

SPECIAL EMERGENCY GRAZING & HAYING ON ACR DESIGNATED AREA:

We have been approved for the emergency haying and grazing provision on ACR for other than wheat growing prior to 1-12-84. This applies only to livestock owned by ACR producers prior to April 17, 1984.

First you must come to the office and certify the number of livestock you owned on 4-17-84 and farm(s) where the ACR is located.

WHEAT HARVEST FOR PIK:

With harvest not too far

POLITICAL CALENDAR

The following individuals have authorized the Borden Star to list them as candidates for election to the respective offices shown as follows in the November 6, 1984, Borden County Democratic Primary Election. (Paid political advertising by candidates listed below.)

FOR SHERIFF
Slick Sneed

FOR COMMISSIONER PRECINCT No. 1
Frank Currey

FOR COMMISSIONER PRECINCT No. 3
Vernon Wolf

FOR DISTRICT JUDGE
Gene Delaney R

FOR DISTRICT ATTORNEY
- Borden & Scurry Counties
Ernie Armstrong D

PUBLIC NOTICE

The current lease and all renewal options, for office space of the Borden County ASCS office will expire on June 30, 1984.

Before negotiating a new lease agreement, the public is invited to submit bids for furnishing County Office space. The space provided must be a minimum of 854 square feet and meet the specifications guide and quality standards for County ASCS office space.

All bids must be submitted by June 11, 1984.

For additional information please contact the Borden County ASCS Office at P.O. Box 116, Gail, Texas 79738, or come by 101 East Wilborn Ave., Monday thru Friday from 8:00 a.m. to 5 p.m. (915-856-4301).

away producers that need to harvest for PIK should remember that you must certify your PIK needs before any other disposition is made of the wheat.

AVAILABLE HAY:

ASCS will assist producers in locating hay, also a list will be kept if you have excess hay you wish to sell.

FINAL PLANTING & REPORTING DATES:

The final planting dates for cotton is June 20 and for grain sorghum is June 30, 1984.

Final reporting date for all spring seeded crops is July 16, 1984.

I know any emergency programs is something different, but we're as close as the phone.

Also this does not include other ACR requirements. If you cannot plant a cover crop where required by 6-30-84 you need an individual request.

EMERGENCY FEED ASSISTANCE PROGRAM (EFAP)

Producers may continue to sign up for assistance thru the EFAP to purchase low grade corn from Commodity Credit Corporation.

The feeding period will run for 30 days from the date an application for assistance is filed. Applications filed must reflect any hay or grain on hand (including any amounts sold), and that insufficient feed is available on the farm to adequately

Gail Junior Rodeo June 22 & 23

CLASSIFIED GARAGE SALE

Saturday, June 9, 1984
8:00 a.m. Downtown Gail.
Lots of everything.

JOBS

Federal, State & Civil Service jobs now available in your area. Call 1-(619)-569-8304 for info. 424 hrs



PROCESS MAIL AT HOME!
\$75.00 per hundred! No Experience. Part or full time. Start immediately. Detail-send self-addressed stamped envelope to C.R.I.-6522, P. O. Box 3149, Stuart, FL 33495

maintain foundation livestock. The amount of corn you will be eligible to purchase will be based upon your loss of feed production (including any loss of grain sorghum or oats produced and sold during 1983).

Production of grain sorghum or oats sold, including PIK grain sorghum, can be offset by providing evidence of purchased feed (either hay or processed feed).

The corn will cost you \$2.05 per bushel (\$3.66 CWT). You will be responsible for the cost of transportation from Lubbock to your farm.

Payment for the corn must be made at the ASCS Office before a loading order will be issued.

Payment must be made by certified check, money order, or cashier's check.

If you have any questions about the program, please contact the county office.

Thanks

I want to thank all of the people of Borden County who voted in the June 2 runoff.

I pledge to work diligently to provide all of the people of Borden and Scurry County with strong and effective prosecution. By working together we can continue to make this area the safest and best place to live in all of West Texas.

Thanks again for your help.

-s- Ernie B Armstrong

The smallest breed of dog is the Chihuahua. At maturity, this Mexican dog may weigh between two and four pounds, but some weigh no more than one pound.

Public Notice

Southwestern Bell Telephone Company has filed a tariff with the Public Utility Commission of Texas to make end user common line charges associated with Centrex CO service equal to those to be billed to Private Branch Exchange service. The Commission has suspended the proposed tariff until October 1, 1984, or before, and assigned the matter to Docket No. 5686.

The equalization of end user common line charges for Centrex CO service is to be accomplished by a reduction in Centrex service charges. The net effect of the Centrex service charge adjustment and an interstate end user common line charge will be an increase in total billing.

Persons who wish to intervene or otherwise participate in these proceedings should notify the Commission as soon as possible. A request to intervene, participate, or for further information should be mailed to the Public Utility Commission of Texas, 7800 Shoal Creek Boulevard, Suite 400N, Austin, Texas 78757. Further information may also be obtained by calling the Public Utility Commission Consumer Affairs Division at (512) 458-0223 or (512) 458-0227, or (512) 458-0221 teletypewriter for the deaf.



Southwestern Bell Telephone

Horseshow

Con't from Pg. 3

JUNIOR FLAG

Steven Cooper, Lubbock;
dody Smith, Lynn; Jason Spence, Lynn; Shea Lee, Lubbock; Jody Woodard,

Lynn; Shayne Hess, Borden.

SENIOR FLAGS

Dana Douglas, Borden;
Darlene Draper, Gaines;
Kristi Hancock, Terry;
Sandra Stice, Lynn; Melody Schwartz, Scurry;
Stephanie Weaver, Scurry.



This print by Bob Moline is being raffled by the Borden 4-H and Livestock Association. "Tally Gate" will be given away on the last day of the rodeo. A chance is \$1.00 each or 6 for \$5.00. See any 4-H member to buy a chance.



Visit Our Deli

Party trays

Custom cakes

Pastries

710 N. 4th

Lamesa

Everybody's
THRIFTWAY

A FRIENDLY Supermarket serving West Texans with Quality Foods at Competitive Prices.

We give S&H Green Stamps - Double on Tuesday after 1 p.m. - All Day Wednesday.

35th & College Avenue
Snyder, Texas 79549