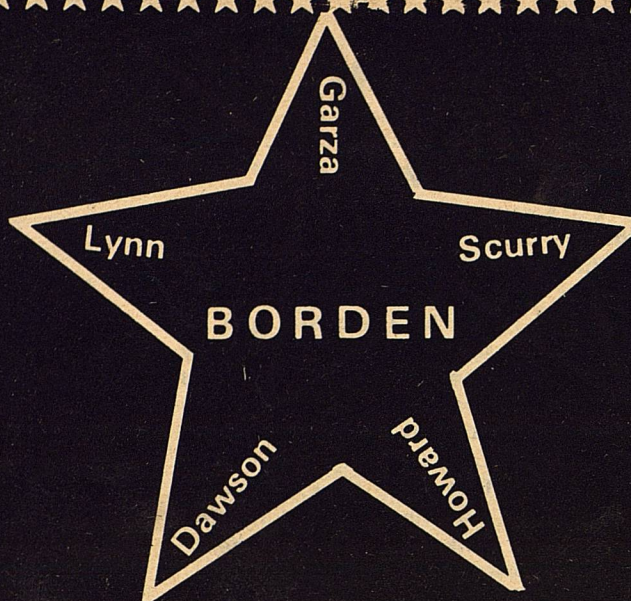


# THE

Volume XI No. 22



# STAR

February 8, 1984

Serving the Counties of Borden, Dawson, Garza, Howard, Lynn & Scurry

## Hill Throws Hat In Ring

Former Texas Attorney General John Hill announced Friday that he will be a candidate for Chief Justice of the Texas Supreme Court in the May 5 Democratic Primary.

Hill, who served two terms as Attorney General from 1973 to 1978, said he would devote his six-year term of office to "trying to

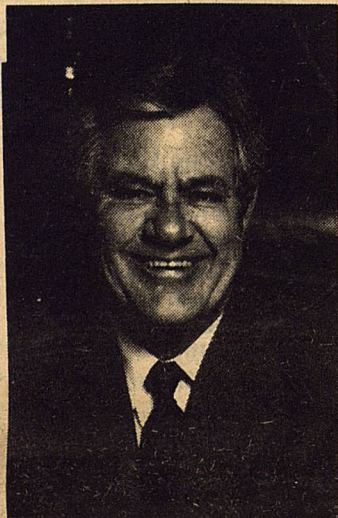
help lead the effort to improve our system of justice by utilizing the judicial and administrative responsibilities of the office of Chief Justice."

Hill, 60, said that improved continuing legal education and codes of professional conduct for lawyers and judges would be the dominant themes of this campaign.

"The competency and integrity of our lawyers and judges must be unquestioned," Hill told supporters and reporters who attended his announcement in the Old Supreme Court Room of the State Capitol.

Hill called for discouraging "even the appearance of judicial impropriety" and for reasonable limits on political contributions to judicial candidates.

In his kickoff address, Hill noted that bigger and bigger backlogs of cases are developing in the state's court system. If that system is going to be made more efficient, Hill said, it will require closer cooperation and understanding between the judicial, legislative and executive branches of state



JOHN HILL

government.

"We must improve our ability to efficiently and fairly dispose of our growing case load - justice delayed is justice denied," Hill said.

Hill suggested that his background as a lawyer, and his background as Secretary of State offer a background of public service and

hands-on practice of law that can be helpful to resolving those problems."

Hill is a senior partner in the firm of Hughes and Hill with offices in Dallas and Austin.

He serves on the Texas Judicial Council and is a member of the American College of Trial Lawyers and the International Academy of Trial Lawyers. He has received numerous other honors during his legal career of more than 30 years.

He is a member of the national board of the Muscular Dystrophy Association and the administrative board of Tarrytown Methodist Church in Austin.

Hill and his wife, Bitsy, make their home in Austin.

## President Proclaims Heart Month

Austin; President Reagan issued a proclamation designating February as American Heart Month and urged the American people to join with him in his commitment to the search for new ways to prevent, detect, and control cardiovascular disease in all of its forms.

The proclamation reads, in part: "Diseases of the heart and blood vessels are among the Nation's most important health problems.

This year one and one-half million Americans will suffer a heart attack, and nearly one million people will die from diseases of the heart. The economic drain on our resources in the form of direct medical cost and lost wages and production will exceed \$64 billion.

Reagan's proclamation continues; "it is gratifying to note that mortality rates for heart disease and stroke are declining. Deaths from

coronary heart disease have declined by more than 25 percent

Thousands of volunteers in Texas will join the effort to distribute heart information and collect contributions to support research, education and community service projects. These programs of the American Heart Association in Texas are aimed at reducing early death and disability from heart disease and stroke.

## Hance Responds To Reagan's Budget

Congressman Kent Hance, a United States Senate candidate, said today that President Reagan's new budget is headed in the right direction, but he has problems with the projected deficit and proposed defense spending.

"I'm pleased there were no new tax proposals, and I think the budget sets reasonable goals for the nation," Hance said. He added, "We must examine defense spending for waste and abuse. No one has a

firmer commitment for a strong defense than I do, but a real increase of 18 percent is unacceptable."

"I'm even more concerned about the lack of any significant deficit reducing proposals in this budget," Hance added. Noting the Reagan proposal reduces spending by \$4.6 billion, the Lubbock Democrat urged further cuts in spending, loosening monetary policy, and tax reform. "We must do more to reduce the red ink in

Washington. \$180 billion deficits are intolerable," Hance said.

Hance called on President Reagan to implement a more flexible monetary policy. He pointed out that tight money has driven up interest rates, reduced the amount of capital available to private enterprise, and excluded the consumer from the loan market.

A member of the house ways and means committee, Hance renewed his call for a look at simplifying the country's tax code. Hance passed an amendment to the committee last year to study ways to make the tax code more simple and possibly reduce the personal income tax rate for everyone.

Finally, Hance said President Reagan is wrong to propose tuition tax credits, voucher programs for education and housing, and disruptive changes in the civil service retirement program.

The Hance campaign also announced today that it raised \$895,814.95 in campaign contributions in

## Cotton Production Meeting Set

There will be a meeting of Borden County producers on February 15, at 7:00 p.m. in the Conference Room at the school. The meeting will be co-sponsored by the Borden County Field Crops Committee and Plains Cotton Growers.

James Supak, area cotton specialist, will be on hand to discuss Cotton Weed Control, Production Practices and the 1984 Farm Program (whether to get in program or not).

There will be a computer

available to be used to help you with your decision on the farm program.

If you have not signed up in the program yet, you may be especially interested in attending this meeting which should be very informative and helpful. The deadline for signing up in the program is February 24.

The Plains Cotton Growers will conduct an election at the end of the meeting to elect a business representative for 1984.

This should be a good meeting and I urge all producers to attend.



# Borden County School News

## Lady Coyotes Fall To Greenwood

A late comeback effort by the Borden County girls basketball team fell short as Greenwood won the rematch of the two district leaders, 47-41. A disastrous third quarter got Borden into a hole they just couldn't climb out of as they entered the fourth quarter 17 points down.

In the first quarter, Greenwood came out hot as they missed only one shot from the field and opened up a 12-6 lead. Six turnovers in the initial stanza also hurt the Coyotes as Kelli Williams, Roxie Wolf, and Becky Massingill each had one field goal.

The second quarter saw Borden put on one of its best defensive efforts as they held Greenwood to 2 points but could only score 7 of their own. Shooting a cold 3 of 13 from the field, Roxie Wolf had all three goals as inside and outside shots just wouldn't fall. Borden also came up with 5 steals in the quarter, three by Shawna Vaughn. Greenwood led at half-time 14-13.

Then the bad third quarter came. Turning the ball over nine times, Borden fell further and further behind as Greenwood took advantage of the mistakes. Borden could only manage 6 field



The Borden Star  
Publication No. 895520  
(USPS 895-520)  
Publication No. 895520

Editor:  
Barbara Anderson

Published weekly, except for Christmas and New Years, on Wednesday at Gail, Borden County, Texas 79738, Box 137, Kincaid Street, Second Class postage paid at Gail, Texas.

Any errors that we make reflecting on the reputation or standing of any Firm Corporation or individual that may appear in the columns of the Borden Star will be gladly corrected when called to the attention of the staff.

Subscription Rates.  
\$8.00 per year

Borden Star Owners:  
James McLeroy, Barbara Anderson, Doris Rudd, Pat Porter, Bob Dyess, Edna Miller, Ruth Weathers, Mrs. Nathan Zant, Sonny Tucker, Eddie Simer, Loree Jones, Martin Parks, Dan Turner, Lela Porter, and Marge Toombs.

goal attempts but hit half of them. Shawna Vaughn had all three of Borden's rebounds in the quarter.

Entering the fourth quarter down 17 points, 37-20, the Lady Coyotes began a furious comeback that pulled them to within 4 with 2 minutes remaining. Cutting the turnovers to four, Borden hit 78 percent from the field and 88 percent from the line to pull close. In the 7 of 9 field goal tries, Roxie Wolf, Kelly Williams, and Kelli Williams each had two and Shawna Vaughn had the remaining. Roxie also hit two of two free throws and Kelli Williams hit 4 of 4 in the comeback. Even with Borden outscoring the Rangerettes 21-10, it was not enough as Greenwood held on to win 47-41 and raise their season record to 20-3. Borden's record moves to 18-2, the two losses coming at the hands of Greenwood.

Roxie Wolf led in scoring with 19 points followed by Kelli Williams with 10. Kelly Williams had 7, and Becky Massingill and Shawna Vaughn each had 2. Teri Billington had a free throw to round out the scoring. Roxie also led in field goal percentage hitting 62 percent. Shawna led in rebounds with 10, led in assists with 5, and led in steals with 3. Kelli Williams led in free throw percentage hitting 4 of 4 for 100 percent. As a team, Borden hit 16 of 36 from the field for 44 percent and 9 of 12 from the line for 75 percent. The difference in the game came with Borden's 22 turnovers and four of the Lady Coyotes starters with four fouls, putting Greenwood on the line 22 times. Still it was a good comeback effort by the girls

## Borden Co. 35, Greenwood 73

Mickey Burkett played his best game of the season against a much larger Greenwood squad Tuesday night in Greenwood. Burkett scored only eight points but his rebounding strength and hustle up and down the court was very apparent.

The starting five consisted of Burkett with eight points, Cooley with fifteen, Martin with six, Turner with six and Hood failed to score.

"Art is man added to nature." —Francis Bacon

to pull back close at the end. Borden now needs one win in its last two games to clinch a playoff spot in bi-district action. They play Sands here Friday and Grady there the following Tuesday. In bi-district, if the Lady Coyotes should reach that far, their opponent would be Highland, the 2nd ranked team in the state.

## Borden 46, Sands 41

"A very good effort by all team members" said Coach Cooley. "We did as we set out to do in hiding our defense. One time down the floor, we were in zone, next time in 'a man to man.'"

Chris Cooley had seventeen points before touting out and Robin Hood had two points before touting out. Keith Martin added ten, Bric Turner nine, Mickey Burkett six and Cam Stone two.

Cam Stone and Mickey Burkett played very well. Both boys have come along way this season. Cam has really progressed and his basketball future looks very bright. He can jump well, he gets up and down the floor quickly, but his shot needs work," states the coach.

In the Boys J.V. game, Mike Douglass had eight, Jerry Green and Matthew Massingill had six each. John Stephens had four and Gerry Smith two. Sands won the J. V. game 34-26.

## Absentees Are Few At Borden Schools

Absentees have been few in Borden Schools the past few weeks in comparison with other schools in the area. We had a few high school students out last week—some with "flu"-like symptoms, and others with infectious conjunctivitis (pinkeye)—but only about 10 percent of the enrollment.

Monday, there are more absent from elementary and junior high grades but still only about 10 percent. It seems to take several days for some students to be fever-free in order to return to school.

"Flattery is telling the other guy what he already thinks of himself." —Hal Wilshire

## FHA MEMBERS MEET

The F. H. members had their monthly meeting January 31, 1984 in the Home economics room. Shana Bradshaw, vice-president of yearbook, brought the meeting to order. Jeanette Massingill Sec-1 called out roll call. Sponsor, Dana Cooley discussed ideas for the FHA and FFA Banquet with members. FHA members chose FHA Beau and Freshman and Sophomores chose Big Sisters. Sec-Jeanette Massingill

also told the members that they were doing a good job with the Secret Grandparents and to keep it up. Reporter, Simona Benavidez announced that member of the month was B. G. Kropp for doing a good job with FHA this month. There being no further information, Shana Bradshaw, 1st Vice-Pres., adjourned the meeting. Refreshments were served by Shana Bradshaw, Rene Telchik, Kelli Williams and Mary Ortiz.

## LADY COYOTES CINCH PLAYOFF SPOT

The Borden County girls basketball team jumped out to a 20-4 first quarter lead against Sands here Friday night and never looked back as they scored a 56-27 win over the Mustangs. The win put Borden into the Bi-District playoffs to be held February 16 or 17.

In the first quarter action, 5 players got into the scoring action, but it was Kelly Williams and Roxie Wolf each hitting three field goals and dominating play inside that took the kick out of the Mustangs. A pressing defense forced 7 turnovers, converting most into points, as Borden hit 53 percent from the field.

It was hard to keep the momentum up with the lead the Lady Coyotes had built, but they still held a 30-16 lead. In the second stanza, Borden came up with 10 defensive rebounds but could not manage any offensive rebounds, even though the offense gave them 10 opportunities.

The third quarter, Borden outscored their opponents 14-6 for a 44-22 lead. They took in 12 rebounds but could only hit 7 of 20 from the field. Roxie Wolf had 8 points in the quarter.

In the final quarter, Borden gathered in 8 offensive rebounds but could only manage to hit 6 of 19 from the field. Outside shots just seemed to not fall as Borden could only hit 2 of 12 outside the lane. Still it was good effort by the Lady Coyotes after Tuesday's heartbreaking loss at Greenwood.

Roxie Wolf led in scoring with 16 points followed by Shawna Vaughn and Becky Massingill with 8 each. Kelly Williams, Shana Bradshaw, and Kelli Williams each had 6.

Simona Benavidez had 4 and Teri Billington had 2 to round out the scoring. Shana and Simona led in field goal percentage with Shana hitting 3 of 3 for 100 percent and Simona 2 of 2 for also 100 percent. Shawna and Kelly tied also for rebound honors with 8 each closely followed by Roxie with 7. Shawna led in assists with 6 followed by Kelli Williams, Teri Billington, and Becky Massingill with 4 each. Nobody missed a free throw, but then again nobody shot a free throw. Shana and Becky tied in honors in steals as each came up with 4. As a team, Borden hit 38 percent from the field where they got all their points. They came up with 17 steals, and had a season high 42 rebounds, 17 offensively and 25 defensive. They also had 20 assists.

Season record for the Lady Coyotes now stands at 19-2, with district record at 5-2. One district game remains, at Grady, on the 7th. This Friday, Borden will play a practice game against Eula of Region II. Eula, the defending champion of Region II returns three starters off last year's state-semi-finalists. Game will be played at Colorado City High School Gymnasium in Colorado City. Time is set for 6:30. Following the girls game, their will be a boys practice game with Eula and Jayton. There remains a possibility of another practice game next Tuesday, February 14, with Iron County, who at the present time are 23-0. Support the Lady Coyotes as they round out district play, and take on tough competition February 10 in preparation for the playoffs.



## "B" Team Captures Second in Tourney

Even with four of its players out due to illness, the Borden County Jr. High "B" team won 2nd place in the Klondike "B" team tournament. Carrying only 7 players the first day and 8 the second, all players got to see plenty of playing time.

In the first game against host Klondike, Borden came away the winner, 25-7. Kristi Adcock led in scoring with 8 points, followed by Felicia Romero with 7. Teresa Breazeale hit 4 points, and Kandy Belew and Rachael Romero each had 3.

The second game put Borden against Sands, a team they had earlier beaten 16-5. This time, Borden again came away the winner with a 25-2 triumph. Borden's defense had held Sands scoreless through the

first three quarters. Seven players got into the scoring with Kristi Adcock once again leading the way with 8 points. She was followed by Felicia Romero, Teresa Breazeale, and D'Lyn Lloyd with 4 each. Kandy Belew and Amy Lewis each had 2 points and Rachael Romero added a free throw.

For the championship, Borden played Grady and were defeated by the bigger girls 19-7. Staying within 4 points at half, the one hour rest Borden had after the Sands game was not enough as Grady outscored the Missy Coyotes 11-3 the second half. Kandy Belew had 4 points followed by Felicia Romero with 2 and Kristi Adcock with 1. Congratulations to the Missy Coyotes for a great tournament.

## Borden Pee Wees 19, Grady Pee Wee 16

With Alex Lemons controlling both offensive and defensive back boards, the Coyotes Pee Wee boys were able to win the first game of the Klondike Tournament against Grady.

Cody Cooley scored nine points, Lemons had five, Jim Rios, four, and Lance Telchik added one.

Our zone defense press really played position well and we didn't give up any points while we were

pressing, said Coach Frisbie.

All thirteen boys making the trip got some playing time. Other members of the winning team are Jim Hidenour, Cody Stone, Armondo Soto, Bryan Barnes, Chad Williams, Wally Breazeale, Jon Herring, James Goolsby, and James Smith.

The squad returns Saturday for the two final games against Sands and Klondike.

## Klondike Pee Wees 26, Borden Pee Wee 20

Jim Rios scored 9 points to lead the Pee Wee boys squad in a close game with the Cougars of Klondike. Alex Lemons had seven and

pressing, said Coach Frisbie. All members of the teams got some playing time as the tournament is used as a learning basketball situation.

## School Lunch Menu

February 13-17, 1984

	Lunch	Breakfast
Monday	Fish Pinto Beans Spinach Fruit Cornbread Milk Salad Bar	Biscuit & Sausage Fruit Juice Milk
Tuesday	Fried Chicken Mashed Potatoes English Peas Fruit & Jello Hot Rolls Milk Salad Bar	Coffee Cake Applesauce Milk
Wednesday	Barbecued Wieners Green Beans Scalloped Potatoes Fruit Cobbler Hot Rolls Milk Salad Bar	Biscuit & Gravy Fruit Milk
Thursday	Lasagna Vegetable Salad Fruit Hot Rolls Milk Salad Bar	Muffins Fruit Juice Milk
Friday	Hamburgers French Fries Lettuce-Tomatoes-Pickles Cookie Milk Salad Bar	Cereal Fruit Milk

## Changes In Education Causing Concern

part one of a series

Rumors have been floating around concerning recent proposed guidelines for education in Texas public schools. H. Ross Perot's Select Committee on Education has been getting the blame or credit for these changes such as beefing up the curriculum and limiting the number of days a student may be allowed to miss a class to participate in an extra curricular activity. That is a false idea; however, since the report or recommendation from the Select Committee on Education of which Mr. Perot is chairman will not be submitted until May 16, 1984.

Some of the reasons for concern have been initiated by House Bill 246. House Bill 246 was passed by the last legislature. Educators have been busy with this bill for the past four or five years. After the bill (246) was passed, the State Board of Education was given the task of writing guidelines to implement policy into Texas public schools beginning September 1984. Final implementation into all Texas Public Schools is scheduled for the school year 1987-88.

In order for the State Board of Education Proposed Rules to become law, three readings are necessary. The first reading and filing authorization was on January 14, 1984; the second reading will be on February 11, 1984; and the third reading will be in March of 1984.

Some of the proposed rules in the curriculum of House Bill 246 are briefly spelled out in this abstract.

### I. Essential Elements

The essential elements represent those core knowledges, skills, and competencies all students should learn to be effective and productive members of society. They are described for each subject by grade level and/or by course. A school district must provide instruction in the essential elements at the grade levels and in the courses specified. A school district may add elements but is not to delete or omit instruction in the essential elements required by the State Board of Education.

### II. Elementary Well-Balanced Curriculum

	ENGLISH LANGUAGE ARTS <sup>1</sup>	MATHEMATICS	PHYSICAL EDUCATION	FINE ARTS	HEALTH	SCIENCE	SOCIAL STUDIES
K <sup>1</sup>	No less than 40% of instructional day	No less than 20% of instructional day	daily <sup>2</sup>	weekly <sup>3</sup>	weekly <sup>3</sup>	weekly <sup>3</sup>	weekly <sup>3</sup>
GRADES 1-3	No less than 120 minutes per day	No less than 60 minutes per day	daily <sup>2</sup>	weekly <sup>3</sup>	weekly <sup>3</sup>	100 minutes per week equivalent <sup>4</sup>	100 minutes per week equivalent <sup>4</sup>
GRADES 4-6	No less than 90 minutes per day	No less than 60 minutes per day	120 minutes per week equivalent	120 minutes per week equivalent	60 minutes per week equivalent	No less than 45 minutes per day	No less than 45 minutes per day

### III. Secondary Well-Balanced Curriculum

#### A. Grade 6 at Middle School

If Grade 6 is departmentalized under the middle school organizational structure, a unit will consist of class periods of a minimum of 45 minutes of academically engaged time for 175 days. The units required for each school district to provide and each student to take are:

Subjects	Units
English Language Arts (one unit shall be reading)	2
Mathematics	1
Science	1
Social Studies	1
Physical Education	1/2
Fine Arts	1/2
Health (essential elements shall be taught)	-

If a district wishes to deviate from the requirements, a plan must be submitted and approved by the Commissioner of Education.

#### B. Secondary Grades 7-8

A unit will consist of class periods of a minimum of 45 minutes of academically engaged time for 175 days. Each school district must teach and each student must take:

Subjects	Units
English Language Arts	2
Mathematics	2
Life Science	1
Earth Science	1
Physical Education	1
Texas History/Geography	1
U.S. History/Citizenship	1
Computer Literacy (1)	0 or 1/2
Reading (2)	0, 1, or 2
Electives	sufficient to complete 12 units

1. One-half unit of computer literacy shall be completed during Grade 7 or 8. A district may develop and implement a plan for teaching and assessing mastery of the essential elements of computer literacy in elementary grades. Students who can demonstrate mastery of the essential elements on an assessment instrument obtained from the Commissioner of Education may be exempted from taking the one-half unit course.

2. Students who score two years or more below grade level on a standardized achievement test will be assigned to a one unit reading improvement course in Grade 7 and a one unit reading improvement course in Grade 8. Students who score between one and two years below grade level will be assigned to the reading improvement course at the discretion of the school district based on the need of the student.

#### C. Secondary Grades 9-12

1. Each school district will offer the courses listed in this section and will maintain evidence that students have the opportunity to take these courses every year or at least every other year.

- English Language Arts - English I, II, III, IV, English IV (academic), Correlated Language Arts I, II, III, IV.
- Mathematics - Fundamentals of Mathematics, Consumer Mathematics, Pre-Algebra, Algebra I, Algebra II, Geometry, and Pre-Calculus (Trigonometry and either Elementary Analysis or Analytic Geometry may be offered in lieu of Pre-Calculus).





Mr. and Mrs. Harlin Williams of Route One, O'Donnell, will be honored with a reception February 19th from 2 until 5 p.m. at the Plains Community Center to celebrate their 50th Wedding Anniversary. The event will be hosted by their children, Kenneth Williams of O'Donnell and Ralph Williams of Lamesa. They have eight grandchildren. Williams and the former Nellie Scott were married February 17, 1934 in Dickens County Texas. Your presence and friendship is most treasured. No other gifts desired.

### Tower to Select Senior Citizens

Washington-Senator John Tower today announced he is accepting applications from Texas senior citizens who wish to participate in an intern program in his Washington office May 11.

The program is designed to provide increased communication between the retired community and their representatives in Congress. Tower was the first member of the Texas Congressional delegation to participate in the initial program in 1977.

The two citizens selected from the applicants will spend a week in Tower's Washington office observing the legislative process, meeting with representatives of departments and agencies, and participating in the operations of a Congressional office.

"Interns selected last year, Ella Mae Swenson of Tyler and Cyril Krotzer of Harlingen both contributed much to my understanding more fully the needs and concerns of our senior citizens," Tower said.

"I once again look forward to learning firsthand more about our senior citizen's problems, needs, and opinions," the Texas Republican added. "At the same time, I hope the interns will learn more about the legislative process and government programs designed for their needs and then share with their peers the experiences and information gained in Washington."

Tower said the interns' demanding schedule of activities will include

meetings with various agencies, department and committee representatives, and the opportunity to attend committee hearings. Plans also include a private tour of the White House and social activities with the Congressional staff and other interns.

Tower said the applicants should be senior citizens, 65 years of age or older, active in their communities, interested in legislation, and willing and able to communicate their knowledge to their fellow senior citizens in Texas.

Interns will receive their airfare to and from Washington, as well as a stipend to cover expenses while in Washington.

Applications can be obtained from Tower's Dallas office a 1100 Commerce, Room 7C14, Dallas, Texas 75242. The deadline for returning the application with two letters of recommendation to the Dallas office is March 15.

## CASE OF BUBONIC PLAGUE IN WINKLER

A case of Bubonic Plague recently occurred in Winkler County. Although plague in West Texas is primarily a disease of rodents, it is occasionally transmitted to man as the result of the bite of an infected flea or the handling of an infected animal. It is a very serious disease and can result in death if not treated promptly. Hunters, trappers or persons who work in areas where rabbits or

rodents are common should be aware of the risk and take steps to avoid being exposed. Any person who becomes ill within a week of coming into contact with wild animals or their fleas, should immediately seek professional medical attention. Evidence of large numbers of sick or dying rodents or rabbits should be reported to the local health department or the Texas Department of Health.

## THANK YOU

The Committee for the Bar-b-cue dinner would like to give each and every person a great big THANK YOU for bringing the good salads, vegetables and desserts for the dinner. Thanks, you make us good food.

A special THANK YOU goes out to C. W. Howell, Moorman Feed Company, for donating the cutlery, and cups for the dinner.

Thanks to each one who had a part.

Thanks again,  
DOROTHY BROWNE  
Mrs. Don Wills  
Mrs. Brent Murphy  
Mrs. Jim Burkett  
Mrs. Frank Herridge

## LOCAL FOLKS

Kandy McWorter's Mother, sister and sister-in-law and two nieces were visiting with Kandy over the week-end.

Patsy Underwood was released from the Snyder hospital, but returned to the Doctor on Monday Morning.

Babe Underwood is still in the hospital suffering from pneumonia.

Max Perry is out of the hospital and is said to be doing fine.

## Thank You

In the midst of our sorrows, we wish to express our heartfelt thanks and appreciation to our many relatives, friends, and neighbors for the kindness and sympathy shown us in the loss of our beloved mother and father, Vernon Creighton, especially those who prepared and served food and for the words and cards, and the donors of the beautiful floral offerings and memorials.

-s-  
Mrs. Vernon Creighton  
Mr. and Mrs. Bo Creighton  
Mr. and Mrs. Corky Ogden  
Mr. and Mrs. Buster Taylor  
Mr. and Mrs. Cliff Durham  
Mr. and Mrs. Ross Westbrook

## Williams and Wolf On Deans List

Keith Williams and Troyce Wolf, both graduates of Borden County High School have been chosen to the Dean's Honor Roll for the fall semester at their respective universities.

Keith, son of Mr. and Mrs. Kenneth Williams of the Plains Community is an undecided major at Angelo State University in San Angelo.

Troyce, son of Mr. and Mrs. Vernon of Route 1, Coahoma, is a senior at Texas Tech University.

Camels were brought into Texas in 1856 to transport supplies to army posts in desert areas of the Southwest.

## LEGAL NOTICE

Notice is hereby given that a School Board Election has been called in the Borden County Independent School District on April 7, 1984.

The terms of office of Jack McPhaul and Jon Monger, members of the Board of Trustees of this School District, will expire on the first Saturday in April, 1984, being April 7, 1984; and on said date a trustee election will be held in the Borden County Independent School District for the purpose of electing two School Board Members to two 3-year terms.

All requests by candidates

to have their names placed upon the ballot for the above mentioned election shall be in writing and signed by the candidate and filed with the secretary of the Board of Trustees at the Superintendent's office not later than 30 days prior to the date of the election March 7, 1984 is the deadline to file).

Doyle Newton, Secretary  
Board of Trustees  
Borden County  
Independent School District

**Claiborne's**  
THRIFTWAY

Visit Our Deli

Party trays

Custom cakes

Pastries

710 N. 4th

Lamesa

THANK YOU FOR  
SHOPPING WITH  
US  
WE APPRECIATE  
YOUR  
BUSINESS

FORD  
MERCURY  
LINCOLN  
**BOB BROCK FORD**

500 W. 4th

BIG SPRING

267-7424



## SHOULD YOU LOSE WEIGHT?

How can you tell if you are overweight? Is there a difference between being overweight and being obese?

These questions often bring conflicting answers and there's even some controversy among nutrition experts about the definitions of and the methods used to determine who is overweight or obese.

Because body weight alone does not determine fatness or leanness, the "average" weight of a person may be meaningless.

For example, skeleton weight can vary from 4 to 9 percent from person to person.

This means that a 125-pound woman could have a skeleton that weighed as little as 5 pounds or as much as 11 pounds.

Also, a very muscular person's weight may seem to be high in proportion to height, but the person actually has very little fat tissue.

Determining the amount of body fat a person has is the best method for defining overweight or "over fat". One way to measure body fat is by weighing under water. Mathematical calculations are then made

which define the amount of body fat.

A reliable method of determining body fatness which is easier than weighing under water is to measure skin fold thickness by constant tension calipers. About half of the body's fat is directly under the skin, so measuring the thickness of this fat (called subcutaneous fat) is a good index of total body fat.

The calipers are used to measure several different body sites for thickness. An index of percent of body fat can then be calculated according to readings at the various body points.

A simpler home test of body fatness makes use of a full-length mirror. A person is often able to decide whether he or she is carrying too much fat by a careful study of oneself before a mirror without clothes.

Have you gained several pounds over the years? Do you find your clothes a little tighter than in the past?

If the signs point to having too much body fat, don't wait. Check with your physician about a well-balanced, reduced calorie diet and an exercise program that would be right for you.

## Oldest Becomes Newest Range Management

Prescribed burning is one of the oldest and newest of range management tools available to ranchers. This may seem like a contradiction of terms, but only requires a look back in history to understand.

Lightening caused many prairie fires in past centuries. Nomadic Indians practiced a form of prescribed burning by setting prairie fires to provide fresh grazing for the free-ranging buffalo. In the last 15 years we have re-discovered the benefits of prescribed burning on native and improved rangeland. Fire plans have been developed which allow us to safely burn the range when key grasses are

dormant and soil moisture is adequate for quick recovery of the plants. With careful planning and burn preparation the danger of large wildfires are reduced. One of the largest wildfires occurred in 1885 and travelled 175 miles from Kansas, south to the Canadian Breaks north of Amarillo. This fire burned 1 million acres of XIT ranch land. Today interspersed cropland prevents most wildfires from spreading very far.

In the Upper Colorado Soil and Water Conservation District, tobosa grass is the dominant vegetation used in prescribed burning. Objectives in burning are to control juniper seedlings,

suppress resprouts from mesquite, control prickly pear and to improve the quality and quantity of tobosa and bluestem rangelands. The optimum time for burning is late January through early March. Now is the time to begin preparation for a burn this year. The Soil Conservation Service will provide technical assistance in developing a fire plan and assisting in carrying out a prescribed burn with the producer. If you would like to conduct a burn and desire more information on burning, contact the Soil Conservation Service at 3423 Avenue T or call 573-0171.

## Safety Bulletin Concerning Contact Lenses

Two recent incidents have uncovered a previously unknown phenomenon of serious gravity.

At Dequeane Electric a worker threw an electrical switch into closed position which produced a short-lived sparking.

An employee at UPS tipped open the colored lense of his welding goggles to better position the welding rod. He inadvertently struck the metal to be welded, producing an arc.

Both men were wearing contact lenses. On

returning home from work, they removed the contact and the cornea of the eye was removed along with the lenses. The result was permanent blindness!

The electric arc generates microwaves that instantly dry up the fluid between the eye and the lense, causing the cornea to be bonded to the lense. This trauma is painless and the operator never knows an injury has occurred until removing the contacts.

As this phenomenon was unknown, no Federal or State safety and health

agency has regulations on this matter, but they are pursuing the investigation zealously and will respond according to findings.

In the meantime, until such regulations are established or until the matter can be brought before your safety committee, it is suggested that no contact lenses be worn by anyone who is potentially subject to an electrical sparking situation.

## Boys Ranch Holds Auction

Due to popular response, a limited number of consignments of energy related and oil field equipment will be included in the auction of the buildings that formerly housed the Pool Company's operations in San Angelo, Texas. The buildings have been donated to West Texas Bowry Ranch by Nick Garcia and T.K. Weatherby, both of San Angelo. The auction is to be held Saturday, February 11, 1984, at the intersection of Bryant Thruway and Avenue N.

All buildings will be auctioned to the highest bidder. Buildings will be auctioned separately and will include all attached fixtures. Bidders may syndicate to take advantage of speciality items. Inspection of the buildings will be by appointment prior to the sale and will be open for public inspection the week prior to the sale.

For more information and appointments for inspection, please call: WEST TEX BOYS RANCH

West Texas Boys Ranch 915 949-1936  
Odus Wittenburg 915 949-2647  
Hudson Russell 915 653-6828  
John Russell 915 653-6818

*Everybody's*  
**THRIFTWAY**

A FRIENDLY Supermarket serving West Texans with Quality Foods at Competitive Prices.

We give S&H Green Stamps - Double on Tuesday after 1 p.m. - All Day Wednesday.

35th & College Avenue  
Snyder, Texas 79549


**WOMEN'S EXERCISE CLASSES**  
Cost-\$18.00 for 4 weeks  
Will Begin Feb. 21 st  
Every week on Tuesday and Thursday from 7:00 p.m. to 8:00 p.m.  
In the old gym in the school  
Phone: (915) 856-4483  
or (806) 872-2962  
Instructor: Renee Sharp Hobson

*Fiberglass Dishes!*

**SKYWATCH SATELLITE SYSTEMS, INC.**

Good Deals For Borden County Customers

**BOB DYESS (806) 439-6624**



## Borden Co. Youth Showing Champs El Paso-Ft. Worth

Ralynn Key, 4-H member from Gail, showed the Champion Crossbred Barrow in the Junior Show at the Southwestern Exposition and Fat Stock Show in Fort Worth February 2.

Later in the day-long show, this same entry was named Grand Champion of the entire Junior Barrow Show.

Her brother, Brice had the Champion Hampshire in the same show.

Kim Wills had a 1st place Finewool, which was also chosen Reserve Champion Finewool at the El Paso stock Show.

Also in El Paso, Shayne Hess had the Champion Duroc in the Med. Weight Class.

Ralynn Key had a 3rd place Lt. Wt. Duroc.

Tammy Voss had a 19th place Duroc.

Shayne Hess also had two other placing animals.

Tammy Miller had a 5th place finewool.

This report is unofficial and incomplete as the showing was still occurring during press time.....Please watch for complete results next week





Rep. Larry Don Shaw

## New Lemon Law

For car buyers who think they got a sour deal, a new Texas law should provide some "lemon" aid.

The Texas "lemon law" which became effective on Jan. 1, is designed to give owners of new cars, those purchased on or after October 1, legal recourse if they believe they have a "lemon."

The bill was backed by the Texas Automobile Dealers Association, and most automobile dealers welcome the new law as a protection for consumers.

According to the Nation Center for Automobile Safety in Washington, D. C., the chance of getting a lemon is 1,000 to one. If you happen to be that unlucky one, you will now have a means to fight back.

The law defines a "lemon" as a car under warranty that has been repaired at least four times for the same major problem which impaired its use, or has been out of service for 30 days in the first year. If the car is ruled a lemon, the manufacturer is responsible for replacing the car, or refunding the purchase price, less allowance for usage of the vehicle.

According to the new law, both original and subsequent owners of a new car under warranty are entitled to complain about the defect. This measure should guarantee that car buyers receive all the benefits from the warranty.

Originally, the bill called for the owner to submit three written notices of complaint of a defect, but I attached an amendment which allows the consumers to submit only one notice to either the dealer, manufacturer, or regional representative if he has a lemon.

The new law gives the Texas Motor Vehicle Commission the power to make a ruling on these cases. If a manufacturer or dealer refuses to comply

with a commission order to replace a car or refund the price, it could result in a fine or license suspension. Hopefully, this new law will encourage car manufacturers to produce vehicles of higher quality which would eradicate this problem altogether.

So, what should you do if you get stuck with a lemon? First of all, you should notify the manufacturer in writing as promptly as possible. The manufacturer will then have the opportunity to fix the car before having to replace it or give a refund. Be sure to send a copy of your complaint to the Texas Motor Vehicles Commission for their files, P. O. Box 2293, Austin, Texas. 78768.

If you are unsatisfied with the manufacturer's response, you should appeal to the nine-member Commission, and they will schedule a hearing to determine liability. One of the major advantages of this process is that consumers like yourself will no longer have to hire a lawyer to obtain relief in warranty disputes.

I hope those of you unfortunate few will take advantage of this new law. Please let me know if you need any help or have any

questions. Please write: Rep. Larry Don Shaw, P. O. Box 2910, Austin, Texas. 78769, or call toll-free, 1-800-592-4731.

Seals sometimes swim 6,000 miles over a period of eight months without once touching land.

**BIG SPRING HEALTH FOOD CENTER**  
1305 SCURRY ST.  
BIG SPRING, TEX.

### -CLASSIFIED-

**HELP WANTED**  
Jobs Overseas-Big money fast. \$20,000 to \$50,000 plus per year. Call 1-716-842-6000, Ext. 21010

**PIANO FOR SALE**  
Wanted: Responsible party to assume small monthly payments on spinet-console piano. Can be seen locally. Write: (include phone number) Credit Manager, P. O. Box 478 Lockhart, Texas 78644-0478

## Strake Criticizes Governor White's New "Caddillac"

Texas Republican Chairman George Strake today said that Gov. Mark White has saddled Texas taxpayers with a new luxury Mitsubishi jet airplane that's a "fully loaded Cadillac with deluxe accessories" including paying an extra \$4,500 for an optional custom toilet.

Among the upgraded accessories ordered by White for his new jet--according to records at the Texas Aircraft Pooling Board--are: a posh swivel seat for \$4,215 more; a deluxe food and drink galley (the most expensive of four options offered) for \$5,135; a custom mobile radio telephone for \$8,195 more; a second executive table for a mere \$1,870 more; a second baggage compartment (for trips out of state) for an additional \$11,635, and two digital clocks for \$1,830.

In addition, White will pay \$17,665 for dual temperature controls--one for the pilot and one for him.

Strake also questioned White's need for an extra \$100,660 expenditure for navigational equipment normally used on international and transcontinental flights.

The Republican Chairman said that according to state

records the Mitsubishi had a sticker price of \$3.1 million but the Japanese company allowed a \$1.2 million trade-in on the Governor's older plane for a net of \$1.9 million.

If Gov. White had had the taxpayers best interest at heart, he should have considered some of the twin-engine propeller-driven planes manufactured as well as assembled by American companies which sell for less than \$2 million," Strake said. Strake noted that, for instance, White could have purchased a Beechcraft King-Air 200 that is about the same size as the Mitsubishi jet for about \$1.8 million total, not including trade-in. This is the same plane used by the State Comptroller and his staff and can fly most anywhere in the state in just 30 minutes more time than the jet takes.

For travel in Texas, the King-Air would have been suitable for small airports and Texans would not have had to pay \$175,000 extra for thrust-reversers to land a jet at small airports," Strake said. "And if Gov. White needs to fly out of state or out of the country, he should take commercial airlines as Texas Governors

traditionally have."

Strake also noted that the Governor's office will lease the Mitsubishi for about \$24,000 per month under a special lease-purchase agreement until September of 1985, when he can then buy the jet for \$1.86 million--if the money is appropriated by the State Legislature. In other words, Texas taxpayers will first pay over \$430,000 for White to lease his luxury jet and then have to pay nearly the full original purchase price for the jet, less trade-in, eighteen (18) months later.

Lease purchase is generally opposed by the Texas Aircraft Pooling Board, since it is not cost effective, but on December 18, 1983, they made an exception so the Governor could purchase his luxury jet.

Another advantage of the King-Air is in fuel and maintenance savings. Average operating cost for per flight hour for the Mitsubishi is \$633, about double the \$327 for the King-Air, however, the state is getting the Japanese plane maintenance-free for two years, holding the operational cost to \$333-hr for 2 years.

## Hance

1983, and has more money on hand than the other two major candidates.

A total of \$285,957.02 was transferred from Hance's previous races for congress, but the campaign did not borrow any funds in 1983. Spending was slightly more than \$90,000.00, leaving the campaign war chest with \$800,592.77 in the bank.

"I run my campaign the

way I think government ought to be run," Hance said. "I'm tight with money."

Officials of the Hance campaign stressed that the major fund raising efforts have just begun. They also

pointed out that Hance raised just as much money as his two chief rivals over a shorter period of time.

Hance said, "We are highly encouraged, we have a debt free campaign,

## T&E's ELECTRIC CO

EXPERT ELECTRICAL WORK

Residential Commercial Industrial

Elizabeth Musgrove

Christeen Ledbetter

(915) 263-8568

(806) 439-6653



## Security State Bank

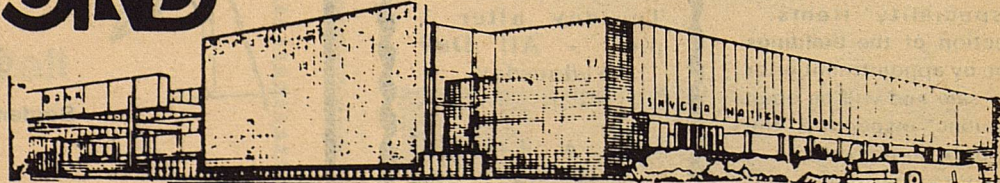
1411 Gregg BIG SPRING, TEXAS 79720

Member F.D.I.C.



## SNYDER NATIONAL BANK

SNYDER, TEXAS 79549



1715 25th

Member FDIC

573-2681



# CAPITOL UPDATE

*John Tower*  
**U.S. SENATOR for TEXAS**  
 WASHINGTON, D.C. 20510



The presence of U.S. forces in Lebanon will be the topic of a great deal of debate now that Congress is back in session.

I recently went to Lebanon, Israel, Syria, Jordan and Egypt; in my capacity as chairman of the Senate Armed Services Committee, to review the political and military situation in the Middle East.

After meeting with senior officials in all of these nations, I concluded that there is no substitute for U.S. forces in Lebanon.

I firmly believe that a Congressionally-mandated withdrawal at this time would be disastrous for American influence in the area. Officials in every friendly nation I visited emphasized this point.

Among the leaders with whom I visited were Hosni Mubarak, president of Egypt; Yitzhak Sharmir, prime minister of Israel; Amin Gemayel, president of Lebanon; King Hussein I of Jordan, and 'Abd al-Halim ibn Sa'id Khaddam, foreign minister of Syria.

I also met with American military and diplomatic officials, including Donald Rumsfeld, the President's special Middle East envoy.

Middle East leaders feel if American forces withdraw, it would be seen as a Syrian victory against the U.S., thus raising Syria's stature in the region. A withdrawal also would weaken the influence of Arab states friendly to the United States.

Officials from friendly nations also said there would be no practical difference between setting a time limit on the presence of our forces and requiring their immediate withdrawal. They felt the Syrians and other opposing forces would refuse to negotiate, but rather would simply wait out the time limit.

I am encouraged by the progress in Lebanon's political situation. A ceasefire has reduced conflict and a new security plan is being negotiated. If successful, it could lead to a more peaceful and secure environment in Lebanon.

Some officials believe this could be a step toward reconciliation of all Lebanese factions and reduce the vulnerability of the peace-keeping forces.

Strides also have been made in increasing the effectiveness of Lebanese Armed Forces (LAF). The LAF is more capable now than many believed was possible and continues to improve. I feel strengthening Lebanese forces is essential for Lebanon to regain control and alleviate its turmoil.

These goals can be hastened through expanded economic and military aid to Lebanon by the United States. Lebanon's internal conflicts have seriously damaged its economy. I will ask the Administration and Congressional colleagues to provide economic and military assistance to Lebanon.

As far as the safety of our Marines in Lebanon, I am convinced that steps have been taken to improve their safety insofar as it is possible to do so.

I feel the U.S. and multi-national forces have a mission in Lebanon although it cannot be expressed in classic military terms. Our presence represents American's commitment to the unity of Lebanon and to seeking peace in the region. We cannot walk away from this responsibility.



**GAGE FINA**  
**TRUCK STOP**  
 & Restaurant  
 Owner-Operator John Hamilton  
**OPEN 24 HRS. DAILY**  
 15 20W Sweetwater, Tex.

## BULLOCK PROPOSES PLAN

Austin; State Comptroller Bob Bullock has proposed a streamlined plan for state aid to education in Texas.

Bullock, chairman of the Finance Subcommittee of H. Ross Perot's Select Committee on Public Education, unveiled his proposal at a recent meeting of the committee in Dallas.

"This plan cuts away 35 years worth of red tape that has tangled up education finance in our state," Bullock said. "Today state aid is based on 22 separate formulas and procedures in each school district. His plan reduces that to 12 formulas and puts state equalization aid into poorer districts."

"Most Texas school people understand that we need to equalize state aid to education before a federal judge steps in and does it for us. Politicians and school people have supported or opposed equalization in the past based solely on whether their districts would get more or less aid, and that's part of the reason our system is threatened by court action today. I hope Texans will be able to rise above their narrow interests and help the Perot Committee and the State Legislature adopt a plan that is fair to all Texas school children."

Bullock's plan is designed to:

1. Simplify the tangled web of funding formulas and systems.
2. Make local school districts responsible for deciding how to best meet local school needs.
3. Channel more state funds to the frontline of the education system--the classroom teacher--rather than to administrators and supervisors.
4. Guarantee that state funds will be directed to the school districts with the greatest need for state aid.

**LETTERS FROM**  
  
**LIEUTENANT GOVERNOR WILLIAM P. HOBBY**

Dear Fellow Texans;

You are aware that the Select Committee on Public Education is studying issues and concerns related to the educational system in Texas. The Select Committee, chaired by Mr. H. Ross Perot of Dallas, has devoted the better part of seven months listening to individuals and associations in an attempt to focus on the real problems. At this time, I want to update you on the work of the committee and give you their timetable for a report.

In October, the Select Committee divided into seven subcommittees to research the various components of our educational system. The areas of attention range from early childhood education to school administration to the financing of the new system.

The subcommittees have been working closely with teacher association, school board members and individual public school personnel in an attempt to address every element of our public schools. The members, who maintain their regular jobs, have devoted vast amounts of time and work on the committee.

Presently, the subcommittees are formulating their recommendations and preparing the first draft for publication in early March. Before the final recommendations are

made, the document will be presented to the public for suggestions and comments.

The Select Committee feels that it is only appropriate that the public have a chance to review the recommendations prior to final adoption. I believe this time for discussion and study is a unique opportunity and one that I hope is taken seriously. Your honest and constructive suggestions will certainly be an asset to the final report and will make it more valuable to the legislature.

Upon completion of the review, the committee will complete a second and possibly a third draft of the recommendations. We want to get it right.

Futhermore, I want to encourage any person desiring information to contact Gwen Newman in the Select Committee Central Office (512-475-1403) or write S C O P, Post Office Box 2910, Committee Coordinator, Austin, Texas 78769.

### Social Worker To Be In Gail Fri.

Ms. Kathalene Brown, Outreach Worker from the West Texas Opportunities will be in Gail Friday the 10 from 9-12.

She will be supplying cheese and butter for those who qualify.

\*\*\*\*\*  
  
**The Symbol of Banking in Big Spring**  
**THE FIRST NATIONAL BANK**  
 MEMBER F.D.I.C. 267-5513  
  
 FULL SERVICE BANKING  
 CHECKING--SAVINGS--I.R.A. ACCOUNT  
 NOW ACCOUNTS  
 Safety Deposit-Certificate Deposit  
 Master Card-Visa Tessie 24 Hour Teller  
 400 MAIN STREET  
 BIG SPRING, TEXAS  
 \*\*\*\*\*



# THANK YOU FROM THE BORDEN COUNTY JR. LIVESTOCK SHOW

## BORDEN CO

Kent Holmes  
 Dick Jones Estate  
 Fannie Lee Flint  
 Trust of Lee Jones  
 Sky Watch Systems  
 Williams System  
 Miller Land and Cattle Co.  
 Ralph Miller  
 Pat Hensley  
 Borden County Abstract  
 Don Wills  
 Borden Gray  
 Borden Gray, Jr.  
 Nolan Jones  
 Gary Parks  
 Sid Hart  
 Guy Zant  
 Jerry Stone  
 Brent Murphy  
 Circle V Construction  
 Vernon Wolf  
 Nathan Zant  
 James McLeroy  
 Larry Smith  
 R.D. Lewis  
 Parks and Isaac Cattle Co.  
 Borden County Farmers and Ranchers  
 Ed Rinehart  
 Frank Herridge  
 Warren and Bettye Beaver  
 Van York  
 Edward Smith  
 Jim Burkett  
 Bill Phinzy  
 Mr. and Mrs. Steve Hess  
 Borden County 4-H  
 Kandy McWhorter  
 Herman Ledbetter  
 Kathryn Stephens  
 Benny and Donny Everett  
 Dan Stone

## DAWSON CO

Shoestring Cattle Co.  
 Hughes Fertilizer  
 Automated Controls  
 Bob Brown Olds-Cadillac  
 Collins Dept. Store  
 1st Nat'l Bank  
 Lamesa Nat'l Bank  
 Production Credit Assoc.  
 Porter Lumber Co.  
 Lamesa Federal Savings & Loan  
 Federal Land Bank  
 A.G. Waugh Company  
 Vestal Meat Co.  
 Bray Implement Co.  
 Western Seed & Delinting Co.  
 Nix Implement  
 Shook Tire Co.  
 Gebo's  
 The Country Store  
 Wilton, Newberry & Heidel  
 McCormick Oil  
 Claiborne's Supermarket  
 Franks Oil Co.  
 Amos Supply  
 Dawson Co. Seed  
 Bizzell & Stephens Lamesa Bearing

McCall Drug  
 Lamesa Cotton Oil Mill  
 Davis Furniture  
 Lamesa Glass & Mirror  
 Lamesa Meat Co.  
 Riverside Chemicals  
 Key-Caprock Gin  
 Goodyear Tire & Rubber  
 Cope Sand & Gravel  
 Barrington Pump & Machine  
 R & S Supply  
 Higginbotham-Bartlett  
 Adolph Hollman, Jr. Cotton Co.  
 K-Bobs (Mr. Kyle Jackson)  
 Brannon Funeral Home  
 Bethel Tire  
 Dean's Farm Store  
 Tommy Brannon  
 Mary Ann's Food Store  
 The Kid's Shop  
 The Vogue  
 Lamesa Butane  
 Doyle Norris  
 Lamesa Printing Co.  
 Dawson County Farm Bureau  
 Western Seed & Delinting  
 Jewell F. Wallace

## GARZA CO

K.P.O.S.  
 Collier Drug  
 Charles McCook D.D.S.  
 Bryan Williams Ins.  
 Wallace Lumber  
 Wells Pharmacy  
 J.L. Feed Co.  
 Jackson Bros. Meat  
 United Supermarket  
 Post Gin, Inc.  
 Higginbotham-Bartlett  
 Garza Tire Shop  
 Cockrum Printing  
 J. Martin Bassinger  
 Palmer's Well Service  
 Happiness Is  
 Trends For Men  
 Danish Imports  
 M & M Place  
 Twins Fashions  
 Caprock Vet-Larry Mills  
 D.V.M.  
 1st Nat'l Bank of Post  
 Garza Co. Jr. Livestock Assoc.  
 Albert Stone.

## LYNN CO

O'DONNELL  
 Woolam Gin  
 Forbes Motor Co.  
 P. D. Products  
 Farmers Coop Assoc.  
 Demsey Gin  
 Midway Gin  
 Jim Chambers  
 Wayland Taylor Imp.

## TAHOKA

Walker & Soloman Ins.  
 Lynntegar Electric Coop.  
 White Funeral Home

## HOWARD CO

Glen Body Shop  
 C.H. Hyden  
 Germania Ins.  
 McCutchen Oil  
 Nally-Pickle Funeral Home  
 Phillips Tire  
 Pat Boatler  
 McMahan Cement  
 Broughton Implement  
 Weaver-Ferguson, Atty.  
 H. & M. Grocery  
 Hollis Kennimer  
 Feagins Imp.  
 Skipper Travel  
 Bureson Machine  
 Wilson Auto Electric  
 Big Spring Hardware  
 Blum Jewelry  
 Bill Ward Western Wear  
 Allstate Ins., Leslie Zant  
 Chapman Meat  
 Southwest Tool  
 Higginbotham Lumber  
 Leonards Drug  
 Bert Massingill  
 Coleman Ranches  
 Ackerly Oil  
 Davis Hot Oil Service  
 Miss Royal  
 Big Spring Auction  
 Luther Gin  
 Taylor Imp.  
 Hubbard Packing  
 M & M Construction  
 Jays Farm Store  
 New Car Dealers  
 Price Construction  
 Sonny Anderson  
 Lonnie Taylor  
 Trio Fuels  
 Co-Op Gin  
 Wayne Bureson  
 Western Hills Vet Clinic  
 Harris Lumber  
 Grady Walker Butane  
 Cosden Oil Co.  
 State National Bank  
 E. P. Driver Ins.  
 Southwest Energy Corporation  
 Universal Construction  
 Bogies Boot & Shoe Repair  
 Giant Discount Grocery  
 Ackerly Gin

## SCURRY CO

Keyshadow investment  
 Everybody's Grocery  
 Production Credit Assoc.  
 Eddies Pharmacy  
 Burgess-McWilliams  
 Pharmach  
 McDonald Welding

## OTHERS

Haney's Jewelry, Roscoe  
 West Tex. Equip, Lubbock  
 Yellowhouse Machinery, Lubbock  
 Anderson-Clayton, Lubbock  
 Godbold, Inc., Lubbock  
 Coahoma State Bank, Coahoma  
 Sue Green, Coahoma  
 Fenton's Gallery, Ruidoso  
 Fenton's - Whitehead, Gallery, San Angelo  
 Fenton-Whitehead Gallery, Ft. Davis  
 Pritchard-Abbott, Inc., Ft. Worth  
 Guys Spraying Service, Brownfield  
 Supreme Mills, Slaton  
 Star Feed Store, Spur  
 Mid-West Electric Coop, Roby  
 John Deere Implement, Brownwood  
 Brownwood Implement, Brownwood

## AUCTIONEER

Monte Paxton



## Announcers

E.L. Farmer  
 Ralph Miller

COUNTY AGENT

Alan Day

COUNTY DEMONSTRATION

Kandy McWhorter

VOCATIONAL

ACHER

Eddy Wallace



## Premium Buyers

Barrows:  
 Gooch Brothers-Abilene

Lambs and Steers  
 Kenny Hart- Snyder

## Judges

SHOWMANSHIP JUDGE  
 John Farris-Lamesa

Barrow Judge  
 Paul Gross

Steer Judge  
 Sammy Yates-Tarzan

Lamb Judge  
 Sam Kuykendall

## Clerk

Kurt Mullins-Big Spring  
 Van York-Gail