

**Century 21**  
Pampa Realty, Inc.  
312 N. Gray • 669-0007

2750 Aspen • \$307,000  
5 bedrooms, 3.5 baths

2510 Evergreen • \$110,000  
3 bedrooms, 2 baths

28

\*\*\*\*\* ALL FOR ADC 780  
\*01 BV04227 12/31/14  
SOUTHWEST MICRO PUBLISHING  
2627 E YANDELL DR  
EL PASO TX 79903-3743

**THE Pampa NEWS**

FRIDAY, MARCH 8, 2002

Vol. 97 No. 287 • Pampa, Texas  
50 cents Daily • Sunday \$1



**Pampa Cyber Net**

**Internet Power for the New Millennium**

Dialup or dedicated, DSL, T-1, and high speed services.

**WEATHER WEATHER**

**HIGH 79**      **LOW 29**

**LOCAL**

**Public invited to Love's reception**

You'll come. That's the invitation to Pampans who want to recognize Pampa Police Lt. Charles L. "Charlie" Love who is retiring after more than 30 years of service. The reception will begin at 2 p.m. Monday, March 18, in the second floor conference room at City Hall.

**St. Patrick Day events planned in Shamrock**

**SHAMROCK** — The place to see the green this St. Paddy's Day will be Shamrock, Texas, site of the 56th Annual St. Patrick's Day Celebration March 15-17. The event will kick-off at 5 p.m., Friday, at 9 a.m., Saturday, and at 12 noon Sunday. Activities and events will include: A carnival, Miss Irish Rose Pageant, dances, arts and crafts show, Donegal Beard Contest, Old Settlers Reunion, parade, Motocycle Rally, Antique and Classic Car Show, Lad and Lassie beauty pageant and Bull Buck-out with PRCA rodeo riders and bullfighters. For a complete listing of events, visit [www.shamrocktx.net](http://www.shamrocktx.net) on the World Wide Web.

**STATE**

**Police suspect mother of suffocating infant**

**PLANO (AP)** — A Plano woman is being held without bond on a capital murder charge for the suffocation death of her 4-month-old daughter.

Investigators believe Guadalupe Garcia caused the death by holding a blanket over the infant's face.

**DEATHS**

No deaths were reported to *The Pampa News* by press time today.

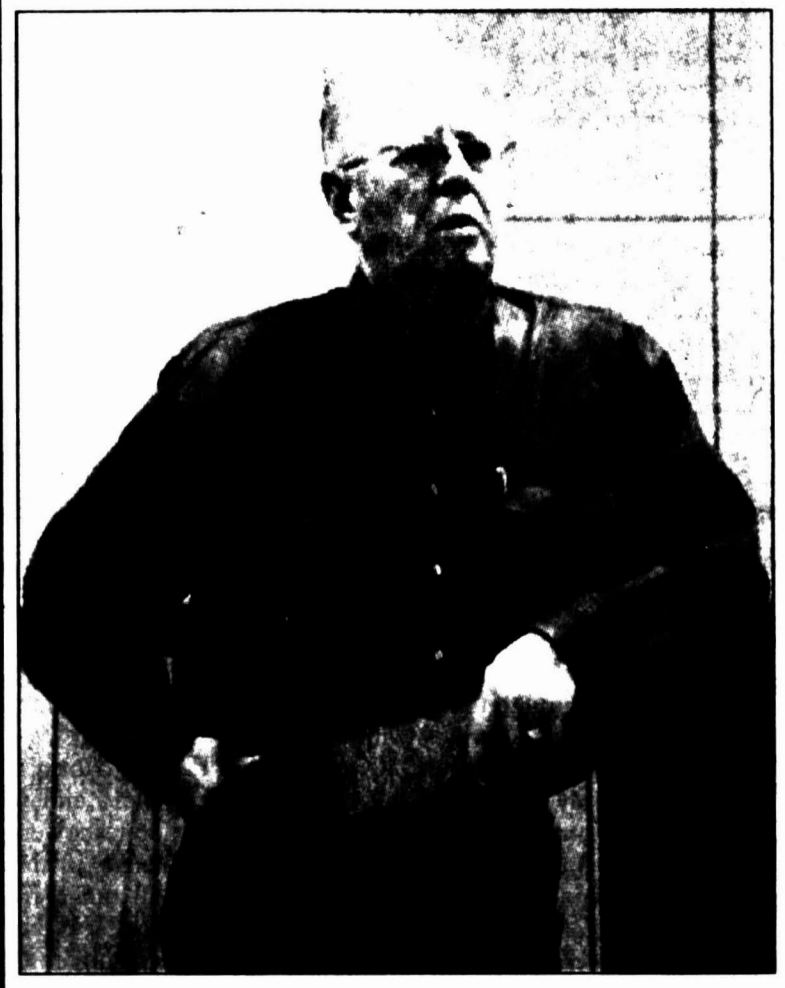
**INSIDE...**

- Classified** ... 11
- Comics** ..... 8
- Religion** ..... 5
- Sports** ..... 9

**West Texas LANDSCAPE**

Residential & Commercial  
669-0158 mobile 663-1277

**Candidates throw last pitch**



(Pampa News photo by Nancy Young)  
**Ed Robinson, candidate for Gray County Commissioner Precinct 4, outlined his position to ACCORD members Thursday night.**

By **NANCY YOUNG**  
MANAGING EDITOR

Political candidates are winding down their campaigns for elected positions on the ballot as the campaigns are going into their final days. Candidates were invited to give one of their last pitches for votes Thursday night in a public setting at the ACCORD Inc. meeting.

The candidates appearing at the forum were all Republican, as only candidates in contested races were invited to speak. The Tuesday Democrat primary has several candidates on the ballot, but none of the local races are contested.

Both candidates for Inspector of Hides and Animals provided humor as they told the crowd in the meeting room at the Lovett Memorial Library why they were seeking the unpaid position.

"I'd like to see my name in the book as having served," John Radcliff said.

Radcliff told the crowd as far as qualifications, he and his opponent Bill Reeves are equally qualified for the position which has no responsibilities and is unpaid.

Radcliff said he'd like to keep the office on the books because it is part of history.

He said research of county records have determined no one has occupied the inspector position for 100 years. He did say it was possible two men — J. J. McCartney and L.A.

Landers — served in surrounding counties around 1920.

Radcliff said he believed the job was possibly filled between 1876 and 1902, but records of county history prior to 1902 are scarce.

He said more than likely the position was held by early day residents who had many hats — such as a grocer who possibly also served as mayor as well as hide inspector on the side.

Reeves told the crowd he was pleased it had been such a clean campaign.

"There has been no mudslinging in the campaign, and there are two reasons," he said. "Number one is we are both nice fellows and the other reason is because we haven't had any moisture around here to have mud to sling."

He also said he would be willing to take any continuing education requirements needed for qualifications for the office which has been done away with in all but a handful of counties in the state.

On a serious note, Reeves said he filed for the office to get rid of it. He cited the problems Donley, Randall and Potter counties have had with county constable positions.

"These counties are facing litigation costs of possibly \$500,000 due to the problems with these positions," he said. "I don't think Gray County can afford this."

All three candidates for the Gray County (See **PITCH**, Page 3)



**Health officials report syphilis outbreak here**

By **KATE B. DICKSON**  
ASSOCIATE PUBLISHER

An outbreak of syphilis is hitting the Texas Panhandle and health department officials here are running blood tests this week in an effort to confirm some possible cases in Gray County.

That's according to Carolyn L. Hall, RN, Disease Intervention Specialist, who said the Amarillo area has a case count into the 30s — up from the usual 12 cases or so at one time.

"Busy," is how Hall, who works out of an office at the Harvest House, 736 S. Cuyler, in Pampa, describes herself of late. She is responsible for 20 area counties excluding Randall and Potter but she has been called to lend a hand there.

Anyone who wants to be tested for this or any other sexually-transmitted disease should contact Hall at 665-4696.

Syphilis is a serious disease which is passed from one person to another during sexual contact, she said. If not treated, it can cause permanent damage to many parts of the body. Pregnant women with syphilis can pass it on to their unborn children causing birth defects or death.

While 90 percent of those with syphilis do become exposed through sexual contact, about 10 percent of the cases result from drug users sharing needles with infected persons, Hall said.

Many people with syphilis have no signs and symptoms while other people with the disease notice an open sore on the sex organs, the anus, or the mouth, she said. Some people develop body rashes, especially on their hands and feet but the rash can appear anywhere, including the face.

(See **OUTBREAK**, Page 3)

**Pretty as her picture**



(Pampa News photo by Redonn Woods)  
**Megan Brock, 4, above, took top honors with her entry, left, in the Pampa News Coloring Contest 4-7 age division. Julie Schuneman's entry won the 8-11 division. Each received \$25 in Pampa Bucks. The girls' winning artwork can be seen on Page 12 of today's edition.**

**Deputy discovers another meth lab**

Second found in Pampa this week

By **KATE B. DICKSON**  
ASSOCIATE PUBLISHER

For the second time this week, the Gray County Sheriff's Department has summoned to Pampa specialists at dismantling methamphetamine labs and properly disposing of the volatile chemicals.

The latest call was prompted by an incident about 12:30 this morning when a sharp-eyed deputy sheriff in search of a suspicious vehicle, spotted a man coming out the back door of a house, said Chief Sheriff's Deputy Kelly Rushing. The deputy was cruising down an alley in the 1100 block of South Christy.

"He (Deputy Heath Cates) saw that the man had something in his hand," Rushing said. "Then the subject turned around and put the object under the house through a hole in the foundation and then went back inside."

Cates spotlighted the hole and could see a plastic bottle with a tube running out of it.

"Through his experience, Deputy Cates knew the bottle was consistent with materials used to make methamphetamine," Rushing said.

Methamphetamine is commonly known as speed or poor man's cocaine.

Cates went to the door of the home and recognized the man who answered both as someone he was familiar with and as the man he'd just seen, Rushing said.

After getting consent to search, Cates turned up a product believed to be methamphetamine and recovered the jug that was rigged for cooking methamphetamine, Rushing said.

Arrested was Patrick Lee Herr, 38, 1130 S. Christy, who remained in the county jail at mid-morning awaiting arraignment on a charge of possession of a controlled substance over one gram and under four.

(See **LAB**, Page 3)

**Borger Kmart to close**

FROM STAFF AND WIRE REPORTS

**BORGER** — Borger's Kmart is one of the 284 stores in 40 states which will be closed as part of its restructuring under Chapter 11 bankruptcy, the company announced today.

Bernie Lawler, manager of the Borger Kmart, said he was notified this morning of the impending closure of the store.

He said the date of the closing has not been announced.

"It will be decided after the company goes to court later this month," he said.

Lawler said approximately 50 people are employed at the Borger Kmart. He has only been with the store 3 1/2 months.

The Borger store is among 33 Texas stores listed as closing. Plainview's Kmart is also on the closing list. No Amarillo stores appeared on the list.

Borger's Homeland will close Sunday as part of a bankruptcy in that company.

Both businesses have been in operation in the Borger community for several decades.

According to an Associated Press story, approximately 22,000 jobs within Kmart will be cut.

Stores to be closed include 271 Kmart discount stores and 12 Kmart Supercenters and one Kmart store in Puerto Rico.

Kmart, the nation's third biggest discount retailer after Wal-Mart and Target, currently operates more than 2,100 stores nationwide. The job cuts amount to just under nine percent of its work force of about 250,000.

(See **KMART**, Page 3)

**Governor names Tripplehorn to state nurse examiner board**

**AUSTIN** — Governor Rick Perry Thursday announced the appointment of six individuals to the Board of Vocational Nurse Examiners, including Pampan Susan Tripplehorn.



The board ensures that Texans are served by a qualified safe practitioner of vocational nursing through the establishment and implementation of educational standards, licensure requirements and disciplinary processes.

Tripplehorn is former executive director of the Pampa Economic Development Corporation. She previously served as a member of the State Board of Physical Therapy Examiners, and is (See **BOARD**, Page 3)

M  
A  
R  
C  
H  
8  
2  
0  
0  
2



CONTINUED FROM PAGE ONE

**PITCH**

Treasurer position spoke at the meeting. Incumbent Scott Hahn told the crowd the duties of the treasurer's office include payroll and managing investments of the county funds. "I have been able to earn \$4 million in interest funds since I have been in office," he said. "Someone said that wasn't a big amount, but it is \$4 million less in taxes that you (the taxpayer) has to pay."

Citing his 15 years in office, Hahn said he wants to be returned to the position.

He said he has successfully managed the county's funds.

"Gray County is a \$7 million corporation, and the voters are given the opportunity every four years to decide whom to hire for their chief financial officer," said Hahn.

He said he has obtained hundreds of hours in training for the position.

Candidate Tory Peet, a teacher and coach at White Deer, also cited the duties and qualifications for the office. He also said investments are a large part of the duties as well as the payroll and employee insurance.

Peet said he teaches math courses at WDHS from algebra to calculus, and coaches all sports.

He said there is currently a bonded indebtedness due to the courthouse restoration, but it is not the treasurer's responsibility to be sure the money is there to pay it. Instead, he said, it is the county judge and four county commissioners.

Streamlining the treasurer's office with computers is one of objective of Peet's. He said he wants to do what is best for the citizens of Gray County.

"I would like to see a new sense of cooperation in the courthouse," he said. "I want the employees to know I'll listen. I will work for them and with them. I'll help them with their paycheck and insurance."

He said there is a spark needed in the courthouse, and he wants to be that spark.

"I am not running because I want to get out of teaching or coaching," he said. "I love to teach and to coach. I just want to serve the community."

Lee Cornelison, a candidate for the office, said his experience in finance includes handling a \$1-1 1/2 million budget of his church.

He also said he has successfully managed a business in Pampa for many years as well as teaching microeconomics at Clarendon College.

Cornelison also listed numerous civic and church accomplishments.

"The county has a job that's coming up for bid, and I want to be your treasurer."

He and his wife own a local beauty salon.

Referring to the November, 2001, election which dissolved the Pampa Economic Development Corporation, Dale Roth asked Cornelison if he felt the vote was a 'voice of the people.'

Cornelison said any comment he would give would be pure speculation. "When the majority speak and the majority win, that's the American way," he said.

In the contested county commission races, only Ed Robinson, candidate for Precinct 4 Commissioner, appeared at the forum.

His opponent, incumbent James Hefley, sent a written statement saying he could not attend due to a prior commitment.

Robinson cited the decline in the local economy, and said he would like to see the economic situation improve locally.

He said the county has always had a large number of self-employed people, and he promotes self-employment. He said he is not an advocate of big government.

A local businessman, he said it is time for a change in county government.

Citing environmental concerns with confined animal feeding operations, he said the county commission has to write the rules.

He expressed his pollution concerns for the area.

In a written statement, Hefley said, "I know all of you are concerned about the environment, and so am I. It is frustrating to deal with appointed authorities, but we must continue to try."

He said he has always put the county business over his personal business, and he would continue to do so. He said he is available 24 hours a day.

Neither M.V. (Bill) Horne or Gary Willoughby, candidates for Precinct 2 Commissioner, were at the meeting, citing prior commitments.

Several candidates said they only received the invitation on Tuesday for the Thursday meeting.

Willoughby sent an e-mail to ACCORD stating he had a prior commitment, but he would appreciate their support.

Justice of the Peace Precincts 1 & 3 Joe Martinez said he would like to continue in the office he has held since March 2001.

He said he wanted to serve the citizens with dignity, and that it has been very rewarding to be in the position. He cited his knowledge of the Hispanic language as an asset in the position.

Challenging him is Rusty Horton, who was working, and sent word he could not attend.

Margie Prestidge is seeking the JP Precinct 2 position she held for 22 years until Kurt Curfman defeated her in 1998. She said she loved that job and would like to return to it. Curfman was not at the meeting due to a prior commitment, but sent word he wants to be returned to office.

In a written statement, he said he has attained the required courses and is continuing to acquire more knowledge and expertise.

"I have worked with the law enforcement agencies to curtail the crime and drug use in our city," he said. "We have touched the surface but we need to continue to work to defeat the use of drugs and stop the crime rate."

son's sexual partners by contacting and interviewing them.

In the case of the current outbreak, Hall said it appears to have come from contact with prostitutes in Dallas and in Oklahoma.

"It apparently came from prostitutes but the outbreak has now worked its way into all aspects of society," she said.

Syphilis is treated with antibiotics such as Tetracycline and Doxycycline.

broken into, Rushing said earlier this week. No arrest was made in that case and an investigation continues.

Meth lab clean-ups are made by a firm from Oklahoma City that contracts with the U.S. Drug Enforcement Administration, Rushing said.

CONTINUED FROM PAGE ONE

**OUTBREAK**

Cases of syphilis are reported to the Texas Department of Health while others come to the health department's notice by people who have a problem and want to get tested for sexually transmitted diseases.

In addition to testing and treating people with this disease and other sexually transmitted ones, Hall also investigates the diseased per-

CONTINUED FROM PAGE ONE

**LAB**

Earlier this week, Deputy Morse Burroughs uncovered a methamphetamine lab at 436 Crest while he was looking for a fugitive.

The resident there had been out of town and returned to find his home had apparently been

CONT. FROM PAGE 1

**BOARD**

currently a member of the Pampa Chamber of Commerce Gold Coats and the Career and Technology Advisory Board at Pampa High School. She is a graduate of the Economic Development Institute at the University of Oklahoma. Her term will expire Sept. 6, 2007.



**LORDY, LORDY  
LOOK WHO'S  
40!**

**SAVE  
A Little Green**

Sale Good March 8 - March 11

**Thriftway White or Wheat Bread**

24 Oz. Loaf **3 For \$2**  
Mix or Match



**Trappey's Blackeyed Peas**



15.5 Oz. Can **3 For \$1**

**Wesson Oil**

48 Oz. Bottle **2 For \$3**



**Asst. Hills Bros. Coffee**



34.5-39 Oz. Can **2 For \$7**

**Asst. Blue Bell Ice Cream**

Half Gallon **2 For \$6**



**Pork Sirloin Roast**



**99¢** Lb.

**Shurfine Jumbo Wieners**

16 Oz. Pkg. **79¢**



**FRESH PRODUCE**

Thompson Seedless White Grapes **3Lbs. \$1.00**

Jalapeños **19¢** Lb.

Large Oranges **3Lbs. \$1.00**

Yalli Pears **3Lbs. \$1.00**

Fresh Asparagus Spears **\$1.49** Lb.

Granny Gourmet Pinto Beans 20 Lb. Bag **\$6.99**

Cello Iceberg Lettuce **2 For \$3.00**

While Quantities Last

**FRANKS THRIFTWAY**

300 E. Brown • 665-5451

**M  
A  
R  
C  
H  
8  
2  
0  
0  
2**

## This Devotional Directory Is Made Possible By The Following Businesses Who Encourage All Of Us To Attend Worship Services

### Adventist

Faith Advent Christian Fellowship  
Grant Johnson..... 324 Rider  
Adventist Seventh-day  
Bill Kasper, Minister..... 425 N. Ward

### Apostolic

Pampa Chapel  
Rev. Ron Noble..... 711 E. Harvester

### Assembly of God

Calvary Assembly of God  
Rev. Jerry Pollard..... Crawford & Love  
Carpenter's Church Assemblies of God  
Independent  
Fred C. Palmer, Minister..... 639 S. Barnes  
Cornerstone Christian Center (White Deer)  
Bob Epperson, Pastor..... 201 S. Swift St.  
First Assembly of God  
Leland & Darlene Lewis..... 500 S. Cuyler  
New Life Assembly of God  
Harold & Wendy Eggert..... 1435 N. Sumner  
Skellytown Assembly of God Church  
Rev. Danny Trussell..... 411 Chamberlain  
First Assembly of God (McLean)  
Pastor Dean Williamson..... 420 Main St.

### Baptist

Barrett Baptist Church  
Rev. J.C. Burt..... 903 Beryl  
Bible Baptist Church  
Bob Hudson, Pastor..... 500 E. Kingsmill  
Calvary Baptist Church  
Rev. Richard Bartel..... 900 E. 23rd St.  
Central Baptist Church  
Dr. Derrell Monday, Pastor  
..... Starkweather & Browning  
Fellowship Baptist Church  
Charles Lowry, Pastor..... 217 N. Warren  
First Baptist Church  
Rev. Randy White..... 203 N. West  
First Baptist Church (Mobeetie)  
Rev. Robert Meller..... Mobeetie Tx.  
First Baptist Church (Lefors)  
Lewis Ellis, Pastor..... 315 E. 4th  
First Baptist Church (Skellytown)  
Fines Marchman..... 306 Roosevelt  
First Baptist Church (Groom)  
Byron Williamson..... 407 E. 1St.

First Baptist Church (Wheeler)  
Rev. Toby Henson..... 601 S. Main  
First Baptist Church (White Deer)  
John Collis, Minister..... 411 Omohundro St.  
First Baptist Church (McLean)  
Pastor Brian Quisenberry..... 206 E. 1st St.  
First Free Will Baptist  
Rev. Tom Smith..... 731 Sloan St.  
Grace Baptist Church  
Bro. Kyle Ohsfeldt..... 824 S. Barnes  
Highland Baptist Church  
Paul Nachtigall, Pastor..... 1301 N. Banks  
Hobart Baptist Church  
Rev. Jim Powell..... 1100 W. Crawford  
Iglesia Bautista Emmanuel  
Bilingual  
Dr. Jimmy Flynn, Pastor..... 1021 S. Barnes  
Macedonia Baptist Church  
Rev. I.L. Patrick..... 441 Elm. St.

New Hope Baptist Church  
Rev. Thomas J. Patterson..... 912 S. Gray  
Primera Idlesia Bautista Mexicana  
Rev. Heliodoro Silva..... 1541 Hamilton  
Progressive Baptist Church  
Rev. Bob Davis..... 836 S. Gray  
Trinity Baptist Church (McLean)  
Pastor: James Mantooth. 603 Commerce St.

### Catholic

Sacred Heart (White Deer)  
Monsignor Kevin Hand..... 500 N. Main  
St. Mary's (Groom)  
Father Neal Dee..... 400 Ware  
St. Vincent de Paul Catholic Church  
Father John Valdez..... 810 W. 23rd

### Christian

Church of the Brethren  
..... 600 N. Frost  
First Christian Church (Disciples Of Christ)  
Senior Pastor Barry Loving... 1633 N. Nelson  
Hi-Land Christian Church  
Mike Sublett, Minister..... 1615 N. Banks

### Church of Christ

Central Church of Christ  
Dan Chaney, Minister..... 500 N. Somerville

Church of Christ (Lefors)  
Rick Pierce..... 215 E. 3rd

Church of Christ  
John Alan Turner, Pulpit Minister  
..... Mary Ellen & Harvester  
Church of Christ (Groom)  
Delton McGuire..... 101 Newcome  
Church of Christ (McLean)  
Jim Reyna..... 4th and Clarendon St.  
Church of Christ (White Deer)  
Don Stone..... 501 Doucette  
McCullough Street Church of Christ  
Frankie L. Lemons, Minister 738 McCullough  
Skellytown Church of Christ  
Kenneth Burkett, Preacher..... 108 5th  
Wells Street Church of Christ..... 400 N. Wells  
Westside Church of Christ  
Michael Gibson, Minister..... 1612 W. Kentucky

### Church of God

Church of God  
Rev. Gene Harris..... 1123 Gwendolen

### Episcopal

St. Matthew's Episcopal Church  
Rev. Jacob S. Clemmens..... 727 W. Browning

### Gospel

Briarwood Full Gospel Church  
Rev. Lynn Hancock..... 1800 W. Harvester  
Open Door Church of God in Christ  
Elder H. Kelley, Pastor..... 404 Oklahoma

### Jehovah's Witness

..... 1701 Coffee

### Lutheran

Zion Lutheran Church  
Pastor Leif Hasskarl..... 1200 Duncan

### Methodist

First United Methodist Church  
Rev. Todd Dyess..... 201 E. Foster  
First United Methodist Church (Mobeetie)  
Rev. Gary Jahnel..... Wheeler & 3rd  
First United Methodist Church (McLean)  
Rev. Thacker Haynes..... 219 N. Gray

First United Methodist Church (White Deer)  
Toni Bailey..... 101 W. 8th  
Groom United Methodist Church  
Rev. Tom Moore..... 303 E. 2nd  
Lefors United Methodist Church  
Rev. Jim Teeter..... 311 E. 5th. Lefors  
St. Marks Christian Methodist Episcopal Church  
Rev. Raymond McKeever..... 406 Elm  
St. Paul United Methodist Church  
Rev. Jim Teeter..... 511 N. Hobart

### Mormon

Church of Jesus Christ of Latter Day Saints  
Bishop Dean Looper..... 29th & Aspen

### Nazarene

Church of The Nazarene  
Rev. Doug Yates..... 500 N. West

### Non-Denominational

Bible Church of Pampa  
Bob Banks..... 300 W. Browning  
Body of Christ at Pampa  
..... 210 N. Ward

Iglesia Casa Del Alfarero  
Pastor Agustin Vasquez..... 500 N. Duncan  
Iglesia Nueva Vida - New Life Church -  
Bilingual  
Pastor Pedro Hernandez.. 801 E. Campbell  
Redeeming Grace Mission  
Liz Sculthrop, Mission Pastor.. 422 West St.

Salvation Army  
Sgts. Gary &  
Patricia Steward..... S. Cuyler at Thut  
Trinity Fellowship Church  
Lonny Robbins, Pastor..... 1200 S. Sumner

### Pentecostal

Faith Tabernacle  
Rev. Ben Corblitt, Pastor..... 610 Naida  
First Pentecostal Holiness Church  
Rev. Albert Maggard..... 1700 Alcock  
HiLand Pentecostal Holiness Church  
Nathan Hopson, Pastor..... 1733 N. Banks

### Presbyterian

First Presbyterian Church  
Dr. Edwin M. Cooley..... 525 N. Gray

**Southwest Collision**  
2525 W. Hwy. 152 • Pampa  
669-9997

**Pampa Nursing Center**  
1321 W. Kentucky  
669-2551

**FOTO TIME**  
107 N. Cuyler  
Photo Processing  
Pampa, Tx 665-8341

**PARSLY'S**  
214 E. Tyng  
669-6461  
Pampa, Texas

**DIAMOND SHOP**  
"May God Be With You During The Week"  
Ken & Stephanie Rheams

669-7171  
**Borger Hwy. - Pampa**  
Jerry E. Carlson, Pres.

**Culligan**  
314 S. STARKWEATHER  
665-5729

**LARRY BAKER**  
PLUMBING HEATING & AIR  
2711 Alcock  
734 Alcock  
665-4392

**PAMPA OFFICE SUPPLY CO.**  
215 N. Cuyler  
669-3353

**Texas PRINTING company**  
PHONE (806) 669-7941  
319 N. BALLARD  
PAMPA, TEXAS

**Titan**  
Hwy. 152 West  
Pampa, Texas  
665-3781

**Century 21 Pampa REALTY INC.**  
312 N. Gray • 669-0007

Apartment Living For Seniors  
**PAM APARTMENTS**  
1200 N. Wells • 669-2594

**Samichael Whitley**  
FUNERAL DIRECTORS

**JOHN T. KING & SONS**  
918 S. Barnes  
669-3711

**CLIFTON SUPPLY COMPANY**  
734 S. Cuyler  
NEW & RE-BUILT QUINCY PUMPS  
665-0089

**H** PAMPA REGIONAL MEDICAL CENTER  
One Medical Plaza  
Pampa, Texas  
806-665-3721

**KEYES PHARMACY**  
"Your Key To Better Health"  
928 N. Hobart - Pampa, Texas  
669-1202 - Emergency 669-3559  
Merlin Rose R.Ph. - Owner - Pharmacist

**CURT B. BECK, P.E.**  
CONSULTING ENGINEER - POLLUTION AND ENERGY  
"When You Need To Know The Facts"  
HUGHES BLDG. SUITE 173A  
PAMPA, TEXAS  
665-9281

**WAYNE'S WESTERN WEAR**  
1504 N. Hobart  
665-2925

**SCHNEIDER HOUSE APARTMENTS FOR SENIORS**  
120 S. RUSSELL • 665-0415

**CHARLIE'S FURNITURE & CARPETS**  
7400 S.W. 34th AMARILLO  
1533 Hobart  
665-0995

2201 Perryton Pkwy.  
Jay Gist  
Pampa, Texas  
Royce Jordan  
669-CHIC (2442)

**HAYDON-FORD CHIROPRACTIC CLINIC**  
103 E. 28th St., Pampa, Tx.  
Dr. Mark W. Ford Jr.  
665-7261

**ENGINE PARTS & SUPPLY**  
416 W. Foster  
Local Company Serving Local Needs  
669-3305

**NATIONAL BANK OF COMMERCE**  
an office of First National Bank, Wauvaca, WI.  
Member FDIC  
1224 N. Hobart Pampa, Tx. 806-665-0022  
501 Commerce St Childress, Tx. 940-937-2514  
305 N. Main Shamrock, Tx. 806-256-2181  
Dumas, TX 1400 S. Dumas  
Pampa, TX 1201 N. Hobart

**DEAN'S PHARMACY**  
2217 Perryton Pkwy.  
Jim Pepper  
Pampa  
669-6896

**DORMAN TIRE & SERVICE CO., INC.**  
Herman Law 1800 N. Hobart Pampa, Tx. 665-5302

**Albertsons**  
Maxwell Carey - Store Director

"Rock Bottom Prices"  
1233 N. Hobart  
Pampa, Tx.  
665-0896

**Pampa Concrete Co., Inc.**  
220 W. Tyng Ave. • 669-3111

**Culberson - Sowers, Inc.**  
SINCE 1927  
CHEVROLET Chevy Trucks  
PONTIAC DRIVING EXCITEMENT GMC TRUCKS  
The Panhandle's PREMIER GM Dealer.  
805 N. Hobart • Pampa, TX  
(806) 665-1665

JESUS CHRIST, THE SAME  
YESTERDAY, TODAY, AND FOREVER  
HEBREWS 13:8

CHR  
Christia  
Calvary  
LOS, an a  
around the  
On Satu  
will presen  
with humo  
APPOL  
Calvary Ba  
cappuccino  
Doors of  
mance at 7  
For mor  
Baptist Ch  
Rushing  
Rushing  
Victory Ce  
the Waka C  
The pub  
ery will be  
Easter S  
GROOM  
announce a  
son at the  
Groom.  
On Goo  
Mysteries v  
At 1 p.m.,  
preside ove  
of Amarillo  
Special r  
Eddie Hasti  
Sign of Eric  
- Sign & S  
On Easte  
at the Cross  
Morrow of  
For mor  
Cross of Ou  
Briarwo  
Briarwo  
airwaves w  
The Rev.  
Gospel Chu  
program p  
KOMX rad  
"Sunday  
KGRO, AM  
All broa  
approximate  
programs ar  
St. Vince  
The you  
Church will  
houette at 7  
duction will  
directors are  
McVay.  
Cast mer  
McVay (M  
Gregory Wa  
Amber Eber  
The you  
church. The  
Dallas Holm  
The prog  
TCU  
progr  
FORT WO  
Texas so  
"Christian"  
might seem li  
for in-depth J  
But Tex  
University -  
prefers to be  
Brite Divini  
launching a  
program and  
library with  
manuscripts a  
ning five cent  
"I am the  
about the 'Ch  
Christian Un  
W. David No  
professor of  
"It's devoted  
diversity - a  
excellence, a  
context that  
have a Judais  
The univer  
ty school are  
Christian  
Disciples of  
started in the  
has about 850  
in North Ame  
the church f  
funding, it do  
its schools.  
The denom  
no official do  
tinues to be in  
founding idea  
ty, openness,  
according to c  
Nelson is  
Christian pro  
But he's cer

# RELIGION

## CHURCH BRIEFS

### Christian coffee house opens Saturday

Calvary Baptist Church announces the opening of APOLLOS, an adult coffee house featuring Christian talent from around the Panhandle each Saturday from 7 p.m. to 9 p.m.

On Saturday, March 9, Rick Scott of the North Fork Band will present a blend of gospel and Christian cowboy ballads with humor and testimony.

APOLLOS is located at 900 E. 23rd at the south end of Calvary Baptist Church. The coffee house offers a menu of cappuccino, slushies, hot chocolate and coffee.

Doors open at 6:45 p.m., following by the musical performance at 7:20 p.m.

For more information, contact Rick Pearson at Calvary Baptist Church, 665-0842.

### Rushing Wind, Waka plan potluck dinner

Rushing Wind Emmaus and Waka Christian Center Victory Celebration is set for 6 p.m., Saturday, March 9, at the Waka Christian Center.

The public is invited to attend the potluck dinner. A nursery will be provided.

### Easter services set at Cross of Our Lord

GROOM — Cross of Our Lord Jesus Christ Ministries announce a series of services celebrating the Easter holy season at the Cross of Our Lord Jesus Christ, off I-40 near Groom.

On Good Friday, March 29, a Rosary of the Sorrowful Mysteries will be led by Jim Lummus of Pampa at 12 noon. At 1 p.m., Bishop John Yanta of the Amarillo Diocese will preside over "The Seven Last Words." Deacon Floyd Ashley of Amarillo will then assist with the Stations of the Cross.

Special music will be provided by Joe Martinez of Pampa, Eddie Hastings of White Deer, Home Grown Kids — Sing & Sign of Erick, Okla., and Loretta Hall and Charla Koopnider — Sign & Sign of Elk City, Okla.

On Easter, the public is invited to Easter Sunrise services at the Cross with Jim Bible of McLean presiding and Sharyn Morrow of Clarendon providing the music.

For more information about Easter observances at the Cross of Our Lord Jesus Christ, call 665-7788.

### Briarwood returns to the airwaves

Briarwood Full Gospel Church is returning to the radio airwaves with a week-day and Sunday broadcasts.

The Rev. Lynn Hancock, minister of Briarwood Full Gospel Church, will present "Words of Life," a devotional program providing encouragement and motivation on KOMX radio, FM 100.3, Mondays through Fridays.

"Sunday Morning at Briarwood" will be presented on KGRO, AM 1230.

All broadcasts follow Paul Harvey's commentary at approximately 8:30 a.m. and 12:30 p.m. Sponsors for the programs are Clifton Supply and Comet Cleaners.

### St. Vincent youth to perform in silhouette

The youth department of St. Vincent de Paul Catholic Church will present "The Mysterious Glories of Jesus" in silhouette at 7 p.m., Sunday, March 24 at the church. The production will be under the direction of Greg Bullard. Assistant directors are Jackie Gerber, Angela Mechelay and Stephanie McVay.

Cast members include: Hector Leal (Jesus); Stephanie McVay (Mary); Angela Mechelay (Mary Magdalene); Gregory Wariner (Peter); Trevor McVay (Centurian); and Amber Ebenkamp (Angel).

The youth will be behind a large screen set up in the church. The shadow play will be accompanied by music from Dallas Holm's "His Last Days" soundtrack.

The program is free and open to the public.

## TCU Divinity School begins program of Jewish studies

FORT WORTH (AP) — A Texas school with "Christian" in its name might seem like an odd place for in-depth Judaism studies.

But Texas Christian University — or TCU, as it prefers to be called — and its Brite Divinity School are launching a Jewish studies program and expanding the library with 10,000 Jewish manuscripts and books spanning five centuries.

"I am the least concerned about the 'Christian' in Texas Christian University," said W. David Nelson, assistant professor of Jewish studies. "It's devoted to free thought, diversity and academic excellence, and within that context that makes sense to have a Judaism professor."

The university and divinity school are affiliated with Christian Church, or Disciples of Christ, which started in the 1800s and now has about 850,000 members in North America. Although the church provides some funding, it does not control its schools.

The denomination claims no official doctrine but continues to be influenced by its founding ideals of informality, openness and diversity, according to church officials.

Nelson is the first non-Christian professor at Brite. But he's certainly not the

first on the Fort Worth campus who is not a Disciple of Christ.

In fact, most TCU students are Catholics, and most Brite students are United Methodists. About 30 denominations are represented in the divinity school's student body, nine in the faculty.

## Music minister, wife work in harmony

By LISA SOULE  
KILLEEN DAILY HERALD

KILLEEN — Choir members at Killeen's First Baptist Church get a double dose of musical proficiency.

Besides the professional expertise of the church's music minister, the choir has the benefit of a well-known Christian composer singing among them.

Music Minister Bruce Berry directs the 40-plus singers including his wife, Cindy, who knows some pieces better than anyone.

Cindy, 52, has composed and published more than 50 Christian anthems. Her pieces are favorites at the Killeen church and are sung nationwide by many denominations.

Although some of her anthems are now best sellers, Cindy said she never dreamed of career in composing.

"It started as a hobby," she said. Bruce, 54, sometimes asked her to write something when his church music budget was running short.

After a music conference in 1983, Cindy said she felt God had called her to write her worship to Him.

It was Bruce who began sending her work to publishers.

"He saw that part of it," Cindy said. "He thought others should have this available."

When the Killeen choir sings a Cindy Berry piece, Cindy said she leaves the directing to her husband.

During a recent choir practice, Bruce gave silent orders with his hands as he signaled to two piano players. Choir members kept time with their feet as they focused on his motions.

When Bruce's directions differ from the tempo markings on her printed work, Cindy said she can sense some choir members stir.

"The choir looks at me, as if to ask, is that OK? But, he is the director and it is OK with me," she said.

Bruce said that was something Cindy had to learn as she first began hearing others interpret her songs. "She had to learn to let it go. That's often hard for young composers," he said.

"I let God use it," Cindy said of her music. Different congregations have different needs. "Some need to speed it up or slow it down," she said.

Cindy said she has come to a point where she can remove herself from her own music. She considers hearing her work performed both a blessing and an honor.

Her first published work, "At the Name of Jesus" is a standard in many churches. She also wrote "Restore My Joy" and has published seven piano books with hymn arrangements.

"Occasionally, I am moved to tears when I hear a choir sing one of my anthems," Cindy said.

The musical couple met in Houston when they were in high school singing in the

choir. They have been married now for 32 years and have three grown children.

Cindy said their children grew up singing in choirs, but none have pursued musical careers. "That's not where their talents lie," she said.

Bruce has taken his ministry from the city of Magnolia, near Houston to Dallas. Before coming to Killeen, he worked at a church in Lawton, Okla., near Fort Sill.

As a music minister, Bruce said he does more than direct the choir. "It's always the big joke, that I just work Wednesdays and Sundays," he said.

"I marry, bury and do counseling as well," he said. Bruce visits church members in the hospital one day each week and also makes home visits.

A church search committee invited him to the Killeen church five years ago, in part, because he understood the military community.

Choir member Stephanie

Walburn was introduced to the couple when her husband was stationed at Fort Sill.

Before she discovered who Cindy was, Walburn said she had no idea a composer was among the choir members.

"She is so humble you just don't know who she really is," Walburn said.

"I love her music," Walburn said. "I can always spot a Cindy Berry piece."

Walburn said singing under Bruce's direction is a great experience. "Bruce has always been my favorite. He loves to be with people and he makes practice fun."

Besides the fun, Walburn said practice is a spiritual experience, too. "He really strives to use the time in choir to minister to us." Walburn said Bruce often has the choir stop to reflect on the words they have sung.

Gloria Walker has been a First Baptist Church member since 1959.

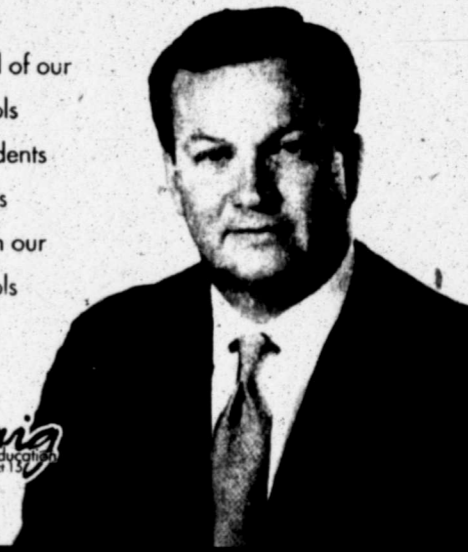
"We are truly blessed to have both of them," she said of the Berrys.

## BOB CRAIG

Republican for the State Board of Education, District 15

### Bob Craig

- For- Local control of our Public Schools
- For- Parents, Students and Teachers
- For- Excellence in our Public Schools



Pol. Act. Paid For by the Bob Craig Campaign, Box 1979, Lubbock, TX 79408, John Simpson, Pres.

## Heard Jones HEALTH MART

### SATURDAY DOORBUSTERS

Specials Good Friday and Saturday March 8th and 9th

Coca Cola, Sprite or Dr. Pepper  
6-12 Oz. Cans \$1.59

Bounty Paper Towels  
6 Roll Pkg. \$4.49

Charmin Bath Tissue  
4 Roll Pkg. 89¢ Limit 3 Pkgs.

Soft N. Gentle Facial Tissue  
84 Ct. Box • Limit 6 Boxes  
3 Boxes \$1.99

Marlboro Cigarettes  
\$23.89 ctn.

Hamburger & Chips  
Saturday Special 99¢  
Monday - Friday 8 a.m. - 6 p.m.  
Saturday 8 a.m. - 5 p.m.  
114 N. Cuyler • Pampa  
669-7478

**Come Worship Jesus our Savior**  
Saturday "Sabbath"  
School • 9:30 a.m.  
Church • 11:00 a.m.  
Wed. Prayer Meeting • 7:00 p.m.  
Seventh Day Adventist Church  
425 Ward • 665-4492

**Have You Seen This Sign?**

**It Stands For More Than Just A Name...**

**It Stands For...**

**FAMILY VALUES  
HONESTY  
EDUCATION  
EXPERIENCE  
COMMUNITY  
DEPENDABILITY  
& COMMITMENT**

**I Want To Be Your County Treasurer!**

Political Ad Paid For By Lee Cornelison, Campaign Treasurer,  
Royce Jordan, 2607 Evergreen, Pampa, Texas 79065, Phone 665-0377

M  
A  
R  
C  
H  
8  
2  
0  
0  
2

# Churches use pagers to alert parents

By **DARREN BARBEE**  
FORT WORTH STAR-TELEGRAM

FORT WORTH — If only Moses had been wearing a pager when the children of Israel forged their golden calf, he could have been beeped the minute mischievous Aaron and his friends started worshipping a false idol.

These days, perils of a less biblical nature are averted each weekend across Tarrant County.

A growing number of church nurseries, from First United Methodist Church of Arlington to St. Stephen Presbyterian Church in Fort Worth, are using vibrating pagers and digital displays to alert parents during worship services when their children need help that only Mom or Dad can provide.

Some parents say they like the immediacy of the system and that ushers no longer raise a clamor searching for them when trouble strikes.

Others may view the paging systems, silent though they are, as yet another intrusion of the secular world into the sanctuary, said Julie Byrne, a religion professor at Texas Christian University.

"It depends on what your taste in sanctity is," she said.

In the sea of 4,000 faces at Fellowship Church in Grapevine, it would have been

difficult to quickly and quietly find 2-year-old Madison's mother, Natalie Walden.

Walden, a volunteer and longtime member of Fellowship Church, said she recalls seeing her child Madison's "name in lights" more than other children's. The church uses two digital displays placed discreetly in the sanctuary.

"We got paged a lot for our daughter," said Walden, who once sent her husband to attend Madison while she stayed for the day's sermon on parenting skills. She was paged 10 times in a three-month period when Madison cried uncontrollably because of stranger anxiety and reflux, she said.

"She suffered from the infant stuff," Walden said.

For congregations as large as Fellowship Church, where 3,200 children attend in a weekend, providing individual beepers would have cost far more than the \$3,000 system now in place, said Mike Johnson, church education director.

The system also provides security. A computer "spits out name tags, spits out the receipt, and parents take their kids right to the classroom," Johnson said. The receipt includes a reference number that, along with the child's name, is used to page a parent and to reclaim a child after services.

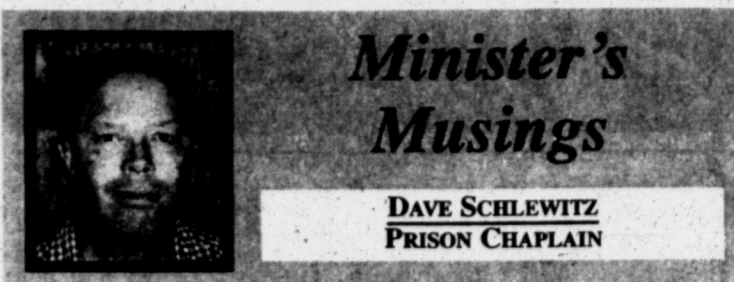
But some think the visual paging screens could cause minds to wander from the sermons. A few models' red numbers resemble the "now serving" displays at customer service desks.

"We felt like the physical pagers, because they vibrate, would only disturb the parents ... wearing them," said Annamarie Hall, nursery coordinator at First United Methodist Church of Arlington. "The visual board has numbers flashing from time to time, so it could be distracting to people in the congregation."

In time, worshippers become accustomed to the flashing displays, said Jamie Harrison, marketing director of Microframe Corp. The Norman, Okla., company is one of several manufacturers of visual paging systems and pagers for churches.

"When the system is first installed, everyone ... is looking at it," Harrison said. "But once it's up, the only people who notice it are parents."

The paging system crosses most denominational lines, since concern for children is universal, she said. But Microframe, which has seen sales increase over the past five years, does not sell as many paging systems to Roman Catholic churches, where parents tend to take their children into the sanctuary.



## Minister's Musings

DAVE SCHLEWITZ  
PRISON CHAPLAIN

A couple I know is celebrating their 25th wedding anniversary this March 5, 2002. I am talking about J.B. and Bethel Walker. I asked J.B. what the secret to a happy and long marriage was and he smiled and said, "Don't argue, and just love the other one more than they love you." Wow, that was neat. Hey, J.B. and Bethel, I salute you! Way to go! And to anyone else who is celebrating 25 years of marriage this year — way to go!

One person wrote that love is "an unconditional commitment to an imperfect person." That is a great working definition of love, don't you think? We tend to think of love as some squishy, sloppy, gooey, mushy lovey dovey thing — an emotion! I think rather it is like the definition states — a choice.

I know I am easy to love when I am in a good mood, all cleaned up, got my aftershave on, hair combed, slacks and shirt are pressed, and wearing a smile. But when I'm not in a good mood (boy, I hate to admit I'm moody) and I'm having a bad hair day, I know my spouse does not depend on emotion. Huh.

No, it's like J.B. said, "Love the other one more than they love you." He's talking about a choice here, not emotion. That kind of commitment and choice carries one through the bad times and the sickness and crisis that come to all of us. In the end, those experiences bond us together even deeper and our love grows even stronger.

Thanks, J.B. and Bethel for the reminder about love. Congrats on your 25th and more power to you.

## U.S.

GARDE eased over enabling U. from the g rushed fres U.S. info Friday in t operation, Mountain D Smith, b fighting in ties" among "I have Wiercinski, Division. Wind an tions Thurs rumble of h more than 2 With the of Hamid K an Afghan Special For A membe central gov fighters, of under the c other fight A convoy Friday head Press phot including tr vehicles wit The need

## Japan

TOKYO toppled into i in at least two economy shr straight quar than-expected rate investme Japan's product, or th and services nation, shrank ing the quart December, t annual 4.5 pe the Cabinet O That was turnaround in my, which gr rate of 1.4 pe same quarter. Japanese heavily on e which go to t But the U not enough demand with helped cripp said Mamoru economist at Japan in Toky "Just bec economy rec

Intention HEMPHILL & CANADI Questar E&F Humphreys; North & 660' Sec. 38, I.G.& HEMPHILL & S.E. Douglas) Me Co., #1 Jone 660' from S line, Sec. 21 8200'. HEMPHILL & S.E. Douglas) Que #5048 Humph from North & West line, Se PD 7300'. HEMPHILL & TEXFEI Questar E&P Hodgson, 103 & 2194' from 20,42,H&TC, HUTCHINS PANHANDLE Corp., Herring for the followi #205, 6400' 4190' from Ea Luce Survey. #206, 2310' 330' from We 8,J,H&GN. APPLICATION t CARSON ( HANDLE) Sta Inc., #A-1 330' from Sc line, Sec. 113 3134'. Amended In Dr WHEELER & S.W. BRIS Morrow) Exploration M #1062 Brown South & 125 line, Sec. 62

**Stokes Mr. Muffler & Industrial Radiator**  
Home of the Life Time Muffler & Tailpipe  
Brakes & Shocks  
Custom Exhaust - Flomaster & Flow-Pro  
Free Local Pickup & Delivery  
525 W. Brown - Highway 60  
665-0190 • 800-762-6381

Find A Flood...  
All Of New Ideas  
WAYNE'S WESTERN WEAR, INC.  
OPEN DAILY 9 A.M. TO 6 P.M.,  
THURSDAY 9 A.M. TO 8 P.M., CLOSED SUNDAY  
1504 N. HOBART • 665-2925

Studio Portraits  
Photography & Complete Photo Finishing  
Photo & Camera Accessories  
Home Owned • Home Operated  
**FOTO TIME**  
107 N. Cuyler • 665-8341

# FOCUS ON THE FAMILY

DR. JAMES DOBSON is a psychologist, author and president of Focus on the Family, a nonprofit organization dedicated to the preservation of the home.

**Q** As a father, what should I be trying to accomplish with my son in these teen years?

**A** Someone has said, "Link a boy to the right man and seldom goes wrong." I believe that is true. If a dad and his son can develop hobbies together or other common interests, the rebellious years can pass in relative tranquility. What they experience may be remembered for a lifetime.

I recall a song, written by Dan Fogelberg, that tells about a father who shares his love of music with his son. It is called "Leader of the Band," and its message touches something deep within me. The son talks of a father who "earned his love through discipline, a thundering, velvet hand." The father's "song is in my soul." The son himself has become a "living legacy to the leader of the band."

Can't you see this man going to visit his aged father today, with a lifetime of love passing between them? That must have been what God had in mind when he gave dads to boys.

Let me address your question directly: What common ground are you cultivating with your impressionable son? Some fathers build or repair cars

with them; some construct small models or make things in a woodshop. My dad and I hunted and fished together. There is no way to describe what those days meant to me as we entered the woods in the early hours of the morning. How could I get angry at this man who took time to be with me? We had wonderful talks while coming home from a day of laughter and fun in the country. I tried to maintain that kind of contact with my son.

Opportunities to communicate openly and build the father-son relationship have to be created. It's a goal that's worth whatever it takes to achieve.

**Q** Can you give me a simple definition of menopause?

**A** It is a time of transition in a woman's life when the reproductive capacity is phasing out. Menstruation gradually stops and hormonal changes occur. Specifically, the ovaries produce only about one-eighth the estrogen that they once did.

This affects not only the reproductive system but the emotions as well. If you are having irregular

periods, if you frequently cry for no apparent reason, if you are having "hot flashes" or night sweats, if your interest in sex has diminished, if you have very low self-esteem and are depressed most of the time, and if you lack the energy to get through your day—you need immediate medical attention.

There is hope for women who are suffering from symptoms associated with menopause. Estrogen replacement therapy can help put you on your feet again. But there are other disorders that produce symptoms similar to menopause. That's why it is important to have a complete physical exam to get a definitive diagnosis.

Dr. Dobson is president of the nonprofit organization Focus on the Family, P.O. Box 444, Colorado Springs, CO. 80903; or [www.family.org](http://www.family.org). Questions and answers are excerpted from "Solid Answers," published by Tyndale House.

COPYRIGHT 2001 JAMES DOBSON INC.  
DISTRIBUTED BY UNIVERSAL PRESS SYNDICATE  
4520 Main St., Kansas City, Mo. 64111; (806) 932-6600

"Finding Value For Cattle"  
Contact  
**Neal Odom**  
806-779-2405  
McLean, Texas  
email - [MFY@ranches.org](mailto:MFY@ranches.org)  
[www.ranches.org/McLean.htm](http://www.ranches.org/McLean.htm)  
**Live Active ... Eat Beef**

**Archie's Aluminum**  
401 E. Craven  
• Custom Screens with a choice of frame colors.  
• Regular wire from Alum to dark colors  
• Specialty wire for Sun Block & Shade Screen

DON'T FORGET TO HAVE YOUR PRESCRIPTIONS FILLED AT  
**B & B PHARMACY**  
• ACCEPT MOST INSURANCE  
• OVER THE COUNTER MEDICATION  
• OSTOMY SUPPLIES  
300 N. Ballard • Pampa  
665-5788 • 800-273-0927  
Emergency 665-2882

# U.S. squeezes in on hard-core al-Qaida

**GARDEZ, Afghanistan (AP)** — Sandstorms and high winds eased over the battle area in eastern Afghanistan on Friday, enabling U.S. and Afghan forces to step up attacks on al-Qaida from the ground and air. Afghanistan's interim government rushed fresh troops to the fight.

U.S. infantrymen came under fire late Thursday and early Friday in the southern sector of the 60-square-mile area of operation, said Col. Joe Smith, chief of staff of the 10th Mountain Division.

Smith, briefing reporters at Bagram air base, described the fighting in the southern sector as heavy with "lots of casualties" among al-Qaida forces.

"I have not seen anyone surrender," said Col. Frank Wiercinski, a brigade commander in the 101st Airborne Division.

Wind and sandstorms slowed allied air and ground operations Thursday. Skies cleared somewhat overnight, and the rumble of heavy explosions from the battle area could be heard more than 20 miles to the north.

With the fight intensifying, the interim Afghan government of Hamid Karzai decided to rush in reinforcements, bolstering an Afghan force made up largely of militias recruited by the Special Forces.

A member of the Gardez town council, Safih Ullah, said the central government was sending about 1,000 new Afghan fighters, of whom about 600 had already arrived. They were under the command of Gul Hydar and came with tanks and other fighting vehicles, the councilman said.

A convoy of 12 to 15 tanks was seen in Logar province Friday heading south from Kabul to Gardez. An Associated Press photographer saw another convoy in the same direction, including trucks carrying multiple rocket launchers and other vehicles with soldiers armed with rifles and grenade launchers.

The need for reinforcements became apparent after U.S.

commanders, relying heavily on their Afghan partners, underestimated the size of the al-Qaida force.

Afghan fighters said they were told to expect about 100-150 al-Qaida foes. U.S. officials are now estimating kills in the hundreds — greater than their initial estimates of the entire force.

In Washington, Defense Secretary Donald H. Rumsfeld said the offensive could end as early as this weekend, but said al-Qaida was also rushing in reinforcements and supplies.

"We have seen some infiltration of additional fighters in small numbers, traveling in SUVs from the south," Smith said. Wiercinski said al-Qaida remained "a determined force" but that seven days into the operation U.S. troops were no longer seeing large groups of fighters.

"We still see small pockets of resistance," he said. "They are determined. Whether you would call that martyrdom or whatever, they are still determined in their small pockets."

U.S. Special Forces teams established checkpoints along roads and smuggling routes to try to intercept al-Qaida fighters trying to slip in from the area along the Pakistani border.

An Afghan commander, Abdul Matin Hasankhail, said some al-Qaida sympathizers managed to cross the Pakistani border early in the battle but he thought most had been blocked.

Hafeezullah, a member of the Surmad town council, said men from his region probably joined the fight on the al-Qaida side because of the prestige of the local commander, Saif Rahman, a former Taliban official whose family comes from the area.

Rahman issued a call earlier in the week for jihad, or holy war, against the U.S. campaign. In Surmad, loudspeakers repeated the call, saying it was the duty of Muslims to fight, said the deputy intelligence chief in Gardez, Ziarat Gul.

The Pentagon is sending about 200 soldiers from the 101st Airborne Division at Fort Campbell, Ky., equipped with 16

# Mexico to export winning theme park across border

**MEXICO CITY (AP)** — The City of Children, a theme park designed to teach a work ethic and create brand loyalty at the same tender age, could be coming soon to a shopping mall near you.

The successful Mexican attraction will begin construction in the United States soon, and malls in the New York and Los Angeles areas are competing to host to the first U.S. branch.

"This is genius," said James Ashton, president of AFC Commercial Real Estate, based in Westlake Village, Calif. He toured the attraction recently and is negotiating with the owners to build a similar park for a new mall in the Los Angeles area.

"People are so starved for something like this and there is nothing comparable. Everything is going kid-oriented and there is nothing that could compete with this."

But the concept that has been accepted so overwhelmingly here — companies build brand-oriented attractions for children within a "city" provided by the developer — could face more probing questions in the United States about its motives.

Mexican upper classes, to which the attraction caters, are lacking in cynicism about commercialism and materialism.

In the United States, where the planned entrance fee of about \$20 would be accessible to many more families, people tend have a more pointed opinion that is the opposite of their Mexican peers.

"There are certainly some segments of the population who very much can't stand that kind of commercialism, but at the same time that's more and more in the mainstream of American society," said Gary Ruskin, executive director of Commercial Alert, a Portland, Ore.-based anti-commercialism group.

"More and more, this is what American marketing is looking like. It seems like there's nothing they won't do to market to kids these days."

The idea of the park is simple: After buying their American Airlines "ticket" to enter, children receive play money, which they can spend on General Motors bumper cars (Avis rents them). Or, they can make themselves up at the Pond's Institute beauty salon or scale a rock wall emblazoned with the word "Nesquik."

If they run out of money, they can go to work — applying Sherwin Williams paints to a wall at the Cemex construction site, caring for babies (dolls, actually) at the Johnson & Johnson hospital or reading bar codes at the Superama supermarket.

The 52 sponsors at the current site put up about half of the money for construction. What they get is hard-core advertising to impressionable children.

"Kids don't say, 'Let's go to the pizzeria.' They say, 'Let's go to Domino's.' Obviously when they want a pizza they're going to want Domino's," said Esteban Lopez Ancona, general director of Amazing Toys de Mexico, which runs the theme park.

The park itself is laid out in the form of a city, with a central kiosk, drainpipes where children can go on an "archaeological dig," a theater where plays are performed every half-hour and streets where fire trucks crawl along, sirens blazing, and tiny detectives in trenchcoats look for bad guys.

There are areas for toddlers — a "farm" with activities for the smallest — and for all other ages. Directors say 80 percent of their clientele is between the ages of 5 and 12, but most are between 6 and 10.

# Japanese economy sinking deeper in recession

**TOKYO (AP)** — Japan topped into its worst recession in at least two decades after the economy shrank for the third straight quarter on a bigger-than-expected plunge in corporate investments.

Japan's gross domestic product, or the value of goods and services produced in a nation, shrank 1.2 percent during the quarter that ended in December, translating to an annual 4.5 percent contraction, the Cabinet Office said Friday.

That was despite a strong turnaround in the U.S. economy, which grew at an annual rate of 1.4 percent during the same quarter.

Japanese growth depends heavily on exports, many of which go to the United States.

But the U.S. recovery was not enough to offset weak demand within Japan, which helped cripple the economy, said Mamoru Yamazaki, an economist at Barclays Capital Japan in Tokyo.

"Just because the U.S. economy recovers, it doesn't

mean the world economy is going to rebound immediately," Yamazaki said. "The impact may start to be felt in the latter half of fiscal 2002."

The last time the economy contracted for three quarters straight was in 1993, when it shrank at around 0.0-0.1 percent each quarter.

Before that, Japan had never seen even two back-to-back quarters of contraction — the usual definition of a recession — since the government began keeping such records in 1980.

On Friday, Yuzo Kobayashi, a Cabinet Office vice minister, acknowledged that the Japanese economy would likely fare worse than the 1.0 percent contraction forecast by the government for this fiscal year ending in March.

"Economic conditions will be severe throughout the current fiscal year," he told reporters.

The most critical factor in the latest GDP data was the 12

percent drop in private sector investment.

That helped wipe out a 1.9 percent increase in private consumption and a 2 percent rise in household consumption. The fallout from the Sept. 11 terrorist attacks also hurt the economy, the government said.

Battered by the global slump, companies held back on investing more in plants and other facilities, said Taro Saito, economist at NLI Research Institute in Tokyo.

Some signs of recovery could come by summer if rising exports set off a chain of good developments, such as boosted corporate profits and salaries, a move that in turn should lift domestic economic activity, he said.

"That's only if everything links up positively," Saito said.

But fixing Japan's economic problems requires basic change.

During decades of modernization, Japan had public works projects and booming exports to keep its economy going.

Both are running out of steam.

Top electronics companies are rapidly losing their competitive pricing edge against growing Asian rivals. The increasingly urbanized public is no longer interested in seeing pork-barrel spending on roads and bridges.

## Five Israelis, 32 Palestinians dead

**GAZA CITY, Gaza Strip (AP)** — On the deadliest day of the 17-month-old conflict, Israeli troops killed 32 Palestinians, including two children and a general, in raids of villages and refugee camps Friday. A Palestinian killed five Israeli teen-agers in an attack on dormitories and a Bible study hall in a Jewish settlement.

In Washington, President Bush announced unexpectedly he was sending his envoy back to the region next week to try to negotiate a cease-fire. In the past, U.S. officials have said mediation only made sense if the Palestinians tried harder to curb violence. It was not immediately clear what brought about the shift.

The past week has been the bloodiest since fighting erupted in September 2000, with 104 Palestinians and 35 Israelis killed. The deaths came in a string of Palestinian shooting and bombing attacks on Israeli civilians, and intense Israeli retaliation, with tanks and helicopters often firing at populated Palestinian areas.

Palestinian officials accused Israeli troops of indiscriminately killing Palestinians and said Friday's raids were intended to sabotage the mediation mission of U.S. envoy Anthony Zinni before it even began. The Israeli military said it was targeting strongholds of Palestinian militants involved in attacks on Israelis.

## DRILLING INTENTIONS

**Intentions to Drill**

**HEMPHILL (WILDCAT & CANADIAN Douglas)** Questar E&P Co., #4038 Humphreys; 2310' from North & 660' from East line, Sec. 38,1,G&M, PD 7450'.

**HEMPHILL (WILDCAT & S.E. CANADIAN Douglas)** Mewbourne Oil Co., #1 Jones Trust '21', 660' from South & West line, Sec. 21,1,G&M, PD 8200'.

**HEMPHILL (WILDCAT & S.E. CANADIAN Douglas)** Questar E&P Co., #5048 Humphreys 'K', 660' from North & 1320' from West line, Sec. 48,1,G&M, PD 7300'.

**HEMPHILL (WILDCAT & TEXFEL Douglas)** Questar E&P Co., #2020 Hodgson, 1036' from North & 2194' from East line, Sec. 20,42,H&TC, PD 7350'.

**HUTCHINSON (WEST PANHANDLE)** J.M. Huber Corp., Herring, PD 3350', for the following wells:

#205, 6400' from North & 4190' from East line, David Luce Survey.

#206, 2310' from North & 330' from West line, Sec. 8,J,H&GN.

**Application to Plug-Back**

**CARSON (WEST PANHANDLE)** Stallion Energy, Inc., #A-1 Brown-Ware, 330' from South & West line, Sec. 113,4,I&GN, PD 3134'.

**Amended Intentions to Drill**

**WHEELER (WILDCAT & S.W. BRISCOE Upper Morrow)** Newfield Exploration Mid-Con., Inc., #1062 Brown, 2500' from South & 1250' from East line, Sec. 62,M-1,H&GN,

PD 15000'. Amended to change well location

**Gas Well Completions**

**ROBERTS (PARSELL Lower Morrow)** Mewbourne Oil Co., #1 Parsell Ranch '156', Sec. 156,42,H&TC, spud 11-23-01, drlg. compl 12-15-01, tested 1-23-02, TD 11300', PBTD 11238' —

**Plugged Wells**

**CARSON (PANHANDLE)** Ananda Energy, Inc., #3W R.C. Ware, Sec. 113,4,I&GN, spud unknown, plugged 2-6-02, TD 3170' (disposal) —

**GRAY (PANHANDLE)** Bradley Operating Co., #11 Gething 'B', Sec. 14,A-9,H&GN, spud unknown, plugged 12-13-99, TD 2860' (oil) —

**GRAY (PANHANDLE)** H&K Plugging & Salvage, J.S. Morse 'H', Sec. 54,25,H&GN (oil) — for the following wells:

#2, spud unknown, plugged 2-18-02, TD 2931' —

#3, spud unknown, plugged 2-15-02, TD 2870' —

**HEMPHILL (HEMPHILL Douglas)** Bracken Operating, L.L.C., #1024 Thomas, Sec. 24,41,H&TC, spud 11-25-01, plugged 12-11-01, TD 8200' (dry) —

**HUTCHINSON (PANHANDLE)** SNW Operating Co., #191 C.L. Dial, et al. Sec. 34,M-23,TCRR, spud unknown, plugged 6-4-01, TD 3044' (oil) — Form 1 in Gulf Oil

**WHEELER (WILDCAT)** Devon Energy Production Co., #1 Patterson '17', Lot 17,CCSL, spud 8-28-99, plugged 2-5-02, TD 16275' (gas) —

**WHEELER (PANHANDLE)** Wildcat Cement Co., #3 Rice, Sec. 25, 13,H&GN, spud unknown, plugged 2-13-01, TD 2307' (oil) —

**DID YOU TAKE THESE DRUGS?**

**FEN-PHEN**

**PONDIMIN • REDUX**

YOU MAY BE A VICTIM  
THOUSANDS OF INNOCENT PEOPLE  
HAVE BEEN HARMED!

IT IS NOT TOO LATE, BUT YOU MUST  
**ACT NOW!**

If you took these diet drugs, and whether or not you are currently having problems, you need to know your rights. For additional information, and to determine if you are eligible for a free screening, please call (toll free):

1/(877) 999-1600  
Levin & Kasner, P.C.  
Eleven Greenway Plaza, 500 Summit Tower  
Houston, Texas 77046

**WE WILL FIGHT HARD FOR YOU!**

NOT CERTIFIED BY THE TEXAS BOARD OF LEGAL SPECIALIZATION  
(MAY WORK JOINTLY WITH OTHER QUALIFIED ATTORNEYS)

## Rules for Investing

### in Today's Stock Market

During periods of uncertainty in the stock market, it's more important than ever to remember...

**the Basic Rules of Successful Investing**

- Buy quality
- Diversify
- Invest for the long term

Whether your investments are with Edward Jones or elsewhere, I'd be happy to discuss how well your investment portfolio may stand the test of time.

Call or stop by today to arrange a free, face-to-face portfolio review.

**Ben Watson**  
408 W. Kingsmill, Suite 197A  
(Hughes Building)  
665-3359  
www.edwardjones.com  
Member SIPC

**Edward Jones**  
Serving Individual Investors Since 1871

# N' Antiques

N' Antiques is closing its retail doors.

## Liquidation Sale

### Doors Close March 9

Entire inventory priced at cost and below.

**Hours: Mon-Sat 10a.m.-6p.m.**

**524a N. Main**  
**Borger, Tx**  
**806-273-3363**

M  
A  
R  
C  
H  
8  
2  
0  
0  
2

# Get a Morgan! We Make! You Need!

Morgan Builds, Sells, Delivers & Services We Make It... You Need It! Financing Available OAC Major Credit Cards Accepted 90 Days Same As Cash

**Spas** Many Sizes Up to 105 Jets

**Buildings** Any size Storage Offices Carports Garages Barns Cottages

**FACTORY DIRECT**

**Morgan** Family Fun Since 1961

7402 Canyon Dr. • I-27 & Bell  
806-358-9597  
www.morgausa.com

**Bldgs Spas Pools** AND CARPORTS

FRIDAY, MARCH 8

## DEAR ABBY

written by Pauline Phillips and daughter Jeanne Phillips

### Encounter Between Dog, Child Isn't Always Walk In The Park

**DEAR ABBY:** Many cities have set aside land for use as "dog parks." They are designed to be open places where dog owners can let their pets off leash to run free.

Last Saturday, a woman brought her 18-month-old son into the dog park. Several of us suggested to her that it wasn't a good idea to let her toddler wander free among 20-plus strange dogs. She said he had been knocked down several times by their own dog, and always got up and laughed and chased after the dog.

I am glad their family dog is child-friendly. My dog is not. Children's quick movements, high-pitched squeals and tendency to hit, poke and grab all scare my dog.

Abby, a dog park is designed to allow dogs the opportunity to run free and socialize with other dogs. What might happen in an encounter between a child and the wrong dog terrifies me. Please pass on this request to parents: If you bring your dog to the dog park, leave your babies at home — or at least keep them close to you and away from the dogs.

**CHILD AND DOG LOVER**  
IN CALIFORNIA

**DEAR C & D LOVER:** Your letter may avert a tragedy. A wise parent will remember that not all dogs are friendly and will closely supervise a dog's

encounter with a child until the parent is certain that both the child and the dog can be trusted.

**DEAR ABBY:** Yesterday for the first time in years, I stopped at a yard sale. As I approached, a man was examining a Colt model 1911 .45-caliber handgun. He waved it around, pointing it at everything in sight.

I asked the owner if the gun was unloaded. "Sure is," he said. "The clip is safely in my pocket." When it was my turn to look at the gun, I pulled the slide back and out popped a live round. I'll never forget the look of horror on the faces of the owner and the man who had been waving the gun.

I don't know what made me stop at that yard sale, but I feel if I hadn't, the gun would have eventually fired and perhaps someone would have been killed.

Abby, I have never felt outlawing guns is the answer. Education is.

**CLOSE CALL** IN YUMA, ARIZ.

**DEAR CLOSE CALL:** I agree. That, and trigger locks and background checks.

**CONFIDENTIAL TO BETWEEN A ROCK AND A HARD PLACE:** You say you

don't believe in divorce. The relationship you have described is not a marriage. One of the first signs of abuse is isolating the victim so that he or she has no one to turn to. Control — withholding money or freedom — is another warning sign of abuse.

It's understandable that you pray to die, but there is help. As soon as you can find a few minutes away from your abuser, you must call (800) 799-7233. It's the number of the National Domestic Violence Hotline. The counselor can direct you in devising a safe escape plan for you and your children.

Let today be the day you flee toward a life worth living. Do it for yourself and for your children.

Pauline Phillips and her daughter, Jeanne Phillips, share the pseudonym Abigail Van Buren. Write Dear Abby at www.Dear-Abby.com or P.O. Box 89440, Los Angeles, CA 90060.

Good advice for everyone — teens and seniors — is in "The Anger in All of Us and How to Deal With It." To order, send a business-size, self-addressed envelope, plus check or money order for \$5 (U.S. funds only) to: Dear Abby — Anger Booklet, P.O. Box 447, Mount Morris, IL 61064-0447. (Postage is included in the price.)

#### For Better or For Worse



#### Zits



#### Garfield



#### Beetle Bailey



#### Marvin



#### B.C.



#### Hagar The Horrible



#### Peanuts



#### Blondie



#### Crossword Puzzle

#### CROSSWORD

By THOMAS JOSEPH

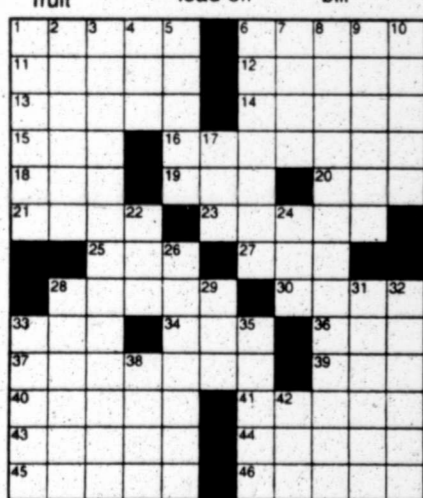
#### ACROSS

- 1 Make fit
- 6 View
- 11 Be eco-friendly
- 12 Gene
- 13 Pakistan neighbor
- 14 Pakistan river
- 15 Knight address
- 16 Shirley's pal
- 18 Before, to a bard
- 19 Compass pt.
- 20 Slippery one
- 21 Nutritional beans
- 23 Victims
- 25 Towel word
- 27 "Cheers" barkeep
- 28 Ladies' men
- 30 League member
- 33 DMX's music
- 34 Balloon fill
- 36 Exist
- 37 Skier
- 39 Calendar box
- 40 Bar setting
- 41 "Arthur" star
- 43 Flynn of films

APES THUGS  
HERO CRANIA  
ARIA OOLONG  
BUCKSHOT  
SLAPSHOT  
FABIAN ABIE  
ALONG MORIN  
IDOL SIPPED  
LONGSHOT  
HEADSHOT  
UNLOCK FAME  
FEISTY OVEN  
ODETS RENT

#### Yesterday's answer

- 10 Art letter
- 11 Nile supporter
- 12 Thin viper
- 13 Sermon shards
- 14 Walking aid
- 15 The Honey-mooners'
- 16 In abundance
- 17 Shriveled fruit
- 18 Ark's resting place
- 19 Nile viper
- 20 Sermon topic
- 21 Have a bite
- 22 Alarm
- 23 In abundance
- 24 Take a load off
- 25 Ark's resting place
- 26 Basket-ball's Anne
- 27 Sped
- 28 Forum visitor
- 29 God of love
- 30 Ark's resting place
- 31 Nile viper
- 32 Sermon topic
- 33 Have a bite
- 34 Alarm
- 35 In abundance
- 36 Shriveled fruit



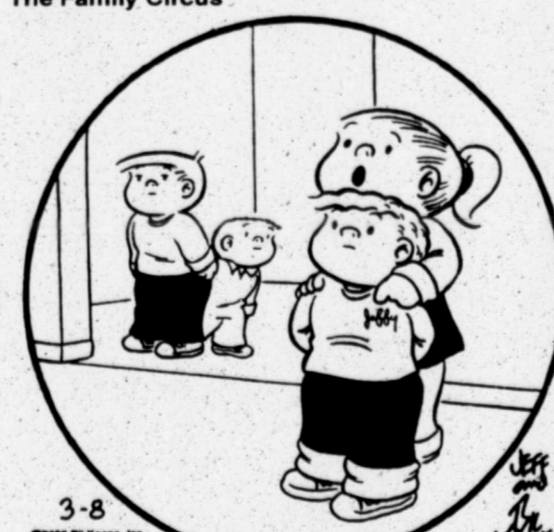
#### STUMPED?

For answer to today's crossword call 1-900-454-7377, 99¢ per min., 18 years of age or older only. A King Features Service.

#### Marmaduke



#### The Family Circus



"If Billy's the oldest and PJ's the youngest, which of us two is the in-betweenest?"

#### Wildwood



**GOLF**

**PAMPA** Donaldson, shot his a with a rou Pampa Cou

**BASEBA**

**PAMPA** be signups baseball an boys and gi 7 on March Optimist Cl Tryouts April 2,3, Park.

**FOOTBA**

**AMARI** school co Gordon W author Joh Amarillo th book sign biography, Century." They are at the Wo 1222 S. Fil a.m. to 2 p. Wood re time win school foo Texas histo games and n pionships. Stamford, Brownwoo ing in 198 been name ry's top Tex football c Dallas Morr

**BASKET**

**SANANT** Rookie poi Parker is sh of his repete off's approach The 19-y 16 points and high 10 rebou career double lead the San to a 99-97 Houston Thursday nig "Tony stepped up Antonio c Popovich said mature before Parker als late in the ga from the left 55 seconds l Antonio a 94 "You don' poise too ofte young," Hou Rudy Tomjan was aggress led his team v Parker su with his perfo "If someb first career would inclu would have never," said ing 2.5 rebou "Assists and have believ rebounds." Tim Dunc double-doubl and finished and 16 reb Malik Rose David Robins rebounds. Th 52-26 advan the paint. It was the last 15 game teams that the the Rockets. San Ant on after Parker's jumper from t with 55 secon a furious f keyed by fou Steve Francis by Walt Wil margin to 97- Two, free Antonio Dani onds left hel









## Coloring Contest winners



The Pampa News recently held a coloring contest open to children between the ages of 4-11. Megan Brock, 4, took top honors with her entry, left, in the 4-7 age division while Julie Schuneman's entry, right, won the 8-11 division. Each received \$25 in Pampa Bucks.

## Astronauts wrestling with camera on Hubble

CAPE CANAVERAL, Fla. (AP) — In the fifth and final spacewalk of their mission, shuttle Columbia astronauts went back out Friday to try to revive a disabled infrared camera on the Hubble Space Telescope.

The objective for John Grunsfeld and Richard Linnehan: connect a prototype refrigeration system to the camera, which hasn't worked for three of its five years.

It is a last-ditch attempt by NASA to open the camera's

infrared eyes so that they can peer once again into the dark, dusty regions of the universe. Officials consider the cooling system experimental and insist they will not be overly disappointed if it does not work.

Mission Control started the spacewalk late to give Columbia's crew time to recover from Thursday's excursion, which went long.

"It's four down and one to go," Mission Control told the astronauts. "It's been a grueling couple of days, but to see you guys work, you'd never know it."

Grunsfeld and Linnehan unbolted the door to the telescope bay containing the infrared camera, then removed the new cooling system from Columbia and carried it up to the open compartment for installation.

"It's nice to see an old friend," said Grunsfeld, who was on the last servicing mission in 1999.

The comatose camera — the Near Infrared Camera and Multi-Object Spectrometer, or Nicmos for short — was launched to Hubble in 1997. But it stopped working in 1999 when a small heat leak caused its supply of nitrogen ice to run out early. The ice was needed to keep the infrared detectors at their operating temperature of minus-350 degrees.

## Universe beige not turquoise

WASHINGTON (AP) — The color of the universe is not an intriguing pale turquoise, as astronomers recently announced. It's actually beige — and a rather ordinary beige at that.

Two Johns Hopkins University astronomers announced in January they had averaged all the colors from the light of 200,000 galaxies and concluded that if the human eye could see this combined hue, it would be a sprightly pale green. That, they said, was the color of the universe.

But Karl Glazebrook and Ivan Baldry said Thursday that their conclusion was wrong. They had been tripped up by flawed software that was uncovered by color engineers who checked their data.

"It is embarrassing," Glazebrook said. "But this is science. We're not like politicians. If we make mistakes, we admit them. That's how science works."

The effect of the error was that the computer picked a non-standard white from its electronic palette and mixed it with the other colors to come up with the turquoise. When the error was corrected and replaced with a standard white index, beige was the result, Glazebrook said.

"It looks like beige," he said. "I don't know what else to call it. I would welcome suggestions."

In January, Baldry called the turquoise "cosmic spectrum green." But the pair offered no fancy name for the new beige hue.

## Republicans delay vote on Pickering

WASHINGTON (AP) — Republicans demanded one more week to try to prevent Charles Pickering from becoming the first judicial nominee to be publicly defeated in a Senate committee in more than a decade.

In a heated Senate Judiciary Committee hearing Thursday, Sen. Orrin Hatch, R-Utah, delayed the vote for the federal appeals court nominee, saying "extreme left" interest groups were "lynching" the Mississippi jurist by opposing him.

Committee members can automatically get a one-week delay on a nomination. The earliest the committee can now vote on Pickering would be next Thursday.

But the committee's majority Democrats insist they still will not approve the nomination. Pickering "does not have majority support in this committee," Sen. Richard Durbin, D-Ill., told Republicans.

Rejection of Pickering, a U.S. District Court judge, would be a setback for President Bush in a prelude to possible future Supreme Court vacancy fights. Bush invited Pickering to the Oval Office on Wednesday to help bolster his nomination.

The last time a judge was voted down in committee was 1991, when the Senate Judiciary Committee voted against Kenneth Ryskamp in his attempt for a seat on the 11th U.S. Circuit Court of Appeals.

The White House, Senate Republican Leader Trent Lott of Mississippi and Judiciary Committee Republicans all said they would use the extra week to sway one Democrat to at least vote to send Pickering's nomination to the full Senate for a vote. Right now, Pickering would likely be defeated 10-9 in a committee vote, with all Democrats opposing him.

Republicans want the nomination sent out of committee and to the Senate floor, where

all 100 senators could vote, and where Pickering's supporters say they could prevail. But Senate Majority Leader Tom Daschle, D-S.D., says Pickering will not get a Senate vote if the committee does not vote him out.

"There may be an opportunity to persuade people, if not to vote for Judge Pickering, which I think is a foregone conclusion, but to at least take the lesser step of reporting him to the floor," said Sen. Arlen Specter, R-Pa.

It also would give Pickering time to decide whether he wants to withdraw his nomination. Lott, one of Pickering's biggest supporters, said last week Pickering would have to "decide whether he wants to go forward with a vote if the votes aren't there."

If confirmed, Pickering would sit on the 5th U.S. Circuit Court of Appeals in New Orleans, which serves Mississippi, Texas and Louisiana.

Much of the opposition to Pickering, 64, has come from civil rights groups which say he supported segregation as a young man in Mississippi. But supporters point to numerous examples of support for civil rights as far back as the middle to late 1960s and note that Pickering won Senate confirmation in 1990 to be a U.S. District judge.

Hatch said groups lobbying against Pickering are politically motivated. "There is a new war over circuit nominees, and they demand that the Democrats do whatever possible to stop or slow the confirmation of these fine nominees," Hatch said.

The Utah senator's lynching remark echoed Supreme Court Justice Clarence Thomas's angry claim 11 years ago that he was the victim of a "high-tech lynching for uppity blacks." Thomas ultimately was confirmed after the committee agreed to send his nomination to the Senate floor.

**VOTE FOR GARY WILLOUGHBY**  
**FOR GRAY COUNTY COMMISSIONER PRECINCT 2**  
**MARCH 12 REPUBLICAN PRIMARY**  
 Pol. Ad. Paid By Gale Thompson, Treasurer,  
 1228 Christine, Pampa, Texas 79065

**Watch Your Savings Add Up With The Purchase Of These Great Brands...**

**SAVE 40¢**

- Price's Cheese Spread
- Breyer's Ice Cream
- Del Monte
- SlimFast
- Zatarain's Rice
- Kaehl Cereal
- Wacky Mac
- Nestle Toll House Morsels
- Stauffer's Home Style Entrees
- Fixodent
- Clorox-Bleach
- Glade Air Freshener
- Red Star Yeast
- Limo-O-Sol
- Rhodes Dinner Rolls
- Ziploc Bags
- Glade Plug-in
- Olan Mills Studio

**SAVE 20¢**

Look for an exciting Rhodes Cookbook offer!

Look for money-saving coupons inside the next edition of **THE PAMPA NEWS**  
 403 W. Atchison  
 806-669-2525

Look for your chance to Win a Trip to Fun Fair in Nashville!

**Vote Para**  
**JOE PATRICK MARTINEZ**  
 El Partido Republicano La Eleccion Primaria  
 El 12 De Marzo De 2002

**EL JUEZ DE LA JUSTICIA DE LA PAZ EN EL CONDADO GRAY PRECINCTS 1 Y 3**

- El Servicio Cometido A Todos Ciudadanos
- Habla El Espanol
- La Instruccion Requerida Realizada
- Las Habilidades Reconocidas De La Gente

Pol. Advertisement By  
 Joe Martinez, P.O. Box 1554, Pampa, Texas 79066