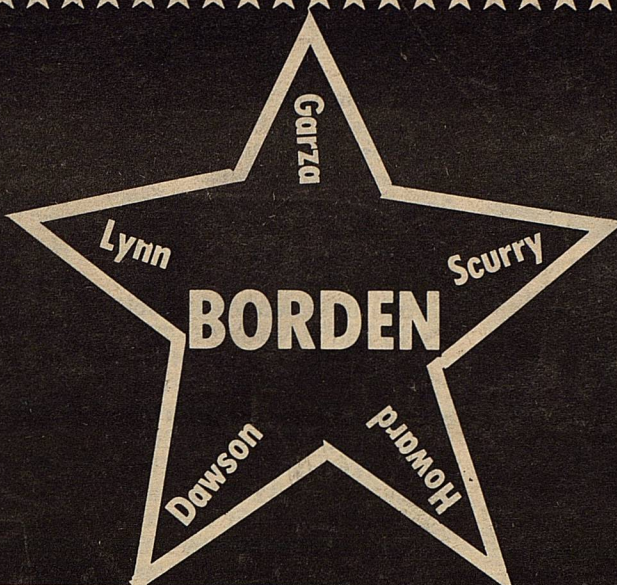


JAN 7, 1987

THE

Volume XLII.



STAR

January 7, 1987

Serving the Counties of Borden, Dawson, Garza, Howard, Lynn & Scurry



SWEARING IN CEREMONY- Several County Officers were sworn in to office last Friday. Beginning his first term was Buck Lemons-taking up the reins in Precinct No. 4.; Carolyn Stone, Justice of the Peace; Larry Smith, County Commissioner, Precinct No. 2; Dorothy Browne, County Clerk; Lisa Ludecke, County Treasurer and Van York, County Judge.

Emergency Farm Loan Applications Bring Accepted Tough Times on The Farm

Applications for emergency farm loans for losses caused by adverse weather are being accepted at the Farmers Home Administration, (FmHA) office located in Lamesa, FmHA County Supervisor D. Craig Simpson said today.

Borden County is one of 24 in Texas recently named by Secretary of Agriculture Richard E. Lyng as eligible for loans to cover part of actual production losses resulting from the adverse weather.

D. Craig Simpson said farmers may be eligible for loans of up to 80 percent of their actual losses or the operating loan needed to continue in business or \$500,000, whichever is less. For farmers unable to obtain credit from private commercial lenders, the interest rate on the first

\$100,000 borrowed is 5 percent; the interest rate is 8 percent on the balance borrowed over that amount.

"As a general rule, a farmer must have suffered at least a 30 percent loss of production to be eligible for FmHA emergency loan," D. Craig Simpson said. Farmers participating in the PIK or Federal Crop Insurance programs will have to figure in proceeds from those programs in determining their loss.

"Applications for loans under this emergency designation will be accepted until August 12, 1987 but farmers should apply as soon as possible. Delays in applying could create backlogs in processing and possibly over into the new farming season," D. Craig Simpson said.

The National Weather Service Seeks Public Assistance

The National Weather Service depends largely on outside sources to help them with a very important program. This is the timely and accurate reporting of storm and severe weather events. The collection of this information not only helps the National Weather Service with collection of vital weather information and verification of warnings that we issue....But one other benefit is that it helps the public in filing their insurance claims. If severe weather wasn't reported to us, we can't provide that information to you.

The National Weather Service uses radar, computers and other sources to detect storms and severe weather, but the bulk of this

information must come from the public and other branches of the community. Ground truth from the human eye witness verifies severe weather, not machines.

Therefore...The National Weather Service urges you to take an active part in reporting severe weather events.

As soon as possible...report severe weather to the Midland National Weather Service Office by calling 563-2509 collect, or call the nearest police department and ask them to relay your report to us.

The following severe weather information is what should be reported...

-Hail dime size or larger giving the size...such

as...dime, quarter, half-dollar, golfball, baseball etc. and time and location.

-Tornado or funnel cloud giving location, movement and time.

-Wind damage giving extent of damage and estimated wind speed, location and time.

-Flooding or flash flooding giving time and location and extent of damage if post event.

Remember...The National Weather Service needs this vital information to issue timely and accurate severe weather warnings that may save lives....Maybe even your own. Post storm reports would also be gladly accepted even if a few days old. Thank you for your cooperation.

Tough Times on the Farm

To say that 1986 has been a tough year on the farm would be a gross understatement. The farm economy remained at a low ebb during the year in Texas as well as throughout the nation. Texas farmers and ranchers will look back at 1986 as a year with mixed emotions. Most will be glad it's over; others will view it as a stepping stone to perhaps better things to come.

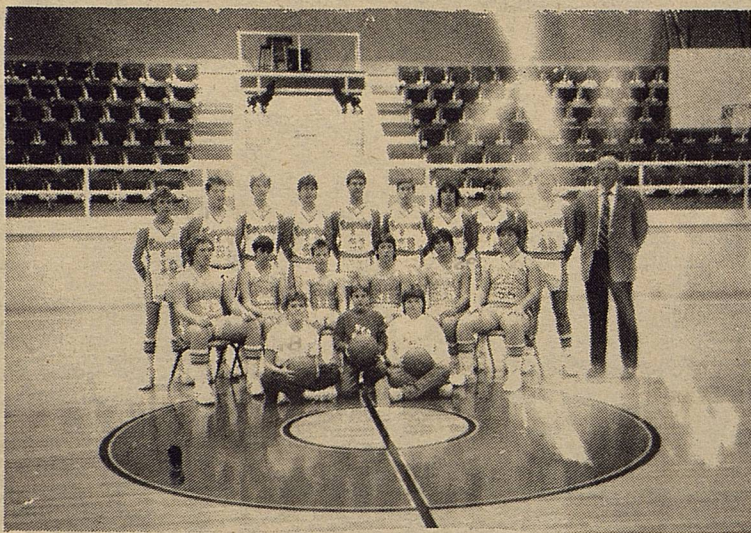
Surplus production, tight farm credit and the weather have taken their toll on the nation's already struggling farmer.

With the waning year and the continuing economic problems in the farm sector came the stark realization that some farmers would not be back in 1987. Texas farm numbers have declined from 187,000 in June 1984 to

160,000 as of June 1986. And there will be even fewer farmers venturing forth to plant crops next spring. Many will have to come to grips with the fact that they gave it their best shot and still lost. To those who are able to get adequate credit to finance '87 operations, perhaps a brighter day lies ahead.

Livestock producers should see higher prices in 1987 due to tight supplies, and cheap feed should help keep costs down. On the other hand, crop producers will again depend heavily on government payments and the export market, which should improve some as the value of the dollar continues to drop abroad and make U.S. commodities more competitive in the world

con't to pg. 5



Boys Varsity--Brian Bond, Randel Hollis, Will Phinizy, Brice Key, Mickey Burkett, Shannon Bond, Chris Kilmer, Mike Bell and Kerry Fryar--Mike Brown, Coach. Lance Telchik, Jon Herring, Cody Stone, Pat Herridge, Jeff Lewis and Cody Cooley. Mgrs. Kate Porter, Chad Williams and Sandy Buchanan.

Boys Grab Second Place In Borden Tournament

The Borden County Boys Varsity Basketball Team won two of three games in the Borden Tourney. The victories gave the Coyotes second place in our tournament for the second year in a row.

In the first game, Borden outscored the Westbrook Wildcats by a score of 73 to 39. The second game featured a hard-fought battle with the Dawson Dragons. The score of this game was Borden 65 and Dawson 58. The Championship game involved an excellent Brownfield J.V. squad versus the Coyotes. The Coyotes fought throughout the game, but fell short by a score of 44

to 36. Brownfield's victory improved their season mark to 14 wins versus 0 losses.

Scoring:
Borden VS Westbrook-Bond 28, Phinizy-16, Kilmer-11, Bond b.-8, Fryar-6, Burkett-2, Bell-2.
Borden VS Dawson-Bond s.-26, Key-16, Phinizy-9, Burkett-6, Kilmer-4, Bond B.-4.

Borden VS Brownfield J.V.-Bond S.-13, Key-9, Bond B.-8, Phinizy-2, Kilmer-2.

Toll Free College Information Hotline

The Texas Association of College Admissions Counselors (TACAC), in conjunction with First City National Bank of Houston, will have a toll-free HOTLINE number available to all Texas residents from 10:00 a.m. to 6:00 p.m. on Saturday, January 10, and Sunday, January 11.

Persons in Texas may telephone toll-free 1-800-253-8989 with their questions about college selection, admission, testing, and financial aid. The most up-to-date information regarding application deadlines, college majors and entrance requirements will be available.

The HOTLINE volunteers who will staff the telephone are members of TACAC, a non-profit organization of high school and college admissions counselors. In addition, college financial aid officers will be available to answer questions regarding costs and scholarships.

TACA Hotline for Lubbock is Ms. Marty Grassel, Director of New Student Relations, Texas Tech University- work (806) 742-1480 and home (806) 829-2834.

THE BORDEN STAR
Publication No. 895520
(USPS 895-520)
Publication No. 895520

Editor
Barbara Anderson

Published weekly, except for Christmas and New Years, on Wednesday at Gail, Borden County, Texas 79738, Box 137, Kincaid Street, Second Class postage paid at Gail, Texas.

Any errors that we make reflecting on the reputation or standing of any Firm, Corporation, or individual that may appear in the columns of The Borden Star will be gladly corrected when called to the attention of the staff.

Subscription Rates:
\$8.00 per year

Ad. rate: \$2.00 a column inch
Classified ads: 15 cents a word
Legal Notices: 20 cents a word

Borden Star Owners:
James McLeroy, Barbara Anderson, Doris Rudd, Pat Porter, Bob Dyess, Edna Miller, Ruth Weathers, Mrs. Nathan Zant, Sonny Tucker, Eddie Simer, Loreen Jones, Martin Parks, Dan Turner, Lela Porter, Marge Toombs.

Lady Coyotes Runners-Up In Borden Tournament

For only the third time in eight years, the Borden Lady Coyotes failed to win the Borden Tournament. This time, as in the other two times, they lost in a double overtime to Loop 48-46. In earlier tournament action, Borden defeated Westbrook 63-19 and Dawson 55-47.

In the first game of the tournament, Borden completely dominated Westbrook, jumping out to a 26-6 first quarter lead. They increased it to 42-10 at half. Eleven players got into the scoring column led by Kelli Williams with 18 and Elana Himes with 15. Kristi Adcock was next with 7 followed by Lisha Sternadel with 6, Kate Phinizy with 4, Linda Sternadel with 3, and Shelly Lewis, Elvira Balague, Ralynn Key, Kristi Stone, and Tammy Johnson with 2 each.

Kristi Stone led in field goal percentage with 100 percent followed by Kelli with 60 percent and Elana with 54 percent. Tammy led in assists with 5. Tammy, Kelli, and Kate all had 4 steals. Ralynn led in rebounds with 9 followed by Kristi Stone with 7.

Then Saturday morning, Borden met Dawson in the semi-finals. Borden jumped out to a 16-7 first quarter lead and increased it to 32-17 at half. Kelli Williams led all scorers with 24 points followed by Elana Himes with 15. Elvira Balague made 5, Kate Phinizy and Lisha Sternadel each had 4, Tammy Johnson made 2, and Linda Sternadel made 1. This set up a rematch with Loop that night, a team Borden had defeated twice this year.

In the finals, Borden started out fine as they held a 12-8 first quarter lead and increased it to over ten in the second quarter. But then things started going crazy! Kelli Williams was forced to leave the game with a injured mouth requiring stitches, Elana Himes was forced to set down as she picked up her fourth foul on a questionable call, and Loop began to claw their way back into the game. Also 16 turnovers in the first half hampered the Lady Coyotes chances. In the second half, Borden cut their turnovers to 5 including the two overtime periods, but went cold from the field hitting 2 of 8 in the third quarter. But still with all the bad luck against them, Borden still had its chances to win as they held leads up through the second overtime period. The first overtime period ended with Borden ahead by 2 points and Loop on the line with two free throws and no time remaining on the clock. Loop made them both to send it into the second overtime

where Loop outscored Borden by 2 to win the championship. Elana was the leading scorer with 17 points followed by Lisha with 10. Kelli made 8, Lynn Herridge made 4, Tammy and Ralynn each had 3, and Kate made 1. Tammy led in field goal percentage with 100 percent followed by Elana with 67 percent. Kelli led in free throw percentage making 4 of 4 for 100 percent followed by Lisha with 73 percent making 8 of

11. Lisha led in steals with 2. Elana led in rebounds with 11 followed by Lisha with 9.

Kelli Williams picked up special recognition as she won the annual free throw award. She made 10 of 10 from the line plus the two practice shots. In the last 10 games, Kelli has hit 42 of 43 for an astounding 98 percent! This raises the Lady Coyotes record to 13-2 on the year. Their next game will be at Hermleigh, maybe, on January 6 at 6:30.



Girls Varsity-Mgr. Michelle Johnson, Kristi Adcock, Shelly Lewis, Elana Himes, Coach May, Linda Sternadel, Lynn Herridge, Kristi Stone and Cindy Lewis. Dana Douglass, Tammy Johnson, Lisha Sternadel, Kate Phinizy, Kelli Williams, Ralynn Key, Elvira Balague, Jennifer Noris. Seated-D'Lyn Lloyd, Felicia Romero, Amy Lewis, Rachel Romero and Randi Woodward.

Borden Eases Past Ira

The Borden Lady Coyotes slipped past the Ira Bulldogs last Tuesday night by a score of 55-43. An inconsistent defense kept allowing Ira to keep pace with the rapid scoring in the first quarter which ended 18-16. Borden only edged the Bulldogs 11-8 the second stanza but half-time strategy worked as the Lady Coyotes outscored Ira 19-6 to break a five point half-time lead to an 18 point lead, 48-30 entering the last quarter.

Kelli Williams was Borden's leading scorer with 19 points despite being played "box and one" all night. She was followed by Lisha Sternadel with 12, Elana Himes with 11, Kate Phinizy with 4, Tammy Johnson with 3, and Elvira Balague, Kristi Stone, and Lynn Herridge with 2 each. Kelli led in field goal percentage with 57 percent followed by Kristi with 50 percent. Kelli also led in free throw percentage with 100 percent hitting 3 of 3. She

also lead in steals with 6 followed by Kate with 4. Elana led in rebounds with 7 followed by Lynn and Lisha with 6 and 5. Kelli, Linda, and Lisha all had 2 assists. This raises the season record to 11-1.

The J.V. game wasn't quite the thriller as Borden jumped out to a 15-2 first quarter lead and increased it to 24-3 at half. Entering the third quarter, Borden led 34-3 and finished with a 43-7 victory. The game was highlighted by two shots at the buzzer by Amy Lewis and Randi Woodward from the 25-30 foot range. All seven players scored in the lopsided win, led by Rachel Romero with 12. Amy Lewis had 9, Kristi Adcock had 7, Randi Woodward made 6, Felicia Romero hit 4, Shelly Lewis made 3, and D'Lyn Lloyd added 2. The J.V. remains undefeated for the year at 2-0. Next game for the J.V. will be at Klondike January 13, starting at 5:00.

**Briggs Welding
&
Muffler Service**

267-1488
267-1380
Big Spring, TX 79720

501 N. Birdwell
Across From
Auction Barn

School Board Meeting

The Board of Trustees for the Borden County Independent School District met in regular session on December 18, 1986 at 12:00 noon.

After minutes were read and approved and bills were approved for payment, the board heard a financial report given by James McLeroy. The attendance report was given as 156 elementary and 62 in high school for a total of 218.

The annual performance report was presented by the superintendent. The board approved the annual performance report as presented.

The purchase of two school buses was discussed and it was the general consensus of the group that two buses

were needed and that the item should be placed on the agenda in April.

The board made its annual evaluation of James McLeroy. It was unanimously agreed the performance of the superintendent was acceptable in all areas.

Extra bus routes were discussed with three items of concern:

1. Should extra routes be added to include all sports?
2. Should extra routes be continued in football only?
3. Should all extra routes be discontinued?

The official action of the board was to stop all extra bus routes.

There being no further business, the meeting was adjourned.

Jr. High Boys

Defeat Sands

The Borden County boys Jr. High basketball team defeated the Sands Mustangs in Monday night cage action. The score was Borden 44 and Sands 21.

The Coyotes used a good pressure defense to build an early lead, and never looked back. The Coyotes forced 22 turnovers in the big win. Rebounding was yet another factor, the Coyotes pulled down 46 total bounds.

The victory moved the Coyotes record to 5 wins versus 1 loss. Furthermore the Coyotes are 4-0 in district play.

Scoring: Rios-14, Kemper-12, Balague-7, Lusk-4, Vestal-4, Buchanan-2, and Holzmann-1.

Jr. High Girls Defeat Sands

Borden's Jr. High girls basketball team got back into the win column here Monday night with a convincing 37-21 victory over Sands. The game didn't start out as a lopsided win as Sands jumped out to a 12-9 first quarter lead. Borden then settled down with good defense as the held Sands to 4, 4, and 1 point in the 2nd, 3rd, and 4th quarters respectively. Borden held a 21-16 half-time lead and increased it to 29-20 in the third quarter. Six people got into the scoring column led by Amanda Anderson with 11, Kristin Monger with 9, Shara Dee Woodward with 8,

Shayne Hess with 6, Leslie Fryar with 2, and Kelly Jordan with 1. On defense, Shara Dee, Kelly Jo, and Kristin all came up with 6 rebounds and Shayne had 4. Kristin led in rebounds with 10 and Amanda had 7. Others playing for Borden were Tammy Voss, M'Lys Lloyd, and A'Lise Lloyd. This was Borden's second win over the Mustangs as they defeated Sands 31-24 earlier in the season in the sands tournament. Borden has an open date next Monday but will resume action on January 19, here at Borden, with Klondike. Game time is 6:00.

Important Parents

Club Meeting

The Parents Club will meet on Thursday, January 15, 1987 at 2:00 P.M. in the High School Conference Room. Mr. McLeroy will bring the program on the school's Discipline Management Plan and also give information on transfers for next year.

Any parent that transfers children into Borden County should attend and find out the options for the coming year.

Sue Mize, President

Varsity Boys Defeat Ira

The Borden County Boys Varsity Basketball Team defeated the Ira Bulldogs in Tuesday night cage action. The score was Borden 63 and Ira 26.

The Coyotes used a quick start and a good pressure defense to capture the victory. A victory that moved the Coyotes to a record of 6 wins and 6 losses.

Borden was lead in scoring by Shannon Bond, who pumped 18 points. Other

top scorers included Brice Key who added 12 points and Mickey Burkett who scored 9 points. Another big factor in the victory was rebounding. The Coyotes had a total of 41 boards, Will Phinzy and Mickey Burkett grabbed eleven rebounds each.

Scoring: Shannon Bond 18, Brice Key 12, Mickey Burkett 9, Chris Kilmer 6, Brian Bond 6, Will Phinzy 4, Randedell Hollis 4, Kerry Fryar 4.

SCHOOL MENU

January 12-16, 1987

Day	Menu	Salad Bar
Monday	Corn Dogs with Cheese Pork and Beans Vegetable Salad Fruit Milk	Salad Bar
Tuesday	Hamburger Steak Mashed Potatoes Green Beans Fruit Hot Rolls Milk	Salad Bar
Wednesday	Chalupas Shredded Lettuce Ranch Style Beans Cake Milk	Salad Bar
Thursday	Hamburgers French Fries Lettuce and Pickles Cookies Milk	Salad Bar
Friday	Teacher Workday (no classes)	

January 1987

Sunday	Monday	Tuesday	Wednesday	Thursday	Friday	Saturday
DECEMBER 1986 1 2 3 4 5 6 7 8 9 10 11 12 13 14 15 16 17 18 19 20 21 22 23 24 25 26 27 28 29 30 31	FEBRUARY 1987 1 2 3 4 5 6 7 8 9 10 11 12 13 14 15 16 17 18 19 20 21 22 23 24 25 26 27 28 29			1 HOLIDAY	2 HOLIDAY	3
4	5 6:00 p.m. J.H. Basketball Boys & Girls Sands - Here	6 6:30 p.m. H.S. Basketball Boys & Girls Hermleigh - There	7	8	9 6:30 p.m. H.S. Basketball Boys & Girls Dawson - There	10
11	12	13 5:00 p.m. H.S. Basketball Boys & Girls *Klondike - There	14	15 End of First Semester	16 TEACHER WORKDAY 5:00 p.m. H.S. Basketball Boys & Girls *O'Donnell - Here	17
18	19 5:00 p.m. J.H. Basketball Boys & Girls *Klondike - Here	20 5:00 p.m. H.S. Basketball Boys & Girls *Grady - There	21	22	23 5:00 p.m. H.S. Basketball Boys & Girls *Sands - Here	24 Sands J.V. Tournament
25	26 5:00 p.m. J.H. Basketball Boys & Girls *O'Donnell - There	27 5:00 p.m. H.S. Basketball Boys & Girls Dawson - Here	28	29 Borden County Stock Show January 29-30-31	30 HOLIDAY 5:00 p.m. H.S. Basketball Boys & Girls *Klondike - Here	31

The First National Bank - of O'Donnell

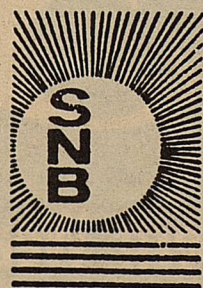
We want to meet the financial needs of this community -

Come in and visit with us

We now have safety deposit boxes.

MEMBER FDIC

890 872-5146
The Pampered Lady
50 to 75 percent off merchandise
January Clearance Sale
100 Austin Lamesa, Texas 79331



We're proud to be a part of the area since 1905

Snyder National Bank

This is your Bank

Member
FDIC

1715 25th
573-2681



REGGIE VAUGHN

Reggie Vaughn Concert

Reggie Vaughn will be in Gail to give a special music and ministering concert complete with her own piano and strobe lights! Come hear her on Saturday night, January 10 at 7 P.M. in the Borden School Conference Room. Everyone is welcome! Youth, parents, college kids on semester break, teachers, everyone is invited to attend this event for the whole family.

Reggie's concert promises to be a very special day for all people! It is sponsored by the Youth Group of the First Baptist Church, Gail, Texas. Come hear Reggie's testimony and what The Lord had done for her life.

Free admission and refreshments will be provided.

Gee, my first concert. I find it hard to believe that anyone would pass up a good Saturday night to come and hear me sing.... "Well, what kind of songs does she sing?"

"Does she sing country, rock 'n roll, blues, ballads or what?"

No, I sing loud, loud and clear about what Jesus had done in my life and what He can do for you. Life gets so tough at times and friends don't always seem the same. But for me, Reggie Vaughn from Lamesa, I have found that Jesus loves us no matter what, He never wants us to settle for less when we can have His best, Jesus Christ is His Name..... So be sure and try to come to this first concert of mine. It might be a lot of fun! See you there! Saturday, January 10 at 7:00 p.m. in the Conference Room.

-s- Reggie Vaughn

"Man is the only animal that laughs and weeps; for he is the only animal that is struck with the difference between what things are and what they might have been."

William Hazlitt

Birth

Miss Jennifer Rose Morgan is proud to announce the arrival of a little brother. He is Jonathan Melton Morgan and was born December 5, 1986 at 8:06 A.M. and weighed 7 pounds, 9 ounces.

Jennifer's and Jonathan's parents are Janice Browne Morgan and Jerry Edward Morgan. The proud grandparents are Dorothy Browne of Gail and Mr. and Mrs. Van Dale Mooney of Seminary, Mississippi.

Million Dollar Bridge Program to Aid Local Governments

State highway engineers and local government officials will consult in selecting projects for a \$37 million bridge replacement program approved this month by the State Highway and Public Transportation Commission.

"The commission recognizes the plight of the cities and counties in coping with bridge deficiency problems," said Robert C. Lanier, chairman of the highway commission. "This program is our way of responding to those problems."

"Together with city and county officials, the highway department will be selecting deficient bridges for possible replacement in this program," he said. "Special consideration will be given to structures that are on school bus routes and those that help local people avoid long, out-of-the-way detours,"

Lanier said.

Other things the state and local road officials will be looking at are volumes of traffic using the bridges, condition of the individual bridges, and cost of replacement, he said.

The program will be financed using 80 percent federal funds earmarked for bridge replacement, he said.

The program will be financed using 80 percent federal funds earmarked for bridge replacement, matched with 20 percent local contributions.

The federal law says a minimum of 15 percent to a maximum of 35 percent of the funds allocated from the Federal Highway Trust Fund to a state for bridge replacement must be used on bridges not part of the federal-aid highway system.

The \$37 million program authorized by the commission is 25 percent of

Survey-Women Concerned About Child Abuse

Child abuse emerged as the issue of most concern to nearly 10,000 Texas women responding to a survey circulated between November 1985 and September 1986 by the Governor's Commission for Women.

About 40 percent of those surveyed rated child abuse as one of the most critical of 25 issues important to women.

Preliminary results show the following rated as the 10 most critical problems confronting women in Texas: child abuse followed by teenage pregnancy, comparable worth, stress, poverty, child support, child

care, unemployment, rape, and unequal job opportunities.

"This survey accurately reflects the very high degree of interest women have regarding issues affecting them. The Women's Commission and dedicated women throughout the state have made this one of the most comprehensive surveys ever conducted concerning women's issues. The results will be incorporated in an interim report and presented to the 70th legislative session. We hope it will make an impact on the Legislature and, in turn, help create positive changes in public

and private policies affecting women in Texas," said Nancy Garms, issues coordinator of the project and a member of the Governor's Commission for Women.

To date, 9,576 women and 516 men have completed the first survey. All ethnic and racial groups and geographical areas in Texas are represented. The average respondent is a white 41-year-old female with 2.3 children living in an area with a population between 250,000 and 1,000,000. She is employed full-time and has completed two years of college.

Sam Buchanan to leave Snyder

Sam Buchanan, District Conservationist for the Soil Conservation Service in Snyder, will be transferring to the Big Spring Field Office as District Conservationist effective January 17, 1987.

Sam assumed responsibilities of the Snyder office in August of 1983.

The Snyder field office, operating under direction of the Upper Colorado Soil and Water Conservation District, provides conservation technical assistance to farmers and ranchers in Borden and Scurry County.

A new District Conservationist will be appointed to fill the Snyder vacancy in early 1987.

We regret losing Sam, but wish him well in his new position.

Sale Continues



30% Off

-H- Western Wear

College Heights Shopping Center

Men's Sweaters & Flannel Shirts

Men's Sport Coats

All Men's Coats

All Ladies Sweaters & Blouses

All Ladies Colored Pants



Gus Clemens of San Angelo points out some of the Indian pictographs which can be seen at Paint Rock, about 30 miles east of San Angelo. The paintings can be found on the limestone bluffs bordering the Concho River. It is estimated that the paintings were begun in prehistoric times, and continued until the late 1800's when the Comanche Indians still hunted in the area. Tx. Tourist Agency photo.

Extension Home Economics Report

By: Kandy K McWhorter

Do You Wonder Where the Money Went

Going over last year's receipts, cancelled checks, W-2 forms and other papers to get ready for tax time is never much fun. But it is even more bothersome when it creates some nagging doubts about how well last year's income was spent.

You might avoid the problem next year by establishing a family spending plan for 1987 while the year is still young. Whether you have a lot of money or a little, a sound plan for spending is the key to having dollars for what is needed and wanted before the money disappears in unexpected ways.

It is fairly simple to set up a spending plan. First calculate your 1987 income from all sources. Then, while you have all your 1986 financial records out, use them to estimate your expenses for next year.

So you do not miss items or underestimate what you spend, look at your weekly, monthly and yearly expenses. Some of the things we buy with "pocket money" such as restaurant

meals or recreation expenses often get overlooked. And do not forget to include irregular expenses, such as semi-annual insurance payments or car servicing.

When you have these two sets of figures, you can plan ahead for what you will spend each pay period, and how much you should set aside in savings to meet irregular bills and unexpected expenses.

Having a spending plan also allows you to "bill" yourself for a certain amount each pay period which can go into savings to meet long-term financial goals. That goal might be a down-payment for a new house or car, college expenses, a vacation or a retirement nest egg.

It takes practice and patience in keeping financial records so that you can use fairly accurate amounts for planning rather than estimates. But good records can help you see where you might want to cut your spending plan in some areas and increase it in others.

COUNTY AG-AGENT REPORT

Farm Bill Conservation Provisions Reviewed

A major part of the Food Security Act of 1985--the 1985 farm bill--deals with soil conservation provisions.

These provisions, known as the Conservation Reserve, sodbuster and swampbuster, are aimed at reducing soil erosion, retaining wetlands and reducing the production of surplus commodities. Some of these provisions have already been implemented, and others which will have a marked impact on agricultural production in the years ahead.

---Conservation Reserve: The Conservation Reserve Program (CRP) offers producers help in retiring highly erodible cropland. The Agricultural Stabilization and Conservation Service (ASCS) will share up to half of the cost of establishing permanent grasses, legumes, trees, windbreaks or wildlife plantings on highly erodible cropland. Under 10-year contracts, the ASCS will make annual rental payments to landowners as long as they meet terms and conditions of conservation contracts developed by the Soil Conservation Service.

---Conservation compliance: Conservation compliance applies if a producer continues planting annually tilled crops on highly erodible fields. To remain eligible for USDA program benefits, the producer (landowner) must

develop and be actively applying a locally approved conservation plan for those highly erodible fields by Jan. 1, 1990. That plan must be fully implemented by Jan. 1, 1995.

---Sodbuster: Sodbuster is effective now and applies if a producer plants an annual crop on a highly erodible field that was not used for crop production during the period 1981-85. To farm such a highly erodible field, a producer must do so under the provisions of a conservation plan developed by the SCS and approved by the local conservation district to remain eligible for USDA program benefits.

---Swampbuster: Swampbuster also is in effect now and applies if a producer converts naturally occurring wetlands to cropland after Dec. 23, 1985 (the date the farm bill was signed). With few exceptions, to remain eligible for USDA farm program benefits, a producer will not be allowed to plan annual crops on newly converted wetlands.

USDA farm program benefits affected by these different provisions are price and income supports, crop insurance, Farmers Home Administration loans, Commodity Credit Corporation storage payments, farm storage facility loans, Conservation Research Program annual payments, and other

programs under which USDA makes commodity-related payments.

Producers have several options:

---Develop and apply a conservation plan for highly erodible fields in cooperation with the SCS and the local conservation district to retain eligibility for USDA farm program benefits.

---Plant permanent cover on land where annually tilled crops cannot be grown because of excessive erosion. With this option, a producer may want to consider entering the land into the Conservation Reserve program and planting permanent grasses, legumes, trees, windbreaks or wildlife cover.

---Produce crops on a highly erodible field without using a locally approved conservation system. With this option, a producer loses eligibility for USDA program benefits.

---Avoid plowing up and planting annual crops on SCS identified wetlands and remain eligible for USDA program benefits.

---Produce crops on newly converted wetlands and lose eligibility for USDA program benefits.

---For more information about the conservation provisions, please contact our local SCS and ASCS offices.

Branon Funeral Home

Service in this area since 1922.

Phone: 872-8335

403 N. Austin - Lamesa

La Posta

412 N. Broadway

495-2648

Post

Wrangler Cowboy Cut Jeans

1st Quality

\$16.90



Visit Our Deli

Party Trays Pastries Custom Cakes

710 N. 4th

Lamesa

WESTERN SEED & DELINTING

Certified Cotton Seed

Paymaster 145, 303, 404, 792
Coker 3131, S110, 500
Terra 383, SR-10, SR-482
SP-21, SR-215, CAMD-E
CAB-CS

COTTON
PLANTING SEED

ACID
DELINTING

Wheat
Grain Sorghum
Hay Grazer

Wheat & Oats Cleaning

LAMESA, TEXAS
RON BUTLER

BUSINESS PHONE
(806) 872-8896
(806) 872-5388

RESIDENCE PHONE
(806) 872-5271

Tough Times

con't from page 1

market. An improving global economy should also help the U.S. farm situation although commodity stockpiles will continue to burden the marketplace.

Farmers, like other businessmen, must contend with tax reform in the year ahead and will likely see some changes in farm legislation once again. Management and marketing skills will be tested as never before if they are to be among those who weather the current economic crisis on the farm.

CLASSIFIED

SHELLED PECANS FOR SALE

This year's crop. Grown Locally, \$4.50 per pound.

Contact Ollie Hoelms - 915 573-4164

Business Practices -Consumer Outlook 1987

The new year will bring some new marketing concepts to the South Plains as well as an increase in some old marketing tactics.

The newest method of marketing goods will be the television auction programs. The cable industry will be promoting several auction programs across the country with some auctions running 24-hours per day. Consumers must use the same common sense when dealing with these television auction promotions that they use with any other marketing plan. Consumers should note that the "regular" retail prices quoted by the "auctioneers" are usually greatly inflated. Unfortunately, when viewing a television auction, it is difficult when a consumer sees an item that appeals to him or her, to do any

comparative shopping.

The mail order industry will continue to grow. The newest direct mail solicitation method involves companies sending real checks to prospective customers. When the customer endorses the check, he or she agrees to a contract to purchase whatever item or service is being marketed. This is reminiscent of the practice in which businesses used to send unsolicited credit cards to consumers. The potential for problems with this new type of promotion is, in the view of the BBB, substantial.

The multi-level marketing business will also be increasing their operations. Unfortunately, along with the growth of the legal multi-level marketing programs will come the illegal pyramid scams. Other

business practices that most likely will cause trouble this new year are: Advanced Fee Employment Opportunities; phoney oil investment scams and work-at-home promotions. For further information on these marketing prospects for 1987, contact the BBB of the South Plains.

LEGAL NOTICE

A Pre-Bidders' conference concerning contract mowing on Highway Right-of-way will be held at the District Headquarters Building, State Department of Highways and Public Transportation, U. S. 83-84 By-Pass, Abilene, Texas, at 10:00 A.M., January 13, 1987. All prospective bidders are encouraged to attend.

Sealed proposals for contract mowing on various tracts will be received, publicly opened, and read on January 20, 1987. All prospective bidders are encouraged to attend.

Sealed proposals for contract mowing on various tracts will be received, publicly opened, and read on January 20, 1987, at the following respective time schedules: Borden, Howard, and Mitchell counties, 9:00 A.M.; Fisher, Nolan, and Stonewall Counties, 9:30 A.M.; Callahan, Shackelford, and Taylor Counties, 10:00 A.M.; Kent and Scurry Counties, 10:30 A.M.; Haskell and Jones Counties, 11:00 A.M.

Each completed proposal shall be placed in a separate sealed envelope so marked to indicate its contents, and submitted to Mr. William G. Burnett, District Engineer, State Department of Highways and Public Transportation, P. O. Box 150, Abilene, Texas 79604; or, it may be hand delivered to Room 225, District 8 Headquarters Building, U. S. 83-84 By-Pass, Abilene, Texas.

The specifications and proposals are available at the District Maintenance Office, Abilene, Texas. Usual Rights Reserved.

PUBLIC NOTICE

TEXAS UTILITIES ELECTRIC COMPANY hereby publishes NOTICE that, pursuant to the provisions of the Public Utility Regulatory Act and the Public Utility Commission's Substantive Rule 23.23(b) (2), it has filed an application on December 19, 1986, with the Public Utility Commission of Texas seeking authority to refund to its customers a prior over-recovery of fuel cost revenues in the amount of \$55,594,567 as of November 30, 1986, including applicable interest.

Texas Utilities Electric Company has proposed that the refund be made with customer billings beginning in the first billing month following five days after entry of a Commission Order authorizing such refund. All customers and classes of customers whose electric service rates include charges for fuel cost pursuant to Texas Utilities Electric Company's Rider FC, entitled "Base Rate Fuel Component," and all territories in which Texas Utilities Electric Company provides electric service through its Dallas Power & Light, Texas Electric Service, and Texas Power & Light divisions will be affected if the application is granted.

A complete copy of said application is on file with the Public Utility Commission of Texas.

Persons who wish to intervene or otherwise participate in these proceedings should notify the Public Utility Commission of Texas as soon as possible. A request to intervene, participate, or for further information should be mailed to the Public Utility Commission of Texas, 7800 Shoal Creek Boulevard, Suite 400N, Austin, Texas 78757. Further information may also be obtained by calling the Public Utility Commission Consumer Affairs Division at (512) 458-0223 or (512) 458-0227, or (512) 458-0221 teletypewriter for the deaf.

TEXAS UTILITIES ELECTRIC COMPANY
Dallas Power & Light
Texas Electric Service
Texas Power & Light

JO REED WESTERN WEAR 1st Round clearance sale

Starts Fri.,
January 2nd
thru Sat., January 10th

Rack long sleeve HANGING SHIRTS - \$10.95 including Panhandle Slim
Packaged shirts, - long sleeve, 100 percent American made. Tem-Tex, H Bar C, Circle S, Mesquite, Dee-Cee - **30% off**

Dress Shirts, (non western), long sleeve. Tem-Tex & John Henry - **40% off**

Comfy Coats - **30% to 50% off**

Suits - Save \$80 to \$100 on all suits in stock.

Walls Insulated Coveralls, small selection left. Reg. \$64.95 Now **\$29.95**

Rack - Satin Jackets & Blazers **40% off**

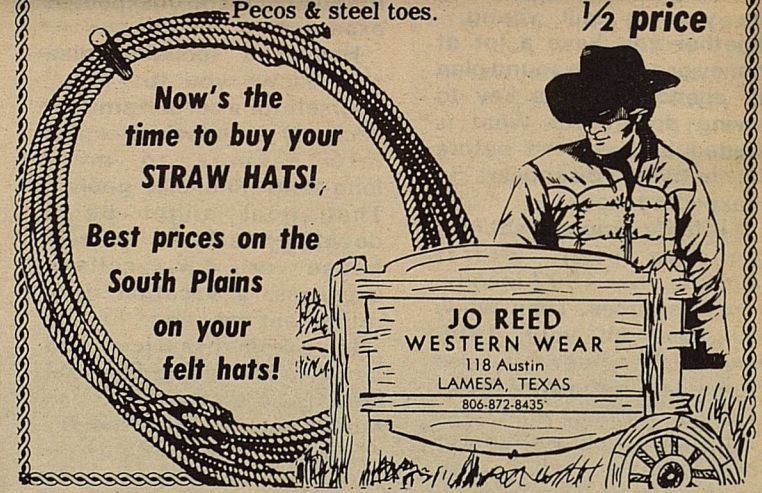
Wrangler's - Men's & Students as low as **\$9.95**

BOOTS: All Texas, Adams, Tex Tan, & Cowtown, cowhide & antelope. Reg. \$116.95, Now **\$49.95**

CLOSE-OUT on all Ladies Western Boots, values to \$169.95 - **\$49.95**

Bullhides & Mulehides - **ALL \$89.95** including tall tops.

ALL Work Boots & Shoes including Red Wings - Pecos & steel toes. **1/2 price**



Now's the time to buy your **STRAW HATS!**

Best prices on the South Plains on your felt hats!

La Fra's Corner
Up to 40 percent off

Liz Porter
Panhandle Slim
Jafapardy

THE FIRST NATIONAL BANK

The Symbol of Banking in Big Spring

FULL SERVICE BANKING
Member F.D.I.C.

400 Main Street 267-5513 BIG SPRING, TEXAS

ASCS NEWS BY Jerry Stone

FmHA accepting Emergency Loan Applications

Borden County was declared eligible for Farmers Home Administration (FmHA) disaster emergency loans on December 16, 1986. Generally, that means that farmers who have lost at least 30 percent of their production due to the drought are eligible for FmHA loans. Proceeds from crop insurance and the PIK program are taken into account when determining eligibility.

FmHA County Supervisor, D. Craig Simpson is urging farmers who are interested in receiving an emergency loan

to get their applications into FmHA as soon as possible. D. Craig Simpson said, "we hope farmers will get their applications in early rather than waiting until near the deadline which is August 12, 1987. The longer they wait, the more chance there is for long delays in getting their checks. If the applications come in early, we can avoid backlogs and speed up the process."

The FmHA office is at 109 NE 14th, in Lamesa, TEX. The telephone number is (806) 872-6761.

1986 Disaster Program

This includes "O" production. If you didn't harvest, an appraisal from your insurance company will be required. If you didn't have insurance, the County Committee will set a yield based on similar farms, or we will appraise your production. If you are unable to complete harvest by January 30th it will be necessary for you to provide this office with an estimate of what acres and how many pounds will be harvested.

C. For producers with insurance, you need to furnish the net benefits for each farm and each crop as well as the amount of your premium.

Before making any management decisions which are centered around the disaster program benefits please keep in mind that \$400 million is all that has been appropriated. Without additional funding, earned payments will be prorated.

Free Trees Given Away By Foundation

The National Arbor Day Foundation is giving ten free trees to people who become Foundation members during January, 1987.

The free trees are part of the Foundation's effort to promote tree planting throughout America.

A Sugar Maple, White Flowering Dogwood, Pin Oak, White Pine, Red Maple, Birch, American Redbud, Silver Maple, Red Oak, and Colorado Blue Spruce tree will be given to members joining during January.

These trees were selected to provide benefits every season of the year: lovely spring flowers, cool summer shade, spectacular autumn

in addition to being eligible for FmHA emergency loans, you may also be eligible for disaster assistance thru this office. To be eligible for cotton, wheat, oats, or milo you must first have been participating in the 1986 farm program for the crop, and secondly, have suffered at least a 50 percent loss in production. The loss will be based on ASCS payment yields. It is also possible that non program crops will be eligible for disaster assistance. If you feel your hay or other non program commercial crops are eligible, contact us for the details.

Sign-up for this disaster program is January 12th thru January 30th. However before you can make application, we must first determine eligibility. To do this we need the following:
A. ASCS 574--Failed Acreage Application
B. ASCS 658 or ASCS 503--1986 Production Evidence.

colors, and winter berries and nesting sites for songbirds, according to the Foundation. The six to twelve inch trees will be shipped postage paid with enclosed planting instructions at the right time for planting this spring. The Foundation makes its spring shipments between February 1 and May 31, depending on the local climate and this year's weather.

The National Arbor Day Foundation, a nonprofit organization, is working to improve the quality of life throughout the country by encouraging tree planting. The Foundation will give the ten free trees to members contributing \$10 during January.

con't to pg 8

Congressman Martin Frost Reports To Texas

Just a few weeks ago, Congress celebrated the passage of a bi-partisan anti-drug bill designed to address the growing problem of drug abuse in our nation.

Democrats and Republicans alike praised the legislation which called for strict, new law enforcement measures against drug traffickers and far-reaching education and rehabilitation programs for teens, children, and those already addicted to drugs.

The Administration also has praised the anti-drug law, with both President Reagan and First Lady Nancy Reagan speaking publicly of their commitment to battle drug abuse.

Unfortunately, however, the Administration has been long on talk and short on substance. I recently learned that the Office of Management and Budget plans to defer spending \$225 million appropriated for the anti-drug bill that President Reagan signed into law in October. These funds have been designated for assistance to state and local narcotics law enforcement

authorities to assist in apprehending narcotics dealers and fighting crime associated with drug abuse.

The state and local law enforcement assistance program is a key part of the new drug law and an essential ingredient to any successful national narcotics control strategy. In formulating a bi-partisan anti-drug bill, increased federal assistance to local law enforcement authorities was widely agreed upon as the least that must be done to address our nation's drug problems. It is terribly disappointing that the Administration is willing to circumvent the will of Congress and violate the intent of the anti-drug legislation by with-holding this funding.

This is not the only example of the Administration's unwillingness to take serious its responsibilities under the anti-drug law. Over the Thanksgiving Holiday, Secretary of Education William Bennett announced that he was re-leading federal funding for drug abuse education programs without

drafting any regulations on the use or accountability of the funds. Under the legislation as passed, the Department of Education was charged with taking a leadership role in formulating national policy on drug abuse education. The Secretary of Education has decided to simply not follow through.

Clearly, drug abuse is a national problem, and the education of our youth about the hazards of illegal narcotics is essential. The Department of Education must play a leadership role in formulating and coordinating effective drug abuse education programs.

I do not question the President or Mrs. Reagan's personal commitment to battle drug abuse. I do question, however, the commitment of Administration staff and department heads. I hope President Reagan will work with Congress and not against it in insisting that the funding appropriated in the anti-drug law be handled appropriately and the intent of Congress be carried out by those in his Administration.

Landscape Architect Share Fall-Winter Tips

There's really no such thing as "the" hardening season in Texas. While spring and summer are, indeed, beautiful, abundant growing periods, it is a mistake to ignore one's outdoor environment when the weather cools.

In fact, fall and winter landscape is crucial. A hibernating gardener--one who neglects his or her landscape when the temperature dips below 70 degrees--is apt to "wake up" to a pretty dismal garden when spring arrives.

No one understands the importance of fall and winter gardening better than Howard Garrett, owner of Howard Garrett and Associates landscape design firm in Dallas, and author of **LANDSCAPE DESIGN...TEXAS STYLE** (Taylor Publishing Company, 1986). In this, the author's second book, Garrett explains the process of landscape design in step-by-step terms, reveals the very best plant materials for each of the eight areas of Texas, and dispels some common myths about landscape design and care.

Fall is the best time to plant trees and major shrubs in the home landscape. "Most people try to plant in the spring, but it's really the "worst time," he explains.

"The ideal time to plant all major materials--trees and larger shrubs-- is in the fall and through the winter. Many people don't know that trees put out roots in the winter, and the roots are the most important part of the tree. When trees and shrubs are introduced to the landscape in the fall and winter, they put all their energy into root growth, since the plants are dormant above-ground during this period. Planted in spring, these same plants will expend energy above and below ground.

Garrett says that plant identification and selection are as important as a timely planting schedule. "The proper identification of trees is crucial," he explains. "One of the biggest problems in our state is the planting of incorrect

varieties, especially as it relates to red oaks. Pin oaks and northern red oaks are being sold as Shumard red oaks. Shumard red oaks are great, and will grow anywhere in Texas unless they aren't provided adequate drainage. Northern red oaks shouldn't be used here, and selling pin oaks as Shumard red oaks in the worst.

Besides offering the perfect opportunity for planting, fall and winter are also the time to protect one's landscape from the whims of Mother Nature. Garrett reminds us that gardeners must continue a regular (once-per-week) watering schedule to discourage plant stress. During dry periods and, especially, before a hard freeze, the landscape should be thoroughly watered.

WHITE FUNERAL HOME

"We care for yours as we would have ours cared for"

O'DONNELL

TAHOKA

510 8th

428-3313

1821 Main

998-4433

Owners-Billie & Donnie Everett, Gail, Tx

Free Trees

Con't from pg. 7

To become a member of the Foundation and to receive the free trees, a \$10 membership contribution should be sent to TEN TREES, National Arbor Day Foundation, 100 Arbor Avenue, Nebraska City, NE 68410, by January 31, 1987.

"All good ideas have already been thought; the point is to try to think them again."
Goethe

The Wall

Is Coming

The Wall is coming to Big Spring! The Wall, also known as The Moving Wall, is on its way to Big Spring and should be here by early Fall 1987. The Wall is a mobile, half-scale replica of the permanent Vietnam Veterans Memorial in Washington, D.C.

The Wall is owned and displayed by the Vietnam Combat Veterans, Ltd., of San Jose, California. It has toured the country since 1984 and is a strong attraction wherever it is displayed. The Wall is an exact half-scale replica of the original memorial. It is 250 ft. in length and 6 ft. in height. The memorial lists all the names of persons who died in Vietnam from 1959-1975—over 58,000 names.

The Wall is scheduled to be in Big Spring from September 30 through October 6, 1987. A committee called The Wall Committee is being chaired by Keith Gibbons, minister of College Heights Christian Church in Big Spring. Gibbons said efforts to bring The Wall to Big Spring have been good so far. "We've had a couple of meetings and lots of interested people have come out to support this project," Gibbons said. "We've also already taken in some money to help us out."

The VCV, Ltd. built The Wall and travel with it across the nation to provide more people the chance to pay tribute to those lost in the war. It is also a symbol of the positive efforts being made by veterans to ensure that the men and women who gave their lives during the Vietnam War will not be forgotten.

Anyone wishing to donate to help bring The Wall to Big Spring may send tax-deductible donations to: The Wall Committee, P. O. Box 2854, Big Spring, Texas 79721

LAW\$UIT



RULES OF THE GAME

Rule 3: Collect Again!

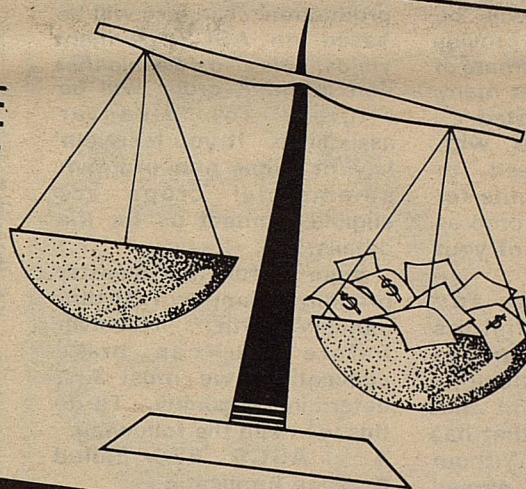
Evidence about payments that have already been made for an injury cannot be submitted in court. In the lawsuit game, these pay-

ments are called "collateral sources" and include out-of-court settlements for lawsuits and insurance payments.

If courts don't know about collateral sources, people can collect more than once for the same injury.

Chance!

DON'T TELL THE JURY! COLLECT AGAIN FOR THE SAME INJURY.



Let's make the rules fair.
Support lawsuit reform through the
Texas Civil Justice League.

Join thousands of Texans—small business owners, engineers, architects, accountants, doctors, newspapermen, builders, contractors and others—who are concerned about the effects of our "sue crazy" society.

Simply fill out this coupon and mail it today!

Name _____

Street _____

City _____ Zip _____

Business/profession _____

Phone (Home): _____ Phone (Work): _____

Mail to: Texas Civil Justice League/710 United Bank Tower
Austin, Texas 78701