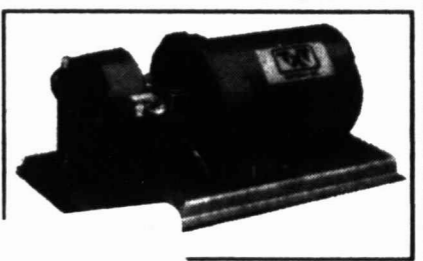


JOHN T. KING & SONS

OILFIELD SPECIALTY ... UNITS • PARTS • SERVICES
918 S. BARNES • 806-669-3711



THE Pampa NEWS

***** ALL FOR ADC 780
*01 BV04227 12/31/14
SOUTHWEST MICRO PUBLISHING
2627 E YANDELL DR
EL PASO TX 79903-3743

SUNDAY, DECEMBER 28, 2003

NEWS

Vol. 99 No. 830 • Pampa, Texas
50 cents Daily • Sunday \$1



WEATHER WEATHER

HIGH **LOW**
45 **20**

STATE

Dallas police choir heads to France

DALLAS (AP) — What began about 20 years ago as a choir of about 11 police officers, is now ready to take to the international stage.

The Dallas Police Choir, which has sung in hospitals, senior centers, festivals, sports events and inaugurations, will perform this summer at the 60th anniversary of the D-Day invasion, in honor of those killed in the June 6, 1944 battle.

DEATHS

Carl Delano Cotham, 64,
U.S. Army veteran.
Edwin E. Simmons, 95,
public accountant.

INSIDE...

Classified20
Comics6
Community . . .13
Editorial4
Medical12
Sports10

Beautiful Paving Stones...

You Can Install Yourself

WEST TEXAS LANDSCAPE
120 S. HOBART
809-0158



CHILDERS BROTHERS HOUSE LEVELING

Uneven Floors
Floor Bracing
Cracks In Bricks
Sinking Doors & Windows
Interior Wall Cracking
FREE ESTIMATES

1-800-299-9563
WWW.CHILDERSLEVLEING.COM

FRED BROWN TREE AND TURF

Tree & Yard Spraying
Insect & Weed Control
Deep Root Feeding

CELL 806-662-3141
PAMPA, TX.

After Christmas



(Pampa News photo by David Bowser)

Christmas is over. Mike Schale, area manager of the Allsup stores, loads unsold Christmas trees, Scotch pines from Michigan, into his truck to haul away. Some of them, he said, would go to Pampa's mulching facility. He said some area ranchers also use them for erosion control and wildlife habitation. Linda Velasquez, the store manager at Starkweather, says there weren't many trees left this year. They sold most of them.



(Pampa News photo by David Bowser)

Four-year-old Braden Kidd takes to the sidewalk on Sierra Street on the bicycle he got for Christmas.

Exports of U.S. beef hard-hit

By EMILY GERSEMA
ASSOCIATED PRESS WRITER

WASHINGTON (AP) — Just days after discovering the nation's first case of mad cow disease, the United States has lost nearly all of its beef exports as more than a dozen countries stopped buying American beef as insurance against potential infection.

Gregg Doud, an economist for the Denver-based National Cattlemen's Beef Association, has said that the United States, at today's market level, stands to lose at least \$6 billion a year in exports and falling domestic prices because of the sick cow.

"We've lost roughly 90 percent of our export market just in the last three days," Doud said.

Keith Collins, the Agriculture Department's chief economist, said the market probably will not see the full economic impact of the mad cow case until trading intensifies after the holidays. He has said that 10 percent of U.S. beef is exported.

Japan, South Korea and Mexico are among the top buyers that banned American beef imports this week after the U.S. government announced it had found a cow in Washington state sick with the brain-wasting illness. An international lab in England confirmed the results Thursday.

As a safeguard, countries usually shut down meat imports from countries where the illness was found.

A U.S. delegation is leaving Saturday for Japan, which takes about one-third of all U.S. beef exports, and possibly other Asian countries that imposed bans on American meat and livestock this past week. The Treasury Department said it is monitoring developments.

Mad cow disease, formally known as bovine spongiform encephalopathy, is a public health concern because it is related to a human disease, variant Creutzfeldt-Jakob. In Britain, 143 people died of the human illness after an outbreak of mad cow in the 1980s. People can get it if they eat meat containing tissue from the brain and spine of an infected cow.

Federal officials on Friday quarantined a herd of 400 bull calves, two of which were offspring of the sick cow. During its life, the infected cow bore three calves.

One calf is at the same dairy near Mabton, Wash., that was the final home of the diseased Holstein cow, one is at a bull calf feeding operation in Sunnyside, Wash., and a third died shortly after being born in 2001, said Dr. Ron DeHaven, chief veterinarian for the Agriculture Department.

"There is the potential that the infected cow could pass the disease onto its calves," he said. No decision has been made on destroying the herds, he said.

Investigators are focused on finding the birth herd of the cow, since it likely was infected several years ago from eating contaminated feed, DeHaven said. Scientists say the incubation period for the disease in cattle is four or five years.

Since 1997, the Food and Drug Administration has banned giving grazing animals feed that contains brain and spinal tissue to prevent the disease from appearing.

DeHaven said the investigation could lead to other states or Canada, which found a case mad cow disease in Alberta in May.

Authorities seeking individuals who missed certain flights

By TED BRIDIS

ASSOCIATED PRESS WRITER

WASHINGTON (AP) — U.S. investigators want to speak with a small number of people in Paris who failed to show up for boarding flights to Los Angeles that fell under close scrutiny in a possible terrorist plot, including one pilot-trainee, a U.S. official said Friday.

The official, speaking on condition of anonymity, said investigators hope to resolve concerns that some passengers aboard those flights might have intended to use them to launch terror attacks against the United States. One of them was receiving pilot training but was not yet certified, the official said.

Discussions between U.S. and French officials led to the cancellation of six Air France flights between Paris

and Los Angeles on Wednesday and Thursday. U.S. officials also were talking to counterparts in other countries.

"We're clearly in a time when the terrorist threat is very real, the efforts that al-Qaida makes to plot and plan to attack us is constant and continuous," said Rep. Jim Turner, the senior Democrat on the House Select Committee on Homeland Security. "It is not anything that we can take lightly."

Turner said he was waiting for formal briefings from the department for more information about the cancellations, and said initial reports indicated the government had dodged another terrorist strike.

The flight cancellations added to Americans' unease during the holidays after the Bush administration increased the national threat level to

its second-highest level, orange.

House spokesman Scott McClellan said Friday the government was working to "make sure we are doing everything we can to protect the American people and prevent possible attacks from happening in the first place."

After the Air France cancellations, French investigators questioned seven men pointed out by U.S. intelligence but found no evidence they planned to use a Los Angeles-bound jet to launch terror attacks against the United States, French authorities said.

Officials in Washington and Nevada disputed a published report

Turner said he was waiting for formal briefings from the department for more information about the cancellations, and said initial reports indicated the government had dodged another terrorist strike.

Friday that the flight cancellations thwarted a possible terrorist plot to crash an airliner in Las Vegas. Jerry Bussell, Nevada Gov. Kenny Guinn's adviser on homeland security, said federal Homeland Security officials told him there was no known threat to Las Vegas.

D
E
C

2
8

2
0
0
3





Sharon McKee

KELLER WILLIAMS REALTY

301 W. Kingsmill • 669-2799 • lindadaniels.realtor.com

504 W. 2nd, White Deer...\$130,000
300 N. Cuyler...\$200,000
Perry St.\$75,000
1225 N. Wells...\$25,000
2623 Seminole.....\$45,900

2300 Beech\$175,000
59.957 Acres w/house,Hedley....\$75,000
821 N. Dwight\$28,900
11931 N. Ragsdale.....\$165,000
932 Terry\$53,900

839 Texas, White Deer.....\$130,000
1320 Terrace....\$27,900
*May Your Holiday Season
Be Filled With Joy ... From Your
Friends At Keller Williams*



Sandra Schuneman

OBITUARIES

CARL DELANO COTHAM 1939-2003

Carl Delano Cotham, 64, of Pampa, Texas, died Tuesday, Dec. 23, 2003, at Amarillo, Texas. Memorial services will be at 2 p.m. Monday, Dec. 29, 2003, at Carmichael-Whately Colonial Chapel with the Rev. Bob Miller, pastor of the South Georgia Baptist Church of Amarillo, officiating. Cremation arrangements are under the direction of Carmichael-Whately Funeral Directors.

Mr. Cotham was born Jan. 30, 1939, in Gray County. He was a 1957 graduate of Shidler High School in Shidler, Okla., and he attended college in Nowata, Okla.

He married Knoxine Russell on March 7, 1979, in Las Vegas, Nev.

He worked as a production foreman for Kewanee Oil, Gulf Oil, and Chevron for about 20 years.

He was a Baptist. He was a veteran of the U.S. Army and served for eight years in the U.S. Army Reserves. He was an avid hunter and fisherman.

He was preceded in death by a brother,

Bob Cotham. Survivors include wife, Knoxine Cotham, of the home; a daughter, Tena Conner and husband Barry of Amarillo; a son, Kirk Cotham and wife Nelda of Pampa; a brother, Floyd Cotham and wife Joyce of Pampa; a sister, Joyce Peterson of Midwest City, Okla.; a sister-in-law, Norma Cotham of Ponca City, Okla.; a brother-in-law, Don Russell of Pampa; and a grandson, Garrett Dale Conner of Amarillo.

The family requests memorials be to Pampa Sheltered Workshop, 1301 W. Somerville, Pampa, TX 79065.

—Sign the on-line register book at www.carmichael-whatley.com.



EDWIN E. SIMMONS 1908-2003

Edwin E. Simmons, 95, of Pampa died Friday, Dec. 26, 2003, in Pampa. Services will be at 10 a.m. Tuesday in Carmichael-Whately Colonial Chapel with the Rev. Ron Noble, pastor of Pampa Chapel of the Apostolic Faith, Mike Mueller, elder of the Reorganized Latter Day Saints Church of Dumas, and Richard Gattis, of the Church of Jesus Christ of Latter Day Saints of Pampa, officiating. Burial will be in Ochiltree Cemetery in Perryton under the direction of Carmichael-Whately Funeral Directors.

Mr. Simmons was born Dec. 6, 1908, in Section 79, Block 4-T, T&NO Railway Co. Survey in Ochiltree County, Texas, to William Andie Simmons and Sarah Elizabeth Seay Simmons of Wawaka, Texas. His only sibling was Joseph Hayden Simmons who was nearly 12 years his senior.

Mr. Simmons married Anabel Gilliam on Sept. 7, 1930, at Gruver. Anabel was born less than one mile from where Edwin was born, and they were never separated for any long period of time during their lifetimes. They had been married for 73 years at the time of his death.

Edwin and Anabel had one child, a son Paul Simmons, who was born in Ochiltree County, Texas, at the home of his mother's parents within two miles of the places of Edwin's and Anabel's birthplaces. Mr. Simmons obtained his Certificate of Public Accountancy on March 31, 1946, and remained in active practice for

more than 56 years. He was a member of the Texas Association of Certified Public Accountants.

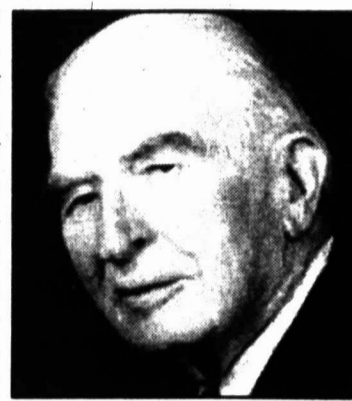
Mr. Simmons accepted Christ as his Savior shortly after the birth of their son Paul, and became a member of the Reorganized Church of Jesus Christ of Latter Day Saints when he was 76 years of age and remained so until his death. He was a member of the Gideons International.

Mr. Simmons was preceded in death by his parents and his brother Hayden.

Survivors include his wife, Anabel Simmons, of the home; a son, Paul Simmons and wife Ione Martin Simmons of Pampa; two grandchildren, J. Vondel Stevens and husband Scott of Canyon and E.P. Simmons of Chicago, Ill.; a great-grandson, Timothy Stevens of Canyon; and a niece, Rubyjo Wilbanks of Spearman who is also his sister by adoption.

The family requests memorials be to a favorite charity.

—Sign the on-line register book at www.carmichael-whatley.com.



ON RECORD

POLICE

Pampa Police Department made the following arrests during the 24-hour period ending at 7 a.m. Saturday.

Friday, Dec. 26

Howard Alexander Santacruz, 17, 713 Locust, was arrested for consumption of alcohol, no seat belt and minor in possession of tobacco.

Saturday, Dec. 27

Levi Ammeron Quackenbush, 19, 1209 Farley, was arrested for theft by check.

AMBULANCE

Rural/Metro Ambulance reported the following calls during the 24-hour period ending at 7 a.m. Saturday.

Friday, Dec. 26

2:16 p.m. — A mobile ICU responded to Pampa Regional Medical Center and transferred a patient to Northwest Texas Hospital, Amarillo.

3:36 p.m. — A mobile ICU responded to the 1200 block of North Wells and transported a patient to PRMC.

6:26 p.m. — A mobile ICU responded to the 1500 block of West Kentucky and transported a patient to PRMC.

7:42 p.m. — A mobile ICU responded to the 600 block of East Browning and transferred a patient to PRMC.

FIRE

Pampa Fire Department reported the following calls during the 24-hour period ending at 7 a.m. Saturday.

Friday, Dec. 26

3:41 p.m. — Two units and six firefighters responded to the 1200 block of North Wells on a call for lifting assistance.

SHERIFF

Gray County Sheriff's Office reported the following arrests in the 24-hour period ending at 7 a.m. Saturday.

Friday, Dec. 26

Johnny Caldwell, 61, 434 Carr, was arrested for violation of parole and no driver's license.

Saturday, Dec. 27

Richard Don Hall, 36, Flower Mound, was arrested for public intoxication.

WEATHER FOCUS

PAMPA

The forecast today is call- highs in the mid 40s and ing for mostly sunny skies, northwest winds 15 to 20

mph. Night should fall on mostly clear skies with lows around 20 and northwest winds 5 to 15 mph. Monday should see mostly sunny skies. Highs in the lower 50s. Southwest winds 5 to 15 mph. Monday night, partly cloudy. Lows in the upper 20s. Tuesday, partly cloudy. Highs in the mid 50s. Tuesday night, partly cloudy. Lows in the lower 30s. Wednesday, partly cloudy. Highs around 60.

Sid Sanders, DPM, R.Ph.

FOOT SPECIALIST

is happy to announce the beginning of a foot clinic each TUESDAY in Pampa For Appointment Call 806-463-1900

3023 Perryton Pkwy. - Suite 201

City Briefs

The Pampa News is not responsible for the content of paid advertisement

BOOTH RENTALS in nice consignment store, in Borger, Tx., 506 N. Main. Call 273-7744, 231-7558.

CROSSES AND Storage Baskets are featured this week at The Auxiliary Gift Shop of Pampa Regional Medical Center. Tuesday-Friday 9AM-4 PM.

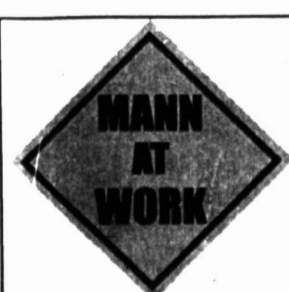
EARLY CIRCULATION Deadlines (starts, stops, etc.) for *The Pampa News*, for New Years! 669-2525.

BRICK REPAIR, Harley Knutson 665-4237 or 664-0543

EARLY LIFESTYLES Deadlines (wedding, anniversary, baby, newsmakers, etc.) for *The Pampa News*, for Sunday Jan. 4th, is Tues., Dec. 30th, 5 p.m.

LEEANN'S GROOMING, 669-9660.

THE VICARY House Tea Room will be open to the public Wed. & Thurs., 11-2 p.m., beginning Jan. 7th.



John Mann
Lawyer

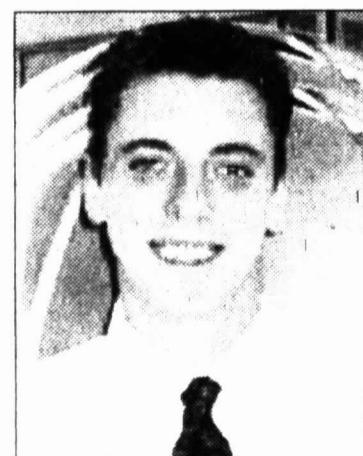
115 W. Foster
"Across From The Coney"
806-665-2555

Now Open

Allison's Quality Quick Lube

1807 Alcock, next to Peggy's

*oil change, transmission change, state inspections, free pick up and delivery, call 688-0042



Brian Cota
Pampa Native
Now at
Gene Messer!

Come by today and check out a great deal from someone you know. Brian will help you find the perfect vehicle at a price that fits your budget. Plus, he will give you the friendly service you expect! So, call or come by today. Remember, ask for Brian Cota!

GENE MESSER
Ford, Lincoln, Mercury & Mazda

34TH & SONCY • 1-800-749-7471 • 806-355-7471

THE
Har
fun
BY MA
SA
STAN
STERL
Skeete F
probably
seemed so
ago.
Funeral
store con
Ross Har
mon in s
then.
And th
made sens
Everyth
build the
downstair
store.
In the
ent caske
became m
the dual
funeral di
seemed to
Foster sai
Ross F
some of th
tion alive.
"We are
service,"
"Most of
family lose
are in a
haven't be
they are m
they haven
want to b
them make
sions and g
information
And F
much mor
town.
The har
a variety
ing nails,
plies, toys
and is the
town that s
for hunters
The nex
to buy su
San Ang
Spring.
"The ha
good beca
needs bolt
don't hav
miles to ge
"I hear th
"I'm reall
here." Wal
some busin
lic really s
do a lot o
and buy w
us. We co
out that."
Randy
Hord Water
Sterling C
ware stor
venience
needs a
doesn't ha
to San An
"It's nic
ware stor
this is re
said. "You
anything t
a neat st
something
you out of
The b
just west
courthous
1905, Fos
inal busin
funeral ho
store.
The t
floors co
10,000 s
building
belt-drive
Foster us
bodies up
The top
display r
viewing
embalmi
Foster

St. A
Spur 2
P. O. I
Panha
(806) 4
† Non-
Texa
† Inter
accep

Hardware store keeps funeral home roots

By MATT PHINNEY
SAN ANGELO
STANDARD-TIMES

STERLING CITY — Skeete Foster's business probably wouldn't have seemed so odd 100 years ago.

Funeral home/hardware store combinations, like Ross Hardware, were common in small towns back then.

And the combination made sense.

Everything needed to build the coffins was right downstairs in the hardware store.

In the 1920s, independent casket manufacturers became more common and the dual hardware and funeral director businesses seemed to go out of style, Foster said.

Ross Hardware keeps some of that old-time tradition alive.

"We are trying to do a service," said Foster, 49. "Most of the time when a family loses someone they are in a situation they haven't been in before and they are making decisions they haven't made before. I want to be there to help them make the right decisions and give them all the information they need."

And Foster provides much more to the small town.

The hardware store sells a variety of goods including nails, plumbing supplies, toys, glass fixtures and is the only store in town that sells ammunition for hunters.

The next closest places to buy such supplies are San Angelo and Big Spring.

"The hardware store is good because if someone needs bolts or nails, they don't have to drive 50 miles to get them," he said. "I hear that all the time, 'I'm really glad you are here.' Wal-Mart has taken some business, but the public really supports us. They do a lot of shopping here and buy what they can from us. We couldn't do it without that."

Randy Hord, owner of Hord Water Well Service in Sterling City, said the hardware store provides convenience when he just needs a few things and doesn't have time to drive to San Angelo.

"It's nice to have a hardware store anywhere, but this is really handy," Hord said. "You can get almost anything there and it's just a neat store. If you need something quick, it gets you out of a bind."

The building, located just west of the county courthouse, was built in 1905, Foster said. The original business was both a funeral home and hardware store.

The top and bottom floors combine for about 10,000 square feet. The building also has an old belt-driven elevator that Foster uses to move the bodies upstairs.

The top floor contains a display room for caskets, viewing room and an embalming room.

Foster's father Ross

bought the building in 1971 and kept the old tradition. The store also sold furniture until 1981, Foster said.

Ross Foster was not a funeral director and had an embalmer come in from Big Spring to do the embalming. Eventually, Johnson's Funeral Home in San Angelo began helping with the embalming.

As a sophomore in high school, Skeete Foster helped with some of the embalming in the funeral home. He graduated from high school in 1973 and after a year of college decided to enroll in mortuary school in Dallas.

He graduated there in 1975 before taking a two-year apprenticeship in Midland. Foster worked with his father until Ross had a stroke about three years ago.

Skeete Foster has an embalmer and funeral director's license. He is president-elect of the West Texas Funeral Director Association and is on the Texas Funeral Director's Board.

The funeral home prepares about 15 bodies a year and Foster said the majority are older people who have lived a full life.

"You have to look at the funeral business like you are helping people out," he said. "I care about the people in Sterling city. In the funeral business you really have to put your mind in the right place. You need to feel like you are doing something good for the family at a time when they are really vulnerable.

That's what I like about it. That's the gratification I get out of it." Foster's wife Nancy is a barber and works as a physical therapist's assistant. She sometimes cuts hair for the funeral home and helps with the embalming. Foster said he couldn't run the dual business without her.

Velma Rodriguez has worked at the store since 1980. She was in the hardware store one day and Foster's mother Margaret asked her if she needed a job, Rodriguez said.

She said she learned about the hardware business from Ross Foster.

"At first the men would come in and ask if there was anyone else working," Rodriguez said. "But they learned pretty quick that I knew what I was doing."

And like many old hardware stores, Foster still lets people buy on credit. On really busy days, some reliable customers will even find what they want, write and sign their own ticket and leave.

Foster said he has never had a problem with non-payments.

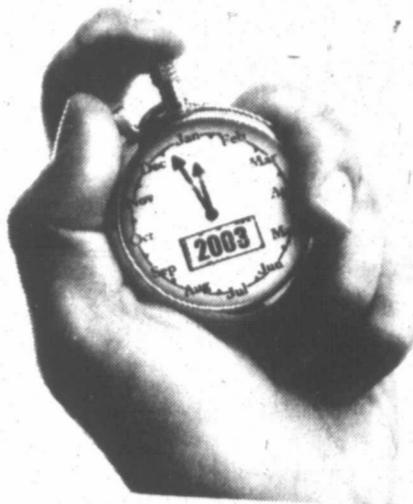
"We supply an honest service and we expect to be paid honestly," he said. "We have a lot of people that come in and like to look at old hardware stores. Especially during Christmas, people just stop in and see what a small town hardware store has."

Just like people did 100 years ago

Distributed By The Associated Press

TEXAS FURNITURE

DOWNTOWN PAMPA SINCE 1932



YEAR-END SALE, ENDS DEC. 31ST COUNT DOWN!

SALE



LEATHER SOFAS \$799
RETAIL \$1399

LA-Z-BOY AND LANE **RECLINERS**
CHOOSE FROM A GREAT SELECTION
BUY ONE ... GET ONE FREE

SAVE UP TO **50%** ON LANE
LEATHER SOFA, CHAIRS & RECLINERS
QUEEN MATTRESS \$299 SET

SPECIAL PRICES ON OUR ENTIRE STOCK OF BEDROOM DINING ROOM ENTERTAINMENT CENTERS



SEALY SAVINGS

FREE DELIVERY
FREE REMOVAL OF OLD BED

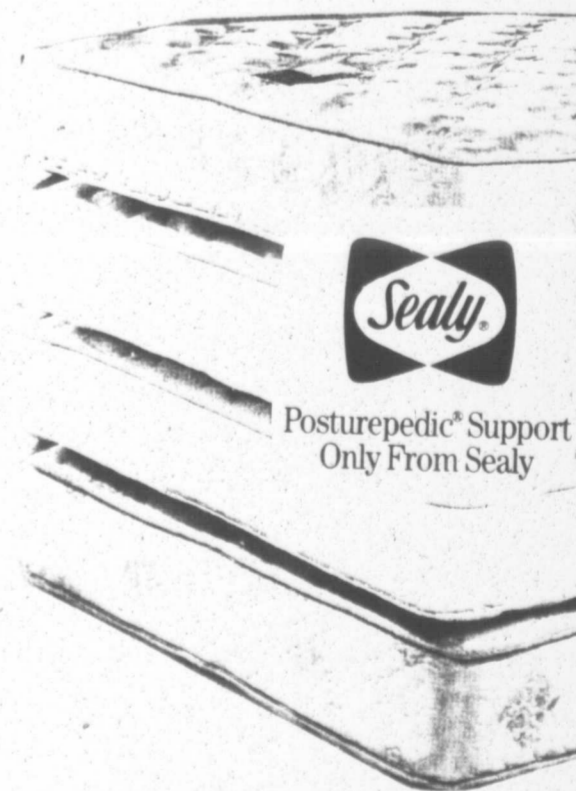
SEALY POSTURE PREMIER	TWIN 2 PC. SET \$249	FULL SET 2 PC. SET \$299	QUEEN SET 2 PC. SET \$349
------------------------------	--------------------------------	------------------------------------	-------------------------------------

SEALY "BELMONT LTD" PLUSH			
TWIN SET \$299	FULL SET \$349	QUEEN SET \$399	KING SET \$649

SEALY "RALEIGH LTD" PILLOW-TOP			
TWIN SET \$399	FULL SET \$449	QUEEN SET \$499	KING SET \$749

ALL NEW 2004 SEALY POSTURE PEDIC "ADORNMENT" CHOOSE PLUSH OR PILLOW TOP

TWIN SET \$499	FULL SET \$549	QUEEN SET \$599	KING SET \$899
--------------------------	--------------------------	---------------------------	--------------------------



St. Ann's Nursing Home
Spur 293, Off Hwy 60
P. O. Box 1179
Panhandle, TX 79068
(806) 537-3194



† Non-Profit Organization known throughout the Texas Panhandle for excellence in resident care.
† Intermediate Care/Medicaid & Private-Pay accepted - call for application & availability.

MONDAY-SATURDAY 9:00 TO 5:30 • PHONE 665-1623

Texas

FURNITURE

210 N. Cuyler In Downtown Pampa

90 DAYS NO INTEREST Financing With Approved Credit

D
E
C
2
8
2
0
0
3

D-FY-IT fund-raiser



(Community Camera photo)

Johnny Moore recently won an autographed Zach Thomas football raffled off by Pampa High's D-Fy-It Program as a fund-raiser to help defray the costs of drug screens and other supplies. Moore is a senior at PHS. D-Fy-It is a voluntary program that encourages, educates and promotes drug-free lifestyles among high school students at PHS. Above: Moore with top raffle ticket sellers Monica Johnson, Evelyn Jasso and Krissy Holman.

Leader brings along experience to Sabre Holdings struggling unit

By SUZANNE MARTA
THE DALLAS MORNING NEWS

SOUTHLAKE, Texas — Michelle Peluso is running late.

Literally. After a lunch meeting with employees and her technology team, Peluso launches into a full sprint across the parking lot at Sabre Holdings Corp. to get to her next appointment, even though she's wearing a skirt and heels.

"They had so many good questions that I thought I could just run from my car and make up enough time to answer one more thing," she tells a visitor. With barely a breath between sentences, she shifts into an energetic presentation about her plans for Travelocity, Sabre's online travel agency.

Travelocity's new 32-year-old president and chief executive has been sprinting through most of her career. She was named to the division's top post Dec. 2, after only eight months as chief operating officer and 20 months after joining Travelocity as a senior vice president.

Peluso came to Travelocity from Site59, a travel Web site she launched in 1999. Site59, which sold last-minute travel packages, was sold to Travelocity in March 2002 for \$43 million in cash.

To some degree, Site59 reinvented the nascent online travel industry because it put the emphasis on selling complete travel packages, not just being the middleman between a customer and an airline or a hotel on a commission-based transaction. The distinction is critical because under the "merchant" model, Site59 could net far larger profits.

Online travel sites that use a merchant model sell hotel rooms themselves instead of just marketing the rooms and earning small commissions. Analysts say sites that use the merchant model can increase their hotel-selling margins significantly.

Now Southlake-based Sabre hopes Peluso can unleash her energy on Travelocity. The pioneer online travel company founded in 1996 has lost ground to rival Expedia Inc. and others that were faster to shift their businesses toward the merchant model. Expedia surpassed Travelocity as the largest online travel agency in late 2001.

Some industry analysts say Sabre couldn't have chosen better.

"Travelocity needed to be shaken up," said Lorraine Sileo, an analyst with PhoCusWright, a travel research firm based in Sherman, Conn.

Henry Hartevelde, an analyst with Forrester Research, said there's no one more qualified to run Travelocity than Peluso.

Sabre increasingly relies on its online travel agency to fuel growth as revenue from its central reservations business declines, but Travelocity has had its own problems. Travelocity focused on distribution deals through other sites such as Yahoo and America Online, while Expedia, formerly a unit of Microsoft Corp., emphasized making its site easier to use and adding products that yield higher profits.

"The companies just had different strategies," said Scott Kessler, a Standard & Poor's analyst.

In 2002, Travelocity booked 24 percent of online travel transactions, down from 35 percent in 2000, according to a PhoCus Wright report. During the same period, Expedia's share grew from 25 percent to 36 percent. And Orbitz Inc. the industry's No. 3 player attracted 17 percent of bookings in 2002, just two years after it was launched.

PhoCus Wright research shows that Expedia continues

to gain at the expense of Travelocity, whose market share fell to 20 percent during the first half of 2003, while Expedia claimed 40 percent.

New opportunities
Peluso said she plans to use her experience from Site59 to create new opportunities at Travelocity. Site59's initial success was largely rooted in merchandising.

Rather than attract customers to any destination that might be available on a given day, Peluso pitched travel experiences. Packages were organized as beach, ski or romance getaways rather than trips to individual cities.

"We wanted people to think of travel as merchandise rather than just a transaction," she said.

Like other travel businesses, Site59 faced a crisis after the September 2001 terrorist attacks. When its revenue dropped 70 percent, Peluso slashed discretionary spending and pleaded with the company's financial backers to give her two months before asking her to cut workers. She wasn't willing to lose expertise.

It was a bet that paid off. The market for last-minute travel rebounded more quickly than the overall market, and by March 2002, Site59's revenue had doubled from September 11 levels. The company

(See SABRE, Page 7)

Chip startup gets \$10 million

By KIRK LADENDORF
AUSTIN AMERICAN-STATESMAN

AUSTIN — Computers keep getting faster and more powerful, but the ability of groups of computers to work effectively together still runs into the "input-output" bottleneck — the relatively slow rate of data communications between computers.

But NextIO Inc., a new Austin chip-design startup, plans to change all that with a new class of data-communications chip that dramatically improves the ability of server computers to work effectively together.

The company, founded in January, has received a \$10 million first round of investment from three venture firms. The lead investor is Adams Capital Management of Pittsburgh. Others include JK&B Capital of Chicago, and VentureTech Alliance, an investment affiliate of Taiwan Semiconductor Manufacturing Co.

NextIO's CEO, K.C. Murphy, says the startup has attracted serious interest from major server makers who want to bolster the effectiveness of their systems installed in data centers.

"The midrange server market is the next major battleground in the computer industry, and every supplier wants to lead in this market," he said.

NextIO, with 18 workers, plans to add three more employees by the end of this year and double its head count over the next year. It expects to sell its first chips in 2005.

expects to sell its first chips in 2005.

The chips will be compatible with the new PCI Express data-communications standard backed by Intel Corp., the largest chip maker in the low-end server market.

Murphy says the company's technology will improve the performance of clusters of servers working together.

Top communication speeds of the new technology is projected to exceed 40 gigabits per second, which is about five times faster than the previous generation.

Co-founders of the company are Chris Petey, chief technology officer; Rick Pekkala, vice president of engineering; Gordon Burk, vice president of marketing and chief financial officer; Brooks I'vey, vice president of sales and business development; and Jim Everett, vice president of human resources.

Distributed By The Associated Press

WHITNEY INSURANCE AGENCY
Donald R. Whitney
 LUTCF
 721 W. KINGSMILL AVE.
 PAMPA, TEXAS 79065

AUTO • HOME • LIFE • HEALTH • COMMERCIAL CROP INSURANCE • FINANCIAL SERVICES ESTATE PLANNING • LONG TERM CARE

OFFICE (806) 665-2221
 TOLL FREE (866) 665-2221

Now you can say cheese and hello at the same time.

\$99.99

Camera Phone Audiovox 8900
 Share the fun of picture messaging for only \$3.99 a month. Sign up now and receive unlimited picture messaging until March 31, 2004. after \$50 mail-in rebate with 2-year agreement.

FREE
Kyocera Phantom KE414
 after \$25 mail-in rebate with 2-year agreement.

AFTER CHRISTMAS CLEARANCE

Levi's
 Wolverine
 Reper
 Cinch
 Gorbaby
 Carhartt
 Montana
 Parhamite Slim

Savings on name brands throughout the store

WAYNE'S WESTERN WEAR

OPEN DAILY 9 a.m. to 6 p.m.
 THURS. 9-8
 CLOSED SUNDAY
 1329 N. HOBART • PAMPA, TX
 665-2925

UNLIMITED INCOMING CALLS FOR 3 MONTHS
 with 2-year agreement

\$40/month

1000 ANYTIME MINUTES

- 1000 mobile-to-mobile minutes
- Unlimited nationwide long distance
- Unlimited nights and weekends

CELLULARONE
 The next best way to say hello.

Cellular One Store: Pampa, 1329 N. Hobart, 665-3435

Authorized Dealers:
 Pampa: Pampa Ad's Treasures, 665-0370; Totally Wireless, 669-1551; Pampa Office Supply, 669-3353; Shamrock Irish Phones, 256-5357
 Wellington: A Touch of Class, N. 9th, 447-5522

1 800 CELL ONE Business Customers, 1 877 566-3222 CellularOne.com

Promotional Offer: Offer good for a limited time on new activations of select \$55 or greater Local, Western Plan, and Western Home calling plans only and are subject to change without notice. Credit approval required. Multimedia Messaging (MMS) capable phone, wireless service plan, and online access to CellularOne.com required. 1000 anytime minutes charge of \$3.99 per month for 3 months, after which the package will include 10 messages for \$3.99 and \$0.25 per message thereafter. Unlimited MMS offers available until March 31, 2004. MMS messages are charged when sent or received, whether read or not, and subject to standard text messaging rates. Incoming Calls for 3 Months promotion requires a 2-year agreement and provides unlimited free incoming minutes for the first three months of service only, after which the incoming minutes will be deducted from other applicable calling plan allowances. Free incoming minutes apply only while on the Western Wireless Corp. network within the home calling area. Any time minutes apply to calls placed or received within the home calling area only, and when other calling plan allowances are exhausted, as do the applicable 1000 Anytime Minutes for Life promotion. It is not possible to add minutes to the plan. The subscriber may select from the calling plan options available at the time of service activation, or change to the subscriber's plan in an effort to retain the benefit of the promotion. If the subscriber selects from the calling plan options available at the time of service activation, Mobile-to-Mobile (M2M) minutes apply to calls placed to or received from another Western Wireless Corp. (aka CellularOne) phone. 1000 Mobile-to-Mobile minutes apply only while on the Western Wireless Corp. network within the home calling area. If the calling minutes are exhausted, such as when CellularOne is in talk lock, mobile-to-mobile minutes will not apply. Night & Weekend "Night" minutes apply to calls made from 9:00 p.m. to 5:30 a.m. Monday through Thursday and "Weekend" minutes apply to calls made from 9:00 p.m. Friday to 11:59 p.m. Sunday. Unlimited night & weekend minutes apply only while on the Western Wireless Corp. network within the home calling area. Nationwide Long Distance: Free nationwide long distance applies to calls made from the home calling area to anywhere within the United States each 1000 anytime minutes. Call made outside the home calling area may incur roaming and/or long distance charges. Other Info: Not available in all areas. Incoming and outgoing calls are tracked up and billed to full minute increments from the time the network begins to pass on the call (before the call rings) to the termination of the call. An fraction of a minute of usage is rounded up and charged as a full minute. Service is subject to the terms of our standard 2-year service agreement that includes a \$200 fee for each phone and a mandatory activation or provision for each phone. Taxes and additional fees apply for long distance, roaming, long distance, service-activated, credit card or other bill charges. Other non-tax charges include Regulatory and Administrative charges, which are currently \$0.17 per line per month, and subject to change without notice. Equipment Return: Returns have no cash value. Taxes apply to original purchase price. Only one rebate per phone purchase. Featured hardware available at CellularOne stores and participating dealers while supplies last. Phones and the CellularOne logo are trademarks of Western Wireless Corp. Other restrictions may apply. Service is not TV compatible. See calling plan for hours and store for complete details. All service marks are marks of The CellularOne Group. © 2003 Western Wireless Corporation.

D
E
C

2
8

2
0
0
3

SUNDAY • December 28, 2003

DEAR ABBY

written by Pauline Phillips and daughter Jeanne Phillips

Teenage Girl Overwhelmed By Too Many Discoveries

DEAR ABBY: I recently discovered I am a lesbian. Unfortunately, I am already pregnant with my boyfriend's baby. We were both drunk when this happened, and it was a horrible mistake. My parents nearly disowned me when they realized I was going to have a child. (We are devout Christians.)

I don't know how they'll react when I tell them I am a lesbian. Abby, I am afraid to tell them and don't know how. Please help me find a way.
TEENAGE LESBIAN
IN COLORADO

DEAR TEEN: Stop dwelling on yourself for a moment. Although the teen years are supposed to be a time of self-discovery, it's time you got off the fast track for a while. Your parents are shell-shocked enough as it is, and you have serious responsibilities ahead. After your baby arrives, my intuition tells me you'll be too busy for much of a sex life (homosexual or heterosexual).

Once your family has stabilized again, there is still time to come out to your family. Parents and Friends of Lesbians and Gays (P-FLAG) can provide you with literature that will make it easier to talk to them. P-FLAG can also offer the emotional support they will need. The address is: 1726 M St. NW, Suite 400, Washington, D.C., 20036. The Web site is www.pflag.org.

DEAR ABBY: I have a serious anger problem. When my fiance and I first met, it was love at first sight. But after six months, everything he does seems to tick me off.

In the beginning, I didn't want to scare him off. Then he said he wanted me to be more open, so I let it all out. Now I'm letting it out every single day. I get mad when he does or says the same things I do or say to him, and I'll isolate myself or give him the silent treatment.

I think I have a serious mental and/or anger problem, but I don't know where it comes from. Everybody thinks I'm crazy. They say, "I don't know when you're happy or mad because you have the same expression."

Maybe they're right. Maybe I'm not happy because I haven't accomplished anything in my life. (I am only 22.) Please help me.

LASHING OUT
IN NORTH CAROLINA

DEAR LASHING OUT: You are only 22. It's too early to declare yourself a failure. However, it is difficult to be loving to others if you don't like yourself.

Before you and your fiance go any further, you must get to the root of what is really bothering you. A call to your local department of social services or mental health association will help you locate a counselor you can afford. A course in anger management would also be helpful for both of you. Please don't wait. You have a right to be happy.

DEAR ABBY: Please inform your readers that if their child is enlisting in the armed services or plans to go overseas, the parents should also get passports.

Our son left to serve in Iraq. He is now in Germany for medical reasons, and we cannot get to him. Passports take six weeks to process. They can be expedited for a hefty fee, but they still take two weeks to arrive.

LEARNED LATE
IN WEST LAFAYETTE, OHIO

DEAR LEARNED: That's a helpful suggestion, and I'll pass it along.
P.S. Your son is in my prayers. Please let me know how he's doing.

Dear Abby is written by Abigail Van Buren, also known as Jeanne Phillips, and was founded by her mother, Pauline Phillips. Write Dear Abby at www.DearAbby.com or P.O. Box 69440, Los Angeles, CA 90069.

For everything you need to know about wedding planning, order "How to Have a Lovely Wedding." Send a business-size, self-addressed envelope, plus check or money order for \$5 (U.S. funds only) to: Dear Abby, Wedding Booklet, P.O. Box 447, Mount Morris, IL 61054-0447. (Postage is included.)

For Better or For Worse

WHAT'S IT LIKE TO BE A TEACHER, LIZ? I MEAN... DO YOU FEEL LIKE YOU'VE GOT ALL THIS POWER AN' STUFF?



TRYING TO GET A WHOLE CLASS TO RESPECT YOU AND TO LISTEN AND LEARN IS HARD ENOUGH, BUT THEN THERE'S THE "BEHAVIOUR PROBLEM"



THERE'S ALWAYS ONE CLOWN WHO CAN'T SIT STILL, MAKES COMMENTS OUT LOUD, HAS TO BE THE CENTER OF ATTENTION. ONE KID CAN DISTRACT EVERYONE. IT MAKES MY JOB IMPOSSIBLE - AND THE WHOLE CLASS SUFFERS.



YOU'VE KNOWN KIDS LIKE THAT, RIGHT?



Zits



Garfield



Beetle Bailey



Marvin



Crossword Puzzle

CROSSWORD

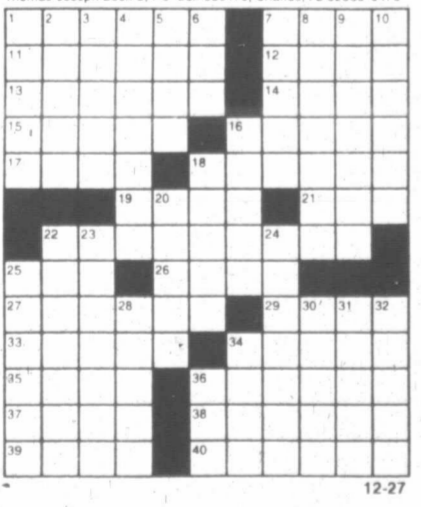
By THOMAS JOSEPH

- ACROSS
1 Giants great
7 Setting
11 Composer's key
12 Cain's brother
13 Larder
14 Greek letter
15 Not heavy
16 DNA shape
17 Otherwise
18 Gambling spot
19 Target
21 — Andreas
22 Six-sided item
25 Bee follower
26 Comfy spot
27 Slipups
29 Ankara native
33 Following
34 Emergency sound
35 Music store section
36 TV's Ray
37 Rational
38 Egg dish
39 Iowa city
40 Disorders
- DOWN
1 Sugar source
2 Modern mes-sages
3 Cod's cousins
4 Busy
5 Legal wrong
6 Attempt
7 Discon-certs
8 Washing-ton Monu-ment, e.g.
9 Eye parts
10 Warning horn
11 School areas
18 Casual eateries
20 One with a title
22 Green shade
23 Posei-don's counter-part
24 Occa-sionally
25 Top quality
28 Monica of tennis
30 Russian range
31 Zellweger of "Chicago"
32 Shoelace problems
34 Any
36 Chip contents, perhaps

MISER CUBIT
UNCLE INANE
STALL GOLAN
TON ALA ARE
END TAR NUT
REAPER ACTS
L S A L L I E
D U S T M I L S A P
A S H D I K H E R
G E E R E A E R A
A D E L E B L E A T
M U T E S L A T T I E
A P S E S E S S E S

Yesterday's answer

NEW CROSSWORD BOOK! Send \$4.50 (check/m.o.) to Thomas Joseph Book 2, P.O. Box 536475, Orlando, FL 32853-6475



Marmaduke



"You've been staring at our holiday wreath up too close again."

The Family Circus



"I really slept in on Christmas morning. Didn't get up till four."

Flo & Friends



Blondie



CH
BR
S
COM
CHI
MER
1/
Tex
BY MAR
ASSOCIATE
Patricia L...
additional b...
improvement...
Antonio h...
bank and...
resource l...
most of the...
Texas: a ho...
credit.
"I don't...
thing we...
Lucero of h...
lauding the...
ment terms...
deductible...
access to the...
It's a fun...
Texas, which...
lending sing...
SABRI
became pro...
quickly as ex...
"We need...
ple." Peluso...
Now, she...
ing is Trav...
opportunity.
"We've d...
disservice...
much on pri...
She points...
branded con...
such as soft...
"If you're...
there's a Co...
and a Pepsi...
you're a Pepsi...
not going to...
because it's...
said.
"Travel is...
personal and...
sion. Why v...
only care abo...
Peluso a d...
said this is w...
Travelocity's...
critical.
"We still h...
opportunity to...
that resonates...
the way tha...
does," she sai...
Communic...
employees w...
important. An...
the company...
employees to...
other compan...
didn't feel Tra...
clear vision.
"Those are...
next generati...
Mr. Hartevel...
said. Leading...
Former...
describe Pelus...
and say her l...
builds stron...
employees a...
innovation.
"I've never...
people more...
someone in r...
Purnima Puri...
analyst with Re

Heard Jones **HEALTH MART**
SPECIALS GOOD THROUGH SAT. JAN. 3rd
 Mon. - Fri. 8 a.m. - 6 p.m. • Sat. 8 a.m. - 5 p.m.
 114 N. Cuyler • Pampa • 669-7478

Health Mart
 PHARMACIES
Free City Wide Prescription Delivery
We Accept All 3rd Party Plans
24 Hour Emergency Service 669-3107



CHECK OUT THESE GREAT AFTER CHRISTMAS CLEARANCE SPECIALS

BREAKFAST SERVED DAILY	COCA COLA, SPRITE OR DR. PEPPER 6-12 OZ. CANS • YOUR CHOICE \$1.39	PUFFS FACIAL TISSUE 108 CT 89¢	KLEENEX COTTONELLE BATH TISSUE 4 ROLL PKG. 89¢	COMPLETE STOCK FASHION JEWELRY 30% OFF RETAIL
COMPLETE STOCK CHRISTMAS MERCHANDISE 1/2 OFF RETAIL	COMPLETE STOCK TOYS 1/2 OFF RETAIL	COMPLETE STOCK PICTURE FRAMES 1/2 OFF RETAIL	SCOTT PAPER TOWELS 89¢	COMPLETE STOCK DESIGNER FRAGRANCES 30% OFF RETAIL

Texas lifts restrictions on home equity loans

By MARK BABINECK
 ASSOCIATED PRESS WRITER

Patricia Lucero, desiring an additional bathroom and other improvements to her San Antonio home, visited her bank and discovered a resource long available in most of the nation but new to Texas: a home equity line of credit.

"I don't think there's anything we didn't like," said Lucero of her new credit line, lauding the flexible repayment terms, low rates, tax-deductible interest and easy access to the cash.

It's a fundamental shift for Texas, which prohibited such lending since its inception as

an independent republic. Barriers quietly disappeared in September and Texas banks started peddling lines of credit against home equity for the first time.

Lucero, for example, said she was unfamiliar with the credit line until she walked into her Bank of America lobby.

With a line of credit, a homeowner can withdraw money based on how much equity they have in a home, essentially the amount they'd receive by selling a home. Unlike with a loan, they can make several withdrawals without penalty and without filing out an application each time money is needed.

Texas' rules remain among the nation's most restrictive: A borrower must have at least 20 percent equity in the home, cannot borrow more than half the homestead's market value and must draw at least \$4,000 each time the line is used.

For example, someone seeking a credit line on a \$100,000 home must owe less than \$76,000 and could borrow no more than \$50,000.

The historic change in Texas banking rules flew under the radar in Sept. 13's constitutional amendment election, dominated by a proposal to reform medical malpractice law. Voters approved Proposition 16, authorizing

credit lines against homesteads, by a two-thirds majority.

"I was at a conference with bankers from all over the country when the subject of home equity lines of credit being brand new in Texas came up," said Stuart Smith, who trains fellow bankers at Bank of America in Dallas. They were surprised the state had just lifted its restrictions, he said.

Some banks immediately began marketing the credit lines, which account for about 90 percent of home equity lending in other states. Standard home equity loans, which are paid back like a mortgage and don't have the flexibility of a credit line, make up the rest.

The only home equity lending traditionally allowed in Texas were home improvement loans. Unrestricted-use home equity loans became legal in 1997, the first chink in prohibitions against such lending started by Republic of Texas President Mirabeau B. Lamar in 1839.

"There was a 19th-century notion that if you allowed people to take second loans that women and children would be thrown on the street," said John Heasley, executive vice president of the Texas Bankers Association.

David Davis, Compass Bank's executive vice president for retail products in Houston, decided to put his

money where his mouth was. He applied for a credit line the morning after the proposition passed and was the first at his bank to get one.

Compass Bank had sensed a major marketing opportunity in the nation's second-most populated state, which has 4.7 million homeowners, including 1.4 million who own outright without a mortgage.

Because most of Compass Bank's employees are lifelong Texans, Davis said they were just as unfamiliar with the new products as their prospective customers.

"We prepared about a three- to four-hour class that everyone except our tellers went through," said Davis, who moved from Florida last year. "The Texas product is a little more complicated than in other states."

Davis said it seems counterintuitive that Texas would be so protectionist when it comes to borrowing on equity.

"One of the things I've learned about Texas is that Texas prides itself on individual liberties," Davis said. "But this is one of those examples of it being more restrictive than the other states."

Texans flocked to banks in the late 1990s when the first home equity loans became available, but Davis said his bank and others aren't seeing that same voracious response this time. Part of the explanation, he said, might be that the proposed amendment was one

of 22 on the September ballot.

There was little or no organized opposition to Proposition 16, though Consumers Union and AARP expressed reservations that some vulnerable homeowners, including the elderly, could get saddled with high-rate loans or exorbitant fees by unscrupulous lenders.

However, Texas comptroller's office figures show that the default rates on home equity lines of credit nationwide last year was only 0.60 percent, compared to 1.3 percent on traditional home equity loans and 3 percent on first mortgages.

Lucero says she's fine with all the restrictions, saying Texans should understand that the 10-minute flurry of signing paperwork to get a line also is authorizing the bank to foreclose if the borrower defaults.

"That's the thing. You can't run out and look at it as extra money," Lucero said. "You have to realize you are paying extra interest on it and you are putting your house up."

CONTINUED FROM PAGE FIVE

SABRE

became profitable twice as quickly as expected.

"We needed all those people," Peluso said.

Now, she said, merchandising is Travelocity's biggest opportunity.

"We've done ourselves a disservice by focusing so much on price," she said.

She points to the power of branded consumer products, such as soft drinks.

"If you're at a deli and there's a Coke for 99 cents and a Pepsi for \$1.39 and you're a Pepsi drinker, you're not going to buy the Coke because it's cheaper," she said.

"Travel is a much more personal and emotional decision. Why would someone only care about price?"

Peluso a diet Pepsi drinker said this is where marketing Travelocity's brand will be critical.

"We still have tremendous opportunity to build a brand that resonates with consumers the way that bottled soda does," she said.

Communicating with employees will be equally important. Analysts note that the company has lost senior employees to competitors and other companies because they didn't feel Travelocity had a clear vision.

"Those are Travelocity's next generation of leaders," Mr. Hartevelt of Forrester said. **Leading the way**

Former colleagues describe Peluso as a visionary and say her leadership style builds strong ties with employees and promotes innovation.

"I've never seen a group of people more dedicated to someone in my life," said Purnima Puri, an investment analyst with Redwood Capital

who served on Site59's board of directors before its sale to Sabre. "I don't think Michelle ever lost a person from her team."

Peluso's management skills were cultivated at a young age. A native of upstate New York, Peluso comes from a family of entrepreneurs. Her father ran an environmental engineering company, and her grandparents spent the last three decades running a hotel in the Hamptons.

That early awareness of what it took to run a business contributes to her driven nature and also helps account for her success at such a young age.

"I grew up so cognizant of what it takes to build a company," she said. "It was a nice counterbalance for me during the Internet craze of starting something and flipping it in two years."

She also learned valuable lessons during a three-year stint as a consultant at the Boston Consulting Group. Peluso recalled a nine-month project that failed.

"We worked hard to come up with the intellectually right answer, but given the personalities in the organization, it just wasn't achievable," she said.

In her Site59 role, Peluso was careful to consider organizational culture issues when implementing ideas.

"She knows how to build a team that marches in the same direction," Puri said.

Travelocity spent the last year retooling its products and its message. The company also upgraded its technology, moving off the system built in the mid-1990s. Analysts say the changes haven't gone far enough to catch up with rivals, but Peluso said more improvements would come out next year.

"We could have changed our hotel technology in one or two months, but we wanted to do it right," she said. "We're building a company that will still be great 30 years from now."

Distributed By The Associated Press

Holiday Clearance SALE
SAVE 50%
 On All Holiday Merchandise
WEST TEXAS LANDSCAPE & GIFT SHOP
 669-0158 • 120 S. HOBART

Special Guest at
Trinity Fellowship Church
Dr. Chuck Pierce
Monday, January 5 • 7:00 pm
 (Childcare will be provided for ages birth to fifth grade)

Dr. Chuck Pierce has been used by God to intercede and mobilize prayer for local churches, cities and nations. He is vice President of Global Harvest Ministries in Colorado Springs, Colorado. Chuck is also President of Glory of Zion International Ministries in Denton, Texas, a ministry that facilitates the vision of other apostolic ministries worldwide. Chuck serves on various national boards of ministries including Generals of Intercession and the International Strategic Prayer Network. He is a member of the International Coalition of Apostles and the Apostolic Council of Prophetic Elders. He has co-authored six books. Chuck and his wife, Pam, live in Denton, Texas with their five children.

Trinity Fellowship
 1200 S. Sumner • Pampa

D
E
C

2
8

2
0
0
3

CALENDAR ITEMS

MEDICAL SUPPORT GROUPS, ETC.

Mommy 'N' Me. A support group for nursing mothers and women needing information on breastfeeding that meets at 10 a.m., the first Monday of each month at Zion Lutheran Church, 1200 Duncan. For more information, call 664-2459.

MSAA. A wide range of free, direct support services is available to local residents suffering from multiple sclerosis through Multiple Sclerosis Association of America. Services include general information, therapeutic equipment, educational literature, national lending library, no-cost MRIs, cool suits, wheelchairs and scooters, support groups and more. For more information, contact MSAA at 1-800-LEARN-MS or access www.msaa.com on the Internet.

MS SOCIETY. The Multiple Sclerosis Society offers a monthly program for people with MS every third Thursday of each month. Some of the topics covered include: "Moving Forward: A Program for People Newly Diagnosed with MS," "When MS Progresses," "Intimacy and MS," "Life after Diagnosis: A Wellness Approach" and much more. A transcript is provided at the site after each program. For more information, call 1-800-FIGHT-MS or (806) 468-7500 or contact the National MS website at www.nmss.org and select Educational Programs.

Muscular Dystrophy Family Foundation. MDFF seeks donations of old or slightly used vehicles for sale by the organization to raise funds to help individuals and families living with muscular dystrophy and other neuro-

muscular diseases covered under the program. MDFF's purpose is to provide wheelchairs, hospital beds, van lifts, breathing machines, clinic services and other items of aid to clients in need. For more information, call 1-800-544-1213.

Music Therapy. Don and Sybil Harrington Cancer Center's Quality of Life Project/Palliative Care Services offers free Music Therapy Sessions at 10:30 a.m. weekly on Wednesdays at the Harrington Cancer Center Quiet Room. Patient and adult family members are encouraged to attend. For more information, call 1-800-274-4673, ext. 291.

Narconon. Narconon, active in the field of drug rehabilitation and education since 1966, provides free professional counseling, evaluation and referral services to internationally recognized alternative and traditional facilities via its hotline and website, 1-800-468-6933 or www.stopaddiction.com. Narconon means "No Drugs."

Open Door AA. Open Door Alcoholics Anonymous at 910 Kentucky (across from Albertson's) meeting schedule — seven days a week — two meetings a day — noon till 1 p.m. and 8-9 p.m. Tuesday and Thursday noon meetings are non-smoking. For more information, call 665-9702.

Open Door Al-Anon. Open Door Al-Anon meets at 8 p.m., Monday and Wednesday each week at 910 W. Kentucky. For more information, call 665-9702. Birthday night begins at 7:30 p.m., the fourth Wednesday of each month.

Open Door Al-Anon Alateen Winners Group. Alateen Winners Group meets

at 8 p.m., Wednesdays at 910 W. Kentucky.

Outreach Health Services/WIC. Outreach Health Services/WIC Nutrition education classes. Open to the public. For more information, call 665-1182.

Panhandle Alliance for the Mentally Ill. A support group for the mentally ill and family members meet the second Tuesday of the month at 7 p.m. at 218 N. Russell. This week we are discussing the negative symptoms of paranoid schizophrenia. There is no charge. For more information or if you need a ride call Sharon King, 665-2818.

Pathways. The Don and Sybil Harrington Cancer Center will offer "Pathways," a four-part support series for those who have lost a loved one, from 1:30-3 p.m. Tuesdays throughout the month. For more information, call Gerry Kelly at (806) 359-4673, ext. 235 or Stan McKeever at (806) 359-4673, ext. 141 or toll-free at 1-800-274-4673.

Planned Parenthood. Planned Parenthood of Amarillo and the Texas Panhandle is now open from 8 a.m.-5 p.m. Monday-Friday, 408 W. Kingsmill Ave., #173-A, in Pampa. For more information or for an appointment, call 665-2291. Planned Parenthood is a not-for-profit health care organization serving women and men in 17 offices covering 26 counties in the panhandle.

Power Wheelchairs. Miracle on Wheels is offering Power Wheelchairs to non-ambulatory senior citizens (65 years and up) usually at no out-of-pocket expense if they qualify. No deposit is required. The chairs are provided to those who cannot

walk and self-propel a manual wheelchair at their home or independent living quarters and who meet additional qualifications of the program. This service may also be available to the permanently disabled of any age. For more information, call 1-800-749-8778 or visit www.durablemedical.com on the World Wide Web.

Prescription Drug Booklet. The Cost Containment Research Institute in Washington, D.C., recently published at 32-page booklet, "Free & Low Cost Prescription Drugs." The revised third edition provides information on how and where to get free and low cost prescription drugs. Consumers can obtain a copy by sending \$5 to cover printing, postage and handling to: Institute Fulfillment Center, Prescription Drug Booklet #: PDF-370, P.O. Box 462, Elmira, NY 14902-0462. The information is also available at www.institute-dc.org.

Princess Warriors. Princess Warriors, a support group for women with gynecologic cancer, meets at 5:30 p.m., the first Tuesday of each month in the Harrington Cancer Center Amphitheater in Amarillo. For more information, call (806) 359-4673 or (806) 934-2364.

Quit Club. The Don and Sybil Harrington Cancer Center will offer the "Quit Club" for smokers from 6-7 p.m., the third Monday of each month at various intervals at the center's Quality of Life Center. For more information or to register for the next session, call 1-800-274-4673, ext. 214.

Rx Program. Rx Program makes available breathing medications and Nebulizers to patients who may have asthma, emphysema or COPD at not cost to qualifying recipients. For more information, call Dennis Karnes toll-free at 1-800-344-5764.

Senior Wheels USA. Senior Wheels USA Program makes available power wheelchairs — at no cost — to senior citizens (65 years and up) and to the permanently disabled. For more information, call toll-free 1-800-246-6010.

SKY Teens. Crown of Texas Hospice is offering SKY Teens, a monthly bereavement series for teens grades 9-12 who are grieving the death of a loved one, from 5:30-7 p.m. the second Monday of each month at its

office at 1000 S. Jefferson in Amarillo. There is no charge for the series. For more information, call 1-800-572-6365.

Texcare. Texcare Partnership is the New Children's Health Insurance campaign developed especially for Texas families with uninsured children, birth through age 18. The following health insurance programs are available: Children's Health Insurance Program, Medicaid and Texas Healthy Kids Corp. For more information, call 1-800-647-6558 or 1-888-892-2273.

T.O.P.S. #41. Take Off Pounds Sensibly (T.O.P.S.) #41 meets at noon Monday at 511 N. Hobart. For more information, call 665-3024.

T.O.P.S. #149. Take Off Pounds Sensibly (T.O.P.S.) #149 meets at 6 p.m. Monday at 513 E. Francis. Call 669-2389 for more information.

Tralee Crisis Center. Women's Support Group for victims of domestic violence offers peer counseling, group support and education on issues resulting from family violence and/or sexual assault from 6:30-7:30 p.m. Thursdays. For more information, call 669-1131.

West Texas Parent Education Network. WTPEN, a program serving West Texas children with disabilities and their parents, is headquartered in Lubbock. Information, technical assistance and training for parents of infants, children and youth with disabilities are available at no charge. A goal of the project is to reach rural and minority parents who have not had access to such services in the past. For more information, call (806) 762-1434 or toll-free at 1-877-762-1435 or write West Texas PEN, 1001 Main St., #804, Lubbock, TX 79401.

YMCA Diabetes Class. Amarillo YMCA is offering new water exercise classes specially-designed for diabetics. Schedule of classes are as follows: 9 a.m., 10 a.m., 2 p.m. and 6 p.m. Mondays; 6 p.m. Tuesdays; 2 p.m. and 6 p.m., Wednesdays; 6 p.m. Thursdays; and 9 a.m., 10 a.m., and 2 p.m. Fridays. Cost is \$4 per class for non-members and \$3 per class with a 10-class punch pass. Y members get in free. For more information, call Cindy Gibson, fitness director, or Junior Garcia, aquatics director, at (806) 374-4651.

EDUCATION, PSAs

ACT. ACT, Inc., education and career planning organization has announced the following do-it-yourself college planning resources on the Internet: www.act.org/fane, www.c3apply.org, www.collegenet.com, www.finaid.org, www.ed.gov/finaid.html and www.fafsa.ed.gov (financial aid sites), and www.bls.gov/ocohome.htm (career planning).

ANIMALPRINTS.COM. AnimalPrints.com has dedicated \$1 from each sale of a newly released series of artist's prints to benefit animals in need. For more information or to view the prints, go to AnimalPrints.com on the Internet.

AIYSE. American International Youth Student Exchange Program is seeking American high school students, ages 15-19, to participate in its foreign exchange program. Students will spend a semester or year with an European family or participate in a 4- to 6-week family stay abroad in the summer. Students are screened by AIYSEP school counselors and educators in local schools. To qualify, students must have evidence of maturity, superior character and knowledge of English and a foreign language. For more information, call 1-800-347-7575 or visit www.aise.com on the World Wide Web.

Arbor Day Foundation. The National Arbor Day Foundation offers a "Tree Planting Resource Kit for Volunteers." The kit is available for \$29.95 plus shipping and handling and includes a leadership guide, a Celebrate Arbor Day guidebook, and a video to help motivate volunteers. For more information, call (402) 474-5655, go online to www.arborday.org, or write: The National Arbor Day Foundation, 100 Arbor Ave., Nebraska City, NE 68410.

AYA. Academic Year in America program is seeking host families for international exchange students between the ages of 15-18 1/2. For more information, call Danielle Carpino at 1-800-322-4678 ext. 5146.

BBB RESOURCE GUIDE. The Better Business Bureau is offering "The Spring BBB Membership Directory and Resource Guide." The publication is available free of charge and includes a listing of BBB member companies as well as businesses who qualify as members and who uphold BBB's standards of ethical practices. The guide also provides tips on how to be better shoppers along with information on current scams. For more information or to obtain the guide, call (806) 379-7133.

CASE. Hosting a high school exchange student is like bringing the world to your doorstep. U.S. Government sanctioned, CSJET listed non-profit educational organization is seeking families of all types; retired couples, couples with children, single parent families and childless couples. Students will be arriving from various countries, ALL of whom speak English. You can choose a male or female between the age of 15 and 18. You will have the support of a LOCAL Area Representative with you throughout the exchange. Students arrive sometime in August (depending on when school starts). Your new son or daughter will attend your local high school for either 5 or 10 months. All students have their own medical insurance. As a host family, you agree to provide room and board and to include your student as a member of your family. For information, contact Joyce toll-free at 877-846-5848.

DID YOU KNOW?



WHITE DEER ISD... is accepting transfer students.

WHITE DEER ISD... is providing transportation from Pampa to White Deer.

For more details on transferring your child call

White Deer ISD
806-883-2311

Celebrate a Great 2004!



NEW Background

\$3.88

WAL*MART Portrait Studio

One Week Only!

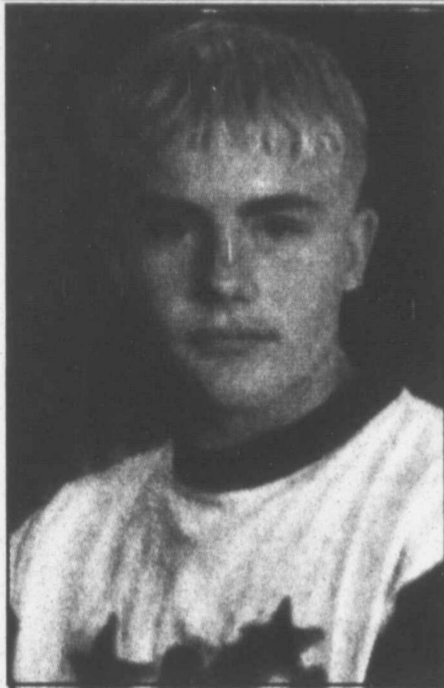
Photographer Hours: 10am-7pm
Photographer will be available these 5 days only:
Friday, January 2 through Tuesday, January 6

PAMPA
N. HOBART STREET

NO SUBJECT FEES OR ADDITIONAL CHARGES. \$3.88 package price good at photography. Free for advertised package our selection. Limit one advertised package per family, please. Up to five additional poses taken for custom collection with no obligation to purchase. All ages welcome (minors under 18 must be accompanied by a parent). Sizes approximate. Backgrounds and props may vary by location. Your choice of available backgrounds, some group limitations apply.

Ce
By
THE
BRAZO
Koenning
Cora Bell
her acquaint
Since tha
persisted to
woman bet
sive. She c
her former
dead and b
century.
Koenning
work with
Cemetery C
mined to fir
came to be
pecan tree
Facilities
Angleton. Th
belonged.
Where dic
No one k
headstone c
John Blanker
tor for the
Attorney's O
first fell into
sometime be
could not rem
"The best
for narcotics v
headstone wa
Blankenship
n't belong t
Intenti
HEMPHI
WALLOW
Dominion C
E&P, Inc., #
1900' from S
West line, Se
PD 12150'.
HEMPHI
& BUFFA
Granite Was
Gas Corp.,
'68', 1900'
1280' from
68.M-1.H&C
HEMPHI
Colleg
The Te
Admission
Education
Annual C
from 10 a.
17, and Su
The Col
largest pro
provides in
ary educat
dents and
may call
number by
ing the pre
Professio
financial a
able to ans
student life
grams.
Happ
INVE
EVE
& W
Retail
C
Hey Lo
HOLIDAY
O
Regular
Kn
Gar
912 S.

NEWSMAKERS



Cole Young

BROWNFIELD — **Cole Young**, son of Pattie and Terry Coonrod of Brownfield, grandson of Wendell and Barbara Palmer of Pampa and Bonnie Young of Lefors, was recently selected for inclusion in the 2003/2004 National Honor Roll.

Young will be listed in a national publication with other National Honor Roll inductees. Induction is based solely upon achievement and merit.

The goal of NHR is to recognize achievements of outstanding students across the United States.

NORMAN, Okla. — **Courtney Marie Lang** of Pampa is among 2003 fall graduates at the University of Oklahoma. She was awarded a bachelor of arts degree.

UPCOMING EVENTS

PCCA

Pampa Community Concert Association's 2003-04 concert series includes the following programs: Lee and Suits Duo - 7:30 p.m., Thursday, Oct. 30, M.K. Brown Auditorium; "Guthrie in Dance and Music" - 3 p.m., Jan. 20, M.K. Brown Auditorium; "The Woods Tea Co." - Feb. 15, Heritage Room, M.K. Brown Auditorium; and Cantus - 7:30 p.m., April 26, Borger High School Auditorium. Memberships/tickets are available at the door. For more information on any of these events, contact Ronnie Holmes, PCCA president, at 665-2631.

OHS/WIC

Stay-at-home moms who would like to work a few hours a week may be eligible for a part-time position as a breastfeeding peer counselor for Outreach Health Services Women, Infants and Children program. Applicants must have a high school diploma or equivalent and a telephone, must have successfully breastfed an infant and must be a current or former WIC client. For more information, call 1-800-200-7121.

TDHS VOLUNTEERS

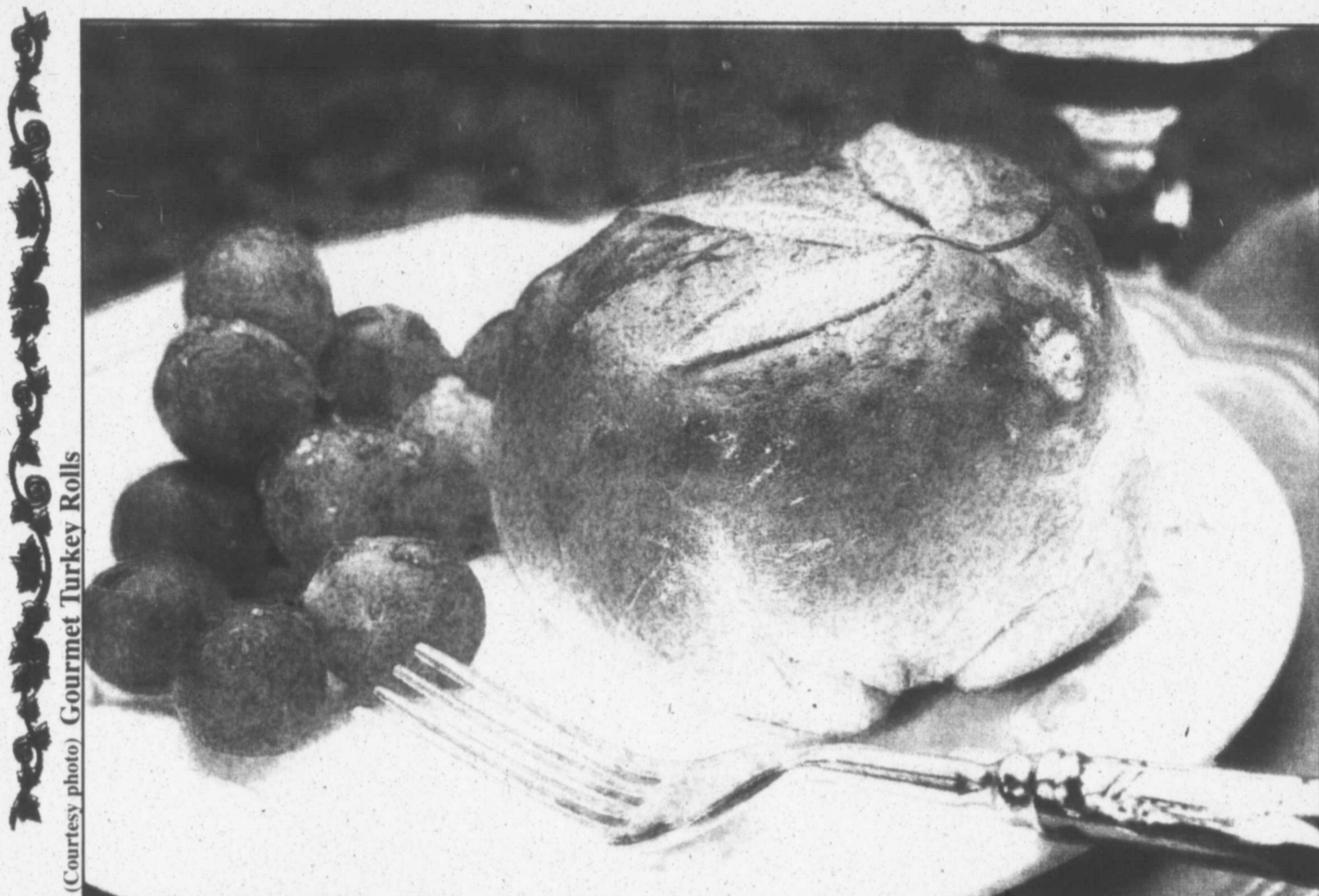
Texas Department of Human Services is seeking volunteers for its Texas Works Services Program. Tasks are varied and placement is based upon the volunteer's interest, capability and availability of openings. Hours are flexible. For more information, contact Beth Miller at 665-1863.

HOGMANAY PARTY

Celebrate the Scottish New Year with League of Celtic Nations from 8 p.m.-12 midnight, Wednesday, Dec. 31, in the Regency Private Party Room at

(More 'EVENTS' Page 22)

Serving up the turkey



(Courtesy photo) Gourmet Turkey Rolls

TURKEY & STUFFING ROLLS

•Ingredients:

12 Rhodes Texas Rolls™ or 24 Rhodes Dinner Rolls™, thawed but still cold
2 cups baked turkey, cubed
2 tablespoons butter, melted
6 ounces cream cheese
1/2 teaspoon thyme leaves
1/2 teaspoon salt
1/2 teaspoon pepper
1 tablespoon minced onion

1 cup herb bread stuffing
1 egg, beaten

Directions: Mix turkey, butter, cream cheese, thyme, salt, pepper and onion. Press each Texas roll (or combine 2 dinner rolls) into a 6-inch circle. Divide filling among the 12 circles. Place filling in the center of each circle and pull edges together to seal. Crush herb bread stuffing into crumbs. Dip each filled roll in egg and roll in crumbs.

Place smooth side up in muffin tins sprayed with non-stick cooking spray. Bake at 350F

between 20-25 minutes or until golden brown. Serve warm.

GOURMET TURKEY ROLLS

•Ingredients:

12 Rhodes Texas™ Rolls or 24 Rhodes Dinner Rolls™, thawed but still cold
2 tablespoons butter or margarine
1/2 cup chopped onion
8 ounces fresh mushrooms, sliced
1/2 pound sausage, uncooked
1/2 teaspoon sage
1/4 teaspoon marjoram

1/8 teaspoon allspice
1 egg, separated
1 pound cooked turkey, cubed
whole sage leaves

Directions: In a skillet, melt butter. Saute onions and mushrooms and set aside. In a bowl, combine uncooked sausage, sage, marjoram, allspice and egg yolk. Mix well. Add turkey and onion mixture.

Combine two Texas rolls or four dinner rolls and flatten into an 8-inch circle, prepare six circles. Divide turkey mixture evenly between the circles. Fold dough over filling and pinch ends together.

Place pinched-side-down on a baking sheet sprayed with non-stick cooking spray. Brush with beaten egg white. Place three whole sage leaves on top, if desired, and brush again. Bake at 375F between 30-35 minutes or until golden brown. Serve warm.



(Courtesy photo)

Turkey & Stuffing Rolls

LIFESTYLES

WEDDINGS

Stowers-Locknane

Mary Celeste Stowers and Grady Tyrel Locknane, both of Lubbock, were wed Saturday, Dec. 20, in First United Methodist Church of Pampa with the Rev. Todd Dyess, of Hobbs, N.M., officiating.

The maid of honor was Ms. Kristen Stowers of Norman, Okla. The matron of honor was Mrs. Mindee Ferland of Pampa. The bridesmaids were Mrs. Shanna Stone of Fort Worth and Ms. Meredith Jumper, Ms. Cortney Locknane and Ms. Chelsea McCullough, all of Lubbock.

The honor attendants were Ms. Tanna Stowers of Pampa, Ms. Teryn Stowers, Ms. Brittany Brazile, Ms. Audra King, Ms. Linley Wagner, Ms. Holly Bennett, Ms. Emily Curtis and Ms. Lindsey Staley, all of Lubbock, Ms. Shayla Keeling of Clovis, N.M., Ms. Courtney Lang of Norman, Okla., and Mrs. Traci Baize of Amarillo.

The best man was Cody Locknane of Pampa. The groomsmen were Joel Ferland of Pampa, Josh Luig and



Mary Celeste Stowers

Randy James, both of Lubbock, and Phil Everson and Mike Smith, both of Lewisville.

Registering the guests were Ms. Amy Spearman of Canyon, Ms. Jaelyn Spearman

Vienna Conspiracy String Quartet of Amarillo, Ms. Meredith Hendricks, vocalist, of Lubbock, and Ms. Roberta Hendricks, pianist, of Pampa.

A reception was held following the service at Pampa Country Club.

The bride is the daughter of Ms. Melinda Spearman Stowers of Pampa and Mr. and Mrs. Keith Stowers of Amarillo and is the granddaughter of Mr. and Mrs. John Spearman, Mr. and Mrs. Vernon Stowers and Mrs. J. Wade Duncan, all of Pampa. She is scheduled to graduate from Texas Tech University in May 2004 with a bachelor of science degree in early childhood education.

The groom is the son of Mr. and Mrs. William Murray Locknane of Pampa and is the grandson of Mr. and Mrs. Edgar Jones of Santa Fe, N.M., and Mr. and Mrs. W.E. Locknane of Clovis, N.M. He is scheduled to graduate in May 2004 from Texas Tech with a bachelor of science degree in cell and molecular biology and a minor in chemistry.

The newlyweds planned to honeymoon in St. Lucia and intend to make their home in Lubbock.

of Pampa, Ms. Joanna Wheeley of Amarillo, Ms. Lee Carmichael of Oxford, Miss., Ms. Rebekah Warner of College Station and Ms. Jessica Morrison of Lubbock. Music was provided by

MENUS

WEEK OF DEC. 29-JAN. 2

Pampa Schools MONDAY-FRIDAY Holiday.

Lefors Schools MONDAY-FRIDAY Holiday.

Senior Citizens MONDAY

Chicken fried steak or chicken ala king/cornbread, mashed potatoes, cream corn, spinach, northern beans, carrot cake or butterscotch pie, slaw, tossed or jello salad, hot rolls or cornbread.

Chicken strips or moch filet mignon, scalloped potatoes, English peas, carrots, beans, devilfood cake or bread pudding, slaw, tossed or jello salad, hot rolls or cornbread.

Roast beef brisket/brown gravy or cook's choice, mashed potatoes, fried okra, California blend, beans,

coconut cream cake or peach/pineapple cobbler, slaw, tossed or jello salad, hot rolls or cornbread.

Closed for holiday.

Catfish/hushpuppies or Swiss steak, potato wedges, broccoli casserole, beans, angelfood cake or tapioca cups, slaw, tossed or jello salad, garlic toast, hot rolls or cornbread.

Chili, salad, cookies. Roast, okra/tomatoes, corn, cake.

Impossible pie, pickled beets, green beans, banana.

Salisbury steaks, peas, carrots, cherries.

Barbecue beef/bun, chips, pork beans, graham crackers.

LIFESTYLES POLICY

1. The Pampa News will not be responsible for photographs used in announcing births, weddings, engagements or anniversaries. We also reserve the right to refuse publication of photographs of poor quality. Photographs cannot be returned unless they are accompanied by a self-addressed, stamped envelope. They may be picked up in the office after appearing in the paper.

2. All information must be submitted by 5 p.m. Wednesday (12 noon Tuesday before a holiday such as Thanksgiving or Christmas), prior to Sunday insertion.

3. Engagement, wedding and anniversary news only will be printed on Sunday.

4. Engagement announcements will be published if the announcement is submitted at least one month before the wedding, but not more than three months before the wedding.

5. Bridal photos and information will not be accepted in The Pampa News office later than one month past the date of the wedding.

6. Anniversary announcements will be published for celebrations only of 25 years or more and will not be published more than four weeks after the anniversary date.

7. Birth announcements will only be published for 0- to 3-month-olds. (See form for more details.)

8. Forms are available from the office 8 a.m. to 5 p.m., Monday thru Friday, or by sending a SASE to The Pampa News, P.O. Box 2198, Pampa, TX 79066-2198.

9. Two anniversary pictures may be placed for a \$25 charge or four extra lines may be added to announcements for \$25 (\$50 for both).

A look back at 2003 arts&entertainment

By The Associated Press

It was a year of extremes — huge Hollywood box office for an animated movie, overnight lines for the latest "Harry Potter" book and record art auction sales for Modigliani and Klimt. But Broadway struggled to find a hit and the "Matrix" franchise tanked.

It was a year of American idols, a body-building action star turned governor and a bizarre superstar who faced

child molestation charges. A year of stolen antiquities and fake millionaires. A year of gay stylists and a little lost clownfish. A year of an exquisite ballerina and a singing ex-drug dealer.

The ailing economy continued to threaten opera and dance companies, symphony orchestras and Broadway. But entertainment and the arts showed their resilience.

ART:

Inspired exhibits and ris-

ing prices for high-end works characterized 2003. But art's biggest story was the looting of priceless antiquities from the Iraqi National Museum.

When U.S. troops left the Baghdad museum unguarded after ousting Saddam Hussein, raiders carted off 14,000 treasures from Mesopotamia's cradle of civilization. Only about 4,000 objects have been recovered despite a worldwide alert.

Acclaimed retrospectives were mounted during the year despite the soaring costs of insuring and transporting loaned works after the Sept. 11, 2001, terrorist attacks — estimated at \$10,000 or more per masterpiece.

Galleries Nationales du Grand Palais in Paris unveiled "Gauguin Tahiti" after four years of curating. London's Victoria and Albert Museum staged the biggest-ever display of art deco. Madrid's Prado unveiled Titian's biggest retrospective in 50 years, and the Netherlands celebrated van Gogh's 150th birthday.

New York's Metropolitan Museum of Art awed the public with shows on Leonardo, Manet-Velazquez and El Greco. The Guggenheim Museum featured Matthew Barney's lusty "Cremaster" happening, and pop art genius James Rosenquist. The Museum of Modern Art was the last stop — after Paris and London — for the stupendous "Matisse Picasso" retrospective, attracting 350,000 visitors to its temporary digs.

Modern works triggered lively bidding at the benchmark fall auctions in New York, where Modigliani's 1917 "Reclining Nude" sold for \$26.88 million at Christie's, and Klimt's 1917 "The Villa at Attersee" fetched \$29.1 million at Sotheby's. Both auctions set records for the artists.

— By David Minthorn, Associated Press Writer.

DANCE:

Despite a grim economy, exciting young companies (See ARTS, Page 18)

WT to host leadership forum

CANYON — The College Talent Search program at West Texas A&M University and the John Ben Shepperd Public Leadership Institute at the University of Texas of the Permian Basin will present a leadership forum for high school students Jan. 9 on the WTAMU campus.

The John Ben Shepperd Public Leadership Institute Student Forum is from 8:30 a.m.-3:30 p.m. in the Agriculture

and Natural Sciences Building. Approximately 75-100 students — primarily juniors — from high schools in Amarillo, Boys Ranch, Bovina, Friona, Hereford and Tulia are expected to attend.

"This forum is an excellent workshop for students who have an interest in learning more about public service and leadership," Julie Arias, director of WTAMU's College Talent Search program, said. "These students will discuss public-affairs issues that impact our local and state communities."

John Ben Shepperd student forums are conducted throughout Texas. They include guest speakers and breakout sessions to develop skills such as goal-setting and communication. The forum also encourages awareness of responsible citizenship.

Welcoming speaker will be Janie Rivas of the Amarillo Independent School District's Board of Trustees. David Terry, associate director of WTAMU's Enterprise Network, will deliver an address, "The Leader Within," during lunch.

John Ben Shepperd served Texas as secretary of state from 1950-52 and as attorney general from 1953-57. He was a long-time advocate of leadership opportunities and public-service training for young people.

The College Talent Search program was devised to identify and assist individuals from disadvantaged or underserved backgrounds who have the potential to succeed in higher education.

For more information about the leadership forum or College Talent Search, contact Montana Hise! at WTAMU's College Talent Search office at 806-651-5350 or mhise!@mail.wtamu.edu.

Bridal Registry... Celeste Stowers • Grady Locknane Amanda Kludt • Erick Anderson Tabitha Lane • Joel Sharp Katrina Pinkerton • Shan Phillips Keely Topper • Jeremiah Downs Julie Marsh • David Radcliff Joys Unlimited 110 N. Cuyler • 665-2515

Fall & Winter Merchandise 1/3 TO 1/2 OFF i'images 123 N. Cuyler • Downtown Pampa Monday-Saturday 10:00am to 5:30pm SALE GOING ON NOW!

Bridal Selection Erin Kerlick ~ Barry Brauchi Celeste Stowers ~ Grady Locknane Amanda Kludt ~ Erick Anderson Amber Ratliff ~ Kurt Jones Lacy Plunk ~ Jason Nolte Julie Marsh ~ David Radcliff On Eagle's Wings 113 N. Cuyler 665-0614

Specially Yours Inside T-shirts & More CHRISTMAS TEXAS STARS HOLIDAY VESTS HOLIDAY SWEATS BRACELETS ORNAMENTS SOY CANDLES TUXEDO RENTAL DECORATIONS KENNETH WYATT CARDS, PRINTS JEWELRY, SHADOW BOXES 15% OFF WITH THIS COUPON 111 W. KINGSMILL AVE.

MARQUEE



SUNDAY, December 28, 2003

to

SATURDAY, January 3, 2004




NTS UNLIMITED HOME ADVANTAGE™

GET UNLIMITED LONG DISTANCE FOR YOUR HOME!*

The Advantage of Local Dial Tone, Unlimited Long Distance, Plus 8 of our most popular calling features!

- Local Telephone Service
- Caller ID Name & Number*
- Call Waiting
- Caller ID on Call Waiting*
- Anonymous Call Rejection
- 3-Way Calling
- Call Forwarding
- Call Return
- Auto Redial

\$45⁹⁵ Monthly*

UNLIMITED LONG DISTANCE calling to the contiguous United States at no additional charge!

NTS COMMUNICATIONS
People Product Price
806-665-0706
1-800-658-2150

www.ntscom.com

*Caller ID Name & Number and Caller ID on Call Waiting services are subject to availability and do not include equipment. The service is available in ZIP codes where service is available. There is no charge for an additional line and is subject to availability. NTS Unlimited Home Advantage™ package does not include emergency services surcharges and our service line charges, separate one-way coverage, and number portability to government-owned lines. Other restrictions and fees may apply. This service is not available in areas where service is not available. The service is not available in areas where service is not available. The service is not available in areas where service is not available. For full details on our service options, refer to the NTS Standard Available Terms and Conditions and Terms on the call. © 2003 NTS Communications. International travel and all other rates are provided upon request. For call rates for Directory Assistance are not included and are priced separately. NTS Communications, NTS Unlimited Home Advantage™ and NTS Advantage Services and associated logo are service marks of NTS Communications.

D
E
C


2
8

2
0
0
3



expecting. expecting the best.

We know the best incubator in the world is a Mother's womb. That's why our physicians and nurses pride themselves on helping "mothers to be" go to term. And when it's time to deliver, you're going to experience personalized care nurtured in state-of-the-art labor and delivery rooms. We're going to help you bring your baby into this world safe and sound. Because Mothers expect it.

The Women's Center  PAMPA REGIONAL MEDICAL CENTER

One Medical Plaza Pampa, Texas 79065 806.665.3721

ENBRIDGE, a leader in the natural gas industry, is currently seeking a candidate for the position of FIELD TECHNICIAN. Selected candidate will be responsible for ensuring the safe and efficient operations of pipelines, compressor stations, dehydration facilities and amine treating facilities.

PHONE IN - MOVE IN
It's not just getting a mortgage... it's building your future.
1-888-883-2086 call today for your Free Pre-approval!
1-888-891-8764 El camino a casa más rápido, más simple, y más conveniente.

Table with columns for Real Estate For The Real World, Pampa-MLS, Amarillo-MLS, For All Your Real Estate Needs, 669-0007, and Visit CENTURY 21 Communities on AOL Keyword: CENTURY 21

Table titled DOUG BOYD MOTOR CO. 669-6062 • 821 WILKS ST. Lists various vehicle models and prices, including 1997 Mercury SABLE, 1997 Buick LESABRE, and 2003 Ford Excursion.

96 Unfurn. Apts. LAKEVIEW Apts, 1-2-3 bedrooms \$99 -first month rent 669-7682. 96 Unfurn. Apts. GWENDOLEN Plaza Apts, 1&2 bdr. Gas / water pd. 3, 6 mo. -1yr. lease. 800 N. Nelson, 665-1875. 1/2 Off Deposit Special.

96 Unfurn. Apts. VERY clean 1 bdr. Appliances, w/d conn. Water & gas paid. References. HUD approved. 665-1346. 98 Unfurn. Houses PICK up rental list from Gray Box on front porch of Lakeview Apartments. Update each Fri.

99 Stor. Bldgs. TUMBLEWEED Acres, self storage units. Various sizes. 665-0079, 665-2450. 102 Bus. Rent. Prop. OFFICE Space for rent, ask about 3 months free rent. 669-6841.

PAM APARTMENTS SENIORS OR DISABLED RENT BASED ON INCOME ALL ELECTRIC 1200 N. WELLS 669-2594. PAMPA MANOR SENIORS OR DISABLED ASSISTANCE AVAILABLE W/D CONNECTIONS 2700 N. HOBART 665-2828.

Quentin Williams, REALTORS Keagy-Edwards, Inc. Selling Pampa Since 1952 669-2522 • 2208 Coffee & Perryton Pkwy.

103 Homes For Sale Twila Fisher Century 21 Pampa Realty 665-3560, 663-1442 669-0007. 103 Homes For Sale Twila Fisher Century 21 Pampa Realty 665-3560, 663-1442 669-0007.

105 Acreage 5 acre tracts on paved road, 2 miles from Pampa. \$2500 per acre, financing available. Call 665-4842. 110 Out of Town Prop. BROOK Hollow (Club) Lake, Memphis, Tx., cap-in & stock for sale. Call aft. 6 p.m. 806-259-2748.

5 ACRES CLOSE TO CITY - Two houses both with three bedrooms, new septic system '98. Water well, 2 baths, central heat and air in one of the homes. Water in the pasture for livestock. MLS 6291. RUSSELL - Well maintained three bedroom home located on corner lot. Vinyl siding on exterior for low maintenance. Recently replaced heat and air. Small basement, utility room, artificial fireplace, double garage. MLS 6264.

ENBRIDGE is currently seeking candidates for the position of PLANT OPERATOR / MECHANIC to perform day-to-day operations and mechanical maintenance activities associated with operating a Cryogenic Gas Processing Plant and natural gas gathering. Specific duties will include: Providing technical knowledge and decision-making capabilities to troubleshoot a variety of natural gas engines and compressors.

115 Trailer Parks TUMBLEWEED Acres, Storm Shelters, fenced, stor. bldg. avail. 665-0079, 665-2450. 120 Autos Quality Sales 1300 N. Hobart 669-0433 Make your next car a Quality Car.

PAMPA REALTY INC. Robert Anderwald.....665-3357 Marie Eastham.....665-5436 Henry Gruben (BKR).....669-3798 Katrina Bigham.....665-4678 Twila Fisher (BKR).....665-3560 Larry Hadley.....662-2779 Melba Musgrave.....669-6292 Jim Davidson (BKR).....662-9021

Bill Allison Auto Sales Quality Used Cars 03 Ford Quad Cab 4X4 \$22,900 02 Chev Tahoe LS \$23,500 XLT 28,000 Miles 28,000 Miles 03 Toyota Tundra SR5 \$21,500 02 Isuzu Axiom \$17,500 14,000 Miles 34,000 Miles 02 Ford Super Crew XLT \$21,900 02 Suzuki Grandvirata \$13,500 20,000 Miles Limited, Leather 02 Dodge Dakota SLT \$16,500 99 GMC Yukon SLT \$16,500 QuadCab 34,000 4X4 47,000 Miles 03 Ford F150 XL \$13,900 99 GMC Suburban SLE \$17,500 8000 Miles 42,000 Miles 00 Ford Quad CabXL \$12,500 24,000 Miles 1200 N. Hobart Bus. PH: 806-665-3992 Pampa, TX 79065 TollFree: 800-658-6336

Becky Bales.....669-2214 Roberta Babb.....665-6158 Danny Whitely.....669-9610 Bobbie Sue Stephens 669-7790 Heidi Chronister.....665-6388 Lois Strate Bkr.....665-7650 Darrel Schorn.....669-6284 Joan Nabry.....669-3201 Linda Burt.....665-5524 Sandra Bronner.....665-4218 Rod Donakson.....669-1720 JUDI EDWARDS GRI, CRS MARILYN REAGY GRI, CRS BROKER-OWNER.....665-3687 BROKER-OWNER.....665-1449 Visit our new site at www.quentin-williams.com E-mail our office at qwr@quentin-williams.com

BUSINESS & SERVICE DIRECTORY Clip & Keep This By Your Phone For A Quick And Easy Reference!

Auctioneer Complete Auction Service ESTATES • LIQUIDATIONS We Hold Auctions Anywhere - Anytime BONDED & LICENSED FOR YOUR PROTECTION Lyndon Loyd Auctioneers WHEELER, TEXAS 806-256-5850 (7119)

Cell Phones DOBSON CELLULAR SYSTEMS Call Today 2131 Perryton Parkway 806-665-0500

Construction RASCO CONSTRUCTION 1000 S. Price Road 806-665-0042 Call Us For A Free Estimate Overhead Doors Steel Frame Carports Residential Doors Commercial Doors Garage Openers Custom Storage Buildings Sales & Service

Insurance ALLISON AGENCY Helen & Tyler HOME • AUTO • LIFE 623 W. Foster, Pampa, Tx. 665-6815 GERMANY SINCE 1896

Tile • Carpet • Flooring Kitchen & Bathroom Carson Tile Tom Carson - Owner Carpet & Ceramic Tile Wood & Laminate Flooring Showers & Countertops Kitchen & Bathroom Specialist 419 E. 10th • Borger, Tx 806-274-6084 mobile 806-679-0215 Open Mon. thru Fri. 9am-5pm Sat. 9am-noon or late by appointment

Title Company GRAY COUNTY TITLE CO., INC. Edith Hill • Manager Abstracts • Title Insurance Escrow Closings 806-665-8241 408 W. Kingsmill Suite 171-A Pampa, Texas

DECEMBER 28 2003

