

THE PAMPA DAILY NEWS

Published evenings except Saturday and Sunday morning by Pampa Daily News, Inc., 322 West Foster, Pampa, Texas.

GILMORE N. NUNN, General Manager
 PHILIP R. FOND, Business Manager
 OLIVY H. HINCLE, Managing Editor

MEMBER OF THE ASSOCIATED PRESS—Full Leased Wire. The Associated Press is exclusively entitled to the use for publication of all news dispatches credited to or not otherwise credited in this newspaper and also the local news published herein. All rights for re-publication of special dispatches herein also are reserved.

Entered as second-class matter March 15, 1927, at the postoffice at Pampa, Texas, under the Act of March 3, 1879.

SUBSCRIPTION RATES OF THE PAMPA DAILY NEWS
 By Carrier in Pampa
 One Year \$6.00 One Month \$.60
 Six Months \$3.00 One Week \$.15

By Mail in Gray and Adjoining Counties
 One Year \$5.00 Three Months \$1.50
 Six Months \$2.75 One Month \$.50

By Mail Outside Gray and Adjoining Counties
 One Year \$6.00 Three Months \$2.10
 Six Months \$3.75 One Month \$.75

NOTICE—It is not the intention of this newspaper to cast reflection upon the character of anyone knowingly and if through error it should, the management will appreciate having attention called to same, and will gladly and fully correct any erroneous statement made.

Telephone 686 and 687

AND THE "GILMER" ALSO

Texas names are prominently associated with President Roosevelt's vacation. The cruiser "Houston," on which the President is traveling, is named after the city of Houston, as everybody knows, and that city, of course, was named for Sam Houston. But the destroyer "Gilmer," which took the President to the "Houston," and from which the newspaper men reporting the trip are sending their dispatches, also bears a name associated with Texas.

The town of Gilmer, as all Texas school boys know, is the county seat of Upshur county. And that circumstance commemorates the tragic deaths of two members of President Tyler's cabinet at the time negotiations for the annexation of Texas were in progress. Gilmer was secretary of the navy and Upshur was secretary of state. They and three other persons were killed by a premature explosion of a pivot gun on board the naval vessel "Princeton" during an official inspection early in 1844. Both of them were strong advocates of the annexation of Texas and had much to do with influencing President Tyler to undertake to bring it about at a time when it seemed politically impossible.

Thomas Walker Gilmer was a distinguished son of Virginia, which State he served in many capacities. He was one of its members of congress at the time he entered Tyler's cabinet, and before that he had been governor. He was greatly interested in Texas during the colonial period, and after it attained independence and sought annexation to the United States he became an ardent advocate of annexation. It was a published statement of his favoring annexation that brought an expression from Andrew Jackson supporting it that figured in the move to pledge the democratic party to annexation and present the nomination of Martin Van Buren for the presidency in 1844. He and Upshur were both known to be true friends of Texas when Texas needs friends, in recognition of which a Texas county and its county seat were named in their honor.

It is fitting, therefore, that the "Gilmer" should accompany the "Houston" as it bears the president of the United States on a much needed vacation trip.—The Texas Weekly.

CROWS
 Tiffin, O.—Elmer Clemens's 4 pe crows helped a lot in luring the wild crows he likes to hunt. Now their voices are giving out and the owner's solution was to record the cries on a phonograph record. Clemens was noncommittal about the phonograph's first trial.

MORE CROWS
 WILLIAMSTOWN, Mass.—Crows have been flying down on the fair-ways and stealing golf balls from the Taconic club course. Some golfers are threatening to carry shot-guns in their bags.

Read The NEWS Want-Ads.

YOU ALWAYS HAVE SUCH DELIGHTFUL SUMMER LUNCHEONS

REALLY...MY NORGE SHOULD GET THE CREDIT FOR THAT!

It Can't Be JUST AS GOOD as Norge Unless It Has ROLLATOR MECHANISM

THE ROLLATOR
 —Only in Norge do you get dependable, lifetime, Rollator Refrigeration.

NORGE Rollator refrigeration

NORGE SALES COMPANY
 A. R. MILLER, Mgr. 214 N. Cuyler St.

NOTICE TO THE PUBLIC!

ANNOUNCING THE REMOVAL OF THE PAMPA BUS TERMINAL

To Our **NEW LOCATION**

At **112 SOUTH RUSSELL ST.**

(Across the Street from Schneider Hotel)

Phone 871 Roy Quinn, Mgr.

OUT OUR WAY By WILLIAMS



Two Teams Will Play For Prizes At Club Sunday

Team play will be featured at the Pampa Country club Sunday afternoon when Clarence "Chinch" Barrett and Art Swanson will select terms and play for a surprise prize. The prize will cost each member of the losing team 25 or 30 cents.

Local golfers desiring to take part in the tournament should register with Del Love by noon Sunday. They may telephone Mr. Love at 9012 if they will not be out of the course before that hour. Play will begin at 1:30 o'clock over 18 holes. At the same time, players with handicaps will compete in an 18 hole medal handicap tournament. To be eligible to compete in that class, a player must have five 18-hole scores recorded with Mr. Love. A small entry fee will be charged and prizes will be awarded the three winners. Players may enter both contests.

ALL SQUARE
 JOHNSON CITY, N. Y.—Rev. Fred E. Lott has paid his debt to the Rev. Cornelius Sweet of Orange City. The latter received the former into membership in the Methodist Episcopal church in 1892. Yesterday, the Rev. Lott officiated at the wedding of the Rev. Sweet, 92, and Mary Jackson Jones, 77.

WHEELER COUNTY RECORDS
 List of filings for Wednesday, July 11:
 ROL—A. S. Martin to H. E. Toles et al, NW 1-4 of SE 1-4 section 101, block 23.
 TOL—Frank F. DuBose to A. S. Martin, NW 1-4 of SE 1-4 section 101, block 23.
 MD—J. M. Noel to M. C. Overton Jr., 1-64 interest W 1-2 of SW 1-4 section 46, block 24.
 MD—Leta Gregg and Leon Harvey to Watson B. Jones, NE 1-4 section 72, block 13, 1-8 interest. (Furnished by Title Abstract company, Wheeler, Texas.)

Mr. and Mrs. M. M. Cushing of Borger were Pampa visitors yesterday.

Read The NEWS Want-Ads.

Political Announcements

The Pampa Daily NEWS is authorized to announce the candidates of the following subject to the Gray County Democratic primary of July 28, 1934:

For Commissioner, Precinct No. 1—
 OLEM V. DAVIS
 A. (ARLIE) CARPENTER
 EDWARD J. GETHING.

For Commissioner, Precinct No. 2—
 JOHN HAGGARD (second term), LEWIS O. COX
 HENRY W. OVERALL

For Commissioner, Precinct 3—
 H. G. McCLESKEY,
 THOS. O. KIRBY

For Justice of Peace, Precinct 2, Place 2—
 E. P. YOUNG,
 HARRY SCHWARTZ

For Justice of the Peace, Precinct No. 2, Place 1—
 W. T. JESSE,
 JAMES TODD JR.

For County Clerk—
 CHARLIE THUT
 J. V. NEW.

For County Tax Assessor-Collector—
 E. E. LEECH,
 EDWIN G. NELSON,
 T. W. BARNES

For Constable, Precinct 2:
 JIM M. KELLER,
 FRANK JORDAN,
 O. E. WASSON,
 H. S. SHANNON

For County Superintendent—
 W. B. WEATHERED,
 JOHN B. HESSEY

For County Treasurer—
 D. R. HENRY.

For Sheriff—
 MRS. C. E. PIPES,
 J. I. DOWNS,
 J. F. MEERS,
 R. B. STOUT,
 EARL TALLEY,
 JOHN V. ANDREWS.

For County Judge—
 C. E. CARY (second term),
 J. P. WEHRUNG.

For County Attorney—
 SHERMAN WHITE

District Clerk—
 FRANK HILL (second term),
 W. S. BAXTER.

For District Judge—
 W. R. EWING

For District Attorney—
 LEWIS M. GOODRICH,
 E. P. RITCHIEY, Miami.

State Representative—
 JOHN PURYEAR, Wellington,
 EUGENE WORLEY, Shamrock,
 PHILIP WOLFE, Pampa.

MAJOR LEAGUE LEADERS

By The Associated Press.
 (Including yesterday's games.)
 American League.
 Batting: Manush, Senators, .403; Gehring, Tigers, .377.
 Runs: Gehring, Tigers, 77; Bob Johnson, Athletics, 72.
 Runs batted in: Gehrig, Yankees, 93; Cronin, Senators, 73.
 Hits: Manush, Senators, 131; Gehring, Tigers, 113.
 Doubles: Manush, Senators, 29; Gehring, Tigers, and Averill, Indians, 28.
 Triples: Manush, Senators, 10; Chapman, Yankees, 9.
 Home runs: Fox and Johnson, Athletics, 26.
 Stolen bases: Werber, Red Sox, 20; Fox, Tigers, 17.
 Pitching: Gomez, Yankees, 14-2; Masberry, Tigers, 10-1.
 National League.
 Batting: Tamm, Giants, .369; Leslie, Dodgers, .353.
 Runs: Vaughan, Pirates, 70; Medwick, Cardinals, 69.
 Runs batted in: Ott, Giants, 86; Collins, Cardinals, 69.
 Hits: Medwick, Cardinals, and Allen, Phillies, 114.
 Doubles: Urbanski, Braves, and Allen, Phillies, 11.
 Triples: Medwick and Collins, Cardinals, 9.
 Home runs: Ott, Giants, 21; Klein, Cubs; Berger, Braves, and Collins, Cardinals, 19.
 Stolen bases: Martin, Cardinals, 12; Bartel, Phillies, 10.
 Pitching: J. Dean, Cardinals, 15-3; Bush, Cubs, 11-3.

Texas Tech Youth Defeated in Finals Of Checker Meet

DALLAS, July 13. (AP)—Proving that checkers is not an "old man's game," two youth battled through a ten-game final in the Texas checker tournament here today, with LeRoy Roberson of Dallas retaining his title by a one-game margin. He won from B. C. Stanphill, Denton, student of Texas Technological college at Lubbock. Roberson is 25 years old; Stanphill, 21. The organization decided to hold next year's tournament in Dallas in July. All officers were re-elected.

CHINESE STUDY WAR CLOUDS

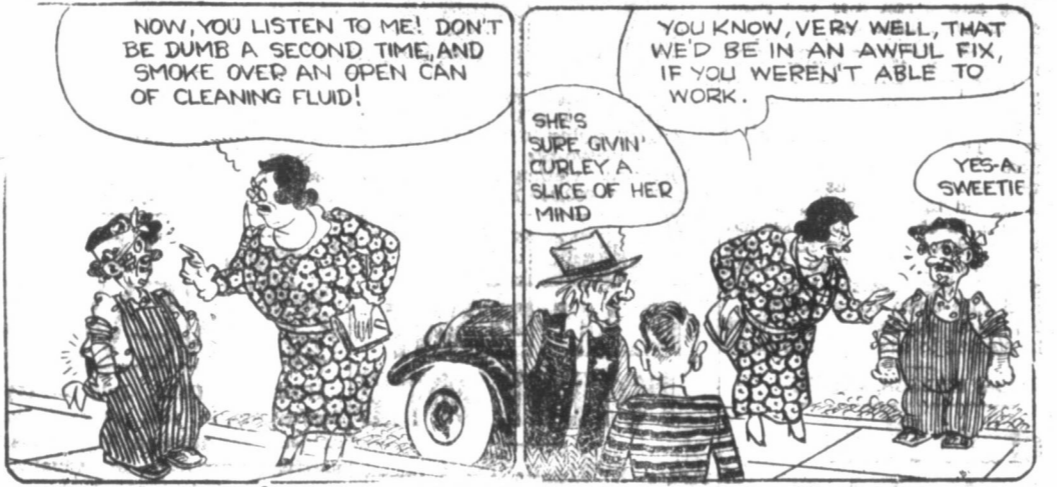
BEIJING (AP)—The Institute of 1936" has been started by students of the national university here to study international trends, which they see leading to a possible world war on expiration of the London naval treaty.

We Repair Your Shoes

By The **Goodyear** **West Shoe Repairing System**

CITY SHOE SHOP
 104 1/2 West Foster

THE NEW FANGLES (Mom'n Pop)



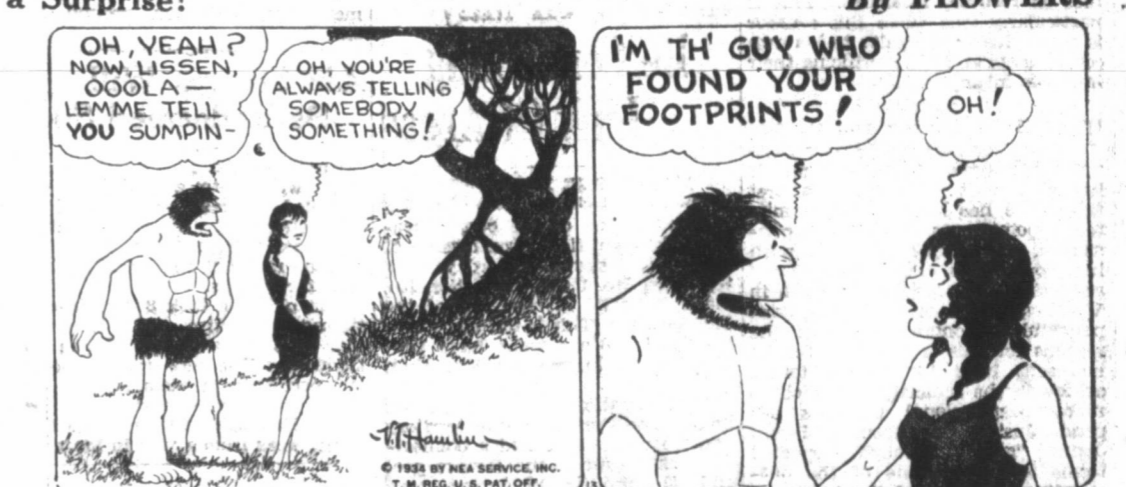
One Time, More or Less!



ALLEY OOP



Oola Gets a Surprise!



OH, DIANA!



Ample Dividends



SCORCHY SMITH Ready for Anything



IT'S THE SAVING ON EVERY ITEM THAT COUNTS
STANDARD
FOOD MARKETS
 Wholesale "SELLS FOR LESS" Retail

BANANAS Standard's Quality Saturday only. **LB. 5¹/₂C**

TOMATOES Large firm 1st grade pink to red. **LB. 7C**

WINE SAP Fancy, to cook or eat. **DOZ. 24C**

POTATOES NEW Fancy Red Triumph. **6 Lbs. for 13C**

WATERMELONS Far Sat

OUTSTANDING GROCERY VALUE

MEAT & PRODUCE PRICES ARE FOR FRIDAY AFTERNOON, SATURDAY AND

STANDARD'S QUALITY MAKE IT A PLEASURE TO

JEWEL SHORTENING
 Jewel, the South's favorite Shortening
8 LB. 61c
 PAIL

RED STAR PROTECTED FLOUR
 BEST SHORT PATENT ALL-PURPOSE FLOUR
24 LB. SACK 93c

FLOUR - FLOUR - FLOUR!
 Pillsbury, Great West or Gold Medal
48 LBS. \$1.96 **24 LBS. \$1.03**

CLOVERBLOOM BUTTER
 Doll Furniture Cutouts in every carton
LB. 23c

ROYAL GELATINE
 Try the new unsweetened ROYAL ASPIC with its meat flavor for jellied soups, salads, vegetables, etc.
2 BOXES 11c

FOR ICED TEA
 Try "TENDER LEAF" You'll Like It!
 A Chase & Sanborn Product
LARGE PKG. 29c **SMALL PKG. 16c**

PEACHES CHERRIES APRICOTS SPINACH
 (8 OZ. BUFFET SIZE FANCY CANNED GOODS)
2 CANS FOR 15c

"FLY-DED" SPRAY
 Kills a room full while you swat one
PINT 21c **QUART 37c**

BLOCK SALT Carried in Stock at Stores 2, 3, 4 only.
 Morton's Sulphurized **50 LB. 48c** Morton's Plain **50 LB. 38c**

STORE NO. 1—PAMPA
 110-12 So. Cuyler St.
PHONES 342-343
 STORE NO. 2—PAMPA
 302-04-06 So. Cuyler St.
PHONE 727
 STORE NO. 3—LEFORS
 Economy Grocery Location
PHONE NO. 1
 STORE NO. 4—MCLEAN
 Corner 1st & Main
PHONE 30

PRUNES Northwestern packed fresh Italian **GAL. 28c**

BLACKBERRIES Fine for pies **GAL. 41c**

PEACHES Yellow cling pie fruit **GAL. 41c**

CHERRIES Sour red pitted **GAL. 46c**

MORTON SALT VALUES
 Plain or Iodized in Round Shaker Boxes **BOX 9c**

MORTON'S ICE CREAM SALT
 10 sack **17c** 5 lb. box **9c**

CORN MEAL Fresh fancy cream **20 Lb. sack 48c**

KOKOHEART Armour's butter substitute **LB. 15c**

MATCHES These will strike **6 Box carton 26c**

PICKLES Whole Sour or Dill in Glass Jars **QT. 17c**

Chase & Sanborn's DATED COFFEE
 "It's in the Bag"
LB. 26c

PALMOLIVE SOAP Toilet Soap, new low price **3 Bars for 14c**

SOAP Giant Size, T. N. T. or Big Ben—The yellow soap that won't chap **6 bars 21c**

POTTED MEAT All first grade **3 Cans for 11c**

VIENNA SAUSAGE All first grade **2 Cans for 15c**

W. P. OIL BASE SALAD DRESSING
PT. 14c **IN GLASS QT. 22c**

RAISINS Thompson Seedless **4 Lb. Bag 32c** **2 Lb. Bag 18c**

BROOMS A four-tie good sweeper value **EACH 31c**

K. C. BAKING POWDER **50 OZ. CAN 29c** **25 OZ. CAN 19c**

SOAP CHIPS Economy clean up **5 Lb. Box 23c**

TOILET TISSUE Standard Food Product
3 LARGE ROLLS 19c

Wilson's, Dold's or Armour's Cornfed Baby Beef

STEAKS

FAMILY STYLE UNIFORM CUTS **LB. 6³/₄c**

CENTER CUT CHUCK OR 7 **LB. 12¹/₂c**

CENTER CUT LOIN STEAK **LB. 14¹/₂c**

SHOULDER ROUND STEAK **LB. 15¹/₂c**

CHOICE CUT SIRLOIN **LB. 17¹/₂c**

CENTER CUT ROUND STEAK **LB. 25c**

CHOICE BEEF TENDERLOINS **LB. 35c**

FRESH KILLED PORK

Small Shoulders Shank 1/2 only **LB. 9¹/₂c**

Center Cut Pork Shoulders **LB. 12¹/₂c**

End Cut Pork Shoulders **LB. 10³/₄c**

Small Fresh Hams, 1/2 or whole **LB. 18¹/₄c**

Center Cut Fresh Ham **LB. 21¹/₂c**

SLAB BACONS
 End cuts or 1/2 or whole slab.

Wilson's Korn King Not too heavy **LB. 18³/₄c**

Wilson's Korn King Light average **LB. 21¹/₂c**

ARMOUR'S STAR **LB. 22¹/₂c**

WILSON'S CERTIFIED **LB. 23¹/₂c**

CURED HAMS

Either End large size as cut and displayed **LB. 9³/₄c**

MORRELL'S EUREKA 1/2 OR WHOLE **LB. 19¹/₂c**

PRIDE, 1/2 or Whole or Premium, whole only **LB. 20³/₄c**

WILSON'S CERTIFIED 1/2 OR WHOLE **LB. 21c**

CENTER SLICES TO FRY OR BAKE **LB. 22¹/₂c**

BULK SNOWDRIFT
 Carried in Stock at Store No. 1 Only
3 LBS. 29c

All poultry is weighed to you dressed—Select your fowl alive if you wish—Drawn Free!

DUCKS & GESE
 FANCY FULL FEATHER **LB. 13¹/₂c**

SAUSAGE OR HAMBURGER ground fresh daily in our own markets **3 Lbs. 25c**

SPARE RIBS Small fresh lean and meaty **LB. 10³/₄c**

CHOPS Center cut pork **LB. 15¹/₂c** End cut pork **LB. 12¹/₂c**

LIVER Fresh Baby Beef **LB. 10¹/₂c** Fresh Young Pig **LB. 8¹/₂c**

YOUNG SPRING LAMB

Shoulder Roast **LB. 14¹/₂c** **Leg of Lamb** **LB. 19¹/₂c** **Lamb Chops** **LB. 20c**

SMALL CHOPS **LB. 35c**

STEW MEAT Fresh lean and meaty **LB. 3¹/₂c**

PIG LINKS Dold's Niagra brand fancy breakfast **LB. 19¹/₂c**

HORSE RADISH Dold's Niagra Pure **2 Bottles for 25c**

SLICED COLD MEATS

Liver **LB. 25c** **Baked Ham** **LB. 38c** **Baked Ham** **LB. 45c**

We handle a complete line of fancy Kosher, Italian and German Salami and Cold Meats

LEAN MEATS Wilson's or Dold's fancy sugar cured **LB. 23¹/₂c**

SWISS CHEESE Genuine imported with big holes **LB. 55c**

BACON SQUARES Sugar cured 1st grades **LB. 12¹/₂c**

BRAINS Fresh not Frozen **LB. 10¹/₂c**

CHEESE Kraft's Velvete Brk. American and Pimento **1/2 LB. Pkg. for 16¹/₂c**

CHEESE Kraft's fancy old English flavor **1/2 LB. Pkg. for 20c**

CHEESE Kraft's all kinds in fancy wine glasses **GLASS 18c**

LONGHORN CHEESE
 FANCY FULL CREAM NORTHERN STOCK—STRICTLY FRESH **LB. 15¹/₂c**

DRIED BEEF All first grades, 1/4 lb. cellophane **2 Pkgs. 25c**

PICKLES Large bulk sour or dill **EACH 5c**

CHEESE Cottage cheese fresh arrivals each day **LB. 12¹/₂c**

POULTRY DEPARTMENTS
 THESE PRICES ARE FOR SATURDAY ONLY

HENS ALL SIZES FANCY **LB. 14¹/₂c**

FRYERS ALL SIZES FANCY **LB. 20¹/₂c**

Wilson's, Dold's or Armour's Cornfed Baby Beef

RO

SHORT RIBS Boil or Bake

FIRST CUTS OF CHUCK

ROLLED ROAST Plain or Seasoned

CENTER CUT CHUCK ROAST

CHOICE CUT ARM ROAST

Veal Forequarter or Beef Prime

CHOICE CUT RUMP ROAST

SLICED

DOLD'S ECONOMY

DOLD'S SUNFLOWER

DOLD'S STERLING

Morrell's Air S or Wilson's Spe

SLICED

ARMOUR'S BANQUET

Certified, Star or Niagra Fancy

SWIFT'S PREMIUM

DOLD'S NIAGRA

LUNCHEON

LARGE FRANKS

SMALL HOT DOG WEINERS

SLICED BOLOGNA

MINCED HAM

ASSORTED LUNCHEON MEAT

PURE B
 Carried in Stock at **6 LBS FOR**

STE

THESE ARE FI
 SERVED WITH **DUMPLINGS**

LB.

LONGS Fancy red ripe, Saturday only LB. 2c

13c SUNKIST LEMONS Large size, full of juice. DOZ. 31c

LARGE LETTUCE HEAD 5c Firm, crisp & green.

NEW CROP ORANGES Large, full of juice. DOZ. 21c

WHITE ONIONS Fancy crystal wax. LB. 5c

THIS AD IS WRITTEN IN CONFORMITY TO THE NEW RETAIL FOOD AND GROC. MERY CODE.

ALUES All this Week!

DAY AND MONDAY ONLY

MEATS TO EAT!

Wilson's, Dold's or Armour's Cornfed Baby Beef

ROASTS

SHORT RIBS to Boil or Bake LB. 6¹/₂c

FIRST CUTS OF CHUCK LB. 8¹/₂c

ROLLED ROAST Plain or Seasoned LB. 10¹/₂c

CENTER CUT CHUCK ROAST LB. 11¹/₂c

CHOICE CUT ARM ROAST LB. 13¹/₂c

Veal Forequarters or Beef Prime Rib LB. 15c

CHOICE CUT RUMP ROAST LB. 16¹/₂c

SLICED BACONS

DOLD'S ECONOMY LB. 14¹/₂c

DOLD'S SUNFLOWER LB. 16¹/₂c

DOLD'S STERLING LB. 19¹/₂c

Morrell's Air Ship or Wilson's Special LB. 22c

SLICED BACONS

ARMOUR'S BANQUET LB. 24¹/₂c

Certified, Star or Niagra Fancy LB. 27¹/₂c

SWIFT'S PREMIUM LB. 29c

DOLD'S NIAGRA 5 lb. \$1.28

LUNCH MEATS

LARGE FRANKS LB. 12¹/₂c

SMALL HOT DOG WEINERS LB. 14¹/₂c

SLICED SOLOGNA LB. 13¹/₂c

MINCED HAM LB. 16¹/₂c

ASSORTED LUNCH MEAT LB. 20¹/₂c

PURE BULK LARD Carried in Stock at Stores 2, 3 & 4 Only 6LBS. 34c FOR

pick the Fowl—We pick the here's—No guessing, yes Standard Quality.

STEWERS THESE ARE FINE SERVED WITH DUMPLINGS LB. 6³/₄c

TOMATOES No. 1 Standard Packed 3 Cans 17c

SWEET CORN No. 2 Standard pack 2 Cans 19c

GREEN BEANS No. 2 Cut Green 2 Cans 19c

CORN FLAKES Miller's Crispy Fresh Toasted 2 BOXES 17c

TOMATOES No. 2 Standard Packed 3 Cans 27c

GOLDEN CORN No. 2 Yacht Club 2 Cans 25c

TOMATO JUICE Beech-Nut, Tall 3 Cans 23c

TOMATO COCKTAIL Van Camp's Tall Giant Size CAN 13c

ELASTIC STARCH Hot Starch in 30 seconds USE IT HOT OR COLD BOX 9c

PORK & BEANS No. 1 Tall Size CAN 5c

SALMON No. 1 Tall Alaskan pink 2 Cans 27c

GRAPE JUICE Quench summer thirst PINT 16c

CRACKERS Delicious Dairy Sailed 2 lb. 19c

WHITE KING GRANULATED SOAP LARGE BOX 29c SMALL BOX 5c

PINEAPPLE No. 2 Fancy Crushed or Matched Slices 2 Cans 31c

CHERRIES No. 2 Sour Red pitted 2 Cans 29c

BLACKBERRIES No. 2 northern cultivated 2 Cans 23c

PEACHES No. 2 1/2 White Swan Deluxe halves in heavy syrup CAN 18c

CLEAN QUICK SOAP CHIPS A Procter & Gamble Product HIGH QUALITY GIANT SIZE BOX 5LB. 29c

SCOTCH OATS or ALTON Brands small size, quick cooking 2 Boxes 11c

ALTON OATS Brand Quick Cooking Rolled oat, large size 2 Boxes 25c

CRYSTAL WEDDING OATS Large size with glassware in every box BOX 17c

QUAKER OATS Brand Oats Quick Cooking Large Size BOX 18c

TOILET SOAP CAMAY the soap of beautiful women The Soap of Beautiful Women BAR 5c

CABBAGE New crop all sizes fancy solid green heads LB. 3c

VEGETOLE SHORTENING IN CARTONS 8LBS. FOR 59c FOR THE CHILDREN TOY CIRCLES CUT-OUTS IN EVERY CARTON

ARMOUR'S BRAND VERIBEST MILK 3 TALL OR 6 SMALL CANS 17c

PURE CANE SUGAR In Sanitary Cloth Bags 10LB. 55c SACK POWDERED OR BROWN IN ONE LB. CARTONS 2 Boxes for 15c

FLOUR PRIDE O'KEENE, KANSANA OR HEART OF GOLD Carried in Stock at Stores 2, 3, 4 only 48 LBS. \$1.69 24 LBS. 89c

IT'S BEVERAGE TIME Par-T-Pak Lime Rickey, Rum's Dry Pale Ginger Ale or "Upper 10" Lithiated Lemon Soda YOUR CHOICE BOTTLE 10c

SURE-JELL For Making Jellies & Jams A Certo Product 2 PKGS. FOR 25c

CHIPS Rich suds That Last Quick suds that last BOX 19c

OXYDOL For general household use BOX 23c

P & G LAUNDRY SOAPS REGULAR 10 BARS 25c GIANT 6 BARS 21c

BRAN CARRIED IN STOCK AT STORES 2, 3, 4 ONLY 100LB. SACK \$1.23

IT'S CANNING TIME!

FRUIT JARS Regular KERR-MASON PINT SIZE DOZ. 69c QUART SIZE DOZ. 84c 1/2 GAL. SIZE DOZ. \$1.03

Preserves, Jellies and Jams, fruits and Vegetables you put up now will taste mighty good this winter.

CERTO Quick, easy, sure BOTTLE 29c Bulk apple cider GAL. 25c

VINEGAR New live rubber DOZ. 5c

RUBBERS To fit old rings DOZ. 14c

JAR LIDS Both Lds. & rings DOZ. 29c

JAR CAPS Both Lds. & rings DOZ. 29c

TOILET TISSUE 650 SHEET ROLL LILLY'S 1 1/2 LB.

SALT MONARCH ALL FLAVORS WHITE KING

GELATINE ARMOUR'S COCOA HARDWATER

TOILET SOAP DOUBLE ACTION CLEANSER

SOAP SPAGHETTI, OR VERMICELLI, 7 OZ.

SUNBRITE

MACARONI

ROLL YOUR CHOICE BOX BOX BAR BAR CAN CAN 5c

SODA ARM & HAMMER BAKING SODA NO. 1 TALL SEAVIEW 12 OZ. FAULTLESS USE HOT OR COLD

MACKEREL GRANULATED Made By B. T. Babbitt

STARCH ALUMINUM CLEANSER Box contains 5 oiled pads & Soap

HOOVER LYE BEADS OF SOAP

BRILLO NO. 1 TALL COOKED IN CHEESE & TOMATOES

SUPER SUDS

SPAGHETTI

LB. BOX YOUR CHOICE CAN CAN CAN CAN CAN 9c

SCHILLINGS TEA Orange Pekoe, Ice Tea Blend 1/2 LB. 36c 1/4 LB. 19c

COFFEE Serve it Iced—Besides being Delicious in Taste it is refreshing and invigorating.

BLISS, a Maxwell House product LB. 24c

SCHILLINGS, both plain and drip LB. 31c

FOLGERS, both plain and drip LB. 32c

HERSHEY'S COCOA BREAKFAST COCOA SERVE IT ICED LB. 17c

GREENS NO. 2 MUSTARD OR TURNIP GREENS 2 CANS

BEANS MED. WAPCO MEXICAN STYLE IN CHILI SAUCE 2 CANS

DOG FOOD FOR DOGS AND CATS 2 CANS

COFFEE BREAK O' MORN PKG. LB.

SPINACH NO. 2 TEXAS GROWN AND PACKED 2 CANS

RICE FANCY FULL HEAD 3LB. PKG.

BEANS MED. WAPCO BABY LIMA 3 CANS

YOUR CHOICE 19c

HERSHEY'S COCOA SMALL SIZE 1 1/2 OZ. SIZE YOURS TRULY

BLACK PEPPER LONG HANDLES

FLY SWATTERS REGULAR VAN CAMPS

TOMATO SOUP WASHING COMPOUND

BORAX REGULAR SIZE

TOOTH PICKS CLEANSER SMALL SIZE

GOLD DUST

CAN YOUR CHOICE EACH CAN CAN BOX BOX 5c

PIRATES TAKE 8 TO 3 GAME FROM DALLAS

BUCCANEERS IN DRIVE FOR FIRST PLACE ON ROAD TRIP

By BILL PARKER
Associated Press Sports Writer
Flery Billy Webb's hustling Galveston Buccaneers, who last year were battling for first place when they embarked on a road trip that gave them ten consecutive victories, are again battling for first place and Thursday night opened a crucial road trip with an 8 to 3 victory over the Dallas Steers.

Clouting Charlie Barnabe for fourteen hits that featured Beau Bell's eighteenth circuit wallop of the season, the Buccs had smooth sailing against the crippled Steers. Orville Jorgens, a fine right hander, started against Galveston but lacked control. After he had allowed a pair of runs in the first inning, Manager Webb waved him to the showers and called in Gumbert, who cooled the Steers in rapid order. Gumbert not only stopped the Steers but laced a line drive over the centerfield fence. The Buccs looked great winning and in their victory was a fair weather warning that they may again take over the league pennant while on the road.

Fighting to retain first place and ward off the rampering Buccs, the San Antonio Missions chilled Fort Worth, 12 to 5. The Missions had a wild night of hitting with sixteen wallops. Caldwell won his thirteenth game of the season by holding Fort Worth to nine hits. The league leaders hoped on C. A. Jonnard for five tallies the first two innings and then coasted home after White had relieved Jonnard.

Cardinal Sharpshooters Will Play Here Tonight



LA HOMA LASSITER

CAROL WORLEY

These two All-American forwards will shoot goals for the Oklahoma City Cardinals when that team meets the Pampa Harvesters tonight in the high school gymnasium. Games time will be 8 o'clock with admission 25 cents for students and 50 cents for adults. The Cardinals

will sail late this month for London to represent United States and Canada in the Women's Olympics. The Harvester team will be strengthened by Whitey Bacous and Frank Murree, who will probably be used sometime during the contest. Although Coach Mitchell would not definitely name his starting

The Tulsa Oilers entrenched themselves a bit deeper in the first division by taking a 5 to 4 battle from Oklahoma City. Two runs in the last of the ninth put Manager Atz's diamond warriors into the win column. Kennedy out-pitched Brown when he held Tulsa to nine hits but he wasn't as good in the crucial spots.

of the ninth to beat Beaumont, 4 to 3. George Payne went the route for Houston and held the Exporters to nine hits.

Mr. and Mrs. Bob Mullen and Mr. and Mrs. Preston Briggs and Burnham Briggs of Borger, will leave tomorrow for Red River, N. M.

J. C. Terry of Miami spent yesterday afternoon in Pampa.

PEACE CHANGE MAY NOT RUN IN ARLINGTON

CAVALCADE IS HIGHLY FAVORED TO WIN CLASSIC

By CHARLES DUNKLEY, Associated Press Sports Writer
CHICAGO, July 13 (AP)—With Peace Change, winner of the Belmont Stakes in sensational time, listed as a doubtful starter, the deciding race for the 3-year-old championship of the American turf in the \$45,000 classic at Arlington Park tomorrow, found Cavalcade an outstanding favorite today.

Pete Coyne, trainer for Joseph D. Widener of New York, owner of Peace Change, said he would wait another 24 hours before making a final decision as to whether Peace Change would go to the post. The thoroughbred has a wrenched knee, but showed no signs of favoring it in his walks around the paddock yesterday.

It appeared probable that ten might go to the post, with Cavalcade, of the Brookmade stable, already a triple-derby winner for purses totaling nearly \$100,000, having Good Goods as his running mate. Smiling Bob Smith, trainer of Cavalcade, displayed no fear of Discovery, the entry of the young New York sportsman, Alfred Vandervilt, or Peace Change, if he goes to the post.

Vandervilt, however, said he believed his entry is in better condition for tomorrow's race than at any time this year.

The real dark horse, if there is any such thing in this race, is Hadage, the entry of Warren Wright of Chicago. Last season Hadage was rated among the dozen leading juveniles of the country.

Mrs. Isabel Dodge Sloane, owner of Cavalcade, believes her prize 3-year-old will have no trouble in plowing through the field to the 1934 3-year-old championship.

ROADRUNNERS ARE DEFEATED IN FINALS OF BORGER MEET

HOW THEY STAND

Played 14 Games in 13 Days With Many Cripples in Lineup; Phillips Wins.

The tired and battered Pampa Roadrunners lost a 19 to 9 game to the Phillips "66" of Borger last night to close the Borger tournament. The Roadrunners won a 7 to 2 game from Wichita Falls in the afternoon to go into the finals.

The Roadrunners played 14 base-ball games in 13 days. Their four losses were to Phillips "66" in night games. Most of the games were played with patched lineups, injuries and sickness having handicapped the club.

"We certainly are glad to be thru with baseball for a few days," Business Manager Harold Miller declared this morning. "There will be no games played this week-end but we have scheduled the fast Shawnee, Okla., team to come here the next week-end. By that time we hope to have lights installed at the park."

Tate pitched the Roadrunners to victory yesterday afternoon, allowing Wichita Falls only nine earned hits. The Roadrunners gathered 11 hits off Robertson, who was the batting hero of the game. The left-hander hit safely three times. Malcolm Mauldin, also of the Wichita Falls team, was the fielding sensation, making five sensational catches in center field.

The game was the fourth of the tournament with the score in the single figure. Other scores have totaled from 18 to 35 runs. Heavy hitting against poor or erratic pitching was outstanding. Winning pitchers in most cases didn't win the games. It was poorer pitching on the losing side that resulted in the outcome of the battle.

Hardin went the distance against Borger last night and pitched good ball for six innings. Pampa led 2 to 1 for three innings and Borger led 3 to 2 until the seventh, when "66" went on a batting spree. Sixteen runs crossed the plate in the ninth inning. Phillips scored nine counters and the Roadrunners came back to count seven times.

The Roadrunner outfield consisted of Bulla, Bacous and Sahn. Seltz was on third, replacing McLarry who received a split finger Wednesday. Brickell was unable to play because of his ankle. Seltz played the game with a badly swollen knee.

Pointexter was the batting star of the game. Aaron Ward connected for his daily home run in the second inning when he was the first man to bat. Deck continued his sensational batting for Borger.

Miss Neva Burgan is vacationing in Canyon.

NATIONAL LEAGUE Results Yesterday

Chicago 7, Boston 5
Pittsburgh 3-1, New York 1-11
Cincinnati 7-13, Brooklyn 9-5
St. Louis 8-3, Philadelphia 5-8

Standings Today

Club	W.	L.	Pct.
New York	50	29	.633
Chicago	49	30	.620
St. Louis	44	33	.571
Pittsburgh	39	35	.527
Boston	39	40	.494
Brooklyn	33	46	.418
Philadelphia	32	47	.405
Cincinnati	25	50	.333

Today's Schedule
Chicago at Boston.
St. Louis at Philadelphia.
Pittsburgh at New York.
Cincinnati at Brooklyn.

AMERICAN LEAGUE Results Yesterday

New York 2, Detroit 4
Philadelphia 2, Chicago 3
Washington at Cleveland, rain—(Only games scheduled)

Standings Today

Club	W.	L.	Pct.
Detroit	49	29	.628
New York	47	28	.627
Cleveland	39	35	.527
Washington	39	40	.494
St. Louis	31	39	.443
Philadelphia	30	46	.395
Chicago	26	51	.338

Today's Schedule
Boston at St. Louis.
Philadelphia at Chicago.
Washington at Cleveland.
New York at Detroit.

TEXAS LEAGUE Results Yesterday

San Antonio 12, Fort Worth 5
Beaumont 3, Houston 4
Oklahoma City 4, Tulsa 5
Galveston 8, Dallas 3

TEXAS PANHANDLE ROOFING COMPANY
Permanently Located in Pampa
Everything from Patch Work to a Complete New Roof
Free Estimates — Work Guaranteed
PHONE 50

TONIGHT HARLEY SADLER
Presenting
A Compassion Play
"ABIE'S IRISH ROSE"
The play that ran 2 years on Broadway
"For Crying Out Loud"
It is the story of an Irish and a Jewish family and each member of the cast portrays the role for which they are best suited.
Admission: Children 10c; Adults 25c; General Reserved Seats, Children 15c; Adults 25c. Special numbered reserved seats now on sale at Pampa-Drug No. 1; children 35c; adults 55c; including front door and gov't tax.
DON'T FORGET THE MERCHANT'S MATINEE TOMORROW

Fights Last Night

By The Associated Press.
DALLAS—Tommy Freeman, 157, Little Rock, Ark., stopped Ralph Chung, 155, New Orleans, 6. Wildcat Monte, 149, Drumright, Okla., outpointed Joe Marcus, 146, Pittsburgh, 8.
LEIPERVILLE, Pa.—Bucky Jones, 147, Philadelphia, outpointed Young Joe Firpo, 142, Penns Grove, N. J., 10.

Texas League Leaders

By The Associated Press.
Leading hitters: Harvel, Oklahoma City, .370; Bell, Galveston, .367; Moses, Galveston, .362; Morgan, San Antonio, .357.
Total hits: Bell, Galveston, and Morgan, San Antonio, 30.
Doubles: Bell, Galveston, 34.
Triples: Binder, Oklahoma City, 13.
Home runs: Bell, Galveston, 18.
Runs batted in: English, Galveston, 71.
Runs scored: Bell, Galveston, 84.
Stolen bases: Shelley, Beaumont, 24.
Most games won: Hillin, San Antonio, 15.
Most strikeouts: Kennedy, Oklahoma City, 93.

Ladies Day Will Be a Feature at The Country Club

"Ladies Day" was introduced at the Pampa Country club yesterday and will be continued every Thursday throughout the summer months. A number of local women played nine holes of golf and the winners were awarded with prizes.

Women golfers are urged to be at the clubhouse at 8 o'clock Thursday mornings to take part in play. A handicap system will be introduced after five scores have been registered.

Mrs. Corbett won yesterday's event with Mrs. Pestel, Mrs. Clyde Pathere, and Mrs. Charlie Thut being tied for second place.

Drillers — Toolholders
Contractors
EMPLOYMENT EXCHANGE
— FREE —
Fox & Lederman, Inc., Bldg.
522 West Foster Ave.

A. T. STARK
Contractor and Home Builder
No Job Too Small, None Too Large — Work Upon Men
427 South Faulkner St.

PAMPA BARGAIN STORE
Pay cash for furniture and other used goods, and bills for cash and bills for less.
Have a good used sewing machine, also washing machine.
529-531 SOUTH CUYLER

Every Summer Sport CALLS YOU TO

HOT SPRINGS NATIONAL PARK ARKANSAS

Vacation where the cool invigorating breezes of the Ouachita Mountains make days and nights gloriously restful. Finest Boating, Bathing, Fishing, Golf and Horseback Riding.

High in the Ozark Mountains where Medicinal Waters Bring Health

While you play — while you enjoy every outdoor sport at its superb best, drink and bathe in the health giving waters of Hot Springs. Kind relief and cure from rheumatism, neuritis, kidney trouble, high blood pressure, and kindred ailments in the 46 world famous Springs. Even a week or two at this renowned Spa will do you a world of good.

HOTEL MAJESTIC
BATH HOUSE AND APARTMENTS

NEW LOW RATES
In keeping with present conditions rates have been sharply reduced.

H. GRADY MANNING, Pres.

FREE SHOW
North of New Post Office

\$20,000 MINIATURE FACTORY HERE TONIGHT
7:00 to 11:00 p. m.

Do you want a new thrill? Then come and see the most modern automobile factory in the world. On display North of Post Office.

It's an amazing miniature model of the Plymouth factory at Detroit. Not an ordinary model . . . a working model!

Come and see one of the most inspiring sights in your experience . . . the building of Plymouth automobiles. Watch every step in their manufacture . . . from the time the raw materials leave the freight cars until the finished Plymouth is driven away under its own power.

It was one of the big attractions of the Century of Progress Exposition. It has drawn record crowds everywhere. Representatives of the Plymouth Motor Corporation are in attendance to explain every operation and answer all questions.

Come yourself and bring the children. Admission free to all.

After you have seen this model you will understand how modern methods enable Plymouth to offer such amazing value for so little money. It's a sight you'll never forget.

On display at our salesrooms for one day only. You are cordially invited.

From "A Century of Progress Exposition"
Working Model of World's Most Modern Automobile Factory

FRUIT JARS 69c
 Quart size, dozen—84c.
 pint size, dozen



MILK 17c
 Armour's very best,
 3 tall cans

PAMPA FRUIT AND Vegetable Market

"The Most Of The Best for The Least"
 ACROSS FROM J. C. PENNEY'S
 PHONE 11 FREE DELIVERY 204 NO. CUYLER

FOOD STORE

DRESSING 29c
 Salad, Miracle Whip,
 quart jar

COFFEE 32c
 Folgers,
 1-pound can

ICE CREAM SALT 10c
 5-lb. box

SWEET MIXED PICKLES 29c
 Quart jar for

JELLY 22c
 White House, 2-lb. jar

SUGAR 54c
 10-pound cloth bag for

TOMATOES 26c
 No. 2 can, 3 for

BEANS 26c
 Green cut, No. 2 can, 3 for

SPINACH 10c
 No. 2 can, each



Shortening 58c
 White Ribbon,
 Pail 66c,
 8-lb. carton

GINGER ALE, 24-ounce bottle
 LIME RICKEY, 24-ounce bottle
 GRAPE JUICE, Pint bottle
 GRAPE PUNCH, Pint bottle
 MARSHMALLOWS, 1 lb. pkg.
 PITTED DATES, 8-oz. package
YOUR CHOICE 19c



FLOUR 97c
 Gold Medal,
 24-pound sack

T N T SOAP 23c
 The large yellow bar, 6 bars

BLUE BARREL 29c
 5-lb. box soap chips

WHITE KING 29c
 Large size package



P & G SOAP 23c
 6 large bars

OXYDOL 21c
 Large package

SPECIALS FOR ALL WEEK
 Exclusive of Meats and Produce

Specials IN OUR MEAT DEPARTMENT

- BUTTER** Cloverbloom, cubes, lb. 24 1/2c, solids, lb. 20 1/2c
- BACON** Squares, per pound 13 1/2c
- FRYERS** Nice and fat, any size, lb. 21 1/2c
- STEWERS** Good for dumplings, lb. 7 1/2c
- DRIE DBEEF** Cudahy's Puritan, pound 31c
- BACON** Sliced, 1-lb. cello package 16 1/2c
- CALF LIVER** Hearts and Tongues, lb. 7 1/2c
- ROAST** Rolled and boned, pound 10c
- DEEF ROAST** Short rib, pound 7 1/2c
- HAM** First grade, shank or butt end, lb. 11 1/2c
- SAUSAGE** Country style sacked, lb. 15 1/2c
- HAMBURGER** All meat, fresh ground, lb. 7 1/2c
- PORK CHOPS** Nice and lean, pound 17 1/2c
- PEANUT BUTTER** Bulk, pound 12 1/2c
- STEAK** Family cuts, pound 8 1/2c
- BACON** Cudahy's Rex, 1/2 or whole, lb. 20 1/2c
- SALT PORK** Per pound 7 1/2c
- BACON** Sugar cured, heavy, pound 17c
- CHEESE** Full cream, Longhorn, pound 15 1/2c
- TENDERLOIN** Pork, Fresh, not frozen, lb. 25c

BACON

- SUNRAY** Sliced, lb. 29c
- WILSON'S CERTIFIED** Sliced, lb. 29c
- CUDAHY'S PURITAN** Sliced, lb. 29c
- ARMOUR'S STAR** Sliced, lb. 33c
- SWIFT'S PREMIUM** Sliced, lb. 33c
- DOLD'S NIAGARA** Sliced, lb. 30c

- HORSE RADISH** 2 regular jars for 25c
- SMOKED TONGUE** Swift's Premium, lb. 29c

PICKLES 19c
 Sour or dill, quart jar

SALMON 29c
 Pink, 2 tall cans for

BAKING POWDER 23c
 Clabber Girl, 2-lb. can



JELL-O 5c
 The new all flavor,
 pkg.



CERTO 29c
 For making jelly,
 pkg.

PRUNES 29c
 Brimfull, gallon can



MILK 18c
 Pet,
 3 tall cans

COFFEE 31 1/2c
 (A beautiful Cook Apron Free with two pounds)
 White Swan, 1-pound can

PORK & BEANS, No. 2 can
 RED BOX TEA
 TOILET PAPER, Large roll
 WHITE KING TOILET SOAP
 MACARONI OR SPAGHETTI
 PEERLESS HARD WATER COCOA SOAP
 HOMINY, No. 1 can for
 FLY SWATTERS
YOUR CHOICE 5c

WATERMELONS 2 1/2c
 Ice cold, pound

LEMONS 29 1/2c
 Sunkist, large size,
 dozen

- PEAS** Blackeyed, lb. 7 1/2c
- CUCUMBERS** Nice ones, lb. 9c
- OKRA** Tender, lb. 15c
- GREEN BEANS** Full of snap, lb. 9c
- TOMATOES** Vine ripened, lb. 12c
- CARROTS** Per bunch 2 1/2c

LETTUCE 5 1/2c
 Firm heads,
 each

PLUMS \$1.25
 Bushel basket

Shop Here... Prove to Yourself You Can Always Buy
FINER FOODS at GREATER SAVINGS

More and more, families are switching to this store to buy foods. Here, they have found the key to greater savings on foods, without sacrificing quality one iota. You get more than low prices — you get dependable foods, guaranteed for freshness and fineness by a dependable store. Come here for your every need — and you'll know that you're getting your money's worth!

PRICES GOOD
 Fri., July 13th
 To
 Fri., July 20th

FLOUR
 Pride of Pampa.
 Every sack sold with money back guarantee.
24 BAG LB. 89c

JERSEY CEREALS
 CORN OR BRAN FLAKES
 2 PACKAGES FOR ONLY **19c**



- SALMON Select Alaska, No. 1 Tall Can **10c**
- TUNA Abbey White Pieces, 2 Cans **25c**
- WAX PAPER Cut Rite, 2 Rolls **15c**
- OLIVES Stuffed or Queen, 3 1/2 Oz. Bottle **10c**
- COFFEE Break O'Morn, 1 Lb. Pkg. **19c**
- HY-PRO Quart Bottle **19c**

- GRAPE JUICE Card's, Pint **15c**
29c
- CAMAY TOILET SOAP Bar **5c**
- P & G LAUNDRY SOAP Large Size, 5 Bars **19c**
- CHIPSO Large Size Box **17c**
- CATSUP Rio Grande, Large Bottle **10c**
- SARDINES American Oil, 2 Cans **9c**

- Borden's or Carnation, MILK 3 Tall or 6 Small Cans **19c**
- APPLE BUTTER Libby's, No. 2 1/2 can **19c**
- LUX FLAKES Large Package **24c**
10c
- RINSO Large Package **24c**
10c
- JELLY White House, Pure Apple, 2 Lb. jar **21c**

BLUE RIBBON
 Malt Extract
 Large Can **55c**

JOHNSON'S
 1/2 Lb. **30c** 1 Lb. **59c**
 Can. Can

KARO SYRUP
 Light or Dark
 No. 10 Can **55c**

- GRANULATED SOAP White King, Large Pkg. **28c**
- STARCH Faultless, 3 Pkgs. **25c**
- SODA Arm & Hammer, 3 Pkgs. **25c**
- CORNED BEEF Armour's, No. 1 Square Can **15c**
- TOILET SOAP Woodbury's, 3 Bars **25c**
- SALAD DRESSING Miracle Whip, Quart Jar **27c**
- PEACHES Sliced or Halves, No. 10 Can **41c**

- STRAWBERRIES No. 10 Can **57c**
- STRAWBERRIES In heavy syrup, No. 2 Can **19c**
- SPAGHETTI Van Camp's, can **9c**
- PICKLES Sliced Sour or Dill, Quart **15c**
- VIENNA SAUSAGE Wilson's, 2 Cans **15c**
- COCOMALT 1 Lb. Can **43c**
- PINEAPPLE Libby's Sliced or Crushed, No. 2 1/2 can **22c**

- HONEY New Crop, Fancy Comb, No. 5 Can **57c**
- CHERRIES Red Pitted, No. 10 Can **47c**
- SUGAR Pure Cane, 10 Lb. Cloth Bag **57c**
- PRUNES Italian, No. 10 Can **29c**
- TOMATO COCKTAIL Van Camp's, Tall Can **11c**
- STRAWBERRIES Water Packed, No. 2 Can **15c**
- FRUIT JARS Kerr, Quart Size, Case **83c**
- NORTHERN TISSUE 3 Rolls **23c**

A Tempting Choice!
FINE MEATS
 When you buy our meats, you get U. S. Government Inspected meats. You get the finest quality, the finest flavor, the most wholesome meat money can buy. Yet—you pay no more for our meats than for ordinary meats. In other words, you get the most for your money!

Picnics Small Sugar Cured Shankless **15c**
PER LB.

CHEESE Fresh Longhorn Per Pound **14c**

HAMBURGER Fresh Ground Per Pound **5c**

SALT PORK Fine for Boiling Per Lb. **7c**

SAUSAGE Fresh, Per Lb. **5c**

BACON SQUARES Sugar Cured Nice to Fry, Lb. **12 1/2c**

GOOD STEAK Cut from choice fed Baby Beef, Lb. **12c**

SLICED BACON 1 Lb. Cello Pkgs., Each **18c**

MINCED HAM or BOLOGNA—Per Lb. **15c**

BEEF TENDERLOINS Frenched or Piece, Lb. **25c**

Butter CLOVERBLOOM—PER LB. **21 1/2c**



AND LUSCIOUS TREE-RIPENED FRUITS AT SPECIAL LOW PRICES!

During these hot summer days you need the added pep and vitality that only fresh fruits and vegetables can give you. You will also appreciate the extra time and freedom from your kitchen that fresh fruits and vegetables will allow you — and remember — fresh food stuffs mean cooler kitchens!

- Carrots, Beets, Green Onions, Turnips, Radishes, Sat. only extra large bunch **3 1/2c**
- ONIONS White, per lb. **4 1/2c**
- SPUDS No. 1 Fed, per lb. **2 1/2c**
- SPUDS California white, lb. **3 1/2c**
- CABBAGE Per pound **3c**
- CANTALOUPE Nice size, each **5c**
- BANANAS Yellow ripe, lb. **5c**
- GREEN BEANS They are the finest money can buy, Sat. only, lb. **5c**
- ORANGES Sunlight, med. size, doz. **25c**
- LEMONS Sunlight, 360 size, doz. **29c**
- WATERMELONS Red ripe, per lb. **1 1/2c**
- LETTUCE Firm, head **5c**
- APPLES Winesape, per doz. **29c**
- PLUMS Fresh, red, 2 doz. **25c**

SHORTENING
 MRS. TUCKER'S 8 LB. CARTON **61c**



FOLGER'S COFFEE
 1 LB CAN FOR ONLY **32c**

