





### Japanese Driven Back, Say Chinese

TIENSIN, China, April 21. (P)—The Chinese military command asserted that Japanese and Manchukuan troops were expelled today from Lwanchow, the main city between here and the coast on the railroad to Shanhaiwan.

Japanese planes and artillery were reported in the city two days ago and Japanese and Manchukuan were said to be joining in the attack. The Chinese military declared the invading troops have been driven back across the Lwan river, on which Lwanchow is situated.

Many thousands of refugees were crowding towns between Lwanchow and Tangshan, 80 miles northward of here, suffering acutely from wind and rain. Kidnapers of women and girls were reported active in the region, resulting in the Chinese military leaders executing anyone believed guilty of kidnaping.

**SUMMER SPECIAL**  
SIAMPOO AND SET, 50c  
DRIED PERMANENTS... \$3.50 to \$8.50  
Enjoy being "correct" by having your work done at our Beauty Salon. Complete line of Belcan, Contoure and Adele Miller Cosmetics.

**ORCHID BEAUTY SALON**  
PHONE.....654  
2nd Floor Combs-Worley Bldg.

### WEST TEXAS WILL ENDEAVOR TO GET LOANS FOR PUBLIC WORKS

AMARILLO, April 21. (P)—West Texas chamber of commerce officials today announced the creation of a bureau to aid political subdivisions within its area to participate in government self-liquidating loans for public works.

D. A. Bauden, manager of the regional chamber, who was here today to confer with President Wilbur C. Hawk, said engineers had been employed to make surveys for proposed construction projects, and that legal counsel would be made available when needed.

He said the chamber of commerce, which has administered relief work in its territory, would handle loan applications and submit them to government authorities without cost to the communities.

A survey is being made of public works projects needed by West Texas cities. Bauden said the needs would total \$45,000,000. He estimated that \$6,000,000 worth of this needed construction would meet specifications for self-liquidating loans, including sewer systems, water plants, swimming pools, city auditoriums and others.

The fund set aside for this type of work originally totaled \$1,500,000, Bauden said, and is available for projects that will pay for themselves over a period of years. He said El Paso was the only West Texas city to participate in the loan to date.

### Ultimate Defeat Of Japanese In China Predicted

BERLIN, April 21. (P)—Four Chinese generals, who reached here after escaping into Siberia from a Japanese army, contend that even today the Japanese hold sway over only a few main centers in Manchuria.

"Battles are still being fought, although the world does not hear about them," said General Li To, one of the party of 60—which arrived yesterday.

The Chinese legation verified that one of the party is the long missing General Ma Chan-Shan, who served as Japanese military command sergeant was killed in battle last July. The others in the party were Generals Su Ping-Wen and Wang-Teh-Lin.

General Ma, who was considered by Japanese leaders as the only Chinese commander of any worth, declared China will ultimately win out in its struggle with Japan.

"Please assure the American people, who we consider China's best friends, that we are determined to fight to the bitter end," he said.

### CHINESE WAR ZONE AVOIDED BY DESTROYER

#### AMERICAN SHIP NOT TO VISIT CITY TAKEN BY JAPANESE

SHANGHAI, April 21. (P)—Establishment of an independent state in the coastal area of North China by the Japanese and Manchukuan forces which seized the area was reported today.

The new domain is the triangular area between the Great Wall of China and the Lwan river with its base extending about 60 miles along the Yellow sea and its apex at the point where the river and wall meet nearly 100 miles inland.

Japanese and Manchukuan officials were reported to have held a meeting yesterday at Peltaho, the coast town near Chinwangtao, where a so-called Lwantung provisional government was organized.

American naval authorities here announced that the U. S. destroyer Henderson has cancelled a scheduled call at Chinwangtao as a result of the occupation of that city by the Japanese.

The destroyer, bringing provisions for the United States marine guard at Peiping, may call at Tangku, the coast town near Tientsin, about May 10 unless the Sino-Japanese conflict has developed that town by then. In that event the ship will go to Shanghai. The destroyer is coming from the United States via Manila.

The Japanese government had not advised the legation that it would pay for damage by bombing of American missions. The office said a statement to that effect, attributed to Japanese representatives in Peiping, could only be an expression of personal opinion.

### STANDINGS TODAY

**NATIONAL LEAGUE**  
Yesterday's Results  
Boston 0, New York 1.  
Philadelphia 10, Brooklyn 2.  
Chicago 3, St. Louis 1.  
Cincinnati at Pittsburgh, rain.

**Standings**

Team	W.	L.	Pct.
New York	2	1	1.000
Pittsburgh	3	1	.750
Brooklyn	3	2	.600
Chicago	3	2	.600
Philadelphia	3	3	.500
Cincinnati	1	2	.333
St. Louis	1	2	.333
Boston	1	3	.250

**Where They Play Today**  
Cincinnati at Pittsburgh.  
Chicago at St. Louis.  
Boston at New York.  
(Only games scheduled.)

**AMERICAN LEAGUE**  
Yesterday's Results  
Washington 1, Philadelphia 8.  
Detroit 1, Cleveland 3.  
St. Louis 4, Chicago 5.  
(Only games scheduled.)

**Standings**

Team	W.	L.	Pct.
New York	5	0	1.000
Chicago	5	2	.714
Cleveland	4	2	.667
Washington	3	4	.429
Boston	2	3	.400
Detroit	2	4	.333
St. Louis	2	5	.286
Philadelphia	2	5	.286

**Where They Play Today**  
New York at Boston.  
St. Louis at Chicago.  
Detroit at Cleveland.  
Washington at Philadelphia.

**TEXAS LEAGUE**  
Yesterday's Results  
Dallas at Tulsa, rain.  
Galveston 3, San Antonio 6.  
Fort Worth 19, Oklahoma City 2.  
Houston 3, Beaumont 4.

**Standings**

Team	W.	L.	Pct.
Dallas	6	1	.857
Beaumont	4	2	.667
Fort Worth	5	4	.556
Houston	5	4	.556
Galveston	4	4	.500
Oklahoma City	4	5	.444
San Antonio	3	6	.333
Tulsa	2	6	.250

**Where They Play Today**  
Dallas at Tulsa.  
Fort Worth at Oklahoma City.  
Beaumont at Galveston (night).  
San Antonio at Houston (night).

**SOUTHERN ASSOCIATION**  
Knoxville 2, New Orleans 5.  
Little Rock 7, Nashville 10.  
Memphis 0, Chattanooga 1.  
Atlanta at Birmingham, rain.

**AMERICAN ASSOCIATION**  
Milwaukee 3, at Columbus 10.  
Kansas City 7-1, at Toledo 5-12.  
St. Paul 2, at Louisville 6.  
Minneapolis at Indianapolis, rain.

**PACIFIC COAST LEAGUE**  
Sacramento 10, at Los Angeles 7.  
Hollywood 5, at Portland 6.  
Oakland 10, at San Francisco 5.  
Missions 15, at Seattle 16.

**Special On Watch Repairing!**  
Reg. \$2.50 clean and... \$1.00  
Reg. \$3.50 balance staff... \$1.00  
Reg. \$2.50 balance jewel... \$1.00  
All work guaranteed.  
**QUALITY JEWELRY**  
2 doors south La. Nora Theater

**Automobile Loans**  
Short and Long Terms  
**REFINANCING**  
504 Combs-Worley Bldg.  
Small and Large  
**M. P. DOWNS**  
Phone 336



Is the motor of your car sluggish and lazy? Is it slow in responding to the accelerator? Does it knock on hills or heavy pulls? Are you getting fewer miles per gallon of gas?

If the answer to any of these questions is "Yes," it will pay you to try Phillips 66... the greater gasoline.

It is the "wake-up" fuel for sleepy engines... packed with extra power and energy... modern... money-saving. The gas that has earned its sensational rise in sales, by delivering improved performance at lower cost to more than 7,000,000 car owners!

And here is a statement of fact that deserves capital letters: PHILLIPS 66 IS HIGHER TEST AND HIGHER ANTI-KNOCK WITHOUT HIGHER PRICE. It is THE sensational gasoline value in a year crowded with good values. It does not cost 3¢ extra per gallon. But it does deliver 100% on every promise we make for it... added pep and power... faster pick-up and get-away... greater flexibility... more miles to every gallon!

It does all this, because right now Phillips 66 gravity ranges from 62° to 68°. We can give motorists this honest and amazing higher test, without a penny of higher price, because Phillips is the world's largest producer of natural high gravity gasoline.

For record-breaking economy and improved operation, just Phill-up with Phillips at any Orange and Black 66 shield. And while you're there, why not drain and refill with Phillips 66 Motor Oil! A wonderful lubricant with marvelous lasting qualities. Refined and recommended by the friendly Phillips organization.

## "HIGHEST TEST" at the price of ordinary gasoline

**NEW LOW OIL PRICES!**  
Monday, April 24

## Quitting Business!

The GLOBE CLOTHIERS are quitting business for good... We are positively quitting business and are offering our entire stock of "CHURCHILL SUITS", "CROSSETT SHOES AND OXFORDS", "SHIRTCRAFT", "MANHATTAN" and "ENRO" Dress Shirts, "DOBBS" and "STETSON" Hats and Caps, "WILSON BROTHERS" and "COOPER" Underwear and hundreds of other items at LESS THAN WHOLESALE COST. Just read the items listed here and then come in and compare the quality and price and then buy your needs for Spring and Summer.

- GROUP 1**  
"CROSSETT" shoes and oxfords, nationally advertised, values up to \$9.00, closing out our entire stock at **\$4.95**
- GROUP 2**  
"CROSSETT" dress oxfords, values up to \$7.00, at only **\$3.45**
- GROUP 3**  
Dr. West's arch support sport oxfords in tan and white, black and white, elk and tan, nationally advertised \$5.00 values for **\$2.95**
- MEN'S DRESS HATS**  
Stetson, Wilson and Dobbs Hats in the newest Spring Shades and hundreds of styles to pick from—  
REGULAR \$7.00 **\$4.00**  
HATS ..... **\$2.85**  
REGULAR \$5.00  
HATS ..... **\$1.69**
- MEN'S CAPS**  
"Dobbs" and "Sweet" Dress Caps for men in the newest Spring styles. Values up to \$3.00. While they last **\$1.69**  
They will close out at
- INTERWOVEN SOCKS**  
Interwoven Nationally Advertised \$1.00 Silk socks, pair **49c**  
Interwoven and "Wilson Brothers", Values up to 75c, the pair **39c**  
One lot of Silk Socks in the newest Spring patterns, the pair **22c**

## Men's Suits

- GROUP 1**  
We are offering our entire stock of Churchill and Middishade suits in the newest Spring and Summer shades and patterns; regular values up to \$35.00 at—  
**\$15.75**  
Extra Pants, \$4.50. No alterations.
- GROUP 2**  
One group of men's suits from our regular stock, high grade, pure wool materials, values up to \$20.00, while they last we are closing them out for—  
**\$10.95**  
Extra Pants, \$3.50. No alterations.
- GROUP 3**  
Men's suits, regular values up to \$25.00 at  
**\$12.95**  
Extra Pants, \$3.50. No alterations.



## MEN'S Dress Shirts

- This group of Men's Dress Shirts consists of "Shirtecraft", "Manhattan", and "Wilson Brothers" Shirts, values up to \$2.50, while they last we will close them out at—  
**\$1.29**
- This group of Men's Dress Shirts consists of the same standard brands, values up to \$1.75, while they last—  
**95c**

**GLOBE Clothiers**  
Hayter Brothers Old Location 114 West Foster

**WE PAY SPOT CASH FOR OLD GOLD**

If you have any old gold such as obsolete gold jewelry, old discarded gold teeth, we will pay you U. S. A. Mint prices for same. Don't wait! Bring us your old Gold as we have the Cash waiting for you.

If you live out of town mail us your gold and we will forward you a check by return mail.

**The Diamond Shop**  
Phone 395 Better Watch Repairing

**We Celebrate the Opening Of Our Double Kay Nut Shop Department Nuts From All Over The World**

Syria, Italy, Spain, Brazil, France, India, Dixieland, and California

DIFFERENT BECAUSE WE TOAST THEM WITH REAL CREAMY BUTTER  
WATCH US TOAST THEM SATURDAY.

**FREE!**  
1/2-Lb. Butter Toasted Salted Peanuts with each purchase of 25c or more at our Nut Shop!

**FREE SAMPLES**

**SATURDAY**  
2:30 'Til 5 P. M.  
Free Demonstration in our window. Watch us toast the nuts for our Nut Shop.

**SODA FOUNTAIN SPECIALS**  
**JIG SAW** Double Dip **GONE**  
**5c**  
SWISS CHOCOLATE SUNDAE **9c**

**EXTRA SPECIAL**  
Mrs. Stover's Extra Large Chocolates. 1 Lb. **49c**

**Drugs & Toiletries**

85c Kruschen Salts **77c**  
\$1.00 Citrocarbonate **79c**  
50c Ungentine, for burns **39c**  
60c Zonite **43c**

**50c Ipana Tooth Paste 33c**

\$1.00 Listerine **79c**  
50c Probak or Gillette Blades **37c**  
50c Williams Shave Cream **39c**  
35c Mennen's Skin Bracer **29c**

**75c Fitch's Shampoo 59c**

40c Vaseline Hair Oil **33c**  
60c Sal Hepatica **49c**  
25c Listerine Tooth Paste **18c**  
\$1.50 Petrolagar **\$1.09**

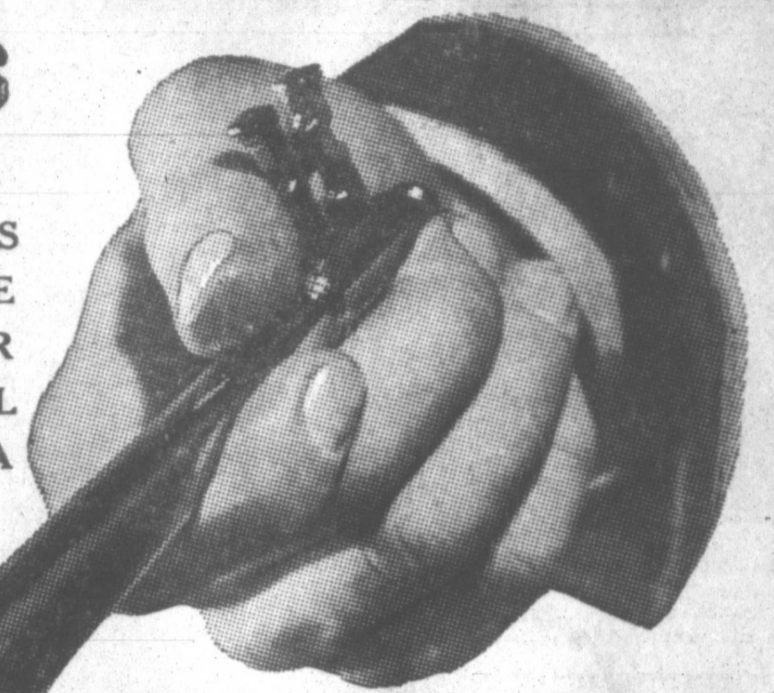
**City Drug Store**  
Pampa The Nyal Store  
Spalding Golf Equipment



# FURR FOOD STORES

## The Key to Greater Food Savings

YOU ARE CHIEFLY INTERESTED IN GETTING THE MOST GROCERIES THAT YOUR MONEY CAN BUY. IT IS ALSO TO YOUR ADVANTAGE THAT YOU BE ABLE TO BUY WITH CONFIDENCE . . . TO KNOW THAT THE FOODS YOU BUY WILL MEASURE UP TO YOUR EXPECTATIONS OF QUALITY. FURR FOOD STORE IS YOUR KEY TO ACCOMPLISHING THIS ECONOMY. TAKE ADVANTAGE OF THESE SPECIALS FOR THIS WEEK, APRIL 21 TO APRIL 28, AND SEE FOR YOURSELF WHY FURR FOOD STORES HAVE BECOME THE CHOICE OF PAMPA HOUSEWIVES.



<b>Coffee</b> Schillings 1 LB. CAN  <b>.27</b>	<b>Krafts</b> Salad Dressing 8 Ounce Jar  <b>.5</b>	<b>Milk</b> Borden's or Carnation 4 TALL CANS  <b>.19</b>
--	---	--



**Clever Housewives Prefer**  
**Shortening**  
**Mrs. Tucker's 8 Lb. Carton .45**

**Garden Fresh**  
PRODUCE SATURDAY ONLY

BANANAS Large Yellow Fruit, Doz.	14c
California Navel ORANGES Extra large size, doz. 29c; Large Size	19c
LEMONS California Sunkist, Dozen	19c
LETTUCE Firm, Crisp Heads, Each	5c
CELERY California, Crisp, Per Stalk	7c
TOMATOES Fancy Firm Ripe, Per Lb.	12½c
SQUASH Young and Tender, Lb.	3½c
GREEN BEANS Fresh, Crisp and Good Snappers, Lb.	3½c
NEW POTATOES These are Nice and Fresh, Lb.	4c
VEGETABLES Carrots, Radishes, Onions, Beets, Bunch THESE ARE ORIGINAL BUNCHES AND NOT RE-TIED	4c

Large Perfect Halves, PECAN HALVES 1 Pound Pkg.	34c	Happyvale Small Green LIMA BEANS No. 2 Can	14c	Libby's Sliced or Y. C. PEACHES 2½ Can	15c	RIPE OLIVES Libby's Buff Can No. 1 Tall Can	9c
RICE Whole Grain, 2 Lb. Pkg.	9c	BEANS Lima, 2 Lb. Pkg.	15c	ASPARAGUS Hillsdale, No. 1 Tall Can	15c	MATCHES Good Strikers, 3 Boxes	10c

**STRAWBERRIES**  
 Fresh LUSCIOUS LOUISIANA CLONDIKES—  
 LARGE, BRIGHT, RED BERRIES—FULL PINT **8c**

KELLOGG'S Wholewheat Flakes, 2 Pkgs.	15c	SALMON Libby's Fancy Red, Tall Can	15c	VIENNA SAUSAGE Libby's, 2 Cans	15c	CORNED BEEF Libby's, No. 1 Square Can	17c
Stuffed Manzanilla OLIVES 6 Ounce Jar	19c	QUAKER OATS Large Pkg. 15c; Small Pkg.	6½c	Butter-Nut, Whole Wheat or White TEA BISCUITS Dozen	5c	Libby's Fancy Bartlett PEARS No. 2½ Can	19c
MUSTARD Quart Jar	15c	Libby's Sliced or Crushed PINEAPPLE No. 2 Cans, 2 for	25c	PRUNES Med. Size, 2 Lb. Pkg.	15c	CANDY All Popular 5c Bars, 4 for	15c

Choice Government Inspected  
**MEATS**  
**Sausage**  
 Fresh Ground, seasoned  
 just like you like it,  
 Per Pound **5c**

<b>Gelatin</b> ROYAL, ALL FLAVORS, PKG.	<b>5c</b>	<b>Wesson OIL</b> FOR BETTER SALADS PINT CAN	<b>19c</b>
--	-----------	--	------------

PEACHES, APRICOTS Gallon Size	29c
OATS Crystal Wedding, Large Pkg.	15c
SPINACH Libby's Tall Can, 2 For	19c



COCOA Hershey's, 1 Pound Can	15c
CORN Standard No. 2 Cans, 2 for	11c
TOMATOES Fancy Libby's, solid pack, No. 2 Can, 2 for	23c

SLAB BACON Medium Weight Per Lb.	10c
PORK CHOPS Rib or Loin, Per Lb.	7c
ROASTS Baby Beef Per Lb.	8c
BOLOGNA MINCE HAM or FRANKS Per Lb.	10c
BUTTER Brookfield or Gray County Creamery Sat. Only, Lb.	14c
SIDE PORK Fresh, Sliced, Per Lb.	9c
CHEESE KRAFT'S, ½-Lb. Pkgs., 2 FOR	25c
SLICED BACON Full Slices 1-Lb. Cello Pkgs., each	14c
CHEESE Longhorn Full Cream, Per Lb.	12c
LUNCHEON LOAVES Assorted, Per Lb.	15c
PORK ROASTS Whole or Half, Sholder Lb.	7c
BRAINS Fresh Hog or Calf Pound	10c

**Sani-Flush**  
 PER CAN **19c**

**Johnson's Wax**  
 FOR FLOORS, CARS, FURNITURE  
 1 LB. CAN **59c**

We Reserve The Right to Limit Quantities or Not To Sell to Other Merchants



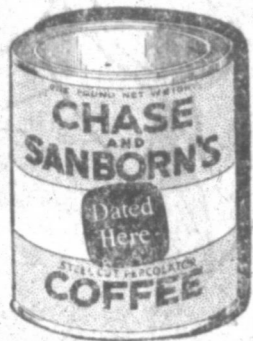
# Baum's Sells Better! Foods for Less!

**Hams** Armour's, Dold's Niagara, Cudaby's, Puritan, Swift's, Premium, as displayed in our Market. Lb. **10<sup>1</sup>/<sub>2</sub>c**

**Armours Bacon 1 lb. 16c**  
Banquet, Sliced, Cellophane—Package

**BANANAS**

Perfect, Golden Ripe Fruit, each and every one perfect. There is not a Mexico Banana in the lot! We invite comparison.  
Priced for Saturday only. Dozen **12<sup>1</sup>/<sub>2</sub>c**



**COFFEE** CHASE & SANBORN DATED—**26c**  
NATIONALLY ADVERTISED PERFECT COFFEE  
POUND

**FREE!** HOT COFFEE & VANILLA WAFERS  
That Perfect Coffee—Chase & Sanborn Dated—**SATURDAY ONLY**

**BREAD** **2<sup>1</sup>/<sub>2</sub>c**  
Pampa Baked, 16 oz. Loaf. No Limit, All You Want. Saturday Only. LOAF

## Strawberries

Large luscious red ripe berries. The pick of the crop. Full Pints. Saturday Only

**2 for 19c**

LIMIT 2 BOXES

**LEMONS** Large Balls of Juice, Doz. **15c**

**RHUBARB** Cherry Red, Lb. **8c**

**ORANGES** Fresh California Fruit, Doz. **12<sup>1</sup>/<sub>2</sub>c**

**Hams** Pinkney's Sugar Cured Picnics—Guaranteed Not Salty. Lb. **7<sup>1</sup>/<sub>2</sub>c**

**Steak** Genuine Milk Fed Veal, Cut from Choice Stock, family style. Lb. **6<sup>1</sup>/<sub>2</sub>c**

**FAT BREAKFAST MACKEREL**, EACH **5c**

**PHILADELPHIA CREAM CHEESE** Pkg. **8<sup>1</sup>/<sub>2</sub>c**

**Pork Chops** Fresh, Lean—End Cuts. Lb. **6<sup>3</sup>/<sub>4</sub>c**

**Veal Roast** Tender, Juicy Oven Roast—Cut from Forequarters. Its Fine. Lb. **7<sup>1</sup>/<sub>2</sub>c**

**BOLOGNA OR MINCED HAM** Fine for Lunches and to take on the first outings. Lb. **10<sup>1</sup>/<sub>2</sub>c**

**HAMBURGER OR FRESH PORK SAUSAGE** Both are fresh Ground from fresh meat. Lb. **6<sup>3</sup>/<sub>4</sub>c**

**RADISHES** FRESH LARGE BUNCHES EACH **2c**

**CUCUMBERS** Fancy Green. For Slicing. Lb. **4<sup>1</sup>/<sub>2</sub>c**

**BELL PEPPERS** Firm, Large and Crisp. Lb. **10c**

**SPINACH** Garden Fresh, Free from Grit. Lb. **5<sup>1</sup>/<sub>2</sub>c**

**NEW POTATOES** No. 1 Red Triumphs. Lb. **3<sup>1</sup>/<sub>2</sub>c**

**ASPARAGUS** Fancy California, Large Green, Bunch **6c**

**Butter** Steffen's or Gray County Quality, Lb. in Carton, Saturday only, Pound **16c**

**Potatoes 15 lbs. 26c**  
U. S. No. 1 Graded Idaho Bakers in White Cloth Bag

**Flour** Pride of Pampa or Perryton. 48 Lb. Bag Sat. Only... **73c**

**SPINACH** LIBBY'S Not 1 Tall Can **9<sup>1</sup>/<sub>2</sub>c**

**TOMATO JUICE** OTEO, Tall Can **5c**

**PEACHES** No. 2 1/2 in Heavy Syrup, a Real Buy, Limit 2 Cans—Per Can **11c**

**POTTED MEATS** Good For Lunches, **3 FOR 10c**

**VIENNA SAUSAGE** Regular Size Cans, Each **5c**

**GRAPEFRUIT** Texas Fruit, 6-Oz. Can. **4<sup>1</sup>/<sub>2</sub>c**

**HOT TAMALES** Tall Can, Alamo Brand, Each **10c**

**CHILI** No. 1 Tall Cans, **3 FOR 25c**

**CORN** Allen's Shoe Peg, or Whole Grain, No. 2 Can. **10c**

**PURE LARD** 8 LBS. **32c**  
Open Kettle Rendered. Snowwhite

**PORK LEGS** **11<sup>1</sup>/<sub>2</sub>c**  
Fresh Hams, Closely Trimmed, Whole, Lb.

**ROLLED ROAST** **7<sup>1</sup>/<sub>2</sub>c**  
Boneless, cut from good stamped beef. Lb.

**STEW MEAT** **4c**  
Fresh, Lean and Meaty, Lb.

**FRANKFURTERS** **9<sup>1</sup>/<sub>2</sub>c**  
Smooth and Fresh. Per Lb.

**SPRING LAMB** **7<sup>1</sup>/<sub>2</sub>c**  
Shoulders, Per Pound

**Hens** Extra fancy colored Hens, everyone a perfect fowl. No Leghorns. POUND **11<sup>1</sup>/<sub>2</sub>c**

**Turkeys** They're young and plump. 8 to 15 Lb. Average. Lb. **12<sup>1</sup>/<sub>2</sub>c**

**Stewing Chickens** Fancy Fat Fowls **7<sup>1</sup>/<sub>2</sub>c**

FRESH SEA FOODS RECEIVED DAILY  
(SEE OUR SPECIAL DISPLAY)

DOCTORS SAY EAT FRESH FISH FOR HEALTH

**TROUT** Speckled Fresh Caught Lb. **17<sup>1</sup>/<sub>2</sub>c**

**SALMON** Fresh, Cherry Red, Northern, Pound. **14<sup>1</sup>/<sub>2</sub>c**

**CATFISH** Fresh caught, fresh water, Pound **19<sup>1</sup>/<sub>2</sub>c**

**EGGS** One Dozen Selected, No 1 **10c**

**Compound 8 lbs. 47c**  
Purity, in Pails

**MEAL** 5-Lb. Bag—Cream **10c**

SATURDAY BAKERY SPECIALS  
FRESH FROM THE OVENS ALL DURING THE DAY

**HOT CINNAMON ROLLS** They will be hot all day. Ideal for Sunday morning. Dozen **10c**

**TEA ROLLS** Fresh Every Few Minutes. Dozen **4<sup>1</sup>/<sub>2</sub>c**

**JELLY RINGS** Covered with pure fruit jelly and coconut **8<sup>1</sup>/<sub>2</sub>c**



**ROYAL BAKING POWDER** 12-oz. Can **37c**

**ROYAL GELATIN** Reg. Pkg. **5<sup>1</sup>/<sub>2</sub>c**



# BAUMS FOOD STORE and MARKET

WE RESERVE THE RIGHT TO LIMIT QUANTITIES  
FREE DELIVERY PROMPT SERVICE

**ONIONS** Crystal Wax, Lb. **3c**

**PEANUT BUTTER** Betchnut, Extra Large Jar. **21c**

**Crackers 2 lb. Box 19c**  
BROWN'S B. C. S., FRESH AND CRISP

**FIG BARS** Full of Fresh Fruits **2 LBS. 21c**

# WINNIE RUTH JUDD CALM AS EXECUTION NEARS—SLAYER'S SERENITY REMAINS UNSHAKEN

A Sanity Hearing To Be Held Today Is Only Hope Of 'Trunk Slayer'

STATE PRISON, Florence, Ariz., April 21. (AP)—Thirteen months in the shadow of the gallows have passed for Winnie Ruth Judd—a period of alternating hope and despair, resignation and hysterical fury—and have brought her closer to the fourth date set for her execution.

Three times a date has been set for her to pay with her life for the murder of Agnes Lerol. Three times she has seen the noose pushed aside.

Under sentence now to be hanged at dawn, Friday, April 24, only a request by the warden for an insanity hearing could save her. The blasting of virtually her last hope of life—commutation of sentence—has left her smiling, but matrons working in six-hour, sleepless shifts, watch her constantly.

An attempt to cut her way to freedom by use of a smuggled saw failed. She then threatened to commit suicide, but the watchful guards have prevented this. As the end approaches she remains so serene as to mystify prison authorities. Now she seems destined to become the second woman to be executed by the state of Arizona. The other was Mrs. Eva Dugan, hanged in 1930.

**Tried On One Charge.**  
The blue-eyed slim young woman who entered the prison soon after her 27th birthday was tried only for the slaying of Mrs. Lerol. The jury did not believe her plea of insanity.

An attempt to place herself on trial for killing Hedvig Samuelson, for the expressed purpose of relating her self-defense story before a jury, failed the day before the pardon and parole board decreed she must die.

Superior Court Judge Howard C. Spearman dismissed the second murder information, holding it would be a waste of money to try her again.

The condemned woman's first real bitterness was displayed when the Arizona supreme court denied her a new trial.

# Slaying Caused By Attack Says Mrs. Mary Dach

LA GRANGE, April 21. (AP)—Mrs. Mary Dach was held in jail here today without bond on a murder charge for the slaying of Henry Stover, 58, whose charred body was found buried in a fire pit on her farm.

The 36-year-old widow was quoted in a signed statement to District Attorney Fred Blundell as saying she shot the farm hand as he slept because he had criminally attacked her last December.

Sheriff Will Loessin, who unearthed Stover's body, announced he would release two men held for questioning.

According to Sheriff Loessin, Mrs. Dach admitted in her statement that she slipped into the room where Stover was sleeping the night of February 23 and shot him in the back of the head.

Notes to the amount of \$650, payable to Stover, were found in her possession, the sheriff said.

**POSTMASTER DIES**  
WHITESBORO, April 21. (AP)—Mrs. Etta Varley, 55, postmaster at Collinsville, Texas, for the past twelve years and sister of Dr. J. M. Gordon of Texas Technological college at Lubbock, died in Tulsa, Okla., last night. Funeral services were planned for Sunday.

**LEVEE BREAKS**  
KENNETT, Mo., April 21. (AP)—The St. Francis river levee gave way about 3 miles west of here today, flooding an area of 2,500 acres. Another levee prevented the water from inundating a large area reaching as far south as Senath, Mo.

# Jarrett's Rhythm Boys To Play Here

Another treat is in store for dancers when Jarrett's Rhythm Boys, a ten piece colored orchestra, plays for the regular Saturday night dance at the Pla-Mor.

They have been playing throughout the southwest the Scovin hotel, Oklahoma City, Baker hotel, Dallas, and the Kemp hotel, Wichita Falls.

Mr. Jarrett has been making a tour of the southwest and is on his way to Phoenix, Arizona where he has a summer engagement at the Arizona Biltmore hotel.

Maggie Jones the celebrated torch singer who appeared at the Pla-Mor last fall was introduced by Mr. Jarrett.

John H. Matthews and Elmer Moss of Amarillo were Pampa visitors today.

# France Resolves To Stay on Gold

PARIS, April 21. (AP)—A government spokesman said today France is determined to maintain the gold standard and fight American dollars in a possible commercial invasion by raising tariffs.

Both the government and Bank

of France are "undisturbed," he said, and consider the franc absolutely solid.

The whole problem, including the changed aspect of the Washington conversations between Roosevelt and former premier Herriot, will be considered at a cabinet meeting tomorrow.

Georges Bonnet, minister of finance, in the meantime, talked with Clement Moret, governor of the Bank of France, and then consulted

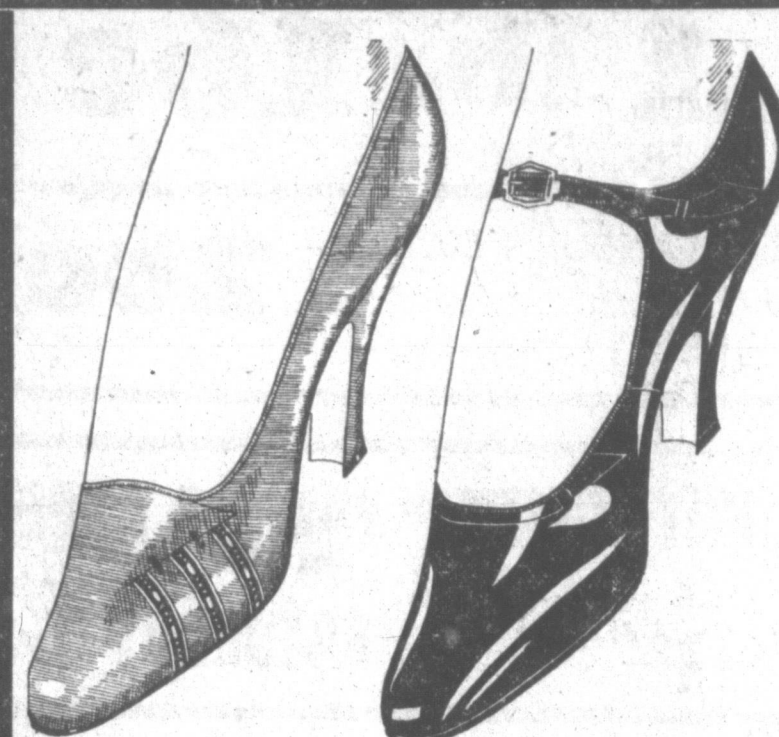
with Premier Daladier. It was agreed that it is unlikely that anything will be done particularly concerning tariff increases until after the Washington talks.

Both the government and press reflect considerable bitterness over the American action. Newspapers said it was unfair to confront Herriot with this new situation and believe desertion of the gold standard by the United States was unnecessary and unwise.

**La Nora**  
Judges Will Announce Winner Tonight On Stage In Our Fourth Annual BEAUTY PAGEANT  
SEE "Miss Pampa" of 1933 selected from a revue of local girls modeling in a Gala BATHING BEAUTY PAGEANT!  
Also...  
'QUEEN OF THE WEST' of 1932 in Person  
Music By: Thrill Harmony Orchestra. After the show attend their Beauty Queen Dance at the Rainbow Garden.  
On The Screen Today and Saturday  
**'THE COHENS AND KELLYS IN TROUBLE'**  
Starts Sunday  
Helen Hayes and Clark Gable  
In  
**'The White Sister'**  
COMING SOON  
**'KING KONG'**  
**REX 10c & 25c**  
Today and Saturday  
BOB STEELE  
In  
**'The Fighting Champ.'**  
Starts Sunday  
JOHN BARRYMORE  
In  
**'TOPAZE'**  
**STATE .10c-15c**  
Today and Saturday  
KEN MAYNARD  
In  
**'Texas Fun Fighter'**  
Starts Sunday  
JOAN CRAWFORD  
In  
**'LETTY LYNTON'**

**La Nora**  
On the Stage  
Daredevil Roland, "The Human Fly"  
Saturday at 3 p. m and 9 p. m.

**TONITE**—Daredevil Roland will climb the court house building at 7:15. As soon as this climb is completed he will climb the front of the La Nora theater building and walk around the edge of the top blindfolded with his wife on his shoulders.



**SHOES**  
\$1.98

Chic Styles Galore! Operas! Oxfords! Ties! T-Straps! Sandals! One-Straps! With cut-outs! Braided leather... buckles... piping... perforations... Cuban, continental, Louis and Jr. Louis heels.

**CHILDREN'S SHOES**  
\$1.00  
Black patent one straps. Patent, log cabin color and black calf grain leather plain toe bluchers, two-tone dark smoke oxfords with rubber sport outsole. Sizes 8 1/2 to 11, 11 1/2 to 2.

**MISSES' SHOES**  
\$1.49  
Patent one-strap, black or brown elk eyellet ties. T-straps with cut-outs, patent straps with punched vamp and quarters. Two tone bluchers with rubber soles. Sizes 11 1/2 to 3.

**GIRLS' SHOES**  
\$1.98  
Less than \$2 will buy patent one-strap, or 3 eyellet ties. Light brown elk sports oxfords with rubber or leather soles. Sizes 4 1/2 to 8.

**BOYS' OXFORDS**  
\$1.98  
Black calf leather blucher oxfords. Huskily made on a Goodyear welt with a medium toe and a rubber heel. Sizes 1 to 6.

**MENS' OXFORDS**  
\$1.98  
If you don't buy anything else for Easter, buy black grain calf leather oxfords. Rubber or leather heels, medium toe, Goodyear welt construction. Also smoke and tan calf grain leather oxfords. Sizes 6 to 11.

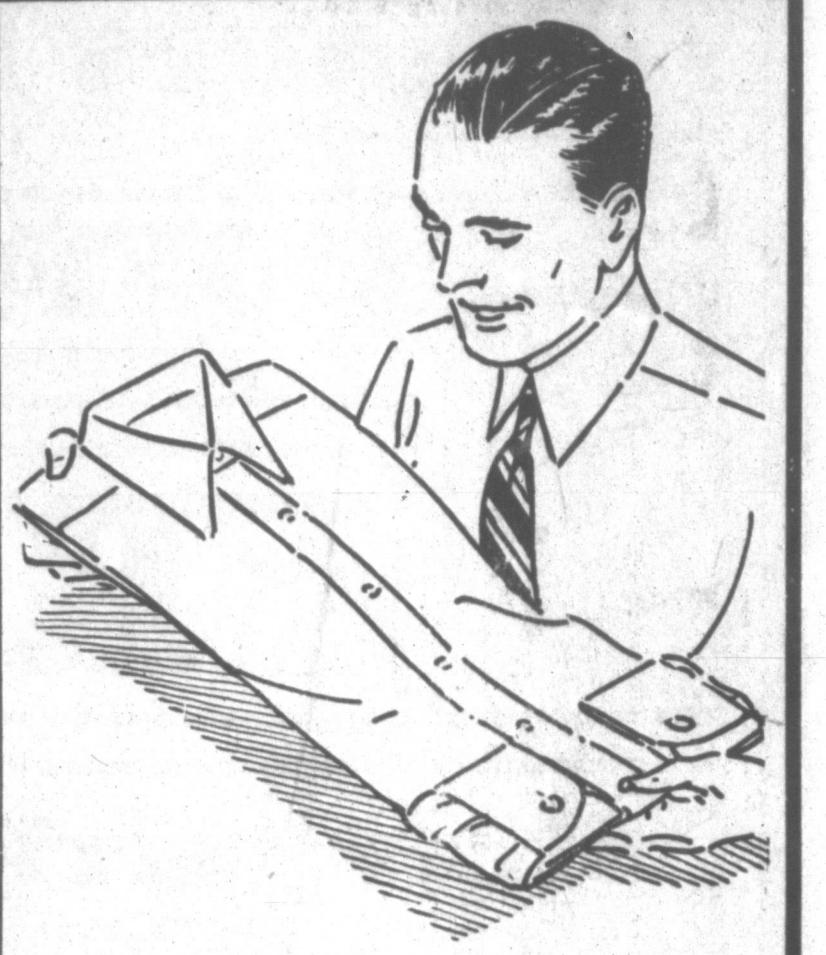


Every week in the year fresh, exciting, new styles arrive at Ward's!

**Dresses**  
2.95  
Capelets, puff sleeves, white touches just popped out of their wrappings. The rapid "turn-over" explains the absurdly low price. Sizes 14 to 44.

**SHIRTS & SHORTS**  
19¢ each  
Fine ribbed combed cotton athletic shirts. Shorts of fine broadcloth with elastic side.

**MEADOWLARK SILK HOSE**  
49¢ pr.  
Suntouch  
Sungleam  
Perfectly splendid shades individually selected by our stylist, to wear with your light toned summer clothes. In MEADOWLARK, a clear dull finish hose, full fashioned, in both chifon sheer or service weight, reinforced at the heel and toe. For those occasional April showers wear RAIN—a grand neutral shade. 8 1/4 to 10 1/4



Dress up for Spring!... and do it at SAVINGS... Buy

**Brand New Broadcloth SHIRTS**  
Inexpensively priced but painstakingly made. Full cut—an extra three yards of broadcloth in every dozen shirts made. Choose Blue, Tan or White. Collars attached styles. Sizes 14 to 17.  
**49¢**

**"Buddy Ward" Shirts for Boys**  
49¢  
As smart as Dad's—with their lined collars, cuffs and center pleat. Choose fine solid or fancy striped broadcloth. Even ages 6 to 12—half sizes 12 1/2 to 14 1/2.

**Save on SHIRTS & SHORTS**  
19¢ each  
Fine ribbed combed cotton athletic shirts. Shorts of fine broadcloth with elastic side.

**New FELTS for Men**  
\$1.95  
Choose snap brim or curl—high crown or low—whatever you choose you'll get a hat that keeps its shape and wears longer because it's made of choice fur felt. Light and dark shades.

**Broadcasting Some Good News**  
...for...  
**Thrifty Women!**  
The next time you buy hosiery, try Archer Hose! You'll be agreeably surprised at the long wear and their sheer beauty.  
Archer FULL FASHIONED SILK HOSE  
NEW SPRING SHADES  
**59¢ 79¢ \$1.00**  
**MITCHELL'S**  
"APPAREL FOR WOMEN"

**MONTGOMERY WARD & CO.**  
217-19 NORTH CUYLER PAMPA, TEXAS PHONE 801





### PAMPA DAILY NEWS NEWSREEL SHOWS RUINS LEFT BY TORNADO

Thousands of families made homeless by a devastating tornado sweeping over three Southern states; the wreck of the crack Pennsylvania Express train, carrying the Boston Red Sox baseball team, which runs into an open switch, killing the engineer and fireman; the dedication of Cincinnati's \$41,000,000 railway terminal by the city's mayor, who opens its door with a golden key, are among the highlights in the current Pampa Daily NEWS-Universal newsreel. Graham McNamee, ace of radio announcers and the screen's most popular talking reporter, vividly describes the events shown in the reel at La Nora.

The wreck of the Pennsylvania flyer in which two men were killed has caused grief and consternation among railway officials, who say their investigations show that the switches had been tampered with, with the result that police are on a hunt for the fiend responsible for the deed.

The opening of the Union Terminal Station in Cincinnati is the realization of a fifty-year dream of the men who made this great edifice possible. Thousands cheer Mayor Wilson as he presides over opening of the highlights.

The newsreel's latest release also furnishes thrilling and spectacular events from California, Illinois, Great Britain and Washington, D. C. Important pictures from the nation's capitol show President

### POULTRYMAN



TITUS P. HARRIS, above, negro poultryman for Standard Food Markets, was recently married in a major social event for those of his race here.

Roosevelt, happily known as the "fighting president," being heartily welcomed by newspapermen of the country as he joins press club.

### TWO TRUCKS IN FLEET WHICH SERVES STANDARD FOOD MARKETS



HERE are two of the big Chevrolet trucks, a fleet of which are necessary to carry to Standard Food Stores the great supply of foods of all kinds sold every week by this local firm.

### SALES TAX TO KEEP SOONER SCHOOLS OPEN

COMMON SCHOOLS WILL GET \$15,000,000 ANNUALLY

By CHARLES HASLET, Associated Press Staff Writer. OKLAHOMA CITY, April 21. (AP)—The problem of keeping the "little red school house" open has led to an experiment by Oklahoma with a 2 per cent general sales tax and other drastic money raising legislation.

Acting in the waning days of their fourteenth session, state legislators moved to get the revenue that John A. Vaughn, state superintendent of instruction, declared was absolutely necessary to insure nine months' terms for at least 4,000 of the state's 4,838 common school districts.

The legislature enacted the sales tax, exempting only food, clothing costing less than \$8, farm products, raw materials and seeds, and a 3-cent cigaret tax. The new revenue may give common schools \$15,000,000 yearly.

The situation had become so acute that Superintendent Vaughn asserted many schools in southeastern Oklahoma would be in session for only two to four months next year unless teachers donated their services and public funds kept the doors open.

Scores of teachers have been unable to cash salary warrants since last fall. Hundreds still are carrying warrants in their purses that were refused for the last five or six months.

Some banks refused to cash the warrants because of depleted county and district general revenue funds. A few "scalpers" and brokers and some bankers bought teachers' warrants at from 50 to 75 cents on the dollar, taking a chance on eventual redemption.

Heretofore the state legislature has supplied the needs of "weak school" districts with state aid, allowing them to operate for seven months out of the year. This year, however, economic conditions resulted in the legislature appropriating only \$1,000,000—only a small part of what was needed.

However, nearly a fifth of the new sales tax revenue will go directly to aid the "weak" districts—those unable to hold a full term after levying a 15 mill ad valorem tax. Half of the total revenue will be used to pay current expenses and reduce ad valorem taxes of common school districts in general; the rest to pay common school indebtedness. The cigaret tax revenue will be distributed in a somewhat similar manner.

The Wichita, Kan., Henrys, noted basketball team, won all eight of their games on their recent invasion of Hawaii.

### MAY QUEEN



ONE of the first of 1933's crop of May Queens is Miss Dorothy Newsom, above, of Durham, N. C. She's the choice of the Women's College of Duke university.

### TRIPLY SMART IN EVENINGS



NEW in three ways is this smart velvet spring evening wrap. First, it's a swagger coat, throwing to the winds the hoar-shouldered, puffed-sleeved styles that ran rampant for winter. Second it has graceful, loose, three-quarters sleeves, with double bandings of elegant sable. Third, it has the new and outstanding spring color—smoke gray.

There is distinguished originality to the neckline of this wrap. The velvet is cut to make a big, crushed bow, which pulls thru a loop to flare out over one shoulder, with the other side of the front draping toward the loop. There is just the suggestion of a little standing collar in the back.

The wrap itself is cut on swinging lines and is the new three-quarters length. It combines all the grace of the cape with the advantages and practicality of a coat.

It is worn over a dress of pale amber flat crepe, which makes a very new color scheme with the smoke gray of the wrap.

### QUEER BOUNDARY DISPUTE BASED ON MAP OF STEPHEN F. AUSTIN

BEAUMONT, April 21. (AP)—A conflict is forecast in a queer boundary dispute which has developed along a two-mile stretch of the Neches river in the Village Creek territory.

According to all maps of Texas showing such detail, the Neches river divides Hardin county on the west and Jasper county on the east. An aerial map made recently shows the river to be non-existent along this particular boundary line sector, but flows a mile and a half to the east in Jasper county.

The question now arises whether the boundary between the counties should remain the imaginary, non-existent line or be moved a mile and a half eastward into Hardin county to the river. Such a move would perhaps mean dispute over thousands of acres of land.

A survey of the stream was made by the Mexican government in 1835 when the river territory was a wilderness. The Mexican survey, which still obtains, was shown on the famous map of Stephen F. Austin and co-worker, Gen. Meir Y. Teran, and has been copied in every map of Texas.

**Congratulations**

Mr. F. S. Brown and the Standard Food Markets upon your one year of growing success.

Schillings' "WINGS OF THE MORN" will always be found in both these large up-to-date stores.

Try a Can of Schillings

**A. SCHILLING & COMPANY**  
SAN FRANCISCO

### -PERSONALITY

(Continued from Page 1)

You know Jim, of the soft voice and perpetual grin, who talk big figures into balancing. When he says "darn" you may know something very, very serious has happened.

Titus P. Harris, poultryman—This cullid man of Standard Food Markets knows his poultry and he sure can pick a wife. When Titus got married recently, it was the biggest social event of all time locally among his people. Incidentally, they bring the poultry to him.

R. W. Shannon, checker, No. 2—Here's a new man with Standard Food Markets. Experienced and courteous, you'll like him, too.

The big "family" also includes a number of part time employees, who include Sam Kleith, Melvin Lancaster, David Whittenburg, R. B. Ragdale, "Smitty" Smith, John Lawson, Clarence Arnold, Clarence Gaines, Jack Johnson, and "Bub" Vandever, sackers at No. 1; Joe Bond, stocker at No. 1; Ernest McDuffy, produce man and sign painter; Eugene Eogue and Finley Vanderburg, sackers at No. 2; Tracey at No. 1 market and Ora Thorp at No. 2 market.

### Canadian Club Boys Will Feed Eighteen Calves

CANADIAN, April 21.—Eighteen calves will be fed by 4-H club boys of Hemphill county, according to Parker D. Hanna, county agent.

Garden seed, purchased with R. F. C. funds, has been distributed by the county agent to 40 families, who will attempt to stock their pantries with canned food next summer.

As a result of a rug school conducted by an A. & M. college extension specialist, Hemphill county women will make their homes more attractive and possibly may sell some rugs.

### CANADIAN NEWS

Mrs. H. H. Stieckley entertained the women of the Christian Missionary society. There were 12 members present and two visitors.

Dr. and Mrs. Snyder left today for Galveston and other points of interest in Texas. They will visit with their daughters.

Mrs. Minnie Reed is leaving today for a visit in Topeka, Kansas.

D. A. Morris is erecting a building on Second street. This building will be used for a restaurant.

**SPECIAL!**  
Your Watch Cleaned \$1.00  
Oiled and Adjusted.  
All Work Guaranteed  
QUALITY JEWELRY  
2 Doors South LaNora Theatre

### Iron Man's Son Shoots Up Cafe

MEXICO CITY, April 21. (AP)—The bullet holes in the ceiling of the fashionable night club, L'Escargot, are the doings of Alfredo Calles. Patrons of the place, including several Americans, told of it today. Four shots were fired, they said. It was early yesterday. The 24-year-old Alfredo, son of General Fullarco Elias Calles, Mexico's "Iron Man," had been toying with the gun. Suddenly, according to others in the club, he raised the weapon, pointed it ceilingward, and began to fire. Young Calles, who was educated

**SUSPECTS HELD**  
MULESHOE, April 21. (AP)—Sheriff Jim Cook held two men in jail here today as suspects in the \$1,642.27 holdup of the Muleshoe State bank last Thursday. No charges had been filed against them. One, an ex-convict, has been identified by two women who were in the bank when it was robbed, the sheriff said. In the United States, has been involved in several episodes in Mexico City cabarets in recent months. A report about a year ago, never confirmed, said his father had banished him to a remote hacienda after an affair at the hotel Regis. The youth, however, returned shortly afterward to Mexico City. General Calles is now at Ensenada, Lower California.

**G. C. Malone Funeral Home**  
**PHONE 181**  
Packard Ambulance

**Congratulations!**  
—TO THE—  
**STANDARD FOOD MARKETS**  
During their large Anniversary Sale they are offering the following Specials on our quality merchandise:

**WHITE KING**  
THE GRANULATED SOAP  
**LARGE BOX ..... 29c**

**WHITE KING TOILET SOAPS**  
Includes Mission Bell, White King Toilet and White King Coco Almond Hardwater Soap.  
**REGULAR SIZE BAR ..... 5c**

**White King Soap Company**

**Congratulations**  
—To The—  
**STANDARD FOOD MARKETS**  
May they continue to grow and prosper in the years to come as they have their first year.  
Their success has greatly been assured by handling only the best in Quality Meats.  
Ask for **Pinkney's Products** the next time you visit their markets!  
**PINKNEY PACKING CO.**  
The Home of . . .  
Sunray Bacon, Hams & Pinkney Beef & Pork

**Stokely's FINEST FOODS**

**CONGRATULATIONS**  
**STANDARD FOOD MARKETS**  
On Your  
**FIRST ANNIVERSARY**

Your achievements of one short year are truly worth commemorating on this occasion.

The shoppers of Pampa and her trade territory will find a complete line of **Stokely's Finest Canned Fruits and Vegetables** upon the shelves of these two modern Stores . . . A Mark of Quality!

. . . Distributed By . . .  
**CARLTON-FLOREY WHOLESALE GROCERY COMPANY**  
AMARILLO, TEXAS

**CONGRATULATIONS TO F. S. BROWN**

And to STANDARD FOOD MARKETS upon the completion of one year of successful operation. . . These are two of the finest and most complete Food Stores and Markets in the Panhandle, and we are proud of the fact that

**SUPREME BAKERS PRODUCTS**  
ARE FEATURED AT BOTH STORES

Take home a 2 Lb. Pantry Size Box of SUPREME SALAD WAFERS today. They're always fresh and crisp and salted "just right". You'll like them immensely!

**THE MERCHANTS BISCUIT COMPANY**  
OF TEXAS

# Tempting Foods FOR THE Spring Table

## SALADS TAKE FIRST PLACE IN SELECTING LIGHTER PLEASING MENUS FOR FIRST WARM DAYS

USE SUGGESTIONS AND PLEASE FAMILY GROUPS



THIS is the time of year when the heavy rich foods of winter are discarded in favor of lighter, more piquant dishes. Foods that are pleasing to the eye as well as to the palate—foods that build energy but do not create heat—these are first in favor. For this reason nearly every dinner or luncheon menu would feature a salad—for salads are the most spring-like and tempting of dishes. And it is fortunate that there are so many types of salads—some so complete and substantial that a whole luncheon with a beverage and simple dessert may be completed when they form the main part of the menu.

Among the most spring-like of all salads are those made of vegetables—one particularly delicious combination consists of cooked fresh peas, carrots, cauliflower and green beans. The vegetables should be cut in small pieces and tossed in French dressing or mayonnaise. This salad may be served in a huge salad bowl on a bed of lettuce or on individual service plates on cup-like beds of lettuce. Individual preference as to combinations of spring vegetables provide variety in the service of this type of salad.

**Frozen Fruit Salad**  
Add ½ pint of boiling water to one package of lemon and one of orange flavored gelatin. To this add 1½ pints of the juices from cans of the following fruits—pineapple, peach and apricot. To this add the juice of three oranges and one lemon. When the gelatine begins to set add the fruit. Pour in one large or several individual molds and chill. Remove and place on lettuce leaves and pour a generous portion of mayonnaise over the mold.

**Pear Salad**  
Hollow out the centers of halved canned pears and fill with Philadelphia cream cheese sprinkled with crushed pecans and place two pears

on each service plate on lettuce leaves. Serve a piquant French dressing with this salad.

**Beet and Herring Salad**  
Chop beets very fine and add about two tablespoons of finely chopped dried herring and one chopped onion. Blend in a dressing of highly seasoned vinegar and allow to stand for several hours. Serve as a relish dish or with portions arranged on lettuce leaves.

**Medicinal Salad**  
1 can string beans.  
1 can peas.  
1 can red kidney beans.  
3 cucumber pickles, chopped.  
1 can pimento chopped.  
1 cup salad dressing.  
Drain peas and beans, slice beans and add other vegetables—serve on lettuce leaves. Fresh cooked vegetables may be substituted as wished.

**Raw Carrot Salad**  
2 cups carrots ground fine.  
1 cup diced apples.  
½ cup chopped nut meats.  
1 cup chopped cabbage.  
Mix with the following salad dressing and serve on lettuce leaves.  
Salad dressing.  
3 teaspoons sugar.  
2 teaspoons flour.  
½ teaspoon mustard.  
To these add 2 eggs well beaten.  
½ cup water to ½ cup vinegar.  
Cook until thick. When cool add 1 cup of cream sweet or sour, whipped stiff.

**Raw Spinach Salad**  
Have you tried serving spinach with French dressing as a salad? It's delicious and a change from the more familiar salad greens. Wash spinach well and drain. Remove the stems and chop spinach medium fine. Add one bunch spring onions chopped fine and toss with French dressing strongly flavored with garlic.

**Other Salad Suggestions**  
Tomatoes, peeled and hollowed out are delicious stuffed with cottage cheese and chopped almonds. Serve on lettuce with French dressing.

Cucumbers and radishes sliced paper thin are an appetizing salad combination.

Fruit salads offer many delectable combinations such as fresh pineapple with strawberries and bananas; oranges and bananas with mayonnaise; a variety of melon balls served with French dressing

## Shaw Denies He Brought Tears To Star's Eyes

SOUTHAMPTON, April 21. (P)—George Bernard Shaw, arriving home from a cruise of the world, declared today that after visiting twenty-nine countries he thought perhaps the best place in which to live, would be heaven.

He denied reports that he had made Ann Harding cry when he was in Hollywood, and he also reiterated his denial that he ever had insulted Helen Keller.

When Mr. Shaw was in California Ann Harding told him she had appeared in one of his plays and he was quoted as replying that it probably was a pirated production. This resulted in Miss Harding's crying.

on beds of lettuce; prunes stuffed with cream cheese and served with mayonnaise.

Combination crabmeat, shrimp and hard boiled egg with mayonnaise on lettuce.

Salmon with chopped cucumber, lemon juice and mayonnaise on lettuce.

Tuna fish with pimento and chopped spring onions.

Cabbage with sliced bananas and mayonnaise.

A modern development in hot sandwiches uses hot rolls or biscuits as well as toast for the foundation. A sauce also often accompanies these "sandwiches" with the result that a most appetizing main dish for the noon meal is served.

Many possibilities for early spring meals are found in these inviting sandwiches. Our appetites need tempting and something different is welcomed for breakfast and luncheon.

Try fish rolls for breakfast or luncheon. They are inexpensive and quite unusual.

**Fish Rolls**  
One cup flaked salt codfish, 2 cups diced potatoes, 1 egg, ½ teaspoon pepper, 8 thin slices bacon, 1 cup flour, 2 teaspoons baking powder, ½ teaspoon salt, 2 tablespoons shortening, milk or water.

Soak fish for one hour before flaking. Cook potatoes and fish until very tender, drain and mash well. Add egg well beaten and pepper. Make into small rolls about three inches long and wrap each roll in a slice of bacon. Be sure the bacon is sliced very thin. Mix the sift flour, salt and baking powder and rub in shortening. Cut in milk or water to make a soft dough and turn onto a floured molding board. Knead lightly for about 10 seconds. Pat and roll into a sheet three-fourths of an inch thick and cut into four rounds. Put two fish rolls on each round of dough and bake in a moderately hot oven until the biscuits are done. When the bacon crisps on one side turn in order to cook the other side. When the biscuits are done serve at once with a hot tomato sauce.

**Tomorrow's Menu**  
BREAKFAST: Sliced oranges, cereal cooked with dates, cream, crisp oven toast, milk, coffee.  
LUNCHEON: Fish roll sandwiches, radishes and new onions, rolled oats cookies, canned peaches, milk, tea.  
DINNER: Tomato juice cocktail, baked white fish, martinique potatoes broccoli with lemon sauce, spring salad, rhubarb shortcake, milk, coffee.

**Tomato and Pineapple Sandwiches**  
These sandwiches are distinctly novel and very good. You will need two good sized frying pans to make them.

Eight slices of bread cut one-half inch thick, 2 eggs, ½ cup milk, 4 thick slices tomato, 4 slices pineapple, 1 teaspoon pearl onions.

Beat eggs slightly with milk and season lightly with salt and pepper. Dip bread into this mixture and sauté in butter in a hot frying pan. Peel tomatoes and cut in slices ¼ inch thick. Sprinkle with salt, dip in flour or fine cracker crumbs and sauté in hot fat. Dip pineapple slices in flour and sauté also. To make the sandwiches put a slice of pineapple on a slice of prepared bread; cover with another slice of prepared

## SISTER MARY'S KITCHEN

By SISTER MARY NEA Service Writer

If you are in the habit of using only lamb chops and leg of lamb you are missing some economical and delicious meals featuring such inexpensive cuts as the breast and shoulder of lamb.

The following rule for breast of lamb makes a dish that needs only salad and simple dessert to provide a nourishing spring dinner.

**Breast of Lamb**  
Two and one-half pounds breast of lamb, 1 teaspoon salt, 1 small onion, 4 medium sized parsnips, 1½ cups tablespoons butter, 2 tablespoons flour.

Separate lamb into pieces for serving and put into a casserole with boiling water to cover. Season with salt and onion, peeled but not cut. Cover and cook in a moderate oven for 45 minutes. Add parsnips which have been scraped and cook 45 minutes longer. Drain from broth and arrange on a hot platter, putting meat in the center and making a border of parsnips. Melt butter in saucepan, stir in flour and when bubbling slowly add milk, stirring constantly. Bring to the boiling point and add peas. Pour over lamb and parsnips and serve.

Save the liquid in which the lamb was cooked. The addition of barley will make a splendid soup for next day's luncheon.

**Roast Shoulder of Lamb**  
One shoulder of lamb, 1 quart can tomatoes, 1 pound bunch young onions, 1 sweet green pepper, 1 cup hot water, 2 bouillon cubes, 2 cups elbow macaroni, ½ cup grated cheese, salt, paprika.

Put meat on rack of roaster and roast in a hot oven for 20 minutes. Then reduce heat and pour over tomatoes which have been rubbed through a sieve and combined with onions cut in slices, pepper seeded and shredded and bouillon cubes dissolved in hot water. Season with 2 teaspoons salt and ½ teaspoon pepper and baste the lamb frequently with tomato sauce while roasting two hours. In the meantime cook macaroni in boiling salted water until tender. Drain. Place meat on a hot platter and pour over tomato sauce. Season and with cooked macaroni sprinkled with grated cheese. Put under broiler flame long enough to melt cheese. Add a dash of paprika over the macaroni for color and serve.

**Tomorrow's Menu**  
BREAKFAST: Stewed prunes, cereal, cream, corn-meal muffins, maple sirup, milk, coffee.  
LUNCHEON: Creamed new onions on toast, grated carrot and cottage cheese salad, hermits, milk, tea.  
DINNER: Breast of lamb with carrots, shredded Chinese cabbage and pineapple salad, cottage pudding with apricot sauce, milk, coffee.

**Limerick Lets Lions See Film, 'Untamed Africa'**

Pampa Lions yesterday were entertained at La Nora theater by the publicity committee, of which George Limerick, manager of the theater, is a member.

The film, "Untamed Africa," showed thrilling scenes with wild animals and natives featured.

Mrs. Jack Dunn and Miss Hazel Christian, members of the Business and Professional Women's club, told the Lions of the B. & P. W. convention opening here Saturday, and obtained cooperation of the clubmen in entertaining the visitors.

Raeburn Burke, manager of the club's soft-ball team, appealed for more players, saying that competition would be strong.

Visitors were F. E. Daly and William Castleberry.

bread and on this put a slice of tomato. Top each sandwich with four or five pearl onions and serve at once.

## Nation Was On Gold Standard For 54 Years

NEW YORK, April 21. (P)—The United States was frankly off the gold standard for the first time since specie payments were resumed in 1879.

The step was hailed in many quarters as a constructive move designed to reduce the purchasing power of the dollar, and consequently raise the price level, in a move to bring the nation's economic machinery once more into working balance.

Going off the gold standard means that the national currency, for the time being, is not redeemable in gold. Gold payments had been severely restricted since the banking holiday last month, but starting Wednesday the government announced definitely that it would cease licensing gold exports to support the dollar in relation to other currencies, which definitely took the country off the gold standard.

The gold standard is of practical importance chiefly in international trade, since gold is the only international standard of value. Cut free from gold, the dollar is left to find its own level in relation to other currencies on a demand and supply basis. Excited selling of the dollar has reduced its level in relation to gold currencies, and theoretically reduced its purchasing power, bringing a sharp rise in prices of sensitive commodities in terms of dollars.

**Pampa Scouters At Morse Court**

A. G. Post, president of the Adobe Walls council, Executive C. A. Clark, Chris B. Martin, and Raymond Harrah attended a court of honor at Morse Wednesday.

Spearman Scouters were also present. Thirteen boys were advanced in rank and 80 were given merit badges.

En route home, the local men encountered a sandstorm which made driving almost impossible at times.

**Hydrator Assures Patrons of Fresh Vegetable Stock**

Standard Food Markets do a tremendous business in vegetables, hence the vegetable hydrator at No. 1 is regarded as a prime asset which customers appreciate. It is the only one of its kind between Oklahoma City and Denver.

The hydrator, cooled under thermostatic control by Frigidaire, is 12 feet long and enclosed in glass. Vegetables are kept between 35 and 40 degrees—above freezing—and are garden fresh when purchased.

There is no shriveling, no loss of flavor. Such things as lettuce, string beans, peas, and other vegetables are firm and fresh to the touch, besides being clean and free from access to flies.

Eppa Rixey, the famous south-paw with the Cincinnati Reds, has a service record of 4,400 innings after 21 seasons in the National League.

**'COUNTY' VEGETABLES SPEARMAN**, April 21. (P)—The lawn around Hansford county's courthouse has been converted into an irrigated garden tract, and the city's needily will be provided with fresh vegetables during the summer. The lawn last year was planted only to turnips and beans but the project was so successful that this year onions, radishes, lettuce, beets, mustard, spinach, and many other vegetables are being planted. The city will provide irrigation.

## Hall's Habit Of Whipping Stars Grows Noticeable

WHITE SULPHUR SPRINGS, W. Va., April 21. (P)—J. Gilbert Hall of South Orange, N. J., is ranked no better than 14th nationally, but he is developing into a source of annoyance to higher ranked stars in southern tennis tournaments.

A week after he had beaten the sixth ranking player, Lester Stofen of Los Angeles, in the north and south tournament at Pinehurst, Hall eliminated Sidney B. Wood Jr., of New York, No. 4 ranking star, in the quarter-finals of the Mason and Dixon tournament here yesterday. The South Orange veteran was entirely too steady for Wood and won with comparative ease, 6-1, 0-6, 6-3.

Joining him in the semi-finals along with Frank Shields of New York and Gregory Mangin of New-

ark was Clifford Sutter of New Orleans. Sutter, recently named to the United States Davis cup team, emerged the winner of a two-hour battle with Berkeley Bell of New York, 2-6, 6-3, 13-11. Shields and Mangin had won their quarter-final matches Wednesday.

**BRITONS ARRIVE**  
STOLPCE, Poland, April 21. (P)—Feeling happy at the realization that they no longer were in Russia, the British engineers expelled by the Soviet government after they had been convicted of sabotage and espionage arrived here today from Moscow. The party included Allan Monkhouse, Mr. and Mrs. C. H. Nordwall, and John Cushny.

Mrs. Edd, Zmotony underwent an operation for gonorrhea yesterday at Worley hospital. She is doing nicely.

### DANCE TO-NIGHT

Music by the Rambling Cowboys of WDAG—Sponsored by the Security Benefit Association, in the Wynne-Merten building, from 9 until—? Dance as long as you wish for 25c. Admission FREE... You are invited.

COME ONE... COME ALL!

### CONGRATULATIONS

To F. S. Brown and the Standard Food Markets upon their one year of success in Pampa...!

## CITY BAKERY

The People of Pampa and Gray County are to be congratulated upon having the finest, most complete Food Markets in the Panhandle.

WE CONGRATULATE THE STANDARD FOOD MARKETS

... and their owner, Mr. F. S. Brown, upon this momentous occasion.

Northern Tissue, a new process of "linenized" paper, is handled in both these new and up-to-date Food Stores!

... Distributed By ...

## AMARILLO PAPER CO.

AMARILLO, TEXAS

### CONGRATULATIONS

—TO THE—

## STANDARD FOOD MARKETS

—ON THEIR—

# FIRST BIRTHDAY

You'll find a complete line of Jacob Dold's Meat Products in both Standard Stores—A Sign of Quality

WICHITA, KANSAS

### CONGRATULATIONS TO STANDARD FOODS ON Their First Anniversary

A Carload of Swift's Quality Products

STANDARD'S CARLOT BUYING FOR THEIR TWO LARGE STORES MEAN GREATER SAVINGS FOR YOU. THIS WEEK THEY OFFER EXCEPTIONAL SAVINGS UPON SWIFT'S QUALITY PRODUCTS.

BROOKFIELD BUTTER It's Always FRESH AT STANDARD'S **lb. 17½c**

10 BARS FOR . **17c**

10 BARS FOR . **17c**

SWIFT'S JEWEL 8 Lb. Carton "Best To Buy For Bake or Fry" **8 LBS. FOR 43c**

SWIFT'S BABY WOOL SOAP "Famous 'The World Over'" **6 BARS FOR .. 17c**

Bar Peerless Free

Peerless Coco Hard-water Toilet Soap

SUNBRITE CLEANSER Double Action—Single Cost "Feel Its Smoothness" **2 CANS FOR .. 9c**

Buy Them By The Dozen 49c

PURE CANE **SUGAR** CANE PURE  
This is PURE CANE—Not Beet or Just Granulated

**10 LB. CLOTH BAG 47c**  
100 LB. BAG \$4.61

**POTATOES**  
U. S. No. 1 Select & Graded

**10 LBS. FOR 9c**  
**100 LB. SACK 99c**

**WE DELIVER**

**STRAWBERRIES**  
Louisiana Large, Firm Red, but Not Over-ripe

**BRIM FULL PINT 10 1/2c**

# Annivers

Exclusive of Meats And Produce **SPECIALS FOR ALL W**

STANDARD'S QUALITY LARGE GOLDEN RIPE PERFECT FRUIT—NOT FROM MEXICO.

**BANANAS** DOZ. **14 1/2c**

**SALTED CRACKERS**  
—SUPREME WAFERS OF PREMIUM—

**2 LB. BOX ... 21c**

ALWAYS FRESH AND CRISP AT STANDARD'S

**MEAL** Pillsbury's Degerminated, Can Not Become Rancid

**5 Lbs. For 13c**

**NEW JELLO**  
Quicker Setting, Real Flavor

**3 BOXES FOR 17c**



**YOUR CHOICE 5c**

**TOMATOES** No. 1 Solid Hand Pack  
**CORN** No. 1 Extra Standard, No Cob  
**Brown Beauty Beans** No. 1  
**WAX BEANS** No. 1 Size, Cut  
**GREEN BEANS** No. 1 Size, Cut  
**HOMINY** Medium Size  
**TOMATO JUICE** Uncle William's  
**KRAUT** Medium Size,  
**PORK & BEANS** Regular Size  
**SOAPS** White King Toilet or Hardwater  
**SCOTCH OATS** Regular Size  
**TOMATO SOUP** Van Camp's

**CAN CAN CAN CAN CAN CAN CAN CAN CAN CAN CAN CAN CAN CAN CAN**

**TEA BLISS**  
Made by Maxwell House

**1/4 LB. PKG. 10c**

**SALMON** No. 1 Tall Alaskan Pink 2 C  
**Break O' Morn Coffee**  
**BROOMS** 4-Tie, Enameled Handle E  
**PINTO** New crop, re-cleaned, Reg. 25c  
**LARGE NAVIES** Regular 25c  
**SUGAR** Powdered or Brown, Reg. 25c  
**RICE** Fancy Full Head, Regular 25c  
**PRUNES** New Crop, Regular 25c  
**BEANS** Wapco, Mexican Style 2 C  
**WAX PAPER** Fort Howard 3 R  
**VANILLA** Baker Boy, 8 oz. BO  
**BABY LIMA BEANS** 3 C

**FOLGER'S COFFEE**  
(GOLDEN GATE)


**1 lb. 32c**

**PRUNES** Solid Pack Italian **GAL. 29c**  
**BLACKBERRIES** Solid Pack Pie **GAL. 33c**  
**APRICOTS** Solid Pack Pie **GAL. 39c**  
**PINEAPPLE** Swift's Fancy Crushed **GAL. 41c**  
**APPLE BUTTER** Alton's Pure **GAL. 47c**

## AT STANDARD ONLY THE BEST IN QUALITY

**CALUMET**  
THE PERFECT DOUBLE ACTION BAKING POWDER

**1 lb. CAN FOR 23c**



**NO. 2 PORTALES TOMATOES 21c**  
Solid Hand Pack 3 CANS FOR  
Sun-Ripened Tomatoes

This Item Special at No. 2 Store Only

**PURE LARD**  
In Your Own Container

**8 LB. FOR ... 35c**

**BACON** Wilson's Korn 1/2 or Whole, L Wilson's Laurel  
**SPARE RIBS** Fresh, Lean & Meaty  
**FRANKS** Or Weiners, No Wrink  
**SAUSAGE** Standard's Per Cent All Meat  
**CHEESE** Fancy Full Cream Longhorn

**LAUNDRY SOAP**

SWIFT'S WHITE OR NAPHTHA **10 BARS FOR 17c**  
CRYSTAL WHITE OR P. & G. REGULAR **10 BARS FOR 25c**  
SWIFT'S T. N. T. GIANT BARS **6 BARS FOR 19c**

**RAISINS** Sunmaid, New Crop, Seedless **2 Lb. Bag 13c**  
**COCOA** Hershey's Finest, in 1-Lb Can **LB. Can For 17c**  
**CHERRIES** No. 2 Kumer, Red Pitted, Sour **2 Cans For 29c**  
**MATCHES** These Will Strike **6 Box Carton 21c**  
**PRUNES** No. 2 1/2 Monarch, Fresh Italian, In Heavy Syrup **CAN 13c**

**FRESH KILLED PORK**


**SROULDERS** Shank, 1/2 or Whole **LB. 5 3/4c**  
**CENTER CUT ROASTS** **LB. 8 1/2c**  
**PIG HAMS** 1/2 or Whole **LB 9 1/2c**  
**CENTER CUT ROAST** **LB. 12 1/2c**

**PIG LINKS** 100 Per Cent All Meat—Real Tre

**STANDARDS FISH**  
Fresh, Extra Large Salt Water Cat, Speckled Trout  
**SPRINGS HENS** Fancy Young Fowls Colored and of Medium  
**DUCKS** Fancy Full Feather  
**TURKEYS** Young and Tender  
**TROUT** Family Size, Select your fowl alive if weighed to you dressed.

**SCHILLINGS COFFEE**  
"Wings of the Morn"

**1 lb. 29c**



**KOKOHEART**  
THE PERFECT SUBSTITUTE

**2 LBS. FOR 15c**

**STAMPED BABY-BEEF STEAKS**

PLAIN FAMILY STEAK UNIFORM CUTS **3 Lbs. For 25c**  
CHOICE T-BONE OR LOIN **LB. 14 1/2c**  
CHOICE CUTS OF FANCY SIRLOIN **LB. 17 1/2c**

**CHILI** Fresh, Block, Just R  
**PORK CHOPS** Center Cuts, End  
**HAMBURGER** All Meats, No  
**STEW MEAT** Best Cut  
**HEARTS** And To From B Beves  
**BACON** No. 1 Dry Salt, Streak of L

**FLOUR SALE 99c**

PILLSBURY'S BEST X X X X **48 LB. SACK**

**CATSUP** Large Size Ruby, Made By Stokley **2 Bottles For 21c**  
**SOAP CHIPS** Quick Arrow, Large **BOX 19c**  
**PINEAPPLE** NO. 2 DOLE'S PINEAPPLE—EITHER SLICED OR CRUSHED **2 Cans For 23c**  
**SOAP** Baby Wool, Bar Peerless Free With **6 Bars For 17c**  
**ASPARAGUS** No. 1 Swift's California, Garden Green **CAN 14c**

**SLICED BACONS**

DOLD'S STERLING or CUDAHY'S REX **LB. 14 1/2c**  
CUDAHY'S OR WILSONS CERTIFIED **LB. 17 3/4c**

THESE ITEMS SPECIAL AT NO. 2 STORE ONLY

**BLOCK SALT** SULPHURIZED EACH 47c—PLAIN **EACH 37c**  
**BRAN** — WE BUY IT BY THE CAR **100 LB. SACK 83c**  
**CORN MEAL** GREAT WEST **10 LB. BAG 16c**

# STANDARD FOOD MARKETS

110-12 SOUTH CUYLER 'SELLS FOR LESS' PHONE 449

**BUTTER**  
It's Always Fresh at Standards

Brookfield, Taylor Farm, Cloverbloom, Quality, Country

**1 lb. YOUR CHOICE 17 1/2c**



# Special Sale

SEEK AT BOTH STORES Exclusive of Meats And Produce

LARGE FIRM AND CRISP CALIFORNIA—KEPT FRESH IN OUR HYDRATOR

## LETTUCE

HEAD **5c**

### WE DELIVER

## ORANGES

LARGE SIZE CALIFORNIA FULL OF JUICE

DOZ. ... **19c**

## APPLES

EXTRA FANCY LARGE SIZE WINESAPS—EATING OR COOKING

DOZ. ... **18c**

## SHORTENING

Jewel

Swift Jewel in 8 Lb. Carton

8 LBS. FOR ... **43c**

YOUR CHOICE



The Perfect Double Action Cleanser

2 CANS FOR **9c**  
By the Dozen ... **49c**

### GRAPE-NUT FLAKES

PEACHES No. 1 Tall in Syrup  
APRICOTS No. 1 Tall in Syrup  
YAMS No. 2 1/2 Hollywood Brand  
SARDINES American Oil  
POTTED MEAT Banner  
BEAN HOLE BEANS  
SPAGHETTI Van Camp's  
KRAUT No. 2 1/2 Size Can  
QUICK ARROW Soap Chips  
Macaroni or Spaghetti Justice  
RAISINS Seedless or Puffed, 15 Oz.

BOX  
CAN  
CAN  
3 CANS  
3 CANS  
CAN  
CAN  
CAN  
BOX  
2 BOXES  
BOX

YOUR CHOICE

**9c**

## POST TOASTIES

"For Quick, New Energy"

LARGE BOX ... **10c**

## FLUFFY BREAD

FULL 16-OZ. PAMPA BREAD. ... IT'S FRESH! NO LIMIT—SATURDAY ONLY

2 LOAVES FOR ... **5c**

# 'S MARKETS

## MEATS AT REAL SAVINGS!

King **LB. 11 3/4c**  
... **5 1/4c**  
... **10 1/4c**  
... **3 Lbs. 19c**  
... **11 1/2c**  
... **9 3/4c**

Swift's Premium HAMS, 1/2 or Whole **LB. 12 1/2c**  
Center Slices, Cut Any Thickness **LB. 17 1/2c**  
BOX BACON Have you tried it?—It's Different **LB. 20 1/2c**  
Premium Slab, 1/2 or Whole **LB. 16 1/2c**

### STAMPED BABY-BEEF ROASTS

CHOICE THICK RIB OR POT **LB. 4 1/2c**  
CHOICE FORE-QUARTER CUTS **LB. 6 1/2c**  
ARM, CHUCK OR BONELESS ROLL **LB. 9 1/2c**  
CHOICE PRIME RIB ROAST **LB. 14 1/2c**

### FRESH KILLED PIG —FRESH—NOT FROZEN

LIVER **LB. 6 1/2c**  
BRAINS **LB. 10c**  
PORK LOIN ROASTS END CUTS **LB. 10 1/2c**

### REAL SPRING LAMB Wilson's Finest Stamped

LAMB BREAST OR STEW **LB. 7 1/2c**  
LAMB SHOULDER ROASTS **LB. 13 1/2c**  
LAMB LEGS **LB. 15 1/2c**

BOILED HAM First Grade **LB. 23 1/2c**  
SOUR or DILL PICKLES Large, EACH **5c**  
PEANUT BUTTER Always Fresh **3 LBS. 25c**  
PACKAGE CHEESE Philadelphia **2 FOR 15c**  
BAKED PICNIC HAMS **LB. 13 1/2c**  
PICNIC HAMS Sugar Cured **LB. 9 1/2c**  
MINCED HAM or Long Bologna **LB. 12 1/2c**  
LUNCH MEATS 25 Different Kinds **LB. 17 1/2c**

VINEGAR Wapco Apple Product **QUART 17c**  
OATS Quick Cooking Quaker, Regular Size Box **BOX 7c**  
OATS Quick Cooking Quaker, Large Size Box **BOX 16c**  
OATS Crystal Wedding, Premium in Every 55-oz. Box **BOX 17c**  
PORK & BEANS Monarch Large Size **2 Cans 15c**

## WHITE SWAN RICE

2 LB. BOX **13c**

PICKLES No. 2 1/2 Size Sour Gerkins **CAN 13c**  
BEETS No. 2 1/2 Swift's Cut Beet **CAN 9c**  
GINEGERALE Monarch Quality, Regular Size **BOTTLE 13c**  
PEAS No. 2 Kurer's Fresh Garden **2 Cans 23c**  
CORN No. 2 Sweet and Tender, Extra Standard—No Cob **3 Cans 21c**

## WHITE KING

THE PERFECT GRANULATED SOAP **LARGE BOX ... 29c**

GREEN BEANS No. 2 Mile High, Cut **3 Cans 23c**  
SPINACH No. 2 Medina Extra Fancy **2 Cans 23c**  
PEACHES NO. 2 1/2 MOON VALLEY IN SYRUP **2 CANS FOR 25c**  
SALAD DRESSING W. P. Oil Base **PINT 14c**  
SALT Regular 10c Shaker Carey's Plain or Iodized **2 Boxes 15c**

## COFFEE

"Good To The Last Drop"  
lb. **25 1/2c**

## LIBBY'S MILK

4 TALL OR 8 SMALL CANS ... **19c**  
BY THE CASE **\$2.35**

## POST BRAN

DELICIOUSLY FLAVORED WITH MALT SYRUP AND SALT  
2 PKGS. FOR ... **17c**

## NORTHERN TISSUE

"IT'S LINENIZED"  
3 LARGE ROLLS ... **17c**

## BISCUIT MIX

FOR DELICIOUS BISCUITS AT LESS THAN A NICKEL A DOZEN  
REGULAR SIZE BOX **29c**

# STANDARD FOOD MARKETS

STORE NO. 2 304-6 So. Cuyler 'SELLS FOR LESS' PHONE 727

THESE ITEMS SPECIAL AT NO. 2 STORE ONLY

BLISS COFFEE **LB. Can 21c**  
WHITE LOAF FLOUR **48 LB. SACK ... 69c**  
BLUE RIBBON MALT **3 Lb. Can 49c**



### International Sunday School Lesson

BY DR. J. E. NUNN

General Topic: Jesus Rebukes Self-seeking.  
Scripture Lesson: Mark 9:33-43.

33. And they came to Capernaum: and when he was in the house he asked them, What were ye reasoning on the way?

34. But they held their peace: for they had disputed one with another on the way, who was the greatest.

35. And he sat down, and called the twelve; and he saith unto them, If any man would be first, he shall be last of all, and servant of all.

36. And he took a little child, and set him in the midst of them; and taking him in his arms, he said unto them,

37. Whosoever shall receive one of such little children in my name, receiveth me; and whosoever receiveth me, receiveth not me, but him that sent me.

38. John said unto him, Teacher, we saw one casting out demons in thy name; and we forbade him, because he followed not us.

39. But Jesus said, Forbid him not: for there is no man who shall do a mighty work in my name, and be able quickly to speak evil of me.

40. For he that is not against us is for us.

41. For whosoever shall give you a cup of water to drink, because ye are Christ's, verily I say unto you, he shall in no wise lose his reward.

42. And whosoever shall cause one of these little ones that believe

on me to stumble, it were better for him if a great millstone were hanged about his neck, and he were cast into the sea.

43. And if thy hand cause thee to stumble, cut it off: it is good for thee to enter into life maimed, rather than having thy two hands to go into hell, into the unquenchable fire.

Golden Text: Love worketh no ill to his neighbor: love therefore is the fulfilment of the law.—Rom. 13:10.

Time:—Summer of A. D. 29, in the third year of Christ's ministry. Place:—Capernaum.

Introduction  
Leaving the neighborhood of Mt. of Mt. Hermon and Caesarea Philippi, our Lord and his disciples proceeded southward to take up their work again in Galilee; but they knew that everywhere their enemies on the watch for them, so they avoid the main-travelled roads, nor did they any more teach openly from village to village. Over and over the Saviour repeated his prophesies of his approaching arrest, crucifixion, and resurrection, for he wanted his disciples to be prepared for those great events; but they could not comprehend the significance of his words, nor did they until his resurrection had placed upon them the stamp of glorious reality.

Erroneous View of Apostles  
There was a very profound misconception concerning the Messiah in the minds of the Twelve as they returned to Capernaum. They fully expected him to establish the Messianic Kingdom within a short time. But they now thought that his Kingdom would be a worldly kingdom. It was from this viewpoint that they took it for granted that the Twelve would occupy high positions in the kingdom.

On this account they had no little argument with each other as they journeyed, the Master now and then walking ahead of the group but apparently overhearing what they said. They were not arguing about the foretold death of the Master, but about "the relative rank of each of them in the political kingdom which they were expecting him to establish" (Robertson). The ignoble part of the argument was not the competition among them as to the service they could render, but the rank they desired to occupy.

Question of the Master  
When the company reached Capernaum, the base of the great Galilean ministry, the house of Peter seems to have been open and ready for them. This was "the home of Jesus when in the city." He asked them, "What were ye reasoning

on the way?" If the altercation was not actually audible to Jesus who was walking a little ahead, he certainly was aware of it. To the earnest question of the Master not one of the Twelve summoned courage to reply. "They held their peace."

He Who Serve Most  
In the attitude of the teacher "he sat down and called to the Twelve," for they were the disputers and seem to have constituted the entire company that took the journey with him. Not in severe rebuke but rather with firm reproof he showed the better way. He laid down the law of greatness in his Kingdom.

"If any man would be first, he shall be last of all and servant of all." In other words, any man who would be first in honor must be first in service. "The Kingdom of Christ is not a Kingdom of self-seeking, but a self-sacrifice. And he is greatest in it who loves best and serves most" (Jones).

Example of the Child  
No finer model could the Master give to the disciples than to take a little child, "and set him in the midst of them and threw his arms around him." v. 36. "A little child has no pride, knows nothing of worldly rank or position, and is simple, teachable, and loving." When Jesus put the child before them, "it was an object lesson to the arrogant conceit of the twelve Apostles contending for primacy."

This entire incident, so perfect in its tender beauty, should teach us the value of work for and with children, in the home, the school, and the church. Nothing pays better than bringing children to Christ. Children not only serve as the best example of the purity, trust, and teachableness, which should mark all Christians, but they are the church of the future; as we guide and develop them now, we are building the kingdom of God that is to come. The Sunday school, and christian nurture of children, first, and foremost being the Christian home—these stand at the very heart of the nation, these are the hope of the world. There is no sounder statesmanship than the loving leadership of a little child in the arms of the Saviour.

Jesus Condemns Bigotry  
"Teacher, we saw one casting out demons in thy name," the man made the demon, "Come out of him, I command you in the name of Jesus of Nazareth!" and the evil spirit obeyed. "And we forbade him, because he followed not us." "Us," be it noted, not "thee." John was concerned for his own prerogatives as an apostle more than for the honor of his Lord.

"But Jesus said, Forbid him not." Christ never forbids any kind of tribute to himself, however crude and imperfect it may be. All reverent use of the name of Christ is to be encouraged, not belittled. "For there is no man who shall do a mighty work in my name, and be able quickly to speak evil of me."

"This condemns limiting the work of the Spirit of God to any sect or outward form of church."—Dean Alford. "True likeness to the Saviour would lead us to rejoice that the kingdom of Christ is advanced, whether by a Presbyterian, an Episcopalian, a Baptist, or a Methodist."—Albert Barnes. "Some are so wedded to their own creed that they would rather let sinners perish than suffer those who differed from them to become the instruments of their salvation."—Adam Clarke.

"This reply of Jesus, 'Forbid him not,' is a strong reproof to bigots who are ready to deny the Christian or Churchly name to those who are not of their set or organization."—Rev. Edwin W. Rice, D. D. Christians should seek to get all men to ally themselves with Christ, as closely as may be, and in the best way possible, but in some way.

Causing to Stumble  
"And whosoever shall cause one of these little ones that believe on me to stumble," "These little ones" are all childlike hearts, such as the little child whom Jesus was still perhaps holding in his arms. Stumbling-blocks are any hindrances placed in another's pathway of life, by deed or word or look. "Don't block the gangway," sailors cry to people that prevent access to the ship along the sloping passageway. That is what is done by any one who hinders or leads astray a boy or girl, a man or woman, who is trying to be good and do his best.

"And if thy hand cause thee to stumble," v. 43. Literally, "scandalize thee." The Greek verb is dalon, "the stick is a trap on which derived from the Green noun skan—the bait is placed, and which springs up and shut the trap at the touch of an animal. Hence, generally, a snare, a stumbling-block. Christ's meaning here is: 'If your eye or your hand serves as an obstacle or trap to ensnare or make you fall in your moral walk.' Any loss is good for us if thereby our lives can be purified and we can be brought nearer to God.

FURNITURE  
When Spring housecleaning, let us brighten up the furniture. —Repair Work Our Specialty— When you need good used furniture, come see our stock. We Buy, Sell or Exchange SPEARS FURNITURE 219 E. Francis Phone 535

### FAMOUS LOG CABIN FROM NORTH CAROLINA IS AT WORLD'S FAIR

A tiny log cabin from the mountains of North Carolina will take its place among the picturesque exhibits at Chicago's 1933 World's Fair—A Century of Progress.

It was in this type of mountain home that the hill people of the Great Smokey country received their first instruction in cultural activities, such as weaving, the manufacture of pottery and work in pewter that has gained fame for the hardy mountaineer.

Mrs. E. L. Hensley, 414 Diversity Parkway, eminent Chicago educator, who has spent her summers for many years training the mountain folk, aided by a number of prominent women of St. Chrysostom's church, has been largely instrumental in bringing the exhibit to the Exposition.

Mrs. Hensley, however, gives most of the credit for the enterprise to a courageous mountain girl, Miss Lucy T. Morgan. This young woman, a native of the Carolina hills, was educated in the north and then went back to her native mountains to instruct her people in useful arts and handicraft.

Under her skillful guidance and with the assistance of Mrs. Hensley and other teachers, Miss Morgan has accomplished something that was never dreamed of in the mountains heretofore.

Anxious to participate in Chicago's 1933 World's fair, Miss Morgan arranged to place a mountain cabin on a truck and drive it to Chicago. Accompanied by two of her husky young mountaineer students she has accomplished her purpose after some arduous labor over the rough mountain roads.

"WHITE FRIENDS" INVITED  
From the church people of the "flats" comes the following statement: "Evangelist J. W. Heads (colored) of Knoxville, Tenn., one of the most timely and also among the greatest entertainers of the northeast, is preaching at the colored school house down among the colored people. Our good white friends are welcome. We mean to make it as comfortable as fate will allow. Our subject tonight is as follows: I have a thing and I want somebody to tell me what to do with it."

### Roosevelt Breaks Another Precedent

WASHINGTON, April 21. (AP)—A slight cold, complicated a bit by a sore throat, Wednesday caused President Roosevelt to hold his press conference in the Oval Room at the White House proper instead of his executive offices.

It was the first time in the memory of veteran reporters that a president had talked on news matters at the executive mansion itself.

It was said that Mr. Roosevelt regarded the cold as something that a little rest and home remedies would clear up. He had not called in a physician, although the naval hospital filled a prescription for his use.

The president answered questions freely, however, and his voice seemed to grow stronger as he talked.

He was asked how the cold began and the chief executive drew a laugh by answering that it was probably from talking too much.

Junior Coen, Kansas City tennis star, was elected to Phi Beta Kappa, honorary scholastic fraternity, at the University of Kansas.

"Boze" Berger, former Maryland basketball star, will play second

### RATTIERS OUT BROWNFIELD, April 21. (AP)—

Rattlesnakes are out early this year, according to reports from the Willow Wells community. A pup belonging to Mrs. Welton Willingham was bitten by a rattler that was later killed. The snake had nine rattles and was one of the largest seen here in recent years.

base for the New Orleans Pelicans this summer.

### GOLF COURSE IMPROVED CHILDRESS, April 21. (AP)—

Fifty bunkers and sand traps are included in the program adopted by the Childress Country club in preparation for the annual Greenbelt Golf tournament to be held in that city June 12-17. The sand greens and grass turf of the 18-hole course will be put into first class shape for this annual event which comes to Childress for the first time this year.

### Congratulations and Best Wishes ... to ...

### STANDARD FOOD MARKETS

We are proud to furnish you with the finest fresh fish obtainable.

### MAGNOLIA FISH COMPANY

St. Martinville, Louisiana  
Wholesale Shippers of  
Catfish, Buffalo, Gaspereau, Frogs, and Turtle Meats  
Sited in the heart of the famous Evangeline Country

# Congratulations STANDARD FOOD MKTS. On your first anniversary Sale

The Standard Food Markets were chosen by us us to act as sole distributory of our products in Pampa due to their handling only the best in Quality Merchandise. As a special introduction they are offering for this Sale:—

## 48 Lb. Pillsbury's Best x x x x FLOUR for 99c

48 LB. SACK

BALANCED FOR BREAD, BISCUITS & CAKES

TAKE HOME A SACK OF PILLSBURY MEAL

# Meal 5 LB. SACK 13c

WHITE CREAM IT'S DEGERMINATED AND CANNOT BECOME RANCID

## PILLSBURY FLOUR MILLS

HOME OFFICE MINNEAPOLIS, MINN.

FOR BETTER BAKINGS AT LESS COST USE THE ECONOMIC AND EFFICIENT

## KC BAKING POWDER

SAME PRICE today AS 42 YEARS AGO

25 ounces for 25¢

Full Pack No Slack Filling

MILLIONS OF POUNDS USED BY OUR GOVERNMENT

CONGRATULATIONS TO MR. F. S. BROWN  
On The First Anniversary of the  
STANDARD FOOD MARKETS

Taylor Farm Dairy Butter and Milk are sold at these stores and all other leading groceries and markets in Pampa.

### TAYLOR FARM DAIRY

314 EAST FRANCIS PHONE 788

WE CONGRATULATE THE STANDARD FOOD UPON THEIR FIRST ANNIVERSARY

You'll always find a fresh supply of "America's Finest" COFFEE At Either STANDARD FOOD STORE

—Along With Other White Swan Products—

### WAPLES PLATTER COMPANY

FORT WORTH, TEXAS

CONGRATULATIONS TO STANDARD FOOD MARKETS

Our "Sweet Heart" brand milk-fed poultry may be obtained at both Standard meat markets. Look for the brand on your next fowl.

## BRADBURY-PRODUCE

Main Office—Woodward, Okla. Shattuck, Okla. Perryton, Texas

Engineer Sticks To Throttle In His Blazing Cab

POPULAR BLUFF, Mo., April 21. (AP)—Sticking to his throttle in the face of blazing gasoline, Engineer Charles Leadbetter, of Little Rock, Ark., brought the crack "Texan," a Missouri Pacific train, to a stop yesterday and then fell unconscious from his seat, critically burned. The passengers were unharmed.

The locomotive struck an oil truck near Mosk, Mo., at 7 a. m., killing the driver and throwing gasoline over the speeding locomotive. Fireman E. E. Hurt, of Little Rock, was killed when he leaped from the flame-filled cab. The engineer brought the train to a stop about three-quarters of a mile from the scene of the crash and then lost consciousness.

The "Texan" was traveling swiftly in an endeavor to make up lost time when it struck the truck driven by Kip Nelson, Corning, Ark., at a grade crossing.

The gasoline was thrown over the hot locomotive which rushed on down the track, a blazing mass. A relief train was sent to Moark to bring in Leadbetter, the dead and the stalled train.

The "Texan" was bound for St. Louis and was due here at 7 a. m. It was late, however, and was speeding over a long level stretch of track when it struck the truck.

CRUCIBLE ASKED Pecos, April 21. (AP)—The Baptist church of Pecos is asking for a "crucible" offering. The pastor, Rev. E. L. Ratliff, has asked all members who have old jewelry pieces containing gold which are no longer of value, to turn them in to the church. The gold will be melted and funds used to carry on church work.

Although Bobby Jones has not played in club competition at his home course, East Lake in Atlanta, his name appears on the club handicap list with a plus 6.

FAIR INSPIRES NEW STYLES



WILL Chicago's 1933 World's Fair—A Century of Progress—introduce a new style of dress inspired by the exposition's modern architecture?

Recently seven of Chicago's most prominent architects sat down and designed a dozen women's costumes, calculated to express the spirit of the exposition and its daring and dynamic architecture.

The results, first worn at the fashionable Red, White and Blue club's supper dance in the Hotel Sherman, made such an impression that no one will be greatly surprised if next spring finds shop windows blossoming forth with Century of Progress designs, featuring metal cloths, bright colors, and geometrically simple lines.

Five of these costumes are shown above. Left to right, are: Miss Sue Willman wearing a brilliant

grass-green creation trimmed with black patent leather and set off by black patent leather hat and shoes; Miss Jane Harries, in white crepe evening gown trimmed with sequins, short black velvet jacket faced with red satin and black velvet hat to match; Miss Kay Ross, in two-piece tomato-red and black-ribbed woolen suit and hat of same material; Miss Connie Domarus, in yellow black patent leather coat and hat; and white satin afternoon dress, and Miss Bea Reynolds, in silver-gray woolen dress, set off by two shades of brilliant blue and panel of white, and hat to match.

The architects who designed the dozen costumes which may set a style revolution are: John Root, Alfred Shaw, Ernest Grunfield, Samuel Marx, Abel Faigy, Louis Skidmore and Walter Frazier.

Ferguson Asks New Agency For Relief Projects

AUSTIN, April 21. (AP)—Governor Miriam A. Ferguson today recommended to the legislature the establishment of a state rehabilitation commission of seven to cooperate with the federal government in relief and rehabilitation work.

She transmitted a copy of a bill to establish the proposed agency along with her message recommending its creation. The bill would provide for appointment of the commission by the governor, the lieutenant governor, and the speaker of the house.

The commission would be in existence only two years, under terms of the bill. An appropriation of \$100,000 to pay the administration expenses of the commission was suggested.

The new agency would replace the existing Texas relief commission that now is supervising federal aid disbursements in 247 counties. Aubrey Williams of the American Public Welfare Officials association and an agent of the reconstruction finance corporation, spoke briefly to the legislature about the proposed plan. Williams said similar organizations had been set up in 20 other states.

Williams said the establishment of a state board would give Texas a much better chance to obtain its share of the federal rehabilitation funds, made available under past acts of congress and which might be available under contemplated action.

Lawrence Westbrook of Waco, reconstruction finance corporation disbursement agent in Texas, also spoke in favor of the proposal. Westbrook said that taking of applications would start Monday or Tuesday under the president's rehabilitation program. It was expected that 11,750 unemployed young men would be enrolled to work on projects in Texas, Westbrook said.

Two Pardons, 2 Paroles Issued

AUSTIN, April 21. (AP)—Governor Miriam A. Ferguson today issued two conditional pardons and two general paroles to inmates of the Texas penitentiary.

Ollie J. Jones, convicted in Williamson county with robbery by assault with a prohibited weapon and sentenced to ten years imprisonment in January, 1932, and Jesse Bright, Shelby county, given two years for hog theft in August, 1932, were pardoned.

Paroles were given Norman Adams, Dallas county, assault to murder and felony, twelve years, convicted in October, 1927, and C. O. Wiese, Navarro county, forgery, two years, convicted in February, 1932.

Regis Mapp, who won 12 games for Virginia Polytechnic Institute in 1930, with no losses, will pitch for the Knoxville Smokies of the Southern league this summer.

City Drug Opens Nut Department

The City Drug store is announcing the opening Saturday of a Nut Shop department, where fresh, roasted nuts of all kinds will be sold. Nuts from every part of the world are furnished for the local shop. They will be sold plain, salted and candy covered.

A special demonstration will be held in the store window Saturday from 2:30 to 5 o'clock showing the roasting process. Free peanuts will be given Saturday with each purchase.

Chattanooga starts the Southern league baseball season as a favorite to repeat for the championship.

San Angelo Country Has Greatest Activity in Cattle in Three Years

SAN ANGELO, April 21. (AP)—The greatest activity in cattle the West Texas range country has known in three years is under way now, and scores of buyers are traveling through the section making purchases daily at rising prices. Cows which sold at \$30 a head are being quoted at \$35 and \$40; steer yearlings, 4 1/2 to 5 1/2 cents a pound; coming two-year-old steers, \$4 to \$4.75 a hundred; heifer yearlings, 3 1/2 to 4 1/2 cents a pound.

Reports persist that some of the 1933 calf crop in the "Heart of Texas" country have been contracted for fall delivery, but the only contract confirmed to date is for 2,000 head of steer calves sold in the Marfa section at 6 cents a pound.

The Sloan sisters of San Saba have sold 300 steer yearlings to go north in a few weeks, but J. H. Burke of San Saba reports there are few steers in that section, most of them having been sold as calves last year. Mason ranchmen report that they have been approached by a number of northern buyers seeking to contract for fall delivery.

A large movement of cattle to northern grass started this week. John Eckert of Mason has sold 150 head of coming two-year-old steers to a Wichita, Kan., buyer for \$4.35 a hundred, weights about 800 pounds.

Pat Nations of Hutchinson, Kan., will receive between April 15 and

A NEW DEAL

CHILLAR PARK, Ill. (AP)—This village is in for some kind of a new deal. It elected Mrs. Julia M. Kolze, reputed to be the best cook in town, as its village president and she said:

"I'm going to run this town just as I run my house." Mrs. Kolze is believed to be the first woman head of a municipality in Illinois. Her daughter, Grayce, was her campaign manager.

Haybailer is the name of a nag that is being groomed for harness races in Ohio this season.

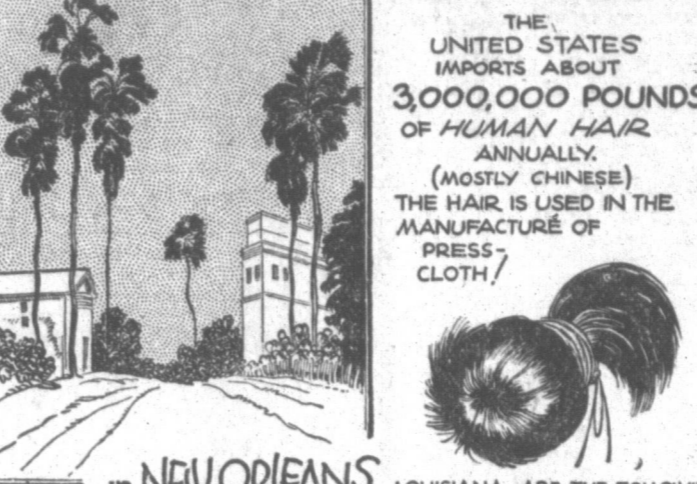
May 1 at Brady 700 head of steer yearlings from Dorman McMillan, sold at \$4.75 a head. Bean Robinson of Palo Pinto county has sold 1,000 head of two-year-old steers to Kansas buyers.

Maurice Butz of Fort Worth has bought 2,000 head of yearling and two-year-old cattle to go to Nebraska.

Alex Angerstone of New Orleans has bought several loads of fat cattle in the Brady section and shipped them to New Orleans. It was said he met stiff competition from California buyers, who are here in numbers. Practically all fed cattle have been shipped out.

The Apache Packing company has bought a number of November calves at 5 cents a pound from Will Lovelace of Eden.

THIS CURIOUS WORLD



IN NEW ORLEANS, LOUISIANA, ARE THE FOLLOWING STREETS: NORTH PETERS, SOUTH PETERS, PETERS, PETERS AVENUE, PETER STREET, AND PETRE STREET.

PRESS-CLOTH, made from human hair, is used for the extraction of oils from vegetable seeds. Thomas Jefferson was greatly interested in nature, and was far ahead of his time on many scientific problems. He never became so busy with politics that he did not have some time left for his study of natural history. He was also an inventor . . . the plow being the best known of his inventions.

WETS AND DRYs CLAIM VICTORY IN RECENT BEER DUEL IN HOUSE

By CHARLES E. SIMONS AUSTIN, April 21. (AP)—Prohibitionists and anti-prohibitionists in the house of the Texas legislature are claiming victory in the recent duel on the beer question.

The anti's contend their victory lies in the assurance that 3.2 percent beer will be a certainty in Texas as if a constitutional amendment to permit the manufacture and sale of brew of this alcoholic content is adopted.

Prohibition leaders claim that submission of the 3.2 percent beer amendment will stave off efforts to bring about a return of liquors of all forms. A majority of the house dry leaders believe the 3.2 percent amendment will be adopted, and that by adopting it the electorate will deal a severe blow to the movement for outright repeal of the prohibition section of the state constitution.

Advocates of legal beer said the opposition made an error in proposing a constitutional amendment ahead of the bill for legalization of the brew.

Rep. P. L. Anderson of San Antonio and other sponsors of the beer bill said submission of the amendment would more surely guarantee return of beer. There were grave doubts about the constitutionality of any act passed by the legislature to bring this about in view of the stringent provisions of the prohibition section which bans the manufacture or sale of intoxicating liquor.

The resolution was pushed forward by the prohibition bloc when it became certain that a vote was about to be forced on the beer bill. It was supported by many members who did not wish to vote on a straight legalization bill because of the unsettled conditions in their home districts. They figured they could vote for the constitutional amendment and then consistently vote for the beer bill since it would merely be the enabling act for the proposed amendment in event of its adoption.

As passed by the house, the beer bill would become effective "if, as and when" the constitutional amendment is approved.

Under this procedure the machinery already will have been provided for manufacture and sale of the beer when, and if, the amendment is approved, and will make unnecessary a special session to pass an enabling act to put the amendment into effect.

The more ardent of the anti-prohibitionists are predicting that Texas will vote five to one, for 3.2 beer. The conservative element believes the margin of victory will be about three to one although some of the prohibitionists are of the opinion that the vote will be fairly close.

REMOVAL NOTICE MURRY BODY WORKS MOVED To 111 North Frost With Hampton & Campbell And Pampa Brake and Electric We invite our friends and customers to visit us in our new location. MURRY BODY WORKS W. V. "BILL" MURRY, Mgr.

McCamey Invited West Texas To Birthday Party

MCCAMEY, April 21. (AP)—All West Texas was invited today to help McCamey celebrate its sixth birthday anniversary as an incorporated city here next Wednesday.

The day's program, sponsored by the McCamey Business Men's league and the Lions club, will include an exposition depicting the story of the transformation from an oil boom town into a permanent city, rodeo, races, polo, baseball, stock and poultry display, street dance and band

BEWARE OF BAR-FEET CHICAGO (AP)—Beware of bar-foot, says Dr. William Gribow, an officer of the Illinois Chiropractic association. "Some men—and women," he told a foot clinic, "have a habit of placing one foot on a rail in front of a bar and keeping it there for a considerable time. The result is that the other foot takes the full weight of the body." This isn't good for the feet, he said, suggesting such persons should try alternating from one foot to the other.

Of Course STANDARD FOOD MARKETS Choose and Use Chevrolet Trucks In both their big volume of road hauling and for the light and speedy delivery of local orders

There Is CHEVROLET TRUCK To Fit Your Needs We will be glad to discuss your trucking problems and recommend the proper size for the most economical and efficient hauling.

Culberson - Smalling Chevrolet Company, Inc. BUTTER-NUT BREAD The Choice of Pampa Housewives For The Past 10 Years! You can always depend on Butter-Nut to be richer in flavor and higher in food value than any bread you ever tasted. . . . You will like it, and you won't get tired of it as with ordinary bread. Try a loaf of Butter-Nut today! Best Wishes To STANDARD FOOD MARKETS

CONGRATULATIONS MR. F. S. BROWN and The STANDARD FOOD MARKETS ALL GRAY COUNTY CREAMERY PRODUCTS —Secure Your Votes on the— SPEED - O - BYKE CONTEST 1st Prize April 29th GRAY COUNTY CREAMERY PHONE 670

FOLGER'S COFFEE CONGRATULATES STANDARD FOOD MARKETS —ON THEIR— FIRST ANNIVERSARY Quality Merchandise is the secret of their success. We are proud to state FOLGER'S GOLEN GATE COFFEE is handled in both their up-to-date Stores. FOLGER COFFEE COMPANY KANSAS CITY, MO.

CONGRATULATIONS On YOUR FIRST BIRTHDAY STANDARD FOODS CARRY A COMPLETE LINE OF WILSON'S CERTIFIED HAMS, BACONS AND RIBBON STAMPED AND GRADE BEEF— TRULY QUALITY UNSURPASSED. Wilson & Co. OKLAHOMA CITY