



BUNCH VEGETABLES

Carrots — Radishes
Green Onions

3 FOR . . 10c

TURNIPS

With Crisp Green Tops
Bunch **5c**

THESE PRICES IN EFFECT WHEN PAPER LEAVES THE PRESS FRIDAY AFTERNOON, THRU SATURDAY, OCT. 30th.

STANDARD FOOD
★ **ONE STOP DOES IT---GROCER**
No. 3—Lefors. Phone No. 1 No. 1—Somerville & Kingsmill

BANANAS

Saturday Only

DOZEN 10c

GRAPEFRUIT

New Crop Texas Marsh Seedless

EACH 5c

FRUITS

- Fancy Washington Jonathan Apples, doz. **17c**
- Fancy Washington Delicious Apples, med. size, doz. **27c**
- New Crop Texas Oranges, large size, doz. **29c**
- Fancy California Oranges, med. size, doz. **26c**
- Sunkist Lemons Large size, doz. **31c**

LETTUCE
Fancy California, head **4c**

CABBAGE
Green and firm, lb **3c**

ONIONS
Spanish Yellow Sweets, lb **4c**

TOMATOES
Fancy California, lb **7½c**

COCOANUTS
Med. size fresh, each **9c**

GRAPES
Calif. Tokays, lb **9½c**

CAULIFLOWER
Well trimmed, lb **12½c**

LIMES
Balls of juice, doz. **16c**

POTATOES

- No. 1 White Cobblers 10 lb bag **16c**
- No. 1 Red Triumphs 10 lb bag **18c**
- No. 1 California Burbanks, lb **3½c**

CRANBERRIES

Cape Cod—Eatmor Brand
LB. 15c

YAMS

Strictly Fancy, No. 1's
LB. 3½c

CANNED SPINACH
Peerless 10-oz

CAN 5c

Tomato Juice

Kuner's Pure
7-oz

CAN 5c

DOG FOOD

Ace Brand
Regular Size

CAN 5c

CANNED TOMATOES

No. 1 Size

CAN 5c

SOAP

TNT
Giant Size
6 BARS FOR

27c

VIENNA SAUSAGE

Clairmont Brand
3½ oz size

2 CANS 13c
for

PEANUTS

Salted ½ lb
Cello

BAG 9c



FOOD VALUES FOR HALLOWE'EN

OXYDOL The Complete Household Soap

LARGE PACKAGE 19c

BUTTER Armour's Country Roll Or Standards Supreme

LB. 34½c

FLOUR Canadian's best, modernized family flour. This flour is guaranteed to be of the highest quality and purity.

48 Lb. Bag **\$1.69**

24 LB. 89c
Bag

LIMA BEANS Olympia Brand No. 2 Size

CAN 10c

ADMIRATION COFFEE

In the new vacuum packed can
Plain or drip ground

LB. 27½c

1.00 SILVERWARE CAKE KNIFE for 25c

with **CRISCO**

3 Lb. Can 57c

NUCOA

A New Vegetable Oleomargarine

LB. 19c

PEAS W. P. Cooked Dry Peas 15 oz

CAN . . . 5c

POP CORN Large Golden

LB. 9c

FREE

A large, world famous painting without extra cost, when you buy one package of Betty Crocker Super Cake Flour.

SOFTASILK
44 oz package

31c

Baking Powder

TOMATOES

BREAD

OLEO Modern Brand A Butter Substitute

Shortening

COFFEE

SALAD

Pork & Beans

TAMALES

PICKLES

SUGAR Limit 1 lb granulated in kraft bags Saturday only

CANNED CORN
BIG M BRAND
SUGAR CORN
No. 2 Size
3 CANS For 25c

TOMATO JUICE
California Home Brand
Large 15 oz
3 CANS For 24c

CANDY
Chase's finest candies. Seven kinds to choose from. Packed in sani-serve cello bag.
2 BAGS 13c

FREE
A large, world famous painting without extra cost, when you buy one package of Betty Crocker Super Cake Flour.

SOFTASILK
44 oz package
31c

FOOD MARKETS

FOODS, MEATS & PRODUCE ★

No. 5.—211 North Cuyler. Phone 127

We Reserve The Right To Limit Quantities

WEEW

PARTIES ARE AT STANDARD'S!

Clabber Girl Large Size
POWDER CAN 19c

No. 2 Size For
3 CANS 19c

Limit—Fluffy Saturday Only
16 Oz. Loaf 5c

Modern Brand A Butter Substitute
LB. 12½c

Armour's Vegetole or Swift's Jewel
4 LB. 43c

White Swan America's Finest
LB. 25c

DRESSING A Real Brand QT. JAR ... 21c

White Swan 10½ oz.
CAN 5c

Marco Brand 1½ size
2 CANS 23c

Key Sour Mixed. A All Glass
QUART 14c

10 LB. BAG 46c

POLISH WIZARD—For Floors and Furniture 24 oz. 19c
Bottle

EVAPORATED MILK 17c
Armour's Tall or 6 Small Cans

CANNED PEACHES DEL MONTE 2 CANS 35c
Fancy California in heavy syrup—Sliced or halves Large 2½ Size

PEANUT BUTTER 27c
Jar Marco Brand Large 24 oz

FRUIT COCKTAIL 2 CANS 25c
No. 1 Tall Bear Brand

TOMATO CATSUP 19c
California Home Brand Vapor vacuum sealed Large 14 oz

RIBBON CANE SYRUP 12c
Pure White Swan Quart Can 21c

P. & G. White Naphtha Soap 24c
For all scrubbing purposes 6 Large Bars

FREE 45c
An 8 Cup Muffin Tin With Purchase of 2 Large Pkgs. Kellogg's All Bran

LAVA SOAP 9c
Bar

SOAP CHIPS 34c
Crystal White 5 LB. BOX

RICE 19c
Fancy, in the bulk BAG

TOMATO JUICE 9c
Beech-Nut 12½-oz CAN

COCOANUT 13c
Long shred ½ lb cello BAG

SANDWICH SPREAD 26c
A Real Brand QT. JAR

SUGAR 15c
Powdered or brown In the bulk 2 Lb. Bag

PREPARED PRUNES 8c
Packed in syrup No. 1 Tall size CAN

WAX PAPER 15c
Cut-Rite Brand 2 Rolls For

CANNED PUMPKIN 17c
Marco Brand No. 2 Size 2 CANS For

Pork Shoulders 17½c
Shank Half or Whole LB.

PORK ROAST 21½c
Center Cuts LB.

SPARE RIBS 19½c
Lots of Meat LB.

PORK CHOPS 21½c
End Cuts Lb
Choice center cuts as displayed, lb 27½c



The Sale Of Sales
ARMOUR'S STAR HAM 23½c
"The Ham What Am" — Half or Whole, Lb.

Chili 19½c
Fancy Red Wrapper LB.

Beef Roast 18½c
Choice Chuck LB.

BEEF STEAK 18½c
Choice chuck, lb

BACON 22½c
Sugar Cured Squares LB.

Poultry and Fish
HENS Fancy colored, lb 21½c
BAKERS Large fryers, lb 22½c
STEWERS Not too large, lb 13½c
FRYERS Fancy colored, lb 29½c
TURKEYS Fancy fowl, lb 26c
WHITING Small fish, lb 12½c
HADDOCK Delux filet, lb 23½c

DELICATESSEN
Pie-Ham Spread, Lb. 30c
Hot Tamales, Each 5c
Bar-B-Q Beef, Lb. 25c
Hot Roast Beef, lb. 35c
Hot Roast Pork, Lb. 55c
Potato Salad, Lb. 15c
Cottage Cheese, lb. 12½c
Home Baked Ham, Lb. 68c

NECK BONES 8½c
Pork, lb

BRAINS 16½c
Fresh, lb

CALF HEARTS 15c
Fresh, lb

CALF TONGUES 17½c
Fresh, lb

SIDE PORK 27½c
Fancy Fresh, lb

SAUSAGE 15c
Pure Pork, lb

HAMBURGER 15c
Pure Beef, lb

BRISKET 12½c
Beef, Boil, lb

STEAK 24½c
Center cut loin, lb

BOLOGNA 14½c
Cut as you like, lb

MINCED HAM 15½c
The best, lb

FRANKFURTERS 15½c
Large, lb

PEANUT BUTTER 12½c
Fall crop, lb

PURE LARD 13½c
Or shortening, lb

PORK ROAST 17½c
Picnic cuts, lb

SLICED BACON
CERRO Lb 29½c
LAKEVIEW Lb 32½c
CUDAHY REX Lb 35½c
BANQUET Lb 35½c
PREMIUM Box 41c
STAR Lb 38½c
SUNRAY Lb 38½c
CANADIAN Style, lb 57½c

BACON 23½c
Iowa Cure Half or Whole Slab LB.

PAMPA YOUTH ADMITS KILLING PORTALES FARMER BUT CLAIMS COMPANION MADE HIM DO IT

CLOVIS, N. M., Oct. 29 (AP)—Two young Texas farm hands were taken to Portales today for preliminary hearing on charges of first degree murder in the shooting last July of Ed Hargus, well-to-do Roosevelt county farmer.

Ray Jackson, 18-year-old Pampa youth, was without legal counsel as yet. Yesterday he signed a statement voluntarily admitting, according to Assistant District Attorney C. M. Compton, that he fired the shots which killed the rancher, but placed the blame on his companion and co-defendant, Marvin McIntire, 22, also of Pampa.

McIntire, apprised of Jackson's statement, refused to say anything. His attorney, Howard Houk, said today no statement would be forthcoming and that McIntire would not waive a hearing in justice of the peace court at Portales.

The young men have not been permitted to see each other since their arrest two weeks ago in Fort Smith, Ark.

Jackson, in his statement yesterday, according to Compton, confessed shooting Hargus because "McIntire gave me 15 minutes to do the job and I was scared to death." He accused his companion, Compton said, of plotting to kill Hargus and later Mrs. Hargus in an attempt to obtain the Hargus property.

The rancher was found buried in a shallow sandhill grave back of a corral three days after he had mysteriously disappeared.

Stole Car in Pampa.
Jackson's statement concerning the rancher begins: "We were at Pampa and were drinking, I mean McIntire, and he tried to get me to break out a window weight at Mrs. Parker's and

'SUICIDE' RAIDERS TO BE BUILT BY AMERICA

WASHINGTON, Oct. 29 (AP)—The United States navy is preparing to follow the lead of foreign fleets in developing small, lightning-fast "suicide" raiders and scouting craft.

Details remain to be worked out, navy officials said today. They declined to amplify a disclosure by Assistant Secretary Charles Edison that two experimental boats, designed to attain speeds up to 30 miles an hour, are planned. "Suicide" raiders and scouting craft.

The expected speed would be greater than that reported for any of the similar craft developed by Italy, Great Britain and Germany, whose navies have experimented with "suicide" ships since World war days.

Their swiftsness, Edison said, would enable them to dash within a few hundred feet of any enemy vessel, discharge torpedoes and dart quickly out of range of hostile guns.

The speed boat raiders, faster than other surface craft, won the "suicide" sobriquet when used by the British in the World war.

Speed and the ability to maneuver quickly are their sole defense. With eight or ten men aboard, the British sent them zig-zagging up and down the Belgian and French coasts in search of submarines and military information.

TWA PLACES ORDERS FOR 8 NEW AIRLINERS

Revealing that more air passengers were carried in September than in any previous month in the company's 11 year history, Transcontinental and Western Air, Inc., announced today the placing of new airplane orders totaling \$1,413,000.

Jack Frye, in announcing the huge new equipment order following passenger traffic gains unprecedented in T. W. A. history, said eight airplanes, varying from 33-passenger transports to 16-passenger

er Skyliners were being purchased.

"Two additional 33-passenger, four-motored 'sky dreadnaughts' will be purchased from the Boeing factory, Seattle, increasing the new T. W. A. super-fleet for use next summer to eight," Frye said.

"The Douglas factory, located in Santa Monica, California, will provide T. W. A. with four more luxurious 21-passenger Skylub liners and two additional 16-passenger Skyliner planes. All eight planes will be built strictly to T. W. A. specifications. The Skyliners, for example, capable of carrying 25 passengers, will be constructed to transport only 16 passengers, thereby providing additional space for two large, luxurious dressing rooms which will be the last word in comfort and convenience."

The airline president revealed that during 1937 T. W. A. has expended \$3,478,500 for new operating equipment and refinements to present equipment. That, plus the new expenditures, brings the total funds spent by T. W. A. in its huge

equipment program for 1937 and the early spring of 1938 to \$4,891,500.

Frye said the Boeing "super-liners" will be delivered next spring while the six Douglas ships were ordered today for service beginning January 1, 1938. Interiors and furnishings are to be specially fabricated with designs drawn up to appeal especially to women air travelers, he declared.

"Traffic figures handed me today show that the company flew 8,093,287 passenger miles in September, indicating to us the need of more airplanes to handle our growing traffic. This led directly to placement of the orders," Frye said. "The figures also showed the popularity of T. W. A.'s new San Francisco-Chicago-New York City and Chicago-Portland-Wayne-Dayton-New York City routes which were established the first of September.

"Passenger totals showed a gain of 15 per cent over August and 31 per cent over September a year ago. For the first nine months of 1937, T. W. A. traffic is 5 per cent ahead of the same period in 1936.

The great fleet of super-liners now operated by T. W. A. makes possible the operation of the fastest schedules over the shortest coast-to-coast route in the United States. Exceptionally heavy winter traffic is anticipated by the airline, officials pointed out, as the company swings into the winter season better equipped to handle winter business than ever before in its history.

Although T. W. A. is included with four other airlines in an experimental four-motored plane being constructed by Douglas, the company will accept delivery on the 42,000 pound Boeings some time next spring.

power pact conference starting next Wednesday at Brussels.

The formal reason given was that Germany was neither a signatory nor an adherent of the treaty guaranteeing China's territorial integrity.

The German reply expressed "full appreciation of the endeavor to bring a speedy end to the lamentable conflict in East Asia by application of friendly means," and concluded with an expression of willingness to cooperate in mediation when conditions are suitable.

BOMB AIMED AT JUROR.
HOLLYWOOD, Oct. 29 (AP)—A bomb exploded early today under the home of Clifford E. Clinton, vice crusader and county grand juror, but failed to injure him or eight members of his household. "There is no question this is a reprisal for my efforts in attempting to get rid of gambling and vice in Los Angeles county," Clinton said.

News Want-Ads Get Results.

Flashes of LIFE

(By The Associated Press)

CEILING ZERO
PHILADELPHIA, Pa.—The "big apple" dance craze closed a liquor store here.

Dancers in a hall over the store became so enthusiastic doing the "big apple" the store's ceiling fell. There were no casualties among the whisky bottles.

WANTED—DICTIONARY OR LAWYER

BALTIMORE, Md.—A negro woman came before Judge Rowland K. Adams on a larceny charge, pleaded "guilty," and then insisted she had stolen nothing.

"Do you know what 'guilty' means?" the judge asked.

"It means I didn't do it," the defendant replied.

The jury acquitted her.

PAY DIET

FIELDALE, Va.—Flood waters on the Smith river here boomed the laundry business in nearby cities. Three million towels in a cotton mill bleaching needed washing after the muddy waters receded.

BIG GRAIN MEN

DALLAS—City detective R. W. Corn put in a call for a fellow officer in Fort Worth.

"Mr. Cobb is ready," said the Fort Worth operator.

"Mr. Corn is ready," said the Dallas operator.

The Fort Worth operator tittered.

"They ought to get together sometime."

AW, SHOOT!

SEATTLE—A luckless hunter dropped wearily to a log, when lo! A big bull elk crashed through the brush and dropped dead at his feet. He quickly applied his game seal to the elk's horn.

A moment later another sportsman came up, rifle smoking. He took in the trophy hunter and seal, then stalked on, muttering:

"By golly, mine can't be very far away."

NO TOW CAR NEEDED

ALBION, N. Y.—John Coveny, 18, and Orrin Preet, 17, were out riding when their car crashed through a railing and came to rest dangling over Laverne Starkweather's junk pile and auto graveyard.

The two jumped to safety and made a deal with Starkweather.

STUMPED

PHILADELPHIA.—Franklin H. Price, chief librarian of the free library, says there's hardly a question he can't find the answer to but he had to admit defeat, he said, when a woman demanded on her rights as a taxpayer that he tell her the name and rank of the unknown soldier buried in Washington.

Magic-Aire Vacuum Cleaners
Sold Exclusively By
THOMPSON Hardware Co.
107 N. Caylor Phone 43

EDDIE CANTOR GIVEN GOLD PLAQUE BY COBB

HOLLYWOOD, Oct. 29 (AP)—Eddie Cantor, pop-eyed funny man of the stage and screen, had a gold plaque today to remind him of his first twenty-five years as a creator of laughs.

Irvin S. Cobb presented it in the presence of some 600 big names of the entertainment world at a testimonial dinner last night with this citation:

"Cantor is a modest, shy soul who has helped many, who loves his fellow man and has made him laugh with the golden melody of humor."

NUTS
CLAREMORE, Okla.—A Chelsea, Okla., man charged his peacan crop was killed by oil pollution.

The oil company attorney introduced pecans from the land as defense evidence. Midway in the damage he heard a crunching. The jurors were eating the evidence.

The defense won.

News Want-Ads Get Results.

CONSIDER THE STYLE COMPARE THE PRICE

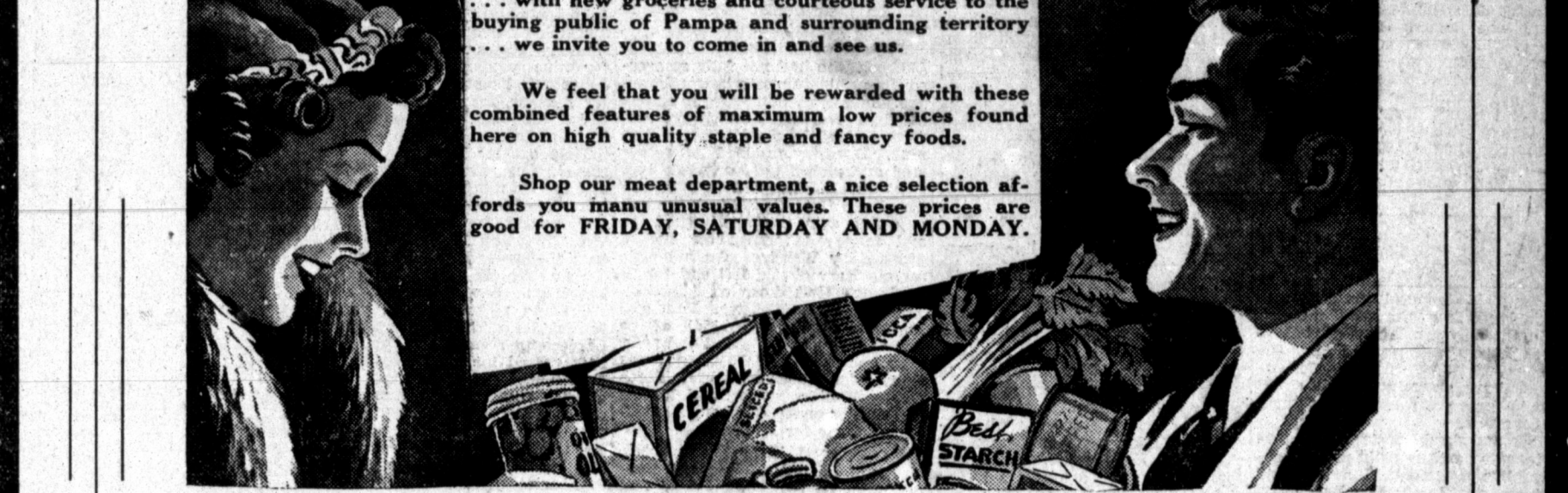


MEN! ATTENTION!
Men's All Wool SUITS
Plain and sport backs, plaids, checks, solids and mixtures. Don't let the price fool you, see these suits today—They are one of the biggest suit bargains we have ever offered.

1355
Complete New Selection Drastically Reduced Prices

PENNEY'S
J. C. PENNEY COMPANY

A NEW FOOD STORE FOR PAMPA



PAMPA FOOD MARKET

FORMERLY THE PAMPA FRUIT & VEGETABLE MARKET

Jak'n Jill Corn Syrup 39c 5 lb pail	King Parrot Pancake Flour 10c Pkg	FLOUR Canadian's Best 48 lbs \$1.69 24 LBS. 89c	SUGAR In Kraft Bag 10 LBS. . . . 55c	Mrs. Tucker's Shortening 1 Pound... 15c 4 Pounds... 49c 8 Pounds... 95c
		CREAM MEAL 10 lbs 35c 5 Lb. Cloth Bag . 19c Canadian's Best Quality	OATS With Cup, Saucer or Glassware 42 Oz. Pkg. . . . 25c	BREAD 16 Oz. 5c Loaf . . . 5c
		PEACHES Halves or Sliced No. 10 . . . 49c No. 2 1/2 Can, 3 cans 33c	CHERRIES No. 10 Red Pitted Sour 69c	
		VANILLA Imitation Flavor Full Pint 25c	Mineral Oil High Viscosity 16 OZ. 47c	
		PICKELS Sour Or Dill 26 oz Jar 15c	Lux or Ivory FLAKES Small Size . . . 10c	
		GREEN BEANS SPINACH No. 2 Cans 19c	RINSO or OXYDOL 3 Small Med. Size . . . 23c	
		PEAS or CORN 2 Cans		

Fresh Selected Vegetables

LETTUCE Crisp Head 4c	GRAPE FRUIT Med. Size 3 for 14c	CELERY Small Stalk 10c
PEPPERS Bell Sweet LB. 5c		RHUBARB LB. 12c
CARROTS BUNCH 5c		CAULIFLOWER LB. 12 1/2c
POTATOES 10 POUNDS 14c	YAMS POUND 2 1/2c	CABBAGE POUND 2c
PEARS Med. size, doz 16c	GRAPES Tokays, pound 5c	ORANGES 288 size, dozen 33c
APPLES Dozen 40c	BERRIES CRAN, pound 17 1/2c	PERSIMMONS Pound 7 1/2c
		LEMONS Sun Kist, dozen 29c

STRIKE UP THE BAND.....

Introducing---

A NEW LEADER

The



Bring Beauty and Convenience to your kitchen with a
Modern Perfection Oil Range



Range R-870, one of 21 High-Power Perfection Stoves

What a delightful improvement these New Perfections will make in the appearance of thousands of kitchens! Cooking will be easier, too, with High-Power burner speed, cleanliness and precision regulation for every needed heat, from simmering to broiling. Whatever your ideas on kitchen decoration, the dainty cream-white porcelain finish of this New Perfection will fit in. Also available with pure white finish.

Corners are rounded, surfaces are smooth, and there's a removable tray beneath the burners. The "Live-Heat" oven, air insulated, is built at convenient height. The two-gallon condensed fuel reservoir is easily filled and removed for filling.

Come in and find out all about it. You'll be pleased with the reasonable price.

Directed Heat with the Oil Burning SUPERFLEX

HEAT DIRECTOR



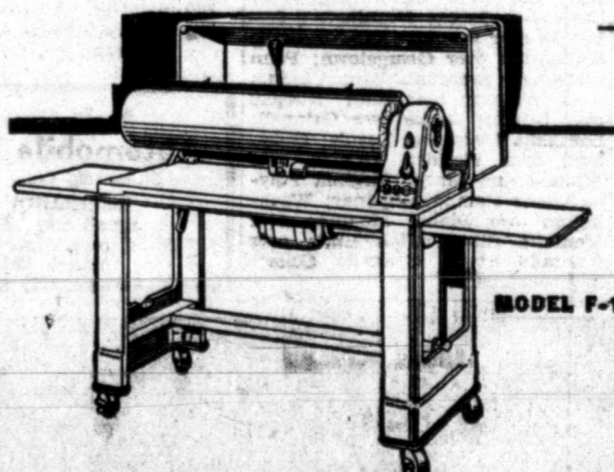
Come in and let us show you this marvelous heating stove. It gives just the heat you need, and patented adjustable shutters direct the heat WHERE you need it. Burns fuel oil. Several sizes and styles, for homes, schools, churches and shops. Easy terms, if desired.

★ See This New Superflex On Actual Display ★

PLAINS MAYTAG COMPANY

Simplicity and Convenience

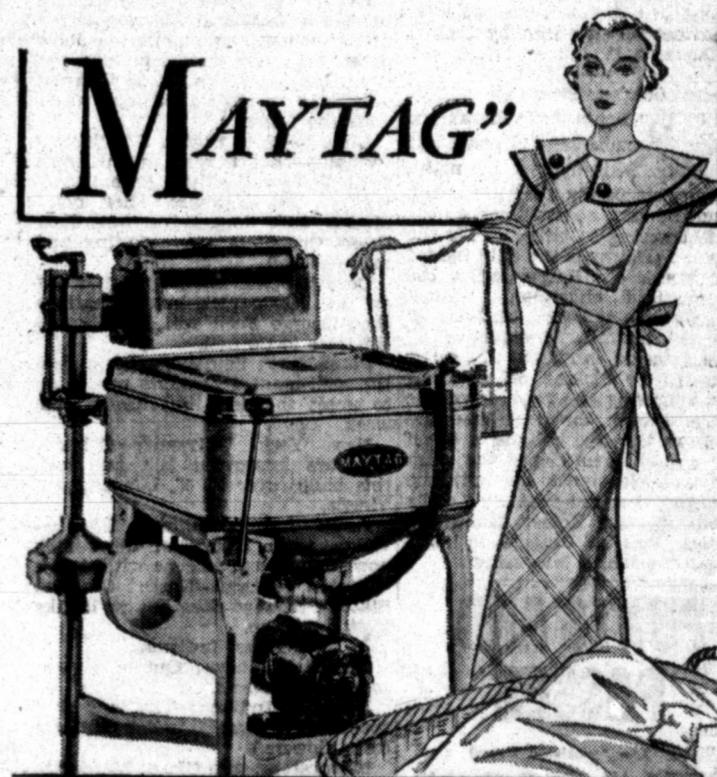
Distinguish the New MAYTAG IRONER



MODEL F-10

Ironer demand is growing at a rapid pace. Women are learning that pulling and lifting a heavy hand iron over the clothes... standing on their feet for hours at a time, is old fashioned and wasteful.

The Maytag Ironer has an ironing surface 3 to 10 times greater than a hand iron. Saves half your time. The pressure, the speed and the heat may be regulated to the right degree for the best results. Knee and hand controls leave both hands free to guide the clothes. The double open-end roll makes it easy to iron tubular pieces, ruffles, laces, or full-size sheets, table cloths and blankets. The Maytag Ironer saves time, work and laundry expense. Your assurance of satisfaction is the Maytag reputation for quality products.



New and improved this Maytag Aluminum Washer offers every owner still better performance, still faster, easier washings for more years. Maytag has held world leadership in sales... world leadership in quality... for more than fifteen years. Now comes this new Maytag... the greatest in Maytag history.

FREE!
To Every Person Visiting Our Salesroom Tomorrow One Package of...

Maytag WATER SOFTENER

"Makes rain-soft water—Saves soap—Saves clothes."

Introducing to Pampa a new appliance store... featuring MAYTAG washers, with a complete sales and service staff.

The MAYTAG franchise of Pampa has been purchased from Bert Curry Ref. Co. with the complete stocks.

Joe Freeman formerly with the Curry Refrigeration Co. is in charge of the service department, equipped to service all makes of washers.

L. W. Scott, connected with the MAYTAG company since 1917 will be the store manager and will assist and gladly help with any home washing or ironing problem you might have.

You are cordially invited to attend the formal opening tomorrow, Saturday, Oct. 30 to see the complete line of washers, ironers, heaters and ranges sold by the Plains Maytag Company.

... and Introducing the New ...

PLAINS MAYTAG COMPANY
L. W. Scott, Mgr.

Phone 1644

116 West Foster

Match Tonight To Tell Champ Featherweight

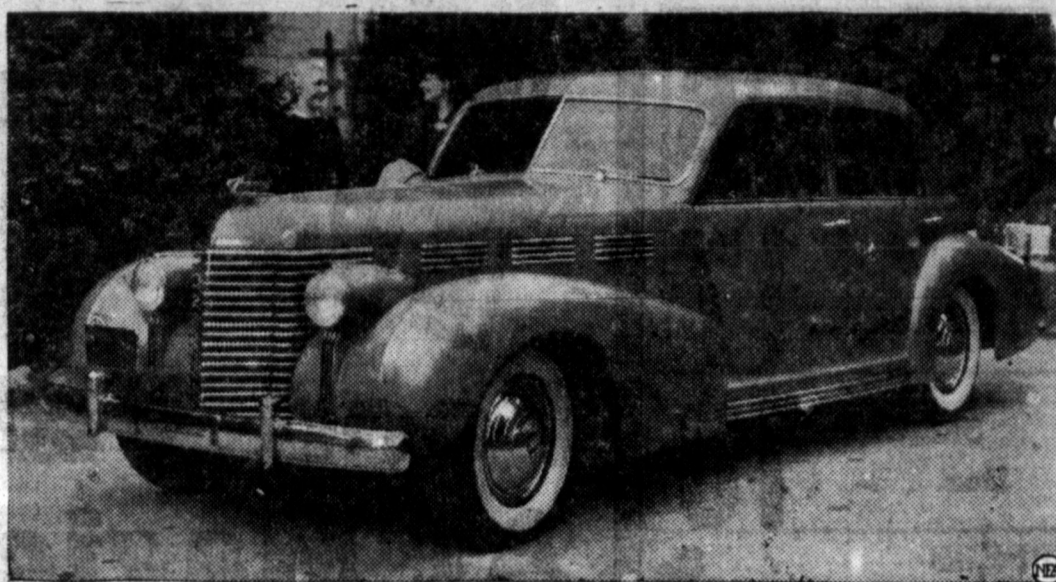
NEW YORK, Oct. 29 (AP)—Henry Armstrong and Peey Sarron, a couple of battling buzz-saws, pop out of Mike Jacobs' hat (where boxing's new car carries all his business) and tangle for 15 rounds in Madison Square Garden tonight to settle the featherweight title mess.

The meeting of the irresistible force in Armstrong's knockout wallop and the immovable defense of the boxer from Bama who has never been floored marks Jacobs' first venture as boss of the house that Tex built, and should iron out the current complicated situation that has three titleholders at the head of the 126-pound parade.

The National Boxing Association and the states it controls recognize Sarron, the Syrian from Birmingham, as the kingpin of the feathers. In California, it's Armstrong, and in other parts, particularly New York, Mike Bellosie gets the call. Bellosie, however, has voluntarily relinquished his claim, and New York's tistic fathers will nominate tonight's winner as top man.

Strictly on his recent record of 21 knockouts in 22 trips to the post, the California negro goes into the ring as the favorite at odds ranging from 3-1 to 3-2.

Cadillac Steps Out in Style for New Year



One of the style leaders of the automobile world this coming year is Cadillac, which brings out one of the smartest cars on the market. Shown here is the Sixty Sedan, which is only five feet five inches high, and made ultra smart by the elimination of running board. The new car can be had with a new gear shift attachment. It is on display at Plains Cadillac-LaSalle Co., this city.

Roosevelt Peculiarly Fitted To Be One of Father's Secretaries

By RODNEY DUTCHER
(Pampa Daily News Washington Correspondent)

WASHINGTON, Oct. 29—If one concedes the propriety of Jimmy Roosevelt's position on the federal payroll as one of his father's secretaries, the snuffing over his new assignment as "coordinator" or "clearing house" between the President and the independent federal agencies is bound to seem superfluous.

It's a job that needs doing. It might have been given to someone other than Jimmy. On the other hand, the President's son is a person peculiarly fitted to try to handle it.

Big problems and little problems are poured in on the White House. The big ones are more than enough to keep the elder Roosevelt busy. Cabinet members sometimes use discretion as between big ones and little ones at cabinet meetings and sometimes not. Anyway, the President hasn't been able to see all the heads of nearly a score administrations, commissions and boards to discuss both their big and little problems.

Jimmy Has Advantages
That's been a bit-or-miss, catch-as-catch-can affair which had led to much bickering on the line of "That fellow gets in and we don't" and "The President doesn't understand our problems." The idea now is to regularize the situation, with Jimmy reserving a half an hour a week for each agency and serving both as a funnel into the inner office and a conveyor of orders or advice in reverse. The problems he will handle will be mostly minor. Governor Eccles of Federal Reserve, Harry Hopkins of WPA, Chairman Bill Douglas of SEC and other big shots will not be taking vital national policies to Jimmy.

The extent and nature of Jimmy's abilities have yet to be proved, although they surely match any other White House secretary's. But the father-son relationship is so close that no official will be jealous, no one will dare try to undermine Jimmy and no one will try to disregard or upset the arrangement without due thought. If it were any other man, that would be a miracle. At the same time, if Jimmy makes messes of things the word is sure to get around. It seemed rather odd that his new work should be announced with such ballyhoo.

Roosevelt's eldest son works at the White House partly because his father was lonely after his bodyguard and comrade, Gue Gennerich, followed Louis Howe to the grave. The President does want Jimmy to go into politics and make a great success—perhaps even day-dreams that he will some time be in the White House in his own right. But "Crown Prince" talk is absurd. Jimmy has a wonderful chance for study and contacts. So far he hasn't even been elected a town constable. And it will take a lot more than that.

New "Assistant Presidents" Gossip is naming the six new administrative assistants to the President whose jobs will soon be created by Congress and who will be expected to have a "passion for anonymity." It's expected Jimmy will be one—although not the most "passionate" of them. The others are as likely as not to be.

William H. McReynolds, now administrative assistant to the Secretary of the Treasury.

Eibert K. Burley, now administrative assistant to Secretary Ickes and

Wildcat Game Crucial Tilt For Aggies

ALBUQUERQUE, N. M., Oct. 29 (AP)—The New Mexico Aggies stand off as potential 1937 Border conference football champions when they tackle Tex Oliver's Arizona Wildcats at Tucson tomorrow.

The Aggies were sharpening up an aerial attack as a special surprise for the limping Arizona eleven, booted around last Saturday by Centenary.

In the only Border conference game this week, two tail-enders—Arizona State of Tempe and the University of New Mexico—clash at Albuquerque in a battle to keep out of the conference cellar.

The New Mexico Hilltop squad, however, was looking in better shape than at any time this season despite last week's 27-0 wallop by Texas Tech.

Tech, meanwhile, sat in the favored role of probably conference champion since the Lubbock eleven has completed its three-game conference schedule undefeated. Only the New Mexico Aggies have a chance to duplicate, but over a longer and harder route.

Thomas G. Corcoran, who serves now to all intents and purposes as an unofficial presidential secretary and liaison man, although titularly a special assistant attorney general and assistant general counsel of the RFC. (It is fairly certain that the RFC. (It is fairly certain that the among the six.)

Undersecretary of the Interior Charles West, who has offices in the Interior Building and signs great batches of documents there, but who when Congress is in session is Roosevelt's chief liaison and contact man on Capitol Hill.

This list should be taken with reservations. The President hasn't actually decided on any individual yet, insofar as anyone but he himself knows.

'LIFE OF CHRIST' TO BE SCREENED ON SUNDAY

"The Passion Play" or "Life of Christ," is veritably a treasured heritage of the ages, to all Christian people, whose faith is anchored in the resurrection of Jesus of Nazareth. The dramatic versions, given periodically, in Europe at Oberammergau, and Freiburg, are visited by hundreds of thousands of Christian people, from all sections of the world, at enormous expense.

The public of Pampa is to be given the rare opportunity of seeing the new and world-famous "Passion Play" motion picture based upon, and patterned after, both Freiburg and Oberammergau productions, and actually produced in Europe—the Holy Land, and Egypt, with special organ, orchestral and choral music, on sound equipment, depicting many famous scenes in the life, crucifixion, and resurrection of Jesus, at the First Methodist church, on Sunday, Oct. 31, at 7:30 p. m. Everybody is invited, and admission tickets are not necessary. A silver offering will be taken, to assist in paying expenses.

Use paper cups in preparing individual portions of frozen foods. Salads and desserts may then be served in the cases or unmolded.

AUTO LOANS

See Us for Ready Cash to

- ★ Refinance.
- ★ Buy a new car.
- ★ Reduce payments.
- ★ Raise money to meet bills.

Prompt and Courteous Attention given to all applications.

PANHANDLE INSURANCE AGENCY

Combs-Worley Bldg. Ph. 804

Gray County Records

Compiled by Pampa Credit Association

Deed of Trust: Laroy West et ux to Panhandle Building and Loan Association, lot 4, block 8, north addition.

Deed of Trust: Bert Arney et ux to Norman Jones, lot 7, block 1, Vincent addition.

Warranty Deed: W. S. Roberts et ux to P. Y. Long, lots 12, 13 and 14 in block 31, Wilcox addition.

Warranty Deed: W. S. Roberts et ux to E. L. Spark, lots 20 and 21, block 31, Wilcox addition.

Warranty Deed: D. E. Davis et ux to E. C. Hooker, east 30' of lots 21 and 22, block 1, ten acre addition.

Warranty Deed: D. E. Dean et ux to William N. Taylor et ux, lot 4, block 2, highway park addition.

Deed: Williston Benedict to J. O. Phillips, lot 13, block 2, south side addition.

Deed: White House Lumber company to Douglas Wilson, lot 7, block 26, Talley addition.

Mechanic's Lien: J. O. Phillips et ux to Lynn Boyd, lot 13, block 2, south side addition.

Assignment: Mrs. Bess Brashears to H. T. Hampton et al, transfer and assignment of right, title and interest in and to that certain lease agreement entered into by Carl G. Brashears and Black Sivals and Bryson under date of 8-26-35.

Assignment of Lien: W. Mullinax to Panhandle Building and Loan Association, lot 4, block 8, north addition.

Assignment of Rentals: Laroy West et ux to Panhandle Building and Loan Association, lot 4, block 8, north addition.

Bill of Sale: Mrs. Bess Brashears to H. T. Hampton et al, frame building, together with all equipment, including air compressor, light pole, lights and all light bulbs located on lot 21, block 1, Hagyard addition.

Gas Royalty Division Order: Willie C. McConnell et al to D. D. Harrington, S 1-2 section 186, block 3, I and GN.

Oil and Gas Mining Lease: Willie C. McConnell et al to D. D. Harrington, S 1-2 section 186, block 3, I and GN, covering the oil, gas and other minerals thereunder to a depth of 2000 feet.

Release: Panhandle Building and Loan Association to Norman F. Jones et ux, lots 5, 6 and 7, block 1, Vincent addition.

Release: J. R. Porter, trustee to Geo. R. Pattulo et al SE 1-4 section 201, block B-2, H and GN.

Release: White House Lumber Company to Douglas Wilson, lot 7, block 26, Talley addition.

Mrs. Shipley Named Secretary of P-TA

By MRS. EARL COURTNEY
LEFORS, Oct. 29—Mrs. G. T. Shipley was elected secretary of the LeFors Parent-Teacher association for 1937-38, at a recent meeting of the organization.

Program of the meeting included group singing, directed by R. E. Paige, music by the orchestra, led by Mr. Finley, songs by the high school girls chorus, and discussion of Founders day by Miss Ila Mae Hastings.

Try peanut butter frosting for covering white or spice cakes. Add one-third of a cup of peanut butter to your regular uncooked white frosting. Blend in the peanut butter well before icing the cake. Add a few roasted peanuts as decoration.

CONGRATULATIONS TO THE PLAINS MAYTAG CO.

Utility Spray Painting

JOHN W. CROUT & SON

Painting and Paper Hanging

Phone 320 Shop, 211 N. Purviance P. O. Box 1831
Loans Made On Painting and Paper Hanging

MASQUERADE BALL

SATURDAY, OCT 30th

ADMISSION . . . \$1.10

\$10 PRIZE

For the Best Halloween Costume. Other prizes Plenty of Confetti, Horns, Hats for Everyone

SOUTHERN CLUB

The ghosts and goblins are after "porky" and is he scared! Scared so bad that we are beginning to believe that he lost his mind, offering everyone such low prices, and so many of them too. No foolin', don't fail to stock up on groceries this week and do it at PIGGLY WIGGLY.

HALLOWEEN

PUMPKIN

Empson's No. 2 1/2 can . . . **10c**

Pork and Beans

Highest Quality **MEATS**

HENS Fat, colored, lb . . . **20 1/2c**

STEAk Select veal round lb . . . **31c**

BACON Banquet sliced, lb . . . **36 1/2c**

Salt Pork Squares 15 1/2c Lb . . . **15 1/2c**

Peanut Butter Fresh bulk, lb . . . **14c**

Parkay or Nucoa Oleo Lb. **19c**

Roast Boneless, rolled and tied Lb. **19 1/2c**

TOMATO JUICE 10 oz CAN **5c**

PEAS Dry pack Tall CAN **5c**

BREAD Pullman Loaf **5c**

PEACHES Heavy Syrup No. 2 1/2 Cans **15c**

PEAS Dry Pack Tall Can **5c**

Cranberries

Cape Cod LB **16c**

BEANS Pintos, recleaned, 5 lbs **33c**

CORN Sweet, 3 No 2 cans **29c**

PUREX The Better bleacher, qt **12 1/2c**

TOMATOES New pack, 3 No. 2 cans **19c**

COCOA Bakers, 2 lb can **23c**

CORN Primrose, 2 No. 2 cans **25c**

TOMATO JUICE Campbell's, 1/2 gallon **25c**

PINEAPPLE JUICE Del Monte, 1/2 gallon **35c**

CAKE FLOUR Swans Down, large box **29c**
Can of Bakers Coconut free.

GRAPEFRUIT JUICE Full No. 2 can **10c**

CRACKER JACKS 3 regular packages **10c**

VEGETABLES AND FRUITS

Lettuce Large heads **4 1/2c**

Celery Large bleached stalks **10c**

CARROTS, RADISHES 3 Bunches **10c**

APPLES Fancy Jonathans, dozen **19c**

APPLES Large fancy delicious, doz **30c**

GRAPEFRUIT Texas Seedless Large Size Each **5c**

P & G SOAP

Giant Bars **5 BARS 17c**

TAMALES Marco **23c**

2 REG. CANS . . . **23c**

ONLY **1c** for a GOLDEN GLOW CAKE PLATE with the two boxes of 1 20c PKG. or 2 10c PKG. CONCENTRATED SUPER SUDS (IN THE BLUE BOX) **21c**

WALNUTS New crop NO. 1, LB. . . . **19c**

CHOCOLATE Cherries LB. BOX **25c**

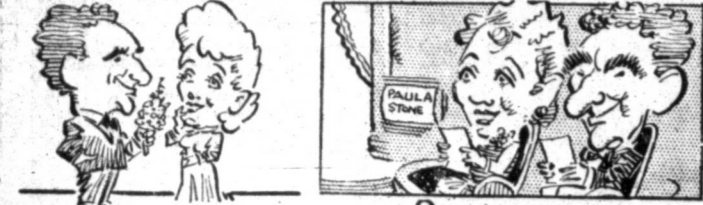
PIGGLY WIGGLY

Movie Scrapbook

HOLLYWOOD ROMANCES FRED STONE and ALLENE CRATER



HAVE NOW BEEN MARRIED MORE THAN 30 YEARS. HE NEVER PROPOSED, LEAVING BY TRAIN TO VISIT HIS SICK BROTHER, HE SCOUTED BACK, "WHEN I GET BACK, WE'LL GET MARRIED." SHE WAS STUNNED.



FELL IN LOVE WHILE WORKING TOGETHER IN A NEW YORK SHOW. DAUGHTER PAULA, IS FOLLOWING IN THEIR FOOTSTEPS.

International Sunday School Lesson

MORAL ISSUE IN THE DRINK PROBLEM.
Text. Romans 13:12-14; I Corinthians 6:9-11; Galatians 5:16-24.
By WM. E. GILROY, D. D., Editor of Advance.

The moral issue in the drink problem, which is the theme of this lesson for International Temperance Sunday, is strongly emphasized at this time.

At one time it was the economic issue that was emphasized. This was true when the country was at war and every available source of economic wealth was necessary. The country then was strongly aroused to the matter of economic waste through drink, both by the loss of man power through the effect of alcohol on human life, and by the waste of food stuffs in the manufacture of liquor.

It was then seen quite clearly that alcohol could confer no benefit upon individuals or nations, but that it might mean a very real economic loss.

This economic issue was also emphasized in the days of the country's prosperity when, broadly speaking, there was a place and need for every man's labor, and when those who were incapacitated through drink slowed down the process of production.

When an artificial prosperity gave place to an artificial depression, when jobs were as scarce as they had been plentiful, and labor was cheap and unneeded, the economic argument against liquor lost much of its practical bearing.

There was a period also when the legal issue was emphasized in relation to liquor. Prohibition was the law of the land, and those who trafficked in liquor were law breakers. At that time the tendency was to put much of the stress upon the duty of the citizen as a citizen, to uphold the law and the Constitution.

The argument did not have much weight with those who wished to drink, and with those who were willing to engage in crime for the sake of profit and the indulgence of appetite. That legal argument has gone out with the repeal of prohibition.

Now once more we are face to face with the moral issue as the chief issue. There ought never to have been any weakening of the moral emphasis, though it should also be realized that the moral emphasis is not the only emphasis. That the prevailing sentiment in favor of total abstinence has weakened does not at all mean that alcoholic liquor is less the foe of humanity than it ever was. Alcohol has still the power to destroy men and to weaken their efficiency economically, morally, and in every other way.

Here in our lesson we are brought face to face with the old problem in terms of sane and healthy living. It is not only a matter of alcohol; but it is a matter of self-control, and of decency in all one's habits and

living. The appeal is specifically to Christians and the Christian life is one of self-mastery and of sound relationships. The man who is led by the spirit of God will not indulge in evil things.

The lesson does not touch upon the question of drinking in moderation, or what some would call the question of temperance as against the question of total abstinence. It is not my purpose here to go into the controversy that might arise at this point.

One may, however, point out that considering all the evil that alcoholic liquor has wrought in the world, there is strong warrant for the contention that the Christian does not arise to his full privilege in combating that evil until he has refused to have anything to do with it at all. The total abstainer has logic on his side when he wars against an evil habit and an evil traffic, and his example gives to his words strength and consistency.

PASSION PLAY FILM TO BE SHOWN AT CHURCH

Many hundreds of Pampa people will attend the First Methodist church, on Sunday night, Oct. 31, at 7:30 o'clock, to see the new and very beautiful motion picture film of the "Life of Christ" and the "Passion Play" depicting the story of Jesus, from the Nativity to the Ascension, which is based upon, and patterned after the world-famous Freiburg and Oberammergau "Passion plays" of Europe, and which was actually filmed in Europe, the Holy Land, and Egypt, at a tremendous cost.

A complete and very appropriate musical score will be played thru-out the entire film, on special sound equipment, reproducing some of the world's choicest and most exquisite orchestral, organ, and choral music by famous composers, blending in with the magnificent scenes, which portray, in authentic and historic fashion, the life, crucifixion, and resurrection of Jesus. The film was produced in Europe, Palestine, and Egypt, and has won the profound admiration and approval of more than two thousand of the largest churches in the United States and Canada, having been exhibited to more than one-half a million people, during the past two years, many times to overflowing audiences.

NUMEROLOGY HITS SHOES.
PARIS (AP)—Numerology has left its mark on shoes. A Paris boot-maker is cutting numbers out of kid, and joining them together to make oddly patterned toes and heels for sandals. Green sixes, yellow fives, and royal blue sevens all get together in such a sly way that it takes looking to find them. For luck, one of the models has a red kid heel on which is stitched a navy blue "13."

"QUAKER OATS" is the breakfast I bank on!

says Great American All-Star Quarterback, VERNIE HUFFMAN, pilot of the 1937 winning All-Star Football team!



Mothers by the millions give this wonderful whole-grain cereal to their children because it's so rich in food energy, so rich in flavor. Yet costs but 1/2 cent per portion. There is no other oatmeal like Quaker Oats!... And Quaker Oats has the extra value of Nature's Vitamin B—the precious vitamin you need daily to combat nervousness, constipation, poor appetite... Lay in a supply today! It's a way to save money!

BRACES UP NERVES & DIGESTION WITH NATURE'S VITAMIN B1

Harris Vegetables

Spuds Red McClures 100 lbs \$1.65 10 Lbs. . . . **17c**

Bananas Golden Ripe Fruit Sat. Only Doz. . . . **10c**

YAMS
Porto Rican Bu \$1.15 Lb. . . . **2 1/2c**

BELL PEPPERS Pound **9c**
APPLES Fancy Delicious, large size, doz **35c**
CELERY Large Crisk, stalk **10c**
BURBANKS No. 1 fancy, lb **4c**
SQUASH Small, white or yellow, lb **5c**
TOMATOES Solid ripe, pound **7 1/2c**

APPLES
Extra Fancy Roman Beauties Large Size Doz. . . . **25c**

ORANGES
Fancy Texas Seedless 252 size Dozen **29c**

VEGETABLES
Carrots Radishes Green Onions 3 Bunches **10c**

GRAPES
Calif. Tokays Lb. . . . **5c**

GRAPEFRUIT
Texas Marsh Seedless Large Size 4 For **19c**

GREEN BEANS
Fresh Snap Lb. . . . **9c**

CABBAGE New Green, lb **2 1/2c**
LETTUCE Firm, crisp heads **4c**

CRANBERRIES
Eatmore Brand Lb. . . . **16c**

PERSIMMONS
Large Japanese 2 For **5c**

Pumpkin
Del Monte No. 2 1/2 Can **12 1/2c**

Tamales
Ratloff's No. 1 1/2 Can **12 1/2c**

BEANS
Heinz Kidney Or Oven Baked 1 for 19c 1 for 1c 2 for 20c

BISQUICK
Special Offer For Salads, Berries, Cold Meats, Etc. Fork and Spoon Large Size **33c**

PEANUT BUTTER Quart Jar **25c**

SUCCOTASH Marshall, No. 2 can **15c**
DOG FOOD Scotty, large can **5c**

RICE Fancy Whole Grain 1 for 5c 1 for 1c **5c**

CATSUP Glen Valley 14 oz Bottle **10c**

PEACHES Del Monte Sliced or halves Tall can **12 1/2c**

CRACKER JAX No. 2 cans 1 for 15c 1 for 1c **2 for 6c**

CLUB SODA 2 for 11c

STARCH Stanley's Gloss 1 lb pkg **2 for 11c**

SUGAR
Pure Cane Cloth bag, 10 lbs. . . . **53c**
Kraft Bag 10 lbs. **49c**

Dried Fruit
PEACHES PEARS APRICOTS APPLES Lb. **12 1/2c**
PRUNES, Lb. **5c**

FLOUR
Queen Of The West Every Sack Guaranteed 24 Lbs. **75c**

HALL

Food Values At Magic Prices

HARRIS FOOD

322 W. Kingsmill STORES 306 S. Cuyler
LOOK! 1c Sale Fri. & Sat.

PEACHES Libby's Buffet

TISSUE Northern

PLUMS Libby's DeLuxe or Green Gage

EXTRACT Vanilla Orange Lemon Strawberry

WAX Johnson's Liquid, Pint

COFFEE Lipton's or Blue Hill

APPLE BUTTER

SOAP Haskin's Bros. Fancy Toilet Perfect Trilby

TAMALES El Toro or Gerbharts

CHILI Rio Rita Large Can

CORN Dairy Maid Kremed Kernel No. 2 Cans

SOUP Marshall Tomato

CARROTS Marshall Diced

PRUNES Libby's In Syrup

CHERRIES Libby's Royal Anne

WAX PAPER Cut-Rite

FIGS Libby's Fancy

APPLE SAUCE

TOMATO JUICE

MAZOLA OIL
We have a large number of other 1c items that space

HALLOWEEN



306 S. Cuyler
Early and share in our great 1c sale for Friday and Saturday only. We have a supply of these 1c items and urge you to shop early. Other prices effective Friday evening, Saturday and all day Monday. We reserve the right to limit quantities.

Sliced or Halves 1 for 10c 1 for 1c	2 FOR..11c
1 for 10c 1 for 1c	2 FOR..11c
No. 2 1/2 can 1 for 19c 1 for 1c	2 FOR..20c
Our Chief 8 oz bottle 1 for 19c 1 for 1c	2 FOR..20c
1 for 69c 1 for 1c	2 FOR..70c
1 lb 33c 1 lb 1c	2 FOR..34c
Libby's 1/2 Can 1 for 25c 1 for 1c	2 FOR..26c
1 for 5c 1 for 1c	2 FOR..6c
No. 1 cans 1 for 10c 1 for 1c	2 FOR..11c
for 23c for 1c	2 FOR..24c
No. 2 Cans 1 for 19c 1 for 1c	2 FOR..20c
1 for 10c 1 for 1c	2 FOR..11c
No. 2 can 1 for 15c 1 for 1c	2 FOR..16c
No. 2 1/2 can 1 for 19c 1 for 1c	2 FOR..20c
No. 2 1/2 Can 1 for 33c 1 for 1c	2 FOR..34c
1 for 10c 1 for 1c	2 FOR..11c
1 for 10c 1 for 1c	2 FOR..11c
1 for 19c 1 for 1c	2 FOR..20c
Heinz oz. Can 1 for 10c 1 for 1c	2 FOR..11c
1 for 29c 1 for 1c	2 FOR..30c

Harris Meats

Pork Roast Fresh Ham Cuts As Displayed **LB. 19c**

Bacon Sugar Cured Squares **LB. 24 1/2c**

SAUSAGE Pinkney's Fancy Roll, lb **24 1/2c**

LIVER Fresh Pork, lb **15c**

PORK Salt butts, lb **16 1/2c**

BACON Decker's 1/2 or whole Sugar cured Slab **LB. 25 1/2c**

PORK STEAK Center Cut Fresh Ham **LB. 27c**

HAMS Armour's first grade, 8 to 12 lbs. or Pinkney's Sunray, 2 center slices 25c
Lb. 24 1/2c

ROAST Baby Beef Chuck Cuts
Lb. 15 1/2c

Pork Sausage 19 1/2c
Pork, lb

Peanut Butter 12 1/2c
Fresh stock

STEAK Baby Beef Chuck
Lb. 16 1/2c

BACON Banquet Sliced
Lb. 33 1/2c

HAMBURGER 13 1/2c
Fresh ground, lb

PICKLES 5c
Extra large dills, each

DELICATESSEN

Bar B Q Beef, lb **20c**

Baked Ham Pound **59c**

Cottage Cheese Pound **12 1/2c**

Sweet Mixed Pickles Pint **29c**

Cheese American or Brick 2 lb box **65c**

Pickeled Pig Feet 9 oz jar **21c**

POULTRY, FISH AND OYSTERS

HENS, nice fat Pound **21c**

FRYERS, Milk Fed Pound **26c**

TURKEYS, nice young Pound **22c**

CATFISH Pound **29c**

RED SNAPPER Pound **29c**

WHITE TROUT Pound **11 1/2c**

OYSTERS Fresh, pint **29c**

OYSTERS Extra select, pint **39c**

BREAD White or Whole Wheat
16 OZ. LOAF 5c

TOMATOES HOMINY SPINACH GREEN BEANS No. 2 Can
3 FOR...23c

Schilling's COFFEE Drip or Regular
Lb. 25c

NOW! BIG PREMIUM VALUES

48 lbs \$1.73
24 lbs **87c**

Lovely 29-Pc. Sets of Virginia Rose Pattern, Dinnerware

Full Sets of Gorgeous Medallity Pattern Silverware

GIVEN FOR COUPONS IN
CARNATION FLOUR

YAMS Candied, No. 2 cans, 3 for **29c**

ALL SWEET Oleo. Free glass, lb **17c**

TOMATOES No. 1 solid pack **5c**

MAXWELL HOUSE COFFEE... **LB. 29c**

SNOWDRIFT 1 lb. 23c
3 LBS. 55c
with the Key to all its goodness

MILK Armour's Evaporated
3 large 6 small
17c

Compound Jewel Or Vegetol
8 lbs 83c 4 LBS. 42c

Whites' Champion

Pink Beans 1 for 10c
Veg. Soup 1 for 1c
Veg. - Beef Soup 2 for 11c

NO. 10 FRUIT

Peaches 49c
Pears 49c
Blackberries 49c
Apples 49c

PRUNES.. 33c

Wall Street Burns Midnight Oil



The crash of stock prices keeps the lights burning in Wall Street's skyscraper brokerage offices until long in the night while clerks catch up with the rush of business for which they had not been prepared. The bright windows of the building above bode ill for shareholders tossed on the financial rocks in the storm of selling that wiped out slender margins.

The Capital Jigsaw

By HOWARD C. MARSHALL

AUSTIN, Oct. 29 (AP)—Senator Franklin Spears of San Antonio sat down at a lunch counter and ordered soft-boiled eggs.

"What time?" asked the waitress.

"Don't matter especially," replied Spears.

"Two, three or four minutes?" insisted the girl.

"Well, make it three," said Spears. "That's what the oil tax ought to be."

Oil taxes had been argued for hours in a Senate committee. Spears advocated three per cent of value, compared with 2 1/2 in effect the last two years.

Persons who have long observed the Texas legislature work are skeptical when peace apparently descends upon it.

House and Senate had adjourned until the next morning and A. C. Dunn, veteran House reading clerk, was sitting at his desk thumbing a book.

"All is peace and harmony," cheerfully commented a press correspondent.

Dunn turned another page.

"Aye," he said dryly, "until 10 a. m."

lature and chairman of the important House committee on appropriations, said he was thoroughly disgusted with action of the Senate in passing an "economy" bill affecting state departments and doing nothing about the other big money measures.

The departments, he indicated, could be attacked by politicians with impunity, while it was another story when they tackled the judiciary and educational institutions.

"The departments are mostly folks who work and there are almost none to give their side," he said.

The bill which proposed to reduce departmental appropriations \$5,000,000 got nowhere, however. Graves' committee sent it to a lingering death in a sub-group after a hearing in which not a voice was raised in its support.

Life in the State Highway Patrol is no snap as a score of patrolmen testified in line of duty.

Veterans for the most part are recovered insofar as possible from injuries they have been assigned to less hazardous jobs in the drivers' license division.

At one time last summer seven patrolmen were in hospitals. One of the chief causes of injury was falling motorcycles which skidded on wet pavement.

Rep. Lon E. Alsop of Carthage sought action on a bill in the appropriations committee of the House of Representatives but instead it was sent to a sub-group.

"What kind of flowers do you want to go with that bill?" Someone jibed good-naturedly. Dispatch to a sub-committee is a favorite way of burying a measure.

"It won't need flowers, I hope," he replied, joining the general laugh.

The even tenor of ways at the state-wide proration hearings has been upset by the aggressive participation of a liberal member of the House.

He is Clarence Farmer of Fort Worth, in whose bonnet, it is rumored, a gubernatorial bee is buzzing.

In the last two hearings he set the oil boys and the Railroad Commission quite by their ears with his questioning.

Among various things he has vigorously opposed any reduction in the allowable of the East Texas field. He took part in the hearings, he said, as a member of the legislature interested in the state's getting a proper yield from the oil tax.

One of the staunchest supporters of D. X. Bible, new football coach at the University of Texas, is Gov. James V. Allred.

He was "pulling" for Bible when it was first rumored the latter might come to Texas from Nebraska and he has been championing him since.

After Arkansas University's eleven overran the Longhorns in Austin, the governor, who saw the game, was asked what he thought of Bible.

"Do I like Bible still?" he cried with uplifted hands. "You bet I do! Arkansas just had a better team that day."

Where did the so-called "game of passing the buck" originate? Members of the House appropriations committee differ.

At a meeting to "bury" the departmental appropriations bill passed by the Senate, someone suggested the origin was "in the army."

Rep. E. H. Thornton Jr. said "maybe so," but it certainly was "well understood in the legislature."

Rep. Harry N. Graves of Georgetown, veteran member of the legis-

A TIME SAVER

Prepare biscuit or muffin dough when convenient. Set in cool place and bake hours later if you wish. You save time in using

Double Tested - Double Action

KC BAKING POWDER

Same Price Today as 47 Years Ago

25 ounces for 25c

You can also buy

A full 10 ounce can for 25c
15 ounce can for 25c

MILLIONS OF POUNDS HAVE BEEN USED BY OUR GOVERNMENT

JILL

BY MARY RAYMOND
Copyright, 1937, NEA Service, Inc.

Yesterday, Alan declares his love for Jill. The event is in the hands of fate now.

CHAPTER VIII
Patty had dropped by Alan's studio for a cheering word and also with a practical suggestion.

"Had he ever done illustrating? There was a chance her publisher might be interested in having him submit some sketches."

Alan thanked her. But color was his forte. He would feel as helpless as an armless man trying to express himself through any medium but paint.

"I've had some good fortune since I saw you," Alan said. "A man—I haven't been able to discover who he was—bought one of my pictures through a dealer. He paid the unbelievable sum of \$3000 for it."

"What a break!" Patty cried. She was genuinely pleased and bewildered. Here, she had been giving the old town a black name for coldness and callousness. And straightway it had taken this newcomer to its heart.

The bewilderment lasted all the way round the corner her apartment, where she found Ardath Holm stretched out on one of the cots, the flowered cover in a wrinkled heap on the floor.

Patty lifted the cover, folded it carefully and placed it on a chair. Oh, well, you couldn't have a neat room and half the rent paid.

"Come to life," she said to Ardath. "Wonders do happen. That painter fellow has just sold a picture for \$3000. What do you think of that for a nice piece of luck?"

Ardath sat up and stared at Patty out of his strange eyes, which now had an excited glow in them.

"Tell me about it," she said in her low, throaty voice.

"Not much to tell," Patty replied. "I don't think he knows so very much about it either. He said someone—he didn't know the man's name—had bought a picture through a dealer."

"He must have some big friends," Ardath drawled. She reached for a cigaret and began to smoke, lazily regarding the circling smoke through half-closed eyes.

Patty was digesting the remark. She rejected scornfully. "He does not know anybody. The seediest crew of the people you could imagine have been coming in to see his pictures. Except for a lot of browsing and out, he knows only you and me—and Jill."

She stopped. There was a queer smile in Ardath's eyes.

"Her voice sounds rich," Ardath drawled.

Patty stared. This Ardath wasn't so dumb after all. Well-bred, beautifully modulated. The voice of a thoroughbred, who had had thoroughbred training. What did you know about that?

"Well, it should," Patty replied. "Her father's John H. Wentworth, the millionaire."

"Then, she's Jacqueline Wentworth," Ardath gasped.

"Of course. Her friends call her Jill."

"I thought her face looked familiar," Ardath stammered. "I've modded dresses for her mother, and once she came in. I didn't think she was much interested in clothes. I couldn't place her the other day—it didn't occur to me."

"Meeting her here, it wouldn't," Patty supplied. "Iry. We were friends at school, and Jill doesn't forget her friends."

"If you think Jill had anything to do with this, you're mistaken," Patty continued, crossly. "Jill was wild for him to sell something. But even a rich man's daughter doesn't go around throwing money away on pictures."

"Maybe she wouldn't be throwing it away on a picture," Ardath's voice sounded wise.

Thinking it over, Patty came to the conclusion that Jill must have interested some of her wealthy friends in Alan's picture—if she had not been, as Ardath had hinted, the actual purchaser. It wasn't likely that a purchaser had dropped out of the skies and left such tangible evidence of his visit.

But she would not tell Ardath Holm this. She wished fiercely that she had not said a word about it. Though, she couldn't see how Jill could be hurt by Ardath's sly insinuation.

"That French Swede," Patty said to herself, has nothing but men on her mind!"

The last of Alan's pictures had been boxed.

He had paid cash for a three month lease on his new, unfurnished quarters. A location which was very different from the rooms he was leaving.

The new place was not luxurious. But it had dignity and good taste. Even the most fastidious of visitors would not be able to find fault with its atmosphere.

The paneling was dark. The floors were polished. There were a few good chairs. The rugs were worn, but they were also good ones.

The hangings were in a rich, vintage shade, and there was some recessed mirrors in the walls, which would reflect some of the paintings and give the appearance of added space. It had required several days to locate a place which would have desirable elements without a prohibitive price.

It had been hard not to call Jill during those few days. But Alan had been sentimental about it, as he began putting his shabby surroundings behind him for a more successful scene.

The setting must be appropriate. He had fallen in love, and through strange good fortune, he was in a position to tell Jill how he felt.

From prudent English ancestors he had inherited the belief that a man should be able to stand on his two financial legs before he discussed marriage. And if marriage were not practical, then it was only decent and honorable to keep silent.

During the next few days, Alan

was a man with two minds. One functioned calmly, rationally for practical purposes. The other was filled with dreams. With tender phrases, tender pictures. With one mind he drove shrewd financial bargains about the lease. With the other, he was writing the prolong of his great adventure. He was in love. Tremendously in love. And amazing as it was, this lovely girl was his. There was no mistaking the fact that all of Jill's heart had been given to him in that kiss.

Tomorrow he would bring Jill to his new place. He would show her how they made tea in English homes. And Jill would sit across a small table and pour tea from the antique silver teapot he had brought from home.

There was a ring at the door. Alan opened the door of the dismantled living room and faced Ardath.

"How are you?" Alan spoke more formally.

Ardath held out a long, slim hand. "Perhaps you don't remember me, I'm Ardath Holm."

"I remember you quite well," Alan said. Which was true. There was something dangerously arresting about this girl. You might not admire her type. But you would never overlook her in a crowd.

"I'm afraid I must appear inhospitable. I can't ask you in, Miss Holm. I'm moving. In fact, I have moved. I'm waiting now for a cab."

"Men," said Ardath, "don't make such a rite of moving, do they? Women always prolong bother. As they do everything."

"Women have more time on their hands," he smiled. He had not expected that kind of remark from this girl. He had decided the other day that she was a mental blank if he ever had seen one.

"Well, goodbye—and congratulations," said Ardath.

"Goodbye," Alan stood in the doorway of his forlorn, barren place. He watched the taxi coming toward him. He motioned to the driver and went inside.

He picked up the telephone book that hung dejectedly by the phone and opened it with shaking fingers. Yes, there was the name, and the address. And the number Jill had given him.

(To Be Continued)

Hold Everything!



"We didn't pay any attention to Junior when he said he'd like to chop it down."

Japanese Official

HORIZONTAL

1.7 Leader of the Japanese government.

12 Naval assistant.

13 Burdened.

16 Tree.

17 Bard.

18 To move sideways.

19 Spirit.

20 Pendant ornament.

22 Alphabet unit.

26 To habituate.

30 To recite.

34 Weird.

35 Ringworm.

36 Singing voice.

37 Performed.

43 Folds.

48 Branches.

49 Frenzy.

51 To oggle.

53 Beers.

54 Presses.

55 Fannel.

Answer to Previous Puzzle

GERALDINE FARRAR

OVOLA MOLAEASE

TELL HADEANTS

PAL REGIMENTS D

AS SERE ESSE ALL

I OATS ERODE

RADIUM R PAT

IDE RR GERALDINE

NO BEE FARRAR

G TADS DUN N

COG ESSAYS EL

PAN PAKEHA ARIA

OPERATIC MOTION

23 Having left a will.

24 The legislature in his country (pl.).

25 He — French and English.

27 Born.

28 Pitcher.

29 River.

31 Twitching.

32 Social insect.

33 Golf device.

38 Sanskrit dialect.

39 Foretold.

40 Unless.

41 To eject.

42 Uncommon.

43 Brood.

44 Whip stroke.

45 In the style of.

46 Wild duck.

47 Delivered.

48 Battering machine.

50 Hurrah!

52 Hurrah!

34

35

36

37

38

39

40

41

42

43

44

45

46

47

48

49

50

51

52

53

54

55

OUR BOARDING HOUSE with Major Hoople



THIMBLE THEATER Starring POPEYE



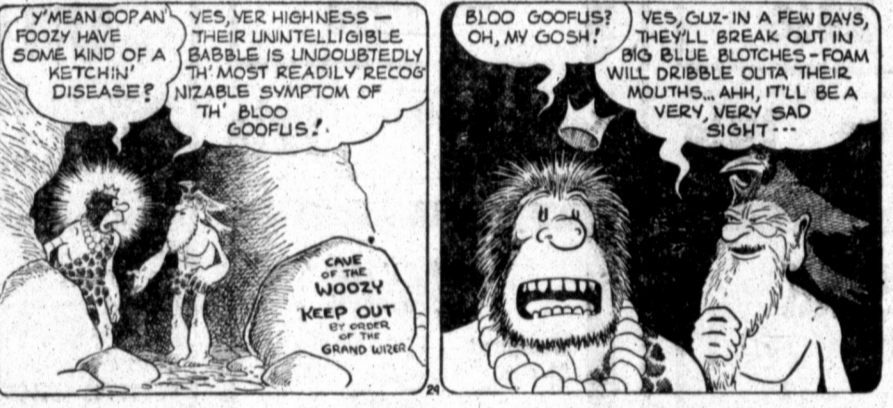
OUT OUR WAY By WILLIAMS



Quick, Judge, Lend Me A Gavel!



ALLEY OOP



A Death Sentence, Just Like That



WASH TUBBS



And That's That for Old Jenny



MYRA NORTH, SPECIAL NURSE



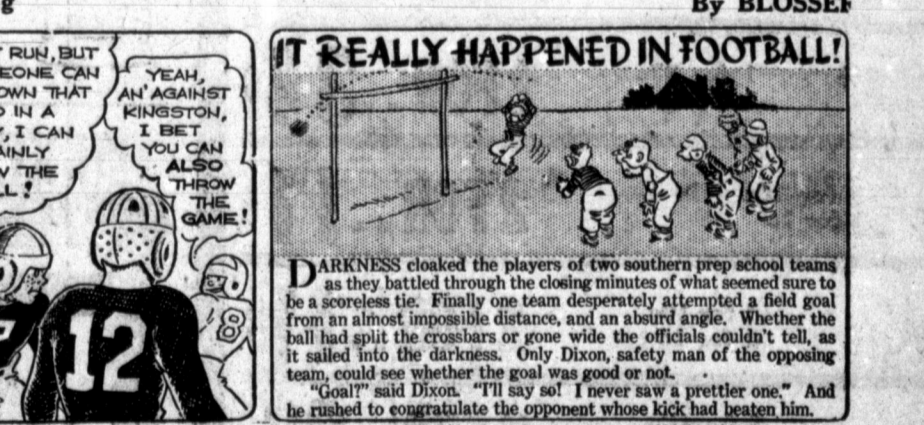
Jason Gets a Forceful Answer



FRECKLES AND HIS FRIENDS



Tough Going



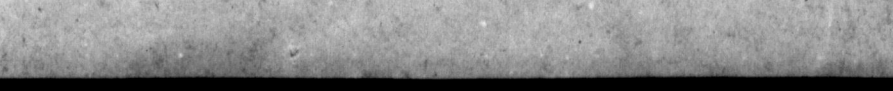
BOOTS AND HER BUDDIES



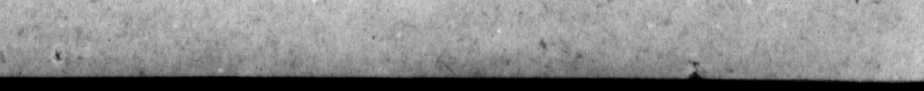
IT REALLY HAPPENED IN FOOTBALL!



Corra Knows Women



By MARTIN





Real Quality and Savings Here Daily

SALAD DRESSING
RELISH SPREAD
Bestyett, Qt. Jar

27c

Coffee

Schilling's, 1 Lb. Can **28c**
2 Lb. Can **54c**

EGGS DOZ. **19c**

EGG PRICES FRIDAY AND SATURDAY

COFFEE Golden Light Lb. **21c**

PEAS Happy Vale 17 oz can 3 For **25c**

PICKLES Sour or Dill Qt. Jar **15c**

SOAP P. and G. 5 Giant Bars **19c**

OATS Quick Quaker Large Pkg. **19c**

OXYDOL Large Pkg. **21c**

TURNIP GREENS No. 2 cans 3 For **25c**
MUSTARD GREENS
SPINACH

SUGAR 10 lb cloth bag, cane Fri. & Sat. **53c**

16 oz Loaf—Friday and Saturday

BREAD **5c**

SOAP Granulated White King Large Box **31c**

Snowdrift 3 Lb CAN **55c**

PRICES ON THIS AD EFFECTIVE FRIDAY, OCTOBER 28TH, THROUGH THURSDAY, NOVEMBER 4TH UNLESS OTHERWISE SPECIFIED

Toilet Soap

White King 14c
3 bars

Toilet Tissue 17c
Northern, 3 rolls

EVERLITE

FLOUR 24 LB. **87c**
Sack EVERY SACK GUARANTEED

Crisco 3 LB. **57c**
can

SPAGHETTI Libby's No. 2 can	10c
PEACHES Gallon	41c
ORANGE JUICE Olmito, can	12c
NOODLES 16 oz cello	15c
PIMENTOS 4 oz can	8c
SOUP Van Camps, 3 cans for	19c
HONEY Table Size	10c
CATSUP Large bottle	10c
PEAS American Wonder	9c
PINEAPPLE Hillsdale, large 2 1/2 can, Fri. and Sat.	17c
CORN Del Maize Niblets, 12 oz vacuum packed 2 cans	25c

SPICED BEANS Gebhart's, 2 for	15c
GREEN BEANS No. 2 can	10c
TOMATOES For Friday and Saturday, No. 2 can	5c
GINGER ALE Bottle	10c
MATCHES Carton	19c
PEACHES Rosedale, heavy syrup, 2 1/2 can	19c
CORN No. 2 can, 2 for	19c
PINEAPPLE JUICE Libby's Tall Can	10c
IVORY FLAKES Small pkg 21c Large package	9c
CORN Libby's, whole grain, No. 2 can	14c
CORN on the cob Del Maize, 4 ears to can	16c

PEAS Libby's fancy, 3 sieve, No. 2 can	15c
APPLE BUTTER Libby's 26 oz jar	17c
ALL BRAN Kellogg's, large pkg	21c
PEARS Fancy Bartlett, No. 2 1/2 can	19c
SOAP Toilet, A-Plus, 3 bars	14c
POTTED MEAT Libby's, can	4c
BABO Can	11c
KRAUT Libby's No. 2 can, 3 for	25c
HOMINY Van Camp's, No. 2 1/2 can	9c
CHIPSO Small Package 21c Large package	8 1/2c
TOMATO JUICE Libby's tall can	9c

QUALITY FRESH MEAT

PRICES GOOD FRIDAY AND SATURDAY

ROUND STEAK Pound	25c
BOLOGNA In the piece, lb	10c
BANQUET BACON Sliced, per pound	35c
SALT PORK Lean Streaked	15c
BABY BEEF ROASTS Meaty, lb	14 1/2c

FRESH PORK HAMS Whole or half, lb	22c
Baltimore Extra Select OYSTERS Pint	39c
PURE LARD 5 pounds	59c
LOIN STEAK Baby beef, lb	23c
SLAB BACON Sugar cured, lb	28c

Fresh Produce

FRIDAY AND SATURDAY

LETTUCE Nice firm large heads	4c	Large Size Texas GRAPE FRUIT Marsh Seedless, each	4 1/2c
YAMS		No. 1 Porto Rican POUND	4 1/2c
NO. 1 RURAL SPUDS 10 pounds	15c	RED DELICIOUS APPLES Extra fine, dozen	39c
WELL BLEACHED CELERY Large stalk	12 1/2c	DELICIOUS APPLES Dozen	29c

We Reserve the Right to Limit Quantity Purchases

Save at **FURR FOOD**

Two Convenient Stores

No. 1 Store 314 W. Foster
No. 2 Store 109 S. Cuyler

FOR SALE -- MODERN HOME, USED RADIOS, CHEVROLET PICKUP -- SEE ADS

Classified Advertising Rates Information

All want ads are strictly cash and are accepted over the phone with the positive understanding that the account is to be paid when our collector calls.

PHONE YOUR WANT AD TO 666 or 667

Our courteous advertiser will receive your classified, holding you word it. All ads for "Situation Wanted" and "Lost and Found" are cash with order and will not be accepted over the phone.

LOCAL CLASSIFIED RATES 1 day--15 words--3c per word 7 days--15 words--15c per word

ANNOUNCEMENTS 1--Card of Thanks 2--Special Notices 3--Funeral Notices 4--Lost and Found

EMPLOYMENT 1--Male Help Wanted 2--Female Help Wanted 3--Male & Female Help Wanted

BUSINESS NOTICES 1--Instructions 2--Miscellaneous For Sale 3--Professional Service

MERCHANDISE 1--Miscellaneous For Sale 2--Radio-Supplies 3--Musical Instruments

LIVESTOCK 1--Dogs-Pedigree 2--Poultry-Eggs-Supplies 3--Livestock For Sale

ROOMS AND BOARD 1--Sleeping Rooms 2--Room and Board 3--Housekeeping Rooms

FOR RENT REAL ESTATE 1--Houses For Rent 2--Furnished Houses For Rent 3--Apartments For Rent

FOR SALE REAL ESTATE 1--City Property For Sale 2--Lots For Sale 3--Farms and Tracts

FINANCIAL 1--Building Financial 2--Investments 3--Money To Loan

ACCOUNTANTS J. R. Roby 412 Combs-Worley, R. 980-W. Of. 787.

ANNOUNCEMENTS L. B. Fisher is no longer connected with the firm of Hutchins, Inc., in any way.

EMPLOYMENT

6--Female Help Wanted WANTED--Experienced girl for housework. Call 353 before 6 and 794 at 6.

CARPENTER Kitchen cabinets, cabinet doors and drawers. Window frames and screen work a specialty.

BUSINESS NOTICES 14--Professional Service High Blood Pressure Responds to Chiropractic in the majority of cases.

17--Flooring-Sanding-Refinishing FLOOR SANDING. Work GUARANTEED. New low prices and quick service.

20--Upholstering-Refinishing MATTRESSES--All kinds at bargain prices. Also covers renovated to sell for their charges.

26--Beauty Parlors-Supplies. HOBS BEAUTY SHOP. Opposite Pampa Hospital.

MERCHANDISE 28--Miscellaneous For Sale. FOR SALE--Child's ivory bed, good condition.

COAL We have in stock the best grade Colorado lump coal and suggest that you buy your requirements now.

PAMPA MILLING CO. 800 West Brown Phone 1130

PAMPA MOTOR CO. "Good Will Used Cars" 211 N. Ballard Phone 365

Used Cars 1937 Ford 60 coupe ... \$525 1935 Chevrolet coach 375

LIVESTOCK Down GO PRICES ON DAIRY AND POULTRY FEEDS Try our feeds for Results

WE SELL HEN TEETH Try our granite grit and your hens will appreciate it. A few sacks oyster-shell yet at \$1.00 cwt.

EMPLOYMENT 6--Female Help Wanted WANTED--Young lady for general housework, good cook, stay nights.

FREE TICKET TO THE LA NORA

Given With Each 3-TIME CLASSIFIED AD Paid in Advance

Hunters will trade useable cash for that used shotgun or rifle.

ERROL FLYNN JOAN BLONDELL "The PERFECT SPECIMEN" A WARNER BROS. PICTURE

LA NORA Friday and Saturday

AUTOMOBILES 1937 Chevrolet Sports Sedan with Radio ... \$775

USED CARS 1936 Deluxe PLYMOUTH 4 door sedan. Very low mileage. Heater and built in trunk.

CULUM & SON 1937 Oldsmobile--2 door touring sedan for sale. See Jake Burkett.

CHEVROLET 1934--4 door sedan--original maroon finish good. Nearly new tires.

FORD 1936--Fordor sedan. Heater and radio. Motor reconditioned.

PONTIAC 1936--2 door sedan with trunk. Original green finish like new.

DODGE 1935 Coupe--New paint, new seat covers, motor reconditioned.

PAMPA MOTOR CO. "Good Will Used Cars" 211 N. Ballard Phone 365

Used Cars 1937 Ford 60 coupe ... \$525 1935 Chevrolet coach 375

FOR RENT

48--Furnished Houses For Rent FOR RENT--Furnished two room house, bills paid, \$4.00 per week.

FOR SALE 58--City Property For Sale. EQUITY in modern 5 room house on pavement.

FOR SALE 58--City Property For Sale. JOHN L. MIKESELL STOP

STOP--Just a real cozy homey 4 R. on dandy corner lot in East Pampa.

LOOK--Possession at once, new 6 R. stucco, built-in, large spacious rooms.

61--Out of Town Property. FOR SALE--Single house, 15x28, to be moved.

FINANCIAL 65--Money to Loan. Why owe so many? Let us make you a loan on your car.

MONEY TO LOAN Salary Loans -- Personal Loans \$5 to \$50

OUR SERVICE Low rates. Long terms. Cash immediately. New car financing.

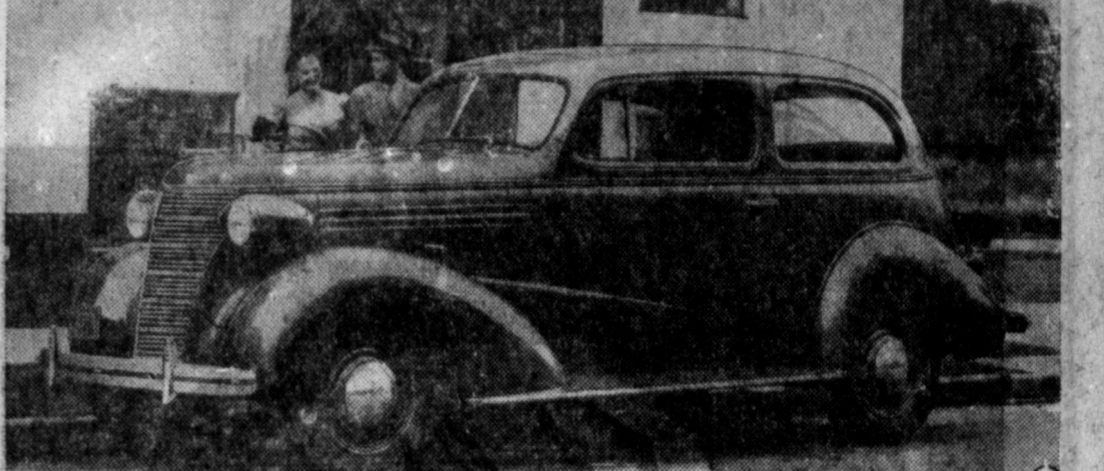
H. W. Waters Insurance Agency Room 107, Bank Building Texas Pampa, Phone 839

MONEY TO LOAN Salary Loans -- Personal Loans \$5 to \$50

WE require No Security We solicit oil field and carbon black workers.

PAMPA FINANCE CO. J. S. Starkey Mgr. 100 1/2 S. Cuyler Phone 450

Light-Pressure Clutch Chevrolet Improvement



A new clutch requiring pedal pressure 25 per cent less than that needed before, and a restyled body, are two of the outstanding points of the new Chevrolet.

For Governor In the CHURCHES



Basing his campaign on making the people of California gay and more carefree, Leo Carrillo, swarthy, grinning character actor of the films, announced he will be a candidate for governor in 1938.

FRANCIS AVENUE CHURCH OF CHRIST M. C. Culbertson, Minister Bible school, 9:45 a. m.

FIRST BAPTIST CHURCH Rev. C. Gordon Bayless, pastor 9:45 a. m. Sunday school.

FIRST METHODIST CHURCH Corner of Foster and Ballard W. C. House, pastor

PENTECOSTAL HOLINESS CHURCH 530 North Roberts street C. R. Howard, pastor

PRESBYTERIAN CHURCH Robert Boshen, Minister 10 a. m. Church school.

Central Church of Christ 500 N. Somerville Will M. Thompson, Minister

FIRST CHRISTIAN CHURCH John S. Mullen, Minister Corner of Kingsmill and Stark-

W. G. Kinzer will be in charge. A three act play will be given called "The Farmer's Wife."

CHRISTIAN SCIENCE SERVICES 901 North Frost street 9:30 a. m. Sunday school.

Among the citations which comprise the Lesson-Sermon is the following from the Bible:

"The Lord shall endure for ever: he hath prepared his throne for judgment. And he shall judge the world in righteousness, he shall minister judgment to the people in uprightness."

Mix your spices to save time in cooking. Add four tablespoonsful of cinnamon to two tablespoonsful of cloves, nutmeg, ginger and mace.

HOUSE GROUP CAN'T AGREE ON CROP PLAN

WASHINGTON, Oct. 29 (AP)--Members of the House Agriculture Committee disagreed today over making the proposed crop control program compulsory or voluntary.

Rep. Coffey (D-Neb) was one of those expressing opposition to compulsory control.

Secretary Wallace has said definite control over surplus crops is essential to success of the proposed ever-normal granary program.

Wallace said the public, farmers and congress must choose between voluntary and compulsory controls.

Spokesmen for the Agricultural Adjustment Administration estimated that about 4,000,000 farmers will share in the \$500,000,000 in benefit payments under the 1937 soil conservation program.

58--Money to Loan. Salary Loans -- Personal Loans \$5 to \$50

Today's Answers to Cranium Crackers

(Questions on Editorial Page.) 1. The Gregorian calendar was adopted in America in 1752.

2. A cow is milked from the right side, a horse is mounted from the left side.

3. You can carry water in a sieve if you freeze the water.

4. The number 568135 forms the word "effect."

5. The family numbers 26 persons. If four die 22 will be left.

THIS CURIOUS WORLD By William Ferguson IN THE UNITED STATES, MORE HOMES BURNED DOWN IN 1934 THAN WERE BUILT DURING THAT YEAR.

FINANCIAL 65--Money to Loan. Salary Loans -- Personal Loans \$5 to \$50

FOR A PERFECT TRIP To the Next Town Or Across America DESTINATION LEAVES PAMPA

Pioneers Of FREE Ambulance Ph. 191 Ph. Pampa Mortuary Inc. E. Bass Clay, Pres. "Pampa's Oldest Funeral Home"