

Pampa Daily News

THE NEW PAMPA Fastest Growing City in Texas. Panhandle Oil and Wheat Center

HOME NEWSPAPER Established April 6, 1907. Official Publication, City of Pampa.

VOL. 26. NO. 296.

(P) Means "Associated Press"

PAMPA, GRAY COUNTY, TEXAS, FRIDAY EVENING, MARCH 24, 1933

Full A. P. Leased Wire.

(12 PAGES TODAY) PRICE FIVE CENTS



Bank Examiner Shot To Death; Bank President Arrested

METEOR BURSTS ON PLAINS

TWINKLES We're going back to the "Little Red Schoolhouse" tonight at 8 o'clock...

Here's our congratulations to Supt. Baze (he of the three-pley initials, M. L. H.) of Hopkins school...

And here are some more congratulations to "Hoot" Fullingim, who demonstrates that graders can also be articulate...

These bright students should remind us that students do study. If tired business men gave as much thought and practice to their public appearances...

Pampa has one of the largest per capita payrolls in the United States. If you draw a circle to include those who come here frequently...

Considering how many false reports the radio has been carrying lately, we hope this country never has another war...

With apologies to the McNaught Syndicate we quote Will Rogers on the subject: BEVERLY HILLS—Here is a suggestion that will help you all out of a lot of anxiety and anguish...

We had an earthquake out here. That's all we had, which was plenty, but that wasn't enough for the radio...

In case of disaster, run (don't walk) to the nearest radio and turn it off, for they take delight in killing you, whether you have been killed or not.

MR. BILL DOLLAR It pays to keep Bill Dollar at work. Tie him up in a moratorium and you see at once the effect on business...

BE CONSISTENT And some of those who talk so much about Bill Dollar do not practice what they preach...

BEER ADS ALLOWED WASHINGTON, March 24. (AP)—Beer advertisements in newspapers were allowed today for the first time in 13 years.

ATTENDS CONVENTION Judge C. E. Cary en route home from a business trip to Austin, stopped in Wichita Falls today to attend the convention of the County Judges' and Commissioners' association.

THREE GUESSES What is the senator known as the 'Kingfish'? What is the chief product of Trinidad? In what game is this used? (ANSWERS on Page 10.)

ERNEST SLAIN AFTER MAN IS FOUND 'SHORT'

LIQUIDATOR IS ORDERED TO TAKE CHARGE OF HEADRICK BANK

GIRL WATCHES SLAYING VICTIM WAS EXAMINER IN OKLAHOMA FOR 15 YEARS

HEADRICK, Okla., March 24. (AP)—W. C. Ernest, a state bank examiner, was shot to death here today when he turned from a telephone after asking State Bank Commissioner W. J. Barnett at Oklahoma City to take over the Citizen State bank...

Virginia Doane, bank stenographer, immediately informed the bank commissioner: "As Mr. Ernest quit talking and turned around, Brock shot him through the heart."

"I've just found Brock short," Miss Doane quoted Ernest as saying to the bank commissioner.

Two operatives from the state bureau of criminal investigation at Oklahoma City were despatched to Headrick, Okla., from Altus, seat of the county in which Headrick is located, also rushed to the town.

W. B. Jones, bank liquidator of Frederick, was ordered by Barnett to take charge of the Headrick bank. Ernest had been a bank examiner for 15 years and was a valuable, trusted employe, Barnett said.

He started examination of the Headrick bank this morning and, after only two hours work, called the bank department to recommend the bank be taken over, the commissioner revealed.

The examiner leaves his widow and two daughters. The body was removed to Altus immediately.

Brewers Deluged With Orders For Legal 3.2 Beer By The Associated Press In more than a dozen states vats were bubbling today in preparation for putting legal 3.2 beer on sale April 7.

Breweries reported they were deluged with orders, in New York the suggestion being made that it might be necessary to ration beer among those who had ordered until supply could catch up with demand.

Beer advertisements appeared in newspapers for the first time in 13 years, heralding the date on which sale will be permitted.

An informal ruling by Attorney General Cummings held anticipatory advertisements were not infractions of the law.

Another decision by Cummings fixed the time at which sale could begin at midnight in each locality, regardless of time zones.

HOW CINCINNATI FLOOD LOOKS FROM AIR



WITH hundreds of homes and business places inundated, Cincinnati is fighting its worst flood since 1927. This air view shows a small section of a residence district where great damage was done as the Ohio river reached a flood stage of 65 feet.

Indict Banker Mitchell

Former Chairman National City Bank Pleads Not Guilty To Tax Evasion

NEW YORK, March 24. (AP)—A plea of not guilty was entered today by Charles E. Mitchell, former chairman of the National City bank, to an indictment returned earlier in the day by federal grand jury charging him with evasion of income taxes of \$573,312.81 for the year 1929.

The indictment charges that in 1929 Mitchell's net income was \$2,823,405.95, whereas he reported a net loss of \$48,000, and therefore paid no tax.

He was charged in the indictment with evading payment of a tax of \$573,312.81.

Mitchell resigned the chairmanship of the board of the National City bank and also of the National City company and other affiliates of the bank during the period in which he was a witness before the senate banking committee in its investigations of the stock exchange.

The indictment charged that his income tax for 1929 was erroneous in that he reported a loss from sale of stocks of \$1,484,067.53, instead of a profit of \$1,388,237.97.

The difference is represented by a loss set up by Mitchell from the sale of 18,300 shares of stock of banks after an examination of the erment contents this was not a bona fide sale.

This was the stock which Mitchell testified before the banking committee that he had repurchased from his wife at \$212 a share, the price at which he said he sold it to Mrs. Mitchell although the stock at the time he repurchased it—March 24, 1932—was then selling in the open market at \$40 a share.

The indictment contains one count, as there is only one act of evasion charged. The maximum penalty provided for a conviction in such a case is a term of imprisonment for five years and a fine of \$10,000, although either imprisonment or fine in any term or amount under the discretion may be imposed at the discretion of the court.

Although designated as "parents" the beginners violin class will give a program in Room 101.

CELESTIAL BODY SEEN BY MANY PAMPANS AS IT ROARS ACROSS NORTHERN SKY AT 6 A. M. TODAY

REPORTED TO HAVE HIT EARTH IN OKLAHOMA PANHANDLE SKY PILOT IS WITNESS AVIATOR THINKS PIECES EXPLODED INTO METEOR TAIL

PAMPA citizens who rose early today and were startled by a meteor which turned darkness into blue-white illumination will not be able to find its remains in the rough country west of the city—the etheral visitor went a long way and was seen in several states at about the same time.

Many who saw the display about 6:03 a. m. thought it barely missed the city and one man declared he thought it was going to hit the Worley building. Three Pampa men returning from Austin, Clyde Fathner, C. H. Walker, and W. A. Bratton, had just left a train at Clarendon when the darkness was suddenly turned to intense light.

Fell In Oklahoma? AMARILLO, March 24. (AP)—A meteor burst over the Oklahoma Panhandle late last night.

McIntosh Couple Given Farewell Party At Hotel Festively honoring Mr. and Mrs. D. T. McIntosh, who are to leave within the next few days to make their home in Breckenridge, a large crowd of friends banqueted and danced last evening.

School Prepared to Welcome Many Parents and Friends This Evening Although designated as "parents" the beginners violin class will give a program in Room 101.

Financial Crisis in Boy Scout Work Compels Beginning of Drive Monday BOY SCOUTING in the Adobe Walls council is at the peak of interest and activities but, paradoxically, at a crisis financially.

Little Theater To Present 'Holiday' "Holiday," comedy by Phillip Barry, noted American playwright, was chosen as the next play to be presented by the Little Theater at a meeting of the directors last night.

Gas Applications Presented By 21 AMARILLO, March 24. (AP)—Representatives of the Texas Railroad commission conducted a hearing in Amarillo today on the applications of gas well owners in the Panhandle field for permits to utilize natural gas for gasoline extraction and carbon black manufacture.

35 Offer Blood For Transfusion; Reed's Accepted Two hours after The NEWS appeared on the street Wednesday afternoon, 35 persons had appeared at Pampa hospital to offer blood to save the life of Mrs. Frank Scott, who has been critically ill for some weeks.

I SAW-- Andy Andrews of the Pla-Mou with a week's growth of whiskers and beard on his face. He denied that he had joined the House of David, and explained that somebody's whiskers has got to grow faster and thicker than his in order to win the \$25 prize he will give away April 27 at a frontier dance at the Pla-Mou.

MISS SUSAN SHEPARD (above), daughter of Senator Shepard of Texas, a junior at Duke University, Durham, N. C., has been chosen the "1933 Queen of Beauties" to head the beauty section of the student yearbook.

GREEN FIGHTS FOREST PLAN OF ROOSEVELT ATTACKS EMPLOYMENT SCHEME AS FORM OF FASCISM STATE BANK RELIEF BILL GOES TO PRESIDENT ROOSEVELT WASHINGTON, March 24. (AP)—William Green, president of the American Federation of Labor, called the Roosevelt reforestation plan one of the "smacking of fascism, Hitlerism, and a form of socialism" today in asserting he had deep apprehension of its effect on wage levels.

SHE'S TEXAN



MISS SUSAN SHEPARD (above), daughter of Senator Shepard of Texas, a junior at Duke University, Durham, N. C., has been chosen the "1933 Queen of Beauties" to head the beauty section of the student yearbook.

GREEN FIGHTS FOREST PLAN OF ROOSEVELT

ATTACKS EMPLOYMENT SCHEME AS FORM OF FASCISM

STATE BANK RELIEF BILL GOES TO PRESIDENT ROOSEVELT

WASHINGTON, March 24. (AP)—William Green, president of the American Federation of Labor, called the Roosevelt reforestation plan one of the "smacking of fascism, Hitlerism, and a form of socialism" today in asserting he had deep apprehension of its effect on wage levels.

35 Offer Blood For Transfusion; Reed's Accepted Two hours after The NEWS appeared on the street Wednesday afternoon, 35 persons had appeared at Pampa hospital to offer blood to save the life of Mrs. Frank Scott, who has been critically ill for some weeks.

I SAW-- Andy Andrews of the Pla-Mou with a week's growth of whiskers and beard on his face. He denied that he had joined the House of David, and explained that somebody's whiskers has got to grow faster and thicker than his in order to win the \$25 prize he will give away April 27 at a frontier dance at the Pla-Mou.

Chemical Elements of Nine Meteors Which Never Touched Earth Known

By HOWARD W. BLAKESLEE
Associated Press Science Editor
AMBRIDGE, Mass., March 24.—The chemical elements in nine meteors which never touched the earth were announced today at Harvard astronomical observatory. The momentary flash of light of the shooting stars, 50 to 70 miles ahead, alone was used to reveal what the meteors were made of. The method is an unpassed piece of scientific detective work.



(Continued from Page 1)

It makes possible a study of the atoms of dust, stones and minerals which fly incessantly through space, always dark and invisible, except for the instant when one of them strikes the earth's atmosphere and ends its existence in a bright flash of light. About 100,000 of them strike the atmosphere every 24 hours.

The nine meteors revealed their makeup through study of their spectra by means of photographs of their light taken through prisms. The studies were made by Dr. P. Millman.

They showed that six and possibly seven of the meteors were mostly iron. All contained some iron. In addition some calcium, the main element in bones and teeth. Three carried magnesium, a silver-white metal used formerly for photographers flash-lights. Four had manganese, an important element in certain industrial processes. One carried a considerable amount of chromium in one, silicon, one of the earth's most abundant elements, was barely indicated as a strong probability. Millman's study noted that the elements of greenish hue contained considerable magnesium.

Pampa Eliminated In One-Act Play Contest in Canyon

The Pampa high school one-act play cast lost in the first round of the one-act play tournament at Canyon today to Panhandle. One judge voted for Pampa and two, both of Amarillo, for Panhandle.

The Pampa play cast, largely inexperienced in competition, is coached by Miss Arless O'Keefe, whose teams in other years have distinguished themselves in stage appearances.

The play used the same as last year, is "The High Heart," with 9 characters and a war spy theme. The characters are: Major Cranston in Stone; General Dodge, Henry; Lieut. Richards, Norman; Mrs. Cranston, Dorothy; Mrs. Peyton, Miss Roy; Blaylock, Augustus, a negro servant; Seron Doucette, Sam Davis, spy; Stephens, two soldiers, Jack and Richmond Eastup.

The cast and Miss O'Keefe went to Canyon last evening. They knew before they left they would meet Panhandle high's team at 10 a. m. and that the winner would meet Panhandle at 8 p. m. tonight. The finals will be Saturday evening. Panhandle's team is composed of 4 boys.

Last year the local team was eliminated by Miami, which then won the meet.



BOTANY (ALL WOOL) TIES \$1.00

Plaids, Checks and Solid Colors

A new degree of Smartness in Men's Neckwear!

CARTER'S MENS WEAR
Combs-Worley Bldg.

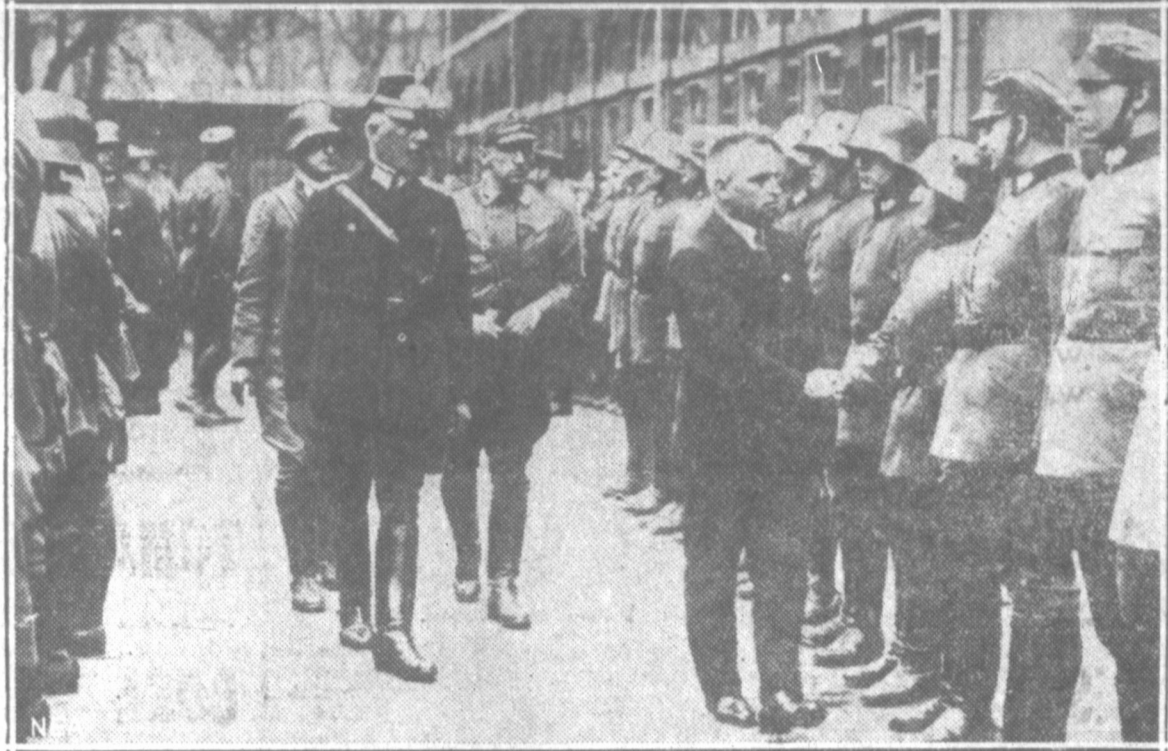
J. L. NANCE GROCERY
900 EAST FRANCIS

I have opened a Grocery and Market at this location and invite all my friends and customers to visit me.

Complete line of groceries, fresh and cured meats, fruits and vegetables.

J. L. Nance

STEEL HELMETS ENFORCE HITLER RULE IN REICH



TAKING stern measures to forestall possible outbreaks against Germany's fascist regime, Chancellor Adolf Hitler has reinforced local police in danger spots throughout the republic by men from storm detachments from the fascist and nationalist ranks. The picture shows Steel Helmets of the auxiliary force being sworn in as the reins of government in the free state of Hesse were seized by the combined fascist and nationalist parties.

Fraser Insurance Company Moving To Larger Quarters

The William T. Fraser Insurance company is moving from the second floor to larger quarters on the third floor of the Rose building. The company has taken over the Planters Mutual Hail association and will handle that business from the new office.

J. Crawford, secretary of the hail association for the past 17 years, has decided to retire. Mr. Crawford is 88 years old.

Tips on CONTRACT

POST MORTEM BY TOM O'NEIL

In discussion after a rubber of what might have been, Mrs. Augusta Dinwiddie, who learned the game in New Orleans, has proved a keen analyst in New York bridge clubs.

After a lively rubber which her side eventually won she was congratulated by partner.

"Well, she remarked, "We failed to bid a slam that could have been made. We bid one in the wrong suit and were set. We had a better chance in another suit. We could have set the enemy."

"What a break for us!" chimed in an opponent.

"Well," said Mrs. Dinwiddie, "you could have set us more on that slam we tried."

Here are the details:

MRS. DINWIDDIE - NORTH			
WEST		EAST	
♠ 7 6 5	♥ 7 2	♠ K J 8	♥ J 9 3
♦ 9 6 4 2	♣ 10 9	♠ A 10 7	♥ 6 5 3 2
DEALER			

MRS. DINWIDDIE - NORTH			
WEST		EAST	
♠ 10 4 2	♥ 10 8 6 5	♠ A 10 7	♥ 6 5 3 2
♦ 8 5 3	♣ 7 4	♠ K J 8	♥ J 9 3
DEALER			

Not vulnerable, Mrs. Dinwiddie opened the auction fourth hand with an offer of three no trump, which was passed all around.

The declarer lost only one trick, to the ace of diamonds. She took a club finesse and discarded two spades on South's hearts. A heart was opened.

"There seemed to be no slam possibilities in my hand," said South. "That's why I left you a three no trump."

"Had you bid hearts over the no trump," said the declarer, "we would have reached a slam. I did not want to open with a two-club bid, forcing, because my longest suit was a four-carder."

The four players were still discussing the possibility of a two no trump bid over a two heart response.

FREAK ROSE BUSH
MANCHESTER (INS)—Arthur Wagner grafted a cluster of sandburs on a rose bush. The sandbur growth developed healthily, presenting a strange contrast to the brilliant rose blooms.

'BIG THREE' OF FARM RELIEF

NEW YORK (INS)—That relic of a forgotten day—the Mayor's Sedan, which was relegated to a dusty garage corner when Mayor McKee took up the reins of "Jimmy" Walker's term, has appeared again for the use of the new city executive, John J. O'Brien.



CHAPING PLANS for pushing the administration's farm relief through congress, the "big three" of the department of agriculture are shown here: left to right, Rexford Guy Tagwell, assistant secretary of agriculture, Dr. Mordecai Ezekiel, economic advisor, and Secretary of Agriculture Henry A. Wallace. The trio collaborated on the bill designed to increase farmers' purchasing power by restoring the balance between production and consumption and by market adjustments.

Shaw 'Knows More Of America Than Its Inhabitants'

SAN FRANCISCO, March 24. (AP)—George Bernard Shaw, the 77-year-old British playwright, arrived on the American Mainland today for the first time with the abrupt pronouncement that he "knew more of America than its inhabitants."

He told a mass of interviewers and cameramen that Americans elected their public officials "because the candidates had their pictures taken with a baby in their arms."

During a discussion of the Tom Mooney case (Mooney was convicted of participation in the predecessor parade bombing at San Francisco in 1916) Shaw stated Americans "were Romantics in their treatment of the whole criminal system."

"You Americans can get remanded about 20 to 30 years in prison," he said, "but to a man in prison six months is terrible. I hesitate to express an opinion regarding Mooney. Generally I would say to bury a man alive in a vault for 17 years is extremely foolish. I am a forger of your courts or police. But if Mooney is not fit to live, have the courage to shoot him. It would be a great relief to me if the governor of your state would pardon Mooney."

The United States, he charged, was a drinking nation because it was an unhappy nation.

"A sick man is given chloroform for an operation but in your crowded cities, when a man gets sick from excessive hours of labor, he takes alcohol."

"I am a teetotaler but I can't expect the United States to come up to my standards. I don't like it, I don't need it."

"Are there any happy people?" a questioner asked.

"Yes, there are, in the cemeteries, I suppose."

"I don't know how Hitler will turn out," he answered a questioner. "The whole German people are in a state of suspense and chaos. They are trying out Hitler like you are trying out Mr. Roosevelt. In four years I will be able to tell you about them."

Shaw today was to go to San Simeon as the guest of William Randolph Hearst, publisher, before joining his ship at San Pedro to continue around the world cruise. He came here from Honolulu.

Pastor Gives Tip On Whisky Still

AMARILLO, March 24. (AP)—The aid of local church workers is making it possible for Sheriff Bill Adams to stay a jump ahead of the bootleggers.

Acting on the tip of a pastor, he seized the second still of the week today, this time before it was taken from the tin shop where it had been made to order. It was a duplicate of the still which Adams, acting on the tip of a Sunday school boy, seized earlier in the week in operation.

Three men were arrested in connection with the first raid, and the fourth was placed under bond today after the tin shop owner had named him as the purchaser of the equipment.

Nance Opens New Grocery Store

J. L. Nance has leased the building at 900 East Francis avenue and opened a grocery store and market. The business formerly occupying the building was operated as "The People's Store."

Besides a complete stock of groceries the store will have fresh and cured meats, fruits and vegetables, according to Mr. Nance.

Mr. Nance has been with Piggly Wiggly and the City Food Store for the past 6 years. He recently sold his interest in the City Food Store to A. B. Zahn.

USES MAYOR'S SEDAN
NEW YORK (INS)—That relic of a forgotten day—the Mayor's Sedan, which was relegated to a dusty garage corner when Mayor McKee took up the reins of "Jimmy" Walker's term, has appeared again for the use of the new city executive, John J. O'Brien.

Are You TOURING Through NEW MEXICO?

Included in New Mexico's Spots of Beauty . . .

—The— FRANCISCAN HOTEL
Albuquerque, N. Mex.

The Southwest's famous tourist hotel. Rooms with bath or shower. Moderate rates. Dining room and coffee shop. Bus service to T-WA airport. Rooms \$1.50 up.

Hamilton Child Has Astounding Presence of Mind

The astounding efficiency and memory of a 4-year-old girl was demonstrated last night by Jerry Hamilton, daughter of Mr. and Mrs. W. B. Hamilton. The tot was in bed when she heard her mother call that she was fainting. Instead of becoming hysterical, the child called a physician at his office and when no one answered she called his residence, asking for the correct number, and told him to come at once, that her mother was ill.

The child then called the railroad commission office, where Mr. Hamilton is assistant deputy supervisor, and told someone there to call her daddy at the Schneider hotel where Mr. Hamilton was attending a banquet. She then called a next door neighbor.

HONOR BOSTON STUDENTS
BOSTON (INS)—Nine Boston university men, including three faculty members, were elected to the Alpha Lambda Chapter of Phi

Delta Kappa, the national honorary education fraternity.

Ask Mrs. Tucker!

QUESTIONS ANSWERED
Hear Mrs. Tucker's Radio Program, W.F.A.A., 7:45 A. M., every Monday, Wednesday and Friday. . . . Ask any question about cooking or household operation. . . . Write Mrs. Tucker, Sherman, Texas, and she will answer them over Radio.

Mrs. Tucker's Shortening

BARKETT GROCERY
216 N. Cuyler . . . Across From Montgomery Ward

SATURDAY & MONDAY SPECIALS

SUGAR	10 Pound Cloth Bag	44c
PEAS	3 No. 2 Cans For	25c
CORN	Narrow Grain, Sweet, 3 No. 2 Cans	22c
BEANS	Cut Stringless 3 No. 2 Cans	25c
COFFEE	Maxwell House Pound Can	27c
SYRUP	Twin "B", 1/2 Gallon	31c
MATCHES	6 Boxes to Carton Carton	20c
OATS	(With Premiums) Large Pkg.	21c
POST TOASTIES	Large Pkg. For	10c
POST BRAN	3 Pkgs. For	25c
MACARONI	3 Regular Boxes	10c
SPAGHETTI	3 Regular Boxes	10c
PEANUT BUTTER	Pint Jar For	9c
PEACHES	2 No. 2 1/2 Cans	25c
TOILET TISSUE	3 Regular Rolls	17c
SOAP	Big Deal—5 Bars For	19c
SPINACH	2 No. 2 Cans For	25c
SUGAR	Powdered or Brown 3 Boxes	25c
BLACKBERRIES	2 No. 2 Cans	21c
PINEAPPLE	Full No. 2 1/2 Can	17c
TOMATOES	4 No. 2 Cans	25c
MILK	Carnation, Tall Can For	5c
CORN, No. 1 Can		
TOMATOES, No. 1 Can		
SOUP, No. 1 Can		
HOMINY, No. 1 Can		
PORK & BEANS, No. 1 Can		

MARKET SPECIALS

HENS	Heavy, Dressed, Pound	12 1/2c
STEAK	Chuck, 3 Lb. For	21c
BACON SQUARES	Per Pound	8 1/2c
BUTTER	Taylor Farm Dairy, Pound	18 1/2c
PORK SHOULDER	Roast, Pound	8 1/2c
BACON	Sugar Cured, Pound	12 1/2c
PORK CHOPS	Small and Lean, Pound	13 1/2c
BEEF ROAST	Nice and Tender, Pound	8 1/2c

Extra Quality and Extra Savings

NEJEWEL, a better desert, regular pkg.
 SOAP CHIPS, Crystal White, regular pkg.
 BORAX, Washing Powder, 2 regular pkgs.
 CORN, Extra Standard, No. 1 can
 TOMATOES, Extra Standard, No. 1 can

5^c

At Piggly-Wiggly

The first consideration of foodstuffs should be "Quality" . . . The wholesome kind that Piggly Wiggly tells . . . and then the savings as only Piggly Wiggly can offer you! We don't meet prices, We make them!

APRICOTS, Choice, Dried, 25c pkg.
 PEACHES, Choice, Dried, 25c pkg.
 PRUNES, 60-70, Choice, 25c pkg.
 LARGE LIMA BEANS, Reg. 25c pkg.
 LARGE NAVY BEANS, Reg. 25c pkg.
 RICE, Clean, new crop, 25c pkg.

18^c

GARDEN SEEDS NEW SHIPMENT at NEW LOW PRICES **GARDEN SEEDS**

OVALTINE The Health Drink, regular can **39c**

SHREDDED WHEAT Large Package for **11c**

SPINACH Fresh, Green, pound **5c**

PRUNES Solid Pack, gallon can **29c**

BAKING POWDER Clabber Girl, 2-pound can **25c**

TOMATOES Arkansas, solid pack, 3 No. 2 cans **21c**

CORN Extra Standard, 3 No. 2 cans **23c**

CORN Little Chief, whole grain, 2 No. 2 cans **25c**

Carrots

Large Bunches
2 For

-5c

Green Onions

Large Bunches
2 For

5c

VINEGAR Pure Apple Cider, gallon **29c**

ORANGES Large size California, dozen **24c**

APPLES Fancy Delicious, large size, dozen **24c**

Free

With every purchase of 50c or more tomorrow we will give you a large, beautiful kite. Every boy and girl wants a kite . . . get yours tomorrow.

Free

SORGHUM Syrup, gallon can for **49c**

RAISINS Seedless, 2-pound package **13c**

RAISINS Seedless, 4-pound package **25c**

FIG BARS Fresh from the oven, pound **15c**

VANILLA WAFERS Fresh, per pound **19c**

POP CORN Jollytime, regular can **10c**

CAKE FLOUR Pillsbury's, large package **19c**

Coffee

Fresh Roasted, Ground While You Wait. The Fastest Selling High Grade Coffee in Pampa. Pound

25c

Always The Lowest Prices In Pampa

MORTONS SALT 25-Lb. Sack **35c**

PEANUT BUTTER 5-pound can for **55c**

APRICOTS Solid pack, gallon can **39c**

BLACKBERRIES Solid pack, gallon can **35c**

MUSCAT GRAPES Libby's syrup pack, 2 No. 2 1/2 cans **25c**

Potatoes

No. 1 Colorado
10 Pounds
For
(Limit, Not Sold Alone)

10c

TOILET PAPER Scott Tissue, 1000 sheets to roll, 3 rolls **23c**

OATS Brimfull, large size package **12 1/2c**

CHOP SUEY DINNER a 60c value (limit 2) each **25c**

SHOE POLISH Barton's Dyanshine, 25c size **18c**

CANDIED YAMS Full No. 2 can for **6c**

Peaches

Halves or Sliced
Solid Pack
Gallon Can

35c

Eat Good Meats

You'll enjoy the High Quality Meats from our Sanitary Market. Good Meats at prices that average a nice savings for you.

PORK HAMS Fresh, Half or Whole Pound **11c**

PORK HAM Center Cuts, Per Pound **14c**

CHILI Made Fresh Daily in Our Market, Lb. **12 1/2c**

SIDE PORK Fresh and Lean, Per Pound **10c**

ROASTS Rib, From 4-H Prize Beef, Lb. **7 1/2c**

HAMBURGER Made from Choice Beef, Pound **7 1/2c**

ROASTS Baby Beef, All Good Meat, Pound **8c**

ROASTS Chuck or Arm, Per Pound **12 1/2c**

SOAP CHIPS Quick Agrow, large package **15c**

MALT Blue Ribbon, 3-Lb. can **52c**

TOMATO JUICE Beechnut, 3 regular cans **25c**

THERE IS ALWAYS PLENTY OF PARKING SPACE AT THE REAR OF OUR STORE — WE DELIVER \$2.00 OR MORE ORDERS FREE.

COFFEE Bulk, 2 pounds **25c**

Soap

Palmolive, Limit 4 Bars to Customer
Per Bar

5c

MILCO MALT 50 Pocket Knife Free With Each Can Per Can **45c**

PEACHES Heavy syrup pack, 2 No. 2 1/2 cans **29c**

MACARONI Spaghetti, bulk, pound **12 1/2c**

CHIPSO Large size package **17 1/2c**

COCOA Pure, Our Mother's, 2-Lb. can **25c**

Bread

Demonstration all day Saturday of Dille's New Butereg Bread. Regular Loaf

10c



Furr Food Stores Lead In Savings Again This Week, March 24 to 31

Chase & Sanborn's Coffee

It's Fresh packed and every single bit of its rich, mellow flavor and its fragrant aroma is sealed in the can. Here is a truly fine coffee at a truly low price. Be thrifty and stock up for months to come!

ONE POUND CAN FOR

28c



FREE

HOT DOGS AND COFFEE

Will Be Served All Day Saturday to
Every Customer. Come In-Be Our
Guest!

POP CORN
Jolly Time, Can 10c
DINA-MITE
Whole Wheat Cereal, 3 for 10c
8 Oz. French Dressing
KRAFT'S
or Mayonnaise 15c

PINEAPPLE
Broken Slices, 2 No. 2 Cans for 23c
LIMA BEANS
2 Lb. Pkg. 21c
CHERRIES
Pitted for Pies, No. 2 cans, 2 for 25c
OYSTERS
Cove, 5 oz. Cans, 2 for 15c
GRAPE JUICE
Church's, Pint Bottle 15c

MARSHMALLOWS
Angelus, 1 Lb. Pkg. 21c
GELATIN
Royal, All Flavors, Box 7c
TAMALES
Ratliff's, 2 Cans 25c
COFFEE
Break 'O Morn, 1 Lb. Pkg. 19c
NAVY BEANS
2 Lb. Cello Bag 11c

FLOUR Gold Medal
24 LB. BAG 53c
48 LB. BAG **91c**

BAKING POWDER
K. C., 25 Oz. Can 19c
MACARONI, Spaghetti
Justice, Pkg. 5c
SARDINES
American Oil, Can 4c

Libby's Fancy Alaska Red
SALMON
No. 1 Tall Can 17c
PRESERVES
Del Monte, No. 2 Can 15c
KRAUT JUICE
Libby's, No. 2 Can 12c

CATSUP
Large Bottle 10c
SALMON
Happyvale, Pink, Tall Can 9c
PRUNES
Italian, Gallon 27c

COCOA
Hershey's, 1 Lb. Can 17c
Libby's Fancy, Small Whole
GREEN BEANS
No. 2 Can 15c
OATS
Crystal Wedding, Large Pkg. 17c

COCOANUT
Fancy Long Thread, 1 Lb. Pkg. 21c
PICKLES
Whole Sour or Dill, Quart Jar 15c
RAISINS
4 Pound Pkg. 25c

**Fresh Country
Eggs**
2 DOZEN FOR **15c**

P & G Soap
10 REGULAR
BARS FOR **25c**

Kellogg Sale
1 Large Box Corn Flakes
1 Box Pep
1 Box Rice Krispies
1 Large Box Whole Wheat Flakes
All For **29c**

SUGAR
In Sanitary
Cloth Bags
10 LBS. FOR **44c**

SAUCE
Lea & Perrins, Bottle 29c
TUNA
El Campo, Can 15c

Big Deal
SOAP
14 Ounce Yellow Bar, 3 For 10c
KRAUT
Van Camp's, No. 2 1/2 Can 10c

Mariposa, Sliced or Y. C.
PEACHES
2 1/2 Cans, 2 for 25c
TOMATOES
No. 1 Can, 2 for 9c

Tomato Soup or Beans
TALL BOY
Vegetable Soup, No. 2 1/2 Tall Can 10c
TOMATO JUICE
Libby's, 3 Cans 23c

MUSTARD
Quart Jar 15c
PEANUT BUTTER
Quart Jar 23c

Borden's Milk TALL
CAN **5c**

Shortening MRS. TUCKER'S—
8 LB. CARTON 44c;
4 LB. CARTON **24c**

OXYDOL
Large Pkg. 21c
PINEAPPLE
Libby's Crushed, 9 oz. tall can 6c
SWEET POTATOES
No. 2 1/2 Cans, 2 For 15c

PEARS
Libby's Fancy Bartlett, 2 1/2 Can 19c
TOMATO SAUCE
Libby's 8 oz. Cans, 2 for 13c
MIXED VEGETABLES
Libby's, No. 2 Can 14c

BREAD
16 Oz. Loaf, 3 for 10c
Large Cream Egg Bread. A new
delicious loaf made by Burrow's—
Demonstration Saturday. Loaf **.9**

SPINACH
Medina, No. 2 Cans, 2 for 19c
RICE
2 Lb. Cello Bag 10c
CUT BEANS
Green or Wax, 3 No. 2 Cans for 25c

Happyvale, Small Green,
LIMA BEANS
No. 2 Can 14c
PALMOLIVE SOAP
3 Bars 17c
CORN
No. 2 Cans, 2 for 25c

POTATOES

Idaho Burbanks, 10 Lbs. 19c
U. S. No. 1 Selected in cloth bags
Peck 33c
Colorado Cobbler, 10 LBS.

.11 1/2

PRIZE BABY BEEF

Purchased through Amarillo Fat Stock Show, has remained under perfect refrigeration to give proper aging. And now we offer you even more tender and more juicy cuts from this choice beef.

SAUSAGE

The same dependable Country Style Sausage with no water or Cereal and seasoned right. LB.

.06

Oranges California Navels
Full of Juice—
Dozen **17 1/2**
Grapefruit Texas Marsh Seedless
Large Size—
4 For **.15**
Apples Washington Winesap
Large Size
Dozen **.25**
Celery Large
Crisp
Stalk **.10**
Lettuce California
Firm, Crisp
Head **.05**

SUNRAY BACON
Sliced, 1 Lb. Pkgs., 2 For **33c**
FRESH SIDE PORK
Sliced, Per Pound **9c**
LOAF CHEESE
American, Pimento or Brick, Lb. **18c**
ROASTS
Cut from choice fed Sunray beef. Lb. **11c**
BACON
Pinkney's Sugar Cured Light Slab, Lb. **11c**
BUTTER
Brookfield or Gray Co. Creamery. Lb. **15c**



PORK CHOPS
Small Pig Loins, Lb. **10c**
OYSTERS
Fresh Shipment of Selects, Pint **25c**
American, Pimento, Brick or Velveta
KRAFT'S CHEESE **25c**
1/2 Lb. Pkgs., 2 for
SLICED BACON
Full Slices, 1 Lb. Cello Pkg. **12c**
PEANUT BUTTER
Bulk, Per Pound **9c**
STEAK
Cut from Pinkney's Sunray Beef, Lb. **13c**

Markets
New York Stocks

NEW YORK, March 24. (AP)—Stocks drifted in desultory trading today. Scattered selling was readily absorbed and the rails and wet stocks displayed some firmness...

CONGRESSMEN RAISE STEINS



Jubilant wet congressmen assembled outside the Capitol to hoist a foaming stein after the beer bill had passed the house by an overwhelming majority.

Panhandle Woman Passes Away Here

Mrs. J. C. Gaston, 26, of Panhandle, died in a local hospital last night after a lengthy illness. She had been a resident of Panhandle for the past two years.

Funeral services will be conducted at 2 o'clock tomorrow afternoon in Panhandle under the direction of the Malone Funeral home.

SCOUTS

(Continued from Page 1)

The treasury is empty and if the towns in the council electing Scouting to continue they must lend their support.

KEEPING MARBLE WHITE

Marble is easy to clean unless stains have marred the surface. A mild soap is the safest and best cleanser for marble.

WIGGINS and SLIDES by WILLIAM BRAUCHER

Personals. One of the first official acts of Eddie Collins as boss of the Red Sox was to tell Marty Burky...

The Baseball Book

Tom Kearney of St. Louis, one of the biggest "storekeepers" in the United States, issues his odds on the baseball races.

ROOSEVELT

(Continued from Page 1)

Earlier, General Douglas MacArthur, chief of staff of the army, had denied the bill was a "draft act" by which men would be picked up on the streets and forced to go to camp...

TEXAN WINS FIRST PRIZE IN ANNUAL ORATORY CONTEST

COLUMBIA, Mo., March 24. (AP)—First prize in the annual Missouri valley oratorical contest went to the University of Texas when Jesse Villarreal was awarded the honor.

IC. C. GIVEN AUTHORITY

WASHINGTON, March 24. (AP)—Legislation to repeal the railroad recapture clause and give the Interstate commerce commission authority to regulate railroad holding companies was approved today by the house...

LA FOLLETTE'S AT WHITE HOUSE



Whether problems of Soviet recognition by the United States or unemployment relief occupied their conference with President Roosevelt, neither Senator Robert M. La Follette of Wisconsin (left) nor his brother Philip La Follette, former Governor of Wisconsin (right) would divulge as they left the White House as pictured here...

COMMISSEONERS AND JUDGES IN MEETING AT WICHITA FALLS

WICHITA FALLS, March 24. (AP)—The largest convention in the history of the county judges' and commissioners' association of West Texas was under way here today with an attendance of 200 assured before the end of the day.

MOTHER OF L. B. AUTREY SUCCEUMBS

L. B. Autrey, manager of a local typewriter agency, left last night for Wichita Falls to attend the funeral of his mother, Mrs. Idela Autrey, 70, who died yesterday afternoon.

FLAT TIRE, NOT AN OFFICER'S BULLET STOPPED FUGITIVE

FORT WORTH, March 24. (AP)—A flat tire and not an officer's bullet stopped Raymond Hamilton and two other fugitives yesterday.

HOME SUPPLY

Grocery & Market Next To Penney's Saturday & Monday SPECIALS

La Nora

Man Against Beast In The Screen's SUPREME THRILLER! CLYDE BEATTY

Mack's Shoe Shop

Men's Prime Leather Half Soles 65c up Ladies' Half Soles 50c up

Mrs. Hazel Rains

Mrs. Hazel Rains, 315 E. Kingsmill, entertained a group of friends with a three-table bridge party on Wednesday evening.

Poland Plans Barter

WARSAW (INS)—Polish firms are making arrangements for barter transactions with Spain, Portugal, Greece, and Holland.

LAFOLLETTE'S AT WHITE HOUSE



Whether problems of Soviet recognition by the United States or unemployment relief occupied their conference with President Roosevelt, neither Senator Robert M. La Follette of Wisconsin (left) nor his brother Philip La Follette, former Governor of Wisconsin (right) would divulge as they left the White House as pictured here...

COMMISSEONERS AND JUDGES IN MEETING AT WICHITA FALLS

WICHITA FALLS, March 24. (AP)—The largest convention in the history of the county judges' and commissioners' association of West Texas was under way here today with an attendance of 200 assured before the end of the day.

MOTHER OF L. B. AUTREY SUCCEUMBS

L. B. Autrey, manager of a local typewriter agency, left last night for Wichita Falls to attend the funeral of his mother, Mrs. Idela Autrey, 70, who died yesterday afternoon.

FLAT TIRE, NOT AN OFFICER'S BULLET STOPPED FUGITIVE

FORT WORTH, March 24. (AP)—A flat tire and not an officer's bullet stopped Raymond Hamilton and two other fugitives yesterday.

HOME SUPPLY

Grocery & Market Next To Penney's Saturday & Monday SPECIALS

La Nora

Man Against Beast In The Screen's SUPREME THRILLER! CLYDE BEATTY

Mack's Shoe Shop

Men's Prime Leather Half Soles 65c up Ladies' Half Soles 50c up

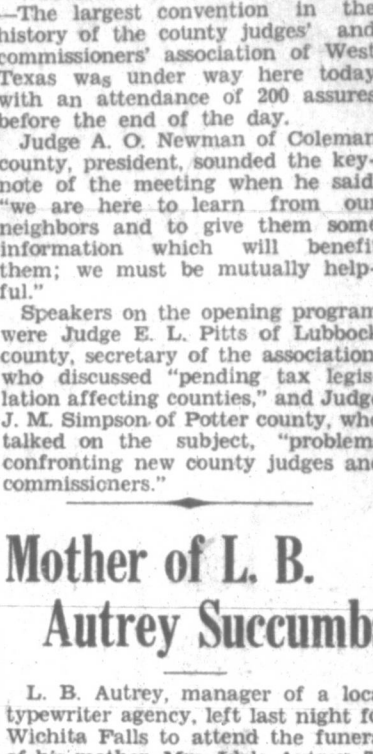
Mrs. Hazel Rains

Mrs. Hazel Rains, 315 E. Kingsmill, entertained a group of friends with a three-table bridge party on Wednesday evening.

Poland Plans Barter

WARSAW (INS)—Polish firms are making arrangements for barter transactions with Spain, Portugal, Greece, and Holland.

COMMISSEONERS AND JUDGES IN MEETING AT WICHITA FALLS



Whether problems of Soviet recognition by the United States or unemployment relief occupied their conference with President Roosevelt, neither Senator Robert M. La Follette of Wisconsin (left) nor his brother Philip La Follette, former Governor of Wisconsin (right) would divulge as they left the White House as pictured here...

MOTHER OF L. B. AUTREY SUCCEUMBS

L. B. Autrey, manager of a local typewriter agency, left last night for Wichita Falls to attend the funeral of his mother, Mrs. Idela Autrey, 70, who died yesterday afternoon.

FLAT TIRE, NOT AN OFFICER'S BULLET STOPPED FUGITIVE

FORT WORTH, March 24. (AP)—A flat tire and not an officer's bullet stopped Raymond Hamilton and two other fugitives yesterday.

HOME SUPPLY

Grocery & Market Next To Penney's Saturday & Monday SPECIALS

La Nora

Man Against Beast In The Screen's SUPREME THRILLER! CLYDE BEATTY

Mack's Shoe Shop

Men's Prime Leather Half Soles 65c up Ladies' Half Soles 50c up

Mrs. Hazel Rains

Mrs. Hazel Rains, 315 E. Kingsmill, entertained a group of friends with a three-table bridge party on Wednesday evening.

Poland Plans Barter

WARSAW (INS)—Polish firms are making arrangements for barter transactions with Spain, Portugal, Greece, and Holland.

FISH Don't Be A Fish! Mitchell's APPAREL FOR WOMEN. All wool materials, silk crepe lined, beautifully tailored, lots of lap, extra gussets, plenty long, no skipping anywhere. Shown in navy, tan, grey, and black.

WIGGINS and SLIDES by WILLIAM BRAUCHER. PERSONALS. One of the first official acts of Eddie Collins as boss of the Red Sox was to tell Marty Burky...

La Nora NOW SHOWING Man Against Beast In The Screen's SUPREME THRILLER! CLYDE BEATTY IN THE BIG CAGE. Mack's Shoe Shop. Mrs. Hazel Rains Hostess to Group.

Home Supply Grocery & Market. Choice of Post Bran, Grape-nut Flakes, Shredded Wheat, Pep or All Bran. TOMATOES 21. CORN 25c. SALMON 19c. MUSTARD 17 1/2c. SOAP 25c. Choice Meats. Poultry Dressed Fresh. POUND LAMB CHOPS 12 1/2c. STEAK 8c. FRANKS 8 1/2c. LARD 36c. STEAK 9c. MEAT 5c.

SUGAR
THIS IS PURE CANE, NOT BEET

10 LB. CLOTH BAG **47c**
100 LB. CLOTH BAG **\$4.59**

MOST COMPLETE FOOD STORES IN THE PANHANDLE
SPECIALS FOR ALL WEEK AT BOTH STORES
(EXCLUSIVE OF MEATS & PRODUCE)
WE DO SELL TO OTHER MERCHANTS AND WE DON'T
LIMIT QUANTITIES...OUR SUPPLY IS UNLIMITED!

FLOUR
GREAT WEST — GUARANTEED

48 LB. SACK **91c**

DRESSING W. F. Salad Dressing Oil Base **PT. 14c**
GRAPES No. 2 1/2 Muskat In Syrup **2 Cans 25c**
MATCHES These Will Strike **6 Box Carton 21c**
COCOA Hershey's Finest In LB. Cans **LB. 17c**

KOKOHEART
A REAL SUBSTITUTE

2 LBS. **15c**
FOR

YOUR CHOICE

19c

PINTO BEANS Regular 25c Reclaimed, PKG.
PRUNES Large Size, Regular 25c PKG.
SUGAR Powdered or Brown, Reg. 25c PKG.
RICE Fancy Full Head, Regular 25c PKG.
BABY LIMA BEANS 3 CANS
COFFEE Break o' Morn LB.
BLACKBERRIES No. 2 Size 2 CANS
STANDARD TISSUE 3 ROLLS
LARGE NAVIES Regular 25c PKG.
QUICK ARROW Soap Chips, Large BOX
BEANS Wapco, Mexican Style 2 CANS
PEANUT BUTTER Alton Brand QT.

MALT
BLUE RIBBON

3 LB. CAN **49c**

OATS Quick Cooking Quaker, Regular **BOX 7c**
OATS Quick Cooking Quaker, Large **BOX 16c**
OATS Crystal Wedding, Crystal Ware in every box **BOX 17c**
CHERRIES Kumer's Medium Red Pitted **2 Cans 29c**

LARGE GOLDEN RIPE PERFECT FRUIT — ALWAYS STANDARD'S FINEST

BANANAS DOZ. **14 1/2c**

PICKLES
QUART SIZE .SOUR IN TINS

Can **13c**

CRACKERS
PREMIUM SALTED, FRESH AND CRISP

2 LB. BOX **21c**

U. S. NO. 1 SELECT POTATOES

100 LB. BAG **\$1.19** 10 LB. BAG **11 1/2c**

FANCY CALIFORNIA LARGE FIRM AND KEPT CRISP IN OUR HYDRATOR

LETTUCE HEAD **5c**

SCOUTS!
BOYS AND GIRLS
Save the labels from Libby's Evaporated Milk for your Uniform and Equipment.

CANS

4 TALL OR 8 SMALL CANS **19c**
BY THE CASE \$2.35

ORANGES FANCY CALIFORNIA LARGE SIZE FULL OF JUICE

DOZ. **18c**

EXTRA FANCY WINESAPS—
COOKING OR EATING

APPLES DOZ. **17c**

U. S. NO. 1 IDAHO BAKING, GRADED 12 OZS. TO THE POTATO

POTATOES 15 LB. CLOTH BAG **34c**

SAVE YOUR LABELS FOR A SCOUT!

APPLES DOZ. **17c**

APPLES DOZ. **17c**

BUTTER
It's Always Fresh at Standard's!

Brookfield, Taylor Farm, Clover-bloom or Country.

LB. 17 1/2c

STANDARD'S QUALITY GOVERNMENT STAMPED MEATS

SHORTENING
Swift's Jewel, 8 Lb. Cartons

8 LBS. FOR **43c**

BLACKBERRIES Solid Pack **GAL. 33c**
PINEAPPLE Solid Pack Crushed **GAL. 41c**
SPINACH No. 2 Extra Fancy, No Sand or Grit **2 Cans 23c**

This Item Special at No. 2 Store Only

PURE LARD
JEWEL COMPOUND OR
In Your Own Container

8 LBS. **36c**

CHEESE Extra Fancy Full Cream Long Horn **LB. 10 1/2c**
SPARE RIBS Small Fresh and Meaty **LB. 6 1/2c**
SAUSAGE 100% Pure Pork From Fresh Home Killed Hogs **LB. 5 1/2c**
PEANUT BUTTER 3 Lbs. **25c**

This Item Special at No. 2 Store Only

SLICED BACON
Pinky's Economy Sliced, Cellulose Wrapped **LB. 9 1/2c**

PEACHES Solid Pack Pie Fruit **GAL. 33c**
APRICOTS Solid Pack Pie Fruit **GAL. 39c**
MEAL 5 LB. BAG **11c** 10 LB. BAG **16c**

REAL FLAVOR WACONIA BRAND

SORGHUM GAL. **41c**

SUGAR CURED HAMS
Half Only as Cut and Displayed **LB. 6 1/2c**
Doid's Niagara Brand Half or Whole Only **LB. 13 1/2c**

LUNCH MEAT Assorted Includes 8 Kinds **LB. 16 1/2c**
FRESH DRESSED PORK
HAM ROAST **LB. 11 1/2c**
SHOULDER Shank 1/2 or Whole **LB. 8 1/2c**

BABY BEEF ROASTS
Choice Short Rib or Pot **LB. 4 1/2c**
Choice Forequarter Cuts **LB. 6 1/2c**
Center Cut Chuck, Arm or Rolled **LB. 9 1/2c**

RED LABEL

KARO GAL. **49c**

PEACHES No. 2 1/2 Moon Valley, In Syrup **2 Cans 25c**
TOMATOES No. 2 Portales, Solid Hand Pack **3 Cans 21c**
SOAP CHIPS Crystal White, Most Soap for the Money **5 Lb. Box 29c**

BABY BEEF STEAK
Choice Forequarter Steak **LB. 6 1/2c**
Loin or T-Bone **LB. 14 1/2c**

BACON Fancy Sugar Cured, Half or Whole **LB. 10 3/4c**
FRANKS These Are Fresh, Not a Wrinkle in a Carload **LB. 10 1/4c**
CHILI Fancy Block, First Grade **LB. 13 1/2c**
P. CHOPS Fresh—Not Frozen—Lean and Tender **LB. 8 1/2c**
PIG LINKS A Breakfast Treat **LB. 12 1/2c**

SLICED BACON
Sterling Or Special Sunray Or Wilson's Or Doid's Box **LB. 13 1/2c**
LB. 17 1/2c
LB. 18 1/2c

CORN No. 2 Extra Standard, Sweet and Tender **3 Cans 23c**
GREEN BEANS No. 2 Mile High, Cut Green **3 Cans 23c**
PINEAPPLE No. 2 Matched Slices, Ukulele Brand **2 Cans 23c**

COFFEE SALE!
CHASE & SANBORN'S **LB. 27c**
MAXWELL HOUSE **LB. 29c**
BEECHNUT **LB. 29c**

FRESH PIG
FEET EACH **3 1/2c**
LIVER **LB. 5 1/2c**

DRY SALT BACON
Jowls For Boiling **LB. 3 1/2c**
Streak Or Lean **LB. 6 1/2c**

LAUNDRY SOAP
6 GIANT BARS SWIFT'S T. N. T. **19c**
11 BARS OF SWIFT'S WHITE OR NAPHTHA

PORK & BEANS Campbell's Regular **CAN**
Brown Beauty Beans No. 1 Size **CAN**
GREEN BEANS No. 1 Size, Cut Green **CAN**
WAX BEANS No. 1 Size Cut Wax **CAN**
RED BEANS Medium Size **CAN**
CORN No. 1 Extra Standard, No Cob **CAN**
TOMATOES No. 1 Solid Hand Pack **CAN**
HOMINY Stokley's Medium Size **CAN**
KRAUT Stokley's Medium Size **CAN**
TOMATO SOUP Van Camp's **CAN**
TOILET SOAP White King, Mission Bell or Camay **BAR**
APRICOTS 5-oz. Blue Bunny In Syrup **CAN**

YOUR CHOICE

5c

POULTRY & FISH DEPARTMENTS
In our fish department you will find a fresh assortment of Fancy, full dressed fresh Water Cat, Trout, and Halibut Steaks

FANCY HENS Extra Fancy, Heavy Colored **LB. 13 1/2c**
TURKEYS Young and Tender Fowls **LB. 13 1/2c**
DUCKS Fancy Full Feather **LB. 15c**
GEESE Fancy Full Feather **LB. 15c**
OYSTERS Extra Select Baltimore **PT. 29c**

All Fowls Weighed To You Dressed—We Draw Them FREE

PEACHES No. 1 Tall in Syrup **CAN**
SPAGHETTI Franco-American or Beechnut **CAN**
BEETS No. 2 1/2 Dell Brand Cut **CAN**
RAISINS Seedles or Puffed, 15 Oz. **BOX**
SOAP Peerless Cocoa Hard Water **2 BARS**
APRICOTS No. 1 Tall in Syrup **CAN**
Macaroni or Spaghetti Justice **2 BOXES**
SUNBRITE CLEANSER **2 CANS**
PINEAPPLE Sliced or Crushed, Flat **CAN**
POP CORN Pops Large Kernels **2 LBS.**
PICKLES 6-oz. Assorted **JAR**
KRAUT No. 2 1/2 Size **CAN**

YOUR CHOICE

9c

THESE ITEMS SPECIAL AT NO. 2 STORE ONLY

BLOCK SALT Sulphurized, Each 54c; Plain **EACH 44c**
BRAN 100 LB. SACK **77c**
SHORTS Mill Run Fancy **100 LB. SACK 87c**

STANDARD FOOD MARKETS

STORE NO. 1 110 So. Cuyler 'SELLS FOR LESS' STORE NO. 2 304-6 So. Cuyler

THESE ITEMS SPECIAL AT NO. 2 STORE ONLY

FLOUR WHITE LOAF FULLY GUARANTEED **48 LB. SACK 69c**
BLISS COFFEE **LB. 21c**
SOAP CHIPS CRYSTAL WHITE REGULAR 10c **BOX 4c**

STANDARD FOOD MARKETS IN PAMPA ARE OWNED AND OPERATED EXCLUSIVELY BY F. S. BROWN

THE PAMPA DAILY NEWS

Published evenings except Saturday, and Sunday morning by Pampa Daily News, Inc., 322 West Foster, Pampa, Texas.

Subscription Rates: Yearly \$6.00, Monthly \$0.50, Single Copy \$0.05.

Notice: It is not the intention of this newspaper to cast reflection on the character of anyone knowingly and if through error it should, the management will appreciate having attention called to it, and will gladly and fully correct any erroneous statement made.

SCIENCE'S QUEST FOR 'TRUTH'

If you have ever felt that modern science has a cocky and self-satisfied air about the body of knowledge it has amassed, you might heed the words of Dr. Harlow Shapley, director of the Harvard Astronomical Observatory.

Dr. Shapley predicts that "practically all current theories" are going to prove mortal before so very long. The axioms of today will be abandoned and outworn theories of tomorrow.

This viewpoint, to be sure, is the general rule among scientists. But laymen often misunderstand it, and because they misunderstand it they sometimes resent what they feel is a too dogmatic and inflexible attitude on the part of science.

A proper understanding of it might save us from a good deal of our creepy dread of the rising of scientific knowledge. For it seems, now and then, as if the scientists were banishing mystery from the world.

Now that kind of talk is calculated to put cold shivers down the back of any thoughtful man. But it is precisely a kind of talk that the real scientist does not indulge in. He is more likely to keep in mind Plato's great picture.

Acting Comptroller of the Currency Anawalt, quizzed newspaper men in the recent rush to reopen the banks, muttered "We're snowed under! We're snowed under!" With frozen assets.

More than 14,000 telegrams pile up on President Roosevelt in 12 days. At least the telegraph companies are getting a new deal.

More gold was dug from the ground in 1932 than any other year. But less from big butter-and-egg men.

Scientists at New York recently demonstrated an "electric eye" that opened the doors of the city's newest room as the shadow of an approaching customer crossed its path.

The 13th hardly can be considered an unlucky day longer, since it was on March 13 that the banks began to reopen.

HE NEWFANGLES (Mom'n Pop)

Comic strip panels for 'HE NEWFANGLES (Mom'n Pop)' with dialogue about rent and job loss.

FRECKLES AND HIS FRIENDS

Comic strip panels for 'FRECKLES AND HIS FRIENDS' with dialogue about a ship and a boat.

Lippmann Predicts New Social Order

BERKELEY, Calif., March 24. (AP)—A new economic, social and political order for future humanity was predicted by Walter Lippmann, editor, author and economist, in a charter day address at the University of California today.

Ranchmen War On Rabid Coyotes In West Texas Area

SAN ANGELO, March 24. (AP)—Ranchmen in the four West Texas counties—Ward, Winkler, Estel and Loving—have been joined in a war on rabid coyotes by the predatory animal division of the bureau of biological survey.

Mad coyotes have been attacking livestock and human beings. Ligon, director in charge of predatory work across the Pecos river, told Landon.

Several state or federal trappers will be sent to the area to start an intensive campaign of trapping and poisoning.

C. Avery, who owns a dairy at Monahans, made the first report of the mad animals. Alder Estes of that place lost eight cows which were bitten.

The newspaper said that a few monuments and fragments of statuary had been found.

ANSWERS section with a cartoon illustration and text for 'THREE GUESSES'.

Al's Not So Dumb!

Comic strip panels for 'Al's Not So Dumb!' with dialogue about rent and a job.

Over The Top!

Comic strip panels for 'Over The Top!' with dialogue about a boat and a ship.

ROOSEVELT INAUGURATION AND PARADE ARE VIVIDLY SHOWN IN PAMPA DAILY NEWSREEL IN CITY

The inauguration of President Roosevelt, shown in detail in the current issue of the Pampa Daily News-Universal Newsreel, proved to be the greatest event in newsreel history, with the latest developments in speed and of the motion picture science enlisted to rush sound pictures of the epochal ceremony to the screen for the millions of Americans unable to see it in person.

Huge Buffalo Head Mounted For Elliot, Son of President

AMARILLO, March 24. (AP)—One of the biggest buffalo heads ever taken from the famous Goodnight herd, near Amarillo, has been mounted for Elliott Roosevelt, son of the President, who is visiting in Arizona.

C. R. Smith, general manager of the southern division of American Airways, ordered the headed mounted by Stanley G. Zimmerman, local taxidermist. It was sent to young Roosevelt by plane.

West Must Win Three Elections For Garner Seat

AUSTIN, March 24. (AP)—Milton West of Brownsville has been put to the necessity of much running to get the seat in congress vacated by John N. Garner, pastor of the fifteenth district, when he was elevated to the vice presidency.

West had a contest on his hands last November when he sought reelection to the Texas house of representatives. He has been through two democratic primaries in his quest of congressional honors and now goes into a general election.

P. M. Keller of McLean transacted business here yesterday.

OUT OUR WAY By WILLIAMS

Cartoon illustration for 'OUT OUR WAY' showing a car and people with dialogue about carrying papers.

By COWAN

Comic strip panels for 'By COWAN' with dialogue about a castle and a town.

By BLOSSER

Comic strip panels for 'By BLOSSER' with dialogue about a boat and a ship.

Increase Size Of Yellow House Ranch

LITTLEFIELD, March 24. (AP)—J. P. "Phelps" White, owner of the Yellowhouse ranch southwest of here, has purchased an additional 5,000 acres of land adjoining the 14,000-acre old headquarters of the ranch.

The ranch is being fenced and White is shipping several hundred head of cattle here. He plans construction of some buildings at headquarters but is not rebuilding the old headquarters ranch house at this time, he stated.

Museum 'Tenants' Will Be Ejected By Opening Date

CANYON, March 24. (AP)—English Sparrows have no respect for the date when the museum of the Panhandle Plains Historical society is supposed to be open for use and inspection.

Although Field Secretary L. F. Sheffy has repeatedly announced that visitors will not be admitted until April 14, the sparrows have visited and even settled down to stay indefinitely. They have built a "penthouse" apartment on the head of the antelope which forms a part of the decoration of the beautiful limestone building.

It is suspected that they will be forcibly ejected before the dedicatory ceremonies, on the fourteenth of April, when hundreds of people are expected for the first public view of the exhibits.

DEER THREATENS ROSWELL, N. Y. (INS)—A tame deer escaped from his pasture and terrorized residents of the Berrendo community recently. The animal walked into two farm houses, chased several men, women and children and stopped automobiles on the highway.

Pilot Has Record ALBANY, N. Y. (INS)—Cy Bittner, a transport pilot, has made 500 round trips to Cleveland since January 1929 without an accident.

Acting Comptroller of the Currency Anawalt, quizzed newspaper men in the recent rush to reopen the banks, muttered "We're snowed under! We're snowed under!"

More than 14,000 telegrams pile up on President Roosevelt in 12 days. At least the telegraph companies are getting a new deal.

More gold was dug from the ground in 1932 than any other year. But less from big butter-and-egg men.

Scientists at New York recently demonstrated an "electric eye" that opened the doors of the city's newest room as the shadow of an approaching customer crossed its path.

The 13th hardly can be considered an unlucky day longer, since it was on March 13 that the banks began to reopen.

VALIANT DUST advertisement with a horse illustration and text by Percival Christopher Wren.

Chapter 28, RAISUL'S PLAN. Kismet! Kismet! Fate plays some funny tricks. Surely one of the funniest was to bring Raisul, looking for just such a tool, across the path of Ricco!

"Raisul, who can pass as a Spaniard in Spain, an Englishman in England, and almost as a Frenchman in France, is really clever, really subtle, and therefore infinitely more dangerous than his father, who is merely a first-class Robber Baron of the old pattern."

"And there again, strangely enough, it was Ricco! who brought Raisul under our more particular notice, for he was watching and cultivating Ricco! when I was doing the same thing. I have kept my eye on him ever since the year he became a captain; for even then he was a very remarkable man. And even then had amazing boundless ambitions, and made no secret of them."

"You won't be too deeply charmed and hurt, I am sure, if I disclose to you the fact that he offered my own wife the same high destiny which he laid at your feet tonight."

"I am a little disappointed, Colonel Le Sage," she said. "It takes a little of the gilt off the gingerbread for me."

"Yes, but I am going to take the gingerbread from under the gilt, for him," answered Le Sage, "and quite soon, I hope."

"Yes," he continued. "A Corsican officer of Chasseurs d'Afrique, who thinks in kingdoms and empires, is worth watching. Especially later, when his partner is the interesting Raisul, son and heir of the Kaid of Mekazzen; and most particularly so, when later still, he intrigues hard, moves heaven and earth, we may say, to get posted to the least desirable spot in the French African Empire, and that spot happens to be on the borders of Mekazzen."

"I wonder the French authorities didn't arrest Raisul," said Margaret. "Oh no, my child, that would never have done. In the first place, there were no grounds for doing so, for it is not a criminal offense to be the son of one's neighbor, and in the second place, once I was on his track and had a pretty clear idea of what was on, I should have been very sorry if the game had been stopped at that stage."

"Well, Raisul fooled Ricco! and Ricco! fooled Raisul, or each thought he was fooling the other. Raisul saw his way to giving France a hideous shock as well as gathering in some very solid material advantages in the shape of the latest guns—very difficult to get hold of—rifles, and a large number of European-trained soldiers. Also officers and specialists, engineers, signalers, gunners and so on."

"Doubtless Raisul hopes that Ricco! will be a perfectly invaluable tool and weapon until the time comes to break it—and that will be the time when the tool begins to turn in its master's hand, the weapon to be two-edged. It may happen at once. Ricco! may show his hand now."

"And then exit Ricco!?" "And where did Ricco! fool Raisul?" "By pretending to be the tool, while intending to be the master. He hasn't the very faintest intention of really serving the Kaid of Mekazzen. Do you know what he has come here to do? Nothing more nor less than to seize this Citadel."

"What?" asked Margaret. "Capture the castle?" "Yes. And whoever holds the Citadel holds the town. And, of course, the country. But Ricco! is not doing this for France. It is for himself."

"How do you know?" "How could you prove it?" asked Margaret. "Know and prove? Well, I know because I have known Ricco! and the workings of his mind for a very long time; and because, thanks partly to you, Margaret, I know that his mind is working today; as it worked when first he brought himself to my notice, through his proposal to my wife. But working now far more violently. That is how I know."

RIDE THE BUS - IT COSTS LESS! advertisement with a table of bus fares from Pampa to various cities.

Vertical text on the far right edge of the page, including 'Int' and 'Generi'.

'Newshawk' Corps Pleased By Free And Easy Discussion of President

WASHINGTON, March 24. (AP)—Something may cause a change later, but so far President Roosevelt and the newspaper corps seem well satisfied with the informal, direct question and answer discussions at Mr. Roosevelt's semi-weekly press conferences.

In re-establishing this type of conferences—abandoned since the early days of the Harding administration—Mr. Roosevelt laughingly said that he had been told they would not continue long. He ventured they could and would be carried out.

Some of the veteran reporters disagreed but after several successful gatherings, they have changed their mind.

The procedure at the conferences on Tuesdays at 10 a. m. and Fridays at 4 p. m. is simple. The newspapermen waiting in the lobby of the executive offices are summoned into the president's room. They fill almost every available bit of space. Mr. Roosevelt greets them and leans comfortably back in his chair.

The questions come thick and fast, and some go to the root of delicate questions and situations. Not once thus far has the president shown any sign of impatience or perturbation. There is no hesitation in his answers. When he doesn't make a direct answer, he says: "I can't tell you anything about that yet," or "I don't know."

First off, Mr. Roosevelt tells the reporters whether the answers are "off the record," or "background" to be used on their own authority. Direct quotations are prepared in writing.

All in all, it is a free and easy, give and take exchange, with the president heartily enjoying the frequent quips and sallies.

Kansas Cowman Buys 3,000 Steer Calves at Marfa

SAN ANGELO, March 24. (AP)—J. W. Greenleaf, cowman of Topeka, Kansas, recently did some of the fastest buying the West Texas cattle country has ever seen. He arrived in Marfa in an airplane from Topeka at 2 o'clock on a Saturday afternoon and by 2 o'clock Monday afternoon had bought 3,000 steer calves for fall delivery. It was the first bunch of calves contracted for fall delivery this year, and many of those he bought have not been born.

Greenleaf got all the steer calves from the herds of Luke Britz, who operates a 123,000 acre ranch; all the steer calves from Lee Fischer's Wirt Love's and Buck Clelland's ranches.

U. S. May Protest Mistreatment Of Jews In Germany

WASHINGTON, May 24. (AP)—Ready to make a formal diplomatic protest if necessary, the American government today sought to learn officially if Jews in Germany are being mistreated by the new Hitler government.

On the heels of a protest from prominent American Jews headed by Rabbi Stephen S. Wise, the state department informed Ambassador Sackett at Berlin that the concern felt here on the basis of press reports and asked him to check officially on their accuracy.

Chancellor Hitler has moved to get his followers under control by proclaiming the most stringent of regulations including detention sentences and even the death penalty for unauthorized wearing of the brown uniform of his national socialist or "Nazi" party for committing terroristic acts in his name.

Many times in the past the American government has lodged strong protests against persecution of Jews, sending notes to Roumania, Russia, Austria-Hungary, and the Mohammedan countries at various times.

Louisiana Plans To Have Beer April 13

BATON ROUGE, La., March 23. (AP)—Beer legislation in Louisiana paused today at the halfway mark for routine procedure with liberal predictions of legalized beer in this state by April 13, or 20 days after repeal of the Hood act, state prohibition law, if perfected.

The senate of the special legislative session last night passed the Dugas state repeal bill by vote of 30 to 7 and sent it to the house for action Friday.

The house with only two dissenting votes adopted the Wimberly beer and wine taxing bill which provides a state excise tax of \$1 a barrel on beer and wine and a state license tax of fifty cents per barrel.

California's Scorn 3.2 Per Cent Wine

SAN FRANCISCO, March 23. (AP)—While brewers speeded preparations to tap beer kebs the night of April 6, California's vintners made no move to take advantage of the simultaneous legalizing of 3.2 "wine."

It is worth nothing, they said, and isn't wine at all. Leaders of the industry in whose cellars are stored 20,000,000 gallons of wine, reiterated they would wait for and continue to fight for legalization of naturally fermented light wines of approximately 10 per cent alcoholic content.

But while the vintners waited, one brewer indicated his company may attempt the manufacture of 3.2 "wine"—but not until the end of the rush attendant upon spigotting beer kegs here at 9:01 p. m. (PST) April 6.

Mr. and Mrs. L. R. Taylor have as their guests Mr. and Mrs. M. R. Dyer of Oklahoma.

QUEEN IS ARTIST
THE HAGUE (INS)—The Queen of Holland takes her painting seriously. She has recently accepted an invitation from her fellow artists to welcome a working member of the Pulchri Studio which is one of the oldest and best-known of the artistic clubs of the Netherlands.

RODEO FOR CHINESE
NANKING (INS)—For an afternoon affairs of state stopped in Nanking while visiting Mongol princes and officials staged a rodeo for three hundred dignitaries watched the Mongol princes perform on their stocky beasts.

SMELTER TO OPEN
HELENA, Mont. (INS)—Helena was cheered recently by word that the East Helena smelter of the American Smelting and Refining company, would reopen about Feb. 1. The smelter, closed since last October, will give part-time employment to about 200 men.

JOBLESS BUILD ROADS
STOCKHOLM (INS)—Over one thousand kilometers of new roads, as well as canals, aviation fields and other large and useful Swedish public works are being built by 15,100 unemployed. The work is being performed in 190 different localities in various parts of the country.

OVERLORD DETERMINED
PEIPING, March 23. (AP)—Chinese resistance against Japanese invaders in Manchuria and Jehol will continue "until the Chinese flag again flies therein," General Ho Ying-Ching, new military overlord of North China said today.

FIVE MORE PARDONS
AUSTIN, March 24. (AP)—Three full pardons, two conditional pardons and one general parole were issued to inmates of the Texas penitentiary by Governor Miriam A. Ferguson today.

GOLF COURSE OPENS
DUMAS, March 24. (AP)—Moore county's only well-maintained golf course has been opened at the Bivins booster station, in the south part of the county. It is a nine-hole course.

R. E. Epperson of Barlesville, Okla. is a Pampa visitor this week.

A. H. Mabry of Plainview is a Pampa visitor today.

G. G. Travis of Tulsa is a Pampa business visitor.

Miss Madeline Murray has returned to West Texas State Teachers college in Canyon after visiting with Mrs. Girtha McConnell.

WOMAN APPOINTED
NACONA, March 24. (AP)—Advises received from Washington said Mrs. True strong has been appointed acting postmaster here.

Frank Benson of Dallas is a Pampa visitor.
Sidney Claiborn, with the Frigidaire company, Fort Worth, is visiting with Bert Curry for a few days.

ONIONS Fancy Yellow Spanish Sweets. Pound .01 1/2

BAUMS FOOD STORE and MARKET FREE DELIVERY PROMPT SERVICE
You small change goes further at Baum's than dollars go elsewhere. So use this special shopping list. Come here and GET LOTS OF FOOD FOR LITTLE MONEY!
WE RESERVE THE RIGHT TO LIMIT QUANTITIES
SPECIALS FOR SATURDAY AND MONDAY

BACON Sliced, Cello Wrapped, Extra Nice (Sat. Only, Per Lb.) .08 1/2

PEACHES 2 for .25 No. 2 1/2 Cans in Extra Heavy Syrup

STEAK .05 1/2 Milk Fed Veal, Sat. Only, Lb.

MILK .05 Armour's Tall Can

Butter .18 1/2 Golden Dale or Taylor Farm, Lb. in Carton....

Lamb Legs, Lb. .13 1/2 Shoulder Roast .11 1/2 Genuine Spring—Look for the U. S. Stamp—That of Quality

ORANGES Arizona Desert Sweets. The Best Orange Buy of the Week, Doz. .14 1/2

BAKERS .08 1/2 Fancy. These are carefully selected fowls, and each and everyone young, fat, and tender, L.B.

HENS .10 1/2 No Leghorns, fancy heavy type, dressed and drawn free. L.B.

POTATOES U. S. No. 1 Selected and Graded Idaho Bakers, Packed in White Cloth Bags. 15 lbs .23

LARD 8 lbs. .35 Home Rendered from Panhandle Hogs—Snow White.

CELERY Fancy individual wrapped, Perfect Taste, Stalk 10c

COCOANUTS Large Size Full of Milk Each 5c

SPINACH Fresh Free from Grit, L.B. 5 1/2c

G RAPEFRUIT Texas Seedless, Chuck Full of Juice, Each .04

CARROTS The finest we have ever shown—Bunch .02

TOMATOES Firm, Ripe or Pinks, Lb. .10

BEETS Fresh Valley, Large Beets, Large Bunch .04

ENDIVE Large Heads, Yellow Centers, Each .05

FLOUR .75 Pride of Perryton, Hard Whea, 48 Lb Bag

BAKERY SPECIALS For Saturday Only

HOT CINNAMON BUNS 1c Fresh From the Ovens All Day, Each

BREAD Mothers Egg, Fresh Egg or Butereg, Demonstrated Saturday, 16 Oz. Loaf, Saturday Only 7 1/2c

FRESH FIG BARS 2 21c Full of Fruit LBS.

COFFEE .24 Will Grind it While You Wait—Then You're Sure That It's Fresh, L.B.

PORK SHOULDERS .07 1/2 Fresh, Saturday Only, Lb.

SAUSAGE .05 1/2 Fresh ground from fresh pork, Seasoned

BACON SQUARES .06 1/2 Sugar Cured, Guaranteed, Not Salty, Lb.

BEEF ROAST .06 1/2 Cut from fancy corn fed baby beef. Lb.

HAMBURGER .06 1/2 Fresh Ground from Fresh Meat, Lb.

Pork Roast .08 1/2 Cut from choice small pigs, Lb.

PIG TAILS .5c Fresh and Meaty, Saturday Only Pound

COMPOUND White They Last 24 Lbs With Pall \$1.49

TOMATO JUICE Beechnut, Tall Can For 8 1/2c

RICE Fancy Full Head, 5-Lb. bag 23c

PEANUT BUTTER Fresh (In Our Mkt) 3 LBS. for, 23c

OYSTERS Fresh Shipment, Large Size, Pint For 19c

DRY SALT BACON For Seasoning, L.B. 3 1/2c

PORK CHOPS Small, Lean and Tender, Medium End Cuts, Lb. 8 1/2c

NECTARINES .19 Dried, 2 Lb. Pkg.

BLACKBERRIES .35 Solid Pack, Gallon Can

RASPBERRIES .33 Red, All Fruit, Gallon Can

PINEAPPLE .41 Libby's, Solid Pack (crushed, Gallon Can)

PRUNES .29 Italian, Whole Fruit, Gallon Can

OATS Crystal Wedding, Each Pkg. Contains a piece of Crystal Ware, Large Package. 16 1/2

SALT .15 American Free Running, 2 Lb. Pkgs. FOR

SOAP .17 Quick Naphtha, 10 Large Bars

PEARS .19 White Swan, No. 2 1/2 Can

SPAGHETTI OR MACARONI .04 Pkg.

PUFFED WHEAT .10 Regular Size Package

PINEAPPLE .11 Hillsdale Sliced, No. 2 Can

MEAL 5 LB. BAG .10 Cream

FISH .19 1/2 Fresh Caught, Cat or Trout, Lb.

ROLLED ROAST .07 1/2 All Meat, No Bone, Very Tender, Lb.

PRIME BEEF ROAST .12 1/2 Cut to Order, Per Lb.

STEW MEAT .03 1/2 Fresh, Lean Meat, Lb.

FRESH SIDE MEAT .06 1/2 Cut from Fresh Killed Young Pigs, Lb.

STEAK .15 1/2 Round, loin, club, etc. U. S. Govt. stamped meats. There is none better, and you are sure of tender delicious meats when you serve this meat. L.B.