

Want Professional, Friendly, Knowledgeable Support On Buying Or Selling Your Home? Call Me ... Linda Daniels ... 669-2799 Accredited Buyers Representative

KELLER WILLIAMS REALTY

110 W. Kingsmill (Behind Best Finance)



Call 665-0106 To Sign Up Today!

Statewide Coverage • Dialup & DSL Service Available High Speed Internet Connections Are Available Now!

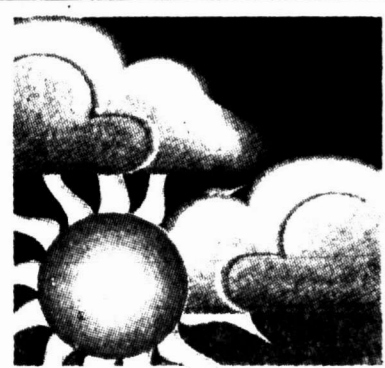


***** MIXED ADC 760 *01 BV04227 12/31/14 SOUTHWEST MICROUBLISHING 2627 E YANDELL DR EL PASO TX 79903-3743

Pampa

Vol. 97 No. 195 • Pampa, Texas 50¢ Daily • Sunday 31

Pampa Cyber Net
Internet Power for the New Miller
Dialup or dedicated T-1, and high speed



High today upper 50s
Low tonight upper 20s
For weather details see Page 2

Two winning tickets for Saturday jackpot

AUSTIN (AP) — Results of the Lotto Texas drawing Saturday night:
Winning numbers drawn: 3-5-7-23-28-29.
Estimated jackpot: \$4 million.
Number matching six of six: two.
Winning tickets sold in: Houston, Eufless.
Matching five of six: 94. Prize: \$1,170.
Matching four of six: 4,282. Prize: \$63.
Matching three of six: 74,943. Prize: \$5.
Next Lotto Texas game: Wednesday night.
Estimated jackpot: \$4 million.

Some telephones out due to heavy rains

PAMPA — As of this morning, Southwestern Bell Telephone had about 50 trouble reports left to work in Pampa, a SWB spokesman in Dallas said. A number of residents lost service due to problems caused by last week's rain but the spokesman did not know how many phones had been out.

Classified advertising gets results for buyers and sellers. Call *The Pampa News* today to place your ad. 669-2525.

- John J. Chesher, 77, farmer, rancher.
- Lavoe W. Lee, 42, former Texas Instruments, Raytheon employee.
- Frances Louvier, 73, office manager for Louvier Fluid Service.
- Nimrod Earl Tennant, 96, retired Sinclair Oil Company employee.

Classified 7
Comics 4
Sports 5

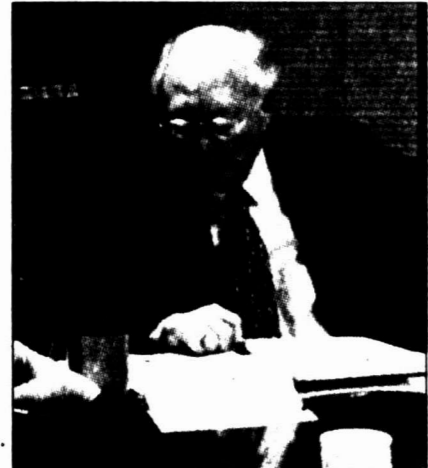
West Texas LANDSCAPE
Residential & Commercial
669-0158 mobile 663-1277

Another shake-up on PEDC board

Two resign, leaving only newcomers to take over

By NANCY YOUNG
Managing Editor

Three new members of the Pampa Economic Development Board learned the shut-down of the PEDC will be quite a learn-



City attorney Don Lane was on hand to explain duties to new PEDC board members.

ing experience as they took office this morning.

The two oldest members of the five-member PEDC board resigned during the early morning session.

Jerry Foote, vice president, and Darville Orr, treasurer, both resigned at the beginning of the 7:30 a.m. meeting at Pampa City Hall. Foote and Orr's resignations were effective after the meeting.

Orr said he believes in "energetic economic effort" for the City of Pampa. "I can't be a part of the dissolution of the EDC," said Orr, who had only been on the board since April, 2001. He said he wished he could have been part of a group to recruit new businesses.

Foote said he left his best wishes with the three new board members.

Expiration of Orr's term was June, 2004, and Foote's, June,



Jerry Foote Darville Orr

2002.

Former board secretary Lee Porter resigned at a meeting on Nov. 12, six days after the Nov. 6 special election in which voters voted to dissolve the economic development corporation.

Former board president Richard Stowers and board member Joe Mullenax resigned in September after citizens gathered over 1,700 signatures to bring the dissolution to a vote.

The new PEDC board president, Dalton Lewis, was elected today. He was a leader of the Concerned Citizens group which gathered the signatures to dissolve the entity.

Lewis, Gary Sutherland and Steve Phillips were appointed



(Pampa News photo by Nancy Young)

Dalton Lewis, new president of the Pampa Economic Development Corporation, and Steve Phillips, new board secretary, learned today during their first meeting of the PEDC board that the dissolution of the economic development corporation be very time consuming.

to the PEDC Board by the Tuesday, Nov. 13. Pampa City Commission (See ANOTHER, Page 3)

Getting an early start ...



(Pampa News photo by David Bowser)

Sheriff Don Copeland ladles gravy onto his plate as he joined members of his department, their families and other invited guests for an early Thanksgiving dinner Saturday night.

Speaker wants pipeline law study

AUSTIN (AP) — Texas House Speaker Pete Laney has ordered a legislative committee to study pipeline laws and regulations, as well as the conversion of older crude oil pipelines to carry more volatile products.

State Rep. Ann Kitchen, D-Austin, requested the examination and hearings. They will be conducted by the Committee on Energy Resources in preparation for the 2003 legislative session.

Kitchen, a member of the energy committee, filed legislation this year in an unsuccessful effort to block a plan to move gasoline, diesel and aviation fuel through a 51-year-old pipeline formerly used for crude oil.

The route of the Longhorn Partners pipeline, from Houston to El Paso, passes through South Austin neighborhoods, sensitive water supplies and parkland.

"It's a recognition of the fact that we need to look into this issue further," Kitchen said of Laney's decision.

The speaker's charge to the committee also calls for a review of natural gas prices, East Texas oil (See SPEAKER, Page 3)

tion fuel through a 51-year-old pipeline formerly used for crude oil.

The route of the Longhorn Partners pipeline, from Houston to El Paso, passes through South Austin neighborhoods, sensitive water supplies and parkland.

"It's a recognition of the fact that we need to look into this issue further," Kitchen said of Laney's decision.

The speaker's charge to the committee also calls for a review of natural gas prices, East Texas oil

(See SPEAKER, Page 3)

Phillips merging with Conoco in \$15.4 billion deal

By DANNY M. BOYD
Associated Press Writer

TULSA, Okla. (AP) — Phillips Petroleum Co. is merging with Conoco Inc. in a \$15.4 billion stock deal, creating a gas retailing giant with 17,000 filling stations across the country.

Phillips, which bought the refining company Tosco Corp. earlier this year, will gain extra strength as a producer of petroleum. The combined market value

of the new company would be \$35 billion.

Under the terms of the deal, announced Sunday and described by the two rivals as a merger of equals, the combined company, ConocoPhillips, would have reserves of 8.7 billion barrels of oil equivalent and daily production of 1.7 million barrels.

Conoco sells gasoline, diesel fuel, and other petroleum products at 5,000 outlets in the United States, while Phillips sells fuel at more than 12,000 stations under

brands such as Phillips 66, Circle K, and 76.

The merger is expected to close during the second half of 2002, pending regulatory and shareholder approval.

The deal, which also includes a \$550 million breakup fee, puts ConocoPhillips behind Exxon Mobil Corp. and ChevronTexaco Corp. in the United States and rank them sixth-largest in the world.

The companies describe the deal as a merger of equals, though under its terms,

Phillips shareholders will end up with a 56.5 percent stake in the new company and Conoco shareholders will own 43.4 percent.

Phillips shareholders will get one share of each of ConocoPhillips stock for each Phillips share they own. Conoco shareholders will get 4677 shares of the new stock. The combined company will also have \$18.6 million in debt and preferred securities.

(See PHILLIPS, Page 3)

Chapel Builders accomplish two major milestones

"Jordan Chapel Builders" at Jordan Prison Unit near Pampa recently reported accomplishing two major objectives.

First, they have received notification from the IRS they are now approved to operate and to receive donations as a 501(c)3 tax-exempt organization. This will allow donors, contributors and grantors to make tax-deductible gifts to the organization.

"We are delighted to have received this notification because it now allows us to begin fund-raising and grant-writing in earnest," said Reed Kirkpatrick, the group's president.

Jordan Chapel Builders are a group of people representing many area denominations all working together to support the chaplaincy department at Jordan Prison Unit. One of the Jordan Unit's major needs is a place for worship, religious classes and spiritual counseling. Currently, the chaplaincy department shares space with the education department.

(See CHAPEL, Page 3)

House struck in wreck; driver charged for 'pot'

A Pampa man was free on a \$1,000 bond today after being arrested Saturday on charges of possession of marijuana.

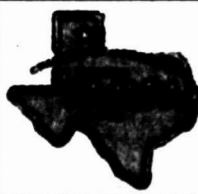
Jesus Manuel Villegas, Jr., 21, 1119 S. Christy, was arrested about 8:30 p.m. Saturday, at the scene of a wreck at the intersection of Campbell and Reid.

A 1993 Chevrolet Suburban driven by Villegas was in collision with a 2001 Dodge Dakota pickup driven by Robert Lewis Schroeder, 66, 723 East Campbell, at the intersection of Campbell and Reid.

Villegas was cited for failure to yield right of way at a yield sign. Officers said Villegas was southbound on Reid at the time of the accident.

Schroeder was westbound on Campbell, officers said. Police reports indicate that following the collision, the Suburban driven by Villegas hit a chain link fence and the corner of a home.

(See HOUSE, Page 3)



Chamber of Commerce Parade ... Centennial Christmas Theme ... Thursday, November 29th, 6:30 P.M. Call For Details 669-3241

Chamber Luncheon Tuesday, Nov. 20th. Come Back To Christmas Saturday, Dec. 1st. Chamber Prayer Breakfast Dec. 4, 6:45 a.m.

N
O
V
1
9
2
0
0
1

Get a Morgan!
We Make! You Need!

Spas
 Many Sizes Up to 105 Jets

Buildings
 Any size

Storage Offices Carports Garages Barns Cottages



Morgan Family Fun Since 1961
 Bldgs Spas Pools AND CARPORTS

Morgan Builds, Sells, Delivers & Services We Make It... You Need It! Financing Available OAC Major Credit Cards Accepted 90 Days Same As Cash

7402 Canyon Dr. • I-27 & Bell 806-358-9597 www.morganusa.com

Monday, November 19

Page 4

Pilgrim Legend Becomes Thanksgiving Tradition

DEAR ABBY: Last year, our family added a new tradition to our Thanksgiving-celebration. As we were being seated at the table, we wondered about a packet of corn kernels at each plate. Our 8-year-old granddaughter explained by reciting "The Legend of the Five Kernels."

"It was very cold for the Pilgrims that first winter. Food was in short supply. Some days, they had only five kernels of corn. When spring came, the Pilgrims planted the remaining corn. The sun and rain helped the seeds to grow and much food was harvested in the fall. Every Thanksgiving thereafter, the Pilgrims placed five kernels of corn beside each plate to remind them of their blessings."

"The first kernel reminded them of the autumn beauty."

"The second reminded them of their love for each other."

"The third reminded them of their family's love."

"The fourth reminded them of their friends... especially their Indian brothers."

"The fifth kernel reminded them of their freedom."

Abby, I am blessed to have learned something I never knew before.

Z. JACOBS, FLORIDA

DEAR Z: What a charming tradition. It honors the original inhabitants of our great country, as well as the immigrants who followed.

DEAR ABBY: When I was a little girl, I would always ask my mom to

Dear Abby
 Is written by Pauline Phillips and daughter Jeanne Phillips

make the same cake for my birthday. It was luscious, a rich chocolate with white frosting and bitter chocolate drizzled over it. I thought it was an old family recipe Mom had gotten from her mother. She recently told me she got it from an old column of yours.

I'm 40 years old now, and it has to have been 25 years since I have tasted that cake. I would love to have it for my 41st birthday. Mom me to ask you for it because she would be thrilled to have that recipe again, too. She also wants the recipe for your fabulous pecan pie. Does this ring any bells with you?

MICKEY IN MADISON, WIS.

DEAR MICKEY: It certainly does. The chocolate cake has been a longtime favorite in my family - and many of my readers'. (It was once featured on the cover of a women's magazine.)

The recipe is too long to be included here, but because I received so many requests for it over the years, I included it in the first of my two cookbooklets. To order my cookbooklet set, send a business-sized, self-addressed envelope, plus check or money order for \$10 (U.S. funds) to: Dear Abby - Cookbooklet Set, P.O. Box 447, Mount

Morris, IL 61054-0447. (Postage is included in the price.)

However, the pecan pie recipe is short enough for me to print. I'm sure it will be a hit at your Thanksgiving feast.

ABBY'S FAMOUS PECAN PIE
 1 (9-inch) unbaked pie crust
 1 cup light corn syrup
 1 cup firmly packed dark brown sugar
 3 eggs, slightly beaten
 1/3 cup butter, melted
 1/3 teaspoon salt
 1 teaspoon vanilla
 1 heaping cup pecan halves

Heat oven to 350 degrees. Prepare pie crust.

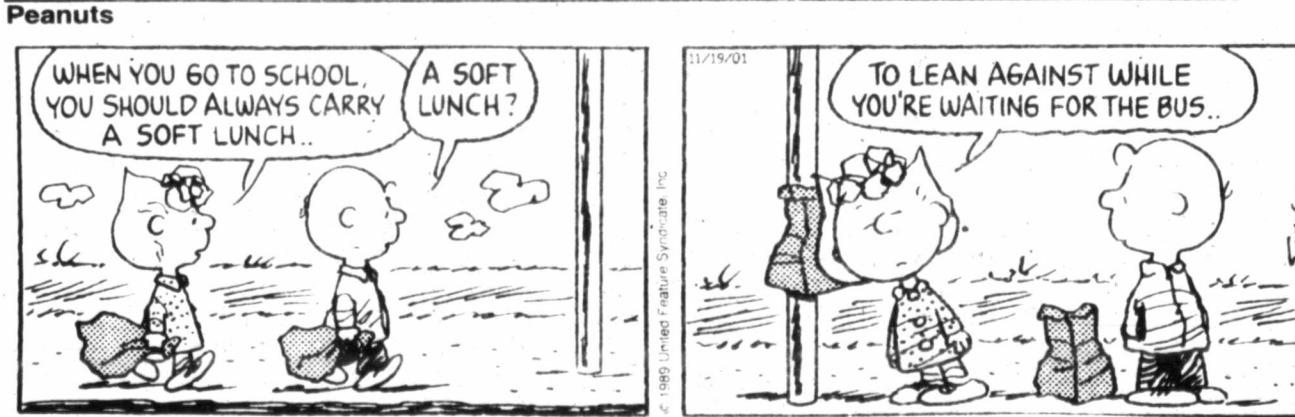
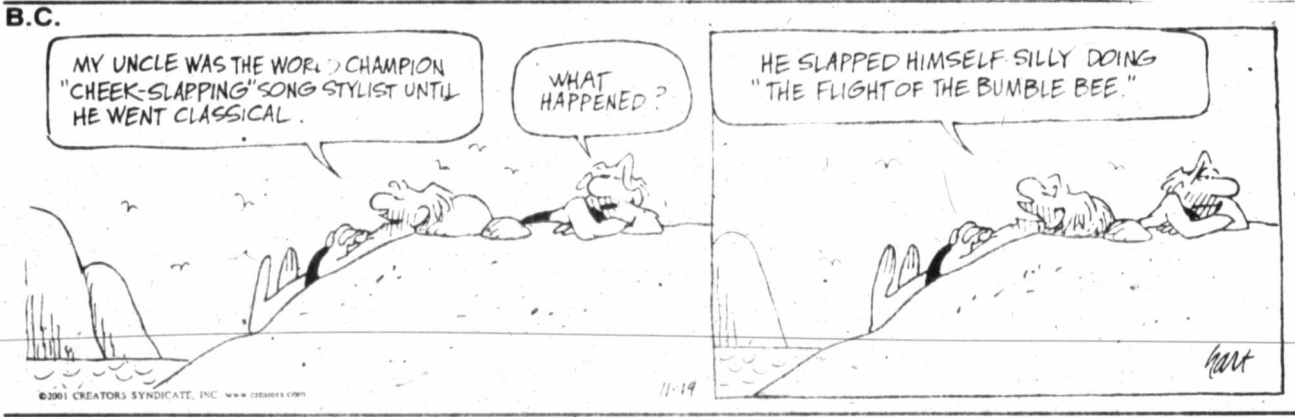
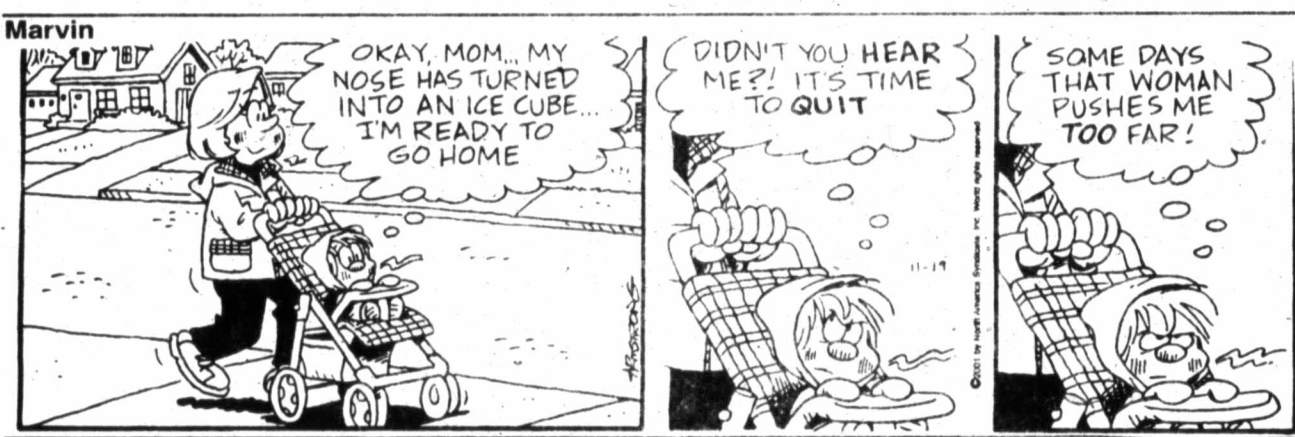
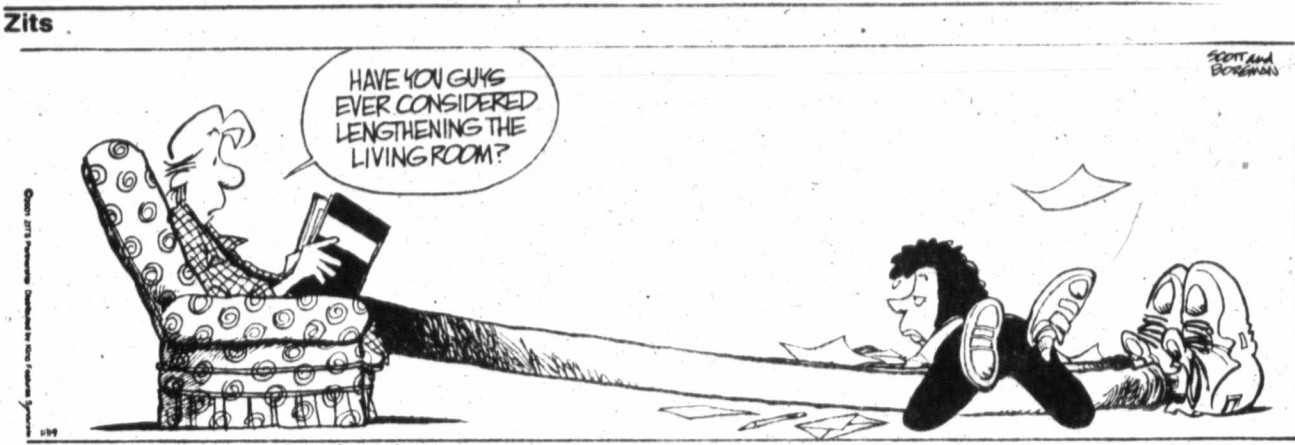
In large bowl, combine corn syrup, sugar, eggs, butter, salt and vanilla; mix well. Pour filling into prepared pie crust; sprinkle with pecan halves.

Bake at 350 degrees for 45 to 50 minutes or until center is set. (Toothpick inserted will come out clean when pie is done.) Cool. If crust or pie appears to be getting too brown, cover with foil for remaining baking time.

You can top it with a bit of whipped cream or ice cream, but even plain, nothing tops this!

Serves 8 to 10.

TIP: The original recipe stated that the pie should be baked 45 to 50 minutes in a preheated 350-degree gas oven. If an electric oven is used, it may be necessary to add 15 to 20 minutes to the baking time. (Begin testing the pie with a toothpick after 45 minutes.)



Crossword Puzzle

CROSSWORD
 By THOMAS JOSEPH

- ACROSS**
 1 Food amounts
 5 Practice for a bout
 9 "Be quiet!"
 10 Abode of the dead, in myth
 12 Last Greek letter
 13 Wed in secret
 14 Medium for a loss
 16 Genealogy chart word
 17 "Dog-gone!"
 18 "It's my belief..."
 21 Utter
 22 Meta-morphic rock
 23 Fists, in slang
 24 Impulse relay
 26 Toothpaste choice
 29 Second election
 30 Volcano output
 31 Play part
 32 Like ice
 34 Sports shoe feature
 37 Without letup
 38 Like a haunted house
- DOWN**
 1 Picture taker
 2 Eventually
 3 Number part
 4 Baseball's Musial
 5 That lady
 6 Chum
 7 Aphrodite's love
 8 Turn from sin
 9 Ribbed pants
 11 Look for
- 15** Begin
19 Subsequently
20 Towel inscription
22 Ride the waves
23 Pair
24 Cell parts
25 Comes in structure
26 Garden
27 Happenings
28 Comes to earth
29 Track event
30 Antisocial sort
33 Took the bus
35 Suffer
36 Golf peg

WAIT ANSON ARENA DELTA REMIX UMA UCB AVE PINIATA ODES CDISTINGLES ILLIAD TVIDINNERS FREE EGRETS AIR ESSI BOP SPORT USAGE TUNER PUTIN SPADE BEET

Saturday's answer



STUMPED?

For answer to today's crossword call 1-900-454-7377. 99¢ per minute, 18 years of age or older only. A King Features Service.



"A date we'll never forget!"

No
 PRO F
 MIAN
 York Je
 fourth
 are 5-0
 York's s
 scored
 returns
 Glenn a
 Green i
 for the
 time.
 New
 gave it
 jets no
 ing plu
 ential.
 The
 out at H
 since 19
 HOCKEY
 DALLAS
 Dallas
 recalled
 Erskine
 Grizzlie
 Niko K
 club's m
 Erskir
 and fou
 ty minu
 Utah
 Hockey
 The
 defense
 games v
 collecti
 assists
 284 pen
 Kapan
 in nine
 this sea
 pound o
 six year
 BASKE
 BRISCO
 swept
 high sch
 end.
 In the
 Cougars
 57-20.
 Kade
 Elliott
 points, v
 and Zar
 6 each f
 Fort B
 44-30 i
 Tamer
 Elliott's
 points. I
 10 point
 GOLF
 KIAWA
 (AP) -
 downpl
 tion at
 Cup. H
 thought
 It wa
 win ov
 Gary P
 the Uni
 1/2-11
 "If th
 fact, ha
 with the
 formed
 ness for
 old Palm
 sure can
 Palme
 12-man
 and old
 7-5. The
 seven o
 midway
 play in
 event at
 "Our
 inspired
 said.
 Palme
 little
 through
 "I wa
 when I
 board c
 looked l
 Palmer
 gone."
 At le
 grabbed
 through
 won w
 Player's
 gerous p
 "We b
 mistakes
 had nin
 than Pla
 could sa
 Gary."
 Mark
 folded
 Ryder C
 made a
 par-3 17
 over lan

Dear Members,

In case you could not make it this year, we had another great "Country Fair". A super night of fun and festivities began with a variety of delicious foods including tacos, sausage, ribs, chicken strips, baked potatoes and cobbler for dessert.

Everyone had a blast with both the silent and live auctions as there were over three hundred items available to bid on. In addition, there were some very happy winners when the drawings were held because \$10,000 was given away again this year. As always, bingo was a big hit and the band FlashBak played to a packed house until after midnight.

We want to take this opportunity to thank everyone who helped make this year's "Country Fair" so successful. We are always very grateful to all who donated items for our auctions, gave so much of their time and energy to the event and especially to those of you who were in attendance. We absolutely could not do it without you. And if you didn't know, the "Country Fair" makes up approximately one third of our annual budget, so it is extremely important that it be successful each year. The importance of having an opportunity to get together and have such an enjoyable time cannot be overstated. This was a tremendous way to kick-off John Curry's upcoming year as Chamber Chairman which begins in January 2002.

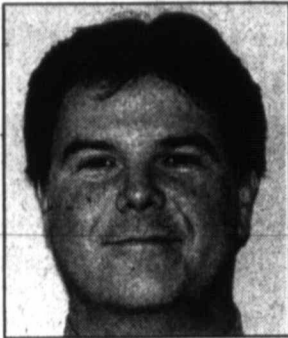
The Pampa Area Chamber of Commerce continues to provide opportunities for the community to come together as a family. Upcoming events include our Christmas parade taking place on Thursday evening November 29th and "Come Back to Christmas" on Saturday, December 1st. These will be two fun filled events. We hope to see you there.

As always, the Chamber is committed to giving our all to continue building the best economic, civic and cultural future possible.

Sincerely,

Clay Rice

Clay Rice



The crowd enjoyed a great evening of food and fun at the 2001 "Country Fair".



New Members

• **Hasting's Books, Music & Movies** - Mike Yates, Manager

• **NPD (USA) Texas, LLC** - John Carter, General Manager

Cof C MONTHLY LUNCHEON

Tuesday, November 20th @ 11:45 am
SPEAKER: David Smith with the inside scoop on the Dallas Cowboys
CATERER: Hoagie's Deli - Lasagna Dinner
SPONSOR: Guaranty Abstract

The crowd enjoyed a great evening of food and fun at the 2001 "Country Fair".



Tourism Committee Meeting

Tuesday, Nov. 27 at 2 pm
 Nona S. Payne Room
 Pampa Community Building

Chamber Christmas Parade

"A Centennial Christmas"
 Thursday, Nov. 29
 at 6:30 pm

"Come Back to Christmas"

A Victorian Celebration

JOIN US ON SATURDAY, DECEMBER 1ST FOR AN EXCITING DAY OF CHRISTMAS SHOPPING IN PAMPA

DOWNTOWN—CORONADO CENTER—HOBART ST. MANY OTHER AREA STORES & BUSINESSES



Auctioneer Dale West, Country Fair Chairman John Curry, and students from the PHS Drama Club get ready for the live auction at the 2001 "Country Fair".

Shop Pampa for all your holiday needs!

"COME BACK TO CHRISTMAS"

A Victorian Celebration

JOIN US ON SATURDAY, DECEMBER 1ST FOR AN EXCITING DAY OF CHRISTMAS SHOPPING IN PAMPA.

DOWNTOWN—CORONADO CENTER—HOBART ST. MANY OTHER AREA STORES & BUSINESSES

2001 PAMPA CHAMBER OF COMMERCE CHRISTMAS PARADE ENTRY FORMS

"A CENTENNIAL CHRISTMAS"

The parade will begin forming at 5:30 p.m. Thursday evening, November 29th in the M. K. Brown Auditorium parking lot. Please enter the parking lot through the West entrance off of Sumner St. on the South side of the auditorium. If dropping someone off, please circle around and exit out the West exit on to Sumner St. on the North side of the auditorium. The parade will begin promptly at 6:30 p.m.

CANDY WILL NOT BE THROWN DURING THE PARADE. Santa and his elves will hand out candy at Dr. V. E. von Brunow Park (on the southeast corner of Foster and Cuyler) immediately following the parade.

There will be only **ONE** Santa Claus.

Please fill out the form below and return it to the Chamber office by no later than November 28, 2001. We look forward to your participation. ALL ENTRIES ARE FREE AND WE ENCOURAGE EVERYONE TO BE PART OF THIS YEAR'S PARADE.

2001 CHRISTMAS PARADE ENTRY FORM

NAME OF ORGANIZATION _____ PRESIDENT/CONTACT PERSON _____

ADDRESS AND TELEPHONE NUMBER OF CONTACT PERSON _____

TYPE OF ENTRY (CAR, FLOAT, BICYCLE, ETC) _____

OTHER INFORMATION _____

PLEASE CIRCLE THE APPROPRIATE CATEGORY FOR YOUR ENTRY.

- | | |
|--------------|------------------------|
| COMMERCIAL | NON-COMMERCIAL |
| RELIGIOUS | HORSES |
| CLASSIC CARS | ANTIQUA FARM MACHINERY |
| BICYCLES | MOTORCYCLES/4 WHEELERS |

PLEASE RETURN TO: PAMPA AREA CHAMBER OF COMMERCE
 P. O. BOX 1942
 PAMPA, TEXAS 79066-1942
 806-669-3241
 FAX: 806-669-3244
 E-Mail: pamcoc@pampa.com

National Bank of Commerce
 AN OFFICE OF FIRST NATIONAL BANK, WAUPACA, WI.
 Member FDIC

PAMPA TEXAS BRANCH
 P.O. Box 2750
 1224 N. Hobart
 806-665-0022

SHAMROCK TEXAS BRANCH
 P.O. Box 590
 305 N. Main
 806-256-2181

CHILDRESS TEXAS BRANCH
 501 Commerce Street
 940-937-2514



Culberson - Stowers, Inc.
 SINCE 1927
 PAMPA, TEXAS

Chevrolet
 "Most Dependable, Longest-Lasting Trucks on the Road"

GMC.
 "We Are Professional Grade"

Oldsmobile.

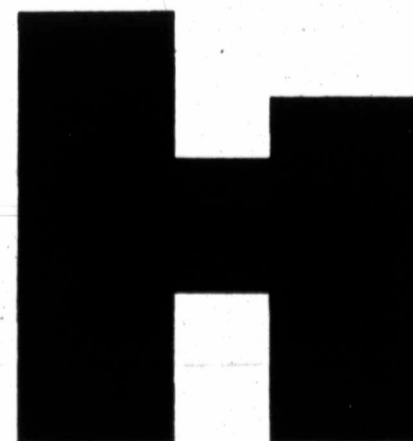
Cadillac.
 "The Fusion of Design and Technology"

PONTIAC
 "Driving Excitement"

Chevrolet
 "We'll Be There"



665-1665 805 N. HOBART 800-879-1665



PAMPA REGIONAL MEDICAL CENTER

One Medical Plaza
 Pampa, Texas
 806-665-3721