

HOPEFUL RAIL OUTLOOK SEEN
GRAY COUNTY PRODUCTION GOES TO NEW HIGH LEVEL
"ALL'S WELL"--ZEPPELIN EXPECTS TO LAND NEAR NOON

GREAT SHIP IS DUE TO FIGHT HARD SQUALLS

Voyage Is Expected to Require About 90 Hours

PASSENGERS IN EXCELLENT MOOD

They Enjoy Antics of Whales in Ocean Below Them

NAVAL AIR STATION, Lakehurst, Aug. 3. (P)—Radio messages received by the navy department at Washington and relayed here late tonight indicated the ship was turning south in its course to avoid stormy weather.

The dirigible Graf Zeppelin, as Sunday approached was making a beeline for the last reach of the broad Atlantic with the hope of making New York by noon at the earliest estimate.

As the great airship narrowed the gap between the shore, radio communications with American stations grew more frequent and more often came the message of reassurance "all's well."

The passengers, according to direct messages to the Associated Press, were in no hurry to land, although it was apparent that their first demand at Lakehurst would be for cigarettes.

The normal crew has been expanded from 275 to 400.

NEWSPAPERS from the larger eastern cities had taken over a section of the huge hangar as press headquarters.

THE WEATHER VANE

WEST TEXAS: Partly cloudy, showers in west portion Sunday; Monday, partly cloudy.

SMALL GIRL ABANDONED HERE BY HER PARENTS

Abandoned by her parents, little Betty Vanagard, 4 years old, sat wide eyed but smiling before Judge Roy E. Duncan in the courthouse yesterday morning while the judge tried to decide what should be done with her.

BIGGEST RECEPTION OF DAY IS GIVEN COL. ART GOEBEL IN CITY FRIDAY—TWO THOUSAND PRESENT

Sanitation of City Is Regarded as Very Good

Health and sanitation conditions in Pampa are regarded good for a summer season. Through the rigid surveys and tests made by Dr. T. J. Worrell sanitation officer and assistant health officer, cleanliness during the summer months, and especially during July, has been maintained.

Dr. Worrell has visited all cafes, restaurants, ice cream parlors, butcher shops, dairies and other places regularly and has kept a strict watch for anything that would cause illness. Only one quarantine of a contagious case was reported last month.

Special attention has been given dairies and water supplies in the city and county. Herds have been inspected regularly and milk tested frequently. In the city 150 houses have been ordered connected to the city sewer system.

County Decides to Increase Jail Here Immediately

Gray county commissioners Friday afternoon voted to relieve the congested jail conditions here. H. L. Case Construction company was instructed to erect a temporary structure to cost not more than \$1,000.

The location for the temporary jail has not been decided. The new quarters will be used for overnight visitors and those who cannot pay fines and have to "lay out" their time.

New Loan Body Is Coming Here

A branch of the Metropolitan Savings & Loan association of Fort Worth will be opened in Pampa this week, company officials announced yesterday. After making a survey of West Texas, the company decided that Pampa was the fastest growing and most stable city in this part of the country.

Two thousand Pampa folk were on hand at the city airport Friday afternoon when Col. Art C. Goebel, piloting the famous Woolaroc plane, visited Pampa by special request of the Pampa Daily News.

Instructed by wire how to land, the three ships making the Woolaroc farewell tour appeared from the west about 3:50 p. m. First down was the last little Cavalier monoplane piloted by Roland Guthrie of Bartlesville.

Col. Goebel, flying alone, brought the huge Woolaroc Travel Air monoplane down with ease, and remained in the cabin as the big crowd surged about the plane.

Although at first having been led to believe Pampa had no suitable airport for landing the Woolaroc, the Phillips party gladly consented to come here when The News telegraphed a special invitation and described the local field.

Members of the party were much pleased by the reception, which they declared to have been the best planned and the largest they had had all day. The especially complimented the work of officers and Boy Scouts in handling the crowd.

Writes for Boys
Goebel was besieged for photographs and autographs, and he smilingly consented. "Just one," he said as a Boy Scout presented a notebook for the signature, but others appeared and he wrote for several minutes.

The Woolaroc is named for Woolaroc lodge, on the big ranch of Frank Phillips, near Bartlesville. There a stone hangar has been erected as the home of the plane which won the Dole flight and the \$25,000 prize. A few more days of the farewell tour will end the Woolaroc's flying service, and it will be housed with all its original equipment.

Mrs. Stella Bastin, who is a graduate of the Grand Rapids, Mich., succeeded in reviving a man's affection for his wife by having him write poems to her.

NEW GUSHERS HIKE OIL WELL OVER DECLINE

Panhandle Is About to Go Over 100,000 Barrels

FINLEY-BROWN POOL EXTENDED

No. 4 Palmer Comes in as Sensation of Territory

Gray county's daily oil production soared to a new high level last week when it reached 62,101 barrels, an increase of 2,220 barrels over the previous period.

The Panhandle's daily production jumped to 97,844 barrels, an increase of 3,036 barrels over the previous week. It was a new high mark for the last year, or since Hutchinson county started its slump.

Four new gushers were brought in last week to start a parade of new wells for Gray county. Only two of the new gushers gave production to last week's figures. The others came in after the report had been made up.

Last Monday Texas company brought in its No. 11 Bowers for an initial production of 4,000 barrels a day. On Tuesday The Gulf Production company extended the Finley-Brown pool a half mile south when its No. 1-A Paulker came in for 3,760 barrels initial flow.

Tuesday saw the Phillips Petroleum company's No. 4 Palmer in the Finley-Brown pool flowed 11,640 barrels the first 24 hours.

Tree new producers topped the pay yesterday.

Production by Counties: Carson—8,289, an increase of 484 barrels; Gray—62,101 barrels, an increase of 2,220 barrels; Hutchinson—25,651 barrels, an increase of 618 barrels; Moore—1,124 barrels, a loss of 26 barrels; Moore—1,124 barrels, a loss of 26 barrels; Wheeler—679 barrels a loss of 260 barrels.

Methodists Will Raise \$33,000 to Wipe Out Debts

A campaign to raise \$33,000 to pay off the outstanding indebtedness of the First Methodist church will be started this morning. The big edifice has all been paid for with the exception of the \$33,000 needed.

The new church has been completed one year. The present congregation numbers 650. When the edifice was completed, the membership was 285. The church has a property valuation of \$115,000 compared with \$20,000 one year ago.

The chief of the family services bureau of Grand Rapids, Mich., succeeded in reviving a man's affection for his wife by having him write poems to her.

So the Public May Know

WHAT—Municipal bond election to authorize needed public improvements. WHEN—August 20, Judge J. B. Ayres in charge. WHERE—City hall, corner Foster and Russell. WHO—All property taxpayers are qualified to vote. By "property taxpayers" is meant any person owning property subject to taxation in the city of Pampa.

PROJECTS—1. Erection of a city hall, with city jail and necessary equipment, and an auditorium with club rooms, at an approximate cost of \$100,000. Levy required, 14 cents on the \$100 valuation of taxable property assessed.

2. Erection of fire station and purchase of needed equipment, entailing an expenditure of about \$33,000. Levy required, 5 cents on the \$100 valuation of taxable property assessed.

3. Construction and improvement of streets and alleys, \$85,000. Levy required, 12 cents on the \$100 valuation of taxable property assessed.

4. Construction and improvement of public parks and playgrounds, at cost of \$20,000. Levy required, 3 cents on the \$100 valuation of taxable property assessed.

BONDS—To be 30-year serials bearing 5 1/2 per cent interest, totaling \$238,000. Total levy required, based on actual property valuation of the 1928 tax roll (\$5,580,000), 34 cents on each \$100 of the taxable property.

(The 1929 tax roll, not yet complete, is estimated at \$6,000,000. This increase would reduce the total levy to 30 cents per \$100 valuation.)

Building Permit Total Is Nearing \$900,000 Mark

Pampa's building permits for the year almost reached the \$900,000 mark last week when \$21,625 in permits were taken out.

The amount for the week was small considering the number of buildings under construction. The total for the year up to yesterday morning was \$894,195.

F. E. Townsend, inspector, says there are at least a dozen houses under construction in two additions for which permits have not been taken out. Builders will be unable to secure plumbing and electrical permits until the building permit has been issued, he says.

PAMPA GROUP OPTIMISTIC ON RETURN HERE

Believe Both Lines to Get Privilege to Build

PLANES USED BY LOCAL MEN

Testimony Bearing on Life of Oil Is Presented

Very hopeful that the Fort Worth & Denver Northern railroad will be given a permit to build from Childress to Pampa, Pampa's delegates to the Fort Worth hearing are returning by car, train, and plane to bear messages of optimism to local people.

Mr. Davis and T. D. Hobart were first to return, and George Briggs and Tom Riggan arrived here last night after flying from Fort Worth to Amarillo by Travel Air cabin plane.

Mr. Briggs, manager of the B. C. D. with T. E. Johnson of Amarillo, Guy Hill of Shamrock, and Mr. Riggan, who is traffic manager of the Pampa Refining company, chartered the plane for the return trip.

At 6 a. m. Saturday morning R. G. Allen of the Cabot company and Mr. Riggan took off here in Bill Ponder's Ryan Brougham and arrived in Fort Worth three hours later.

They were called to the railroad hearing to insert what proved to be valuable testimony. With Director Mahaffie ruling out much testimony and trying to arrive at some understanding of the probable length of life of the Panhandle oil and gas field, it was held vital to get expert evidence such as Mr. Allen and Mr. Riggan were able to give.

Mr. Biancetti and Mr. Jackson said yesterday that they had started getting horses, steers, and calves for the various events. The event last year was a great success and large crowds attended all performances.

This year the rodeo will be held in the Wilcox addition on the location of the Pampa Grays' baseball park.

TULSA MAN IS OUT ON PAJAMA TOUR OF NATION

ST. LOUIS, Aug. 3. (P)—Clad in orange pajamas, Ronald Daly, Oklahoma oil man, arrived here today from Tulsa, by airplane. He announced he had started a pajama-wearing air tour of the country in the interests of "more sensible clothes for men."

He expects to continue his tour tomorrow, circling the West and then to the East Coast.

E. E. Voss of Dallas, deputy regional executive of the Boy Scout movement in the Southwest, will be a guest at a council meeting of the Adobe Walls council here Thursday night. Council members from all town in the territory will be present, Commissioner Scott Barcus announced yesterday.

The session will be held in the Chamber of Commerce rooms and has been called for 8:30 o'clock. J. Sid O'Keefe of Panhandle is president of the Adobe Walls council. He will preside at the meeting.

COMMISSIONERS WILL ADJUST COUNTY VALUES

The county commissioners will sit as a board of equalization tomorrow in the courthouse. Any property owner in the county who has reason to believe that he is over or under assessed may appeal to the commissioners to have his valuation adjusted.

Tax rolls were received and approved at a meeting of the commissioners last week. Few changes were made.

A memorial stone will be placed on the site of the building in Beloit, Wis., where the first successful twine-binding grain harvester was produced.

FORT WORTH, Aug. 3. (P)—The golden apple of Eastern Texas Panhandle railroad facilities may be given to one road or sliced into portions for four major rail systems as a result of six days of testimony at the interstate commerce commission hearing which closed here today.

Four major railroad systems presented testimony supporting their applications for convenience and necessity certificates to construct 374.3 miles of line costing, eventually, \$11,359,178 (See RAILROAD, Page 8)

Pampa Daily News

Published every evening (except Saturdays) and on Sunday morning by the News-Warren Publishing Company Inc., 322 West Foster.

The only newspaper adequately covering Pampa and Gray county events and the Pampa oil field.

PHILIP H. POND, Manager; OLIN E. HINKLE, Editor

Members of the ASSOCIATED PRESS... Entered as second-class matter March 15, 1927... The Associated Press is exclusively entitled to the use for republication of all news dispatches credited to it...

Subscription rates table with columns for 'In Advance', 'In Advance', and 'Per Annum' for various locations like Pampa, Amarillo, and Dallas.

NOTICE TO THE PUBLIC... The undersigned, acting as the agent for the registration of corporations...

"I Like This"

GOEBEL HAS COME AND GONE... Aviation here received a distinct stimulus, both by virtue of interest in the famous pilot and plane...

The News, in causing the Woolaroo schedule to be changed to include Pampa... felt some apprehension when it was informed that 2000 feet of smooth landing ground was regarded as a necessity...

Fortunately the wind stayed in the southwest, and the only danger involved was when Goebel almost failed to see the north fence of the airport... visibility at low altitude is poor in many places...

Pampa will lose many opportunities if she does not provide proper landing facilities. Aviation is going to be an accompaniment of progress in all future transportation...

Scores of other planes plan to miss Pampa in similar fashion. Inquiring at distant airports by persons wishing to come to Pampa leads them to believe that Amarillo is the nearest safe landing field...

By enlarging the field now, Pampa may obtain publicity and a rating which will prevent isolation. A hangar and fueling equipment will likely be placed soon.

Placing of Pampa on the Braniff Airlines, Inc., route means not a little. The News has received a pamphlet which shows Pampa prominently located on the Amarillo-Pampa-Oklahoma City-Tulsa division of the Universal Airlines system.

WASHINGTON LETTER

BY RODNEY DUTCHER WASHINGTON—A jute plant was moved recently from a town in Maine to a town in India and the factory force, of 55-a-day white men was thrown out of work in favor of Indian workers who can be had for 30 cents a day.

These are instances of a trend to establish American branch or independent factories abroad—an enormously growing migration of industry which is estimated already to have placed about 2000 such plants on foreign soil.

This movement has been studied and ably described by Theodore M. Knappen in an article in the latest issue of the Magazine of Wall Street, who seeks to answer a question of interest to manufacturers, investors, workers and others—What does it portend?

Many Advantages The main reason for establishing American factories abroad and thus in the heart of or much nearer the export markets are to get nearer the export markets or to get inside tariff walls, reduce transportation costs—

minating oceanic freight entirely—reduce labor costs, get cheaper raw materials, get nearer to the foreign consumer and his good will and to smother, difficulties caused by patent laws and regulations.

The profits of these enterprises return to American investors, but other countries gain through increased employment for their workmen, taxes and the increase of business due to purchases both by the factory and its workers.

On the face of it, their gains are our losses. The American Federation of Labor is studying the problem on behalf of labor, fearing a menace to the protection it has obtained under the immigration laws, which may be nullified if factories are moved to cheap foreign labor territory.

Establish Many Branches Nearly all the great American corporations now have plants abroad—American Radiator, Bell Telephone, Du Pont, Eastman Kodak, International Harvester, National Cash Register, Otis Elevator, Radio Corporation, Standard Oil and the packing, automobile and tire companies are only a few.

The total amount of American money in stock and bonds of European manufacturing companies is between \$300,000,000 and \$400,000,000. Knappen says, "an amount already exceeded by the direct investment in American branch or controlled plants, which is put at over \$500,000,000. The total American investment in Canadian manufacturing enterprises, mostly American owned or controlled, is \$1,100,000,000. Latin America has another billion of American industrial money and the rest of the world \$8,500,000,000. About \$8,500,000,000 of American money abroad is competing, in some sense, with domestic investments."

TWINKLES

Of course it's hot, but take a tip from any welder or ditch digger you meet and forget about it.

The Santa Fe organ is The Earth. Perhaps the Amarillo chamber of commerce would do well to adopt it for their official publication.

Well, we read that the train is safer than staying at home, and flying is safer than any other mode of travel, so maybe those St. Louis boys had it softer up there than we imagined.

Let everyone who has done or is doing any building for which a permit has not been issued take out this official sanction at once. To do so would raise the official permit total above the million dollar mark for the year—quite a well sounding total.

Judging from newspaper dispatches, another reason why we should hasten our vacation is that much of the best scenery is burning up. And the sign boards along with it, we hope.

Wonder if Dawes' disarmament plans include his abandonment of his worst explosives? There is lots of misery in the world, or rather was before these patent medicines were invented.

Here is our commendation of the black stripe down the center of highway paving. The stripe shows up the road hogs, not speaking directly, however, of a certain prominent citizen who likes to straddle the line as much as possible.

The old gag about the elusive collar button is spiked—in Austin man has worn the same one for 51 years.

Advertisement for Wahl-Eversharp Personal Point Fountain Pens. Features a circular logo with a pen nib and the text 'Any point any holder with the Wahl-Eversharp PERSONAL POINT Fountain Pen'. Includes a testimonial and contact information for Pampa Drug No. 2.



Advertisement for 'OUT OUR WAY' fountain pens. Features a cartoon of a man writing 'DOWN-DOWN! LET IT DOWN!' and another man saying 'I CAN'T FIGGER OUT WHAT THEY MEAN BY "THE BETTER MINDS" THAT JOHN MAY NOT HAVE BRAINS ENOUGH TO BE A BOSS. BUT HE'S GOT BRAINS ENOUGH TO KEEP WHAT BRAINS HE HAS GOT.' Includes the text 'THE WEAK SPOT' and 'J. WILLIAMS, Editor of THE NEWS'.

Comic strip 'MOM POP' by Cowan. Panel 1: 'CHICK, IS THAT YOU? COME IN HERE A MINUTE.' Panel 2: 'Ain't She Sweet?' Panel 3: 'By Cowan'.

Comic strip 'FRECKLES and His FRIENDS'. Panel 1: 'DON'T LOSE YOUR TEMPER, TAG—YOU HAVE TO HAVE AN ANGRY LOT OF PATIENCE TO BE A FISHERMAN!!' Panel 2: 'AN—I'M NOT GOING TO TRY ANY MORE!!' Panel 3: 'I GOT ANOTHER BITE, DAN!! BOY!' Panel 4: 'FEEL HIM IN STEADY, FRECKLES!!' Panel 5: 'TOO BAD YOU HAD SUCH BAD LUCK, TAG—LOOKS LIKE I'M THE ONLY ONE THAT CATCHES ANYTHING, DOESN'T IT?' Panel 6: 'OH—I DON'T KNOW... LOOK WHAT MY EYES JUST CAUGHT!!' Panel 7: 'TAAG... SEE... SPAN... THIS... BUT... WE'LL... HANE... CONTINUED'.

Comic strip 'MOM POP' by Cowan. Panel 1: 'CHICK, IS THAT YOU? COME IN HERE A MINUTE.' Panel 2: 'Ain't She Sweet?' Panel 3: 'By Cowan'.

Comic strip 'MOM POP' by Cowan. Panel 1: 'CHICK, IS THAT YOU? COME IN HERE A MINUTE.' Panel 2: 'Ain't She Sweet?' Panel 3: 'By Cowan'.

Comic strip 'MOM POP' by Cowan. Panel 1: 'CHICK, IS THAT YOU? COME IN HERE A MINUTE.' Panel 2: 'Ain't She Sweet?' Panel 3: 'By Cowan'.

Comic strip 'MOM POP' by Cowan. Panel 1: 'CHICK, IS THAT YOU? COME IN HERE A MINUTE.' Panel 2: 'Ain't She Sweet?' Panel 3: 'By Cowan'.

Comic strip 'MOM POP' by Cowan. Panel 1: 'CHICK, IS THAT YOU? COME IN HERE A MINUTE.' Panel 2: 'Ain't She Sweet?' Panel 3: 'By Cowan'.

Comic strip 'MOM POP' by Cowan. Panel 1: 'CHICK, IS THAT YOU? COME IN HERE A MINUTE.' Panel 2: 'Ain't She Sweet?' Panel 3: 'By Cowan'.

Comic strip 'MOM POP' by Cowan. Panel 1: 'CHICK, IS THAT YOU? COME IN HERE A MINUTE.' Panel 2: 'Ain't She Sweet?' Panel 3: 'By Cowan'.

Comic strip 'MOM POP' by Cowan. Panel 1: 'CHICK, IS THAT YOU? COME IN HERE A MINUTE.' Panel 2: 'Ain't She Sweet?' Panel 3: 'By Cowan'.

Comic strip 'MOM POP' by Cowan. Panel 1: 'CHICK, IS THAT YOU? COME IN HERE A MINUTE.' Panel 2: 'Ain't She Sweet?' Panel 3: 'By Cowan'.

Comic strip 'MOM POP' by Cowan. Panel 1: 'CHICK, IS THAT YOU? COME IN HERE A MINUTE.' Panel 2: 'Ain't She Sweet?' Panel 3: 'By Cowan'.

About New York

By RICHARD MASSOCK
NEW YORK—Actors and actresses with whom superstition is more than traditional, will go almost any length to court the favors of a sometimes unkind fate.

The charm relied upon most often to ward off disaster to person, performance, or play is some article of wardrobe which adorned the player in a past success.

Thus MacIntyre, or is it Heath, of the famous minstrel team, still wears a 30-year-old pair of oversized shoes, now but a collection of patches.

Even the greenest ingenue, fresh from dramatic school, has in her make-up box a time-honored symbol of fortune—a rabbit's foot with which she spreads the powder on her smooth and eager face.

Then there's the good-luck coin, without which, it is said, no production of Al Woods is launched. Woods before a premier distributes to the cast shiny quarters that stay in pockets and circles for the fun of the play, at least.

STAIRS TO FAME

The most notable tallman in Broadway history, however, seems to have been the staircase of Helen Dauvray. Miss Dauvray, an old-time actress, said she never had a successful play that didn't have a staircase. "The Barber's Chair," "The Wife" and "The Heirloom"—in each of these her ascent was literal.

Her singular faith in a flight of steps as a consequence, was carried to extremes that puzzled such gifted men as Bronson Howard, the author of "Our Girl." She compelled Howard entirely to rewrite the first act, a ballroom scene, in order to introduce a staircase.

ANXIOUS AUTHOR

But the most awkward task apparently was that which fell to Sydney Rosenfield and Joseph Brooks. Miss Dauvray's manager, when the former wrote for her "The Whirlwind." For weeks the playwright struggled with that obstreperous staircase. Finally, under date of May 28, 1906, he wrote the following letter:

"My dear Miss Dauvray:—What are you going to do with that staircase you wanted written into "The Whirlwind?"

"I am now building your play for you, laying it out in sections, and every time I get one section completed and get about to pass on to the next, that cheerful staircase of yours obtrudes

itself and insists upon getting itself written in where it doesn't belong.

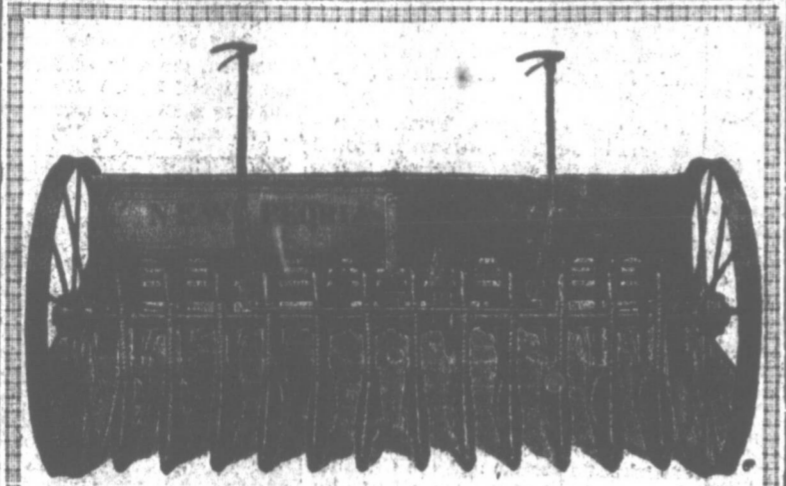
"I forget now what your object was in having a staircase anyhow. I vaguely remember that you had an object. I know it wasn't to slide down. It must have been something else.

"I have temporarily placed that staircase in the first act and am endeavoring to write around it, but I feel sure before I am half thru this act the plagued thing will have wobbled itself on to another scene. I am endeavoring to reconcile all my character scenes

and incidents with the items you have suggested for your peace of mind, but my life is getting soured in my feverish anxiety to find what particular use that staircase is going to be to you.

"Yours in frantic suspense,
"Sydney Rosenfield."

Fortunately the records do not contain the temperamental star's reply. Mrs. G. C. Malone and children returned Wednesday from Oklahoma City.



STOP WINTER KILL, SEED BLOWING SOIL DRIFTING—INCREASE WHEAT YIELD 40 TO 112 PER CENT

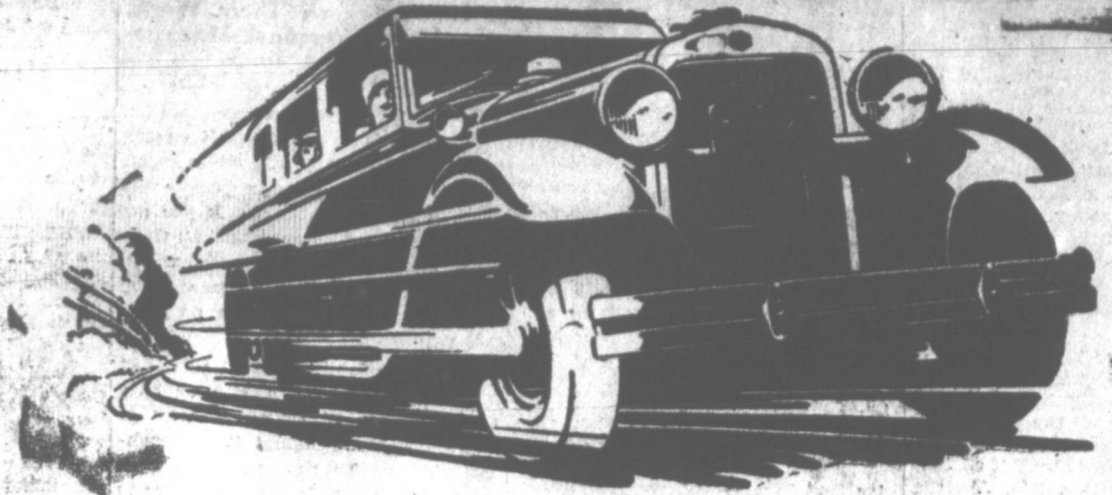
Wyoming Experiment Station reports 100 per cent yield increase with furrow drill on early plowed fallow; 112 per cent increase on late plowed fallow. Montana Experiment Station Farm, at Moccasin, reports a 65 per cent saving in Winter kill:—"In a series of tests covering a period of four years, the Montana Experiment Station Farm at Moccasin has obtained an average of six bushels of wheat more to the acre by the use of furrow drill than by the ordinary method of planting. During the last Winter, losses from Winter killing have been unusually severe in Central Montana. Losses on wheat planted by the usual method have averaged 90 per cent loss in many cases. Furrow drilled wheat came through with an abandonment of approximately 25 per cent.

A. W. BUTLER—W. J. HOLMES

—Dealers—

Phone 757 615 West Foster

ESSEX THE CHALLENGER



the reliability Car of the year!

"Reliability" is dominantly associated with all that Essex the Challenger stands for. The experience of more than 200,000 owners, with the lowest record of service cost and requirements, has established it outstandingly as "the Reliability Car of the Year."

Wide choice of color at no extra cost

4 hydraulic shock absorbers—Steering and electric gears for fuel and oil on dash—Radiator shutters for heat control—All light parts chromium-plated—Weatherable tires—glass-paned rear window—New type double-acting shock absorbers uniformly effective in all weathers.

The winning of the Tour de France reliability classic, in which two Essex Challengers were the only cars to make perfect scores, in a field of high-priced American and European entries, is but dramatic evidence of the

kind of reliability every Essex owner knows.

Essex records are country-wide. No matter where you live, you will probably find the outstanding reliability event of your locality is held by Essex the Challenger.

\$695

AND UP AT FACTORY

DOVER, the Commercial Super Six, Now Available

ROSTON PHILLIPS, Inc.

PAMPA, TEXAS

BEAUCHAMP MOTOR CO., LeFors, Texas

WE ARE HERE TO SERVE Blackwell Welding Supply Co.

Day and Night Service

Telephone No. 868

Located at 719 S. Cuyler

We are opening in Pampa with a complete stock of Welding and Cutting Apparatus, Rod, Supplies and Sundries for both the Oxy-Acetylene and Arc processes.

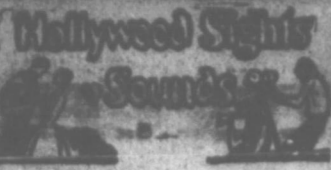
Courtesy and service, our motto and we will at all times carry a complete line for your ready call. Warehouse stocks at Borger, Texas, Blackwell and Oklahoma City, Okla., during the past ten years have enabled us to care for our trade and the new warehouse is but another move to make our service available.

Products of Highest Quality Only

LINDE OXYGEN
OXWELD ROD & SUPPLIES
CARBIC FLARELIGHTS
OTTO HART, District Manager

UNION CARBIDE
PRESTOWELD APPARATUS
WELDERZFREND GENERATORS

PREST-O-LITE
MECCO APPARATUS
HANSEN ARC WELDERS
J. M. KRISMAN, Local Manager



FLOYD BATTERY & RADIATOR CO.

Whose Establishment is Located at 510 W. Foster St., is the Foremost Starting, Lighting and Ignition Shop in This Section and the Work Turned Out Has Always Been Satisfactory, and They Give a Guarantee on Their Work, Featuring Standard Battery. Under Personal Management of F. A. Robinson. Phone 472.

HOLLYWOOD—Jeanette MacDonald lives in professional fear—the dread of becoming "typed."

Last winter she starred in "Angela" on Broadway as a princess. After playing in "Boom Boom," in other musical comedy, she came to Hollywood to do talkies. Her first assignment was that of the young queen in "The Love Parade," film operetta, opposite Maurice Chevalier. Her next, she has been told, is to be that of the princess in "The Vagabond King."

So for some time to come she is to wear the stiff trappings of royalty and be regal. And frankly she would not like the prospect of any more such roles. She even is considering speaking to the studio powers about it if they have plans along that line. Jeanette craves variety, and modern roles—not those of sophisticated women, nor certainly of witless flappers, but parts such as those which (until "Angela" started it all) she played in musical comedy. One she liked very much was a shop girl.

"Heaven help me if I must always be royal," she sighs in mock despair. "Why? Because a queen, a princess, cannot really act. She must be majestic, ultra-refined, formal; must never 'make a scene,' as I have been so frequently reminded in these roles. So many screen actresses have been typed—and the public soon does not like to see them in other kinds of characterizations. If I must be then let me be a Cinderella—the people always love a Cinderella. And, oh, how I'd love to play a 'roughneck' now!"

A DANCER
Miss MacDonald, lovely of face and form as she is, probably would never have come to Hollywood but for her high soprano voice, and strange, it was as a dancer rather than a singer that she first came into demand on the stage.

She has been singing since the age of three, but when she seriously em-

A few years ago when automobiles became common the need for specialists to keep their ignition and electrical systems in running order became evident and houses such as this were established, whose sole purpose it is to look after and repair these parts.

With so many makes on the market it takes men who are expert auto electricians to do the work properly and it requires constant study and application to keep up on improvements and perfection. The Floyd's Battery Station is in charge of experts and the reputation they have gained in this line is truly commendable.

Everett Raburn, recently moved here from Dallas is in charge of the electrical and ignition work. Raburn is a factory trained man and has more than eight years experience in this line of work. He comes here well recommended and the work he has done since his arrival has proven these recommendations true.

While they specialize on ignition they do work on all kinds of electrical units and only use such repair parts as are made by the people who originally made the units. If you are having trouble with your car call them or take your car to them and it will be repaired to your entire satisfaction and they give a guarantee on their work.

Such an establishment as this is of vital importance to a city as they give this line of work all their attention and understand it thoroughly.

We advise that you take such work to them, as it is much better to go where they have the proper equipment and knowledge to do it properly than to an ordinary garage.

The management is in the hands of men who have always helped and aided the progress of the community in every way possible and their establishment deserves your support.

They bear the one word "Equity," signifying the driver's sympathy with the association's demand for unionized screen players. Jane Collier of Fox seems to have become a Paramount fixture. She is to play in "The Love Doctor" with Richard Dix—his last before leaving for R-K-O.

T-ANCHOR ROUNDUP WILL BE HELD AUGUST 22

CANYON, August 3. (Special)—Invitations have been sent out to old time cow punchers of the Plains to join in the annual T-Anchor roundup at the ranch of Mrs. W. C. Baird, one mile north of Canyon, on August 22. More than 600 attended the reunion

last year, and it is expected that the number will be larger this year. John Arnot of Amarillo is president of the association. J. W. Turner is chief cook, and will provide not only the feed for the day of the reunion, but also supper the night of the 21st, and after those who come to camp for the night.

ELECTION NOTICE

WHEREAS, the City Commission of the City of Pampa, Texas, deems it advisable to issue bonds of said City for the purposes hereinafter mentioned;

THEREFORE, BE IT ORDERED by the City Commission of the City of Pampa, Texas, that an election be held on the 20th day of August, 1929, at which election the following propositions shall be submitted:

1. Shall the City Commission of the City of Pampa, Texas, be authorized to issue bonds of the City of Pampa, Texas, in the aggregate sum of \$238,000.00, provided all the hereinafter mentioned propositions carry at such election, or for the amounts or aggregate amount designated in the proposition or propositions which do carry, maturing serially, at such time or times as may be deemed most expedient by the said City Commission, not to exceed forty years, bearing interest at a rate not to exceed 5 1/2% per annum, payable annually, and to levy a tax of 34 cents

on each \$100.00 valuation on all taxable property in the City of Pampa, Texas, to pay the interest on said bonds and create a sinking fund sufficient to redeem them at maturity for the following purposes, to-wit:

For the construction of a City Hall, City Jail and to purchase the necessary equipment therefor at a cost of \$100,000.00;

For the construction of a Fire Station and to purchase the necessary equipment therefor at a cost of \$33,000.00;

For the construction and improvement of the streets and alleys at a cost of \$85,000.00;

For the construction and permanent improvement of Public Parks and Play Grounds at a cost of \$20,000.00;

in the City of Pampa, Texas, as authorized by Article 6, Section 1, Special Charter of the City of Pampa, Texas, adopted by vote of the people on the 8th day of November, 1927, and amendments thereto and the Constitution and Laws of the State of Texas.

Said election shall be held in the City Hall in the City of Pampa, Texas, and J. B. Ayres is hereby appointed manager of said election.

Said election shall be held under the provisions of the Special Charter of the City of Pampa, Texas, adopted on the 8th day of November, 1927, and amendments thereto and the Constitution and Laws of the State of Texas,

and only qualified voters, who are property taxpayers of said City, shall be allowed to vote.

All voters shall vote on each of said propositions separately and all voters who favor the propositions to issue the bonds shall have written or printed upon their ballots as regards each of said propositions "For the issuance of bonds," and those opposing shall have written or printed upon their ballots as regards each of said propositions "Against the issuance of bonds."

The manner of holding said election shall be governed by the laws of the State of Texas, regulating general elections, and the Special Charter of the City of Pampa, Texas.

A copy of this order signed by the Mayor of the City of Pampa, Texas, and attested by the City Secretary of said City shall serve as a proper notice of said election.

The Mayor is authorized and directed to cause said notice of the election to be posted up at the City Hall and at one public place in each of the voting places of the City of Pampa, Texas, for at least thirty full days prior to the date of said election. The Mayor is further authorized and directed to have said notice of election published once each week for four weeks in some newspaper of general circulation published in said City for a period of more than one year prior to the date of the first publication; the date of the first publication being not less than ten full days prior to the date of the election.

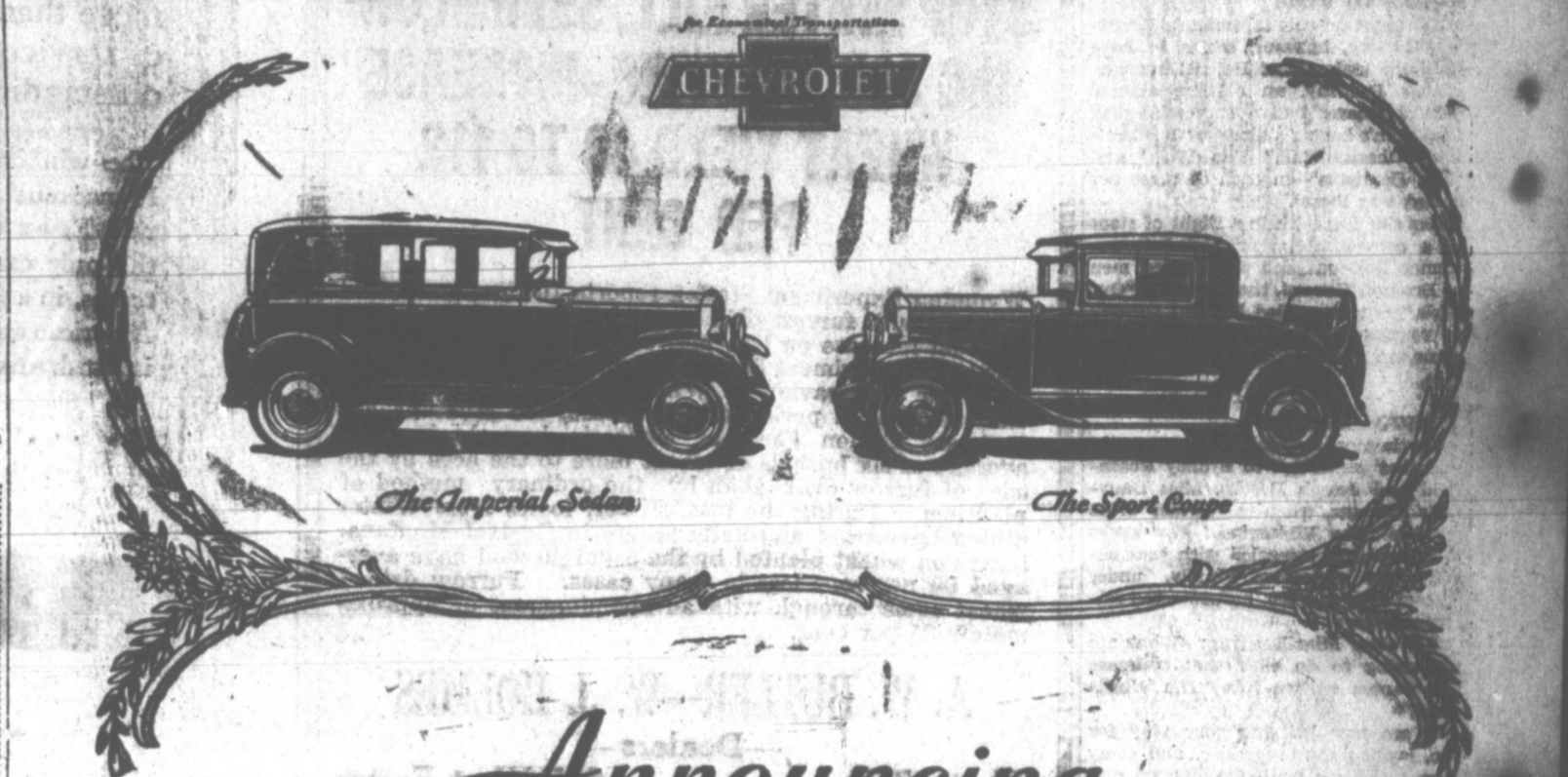
D. W. OSBORNE, Mayor, City of Pampa, Texas.

ATTEST: C. O. BUSBY, City Secretary. 21-28-4-11

FOR SALE

1928 WHIPPET "4" COACH, driven only 8,142 miles, 4 new Goodyear tires, very good motor, upholstery and paint, priced to sell at \$425

McGARRITY MOTOR CO.



Announcing Two New Models of the CHEVROLET SIX

Broadening the appeal of a line of cars which has already won over 950,000 buyers since January 1st, Chevrolet presents two distinguished new enclosed models of the Chevrolet Six—the Imperial Sedan and the Sport Coupe. With beautiful new Bodies by Fisher available in a variety of striking color combinations and with numerous advanced convenience features—these new models provide, in abundant measure, those elements of distinction ordinarily associated with more expensive automobiles.

you will be impressed by their individuality and completeness. But you cannot fully realize what an achievement they represent until you get behind the wheel and drive! For here are all the qualities of six-cylinder smoothness, power and acceleration which Chevrolet alone provides in the price range of the four—combined with economy of better than twenty miles to the gallon of gasoline!

When you examine the new Imperial Sedan and Sport Coupe, you will be impressed by their individuality and completeness. But you cannot fully realize what an achievement they represent until you get behind the wheel and drive! For here are all the qualities of six-cylinder smoothness, power and acceleration which Chevrolet alone provides in the price range of the four—combined with economy of better than twenty miles to the gallon of gasoline!

Come in today. Learn for yourself the new standards of quality and luxury that Chevrolet has made available in six-cylinder cars—at prices within the reach of all!

COMPARE the delivered price as well as the list price in considering automobile values. Chevrolet's delivered prices include only reasonable charges for delivery and financing.

CULBERSON-SMALLING

Chevrolet Company, Inc.

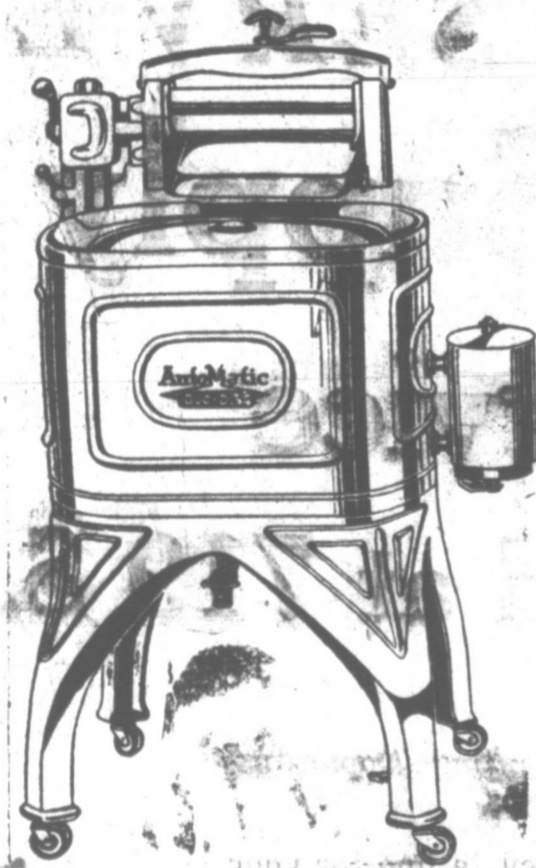
Pampa, Texas

A SIX IN THE PRICE RANGE OF THE FOUR

FREE!!

\$7 GAS HEATER WITH EVERY AUTOMATIC WASHER

PURCHASED FOR A LIMITED TIME ONLY



This heater attached to your washer enables you to heat the water in the tub and keep it warm while washing.

Do not confuse this heater with the old type burner under the tub

SEE THIS WONDERFUL WASHER THAT WASHES EITHER FROM THE TOP OR BOTTOM

VERY LOW PRICE SMALL DOWN PAYMENT Call or Phone—615

Central States Power & Light Corp. YOUR GAS COMPANY PAMPA, TEXAS

CHURCHES

FIRST BAPTIST CHURCH
 Sunday school, 9:45 o'clock.
 Morning preaching service, 11 o'clock.
 B. Y. P. U. and B. A. P. U., 7:15 o'clock.
 Evening preaching hour, 8:30 o'clock.
 The assistant pastor will speak at the morning preaching service. Special attention is directed to the zone meeting which will be held with this church this afternoon at 2:45 o'clock. All B. Y. P. U. and Sunday school workers are urged to attend this meeting. A good program has been arranged.
 The service at the time of the regular preaching service this evening will be devoted to a "Song Sermon." The entire message will be given in Scripture and in music.

METHODIST CHURCH
 Sunday school, 9:45 o'clock. During the summer months we are working to hold our attendance up to the 300 mark. Today we hope to go over that number. You are invited to join with us in the study of God's word. Every department of the Sunday school is well organized and we have a class for every age.
 Worship periods, 11 o'clock morning; 8:15 o'clock evening. At the morning hour Rev. Z. R. Fee of La Feria, Texas, will bring the message. Rev. Fee has been a very successful pastor for several years in the West Texas conference. He is now stationed in one of the leading churches of the Rio Grande valley. You will be greatly helped by the message he brings Sunday morning.
 The pastor will speak at the evening hour. Theme, "The Leaven." A great deal is said today about the "Coming of the Kingdom of God." How is the world to be Christianized? The message at the evening hour will deal di-

A Sermon For the Week

Tolerance Is Misdefined

By THE REV. HAROLD F. CARR

(Pastor of the Asbury University Church, Philadelphia)

Tolerance and broadmindedness have obtained a state with many of us where we are like the Platte river in my home state—a mile wide and an inch deep.

Tolerance is misdefined until it becomes a method of putting one's spiritual flywheel on dead center. It and broadmindedness result in shallowness of understanding and attempt at carrying on the work of Christianity unless we have a firm conviction to start with.

A healthy tolerance demands three difficult accomplishments. First one must have some ideas, and that's where so many people fall down. They find themselves not caring if some one differs with them and they think it is tolerance. The reason is that they have nothing about which they are enthusiastic and which they feel like defending.

Secondly, he must meet some one with whom he differs. That's a large order, too. It is so easy to sit in a congregation of saints with whom one agrees.

Thirdly, one has to exercise the quality of forbearance and understanding with those who differ.

An academic study of comparative religion is no good at all for religious use. It must be based on personal experience. Among the campaigners, it is encouraging to note, one finds the glorious enthusiasm and strong conviction that are lacking in those who have made religion an academic study only.

There are those who point out that Christianity is one of many good ways but that it is not sufficient. A Christian must believe that Christ is supreme.

rectly with these problems. Another added attraction for the evening hour will be some special selection by a negro quartet. If you enjoy the old Gospel hymns, sung only as the negro can sing them, be present Sunday night.

Special music is provided at all services. You are invited to worship with us.

Tom W. Brabham, Pastor.
Grady Morton, educational director.

Mr. and Mrs. H. Phillips will leave this morning for Elk City, where they were called because of the critical condition of Mr. Phillips' sister, Mrs.

Robert Wallace, who was injured July 31, in an automobile accident in which her husband was fatally hurt. If Mrs. Wallace's condition will permit their leaving her, Mr. and Mrs. Phillips will go to Leedy, Oklahoma, tomorrow, to attend funeral services for Mr. Wallace, who died yesterday.

SORE GUMS—PYORRHEA

Foul breath, loose teeth or sore gums are disgusting to behold, all will agree. Leto's Pyorrhoea Remedy is highly recommended by leading dentists and never disappoints. Druggists return money if it fails. City Drug Store.

Talks To Parents

By ALICE JUDSON DEALE

During the first week of camp Julie sat at the table opposite her younger brother. During every meal her shrill, aggressive voice dominated the conversation. But especially did she make life miserable for that younger brother.

"You're putting too much sugar on your cereal, Tommy. Tommy! You know mamma doesn't allow you to have three spoons full at home." And: "Tom, close your mouth when you chew, and look! You've got egg under your ear. Really, you're a perfect mess."

A few days later two boys a little older than Julie came to camp and joined the long table. Julie, sitting opposite those fine sturdy lads, was a very different Julie from the girl who bedeviled her younger brother.

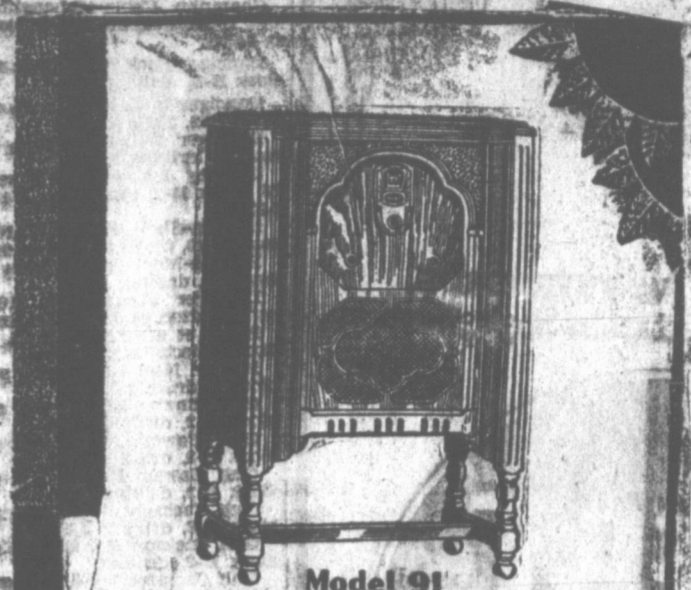
Julie's voice was pleasant. She didn't talk half so much. She didn't even try to monopolize the conversation. The big boys and the other girls of her own age had something to say, and they were quite able to say it. Julie's manner became positively gentle. The best antidote for Julie's aggressiveness had been found and she herself remained entirely unconscious of its working.

An adolescent girl who does not care how disagreeable she makes herself at the family dinner table will mend her ways very quickly under the eyes of friends of her own age, especially if these are members of the opposite sex.

Try it. Invite your daughter's friends, boys and girls, to share your family meal and you will find that fraternal bickerings will cease and a hitherto unknown social grace make its appearance.

Daily News' want-ads get results.

Majestic ELECTRIC RADIO



Model 91 \$137.50 (less tubes)

Cabinet of American walnut in early English design; instrument panel overlaid with genuine Australian lace wood, knobs and escutcheon plate finished in silver. Has every distinctive feature that has helped to make Majestic the outstanding radio of the world.

At Last Power Detection With the New 45 Tubes

Quiet No AC Hum

Uniform Amplification Automatically At Any Point On the Dial

ATTEND THIS GREAT SALE!



With the thousands of dollars represented in this Big Furniture Sale—hundreds and hundreds of new customers were quick to appreciate the tremendous savings and sacrifice necessary in these tremendous stocks. The sale is about half over—selections are still good, but stocks are moving fast. Bigger and better values are available in this offering than ever before. Shop at our store—buy the things you want—use your credit if you want to.

COME!

LOOK!

BUY!

POSITIVELY!

20% to 60% REDUCTIONS

GUARANTEED!



AMARILLO FURNITURE COMPANY

Phone 264

B. R. HARRIS, Mgr.

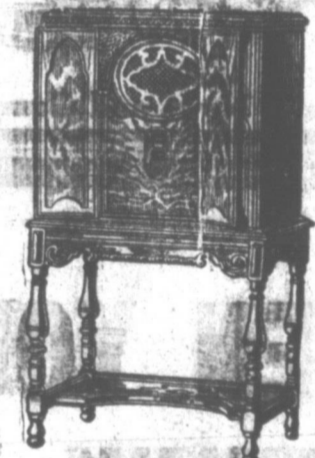
117 N. Cuyler

The Mighty Monarch of the Air

The World's Greatest Radio

More Than 5,000 Sets Sold Each Day

Get Your Majestic Now; They'll Be Hard to Get Later On



Model 92 \$167.50 (less tubes)

A cabinet inspired by the Jacobean period is evolved from select American walnut with genuine Australian lace wood overlays on doors and interior panel. Escutcheon plate, knobs and door pulls finished in silver.

this MAJESTIC Electric Radio

Is Sold Exclusively in Pampa

by

ODEN MUSIC SHOP

Phone 297

for a Demonstration. We are always glad to show this wonderful machine.

Mrs. M. D. Lewis and her small son, Delbert, Jr., are in Wichita Falls, where the latter is being examined at a baby clinic.

John Purviance, a student in the University of Minnesota, Minneapolis, arrived home a few days ago to spend the remainder of his vacation with his parents, Dr. and Mrs. W. Purviance.

Daily News' want-ads get results.

Drilling Is More Slow as Wells in Sure Production Areas of Gray County Are Carried Nearer the Pay

Drilling work continues strongly in Gray county, where scores of wells started a few weeks ago are nearing the pay.

Midweek operations, compiled by The News from field reports, follows:

Adams et al Morse No. 1, ne 1/4 section 3, block 26, rigging up.

British American Purviance No. 1, e 1/2 section 61, block B-2, location.

Champlin Coble-McLaughlin No. 2, ne 1/4 section 33, block B-2, cleaning out at 2,850.

Dancier Beck No. 2, nw 1/4 section 28, block B-2, drilling 2,575.

Dancier Beck No. 3, nw 1/4 section 28, block B-2, fishing 2,667.

Dancier Williams No. 1, section 7, block 1, drilling 2,900.

DeLaney Jackson No. 8, se 1/4 section 88, block B-2, cementing 2 1-4 inch at 2,150.

Dodson-Shell Saunders No. 1, se 1/4 section 40, block 3, drilling 900.

Dunlop-Morse No. 2, nw 1/4 section 2, block 26, drilling 1,850.

Dancier Jackson No. 10, Jackson, nw 1/4 section 88, block B-2, building rig.

Eslick et al Lovett No. 1, nw 1/4 section 5, block B-2, location.

Empire Noel No. 1, se 1/4 section 151, block 3, drilling 2,575.

Gulf Bower No. 8, w 1/4 section 89, block B-2, drilling 2,950.

Gulf Bowers No. 9, w 1/4 section 89, block B-2, drilling 2,900.

Gulf Bowers No. 10, w 1/4 section 89, block B-2, drilling 2,965.

Gulf Jackson No. 3, nw 1/4 section 62, block B-2, drilling 2,830.

Gulf Jackson No. 4, nw 1/4 section 62, block B-2, drilling 3,000.

Gulf Jackson No. 5, w 1/4 section 62, block B-2, drilling 3,000.

Gulf Jackson No. 6, w 1/4 section 62, block B-2, cleaning out 2,655.

Gulf Jackson No. 7, w 1/4 section 62, block B-2, drilling 2,830.

Gulf Saunders No. 2, sw section 3, block 1, 2,100.

Gardner & Collins Saunders No. 2, w 1/4 of ei-2 of J. G. Eustice survey, location.

Herrigan Bradford No. 1, n 1/2 ne 1/4 section 123, block B-2, shut down for casing 145.

Humble Jackson No. 1, e 90 acres, section 90, block B-2, pipe frozen at 2,723.

Humble Jackson No. 2, e 90 acres, section 90, block B-2, drilling 2,850.

Independent Hollenback No. 1, w 1/4 se 1/4 section 176, block B-2, gas at 3,040; fishing at 3,220.

Lyons Morse No. 1, sw 1/4 section 2, block 26, drilling at 1,850.

Magnolia Bowers No. 6, block B-2, building rig after burned.

Magnolia Wright No. 1, sw 1/4 section 13, block 3, drilling 1,800.

Mariand Finley No. 5, ne 1/4 section 32, block B-2, standardizing 2,740.

McCollum Meers No. 1, sw 1/4 section 107, block 3, drilling 2,500.

McMann Jackson No. 2, e 1/2 section 90, block B-2, standardizing 2,800.

McMann Palmer No. 3, center section 31, block B-2, drilling 2,300.

Mordyan Davis No. 2, section 8, block 1, drilling 1,500.

Osborne Morse 1-A, ne 1/4 section 1, block 26, rigging up.

Operators Cook-Faulkner No. 4, w 90 acres section 30, block B-2, drilling 2,700.

Operators Cook-Faulkner No. 5, w 90 acres section 30, block B-2, rigging up; Drilling 2,300.

Operators Bowers No. 1, e 1/2 of sw 1/4 section 57, block B-2, drilling 1,950.

Operators Lovett No. 1, w 1/2 of ne 1/4 section 57, block B-2, location.

Phillips Palmer No. 5, w 90 acres section 31, block B-2, drilling.

Phillips Palmer No. 6, w 90 acres section 31, block B-2, building rig.

Phillips Blaisdell No. 1, ne 1/4 section 56, block 25, drilling 1,250.

Phillips Cox-Jackson No. 1, ne 1/4 section 58, block 10, exhausted water 3,134.

Phillips Joe Dan No. 2, ne 1/4 section 88, block B-2, drilling 2,850.

Phillips Joe Dan No. 6, ne 1/4 section 88, block B-2, drilling 2,880.

Prairie Langham No. 1, sw 1/4 section 162, block 3, drilling 2,485.

Prairie Langham No. 1, sw 1/4 section 1, block B-2, drilling 2,100.

Quinlan Barrett No. 1, section 131, block 3, rigging.

Shell McConnell No. 3, section 174, block 3, to shoot.

Sherwood Gething No. 1, ne 1/4 section 14, block A-9, drilling 1,700.

Skelly Jackson No. 2, section 62, block B-2, drilling 2,850.

Skelly Jackson No. 2, w 1/2 section 90, block B-2, drilling 2,900.

Skelly Jackson No. 3, w 1/2 section 90, block B-2, drilling 2,900.

Skelly Jackson No. 4, w 1/2 section 90, block B-2, drilling 2,900.

Sun Purviance No. 3, w 1/4 section 61, block B-2, cleaning out.

Texas McLarty-Lester No. B-2, sw 1/4

Rose survey, drilling at 2,500.

Texas McLarty-Lester A-5, sw 1/4 section 2, block 1, drilling 2,550.

Texas Patton No. 2, section 61, block B-2, drilling.

Texas Patton No. 3, sw 1/4 section 61, block B-2, drilling 2,800.

Texas Patton No. 4, se 1/4 section 61, block B-2, 1 million feet gas at 2,554.

Texas Patton No. 5, ne 1/4 section 61, block B-2, drilling 2,825.

Texas Saunders No. 11, ne 1/4 section 3, block 1, drilling 2,100.

Texas Patton No. 12, Eustice survey, drilling 2,600.

Texas Saunders No. 13, Eustice survey, drilling 2,550.

Texas Williams No. 5, nw 1/4 section 7, block 1, drilling 1,800.

Texas Archer No. 1, se 1/4 section 174, block 3, show oil 3,100.

Texas Bowers No. 8, se 1/4 section 89, block B-2, drilling 2,950.

Texas Bowers No. 9, ne 1/4 section 89, block B-2, drilling 2,955.

Texas Bowers No. 10, ne 1/4 section 89, block B-2, drilling 2,750.

Texas Bowers No. 12, e 1/2 section 89, block B-2, drilling 2,900.

Texas Bowers No. 13, e 1/2 section 89, block B-2, drilling 2,300.

Texas Combs-Worley No. 3, se 1/4 section 36, block 3, drilling 1,000.

Texas Combs-Worley No. 4, se 1/4 section 36, block 3, drilling 1,200.

Texas Cook-Faulkner No. 4, w 1/2 section 29, block B-2, 20 million feet gas; fishing 2,855.

Texas Jackson No. 1, se 1/4 section 60, block B-2, drilling 2,950.

Texas Chapman No. 3-B, se 1/4 section 69, block 25, H&G, location.

Texas Davis No. 4, nw 1/4 section 8, block 1, ACH&B, drilling 1,400.

Texas Davis No. 5, n 1/2 of nw 1/4 section 8, block 1, ACH&B, drilling 1,000.

Texas Shaw No. 3, se 1/4 section 5, block 1, building rig.

Texas Williams No. 6, nw 1/4 section 6, block 1, drilling 100.

Wilcox Combs-Worley No. 8, se 1/4 section 60, block 3, show oil 2,780-2,785.

Wilcox Combs-Worley No. 9, sw 1/4 section 35, block 3, drilling 1,900.

White Eagles Cook-Faulkner No. 1, e 90 acres section 28, block B-2, drilling 1,600.

Ex-student Body Begins Move for New Department

CANYON, Aug. 3. (Special)—The Ex-students' association of the West Texas State Teachers' college today began its campaign for a larger and more active membership with a chapel program. The membership drive is but a preliminary action looking toward the consummation of many plans of the organization for the mutual benefit of the Teachers' college and its exes.

Among its many proposed improvement programs, the most important at present is that of securing for the West Texas State Teachers' college a graduate school. The large number of graduates who have gone out from the college at Canyon to teach in the high schools of Texas and other states realize each year the need for a graduate teacher training institution in West Texas.

In a series of resolutions passed at the last meeting of the association, this group, made up of 150 successful high school teachers, principals, superintendents, and a few business men expressed the urgent need as they saw it. A very large per cent of them have received higher degrees from other schools, non-teacher training institutions, and they emphatically insist that there is a crying need for graduate work in the field of teacher training.

The Panhandle region with its rapid-

ly increasing population and resultant large number of new schools and rising standards is constantly demanding larger numbers of high school teachers with at least the M. A. degree, and the Teachers' college must meet this need if it is to continue its record of achievement and unparalleled service to this region.



EYE FACTS

Authorities state that one child in every five has defective sight. Only an eyeght examination can give you the true facts about your child's eyes.

From 9 to 11 a. m., daily during the entire month of August, we are conducting a free clinic for school children.

Guard Your Child's Eyes As You Would Your Own

JACOBS OPTICAL CO.
"Pampa's Only Exclusive Optical Establishment"
165 E. Foster
1st National Bank Bldg.

REX PAMPA Starting Today

Coollest Spot in Texas

WARNER BROS. Spectacular Singing Success

The DESERT SONG

A staggering succession of howling songs that flow from the screen with thrilling intensity! Your heart will tingle with this superb rendition of thrilling melodies, and the gorgeous grandeur of the mighty chorus and symphony orchestra!

ALSO International News and Comedy

WHEN YOU THINK

of Quality Cleaning you think of the De Luxe Dry Cleaners. This is because we have an established reputation for doing only the best kind of work—a reputation which has been built up through painstaking effort, careful attention to the more scientific methods of cleaning and dying, adequate equipment to care for our increasing volume of business, and a desire to render the best service in the Panhandle. Let us clean your delicate clothes.

Corner West of Post Office

Call **De Luxe DRY CLEANERS** 616

PAMPA, TEXAS
PAMPA'S FINEST

CLEAN-UP SALE

of ODDS and ENDS

Beginning Monday morning we are opening a sale on every odd piece of furniture in the house. Every piece is new and modern—not a scar or defect in the entire lot! From time to time we have occasion to sell three pieces of a four piece suit, a few extra chairs are accumulated here and there, odd pieces of floor coverings stack up—and at the end or eight or ten months we have a group of high class merchandise that we call odds and ends.

BEGINNING MONDAY WE ARE GOING TO PLACE ALL THIS ON SALE AT EXCEEDINGLY LOW PRICES! It's your chance to purchase floor covering for the smaller rooms and odd pieces for the vacant places in your home.

Extra Special!

6x9 Felt Base Art Squares

ONLY \$2.16

WHILE THEY LAST

Cabinets
Magazine Racks
Smoker Sets
Table Lamps

Floor Coverings
Overstuffed Chairs
End Tables
Buffets

Floor Lamps
Cedar Chests
Etc, Etc, Etc

MALONE FURNITURE CO.

"YOUR CREDIT IS GOOD"

Get your New Victor Radio

NOW

Play while you pay!

A small payment down, and we'll make delivery today.

Micro-synchronous—sensitive, balanced, 3 separate units, all accessible... interchangeable. Marvelous new dynamic speaker—loud or soft at the turn of a knob. Handomest radio cabinets ever built.

Also the superb new Victor Radio-Electrola.

The nation is turning to Victor-Radio!

Don't wait. come in today!

Victor-Radio Console R-33

The Greatest Sensation in Radio History

Oden Music Shoppe
117 West Foster Avenue
Phone 297