







# SHORTENING

Jewell  
or  
Vegetole

4 LB. 46<sup>c</sup>  
CTN.

8 LB. 91<sup>c</sup>  
ctn.

# 91<sup>c</sup>

# SUGAR BREAD

Saturday Only - Limit  
Fine Granulated in Kraft  
Bags

Limit - Saturday Only  
Fluffy, 16 Oz. Loaf

# WHITE KING

It Takes So  
Little

LARGE PACKAGE

# 29<sup>c</sup>

10 LB. 47<sup>c</sup>  
BAG

EACH 5<sup>c</sup>

# MATCHES

Dandy Diamond Brand

6 BOX CARTON .. 19<sup>c</sup>

Pen-Jel 21<sup>c</sup>  
For making jams and jellies  
3 oz. net  
2 PACKAGES for

PANCAKE FLOUR  
Delco Brand—Pillsbury Product  
1 1/4 Lb.

PACKAGE 5<sup>c</sup>

TOMATOES

Solid Pack, No. 1 Size

CAN 5<sup>c</sup>

Certo 19<sup>c</sup>  
For making jams and jellies. Enough for  
22 glasses. Recipe book attached. Limited.  
Regular 29c seller.  
SPECIAL PRICE

BABBIT CLEANSER  
Safe - Sanitary - Economical - Quick  
14 oz

CAN 5<sup>c</sup>

CANNED SPINACH

Peerless Brand, 10 oz.

CAN 5<sup>c</sup>

TOMATO JUICE 5<sup>c</sup>  
7 Oz.  
CAN . . . .

CANNED  
CHERRIES

Fancy Michigan 1/2 gal.

CAN 44<sup>c</sup>

PREPARED  
PRUNES

Packed in syrup  
No. 1 Tall size

CAN 8<sup>c</sup>

PORK & BEANS

Phillips Brand

15 oz.

2 CANS 15<sup>c</sup>  
FOR

VINEGAR

Apple Cider  
Bring your jug

GAL. 21<sup>c</sup>

LEMON  
FLAVOR

Pure Bar-X  
In Fancy Vase

JAR 29<sup>c</sup>

TOMATO  
JUICE

Pure Marco Brand

GAL. 49<sup>c</sup>

COCOANUT

Long Shred  
1/2-lb. Cello

BAG 13<sup>c</sup>

DOG FOOD

Ideal Brand Tall Size

3 CANS FOR  
25<sup>c</sup>

IT'S THE SAVING ON EVERY IT

# STANDARD

FOOD MARKET

"SELLS FOR"

No. 1—Somerville & Kingsmill, Phone 34, 343 and 7  
No. 5—211 N. Dwyler, Pho

Prices in Effect When the Paper Leaves the Press Friday  
For One Week—Meat and Produce Prices Are For Fri  
day Only . . . Use Standard's Free Delivery Service. Ph  
No. 5 on 127.

# FLOUR

Pillsbury's  
Best

48 LB. BAG . \$1.66

# 24

# JELLO

Limit  
The N  
Improv  
6 assor  
Flavors

# TEA

Orange Pea. Noontim  
Packed for Standard Foo

3 OZ. PKG

# OLIVES

See Calif  
rimful Br  
76, Coun

# CRACKERS

# BEETS

Canned  
Cut-well  
colored  
No. 2 1/2  
size  
can  
12 1/2<sup>c</sup>

# GRAPEFRUIT

# DRESSING

# MACARONI

# CORN

Canne  
M  
NO. 1

# APRICOTS

Brinful  
No. 1  
Fancy

SHOP HERE AND Save More!

ON STANDARD'S STRICTLY FRESH VEGETABLES . . . !

BANANAS  
Saturday Only  
DOZEN 10<sup>c</sup>

PEACHES  
Fancy California Elbertas  
DOZ. 29<sup>c</sup>

GRAPES  
No. 1 Concord  
Basket 18 1/2<sup>c</sup>

FRESH CORN EAR 3<sup>c</sup>

CABBAGE LB. 3 1/2<sup>c</sup>

CUCUMBERS LB. 7<sup>c</sup>

CAULIFLOWER LB. 12 1/2<sup>c</sup>

LIMES DOZ. 16<sup>c</sup>

ORANGES Medium Size DOZ. 26<sup>c</sup>

LETTUCE

Firm, Crisp

HEAD 5<sup>c</sup>

LEMONS

360 Size

DOZ. 29<sup>c</sup>

APPLES

Cooking Nice size, doz. 17<sup>c</sup>

Calif. Gravensteins Dozen 23<sup>c</sup>



Snowdrift  
3 LB. 55<sup>c</sup>  
Can

SUGAR

Powdered or Brown  
in the bulk

2 lb. bag 15<sup>c</sup>

DOG FOOD

Ace Brand

Regular Size  
Can 5<sup>c</sup>

# FRUIT COCKTAIL

Bear Brand - No. 1 Tall

2 CANS 25<sup>c</sup>  
for



1 LB. CAN 25<sup>c</sup>



only 25<sup>c</sup> FOR THIS \$1.50  
HEAVY SILVER PLATED  
WM ROGERS  
SERVING SPOON  
with only 1 BOX TOP from  
SUPER SUDS  
THE RED BOX FOR WASHING DISHES  
MAILED FREE - ASK FOR DETAILS  
OUR PRICE

SANDWICH  
SPREAD  
A Real Brand

QUART 26<sup>c</sup>

PORK & BEANS  
Phillips Brand. No. 2 1/2 size

2 CANS 21<sup>c</sup>  
for

# BUTTER

Standard's Supreme, Brookfield or Quality

LB 32<sup>c</sup>

FRESH  
VEGETABLES

Carrots, Radishes,  
Green Onions

3 BUNCHES FOR  
12<sup>c</sup>

POTATOES

California Burbanks

LB. 4 1/2<sup>c</sup>

No. 1 Cobblers 10-lb bag 19<sup>c</sup>

No. 1 Red Triumphs, 10-lb bag 21<sup>c</sup>

TOMATOES

Fancy California Pinks

LB. 7 1/2<sup>c</sup>

SQUASH

Yellow or White

LB. 6<sup>c</sup>

GREEN BEANS

Colorado's Finest

LB. 8<sup>c</sup>

BLACK EYE PEAS

Garden fresh—will shell

LB. 7<sup>c</sup>

**ON EVERY ITEM THAT COUNTS**  
**STANDARD**  
**MARKETS**  
**SELLS FOR LESS**

Phone 342, 343 and 727. No. 3—Lefors. Phone No. 1  
 5—211 N. Bayler, Phone 127

Leaves the Press Friday Afternoon . . . Grocery Prices Are  
 Lower Prices Are For Friday Afternoon, Saturday and Mon-  
 e Delivery Service. Phone Store No. 1 on 342, 343, or 727

Pillsbury's  
 Best  
**24 LB. 84**  
 bag

Limit  
 The New  
 Improved  
 6 assorted  
 Flavors  
**PKG. 31 1/2c**

Orange Peel, Noontime Brand,  
 Packed for Standard Food Markets  
**3 OZ. PKG. . . . 11c**

Hope California  
 Brimful Brand  
 76, Count  
**CAN 14c**

Fresh  
 Salty  
 Flakes  
**2 LB. 10c**  
 BOX

Canned  
 Cut-well  
 colored  
 No. 2 1/2  
 size  
 can  
**12 1/2c**  
 No. 2  
 Size  
 Can . . . . **10c**

**FRUIT JUICE**  
 Marco Brand  
 No. 2 Size  
**CAN 10c**

**ING SALAD**  
 A real brand  
 quart jar  
**21c**

Or Spaghetti  
 Purity Brand  
**6 OZ. PKG. 31 1/2c**

Canned Whole Grain  
 Marco Brand  
**NO. 2 CAN . . . . 14c**

Brimful Brand  
 No. 1 Size  
 Fancy Table  
**2 CANS 23c**  
 FOR

**BAKING POWDER**  
 "Clabber Girl" Large Size  
**CAN 23c**  
**Whole Wheat Flakes**  
 O'Kay Brand  
 10 Oz. Size **2 PKGS. FOR 19c**

**CANNED KRAUT**  
 No. 2 Size  
**3 CANS 25c**  
 for

**SALT**  
 QUICK FREEZE  
 ICE CREAM  
**4 LB. 9c**  
 BOX

**SOAP**  
 Big Ben  
 Giant Size  
**6 BARS FOR 27c**

**Fly Swatters**  
 Long Handle  
 Fiber - Cello  
**EACH 10c**

**VIENNA SAUSAGE**  
 ANDREWS BRAND  
 3 1/2 Oz. Size  
**2 CANS 13c**  
 FOR

**CANNED TOMATOES**  
 No. 2 Size  
**3 CANS 23c**  
 FOR

**PUREX**  
 The Master Bleacher  
**QT. 14c**

**POST TOASTIES**  
 The Better Corn Flakes  
 2 Pkgs. For  
**19c**

**PEANUT BUTTER**  
 Marco Brand, New crop. Large 24oz  
**JAR 27c**

**CRACKER JACK**  
**3 PKGS. FOR . . . . 10c**

**Canned Peaches**  
 Brimful Brand, Fancy fruit in heavy syrup  
 Sliced or halves. Large 2 1/2 Size  
**CAN 17 1/2c**

**CORN FLAKES**  
 Kellogg's Oven-Fresh  
**2 19c**  
 PKGS

**EVAPORATED MILK**  
 "Armour's"  
**3 TALL OR 6 SMALL CANS 21c**

**FREE** 1- Blue Cereal Bowl  
 with 2 Packages  
**LIPTON'S TEA**

**FREE \$1,000 EVERY DAY for 30 DAYS**  
 30 DAILY CONTESTS - \$30,000 CASH  
**Oxydol** Large pkg.  
**21c**  
 ASK US FOR ENTRY BLANKS

**NUCOA** A new  
 Vegetable  
 Oleomargarine  
**LB. 19c**

**ROYAL PUDDING**  
 Chocolate or Vanilla  
 4 1/2-oz. size  
**3 pkgs. for 17c**

**FREE!**  
 Birthstone  
 BRACELET  
 14 Kt. Gold Plate  
 FOR ONLY 20 WRAPPERS FROM  
**CRYSTAL WHITE SOAP**  
 ASK US FOR DETAILS  
**OUR PRICE**  
 6 Giant  
 Bars . . . . . **24c**

See Beautiful China Drip-O-Later  
 and Waterless Cooker On Display  
**ADMIRATION COFFEE**  
**LB. 25c**  
 PKG.  
 Coffee Try a Pound Today and Be Convinced  
 By Comparison



**POULTRY AND FISH**

TURKEYS Fancy fowl, lb	21c
HENS colored, lb	16 1/2c
FRYERS, Extra Fancy, lb	25 1/2c
HALIBUT STEAKS lb.	29c
HADDOCK Deluxe Filet, lb	23 1/2c
WHITING, Small Choice, lb	12 1/2c

**STEAK** Fancy Center  
 Cut chuck  
**LB. 19 1/2c**

<b>CORNED BEEF</b>	Fresh Home Made	<b>LB. 25c</b>
<b>ROLLED ROAST</b>	Choice Boneless No Waste	<b>LB. 17 1/2c</b>
<b>PORK CHOPS</b>	Cut From Small Loins	<b>LB. 26 1/2c</b>
<b>FRANKFURTERS</b>	Large And Juicy	<b>LB. 14 1/2c</b>
<b>PEANUT BUTTER</b>	Fresh in the Bulk	<b>LB. 12 1/2c</b>

**ROAST**  
 Choice Chuck  
**LB. 18 1/2c**

**Cheese** Longhorn  
 Fancy Full Cream  
**LB. 18 1/2c**

**HAMS**  
 Cured ends as displayed  
**LB. 17 1/2c**

DELICATESSEN		SLICED BACON	
Pickled Pig's Feet halves, each	5c	Cerro or Rival	29 1/2c
Bar-B-Q Beef	20c	Wilson's Lakeview	33c
Beef Roast	35c	Rex or Banquet	36 1/2c
Potato Salad	15c	Korn King	37 1/2c
Baked Ham	65c	Armour's Star	41c
Cottage Cheese	12 1/2c	Pinkney's Sunray	41c
Sweet Mix	30c	Swift's Premium	44c
Pickles, pint	30c		

**CURED HAMS**  
 Decker's Iowana  
 Half or Whole  
**LB. 29 1/2c**

**BEEF ROAST** Family Style  
**LB. 12 1/2c**

**SLAB BACON**  
 Medium Weight  
 Half or Whole  
**LB. 25 1/2c**

**MINCED HAM OR BOLOGNA**  
**LB 14 1/2c**

**PORK ROASTS**  
 Picnic cuts  
 Lb. . . . . **20 1/2c**  
 Center Cut  
 Lb. . . . . **24 1/2c**

**PORK SAUSAGE**  
 Standard's 100%  
**LB. 24 1/2c**

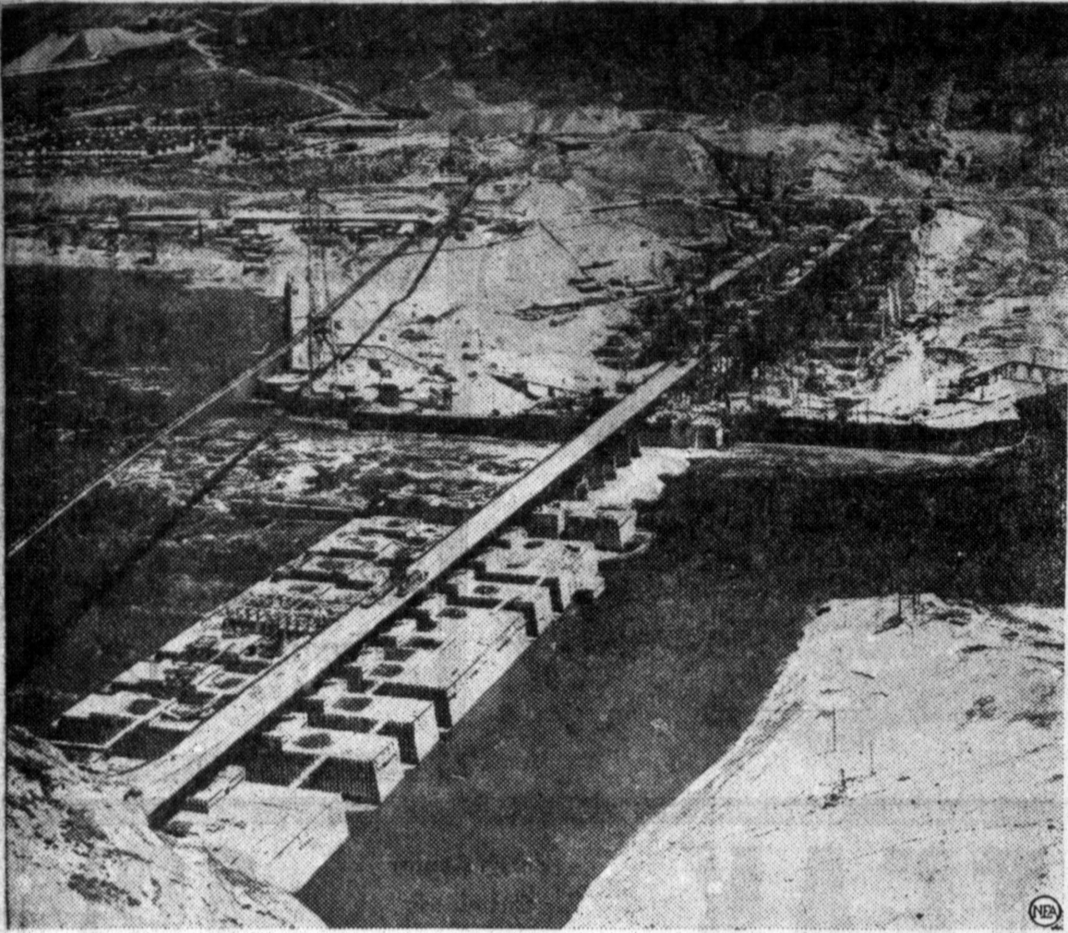
**HAMBURGER**  
 Fresh Ground  
**LB. 14 1/2c**

**CHOICE LAMB**  
 Stew, Lb. 12 1/2c  
 Shoulder Roast, Lb. 25 1/2c  
 Legs, Prepared, Lb. 31 1/2c

**FRESH LIVER**  
 Beef, Lb. 19 1/2c  
 Calf, Lb. 29 1/2c  
 Pork, Lb. 14 1/2c

**LOIN STEAK** Choice Center Cuts  
 Baby Beef  
**LB. 25 1/2c**

### World's Greatest Cofferd Dams Harness Columbia



Its mighty flow checked by the world's greatest system of cofferdams, flood stage of the Columbia river did not impede construction of the Grand Coulee Dam, shown above. While waters of the chained river rushed through slots in the half-completed west section, shown center, with the force of a cataract, excavation and construction work on the distant central portion, in the background, continued. Upon completion, the greatest dam construction ever attempted by man will furnish power for irrigation of 1,500,000 acres and for other northwest agricultural and industrial enterprises.

### Kindling World Friendship



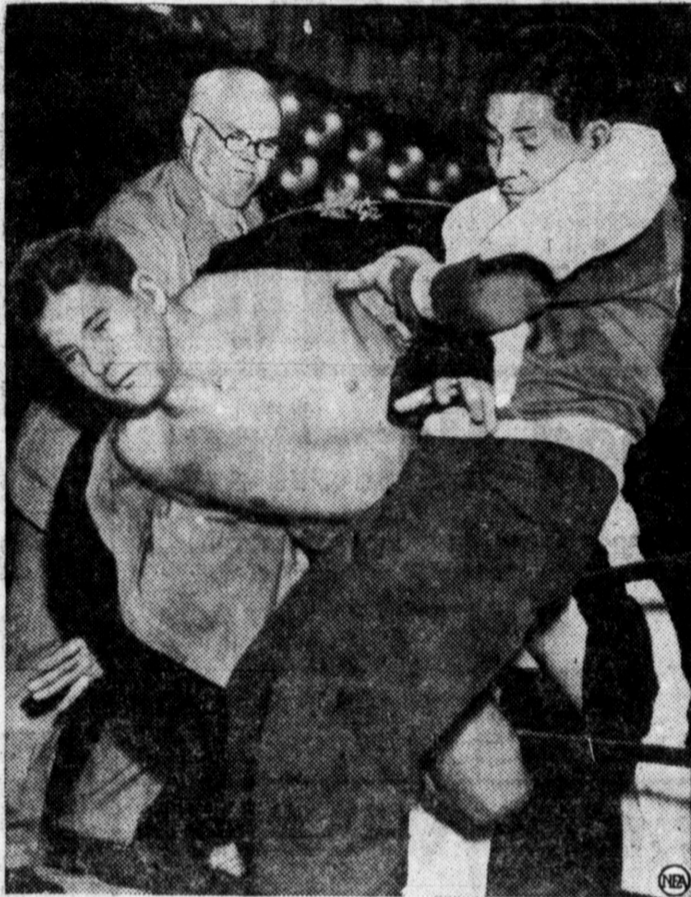
Despite a world of difference in customs and languages, Girl Scouts gathered from all over the world for the Silver Jubilee encampment at Camp Andree, Briarcliff Manor, N. Y., comprise a "league of nations" that has no need for sanctions or other punitive measures. Co-operating at the wood pile are, left to right, Rozalie McDonald, Australia; Girette Thorn, Luxembourg; and Jadvyga Pavilanaite, Lithuania.

### Where Bombs Killed Foreigners in Shanghai



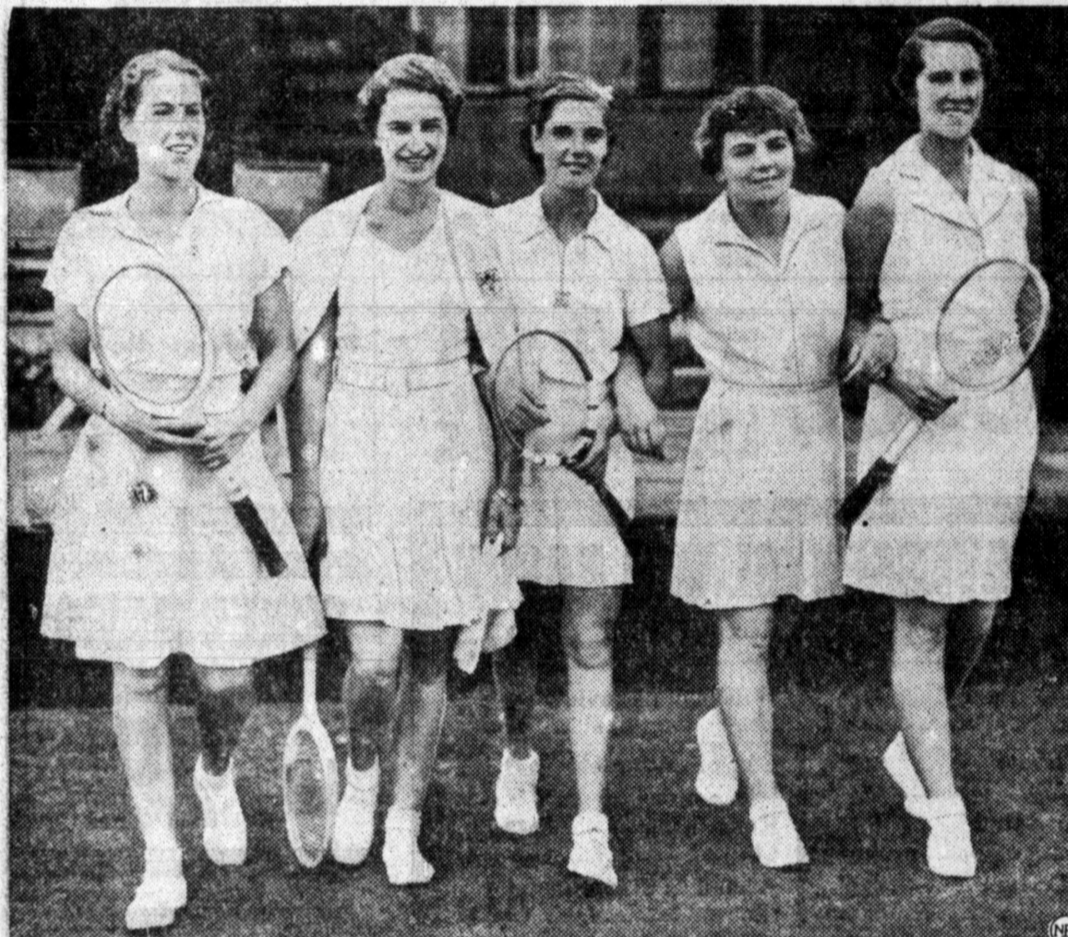
Along Shanghai's famous bund, or waterfront boulevard, death dropped from the skies in a bloody shower as indiscriminate bombing and shelling from opposed Chinese and Japanese forces raked the international settlement whose center is shown above. The massive building at right is the Astor House annex, from which the first Americans were evacuated and where American Marines and sailors patrolled along Soochow creek. The building with the dark, pointed tower is the Hotel Cathay, where the bombs of Chinese flyers, aimed at Japanese vessels in the Whangpoo river (foreground) killed scores, including three American. The twin-towered building just to the left is the Palace Hotel, similarly bombed.

### Football vs. Wrestling



Senor Vincent Lopez is being carried from the ring after his encounter with Bronko Nagurski. The old Minnesota All-American, who quit the Chicago Bears, to be the newest claimant of the heavyweight wrestling championship, won from the pride of all Mexico in two straight falls, employing a flying tackle to gain the clincher in 1 minute and 10 seconds at Wrigley Field, Los Angeles.

### British Tennis Trouble



Strolling to the courts of the West Side Tennis Club, Forest Hills, L. I., these members of the British Wightman Cup team are, from left to right, Margot Lumb, Mary Hardwick, Kay Stammers, Joan Ingram, and Evelyn Dearman. They hope to do better in their challenge there, Aug. 20-21, than did their brothers in defense of the Davis Cup.

### Japanese Target That Aviators Missed



When Chinese aviators bombed the International Settlement in Shanghai, their target was said to have been the Japanese cruiser Izumo, which was moored, as it is pictured above, alongside the Japanese consulate to serve as a floating naval station. The faulty marksmanship that cost nearly 600 lives was blamed on damage to the plane's bomb mechanisms by Japanese shells.

### Swims Channel



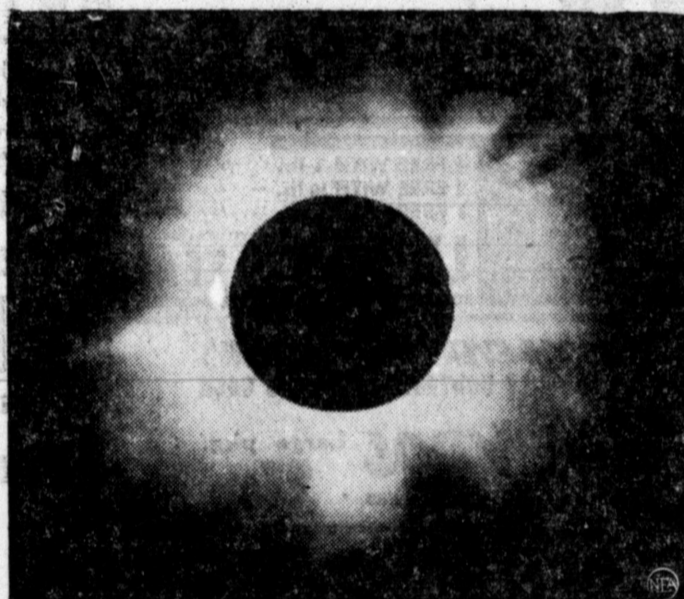
Thomas Blower, despite his name, was breathing easily when he stepped ashore on the English coast, after swimming the channel from Cap Griz Nez. The 22-year-old Briton made the crossing in 13 hours and 29 minutes, failing by 2 hours and 24 minutes to beat the record established in 1926 by Georges Michel of Paris. His was the 21st successful swim across the channel.

### Geraldine Leaps Into the Movies



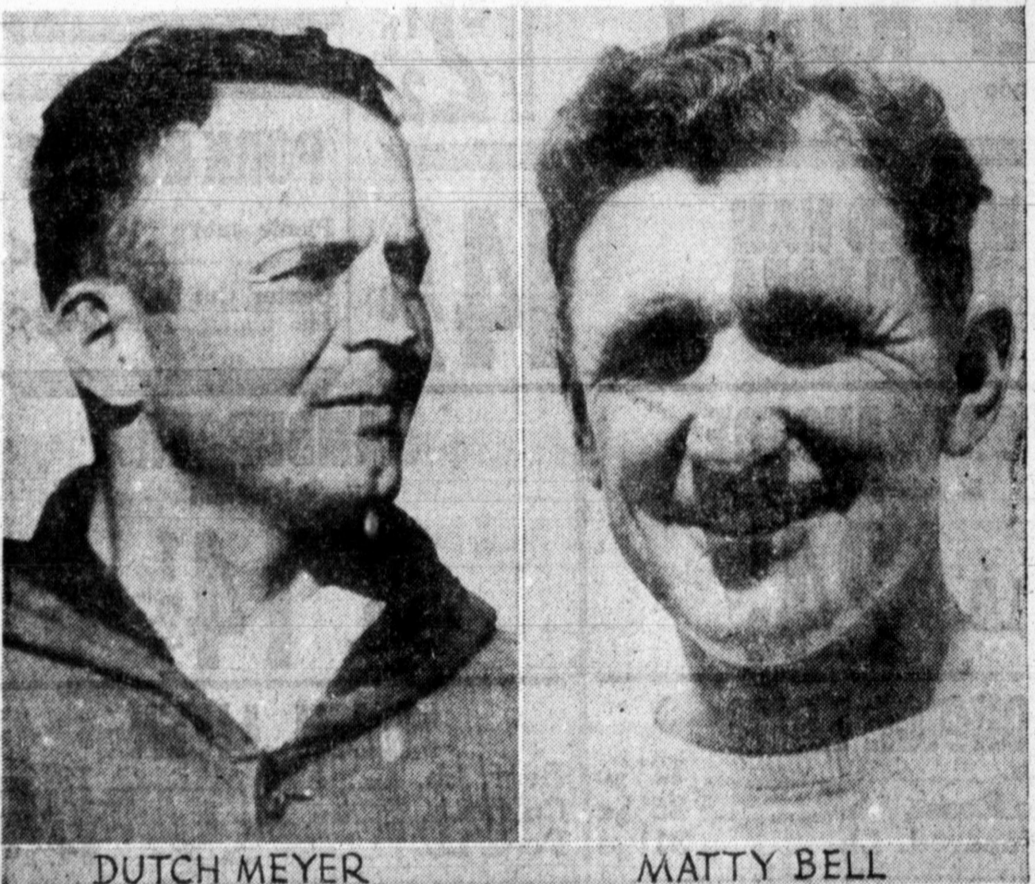
The leap that Geraldine Spreckels takes above is no greater than the leap she has just made in real life—from society to celluloid, from parties to pictures. For 24-year-old brunet Geraldine, San Francisco's sugar heiress and reputed to be worth \$15,000,000 in her own right, has signed a contract with Universal and will play the heroine in sparkling romances.

### Here's Million-Mile Sun-Hat



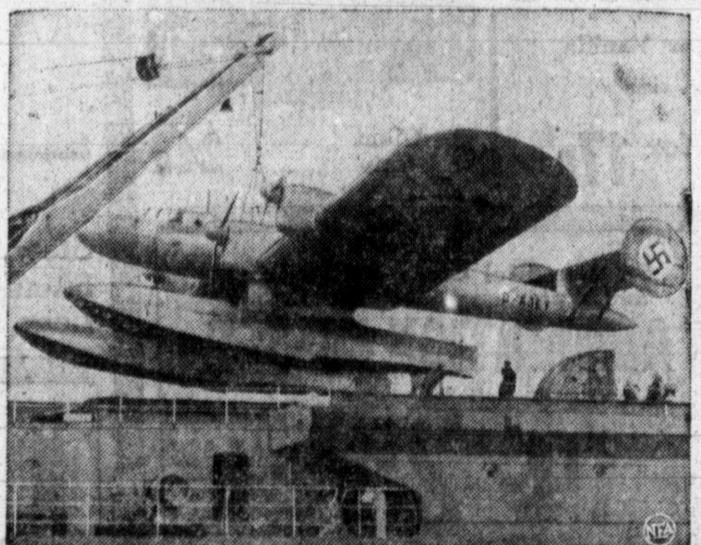
A totally new conception of the structure of the sun, surrounded by a blanket of atmosphere a million miles deep instead of spears of flame shooting out from the central mass—is offered to science as a result of the photographs taken by Major A. W. Stevens from a height of 30,000 feet during the recent solar eclipse. One of Major Stevens' spectacular shots of the sun and its fiery brim is reproduced.

### Can They Do It Again?



That's the question Southwestern football fans are asking concerning these two famous head grid coaches, Meyer of Texas Christian University and Bell of Southern Methodist, who last year gained distinction as the only men in history to pilot a group of college all-stars to a football victory over a recognized professional team. Directing a band of stellar stars, all seniors of the previous season's college campaign, they defeated the mighty professional Chicago Bears, 7 to 6, in the South's first dream game. Because of their outstanding success in 1936, the Greater Texas and Pan American Exposition athletic committee unanimously elected Meyer and Bell to coach a similar group of college all-stars this year and accepted a challenge by George Halas, president-coach of the Chicago Bears, for a return meeting with Matty and Dutch. All indications are that this year's all-star team, headed by Slinging Sammy Baugh, will be even greater than the 1936 eleven. Can they upset the powerful Bears again? Bell and Meyer are hopeful. The answer will be given the night of September 6 in the big Cotton Bowl at the Greater Texas and Pan American Exposition, where a near capacity crowd is expected to see the greatest assembly of gridiron talent in action that has ever been brought together in the South.

### Nazis' Bid for Atlantic Air Trade



Newest entry in the international race for supremacy in the North Atlantic air passenger service of the future is the giant German flying boat Nordmeer, above, which took off from Travemunde, on the Baltic Sea, for a survey flight—by easy stages—and arrived in New York this week.



Prospect of a Senate vacancy through appointment of Senator Hugo Black of Alabama to the Supreme Court brought announcement from Representative Lister Hill (Dem., Ala.), above, that he would be a candidate to succeed Black. The announcement was made from Paris, where Hill was on tour as a member of the Battle Monuments Commission. Hill's home is in Montgomery.

### AN EGG-CITING RACE



With egg-centric friends egging him on, this contestant in an egg-and-spoon race is a study in concentration as he paddles across a pool at Clacton-on-Sea, Essex, England.

Oilers and Blackfaces Meet Tonight in Borger

Weather permitting, the Pampa Oilers and Huber Blackfaces will meet for the fourth game in their Panhandle championship series tonight in Borger.

Manager Fred Brickell will more than likely send Harvey Hutton to the mound in an effort to bring the Oilers out in front.

Sixth game of the tournament will be played in Borger Tuesday night unless future games are transferred to the Pampa park, where a good crowd saw the game on Wednesday night.

Farr Pushover For Louis, Says Max Schmeling

NEW YORK, Aug. 20 (AP)—Max Schmeling, who knows the Atlantic ocean as well as most people know their front yard, is back in town to start another installment of his hunt for the heavyweight championship of the world.

The big German completed his fifth transatlantic trip within little more than a year Wednesday, and immediately went into a huddle with newspapermen, who emerged with the not-too-startling news the U.S. considers Tommy Farr a pushover for Joe Louis.

Five Texans Seek Sailboat Trophy

DALLAS, Aug. 20 (AP)—Five expert Texas sailors head today for an opportunity at New Rochelle, N. Y., to return to this state the Hub Isaacks trophy emblematic of the international snipe racing championship.

Howard Chilton and Delany Lingo, crewman, of Dallas, and Elbert Lovelace and Crewmen Marvin Harrison and Carl Woodson, of Denton, will represent Texas in the races Aug. 27, 28, and 29.

Chilton won the right to represent the Dallas fleet when he won 12 of 16 races, included among those he defeated was Bill Bracey of Dallas, who won the international title in 1933.

The Denton crew this season has defeated Bracey and George McGovern of Fort Worth, last year's runner-up for the international title.

PARTNER OPENS LONG GASH ON FARR'S EYE

LONG BEACH, N. J., Aug. 20 (AP)—A few of the more faint-hearted of Tommy Farr's beard strategy are heaving sighs of relief that the British empire's heavyweight champion wasn't scheduled to do any boxing today.

Farr was sparring with Joe Wagner yesterday when Wagner drove home a left hook to Farr's face and ripped open an inch-long gash under Tommy's right eye.

BOB REYNOLDS WILL PLAY IN GRID GAME

DALLAS, Aug. 20 (AP)—Big Bob Reynolds, hero of last year's game, was assured a place today in the lineup of the college all stars when they tackle the Chicago Bears here the night of Sept. 6.

Collins and His Game Leg



Jimmy Collins watches the Chicago Cubs battle to hold their National League lead with four of their stars on the sidelines. The first baseman will be out a month as the result of breaking a bone in his ankle in sliding.

HARVESTER GRID CANDIDATES ASKED TO MEET WITH COACH

Sport Sparks

DALLAS, Aug. 20 (AP)—Promoters of Port Isabel on the Rio Grande valley's golf coast, believes recent catches of Blue Marlin will revolutionize game fishing in that region.

NEW YORK, Aug. 20 (AP)—Premier sitting football coach is Dana X. Bible at Texas U. He has a ten year contract at \$15,000 per year.

AMERICANIZED CHINESE RAISING RELIEF FUND

SAN FRANCISCO, Aug. 20 (AP)—War excitement swept through San Francisco's famed Chinatown today and inhabitants turned from the prosaic task of entertaining tourists to piling up a relief fund for the battle-torn homeland.

BUCK LIPSCOMB WILL RETURN TO PAMPA MAT ON MONDAY

Everything will not be rosy at the Pampa Athletic arena on Monday night when Gust Johnson of Sweden and Leo Donahue of Detroit, Mich., meet in a predicted clean, scientific main event wrestling match.

GALVESTON TURNS IN THIRD STRAIGHT WIN OVER SOONERS

(By The Associated Press) Galveston's never-say-die Pirates may never get a look at the first division this winter season but as of today they could boast of what they did to Oklahoma City's high and mighty Indians.

KING OIL EVENS SERIES WITH CITIES SERVICE; PLAY TONIGHT

King Oil pulled up even with Cities Service in the Industrial Softball league playoff last night with a 7 to 1 victory over the gamblers in game played at Recreational park.

YESTERDAY'S STARS

Bray Campbell, Indians: Hit homer, triple, double, drove in four runs in 9-1 win over Browns.

MAJOR LEAGUE LEADERS

(By The Associated Press) National League Batting: Medwick, Cardinals, .401; Waner, Pirates, .388.

Whiskey you can TRUST

Every drop distilled and bottled by Glenmore. We have never shopped outside for whiskey to go into Glenmore bottles.



Curt Davis Hurls Cubs To Win Over Jinx Club

Then came the slump. The Cubs last five in a row, and their lead was cut to two games over the revving Giants.

Into that situation, Grimm yesterday threw Davis, largely because there wasn't much else to do, the hospital list being what it is.

KING OIL EVENS SERIES WITH CITIES SERVICE; PLAY TONIGHT

King Oil pulled up even with Cities Service in the Industrial Softball league playoff last night with a 7 to 1 victory over the gamblers in game played at Recreational park.

YESTERDAY'S STARS

Bray Campbell, Indians: Hit homer, triple, double, drove in four runs in 9-1 win over Browns.

MAJOR LEAGUE LEADERS

(By The Associated Press) National League Batting: Medwick, Cardinals, .401; Waner, Pirates, .388.

Whiskey you can TRUST

Every drop distilled and bottled by Glenmore. We have never shopped outside for whiskey to go into Glenmore bottles.

Advertisement for New Eastman Kodaks and a shaver, featuring product images and pricing information.

Advertisement for Marvels Cigarettes, featuring a pack of cigarettes and the text 'The man with money to buy what he wants...'.

Advertisement for Richard's Drug Co. with a list of products and prices, such as '25c Energine Shoe White' and '34c Sal Hepatica'.

Advertisement for 50c Parke Davis RUBBING ALCOHOL and \$1.00 WINE CARDUI, including a 'Thank You!' note and a 'RELIABLE PRESCRIPTIONS' logo.

Advertisement for a Free! 25c FOOT MASSAGE BRUSH and '3" Necessities Home Foot Treatment For Relief of Sore, Tender Feet'.





**QUALITY MEATS**  
Meat Prices Good Friday and Saturday Only

**HAMS** Sunray or Puritan Whole or Half **LB 27<sup>1</sup>/<sub>2</sub>**

**SHORTENING** Armour's Vegetole in your own container **LB. 12<sup>1</sup>/<sub>2</sub>c**

**SLICED BACON** Sugar Cured **LB. 30c**

**FRYERS** Colored Type **LB. 24c**

**STEAK** Baby Beef **LB. 18c**

**CHEESE** Fresh Longhorn **LB 16c**

**DOG FOOD** 15 1/2-oz Can **EA. 5c**

**LOAF CHEESE** American, Pimiento, Brick **LB. 28c**

**BOLOGNA** in the piece **LB. 12<sup>1</sup>/<sub>2</sub>c**

**SALT PORK** For Boiling **LB. 17c**

**WE'LL HARMONIZE IN SALADS**

**SALAD DRESSING** 27c

Relish Spread, Bestyett, Qt. Jar

**FRESH PRODUCE**  
Produce Prices Friday and Saturday Only

**CARROTS OR RADISHES** Large Bunches **2 FOR 5c**

**CANTALOUPE** Home Grown, Large Size **3 For 10c**

**LEMONS** Fancy Sunkist Large Size **DOZ. 30c**

**POTATOES** Fancy No. 1 Reds, Grown in Idaho **LB. 1<sup>1</sup>/<sub>2</sub>**

**APPLES** Gravenstein Large Size **DOZ. 25c**

**TOMATOES** Fresh, Extra Nice **LB. 7<sup>1</sup>/<sub>2</sub>c**

**PEAK of the Season**

**S O A P** P. & G. **5 Giant Bars 18c**

**WESSON OIL** For Boiling Vegetables  
Quart Size **41c**  
Pint Size **23c**

**T E A** **1/4 LB. .... 21c**  
**1/2 LB. .... 39c**

**K A R O** Light or Dark  
No. 5 Can **36c**  
No. 10 Can **67c**

**TREE TEA** For Iced Tea **1/4 Lb. 15c**

**Spinach** Libby's, No. 2 Can **2 CANS 25c**

**Tomato Juice** Libby's 14 OZ. Can **7c**

**Grapelade** Welch's 16 OZ. JAR **19c**

**Peaches** Libby's, Whole Pickled **NO. 2 1/2 CAN . . 22c**

**BUTTER** 1st Grade Creamery, fresh stock **LB 29<sup>1</sup>/<sub>2</sub>c**

**E G G S** Strictly Fresh, Guaranteed **DOZEN 16<sup>1</sup>/<sub>2</sub>**  
Friday and Saturday Only

**SUGAR** Pure Granulated **10 LB. KRAFT BAG . . 44c**  
Friday and Saturday Only

<b>PEAS</b> Libby's Fancy 3 Sieve <b>NO. 2 CAN 15c</b>	<b>POPPED WHEAT</b> Miller's <b>PKG. 10c</b>	<b>OATS</b> Crystal Wedding <b>Large Pkg. 21c</b>	<b>TOMATOES</b> No. 2 can <b>3 cans 21c</b>
<b>HONEY</b> Sanders New Crop, Sweet Clover No. 5 pail, strained <b>53c</b> No. 10 pail, strained <b>98c</b>	<b>CORNED BEEF</b> Wilson's Brand <b>2 CANS 35c</b>	<b>HERSHEY'S SYRUP</b> 16 oz. can <b>9c</b>	<b>GELATIN</b> Marvin Box 4 1/2c <b>6 boxes 25c</b>
<b>APPLE BUTTER</b> Libby's 26-oz jar <b>17c</b>	<b>GUEST IVORY SOAP</b> <b>2 BARS 9c</b>	<b>SOAP</b> Lifebuoy or Lux <b>3 bars 20c</b>	<b>FLOUR</b> Gold Medal <b>24 lb. sack 93c</b>
<b>MUSTARD</b> Libby's 9 oz. jar <b>9c</b>	<b>IVORY FLAKES</b> Small Package <b>8<sup>1</sup>/<sub>2</sub>c</b> Large Package <b>22c</b>	<b>OXYDOL</b> <b>LARGE PKG. 19c</b>	<b>TISSUE</b> Northern <b>3 rolls 19c</b>
<b>PICKLES</b> Libby's Kosher Dill <b>QT. 21c</b>	<b>GRAPE PRESERVES</b> Welch's 16-oz jar <b>21c</b>	<b>GRANULATED SOAP</b> Large Pkg. White King <b>31c</b>	<b>SCOTTOWELS</b> <b>2 rolls 19c</b>
<b>CORN FLAKES</b> Kellogg's <b>PKG. 10c</b>	<b>GRAPEFRUIT JUICE</b> No. 2 Can <b>10c</b>	<b>GRAPE PRESERVES</b> Kingston Hall 4-lb jar <b>49c</b>	<b>COCOANUT</b> Lge. Cello Pkg. <b>21c</b>
<b>WHOLE WHEAT FLAKES</b> Kellogg's, package <b>9c</b>	<b>PKG. . . . 9c</b>	<b>BEETS</b> Libby's Fancy Whole <b>No. 2 1/2 Can 12c</b>	<b>MARSHMALLOWS</b> Angelus 1-lb pkg. <b>15c</b>
<b>COFFEE</b> Golden Light <b>1 lb. pkg. 21c</b>	<b>APRICOTS</b> New Crop Large cello pkg <b>25c</b>	<b>ORANGE JUICE</b> Omitta <b>12 oz. can 10c</b>	<b>PICKLES</b> Sour or Dill <b>QT. JAR 17c</b>
			<b>CRISCO</b> 6-lb. can <b>55c</b> \$1.09

**B R E A D** Baked Fresh Daily **16 OZ. LOAF 5c**

**Pork & Beans** Van Camp's **16 OZ. CAN 5c**

**SUNBRITE** Cleanser **LARGE CAN 5c**

**SPINACH** Peerless **TALL CAN 5c**

**J E L L O** Assorted Flavors **BOX 5c**

**SALMON** Fancy Alaskan **TALL CAN 10c**

Prices on this ad effective from Friday, August 20th, through Thursday, August 26th

**Saw at FURR FOOD**

**Wax Paper** Cut-rite **2 ROLLS 15c**

Pampa Daily News

Published every evening, except Saturday, and Sunday morning by the Pampa Daily News, 322 West Foster Street, Pampa, Texas. Phone 616—All departments JAS. E. LYONS, Gen. Mgr. TEX DE WEESE, Editor

Tex's Topics

Clarence Kennedy, the man who always knows all the newest jokes first, is displaying plenty of evidence from that recent snake-bite fishing trip he took into the mountains with Mayor Bratton, John Sturgeon, Frank Culbertson, Claude Motley and Carl Benefield.

Pampa Kiwanians were observing a happy birthday today. The local club was seven years old at noon. Shelby Gantz arranged a swell birthday program and Judge Newton P. Willis, one of the club's charter members, took other charter members and newer members back to that day on Aug. 22, 1930, when the Kiwanis club was organized here.

Dr. H. H. Hicks, the dental surgeon, finds the most difficult task he has to do is one which would fall at a certain time each day. Fighting the clock is not to his liking, and thinking about the thing ahead of time would throw him completely off gear all day long.

We make this public apology to a certain person because of a gruff-sounding telephone voice which went out over the Southwestern wires under the press of time.

ENDANGERING PUBLIC HEALTH A Department of Agriculture survey indicates that providing the right food for a family of five in proper quantity, calls for an expenditure of approximately \$50 per month.

Washington Letter By PRESTON GROVER WASHINGTON—When we pick up our newspaper these days and read about harmony in political parties, we are tempted to call to the attention of our master minds the column in the unabridged dictionaries about "harmony."

Yesteryear In Pampa TEN YEARS AGO TODAY For the first time since late in 1926, the Panhandle oil field fell below 100,000 barrels a day in production. The total for the week was 99,848 barrels as compared with 105,666 for the previous week.

FIVE YEARS AGO TODAY Interesting statistics on Gray county tax matters were contained in a report of Moore Lynn, state auditor. His report showed that for the fiscal year ending March 31, 1931, Gray county collected \$470,333.75 in taxes.

The L. T. Hill company closed to permit removal of its large stock to the new building just remodeled according to the needs of the firm.

It might be able to voice the inarticulate beliefs of most Americans or at least that part of the middle class which has a doubtful small farm near a big town. And what are held on a house and lot in the suburbs or a these people—the ones who really hold the balance of power actually thinking about government? Are they ready for the scepter, or being a war generation, have they lost their influence as a group?

All that remains to be seen, but harmony—the pompous kind that sticks out at big political dimers and pep rallies—won't bring out the best that's in us.

'Farley May Take Job With Automobile Co.'

FOR \$2500 MORE WE'LL LET YOU HAVE A RECORD OF OUR LAST SALES CONVENTION. I JUST WANT TO BUY A CAR! AND HOW MANY DO YOU PREDICT WE'LL SELL THIS YEAR, MR. FARLEY? THE MOST SUCCESSFUL MACHINE IN THE COUNTRY. PREVIOUS EXPERIENCE. MORE POWER! HOW MANY ORDERS CAN YOU DELIVER? DON'T SPARE THE OIL, BOYS. FACTORY DEPT. EMPLOYMENT. HERGLUCK!

Man About Manhattan

NEW YORK—As addenda to the already incredible fund of Hollywood legends which throw some light on why studio attaches go insane early in life, Fibber McGee offers this recital of a film autocrat whose tantrums were the despair of everybody who worked for him.

People You Know

Two days before Mrs. Harrah suffered the stroke that led to her death she spent the day with this one's mother. She came home with her from church. That afternoon the dust blew until the April sun was hidden behind a golden screen. She did not complain about the duster as most people do, because Mrs. Harrah seldom complained. You could talk to her all day and you would not hear her "talk about" people. That day, the last time this one saw her, she smiled kindly because it was her nature to do so, even when there was no reason for smiling.

Around Hollywood

HOLLYWOOD—Scenario writers may go gunning for Cameron Rogers. What he says about writing for publication But he says you don't have to—back and back up with statistics. Just to prove his point, he looks up the records of more than 200 of his conferees. Some of the best, he says, broke in not by writing novels and plays, but writing "originals" and selling them cold, somehow or other, to the studios.

Answers To Questions

A reader can get the answer to any question of fact by writing The Pampa Daily News Information Bureau, Frederic J. Haskin, director, Washington, D. C. Please enclose three (3) cents for reply. Q. How many states use a civil service merit system? G. H. A. Fourteen states now have civil service laws. These states are: New York (1883), Massachusetts (1884), Wisconsin (1905), Illinois (1905), Colorado (1907), New Jersey (1908), Ohio (1912), California (1913), Maryland (1920), Michigan, Arkansas, Tennessee, Maine, and Connecticut (all 1937).

Book A Day

It is probably enough to say that another collection of the late Clarence Day's pieces is being published today. Mr. Day left, it should be explained, enough stories for a couple of books, and these are industriously being published into books. This collection is called "Life With Mother," and in these stories Mr. Day is evidently trying to make his mother the center of interest. She probably is the center, technically. But this reader, at least, found Father overshadowing her most of the time.

How's Your Health?

By DR. MORRIS FISHBEIN The pineal gland is one whose activities seem to cease at the time of maturity. This gland lies within the skull at the lower portion of the brain. As yet we have no certainty as to what its functions in the human body actually are. When this gland is studied under the microscope, it is found to consist largely of cells which have a secretion.

Side Glances

By George Clark Elizabeth Meehan was a Follies girl. Marguerite Roberts and Anne Austin were stenographers. Sonya Levin was a lawyer. Zoe Adkins and Seal Hoffenstein were poets. Marion Jackson was a society editor. There is even an concert pianist among the lot—Maude Fulton. And out of society, via the fan magazine, stepped Marcella Burke.

Learn to Tell Your Fortune

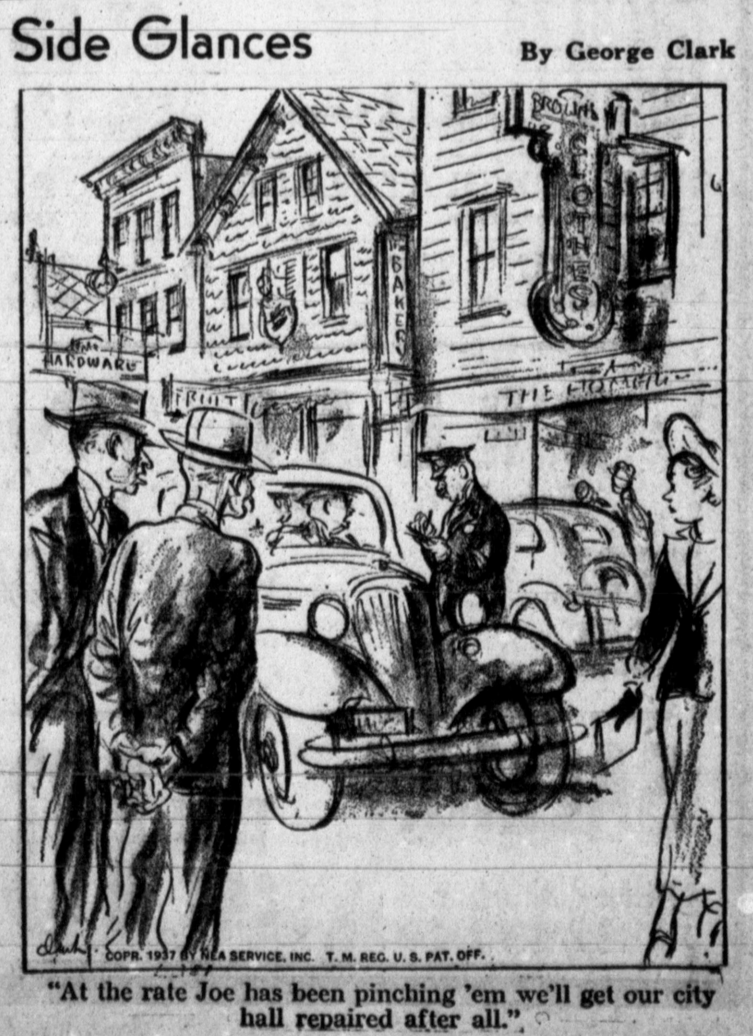
USE THIS COUPON. The Pampa Daily News Information Bureau, Frederic J. Haskin, Director, Washington, D. C. I enclose herewith 10 cents in coin (carefully wrapped in paper) for a copy of the booklet, Fortune Telling. Name..... Street..... City..... State..... (Mail to Washington, D. C.)

So They Say

I think 13 is my lucky number. It seems to pop up every time anything good happens to me. —MISS LUCY ELIZABETH HODDER of Belmont, Mass., who lives at 13 Sycamore street, and was married Friday the 13th at 5:13 p. m. Her engagement ring had 13 diamonds and she carried 39 white roses—three times 13.

FARMER DIGS UP RING LOST 20 YEARS

AUBURN, Neb. (AP)—Carl Gebers, Auburn farmer, knocked off a piece of dirt containing a gold ring recently while cleaning the shovel of his cultivator. He told the editor of the Auburn newspaper about it, and a little more than a week later received a letter from Mrs. Henry Unland of Jordan, Mont., who said she had read the story and recalled she had lost a gold ring 20 years ago when the Unland family lived on the farm now owned by Gebers. Gebers sent the ring to Mrs. Unland.





# SERVE Better Foods

## AT LOWER PRICES



### SUGAR

FINE GRANULATED IN SANITARY CLOTH BAGS

Fri., Sat. Only—Limit

10 LBS.

### 43c

### PAMPA

## FRUIT & VEGETABLE MARKET

"The Most of the Best for the Least"

Shop Our Store Daily and Save

204 North Cuyler

### FLOUR

Gold Medal Kitchen Tested

24 LB. BAG ..

### 89c



### BREAD

QUALITY MADE SLICED 16-OZ. LOAF

### 4c

### Lipton's TEA

1/4 lb. Box

### 19c

### PEACHES

FINE FOR PIES OR DESSERTS NO. 2 1/2 CAN

### 29c

### PRUNES

FRESH OREGON GAL. CAN

### 26c

### COFFEE



Folgers Plain or Drip

### 25c

2 lb. can 50c 1 lb. can

### KRAUT

No. 2 can, 2 for

### 15c

### MUSTARD

Greens, No. 2 can, 2 for

### 17c

### SPINACH

No. 2 can, 2 for

### 17c

### MATCHES

Good Strikers, carton of 6 boxes

### 16c

### PRUNES

Evaporated, 2-lb. cello bag

### 10c

### PEN JELL

The jelly maker, box

### 10c

### HOMINY

No. 2 can 2 for

### 15c

### CRACKER JACKS

3 regular boxes for

### 10c

### OVALTINE

### LARGE CAN . . . 49c

### CALUMET

### Baking Powder 1 LB. CAN . 18c

### SUGAR

Powdered or Brown

### 2 BOXES . . . 15c

### Tomato Juice

14-oz. can

### 3 FOR . . . 23c

Friday & Saturday Only Limit

### Shortening



ARMOUR'S VEGETOLE

3-lb. carton 89c 4-lb. carton

### 46c

### SNOWDRIFT



For Finer Baking

### 3 LB. can 53c

### Post Toasties



The Better Corn Flakes Large Box

### 2 FOR . . . 17c

### OXYDOL



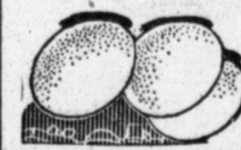
Makes Washing Easy Large Box

### 19c

### 5 Giant Bars The World's Largest Seller 18c

FRESH COUNTRY

### EGGS



Every One Guaranteed

### DOZ. . . 17c

### Salad Dressing

Miracle Whip

### QUART JAR . . . 34c

### JELL-O



Six Delicious Flavors

### BOX . . . 41c

### ICE CREAM POWDER, 2 for . . . 17c

### PUFFED WHEAT



### 3 BOXES 25c

### NORTHERN TISSUE

### 2 ROLLS . . . 15c



Cat Fish

Prices are Down on



### 29 1/2c LB.

Fresh Shrimp

### 30c LB.

### FISH

White Trout LB. 10 1/2c

### BACON

Dold's Sterling Sliced LB. 33 1/2c

### CHEESE

Family Style 2 lb. box 59c

### OLEO

Butter Substitute LB. 15 1/2c

### BRAINS

FRESH CALF LB. 12 1/2c

### BACON

In the Slab Half or Whole LB. 29 1/2c

### FRYERS

CHOICE MILK FED

### lb. 22 1/2c

### HENS

HEAVY COLORED TYPE

### lb. 16 1/2c

### BEEF ROAST

Center Cut Chuck

### LB. . . 18 1/2c

### Peanut Butter

In the Bulk

### LB. 12 1/2c

### PICKLES

Large, sour or dill, each

### 5c

### HAMS

Butt or Shank Ends

### LB. 19 1/2c

### PORK CHOPS

### 27 1/2c

### BEEF ROAST

Arm or Rump, lb.

### 22 1/2c

Bell Peppers **12 1/2c** LB.

*It's VALUE-time for*

## FRUITS & VEGETABLES

*Too!*

CUCUMBERS Good and Green **6c** LB.

CONCORD GRAPES Regular basket, fine for jelly **14 1/2c**

BANANAS Golden Ripe Green Tips **10c** DOZ. . . .

LEMONS 360 Size Red Balls **23c** DOZ.

LETTUCE Large Crisp **3 1/2c** HEAD

FRESH CORN **2 FOR 5c**

FRESH OKRA LB. 5c | B. E. PEAS Fresh LB. 5c

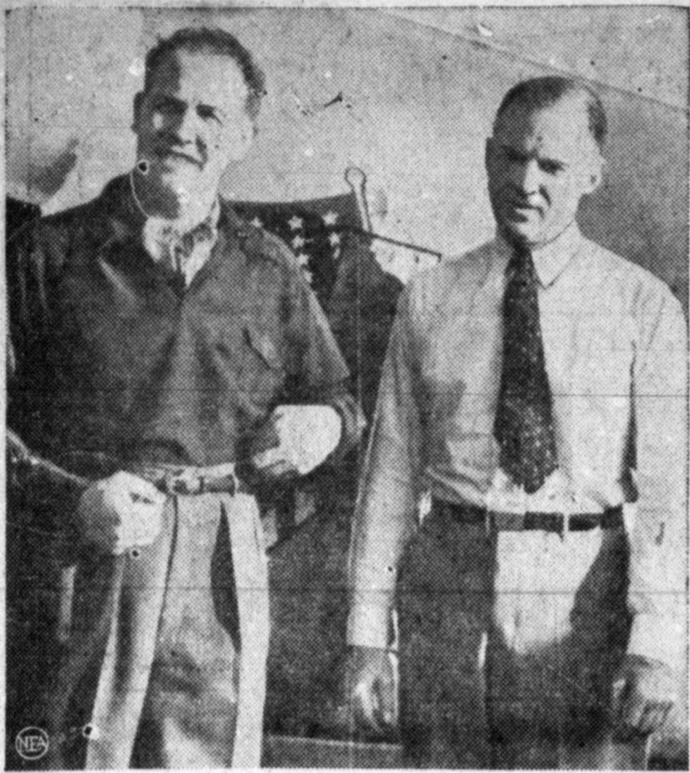
WATERMELONS Ice Cold **1c** LB. . .

TOMATOES Fresh California Large Size **25c** 3 Lbs.

GRAPES Red Malaga **24c** 3 LBS. . . .

POTATOES No. 1 White Cobblers **17c** 10 LBS. . . **2c** LB. .

### Join Search for Soviet Airmen



Jimmy Mattern was repaying a debt of gratitude when he entered the search for Sigismund Levanovsky and four companions who were forced down in the far north on their attempted flight from Moscow to California. Mattern, pictured left with his co-pilot, J. S. U. Jones, just before they left Oakland, Calif., for Fairbanks, Alaska, was rescued four years ago in Siberia by Levanovsky while on a round-the-world flight.

### The Capital Jigsaw

By HOWARD C. MARSHALL

AUSTIN, Aug. 20.—The committee of the House of Representatives investigating state institutions for the insane was puzzled by the question whether certain inmates actually were insane.

Chairman Leland Johnson of Waxahachie said he talked to a woman who, records showed, had been committed after a jury hearing. She said she was sane and gave every appearance of being so. She also said she wanted to be released, yet, according to Johnson, the superintendent of the institution affirmed she undoubtedly was suffering from dementia praecox and probably would never recover.

Another case was a boy about 18 committed to the institution when a child on application of his foster grandmother. He gave every evidence to the committee he was sane, yet was on the records as insane.

The committee found other instances where inmates seemed to be entirely rational and gave plausible stories why they had been committed, but it usually found itself confronted with records and expert testimony that such persons were insane.

Austin has decided to install parking meters on the principal business streets. After wrangling for several months the council bought 446 meters for a 90-day trial. In newspaper discussion and also in that before the council, the chief issue seemed to be whether the public ought to be charged by the city for the privilege of parking automobiles.

Gov. Walter F. Woodul does not think much of offering rewards in the general run of criminal cases. He expressed the opinion after an Austin man had been killed recently by a suspected robber who wanted the man's automobile in which to escape. The man's wife and son also were shot when they came to his aid. Woodul finally offered a reward of \$500—he was acting as governor in the absence of Gov. James V. Allred—but pointed out he had not put up

any for arrest of criminals in certain other sensational ones. "Officers are paid to catch criminals," he said. "It is their business and not that of private citizens, incidentally. If we have officers who can't do their jobs, we ought to get others."

He admitted there was some justification for the posting of rewards in the mysterious Blanton case, which has baffled law enforcement officials for nearly a year.

It was still too early, he added, to pass judgment on the state department of public safety, now about two years old.

It won't be long until C. V. Terrell, chairman of the railroad commission, will go hunting again.

The commissioner's office has a couple of elk and moose heads hanging on one wall and an enormous bear skin on another, all trophies of his hunting prowess.

Terrell laughed when it was suggested that since his reputation as a hunter and marksman had been established he try to develop one for "bringing 'em back alive." He said he would have no use for live animals.

Terrell usually hunts in the Teton mountains near Yellowstone National Park in Wyoming.

IT'S A GREAT GADGET IF YOU UNDERSTAND IT

WASHINGTON (AP)—Gangway for the Mechanical Mole.

It is a gadget developed by the soil conservation service to save hillside soil from erosion. The thing splits the sod along a hillside, burrows a neat gash beneath, and, zipper like, closes the resulting gash. But when it is all stitched up the lower level on the hillside somehow is higher than the upper level, and—

Aw, well, write the soil conservation service. They can tell you all about it.

### CROSS CHILDREN May Have Round-Worms

Nervous or delicate children often have worms—very common in city and country. Other signs—broken sleep, bad dreams, itching, grinding of teeth at night, loss of weight, appetite or color. Laxatives don't help—get Jayne's Vermifuge. Children like it. 45 million sold.

**JAYNE'S VERMIFUGE**  
CRETNEY DRUG STORE

**Your Host in Oklahoma City**

Convenient to all business activities. 600 Rooms, each with Bath, Radio, Ceiling Fan, Circulating Ice Water and Draft-Control Ventilating Device. All Public Rooms Air-Conditioned. Rates from \$2.50.

**Hotel OKLAHOMA BILTMORE**

Affiliated NATIONAL HOTELS

# CORN FLAKES

Free—Blue cereal bowl with each purchase

## 2 PKGS. 19c

## CORN

Fancy Sugar Brimfull

## SOAP FLAKES

Balloon Full Box

## Oleomargarine

Sunlight Butter Substitute

## TOMATO JUICE

Swift's No. 1 Tall Can

## Candy

Peanut Squares  
Peanut Creams  
Fudge  
Chicken Bones

## TEA

Bliss

1/2 Lb. 25c  
1/4 Lb. Pkg.

## BABY FOOD

White Swan, Assorted

## PEAS

Fancy Sifted Brimfull Brand

## NO. 2 CAN 12 1/2c

## 5 LB. BOX 39c

## LB 16c

## 2 FOR 15c

## LB. 10c

## 15c

## 3 FOR 25c

## NO. 2 CANS 12 1/2c

## Two Schilling Coffees

POUND 24c

## Coffee

Golden Light

## COCOA

Hershey's

## PEAS

El Food Black eyes

## BUTTER

Cloverbloom, Full

## RED STAR FLOUR

The Perfect Process Flour

## BOX 10c

## 3 CANS 23c

## LB. 31c

## 89c

## LB. CAN 15c

## 21c

## 15c

# HARRIS FOOD STORE

322 W. KINGSMILL

BETTER MERCHANDISE FOR  
Again Harris Food Stores bring you exceptional food Saturday and Monday. We invite you to compare the chardise. Being Pampa's largest food distributors at of buying enables us to sell our merchandis at a gre

Prices Effective Friday Afternoon, Sa

# VEGETABLES

*Fresh THIS MORNING*

All our vegetables are purchased fresh and kept fresh by clean, modern refrigeration. Trucks arriving daily with fresh assortments.

<b>Potatoes</b>	No. 1 Colorado Red McClures	10 LBS. 15c
<b>CELERY</b>	New Bleached	BUNCH 9c
<b>GREEN BEANS</b>	Fresh Snap	LB. 7 1/2c
<b>BANANAS</b>	No. 1 Fruit	DOZEN 10c
<b>TOMATOES</b>	Fancy California	LB. 7 1/2c
<b>CABBAGE</b>	New Crop	LB. 3c
<b>LEMONS</b>	Fancy Sunkist	DOZ. 29c
<b>ORANGES</b>	Fresh Juicy	DOZ. 19c
<b>WATERMELONS</b>	On Ice While They Last	LB. 1c
<b>CANTALOUPE</b>	Firm Ripe	EACH 5c
<b>MUSTARD</b>	Greens	BUNCH 5c
<b>GRAPES</b>	Arkansas Concord While They Last	5 lb. basket 17 1/2c
<b>BUNCH VEGETABLES</b>	Carrots, Beets, Radishes, Green Onions	LARGE BUNCHES 3 FOR 10c
<b>LETTUCE</b>	Firm Crisp	HEAD 5c
<b>BULK</b>	Turnips, Carrots, Beets	LB. 3 1/2c

Plenty of Peaches, Concord Grapes, Plums and All Kinds of Fresh Fruits and Vegetables.

## Noteworthy FOOD

**PEACHES**

**Tomatoes** No. 2 Can Solid Pack

**Tomato Juice** Heart's Delicacy Armour's

**Spinach** No. 2 Cans

**Pineapple Juice** Del

**Grapefruit Juice** N

**Corn Meal** El Reno's Best

**MILK** Armour's



**Stock up NOW!**

**Bread** Made with milk 16 Oz. 3 for 10¢  
White or whole wheat Loaf



**SHORTENING**  
Armour's, 8 Lbs. 89¢

Limit with order  
**4 LB. CARTON 45¢**

**Ginger Snaps** Fresh Snappy 2 LBS. 25¢

**Puffed Wheat** PKG. 10¢

**Chocolate Syrup** Hershey's Large Size 15¢



**FREE!**  
1-10c pkg. Blue Bonnett seed with 1 lb White Swan Coffee. America's finest coffee  
**LB. . . . 29¢**

**SALAD DRESSING**  
Miracle Whip  
PINT 25¢  
**QUART 39¢**

**PUREX**  
For Bleaching  
A Better Bleacher  
**QUART 12½¢**

**HARRIS STORES**  
306 S. CUYLER

**CHANDISE FOR LESS MONEY**  
Give you exceptional food values for Friday afternoon, invite you to compare the prices and quality of our mer-  
chandises with a cooperative system at a great savings to our customers.  
day Afternoon, Saturday and Monday

**FOOD Bargains**

**PEACHES**  
El Monte, Sliced or Halves  
**1/2 CAN 19¢**

**No. 2 Cans Solid Pack** 3 FOR 22¢

**Juice** Heart's Delight or Armour's GAL. 39¢

**No. 2 Cans** 3 FOR 25¢

**Juice** Del Monte 46 OZ. CAN. 35¢

**t Juice** Marco or Curtis NO. 2 CAN 9¢

**El Res's Best** 5 LB. BAG 17¢

**rmour's** 6 SMALL OR 3 LARGE. . . . 18¢

**SAVE ON Quality MEATS**  
Meats are better and more tasty if purchased at Harris Food Stores Markets. We feature only fancy Stamped Beef and Baby Beef. We also have the very best in fresh poultry and fish. If it comes from Harris Food it must be the best. Try these new meat recipes.

**Roast** Baby Beef Boned and Rolled LB. 17½¢

**CHEESE** Mountainkist Longhorn LB. 16½¢

**Hams** Wilson's Boneless Certified Picnic LB. 34½¢

**POULTRY**  
HENS Nice fat heavies, lb 15¢  
FRYERS, milk fed dressed and drawn free, lb 25¢

**PEANUT BUTTER** Fresh Barrel LB. 10¢

**PURE LARD** Bring Pail LB. 12½¢

**FISH** LAKE TROUT, lb 11¢  
FRESH WATER CAT FISH, lb. 29¢

**SUGAR**  
Fine Granulated, Limit With Order  
**10 LBS. 45¢**

**SNOW DRIFT**  
\$10,000 in cash prizes  
**3 LB. CAN 63¢**

**WESSON OIL**  
See Our Free demonstration Saturday  
**QUART 45¢**  
Pint 23¢

**Try These New Recipes For a Change**  
Each week we will bring you two new recipes. We invite you to bring or send in your favorite recipe. For the two best recipes there will be a prize and the recipes printed in our ad with the name of person submitting recipes. Bring or send your recipe to either Harris Food Store.

**MEATLOAF IS GRAND For Potluck Suppers**  
No "potluck" picnic or church supper is complete without meatloaf. Probably, because meatloaf is one of the simplest ways of serving a meat. But here's a meatloaf that will make it cook famous then and ever after at any social gathering where there's food.  
You can see that it's delicious from the ingredients:

- 1½ pounds ground round steak
  - ¼-pound lean pork shoulder, ground
  - ½ cup Quick Quaker Oats
  - 12 large ripe olives, minced
  - ½ small onion, minced
  - 2 teaspoons salt
  - ¼ teaspoon pepper
  - 2 cups thick tomato puree
- Mix all the ingredients thoroughly and place in a greased loaf pan. Cover and bake in a moderately slow oven, about 325 degrees, for one hour. Uncover and bake 15 minutes longer.  
The meatloaf will serve from 6 to 8 persons and can be served either hot or cold.



**BEEF EN CASSEROLE**  
2 cups cooked beef  
1 cup carrots  
1 green pepper  
8 small onions  
1 stalk celery  
1 cup canned tomatoes  
1 teaspoon salt  
¼ teaspoon pepper  
1 cup stock  
1½ cups potato balls  
2 tablespoons fat  
2 tablespoons flour  
1 cup cooked string beans  
Combine all ingredients (except fat, flour and beans) chopping vegetables. Cover, put in oven and bake 1 hour or till vegetables are tender. Add fat melted and browned with flour. Add beans and bake 15 minutes.

**BEEF STEAK**  
Baby Beef, chuck  
**LB. . . . 17½¢**

**SLAB BACON** Cudahy's Sugar Cured **LB. 28½¢**

**COTTAGE CHEESE** Fresh Creamy **LB. 10¢**

**BACON** Armour's Banquet, lb 34½¢ Armour's Climax **LB. 29½¢**

**HAMBURGER** Fresh Ground **LB. 12½¢**

**Borotra Keeps on Winning**



Jean Borotra, for years a star of the French Davis Cup team, carried his winning ways into romance with his successful courtship of Mrs. Mabel de Forest, former wife of a French politician. He is seen with his bride in the first picture since their marriage.

**Gray County Records**  
Compiled by Pampa Credit Association

**Wins 3rd Title**



Marion Miley holds the cup and smiles for the cameramen after shooting her fourth consecutive sub-par round—39-38-77—to become the first person to win the Women's Western golf derby three consecutive times. The Lexington, Ky., miss recorded a new tournament record of 309 for the 72 holes. Play was over the Onwentsia Country Club course, Lake Forest, Ill.

Deed: Cities Service Oil Company to Empire Oil & Refining Company, 3½ of lot 2, block "C" according to the map of the sub-division of the east part of plot 175, suburbs of Pampa.  
Part release: Continental Supply Company to Vulcan Petroleum Corp., et al SW¼ of section 41, block 25, H&GN.  
Deed of trust: Ewell Powell et ux to J. M. Smith, E¼ of section 49, block M-2, H&GN.  
Deed: B. C. Priest et ux to L. D. Blasingame, lot 4, block 3, Priest addition to Pampa.  
Laborer's lien: R. R. Stalcup to Doniphon Oil & Gas Company, NE¼ section 165, block 3, I&GN.  
Quit claim deed: Southland Royalty Company to R. E. Johnson et al, N¼ of section 88, block 3, I&GN.  
Release of materialman's lien: Zero Hour Bomb Company to Mills Oil Company, NE¼ section 13, block A-9, H&GN.  
Mineral deed: Argo Oil Corporation to Imperial Crown Royalty corporation, (a) Undivided 3-32 interest in such minerals in NW1-4 SE1-4 and N1-2 SW1-4 of section 2, block 26, H&GN; (b) Undivided 3-128 interest in such minerals in E1-2 section 4, block 1, ACH&B; (c) Undivided 3-32 interest in such minerals in W1-2 section 5, block 1, ACH&B; (d) Undivided 3-32 interest in such minerals in NE1-4 section 28, block BM-2, H&GN; (e) Undivided 3-128 interest in such minerals in N1-2 section 33, block B-2, H&GN; (f) Undivided 3-32 interest in such minerals in E-155 acres of W-235 acres of section 61, block B-2, H&GN.  
Deed of trust: Ethel Arthur to Panhandle Bldg. & Loan Ass'n., east 50 feet of lots 7 and 8, block 29, Original town of Pampa.  
Deed: Amarillo Development Co. to John T. Miller, S1-2 lot 5, block 4, Tulsa Addition to Pampa.  
Release: Champlin Refining Company to Irene K. White et al, SE1-4 section 1, C&M Survey.  
Release: First Nat'l Bank to L. C. McConnell, S1-2 section 187, block 3, I&GN.  
Deed of trust: J. F. Meers et ux to First Nat'l Bank, W1-2 section 187, block 3, I&GN.  
Deed: A. L. McAnally to B. E. Fulbright, lot 6, block 40, Talley addition.  
Release: Girtha McConnell to L. C. McConnell, S1-2 section 187, block 3, I&GN.  
Deed: B. C. Priest to Bertice Sawyer, lot 11, block 2, Priest addition.  
Deed: Panhandle Bldg. & Loan Ass'n. to Ethel Arthur, east 50 feet of lots 7 and 8, block 29, original town of Pampa.  
Deed: Panhandle Bldg. & Loan Ass'n. to Henry Thut, lot 8, block 7, West End addition.  
Mineral deed: Saltmount Oil Co. to Imperial Crown Royalty Corp. (a) Undivided 3-32 interest in such minerals in NW1-4 SE1-3 and N1-2 SW1-4 of section 2, block 26, H&GN; (b) Undivided 1-128 interest in such minerals in E1-2 section 5, block 1, ACH&B; (c) Undivided 9-640 interest in such minerals in W1-2 section 5, block 1, ACH&B; (d) Undivided 1-32 interest in such minerals in NE1-4 section 28, block B-2, H&GN; (e) Undivided 1-128 interest in such minerals in N1-2 section 33, block B-2, H&GN; (f) Undivided 1-192 interest in such minerals in E-155 acres of W-235 H&GN.  
Release: Witt Springer to R. C. Lewis, south 100 feet of lot 9, block A, in town of McLean.  
Deed of trust: Henry Thut et ux to Panhandle Bldg. & Loan Association, lot 8, block 7, West End addition.  
Deed: J. C. Volmert et ux to First Nat'l Bank, W1-2 of section 140, block 3, I&GN.

interest in such minerals in W1-2 section 5, block 1, ACH&B; (d) Undivided 1-32 interest in such minerals in NE1-4 of section 28, block B-2, H&GN; (e) Undivided 1-128 interest in such minerals in N1-2 of section 33, block B-2, H&GN; (f) Undivided 1-192 interest in such minerals in E-155 acres of W-235 H&GN.  
Release: Witt Springer to R. C. Lewis, south 100 feet of lot 9, block A, in town of McLean.  
Deed of trust: Henry Thut et ux to Panhandle Bldg. & Loan Association, lot 8, block 7, West End addition.  
Deed: J. C. Volmert et ux to First Nat'l Bank, W1-2 of section 140, block 3, I&GN.

**WHAT CONGRESS IS DOING**

(By The Associated Press)  
Today: Senate: Debates deficiency appropriation bill.  
House: Considers Senate amendments to anti-tax evasion bill and conference report on sugar quota legislation.  
Yesterday:  
Senate passed tax bill; approved sugar report.  
House postponed action until next session on New Hampshire election contest; voted to revise administrative provisions of customs laws.

**HOUSTON CONVICT SHOT BY PRISON FARM GUARD**

ANGLETON, Aug. 20 (AP)—Tom Mills, Houston convict, was shot dead yesterday by Alvin Stewart, Retriever prison farm guard who said the prisoner attacked him.  
At an inquest Stewart and several convicts said Mills refused to work at his wood-cutting assignment and approached the guard, who was watching the crew with a shotgun across his knees. The witnesses testified Mills picked up a stick of wood and swung at Stewart. Without raising his weapon the guard fired and the convict fell dead, they asserted.  
Mills was serving sentences from Grimes and Montgomery counties for burglary and felony theft.

**WORN OUT?**

Overwork causes a drain on the blood's iron supply. This daily loss may be offset by eating more of strengthening iron-rich foods and taking Medicinal Iron such as found in **JAYNE'S TONIC PILLS**. They supply extra iron in rich measure, besides other tonic ingredients that build up appetite and encourage ingestion of extra food needed to build up strength or weight. All druggists recommend them. Only . . . . .  
**75¢**  
Cretney Drug Store

**FOR A PERFECT VACATION**  
To the Next Town Or Across America  
DESTINATION LEAVES PAMPA  
Oklahoma City 8:45 a. m. and 4:15 p. m.  
End 10:00 p. m.  
Dallas 11:00 a. m., 2:45 p. m. and 7:00 p. m. via Amarillo.  
**GO VIA Panhandle Trailways**  
Five Round Trips Daily To Amarillo and Borger. Two Buses Daily to Dumas and Sunray.  
**PAMPA BUS TERMINAL**  
PHONE 871

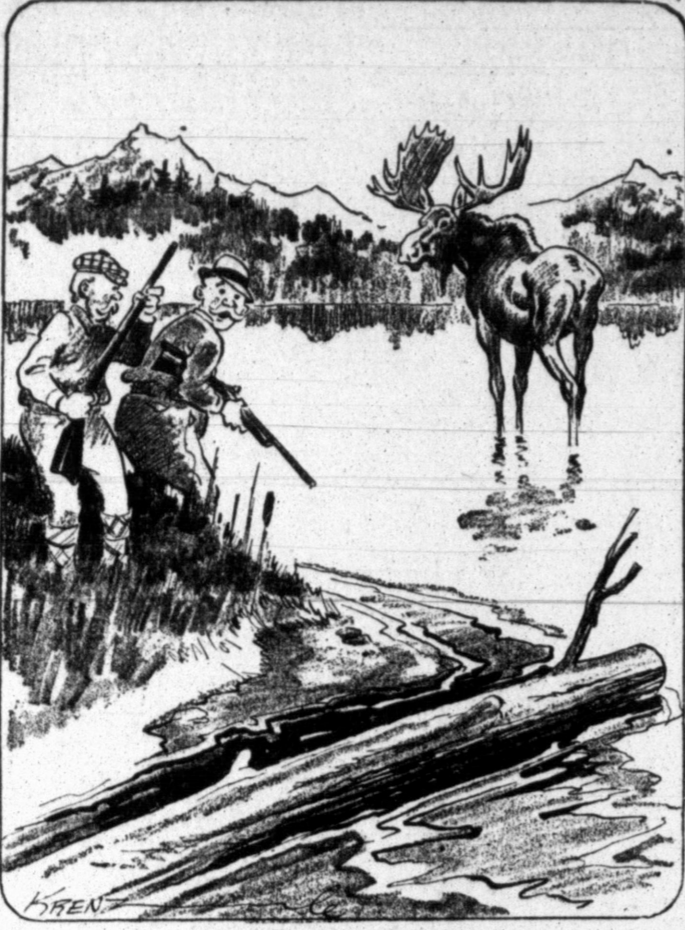




NEW SUPREME COURT JUDGE ALWAYS LEADER

DALLAS, Aug. 20 (AP)—Plain-spoken Hugo Black of Alabama, the Supreme Court's newest member, wasted none of his childhood years in playing he was undisputed leader of his playmates.

What Is It Anyway?



"I don't know what you'd call it, old topper, but it looks like one of those blasted things you see hanging on the walls of the Yale Club."

PLAINS AREA RANCHERS REPORT HORSE DISEASE

FORT WORTH, Aug. 20 (AP)—A seasonal outbreak of sleeping sickness among horses in the Panhandle, with losses in some instances as high as 50 per cent, was reported today by Dr. Leon G. Cloud, assistant state veterinarian of the livestock sanitary commission.

The greatest area of infection includes farms and ranches between Lubbock and Amarillo, Dr. Cloud said.

LIQUOR STORES MUST CLOSE NEXT MONDAY

AUSTIN, Aug. 20 (AP)—Bert Ford, liquor administrator, reminded dealers today beer may be sold Monday when six proposed constitutional amendments will be voted upon.

FLIER WILL USE PENNY FOR LUCK ON POLAR HOP

CHILDRESS, Tex. (AP)—James Mattern, famous flier, will carry a Childress penny in his shoe when he makes his projected transpolar air trip to Moscow next year.

DEER CAUSES PANIC IN RESORT TOWN

CHARLEVOIX, Mich. (AP)—Citizens of this resort town scurried for cover recently when a large eight-point buck strayed into town, became frightened and fed, leaving a trail of wreckage behind.

RELIGION OF A NATION

Does a nation need religion? That is the great question that is confronting America today, at a time when vast numbers of people seem to have lost interest in the religious faith and practice of their forefathers.

On Capital Hill

AUSTIN, Aug. 19 (AP)—Citizens of Texas are experiencing good times, judging from travel through the capitol.

August 8, 321 persons registered in the hall of the house of representatives and the total for the 30-day period ending that day was approximately 5,000.

An elaborate alarm system guards the fine new vault in the state treasury, constructed at a cost of about \$40,000, but a small boy thought the other day he had found a combination to a part of it.

A certain door leading to the vault may be opened by one of three push buttons, but no one except employes knows which to press.

Visiting the vault with parents, the boy listened closely when an attendant casually commented on the buttons.

"I saw you push that button! It's the one in the middle!"

The attendant laughed and explained the buttons could be changed and the next time it might not be the "one in the middle."

Members of the Senate committee investigating state finances with the view of reducing expenses if possible, have about concluded they tacked a job too big to be handled completely in a short time.

The original idea of the committee was to make a complete report with recommendations to the special session of the legislature which Gov. James V. Allred has said would be called in September.

The House passed a lengthy bill putting some of the recommendations into effect out of courtesy, it was generally believed to the member of the legislature who drafted it and then the Senate let the matter expire in committee.

"There won't be anything done until the state gets mad over the situation," a department official said recently, "and none can say when that will be."

Senator John S. Redditt of Lufkin, chairman of the important Senate finance committee, passed through Austin recently en route to California for a vacation.

"Going by yourself or taking the family?" asked a friend.

"I always take the wife and two kids on vacation," replied the Senator. "Otherwise I don't go."

International Sunday School Lesson

RELIGION OF A NATION. Text: Exodus 25:1-2, 8-9; 29:43-46; 40:34-38. By WM. E. GILROY, D. D., Editor of Advance.

called of God as were the ancient Israelites. The same obligations and privileges are theirs if they will but realize it.

Even in many cases where people continue association with the church, and attend its services regularly or irregularly, they have lost that sense of devotion and that recognition of religion as the commanding interest in their lives that was more common a generation ago.

There are 1536 churches in New York City. News Want-Ads Get Results.

GET 2/3 MORE JELLY WITH SURE-JELL!

10 GLASSES INSTEAD OF 6 From Exactly The Same Amount Of Juice! You Get Actually 2/3 MORE JAM OR JELLY When You Use Sure-Jell.

1-2-3-4-5-6-7 8-9-10-11-12-13-14 15-16-17-18-19-20-21 22-23-24-25-26-27 28-29- ONLY A 30 SECOND BOIL FOR JELLIES — ONE MINUTE FOR JAMS!

REAL FRESH FRUIT FLAVOR AND COLOR! Due to Sure-Jell's short boil, neither the flavor nor the color of the fruit is changed!

FRUIT IS PLENTIFUL AND CHEAP RIGHT NOW! So don't wait! Start today to fill up your jelly cupboard with those delicious jams and jellies your family will enjoy so much next winter!

SURE-JELL advertisement showing a jar of jam and a box of the product. Text: "Rich in Nature's Vitamin B, to BRACE-UP NERVES, DIGESTION, APPETITE."

LAMBS FIND COW A GOOD MOTHER. FREMONT, O. (AP)—A cow on Mrs. Josiah Smith's farm near here is mothering five orphan lambs.

GHOST TOWN OFFERED FOR SALE, NO BUYERS. MACKAY, Idaho, Aug. 20 (AP)—White Knob, a ghost town sprawled dustily over eight miles of ore tunnels, was offered for sale by Custer county today without result.

HONEST ABE. LOS ANGELES—It was the shifty look in the eye of Honest Abe secret service agents didn't like. They said they found "dishonest looking" Abraham Lincoln on \$5 bills found in the possession of Irvin Enslow and James C. Hartwell.

Idaho town and mine seven miles west of here was scheduled, but was postponed indefinitely for lack of bidders.

BREAD Sliced Large Loaf each 5c. Vegetole COMPOUND 8-lb Carton 92c

Good Things to Eat at BARGAIN PRICES. PIGGLY WIGGLY Always Has Them!!! CHECK EVERY ITEM!!!

FRYERS Colored First Grade LB. . . . . 23 1/2

Market prices: CARROTS radishes, Onions 10c large bunches, 3 for. CANTALOUPE Home Grown each 5c. LETTUCE Large Firm head 4 1/2c. New Potatoes 12 1/2c. PINEAPPLE JUICE Del Monte, 1/2 gal 35c. ORANGE JUICE 1/2 gallon 47c. APPLE BUTTER Pure Fruit, No. 2 1/2 can 15c.

Sugar Pure Cane 10 LB. 52c. SWEET CORN New Crop, No. 2 can 10c. VANILLA 8-ounce bottle 10c. SPINACH New Pack, 3 No. 2 cans 25c. PUREX The Better Bleacher, quart 12 1/2c. BACON Banquet Sliced, lb 35 1/2c. BUTTER Cloverbloom solids, lb 32c. HAMS half or whole, lb 28c. PIGGLY WIGGLY

QUAKER OATS advertisement featuring a woman and a child. Text: "TODAY OUR HEALTHY DIOME QUINS HAD QUAKER OATS". "Rich in Nature's Vitamin B, to BRACE-UP NERVES, DIGESTION, APPETITE".