

# Pampa Daily News

VOL. 1, NO. 280.

(AP)—Associated Press

PAMPA, GRAY COUNTY, TEXAS, WEDNESDAY EVENING, FEBRUARY 1, 1928.

(NEA Service)

PRICE FIVE CENTS

## SECOND HICKMAN TRIAL IS SET

### Removal of County Seat to Pampa Declared Certain

#### TOTAL IN POLL TAX DRIVE IS VERY PLEASING

Pampa Community Has Final Total of 3,500

#### MANY OTHERS ARE ELIGIBLE

#### Support Over County Is Expected to Increase the Margin

Surveying their work in the light of final poll tax figures, the Pampa committee today forecast the removal of the county seat to this city in the election of March 9.

Stating that this city and surrounding territory had made a fine response to the campaign, the workers, headed by Ivy Duncan, expressed confidence in the final outcome. On the basis of poll tax payments, county sentiment leans heavily toward Pampa for the permanent location of the county seat.

Yesterday was the last day to pay the poll tax. It will be several days before the sheriff's office can mail out the receipts asked by proxies, and, since there is a shortage of receipts, some delay will be inevitable. All persons who do not receive their receipts by February 10 are asked to notify the sheriff or Manager Scott Bercus at the Chamber of Commerce.

The approximate poll tax totals are:

- Pampa, 3,500.
- McLean, 700.
- Alanreed, 200.
- LeFors, 100.

The smaller communities will raise the total considerably, and Pampa will receive a substantial portion of those votes. Furthermore, "overs," "unders," and other eligible voters will give this community an additional thousand votes.

In addition to those who paid their poll taxes, the following may vote in the count year election:

1. All persons over 60, who have been in the state a year and in the county six months.
2. All who have reached the voting age since January 1, 1927 and who have been in the state a year and in the county six months.
3. All persons who have come into the state since January 1, 1927, and who have been in the state a year and in the county six months.

The "Pay Your Poll Tax" committee has been retained as the election committee, and these workers will enlist the entire community.

Chairman Ivy Duncan of the polls on March 9.

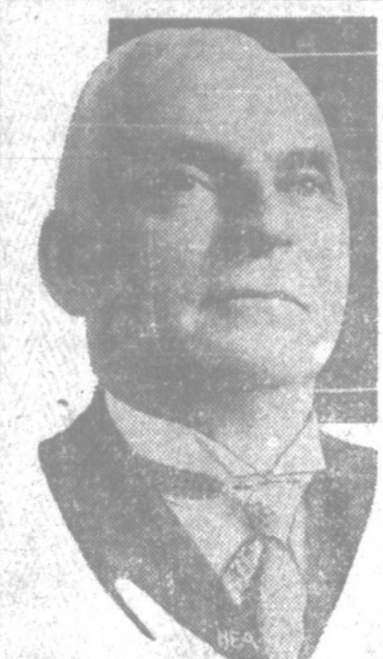
Chairman Ivey Duncan of the committee today asked the News to make this statement:

"The committee appointed by the president of the Chamber of Commerce, consisting of Mooney, Saulsbury, Laysander, Carlson, Reid, and Duncan, to conduct the campaign for more poll taxes has completed its work, and desires to thank each and every one who assisted in making the drive a successful one, and espe-

(Continued on Page 8.)

#### DAILY NIGHT AIR MAIL TO TEXAS

##### Hickman Judge



Judge J. J. Trabucco of Mariposa county, California, is the new judge chosen to try William Edward Hickman on the charge of murdering Marian Parker. Judge Trabucco (above), a veteran jurist, was chosen after charges of prejudice had been preferred against Judge Hardy.

#### ISLAND ENJOYS LINDY HOLIDAY

#### Flier to Hop Off for Porto Rico at 2 p. m. Friday

ST. THOMAS, Virgin Islands, Feb. 1.—This American island today celebrated a public holiday in honor of Col. Charles A. Lindbergh, who flew here from Maracay, Venezuela, over islands and waters which have figured large in the history of exploration.

Swinging along a crescent of 1,050 miles, over the coast of Venezuela and the Lesser Antilles, Lindbergh made his way with clock-like precision. He passed over dozens of islands, large and small which became inscribed on the maps of the world with the voyages of Columbus. The flight was completed in ten hours and 15 minutes.

Lindbergh flew high. He encountered slight headwinds and a little rain. He said the air was slightly rough, but not enough to hamper his progress.

The chain of the West Indies over which he flew appeared to be very beautiful, he said. He saw no obstacle to the aviation along the trail he blazed.

A presidential salute of 21 guns announced Lindbergh's arrival, after the firing of two cannon and the ringing of church bells had heralded his approach.

One of the island belles gave Lindbergh a bouquet of flowers as he stepped from the plane. He was then welcomed by Capt. Waldo Evans, U. S. N., retired, governor of the islands.

The Lone Eagle will hop off about 2 o'clock tomorrow afternoon for San Juan, Porto Rico.

#### Fire Department Not Sponsoring Lectures

The Pampa Fire department will not sponsor lectures on the life of Hickman as announced last night, it was said today.

After further considering the matter, and hearing comments, the department decided not to become connected with the lectures, although refraining from passing upon their educational value.

#### New Schedule to Start Tonight on Chicago-Dallas Route

KANSAS CITY, Feb. 1.—Over a lighted path of 995 miles, air mail fliers will wing their way on the Chicago-Dallas route tonight with the inauguration of night flying schedules.

Winking gas lights every few miles and large revolving beacons at greater distances will guide the planes through the darkness.

Leaving Chicago on the southbound trip at 8 p. m., the mail will be transferred shortly after 1 a. m. at Kansas City to a second plane which will continue through the darkness and dawn, arriving in Dallas at 8 a. m. The northbound plane leaves Dallas at 7 p. m., reaching Chicago at 7 o'clock the next morning.

At the south end of the route, the Chicago mail will connect with two Texas routes, one to Houston and Galveston, and the other to Waco, Austin and San Antonio. Northbound planes will connect with the transcontinental mail at Chicago.

A survey of railroad schedules by the National Air Transport, Inc., which operates the route, showed 200 cities will obtain advantage of rail connection with the line through inauguration of the night schedule.

The night schedules, the N. A. T. officials said, will save approximately 24 hours in delivery of Dallas mail in Chicago by eliminating overnight delays in delivery. Air mail leaving Dallas business houses at the close of the day, they explained, laid in the postoffice overnight awaiting the morning plane, and that night laid in the Chicago postoffice awaiting delivery.

The north end of the route, between Kansas City and Chicago, also will have day service, the present day schedules between those cities being retained.

#### Bank Teller Says Chicago Kidnaping Was a Frame-Up

CHICAGO, Feb. 1.—A 23-year old bank teller has told police that the \$40,000 robbery of the Industrial State bank Monday was a "frame-up" with three other men and two women involved besides himself. All but one of them were in custody of police today; and about \$12,000 of the loot was recovered.

James Dillon, the teller, told police after several hours questioning that the man who kidnaped him and forced him to open the vault was Albert Rothpart, 19, a friend. The others he named were Alvin Vandervord and Lea Howard, who he said were the "brains" of the band; Joseph Rennelli, and Joseph Vasselli, a chauffeur. Vasselli still was sought by police.

#### S-3 Reports She Is Under Control

WASHINGTON, Feb. 1.—The submarine S-3, which was out of communication with other vessels from last Saturday until Monday night, reported to the Navy department last night that she was proceeding through crooked island passage and expected to arrive in Guantanamo Bay today.

The message, made public today, said that the craft encountered severe storms enroute down the coast, but gave no further details.

Crooked Island passage is about 200 miles north of Guantanamo Bay.

##### Air Widow



Fred Hoyt, daring Wichita (Kas.) pilot, had to leap from his ice-coated plane during a blizzard in Idaho. He reached ground safely in his parachute only to freeze to death within 200 yards of a well-stocked cabin of a rancher. Mrs. Mary Hoyt (above) of Wichita had been his bride since the Christmas holidays.

#### MARVIN JONES ATTACKS BLOC

#### Says Farm Leaders Helped to Block Tariff Resolution

(By the Associated Press.) WASHINGTON, Feb. 1.—Charges that leaders of the House farm bloc had assisted in blocking action by the House on the McMaster resolution favoring a lowering of excessive tariff rates were made in the farm relief hearings of the agriculture committee today by Representative Jones, Democrat, Texas.

The Texan intimated that these leaders had been disloyal to legislation in the interest of the farmer. He mentioned Representative Dickson, Republican, Iowa, as a "reputable leader of the farm bloc," and said that he and others had "deserted the ship" after threatening for years to force a downward revision of the tariff unless adequate farm relief legislation were enacted.

#### Accept Life Terms on Murder Charges

(By the Associated Press.) HOMER, La., Feb. 1.—Mrs. Essie Jowers, 39, and J. Elisha Swift, 43, charged with the murder of J. Frank Jowers, the woman's husband, with drew their pleas of not guilty today and accepted life sentences in the penitentiary on pleas of guilty without capital punishment.

#### RAILROAD APPEAL DISMISSED

(By the Associated Press.) CHICAGO, Feb. 1.—A petition by Western railroads to set aside an award increasing the pay of locomotive firemen and hostlers on fifty-five systems was dismissed today by Judge George A. Carpenter in Federal District Court.

#### TO PROBE UTILITIES

(By the Associated Press.) WASHINGTON, Feb. 1.—The Walsh resolution for an investigation of public utility power corporations was approved today by the Senate Interstate Commerce committee with an amendment confining the inquiry to companies engaged in interstate commerce.

#### Two Courts Call For Youthful Slayer on Twentieth Birthday

(By the Associated Press.) LOS ANGELES, Feb. 1.—The scheduled murder trial of William Edward Hickman and his 16-year-old accomplice Welby Hunt, for the killing of C. Ivy Thoms in a drug store holdup, was continued to Wednesday, February 15, two weeks from today.

The continuance was given by Superior Judge Carlos Hardy before whom the two were scheduled to go on trial today. The defense attorney, Jerome Walsh, suggested that the present trial of the defendant Hickman for the kidnaping and killing of Marian Parker might be completed in ten days.

#### 100 Farm Leaders of South Meeting in Memphis Today

MEMPHIS, Tenn., Feb. 1.—More than 100 agricultural leaders representing all southern states attended the opening today of the twenty-ninth annual convention of southern agricultural workers, which will continue through Friday.

Dr. B. Youngblood, in charge of cotton utilization research for the United States Department of Agriculture the principal speaker today, urged adjustment of the quality of the cotton crop upwards in order to meet existing requirements in grade and staple length of American spinners.

The American cotton crop in recent years apparently has declined in grade if not in staple length, he said, and today only a small part of the cotton is of the better varieties, although the number of improved cotton varieties is greater than ever.

#### Marland Has Bad Year, Losing Seven Millions in 1927

NEW YORK, Feb. 1.—The Marland Oil company had an unprofitable business in 1927, the report showing net loss of \$7,691,076 after charges and reserves for intangible drilling costs and reductions of crude oil inventory, in contrast to a net income of \$11,690,811 in 1926, or \$6.05 a share.

There was a deficit of \$10,001,923 after dividends, against surplus of \$4,039,744 the year before. Gross earnings fell to \$56,322,473 from \$77,698,348.

#### Supply Company Will Erect New Warehouse Here

C. D. Erelwine, district manager of the Marion Machine Foundry and Supply company, with head offices in Dallas, here yesterday inspecting the Gray county oil field and was much impressed with the activities.

Before leaving this morning, he instructed W. L. Mangum, local manager, to make arrangements for the erection of a warehouse in Pampa. As soon as a satisfactory site has been obtained, the warehouse will be erected and stock moved in. The company expects to be in its new building serving the Gray county oil field before March 1, Mr. Mangum stated this morning.

#### SON TO STAFF MAN

An addition to the staff of the Pampa Daily News arrived this morning to Mr. and Mrs. Nathan Jones. A son was born at the home of Mrs. Jones' mother, Mrs. T. D. Shroyer, in Memphis Tenn.

Mr. Jones has been circulation manager of the Pampa Daily News for the past year and today is receiving the congratulations of his host of friends here.

(By the Associated Press.)

HALL OF JUSTICE, LOS ANGELES, Feb. 1.—The sanity trial of William Edward Hickman was continued today with the reading of more defense depositions, after having been delayed fifteen minutes, while the slayer of Marian Parker appeared in another court on a charge of committing a previous murder a year ago Christmas eve.

Richard Cantillon of the defense objected to a prosecution question, which was being read from a deposition of a Kansas City school mate of Hickman. Cantillon protested the school boy witness was incompetent to render an opinion of any man's sanity.

The objection was overruled by Judge Trabucco.

The school boy life of Hickman apparently excited considerable interest. The spectators seats were jammed 15 minutes before the court hour and the feminine curiosity was predominant.

LOS ANGELES, Feb. 1.—On his twentieth birthday today two Los Angeles courts, in each of which he is accused of a separate murder, demanded the presence of William Edward Hickman.

Opening of today's session of his sanity trial to determine his punishment for the kidnaping and slaying of little Marian Parker was ordered delayed that the youth might appear before Judge Carlos Hardy for the scheduled beginning of his trial for the murder of C. Ivy Thoms, a druggist killed during an attempted holdup.

Hickman's appearance in the Thoms case in which he is jointly accused with Welby Hunt, his 16-year-old confessed accomplice, was declared to be a mere formality. Attorneys previously had agreed to a continuance of the case until after the close of the sanity trial on the Marian Parker charges.

Fifteen defense depositions of Midwest witnesses on the peculiarities and "queerness" of Hickman and members of his family have been read into the record in the sanity hearing. A dozen more from former employes, schoolmates and friends of the young slayer remained to be presented.

Sandwiched between these last depositions, his attorneys disclosed, was that of James Parker, Kansas City butcher, who testified that the youth who calmly confessed to the brutal murder of Marian Parker, quit his job in the butcher shop after refusing to kill a chicken for a customer.

One of the first witnesses to take the stand in the courtroom here

(Continued on Page 8.)

A Ford coupe, owned by W. L. Richards, was almost completely destroyed by fire today. Mr. Richards was cleaning the engine with gasoline and when he turned on the switch the gas ignited. He was scorched about the head and face but suffered no serious injury.

The fire department made a fast run and soon had the fire out by means of chemicals.

#### THE WEATHER

OKLAHOMA—Tonight and Thursday fair; warmer Thursday.  
EAST TEXAS—Tonight and Thursday partly cloudy in north. Cloudy and unsettled in south portion probably rain on west coast.  
WEST TEXAS—Tonight and Thursday, partly cloudy; warmer in north portion Thursday.

Pampa Daily News

Published every evening except Saturday, and on Sunday morning by the News-Warrior Publishing Company, Inc., at 185 West Foster Street.

The only newspaper adequately covering Pampa and Gray county events and the Pampa oil field.

PHILIP R. POND, Manager; OLIN E. FINKLE, Editor

Entered as second-class matter March 25, 1922, at the post office at Pampa, Texas, under the Act of March 3, 1879.

MEMBER OF THE ASSOCIATED PRESS. The Associated Press is exclusively entitled to the use for republication of all news articles credited to or not otherwise credited to this paper, and also the local news published herein.

All rights of republication of special dispatches herein also are reserved.

SUBSCRIPTION RATES: By Carrier in Pampa: One Year \$4.00, Six Months \$2.75, Three Months \$1.75, One Month \$1.00. By Mail: One Year \$5.00, Six Months \$3.25, Three Months \$2.00, One Month \$1.25. Weekly Pampa News \$1.00 per year to Daily News subscribers.

NOTICE TO THE PUBLIC: Any erroneous reflection upon the character, standing, or reputation of any individual, firm, concern, or corporation that may appear in the columns of the Pampa Daily News will be gladly corrected when called to the attention of the editor. It is not the intention of this newspaper to injure any individual, firm, or corporation, and corrections will be made, when warranted as to substance as was the wrongfully published substance or article.

Telephone 100, all departments.

DAILY NEWS' 1928 PROGRAM FOR PAMPA

- One or more new railroads. New city hall-auditorium. County agricultural agent. Additional street paving. Exchange building. Expedite road paving work. Encourage existing industries. Invite new industries. Complete water, sewer systems. More and better homes. Extend Pampa trade territory. Develop dairying industry. Municipal band. Municipal airport. Pampa Fair. Associated Charities. County home demonstration agent. High school gymnasium.

QUITE RIGHT—Gene Howe, or the Tactless Texan of the Amarillo Globe-News, says that "Pampa is growing faster in proportion than any other city in the Panhandle."

His statement is several thousand per cent more correct than the Globe-News radio announcer was recently when he gave Pampa credit for 2,500 population, "and growing." The difference probably is that Mr. Howe is the editor, while the announcer was an employe who had taken street corner talk from an Amarillo anti-Pampa man. Now if Tack's employes read their newspaper, perhaps such errors may be expected to cease in the future.

Mr. Howe quoted the Southwestern Public Service company, which installed 60 new connections in Amarillo and 40 in Pampa last month. He might have added that the telephone company, the gas company, or the city water department have been making similar connections.

Those in a position to know vouch for the statement that Pampa has more people now than at any time during the boom. While transients who used to cluster about on the streets lowered the total population by leaving as oil went down in price, the city quickly took up slack and for several months has been building up solidly. Residences have caught up with the population insofar as most persons are concerned, but there is an active—even acute—demand for houses and apartments. One of the things to be most keenly regretted right now is the shortage of house and the high rents which obtain. In

comparison with other cities of the Panhandle Pampa has a tremendous demand for rent houses which will command prices in keeping to the salaries of the average man.

With many prerequisites of a permanently stable city of 10,000 to 20,000 people, Pampa is in a fine position—to be built. Local citizens are doing much to build the city and the Chamber of Commerce is not counting on good fortune or outside capital to do the work. The Kell railroad is the biggest proposition before the city, and its completion will still further cinch Pampa's position as the center of things.

Gray county needs a more accessible court house and Pampa has the sole opportunity to remove this government center. That the courthouse will still further centralize things and help build Pampa on one will deny. But Pampa is building up Gray county and paying three-fourths of the costs. The county seat must be brought here in the election of March 9.

As Pampa becomes stabilized, finance corporations are taking an interest in this community and, given the proper protection through the usual legal channels, they will provide much of the necessary capital. Moreover, centralization of things in Pampa is going to depend a great deal on the facilities which are offered. The much discussed office building is as greatly needed as ever. It is to be hoped that this structure, so often on the verge of being started, will become a reality.

Cities do not grow; they are built, even when there are many natural advantages. Big things should take form in Pampa in 1928.

WASHINGTON LETTER

By RODNEY DUTCHER, NEA Service Writer

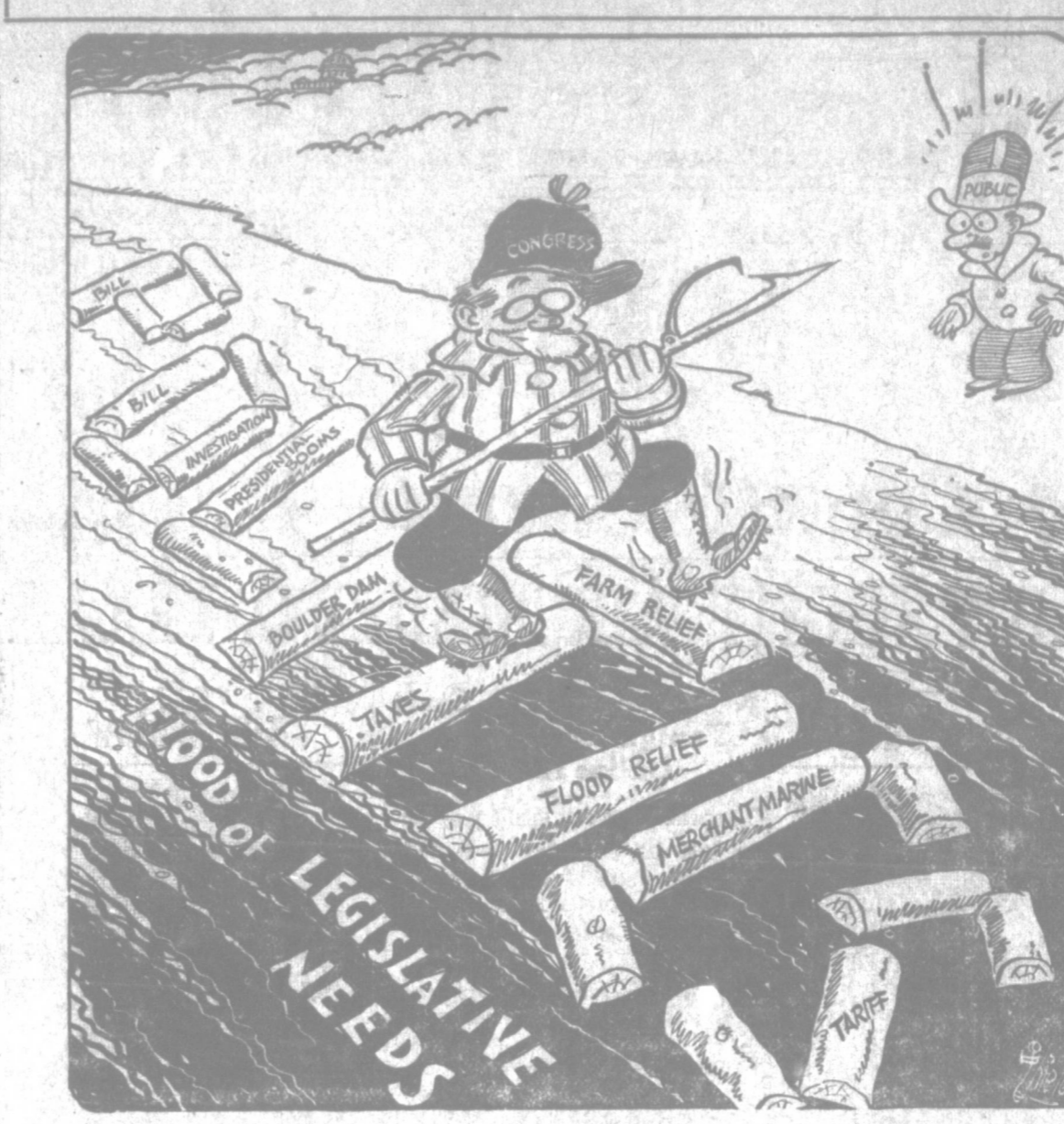
WASHINGTON—If Congress man Everett Kent doesn't watch out, they'll stuff him and put him in the Smithsonian museum.

Kent is the only Democratic congressman from Pennsylvania. He got into the House after a gory battle with a powerful machine and a big slush fund. He is so intelligent and aggressive that he has taken command of a fight which may give Boss Bill Vare of Pennsylvania his second bad licking here this session.

Defying the 35 other Pennsylvania representatives, Kent is out to unseat the Hon. James M. Beck. Boss Vare, elected to the Senate and doomed to be thrown out, gave Beck his old seat in the House last fall after Beck had lawyered for him even unto the point of writing a book to prove Vare's right to the senatorship.

The allegation against Beck is that he wasn't even a legal

The Log-Rolling Champeen



Philadelphian and hence had no right to run in the special election arranged for him by Vare.

Kent, 39 years old, is a former machinist, newspaper reporter, school teacher and principal, coal dealer and lawyer. He served a term here once before, being elected in 1922.

With reference to his last election, Kent was asked: "How did you, a Democrat, ever get elected in Pennsylvania?" "Simple," said he. "I went to the people with a doctrine of equal and exact justice to all and special privilege to none. Did the people get what I meant? You bet they did!"

"The gang raised \$75,000 to beat me. Prohibition enforcement officers and other federal job-holders raised most of it by squeezing it out of the liquor dealers. The liquor dealers were called on to contribute. They had to pay, but they were so angry about it that they voted for me after supporting me on the quiet."

"The output of several breweries was diverted into my district in the last four days of the campaign. Anyone who wanted to distribute it to persuade the voters to vote against me could have a barrel free. But most of them took it and sold it for 15 cents

a glass and then voted for me.

"I couldn't get a campaign card on railroad property. The railroad officials placarded their grounds with opposition placards and worked on their

employes, but the workers came to my meetings at night and all employes except the officials voted for Kent.

"In 1924, during the Republican landslide, they counted me out in districts that were

positively mine. This time I served notice that they hadn't better try it again, paid \$200 for watchers and won by 1500 votes. I've got the great independent districts of Pennsylvania, which has never been debauched.

"When I tell the railroad men, farmers, miners and factory workers there that the Pennsylvania tax system hits widows worst of all—especially widows forced out to make their own living scrubbing floors, dressmaking or in factories—while nine billion dollars of corporate wealth goes untaxed, they know what I mean because they've seen it work. My opponent had referred everybody who wanted anything in Washington to the county chairman at home and they didn't like that.

"I made 130 speeches and spoke wherever I could get a front porch, a church social or an abandoned hotel barroom." Kent predicts that Democracy will soon recover itself in Pennsylvania.

TWINKLES

An exchange says sophisticated New York failed to "get" this bit of stage play and the director had to cut it from the script: "Where's your chivalry?" "I traded it for a Dodge."

FRASER, UPTON & DOWNS "THE INSURANCE MEN" Bonds, City and Farm Loans Phone 372

Dependable Used CARS and TRUCKS Reasonable Terms Dyke Cullum Dodge Dealer

Pampa's Business, Professional and Commercial Directory

LAWYERS: STUDER, STENNIS & STUDER; H. E. FLOREY; W. M. LEWRIGHT; CONTRACTORS: HENRY L. LEMONS; CHIROPRACTORS: DR. AURA W. MANN; DR. J. C. HIGGINBOTHAM

PHYSICIANS AND SURGEONS: ARCHIE COLE, M. D.; DR. C. D. HUNTER; DR. ROY A. WEBB; DR. W. PURVIANCE; W. B. WILD, M. D.; J. A. ODOM, M. D.; PLUMBING: PAMPA PLUMBING CO.

DENTISTS: DR. H. H. HICKS; DR. W. F. NICHOLAS; DR. A. R. SAWYER; EYE SPECIALIST: DR. T. M. MONTGOMERY; MISCELLANEOUS: Picture Framing by an Expert; Thompson Hardware Co.

DRESSMAKING! Spring's favorite colors fashioned as you like them—That's the result of our dressmaking. Watch our windows every Wednesday and Thursday evening. Have you visited our Millinery Department? The French Shoppe On Balcony at Crystal Palace Confectionary

FRECKLES and His FRIENDS Uncle Harry's Quite a Mystery By BLOSSOM

YESTERDAY A TELEGRAM WAS RECEIVED BY FRECKLES' MOTHER FROM HER BROTHER HARRY, ANNOUNCING THAT HE WOULD STOP OFF FOR A FEW DAYS VISIT SOON!

IS HE COMING TO OUR HOUSE, FRECKLES? THAT'S WHAT THIS TELEGRAM SAYS—SEE—I WONDER WHAT OUR UNCLE HARRY LOOKS LIKE?

MOM—WHAT'S OUR UNCLE HARRY LOOK LIKE AND WHY HAVEN'T WE EVER SEEN HIM BEFORE? WELL, IT'S A LONG STORY—WHEN YOUR UNCLE HARRY WASN'T MORE THAN A LITTLE BOY HE WITH SEVERAL OTHER YOUNG MEN TOOK A SUDDEN NOTION TO WORK THEIR WAY ON A BOAT TO ENGLAND—FOR AWHILE I HAD LETTERS FROM HIM AND THEN FOR ELEVEN YEARS NO WORD CAME FROM HIM UNTIL THAT TELEGRAM YESTERDAY!

HAS HE ANY LITTLE BOYS THAT WE CAN PLAY WITH, DO YOU SUPPOSE? THAT I COULDN'T SAY—MAYBE HE HAS AND MAYBE HE HASN'T!

# Pampa Harvesters Surprise Sandies and Win, 30-26

## Locals Led at Half by the Score of 17 to 7

Displaying their best form of the season, the Pampa Harvesters team last night beat the Amarillo Sandies, pride of Amarillo, on their own floor 30 to 26.

At the end of the first half the Harvesters were in the lead 17 to 7, and the best efforts of the Sandies could not catch the fast traveling Pampa five. The local squad, although handicapped in their practices, surprised the Sandies, who recently defeated Panhandle after the latter had defeated Pampa in the Horger tournament.

The Harvesters, led by Captain Troy Maness with 13 points, and Troy Stalls, flashy center, with 8 points, have hit their stride. The passing of the men was short and accurate and they scored baskets from almost every angle. The Pampa defense had the Sandies' forwards bottled.

Travis, star forward on the Sandies five, was the only man on the team who could penetrate the Harvesters defense. He scored 17 of his teams points and was shooting accurately. Most of his baskets were long shots.

With the exception of Cash, the entire Pampa team was in the scoring list. Moore, Kahl, and Saulsbury repeatedly carried the ball up the floor for shots.

If the local boys had a gymnasium in which to play their games they would be hard to beat as they demonstrated on the floor last night when they sent their ancient rivals down to defeat by means of a well organized offensive which never let up through the entire game.

### Individual Scores

| Players       | PAMPA (30) | Points |
|---------------|------------|--------|
| Maness, f     |            | 13     |
| Cash, f       |            | 0      |
| Stalls, c     |            | 8      |
| Kahl, g       |            | 2      |
| Saulsbury, g  |            | 2      |
| Walstad, g    |            | 1      |
| Roberts, g    |            | 1      |
| Moore, g      |            | 3      |
| AMARILLO (26) |            |        |
| Gibson, f     |            | 0      |
| Vancy, c      |            | 0      |
| Alexander, c  |            | 0      |
| Travis, f     |            | 17     |
| Walker, g     |            | 2      |
| Doebler, g    |            | 1      |

### Basketball Results

(By The Associated Press.)  
 AT DENTON: West Texas State Teachers 26, North Texas State Teachers 19.  
 AT BROWNWOOD: Howard Payne 25, Southwestern 22.  
 AT ABILENE: Texas Tech 24, Simmons 19.

JITNEY JUNGLE sells for less—  
 "Save a Nickel on a Quarter."

Marcel Beauty Parlor  
 A Wave That Stays—75c  
 Room 12 Smith Bldg.  
 Phone 534

DRESSMAKING  
 Designing & Alterations  
 MRS. LIGON  
 Room 12 Smith Bldg.  
 Phone 534

Special for this week—  
 Eugene Permanent  
 Wave—\$10.00  
 Wave Guaranteed  
 Milady Beauty Shoppe  
 424 North Ballard  
 Phone 244

## "Scarface Al" Capone at Play



This is one of the few pictures ever taken of "Scarface Al" Capone, Chicago gang leader, and shows him (right) watching a friend take a workout with the medicine ball. The picture was taken without Capone's knowledge at Beach Casino, Miami, Fla., just before his conference with city officials at which it was agreed "mutually" that it would be best if Capone gave up his expensive, leased Miami Beach home and left the city.

## Southern Baseball Will Open Early

(By The Associated Press)  
 NEW ORLEANS, La., Feb. 1.—Southern Association baseball will get away to an early start in 1928, with decision of the directors yesterday to call April 10 opening day for the first half of the split season.

The first half of the season will conclude June 27, the directors announced the second half beginning with the games of June 28 and continuing through September 15. Post season championship series dates will be decided later.

Try a Daily News Want Ad First

### Madame Fanning

Will Be at the  
 Schneider Hotel  
 February 2nd  
 Character Analysis and advice given on business and all personal affairs. Interview only by appointments.  
 Satisfaction Guaranteed.  
 Please make appointments early.

## Our Life-Time Scholarship

Entitles You to Thorough Training. A job as soon as you can hold one. Life membership in Employment Department. We teach Gregg Shorthand, 20th Century Book-keeping, Rational Typewriting, Business Writing, Spelling, Business English, Business Arithmetic, Commercial Law, Office Training, Higher Accounting, Banking, Mimeograph, and Multigraph. We can train you for Civil Service Examinations.

Day and night Classes now being conducted. Reasonable rates on your own terms.

Phones 497 or 166-W

Up-Stairs opposite P. O.

### Pampa School of Commerce

## News Want Ads Pay

## KC Baking Powder

for best results in your baking

Same Price for over 35 years  
 25 ounces for 25¢

Use less than of higher priced brands

Guaranteed Pure

## STUDEBAKER COMMANDER

World's Champion Car

25,000 miles in less than 23,000 minutes—nothing else on earth ever ran so far so fast

4 Door Sedan

1495

That-Saunders Motor Co.  
 Pampa, Texas

## Spring Building Evidently to Have Very Early Start

Building permits amounting to more than \$15,000 have been taken out at the city hall during the last week. Owing to the spring-like weather and the need of more residences, the spring building program has commenced early.

Among those taking permits during the last week are: Peak and Landry, local building contractors, who plan to erect a \$3,000 residence in the Park Hill addition.

Wm. Mullinax, another local building contractor, is erecting a \$3,000 home in the North addition.

George Woodhouse will build a \$2,000 residence on his lot in the Crawford addition. He plans to use tile and will do the building himself.

In the South Side addition, J. T.

Glover, local contractor, is erecting a \$3,500 residence for E. L. Eldridge.

Several business and residential lots have been sold this month and an extensive building program is expected to commence immediately.

### LEAVES TO TAKE UP POSITION ON NEWSPAPER

William T. Finley left yesterday

for Knoxville, Tenn., where he will be in the editorial department of the Knoxville News-Sentinel, a Scripps-Howard publication.

Much of his work will be feature writing, and he also will do photograph work.

Mr. Finley, son of B. E. Finley, has been here on a leave of absence from the News-Sentinel for two months.

Come! Learn! Enjoy!

FREE

Power Farming Meeting

FEBRUARY 6 AND 7

JOHN HAGGARD  
 Pampa, Texas

Across Street from Schaffer Hotel

## Valuable Information on Power Farming Machinery

Practical talks by practical men for practical farmers will be given on how to get the very best service out of power farming machinery. Illustrated by moving pictures and slides. You are cordially invited to come early and attend all the sessions no matter what machinery you use. Experienced men will be there to help you solve your practical machinery problems.

## You Will Not Be Asked to Buy

This meeting will be held in cooperation with the J. I. Case Threshing Machine Company, Racine, Wis.

Brunswick  
 Panatropes—  
 Brunswick Records  
 Pampa Music Store  
 Horn & Coffee Grocery Bldg.

If you want something "new" for a change—

Roll a

Velvet

cigarette



Over 242 million

rolled every month

LIGGETT & MYERS TOBACCO CO.

## MOM'N POP

A Surprise in Store

By TAYLOR

IN HIS ATTEMPT TO HEAD OFF THE FAKE BILL GERRICK, WHO IS PLANNING TO ESCAPE IN A PLANE WITH GUNN'S AND TYNE'S MONEY, THE REAL BILL GERRICK ARRIVES AT THE FLYING FIELD FIRST—AND HAS A BATTLE WITH HIS WIFE'S MURDERER!

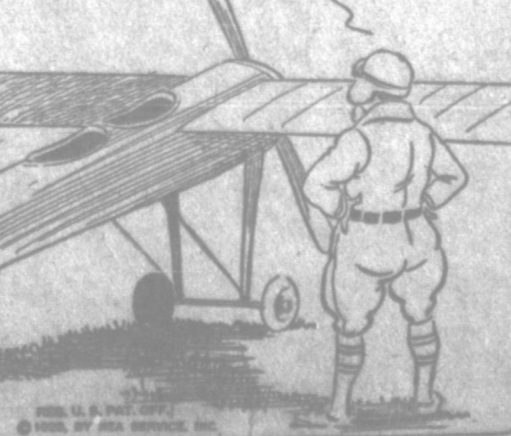
BE'LIENE ME IT'S GONNA TAKE MORE THAN THE COUNT OF TEN TO BRING THIS FELLOW TO—CHAG, BODDY, I GOTTA PLAY THE PART OF A QUICK CHANGE ARTIST



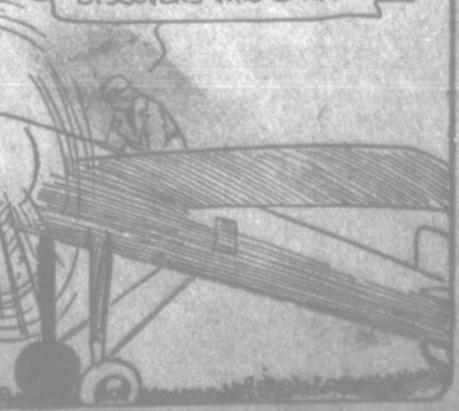
AS LUCK WILL HAVE IT—A PERFECT FIT—



NICE LITTLE SKY BOAT MY IMPERSONATOR'S PLANNED TO SWIP IN—HERE'S WHERE MY EXPERIENCE IN THE AVIATION CORPS WILL COME IN HANDY



EVERYTHING'S IN TIP-TOP SHAPE—NOW WHEN THAT IMPOSTOR SHOWS UP HE'LL BE IN FOR A BIG SURPRISE—HE THINKS HE'S GOING UP IN THE AIR—AND HE IS—WHEN HE DISCOVERS WHO I AM



IN NEW COLORS, PLAIDS AND SOLIDS—FUR TRIMMED  
**\$9.90 TO \$19.90**

BABY CRIB BLANKETS  
Good Size—Each  
**49c**

MEN'S PURE THREAD SILK HOSE  
Solid and Fancy Colors  
Per Pair  
**49c**

ONE BIG TABLE MEN'S FINE GRADE WOOL SHIRTS  
Levine's Grand Opening Sale Price  
**\$2.49**

MEN'S PART WOOL WORK SOX  
Per Pair  
**19c**  
Sale Starts Friday, Feb. 3rd.

MEN'S FANCY HOSE  
Per Pair  
**19c**  
Sale Starts Friday, Feb. 3rd.

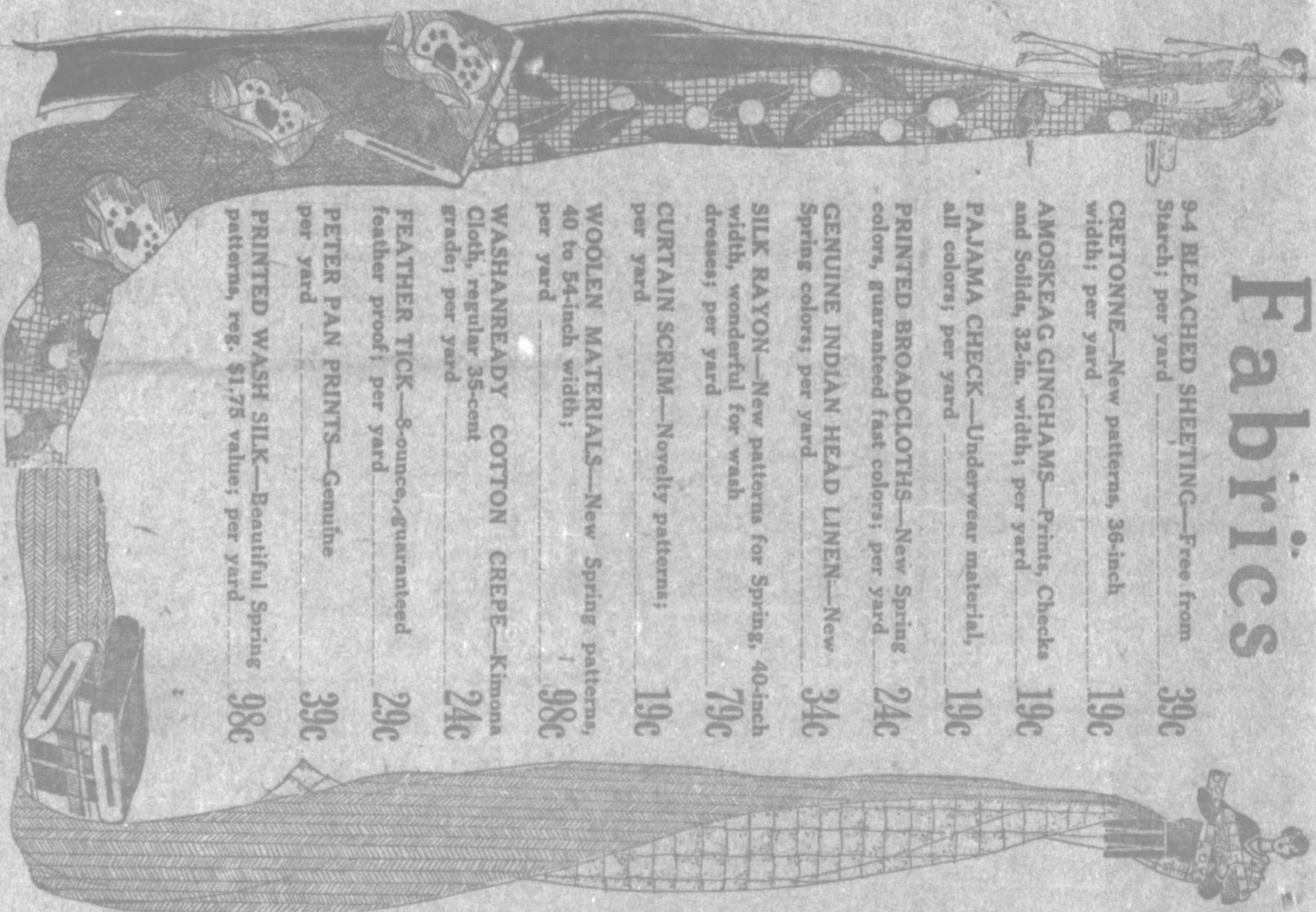
SOUVENIRS for the KIDDIES!



SHOES ON THE TABLE  
300 Pairs Odds and Ends in Ladies Slippers  
Values to \$7.50  
Your Choice  
**\$1.89**

LARGE ASSORTMENT NEW SPRING

Fabrics



9-4 BLEACHED SHEETING—Free from starch; per yard **39c**  
CRETONNE—New patterns, 36-inch width; per yard **19c**  
AMOSKEAG GINGHAMS—Prints, Checks and Solids, 32-in. width; per yard **19c**  
PAJAMA CHECK—Underwear material, all colors; per yard **19c**  
PRINTED BROADCLOTHS—New Spring colors, guaranteed fast colors; per yard **24c**  
GENUINE INDIAN HEAD LINEN—New Spring colors; per yard **34c**  
SILK RAYON—New patterns for Spring, 40-inch width, wonderful for wash dresses; per yard **79c**  
CURTAIN SCRIM—Novelty patterns; per yard **19c**  
WOOLEN MATERIALS—New Spring patterns, 40 to 54-inch width; per yard **98c**  
WASHANREADY COTTON CREPE—Kimona Cloth, regular 36-cent grade; per yard **24c**  
FEATHER TICK—8-ounce, guaranteed feather proof; per yard **29c**  
PETER PAN PRINTS—Genuine per yard **39c**  
PRINTED WASH SILK—Beautiful Spring patterns, reg. \$1.75 value; per yard **98c**

KOTEX  
Per Box  
**29c**

CHILDRENS UNIONALLS  
Stripes and Solid Colors  
Sizes 2 to 8—Garment  
**89c**

One Big Table Children's Shoes  
Previously Sold up to \$2.50  
Choice of Lot—Pair  
**\$1.00**

VALUES TO \$15.50 OR 2 FOR  
**\$7.95**  
BRING A FRIEND **\$15**

20 PER CENT DISCOUNT ON ALL MENS BOOTS AND SHOES

GENUINE PACKARD SHOES FOR MEN  
LEVINE'S GRAND OPENING SALE PRICE  
PER PAIR  
**\$7.85**

DOORS OPEN AT 9 A. M.

2500 MENS NEW SPRING SHIRTS  
Beautiful New Patterns  
Grouped in 8 fast selling groups  
Group 1—\$1.50 Value  
**89c**  
Group 2—\$2.25 Value  
**\$1.69**  
Group 3—\$3.50 Value  
**\$1.98**



"PRICES TALK" LEVINE'S  
Formerly The Peoples Store  
PAMPA, TEXAS

**DOORS**  
will open  
...at...  
**9 O'CLOCK**



**"PRICES TALK,"**  
**LEVINE'S**

Formerly --- The Peoples Store

**GRAND OPENING SALE BEGINS FRIDAY, FEB. 3**

**Store Closed Wednesday and Thursday**  
In order to make preparations for this Grand Opening Sale we will close all day Wednesday and Thursday. Friday morning we will open our doors to Levine's nice new fresh stock which will be sold at friend-making prices.

Preparations are being made now for the Grand Opening Sale of Levine's. This is the kind of sale that will win new friends. We guarantee to each and every one who visit this sale a savings that will warrant return business. Levine's associated stores have a buying power that is hard to equal and never surpassed. We are glad to pass this saving on to you —our profits come from volume sales! You're always welcome at Levine's folks, but at our Grand Opening Sale we extend a personal invitation to all. Be here on the opening day.

**WANTED!!**  
Fifteen Experienced Sales People to Assist in this Sale

**Ladies' Spring Coats**



**36-IN. BLEACED DOMESTIC—**  
Fine grade; limit 5 yards to a customer—  
Per yard **9c**

**GENUINE HUMMING BIRD HOSE**  
Silk to Top and Full Fashioned—  
Per Pair **\$1.59**

**READY-MADE CURTAINS**  
Rayon Trimmed—All colors—  
Per Pair **98c**

**MEN'S FELT DRESS HATS**  
New Oxford Grays and Soft Shades of Tan—Fifth Avenue Styles  
**\$3.45**

**MEDIUM WEIGHT UNIONS**  
This is a Clean—  
Per Pair **69c**

**Boy's Heavyweight Underwear**  
Regular 98c  
Value at—  
Per Pair **69c**

**JUST ARRIVED!**  
Special Purchase for this Sale!  
**100 LADIES NEW SPRING HATS**  
Values to \$8.50—Opening Sale Price **\$4.95**

**MEN'S FAST COLOR WORK SHIRTS**  
Shades: Powder Blue, Honey Kong and Sand—  
Sale price, each **98c**

**BOY'S BLUE OVERALLS**  
Size: 6 to 16—As long as they last during this sale for—  
per pair **79c**

**MEN'S KHAKI WORK TROUSERS**  
Sale Price during this Sale Per Pair **89c**

**MEN'S DRESS TROUSERS**  
We can match your coat; New patterns To **\$5.95**

**Clean-Up Price on Boys Suits**  
**\$5.95**  
To **\$15.95**  
**REMNANTS ONE-HALF PRICE**

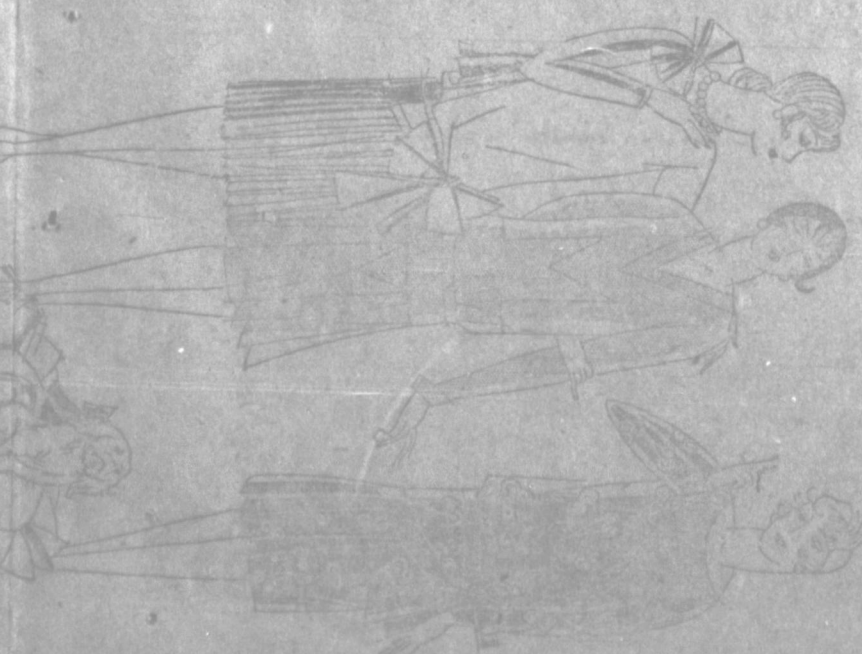
**Ladies' Shoes**

**GROUPED IN 4 FAST SELLING GROUPS**

All \$5.00 Slippers **\$2.98**  
All \$6.50 Slippers **\$4.48**  
All \$7.50 Slippers **\$4.98**

Mirror of Fashion, hand made slippers; regular \$10.00 sellers **\$5.98**  
Sizes: AAA to EEE

**New Spring Dresses**



LARGE ASSORTMENT NEW SPRING

Permit No. 1  
1 1/2-Cent Faith  
PAMPA TEXAS  
Box Holder  
Route No.  
Texas

# THE "CANARY" MURDER CASE

by S. S. VAN DINE AUTHOR OF THE BENSCH MURDER CASE

**CHARACTERS**  
**PHILO VANCE**  
**JOHN F.-X. MARKHAM**, District Attorney of New York County.  
**MARGARET ODELL** (The "CANARY")  
**CHARLES CLEAVER**, a man about town.  
**KENNETH SPOTSWOOD**, a manufacturer.  
**LOUIS MANNIX**, an importer.  
**DR. AMBROSE LINDQUIST**, a fashionable neurologist.  
**TONY SKELL**, a professional burglar.  
**WILLIAM ELMER JESSUP**, telephone operator.  
**HARRY SEIVELY**, telephone operator.  
**ERNEST HEATH**, Sergeant of the homicide Bureau.

**THE STORY THUS FAR**  
 Spotswoode told Markham it was he who had gone out with Margaret Odell the night she was murdered. When he left her apartment he told Jessup to call him a cab. While waiting they heard a scream from the "Canary's" apartment. Both rushed back and were told everything was all right. But the next morning the girl was found strangled. Vance believes two men were in the apartment at the time of the murder, the strangler and a man who hid in the clothes closet. There is no way to account for the presence of anyone in the apartment. All the circumstances point to the impossibility of the girl's having been murdered, but her strangled body gives the lie to such a conclusion.

**CHAPTER XIV**  
 "Your Long Island Don Juan has certainly not supplied you with any footprints in the snow," said Vance. "Anyway, his coming forward at this time closes one line of inquiry over which we might have wasted considerable time."  
 "If many more lines of inquiry are closed," remarked Vance, drily, "you'll be in a distressing dilemma, don't you know?"

"There are enough still open to keep me busy," said Markham, pushing back his plate and calling for the check. He rose, then pausing, regarded Vance meditatively. "Are you sufficiently interested to want to come along?"  
 "Oh, what? My word! . . . . . Charmed, I'm sure. But, I say, sit down just a moment—there's a good good fellow!—till I finish my coffee."

I was considerably astonished at Vance's ready acceptance, careless and flustering though it was for there was an exhibition of old Chinese prints at the Montross Galleries that afternoon, which he had planned to attend. A Riokai and a Moyeki, said to be very fine examples of Sung painting, were to be shown; and Vance was particular eager to acquire them for his collection.

We rode with Markham to the Criminal Courts building and, entering by the Franklin Street door, took the private elevator to the district attorney's spacious but dingy office which overlooked the gray-stone ramparts of the Tombs. Vance seated himself in one of the heavy leather-upholstered chairs near the carved oak table on the right of the desk, and lighted a cigarette with an air of cynical amusement.

"I await with anticipatory delight the grinding of the wheels of justice," he confided, leaning back lazily.  
 "You are doomed not to hear the first turn of those wheels," retorted Markham. "The initial revolution will take place outside of this office." And he disappeared through a swinging door, which led to the judges' chambers.

Five minutes later he returned, and sat down in the high-backed swivel chair at his desk, with his back to the four tall narrow windows in the south wall of the office. "I just saw Judge Redfern," he explained—"It happened to be the midday recess—and he verified Spotswoode's statements in regard to the poker game. The judge met him outside of the club at ten minutes before midnight, and was with him until three in the morning. He noted the time because he had promised his guest to be back at half past eleven, and was twenty minutes late."

"Why all this substantiation of an obviously unimportant fact?" asked Vance.

"A matter of routine," Markham told him, slightly impatient. "In a case of this kind every factor, how-



"The case was pried open with a specially made cold chisel such as only a professional burglar would know how to use."

ever seemingly remote to the main issue, must be checked."  
 "Really, you know, Markham"—Vance laid his head back on the chair and gazed dreamily at the ceiling—"one would think that this eternal routine, which you lawyer chaps worship so devoutly, actually got one somewhere, occasionally, whereas it never gets one anywhere. Remember the Red Queen in "Through the Looking-Glass—"

"I'm too busy at present to debate the question of routine versus inspiration," Markham answered brusquely, pressing a button beneath the edge of his check.  
 Swacker, his youthful and energetic secretary, appeared at the door which communicated with a narrow inner chamber between the district attorney's office and the main waiting-room.

"Yes, Chief?" The secretary's eyes gleamed expectantly behind his enormous horn-rimmed glasses.  
 "Tell Ben to send me in a man at once."

Swacker went out through the corridor, and a minute or two later a suave, rotund man, dressed immaculately and wearing a princely smile, entered, and stood before Markham with an ingratiating smile.

"Morning, Tracy." Markham's tone was pleasant but curt. "Here's a list of four witnesses in connection with the Odell case that I want brought down here at once—the two phone operators, the maid, and the janitor. You'll find them at 184 West 71st Street; Sergeant Heath is holding them there."

"Right, sir." Tracy took the memorandum, and with a prish, but by no means inelegant, bow went out.

During the next hour Markham plunged into the general work that had accumulated during the forenoon, and I was amazed at the man's tremendous vitality and efficiency. He disposed of as many important matters as would have occupied the ordinary business man for an entire day.

Swacker bobbed in and out with electric energy, and various clerks appeared at the touch of a buzzer, took their orders, and were gone with breathless rapidity. Vance, who had sought diversion in a tome of famous arson trials, looked up admiringly from time to time, and shook his head in mild reproach at such spirited activity.

It was just half past two when Swacker announced the return of Tracy with the four witnesses; and for two hours Markham questioned and cross-questioned them with a thoroughness and an insight that even I as a lawyer had rarely seen equaled. His interrogation of the two phone operators was quite different from his casual questioning of them earlier in the day; and if there had been a single relevant omission in their former testimony, it would certainly have been caught now by Markham's grueling catechism.

But when, at last, they were told they could go, no new information

had been brought to light. Their stories now stood firmly grounded; no one—with the exception of the girl herself and her escort, and the disappointed visitor at half past nine—had entered the front door and passed down the hall to the Odell apartment from seven o'clock on; and no one had passed out that way.

The janitor reiterated stubbornly that he bolted the side door a little after six and no amount of wheedling or aggression could shake his dogged certainty on that point. Amy Gibson, the maid, could add nothing to her former testimony. Markham's intensive examination of her produced only repetitions of what she had already told him.

Not one new possibility—not one new suggestion—was brought out. In fact, the two hours' interlocking proceedings resulted only in closing up every loophole in a seemingly incredible situation. When at half past four, Markham sat back in his chair with a weary sigh, the chance of unearthing a promising means of approach to the astonishing problem seemed more remote than ever.

Vance closed his treatise on arson, and threw away his cigarette.  
 "I tell you, Markham, old chap," he grinned, "this case requires contemplation, not routine. Why not call in an Egyptian seeress with a flair for crystal-gazing?"

"If this sort of thing goes on much longer," returned Markham, dispiritedly, "I'll be tempted to take your advice."

Just then Swacker looked in through the door to say that Inspector Brenner was on the wire. Markham picked up the telephone receiver, and as he listened he jotted down some notes on a pad. When the call had ended, he turned to Vance.

"You seemed disturbed over the condition of the steel jewel-case we found in the bedroom. Well, the expert on burglar tools just called up; and he verifies his opinion of this morning. The case was pried open with a specially made cold chisel such as only a professional burglar would carry or would know how to use. It had an inch-and-three-eighths beveled bit and a one-inch flat handle. It was an old instrument—there was a peculiar nick in the blade—and is the same one that was used in a successful house-break on upper Park Avenue early last summer. . . . Does that highly exciting information ameliorate your anxiety?"

"Can't you say that it does," Vance had again become serious and perplexed. "In fact it makes the situation still more fantastic. I could see a glimmer of light—seric and unearthly, perhaps, but still a perceptible illumination—in all this murkiness if it wasn't for that jewel-case and the steel chisel."

Markham was about to answer when Swacker again looked in and informed him that Sergeant Heath

(See CANARY MURDER, Page 8.)

## MANY ANNOUNCE FOR RE-ELECTION

### S. A. Hurst Is Out for Sheriff of Gray County

S. A. "Art" Hurst has announced his candidacy for Sheriff of Gray county for the coming term. Mr. Hurst has resided in Gray county for the past two years coming here from Shawnee, Okla.

He is a well known figure in the oil field being classed as one of the best drillers in the Panhandle. He is in charge of operations for the Guernsey Oil company, a local organization, drilling west of Pampa. Mr. Hurst is highly recommended by his numerous friends in the oil industry and since his arrival in Pampa he has made a host of friends.

### Ivy Duncan Has Consented to Run for County Judge

In consenting to run for the office of county judge, Ivy Duncan made the following statement:

"In answer to the petitions that were presented to me yesterday requesting that I make the race for County Judge of this county, I have consented to become a candidate and will make the race.

However, I will withhold making a formal announcement of my policies, etc., until a later date, due to the fact my time is taken up with work on the poll tax committee, the county seat election committee, and the soliciting committee for the new railroad."

IVEY E. DUNCAN.

### Charlie Thut Is Known as Good Clerk of Courts

Charlie Thut, a pioneer of Gray county, who for the last three years has served as county and district clerk, has announced for re-election to those offices which he is known to fill capably.

Mr. Thut was born where the townsite of LeFors is situated, and has lived in Gray county all his life. He has been a prominent figure both in private and political life in the county.

He has been especially interested in the progress of Gray county, and has worked for all necessary improvements.

### County Attorney Is Candidate for 1928 Re-Election

County Attorney John Studer is seeking re-election as county attorney for Gray county. He has served in that capacity for the last three years. He is the senior partner of the local law firm of Studer, Stennis, and Studer.

During Mr. Studer's term of office, Pampa became a city and Gray county an oil center, and his duties increased in proportion. He also filled the position of city attorney un-

til the time when a full-time attorney was needed.

Mr. Studer has resided in Pampa five years having opened a law office here after graduating from Cumberland university in 1922. During the war he served with the American flying corps. He is a native of the Panhandle, being a son of J. C. Studer of Canadian.

### 8 Candidates Have Announced

Seven new political announcements which the News is authorized to make today bring the county total to eight.

H. G. McClesky, candidate for commissioner in Precinct 3, announced a few weeks ago.

While other announcements are expected soon, the incumbents so far have shown most interest in the July primary. A number whose friends have been urging them to run for office have not yet seen fit to make a decision.

City offices are now appointive, instead of elective.

### Ewing Leech Is Values Expert—Seeks Re-Election

Ewing Leech, who filled part of one term as county assessor and was elected the next term, again aspires to that position. In all kinds of weather conditions, he has faithfully carried out his duties as assessor and collector of taxes for Gray county.

Mr. Leech has been a resident of Gray county for the last 20 years. He was formerly a successful rancher near Pampa.

He has worked under difficulties through his term, due to the fact that his office was in LeFors and most of his work in Pampa. He has a wide knowledge of Gray county values.

JITNEY JUNGLE sells for less. "Save a Nickel on a Quarter."

### W. A. Taylor Offers His Services Again As a Commissioner

W. A. Taylor, for the last ten years county commissioner of Precinct 2, in which Pampa and LeFors are situated, is again in the race for re-election. Mr. Taylor has served the precinct faithfully, as his re-election each term indicates.

Chief among the commissioner's accomplishments are good roads. Since the finding of oil in the county, good roads have been especially needed and Mr. Taylor's work has been heavy and important.

Mr. Taylor moved to Pampa eighteen years ago from Cleveland county, Okla., where he served as county commissioner for ten years before moving to Texas. Since moving to the Pampa vicinity he has been a successful farmer and dairyman. In the city he maintains the Pampa Land company.

### Sheriff Graves Enters Race for the Office Again

Sheriff S. Graves, in whose hands the law enforcement of the county has rested for the last seven years, is again in the field for re-election to that office. Although an oil field county, Gray boasts of never having had a crime problem.

During the seven years Sheriff Graves has been in office there has been nothing which resembled a crime wave, and major offenses have been rare.

Sheriff Graves and his family moved here seven years ago from Cleburne, where he was a deputy sheriff in Johnson county. Before moving to Cleburne he was a successful rancher near Fort Worth.

The jovial sheriff believes in strict law enforcement, and says he is now endeavoring to stamp out the illicit whiskey business here.

**I WISH TO ANNOUNCE**

my candidacy for re-election as

**COMMISSIONER OF PRECINCT No. 2**

Subject to the will of the Voters at the Democratic Primary July 28

I am closing my tenth year as Commissioner of this precinct and if re-elected will carry on the duties of the office faithfully and efficiently.

**W. A. TAYLOR**

**S. A. HURST, Better Known as ART HURST**

formally announce my candidacy for

**SHERIFF OF GRAY COUNTY**

subject to the Democratic Primary, July 28, 1928.

I pledge myself to the full and impartial enforcement of the law and the full performance of the duties of Sheriff of the County.

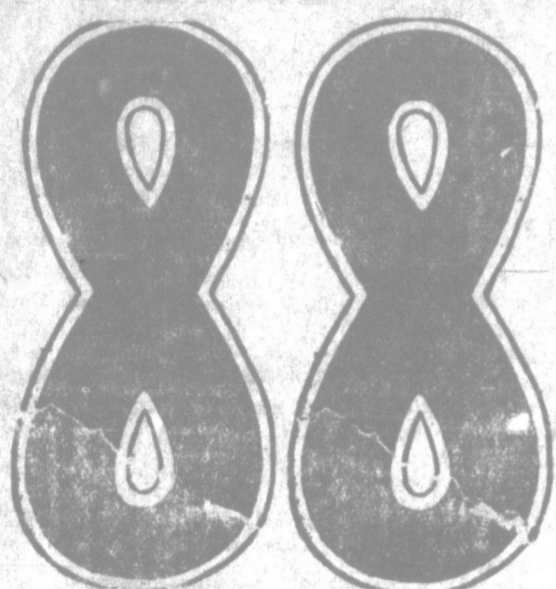
I am well known among the oil men of the county and seek their support as well as the support of the other citizens of Gray County.

**S. A. HURST**

Pampa,  
Texas

# K C STORE

Pampa,  
Texas



88c

# SALE



88c

Just for 3 Days, Thursday, Friday and Saturday

FEBRUARY 2, 3 and 4

PAMPA'S BARGAIN CORNER

**MEN'S HOSE**  
Silk and Lisle  
3 Pair for **88c**

**MEN'S FLEECE UNIONS**  
Regular \$1.25  
Value for **88c**

**LADIES' SHOES**  
To go in this Sale at **\$2.88 and Up**

House  
Dresses **88c**

**LADIES' SILK HOSE**  
Regular \$1.50  
Value for 3 Pairs for **\$2.50 88c**

**Men and Boys ALL-WOOL LUMBER JACKS**  
Worth to \$4.95 All Sizes  
**\$2.88**

**MEN'S SEAL SKIN CAPS**  
Worth Up to \$7.00  
**88c**

**MEN'S SHOES**  
OUT THEY GO  
**\$1.88**

**MEN'S BLUE CHAMBRY SHIRTS**  
2 FOR  
**88c**

**MEN'S FLANNEL SHIRTS**  
**88c**

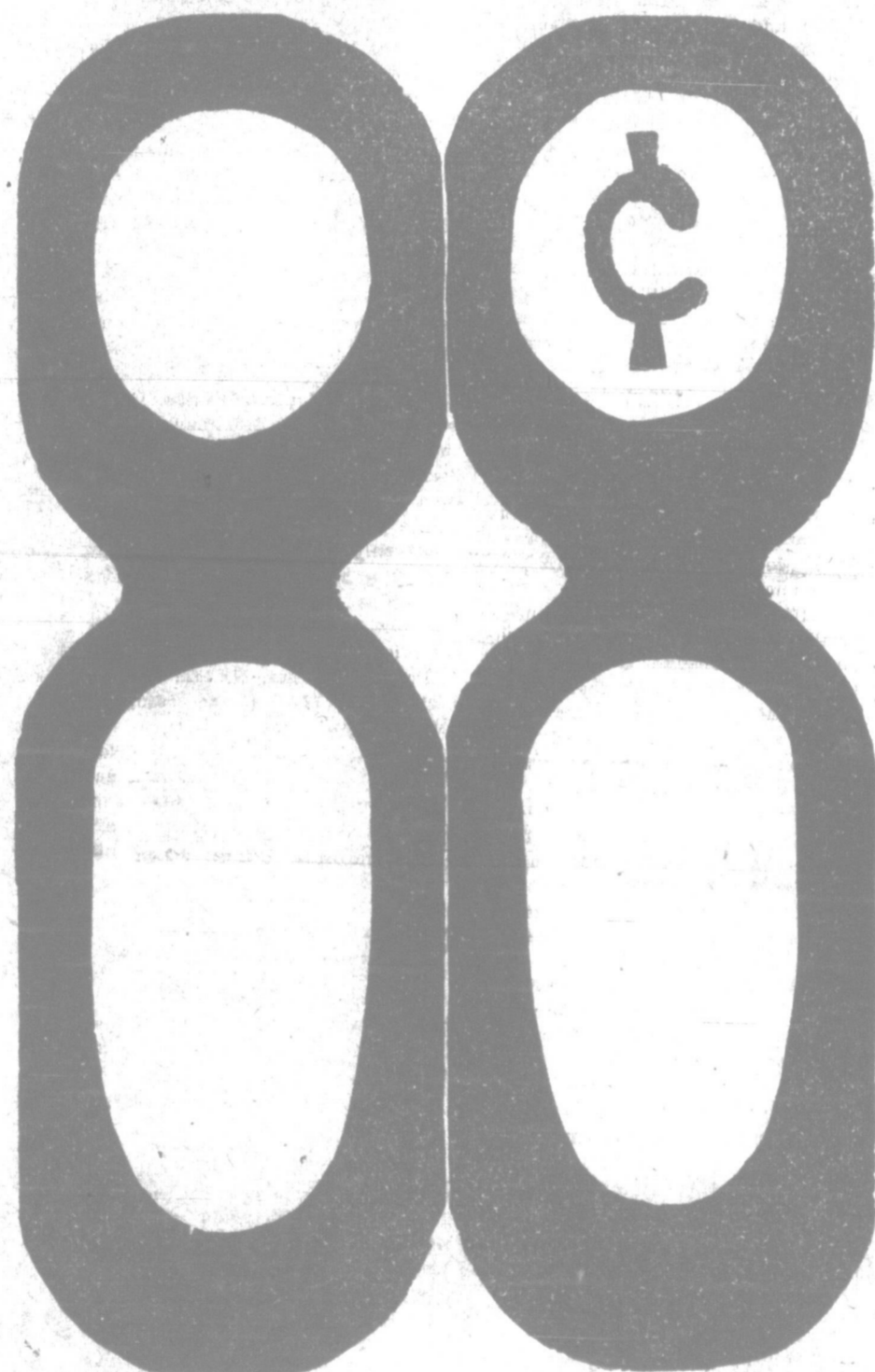
**MEN'S FLEECE LINED LUMBER JACKS**  
Sizes 34 to 42  
**\$1.88**

**MEN AND BOYS CAPS**  
**88c**

**LITTLE BOYS' BOOTEES WITH FLASHLITE**  
Sizes 10 to 11½  
**\$2.88**

**Ladies Phillipine GOWNS**  
Hand Embroidered  
**88c**

**TABLES OF SWEATERS**  
Worth to \$6.00 for  
**\$1.88**



**Ladies Dresses**  
One Lot Worth to \$16.85, Special  
Buy 2 for \$17.00 Consisting of... Flat Crepes, Satin Back Crepes, Satins, Etc.  
**\$8.88**

**Group No. 2 Dresses**  
Consisting of Jeannete Crepes, Crepe de Chene, Etc.  
**\$4.88**

**New Spring Coats**  
Just received and included in this value giving Sale...  
**\$10.88 AND UP**

**MEN'S OVERCOATS**  
One Special lot while they last—  
and they are all-wool and well worth twice the price you pay.  
**\$8.88**

**Cotton Blankets —and— Comforts**  
Size 68x76 Worth Up to \$3.95  
**\$1.88**

**Child's Sweaters**  
Slip-Over and Coat Styles just the right weight for the Children to play in; Sizes 24 to 34  
**88c**

**Child's Stockings**  
7 PAIR FOR **88c** BLACK ONLY  
**Child's Unionalls**  
To Go in **88c** This Sale at **88c**

**Child's Unions**  
Just a few left. Sizes 8 to 14—  
**3 Pair For 88c**  
TRADE HERE AND HAVE MONEY IN THE BANK

### SOCIAL NEWS

BY MISS LEORA MAY

PHONE 100

#### Sunday School Class Is Entertained in Home of Mrs. White

Mrs. Jim White was hostess Tuesday evening to the Rev. W. B. Evans' Sunday school class of the Presbyterian church. A short business meeting was held, in which the class organization was perfected and various committees appointed. The class was divided under two group captains, and each side will work for the most members in a membership drive during the month of February. This contest will close with a class social with the winning side as the guests of the losing side.

An informal program and a number of games were enjoyed during the evening, after which a delicious plate luncheon was served the following guests:

Mr. and Mrs. C. H. Todd, Mr. and Mrs. C. C. Cockerill, Mr. and Mrs. E. W. McJunkin, Mr. and Mrs. J. M. McDonald, Mr. and Mrs. R. S. Jones, Mr. and Mrs. Jim White, Mrs. Harry Winters, Mrs. Ada Ferguson, Mr. and Mrs. Vaughn, Mrs. Haliburton, Mrs. Ivan Kullmann, and the Rev. W. L. Evans.

#### University Club to Meet at Schneider Hotel Saturday

The University club will meet at the Schneider hotel Saturday at one o'clock. All those who were listed as members at the first meeting should be present, as there is business to be presented before the club. Those who have not yet received their credits are also asked to be present. Call luncheon reservations to Mrs. A. D. McNamara at 199.

#### C. I. C. Club of City Change Name at Special Session

The C. I. C. club met at the home of Mrs. Henry Thut, Jr., on last Monday afternoon in a special called session.

The object of the meeting was to further the plans for the establishment of a small public library in the city. After a thorough discussion of all phases of the movement it was decided that a committee of three from this club meet with all other clubs of the city, also all church organizations, and secure the co-operation that would be necessary to put in a public library. Mrs. James Todd, Mrs. A. R. Sawyer, and Mrs. J. D. Sugg were appointed to that committee.

Another object of the meeting was to discuss the changing of the name of the organization.

It is the purpose of the organization to be a study club, and at the same time to carry on some definite civic work, and to promote a civic pride in the community. It was unanimously voted to change the name to the Twentieth century club.

At the close of the session, the hostess served delicious refreshments to the following: Mrs. B. C. Malone, Mrs. James Todd, Mrs. J. D. Sugg, Mrs. H. D. Lewis, Mrs. Joe Smith, Mrs. A. H. Doucette, Mrs. H. G. Ewiford, Mrs. A. R. Sawyer, Mrs. Raymond Harrah, and Mrs. V. E. Fatheree.

#### Political Announcements

Subject to the Action of the Democratic Primary July 28, 1928.

FOR COMMISSIONER PRECINCT NO. 3—  
H. G. McCLESKEY

FOR COMMISSIONER PRECINCT NO. 2—  
W. A. TAYLOR  
(Re-Election)

FOR COUNTY ATTORNEY—  
JOHN STUDER  
(Re-Election)

FOR SHERIFF AND TAX COLLECTOR—  
H. S. GRAVES  
(Re-Election)

FOR TAX ASSESSOR—  
P. E. LINCH  
(Re-Election)

FOR COUNTY AND DISTRICT CLERK—  
CHARLIE THUT  
(Re-Election)

#### Unique School Party Is Given by Azor Baptist Class Tuesday

One of the most unique parties that has been given this season was the school party given in the home of Mrs. Orville Davis by the Azor Sunday school class of the Baptist church Tuesday afternoon. The guests, of which there were 56 present, were seated on the floor in rows. A "Friday afternoon" program was enjoyed with reading and songs by all those present.

Mrs. Floyd McConnell was school teacher, and the guests were dressed in the fashions worn at the time of their school days.

Several parents were present, who viewed with pride the work of their children.

Fruit was served the school during recess.

#### PERSONAL MENTION

The meeting of the Friday 13 Bridge club has been postponed until Friday, Feb. 10. The meeting will be held in the home of Miss Ruth Ann Mitchell.

Miss Bonita Darmon visited in Amarillo yesterday.

Mr. and Mrs. H. Otto Studer returned yesterday from Childress, where Mr. Studer has been attending court.

Dyke Cullum, local Dodge dealer, who has been confined to his home with diphtheria, was able to be out today for the first time.

Floyd Senter, with the National Tank company, transacted business here yesterday.

Ford Carmen of Borger was a business visitor here yesterday.

Mr. and Mrs. A. J. Barnes of Amarillo visited here yesterday.

J. E. Cunningham of Amarillo, commercial manager of the Southwestern Public Service company, was a visitor here today.

"Iron Mike," the marvelous printer-telegraph instrument installed this week in the Daily News office, is being inspected today by officials of the Southwestern Bell Telephone company. These are M. W. Benjamin of Dallas, printer-telegraph supervisor, and R. M. Williams of Fort Worth, installation foreman. P. O. Anderson installed the News' machine.

Mr. Everett D. Hickman of the Hickman Construction Company has purchased half interest with the National Bank Protective association of Ponca City, Okla. Mr. Hickman left Tuesday for Oklahoma where he will resume his duties, while at the close of the present term, Mrs. Hickman and children will make their home in Ponca City.

Mr. and Mrs. D. H. Hudgins, Mrs. Mable Hudgins, Mrs. Ferguson, Mrs. Long, Miss Margaret Ferguson, and Virginia Ferguson, all of Amarillo, were guests in the I. B. Hughey home Sunday.

Mrs. J. W. Grudginton and small son of Amarillo were the guests this week-end of Mr. and Mrs. T. W. Saunders.

Mrs. M. A. Finney, Mrs. Lester Chiles, and Mrs. G. A. Holloway were Amarillo visitors Tuesday.

### HAIG'S BODY IS POPPY COVERED

#### Nation Pays Tribute to Leader of War Forces

(By The Associated Press.)

LONDON, Feb. 1.—Crimson poppies of Flanders today surrounded the body of Field Marshal Earl Haig. They were the tribute from the world to the general who led the British forces to victory over the blood-stained fields of France.

It was Lady Haig's wish that all wreaths and floral tributes should consist of Flanders poppies. The sale of these poppies, which are made by wounded former service men, swells the funds of the soldier organizations. Thus even in death, Earl Haig continued his work, begun after the war, of aiding the men who fought under him.

London had opportunity today to pay tribute to the field Marshal at St. Columbia's church, where until tomorrow his body will lie in state. At this church, with which he was long connected, a private requiem will be held for Earl Haig's family and friends Friday morning.

After the private services Great Britain will pay final honors to the great war leader in Westminster Abbey. A military funeral will be held, the cortege passing Constitution Hill, The Mall, Horseguard's Arch and Whitehall, all places associated for centuries with the national life of Britain.

The Prince of Wales, Marshals Foch and Pétain of France and representatives of the nation and the army will attend the funeral in the Abbey. From the Abbey, the field marshal will be taken to Edinburgh, Scotland. The body will lie in state at St. Giles Cathedral until Monday night. Later he will be buried as he desired, at his estate at Bremoyside, bought for him by a grateful country after the war.

#### Heavy Sentences Are Approved

AUSTIN, Feb. 1.—Two heavy sentences were affirmed today by the Court of Criminal Appeals and another was reversed.

Affirmed: Zalie Tarver, negro, Dallas county, attempted criminal assault on Jeanne O'Dell, actress, 101 years; Harold Bomberger, Dallas county, robbery, 50 years in connection with the holdup of L. R. McClain in July, 1927, from whom \$150 allegedly was taken.

The court reversed a 99-year sentence imposed on Hugh David Butler in Limestone county for the killing of Lester Bolton, October 2, 1926, because trial court restricted testimony concerning possible aggravation of the defendant.

Rehearing was denied Russel Parks, Potter county, convicted of killing Donna McGaffin Calvert and sentenced to 99 years.

#### LOFTUS HELPS MIAMI MERCHANTS TO ORGANIZE

Carson Loftus, secretary of the local Business Men's association, attended a meeting of the business men of Miami last night for the purpose of assisting them in organizing a Business Men's association there.

Ten business houses were represented at the meeting and were enthusiastic about the organization. A committee of three was appointed to see the rest of the merchants and business men of Miami. It was also decided to place the monthly dues at \$10.

Mr. and Mrs. J. E. Ward and son, and Mrs. Robert Morris returned Tuesday from an extended trip to San Angelo and other southern points.



had arrived and wanted to see him.

Heath's manner was far less depressed than when we had taken leave of him that morning. He accepted the cigar Markham offered him, and seating himself at the conference table in front of the district attorney's desk, drew out a battered note-book.

"We've had a little good luck," he began. "Burke and Emory—two of the men I put on the case—got a line on Odell at the first place they made inquiries. From what they learned, she didn't run around with many men—limited herself to a few live wires, and played the game with what you'd call finesse. The principal one—the man who's been seen most with her—is Charles Cleaver."

(To Be Continued)

"Ben" was Colonel Benjamin Hanson, the commanding officer of the detective Division attached to the District Attorney's office.

### Oil Briefs

The Phillips Petroleum company is drilling its No. 1 Jackson in section 88, block B-2, deeper. The well has been making better than 400 barrels a day since it was brought in at 2,959 feet.

It is the opinion of geologists that a bigger pay is to be found deeper in that section of the Bowers pool and this test is being drilled deeper as an experiment.

The Phillips Petroleum company's No. 1 A. Riley in section 88, block B-2, is making 150 barrels a day from first pay at 3,007 feet and may be drilled deeper.

The Phillips Petroleum company is setting 8 1/4 inch casing in its No. 2 Jackson in section 88, block B-2, at 2,615 feet and also setting 8 1/4 inch casing in its No. 3 Jackson in the same section, at 2,740 feet.

The Magnolia Petroleum company's No. 1 Bowers in the southwest corner of the northwest quarter of section 63, block B-2, is drilling ahead at 2,800 feet after casing off 2,000,000 cubic feet of gas.

### HICKMAN---

(Continued from Page 1.)

in support of the youth's insanity plea, his attorneys said, would be his mother, Mrs. Eva Hickman of Kansas City. Defense counsel said she would take the stand probably late today, and tell of her mental condition just before Hickman was born, twenty years ago today.

It was the mental status of this mother and her boy upon which the testimony in yesterday's depositions centered.

A doctor, the superintendent of the state hospital where Mrs. Hickman was committed after a suicide attempt, described her as a woman of "ordinary intelligence" but suffering from "simple depression." He believed her quite capable of distinguishing between right and wrong—a mark of sanity under California law.

Dr. H. F. Routh of Tulsa, Okla., who examined Mrs. Hickman deposed that she suffered from "mild dementia" but said her trouble was of a curable type.

The deposition testimony of schoolmates of young Hickman at the time he attended high school in Kansas City pictured him as a superior student, disappointed in oratorical ambitions and in love.

Hickman's father, William Thomas Hickman of El Paso, according to defense plans also will take the witness stand. The attorneys for his son said the Elder Hickman, accused in some of the depositions of "chasing around with waitresses," would tell about the events of his early married life.

### POLL TAX---

(Continued from Page 1.)

cially do we wish to thank Chas. Hughes for his ever-readiness in helping us."

IVY E. DUNCAN, chairman.

#### STATE TAX REPORTS

DALLAS, Feb. 1.—Total poll taxes issued in Dallas county amounted to \$5, 025, with 7,000 additional exemptions a recheck of figures showed today. This figure was 3,199 short of the last presidential year, 1924, when 61,224 poll taxes were issued.

SAN ANTONIO, Feb. 1.—Poll tax payments and exemptions in Bexar county totaled approximately 56,585, the largest ever made in the county.

WISHITA FALLS, Feb. 1.—Poll tax receipts and exemptions for the current year will exceed 18,500. The total exceeds by more than a thousand that for 1926, the previous record year.

AUSTIN, Feb. 1.—Approximately 17,800 poll taxes and exemptions were issued here.

### Convict Serving 99 Years Escapes From Prison Farm

(By the Associated Press.)  
SUGARLAND, Feb. 1.—Jess Dalley, sentenced to prison for 99-years for robbery by firearms from Dallas, escaped from the Imperial state prison farm here a week ago, it developed Wednesday, and has not been recaptured.

Dalley with four other convicts broke away from the guard early in the morning of January 24 while on the way from the barracks to the arm field.

#### TWO FOUND DEAD.

(By the Associated Press.)  
DAWSON, Minn., Feb. 1.—Killed by shotgun charges, the bodies of Mr. and Mrs. Ole S. Agre were found in bed on their farm near here yesterday by their eight year old daughter when she returned from school. Authorities said indications were that Mrs. Agre shot her husband and then killed herself.

A sudden attack of insanity is the only reason advanced by friends for the act.

The Central P. T. A. will meet Friday afternoon in the Central High school Auditorium at 3 o'clock.

er of section 63, block B-2, is drilling ahead at 2,800 feet after casing off 2,000,000 cubic feet of gas.

This location is an offset to the Midwest Exploration company's No. 1 Bowers, in the same section, and the Phillips Petroleum company's No. 3 Jackson in section 88, block 3-2 and the Skelly Oil company's No. 2 in the same section.

The Gibson-oil company has made a location to drill its No. 9 Bowers, in the northwest corner of section 92, block B-2, in the Bowers pool. The location is an offset to the Texas company's No. 3, Bowers in section 91, block B-2.

### DANCE Friday, February 3rd. DANCELAND Black Aces 10-Piece Band

**REX TODAY**

Billie Dove  
—in—  
"AMERICAN BEAUTY"

TOMORROW

"SAILORS WIVES"  
—with—  
Mary Astor

### Big Time Vaudeville Thursday of Each Week CRESCENT Yours for Better Shows; Courtesy But Not Overdone

### Crescent Theatre "Yours for Better Shows; Courtesy, but not overdone"

TODAY  
Last Showing  
"THE GAY RETREAT"

**BIG TIME VAUDEVILLE**  
—also—  
**CLARA BOW**  
—in—  
"My Lady of Whims"  
THURSDAY, FEB. 2  
**CRESCENT**  
"YOURS FOR BETTER SHOWS—COURTESY BUT NOT OVERDONE"

### Why Pay Rent?

Own and improve your own Home—It's Easy—Note the Cost:

- \$6.39 per month will pay the cost of a loan of \$500.00
  - \$13.77 per month will pay the cost of a loan of \$1,000.00
  - \$20.67 per month will pay the cost of a loan of \$1,500.00
  - \$27.54 per month will pay the cost of a loan of \$2,000.00
  - \$41.34 per month will pay the cost of a loan of \$2,500.00
  - \$41.34 per month will pay the cost of a loan of \$3,000.00
- Come to Our Office

### Wisdom & McKnight Real Estate, Loans, Investments—First Nat'l. Bank Bldg.

IF IT IS GLASS See Us

### CONWAY GLASS WORKS In Alley Rear First Nat'l. Bank

**CLASSIFIED ADVERTISING**

Rates: Two cents per word per insertion; three insertions for five cents per word; minimum, twenty-five cents per insertion. All classified ads cash in advance.

### WANTED

- EXPERIENCED bookkeeper and stenographer desires position. Phone Miss Harries 6610 or write 207 West Twelfth, Amarillo 78-3p
- WANTED—FAMILY washline. Rough dry \$1.00 Mens work, satisfaction guaranteed. 35 S. Cuyler. 80-4c
- WANTED—Experienced Lady cook. Call at Republic Lunch. 79-4p
- WANTED—Practical nursing. Maternity or surgical cases under doctor's care. Apply Mrs. Kellar, Phone 228-J. 88-3p

### FOR RENT

- FOR RENT—Two-room house and furniture for sale. Modern Central addition on Francis Ave. Koster. 80-1p
- FOR RENT—Small furnished house. Mrs. Emma Jackson, two blocks east of Hospital. 80-4p
- FOR RENT—Bedroom in modern home with garage. See Bob Chaffin, Pampa Drug No. 2 80-4p
- PAMPA BUNGALETTE COURT—Conveniently arranged, prices reasonable. 25-40c
- FOR RENT—Suburban Store building 14x26, with shelves and counters, also living quarters adjoining, in West Pampa. Also two one-room rent houses. Apply D. W. Cary on Borger road. 78-3p
- FOR RENT—Two-room cottages with garage. Cross railroad at Schneider Hotel, 100 to first street west go south to end of Southville Latham Cottages. 31-90p
- ROOMS AND BOARD—Meals family style; Mrs. Cooper, proprietor, block south of Jones-Secrets Machine shop. 78-6p
- FOR RENT—Two-room house, furnished or unfurnished. Phone 269, Dr. Mann. 77-7p
- FOR RENT—Two bedrooms in modern home. 275 W. Francis Avenue. 78-6p
- FOR RENT—Two-room house on Borger Highway in Talley Addition. See Mrs. Parsons across St. from Pampa Grain Co. Elevator. 78-3p
- FOR RENT—Three-room house, fourth block south Somerville, inquire at Case Planning Mill. 78-3p

### FOR SALE

- FOR LEASE—Oil or gas, or farming (1928); section 16, block B-2, seven miles northwest of Alameda, S. B. McClure, Canyon, Texas. 78-3p
- FOR SALE OR TRADE—Acetylene welder, blacksmith, garage and carpenter tools. If desired, will sell or rent, 20x40 building for continuing business. Inquire at Adams' Shop, Kingsmill, Texas. 78-6p
- FOR SALE—Permanent Wave Machines. 1-2 blocks back of Grimes Drug. Phone 205, Canadian, Texas. 80-3p
- FOR SALE—Corner lots 11 & 12, block 2, North Addition of Pampa. Call Mrs. Davis, Phone 219 or 47. 80-3p
- FOR SALE—Bedstead, springs, heater, rockers and refrigerator, cheap. North Grace Street, fourth house, east side street. 77-2p
- FOR SALE—Lephorn baby chicks from trapped breeding stock. Price lists and catalogs on request. Cole Bros, Poultry Farm, 1-2 miles south of Pampa. 69-25c
- PIANO FOR SALE—Or rent, almost new, also piano box with rollers, call Johnson Hotel, No. 346. 78-4p
- FOR SALE—Portable typewriter, standard keyboard, latest model, practically new, \$25.00. Call 497 or 1681W. 77-2p
- FOR SALE—Two-room house furnished. Close in. See Ed Foster, Western Cafe. 77-2p
- FOR SALE—1927 Hudson Coach. Good condition. Will take Ford Coupe as part payment. Box 1473. 78-3p

### TRADE

FOR TRADE—One new 1928 model Dodge Sedan, will trade for cheaper car, and person take up payment \$4.00 per month, light payments to be made. Ask for information White's filling station, James Neely. 78-3p

### LOST AND FOUND

FOUND—Black leather purse. Owner can have same by paying for this ad. 80-5c

Have some very desirable territory open for men of financially responsible standing wishing to open agency for medium price six cylinder car. This full particulars write H. E. KNAPP, 115 W. 6th St., Amarillo, Texas.