

Full Automatic  
Leased Wire  
of AP

# Pampa Daily News

'The Newspaper  
of The New  
Pampa'

A Home-Delivered Newspaper With Circulation Supremacy in Gray County.

VOL. 2, NO. 256

(P)—Means Associated Press

PAMPA, GRAY COUNTY, TEXAS, SUNDAY MORNING, JANUARY 6, 1929

PRICE FIVE CENTS

## LOCAL BOY KILLED IN ACCIDENT

### ADULT SCOUT LEADER TRAINING COURSES PLANNED

### STATE FILES SUIT TO RECOVER RICH PECOS OIL PROPERTY

#### HALF MILLION IN PROFITS IN LATEST CASE

Thirty-Four Companies  
Involved by New  
Action

HEARING DATE  
NOT ANNOUNCED

Attorney General Acts  
Soon After Group  
Sees Moody

AUSTIN, Jan. 5. (P)—Another state suit for title and accounting of oil profits from recently developed land in West Texas, was filed today in district court less than 24 hours after a West Texas Chamber of Commerce committee had presented Governor Moody with a Midland mass meeting resolution deploring the disturbance of land and mineral titles and seeking legislation to quiet litigation in that connection.

The suit was against the California company and 33 other corporations for title and recovery of at least \$500,000, estimated oil revenue from 106 1-2 acres of Pecos county land. The attorney-general's department filed the petition, alleging the state owned the oil and mineral rights on the acreage as early as January 1, 1925, and that the defendants possessed themselves of the land since.

Date of hearing of the suit has not been set.

Among the individual defendants are Ira G. Yates, former ranchman immensely wealthy from oil on his Pecos county holdings, and Mrs. Mattie Smith and her second husband, W. A. Smith of San Angelo. Mrs. Smith's Pecos county holdings are tied up in a Pecos county suit in which she has sought a supreme court mandamus to dissolve receivership proceedings instituted by her children, by her first husband. They are trying to gain control of her property but are claiming no interest in it, alleging that she is incapable of handling it. Hearing on the mandamus action is set for January 26.

W. H. Colquitt of Presidio county, receiver of the Smith estate, is one of the defendants in the state's suit filed today.

Other defendants include the Atlantic Oil company, Dallas; Lucey Petroleum company, and two San Angelo concerns, Brown Oil & Realty company, and the Peeries Oil & Gas company.

#### Ice Company Buys Site for Drive-in Dock on S. Cuyler

Purchase of a site on South Cuyler street for a drive-in dock has been announced by George C. Custer, manager of the Pampa Ice Manufacturing company, who said this is the first step toward installation of a second ice plant.

The South Pampa unit will more fully serve many customers. Mr. Custer points out, and also its installation further illustrates the faith the company has in Pampa's future. Effective immediately, a voluntary reduction in price at the dock is being made, according to a schedule announced in this issue. Plant capacity for distribution of pure crystal ice will be kept greater than demand at all times as a company policy.

#### THE WEATHER VANE

WEST TEXAS: Fair, rising temperature in north portion, Sunday; Monday fair, warmer except in southwest portion.

#### TWO MEN HURT AS MULE CAUSES TRAIN WRECK

SAN ANTONIO, Jan. 5. (P)—Albert Mosier of this city was critically injured and J. C. McGrail, also of San Antonio, was hurt when a fast passenger train on the S. A. U. & G. railway left the track near Odem early today.

Mosier, fireman, received a severe cut on the head and a possible fracture of the skull in addition to internal injuries. McGrail, engineer, had a wrenched right shoulder and arm.

The train was wrecked when the mangled body of a mule, struck by the engine, became wedged in the pony truck.

#### PRODUCTION IN GRAY LARGER

Entire Panhandle Has  
Loss of Ninety  
Barrels

Panhandle's daily oil production varied only 90 barrels from last week. Hutchinson county reported the greatest decrease, with 475 barrels. Moore county was another county to show a slight decrease.

Gray county, with an increase of 180 barrels, showed first and was followed by Carson county, with 150 barrels and Wheeler county with 85 barrels over last week.

No sensational producers were reported from over the Panhandle. The Gulf Production company's No. 1 Saunders, in section 3, block 1, blew in from a high level last week to be the surprise well of the county. Skelly Oil company got another in the same field, but not in time to boost last week's production.

Cold weather which has settled over the Panhandle is keeping production low, but with the open weather great activity is expected.

Production by counties:  
Carson: 5,825 barrels, a gain of 150 barrels.

Gray: 21,960 barrels, a gain of 180 barrels.

Hutchinson: 27,665 barrels, a loss of 475 barrels.

Moore: 2,335 barrels, a loss of 30 barrels.

Potter: 20 barrels.

Wheeler: 800 barrels, a gain of 85 barrels.

Total: 58,605 barrels, a loss of 90 barrels.

#### County May Reclaim Old School Lands

A portion of Gray county's school lands in Gaines and Dawson counties will be reclaimed for back taxes, it was decided at a meeting of county trustees in the courthouse Friday afternoon. Rural schools of the county owned 17,712 acres of land which was sold for \$61,992 in 1907.

Taxes on much of the land has fallen in arrears until the trustees feel that the land should be reclaimed. Superintendent John B. Hessey will make a trip to Gaines and Dawson counties in the near future.

The board agreed that Supt. Hessey should have an assistant to remain in his office while he is visiting the rural schools. No appointment has been made.

#### JUSTICE MARRIES COUPLE

A unique wedding ceremony was performed Friday afternoon by Justice C. E. Cary in his office in the courthouse. He united Miss Samantha Ryan and Edward Monroe Snider in the presence of Judge Newton P. Willis of the 84th district court, Judge W. R. Ewing of the 31st district court, Judge T. M. Wolfe, retired county judge and Judge C. S. Rice of McLean.

#### DIRECTORS OF ADOBE WALLS COUNCIL MEET

Scott Barcus Employed  
to Inaugurate  
Schools

CALL IS ISSUED  
FOR 150 MEN

Membership Increase  
of 250 Per Cent Is  
Announced

A training course for Scout leaders will open here within the next two weeks, it was announced at a meeting of the executive committee of the Adobe Walls council held in Panhandle Friday night. Scott Barcus was employed to set up the training course here and in other towns where troops have been organized.

Mr. Barcus expects to have a class of 150 men here and in Panhandle, White Deer, Borger, and Canadian. R. B. Fisher has been chosen training chairman for the Pampa school.

At the meeting in Panhandle, a report of the council's activities since its organization were given. The financial standing is excellent and much has been accomplished since the council became active eight months ago.

Plans for the coming year were discussed. Included in the program for 1929: Extension of Scout work to include Groom, Conway, Wheeler and Mobeetie; increasing the number of scouts in the Adobe Walls council to 500 before the end of the fiscal year; training at least 150 leaders, and making the council the outstanding one in the Panhandle.

High lights in the activities of Boy Scouts of the Adobe Walls council included: 250 per cent increase in members; 90 per cent enrollment at the boys' summer camp; two Scout field days; court of honor, and community activities which included the collecting of toys for Christmas gifts, service at conventions, and other valuable activities.

George W. Briggs and Scott Barcus attended the executive meeting and banquet Friday night.

#### THREE ARE KILLED IN BOILER EXPLOSION

OWENSBORO, Ky., Jan. 5. (P)—Three men were killed late today when a boiler at an oil well in Ohio county exploded.

The dead:  
James Alexander, 34, superintendent.

Delmar Alexander, 27, pumper.

Arnold Newsom, 27, assistant superintendent.

The explosion is unexplained.

#### TEX RICKARD HOLDS HIS FEEBLE STRENGTH

MIAMI, Fla., Jan. 5. (P)—The condition of Tex Rickard, critical, at midnight was reported by his physician, Dr. Adkins, as unchanged. He added that Rickard's loss of resistance had stopped and that his pulse and temperature were the same as at 9:15 a. m.

Dr. Adkins left the hospital shortly afterward and said he would not return until morning unless called.

#### Will Bar Women in Northcott Jury

RIVERSIDE, Cal., Jan. 5. (P)—Special Prosecutor Kelly announced today that he will not allow women on the jury for Gordon Stewart Northcott, whose trial for murder of three boys at his Wineville chicken ranch will be resumed Monday. "Sympathetic women" have been considered a strong point in the defense by Northcott who today declared plans to assume personal control of his defense.

#### COLDEST WEATHER NEARLY FREEZES EARLY TRAVELER

Friday night was "rough," being coldest of the winter with wind carrying a light snow in its teeth. Few braved the "elementals" to attend the basketball game at the gymnasium.

Most owners of thermometers agreed that 14 degrees above zero was the minimum temperature. Roads were almost impassable and every kind of activity was curtailed.

One man who drove to the city before dawn in an open car was almost helpless by the time he reached a restaurant. Fearing he was in need of a doctor, cafe men summoned a physician, but the shivering man quickly recovered. Rising temperatures for today and Monday are predicted.

#### JERSEY CATTLE CLUB TO MEET

Local Stockmen Urged  
to Attend Convention

The Board of City Development is anxious that a number of Gray county cattle raisers attend the annual convention of the Jersey Cattle club in Amarillo Wednesday and Thursday. This will be the first time that the association has held its convention in West Texas.

Every dairy farmer and stock raiser in the county is especially invited to attend the meetings and hear the program which will be of an educational nature.

A banquet will be held at the Herring hotel at 7-6'clock Wednesday evening, when nationally known men of the dairy industry will be heard. The chief speakers will be the Hon. Sam F. Crabbe, president of the American Jersey Cattle club, and Frank Briggs, president of the Southwest Dairy association.

It is expected that more than 200 dairy farmers from over the Panhandle will participate in the convention.

#### Santa Fe Loses Damage Suit in 84th District Court

An 84th district grand jury awarded W. T. Reeves \$20,500 for injuries received when his car crashed with a Santa Fe freight train on the Hobart street crossing the night of December 17, 1927.

The jury returned a verdict yesterday afternoon after being out 18 hours. Reeves had sued for \$35,000.

Attorneys for the Santa Fe have asked for a new trial.

The case lasted three days before going to the jury. The Santa Fe was represented by Hoover, Hoover & Cushman of Canadian, and Studer & Stennis of Pampa. W. M. Lewright of Pampa represented Mr. Reeves.

The jury: R. M. Gibson, foreman; R. A. Hill, John Fulton, L. G. Blanton, G. C. Andis, M. C. Doss, J. S. Tidwell, M. C. Burdine, E. J. Cox, Tom Cranfill, Claude Schaffer and D. E. Hessey.

#### DALLAS MAN ELECTROCUTED

DALLAS, Jan. 5. (P)—Evidently electrocuted when he stepped on water soaked concrete while carrying a coil of light extension cord, Mayhew Little, 22, bridegroom of two weeks, was found dead today in the basement of school building here, where he was employed.

#### SMOTHERED BY COTTON

SAN ANTONIO, Jan. 5. (P)—C. T. Williams, 53, laborer at a cotton oil mill here, was smothered to death when cotton seed caved in on him today.

#### BILL PROVIDES FOR DISTRICT COURT TERMS

Three-Week and Two  
Nine-Week Gray  
Sessions

JUDGES WRITE  
PROPOSED PLAN

Wheeler, Roberts, Car-  
son and Gray in 31st  
Division

District Judges Newton P. Willis and W. R. Ewing have collaborated in preparing a bill for submission to the Fortieth legislature to create two judicial districts out of the nine counties now comprising the jurisdiction of the old 31st district court. The 84th district ceased to exist yesterday.

Unless the legislature acts at once, Gray county's next term of court will be in March, and will last but one week. If the bill just written is passed, a three week term of the re-organized 31st district court will begin January 21.

The judges are in accord with a provision to make the 31st district, presided over by Judge Ewing, include Roberts, Wheeler, Carson, and Gray counties. The yearly terms of court in this 31st district would be as follows, for 1929:

January 21—Gray county three weeks

February 11—Wheeler county six weeks

March 25—Carson county, four weeks

April 22—Gray county, nine weeks

June 24—Roberts county, one week

July 22—Roberts county, two weeks

August 5—Wheeler county, seven weeks

September 23—Carson county, four weeks

October 21—Gray county, nine weeks

During 1929 and thereafter, the following schedule would obtain in the 31st judicial district:

Roberts county—Two week sessions beginning on first Monday in January and fourth Monday in July.

Wheeler county—seven week terms beginning on fifth Monday after the first Monday in January and second Monday after fourth Monday in July.

Carson county—Four week terms beginning on the twelfth Monday after the first Monday in January, and on the eighth Monday after the fourth Monday in July.

Gray county—Three-week terms beginning on the second Monday after the first Monday in January; and on the sixteenth Monday after the first Monday in January; and on the twelfth Monday in January after the fourth July, nine weeks each.

The 84th district, presided over by Judge Willis, would include Hutchinson, Hanford, Ochiltree, Lipscomb, and Hemphill counties.

The court terms, after this year, would be as follows:

Lipscomb county—Two, two-week terms.

Hutchinson county—Two thirteen-week terms.

Hemphill county—Two four week terms.

The bill provides for the straightening out of the sockets of the courts, transfer of cases, cooperation of district attorneys, and for immediate effectiveness of the act under an emergency clause.

#### FATHER OF MRS. WOODWARD AND C. E. KINGSBERY DIES

Friends of Mr. and Mrs. W. L. Woodward of Pampa have learned of the death Friday of Mrs. Woodward's father at Santa Anna, Mr. Kingsbery, who was also the father of C. E. Kingsbery, formerly of Pampa.

The funeral was held Saturday at Santa Anna.

#### CASH IS SHORT BUT STATE NOT "IN THE RED"

AUSTIN, Jan. 5. (P)—The state paid out more than \$3,000,000 in excess of the amount of collections from all sources during December. Although the general fund was not "in the red," outstanding warrants were more than 10 times in excess of the cash balance on hand at the end of the year. The situation was being cared for by reserve depository banks, holding the warrants until the fund can be replenished gradually.

Receipts for December amounted to \$3,278,675.96, with disbursements totaling \$6,350,580.02, State Treasurer Hatcher said today.

#### GILCHRIST ILL WITH THE FLU

State Engineer Stricken  
En Route to Gray  
County

Enroute to Gray and Roberts counties on highway matters, Gibb Gilchrist state engineer, became ill with influenza after reaching Amarillo and was unable to complete his trip.

He had planned to inspect proposed routes from Pampa eastward. When he will be able to come here was not learned.

It is expected that the state highway commission will let a contract for grading and drainage structures west from Pampa to the Carson county line at its January session.

Specifications for grading and paving of this road were submitted to the commission several months ago by C. L. Hasie, resident engineer. With no route controversy on that part of the paving program of this special road district further delay is not likely.

#### Road Problems of Panhandle to Be Topics of Meeting

Important road matters pertaining to Panhandle counties will be taken up at a meeting of the Panhandle Highway association in Amarillo Tuesday.

Members of the executive committee will meet at Amarillo hotel at 2 o'clock Monday afternoon to outline the program for the following day. Every county in the Panhandle that has outstanding road interests is expected to send delegations before the executive committee in order that the matters may be discussed in open meeting the following day.

Judge A. A. Callaghan of Panhandle, as president of the association will preside at both meetings. The session Tuesday has been called for 11 o'clock in the morning and will last until all business has been completed.

A large delegation from Gray county will leave the B. C. D. headquarters at 8:30 a. m. Tuesday morning. Those without transportation are asked to leave word at the B. C. D. offices before 5 o'clock tomorrow evening.

#### MANY DEER KILLED

RAYMONDVILLE, Jan. 5. (P)—Seventy-five deer were killed in Willacy county during the season just ended, Game Commissioner Robert Snow estimated today, and 300 in Cameron, Hidalgo, Starr and Willacy counties.

#### KING IS RESTLESS

LONDON, Jan. 5. (P)—King George held his own today despite restlessness. His weeks of illness caused the restlessness, it was said.

#### SCHOOLS BONDS CARRY

ALPINE, Jan. 5. (P)—A \$90,000 school bond election here today car-

#### NECK BROKEN AS CAR TURNS OVER IN ROAD

W. B. Orr, His Cousin,  
Badly Bruised  
But Lives

DETAILS OF THE  
ACCIDENT FEW

Local Youths On Way  
to Oklahoma in  
Old Auto

Clarence Hughes, 19-year-old son of Mr. and Mrs. Ira Hughes of Pampa, was instantly killed about 4 o'clock Saturday afternoon when his automobile overturned on a slippery turn near Laketon.

Riding with him at the time was W. B. Orr, a cousin, who was badly bruised but was able to go to his home after receiving emergency treatment at a local hospital.

The Hughes had, former Pampa high school student, was driving eastward on highway 33, en route to Oklahoma, when the accident occurred. Little is known of how the car turned over. His neck was broken in the wreck. The body is at Malone funeral home, and funeral arrangements have not been made.

Besides his parents, he is survived by three sisters, Thelma and Pearl, and Mrs. Elkin Palmer.

#### "Question Mark" Roars On—Crew Almost Nonchalant

METROPOLITAN AIRPORT, Los Angeles, Jan. 5. (P)—Refueled and primed once more to continue its battle against gravity, the army plane, Question Mark, had piled up 105 hours in the air at 4:26 p. m. today. It had only six hours more to go to equal the sustained flight record of the Graf Zeppelin. The Question Mark took off from Metropolitan airport at 7:26 a. m., New Year's day.

METROPOLITAN AIRPORT, Los Angeles, Jan. 5. (P)—Like a great enduring bird, the army's plane, Question Mark, today soared into its second 100-hour period in the air, apparently warming up to its task of determining how long man can fly a heavier-than-air machine.

Messages from Major Carl Spatz, Question Mark commanding officer, rang almost with nonchalance, and if worry harassed the crew, they kept it secret.

#### B. C. D. Chairmen Are Chosen Saturday

Chairmen for various board of city development committees were chosen at a meeting of executive officers at the Schneider hotel yesterday noon. The names will be announced at the meeting of the board of directors tomorrow night in the B. C. D. rooms.

F. D. Keim, president of the B. C. D., presided over the luncheon and business meeting.

The duty of each chairman was outlined. Each committee leader is to choose four men to assist him in his work. President Keim announced that each committee would be asked to make a report at every meeting of the board.

#### A. B. SPENCER DIES

FORT WORTH, Jan. 5. (P)—A. B. Spencer, former president of the West Texas Chamber of Commerce, railway builder and business man, died suddenly at his home here late today. He was the only man to serve two terms as president of the chamber.



**Pampa Daily News**

Published every evening (except Saturday) and on Sunday morning by the Nunn-Warren Publishing Company, Inc., corner of West Foster and Somerville.

The only newspaper adequately covering Pampa and Gray county events and the Pampa oil field.

PHILIP R. POND  
Manager  
OLIN E. HINKLE  
Editor

Entered as second-class matter March 25, 1927, at the post office at Pampa, Texas, under the Act of March 3, 1879.

MEMBER OF THE ASSOCIATED PRESS  
The Associated Press is exclusively entitled to the use for republication of all news dispatches credited to it, and also the local news published herein.

All rights of republication of special dispatches herein also are reserved.

**SUBSCRIPTION RATES**  
By Carrier in Pampa

One Year	\$8.00
Six Months	\$4.50
Three Months	\$2.50
One Month	25c

By Mail in Pampa and adjoining counties

One Year	\$6.00
Six Months	\$3.50
Three Months	\$2.00
One Month	20c

By mail outside of Gray county, and adjoining counties.

One Year	\$7.00
Six Months	\$4.00
Three Months	\$2.25

**NOTICE TO THE PUBLIC**  
Any erroneous reflection upon the character, standing, or reputation of any individual, firm, concern, or corporation that may appear in the columns of the Pampa Daily News will be gladly corrected when called to the attention of the editor. It is not the intention of this newspaper to insure any individual, firm, or corporation, and corrections will be made, when warranted, as promptly as we are able to do so.

**"It's Like This—"**

ONE OUTSTANDING public improvement looms on Pampa's horizon for 1929. It is an adequate city hall-auditorium, to be placed in the center of a beautified Albert square.

If this public necessity is to be built, now is the time to construct it, while valuations are ample to retire the bonds in a few years. There is nothing to be gained in delay, if the asset is ever to be enjoyed.

Judge Newton P. Willis won applause and started a round of discussion when he told Pampa Rotarians that Canadian this week had voted a bond issue for a city hall and suggested that it would be a fine thing for Pampa to do likewise.

The need for a practical community center building is keenly felt. Full maintenance of the building, and funds to develop a mall park surrounding the city hall-auditorium could be obtained by charging small rentals for use of the hall. Perhaps it would be possible to so arrange the auditorium that it could be used for such things as food shows, carnivals, and various exhibits, in addition to the usual stage and platform performances.

The city officials need more room than they now have. The fire department needs roomier quarters for the trucks and a living arrangement for volunteer firemen. They should have a reading room, recreation room, showers and sleeping rooms.

Albert square is destined to be one of the city's greatest assets. But, undeveloped, it is almost a liability, being unsightly and a question mark to all visitors. Moreover, it was given for city use, and unless used there may be some doubt as to the city's claim to it. At least it is not keeping faith with the donors to see it go undeveloped in modern Pampa.

A companion project is that of a city recreation park, which could easily be made out of the old dump grounds. This site is well located, and a park could be developed at relatively little cost. It might be well to include in the city hall-auditorium bond issue a few thousand dollars to improve this site and provide a pool of water. Park enthusiasts of the city are particularly enthusiastic about this plan.

The city commissioners could issue warrants for these purposes, but the better plan is to submit the idea to the people as the 1929 bond issue. Holding of an election within a sort time appears logical. Its success will depend upon the support and cooperation of the citizens interested in building a better city.

Canadian voted \$35,000, which would be about \$100,000 translated in terms of Pampa's size. On the basis of valuations, Pampa could spend more than that with a mini-

mum tax levy. Nearly every city above 4,000 inhabitants in this section has a city hall to which citizens point with pride, and auditoriums are being constructed in many places. Sweetwater, about the size of Pampa, has one of the best city hall-auditoriums in the state, not to mention separate fire stations in two parts of the city.

Looking over; Pampa's best forward step in 1929 appears to be construction of a big auditorium with quarters for the city departments on a beautiful Albert square.

**HIGHWAY LEGISLATION** promises to be one of the major issues before the legislature. Proposals will center around the statewide bond issue plan recommended in the majority report of Governor Moody's advisory committee of 31.

West Texas will make no organized fight on the state bond issue plan. But this section must be on its guard to see that certain outstanding weaknesses of the plan, in operation, are corrected. Several newspapers have come out for the plan without reservations. We suggest they consider these questions:

1. If \$300,000 in highway bonds is voted, how much of this should be spent in West Texas counties?  
2. Deducting the amount necessary to remunerate counties whose designated highways already are paved, how much money is likely to be available for new construction in West Texas?

3. If the present designated roads in West Texas are paved by filling in all gaps, how much money will be required?

4. If the entire sum is expended on the basis of these present needs—over a ten-year period—how many counties will receive very little paving, although in the life of the bonds their needs may be much greater than now?

5. Will the state highway department be given full permission to follow the present plan of bee-lining routes between control points and by missing intervening towns lowering property values built up through the years?

These questions are raised as a matter of West Texas interest in the application of the funds. With the bond issue plan itself we find no fault, but many abuses can be imagined in the expenditure of the funds. We have not forgotten the Ferguson commission.



WASHINGTON—Guests at a very swanky White House reception recently heard the pounding of hammers between the tunes played by the red-coated Marine band.

The hammers belonged to packers who have already been called in to assemble the personal belongings of the president, and begin baling and boxing them.

February is the traditional White House moving month for outgoing presidents. Official courtesy has always decreed that the attic at least must be ready for the incoming Lares and Penates of the new president in February.

Those who recall the moving of the effects of President Wilson, the dozens and dozens of gifts brought back with him on his trip from abroad, and the Roosevelt moving with its myriad gifts presented to a household of kids, find it curiously queer that the Coolidge moving seems to be as big a job.

Both President and Mrs. Coolidge have always graciously declined as many gifts as was possible. Most of the White House menagerie has died off, but even so, Coolidge is taking his moving seriously even this early and seems to regard it as a real undertaking.

A president seems rather sure to collect about the same collection of gifts. He always has his dogs and cats and coons and birds sent him by various fancier associations who want to be able to publicly say that one of their

breed is at the White House.

He always has his several hundred gavels made from various historic trees or buildings. If he expresses any personal pleasure such as whistling or whittling or walking or riding, he will find himself showered with whistles and jackknives and canes and riding habits. President Coolidge, for instance, has been given dozens and scores of jackknives.

Ever since he appeared out west in chap and a gallon hat he has received dozens of duplicates. His fishing tackle could supply a whole community of Izaak Walton's.

China and silver, mostly spoons, have been sent in by nearly every American potter and silversmith. It is said that most of it will be left at the White House.

The zoo is always every outgoing president's chief problem. Providence has partly solved this for Coolidge by calling to heaven most of the Coolidge pets, though, it is said that during these moving days both the President and Mrs. Coolidge have been heard to mourn that there is no Rob Roy and Prudence Prim to take with them to Northampton.

Paul Pry, the air dale who attached himself to Mrs. Coolidge and nipped a maid who, in Mrs. Coolidge's absence, went to her room to get something, has been given to the marines.

Peter Pan, a wire-haired terrier who fought with the other dogs, was given to Ted Clark, the president's secretary.

There was Blackberry, a black chow, who now belongs to Florence Trumbull, John Coolidge's fiancée.

Boston Beans, the dog that the late Prudence Prim loved to tease, has been sent up to Northampton.

But these dogs are left at the White House—Ruby Rough, a silky brown collie, Calamity Jane, a Scotch Sheltie, Kink Kle, a Belgian Gruendael, and Tiny Tim, the chow. President and Mrs. Coolidge, it is said, just can't decide which, if any of the dogs, will

follow them to Northampton. Tiny Tim, the stately silent chow, is said to be the president's favorite, but Mrs. Coolidge likes funny frolicksome Calamity Jane.

**TWINKLES**

Basketball is a clean, fast, indoor game—a game of skill and good physical condition. When Twink asked for a reserved seat for the season in the new gym, he had no idea he could have one hundred seats for the asking.

Heard: Man say he had not written any 1928 checks in 1929—he had to think so much about whether the old account would stand the gaff that he couldn't forget the date.

The babe New Year looks like Cupid, but marriage statistics in Gray county show that his actions are different.

Looking over some Pampa photos taken in 1902, and noting ladies' costumes, we are inclined to wonder why cotton is worth raising at all these days.

**BARBS**

(Copyright by NEA Service, Inc.)

While Coolidge is down hunting wild animals, several wild animals are waiting to hunt Hoover.

The number of millionaires has grown to 40,000 in the last fourteen years. Quite a few of them are reported to have made their money outside of the liquor business.

We're all children of the sun, say the geologists. But how do they account for the national taste for moonshine?

Women's clothes express their sentiments, says a novelist. Most of the ladies we've seen lately seem pretty vague.

**OUT OUR WAY**



By Williams

**COLD WEATHER SPECIALS!**



Men's Sheep Lined

**COATS**

Four Pockets

**\$6.35**

Men's Heavy UNDERWEAR

**89c**

Men's Heavy OVERSHOES

**\$1.89**

Men's Heavy Weight Corduroy Pants

**\$2.45**

Men's Heavy SWEATERS

**\$1.00**

Men's Wool SHIRTS

**\$1.95**

CORDUROY CAPS with fur inbands

**\$1.00**

Men's Heavy Weight OVERALLS

**\$1.00**

Boys All Wool LUMBER JACKS Heavy Weight

**\$2.49**

Boys' Sheep Lined

**COATS**

**\$4.85**

LADIES' COATS

**1-3**

Off Former Prices

Men's Heavy JUMPERS

**\$1.00**

Flanelette

NIGHT GOWNS

Heavy wt.

**77c**

Men's and Boys'

OVER-COATS

**1-3**

off former Prices



YOUR DOLLARS GO FURTHER AT

**GORDON STORES CO.**

"Standard Brand Merchandise at Popular Prices"

**GET YOUR 1929 Auto License**

BEFORE

**January 15**

Bring Your 1928 Automobile Receipt

We must have the old receipt before issuing new receipt.

New Light Testing Certificate must be secured and brought to this office before 1929 License Plate may be issued.

**E. S. Graves**  
SHERIFF



## Pampa Social News

BY MISS WILLETTE COLE

PHONE 666

### Social Calendar

#### MONDAY

The Study club of the A. A. U. W. and College club will not hold its regular meeting.

#### TUESDAY

El Progreso club will meet at 2:30 o'clock in the home of Mrs. W. M. Craven.

The Twentieth Century club will meet in the home of Mrs. A. R. Sawyer at 2:45 o'clock.

Mrs. Floyd McConnell will be hostess to the Kongential Kard club, which meets at 2:30 o'clock.

#### WEDNESDAY

The Women's Auxiliary to Union No. 212 will meet at 2:30 o'clock in the Union hall, and all members are urged to be present. The regular time of meeting has been changed from evening to afternoon.

The Women's Missionary Society of the Methodist church will hold its first circle meetings at 3 o'clock, with each circle convening in the home of its chairman.

Circle No. 1 will meet in the home of Mrs. R. C. Campbell. Mrs. C. T. Hunkapillar will be hostess to Circle No. 2. Circle No. 3 will meet in the home of Mrs. H. F. Barnhart.

Members of Circle No. 4 will meet in the home of Mrs. G. C. Walstad.

Circle No. 1 of the Baptist Women's Missionary Union will meet at 2:30 o'clock in the home of Mrs. Marvitz Lewis.

Circle No. 2 will meet in the home of Mrs. E. G. Barrett at 2 o'clock. Circle No. 3 will meet at 2 o'clock in the home of Mrs. Adams.

#### FRIDAY

The Child Study club will meet in the home of Mrs. Joe M. Smith at 2:30 o'clock.

Mrs. J. J. Cassidy will entertain members of the Just We bridge club at her home at 2 o'clock.

#### SATURDAY

The Young Women's Auxiliary of the Baptist church will meet with the sponsor, Mrs. J. P. Wehrung, at her new home on North Somerville. The meeting is announced for 3 o'clock.

#### CLUB DATES SET

DALLAS, Jan. 5. (AP)—The midyear board meeting of the Texas Federation of Women's clubs will be held in Austin, January 29. Mrs. W. R. Potter of Bowie, state president, announced her today. The annual educational conference of the state federation will meet in Austin the next day.

### Miss Margaret Buckler Hostess at Bridge Friday

One of the delightful parties which marked the close of the mid-winter vacation was a bridge party given Friday evening by Miss Margaret Buckler, at the home of her parents, Mr. and Mrs. C. P. Buckler.

Five tables were in the game, with the following playing: Mr. and Mrs. M. D. Oden, Mr. and Mrs. Clyde Fatheree, Mr. and Mrs. Clarence Barrett, Mr. and Mrs. William Gould, Mrs. Clinton Henry of Paloduro, Miss Gertrude Cooke of Waco, Miss Margery Jewell, Miss Louise Miller, Miss Dee Breeding, Alex Rainouard, Frank Allday, Ira Allday, F. F. Kennedy, Clifford Whitmore, B. O. Lilly and Oscar Dial.

High score favors were awarded Mrs. Henry and Ira Allday. Mrs. Fatheree and Mr. Whitmore received consolation for low scores. Dainty refreshments were served at the end of the game.

Miss Buckler is a student in Pine Manor, Wellesley, Mass. She will leave this afternoon to return to school, after spending two weeks at home.

### Back Again



LILLIAN MURRY

The well known musical comedy show managed by Lillian Murry and Elmer Wright will open a stay at the Crescent theatre tomorrow.

Miss Murry has an enlarged show, consisting of eighteen persons. These include Florence Holland, Fred Ewen, Betty Martin, Fat Wilds, Billy Martin,

and a chorus of eight girls.

Snappy specialties, pretty girls, good acting, and gorgeous clothes, together with a new line of scenery are said to make the show better than those usually seen in this section. Daily program changes will be offered, with new bills.

### HOUSTON MAN DROWNS

HOUSTON, Jan. 5. (AP)—The Houston ship channel was dragged tonight for the body of Wallace Ellis, 24, who leaped overboard from a launch when a small blaze developed on it. Four other members of the party braved death in the waters in a futile attempt to rescue their comrade.

### DETECTIVE KILLS ROBBER

YONKERS, N. Y., Jan. 5. (AP)—A robber was killed tonight by a detective hid in a bakery truck to frustrate an expected hold-up. The truck had been held up twice within the past six weeks. The victim was identified as Joseph Scalice, Yonkers.

### Mr. and Mrs. Don Wakeman Honored Before Departure

After a year's residence in Pampa, Mr. and Mrs. Don Wakeman will leave this week to make their home in Wewoka, Okla. Farewell courtesies given in honor of this popular couple added interest to the closing days of week.

Mrs. J. H. Lavender, Mrs. S. L. Maynard, Mrs. J. G. Christy and Mrs. J. H. Lutz gave a delightful little party at Mrs. Lavender's home Friday afternoon, complimenting Mrs. Wakeman. Bridge was played, with three tables in the game. Those who played were Mrs. Wakeman, honoree; Mrs. H. W. Johns, Mrs. J. J. Cassidy, Mrs. R. S. McConnell, Mrs. C. E. McHenry, Mrs. E. H. Hamlett, Mrs. C. M. Carlock, Mrs. Carl Taylor, and the hostesses.

At the close of the game, Mrs. Wakeman was presented a beautiful linen luncheon cloth, a gift from the other guests and the hostesses. A dainty salad course was served at the tea hour.

On Friday evening, Mr. and Mrs. R. S. McConnell entertained Mr. and Mrs. Wakeman and other members of the Night Owl Bridge club at their country home. Attractive gifts were presented the honored guests, and at the end of five interesting bridge games, high score favors were awarded Mr. and Mrs. Frank Seal. Mrs. C. M. Carlock was fortunate in the general cut.

The following were guests: Mr. and Mrs. Wakeman, Dr. and Mrs. W. C. Mitchell, Mr. and Mrs. Joe Lutz, Mr. and Mrs. Frank Seal, Mr. and Mrs. L. M. Williams, Mr. and Mrs. J. J. Cassidy, Mr. and Mrs. C. M. Carlock and J. H. Lavender. The party was brought to a close with a two-course supper.

Mr. and Mrs. Wakeman were again honored when Mrs. J. H. Lutz and Mrs. J. G. Christy entertained last evening at the latter's home. The invitation list included, besides the names of the honored guests, the following: Mr. and Mrs. C. M. Carlock, Mr. and Mrs. L. M. Williams, Mrs. S. L. Maynard, Mrs. J. H. Lavender and Laverne Lavender.

Favors were given for high scores, and gifts were presented Mr. and Mrs. Wakeman. Delicious refreshments were served.

#### ROB RESIDENCE

KANSAS CITY, Jan. 5. (AP)—Three men robbed Mr. and Mrs. Benjamin Taxman, in their home here tonight, of \$120 and jewelry valued at \$8,000.

YOU ARE CORDIALLY INVITED

to attend all the services of the

METHODIST CHURCH  
TODAY, SUNDAY, JAN. 6

Sunday school, 9:45—A class for every age, and a hearty welcome to all. Help us reach the 450 mark today—the first Sunday in 1929.

—Preaching, 11 o'clock—"Making Life Worth While"

Special Musical Program, 7:15, evening, under the direction of Thomas Fannell. Good singing and great music. If you enjoy music you won't miss this treat.

THE CHURCH WITH A HEARTY WELCOME



## SPRING DRESSES

As cheerful and gay as the new spring season . . . these stunning dress models appear in smart profusion. Printed silks, georgettes, chiffons, flat crepes and crepe de chines, in all the gorgeous new colors of the new season.

\$15 up

Unusual Necklines  
Uneven Hemlines

New Spring Hats and Coats  
Arriving Daily

JEMurree & Co  
Outfitters to the Whole Family

Let  
**CREDIT**  
FURNISH  
YOUR  
HOME

# FURNITURE

## Grand Opening Monday, Jan. 7-12

USE  
YOUR  
CASH  
FOR  
OTHER  
THINGS

We invite you to call and inspect our wonderful offering of the most beautiful and up-to-date furniture selected from the markets in the North and East. Everything for your selection in furnishing your home and you can use your credit to make it easy to pay for your purchases.

Enjoy the comforts of a home well furnished and pay for them as you enjoy them. Easy terms.

FREE

See the beautiful Bed Room Suite on display in our window. It may be yours. Some one will be the proud owner of this beautiful bed room suite, all have an opportunity. No obligations, just call and ask us about it. Visit us every day during our opening. We want to get acquainted.

USE  
YOUR  
CREDIT  
AT  
OUR  
STORE

# AMARILLO FURNITURE CO.

117 N. CUYLER

Mgr. B. R. HARRIS

Phone 264



**Pampa Daily News**  
**CLASSIFIED**  
**ADVERTISING**

**Rates and Information**  
Phone Your Want Ad to

All Want Ads are cash in advance. They must be paid before they will be inserted. Want Ads may be telephoned to the office before 12 o'clock on the day of insertion and a collector will call.

Rate: Two cents per word per insertion; three insertions for five cents; minimum, twenty-five cents per insertion.

Out of town advertising cash with order.

The Daily News reserves the right to classify Want Ads under appropriate headings and to revise or withhold from publication any copy deemed objectionable or misleading. Notice of any error must be given in time for correction before second insertion.

**Wanted**

LAUNDRY done Reasonable, work guaranteed. 109 North Wynne St. 51-6p

WANTED—Capable young white woman for counter work in restaurant. Apply Republic Lunch. 53-1fc

WANTED—4 speed flat body Chevrolet trucks to haul ties. Apply Wheeler, Texas, Clinch-Mitchell Construction Co. 53-3c

PERSONAL—Flowers very scarce on Denver and California market. No coupons taken at present. Will redeem later. Pampa Florists.

WANTED—Used car for cash. 625 N. Grace. 56-3p

**Lost and Found**

LOST—Pair of horn-rimmed spectacles. Reward for return to Pampa Daily News. 54-3un

**For Rent**

FOR RENT—Four room modern house, one block west of high school. 54-2p

FOR RENT—Three room duplex, modern, everything furnished, \$40 per month. 724 Bent Street, Country Club Addition. 54-3p

FOR RENT—Two-room cottages with garage, 2 blocks west from end of S. Cuyler St. paving. Latham Cottages. 71-182p

FOR RENT—Large front room furnished for light housekeeping; hot and cold water. 825 West Kingsmill. Call 728-W. 55-1c

FOR RENT—3-room furnished house with garage. Call at 506 S Russell. 54-1c

FOR RENT—One, two room house furnished, also one room house. Talley Addition. Call 9019F2. 54-3p

FOR RENT—Large front room furnished for light housekeeping; hot and cold water. 825 West Kingsmill. Call 728-W. 57-2c

FOR RENT—Furnished cottage with garage. Close in. Reasonable. 102 West Foster. Call 93-J. 55-3c

FOR RENT—Three room modern duplex & 3 room house, also garage. 625 North Grace. 56-3p

FOR RENT—Two nicely furnished rooms, close in. 311 Frost. Call 113-J. 56-4c

FOR RENT—One, two room modern apartment. One, sleeping room in private home. No children. Call 384. 54-3p

FOR RENT—Furnished one room house. \$4 per week. 627 West Street. Dr. Nicholas. 56-1c

FOR RENT—Bedroom in private home. 627 West Street. 56-3p

FOR RENT—Furnished housekeeping room. Close in, on corner west of Pampa Laundry. 56-1p

**For Rent**

FOR RENT—Beautifully furnished 3 room duplex apartment. Call 605 or 154-W. 56-3p

FOR RENT—Two room furnished apartment. 3rd house north of Telephone office. 56-2p

FOR RENT—Two light housekeeping rooms for rent. Three blocks west of Rex Theatre. First house north. 56-1p

**For Sale**

FOR SALE—1928 4-door Pontiac sedan driven 5,500 miles. Perfect condition. This car must be seen to be appreciated. Pampa Motor Co. 41-1fc

FOR SALE—Choice residence lot in South Pampa. Reasonable. Mrs. Chas T. Mullen. Box 184. 54-3p

BUNDLED cane and Kaffir corn for sale. D. C. Holmes. 9 miles north. 54 & 60-c

FOR SALE—Good used piano at real bargain. Call W. H. Johns 9019F2. 55-6c

FOR SALE—One carload high grade Jersey milk cows. Ward's Wholesale. Phone 9019F2. 55-3c

FOR SALE—Ford truck in good condition. T. A. Steele, owner. Inquire, Eldridge's Rooming House, South Cuyler. 55-3p

FOR SALE—Home made quilts. Apply Adams Drug company. 56-2p

FOR SALE—Dressed hogs, grain fed, country sugar cured meat, sausage, pon-hos and lard. Two miles East on Highway 33. R. R. Mitchell. 5-3c

**GRANDMOTHER FILES BREACH OF PROMISE SUIT**

HOISINGTON, Kan., Jan. 5. (AP)—Wooling, winning and then deserting a grandmother allegedly are circumstances through which L. B. Scott, real estate dealer, has come to face a heart balm suit for \$20,000.

**HAVE YOU TRIED IT?**

**A NEW LOAF**

Dilley's Cottage Bread

It has that Home Made Flavor

---

**THE DILLEY BAKERIES**

Herrington, Kans., Borger, Pampa, Tex.

Buy Bread Made in Pampa

**Something To Get Excited About You Bet! Busted Pipes**

**But, Why Worry?**

Let us do the worrying, a call will bring immediate relief. Our expert plumber will be right out and repair the damage. And at a moderate cost and you can be assured that the work is done right.

Satisfaction guaranteed. Open day and night, Sunday and holidays.

**MARVIN TWADDELL PLUMBING COMPANY**

Phone 774

**FOR RENT**

Dandy three room modern duplex unfurnished, four blocks west new West End School. \$30.00.

Almost new three room house, unfurnished, has gas, electric lights, and water. Unfurnished. Located first block Talley Addition. Rent, by month, \$30 or on lease, \$25.

Small furnished two room house with garage. Block north Ward's Market, Talley Addition. Rent \$20.

Nice three room house unfurnished, has gas, lights and water. Located half block Borger Road, Talley Addition. Rent \$25.

**TRADE**

We offer three nice modern five room homes, well located for sale or trade. Will accept small clear houses or other property as down payment, balance like rent.

\$50,000 worth of good Pampa property to trade for good grain farm any place in Panhandle. Might consider putting in part cash.

When you deal with us, you pay no commission as we handle nothing but our own property.

**Pampa Development Company**  
TALLEY ADDITION BUILDING  
Phone 231, Pampa, Texas.

**FOR RENT**

4 rooms and bath, unfurnished. \$50

2 room house, unfurnished. \$20.

1 room house, unfurnished. \$18.

2 rooms, furnished. \$40.

2 room house, furnished. \$25.

3 rooms, breakfast room and bath, not furnished. Garage. \$50.

**FOR SALE**

Fla-Mor building, 100x100 ft. Has income of 20 per cent on the investment. This building has been priced to sell.

2-story brick building in Woolworth block on Cuyler Street. \$350 per month income. This investment will pay 25 per cent.

6 room house, corner lot in North Addition. Double garage. Fireplace, and all built-in effects. This is a real home and can be bought at a bargain. \$5500. \$1000 will handle.

5 rooms, breakfast nook and sleeping porch. Close in, east front, corner lot. Garage. Price \$3250.

5 room house on Frost St. with large 8x20 glassed sleeping porch. Garage. East front. This house is close in. Can be bought for \$4250. \$500 down.

4 room stucco on good east front lot built-in effects. Bargain at \$1600.

Brick veneer, 5 rooms and bath on east front corner lot, close in. New oak oak floors. Fireplace, abundant closet space. Built-in tub with shower and automatic heater. Walks and driveway, double garage. \$5500.

Stucco garage and 2 rooms and bath on rear of good residence lot. Rents for \$35 per month. This property is for sale at \$1800.

New 4 room house near new east school. Garage, walks and driveway. \$600 down and you can move in. Balance \$55 per month.

5 rooms, bath and breakfast nook on Somerville. Garage and servants quarters. \$5000. Terms.

4 large rooms, closets and bath. Also small house at rear renting for \$35 per month. 3 blocks from High school \$3000. Terms.

Good 2 room house, water, gas, electricity. Corner lot. Rents for \$20. Price \$900.

5 rooms and bath, east front, 4 blocks east of Cuyler. Garage. \$4000.

**RANCHES IN S. W. TEXAS**

36 sections in Hudspeth county. Price \$3 per acre. Joining the T. F. Railroad. Fine for sheep or cattle.

60,000 acres in Culberson county foot hills of the Davis Mts. Good wells, mills engines and reservoirs for large storage of water.

Several good ranches can be had in the same part of Texas in size from 10,000 to 170,000 acres, priced from \$3 to \$10 per acre.

Many new people are coming to our city who are willing to pay up to \$250 as down payment on the purchase of a home. If you want to sell your house with a small initial payment, we can help you.

We also have calls for small acreage, from 1 to 20 acres within five miles of Pampa. If you have such property to sell, come in and see us.

Many renters are inquiring for places to live. List your rentals at our office.

**F. C. WORKMAN**  
Merris Dress Store Phone 271  
Next to Woolworths

**Orchid**

BY ELEANOR EARLY

CHAPTER XIX

ASHTORETH slipped her hand in Smythe's.

"Come on!" she challenged.

But all the while she was wondering exactly what was going to happen. And just how an Englishman acts when a girl laughs at his love making. She imagined that English people were mightily dignified, and she meant to humiliate Jack Smythe for saying that all American girls petted. She'd show him!

"You're sure," he teased, "you hadn't rather go to bed?"

"Bed!" she echoed. "A night like this!"

He held her close against his side.

"You know," he whispered, "you're not going to stand me again. Because this time I shan't stop for it, my dear."

"No?" she retorted. "And what would you do about it?"

Suddenly it occurred to Ashtoreth that perhaps she was not doing a sporting thing. English people made such a fuss about being sport-ing.

Smythe had warned her that he meant to kiss her. It was, in fact, his expressed purpose.

Probably then she really oughtn't to go. No girl, she supposed, went up to the boat deck with a man, unless she meant to be kissed. Particularly on such a night.

"You know," Smythe was saying, "someone's said even an atheist half believes in a God by night. Did you ever see anything so perfect in your life? Why, the ocean's a silver sea!"

Ashtoreth sighed.

"It's heavenly," she whispered.

A moonlit mood was on her. After all, why not let Smythe kiss her? She'd be a dreadfully poor sport to let him think he might—and then get mad over it.

She glanced at him sideways. He did look extraordinarily like the Prince of Wales. Those little lines about his eyes. And his mouth...

"It's wonderful," he said, "what a night like this can do to a man. Why, I knew a misogynist once—he simply hated women. Loathed and despised them, and all that sort of thing. And he took a cruise down here through the Indies—and fell in love with every woman on the ship!"

"A misogynist," thought Ashtoreth, "must be a woman-hater."

It was one of those 50-cent words Sadie talked about.

"Personally," continued Smythe,

ASHTORETH put her hand on Smythe's sleeve. But Mona struck his arm away and turned upon him in uncontrollable wrath.

"I've always thought a misogynist was a queer bird. Women were obviously made to be loved."

"But—" Ashtoreth felt curiously tongue-tied. She wanted to say something about women being meant for finer things. But she hated to sound terribly prim and old-maidish. And she couldn't think of anything at all clever.

"If all women agreed with you," she said, "there wouldn't be any really good women, would there? I mean, if we let all the men who are a dreadfully tarnished lot. And we wouldn't be what men call 'good women' at all, would we?"

They had leaned over the rail, to watch the lights of St. Thomas twinkling, like distant fireflies across the water.

"Good?" repeated Smythe, slipping his arm across her shoulders.

"Why, I suppose that depends upon your definition of good. Our wise George Bernard Shaw has something interesting to say on the subject. Goodness," says Shaw, in its popular British sense of self-denial, implies that man is vicious by nature. And that supreme goodness is supreme martyrdom."

"The idea isn't confined to us British, you know. It's also an American notion. Frenchmen haven't any such conceptions. As for the Latin races—they believe that anything that is natural is good. I think so myself. It's natural to want to kiss a pretty girl. It is also natural for a girl to like to be kissed. Therefore it is good. It is supreme nonsense to believe that anything that is natural is wicked. Or even that self-denial is a virtue. Those are very pious notions. But they're most fearfully dull."

ASHTORETH, like most girls, believed that good things usually were stupid. And that wildly exciting things were more apt than not to be wrong. It was, she had found, a fairly safe way to look at life.

But Smythe made her feel childish and ignorant. She wished that

It was Monty's arm across her shoulder. And Monty's lips against her hair. It would be such a relief not to have to be so dreadfully highbrow.

For months and months Ashtoreth had been pretending. Ever since she had gone to work for Hollis Hart. Pretending to bookish knowledge and high ideals. And culture. And wealth. And all sorts of things.

There was that day she had tried to make Mr. Hart think she knew all about Egyptology and Cleopatra and Scargels. Well, it hadn't gotten her far. Mr. Hart thought 'now that she was just as common and cheap as Sadie, most likely. . . . Then, of course, there was Sadie. She was always trying to impress Sadie. . . .

And Mona. Mona thought she had been to boarding school. Not that Ashtoreth had directly implied any such thing. Only Mona picked up the notion somehow, and it seemed senseless to deny it. Mona thought, too, that she had read all sorts of books. Not, of course, that Ashtoreth had ever said so.

After all, though, could a girl ever be just herself? With anyone, that is, who really counted? Wouldn't it be perfectly insane to let anyone you cared the least thing about discover how silly and stupid you really were?

In her secret heart Ashtoreth believed that her ignorance would simply appall anyone who actually knew anything. Anyone really clever. Hollis Hart, for instance, or Jack Smythe.

It was, really, a lot easier to be kissed than to get philosophical about it. If they went on talking about abstract good and evil, Jack would learn how stupid she was. Whereas, if she simply let him kiss her, he would discover her to be altogether desirable.

He drew her from the rail into the shadows.

"There are two chairs somewhere over here," he was saying. "I had the steward place them after dinner."

He put his arms around her, and held her close.

"You know," he whispered, "you've the softest skin in the world."

Then he kissed her arms, and brushed his lips to her neck, where her hair curled in little tendrils.

MAIZIE was awfully old-fashioned. Maizie always said you shouldn't give your lips to a man unless you really, and truly loved him and were going to marry him. But of course Maizie didn't know anything about such kisses as these! Mothers are so innocent—the poor dears. . . . Ashtoreth melted softly in his arms.

In a moment he held her away from him.

"Damn!" he muttered. "There's somebody in that chair down there. A woman—she just coughed. Over there—behind the wireless."

Ashtoreth's heart was beating wildly and something in her throat pulsed like a little fluttering bird.

"Oh!" she gasped, and laughed a little, breathlessly.

He steeled her, with his hands on her shoulders.

"There's no sense," he admonished indulgently, "in being take-a-chancey."

The woman in the deck chair had risen to her feet. She was all in white, and wore a white hat, like a turban. A long, gold tassel hung from her dress. And another from her turban, swaying as she walked. Nobody but Mona would have dressed like that.

She greeted them indolently. But, as she drew near, Ashtoreth saw that her eyes were smoldering. Jack Smythe lounged uncomfortably away and muttered an imprecation.

Ashtoreth put her hand on his sleeve. But Mona struck his arm away and turned upon him in uncontrollable wrath.

(To Be Continued)

Mona's wild tirade reveals an astounding truth. Read the next chapter for the surprising facts about Jack Smythe.

**Announcing the Following Ice Price Reduction**

**NEW DOCK PRICES**

100 pounds	70c
75 pounds	55c
50 pounds	35c
25 pounds	20c
12½ pounds	10c

**SCORED ICE—FULL WEIGHT**

Residence Coupon Books 75c per cwt.

500 lb. coupon book	\$3.75
1000 lb. coupon book	7.50

**COMMERCIAL RATES**

500 lb. coupon book	\$ 3.75
1000 lb. coupon book	7.50
2000 lb. coupon book	14.00
5000 lb. coupon book	30.00

**Coupon Books are convenient and Effect a Saving**

**PAMPA ICE MANUFACTURING CO.**

GEO. C. CUSTER, Mgr.



### Mobeetie High Swamped by Scoring Machine of Central High as Shamrock Postpones Game on Account of Storm

### Attorney General Takes Up Boston Sports Tangle

BOSTON, Mass., Jan. 5. (AP)—The Sunday sports controversy between the Boston city council and officials of the Boston National league baseball club in which charges of attempted bribery have been made, came under surveillance of Attorney-General Warner today.

The attorney-general announced he had assigned Gerald J. Callahan, assistant attorney-general, to assist him in an investigation.

The angle bringing the attorney-general into the case was the charge made before the commission that the \$30,000 raised by the Outdoor Recreation League of Massachusetts in support of the referendum for Sunday professional sports, accepted by a large majority at the November election was contributed almost wholly by Emi Fuchs, president of the Braves. The charge was made by Joseph P. Walsh counsel for Councilman William G. Lynch and for Daniel K. Carroll, boxing promoter associated with Lynch.

### Basketball Scores

U. of Kansas 24, U. of California 22  
Southwestern of Winfield, Kan., 32  
Oklahoma City U. 21.  
Nebraska 48, Colorado college 26.  
Wichita U. 43, Alva Teachers 27.  
West Virginia U. 54, Carnegie Tech 19.  
Chicago 24, Butler 21.  
Notre Dame 49, Detroit 14.  
Duquesne 38, Muskingum 26.  
Wisconsin 29, Minnesota 21.  
Iowa 34, Ohio State 26.  
Washington U. 36, Drake 17.  
Pennsylvania 35, Yale 19.  
St. Bonaventure 36, U. of Toronto 17.  
Purdue 33, Illinois 24.

### Espenosa Tied by Young Missourian

CHULA VISTA, Calif., Jan. 5. (AP)—Heron Smith, young Joplin, Mo., marvel and Al Espenosa, veteran, Chicago, marched abreast tonight at the fore of the field in the \$2,500 San Diego open, deadlocked at the end of 36 holes of qualifying play with 137s.

### Sarazen Repeats as Miami Champ

MIAMI, Fla., Jan. 5. (AP)—Gene Sarazen of New York repeated his triumph of last year in winning the annual Miami open tournament here today with a medal card of 294 for the 72 holes. Jock Hutchison was second, with 302, George Christ third, with 304. Johnny Farrell, national open champion, trailed in the money with a card of 308.

### Texas Quintet Is Victor Over Daniel Baker, 39 to 35

AUSTIN, Jan. 5. (AP)—The Texas university basketball squad had its closest call of the practice season here tonight when it emerged winner over the Daniel Baker Hill Billies, 39 to 35. Coach Walker of the Longhorns, started his second-stringers but the regulars had to go in to stave off defeat.

Holly Brook, Texas captain, turned the tide of the battle, with several well directed shots and the Longhorns finally nosed Daniel Baker out by the close margin.

Miller and M. Chambers were the stars for the Hill Billies.

### Denton Teachers Reverse Form to Defeat Simmons

DENTON, Jan. 5. (AP)—North Texas State Teachers' college basketball team reversed form tonight to defeat Simmons university, 32 to 14, after losing 34 to 23 to the Cowboy quintet Friday night.

During the first half the Denton team displayed clever floor work and sneaked the ball under the Simmons' basket repeatedly for close-in shots. Brook, Denton center, led in scoring with a total of 14. Houghton, forward; Mathews, center, and Smith, guard, carried the brunt of the Cowboy attack.

### NAVAL PLANES DOWN

CHARLESTON, S. C., Jan. 5. (AP)—Eight of the 24 planes that left Hampton Roads naval air station today en route to the canal zone tonight were unaccounted for. The other sixteen were reported forced down at various points along the South Carolina coast by strong winds and heavy mist. The planes were on their way to take part in winter battle maneuvers with the scouting fleet in the Canal Zone.

With Stalls and James on a scoring rampage, and the defense almost air-tight, Pampa Harvesters overwhelmed Mobeetie high school basketballers here Friday night, 50 to 12. Shamrock postponed coming on account of the muddy roads.

At the end of the first quarter, the score was 20-2. At the half it was 32-3, and at the end of the third period 40-3. In the final stage, free throws and several nice field goals ran up the Mobeetie score as Coach Oduis fitchell of Central fed his second-stringers into the game.

Player	Pg.	Ft.	F.
Cabell, rf	1	0	0
James, lf	8	0	1
Stalls, c	13	0	1
Walstad, rg	0	0	1
Saulsbury, lg	0	0	0
ard	0	0	0
Thorne	1	0	0
English	0	0	0
Yres	0	0	1
Jason	0	0	0
ash	2	0	0
Johnson	0	0	0
Willis	0	0	0
Totals	25	0	4

Player	Pg.	Ft.	F.
Webb, rf	1	1	0
Jobert, lf	2	0	0
Turns, c	1	1	1
Goodnight, rg	0	0	0
Johnson, lg	1	0	0
Totals	5	2	1

Referee: Jack Griffith, (Oklahoma).

### Aggies Take Two Games Off Teachers

COLLEGE STATION, Jan. 5. (AP)—Texas A. & M., made a clean sweep of its basketball series with the Sam Houston Teachers' college five by winning 29 to 23 here tonight.

Coe Bearkat, captain and center, was high-point man, with nine of his team's total. Blount, Webster and Davis tied for second and led the Aggies with six points each to their credit.

Monday A. & M., is to go to Georgetown to meet Southwestern.

### ATHEISTS ARE ACCUSED

CHICAGO, Jan. 5. (AP)—Charge that atheists have a well-organized campaign to destroy Bibles placed in hotels and lodging houses by the Gideon organization was made today by A. B. T. Moore, international secretary.

### "I'm Going to Win This Fight" Says Tex Rickard, Very Ill, to Dempsey Saturday—Plans for Bout Continue

MIAMI BEACH, Fla., Jan. 5. (AP)—"I'm going to win this fight, Jack," Dr. S. W. Fleming of New York, Mrs. Tex Rickard's personal physician, arrived here tonight in an airplane from Palm Beach, where he is spending the winter.

Attendants said he was taken to the hospital where the promoter is critically ill after an operation for appendicitis, and went into consultation immediately with Dr. Adkins, in Rickard's room.

MIAMI BEACH, Fla., Jan. 5. (AP)—Tex Rickard, critically ill here, continued to rally today from a relapse that last night caused physicians to fear he might not live through the day.

Early tonight the fight promoter, president of Madison Square Garden, New York, was resting easily after having slept nearly two hours during the day. Attendants said his pulse was lower and that his temperature appeared to have dropped since the last official bulletin.

### Canyon Teachers Defeat Baylor

WACO, Jan. 5. (AP)—Canyon Teachers' basketball team made it two in a row over Baylor's Bears here tonight, winning 48 to 27.

### Heine Sand Goes to Rochester Club

ST. LOUIS, Jan. 5. (AP)—The St. Louis Cardinals tonight announced release on option of Heine Sand, shortstop, to Rochester, of the International league. Sand will replace Charley Gelbert, drafted by the Cards.

### Bogges Is First Steer to Sign

DALLAS, Jan. 5. (AP)—Lynn (Dusty) Bogges, utility man, bought by Dallas of the Texas league from San Antonio, is the first of the 1929 Steers to sign his contract. Business Manager Tarleton announced tonight.

### PATROLMAN IS KILLED

HOUSTON, Jan. 5. (AP)—Patrolman James Faulkner, 37, died today of a fractured skull received when a truck struck him as he was crossing a street several hours earlier.

### Razorbacks Beat Mustangs Easily in Second Game

DALLAS, Jan. 5. (AP)—The six-footers from Arkansas university are off to a flying start in defense of the South-west conference basketball crown they have held three successive years. With Tom Pickel, their captain, leading the way with 18 points, the Razorbacks trimmed Southern Methodist university, 39 to 17, in the second game of the inaugural conference series here tonight for a clean sweep.

The Mustangs apparently shot their bolt when they fought the champions to a bare 33-26 decision last night.

Employing a revised line-up, the Mustangs managed to give the champions a fit for the first half of tonight's tussle, during which the lead saw-sawed. The Porks rallied in the latter stages, to hold a 11-to-8 advantage at the rest period.

In the second period the tall Arkansans hit their real stride, however, and the Mustangs rapidly were left in the rear. In closing minutes of play the Porks appeared demoralized and much of the crowd had departed when the gun sounded.



Our inventory is finished—we are rearranging our store to receive Spring Merchandise. We want to clean up all our winter stock and odd lots so we are offering some exceptional values.

All ladies long sleeve wash dresses, woolen sport dresses, and all winter silk dresses.

**20 Per Cent Discount**

Your choice of any Evening Dress

**20 Per Cent Discount**

All Jewelry, Mesh Bags, Leather Hand Bags, Novelties, Vases, Pictures, etc.

**20 Per Cent Discount**

Bridge Luncheon Sets, fancy table and bed linens.

**20 Per Cent Discount**

#### For the Baby

Silk and Velvet Bonnets, Wool and Silk Caps, Sweaters, Booties, Sweater Suits, Quilts and Shawls.

**25 Per Cent Discount**

Broken lots Brassiers and Corsets, you may find just the garment you want.

**33-1-3 Per Cent Discount**

Dress and Coat Flowers

**25 Per Cent Discount**

Kenwood Baby Coats, the finest coat ever made.

**33-1-3 Per Cent Discount**

Negligees and Robes, a large selection. Buy now and save.

**25 Per Cent Discount**

100 Ladies Hats, Felts, Satins and Combinations. All new mid-winter styles to clean up at, your choice

**\$1.00**

Baby Rompers, size 1 to 3. Were 85c to \$2.25. Buy them now at 50c and \$1.00.

School Dresses, 2 to 14 years. Buy them now at a savings of nearly half.

Children's Jersey and other Woolen Dresses

**25 Per Cent Discount**

All Winter Coats must go—2 to 16 years

**One-Half Price**

Sizes 16 to 48

**One-Half Price**

## ANNOUNCING—

The Opening of the

# Rex Electric Shop

First Door West of Rex Theatre

Carrying a most complete line of

## ELECTRIC FIXTURES

You will find in our stock, on display in our shop, an assortment from which you can select suitable fixtures for every room in your home.

## ELECTRICAL CONTRACTING

Experienced men from our shop are available for any kind of electrical repairing, installation or service. Men who have had many years of experience in electrical work are at your service.

Office Phone 134

Night Phone 138

# Rex Electric Shop

G. R. Hassell      318½ West Foster      E. B. Smith

MITCHELL'S  
Apparel for Women





**TODAY**

Flirtation!  
Fascination!  
Captivation!  
Exaltation!

**BILLIE DOVE**

The Screen's Most  
Beautiful Star

IN

**"Adoration"**

with  
Antonio Moreno

Open 1 p. m.

**Grand Jury Asks  
Closer Watch on  
Funds of County**

The following is the complete report of the 84th district grand jury:

To the Honorable Newton P. Willis, District Judge: We your grand jury for the December term, 1928, of the 84th District Court of Gray county, Texas, having finished our labors beg to submit this our final report.

We have been in session eleven days and have examined a great many witnesses and have returned indictments in all cases, wherein the evidence in our opinion warranted such action having returned 28 felony indictments and 2 misdemeanor indictments.

We desire to call the commissioners court's attention and urge upon them to properly look after the finances of the county and see that the county's money is properly expended and that no waste and extravagance is permitted. We also recommend that the commissioners' court see that the interest due the county by the depository bank is paid monthly into the county funds.

We also call attention to the officers of the county to see that the provisions of the law relating to the recovery of stolen animals and theft thereof are strictly enforced. We are advised that the butchers of the county are failing to make reports of animals slaughtered and to keep a record of all animals purchased and from whom and a description thereof including the brand, and are also failing to have the hide and ears of such animals inspected by the proper inspector.

We also desire to thank the court and other officers for assistance rendered and for courtesies shown, and having no further business to come before us, we respectfully ask to be discharged.

J. A. ASHBY, Foreman of the Grand Jury.

**Pythian Installation  
Will Be Public**

The public is invited to attend the public installation of officers of the Knights of Pythias lodge tomorrow night at 8 o'clock. The installation will take place in the basement of the Methodist church.

An excellent entertainment has been arranged which will include numbers by the high school orchestra, solos, piano numbers, and skits. Sandwiches and chocolate and coffee will be served after the installation ceremonies.

**WOMAN IS SUICIDE;  
HUSBAND KILLED SELF**

SAN ANTONIO, Jan. 5. (AP)—Six days after her husband was shot to death in his home near Converse, presumably by his own hand, Mrs. August Betcher, 47, was found dead in the home of her son, Alfred Betcher at Schertz today.

A justice of peace returned a verdict of suicide. Another justice had called the husband's death suicide.

**BONES OF MISSING  
BOY THOUGHT FOUND**

ORRVILLE, Ohio, Jan. 5. (AP)—Four-year-old Melvin Horst disappeared from his home here nine days ago.

Tonight after examination of ashes taken from the furnace of the home of a neighbor, Elias "Nul" Arnold, Prosecutor Moughey said they contained what appeared to be particles of bone and part of a button. A physician, concurred after an examination.

Arnold is one of five held on a charge of child-stealing in Melvin's disappearance.

**COAL MINE AFIRE**

WHEELING, W. Va., Jan. 6. (AP)—Fire companies from Shady side, Ohio, Bellaire, Ohio, and Wheeling early today were battling a fire in the Pultney mine of the Cambria Collieries company, between Bellaire and Shady side, across the Ohio river from here. There were no workers in the mine, idle for two years. The extent of the flames was unknown. Firemen had not determined what started the fire, which broke out late Saturday night.

**Five Persons Die  
in Texas Tornado  
Friday Evening**

BAY CITY, Jan. 5. (AP)—Five persons were known to have been killed and 14 injured, several severely, by a tornado which struck seven miles south of here last night, yet officials said they feared the life and property toll might increase with the re-establishment of communication.

Reports received today indicated the wind had struck only one community, but Justice D. E. Capes, who conducted inquests for the storm victims, said other more isolated sections might have been struck.

Three members of one family were killed and three others injured when the storm demolished their home. Townsend Wiley, 45, Derrine Wiley, 12, and Claude Wiley, 17, were killed, and the boys' father and mother, Mr. and Mrs. Charles Wiley, were severely injured. Townsend Wiley was a brother to Charles.

In the same community, D. J. Mayer, 40, was injured fatally by a flying timber. He died on the way to Bay City for treatment.

The fifth victim was a negro girl.

KANSAS CITY, Jan. 5. (AP)—Frigid temperatures were felt by the middle-west and southwest tonight on the heels of the worst storm of the season, which lashed the regions last night and today and brought death to at least eleven persons.

The season's heaviest snow in many sections, made trains late, hampered wire communication, and tied up street and highway traffic over a wide area, while temperatures were at the lowest mark of the winter. Air mail service both north and south on the Chicago-Dallas route was suspended.

Snowfall in Kansas and western Missouri ranged up to 10 inches and some livestock men expressed fear of cattle losses.

**Building Activity  
Starts Briskly**

DALLAS, Jan. 5. (AP)—Texas building activity started the new year with a rush, the three largest cities in the state having a total of almost a million dollars between them. Dallas, where building dragged at the end of 1928, took the lead for the five-day period between New Year's day and Saturday night.

Figures for the year to date follow:  
Dallas ..... \$331,000  
Houston ..... \$307,810  
San Antonio ..... \$259,474  
Fort Worth ..... \$168,746  
Wichita Falls ..... \$104,225  
Corpus Christi ..... \$ 67,200  
Lubbock ..... \$ 55,300  
Austin ..... \$ 23,825  
Beaumont ..... \$ 7,548

**Three Buildings in  
Honey Grove Burn**

HONEY GROVE, Jan. 5. (AP)—Fire tonight destroyed three buildings on the north side of the square here. Loss was estimated at \$75,000. Fire departments from Paris and Bonham aided in extinguishing the blaze.

An explosion on the second floor of a dry goods store was said to have started the fire. The dry goods concern, a grocery, and a bank were destroyed.

**Osage Indian Is  
Found Dead in  
Snow—Four Held**

PAWHUSKA, Okla., Jan. 5. (AP)—Four persons were held, and a fifth, was sought here tonight in connection with the death of He-Lo-Ki-He, 65, Osage Indian, whose body, frozen and snow-covered was found early today in a ditch, west of Pawhuska.

The county attorney refused to reveal names of the men being held, but officers said they had been on a "party" with the aged Indian, Friday night. They were being held, officers said, pending outcome of a coroner's inquest.

**Dallas Man Is  
Slain by Relative**

DALLAS, Jan. 5. (AP)—Joseph Alexander Campbell, 30, Dallas, was shot and fatally wounded tonight at the side of his stepfather-in-law's home.

F. F. Fisher, Mrs. Campbell's stepfather, surrendered to police and made a statement in which he asserted that Campbell was shot as he was trying to force an entrance to the Fisher home.

Campbell lived only a few doors from the Fisher residence. A few moments before the shooting two policemen had answered a call to the Campbell home, neighbors having reported a disturbance. Later, Fisher told police, Mrs. Campbell came to her stepfather's home to spend the night and Campbell followed.

Fisher was released on his own recognizance.

**GIRL COMMITS SUICIDE**

GOODING, Idaho, Jan. 5. (AP)—After struggling a mile and a half through deep snow to a Butte near Gooding, Helen Tenney, 18-year-old daughter of President C. W. Tenney of Gooding college, shot herself through the head. Her body was found by searchers today. Miss Tenney had been in ill health.

**HELEN HICKS WINS**

HAMILTON, Bermuda, Jan. 5. (AP)—Coming from behind in the last 18 holes, Helen Hicks, 18, Hewlett, N. Y., today won the Bermuda women's golf club, defeating Ada Maskenzie, Toronto, 2 up in the 36-hole final round.

**Rice Institute  
Cashier Shoots  
Self to Death**

HOUSTON, Jan. 5. (AP)—D. E. Wade, cashier of Rice Institute here, despondent over ill health, sent a bullet through his head at his home here tonight. He died instantly.

Mrs. Wade said her husband had threatened to kill himself several times. Saturday, she told a justice of peace who held an inquest, she asked him to accompany her to the city.

Wade walked upstairs and his wife heard a dull thud. She ran to investigate and found her husband dying on the floor, a bullet wound in his head. A pistol was beside the body.

A verdict of suicide was returned. Wade for 12 years had been cashier of the educational institute and was active in its business affairs.

**LOUISIANA TOWN HELD  
IN SUSPENSE BY CASE**

FRANKLIN, La., Jan. 5. (AP)—At the end of what the state had decreed should be their last day to live, Mrs. Ada Bonner Leboeuf and Dr. Thomas E. Dreher tonight began another week of uncertainty after 24-hours during which the thumb of fate turned first up, then down and then up again.

The final decision of Governor Long to grant the couple, convicted of murdering the woman's husband, James Leboeuf, a stay of execution until Saturday came four hours before the final time set for the hanging at 3 p. m.

The day's developments, which started with a disagreement between the chief justice and four other members of the state supreme court, so stirred citizens of Franklin that business was at a standstill.

**PISTOL TRAP KILLS  
THIS NEGRO INTRUDER**

CHICAGO, Jan. 5. (AP)—Four robbers of his home within two weeks were too many for Robert Graves, negro.

So Graves attached a pistol near the rear door, pointed it so it would hit an intruder, and fastened a cord to the trigger and the doorknob.

Today an unidentified negro about 30 shot through the head was found inside the door, victim of the trap. Both locks of the door had been jimmied.

**CRESCENT**  
"PAMPA'S LEADING PLAYHOUSE"  
THE HOME OF PARAMOUNT PICTURES

Starting Monday, January 7  
**LILLIAN MURRY**  
and Her Zippity Zip Co. of  
18 PEOPLE

New faces, new plays and new laughs  
Change of Picture and Vaudeville Daily  
Vaudeville Starts 3:30, 7:30 and 9:30

Report of the Condition of the  
**FIRST NATIONAL BANK**  
of PAMPA, TEXAS

Statement of Condition at the Close of Business December 31, 1928

RESOURCES	
Loans and Discounts	\$566,590.89
Overdrafts	1,146.21
Real Estate	13,744.51
Bank Building	30,000.00
Stock Federal Reserve Bank	2,250.00
U. S. Bonds to secure circulation	6,260.00
Cash quickly available:	
Call and Commercial Loans	\$145,000.00
Stocks and Securities	1,755.69
Liberty Bonds	94,600.00
Bankers' Acceptances	443,687.29
Cash and Sight Exchange	393,855.44
Total	\$1,698,890.03
LIABILITIES	
Capital Stock	\$ 50,000.00
Surplus	25,000.00
Undivided profits	2,515.29
Dividend Unpaid	5,000.00
Circulation	6,260.00
Deposits	1,610,114.74
Total	\$1,698,890.03

**DIRECTORS**  
F. C. Ledrick  
H. J. Lippold  
J. R. Henry  
T. H. Lane  
B. E. Finley  
DeLea Vicars

**OFFICERS**  
B. E. FINLEY, President  
J. R. Henry, Vice-President  
DeLEA VICARS, Vice-President  
E. S. VICARS, Cashier  
J. O. GILLHAM, Asst. Cashier  
B. D. ROBISON, Asst. Cashier

**ANNOUNCING**

The Sale of Earl Rice's Interest  
in the

**DeLuxe Cleaners**  
to Clarence Kennedy

Who has been with the Pampa Dry Cleaning Co., for the past two years.

Mr. Kennedy states that there will be many changes made in the plant and when completed it will be the best equipped dry cleaning establishment on the North Plains.

We wish to take this opportunity to thank our many friends and patrons for their patronage the past year and we want to keep on serving you through 1929.

May the new year bring you happiness and prosperity and Better Dry Cleaning.

**DeLuxe Dry Cleaners**  
Morris Johnson                      Clarence Kennedy  
Phone 616

**Top Prices  
FOR USED FURNITURE**

CASH OR TRADE-IN

**PHONE 181**

And One of Our Buyers Will Call Promptly

When you want to buy used furniture you will always find as large a stock here as you might desire to select from. And you'll find that our used furniture is good—experienced furniture repair men are here all of the time to keep our large stock of used furniture in perfect repair.

Whether it's New or Used—Look to Malone's for the Best!!!

**G. C. MALONE  
FURNITURE Co.**

Malone's for Furniture                      Your Credit Is Good



## NEW HUDSON AND ESSEX CARS RECEIVED BY PHILLIPS

Packard Exhibits  
Most Complete in  
Company's Life

This year's automobile show sees the Packard Motor Car company exhibiting with the most complete line of cars in the company's history. Packard now is building straight eights exclusively in three distinct price classes, actually with four, if individual custom cars with bodies built in the shops of some of the country's best known body builders are to be considered.

The Packard "line" embraces the Standard Eight, built on two different wheel bases; the Custom Eight with a slightly larger and more powerful motor than that of the Standard Eight and with a wheel base of 140 inches and the DeLuxe Eight, called the most luxurious car Packard has ever built.

The DeLuxe Eight is a new car just announced last month with a surprise showing at the automobile salons. It is one of the largest cars built having a wheel base of 145 1/2 inches. With such a chassis and the long rakish Packard lines the custom body builders were given. It was remarked at the salon, an opportunity to outdo all their previous efforts in luxurious body building.

The Packard Standard Eight since its introduction last summer has been proving one of the most popular cars the company has ever built and the Detroit factory has been pressed harder than ever before in its history, because of this popularity, in an effort to make the supply somewhere near equal the demand.

It was believed last year that the last word had been reached in the Packard Six, as exhibited in the automobile shows then. However, cars now exhibited show that Packard has done far more than just add two more cylinders to its engine, which in itself would have been, automobile men say, a considerable step.

Bodies of the Standard Eight have been given much in added comfort as well as appearance. A wide selection of color combinations is offered. Seats have been made deeper and given scientific contours which, with softer springs and upholstery, go far toward the elimination of driving fatigue.

The new motor actually develops on the test bed 90 horsepower. Its designers are said to have added much in the way of smoothness of operation with a number of important features such as a vibration damper and a sturdy crankshaft with nine main bearings. The motor is equipped with a crankcase ventilating system which carries harmful vapors out of the engine and does away with all burned gas odors inside of the car. Examination of the power plant shows that Packard has retained the important feature of a piston lubricating system. By this arrangement oil is delivered to each piston when the choke is used, as when starting. It is at this time that the greatest wear occurs in an automobile engine.

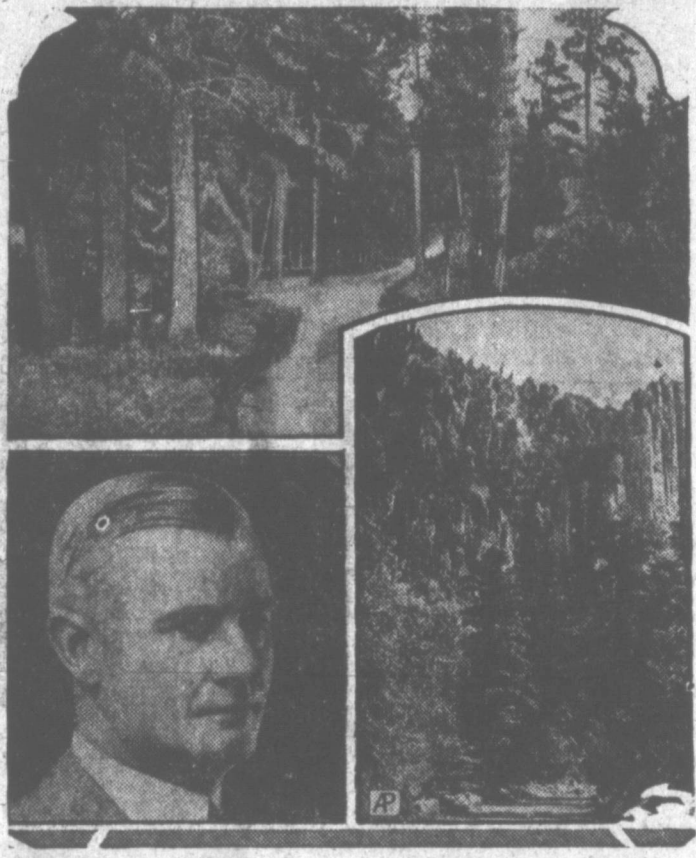
One feature of the new Packards has been hailed as one of the most important developments in automobile engineering in years. It has been called the Packard shock absorbing system, and consists of a number of devices all designed in close relation with each other to eliminate road shocks. Through this system Packard has succeeded, it is asserted, in eliminating front wheel "shimmy" and steering wheel "whip" something on which motor car engineers have been concentrating since the advent of low pressure tires.

Surety Bond Now  
Given With Dunlops

BUFFALO, N. Y., Jan. 5.—The Dunlop Tire & Rubber company has adopted a plan by which the person buying a Dunlop tire and tube will receive a Surety Bond, issued by the American Surety company of New York. This Surety Bond covers the tires for 12 months against accident, collision, blow-out, misalignment, stone-bruise, road-cuts, rim-smash, side-wall injuries, tube-pinchings, valve-tearing, under-inflation and faulty toe-in.

President Edward B. Germain in his formal announcement to Dunlop dealers said: "The primary purpose of this Surety Bond is to save the purchaser from loss due to tire and tube accidents such as collisions, blow-outs, stone-bruises, cuts, rips-smashes, tube-pinchings and valve-tearing. However, it is so liberal in its provisions that it includes such well known abuses as under-inflation, misalignment, over-loading, misuse of brakes, bad rims, etc. Tubes are also guaranteed where included as a unit with the casing.

The public should appreciate that a guarantee of this sort is only pos-

New Mexico Improves  
Scenic Roads to Draw  
Big Tourist Traffic

To attract tourists, New Mexico is improving the roads off its main highways, so motorists may see palisades in canyons (lower right) and follow forest trails like those above without inconvenience. Gov. R. C. Dillon (lower left) sponsors the road building.

SANTA FE, N. M. (P)—New Mexico is building good roads in sparsely settled regions off main highways to make remnants of the great western wilderness within its borders accessible to tourists.

The tourists are paying the bill, for most of the revenue obtained through the state's 5-cent gasoline tax for financing road construction is paid by motorists from other states.

Gov. R. C. Dillon is pushing the good roads program, and the citizens apparently approve his policy, for they have re-elected him by the largest majority ever given a governor. He is the first governor to win a second term.

"The more good roads we have the more tourists will come to see us," Governor Dillon says. "As the tourist traffic increases the revenue from the gasoline tax will increase, so we can put down more good roads to attract more tourists."

The governor points out that many of New Mexico's scenic assets are off the transcontinental highways. The state becomes more interesting to visitors, he explains, as secondary roads make the beauty spots accessible to motor travel.

One of the secondary roads improved in the last year carries the tourist through towns which are quaint relics of the frontier. It runs through the Dawson mines section into Cimarron canyon, where Vice-president Dawes recently hunted for bear; past the canyon palisades; around Eagle Nest dam and Lake Laguna; over the timbered mountains into the adobe city of Taos; by the ancient Indian pueblo; along the walls of a canyon at the source of the Rio Grande and finally into old Santa Fe.

Emphasis given these scenic trails is revealed by the fact that New Mexico improved this year 1,400 miles of secondary highways compared with 400 miles of primary roads.

Cost of road building is comparatively low, for dilled gravel is adequate for surfacing in this section of light rainfall. In fact, New Mexico has only 80 miles of concrete roads.

The state's revenue from the gasoline tax is expected to exceed \$1,800,000 this year. A part of this money goes into a sinking fund to retire \$2,500,000 of five-year road debentures, and the balance is available for highway construction.

Registration taxes on motor vehicles owned by New Mexico residents total only \$300,000 a year. An additional \$300,000 is derived from a one-mill road levy.

sible when an unusually strong factor of safety is built into the tire. Only through such high strength could the effect of abuse be reduced to the minimum that could justify a bonded guarantee like this.

Emmett LeFors was a business visitor in Amarillo yesterday.

Mrs. George Casey is seriously ill with influenza.

Basic Improvements  
Notable in Hudson  
Line for 1929

Greater than previous Hudsons in size, power, roominess, comfort, beauty and in every phase of performance, the new 1929 Hudson cars embody from end to end interesting and fundamental improvements such as the automotive world has become accustomed to expect.

It is well named "The Greater Hudson." As in the past, there are two Hudson chassis. Both are longer, and each has been widened to accommodate the most luxurious bodies in Hudson history.

Both chassis are powered by the new Super-Six F-head motor which in stock trials has turned in an easy, smooth 92-horsepower. Increased motor size, greater valve life and a new twin jet Marvel carburetor provide this added power that gives road speeds in excess of 80 miles per hour and acceleration that is beyond even what Hudson offered in the past. The safety factor, ever regarded by Hudson as of importance even above speed and beauty, is more certain than ever before.

Unbiased automotive experts who have tested the new Hudsons under every condition have been as much impressed with the smoothness and the ease with which the remarkable power is conveyed from the motor to the wheels as they have been with the speed and control.

A complete "cushioning" of the entire power line is made possible by a Lancaster Damper on the crankshaft, a larger clutch of advanced design, a beautifully finished transmission, and improved universal joint lubrication.

In addition to adding much to driving pleasure and riding comfort, this complete elimination of power line vibration means that every ounce of engine power is delivered to the wheels and the normal wear and tear on power line parts, from the crankshaft to axle, materially reduced.

Control, always an outstanding feature of Hudson cars, brings new driving ease and new security to motoring. Steering is made almost telepathic through an increased steering ratio, the use of roller bearings in the steering gear, and the wide-leverage, grip-molded steering wheel.

New brakes balance the greater power, providing effortless deceleration that gives even the unseasoned driver complete confidence. These brakes are self-energizing with either forward or reverse motion. The braking material is new and offers interesting advantages. Instead of the fabric formerly used, these brakes are faced with a composition material that is impervious to moisture and to all practical purposes is wear proof. Brake drums are larger, and brake tension is regulated by a single simple adjustment.

Twenty-Six Million  
Vehicles on Roads

At present, there are about 24,500,000 passenger cars, trucks and buses on this country's roads and streets. By the end of 1929, automobile registrations will be but a few less than 26,000,000 vehicles.

With this steady increase in automobile ownership, the highway takes on a new aspect. The question is no longer whether or not the pavement mileage shall be increased. The problem is, how can more pavements be financed.

Forward looking communities now consider automobile travel to be composed of two chief costs: the direct payment of money for gas, tires, car depreciation, etc.; the indirect payment for motor comfort through the various taxes collected to improve roads.

Car costs are directly dependent upon the road surface. At one time cars lasted only half as long in Missouri as they do now since the adoption of a sensible paving program. Tires in many localities give only half the mileage that is possible over pavements. This loss alone may be \$25 or \$50 a year.

Highway authorities point out that by slightly increasing motor vehicle taxes, perhaps thereby increasing motoring costs for a short time, cheaper motoring costs will be brought about. Most road improvements are paid for in one way or another by car owners. Consequently the proper levying and expenditure of road taxes will shortly bring about a saving that more than offsets reasonable taxes.

Indiana, for instance, is considering the raising of the motor vehicle license fee by \$5. This extra income will permit the Hoosiers to complete the paving of the state highway system in five years, rather than the 16 years that will be required if present highway income is not enlarged.

## Sells Cars



Dee Richardson is now sales manager of the Phillips Motor company, handling Hudson and Essex cars. Mr. Richardson has had several years' experience in automobile salesmanship. He was formerly connected with the Chevrolet agency here.

Great Chevrolet  
Facilities Provide  
Big Car Supply

Although Chevrolet originally planned only for 11 major advance showings of its new 6-cylinder car, the tremendous interest which has been excited throughout the country to see the new car has made it necessary for the company to plan 50 additional advance showings in other important centers.

Already additional showings have been held at Philadelphia, Indianapolis, Kansas City, Flint, Columbus and Cleveland.

Everywhere the new Chevrolet line has been displayed the crowds have been tremendous. At New York, Detroit, Chicago, Los Angeles and Washington, cities on the original list of 11 where showings have already been completed, close to a million persons flocked to inspect the new cars.

At Detroit the opening day crowd, November 24, was 28,000, a figure which bettered by 3,000 the best opening day crowd in the history of the famous Detroit automobile show. Approximately a quarter million people visited the showing during its six-day New York run. Proportionate crowd interest was demonstrated at Washington, Chicago and Los Angeles.

When it was decided that the advance showings should take in more territory so that no large center would be overlooked prior to the nation-wide exhibit December 29, Chevrolet's vast and efficient sales force went into immediate action. Marshalled by H. J. Klingler, general sales manager of the company, and captained by the regional sales managers, arrangements were culminated almost overnight to bring about the showings in Philadelphia, Cleveland, Columbus, Indianapolis, Kansas City and Flint.

Cars from the Flint factory had to be loaded and rushed express. Dealer organizations in each of these places, working smoothly in every instance, selected centrally located and popular exhibit places. Newspaper advertising was relied upon to welcome the public. And the success of the suddenly planned venture was attested to by the mammoth crowds which poured forth at all these points to view the handsome new Chevrolet.

Fifteen mammoth Chevrolet factories throughout the country are working at top speed turning out parts and assembling these parts into complete automobiles. Every thing is being pushed forward at peak capacity so that the thousands who have already placed orders will not be disappointed. As soon as the cars come off the assembly line they are distributed to the dealer organization so that every Chevrolet dealer had cars on display and ready for delivery to customers December 29.

## NOTE TO PACKARD OWNERS

Packard drivers who prefer to leave their cars in gear should be careful not to leave it in reverse at night, says Jack Mason of Biggs-Horn, Packard dealer.

When the gears are in reverse a 21-candle power backing light is automatically switched on if the other car lights are on and if the car stands several hours an excessive drain is made on the battery.

Mrs. Thomas A. Cox is visiting relatives in Cleburne.

New Whippet Is  
Wonderfully Re-  
ceived Over Country

First reports received on the welcome accorded the new Whippet four and Whippet sixes, which were introduced recently by the Willys-Overland company, indicate that the Toledo manufacturer has achieved the greatest success in the 20 years history of the company.

The remarkable public reception accorded the new cars in the cities where they were first shown proved clearly that Willys-Overland had struck the public fancy to a greater degree than ever before through its introduction of high priced car beauty and advanced mechanical features in the low priced high priced car of beauty and advanced marked advancement would tend to establish a new trend of design in the Whippet price class.

Although it was known that the public was in a highly receptive mood for the new models because of the outstanding reputation of the original Whippet, yet the interest that was manifested exceeded even the most optimistic expectations of Willys-Overland executives.

Before the presentation of the new Whippets the interest of the public was aroused because of advance information that seeped out that in the new cars the Willys-Overland company was taking the initiative by bringing out something entirely new and totally different from anything heretofore shown in the low priced field.

The public showed a tremendous interest in the development of the Whippet body lines which reach a standard of beauty entirely new to cars in the price range of the Whippet four and six. In addition, marked interest was shown in the increased length of the cars and the roomier and richly upholstered interiors.

There was one notable feature of the new Whippets which proved a chief point of interest in the matter of mechanical advancement over other motor cars—that of the new "Finger-Tip Control," declared by experts to be the greatest advancement in driving convenience since the self-starter.

The "Finger-Tip Control," which is standard equipment on all Whippet fours and sixes, consists of a button in the center of the steering wheel by means of which the driver controls all the functions of starting the motor, controlling the lights and sounding the horn without removing a hand from the steering wheel.

This advanced driving convenience proved especially interesting to the thousands of women who inspected the cars since it eliminates the necessity of searching for the starter button in the dashboard.

The new Whippet fours and sixes are conspicuous for their outstanding development of artistry in body lines from the new trim higher radiator to the carefully rounded rear quarters. The color schemes of the exterior round out the craftsmanship that brings a new conception of beauty to cars in the low priced field.

The power plants of both the four and six have been materially improved, providing a speed and power performance far superior to that of the previous models.

With production on the new models being stepped up daily, executives of the Willys-Overland company are confident that retail deliveries to buyers will be effected much sooner than was at first anticipated.

Money Spent in  
Paving Is Tangible

By E. E. DUFFY

Where does money go when it is spent, has been a query on the tip of tongues since the invention of money some 3,000 years ago.

In the case of roads, however, the Iowa state highway commission has prepared an illuminating answer. All things considered, labor receives a trifle more than half of the construction cost of a mile of pavement. The cost of stone aggregate, cement, reinforcing steel, freight and other construction costs account for the remainder of the cost.

In Iowa, the construction cost of a mile of pavement has averaged \$26,194. Of this amount 52 per cent, or \$13,706 goes to labor through various channels.

Costs for a mile of highway are distributed as follows: stone aggregate, \$3,441; cement, \$5,856; reinforcing steel, \$850; freight, \$5,820; grading, \$2,000; miscellaneous contractors costs, including profits, \$8,517.

From these items labor receives the following amounts: stone aggregate, \$1,032; cement, \$3,116; reinforcing steel, \$255; freight, \$2,448; grading, \$1,500;

Formal Opening  
of New Agency  
to Be Monday

Ruston Phillips, of the Phillips Motor company, announces the arrival of a shipment of new Hudson and Essex cars. The new motor company has just moved into the old C. & G. Motor company's location on Frost street.

The new Hudson-Essex garage has a showroom 40x50 feet. A large repair shop with expert mechanics will never close, Mr. Phillips says. Leo Williams, with 15 years Hudson-Essex experience, is shop foreman. He has been with Tony Chisum of Amarillo for several years. Assisting Mr. Williams is Garland Wilson of Amarillo, five years with Mr. Chisum.

The first new Hudson goes to Sheriff E. S. Graves. It is a brown coupe. Dee Richardson, formerly with the Chevrolet company, is sales manager of the Phillips Motor company.

A grand opening will be held in the showroom of the Phillips Motor company tomorrow night beginning at 8 o'clock. Entertainment features will be presented. A Hawaiian orchestra will be in attendance. This opening will not be a sales proposition but an acquaintance-gathering, Mr. Richardson says. We just want to get acquainted with the people of our city.

An old fiddlers' contest will be a feature of the evening.

Willys-Overland  
Schedule Biggest  
in Firm's History

TOLEDO, Jan. 5.—Completing the year with a total production exceeding 315,000 cars, and with the company's plants now turning out new Whippets at the rate of 1,000 every day, the Willys-Overland company is entering the new year with the most aggressive production schedule in the history of the company.

December shipments of the new models exceeded 15,000, while January schedules call for more than 35,000, with the daily production gradually increasing to more than 1,500 by the middle of January, President John N. Willys said. The company's plants are employing 23,000 workers and 10,000 more skilled laborers will be added during the next 30 days. A total of 968 of the new Whippets were produced on Thursday, December 27.

This is the first time in Willys-Overland history that the company has begun a new year with employment near the previous peak and with production and unfilled orders anything near the volume of the present. The company's new body plant in Toledo is in full operation and is making possible several important economies as well as greatly improved quality, Mr. Willys pointed out.

Willys-Overland's planned production for the first six months of 1929 is 300,000 cars. The highest previous six months' record was 200,000 cars, a record reached in June, 1928.

and the labor portion of miscellaneous contractor's costs, \$6,855.

From these studies it is apparent that the circulation of money is not unlike the circulation of blood. Eventually it gets back to the starting point. The general citizenry of Iowa for instance, through the recently passed \$100,000,000 bond issue, will pay for the construction of some 3,400 additional miles of paving. This program will mean that Iowa labor alone will be benefited to the tune of more than \$50,000,000.

With this considerable pavement mileage reducing car operating costs of Iowa motorists to a point where the bond issue charges will be more than compensated for, it is obvious that bond issues and improved road programs are decidedly good business. Some students of economics point out that this very progressiveness of state and local governments and the resultant wide distribution of funds has in no small part accounted for current prosperity.

Tom Hudson left today on a business trip to Seagraves.

J. O. Gillham has been confined to his home the last three days, after suffering an attack of appendicitis.

Miss Zelma Sellers will return to the central office of the Panhandle Insurance company as stenographer, after working several months in the branch office at Panhandle. She takes the position tomorrow.

Mr. and Mrs. Clyde Ives are expected to return today from a holiday visit in Des Moines, Iowa.



### Oil Situation to Be Studied by Committees

TULSA, Okla., Jan. 5. (AP)—The oil situation from a national standpoint is to be studied by a committee named today by E. B. Reeser, president of the American Petroleum Institute.

This committee, authorized at the Chicago convention, will ascertain the amount of crude required in 1929, learn how oil is shut in, estimate potential output of the states, consider recommendations for retarding drilling of wildcat wells, learn how much oil is refined in the states, how much oil refined in the states is sold there, find out what voluntary co-operative movements are now in effect and make recommendations to the several state legislatures for further conservation of oil.

The country was divided into five regions, with W. C. Frankish, Tulsa, chairman for Oklahoma-Kansas; W. S. Farish, Houston, chairman for Texas-New Mexico; M. J. Grogan, Shreveport, chairman for Louisiana-Arkansas; S. J. Keoughan, Denver, chairman for Rocky Mountains, and Press St. Clair, Los Angeles, chairman for California. Each chairman has associates and may name others.

Mr. Reeser recommended that the general committee on petroleum situation meet at Fort Worth soon to outline its work.

### Advance in Sheep Prices Is Feature of Livestock Markets

KANSAS CITY, Jan. 5. (AP)—(U. S. D. A.)—Livestock trade around the eleven-market circuit this week was featured by a sharp advance in sheep prices. Fat lambs advanced 50-80 cts, with the top at Chicago 16.50. Aged stock ruled strong to unevenly higher, the maximum upturn of 75 cts to \$1 being reported at Chicago. The supply approximated 202,500 as compared with 189,616 last week, and 218,117 the corresponding period a year ago.

Considerable price fluctuation prevailed throughout the week on hogs. The high point occurred Tuesday, only to be followed by a sharp decline and then a moderate rally. Closing values are unevenly steady to 30 cents higher compared with a week ago. The closing top at St. Louis was 9.25. Total offerings were around 638,800, an increase of 163,400 over last week, and 4,000 more than a year ago.

In the cattle contingent demand centered around light weight steers

### At Nebraska



MANY SAILORS LOST  
PARIS, Jan. 5. (AP)—Only one officer and five sailors of the crew of the French steamer Malakoff, which sank two days ago off the island of Minorca, were saved, according to messages received here. The wife of the captain and two persons who were supposed to be passengers, were among the 27 reported lost.

SEMINOLE PRODUCTION STEADY  
TULSA, Okla., Jan. 5. (AP)—Severely cold weather apparently has had no effect on greater Seminole field during the past week, as production has been climbing steadily with no new wells added. Today, the field gauged 278,936 barrels from 1,313 wells, an increase of 136 barrels over yesterday's yield in a 48-hour gain of 2,048 barrels. In the past three days greater Seminole field has gained 5,856 barrels.

Paul McDonald is riding in a new Ford roadster.

### TO THE STOCKHOLDERS OF CLINTON - OKLAHOMA - WESTERN RAILROAD COMPANY OF TEXAS:

You are hereby notified that the Board of Directors has called a meeting of the stockholders to be held in the City of Wichita Falls, County of Wichita, State of Texas, at the principal office of the Company, on the 15th day of March, 1929, between the hours of 2 o'clock p. m. and 8 o'clock p. m., to consider and act upon a proposition to authorize the execution by the Company of a mortgage on all of its railroad properties now owned

or hereafter acquired, to secure bonds to be hereafter issued in series, so much of such bonds as may be necessary, not exceeding Two Million Four Hundred Thousand Dollars, to be used in paying or exchange for the present indebtedness of the Company, other bonds to be issued to be used for the acquisition, construction or extension of railroads, additions and betterments to such railroads and properties now or hereafter owned, and for other lawful corporate purposes; each series of bonds to be issued to mature at such time and provide for the payment of such lawful rate of interest, to be taxfree or not taxfree, to be convertible or not convertible into shares of capital stock, as may be determined by the Board of Directors, and to contain such other terms and conditions as may be determined or prescribed by said Board; and such mortgage to contain such terms and conditions as may be prescribed or authorized by the stockholders at said proposed meeting.

O. B. WOMACK, Secretary. 3-15

**PAMPA FURNITURE CO.**  
Picture Framing  
Furniture Repairing  
307 W. Foster  
Phone 105

## THE BUSINESS, PROFESSIONAL AND COMMERCIAL DIRECTORY OF THE CITY OF PAMPA

<b>PHYSICIANS AND SURGEONS</b>  <b>ARCHIE COLE, M. D.</b> PHYSICIAN AND SURGEON Office over First Nation Bank Office Hours 10 to 12-3 to 5 Residence Phone 8    Office Phone 55  <b>DR. W. PURVIANCE</b> Office over First National Bank PHYSICIAN AND SURGEON Office Hours: 9 to 12-1 to 5 Office Phone 107    Residence 45  <b>LAWYERS</b> <b>STUDER, STENNIS &amp; STUDER</b> LAWYERS Phone 777 First National Bank Building  <b>BARBERS</b> <b>SCHNEIDER BARBER SHOP</b> Open 7 a. m. to 9 p. m. New Schneider Hotel BILL HULSEY, Prop. We specialize in ladies hair cutting.	<b>CONTRACTORS</b>  <b>HENRY L. LEMONS</b> General Oil Field Contracting Office: New Schneider Hotel Office Phone 300-Res. Phone 387-J  <b>H. L. Case &amp; Co.</b> General Contracting Phone 162  <b>TRANSFER</b>  <b>PAMPA TRANSFER &amp; STORAGE CO.</b> Moving, Shipping, Storing Phone 586 "Reliable Service"  <b>TAXIDERMIST</b>  <b>VERNON E. MOORE</b> Taxidermist Specimens guaranteed to be mounted true to life. P. O. Box 2024    Pampa, Tex. Phone 566-M	<b>EYE SPECIALIST</b>  <b>DR. T. M. MONTGOMERY</b> Eye Sight Specialist In Pampa Every Saturday Office in Fathree Drug Store  <b>ARCHITECTS</b>  <b>W. R. KAUFMAN</b> Architect Phone 599  <b>INSURANCE</b>  <b>R. G. "DICK" HUGHES</b> Life Underwriter Brunow Building Phone 531  <b>CHIROPRACTOR</b>  <b>DR. A. W. MANN</b> Chiropractor Rooms 20, 21, Smith Bldg. Office Phone 243 Residence Phone 293  <b>PICTURE FRAMING</b>  <b>PICTURE FRAMING</b> By an expert Large Assortment of Mouldings <b>THOMPSON HARDWARE COMPANY</b> Phone 43
--	---	---

### Authorized Light Testing Station

Three blocks south of track on Cuyler and 1/2 block West.

**5,000,000**  
came the first week!

**Greater Beauty Larger Bodies Acclaimed Everywhere!**

### WITH THE NEW "FINGER-TIP CONTROL"



THE MOST NOTABLE ADVANCE IN DRIVING CONVENIENCE SINCE THE SELF-STARTER

**GREATER BEAUTY**  
When the new Superior Whippet was presented to the American public last month, it won the enthusiastic praise of millions who thronged the 6,000 showrooms of Willys-Overland dealers.

The style creation of master designers, the new Superior Whippet introduces beauty of line and color never before associated with Fours and Light Sixes. Longer bodies, higher radiator and hood, sweeping one-piece full crown fenders, all contribute to the trim, smart appearance that arouses the admiration of millions throughout the country. Mechanically, the new Superior Whippet improves upon even its own predecessor. A higher compression engine gives considerably more

**WHIPPET 4 COACH**  
**\$535**  
Coupe \$535; Sedan \$595; Roadster \$685; Touring \$475; Commercial Chassis \$365.

**WHIPPET 6 COACH**  
**\$695**  
Coupe \$695; Coupe (with variable seat) \$735; Sedan \$795; Sport Deluxe Roadster \$850 (including rumble seat and extras). All Willys-Overland, Toledo, Ohio, and specifications subject to change without notice.

**LARGER BODIES**  
speed, power and hill-climbing ability. Higher second gear speed gives faster pick-up. And the new car is well qualified to carry on Whippet's unsurpassed reputation for dependable performance and operating economy.

The Superior Whippet is the only low-priced car with new "Finger-Tip Control"—a single button at the center of the steering wheel, which controls all functions of starting the motor, operating the lights and sounding the horn. The illustrations at the left clearly explain the operation of this fundamental improvement! See the new Superior Whippet today. An immediate order will aid in early delivery.

**WILLYS-OVERLAND, INC., Toledo, Ohio**

**FOURS SUPERIOR Whippet SIXES**

**McGARRITY MOTOR CO.**  
Phone 340 . . . . . Pampa, Texas

### HATCH OFF JAN. 8



### 10 PER CENT DISCOUNT

On all orders for chicks booked during the show.

We guarantee buyer full protection on declining prices at delivery date, anytime during the Spring season. Book your orders for delivery any time.

January prices range from 13c to 16c. Don't fail to talk to us about your chick orders.

REMEMBER, get your "Superior" Chick Starter from us; it starts them right.

Full line of poultry and chick supplies, as well as Dairy feed.

**Dodd's Hatchery & Produce**  
Custom Hatching-Day-Old-Chicks

Cash Market for Poultry and Eggs  
C. C. DODD, Manager

PAMPA, TEXAS



## POULTRY SHOW JUDGES NAMED

### Coops for Use Here Rented From Tri-State Fair

Chicken coops have been rented from the Tri-State Fair association in Amarillo for use in the Pampa Poultry Breeders' association's show here Thursday, Friday and Saturday. All entries must be in by 10 a. m. Thursday. The fair will be held in the Smith building, formerly occupied by the Pampa Daily News.

Some of the finest poultry in the county will be exhibited. Numerous entries have been received already and more are expected. Eggs also will be a part of the exhibit.

Prize ribbons were received this morning and are on display in the window at Pathere drug No. 2. Special purple ribbons for champions will be awarded.

Association members will assist in picking best birds for exhibit if inexperienced persons desire this help. In such instances, exhibitors should take a crate of their best chickens to the building.

At the close of the judging Friday afternoon, J. R. Duke of Amarillo, one of the judges, will address local poultrymen on how to prepare birds for show purposes. The other judge will be W. Callaway of Amarillo.

The condition of Mrs. W. J. Smith, who is a patient in the Pampa hospital, was reported last night to be satisfactory.

Mrs. Ira Spearman returned home yesterday, after being in the Pampa hospital a week.

Some improvement was noted last night in the condition of Dr. W. B. Wild, who is an influenza patient in the Pampa hospital.

Miss Margaret Lorraine McCrackin of Groom is seriously ill with pneumonia. She was admitted to the Pampa hospital yesterday afternoon.

Mrs. J. C. McConnell has as guests for the week-end her daughter, Mrs. D. B. Deering, and the latter's daughters, Mrs. Preston Folkes and Miss Asell Boone, and son, Hershall, all of Amarillo.

J. A. Lard, an influenza patient in the Pampa hospital, was improving satisfactorily yesterday, hospital officials said.

## A Closeup of the "Flying Windmill"



Whirling up and down over the field before a small crowd of spectators, this weird inverted windmill, the autogyro, made its first successful flight the other day at Pitcairn Field, Philadelphia. The plane, which is the property of Harold Pitcairn, airplane manufacturer and aviation enthusiast, is about 35 feet long, with wings only about five feet in length. The huge windmill, about 25 feet in diameter, takes the plane straight up from the ground.



By G. D. SEYMOUR

NEW YORK.—On two nights just a week apart, Broadway is its idliest and its busiest.

The duller evening of the year is Christmas eve. The most tumultuous, year after year save when a quadrennial November brings an election night throng into Times Square, is New Year's eve.

On the night before Christmas even the faces that are a part of Broadway

are missing. The woman who sells the Birth Control Review apparently has a home, after all. The doormen in front of the movie theatres are apprentices, lacking the height and grandeur of the majestic menials stationed there on ordinary nights. Cab starters in front of restaurants and cafes drowse inside the revolving doors.

Within the movie houses only the few front rows are filled. Even the blithest of pipe organ jazz sounds cathedralesque and somber as it reverberates through empty galleries and echoes against the vaulted ceilings. At a few theatre premiers audiences are as sparse—only a few friends of the producer and the players, and a handful of critics who can't escape attendance.

Here and there a shop is open to serve belated buyers of Christmas gifts. Along the sidewalks a few figures move, but none of them are loitering

as on other nights. All the signs of the square are alight, and the Christmas tree in the center of the street sheds its beams with wonted brilliance, but the scene is anything but cheering.

### Wilderness of Tumult

A week later the vista is transformed. Thronging mill so thickly in Times Square that mounted police must shout

and threaten in order to break a lane for traffic. Out of upper windows along the street rivulets of paper stream down, and gusts of confetti are tossed. The din of thousands of horns splits the air, and merges into a numbing monotone of sound. The blaze of light from the signs above the street is reflected palely against upturned faces scanning the timepieces which surmount the square as the hands creep slowly toward midnight and the new year.

The movie houses are overflowing with spectators, and theatres are jammed with patrons who have paid as much as \$25 for the privilege of standing up. At every restaurant and chowmeinerie the doorman is explaining to arrivals that all the tables are taken.

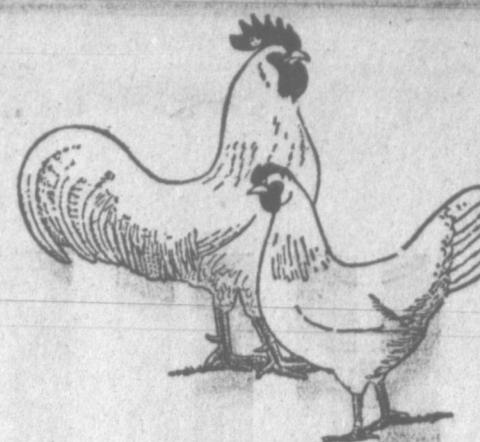
### Midnight? What Of It?

The crowd in Times Square is constantly moving, but only around and around the triangle. Everybody is busy going nowhere, waiting for midnight.

The clocks say midnight, but there is neither increase nor diminution in the noise as the new year arrives. If whistles are blowing along the waterfront or across the East river, they are borne too faintly into Broadway to be audible by themselves.

Half an hour after 12 has struck the throng seems to be thinning. Swarms collect at the entrance to the subway kiosks. By 2 a. m. the crowd is largely gone. By 8 on New Year's morning the square is almost empty.

Dilley's Cottage Bread, Home made flavor at your grocer. 54-3



Johnson's Strain, Single Comb

## WHITE LEGHORNS

Baby chicks for February delivery.

Hatching Eggs

Reliable Egg Laying Mash

**100 LBS. \$2.75**

See us for breeding stock

Visit our exhibit at the Poultry Show

**COLE BROTHERS POULTRY FARM**

Box 402

1 1/2 miles south of Pampa

# Studebaker announces a new World Champion President Eight

of greater power,  
beauty and luxury

**\$1785** at the factory

115-horsepower motor; Double-drop frame; New, longer, lower lines; Dual carburetors; Non-shatterable windshield; Adjustable front seat; Automatic choke control; Safety steel-core steering wheel; Ball bearing spring shackles; Houdaille hydraulic shock absorbers

AT THE moment when eager eyes turn to the newest offerings of American automotive genius, Studebaker announces a surpassing achievement—a new and finer world champion President Eight! A motor car priced in a range where such performance, such luxury, such beauty of coachcraft and color, have never sold before!

In traveling 30,000 miles in 26,326 minutes the great President Eight officially demonstrated more speed and endurance than any other regular factory production car the world has ever known. The President Eight today holds every official speed and endurance record for fully equipped stock cars.

Today's motor car is the eight! At the recent Paris Salon de l'Automobile—at the Olympia Motor Show in London—on the boulevards and highways of America during the past twelve

months, the trend of motor car demand has been unmistakably to the straight eight.

**The Eight is THE Car.  
This is THE Eight!**

It has been Studebaker's privilege, through providing the first truly great eight of moderate cost, to be the standard-bearer of the industry in the swing toward this finer, more flexible, more suave and pliant transportation. Dramatically and sensationally, Studebaker's President Eight led the way.

But the engineering genius which created such a car could not rest idly on its laurels. Hence today, Studebaker presents a still greater President Eight—the triumphantly successful product of Studebaker's research laboratories and million-dollar Proving Ground.

This new President Eight is as near to a perfect motor car mechanically as champion-builders can make it. It is a large car—but not bulky. It is a genuinely beautiful car—a smart car—with good taste in every line and in all its appointments. It is a fast car, and enduring. Its manners and its comforts await your appraisal in Studebaker showrooms today. Come, drive a champion!

**STUDEBAKER MODELS AND PRICES**  
The President Eight • \$1785 to \$2575  
The Commander • • 1375 to 1525  
The Dictator • • 1265 to 1395  
The Eskimo Six • • 835 to 1045  
PRICES AT THE FACTORY



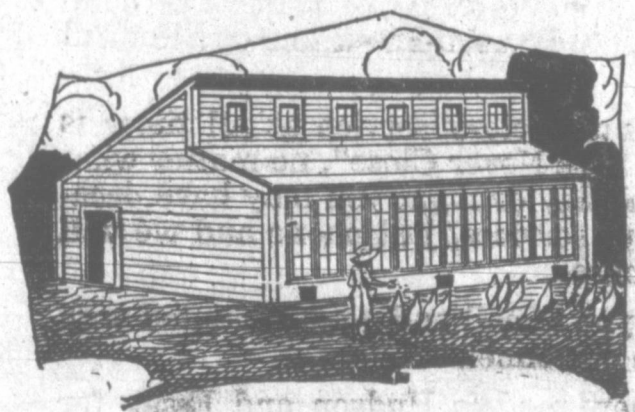
NEW PRESIDENT EIGHT BROUGHAM FOR FIVE—Six wire wheels and trunk are standard equipment—\$2350 at the factory. Equipment, other than standard, extra

See also Studebaker's New Commander Six

**THUT-SAUNDERS MOTOR CO.**

PAMPA, TEXAS

## Poultry Show, January 10, 11, 12



## Raise Healthy Chicks!

Protect your chicks, build a good warm house for them. Give them plenty of sunlight, keep them dry and warm. You will have stronger, healthier chickens and will get more eggs at a great saving in cost of production. Save on your feed bill, it will take much less feed to produce the eggs and raise the chicks. Let us help you plan your poultry houses and other farm buildings. We will give you the best.

Visit the Poultry Show  
Foster Street in the old News building

Our Aim - To Help Improve the Panhandle  
**PANHANDLE LUMBER CO.**

Quality - Service - Courtesy

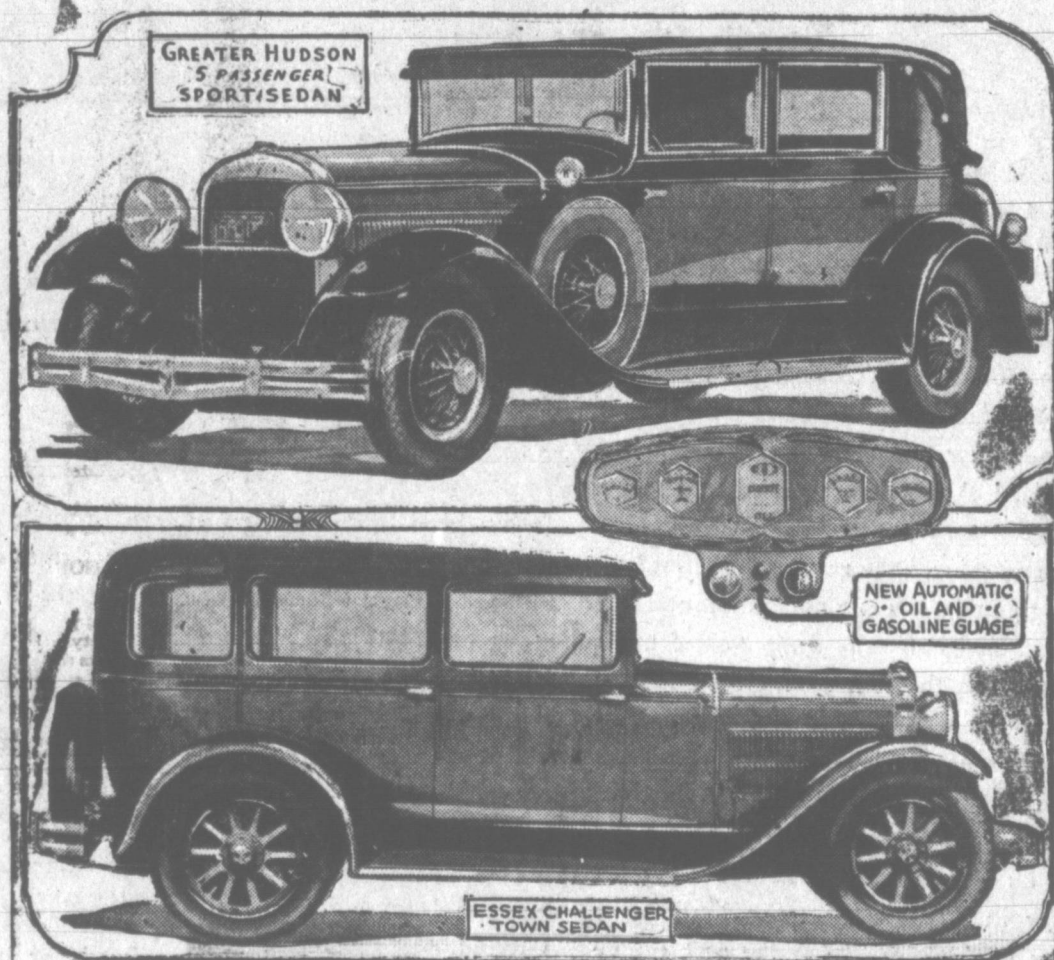




# HUDSON--ESSEX

ANNOUNCE  
the appointment of  
**Phillips Motor Co.**  
"Authorized Hudson-Essex Dealers"  
For Pampa and Vicinity

## Leaders in Hudson-Essex 1929 Line



Sweeping body changes, 140 improvements, plus ten new models and sensational price reductions mark announcement of greater Hudson and Essex Challenger lines.



**ROSTON PHILLIPS, President**

The Phillips Motor company offers a complete service and sales to the entire community on the Hudson-Essex line of beautiful autos.

Pleasant satisfactory service at all times is our aim. "We Never Close", no matter what hour of the day or night you may have occasion for our services, just phone and we will be right there.

We want you to call and get acquainted with our entire personnel.

See the new models Hudson and Essex for 1929 on our display floor.

Inspect our service departments, complete in every detail, repairs, batteries, tires, parts, greasing, washing and storage.

# Phillips Motor Co.

Phone 368

"We Never Close"

113 Frost St.



### New Electric Shop Opened Next Door to Rex Theatre

G. R. Hassell and E. B. Smith are announcing today the opening of the Rex Electric shop at 318 1/2 West Foster avenue, first door west of the Rex theatre. Both Mr. Hassell and Mr. Smith are widely experienced in electrical work and in addition to doing all kinds of electrical work, will handle a complete line of electric fixtures. The fixtures have been ordered and are expected tomorrow or Tuesday.

Mr. Hassell came to Pampa in 1926 and was instrumental in the city's adoption of the underwriters' code for electrical contractors. He has the original copy which was drawn for use in Pampa. He has worked in several of the larger cities of Texas in his 13 years of electrical work, helping install one of the largest power plants in the state at Houston. He started the Pampa Electric shop here in April, 1926.

The trail of Mr. Smith's electrical work carried him through one of the largest gold mines and worked at Muscle Shoals, Wichita and Augusta, Kan., and many Texas cities during his 30 years in this work. "The most notable changes in the work," says Mr. Smith, "are the increased demand for electrical fixtures, particularly heaters and ranges." It is interesting to think back when 40-watt lamps sold for \$3.50 and they came in all sizes, shapes and colorings. Globes have recently been standardized to three styles.

Mrs. C. E. Bell, is secretary and in charge of the office of the new shop.

### Uneasiness Seen in Stock Market

By CLAUDE A. JAGGER,  
Associated Press Financial Editor

NEW YORK, Jan. 5. (AP)—Uncertainties in the credit outlook prompted heavy realizing on the stock market today, although there was a burst of strength at the opening.

While the rise in the federal bank's buying rate for bankers acceptances was believed to be a direct result of the bank's desire to throw a greater part of the burden of carrying them on the member banks, it has caused considerable uneasiness over the possibility of an increase in the rediscount rate, and many traders were disinclined to carry their holdings over the week-end.

The New York banks supported the bull movement over the holidays by putting more than \$400,000,000 into the call money rate, while interior banks, corporations and individuals were with drawing funds. The reserve bank has definitely indicated that it now expects the New York banks to reduce their borrowings, as the currency withdrawn from holiday requirements returns.

John Thompson recently made a trip to Wheeler county.

## SEÑOR HOOVER!

Here's the Way South American Cartoonist Pictured Our President-Elect



To South Americans, Senor Herbert Hoover, our president-elect, looks like this, judging from this sketch, drawn by one of that continent's most celebrated cartoonists who is attached to the staff of a newspaper at Guayaquil, Ecuador. The picture was published on Hoover's recent visit to that city and has just reached the United States.

Lawrence Hastings was able to leave the McKean & Connor hospital today.

Mrs. J. C. Swindle is reported to be doing nicely in the McKean & Connor hospital.

Mrs. Q. N. Lewis was much improved last night, it was said at the Pampa hospital.

H. W. Jarvis is doing nicely in the McKean & Connor hospital following a serious operation last week.

### GRANDVIEW ITEMS

We had our Christmas program and tree, and every body enjoyed the occasion.

Miss Eula Pearl Durnell spent Christmas in White Deer with relatives and friends.

There is much influenza in the community. Several members of the McDonald family are ill. Two of Wm. Wagner's family are also sick.

Eddie McCauley, who is attending school in Spearman, came home for the holidays.

The people of the community met at the school house on the 21st of December and had a surprise party for Mrs. Guy Lawrence and Mrs. McCauley.

Wm. Kuykendall visited in Vernon during the holidays, and the Kuykendall family went to Odell.

Mr. Parker had his son from A. & M. college and his daughter from Lubbock as guests for the Christmas holidays.

School resumed work December 31, and the pupils are going forward with their work. We are planning to take an active part in Interscholastic league work this year.

The Jones family visited Mrs. Jones' mother at Canyon during the holidays.

Mrs. Jack Stevens is in the sanitarium at Pampa for treatment.

Mr. and Mrs. Mackey of Hereford visited Mrs. Mackey's parents, Mr. and Mrs. Wells, during the holidays.

Miss Elizabeth Corson, who is a student in Trinity university, left yesterday afternoon for Waxahachie, after spending the holidays with her parents, Mr. and Mrs. J. E. Corson. Miss Leora May, who was Miss Corson's guest during the vacation, returned to Amarillo at the same time.

## Markets

CHICAGO GRAIN

CHICAGO, Jan. 5. (AP)—Right-about-face in the wheat market late today sent prices down to an all-around new low record for the season. Chicago wheat traders switched suddenly to the selling side on account of weakness which developed in wheat values at Winnipeg after an early bulge here that was due to a brisk advance in corn owing to stormy weather west and to drought reports from Argentina.

Closing quotations on wheat were 5-8 3/4-4c to 1-1-8 net lower. Corn finished at 1-4c to 1-2c net gain, oats 1-8c to 1-8 1/4c up, and provisions varying from 2c decline to a rise of 1c.

At first, the corn market dominated wheat action, but the reverse was the case as the day drew to an end. Stormy weather sweeping eastward across the corn belt, and doing much to hoist corn prices, was subsequently

emphasized as a bearish factor relative to wheat, the reason put forward being that domestic winter wheat would benefit from a general snowfall which was reported.

Advances in corn prices went to within a fraction of the topmost level yet this season. Best figures, however, were not maintained owing to increased profit-taking by holders and as a result of late weakness in wheat.

Mrs. Jack Stevens of Groom, who was admitted to the Pampa hospital several days ago, showed a marked improvement yesterday.

W. W. Maddox of the Hay-Hook ranch left the Pampa hospital yesterday afternoon, after recovering from an attack of influenza.

Mrs. George Berlin will leave early today for McCamey, where she has been called by the serious illness of her mother.

Mrs. Jack Back and Mrs. K. C. Whinnery were in Amarillo Friday.

Mrs. Clinton Henry returned to her home at the J. A. Ranch Friday afternoon, after spending the Christmas holidays here in the home of her parents, Mr. and Mrs. Dave Fogg.



A message of hope and determination will be in the New Year's sermons at the First Presbyterian church Sunday.

At 11 a. m.—"The Closed Door"; " . . . and the door was shut"—Matt. 25:10. Anthem by the choir.

At 7:30 p. m.—"The Open Door"; (Behold I set before thee an open door, and no man can shut it)—Rev. 3:8.

Begin the New Year in Sunday school. Today and every Sunday morning at 10 o'clock. We begin the study of great Christian teachings.

Come, you are welcome. REV. A. A. HYDE.

## THE FIRST NATIONAL BANK

Capital, Surplus and Undivided Profits over \$85,000.00

### Officers:

- B. E. FINLEY, President
- J. R. HENRY, Vice-President
- DeLEA VICARS, Vice-President
- EDWIN S. VICARS, Cashier
- J. O. GILLHAM, Asst. Cashier
- B. D. ROBISON, Asst. Cashier



# Beyond all Expectations!

-say those who have seen the

## Outstanding Chevrolet of Chevrolet History

-a Six in the price range of the four!

The Outstanding Chevrolet of Chevrolet History has now been seen and inspected by millions of people in every section of America—and everywhere it has been enthusiastically hailed as exceeding all expectations.

Everyone anticipated that Chevrolet would produce a remarkable automobile—but no one expected such a sensational six-cylinder motor . . . such delightful handling ease . . . such marvelous

comfort . . . such luxurious Fisher bodies . . . and a fuel economy of better than 20 miles to the gallon! And no one believed that it would be possible to produce such a car in the price range of the four!

If you have not already made a personal inspection of the new Chevrolet, we urge you to do so at your earliest convenience. The beautiful new models are now on display on our showroom floor—and you are cordially invited to call.

The Roadster . . . . .	\$525	The COACH		The Convertible . . .	\$725
The Phaeton . . . . .	\$525			Sedan Delivery . . .	\$595
The Coupe . . . . .	\$595	\$595		Light Delivery . . .	\$400
The Sedan . . . . .	\$675	All prices f. o. b.		1 1/2 Ton Chassis . . .	\$545
The Sport Coupelet . . . . .	\$695	Flint, Mich.		1 1/2 Ton Chassis with Cab . . . . .	\$650



Come in and See these Sensational New Cars—Now on Display

CULBERSON-SMALLING CHEV CO. INC.  
PAMPA, TEXAS

QUALITY AT LOW COST

Read what these leading automobile editors said after seeing and riding in the new Chevrolet Six—

"One of the greatest automobiles I have ever seen. In performance, construction and beauty it is phenomenal. Never saw so much car for the money."  
—NORTH BIGGER  
Dallas News

"In appearance, performance and mechanical nicety the new Chevrolet Six presents actual values far beyond its price range."  
—HAZEN CONKLIN  
New York World

"The new Chevrolet is a triumph for volume production. The car at its price is one of the greatest achievements ever recorded in the automobile industry. Its beauty is a treat; its riding comfort a new delight and its performance a real sensation."  
—RAY PRIEST  
Detroit Times

"Aside from beauty in body lines and attractiveness in finish, the astounding feature of the new Chevrolet Six is its powerful and flexible motor. One will have to go far to equal the high performance of this new Chevrolet in general road and traffic use."  
—LEON J. PINKSON  
San Francisco Chronicle

"In speed and acceleration, the new Chevrolet will more than satisfy the average person. In design, Fisher offers costly car appearance. In short, the new car is by far Chevrolet's outstanding achievement."  
—EDWARD M. MILLER  
Portland Oregonian

"Introducing new style, beauty and smoothness, the new Chevrolet Six certainly meets the requirements of the most exacting buyer."  
—H. M. VAN DEVENDER  
Atlanta Constitution

THE WORLD HAS A NEW AND FINER MOTOR CAR

Special Six "400" Sedan \$10.75

**Without a doubt—the Motor Car Industry's Easiest Steering Motor Car**

If you will ask one of your friends what he thinks of his new Nash "400", he'll tell you among other things, it is the easiest handling car he ever laid hands on.

When you drive the "400", as you certainly should, to know what is newest and finest in modern motoring, you'll discover that he did not overstate the facts. Women drivers maneuver the "400" through traffic and around corners with the ease and precision of strong-armed chauffeurs. The "400" turns in a shorter radius. A mere touch turns the wheel.

This great new motor car has more features of outstanding desirability and value than any other car you can buy today. Everyone who drives it immediately becomes a "400" enthusiast.

We only ask you to drive this new motor car before you decide which car to buy. It performs on the road just as it does in this advertisement.

9 Sedan \$1005 to \$2088, 8 Coupes, Cabriolets, Victorias \$1005 to \$1938, Delivered.

# NASH "400"

Leads the World in Motor Car Value

IMPORTANT FEATURES—NO OTHER CAR HAS THEM ALL

Twin-Ignition motor	Aluminum alloy pistons	Stiff centralized chassis lubrication	Longer wheelbases
12 Aircraft-type spark plugs	New double-drop frame	Electric clocks	One-piece Sedan fenders
High compression	Torsional vibration damper	Exterior metalware chrome plated over nickel	Clear vision front pillar posts
Hondaills and Lovejoy shock absorbers (exclusive Nash invention)	World's easiest steering	Short turning radius	Nash Special Design front and rear bumpers
Salon-Bodies	7-bearing crankshaft (exclusive Nash invention)		

**BIGGS HORN**  
Pampa, Texas



# CHURCHES

## WITH BYRD AT THE BOTTOM OF THE WORLD

### FIRST PRESBYTERIAN CHURCH

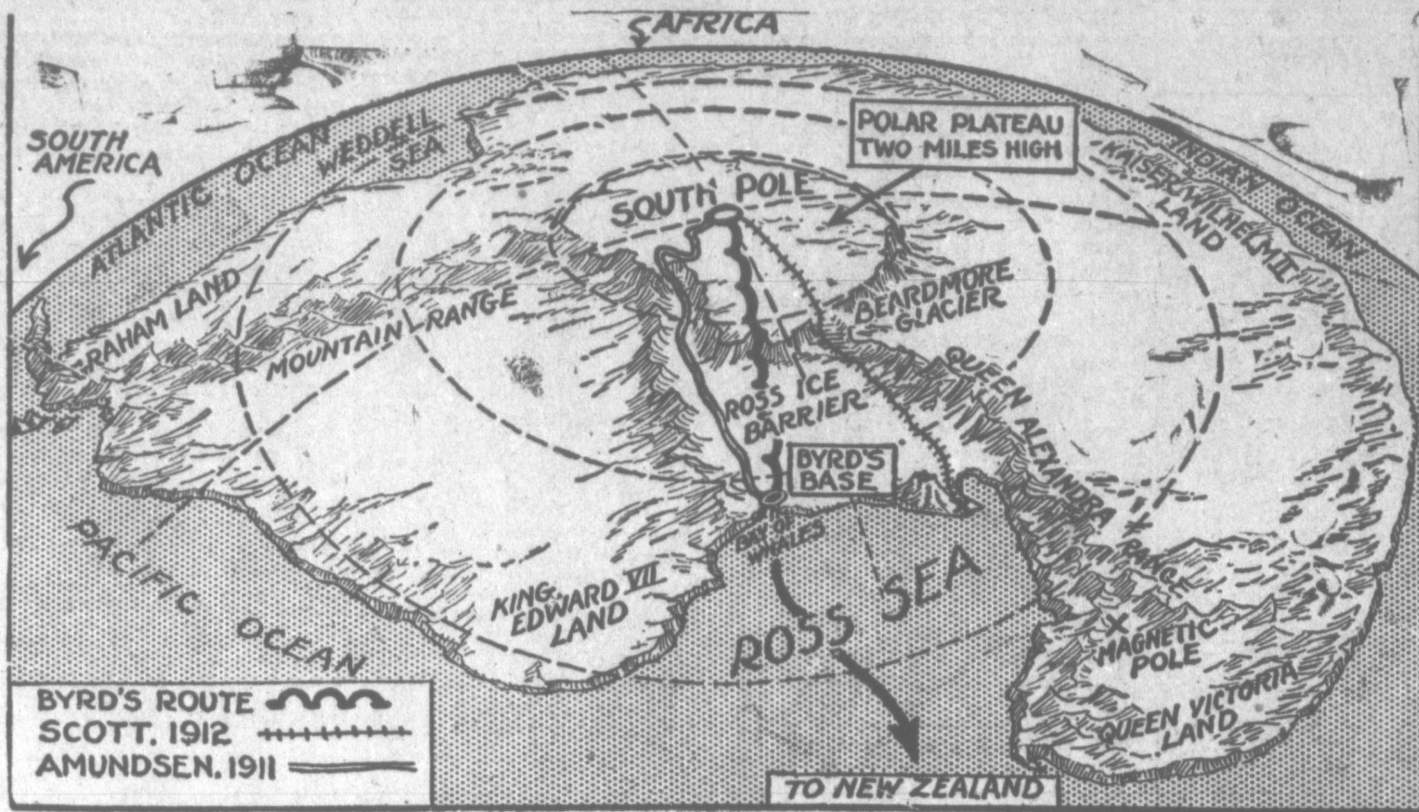
There will be two New Year's sermons today.  
11 a. m.—"The Closed Door;" ("— and the door was shut," Matt. 25:10.)  
7:30 p. m.—"The Open Door;" ("Behold, I set before thee an open door," Rev. 3:8.)  
An anthem, "Blessed Be God," will be sung at the morning service.  
Worship with us.  
REV. A. A. HYDE

### CHRISTIAN CHURCH

Special honors will be paid the superintendents and teachers of the church school at the morning service today. A section of pews will be reserved for them. The minister will preach a special sermon in which mention will be made of the enlarged religious educational program that is being undertaken now that the church is in the educational building.  
All members and friends of the church are urged to be present. The service begins at 10:45. The church school opens promptly at 9:45, each department having its own opening exercises. The study period begins at 10 o'clock, and closes at 10:30. The school then assembles in the auditorium for the closing exercises.  
The evening service at 7 o'clock will be evangelistic. Three young peoples meetings will be held in the assembly rooms on the third floor at 6 o'clock, and the regular monthly meeting of the official board of the church meets at the same hour in the Men's Bible class room.  
A cordial invitation is extended to all strangers and visitors in the city, and hearty welcome every one attending the Christian church.  
JAMES TODD, Jr., Minister

### FIRST BAPTIST CHURCH

Sunday school, 9:45.  
Sermon, 11.  
Morning subject, "A Golden Gate of Opportunity."  
Mission Sunday school, 2.  
Sermon, 3.  
Jail services at 5. Public invited.  
ed.  
Training service, 6:15.  
Sermon, 7:30.  
Evening subject, "The Changeless Jesus."  
This is the time of year when the commercial world is checking its business, why not we as church members and Christians check up on our religious and church life, and start in this new year right, for it is a golden opportunity. Joshua said, "Ye have not passed this way heretofore." He was talking to the children of Israel,



This map shows the scene of one of the greatest adventures of an adventurous age, Commander Richard E. Byrd's conquest of the South Pole area by airplane. Byrd has established his base at the Bay of Whales, 800 miles from the pole, and plans emergency landing stations at 100-mile intervals. He will have to fly above the great polar plateau, a circular mass of ice nearly two miles high. He also plans

to explore much of the surrounding Antarctic continent, desolate wastes of mountainous ice that are swept by terrific blizzards. The routes of Amundsen and Scott, who reached the pole by dogsled, are shown. Capt. Wilkins, rival polar explorer, has established his airplane base on an island in Weddell Sea (upper left) and plans to the pole from that direction.

as they were about ready to cross the Jordan to the promised land. The golden opportunity is ours at this time as we are soon to move into our new building, and many who have been staying away on the account of lack of room will be with us, and an entire new organization will be perfected, on the arrival of our new assistant pastor, John Lee Harris. Now, are we ready to pass over and take this city for Christ or will we say no, I will stay on this side. If you are not attending services elsewhere where we want you to come with us, or if you are a Baptist and not attending the Baptist church we want you to come. "Come with us and we will do thee good."  
The Church with a BIG welcome.  
D. H. TRUHITE, Pastor

dent. Help us reach the 450 mark on this the First Sunday of 1929. You will find a class for every age.  
Preaching services, 11 o'clock, morning; 7:15 o'clock, evening.  
The pastor, Rev. Tom W. Brahman will speak at the morning hour. Theme for discussion "Making Life Worth While."  
A special musical program will be rendered at the evening hour. This musical program will be under the personal direction of Thomas Fannell. If you enjoy good singing and great music, you cannot afford to miss the program for the evening hour.  
THE CHURCH WITH A HEARTY WELCOME.

### CARRIERS SEE MOVIE

H. A. Gilliland, owner of the Crescent theatre, was host to the carrier boys of the Pampa Daily News at the matinee yesterday. The boys greatly enjoyed the picture, "The Burning Bridge," a thrilling western featuring Harry Cary.

**METHODIST CHURCH**  
Programs you cannot afford to miss will be rendered at the Methodist church Sunday morning and evening. Sunday school starts promptly 9:45 o'clock. J. O. Gillham is superintendent.

### Menus for the Family

By SISTER MARY  
BREAKFAST—Halves of grapefruit, cereal, cream, creamed finnan haddies on toast, milk and coffee.  
LUNCHEON—Scalloped sausage and

apples, shredded cabbage in cream dressing, whole wheat bread, old-fashioned bread pudding, milk, tea.  
DINNER—Boiled corned brisket of beef, steamed potatoes, creamed turnips, banana and peanut salad, individually caramel custards, milk coffee.  
Cold boiled corned beef makes delicious sandwiches combined with salad

dressing. The meat can be coarsely chopped and mixed with the dressing or thin slices of meat can be spread with salad dressing. Crisp lettuce can be added with good effect.

**Scalloped Sausage and Apples**  
One pound link sausages, 4 apples, 1-2 cup dark brown sugar, 1-2 teaspoon cinnamon.

Pan broil sausages until brown on all sides. Arrange in a casserole and pour about 4 tablespoons boiling water over them. Cover with apples pared and cut in slices. Sprinkle apples with sugar and cinnamon. Cover casserole closely and bake in a slow oven for one hour. Serve from casserole.

Choose tart quick cooking apples.  
(Copyright, 1928, NEA Service, Inc.)

Mr. and Mrs. Will Seltz were called to White Deer Friday by the serious illness of Mr. Seltz' mother, Mrs. Geo. Seltz.

**GRANDMA DUNCAN HURT**  
"Grandma" Duncan, 90 years old, mother of J. N. Duncan, in rising from her bed Friday morning fell and broke her hip. She was taken to Pampa hospital to be under the care of Dr. R. A. Webb and Mrs. Graham, special nurse.

## WANTED

Used Furniture of all kinds, gas stoves and floor coverings.

PHONE 181

And our buyers will call

Egg Prices are High...  
Feed  
MERIT EGG MASH  
and Make Money

Stark & McMillen  
"A Complete Feed Store"  
Phone 205

PAMPA BATTERY CO.  
West of Schneider Hotel

1 Year GUARANTEED Batteries  
13 Plate ..... \$ 9.95  
15 Plate ..... 12.95  
Starter and generator service  
Phone 488

Notice To Stockholders of the Gray County State Bank

There will be a meeting of all stockholders at 2 p. m. Tuesday, Jan. 8 at the Gray County State Bank.

# S-P-E-C-I-A-L

For Monday Only

## END TABLES

# \$216



We have a large assortment of these beautiful End Tables—and for one day only—Monday—you can have your choice for only \$2.16.

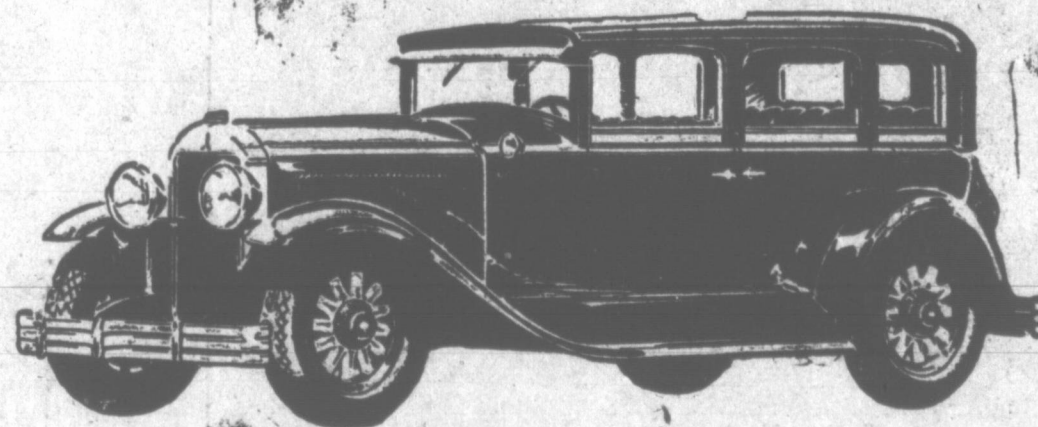
A few months ago we had a similar special on these tables at \$2.69 and every one was sold. Today with the volume of our former three stores, and with but the overhead of one store, we can sell the same table for \$2.16.

You'll find that every article in the store is priced accordingly!

**G. C. Malone Furniture Co.**  
Malone's for Furniture Your Credit Is Good

# The New BUICK

as new and unrivaled to-day as the day it appeared



With all makes of cars on display—with the improvements for 1929 a matter of record—it must be plain to all that the new Buick with Masterpiece Bodies by Fisher merits recognition as the most advanced automobile of the day!

Its arresting new lines—radiant colors—luxurious upholstery and appointments—stamp it the newest and most distinctive motor car style.

Its new Valve-in-Head six-cylinder engine is not only the most powerful automobile engine of its size in the world but the leader in getaways, swiftness and stamina as well.

Moreover, a host of new luxury factors make the new Buick the most comfortable car to ride in and to drive.

Scores of thousands have recognized these facts and bought the new Buick during the past five months. And scores of thousands of others are acclaiming the plain evidence of Buick's advanced quality at automobile displays throughout the country.

Every comparison proves the new Buick an outstanding value—as new and unrivaled today as the day it appeared!

## BUICK

WITH MASTERPIECE BODIES BY FISHER

**PAMPA BUICK CO., Inc.**  
Pampa, Texas

WHEN BETTER AUTOMOBILES ARE BUILT... BUICK WILL BUILD THEM