


Texas Rose Steakhouse
LIMITED TIME
OPEN SUNDAY 11:00 - 2:00
 2537 Perryton Parkway 806-669-1009

Century 21
Pampa Realty, Inc.
 312 N. Gray • 669-0007

Jim Davidson
"PHONE IN"
"MOVE IN"
 888-883-2086

DYERS B•B•QUE
 Hwy. 60 West  806-665-4401
 ***** MIXED ADC 760
 *01 BV04227 12/31/14

Pampa

SOUTHWEST MICRO PUBLISHING
 2627 E YANDELL DR
 EL PASO TX 79903-3743


Vol. 96 No. 203 • Pampa, Texas
 50¢ Daily • Sunday \$1

Pampa Cyber Net
Internet Power for the New Miller
 Dialup or dedicated T-1 and more

806-665-0106
Centramedia
 ONLINE SERVICES
Limited Time Only
\$34.95 per mo. DSL
 Installation and Equipment Extra
 Call 665-0106
To Sign Up Today!
 DSL Provided by IP-Communications
 Not Available In All Areas

PISD has high teacher retention rate

By NANCY YOUNG
 Managing Editor

Pampa Independent School District is fortunate to have many quality teachers who have chosen to be a part of the Pampa community for many years.

That's according to PISD Superintendent Dr. Dawson Orr who recently informed the PISD school trustees of the results of a report from Texas Education Agency. The report gave high marks to the school system in several areas, including their teachers.

The district rated high in teacher retention in comparison to the state rates. Local teachers average 10.5 years with the local district while the state average is only eight years with one district, said Orr. Average years experience of Pampa teachers is 14 years while the state average is 11.9 years.

Teachers are staying in Pampa as

"This simply means our local teachers are older and wiser. We have a strong core of teachers who begin teaching in Pampa and retire here."

— PISD Supt. Dr. Dawson Orr

reflected by the Academic Excellence Indicator System report. Turnover rate of Pampa school teachers in the local school system is fortunately lower in comparison to the statewide average. Local teachers only had a 12 percent turnover during 1999-2000 in comparison to a state average of 15 percent, according to the AEIS report.

"This simply means our local teachers are older and wiser," said Dr. Orr. "We have a strong core of teachers who begin

teaching in Pampa and retire here."

Only three percent of the teachers in the PISD system during 1999-2000 school year were first year teachers in the system in comparison to a 7.6 percent average statewide. Eight teachers were first year teachers in PISD during the last school year, according to the AEIS report.

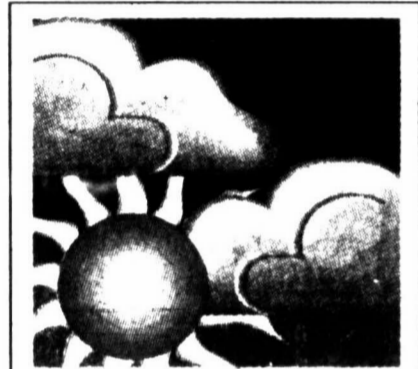
Orr said the district compared favorably in most all areas with school districts across the state. He said the district is very fortunate to have the experienced

and quality teachers teaching the local school children.

Pampa teachers who have one-to-five years experience total 57. The number of teachers with six-to-10 years experience was 50.5 teachers while 79 teachers in the local school district have between 11 and 20 years experience. Locally the district has a three percent lead over the statewide average with 29-to-26 percent. Teachers in the local school system who have over 20 years experience number 76.5, according to the AEIS statistics. Pampa district is considerably higher with 28 percent of their teachers being with the district over the longer period compared to the state's 21 percent.

Of the 271 teachers in the local school system, 208 teachers' highest degree is a Bachelors degree while 63 teachers have a Masters.

The local teachers are composed of 219 (See PISD, Page 2)



High today 47
 Low tonight mid 20s
 For weather details see Page 2

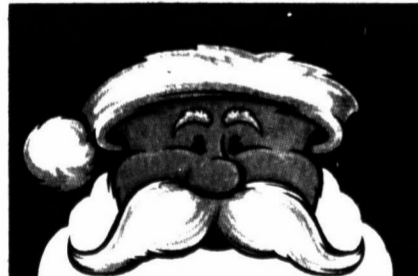
CCPC offers TASP, computer classes

PAMPA — Clarendon College-Pampa Center, 1601 W. Kentucky, will hold "ABC Computer Class" from 1-3 p.m. Dec. 4 and 6 and "Quick TASP" at 9 a.m. Wednesday, Dec. 6. Cost of the computer class is \$40, and the registration deadline is Nov. 27. The fee for the TASP test, due at the time of testing, is \$29 and must be accompanied by two forms of ID including one photograph.

Need extra Christmas cash? Use The Pampa News classifieds to sell unwanted items. Call 669-2525.

- Maydell Kimbell, 82, homemaker.
- Marie Louise Lindsay, 62, day care teacher.
- Eva Mae Penland, 82, cotton boll puller, homemaker.
- Glema Faye Pryor, 59, homemaker.
- Ashley Nicole Roe, 15, PHS freshman.

Classified 7
 Comics 12
 Religion 11
 Sports 5


Where in the World is Santa?
Clue # 8
 Santa had a wreck in his sleigh! He needs to go check on his "sledsurance."
 Coronado Center Merchants Association

Police investigate teenage girl's death

By DEE DEE LARAMORE
 Staff Writer

Pampa police today are investigating suspicious circumstances surrounding the death of a 15-year-old Pampa girl who suffered an apparent seizure while at a friend's house over the weekend.



Ashley Nichole Roe

Ashley Nichole Roe, 15, of Pampa died Thursday in an Amarillo hospital, police confirmed today. Justice of the Peace Haven Dysart of Amarillo, acting coroner, ordered an autopsy to be conducted at the Lubbock County Medical Examiners Office.

"We have not received a preliminary autopsy report. Until then we cannot know what the cause of death is," Judge Dysart said today. "Meanwhile, the case is still under investigation."

"After she died yesterday, they notified us to begin an investigation and we began redoing the report," Police Chief Charlie Morris said. "We are conducting an investigation to determine the cause of her death," he said.

"All unexplained deaths we approach as a homicide until proven otherwise," Morris added.

(See DEATHS, Page 4)

Tralee tree holds wish tags for taking Gifts sought for Christmas

By NANCY YOUNG
 Managing Editor

While most local residents are just getting their Christmas trees decorated, Tralee Crisis Center has theirs fully decorated and are asking local residents to help get it undecorated as soon as possible.

Decorations covering the Christmas Tree are not the traditional Christmas Tree decorations. Hanging on the tree at the crisis center are tags in the shape of homes, women and children, both boys and girls.

On each tag decoration is a wish list item that the individual represented by the tag would like to receive. Shelter and office needs are listed on the house tags.

Last year the local Tralee Crisis Center was able to provide 82 women and children who were victims of domestic violence some joy and Christmas cheer because of the kindness of Pampa and the surrounding area.

Holidays can be a very sad time for victims of domestic violence.

(See TRALEE, Page 2)

Full production near for Osprey

WASHINGTON (AP) — The Marine Corps' top officer said Thursday he expects the Defense Department to give the go-ahead soon for starting full-scale production of the MV-22 Osprey, a hybrid helicopter-airplane.

The Marines are counting on the new aircraft to replace their Vietnam-era fleet of transport helicopters.

"I'm confident it should be approved, and I've seen nothing to lead me to believe that it won't," Gen. James Jones, commandant of the Marine Corps, said in a brief interview with The Associated Press.

The Pentagon is expected to announce next week whether to approve full-scale production of the MV-22, which takes off and lands like a helicopter and flies like an airplane. The Osprey is being produced by Boeing Co. and Bell Helicopter Textron, and the Marines plan to buy 360 of them for \$3.6 billion.

(See OSPREY, Page 4)

Christmas parade fun!



(Pampa News photos by Dee Dee Laramore)

Santa Claus, above, waves to the crowd from atop a vintage fire truck brightly decorated by Pampa Fire Department firefighters during the 2000 Santa Parade Thursday evening. Katelyn Wall, 9, of Pampa, below, gets a big kiss from her Corgi, Dexter, while waiting for the parade to begin.

Night parade draws crowds to downtown

By DEE DEE LARAMORE
 Staff Writer

A return to a nighttime lighted Christmas parade Thursday proved to be immensely popular, organizers said today.

"I think there were a lot more people (watching the parade) than last year," said Clay Rice, executive director of the Greater Pampa Area Chamber of Commerce, the parade's sponsor.

"It was amazing!" said Paulette Hinkle, Chamber president, whose business M&H Leasing entered a lighted float in the Commercial Division. "When we were all going down Somerville Street with the floats



lighted and the trees lighted and so many of the houses decorated. I thought, 'Wow! We've really got something here!'"

The parade, led by the Knights of Columbus Color Guard and Grand Marshal John Curry — Pampa's Citizen of the Year, got a late start from M.K. Brown Auditorium's parking lot, almost 45 minutes after the scheduled 6 p.m. beginning.

(See PARADE, Page 4)

Victims of assaults won't press charges

Pampa police investigated two aggravated assaults Thursday, but neither victim wanted to file charges.

In one instance, officers found Corrie Nicole Hammond, 17, of Miami, bleeding "copiously" from a two-to-three-inch gash above her right eye when they responded to a call that woman was being assaulted at 1140 Varnon Dr.

Deputy Chief Terry Young said Hammond

would not discuss with police what happened to her. Other witnesses told officers that she had been fighting with another woman over a boyfriend. Hammond would not file charges, according to the report.

Curtis Matlock, 42, 203 W. Brown, told police that two men and a woman had beaten him with a metal pipe and a sack of full beer cans.

(See VICTIMS, Page 2)



Join the Chamber of Commerce ... call Clay Rice at 669-3241

D E C 0 1 2 0 0 0

Calendar of events

PAMPA AREA LITERACY COUNCIL
Pampa Area Literacy Council office is open from 10 a.m.-4 p.m. Monday-Friday. For more information, call 665-2331.

ADHD/ADD SUPPORT GROUP
If interested in the ADHD/ADD Support Group call Connie at 669-9364.

ST. MARK CME CHURCH
St. Mark will host a monthly breakfast the first Saturday of every month from 8 a.m. to 11 a.m. Donations will be accepted.

MACEDONIA CHURCH
Macedonia Church will host a monthly breakfast the third Saturday of every month from 8 a.m. to 11 a.m. at 441 Elm Street with the Rev. I.L. Patrick. Donations will be accepted and the public is invited.

THE FELLOWSHIP OF CHRISTIAN COWBOYS
The Fellowship of Christian Cowboys potluck will meet on the fourth Saturday of each month at 6 p.m. in the Clyde Carruth Pavilion. For more information, contact Keven Romines at 665-8547 or Jim Greene at 665-8067.

PAMPA FINE ARTS ASSOCIATION
Pampa Fine Arts Association Board of Directors will meet at 6 p.m. the third Thursday of each month at Pampa Community Building.

SHRINE CLUB
Pampa Shrine Club holds a covered dish meeting at 7 p.m. every third Friday of each month at the Sportsman's Club on South Barnes.

PRE-SCHOOL STORY HOUR
Lovett Memorial Library will sponsor a pre-school story hour at 10 a.m. every Tuesday this fall beginning Sept. 5. The free program is open to children 18 months to 5 years of age and will include stories, crafts and other activities. No registration is required. For more information, call the library at 669-5780.

CPF
Cerebral Palsy Foundation is seeking families with children (birth to age 12) affected by cerebral palsy in an effort to establish a chapter in the area. CPF offers financial and emotional support as well as many free services. For more information, call 1-888-872-7966 toll-free.

BREAKFAST WITH SANTA
Shepherd's Helping Hands is sponsoring "Breakfast with Santa" at 9:30 a.m. or 11 a.m. Dec. 2 in the parish hall of St. Matthew's Episcopal Church, 727 W. Browning. Cost is \$8 per child and covers breakfast, a picture with Santa and a goodie bag. Space is limited and reservations are encouraged. Children must be accompanied by an adult. For more information, call Cora at Shepherd's Helping Hands, 665-9750.

DISCOVERY CENTER SANTA BUFFET
The Don Harrington Discovery Center in Amarillo will host "Breakfast with Santa" from 8-11:30 a.m. Dec. 9 at the center located at 1200 Streit Drive, Amarillo. The event will include a breakfast buffet, a special holiday Planetarium show and pictures with Santa for \$3. Cost of admission for child members is \$5, for non child members, \$7, and for adults eating breakfast, \$5. For more information, call (806) 355-9548, ext. 11.

ARC OPEN HOUSE
Gray County Chapter of the American Red Cross will host an open house from 1-4 p.m., Thursday, Dec. 7 at the chapter office at 108 N. Russell. The event is free and open to the public.

QUICK TASP
Frank Phillips College in Borger will conduct a Quick TASP exam at 4 p.m., Tuesday, Dec. 5 in the Library on campus. Participants may register on-site. Students who took the test in August are not eligible to take the test this month but must wait until January. For more information, call (806) 274-5311 or 1-800-687-2056, ext. 721.

FPC CHRISTMAS CONCERT
Frank Phillips College Music Department and Director of Community Choir will hold their annual Christmas Concert at 3 p.m., Dec. 3 and at 7:30 p.m. Dec. 4 in the Fine Arts Building Auditorium on the FPC campus in Borger. Both performances are free and open to the public.

COUNTRY CHRISTMAS EXTRAVAGANZA
Donley County Extension Office in Clarendon has announced the annual Country Christmas Extravaganza will be from 9:30 a.m.-4 p.m. Saturday, Dec. 2, in First United Methodist Church, 420 S. Jefferson, in Clarendon. The event will include: barnwood birdhouses, quilts, topiaries, computer generated notes and prints, candles, sterling jewelry, ornaments, nativity scenes, baked goods, clothing and much more. For more information, contact the Extension office in Clarendon at (806) 874-2141.

CCPC
Clarendon College-Pampa Center, 1601 W. Kentucky, will hold "Quick TASP" at 9 a.m. Wednesday, Dec. 6. Cost of the computer class is \$40, and the registration deadline is Nov. 27. The fee for the TASP test, due at the time of testing, is \$29 and must be accompanied by two forms of ID including one photograph.

PDHG
Palo Duro Handweaver's Guild will meet at 7:30 p.m. Dec. 7 in Amarillo. Anyone interested in weaving, spinning, dyeing or fiber arts is welcome. For meeting location or more information, call Becky Martin, (806) 358-2765.

TRAIN SHOW
Amarillo Model Railroad Association will hold its annual Magic of Christmas Past Train Show beginning Nov. 24 in Western Plaza. Show hours are, 12 noon-8 p.m., Nov. 24-26 and Dec. 25-31 as well as 5-8 p.m., every Friday in December. The association will raffle off a 4' x 8' HO-scale model railroad at 4 p.m. Christmas Eve. Admission is \$1 for adults and 50-cents for children. Raffle tickets are \$1 a chance or six for \$5.

GED TESTING
Clarendon College-Pampa Center conducts GED testing the fourth Monday and Tuesday of every month except for May and June. Test dates for these two months are May 22 and 23 and June 19 and 20. Those taking the full test must attend both days. Preregistration is required. For more information, call Jana Wesson-Martin at 665-8801.

RED CROSS CLASSES
Gray County Chapter of the American Red Cross will offer the following courses this month: First Aid, 3-7 p.m., Dec. 5, ARC office, 108 N. Russell; CPR class, 5-9 p.m., Dec. 12 at the ARC office. To register or for more information, call 669-7121.

THANKSGIVING DINNER
The Salvation Army, 701 S. Cuyler, will hold its first annual community Thanksgiving Dinner from 12 noon-2 p.m., Thursday, Nov. 23. All are invited to attend.

MIP CLASSES
Clarendon College will offer ABC Computer Class from 1-4 p.m., Dec. 14 and from 8:30 a.m.-12 a.m. and 1-4 p.m., Dec. 15. Minor in Possession classes are scheduled from 7:30-10:30 p.m., Dec. 11-12 in Clarendon. For more information, call Clarendon College-Pampa Center or Eddie Hankins, (806) 874-5074.

ADOPT-A-SEA TURTLE
Adopt a sea turtle for some one you love this holiday season. For a tax-deductible \$25, the Sea Turtle Survival League, an educational, outreach program of the nonprofit Catibbean Conservation Corp., will send participants a personalized color sea turtle adoption certificate, a sea turtle fact sheet, colorful decal and magnet and a subscription to the organi-

zation's quarterly newsletter, all in a special folder. For more information, call 1-800-678-7853 or visit www.ccturtle.org on the Internet.

CHILDREN'S HOPE INTERNATIONAL
Trinity Fellowship Church, Family Life Center, will sponsor a Children's Hope International meeting from 7-9 p.m., Thursday, Oct. 26 at the church, 5000 Hollywood Rd., Amarillo. The meeting will provide information on adoption programs in China, Russia, India, Vietnam and Guatemala. Brenda Barker, Southeastern Regional director for Children's Hope International and mother of seven internationally adopted children, will be the presenter. For more information, call (615) 309-8109, (615) 399-0032 or e-mail brendabarker@earthlink.net.

ALZHEIMER'S SUPPORT GROUP
The local Alzheimer's Support Group will conduct a four-part series this fall. The series will kick-off Sept. 7 with Dr. Bruce Harrow presenting an overview of the disease. Topics will include: Communication and Activities of Daily Living, Oct. 5; and Community Resources and Caregiving Planning, Nov. 2. The series will conclude Dec. 7 with a panel discussion. The group meets regularly at 7 p.m. the first Thursday of each month at Shepard's Crook Nursing Agency, 916 N. Crest. For more information, call Dauna Wilkinson, 665-0356.

FPC EXTENDED EDUCATION CLASSES
Frank Phillips College in Borger will offer the following extended education classes: PC Upgrade class, Dec. 4-14; Concealed Handgun course, Dec. 12-13. For more information, (806) 274-5311 or 1-800-687-2056, ext. 777.

'Nutcracker'



Pampa Civic Ballet will present "The Nutcracker" at 7:30 p.m., Saturday, Dec. 2, at M.K. Brown Auditorium. The annual production will be under the direction of Jeanne Willingham. The guest artists for this year are Cornel Crabtree and Dana Lewis and the soloist is Deanna McGill. Above: (Harp Angels) Mackenzie Parks, Dacie McGill, McKinley Hancox, Lindsey Gillis, Kirsten Hood, Jessica Hooker, Cassidy Winegeart, Madison Joyce, Kailyn Troxell, Madison Fatherree, Bailey Read, Brooke Woelfle, Jacee Hamlin, Jessica Zellefrow, Carissa Colton, Abigail Taylor, Treyci Carroll.

It's All Happening Downtown!

Saturday, December 2nd

"Come Back to Christmas"

Downtown Pampa

Victorian Costumes & Decor

Horse Drawn Carriage Rides

In-store specials, refreshments & SANTA

Participating Merchants Open till 8 pm

Buckle that seat belt!

A Christmas Spectacular

"That Night"

Dec. 2, 3, 4, 5 - 7 PM

CENTRAL BAPTIST CHURCH

Rolanda's

Silk Flowers & Gifts

For Christmas

301 W. Foster

PAMPA CINEMA 4

Coronado Center • 665-7141

All Show Times Before 6:00 pm. After 6:30 pm. For P&G

| | |
|--|--|
| <p>REMEMBER THE TITANS</p> <p>Rated PG13</p> <p>Friday, Saturday & Sunday 3:15 • 7:30 • 9:55 *Fri. & Sat. Only Monday thru Thursday 5:15 • 7:40</p> | <p>THE LEGEND OF BAGGER VANCE</p> <p>Rated PG13</p> <p>Fri., Sat. & Sun. 3:00 • 7:00 • 9:35 *Fri. & Sat. Only Mon. thru Thur. 5:00 & 7:30</p> |
| <p>MEET THE PARENTS</p> <p>Rated PG13</p> <p>Friday, Saturday & Sunday 3:30 • 7:45 • 10:10 *Fri. & Sat. Only Monday thru Thursday 5:30 • 8:10</p> | <p>RUGRATS IN PARIS</p> <p>Rated G</p> <p>Friday, Saturday & Sunday 3:45 • 7:15 *Fri. & Sat. Only Monday thru Thursday 5:45</p> |

6TH DAY Rated PG13 Friday & Saturday 9:15 pm, Sunday 7:15 pm
Monday thru Thursday 7:55 pm

Web Site For Movies: www.movies.com

DECA officers



(Special photo)

Pampa High School DECA Chapter recently installed the following officers for the 2000-01 school year: (top, left-right) Liana Ammerman, president; Miranda Dyer, treasurer; Tosha Anderson, secretary; Ashley Cain, reporter-historian; (bottom, l-r) Mike Shelton, sergeant-at-arms; Montana Farnum, senior vice president; Robbie Hamrick, junior vice president. The chapter also inducted the following new members: Tamkia Davis, Michelle Gomez, Cassie Hamilton, Mikel Hartley, Jeff Jones, Corey Kindle, Ben Ledbetter, Kevin Needham and Charity Godwin.

Lieberman suggests more combat beyond Supreme Court hearings

WASHINGTON (AP) — Even as Democratic lawyers make their case Friday to the U.S. Supreme Court for an Al Gore presidency, vice presidential running mate Joseph Lieberman suggests the case may not end with the nation's highest court. In an interview with The Associated Press, Lieberman declined to say definitively whether he and Vice President Gore would end their bid for the White House if the Supreme Court rules against them. Lieberman said the Supreme Court case was prompted not by them, but by Republican rival George W. Bush. The Democrats have appeals in two Florida state courts. "Our feeling has been that ultimately the Florida Supreme Court would be the final arbiter of this election, and the will of the people in Florida," Lieberman said Thursday.

New President Fox moves Mexico forward into democratic future

MEXICO CITY (AP) — A new government took office at midnight, ending 71 years of ruling-party domination and beginning a day that some Mexicans have hoped for — and others have feared — for generations. Vicente Fox prepared to take the oath of the presidency Friday in an act that would mark the first peaceful transfer of power to an opposition party in Mexico's history. The dawn of democracy here bred an enthusiasm that blurred, at least momentarily, ideological lines and political interests across the nation. Even the long-silent Zapatista rebel leader Subcomandante Marcos, hunkered down in the jungle of Mexico's southern Chiapas state, saw some hope. "For us, the nightmare ends today," he wrote. "Another could follow, or

it could be a new dawn."

Police brace for Palestinian riots in Jerusalem on holy day

JERUSALEM (AP) — Thousands of Israeli police streamed into Jerusalem for the first Friday of the Muslim holy month of Ramadan, hoping to head off riots after prayers at a disputed holy site and prevent a resurgence of Palestinian protests. The move came as Israeli politicians, gearing up for early elections, started a campaign focused on the chances for peace with the Palestinians. In Jerusalem, Israel eased restrictions banning young Palestinians from praying at the Al Aqsa mosque so all Muslims with Israeli identity cards — those with Israeli citizenship and Palestinians who live in Jerusalem — could come to the site for Ramadan prayers. But Palestinians from the West Bank and Gaza were banned.

Tommy Tune leaving Las Vegas stage production

LAS VEGAS (AP) — Tommy Tune is leaving his headline role in "EFX" at the MGM Grand hotel-casino after two years. The nine-time Tony Award winner's last performance in the \$75 million stage production will be Jan. 13. "Tommy has been an integral part of 'EFX' and we'll miss his passion for perfection and dynamic performance style," said Richard Sturm, president of MGM Mirage Entertainment and Sports. Tune plans to return to the East Coast to pursue other opportunities. "I've really and truly loved performing and living these past two years in fabulous Las Vegas," he said. MGM Grand officials have not announced his replacement. Tune took over as headliner after David Cassidy left the show in January 1999. Cassidy is now starring in his own production at the Rio resort.

Endeavor lifts off with wings for international space station

CAPE CANAVERAL, Fla. (AP) — Space shuttle Endeavour thundered into the night with massive solar wings needed to energize the international space station.

Endeavour and its five astronauts immediately gave chase to the space station, Alpha, which was soaring high above the Indian Ocean at the moment of liftoff late Thursday. Its three residents were supposedly asleep.

The shuttle should catch up with the station on Saturday, and the electricity-producing solar wings installed on Sunday with the help of two spacewalkers.

Endeavour's climb to orbit began right on time and was perfect the whole way. The shuttle resembled a bright star as it sped through a clear sky and headed up the East Coast; it was spotted as far north as Long Island, N.Y.

Gov. Jeb Bush, on hand for his first

shuttle launch, was grateful for some good news for his state.

"I don't know if you've noticed. You all have been very busy. But there's a lot of attention on Florida over the last couple of weeks," Bush told launch controllers, drawing a big laugh. "I want to tell you that the best of Florida is right here, not what is being depicted on television, but what just happened right now."

The world's largest, most powerful set of spacecraft solar wings is stuffed into Endeavour's cargo bay. Attaching the \$600 million wings to the space station represents NASA's most daunting construction job to date.

Once unfurled, the wings will stretch 240 feet from tip to tip, and 38 feet across, constituting the largest structure ever deployed in space. It is one of the heaviest shuttle payloads ever, 35,000 pounds counting all the batteries and radiators.

The wings, designed to catch sunlight for electricity, will provide the power necessary to open up the entire station and to run the U.S.-made laboratory section when it arrives in January. Alpha's commander, Bill Shepherd, and his Russian crewmates have been confined to two of the station's three rooms because of insufficient power for heating.

Besides the solar wings, Endeavour is carrying Christmas presents for Shepherd, Yuri Gidzenko and Sergei Krikalev from their families. The men are one month into their four-month station mission.

Even though their spacecraft will link up Saturday, the Endeavour and Alpha crews will not meet until Dec. 8. The shuttle astronauts must conduct three spacewalks to hook up the solar wings and install other equipment before all the hatches can be opened.

Police chief defends officer

GARLAND, Texas (AP) — An officer who fatally shot a 15-year-old boy who threatened him with butcher knives was justified in using deadly force, his police chief says.

A videotape of Justin Scott Sanders' confrontation with Garland Patrol Officer D.S. Weand shows that the lawman "did what he had to do," Chief Larry Wilson said Thursday.

Weand was responding to an early-morning disturbance call at a house in the East Dallas suburb on Monday when Sanders lunged at him while holding two 13-inch knives, police said. Sanders died about an hour later at Baylor Medical Center of Dallas.

Wilson told a news conference where the videotape and a tape of a 911 call made during the confrontation were released that Weand followed all police procedures. But the teen-ager's relatives said after viewing the video that the officer overreacted.

"My son didn't lunge at him," the boy's father, Donald Sanders, told The Dallas Morning News in Friday's editions. "Garland police, you killed my son. You killed my son for no reason."

The teen is shown in the silent videotape, recorded from the squad car of an officer sent as backup, running across the street after two officers searched for him between houses. Weand at one point lowered his gun, with Wilson saying the officer told him the youth was lowering his knives.

Individually they are standouts. Attention. Attention. Attention. We interrupt this ad to bring you these important deals. Rate of change.

The only minivan with a 4.9% APR for 60 Months which can save you up to \$2,104. All-new. "Best Minivan Ever"*** Select 2001 Dodge Grand Caravans.

Dodge Durango. 0.9% APR for 60 Months which can save you up to \$5,693. OR \$1,500-\$2,000 Cash Allowance, depending on model. 2000 Dodge Durango.

Dodge Ram. Requires very good credit. \$179 a month for 36 months. 2.99% down after cash all models. 2001 APR. Balloon payment due at loan end. No security deposit for very well-qualified buyers. 2001 Dodge Ram.

Dodge Different.

See The Friendly Dodge Dealer Near You

800-4-A-DODGE

The dealers listed below may be participating in this offer:

ROBERT KNOWLES

CHRYSLER - PLYMOUTH - DODGE
PAMPA, TEXAS 806-665-6544

*4.9% APR/60 mos. financing=\$18.83 per mo. per \$1,000 financed; 0.9% APR/60 mos. financing=\$17.05 per mo. per \$1,000 financed. Finance savings (for very well-qualified buyers with 10% down) depend on model and are based on avg. total payments for applicable models financed during 7-9/00 for 60 mos. by Chrysler Financial Corporation. **Based on AMCI overall weighted evaluations of 2001 Grand Caravan vs. similarly-equipped 2000 MY competitors. Call 800-4-A-DODGE for details. †Example for select buyers with exceptional credit from participating dealer stock, based on MSRP less dealer contribution, which may affect final price. Tax, title, and license extra. \$9,975 due at loan end. Offer ends 01/08/01.



TARPLEY'S ONE DAY SALE!

Saturday, December 2nd

10:00 am - 8:00 pm

Come Visit Santa 12:30 to 1:30 and 6:00 to 8:00



Coupon
25% Off
Any Guitar Or
Amp In Stock
Saturday Only

Coupon
30% Off
All Accessories
In Stock
Saturday Only

Coupon
20% Off
Any Drum Set, Digital
Keyboards, Violins or
Audio Equipment In Stock
Saturday Only

Coupon
15% Off
All Music Or
Instruction Books
In Stock
Saturday Only

Coupon
30% Off
Any Piano
In Stock
Saturday Only



**TARPLEY
MUSIC COMPANY**

117 N. CUYLER 806-665-1251

"Come Back To Christmas" APPRECIATION DAY SALE

10:00 AM TO 8:00 PM

Register For A Free Diamond Ring

30% To 50% OFF

***STOREWIDE SALE**

RHEAMS DIAMOND SHOP

111 N. CUYLER 806-665-2831

www.rheamsdiamondshop.com

*Sale Excludes Fossil



THE **Pain** NEWS

Working Together To Keep You

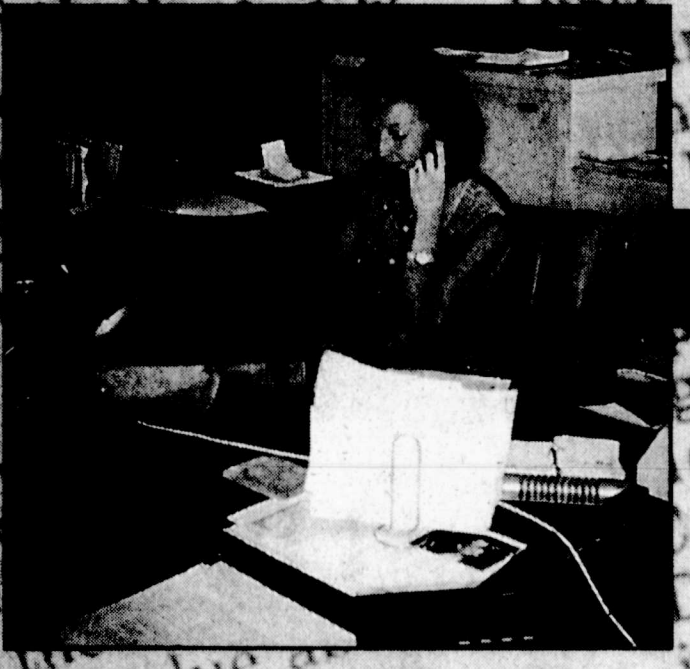


Publisher & Associate Publisher

L.W. McCall

Advertising

Redon Woods
Advertising Director
Danny Cowan & Kristi Whitley



Front Office

Beverly Taylor, Leann Heard,
Beth Rowell & Gertie Ellis

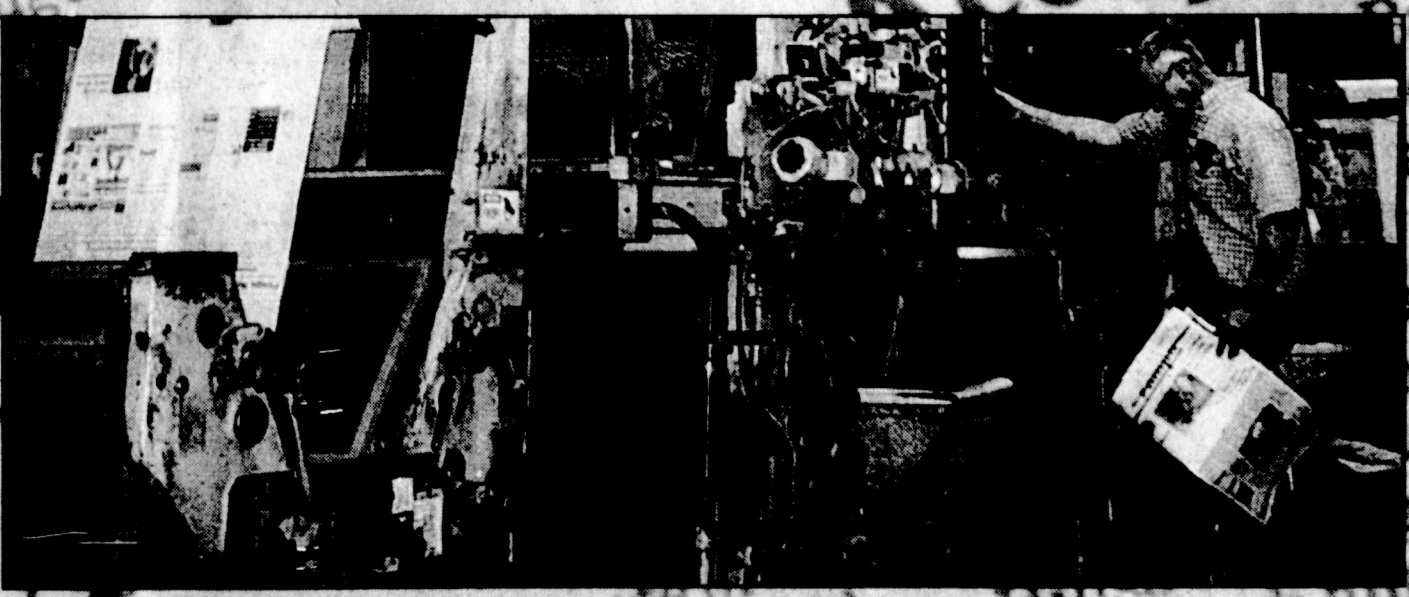


Composition

Brenda Cook, Supervisor, Chico Ramirez & Bree Rohrbacher

Press

B.J. Green - Forman,
John Allen & Gary Glover



Editorial

Kate B. Dickson 4 Editor, L.D. Strate, Skyla Bryant,
Nancy Young, Dee Dee Lanmore & David Bowser



Carriers

Represented by Esther Hudson



Circulation

Dan Lynch, Manager
Jeff Leigh, Pamela Cates & Pam Basen



Hills
in regul
with d
to give

BAR W'S GOING

WITH CRAZY DEALS!!!

WILD CARD SPECIAL

\$2,000 Rebate



Stk. #1641

2001 Ram 1500

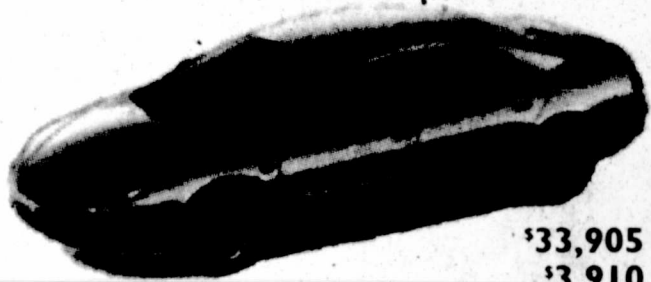
\$17,215 MSRP

\$1,220 Disc.

\$2,000 Rebate

\$13,995 or \$229 mo.

2001 CHRYSLER 300M



Stk. # C9464

\$33,905 MSRP
\$3,910 Disc.

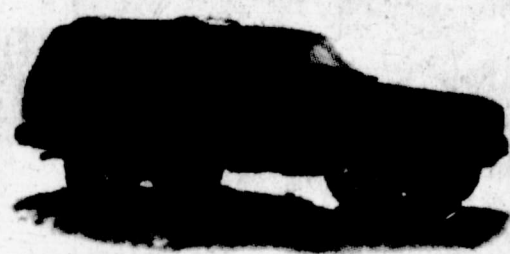
\$29,995

PRE-OWNED SPECIALS

CARS

- J9750A **1996 CHEVY CAVALIER** \$5,995⁰⁰
4 Door, Auto, A/C, 75XXX Miles
- P103 **1997 CHEVY CAVALIER** \$6,995⁰⁰
4 Door, Auto, A/C, 56XXX Miles
- D6134A **1998 FORD CONTOUR** \$7,995⁰⁰
- B5077A **1997 MERCURY SABLE** \$8,995⁰⁰
Station Wagon
- FD918A **1996 FORD THUNDERBIRD** \$8,995⁰⁰
Auto, A/C, 80XXX Miles
- FD566N **1998 CHEVY CAVALIER** \$8,995⁰⁰
4 Door, Auto, A/C, 58XXX Miles
- D1287A **1996 BUICK** \$8,995⁰⁰
Auto, A/C, 61XXX Miles
- P145 **2000 FORD CONTOUR** \$10,995⁰⁰
Auto, A/C, 27XXX Miles
- F3349B **1998 CHRYSLER SEBRING** \$15,995⁰⁰
Auto, A/C, Loaded, 29XXX Miles

2001 JEEP CHEROKEE SPORT



Stk. # J3382

\$22,340 MSRP
\$1,845 Disc.
\$1,500 Rebate

\$18,995

2000 DURANGO SLT PLUS



Stk. # D5449

\$30,900 MSRP
\$3,405 Disc.
\$1,500 Rebate

\$25,995

2001 RAM 1500 QUAD CAB

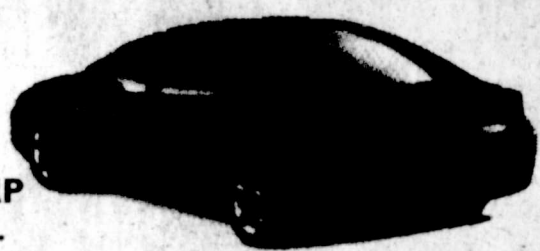


Stk. # D6339

\$24,625 MSRP
\$3,630 Disc.
\$2,000 Rebate

\$18,995
or \$309 mo.

2001 DODGE NEON



\$14,875 MSRP
\$1,000 Disc.
\$1,000 Rebate

Stk. # D9503

\$12,875
or \$209 mo.

SPORT UTILITIES / VANS

- D7031A **1999 JEEP WRANGLER** \$12,995⁰⁰
4x4, Red/Black Top, 6XXX Miles
- F7751A **1997 HONDA CRV** \$13,995⁰⁰
4x4, A/C, Auto, Extra Clean
- D2301A **1996 FORD EXPLORER** \$14,995⁰⁰
4 Door, 4x4, Leather, Very Nice
- D9382A **1998 FORD EXPLORER** \$15,995⁰⁰
2 Door, 4x4, 30XXX Miles
- P116 **1997 CHEVY TAHOE** \$17,995⁰⁰
2 Door, Auto, A/C, 4x4
- F0243A **2001 FORD EXCURSION** \$27,995⁰⁰
9XXX Miles, Like New

2001 RAM 2500 QUAD CAB DIESEL

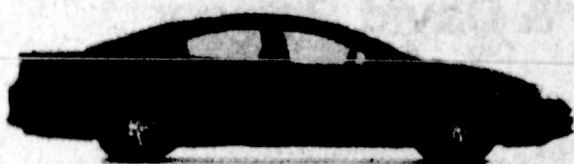


Stk. # D4080

\$31,865 MSRP
\$3,870 Disc.
\$1,000 Rebate

\$26,995

2001 DODGE INTREPID



Stk. # D8339

\$22,590 MSRP
\$1,595 Disc.
\$1,000 Rebate

\$19,995
or \$329 mo.

TRUCKS

- P139 **1996 DODGE RAM** \$17,995⁰⁰
3/4 Ton, X/C, 54XXX Miles
- P140 **1997 DODGE RAM** \$18,995⁰⁰
1/2 Ton, X/C, 4x4, 39XXX Miles
- P126 **1996 DODGE RAM** \$19,995⁰⁰
3/4 Ton, X/C, 56XXX Miles
- P116 **1998 GMC SIERRA** \$21,995⁰⁰
1/2 Ton 4x4, X/C, 27XXX Miles
- P135A **2000 FORD F150** \$22,995⁰⁰
1/2 Ton, X/C, 7XXX Miles

2001 DAKOTA QUAD CAB

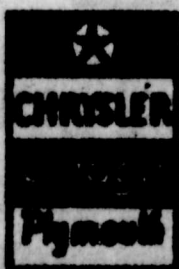


Stk. # D1791

\$24,355 MSRP
\$2,360 Disc.
\$1,000 Rebate

\$20,995

Pictures are for illustration purposes only. Payments are calculated at 10% APR for 72 months W.A.C. with 10% of MSRP down plus tax, title and license fees. Dealer retains all factory incentives.



BAR W MOTOR COMPANY

1-888-220-2545

1300 W. Wilson • Borgert • 273-7541

Mon.-Fri. 7:30 am-7:00 pm • Sat. 9:00 am - 6:00 pm