

Texas Rose Steakhouse



LIMITED TIME
OPEN SUNDAY 11:00 - 2:00

2537 Perryton Parkway 806-669-1009

***** MIXED ADC 760
*01 BV04227 12/31/14

SOUTHWEST MICRO PUBLISHING
2627 E YANDELL DR
EL PASO TX 79903-3743



Jim Davidson
Broker/Owner
312 North Gray Ste 21
Pampa, Texas
Business 806-669-0007
Fax 806-669-0008
Email Jdavid2140@aol.com

DYERS B•B•QUE

Hwy. 60 West



806-665-4401

Pampa

BEST AVAILABLE COPY

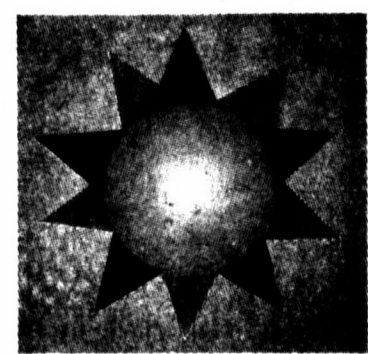
Vol. 96 No. 128 • Pampa, Texas
50¢ Daily • Sunday *1

Pampa Cyber Net

Internet Power for the New Millennium
Dialup or dedicated, T-1, and high speed DSL

806-665-0106
Centramedia ONLINE SERVICES
INTERNET DSL HOME ACCESS
Now \$99.00

SERVICE IS AVAILABLE NOW
Includes: Installation and Setup, Equipment & 1st Month Service
Not available in all areas of State.
Some restrictions may apply
OFFER VALID UNTIL Sept. 30, 2000
DSL Powered By: IP Communications



High today near 100
Low tonight 70
For weather details see Page 2

GED classes start Tuesday

PAMPA — Adult GED classes will be offered from 6-8 p.m. at Pampa Learning Center, 212 W. Cook, starting Tuesday, Sept. 5. For more information, contact Carol Wade, Pampa High School, at 669-4800, or PLC at 669-4750.

Tots-n-Training registration to begin

PAMPA — Registration for Tots-n-Training, a preschool program for children ages 3 to 5, will be Sept. 5-7 in Pampa. Parents may register children Tuesday, Sept. 5 from 11-11:30 a.m. and from 2:30-3:30 p.m. at Lamar Elementary; Wednesday, Sept. 6 from 3-4 p.m. and from 5-6 p.m. at Frank's Foods and from 4:30-6 p.m. at Community Day Care; and Thursday, Sept. 7 from 3:30-5 p.m. at United Supermarket. For more information, call 669-4700.

Sunshine Lunch on tap Sept. 20

PAMPA — Crown of Texas Hospice will sponsor a bereavement "Sunshine Lunch" (Dutch treat) from 11:30 a.m.-1 p.m. Wednesday, Sept. 20 at Dyer's Bar-B-Que, Hwy. 60 West. This luncheon is a social time for those who are grieving the death of a loved one. For reservations or for more information, call 1-800-572-6365.

- Harold Thomas Beck, 83, retired truck driver
- Don R. Garton, 57, retired from industrial cleaning service
- Mary 'Ma Mary' Hudson, 99, longtime Briscoe resident
- Alvin Hoyt McLemore, 64, former tire company employee
- Ronda Kay Prestidge, 42, retired U.S. Navy nurse
- Jon Michael Tarvin, 53, retired employee of IRI International

Agriculture17
Classified18
Comics8
Editorial4
Entertainment16
Sports9

Chautauqua in Central Park Monday

By DARLENE BIRKES
For The News

With something for everyone, those attending Chautauqua 2000 in Central Park Labor Day can indulge in a variety of food, from snow cones to chocolate covered bananas, frozen pickle juice pops to burritos — and the list goes on.

Every year non-profit groups introduce new items to tempt the visitor. The money spent at the food booths sponsored by churches and service organizations benefit many projects in Pampa throughout the year.

The Christmas shopping tour, AFS exchange students, eye bank, children's glasses, medical insurance policies, scholarships and camps are some of the many projects provided by service organizations including the Downtown Kiwanis Club with their hamburger booth, the Noon Lions' steak on a stick booth, and the Rotary pancake and sausage breakfast, which opens from 7-10 a.m. Labor Day.

Beverages sold by Boy Scout Troop 413 and 414 and cotton

candy by the Girl Scouts benefit their service projects and camping trips. Mary's Circle of First United Methodist Church will introduce smoked turkey legs and the Panhandle CattleWomen will sell chopped brisket on a bun. Women of the Moose will offer Frito chili pie and the Christian Cowboys fajitas and water.

Saint Matthew's Support Group will sell juice drinks, AFS exchange students nachos, Juvenile Diabetes Foundation caramel apple chunks, and Salvation Army hot dogs and pickles. The T-O Texas Rodeo Association will offer fried steak sandwiches and fries.

The Chautauqua runs will begin at 8 a.m. and medal awards for winners in 24 divisions will be made from the stage at 9:45 a.m. by Terry Barnes of Pampa Regional Medical Center, sponsor of the 5K and fun runs. T-shirts will be given to all participants and proceeds are donated to the United Way.

The opening ceremony at the free stage will begin at 9 a.m.

with MCs Wanetta Hill and Lynn Hancock, the Girl Scout flag salute, PHS band brass ensemble and vocal rendition of "The Lord's Prayer."

Special entertainment on or near the stage during the morning will include: Pampa Gymnastics, 9:15 a.m.; Tae Kwon Do martial arts demonstrations, 10:20 a.m.; vocalist Rick Scott, who plays the harmonica and guitar, 9:30 a.m.; PHS Fiesta Dancers, 10 a.m.; and magician Brent Boswell, 11:15 a.m. The Sandal Band from Amarillo goes on stage at 10:45 a.m. and Calvary Baptist Praise Band, 11:30 a.m.

At noon the AFS exchange students will be introduced followed by the Pampa High School Show Choir. The Turning Point band performs at 12:45 p.m. and Perchance to Dream band at 1:45 p.m. Chris Crow will sing and play the guitar at 1:15 p.m., followed by "Elvis" at 2:15 p.m. and Boswell, the magician, at 2:25 p.m. Scott returns to the stage with his harmonica and guitar at 2:45 p.m. and vocalist Clay Britton at 3 p.m.

A tribute to Woody Guthrie will begin at 3:15 p.m. with Pat Stewart of St. Louis, Mo., Frank Simpson of Madison, Wis., and Amarillo musicians Sarah Atherton and Carol Pachi.

Chautauqua 2000 will close with the traditional "Day is

Dying in the West" written by the Chautauqua Institute in New York in 1877 and a trumpet rendition of "Taps."

Stage director Loralee Cooley announced that 1930 news clips for Sept. 4 will be read along (See CHAUTAUQUA, Page 2)



Ajay Connor Mitchell models the Pampa Regional Medical Center 2000 Chautauqua Fun Run/Walk and 5K T-shirt. Ajay is the son of John and Lisa Mitchell of Pampa and the grandson of A.C. and Estelle Malone of Pampa and Gene and Jan Aufleger of Amarillo. Great-grandparents are Bessie Malone and Winnie Flowers, both of Pampa. To get a T-shirt join Monday's race. It's \$5 for the Fun Run/Walk and \$10 for the 5K. Proceeds go to United Way. Registration begins at 6:45 a.m. at the corner of Mary Ellen and Georgia in Central Park. Races start at 8 a.m.

Pampan dies in crash

A crash that tied up part of Interstate 40 near Amarillo for hours Thursday claimed the life of Jon Michael Tarvin, 53, of Pampa. (See obituary on Page 2).

Tarvin apparently died instantly when the 1997 Toyota Camry he was driving west near FM 1912 close to the Amarillo Technical Center exit crashed into a tractor trailer rig, said DPS Trooper L.B. Snider.

The wreck happened at 11:40 a.m. when Tarvin's car skidded on the road, crossed the median and struck a tractor-trailer rig that was pulling two pup

trailers, Snider said. Just why the car left its lane of travel is not known.

Tarvin's car struck the back wheel of the first trailer, smashing the front of the car, the trooper said. The crash caused the back trailer to whip around and demolish the rear of the small car.

The big rig then turned over on its side causing minor injuries to the Roadway Express truck driver Kenneth Maurice Dabney, and his passenger who was in the sleeper, Timothy Lucas.

Snider said the justice of the peace who pronounced Tarvin dead ordered an autopsy.

City public hearing Tuesday on property tax hike proposal

By KATE B. DICKSON
Associate Publisher

There's a public hearing Tuesday at 6 p.m. at City Hall regarding plans by the City Commission to up the city's tax rate to 67 cents per hundred valuation.

In addition to upping taxes, it's expected commissioners will also institute increased sanitation and water rates though all the details remain to be worked out after an all-day budget review session on Aug. 22.

Landfill customers, including the largest one — Berger at 30 percent usage — most likely will have their per ton charges hiked as well in order to pay for closing the disposal cell in use now and to pay

for opening a new one. Another landfill change will be shortened hours and the cutting of an employee in order to save money.

City Manager Bob Eskridge reminded commissioners that funds originally planned to be saved last year for landfill needs were instead used to balance the current budget.

Commissioners have voted once to pass the tax rate increase and must vote a second time in favor of it before the proposal becomes effective on the Oct. 1 beginning of the 2000-01 fiscal year.

Currently, without dipping into the city's dwindling general fund savings, the proposed budget stands at \$165,000 in the red, City Finance Director John Horst said previously.

(See CITY, Page 2)

Battery intervention program highlights crime's seriousness

By TONYA FINSTERWALD
reprinted by permission from
Wheeler County Star-News

WHEELER — Although the court systems generally see only one victim in a spousal abuse case, batterers tend to create multiple victims, namely the children witnessing the crime.

Area law enforcement, judges, parole officers and more attended a Battering Intervention and Prevention Program recently at Wheeler. The program was presented by Cindy Smith, M.S., executive director of the Panhandle Crisis Center of Perryton. The program's main focus is Intimate Partner Violence. Statewide statistics from last year showed that 60 percent of those enrolled completed the program.

The Battering Intervention and Prevention Program, also known as BIE, offers an educational program for batterers. It is being suggested as an additional requirement of probation for those facing problems controlling their violence. Right now the groups consist only of men, but the organization has plans to implement programs for female offenders as soon as the need arises.

Smith emphasized the need to (See Battery, Page 3)

9-1-1 call from child

EDITOR'S NOTE — This is the transcript of an actual 9-1-1 call involving a child witnessing a violent act. The tape of the call was played for those attending a Battering Intervention and Prevention Program meeting in Wheeler recently. In the recording, the voice of the little girl is distraught throughout, filled with tears and shrill screams for help. This transcript is reprinted with permission from the Wheeler County Star-News.

Lisa: "My mommy and daddy are having a fight."

Dispatcher: "Is he hitting her?"

Lisa: "I'm talking to the police, Mommy. Stop it. Mommy. Stop it. Don't take the baby. Don't hurt the baby. Stop it. Could

(See 9-1-1, Page 3)

Chautauqua fun!

Little Dylan Hall with father Brett is studying the pumping water pump, one of the antique machinery displays during last year's Chautauqua. Old machinery will again be on display Monday in Central Park during the annual day-long festival.



Chamber Prayer Breakfast 200 N. Ballard --
September 5, 2000 -- 7:00 a.m. -- RSVP at 669-3241

S E P T E M B E R 2 0 0 0



A seriously injured Texas Panhandle woman represented by Amarillo Attorney Jack Hazlewood and his Dallas Co-Counsel awarded \$8.2 million Jury Verdict in Products Liability lawsuit against major automobile manufacturer (Case No. 93-10141, 116th District Court, Dallas County). Results obtained depend on the facts of each case.

Jack Hazlewood

Suite 200 PNB Place • Fillmore At 8th • Amarillo, TX
website: hazlewood.wid.com • e-mail: jhazelw@arn.net

HAS YOUR LOVED ONE BEEN INJURED IN A NURSING HOME?

Then you need an experienced attorney

LAW OFFICES OF

Jack Hazlewood

SERIOUS INJURIES-WRONGFUL DEATH

- Automobile/Truck Accidents
- Industrial/Construction Liability
- Products/Premises Liability
- Nursing Home Liability

MEDICAL MALPRACTICE

- Doctors
- Nurses
- Hospitals
- Therapists, etc.

Board Certified
in Personal Injury
& Civil Trial Law By
Texas Board Of
Legal Specialization

FREE CONSULTATION

Toll Free 888-376-6372

CONTINUED FROM PAGE ONE

9-1-1

you just send the police, please?"
Dispatcher: "Okay, we're going to be there."
Lisa: "Stop it. No."
Dispatcher: "Where's your mom?"
Lisa: "What?"
Dispatcher: "What's going on?"
Lisa: "They're having a fight. This has been going on forever and ever. They always have this because he has to come in and he's always been drinking and getting drunk."
Dispatcher: "What is his name... your father's name?"
Lisa: "Pierre."
Dispatcher: "Pierre?"
Lisa: "Yes."
Dispatcher: "What's his last name?"
Lisa: "I don't know, but I think..."
Dispatcher: "Is he white, black, or Hispanic?"
Lisa: "He's black."
Dispatcher: "He's your father?"
Lisa: "He's my stepfather."
Dispatcher: "Okay, how old is he?"
Lisa: "I don't know."
Dispatcher: "Does he have any weapons?"
Lisa: "No, but he's hurting Mommy."
Dispatcher: "How is he hurting her?"
Lisa: "Mean to Mommy."
Dispatcher: "Okay, don't cry, we're going to send the police."
Lisa: "Okay."
Dispatcher: "Okay, now where's your mother at right now?"
Lisa: "He's in the room fighting with her."
Dispatcher: "Do you have a little baby sister?"
Lisa: "No, I've got a baby brother."
Dispatcher: "And he's trying to take your baby brother? He's trying to take the baby?"
Lisa: "Yeah, Mommy's not drunk. He's beating her 'cause he comes in mad 'cause he's drunk. My step daddy's drunk."
Dispatcher: "Are they in the room fighting? Where are they at now?"
Lisa: "They're in the room still."
Dispatcher: "They're in the bedroom?"
Lisa: "Yeah. I don't want him to do nothing dirty to the baby 'cause if it drops, ...he's a newborn baby. He's very delicate."
Dispatcher: "What do you mean 'do anything strange'? What do you think he's going to do to your baby?"
Lisa: "I think he's going to take the baby and do something because he's drunk. He might not see the baby and go off without the baby and take it."
Dispatcher: "How old are you?"
Lisa: "I'm six and my little sister is four."
Dispatcher: "You're six years old? You're six?"
Lisa: "Yeah, I'm in first grade and my sister is in kindergarten."
Dispatcher: "And what is your name?"
Lisa: "Hmmm?"
Dispatcher: "What is your name?"
Lisa: "Lisa and my sister's name is Julie."
Dispatcher: "Julie? Okay."
Lisa: "Could you just please send someone?"
Dispatcher: "Yeah, they're on their way, but I need to keep you on the line until they get there, okay? Is your front door open?"
Lisa: "No."
Dispatcher: "Can you go unlock it and come back to the phone so the officers can get in?"
Lisa: "Okay. Just wait for me."
Dispatcher: "Okay."
Lisa: "He just knocked my sister down!"
Dispatcher: "What sister did he knock down?"
Lisa: "My little sister. It's the four-year-old."
Dispatcher: "What do you mean he knocked her down?"
Lisa: "He pushed her down on the floor and she's crying. I mean it. Stop doing this."
Lisa: "Pierre just slapped Mommy."

BATTERY

intervene in order to stop the violence and prevent it from escalating. She encouraged those involved to look at the history of the batterer when working certain cases. Smith said the complaint may look like a singular incident, but is probably just the only time the batterer was caught.
"We need the criminal justice system's input on this," Smith said.
She encouraged law enforcement officers and judges to look beyond the idea that the incident only happened once and seek the appropriate help for the perpetrators. Smith explained that the report could say he slapped her

and that's all, but this doesn't show what happened in the home or the effect of it.

Smith stressed that while the program is focused on the behavior of the offenders, the Panhandle Crisis Center is there to serve the victim and this program offers a possible solution.

"Batterers are capable of managing their anger," Smith said. "Abuse involves a choice."

Smith also discussed the cost effectiveness of the program compared to one-on-one counseling. The 18-week program, consisting of two hours per week, costs participants \$15 per week. The groups are led by a licensed professional counselor. Smith reminds those that feel the 36-hour program is too stiff

to remember that the victims and children, often silent witnesses to the brutal acts, spend well more than 18 weeks struggling with the abusive situation.

Without intervention, the violence usually gets worse and the end result can easily lead to death. Some actions and their possible results include the following:

Acts leading to homicide or suicide - a push, punch, slap, kick, throwing objects, choking or use of weapons;

Acts leading to suicide, depression or substance abuse - name calling, criticizing, insulting, ignoring, yelling, isolating, humiliation; or

Acts leading to rape - unwanted touching, sexual insults, unfaithfulness, false accusations, forced sex.

Referring to the offenders, Smith stated, "Their actions will create new generations of abusers. There has to be consequences for abuse behavior."

Attending the meeting were members of Wheeler, Roberts and Hemphill County Sheriff's

Departments, adult probation officers and county officials including Wheeler County Judge Jerry Hefley, County Attorney Bobby Hill, Assistant District Attorney Phil Pendleton, Hemphill County Attorney Charles Kessie, Justice of the Peace Art Taylor and Brady Meadows, Wheeler County Sheriff Jimmy Adams, Deputies David Watson and Morgan Hightower, Hemphill County Sheriff's Department Doug Tennant, Jim Graham and Pamela Trimble, Dispatchers Kathleen Frankenbery, Carolyn Sabbe and Carrie Gaines, Wheeler County Probation Officers David Britt, Tammy Moore, Chelcie Deger, Wheeler County Constable Joe Montgomery, Tralee Crisis Center Outreach Coordinator Ann Hamilton, and Wheeler area citizens Vicki Bailey, Judy Woollard, Lori Breeding, Betty Hennard, Dixie Chick, Diane Wells, Ruth Chasteen, Rita Pearson, Sarah Meadows, Danielle Mayfield, Mark Watson and Jeff McLendon.

9-1-1 continued

Dispatcher: "Okay. What room are they in?"
Lisa: "They're in the bathroom."
Dispatcher: "They're in the bedroom or the bathroom?"
Lisa: "Bathroom. Oh my God!"

Dispatcher: "What's the matter?"

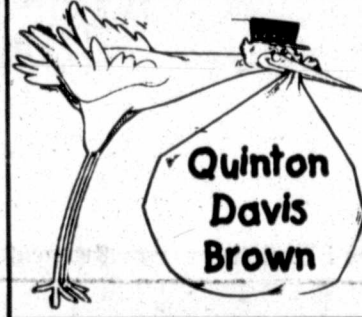
Lisa: "Something happened! Just please get the police. Wait. I want to go see what happened, please."

Dispatcher: "Well can you... The police are on their way, okay? Hello? Lisa?"

Lisa: "Um... my step daddy's got the baby..." END OF TAPE

Crime Stoppers
669-2222

BIRTH ANNOUNCEMENT



Quinton Dale & Michele Lee Brown of Shamrock are proud to announce the arrival of Quinton Davis Brown, born Aug. 9, 2000 in Pampa weighing 7 lbs. 8 oz. The Paternal Parents are J. C. and Bobbi Albin of Pampa, and the Maternal Parents are George Silbersdorff of Kent Washington and Lee Bowen of Costa Mesa, Calif.

Skellytown residents and/or property owners within the city limits of Skellytown: The City Council would like to make each of you aware that many of you are not in compliance with City Ordinances. As of September 4, 2000, those who do not abide by the following ordinances will be served a letter giving them ten days to comply or legal action will be taken.

- Ordinance 87-02: Regarding Health, Safety & Nuisance
 - o Example: Weeds over 10" tall, abandoned appliances, trash on resident's property
- Ordinance 84-02: Junked or abandoned vehicles
 - o This ordinance pertains to vehicles in which tags and inspection stickers are expired and that are visible to the public eye
- Ordinance 90-03: Animals at large
 - o This ordinance pertains to pets which are not kept within a fenced yard or on a leash

Additional information regarding City Ordinances may be obtained at the Skellytown City Hall. Your cooperation on this matter is appreciated.
The Skellytown City Council

We would like to remind everyone that the care and maintenance of your property, whether you own or rent, starts at the street and continues to the center of the alley ways. This means that the owner or resident is responsible for maintaining the alley, curb, or ditch, in the front, the sides, and behind your home, business, or property. If you need information as to where you may dispose of tree limbs, grass clippings, junk, etc... Please inquire at city hall. If everyone does his or her share we can take pride in our community!

BLOW THE WHISTLE ON SAVINGS

CRINKLE BROOMSTICK SKIRTS

9.99
Reg. 20.00

50% OFF

*New Shipment

Dr. Martens

50% OFF

BARK GRIZZLY FANCY

49.99
Reg. 100.00

JANTZEN MULES

4.99
Reg. 14.00

65% OFF

*Canvas, Mesh, Denim!

AZTEC OLD WEST PUNCHED SANDAL

54.99
Reg. 110.00

DUNLAPS OPEN LABOR DAY 10:00 - 5:00

Commodore Center • 669-7417

Fall 2000 Volunteer Training/Community Education Class

"The Hospice Approach to Living with Dying"

Presented by
BSA Hospice Pampa

A class for anyone interested in becoming a hospice volunteer, learning more about hospice care, and/or desiring personal growth and enrichment.

10-session class meets
Monday and Thursday evenings ■ 6 p.m. to 9 p.m.
September 11 through October 12, 2000
Clarendon College ■ 1601 W. Kentucky ■ Pampa, TX

■ Training is free of charge.
■ 3.0 CEU's will be awarded by Clarendon College.

For more information or to register, call
Janet McCracken, Volunteer Coordinator, at 665-6677.



Volunteers Make A Difference. Register Today.

Letters to the editor

Jordan Unit inmate looking for a pair of shoes ...

To the editor,
I am presently incarcerated for crimes that I did commit here at Pampa's Prison Industrial Complex. The infamous Rufe Jordan Unit.
In case anyone doesn't know, the Jordan operates and maintains a multi-million dollar boot factory employing at least 300 inmates. A factory that makes shoes and boots for the 150,000 prisoners incarcerated within Texas Department of Criminal Justice-Institutional Division.
For the past several months, I have been unable to get a pair of boots. Though to be fair, I wear a size 12 EEEEE. I have written requests, filed grievances and was even called into the major's office who asked me if my family would be willing to buy me a pair? He stated that as of right now they are over budget and cannot get me any.
My family has enough problems without worrying about having to purchase me a pair of shoes, which is clearly the responsibility of the prison system.
The reason I've written this letter is that I am hoping that some group will call up and tell the warden where he can procure a pair of shoes. As winter is coming on and it will be uncomfortable walking around in my stocking feet.
Floyd D. Allen, Jr.
Jordan Unit

local businesses has the PEDC helped, and how many local businesses has the PEDC driven out of business?
We held a public rally in 1987 after the Celanese explosion, to encourage Celanese to rebuild, and it helped. Are we going to let taxes destroy what's left of this town and encourage businesses to go elsewhere or are we going to fight for what's left? You decide.

There is going to be a public hearing at 6 p.m. on Sept. 5 at the commission chambers at City Hall — that's Tuesday after Labor Day. I seriously believe that the commissioners should hear from the public, don't you?
Alinet L. Eldredge
Pampa

Someone will have to foot the bill for new facilities

To the editor,
Texas: Needs new prisons to hold violent children under the age of 10, juvenile justice experts told legislators in March 2000. A state senate committee must decide whether to create a new prison system for adolescent offenders under 10 or continue to keep them in the crowded juvenile system currently being utilized.
Texas: After months of negotiations and lobbying, Gov. Bush finally yielded to pressure and signed an executive order in May 2000 to give correctional officers a pay raise to \$28,380 — an increase of \$1,656 or \$138 more per month. Money for this salary increase will come from TDCJ's existing budget for 2000. But in January 2001 the legislature will be asked to make up for this new prison deficit with a special appropriation. New taxes.
Texas: State Sen. John Whitmire (D-Houston) criticized parole board members for constantly sending non-violent technical parole

violators back to prison. Texas prisons are critically overcrowded once again. The prison populace has nearly quadrupled in the past 12 years — from 38,000 in 1988 to more than 150,000 at present with the numbers still spiraling upward.

Now that Texas and TDCJ have used up the \$1.7 billion tax dollars (which the taxpayers are still struggling to pay) to build from 30 prisons to at least 16 prisons and have created a new job industry for Texas while automatically creating new taxes. The Criminal Justice Policy Council has all ready recommended the construction of additional prisons. Prisons equal taxes which the legislature will also be urged to consider in January 2001. The 116 existing units are all ready at capacity, with thousands of prison-ready inmates housed in county jails. As was done in the 1980s and early 1990s, counties will charge TDCJ for housing these prison-ready inmates. Guess who will ultimately have to pay for this drastic extreme!

Texas: Wonder if your state legislators will consider your tax dollars when her or she votes to build new prisons in which to keep non-violent offenders and non-violent technical parole violators incarcerated longer. Texas citizens should brace for another tax increase after the elections of 2000. Someone obviously will have to foot the bill to pay for all the thousands of non-violent offenders who are a continuous drain on the economy simply because they are locked up and unable to work and support themselves and pay taxes.

John LaRoux
Abilene

How many tax hikes can citizens of Pampa, Gray County stand?

To the editor,
This is a letter to the remainder of property owners and business owners that are still surviving in the City of Pampa and Gray County. How many more taxes can we stand? How much more of the PEDC can we stand? Are we, the few who remain in Pampa and Gray County going to stand back and be gouged for the taxes that would have been collected from all the property owners and businesses that have left this town and continue to allow the PEDC to give our tax money to new businesses that end up leaving this town after they have more or less robbed us of all the "free" taxes they can get?
I, for one, am fed up to the gills, Mr. and Mrs. Taxpayer! Are you fed up, too?
I think it's just about time for a tax cut! Also closed its doors. Shouldn't that tell the commission something? What is our population now in Pampa? Is it 25,000? I bet it is closer to 9,000 or possibly even 10,000. We are not a large city like Amarillo, but our taxes are higher! Our local people are shopping in Amarillo. Shouldn't that tell the commission something?
I believe it's time to ship the PEDC out of Pampa, too. How many

COUPON

\$5 off any incoming order of \$20 or more
Exp. Sept. 30, 2000

COMET CLEANERS

726 N. Hobart 669-0207

COUPON

Good rate. Good neighbor service.
That's State Farm insurance.

See one of these good neighbor agents:

Dannie Hoover State Farm
103 W. Foster
665-0819

Joanna Ostrom, Agent
1615 N. Hobart
665-4051

Sheila Webb Insurance
Coronado Center
669-3861

Like a good neighbor, State Farm is there®
State Farm Insurance Companies
Home Offices: Bloomington, Illinois

Men's & Ladies' Wrangler 20x Jeans
reg. \$34.99 **\$29.99**

Kid's Wrangler 20X Jeans **\$19.99**

BACK TO SCHOOL **All Summer Wear**
Kids' Justin Chukkas **\$69.99**
Kids' Roper Shoes **\$39.99** **40% Off**

Straw Hats ... 25% Off
Excluding Already On Sale & Palm Leaf

WAYNES WESTERN WEAR, INC.
DAILY 9 A.M. TO 6 P.M., THURS. TIL 8 P.M., CLOSED SUNDAY
LAYAWAYS WELCOME ON REGULAR PRICED MERCHANDISE
1504 N. HOBART • PAMPA • 665-2925

SHORT ROLL SALE!

We Have Too Many Short Rolls!
We Are Going To Sacrifice Them!
Bring In This Coupon And
SAVE \$2.00 To \$5.00 Per Sq. Yd.
Off Our Sale Price
On Any Roll Up To 50 Sq. Yds.!

HURRY! This Carpet Won't Last Long At These Prices!!

Exp. 9/15/00

\$2.00 to \$5.00 Off

Any Roll Up To 50 Yards

Charlie's
1533 N. Hobart • 665-0995

Cable Rates Are On The Rise Again...

DUMP CABLE OR DIRECT TV

FOR DISH NETWORK!

FREE and FREE

BASIC PROFESSIONAL INSTALLATION DISH 500 SATELLITE TV SYSTEM
(MODEL 3722/3822 MSRP \$199)

HERE'S HOW IT WORKS

- 1 Choose a deluxe, multi-room ready DISH 500 satellite TV system, Model 3722/3822.
- 2 Provide a valid credit card, an original cable bill or Direct TV Bill and agree to one year of America's Top 150 programming package, or America's Top 100 CD and other programming totaling at least \$39.98 per month.
- 3 Get a FREE DISH 500 Model 3722/3822 satellite TV system (MSRP \$199) and FREE basic Professional Installation (MSRP \$199)!
- 4 Call DISH Network to activate programming.

Some restrictions apply. See participating retailer for details.

Coming Soon!
MORE LOCAL CHANNELS ON DISH NETWORK!

DISH Network local channels available in most cities, not all cities. Local channels available by subscription in other areas. Prices for availability restrictions apply.

PAMPA COMMUNICATIONS
SATELLITES
641 N. HOBART • 665-1663

How would you like your TV?

Community Calendar

MAGIC PLAINS CHAPTER of the American Business Women's Association will meet at 6:30 p.m. the second Monday of each month at Furr's Cafeteria. Working business women are invited to attend. For more information, call Pat Winkleblack at 669-7828 or Estelle Malone at 669-9614.

FREEDOM MUSEUM, USA, 600 N. Hobart is open from 12-4 p.m. Tuesday-Saturday. Revolutionary War to Kosovo. All branches of service are represented. For more information, call 669-6066.

FELLOWSHIP OF CHRISTIAN COWBOYS meet the fourth Saturday of each month at the Clyde Carruth Livestock Pavilion, 6:30 p.m. Pot luck supper. For more information contact Kevin Romines, 665-8547 or Jim Greene, 665-8067.

RETIRED TEACHERS ASSOCIATION meets at 2 p.m. the third Monday of every month at the Senior Citizens Center. For more information, contact Carolyn Smith, 665-5158.

FIRST PENTECOSTAL HOLINESS CHURCH hosts "Second Sunday Singing" from 2-4 p.m. the second Sunday of each month. Singers and musicians from all over perform congregational singing. The public is cordially invited to attend. For more information, call Mina Towey, 665-8529.

WHITE DEER LAND MUSEUM will celebrate its 30th anniversary in the Year 2000. A new exhibit, "A Season of Change, 1900-200," will go up in January to celebrate the anniversary and the millennium. The

exhibit will run from January-September.

WHITE DEER LAND MUSEUM will be selling leaves and rocks to go on the new bronze Heritage which is in the Holland Wing. The items may be purchased all year as memorials and tributes to families, family members and friends.

TRALEE CRISIS CENTER support groups for victims of family violence — both women and children — meet every Thursday evening. For more information, call Diane about the adult support groups, 669-1788, and Nita about the children's support groups, 669-1131.

TRALEE CRISIS CENTER Coordinating Council meets once a month. For more information, call Ann, 669-1131.

MEALS ON WHEELS Garage Sale, 900 N. Frost, will be every Monday throughout February and April. For more information, call Cindy Gindorf, 669-1007.

PAMPA YOUTH AND COMMUNITY CENTER Water Aerobics class will be from 6-7 p.m. Tuesdays and Thursdays. For more information, call Frankie Hildenbrand, 669-3713, or Lee, Betty or Liz at Pampa Youth Center, 665-0748.

PAMPA AREA LITERACY COUNCIL office will be open from 10 a.m.-4 p.m., Monday-Friday. PALC volunteers work with people who need basic reading/writing skills as well as English as a second language. For more information, call 665-2331.

GRAY COUNTY REPUBLICAN PARTY HEAD-QUARTERS located in the Combs-Worley Building, 120 W. Kingsmill, Suite 202. Open Tuesdays and Thursdays from 10 a.m.-2 p.m. For more information, call 669-1276.

OUTREACH HEALTH SERVICES/WIC Nutrition education classes. Open to the public. For more information, call 665-1182.

PANHANDLE ALLIANCE FOR THE MENTALLY ILL will meet the second Thursday of the month at 7 p.m. at 218 N. Russell. For more information call Sharon King, 665-2818.

AL-ANON will hold weekly meetings on Mondays and Wednesdays at 8 p.m. at 910 W. Kentucky. For more information, call 669-7501.

CLEAN AIR AL-ANON will hold weekly meetings on Tuesdays and Thursdays at noon at 810 W. 23rd. For more information, call 669-7501.

CLEAN AIR AL-ATEEN will hold weekly meetings on Mondays at 7 p.m. at 810 W. 23rd. For more information, contact 669-3988.

VFW POST #1657, 105 S. Cuyler. Charity Bingo

every Wednesday at 7 p.m. and Sunday at 1:30 p.m. Doors open one hour early. No one under 18 allowed. Public is welcome. License No. 1-75-6037422-9. For more information contact Edgar D. Carson, 669-0853 or 669-1264.

WOMEN OF THE MOOSE Charity Bingo every Monday at 7 p.m. at the Moose Lodge, 403 W. Brown. Doors open at 6 p.m. Public welcome. License #1-751616469-0.

THE ALZHEIMER'S SUPPORT GROUP will have regularly scheduled meetings the first Thursday of each month at 7 p.m. at Shepard's Crook Nursing Agency, Inc. For more information contact Chrys Smith at 665-0356.

HIDDEN HILLS Women's Golf Association will hold its "Play Day" at 6 p.m. each Monday from May-September. For more information, call 669-0434.

GRAY COUNTY GENEALOGICAL SOCIETY regular meetings will be at 7:30 p.m. on the fourth Monday of each month at the Sheriff's office classroom at the Francis Street entrance. For more information, call Harley Madison at 669-6294.

CONTINUED FROM PAGE 17

FRENCH

"To people who like neoclassical design, 18th century French never is out of style, but at the moment it seems to be enjoying an incredible rebirth," he says. "There's a whole new group of people in their 20s and 30s asking for it."

French antiques at the highest level will be on display Sept. 15-Oct. 1 at the Biennale des

Antiquaires (Biennial Exhibition of Antiques Dealers) in Paris. Some people regard the Biennale as the world's most beautiful antiques event. The show, held every two years at the Carrousel du Louvre, is attended by many Americans, especially interior designers and their wealthy clients. It's estimated that 60 percent of the items sold are exported and half the exports go to the United States.

Up for sale at this fall's show are scenic French wallpaper panels, made in 1804 by Dufour, depicting the voyages of Captain Cook (through Carole Thibaut-Pomerantz, an American dealer in New York and Paris). Buyers also will find a pair of 18th century marquetry cabinets by elite cabinetmaker Adam Weisweiler (through Didier Aaron, a Paris dealer).

Before an object can be sold at the Paris show, it must be approved by a panel of experts. This year's show will include an unusually large number of later 20th century French art and design objects. And for the first time, objects dating to 1960 will be accepted.

Leading antiques show are often a bellwether for mass market styles, so you can expect that mid-century modern French styles may soon emerge in adaptations.

**Lose the worry,
find the facts,
with tax training from H & R Block!**

We cover everything from completing a basic 1040 to the skillful handling of complex schedules. Learn about recent changes in tax laws, as well as proven tax-saving strategies. Once you've completed the course, you may even have the opportunity to interview with H & R Block. Call for the flexible course times and convenient locations in your area and enroll today!

H & R BLOCK

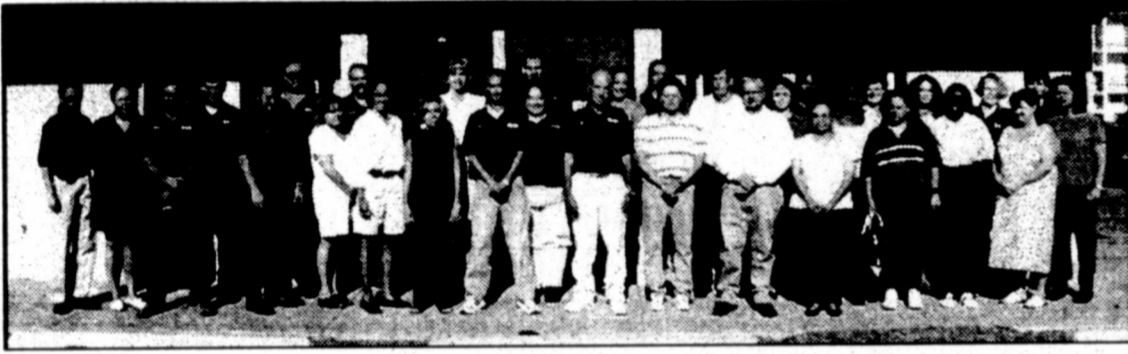
1301 N. Hobart, Pampa, Tx. 79065
806-665-2161



for SALES-PARTS-SERVICE
AMERICAN
EQUIPMENT & TRAILER
610 N. GRAND - AMARILLO, TX.
806-383-8831

NOW OPEN IN PAMPA!

BritKare HOME MEDICAL
"Where Service Is First! 24 Hours"



For all your home medical equipment needs!

• Oxygen • Hospital Beds • Wheelchairs & More

Accepting all insurance

PAMPA
800 N. SUMMER
(806) 669-1622

OR CALL TOLL FREE
1-800-861-9987

AMARILLO
2112 S. COULTER
(806) 351-2500

ALLSUP'S

ALLways
LOW PRICES!

ALL VARIETIES
TRADEWINDS
TEA
16 OZ. BTL.

79¢

BAR-S
FRANKS..... 12 OZ. PKG. **59¢**
BAR-S 1/4 LB. HAMBURGER **\$1.99**
PATTIES..... 5 CT. PKG.
ALL VARIETIES
SOBE..... 20 OZ. BTL. **99¢**

COPENHAGEN or SKOAL.....EA. **\$2.99**

ALL VARIETIES REG. OR WAVY

LAYS
\$1.99
REG. \$2.99

BLUE BUNNY
TWIN POPS OR
FUDGE BARS

4 FOR \$1

TENDERCRUST HOT DOG OR HAMBURGER
BUNS.....8 CT. PKG. **69¢**
SHURFINE
CHARCOAL..... 10 LB. BAG. **\$2.59**
SOLO 16 OZ.
PARTY CUPS.....20 CT. PKG. **\$1.29**

From 9/10 ALL VARIETIES
DR PEPPER

12 PACK CANS **\$3.49**
6 PACK OR 3 LITER BTL. **\$1.59**



ROMAN MEAL
BREAD

16 OZ. ROUND LOAF
\$1.19



ALLSUP'S 1% HOMOGENIZED
OR SHURFINE 2%

MILK
GALLON

\$2.09



PRICES EFFECTIVE SEPT. 3 TO SEPT. 16, 2000 WHILE SUPPLIES LAST

Business Spotlight

DELETE DENTS

**PAINTLESS DENT
REMOVAL**
Hail Damage • Door Dings
• Minor Dents



806-663-1842
Wendell Shults
2137 N. Banks
Pampa, Texas 79065
Home: 806-665-7004
Fax: 806-665-2889

Email: shults91@nts-online.net **I-CAR**

*Cottonwood Springs
Guest Ranch*
Need A Quick Overnight Or Weekend
Get-A-Way. Come Enjoy The Quiet Relaxing
Atmosphere Of Cottonwood Springs Guest
Ranch. Only 20 Minutes From Pampa.
806-665-7126

TOP OF TEXAS AWARDS & GIFTS
Elegance in Awards
See us for your Trophy needs.
Free engraving on all Trophies during
the month of September!
Your Awards are Our Business!
207 N. CUYLER • 806-669-2579

Drive In...
SAVE BIG!
Buy 3 Struts
Get The 4th FREE
LENTZ CHEVRON
300 N. Hobart 665-3281

Unlimited Flat Rate Calling
To Amarillo, Borger, Canyon, Dumas
& Other Panhandle Towns Now Available
For Only **\$15** per month
(residential)
CityLINK
848-2000 ext. 0

PESTAMOS • PESTAMOS • PESTAMOS • PESTAMOS
LOANS
\$100-\$467
Phone Application Welcome
Loans While You Wait
Sé Habla Español
CONTINENTAL CREDIT
Monday - Friday 9:00 - 5:00
1427 N. Hobart Street
806-669-6095

Roofs Unlimited
Your Complete Roofing Service
Roof Repairs Welcome ♦ Free Estimates
Residential & Commercial/Licensed & Bonded For Your Protection
♦ Built-Up ♦ Gravel ♦ Modified ♦ Shakes ♦ Wood Shingles ♦ Composition ♦ Metal
Over 24 Years Experience
Specialists in Tile
CONCRETE TILE
CLAY TILE • MAXI TILE
LIGHTWEIGHT TILE
Ricky Waldrip
806-665-0479
Cell 806-662-5055

Steel Buildings
"Our Reputation is Built
On Customer Satisfaction"
Multi-Purchase
Shop & Utility Buildings
Hundreds of sizes available
* Custom & Priority Sizes * Bold New Colors
Johnny Mote Construction
211 9th St.
Wellington, TX. 79065
Phone 806-447-5093

Bridal Selections...
Gina Barnett ~~~ David Gilmore
Krista Carpenter ~~~ Kirk McDonald
Marti Emmert ~~~ Kaleb Meek
Charlene Mejia ~~~ Jason Velasquez
Brooke Petty ~~~ Matthew King
Amy Seitz ~~~ Don Ray Howard
Peggy Williams ~~~ Scan Cook
COPPER KITCHEN
Coronado Center 806-665-2001

For All Your Roofing Needs
A-1 Roofing & Construction
Residential Commercial Bonded/Ins Free Estimates
• Asphalt • Wood
• Built-Up • Shake
• Composite • Tile
• Gravel • Metal
Vince David
Pampa 665-4243
Mobile 662-3166

Great furniture at
great prices \$10
referral fee on all
approved rentals
Se' Habla Español
BEST SALES & RENTALS
201 N. CUYLER • 669-0558

BEST
FINANCE
201 N. CUYLER * 669-0558
CASH LOANS
No Collateral Needed
\$100-\$470
With A Qualifying Application
WE LIKE TO SAY YES!
\$10 Referral fee on all approved loans • Se' Habla Español

HARVESTERS HEADQUARTERS
T-SHIRTS • CAPS • SWEATS
SOCCER COMBO DEALS
CLEATS • SHINGUARDS • BALL
FOR ONE LOW PRICE!
HOLMES SPORTS CENTER
304 S. Cuyler • 665-2631

Buy Any , Or Shirts
Or Shirts Or Pants And
We'll Starch Them For FREE
Jiffy Cleaners & Laundry
1807 N. Hobart & 824 W. Francis

Dean's Pharmacy
Full Service Pharmacy
Medical Equipment
Gift Ideas
2217 Perryton Parkway
Pampa, Texas
669-6896
Jim Pepper
Mon.-Fri. 9am-6:30pm
Sat. 9am-1:00pm

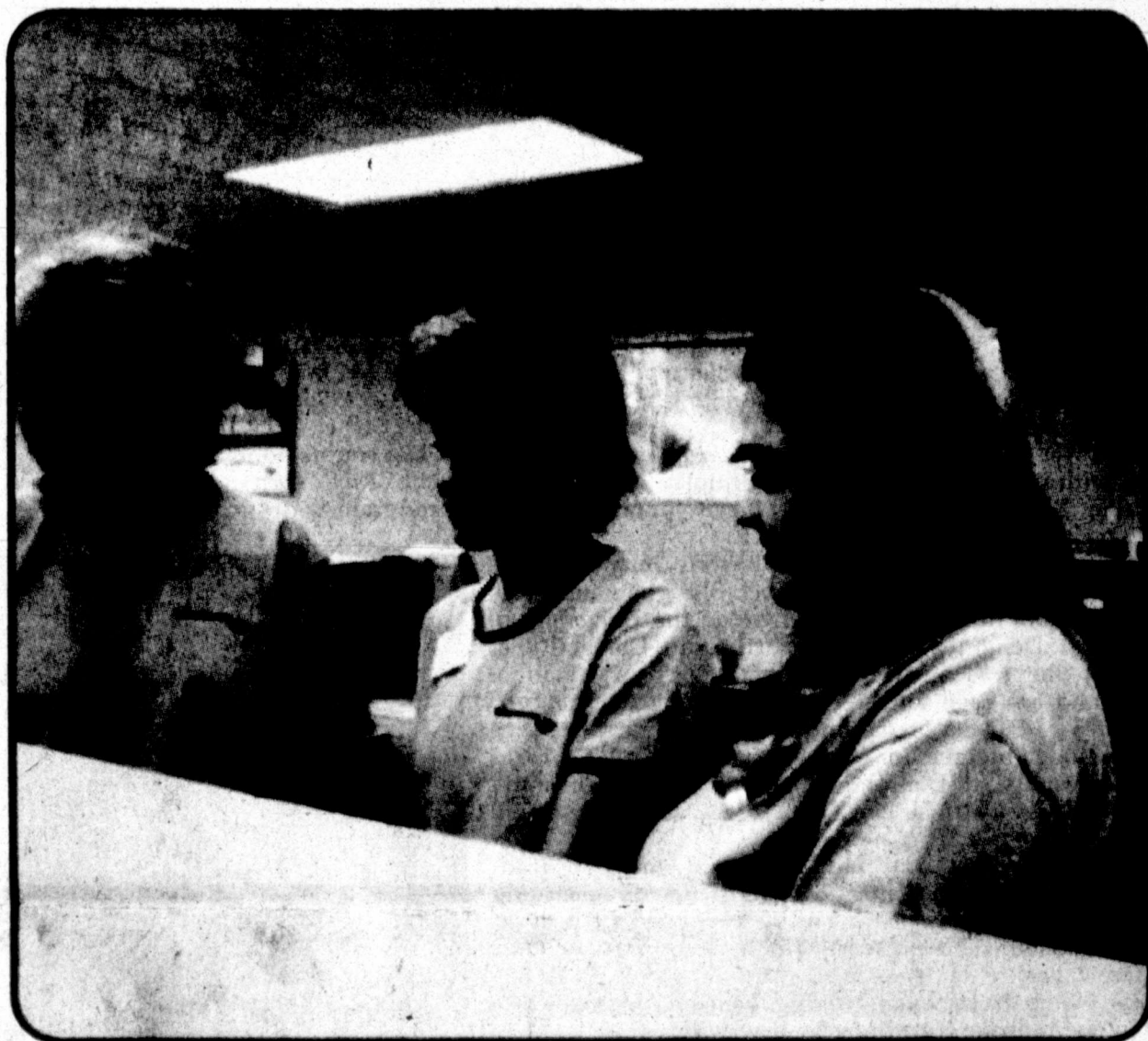
SOUTHWEST COLLISION
We are a **QUALITY** repair shop!
2525 West Hwy. 152
P.O. Box 977
ASE I-CAR 806-669-9997
Certified Owners Jim Schoonover & Mike Stone

**Phone In Move In
Mortgage Program**
We'll beat any lender's price, guaranteed, or pay you \$250*
Same-day loan decision - guaranteed - or we'll give you \$250
We guarantee to meet your requested closing date or your interest rate
will be reduced by 1/8th of one percent for the life of the loan**
Call or Come By Our Office For Complete Details
Century 21 **CENDANT Mortgage** 1-888-883-2086
Toll Free Here to answer your calls 7 days a week

We Salute Our Home Town Heroes



JoAnn Koelzer will be at work at her job at Taylor Mart on Monday, Labor Day. While many workers will be observing the holiday by being away from the job on that day, there are many who still must be at work.



Bank of America employees Brandi Wyatt, Shonda Rucker and Verna Landry will be able to observe the Labor Day holiday away from work on Monday as the bank along with other banks in the area will be closed.

Labor Day began over 100 years ago to recognize the American workers.

Samuel Gompers, founder and longtime president of the American Federation of Labor, is credited with saying, "Labor Day differs in every essential from the other holidays of the year in any country. All other holidays are in a more or less degree connected with conflicts and battles of man's prowess over man, of strife and discord for greed and power, of glories achieved by one nation over another. Labor day...is devoted to no man, living or dead, to no sect, race, or nation."

The first Labor Day was celebrated Sept. 5, 1882. By 1894, 23 other states had adopted the holiday in honor of workers, and on June 28 of that year, Congress passed an act making the first Monday in September of each year a legal holiday in the District of Columbia and the territories. In the first proposal of the holiday, a street parade to exhibit to the public "the strength and esprit de corps of the trade and labor organizations" of the community were outlined.

This was followed by a festival for the recreation and amusement of the workers and their families. This became the pattern for the celebrations of Labor Day. Speeches by prominent men and women were introduced later, as more emphasis was placed upon the economic and civic significance of the holiday.

Still later, by a resolution of the American Federation of Labor convention of 1909, the Sunday preceding Labor Day was adopted as Labor Sunday and dedicated to the spiritual and education aspects of the labor movement.

Both Peter McGuire and Matthew Maguire have been credited with founding the holiday. Recent research seems to support Matthew as the founder.



Pack 'n' Mail office personnel will have the day off Monday in observance of the Labor Day holiday. Nancy Poole and Teresa Kieth, front, along with Bob Poole will be observing the century-old holiday away from the business.

Have a *safe*
and
Happy Labor Day



Brooke Petty and Matthew King

Petty-King

Brooke Petty and Matthew King, both of Richardson, were wed Aug. 5 in Calvary Baptist Church of Pampa with the Rev. James Greer, of West Athens Baptist Church of Athens, Texas, officiating.

The matron of honor was Laura Tollerson of Pampa. The bridesmaids were Mandy Parks of Lubbock, Urmi Pandya of Denton and sisters of the bride Heather Petty of Pampa and Kelci Hedrick of Mahomet, Ill. The flower girls were K'Lyn King and Hailee King, both daughters of the groom of Pampa.

The best man was Danny King, father of the groom of Miami. The groomsmen were M.K. Cheatham of Dallas, Robert Brumley of Grapevine, Chad Snapp of Pampa and Billy York of Garland. The ring bearer was Kamron Hedrick, brother of the bride of Mahomet.

The ushers were Robert Brumley of Grapevine and Chase Brewer, brother of the bride of Pampa. The candlelighters were Micki Petty and Kaylie Brewer, both sisters of the bride of Pampa. Registering the guests was Cindy Nunn of Pampa.

Music was provided by vocalist Mindee Stowers of Lubbock and organist Doris Goad of Pampa.

A reception was held following the service in fellowship hall of the church with cousins of the bride Jill Brumley of Grapevine, Jenny Butler, Rebekah Jennings and Micah Jennings, all of Amarillo, serving the guests.

The bride is the daughter of Larry and Beverly Petty of Pampa and Barry and Karen Hedrick of Mahomet. She graduated from Pampa High School in 1998 and has attended the University of North Texas at Denton and Midwestern State University at Wichita Falls. She was a cheerleader on the co-ed squad at Midwestern and has been inducted into two collegiate national honor societies — Phi Eta Sigma and Alpha Lambda Delta. She plans to pursue a degree in elementary education at Texas Woman's University at Denton in January and is currently employed by Miss Pattie's Place Preschool and Daycare in Lewisville.

The groom is the son of Danny and Sue King of Miami. He graduated from Pampa High School in 1992 and is currently pursuing a degree in architectural engineering at the University of Texas at Dallas in Richardson. He is presently employed by Equity Office Properties in Dallas.

The couple planned a honeymoon trip to Manuel Antonio, Costa Rica, and intend to make their home in Lewisville.



Alison Kaye Wimberley and Keith Allton Bray

Wimberley-Bray

Alison Kaye Wimberley and Keith Allton Bray were wed July 15 at Grand Lido Negril oceanside resort in Negril, Jamaica, with the Rev. James M.H. Peart officiating.

The maid of honor was Amy Kimberley, sister of the bride. The best men were Seth A. Bray and Sterling A. Bray, both brothers of the groom.

Music was provided by a soloist on the soprano saxophone. A reception was held following the service in the atrium of the resort.

The bride is the daughter of Mr. and Mrs. Glenn R. Wimberley of Athens and is the granddaughter of Mr. and Mrs. R.W. Sidwell of Pampa. She is a 1993 graduate of Athens High School and is a 1997 graduate of the University of Texas at Austin. She teaches fourth grade in the Grand Prairie Independent School District.

The groom is the son of Mr. and Mrs. William A. Bray, of Plano. He is a 1993 graduate of Bowie High School in Austin and is a 1998 graduate of the University of Texas at Austin. He is the owner of an Internet technology firm.

The couple honeymooned at Grand Lido Sans Souci resort in Ocho Rios, Jamaica, and intend to make their home in Arlington.



Catherine Danette Hoover and Ruben Rivera

Hoover-Rivera

Catherine Danette Hoover of Fort Worth and Ruben Rivera of Weatherford, Okla., were married Aug. 12 in First Baptist Church of Pampa with Dr. Randy White of Pampa officiating.

The maid of honor was Mary Christine Hoover, sister of the bride of Fort Worth. The bridesmaids were Julie Friend, Angie Odell, sister of the groom, and Jessica Whitney, all of Pampa, and Summer Stephens of Belton. The flower girls were Ashton Phillips, cousin of the bride of Clinton, Okla., and Samantha Rivera, niece of the groom of Fort Worth.

The best man was Robert Rivera, brother of the groom of Fort Worth. The groomsmen were Ricky Rivera and Juan Lopez, both brothers of the groom, and Pete Jimenez, all of Pampa, and Joe Garcia of Fort Worth. The ring bearers were Markus Staam, cousin of the bride of Houston, and Trey Johnson, nephew of the groom of Fort Worth.

The ushers were Jared Daniel Hoover, brother of the bride, David Sanchez and Daniel Sanchez, all of Pampa, and Chase Phillips, cousin of the bride of Clinton.

The candlelighters were Grant Phillips, cousin of the bride of Clinton, and Jimmy Alonzo, nephew of the groom of Fort Worth.

Registering the guests was Rosa Rivera, sister of the groom of Fort Worth.

Music was provided by pianist and vocal soloist Tammy Greene of Pampa, violinist Lucy Proctor of Midland, and vocal soloist Summer Stephens of Belton.

A dinner, reception and dance, hosted by the groom's parents, was held following the service at the M.K. Brown Heritage Room with Vera Guerra, Junea Alvarado, Melinda Rossitor, Irma Silva, Estella Shorter, Connie Diaz, Nancy Vigil, Eva Silva, Kristi Lee, Ashley Roe and Bobby Davis Jr., and Cynthia Davis, both cousins of the groom, serving the guests.

The bride is the daughter of Dannie and Angie Hoover of Pampa and is the granddaughter of Gilbert and Mary Lou Peppers of Guymon, Okla. The groom is the son of Ricardo and Mary Lou Lopez of Pampa. The couple now reside in Fort Worth.



Dr. and Mrs. Mark W. Ford, Jr.

Ford anniversary

Dr. and Mrs. Mark W. Ford, Jr., will celebrate their 25th wedding anniversary Sept. 6, 2000.

Mark W. Ford, Jr., and Glenda Ashmore were married Sept. 6, 1975, at Anaheim, Calif. The couple have been Pampa residents for over 12 years and attend First Christian Church of Pampa.

Both Dr. and Mrs. Ford have been employed with Haydon-Ford Chiropractic Clinic of Pampa for the past 12-plus years.

Dr. Ford is a member of the Kiwanis Club. Children of the couple are Trey Ford, a Texas Tech University student, and Samantha Ford, a junior at Pampa High.



Mr. and Mrs. Gary Stevens

Stevens anniversary

Mr. and Mrs. Gary Stevens of Pampa will celebrate their 35th wedding anniversary Sept. 4, 2000.

Gary and Donna Stevens were married Sept. 4, 1965, in First Baptist Church of Waynoka, Okla.

Mr. Stevens is fire marshal for the City of Pampa.

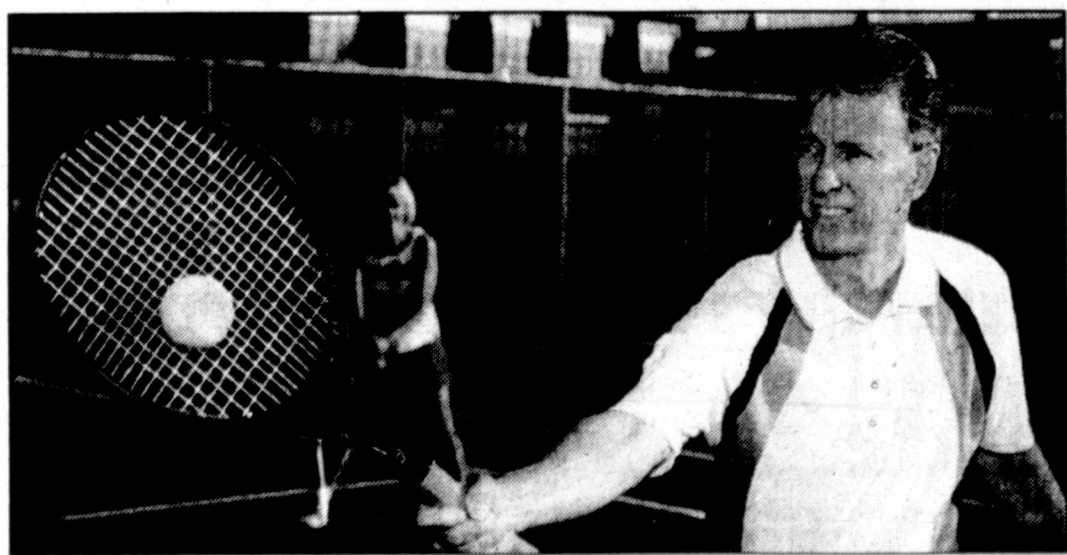
Mrs. Stevens is a homemaker.

Children of the couple are Danille and Kenny Mayer and Rusty and Brenda Stevens, all of Pampa. They have three grandchildren.

Books: A rich diet of food for thought



Bridal Selections
Crystal Hopper
and Joey Mendoza
BEST KEPT SECRETS
1925 N. HOBART



TAKE ADVANTAGE

Prosoft Contact Lenses can improve reaction time on the court because the tennis ball is seen more distinctly. The lens incorporates a teal filter that mutes all colors except for optic yellow as a result a yellow tennis ball stands out vividly against the background making it easier to locate and hit. Take advantage with Pro Soft Contact lenses.

The Vision Source
Drs Simmons • Simmons
1324 N. Banks 665-0771

Shop Pampa!



Now, women have
a specialist
Just For Them

As the new board-eligible obstetrics and gynecology specialist in the area, Otoniel Huertas, MD, will bring a lot of life to the Panhandle Area. One of his primary interests will be to deliver babies and care for their mothers. His training and expertise in women's health issues, including the needs of the unborn child, make him the perfect choice for women who want to achieve optimum health at every stage of their lives.

As a specialist in gynecology, Dr. Huertas will be treating women who are faced with the complexities and challenges that occur as they pass the childbearing stage of their lives. Dr. Huertas will also be providing his experience in gynecologic surgery, infertility, and laparoscopy.

If you are planning a new addition to your family or are a woman who wishes to receive specialized care at any stage of your life, call Dr. Huertas' office today.

Call for an appointment
(806) 273-7771

503 W. 1st, Suite C • Borger, Texas

MARQUEE

Sunday, September 3

through

Saturday, September 9

COME CELEBRATE WITH US SAT., SEPT. 9th

1st Anniversary Party

- Fattest Cat Contest - 2 p.m.
- People - Pet Look-A-Like Contest 3 pm
- Funny Pet Trick Contest 4 pm
- Prizes - Refreshments • Drawings

THE PET PATCH

866 W. FOSTER • 665-5504

PAMPA'S CINEMA 4
Coronado Center • 665-7141

COYOTE WUBLY Rated PG-13
Fri., Sat., Sun. & Mon. 2:00 - 4:00
*1999 Wed. & Sun. Only • *Hobart Ave. Thursday 2:00-4:00

DINGDAR Rated PG
Fri., Sat., Sun. & Mon. 2:00 - 4:00
*1999 Wed. & Sun. Only • *Hobart Ave. Thursday 2:00-4:00

WHAT LIES BENEATH Rated PG-13
Fri., Sat., Sun. & Mon. 2:00 - 4:00
*1999 Wed. & Sun. Only • *Hobart Ave. Thursday 2:00-4:00

SPACE COWBOYS Rated PG-13
Fri., Sat., Sun. & Mon. 2:00 - 4:00
*1999 Wed. & Sun. Only • *Hobart Ave. Thursday 2:00-4:00

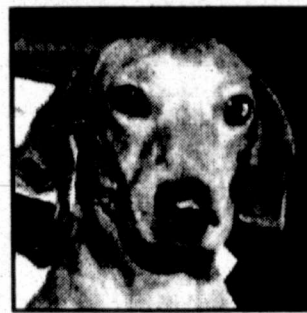
THE ART OF WAR Rated R
Fri., Sat., Sun. & Mon. 2:00 - 4:00
*1999 Wed. & Sun. Only • *Hobart Ave. Thursday 2:00-4:00

GOING IN 60 SECONDS Rated PG-13
Fri., Sat., Sun. & Mon. 2:00 - 4:00
*1999 Wed. & Sun. Only • *Hobart Ave. Thursday 2:00-4:00

Coming Soon - The Cell • Bring It On

*Sorry...see some under I.E. will be submitted without parent or guardian.
Visit Site For Complete Information

Pet of the Week



"Eddle"

This 3 year old male red dachshund needs a loving home. Take him home to your caring family!



"Mr. Whiskers"

This 8 month - 1 year old blue point siamese male cat is sweet & love-able Take him home today!

For information about these pets or any other contact the Animal Shelter at 669-5775 or come by their location at Hobart Street Park. Office hours are Monday-Friday 5 p.m.-6 p.m.; Sat., Sun. & Holidays 11 a.m.-12 noon and 4 p.m.-5 p.m.

Sponsored By The Pampa News

Lost Your Pet? Call the Animal Shelter first! Leave a detailed message with your phone number. We hold stray animals for 72 hours only. So PLEASE call us as soon as your pet is missing!



CHAUTAUQUA

Labor Day - Monday September 4th, 2000

Rotary Pancake-Sausage Breakfast 7 am

Pampa Medical Center 5K, Fun Runs 8 am (Georgia & Mary Ellen Streets)

FREE STAGE

9:00 am	Opening: MCs Wanetta Hill & Lynn Hancock	12:10 pm	Students Introduced
	Girl Scout Flag Salute,	12:40 pm	PHS Show Choir
	PHS Band Brass Ensemble	12:45 pm	Raffle - News Clips From
9:10 am	PHS Cheerleaders		September 4, 1930
9:15 am	Pampa Gymnastics	1:15 pm	Turning Point Band
9:30 am	Rick Scott Harmonica - Guitar - Singer	1:35 pm	Chris Crow Singer - Guitar
9:45 am	Awards for Chautauqua Runs		Raffle - News Clips From
9:55 am	Raffle - News Clips From	1:45 pm	September 4, 1930
	September 4, 1930	2:15 pm	Perchance To Dream Band
10:00 am	PHS Fiesta Dancers	2:25 pm	"Elvis" - Smoky Binion, Jr.
10:20 am	Tae Kwon Do Martial Arts Demonstration	2:45 pm	Brent Boswell, Magician
10:40 am	Raffle - News Clips From	3:00 pm	Rick Scott Harmonica - Guitar - Singer
	September 4, 1930	3:10 pm	Clay Britton Singer
10:45 am	Sandal Band		Raffle - News Clips From
11:15 am	Brent Boswell, Magician	3:15 pm	September 4, 1930
11:30 am	Calvary Baptist Praise Band	4:00 pm	Woody Guthrie Tribute
12:00 noon	A.F.S. (American Field Service)		Closing: Girl Scouts Retire Colors;
			"Day Is Dying In The West"
			(Chautauqua Theme); "Taps"

CHILDRENS ACTIVITIES

ARTS & CRAFTS

FOOD BOOTHS

EXHIBITS

Ad Courtesy of Pampa Regional Medical Center

S
E
P
0
3
2
0
0
0

SUNDAY AFTERNOON / EVENING. Table with columns for time slots (12pm-11:30pm) and rows for various TV channels (KACV, KAMR, etc.) listing programs and their descriptions.

MONDAY AFTERNOON / EVENING. Table with columns for time slots (12pm-11:30pm) and rows for various TV channels (KACV, KAMR, etc.) listing programs and their descriptions.

TUESDAY AFTERNOON / EVENING. Table with columns for time slots (12pm-11:30pm) and rows for various TV channels (KACV, KAMR, etc.) listing programs and their descriptions.

WEDNESDAY AFTERNOON / EVENING. Table with columns for time slots (12pm-11:30pm) and rows for various TV channels (KACV, KAMR, etc.) listing programs and their descriptions.

The Texas Agricultural Extension Service AgriPartner Report for the week of Aug. 28 is as follows:

—Spider mites continue to be a problem in late planted corn. Although these pests may not impact the yield, they could cause premature lodging.

—Beet armyworms have been reported infesting seedling wheat. These worms are capable of destroying stands of young wheat. If conditions continue hot and dry, they could be a problem until freezing weather.

—Adult corn borer moth activity is almost over for the season; however, larvae continue to tunnel inside stalks where they are safe from insecticide applica-

tions. These larvae will continue to feed until mature at which time they will prepare for overwintering.

—Corn earworm continue to be active primarily in crops other than corn. In soybeans, these worms would be called podworms. Light infestations of podworms have been reported in isolated soybean fields. In sorghum, corn earworms are referred to as headworms. No headworm infestations have been reported.

—Beet armyworm infestations have declined in cotton; however, continue to monitor this pest, for pheromone traps continue to catch relatively high numbers of adults. These worms could be a

problem up until the first freeze. —Bollworms could yet develop to economic levels in irrigated fields. Most reports indicate infestations below

the economic threshold. —Cotton aphids continue to increase in some fields. Honey dew produced by these aphids can cause a sticky cotton problem

which will require a good rain or overhead irrigation to flush away. —Boll weevils can easily be found in some fields especially

those that have been recently irrigated. Drought stressed cotton has little weevil activity and most of the bolls are safe from weevil damage.

Tri State Fair Sept. 16-23

Celebrate The Spirit

8 Days of the Biggest Fair You've Ever Seen!

RODEO AMARILLO **FRIDAY, SEPT. 22ND**
SATURDAY SEPT. 23RD!

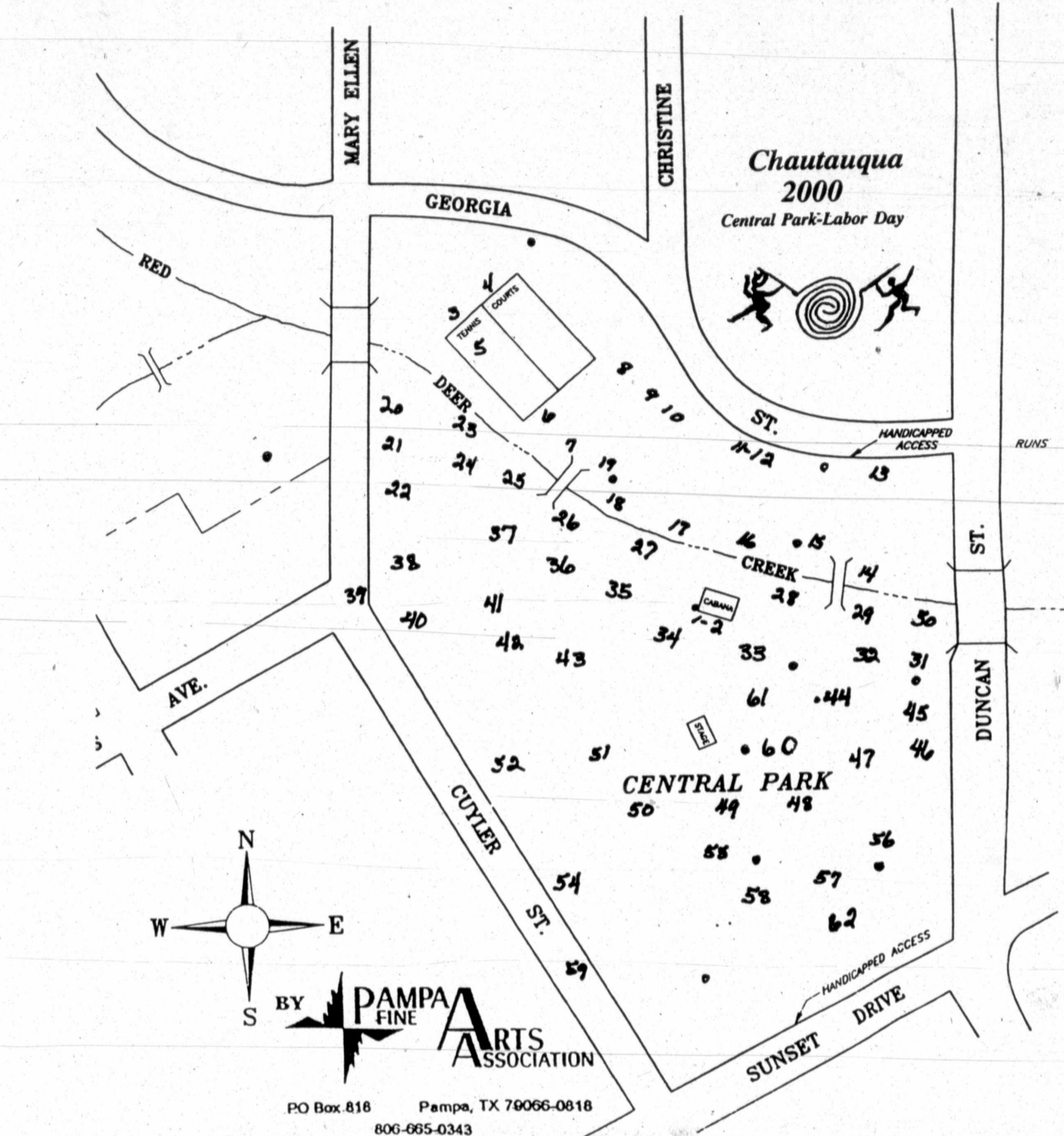
Largest Prize Money Ever OVER \$50,000.00
7:30pm
Amarillo National Center

Reserved Seating — \$12.00
Gen. Admission — \$6.00

Coors of Amarillo

CELLULARONE

For rodeo tickets call the Tri-State Fair — (806) 376-7767



- Guide to Chautauqua map:**
1. Pampa Fine Arts - Information Booth
 2. Pampa Fine Arts
 3. Chamber of Commerce
 4. Mootilda the inflatable Cow - Pictures made with Cow
 5. Community Christian School - Inflatable Bouncer, Children
 6. Gymnastics of Pampa - Dunking Booth, Children
 7. Calvary Baptist Youth - Frozen Pickle Juice Pops
 8. Junior Service League - Fishing

9. Junior Service League
10. Shepherd's Helping Hands - Hair & Face Painting, Tattoos
11. Crime Stoppers - Baby & Toddler races
12. Crime Stoppers
13. Crime Stoppers
14. Pampa Salvation Army - Hot Dogs & Pickles
15. Pampa Rotary Club - Pancake & Sausage Breakfast, 7-10 a.m.
16. Creative Memories - Family Memory Books
17. First United Methodist Church - Smoked Turkey Legs
18. Saint Matthews Support Group - Juice Drinks
19. Girl Scouts - Cotton Candy
20. Emanuel Bautista Youth - Chile Relleno's, Enchiladas, Cantaloupe Water
21. Flower Booth - Pampa High School Choir - Auto and Pictures
22. Pampa Tribute to Woody Guthrie - Music
23. Boy Scout Troop 416 - Flunko Game
24. Las Pampas Woolies - Wool Spinning, Twining & Wool Products (hats)
25. BSA Hospice - Hand painted T-shirts, Angel pins
26. Sand Things - Sand Crafts
27. Pampa Take Down Club - Wheel of Fortune & Ring Toss
28. Act 1 - Strolling Actors in costume
29. Golden Spread Wood Carvers - Wood Carving
30. Phillis Handbags - Handbags
31. New Life Church-Iglesia Nereva Vida-Burritos, Corn on Cob, Snow Cones
32. Calvary Baptist Church - Funnel Cakes, Gatorade, Tea
33. Top of Texas Rodeo Assoc. - Chicken Fried Steak Sandwiches, Curly Fries

34. Boy Scouts Troop 413 - Pepsi & Drinks
35. Shepard's Crook Nursing Agency - Shaded Rest Station
36. American Field Service - Nacho's
37. Top of Texas Cattlewomen - Beef (Brisket) Free Samples
38. Kessie for DA - Election Information
39. Firemen - Water Polo - Children
40. Pampa Radio Operated Plane Society - Model Planes
41. JoAnn's Jewelry - Jewelry
42. Lovette Memorial Library - Story telling & Activities
43. The Silver Kiln - Linda Nowell
44. Pottery & Silver Jewelry
44. Pampa Lions Club - Sausage on a Stick
45. Women of the Moose - Frito Chili Pie
46. Balloon Art - Yo-yo Balloons
47. Zion Lutheran Church - Cookies & Lemonade
48. Fellowship of Christian Cowboys - Fajitas & Bottled water
49. New Life Assembly of God Church - Chocolate Covered Bananas, Watermelon Water
50. Train Space - Children's train
51. Train Space
52. Train Space
53. Rural Metro Ambulance - Ambulance Exhibit
54. Train - Children
55. Boy Scouts Troop (Kane) - Com Dogs
56. Republican Party - Election information
57. Fireside Comfort - Demonstrations, Beef Cooking
58. Juvenile Diabetes - Caramel Apple Chunks
59. Rural Metro Ambulance - Ambulance Exhibit
60. Boy Scouts Troop 414 - Cokes & Drinks
61. Kiwanas - Hamburgers
62. St. Vincent School - Exhibit, Pictures in Auto

When someone's really there for you, you don't have to ask.



To make sure we're always there for you, we're spending millions on fiber optic cable and back-up power. You deserve a clear picture and sharp reception every time. That's why reliability is our top priority. We can't control the unexpected—like Mother Nature—but we're working harder than ever to be the one you count on.

CABLE ONE
The ONE you count on

FREE HEARING CHECK

Rayovac and Arnold Palmer have teamed up to promote better hearing worldwide.

•BATTERIES •REPAIR
•SERVICE

HIGH PLAINS HEARING AID CENTER

721 W. KINGSMILL • 665-6246
1-800-753-1696

Sonic Volleyball Tournament
September 16, 2000

Six man team, \$6.00 donation for each team. donation will go to the Special Olympics.
Each team member will be given a gift for their donation.
Winning team will get the SONIC GOLD.
contact Julie at 669-7743 for more info.

Entries due by
September 9, 2000



Club

Club n... on a fir... due to a... deadline... paper is... (Tuesda... such a... Christm... guarant... you.

PFQG Panha Quilt

Fre... alwa

By BAR For AP

The I connect

While go, Fre... to retur... interpre... level, fr... niture a... highest... design

Fren... usual a... furnitur... N.C., i... offering... Th... a la mo... — Hem... new i... Proven... and w... Highlan... subsidia

"Fren... real sto... planni... of cour... and oc... says Gu... dent of... ing at... today's... need fo... and Fr... well."

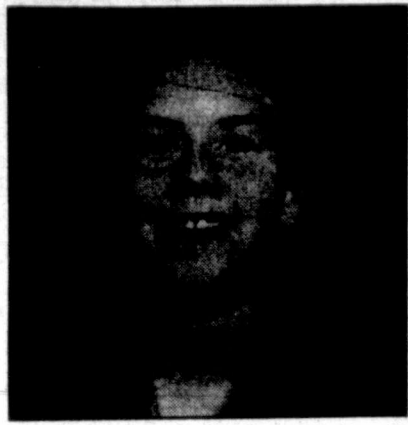
"Of t... tions ge... ture ret... number... consum... Tom St... general... six incl... of Am... French... and mo

"Wh... like is... the pr... pieces... make 9... decisio... someth... man m... At th... also is... mome... Bay S... this sp... tional... French... forma... foyer.

The... er, B... "Savo... honor... Prove... bough... ur... ter... access... was... farm... not w... for... roma... my c... Ellis... West... For... reign... Kips... Simo... nish... ly co... frette... tel is... ture... his... moti... fied... with... nitu

W... M... par... We... app... lab... - c... av... p... S...

Newsmakers



Jordan Nicole Albracht

The United States Achievement Academy recently announced Jordan Nicole Albracht, a Pampa Middle School student, was named a United States National Honor Roll Award Winner. All USAA award-winners will

appear in the USAA Official Yearbook, published nationally. The Academy selects USAA winners based upon the exclusive recommendation of teachers, coaches, counselors and other qualified sponsors and upon academic performance, interest and aptitude, leadership qualities, responsibility, enthusiasm, motivation to learn and improve, citizenship, attitude and cooperative spirit and dependability.

Albracht is the daughter of Dr. Jack and Jana Albracht of Pampa, is the granddaughter of Dr. John and Ann Albracht of Amarillo, Eddie Spratt of Irving and Shirley Vansickle of Boswell, Okla., and is the great-granddaughter of Eva Badders of Irving.

WEATHERFORD, Okla. — Cody Micheal Shepard of

Pampa was among 121 high school seniors attending Southwestern Oklahoma State University's fifth and final freshman orientation session held recently on the SWOSU campus. In total, 758 incoming freshmen participated in the orientations in preparation for the 2000 fall semester.

CANYON — West Texas A&M University will hold a "President's Honor Scholars Dinner" in honor of the President's Honor Scholars Program, established in 1992, at 6:30 p.m. Thursday, Sept. 7 in the Alumni Banquet Facility on the WTAMU campus.

Each President's Honor Scholarship endowment is a \$40,000 contribution given by an individual or group. The dona-

tion may be a one-time gift, or payments may be made over a maximum of five years.

Gifts are permanent endowments that are never spent; only the income is used to make scholarship awards. Among the honorees will be four new President's Honor Scholarships founded this past year.

The four newest endowments are in recognition of Carl Clyde Periman, Mary Arless O'Keefe Periman, W.K. and Minnie Savage and Stanley Schaeffer.

To receive a scholarship in the President's Honor Scholars Program, students must rank in the top 10 percent of their high school graduating class, score at least a 25 on the ACT or a 1,200 on the SAT and have proven themselves as community leaders.

To maintain eligibility, students must keep a cumulative grade point average of 3.4 or higher and carry at least a 15-hour class load each semester.

Although restrictions may not be placed on a scholarship, the donor is allowed to indicate preferences such as geographic area or major. The WTAMU Foundation makes every effort to match student recipients with those preferences made by the donor, according to Pat Hill Cathcart, executive director of the WTAMU Foundation.

Recipients of President's

Honors Scholarships for the 2000-01 school year and those student's benefactors include: Michalla Mechler, a freshman computer science major of Pampa, Louisa Miller Eldredge endowment.

COLLEGE STATION — Texas A&M University recently awarded diplomas during summer commencement ceremonies.

The degrees were presented in two separate ceremonies. Among those receiving degrees were: Kimberly Elizabeth Sparkman of Pampa, bachelor of art degree.



Peggy Lynn Williams and Sean Cook

Williams-Cook

Peggy Lynn Williams of Pampa and Sean Cook of Richardson were wed Aug. 5 at First Christian Church of Pampa with the Rev. J.C. Burt, of Barrett Baptist Church of Pampa, officiating.

The bride was attended by her brother Doug Williams of Denton. The bridesmaid was Melissa Williams, cousin of the bride of San Angelo.

The best man was Cameron Moore of Abilene. The groomsmen were Shannon Cook, brother of the groom of Abilene.

The ushers were Dennis Grover of Abilene, Seth Stone of Denton and Alex Hoffman of Plano.

Registering the guests were Michelle Williams, cousin of the bride of Midland, and Katie Bosley, cousin of the groom of Alvarado.

Music was provided by organist Myrna Orr of Pampa.

A reception was held following the service in the parlor of the church with Tonia Cook, sister-in-law of the bride and groom of Abilene, and Jennie Brown, Mary Gandy and Mr. and Mrs. Randy Milligan, all of Pampa, serving the guests.

The bride is the daughter of Douglas B. and Janis Williams of Pampa. She graduated from Hardin-Simmons University at Abilene with a degree in biology in May 2000 and plans to pursue a graduate degree in geographic information science this fall at the University of Texas at Dallas.

The groom is the son of Miles and Rita Cook of Pampa. He graduated from Hardin-Simmons University with a degree in computer science in May 2000 and is currently employed as an MSS in fiber optics for Nortel Networks.

The couple planned a honeymoon trip to Fort Davis, Texas, and intend to make their home in Richardson.

Opera star to perform in Lubbock

Pampa native and opera singer Mary Jane Johnson will perform in Lubbock on Sept. 21 on the final night of Malouf's "La Bella Italia," which takes place Sept. 18-21.

The Italian Trade Commission previously announced that Malouf's would host the show of Italian fashion along with a few other select stores.

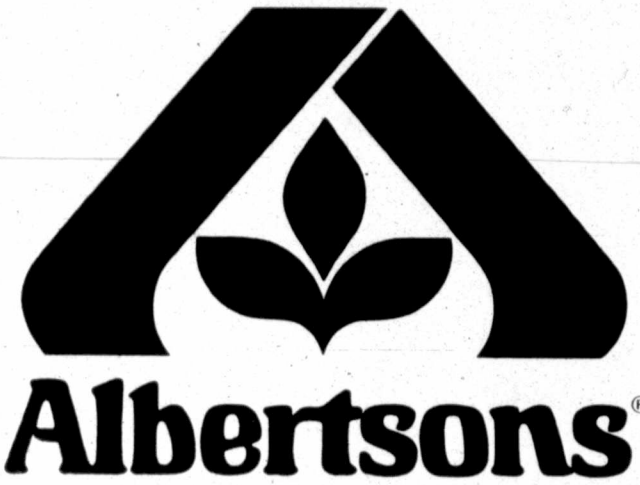
During the event, Malouf's will feature exclusive trunk shows by top Italian designers representing current trends in Italian fashion.

The event finale will take place Sept. 21 from 7-9 p.m. and will include a special performance by renowned opera diva Johnson. In addition, a runway fashion show featuring top Italian designers will be presented while guests enjoy fine Italian cuisine and wine.

The first Luciano Pavarotti International Voice Competition in 1981 saw 500 singers apply from the far reaches of the globe. The finals produced the discovery of Johnson, who now sings starring roles in the great opera houses of the world.

Her career went to the next level when she appeared with Pavarotti in a televised performance as Musetta in Puccini's La Boheme with the Opera Company in Philadelphia. Other important highlights of her televised performances include the nationally televised Pavarotti Plus Gala, Live from Lincoln Center and the CBS "Sunday Morning" show with the late Charles Kuralt.

Johnson is a graduate of Texas Tech University and currently is an Artist in Residence at West Texas A&M University. She lives in Amarillo.



NO CARD NEEDED!

Limit 1 With 10 Purchase

Beef Brisket
Whole, In The Bag
Untrimmed

Market Trimmed Brisket 1.29 lb.

BONUS BUY!
Save 94¢ lb.

55¢ lb.

Limit 4

BONUS BUY!
Save 4.00 on 2

Coke, Sprite or Dr Pepper
12 Pack 12 oz. Cans
Asst. Varieties

2\$5 for

Lay's Potato Chips
13.25 oz. Assorted
Reg. 2.99

Kraft BBQ Sauce
18 oz. Assorted
Reg. 1.49

BONUS BUY!
Save up to 30¢ ea.

Albertson's Bread
24 oz. Loaf

69¢ each

BONUS BUY!
Save 1.11 lb.

Seedless Grapes
California Thompson

88¢ lb.

18 12 oz. Cans

Coors Beer
18 Pack 12 oz. Cans
Reg. or Light

9.99 each

COWBOYS
Albertsons
PROUD SPONSOR OF THE DALLAS COWBOYS

REGISTER AT ALBERTSONS TO WIN 2 TICKETS TO ONE OF THE COWBOYS HOME GAMES!

400 DALLAS COWBOYS TICKETS TO BE GIVEN AWAY

SEE STORE FOR RULES & REGULATIONS

Open Regular Hours Labor Day Prices Effective: September 3, 4 & 5, 2000. Good at Our Amarillo and Pampa Albertsons Store Locations. Limit Rights Reserved.

BANANA SPLIT BLOWOUT 2000
Children's Choir Enrollment Party
September 5, 2000
After school at Central Park

sack race
Fun --- Relay Games --- Food
Pampa's Largest Banana Split - 24 Feet!

baseball bat spin
Van pick up at Middle School, Travis, Austin, & Wilson

waterballoon games
Preschool 4 (age 4 by Sept. 1, 2000) to Sixth Grade

Parents: Pick up children at 5:00 p.m. at the park.