

# Pampa Daily News

VOL. 1. NO. 6.

PAMPA, GRAY COUNTY, TEXAS WEDNESDAY, EVENING, MARCH 16th, 1927

PRICE FIVE CENTS.

## FOUR DIE IN SHAMROCK BLAST

### PAMPA SEEKS NEW RAILROAD THROUGH LINES

Committee To Place Facts Before Big Companies

### SPUR TRACKS ARE OPPOSED

Chamber of Commerce Believes Building Time Now

Pampa is in the market for another trunk-line railroad.

In a meeting last night the highway and railroad committees viewed with disfavor impending construction of a spur line in this vicinity, and vigorously expressed the opinion that if a branch line is to be built it should be a through-line leading to other important railroads to the north or south.

It was pointed out that Lubock, Houston, and other Texas cities have been hampered by spur line construction which blocked the entrance of railroads which would establish commercial and industrial centers.

#### Need Combination Rate

Because Pampa is not enjoying any combination rate, shipments originating on any road other than the Santa Fe are requiring high freight rates. For this reason, the crossing of the Santa Fe here with another road would be particularly advantageous.

Immediate action to interest railroad companies in construction through Pampa was decided upon following a lengthy discussion in which more than a dozen business men took part. The railroad committee composed of M. K. Brown and C. P. Buckler was increased by the addition of J. M. Dodson, B. E. Finley, W. L. Woodward, Lynn Boyd, and E. Solow.

These men will collect all of the facts obtainable relating to proposed routes through territory and will place them before not only the Santa Fe, but the Fort Worth & Denver, Missouri-Kansas-Texas, and the Rock Island railroads. When the best proposition has been determined, cities along the proposed route will be invited to help obtain the right-of-way and encourage construction.

#### Spur Plans Important

While building of spur lines was deplored, it was the belief that any lines leaving the Santa Fe should go out from here, since future demands for the extension of the spurs to other trunk lines or large cities will make the spur beginning of unusual significance.

Believing that now is the crucial time in the railroad situation, the Chamber of Commerce will take its argument to the highest authorities and make several trips for the purpose. These steps are spurred by the recent announcement that the Santa Fe will build a short line into the northwest oil pool of the Pampa field. The members of the railroad committee wish that line to continue on to Spearman or some other connecting point if built.

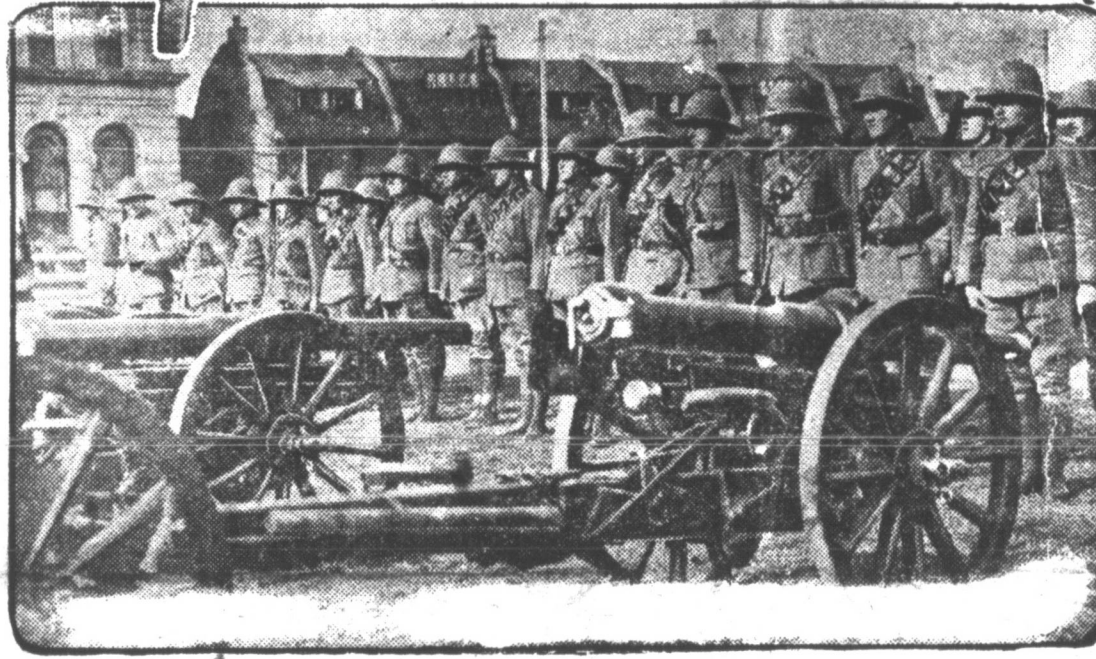
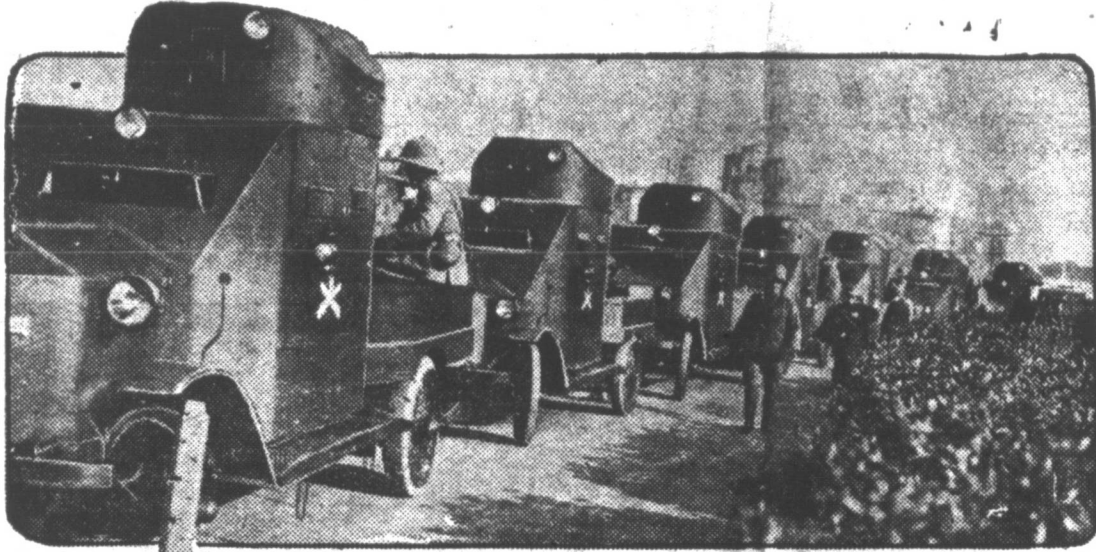
### Legislature To Delay Ending Of Session Today

(By The Associated Press)

AUSTIN, March 16.—Legislative clocks were running two hours behind time at noon today, the hour set for adjournment of the regular session. It seemed likely both houses would continue work until late today.

Action on the motor license fee bill, penitentiary reorganization bill and the text book bill is sought before adjournment.

### The British Bulldog Bares His Fangs at Shanghai



Here are some of the teeth of the British bulldog on guard over the foreign concessions at Shanghai. The string of armored cars shown in the upper photo and the artillery unit drawn up below had just been landed from a British warship when the pictures were taken. The armored cars are a new type, speedier and more mobile than tanks. The Cantonese army will collide with this armament if its expected attack on Shanghai endangers the lives of foreigners there.

### ALL DOGS MUST BE CHAINED OR MUZZLED

Mayor Reid today issued a proclamation ordering all dogs tied up or muzzled during the next 30 days.

The order is issued because several mad dogs have been found and it is feared the disease will be spread to alarming proportions.

Dogs found loose upon the streets without muzzles will be killed, the proclamation says.

### Truett Extends Campaign Until Next Tuesday

(By The Associated Press)

DALLAS, March 16.—The Conquest campaign of Texas Baptists for \$2,000,000 to pay institutional debts is to be extended until next Tuesday. Today had been set as the final day for subscriptions, but Dr. George Truett, general director of the campaign, announced that large numbers of churches have taken collections and have not had time to report.

Incomplete returns indicate that considerably more than \$1,000,000 has been pledged, Dr. Truett said.

### TWO ENTERTAINMENTS AT CHRISTIAN CHURCH SOON

The Young Married Women's class of the Christian church will have a social hour in the Bible School annex Thursday evening. The women are to wear aprons, and their husbands overalls.

On Friday evening the young people of the church will have a social hour to which all of the young people and friends of the congregation are invited.

### SPECIAL ROAD BOND ELECTION COMMITTEE IS NAMED TO PLACE FACTS BEFORE PAMPA VOTERS

While the county road bond issue of March 30 should "carry anyway," in the belief of the highway committee of the Chamber of Commerce, the election campaign will not be carried on with that presumption in mind.

A special bond election committee was appointed last night to assemble all the facts relating to the project and to organize this community to bring out a large affirmative vote.

The special committee is composed of F. P. Reid, J. L. Nally, C. T. Hunkapillar, C. B. Barnard, O. K. Baker, P. B. Carlson and J. H. Lavender.

It will be shown how county property valuations have more than quadrupled in the last year and why taxes will not be greatly raised for the necessary special levy. Furthermore the continued increase in valuations will lower the taxes required as time passes.

Women of the county are now being organized to help get out a representative vote of their sex. An educational campaign of publicity will be started soon. Arguments against the issue will be met with facts which cannot be disputed.

Special attention will be called to the amount provided for lateral road building and maintenance. The bond issue is so written that while the major portion will be for the main traveled highways, the country roads leading to the principal roads will be conditioned and maintained. The purpose is to make every part of the county accessible to the main highways.

The first meeting of the new committee was set for this afternoon.

Two bus drivers of the same company clashed yesterday afternoon over a dispute about passengers, and later paid fines for the affray.

### Heavy Fighting Is Under Way Near Shanghai Today

(By The Associated Press)

SHANGHAI, March 16.—Desperate fighting is reported west and northwest of Shanghai, where the Cantonese are driving toward the railway which connects General Chang with his base in the Shantung province.

### Sinclair Case Is Near End

(By The Associated Press)

WASHINGTON, March 16.—Harry Sinclair approached the end today of the first of two criminal prosecutions brought against him as a result of the Senate investigation into his leases in the Teapot Dome Naval oil reserves.

With an hour and a half allotted each side for argument, District Attorney Gordon opened the final summing up before the jury in the case against Sinclair. Sinclair is charged with contempt of the Senate.

### Man Is Taken From Well After 13 Hours There

(By The Associated Press)

FUQUAY SPRINGS, N. C., March 16.—Entombed for thirteen hours in a 70-foot well, Jeff Ashworth was rescued today.

Ashworth had been pinned by caving of the walls and was released after a group of workers had dug away the debris.

### Junior Play Is Much Enjoyed By Big Crowd

A pleasing comedy, well presented by school talent, and supported by appropriate music and between-act features, was presented last night by the junior class of the high school.

"The Arrival of Kitty" combined a love theme with a humorous confusion of persons and against this combination were played the counter personalities of the objecting relatives. Harry Anderson and Thelma Qualls were adequate in their playing of the leading parts, and the work of Floyd Coffin was outstanding.

Interesting minor characters whose enthusiasm hid themselves nicely in the various parts, were Lottie Schafer, Thomas Clayton, Sammie Henton, Tommy Tisdale, Nell Jones and Angela Ballew.

The Junior chorus, featuring Edna Baird and George Heinbockle, was liked by the large audience. Other members of the chorus were De Vere Abersold, Claudine Haynes, Lillian Keahy, Mary Maness, Lillian McMillan, Lucille Mooney, Marjorie Parker, Edith Pearson, Cleora Standard and Russell Kennedy. Mrs. Frank Keehn furnished the accompaniment.

Readings by Miss Mildred Fahy and vocal solos by George Heinbockle, accompanied by Lucille Mooney, and assisted by little Miss Frankie Lou Keehn, were other popular features. Special music was furnished by the Pampa Chamber of Commerce orchestra.

Ushers for the evening were Waldo Kretzmeier, Hugh Moore, Moss Smith, Katherine Harbison, Velma Kennedy, Deva Dean, Opal Johns, and Lorene Weir.

### Errors In Charge Cause Reversal Of Murder Case

(By The Associated Press)

AUSTIN, March 16.—Because errors were in the court's charge, the Court of Criminal Appeals today reversed the 7-year sentence imposed on John Miller, Georgetown, convicted on a charge of murder in connection with the Sealy alleged Klan street fight September 5, 1925.

### GAS TAX UPHOLD

AUSTIN, March 16.—(AP)—Validity of the one-cent gasoline tax today was upheld by the Supreme judgement for taxes against the Pioneer Oil Refining company.

### Four Men Are Injured As Car Hits a Truck

HOUSTON, March 16.—The legs of four men were broken and other passengers on an inbound heavily laden Harrisonburg street car were shaken up today when the car collided with a heavy truck loaded with ing in the truck.

### OIL COMPANIES STOP WORK ON SOME PROJECTS

Pending passage of the decline in crude oil prices, several oil companies have suspended contemplated/spring activities.

It is not believed that the orders will be maintained more than a few days, although a few companies will cease work on new plants for 15 days or more.

### Kidnaped Son, Carried To Germany By Nurse, Made Soldier In World War, Meets His Mother At Borger

(By The Associated Press)

BORGER, March 16.—The hope of an anxious mother that her kidnaped five-months-old son—now grown to manhood—would some day be restored to her has been realized here.

B. E. Hill, 25, ill in a local hospital with pneumonia, has been identified by Mrs. Clifford Clark of Houston as her son, who was kidnaped

### ANOTHER MAN BADLY INJURED AND MAY DIE

Dead Are Jack Todd, P. W. Melton, Lason Chance, Belk

### INVESTIGATION UNDER WAY

Explosion Is In A Columbian Gas Plant

(By The Associated Press)

SHAMROCK, March 16.—Four men were killed and another perhaps fatally injured in an explosion at the gasoline absorption plant of the Columbian Gasoline corporation near here today.

The dead are Jack Todd, P. W. Melton, Lason Chance and C. B. Belk.

The injured man, Bob Griffin, is not expected to live.

The explosion shut off the gas which supplies Wichita Falls and many other Northwest Texas cities.

Extensions of the plant were under construction at the time of the blast. An investigation is under way to determine the cause of the accident.

### Bandit Confesses Part In \$104,000 Payroll Robbery

(Special to The News.)

PITTSBURGH, Pa., March 16.—Joe Jaworski has confessed that his gang of five members was responsible for last week's \$104,000 payroll robbery near here, District Attorney Samuel Hardner said today.

Jaworski was arrested here yesterday. The band also was responsible for three other robberies, one in which a guard was killed, the confession said.

### Senator King Is Barred From Haiti And Stays Out

(By The Associated Press)

SANTO DOMINGO, March 16.—Senator William King of Utah will not attempt to enter Haiti, whose government has decided against admitting him into the country, he announced today.

He said he feared his presence in Haiti might provoke trouble, which he wishes to avoid with a friendly country. He also feared untoward incidents due to strong feeling here against the United States.

### LEGION MAKES \$75 FOR FIREMAN FUND

A total of \$75 was cleared at the American legion ball Monday night. The money was presented to the fire department to help purchase equipment.

when five months old by a German nurse.

Hill was taken to Germany by the nurse, grew up in that country, and fought with the German army in the world war. When 18 years old, he learned that his mother lived in Texas and set out to find her.

Mrs. Clark identified her son by a mark on his face.

**ALUMINUMWARE  
GIVEN FREE!**

To the first Fifty customers making a purchase of \$5.00 or over, on Opening Day, we will give choice of Pure Aluminum Coffee Percolater, 6 Qt. Cooking Kettle, Double Roaster, Double Boiler or 8 Qt. Dishpan.

**A Carnation FREE to Every Lady Making a Purchase**

**INTRODU**

**HOUSE APRONS**

Best Quality  
LaFrance  
Gingham

**69c**

**TURKISH  
TOWELS**

Blue Border,  
Size 24x30

**15c**

**PAMPA'S NEWEST RETAIL CHAIN**

**81x90 SHEETS**

Good Quality  
Starchless

**98c**

**HOUR SPECIAL**

Between the hours of 9 and 10 a. m., Tuesday, March 22, we will sell Full Fashioned Silk Chiffon Hose at the very low price—

**79c**

Limit 1 Pair To Customer

**FIFTY**

**STORE**

**FRI., MARCH 18 TO SAT., MARCH 19**

**GET ACQUAINTED WITH US**

**TOM SAWYER  
PLAY SUITS**

Color Guaranteed

**\$1.95**

**A Chain Store We Take Great Pleasure In**

**PILLOW CASES**

Medium Sized

**19c**

**Silk Dresses**

Modes Sponsored by Smart Women



**AUTHENTIC  
GARMENTS**

A Wondrous Selection! Fascinating, New Fashions of Beauty and Brilliance

**PRICES  
RANGE**

**\$9.90**

**\$11.75**

**\$24.75**

**\$35.00**

Choice of Any  
**HAT FREE**

With the Purchase of Dress

**\$16.75 or Over**

**OPENING DAYS**

**New Straws Favored  
For Spring**



Pedaline Braid  
Legorno, Visco  
and Novelty Hair  
Braids  
Predominate

Large Showing At—

**\$2.95**

**LADIES'  
Novelty Shoes**



All new  
Spring  
Modes

**\$3.98**

And Up

**Full Fashioned Chiffon  
Silk Hose**



Every color  
you wish is  
here in all-  
styles

**98c**

1st. Because it brings to Pampa makes trading a pleasure, right in the city.

2nd. Because we carry only quality which we guarantee, regardless of pay for it.

3rd. Because we sell for cash, we keep expense, no delivery expense, allowing us to sell to you at a profit.

4th. Because we buy direct from the manufacturer, giving you the benefit of the job, without the salesman's commission.

5th. Because we depend upon small profit and quick turn-over, increases your buying power.

6th. Because a fifty-store buying plan, it is possible to sell merchandise at a profit, which you can't afford to pay.

7th. Because we render service everywhere.

8th. Because this is Pampa's first store, it is a pleasure to serve you.

**GET THE HABIT OF MEETING  
FRIENDS AT HILL'S**

**HOUR SPECIAL  
16x30 Huck Towel**

Between the hours of 3 and 4 p. m., Monday, March 21st, we will sell Huck Towels—

**9c**

Limit 12 to Customer

**DOUBLE  
BLANKETS**

45x72

**98c**

**BUNGALOW  
CRETONNES**

Yard Wide

**19c**

**The L. T. Hill**

In The New Brunow Bldg.  
Corner Cuyler and Foster

**CHAIN STORE OPEN  
In Texas at Panhandle**

**A Pair of "Boss Wollaper" Gloves Free With Every Purchase**

g a Purchase on Opening Day, Friday, March 18

# PRODUCING

## IL CHAIN DEPARTMENT STORE

18 TO SAT., MARCH 26 IS  
ACQUAINTED WEEK

**BUYING  
POWER**

**HOOR SPECIAL**  
Between the hours of 3 and 4, Saturday  
afternoon, March 19, we will sell fast-color  
House Aprons—  
**49c**  
Limit 2 To Customer

**HOOR SPECIAL  
HOPE MUSLIN**  
Between the hours of 10 and 11  
Saturday, March 19, we will  
sell genuine Hope Muslin at—  
**12<sup>1</sup>/<sub>2</sub> yd.**  
Limit 5 Yds. to Customer

asure In Introducing To This Community

brings to Pampa a place that  
pleasure, right in the heart of

carry only quality merchandise  
ntee, regardless of the price you

sell for cash, we have no book-  
no delivery expense, no bad ac-  
us to sell to you at lower prices.

buy direct from the factory,  
enefit of the jobber's profit and  
mission.

depend upon large volume,  
d quick turn-over, all of which  
uying power.

fifty-store buying power makes  
l merchandise at prices you can

e render service second to none

is is Pampa's most courteous  
asure to serve you.

**HABIT OF MEETING YOUR  
AT HILLS'S CORNER**

# Hill Co. Inc.

**STORE OPERATORS**  
exas at Panhandle, White Deer, Pampa, Borger and Stinnett

h Every Company Check Cashed Opening Day---Fri., March 18

**MEN'S WORK  
SHIRTS**  
Full Cut—Two  
Pockets  
**49c**

**Boss Wollaper  
Work Gloves**  
Reg. 25c Value  
2 Pair  
**25c**

**HEAVY WOOL  
MIXED HOSE**  
Reg. 25c Value  
**2 pr. 25c**

**MEN'S HEAVY  
UNIONS**  
Spring Needle  
Knit  
**98c**

**ALL WOOL  
BLAZER COATS**  
For Men  
**\$3.75**

**MEN'S DRESS  
PANTS**  
New Spring  
Patterns  
**\$2.98**

**MEN'S DRESS  
SOX**  
Reg. 19c Value  
**2 pr. 25c**

**HOOR SPECIAL  
32-Inch Gingham**  
Between the hours of 9 and 10  
Monday, March 21st, we will  
sell 32 inch Ginghams, all new  
Spring patterns—  
**12<sup>1</sup>/<sub>2</sub> yd.**  
Limit 6 Yards to Customer

**MEN'S DRESS SHIRTS**  
  
Quality Guaranteed  
**98c and up**

**MEN'S DRESS OXFORDS**  
  
Full Stock  
Calf Oak  
Sole  
**\$3.95**

**FANCY SILK HOSE  
FOR MEN**  
  
Beautiful  
Combination  
Of  
Shades  
**49c pair**

**NEWEST CREATIONS IN  
SPRING COATS**  
  
Straight Line  
Snappy  
Silhouettes,  
Sport Types  
In Browns,  
Wines, Blutes,  
Greys and  
Blacks  
**PRICES  
RANGE  
\$9.90  
\$19.75  
\$29.75  
AND UP**  
Your Choice of Any Hat,  
Free with the Purchase of  
Coat \$16.75 or Over  
**OPENING DAYS!**

**8 OUNCE  
CANVAS  
GLOVES**  
For Men  
Blue Wristlet  
**5c pair**

**JERSEY  
BLAZER  
COATS**  
**\$1.75**

### Hints For the Motorist—Tips On Steering, Driving, Braking

"He thinks he's just a pedestrian," explained the pert young lady whose father had driven across the busy intersection against the red light.

#### Modern Car Protector

The modern motor car has become something of an automatic protector for the driver. In addition to being sheltered behind the wheel, he now is behind a cloak of usual safety devices.

Once upon a time the motorist sat up in a precarious position, where, without a moment's notice, he could be bounced head first into the path of his own vehicle. Manufacturers decided to give him a body that offered more protection, and later protected the body with fenders. With the increase of traffic, however, it became necessary to protect fenders, this marking the introduction of bumpers, front and rear. Now the bumpers themselves are being equipped with rubber shock absorbers.

Nowadays the automobile owner may sit behind safety glass. He rides upon air cushions, and a chassis that is protected against upthrust by the most approved spring control devices. He has a steel superstructure to keep the car from crushing him if it turned over. And he has side bumpers in the way of steel running boards.

#### Locating Traffic Lights

With automatic signal lights being placed at busy corners in the outlying sections of many cities, it frequently happens that the motorist unfamiliar with the locality, will not see them and as a result, drive counter to their direction. If there are no other cars to follow, it may be wise to assume that the traffic approaching with assurance from the left or right has the right of way. The speed with which this line of traffic is travelling is usually indicative of its assurance.

#### Skids From Steering

Just why it is that so many motorists think of their brakes alone in connection with skidding remains a problem. Experienced drivers have said time and time again that they can take a car with bad brakes and prevent it from skidding through sheer good steering. But the average driver still clings to the idea that the skid is all a matter of traction and braking. When the streets are slippery and in a dangerous condition, careful consideration always should be given to steering, with avoidance of quick movements in steering as the outstanding point. Make changes in the car's direction as carefully as you would apply the brakes, and if the car starts to skid, always steer in the direction of the skid, meanwhile releasing the brakes.

#### Old Rules Still Best

Let those who wish to boast of car of the freight train and drive it sixty-five miles an hour. Let them believe that it is not necessary to "baby" a new engine for the first thousand miles. They are entirely at liberty, of course, to hold their own opinions.

Recently a group of veteran motorists were discussing fast driving of brand new engines. One remarked that there was no possibility of damage provided the engine did not freeze up, and that almost any good driver could tell in advance when the engine might be disposed to bind.

### 'Colonel House' Of Oklahoma



Mrs. O. O. Hammonds has been called the Colonel House of Oklahoma because she is secretary and adviser to Governor Henry S. Johnston. The legislature recently demanded her dismissal, charging she took too much upon her shoulders, but the governor paid no attention.

In the next breath, however, the group took up various incidents regarding the wrecking of engines through excessively fast driving when new. One owner told of having witnessed a connecting rod come clear through the side of a crank case and nearly through the hood. Another related how, at something around seventy, he had cracked a piston.

Perhaps the most interesting confession of all was the fact that one speaker mentioned the matter of repairs being made to his new automobile that very evening. There was a bad knock in it, and the service doctors were trying to get rid of it. This car was driven faster than 60 miles an hour before it had that much in mileage to the speedometer.

Each member of the group seconded the idea that it always is best to allow the car to gain its speed gradually rather than to force it to top speed in a short stretch of the road.

And there was the important hint for the car owner. High records in car service can be obtained best by allowing the speedability to materialize gradually.

Driving moderately for the first thousand miles still seems to be the best rule, though it is permissible and advisable for the new car owner to indulge in an occasional spurt.

#### What Happens In Reverse

How many motorists can picture their engines running in reverse direction?

Students in aviation engineering are required to work out some problems that would literally astonish the average motorist, and even the mechanic who seems to do such wonders with the car. They are asked to tell what position piston No. 7 of a V-12 is in while piston No. 3 is going down on its power stroke. Reversing an engine, mentally is something on that order. You can get a headache easily thinking about it.

Many motorists, however, have reason to wonder about this reversal business because they do not know whether to leave their car in second or reverse gear to hold it, better when parking while headed down hill. If the car is in reverse, the engine tends to revolve backwards if the pistons move a little, and the question arises whether the compression is the same if the engine revolves normally or the reverse.

It is obvious that, no matter which way it turns, there is a point in the course of each piston where both valves for its cylinder are closed. Thus there is compression if the engine goes backward. But, it is of shorter duration than when the engine revolves normally, since the exhaust valve does not close fully until the piston is part way up on its travel. There is, however, on the reverse action, a period when the piston sucks on closed valves. This is the reverse of the compression stroke and might be called a suction stroke. It makes a good holding brake.

#### Two Parking Pointers

One way to help the parking problem is to make operators out of all members of the family. The day when only one member of the family is capable of driving is definitely past. Today when the housewife wants to make a purchase the husband takes the wheel. It works the same way when she takes the wheel to keep the car on the move until he has returned from an errand. This of course may congest traffic, but it does save parking spaces for those who will need them for longer periods.

It does not always pay to leave the car with the front wheels turned in toward the curb. While this is a good plan and a safe one, if the car is parked on a down grade, nevertheless it is apt to be costly if the driver makes it a constant practice. If the car is struck by a passing vehicle when the wheels are turned in toward the curb, it may be hurled up on the pavement where it is liable to do physical injury to pedestrians.

#### Beware Leading Driver

When following a speedy driver on the open road try to gain an intuitive idea of his motoring ability. Many recent accidents have resulted because the motorist had been trailing incompetent speeders. In each case it was discovered that the drivers following did not know what sort of drivers were ahead of them. If they had known, they would not have followed at approximately the same rate of speed, otherwise they would have overtaken the incompetent motorists and enjoyed the advantages of seeing what was ahead for themselves. Driving close behind another car means, to a certain extent, relying upon the other fellow's judgment. And that's often a most dangerous practice.

### The Judge



Federal Judge Fred M. Raymond is presiding over the trial of the \$1,000,000 libel suit brought against Henry Ford by Aaron Sapiro, at Detroit.

### MORE AND BETTER SEED INCREASES POTATO YIELD

Last fall a firm of California's potato growers harvested an average of 1,000 bushels of potatoes per acre from 9 acres. The rest of the country, if previous production records are a reliable index, harvested approximately 113 bushels to the acre. Farmers in Great Britain have been producing an average of 200 bushels per acre for a number of years. It is evident that the general run of farmers who grow potatoes in the United States do not make efficient use of the available knowledge on increasing acre production.

Of the many factors causing a low average potato yield in this country, poor seed is one of the most important. The American potato grower, generally speaking, pays little attention to the quality and quantity of the seed used. The California record was due in part to the use of 40 bushels of seed per acre, almost twice the quantity generally used even by the most progressive growers.

Perhaps the best way for the average grower to be assured of good seed is to purchase "certified seed." Certified seed is being produced by groups of growers in 20 or more states, who give special attention to the production of seed that will pass state inspection as to yielding ability, uniformity, trueness to name, and freedom from disease. There is abundant evidence that certified seed is improved seed, and that it will yield much more per acre than common or "grocery store" seed. For instance, the average yield in Michigan last year was 122 bushels per acre, while the average production from certified seed was 256 bushels per acre. This represents a gain of 134 bushels on each acre planted with certified seed. In comparative tests made last year by the Tennessee State experiment station certified seed produced an average of 183 bushels to the acre, while the yield from uncertified seed was but 102 bushels per acre.

"I am shaving myself for the first time in years," said a business man today. "This boost up to 35 cents for a shave is a little too much."

### Special Meeting of Boy Scout Committee Called To Meet With Dr. J. A. Hill, Foundation Head

A special meeting of the Pampa Boy Scout committee has been called by Edmonds Knittle, district executive, for 4 o'clock in the Chamber of Commerce rooms.

The purpose of the meeting is to discuss scout matters with Dr. J. A. Hill of Canyon, who is head of the Panhandle Boy Scout Foundation committee.

Dr. Hill, who is president of the West Texas State Teachers college, will come here with the college band while on a tour of the North Plains.

The band is scheduled to arrive in Pampa at 3 o'clock. It will go at once to the high school auditorium, where a concert of band selections and solo numbers will be given. Dr. Hill likely will be with the band until 4 o'clock, when he will tell the local scout committee of his plans to finance the movement in the Panhandle.

Dr. Hill and the band will go to Panhandle in the evening for concerts and a scout meeting there.

Hog prices were up 10 cents today. This advance took the market to the high point of the past two weeks. Because of the active demand a further advance is anticipated before the week end. The 140 to 170 pound hogs sold at \$11.75 to \$12; 170 to 230 pounds at \$11.40 to \$11.75; 230 to 260 pounds \$11.25 to \$11.55; 260 to 310 pounds \$11.15 to \$11.35; packing sows \$10 to \$10.50; stags \$9.50 to \$10.25 and stock hogs and pigs \$11.75 to \$12.65. Indications are that receipts will remain light.

Lambs were 10 to 15 cents lower than last week's close and fully 50 cents under the high point last week. Choice fat lambs sold at \$14.75 to \$14.85; quoted at \$11.25 to \$12; wethers \$9.25 to \$10; ewes \$8.50 to \$9.25 and feeding lambs \$13.25 to \$14.50.

Demand for horses and mules remains larger than the supply at firm prices.

#### Tell It To The Marines.

#### Proclamation

As more mad dogs have been found in the city limits, I issue this order that all dogs must be kept tied up or muzzled and that all loose dogs be shot and killed. This order stands good for 30 days from this date and will be continued for another 30 days if any dogs are found to go mad during the period mentioned.

F. P. REID, Mayor.

D6-4tc

#### Card Of Thanks

We wish to express our deepest appreciation of the many loving kindnesses and tender sympathy extended us during the illness and bereavement of our beloved wife and devoted mother.

C. V. Gott and family.

#### Tell It To The Marines.

### WANT ADS

FURNISHED ROOMS WANTED—Two or three furnished rooms for light housekeeping. Have two small children. Must be modern and preference given those close in. Write box "3", care of Pampa Daily News, or see W. H. White at Daily News Office.—D6-4tc

FOR SALE—4 piece bedroom suite, shaded antique walnut; 1 bow end bed; 1 vanity dresser; 1 chest of drawers; 1 small rocker; 1 double coil spring; 1 seamless Axminster Rug, 9x12. C. W. Means, Orion Tourist Park, west side city. D6-4tc

FOR SALE—3 room modern house. Call at home, 151 West Street. Reasonably Priced. D6-4tc

FOR RENT—Nicely furnished front bedroom, close in. Apply at Milady Beauty Shoppe. Phone 244. D6-4tc

WANTED—Two or three men to room and board. Mrs. George Walstead. D6-4tc

FOR RENT—Furnished apartment. Phone 185. D6-4tc

FOUND—Lady's Hat. Owner may have same by identifying at News office and paying for this ad. D6-4tc

INTENSIVE TRAINING.—In shorthand and typewriting. Small classes. Phone 17. D6-4tc

FOR RENT—One furnished room for light housekeeping—six blocks out. Furniture at Wade's store. Phone 106. Mrs. D. C. Meador. D6-4tc

FOR SALE—Just received shipment of extra select oysters. Saddle Rock Cafe, just east of White House Lumber Yard on Foster Avenue. D6-4tc

FOR SALE—Show case, back bar, mirrors, marble top tables, nickel back chairs, steaks table, 2 pianos (1 electric). Crystal Palace Confectionery. D6-4tc

### Cattle Firm And Hogs Higher On K. C. Market

KANSAS CITY Stock yards, March 15.—Last week's advance in fat cattle failed to attract any material increase in the offerings today and prices ruled firm again. Trade was active and the market showed indications of an advance before the week-end. Prices for butcher cattle were strong, spots higher. Stockers and feeders were fully steady. Hog prices ruled strong to 10 cents higher and this gain took the market back to the high point of the past two weeks. The light weight classes are bringing a premium over other weights. Lambs were quoted down 10 to 15 cents from last week's close. Sheep were steady.

#### Today's Receipts

Receipts today were 13,000 cattle, 6,000 hogs, and 4,000 sheep, compared with 11,500 cattle, 9,000 hogs, and 7,000 sheep a week ago and 13,500 cattle, 10,900 hogs and 11,700 sheep a year ago.

Fat cattle remained in a strong position at last week's advance. Most of the offerings today were medium to good steers that sold at \$9.50 to \$11.50. No choice to prime steers arrived and the fact that the run was practically all in the same class tended to halt an upward movement. However, the general market is at the high point of the year with indications for moderate receipts for the next two months. Southern fed steers brought \$8 to \$10 and Western fed steers \$9.25 to a point where killers are trying to fill in as far as possible with the medium priced cows and heifers. The mild weather has improved the demand for choice heifers and the mixed yearling classes. Bulls and cows were quoted steady.

In proportion to total supplies of cattle receipts of stockers and feeders were liberal. Demand, however, was active and prices ruled firm, with fat cattle at the high point of the season and spring demand for thin cattle under way there is small chance for the supply exceeding the demand.

### Swish—Socko! There Babe Goes!



Down the groove the ball comes sailing—a swish and a crash as bat is the \$210,000 Maharajah of Maul in action at the Yankee training camp, St. Petersburg, Fla., and he's just 'arin' to mash it all over the swings and meets it, then—there it goes, and there Babe goes, too. It place. Inset shows Mr. Ruth rounding the bases.

### TODAY Crescent Theatre

THOMAS MEIGHAN in

"Tongues of Flame" ALSO COMEDY

TOMORROW CORRINE GRIFFITH in

"Into Our Kingdom"

High Class Vaudeville Every Monday and Tuesday

"Tell It To The Marines"

INSURANCE—BONDS—LOANS FRASER & UPTON "The HOME Agents" Sharp-Reynolds Bldg. Phone 272



### STEP LIVELY!

Don't delay now to plan to be one of the many hundreds that will be at the—

K. C. STORE OPENING SALE

FULL DETAILS TOMORROW

WATCH FOR IT!

### WATCH

For The Announcement

—OF—

A REAL OPPORTUNITY

TO BUY

SECOND HAND FURNITURE

Within The Next Few Days

HOME FURNITURE CO.

145 WEST TYNG ST.

### STATEMENT SHOWING DOMESTIC NATURAL GAS RATES PREVAILING IN TEXAS AT CLOSE OF YEAR 1925 RAILROAD COMMISSION OF TEXAS

Name of Company	City or Town Served	Gross	Net	Minimum Charge	Customers Charge
Community Gas Co.	Maypearl	.75	.67½		1.00
Community Gas Co.	Propser	.75	.67½		1.00
Community Gas Co.	Sanger	.75	.67½		1.00
Community Gas Co.	West	.75	.67½		1.00
Community Gas Co.	Wortham	.75	.67½		1.00
Community Gas Co.	Mexia	.75	.75		2.00
Community Gas Co.	Everman	.75	.67½		1.00
Community Gas Co.	Forrester	.75	.67½		1.00
Community Gas Co.	Handley	.75	.67½		1.00
Community Gas Co.	Irving	.75	.67½		1.00
Community Gas Co.	Joshua	.75	.67½		1.00
Community Gas Co.	Keene	.75	.67½		1.00
Community Gas Co.	Lewisville	.75	.67½		1.00
Community Gas Co.	Lipan	.75	.67½		1.00
Community Gas Co.	Rhome	.75	.67½		1.00
Community Gas Co.	Richland	.75	.67½		1.00
Community Gas Co.	Sagamore	.75	.67½		1.00
Community Gas Co.	Hill	.75	.67½		1.00
Community Gas Co.	Valley View	.75	.67½		1.00
Burkburnett Gas Co.	Burkburnett	.75	.67½	1.00	
San Antonio Public Serv.	San Antonio	1.05-.75	94½-67½		
Albany Gas Co.	Albany	.75	.67½	1.00	
Sinton Gas Co.	Sinton	1.00	.90	.90	
Robstown Gas Co.	Robstown	1.00	.90	.90	
City of Corpus Christi (Municipal Plant)	Corpus Christi	.60	.60	1.00	
Stroud Gas Co.	Groesbeck	.66	.60	1.00	
	Shamrock	.75	Reduced price		
All Towns from Refugio to	Houston	.75	.67½		.50
	Comanchie	1.00	.90		
	Dublin	1.00	.90		
	Stephensville	1.00	.90		

A 50c Customers Charge Will add about 10c per Thousand to the Price of Domestic Gas

NOTE—In the case of Dallas Company rates, they are somewhat different from any other in the state at the present time. The actual scale of these rates are:

	Gross	Net	Min. Chg.
First 400 C. F. @	16.75c	15c Per 100CF	.50
Next 600 C. F. @	7½c	6¾c Per 100CF	.50
All Over 1,000 C. F. @	75c	67½c Per 1,000CF	.50

#### OUR RATES ARE:

First 30,000M per month	50c per 1000 C. F.
Next 170,000M per month	25c per 1000 C. F.
Next 2,000,000M per month	20c per 1000 C. F.
Next 5,000,000M per month	15c per 1000 C. F.
Next 10,000,000M per month	12½c per 1000 C. F.
Next 15,000,000M per month	10c per 1000 C. F.
All over 32,200,000M per month	8c per 1000 C. F.

The 50c, 25c and 20c rates in the above schedule are subject to 10 per cent discount if bills are paid within ten days after rendition.

### STATEMENT SHOWING DOMESTIC NATURAL GAS RATES PREVAILING IN TEXAS AT CLOSE OF YEAR 1925 RAILROAD COMMISSION OF TEXAS

Name of Company	City or Town Served	Gross	Net	Minimum Charge	Customers Charge
Amarillo Gas Company	Amarillo	\$.50	\$.45	\$1.00	\$
Dallas Gas Company	Dallas				
(See note at end of statement)					
County Gas Company	Arlington	.75	.67½	1.50	
County Gas Company	Grand Prairie	.75	.67½	1.50	
County Gas Company	Dalworth	.75	.67½	1.50	
County Gas Company	Dallas Suburbs	.75	.67½		.50
Atlanta Gas Company	Atlanta	.65	.58½	1.45	
Hart Gas Company	Bangs	.80	.72	2.00	
Coleman Gas & Oil Co.	Coleman	.65	.60		.50
Canyon Oil & Gas Co.	Cross Plains	.75	.67½	2.00	
Fort Worth Gas Co.	Fort Worth	.75	.67½		.50
Gainesville Gas & Elec.	Gainesville	.75	.67½		.75
Central Texas Nature Gas Company	Gorman	.60	.55	2.00	
Klegbery Co. Oil & Gas	Kingsville	.75	.75	1.00	
Marshall Gas Company	Marshall	.50	.45	1.00	
Rising Star Gas Co.	Rising Star	.75	.75	2.00	
Upham Gas Company	Weatherford	60-40	60-40	1.00	
Upham Gas Company	Mineral Wells	.60	.55	1.00	
Taft Packing House	Taft	.70	.70	1.00	
Three Rivers Prod. Co.	Three Rivers	.50	.50	3.00	
Texas Power & Light Co.	Waco	.90	.90	1.00	
West Texas Utilities Co.	Cisco	.75	.67½	1.00	
West Texas Utilities Co.	Abilene	.75	.67½		.75
Brownwood Gas Co.	Brownwood	.50	.50	1.50	
Southwest Gas, Light & Power Co.	Ranger	.60	.60	2.00	
Southwest Gas, Light & Power Co.	Graham	.75	.67½	1.00	
Southwest Gas, Light & Power Co.	Breckenridge	.55½	.50	1.25	
Texas Co. Nat. Gas Co.	Baird	.75	.67½	1.00	
Texas Co. Nat. Gas Co.	Clyde	.75	.67½	1.00	
Texas Co. Nat. Gas Co.	Moran	.75	.67½	1.00	
Texas Co. Nat. Gas Co.	Putnam	.75	.67½	1.00	
Texas Co. Nat. Gas Co.	Crystal Falls	.75	.67½	1.00	
Santa Anna Gas Co.	Santa Anna	.75	.75		
Eastland Gas & Elec. Co.	Eastland	.75	.67½	1.00	
Texas Pacific Coal Co.	Caddo	.75	.65	1.50	
Texas Pacific Coal Co.	Thurber	.50	.50	1.00	
Border Gas Co.	Laredo	.50	.45	1.00	
Municipal Gas Co.	Wichita Falls	.75	.67½		.50
Municipal Gas Co.	Byers	.75	.67½		.50
Municipal Gas Co.	Petrolia	.75	.67½		.50
Municipal Gas Co.	Belview	.75	.67½		.50
Municipal Gas Co.	Sunset	.75	.67½		.50
Municipal Gas Co.	Alvord	.75	.67½		.50
Municipal Gas Co.	Bowie	.75	.67½		.50
Municipal Gas Co.	Decature	.75	.67½		.50
Municipal Gas Co.	Bridgeport	.75	.67½		.50
Municipal Gas Co.	Denison	.75	.67½		.50
Municipal Gas Co.	Sherman	.75	.67½		.50
Municipal Gas Co.	Denton	.75	.67½		.25
Municipal Gas Co.	Whitesboro	.75	.67½		.25
Municipal Gas Co.	McKinney	.75	.67½		.25
Municipal Gas Co.	Corsicana	.75	.67½		1.00
Municipal Gas Co.	Ennis	.75	.67½		1.00
Municipal Gas Co.	Waxahachie	.75	.67½		1.00
Municipal Gas Co.	Hillsboro	.75	.67½		1.00
Municipal Gas Co.	Cleburne	.75	.67½		.50
Community Gas Co.	Alvarado	.75	.67½		.50
Community Gas Co.	Bardwell	.75	.67½		1.00
Community Gas Co.	Burleson	.75	.67½		.50
Community Gas Co.	Celina	.75	.67½		.50
Community Gas Co.	Emhouse	.75	.67½		.50
Community Gas Co.	Frisco	.75	.67½		1.00
Community Gas Co.	Grandview	.75	.67½		1.00
Community Gas Co.	Henrietta	.75	.67½		1.00
Community Gas Co.	Itasca	.75	.67½		1.00

When Cheaper Gas Is Sold In Pampa  
—we will sell it!

# PAMPA GAS COMPANY

**Pampa Daily News**

Published every evening except Saturday, and on Sunday morning by the Nunn-Warren Publishing company, at 155 West Foster avenue.

The only newspaper adequately covering Pampa and Gray county events and the Pampa oil field.

Application made as second-class matter at the Post Office at Pampa, Texas, under the Act of March 30, 1879.

W. E. LOWE  
Manager  
OLIN E. HINKLE  
Editor

Temporary, bargain rate for subscriptions: One year \$5.50; six months, \$3, by carrier in Pampa or by mail.

MEMBER OF THE ASSOCIATED PRESS  
The Associated Press is exclusively entitled to the use for republication of all news dispatches credited to or not otherwise credited in this paper, and also the local news published herein.

All rights of republication of special dispatches herein are also reserved.

**NOTICE TO THE PUBLIC**

Any erroneous reflection upon the character, standing, or reputation of any individual, firm, concern, or corporation that may appear in the columns of the Pampa Daily News will be gladly corrected when called to the attention of the editor. It is not the intention of this newspaper to injure any individual, firm, or corporation, and corrections will be made when warranted, as prominently as was the wrongfully published reference or article.

**THE FEE SYSTEM**

Within the next year, it is now practically certain, Texas voters will be asked to pass an amendment to abolish the peace officer fee system and to substitute salaries.

That amendment likely will pass easily. The fee system is one of the biggest defects in the law enforcement statutes in this country.

A good officer does not have to make arrests to obtain a good salary, and a poor one is apt to abuse the privilege. Some officers make \$50 a day; others make 50 cents, according to conditions. Such a system is unsound.

A chief evil which exists is the inadequate system of record keeping which results. How many arrests does an officer make? What occupation taxes does he collect? How many fines are paid in a given week or month? How much does he earn in fees in a month's time? Are the fees sufficient to support a larger peace officer force? Would a city or county save money by taking the fees and paying adequate salaries? Are those classes of fees which go to the city exclusively paid into the treasury? Is each officer getting his share of the business?

The Supreme Court has declared that judiciary officials may not work in cases in which they are financially or otherwise directly interested. The same principle applies to the peace officers. The integrity of the officers as a class is not questioned; rather, the system under which they work is at fault.

Pampa has just put into effect a new system of record keeping, yet this system will not be used without the cooperation of the officers. Itemized accounts of all monies received should be filed with the city secretary under the new system, including fees of every character. At the end of each month the records should show the amount of fees received by each city official. These are a part of the public records and in considering various forms of government the facts are important.

**TWINKLES**

That bird who set a "no fishing" sign on our favorite lake near our office will never get his name in this organ, if we know it. We are afraid the lake will be removed, and we are contemplating buying a flivver which could use that for parking space without complaining.

It is peculiar how some men want a newspaper to speak only good of a town, when said persons never do their part to make it better.

Ten years seeking a mate is the average for the young man, it is said, while the bachelor, we suppose, uses twice that much and in the end doesn't do as well.

Our beloved dead are too much loved in proportion to the never-enough-loved living.

Don't sprinkle the dropping boards with hydrated lime. You'll lose a lot of ammonia that way. A better practice is to mix acid phosphate with the droppings when they are stored.

**PRESS FORUM**

Senatorial criticism, heaped upon the administration in connection with the Nicaraguan and Mexican problems, set a precedent for peace-time attacks upon the central authority, then followed another incident which in other conditions might have created a storm of comment. Says the Friona Star:

If the report be true that Senator Borah, of Idaho, has been carrying on a correspondence with President Calles of Mexico, then he has evidently upset the diplomatic dope bucket.

But it should be remembered that all diplomatic precedents are being broken. The State Department may feel that it should have been the medium of foreign communication. However innocent or rightful the Idaho senator's act, it is further evidence that our national congress is gradually—though perhaps unconsciously—encroaching upon and assuming the functions of the executive and judicial departments of the government.

The Memphis Democrat, probably despairing of trying to offer a solution for the crime wave, slips into the following nonchalant statement:

That crime has reached staggering proportions is a fact that stands out in bold relief on the front page of practically every daily newspaper. If the recording angel keeps a record of all charges filed against murderers, robbers, forgers, hi-jackers, bootleggers, hot check artists, etc., with a view of carrying same to the Supreme Court of the Universe, the probability is the docket will be greatly congested when the celestial tribunal convenes.

Not realizing the local conditions, under which hundreds of residents are not allowed to vote because of election laws, various editors have taken sly jabs at the ballot totals. But perhaps they are partly right, for surely the vote on such a vital matter will get more votes in the next similar election. We read:

Pampa, with an estimated population of 8,000, cast 313 votes in an election to determine whether the commission form of government should be adopted. The measure lost by a majority of 13 votes.—Shamrock Texan.

We're not real sure what the Texan is trying to prove by the fact that only 313 people out of 8,000 voted in a recent election in Pampa, but it looks to us like somebody has been unduly and unnecessarily agitating themselves in bringing about an election in which only this number could be interested.

Although, not in this connec-

**Can You Do It?**



Cosch H. E. Briceland, left, aids K. M. Peterson, right, in showing University of Iowa gym students a neat trick with empty milk bottle. Try it some time—they say it is rather easy.

tion, Shamrock recently refused to sell its light plant to the Central Power and Light company at a profit of \$100,000 or some such a matter. That's one mistake Shamrock has made and a couple more like that will just about put an end to the aims and ambitions of that little town—if they ever had any.—Collingsworth Standard.

The Presbyterian choir met at the home of E. E. Fisher, director, for rehearsal and social meeting Friday evening. Practices for an Easter cantata are being held each Tuesday and Friday evening.

**REX TODAY**

LAURA LA PLANTE

in  
**"The Midnight Sun"**

WITH A CAST OF 1500

TOMORROW

**"Down The Stretch"**

World's Greatest Racing Drama

**Under Your Feet**

With Springtime, keep the freshness within the home, as well as out of doors. Floor coverings—for the kitchen or the parlor, the hall or the stairs—you'll find the newest patterns at Malone's.

**G. C. MALONE FURNITURE AND UNDERTAKING CO.**

Quality Home Furnishings at Quantity Prices

**Service**

Our motto is to serve our customers any time during the twenty-four hours. Heavy Forging, Oil Field Repairs on short notice, Pipe Threading, General Machine Work, Cylinder Regrinding, etc.

Bar Iron, Steel, Bolts, Oxygen, Carbide, Welding Supplies In Stock

**JONES EVERETT MACHINE CO.**

**LUCKY PILOT TO TRY HARD FLIGHT**

ST. LOUIS, Mo., March 16.—(NEA)—Four times death has sung in the ears of Pilot Charles A. Lindbergh. Now "the luckiest pilot in America" is to put his luck to its greatest test—conquest of the Atlantic ocean, alone.

To date "Lucky" Lindbergh, in his brushes with death, has come off winner. Next—but that's this story.

Early in the summer, Lindbergh will dash from Roosevelt field, Long Island, New York, for Paris—in a land monoplane, without pontoons or radio sending apparatus, and with a single motor to pull the bird through the air!

St. Louis will send him on his way. The monoplane, which will be christened when completed, "The Spirit of St. Louis", is now being constructed at San Diego, California. Lindbergh is watching every detail of building.

At Kelly field, Texas, Lindbergh, while flying at 10,000, hit another plane. Two miles above the earth both pilots jumped. Parachutes saved them.

Six months later, near St. Louis, Lindbergh's ship went into a spin. He jumped, and the parachute saved him.

Lindbergh's plane will measure 42 feet between the wings tips, a pigmy compared with Byrd's mammoth in which he sailed over the north pole. It will carry 425 gallons of gasoline and 35 gallons of oil, with a cruising speed of 105 miles an hour.

Lindbergh seeks a prize of \$25,000. This is offered by Raymond Orteig of New York to the first aviator leaving a point within 50 miles of New York and landing in France without stopping.

The flyer does not look the daring part he will play. He is bash-

ful and soft-spoken, but other fliers say he possesses a steel nerve and a cool head.

He will leave the steamer lanes and follow the shortest route between Long Island and Paris, depending upon a lone 220-horsepower motor to carry him along safely. Tentatively the flight is set for July 4, but the aviator hopes to leave Roosevelt Field before that date.

**DR. EDGAR A. ELLIFF**

Eye, Ear, Nose and Throat  
Glasses Fitted  
Duncan Bldg. Pampa, Texas

**Business & Professional DIRECTORY**

**INSURE YOUR FAMILY WITH AMERICAN CENTRAL LIFE INSURANCE**  
Real Estate  
P. B. CARLSON, Agent  
Room 14 Smith Bldg.

**DR. AURA W. MANN**  
CHIROPRACTOR  
OFFICE 20-21, SMITH BUILDING  
Office Phone 263  
Residence Phone 213J

**DR. W. PURVIANCE**  
PHYSICIAN AND SURGEON  
Office Over First National Bank  
Office hours: 9 to 12-1 to 5  
Office phone 107. Residence 45  
PAMPA, TEXAS

**DRS. MARTIN & KLEIN**  
PHYSICIANS AND SURGEONS  
SHARPE BUILDING  
Phone 273

**ARCHIE COLE, M. D.**  
PHYSICIAN AND SURGEON  
Office over First National Bank  
Office hours 10 to 12-8 to 5  
Residence Phone 8. Office phone 55  
PAMPA, TEXAS

**NOTICE**



Pampa Lodge No. 966, A. F. & A. M. Regular Meeting, Fourth Saturday in each month.

Masonic Hall in White Deer Land Building.

C. P. BUCKLER, Secretary

**PAMPA ELECTRIC COMPANY**  
ELECTRICAL CONTRACTORS  
All Work Guaranteed Phone 188  
Estimates Furnished on all Classes of Wiring

**STUDER, STENNIS & STUDER**  
LAWYERS  
Office Over First National Bank  
PAMPA, TEXAS

**DR. A. B. SAWYER**  
DENTIST  
White Deer Land Building  
Business Phone 168  
Residence Phone 55  
PAMPA, TEXAS

**V. E. VON BRUNOW**  
PHYSICIAN AND SURGEON  
Consultations by Appointment Only  
Phones 29 and 40  
PAMPA, TEXAS

**O. S. LEWIS**  
Contractor and Builder  
Pencil Plans and Estimates  
FREE!  
PHONE 310

**W. B. WILD, M. D.**  
PHYSICIAN & SURGEON  
Office—Room 6-7 Smith Building  
Phone 232 Pampa, Texas

**BABY CHICKS**  
10c to 16c each  
Custom Hatching  
BOOK YOUR ORDERS NOW

**DODD'S HATCHERY**  
PHONE 9  
PAMPA — TEXAS

**TOM LEWIS AND HIS 'FLASHES'**

Returning Today by Special Request for Another Enjoyable Week at the

**GRAND THEATRE**

(SOUTH SIDE)

Will Be Here 7 Days, Beginning Today. New Musical Comedy Hits, Clever Singers, Dancers, Comedians

**Pretty Girls**

Complete Change of Program Daily—Everything New  
3:30—7:30—9:30

ALSO TODAY

A Big Western Picture, "Prince of Saddle" Featuring  
**FRED CHURCH**

TONITE

Old Fiddlers Contest and Charleston Dancing

**THREE CASH PRIZES**

**EVERY NIGHT A BIG NIGHT**