

1385

ADVERTISE IN THE NEWS AND REACH HUNDREDS OF PAMPA FAMILIES

# THE PAMPA NEWS

SUBSCRIBE FOR THE NEWS AND BE INFORMED ON ALL LATE OIL NEWS

VOL. 20, NO. 81.

PAMPA, GRAY COUNTY, TEXAS, FRIDAY, OCTOBER 29, 1926.

Price, Five Cents

## \$2,200,000 ROAD BOND IS PROPOSED

## 635 CARLOADS WHEAT SHIPPED FROM PAMPA

### ELEVATOR OPERATORS ESTIMATE THAT TOTAL FOR YEAR WILL BE MORE THAN A MILLION BUSHELS

There has been 635 carloads of wheat shipped from Pampa since the beginning of the wheat-shipping season in June. Each car will average about 1400 bushels, which means that approximately 889,000 bushels of wheat have been shipped from Pampa.

Elevator operators here estimate that 100 more carlots will be shipped yet this season. If this number is shipped the total will pass the million-bushel mark. This season has been the best for a good wheat crop since 1921, according to elevator operators here.

The following is an estimate of the carloads shipped by the local elevators: Great West Mill and Elevator Co. 95 cars; Martin-Lane 55 cars; Pampa Grain Co. 270 cars; Stark and McMillan Grain Co. 120 cars; L. C. McMurtry Grain Co. 95 cars.

### Santa Fe Officials Arrive In Pampa To Study Developments

Several officials of the Santa Fe Railway Co., accompanied by Mayor F. P. Reid and other residents of Pampa, made a tour of the oil field south of Pampa last week. "This field has made wonderful development," said one of the officials who had made a tour of the field several months ago.

Representatives of the Railway Co. who made the tour were: A. G. Wells, vice-president, F. A. Lehman, general manager, F. L. Meyers, assistant general manager, F. J. McKie, superintendent, M. C. Blanchard, chief engineer, and R. W. Pretue, train master. The party went west ahead for Mayor Reid to meet them and accompany the touring party.

The purpose of the survey of the field was to draw conclusions from which the Railway Co. can make its future estimates, according to reports here. From all outside appearances the officials were interested in the rapid development of the field. Less than a year ago, where was then nothing but plant life growing, now is dotted with derricks. The oil soaked soil tells its own story.

S. W. Kline, local Santa Fe agent, E. E. Reynolds, N. R. Butler, E. R. Carr, W. B. Solter, John Henry and H. L. Pope also accompanied the party on the tour of the field.

Mayor Reid, after meeting the officials and talking with them, found that he and A. G. Wells, vice-president of the Railway Co., as well as F. J. McKie, superintendent of the company, were related within a few miles of each other. They had never met before that they knew of, but all were confident that they had played on the same playgrounds when they were boys.

### Piggly Wiggly Store Opens on Foster Ave.

A Piggly Wiggly grocery store has opened on West Foster Ave. this week. The store is a branch of the company's chain store which are found throughout the U. S. and Canada.

C. S. Smith, manager of the store, is interesting the store here. Each customer is given a basket when they enter the store and they go about the store selecting the articles that they wish to purchase. When they are through they pass by the cashier's desk as they go out and the articles they have selected are checked. The only check on the cashier's desk is that the customer's goods are able to wait on themselves at all times.

Mrs. C. V. Whitwell and children returned from Dallas Monday when they attended the fair and visited friends.

### Dr. Cole Returns From Business Trip To East

Dr. A. Cole returned to Pampa Sunday after a two-weeks trip. He attended a meeting of the South-west Clinical Conference in Kansas city for a week and from there went to Chicago where he spent a week, attending the annual meeting of the American College of Physiotherapy.

"Chicago and Kansas City were dull to me," said Dr. Cole when he returned, "I had to come back to Pampa where there is something going on." He says that he saw soldiers in Kansas City and in Chicago guarding the United States mail. Only recently the government has had the soldiers in the United States army to guard the mail in an effort to decrease the startling number of mail robberies.

### To Complete High Line By First of the Week

Everything is scheduled to be complete on the new high line from Amarillo to Pampa by Monday, according to Theo Tipps. All of the poles were set by last Monday, and the wire was complete from Amarillo to a point three miles west of Pampa Wednesday.

The sub station here is being erected and larger transformers are being installed. It is expected that electric current will be supplying Pampa from the high line within a few days.

A pie supper will be held at LeFors school Friday, Oct. 29. The proceeds will be used to purchase school ground apparatus. The sale of the pies will begin at 7:30 o'clock Friday evening.

Mr. and Mrs. Carol Kingsberry and daughter of Santa Anna have moved to Pampa where they are making their home. Mr. Kingsberry is the brother of Mrs. W. L. Woodward, and is employed by the Pampa Gas Co.

### 500 People Attend The Skelly Barbecue

About 500 people attended the barbecue at Skelly Sunday. Judge J. C. Paul of Panhandle made an interesting address. Barbecue was served to all those who attended the celebration.

Skelly is a new town on the highway between Pampa and Borger and eight miles north of White Deer. Several buildings are being built there now.

### Council Lets Contract For Erection of Signs

The city council voted to have street signs installed at a meeting Tuesday night. The signs will be made of wood and will extend eight feet out of the ground. The making and installation of the signs has been contracted for \$175. They will be erected as soon as locations are made for them.

The council voted to have all the typhoid cases under the direct supervision of the doctors of the city at present. Ike Lewis, Dr. W. Parviance and Dr. V. Brunow were appointed as a committee to revise the sanitary ordinance and present it at the next meeting of the council.

### \$5,000 Steel Bridge on Pampa-LeFors Rd.

The county let the contract for a bridge over the Thut creek, two miles this side of LeFors on the Pampa and LeFors Highway to the Austin Bridge Co. The consideration is a little more than \$5,000, according to A. H. Doucette.

The bridge will be a 100-foot steel 15-ton structure, with concrete piers and abutments. Work on the bridge will begin in about two weeks. It is expected to be completed within four weeks after work begins.

## WILCOX NUMBER 5 IS IN FOR 35 BARRELS PER HOUR; McMAN COMPANY SHOOTS FOUR WELLS

Worley No. 5 came in last Saturday and is now making 35 barrels an hour. It is located in the northeast corner of the southwest quarter of section 63, block 3, W-103 and 14, both of which are producers, are in the same quarter of the same section.

The McMan Co. has shot four of its wells in the Gray county field, and it is believed that the production will increase substantially. The company's Worley No. 4 was given a 150-quart shot from 3267 to 3257, and is showing 215 wbl in its section 53, block 3, No. 5, in the same section, was shot with 100 quarts and is making 55 barrels. No. 3 was shot at from 3225 to 3235 and showed 120 barrels. Their Worley No. 1 was given a shot of 300 quarts at from 3185 to 3245 feet and made 247 barrels the first 15 hours it was tested.

Worley No. 2 and Worley No. 1 of the Humble Oil and Gas Co. are approaching the pay. The Worley well in its section 53, block 3, and the Worley well in its section 57, Gray County. The Worley well has considerable oil in the hole, but no definite reports have been received as to what the wells might make.

The Texas Company has hit gas in its Well No. 2, and is moving the boiler back. A million feet of gas was reported at from 2960 to 2970 feet. This well is located in section 53, block 3, Gray County. The company's No. 1 Well in the same section and block is drilling in gray time at a depth of 3225 feet.

The Southwest Oil and Develop-

ment Co. has purchased some acre of land in Gray County, according to a report from Edward Bentley of the company. Drilling will be started in this county within a short time, according to the report. The company's headquarters are in California.

The development of the acreage between here and White Deer has caused considerable land transaction recently. Several oil companies are now in control of most of the available land, and development in this direction is expected to begin at once.

The Gulf Production Co. is drilling past 2-1/2 in their Worley No. 2. Drilling on the Bay Shore No. 1 Bradford has been resumed after several days delay. This well is located in section 143, block 3-2 Gray County.

The White Deer Oil Company's No. 1 Center is being placed back to shoot at a former showing. This well is located near the Roxana well near White Deer.

The weather conditions have permitted the rapid transportation of materials and work is progressing rapidly in the fields. Storage tanks are being rapidly constructed and the increase in production of the entire Gray county field is expected soon. Reports from the field are that all of the workers are employed, and more help is being demanded in Pampa. With the present substantial production, and the wells now drilling that are expected to come in for good production, the Gray county outlook is good.

### GRAY CO. HIGHWAY ASSOCIATION ORGANIZED AT MEETING HERE OF THE DISTRICT REPRESENTATIVES

The Gray County Highway Association was formed at a meeting of twenty men representing all parts of the county Tuesday afternoon at the Pampa Hotel. C. C. Cook was elected president of the association. Other officers elected were: M. D. Bentley, vice-president; E. B. Hedrick, secretary and treasurer. W. E. Ginn and A. P. McAfee were appointed members of the board of directors. The officers of the association will also act as members of this board.

A petition calling for a bond election to issue bonds to the amount of \$2,200,000 is being circulated for signatures and will be presented before the county commissioners court which will convene at LeFors Monday. A committee composed of A. H. Doucette, chairman, L. O. Cox, M. D. Bentley, E. B. Hedrick, A. P. McAfee and W. E. Ginn were appointed to draw up the petition. In the petition is the recommendations as to mileage as was given by L. O. Cox, Carson County Engineer. These recommendations as to mileage were based upon the amount of traffic each highway carried. They are: Highway No. 33, which carries the heaviest amount of traffic, 8 miles; Highway 55, second as to amount of traffic, 12 miles; No. 75, third, 22 miles, and No. 33-A, fourth, 14 miles. This does not mean that the roads be paved in the order named, for that will be partially determined by the State and Federal Highway departments.

A committee composed of Riley Strickland, E. B. Hedrick, D. C. Jones, A. B. McAfee and W. E. Ginn were appointed to draw up by-laws, rules and regulations which will govern the membership committee appointed to take steps to enlarge the membership. The members of this committee are: O. I. Skelly, chairman, F. P. Reid and F. R. McCracken.

The origin of the association really dates back to a meeting last Friday when several members of the McMan Chamber of Commerce and two men from Alameda came to Pampa and met with members of the Pampa Chamber of Commerce. No steps or mention there, however, had been made of forming the association previous to the meeting Tuesday afternoon.

Those representing the Chamber of Commerce of McMan at the meeting last Friday were: O. G. Skelly, M. D. Bentley, M. M. Newman, D. M. Massey, H. W. Brooks and D. C. Jones. The representatives of Alameda were E. B. Hedrick and F. R. McCracken. These men came to present a plan of road paving whereby practically everyone in the county would derive benefits. Their plan, for the most part, was adopted by the Gray County Highway Association at the meeting Tuesday afternoon.

The plan as now under consideration calls for the paving of approximately 56 miles of roads. The bond issue will be sufficient to expend enough money on lateral roads in the county, if the issue carries, to put them in very good shape.

"We want everyone in the county to be benefited by the roads," said C. C. Cook, president of the association. "No one will receive an unfair share, but the county as a whole will be greatly benefited."

Various members of the new association, which are representative of all parts of the county, expressed the opinion that the bond issue would be met favorably by the voters because of its broadness.

Mr. and Mrs. Charles Clark of Wichita Falls are visiting J. M. Smith and Mr. and Mrs. Joe Smith.

Mrs. F. C. LeDrack returned Monday from Dallas, where she spent several days visiting friends and relatives.

### Pampa H. S. Wins From Wheeler In Fast Game Here

The Pampa High School football team won from the Wheeler team here last Friday afternoon 20 to 0. Both teams failed to score in the first half, but in the second, with aerial attacks and end runs, Pampa succeeded in making three touchdowns and kicking two of the extra points.

At the beginning of the half Pampa kicked off to Wheeler. Wheeler returned and made two short gains through the line and kicked. Pampa's ball on their own 20-yard line. Pampa completed a pass for a 30-yard gain, but failed to gain through the line. Two more passes were completed and it was Pampa's ball on Wheeler's 10-yard line. Pampa fumbled but recovered. A yard was gained through the line. Pampa passed out of bounds. Wheeler kicked and Pampa returned to Wheeler's 25-yard line. Pampa waged two line plunges for a touchdown. Goal was kicked. Score, Pampa 7, Wheeler 0.

Pampa kicked off and Wheeler returned the ball to Pampa's 40-yard line. Wheeler gained 5 yards in three downs and kicked. Pampa had the ball on their own 25-yard line. Pampa failed to gain through the line and kicked. It was Wheeler's ball on their own 20-yard line. Pampa intercepted Wheeler's pass and made the first down. Pampa made two line plunges for a touchdown, but failed to kick the extra point. The score was 15 to 0 with eleven minutes of play to go.

Wheeler kicked off and Pampa returned to their own 30-yard line. Both teams opened up with aerial attacks. Pampa made several gains and made another touchdown. They kicked goal making the score 20 to 0. There was two minutes of playing left. Wheeler opened up with scattered aerial attack but failed to complete them. The final whistle blew with the ball in the center of the field. Score: Pampa 20, Wheeler 0.

Several cars from Wheeler brought rooters to Pampa. Between three and four hundred people witnessed the game. Pampa will meet Claude High School team here Friday, October 29.

### 3 New Hardware Stores Located Here

Three new hardware companies have opened in Pampa recently. The Pampa Hardware Company recently purchased the Johnson Hardware Company here. Danaway Brown, who recently purchased the Davis Hardware Co. stock have opened as well as the Thompson Hardware Company, who recently purchased the Crawford Co. Each of the three stores are getting in new stocks. Two of the companies have stores in other towns.

Mayor F. P. Reid, O. V. Vornan and W. O. Galton were named members of the nominating committee of the directors of the Tri-State Fair Board for the next year at a meeting of the board in Amarillo Monday.

**SOCIETY NOTES**

**"Mystic Four" Entertains Members of Football Team**  
 Members of the "Mystic Four" entertained in honor of the boys of the members of the Pampa High School Football team Friday evening at the home of Mrs. W. H. Lang. The evening was spent by playing games.  
 Those present were: Ted Williams, Elmer Harden, Albert Lester, Sam Carleton, Alfred Duncan, Russell Kennedy, Jimmy Oleson, Carl Stone, Edward Herlecher, Angela Ballew, Mildren Taley, Theima Qualls and Nell-Jones.  
 Mrs. W. H. Lang and Miss Lou Jones were chaperons.

**Mrs. Guy Farmington Entertains at Luncheon**  
 Mrs. Guy Farmington entertained at 1 o'clock luncheon last Friday afternoon. The afternoon was spent playing games and by contests. The guests were: Mesdames Joe Lewis, C. C. Stockstill, Earl Lewis, Ira Spearman and Clyde Carruth. Regrets were received from Mrs. Harry Gillespie.

**Mrs. Isbell Entertained Last Thursday afternoon.**  
 Mrs. Bert Isbell was hostess to a number of friends Thursday, Oct. 21. The afternoon was spent embroidering, and with contests. The house was decorated in keeping with the season with yellow and black. A delicious salad course was served.  
 The following guests were present: Mesdames Tom Clayton, W. M. Castleberry, Chris Boir, B. J. Osborn, W. A. Taylor, C. P. Woodward, Ivin Turman, Willy Vincent, W. E. Noblet, Alvin Turner, W. H. Peters, Miss Leach and Miss Ina Hale.

**Mrs. Carson Loftus Hostess to the El Progreso Club.**  
 Mrs. Carson Loftus was hostess to the members of the El Progreso Club on Tuesday afternoon of this week. Mrs. P. C. Ledrick led the discussion on the subject of study which was "Wild Geese."

An interesting article was read by Mrs. C. C. Cook on the life of Martha Ostenso, author of "Wild Geese." The article explained how

and why the author wrote the book Mrs. P. C. Ledrick very cleverly gave the setting of the story. Mrs. Dave Pope gave a vivid description of the characters, as well as the general setting of the story. The plot of the story was interestingly told by Mrs. T. D. Hobart.

Dainty refreshments of perfection salad, nut-bread sandwiches and coffee were served to the guests.  
 Mrs. W. Purviance Hostess to W. M. S.

The W. M. S. met with Mrs. W. Purviance Wednesday, October 27, for an all-day meeting. The Mission Study Book "Healing Ourselves," was studied. Mrs. Lee Woodward gave an interesting discussion of the book.

Mesdames B. J. Osborn, Dave Pope, T. D. Hobart and W. Purviance gave interesting discussions on special topics. They represented the various races of the United States in making clear the little effort that is being given to educational and religious training.

Luncheon was served by the hostess at noon. The next meeting of the group will be held next Wednesday at the church building. Mrs. Nicholson will be leader of the discussion.

**Presbyterians Hold "Get-Together" Meeting.**

The Presbyterians held a "get-together meeting" last Thursday evening at the home of Mrs. Joe White. Those present were greatly enthused over the prospects of organizing and building a church building here. Games and contests were enjoyed and refreshments of pie and coffee were served.

**Lyceum Course to Present First Program**

The first number of the Lyceum course under the auspices of the P. T. A. will be given at 8 o'clock Wednesday evening, Nov. 3. The first course, which is presented by the Henchon Co., a group of high class entertainers, will consist of music, a magician and a reader.

The association is taking this means of raising funds for the benefit of the school. The tickets for the first program will be sold by the school children and at the drug stores Saturday afternoon.

Miss Mary Nail and Miss Josephine Cariker were visiting in Amarillo Saturday.

**1925 Makes Record for Telephone Cable Work**

The production of lead covered telephone cable manufactured by the largest concern engaged in the work reached a new peak in 1925 when the output of this cable both underground and aerial, totalled 36,100,000,000 conductor feet, as compared with 32,700,000,000 in 1924 and 10,600,000,000 in 1920, according to the Texas Public Service Information Bureau.

Thirty-six billion conductor feet would reach more than 2,000 times across the continent from New York to San Francisco. The Conductor foot is a measurement of the amount of wire entering into the manufacture of cable and therefore represents the wire mileage in the cable. The Conductor foot furnishes a standard of comparison for all cable, no matter how the cable itself differs in diameter.

The manufacturing of loading coils, which are used to improve transmission on trunk telephone and toll cables, increased to 301,000 in 1925 as compared with 218,000 in 1924.

**Hereford Minister Tenders Resignation**

Hereford, Texas.—The Rev. W. R. Hill, pastor of the First Baptist church of Hereford, tendered his resignation at last Sunday's services, and it was accepted. The resignation is to take effect Dec. 31, 1926.

Rev. Hill has been pastor of the local church for a little over four years, and has made many friends who regret to lose him. He stated this week that his plans for the future are not yet matured, altho he has tentative offers from churches in Tennessee and Mississippi, and may decide to go up in that part of the country, where he originally lived. No announcement has been made as to the plans of the Baptist congregation for filling the vacancy.—The Hereford Brand.

Oiled floors should be swept with a soft brush and dusted with an oiled cloth or mop. Occasionally clean them with a cloth wrung out of warm soapy water, followed by polishing with a cloth moistened with kerosene or good floor oil. Use water and soap sparingly.

**Clarendon Ranch Sells 4,500 Yearling Calves**

Clarendon, Texas.—One of the largest sales of stock reported in the Panhandle for some time is that by the J. A. Ranch at Clarendon. Forty-five hundred steer calves and short age yearlings have been sold at an average of \$35.00. This stock belonged to T. D. Hobart.—Clarendon Record.

Captain W. L. Woodward, who has been the guest of Mr. and Mrs. W. L. Woodward, has reported for Santa Anna. He will go from there to his home in Galveston.



**Safe or Sorry**

There are no cut prices to health. The best is none too good. So, when you buy cheap plumbing fixtures, and think you are saving money, you are not. You are losing money. And, what's worse, you are making your home a breeder of disease.

The only kind of plumbing worth having is the best. Anything else is dead loss.

When you buy "Seconds," "Damaged," "Defective" plumbing goods, you buy trouble, sickness, death.

A crack is a home for disease germs. A leaky pipe leaks away health.

Buy only quality plumbing—quality fixtures, quality materials, quality workmanship—the kind that is guaranteed.

**TANNER PLUMBING CO.**  
 Phone 220 PAMPA, TEX.  
 Phone 388N CANYON, TEX.  
 Licensed and Bonded

**ANNOUNCEMENT**

**WE** have just opened a modern Coca-Cola plant in Pampa. Have installed the most up-to-date bottling machinery on the market, and extend to the public an invitation to make close and personal inspection at any time.

**PAMPA COCA-COLA BOTTLING COMPANY**

Bottlers of *Coca-Cola* and Seven Flavors of High Grade Soda Water.

**Business & Professional DIRECTORY**

**V. E. VON BRUNOW**  
 PHYSICIAN AND SURGEON  
 Office Hours 10 to 12—3 to 5  
 State License No. 7752  
 PAMPA, TEXAS

**ARCHIE COLE, M. D.**  
 PHYSICIAN AND SURGEON  
 Office over First National Bank  
 Office hours 10 to 12—3 to 5  
 Residence Phone 8. Office phone 55  
 PAMPA, TEXAS

**DR. W. PURVIANCE**  
 PHYSICIAN AND SURGEON  
 Office Over First National Bank  
 Office hours: 9 to 12—1 to 5  
 Office phone 107. Residence 46  
 PAMPA, TEXAS

**O'NEAL ABSTRACT CO.**  
 Abstracts of Title  
 PROMPT SERVICE  
 PANHANDLE, . . . . . TEXAS

**DR. T. M. MONTGOMERY**  
 OPTOMETRIST AND OPTICIAN  
 In Pampa every other Thursday  
 Call Fatherson Drug Store for appointment

Facials, Marcelling, Shampooing, Manicuring, etc.  
**MRS. G. A. LATUS**  
*Molar System Graduate*  
 1 Block North Christian Church.

**DR. W. F. NICHOLAS**  
 DENTIST  
 Office Room 5-9 Smith Building  
 Phone 222 Pampa, Texas

**DR. AURA W. MANN**  
 CHIROPRACTOR  
 OFFICE 20-21, SMITH BUILDING  
 Office Phone 263  
 Residence Phone 213J

**BOONE SIGN CO.**  
 COMMERCIAL SIGNS  
 OF ALL KINDS  
 115 West Tyng Street

**W. B. WILD, M. D.**  
 PHYSICIAN & SURGEON  
 Office—Room 6-7 Smith Building  
 Phone 212 Pampa, Texas

**DRS. MARTIN & KLEIN**  
 PHYSICIANS AND SURGEONS  
 SHARPE BUILDING

**G. C. MALONE**  
 FUNERAL DIRECTOR AND LICENSED EMBALMER  
 Phone 181 Pampa, Texas

**DR. A. R. SAWYER**  
 DENTIST  
 White Deer Land Building  
 Business Phone 168  
 Residence Phone 58  
 PAMPA, TEXAS

**W. MINOR**  
 CONTRACTORS  
 Brick and Concrete  
 At A. B. Keahy's Office  
 PAMPA, TEXAS

**INSURE YOUR FAMILY WITH**  
 AMERICAN CENTRAL LIFE INSURANCE  
 P. B. CARLSON, Agent  
 175 West FOSTER

**HAL B. STEWART**  
 ARCHITECT and STRUCTURAL ENGINEER  
 613 1/2 Polk Street Amarillo, Tex.

**STUDER, STENNIS & STUDER**  
 LAWYERS  
 Office Over First National Bank  
 PAMPA, TEXAS

See H. W. HICKMAN  
 —For—  
 CONTRACTS on BUILDING  
 Pencil Plans Furnished.  
 Cabinet work, mill work and Truck Cabs. Bodies a specialty. Phone 225.  
 HICKMAN CONST. CO.  
 Ref. See customers.

**PAMPA ELECTRIC COMPANY**  
 ELECTRICAL CONTRACTORS  
 All Work Guaranteed Phone 183  
 Estimates Furnished on all Classes of Wiring

**J. B. DUFFIELD**  
 GENERAL BUILDING CONTRACTOR  
 Concrete Work  
 No job too large or too small.  
 ST. 12-e

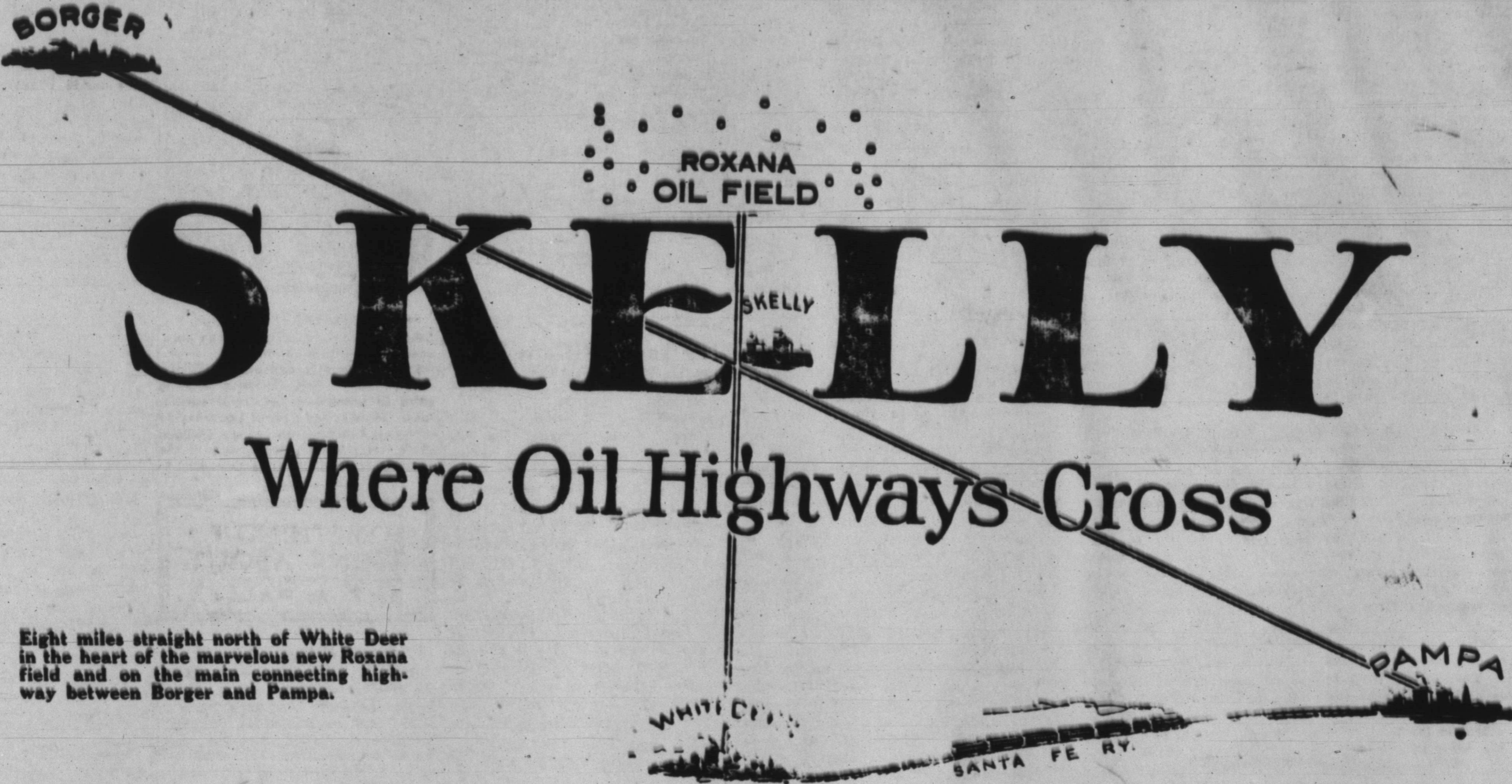
**Lumber, Rig Timbers Building Material**

We are open with a very complete line of Building Material of every kind, specializing in home building and oil field construction materials.

Let us furnish an estimate on your next order before you buy.

**Mintener Lumber Co.**  
 G. W. BECHTELHEIMER, Manager  
 Brown and Gray Sts. South Side

# Make Money on Townsite Lots!



Eight miles straight north of White Deer in the heart of the marvelous new Roxana field and on the main connecting highway between Borger and Pampa.

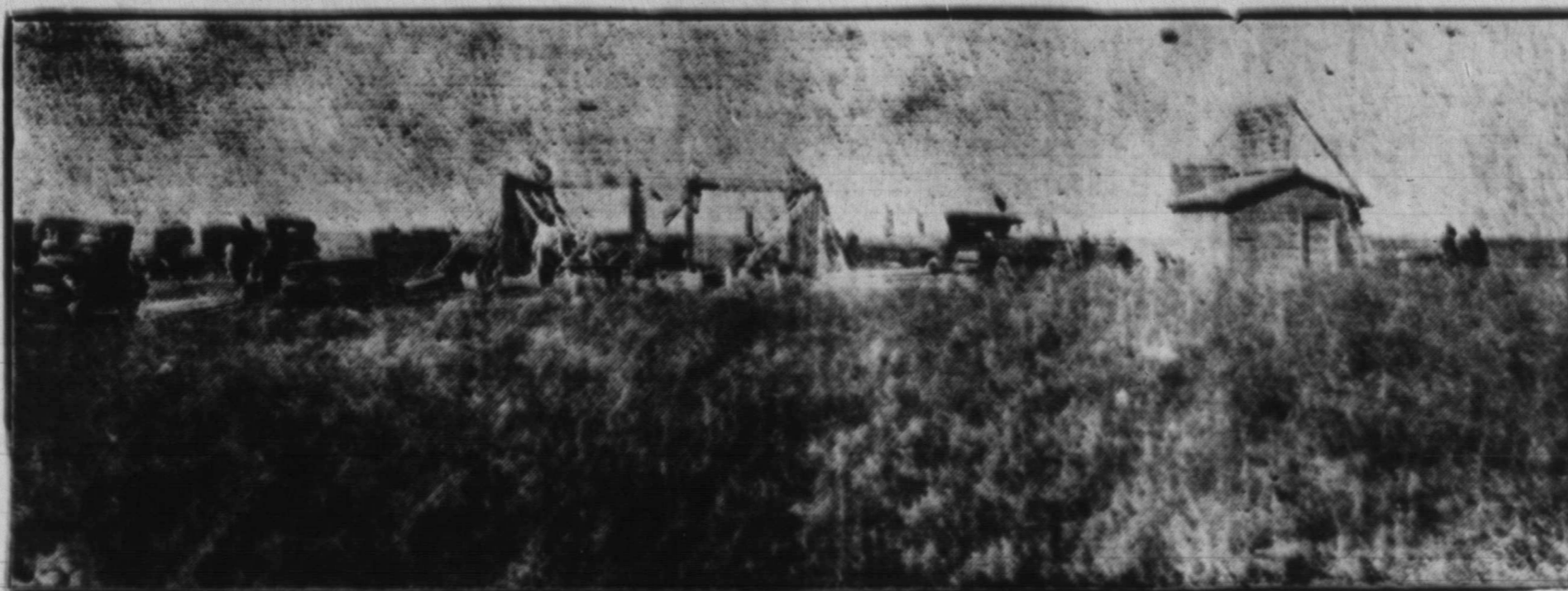
One man who purchased 8 lots on First St. in Skelly a week ago Saturday, sold four of them the next day for a 250 per cent profit on his down payment. Then he held two of the remaining four lots for a few more days, sold them for a 350 per cent profit, and has refused even larger profits on the two sites he has left. And this is just one of dozens of similar genuine instances of quick, big profits!

The merchants who are locating in Skelly report good business—dozens of buildings are going up—more than \$30,000 worth of building sites have already been purchased, practically all of them by people who know oil towns and have made their investments either to build on, or in the belief that they will double and treble their money on increases in values.

The desirable Main Street Extension of Skelly has just been opened for sale—the original townsite practically sold out within a week after being placed on the market. Yet there is no increase in prices in spite of the high valuations which now obtain for Main Street and First Street lots a block away!

Excellent lots in the new addition will be only \$75 up, terms only 25 per cent down, with five equal monthly payments on balance. Warranty deed with every lot, only the mineral rights being reserved. Every street graded; and water and gas being piped immediately to every lot.

Looking north from Skelly. The building under construction is the new Skelly Hotel at the corner of First and Main Street. A number of additional buildings not shown in the picture are in various stages of completion; the water well is being drilled; and civic improvements are going in rapidly.



Note the newest oil field in the Panhandle in the background. 21 derricks are already up around the Roxana discovery well in Sec. 92, Block 4, Carson County; and more than 100 locations have been made for immediate drilling. Skelly Townsite is at the crossroads of the Borger-Pampa road and the main highway from White Deer to the new oil field.

## COME OUT TODAY!

To go to Skelly from the main line of the Santa Fe, turn North for eight miles at White Deer. From Pampa take Borger road straight west for fifteen miles; and from Borger take the Pampa road east for eighteen miles. Skelly is the crossing point for these main highways.

**SKELLY TOWNSITE CO.**  
OWNERS AND DEVELOPERS

SKELLY  
FIELD OFFICE

AMARILLO  
115 E. 4th St., Phone 151

**THE PAMPA NEWS**

Published Every Friday  
at Pampa, Texas

DAVID M. WARREN  
Publisher  
W. E. LOWE  
Manager  
BEN F. RENO  
Editor

Office in News Building  
Phone No. 100

**SUBSCRIPTION RATES**  
In Texas

One year .....\$2.00  
Six months ..... 1.25  
Three months ..... .65

Outside Texas  
One year .....\$2.50  
Six months ..... 1.50  
Three months ..... .85

Advertising Rates Upon Application

Entered at the Pampa, Texas  
Postoffice as Second Class Mail

**THE TOURIST FRIEND**

A tourist in El Paso drove across a boulevard street without stopping. He did not see the sign. About two blocks further on a motorcycle officer drew alongside his car. The tourist stopped and awaited the usual proceedings. The policeman remarked that the driver seemed to be a stranger in the city. Let the tourist tell the story:

"He pointed out to me the one-way streets; he told me the speed limit and in what block I could park, and expressed the wish that my stay in El Paso would be most pleasant. He also advised me that if there was anything the police department could do for me not to hesitate to call on them."

This tourist became a friend of the entire city. Let us all express the wish to tourists that might be in Pampa that their stay be a most pleasant one. The traffic laws in different cities and town vary, and the result is that the tourist innocently violates traffic laws. If this is called to his attention in a polite manner, he will become a law abiding "citizen in mind" of the town in which he has received due consideration.

Bad boys or bad checks, which do you prefer?

**GROWING PAINS**

Trouble and inconvenience, heart aches and sighs, sorrow and happiness, it's all in a life-time. And so it goes in the life of a city. Youth is filled with happiness and prosperity, but the growing pains are severe. There are a few tears along with the smiles, but it is not true that the more the smiles the more the tears.

With the oil fighting for the surface of the earth in the Panhandle, with apologies to Lincoln, we might say that we are met on a great battlefield of that ground. Steps are being taken now that will make the future generations, as well as the present, proud of the city of Pampa. No doubt mistakes are being made now that will be difficult to remedy in years to come, but again the growing pains must be taken into consideration. Individuals are not perfect; how can anyone expect a city to be perfect?

Some are knocking—some are boasting, but Pampa will undergo the initiation stage and become a city regardless. We have wealth in oil below the ground, we have wealth in wheat above the ground, we have industrious people who are improving the mechanical side, we have churches, we have schools. World, just give us time.

**BETTER ROADS**

A group of progressive men met Tuesday and organized the Gray County Highway Association. The outstanding purpose of this organization is to lift the county out of the mud. These men represent the various parts of the county, and they are all combining their efforts to better the entire county.

These men are already at work, but they cannot take progressive steps without the support of the county. Not one of the individuals will derive more benefits from good roads than the rest of us. Let's cooperate with the new organization and have better roads.

When the election is held to vote on a bond issue let's all invest in prosperity. Our roads are the arteries that carry the life blood of the entire county. Bad roads mean isolation; good roads mean contact with the outside world.

**PREVENTIVE HOUSECLEANING**

If the home has been regularly and systematically cared for, the old fashioned strenuous prelude of upheaval which our mothers called "spring" or "fall" cleaning is no longer necessary. Even in the cleanest homes, however, the changes of the season necessitate certain changes in the details of housework, and some rearrangement of one's furnishings and storage places.

In going through one's home, the object should be not to make everything spick and span for the time being, but to make such changes as will help it to remain so with the least possible daily or weekly work. Much of the dirt that gets into the house is blown or tracked in. Remove dirt regularly from window sills, porches, steps and walk to keep it from being blown into the house. Screens covered with cheesecloth will stop much dust and soot at windows and doors. Concrete walks will reduce the amount of dirt carried in on shoes. Provide mats and scrapers to help still further. A place just inside the entrance where muddy boots and coats may be left is a great help.

Lessen the number of dust collecting places. Furnish waste baskets, ash trays, and receptacles for burnt matches in every room, and above all, train the members of your family to help by leaving things where they belong and in good condition. Take dirt and rubbish away and dispose of it permanently when you have finished cleaning any given part of the house and make your motto "to keep clean rather than clean up."

**LABELS MUST BE CORRECT**

The only positive label requirement in the Federal food and drug act is that all canned food labels shall bear a correct statement of the net weight of the contents of the can. If other statements are made on the label, they must be true and must not be false or misleading in any particular.

A man is as old as his oats are wild.

News Wants Ads pay.

**IT ISN'T YOUR TOWN—IT'S YOU!**

If you want to live in the kind of a town, Like the kind of a town you like, You needn't slip your clothes in a grip, And start on a long, long hike. You'll only find what you left behind For there's nothing that's really new, It's a knock on yourself when you knock your town, It isn't the town, it's you. Real towns are not made by men afraid Lest somebody gets ahead, when everybody works and nobody shirks You can raise a town from the dead, And if while you make your your personal stake Your neighbor can make one to, Your town will be what you want to see, It isn't your town, it's YOU.

**Thomas Meighan**



It was in the city of Pittsburgh, Pa., that popular Tom Meighan was born, where he spent his childhood and where he made his first appearance on the stage, later being assigned leading roles in prominent theatrical companies. He was induced to get into the picture, and he is one of the favorite stars. His latest picture, now in the making, is entitled, "The Canadian."

**SOMETHING TO THINK ABOUT**  
By F. A. WALKER

**Great Bridge Planned**  
Bids for the steel work of one of the greatest overwater railway spans of Europe have been asked by the Danish railway authorities, with the approval of the rigging. The steel work will cost more than \$5,000,000 and the completed bridge will cost at least \$8,700,000, according to estimates of the engineers. The structure will span the Little Belt, between the island of Funen and the east coast of Jutland.

**Flappers Wait in Car While Sheiks Hook Face Powder**

Hartford, Conn.—While their girl friends waited in stripped down cars for the get-away, four youths entered drug stores and took perfumery, face powder and cosmetics for the beautification of their female companions.

Thus, according to alleged confessions today, began the criminal careers of Percy Parker and Andrew Durbuck of Hartford, Harlan Wallenheff of Rocky Hill, all in their teens.

The boys were said to have confessed that in the last five months they made twenty breaks in Hartford and at least ten more in surrounding towns, specializing in drug stores, chain groceries and provision stores and road houses.

On each of these raids they were said to have accompanied five or six Hartford girls, none more than 16 years of age.

Parker and Durbuck were arrested yesterday when they were recognized by an officer as youths previously convicted of aking automobiles without permission of owners. Their alleged confession led to the other arrests.

**Mrs. C. W. Bowers Hostess To Willing Workers Club.**

Mrs. C. W. Bowers was hostess to the Willing Workers Club on Wednesday afternoon. Instead of holding the regular meeting, a cooking demonstration was given by Mr. Bentley.

The Club gave a shower in honor of Mrs. L. W. Holland and her son, Bennie Leo. The club will meet regularly during the two remaining months of the year. Delicious refreshments were served to the six members of the club who were present and two visitors.

The club will hold its next meeting Nov. 3, with Mrs. A. Converse as hostess.

Price levels usually stay close to the pocket books.

Several men have been employed on the streets during the last few days, and the mud that stood in the gutters has been dragged into the street where it rapidly dried.

**PIGGLY WIGGLY**

2172 PIGGLY WIGGLY STORES ARE NOW IN OPERATION

The First PIGGLY WIGGLY Store Opens in Pampa  
**FRIDAY, OCTOBER 29, 1926**

THIRD DOOR WEST OF MASTERS CAFE ON W. FOSTER AVE.

A BASKET Is Loaned For Use While in the Store

Advantages to Customers: Lowest Prices; Best Products; 1000 Items; Freedom of Choice; Clean Store and Fresh Goods.

And when you come to see and investigate the truth of this advertisement you will not be asked to buy and you will not be criticized for not buying.

Whether One Buys or Whether One Merely Looks—In Either Case It's All Right With PIGGLY WIGGLY

All Packages Are Wrapped At the Checking Counter

Help Yourself; No Waiting to Be Waited On; Vegetables and Fruit Sold by Weight—the Honest Way.

Piggly Wiggly Stores are a national affair with each city and town unit co-operating with all other town units toward a lower cost of operation and with ability to make lower prices.

**Meat Market**

For the convenience of our customers we are operating a thoroughly modern and sanitary Meat Market.

**Operating Cost**

The operating cost of PIGGLY WIGGLY STORES is lower than any heretofore known method of retail distribution. This saving in operating cost is given to the consumer, affording prices which are savings that cannot be obtained elsewhere.

**Food Products**

Food products of a variety including fresh fruits and vegetables, of more than one thousand items, each item priced by a swinging price tag. National known advertised brands of a most comprehensive assortment is the class of merchandise to be found in every PIGGLY WIGGLY Store.

**Visitors Welcome**

You can look and be at home in this store and go through its two separate aisles upon a tour of inspection as to merchandise, as to its cleanliness, as to the prices—you may know that we are glad that you came.

**Your Own Decision**

If you see something that you want to buy of your own free will, without persuasion from anyone, without intimation from anyone, without suggestion from anyone, without mental contact whatsoever with anyone—if you want to make a purchase voluntarily, we, of course, will be glad to have you as a customer.

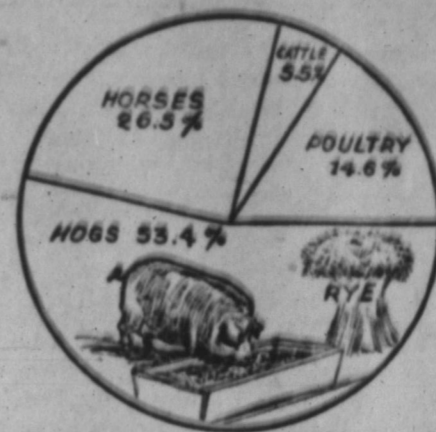
**Thousands Saved**

The main thing, however, that we want everybody to know is, that it is desired to have Pampa women and Pampa men to come and look at this wonderful store. We will be satisfied with your judgment of our claim that Pampa will have a saving in her food bill that will go into thousands of dollars by cashing in on the opportunity afforded by PIGGLY WIGGLY Stores.

Many of the instrumentalities employed in PIGGLY WIGGLY Stores are protected by copyrights, trade marks and patents granted by and applied for in the United States and the principal foreign countries. All such instrumentalities will be fully protected and infringers are hereby notified that rights under these grants will be strictly and vigorously enforced.



Where two great highways cross! View looking east along the Borger-Pampa Highway, with the White Deer road crossing just in front of the new oil town of Skelly. Just north of Skelly a new oil field has come into being over night around the Roxana discovery well in Section 92, block 4, Carson county. Twenty-one derricks are up and more than one hundred location have been made for immediate drilling.



(Sears-Roebuck Agricultural Foundation)

American thumbs have always been turned down where rye for table purposes is concerned. Most of our rye crop has been exported to Europe and the bulk of the remainder fed to farm animals, according to a survey by the Sears-Roebuck Agricultural Foundation. This year, however, a crop of 42,000,000 bushels is expected and less than usual will be sent to Europe as their crops will also be fairly large. This fact, coupled with feed-crop failures in many of our rye-growing sections, means that more of our rye crop will be fed to farm animals this year than usual. Hogs, on an average, consume 53.4% of the rye used on the farm, horses 26.5%, poultry 14.6% and cattle 5.5%.

### Forgers, Drunks, Bootleggers and Vags Are Caught

The sheriff's department has made about thirty arrests during the past six days. One was charged with forgery, four with selling intoxicating liquor, four or five with vagrancy, and the rest for being drunk. The jail house is hostess to several persons all of the time, and a part of the time it is crowded. Stolen cars, tires and accessories are beginning to be a thing of the past around Pampa, according to Sheriff E. S. Graves. For several months it was not unusual for the sheriff and his deputies to arrest several car thieves and car strippers a week. One of the deputies spent practically all of his time on the lookout for the thieves, and about two weeks ago the last one was apprehended. The fines were by no means small on those arrested and found guilty. "I believe that we have ended that kind of trouble for a while at least," says Sheriff Graves.

Photographs are extensively used in a London school where parrots are taught to talk.

USE A WANT AD

### Pampa Is Praised in a West Texas C. of C. Publication

The following article appeared in "West Texas Today," the official publication of the West Texas Chamber of Commerce:

"Pampa is the thrice-blessed city of the North Plains Panhandle Country. The growing little Gray county town is thrice-blessed because some magic hand destined for it unlimited success with three chief resources: First in the field of livestock raising, second in wheat farming and the third in oil developing.

"Years ago a group of pioneer plainmen settled on a treeless stretch of land in Gray county and called the place they selected for their home 'Pampa,' borrowing the name from the Spanish language in which the word signifies a field of grass-covered, treeless plain. From the essential nature of the land, stock-raising, dairying and poultry raising grew to be important industries of the section. Today Pampa is headquarters for one of the most successful Farmers' Co-operative Poultry Associations in the southwest and many thousands of dollars worth of shipments in cream and in marketing of hogs take place through its commercial gateway each year. The Panhandle bows to Pampa in recognition of its adaptability for livestock production, dairying and poultry raising.

"Pampa's second blessing came in the form of its recognition as one of Texas' and America's greatest wheat centers, from which the place has become known as the queen 'Wheat City of the Plains.' Pampa is the largest wheat shipping town in the state, over two million bushels of grain being shipped from there annually. Five great grain elevators are used to accommodate the immense winter wheat crop. In addition to the banner production of this grain, oats, barley, rye, corn, kafir, maize, feterita, sorghum, broom, corn and cotton are grown successfully on the black and fertile soil around Pampa.

"The flowing treasure of black gold, oil, Pampa's latest blessing, is showering the rising North Plains town with all good fortune.

Pampa is located in the geographical center of the great Texas Panhandle oil field. Already the Pampa section has many producing wells and a total of 254 are now drilling. Over 6,000 barrels of oil are shipped out from the town daily. Big oil companies located in the district are expending money investing in development projects in Pampa that will reach several million dollars before the first of the year.

"An abundant water supply is secured from wells in the territory with high purity tests. A modern sewage system serves the city. Natural gas is installed in the town, and a recent extension of the electric power plant gives completely satisfactory light service. There is a modern steam laundry in Pampa. It has brick and concrete business houses of the latest construction, and many blocks of sidewalks. Pampa's newspaper is one of the best and leading journals of the North Plains country. Banking facilities in the town consist of two institutions with combined deposits of over two million dollars.

Pampa is located on the leading highways connecting with strategic points in the Panhandle country. The main line of the Santa Fe railway system passes through the town and a \$25,000 fire proof depot, of Spanish mission style is maintained by the system there.

"The thrice-blessed city of Pampa is being built into a city of the future through the constructive policies of its far-seeing mayor, F. P. Reid, and through its chamber of commerce organization of which M. A. Turner is secretary, who guides its development into channels for the fullest agricultural, industrial and commercial good of all."

If men are brothers under the skin, women are sisters under the rouse.

A person can stand on one of the highways leading into Pampa and draw but one conclusion, the traffic is certainly heavy.

M. Hefflin is building a new warehouse on Brown Avenue. The building, when completed, will be 47x99 feet.

News Wants Ads pay.

### Unique Irrigation System Is Used in Gray Co. Acres

McClean.—The Aztecs, ancient Egyptians, and Asiatic races have developed systems of irrigation which won the admiration of modern hydraulic engineers. But the works of these people, remarkable as they undoubtedly are, are no more praiseworthy nor unique than the system of irrigation practiced by Wilson Brothers of this place, who irrigate a commercial apple orchard in a manner as unique as that of any of the race mentioned.

Wilson Brothers' orchards are located about three miles from McClean, in a valley formed by the breaks of the Red river. In this section water is secured at a depth of six to nine feet. The soil is deep sand and unsuited for ordinary methods of irrigating by canals. Wilson Brothers, however, irrigate their lands in a method that is both economical and practical and wonderful financial returns they reap from the orchard attest the success of their methods.

With an ordinary post hole digger, they dig to the water bearing sand six feet or so beneath the surface of the earth. A wooden box or other such simple method is used to "case" the hole and prevent caving. These holes are thickly interspersed throughout the orchards and grape vineyards. An ordinary windmill on a low tower is mounted on skids. In dry weather the windmill is skidded to one of the holes and the pumping barrel lowered into the water. The slight lift will permit the mill to run in even a light breeze. The water in abundance is pumped to the surface and used to irrigate the apple trees or grape vines within convenient distance of the shallow well. The supply of water here is practically inexhaustible and of a quality admirably suited for irrigation. The deep sand readily absorbs the water.

When the trees and vines near the well have received sufficient water, the pump is removed from the hole and the windmill is skidded to the next hole, where the procedure is repeated. This is continued un-

til the entire orchard or vineyard is watered, and, if rain has not fallen, they go back to the first hole and irrigate the grapes or apples again.

The method of irrigation practiced is so simple that even a boy can operate the irrigation plant. Expense of operation is practically nothing. No ditches are necessary and no space is taken up for irrigation canals. If a "well" becomes damaged they simply dig another hole with the post hole digger and fill up the hole which was damaged. The never-failing winds of Texas furnish ample power for the work.

The Wilson orchards have become famous throughout the entire southwest. Thousands of bushels of apples are sold annually from this orchard and the apples are of wonderfully fine quality and flavor. Apples from these orchards have been displayed at fairs all over the country and have been consistent prize winners even when pitted against the best of Arkansas, Oregon or Washington. B. M. Whiteaker, exhibit manager of the West Texas Chamber of Commerce, who was here recently, arranged for apples from the Wilson orchards to be sent to Philadelphia for display at the exhibit maintained by the West Texas Chamber of Commerce at the SesquiCentennial Exposition there.

It is said that thousands of acres

of land in this section of Texas may be irrigated by the process used, by the Wilsons and more such plants will be established hereabouts.—West Texas Today.

## R. R. JONES

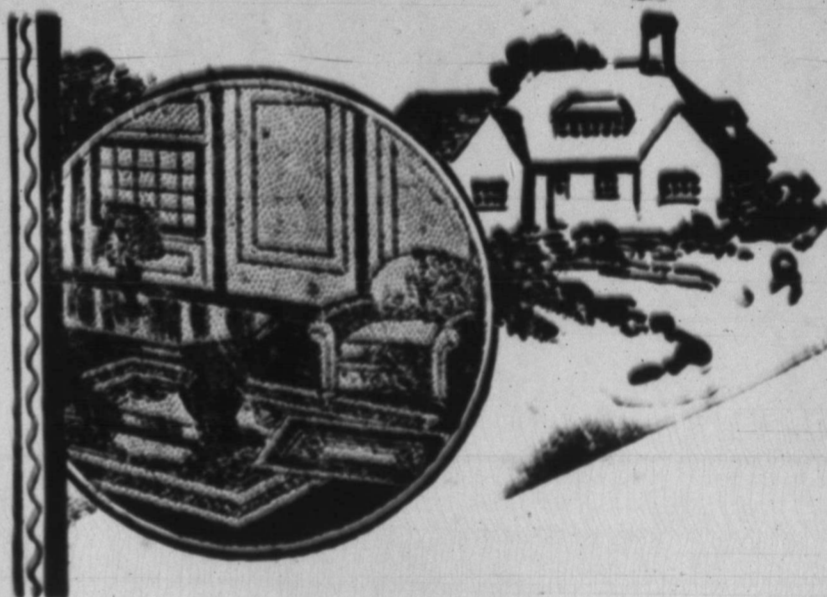
(LICENSED AND BONDED PLUMBER)

Plumbing and Steam Heating

WE DO GOOD FIRST CLASS WORK GIVE US A TRIAL

NO JOB TOO LARGE NO JOB TOO SMALL

ESTIMATES GLADLY FURNISHED PHONE NO. 258



## Invest In Independence

We are offering a complete "Home Builders Service"

BUILDING MATERIAL, RIG TIMBERS FAIRBANKS MORSE AGENCY

WHITE HOUSE LUMBER COMPANY

"Service that Satisfies"

## Announcing

THE OPENING OF OUR NEW CAFE MONDAY, NOVEMBER 1st

We have installed the very latest restaurant equipment and, with expert help, are prepared to serve high quality foods at popular prices.

DENVER CAFE

Opposite Hotel Pampa

W. Foster Ave.

# CLASSIFIED ADS

Rates for Classified Ads: One and one-half cents per word per week, minimum twenty-five cents. Strictly cash in advance.

## FOR SALE

**FOR SALE**—Improved Section Cedar County. New six room house, modern; new paper and paint; good big barn, new paint; good young peach orchard; 14 bearing cherry trees; garden with strawberries, blackberries, gooseberries, grapes, etc.; good chicken house; garage; 30 acres fenced hog proof; plenty of good water; wind mill; good tank, no waste land; 160 acres ready for wheat sowing; 75 acres more in cultivation. This is a real home; 6 miles north and two miles west of Hart; one third cash balance terms. John F. DuBose, Plainview, Texas. 20-10.

**FOR SALE**—Coal range cook stoves at bargain prices, \$5.00 to \$25.00. All in good condition. G. C. Malone Furniture and Undertaking Co. 3-14c

**FOR SALE**—1 Ford truck, 1 new Essex touring, 1 Master Buick sedan, 1 Ford touring, 1926; 1 Ford touring, 1925; 1 Ford roadster, 1925. Pampa Buick Co. 25-14c.

**FOR SALE**—125-acre farm 5 miles west Mobeetle. Price \$30 per acre. \$1,000 credit or more cash. One-sixteenth interest in royalty reserved. Will not be rented before Nov. 1. Write or phone W. H. Pugh, R. F. D. No. 3, Mangum, Okla. (28-41c)

**FOR SALE**—Six room house in White Deer; newly decorated, no encumbrance. 1 block west of school. Write Mrs. M. T. Shadix, Erick, Oklahoma. 29-41p.

**FOR SALE**—Sweet milk in 5 gallon lots. 50 cents a gallon delivered. W. C. Christopher. (30-21p)

**FOR SALE**—Furnished house and lot in Haggard Addition Gas in house. \$200 down balance in easy payments. 30-2-T-P

**FOR SALE**—Large coal heater for sale, good as new, phone 174-W. 30-21-P.

**FOR SALE**—Sorghum Case, bundled. See T. C. Neal, three-fourth mile south of railroad on Clarendon Highway, or phone 9005P4. 31-41p

**FOR SALE**—Only restaurant in growing town, paying proposition, worth double amount asked. Harden and Heavis, Groom, Texas. (30-21p)

Ivory enameled breakfast table and four chairs. Priced to sell. See Mrs. Stowell second house east of Christian Church. 31-11-p

**FOR SALE**—Used furniture. Any one wishing to buy used furniture, call on Mrs. I. N. Duncan, 1/2 mile north of Pampa on main highway. 31-14

**FOR SALE**—House and lot, call first house south Pampa Lumber Co. L. J. LAURRELL. 31-11p

**FOR SALE OR TRADE**—Vacant lots in Pampa, Texas, 30 acres in Oklahoma. Good geological survey, Deed and Abstract furnished. Price \$10.00 per acre. E. H. Stover, Mt. Sterling, Illinois, Box 141. 31-21p

**FOR SALE**—No. 16 Round Oak Heater; also hot blast coal heater, good condition (medium size). Call 244, Miady Beauty Parlor. 30-10.

## FOR RENT

**FOR RENT**—Rooms—Maynard Hotel, just opened Everything new and clean. Rates by day, week or month. Located by Pampa Service Station. 29-41c.

**FOR RENT**—Light housekeeping room three mile east on 33 highway on Roy Tinsley's farm—R. R. Mitchell. 29-41c.

**FOR RENT**—Furnished bed room, gas heat. A clean quick place in private home. Suitable for man working tour. \$5 per week. Phone 211J

**FOR RENT**—Latham cottages. Garage with each. As low as \$20 month. Eight blocks south of Main St. crossing and west. 30-41-p

Three light housekeeping rooms three miles west of Pampa on Panhandle highway and half mile south. Phone 9018P13. Mrs. Roy Sullivan. 31-21-p

Light housekeeping room south of Holmes City at the end of lane. Mrs. T. J. May. 31-21-p

**FOR RENT**—Three-room house in block north of Pampa Laundry. Mrs. T. W. Sweetman. 30-2-T-P

## WANTED

One hundred men to build small residence houses. We have the lots. Lee Banks & Co.

**WANTED**—Royalties near tests of locations. Must be on structure. Write W., care this paper. (29-41p)

**WANTED**—To buy used furniture and oil stoves. G. C. Malone Furniture and Undertaking Co. 3-14c.

**Wanted**—Clean, Cotton Rags, Pampa News.

Housework by young lady willing to work for board and school supplies. Call Jewell Sells, Schneider Hotel. 31-11-p

**WANTED**—An elderly woman to do light housework and care for two small children. Apply Postmaster at Postoffice. 31-11c

**WANTED**—Lady wishes charge of rooming house, eating house or cashier work. Apply Gray Pampa Hotel, Room 28. 16-11p

**GIRL WANTED**—Apply Schneider Hotel. 31-11c

## LOST AND FOUND

**FOUND**—Two bay horses, one black mule, one bay mule, one dark gray mule at A. Holmes farm, three miles south Pampa. Come and get them and pay damages. (29-41p)

**LOST**—Octagon Swiss wrist watch, black band, somewhere between Pampa tourist-camp and Cuyler St. Reward. Return to News office. 31-11p

**FOUND**—Money order payable to Commercial Investment Co., Denver Colo. Also check payable to Jessie Hunter. Call at Mayor's office. 30-11c

## MISCELLANEOUS

**FOR QUICK ACTION LIST YOUR** oil leases, farm and city property with Rice and Park. Located just across street from Magnolia Filling Station. 4-14c

We are glad to assist you in planning that new home you have been contemplating building. Our motto, "Service that Satisfies." White House Lumber Co., Pampa, Texas. 11-4c

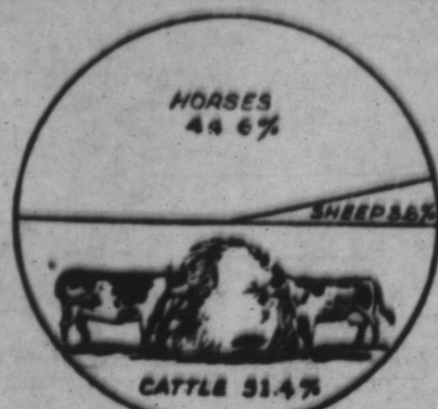
I will start teaching Art in my home November first. Will be glad to have anyone. Mrs. E. R. Lurman, phone 186. 31-11c

**WILL SELL** you a home built to suit you. Small payment down, balance monthly payments same as rent. J. M. Ikard, Star Cafe, 224 South Main. 31-21p

**FOR TRADE**—Model 61 Cadillac, like new, to trade for lots. Phone 203 or call at 123 W. Foster. A. Spangle. 31-11p

"One hundred thousand dead," cried the newsboy. "Where?" asked the excited bystander. "In the New York cemetery."

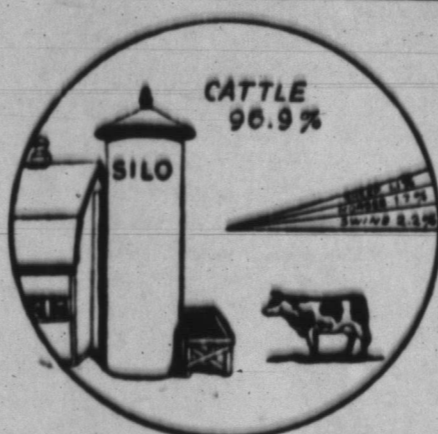
## Hay Cafeteria Service



(Sears-Roebuck Agricultural Foundation)

Our hay crop furnishes one of the largest cafeteria services in existence, according to the Sears-Roebuck Agricultural Foundation. Seventy-eight million tons, it is expected, will be produced in 1928, a large part of which will be consumed by cattle. According to figures put out by the Department of Agriculture, 51.4% of this amount will be eaten by cattle, 44.6% by horses and the remaining 3.8% by sheep. The amount of hay eaten by hogs is very slight, only a small fraction of one per cent of the alfalfa crop. As in the case of other feed crops most of this hay is consumed right on the farm where it is grown.

## Eat Way Through Corn Acres



(Sears-Roebuck Agricultural Foundation)

Eating their way through almost four million acres of canned corn in the form of silage is the Job American cattle, mostly dairy cows accomplish every year, according to the Sears-Roebuck Agricultural Foundation. It has been estimated that they eat 90.9% of the vast amount of silage while of the small amount left, swine consume 2.2%, horses, 1.7% and sheep 1.1%. Very little silage is fed to poultry. All silage made on the farm is consumed on the farm because it is not a product that can be handled successfully through commercial channels.

The rich get richer and poor get well that's another story.

"I'm out of breath," came the whistling cry of the flat tire.

"I've passed you many a time," said the left shoe to the right.

There's one born every minute, and Barnum didn't specify the sex.

Dora might be dumb, but she knows what its all about.

"Unchain a pair," cried the waiter, when his customer ordered two hot dogs.

## CABINET WORK

Screens and Frame Done to Order. Work Guaranteed

T. S. JERNIGAN

Galbraith Fosworth Lumber Yard

## Our Banking Policy

—is that this institution is wholeheartedly interested in the industrial and commercial development of Pampa and tributary territory. It will assist in the development and co-operate to the fullest extent with business concerns whose financial integrity is indicated by capable management.

COMPLETE BANKING, TRUST AND INVESTMENT SERVICE

**Gray County State Bank**  
C. L. THOMAS, President. W. H. DOYLE, Cashier.

# PEOPLE of PAMPA and COMMUNITY

A Special Invitation to Our Party  
**FRIDAY NITE**

Souvenirs for the Ladies.  
Cigars for the Men.  
Candy for the Children.  
Refreshments for Everybody.

Music 6 p. m. to 10 p. m.  
Hear our \$2,000 Violano-Virtouso

**LEDBETTER DRUG CO.**  
Foster PAMPA, TEXAS Phone 266

UNUSUAL VALUES IN

# Fur Trimmed Coats \$19.75

The season's favorite modes—fashioned of beautiful Bolivias and Velours. Handsomely fur trimmed. Each one a distinct style. Sizes for women and young misses. Come in for your winter coat today. This price means a saving to you. your choice of this fine group of new coats for \$19.75



## BEAUTIFUL DRESSES AT \$19.75

These dresses are also values of unusual merit at the price—you will say so when you see them. Black, Claret Red and Green satin and satin face crepes; sizes 14 to 42. Come in and see them Friday or Saturday at only \$19.75

### SPECIAL LADIES' HOSE

Rayon silk and silk lisle hose in big assortment of colors, including black. 10 dozen to sell Friday and Saturday. Supply your needs at

3 Pairs for 87c

### SPECIAL MISSES' HOSE

15 dozen to sell Friday and Saturday. English ribbed in Champagne and nude colors; sizes 6 to 9. A good wearing hose and very cheap at

3 Pairs for 87c

### SPECIAL Fancy Cheviots

500 yards fancy cheviots in assorted patterns for Friday and Saturday selling. This fabric is good for shirts, dresses, comfort lining, etc. Your choice

15c Yard

A Chain Store Corporation

THE STORE WITH THE RIGHT GOODS  
**Diamond C.**  
DRY GOODS CO.

We Make Your Dollars Go Further

Next Door North of Rogers Cafe

**Gray County Seat As Described in West Texas Today**

"When the Creator planned the Garden of Eden, he must have had the beautiful valley of Lefors to use as a pattern, according to residents of this beautiful spot in the exact geographical center of Gray county, Texas. This quaint little village, the county seat of the county, is located among the grape vines and cotton wood trees in the broad valley formed by the North Fork of Red River, just where the river breaks from the Cap Rock to wind its meandering way to the sea. The towering cottonwoods which were used to supply timber for the construction of Fort Elliott, are intertwined with the wonderful grape vines which grow wild throughout the valley and the vines actually enshroud the tops of the giant cottonwoods, and hang down like veils from the spreading branches of the "alamos." The sheltered dells of the valley, protected from the cold winds and the frosts are literally gardens of fruit. Here the cherry trees equal the famed cherries of Japan. The plum both wild and cultivated grows luxuriantly, apples produce astounding crops of wonderful "delicious" and "winsap" varieties and everything that grows in the north Temperate Zone finds its ideal home in Lefors valley.

Lefors boasts that it is the only county seat in Texas that does not have a jail. The sheriff became so discouraged at seeing the jail stand vacant year after year that he finally gave up in despair and leased the cell of the jail to a nearby oil town to be used as a house-garage during its oil boom. One side of the stone jail building was torn out and the cell moved away. Lefors also claims to have the smallest cemetery in one of the oldest towns in the state. Although the town has had settlers for nearly half a century, but four graves are in the cemetery which overlooks the town. The climate is just too healthy, and people cannot die, according to the residents there, many of them being above eighty years of age. They say one of the graves is that of the only doctor who ever settled there, and it was rumored he starved to death from want of practice.

Lefors boasts another distinction. It is the only town on the plains which has a saw mill. The giant cottonwoods of the valley were used to supply timbers for Fort Elliott. The old sawmill used in sawing the lumber is still standing, but has not been used for forty years.

Lefors is right now undergoing a great comeback. The development which has hit the entire north Panhandle country has put new life into the county seat. The population has increased 500 per cent

within six weeks, more than 100 business and residence have been purchased by incoming citizens within the past month. A new school building has been built, several new business houses have been constructed and sixteen residences are pledged to be built soon. The town has enjoyed the distinction of being the smallest county seat in Texas. Three times elections have been held to remove the court house to other points. One time a bare 3 votes saved the county seat for Lefors. The people of the town now declare they are going to build the town so big that all efforts to remove the court house will be abandoned.

Oil is a big factor in the building of Lefors. The big Wilcox field is located but three and one-half miles away. The town is supplied with gas from its own well just one and one-half miles from the court house. Numerous tests are going down throughout the section and Lefors is getting new life from the pool.

The homes of Lefors are supplied with water from wells nine feet deep. Post hole diggers are used to sink the wells, and the water secured is as pure and clear as one could wish. The residents collect grapes from the wild vines by hundreds of bushels. Practically every home has its supply of pure grape juice which they drink the year round. The crops of grain, cotton and maize produce abundantly in Lefors and no where are crops more sure and abundant.

Lefors right now, is after the honors of having the largest West Texas Chamber of Commerce membership in proportion to population in the state. Twenty-five members has been set as the goal for the town and the town leaders have assured the West Texas C. of C. that these memberships will be secured at once. Lefors may not be the largest town in West Texas, but they are determined to become known as the liveliest West Texas Today.

**P-T. A. To Present A Health Program on Friday, Nov. 9**

The Parent-Teachers Association will present a program at the high school auditorium at 8:15 o'clock Friday afternoon, Nov. 9. The following health program will be presented:

Group Singing.  
Prayer, Mrs. Anderson.  
Health Play, First Grade.  
Song, Janice Purviance.  
Essay, "Our first settlers, What have we to thank them for?" Clyde Carter.  
Essay, "Our latest settlers, What have they to thank us for?"  
Topic on "How to prevent venereal disease," Mrs. B. E. Finley.  
Business session.  
Roll Call.  
Topic on "What is the best thing that happened to you this year?"  
"We earnestly hope that all parents will be present and will cooperate with us," says a member of the association. "The organization is working with and through the school with only one purpose in view, the welfare of the children of Pampa."

**Pampa Ice Co. to Open Plant in White Deer**

White Deer.—Representatives of the Pampa Ice Company, which is a chain company, purchased two lots located just south of the Santa Fe station his week adjoining trackage of that company and it is stated that they plan the construction of a cold storage plant here this winter and be ready by spring to begin operating.

It is understood that the consideration involved in the purchase of the property was \$2,300. A small building stands on one of the lots purchased. Crumpacker & Coffee negotiated the deal.—White Deer Review.

**More Water Power Insured.**  
The city has ordered a 30-horsepower motor to connect to the booster pumps at the water wells. "We'll have some pressure now," says M. A. Turner, city secretary. The new motor is expected to be here and installed immediately."

Rancidity in lard is caused by chemical action of the air. The Federal Meat Inspection Service advises that lard should be well rendered, free from moisture and particles of scrap. Lard should be placed in completely filled, tightly closed containers, preferably of glass or earthenware and kept in a cool dark place for preservation.

Mrs. Loren Purviance and daughter, Mrs. Mark Skiles of Pleasant Plains, Ill., visited at the home of Dr. and Mrs. W. Purviance Saturday and Sunday.

The persons who wrote "Thanks for the buggy ride" was no doubt here when the automobile wasn't.

Five hundred of the 900 broadcasting stations in the world are in the United States.

"So this is the life hereafter," said the time-worn nickels as they were thrown in the melting pot.

**A. & C. MERCANTILE CO. GROCERY & MARKET**

Get your good things to eat here—our prices are always right.

**SATURDAY-MONDAY SPECIALS**

- Pure Cane Sugar, 14 lbs ..... \$1.00
- Peaberry Coffee, lb ..... 33c
- Sweet Potatoes, 10 lbs ..... 35c
- Armour's Pork and Beans, large can ..... 10c
- Picnic Hams, whole, lb ..... 19c
- Swift's Bulk Compound, lb ..... 16c
- Frying Size Chickens, lb ..... 35c

Service Our Motto

**FREE! FREE! FREE!** Nice Baking Pan with each lb. of Calumet Baking Powder Remember the address, 216 Cuyler Street.

**"HOT STUFF"**

A rag with a deep-red stain, a paper label bearing "Stearns Canned Heat," an empty can, all may be found in the wayside ditch or probably in one of the alleys, but the story is the same; someone has wanted a drink and the evidence is that they got it.

We think our people are civilized, but some few who drink the "hot stuff" must be eliminated. Blindness, internal complications, a slow agonizing death, yet the will-power of some is too weak. It's a queer old world, isn't it?

More than 40 per cent of nearly 70 headlights submitted to the official headlight testing laboratory of Texas have failed to meet the requirement of the automobile headlight law, according to C. R. Granberry, instructor of engineer in the University of Texas.

Try popcorn for a breakfast cereal, served with milk or cream.

To remove saltiness from a slice of ham, let it stand in sour milk or buttermilk for an hour or two. This will also help to make it tender.

MONDAY-TUESDAY, NOVEMBER 1st and 2nd

**"SON OF THE SHEIK"**  
With RUDOLPH VALENTINO

WEDNESDAY

**"TESSIE"**  
With MAY McAVOY

THURSDAY

**"WE MODERNS"**  
With COLLEEN MOORE

FRIDAY

With TOM TYLER

SATURDAY

**"HIS SECRETARY"**  
With NORMA SHEARER

Comedy each night. Don't miss the Midnight Matinee Sunday Night 12:01 A. M.

**CRESCENT THEATRE**

**Hudson Bay Fur Shop**

"THE SIGN OF PERFECTION"

**FURS**

FROM MANUFACTURER TO WEARER

- |   |            |
|---|------------|
| Regular Price   | Sale Price |
| \$650.00 Hudson Seal Coats, Nat. Squirrel, Kolinsky, Jap Marten and Mink Collars and Cuffs  | \$395.00   |
| \$625.00 Kolinsky Coats   | \$475.00   |
| \$650.00 Mink Coats, dark skins   | \$525.00   |
| \$750.00 Dark Siberian Squirrel Coats, genuine platinum fox collars                         | \$595.00   |
| \$525.00 Natural Russian Pony Coats, Blue Fox Collars                                       | \$375.00   |
| \$495.00 Genuine Silver, Golden and Black Muskrat Coats, Fox and Beaver Collar and Cuffs    | \$325.00   |
| \$375.00 Belgium Buck Seals, Natural Squirrel, Cocoa, German Fitch, Marten Collar and Cuffs | \$250.00   |



- \$395.00 Mendoza Beaver Coats, coca squirrel collar and Cuffs ..... \$235.00
- \$495.00 Scotch Mole Coat, fox collar and cuffs ..... \$375.00

**Buy Your Furs From a Furrier**

The only exclusive Furrier in the Panhandle

Foxes, all the leading shades; Stone Martens and Baumartens reduced 25 per cent regular price. Our location is secured by a long lease. All our FURS carry OUR written guarantee.

Cleaning, Repairing and Remodeling, special orders

**Hudson Bay Fur Shop**

509 Polk Street

Amarillo, Texas

**ANNOUNCING**

The opening of the

**Grand Theatre**

Pampa's New Playhouse

Featuring in Our Opening Picture

**HAROLD LLOYD**

**"For Heaven's Sake"**

One of screenom's greatest productions and Harold Lloyd's second latest picture

FIRST SHOW TUESDAY EVENING 7 o'clock

Wednesday Matinee 2 o'clock and running continuously until 10

ADMISSION CHILDREN 10c ADULTS 35c

Believing that Pampa deserves the best in pictures we are booking only Paramount, Fox and Universal pictures, the world's best.

**Grand Theatre**

SOUTH MAIN AND BROWN STREETS

### Schneider Hotel Co. To Begin New Building at Once

The Schneider Hotel Co. has announced its intention to immediately call for bids and proceed with the construction of a modern hotel on the site, and of the type described in these columns several weeks ago.

The following are the officers of the Schneider Hotel Co.: Alex Schneider, Jr., president, M. C. Parker, vice-president, O. K. Baker, secretary and treasurer. In the active management of the new hotel, Alex Schneider will be general manager and will be in charge of the catering, assisted by O. K. Baker, who will be in charge of the rooms and the front office. The company announces that the present plans are to have the new building completed and open for business by March 1, 1927.

Cross Atkins and Martin, who started the organization, have withdrawn all connection with the company, according to Mr. Schneider, and T. E. Baker and his son, O. K. Baker, formerly in the hotel business in Woodward, Okla., take their place on the board of directors.

O. K. Baker comes to Pampa with the unqualified endorsement of the citizens of Woodward, Okla., where he was reared and educated.

"Mr. Baker has accomplished the rather difficult feat of making a success of business in his 'home town,' writes Joe L. Pope, secretary of the Woodward Chamber of Commerce. He is a graduate of our high school, and a graduate of the U. S. Naval Academy at Annapolis; he is a man of ideals, fine business training, and trustworthy to the highest degree. No man residing in Woodward goes forth with a more complete indorsement than does O. K. Baker. He has always sustained every confidence reposed to him."

Mr. and Mrs. Joe Shelton announce the birth of a daughter Oct. 26. She has been named Joe Ella.

J. E. Brown departed for Rhonessboro last Sunday where he will spend the winter visiting relatives. He expects to return next May.

NO. 192.  
THE STATE OF TEXAS

To the Sheriff or any Constable of Gray County, Texas, Greeting: You are hereby commanded to cause to be punished once each week for a period of ten days before the return day hereof, in a newspaper of general circulation, which has been continuously and regularly published for a period of not less than one year in said Gray County, and, also, to cause to be posted in three public places in Gray County, Texas, no two of which places to be in the same city or town, for a period of at least ten days, exclusive of the day of posting, prior to the return day hereof, a copy of the following notice:

THE STATE OF TEXAS  
To all persons interested in the Estate of W. S. Cambern, deceased: Notice is hereby given that A. S. Cambern has filed in the County Court of Gray County, Texas, an application for the probate of the last will and testament of said W. S. Cambern, deceased, said will being filed with the clerk of said court contemporaneously with the filing of said application, and for letters testamentary thereon, said will being dated August 27, 1926, and which said application will be heard at the next term of said County Court of Gray County, Texas, commencing on the Third Monday in November, A. D. 1926, at the Court House thereof, in the town of Lefors, Texas, at which time all persons interested in said estate may appear and contest said application should they desire to do so.

Herein Fail Not, but have you before said Court on the said first day of the next term thereof this Writ, with your return thereon.

LOW-COST TRANSPORTATION

Star Cars

MORE POWER

Commercial Chassis	\$425
Roadster	525
Touring	525
Coupester	595
Coupe	675
Coach	695
Sedan	775

(F. O. B. Lansing, Mich.)

DURANT MOTORS, INC.  
JESS FLETCHER, Representative

showing how you have executed the same.

Given under my hand and seal of said Court at Lefors, Texas, this 27th day of October, A. D. 1926.

CHARLIE THUT,

Clerk of County Court, Gray County, Texas.  
Issue the 27th day of October, A. D. 1926.

CHARLIE THUT,

Clerk, County Court, Gray County, Texas. 31-21c

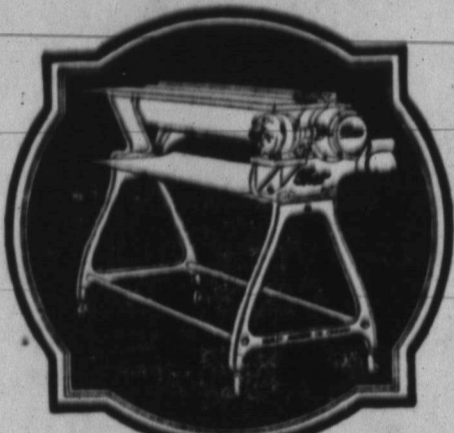
Mr. and Mrs. J. L. Stroups and Mrs. Olys Hazelton spent the weekend in Miami visiting Mrs. Milo Laughlin.

Captain Robertson of Santa Anna has been visiting Mr. and Mrs. W. L. Woodward.

### Canyon May Organize a Kiwanis Club Soon

Canyon, Texas.—Dr. J. W. Stevens and V. G. Hill of Tulla were in the city Monday desiring a conference with citizens with a view of establishing a Kiwanis Club here. Dr. Stevens is one of the district trustees, and will return to Canyon soon to take up the matter with citizens regarding the club.

Mr. Hill is secretary of the Chamber of Commerce in Tulla, and one of his important jobs just now is the building of the new \$50,000 hotel for Tulla. He states that this is the fifth hotel he has helped promote as Chamber of Commerce secretary, and every one has been a great success.—Canyon News.



### SHORTEN THE HOURS

ON IRONING DAY WITH AN

### ELECTRIC Thor MANGLE

We also have Toasters, Waffle Irons, Table Stoves, Percolators and Other Appliances

## Southwestern PUBLIC SERVICE Company

Pampa — Amarillo — Panhandle

## ANNOUNCING

The opening of Pampa's newest Barber Shop. We are now operating a thoroughly modern sanitary Barber Shop, manned by expert workmen and catering specially to Women's Bobs. Visit our shop and become a satisfied customer.

### O. C. PERKINS

NEXT DOOR TO FIRE STATION

## After the Show

Try our 100 per cent

### Iceless Fountain

Delicious Drinks--

--Butter Kistwich Sandwich

Meet Your Friends at the

Pampa Confectionery



## Remember:

We have in connection with our "JEMCO" service a two ton Dodge truck for transporting either of our ELECTRIC or ACETYLENE WELDING plants direct to the spot necessary for quick and efficient repairs.

This "JEMCO" service is all the name implies—PLUS SATISFACTION.

# Jones=Everett Machine Co.

PHONE 243

Pipe Threading and Nipple Work a Specialty

PAMPA, TEXAS



# MONEY SAVERS

THE PEOPLES STORE  
"WE SELL FOR LESS"

### MEN'S SHOES

All leather work shoes, bal style, sewed and tacked sole, some ask \$3.00. Our price only **\$1.95** Each

### SOX

Men's extra heavy part wool sox, fine for boot sox. Only **19c** Pair

### SUIT CASES

Specially priced for three days. Well made of fibre and reinforced with steel frame. **98c** Each

### GLOVES

Men's leather palm gloves, gauntlet or knit wrist. Our regular 25c seller. Only **19c** Pair

### OIL CLOTH

Table Oilcloth in all patterns and colors. Always at the Peoples Store. **34c** Yard

Overalls, blue denim **8c**  
JERSEY GLOVES, pr **19c**  
COMFORTS **\$2.25 and up**  
SUITCASES **\$1.00 to \$9.85**

### HOUSE DRESSES

Marcy Lee House Dresses, nicely made and trimmed, regular \$2.25 seller, special for three days, only **\$1.98** Pair

## 3 DAYS ONLY

FRIDAY---SATURDAY---MONDAY

Here's Why the Crowds Are Always at THE PEOPLES STORE

### SILK HOSE

Ladies' good grade Chiffon Hose, silk to the top. **98c** Pair

### LADIES HOSE

Ladies' Rayon Hose, lister welt, worth 75c pair, now only **49c** Pair

### PERCALE

Several patterns and colors to choose from, Checks and Stripes, only **8c** Yard

### TOWELS

17x34 double-thread Turkish Towels. Worth 25c, only **19c** Pair

### We Sell McCalls Patterns "They're Printed"

Constant leaders in our field is our aim. Buying in large quantities and selling on a lower margin of profit helps us to hold that leadership.

Operating a chain of five modern and well stocked dry goods stores gives our firm a buying power that is known in all wholesale selling centers.

### MILLINERY

Our millinery department is the best stocked in town. Three days only—one big table of ladies' new winter hats to be sold for only **\$3.95** Each

### SHOES

FOR CHILDREN. Solid leather throughout, both slippers and high tops, patent, combination and calfskin. Two lots—**98c and \$1.49**

### DRESSES

One large lot of ladies' silk dresses, including many up to \$19.50. For three days only **\$9.85** Each

### BLANKETS

Double blankets, assorted plaids and solid colors. Worth \$3.00. Only **\$2.15** Pair

### SOX

Men's cotton work or dress sox, blue, brown and black, worth 15c pr. Only **8c** Pair

### SOAP

Witch Hazel and Palm and Olive Oil Soap, three days only, 6 bars for **25c**

### GINGHAMS

Plaids and Checks, good grade, **8c** Yard

### PILLOWS

Large size with good heavy ticking, sanitary, clean, feather filled. Only **89c** Each

Clark's ONT Sewing Thread, always 6 spools for **25c**  
Palmolive Soap, 6 bars **25c**  
OUTING, light and dark colors, yard **16c**  
Pillow Slips, each **24c**  
Hat Boxes for ladies **\$2.45 up**

Merchandise worth buying is all that is to be found at the PEOPLES STORE. Standard brands priced below the regular price. From the cheapest that is good to the best there is.

COMPARE THE QUALITY AND LOWER PRICES AND YOU WILL BUY AT THE PEOPLES STORE.

The Peoples Store

WE SELL FOR LESS

Barber Towels, regular size and worth much more. Only **8c** Each

### Claude High School Team To Play Here Friday, October 29

The Pampa High School football team will meet the Claude High School team here Friday, October 29th. The Claude team is expected to be strong. The following appeared in the Claude News following the defeat of Claude by Amarillo: "The Claude team will have a return date and will wallop that Amarillo bunch, and we don't mean maybe."

The Pampa boys have the "show me" spirit, and with some excellent coaching by Verde Dickey and Oscar Dial, they are expected to rank high by the end of the season. The game Friday will be played on Ayres Field, eight blocks east of the high school building.

#### AT THE METHODIST CHURCH

We had a larger attendance at each service last Sunday than usual. We appreciate the fact that people are turning their attention more to the church. It is one of the best evidences of the highest class of citizenship that they attend church services. There are enough people in Pampa to fill all the churches to capacity every Sunday. THE DOORS ARE OPEN AT THE METHODIST CHURCH, and a hearty welcome awaits any who may come to our services.

The superintendent of the Cradle Roll department in the Sunday school is planning for a baptismal service the first Sunday in November.

For the benefit of some who are not clear in their views, I have agreed to preach on the subject of Infant Baptism next Sunday at the 11 o'clock hour. Any person who cares to hear this subject discussed, is invited to be present.

Sunday school begins at 9:45 a. m.

Preaching 11 a. m., and 7:15 p. m.

Prayer meeting 7:15 p. m., Wednesday, choir practice following.

Board of Stewards meets 7:30 p. m. Friday.

B. J. OSBORN, Pastor.

Finley Banks Addition has lights, gas and water now.

### Mother's Cook Book

Emotion balanced by motion eliminates dead tissue and preserves sanity. Impress and express; inhale and exhale; work and play, study and laugh, love and labor, exercise and rest.

#### VARIETIES OF CHEESE

CHEESE being one of our most valuable of foods we need to review our knowledge of it. As the United States produces a large proportion of the cheese made in the world we should be better informed of our own product, its value commercially and dietetically. We have quite successfully imitated many of the foreign varieties and established our own reputation for the best cheese in the world. We get Stilton, a rich, choice cheese, and Cheddar, pale and nutty, from England. From France comes Gruyere, which is full of large holes like Swiss, and is especially good in cookery; Neufchatel, Camembert and Brie, as well as the tasty and fascinating Roquefort, such a favorite among cheese lovers. From Holland comes the famous Edam; from Germany the odoriferous but well-liked Limburger, which is said to be most delicious, once you get it past your nose.

From the sunny south beyond the Alps comes Parmesan and Gorgonzola. Those who have not cultivated or acquired by inheritance a taste for cheese are deprived of one of the choicest of foods and flavors. As a finish for dinner there is nothing which takes the place of a bit of cheese, a cracker and a cup of black coffee. Roquefort is commonly served thus.

Cream cheese and cheese crackers with a salad are looked upon as a necessary part of a good dinner.

Cheese crackers are prepared by sprinkling mild cheese grated over salted water, dashing on a bit of cayenne and then putting them into a hot oven to melt the cheese.

Many have never tried the good combination of cheese and rice; added with a cupful of white sauce and baked as an escalloped dish it is most wholesome.

Cheese canapés may be served as a first course for luncheon or dinner and are prepared by spreading soft cheese on shaped pieces of buttered bread and finish with a four-inch border of chopped olives and a piece of pimento cut into fancy shape in the center.

Mr. and Mrs. J. D. Sackett announce the birth of a daughter Oct. 25. She has been christened Billie Louise.

Mr. and Mrs. C. C. Dodd were visiting in Borger last Sunday.

### 47th Anniversary of Electric Light Oct 21

"Electric Night," marking the anniversary of the invention of the incandescent lamp by Thomas A. Edison and heretofore a national observance only, became world-wide October 21 when fifty broadcasting stations scattered throughout the world, joined in offering programs to mark the forty-seventh anniversary of Edison's epochal invention. People in the Far East, South America, South Africa, the countries of Europe, Canada and the United States listened to special anniversary programs initiated by leaders in the electrical industry, says the Texas Public Service Information Bureau.

Forty-seven years ago, October 21, after months of patient work, Edison carbonized a piece of cotton sewing thread bent into a loop. This he sealed in a glass globe from which the air had been exhausted. The lamp was put on an electric circuit and was lighted brightly to incandescence and burn-

### Oil Worker Killed by Falling Pipe Monday

Charles Hitson, 39, an employe of the Prairies Oil and Gas Co., was killed in Borger Monday when a pipe fell on him from a truck. He was rushed to an emergency hospital but died shortly afterwards.

Hitson had been employed by the company but an hour when he was fatally injured. He is survived by a wife and three small children.

Mrs. B. L. McCandless of Verdanda Beach, Calif., is visiting her sister, Mrs. J. L. Williams. She expects to remain in Pampa another week before returning to her home.

#### USE A WANT AD

### News Wants Ads Get Result

#### FOR SALE OR RENT

Concrete mixer, engines, air compressors, pumps, saw rigs, paint sprays.

#### UNIVERSAL SUPPLY & MACHINE CO.

G. G. HENDERSON, 210 East 3rd Street, Amarillo, Texas.

#### REAL ESTATE, FARM LOANS, LEASES AND ROYALTIES

List your city property with me. I have calls for residence property, large tracts of land and exchanges for farms.

Good connections with oil firms and real estate dealers over the United States.

F. P. REID & CO. Office, Gray County Bank Bldg.

# Dollar Day

## AT GORDON STORES COMPANY SATURDAY AND MONDAY

In the 'LADIES' READY-TO-WEAR DEPARTMENT we will give ONE DOLLAR OFF on any DRESS, COAT or HAT as a gift of the Gordon Stores Co.

It will pay you to make your selection early.

PRICE PLUS QUALITY is your reason for trading at

## Gordon Stores Co.

Pampa's Bargain Center

## PANHANDLE LUMBER COMPANY

### RIG MATERIAL BUILDING MATERIAL

Quality - Service - Satisfaction

# GREETINGS!

## PAMPA -- PANHANDLE -- ISOM

### OUR THREE STORES

**\$100,000.00 Stock of Hardware and Furniture**

TRY US

WE HAVE IT

QUALITY--SERVICE

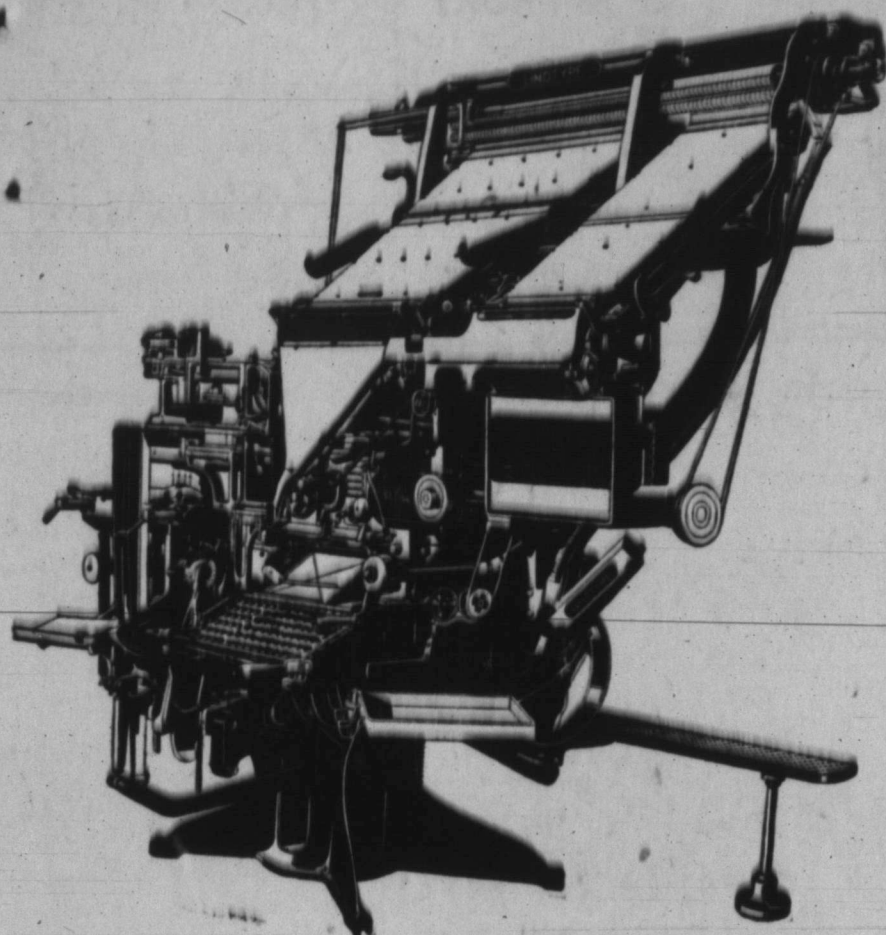
# DUNAWAY BROS. HARDWARE & FURNITURE COMPANY

PANHANDLE

PAMPA "The Home Furnishers"

ISOM

### New Linotype Installed at News Office Gives Operator Command of 568 Characters



With a good deal of satisfaction the editor of the News announces the installation of a new Model 14 Linotype. This mechanical marvel is especially equipped with a complement of type faces which enables us to serve efficiently the large number of persons who look to our publication for enlightenment and entertainment, and who patronize our job-printing department.

The rapidly increasing circulation of the News, together with our desire to place at the command of our advertisers and others the highest grade of typography, induced us to add to our mechanical equipment a multiple-magazine Linotype for the quick and accurate and pleasing presentation of the news of the day, and the production of superior job work.

Our new Linotype enables us to set by machine virtually all forms of composition that previously necessitated tedious work by hand. Our plant is now capable of turning out composition consisting of

whose hand is made famous by the Mergenthaler Linotype Company as "the hand that keeps the world informed"—on the versatile machine sets type of the following faces and sizes:

**NEWS Want Ads Pay.**  
**NEWS Want Ads Pay.**  
**NEWS Want Ads Pay.**  
**NEWS Want Ads Pay.**  
**NEWS Want Ads Pay.**  
**NEWS Want Ads Pay.**  
**NEWS WANT ADS**

This installation is a testimonial to the prosperity of Pampa and vicinity. And that the good people of the community are duly appreciative of our efforts to serve them in all departments of the printing business is manifested by the many compliments received from individual patrons since the arrival of our new machine.

The accompanying illustration will give our readers some idea of the marvelous mechanism of the Linotype, a composing machine on which are assembled matrices (or little brass molds) and lines of type cast—such lines as you are now reading. The particular model of machine which we have just installed carries at one time four sets of matrices—controlled from a standard keyboard of 90 keys, and gives the operator instant command of 568 different characters.

Besides enabling the operator to set various faces and sizes of type, our Linotype makes it possible for him to produce the rules, dashes

and borders which are used in various advertisements in each issue of our publication. When employed in the composing of advertisements, newspaper headings, booklets, catalogs and various other kinds of printed matter, our new Model 14 enables one operator to set in the same time more type than ordinarily could be produced by five or six men or women doing the work by hand—and the composition is incomparably better.

While for a long time we have received the patronage of a host of subscribers, advertisers and printing buyers in general, we look forward to the handling of an even greater volume of business now that we are so well qualified to render the sort of service most to be desired.

It has been our aim to present the news of the day without fear or favor, and to reflect faithfully the ideals and ambitions of our constituents, and we shall continue to devote our talents and resources to the fulfilling of this aim. And of great help to us in the carrying out of our purpose will be our new Model 14 Linotype.

## NOTICE

We take pleasure in announcing that we have just installed and put into operation a \$12,000.00 finishing unit which will insure our customers a quality of work unequalled. We give every other day service on all work.

**CHICKEN REMOVER**  
A GREAT POULTRY REMEDY  
Great for drinking water or mixed in feed thoroughly  
This form of all blood-poisoning  
kills all intestinal worms and parasites  
It forms a salubrious and other  
ingredients known remedies for improving  
the appetite, purifying the blood, toning  
the system and preventing disease. Better  
prevent than try to cure. Contains no alcohol  
or poison. Can be given to all kinds  
of chicks, old fowls and turkeys, any kind  
of weather with good results.  
It cost is very small—a one dollar bottle  
will last 100 fowls more than 100 days.  
The manufacturers are anxious for all  
poultry raisers to try it—50¢ per bottle—  
risk on the following conditions: After  
using 60 days if your flock has not im-  
proved in health, produced more eggs—same  
that hatch stronger and healthier young  
chicks—come back to your dealer—he is  
authorized to refund your money.

PAMPA DRUG STORE

**SCHNEIDER'S**  
**Commercial**  
**Hotel**  
PAMPA - TEXAS  
A First-Class Hotel  
CUISINE A-1 - GOOD ROOMS

**Clarendon Laundry**  
OFFICE ACROSS FROM POST OFFICE  
PHONE NUMBER 264

**BRICK AND TILE CONTRACT WORK**  
BRICK CONTRACTOR WITH TWENTY-FIVE  
YEARS EXPERIENCE  
Art Tile Work, Bath Rooms, Drain Boards, etc.  
**ART JAYNES**  
PHONE No. 37

**PAMPA SHOE AND  
HARNES SHOP**  
324 North Main St.  
PAMPA, TEXAS  
WHERE SERVICE AND  
QUALITY MEET

**The ARMY & NAVY Store**  
169 South Main Street  
Army Blankets Lumber Jackets  
O. D. Shirts Sweaters  
Officer's Boots Breeches  
Regulation Shoes



## Inspect Dodge Brothers improved Special Sedan

Dodge Brothers Special Sedan, impressively bettered during the past few months AND WEEKS, now awaits your inspection.

TOURING CAR	\$930.00
COUPE	\$985.00
SEDAN	\$1045.00
SPECIAL SEDAN	\$1130.00

DELIVERED IN PAMPA  
COBB MOTOR COMPANY

**DODGE BROTHERS  
MOTOR CARS**

# FINLEY-BANKS ADDITION

## THERE IS A ROYAL ROAD TO RICHES

That road leads through land ownership. Buy real estate. Buy it any time, all the time, but above all buy it when the price and location is right.

In your lifetime you have been offered bargains in many things but never before have you been offered bargains in highclass building sites the equal of these we are offering in **Finley Banks Addition.**

**We Will Build You a Home on Monthly Payments**

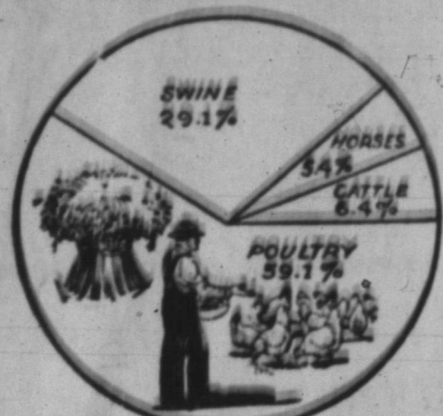
Pampa is a rapidly growing City. If you ever expect to own a home (and who does not?) now is the time to secure that lot. Come to our office and let us show you.

**LOTS 50x125  
PRICES \$195.00 UP  
TERMS VERY EASY**

# FINLEY-BANKS ADDITION

DOWN TOWN OFFICE  
SMITH BLDG. ROOM 4 and 5

**Chickens Top Wheat Eaters**



(Sears-Roebuck Agricultural Foundation)

Wheat and flour are synonymous in the minds of many. As a matter of fact, however, forty per cent of our mammoth wheat crop never leaves the farm at all, but is used for seed purposes and feeding farm animals, states the Sears-Roebuck Agricultural Foundation in a survey recently completed on wheat consumption. It is used most abundantly for feeding in those sections of the country having a wheat surplus and a shortage of the usual feed crops such as corn, oats and barley. The poorer qualities of wheat, not suited for making flour, are kept behind for this purpose.

Chickens are the heaviest consumers of wheat fed on the farm using 59.1% of all wheat so distributed. Swine are next, with 29.1%. In wheat-growing sections horses are fed wheat and consume on an average 6.4% of all wheat fed on the farm, while the remaining 6.4% goes to cattle.

**"Feeling His Oats"**



(Sears-Roebuck Agricultural Foundation)

Only a fourth of our oats crop goes into porridge and other table supplies, according to a survey by the Sears-Roebuck Agricultural Foundation. The remainder stays on the farm where it is fed to as many Dobbins and Baldies as are left to enjoy it. With the coming of the truck and tractor, a smaller percentage of oats fed to farm animals goes to the stable and more finds its way into the pigsty. At present horses consume 67.8% of the oats fed to farm animals, cattle 15.2% and swine 10.8%. Oat chops have been found to be ideal for producing rapid growth in young pigs. Poultry consume 5.9% and sheep the remaining 2.3% of the total amount of oats fed to animals.

The Prairie Oil and Gas Co. has made a location in section 14, block 3. This is on the Finley Banks addition.

**THE YOUNG LADY ACROSS THE WAY**



The young lady across the way says this country has been paternalistic long enough and it's high time the women were getting their reforms through and filling some of the new federal offices themselves.

(© by McClure Newspaper Syndicate.)

**Degrees of Poverty**

People reckon themselves poor as they lack money, yet there is a greater poverty. Many men and women go through the world unaware of the beauty, the goodness, and the glories in it. Such people, though they have money, are poor indeed.—Grit.

**New England Pie**

The New England pie has an individuality all their own, it is the spoonful of more of molasses which is added to all berry pies.

**Bridge Pie**

Take one cupful of dates, three-fourths of a cupful of nuts, one cupful of sugar, one-fourth cupful of butter, four tablespoonfuls of milk, two egg yolks. Mix all together and fold in the stiffly beaten whites of two eggs, flavor with vanilla and bake in one crust.

Mrs. Rodford McKay is the guest of Mrs. Raymond Harroue this week.

**THE WHY OF SUPERSTITIONS**  
By H. IRVING KING

**HENYARD MAGIC**

IN SOME parts of the South, it is believed that if a bright fire is kept burning upon the hearth it will prevent chicken cholera among the hens. In some sections of the country there is a superstition that the throwing of a handful of stones upon a fire while it is burning brightly will prevent the chickens from being carried off by hawks. There is another means of preventing the ravages of hawks upon the chicken yard and that is by waving a lighted candle over the eggs when a "setting" is placed under a hen. Chicks hatched from those eggs will be safe from their enemies of the air. This latter superstition is quite common in England and is sometimes found in rural districts of this country and Canada. The same may be said of the belief that it is unlucky to set a hen after dark and the one which says that no good will come of a setting of eggs laid after sunset.

All these superstitions are directly traceable to the connection between the cock and the sun in all the old mythologies. The cock was an emblem of Mercury because of his supposed vigilance but was also regarded as a "solar animal" and as such sacred to the sun-gods Osiris, Serpis, Jupiter and Apollo. Therefore, we protect our henyards by sun worship. The fire upon the hearth is the imitative sun. When we throw stones into it to keep off hawks we do a little "stunt" in sympathetic magic. The stones represent the feathered depredators which we thus consign to the flames and the sun-god does the rest. The candle waved over a setting of eggs is an imitative sun and the eggs are thus consigned to the care of the sun-god whose sacred bird is the cock. Setting a hen after sunset is bad luck because the sun-god no longer is in the sky to protect them from evil influences.

(© by McClure Newspaper Syndicate.)

Mr. and Mrs. J. D. Sugg motored to Wellington Saturday where they visited Mr. Sugg's father. They returned Sunday evening.

USE A WANT AD

Mr. and Mrs. P. O. Sanders, Miss Dee Breeding and Hugh Breeding motored to Wheeler Sunday where they visited friends and relatives.

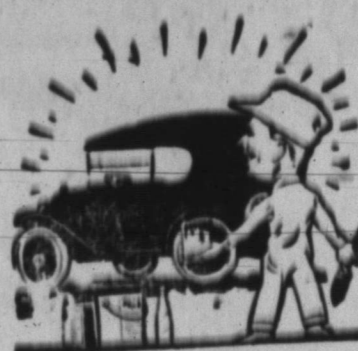
George R. Ragsdale of Perryton was in Pampa over the week-end on business. He is in the mercantile business in Perryton.

**A. B. SHORT & COMPANY**

Accountants & Auditors  
Tax Consultants

SMITH BUILDING AMARILLO, TEXAS

Accounting Systems Specially Designed



**DO IT WITH DUCO!**  
Give the old car a coat of  
**DUPONT DUCO**

and it will look like a show-room model. Just brush it on—it dries fast and lasts. We'll gladly tell you more about it.

Lumber and Building Material

**The Fox Rig Co.**

Phone 210

**News Wants Ads Get Result**

**POULTRY, EGGS AND HIDES**

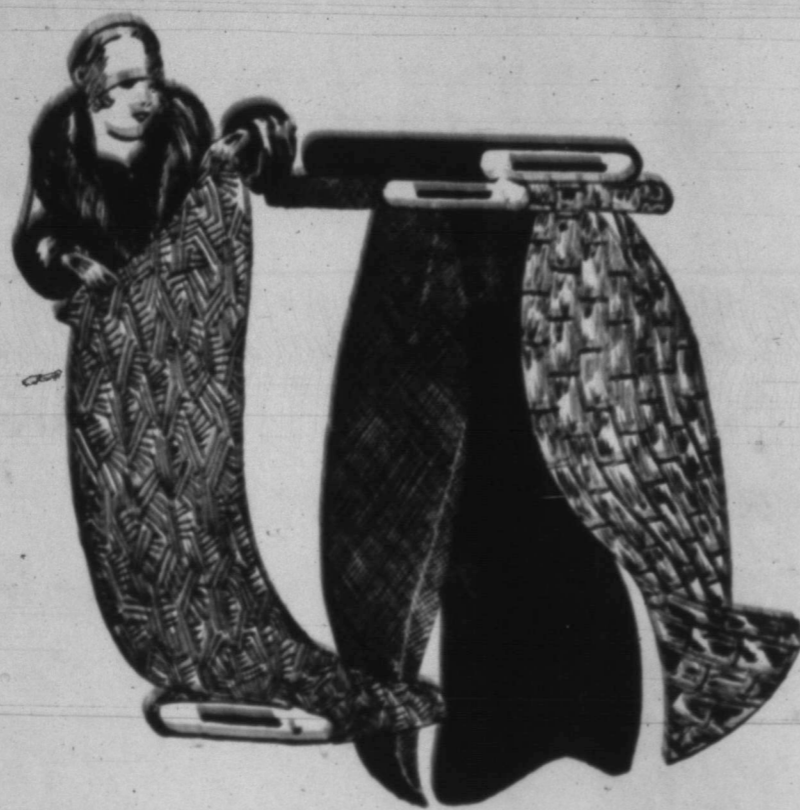
Dressed Chickens our specialty. Fresh candeled eggs at all times. If you have any to sell see us. If you want to buy call us.

**FEEDS**

We have a full line of feeds to sell. Bran shorts, oil meal, dairy ration, corn chops, corn, ground oats, ground barley, threshed maize, alfalfa lass, Superior Alamo horse and mule feed, Superior chicken feed, egg mash, hen scratch, chick scratch, chick starter, corn feed meal, chicken fatner, oyster shell, charcoal and beef scraps.

**C. C. Dodd Produce & Hatchery**  
WE DELIVER IN THE CITY LIMITS

**Winter 'll Soon Be Here**



In fact, it is here some day, so why delay longer the purchase of warm wear? Note these suggestions and heed them for personal comfort and protection.

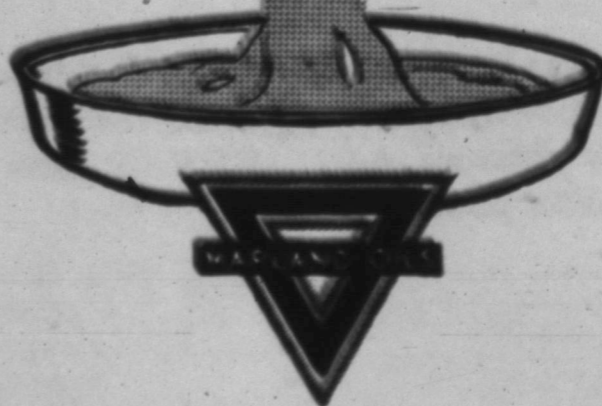
- |                       |             |
|-----------------------|-------------|
| COATS                 | LUMBERJACKS |
| SWEATERS              | SILKS       |
| DRESSES               | WOOLENS     |
| HOSIERY               | OUTINGS     |
| BLANKETS AND COMFORTS |             |

**J. E. Murfee & Co.**  
Outfitters to the Whole Family

**A Simple thing that will add years of usefulness and reduce repair bills on your car**

*Here it is*

Have your crank case drained regularly—preferably every 500 miles, and refill with the right grade of Marland Super Motor Oil—the service is free at all Marland Stations and from Marland Dealers.



**MARLAND SUPER OILS**  
MARLAND REFINED UNDER EXCLUSIVE PATENTS

Marland Dealers in This Territory Are:

Southern Service Station  
424 S. Cuyler St.

Lefors Service Station  
129 Houston St.

Penmark Service Station  
461 N. Cuyler St.

**MARLAND REFG. CO.**  
Gray and Foster St., Phone 131

# Heating Comfort---



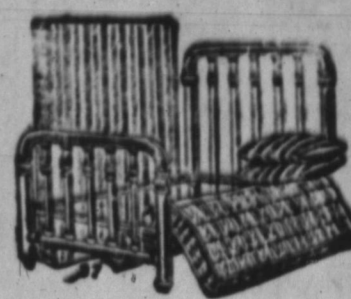
You can close the doors and windows and light a BROOKS GAS HEATER, but there is not the slightest presence of escaping or unburned gas.

Here is a gas heater that is scientifically built, one that gives the best heat at the lowest cost. The same quality is built into our gas ranges.

Buy a BROOKS.

# Sleepless Nights Call For Simmons Beds

You never have that tired feeling in the morning if you have rested well. Simmons beds are constructed so that the entire body is at rest.



We can furnish Simmons Beds in the latest designs and finishes. Let us show you our complete line.

BE SURE IT'S A SIMMONS.

## QUANTITY BUYERS OF QUALITY STOCK

# G. C. MALONE FURNITURE & UNDERTAKING CO.

### QUARTERLY REPORT

Of Miriam Wilson, County Treasurer of Gray County, for the Quarter ending the 31st day of July, 1928.

#### JURY FUND—1st Class

To balance in hands of Treas. last Quarterly Report	\$2,899.51
To amt. received by Treas since filing last Quar. Report	785.82
By amount paid out by Treasurer	60.00
By amount transferred to other Funds	2,000.00
By 2 1/2 per cent commission on amount received since filing last Quarterly Report	19.64
By 2 1/2 per cent commission on amount paid out since filing last Quarterly Report	1.50
Total Debits and Credits	3,885.33 2,081.14
Balance in hands of Treasurer	\$1,604.19 \$1,604.19

#### ROAD AND BRIDGE FUND—2nd Class

To balance in hands of Treasurer, last Quar. Report	636.94
To amt. rec by Treas. since filing last Quar. Report	218.62
By amount paid out by Treasurer since filing last Quarterly Report	918.65
By 2 1/2 per cent commission on amount received since filing last Quarterly Report	5.46
By 2 1/2 per cent commission on amount paid out since filing last Quarterly Report	22.96
Total Debits and Credits	855.56 947.07
Balance in hands of Treasurer	\$ 91.51 \$ 91.51

#### GENERAL FUND—Third Class

To balance in hands of Treas., last Quarterly Report	\$2,090.37
To amount received by treasurer since filing last Quarterly Report	1,225.05
To amount transferred from other Funds since filing last Quarterly Report	4,000.00
By amount paid out by Treasurer since filing last Quarterly Report	6,246.72
By amount transferred to other Funds, since filing last Quarterly Report	1,000.00
By 2 1/2 per cent commission on amount received since filing last Quarterly Report	50.62
By 2 1/2 per cent commission on amount paid out since filing last Quarterly Report	156.16
Total Debits and Credits	7,315.42 7,433.50
Balance in hands of Treasurer	118.08 118.08

#### COURT HOUSE AND JAIL FUND—4th Class

To bal in hands of Treasurer, last Quarterly Report	\$4,336.09
To amount received by Treasurer since filing last Quarterly Report	1,191.92
By amount paid out by Treasurer	884.18
By amount transferred to other funds	2,000.00
By 2 1/2 per cent commission on amount received since filing last Quarterly Report	29.79
By 2 1/2 per cent commission on amount paid out since filing last Quarterly Report	22.10
Total Debits and Credits	5,223.01 2,533.07
Balance in hands of Treasurer	\$2,591.94 \$2,591.94

#### STATE HIGHWAY FUND—5th Class

To bal in hands of Treasurer, last Quarterly Report	\$1,748.43
To amount received by Treasurer since filing last Quarterly Report	791.52
By amount paid out by Treasurer	2,102.33
By 2 1/2 per cent commission on amount received since filing last Quarterly Report	33.54
By 2 1/2 per cent commission on amount paid out since filing last Quarterly Report	52.55
Total Debits and Credits	2,490.16 2,173.42
Balance in hands of Treasurer	\$ 316.74 \$ 316.74

#### WATER FUND—6th Class

To bal in hands of Treasurer, last Quarterly Report	\$ 194.38
To amount received by Treasurer since filing last Quarterly Report	165.52
By amount paid out by Treasurer	175.99
By 2 1/2 per cent commission on amount received since filing last Quarterly Report	4.32
By 2 1/2 per cent commission on amount paid out since filing last Quarterly Report	4.32
Total Debits and Credits	205.99 185.91
Balance in hands of Treasurer	\$ 85.99 \$ 85.99

#### WATER FUND—7th Class

To bal in hands of Treasurer, last Quarterly Report	\$1,201.05
To amount received by Treasurer since filing last Quarterly Report	147.74
By amount paid out by Treasurer	205.46
By 2 1/2 per cent commission on amount received since filing last Quarterly Report	3.09
By 2 1/2 per cent commission on amount paid out	

### Wellington Council Extends Fire Limits

Wellington, Texas.—At the meet- of the city council last Monday night it was decided to increase the fire limit area here by adding to the limits the east halves of blocks No. 219, 233 and 234. This move has been in contemplation for some time but has not been considered practicable until now. Routine business occupied the councilmen during the rest of the meeting.—Collingsworth Standard.

### 'Buy a Bale and Save a Bale' in Wellington

Wellington, Texas.—A. L. Cochran has started a "Buy a bale and Save a Bale" campaign in Wellington. Last Tuesday he bought a bale and placed it in front of his store. He said he was afraid he might be forced to join the "Burn a Bale" League by some careless smoker, so he had his cotton insured. Mr. Cochran intends to hold his cotton for a higher price.—Wellington Leader.

since filing last Quarterly Report	6.88
Total Debits and credits	1,419.49 286.02
Balance in Hands of Treasurer	\$1,133.47 \$1,133.47

#### TIME WARRANT FUND—8th Class

To bal in hands of Treasurer, last Quarterly Report	\$ 496.89
To amount received by Treasurer since filing last Quarterly Report	115.07
By 2 1/2 per cent commission on amount received since filing last Quarterly Report	2.87
Total Debits and Credits	601.96 2.87
Balance in hands of Treasurer	\$ 599.09 \$ 599.09

#### ROAD 2 FUND—9th Class

To bal in hands of Treasurer, last Quarterly Report	\$ 673.25
To amount received by Treasurer since filing last Quarterly Report	287.84
By amount paid out by Treasurer	785.42
By 2 1/2 per cent commission on amount received since filing last Quarterly Report	7.19
By 2 1/2 per cent commission on amount paid out since filing last Quarterly Report	19.63
Total Debits and Credits	961.09 812.24
Balance in hands of Treasurer	\$ 148.55 \$ 148.55

#### 2nd SINKING FUND—11th Class

To bal in hands of Treasurer, last Quarterly Report	\$ 935.54
To amount received by Treasurer since filing last Quarterly Report	82.60
By 2 1/2 per cent commission on amount received since filing last Quarterly Report	2.04
Total Debits and Credits	1,018.16 2.04
Balance in hands of Treasurer	\$1,016.10 \$1,016.10

#### 3rd SINKING FUND—12th Class

To bal in hands of Treasurer, last Quarterly Report	\$1,015.05
To amount received by Treasurer since filing last Quarterly Report	123.87
By 2 1/2 per cent commission on amount received since filing last Quarterly Report	3.09
Total Debits and Credits	1,142.92 3.09
Balance in hands of Treasurer	\$1,139.81 \$1,139.81

#### WATER FUND—13th Class

To bal in hands of Treasurer, last Quarterly Report	\$ 111.24
To amount received by Treasurer since filing last Quarterly Report	67.97
By amount paid out by Treasurer	3.35
By 2 1/2 per cent commission on amount received since filing last Quarterly Report	1.19
By 2 1/2 per cent commission on amount paid out since filing last Quarterly Report	.38
Total Debits and Credits	359.21 4.82
Balance in hands of Treasurer	\$ 186.59 \$ 186.59

#### 4th SINKING FUND—14th Class

To bal in hands of Treasurer, last Quarterly Report	\$ 448.85
To amount received by Treasurer since filing last Quarterly Report	82.00
By 2 1/2 per cent commission on amount received since filing last Quarterly Report	2.04
Total Debits and Credits	489.25 2.04
Balance in hands of Treasurer	\$ 487.19 \$ 487.19

Examined and approved in open Commission's Court of Gray County, at Pampa, this August 26th, 1928.  
 T. M. WOLFE,  
 Presiding Officer of Commission's Court.  
 CHARLES TART, Co. Clerk Gray County.

9142  
**The First National Bank**  
 Pampa, Texas

**Better Secure a Safety Deposit Box Now for Your Valuable Papers**

B. E. FINLEY                      DE LEA VICARS  
 President                                      Cashier

Accounting and Taxation in all their branches. A system for your particular need. Personal attention based on 20 years successful experience.

**JOHN S. OGLESBY**  
 Certified Public Accountant of Claude, Texas. At Schneider Hotel Saturday and Sunday. (At Lefors until Saturday.)

**Your Groceries by Phone**

There's no need of "dropping around" to our Store. You can telephone your order and be assured of the same satisfaction guaranteed you when you buy your groceries across the counter. Market in connection.

**HORN & COFFEE**  
 PHONE 5 FOR QUICK DELIVERY

### Officials To Unite In Effort To Obtain M K and T Railroad

M. A. Turner, secretary of the Pampa Chamber of Commerce, is planning to have the officers of the Clarendon, Panhandle and McLean chambers of commerce meet in Pampa in the near future. He proposes to have a committee appointed to make an effort to have the Missouri, Kansas and Texas Railway Co. build a railroad through Pampa.

The railway company began the construction of a line from Galveston, Texas to Denver, Colo. several years ago, but when the United States entered into the World War the line had only been completed from Galveston to Wellington, Texas. Since that time there has been no further work on the road. He wants the different organizations to endeavor to have the road built from Wellington across to Clarendon, and then through Pampa and up through the Hutchinson County oil field.

A more direct route is available, but it is believed that due to the roughness of the land on the more direct route, the company might be induced to build through Clarendon and Pampa.

If the road were built to follow such a route, the exports from Pampa would be on a direct shipping route to Galveston, according to Turner.

### Court Report Shows 85 Convictions Out Of Every 100 Trials

Out of every 100 cases tried in Texas there are 85 convictions, 15 acquittals, 13 appeals and 5 reversals, according to a report made by Olin W. Finger, clerk of the court of criminal appeals.

The following is a statement showing the number of felony cases tried in Texas and results for a ten-year period ending Aug. 31, 1926: trials 2,012, convictions 23-002, reversals 1,308.

Figures were compiled from reports of district clerks. The law requires such reports and that the Attorney General embrace the data in his biennial report to the Governor. The reports are not complete in that only part of the clerks made reports to the Attorney General.

Other information is obtainable from the reports mentioned, such as the number of indictments, dismissals, and the nature of the offenses. To embrace all would extend this statement too much, and additional facts obtainable from the public records mentioned will, when compiled, be embraced in another statement.

The foregoing relates to felony cases only. The data at present available, relating to misdemeanors, covers but four years, and discloses the following:

Trials, 32,099; Convictions, 28,046; Reversals, 184.

The misdemeanor reports do not include trials in justice and corporation courts, but only those in county courts of the counties reporting. The data touching appeals and reversals was compiled from the records of the Court of Criminal Appeals.

Missie Bell Roberts, who has been in the Northwest Texas Hospital in Amarillo for some time with infantile paralysis, has returned to her home in Pampa. She is reported to be greatly improved.

Lyla Bell Sharp spent the weekend in Stratford.



**GEORGETTE BEAUTY SHOPPE**  
 Marcelling  
 Permanent Waving  
 Hair Bobbing  
 Balcony of  
 H. & K. Drug Store  
 One Block West of First  
 National Bank

### "Make The Living Room Attractive," Says This Woman

Spring is well known to move young men to thoughts of love; it remains for Miss Mayne Lee Hayden to express the longings of Autumn. "The bright autumn colors which are seen everywhere in nature," she says, "make one determined to re-finish the old living room and make it a place of comfort and beauty for the entire family this winter. For the living room is the heart of the home, and should not overlook the needs of any member of the family."

Whole chapters may be written on inexpensive ways of treating the various parts of the room, but I will here confine my suggestions to the floors and walls.

**Floors Not A Big Job**  
 "Worn out floors may be planed smooth down to the natural wood and then a commercial filler applied. Follow this with two or three coats of a good floor varnish and wax and polish, and presto! you are amazed!"

"A second method is to get a good painted floor by planing the rough places and then combine paint and the best floor varnish available, three parts paint to one of varnish. As to color, use one in harmony with the dominant color of the room, making it soft and subdued and in general slightly darker than the walls."

"Any one of these finishes will allow the use of small braided rag or hooked rugs, which may be made,—but that is another story. The beauty of such rugs is many fold, namely: they use old materials, make no extra cost, are durable, and give a pleasing result in the furnishings. Large rugs should be of neutral or subdued colors, blending in with general color

scheme. Avoid spotty effects in large or small rugs.

**Walls A Background.**  
 "Now go to the walls. Miracles may be worked by doing them over in putty, ecru, cream or gray by the aid of water-tints or a plain un-glistening paper. Use no border of any kind, but a picture molding at the ceiling turn, for surely you have pictures. Let the ceiling be plain and un-glistening, also, and of a tone a bit lighter than the walls, or else in ivory. If figured wall paper is used, make it of very small design or even repeat. If by any chance you use paper of large design, let it be very indistinct, since the walls form the background for the furnishings in the room."

**Do A Little Each Year**  
 "I would give the woodwork three coats of the best paint available because it is cheaper and requires less work than enamel finish and yet gives just as pleasing a result. I suggest putty-color on all woodwork because it will blend nicely with old furniture."

"If these things are done this

### BAPTIST CHURCH

Dr. L. J. Mims of Dallas will preach at the Baptist church at both morning and evening services Sunday. Most of our people have heard him and will be glad to now have the privilege of hearing him again. We are anxious for a large attendance.

The pastor is in a good meeting at Higgins, but expects to be back in his field by Monday.

Sunday school services are held at 10:00 o'clock Sunday morning, preaching at 11:00 o'clock in the morning and at 7:45 in the evening. B. Y. P. U. at 7:45 Sunday. W. M. U. at 2:30 o'clock Wednesday afternoon, and prayer meeting at 7:30 o'clock Wednesday evening.

You will always find a hearty welcome at the Baptist church.

F. A. TIPPEN, Pastor.

year, even though the furniture, draperies, pictures, and other furnishings are untouched, the family living room will become a pleasant gathering place for the home circle."

F. P. Kelley returned from Oklahoma last week where he spent several days. He reports that business in many of the cities he visited was below normal.

Paying rent is wasting money. Why not let us build you a home. You pay for it by the month. Lee Banks & Co., Rooms 4 and 5, Smith Bldg. 31-11c

**EAT AT  
CHILI KING'S CAFE**

Try our Chili, It's the Best in Pampa

All kinds of Sandwiches	each	10c
Hot Soup		10c
Stew		25c
Best Coffee in Town		5c

**Excellent Cooking—Excellent Quality**

**PARIS HARGIS, Owner**  
 1/2 Block East of Cuyler on Atchison Street

**GRAY - PAMPA HOTEL**  
 IN THE HEART OF PAMPA

A place for those who choose the best.

112 South Main Street  
 A. Holmes Building  
**A. E. SHAW, Manager**

**HAVE YOUR  
ABSTRACT**

COMPILED BY A WELL ESTABLISHED, RELIABLE AND COMPETENT FIRM.

**Gray County Abstract Co., Inc.**  
 P. O. SANDERS                      H. W. JOHNS  
 PHONE NO. 240  
 PAMPA, TEXAS

**A Word To The Wise  
Is Sufficient**

WE WILL CONTINUE FOR ONE MORE WEEK OUR SALE  
ON TIRES AT WHOLESALE COST

**Never Before Have Tires Been Sold In Pampa As Cheap**

ENTIRE STOCK TIRES AND TUBES, EXCEPTING CLINCHERS AND 29x4.40, AT ACTUAL WHOLESALE COST

NOW IS YOUR OPPORTUNITY TO SAVE SOME MONEY.  
SALE CONTINUES ONE MORE WEEK ONLY

**TEXAS GARAGE**  
 Corner Main Street and Kingsmill Avenue PAMPA, TEXAS

**PUBLIC SALE**  
 OCTOBER 30TH, 1926  
 BORGER, TEXAS


The Following Described Personal Property To wit:

<p><b>10—HEAD OF HORSES—10</b></p> <p>1 pair well matched Blood Bay Horses, 9 years old, weight 1500 each.</p> <p>1 pair well matched Sorrel Horses, 9 and 10 years old, weight 1800.</p> <p>1 Brown Horse, 6 years old, weight 1450.</p> <p>1 Bay Horse 7 years old, weight 1500.</p> <p>1 Roan Horse, 10 years old, weight 1800.</p> <p>1 Bay Horse, 9 years old, weight 1800.</p> <p>1 Black Horse, 8 years old, weight 1550</p> <p>1 Bay Saddle Horse.</p>	<p><b>7—HEAD OF MULES—7</b></p> <p>1 pair well matched Gray Gin Mules, 9 years old, weight 1200 each.</p> <p>1 pair well matched Brown Gin Mules, 9 years old, weight 1200 each.</p> <p>1 pair well matched Brown Gin Mules, 9 and 10 years old, weight 1250.</p> <p>1 Iron Gray Horse Mule, 7 years old, weight 1250.</p>
--	--

**EQUIPMENT—Good Wagons and Harness for all this stock and some extra well.**

**G. C. WELSH, Owner**  
 TERMS CASH

In case of bad weather the sale will be held the following Monday.



**Your  
Choice  
of Many**

When you come here to buy baked goods you are not limited to a choice from a few items. We bake each day, many different articles—all good, and always fresh.

**Pampa Bakery**  
 FRED SCHAFFNER, Prop.  
 Phone 81                      133 Foster Ave.

*The*  
**Greatest Buick Ever Built**  
 is  
**the Greatest Value  
Ever Offered**

Look at the new Buicks—note their prices—compare their grade and refinements with those of other cars—then drive one of them! You've never driven anything like it, you've never seen value to compare. Here is the Greatest Buick Ever Built!

<b>Series 115</b>		
5 Passenger 2-Door Sedan	(Model 20)	\$1199
4 Passenger Sport Roadster	(Model 24)	1199
5 Passenger Sport Touring	(Model 25)	1229
2 Passenger Coupe	(Model 26)	1199
4 Passenger Country Club Coupe	(Model 26a)	1279
5 Passenger 4-Door Sedan	(Model 27)	1299
4 Passenger Coupe	(Model 28)	1279
<b>Series 120</b>		
5 Passenger 2-Door Sedan	(Model 40)	\$1399
5 Passenger 4-Door Sedan	(Model 47)	1499
4 Passenger Coupe	(Model 48)	1469
<b>Series 128</b>		
7 Passenger Sedan	(Model 50)	\$1999
5 Passenger Brougham	(Model 51)	1925
4 Passenger Sport Roadster	(Model 54)	1499
4 Passenger Country Club Coupe	(Model 54c)	1765
5 Passenger Sport Touring	(Model 55)	1525
5 Passenger Coupe	(Model 56)	1850

*All prices in U. S. dollars, plus car tax and license*

*The Greatest Buick Ever Built*

**Underwood Motor Co.**

**\$20,000 Building Under Construction Here**

The \$20,000 brick and tile building now under construction on the north side of West Foster Ave., between Russel and Somerville St. will be completed about Nov. 15, according to John Haggard, owner of the building.

The building will be 100 by 140 feet, and is being built with brick anytile. The south side will be occupied by the Russel garage and machine shop, and the north side will be occupied by a battery shop and implements salesquarters. Fuller-Barnett will operate the battery shop and John Haggard, owner of the building will deal in tractors and farming implements.

**Tax Payers Furnish A Part of Car Fare**

For some years, people from other cities who paid 5 cents for a ride in New York subways have wanted to know why the fare on street cars in their home cities was 7 or 8 cents.

Comptroller Berry of New York, answered that question when he recently stated that the cost of giving a 5 cent ride in New York was 8 cents, that the tax payers of New York paid the extra 3 cents in these ways:

- 1. Constructed the subways.
  - 2. Leased them to the operating railway company at a rental that does not cover interest on money invested by the city in the subways.
  - 3. The city does not collect any taxes on subway property, as it does on railway properties owned by private companies such as supply transportation in other cities.
- Berry figures that supplying a ride that costs 8 cents to give, for 5 cents is costing New York tax payers \$13,000,000 a year, and that unless the situation is remedied, the City of New York may have a deficit that will ruin its credit.

**PRESBYTERIAN SERVICES**

Presbyterian services will be conducted at 11 o'clock Sunday morning at the high school auditorium. Everyone is invited to attend the services.—W. M. BAKER, minister in charge.

**Borger Man Is Shot And His Car Stolen**

O. C. Kirk was shot down and his car stolen Monday night near Electricity, an oil camp close to Borger. He suffered bullet wounds in his abdomen, but is expected to recover, according to reports here.

Kirk had taken a man to a tent show, whom he had known as Fred. On returning from the show something went wrong with the car, and when he stopped the other man pulled a gun and fired without warning, according to Kirk. A second bullet grazed Kirk's head. He managed to make his way to the oil camp nearby and reported the trouble.

Kirk's home is believed to be in Bucklin, Kans., according to a dispatch from Dodge City, Kans.

Winter will soon be here. Why not let us build you a home on monthly payments. See Banks & Co., Rooms 4 and 5, Smith Bldg. 31-11c

Mrs. Olys Hazelton will entertain the members of her expression class Friday evening with a Halloween party at the home of Mrs. J. L. Stroupe.

**Borger, Isom, Dixon Creek Incorporated**

The citizens of Borger, Isom and Dixon Creek townships voted Tuesday to incorporate the three towns. The vote carried 96 to 5. The small number of votes cast is due to the fact that a large majority of the inhabitants have lived there less than six months, so that they were not eligible to vote.

John Miller was named mayor and head of the temporary city government. I. Fieig and Dr. W. T. Malone were elected commissioners. These officers will serve until April when the biennial election will be held.

**30-Room Hotel Opens.**

The Gray Hotel opened last week in the A. Holmes building just south of the railroad tracks. The hotel has thirty rooms and is on the second floor. The first floor is not completed yet. It will be occupied by a dry goods store on the south side, and a barber shop and a cafe on the north side. A. E. Shaw is operating the hotel.

Mr. and Mrs. Neal McCullough have returned from El Paso, where Mr. McCullough has been attending the Shriners Convention.

**IT IS STRANGE**  
 Isn't it funny?  
 That, so many  
 Business men  
 Will get up in the morning  
 Shave with an advertised razor  
 And advertised soap,  
 Put on advertised underwear,  
 Advertise hose, shirt, collar, ties,  
 shoes, and suit;  
 Seat themselves at the table  
 And eat advertised breakfast food  
 Drink advertised coffee or substitutes,  
 Put on an advertised hat,  
 Light an advertised cigar,  
 Go to their place of business in an advertised automobile  
 And  
 Turn down an advertising plan  
 On the ground  
 That  
 Advertising doesn't pay?—Hartford Agent.

Mayor F. P. Reid attended a meeting of the Tri-State Fair Board in Amarillo the first of the week.

Miss Lucile Elkins, formerly with the W. P. Davis Co., has accepted a position as bookkeeper with the Dunaway Bros. Hardware Co.

We will build you a home on Finley Banks Addition. Small payment down, Balance monthly like building and loan plan. 31-11c

Mr. and Mrs. Will Dodd were the week-end guests of Mr. and Mrs. C. C. Dodd.

**Announcing the Opening November First of**  
**HOTEL RITZ**  
 Pampa's Newest Hotel  
**New and Modern Reasonable Rates**  
**MRS. B. MARTINEZ, Prop.**  
 South Main and Tyng Streets

**LISTEN IN ON THE NEW IMPROVED RADIOS OF 1927**

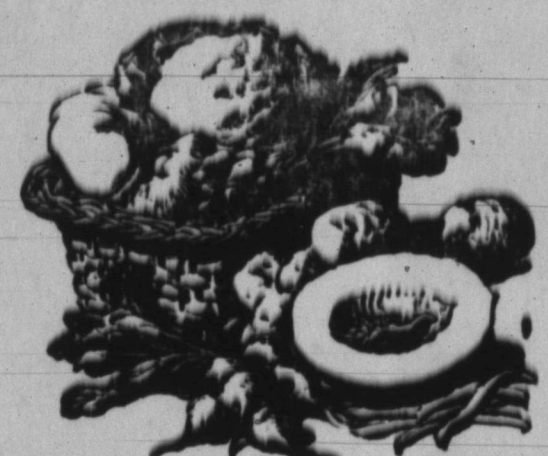
We will set one up in your home without any obligations demanded.

We can Sell on Easy Payment Plan  
 Prices Range from \$38.00 Upward

Dealers for  
**Shamrock, Kolster and Crosley Radios**

**RADIO NEWS STAND**

Telephone No. 201—175 West Foster  
 Cigars Tobacco Newspapers  
 Magazines Candies



**Fruits of the Harvest**

Autumn, the harvest time of the year, brings to our tables the choicest of the season's crops. Our stock is always at your command.

**Woodward-Lane Grocery**

---Phone 30---

**For Texas' Sake Vote The Texas Republican Ticket**

**REPUBLICAN STATE TICKET**

- GOVERNOR**  
Harvey H. Haines—Houston
- LIEUTENANT-GOVERNOR**  
W. H. Holmes—Amarillo
- ATTORNEY-GENERAL**  
Caswell K. McDowell—San Antonio
- COMPTROLLER**  
Ripley A. Hanrick—Waco
- TREASURER**  
J. A. Keelman—Weatherford
- SUPERINTENDENT OF PUBLIC INSTRUCTION**  
A. A. Lindsay—Winnsboro
- COMMISSIONER OF AGRICULTURE**  
Robert H. Coston—Mount Enterprise
- LAND COMMISSIONER**  
Helen M. Reynolds—El Paso
- RAILROAD COMMISSIONER**  
Wood Durrett—Dallas
- ASSOCIATE JUSTICE SUPREME COURT**  
G. N. Harrison—Brownwood

**REPUBLICAN PARTY PURPOSES**

1. To co-operate with the National party of construction, progress and prosperity.
2. To give Texas her rightful voice in National affairs.
3. To establish in Texas the truly American two-party system
4. To restore a free secret ballot to the people.
5. To emphasize laws and principles above individuals and personalities.
6. To free our educational system from partisan politics and support it adequately.
7. To bring to Texas the efficiency, economy and the high standard of public service only attainable through political competition.

**ASSOCIATE JUSTICE OF CRIMINAL COURT OF CRIMINAL APPEALS**

- J. D. Dodson—San Antonio
- CONGRESSMAN, 18th DISTRICT**  
S. E. Fish—Amarillo

**A TEXAS PARTY—LED BY TEXANS**

**Gray Co. Republican Committee**

V. E. v. BRUNOW, Chairman

## Reindeer Industry Proves Successful In Alaskan Lands

The reindeer industry in Alaska, though still in its infancy, promises, with proper guidance, to become an important factor in the future development of the Territory, says the Biological Survey of the United States Department of Agriculture in a recent bulletin on reindeer grazing in Alaska. It is comparatively a recent undertaking, and as a commercial enterprise dates back only a few years. From the original stock of 1,250 animals imported from Siberia over a period of 10 years up to 1902, the reindeer in Alaska have now increased to about 350,000 animals, distributed in 110 herds.

In addition to the numbers in present herds, it is estimated that about 125,000 have been killed for food and clothing. During the period from 1915 to 1926 more than 1,875,000 pounds of reindeer meat was shipped from Alaska, the total for 1923 being nearly 200,000 pounds, for 1924 about 375,000 pounds, and for 1925 approximately 680,000 pounds. With continued development, there promises to be a steady increase in the output, says the department. Steers for butchering sold in 1925 for \$10 to \$12 a head. Breeding stock is valued at \$18 to \$20 a head, and the average cost of production for each animal is about \$1 a year. At Nome and St. Michael reindeer meat retails at 15 to 20 cent a pound.

The natural cold-storage facilities of Alaska have been used advantageously in handling reindeer meat. In areas adjoining the Arctic coast solid ice is reached within 3 or 4 feet of the surface and extends downward to great depths. During the winter of 1923 one chamber large enough to hold 100 carcasses was excavated in the underground ice. In the spring the carcasses thus stored were removed in excellent condition for shipping.

**MAYNARD HOTEL**—Just opened. Everything new and clean. Rates by day or week or month. (29-4tc)

**SORE GUMS NOW CURABLE**  
You won't be ashamed to smile again, after you use Leto's Pyorrhea Remedy. This preparation is used and recommended by leading dentists and cannot fail to benefit you. Druggist return money if it fails. H. & K. Drug Co. 1-11-c

### "HATCHERY"

Strats operating October 4th. The early bird catches the worm. Fall chicks bring fancy prices as broilers in January and February. Why let some one ship them in this year to fill the demand when you can raise them at home. Place your order early for chicks. Write us for late prices.

**DODD'S HATCHERY**  
Pampa, Texas

## Grinding Diamond Loses 5 Carats In Ten Years

One of the hardest diamonds in the world is the property of the Chevrolet Motor company which has used the big diamond continuously during the last 10 years in the dressing of abrasive wheels for precision grinding.

Due to its extreme hardness, "C-66" as the gem is prosaically designated in the Chevrolet records, has outlived probably \$200,000 worth of diamonds used by the company.

F. W. Smith, grinding engineer of the General Motors corporation, and inventor of a patented method for setting grinding diamonds, contends that "Old C-66" is a freak. "It is a South African black ball, originally weighing about 30 carats," he said. "Today, after 10 years of continuous service in turning the grinding wheels used on piston jobs, it still weighs 25 carats. An ordinary grinding diamond would have worn out years ago. 'Old C-66' is so hard that it requires resetting only about three times a year."

## Tests Of Honey Locust Tree Prove Successful

Some twenty-five years ago a small planting of forest trees was started near Channing. This planting consisted of several varieties of trees. It has been noticed for some years that only one variety of these trees is making satisfactory growth. This tree is the honey locust. The black locust that for years has been planted in this territory, according to the result of tests made, is inferior to the honey locust.

The honey locust tree is not affected by the locust borer. Photographs of the various tests are being made and will be used by the county agents to make the information known to a large number of people.

**Three Births Are Recorded**  
Three births have been recorded here during the past two weeks. They are: Ernie Tadine Walker, born to Mr. and Mrs. J. P. Walker, October 15; Ruth Pierson, born to Mr. and Mrs. J. A. Pierson, October 15; Naomi Beth Harrel, born to Mr. and Mrs. R. G. Harrel, October 20.

## NOTICE OF APPLICATION FOR PROBATE OF WILL

THE STATE OF TEXAS: To the Sheriff or any Constable of Gray County, Greeting: YOU ARE HEREBY COMMANDED to cause the following notice to be published in a newspaper of general circulation which has been continuously and regularly published for a period of not less than one year preceding the date of the notice in the County of Gray, State of Texas, and you shall cause said notice to be printed at least once each week for a period of ten days exclusive of the first day of publication before the return day hereof: **NOTICE OF APPLICATION FOR PROBATE OF WILL**

THE STATE OF TEXAS, To all persons interested in the estate of R. A. Burgess, Deceased, A. A. Callahan of McLean, Texas has filed in the County Court of Gray County, an application for the Probate of the last Will and Testament of said R. A. Burgess Deceased, filed with said application and for Letters Testamentary. As above stated the last will and testament of the said R. A. Burgess is filed with said application for the probate thereof, and the number of said cause is No. 191 on the Probate Docket of the County Court of Gray County, Texas.

Which will be heard at the next term of said Court, commencing on the 3rd Monday in November, A. D. 1926, the same being the 15th day of November A. D. 1926, at the Court House thereof, in Lefors, Texas, at which time all persons interested in said Estate may appear and contest said application, should they desire to do so.

HEREIN FAIL NOT, but have you before said Court on the said first day of the next term thereof this Writ, with your return thereon, showing how you have executed the same.

Given under my hand and the seal of said Court, at office in Lefors, Texas this 23rd day of October, A. D. 1926.

CHARLIE THUT, Clerk, County Court, Gray County, Texas. 31-41-c

**\$2,000,000 Factory At Childress**  
Childress, Texas, Oct. 27.—Plans are being completed for the establishment of a big industrial plant here that will involve the expenditure of \$2,000,000. The factory will consume 5,000,000 cubic feet of gas daily, and will furnish employment to between 400 and 500 workmen.

## Students Working to Pay Their Expenses

Of the 4,710 students in the University of Texas at the present time, 2,310 are earning all or part of their expenses, figures from the office of the registrar reveal. In other words, nearly half of the members of the student body contribute to their own support. Of this number, 1,928 are men and 328 are women students. Moreover, 979 men students and 295 women are entirely self-supporting.

**Poultry Association To Meet**  
The members of the Pampa Poultry Mercantile Association will hold a meeting at 2:30 o'clock Saturday afternoon, October 30. Any business that might come before the members will be transacted. Charles T. Mullen is secretary of the association.

**BABY CHICKS FOR SALE**  
Barron strain large type purebred White Leghorn baby chicks \$10.50 a hundred.  
Everlay strain Brown Leghorns, \$11.50 a hundred.  
Sheppard strain single comb Anconas, \$14 hundred.  
Owens and Donaldson strain Rhode Island Reds, \$14.85 hundred.  
Thompson strain Barred Rocks, \$14.85 hundred.  
White Rocks, \$16 hundred.  
All good, healthy, strong purebred guaranteed.  
We pay postage charges and guarantee live arrival on all baby chicks.  
Pullets of any breed listed, \$1.50 each.  
Cockrels, good size, \$3 each.  
Poultry book on feeding and raising chicks and pullets, \$3 postpaid.  
**THE FULGHUM HATCHERY**  
EMORY, TEXAS  
31-121-c

**FREE**  
One Tube with each Tire bought Nov. 1st and 2nd.  
**2 DAYS ONLY**  
**Pennant Filling Station**

**PAMPA'S STANDING**

Pampa	6	Shamrock	14
Pampa	6	Panhandle	0
Pampa	20	Wheeler	0
Pampa	7	Claude	7

**LUMBER** For good lumber, quick service and real satisfaction on all building materials at great saving, visit for shipment anywhere. We want agents in every county. **Louisiana Lumber & Supply Co.** Main office and Distributing Yard, Amarillo. Branch Office, Dallas, Texas.

# FOOTBALL!

**CLAUDE HIGH vs PAMPA HIGH**  
FRIDAY, OCTOBER 29th, 1926  
Ayres Field 3:30 P. M.

## SOUTH SIDE TAILORS

THROUGH QUALITY SERVICE  
WATCH US GROW"  
We CALL FOR AND DELIVER  
ALL WORK GUARANTEED  
We Specialize in Silks  
**PHONE 261**

## 7 PASSENGER CADILLAC

Excellent condition, Duco Finish, Brow Spanish Leather Upholstering, Tonneau, Windshield, Permanent Leather Top. Ideal for Bus. Also CHEVROLET COUPE. Good Condition. Bargain.

**ROCK ISLAND TOWNSITE CO.**  
Amarillo Building, Amarillo, Texas Phone 4295

**CHEVROLET**

**Performance proved beyond all doubt!**

Out on the curves and straightaways of the General Motors Proving Grounds—over rough and rutted roads, through blistering heat and bitter cold, through rain and slush and mud and snow, Chevrolet performance is proved before it is enjoyed by owners!

Here testers drive, night and day, until the speedometers register 20-30-40,000 miles and more! Here during the long, steady grind—every mile of which is driven under observation—materials and designs are constantly analyzed and checked; performance, wear and repairs are tabulated! Here the collective genius and experience of Chevrolet and General Motors engineers is utilized to assure buyers an investment of utmost soundness and satisfaction when they purchase a Chevrolet!

See us now! Arrange to drive the smoothest Chevrolet in Chevrolet history. Small down payment and convenient terms. All about our 6% Purchase Contract Plan.

**510**  
**645**  
**735**  
**765**  
**1375**  
**1495**

**PAMPA MOTOR CO.**

**QUALITY AT LOW COST**

# At Your Service

## Santa Fe System Lines

Whether you are shipper, traveler, business man or farmer

**Freight**—Modern freight cars of steel under-frame construction, equipped with air brake and automatic coupler, insure safety for consignments.  
Through package and carload Red Ball service from Chicago, St. Louis and Kansas City, Mo., to principal points in the South and West.  
Emigrant Movable are given special attention.

**Passenger**—In addition to the four trans-continental trains which the Santa Fe for years has been running between Chicago, Kansas City and California, "Santa Fe all the way," a new extra fare train, The Chief, has been established, which makes the run between Chicago and Los Angeles in two business days.

**Commodities**—This department of the Santa Fe is prepared to furnish dependable information with reference to land values, the class of crops that can be grown most successfully, community development, and a general survey of the country, so that a good idea may be obtained of the opportunities that each region affords.

**Agricultural Development**—The Santa Fe Railway is cooperating with the United States Department of Agriculture, State Agricultural Colleges, State Boards of Agriculture and County Farm Bureaus in helping to develop the agricultural resources of the territory served by its lines, including California, Arizona, New Mexico, Texas, Louisiana, Colorado, Nebraska, Kansas, Oklahoma, Missouri, Iowa and Illinois.

**Industrial**—Are you seeking raw materials, cheap fuel, pleasant surroundings for your employees?  
Cannot a new branch house, strategically located, better serve your trade and save transportation charges?  
Our men are familiar with conditions throughout the twelve great states reached by the Santa Fe and will give you reliable information concerning any portion of this vast territory.

**Live Stock**—Consult us on your shipping problems. We are anxious to serve you by advising as to rates, routes, equipment, quarantine regulations, pastures, feeding facilities, etc. Santa Fe equipment and feeding facilities are second to none. It is our desire to see that your shipment is carefully and expeditiously handled.

**Refrigerator**—The Santa Fe Railway operates its own refrigerator cars for perishable freight, carload and less than carload. Its Refrigerator Department gives efficient supervision to perishable protective service from origin to destination.

W. B. Sawyer, President  
The Northern, Texas & Santa Fe Railway System