

# Pampa Daily News

VOL. 1. NO. 80.

16 PAGES TODAY

PAMPA, GRAY COUNTY, TEXAS, FRIDAY EVENING, JUNE 10, 1927.

PRICE FIVE CENTS.

## PUBLIC IMPROVEMENTS ORDERED

### DIRECTORS OF C. OF C. ORDER BIG LUNCHEONS

Whole Membership To Meet Once Each Month

### WILL DISCUSS CIVIC PROBLEMS

Barcus Will Attend Managers' Session In Sherman

Pledging cooperation in civic affairs and setting aside a monthly membership meeting to discuss local needs, the directors of the Chamber of Commerce last night planned much business for their organization.

Scott Barcus, manager, was instructed by the directors to attend the annual meeting of the Texas Commercial Executives' association at Sherman, June 23, 24 and 25. The meeting will feature industrial development, and Sherman is the greatest industrial city in Texas, according to population.

The directors approved the plan of a monthly membership luncheon to be at the new Schneider hotel. Arrangements will be made to have a prominent speaker at each meeting to address the members on civic subjects. Also at each luncheon some important feature in the city's development will be discussed by the members.

An executive committee was appointed by the directors, with J. M. Dodson as chairman and W. L. Woodward and M. K. Brown assisting. The executive committee will approve all purchases and expenditures of the Chamber of Commerce.

After the meeting adjourned, the directors visited the city council, in session at the White Deer Land company office, and invited the members to a luncheon with the directors of the C. of C. The invitation was accepted and the date of the luncheon will be set at a later date. The Chamber of Commerce plans to cooperate with the city government in improving conditions in the city.

### Empire Gas Line Work Will Begin Here June 15

Officials of the Empire Oil and Gas company and the sub-contractors are in the city making arrangements to commence operations on the C. C. Dodd booster station on the C. C. Dodd property, and the laying of the pipeline to Kansas. Work will start about June 15.

Booth and Flynn of IPTsburgh, Penn., have the contract for laying the pipe, and Tibbets and Tibbets the contract for stringing the pipe, which is arriving over the Santa Fe and is being distributed along the line of survey.

The large ditching machine arrived in the city early this week and has been unloaded.

The Texas company's No. 1 J. B. Barrett, in the NE corner of section 130, block 3, has a showing of oil at 3,137 feet. This well is in semi-wildcat territory and if brought in will extend the Pampa field to the southwest. The company is fishing for a liner and expects to commence drilling in by Sunday.

The Empire Gas and Fuel company's No. 1 J. F. Meers, located in the northeast corner of section 107, block 3, has succeeded in casing off the 70,000,000 cubic feet of gas and the well is spraying oil at 3,120 feet. It will be drilled in as soon as the pipe line is connected.

C. N. Campbell, of Washington, D. C., is visiting with Mr. and Mrs. R. C. Campbell and may locate in Pampa.

### Says Moody Did Not Take Friends Into Confidence

(By The Associated Press.)  
DALLAS, June 10.—Because Governor Moody failed to take into his confidence his legislative friends, his program went upon the rocks, Representative Ray Holder of Lancaster declared in a signed statement issued here today.

The representative said the governor's denunciation of the Legislature, issued Thursday, for failing to pass certain bills sponsored by Governor Moody, was unfair.

Holder said he supported all of the governor's legislation.

### LINDBERGH IS NEARING HOME

Preparations Being Made For Welcome Elaborate

(By The Associated Press.)  
ABOARD U. S. S. MEMPHIS, June 10. (By Wireless).—First home contact for Col. Charles Lindbergh occurred this morning when the scout cruiser Memphis met the scout vessel at sea.

The vessels met 250 miles off the coast. The destroyer took aboard movie films made of the aviator during the voyage and a bag of official mail, which she is to carry to New York.

WASHINGTON, June 10.—(AP) Mrs. Evangeline Lindbergh, mother of the famous flier, broke her rail journey from Detroit to Washington today at Baltimore, and will be brought here from that city this afternoon in a White House automobile.

NEW YORK, June 10. (AP)—Mayor James Walker by proclamation today formally declared next Monday a day of public celebration in honor of Col. Charles Lindbergh.

BERLIN, June 10 (AP)—Through streets lined with cheering noon-day crowds, Clarence Chamberlin and Charles Levine drove to Rathaus today, accompanied by the American ambassador, to receive further honors in recognition of their sensational non-stop flight from New York to Germany.

During the banquet, the Lord Mayor announced that the thoroughfare leading to the air field would henceforth be known as Columbia Strasse, after the trans-Atlantic plane.

He then bestowed upon the guests the city's honorary plaque, which usually is reserved for distinguished citizens of Berlin.

### Patients In New Hospital Improving

Richard A. Hall, employed by the Humble Pipe Line company at Al-lanreed, and admitted to the new hospital Wednesday with a lacerated leg caused from a fall on a pick while at work, is improving and will soon be able to leave the hospital.

Oliver C. McGehee, with the Humble Production company here whose arm, shoulder, back and eye were injured when material he was working with fell on him, is also improving in the new hospital.

### Early Wheat Cutting Reported

The first load of wheat of the season was delivered to the Ecla Grain company at Kingsmill yesterday afternoon by Noah Cude, a farmer living north of Kingsmill. The grain was a little green and tested 58. It yielded twelve bushels to the acre and brought \$1.28 a bushel. J. C. McConnell threshed some yesterday, but it was green.

This is the earliest time for wheat to be threshed in the Panhandle, local elevator men say. In 1925 some wheat was threshed on June 19, but was too green for market and June 26 has been reported as the earliest successful threshing.

### 1st Photo of Chamberlin and Levine In Germany



### Formal Opening of New Schneider Hotel To Bring Many Here Tomorrow

#### Masons In Charge Of Saunders' Burial Here This Afternoon

Members of the local Masonic lodge will be in charge of the funeral of Judge G. H. Saunders, pioneer of Gray county, who died Wednesday in Sterling City. Judge Saunders was a charter and a life member of the local lodge, and was an active Masonic worker.

Funeral service will be conducted by the Rev. James Todd Jr., at the Christian church at 4 o'clock this afternoon. The pall-bearers will be old-time associates of Judge Saunders.

#### Local Negroes To Celebrate June 19

The negro people of Pampa will celebrate June 19 with a barbecue and speeches by local men. It was June 19, 1864, that the negroes were set free from slavery. C. W. Williams, pastor of the new negro church here will be in charge.

The home mission circle, with Maggie Harris as president and Ella Woods as chairman of the entertainment committee, raised \$15.25 for the building fund.

#### Texas Light Company Given Service Prize

DALLAS, June 10.—The Texas Power and Light company, serving more than 200 cities and towns, was awarded the second prize of \$3,000 at Atlantic City today in a contest conducted by the National Electric Light association for having rendered the greatest service to home industry in 1926, according to word received at the company's office here.

Mr. and Mrs. R. C. Campbell and daughter, Frances, have returned from a trip to Comanche, Austin and Fort Worth.

Many out-of-town people will join Pampa citizens here tomorrow at the formal opening of the new Schneider hotel, which is nearly finished and will be ready in all its elegance by tomorrow.

A five-course dinner will be served from 7 to 9 p. m., followed by dancing until midnight to music furnished by a local six-piece orchestra.

During the meal there will be miscellaneous entertainment by local talent, including dancing by Mrs. L. C. McMurtry's pupils, vocal solos by Mrs. A. H. Doucette, violin duets by Little Misses Roberta and Bonnie Lincoln, and other numbers.

Among the speakers will be Mayor F. P. Reid and Judge Newton P. Willis.

#### C. of C. To Sponsor Home Talent Play Here June 27-28

The local Chamber of Commerce will sponsor a home talent play, "Rosetime," to be given June 27 and 28. The cast will be selected and a representative of the Wayne P. Sewell Lyceum and Producing company of Atlanta, Ga., will arrive in the city next week to take charge of rehearsals, and arranging of the cast.

A committee composed of Mrs. A. H. Doucette, Mrs. R. R. Jones, and Harry Hoare was appointed to select the cast for the play. Pampa has several artists who will take part in the play, which is especially adaptable for home talent production.

#### GOOD FISHING

Otto Hund, proprietor of the City Drug store, is back in the city after a fishing trip through Kansas. Mr. Hund reports good fishing, having caught 65 pounds his last day out, one a carp weighing 16 pounds.

While in Kansas Mr. Hund was in an electrical storm which had the appearance of a sand storm and which turned thousands of acres of wheat black.

Here is the first picture to reach America showing Clarence D. Chamberlin and Charles A. Levine after they had landed in Cottbus, Germany, on conclusion of their world record-breaking non-stop flight from New York. Chamberlin stands at the left, pointing to the broken propeller of their monoplane, "Columbia," while Levine, at the right, and a German, in the rear, look on. This picture, taken a few moments after the Columbia had come down in a swamp at Cottbus, breaking its propeller, was rushed to London by airplane, being the first picture to reach England. At London it was transmitted to New York by the Radio Corporation of America, reaching New York before any other picture. There it was placed on the telephoto wires and sent broadcast throughout the country. It took less time for this picture to reach The Pampa Daily News from Germany than it took for Chamberlin and Levine to fly from New York to Cottbus.

#### To Sing



Mrs. A. H. Doucette will sing Saturday-night at formal opening of the New Schneider Hotel. She helped to organize the Music Study club in 1923, was its president for three years and is well known in the city for her musical ability.

### WATER, SEWER EXPANSION IS NEW PROPOSAL

Nine and One-Half Additional Blocks To Be Paved

### ELECTION ORDER BEING DRAWN

Entire City Will Be Cared For Under Plans

Nine and one-half additional blocks of paving were passed by the city council in special session last night, and calling of an election to extend the water and sewer systems to every part of the city and to refund the outstanding warrants was ordered.

Approval of the election order being drawn today likely will be made in another council session tonight.

A. H. Doucette, city engineer, is preparing specifications for the additional paving that work may continue. The Stuckey Construction company will do the paving at the same price of its old contract—a figure which gives Pampa a thicker base and better brick than most Panhandle towns have gotten and at a lower rate.

The paving extension will be as follows:

From the paving terminus on Atchison street west to Frost street, north on Frost street to Kingsmill, east on Kingsmill avenue to the present paving terminus at the post office, making a circuit which includes two sides of the new Schneider hotel.

From the terminus of the present paving on Kingsmill avenue east to Ballard street, south on Ballard street to Foster avenue, and west on Foster avenue to the present terminus, serving, among the businesses, the traffic about the Adams hotel.

Russell street from Atchison to Foster, the short street along the east front of the new Schneider hotel.

One additional block west from the terminus of the paving on Foster avenue.

The plans for sewer and water extensions call for a disposal plant east of the city to care for the South Side, a new disposal plant two miles east of the present one, with paralleling water line. New sewer lines, dropped to a contour which will handle every part of the north portion of the city, will be made, and a 12-inch line will be available for growth west of the city to tie into later.

These plans will give adequate facilities for the present and even a larger population, and will at the same time give greater fire protection.

Members of the council postponed approval of an election order pending defining of legal details, but all other action was ordered and so entered upon the minutes of the meeting.

Unrestrained optimism was evidenced in the city as news of the proposal spread, and passage of the necessary bond issue by the largest majority of the kind ever polled here was predicted.

The bonds will be issued on the new evaluations, and the amount to be voted will not reach the possibilities under the present rate. Taxes will not be raised, but on the other hand the city will be enjoying the results—through public improvement—of the remarkable growth of the city.

#### BODY OF BLAST VICTIM SENT HOME

The body of Earl Lee Masters, tool dresser who was burned to death Wednesday afternoon in the explosion of the Empire company's No. 1 W. C. Archer, was sent to his home in Shawnee, Okla., for burial. The body was prepared by the G. C. Malone Furniture and Undertaking company.



# Sport Columns

## Baseball Results

**Western League**  
 Amarillo 3, Tulsa 7.  
 Wichita 12, Oklahoma City 6.  
 Lincoln 8, Omaha 7.  
 Denver 5, Wichita 2.

**American League**  
 St. Louis 3, Philadelphia 9.  
 Detroit 6, Boston 4.  
 Chicago 3, New York 8.  
 Cleveland 7, Washington 1.

**National League**  
 New York 12, Pittsburgh 1.  
 Philadelphia 6, Cincinnati 5.  
 Brooklyn 3, Chicago 4.  
 Boston 1, St. Louis 6.

**American Association**  
 St. Paul 6, Louisville 3.  
 Minneapolis 9, Indianapolis 2.  
 Kansas City 4, Toledo 6.  
 Milwaukee 14, Columbus 4.

**International League**  
 Syracuse 9, Jersey City 3.  
 Rochester 9, Newark 2.  
 Reading 3, Buffalo 2.  
 Toronto 6, Baltimore 4.

**Southern Association**  
 New Orleans 2-4, Nashville 16-1.  
 Mobile 0-6, Chattanooga 2-0.  
 Birmingham 9-4, Little Rock 2-3.  
 Atlanta 3, Memphis 4.

**Pacific Coast League**  
 Los Angeles 4, Portland 1.  
 Sacramento 4, Missions 3.  
 Oakland 5, Hollywood 2.  
 Seattle 10, San Francisco 2.

**Lone Star League**  
 Palestine 4, Corsicana 5.  
 Tyler 3, Mexia 4.  
 Texarkana 1, Paris 2.

### Standings

Western League				
Team	G	W	L	Pct.
Tulsa	54	40	14	.741
Wichita	55	33	22	.600
Oklahoma City	52	26	26	.500
Denver	54	27	27	.500
Amarillo	52	24	28	.462
Des Moines	52	23	29	.442
Omaha	52	23	29	.442
Lincoln	53	19	34	.358

American League				
Team	G	W	L	Pct.
New York	49	34	15	.694
Chicago	51	31	20	.608
Philadelphia	49	27	22	.551
Washington	46	22	24	.478
Cleveland	50	23	27	.460
St. Louis	48	22	26	.458
Detroit	47	21	26	.447
Boston	46	13	33	.283

National League				
Team	G	W	L	Pct.
Pittsburgh	45	30	15	.667
Chicago	46	27	19	.587
St. Louis	45	26	19	.578
New York	45	26	20	.565
Brooklyn	52	23	29	.442
Philadelphia	44	19	25	.432
Boston	41	17	24	.415
Cincinnati	49	16	33	.327

Texas League				
Team	G	W	L	Pct.
Wichita Falls	55	32	23	.582
Waco	57	31	26	.544
Houston	57	30	27	.526
San Antonio	57	30	27	.526
Dallas	58	29	29	.500
Beaumont	58	27	31	.466
Fort Worth	57	25	32	.439
Shreveport	53	22	31	.415

## SPORT TALK

Where to Sunday, ball fans? The Grays play a game in Wheeled against a fast team of players from nearby towns, and the Oilers, lately reorganized, play in McLean.

It seems that big Bob Clarke just can't win a game of ball. In yesterday's struggle his support is reported to have been miserable. Sure outs went for hits and two errors let in four runs.

Automobile races in Amarillo July 4. If any of the speed merchants of Pampa that have been practicing on the new pavement wish to enter, send word to Roy L. Brown, at Amarillo Athletic club.

Borger is to have a big celebration July 3 and 4. The Pampa Grays will feature the two-day baseball tournament. Manager Ed Gober is on the warpath for a couple of real pitchers and hopes to have a surprise for the Borger nine by that time.

The old veteran, Walter Johnson lost another game yesterday, lasting only five innings. It looks like the big train is through with baseball and can move home to Coffeyville, Kans.

## Blaeholder Is Too Much For Amarillo Texans

AMARILLO, June 10.—Blaeholder league-leading pitcher, continued his string of victories here yesterday by beating the Texans 7 to 3.

Bob Clarke started for Amarillo, but was jerked in the third after the Texans had sampled his offering and liked it. The Texans made three errors, but it was mainly Blaeholder who was responsible for the failure to run up enough tallies to make a win possible.

The box score:

	A	B	R	H	P	O	A	E
Tulsa	4	0	1	0	1	0	0	0
Grimes, 2b	5	0	0	2	0	0	0	0
Brannon, 2b	5	0	0	2	0	0	0	0
Casey, cf-2f	5	2	4	1	0	0	0	0
Sturdy, 1b	1	0	0	10	0	0	0	0
Munson, rf	2	1	2	3	0	0	0	0
Bennett, lf	3	2	3	0	0	0	0	0
Kress, ss	4	2	3	4	2	0	0	0
Porter, c	5	0	3	2	0	0	0	0
Blaeholder, p	3	0	0	7	0	0	0	0
Patterson, cf	1	0	0	2	0	0	0	1
Totals	35	7	16	27	10	1	0	1

Score by innings:  
 1 0 0 0 0 0  
 2 0 0 0 0 0  
 3 0 0 0 0 0  
 4 0 0 0 0 0  
 5 0 0 0 0 0  
 6 0 0 0 0 0  
 7 0 0 0 0 0  
 8 0 0 0 0 0  
 9 0 0 0 0 0

Sacrifice hits, Kress, Sturdy (3), Munson, Carey. Two-base hits, Casey (2), Munson, Connelly, Porter. Three base hits, Casey, Swanson. Double plays, Swanson to Adams. Hits and runs, off Clarke 7, and 4 in 2-3-3 innings; Ramsey 9 and 3 in 6 1-3 innings. Struck out, by Clark 1, Ramsey 1, Blaeholder 2. Left on base, Amarillo 8, Tulsa 10. Hit by pitcher, Blaeholder by Ramsey. Winning pitcher, Blaeholder. Losing pitcher, Clarke. Time of game, 2:08. Umpires, Cady and Tomlin.

### ARE YOU COOKING YOUR VEGETABLES PROPERLY?

Since vegetables are found to contain protein, starch, sugar, cellulose, mineral matter and organic acids, it is quite important that they should be included in the diet. Cellulose, the coarse fiber of the plant is of great value because it stimulates the muscular action of the digestive tract. When an individual is inclined to overeat, generous serving of a coarse vegetable satisfies the appetite, yet they do not burden the digestive tract. Such food should be used generously in the diets of people who are overweight.

There are two classes of vegetables the strong juiced, such as turnips, onions, cabbage, cauliflower, and sweet juiced vegetables, as spinach, asparagus and peas.

The best method of cooking vegetables is steaming because there is less loss of food value. They may be put on a plate of a steamer, covered

closely, set over boiling water and kept there until tender.

To season add to each cup of vegetables, 1/2 teaspoon salt, 1/8 teaspoon pepper and 1/2 teaspoon butter. If a creamed product is desired, a white sauce made of 1 cup liquid, 2 tablespoons butter, 2 tablespoons flour and 1/2 teaspoon salt and 1/8 teaspoon pepper may be added to the steamed vegetable. This amount of white sauce is sufficient for two cups of vegetables.

If the vegetables are to be boiled, the housewife must take into consideration the type of vegetable she is cooking. If it is a strong vegetable it should be cooked in rapidly boiling water in an uncovered container. By this method some of the odor and flavor will be driven off. The vegetables are milder if cooked in a large amount of water. That is quite permissible if the water from the vegetables is utilized in some way a sin soup stocks. If it is thrown out the

mineral supply is diminished.

The mildly flavored vegetables should be cooked slowly in a small amount of boiling water. The cover may be left on while cooking them.

Potatoes should not be pared several hours before they are cooked, unless they are put into an ice box without the addition of water. If the potatoes are placed in cold water as is so customary with housewives

much starch is lost in the water, so that the potato doesn't contain its normal food value. Start potatoes to cook in boiling water, because the high temperature causes the starch on the outside of the potato to cook before it has time to dissolve and be lost in the water.

Miss Ruby Cook of McLean spent Thursday in the city.

## ANNOUNCING THE OPENING OF THE ALADDIN BEAUTY SHOPPE



in the  
**NEW SCHNEIDER HOTEL**  
 First Floor  
**SATURDAY, JUNE 11**  
 Call 290 Friday for  
 Appointments

Our service includes permanent waving, marcelling, hair cutting, finger waving, manicuring and facial and scalp treatments.  
 All work under personal supervision of Hazel Bechtelheimer.

### Congratulations

We congratulate the builders and management of the New Schneider Hotel upon the completion of such a creditable home for their institution in the city of Pampa, and we wish them success beyond their fondest expectations.

**THE SOUTHWESTERN PUBLIC SERVICE CO.**

"THE MODERN SERVANT"—WILL BE AN IMPORTANT FACTOR IN THE UNEXCELLED SERVICE TO BE HAD AT PAMPA'S

## New SCHNEIDER HOTEL

Every kind of Electric Appliance which will add to your comfort and convenience while a guest at the hotel has been installed by Mr. Schneider and associates.

The Southwestern Public Service Company furnished the Electric Lighting Fixtures, the Premier Duplex Carpet Sweepers and the Ceiling Fans for this fine hostelry.

The various appliances and equipment of the hotel will utilize four classes of electric current, viz: Three phase power; single phase power; single phase cooking and single phase lighting.

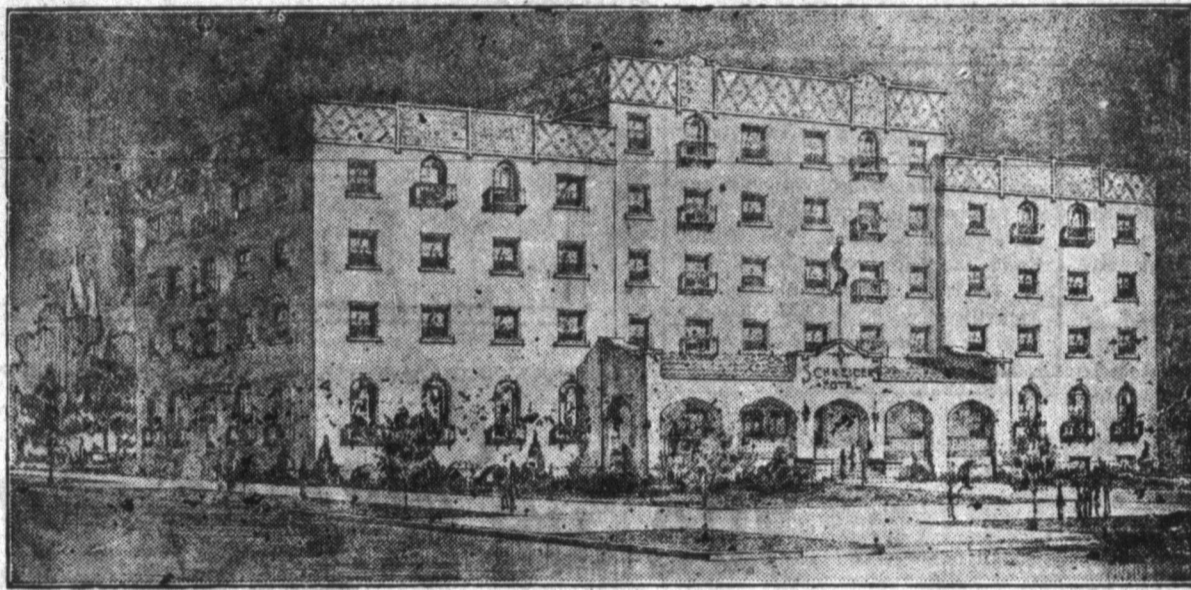
# SOUTHWESTERN PUBLIC SERVICE COMPANY

PAMPA WHITE DEER McLEAN PANHANDLE AMARILLO



In bringing Pampa's greatest building project to a successful completion we wish to express our appreciation for the hearty cooperation on the part of the Owners, Architect, City Officials and each and every workman who contributed in any degree to our earnest efforts to make this building a credit to the City of Pampa.

CHAS. H. SHARP, President  
J. W. VASEY, General Manager  
CHAS. McGLADE, Construction Supt.  
P. L. HAYNES, Auditor and Paymastr



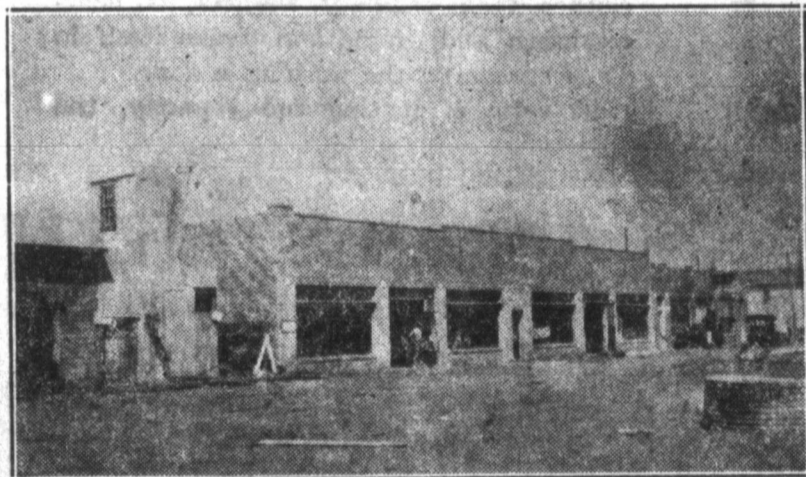
NEW SCHNEIDER HOTEL

# GREETINGS

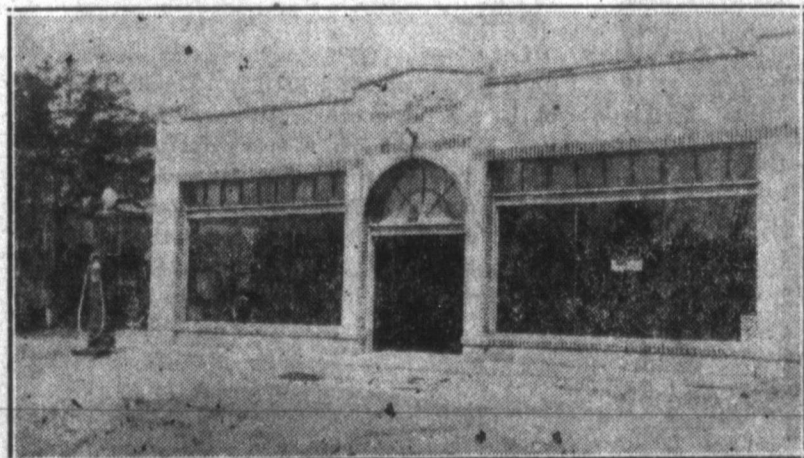
— TO THE —

## New Schneider Hotel

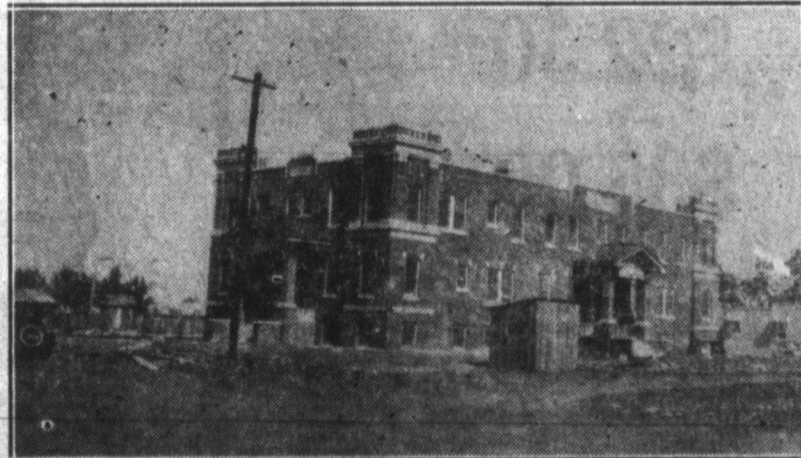
# Chas. H. Sharp Construction Co.



COBB GARAGE



SMITH GARAGE



PAMPA HOSPITAL



**Pampa Daily News**

Published every evening except Saturday, and on Sunday morning by the Nunn-Warren Publishing company, Inc., at 155 West Foster street.

The only newspaper adequately covering Pampa and Gray county events and the Pampa oil field.

PHILIP R. FOND  
Manager  
OLIN E. HINKLE  
Editor

Entered as second-class matter March 25, 1927 at the post office at Pampa, Texas, under the Act of March 3, 1879.

MEMBER OF THE ASSOCIATED PRESS  
The Associated Press is exclusively entitled to the use for republication of all news dispatches credited to or not otherwise credited in this paper, and also the local news published herein.

All rights of republication of special dispatches herein are also reserved.

**SUBSCRIPTION RATES**  
By Carrier in Pampa

One Year	\$5.00
Six Months	\$2.75
Three Months	\$1.75
One month	.50

By Mail

One Year	\$5.00
Six Months	\$2.75
Three Months	\$1.75
One Month	.50

Weekly Pampa News \$1.00 per year to Daily News subscribers.

**NOTICE TO THE PUBLIC**  
Any erroneous reflection upon the character, standing, or reputation of any individual, firm, concern, or corporation that may appear in the columns of the Pampa Daily News will be gladly corrected when called to the attention of the editor. It is not the intention of this newspaper to injure any individual, firm, or corporation, and corrections will be made, when warranted, as promptly as was the wrongfully published reference or article.

Telephone 100, all departments

**SPECIAL SESSIONS— BUT HOW DIFFERENT**

Through unusual anomalies in state and national affairs, the Texas governor and the president of the United States will call special sessions of the legislative bodies over which they have nominal control.

Coolidge has signified that he will convene Congress about October 1, while Moody will call the Legislature into a second special session a month

earlier. There are likenesses and differences in the conditions which call forth these acts. The president has been bitterly assailed during the last few weeks because of apparent lack of perception of the need for relief and rehabilitation in the Mississippi flood area. Now that he has become convinced of the need for a session, he has named other projects as well as flood work, and, if the relief work is the moving factor, he has covered up delay by mentioning several other needs. It has been the case of a slow-moving leader responding slowly to a public outcry. The criticism which arose will not likely be stilled by the president's move, which will be described to politics by his political enemies.

Moody, on the other hand, is an example of a public officer with progressive, constructive ideas, who is frank in admitting his disappointment in a session which developed blocs and barriers to effective work. Although he went into office as one of the most popular of Texas governors, he has been too alert and too mindful of the need for reform to get the support of those politicians who wish to bask in the political sunshine which rose for them when Ferguson was ousted from the capitol.

Moody has denounced a "veto session," and stated that he will call a special session to submit the questions which were passed over at the term just adjourned. With the necessary appropriations out of the way, he likely will submit only the few subjects he believes the state most needs,

and will insist upon action. No doubt opposition to the call of another session will result, particularly among those who do not wish to get into the "brass tacks" questions of state government. Yet Texas' outgrown institutions and regulations, long in need of revision, will never be bettered unless the best minds of the Legislature give earnest application to the problems.

That the Legislature did not take action on prison, civil service and highway measures may not, however, be ascribed to opposition to these subjects entirely, but to lack of time. The appropriations were debated upon, often bitterly, during most of the month. Another special session will be expensive, yet withal worthwhile if there is a possibility of needed reform. But unless there is a good prospect for workable harmony, Moody's special session will not be creditable to his administration. The same might also be said of the called session of Congress, in which a few brilliant insurg-

**FOR SALE OR LEASE**  
Store building with two living rooms in rear. Lights, water and gas. Terms. Would consider one or two well located lots in Pampa as part payment. In Finley Banks addition, two blocks west of Hy-Way Service Station on Amarillo road. See owner, Charles Richeson, on premises.

ents can block almost anything they oppose.

**NEWS JABS**

Time is money when you have your bet placed on the winning horse. — The Toledo Blade.

The government purposes cutting down the size of paper

money to save \$2,000,000 annually, but intends to keep the change.—The Louisville Courier-Journal.

Detroit now boasts a body of water that's wet on one side and dry on the other. — The Detroit News.

Even when a jury renders a verdict according to facts,

these times, we are never quite certain that they have complied with the law.—The Tulsa Daily World.

Panhandle folks in need of a thrill can get one close about by going to Carlsbad cavern.

It's dry, folks, but you can't beat our nights.

**THE NEW SCHNEIDER HOTEL**

Was Designed and the Construction Supervised By

**M. C. PARKER, ARCHITECT**

414 Oliver-Eagle Bldg. Amarillo

We are *The Exclusive*  
**MAYTAG Dealer** for  
**Pampa**

WE are pleased to announce that we have secured the exclusive franchise for the sale of the Maytag Aluminum Washer in this city. We are fortunate in obtaining this dealership for the fastest selling washer in the world—the washer that won World Leadership in less than 600 days. The Maytag has proved conclusively that it washes cleaner, faster and easier.

The Maytag is the ONLY washer with a cast-aluminum tub that is life-lasting because it will not corrode, rot, rust, split, crack nor break. The tub holds more clothes than ordinary washers, is heat-retaining, and drains and cleans itself in 30 seconds after the washing is done. In spite of its big tub capacity, the

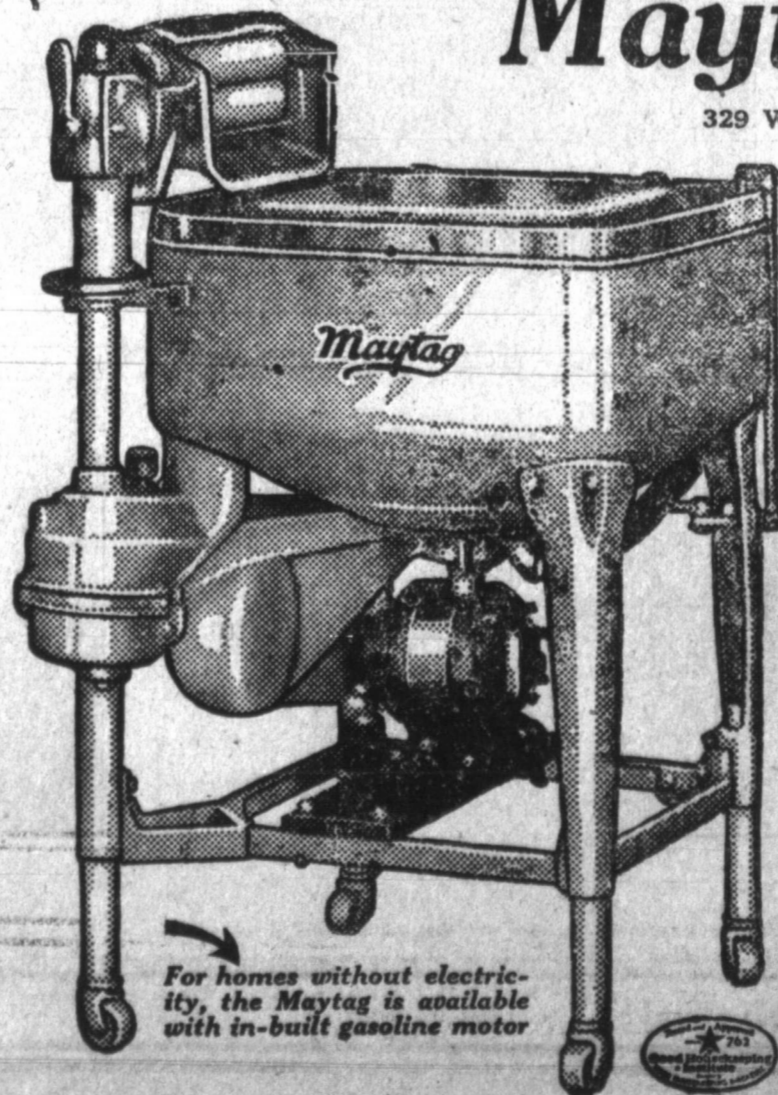
Maytag is so compact that it can be used in any space that will accommodate a chair. Through adjustable legs the Maytag is easily raised or lowered to suit your height. The famous Maytag wringer automatically and instantly adjusts itself to a handkerchief or a blanket and wrings both equally dry.

**Maytag Shop**

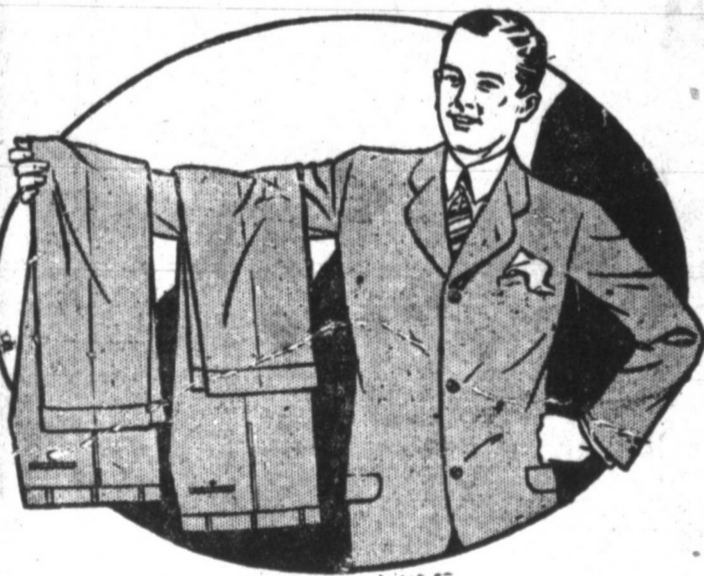
329 WEST FOSTER STREET

 **Phone Us**

Let us send a Maytag to your home to do a whole washing FREE. There is no obligation nor expense. In your own home you can test each Maytag feature that makes washday so much easier and shorter. You can wash big tubfuls in 3 to 7 minutes. Wash even collars, cuffs and wristbands without hand-rubbing. Try the Maytag—if it doesn't sell itself, don't keep it.



For homes without electricity, the Maytag is available with in-built gasoline motor



We congratulate the Schneider Hotel Corporation on its magnificent New Building—

**THE SCHNEIDER HOTEL**

This building is a credit to any city. We are proud of it. Cities do not happen—they are built. The Schneider has set the pace.

Special Quality!  
Special Price!

**TWO-TROUSERS SUITS**

**\$22.50**  
—TO—  
**\$35.00**

Especially the Suit of Service in the "good old summer time." When frequent changes of trousers become a necessity here are the Clothes that serve you well. Styled to the minute, fabrics of unusual appeal and tailoring of the best.

**JEMurfee & Co.**  
Outfitters to the Whole Family

"Forward With Pampa Since 1916"



## Cut the Family Food Bill

Thrift is wise spending. Thrifty people have what they need but avoid waste. When you buy at PIGGLY WIGGLY you get (1) the quality you prefer, (2) the quantity you need, (3) the lowest price. Thus you actually cut the family food bill without sacrificing the quality or skimping on the quantity. Try it and see for yourself.

ELFOOD MAYONNAISE, 8 OUNCE BOTTLE	.22
CORN, EXTRA STANDARD NO. 2 CAN	.09
RICE, ASTOR BRAND, WHITE, 2- POUND PACKAGE	.18
SOAP, P & G WHITE NAPTHA, 10 BARS	.35
CLOTHES PINS, HOUSE- HOLD, 3 DOZ. PACKAGE	.14
O'CEDAR OIL FURNITURE POLISH, 30c SIZE	.19
O'CEDAR OIL FURNITURE POLISH, 60c SIZE	.39
EGGS, FRESH COUNTRY CANDLED, DOZ.	.19
TREE TEA, 1-4 POUND	.17
TREE TEA, 1 POUND	.65
BANANAS, NICE YELLOW FRUIT, POUND	.07
COMPOUND, SWIFT'S JEWEL 4-POUND BUCKET	.55
TOMATOES, FRESH EAST TEXAS HARD PINKS	.07
PORK ROAST	.21
BUTTER, ALL KINDS PER POUND	.42
PURITAN SLICED BACON, PER POUND	.39

# PIGGLY WIGGLY

"We Don't Meet Prices—  
We Make THEM"

### PRESS FORUM

One branch of our government seems not to be getting due and proper recognition of the part it played in the successful American flights to Europe.

We refer to the much-abused, little-understood, long-suffering weather bureau.

Before he started for Paris, Lindbergh studied the weather reports for days. Several times he was on the verge of hopping off, only to be held up by adverse reports from the weather bureau. Finally, when the reports were favorable he took a chance and got through without mishap.

Chamberlin also studied the weather reports, and waited for a favorable one before hopping off. The bureau told him he might expect good weather all the way, and apparently this report was verified as he went along.

When Lindbergh got ready to hop from London over to Paris, he was informed, so he delayed his departure to a more auspicious hour.

You see, these men have confidence in the weather bureau and its reports. They have long since learned that such service may be depended upon. Nothing is so important to a flier as the state of the weather.

We ought to feel proud of our weather bureau, and give up our unjustified habit of belittling it with or without excuse.—Abilene News.

### TWINKLES

"McAdoo Demands Pro-Law Beliefs"—which is not a sign of originality on the part of Mr. McAdoo.

Cotton hose has been recognized as a basis for divorce. But, to put it more accurately, any hubby's insistence upon cotton is enough to start plenty to make divorce desirable.

Maybe, after flying around the world a few times, these geniuses will devise an entirely safe way to cross the street.

Lindbergh can't help it, but we wish he could. And that boy is breaking the heart of the press agent profession.

We have an entry blank for the Dallas to Hong Kong flight. One at a time, folks, don't crowd after it.

A note book of the sayings of a college prof is not, unfortunately, an exhibit which carries much weight with a prospective boss.

Tex Thornton was delayed in putting out our burning well, part of it being charged, probably, to taking time out to explain to newspaper men why he doesn't like publicity.

There will be a cotton crop after the flood, anyway, and then we shall know whether a boll weevil can swim.—The Buffalo Evening News.



## Why be a Tire nurse?

When a tire gets old and weak, there's a choice of two things for the wise motorist to do—

(1) Bring it in and let us see if our repair methods can put new vim and vigor into it

(2) Retire it on a pension and let us put on a sturdy new Goodrich Silvertown.

We'll save you money on either operation.

JACK GATTON'S SERVICE  
MAGNOLIA FILLING  
STATION

68—Phones—345



Sentiment is greater than wealth, according to Charlie Schwab, but usually only the wealthy can afford indulgence in sentiment.—The Lynchburg News.

Even if a man isn't his brother's keeper, there are times when he thinks his brother needs one.—The Lansing State Journal.

Death and taxes are both inevitable, but one is more lingering.—The Lynchburg News.

Have you read the classified ads?

## TERRAZZO FLOOR

OF THE

## NEW SCHNEIDER HOTEL

WAS PUT DOWN BY THE

## NORTH TEXAS TERRAZZO Co.

V. M. ZANCHETTIN, Mgr.

304 Marland Ave.

AMARILLO

Phone 3159W

We Will Be Glad to Submit Figures to Anyone Desiring This Kind of Work.

# 25 per cent to 50 per cent off on all

You save 1-4 to 1-2 on these Beautiful Hats—Early Selection is Advisable.

# New Summer Hats



Summer Millinery High Lights

It's hard to say which is the leader—the large and graceful wide-brimmed hat or the ever-popular close-fitting models. But the odds are quite even, we think, in favor of both types. All have the severe simplicity that Paris adores and there are straws, silks, combinations of the two and felt.

A Special Event in our Shoe Department for the next week, starting Saturday, June 11.

Reductions range from 10 per cent to 25 per cent—all the wanted shades, Blondes, Black, Robin Egg Blue and Green.



# J. E. Murfee & Co.

Outfitters to the Whole Family



### Produce Code Explained By Bureau Chief

Distributors and brokers, as well as commission merchants, are subject to provisions of the Produce Agency Act, under rules of administration issued by Secretary of Agriculture Jardine.

In general, all persons, firms, associations or corporations receiving produce for or on behalf of another in interstate commerce, whether at point of origin or at destination or elsewhere, are subject to all the provisions of the act.

The secretary's code of regulations was followed by a supplementary statement from Lloyd S. Tenny, chief of the Bureau of Agricultural Economics, who, by virtue of his office is responsible for administration of the law.

"The act," Tenny said, "makes it a misdemeanor for anyone receiving perishable farm products for or on behalf of another to dump, abandon or destroy the products so received without good and sufficient cause therefor; or, knowingly and with intent to defraud, to make any false

statement concerning the handling, condition, quality, quantity, sale or disposition thereof.

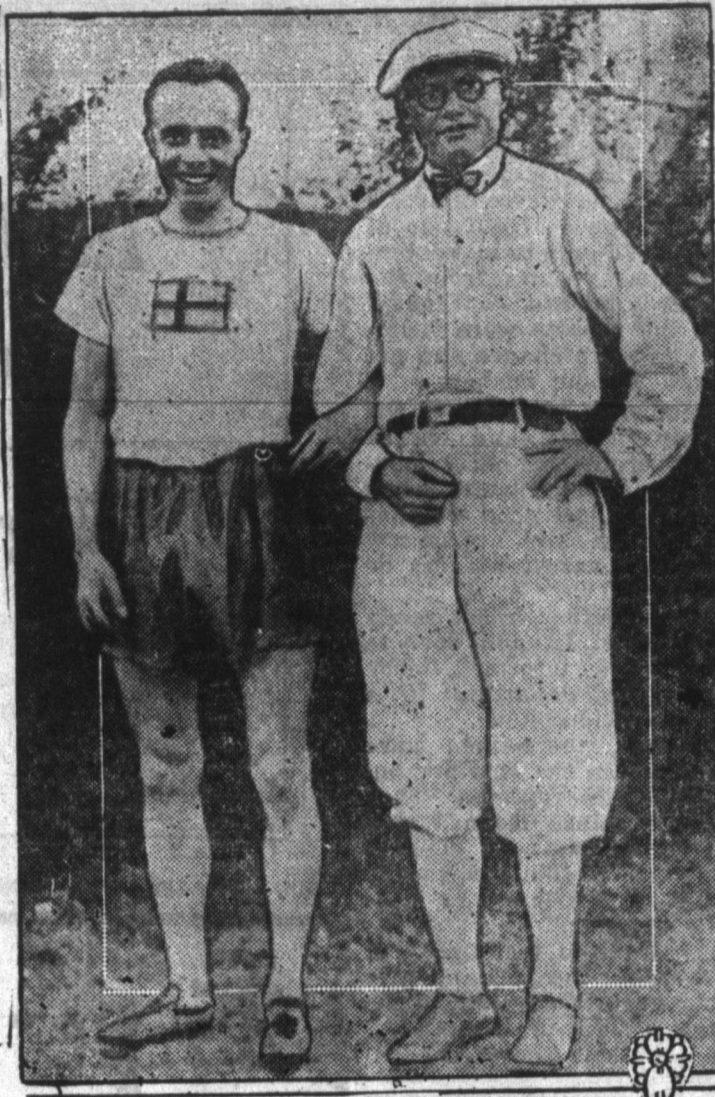
"The act and the regulations thereunder provide, however, that a certificate may be obtained on produce without commercial value when such produce is intended to be dumped, abandoned or destroyed. The purpose of the certificate is to protect the receiver subject to the act by furnishing him with evidence which he may submit to his principal to show that he had 'good and sufficient' cause for the course pursued.

"The act does not, under any circumstances, require that a certificate be obtained before the produce is abandoned, dumped or destroyed. If the receiver is satisfied that he is within his rights in disposing of the produce he is not required to have it inspected."

Wade's Cut Rate Variety Store guarantees to undersell. What we want is volume. Prices are down. 79-3tc

Detroit used seventeen players to win a ball game from Boston yesterday and only two of them pitchers. Fothergill had a perfect day at bat.

### COACH HAS RECORD OF 90 PUPILS WHO HAVE WON OLYMPIC POINTS



Edwin Wide, Swedish runner (left), and Ernie Hjertberg, track coach

HOUSTON, Texas, June 10. (AP) —Ernie Hjertberg, track coach at Rice Institute here, has a record of 90 proteges who have won points in the Olympic games.

The Rice coach came here two years ago, after 14 years as a coach in Europe. He trained Edwin Wide for the 1920 Olympics and the Swedish track team of which Wide was a member placed second in the 3,000 meter race.

Hjertberg is confident Wide's feat of running an exhibition mile and a quarter in 5:31.1 at the annual track and field meet of the Southwestern Collegiate conference here recently will stand as a world's record for that distance. The best previous time, he pointed out, was 5:25, made by Paavo Nurmi in Los Angeles about two years ago.

Jack Rafferty, of Houston, regional director of the Southern Amateur Athletic Union, also believes Wide's time will stand as a record. He was present when the trial was made and both he and Hjertberg pointed out the track is of regulation length and the referee was a regular named official of the meet.

### Oil Men Will Meet In Breckenridge To Form Bureau

BRECKENRIDGE, June 10.—Not less than 200 of the leading oil men of West Texas and officials of the West Texas Chamber of Commerce will attend a meeting here June 13, called by the West Texas and Breckenridge chambers of commerce for the purpose of considering formation of an oil, gas and mineral bureau of the former.

The call for the meeting was issued recently at Fort Worth by President R. W. Haynie of the West Texas chamber of commerce, after a conference there attended by himself, manager Homer D. Wade of the regional organization, and W. S. Cooper, secretary of the Breckenridge

The business session will be convened at the municipal building at 4 o'clock in the afternoon. At six o'clock a banquet will be tendered all visitors by the Breckenridge Chamber of Commerce. This city is fast completing arrangements for one of the most elaborate entertainment programs ever attempted in Breckenridge.

"This meeting gives every promise of developing into the most auspicious of its kind ever convened in this country, and from it we expect to develop a department in the West Texas Chamber of Commerce to mean much to West Texas." Manager Wade declared in an address delivered before executive officials of the Breckenridge chamber of commerce and local oil men Saturday night. "This is to be a gathering of outstanding oil men from all over West Texas, and their enthusiastic interest in the proposed bureau assures success of the venture."

The West Texas and Breckenridge Chambers of commerce are extending invitations to every oil and gas man of West Texas to attend. Invitation

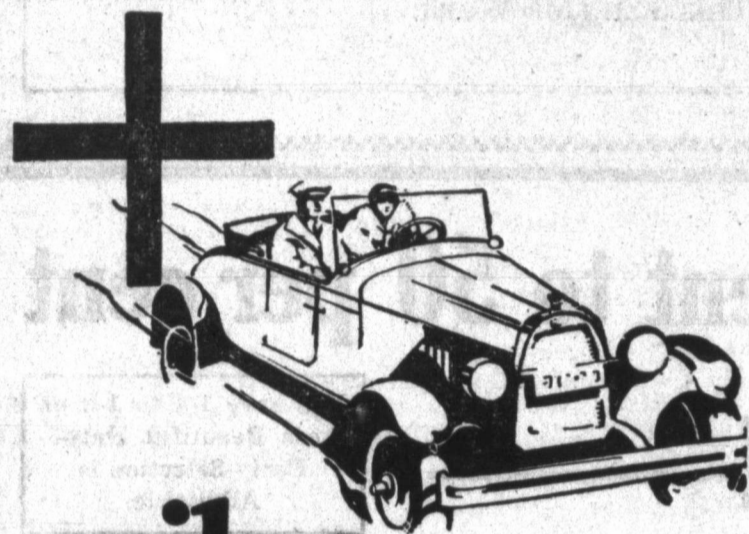
has gone out to several hundred from offices of the two organizations and already a large number of acceptances have been received.

Buy at Wade's Cut Rate Variety Store and save the difference. Formerly Wade's Store. 79-3tc

The Bureau of Engraving and Printing is breaking all records for speed in its hurry to strike off at least one print of the new Lindbergh 10-cent stamp so that it can be presented to Lindbergh on his arrival.

See The Classified Department.

DID YOU EVER SEE  
**COLORED FOLKS  
DANCE?**  
COME TO THE PAMPA  
DANCING CLUB HALL  
TONIGHT



miles plus

DON'T expect a good average number of miles from a tankful of Summer Conoco Gasoline. Expect more.

And you won't be disappointed! Summer Conoco is especially refined to give you mileage—to cut down your cost per trip—to deliver real power under all motoring conditions.

So why not use the extra miles that are packed into Summer Conoco Gasoline?

Just make sure you are getting it by filling only where you see the Conoco sign—at service stations and garages.

### CONTINENTAL OIL COMPANY

Producers, Refiners and Marketers of high-grade petroleum products in Arkansas, Colorado, Idaho, Kansas, Missouri, Montana, Nebraska, New Mexico, Oklahoma, Oregon, South Dakota, Texas, Utah, Washington and Wyoming

CONOCO Motor Oils  
Packed with  
**extra miles**



ALL MILL WORK AND SASH AND DOORS FOR THE NEW

**SCHNEIDER HOTEL**

WERE FURNISHED BY

**HUTTIG SASH AND DOOR COMPANY**

ST. LOUIS, MO.

## BUILDER'S HARDWARE

Is made up of Hinges, Locks, Knobs, and all the Hardware of the Home. When the old Hardware refuses to serve longer, Let Us—

### RE-HARDWARE

Your Home  
Call Us At 210

**THE FOX RIG & LUMBER CO.**

PHONE 210

for Economical Transportation



## WHY Chevrolet can offer such marvelously fine cars at such remarkably low prices!

Only when you know the facts about the Chevrolet Motor Company is it possible to understand how Chevrolet can offer such marvelously fine cars at such remarkably low prices.

A unit of the General Motors Corporation, the Chevrolet Motor Company is backed by the vast resources and tremendous purchasing power of this mammoth organization. The twelve great Chevrolet factories are equipped with the most modern machinery known to engineering science... while

tremendous volume production makes possible enormous savings, both in the purchase of raw materials and in the manufacturing processes.

These savings Chevrolet passes on to the purchaser by providing the greatest dollar-for-dollar value in the history of the automotive industry.

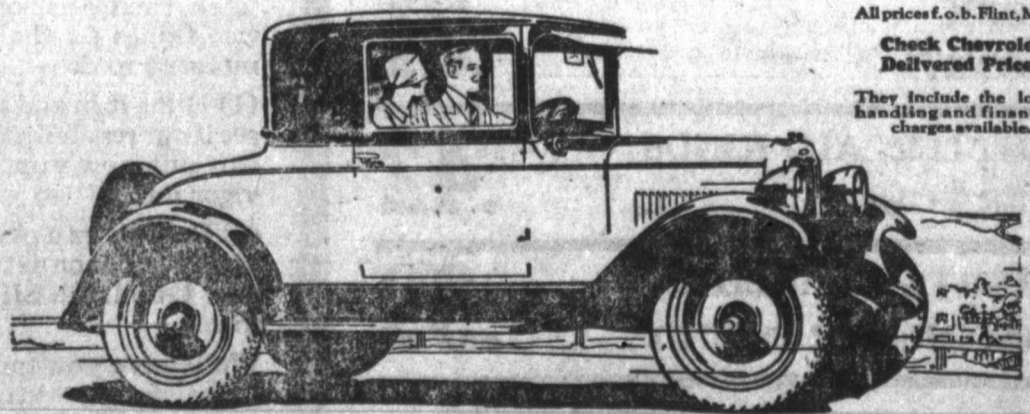
Come to our showroom and see the Chevrolet models—and you will know why thousands of buyers are selecting Chevrolet each day!

- The Touring or Roadster 525
- The Coach 595
- The Coupe 625
- The 4-Door Sedan 695
- The Sport Cabriolet 715
- The Landau 745
- The Imperial 780
- 1/2-Ton Truck (Chassis only) 395
- 1-Ton Truck (Chassis only) 495

All prices f.o.b. Flint, Mich.

Check Chevrolet Delivered Prices

They include the lowest handling and financing charges available.



The Coupe

**Culberson - Smalling Chevrolet Co.**  
QUALITY AT LOW COST



# SOCIAL NEWS Phone 72 Mornings

Mrs. O. E. Cowser and children of Wortham are here visiting Mrs. Cowser's sister, Mrs. George Woodhouse.

Miss Ruth Phillips of the Gray County State bank is ill this week.

Hayden Bathrope is in Panhandle today on business.

E. G. Barrett has returned from a visit to Austin.

Mrs. R. A. Webb and Mrs. E. A. Elliff drove to Amarillo Thursday for the day.

Curtis E. Clem is in Amarillo today on business.

Grover Calhoun has returned from a visit in Dallas.

Tom Simmons of the Oil Well Supply company had an operation on his ear Monday and is reported to be doing nicely.

Joe M. Smith spent Thursday in Amarillo on business.

Miss Willie Newton of Erick, Okla., is here visiting her sister, Miss Lillian Newton.

Miss Ruby Williams of South Dakota is here visiting friends and relatives.

Judge and Mrs. McKenzie of Miami are here visiting Mr. and Mrs. J. E. Williams.

Mrs. Hazel Bechtelheimer was a visitor in Amarillo Thursday.

Mrs. de Fur and children, who have been visiting her brother, O. W. Ferguson, and family, left Thursday for California to spend the summer.

Mr. and Mrs. J. E. Williams have returned from a visit.

E. A. Simpson of the law firm Underwood, Johnson, Dooly, and Simpson of Amarillo is in Pampa today transacting business and attending court.

Mrs. O. A. Willett is in Corsicana visiting friends and relatives.

Mr. and Mrs. Frank Schriver have returned from a month's travel in the Eastern part of the U. S. and Canada.

H. A. McDonald is in Amarillo today on business.

Mrs. Willie Richardson and Mrs. Odie Cox of Sayre, Okla., are here visiting Mrs. J. M. Strickland.

Mr. and Mrs. Roy Huff and daughter of Miami were in the city shopping on Thursday.

## Hystans Give Bridge Party

Mr. and Mrs. Hystan of the McMan Oil company entertained with bridge at their home in the Wilcox addition on Wednesday evening.

Mrs. Paul Sheppard won high score and tied with H. A. McDonald. A most enjoyable time was had and at a late hour lovely refreshments consisting of a salad course, sandwiches and iced tea were served to Misses Wilma Chapman, Moleta LeFors, Jewel Flannigan, Nellie Bird Richey, Messrs. Dale Crosby, H. A. McDonald, Ed Peters, Bill Gould, Mr. and Mrs. Paul Sheppard and Mr. and Mrs. Hystan.

## Mrs. Clem's Class Has a Picnic

Mrs. C. E. Clem's "Azor class" of the Baptist church enjoyed a moonlight picnic at LeFors Thursday night. Everyone met at the church at 5:30 and drove to LeFors, where they spread a most inviting picnic lunch and about 65 indulged in the good things to eat and all that makes a picnic a success.

## Missionary Union Has Study

The Missionary Union of the Baptist church met with Mrs. Charlie Barrett Wednesday afternoon.

The Scripture and lesson study, "Life Beautiful" was led by Mrs. Curtis E. Clem. After the regular business meeting a social hour was enjoyed and delicious refreshments were served to the ten that were present.

## Mrs. Gilchrist Is Hostess

Mrs. Robert Gilchrist was hostess to the Thursday Bridge club at her home Thursday afternoon. High score prize was won by Mrs. John Studer, high guest prize by Mrs. G. G. Rainouard, and consolation was awarded to Mrs. P. B. Carlson.

Lovely refreshments were served to the following club members and guests: Mesdames Raymond Harrah, J. D. Sugg, John Studer, P. B. Carlson, John Willis, Finney, Walter Coffee, C. T. Hunkapillar, C. Thomas, DeLea Vicars, W. A. Adams, Osborne, G. G. Rainouard and the hostess, Robert Gilchrist.

Wade's Cut Rate Variety Store absolutely guarantees to under sell. Formerly Wade's Store. 79-3tc

"Hollywood Trio," direct from Warner Bros. Studio, Hollywood, will entertain you at the Crescent Monday and Tuesday.

## J. B. Duffield Does All Concrete Work for Sharpe

J. B. Duffield, local cement work contractor, was in charge of the entire cement work on the new Schneider hotel. In the construction of the building, five cars of cement were used, amounting to 1,000 barrels or 400,000 pounds. The cement was purchased by the local concern from the Victor Cement company of Oklahoma City. Local lumber yards supplied the wood used in forms for pouring

the concrete.

J. B. Duffield has been in business in Pampa since July and has employed as many as fifteen men on a job. He has done all the cement work for the Sharpe Construction company here. This includes such buildings as the Adams hotel, Pampa Hospital, the Schneider hotel and the new school on the south side.

Before moving to Pampa, Mr. Duffield was in business in Pueblo, Colo., where his biggest job was the building of a subway for flood prevention in Pueblo. The entire construction was concrete and was completely under the control of Mr. Duffield. He predicts a busy season in Pampa.

An Oklahoma farmer owns a bullet pouch, powder horn and sash over 100 years old, which was at one time the property of Tecumseh, Shawnee Indian warrior.

Fifty thousand Japanese beetles, capable of preying on leaf-eating insects on farms and truck gardens in Washington, arrived this week from the Orient.

# STUDEBAKER

"The Commander will maintain any given speed, up to 65 miles per hour, longer, more smoothly, and at less expense for gasoline, oil and repairs than any other stock automobile now being built."

Harry Hartz, world's racing champion, said that and he ought to know—he drove The Commander 5000 miles in less than 5000 minutes! Take command of your Commander today.

THE COMMANDER \$1545

to \$1645 f.o.b. factory. Other Studebaker and Erskine models from 1945 to 19495

THUT MOTOR COMPANY Pampa, Texas

THIS IS A STUDEBAKER YEAR

# Have you ever made good on one job.. for 39 years?

THE extra mileage you get from Dunlop tires starts with the fact that Dunlop has had thirty-nine years of tire-building experience—more than any other tire-maker.

Each part of each Dunlop is built right. Dunlop owns its own cotton mills to spin selected long-fibre cotton into the special Dunlop cable-twist cords.

These cords mean extra strength—an added factor of safety against constant load and pounding of roads—longer life and greater mileage.

They mean extra "stretch"—so the tire carcass will give under blows, and come back to its original shape without the slightest injury.

Every Dunlop you buy has extra miles built into it because Dunlop knows each part of its job. That is why we recommend you put Dunlops on your car.

Culberson-Smalling Chevrolet Company PAMPA, TEXAS



every 2 1/4 seconds someone buys a

# DUNLOP

FOUNDERS OF THE PNEUMATIC TIRE INDUSTRY

## DeSpain & Son

### KASH and KARRY GROCERY and MARKET

SUCCESSORS TO PAMPA POULTRY MERCANTILE ASS'N.

THESE SPECIALS FOR SATURDAY AND MONDAY, 11th and 13th ONLY

- No. 2 1-2 Napace Tomatoes—Regular price 20c, our sale price 15c
- Quail Brand Catsup, regular price 30c, our price 19c
- New Crop Honey, just from South Texas Aparies:
  - 10 lb. Bucket Comb \$2.00
  - 5 lb. Bucket Comb \$1.10
  - 3 lb. Bucket Comb 70c

#### EXTRACTED HONEY

- 10 lb. Bucket Strained Honey \$1.75
- 5 lb. Bucket Strained Honey 95c
- 3 lb. Bucket Strained Honey 60c

LARGE SIZE LOUIS COFFEE \$1.29

We are going to offer you your choice of the Santa Fe Line of Syrup Packet Fruits, regular sellers at 30c and above.

24c OUR SALE PRICE 24c

#### Pick Your Choice—

- No. 2 Can Grape Fruit
- No. 2 Can Apricots
- No. 2 Can Peaches
- No. 2 Can Cherries, Red Pitted and Royal Anne
- No. 2 Can Pears
- No. 2 Can Blackberries
- No. 2 Can Red and Black Raspberries
- No. 2 Can Gage Plums and Green Plums
- ANY OF THEM FOR 24c

This is the greatest hit of the season and the best bargain of the sale. To the customer purchasing a \$10 bill of groceries and meats (specials not included in this offer) we will give one gallon Gooseberries FREE. For a \$5 purchase we will give a three-pound bucket of Crisco FREE.

## BABY CHICKS JUNE PRICES

AN IDEAL TIME TO RAISE CHICKS AND AN IDEAL PRICE

White, Buff or Brown Leghorns	100 lots \$8.50	500 lots \$8.00	1,000 lots \$7.00
Heavy Standard Breeds	\$10.00	\$9.50	\$9.00
Mixed Table Chicks	\$9.00	\$8.50	\$8.00

Week Old Leghorns	\$10.00 per hundred Chicks
Two Week Old Leghorns	\$13.00 per hundred Chicks

One Week Old Heavy Standard Breed	\$12.50 per hundred Chicks
Two Week Old Heavy Standard Breed	\$15.00 per hundred Chicks
One Week Old Mixed Table Chicks	\$11.00 per hundred Chicks
Two Week Old Mixed Table Chicks	\$13.00 per hundred Chicks

With these attractive prices on chicks and the ideal weather in June a great success can be had in raising chicks.

We pay the postage and guarantee 100 per cent. live delivery. We hope you will take advantage of this opportunity and send us an order.

Order direct from these prices, no further correspondence is necessary. Stating your second choice in case we are out of your first choice.

We require cash with the order or one-fourth cash with the order and the balance must be in our hands before the shipping date. We do not send chicks C. O. D.

## DODDS HATCHERY PAMPA, TEXAS.

### WANT ADS

Rates: Two cents per word per insertion; three insertions for five cents per word. All classified ads cash in advance.

FOR RENT—Furnished sleeping and light housekeeping rooms at 461 East Foster. 80-2tp

FOR RENT—Unfurnished apartment. Four rooms with private bath. Strickland apartments. Corner Browning and Somerville. 80-3tc

WILL TRADE vacant lots for good used furniture, or will take furniture, diamonds, good used auto, or other things of value as down payment on lots or on good three or four room house and lot. Easy terms. Pampa Development company. Talley Addition building. 80-4f

What have you to trade for vacant lots or improved property? See us for trades, financing, loans, Pampa Development Company. Talley Addition Bldg. 80-4f

WANTED—Amusement stands, dance pavilion, soft drink stands, hamburger or barbecue, rides, merry-go-round. Pampa's only within ten days. For further information see or write to: Plains Amusement company, J. G. Christy, Trustee. Talley Addition Bldg. Pampa, Texas. Address mail to P. O. Box 774. 80-4f

FOR RENT—One room house, \$20 per month. One block east and one block north of Pennington Filling station. J. L. Cole. 80-1tp

LOST—Bay horse, weight 1,000 lbs. Branded "H" on left hip. "T. I. T." on left jaw. Large wart on inside hind leg. Reward. J. P. Prather, Kingsmill 80-2tp

LOST—Ladies wrist watch at Peoples store. Friday morning between nine and ten o'clock. Five dollars reward for return to News Office. 80-1tp

FOR RENT—Nice cool rooms, modern, hot and cold water. New management. Gray Pampa Hotel. 79-4fc

FOR RENT—South front bed room in modern home adjoining bath. Telephone. One block north of High School on Russell Street. 79-8tp

FOR RENT—Two large bed rooms for men in modern home. Five blocks east of Post Office. Phone 66. 79-8tc

FOR RENT—Furnished apartments with garage. Modern. Prices reduced. 2 1-2 blocks south and 2 west of track. 79-8tp

FOR RENT—Two room apartment, furnished. Price reasonable. 433 North Somerville. Phone 214W. 79-8tp

FOR RENT—Sleeping rooms in modern home. 3 blocks east and one-half block south First National Bank. 79-8tp

FOR RENT—4-room house. 425 north Caylor. Sterling Williams. 76-4tp

PERSONAL—Rev. Anna Mitchum—Spiritualist Medium. Readings daily. Texan Hotel. 77-6tp

FOR SALE—Two 1927, one 1928 and one 1928 Chevrolet Trucks. Terms to responsible parties. See Walter Butler. Phone 165. 75-6tp

WANTED—To buy good butcher cattle and hogs. Phone 9919F2. T. C. Ward, Talley addition. 75-6tp

LOWEST summer rates ever known: Irvett school in Texas. Write for information. Fleming Business College, Amarillo, Texas. 71-6t-nw

FOR SALE OR TRADE—Two lots in Nocton, will consider Ford Coupe in trade or will sell cheap for cash. Write Box A-4 Pampa Daily News. 61-3b



**REX today**  
**BEBE DANIELS**  
 —IN—  
**'SENORITA'**

**COOLIDGE TO RECALL  
 FLOOD CONFERENCE**

WASHINGTON, June 10. (AP)—Delegates to the recent flood control conference at Chicago, who called on President Coolidge, said the president indicated he would call a new conference to map out a flood prevention program.

**Indian Drugged  
 And Robbed—Wife  
 Missing Today**

(By The Associated Press.)  
 MEMPHIS, June 10.—Joe Duncan, 22-year-old Indian of Pawhuska, was found in a dazed condition here today.  
 His wife has disappeared and money and jewelry valued at \$4,650 had been taken, police reported. Authorities believe, then robbed. Duncan had been drugged, au-

**EARTHQUAKE FELT  
 CHARLOTTESVILLE, Va., June 10. (AP)—**Earthquake shocks severe enough to awaken many residents were felt here this morning and were recorded by the seismograph of the University of Virginia.

**Negro Rioters Are  
 Given Paroles**

(By The Associated Press.)  
 LEAVENWORTH, June 10.—Eleven negroes, former members of the Twenty-Fourth infantry convicted for participating in a Houston race riot in 1917, were released on parole yesterday from the United States disciplinary barracks at Fort Leavenworth.  
 Four more rioters are to be released on parole within a short time, it was said. More than one hundred negro soldiers were convicted for rioting, several sentenced to be hanged.  
 Sixty-nine received sentences of life imprisonment.

**SUFFRAGIST DIES  
 CHELTENHAM, England, June 10 (AP)—**Victoria Woodhull Martin, author and pioneer suffragist who once ran for president of the United States, died here today.

**"REPLY TO TERRORISM"  
 MOSCOW, June 10. (AP)—**Execution of 20 persons as a reply to open terrorism by opponents of the Soviet regime was announced in an official communique published today.

**TEXAS WHEAT CROP  
 ONE-FOURTH OF LAST  
 YEAR'S RECORD YIELD**

Crops generally are in fair to good condition in Texas except in the Panhandle section where the protracted drought has not broken. In this latter territory, there probably will be a good cotton crop as well as row crops but lack of moisture throughout the Texas Panhandle has turned the earlier good winter wheat of two months ago into one of uncertainty, production now being estimated at 5,000,000 bushels compared with 22,000,000 bushels harvested last year; although good rains in the vicinity of McLean were reported on May 27 and the advent of more general rains production may exceed present forecast 10 to 15 percent.

Panhandle Section—There have been recent good rains in the vicinity of McLean but more moisture is needed especially in extreme western counties. Small grain is being harvested. Winter wheat production is estimated at 5,000,000 bushels compared with 22,000,000 bushels harvested last year, but if good rains

come soon actual production may be ten to fifteen per cent greater. Cotton is in fair condition—acreage is somewhat larger than last year.  
 Western, Central, Northern and Northwestern Texas—There has been more or less rain during the past two weeks, but moisture is needed especially in western sections. Harvesting of small grain has commenced—crops of wheat and oats will not be as large as last year. Corn is doing well generally but needs more rain in most localities. Cotton acreage is ten to fifteen percent less than last year. Ranges are in fair condition.

Eastern, Central, and Northern Central Texas—Field work is still being more or less retarded due to wet soil and warm dry weather is needed for advancement of all crops. Wheat and oats are being harvested—it is too early to furnish a reliable estimate as to quality and quantity of production. Cotton planting is about 70 per cent completed. Not much corn has yet been planted account of the incessant heavy rains; some farmers are planting peanuts for hog feed.

Southwestern Texas—There have been good rains recently which greatly improved late corn. Oats are being harvested—yield is about 50 per cent of normal. The recent rain was

very helpful to maize and stock feed crops. Cotton acreage is small but this crop is in good condition.  
 South Texas—Settled weather prevails. Cotton and rice, need rain but the dry weather will not harm rice. Ranges generally are in good condition.  
 El Paso Section—Pear crop around Ysleta is about 85 per cent of normal. First cutting of alfalfa is completed. Cotton is up to a good stand and in fine condition. Ranges are about 75 per cent of normal and need rain.

Wade's Cut Rate Variety Store, formerly Wade's Store, has slashed the prices.

**SAFETY IN TRAVELING  
 SOUGHT FOR GOLDFISH**

WASHINGTON (AP)—Travel is going to be made safe for goldfish if the government can do it.  
 Acting on complaints about the heavy mortality rate of their charges while proceeding in cans via express toward private bowls, the Bureau of Fisheries has undertaken a serious investigation. It already has some results to announce.

FOR RENT—Two-room apartment with bath. Private residence in N. E. part of town. Phone 135. \$0-2tc 79-2tc

"Our Bizness Is Boostin'  
 Your Bizness"  
 The Huge  
 Electric  
 Sign  
 Atop The  
 Schneider Hotel  
 Was Designed and Erected  
 By The  
 Booster Sign System

**Crescent**  
 TODAY  
**"CALIFORNIA  
 OR BUST"**  
 The Biggest Laugh In Town.  
 Al Cooke, Kit Guard and  
 Why? Because it has George  
 O'Hara, Kit Guard and Al  
 Cooke. It's comedy, it's speedy  
 and it's good.  
 also  
**"WISECRACKERS"**  
 SATURDAY  
 DICK HATTON  
 —in—  
**"HE-MAN'S  
 COUNTRY"**  
 With a Good Black-Face  
 Comedian  
 Also Good Comedy

**NOTICE**  
 The Beautiful Draperies  
 In The  
**NEW SCHNEIDER  
 HOTEL**  
 They Were Supplied by Us—  
 Let Us Furnish Estimates for  
 Decorating Your Home.  
**FAKES-PALMER  
 FURNITURE CO.**  
 903 Polk St. Amarillo

**NEW SCHNEIDER HOTEL**

**WHITE DEER  
 LANDS  
 BROWN &  
 BUCKLER**

Congratulations on retiring from the old frame building to the new magnificent brick Hotel.



The merchants on this page offer congratulations to Pampa's new \$180,000 hotel and to those interested in its construction and maintenance. These business and professional men are interested because the hotel marks another step forward for Pampa and the Texas Panhandle.

**CONGRATULATIONS**

We are glad to be located just west of the—  
**New Schneider Hotel**  
**COBB MOTOR CO.**  
 Dealer Dodge Bros. Motor Cars and Graham Bros. Trucks. Let us care for your car.

**Panhandle Lumber Co.**

**W. W. HENRY**  
 Congratulates the Schneider Hotel Co. on its fine building. We are proud that our meats and groceries are served at Schneider Hotel.

**WHITE HOUSE LUMBER CO.**  
 Congratulates The Schneider Hotel Co.  
 We are glad to have furnished a part of the material in the New Schneider.

**CONGRATULATIONS**  
 All good wishes for the future success of "The New Schneider."  
**GRAY COUNTY ABSTRACT COMPANY, INC.**



## NEW SCHNEIDER HOTEL IS NOW READY

### INSTITUTION IS CREDIT TO CITY IT OVERLOOKS

Famous Food Service  
To Be Continued in  
Fine Building

CLEVER IDEAS  
LEND DISTINCTION

Nothing Left Undone  
In Providing for  
Guests

Standing as the foremost part of Pampa's skyline, and no less prominent in the assets of the city, the new Schneider hotel raises its five stories skyward to overlook the prosperous and promising little wheat capital and oil metropolis that has made it possible.

Long famous for its excellent food and hospitality, the Schneider now proposes to continue these essentials in a new, magnificent building than which none other on the Plains, excepting Amarillo's, is better appointed.

Pleasing from the exterior, it is even more satisfying within. The visitor approaches a well proportioned building, constructed of cream and red colored brick and white stone trim topped by the big electric sign. It is the conception of M. C. Parker, architect of Amarillo and Los An-

### Hotel Founder



Alex Schneider Sr., is a hotel man of unusual experience, having operated a 60-room hotel in Biel, Switzerland at one time. He is a pioneer in West Texas, and widely known for the excellence of the meals he serves.

geles, who specializes in schools and hotels.

#### Exceptional Floor

The door swings open to let visitors in upon a beautiful terrazzo floor, made by experts who worked chipped marble into soft concrete and polished the surface to a gloss. The base also is of terrazzo. "Jazz" plaster, applied by specialists in two tones of brown, gives the walls a dis-

tinctive appearance. The woodwork is of oak, in natural finish harmonizing with the walls. All the lights and fixtures are appropriately colored and designed.

At the left is a roomy space to be occupied by a cigar and news stand, while across the little hallway from this is the women's lounge room, beckoning tired travelers to its comforts. Down the little hall at the south is the Aladdin Beauty shop, and beyond is the office of the Chas. H. Sharp Construction company, builders of the hotel and many other local structures.

#### Private Branch Exchange

Opposite the entrance is the business office, where specially designed fixtures are distinctive. A private branch exchange has been installed, and there are automatic telephones in every guest room. The switch board is located so that the night clerk may have a commanding view of the entire lobby while answering the telephone. There is a private office for the manager. The DeSaules color system of room designation has been installed, along with special fixtures to facilitate record keeping by floors.

A 60-foot porch at east and west give outdoor conveniences, and rustic oak furniture is provided. Massive brick work lends an artistic effect without.

A 1,500 pound Otis elevator lets one quickly down into the large basement or lifts a person quickly to any of the five stories above. The basement has the overhead heat system, contains the latest type of Bryant heating plants, has an extra large water heater, pay toilets, and includes the Vogue cleaners, a hotel laundry, and a Frigidaire machine which provides circulating ice water

### Hotel Manager



Alex Schneider Jr., trained in a hotel school in Switzerland and in big hotels of that country and the United States, heads the local corporation and is general manager of the new Schneider. He has been in Pampa since 1912.

for each room. There is also a sample room and a large clubroom for banquets and luncheons.

#### Well Equipped Kitchen

The west porch leads to the offices of Alex Schneider, Jr., general manager of the hotel, who will have charge of purchasing, the kitchen and dining room. The kitchen, equip-

(See INSTITUTION—Pg. 4, Col. 3.)

### SWITZERLAND LAD BECOMES HOTEL OWNER

Alex. Schneider, Sr.,  
Came to U. S. When  
20 Years Old

FAMILY STYLE  
HIS HOBBY

Sold Sauer Kraut to  
Soldiers of Fort  
Elliott

The story of Alex Schneider, Sr., chief figure in the establishment of the Schneider hotel, is one of a young man who left his native land of Switzerland to try his fortunes in the New World.

Born in Biel, Switzerland, in 1854 Mr. Schneider spent his early years in the pursuit of his father's profession—that of a tanner. With a few of his friends, he came to the United States when he was 20 years old, going to Chicago to become a tanner for two years. Typical of the old world culture, he was an accomplished musician. His favorite instrument, the cornet, earned him a livelihood for three years, during which he played in some of the large bands of Chicago.

The call of the homeland became so strong that he returned to Switzerland in 1879. But he was back in the

United States in 1881. He went to a Swiss colony at Frankfort, Ky., where he stayed until 1885. He married while there. His next move was to Gray county, where he joined a brother-in-law, Henry Thut, at the Diamond F. Ranch on White Deer creek.

#### Raised Big Cabbages

During that time Mobeetle was the trading point, and there Mr. Schneider went for provisions. He and Mr. Thut raised, one year, a big crop of cabbages in the creek bottom. They grew prolifically, averaging more than 15 pounds to the head. In the absence of a better market, Mr. Schneider made the cabbages into sauer kraut and sold it to the soldiers at old Fort Elliott.

The first brass band in the Panhandle was formed at Mobeetle in 1887 by Mr. Schneider. There were several soldiers in the group of twelve musicians. The music was a real treat in those days.

The hotel business took Mr. Schneider's attention for the first time in 1890. He had gone back to Switzerland to his home town of Biel, and there took charge of a 60-room hotel, remaining about ten years.

#### Drained Many Glasses

"In this country, people are not particular about their meals," Mr. Schneider remarked as he reclined and gazed reminiscently through the smoke of a cigar. "But not so in the old country. There meals are always served in courses, and patrons take their time at the table. With many nationalities to serve, cooking is truly a fine art. When Frenchmen were present I would cook their food as French like it; for the Germans it was something else, as sauer kraut and pig knuckles."

(See OWNER—Page 4, Column 1.)

THE NEW \$180,000

# SCHNEIDER HOTEL

WILL HOLD ITS

## GRAND OPENING

SATURDAY EVENING, JUNE 11th

7:00 O'CLOCK

Reservations can Still be Made---Phone 23

No expense has been spared to make the Schneider a convenient and comfortable place to spend a night or a month. Wide variety of accommodations in single and double rooms have been provided. Everything is new, modern, nicely finished and conveniently arranged to give guests the maximum of comfort.

The dining room of the new Schneider will be run along the same lines as that of the old hotel. The same good quality of food and high class service which marked our hotel during the last fourteen years will be given. Our kitchen equipment is the best that can be had.



## Utilities Company Lays 100 Miles of Lines in 60 Days

(By The Associated Press.)  
 McCAMEY, June 9.—Building 100 miles of high tension transmission line in 60 days, or more than 2 miles for each working day, is a feat just accomplished by the West Texas Utilities company in an effort to keep up with oil development in West Texas. This is believed to be a record unequalled in the country, because in no other section of the United States are such distances being spanned by electric wires.

These new lines made it possible to start electric service to the oil field industries and towns of the Pecos oil field section June 1. The company now has 15,000 horsepower electric energy available at McCamey in the middle of the big oil field development. Fifty miles of additional lines are to be completed in a few days to other sections of the oil territory.

More than 600 laborers, line men, and engineers have been employed on rushing the long transmission lines across the country, and it was necessary to establish at McCamey a big camp and headquarters barracks for the workmen. A modern office building for the company is under construction here.

Combustion engines of 3,000 horse power capacity are being installed here to act as stabilizers, and a large switching station and substation are being completed. These local power units and the transmission lines will enable the West Texas Utilities company to supply emergency service to the Texas Power and Light company at Crane where interconnection between the lines of the two companies is to be made.

While the West Texas Utilities company is pioneering in the Pecos region, it has had experience in large oil field operations in the older West Texas fields, notably in Eastland, Schackelford, and neighboring counties.

The new transmission lines brings power from the large generating stations of the company at Abilene and San Angelo. At San Angelo the company is completing a new generating unit at a cost of \$1,250,000.

## Stock Raisers Open Attack On Wolves

MARFA, Texas, June 10.—The mournful howls of the wolf packs, which have struck terror in the hearts of many a cattle and sheep raiser in the Big Bend country of Texas, soon may be stilled.

A wholesale wolf extermination campaign now is under way in the highland country of Texas, and since its inauguration more than 2,000 wolves have been poisoned or shot. State and federal wolf hunters are rapidly clearing the country of these destructive enemies of the stockman with traps and poisoned baits.

The wolves range in size from the small gray coyote to the huge golden black Texas lobo, which attains an enormous size, some specimens weighing 200 pounds. "Old Blackie," huge she-wolf which eluded capture for 10 years and did damage estimated in excess of \$30,000 to the live stock men of the section, recently fell a victim of the trapper. The huge wolf, coal black in color, with whitish green eyes, was caught by a trapper who first captured one of her cubs and used it as a bait to lure the dam into his steel trap. She was taken alive, and several of the larger zoos of the country are seeking to get her as a specimen.

Baits composed of poison enclosed between two pads of pork have been distributed throughout Brewster and Presidio counties by the hundreds of thousands.

In the last few years the Texas highlands have yielded to civilization of a sort, and pure bred livestock is being raised here. The Highland Hereford Raisers' association, the Highland Sheep Raisers' association and the Highland Poultry association have developed into active and constructive organizations. Where a few years ago sheep were unknown, cattle were numbered by the score and poultry was known only by pictures there are now hundreds of thousands of sheep, herds of cattle that recall memories of the Old West, and the poultry industry has assumed proportions undreamed of by the West Texans.

DALHART.—Cream receipts for the Kaufman creamery company, which has been located in Dalhart for the past two years, totaled \$5,300.60 for the month of May up to noon of May 27. This amount is more than twice the business of May, 1926. More than 450 farmers are patrons of the creamery. The establishment has promoted introduction of several carloads of dairy cattle.

## Machine 70 Years Old



A sewing machine that was transported across the western plains in an ox train in 1870 and caused Indian squaws to marvel, is still used by a Spokane, Wash., woman. Mrs. Mary Jane Smith's antique is 70 years old, and is run by hand power. It has stitched rought pioneer clothing, heavy Indian garments and household materials ever since her mother took it west with her.

## Screen-Struck Pupils Scarce In Hollywood, Principal Finds

HOLLYWOOD, Cal. (AP)—Boys and girls who go to high school in Hollywood are not eager to enter the movies.

William H. Snyder says so, and he should know. He has been principal of the Hollywood high school for nineteen years, and has seen the studios here grow from cheap experiments in barns to great picture plants covering many acres and costing many millions.

Yet in all that time he has never seen his students get excited over the chance to break into the movies, even though some of them take the chance when it is offered.

Questionnaires filled out by members of the last graduating class revealed 81 per cent planned to go on to college.

"There is no distance here," explained the veteran schoolman, "to lend enchantment to the thought of Hollywood and motion pictures. Our students live in Hollywood and they see screen celebrities as often as they see policemen or firemen.

"Talk of fabulous film salaries does not impress these boys and girls. They know a little of the other side of film life. Perhaps the actor next door cannot pay his rent of the girl acquaintance who was headed for stardom a few months ago has had to give up her automobile. They know that real screen success usually means a long upward climb, with many hardships and pitfalls."

Hollywood high school graduates are easy to find in the motion picture studios, Snyder observed, but the percentage is no greater than it would be if the studios were wagon factories or any other industries.

Not long ago a producer was looking for a girl with the face of the Madonna. He thought the type he sought might be among the girls of Hollywood high school. Snyder and his assistants cooperated in the

search, but there was no stamped. It was just a chance to act in the movies.

Some of the undergraduate students already work in pictures. They are absent from school several weeks at a time, but they come back when the picture is finished and go on with their school work.

## Fraser and Upton Insured Hotel at Its Every Stage

During the construction of the new Schneider hotel the local insurance firm of Fraser and Upton cooperated in every way with the hotel officials and the Chas. H. Sharp Construction company in keeping the property protected. Through the efforts of this general insurance agency there were furnished bonds, builder's risk on both fire and windstorm, workmen's compensation, and employer's liability and life insurance.

A survey of the hotel is being made by this agency and every detail of the construction is being carefully noted that every credit may be taken into consideration and a minimum of insurance rate obtained from the state department. It has been a pleasure to this agency to work with the hotel officials in this connection and the personnel of the agency wish for the new Schneider hotel success beyond their expectations.

The firm of Fraser and Upton has been in business here since August of 1926. Before moving to Pampa they were at the home office of the Fidelity Union company of Dallas. W. T. Fraser is a native of Gray county and W. C. Upton is a native Texan.

## NEW DODGE SIX

**DRAWNS MUCH PRAISE**  
 The arrival of Dodge Brothers keenly anticipated Six has swung the spotlight of interest in the direction of the salesroom where, tradition tells us, the word "dependable" was given popular coinage. There it remains focused, for the new six, the Senior, reveals much that absorbs the attention and much also that creates surprise.

New cars and new models are constantly rolling over the horizon, but

a Six arriving from the Dodge laboratories carries its own peculiar news value. There are, of course, certain pre-conceived ideas of the makers as to high quality in structure and mechanics, due to the past history of nearly two million cars built and marketed during a period of twelve successful years. But how does this new member of the family perform? And—here is where curiosity is perhaps uppermost—how does it look? Is there a note of conservatism in its appearance? Or does it look as

though the designers were appealing to flaming youth?

It may be said at once that without being extreme in any sense Dodge Brothers Six has plenty of snap in its appearance as well as in its performance. Niran Bates Pope who is one of the foremost technical editors in the country, hits it off well when he says in Automobile Topics: "Dodge Brothers Senior is a distinctive embodiment of the spirit of the times."

# Naturally

Our firm was chosen to do the Interior Painting and Decorating on the

## NEW SCHNEIDER HOTEL

We are the best equipped firm, from the standpoint of experience, to do this class of work, in the Panhandle and are proud of the fact that we have had a share in completing this and many others of the finest and largest private and public buildings in this section of Texas.

# M. J. TWADDELL

PAINTING AND DECORATING  
 AMARILLO, TEXAS

# All Plumbing and Heating

in the

## NEW SCHNEIDER HOTEL

Was Furnished and Installed by the

# ELLISON Plumbing Comp'y

Kohler Plumbing Fixtures  
 American Radiators

We Congratulate The

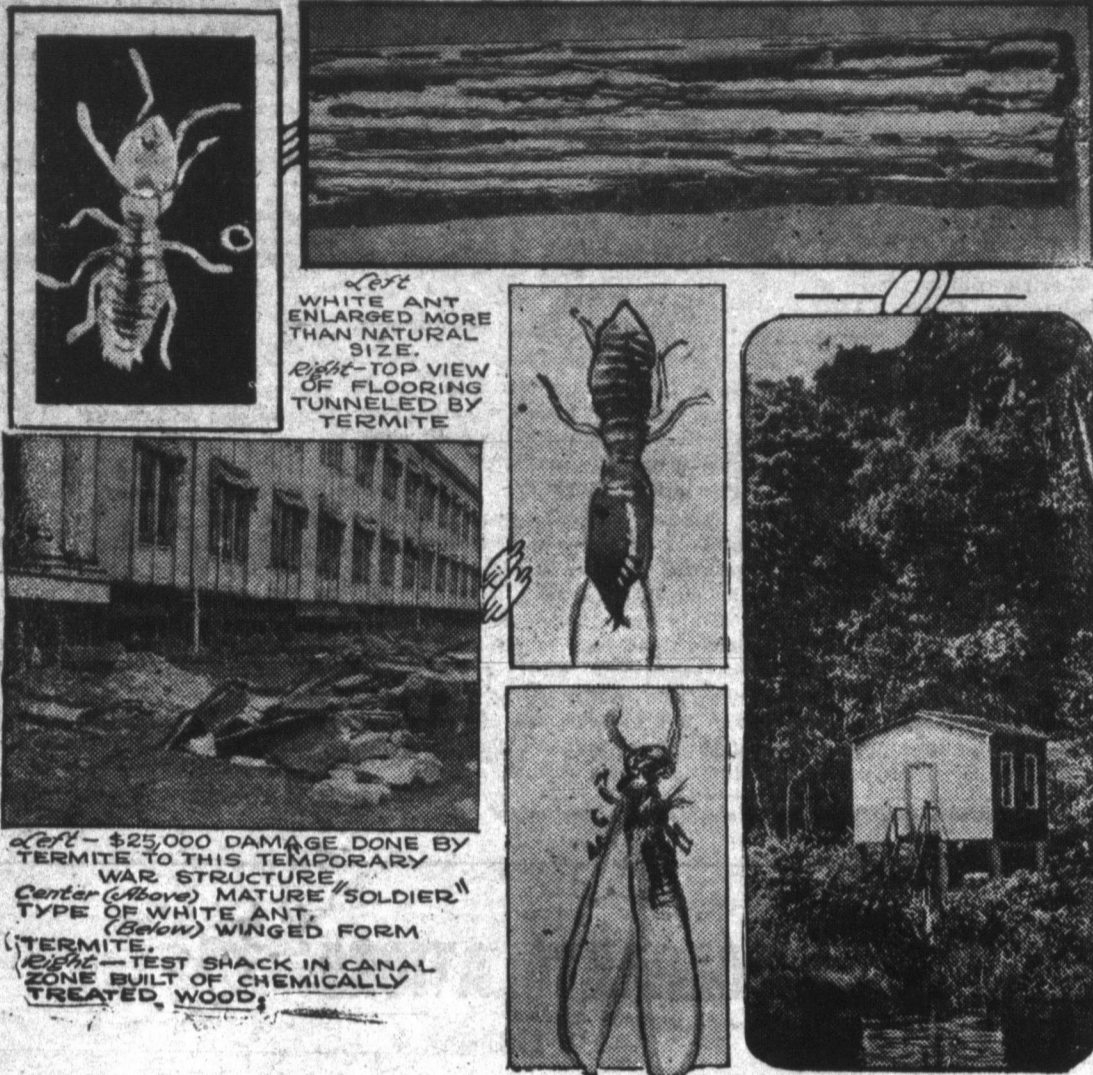
## NEW SCHNEIDER HOTEL

We Are Proud To Have Supplied Hardware For This Fine Building.

Pampa Hardware & Imp. Co.



### Home Builders Warned Against White Ants



Fifteen million dollars damage every year is the toll which Federal entomologists estimate is taken by the boring proclivities of the termite or white ant, of which there are 42 species in the United States.

The little pale-colored, soft-bodied, social insects of the order Isoptera, some of which are totally blind, destroy the foundations and woodwork of buildings and articles in them as well as living fruit and other trees, crops and various forms of vegetation.

The Federal Bureau of Entomology has several specialists constantly at work to determine methods to keep this enormous damage down to a minimum. It is urging city building officials to slightly modify their building codes to thwart the pests and is advising county agents to give helpful advice to farm home builders.

Some localities where termite damage has been serious are changing their building regulations in accordance with the Bureau's suggestions. When the untreated wood of buildings is in direct contact with the ground, termite damage in the Eastern section, Gulf States, the Central West and Pacific Coast states is often very serious, say entomologists.

In the Canal Zone, where the pest is prevalent, a chemically-treated wooden shack is used for experiments with the insect. Termites live in large colonies. There are both winged and wingless mature individuals, "soldiers" and "workers," and various fertile reproductive forms. The "workers" which are blind, are the most destructive. They are able to penetrate the hardest of woods provided they have access to moisture in the ground.

Considerable damage has been wrought by the pest in many government buildings in Washington, \$25,000 being spent at one time to repair a temporary war structure rendered unsafe by the gnawing away at the foundation. The following prevention methods are suggested by the government entomologists:

No foundation timbers, floors, sills, clapboard, etc., of untreated wood should be laid on or in the earth, and untreated beams must not be laid in concrete without at least one inch of concrete underneath and separating it from the earth. A special grade of hard mortar should be used in making foundations or in cellars and walls where they are in contact with the earth, as termites are able to penetrate certain mortar after it is some years old.

For greater safety all brick-work extending below the surface should be faced and capped with concrete at least one inch thick.

Metal termite guards should be provided between the earth and treated foundation timbers, stone, brick

or concrete foundations. By simply inserting a sheet of galvanized iron into the masonry and turning the projecting edges downward at an angle, communication of termites with the earth can be cut off.

In less pretentious frame buildings, metal caps are placed over the tops of construction stone piling, pillars, or wooden supports.

There are three principal points to remember—insulation of untreated woodwork from the earth, metal termite shields to shut off the shelter tubes built by the insects over impenetrable substances, and treatment of interior woodwork and furniture with preservatives. The last recommendation is directed principally to builders in the Gulf States, the Southwest and Southern California.

#### Zahner Company Furnished Kitchen for Schneider Hotel

When it came to furnishing the well designed kitchen at the new Schneider hotel, the Zahner Manufacturing company of Kansas City, for which W. W. Haskins is local representative, was called upon.

Mr. Haskins selected a new style Majestic range, header by gas; an automatic electric dish washer which also sterilizes and dries, steam tables and plate warmer; utensils; kitchen cutlery, and mechanical potato masher—all of the latest types manufactured.

The Zahner company specializes in these lines.

#### Malone Experts Furnished New Elegant Hotel

When it came time to furnish the new Schneider hotel, the management at once consulted G. C. Malone and company, furniture dealers and interior decorators, who ordered the required necessities and had them placed for the opening.

The carpet used was the best that could be purchased and was laid by experts of the Malone company. In all 2,500 yards of fine grade Axminster carpet was used for the hotel and 1,796 yards of Ozite padding was necessary under the carpet.

There are 103 Simmons beds and the same number of the famous Simmons Beauty Rest mattresses in the hotel. The dressers, chairs, and rockers in the bedrooms are designed for comfort. Some of the rooms are furnished with beautifully decorated steel furniture, with "vanities." This furniture is a new creation and will not mark or stain, even though lighted cigarettes are placed on it.

There were 150 pairs of lace curtains and rods supplied by the local firm, as well as 167 Luxor hand-tinted window shades. It took one car load of over-stuffed furniture, consisting of davenport, chairs, easy chairs, and Chesterfields and a total of six car-loads of furniture.

The G. C. Malone Furniture and

### It Required 1 1-2 Tons of Nails In Schneider Hotel

Workmen's tools, wheelbarrows, emergency equipment, and nails were supplied by the Thompson Hardware company. The average person probably could not visualize a load of nails used in the Schneider hotel, but figures furnished by the hardware company show that more than a ton and a half of nails were used in the building.

It would have given the average large truck plenty to do in the way of bearing the weight of the nails, if it carried all of them from the hardware store to the new building. If a man were to carry the nails to the building it would have taken many days to accomplish the job, but the truck service of the Thompson Hardware store made the work easy and assured delivery at the time needed.

#### Vogue Cleaners Located in New Schneider Hotel

"The Vogue" Tailor shop is open in the new Schneider hotel. It will feature service and high quality cleaning, pressing and repairing.

J. V. New, manager of the shop, states that work from the guests of the hotel will receive prompt and careful attention by experts. Mr. New has been in the business for twelve years and is thoroughly experienced with all lines of tailor work.

It is also Mr. New's intention to give the people of Pampa the best of service in all branches of his shop, which includes a made-to-measure suit department in charge of expert workmen. Since moving to Pampa over a year ago, he has been connected with Rice Brothers and the De-Luxe Cleaners.

#### Pampa Hardware Company Supplied Hotel Silverware

To secure the best in material as well as workmanship for the new Schneider Hotel, sanded brass finish hardware was used throughout the building and was ordered through the Pampa Hardware company.

The company also supplied the hotel with Rogers silverware, the highest grade obtainable, and all the glassware necessary.

Probably the most interesting feature of the hardware and one not noticed until an emergency arises is the number of each room on the inside of the door. The number is on a small brass plate and can easily be seen when talking over the telephone.

See The Classified Department.

Undertaking company has been in business for two and a half years, and has grown to such an extent that there are now two store, and a new Funeral home is under construction.

## The First National Bank

CONGRATULATES THE

### NEW SCHNEIDER HOTEL

We are glad to have had a part in the building of this hotel. A mark of achievement for the Sharp Construction Company and a building of which the city of Pampa and the Panhandle may well be proud.

#### THE FIRST NATIONAL BANK

B. E. FINLEY, Pres.

DELEA VICARS, Cashier

## The Plain and Ornamental

# CUT STONE

On The

### NEW SCHNEIDER HOTEL

Was Furnished by

## The Bedford- Carthage Stone Company

—Plants At—

Amarillo

Cisco

Houston

Tulsa

Quarries at Leuders and Barstow

CONGRATULATIONS TO THE

### SCHNEIDER HOTEL COMPANY

We Are Proud to Have Written the Insurance  
On The Building.

PHONE 272

#### FRASER & UPTON Sharpe-Reynolds Bldg.

#### PUPS

ENGLISH BULL  
REGISTERED STOCK

Just four of 'em—hurry and  
See

ED MOSLEY

Pampa Confectionery Before  
They're

ALL GONE



**Chamberlin's Winning Smile**



Here is Pilot Clarence D. Chamberlin, first man to fly an airplane from New York to Germany. He inherited his pioneering bent from his father, E. C. Chamberlin of Deulson, Ia., who was the first man in that town to own an automobile. Clarence, as a freckled youngster, got his first mechanical experience tinkering with the car.

**OWNER—**

But while eating was slow, hotel managers delighted in that fact, the speaker remarked. Each course meant other portions of wine and the glasses were drained many times. Much of the profit was made on the drinks. Mr. Schneider kept a large American flag upon the wall, and because his family spoke English his hotel was very popular with American tourists.

**Put Son in School**

Before returning to this country, he placed Alex Schneider, Jr., then a lad of about 18 years, in a hotel school. He came back to this country in 1900, and spent several years in New York. Then he went into the hotel business at Frankfort, Ky., and stayed there about five years.

His return to Gray county was in 1911, when he came to Pampa and purchased the Holland hotel, long famous in this section as the Schneider.

Schneider service is always served in family style, a manner which is most typical of the Western spirit. In the opinion of the Schneider family, it has proven very popular, and since people like it, Mr. Schneider sees no reason for changing. The new Schneider will continue this institutional tradition.

**Cooks Hard to Find**

Mr. Schneider has been serving delicious food for 30 years, prepared by himself and Mrs. Schneider for the most part. Cooks of the kind desired are difficult to find, and most of them are hard to coax into West Texas.

Mr. Schneider hopes to obtain and "break in" dependable cooks at the new hotel, that he may return to Switzerland, where he has not been for many years. He has been working consistently for thirteen years without a vacation.

Besides his hotel business, this pioneer has always loved his music, and recalls with pleasure the days when he led Pampa's brass band, in which Mrs. Lottie Schneider, Mrs. A. H. Doucette, and M. K. Brown were members.

Despite his years, Mr. Schneider is very active.

**Pampa Electric Co., Worked Steadily on Schneider Hotel**

The Pampa Electric company had the contract for wiring the new Schneider hotel and the hanging of the fixtures.

The wiring was a continuous job during its construction, each floor being wired as it was erected. The wiring is entirely fireproof. It was inspected and approved as work progressed.

Pampa Electric company has been in business since last August and T. H. Barnard, owner and manager, has been a resident of Pampa for the past nineteen years. He has increased his building and stock a great deal during that time and expects this year to be exceptionally good.

Have you read the classified ads?

**INSTITUTION—**

ped by the Zahner Manufacturing company of Kansas City, has the latest of machines and utensils, including a four-oven Majestic range, Crescent automatic dish washer and drier, Frigidaire-McCray ice box of huge proportions, and all needed steel tables.

The kitchen is so arranged that the waitresses pass in and out in a circle, and do not meet each other in the awkward fashion which is often unavoidable unless the building is specially designed. Between the kitchen and dining room is the pantry, with another Frigidaire and shelves for desserts, salads, dishes and other necessities.

**Dining Room Large**

In general appearance the dining room is a refinement in tones of the lobby, having the same kind of walls, trimmed at the windows with curtains of black and gold. Four large fans cool the room, which is lighted by seven windows on two sides. Ordinarily the tables will seat 106 persons but there is a banquet capacity of 200 or more. The hardwood floor is especially adapted to dancing, and has a single massive pillar in the center.

The careful planning and elegant equipping of the guest rooms is apparent from the time the visitor steps out of the elevator upon the fifth floor, where there are eleven of the more than one hundred rooms. The beds and furnishings are Simmons' all-steel, with the exception of occasional upholstery. The bathrooms are either in or adjacent to the room assembly. The toilets are flushed by valves, unlike the usual tanks which so often give trouble. There are specially designed shaving assemblies, with a light placed directly above the mirror. Hot and cold water is instantly available, and may be cut off from the room—in case of leaks—without affecting any other room or floor. Easily visible from the telephone is a small duplicate number in the inside of the door so that the guest may tell the bell boys at a glance of the room number and the service desired. The hotel rules and rates have been placed upon each floor.

**Special Door Locks**

The doors have the latest type of hotel locks, with keys which may not be left in the door when it is locked as the guest leaves the room, and which prevent intruding at all times. Some rooms have private showers. Rugs are plentiful, and a high grade of Axminster carpet, laid upon the Oxite cushion, cuts noise to almost nothing. The carpeting was done by experts of the G. C. Malone company.

All exits are marked according to approved safety rules.

The other floors are similar, though they have some different combinations. A few do not have bath, and some have toilets but not bath. Some have two beds.

Provided for O. K. Baker, assistant manager, and Alex Schneider, Jr., are special apartments with every convenience. Fireplaces are particularly artistic, and bath, kitchenette, and closets are provided.

Although the managers do not have the advantages of separate homes, they have provided all the conveniences of the well-planned home and made their private quarters extremely home-like in all details.

Homelike is a favorite term of the Schneider method. Food cooked as careful and appreciated guests desire, hospitality typical of West Texas and conveniences only as careful planning by master hotel men can obtain with ample capital—these factors are expected to continue Schneider hotel prestige and make it an even greater asset to a Greater Pampa.

**Ellison Plumbing Company Installed Hotel System**

The Ellison Plumbing company, with W. W. Ellison in charge, had the plumbing contract for the new Schneider hotel. The heating equipment, Mr. Ellison says, is the best obtainable and of the latest type, having automatic motor and pump controls.

There are 133 radiators in the building heated by a boiler weighing 9,700 pounds, which carries 4,500 feet of radiation. The structure has a 4 inch independent fire line from the city service, which reaches to the fifth floor of the building with openings on each floor for emergency purposes. Thus the building is protected from fire with its own equipment.

All fixtures used in the building were purchased through Clowe and Cowan, jobbers, of Amarillo, and were of the best quality obtainable. Five carloads of plumbing material was used.

W. W. Ellison has been in the plumbing business for 26 years, the last fourteen in Tulsa, Okla. He had charge of the work on the Palo Duro apartments and the Sterling block in Amarillo, and is working on the new school on the south side that is being erected by the Sharp Construction company.

The Los Angeles aqueduct has been dynamited for the third time recently during the water war between the ranchers and the city of Los Angeles.

C. H. Ackert, who rose from telegraph operator to vice-presidency of the Chicago and Alton Railroad, died at the age of 71 at his home in Chicago recently.

**S. W. Public Service Company Planned Schneider Lighting**

Lighting fixtures used in the new Schneider hotel are the best money can buy, according to W. H. Curry, manager of the Southwestern Public Service company, which furnished the fixtures for the building. The wiring and hanging was done by the Pampa Electric company.

Fixtures in the building were selected to conform with the color scheme and will give the maximum amount of light per kilowatt of electricity consumed. The glass in the lights of the lobby is etched in accordance with the color scheme and give a light which is very similar to ordinary daylight. The lights in the remainder of the building are arranged so that they throw no shadow. Accomplishment of this effect is obtained by the light being diffused from the bulbs in such a way that it penetrates all corners of the room.

The lights used in the kitchen are of the Benjamin Dome make and are used on account of their long wearing quality and large amount of illumination.

Electrical appliances such as toasters, waffle irons, and egg boilers are used in the kitchen. In all, there are 357 light outlets in the hotel, some of which are double and cluster units.

The fixtures used were purchased from the Graylor Electric company through the Southwestern Public Service company here. The company will move into its new and larger quarters in the Brunow building in the near future, and will be able to give still better service and carry a larger stock.

**RANDALL WHEAT IS**

**BETTER THAN EXPECTED**

CANYON, June 10.—(Special)—Randall County's wheat crop is much larger than has been estimated. Canyon received the first load of wheat today from the farm of G. S. Gragsby, south of Canyon.

Summer fallowed ground on the farm of Fritz Friemel, twelve miles west of Canyon, is yielding twenty bushels to the acre.

Grain men here estimate that Canyon will handle more wheat this year than last. The yield last year was close to thirty-five bushels per acre but the acreage was only half of the usual amount. This year it is slightly above normal.

**MARRY YOUNG, RULE HOME, MEN ADVISED**

ELIZABETH CITY, N. C.—(AP)—Young man, marry at 25 or earlier, and marry a girl from 19 to 22 years of age.

Let her know from the beginning you are the master of the house. Move away from mothers-in-law and don't let them meddle.

These are the bits of advice handed out by Rev. Edwin Ferebee Sawyer, the "marrying parson of Elizabeth City," whose ceremonies run into the thousands, to those who would be happy though married.

"Of all the folk I have married," the 73-year-old minister observes, "those most anxious to get through with the ceremony in a hurry are the widows and widowers."

APIA, Samoa (AP)—Much as a small boy slips away with a circus, Sivanu, a 13-year old native lad, left the Island of Upolu with a mission conference a few years ago. Recently he was blown back home in a storm which caught his small boat and carried him out to sea, while he was attempting a trip of a mile between villages. He was adrift three days and nights without food and much of the time terrified by savage looking sharks.

**CONGRATULATIONS**

—TO THE—

**NEW SCHNEIDER HOTEL**

In bringing to Pampa and the Texas Panhandle one of the finest hotels in the country. We are glad to have had our part in handling the financial matters pertaining to the organization and erection of the New Schneider.

WE ARE ALWAYS BACK OF ANY ACHIEVEMENT OR ADVANCEMENT FOR PAMPA AND THE PANHANDLE

**GRAY COUNTY STATE BANK**

C. L. Thomas, Pres. J. M. Dodson, Vice-Pres. W. H. Doyle, Cashier

**J. B. DUFFIELD**

**CEMENT CONTRACTOR**

DID ALL OF THE CEMENT AND HOISTING WORK ON

**THE NEW SCHNEIDER HOTEL**

A large, fine building such as this requires cement work of permanent structure. The foundation must be as strong as the building. Every precaution is taken by our workmen in order to make our's the best.

SEE

**DUFFIELD**

For Better Cement Work

—The—

**THOMPSON HARDWARE CO.**

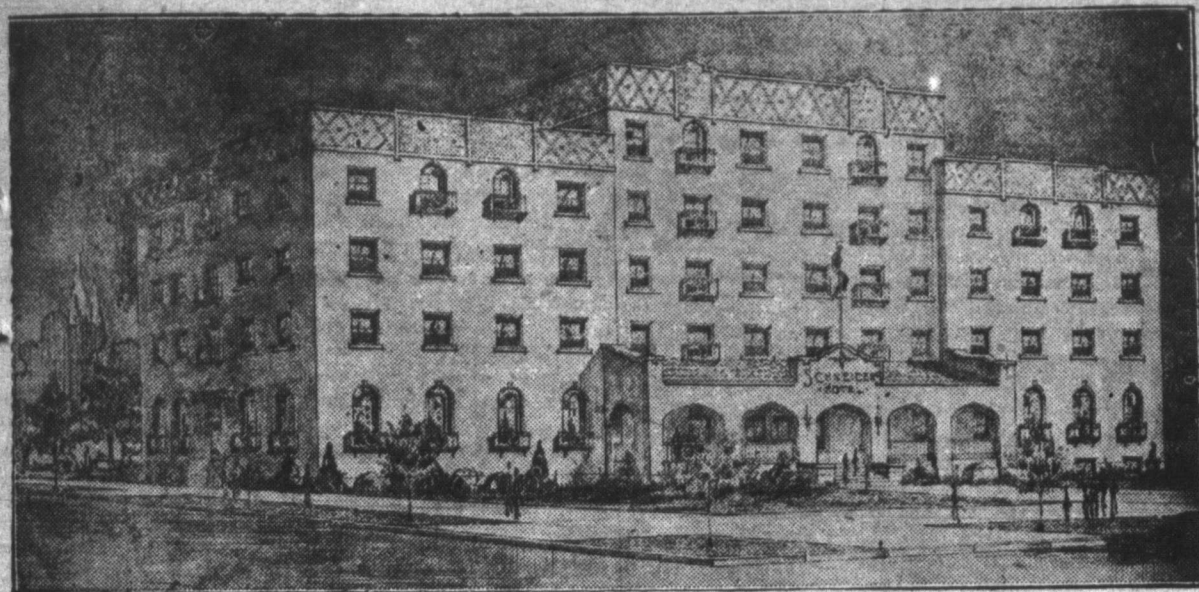
Furnished Hardware Supplies For The

**NEW SCHNEIDER HOTEL**

THOMPSON HARDWARE CO.



### Magnificent New Schneider Hotel



Erected at a cost of more than \$180,000, the New Schneider Hotel, located near the center of the business section, stands as one of Pampa's biggest community assets. It is fire-proof and modern in every particular, embodying the best ideas in the hotel profession.

## PAMPA'S FINE BUILDINGS SHOW CONTRIBUTION OF CHAS. H. SHARP CONSTRUCTION COMPANY TO CITY

Organization Located Here Has Big Payroll, Owns Big Structure, and Has Shown Faith In Future of Community.

An industry which has done great things in Pampa and which has contributed greatly toward its rapid growth during the last twelve months and one which perhaps in the feverish excitement over oil and its possibilities escaped the notice of many people here, is the Sharp Construction company.

Locating in Pampa of July of last year, this firm has been steadily at work during the intervening months, working at all times, often night and day, towards the upbuilding of our city. Composed as it is of wide awake progressive men, it has lost no time in taking advantage of all opportunities in its line to erect the better class of public buildings. Its record while here speaks for itself in the way of completed public buildings.

This organization, maintained in Pampa, is composed of men carefully selected, all proven experts in their various lines. Chas. H. Sharp, president of the Chas. H. Sharp Construction company, is a builder of national reputation, having been in the general contracting business for a period of over 25 years, during which he has constructed public buildings in most of the western states, as well as in some of the southern states. J. W. Vasey, who is Superintendent and General manager of all Pampa operations is also a builder of known reputation, having been connected with the company for a great many years. Mr. Vasey has as his assistant P. L. Haynes, who is also auditor for the company. Chas. McGlade is the brick superintendent.

The pay-roll of the Chas. H. Sharp Construction company during the extreme winter just experienced has been the means of keeping many men in Pampa. They have at all times kept this pay roll up to their average of approximately \$10,000 a week. During this time they have unloaded approximately 100 carloads of building material, not including material which has been purchased from local dealers. Although their main office and purchasing department has been maintained in Amarillo, they have purchased as much of their material as was possible from local merchants. Their banking business which is an asset to Pampa, has been done entirely through Pampa banks.

Deciding to locate permanently in Pampa in July of last year, Mr. Sharp immediately purchased a lot on main street and to further show his faith and confidence in the future of Pampa erected the modern Sharp-Reynolds building for himself. This building is now occupied by the Rogers cafe and the Diamond C. Clothing store.

This is one of the most modern and up-to-date building on main street. The upstairs is cut into offices and is occupied by some of the most prominent attorneys and insurance men in the city.

After building his own building, the next work of Mr. Sharp was the erection of the beautiful Adams hotel, truly a credit to this efficient organization and the city of Pampa. The M. L. McAtee company, a local firm of architects, designed this building for Mr. Adams. The interior of the Adams hotel is a masterpiece of the builders' art.

Immediately upon the completion of the Adams hotel, work was started upon the Pampa hospital, another creation of local architects, the M. L. McAtee company. Believing in the future of Pampa and realizing the need of such an institution, Mr. Sharp cheerfully put his organization on

this work even before the complete financial details were settled, well knowing the people behind this movement would carry it through. His faith and foresight have not been in vain, and through his efforts the people of Pampa now own one of the most modern and up-to-date hospitals in the state.

Early in December of last year, some of the most progressive of Pampa's business men launched the New Schneider hotel movement. They employed M. L. Parker of Amarillo to draw them a set of plans for a hotel to be as modern and well built as money and experience could build one. Mr. Parker in his wide experience as a successful architect, knowing that Mr. Sharp and his organization would carry out his plans in every detail very wisely employed the Chas. H. Sharp construction company to build the new Schneider hotel. That Mr. Parker's judgement was not misplaced is now evidenced by the beautiful New Schneider hotel which stands out over the city of Pampa as a fitting monument to the foresight of the owners and architects and this very efficient building organization. It is a credit to the entire Panhandle, and Pampa should be proud of this testimonial of these men to the future of the city. From the day this contract was awarded to Mr. Sharp his organization has worked night and day through all kinds of unpleasant weather to bring this project to a very successful completion.

During the construction of the new Schneider hotel and with the same organization Mr. Sharp has also built and completed two other beautiful additions to the rapidly forming skyline of Pampa, these belong to J. M. Smith and Son, garage, and the T. B. Cobb garage. The Smith garage facing the Schneider hotel with its convenient display room was completed in 23 working days and has to be seen to be fully appreciated. The

Cobb garage, modern and absolutely fireproof was also completed several days ahead of schedule and with its beautiful buff brick front is surely a credit to the business houses of Pampa.

Mr. Sharp's organization members make their homes in Pampa and he and his men always generously contribute to any worthy cause that leads to the general upbuilding of the city.

### Scented Amaryllis May Fulfill Dream of Father and Son

Nowhere in the world is there a scented amaryllis—yet.

The marvelous flower may never radiate fragrance, but in government greenhouses a closely guarded experiment has given rise to the hope that by late summer a nodor, perhaps never before known, will characterize hippeastrum blossoms.

If it does a dream of two generations will have come true and the last chapter will have been written in a story of filial devotion.

Half a century ago there came to work in the United States gardens a native of Scotland, E. M. Byrnes. He knew flowers. After 29 years at propagating plants he was chosen assistant in charge of experiments.

There was a son, for whom he had the usual ambitions—not excluding the presidency. But J. Wise Byrnes liked flowers too. He labored and studied with his father.

Thus, in 1909, a daring project evolved. With amaryllis bulbs imported from England the Scotch gardener started a scheme to change the red petals to white. Skillfully he cross-pollinated the lighter shades, and in 1920, with flowers ranging the spectrum of color from deep red to salmon, he saw the approach of success. Again he tried and in 1922 there burst forth the first white amaryllis human eye had ever seen.

Only one thing was lacking—fragrance.

With aged and toilworn hands the pioneer made a last valiant effort. When death came on January 22, 1922, his work was unfinished. To his son, for 16 years his associate, came a two-fold heritage, the position of assistant and the task of completing their project.

Interspersed with other experiments, with national flower shows and their attendant preparations, the

## CHURCHES

### PRESBYTERIAN CHURCH

The usual Presbyterian church services will be conducted Sunday at the Rex theatre.

Sunday school will be held at 10 a. m., and public worship at 11 a. m.

Special music will be rendered. W. M. BAKER, Minister in Charge.

### METHODIST CHURCH

Sunday school promptly at 9:45 a. m., H. McBee, superintendent. All are invited to be present. Join a Bible class and learn God's will concerning us.

Preaching at 11 a. m. and 8:30 p. m.

Themes for discussion by the pastor: Morning, "The Church—

Who Organized It, Who Compose It, and How to Get Into It"; evening, "The Deadly Effect of Sin."

There will be great singing, good instrumental music, and Gospel preaching at all services. You are invited to be present. A big welcome and a hearty handshake await you. Come worship with us. TOM W. BRABHAM, Pastor.

### CHURCH OF CHRIST

Meetings are held in one of the temporary ward school buildings on Cuyler street.

Bible study is held at 10 a. m. and communion service at 11 a. m. Everyone is welcome to attend these services.

### CHRISTIAN CHURCH

"The Great Mystery" will be the subject Sunday evening. Everyone is interested in the mysterious. Hear this subject discussed Sunday evening. The song service begins promptly at 8:30 p. m. The entire service lasts one hour.

A meeting of the official board will be held at 7:45 p. m. The three young people's meetings begin at 7:30 p. m.

At 10 o'clock in the morning the special Children's Day program begins, followed by the morning ser-

vice at 11 a. m., at which the minister will discuss one of the important church problems of the day.

A cordial invitation is extended to all.

JAMES TODD Jr., Minister.

### CATHOLIC SERVICES

Catholic services will be held at the Chamber of Commerce rooms Sunday morning at 10:30 o'clock.

### Aladdin Beauty Shop At Schneider Offers Service

The Aladdin Beauty Shop is now open in the new Schneider hotel, with Mrs. Hazel Bechtelheimer, formerly of Denver, Colo., in charge. The shop is equipped with the best and latest equipment for marcelle, permanent wave, and shampoo service. It will be the policy of the Aladdin shop to give service and satisfaction to hotel guests and the public.

Mrs. Bechtelheimer has had extensive training in beauty parlor work and is an expert at cutting hair and shaping the cut to suit the personality. She had a large beauty shop in Denver before moving to Pampa, and will have expert help in the shop.

Excavation Work Heavy Hauling

## F. C. ECKART

Furnished all of the Sand and Gravel for the NEW SCHNEIDER HOTEL BLDG. SEE ME FOR SERVICE

## F. C. ECKART

"THE SANDMAN"

Phone 359

Team Contractor

Drayage

## Pampa Electric Co.

DID ALL OF THE ELECTRICAL WORK ON THE

## NEW SCHNEIDER HOTEL

When figuring on the new home, don't forget Pampa Electric Company. We do the best work in the city and have an up-to-date line of fixtures. Skilled workmen are always ready to serve you.

PROMPT SERVICE

PHONE 203

## Pampa Electric Co.

123 FOSTER AVENUE

### OPENING SOON

IN THE

### NEW SCHNEIDER HOTEL

MAIN FLOOR

### K AND B CIGAR STAND

CIGARS—TOBACCO—SODA FOUNTAIN

You are invited to visit our stand at the grand opening Saturday night.



**International Rotary Head**



Arthur H. Sapp

Arthur H. Sapp of Huntington, Indiana, chairman of the constitution and by-laws committee of Rotary International, is the successful American candidate for President of the organization at its Ostend convention.

**Both Grain and Cotton Badly Hit  
By Drouth in State—Winds, Bugs  
and Heavy Rains Are Damaging**

(By The Associated Press.)  
HOUSTON, June 10.—Crops, both grain and cotton, in all parts of the state, except probably in east Texas and other spotted sections, are suffering for lack of rain, according to reports of H. H. Schutz, government statistician here.

Scores of his correspondents in all parts of the state report that conditions of June 1, approach those of a drouth.

In northwest Texas correspondents at Muleshoe report little rain for six months; no cotton has been planted at Floydada; near Clarendon wheat production is fair; at McCulley the ground is so dry seed in the ground will not germinate. Small grains are dead from the drouth near Spearman, where all fields are being plowed up; at Haskell grain crops are almost a failure; cotton, corn and oats are dying for lack of rain at Avoca; about 50 per cent of the cotton is yet to be planted at Jayton because of lack of rain; at Follett much wheat is being plowed up and other fields are not worth cutting; at Amarillo stock is suffering from want of water and grasses; conditions are reported distressing at Kress. In Swisher county; cotton has made only 75 per cent of a stand in Young county and at Graham corn is beginning to suffer while cotton is slow in coming up.

**North Texas Hit.**

In North Texas, drouth, greenbugs and high winds have caused a poor grain crop near Byers; at Henrietta hot winds are burning up the corn while at Farmerville rain has ruined the oat, wheat and potato crops and a late freeze has killed the fruit; cotton is well up to a stand at Sanger in Denton county but near Krum greenbugs and excessive rains have caused low fields of oats and wheat, but at Pilot Point corn and cotton crops have improved. All crops are from two to four weeks late owing to a wet spring near Dodd City in Fannin county where cotton is just coming up; at Bonham crops are in good shape; Honey Grove has had too much rain until the last week in May, but at Ivanhoe, while corn needs rain, pastures are fine and hay and oats are doing well. At Denton wheat, oats and cotton are doing well but at Tom Bean farmers are greatly discouraged. Sherman reports drouth and greenbugs have almost ruined the grain crop and pastures and gardens are burning up, but at Lone Oak in Hunt county oats yielded 10 per cent better than expected on a large acreage. At Pesater in Parker county cotton is looking fine and near Fort Worth wheat has improved, but oats are poor and labor scarce.

**"Too Much Rain."**

In Northeast Texas, some cotton has not been planted in Bowie county due to too much rain in May. Cass, Delta, Franklin, Hopkins and Rains counties report too much rain and a backward season but in Smith county dry winds are beginning to hurt all crops.

In West and West Central Texas the drouth has almost ruined small grain crops in Brown county while a freeze and hail has destroyed all fruit except pears. In Coke county it has been too dry to plant cotton and in Concho county most of the April planted cotton has been killed by frost and bigwinds. Mason

county reports a good rain with a generally good stand. In Mills county wheat, corn and livestock are in good condition but oats are poor and in Nolan county cotton is 60 per cent planted. The same condition exists in Runnels county and in Tom Green county dry weather is affecting pastures and all growing crops.

In Central Texas, Smithville in Bastrop county reports a good stand of cotton, well cultivated and vigorous but weevils are considerably in evidence with cotton hoppers appearing. In Bell county about 50 per cent of the wheat has been mowed for hay. In Bosque county in rust, greenbugs and drouth have injured crops and from Caldwell in Burleson county comes the report that cotton is shedding squares on

account of weevil and cotton hoppers; grass hoppers are numerous, but except for insects the prospects is called fine.

**Spotted Conditions.**

At Dale in Caldwell county cotton is up to a good stand and moisture has been plentiful but at New Braunfels all crops are below normal. At Bardwell in Ellis county insects are destroying cotton and at LaGrange in Fayette county cotton is two weeks earlier than usual. The oats crop at Cleburne is called poor, due to greenbugs and drouth, corn needs rain and cotton is up to a very good stand. At Thornton in Limestone county, no hoppers or weevils have appeared and cotton acreage has been out 15 per cent. At Waco rust has cut the oats crop short and some cotton has been replanted after much rain. In Milan county cotton is reported doing very well and at Corsicana oats have been badly damaged by rust and corn needs rain. Some damage is showing up at Hearne from weevil and grasshoppers. At Georgetown cotton is late and corn needs rain, while at Taylor crops are two weeks early but need rain.

In East Texas crops have made slow growth due to cold and rain and at Jacksonville cotton is late but is growing well. The correspondent at La Rue, Henderson county, says the potato crop is very promising but all crops are late on account of too much rain. At Crockett cotton is late and has been damaged by too much rain and in San Augustine county where cotton is 30 days late, all crops are in bad condition with fields grown up in grass and weeds. At Timpson in Shelby county cotton is reported to have reached a perfect stand with no signs of weevil but at Groveton in Trinity county cotton has a late start on a 25 per cent reduced acreage.

**Cotton Is Hurt.**

In South Texas, where the first bale of 1927 cotton was grown, ginned and sent to market at Houston, rain is badly needed. At McCoy, Atascosa county, drouth and hot winds are hurting all crops; San Antonio reports insufficient moisture, Falfurrias calls the dry spell the most severe in several years and Cuero reports, while cotton hoppers are present in small squares and weevil are numerous, cotton plants are blooming unusually well. In Duval county all crops need rain but in Goliad county cotton is in good condition except that weevil are numerous. Gonzales reports cot-

ton doing well but is late; Hidalgo county calls the drouth the worst in 12 years. Near Karnes City corn is practically a failure due to the drouth. Corn and other crops of grain are suffering from lack of moisture in Uvalde county but cotton is doing well.

Southeast Texas conditions are reflected in reports from Chambers county, which say that some cotton and corn are yet to be planted after no rains in May. In Liberty county the cotton acreage is about 60 per cent of that of last year and near Bay City cotton is blooming with insects doing some damage. Weevil, meantime, are more numerous than last year. In Orange county drouth is damaging crops; in Waller county cotton is two to three weeks earlier than last year but needs rain badly and El Camp reports the cotton crop about a month early with weevil unusually numerous. All crops, however, need rain.

**CHEVROLET SALES SHOW BIG INCREASE**

Spurred on by the greatest demand in its history, Chevrolet in April again set up a new production record with a total output for the month of 111,937 units. This exceeds by 4,037 units the best previous monthly performance in the history of the company and establishes an all-time record for the monthly production of gear-shift cars.

Equally as spectacular as the remarkable production feat and dividing the spotlight with it was the mark established April 29, when in the short space of a day's working hours, the factories built 5,347 Chevrolet cars and trucks. This was 272 units in excess of the best previous day's record.

It was particularly fitting that the record day happened to be the same one that Alfred P. Sloan, Jr., president of the General Motors Corpor-

ation, chose for a visit to the Flint plant. Mr. Sloan, with C. S. Mott, vice-president of the General Motors Corporation, arrived at the factory early in the day as guests of W. S. Knudsen, president, and C. F. Barth, vice president of the Chevrolet Motor company.

Before Mr. Sloan had completed his inspection of the big Flint plant, where men and machinery were combining to build the eight types of Chevrolet cars now available, it was evident that a new production record was in sight.

Mr. Sloan waited for number 5,347 to come off the line, congratulated Mr. Knudsen on the remarkable showing being made by the Chevrolet Motor company and its product and rode off in the epoch-making model which again happened to be a coach.

Pola Negri and her youthful husband, Prince Serge Mdivani returned to New York on their honeymoon.

**Face Brick**

Furnished By

**VERNON-WILLIAMS COMPANY, INC.**

FOR THE NEW SCHNEIDER HOTEL

203 W. 6th St.

Amarillo, Texas

**VOGUE CLEANERS**

"THERE'S NONE BETTER"

Located In The Basement of The  
**NEW SCHNEIDER HOTEL**

We're going to be as good as the hotel we're in.

You are invited to visit our shop at the grand opening tomorrow evening.

**QUALITY JEWELERS**

Are Proud To Furnish

**The Clock**

for The

**NEW SCHNEIDER HOTEL**

Have You a Beautiful Clock In Your Home?

**QUALITY JEWELERS**

"Santa Fe Watch Inspectors"

**Pampa Gas Co.**

WE CONGRATULATE THE  
SCHNEIDER HOTEL COM-  
PANY ON THEIR MAG-  
NIFICENT HOTEL.

With our 27 miles of mains in the city connecting with 18 miles of field lines, giving us a total of 45 miles of gas mains, it is a pleasure to supply all fuel used in this beautiful building as well as the outlying sections of the city.

**Pampa Gas Co.**



OUT OUR WAY

—By Williams



Chamber of Commerce was effected here recently at a mass meeting of the Pyote citizenship. Men from every phase of the commercial and civic life enlisted in membership of the body. Among officers elected were the following: Paul S. Cotner, president; A. J. Sitton, vice-president, and J. J. Ross, secretary-manager.

CISCO.—Notable and prominent leaders of West Texas and the state will be in attendance at the board of directors meeting of the West Texas Chamber of Commerce to be held here June 13. This gathering will mark the first official executive session to be held by the board appointed at the ninth annual convention. Momentous action is expected to characterize the meeting at which a comprehensive program for the year will be outlined.

SWEETWATER.—Sweetwater will be the assembling point for the distinguished personnel which will make up the motorcade party sponsored by the West Texas Chamber of Commerce to the Davis mountain section of West Texas and to the scenic wonderland of eastern New Mexico. Cars will gather here July

2, and will proceed with Alpine, Texas and Cloudcroft, N. M., as objective points, at which places district West Texas Chamber of Commerce conventions are scheduled. Short stops are to be made at towns en route, and three days will be spent in side trips to points in the Davis mountains. One or two days will be spent in El Paso. An exploring party through the famed Carlsbad caverns will climax and close the trip.

SLATON.—Construction is in progress on between 15 and 20 blocks of street paving in the residence section of the city. When completed, there will be 40 blocks of pavement in Slaton. It is all of brick laid on a concrete base.

McCAMEY.—An emergency fire fighting system is under construction here, giving McCamey fire protection which it has needed since the town was built. Actual proceedings have been started toward building a road to the Yates oil field, thereby giving McCamey additional 25 miles of trade territory and giving the town connection with the greatest shallow oil field in the world. Erection of \$200,000

worth of new schools is also under way. All these projects are being sponsored by the chamber of commerce which recently reorganized with the following new officers: Tryon Lewis, W. H. Jones, J. W. Schooler, G. L. Hildebrand, E. L. Cole. Cole is secretary-manager of the commercial body.

OLD INSTRUMENTS USED

FOREST GROVE, Ore., June 10. (AP)—Disciples of Samuel F. B. Morse, inventor of the telegraph, have found some of his original instruments and a library of books which he owned at Pacific university here.

The library includes several books written by the inventor's father, Dr. Jedediah Morse, a theologian and geographer. One of the rare volumes is Ptolmey's "Universal Geography," printed in 1542. There are also first editions of Cotton Mather's works on theology.

Samuel Morse's brother, Sidney Edward Morse, gave the instruments and the library to the university 50 years ago.

Subscribe for the Daily News now.

FEATURES FROM OTHER LANDS

KING'S GOLD PLATE HAS SPECIAL GUARD

LONDON (AP)—Magnificent gold plate is used by Queen Mary and King George at State banquets given to rulers of other countries when they visit England.

Although these functions generally take place at Buckingham Palace, London, the precious tableware is stored at Windsor castle, 20 miles away.

The removal of the plate at London from Windsor is no light matter. It is brought in an armored van, sheathed, and drawn by two or more bay horses, and with outriders for protection.

The gold plate consists of a dinner service for 100 guests, complete with tureens, meat dishes, entree dishes, and covers, a fruit service, and a coffee service. Golden candelabra are used as table decorations. These are from three to four feet high and branch in all directions.

The golden service is kept in the strong room at Windsor Castle. Each article has a separate pigeon hole and each hole a separate lock. The guard is a silversmith and goldsmith, for he must clean gold plates without any loss of weight or value.

DRURY LANE'S ROYAL LACKEYS NOW WEAR RED

LONDON (AP)—Drury Lane Theatre still has the two lackeys known as "green coats," though their livery today is actually a brilliant red. The posts held by these men are of very old standing, and in the sixteenth century the holders were glad to rely on the cast-off clothing of the actors for their dress. At that time Drury Lane was the Theatre Royal, and actors being the King's servants, had to wear the royal livery, which was green colored. The two stage hands were dubbed by their colleagues "green coats" and the name has endured to this day.

EVEN ROMAN WOMEN IN LONDON HAD CORNS

LONDON (AP)—Roman women who lived in London 1,800 years ago suffered from corns on their feet just as some of the social butterflies of Mayfair do today.

Evidence of this has been discovered in an excavation for a building near the Bank of England. The sole of a dainty Roman shoe, on which the mark of a corn at the base of the little toe can clearly be seen, was unearthed. The sole is well worn, rather thin, but as delicately shaped as any in Bond Street windows today.

BRITISH QUAKERS HAVE WELL GUARDED LIBRARY

LONDON (AP)—When British Quakers held their 260th yearly meeting at a newly erected meeting house on the North of London, they stood above the most guarded theological library in Britain.

Far underneath the building are formidable strong rooms, built to preserve the cherished manuscripts of the Society, nearly all irreplaceable. The enormous steel outer door of the manuscript room weighs half a ton. It is a foot thick and is closed by machinery. It opens into a short corridor terminated by another door of

tubular steel. A third metal doorway seals the manuscript room.

Ranged round this room the the society's records. Some after time labelled "sufferings" tell their tales of long years of persecution.

Other treasured manuscripts are, "A Treaty of Friendship and Alliance" made between the Quaker colonists of Pennsylvania and Indians, and a deed of sale between the colonists and Indians in Pennsylvania. The Indians signed it with their marks or totems, crude drawings of turtles, birds and snakes.

SAVILLE-ROW TAILORS NOW CONTRACT WORK

LONDON (AP)—A firm of Saville-row tailors has prepared a schedule of prices for dressing men in the latest modes of London by yearly contract. The customer pays a stated amount a year and takes his choice of the tailors' materials when new garments are required.

Dressing by contract is not new as far as English society women are concerned. The better London dress-makers adopted this plan some years ago. It is not unusual for prominent society women to pay large sums yearly on the understanding that in return they shall have all the clothes they want.

SNUFF-TAKING HABIT GROWING IN ENGLAND

LONDON (AP)—The habit of snuff-taking by women is growing rapidly in England, not only among the poor and middle-classes, but in society too. A prominent snuff manufacturer says 65 percent of the snuff now sold is bought by women.

It is most prevalent among the

cotton workers in Lancashire mills and girls and women can be seen handing their snuff boxes to each other for a pinch which they find a means for clearing their nostrils of the fluff which arises as they bend over their work.

With society women it is different, for they take it secretly. They never admit the habit but there is a widespread demand for fancy boxes which are carried in the same vanity bag as the powder puff and lip stick.

NEWS PARAGRAPHS OF OTHER TEXAS TOWNS

MILES.—An up-to-date, 15-room hotel is under erection here. The building is a two-story structure, located in the heart of the town, and is under the management of Joe Theile.

BRECKENRIDGE.—A conference of oil men in the West Texas Chamber of Commerce territory has been called to meet here at 6 p. m., June 13, for the purpose of more fully co-ordinating efforts, and for taking some definite action on the recommendation for creation of an oil and gas bureau of the West Texas Chamber members. Members of the Texas railroad commission, the president of the Mid-Continent oil and gas association and many other prominent professional leaders will attend the conference. The proposed oil and gas bureau of the West Texas Chamber of Commerce would have for its purpose, "the exploitation, conservation, protection and development of the oil and gas industry of the west." The advisability of such a bureau will be discussed and decided upon at the Breckenridge meet.

PYOTE.—Organization of an ac-

The Roof on the New Schneider Hotel Is

SAFE!

and durable

It was especially designed by the

LYDICK ROOFING CO.

401 N. Harrison

Amarillo

Congratulations

—TO—

Mr. Alex Schneider and associates on the completion of Pampa's Fine Hotel.

THE NEW SCHNEIDER HOTEL

The kitchen and culinary equipment in the SCHNEIDER is the finest that money can buy.

FURNISHED BY

Zahner Mfg. Co.

Kansas City, Mo.

W. W. HASKINS, Local Representative

Welcome---

TO OUR BIG NEIGHBOR ACROSS THE STREET

We Congratulate Mr. Alex Schneider and Associates On the Completion of the

NEW SCHNEIDER HOTEL

This hostelry will be a big asset to the city and would be a credit to any city. After your inspection of the hotel step across the street and see the latest models of Willys-Knight and Whippet, 4's and 6's.

McGARRITY-DEAN MOTOR CO.

DEALERS

WILLYS-KNIGHT AND WHIPPET MOTOR CARS PAMPA, TEXAS



**Assistant Manager of Hotel**

O. K. Baker, assistant manager of the new Schneider hotel and secretary-treasurer of the corporation, is a young member of a prominent Oklahoma hotel family, and brings to Pampa much experience in office and room management.



**HOTEL FIRM IS A CORPORATION**

**Bakers and Schneiders Will Manage New Institution**

Ownership and management of the new Schneider hotel has brought together two outstanding hotel families, the Schneiders and Bakers.

The company, incorporated in September of 1926 at \$250,000, has the following officers and directors:

Alex Schneider Jr., president.  
M. C. Parker, vice-president, Amarillo.

O. K. Baker, secretary-treasurer.  
Mrs. P. A. Worley, director.

T. E. Baker, director, Woodward, Okla.

Assets of the corporation include the building, \$145,000; equipment and furnishings, \$35,000; and 12 well located lots, \$70,000.

Alex Schneider Jr., is general manager. O. K. Baker, a young man, is assistant manager and has charge of the office and rooms. Mr. Schneider will give special attention to the kitchen and dining room. Mrs. Alex Schneider Jr., is housekeeper. Earl Baker, brother of O. K. Baker, is day clerk, and Jack Brunker is night clerk. Mrs. O. K. Baker will assist in the bookkeeping department.

The management expects to popularize the dining room, and will have dances there on Saturday nights, or on demand.

Perpetuating an old Schneider custom, the traveling man will still be "king" of the hotel, and sample rooms and other conveniences have been provided. There is ample banquet space and the hotel is especially adapted to convention use.

O. K. Baker comes to Pampa as one who has had much hotel experience. He formerly was connected with the Huckin's hotel in Enid and the Jens-Marie at Ponca City. With his brother, he bought the Baker hotel at Woodward from his father. Recently he sold his interest to his brother and invested in the Schneider hotel here. His family has been in the hotel business in Woodward 17 years, and now have the Bolton and Baker hotels there.

**Manager of Hotel Was Trained In Swiss School**

Training in a hotel school in Switzerland, followed by experience in some of the biggest hotels of that country and the United States, has given Alex Schneider Jr., general manager of Pampa's newest hotel, an unusual background for his work.

When 18 years old his father sent him to a school at Ouchy, Switzerland, which is maintained by the hotel association. There the training includes every department of hotel administration. In that country a person must have a permit from the school to operate a hotel.

Later, the young man went to the National Hotel in Geneva and

the Hotel DuLac at Lucerne. Returning to this country, he entered the Plaza, Knickerbocker, Rector's, and other large hotels and restaurants of New York.

He came to Pampa in 1912 and has been associated with his father since that time. He has general charge of the new hotel, and is president of the corporation.

**K. B. Cigar Stand Opens In Hotel**

The K. B. Cigar stand, operated by Kincaid and Bechtelheimer, will be located in the new Schneider hotel with a complete line of smokers' needs and supplies. Newspapers and magazines will also be sold at the cigar stand.

All the important newspapers of the country and a complete line of the latest and most popular magazines will be handled.

Have you tried a want ad?

**The Structural Steel and Ornamental Iron**

For the New

**SCHNEIDER HOTEL**

Was Furnished By The

**Amarillo Iron Works**

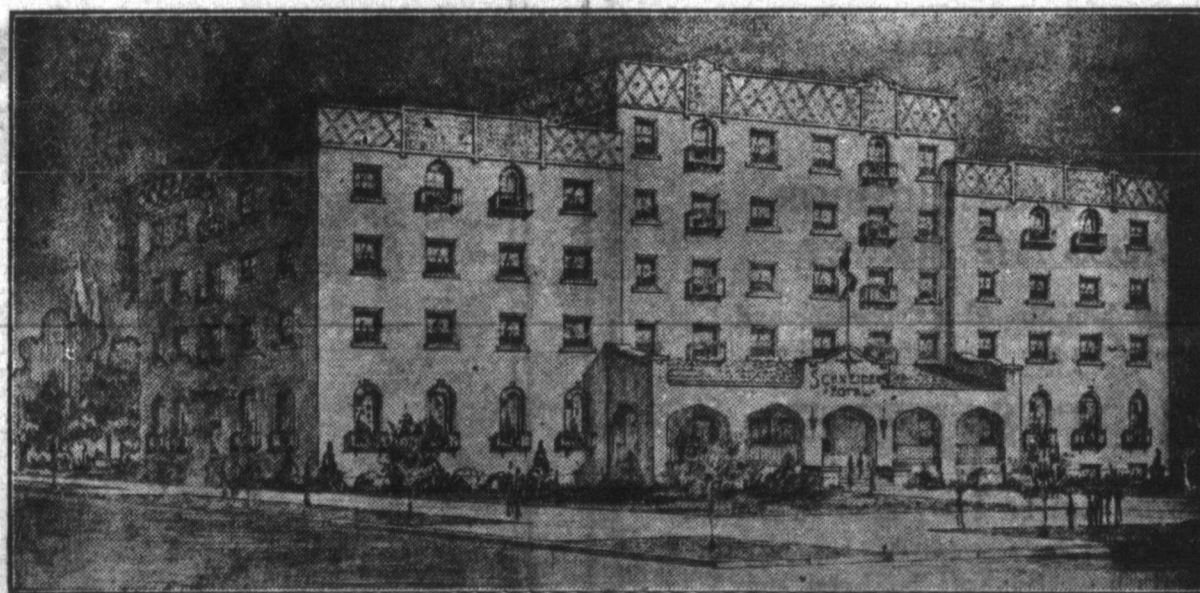
We compliment the City of Pampa, the Schneider Hotel company and the Sharp Construction company on this mark of achievement.

**G. C. MALONE**

**Furniture & Undertaking Company**

Furnished the New Schneider Hotel from the first floor to the roof with furniture, floor coverings, draperies and shades that are in keeping with the finest hotel in any city.

QUANTITY BUYERS OF QUALITY FURNITURE



LET US FURNISH THE NEW HOME

Stores No. 1 and 2 Pampa, Texas

THREE BIG STORES

Store No. 3 Roxana, Texas