

# Pampa Daily News

VOL. 1, NO. 270.

(P)—Associated Press

PAMPA, GRAY COUNTY, TEXAS,

FRIDAY EVENING, JANUARY 20, 1928.

(NKA Service)

PRICE FIVE CENTS

## COUNTY SEAT VOTE ADVOCATED

### Governor Johnston Refuses a Requisition for Terrill

#### MOODY TOLD BANDIT DOING PRISON TERM

Gunman Wanted for Murder of Borger Officer

#### RATLIFF PLEADS CHANGE OF VENUE

Alleges That Trial So Far Shows Prejudice

(By Associated Press)  
AUSTIN, Jan. 20—Governor Moody's requisition for Ray Terrill, wanted for killing Coke Buchanan at Borger, has been refused by the Oklahoma governor because Terrill is serving an Oklahoma prison term, the executive department was notified today.

Terrill, whose operations in the Panhandle resulted in man hunts for him following the robbery of the First National bank at Pampa, is alleged to have slain Buchanan, a policeman, a few weeks prior to the robbery. He was named in confessions later obtained from gunmen.

(By Associated Press)  
EASTLAND, Jan. 20—Alleging that exhaustion of the venire of 150 men with the selection of only three jurors indicates that it will be impossible to secure a jury to try Marshall Ratliff for robbery with firearms in connection with the hold-up of the bank at Cisco, attorneys for Ratliff today filed a renewed motion for a change of venue.

The venire was exhausted as court recessed last night. Judge George Davenport, however, refused a second plea for a change of venue.

#### Skelly Well on Top of Pay in the Bowers Pool

The Skelly Oil company's No. 2 Jackson in the northeast corner of the southeast quarter of section 88, block B-2, in the Bowers pool, struck oil late last night at 3,037 feet and commenced flowing ten barrels an hour. The well will be drilled in today. A million feet of gas was encountered at 3,695 feet.

This location is an offset to the Midwest Exploration company's Bowers and the Magnolia company's Bowers, both in section 83 blk. B-2 and Phillips Petroleum company's Jackson in Section 88, block B-2. The elevation at this point is 3,083 feet.

The Skelly Oil company's No. 1 Jackson in the northwest corner of the southeast quarter of section 88, block B-2, is drilling in granite wash at 3,025 feet. This location is offset by Danciger, Delaney et al, and Phillips wells.

The Amerada Petroleum company has made a location 330 feet from the east and south lines of the southwest quarter of section 2, block 26, H. and G. N.urvey.

The Gulf Production company will drill two wells in section 89, block B-2, on the Joe Bowers lease. The wells will be No. 4 and No. 5.

The Hardendorf Drilling company has made a location to drill a well 325 feet from the north and east lines of the east half of the northeast quarter of section 47, block 25, in the eastern part of the county.

#### Mysteriously Missing Girl



Mysterious was the disappearance from the campus of Smith College, Northampton, Mass., of Frances St. John Smith, 18, daughter of wealthy New York parents. After her unexplained absence became prolonged an extensive search for her was begun. Frances, pictured here, was a member of the freshman class. A big reward is offered for her return alive.

#### AUTOMOBILE DEALERS WILL PLAN SHOW SPACE TONIGHT

#### Demand Is Growing for the Old-Fashioned Square Dance

Pampa automobile dealers will meet this evening at 6:30 o'clock at the Sharp building under construction, where the automobile show will be held this month.

After looking over the building for the purpose of planning space arrangements, the dealers, will go to the New Schneider hotel for a dinner, and to make further plans.

Interest has assured that an excellent entertainment will feature the big Automobile show to be held here January 27 and 28, when the cream of the automobiles manufactured will be presented to the Pampa public by local dealers.

Charles H. Sharp, local building contractor, reports that his building is nearing completion and that he the new cars.

Henry Thut, in charge of the entertainment, states that he will have a regular surprise for Saturday night and that he is having so many requests for a real oldtime square dance that on Friday night there will be no round dancing. That will be left for the closing night when a good orchestra will be in attendance.

Mr. Sharp has kindly donated his building on North Somerville street to the Automobile Dealers association will have it ready for the big event for the occasion.

The new Ford, Chevrolet, Whippet, Pontiac, Dodge, Buick, Studebaker, Chrysler, Oakland, Erskine, Nash, Willys-Knight, and Packard will all be on the show floor and all are handled by local dealers.

This is to be a show by the retail automobile dealers of Pampa and they invite the entire community to attend the entertainments and see the necessary men will also be present with a full line of accessories for Pampa.

#### Moody Asks for Ruling on Pampa Desertion Case

(By Associated Press)  
AUSTIN, Jan. 20—A ruling as to whether a man released from custody on a county court habeas corpus writ legally can be extradited to another state was requested today of Assistant Attorney-General Galloway Calhoun by Governor Moody.

Moody referred to a man arrested in Pampa on an Oklahoma wife desertion charge. The Oklahoma governor had issued the requisition. The question apparently hinges on whether a county court habeas corpus writ is valid in such matters.

The above case is that of W. J. Ford, who was released last week in a hearing before Judge T. M. Wolfe, Judge Ben Baldwin is Ford's attorney.

#### Experts to Probe S-4 Disaster Are Suggester Today

WASHINGTON, Jan. 20—Three civilian experts picked today for appointment on the proposed presidential commission to investigate the S-4 submarine disaster were named by the Senate today as John Stevens of New York, president of the American Society of Civil Engineers; W. H. Whitney of Schenectady, director of research for the General Electric company; and Thomas Scroll, salvage expert.

ies and tires of all makes. This is the first, but not the last.

#### STATE AID IS AFFIRMED FOR PART OF NO. 33

New Surveys Will Be Made East of Pampa

#### LOCAL PEOPLE TO TAKE HAND

Panhandle Acts Late in Asking Change in Route

Two-thirds state and federal aid on Highway 33 from the Carson county line to Pampa was affirmed this week by the State Highway commissioner, before which County Commissioner W. A. Taylor and Engineer Hazey appeared in behalf of the Pampa special road district.

The state body passed—temporarily at least—the question of state and federal aid on Highway 88, largely because the precinct method of road building has not assured the county of a connected system. And relative to aid on Highway 33 out of Pampa north and that of 33-A, the commission deferred action until two routes may be surveyed toward Miami. One of these will be north of the Santa Fe railroad, and the other on the south side, possibly not exactly parallel in either case. The routes of highways 33 and 33-A will be considered for aid along with the new surveys.

The action of the commission is not taken as final here, but it indicates that public sentiment in this special road district will likely have to be brought to bear on the commissioners to obtain a good apportionment of state aid and to help fix the routes. The reports of the state engineers and surveyors will enable the commission to understand local conditions more thoroughly.

Bonds voted in the district are for hard-surfaced roads, some of which can be built with inverted penetration bituminous asphalt construction, and with concrete where state and federal aid is concerned. The state and federal engineers will not determine routes on which no aid is given, and it is believed they will be influenced by local desires in regard to recommendations.

#### PANHANDLE DISCUSSES CHANGE IN HIGHWAY

F. P. Reid attended a mass meeting of Panhandle citizens held last night to plan means of routing Highway 33 through that city.

State and federal engineers routed the highway around Panhandle on the south, although the road formerly crossed the Santa Fe west of the city, followed the main street north, then turned east and re-crossed the railroad. The present route is shorter, and does not cross the tracks.

Panhandle citizens are determined to re-route the road, even if they have to build some paving at their own expense, and it is believed the highway commission will agree to some such plan. Mr. Reid, as an official of the Southwest Trail, offered his support because of what the change would mean to Panhandle.

#### Herrick Welcomed To Paris Today

PARIS, Jan. 20—Myer Herrick, American ambassador to France, returning to his post after a long sick leave to the United States, was received like a conquering hero today as he touched the soil of France at Havre.

Steam whistles of all crafts in the port joined in shrieking their welcome.

#### Hiking to Paris



One of our biggest heel-and-toe men is Owen C. Easterman, of Salem, Mass., who is shortly to add a Boston-to-Paris hike to his already imposing walk records. Canada, Alaska, Siberia, Germany and Belgium are on his itinerary. He's backed by Eleanor Seares, Boston's famed society pedestrienne.

#### HARVESTERS IN MIAMI TODAY

#### Basketball Meet Draws Strong Teams From This Section

The Pampa Harvesters left early this afternoon for Miami to enter the basketball tournament sponsored by Coach Stovall and Phillips of Miami high school.

Tournament plans called for drawing for places at 2 p. m., followed by two or three elimination games this afternoon. The night contests in the indoor gymnasium will begin at 7 o'clock, when two or three games will be played. The tournament will continue all day tomorrow, with the final championship game scheduled for the evening. Miami high school girls also will play a girl's team from Shamrock Saturday evening.

Much interest has been aroused in the sectional tournament, and a dozen or more teams are expected to compete. A large loving cup will be given the winning team, and smaller cups, made in the form of basketballs, to the winners of second and third places.

Visiting coaches will pick the five best men playing in the tournament, and these will be given gold basketballs.

#### Texas Ranger Sent to Wharton County

(By Associated Press)  
AUSTIN, Jan. 20—Ranger Townsend has been sent to Wharton county to aid officials there in compelling enforcement of tick eradication regulations. Adjutant General Robertson said today.

#### "MELODY LAND" ENJOYABLE AT THE CRESCENT THURSDAY

A full house enjoyed "Melody Land" at the Crescent theatre last night.

Clever eccentric dancing, gymnastics, and banjo music were featured, along with very pleasing renditions of popular songs in soprano voice. Banjo solos were perhaps the hits of the evening, however.

The Crescent is presenting big-time vaudeville last Thursday evening at Amarillo.

#### ELECTION MAY BE CALLED AT ANY TIME NOW

Previous Attempts at Removal Failed Two Times

LAST POLL WAS MARCH 19, 1925

Pampa Has Chance If Record Total Can Be Cast

Gray county's fourth county seat election probably will be written into 1928 history, inasmuch as this old question, now acutely new because of the heavier business incident to oil development, has been received by a Supreme Court decision making another vote possible.

Poll tax drives are in progress over the county, and the prospective county seat removal election is being frankly used as one of the reasons why a full vote should be made possible. The isolated location of the county seat has caused much inconvenience, and a majority of the people of the county would like to see the seat of government moved. Candidates for a new location will number at least two, however—Pampa and McLean—and a two-thirds majority will be difficult to obtain. Pampa is regarded as the only city with a chance to obtain the county seat, but her vote will have to break all records to be decisive.

The history of Gray county government dates back to the original election locating the county seat. This was held on March 17, 1908, when LeFors won. The vote was: LeFors, 245; Alanreed, 63; McLean, 187.

Pampa, then a new town, was not in the running. This town grew steadily, however, and on June 10, 1919, it made a bid for the county seat, but lost. The poll showed 487 votes for Pampa, 312 for LeFors, and one vote for Alanreed, McLean voting to block removal.

The issue came up again March 19, 1925 in the last election. By a narrow margin, other parts of the county defeated Pampa's effort to move the county seat here. Pampa polled 1,221 votes, and the rest of the county gave LeFors 775 votes to defeat the two-thirds majority.

An election could now be called by petition and held in slightly more than a month. If this election should fail, it would be two years before another vote could be called.

With this and many other votes approaching, everyone is being urged to pay his poll tax before January 31 in order that he may have a voice in the big issues.

#### Smith, at Home, Wonders How to Get Senate Seat

(By Associated Press)  
CHICAGO, Jan. 20—Forbidden to sit in the United States Senate, Frank Smith rested at his home at Dwight, Ill., today to wait word from his counsel as to his future course.

Smith is regarded by Governor Small as senator-elect, even if he hasn't a seat.

Nothing short of Smith's resignation would cause the governor to appoint a temporary senator, it was indicated, and the former chairman of the Illinois Commerce Commission has no intention of resigning.



# THE "CANARY" MURDER CASE

By S. S. VAN DINE AUTHOR OF THE BENSON MURDER CASE

**THE STORY THUS FAR**  
Margaret Odell, the "Canary," a former Follies girl, was one of Broadway's favorites and a prominent figure in New York night life. When her strangled body was found lying on the davenport in her apartment, New York was confronted with one of the most baffling murders in its history. Markham brings Vance with him to the disordered apartment, where police investigation is under way.

**CHAPTER IV**

The two rooms had apparently been thoroughly ransacked. Clothes and various articles were strewn about the floor. The doors of both clothes-closets (there was one in each room) were open, and to judge from the chaos in the bedroom closet, it had been hurriedly searched; although the closet off of the living-room, which was given over to the storage of infrequently used items, appeared to have been ignored.

The drawers of the dressing-table and chest had been partly emptied onto the floor, and the bedclothes had been snatched back. Two chairs and a small occasional table were upset; several vases were broken, as if they had been searched and then thrown down in the wrath of disappointment; and the Marie Antoinette mirror had been broken.

The escritoire was open, and its pigeonholes had been emptied in a jumbled pile upon the blotter. The doors of the Boule cabinet swung wide, and inside there was the same confusion of contents that marked the interior of the escritoire. The bronze-and-porcelain lamp on the end of the library table was lying on its side, its satin shade torn where it had struck the sharp corner of a silver bonbonniere.

Two objects in the general disarray particularly attracted my attention—a black metal document box of the kind purchasable at any stationery store, and a large case of sheet steel with a heavy inset lock. The latter of these objects was destined to play an important and sinister part in the investigation to follow.

The document box, which was now empty, had been placed on the library table, next to the overturned lamp. Its lid was thrown back, and the key was still in the lock. In all the litter and disorganization of the room, this box seemed to be the outstanding indication of calm and orderly activity on the part of the wrecker.

The jewel-case, on the other hand, had been violently wrenched open. It sat on the dressing table in the bedroom, dented and twisted out of shape by the terrific leverage that had been necessary to force it, and beside it lay a brass-handled, cast-iron poker which had evidently been brought from the living-room and used as a makeshift chisel with which to pry open the lock.

Vance had glanced but casually at the different objects in the rooms as we made our rounds, but when he came to the dressing-table he paused abruptly. Taking out his monocle he adjusted it carefully and leaned over the broken jewel-case.

"Most extraordinary!" he murmured, tapping the edge of the lid with his gold pencil. "What do you make of that, sergeant?"

Heath had been eyeing Vance with narrowed lids as the latter bent over the dressing-table.

"What's in your mind, Mr. Vance?" he, in turn asked.

"Oh, more than you could ever

guess," Vance answered lightly. "But just at the moment I was toying with the idea that this steel case was never torn open by that wholly inadequate iron poker, what?"

Heath nodded his head approvingly. "So you, too, noticed that, did you? . . . And you're dead right. That poker might've twisted the box a little, but it never snapped that lock."

He turned to Inspector Moran.

"That's the puzzler I've sent for 'Prof.' Bremer to clean up—if he can. The jimmying of that jewel-case looks to me like a high-class professional job. No Sunday school superintendent did it."

Vance continued for a while to study the box, but at length he turned away with a perplexed frown.

"I say!" he commented. "Something devilish queer look place here last night."

"Oh, not so queer," Heath amended. "It was a thorough job, all right, but there's nothing myster-

ous about it."  
Vance polished his monocle and put it away.  
"If you go to work on that basis, sergeant," he returned carelessly, "I greatly fear you'll run aground on a reef. And may kind Heaven bring you safe to shore!"

(Tuesday, Sept. 11, 9:30 a. m.)  
A few minutes after we had returned to the living-room Doctor Doremus, the chief medical examiner, arrived, jaunty and energetic. Immediately in his train came three other men, one of whom carried a bulky camera and a folded tripod. These were Captain Dubois and Detective Bellamy, finger-print experts, and Peter Quackenbush, the official photographer.

"Well, well, well!" exclaimed Doctor Doremus. "Quite a gathering of the clans. More trouble, eh? . . . I wish your friends, Inspector would choose a more respectable hour for their little differences. This early

rising upsets my liver."  
He shook hands with everybody in a brisk, businesslike manner.

"Where's the body?" he demanded breezily, looking about the room. He caught sight of the girl on the davenport. "Ah! A lady."

Stepping quickly forward, he made a rapid examination of the dead girl, scrutinizing her neck and fingers, moving her arms and head to determine the condition of rigor mortis, and finally unflexing her stiffened limbs and laying her out straight on the long cushions, preparatory to a more detailed necropsy.

The rest of us moved toward the bedroom, and Heath motioned to the

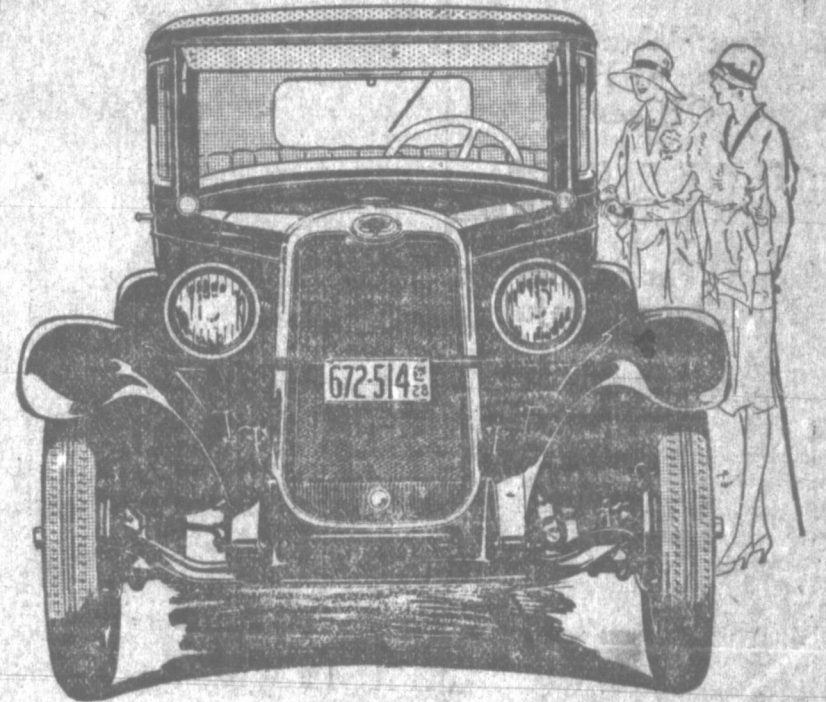
finger-print men to follow.  
"Go over everything," he told them.  
(See CANARY MURDER, page 6)

Dependable Used  
CARS and TRUCKS  
Reasonable Terms  
Dyke Cullum  
Dodge Dealer

PIE AND CAKE  
SALE  
Saturday, Jan. 21  
at

Woodward-Lane  
Grocery  
by the  
BAKER SCHOOL P.-T. A.

FRASER, UPTON  
& DOWNS  
"THE INSURANCE MEN"  
Bonds, City and Farm Loans  
Phone 272



Again—  
Chevrolet Electrifies America  
with a Great New Motor Car

A new automobile so sensational as to electrify the nation! Marvelous new Fisher bodies—107-inch wheelbase, four inches longer than before—4-wheel brakes—and many engineering advancements, in addition to Chevrolet's long famous list of quality features! Small wonder that this Bigger and Better Chevrolet is being hailed as an outstanding automotive achievement!

Come in and see this great new car with its improved, valve-in-head motor—its new streamline beauty and its thrilling acceleration and speed! Learn why it is everywhere hailed as the world's most luxurious low-priced automobile!

4-Wheel Brakes



"Prices Reduced!"

The COACH	\$585
The Roadster	\$495
The Touring	\$495
The Coupe	\$595
The 4-Door Sedan	\$675
The Sport Cabriolet	\$665
The Imperial Landau	\$715
Light Delivery Truck	\$375
Utility Truck	\$495

Culberson-Smalling Chevrolet Co.

CHEVROLET CO.

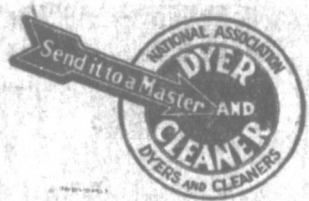
PAMPA, TEXAS

QUALITY AT LOW COST

## SEND IT TO A MASTER

For a High Grade  
of Fine Cleaning

You do not take a  
chance . . . for we  
guarantee our work-  
manship.



Phone 294

Pampa Dry Cleaning Co.  
R. E. GILBERT, Mgr.

## BOXING!

31 ROUNDS

Main Event—10 3-Minute Rounds  
**WARNIE SMITH**  
Tulsa, Okla.—165

The first man to put Shuffel Calahan down for the count of 10.

vs.

**TOMMY O'BRIEN**  
Dodge City, Kan.—165, who just beat Chief Elchart

Semi-Final—8 Rounds

**COUNTRY BOY LANTZ**  
Ft. Worth, Texas—147; 78 fights, 31 K. O.'s  
Draw with Fred Whittington and Hamp Brown

vs.

**DOGGIE LAWHEAD**  
Dodge City, Kan.—145. Has beaten Sid Young, Billy Pelts, K. O.'d Pat Shelbie in one round

Added Attraction—6 Rounds

**GUY BEARD vs RUSTY CAHILL**  
White Deer—142 Pampa—139  
The Fighting Baker The Pride of Pampa

SPECIAL EVENT—4 ROUNDS

**KID ANDREWS vs "BAT" SIKES**  
Bartlesville—132 Shreveport—135

GOOD 3-ROUND PRELIMINARY

Prices—\$1.35, \$1.65, \$2.20, Taxes included. Tickets on sale at Pampa Drug No. 2.



## Pampa Athletic Club

WEST FOSTER AVE.  
MONDAY, JANUARY 22, 8:30 P. M.

PAMPA, TEXAS  
AMERICAN LEGION CARD



# Announcing the Opening of a

FREE—One 5-pound bag Cane Sugar free with the purchase of \$4.00 or more in other groceries.



FREE—One 15-cent package Saltine Crackers with the purchase of a 35-cent 1-pound box Brown's Marshmallow Cookies for 29c.

Location Formerly Known as W. H. Thomas Grocery

We're going to swing the doors open to the first Sipes Self-Serving Store in the State of Texas at 8 o'clock Saturday morning. This system of stores has won a wide reputation among the thrifty grocery buyers throughout Oklahoma, and now the people of Pampa and surrounding territory will have the opportunity to really cut the grocery bill. We have plenty of parking space right on the pavement. Be here on the opening day whether you want to buy groceries or not. When you trade at this store you will enjoy the savings made possible by large chain store buying power, and low overhead marketing. "EVERY ONE IS WELCOME"—W. H. THOMAS, Proprietor.

## DOORS OPEN 8 A. M. SATURDAY

Here Are a few Real Specials for Our Opening Day!

Post Bran Per Package 10c

Post Toasties Large Pkg. (Limit) 10c

Tomatoes No. 2 Can, Each 8c

Raisins 4-pound Package For 34c

Raisins 2-pound Package For 19c

Soap Big Four— 10 Bars For 34c

Jello 3 Boxes For 24c

Matches Crescent— 6 Boxes For 19c

Milk Carnation— Large (Limit) 10c

Milk Carnation— Small (Limit) 5c

Ketchup Snider's— Large Bottle For 19c

Pork Chops Nice and Lean— Per Pound 22c

Pork Roast Nice Lean Shoulder— Per Pound 15c

Sausage Fresh Pure Pork— Per Pound 16c

Bacon Best Sugar Cured Buffalo— Per Pound 23c

Hens Young, Nice and Fat— Per Pound 18c

FREE—One 3-ounce Jar of Mench's Mayonnaise with the purchase of an 8-ounce jar for 25c.



SECOND BLOCK SOUTH OF TRACKS

FREE—A 1-pound Box of Dold's Niagara Bacon to the first 24 ladies purchasing groceries to the sum of \$1.00.



Pampa Daily News

Published every evening except Saturday, and on Sunday morning by the Pampa-Daily News Publishing Company, Inc., at 155 West Foster street.

The only newspaper adequately covering Pampa and Gray county events and the Pampa oil field.

PHILIP R. POND, Manager; OLIN E. HINKLE, Editor

Entered as second-class matter March 25, 1917 at the post office at Pampa, Texas, under the Act of March 3, 1879.

MEMBER OF THE ASSOCIATED PRESS. The Associated Press is exclusively entitled to the use for republication of all news dispatches credited to it or not otherwise credited to this paper, and also the local news published herein.

All rights of republication of special dispatches herein also are reserved.

SUBSCRIPTION RATES

By Carrier in Pampa: One Year \$8.00, Six Months \$4.50, Three Months \$2.75, One Month \$0.90. By Mail: One Year \$9.00, Six Months \$5.00, Three Months \$3.00, One Month \$1.00.

NOTICE TO THE PUBLIC

Any erroneous reflection upon the character, standing, or reputation of any individual, firm, concern, or corporation that may appear in the columns of the Pampa Daily News will be gladly corrected when called to the attention of the editor. It is not the intention of this newspaper to injure any individual, firm, or corporation, and corrections will be made when warranted as responsibly as was the wrongfully published reference or article.

Telephone 100, all departments.

DAILY NEWS' 1928 PROGRAM FOR PAMPA

- One or more new railroads. New city hall-auditorium. County agricultural agent. Additional street paving. Oil Exchange building. Expedite road paving work. Encourage existing industries. Invite new industries. Complete water, sewer systems. More and better homes. Extend Pampa trade territory. Develop dairying industry. Municipal band. Municipal airport. Pampa Fair. Associated Charities. County home demonstration agent. High school gymnasium.

Mother Hubbard Went to the Cupboard—



projects, should be handled skilfully. Bond buyers have in the past obtained local city bonds at below par or slightly above, then have been able to re-sell them for as much as ten points higher. There is no longer any doubt as to the worth of local paper, and in a strictly competitive market our bonds will rank with those of any city in West Texas, and above many.

ing to market its eggs," and that Kansas eggs dominate our best territory.

The West Texas Chamber of Commerce is turning its attention to marketing by compiling statistics, and the poultry and dairy committee will devise ways and means of opening up the markets for the diversified products which this section can profitably produce in greater quantities.

Poultry and dairy products cannot be marketed efficiently like cattle, hogs, cotton, and wheat. West Texas needs an organized agriculture. County agents can do much by cooperating along this line. Gray county needs such an agricultural agent.

Marketing is going to be as big a problem in West Texas as production of diversified products, in the opinion of the Abilene News, which suggests that this section must cooperate in the competitive markets. It points out that West Texas is "certainly fail-

We can't make up our mind whether to buy one of the new small cars now or wait until late summer and get two for a quarter.

The man starting the chain of 5-cent-to-a-dollar stores probably later on will handle the new automobile lines.

You can blame the bootlegger for the modern rye face. Half the world doesn't know why its better half lives.

Have you heard that sober ballad about the flapper: "Just Before the Bottle, Mother"?

The eagle is said to fly fastest when going away from its nest. A nice emblem for our money.

Henry Ford says railroad trains should be lighter. That would give Model A a better break.

John J. Pershing has been named a bank director. Maybe because he knows his doughboys.

We see no mystery in the bulletin from a university announcing the finding that fat students study most while the lean ones are more popular socially. If you thing it's puzzling go out and learn one of the new dances and then weigh yourself.

Political Announcements

Subject to the Action of the Democratic Primary July 28, 1928.

FOR COMMISSIONER, PRECINCT NO. 3— H. G. McCLESKEY

bring all back to the party line-up. If the plan is logical there must be some slight misunderstanding, mustn't there?

The Standard and Dutch Shell are having a price war abroad. Considering that prices over here likely will stay up to support that conflict, even gasoline fights must run true to what Sherman said of war in general.

Inventors used to create demands; now they merely strive to meet them.

We don't wish Miami any more harm, but we would like to have for Pampa a few of those empty skyscrapers.

A Nebraska wife has learned that "women do not have to work or go to jail." But the judge in the case said he could not but admire the husband who could make his wife believe that.

COOKED FOOD SALE

Saturday

Oil Belt Grocery by the Friendship Class of the Methodist Church

TWINKLES

The saxophone has just about achieved a place in music, so we are due for the introduction of another instrument of sonant torture.

Texas Democrats, like all others, are pretty much divided, but the primary pledge in this state is calculated to

BARBS

(By N.E.A. Service Inc.)

The man who gave the University of Chicago a million to seek means of lengthening human life knows his cities very well.

Pampa's Business, Professional and Commercial Directory

LAWYERS

STUDER, STENNIS & STUDER, LAWYERS, Phone 85, First National Bank Building

H. E. FLOREY, LAWYER, Office in Smith Building, PAMPA, TEXAS

W. M. LEWRIGHT, ATTORNEY-AT-LAW, Phone 495, Duncan Building

CONTRACTORS

HENRY L. LEMONS, General Oil Field Contracting, Office: New Schneider Hotel, Office Phone 300—Res. Phone 307-J

CHIROPRACTORS

DR. AURA W. MANN, CHIROPRACTOR, OFFICE 20-21, SMITH BUILDING, Phones: Office 263, Res. 293-J, Office Hours 7 a. m. to 9 p. m. Other Hours at Residence

Dr. J. C. Higginbotham, CHIROPRACTOR, OFFICE HOURS 7 A. M. TO 9 P. M., Phone 39, Sharpe-Reynolds Bldg.

ABSTRACTS

PLAINS ABSTRACT CO., Pampa, Office: Duncan Bldg., Phone 11, LeFors Office: Court House, Phone 9031, L. H. Schwendener, Chas. M. Spurlock

PHYSICIANS AND SURGEONS

ARCHIE COLE, M. D., PHYSICIAN AND SURGEON, Office over First National Bank, Office Hours 10 to 12—3 to 5, Residence Phone 8, Office Phone 55

DR. C. D. HUNTER, PHYSICIAN AND SURGEON, Phone 331 Day or Night, Room 9, Duncan Bldg.

DR. ROY A. WEBB, Physician and Surgeon, Office Phone 372, Residence Phone 282, Rooms 2 and 4, Duncan Bldg.

DR. W. PURVIANCE, PHYSICIAN AND SURGEON, Office over First National Bank, Office Hours: 9 to 12—1 to 5, Office Phone 107, Residence 45

W. B. WILD, M. D., PHYSICIAN AND SURGEON, Office Smith Bldg., Rooms 1, 2, 3, Phone 232, Night Phone: Schneider Hotel

J. A. ODOM, M. D., Practice Limited to Eye, Ear, Nose, Throat and Glasses Fitted, Office in Duncan Building (Rooms formerly occupied by Dr. EHL.)

PLUMBING

PAMPA PLUMBING CO., J. W. Minnis, Mgr., Res. Phone 421-W—Shop 380, Shop in Jones & Griffin Warehouse

DENTISTS

DR. H. H. HICKS, Dentist, X-RAY—GAS—ANESTHESIA, Office Phone 577—Res. Phone 77-W, ROOM 10, DUNCAN BLDG.

DR. W. F. NICHOLAS, Dentist, X-Ray work, General Anesthetics and Extraction Work a Specialty, Smith Building, Rooms 8 and 9—Phone 328

DR. A. R. SAWYER, X-RAY AND GAS SERVICE, PAMPA, TEXAS, White Deer Land Building, Business Phone 108, Residence Phone 50

EYE SPECIALIST

DR. T. M. MONTGOMERY, Eye Sight Specialist, In Pampa Every Saturday, Office in Fatherson Drug Store

MISCELLANEOUS

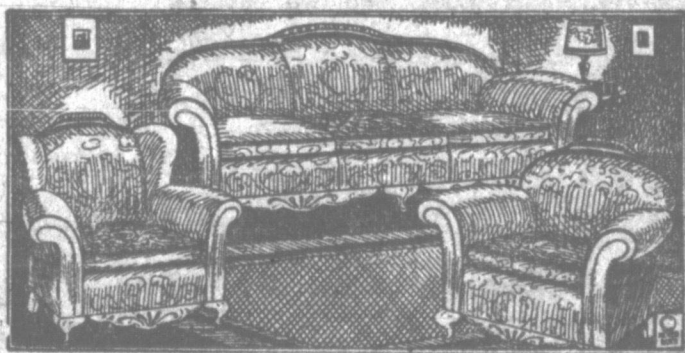
Pampa Lodge No. 386 A. F. and A. M. Meeting held 7:30 P. M., second floor, White Deer Land Building Main street. Office of Secretary first floor. CALL MEETINGS: Tues. Jan. 5, Work in E. A. Day, Tuesday, Jan. 10, Work in F. C. Day, Tuesday, Jan. 17, work in E. A. Day, Tuesday, Jan. 24, Work in F. C. Day, Saturday, Jan. 28, regular meeting, C. F. Buckler, Secretary.

Picture Framing

By an Expert, Large Assortment of Moulding, Thompson Hardware Co., Phone 45

FURNITURE

The kind that makes the home a more attractive and a more comfortable place to live. . . .



Come in and Let Us Show You Our Stock

Pampa Furniture Co.

West Foster Ave. Opposite Cross Dry Goods

FRECKLES and His FRIENDS

That's How He Feels

By BLOSSOM



1928 BY N.E.A. SERVICE, INC.



# CHURCHES

## FIRST PRESBYTERIAN CHURCH

Sunday school, with B. E. Finley as superintendent, begins at 9:45 a. m. We have Bible study for all ages, and we extend a cordial welcome to others to join our classes.

Morning worship and the sermon begin at 11 o'clock. The subject of the sermon will be "We Would See Jesus." There will be special music. The Christian Endeavor for the young people meets at 6:30 o'clock. All the young folks are cordially invited to attend.

The evening preaching service begins at 7:30 o'clock, with special music by the orchestra. The subject of the evening message will be "The Windows of Heaven."

We extend a cordial welcome to the people of Pampa to attend our services.

W. L. EVANS, Minister.

## FIRST BAPTIST CHURCH

Sunday school, 9:45 a. m.

Supt. Chas. Barrett tells us that the Sunday school will begin on time, run on time, and close on time, and if you want to be counted in the Sunday school be present at 9:45 a. m., Sunday morning.

Morning worship, 11 a. m.

Subject "Where is Thy Brother?"

Mr. Vaughn, our new educational director, promises us a real musical program Sunday morning and evening. Dr. and Mrs. Mann will sing for us.

B. Y. P. U.'s 6:15 p. m.

Evening worship, 7:30 p. m.

Subject, "God's Blockade of the Road to Hell."

Last Sunday was a day long to be remembered; souls were saved, and four united with the church. Many have expressed themselves relative to our services, saying, "The oldtime Gospel, preached in the oldtime way will bring men to Christ."

If you haven't a church home, come with us, if you need a Savior the church house will be a mighty good place to find Him. Come Sunday, you are always welcome.

D. H. TRUITTE, Pastor.

## CHURCH OF CHRIST

Preaching is at 11 a. m. and 7 p. m. on the first and third Sunday of each month.

Bible study is held each Sunday at 10 a. m., and there is communion at every morning service.

You are invited to attend these services at the church six blocks east of the high school.

CHARLES BANKHEAD, Pastor.

## ELECTED TO LEGISLATURE ON PARENTS' ANNIVERSARY

The honor of being elected to the Legislature of the state of Mississippi on the day of the anniversary of his parents' golden wedding fell to John C. Stennis, 25 years old, of Kemper county. He is the youngest brother of S. D. Stennis of the firm of Studer, Stennis and Studer, here.

S. D. Stennis was at his parents' home in DeKalb, Miss., attending the golden anniversary when the election returns announcing the election of his brother were received. He returned to Pampa yesterday from the delightful occasion.

## DRESSMAKING BEAUTY WORK

Bring your problems to us. Let us make that new Spring Frock. We save you money. Tailored Dresses and Suits \$4.50 to \$10.00.

We give you a beautiful marcel for 50c, with ringlet ends 75c.

MRS. LIGON

Room 12 Smith Bldg. Phone 584

# SOCIAL NEWS

BY MISS LEORA MAY

PHONE 100

## Young Woman's Circle Organized Wednesday In Christian Church

Wednesday evening a number of young ladies met at the Christian church for the purpose of organizing a Young Woman's Circle. The president and secretary of the Woman's Missionary society met with them. Mrs. V. E. Fatheree gave a talk explaining the work of the circle girls, after which the following officers were elected:

President, Miss Elizabeth Procter; vice-president, Miss Mary Jo Harmon; secretary, Miss Hazel Campbell; reporter, Miss Wretha McCallip.

Mrs. James Todd was chosen as counsellor. Miss Mary Jo Harmon will be leader of the first program and will be assisted by Miss Hazel Campbell and Miss Elizabeth Procter. The first meeting will be held at the home of Mrs. V. E. Fatheree, 598 W. Kingsmill ave. on February 1.

## Friendship Class of Methodist Church Holds Benefit Meeting

The Friendship class of the Methodist church held an all day meeting Thursday at the church. A delicious luncheon was served those present, and the time was spent in quilting and other sewing.

Next Thursday, the Class will meet in the home of Mrs. Carl Boston on Grace street for a similar meeting. The money secured from the sale of the quilts will go to help build the new church.

The members of the class will have a cooked food sale Saturday at the Old Belt grocery. This sale is the first of a series that will be given for church benefit.

## Kingsbery Residence Is Scene of Bridge Party Thursday Night

Mr. and Mrs. C. E. Kingsbery entertained Thursday evening with

bridge. Mrs. Neal McCullough won high score during the games, while W. A. Bratton won high score for the gentlemen. Cut prizes were awarded Mrs. J. M. McDonald, and Neal McCullough.

The hostess served a delightful plate luncheon to the following guests: Mr. and Mrs. M. A. Finney, Mr. and Mrs. C. T. Hunkapillar, Mr. and Mrs. W. A. Bratton, Mr. and Mrs. J. M. Dodson, Mr. and Mrs. Joe Smith, Mr. and Mrs. W. L. Woodward, Mr. and Mrs. Neal McCullough, Mr. and Mrs. C. C. Cook, Mr. and Mrs. J. M. McDonald, and Mr. and Mrs. G. C. Walters.

## Mrs. A. B. Kirby To Give Recital at Schneider Saturday

Mrs. A. B. Kirby will give an expression recital Saturday afternoon in the Schneider hotel from 3 to 4 o'clock. Mrs. Kirby is taking the place of Mrs. T. F. Morton in the dramatic arts department of the local high school, and invites all those interested to be present Saturday at her recital.

## PAY INCREASE GRANTED

TOPEKA, Jan. 20—A flat wage increase of 3 cents an hour for 2,900 Santa Fe railroad telegraph employes was announced today.

## NORTHER SWEEPS ON

(By Associated Press) WICHITA FALLS, Jan. 20—A fresh norther sent the mercury down here today to 33 degrees, and reports from the Panhandle said freezing weather was being experienced in that section.

## MOTHER OF DANCER KILLED

(By Associated Press) MIAMI, Fla., Jan. 20—Mrs. F. E. Fountain, 50 years old, and mother of Evans Fountains, the dancer, was killed today near New Smyrna, Fla., today when the automobile in which she was riding crashed into a passenger train.

## Weddings Totaled 144 in Gray County in 1927, Records Show

Wedding bells in Gray county tolled during 1927 more than ever before, according to the number of licenses issued at LeFors. The number issued in 1927, which totaled 144, far outnumbered that of the previous year.

The growth of Pampa following the discovery of oil is largely responsible for the increase in the number of marriages. The year 1928 promises to be stronger for nuptials than last year considering the number of licenses issued so far.

## Much Business on Hand for February Term of 84th Court

The 84th district court, with Judge Newton P. Willis presiding, will open its 1928 session at LeFors February 20.

Several new cases are to be heard during this term of court, and a number of cases continued from the last session will be heard. Divorce and liquor cases are the most numerous.

Mrs. J. W. McCray of the Independent Boiler Welding Works has returned from Seminole, Okla., where she was called on account of sickness.

The Rev. W. L. Evans, who has been confined to his room several days on account of illness, is improving.

## Ballew Wholesale Market to Meet Competing Prices

L. M. Ballew, proprietor of the Ballew market No. 1 on South Cuyler street and the Ballew market No. 2 on Kingsmill avenue at Wright's grocery, announces that he will wholesale meat from the Cuyler street market, and retail meat from both markets.

Mr. Ballew has a completely equipped market on South Cuyler including a large Frigidaire cooling system and an electric Jim Vaughn meat cutter.

"I am in a position to meet any and all competition in the wholesale line, catering especially to restaurants and hotels," says Mr. Ballew. "At my larger store on Cuyler street I will wholesale the meat out to the hotels and restaurants and operate a retail business at both of the markets."

The market at Wright's grocery will first open for business tomorrow. A full line of meats will be carried at both markets.

Mrs. W. H. McIntyre of Amarillo is here visiting for a few days.

A. H. Doucette was a business visitor in Borger today.

# GROCERIES

With the opening of the L. M. Ballew Meat Market in our store, we are going to offer some

RED HOT SPECIALS

QUALITY GROCERIES

Watch our Windows for list of Specials Be Here

SATURDAY

and Save on the Grocery and Meat Bill

# WRIGHT'S GROCERY

First Door East of Post Office

# Pampa Wholesale Meat Co.

424 S. Cuyler St. Phone No. 549

We are opening a Wholesale Meat and Produce House in Pampa on Saturday, a. m., Jan. 20, giving special attention to Hotel, Cafe, Suburban Stores and Boarding Houses.

We buy in carload lots and carry all items of Meat and Produce.

We guarantee you fair prices, honest weights and quality meats. Our prices on a few items are listed below for Saturday and Monday selling. We solicit Wholesale and Retail Business.

<b>HAMS</b>	PURITAN SKINNED— Half or Whole; 16-18 average; per lb.	<b>21c</b>
<b>ROAST</b>	FRESH PORK HAM— Per lb.	<b>18c</b>
<b>BACON</b>	PURITAN SLICED— Per lb.	<b>37c</b>
<b>SAUSAGE</b>	PURE PORK—BULK— Per lb.	<b>16c</b>
<b>SHORTENING</b>	RICH NUT—IN CUBES— Per lb.	<b>28c</b>
<b>PORK CHOPS</b>	Per Pound	<b>21c</b>
<b>CHUCK STEAK</b>	CUT FROM BABY BEEF— Per pound	<b>17 1/2c</b>

<b>DRY SALT BELLIES</b>	Per lb.	17c	<b>BUTTER</b>	Kaufmans Best; per lb.	47c
<b>Rex or Cudahy Fresh Picnic Hams</b>	Shankless, per lb.	20c	<b>REX BACON</b>	By Slab— Light Average; per lb.	27c
<b>PORK SHOULDER</b>	Per lb.	16c	<b>FRANKFURTERS</b>	Per lb.	17c
<b>SPARE RIBS</b>	Per lb.	17c	<b>NIAGARA Regular HAMS</b>	8 to 12 lb. average; lb.	22c

# Pampa Wholesale Meat Co.

Plenty Parking Space

424 S. Cuyler St.

## MOM'N POP

The Accomplice

By TAYLOR

AN-HA! ANOTHER EGG IN THE PAN! BILL, PLANNING A QUICK GETAWAY, AFTER HE SECURES POP'S AND TYES BANKROLL, HAS SECURED THE SERVICES OF THE "HYENA" TO FLY HIM ACROSS THE BORDER.

SO Y' TINK YOU'LL HAVE TH' SWAG IN A FEW DAYS, EH? WELL, COUNT ON ME T'HAVE DIS SKY BOAT IN TIP-TOP SHAPE



EXACTLY! AN' NO DOUBLE CROSSIN'! SEE! I'M COUNTIN' ON YOU, BUT IF Y' SELL OUT ON ME I'LL BE COUNTIN' YOU OUT—WRAP THAT UP



IT'S K.O. WIT ME KID—ONE FLICK O' DAT PROPELLER AN' WE'LL LEAVE TH' U.S.A. BEHIND SO FAST IT'LL BE LIKE TURNIN' OVER A PAGE IN A GEOGRAPHY



SPOSIN' WE GO UP FOR A LITTLE SPIN—I WANTA SEE HOW SHE'S WORKIN'



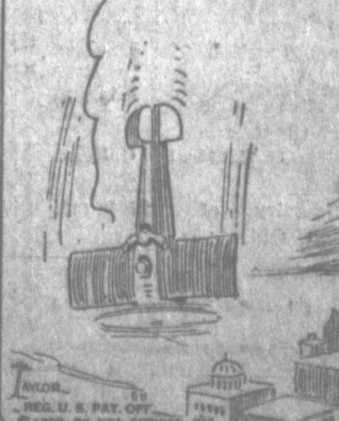
HEY! CUT OUT ALL THESE FANCY TWISTS AN' LOOPS—YOU'LL KILL US BOTH



THAT'S AWRIGHT, BILL—Y'KNOW MY MIND WAS ALWAYS BENT ON CLASSY FLYIN'



BROTHER, YOU DONT MEAN BENT—YOU MEAN WARPED





## THE "CANARY" MURDER CASE

By S. S. VAN DINE AUTHOR OF THE BENSON MURDER CASE

them. "But take a special look at this jewel-case and the handle of this poker, and give that document-box in the other room, a close-up-and-down."

"Right," assented Captain Dubois. "We'll begin in here while the doc's busy in the other room." And he hand-Bellamy set to work.

Our interests naturally centered on the captain's labors, or fully five minutes we watched him inspecting the twisted steel sides of the jewel-case and the smooth, polished handle of the poker. He held the objects gingerly by their edges, and, placing a jeweler's glass in his eye, fished his pocket-light on every square inch of them. At length he put them down, scowling.

"No finger-prints here," he announced. "Wiped clean."

"I mighta known it," grumbled Heath. "It was a professional job, all right." He turned to the other expert. "Found anything, Bellamy?"

"Nothing to help," was the grumpy reply. "A few old smears with dust over 'em."

"Looks like a washout," Heath commented irritably. "Though I'm hoping for something in the other room."

At this moment Doctor Doremus came into the bedroom and, taking a sheet from the bed, returned to the davenport and covered the body of the murdered girl. Then he snapped shut his case, and putting on his hat at a rakish angle, stepped forward with the air of a man in great haste to be on his way.

"Simple case of strangulation from behind," he said, his words running together. "Digital bruises about the front of the throat; thumb bruises in the sub-occipital region. Attack must have been unexpected. A quick, competent job, though deceased evidently battled a little."

"How do you suppose her dress became torn doctor?" asked Vance.

"Oh that? Can't tell, he may have done it herself—instinctive motions of clutching for air."

"Not likely though, what?"

"Why not? The dress was torn and the bouquet was ripped off, and the fellow who was choking her had both hands on her throat. Who else could've done it?"

Vance shrugged his shoulders and began lighting a cigaret.

Heath, annoyed by his apparently inconsequential interruption, put the next question.

"Don't those marks on the fingers mean that her rings were stripped off?"

"Possibly. They're fresh abrasions. Also, there's a couple of lacerations on the left wrist and slight contusions on the thenar eminence, indicating that a bracelet may have been forcibly pulled over her hand."

"That fits O. K.," pronounced Heath, with satisfaction. "And it looks like they snatched a pendant of some kind off her neck."

"Probably," indifferently agreed Doctor Doremus. "The piece of chain had cut into her flesh a little behind the right shoulder."

"And the time?"

"Nine or ten hours ago, say, about eleven-thirty—maybe a little before. Not after midnight, anyway." He had been teetering restlessly on his toes. "Anything else?"

(To Be Continued)

### O'brien to Fight---

first raters. He will have his hands full to stay with Warnie Smith, who is a veteran of the ring and who has never left his feet for a count of ten.

The balance of the card is com-

## Markets

FORT WORTH, Jan. 20—Receipts continue moderate, 3,500 cattle and 800 calves being the estimate Tuesday. Prices on steers were steady with trading active. The best steers offered were two loads of choice, white-face, dehorned cattle at \$13.10. Other good to choice steers sold at \$12 to \$12.50.

All classes of cows are strong and 10 to 15c higher for the week, which include canners and cutters. Bulk of the good mat cows are selling from \$6.50 to \$7.25, with extra choice cows from \$7.75 to \$8.50; common kind of fat cows, \$5.75 to \$6.25; cutters, \$5.25 to \$5.75; canners, \$4.75 to \$5.10. No good stock cows on sale, but there is a good demand for same, and prices would be fully in line with killing cows.

posed of veterans like Country Boy Lantz and Doggie Lawhead, Rusty Cahill and Guy Beard, Kid Andrews and Bat Sikes. It is expected to be the best card of the season.

The calf market is fully steady; good fat killing calves selling from \$9.00 to \$10; choice stocker steers calves from \$10 to \$10.75; medium to good killing calves, \$8 to \$9; common and doyle calves, \$5.50 to \$6.50.

The hog market is 10 to 25c lower; top at \$8.10; bulk of the good butcher hogs selling from \$7.30 to \$8; packing sows, \$6.50 to \$7; pigs, \$5.75 to \$6.50.

No sheep were on sale; receipts, with exception of a few lambs trucked-in, being direct to killers.

Charles Anderson of Chicago, connected with the Operators Oil company, is here transacting business.

### LOST

- 1 gray horse, full shod.
- 1 bay mare, full shod, bar on left shoulder.
- 1 roan mare, bar on left shoulder.
- 1 sorrel horse, 8-inch mane.

### \$5 REWARD FOR INFORMATION

John B. Smith  
Box 973—Phone 385-J

### A. E. Dixon Company

#### INCOME TAX CONSULTANTS

Audits, Systems, Oil Depletion

PAMPA

AMARILLO

Pampa Office, first door east of Western Union—First Nat'l. Bank Bldg. Telephone No. 7.

## C. & C. MERCANTILE CO.

(WHOLESALE and RETAIL)

Good Things to Eat for Less

### SPECIALS FOR SATURDAY ONLY

<b>POTATOES</b>	No. 1 GRADE— 10 pounds	<b>22c</b>
<b>PRESERVES</b>	STRAWBERRY— 16-oz. Jar	<b>16c</b>
<b>CHILI</b>	WALKER'S—"Red Hot" No. 1 can	<b>11c</b>
<b>CHILI</b>	WALKER'S—"Red Hot" No. 2 can	<b>20c</b>
<b>PORK &amp; BEANS</b>	VAN CAMP'S— No. 2 can	<b>9c</b>
<b>FLOUR</b>	ROBB-ROSS PANCAKE—	<b>11c</b>
<b>CLEANSER</b>	SUNBRITE— Per box	<b>5c</b>

### MARKET SPECIALS

<b>SAUSAGE</b>	PURE PORK— Per pound	<b>20c</b>
<b>BACON</b>	"REX"—Extra Fancy Strip; lb.	<b>29c</b>
<b>FRESH DRESSED YOUNG FAT HENS</b>		

### LEARN STENOGRAPHY!!



city now. Day school open now. Night school student placed this week. Night classes increasing. Many new enrollments. We could place several competent stenographers in the winning of classes.

### Pampa School of Commerce

Opposite Post Office—Ph. 497

### PROFESSOR OTTO SCHICK

Teacher of violin, clarinet, saxophone, trumpet, French Horn, Cello and advanced students in piano.

Using same studies for violin which are composed by Prof. Otakar Sevelk, professor at Vienna Conservatory and other conservatories as follows:

- Guildhall School of Music.
- "I think it is one of the most remarkable educational works that I have ever seen. It should be of great value to all students of violin, and I shall lose no opportunity to make my professors in this school acquainted with it."
- Landon Ronald, London, Eng.
- New England Conservatory of Music, Boston, Mass.
- Pittsburgh Musical Institute, Pittsburgh, Pa.
- Aolian Conservatory of Music, Morrison, L. Davago, Baltimore, Md.
- American Conservatory of Music, Chicago.
- Chicago Musical College, Chicago.
- University of Oklahoma, Norman, Okla.

Residence Phone 115-W  
Studio on High School Campus



### LENORE ULRIC

Talented Actress,  
writes:

"With women in practically all the professions smoking, I have observed those in my own calling and have found their favorite cigarette is the Lucky Strike. I always choose it for my occasional smoke because it affords the greatest relaxation and pleasure."

*Lenore Ulric*

## The Cream of the Tobacco Crop

"I love the Tobacco business. There is a fascination about it that grips you. The fine texture and beauty of a Leaf of Tobacco appeals to the Tobacco buyer as a great Painting does to the artist. I buy Tobacco for LUCKY STRIKE Cigarettes. I buy 'The Cream of the Crop.' Under instructions only the best and mildest goes into LUCKY STRIKE. It is my job to see that it is so."

*W. Holman*  
Buyer of Tobacco



## "It's toasted"

No Throat Irritation—No Cough.



# Hooks and Slides

## Handing the Amateurs

Charley Paddock's recent assertion that Helen Wills, Bob Jones and several other stars were not amateurs in the strict spirit of the rules was rather surprising when the source was considered.

If memory does not fail Paddock was up once or twice, before the officials of the Amateur Athletic Union and was asked to explain some of his activities that were thought to have come under that mooted classification of "indirect benefits."

It takes a brave young man and one who must feel quite secure in his position to cast pebbles when rocks might be hurled back at him by counter-belligerents.

Regardless of his qualifications to sit in judgment upon the athletic morals of the distinguished amateurs in other branches of sport the point made by Paddock is well taken, as is known to all those familiar with the activities of most of the athletes who are supposed to get no returns of any kind for their services.

Paddock maintained that Jay Gould, the court tennis star, was the only real amateur of his acquaintance and that he had so much money he had no inducement of temptation to become a semi-pro.

## Gentlemen Athletes

Gould is generally accepted as an amateur in the strictest interpretation of the word, but there are others, although Paddock may not know of them, who have no fear of an investigation, although very few of them are absolutely spotless.

And those who are accepted as being beyond reproach are wealthy and of the class known to the British as "gentlemen athletes."

For a number of years the line was so finely drawn in England that a tradesman or a man who worked for a living could not compete in the same class with a gentleman.

On one occasion the application of Jack Kelly, one of America's greatest oarsmen, for entrance in the Diamond Sculls race was refused because he worked for a living.

Kelly had to wait for the 1920 Olympic games to get revenge and he got it in Brussels by giving a terrific beating to Jack Beresford, the British champion.

Considering all the angles to this amateur problem it would seem that the British did have the only way in drawing a line between an amateur and a professional or semi-pro that was chest-proof. If the rule is enforced in its strictest spirit only a rich man or a lord or a duke could play in amateur games.

## The Amateur Sports

Mrs. Molla Mallory, for years the American tennis champion and one

of the greatest woman players of all times, certainly is an amateur, but she is the wife of a very wealthy New York broker and she is so particular about her position that she very seldom will admit to even a casual interview.

The polo players as a class are certainly real amateurs, but they are all from the wealthy class or they couldn't be playing polo. The average man couldn't keep himself supplied with boots and saddles, let alone a string of ponies at from \$5,000 a head upward.

Rowing is another sport that is not bothered much in this country with amateur problems but as a British writer said at the last Olympic games—"Rowing? That's not a game, it's a bloomin' prank."

The liberal interpretation of the American amateur rules applied to the writing of newspaper and magazine articles is the cause of the complaints, if they are such, directed against Helen Wills and Bobby Jones.

The question of whether their articles find a market because of the

## O'Brien, With Record of Knock-Outs, Will Meet a Tough Man

Tommy O'Brien, 165 pounds, the boy whom H. C. Ripple has developed into one of the best of his class, will meet Walter Page, the Oklahoma cowboy, in a 10-round exhibition at the Pampa Athletic club Monday night. The card is composed of first class boys who have been fighting as headliners for years.

O'Brien will be remembered as the boy who was here with Walter Page when he boxed Fred Whittington. He has the record of never being knocked out and has in turn scored more than 50 knockouts. He recently kayoed Chief Jack Eikhart, a contender for the championship, and won decisions over Al Webster, Eddie Gross, Ace Hudgins, and other

(See O'BURN TO FIGHT pg. 6)

names of the authors and that their names give their products a higher market value than the works of other writers could be answered only by the editors as the copy of the young tennis and golf stars to be in demand.

# The Only Real Test for Baking Powder is in the Baking

For Best Results Use

# KC BAKING POWDER

DOUBLE ACTION  
First in the Dough - Then in the Oven

Same Price <sup>25 Ounces</sup> <sub>for 25¢</sub>  
For Over 35 Years

Millions of Pounds Used By Our Government

Most of the Mileage  
At Half the Cost

## USED CARS

Every used car taken in trade is examined for the slightest possible defect and reconditioned, painted, cleaned and polished. Still another final inspection is given it before you take it from the floor. In this way we assure you of getting the longest possible service from your used car.

Startling Values!

- 1927 Chevrolet Touring
- 1926 Chevrolet Coupe
- 1926 Chevrolet Roadster
- 1926 Star Sedan
- 1925 Dodge Commercial

CULBERSON-SMALLING  
CHEVROLET CO.

West Kingsmill Avenue  
Phone 366

# YOU SAVE When You Buy at M SYSTEM



M System Offers the Lowest Prices possible without sacrificing Quality

## SPECIALS FOR FRIDAY AND SAT.

LETTUCE	CALIFORNIA ICEBERG— Large Firm Heads; each	7c
YAMS	EAST TEXAS— Kiln Dried; per pound	3 1/2c
BANANAS	YELLOW RIPE— Per pound	9c
ONIONS	SPANISH SWEET— Per pound	4c
COFFEE	SCHILLING'S— Per pound	49c
SECTIONS HONEY	Each	25c
LIBBY'S CATSUP	Large Bottle	21c
JELLO	ALL FLAVORS— 3 for	25c
FRENCH'S MUSTARD	Per Jar	11c
SHAKER SALT	Per Package	10c
MATCHES	3 BOXES— For	10c
RED KIDNEY BEANS	Per Can	10c
HAPPY VALE DILL PICKLES	No. 2 1-2 Can	17c
MARSHMALLOWS	ANGELEUS— Package	7 1/2c
VAN CAMPS MILK	Small Large	5c 10c
PREMIER DRESSING	Large Size	39c
Fresh PORK CHOPS	per lb.	23c
Sugar Cured BACON SQUARES	per lb.	19c



AT THE REX TODAY

RICHARD DIX

"THE GAY DEFENDER"

Saturday—Hoot Gibson in "PAINTED PONIES"

Crescent Theatre

"Yours for Better Shows; Courtesy, but not overdone"

TODAY

Tom Tyler and His Pals in "The Cherokee Kid"

Saturday

Rex Beach's "THE BARRIER"

WARNING!

Big Time Vaudeville

Thursday of Each Week

CRESCENT

Yours for Better Shows; Courtesy But Not Overdone"

DANCE

Friday, January 20th

Black Aces 10-Piece Orchestra

DANCELAND

New Self-Serving Grocery to Open Here Saturday

W. H. Thomas will open the first of the Sipes Self-Serving system of stores in Texas Saturday morning.

Grocery stores of this system are operated throughout Oklahoma and the plans of the officials are to open a large number of stores in Texas.

The fixtures in the store are all white, with a black baseboard. A large Fridgidaire cooling system is installed in the meat market, which will be operated in connection with the grocery department.

The shelves in the central part of the store are in the shape of a large "S."

Mr. Thomas opened the first grocery store in south Pampa more than a year ago.

Try a Daily News Want Ad First Let a want ad work for you.

Amarillo Man Is Held on Charge of Burglary Here

Charged on allegations of having attempted to steal household goods from Harry Hanna, who lives on the Herndon ranch northwest of here, John Greenleek of Amarillo was arraigned before Justice of the Peace I. S. Jameson today.

Mr. Hanna, returning from Borger with an employe last night, is said to have met Greenleek as the latter was loading household goods on a car. A chase ensued, in which Hanna sent a bullet through Greenleek's hat and grazed the latter's scalp, and furniture was strewn over the prairie.

Mr. Hanna's house was robbed earlier in the week of considerable bedding and other articles.

Arbitration for Western Disputes Is Suggested in Havana

HAVANA, Jan. 20—Compulsory arbitration for all international disputes on the western hemisphere and use of the World Court at The Hague as an arbitration board was set forth by Dr. Guerrero today as his aims in connection with his work at the Pan-American conference in session here.

Dr. Guerrero yesterday was appointed chairman of the committee on international and public law.

G. C. MALONE Ambulance Service, Phone 181.

Name It

Titles Suggested Paper Is Neighbor

John Page Paving Grows

By David M. Warren Readers of this column are going to have just a few more days left to submit titles for the \$10 prize which will be given to the person suggesting the most appropriate name.

Many good suggestions are being received along with several humorous ones. A school boy from Borger writes, "If I win your \$10 bill, I'm going to buy me a pig and some hens and start me a bank account."

Parker McCullough, abstractor incidentally and president of the Pampa School Board primarily, and considered a authority on teachers' pulchritude, has suggested the name of "Warren's weekly Wallings." Parker, why not make those wallings "weakly"?

Suggestions for the permanent name of this column should be left at the office of the newspaper in your city by Saturday night, January 28.

Some of the titles used in other papers are: Left at the Post, So Think We, The State Press, Starbeams, Echoes of the Streets, The ence, Solomon's Sayings, and Nubbins. Eugene Field's famous column for the Chicago Daily News was called Sharps and Flats.

Among the names suggested for this column are: The Gleaners, Warren's Name It and Take It, Listen to Warren. Doings of the Day, Dave Says, The Mirror, Whittlings, This and That, The Lone Star, The World, Blowouts and Light of The Panhan-

DRESSMAKING!

We want the Ladies of Pampa and surrounding territory to know that we do high-class dressmaking and altering of all kinds—Compare our price. ALSO—We carry a choice selection of Exclusive Millinery.

The French Shoppe On Balcony at Crystal Palace Confectionary



Your Cleaning and Pressing!

The service of the cleaners of Pampa is one of the most important factors in the activity of Pampa business men and women and the social life of the community.

THE QUALITY MUST BE HIGH

We have the equipment which is used in the better plants all over the world and which assures you that your clothes come back completely cleaned, properly handled, and with an appearance which makes you proud to wear them.

IMMEDIATE SERVICE

We are equipped with cars and trucks for calling for and delivering your clothes which makes it possible, with our plant equipment, to give service unexcelled.

We appreciate your patronage in the past and your future business assures Pampa of the highest type of cleaning and pressing work.

DE LUXE CLEANERS Phone 221

PAMPA CLEANERS Phone 294

VOGUE CLEANERS Phone 287

NO-D-LAY CLEANERS Phone 353

CITY TAILORS Phone 351

J. L. Nunn, president of the Nunn-Warren Publishing Company, has just returned from two-months' trip through the East, comes back to the Panhandle more confirmed than ever that this is the greatest section in the United States.

Interest in paving the Panhandle-Plains country continues. Dallas county, it is understood, is becoming interested in paving its two main highways. Other counties within a few months will be calling bond elections for permanent paving.

Gray, Hutchinson, and Carson counties deserve praise for the progress which they have shown in voting bond issues. Traffic is so heavy in these three counties that dirt roads cannot be kept in good shape.

Many good suggestions are being received along with several humorous ones. A school boy from Borger writes, "If I win your \$10 bill, I'm going to buy me a pig and some hens and start me a bank account."

Parker McCullough, abstractor incidentally and president of the Pampa School Board primarily, and considered a authority on teachers' pulchritude, has suggested the name of "Warren's weekly Wallings." Parker, why not make those wallings "weakly"?

Suggestions for the permanent name of this column should be left at the office of the newspaper in your city by Saturday night, January 28.

Some of the titles used in other papers are: Left at the Post, So Think We, The State Press, Starbeams, Echoes of the Streets, The ence, Solomon's Sayings, and Nubbins. Eugene Field's famous column for the Chicago Daily News was called Sharps and Flats.

Among the names suggested for this column are: The Gleaners, Warren's Name It and Take It, Listen to Warren. Doings of the Day, Dave Says, The Mirror, Whittlings, This and That, The Lone Star, The World, Blowouts and Light of The Panhan-

The roads in the two South Plains counties are kept in far better shape than those in the three North Plains counties. At first we thought that we did not receive the maintenance work in the north Panhandle, but we are more and more convinced that on account of the traffic being three or four times heavier, that there are no dirt roads that can stand up with some automobiles and oil field trucks passing over them.

FALL'S SON-IN-LAW IS SUMMONED BY COURT

(By Associated Press) WASHINGTON, Jan. 20—M. T. Everpart, Pueblo, Colo., banker and son-in-law of Albert Fall, has been summoned to appear Tuesday before the Senate committee which is to reopen the naval oil lease inquiry.

G. C. MALONE Ambulance Service, Phone 181.

IF IT IS GLASS See Us CONWAY GLASS WORKS In Alley Rear First Nat'l Bank

CLASSIFIED ADVERTISING

Rates: Two cents per word per insertion; three cents per word per week; five cents per word per month; ten cents per word per quarter; twenty cents per word per year. All classified ads cash in advance.

WANTED

WANTED—Auto storage and expert auto repair work at reasonable prices. Band E Garage, corner Brown and Commerci streets. 62-3p

LAUNDRY WANTED—Three dozen rough dry for \$1.00, 351 Cuyler Street, in back room of Irwin Apartment, second door north of Jitney Jungle. 71-6d

GIRL DESIRES position as cashier, typist or office work. Call 507-W. 55-3p

WANTED TO BUY—Small house, must be cheap. Address Box 1548. 65-3p

WANTED—A range cook stove, practically new. Brand Oake Chief preferred. Phone No. 5906-FS. 75-3p

WANTED—Position by competent stenographer. Best references. P. O. Box 2718 or phone 5907, Amarillo, Texas. 79-3p

WANTED—Girl to stay in home for room and board. Call 675-J after 5:30 p. m. 79-3p

FOR RENT

PAMPA HUNGARETTE COURT—Conveniently arranged, prices reasonable. 55-60c

FOR RENT—Two-room furnished house, Wilcox Addition, Sparlock, Duncan, Bldg., phone 11. 55-3p

FOR RENT—Furnished or unfurnished two-room house. Phone 263. 65-3p

FOR RENT—Modern sleeping room, 422 Kingsmill. 65-3p

FOR RENT—Two-room modern furnished apartment, Phone 155. 65-3p

FOR RENT—Two-room furnished house near water wells, W. E. Riggin. 65-3p

FOR RENT—Two-room furnished apartment Three blocks north of high school, N. E. Ellis. 65-3p

FOR RENT—Two-room cottages with garage. Cross railroad at Schneider Hotel, log to first street west go south to end of Sommerville Leitham Cottages. 11-59p

FOR RENT—Two-room furnished apartment. Three blocks east of Fountain Filling Station, half block north second house east side of street, Mrs. D. E. Cecil. 65-3p

FOR RENT—Storage room, DeSpain and Son, Phone 118, P. O. Box 1085. 47-3c

FOR SALE

FOR SALE—Two-room house and lot in Regard addition, Sell on terms. Inquire White Filling Station, J. W. Neely. 65-3p

FOR SALE—Lephorn baby chicks from trusted breeding stock. Price lists and catalogs on request. Cole Bros, Poultry Farm, 1 1/2 miles south of Pampa. 65-22ah

FOR SALE—National cash register. Registers to 20 dollars detail, price \$100. Or set 30 pound Toledo counter scales \$50. 32. Jeffrey. 70-3p

FOR SALE—Main Street business lots, corner Francis and Cuyler. Also residence on Grace Street. Dr. Edith Hughes, Ottaway, two blocks north of high school. 70-3c

FOR SALE OR RENT—Home; one block west Jitney Jungle. Auto parts for sale. C. Ockerhill. 65-3p

FOR SALE OR RENT—New, modern seven-room home, bath, one big room in basement (east front) plastered and stuccoed. Beautiful decorations, nice front porch, driveway, garage and good location. See 65-3p

FOR BARGAINS in Ochiltree County. Wheat land and good cattle ranches in Ochiltree, Roberts and Hemphill Counties. See write or phone Perryton Land Company, G. E. McLeary, home office, Perryton or W. D. Christopher, Johnson Hotel, Bargains and square dealings our specialty. References: First National Bank, Perryton, Gray County State Bank, Pampa. 65-3p

APARTMENT HOUSE, consisting of twelve apartments, all furnished and occupied. \$250.00. W. F. Clauson, phone 375 or 455-W. 65-6p

FOR SALE—Seventeen-room two-story hotel building and furnishings; store rooms downstairs. Wilcox hotel, Wilcox, Townsite. Located six miles southeast Pampa. See J. D. Gault, Phone 266-J. 65-6p

FOR SALE—Stock of tires and accessories in filling station corner of Tynd and Houston Streets. Stock can be bought or traded for at very reasonable price. Station can be leased for very small rent. Call 12 phone 35 or 185-J. 65-3p

PIANO FOR SALE—Or rent, almost new, call Johnson Hotel, No. 245. 65-12p

FOR SALE—Good market and grocery fixtures at Alton, Okla. Will deliver to Pampa if necessary. DeSpain and Son, Phone 118, P. O. Box 1085. 67-3c

TRADE

WILL TRADE—Chevrolet '27 sedan for lots. Call at 105 Starweather. 65-3p

LOST AND FOUND

LOST—Boy's overcoat, on Miami Highway opposite Fashion Park, Sunday afternoon. Phone 255-W for reward. 65-3p

LOST—On Main Street, Saturday, one ear bob with pearl and brilliant drop. Return to News Office and receive liberal reward. 65-3p

HOME BUYERS ATTENTION!

1 room house, Channing Add. 4774. 1 room house, Campbell Add. 6420. 4 room house, Campbell Add. 6525. 21 room hotel, Jesse & Furness. 6750. Choice residence lot, Crawford Add. 3100. Choice residence lot, Channing Add. 3750. Choice residence lot, Campbell Add. 3320. Choice residence lot, close in. 3200. Choice residence lot, Channing Add. 3500.

All the above property well located and can be bought on good terms. See WISDOM & MCKNIGHT Exclusive Agents First National Bank Bldg.

JITNEY JUNGLE SAVE A NICKEL ON A QUARTER

The Jitney Jungle System of buying Groceries is a moulder of character, because it teaches Thrift, because it keeps people out of debt by aiding them to live within their income, because it sets a good example in living by providing the best, and always JITNEY JUNGLE SELLS GROCERIES FOR LESS.

SPECIALS FOR SATURDAY and MONDAY

POTATOES FINE IDAHO— 15 lbs. for 30c

BUTTER CHEROKEE Jersey Brand—per lb. 48c

JELLY SPHINX—5-lb size, assorted 90c

PICKLES KUNNER'S Large Sour—6 for 20c

PICKLES LARGE DILLS— Gallon can 80c

PEANUTS FRESH SALTED PEANUTS; 1-lb. pkg. 28c

COFFEE ADMIRATION—3 lb. Can; Cup and Saucer \$1.59

PORK & BEANS VAN CAMP'S— Med. can; 3 for 24c

PEACHES DEL MONTE—Melba Halves; 2 1/2 can 26c

CHERRIES SUN KIST—Royal Anne; No. 1 can 29c

CLEANSER OLD DUTCH— 2 cans for 13c

SPINACH DEL MONTE— Gallon can 73c

POST BRAN REGULAR SIZE PKG.—3 for 33c

In Our Sanitary Market Where Your Dollar Does Its Duty

HAMS CUDAHY'S Puritan Skinned Hams—Half or Whole 24c

BEEF BABY BEEF PLATE RIB BOILING BEEF— per lb. 12c

JITNEY JUNGLE

"Save a Nickel on a Quarter" Woodward & Kolb Owners 375 South Cuyler Plenty of Parking Space