

POSTAL RECEIPTS ARE CLIMBING

COMMISSION GOVERNMENT IS BEFORE PAMPA PEOPLE

ROXANA OIL MAN IS ASPHYXIATED IN BATH ROOM

OVERCOME BY GAS WHILE HE WAS SHAVING

Came From South Dakota Short Time Ago

While he was shaving in a bath room, gas fumes escaping from a water heater overcame Herbert B. Olsburg of Lesterville, S. D., an employe of the Roxana Oil company, Saturday morning. He was dead when found by fellow workmen at Roxana.

The body is here in charge of G. C. Malone, funeral director, pending receipt of instructions from relatives in South Dakota.

Olsburg, about 30 years old, was a powerful man, being six feet tall and weighing about 190 pounds. He had taken a bath and fifteen minutes before he was found dead another employe was in the bath room with him. At that time he was drying himself preparatory to dressing and shaving. The door of the room was closed as the other man left.

When the bath room was entered again Olsburg was collapsed on the floor and efforts to revive him were unsuccessful.

Details of the man's relatives are being sought. He had been in the employ of the company but a few weeks.

Sheriff Makes Arrests Under License Laws

About fifteen persons have been arrested since February 10 for operating cars and trucks without displaying a 1927 license plate. Sheriff Graves fixed the time limit on the tags as February 10, and all persons who are found operating a motor vehicle without new tags are being arrested.

Sheriff Graves and his deputies made three raids the last three nights and a small amount of whiskey was captured in each raid. Several persons were arrested and fined for drunkenness. One negro man was arrested and charged with possessing and selling intoxicating liquor. He is being held in jail now.

Four other persons who were arrested and charged with possessing whiskey made bonds and will be tried.

IMPROVEMENT OF PHONE SERVICE DUE AT ONCE

Immediate work on the enlargement and improvement of the local telephone equipment has been announced by the company and the Chamber of Commerce has been assured that steps are being taken to better the service.

Shipments of poles and wire have been received. Cable is available now and has been ordered sent here.

TOE IS AMPUTATED

Both underwent an operation at the emergency hospital here yesterday. A drilling stem dropped on his foot February 2, and resulting infections made it necessary to amputate one of his toes.

Officials at the hospital say that he will probably not be able to get out for several weeks.

Miss Golda Jameson, who was injured in an automobile accident recently, is able to be out now.

Farmers to Be Guests of C. C. Next Thursday

Farmers of Gray county are urged by the Chamber of Commerce to meet in the organization's room Thursday afternoon at 4:30 o'clock to discuss agriculture and related subjects.

J. L. Lester, teacher of vocational agriculture in Pampa high school, is chairman of the agriculture committee of the Chamber of Commerce, and will have a leading part in the farm program of the organization.

Following the meeting, the farmers will be guests of honor at the regular social meeting. A first class entertainment, including orchestral music, singing and readings will be provided.

THREE HURT IN CAR ACCIDENT

Broken Steering Gear Causes Vehicle to Overturn

Three men were injured Saturday night when the steering gear of their automobile broke and the car turned over several times. The men are Pat Carmichael, Joe Marz, and Frank Marz.

Carmichael's left hand was badly mashed, one finger being taken off. Joe Marz has an injury of the spine between the shoulders. Frank Marz sustained several body bruises and cuts.

The men had been to McLean, and had returned to a point about eight miles south of before when the accident occurred. When the steering gear broke, the car wheels turned sharply and the car turned over several times. The vehicle, which was a Dodge coupe, was slightly damaged.

Carmichael is a partner in the Black and Carmichael Drilling Contract company. Joe Marz is employed as a driller by one of the oil companies here. Frank Marz is also employed in oil field work.

Carmichael and Joe Marz expect to return to Sapulpa, Okla., today or tomorrow and stay until they are able to return to work.

County Jail Is Empty Few Hours

The county jail was empty yesterday morning for the first time since it was moved here from Lefors last April. Six prisoners broke out early Friday morning, and five others in the jail made bonds for their release.

"It wasn't empty long, though," says Sheriff E. S. Graves. "In a few hours time a new start was made and there are three prisoners in there now."

ASSISTANT MANAGER OF W.F.C.C. VISITOR HERE

H. Frank Bennett, of Stamford, assistant manager of the West Texas Chamber of Commerce, was here Friday in consultation with the local C. of C.

Bennett recently put on a membership campaign in Panhandle and obtained 100 members for his organization.

Miss Ruth Williams is at her home suffering with an attack of influenza. She is employed as a nurse at the emergency hospital here.

MAYOR WOULD COMPLETE HIS USUAL TERM

Plan Now In Use In Many Cities of Texas

Whether or not Pampa will enter the list of cities having the commission form of government, will be decided this week when the voters go to the polls Saturday.

The election has been duly called and advertised and a majority vote will determine whether the proposal will be effective. The change, if made, will be in accordance with the state statute, providing for the establishment of the commission form of government in cities.

Under this statute, at the election shall be chosen two commissioners, who shall serve until the first Tuesday in April following. The mayor would serve until the end of his elective term, and thereafter, a mayor and two commissioners would be elected every two years, on the first Tuesday of each April.

The new commissioners and the mayor retained would supersede the present council upon qualifying for the offices. The two commissioners would serve until April 5 of this year, when the general city election will be held.

The board of commissioners would have "to appoint a competent person to be clerk, who shall also be treasurer and assessor and collector of taxes of such city or town." This clerk would be required to make a bond equal to twice the amount of estimated annual revenues of the city. The commissioners also "shall have authority to appoint a city attorney and such police force and such other officers as they may deem necessary, and fix the salary or other compensation to be received by such clerk, and such officers, and define their duties, and at any time may abolish any office which it creates, and may discharge any officer, clerk, or employe which it appoints."

The mayor and each commissioner would enter into a bond of \$3,000 conditioned for the faithful performance of the duties of their offices. The board of commissioners would be obligated to meet at least once monthly, and the mayor or two commissioners could call as many special meetings as municipal needs required. Each commissioner and the mayor would receive for their services \$5 per day for each regular meeting and \$3 for each special meeting, but they could not receive pay for more than five special meetings in a month.

In lieu of this arrangement, the commission could fix salaries, not to exceed \$1,200 per year, for the mayor, and not to exceed \$600 per year for the commissioners.

In case of the death or resignation of the mayor or a commissioner, the remaining members of the board would appoint a man to fill the vacancy, except when a member dies or fails to qualify, in which instance a special election would be called.

These provisions constitute practically all of the details involved in adopting the commission form of government, which is relatively simple, and which grew out of the emergency occasioned at Galveston by the flood of 1900, when speed and flexibility of government were needed and the commission plan was adopted.

Since 1900 the commission plan has become one of the most widely used forms of city government. Some of the Texas cities having the com-

Borger, City of Unusual, Shaken by Blast--Man Is Killed, Windows Broken

Borger, city of unusual occurrences is taking an inventory today of a dynamite explosion which about 11 o'clock last night shook the oil sector like an earthquake and left few windows unbroken.

One man, Melvin, Norris, driller, was killed when a piece of flying shale struck him as he stepped out of his rig to see what it was all about. Several others were slightly hurt by falling debris.

About fifteen tons of dynamite, buried in a canyon about a mile and a half from Borger's main thoroughfare, exploded from a cause not yet determined. A crater 30 feet deep and nearly 100 feet across was torn out by the blast, which

Prairie Fire Threatens Rig Co. and Houses

A prairie fire that started several miles west of here this morning on the Santa Fe right-of-way, threatened several dwelling houses and the yards of the Fox Rig company before it was extinguished. The origin of the fire has not been determined.

The fire department was called out and with the chemicals and aid of more than fifty men, the fire was kept from spreading to the buildings. A strong west wind caused the fire to spread several miles before it was under control.

Quick work in the city probably prevented serious damage.

Council Orders Paving Work to Be Started Soon

A city council order to the Stackey Construction company to start the eleven-block paving project was issued yesterday.

Under the terms of the contract work must start within the next fifteen days, or immediately following the first of the month.

The Whitacre Construction company has done preliminary work in enlarging the water mains and moving fire plugs six feet back. Removal of the curbs in connection with the paving will make the streets about twelve feet wider.

Much material for the paving already has arrived. The contractor is from Wichita Falls.

mission form of government are: Abilene, Alpine, Aransas Pass, Arlington, Athens, Ballinger, Beeville, Breckenridge, Brenham, Cisco, Coleman, Commerce, Cooper, Corpus Christi, Corsicana, Comby, Dallas, De Leon, Del Rio, Denton, Denton, Devine, Electra, El Paso, Ennis, Franklin, Galveston (original commission), Goldings, Graham, Grand Prairie, Greenville, Groesbeck, Harford, Honey Grove, Houston, Kenney, Kerrville, Knox City, Ladonia, McAllen, McGregor, Mertens, Minnola, Mineral Wells, Navasota, New Braunfels, Nacoma, Palestine, Pharr, Port Arthur, Port Lavaca, Post, Prosper, Ranger, Rosenberg, Renzo, San Benito, San Marcos, San Saba, Sinton, Slaton, Somerville, Streetman, Sweetwater, Texas City, Van Alstyne, Weatherford, Westminster, Wichita Falls, Wolfe City, Youcam.

FIRST CLASS POST OFFICE IS COMING SOON

Washington Is Amazed at Figures--Two Men Added

That the Pampa postoffice will reach first class rating this year is virtually certain, as indicated in the rapidly increasing business, which today was further augmented by the inauguration of the postal savings system.

Not on account of the savings business, but because of heavy mails, two additional, experienced distributors are being added to the force this month. One, Claude S. Savage, of Wellington, was transferred here today, while the other, Benjamin F. McGraw, will come here from Hollis, Okla., March 1.

Yesterday two men were put on the parcel-post traffic and two on the general delivery, and the lines of waiting patrons did not disappear until in the afternoon.

Beginning today, not only may local people use the postal savings system, but persons living elsewhere in the Panhandle may use the local depository by making application through their postmaster and sending money by registered mail to the Pampa postoffice.

Now Savings Depository

Anyone may open an account, which may be \$1 or any sum up to \$2,500. The deposits are payable on demand and draw 2 per cent simple interest. The deposits when large enough, may be exchanged for 2 1/2 per cent bonds ranging from \$20-\$2500. Transfers may be made between post offices without loss of interest. Accounts for the present will be handled in connection with the Austin accounting office, but an arrangement will be made to deposit part of the funds in local banks.

The only other depository in the Panhandle is located at Amarillo.

A comparison of postal receipts here shows as well as any other group of statistics which might be used how Pampa has grown in population and prosperity. For example, the total receipts for 1925 amounted to \$6,452, while the total for 1926 was \$20,255.44. The office went to second class rating July 1, 1926. On the basis of growing monthly receipts, the office will pass the \$40,000 mark this year and attain first class rating.

Washington Surprised

When the quarterly report for the last three months of 1926 was sent to Washington, that office sent it back with the remark "that it wished only the last quarter's report, not for the entire year. 'What's the matter down at Pampa?'" was the query of the perplexed clerks in Washington. The report submitted for October, November and December amounting to \$8,921.96, was larger than the entire figure for 1925, which was but \$6,452. Washington was informed that the report was correct and that Pampa was a city approaching 10,000 in population. The postal department has since had other complete reports on Pampa and may be expected to grant personnel increases as the city enlarges.

In January of 1926, receipts here totalled \$542.11; last month the total was \$2,769.93. Last month's figure also showed a substantial increase over last November, when receipts amounted to \$2,336.27. However, the past December, with its holiday trade, broke all records with a total of \$3,996.96.

Want City Delivery

Several local people have made and are making investigations pre-

Escaped Prisoners Still at Liberty

No word has been received here as yet about the six prisoners who escaped from the county jail early last Friday morning. The men escaped after sawing several iron bars. It is believed that they went west from Pampa, but no definite clues have been found.

The men who escaped are Wayne Thomas, J. D. Cornwell, Floyd Whitney, Roy Collins, T. B. Pittman, and another man whose name has not yet been determined.

Officers in surrounding towns and cities were notified as soon as the jail-break was discovered.

J. N. Nally is in Oklahoma City.

FORT ELLIOTT HIGHWAY CITIES STRESS OIL ROUTE

SHORTEST WAY TO OIL FIELDS THROUGH HERE

Confusing Signs Take Travelers Over an Inferior Road

The Pampa Chamber of Commerce has had printed and is now distributing the first group of 10,000 highway maps showing the Fort Elliott highway as a unit of the shortest route between Oklahoma City and Clovis, N. M.

The map has been printed through the co-operation of important towns along the route, whose write-ups appear on the back side of the folder. These places are Amarillo, Panhandle, White Deer, Pampa, Wheeler, Mobeetie, Berlin, Okla.; Grimes, Okla.; Meridian, Okla.; and Elk City, Okla., and each will receive supplies of the maps. The mailing list includes chambers of commerce throughout the west.

The route indicated is composed of the 33A East road from Pampa to Elk City, and thence by the Postal highway to Oklahoma City, with the Fort Elliott section so marked. It is known as the short route to the oil fields from either direction. It leads to connections with highways to Tulsa, St. Louis, and Enid, Okla., and by way of the Southwest Trail to Kansas City and Chicago. And on the West is the direct route to El Paso. The Pampa and Borger oil fields are marked with circles and derricks.

It has come to the attention of local groups that signs are being placed by Shamrock interests to direct traffic from Wheeler south into Shamrock and thence to Amarillo along the Rock Island railroad. This action has aroused much resentment along the Fort Elliott highway, because it takes travelers away from the oil fields over a road which is inferior to the Fort Elliott section, and results in much confusion. This confusing sign erecting along the highway may be called to the attention of the state highway commission in an effort to stop the attempts to divert traffic by the indirect route.

Steps are being sponsored for the hard surfacing of the direct route, and the highway is being kept in good condition so as to merit the designation it has received.

Pampa Man Loses Leg Following Gun Shot In Accident

C. E. Cary returned to Pampa Saturday after spending nearly two months in the St. Anthony hospital in Amarillo.

After being accidentally shot in the leg, infections made amputation necessary below the knee. Cary expects to return to the hospital in the near future for further operations. He is connected with the Cary Grocery store in the northwest part of the city. He was cleaning a revolver at the time he was hurt, and accidentally dropped the gun, which fired through one of his legs.

LEAVELL TO REPRESENT LARGE SHOE MANUFACTURER

Ray B. Leavell, formerly proprietor of the Rex Clothing store here, has sold his business and will take over the sales of Huteson shoes in West Texas.

Leavell opened his store here about three months ago. Before that time he represented G. H. Bass and company and traveled over the entire south.

It says that the traveling salesmanship appeals to him and that he is glad to be back "in the open."

We buy, sell and exchange used furniture. Malone Furniture Company.

LARGE CLOTHING COMPANY BUYS REX STORE IN PAMPA

What until recently was the Rex Clothing store has been purchased by a large firm with stores in Borger and El Dorado, Ark. Frank Seliger and I Katsch are the new owners.

The store will reopen under the name of the K. C. store, following extensive remodeling and decorating. For the big opening one of the finest stocks of national lines of ladies' and men's ready-to-wear, shoes and other apparel will be stocked.

The company is now inventorying the stock of the Rex store. Its stores are favorite shopping places, as shown by the patronage received. It is the intention of the owners to put in Pampa goods which ordinarily are found only in the larger cities.

MAGNOLIA ADDS TWO BUILDINGS

Large Garage and An Office Structure to Be Built

Adding to its already extensive property here, the Magnolia Petroleum company is building a 200-foot garage and a temporary office building about 32 feet by 60 feet.

The garage will be of sheet-iron material and will house eleven trucks and trailers and the half dozen cars belonging to the company of officials.

The frame office building is to be rushed to house the officials who make their headquarters here, including the production superintendent, drilling superintendent, and gasolin superintendent. The company has been negotiating relative to the construction of a large, modern brick building, but has been unable to complete satisfactory arrangements for a site.

Located at Pampa is the best gasoline plant owned by the big company, a plant which though originally estimated at \$150,000 was built for \$350,000, in six units, having the very best available equipment. Within a short time it will be, using wet gas and crude exclusively from the Pampa field. The gasoline is expected to be of exceptionally high grade.

RETURN TO ARIZONA

Mr. and Mrs. Louis Holms departed for their home in Phoenix, Ariz., this afternoon, after spending several days here visiting friends.

They lived in this vicinity for about fifteen years, up to last October, when they moved to Phoenix.

SHE TELLS THE STORY OF MANY OTHERS

Dr. W. C. Rountree, Texarkana, Texas.
Dear Doctor:—About 8 years ago I was taken with a bad case of stomach trouble. I got better in Winter, worse in Spring and Summer. I suffered untold agonies, took many kinds of medicine and found no relief. After four years I broke out with something that looked like sun burn. At first it appeared on my hands, later on my face and neck. My mouth got sore, feet burned and swelled until I could hardly walk. My heart beat too fast and I had a hurting in my chest. Some one sent you my name and you sent me one of your little books and Questionnaire, but I did not order your treatment at first. I waited thinking I would get better, but instead I got worse. Finally I got so bad that I could not walk 20 steps without resting. I ordered your Pellaagra treatment and on the 9th day of July 1925 I began taking it. I soon saw that it was helping me and by the time I had taken the treatment the rash and many of the other symptoms had disappeared. I have taken your treatment and am entirely relieved of all symptoms of Pellaagra. I appreciate the kindness and kindness with which you have dealt with me. Now I have found everything that you told me about the treatment to be just like you said. I want to ask all who have the disease to not get off ordering your treatment like I did for whom they are waiting this terrible disease is stealing their life away.
(Signed) Savannah Taylor,
Rt. 1, Box 100, Wagon, Texas.

Baseball Fans In and Around Pampa Propose Team for City

Although Pampa is a very busy city, it is one with a very large number of energetic young men, many of whose thoughts are now turning to baseball.

Those interested believe that Pampa should have a good team this summer and that the material is available for a nine which would rank with any other amateur team in this section. In oil work in this vicinity are college athletes, former semi-pro stars, and a wealth of former high school men, according to several young men who are advocating the organization of a team. They point out that baseball would provide needed recreation and bring publicity to the city. The only expense would easily be met by nominal gate receipts.

It is understood here that teams will be placed in the field by Shamrock, Panhandle and Miami, and possibly other towns.

Organization of a team is the first step contemplated. A baseball club,

or possibly one not confined merely to baseball, but to other sports, is being considered. Time for practice would be limited, but experienced men, it is pointed out, need teamwork more than lengthy practices. Home sports are desired, so that the fans will not have to motor elsewhere.

Athletes interested in the organization of a baseball team for Pampa likely will have a meeting soon. Names of the men who would like to have a part in the venture will be given to the promoters of the idea if sent to the Sports Editor of the Pampa News.

MASONIC MEETING IN MARCH

Many local Masons likely will attend the forty-third reunion of the Scottish Rite order, which will convene in El Paso March 28. The meeting will attract delegates from a wide area, comprising the southern jurisdiction.

BORGER PLANS BIG ANNIVERSARY FETE

March 8, the date of Borger's establishment last year, will mark the holding of a gigantic anniversary celebration, according to announcements by the Chamber of Commerce of that city. Many invitations are being sent out. Prominent speakers will be present.

EYE IS INJURED

Hugh Williams, oil field worker, is suffering with an injury to his eye. He was working on a boiler in the field south of here when a

piece of steel hit him in the eye. Medical authorities are not yet able to determine whether or not he will regain sight in the injured eye.

G. C. Durham has been employed in the office of the G. C. Malone Furniture company. He formerly lived in Lorenzo where he owned and operated a furniture store for several years. His wife and baby will move from Lorenzo the latter part of the week and make their home here.

A full line of office desks at Malone Furniture company.

RITTENHOUSE DINING ROOM

Two Blocks West of Rex Theatre

REAL HOME COOKED MEALS
FAMILY STYLE 50c

Formerly At Texan Hotel

PANHANDLE LUMBER COMPANY

RIG MATERIAL-BUILDING MATERIAL

Quality - Service - Satisfaction

AUCTION SALE

THURSDAY, FEBRUARY 17TH

At the Cole farm, one and one-half miles directly south of Pampa.

The following list of Live Stock and farm equipment will be offered at auction.

LIVE STOCK

- | | |
|---|--|
| 1 Black Horse, age 7 years, wt. 1500 lbs. | 1 Gray Mare, age 12, wt. 1500 lbs. |
| 1 Black Horse, age 7 years, wt. 1500 lbs. | 1 Gray Team of Mares, 7 and 8, wt. 2800. |
| 1 Black Mare, age 12 years, wt. 1500 lbs. | 14 head of mules, broke and unbroke. |
| 1 Black Mare, age 9 years, wt. 1500 lbs. | 3 head of Jersey cows, giving milk. |
| 1 Gray Horse, age 12, wt. 1500 lbs. | 2 Jersey cows, fresh soon. |
| 1 Gray Horse, age 8, weight 1400 lbs. | 1 Holstein cow. |
| 1 Gray Mare, age 12, wt. 1400 lbs. | 3 Jersey heifers. |
| 1 Bay Mare, age 14, wt. 1500 lbs. | 2 Poland China gilts. |

FARM EQUIPMENT

- | | |
|---------------------------------------|-------------------------------|
| 1 Combine, 12 foot McCormick-Deering. | 1 heavy farm wagon. |
| 1 two row P & O Lister. | 1 light farm wagon. |
| 1 Sixteen hole wheat drill. | 1 hay frame. |
| 1 four disc Emerson Plow | 1 Sharpless Cream Separator. |
| 1 four section harrow. | 1 500 chick Sol-Hot Brooder. |
| 1 John Deere Tandem Disc, 7 foot. | 5 sets Leather Harness. |
| 1 Cultivator. | 1 twelve foot Deering Header. |
| 1 Slide Go-Devil. | |

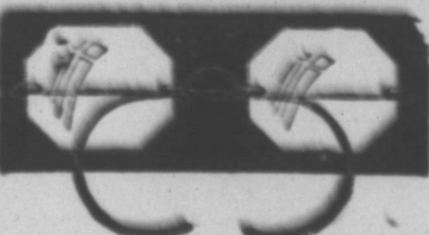
Many other items too numerous to list here will be offered for sale.

TERMS: All sums of \$20 and under, cash. All sums over \$20 six months time on bankable notes bearing 10 per cent interest.
5 per cent discount for cash.

Sale starts promptly at 11:00 A. M. FREE LUNCH AT NOON

For further information see L. W. Cole, or L. S. JAMESON, Auctioneer

EYE HELP



If you have eye troubles or need glasses you may see me in my office in the Fatheree Drug Store every Saturday.

DR. T. M. MONTGOMERY

associated with
HYDEN'S
620 Polk Street
AMARILLO, TEXAS

P. S. We are not boom Doctors. We have been in the Panhandle and Amarillo for fourteen years and will be here after the boom is over.

ROLE OF BIRD IS IMPORTANT

Control Of Insects Is Credited to The Vertebrates

Without birds the country would be overrun with insect pests, in the opinion of many ornithologists and entomologists. Credit for eating obnoxious insects should also be given to a number of other vertebrates, especially to toads, lizards, shrews, moles, bats, and skunks, but because of the numbers of birds, and their appetite for insects in all stages, their powers of swift locomotion, and their tendency to concentrate wherever unusual numbers of insects appear, they are of chief economic importance among insectivorous vertebrates.

A historical and most picturesque example of birds saving a crop from insect destruction was given by California gulls in pioneer days in Utah, when they swooped down on the Mormon crickets that were devouring the wheat of the early settlers. Since that time these birds have been held almost sacred in Utah and a monument has been erected to commemorate their service. In an investigation of the Biological Survey of the United States Department of Agriculture of 109 cases of satisfactory control and 88 cases of local suppression of insects by birds, many interesting food habits were brought to light. Contrary to popular belief, various birds eat even the hairy types of caterpillars, like those of the tussock, gipsy, and brown tail moths, and the tent caterpillars.

Sparrows are noted for feeding on ants, cabbage bugs, cicadas, green bugs, alfalfa weevils, army worms, and caterpillars. Meadow larks eat grasshoppers and crickets. White breasted nuthatches have been observed to reduce greatly the numbers of pear psylla and the codling moth. Goldfinches like plant lice of several species. Woodpeckers are among the most effective enemies of bark beetles and wood borers of various kinds, as well as the European corn borer, and they also eat many leopard and codling moths and other woodland pests. Crows, blackbirds, and grackles are fond of white grubs in quantities and will follow a plow to get them in the spring.

Forty-five species of birds were found to feed extensively on the alfalfa weevil while it attacks the cotton-boll weevil. Orioles will pick the weevil out of the squares or flower buds, of the cotton, while swallows feed on them when in flight and extending their range. Mallard ducks have been effectively used in ponds for mosquito control. Red-eyed vireos seem to be attracted by fall web worms, while cutworms form a large part of the diet of starlings, crows, and jacksnaws. Blackbirds help to keep down the numbers of the boll worm and many other pests. Sparrows and other birds have been observed to clean up infestations of termites.

According to the Biological Survey, birds may be looked upon as an ever present force that automatically tends to check outbreaks of insect pests, a force that should be kept at maximum efficiency by protective measures so that their services may be utilized whenever possible.

Mercerized Cotton Fabrics Hold Sheen

Will the sheen stay on mercerized cotton fabrics after they are laundered? Textile experts of the United States Department of Agriculture say it will, if the fabrics are really mercerized. True mercerization renders cotton fibers stronger and gives a gloss that will last as long as the fabric. Sometimes the cotton yarns are mercerized before the weaving or the cloth itself may be given this treatment. In either case the result is the same. The cotton acquires a silky finish and yet is just as easy to wash and iron as plain cotton and wears even better.

Mercerized cottons are being woven into damask and toweling which look much like Irish fabrics. These mercerized cotton tablecloths, napkins, and towels, however, do not have the smooth feel and ability to retain moisture that makes linen the most highly prized texture for such articles. Nevertheless, the mercerized cottons are good for many purposes and their lower cost makes them attractive. For summer dress goods, coolness and easy laundering qualities of mercerized cottons make them difficult to equal.

See the four-piece bedroom suites in three finishes at Malone's for only \$67.50

Western Union Traffic Heavy

With a daily average of about 450 messages, the Pampa office of the Western Union is maintaining a very heavy and undisturbing traffic. Arrival of spring is expected to bring such an added volume of business that additional employees will be necessary.

January receipts were but \$50 below the best month experienced since the discovery of oil in this vicinity. Establishment of the big Berger office has not had the effect of diminishing traffic here, the records show.

Five employees are in charge of the office here at this time Morris Davis, the manager states that the volume of business at Pampa has surprised officials of the company. It is believed that only prolonged cold weather could cause a slump. Much winter oil field activity is indicated in the heavy, sustained traffic handled here.

A salary quota of \$1,200 monthly has been assigned temporarily to Pampa. Should the predicted development come about in early summer, the office will be expanded to keep pace with local growth.

SOLE BLEEDING GUNS
Only one bottle of Leto's Pyorrhea Remedy is needed to convince you. No matter how bad your case, get a bottle, use as directed, and if you are not satisfied, druggists will return your money. H. & K. Drug Co. 5-12-c

TO FOSTER GOOD WILL

AUSTIN—El Club Mexicano has been organized by Mexican students attending the University of Texas. The three ideals of the organization are the promotion of friendship between American and Mexican students, the discussion of questions on the Latin-American situations of the present and future, and the production of plays in the Spanish language. Dr. Charles W. Hackett, professor of Latin-American history in the University, was elected sponsor of the club.

DR. ROY A. WEBB
PHYSICIAN AND SURGEON
Office Phone 372, Res. Phone 333
Rooms 2 and 4, Duncan Bldg.
Pampa, Texas.

LUMBER TIMBER SHINGLES All Building Materials

Direct from mills and factories to builders anywhere. White Pine, Yellow Pine, Fir, Cypress, Cedar, Hardwoods. Straight cars, house bills or smaller shipments, by train or truck. High grades, quick shipments, great saving. Write or wire

Louisiana Lumber & Supply Company
Distributing Yard & Office
AMARILLO
1509 W 6th St. Phone 4290

TWO BLOCKS SOUTH OF RAILROAD

Saturday and Monday

100 lbs. Pure Cane Sugar	\$7.40
1 Gallon Can Red Pitted Cherries	1.00
1 Gallon Can Wigwam Syrup	1.00
1 Gallon Can Pure Country Sorghum	1.00
3lb Star Coffee	1.00
1lb Package Alton Cocoa	.15
Corn Flakes, two packages,	.25
Post Bran, two packages,	.25
Best Head Lettuce, per head	.10

Onion sets are now here.

We sell for Cash and Sell it Right.

M. HEFLIN

"The man who doesn't keep moving soon finds that he's in somebody's way."



THEODORE ROBERTS

To dream is universal, but to make them come true is exceptional.

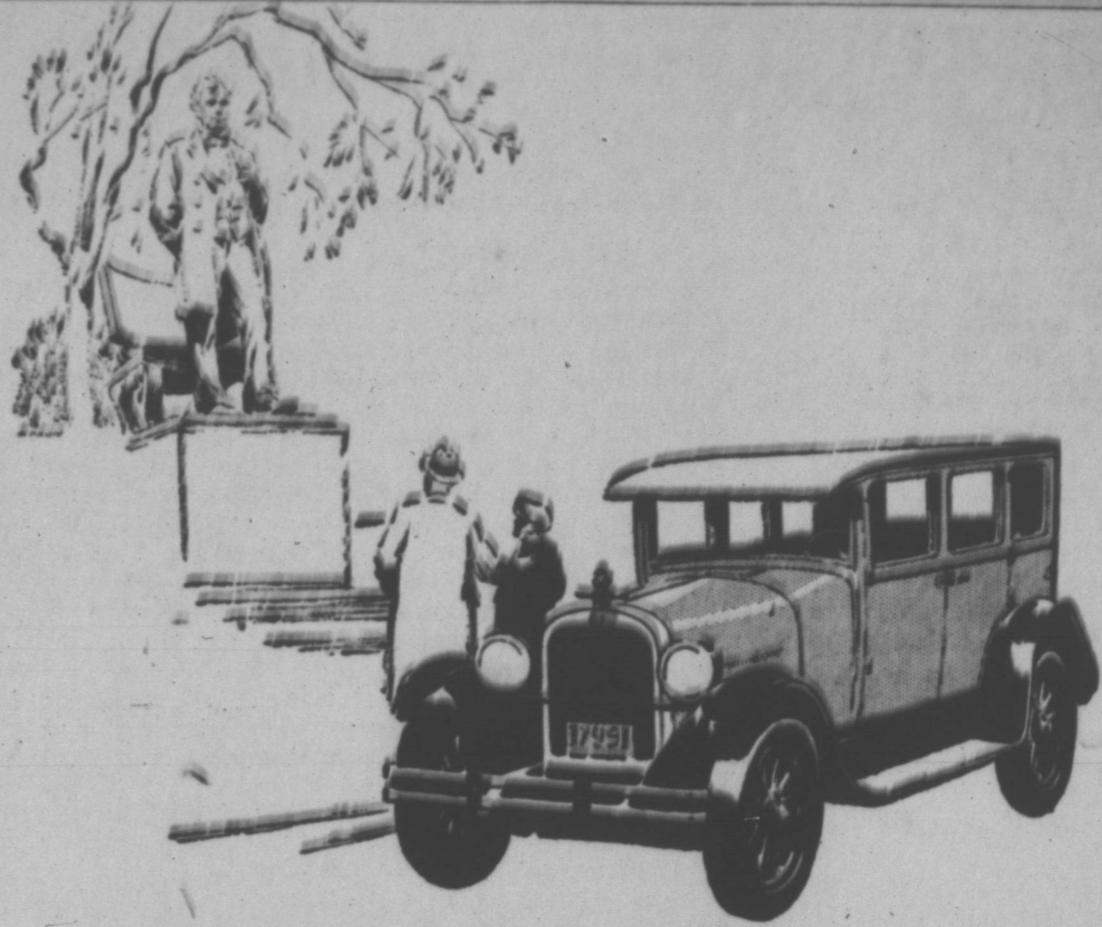
Whether sweetheart dreams or dreams of the more practical problems of life, there must be specific planning of work and working of plans.

Our bank can be used to good advantage by you whatever your dream may be.

"There is no Substitute For Safety"

GRAY COUNTY STATE BANK

C. L. THOMAS, President W. H. DOYLE, Cashier



Announcing-

Important improvements in the sturdiness, operation and appearance of all Dodge Brothers Motor Cars.

TOURING CAR	\$930.00
COUPE	\$985.00
SPECIAL SEDAN	\$1130.00

DELIVERED IN PAMPA

COBB MOTOR COMPANY

We Also Sell Dependable Used Cars

DODGE BROTHERS MOTOR CARS

WE WELD

Broken Cylinders and many other parts of Automobile, Gas Engines, Pumps and etc. with

"ELECTRIC ARC"

Without Disassembling

Latest and best machinery made for Re-conditioning gasoline motors.

Expert Mechanics in every department

Jones Everett Machine Company

PAMPA,

TEXAS

PIPE THREADING, Heavy Forgnig and General Machine Work, Fishing Tools, Supplies, and Etc.

THE PAMPA NEWS

Published Tuesday and Friday at Pampa, Texas

DAVID M. WARREN
Publisher

W. E. LOUKE
Manager

OLIN E. HINKLE
Editor

Office in News Building
Phone No. 100

SUBSCRIPTION RATES
in Texas

One Year \$3.00
Six Months 1.50
Three Months50

Outside Texas

One Year \$3.00
Six Months 1.75
Three Months90

Advertising Rates Upon Application

Entered at the Pampa, Texas
Postoffice as Second Class Mail

FARMING CHANGES

When a farmer has been in a community for considerable time, he usually has learned by trial and error and discussions with neighbors how to make a living off his land. Particularly is this fact true of the one-crop system. But when new industries are introduced, or many new farmers move in, farming ceases to be simple. Under such conditions a county agricultural agent can accomplish much in advising new farmers and organizing the group to obtain better prices for better products.

The Panhandle at this time is shipping in from states as far away as Wisconsin many thousands of dollars worth of farm products which can be grown here. That does not speak well for Plains agriculture. When a farmer asks for a loan on next year's crop in order to buy butter, lard, and meat imported from neighboring states, he is taking a risk which too often has led to bankruptcy.

Moreover, when farmers start raising diversified products, the market often does not respond to the local supply, for several good reasons. Consumers like to know that they are buying pure produce and do not take kindly to country butter, for example, which lacks uniformity and which occasionally lacks quality. Uniform products produced in sufficient quantities to meet community demands will alone supercede imported produce. Quantity is an important factor, because large buyers of farm products, whether consumers or manufacturers, must be assured a steady supply. All of these questions must be considered if the Panhandle is to develop its farming industry.

An agricultural agent should be in the employ of every county. The farmers, large taxpayers under the present tax system, are entitled to the services of a man who will give his attention to their needs. Every good farmer knows how to get service out of a county agent.

TWINKLES

Age does not give authenticity to the simile, "as regular as a clock," but we believe clocks are getting better right along.

We understand that all some European cities need to have a "bath tub" scandal is a bath tub.

Young ladies of the present throw an awful "line," but that is not as dangerous as the proverbial rolling pin.

Late statistics show that war is almost as destructive to human life as peace.

Careless driving is a misnomer, but if the laws were enforced it would be a careless person who would violate them.

In pioneer days, a woman we know washed in a creek and dried her hands on her bonnet. It looks like the conditions are often reversed in Pampa.

This is a democratic country, yet some classes of people are not satisfied without a czar.

And if the speed maniacs like to whiz over some of these oil field roads off the highways, then let 'em.

EVOLUTION BILLS

Recent defeat of an anti-evolution bill in the Missouri legislature again shows a growing tendency to keep religious questions out of government, but neither advocates nor rabid opponents of the measures accomplished much for their cause. The point in the matter is that such extreme tactics are not welcomed by the majority of the people, whether legislators or not.

Even those who do not approve of the teaching of evolution by men who are inclined to accept the theory are unwilling that discussion of it shall be forbidden. Ten Protestant pastors of St. Louis, for example, signed a statement protesting against passage of the Missouri proposal.

Experience of many generations has shown that no issue can be settled by stopping discussion of it. If the matter could be brought to a climax, some justification for a regulating law might be feasible, but legislators are wise in leaving debatable questions to the chief actors in the unending comedy.

That the question is of importance is not doubted, but the actions of those who oppose or advocate such issues discredit the whole matter. In the halls of the Missouri capital, laughter mingled with invective as the debate grew warm. One legislator introduced an amendment providing that the evolution bill should be applicable only to those counties whose people "have rejected and still reject the findings and discoveries of science, thought, and research of the last 400 years and who believe the world is flat, the sun travels daily around the earth, and that the storms of the sea are caused by the fury of monsters of the deep."

A great fallacy is indicated in the humorously intended amendment, in that many who accept known facts of science fear and disbelieve the evolutionary hypothesis. But another amendment, equally absurd, would doubtless suit a few of the near-sighted religious fanatics. This second amendment proposed to make punishment for violation of the law "imprisonment in the St. Louis zoo for 30 days and 40 nights."

Has any man in error ever been more completely vanquished than by his own words? Free discussion will enable clear thinkers to accept the conclusions they think most true.

FIRE PRECAUTIONS

More than generally is the case, fire should be considered as an individual problem.

It may afford some personal satisfaction to believe that somehow the fire department will arrive in time to prevent heavy damage or total loss, but this feeling is not well founded. Especially in rapidly growing cities are residence fires apt to be destructive.

Of those fires which are discovered by the residents themselves, a great per cent could have been extinguished had forethought been used. Assuming that fire should result from a faulty flue in the average home, quick action

would be necessary. At the start a small amount of chemical would be effective within a few minutes neither chemicals nor the amount of water usually available around the home would be adequate. Every home owner should take thought of possible fires, and equip himself with some kind of fire-fighting apparatus. The motorist likewise might save his vehicle if so equipped.

Few fires are really mysterious, according to experienced firemen. They may be explained in terms of neglect, carelessness or some kind of inefficiency. The annual fire loss in the United States would soon pay off the nation's debts if diverted to that end. Of course, there will always be fires, but the losses, which mean so much to the individuals involved, could be greatly lessened.

PRESS FORUM

"Aimee Semple McPherson, the female Norris of California, is not meeting with the howling success on her 'triumph' tour that she had anticipated," says the Plainview News, which is evidently greatly pleased with the fact. "Wichita, Kansas, gave her a small turn-out and she left without settling for the auditorium which she had rented for her meeting. Kansas City's receipts fell short of paying her expenses when but a few more than 300 curious people paid to hear her."

The result might have been expected. Mrs. McPherson's message does not have sensational qualities to attract the thousands desired, and her personality does not affect strangers as it is reported to have influenced her intimate followers in the atmosphere of Angelus temple.

As the Plainview editor explains, "Daily newspapers are not giving her the headlines that she once carried, and her publicity is falling short. The power of the press is greatly coveted by evangelists of her type, and she is discouraged at the start of her tour."

Glass enclosed stadiums have been proposed. But think what would happen if Harvard and Yale had them.

BABY CHICKS

10c to 16c each
Custom Hatching
BOOK YOUR ORDERS NOW

DODD'S HATCHERY
PHONE 9
PAMPA — TEXAS

O. GOOD MONUMENT CO.
Manufacturers of Distinctive
Granite and Marble

MEMORIALS

"Mark Every Grave"
Write Us For Prices
800 Taylor Street Amarillo Texas

ANNOUNCING THE OPENING OF Croft's Music Studio

REAR TEXAN HOTEL
Teaching all Band and Orchestra Instruments.

17 YEARS EXPERIENCE

Instructions given to beginners and advanced students

PHONE 219

Postal Receipts Mounting Rapidly

(Continued from page 1.)

paratory to campaigning for city delivery service. It was found that with the limited number of general delivery, money order and parcel post windows, to increase the number of employees in the post office will not solve the problem. But the city delivery would ease the situation both at the windows and in the distributing of mail, and also would be a great service to business men.

To get the city delivery system established, it would be necessary to erect street markers, showing the name and number of the streets and houses, and in the residence districts sidewalks would be necessary. However, the government will accept at this time, walks made of chat, cinder or gravel. It is believed that local citizens will be glad to meet these liberal requirements.

Relative to street markers, it is held that their advantages in enabling new citizens to find their way about the city would be as great as their service in making mail delivery in the business district possible. At this time it is difficult to obtain adequate information about the city streets and much confusion is resulting.

A postal inspector, who recently

made a hurried survey of the situation, will, it is believed, report favorably on the need for city delivery, and it should be possible to obtain two carriers when the conditions are met in and near the business section. But local people are interested in seeing a more thorough distribution over the city and steps likely will be taken soon to map out the largest area of delivery possible.

With the addition of the postal

savings system, the proposed city delivery and the expected receipts, the size of activities of the Pampa office will be second only to Amarillo in all the North Plains region. Three star routes and a rural route are operated out of here.

Two watch repair men at the Quality Jewelry store—Service. Have you read the classified ads?



Owning a Buick --- Reflects good Taste

Style and distinction in your motor car are important to you. Buy a Buick!

Then your car will appeal to your sense of good taste. There is a youthful smartness in the profile of this famous motor car which never grows tiresome, no matter how many Buicks you see.

And you see Buicks wherever you go—bought by people who value finer performance as well as princely beauty. Buick today is a mechanical masterpiece, with an engine literally vibrationless beyond belief.

Buy a Buick! It is a car you will be proud to own, and delighted to drive.

THE GREATEST BUICK EVER BUILT

PAMPA BUICK CO.

SPECIAL

GRANDE THEATRE

13

South Side

13

P
E
O
P
L
E

Opening Thursday, February 17th.
For Two Weeks

Tom Lewis and His

'FLASHES IN FROLICS OF TODAY'

A Musical Revue from Palace Theatre, Oklahoma City.

Different from anything that has been in town.

CLEAN—DELIGHTFUL ENTERTAINING

GRANDE THEATRE

P
E
O
P
L
E

**Business & Professional
DIRECTORY**

V. E. VON BRUNOW
PHYSICIAN AND SURGEON
Office Hours 10 to 12-3 to 5
State License No. 7753
PAMPA, TEXAS

H. E. FLOREY
LAWYER
Office in Smith Building
PAMPA, TEXAS

O'NEAL ABSTRACT CO.
Abstracts of Title
PROMPT SERVICE
PANHANDLE, TEXAS

DR. T. M. MONTGOMERY
OPTOMETRIST AND OPTICIAN
In Pampa every Saturday
Call Father's Drug Store for ap-
pointment

DR. AURA W. MANN
CHIROPRACTOR
OFFICE 20-21, SMITH BUILDING
Office Phone 263
Residence Phone 213J

BOONE SIGN CO.
COMMERCIAL SIGNS
OF ALL KINDS
115 West Tyng Street

**PAMPA ELECTRIC
COMPANY**
ELECTRICAL CONTRACTORS
All Work Guaranteed Phone 183
Estimates Furnished on all Classes
Of Wiring

**STUDER, STENNIS &
STUDER**
LAWYERS
Office Over First National Bank
PAMPA, TEXAS

J. B. DUFFIELD
GENERAL BUILDING
CONTRACTOR
Concrete Work
No job too large or too small.
27-14-c

**INSURE YOUR FAMILY
WITH**
AMERICAN CENTRAL LIFE
INSURANCE
Real Estate
P. B. CARLSON, Agent
Room 14 Smith Bldg.

R. EDDY
Contractor
Team and Truck contracting, ex-
cavating, furnish Sand.
Phone 250

W. B. WILD, M. D.
PHYSICIAN & SURGEON
Office—Room 6-7 Smith Building
Phone 232 Pampa, Texas

W. C. G...
Gen. Building Contractor
Estimates furnished on all kinds
of building

COFFEY AND GRACE
Attorneys
CLEVE COFFEY H. L. GRACE
Offices in Sharp Reynolds Building.

G. C. MALONE
FUNERAL DIRECTOR AND
LICENSED EMBALMER
Phone 181 Pampa, Texas

DR. A. R. SAWYER
DENTIST
White Deer Land Building
Business Phone 168
Residence Phone 56
PAMPA, TEXAS

DRS. MARTIN & KLEIN
PHYSICIANS AND SURGEONS
SHARPE BUILDING
Phone 273

DR. W. F. NICHOLAS
DENTIST
Office Room 8-9 Smith Building
Phone 328 Pampa, Texas

DR. W. PURVIANCE
PHYSICIAN AND SURGEON
Office Over First National Bank
Office hours: 9 to 12-1 to 5
Office phone 107. Residence 45
PAMPA, TEXAS

JOHN F. CANTERBURY & CO.
Accountants and Auditors
Income Tax Service
604 Amarillo Bldg. Phone 2738
Jno. F. Canterbury, Accounting con-
sultant, Amarillo, Texas

See **H. W. HICKMAN**
—For—
CONTRACTS on BUILDING
Pencil Plans Furnished.
Cabinet work, mill work and
Truck Cabs. Bodies a special-
ty. Phone 225.

HICKMAN CONST. CO.
Ref. See customers.

ARCHIE COLE, M. D.
PHYSICIAN AND SURGEON
Office over First National Bank
Office hours 10 to 12-3 to 5
Residence Phone 8. Office phone 55
PAMPA, TEXAS

HAL B. STEWART
ARCHITECT
and
STRUCTURAL ENGINEER
613 1/2 Polk Street Amarillo, Tex.

**SANTA FE TO OPERATE
TRAIN TO COWMEN'S MEET**

According to an announcement made by T. B. Gallaher, Santa Fe passenger agent, the Santa Fe will operate a special train from Amarillo to El Paso Texas and return for the accommodation of delegates and visitors attending the Texas and Southwestern Cattle Raisers' association meeting to be held at El Paso March 15, 16 and 17.

The special train will depart from Amarillo at 7 p. m. Sunday, March 13, arriving El Paso early the next morning. This schedule will afford convenient connections with all trains from over the Panhandle and South Plains. An open rate has been authorized of \$17.85 from Amarillo, which will include a side trip to Albuquerque, N. M., on the return trip.

Correspondingly low fares have been authorized from other Panhandle and South Plains points. The Santa Fe is cooperating with the cattlemen and board of city development, Amarillo, in an endeavor to have a large delegation attend the convention at El Paso when Amarillo will enter a "bid" for the 1928 convention.

L. W. Klein, Santa Fe local ticket agent here, announces that the round trip fare from Pampa, Texas, to El Paso, will be \$19.80. He urges everyone interested in making the trip to get in touch with him as early as possible for sleeping car space.

**LOITERING NEAR JAIL
MAY LEAD TO ARRESTS**

Persons loitering near the city jail or talking to prisoners are apt to be arrested under the city ordinance regulating such practice.

CARY & WORTMAN
LAWYERS
General Practice, Compensation Cases, Criminal Law, Contracts.
Duncan Bldg. Pampa, Texas



NOTICE
Pampa Lodge No. 966, A. F. & A. M. Regular Meeting, Fourth Saturday in each month.
Masonic Hall in White Deer Land Building.
C. P. BUCKLER, Secretary.

**AT THE
CRESCENT THEATRE**

—WEDNESDAY—
"HER LOVE STORY"
with
Gloria Swanson
—THURSDAY—
"THE BROWN DERBY"
with
Johnnie Hines
—FRIDAY—
"LONE HAND SAUNDERS"
—WITH—
Fred Thompson

The recent escape of six prisoners was made possible by their obtaining hack saws from some unknown source. Recurrence of the offense is highly undesirable, and persons loitering near the jail will be subject to scrutiny.

Service is our watchword. Quality Jewelry Stor.

GROOM—Contract for grading and concrete structure on a 20-mile oil field highway from Panhandle to the Hutchinson county line has been let, involving a total expenditure for construction cost of \$70,435.40.

Have you read the classified ads?

**TEXAS UNIVERSITY TO
HOUSE 100 WOMEN**

AUSTIN.—Next fall when another building is opened for women students at the University of Texas, approximately 1,000 of the girls attending that institution will be housed in dormitories. At the present time, there are some 550 women residing in the five dormitories located about the campus. The opening of the Alice B. Littlefield dormitory, will provide accommodations for 150 additional freshmen girls.

Mayor F. P. Reid, who was ill yesterday, was able to be in his office today.

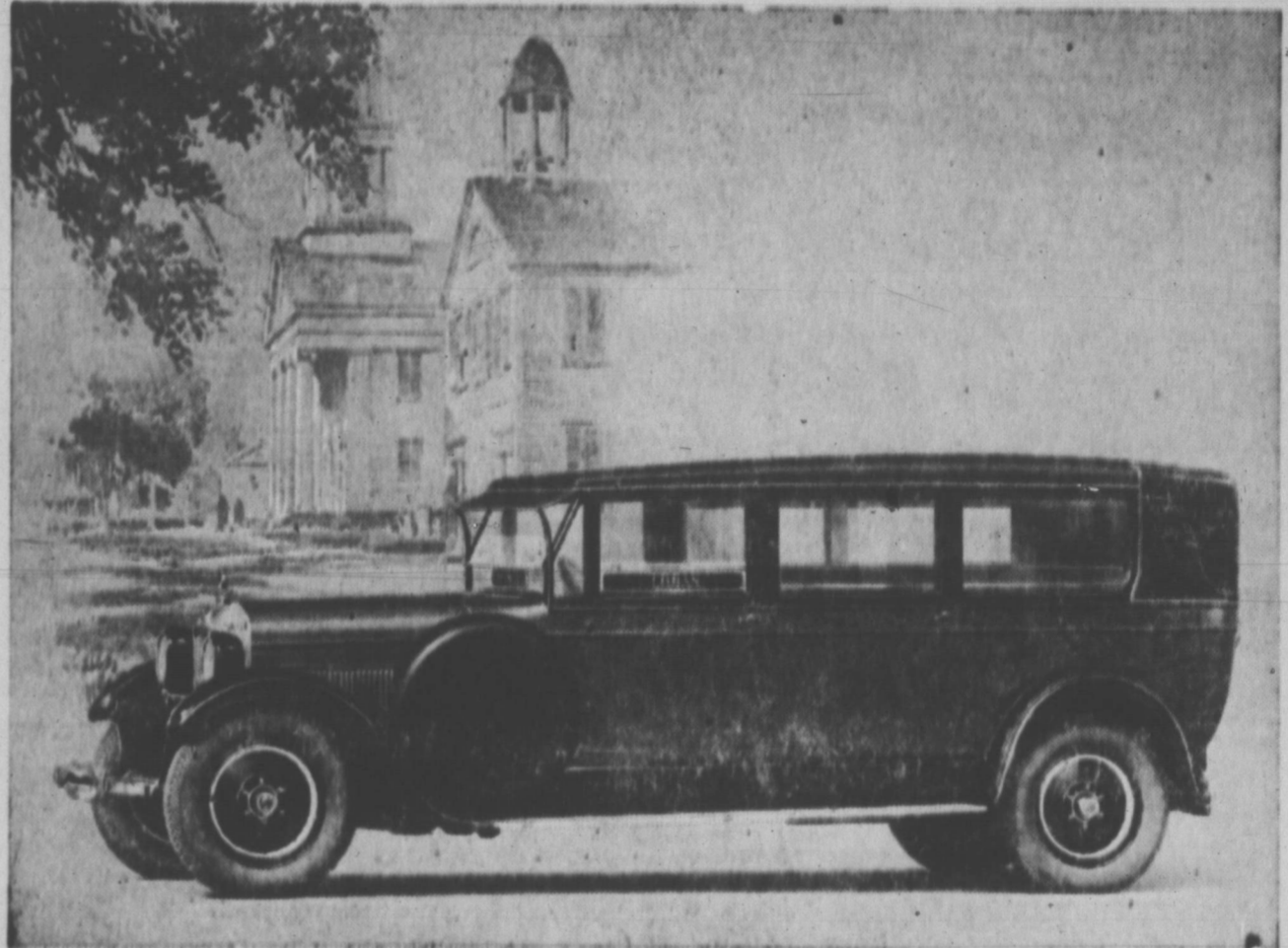
**TRAFFIC CONGESTION
IS NO PUZZLE TODAY**

Why is traffic congested? Look along the curb. Automobiles parked in a virtually solid line on both sides of downtown streets narrow the streets to the width of alleys. And all moving traffic must be accommodated in the narrow path that is left.

Traffic is congested whenever traffic ways are occupied by standing vehicles.

Out on the highways sometimes it happens when several cars are stopped in the road opposite a ball game.

Traffic is congested whenever traffic ways become grandstands and bleachers.



DAY AND NIGHT AMBULANCE SERVICE

G. C. MALONE

Pampa, Texas.

Phone 181

**HONEY
HANK
HARRIS**

AND HIS HONEY GIRLS

12 People 12

POSITIVELY THE BEST SHOW TOURING THE STATE
OF TEXAS

*The Sweetest Show on
Earth!*

3:30

7:30

10:00

ALL THIS WEEK AT THE
REX THEATRE

NOBODY!

LIKES TO CHANGE A TIRE

JUMPING JACK DOES

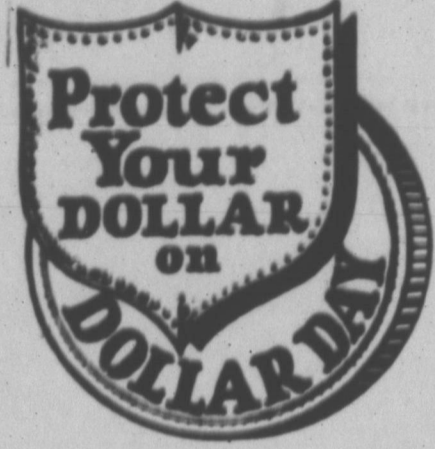
CALL

356



SERVICE ON THE JUMP

PEOPLES STORE



PAMPA, TEXAS

DOLLAR DAY



To the first 20 customers Thursday Morning 10 yards genuine Hope Domestic for

\$1

Regular 25c a yard value.

Double Your Dollar Values During our
DOLLAR DAY SALE

THURSDAY and FRIDAY

Ladies' Pure Silk Chiffon Hose—

\$1

Silk from Top to Toe Regular \$1.50 Value

Children's Unionalls **\$1**
These are the better kind.

Men's Good Grade Ribbed Unions **\$1**
\$2.00 Value, Special

Men's All Wool Boot Sox, **\$1**
2 Pair For

Men's Genuine Broadcloth Shirts. **\$1**
Regular \$2.25 Values.

Boss Walloper Heavy Canvas Gloves **\$1**
7 Pair For
We sell for less.

\$1.00 OFF ON ALL LADIES DRESSES AND COATS
Children's Hose, 3 Pair For **\$1.00**
WE SELL FOR LESS

Radium Silk, 36 Inch width, Per Yard **\$1.00**
MAKE YOUR DOLLAR DO DOUBLE DUTY
42 Inch Silks All Colors, Per Yard **\$1.00**
THE PEOPLES STORE DOLLAR DAY
One Lot Of Children's Slippers **\$1.00**
Small Sizes Only

Children's Tennis Shoes, All Sizes **\$1.00**
Regular Size Window Shades, Linen Color 2 for **\$1.00**
THE PEOPLES STORE

Parasite Tweeds, 32 Inch Width, Regular \$1.00 Value, 2 Yards For **\$1.00**
26 by 44 Bath Towels, 5 For **\$1.00**
VISIT THIS STORE ON \$1.00 DAY

\$1.00 OFF ON ANY PAIR OF LADIES' SHOES FROM \$4.95 UP

Printed Broadcloth, Regular 75c **\$1**
Yard, 2 Yards for
See what a Dollar Will Buy

3 Pound Rolls Quilting Cotton, **\$1**
3 Rolls For
The Peoples Store Leads In Value Giving

Men's Pure Thread Silk Hose, Regular \$1.00, 2 Pair For **\$1**

One Lot of Ladies Hats, Choice **\$1**

72 Inch Table Damask, 2 Yards for **\$1**

DOLLAR *The Peoples Store* **DAY**
THURSDAY **WE SELL FOR LESS** FRIDAY

New Street Markers to Show Pampa Folk Where They Live

Within a short time street markers will show newcomers and some not so new how to find their way about the city. Many people, it is very likely, will find where they live for the first time.

The contractor is now digging the holes preparatory to placing 4x4 posts and signs 4 inches by eighteen inches.

One hundred and four signs for the main streets have been prepared, but it is likely that the streets to be paved will not be designated until after the paving contractor has completed his work.

The city council ordered 72 markers and the Chamber of Commerce added 32. House numbers were placed over part of the city last fall. Additional numbers may be obtained at cost from the Chamber of Commerce.

The numbering and marking removes the principal obstacles in the way of city mail delivery and it is believed carrier service may be secured within a short time.

NUMEROUS AMENDMENTS TO IMMIGRATION ACT

During the present session of congress bills and resolutions have been introduced almost daily to amend the Immigration Act of 1924. A few of these are such as: admission to the United States in unusual cases of immigrants unable to secure a visa, by reason of the quota being exhausted, provided by House Bill No. 16804; one to admit the wives of immigrants now in this country; House Bill No. 15910 authorizing the admission annually of a quota of 15 immigrant women who seek to enter the Island of Porto Rico to serve as nurses and religious teachers in the charitable institutions; Joint Resolution No. 82 to amend Subdivision (a) of Section 4 of the Immigration Act of 1924, also Subdivision (c) of Section 4 and Section 6 of this act; and a resolution introduced by Senator Johnson, providing that the effective date of the National Origins Clause of the Immigration act should be changed from April 1, 1927, to April 1, 1928. It is evident that the opponents of this act have decided that the best way to destroy its effectiveness lies through amendments.

The resolution changing the National Origins clause was adopted by the Senate on February 1st. Some of the Senators declared that it was their ultimate intention to try to repeal this clause of the act. When asked what those who desired the repeal of this clause wished to substitute for it, the answer was given that for the present they desire to leave the method of basing the quotas on the census of 1890. The principal objection to the change comes from the Irish Free state and the German element because their quotas would be cut down by the National Origins clause. It was shown that the clause would reduce the number of immigrants about 11,000 anually.

Those supporting the repeal of this clause claim that it is not their

Work on South Oil Field Road To Start in Week

Work on the oil field highway, which has been rapid during the last several days, likely will be completed by the end of this week. It will be taken into Skelly.

On the road into the south pool of the Pampa field the work will start early next week. About five miles of this road will be regraded and afterward the farmers along the route will be employed to keep the highway in good condition.

Will Excavate to Find Site of Indian Battle

T. D. Hobart recently joined J. Evetts Haley, field secretary of the Panhandle-Plains Historical society; Prof. L. F. Sheffy, of the Teachers college, at Canyon; and Mrs. Billy Dixon, of Miami, in a trip to the site of the Buffalo Wallow battle-ground in Hemphill county.

The group went to the spot where it is believed the pioneers made their famous stand against a large group of Indians. This location, now in a cotton patch, corresponds to descriptions given by Billy Dixon and others. The Historical society will excavate in the hope of finding more data, government cartridges, and other evidence of the exact location.

The spot is on the Charles Teas ranch. Mr. Teas, who accompanied the party to the location, told of having found empty cartridges there several years ago.

According to records left by Billy Dixon, who took part in the battle, Indians "jumped" the men near Three-mile Creek, forcing them to retreat to a buffalo wallow overlooking Gagoby valley, where a determined stand was made.

intention to increase the number of immigrants, but regardless of their intention, the number, if the clause is repealed, will be 11,000 more as is shown above. The changes brought about would be as follows:

	Und. Pres.	Und. New
	Method	Method
Germany	51,277	23,428
Great Britain and Northern Ireland	34,007	73,039
Irish Free St.	28,567	13,862
Denmark	2,789	1,044
Sweden	9,561	3,259
Italy	3,845	6,091

DR. EDGAR A. ELLIFF

Eye, Ear, Nose and Throat
Glasses Fitted
Duncan Bldg. Pampa, Texas

Warning on Trash

County commissioners are aroused over the prevalent habit of dumping trash, tin cans and other unsightly matter in the ditches along public and private roads and highways.

This action, they point out, is in violation of state laws and offenders are subject to fines. Unless there is more regard for the statute, prosecutions will follow, it was stated.

Annual spring clean-ups will soon be in order, but the highways, too, must be kept clean.

The Historical society is sponsoring the erection of a suitable monument, which has already been prepared. This monument was purchased with funds raised by public subscription in Hemphill county.

Special Handling Improves Service of Herd Sires

Dairy bulls at Beltsville, Md., have been put on a daily regime calculated by specialists of the Bureau of Dairy Industry, United States Department of Agriculture, to prolong their life of usefulness in the various breeding projects under way on the experimental farm. Systematic exercise and the feeding of sprouted oats are two of the most important features of the plan.

Investigations in the past have proved the beneficial effects in maintaining the health and fertility of bulls, and the practice has been consistently advocated. The feeding of sprouted oats to bulls in line with the beneficial results this feed has shown in correcting breeding difficulties in cows and virgin heifers.

Sprouted oats supply the co-called Vitamine E, a shortage of which is held responsible for abnormal functioning of reproductive organs in various kinds of animals.

The special need for determining the best method for handling dairy bulls to maintain their potency for many years is a result of the "proved sire" idea recently brought into favor. Proved sires are those

whose daughters have been tested in sufficient numbers to indicate a consistent ability to transmit high production. Such proof obviously cannot be obtained until the sires are older than the average dairy bull.

Five of the bureau's herd bulls are over 8 years of age and average 10 1-2 years. One is 15 years old and continues an active breeder. Several young bulls are being fed experimentally to test the effect of rations on fertility, and two older bulls are now being examined to determine the effects on fertility of excessive service, lack of exercise, and close confinement.

DR. COLE WILL ERECT \$8,000 RESIDENCE SOON

Dr. A. Cole has taken out a permit to erect an \$8,000 brick veneer residence on his property in the Cook-Adams addition.

Mullinax and company will do the work.

Eyes Examined

By the most modern methods. GLASSES ground in our own shop, to meet your special requirements.

SPECIAL EQUIPMENT for testing children's eyes.

WHEN IT COMES TO GLASSES come to us. We guarantee you FIRST CLASS, HIGH GRADE WORK at reasonable prices.

This is our fifteenth year in Amarillo.

YOU ALWAYS KNOW WHERE TO FIND US

HYDEN'S

Exclusive optometrists and Opticians

Dr. J. M. Hyden in charge

7th and Polk Streets, Amarillo.

OPENING DANCE

Tuesday, February, 15.

WALKER'S COLLEGE TRUMPETERS

Furnish That Smashing Music

SKATING RINK

Across Street From REX THEATRE

Amarillo Musician Opens Studio to Teach Instruments

Wood V. Croft, formerly of Amarillo, has moved to Pampa to open a music studio. He plans to organize a high school orchestra, and later, possibly, a municipal band.

Croft has been instructing band and orchestra work for the past seventeen years. He is located here in the rear of the Texan hotel.

—a Sure Sale
—a Fair Profit
if you list with

RICE & PARK

Real Estate, Oil Leases, Royalties, Drilling Contracts

PHONE 133

"Let Us Bond and Insure You"

PAMPA INSURANCE AGENCY

—INSURANCE FOR EVERYTHING—

We have just opened our office in the First National Bank Building

PHONE 7

INCOME TAX

Every Corporation and all Partnerships must make a return for Income Tax Purposes, regardless of Profit or loss.

All Individuals having an income in excess of personal exemptions, must make a return.

All Persons handling a Gross of \$5000.00 or more a year, must make a return.

We have had 8 years experience in making Income Tax Returns and will be in Pampa February 10, to furnish services to those wanting same, and will be located at the Johnson Hotel. For personal reference, T. D. Hobart, M. K. Brown, and Siler Faulkner.

J. J. ALEXANDER

WHITE HOUSE LUMBER CO.

'SERVICE THAT SATISFIES'



H O M E

BUILDING IS FASCINATING

It is also cheaper than paying Rent

OWN YOUR OWN HOME

Our Material is of The Best—Our Service Complete. Everything that Goes into the completed Home.

From this date on, the Sign business known as the Boone Sign Co., and owned by B. M. Cannon, located at 115 W. Tyng St., south side, will be known as the

PAMPA SIGN WORKS

The business will be continued at the same place and B. M. Cannon will continue as owner and manager, as he has since buying the Boone Sign Co., on September 8, 1926.

9142

The First National Bank

Pampa, Texas

Better Secure a Safety Deposit Box Now for Your Valuable Papers

B. E. FINLEY

President

DE LEA VICARS

Cashier

CLASSIFIED ADS

Rates for Classified Ads: One and one-half cents per word per week, minimum twenty-five cents. Strictly cash in advance.

FOR SALE

FOR SALE—Singer Machines bought and sold. New singers sold on easy terms. Machines rented by week or month. Eldridge, the Singer Man at Thornton's Store. Phone 335. 45-1tc

FOR SALE—Show case, 70 inches long, 27 inches wide and 14 inches high. In good condition. Will sell very reasonable. Call at Pampa News or phone 100. 58-3tp

FOR SALE—2 room house with garage and lot. 50x1600. Water, gas and sewer. \$250.00 down. Balance easy terms. Phone 100. 58-3tp

FOR SALE—Or drilling contract—The Independent Syndicate No. 3, of Pekin, Ill., offers for sale or drilling contract, the southwest quarter of the northeast quarter of section eighty-four, Gray County, Texas. 58-2tc

FOR SALE—Just received, and they're going at special prices—QRS Player Piano rolls—Hear them at the Pampa Music Store. Two English Bull pups (male). J. K. McKenzie, at Pampa Poultry Mercantile Association. 60-2tp

1924 Model Fordson tractor. Bargain. With or without 2-disc plow. Clay Thompson, 404 Amarillo Building, Amarillo, Texas. 60-2tp

AUTOMOBILES

WATCH THIS SPACE FOR EXCEPTIONAL VALUES IN USED CARS.

1926 OAKLAND ROADSTER
Four new tires, mechanically good. A splendid used car value. Others priced to sell.

BIGGS HORN NASH CO.

Phone 123

59-1tc

FOR RENT

FOR RENT—Furnished or unfurnished two room house. Three blocks west of City water wells. W. C. Stalcup. 58-2tp

FOR RENT—Unfurnished rooms. See Arnold Neal at C. O. D. Produce House or call 249. 58-2tp

FOR RENT—Unfurnished apartments, close in. See Sterling Williams across street from old school house. 54-8tp

One large light housekeeping room furnished. J. K. McKenzie, at Pampa Poultry Mercantile Association. 60-2tp

FOR RENT—Light housekeeping rooms. Phone 157. 57-1tc

FOR RENT—Well furnished housekeeping rooms. Close in. Inquire 4 miles east on 33 highway. R. R. Mitchell. 59-4tp

BOARD AND ROOM

Texas Hotel Dining Room—Hot biscuits three times a day. Family style meals 50c. A la carte breakfasts. 57-1tc

MISCELLANEOUS

We are glad to assist you in planning that new home you have been contemplating building. Our motto, "Service that Satisfies." White House Lumber Co., Pampa, Texas. 11-4tc

TAKEN UP—About January first. 2 bay horses, about 17 hands high, manes sheared. L. B. Holmes, 2 miles west and three south of Pampa. 58-4tp

Expert phonograph repairing done at the Pampa Music Co. 57-8tc

Cemetery Work—If you have a lot in the cemetery and want it marked, please see May at Malones. 59-2tp

Fresh fish and oysters, trout, red snapper, channel cat. Half block east White House Lumber yard. Saddle Rock Cafe (McMahon-Pinner). 59-2tp

LOST

LOST—A Schaffer fountain pen February 4 at Pampa, Miami or Higgins. Initials "K. S." engraved on gold band. Reward. K. S. Satter, Box 606, Borger, Texas. 60-1tp

LOST—Yellow gold wrist watch, somewhere between Pampa Bakery and my home in east part of town. Will finder please return to Elizabeth Barnett and receive reward. Phone 154-W. 60-1tp

WANTED

WANTED—Clean, Cotton Raags, Pampa News. 5

WANTED—To buy used furniture and oil stoves. G. C. Malone Furniture and Undertaking Co. 3-4tc

HELP WANTED

WANTED—Men with car. For sales work with Fuller Brush Co. Write

Good Work Is Revealed in a Big Honor Roll

Excellent work by many pupils is indicated in the large honor roll just released by Supt. R. C. Campbell, covering the first semester's studies.

The largest number of A-grade and B-grade pupils is in the lower grades, which, however, have a greater enrollment.

The complete list follows:
Senior class—A grade: Clara Brown, Ina Mickey, Margaret Buckler; B grade: Macie Lester, Eva Clemens, Rosie Baggerman, George Walstad, Minnie V. Haynes, Ruth Henry.

Junior class—A grade: none; B grade: Tommy Tisdale, Claudine Haynes, Sammie Henton, Theima Qualls, Lottie Schafer, Lillie McMillan, Cloona Stanard.

Ninth grade—A grade: Virginia Faulkner, Melba Graham, Claudine Popo, Monte Winkler, Perry Morgan, Willie ... Blanks; B grade: Lola Barnes, Gladys Carter, Oak Roberts, Cornelia Barrett, Dorothy Mullen, Pearl Wilson, Beth Blythe, Dee Blythe, Harold Homes, Merle Hughey, Bob Mullen, Ruby Alice Quest, Catherine Vincent, Alma Walker, Donald Zimmerman, Tootsie Jones, Retha Hester, Thelma Gott, Mary E. Yoder, Nora Murray.

Eighth grade—A grade: Vivian Vickers, Valera McKeown; B grade: Violet Schafer, Le Fors Doucette, Viola Cunningham, Florence Baer, Evelyn Carter, Ward Ault, Gene Fathores, Eva Fish, Bill Williams, Georgia Sanders.

Seventh grade—A grade: Robbie Brown, Wanda Barnard, Frances Campbell, Sam Keith, Virginia Rose, Dary V. Meador, Susie Bell Hickman, Alice Ingram, Yvonne Thomas, Vidamae Woodworth, Lucy White, Lorene Qualls; B grade: Blanch Anderson, Charles Compton, Captola Borden, Annie Laura Burleson, Katherine Roberts, Hazel Fletcher, Pearl Neal, George Ingram, Finley Barrett, Nolan Hale, Chester Kirk, Ina Hathaway, Wilma Washmon, Ruth Weir, Glenor Carter, Russell McConnell, Robert J. Meers, Helen Converse, Miriam Lefflon, Mary McKamney, Louise Smith, Juanita Stephenson, Charles Barrett, Edward Nichols, Ralph Poe, Walter Schafer.

Sixth grade—A grade: Jeanette Boyer, Eloise Lane, Barbara Hawkins, Bertha Baggerman, H. L. Ledrick, Phyllis Hukill, Vand Teaver, Pauline, Banard, Laverne Twiford, Lola Mae Scott, Shirley Rusk, Beryl Botkin, Glenn Hassell, Turney Mullinax, Dean Washmon, Melvin Webb; B grade: Edgar Eldridge, Oscar Adair, Vola Teaver, Virginia Doyle, Eugene Quest, Harold Farrell, Martha Pennington, Clayton White, Garnett Poole, Woodrow Weeks, Geraldine Price, Esther Stark, Pearl Page, Lavacca Moore, Dorothy Stumpner, J. T. Richardson, Viola Haggard, Dorothy Shilling, Frances Finley, Doris Kissinger, Joseph Sells, Delma Conner, William Finley, Emily Harbison, Lorene Keith, Hazel Isaacs, Elizabeth Barrett, Fred Pribble, Lavera Wilson, Madeline Gantz, Dorothy Doucette, Leslie Cunningham, Lucy Ward, Walton Heard, Isabell Baer, J. A. Poole.

Fifth grade—A grade: Freda Culverhouse, William Ward, Anneline Barnett, George Keahey, Billie Jaynes, Myrl Davis, Marjorie Buckler, Louise Walstead, Loretta Fletcher, Johnnie Davis; B grade: Dorothy Dodd, Josephine Lewis, Lucille Cole, Leo Salisbury, Ellison Houston, Timmy Walker, Russell Rittenhouse, Winnifred Heiskell, Marjorie Swinehart, Grace New, Helen Riggie, Mary Swinehart, Luella Clark, Siter Faulkner, Derwood Dean, Josephine Gantz, Randall Gaylor, Winnifred Cummings, Ruth Reynolds, Wiley Reynolds, Viva Graham, Irene Owens, Fred Johnson, George Dees, Hadley Graham, Phil Hawkins, Virginia Mason, Mildred Brake, Wilkes Chapman, Lawrence McMurry, Jr., Berton Doucette, Christine Cook, Theo Post, Franklin Baer, Redget Brown.

E. R. Manley, Pampa, Texas. 59-2tp

Lady to take care of two children during days only. Phone 100. 2-tp

SITUATIONS WANTED

WANTED—Set of books to keep in evenings. References. Address box 572, Pampa.

WANTED—Ditch filling, street grading, small houses to move, anything that a good tractor and a handy man can do. See Less Saltzman, North Ballard St., one block east Pennant filling station. 59-4tp

WANTED—Plain and fancy sewing. Call for Estelle Caraway, at room 16, Dallas Hotel. 60-2tp

WANTED—Laundry work. All washing done by hand. Mrs. W. F. Mottin, South Side, across street east from Cotton Gin. 59-4tp

C. of C. to Offer Fine Entertainment Next Thursday

A high class entertainment drawing its talent from local entertainers and augmented by vaudeville by the company now at the Rex theatre has been announced by the Chamber of Commerce for its social meeting Thursday evening, beginning at 8 o'clock.

The Chamber of Commerce orchestra and quartet will be heard in several numbers, and there will be readings and songs and other attractions to make a program of more than an hour in length. No business matters will be discussed.

Women's Auxiliary To Give George Washington Teas

The Women's Auxiliary of the Presbyterian church will hold a George Washington silver tea on Monday afternoon, February 21 at the home of Mrs. T. D. Hobart. Programs will be from 3 to 6 o'clock. Refreshments will be served following each program. It is hoped that many women will attend. The programs:

- 3 O'Clock
1. Talk on George Washington's life, Mrs. Joe M. Smith.
2. Piano solo, Miss Nina Cliff.
3. Reading, Phyllis Smith.
4. Vocal solo, Mrs. John Andrews.
5. Reading, Mrs. Carson Loftus.
6. Piano solo, Mrs. Clinton Henry.

- 4 O'Clock
1. Piano solo, Mrs. Tom Rose.
2. Reading, Anne Clayton.
3. Solo, Mrs. A. H. Doucette.
4. Reading, Katherine Vincent.
5. Violin solo, LaVerne Twiford.

- 5 O'Clock
1. Piano solo, Mary Hobart.
2. Reading, Dorothy Doucette.
3. Vocal solo, Mrs. Alex Schneider.
4. Reading, Mrs. Morton.
5. Vocal solo, Mrs. E. E. Fisher.

Miss Ritchie Is Hostess to L.L. Club
Miss Mellie Byrd Ritchie entertained the L. L. club at the home of Mr. and Mrs. B. E. Finley, February 10. The house was decorated in honor of St. Valentine's day and several Valentine games were played.

A delightful program, consisting of readings, piano solos and a ukulele duet was rendered. At a late hour refreshments of hot chocolate and macaroons were served.

Those present were Mrs. T. E. Rose, Mrs. Morton, Messrs. and Mesdames Fisher and B. E. Finley, and Misses Jewel Flannagan, Margaret Schmidt, Nina Cliff, Morrison, Wilma Behrends, Finle Allred, Bernice Whiteley, Ina and Thelda Mickey, Daisy and Deva Dean, Josephine Gantz, Mildred Fay, Virginia Rose, Dorothy Doucette, Frances Finley and Mellie Byrd Ritchie.

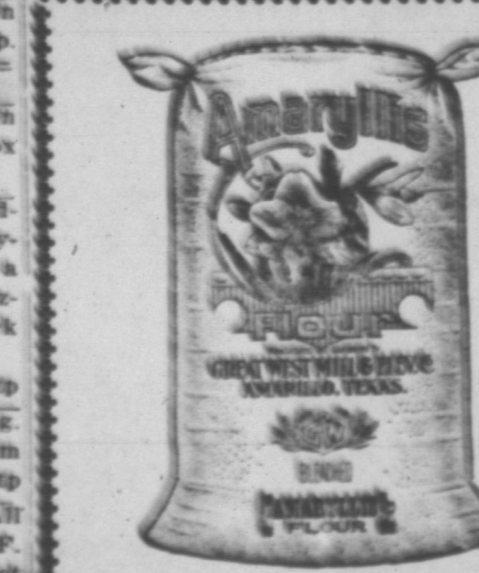
REAL ESTATE, FARM LOANS, LEASES AND ROYALTIES

List your city property with me. I have calls for residence property, large tracts of land and exchanges for farms.

Good connections with oil firms and real estate dealers over the United States.

F. P. REID & CO.
Office, Gray County Bank Bldg.

SCHNEIDER'S Commercial Hotel
PAMPA, TEXAS
A First-Class Hotel
CULINARY ART - GOOD ROOMS



Noelton, Near to Pampa, Grows Up At Surprising Pace

Boom towns are common in the Panhandle, but seldom has one grown with the rapidity of the new town of Noelton, eight miles west and one north of Pampa, according to observers.

Recently two big wells, the Parks-Noel and the Prairie-McConnell, came in for heavy production. J. L. Noel, owner of land in that vicinity, decided to open a townsite which was done February 9.

He placed 200 lots on sale, of which 75 per cent have been taken. Two lumber yards are established and doing business. A two-story hotel is being erected. A cafe is doing a good business and dozens of other buildings are being started.

Forty locations for oil wells have been made and sensational play is expected during coming months. Dozens of derricks will mark the location of the rich oil sand.

An unusual condition is that the new town grew up on the "bold prairie" nearly a mile off any highway.

TAHOKA—Water mains over Tahoka are to be extended to the extent of \$26,000 expenditure for improvement. Piping, hydrants and pumps are included in enlargement of the system.

Watches, diamonds, Jewelry—at the Quality Jewelry Store.

HISTORICAL SOCIETY WILL MEET FRIDAY

The Panhandle-Plains Historical society will hold its annual business meeting and banquet at Canyon February 18, the banquet at six o'clock at Cousins' hall. Dr. R. Thomsen, pastor of the Central Presbyterian church, of Amarillo, is the main speaker on the banquet program.

The Historical society has 114 active members scattered over the Panhandle territory. The society is collecting a great body of material dealing with every phase of the life and development of the area with which it deals. Its museum is worth many thousands of dollars and its source material on Indians, buffalo hunting, ranching, cattle breeding, railroads and other phases of life in the Panhandle is invaluable.

Judge O. H. Nelson, Romero; Mrs. T. V. Reeves, Canyon; J. Evetts Haley, Canyon; T. D. Hobart, Pampa, have been officers during the past year. New officers will be elected at the business meeting.

HAIRD—Work is progressing nicely on a modern water system for this town. When completed, Baird will have a water system that will compare with the best in West Texas.

News Want Ads Pay

PANHANDLE OIL MAPS
Blue Printing and Surveying
AMARILLO ABSTRACT CO.
108 West Fifth Street
Phone 1198
AMARILLO, TEXAS

PURE RICH MILK

The A. C. Brand, it's purity is guarantee by the A. C. Bottle and sold direct from the Converse Farm and sold only at King's Butcher Shop in the building occupied by the Poultry Mercantile Association and at the Piggly Wiggly Store.

New Spring Frocks
SPECIAL ADVANCE SELLING OF ADORABLE SPRING DRESSES

Spring's Newest Modes fresh from New York and Fifth Avenue—America's Style Center.

The styles this spring are more fascinating than ever. Come in and see for yourself. We're offering them at Special Introductory Prices.

\$11.85 AND \$16.75

Priced So That All May Have One

\$16.75 and **\$19.50**

Newest Spring Coats

They've just arrived—Wonderful styles that will delight you. You are invited to see them.

Diamond C.
THE STORE WITH THE RIGHT GOODS
DRY GOODS CO.

"FOR BETTER BAKING"
BUY THEM FROM YOUR GROCER

GREAT WEST MILL & ELEVATOR CO.