

NEW REFINERY FOR PAMPA SOON

INSPECTOR RATES POST OFFICE MONEY NOW APPROPRIATED TO LAUNCH PROJECT HERE

Fire Department Out Friday Night

The fire department was called out Friday night to answer a call at the Southwestern Public Service Light and Power plant. Workmen were thawing frozen pipes with torches, and it is supposed that someone thought that the building was on fire.

DIRECTORS HOLD BUSINESS MEET

Several C. Of C. Bills Approved To Be Settled

The members of the Board of Directors of the Chamber of Commerce, composed of F. P. Reid, Neil McCullough, P. E. Boyd, W. P. Peters, J. M. Dodson, M. K. Brown, M. W. Jones, O. K. Baker, W. L. Woodward, C. C. Cook and J. N. Nalley, held a short business meeting last night and disposed of routine business.

Several bills were passed and approved to be paid by the secretary. Seven of the members of the Board of Directors were elected at a meeting on Thursday night, January 11. At a meeting the next Thursday night, the members voted to elect four additional members on the board which makes a total of eleven members.

A. Turner, secretary of the organization, addressed the members of the board following the business session. In outlining past and future work, he said: "The biggest thing I can recommend for Pampa this year, or in fact, any year, is that the citizens should have absolute confidence in the future of Pampa. This mental outlook is necessary to achieve prosperity. A city is built in the minds of its citizenship before it materializes, and if our confidence in Pampa's possibilities is limited, our developments will be limited."

Confidence in people and their ability is necessary for the financing of projects. In the past Pampa never has failed to come up to expectations; in the future, our achievements depend on how high we set our standards. This is brought out plainly in communities where fear and uncertainty have split the citizens into factions, growth retarded, confidence in business destroyed and suggested improvements are torn to pieces.

Individual projects will fall on account of these limitations. We must have confidence in ourselves individually, as well as in the city. The average person underestimates his own ability. If everyone in Pampa brings himself to a realization of what he can actually accomplish in his own line and throws himself into his work with unequalled confidence in the line, individual projects will thrive and increase by leaps and bounds. If we believe firmly as a body in our own resources, our ability and our future, there will be no limitations as to Pampa's accomplishments.

CLASSIFIED NEXT TO FIRST CLASS

New Department Will Be Opened In Few Days

A. S. Page, federal post office inspector, was here last week, and after a thorough inspection of the office here, gave it the highest rating under the second class post office in the state.

Second class post offices are rated under three classifications, first, second and third. The Pampa Office rates first in the second class. Page said that there was no better equipped or operated second class post office in the entire state.

A postal savings department will be started here within the next few days. W. A. Crawford, postmaster, expects to have a special man here until the new department has been open for some time. Arrangements are being made now so that there will be no delay in rendering the new service department.

More lock boxes will be installed in the post office at once. The demand for boxes has exceeded the supply since the postal headquarters were moved. The number of boxes was doubled when the change was made, but more applications were in than boxes. "With additional boxes," says Crawford, "we can increase our service here even more."

Very little mail is left at the post office long after it arrives, despite the rapid influx of new customers. Occasionally a person moves away without leaving a forwarding address, but otherwise the mail is called for at the general delivery window.

C. H. Fisher Returns From Wichita Falls

C. H. Fisher, city secretary, returned from Wichita Falls Saturday after spending several days completing business there.

"Wichita Falls is quite a place," says Fisher. "I can remember when it was smaller than Pampa, but the boosters built the city and business to what it is today. Pampa can be built in the same way; if we are all boosters and pull together we will reach our goal."

G. C. Malone returned from Hillsboro today where he went after his wife and children who have been visiting Mr. and Mrs. L. F. Malone.

There is much more of this business to be had if we go after it.

"The Chamber of Commerce should undertake a systematic program of expansion, looking to the future to provide those things that will be necessary to maintain the average business conditions, after the oil has gone."

"There are advantages here for wholesale houses and many other lines of business, and large possibilities of expansion for those already here. The Chamber should also encourage agricultural developments, having a farmer's auxiliary, holding meetings as often as may be necessary that the farmers can attend, and at the same time come in contact with people and thereby bring about a better understanding between all the people in the County."

"Road construction and the keeping of the roads in good condition will help extend our trade territory, and one of the principal aims of the Chamber this year should be to see that every facility is afforded every line of business, in order that we may grow and prosper."

"This will be our greatest year, if the membership will cooperate and make it so."

Plans were made whereby various members of the board will serve as chairmen of committees to be appointed from time to time.

All Eligible Voters Must Pay Poll Taxes At Once

The person without a vote is practically the person without a country. Without a vote there is no chance to take part in your own affairs. No person is eligible to vote unless they have paid a poll tax.

Poll taxes are now payable at the office of Sheriff E. S. Graves, and at several of the stores. Persons of voting age must live in the state for at least a year and in the county for at least six months, and in the precinct for at least thirty days before they can vote, and then they are not eligible unless they have paid a poll tax and have a poll tax receipt.

Every person of voting age is urged to pay a poll tax at once. Elections, both general and special, are only fair when participated in by a majority. When you do not vote you are not only doing an injustice to yourself, but to your home city.

Poll taxes must be paid before midnight on January 31. Pay them at the Sheriff's office or at one of the stores at once.

Paying a poll tax may be a small matter, but the right to protect yourself at the election polls is important. Pay your poll tax today.

Residence Numbers Are Obtainable Now

The figures to number the residences here have arrived and may be obtained at the Chamber of Commerce headquarters at the White Deer Land Building. The number of each residence in town can be obtained at the office of the city engineer in the same building.

The figures are being distributed at cost price of eight cents for each figure. Most of the downtown business houses have already been numbered.

CHRYSLER FOUND IN DENVER, COLO.

Stolen From Colquitt Here Last Sunday Evening

The Chrysler Coupe that was stolen from in front of the Methodist Church Sunday night, January 16, was found in Denver, Colo., last night. Three men were caught with the car. Sheriff E. S. Graves and J. O. Colquitt, owner of the Chrysler, departed for Denver this afternoon to return the car and men.

Colquitt left the car parked in front of the Methodist church a week ago Sunday night, and when he came out of the building about an hour later the car was gone. Officers of other cities were notified, but no trace of the car was found until last night.

CAR RECOVERED AT WELLINGTON

Deputy Sheriffs Bring Two Men Back To Pampa

Floyd Whitney and Roy Collins have entered pleas of guilty to stealing an automobile from in front of the Pampa Hotel last Monday. Sheriff E. S. Graves notified the sheriffs of surrounding counties, and the two men were caught in Wellington.

Deputy Sheriffs Lee Banks and O. T. Smith went to Wellington Friday and brought the men to Pampa. Whitney gave his home address as Jennings, Oklahoma and Collins as Joplin, Missouri.

The stolen car, a Chevrolet Coupe, is owned by J. H. Wootley.

4 QUAIL HUNTERS ARRESTED FRIDAY

Each Fined \$23.60 For Violating The Game Law

E. R. Turman, special game warden for this district, arrested four quail hunters near the mouth of the White Deer Creek Friday. The men gave their home address as Borger. Each pleaded guilty to a charge of hunting birds out of season and paid a fine of \$23.60.

Turman stayed out along the creek most of last week, but the four men from Borger were the only game violators that he found. Turman, by the aid of his field glasses, is able to remain on a high point and see what is going on for miles around. He was two miles from the bird hunters Friday when he first discovered them.

Turman says that there are very few arrests made for violating the game laws in this particular vicinity. The hunters that were arrested Friday had not killed any birds, but admitted that their purpose was to kill some. Turman saw one of the men shoot at a quail before he made the arrest.

EQUIPPING C. OF C. OFFICE FOR HOME

Room To Accomodate Citizens And Visitors

A writing table has been installed at the Chamber of Commerce headquarters in the White Deer Land Building. Stationery is kept on the desk all of the time so that visitors can care for their correspondence work.

The present plans are to furnish the room with newspapers and magazines and literature about Pampa so that visitors and citizens here will have a place to spend an hour of leisure.

"I don't want to make this a loafing place," says M. A. Turner, secretary of the organization, "but I do want it to be a place where the citizens here and the many visitors that come to the city. Persons who come into the room and write a letter, or read the papers and magazines, will in no way interfere with other work in the office."

The Chamber of Commerce headquarters are open every day, except Sunday, from 9 o'clock in the morning until 11 o'clock at night.

Favorable Comment Received From Leading Oil And Business Men In Cities Of Three Oil States

"A four-hundred thousand dollar refinery for this immediate vicinity," was the word brought back by M. A. Turner, secretary of the Pampa Chamber of Commerce, on his return from a tour of several large oil cities east of here.

The directors of one of the larger oil companies have appropriated the money for the refinery, and actual construction will begin at an early date. The name of the company that will install the refinery is being withheld, but Turner was assured that the project would be completed in the immediate territory surrounding Pampa.

Turner went to Independence, Kansas, where he talked with the officials of the Prairie Oil and Gas Company as well as the Prairie Pipeline Company. The three outstanding objectives of the trip were, first, to obtain the assistance of the oil companies in building the new hospital under construction here now, second, to determine to what extent the larger oil companies are interested in Pampa, and third, to get the opinion of the general public as to the future possibilities of Pampa. He met with favorable reply from practically every person he interviewed.

From Independence he went to Ponca City, Oklahoma where he met with the officials of the Harry Cragin Lumber Company and the Marland Refining Company. He then went to Tulsa and interviewed the officers of the Oklahoma Refining Company. He also stopped over in Oklahoma City and discussed Pampa.

"I talked with the secretaries of the Chambers of Commerce in each town I visited," says Turner, "and I gathered favorable comment from each as to the future of Pampa. The bankers and merchants in each town were of the general opinion that Pampa was destined to be the leading oil city of the entire Panhandle of Texas."

The expenses of the trip were paid by three Pampa business men. A report of the trip will be made at the meeting of the Chamber of Commerce Thursday night.

26 City Arrests In Past Ten Days Here

John V. Andrews, city marshal, and his assistants have arrested 26 persons during the past ten days. Three of the charges stood for violating traffic ordinances, one for vagrancy, one for fighting, one for gambling, one for violating a sanitary ordinance and four for disturbing the peace.

A large percent of the persons arrested plead guilty to the charges filed and pay fines. Some, however, plead not guilty and are tried before Mayor F. P. Reid.

Election To Be Held At C. Of C. Quarters

The special election that has been called for February 15 to determine whether or not the majority of voters want the commission form of city government instead of the aldermanic, will be held at the Chamber of Commerce headquarters in the White Deer Land Building instead of the American Legion Hall.

Parents Sentenced For Child Desertion

Mr. and Mrs. Bert Hester, formerly of Wichita Falls, were sentenced to one year in jail last week for deserting two small children at Clarendon. The parents were found in Wellington. The children, girls, five and seven years old, are being cared for at a private home in Clarendon.

Rig Workers Demand Raise Of \$2 Per Day

A large portion of the rig workers in the oil field south of town walked out Sunday and refused to work unless their salaries were raised from fourteen and sixteen dollars a day. They claim that workmen in other fields are drawing sixteen and eighteen dollars a day. A portion of the rig builders in the Borger field also walked out because of dissatisfaction in the amount of pay they were drawing.

Members of various rig crews say that they expect to be at work soon at sixteen and eighteen dollars a day.

The recent cold weather has slightly retarded the oil field work, but workmen say that no serious delay has been noticed. New rigs have gone up in the fields south and northwest during the past few weeks and drilling is expected to continue rapidly.

The Gray County Petroleum Company's number 1 Herndon in section 147, Block 3 of Gray County has shut down on top of the lime at 2400 feet awaiting the arrival of casing.

The Sun Oil Company is putting down three tests in Gray County. They are all located in section 3, block 3.

Several completions are expected in Pampa field in the near future.

MEXICAN GIVEN 99 YEAR TERM Charged With Murder Of J. E. Newberry At Goodnight

Canyon, Texas.—The jury found Raul Morales guilty of the murder of J. E. Newberry near Goodnight a few months ago, and Monday assessed his punishment as 99 years in the penitentiary.

The Mexican was tried for insanity before a jury last Thursday and was found to be of sane mind. The case was ordered to start Friday, and the jury was secured and two witnesses examined before the close of court that night.

W. J. Fleisher, district attorney, was assisted by County Attorney J. E. Stallings of Claude. Mr. Fleisher served in his first murder trial as new district attorney. The court had appointed A. D. Payne and Alex Mood to defend the Mexican who was without funds.

Sheriff John Fry has the Mexican in custody, as notice of appeal was made by the defense.

Habeas Corpus proceedings were started Monday to bring before the court a young man being held for the murder of Fred Conner of Tulla several months ago. The case was set for yesterday, but the defendant was not brought here. The case will likely come up before the end of the week.

Mrs. Anna Showey Wilson was granted a divorce from Elmer E. Wilson, and was given the custody of her three children. The case of Leonard Shores was moved to Amarillo.

—The Canyon News.

PRESERVATION OF WOOD IMPORTANT

Treatments Are Given To Stop Major Decaying

Preservative treatment of wood helps to keep down timber costs and to make the national timber supply last longer for all consumers, says George M. Hunt, in charge of wood preservation investigations for the United States Department of Agriculture. Treatment of wood to prevent decay is no new thing, he says, the first practical means on record having been devised early in the nineteenth century. At that time England's oak navy seemed doomed to literal annihilation by the ravages of decay—a time when that nation was fighting for its very existence.

This acute situation in England resulted in the development of three processes for impregnating wood with zinc chloride, coal tar creosote and mercuric chloride, respectively. In the century that has elapsed since these celebrated processes were patented, their use has spread through out the world and these three original preservatives are today being applied in enormous quantity. In the meantime, improved processes have been developed, new preservatives have been discovered, and treatment of wood to make it last longer has become an important practice in the field of structural materials.

The railroads have been the leaders in the use of wood preservatives in this country for the past 50 years says Mr. Hunt. They have found that decay is the chief cause of early destruction of wood and that treatment is the remedy. In 1925 more than 220,000,000 cubic feet of ties and other railroad timber was treated and the use of preservatives is increasing. Without treatment the life of such timber as is used in bridges, trestles, tanks, marine piling and other wooden structures would be so short that the railroads would by this time be returning to more expensive and less satisfactory substitutes on account of high timber prices.

There is, however, another field for the use of wood preservatives that has not been so adequately covered as it should be, according to Mr. Hunt. Despite the great quantity of timber used in mines that industry has not generally resorted to preservative processes. A Pennsylvania coal mine, however, has demonstrated that treated loblolly pine will last from 10 to 20 years in places where similar timber, untreated, lasts in 2 or 3 years.

NEW FACTS FOR POULTRYMEN

Extensive investigations in breeding and feeding of poultry were carried on by the Bureau of Animal Industry, United States Department of Agriculture, during the last fiscal year, according to a report of the chief of that bureau. In experiments with Rhode Island Reds and Single



ROOSTER BRAND
A GREAT POULTRY REMEDY
Given forth in drinking water or mixed in feed, thoroughly cleanses the blood, purifies the system and prevents disease. Better prevent than try to cure. Contains no alcohol or poison. Can be given to all sorts of chicks, old birds and turkeys, any kind of weather with good results.
It is not a very thick one dollar bottle. It will last 100 birds more than 100 days. The manufacturer also advises for poultry return to try it 30 days at least on the following conditions: After using 30 days if your flock has not improved in health, produced more eggs—cleaner, more vigorous and their waste matter—come back to your dealer for a refund to return your money.

PAMPA DRUG STORE

SHE TELLS THE STORY OF MANY OTHERS

Dr. W. C. Rountree, Tarkenton, Texas.
Dear Doctor:—About 8 years ago I was taken with a bad case of stomach trouble. I got better in Winter and worse in Spring and Summer. I suffered untold agonies, took many kinds of medicine and found no relief. After four years I broke out with something that looked like sun burn. At that it appeared on my hands, later on my face and neck. My mouth got sore, feet burned and swelled until I could hardly walk. My heart beat too fast and I had a burning in my chest. Some one sent you my name and you sent me one of your little books and Questionnaire, but I did not order your treatment at first. I waited thinking I would get better, but instead I got worse. Finally I got so bad that I could not walk 20 steps without resting. I ordered your Pellaqua treatment and on the 10th day of July 1926 I began taking it. I soon saw that it was helping me and by the time I had taken one treatment the rash and many of the other symptoms had disappeared. I have taken four treatments and am entirely relieved of all symptoms of Pellaqua. I appreciate the honesty and kindness with which you have dealt with me. For I have found everything that you told me about the treatment to be just like you said. I want to ask all who have this disease to not get off ordering your treatment till I did for while they are waiting this terrible disease is stealing their life away.
(Miss) Savannah Taylor,
Rt. 1, Box 150, Naples, Texas.

University Girls Plan Four Day Hiking Trip

Austin, Texas, Jan. 25—A four day camping trip is being planned for February 19th to 22nd by the co-eds of the Camp Te-Waa-Hiss of the University of Texas. The girls will hike the eighteen miles to a lodge on Lake Austin where the camp will be held. In addition to providing wholesome recreation and knowledge of organized camping for women in college, Camp Te-Waa-Hiss endeavors to teach the members

Comb White Leghorns for increased egg production, there was a higher proportion of 200-egg records than during any previous year.

Other experiments with poultry involved chick mortality, hatchability and fertility of eggs, inheritance of egg production, and various experiments in feeding for egg production. In feeding tests for egg production, it was found that omitting limestone, a shell forming ingredient from the ration, reduced egg production 50 percent.

to be leader and to know how to direct outdoor recreation in their own towns.

Messages Put In Box To Remain 73 Years

Washington, D. C.—A hermetically sealed box containing messages from masonic and government officials was deposited in a "secret and secure place" in this city on the night of January 14, and it will not be opened until the night of

January 14, in the year 2,000. The unique ceremony took place following the council ritual at the first annual grand visitation of Brightwood Council, No. 6, R. & S. M., at the Brightwood Masonic Temple. The messages in the box are addressed to those who will hold high offices in the year 2,000.

News Want Ads Pay

Some people mistake kindness for stupidity.

When ignorance is bliss it's folly to ask questions.

Some of us can fool ourselves but we can't fool our bank account.

Many small profits are usually better than one big one.

The world, said Montaigne, does not need to be told much as it needs to be minded.

WE WILL BUY

Stocks—Bought, Sold Quoted
Alask Pet. Fly-Blackburn
Amarillo P. John...
& Ref. Mellre...
Badger Oil Nabob...
Bayshore Pet. Neptune...
Black Diamond Panfield Oil Co.
Bryan Royalty Panhandle Bik.
Canadian Riv. Panhandle Oil
er. Sullivan
Chechako Oil Sunburst Oil
Cockrell-Mellroy Spring Creek
Dixon Creek Smith Royalty
Double Five Rock Island
Echo Oil Triangle Oil.

We buy and sell ALL Stocks, "OIL & MONEY DIGEST" Describes all companies, gives latest ACCURATE prices, and tells how to buy Stocks on credit. FREE ON REQUEST.
YOUNG & HAWLEY
Central Oil Stock Exchange
Amarillo Bldg. Amarillo, Tex.

KING--
CAFE--
AMARILLO

PURE RICH MILK

The A. C. Brand, it's purity is guaranteed by the A. C. Bottle and sold direct from the Converse Farm and sold only at King's Butcher Shop in the building occupied by the Poultry Mercantile Association and at the Piggly Wiggly Store.

The Greatest Slaughtering Sale THAT PAMPA HAS EVER EXPERIENCED

\$15,000 STOCK—CREDITORS ARE DEMANDING CASH. HERE GOES THE ONLY CHANCE TO RAISE IT. SALE LASTS THREE DAYS—

THURSDAY, FRIDAY and SATURDAY

When you read these prices open your purse and make your dollars do double duty. This is our OPENING SALE.

We moved our entire stock from Lubbock, Texas, where the low price of Cotton threw us far behind with our Creditors.

THIS SALE WILL START THURSDAY MORNING

Heavy Blue Overalls and Jumpers, \$2 values \$1.15 EACH	Men's Cotton Socks, 25c values 8c PAIR	All newest shades in Ladies' all Chiffon Hose, \$3.50 values \$1.95	Men's low cut Dress Shoes \$6.50 values \$3.45
One Lot of Boys' Suits, while they last \$1.85	Men's Dress Caps, \$3.45 values \$1.45	Wardrobe Trunks, \$27.50 values, now, \$16.85	Men's all-leather Horsehide Gloves 95c
One Lot of Ladies' Dresses, \$3.75	One Lot Girls' Hats 85c While they last.	Fibre Suit Cases 85c	Men's heavyweight Blue and Khaki Unionalls, \$3.50 values \$2.45
Children's Fancy Wool Sweaters, \$3.95 values going at \$1.45 While they last.	Men's Fancy Dress Sweaters \$6.50 values. \$2.95	All Men's Dress Trousers, \$6.50 to \$8.50 values, going at \$3.95 AND \$4.95	All fine Trunks \$9.95
Children's Canvas Gloves 5c PAIR	Beautiful Line of Ladies' Coats \$35 values \$12.95	Ladies' Spring Hats \$7.50 values, \$3.95	Men's Corduroy, lace-leg and Button Trousers, \$5.50 values \$3.45
Men's Broadcloth Shirts, \$2.50 values \$1.25 EACH	One Lot of Ladies' Serge, Wool and Silk Dresses, \$25 values \$9.95	Men's guaranteed Leather Work Shoes, \$5 values \$2.95	All Wool Heavy Army Blankets, \$5.50 values \$3.45
Heavy Ribbed Fleece Union-suits, \$1.75 values 95c While they last.	Men's beautiful Silk Ties, \$1.50 values, going at 65c	One Lot of Men's Dress Hats, \$6.50 values \$2.45	Moleskin Pants, \$4.50 values \$2.45
One lot of Men's all wool, heavy Plaid Shirts, \$7.50 values \$3.95	Ladies' and Girls' low heel Oxfords, plain and fancy, \$6 values now \$2.95	Ladies' Patent, Satin and Kid Shoes, latest novelties, \$10 values \$4.85	Men's Army Wool Overcoats \$2.95 While they last.

Remember Folks! We are new people in this town. We have just opened up this store, and we want to get acquainted with you. Our Creditors demanding CASH tells the story of these wonderful bargains

Our Store is in the old Davis Building on West Foster Avenue, across the street from the Gray County State Bank. Our front is painted yellow and we have a red sign over our window. Be sure you enter the right store.

M=BLANK'S STORE

DAVIS BUILDING

WEST FOSTER AVENUE

ADMINISTRATIVE OFFICERS MEET

Superintendent Heads To Convene At Dallas

The Department of Superintendence of the National Education Association will hold its fifty-seventh annual convention at Dallas, February 26 to March 2, inclusive, with Dr. Randall J. Condon, superintendent of Cincinnati public schools presiding.

The Department of Superintendence is the largest department of the National Education Association. Its membership is composed of administrative officers. The department was started in 1865 at Philadelphia as the National Association of School Superintendents. It has since grown to a membership of more than 3400.

One of the outstanding features of this convention is its exhibit. There will be the usual commercial exhibit with its yearly improvements and enlargements, and a special educational exhibit sponsored by the department. Dallas is said to be especially fitted to such a purpose, due to its Fair Park.

The convention will have its offices beginning when Dr. Condon, president of the department, opens the exhibit, Saturday, February 26. This is the first time an official opening of exhibits has been held, and it is intended to emphasize that these exhibits are distinctly an educational feature of the session.

The Sunday afternoon vesper service will be held in McFarland auditorium of the Southern Methodist University. Dr. George W. Truett, of Dallas, one of the great preachers of the South will deliver the address. The musical features of the program will consist of organ numbers by Palmer Christian, head of the department of music of the University of Michigan; two numbers by the string section of the National High School Orchestra, led by Joseph E. Maddy, supervisor of music at Ann Arbor, Mich.; and two numbers by the Choral Society of the Southern Methodist University. Mr. Carusian will give an organ recital in the Fair Park auditorium, Sunday evening, at eight o'clock.

351 Honor Students.
Austin, Texas, Jan. 25—The fall term honor roll of the Colleges of Arts and Sciences of the University of Texas officially commended 351 students of the 3,151 enrolled in that division of the institution.

PANHANDLE OIL MAPS
Blue Printing and Surveying
AMARILLO ABSTRACT CO.
108 West Fifth Street
Phone 1193
AMARILLO, TEXAS

Eyes Examined
By the most modern methods. GLASSES ground in our own shop, to meet your special requirements.
SPECIAL EQUIPMENT for testing children's eyes.
WHEN IT COMES TO GLASSES come to us. We guarantee you **FIRST CLASS, HIGH GRADE WORK** at reasonable prices.
This is our fifteenth year in Amarillo.
YOU ALWAYS KNOW WHERE TO FIND US
HYDEN'S
Exclusive optometrists and Opticians
Dr. J. M. Hyden in charge
7th and Folk Streets, Amarillo.

NOTICE TO THE PUBLIC

This is to notify the public that I am in no way connected with the Masters Cafe in Panhandle, Texas, having sold outright. The new Management has assumed all outstanding accounts against same.

Signed,

W. P. MASTERS
Pampa, Texas
P. O. Box 577

WHAT'S DOING IN WEST TEXAS

Haskell—Work on the city hall here is progressing nicely. When completed, the building will hold offices of the mayor, city secretary, and water Department as well as housing equipment of the Haskell Fire Department. A city jail is also included in the building, occupying a part of the ground floor in the rear of the structure.

Stamford—Nine of the 15 men named as Master Farmers of Texas in the recent contest of The Progressive Farmer are men who live in the territory served by the West Texas Chamber of Commerce. Though West Texas entrants in the contest were rather noticeably in the minority, more than fifty percent of the winnings were carried off by the western section. The Master Farmers of West Texas came from the following counties: Comanche, El Paso, Medina (2), Hale, Kerr (2), Lubbock, and Howard.

Plainview—Hale County has added 14 fine registered bulls to its bull circles. The animals were brought from Ohio by Paul Huey, county agricultural agent.

Shamrock—A two story hotel containing 24 rooms is being erected here. Each room is to be equipped with hot and cold running water and will be heated by gas.

Pampa—Brick work on the new Schneider Hotel has started, and the building will be ready for occupancy by May 1, according to the contract. Several colors of bricks are being used in the work.

Stamford—Approximately a quarter of a million dollars annually will be saved by shippers of the South Plains section due to the activity of the West Texas Chamber of Commerce in their behalf. The West Texas Chamber through its traffic Department has successfully presented the Santa Fe differential cases to the Railroad Commission and as a result, South Plains shippers will be relieved of paying the western differential.

Lampasas—Lampasas' 24,000 egg capacity chick hatchery has

opened for 1927 operations. C. R. Oakley is in charge.

Borger—Outlining a booster and advertising campaign to be launched this month, the local chamber of commerce directors at a recent meeting chose the slogan, "Buy It In Borger," as the initial move toward civic promotion and development. The Roster Campaign is to extend two weeks.

Levelland—Contract has been entered with the Texas Utilities Company for maintenance of fourteen street lights for the business section of the town. The lights are to be of 100 candle power and of the pole and bracket type.

Paint Rock—Possibilities of Paint Rock as a summer and health resort are to be exploited if movement on the part of leading citizens goes through. The town believes its location near the banks of the silvery Concho make it an ideal spot for a summer playground where swimming, boating, fishing, and hunting can be had in abundance.

Gillilands Return Monday
Mr. and Mrs. H. A. Gilliland and Miss Bernice Barnard returned Monday from a motor trip to Norman, Oklahoma where they visited Alfred Gilliland. They also stopped at Minco and visited Mr. Gilliland's brother. They returned by way of Oklahoma City.

Watch for announcement of opening of Master's new Dining Room in Borger.

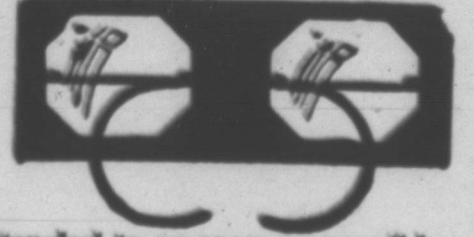
GRAY-PAMPA HOTEL
"In the Heart of Pampa"
112 S. Main St.
A. E. SHAW, Mgr.

MODERN BEAUTY METHODS
AS PRACTICED BY
EXPERIENCED OPERATORS
in all lines of Beauty Culture insure perfect satisfaction at the
BLUE BIRD BEAUTY PARLOR
In the Crystal Palace Confectionery



RANGER HOTEL
Just South of Depot
35 Rooms
Reasonable rates by day, week or month
Hot and Cold Running Water in All Rooms
Bath to Public 50c

EYE HELP
Do you have headaches? Do your eyes burn or itch or feel dry? Does the print blur or run together after you read a while?
All are symptoms of eye strain and should be attended to as soon as possible. We are exclusive optometrists (eyesight specialists) and specialize in the study of the human eye and the correction of its defects.
If you have eye troubles or need glasses you may see me in my office in the Fatheree Drug Store every Saturday.
DR. T. M. MONTGOMERY
associated with
HYDEN'S
620 Folk Street
AMARILLO, TEXAS
P. S. We are not boom Doctors. We have been in the Panhandle and Amarillo for fourteen years and will be here after the boom is over.



Methodists Lead in Number At Texas U.

Austin, Texas, Jan. 25.—Methodists lead all other denominations in the student body of the University of Texas during the present long session. There are 1500 students of that denomination, 894 Baptists, 675 Presbyterians, 325 Episcopalians, 300 Christians, 200 Catholics, 170 Jews, and 150 members of smaller denominations represented by one or more students. Of the entire student body, 54 percent gave some definite church preference.

Student Cartoonist Earns Half Expenses

Austin, Texas, Jan. 25.—Ingenuity of students in working their way through the University of Texas is illustrated by Tom Halloway of Ennis, who, by his skill as a cartoonist, earns half of his expenses. His drawings posted on the campus "Bull Board" in front of a drug store near the campus are sold for twenty-five cents each and are generally spoken for within a few moments after they are displayed, he said.




Safe or Sorry
THERE are no cut prices to health. The best is none too good. So, when you buy cheap plumbing fixtures, and think you are saving money, you are not. You are losing money. And what's worse, you are making your home a breeder of disease.
The only kind of plumbing worth having is the best. Anything else is dead loss.
When you buy "Seconds," "Damaged," "Defective" plumbing goods, you buy trouble, sickness, death.
A crack is a home for disease germs. A leaky pipe leaks away health.
Buy only quality plumbing—quality fixtures, quality materials, quality workmanship—the kind that is guaranteed.
TANNER PLUMBING CO.
Phone 220 PAMPA, TEX.
Phone 388N CANYON, TEX.
Licensed and Bonded

WIN TEN DOLLARS IN GOLD
The Y & M Cafe is offering ten dollars in gold for the best name submitted for the name of the cafe.
Each person may submit one name. Contest closes February 1. Turn in a name. You can win ten dollars in Gold.
Cafe located east of White House Lumber Yard on Foster Avenue.
McMAHAN & PINNECKER
PICK OF THE PICTURES—FIRST PICK AT THE CRESCENT THEATRE
—WEDNESDAY—
"WITH THIS RING"
with
Alyce Mills and Lou Tellegen
—THURSDAY—
"SWEET DADDIES"
with
Charles Murray, Geo. Sidney, Vera Gordon and others
—FRIDAY—
Bob Custer
"THE FIGHTING FOOL"
Good Comedy With Each Program
If it's a good show its at the Crescent

EVERY DAY
Brings us new Coats, Dresses and Hats, and we consider it a real pleasure to show them.
You will never know Hosiery satisfaction until you try "Gotham Gold Stripe".
\$1.85 — \$1.95
Mitchell's
THE LADIES' STORE
Pampa, Texas.

YOU'LL BE WELL SATISFIED WITH YOUR GROCERIES
A smile of pleasant satisfaction will be yours when you inspect your order of Groceries, if they are selected from our carefully chosen stock. The prices will please you, too.
WOODWARD-LANE GROCERY
PHONE NO. 30



PERSONAL & LOCAL

The new Adams Hotel will be formally opened soon.

Mr. and Mrs. P. O. Sanders motored to Wheeler Sunday.

R. A. Tipton of Amarillo was here on business Monday.

Ivy Duncan has returned from a three months visit in Corpus Christi.

Construction work on the new Schneider Hotel is progressing rapidly.

G. C. Malone will start construction of a new funeral home here soon.

Judge Sid O'Keefe and M. B. Welsh of Panhandle were here last week.

Mrs. Porter Malone spent the week-end in Amarillo visiting her parents.

M. A. Turner returned Friday from a tour of several cities east of here.

Ben Breeding has returned to Pampa and will re-enter the Pampa High School.

Master's new Dining Room will open soon in Berger. Watch for announcement.

Mr. and Mrs. I. S. Jameson returned from San Antonio last week after spending several weeks.

C. C. Dodd departed for Woodward Oklahoma, yesterday. He expects to return in about a week.

The new Chevrolet Garage on West Kingsmill Avenue has been completed and is open for business.

Brick work on the Brunow Building at the corner of Cuyler Street and Foster Avenue has been completed.

Mrs. H. W. Johns has returned from the Northwest Hospital in Amarillo where she underwent an operation.

Wayne O'Keefe, Earl O'Keefe and the Rev. Johnson of the Baptist Church of Panhandle were here on business today.

Putting On Campaign Here
C. A. Dockstader, Paul Briastow, James Oakes, all of Amarillo, and J. A. Connors, factory representative of the Premier Duplex Cleaner Company, are here this week putting on a campaign for the Premier Company.

Joe Vincent, who has been confined to his home for the past few days with appendicitis, is reported to be improving.

W. W. Ellison of the Ellison Plumbing Company of Amarillo has taken out a permit to start plumbing work on the new Schneider Hotel. The heating system will be installed by the same company.

Dr. Elliff Opens Offices Here
Dr. Edgar A. Elliff has opened offices in the Duncan Building. He came to Pampa recently after spending several months at St. Louis, Missouri, and in Vienna in Europe, specializing in the treatment of the eye, ear, nose and throat.

THE FAMILY MENU

BREAKFAST—Apples, cereal cooked with dates, thin cream, crisp broiled bacon, fried cornmeal mush, syrup, milk, coffee.

LUNCHEON—Potato and cheese soup, Boston brown bread and butter sandwiches, jellied fruit salad, molasses cookies, milk, tea.

DINNER—Roast lamb, potatoes baked with meat, cranberry jelly, creamed carrots, banana and tomato salad whole wheat bread, orange ice, chocolate cake, milk, coffee.

If fresh tomatoes are not available slices of well-ripened bananas served on slices of tomato jelly make a delicious and novel salad. Finely minced celery is used to garnish the salad and a French or mayonnaise dressing may be chosen.

Chocolate Cake
Two squares of bitter chocolate, 1 cup granulate sugar, 1 3-4 cups flour, 2 eggs, 1 teaspoon soda, 1 teaspoon vanilla, 1-4 teaspoon salt. Melt chocolate in 1-2 cup milk and cook to a paste. Cream butter

FOR SALE OR RENT

Concrete mixer, engines, air compressors, pumps, saw rigs, paint sprays.

UNIVERSAL SUPPLY & MACHINE CO.

G. G. HENDERSON, 210 East 3rd Street, Amarillo, Texas.

LUMBER TIMBER SHINGLES
All Building Materials

Direct from mills and factories to builders anywhere. White Pine, Yellow Pine, Fir, Cypress, Cedar, Hardwoods. Straight cars, house bills or smaller shipments, by train or truck. High grades, quick shipments, great saving. Write or wire

Louisiana Lumber & Supply Company
Distributing Yard & Office
AMARILLO
1509 W 6th St. Phone 4290

and beat in sugar, add first mixture. Mix thoroughly. Beat yolks of eggs until light with remaining milk and add alternately with flour to first mixture. Add vanilla, salt and soda dissolved in a little cold water. Beat hard for two minutes and turn into a dripping pan lightly oiled and floured. Bake 30 minutes in moderate oven. When cake is cool, cover with a boiled icing made with the whites of eggs. Cover the icing with 1-4 cake bitter chocolate melted over warm water.

GRADE SIRE "FADE AWAY"
In conducting the "better sires—better stock" campaign, a nationwide crusade promoting the use of purebred sires, the Bureau of Animal Industry of the United States Department of Agriculture receives many interesting accounts to interesting experiences from livestock owners who are gradually learning the merits of well bred animals. On each enrollment blank, which must be signed by anyone wishing to become a member, a space is

owner may mention any inferior sires recently disposed of, giving reason for doing so. An enrollment blank received from a Montana farmer contained a brief account of his experience with a grade boar.

"I disposed of a high-grade boar about two months ago," he wrote. "Secured a younger purebred for the same money. I have noticed that grades (Duroc)—even after several generations of pure crossings—fade in color as they grow older and do

not fatten so readily or look so well".

Though the fading in color possibly requires further explanation than the reasons given, officials in the Bureau of Animal Industry remarked, when noting the experience of the farmer, that in view of the increasing number of farmers using only purebred sires, grade boars are "fading away in a broader sense. In a few decades, or even a few years, one may see many titles insisting on purebred sires in all

PANHANDLE LUMBER COMPANY

RIG MATERIAL—BUILDING MATERIAL

Quality - Service - Satisfaction

WE NOW HAVE

A Modern Plant

and can give

ONE DAY ODORLESS CLEANING SERVICE

PHONE 261

WE CALL FOR AND DELIVER

SOUTH SIDE TAILORS

REX

ALL WEEK
Beginning Monday
January 24th

The Show Everyone Will Want To See



Bert Humphries and Her Brevities

A CLEVER, CLASSY, MUSICAL SHOW!
NINE LOVELY YOUNG GIRLS IN CHORUS
FEATURING

BERT HUMPHRIES

The Funny Old Lady Who Will Make You Scream With Laughter.

Billie Weber, that Black-Face Boy from Dixie
Griffith Sisters, Harmony Due and the DeHaven Twins
Clever Dancers



IT'S SOME SHOW—SEE IT THE FIRST NIGHT
And You'll See It Every Night
All New Bills, Written by Miss Humphries
THE CHARACTER COMEDIENNE

IT'S A BIG SHOW
LET'S GO!

Matinees 10-35
Nights 10-50

AMARILLO FENDER & BODY WORKS
FOR

TOOL RACKS—
TOOL BIT BODIES—
TRUCK BODIES—

R. G. BENNETT

TELEPHONE 3310 — — — 207 POLK ST.



NOT
ONLY
PLEASED—
DELIGHTED

Folks all over town are finding out for themselves that our cleaning and pressing is of the highest quality and that for prompt and courteous service, we can't be beat.

LET US SHOW YOU

DE LUXE CLEANERS
"Service With a Smile"
Phone 221

CLASSIFIED ADS

Rates for Classified Ads: One and one-half cents per word per week, minimum twenty-five cents. Strictly in advance.

FOR SALE

FOR SALE—Coal range cook stoves at bargain prices, \$5.00 to \$35.00. All in good condition. G. C. Malone Furniture and Undertaking Co. 3-4tc

FOR SALE—Singer Machines bought and sold. New singers sold on easy terms. Machines rented by week or month. Eldridge, the Singer Man at Thornton's Store. 49tc

FOR SALE—SEED BARLEY—Heavy bright, free from all other seeds, strong germination. \$1.00 bu. four miles north. John L. Cecil. 52-4tp

FOR SALE—Show case, 70 inches long, 27 inches wide and 14 inches high. In good condition. Will sell very reasonable. Call at Pampa News or phone 100. x

FOR SALE—Brood Sow. Ten miles east, four north. Stockstill Bros. Phone 9008P42. 54-1tc

FOR SALE—Account of ill health will sell the Cinderella Beauty Parlor. Mrs. C. A. Christian, Phone 262. 54-2tp

FOR RENT

FOR RENT—Well furnished house-keeping rooms. Inquire four miles east on 33 Highway. R. R. Mitchell. 53-1tp

FOR RENT—Sleeping Room, adjoining bath. Strickland apartments. 54-1tp

FOR RENT—Furnished and unfurnished rooms. Nine blocks north post office at Duncan farm. Inquire for Mrs. Gaylor at farm. 52-4tp

FOR RENT—Two bed rooms and two rooms for light housekeeping. Mrs. George Walstad. 54-1tc

FOR RENT—Two room furnished apartment, modern. Walking distance. Phone 135. 54-1tp

FOR RENT—Unfurnished apartments, close in. See Sterling Williams across street from old school house. 54-6tp

WANTED

WANTED—To buy used furniture and oil stoves. G. C. Malone Furniture and Undertaking Co. 3-4tc

WANTED—Salesmen. Two men with cars for saleswork with the Fuller Brush Co. Write E. R. Manley, Pampa, Texas. 54-2tp

WANTED—MAN with five passenger touring car wants employment of any kind. Mr. Sawyer, Box 448 Pampa. 53-4tp

LOST AND FOUND

LOST—Automobile disc wheel and spare tire. Will fit no other car but old model. Lost between Roxana and Deer Sunday. Reward if returned to E. H. R. Sabens. Deer. 54-1tp

MISCELLANEOUS

We are glad to assist you in planning that new home you have been contemplating building. Our motto, "Service that Satisfies." White House Lumber Co., Pampa, Texas. 11-4tc

BOARD—Good board in private home. \$1.50 per day. Mrs. E. D. Zimmerman. Phone 1253. 54-2tp

For Sand, Gravel and Rock phone 9011P31. C. E. Bennett at Roy Tinsley place. 52-4tp

TAKEN UP—One stray mule, light gray, about 14 hands high, weight about 750 lbs., 8 or 10 years old, at the John Henry place. One-half mile east. Ed Lynch. 52-4tp

Plenty of Fresh Fish and Oysters. Just east of White House Lumber Yard. McNahan and Prosser. 52-4tc

SORE BLEEDING GUNS

Only one bottle of Leto's Pyorrhea Remedy is needed to cure you. No matter how bad your case, get a bottle, use as directed, and if you are not satisfied, druggists will return your money. H. & K. Drug Co. 5-4tc

W. T. HANSETT A. E. DIXON

A. E. DIXON CO.

INCOME TAX CONSULTANTS

725 AMARILLO BLDG.

Phone 1095

AMARILLO, TEXAS

Mode Is Light Shades In Fashions For Spring

There will be no real marked change in women's fashions in hosiery this spring although there will be a demand for modifications of the present colors and a tendency toward matching the shoes.

Black hose and the different shadings of black promises to be popular for this spring. Black pumps and sheer black hose will be considered very smart, and also grays, gunmetal and cannan shades will be worn during the very early spring months.

The later spring months will bring out the extremely light shades into prominence and the neutral tones of the atmosphere parchment and the nude with less red and more yellow used on the makeup.

Then in the late spring and early summer white hose with colored clocks promises to be a favorite combination. A new weave called chiffon lisle will be introduced for summer wear.

There is a new idea that has come from Paris in an ombre effect known as "compose". A shading result is produced by special dye process in which the color darkens as it reaches the top of the hose. Its purpose is to create the idea of slowness.

Some of the leading colors will be flesh pink, a soft brown, shell gray, atmosphere, champagne, sunset, French nudes, Alesan, Dove Gray, Piping Rock, Evenglow, blue, fox, grain and Blige.

Among the smart new things offered in the shops are the black and white pearls. These pearls are made up into very attractive combinations of earrings, necklaces, bracelets, and rings.

For the dark winter frock a touch of newness and a brightness is added by a collar. A bertha collar makes a smart addition to a plain dress or a lacy white round collar, or perhaps ruffled crepe de chine collar in some striking color that harmonizes with the costume.

Perhaps a colored suede belt worn with your winter outfit will add

just that needed touch of brightness to give it a certain charm for early spring.

Felt still holds its old place as the most popular of hat materials, and now there is the speckled felt that suggests crackle wear by its printed designs.

A jeweled buckle at the back of the collar adds a note of distinction to the plain frock.

There are some interesting new belts of silver metal with carved crystal. Then silver and enamel is the material that is used in another to bring out the same rich effect so necessary to the present mode.

Mr. and Mrs. G. L. Reno of Columbia, Missouri have been visiting friends and relatives here for the past few days.

Members of the American Legion are completing plans to have a two story brick building constructed in the near future.

News Want Ads Pay

Dodd's Produce

WHOLESALE and RETAIL. Live and dressed poultry. Canceled and fresh eggs.

FEEDS All kinds stock and dairy.

FLOUR Red Star and Belle of Wichita

PRODUCE Cash paid for poultry, eggs, and hides.

DODD'S PRODUCE AND HATCHERY PAMPA — TEXAS



FINAL CLEARANCE

Ladies and Misses COATS HALF PRICE

Every Winter Coat Included in this drastic Reduction. All Good Styles and Colors. Every Garment is new for this season. Practice Economy. Come and Take Your Choice for One-Half of Regular price.

MANY OTHER CLEARANCE ITEMS JUST AS INTERESTING

SPRING FOOTWEAR

Many Beautiful Eastern Patterns in Spring Footwear now here for your approval. We can fit you—All sizes, AAA to C.

Men's and Boys' Overcoats 25 Percent Off

Spring Dress Fabrics

THE STORE WITH THE RIGHT GOODS
Diamond C.
DRY GOODS CO.

New Spring Stetson Hats

A Chain Store Next To Rogers Cafe

HAPPY JACK JENK'S VARIETIES

Opened Monday night to a capacity house.

A Fast-Stepping, up to the minute Super Comedy Show.

Clean wholesome fun aids digestion. Come and laugh with the crowds.

Carefully selected Players and plays, and really wonderful music.

ALL THIS WEEK AT THE

CRESCENT THEATRE

Sunday and Monday, "The Winning of Barbara Worth."

BIRD'S ROOFS



SHINGLE DESIGN Roofing

A FEELING OF SECURITY

You experience a feeling of security when you have a BIRD'S ART CRAFT ROOF over your head. Let us tell you more about this economical roofing.

THE HUDSON HOUSTON LBR. CO. EVERYTHING FOR THE BUINDER

WE WELD

Broken Cylinders and many other parts of Automobile, Gas Engines, Pumps and etc. with

"ELECTRIC ARC"

Without Disassembling

Latest and best machinery made for Reconditioning gasoline motors.

Expert Mechanics in every department

Jones Everett Machine Company

PAMPA,

TEXAS

PIPE THREADING, Heavy Forging and General Machine Work, Fishing Tools, Supplies, and Etc.

THE PAMPA NEWS

Published Tuesday and Friday at Pampa, Texas

DAVID M. WARREN
Publisher

W. E. LOUPE
Manager

HEN F. RENO
Editor

Office in News Building
Phone No. 100

SUBSCRIPTION RATES
in Texas

One Year	\$2.50
Six Months	1.50
Three Months	.85
Outside Texas	
One Year	\$3.00
Six Months	1.75
Three Months	.90

Advertising Rates Upon Application

Entered at the Pampa, Texas
Postoffice as Second Class Mail

GETTING IN A RUT

Many towns, families and countries are unprogressive because a large number of the people in them have got in a rut and stayed there to their own detriment as well as that of others. These people are those who have become satisfied with their lot and are not interested in bettering their own condition or helping others to better their condition.

Pampa like every town has some of these people who are so satisfied with themselves and what they have done that they have gotten in a rut and have become unprogressive. They are the people who say "Let George do it," and are always speaking of things in the past instead of in the future. They live in the past and let the future take care of itself instead of trying to make the future better than the past.

Most of these people who have gotten in a rut are the ones who have been successful in business, and feel that because they have provided for their families that they should not be asked to do anything else. It is this selfish attitude which holds back many towns and causes them to deserve the name of "hick towns".

A man's duties are not over when he has provided for his family and given his children a chance to make good in the business world. Every citizen of a town owes that town his cooperation in improving it and making it a better place to live in for the future as well as the present. This cooperation takes the form of voting during city elections, supporting civic improvement organizations, supporting public betterments and taking a part in all movements which are for the betterment of the community.

CONCENTRATION

The purpose of every student in the schools of America is to acquire an education. Educations are acquired through study. Before a student can study with the greatest measure of success, he must know how to study. The secret or keynote to successful study lies in concentration. Webster defines concentration as "the bringing of all powers to a common center." It is intensified attention. It is the steady, complete, and systematic application of the mind to the acquisition of knowledge from the printed page.

Concentration is merely a matter of practice, and it reaches its highest degree of perfection when one is able to keep his mind upon his work, regardless of usual noises and ordinary conversation close at hand. Do not believe, even after scores of attempts, that you cannot acquire the fine art of concentration. It is possible in every case to develop the power of concentration to such a degree that you could forget all else except that you are studying in the din and roar of a factory. When your interest is sufficiently strong, the thing is achieved.

It is said that there is a great magnifying glass in a laboratory in New York City, three feet in diameter, which focuses and concentrates the rays of the sun falling upon its surface, upon a position the size of a pencil point. When the rays of the sun, falling upon this glass three feet in diameter, are focused upon one point, the heat at that point is so great that it will burn through a steel plate as

readily as an acetylene torch. These rays, when they fall upon the body, are only pleasantly warm. When they are concentrated at one point, an intense burning heat is developed.

When all of the powers of the human mind are concentrated upon one thing, no earthly power can resist its force, or curb its action or suppress its achievement. Remember that three feet of ordinary sunshine will burn through a steel plate. Marshall your will power! Concentrate.

UNIFORM TRAFFIC LAWS

Every state in the Union should have uniform traffic laws, according to H. O. Rounds, supervisor of the Bureau of Public Safety of the Detroit Police Department.

According to Mr. Rounds, the chief causes of accidents are taking the right of way from the other fellow; failure to give signal of intent to stop or turn; cutting in ahead—not waiting until well past the other car before turning, and so driving him into the curb or ditch or into parked cars; and exceeding the speed limit.

"No driver ever left home in the morning with the firm intention of killing or injuring someone during the day," he says. All accidents happen in emergencies. Therefore I maintain that any man who drives so fast that he cannot stop in time to prevent taking a life when that emergency arises is exceeding the speed limit. I don't care whether he is travelling but ten miles an hour.

By establishing uniform traffic laws all over the United States much of the traffic problem would be done away with. The laws are different in every state and in every town, and no motorist can keep from violating some of the laws when he goes from one state to another or from one town to another. Of course there are some districts where

AT THE THEATRES

The Happy Jack Jenks Company has been holding the attention of patrons at the Crescent Theatre this week, while Bert Humphries has been entertaining at the Rex.

Both of the shows are something unusual in the way of theatre entertainment. The clever stage interpretations of Bert Humphries are of her own manufacture. She sings various songs composed by herself, and to a tune that is entirely original. Some of her sure-fire hits are "The Washboard Blues" which she conceived after seeing a negro sing with a wash-board accompaniment, and "Sure Cure For Blues," a snappy composition.

The Happy Jack Jenks Company holds a laugh in every minute of the fifty-minute witty comedy. The groups of players have been selected for a show that is a little different from anything else. The plays include plenty of push, music, harmony, singing, mixed voices, piano solos and chataqua numbers. The entire program is unrolled in fifty minutes.

Both the Rex and The Crescent announce a complete change of vaudeville and picture program each night during the week.

The Grand Theatre is installing some new machines and a generator to regulate the electric current that is used in the projectors.

Metal Cutting With Gas Proves Success

Illuminating gas to replace acetylene, hydrogen and other fuel gases in combination with oxygen for metal cutting has been adopted at the Schenectady plant of the General Electric Company, following a comprehensive study of the various classes of work.

A special oxy-illuminating gas torch was developed for the purpose, and is now being used for the cutting of risers in the steel foundry of that plant varying in thickness from 1 to 20 inches. This method is also used on machines cutting intricate shapes from steel plate.

If we love mystery and adventure we must love life for life is both of these.

Alaskan Reindeer Studied By Canada

The reindeer industry in Alaska has been given considerable aid by researches of the Biological Survey of the United States Department of Agriculture. Officials of Canada have now begun an investigation with a view of restocking northern Canada with reindeer from Alaska. Two representatives were sent to Alaska last year to get practical knowledge of reindeer herd management and of reindeer forage plants, under the guidance of Biological Survey experts. They are also seeking information on the best breeding and grazing grounds over which to make a drive of approximately 2,000 reindeer to the Mackenzie River delta region. It has been estimated that such a drive would take

about three years and would cost about \$100 for each animal. The purpose of the undertaking is to provide reindeer to enable the Eskimos of northern Canada to become self-supporting, and the Biological Survey is giving all cooperation possible.

Women's Auxiliary Holds Meeting

The Women's Auxiliary of the Presbyterian Church met last week at the home of Mrs. Dave Pope with Mrs. John Andrews presiding. Mrs. T. D. Hobart had charge of the Bible lesson. The subject discussed was "Faith".

Later a social time was enjoyed and a delicious salad course was served by the hostess, Mrs. Tom Clayton. Thirteen members and three visitors were present.

"Opportunity Knocks some folks cold".

Who's Who TODAY



CHARLIE CHAPLIN

BECAUSE THERE REALLY IS FRIENDLY INTEREST HERE

We are able to not only furnish excellent service but also to impress upon the mind of the patron that he is in the hands of friends.

We are able to surround him with an atmosphere of comfort and mental ease that makes him know he will get a square deal.

We apply our personal service PERSONALLY.

"There is no Substitute For Safety"

GRAY COUNTY STATE BANK

C. L. THOMAS, President W. H. DOYLE, Cashier

Your Income Tax Report

I will be at the
GRAY COUNTY STATE BANK
FOUR DAYS ONLY
JANUARY 31, FEBRUARY 1, 2, and 3
and solicit your tax work.
Reasonable Fee
OIL DEPLETION

J. B. WRIGHT
PUBLIC ACCOUNTANT

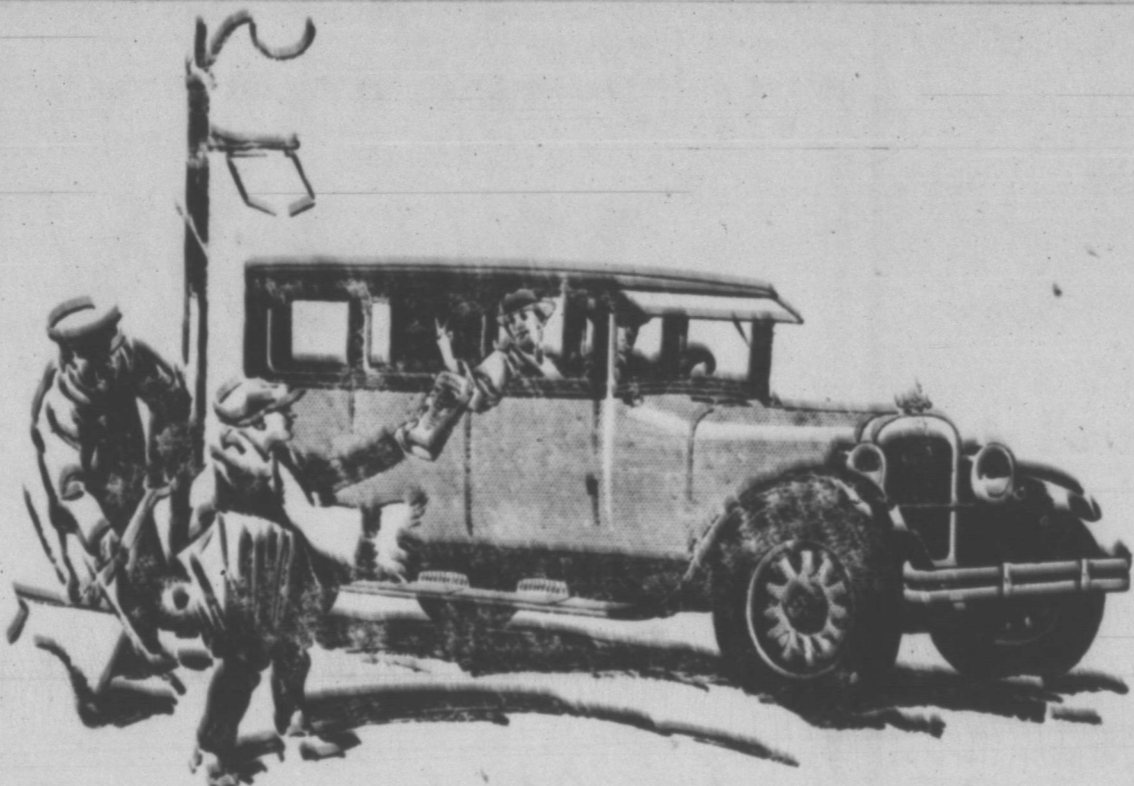
The First National Bank

Pampa, Texas

Better Secure a Safety
Deposit Box Now for Your
Valuable Papers

B. E. FINLEY
President

DE LEA VICARS
Cashier



The Secret... of Dodge Brothers Reputation

The secret of Dodge Brothers reputation for building a dependable product can be summarized briefly and forcefully in two sentences:

Never a type that had to be withdrawn.

Never a fundamental mistake that the public was asked to forget.

TOURING CAR	\$930.00
COUPE	\$985.00
SPECIAL SEDAN	\$1130.00

DELIVERED IN PAMPA

COBB MOTOR COMPANY

We Also Sell Dependable Used Cars

DODGE BROTHERS MOTOR CARS

LEGION MEMBERS WITH OFFICIALS

Attempt Being Made To Legalize Boxing

Legionnaire Ben Dean of Breckenridge, has been appointed the Chairman of the American Legion Legislative committee, and will look after matters pertaining to the welfare of the Legion, during the present session of the Legislature. It will necessitate the advancement of approximately \$5,000 to finance the committee of which Mr. Dean is chairman and this amount is being raised by the various legion posts of Texas, by donations. Brackenridge and Abilene have each sent in \$100. Contributions should be sent to the Department Adjutant S. M. Hankins, 3rd Floor, Land Office Bldg., Austin, Texas.

Among the various measures which the Legion seeks to have enacted into law, is one that would legalize boxing contests in Legion exhibitions, with proper restrictions, against gambling, ten percent of the receipts to go to the Public Free School of Texas.

Another law is sought that would exempt from taxation all Legion owned property in Texas, like church property. It is to be hoped that every Legion Post in Texas will get squarely behind Ben Dean and help him put over these Legion measures by sending in your contributions immediately to the address mentioned above.

There is confidence in the boxing bill going over, and this means a financial benefit to each Post, therefore the money you contribute to the Legislative Committee is loaned on a big 'intress' basis with much to gain financially.

Labor Leader Sees Coming Short Week

In an address before the New York Building Congress December 8, William Green, president of the American Federation of Labor, said: "The change from primitive methods of manufacturing and industrial service to mechanical and modern methods represents the revolution which has taken place in the industrial and economic world. Thus far we have not reached the limit of American enterprise or topped the standard of American efficiency and service."

"In reflecting over these tremendous possibilities we must take into account the use and importance of electricity in industry. As steam revolutionized our industrial processes we and electric power is working a greater transformation at the present time. The general use of electric power has enabled the workers to raise their standard of efficiency and productivity until America has established its industrial supremacy throughout all nations of the world. It is clearly evident that electric power will be utilized and applied in an ever increasing way in all lines of industry."

"As the amount of electric power supplied to each individual in industry is increased in like proportion his efficiency and productivity is increased. Though silent and unseen electric power is the greatest agency making for the establishment of the shorter work week in all lines of industry."

NEWS WANT ADS PAY

FREE - FREE

CAN YOU SOLVE THIS PUZZLE?

GIRERNH

NAME OF A POPULAR AMERICAN HOTEL

To the persons solving this puzzle will be given two building lots in a close-in Amarillo Subdivision. You may have two of these lots for the mere expense of grading the streets, planting, staking and surveying, etc. Write your answer plainly and forward it to THE PAMPA NEWS, BOX 445

Name of Hotel

(Contestants Name)

(Contestants Address)

Intersociety Debating Adopted By T. U. Girls

Austin, Texas, Jan. 25—Girls have taken up intersociety debating for the first time in the history of the University of Texas, according to Miss Lorena Drumond of Austin, president of Versus Club. In 1925 that debating society was organized with the object of holding intersociety debates. But this was impossible until another girl's organization was formed this fall which is known as the Hegg Auxiliary. The question for discussion is that used in the Interscholastic League: Resolved, That congress should pass a bill legalizing light wines and beer.

Getting New Facts On Old Apple Pest

The codling moth is a troublesome insect enemy of apples, prevalent in most apple-growing regions. A special appropriation for meeting the situation in Kansas was made available to the Bureau of Entomology July 1, 1926, but in order to cover a nentire season work was begun in cooperation with the Kansas Agricultural College during the spring. Damage was especially severe in Kansas and the Ozarks during the preceding season, and it is hoped that these studies will throw much light on the codling-moth problem throughout this region. Field experiments in control are under way at the Bentonville, Ark., laboratory, which include the testing of arsenicals applied in various dosages and at various times, and of ovidical and larvicidal materials. Questions relating to the quantity of spray residue on fruit at harvest time are being studied at the Yakima, Wash., field station. Tests of a large series of baits for moths in the orchards and in packing sheds are also being made. An apple ferment has been found to be the best bait material of those tried, though a ferment of molasses and yeast is also good. None of the essential oils tested shows much promise.

At the Sligo, Md., laboratory the feeding habits of the codling-moth larvae are being studied, especially those just hatched. The development of insecticides other than arsenicals is being attempted.

ent auditorium can be erected at the University, Williamson said.

Semi-Portable Stage Adopted

Austin, Texas, Jan. 25—Construction of a semi-portable stage has been asked by certain students of the University of Texas in a petition to President W. M. W. Splawn signed by Melvin E. Williamson of San Antonio, director of the Curtain Club. The stage could be erected on short notice and serve a great variety of purposes until a permanent

Masonic Collar More Than 200 Years Old

Belfast, Ireland.—James O'Prey, of this city, has in his possession a Masonic collar, in fair state of

preservation, belonging to his great-grandfather. It bears the inscription, "James O'Prey, K. L. No. 117," and for the past 200 years or more has been handed down from family to family of the O'Preys. Another interesting relic is a Masonic Cube bearing the inscription, "F. E. O'Prey, Earl of Belfast," but about its history there is no evidence.

IT IS OUR POLICY

ALWAYS to render the class of title service that is now our greatest asset in obtaining new business. OUR reputation for promptness, accuracy and reliability has been the soliciting medium between our firm and the public which has daily increased the volume of our business since our plant was established.

GRAY COUNTY ABSTRACT CO.
P. O. SANDERS H. W. JOHNS
"PHONE 240
PAMPA, TEXAS

ARMY AND NAVY STORE

169 SOUTH MAIN ST.

TENTS, COTS, BLANKETS,
SHOES AND CLOTHING

BUILDING STURDY CHILDREN

Beauty bread is a staple food on the table of those who wish their children to grow up sturdy and healthy. Made pure, fresh each day, it is a food they want every meal.

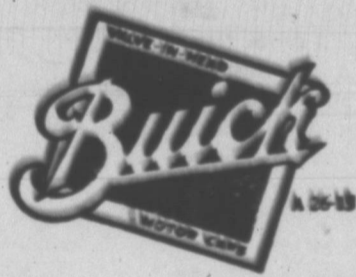


Cake — Pastries of All Kinds

PAMPA BAKERY

FRED SCHAFFNER, Prop.

Phone 81 133 Foster Ave.



Everyone says—
"Buick is Reliable"

Buick reliability is one reason why the majority of new Buicks every year are purchased by old Buick owners.

Buick is the car with the Sealed Chassis, which encases every operating part inside an iron or steel housing, to keep out dirt.

Buick is the car with the high-speed starting motor, for reliability in starting—with mechanical 4-wheel-brakes, for certainty in stopping—and with a six-cylinder, valve-in-head engine, for engine performance that is the envy of the motor car industry.

Buy a Buick! It is a more dependable and more enjoyable motor car.

THE GREATEST BUICK EVER BUILT

PAMPA BUICK CO.

OUR SPECIAL CAMPAIGN

ON

Premier Duplex

IS NOW ON

Let one of our representatives demonstrate this wonderful new cleaner in your home and show you how much of the drudgery of house-keeping this will eliminate. When you buy Premier Duplex you buy the best cleaner the market affords and a cleaner that will give you years of service.

REMEMBER This Special Campaign
Is for This Week Only

A liberal allowance for your old cleaner.

Southwestern
PUBLIC SERVICE
Company

NOTICE

By making publication of the hereinafter set out ordinance notice is given of all matters and facts therein contained, which said ordinance is as follows, to-wit:

ORDINANCE DETERMINING TO ASSESS A PART OF THE COST OF IMPROVING PORTIONS OF CUYLER STREET AND SUNDRY OTHER STREETS IN THE CITY OF PAMPA, TEXAS, AGAINST ABUTTING PROPERTY AND THE OWNERS THEREOF, AND AGAINST RAILWAYS AND THE OWNERS THEREOF, ADOPTING ENGINEER'S ROLLS, PROVIDING FOR NOTICE OF HEARING AND HEARING, AND DECLARING AN EMERGENCY.

WHEREAS, the City Council of the City of Pampa has heretofore ordered that the following portions of streets in said City be improved by raising, grading and filling, and installing concrete curbs and gutters, and paving with three inch Vertical Fibre Brick on 5 inch Concrete Base, with necessary incidentals and appurtenances, and in accordance with the plans now on file with the City and in accordance with the specifications therefor attached to the contract between the City and Stuckey Construction Company hereinafter referred to, said portions of streets being as follows, to-wit:

CUYLER STREET from its intersection with the North property line of Brown Avenue to its intersection with the North property line of Francis Avenue, known and designated as Unit or District No. 1.

KINGSMILL AVENUE from its intersection with west property line of Cuyler Street to its intersection with the East property line of the alley between Cuyler and Russell Streets, known and designated as Unit or District No. 2.

Engineer's roll or statement for Cuyler Street from its intersection with the North property line of Brown Avenue to its intersection with the North property line of Francis Avenue known and designated as Unit or District No. 1.

tersection with the East property line of Cuyler Street to its intersection with the West property line of Alley between Cuyler and Ballard Streets, known and designated as unit or District No. 3.

FOSTER AVENUE from its intersection with the West property line of Cuyler Street to its intersection with the East property line of Sommerville Street, known and designated as Unit or District No. 4.

FOSTER AVENUE from its intersection with the East property line of Cuyler Street to its intersection with the West property line of the alley between Cuyler and Ballard Streets, known and designated as Unit or District No. 5.

ATCHISON AVENUE from its intersection with the West property line of Cuyler Street to its intersection with the East property line of alley between Cuyler and Russell Streets, known and designated as Unit or District No. 6.

ATCHISON AVENUE from its intersection with the East property line of Cuyler Street to its intersection with the West property line of the alley between Cuyler and Ballard Streets, known and designated as Unit or District No. 7.

WHEREAS, contract was let and entered into with Stuckey Construction Company for the making and construction of such improvements and the City Engineer has prepared and filed rolls or statements concerning the improvements and assessments therefor in each unit; and same have been examined and all errors found therein by the City Council corrected; and

WHEREAS, the City Council has determined to assess a portion of the cost of such improvements against the owners of property abutting thereon, and against such property;

NOW, THEREFORE, BE IT OR-

DAINED BY THE CITY COUNCIL OF THE CITY COUNCIL OF THE CITY OF PAMPA, TEXAS: THAT,

I. The City Council of the City of Pampa, Texas, does hereby determine to assess a portion of the cost of said improvements on said portions of the streets against abutting property thereon and against the owners of such property, and against the owners of railways using or occupying any portion of same, said assessments to be levied in exercise of the powers granted by the Charter and by Articles 1086 to 1096, both inclusive, and Articles 1104 and 1105, of the Revised Civil Statutes of the State of Texas, of 1925, heretofore adopted by this City.

II. Said rolls or statements, as corrected, be and the same are hereby adopted and approved.

III. Assessments when levied shall be and constitute the first enforceable lien and claim on the property against which such assessments are levied, superior in all respects to all other liens and claims, except state, county and municipal taxes, and shall also be a personal liability and charge against the real and true owners thereof. The descriptions of the parcels and tracts of the abutting property, the several amounts proposed to be assessed against such parcels of property, and the owners thereof, the total estimated cost of the improvements in each district, the amount to be assessed against railways for work between rails and tracks and two feet on the outside thereof, the total amount proposed to be assessed against each parcel property, and other matters and things as shown on said rolls or statements being as follows, to-wit:

of Cuyler Street to its intersection with the West property line of the alley between Cuyler and Ballard Streets known and designated as Unit or District No. 3.

Table with columns for Name, Address, Rate per lineal foot for curb, Rate per front foot for other, Amount total property owners, Amount City's part, Total cost.

Engineers roll or statement for Foster Avenue from its intersection with the West property line of Cuyler Street to its intersection with the East property line of Sommerville Street: known and designated as Unit or District No. 4.

Table with columns for Name, Address, Rate per lineal foot for curb, Rate per front foot for other, Amount total property owners, Amount City's part, Total cost.

Engineers roll or statement for Foster Avenue from its intersection with the East property line of Cuyler Street to its intersection with the West property line of the Alley between Cuyler and Ballard Streets known and designated as Unit or District No. 5.

Table with columns for Name, Address, Rate per lineal foot for curb, Rate per front foot for other, Amount total property owners, Amount City's part, Total cost.

Engineers roll or statement for Atchison Avenue from its intersection with the West property line of Cuyler Street to its intersection with the East property line of the alley between Cuyler and Russell Streets known and designated as Unit or District No. 6.

Table with columns for Name, Address, Rate per lineal foot for curb, Rate per front foot for other, Amount total property owners, Amount City's part, Total cost.

Engineers roll or statement for Atchison Avenue from its intersection with the East property line of Cuyler Street to its intersection with the West property line of the alley between Cuyler and Ballard Streets known and designated as Unit or District No. 7.

Table with columns for Name, Address, Rate per lineal foot for curb, Rate per front foot for other, Amount total property owners, Amount City's part, Total cost.

Main table with columns: Name of Owner, Description of Property (Lot No., Block No.), Number Front Feet, Assessment for Curb, Assessment for other improvements, Total Assessed.

Engineers roll or statement for Kingsmill Avenue from its intersection with the West property line of Cuyler Street to its intersection with the East property line of the alley between Cuyler and Russell Streets known and designated as Unit or District No. 2.

Table with columns for Name, Address, Rate per lineal foot for curb, Rate per front foot for other, Amount total property owners, Amount City's part, Total cost.

Engineers roll or statement for Kingsmill Avenue from its intersection with the East property line

IV.

A hearing shall be given by and before the governing body of the City of Pampa, Texas, on the 2nd day of February, 1927, at 10:00 o'clock, A. M., in the City Fire Station of Pampa, Texas, in the regular meeting room, to the owners of the respective parcels of property and of such railways and to all others in any wise interested, whether they be named herein or not, all of whom are hereby notified to be and appear at the time and place herein named and fixed, and said hearing shall be continued from time to time and from day to day, if necessary, until all desiring and presenting themselves to be heard shall have been fully and fairly heard, and at which hearing any mistakes, irregularities, or invalidities in any of the proceedings with reference to the making of said improvements or assessments therefor may be corrected, and the benefits by means of the said improvements, and the amounts of the assessments, and the apportionment of the cost of the said improvements, and all other matters shall be determined, and the real and true owners of the property abutting upon the said streets to be improved and of railways using or occupying any portion of same, and any and all others in anywise interested, their agents and attorneys, shall be and appear at said hearing at said time and place and present and make any protests or objections which they, or any of them may have as to the said improvements, as to the benefits therefrom, as to the cost thereof, as to the amounts of such assessments, or as to any mistake, irregularity or invalidity in any proceedings with reference to said assessments, such improvements, or the contract therefor, and as to any matter or thing in anywise connected, either with said improvements, contract or proceedings, and after all desiring and presenting themselves to be heard, either in person or by agents, attorneys or representatives, have been fully and fairly heard, the said hearings shall be closed and assessments will be ordinance and in accordance with law and the proceedings of the City be levied against the respective parcels of abutting property and the owners thereof, and against such railways, whether such owners be named herein or not, and whether the property be correctly described

herein or not. At such hearing any one in anywise interested or affected may subpoena witnesses and introduce evidence, and has the right to appear and to be heard.

V.

The improvements in each district or unit constitute an entirely separate, distinct, and independent unit, and the proposed assessments for the improvements in each unit are in no wise affected by any fact or circumstances in connection with any other unit, all to the same extent and as fully as if entirely separate and independent contracts had been made for each Unit and separate proceedings had, separate hearings, and separate notices thereof ordered.

VI.

The City Secretary of the City of Pampa is directed to give notice to the owners of property abutting upon the said portions of streets named to be improved and to the owners of railways using and occupying same, and to all others interested, of the time, place, and purpose of such hearing, and of all matters and things, by causing a substantially correct copy of this ordinance to be published at least three times in a newspaper published in and of general circulation in the City of Pampa, Texas, the first of which publications shall be made at least ten days before the date for such hearing, and by such publication all owners of property abutting upon said portions of said streets, and all owners of railways using or occupying any portion of any such streets and avenues, whether named herein or not, and whether the property be correctly described herein or not, as well as all others in anywise interested therein, or to be affected thereby, shall be and are duly notified, and no error or mistake in the name of any property owner, or in the description of any property, or in the amount of any proposed assessment shall in any wise affect or invalidate such notice or any assessment levied pursuant thereto, and the real and true owners of such abutting property shall be and are by such notice duly and fully notified. The City Secretary is further directed, but not required, to give further notice of such hearing by causing a substantial copy of such published notice to be mailed to each owner of property abutting upon such portion of said streets, and to the own-

ers of railways, but all such notices by mail shall be only cumulative of such notice by advertisement, and publication, and said notice by advertisement and publication shall in all cases be sufficient and binding whether or not any other kind or character of notice be given.

VII.

The present condition of said portions of said streets and avenues endangers health and safety, and it is necessary that the improvement thereof be proceeded with at once and while the weather will permit, and such facts constitute and create an emergency and an urgent public necessity requiring that the rules and provisions providing for ordinances to be read more than one time or at more than one meeting be suspended, and requiring that this ordinance be passed on and take effect as an emergency measure and such rules and provisions are accordingly suspended and this ordinance is passed as and shall take effect as an emergency measure and shall be in full force and effect from and after its passage.

Passed and approved this 13th day of January, 1927.

F. P. REID, Mayor, City of Pampa, Texas.

ATTENT:

C. W. FISHER, City Secretary.

Done by order of the City Council of the City of Pampa, Texas.

(SEAL) C. W. FISHER, City Secretary.

Texas Ranks Second In Livestock Production

Texas ranked second in the production of livestock for the year of 1926, with a total valuation of \$361,000,000. Farm crops including cotton, have increased in value from \$300,000,000 in 1925 to \$310,000,000 in 1926. Petroleum production has increased from 117,000,000 barrels in 1925 to 155,000,000 barrels estimated for 1926. Forest products have increased \$10,000,000 in value over 1925, and mineral wealth produced, including oil amounts to 275,000,000 barrels.

Texas sold \$7,000,000 worth of land to the United States in 1926 for ten million dollars. That left only 175,594,166 acres in Texas.