

STOCK REDUCING SALE -- OWING TO DELAY IN SHIPMENT OF FIXTURES FOR OUR NEW LOCATION, STANDARD FOOD MARKET STORE NO. 1 WILL OPEN IN PLA-MOR BUILDING OCT. 12TH

BUTTER Armour's Cloverbloom

Country Roll
LB. **32¹/₂^c**

CUT - RITE Waxed Paper 40 Feet Roll
EACH **6¹/₂^c**

POTATOES A Sell-out last week—Another shipment for this week-end.
Positively U. S. Inspected No. 1 Rurals
100 POUND BAG \$2.15
Saturday Only

NATIONAL OATS New Speedy Rolled Oats
THEY COOK IN 3 MINUTES
Net Weight 14 oz.

PACKAGE **7¹/₂^c**
FOR **18^c**

PURE EGG NOODLES Buddie Brand
Net Weight 3 Oz.
PACKAGE **5^c**

FRUITS & VEGETABLES Garden Fresh

BANANAS Large Golden Ripe
DOZ. **12^c**

POTATOES No. 1 Red Triumphs or White Cobblers
10 POUND BAG 25^c

Saturday Only
CRANBERRIES Eatmor Brand
FULL QUART **25^c**

TOMATOES Fancy Wrapped California Pink,
LB. **7¹/₂^c**

LETTUCE Green and Solid
California HEAD **8¹/₂^c**

CELERY JUMBO Well Bleached
STALK **14^c**

ORANGES California Fancy-Wrapped 252 Size
DOZ. **23^c**

LEMONS Sunkist 360 Size
DOZ. **27^c**

CAULIFLOWER Snow-White—Med Size
LB. **9¹/₂^c**
GRAPES Fancy Table Tokays
LB. **7¹/₂^c**

APPLES Winter Banana or Jonathna 150 Size
DOZ. **24^c**

RHUBARB Cherry Red
POUND **7¹/₂^c**

SHORTENING Armour's Vegetole **8 POUND CARTON 94^c**

MAINE SARDINES In Salad Oil
Weight 3 1/4 Ozs.
2 CANS 9^c FOR

LIGHTHOUSE CLEANSER Will Cleanse - Purify and Brighten
3 CANS 10^c FOR

PORK & BEANS Campbell's Brand No. 2 1/2 Size
2 CANS 21^c FOR

DOG FOOD Dold's Ace Brand Regular Size
CAN **5^c**

COCOANUT Long Shred 1/2 Lb. Cello
BAG **13^c**

PORK & BEANS "White Swan"
Contents 11 Oz. CAN **5^c**

GRAPEFRUIT JUICE No. 1 Size
2 CANS 15^c FOR

CANNED APPLES Northwest Solid Pack
GALLON **41^c**

SUGAR Fine Granulated In Kraft Bags
10 POUND BAG 52^c
LIMIT—Saturday Only

FLOUR GOLD MEDAL "Kitchen Tested"
24 POUND BAG 93^c

COCOA Pure Peerless Brand
2 POUND CAN 16^c

OLEO "Re... A Butt...
2 POUNDS 3^c FOR

EVAPORATED MILK "Armour's"
3 Tall Or 6 Small CANS 23^c

CANNED APRICOTS WHOLE FRUIT Brimful Brand, No. 1 Tall
2 CANS 23^c FOR

TOMATO JUICE CAMPBELL'S BRAND 5-LB. SIZE
CAN **29^c**

VINEGAR Colored Distilled
PINT BOTTLE **5^c**

CHILI BLEND Vinnedge's Brand
Contains all the ingredients necessary to make Chili, Hot Tomatoes, and all Mexican dishes.
1/2 LB. BAG 25^c

COFFEE White Swan
DRIP OR REGULAR GRIND
1 LB. CAN 29^c

PINTO BEANS NEW CROP, RECLEANED
5 LB. BAG 31^c

CRACKERS Thin and Crisp Nut Brown 20 Dozen Crackers
2 POUND BOX 15¹/₂^c

Meat and Produce Prices Are For Friday Afternoon, Saturday and Monday

Outstanding FOOD VALUES For the Week

STEAKS Cut from Choice veal
Center Cut Chuck, Lb. **15¹/₂^c**
Center Cut Arm, Lb. **19¹/₂^c**
Short Cuts, Lb. **22¹/₂^c**
Round or Loin, Lb. **29¹/₂^c**

ROASTS Cut from Grain fed Beef
Brisket or 1st Cut Chuck, lb. **12¹/₂^c**
Roll, no Bone, Lb. **16¹/₂^c**
Center cut Chuck, Lb. **16¹/₂^c**
Center cut Arm, Lb. **19¹/₂^c**

Hamburger CHOICE FRESH GROUND BEEF
LB. **12¹/₂^c**

SAUSAGE Country style Sack, 5 Lb. avg. 1/2 or Whole Bag

LUNCH LOAVES
Bologna, M. Ham Or Franks, Lb. **12¹/₂^c**
Cottage Cheese, Lb. **15^c**
Assorted Loaves, Lb. **25¹/₂^c**

SLICED BACON
Cudahy's Rival, Lb. **12¹/₂^c**
Wilson's Laurel, Lb. **12¹/₂^c**
Dold's Sterling, Lb. **12¹/₂^c**
Pinkney's Special, Lb. **12¹/₂^c**
Pinkney's Sunray, Lb. **12¹/₂^c**

BACON SQUARES SMOKED, SUGAR CURED
LB. **21¹/₂^c**

NECK BONES Lean And Meaty LB. **9¹/₂^c**
FRESH BRAINS Calf Or Beef LB. **12¹/₂^c**
FRESH LIVER Cut From Baby Beef LB. **19¹/₂^c**

SLICED BACON Armour's Banquet
LB. **31¹/₂^c**

DELICATESSEN Sold at No. 2 Market only
Large Tamales, Each **5^c**
Bar-B-Q, Short Ribs, Lb. **23^c**
Boneless Roast Beef, Lb. **28^c**

POULTRY AND FISH
Fresh Cat, Lb. **12¹/₂^c**
Fresh Trout, Lb. **12¹/₂^c**
Fillet Haddock, Lb. **12¹/₂^c**
Halibut Steaks, Lb. **12¹/₂^c**
Hens, fancy colored, Lb. **12¹/₂^c**
Fryers, extra choice, Lb. **12¹/₂^c**
Ducks, fancy fowls, Lb. **12¹/₂^c**
Stewers, not too large, Lb. **12¹/₂^c**
Guineas, Each **12¹/₂^c**
Fresh Shrimp and Crab

LAMB Stamped fancy Genuine Spring
Medium Shoulders, Lb. **12¹/₂^c**
Legs, Prepared, Lb. **12¹/₂^c**
Fancy Chops, Lb. **12¹/₂^c**

WE RESERVE THE RIGHT TO LIMIT OUR STOCKS
These Prices in Effect When the Paper Leaves the Press

TOMATO SOUP PLAIN
Crosse & Blackwell Brand
Full 16 Oz. Size
2 CANS 21^c FOR

IT'S THE SAVING ON EVERY I
STANDARD
FOOD MARKET
Wholesale "SELLS FOR"
No. 1—110 So. Cuyler, Phone 342
No. 2—304 So. Cuyler, Phone 727

STOCK REDUCING SALE -- OWING TO DELAY IN SHIPMENT OF FIXTURES FOR OUR NEW LOCATION, STANDARD FOOD MARKET STORE NO. 1 WILL OPEN IN PLA-MOR BUILDING OCT. 12TH

CHECK EVERY ITEM

PURE LARD
Open Kettle Rendered
In your own
Container
LB. 10¹/₂^c

LONGHORN CHEESE
ELKHORN
FULL CREAM **LB. 19³/₄^c**

CURED HAMS
Puritan brand—Cudaby's 1st grade
1/2 or Whole
LB. 22¹/₂^c

PORK CUTS
Fresh Shoulder
Shank, 1/2 or whole, Lb. **15³/₄^c**
Fresh Hams,
1/2 or Whole, Lb. **22¹/₂^c**

SLICED BACON
Rival, Lb. **26¹/₂^c**
Laurel, Lb. **27¹/₂^c**
Merling, Lb. **28¹/₂^c**
Special, Lb. **31^c**
Sunray, Lb. **33¹/₂^c**

BREAD Fluffy
16 Oz. Loaf
Saturday only—limit

EACH 5^c

NUCOA The New Vegetable
Oleomargarine

LB. 21^c

PINEAPPLE JUICE Del Monte
12 1/2 Oz. Size

2 CANS 19^c
FOR

SALAD DRESSING
A REAL BRAND
Packed Especially For
Standard Food Markets

QUART JAR 21^c

MEAL Great West

5 POUND 18^c
BAG

CANNED PEAS
Prepared From Dry Peas
No. 2 Size

2 CANS 17^c
FOR

BUTTER Standard Food
Markets Supreme
Quarter Molds in Cartons, Lb. 34c

Solid Molds
In Cartons **LB. 33^c**

PEANUTS Salted, Just
Right

8 oz. 9^c
PKG.

CANNED VEGETABLES
Turnip Greens, Spinach or
Mustard Greens,
No. 2 Size **2 CANS 19^c**
Black Eyed Peas,
Shelled and Snapped, **2 CANS 19^c**
15 Oz. Size
Peas—Early June,
Not Soaked—
No. 2 Size **2 CANS 24^c**
Corn, Tender,
Sweet,
No. 2 Size **2 CANS 26^c**
2 FOR

Layer Cakes
BAKED BY BURROWS BAKERY
ASSORTED FLAVORS
REG. 15c SELLER

EACH 12^c
SATURDAY ONLY

SUGAR Powdered or
Brown
In the Bulk
2 LB. 15^c
BAG

POP CORN

Festival Brand
Large White
New Crop

10 Oz. Can

12¹/₂^c

PEACHES
"Del Monte"
In Heavy Syrup
Melba halves or fancy sliced
SIZE 2 1/2

CAN 18¹/₂^c

SOAP CHIPS

Blue Barrel
6 Oz. Net
Weight

Pkg.

5^c

SLICED BACON
FRESH TID-BITS **LB. 17¹/₂^c**

POULTRY AND FISH

at, Lb.	29c
out, Lb.	29c
addock, Lb.	23c
Steaks, Lb.	29c
ncy colored, Lb.	17 1/2c
extra choice, Lb.	18 1/2c
fancy fowls, Lb.	15 1/2c
not too large, Lb.	13 1/2c
Each	49c

h Shrimp and Crab Meat

TONGUES, Or Small Hearts **LB. 12¹/₂^c**

SLAB BACON Wilson's Sycamore 1/2 or Whole **LB. 23¹/₂^c**

LINK SAUSAGE Small Breakfast Style **LB. 28^c**

PEANUT BUTTER lots of oil
FRESH **LB. 12¹/₂^c**

PORK ROAST Shoulder Center Cut **LB. 20¹/₂^c**

PICNIC HAMS Med. 1st Grade **LB. 21¹/₂^c**

FRESH SIDE Lean Fine to Fry **LB. 27¹/₂^c**

M B Stamped fancy
Genuine Spring

Lb.	16 1/2c
Lb.	22 1/2c
Lb.	30c

SOAP CHIPS Armour's Balloon White **5 POUND 29^c**
BOX

TISSUE Standard Food Brand

3 ROLLS 19^c
FOR

CANNED PINEAPPLE
Matched Slices or Std. Crushed
No. 2 Size

2 CANS 31^c
For

RICE Fancy Choice
In the Bulk

BAG 19^c

POTTED MEAT Armour's Star
3-1-4 Oz. Net

3 CANS 11^c
FOR

OVEN WARE 8 Piece SET

Baking Kitchen Ware, With
One Purchase of Merchandise
Amounting to \$5 or More

SET \$1.24

Apple JELLY
PURE
BRIMFUL BRAND

2 LB. 24
JAR

EO "Red Rose"
A Butter Substitute

2 POUNDS 33^c
FOR

BROOMS Our Leader Brand
Medium Weight—5-Strand

EACH 21^c

BLACK PEPPER
CAGES BRAND

8 oz. 12¹/₂^c
PKG.

MATCHES Dandy
Diamond Matches

6 BOX 19^c
CTN.

TOMATOES
NEW CROP
Full No. 2 Size Can

3 CANS 27^c
FOR

LIMIT QUANTITIES OF ALL PURCHASES
at the Press Friday Afternoon. Grocery Prices Good One Week

ON EVERY ITEM THAT COUNTS

STANDARD

MARKETS

FOR LESS

Retail

No. 3—LaFors, Phone No. 1
No. 4—McLean, Phone No. 9

CREAM SOUPS
Crosse & Blackwell
Brand
Eleven Different Varieties
to Choose From
Full 16 Oz. Size

2 CANS 25^c
FOR

EVAPORATED MILK
PET OR CARNATION

3 Tall or 6 Small cans **25^c**

MACARONI, SPAGHETTI OR SHELLS
In the Bulk

BAG 17^c

DOG FOOD ARMOUR'S
Sandy Brand
No. 1 Tall Size

2 CANS 19^c
FOR

ADMIRATION COFFEE
Plain or Drip Grind

Ask clerk how to
Secure Waterless
Cooker on display **POUND 25^c**
PKG.

PRESERVES Banner Brand
Assorted Flavors

4 LB. 49^c
JAR

GRAPE JAM Pure
Ma Brown

4 LB. 51^c
JAR

HOMINY
Large Snow-white
No. 2 1/2 size

2 CANS 25^c
FOR

FLOUR Kansas—A Red Star Product.
Every Sack Guaranteed—
Stocked at No. 2, 3 and
No. 4 Stores Only

24 LB. 79^c
BAG

GAS CHAMBER IN FLORENCE CLAIMS LIFE

VETERAN IS EXECUTED FOR \$2.40 HOLDUP SLAYING

FLORENCE, ARIZ., Oct. 2 (AP)—Roland H. (Jerry) Cochrane, former U. S. Marine who bravely faced death in the service of the government during the Nicaraguan rebellion, calmly and smilingly went to his execution at the state penitentiary at dawn here today in payment of a \$2.40 holdup slaying.

Cochrane, decorated for war service by the Nicaraguan government and by his own country, entered the lethal gas chamber at 5:55 a. m. CST. The deadly cyanide gas was dropped into a bucket beneath his chair at 5:57 a. m. and Dr. B. L. Steward, prison physician, pronounced him dead seven minutes and 40 seconds later.

He smiled once just before his body became rigid and he became unconscious.

While the witnesses filed out of the prison yard Thelma Martin, Phoenix waitress and sweetheart of Cochrane, walked by to claim the body. She had ordered a coffin. During the execution she and Cochrane's father sat outside the prison walls with a car.

Cochrane was convicted in Maricopa county superior court nearly two years ago of having shot and killed Richard Giles, Chandler, Ariz., cattle buyer, in a Phoenix holdup plotted with two others in a Phoenix gambling hall. His companions, Horace Hunter and Otis Phillips, who testified for the prosecution at his trial, are serving life sentences here.

Cochrane's share in the loot was said to have been \$1.40. The other dollar went to Hunter or Phillips.

Cochrane was a native of New York and joined the marines; he said, "as soon as I was old enough."

A cedar tree four feet high is growing on the limb of a chinaberry tree near San Augustine, Texas.

France Turns to Combat Fascism And 'Civil War'

PARIS, Oct. 2 (AP)—Devaluation of the franc accomplished, the French government turned today to active combat against fascism and threatened "civil war."

Criminal investigation of the French social party was ordered by Minister of the Interior Roger Salengro after leftist charges the new political organization was merely a veil for activities of the dissolved nationalist Croix de Feu league. The Croix de Feu—Cross of Fire

—was ordered disbanded after clashes between rightists and leftists but its leader, Col. Francois de la Roque, countered by organizing the group as a separate party body).

The "crack down" orders of the government followed partial victories in the senate which approved reduction of the gold content of the franc but placed in the hands of the national economic council the power to prevent increases in living costs. The legislative action was concluded yesterday when the upper house passed the compromise monetary measure and the chamber concurred.

The ministry of finance suspended its decree issued last week to permit stock, bond and foreign exchange markets to open today after cessation of dealings for six days.

REBELS PLAN TO USE FEAR IN BIG PUSH

'MOORS ARE COMING' RUMOR EXPECTED TO PANIC MADRID

TOLEDO, Spain, Oct. 2 — Artful fascist commanders added a whis-

pering campaign and the baleful roar of cannon to their military drive against Madrid today.

Insurgent officers disclosed Gen. Francisco Franco hopes to substitute "fear for force" in the onslaught against the capital toward which three fascist columns are pushing.

The high command is maneuvering its forces close to Madrid, on both the north and south sides, in an attempt to place artillery batteries near the suburbs, the general staff declared.

Once in position, the gunners would bombard the outskirts, the officers predicted, to throw suburban residents into a panic and start a general movement into the city.

Coupled with the barrage—which might be more noisy than deadly—would be a whispering campaign

that "the Moors are coming," the lieutenants of the fascist military commander said.

They asserted fear over a projected invasion of the capital by the Moorish legionnaires in the insurgent columns was growing daily in Madrid.

Occupation of the village of Alcala la Real in Jaen province was announced by the fascist radio station in Seville. The town is a strategic point between Cordoba and Granada.

Insurgent bombing planes accompanied the driving warriors, clearing the way before them with tons of explosives hurled onto government positions.

Read the Classified Ads today.

Read the Classified Ads today.

NOTICE
The P-K ONE STOP STATION at 403 West Foster
Will operate under the name of
F. E. Hoffman One Stop Station
Humble Oils & Greases — Skelly Gas
Firestone Tires
Your Business is Always Appreciated
403 W. Foster Phone 100

LANORA
Today and Saturday
ROMANCE AT HIGH SPEED
ANN SOTHERN
GENE RAYMOND
A picture that will warm your heart with its melodies as you thrill to its laughter and life.
WALKING ON AIR
SPECIAL SHORT
This Month's "MARCH OF TIME"
Including a picture history of the Texas Centennial.
LOOK KIDS
UNDER 12
Hiring a pair of discarded but usable shoes and go to the show free Sat. 1 to 6
Prevue Sat. Night Sun-Mon-Tues
"No Man Ever Kissed Her" Just once—
Joan Crawford
Robert Taylor
Lionel Barrymore
Franklin Panama
Melvin Douglas
THE GORGEOUS HUSSY
"Rhythm On The River"
Cartoon News
10c REX 25c
Today and Saturday
Tom Tyler in "ROAMIN' WILD"
also Chapter 13 "Custer's Last Stand"
10c STATE 20c
Today and Saturday
Warner Baxter in "Robinhood of El Dorado"

SPUDS U. S. No. 1 10 LBS. 23c
COMPOUND 8 Lb. Carton 99c
MILK Armour's or Rose Brand Tall Can 7c
FLOUR 24 LB. SACK 89c
SUGAR 10 LB. Cloth bag 51c
CRACKERS Brown's 2 Lb Box 15 1/2c
TOMATOES No. 2 Can 3 For 25c

CONTINUE TO PROFIT DURING OUR STOCK CLEARANCE SALE
CHECK THESE PRICES

PEACHES DRIED 1 Lb. Pkg. 15c
SOAP CHIPS 5 Lb. Box 29c
WASHING POWDER White King, Large Box 30c
BROWN'S COOKIES Large Assortment, Reg. 10c Pkg. 3 FOR 25c
POP CORN Giant White Reg. can 11c
PEACHES No. 2 1/2 Syrup Pack. Can 15c

FRESH, CRISP Vegetables
CARROTS Large bunches 2 For 5c
SWEET SPUDS Kiln Dried, Lb. 4 1/2c
APPLES Fancy Jonathon DOZ. 17c
GRAPES Fancy Tokays LB. 7 1/2c
ONIONS Spanish Sweet LB. 3c
RADISHES Large Bunches 2 For 5c

Quality MEATS are Worthwhile

BACON Pinkney's Special, Sliced & Rined, Lb. 30c
PORK SHOULDERS Half or whole Lean LB. . . . 21c
ROAST Choice Sun Ray Beef LB. . . . 19c
BACON Pinkney's or Armour's Slab LB. . . . 28 1/2c
BOILING BEEF Plate Ribs Meaty LB. . . . 12c
MEAT FOR LOAF Pork Added LB. . . . 19c

WE WILL BE IN OUR NEW LOCATION OCT. 12 IT WILL BE THE FINEST FOOD STORE IN THE PANHANDLE

MAXWELL HOUSE COFFEE LB. TIN 25c

OXYDOL 23c Large Package
PEAS 15c Brimful, No. 2 Can
SOAP 4c P & G Giant Bar
SPINACH 9c No. 2 Can
CAKE FLOUR 25c Swansdown, Large Box
SALMON 11c Pink, Tall Can
WAX PAPER 15c Cut rite, 2 Rolls
SALAD Dressing 23c Quart Jar
CORN No. 303 Can 3 FOR 25c
FRYERS 2-lb. Average. Nice and fat, Each 39c

PINTO BEANS 29c 5 Lb. Bag
MARSHMALLOWS 15c 1 Lb. Package
PORK & HOMINY 10c Armour's 2 1/2 Can
Pineapple 9c Flat can

PIGGLY WIGGLY

JUNIOR CLUB'S SEASON OPENS AT BREAKFAST Miami Delegation Is Among Trippers To Dallas

MIAMI, Oct. 2.—The Junior Home Progress club opened their season with a lovely breakfast Thursday morning at the home of Mrs. W. E. O'Laughlin. A delightful program on China was enjoyed afterward.

Those from Miami attending the Continental at Dallas on the special train from the Panhandle were: Virginia Harris, Rachael Seitz, Marguerite Russell, Jack Ramsay, J. W. Jackson, Pauline Russell, Horace Shield, Vernon Graham, Ardena Shield, LaVerne, Bettie Lee and Vernal Rose Berry, Cassie Lee and Meador, Martin Wyckoff, Sam Roach, Mabel Ramsey, Francis Dean, Carl Michael, Evra Jean, Enlow, Frances Fitch, Rachael Melton, Fern Keehn, Ruth Meador, all students in the Miami schools. Among others attending were: Miss Vera B. Harris, Mrs. J. G. Ramsay and Ruth, Mrs. Rosa Cora, Mrs. Thelma Berry, Miss Avis Smith, Miss June David Crovison and Mrs. H. Russell.

Mr. and Mrs. Polk Osborne left Thursday evening to attend a sale of registered Herefords at Coleman Friday.

Mrs. S. J. Montgomery and son, Richard, are visiting her parents in Kansas this week.

MARKET BRIEFS

Stock market summary table with columns for various stocks and their prices.

CHICAGO GRAIN

Table of grain prices for Chicago, including wheat, corn, and other commodities.

GRAIN TABLE

Summary table of grain prices with high, low, and close values.

WOOL MARKET

BOSTON, Oct. 2. (AP)—The Commercial Bulletin will say tomorrow. "There has been a scattering demand for wool in a limited way this week."

Minute By Minute at Station KPDN

FRIDAY AFTERNOON 3:30—Cas Lone Cowboys. 3:45—The Grah Bar. 4:15—American Family Robinson. 4:30—Pats and Flank. 4:45—Saxophone Quartet. 5:00—Late Afternoon News. 5:15—Dancing Discs. 5:30—Borrow Studio. 6:00—Sign Off. 6:15—Sign Off.

SATURDAY MORNING 6:30—Sign On. 6:45—The Grah Bar. 7:30—Waker-Uppers. 7:45—Overnight News. 8:00—Dancing Discs. 8:15—It's Your Own Feast. 8:30—Shopping With Sue. 8:45—Borrow Studio. 9:30—Better Vision. 9:45—Friday Studio. 10:15—Mid-Morning News. 10:45—Key Lazer's Orchestra. 11:00—Household Hints. 11:15—Announcer's Choice. 11:30—Sign Off.

THE NETWORKS

(Time in Central Standard) NEW YORK, Oct. 2. (AP)—By now, Dec. changed hands at 12.04 at the halfway mark in trading. March sold at 12.01 and May sold at 12 cents even.

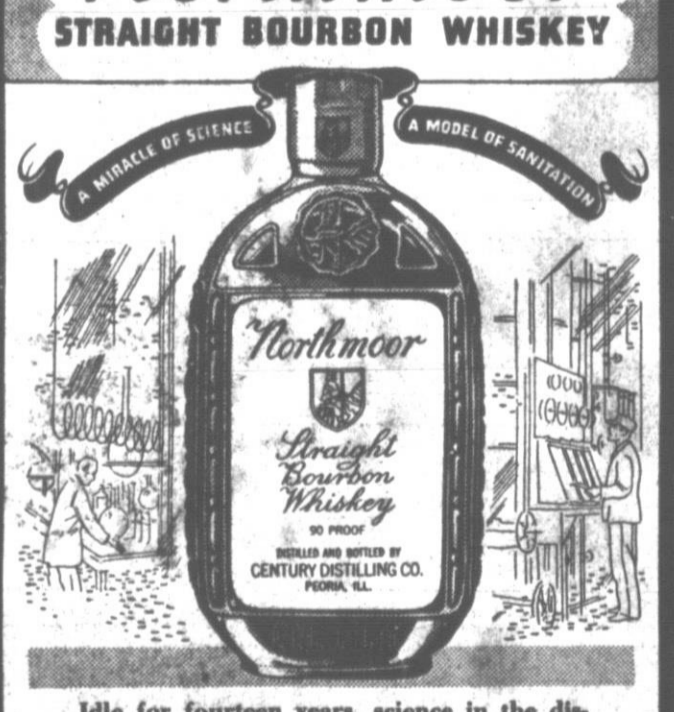
Hopkins No. 2 News

By HELEN PARTRIDGE Hueilyn Laycock presented a chapel program in school Wednesday. First part of the program was an educational feature, "Wonders of the World." Seven girls represented the seven wonders of the old world, and seven boys represented the seven wonders of the new world.

NO. 3

response to tomorrow morning's affair. Guests are invited to attend the broadcast if they desire, or the night owl can plan to be on the receiving end of the dial.

Northmoor STRAIGHT BOURBON WHISKEY



Idle for fourteen years, science in the distiller's art has now made up for lost time. From start to finish, from the degermination of the corn to bottling, in the mashing, fermenting and distilling, science and sanitation have produced in NORTHMOOR a clean bourbon of truly superlative quality.

NO. 1

GIANTS—Jackson popped to Lazzeri. Gable walked. Moore lined to Dimaggio. Bartlett lined to Powell. No runs, no hits, no errors.

SEVENTH INNING YANKEES—Holtz walked. Selkirk singled. Powell singled, filling the bases. Lazzeri lined to Leiber. Dickey scored and Selkirk went to third. Whitehead threw out Gomez. Selkirk scored. Crosetti flied to Leiber. Two runs, two hits, no errors.

EIGHTH INNING YANKEES—Holtz popped to Whitehead. Dimaggio doubled. Gehrig walked. Dickey flied to Ott. Selkirk grounded out. Terry flied to Ott. Selkirk scored. Crosetti scored. Crosetti scored. Crosetti scored.

NINTH INNING YANKEES—Holtz popped to Whitehead. Dimaggio doubled. Gehrig walked. Dickey flied to Ott. Selkirk grounded out. Terry flied to Ott. Selkirk scored. Crosetti scored. Crosetti scored.

FIFTH INNING YANKEES—Frank Gable, right-hander, now pitching for the Giants. Powell walked, and stole second. Lazzeri hoisted at Leiber and Powell ran to third. Gomez singled, scoring Powell. Crosetti singled to left. Gomez scored. Crosetti scored. Crosetti scored.

SIXTH INNING YANKEES—Bartlett threw out Gomez. Crosetti walked. Roffe singled, sending Crosetti to third. Dimaggio flied to Moore and Crosetti scored. Gehrig flied to Ott. One run, one hit, no errors.

GIANTS—Jackson popped to Lazzeri. Gable walked. Moore lined to Dimaggio. Bartlett lined to Powell. No runs, no hits, no errors.

OIL COMPACT TO BE OBSERVED DECLARES COLONEL THOMPSON

OKLAHOMA CITY, Oct. 2. (AP)—The Interstate oil compact commission was told today by E. O. Thompson, chairman of the Texas Railroad commission, that Texas "proposes to keep to the letter of the compact."

Thompson was speaking as the member from Texas. The action of Texas is raising its oil allowable to 70,000 barrels above that of the Federal Bureau of mines recommendation was not discussed.

"So long as we stay within the letter of the treaty, there will be no question as to its success," Thompson said.

The compact is for the purpose of preventing waste of oil. I believe you have pointed to a constitutional way to solve many of the problems of the oil industry and states can work out their problems around the table.

Earlier Thompson was named chairman of the commission by an unanimous vote. He succeeds Gov. E. W. Marland, chairman of the commission since its inception one year ago.

Hiram Dow of New Mexico was named first vice-chairman, and Will Bell of Illinois was named second vice chairman.

Court-let in English law is a local customary court with a limited criminal jurisdiction.

Revival Program Of Week-End Has Special Services

Prayer for the sick will follow this evening's sermon on Divine Healing by the Rev. A. C. Valdez, who is conducting a revival at the Pull Gospel Temple, 500 S. Cuyler.

The revival is progressing with good attendance and interest, reports the Rev. H. E. Comstock, pastor.

The Saturday evening service will be devoted to questions and answers. An interesting and instructive hour is planned.

Sunday morning the evangelist's subject will be The Picture of the Bride of Christ. At 3 in the afternoon there will be a baptismal service at the church, and a talk by the evangelist.

Sunday school meets at 9:45, with classes for all ages. The public is invited to all services.

Earl W. Ticknor, former gauger for the Magnolia Pipe Line Co. at Berger but recently made superintendent at Midland, died yesterday following an emergency appendectomy.

Funeral services were conducted at 10 o'clock this morning at Midland.

Mr. and Mrs. E. V. Frulin of Mason, Mich., and Lewis Knight of Lansing, Mich., have returned to their homes after a visit with their sister, Mrs. B. A. Davis, and Mr. Davis. Accompanied by Mrs. Davis, they spent several days at Plainview during their visit in Texas.

Frank Caldwell, Austin, Tex., traveling salesman, has a library of 1,000 books on Texas history collected over a quarter of a century.

Jules Delou, who died in 1902, was the most famous French sculptor after Rodin of the later 19th century.

Sir Henry Craik, the British author and educator, was born in Glasgow in 1846. He died in 1927.

"BLACK-DRAUGHT IS PURELY VEGETABLE"

A great many things can cause constipation and there are many remedies to relieve it, but possibly none more popular than the "vegetable" laxatives.

Among these, Black-Draught is outstanding. In its manufacture, leaves of a certain plant are used, and the roots of certain others. These are dried so they will keep without preservatives.

Black-Draught is so economical that a 25-cent package averages upwards of 25 doses.

GET READY FOR WINTER

Large advertisement for clothing and goods. Includes sections for Men's Corduroy Pants (\$1.98), Mens and Boys Sweaters (\$1.00), 72x90 Part Wool Blankets (\$2.98), Men's 54-in. Woolens (\$1 to \$1.98 yd.), Ladies' Coats (10.90), Boys' Blue Melton Jackets (\$1.98), Men's and Women's Riding Boots (\$5.95), and Men's O'coats (12.50). Promotes Saturday shopping at Pampa.

International Sunday School Lesson

THE MACEDONIAN CALL
By Wm. E. Gilroy, D. D.
Editor of Advance

Having finished his first missionary journey, Paul and his companion, Barnabas, returned to Antioch. But almost immediately Paul conceived the plan of a second journey to the cities in Asia Minor, where they had already founded churches or, perhaps one should say, established groups of disciples, giving them encouragement in the faith. At the outset, one of these unfortunate rifts which occur even between good men, and in the best of organizations, marred the feeling

of personal good will, and left a blot upon the early history of the church.

The quarrel concerned John Mark, who had been the companion of Paul and Barnabas on the first journey, but who had left them during the journey apparently, as Paul thought, without good reason. Barnabas wished to take John Mark with them again. Paul refused, and the contention between the two good men was so sharp that they separated, Paul taking Silas as his companion.

Whatever may have been underlying the dispute, or whatever may

have been the fault of John Mark, he evidently retrieved it, for the young disciple became the author of our second Gospel, the simplest, most vivid, and most direct record of the life and ministry of Jesus.

This second journey of Paul was to have results momentous in his own experience and for the western world. He did not contemplate leaving Asia, but his plans, by what he considered Providential guidance, were interfered with at more than one point.

Having visited the churches in Galatia, he found himself at Troas on the Aegean Sea, across which was the continent of Europe. Here at Troas a vision appeared to Paul in the night. He saw a man of Macedonia, and heard him saying: "Come over into Macedonia and help us."

The significance of such a vision for a man such as Paul was plain. Immediately, he laid plans to go to Macedonia, and arrived ultimately at Philippi, chief city of the district. Here he tarried and, on the Sabbath day, went outside the gate of the city by a riverside, where there was supposed to be a place of prayer.

Just what this means is not clear. The probability is that those who came by the riverside to pray were earnest souls whose devotion might have made them marked in a pagan city, and who chose this place of retreat and worship.

There is no reference to any men in the company, but we are told that Paul spoke to women who were gathered there. Among these was Lydia, a seller of purple," whose home was in Thyatira. The infer-

ence would be that she was a woman of some substance in business, for "purple" was a requisite of the well-to-do.

The baptism of Lydia was a notable event. She became the honored first of that long and noble line of women in Europe and the western world, who have ministered to the saints and served the church with fervor and devotion. Blessed be Lydia, "the seller of purple!"

TRIPLETS ARE BORN TO COUPLE AT BIG SPRING

BIG SPRING, Oct. 1 (AP)—Triplets born Wednesday night to Mr.

and Mrs. D. S. Shaw were named Franklin, Delano and Roosevelt.

The Shaws, the Big Spring Herald learned, are on relief and have eight other children.

"Franklin" weighs five pounds, "Delano" and "Roosevelt" five and one half pounds each. They were born at 15-minute intervals and were reared in order.

The mother and sons are doing nicely today. The Shaw family lives at the Knott community, 20 miles north of Big Spring.

brates East Texas Yamboree day Oct. 14.

Fair heads said forty-five counties would participate in preparation for the annual East Texas Yamboree at Gilmer.

Read the Classified Ads today.

HAT Cleaning
Hats Left Over
All styles, colors, sizes, slightly worn, Your Choice...
Caps - 25c
TOM The HATTER
109 1/2 West Foster

MEAT & PRODUCE PRICES ARE SATURDAY & MONDAY ONLY

PAMPA

FRUIT & VEGETABLE MARKET

204 North Cuyler

"The Most of the Best for the Least"

FOOD STORE

Yams 5 1/2c
East Texas Grown
LB.

Peppers 4 1/2c
Nice, Large, Green Pods
LB.

Apples 35c
Winesaps, Colo. Grown,
Fine For Cooking, Peck

Grapes 7 1/2c
Calif. Tokays
LB.

Celery 12 1/2c
Large Well-bleached
JUMBO STALK ..

Onions 3 1/2c
Spanish Sweet, Med. Size
LB.

ORANGES
Calif. Sunkist
DOZ. 23c

APPLES
Jonathons, Med Size
DOZ. 23c

CAULIFLOWER
Fancy White Heads
LB. 9c

LEMONS
Calif. Sunkist
Large Size
DOZ. 23c

SPUDS
U. S. No. 1 REDS
Med. Size
10 LB. BAG 23

JELLO Six Delicious Flavors—Box 4 1/2c

PICKLES Sour or Dill For Lunches Full Qt. Jar 12 1/2c

OVALTINE LGE. CAN 49c SMALL CAN 29c

COCOANUT Shredded Cello LB. PKG. 29c

RAISINS Fresh stock 2 Lb. pkg. 19c

PRUNES Fresh stock 2 Lb. Celo. pkg. 19c

RICE Bulk, full Heads. 2 Lb. PKG 19c

PEPPER Black 1/2 Lb. BOX 19c

OXYDOL Large Pkg. 19c

M. MALLOWS Fresh, Lb. PKG. 15c

FLAKES Balloon Soap 5 Lb. Box 29c

POTTED MEAT 3 Reg. Size CANS 10c

CORNER BEEF Armour's Lb. Can CAN 17c

SAUSAGE Vienna, 2 Reg. CANS 15c

SOAP Big Ben 5 Regular Bars 19c

TAMALES Mexican Style, 2 No. 2 CAN 23c

BEANS Mexican Style 3 CANS 25c

DOG FOOD Ideal Brand 3 CANS 25c

GOLD MEDAL FLOUR
Kitchen Tested
89c
24 Lb. Bag

MILK
6 SMALL or 3 TALL CANS
23c
Case \$3.49

Catsup 23c
Wapco, 14 Oz.—2 Bottles

SUGAR 10 LB. 49c
With \$3 Order or More

BREAD 5c
Sliced
Limit 2 With 16 OZ. Purchase

CORN New Crop 2 No. 2 CANS 19c

PEAS New Crop 2 No. 2 CANS 19c

TOMATOES 2 No. 2 CANS 19c

SPINACH 2 No. 2 CANS 19c

BEANS Green 2 No. 2 CANS 19c

HOMINY 2 No. 2 1/2 Size cans for 19c

FRUIT COCKTAIL No. 1 Tall CAN 19c

PEACHES Del Monte No 2 1/2 CAN 19c

MEAL 5 LB. 19c
Fresh Stock Great West

P.-APPLES Sli. or Cru. No. 1 Flat CAN 9c

BLACK BERRIES Two No. 2 CANS 25c

FRUIT JARS Quarts, Doz. 69c

B-Powder 19c
Clabber Girl 2 Lb. Can

MATCHES Carton of Six boxes 19c

CLEANSER Lighthouse, 3 Cans 10c

DRESSING Excell Salad—Qt. JAR 23c

COFFEE FOLGERS' COFFEE LB. CAN 28c

CRACKERS Brown's Saxet Wafers 2 Lbs. . . 15 1/2c

FRYERS Milk Fed—Plenty To Pick From LB. 16 1/2c

HENS Milk Fed, All Colored LB. 16 1/2c

TURKEYS Young Fat Toms, No. 1 LB. 20c

BEEF ROAST Cut from Grain Fed Beef. LB. 19c

BACON Jones Dairy Farm, 1/2 or Whole Strip Lb. 37c

BACON Banquet Lb. Pkg. 34 1/2c Pinkney Spec. Lb. Pkg. 32c

HAMS PICNIC, 1/2 or Whole, LB. 22c

CHILI Fresh Stock, Lb. 19c

MEAT SPECIALS

BUTTER Old Fashion Roll, Lb. 33 1/2c

BOLOGNA Large, Lb. 12 1/2c

HAMS Armour's Star, Small Avg. Lb. 27 1/2c

CHEESE Longhorn Full Cream Lb. 22 1/2c

FRANKS Pure Meat, Lb. 12 1/2c

OYSTERS Fancy Select, Pt. Shrimp, Pint 35c

COFFEE 1 LB. **27c**
Schilling's 2-Lb Can, 52c

RAISINS 27c
Seedless, 4 Lb. Pkg.

OVALTINE 57c
Small Size 31c; Large Size

MACARONI, SPAGHETTI 9c
SPAGHETTI, Famous, 2 Pkgs.

CATSUP 10c
Kerns, 14 oz. Bottle

SLICED PINEAPPLE 10c
Libby's, No. 1 1/4 Can

WHITE KING 30c
GRANULATED SOAP
Largest Size Box

PEACHES 15c
Hillsdale Halves, No. 2 1/2 Can

PEAS 25c
No. 3 Sieve, Early June, 17 oz. Can, 2 Cans

DATE PUDDING 8 1/2c
Morton House, No. 1 Can

CORN 27c
Stokley's, Fancy Country Gentleman, No. 2 Can, 2 Cans

COCOA 10c
Hershey's 1 Lb. Can

Fresh FRUITS & VEGETABLES



Prices Good Friday and Saturday

POTATOES 10 LBS. **25c**
Colorado Reds, New Crop

YAMS 4 1/2c
Porto Rican Good Quality, LB.

CABBAGE 4c
Medium Size Heads, LB.

BELL PEPPERS 4 1/2c
Nice Home Grown, LB.

CARROTS 10c
Large Original Bunches, 3 FOR

GRAPES 3 LBS. **17c**
Fresh Tokays

DRY ONIONS 3c
New Crop Per LB.

CRANBERRIES 23c
New Crop, Extra Nice, QUART

APPLES 17 1/2c
Jonathan, Medium Size, DOZ.

ORANGES 19c
Good for Juice, DOZ.

POTATOES LB. **3 1/2c**
No. 1 Idaho, Nice to Bake

BUTTER 31c
Gray County or Brookfield, Sold Molds, Lb. (Fri. & Sat. Only)

RIPE OLIVES 13c
Libby's, Extra Large Size, No. 1 Tall Can

PINEAPPLE JUICE 29c
Libby's, 46 oz. Can

TOMATO JUICE 23c
Libby's, No. 1 Tall Can, 3 Cans

Prepared Spaghetti 8c
Libby's, No. 2 Can

Prepared Spaghetti 15c
Libby's, With Meat, No. 2 Can

SUGAR 51c (Friday and Saturday Only) 10 Lb. Kraft Bag
SHORTENING \$1.01 MRS. TUCKERS, 8 Lb. Carton

SLICED DRIED BEEF 11c
Libby's, Small Jar

PORK & BEANS 9c
Van Camps, Large 22-oz. Can

BABY FOOD 25c
Libby's, 3 Cans

MATCHES 19c
Strike Anywhere, 6-Box Carton

PRESERVES 55c
Libby's, Asst. Fruit, No. 5 Can

BAKING CHOCOLATE 9c
Large Pkg.

PRESERVES 67c
Libby's, Asst. Berry except Strawberry, 5 Lb. Can Strawberry, 5 Lb. Can—76c

CHOCOLATE BARS 11c
Hershey's, Almond or Plain, 1/2 Lb. Bar Three 5c Bars 10c

CIGARETTES 15c
Camels, Chesterfield, Lucky Strikes, Pkg. 2 Pkgs. 29c

RINSO 15c
Small Pkg., 2 Pkgs. 19c Large Pkg.

OATS 17c
3-Minute, Large Pkg.

FIELD CORN 25c
Waynesville, No. 2 Can, 3 Cans

LIFEBUOY 19c
3 Bars

TUNA 25c
El-Campo, No. 1 1/2 Can, 2 Cans

TOILET SOAP 25c
Lux, 4 Bars

LUX FLAKES 19c
Small Pkg., 2 Pkgs.

CRYSTAL WHITE SOAP 10 GIANT **35c**
Bars for

SALAD DRESSING 9c
Best Yet
Qt. Jar 25c; Pt. Jar 15c; 1/2 Pt.

Goose Berries Loganberries
No. 10 **CAN 59c**

Apricots and Peaches
No. 10 **CAN 49c**

FRANKS 12c
Fresh and Juicy LB.



Prices Good Friday, Saturday and Monday

BOLOGNA 10c
In the Piece, LB.

ROASTS 17 1/2c
Center Cut Arm or Chuck, Baby Beef, Lb.

STEAK 14c
Lean, Meaty Cuts, Baby Beef, Lb.

PEANUT BUTTER 10c
In your own container, Lb.

CHEESE 19c
Full cream longhorn, lb.

HAMBURGER 25c
Ground from fresh meat, 2 Lbs. for

ROUND STEAK 19c
ground, Per Lb.

SLICED BACON 25c
Uniform slices, sugar cured, Lb.

CHICKENS 17c
Hens, Lb. 15c; Fryers, Colored type, Lb.

SAUSAGE 17 1/2c
Country Style, Cloth Bags, Whole or Half, Lb.

Veal Steak 19c
Round, Loin or T-Bone, Lb.

ROUND-UP

of Nationally Advertised Brands



Save at **FURR FOOD**

Prices Good Thru Thursday October 8