

WEATHER

January 24 57 21  
January 25 60 23  
January 26 53 26

Moisture to date .27

# BAILEY COUNTY JOURNAL

'The Community of Opportunity-Where Water Makes the Difference'

Vol. 18, No. 4

16 pages

Published Every Sunday at Muleshoe, Bailey County, Texas 79347

Sunday January 27, 1980

## Harrison, Wheeler, Morrison Win Show

### Big Time Wrestling Here Next Weekend

Under the auspices of the Muleshoe Rotary Club, Big-Time Wrestling from Amarillo will be featured in Muleshoe next Saturday, February 2.

Five bouts are scheduled at 8:30 p.m. at the Bailey County Exhibition Center and Coliseum, featuring the Mexican Heavyweight Title Match between ever-popular Ricky Romero and El Gran

### Optimists Will Host Tourney

March 3-8, the Optimist Club of Muleshoe will host their second annual Men's Outsiders basketball tournament. Brackets will be filled for 16 teams the same as the 1979 tournament.

Teams wishing to enter the tournament may send the team entry fee of \$60 to Sam Gonzales, program chairman, 226 Main Street, Muleshoe, TX 79347.

Checks for the team entry should be made payable to Optimist Club of Muleshoe. Deadline for entering is February 25 on a first-come, first-serve basis.

Trophies will be presented for first, second, third and consolation, and this year, Optimists will be giving individual trophies to the first place winners.

"We are planning a tournament the last of March or the first of April, a tournament of Champions from all outsider tournament champions in our area," said Gonzales. "This should be a real hum-dinger. Also, if we can get as many as eight women's outsider teams, we will have a women's tournament."

For additional information contact Sam Gonzales at Sam's Sporting Goods. His business phone is 806/272-4414 and after 6 p.m., he can be contacted at 806/272-3853.

Marcus. A \$2,000 Battle Royal will feature all the wrestlers on the card for the night, plus David San Martino. In order for wrestlers to qualify for and win they must throw all other opponents over the top rope for the arena. The last wrestler left in the ring will be declared the winner.

But, how hard will Haystack Colhoun be to throw out of the ring? He is probably the largest wrestler expected to be in the arena. The other wrestlers also are not small.

Gary Young will go up against Haystack Colhoun

Cont. on page 6, col. 4

### Parents Asked To Attend RH Workshop

If you have a child enrolled in the first grade in the Muleshoe School System, it has been suggested that you make plans now to attend the 'Make And Take' Workshop in the cafeteria at Richland Hills Primary School on Tuesday, January 29.

The meeting will be conducted from 7-8:30 p.m., with seven first grade teachers working with parents to help them make instructional materials to take home to reinforce what the teachers are doing at school.

Parents will be making instructional aids for reading and math and 'getting acquainted' with others, which is considered an important part of the meeting for the evening.

A school spokesman said, "Our children's education must be a joint effort of home and school, and therefore, working together is a MUST."

Babysitters will be available at the school for people with small children, contributed by the Muleshoe Chapter of FHA, and refreshments will be served.



THIS PIG'S A CHAMPION, A GRAND CHAMPION--Sharla Morrison, daughter of Mr. and Mrs. Herman Morrison, was jubilant as she won the trophy for showing the grand champion barrow during the Bailey County Junior Livestock Show on Friday. This is her first major win in a local stock show.

### Icy, Frigid Weather Invades South Plains

If you don't like the weather on the South Plains, just wait a little while, and it will change. From a balmy, spring-like day to close out the annual Bailey County Junior Livestock Show on Friday, the weather changes overnight to another weekend frigid ice-storm.

Shortly after daylight Saturday morning, ice was beginning to coat vehicles, trees and anything else

### Area wildcat continues drilling

An area wildcat, the O.L. Jormon No. 1 should be drilling below 5600 feet after running a 9 and 5-8 intermediate line pipe to that depth.

The well has a 13 3/4 surface casing set at 1700 feet. The well has been projected to go to 8800 feet.

Convest Energy Cooperation of Houston, Texas, is the operator and the well is being drilled by Sitton Oil Company of Lubbock.

The location is approximately 8 miles north and 1 mile east of Muleshoe.

exposed to the elements in the latest of continuing weekend ice storms in the area.

National Weather Service predicted that the latest winter storm, that left record amounts of snow on Wymong, western Nebraska and in parts of Colorado, would not have that much effect on the Panhandle and South Plains of Texas.

Chances of measurable snow for the Panhandle and South Plains was around 20 percent for Saturday, and again on Sunday, with a slight break in the weather expected for Monday, before another wintry onslaught on Tuesday.

### Dinners Set For Clayton Appreciation

Citizens from Bailey, Castro, Cochran, Deaf Smith, Lamb, Oldham and Parmer counties are putting together appreciation events to honor their state representative, Bill Clayton.

Clayton, who is also a statewide political figure through his service as Speaker of the Texas House of Representatives for three terms, is being honored "for what he has done for the people of this area," according to Dr. B.W. Armistead of Littlefield, coordinator for the events.

"All of these events are called 'Bill Clayton Appreciation Dinners' and are being held throughout the district and are local events hosted by local people," Armistead said.

The kick-off event was Saturday, January 19, in Dimmitt for all of Castro County. The dinner was in

Sunday's high temperatures were predicted to be in the 30s in the immediate area, and wind that made the temperature seem to be much colder than the thermometers actually registered.

In northern states, National Weather Service said the high winds bearing heavy snowfalls caused major traffic pileups. According to the NWS forecaster from Colorado, a full-blown blizzard was

Cont. on page 6, col. 5

### Local Jaycees At Seminar This Weekend

Muleshoe Jaycees will be attending the annual Texas Jaycee Legislative Seminar in Austin this weekend.

The Seminar, sponsored by the Austin Jaycees, is designed as Jaycee Government in Action. Jaycees assume the offices of duties of the Texas House and Senate, and those offices of Governor and Lt. Governor.

Special resolutions will be discussed, debated, and voted on as they are in the real actions of Texas government.

Attending from the Muleshoe Jaycees are Jaycee President Johnny St. Clair, Galen Bock, Bruce Woods, Ricky Mata, and Martin Nowlin.

This year's Seminar will be highlighted by an address by United States Vice President Walter Mondale, with addresses also by Governor Bill Clements and other dignitaries.

In other action, the Jaycee Board of Directors will meet on the first and third Thursdays at St. Clair's

### Allen Harrison Given Senior Citizen Housing Complex Meeting Monday

A most important meeting, of vital interest to senior citizens, is scheduled in Muleshoe tomorrow, Monday. All senior citizens and other persons interested in the proposed senior citizens' housing complex are urged to attend the meeting.

It will be at 2 p.m. in the council meeting room at the Muleshoe City Hall and members of the Muleshoe Housing Authority will give an update on the planned project, according to Harmon Elliott, chairman of the Housing Authority.

Although funding has been approved for the project, Elliott said the funds have been cut, and only a portion of the planned 50-units will be constructed at this time. The Housing Authority has an option on six acres of land to construct the housing, which will be utilized by senior citizens of this area. Whitaker and Hall, architects from Lubbock, who are handling the planning of the project, will be at the meeting to give a slide presentation and answer questions about the project.

Make your plans to attend this most important meeting, suggested Elliott.

### Mules, Mullettes Stop Littlefield In Double Win

Friday night, the Muleshoe Mules defeated the Littlefield Wildcats 63-47 to up their district record for the season 1-2. Sam Whalin was high pointer for the Mules with 17.

In girls' action, the Mullettes dropped the Littlefield girls by a narrow 48-44 victory behind Shelly Dunham's high point game of 16 points. The Mullettes' win raised their record for the season to 18-3 and 4-1.

### Allen Harrison Given Black Memorial Award

The 1980 Bailey County Junior Livestock Show became history early Friday afternoon, as the youths, their parents and all the assistants started loading out the animals. Final judging was completed early in the afternoon Friday, and named with grand champion barrow of the show was Sharla Morrison, daughter of Mr. and Mrs. Herman Morrison.

Thursday night, named with the champion lamb of the show was Jodi Wheeler of the Maple

### New Tax Form For Exemption Is Available

Jesse Click, city/school tax assessor/collector, has reminded that recently exemption certificates were mailed to owners who qualified for the home-stead, over 65, blind or disabled special exemptions.

He reminded that it is urgent for the homeowners to sign and return the exemption forms to his office at the Muleshoe City Hall prior to April 1 in order to receive the exemption.

Click said that any person who did not receive the exemption last year and will qualify for the exemption at this time, may pick up a form at the tax office.

According to Click, the necessary thing is to sign the form. He said homeowners need not worry about finding the legal description of their property to fill in on the form. The description is available at his office.

Also, Open Space Land Applications have been mailed to all landowners for each piece of land they own. He said the forms do need completed and returned to the tax office by April 1, in order for the land owner to qualify for ag-use values.

For any questions concerning the forms, call the city/school tax office at 272-4310 or go by the Muleshoe, City Hall and visit the tax office.

community, daughter of Mr. and Mrs. Joe Wheeler, and Alan Harrison showed the grand champion steer. He is the son of Mr. and Mrs. Ted Harrison. Alan also received the Jimmie Dale Black memorial award.

Showmanship awards were presented Brenda Dodd, lambs; Alan Harrison, steers and Greg Harrison, swine.

Results of the 1980 Bailey County Junior Livestock Show were:

MEDIUM WOOL HEAVYWEIGHT  
Jodie Wheeler, first breed champion and grand champion of show; Kellie Overman, Ben Harmon, Starla Black, Jamie Roberson, Shawn Cooley, Wayne Parkman, Tim Roberts, Wayne Parkman and Mandy Plank.

MEDIUM WOOL MIDDLEWEIGHT  
Belinda Wheeler, first, reserve breed champion and reserve champion of show; Brenda Dodd, Tamara Gilliland, Jodie Wheeler, Mitzi Robertson, Lyndall Stovall, Wesley Rasco, Lisa Black, James Simpson, Bryan Roberts and James Simpson.

MEDIUM WOOL LIGHTWEIGHT  
Jamie Wheeler, Belinda Wheeler, Ben Harmon, Todd Ellis, James Simpson, Mandy Plank, Lyndall Stovall, Starla Black, Wesley Rasco, Ricky Rasco and Wesley Rasco.

FINE WOOL HEAVYWEIGHT  
Brenda Dodd, first and breed champion; Brenda Cooley second and reserve breed champ, Shawn Cooley, Bret Alexander and Bret Alexander.

FINE WOOL LIGHTWEIGHT  
Renee Cooley, Mandy Plank, Renee Cooley, John Snitker and John Snitker.

FINE WOOL CROSS HEAVYWEIGHT  
Mitzi Robertson, first and breed champion; Jamie Wheeler, Brenda Dodd, James Simpson, Tim Roberts and Starla Black.

FINE WOOL CROSS  
Cont. on page 6 col. 1



JODIE WHEELER SHOWS GRAND CHAMPION--Jodie Wheeler showed the Grand Champion Lamb Thursday night in the opening night of the Bailey County Junior



GRAND CHAMPION STEER SHOWN BY ALAN HARRISON--After showing steers for the last several years, Alan Harrison, son of Mr. and Mrs. Ted Harrison, showed

**WE'VE GOT YOUR DOLLARS WORTH AT**  
**Pay-n-Save**

STORE HOURS:  
 OPEN 8:00 - 9:00  
 MONDAY - SATURDAY  
 SUNDAY - 9:00-8:00



**IT PAYS TO SAVE WITH US!**

HEAVY GRAIN FED BEEF  
 BLADE CUT

**CHUCK ROAST**  
**\$1.29**  
 LB.

**MEAT SPECIALS**

<b>ROAST</b> HEAVY GRAIN FED BEEF BONELESS CHUCK	LB.	<b>\$1.89</b>
<b>STEAK</b> HEAVY GRAIN FED BEEF CHUCK	LB.	<b>\$1.49</b>
<b>STEAK</b> HEAVY GRAIN FED BEEF BONELESS CHUCK	LB.	<b>\$1.99</b>
<b>STEW CUBES</b> HEAVY GRAIN FED BEEF LEAN	LB.	<b>\$1.99</b>
<b>FRANKS</b> SHURFRESH REGULAR	12 OZ. PKG.	<b>89¢</b>
<b>BOLOGNA</b> SHURFRESH REGULAR SLICED	12 OZ. PKG.	<b>99¢</b>
<b>HOT LINKS</b> GLOVER'S MEXICAN STYLE	LB.	<b>89¢</b>
<b>CHILI</b> THE ORIGINAL CHILI BOWL WITH THE REAL MEXICAN FLAVOR	1 LB. CTN.	<b>\$1.89</b>
<b>BACON</b> GLOVER'S HICKORY SMOKED THICK SLICED SLAB	LB.	<b>89¢</b>

LEAN FRESH GROUND BEEF GUARANTEED 73% LEAN  
**\$1.39**  
 LB.



CHUNK LIGHT CHICKEN OF THE SEA

**TUNA**

6 1/2 OZ. CAN

**79¢**



SHURFINE PURE GRANULATED

**SUGAR**

5 LB. BAG

**\$1.19**  
WITH PURCHASE OF \$7.50 OR MORE EXCLUDING CIGARETTES LIMIT 1



SHURFINE ALL VEGETABLE

**OIL**

24 OZ. BTL.

**99¢**



DETERGENT **BOLD** -3 GIANT SIZE

**\$1.59**



LIQUID **CAMPHO-PHENIQUE** 2 OZ. BTL.

**\$1.39**



SINUS RELIEF **SINAREST TABLETS** 20 CT. BOX

**\$1.19**



NASAL **SINAREST SPRAY** 1/2 OZ. BTL.

**\$1.10**



EXCEDRIN **P.M. TABLETS** 30 CT. BTL.

**\$1.29**



TREATMENT **IVO-5 HOT OIL** 2 CT. PAK

**\$1.39**

Surefine

**Sweet Pickles** 22oz. Jar.

**99¢**

Surefine Sliced

**Cucumber -Chips** 16oz Jar

**69¢**

Thrift King

**Salad Dressing** Qt Jar

**79¢**



**SPECIALS FROM THE GROCERY DEPARTMENT**

ALL GRINDS

**SHURFINE COFFEE** 1 LB. CAN

**\$2.99**

**CHILIES** OLD EL PASO GREEN WHOLE/CHOPPED

4 OZ. CAN **49¢**

**OLIVES** SHURFINE STUFFED MANZANILLA

5 OZ. JAR **69¢**

**VAN CAMP'S** CHILEE OR BEANIE WEEVIES

2 8 OZ. CAN **89¢**

**JUICE** LUCKY LEAF APPLE

10 OZ. BTL. **39¢**

**SYRUP** LOG CABIN PANCAKE IN GLASS

24 OZ. BTL. **\$1.10**

**HOT COCOA** CARNATION MIX.

12 CT. BOX **\$1.10**

**GLADE** AIR FRESHENER

7 OZ. CAN **69¢**

**BEHOLD** POLISH SPRAY

14 OZ. CAN **\$1.29**

**PRODUCE SPECIALS**

ALL PURPOSE

**RUSSET POTATOES** 20 LB. BAG

**\$1.49**

**PEPPERS** CALIFORNIA BELL

LB. **39¢**

**TURNIPS** PURPLE TOPS

2 LBS. **49¢**

**PEARS** WASHINGTON

**39¢**



VAN CAMP'S

**PORK & BEANS** 300 CANS

**3 \$1**

**DAIRY AND FROZEN FOODS**



CORN OIL QTRS. **MAZOLA OLEO** 1 LB. BOX

**79¢**

**WAFFLES** AUNT JEMIMA JUMBO

10 OZ. BOX **69¢**

**DINNERS** MORTON'S ASSTD.

2 11 OZ. BOX **\$1.00**

**BISCUITS** PILLSBURY BIG COUNTRY

4 5 CT. CANS **\$1.00**

**BUTTERMILK** BORDEN'S CREAMY

1/2 GAL. CTN. **99¢**

**ICE CREAM** BORDEN'S ASSTD.

1/2 GAL. CTN. **\$1.49**

Lipton **Instant Tea** 30z Jar

**\$1.99**

**Pine Sol** 28oz.

**\$1.59**

Grade A Large

**Eggs**

**65¢**

COME TO PAY 'N' SAVE FOR YOUR W I C CARD PURCHASES

We Welcome USDA FOOD STAMP COUPONS



### Good Quality Hay Pays Off

COLLEGE STATION --Grazing of low quality forage or feeding low quality hay during the fall and winter months will cause performance to suffer.

"High quality hay or winter grasses can go a long way in keeping cattle herds at or above a maintenance level during the winter season," contends Dr. Dennis Herd, beef cattle specialist with the Texas Agricultural Extension Service, Texas A&M University System.

"Grasses or hay with a crude protein content of 6 to 7 percent are adequate for maintaining cattle condition. But if the protein content is less, supplemental feed will be needed for all classes of cattle. Cows nursing calves and growing cattle need 10 to 12 percent protein in their feed."

To determine the effects of hay quality on animal performance, a 98-day study was conducted at the Brenham Livestock Auction with three groups of heifers donated by the D Bar J Ranch. The first group received fair quality hay, the second got good quality hay, and the third received fair quality hay plus cottonseed meal and milo at a level to produce heifer performance equal to that on the good hay. All groups had free-choice mineral.

Total gain per animal for the first group was 16 pounds compared to 64 pounds for the other two groups. The real difference came in feeding costs, which were only \$44.17 per hundred pounds of gain for the group receiving good quality hay compared to \$161.25 for the first group (fair quality hay) and \$69.03 for the group on fair quality hay, cottonseed meal and milo.

With the good hay valued at \$60 per ton, the poor hay was worth only \$25 per ton.

"All this points to the importance of feeding high quality hay to cattle," emphasized Herd. "And to determine hay quality, get a forage test."

"There is no practical place for poor or even fair quality hay in a cattle program, particularly where young animals are involved," believes Herd. "A protein supplement is needed with low quality hay, and this means higher production costs."

### ONE MINUTE SPORTS QUIZ

1. Who was named baseball's Sportsman of the Decade?
2. When was Joe Louis heavyweight champion?
3. Who was named the NFL's Most Valuable Player by the Associated Press?
4. John Havlicek is known in what sport?
5. Who was named NFL's Coach of the Year by the Associated Press?

### Answers To Sports Quiz

1. Pete Rose.
2. 1937-49.
3. Earl Campbell.
4. Basketball.
5. Jack Pardee.

U.S. plan for missiles in Western Europe approved.

### West Plains Medical Center Report

#### ADMITTED

January 21, Sue Claunch, Alice Gutierrez, Jim Emerson, Rosemary Pool, Carolyn Willoughby, Carrell E. Merrell, Lupe Flores  
 January 22, David Crowder, Debbie Brooks, Jessie Ramas, Melanie Blackwell, Irene Steinbock  
 January 23, Jo Ann Herrington, Joe Lee Truelock, Frank Madrid, Monique Herrira  
 January 24, Emily Bara, Janna Bennett, Noe Torres

#### DISMISSED

January 21, David Claybrook, Lizabeth Patterson, Rita Jones, Mona Haradage, Stanley Seagraves, Frank Derrick, Donna Locker, Dicie Smither, Maria Franco, Bumie Herd  
 January 22, Alice Gutierrez, Ed Harp, Eleuterio Venegas.  
 January 23, Lee Roy Cole, Sarah Grahams, Guy Nickles, Odessa Pritchard, Arma Perez, Janie Stancel, Lordez Nieto and baby boy, Tina Reid  
 January 24, Doris Herington

When it comes to getting results for these major retailers, Muleshoe & Bailey County Journal



272-45326

**OPEN!**  
**8760**  
 hours a year  
 the 24 hour bank

**the ready bank**

**MULESHOE STATE BANK** **A FULL SERVICE BANK**

101 AMERICAN BLVD. • 272-4561 • Member FDIC

**True Value**  
 Hardware Store

**Hardware value of the MONTH**

**Master MECHANIC**

While Supplies Last  
**now 3.99**

**PARTS CABINET**  
 15 uniform drawers, 1 large bottom drawer. Unbreakable plastic drawers; enameled-steel cabinet measures 12x5 3/4x8 5/8 in. MMC16  
 Quantities Limited

401 S. 1st.  
 Muleshoe  
 272-4511

**COX**

# WINTER CLOSE-OUT Sale

Jan.28-Feb 2

Storm Door Close out

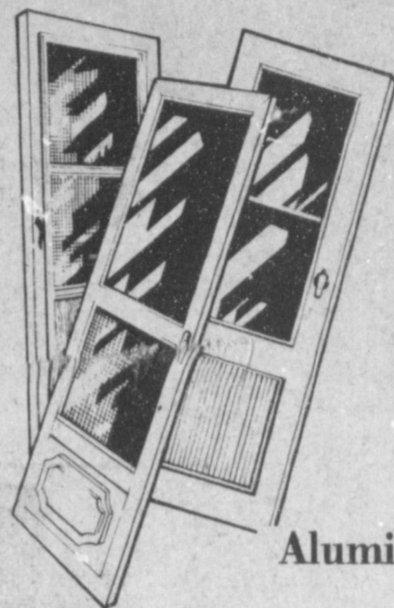
Discontinued Styles

**All Glass Door** Reg. \$89<sup>95</sup> **\$68<sup>00</sup>**  
 3 Only 32"x 80" Left Hinge  
 1 Only 32"x 80" Right Hinge

**White Cross Buck Door** Reg. \$79<sup>95</sup> **\$58<sup>00</sup>**  
 1 Only 36"x 80" Right Hinge  
 3 Only 36"x 80" Left Hinge

**Aluminum Door With Sliding Window** Reg. \$59<sup>95</sup> **\$38<sup>00</sup>**  
 3 Only 36"x 80" Left Hinge

(Installation Available)



### Carpet Remnants

12x12 1/2" Burlington	Sculptured Gold Rust	Reg. 294 <sup>30</sup>	\$147 <sup>19</sup>
12x22'2" Pepperell	Sculptured Barely Green	Reg. 442 <sup>52</sup>	\$221 <sup>26</sup>
12x12'10" Williamsburg	Saxony Slate Brown	Reg. 257 <sup>13</sup>	\$129 <sup>57</sup>
12x11'6" Pepperell	Sculptured Beige	Reg. 208 <sup>64</sup>	\$104 <sup>32</sup>
12x11'11" Philadelphia	Plush Roman Rust	Reg. 255 <sup>20</sup>	\$127 <sup>60</sup>
12x14'9" Brunkcrest	Plush Rust	Reg. 279 <sup>00</sup>	\$140 <sup>00</sup>
12x16'11" Pepperell	Sculptured Deep Brown	Reg. 336 <sup>30</sup>	\$168 <sup>75</sup>
12x12'4" Philadelphia	Plush Roman Rust	Reg. 263 <sup>71</sup>	\$131 <sup>85</sup>
12x17' World	Commercial Precious Stones	Reg. 293 <sup>53</sup>	\$146 <sup>77</sup>
12x 10'5" Armstrong	Level-Loop Earth Tones	Reg. 209 <sup>90</sup>	\$104 <sup>65</sup>
12x16'10" Brinkcrest	Level-Loop Green-Gold	Reg. 270 <sup>86</sup>	\$135 <sup>43</sup>
12x 8'2" Viking	Level-Loop Rust	Reg. 174 <sup>99</sup>	\$55 <sup>00</sup>
7'7"x7'9" Philadelphia	Plush Gold	Reg. 113 <sup>77</sup>	\$35 <sup>00</sup>
12x6'9" Philadelphia	Sculptured Marine	Reg. 128 <sup>34</sup>	\$45 <sup>00</sup>

(Installation Available)

### Browning Shotguns

**B-2000 Gas Auto Shotgun**  
 Reg. \$429<sup>95</sup>  
**\$399<sup>95</sup>** 20 ga. mag.

**Auto-5 Shotgun**  
 The Aristocrat of Automatic Shotguns.  
 Reg. \$474<sup>95</sup>  
**\$444<sup>95</sup>** 12ga. & 20ga.

**BPS the high rib, bottom ejection, butter-smooth pump.**  
 Reg. \$309<sup>95</sup> **\$289<sup>95</sup>** 12 ga.

Although Gold And Silver Prices Have Declined, We Will Still Be Paying Cash For

**SILVER COINS DOLLARS \$15.00**

14 Times Face Value  
 Dollars \$15<sup>00</sup> 1935 For before  
 Dimes \$1<sup>00</sup> each 1964 & Before  
 Quarters \$3<sup>00</sup> each 1964 & Before  
 Half Dollars \$7<sup>00</sup> each 1964 & Before  
 Cold Halves 1965-1969 \$2<sup>00</sup> each

# Congratulations



RESERVE CHAMPION OF SHOW... Belinda Wheeler is shown here with her Medium Wool-Middle Weight Lamb which won Reserve Champion of Show at the Bailey County Livestock Show. Belinda is the daughter of Mr. & Mrs. Joe Wheeler.

## Muleshoe Co-op Gins

P O Y N O R S



**Yvette Mendoza**

Mr. and Mrs. Jose Mendoza, of Bovina, are the proud parents of a new daughter, born January 8, at 10:07 a.m.

The young lady has been named, Yvette. She weighed 7lbs., 8 ozs., and is the couples first child.

**Edna Catalina Carrera**

Mr. and Mrs. Raface Carrera, of Friona, are the proud parents of a baby girl, born January 15, at 11:08 a.m., in the West Plains Medical Center, and has been named, Edna Catalina.

Edna weighed 6 lbs. and 12 1/2 oz. She has a brother, Raface Antonio, two years of age.

Grandparents are Raface Carrera and Catalina Carrera, both of Friona.

Great grandparents are Mr. and Mrs. Hortencia Perra of Mexico.

**Veronica Jeanine Smith**

Mr. and Mrs. Jerry Smith, of Hurst are parents of a daughter, Veronica Jeanine, who was born January 8. She weighed 7lbs. and 15 1/2 ounces.

Veronica has a three and one half year old brother, Stephen.

Grandparents include, Mr. and Mrs. Jack (J.C.) Withrow and great grandparents include Mr. and Mrs. J.H. Withrow, all of Sudan.

Mrs. Smith is the former, Sherry Withrow.

**Christopher Floyd**

Mary Jane Floyd, and Gerry Floyd, both of Muleshoe, are the parents of a



**CONGRATULATIONS...** Thursday at the birthday party in the Nursing Home Charlie Garth, was named as resident of the month, employer of the month, Maril Toscano, was also honored. Each received a small trophy.

new son, Christopher Wayne, born January 17, at 11:52 a.m.. He weighed 7lbs., 15 ozs.

Grandparents are Mr. and Mrs. Frank Matthews, and Mr. and Mrs. John Moore.

**In Fashion**

The quilted coat, a spin-off from insulated ski wear, has successfully made its fashion debut. The cool-weather quilted coat is found in dressy and casual designs.

Skirts in winter fashions continue to be slim. The very slim miss can choose a knife-pleated skirt or a bias skirt that sits smoothly over the hips and then flares at the hem.



**HAPPY BIRTHDAY...** Four residents of the Nursing Home had birthdays in January. They are left to right, Bulah Connell, 91; Ida Collins, 84; and E.L. Clark, 93; also having a birthday, but not pictured was Ed Parks, 75.

**Associates Of Children's Home Meet**

Williams, and Florine Mills helped the hostess with the refreshments.

Refreshments of coffee, fudge, coconut bars, filled hi-ho crackers, spudnuts and coffee cream pie were served.

Other members present were Ethel Julian and Mabel Caldwell.

The Muleshoe Associates of the Portales Christian Childrens Home met Monday, January 21, in the home of Onedia Cornelison, to make nine owl memo pads. The pads will be sold for the benefit of the home.

The next meeting will be February 4 in the home of Modene Elmore. The club meets twice a month to work on projects. Meetings are held on the first and third Mondays of each month.

**Residents Birthday Party**

The Needmore Community Club held a birthday party Thursday, January 24, in the Nursing Home for residents having birthdays. Flowerland furnished the flowers for the residents. Mrs. J.C. Shanks played the piano.

Punch and cake were served by the Community Club. Those having birthdays were E.L. Clark who was born in Missouri, January 10, 1887, Ed Parks born in Texas January 22, 1905, Ida Collins, born in January 1896 and Bulah Connell who was born January 8, 1889.

**Anderson's Show Slides Of Egypt, Greece, and Turkey**

Xi Omicron Xi of Beta Sigma Phi met on Tuesday night, January 22, in the home of Mrs. Clifford Black.

The program was presented by David and Ricka Anderson from Lazbuddie. They gave a slide presentation and talk on Egypt, Greece and Turkey. Two years ago, they made a trip to these countries and were able to give us first hand information on the cultures and the way of life of these people. The program was informative and enjoyed by all members present.

President, Mrs. Bob. Finney, called the meeting to order and thirteen members answered roll call. Mrs. Ken Box read the minutes of the last meeting and they were approved.

Committee reports were given and a discussion was held concerning the upcoming Valentine Ball. The ball will be held on February 16, at 8:00 in the evening. The queens for all three local Beta Sigma Phi sororities, a honor voted on by all members of each group, will be announced and crowned at the dance.

Members were asked to order theme charms for this year if they wanted them. Each year, Beta Sigma Phi offers a different theme charm. Each charm is in color and can be added to the sorority bracelet each member has.

Refreshments of cucumber sandwiches, shrimp dip, chips and cake were served to the following members.

Mrs. Clifford Black, Mrs. Tommy Black, Mrs. Dick Chitwood, Mrs. Bob Finney, Mrs. Tim Foster, Mrs. Tom Little, Mrs. Skip Magby, Mrs. Dave Marr, Mrs. Tom Merritt, Mrs. Alec Schuster, Mrs. Kearney Scoggin, Mrs. Gary Toombs and Mrs. Paul Wilbanks.

**TOPS Has Weekly Meeting**

Clara Lou Jones, president of the TOPS Club, met Thursday, Jan. 24, in the Community Room of the Bailey County Electric.

The TOPS song, was sung and the pledge recited.

Weight recorder, Evelene Harris, called the roll. Members answered the roll call by telling how much they had lost or gained. There were 22 present.

Aurora Mata, was named best loser for the week. Carlene Stroud was first runner up, with Ella Norman as second runner up. The meeting was dismissed by singing the goodnight song.

Men who are at a loss for words might try the dictionary.

**Bookmobile News By Lorene Sooter**

Friday, February 1  
Pleasant Valley 10:00-11:00  
Sudan #1 12:00-1:00  
Sudan #2 1:00-3:45

Adult Education  
"You used to say I was all the world to you."  
"Yeah, but I didn't know much about geography then."

Never Trust 'Em  
Prison Chaplin--Why are you here again, Tom?  
Convict--Because of my belief, sir?  
Chaplain -- Nonsense!  
What do you mean?  
Convict--I believed the policeman had gone by, sir.

Tuesday, January 29  
Morton 9:30-11:45

Wednesday, January 30  
Circleback 9:00-10:00  
Bula #1 10:30-11:30  
Enochs 12:00-1:00

Thursday, January 31  
Springlake #1 10:30-11:45  
Springlake #2 12:00-1:00  
Earth 1:15-3:45

**OPEN! 604,800 seconds a week**

the ready bank

MULESHOE STATE BANK

101 AMERICAN BLVD. • 272-4561 • Member FDIC

**Sonic Presents...**

**Tuesday Night Family Special**

For Only **\$5.99**

You Get 10 Pieces of Fried Chicken, Fries, Texas Toast, Salad & 1 Liter Pepsi.

**Tuesday ONLY**  
6-9 p.m.

Call Ahead and We'll Have It Ready For You.  
272-3998

**JANUARY CLEARANCE SALE**

STARTS MON. JAN. 21 9:00 AM  
ALL BOOTS AT REDUCED PRICES

<b>WESTERN BELTS</b> NAMES PUT ON FREE!! LARGE SELECTION	<b>ALL MEN, WOMEN AND CHILDRENS</b> COATS AND VESTS POLY OR DOWN <b>40% LESS</b>	<b>GROUP MENS DRESS SUITS</b> \$68 <sup>00</sup> .....\$34 <sup>95</sup> \$89 <sup>00</sup> .....\$49 <sup>95</sup> \$129 <sup>00</sup> .....\$69 <sup>95</sup> \$149 <sup>00</sup> .....\$89 <sup>95</sup>
<b>LEATHER COATS</b> PIONEER & ALTMAN MEN & WOMEN VALUES TO \$270 <sup>00</sup> .....\$199 <sup>95</sup> \$165 <sup>00</sup> .....\$115 <sup>95</sup> \$250 <sup>00</sup> .....\$179 <sup>95</sup> \$135 <sup>00</sup> .....\$99 <sup>95</sup> \$185 <sup>00</sup> .....\$129 <sup>95</sup> \$99 <sup>00</sup> .....\$69 <sup>95</sup>	<b>LADIES AND MENS SWEATERS</b> VALUES TO \$22 <sup>00</sup> .....\$12 <sup>95</sup> \$32 <sup>00</sup> .....\$18 <sup>95</sup> \$25 <sup>00</sup> .....\$13 <sup>95</sup> \$50 <sup>00</sup> .....\$29 <sup>95</sup> \$29 <sup>00</sup> .....\$16 <sup>95</sup> \$55 <sup>00</sup> .....\$31 <sup>95</sup>	<b>MEN TAOS MOCCASINS</b> WOMEN CHILDREN <b>30% OFF</b>
<b>THREE PIECE BOYS LEE BRUSHED DENIM SUITS</b> NOW \$59 <sup>95</sup>	<b>MEN &amp; BOYS LONG SLEEVE SHIRTS</b> DRESS & FLANNEL GET THREE FOR PRICE OF TWO!! WE HAVE LARRY MAHAM SHIRTS ON SALE	<b>PAINTER PANTS 2 COLORS</b> \$12 <sup>95</sup> & \$13 <sup>95</sup> GIRLS GET IN STYLE
<b>SANDERS SNAKE BOOTS</b> \$176 <sup>00</sup> VALUE NOW \$129 <sup>95</sup> NOCONA LIZARD TRIAD DESIGN \$213 <sup>00</sup> VALUE \$159 <sup>95</sup>	<b>ALL GIRLS &amp; BOYS FASHION JEANS</b> BY WRANGLER, LEE & LEVI <b>30% LESS</b>	<b>WRANGLER DENIM JEANS</b> STYLE 945 \$13 <sup>95</sup> STYLE 13MWZ \$14 <sup>95</sup> STYLE 938 \$12 <sup>95</sup>
<b>FASHION BOOTS</b> \$82 <sup>00</sup> .....\$62 <sup>95</sup> \$88 <sup>00</sup> .....\$64 <sup>95</sup> \$76 <sup>00</sup> .....\$59 <sup>95</sup> \$51 <sup>00</sup> .....\$48 <sup>95</sup>	<b>ALL MEN &amp; BOYS VELOUR TOPS</b> \$6 <sup>00</sup> .....\$3 <sup>95</sup> \$9 <sup>00</sup> .....\$5 <sup>95</sup> \$10 <sup>00</sup> .....\$5 <sup>95</sup> \$18 <sup>00</sup> .....\$10 <sup>95</sup> \$16 <sup>00</sup> .....\$8 <sup>95</sup> \$25 <sup>00</sup> .....\$13 <sup>95</sup>	<b>WRANGLER FLARE LEG DENIM JEANS</b> REG. \$16 <sup>95</sup> \$11 <sup>95</sup> STYLE 925
<b>MENS SUEDE TRIM SWEATERS</b> VALUES TO \$55 <sup>00</sup> .....\$38 <sup>95</sup> \$59 <sup>00</sup> .....\$42 <sup>95</sup>	<b>LEE LEISURE SUITS</b> WAS \$45 <sup>00</sup> \$34 <sup>95</sup> <b>3 COLORS</b>	<b>WOMEN SUITS</b> VALUES TO \$130 <sup>00</sup> .....\$90 <sup>95</sup> \$115 <sup>00</sup> .....\$74 <sup>95</sup> \$88 <sup>00</sup> .....\$61 <sup>95</sup>
<b>LARGE GROUP CORD COATS LINED</b> WAS \$37 <sup>95</sup> NOW \$26 <sup>95</sup>	<b>PANHANDLE SLIM PIONEER</b> WRANGLER 2 COLORS	

MANY OTHER ITEMS REDUCED TO MAKE ROOM FOR NEW MERCHANDISE

No Approvals  
No Refunds  
No Layaway

Minimum Charges For

ee's WESTERN WEAR

**Bend Over To Anthony's**

**The Bend Over Pant**  
By Levi's® Womenswear

This is Levi's® "Stretch Gabardine"  
100% woven texturized  
Dacron® polyester  
Machine washable

**JR. L' Glove Levi**

A stretch woven fabric with the comfort and flex of a knit (but without the sag of a knit). Try it on. And sit, twist, kneel or bend. You have never felt so comfortable, or looked so great, as you do in Levi's® stretch gabardine.

Your Choice **\$15.88**  
Regular \$19.95

Queen Size....\$17.88

● 4 Days Only Mon-Thur.

Levi's WOMENSWEAR

QUALITY NEVER GOES OUT OF STYLE

321 MAIN STREET • MULESHOE

**Anthony's**  
C. R. ANTHONY CO.

Let Us Do Your Spraying

Ron Kidd  
Custom Application

Treflan-Atrazine  
Milogard & Other  
Chemicals

We Are Now Taking orders  
on Bo-Bar Rope wick  
Applicators

Contact: Ron Kidd  
Day: 925-2374 Night: 272-3705

# Caring For Lawn

LUBBOCK -- Home-owners who wonder why their front lawn does not look like a well manured golf course during the summer months can do something about it right now, during winter.

A Texas Tech University horticulturist says the first thing to remember is that "lawns do not die during winter. They only appear dead and need to be kept alive."

The stem and the leaves of most grass species die after the first freeze, but the crown stays alive during winter, according to Robert R. Reed of the Department of Plant and Soil Science.

Reed said there are four things that homeowners can do in winter to help produce a lush growth in summer.

"Water the lawn four or five times during winter, fertilize it, apply pre-emergent herbicide and prevent the soil from getting compacted," he said.

Watering lawns is especially important during the unseasonal warm days in winter months, "as the water prevents the soil temperature from increasing beyond winter limits," he added.

High soil temperature during winter starts the growth process in the grass. But the tender growing plant tissue dies following a drop in the temperature, which results in "spotty growth" during the summer, the Texas Tech horticulturist said.

"Homeowners should water lawns on days when the temperature is not expected to drop below freezing because moisture which enters the plant at freezing temperatures may crystallize and break the living cell walls in the plant tissue," Reed added.

Winter fertilization, the second item on Reed's list,

helps in root development and strength during the cold months.

"Phosphorous and potassium fertilizers are most important during winter months for root development and homeowners can buy them from any nursery," he said.

Nitrogen fertilizers, which mainly produce the green matter in the stems and the leaves, are of little use during winter, he added.

The third item to remember is pre-emergent herbicide, "which is essential for suppressing weed growth, especially during winters which follow above normal rainfall," Reed said.

High rainfall during the pre-winter months produces an abundant crop of weed seeds which lie in the soil waiting for warm temperatures, according to the horticulturist.

"Pre-emergent herbicides will suppress the weeds and will not affect the grass crown," he added.

Preventing the soil from getting compacted, Reed's fourth admonition, allows free movement of water and air through the soil surface and helps in regeneration of the grass.

"The soil gets compacted as people tend to step over the grass more often during winter than during summer," he said.

"Homeowners can rent airing or coring equipment from nurseries to punch holes in the soil surface or to remove small cores from the soil to make it fluffy," the horticulturist added.

If homeowners follow these suggestions, Reed said, they can expect to see improvement when the grass turns green after winter, but he cautioned against expecting too much.

"It takes more than one

winter of caring for the grass to produce the golf-course look," he said.

## Happy Birthday

Jamie Gatewood was honored on his sixth birthday January 7, with a small party at school, with his classmates.

Later Jamie and his friends, Shannon Fisher, Ty Kaufhold, Clay Carr, and Grant Gatewood, went to Littlefield to eat pizza.

They returned home for cake and refreshments. Party favors were given each guest.

Special guests were, grandmother's Mrs. Glenn Gatewood, Mrs. W.L. Rice and Mary Kay Baker and Kelli.

Jamie is the son of Mr. and Mrs. Gary Gatewood, soc Luncheon

Mrs. Elsie Seymore, hosted a luncheon Tuesday, January 15, in honor of Mrs. Lucille Fox, on her birthday.

Present were Mrs. Doris Pierce, Mae Fisher, Opal McCaghen, Micky Stephens, Nellie Kersler, Maxine Nichols, Elsie Welson, Jeanne Bartley, Neel Ingle, Bethlene Harper, Evelyn Fisher.

Also, Yvonne and Heather Pierce, Heath Pierce, Verna Wimberley, Mrs. Lena Humphrey, Elsie Seymore and Sissy and the honoree, Lucille Fox.

# Fast Food Facts And Fantasy

There may be some hope, but not much, for fast food addicts. Instead of totally condemning those muchy morsels loaded with calories and salt, some nutritionists are saying fast food can have a place, but just a small one, in people's diets.

The key to eating fast food is moderation. Since a typical fast food meal of a burger, shake and fries is packed with fats, sugar and salt, overloading on these substances would be easy if you ate fast foods a lot. Consumer Reports magazine says. Only eating fast food occasionally and having a balanced diet the rest of the time is the best way to avoid an overload.

Fats, sugar and salt, the ingredients easiest to overload on, all have been blamed for contributing to medical problems. For instance, excess salt may help cause high blood pressure and too much fat or sugar can cause a weight problem, the Texas Medical Association says.

To have a balanced diet that includes fast foods, other meals need to make up for any nutritional shortages. It is hard to make broad statements since the definition of fast food can include everything from tacos to pizza, but often fast food meals lack fiber and some nutrients found in fruit and vegetables. So if you eat a fast food meal, be sure and eat plenty of fruit and vegetables at other meals that day. You also need to eat dairy products if you do not have a shake with the fast food meal.

Fast food usually has enough protein and some vitamins and minerals but you get a big wad of calories along with them. Three San Antonio dietitians, writing in Medical Times magazine, estimate just one fast food meal provides about half of the needed daily calorie requirement. Obviously a steady diet of fast food could cause a calorie overdose that the body would store as unwanted fat.

The fast food shake is one of the biggest calorie culprits. Substituting a lower calorie drink (such as water, tea or coffee) could knock out several hundred calories and a surprising amount of salt from the meal, according to the September issue of Consumer Reports, which did

an analysis of many varieties of fast food.

The analysis showed the high calorie leader was burgers, followed by fish, chicken and roast beef sandwiches. But they all have high calories. People especially concerned about vitamins, minerals and salt should check nutritional

information because the different companies' products vary and the lower calorie fast foods do not necessarily have the lowest salt content or the most vitamins and minerals.

For instance, burgers generally have more vitamins and minerals than roast beef sandwiches but burgers also have more salt. Roast beef sandwiches have roughly as many vitamins and minerals as chicken and fish fast food items.

**STAIRS DANGEROUS**  
Canadian architect Pauls says the exterior ways of Detroit's new Louis Arena-one of structures to be used for 1980 Republican National Convention-are dangerous. Pauls said the stairs are steep, inadequately lighted have poor drainage and should be protected from the weather by a cover.

## ABOUT YOUR HOME

By April Rhodes

After ironing starched curtains, drop a knife through the hem and the rod will slip through easily and frayed nerves will be avoided.

Small plastic prescription bottles are useful for storing small objects--screws, nails, tacks, washers, needles, pins, seeds and many other things.

**He Could**  
"What is the tactful way for a girl's father to let her boy friend know it's time to leave?"

"He may casually pass through the room with a box of breakfast food."

**Negative Criticism**  
Angry Patron (leaving cinema)--I've never seen a worse picture in my life!  
Commissionair (overhearing the remark)--Ever 'ad yer photo taken?"

# The Miracle Of America

Presented By  
**Farm Bureau & The Freeman Institute**

*How America Came To Be; Religion & Law From Moses To Present; Life, Liberty, Rights, Property & Things; Local Self-Government The Keystone To Preserving Human Freedom. All This & Much More By Dr. Cleon Skousen At Texas Tech University Center Ballroom Friday & Saturday, Feb. 1 & 2. \$35 Per Family Includes Children Over 12.*

Register With Bailey County Farm Bureau

Ph. 272-4567

**St. Clair's** Starts Monday, Jan. 28  
Since 1930

**LEFTOVER SALE**

Sale!

**Entire Stock Mens Tailors Bench Slacks \$17<sup>97</sup>**

**Ladies & Childrens Shoes Ladies Purses \$5<sup>97</sup>**

**Girls Blouses (Her Majesty) Toddler pants \$5<sup>97</sup>**

**Sheets By JP Stevens**

**Toddler Pull Over Shirts Health Knit 2/5<sup>00</sup> Childrens Blouses (Her Majesty) Ladies Blouses, Jr. Shirts \$3<sup>97</sup> Towels by J.P. Stevens**

**Fall Pants (Catalina, Tami, Bobbie Brooks) Sweaters Fall Skirts \$13<sup>97</sup>**

**Entire Stock Fall Blouses (Catalina, Tami, Bobbie Brooks) Ladies & JR Dress \$9<sup>97</sup>**

**Boys Pant & Top Sets (Rob Roy) Mens Corduroy Pants (Dickies) Entire Stock Mens Sweater Shirts**

**Childrens Sleepwear (Mr. Majesty, Her Majesty) Boys Shirts (Rob Roy) Ladies Purses \$7<sup>97</sup>**

**Mens Long Sleeve Dress & Sport Shirts**

Further Reduction

Sale

Starts Monday January 28

Good Selections

In Dresses-Lingerie Co-ordinates

*Lookin' Good*

## RECIPE

By Sarah Anne Sheridan

Casseroles are the answer to a prayer if you do not have a maid and yet want to be free to enjoy your guests while the food stays hot and appetizing. A casserole can be prepared before your guests arrive. All you need to do after they arrive is heat and serve.

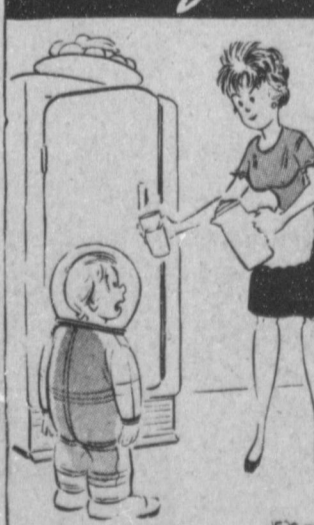
With a casserole, to make a complete dinner, all you need is a salad, hot bread, coffee and a dessert. Include a relish or jelly if time permits.

### Oysters Claremont

- 1 c butter
- 1 t English mustard
- 1/4 c stock or bouillon
- 1/4 t salt
- 1/4 t celery salt
- 1 1/2 c diced celery
- 3 c heavy cream
- 2 dozen fresh oysters, drained
- 2 T sherry or Madeira
- parsley
- 6 slices buttered toast

Melt butter in two-quart, flame-proof casserole; stir in mustard; add stock or bouillon, seasonings and celery. Cover and cook on top of range, or in moderate oven (325 degrees) until celery is tender, about 25 minutes. Add cream, stirring slowly. Bring to boiling point, but do not boil. Add oysters, let cook for 3 to 5 minutes. Add wine, and stir. Remove casserole and keep warm until ready to serve. Toast bread and garnish with parsley. Serves six.

## Out of Orbit



YOU'D BE THIRSTY TOO, IF YOU HAD BEEN ALL THE WAY TO JUPITER

## The Long Form could save you money on your taxes

This year, make sure you are using the proper tax form. Even if you filed the Short Form last year, your circumstances this year could help you save money by filing the Long Form. At H&R Block, we'll review your tax situation to decide which form allows you to pay the lowest legitimate tax.

**H&R BLOCK**  
THE INCOME TAX PEOPLE  
224 W. 2nd.  
Ph.-3332  
9-6 Wk. Days  
9-12 Sat.

## CAR-SENSE

Kent Kelly



We feel when you buy a car at our dealership you will be getting one of the best car values in this area. Here are a few of the reasons: 1) Our entire stock is ordered for buyers in this area with the options they will need. 2) We try to keep our shop in a position to service our new cars quickly and efficiently, with mechanics trained by the manufacturer. 3) When you order a car from us we guarantee you get what you ordered. 4) We prepare new cars for the road right here in our shop, using manufacturer's guidelines. 5) We try harder to make our customers happy. Come by and look at our stock of new cars--who knows you might be in the market for a new car and not know it.

## Sedgefield Final Week Of 1979 Jeans Prices

- |                 |                    |
|-----------------|--------------------|
| <b>Boys</b>     |                    |
| Wrangler.....   | \$8 <sup>97</sup>  |
| Sedgefield..... | \$9 <sup>98</sup>  |
| <b>Students</b> |                    |
| Wrangler.....   | \$10 <sup>97</sup> |
| Sedgefield..... | \$13 <sup>98</sup> |
| <b>Mens</b>     |                    |
| Wrangler.....   | \$12 <sup>97</sup> |
| Sedgefield..... | \$14 <sup>98</sup> |

**Show...**

Cont. from page 1

**MEDIUMWEIGHT**  
Mitzi Robertson, Delia Shaw, Renee Cooley, Tamara Gilliland, Dale Simpson, Brenda Cooley, Kellie Overman, James Simpson and Bryan Roberts.

**SOUTH DOWN HEAVYWEIGHT**  
Lisa Black, Beth Harmon, Shawn Cooley, Ricky Rasco and Beth Harmon.

**FINE WOOL CROSS LIGHTWEIGHT**  
Ricky Rasco first and reserve breed champion; Ben Harmon, Delia Shaw, Sheryl Waltrip, Beth Harmon, Mike Nichols, Mike Nichols and Dale Simpson.

**BEEF CATTLE DIVISION FEEDER STEERS**  
Jerry Gleason, Jimmy Gleason, Jacinda Gleason, Alan Harrison and Jay Gleason.

**HEIFERS**  
Kelly Harrison, Jimmy Gleason and Shane Claunch.

**HEAVYWEIGHT STEERS**  
Alan Harrison, first and grand champion steer; Shane Claunch, Reserve champion steer; Shane Claunch, Kelly Harrison, Jodie Wheeler, Belinda Wheeler, Mitzi Robertson, Chad Roberson and Chris Young.

**MIDDLEWEIGHT STEERS**  
Belinda Wheeler,

Jamie Wheeler, Jacinda Gleason, Jacinda Gleason, Delia Shaw, Jay Gleason, Jodi Wheeler, Chris Young, Delia Shaw and Mitzi Robertson.

**SWINE SHOW**

**DUROC**

**HEAVYWEIGHT**  
Sharla Morrison, first, breed champion and grand champion of show; Tori Hunt, second and reserve breed champion; Jason Scoggin, Todd Ellis, Tracy Tunnell, Delia Shaw, Keith Layton, Kay Lynn Prather, Mchelle Stevenson, Johnny Puckett, Allen Beasley and Gary Cox.

**MEDIUM HEAVYWEIGHT**

Chris Young, Mike Dunham, Preston Scoggin, Darin Shaw, Curtis Hunt, Todd Bessire, Lynn Moore, Curtis Wheeler, Tom Dulin, Edwin Reeves, Bill Eubanks and Ben Harmon.

**MEDIUM LIGHTWEIGHT**

Keith Layton, Shonnie Hodnett, Chris Young, Keith Layton, Kent Parsh, Robbie Barrett, Rempe, Danny Seales, Gary Cox, Todd Holt, Barry Bass, Renee Cooley, Kevin Reeves and Chris Hopkins.

**LIGHTWEIGHT**

Staci Kirby, Larry Nowell, Chist Hopkins, Allen Beasley, Kevin Reeves, Barry Bass, Shonnie Hodnett, Brenda Cooley, Ben Harmon, Edwin Reeves, Kevin Reeves and Edwin Reeves.

**HAMPSHIRE HEAVYWEIGHT**

Preston Scoggin, first, breed champion and reserve champion of the show; Sharla Morrison, Delia Shaw, Randy Isbele, Jason Scoggin, Staci Kirby, Preston Scoggin, Derek Prater, Mike Holt and Wade Prater

**MEDIUM HEAVYWEIGHT**

Greg Harrison, reserve breed champion; Greg Young, Darin Shaw, Curtis Hunt, Todd Bessire, Curtis Wheeler, Benton Glaze, Tyrry Vandiver, Todd Holt, Earl Parish and Mandy Plank.

**MEDIUMWEIGHT**

Tracy Tunnell, Sherri Bessire, Mike Dunham, Danny Seales, Bobby Grumbles, Staci Kirby, Curby Brantley, Derek Prater, Wade Prater, Lynn Moore.

**LIGHTWEIGHT**

Kim Gatewood, Shawn Cooley, Brenda Cooley, Shonnie Hodnett, Lewis Peacock, Earl Parsh, Robbie Barrett, Larry Nowell, David Pruitt and David Pruitt.

**YORKSHIRE HEAVYWEIGHT**

Greg Harrison, first and breed champion; Lisa Black, Roby Kelton, Blake Stevens, Tom Dulin, Brenda Dodd, Roby Kelton and Mike Holt.

**LIGHTWEIGHT**

Blake Stevens, first and reserve breed champion; Sherri Bessire,

Brenda Dodd, Robin Moore, Brenda Dodd, Todd Holt and Bryce Holmes.

**SPOTS**

Ricky Rasco, first and breed champion; Greg Young, second and reserve breed champion; Curtis Wheeler, Benton Glaze, Kim Gatewood and Kim Gatewood.

**POLAND CHINA**

Tyrry Vandiver, first and breed champion; Scott Saylor, second in reserve breed champion; and Michelle Stevenson.

**CHESTER WHITE HEAVYWEIGHT**

Benton Glaze, reserve breed champion; Curby Brantley and Tommy Wheeler.

**LIGHTWEIGHT**

Renee Cooley, first and breed champion; Greg Harrison, Jason Scoggin, Jay Pearson and Gary Cox

**BERKSHIRE**

Kay Lynn Prather, Kay Lynn Prather, Lee Free, Lee Free, Shawn Cooley, Lee Free, and Monty Hysinger.

**CROSSBRED HEAVYWEIGHT**

Tracy Tunnell, Greg Young, Sharla Morrison, Darin Shaw, Starla Black, Todd Bessire, Tommy Wheeler, Scott Saylor, Mike Holt and Casey Farmer.

**MEDIUMWEIGHT**

Chris Young, first and breed champion; Danny Seales, second and reserve breed champion; Curby Brantley, Bryan Powell, Robbie Barrett, Mandy Plank, Curtis Hunt, Tommy Edmonson, Wesley Rasco, and Brenda Cooley.

**LIGHTWEIGHT**

Lewis Peacock, Shawn Cooley, Sherri Bessire, Kim Farmer, Kevin Atwood, Johnny Puckett, Mike Dunham, Tommy Edmonson, Bryan Powell, Tommy Edmonson and Jay Pearson.

**Wrestling...**

Cont. from page 1 in a preliminary bout. Other preliminary bouts will pit Sivi Afi against Bob Morgan and Gino Caruso will take on Rick Winters.

Advance tickets have gone on sale at First National Bank and Muleshoe State Bank. Tickets are \$4.50 for all ringside seats on a first come, first serve basis. General Admission tickets are \$3.50 and tickets for children under 12 are \$2.50 each.



The Fine Arts Boosters would like to remind all parents, of students in Art, Speech, and Band, in both Junior High and High School, there will be a meeting Monday, January 28, at 7:30 p.m., in the Band Hall. All of these parents are urged to attend.



**TAX APPRAISAL BOARD SWORN IN**--Thursday night, the Bailey County Tax Appraisal Board conducted their first official session after being elected to their posts. The new board was sworn in by Bailey County Judge Glen Williams prior to the session. Pictured from left are Judge Williams; Jim Shafer, representing the Muleshoe Independent School District; Bob Finney, representing the Muleshoe City Council; Jack Lane, representing the Three Way Independent School District; Bob Sanders, representing the Bailey County Commissioners Court and Ernest Ramm, representing the Muleshoe Independent School District.

**Clayton...**

Cont. from page 1 The final event will be for Lamb County on Saturday, February 23 in Olton at the High School Cafeteria.

**Weather...**

Cont. from page 1

underway in Colorado. One 20 mile stretch of highway just north of Denver produced a massive pile-up of vehicles, with some 450-500 vehicles involved.

Winds of 50 to 60 miles per hour, and a massive snowfall that produced 11 inches of snow in just a few hours, virtually paralyzed traffic in the Cheyenne, Wyo. area, before whistling through Colorado on its southern trek.

Light snow was predicted for this immediate area.

day, February 23 in Olton at the High School Cafeteria.

"Bill Clayton has touched every citizen in every one of these seven counties at one time or another. He has always been a staunch defender of our rights and the number

precipitation will be Saturday, February 2, in Morton at the High School Cafeteria.

Both Deaf Smith and Oldham county committees are working on the Monday, February 11 event in Hereford at the Community Center.

Farmer and Bailey county committees will hold their affair in Friona on Monday, February 18, in the High School Cafeteria.

of people he has helped directly can't be accurately measured. "He will be serving the district only one more two year term and there has been an overwhelming desire from throughout the district to show their appreciation for the 20 years of life he has given to us all," Armistead added.

**General Cement Construction**  
All Types Cement Work  
Big or Small  
Specializes In: Storm Cellars Basements, Slab Foundations, Metal Buildings Sidewalks & Drives.  
Free Estimates  
**Garcia Bros.**  
Hereford, Tex. Phone 364-3507  
614 Ave. K Mobile 578-4692

**Congratulations**

**BREED CHAMPION...**Brenda Dodd is shown here with her Fine Wool Wool lamb which won Breed Champion at the Bailey County Livestock Show. Brenda is the daughter of Mr. & Mrs. Bob Dodd.

**Bailey County Farm Bareau**

**Congratulations**

**FIRST PLACE...**Mitzi Robertson is shown here kneeling by her Fine Wool Cross Medium weight lamb which won First Place at the Bailey County Livestock Show. She is the daughter of Mr. & Mrs. Darwin.

**BREED CHAMPION...**Mitzi Robertson is shown here with her Fine Wool Cross Heavy Weight lamb which won Breed Champion of the Bailey County Livestock Show. She is the daughter of Mr. & Mrs. Darwin Robertson.

**Farmers Coop Elevator**

**Valley Center Pivots**

**Take a hard look at what you can't see.**

Nobody builds them tougher than Valley. Tough Valley construction, rugged Valley gearboxes, quality engineering you can see out standing in the field. But what you can't see may be even more important. **That means fast, dependable Valley service, the top-flight Valley dealer organization, the well-known high Valley resale value. The tens of millions of hours of proven reliability. The security you'll get in going with the leading company in the center pivot industry. And all at new low prices.** See your Valley dealer today. Value and price—two more ways Valley dominates the field.

**Valley dominates the field.**

**New Valley Lease**  
10% Down  
8.82% Interest Rate

**American Valley, Inc.**

# Diet Related To Diseases

"The last answer about the relationship between diet and disease is not in," said Robert Olson, M.D., Ph. D., St. Louis University School of Medicine. "We have spent some 40,000 man-years studying dietary effects in humans," Olson said, "with few conclusive results." Dr. Olson was recently a

featured speaker at the Fifth Annual Nutrition Press Symposium co-sponsored by Dairy Council, Inc. and Texas Cattle Feeders Association. The hours of research have reduced or eliminated many of the deficiency diseases and infectious diseases around the world. Now, researchers are

taking a nutritional (environmental) approach to managing chronic degenerative diseases like heart disease, stroke, cancer, cirrhosis of the liver, and diabetes. Scientists are now asking, "Is there a way of controlling the diet that will reduce the incidence of these diseases?"

Olson reported on a current dietary study being conducted among the Eskimos to determine why their blood-lipid (fat) levels are below normal even though they consume a high-fat, high-cholesterol diet of whale blubber and fish oil. Surprisingly, they show an extremely low incidence of cardiovascular disease. "During the next two years, intensive research will be done on the effects of fish oil in the diet and its relation to heart-health." Olson hypothesized, "It may be possible that two tablespoons of cod liver oil a day could counteract our high fat diets and considerably reduce the incidence of heart disease and stroke."

Certain special-interest nutrition groups have tried to pin down dietary elements commonly thought to be problem-causers. For example, Senator George McGovern's Senate subcommittee developed the "U.S. Dietary Goals." These specific recommendations, to decrease salt, sugar and fat in the American diet, and to increase dietary cereals and starches, are based primarily on general trends and health indications, rather than hard research facts, according to Dr. Olson.

Olson argues strongly against the Dietary Goals, pointing out that no conclusive proof exists that such a diet will prevent heart disease, stroke, or cancer in the American population. Olson also says that if we specifically reduce the so-called high-fat, high-cholesterol foods such as meat, eggs and whole milk, there would almost certainly be an increase in malnutrition in certain vulnerable population groups.

Olson spoke in favor of balancing the diet among the four main food groups (milk; meat; vegetable/fruit; and bread/cereal) of USDA's Food Grouping System. By eating a variety of foods from the four main food groups, and occasionally selecting something from the fifth (high-calorie / sweet) group, anyone can be sure of a good diet. "Whatever new 'break-

through' you hear about, or new 'miracle diet' that comes along, just remember that the last answer is not in," he said. "We will always be learning more about what we should eat to stay healthy." Some of the puzzles of life confound us, but we're always able to find someone who knows all the answers.

Some of the puzzles of life confound us, but we're always able to find someone who knows all the answers.

**Special Cow Sale**  
 Friday, Feb. 1, 12 noon  
 Selling 1,000 Cows, either with Calves at side or Springing all are Pregnancy tested, Bangs tested and sorted in lots to suit buyer. A Consignment to Registered longhorn bulls and other breeding bulls.  
**Lubbock Stockyards Inc.**  
 Lubbock, Texas  
 For information or to Consign Cattle please call Wayne May 806-745-3383.

**Very limited amounts of discontinued merchandise still available. Be prepared to put pennies back into your purse. Thanks for Shopping with us!**

  
**PIGGLY WIGGLY**  
 Prices Good Thru Sat., Feb. 2, 1980

**Piggly Wiggly**  
 Low Fat **1 1/2% Milk**  
 1-gal. jug  
**\$1.58**  
 Limit 2, please

All Coffee Grinds  
**Maryland Club**  
 1-lb. can  
**\$2.84**

25¢ Off Label Laundry Detergent  
**Cheer**  
 84-oz. pkg.  
**\$2.46**

  
 Boneless Tender Western Beef  
**Bottom Round Roasts**  
 1-lb. pkg.  
**\$1.89**

Buy Now For Your Freezer And Get Ahead On Savings!  
 Oscar Mayer  
**Meat Bologna**  
 1-lb. pkg.  
**\$1.39**

  
 Pack Your Freezer Now and Save  
 • Eye of Round Roast  
 • Eye of Round Steak  
 • Bottom Round Roast  
 • Bottom Round Steak  
 • Head of Round Roast  
 • Hammy Roast  
 • Ground Beef  
 All Cans Be Cut From One Whole Bottom Round. All Cans Boned.  
 Cut & Wrapped At NO CHARGE Cry-o-vac  
**Wilson Certified Franks**  
 12-oz. pkg.  
**95¢**

Mazola  
**Margarine**  
 1-lb. pkg.  
**79¢**

Van Camp's  
**Pork 'N Beans**  
 No. 300 Cans  
**87¢**

Coffee Creamer  
**Coffee Mate**  
 16-oz. jar  
**\$1.29**

Hi-Dri  
**Bath Tissue**  
 4-roll pkg.  
**69¢**

Solid, Firm Heads  
**Green Cabbage**  
 1-lb.  
**10¢**

Liquid For Dishes, 20¢ Off Label  
**Joy Detergent**  
 32-oz. btl.  
**\$1.28**

Red or Gold  
**Delicious Apples**  
 3-lb. bag  
**99¢**

U.S. No. 1, Russet. Large Size  
**Baking Potatoes**  
 5-lb. bag  
**\$1.00**

## Congratulations



FIRST PLACE... Shawn Cooley is pictured here with the First Place Fine Wool lamb. He is showing the lamb for his sister Renee. They are the children of Mr. & Mrs. Burl Cooley.

 **Campbell IRRIGATION SYSTEMS, INC.**

## Congratulations



GRAND CHAMPION OF SHOW... Jodie Wheeler won Grand Champion of Show with her Medium Wool-Heavy Weight lamb, at the Bailey County Livestock Show. She is the daughter of Mr. & Mrs. Joe Wheeler.

**Robert Green**



# MULE'S TALE

Editors Lynnette Shafer And Keva Roming

Official Publication of Muleshoe High School Written and Edited by Students of the Muleshoe Schools

Volume 15, No. 15

Sunday January 27, 1980



## Work, Sacrifice Make Any Program A Success

### Speech Competes At Midland

Muleshoe High's speech squad competed in the Midland Tall City Speech Tournament this past weekend along with thirty-four other high schools.

Debra Stevens and Dana Brewer won second place in debate, with seven wins and one loss. The girls lost in the finals to San Antonio Chruhchill. Fran Berryhill placed fourth in persuasive speaking and qualified for

the state Texas Forensics Association's tournament. Jesse Silguero and George Vela placed sixth in duet acting; Debra Bouchelle, Marlin Bynum, and Carla Shafer competed in the semi finals.

Muleshoe's squad placed sixth in the tournament behind Churchill, Lubbock Coronado, Waco Richfield, Amarillo Tascosa, and Amarillo High.

The speech squads' next tournament will be February 1-2 at Amarillo Tascosa.

GOOD LUCK!!!

### Livestock Show

The Bailey County Junior Livestock show was held Thursday, Friday, and Saturday, January 24, 25, & 26 in the Muleshoe Civic Center. Members of the Bailey County 4-H Clubs and FFA members competed in this event. Results were not known at press time.

### Muleshoe School Menu

Monday	BREAKFAST
Milk	Cereal
Fruit	
LUNCH	
Steaks and Gravy	Buttered corn
Creamed potatoes	Hot Rolls
Fruit	
Tuesday	BREAKFAST
Milk	Toast
Jelly	Juice
LUNCH	
Milk	Hamburgers
Lettuce and Tomatoes	Pickles and Onion
Tater Toes	Cobbler
Wednesday	BREAKFAST
Milk	Buttered Rice
Toast	Fruit
LUNCH	
Milk	Chicken Enchilada
Beans	Tomatoes
Corn Bread	Fruit Jello
Thursday	BREAKFAST
Milk	Honey Bun
Juice	
LUNCH	
Milk	Corn Dogs
Veg. Beef Soup	Crackers
Cinnamon roll	Fruit
Friday	BREAKFAST
Milk	Oatmeal
Toast	Fruit
LUNCH	
Milk	Fried Chicken
Gravy	Cream Potatoes
Green Beans	Hot Rolls
Cake	

### FCA Notice

The Fellowship of Christian Athletes will meet Thursday, January 31, in the home of Monti Vandiver at 7:00 p.m. The main item of business will be the mini-convention that will be held at Panhandle State University. It will be held February 9-10, and the cost will be \$10.00 for the overnight convention. This includes housing, all meals and seminars. Many popular athletes will be on hand to speak to the youth. Also the youth will be involved in several types of competition. Everyone is urged to go; if interested contact Sandy Dunbar.

### Correction

GED Tests will be given February 22 and 23 instead of January 22 and 23 as printed in last week's Journal.



January 30-Sylvia Quintana, Orpha Pecina, Debra Pecina  
January 31-Eugene Porras, Donna Rodriguez  
February 1-Victor Gardea  
February 2-Susie Piece

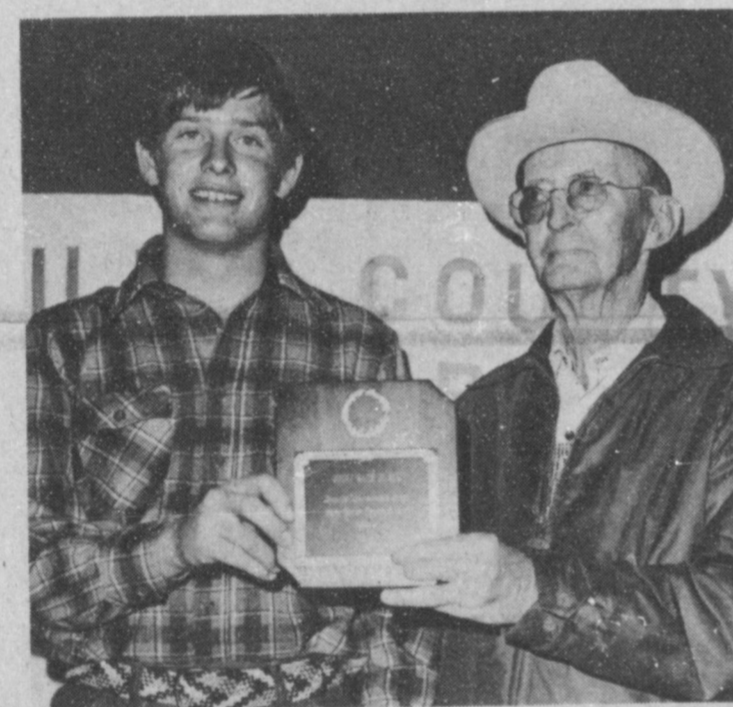
### Calendar Of Events

Monday, January 28  
6:00 - NHS - Leal's  
Tuesday, January 29  
Frona A & B Goys- Girls Here at 5:00  
Wednesday, January 30  
8:00 A.M. - Student Council  
Thursday, January 31  
TFTA State Convention Houston  
8:30 a.m. - S.C. Program  
7:00 - FCA--Butch Vandiver Home  
Friday, February 1  
TFTA Convention Tascosa Speech Tournament  
Saturday, February 2  
Tascosa Tournament  
TFTA State Convention

George Bush, former CIA director and GOP presidential candidate:  
"Democratic contended Edward Kennedy was outrageously irresponsible for appearing to criticize the United



SHOWMANSHIP WINNERS--Brenda Dodd, left, daughter of Mr. and Mrs. Bob Dodd, won the showmanship award in the livestock show this weekend; and Alan Harrison, right, son of Mr. and Mrs. Ted Harrison, won the showmanship award in the steer division of the livestock show.



JIMMIE DALE BLACK AWARD WINNER--Alan Harrison was named winner of the coveted Jimmie Dale Black Award during the Bailey County Junior Livestock Show for 1980. Making the presentation was Ralph Black.

### Mullettes Fall To Dimmitt

The Muleshoe Varsity Mullettes were handed their first district loss by the Dimmitt Bobbies Tuesday night, January 22. The Bobbies narrowly beat the Mullettes by 44-40 on their home court. Leading all scorers was Kathleen Patterson with 16 points. This loss made the Mullettes record 18-3.  
Friday, January 25 the Mullettes traveled to Littlefield to take on the Wildcats. GOOD LUCK MULETTES!!!

### Bake Sale Underway

The Future Homemakers of America met Tuesday, January 15, in the kitchen lab of the Homemaking Department. The Bake Sale was discussed, and the plans were finalized. The last day to order baked goods is February 2. The cakes to be sold are: Italian Cream, German Chocolate, Mississippi Mud, Carrot, Pumpkin, Plum, Chocolate with chocolate icing, brownies, cookies, and plain cake. You can order any of these baked items from any FHA

### WHO KNOWS?

1. What is unique about February in 1980?
2. Define stoical.
3. Who is credited with saying "The ballot is stronger than the bullet"?
4. Where is Mount McKinley?
5. Name the author of "Captain Courageous"?
6. When did Hitler become Chancellor of Germany?
7. Name the flower and stone for January.
8. When was the battle of New Orleans fought?
9. When was the first national election held?
10. Define Deo Gratias.

### NEWS VIEWS

Harold Brown, Defense Secretary, on increased defense spending:  
"I think there is a real danger that increased turbulence will be seen in more areas in the Middle East and other parts of the developing world."

### Education Theme Of Convention

The Eighteen Annual Young Homemaker's of Texas Convention will be held in Dallas on February 1 and 2. The theme of this convention is "Education: Key to the 80's."

On Friday morning the speaker will be Marlene Hodge LaRoe. Houston. She is a social psychotherapist. She also is an author and popular speaker. She will speak on "The Five Crises of Marriage." The musical group that will perform for the morning session are, "Harmony and Understanding," from Tyler Junior College.

The afternoon speaker will be Mrs. Millie Cooper. She is the coauthor of "Aerobics for Women." Her presentation will deal with ideas for improving our physical well being. The Saturday morning speaker will be Dr. Jim Towns, communications specialist, Stephen F. Austin State University. His topic relates to self-awareness and self-acceptance.

The highlights of the luncheon will be presentation of state awards and musical comedy entertainment by Oris Baldwin and his daughter, Jo Shannon, Fort Worth. Miss Baldwin is presently reigning as Miss Fort Worth.

Those who will be attending will be Mrs. Jean Richardson, Mrs. Dorine Harbin, and Sharla Henry.

Mrs. Jean Richardson is an area officer in charge of awards. Mrs. Dorine Harbin is the advisor of the Young Homemakers Chapter in Muleshoe. Sharla Henry is the Outstanding FHA Member for the Young Homemakers.

### Mules Lose District Games

The Mules dropped their first two district outings this past week, but gained a great deal from their losses. Despite a 27 point performance by the Morton Indians in the second quarter, the Mules held Morton to 30 points in each of the other three periods only to fail to come up with enough offense for a win. The final tally found the Mules short eight points, 57-49.

In the Dimmitt ball game, once again the offense was lacking as the Mules fell behind 14-4 in the first quarter and never could make up the distance. The final tally in the Dimmitt game was 58-40.

The Mules travel to Littlefield Friday night, January 25, and host Frona Tuesday night as the first half action continues.

The Mules elected captains for 1979-1980. Those elected were Mike Northcutt, Sam Whalin, and James Atwood, all seniors.

Mr. Kerry Moore has been the speech/drama coach and director for twenty years at Muleshoe High School. His speech squads have won 19 consecutive district championships, and nine regional squad championships. He has coached 14 state champions, and his squads have won numerous invitational tournament sweepstakes. He commented, "It takes students who are willing to work and sacrifice their time to make any program a success. A coach is to provide the incentive and organization for the students and the program. One without the other is impossible for success."

Last week the Mule's Tale staff featured the Senior and the Juniors on the Speech team. This week we would like to feature the Freshman and Sophomores. The team has competed in many tournaments, but are just now getting into the full swing of the tournament season. The Mule's Tale staff wish Mr. Kerry Moore and his Students a very successful year.

Debra Bouchelle is the 15-year-old daughter of Terry and Lou Nell Bouchelle. She is a sophomore and competes in Extemporeous Speaking; she is also active in Band. Debra commented, "It's really been fun in speech this year and especially at the tournaments. Go Speech!"

Sheri Ellard is the 16 year old daughter of Mr. and Mrs. Warren Sheri competes in Oral Interp and is active in FTA. She commented, "I love speech!"

Dana Brewer is the 15 year old daughter of Charles and Pat Brewer. She is a Debater and is active in Band. Her comments were, "Speech has really been a lot of fun the last couple of years. It has given me a chance to meet many people."

John Wuerflein is the 14 year old son of Mr. and Mrs. Frank Wuerflein. He is a freshman this year and plays basketball and is in Ag. As a Speech student he participates in oral interp. and duet. John says, "Muleshoe has a wonderful speech department. We have a real good Speech teacher and we really learn a lot from him. We should be winning speech tournaments soon."

Jeff Combs is a Freshman this year; and as a Speech student, he participates in prose, humorous interp. and duet. His parents are Mr. and Mrs. Larry Combs. His other activities include wood-working and P.E. Jeff's comments were, "Muleshoe's speech team is the best in the world, and so is the coach. That's all there is to it. We're just number 1!"

Shelli Walker is the 14 year old daughter of Mr. and Mrs. Curtis Walker. She is a Freshman and is

believes, "We have a good Speech team, but it could be better, I'm sure, if we all tried a little harder, like Mr. Moore asks."

Another Freshman in Speech is Robert Nowlin, the 14 year old son of Joel and Bonnie Nowlin. He is in debate and humorous interp. Robert's other activities include band, FTA and stage band. His comments, "Our Speech team is really great and I hope I can make state."

Roger Unrein, son of Mr. and Mrs. Ralph Unrein, is a participant in humorous, dramatic, acting. He also participates in off season football. Roger says, "Muleshoe has a wonderful speech class. The teacher is the best speech coach in the world."

Tammy Clark is the daughter of Mr. and Mrs. George Bush. As a speech student she is in extemp. Her comments, "I really like speech, because it helps to know what is going on everywhere. I think we have a really good speech team."

Stacey Barnhill is a Sophomore at MHS. She is in informative speaking. She is the 15 year old daughter of Mr. and Mrs. Ted Barnhill and is also in U.M.Y.

Joe Neel is in extemp. Joe is the 16 year old son of Mr. and Mrs. Nerlyn Neel. His other activities include athletics and FTA. His comments, "We have a good speech team and the best teacher in the country. If we really work hard, we can really do well against the other schools."

Dusty Puckett is another Sophomore who participates. He is in extemp. He also is in athletics, FTA, Student council and FCA. Dusty is the 15 year old son of Mr. and Mrs. D.W. Puckett. Dusty's comments, "We have not gotten off to a good start, but I think everyone's attitude is changing. We should start winning some tournaments if everyone keeps working."

Danny Seales, 15, is the son of Mr. and Mrs. Billy Seales. He participates in Prose, Duet acting, and Dramatic Interp. He is a freshman and is active in FFA, Speech, and Athletics. His comments were, "Speech has been fun this year. It has helped me in many ways to be a better person."

Sandra Graves is the daughter of Mr. and Mrs. Eldrige Graves. She is 16, a sophomore and is in Oral Interp. Her activities include Speech, and Basketball. She commented, "We have a real good and strong close team and I think that is going to really help a lot in our winning."

Michael Isaac is the 14 year old son of Mr. and Mrs. Charles Isaac. He is in informative speaking and is active in Student Council, FTA, and athletics. His comments were, "This year did not start off too swift, but I am sure in the future we will

Scott Ellard, 15, is the son of Mr. and Mrs. Leon Warren. He is a freshman and is a Duet actor and is in Prose. His comments were, "Speech has had a great influence on me and it has helped me in other classes."

Belinda Clayton, the daughter of Mr. and Mrs. Carson Clayton, is 14 and is in Prose. She plays basketball, and is a member of FHA. She commented, "I really have enjoyed Speech these past few months. It really is a fun, learning class."

David Pruitt is the 15 year old son of Mr. and Mrs. Jarrell Pruitt. He is in Duet acting and Prose. His comments was, "Speech is number 1."

Thomas Sliger is the 14 year old son of Mr. and Mrs. Tommy Sliger. He is an informative speaker and is active in athletics. He commented, "Speech has helped me a lot. I have learned a lot of different things."

Stacey Campbell is the daughter of Mr. and Mrs. Buck Campbell. She is 16 and a debater. Her activities include FTA, and UMY. She commented, "I live Speech this year. The squad is improving at each tournament. We are a close group, and Mr. Moore is a great teacher and friend."

Congratulations to these speech participants and also to Kerry Moore, the speech director.

### Student Council

Student Council met Wednesday, January 23, 1980. The meeting was called to order and Diana Saldana led the prayer.

Student Council's next attraction will be Comedy Pantomime, January 31. It will be presented by International Lectures, starring Wayne Milns.

Wayne Milnes, who is featured at Silver Dollar City and stars at the Corn Crib Theatre near Branson, Missouri, is a young man with a unique talent. Using only background music and his superbly disciplined body, Mr. Milnes brings to life a most unusual assortment of characters with whom we are all familiar.

Sketches include: "The Mechanical Man", "The Rooky Pitcher", "The Lazy Juggler", "The Fence", "The World's Eater", "Bojangles", "The Bullfighter", "The Rock Singer", "The Clown", and others.

A coming attraction will be the Jr. Olympics. Student Council would like to say "Thanks" to all the coaches who will be helping Student Council bring this program to the future athletes.

Start saving your blood folks! The Blood Drive is coming again in March. Just a little note to all of the football players, we're expecting you on this time.



## Nursing Home News

By Joy Stancell

The Lazbuddie Church of Christ ladies made and brought to the Nursing Home many delicious pies for the residents to have with their supper Thursday.

Russ Duncan, her daughter Kate, Ora Roberts and Willie Steinbock played dominoes Monday.

Sena Burkman and Dottie Wilterding, take walks down the halls together.

Bertie Hendrix was taken out by Betty Cox Tuesday afternoon.

Wednesday afternoon, Glenda Jennings, Mr. and Mrs. Crenshaw from the Lazbuddie Methodist Church, came to have a Sing-A-Long with the residents. Residents attending were Edna Henderson, Russ Duncan, Dasha Dykes, Guy Nickels, Archie Scarlett, Annie Brown, Ora Roberts, Chellie Bradley, Lottie Hall, Willie Steinbock, W.W. Parker, Marie Engram, Maggie London, Grace Kemp, Marie Patton, Dottie Wilterding.

Sena Burkman and Bulah Connell.

Kem Jennings, Marie Collum, Jessie Mae Sherwood of Lazbuddie visited the Nursing Home Wednesday.

Visiting with Ora Roberts were Jeff Sliger, Tim Sliger, Bruce Duncan, Mrs. Dawson, Kerma McGuire and Betty Cox.

Marie Engram was visited by Terry Bouchelle, Jaunice Glasscock, Bessie Stephenson, Barbara Milburn, Stacey Campbell, Stacy Barnhill, Wilma Waddle and Lena Hawkins.

Ida Collins was taken to Clovis by her family to eat at Furr's for her birthday. She was visited by her niece and nephew from Lubbock, Mrs. Joe Embry and Bobby Gable. Her daughter and her husband also visited with her.

Bertie Hendrix was visited by Bobby Gable, Mrs. Joe Embry and Mrs. Hendrix family visited with her.

Annie McDaniel received a phone call from Helen Thursday morning. Onnie was visited by Sadie Howard, Janie and Rudolph

Moraw, and Paul Wilbanks.

Johnnie Westbrook was visited by C.W. Wilhite, Lena Hawkins, her sister Rita from Sundown, Mrs. Lindal Murray. Johnnie went out to Progress for a U.M.W. meeting Monday.

Russ Duncan was visited by her daughter Kate, Monday.

Sena Burkman was visited by Mildred Head, Bobby Gable, Lena Hawkins, Lona Embry, Aunt Dot called Mura in Nebraska Monday and enjoyed visiting her on the phone.

Friday residents made sewing kits in crafts. Residents participating were Ora Roberts, Grace Kemp, Edna Henderson, Maggie London, Marie Engram, Marie Patton, Archie Scarlett and Mrs. Trout.

Friday afternoon members of the Richland Hills Baptist Church, came to have a Devotion with the residents. Brother Sikes gave the Bible reading and expressed words of encouragement to the residents.

Sunday morning E. B. Wilson came to have Bible study with Marie Patton, Sena Burkman, Maggie London, Dottie Wilterding, Marie Engram, Ora Roberts, Onnie McDaniel, Archie Scarlett and Charlie Garth.

Tuesday afternoon the Hospital and Nursing Home Auxiliary came to shampoo and set the ladies hair. Those having a shampoo and set were Annie Brown, Roie Stein, Marie Patton, Ora Roberts, Sena Burkman, Johnnie Westbrook, Maggie London, Ruth Bruns, Dasha Dykes, Chellie Bradley, Grace

Kemp, Rose Sebring, Lula Trout, Lottie Hall, Russ Duncan, Effie Splawn and Bertie Hendrix.

The Auxiliary gave manicures to Chellie Bradley, Marie Engram, Lottie Hall and Annie Brown.

Marie Engram was visited by Lee Pool, Mrs. Docia Parish, Jaunice Classcock, Onna Higgins, Rachelle Hardage, Stacey Barnhill, Kevin Roberts, Maude Kersery, and Barbara Milburn.

Clara Weaver was visited by Mr. and Mrs. Finnis Jennings, Jerry and Jaley Weaver, Lorene Gallman brought her supper one night.

Onnie McDaniel was visited by Terry Bouchelle, Janie and Rudolph Moraw, Royce and Bernice Garth, Anita, Paul Paul Wilbanks, Mildred Head, C.W. Wilhite, Lona Embry, and May Wilterding.

Russ Duncan was visited by her daughter, Kate from Ill. She was visited by Mr. and Mrs. Hillis Duncan.

Margaret Jones was visited by Azlae Martin of Whitharral, Rafe Rogers from Littlefield, Jana Jones, her granddaughter, from Roswell, Micky DeNopoli, Great Grandson from Roswell, her son-in-law, Tom Burrus from Whitharral, Betty Jones, daughter-in-law, from Lubbock.

According to the poll, former Texas Gov. John B. Connally leads Ronald Reagan, George Bush, and all others in Texas. Connally mustered 30.3 percent to Reagan's 27.6 percent and Bush's 13.2 percent. Not unpredictably, Connally called the poll's results "a victory," while his detractors called it "a setback" for him.

## Scientist studies aquatic deaths in Texas

GALVESTON — A Texas A&M University researcher in Galveston has begun a two-year study of the thousands of water-related deaths in Texas since 1971 to help design a safety program for seasonal hot spots, perhaps preventing more tragedies.

The search, said Dr. James McCloy of Texas A&M University at Galveston, will examine when, how and why drownings and other water-associated deaths occurred on Texas rivers, lakes and bays from 1971 to 1978.

With 367 air miles of marine coastline and 2.8 million acres of inland water, Texas has the nation's second highest death toll

from aquatic accidents, said McCloy.

An average of 608 people died annually from 1970 to 1977 in water-related accidents.

McCloy said drownings and other aquatic deaths are the number two killer of persons under age 45, second only to automobile accidents.

How Come? Small fry to father—How come soda pop will spoil my dinner and martinis give you an appetite? —Newsletter, Evensville.

Man's real life is happy, chiefly because he is ever expecting that it soon will be so. —E.A. Poe.

Few question the benefit of taking a brisk early morning walk. Few take such walks. —News, Boone, Ia.

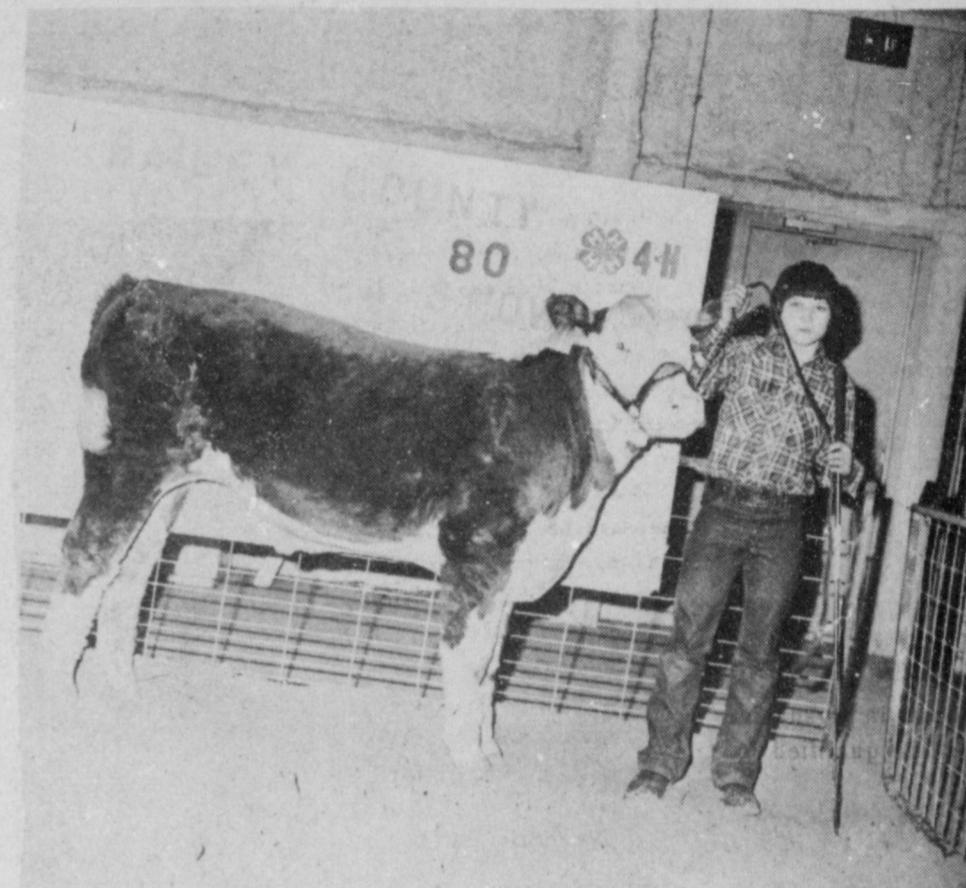
## Classified Ad s

Dead line for Thurs. Is Tues. At 11:00 a.m.

Deadline For Sun. Paper is 11:00 a.m. Fri.

Call 272-4536

## Congratulations

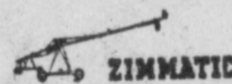


BREED CHAMPION... Jerry Gleason is shown here with his Feeder Steer which won Breed Champion at the Bailey County Livestock Show. Jerry is the son of Dr. & Mrs. Jerry Gleason.



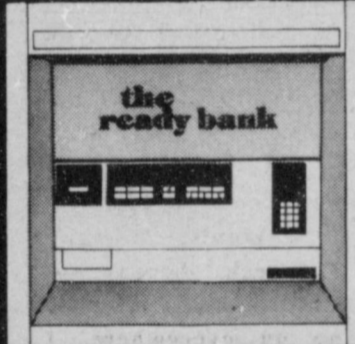
**WESTERN  
SPRINKLERS  
INC.**

P.O. Box 546 — Phone 806/272-4544  
MULESHOE, TEXAS 79347



## Convenient

the 24 hour bank



MULESHOE STATE BANK

A FULL SERVICE BANK

101 AMERICAN BLVD. • 272-4561 • Member FDIC

## GIBSON'S DISCOUNT CENTERS

WHERE YOU ALWAYS BUY THE BEST FOR LESS!

Store Hours:  
Mon-Sat. 9-7  
Sun. 1-6

Jan.  
27-30

Duct Tape \$2.99

Men's White Work Socks \$2.99

Aim Toothpaste \$1.19  
82oz. Super Size

Pennzoil 30.W 69¢

Dove Bath Size 2/90¢

Northern Bath Tissue 79¢  
4 Roll Pk.

Lysol Aresol \$2.19  
Spray 18oz.

Gibson's Latex Wall Paint \$4.99  
High Hiding White

Mouthwash Scope \$1.19

Light 'n Easy Steam & Dry Iron G.E. \$17.99

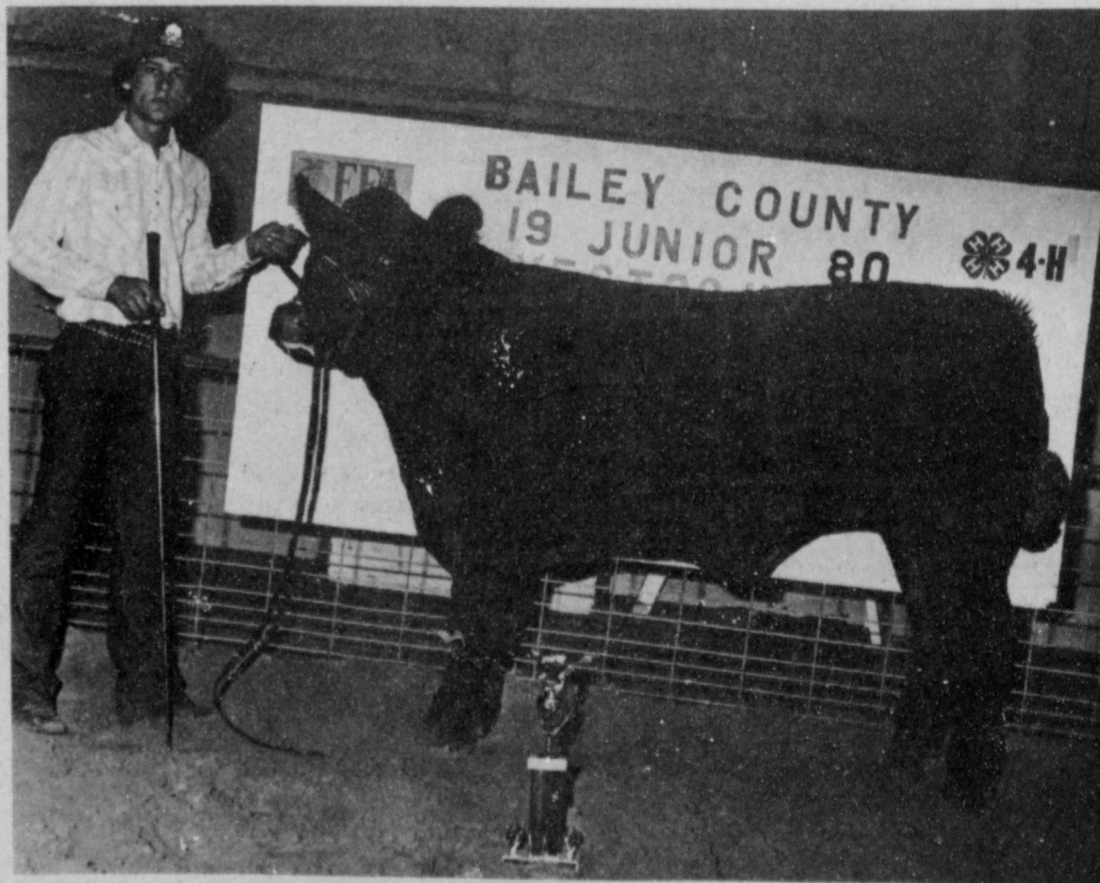
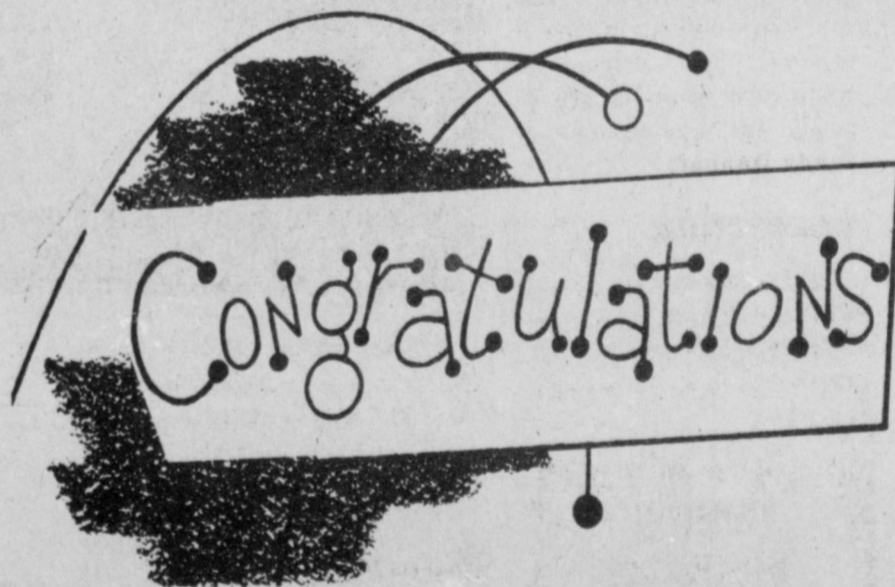
Work Gloves 20% OFF

Note Book Paper 200 Count 69¢

Van Camp Pork N' Beans 3/\$1.00  
160z.

EVERY DAY LOW PRICES

Gal. Homo Milk	\$2.05
1/2 Gal. Homo Milk	96¢
Gal. Lowfat Milk	\$1.89
1/2 Gal. Lowfat	94¢
1/2 Gal. Buttermilk	98¢
2 Lb. Cottage Cheese	\$1.69
1 Lb. Cottage Cheese	91¢
Sour Cream	49¢
Whipping Cream	59¢



RESERVE CHAMPION OF SHOW... Shane Claunch is shown here with his Heavy Weight Steer which won Reserve Champion of Show at the Bailey County Livestock Show. Shane is the son of Mr. & Mrs. Jim Pat Claunch.

## Claunch Gin

## Weather Becomes Key To Winter Pasture

COLLEGE STATION -- How much winter pasture stockmen will have available for livestock grazing in the weeks ahead will depend on three key factors--sunlight, temperature and moisture.

And the way things are going so far, at least one of these factors--moisture--has been in a deficit and

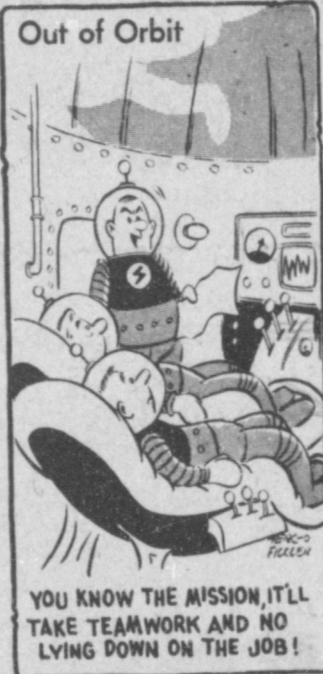
has kept production down. "Winter pastures are generally poor over the state due to the dry fall weather," points out Don Dorsett, a forage specialist with the Texas Agricultural Extension Service, Texas A&M University System. "This will put more pressure on stockmen to feed their herds

more or to cull heavier." With winter approaching the odds for substantial growth from winter pastures continue to decline due to sunlight and temperature factors. Winter means shorter days and less sunlight for plants to make their own food for growth. Cloudy days during winter further

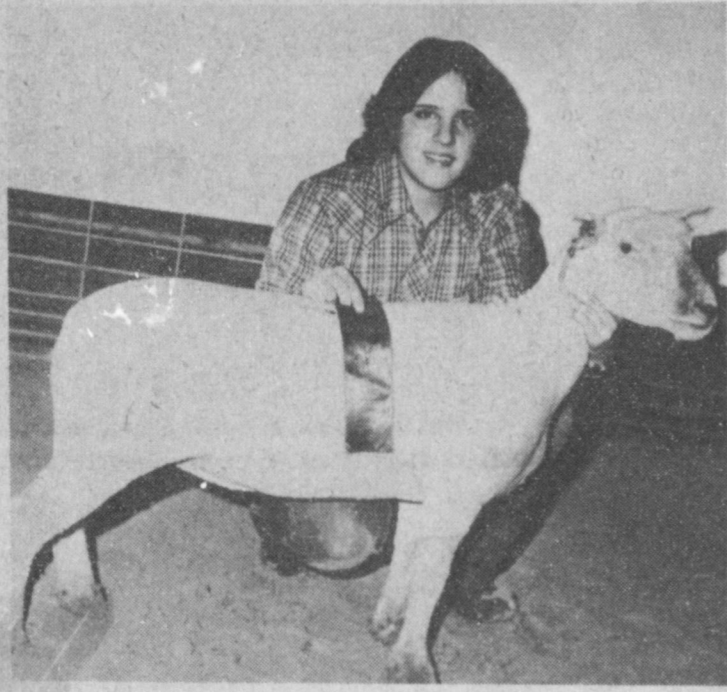
restrict plant growth, explains Dorsett. Temperatures also will be dropping in the coming weeks, thus restricting plant growth. Severe winter temperatures will stop plant growth completely and may even cause freeze damage. Milder winter temperatures would allow pastures to make normal growth, but again, sunlight and moisture must be present.

"Livestock producers need to look at sunlight, moisture and temperature factors in gauging the grazing potential of their winter pastures in the weeks ahead," points out Dorsett. "If weather conditions are favorable for growth, and if adequate amounts of fertilizer have been applied, then winter pastures should provide high quality grazing. This would take the pressure off supplemental feeding and culling of cow herds."

**Young As You Feel!**  
It has been observed that women live longer than men. Possibly because they remain girls for so many years.  
-Courier, Craig, Col.



## Congratulations



RESERVE BREED CHAMPION...Beth Harmon is shown here with her South Down lamb which won Reserve Breed Champion of the Bailey County Livestock Show. Beth is the daughter of Mr. & Mrs. Bill Harmon.

## Wooley - Husrst Inc.

## Three-Way Menu

### Monday

#### BREAKFAST

Cereal

Juice

1/2 Pint Milk

#### LUNCH

Texas Hash

Mashed Potatoes

Salad

Hot Rolls

1/2 Pint Milk

Brownies

### Tuesday

#### BREAKFAST

Cinnamon Toast

Juice

1/2 Pint Milk

#### LUNCH

Burrito

Green Beans

Lettuce

Wedges

1/2 Pint Milk

Cherry Cobbler

### Wednesday

#### BREAKFAST

Sausage

Toast

Juice

1/2 Pint Milk

#### LUNCH

Pinto Beans

Tator Tots

Spinach

Corn Bread

1/2 Pint Milk

Cake

### Thursday

#### BREAKFAST

Bisquits and Jelly

Juice

1/2 Pint Milk

#### LUNCH

Sloppy Joes

Buttered Carrots

Mashed Potatoes

1/2 Pint Milk

Jello

### Friday

#### BREAKFAST

Waffles and Syrup

Juice

1/2 Pint Milk

#### LUNCH

Hamburger

French Fries

Lettuce

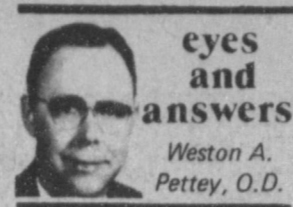
Tomatoes

Onions

Pickles

1/2 Pint Milk

Cookies



## eyes and answers

WESTON A. PETTEY, O.D.

### AFTERIMAGES ARE FASCINATING

Dear Dr. Pettey: I've never had any eye or vision trouble, but I've just discovered something I have never heard anyone else mention before. I've been fine-lettering some large bright red and bright green display cardboard. After a few minutes' work on the red cards (with white ink), I can stare off

across the room at an off-white wall and see GREEN the size and shape of the RED cardboard. The same thing happens when I work on the GREEN cards--looking at the wall I see RED. Could there be something wrong with my eyes?

You are the first one to write me on this interesting subject. Thanks.

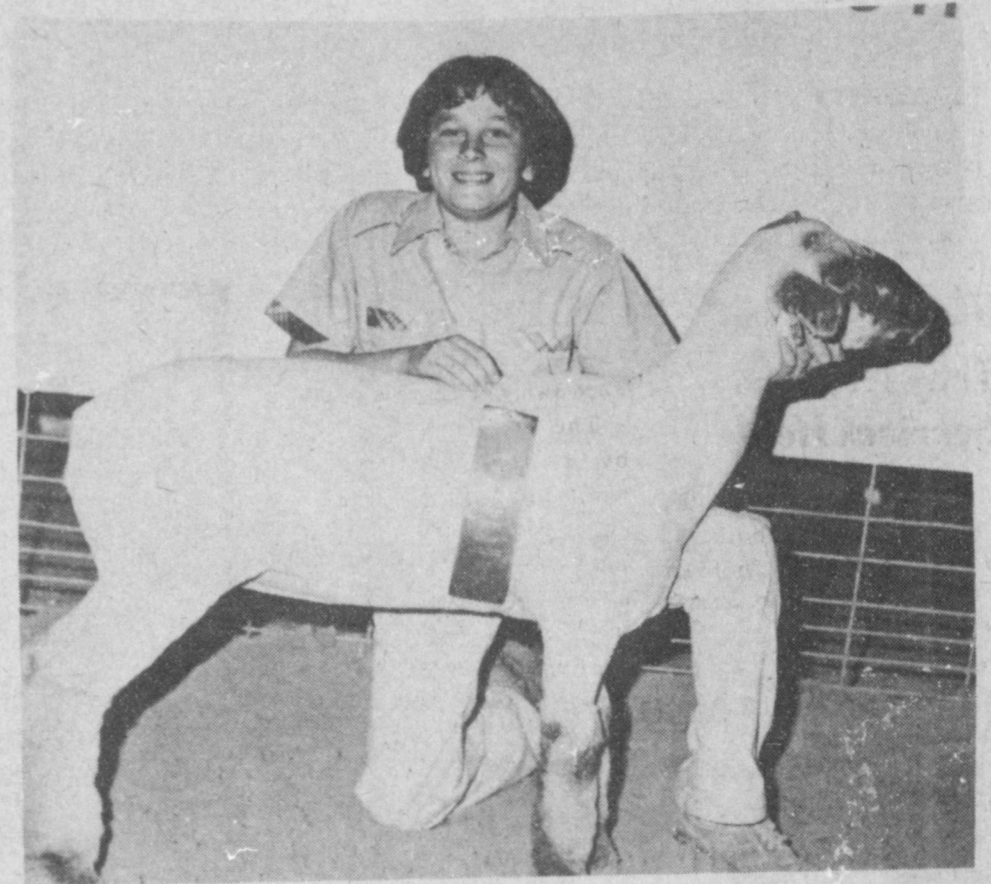
Your experience sounds like a completely normal one--the seeing of after-images. Nature built into our eyes the chemical, rhodopsin--called visual purple. This can be loosely compared to the emulsion found on a color photographic film, making for

image formation in the eye as film emulsion lets an image form on the film.

Exposed to a given "light," the visual purple is bleached a little; but instead of staying permanently bleached like film emulsion does, the eye chemical is quickly replaced; the eye is then ready to look at, and register, another scene or scenes.

Continued viewing of a bright red, or green, background keeps bleaching the visual purple more than nature can replace instantly. So, when the eyes look off at a neutral color scene, there is an afterimage for a few moments.

## Congratulations



RESERVE BREED CHAMPION...The Reserve Breed Champion of the Bailey County Livestock Show was won by Ricky Rasco with his Fine Wool Cross, light weight lamb. He is the son of Mr. & Mrs. Odell Rasco.

## First National Bank

## Congratulations ..... ARE IN ORDER



GRAND CHAMPION OF SHOW...The Grand Champion of Show of the Bailey County Livestock Show was won by Alan Harrison with his Heavy Weight Steer. Alan is the Son of Mr. & Mrs. Ted Harrison.

## Muleshoe Liquid Feed

## Thanks America

Thanks America. In order to provide the customers of Southwestern Public Services with reliable electricity, we are using one of our most plentiful fuels...coal.





**FIRE DESTROYS UNOCCUPIED HOUSE**--Thursday evening, frustrated Muleshoe Fire Department members found themselves shut away from this fire as a long train roared down the tracks through Muleshoe. The unoccupied house burned to the ground. No official cause for the fire was released by the fire department, however, it was suspected that children playing with matches possibly set the building on fire.

**R.R. Mick Funeral Held Here Saturday**

Funeral services for R.R. 'Ross' Mick, 82, were conducted at 2 p.m. Saturday, January 26, in Singleton-Ellis Chapel of the Chimes with Rev. David Hamblin, pastor of the First United Methodist Church officiating. Burial was in the Muleshoe Cemetery with Masonic Graveside Rites. Services were under direction of Singleton-Ellis Funeral Home.

Ross Mick died Tuesday in West Plains Medical Center in Muleshoe. He had been a resident of Bailey County since 1950, moving here from the Big Square community where he had resided since 1909, moving there from Iowa.

He was born May 25, 1887 at Bayard, Iowa and was a retired carpenter-painter. He was a Methodist and was a member of Muleshoe Masonic Lodge 1231. In the lodge, he was a Past Senior Warden and

served as Worshipful Master in 1973-74. He was also a member of Muleshoe Chapter 792, Order of Easter Star; a charter member of Lubbock Scottish Rite; member of Khiva Shrine of Amarillo; he has served on advisory boards of DeMolay and Rainbow Girls for many years. He was also a Veteran of World War I, having served in the U.S. Army and was a member of Ben Richardson Post 403 of American Legion Chapter, Muleshoe.

Survivors include one son, Mark Lee Mick and one daughter, Mrs. Phoebe Johnson, both of Sacramento, Calif.; one sister, Mrs. Lucille Branscum, Muleshoe; 10 grandchildren and nine great grandchildren.

Government revising food labeling laws.



R.R. 'ROSS' MICK

*She Can*

Many a woman who can't add can certainly distract. -Tribune, Chicago.

*Accurate Definition*

Late middle age is that period when it takes you half as long to get tired and twice as long to rest. -Your Life.

**BIBLE VERSE**

"Return unto me, and I will return unto you, saith the Lord of hosts."

1. Through whom was the above statement made?
2. To whom was it made?
3. For what is the author's book in the Bible best known?
4. Where may this statement be located?

**Answers To Bible Verse**

1. Malachi, Old Testament prophet.
2. To the children of Israel, and also to us today.

3. Malachi 3:10, which begins, "Bring ye all tithes into the storehouse..."
4. Malachi 3:7.

A wicked man's gift hath a touch of his master. -George Herbert.

Saints themselves will sometimes be, Of gifts that cost them nothing, free. -Samuel Butler.

Nothing costs so much as what is given us. -Thomas Fuller.

**Robert R. And Troy Rennels Services Held**

Services for Robert R. and Troy Rennels, both 73, of Fort Sumner were held at 2 p.m. Thursday in Julian Mortuary Chapel with the Rev. Bill Seassom, pastor of the First Baptist Church, officiating.

Burial was in the Fort Sumner Cemetery under the direction of Julian Mortuary.

Mr. and Mrs. Rennels were found dead at their home at 5:10 p.m. Monday, January 21.

The couple was married on November 19, 1933, and had lived in Roaring Springs until 1933, when they moved to Lubbock. Two years later, they moved to Fort Sumner, where they lived until they

moved to Muleshoe in 1945. They returned to Fort Sumner 16 years ago.

The couple is survived by a son, Jack R. of Muleshoe, two grandchildren, Gilbert and Thomas Payton Rennels, both of Muleshoe.

Mrs. Rennels also is survived by three sisters, Della Seales, Ola Seales and Mrs. J.E. Tucker, all of Yoakum.

**Golden Gleams**

Every good gift and every perfect gift is from above, and cometh down from the Father of lights.

-James 1:17.

Whoever makes great gifts wishes great gifts to be made to him in return.

-Martial.

Rich gifts wax poor when givers prove unkind.

-Shakespeare.



Rates for listing in the Journal's Political Column is: \$35 for all offices except those for City Council and School Board post which is \$15. This fee includes a front page announcement article and a one-column photograph at the time the announcement is made, in addition to the listing in the Political Column from the date of announcement until the final election.

Charges for announcements are cash in advance, and this same policy applies to all political advertising carried in the columns of this news paper. Names for each office will be listed in the Political Column in the order they are received at the newspaper office.

The Journal has been authorized to announce the following candidates for public office:

**STATE SENATE DISTRICT 31**

**Bill Sarpalius**

**COMMISSIONER Precinct I**

**Raymond Scott**

**Precinct III**

**R.P. (Bob) Sanders**

**REPRESENTATIVE**

**Bill Clayton**

**SHERIFF**

**Bob Henderson**

**Jerry Hicks**

**DISTRICT ATTORNEY**

**Jack Young**

**COUNTY**

**Tax Assessor**



**ATTEND THE CHURCH OF YOUR CHOICE**



**CHURCH OF THE NAZARENE**  
Ninth and Avenue C  
**Dana Shunko, Pastor**

**FIRST CHRISTIAN CHURCH**  
130 W. Avenue G  
Rev. Walter Bartholf  
Suncay School 10 a.m.  
Worship 11 a.m.

**LATIN AMERICAN METHODIST MISSION**  
Avenue D, and Fifth Street  
R.O. Chavez, Pastor

**THE COMMUNITY CHURCH**  
H.D. Hunter, Pastor  
Morton Highway

**CALVARY BAPTIST CHURCH**  
James Williams, Pastor  
1733 W. Avenue C

**FIRST UNITED METHODIST CHURCH**  
Rev. David Hamblin  
507 West Second, Muleshoe

**PRIMITIVE BAPTIST CHURCH**  
621 South First  
Elder Bernard Gowens

**MULESHOE ASSEMBLY OF GOD**  
517 South First  
Rev. Joe Stone

**EMMANUEL BAPTIST CHURCH**  
Iglesia Bautista Emmanuel  
107 E. Third  
Isaias Cardenas, Pastor

**RICHLAND HILLS BAPTIST CHURCH**  
17th and West Ave. D  
Roy L. Sikes, Pastor

**SPANISH BAPTIST MISSION**  
Rev. Ynes Aleman  
East Third and Avenue E

**TRINITY BAPTIST CHURCH**  
314 Ave. B.  
Rev. Gene Prevo

**MULESHOE CHURCH OF CHRIST**  
David Cox, minister  
Clovis Highway

**FIRST BAPTIST CHURCH**  
220 West Ave E  
Rev. J.E. Meeks

*Whiter than Snow...*

"Purge me with hyssop, and I shall be clean: wash me, and I shall be whiter than snow." The Psalmist desired to be pure and white as snow, and knew that this could come only from God. Complete joy, and gladness of a pure heart can be yours too, when you walk close with the Lord.

*The Church is God's appointed agency in this world for spreading the knowledge of His love for man and loving his neighbor. Without this grounding in the love of God, no government or society or way of life will long persevere and the freedoms which we hold so dear will inevitably perish. Therefore, even from a selfish point of view, one should support the Church beyond that, however, every person should uphold for the sake of the welfare of himself and his family, and participate in the Church because it tells the truth about man's life, death and destiny; the truth which alone will set him free to live as a child of God.*

*Coleman Adv. Serv.*

<b>Western Drug</b> 114 Main 272-3106	<b>Johnnie's Safety Center</b> 320 E. Amer. Blvd. 272-3043	<b>Lee's Wear</b> 1910 W. Amer. Blvd. 272-4663	<b>Roy Whitt Chevrolet</b> 201 Main 272-3100
<b>Bratcher Motor Supply</b> 107 E. Ave. B 272-4288	<b>Watson Alfalfa</b> Alfalfa Hay 272-3552	<b>Whites Cashway Grocery</b> 'Where Friends Meet & Prices Talk' 402 Main & 272-4297	<b>Bailey County Memorial Park</b> 'Every Service A Sacred Trust' 272-4383
<b>Dairy Queen</b> Margie Hawkins, Manager 272-3412	<b>James Roy Meat Market Co.</b> 506 W. Amer. Blvd. 272-4361	<b>Dent-Rempe Implement Co.</b> John Deere Dealer 272-4297	<b>Dari-Delite Drive In</b> 'Take Out Orders' 210 N. First 272-4482
<b>St. Clair's</b> 110 Main 272-4453	<b>Muleshoe Co-Op Gins</b>	<b>First National Bank</b> 'Home Owned' 224 S. First	<b>Lambert Cleaners</b> Steam Carpet Cleaning Drycleaning
<b>Baker Farm Supply, Inc.</b>	<b>401 S. First Muleshoe</b>	<b>Western Sprinklers, Inc.</b>	

### Enochs News By Mrs. J.D. Bayless

Mrs. Clifford Snitker was dismissed Monday after spending a week in the West Plains Medical Center in Muleshoe for tests and x-rays.

Mr. and Mrs. Raymond Hearrell and son, Raymond Jr. of Cleburne, were guests in the home of her dad, Mr. and Mrs. Johnny Cox last Sunday. Mr. and Mrs. Junior Austin of Lubbock were also guests Sunday night.

Durwood Howell and sister, Alyce Marie Harlan of Lubbock visited friends in the community one day

last week. Mr. and Mrs. Clyde Price and the E.N. McCall's.

Mr. and Mrs. J.W. Layton and Mrs. J.E. Layton attended the funeral services of Mrs. Mamie Mize, 4:30 p.m. Friday at the Church of Christ at Ralls.

The Baptist women met 9:30 Tuesday morning. Mrs. J.E. Layton gave the

first study in their mission book "Just Folks" in the North Central States. Mrs. Buford Peterson read Ge. 4: 22-32 and read the Missionaries names having birthdays and Mrs. J.D. led the benediction in prayer for the missionaries. Those present were: Chester Petree, J.D. Bayless, Dale Nichols, Johnny Cox, Mrs. J.W. Layton, Buford Peterson and J.E. Layton and two visitors.

Worth last Monday to attend the Evangelism Conference till Wednesday. They stayed with their parents, Mr. and Mrs. L.T. Heady and Mr. and Mrs. P.M. Cardwell at Aledo while there.

Mrs. A.P. Fred had as her guests recently her brother, Mr. and Mrs. Aubrey Simpson from Ft. Smith, Arkansas.

Mr. and Mrs. F.L. Simmons and son, Chick, of Lubbock spent Wednesday till Friday with their grandson and Chicks son, Mr. and Mrs. Lee Carol Simmons.

Mr. and Mrs. Tommy Kirk and Jennifer went with Mr. and Mrs. Barry Armes of Littlefield to Anglefire, N.M. for the weekend skiing.

Dinner guests in the home of Mr. and Mrs. Dale Nichols Thursday was his sister, Mrs. L.B. Davis of Shallowater and a brother, Harold Dean Nichols of Idalou.

Real estate expert predicts a scarcity of mortgage money

COLLEGE STATION — Recent fluctuations in the prime interest rate, the rate banks charge their best customers, will send shock waves through the Texas home mortgage rates, predicts a Texas A&M University real estate expert.

Dr. Jack Friedman, head of the Research Division of the Texas Real Estate Research Center at Texas A&M, said mortgage funds in Texas will no doubt become scarce and that could cause a slowdown in both new home construction and the resale of existing homes statewide.

The present prime rate, combined with an already tight money policy, will surely cause a scarcity of mortgage money from supply and demand standpoints, added the expert.

Air leak device can lower heating bills

COLLEGE STATION — When heating bills go up as temperatures go down, an architect and engineer at Texas A&M University has a relative simple and inexpensive method of checking air leaks.

Air leaks represent higher heating bills and a waste of energy, but are easily detected and can be fixed at a low cost by

homeowners and renters, says Professor William M. Kellett.

Finding the leaks is simple, claims Kellett. He uses a facial tissue or similar size square of light plastic fastened with clothespins to a wire

clothes hanger.

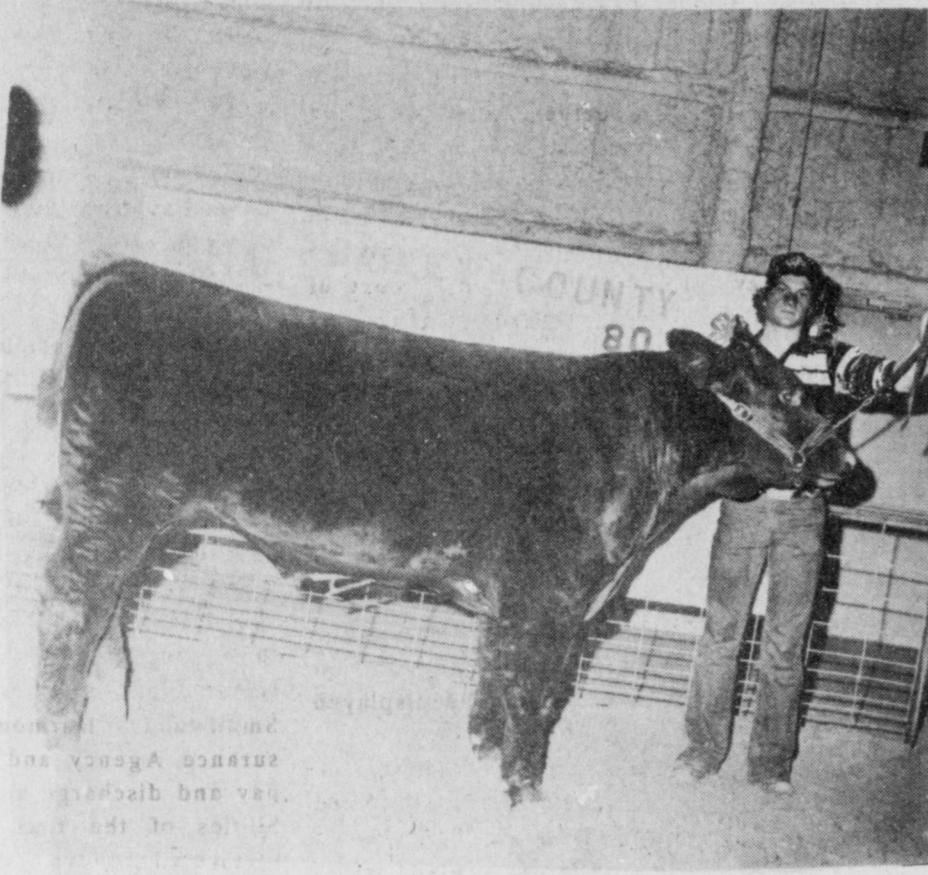
"This should be held within a couple of inches of suspected leak points," the architect says. "If the tissue or plastic moves, there is too much air leaking."

Kellett says places to check include doors and thresholds, windows, wall outlets, where walls abut fireplaces and other suspected leaks.

Caulking and weather stripping the spaces is an easy and inexpensive way to stop the leaks and to keep the heat inside the house, Kellett advises.

Margaret Thatcher, British Prime Minister: "If President Carter decides to seek United Nations sanctions against Iran, Great Britain will be the first to support him."

## Congratulations



FIRST PLACE... First place in the Middle Weight Steers of the Bailey County Livestock Show was won by Jimmy Gleason, he is the son of Dr. & Mrs. Jerry Gleason.



ee's WESTERN WEAR

1910 W. Amer. Blvd. Muleshoe 272-4663

Mr. and Mrs. Junior Austin and family of Lubbock visited his parents, Mr. and Mrs. Jack Austin last Sunday.

A cold front came through Saturday and that night it thundered, lightened, and misted rain. Sunday, ice was all over everything and very cold. Services were dismissed at the Baptist Church Sunday night.

Mr. and Mrs. Andrew Petree of Levland, were guests in the home of his brother, Mr. and Mrs. Chester Petree Monday.

Word was received that Bill Burris has been dismissed from Methodist Hospital in Lubbock. He was dismissed Friday. He is the son-in-law of Carl Hall.

Mr. and Mrs. Zed Robinson of Muleshoe were dinner guests in the home of Mr. and Mrs. E.N. McCall Thursday.

Mrs. D.M. McBee underwent surgery at the Littlefield Medical Center last Monday. Mrs. Dean McBee has been staying with her son and children while Mrs. McBee has been in the hospital.

Reverend and Mrs. Mike Heady, drove to Fort

## Congratulations



FIRST PLACE... Belinda Wheeler is shown here with her Light Weight Steer that won first place at the Bailey County Livestock Show. Belinda is the daughter of Mr. & Mrs. Joe Wheeler.

# James Crane Tire Co.

## CONGRATULATIONS AND OUR BEST WISHES



BREED CHAMPION... Kelly Harrison is shown here with his Heifer which won Breed Champion of the Bailey County Livestock Show. Kelly is the son of Mr. & Mrs. Ted Harrison.

Nickels & Nickels Gin of Goodland  
And  
Nickels Gin of Baileyboro

## We Are Happy To Extend Our CONGRATULATIONS



RESERVE BREED CHAMPION... Brenda Cooley won Reserve Breed Champion with her Fine Wool lamb at the Bailey County Livestock Show. Brenda is the daughter of Mr. & Mrs. Burl Cooley.

John's Custom  
Mill



Page 12, Mrs. Enoc, Mrs. West in and r

### The Sandhills Philosopher

Editor's note: One Sandhills Philosopher on his Johnson Grass farm on Sandy Creek thinks he has solved the farm fuel problem. If you see a flaw in his idea, let us know. Dear editor: One reason the massive production of gasoline hasn't taken place—aside from the fact big oil com-

panies aren't interested in every farmer having what amounts to an oil well in his backyard and bourbon makers aren't interested in increasing the number of stills in the country—is that some government expert figured out a few years ago that it takes more energy to make alcohol out of grain than the alcohol itself yields. And a lot of people believed him. It's a good thing that expert wasn't operating 50 years ago or he would have proved that it takes more grain to feed a mule than

the mule can produce pulling a plow, thus making farming mathematically impossible. Now it's true you've got to have some heat to turn grain into alcohol, just as it's been proved you can run a tractor or a car on pure alcohol if you make some changes in the carburetor, or the windshield wiper, I forget which. However, what the experts overlook is that after you extract the alcohol from the grain you've still got a lot of high-protein cattle feed left over, worth a lot

of money. Year, the experts say, but you're still going to have to buy a lot of scarce, high-priced butane or other oil-based fuel to generate the heat to turn that grain into alcohol. All right, say you figure it'll take 50 acres of grain to produce all the alcohol you need to operate your farm on. Well, you plant an extra 15 acres. Then you buy enough butane to cook off your first batch, and then store the surplus alcohol from that extra 15 acres to fire your boiler for

the second batch, and so on, eliminating the need for any more butane. You'd then have a self-perpetuating fuel supply, if you don't count your own labor and can remember the stuff isn't fit to drink. There may be a hole somewhere in this idea but I can't see it. The way it looks to me is it'd make OPEC look like two-bits. Yours faithfully, J.A.

U.S. now growing its own pistachios. Carter urges Soviets withdraw troops. Four OPEC members up prices 20 percent.

**OPEN! 10,080 minutes a week**  
 the ready bank  
**MULESHOE STATE BANK**  
 101 AMERICAN BLVD • 272-4561 • Member FDIC

**Church of Christ**  
 16th and Avenue D  
 SERVING CHRIST AND OUR FELLOW MAN  
 Sunday 10:30 am  
 6:00 pm

# Anthony's C. R. ANTHONY CO.

## AFTER INVENTORY CLEARANCE

### MILLION DOLLAR COUNTDOWN SALE

321 MAIN STREET  
 MULESHOE, TX

\*SORRY, NO LATAWAYS ON THESE ITEMS

We Have 4 Days Left To Reach Our Million Dollar Goal And We're Going All Out With These And Other Outstanding Values

## Entire Stock McCALL'S Patterns And SIMPLICITY

- 4 DAYS ONLY
- MONDAY THRU THURSDAY
- SORRY NO RAINCHECKS
- COME EARLY FOR BEST SELECTION

# 1 1/2 PRICE

"Red Heart" Yarn  
 88¢ ea.  
 6 for \$5.

Hand knitting yarn is one of the most exciting and creative handicraft items today. Excellent shape retention, a minimum of pilling and stretching, ease and workability and the quality of the finished garment.

Polyester Thread  
 10 spools \$1.

Stock up now for your Spring sewing. Savings couldn't be greater. 100% pure polyester thread. 225 yds. per spool.

Gauze Knit Coordinates 2 yds. \$5.	Stretch Gabardine 2 yds. \$5.	Fabulous Terry Cloth 2 yds. \$5.	Sport and Dress Fabric \$1. yd.
---------------------------------------	----------------------------------	-------------------------------------	------------------------------------

No better way to enter into the Spring Change than in our shapely Gauze Knit Coordinates. The beauty of 100% polyester gauze knit prints, the richness of their coordinating solid gauze knit are without peer and this year they're yours in exciting color combinations. Reg. \$2.99 yd.

Getting down to basics in sportive shape-ups is a cinch with 50" stretch gabardine. Achieve the newest look in jackets, pants and sportswear. Comes in all the new Spring colors. Reg. \$2.99 yd.

For a job or a jog, get the jump on fashion with this 48" Terry Cloth. 75% Arnel® Triacetate and 25% nylon makes this a very versatile fabric. Choose from a rainbow of colors. Reg. \$2.99 yd.

Some of the Nation's leading mills are offering a beautiful collection of fashion dress and sportswear prints. Easy care polyester and cotton blends. Reg. \$1.49 yd.

**Ladies FASHION BLOUSES**  
 Assorted Styles on 3 Full Racks  
 \$4.97

Special Purchase While They Last

**Final Clearance Garfield & Rosen FALL FASHION SHOES**  
 Reg to \$199 **\$7.97** Pr

Large Selection Still Available

**Giant Group Mens Dress & Sport Shirts**  
 Reg to \$15 Assorted Styles **\$5**

**Special Purchase MEN'S FASHION JEANS**  
**\$5.88 3 FOR \$15**

An Assortment Of fashionable jeans for the smartly dressed man. Sizes 28 to 38.

