













# Lifestyles

## White Deer Lands advertised with booklets and exhibit building



### Museum Mementos

Eloise Lane  
White Deer Land Museum

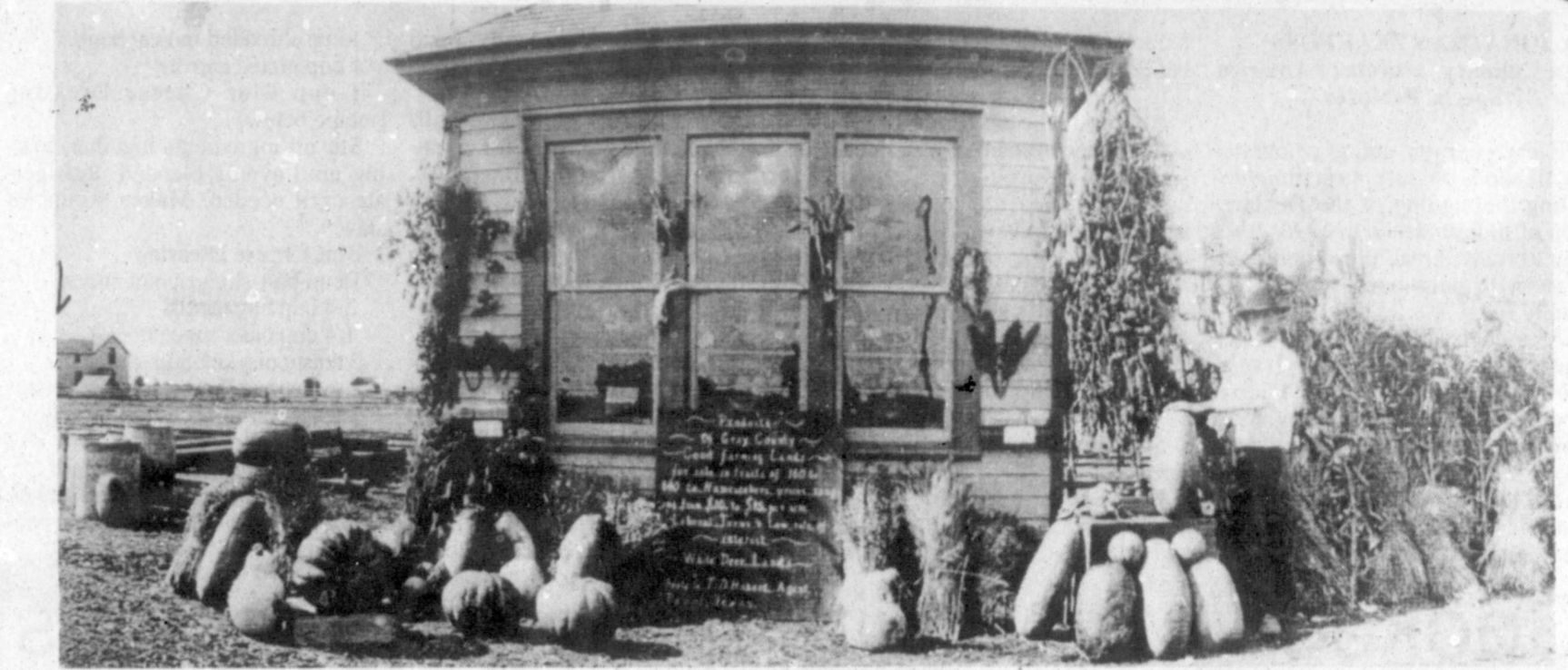
In making the transition from ranching to farming on the White Deer Lands, T.D. Hobart inaugurated a plan of selling the lands in small tracts, ranging in size from 160 to 640 acres, to settlers only. The terms of the sales were usually one-fifth cash and the balance in 1, 2, 3, 4, 5, 6, and 8 years respectively from date of purchase with interest at the rate of six percent per annum. No payment was required for the first year after sales were made so that purchasers could make improvements on the land, such as

building substantial residences, fencing, providing water, and other necessary improvements. Settlers were required to set aside thirty feet along the borders of the land for roads, and no stock were to be turned loose until the land was fenced with three strands of wire. Every possible inducement was given to the purchaser to improve the property and to build permanent homes.

Hundreds of stock farmers, with little or no money, began the task of building a civilization on the rolling prairies of the White Deer Lands. Without the credit features in the sale of the lands instituted by Hobart, many of these early stock farmers could not have remained. Suits were never brought against failure to make annual payments. If lands were relinquished by the purchasers, every effort was made to find a new purchaser to reimburse the original settler for whatever improvements he had made. Hobart's plan in the disposition of these lands as unique in that he sold lands directly to settlers only and without the aid of any outside agencies.

In 1905 Hobart had several thousand booklet printed for free distribution to prospective purchasers. When trains stopped at Pampa for water, these booklets were given to interested persons. Since outside agents were claiming that it was not possible to obtain clear title to White Deer Lands, Hobart included letters from attorneys who attested that clear titles were obtainable.

Several maps showed the location of the land. A section on topography included an early explorer's description of the climate: "Perhaps no part of the habitable globe is more favorable to human existence, as far as the atmosphere is concerned. ... This immense grassy expanse is purged from impurities of every kind and the air imparts a force and vigor to the body and



J.A. Mayfield is standing by the White Deer Lands exhibit building where produce of area farmers is displayed. The boarding house of White Deer Lands (116 West Atchison) is shown at the far left. (White Deer Land Museum photo)

mind, which repays the occupant in a great measure for his deprivations; nature has conferred upon him health the first and best of her gifts."

In addition to an explanation of the mode of selling land, the booklets included information on soil and vegetation, water supply, railroad facilities, taxes and county government, rainfall, crops ideal planting time and diagrams for planting. Pictures of the Pampa schoolhouse (1903) and a number of farm scenes were included. Testimonials from farmers near Miami and in Carson County told of successful crops.

In 1905 and 1906, large immigration companies ran regular homeseekers' excursion trains from Chicago, St. Louis and other points in the North into the Texas Panhandle. Transportation was free to those who purchased land. When these trains reaches their points of destination, they were parked along railroad siding for several days at a time while scores of land agents took the homeseekers to observe the lands listed with their companies. Trains

were closely guarded so that individuals or corporations not listed with the immigration companies could not contact the prospective buyers.

In 1906 Avery Turner, passenger agent at Amarillo, granted permission for Hobart to construct a small exhibit on the railroad right-of-way near the depot at Pampa. Around the building farmers displayed their produce which included pumpkins, watermelons, wheat shocks, squash and tomatoes. An employee of White Deer Lands was stationed at the building to hand out descriptive literature and booklets. The sign in front of the building read:

Products of Gray County Good farming Lands for sale in tracts of 160 to 640 to Homeseekers prices range from \$10 to \$15 per acre Liberal Terms and Low rate of interest White Deer Lands Apply to T.D. Hobart, Agent Pampa, Texas

The enraged immigrant land agents began to circumvent the effectiveness of the exhibit building. The left the main part of their trains about half a mile from the Pampa station. They detached their engines and brought them to Pampa for the needed water. Then they returned to the trains to attach the engines and come through

Pampa at a high rate of speed so that the passengers could not alight and see the products on display.

In early, September, 1906, Hobart received a letter from one of the Chicago immigration agents. The agent began: "I confess that I was getting ready to slug one of your agents who persisted in handing booklets into my car (train). He seemed to be a little light in the upper story and a few questions asked him, caused him to so tangle himself that he did us no harm."

The Chicago agent then proposed for Hobart to join him in selling land in a way that would exploit land buyers. In a terse letter Hobart informed the Chicago agent that he did not employ outside agents. Hobart concluded: "I have been in Texas some 24 years, and my knowledge of Texas people convinces me that they do not take kindly to sluggers, and I have known the result to be very unpleasant. Just keep your sluggers in Chicago, and I feel sure they will enjoy much better health than if they attempt to apply their vocation here."

The feud between Hobart and the outside agents became more heated. The outside agents resorted to any kind of strategy to prevent buyers from getting information about White Deer Lands. Their secretive methods aroused the suspicions of

the homeseekers and Hobart's booklets continued to be in great demand. This stirred the anger of the outside agents to its highest pitch and in retaliation two night raids were made on the exhibit building. On one occasion Hobart had the sheriff and a deputy stationed to preserve order.

Railroad officials were concerned because they furnished the excursion trains to the Southwest and were greatly interested in seeing that the lands along their lines were settled and developed. Hobart, who did not want to embarrass the railroad officials, wrote to Avery Turner, giving a detailed account of the differences between himself and the immigrant agents. By that time he thought that his best advertising came from the people who had examined what White Deer Lands had to offer and told others about it.

The produce of farmers on White Deer Lands was displayed at the exhibit building during the summers of 1906-07-08. Then Starkweather, Superintendent of the Santa Fe at Amarillo, ordered the White Deer Land Company to remove the exhibit building from the right-of-way. For a time the building served as an office for J.N. Duncan, first mayor of Pampa. Then it was moved to Fairview Cemetery and used to house tools and equipment.



### Dear Abby

Abigail Van Buren

### Sweltering dog days can kill

DEAR ABBY: Now that summer is here, I can see more and more people leaving their animals in parked cars. I am from Texas, and the temperature here can reach well over 100 degrees. It hurts me to see a helpless dog left in a car while its owner spends an hour (or more) in a shopping mall.

A while back you printed some figures on how fast a car heats up on a hot summer day, and included an address where people could write to get cards that have a printed warning about this. Would you please reprint that address? I know many people who feel strongly about this and would take action to save an animal's life.

ANA SABRINA GONZALEZ,  
PLANO, TEXAS

DEAR ANA SABRINA: Thank you for writing. Your letter may save some pet owners a good deal of grief and remorse.

The Animal Protection Institute, P.O. Box 22505, Sacramento, Calif. 95822, sells cards that can be placed under the windshield wipers of thoughtless pet owners. They sell for only \$3 per 100 cards.

The printed message reads: "Your dog may be dying! We understand you meant to be kind by taking your dog with you today, but you could be risking your pet's life."

"On a hot summer day, the inside of a car heats very quickly. On an average 85-degree day, for example, the temperature inside your car — with the window slightly opened — will reach 102 degrees in 10 minutes. In 30 minutes it will go up to 120 degrees. On warmer days, it will go even higher.

"A dog's normal body temperature is 101.5 to 102.2 degrees Fahrenheit. A dog can withstand a body temperature of 107 to 108 degrees Fahrenheit for only a very short time before suffering irreparable brain damage — or even death. The closed car interferes with the dog's normal cooling process, that is, evaporation through panting.

"If your dog is overcome by heat exhaustion, you can give immediate first aid by immersing him or her in cold water until body temperature is lowered."

\*\*\*

DEAR ABBY: Six years ago, I did something stupid. My husband and I had two children and our marriage was rather shaky, so I let myself get talked into having my tubes tied. Four years later, we divorced.

Seven months ago, I remarried. Guess what? We want children. I was told that my surgery can be reversed — for \$12,000! Paid in full — up-front! This type of surgery is not covered by our insurance company. Abby, I barely earn that in a year.

All right, I made a mistake, but why should my new husband be punished? Do you know how long it will take us to save \$12,000? I am 35 years old and my biological clock is running out.

I know you can't help me, but maybe this letter will help someone else. Women, please do not have your tubes tied if there is even the slightest chance that you will regret it later.

ALL TIED UP

DEAR TIED: It's sad you didn't think things through before having your tubes surgically tied. Thank you for writing to warn other women.

WHITE  
DEER  
LANDS

IN THE

PANHANDLE  
OF  
TEXAS

(White Deer Land Museum photo)  
The booklet, measuring 3 3/4-by-7 inches and consisting of 38 pages, was issued in 1905 to advertise White Deer Lands. In later years other booklets were issued with more details and testimonials.

**Anthony Harwell, D.D.S., M.S.**  
Orthodontics for Children & Adults  
Announces the Opening  
Of His Pampa Office  
908 N. Crest  
665-1075 or 1-800-7-ORTHO-7  
Member American Association of Orthodontics  
Diplomate American Board of Orthodontics

"Cut It Out!"

SPECIAL OFFER

**1/4% OFF!**

Any approved AmWest Vehicle or Home Improvement Loan.

Loans are subject to credit approval. Rates are subject to change and vary according to loan terms. Home improvement loans only available for residential property. Down payment is required for vehicle loans and varies according to loan term.  
Coupon must be presented by 9-1-93 to receive discount.

"Are you dreamin' about a new kitchen . . . a car . . . a boat . . . or a RV? Cut it out . . . stop dreamin' and ride on over to AmWest Savings and talk about a home improvement or vehicle loan. With today's low interest rates and AmWest's flexible terms, now is the time to make your dreams come true. And, if you head on over now, the folks at AmWest will even cut their already low rates by 1/4%. That's good enough reason for me to bank on AmWest. How 'bout you?"

Annual Percentage Rate  
**7.50%**  
with coupon  
48-MONTH NEW AUTO LOAN  
Call today for more details.  
Other rates and terms available

Put Your Money on Texas.  
**AmWest Savings**  
PAMPA: 221 North Gray, 806-665-2326  
2500 Perryton Parkway, 806-669-1144  
Shamrock

Red Steagall,  
Cowboy Singer,  
Poet and  
AmWest Customer





# Thanks America.

Manufacturer's Coupon    Expiration Date: 7/15/93

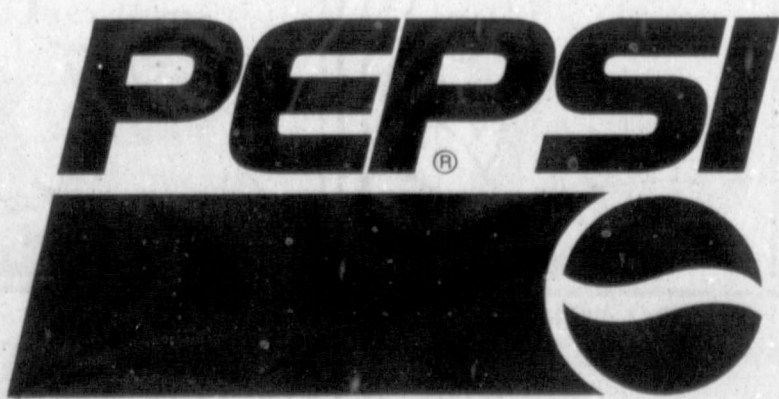
**PEPSI** **SAVE \$1.00** **PEPSI**  
ON A CASE OF PEPSI.

(Offer valid on your next purchase of 24 cans, 24 16oz. or 20oz. bottles, or 6 2L bottles of Pepsi, Diet Pepsi, Caffeine-Free Pepsi, Caffeine-Free Diet Pepsi, Crystal Pepsi or Diet Crystal Pepsi.)

CONSUMER: Only one coupon per purchase. Cannot be doubled. You pay sales tax and/or deposit charge. Coupon may not be assigned, transferred or reproduced. Any other use constitutes fraud. Cash value: 1/100¢. RETAILER: We will reimburse you for the face value plus 8¢ handling if you and the consumer have complied with our Coupon Redemption Policy available at the redemption address. Mail coupons to: PEPSI-COLA COMPANY, CMS Dept. #12000, 1 Fawcett Dr., Del Rio, TX 78840. Coupon expires 7/15/93. PEPSI, DIET PEPSI, CAFFEINE-FREE PEPSI, CAFFEINE-FREE DIET PEPSI, CRYSTAL PEPSI and DIET CRYSTAL PEPSI are trademarks of PepsiCo, Inc.

64101  
5 12000 00076 3

Let's celebrate July 4th together.



# The Pampa News

## Comic Page

### NEA Crossword Puzzle

**ACROSS**

- Piece garment
- Prong
- Sinew
- Timetable abbr.
- Kennel sound
- Character in "Othello"
- Actress — Arthur
- Loneliness
- City in Germany
- Epic tale
- The man
- Wager
- Too inquisitive
- Tunisian ruler
- Offer
- Pig sounds
- All right
- voyage
- 2,100, Roman
- Come all — faithful
- Fable writer

**DOWN**

- Infant
- Angers
- Worthless

**Answer to Previous Puzzle**

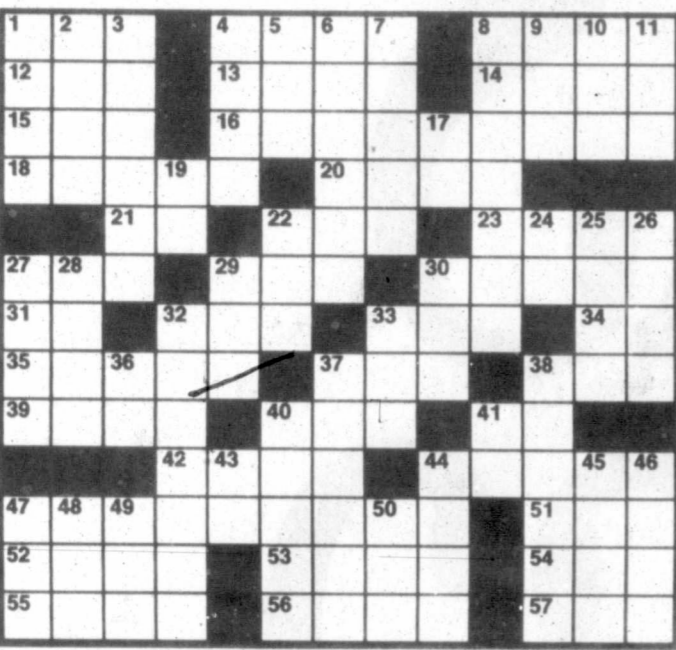
M	P	H	E	L	E	G	Y	M	I	G
M	I	A	O	A	S	I	S	I	T	A
I	S	L	A	N	D	G	E	I	G	E
L	O	S	E	S	R	A	N			
P	O	U	R	N	I	L		N	O	E
S	I	X	T	H	P	E	A	N	F	L
A	L	A	I	R	A	R	C	R		
L	E	D	M	I	D	E	L	M	E	R
M	R	E	D	B	E	G	A	I	M	S
M	O	O		B	E	A	R	N	S	
I	P	E	C	A	C	R	U	S	H	E
M	I	N	R	H	O	D	E	A	R	S
P	A	T	S	A	T	E	D		P	S

**ACROSS**

- Look-alike
- Greek island
- Lassoed
- Musical key
- Ship that sank
- Ball — position
- The self
- Finished first

**DOWN**

- Symbol for silver
- College deg.
- Storage compartment
- Switch
- terrier
- River in Belgium
- Vessel
- Makes do with
- Hill (sl.)
- Medical suffix
- Edges
- Married woman's title
- A continent (abbr.)
- Short jacket
- Unwholesome vapor
- Midler
- Meet Me in — Louis
- World org.
- Deposits
- Slant
- Type of duck
- 100 lbs.
- Hawaiian wreath
- Author — Fleming
- Bernstein, for short



### WALNUT COVE

By Mark Cullum

Miriam used to write me notes on things she needs done around the house...

I'd spend the whole week finding those little notes and then losing them again.

But with our new computer, she just types a list into a certain file, and I press a button, and...voilà!

You just lost it.

In a fraction of the time!

### ARLO & JANIS

By Jimmy Johnson

GENE! OH, MY NAME'S GENE!

ARE YOU HERE WITH YOUR FAMILY?

YEAH, WE COME TO THE BEACH EVERY YEAR.

HOW LONG HAVE YOU BEEN HERE?

ALMOST TWO WEEKS.

WHEN DO YOU LEAVE?

MOM AND DAD ARE LEAVING TOMORROW!

### ECK & MEEK

By Howie Schneider

WHY SO DEPRESSED?

I'VE BEEN ON THIS DIET FOR THREE WEEKS THAT I PAID EIGHTY BUCKS FOR.

REALLY? HOW MUCH DID YOU LOSE?

EIGHTY BUCKS.

### B.C.

By Johnny Hart

CLIQUE

SOUND MADE BY A FRENCH CAMERA

### MARVIN

By Tom Armstrong

LOOK, JEFF, I AGREE IT'S A GOOD IDEA THAT I KEEP MY DISTANCE FROM YOU AND THE BABY...

IN CASE EITHER ONE OF YOU IS ALLERGIC TO POISON IVY.

### MARMADUKE

By Brad Anderson

ANIMAL SHELTER

DOG CATCHER

BUT DON'T YOU THINK QUARANTINING ME IN HERE IS A BIT OF AN OVER-REACTION?

### KIT N' CARLYLE

By Larry Wright

ANOTHER WAY TO RECOGNIZE SOMEONE WHO SPENDS TOO MUCH TIME ALONE WITH HER CAT.

DON'T FORGET YOUR EARS.

### ALLEY OOP

By Dave Graue

AS SOON AS MY MASTERPIECE IS FINISHED YOU WILL BE THE FIRST TO SEE IT, GUNDR!

GOOD! WHEN CAN YOU GET STARTED?

AS SOON AS I GET MY PAINTS AND BRUSHES!

GREAT! I'LL GO TELL MY WOMAN TO GET HERSELF READY!

AN ARTIST IS GOING TO PAINT A PICTURE OF LITTLE OLD ME?

THAT'S RIGHT! WILL YOU PLEASE WEAR THAT LITTLE FLOWER!

OH, DEAR! WHATEVER WILL I WEAR?

WELL, SINCE THAT SKIN YOU GOT ON IS YOUR ENTIRE WARDROBE I THINK YOU BETTER STICK WITH THAT!

### SNAFU

By Bruce Beattie

PARIS

ALASKA

"Got any cruises short enough so our clothes will still fit when it's over?"

### THE FAMILY CIRCUS

By Bill Keane

Lemonade 25¢ a cup

"Daddy, how much can I earn before I hafta pay taxes?"

### WINTHROP

By Dick Cavalli

WHEN THE DAYS OF MY LIFE ARE OVER...

AND I GO TO MY ETERNAL REWARD...

THE PAPER BAG INDUSTRY WILL GO RIGHT DOWN THE DRAIN.

### CALVIN AND HOBBS

By Bill Watterson

I READ THAT SCIENTISTS ARE TRYING TO MAKE COMPUTERS THAT THINK.

ISN'T THAT WEIRD?? IF COMPUTERS CAN THINK, WHAT WILL PEOPLE BE BETTER AT THAN MACHINES?

IRRATIONAL BEHAVIOR.

MAYBE THEY'LL INVENT A PSYCHOTIC COMPUTER.

### THE BORN LOSER

By Art and Chip Sansom

RATS! MY BALL ROLLED OFF THE GREEN ONTO THE CART PATH!

DON'T FRET, MY BOY... YOU GET A FREE DROP FROM THERE!

NOT IN THE HOLE!

### FRANK AND ERNEST

By Bob Thaves

NOBODY TRUSTS ANYBODY ANYMORE!

WARNING: THIS PERSON MONITORED BY CLOSED-CIRCUIT TELEVISION.

### PEANUTS

By Charles M. Schulz

CHARLIE BROWN IS ROUNDING FIRST! HE'S ROUNDING SECOND! HE'S ROUNDING THIRD...

BUT ROY HOBBS' GREAT-GRANDDAUGHTER HAS THE BALL!! SHE'S BLOCKING THE PLATE!!!

### GARFIELD

By Jim Davis

GARFIELD, FOR ONCE I'D LIKE A GOOD NIGHT'S SLEEP.

OH, ALL RIGHT.

HERE.

AND THE FLARES?

YOU ARE NO FUN, YOU KNOW THAT?







