



# BAILEY COUNTY JOURNAL

'The Community of Opportunity-Where Water Makes the Difference'

## Weather

	HIGH	LOW
January 30	58	24
January 31	63	19
February 1	66	26
February 2	69	18
Rainfall to Date:	0.68	

Vol. 11 No. 5

10 PAGES

Published Every Sunday at Muleshoe, Bailey County, Texas 79347

10 CENTS

Sunday, February 3, 1974

# Over 200 View Heart Surgery Film

## Hospital Finance Committee To Be Named

A group of some 200 people met in the city hall Friday night, February 1, to discuss the hospital situation in Muleshoe.

Administrator of West Plains Memorial Hospital Marshall Cook stated that "at some point on down the line, if we can't get what is needed done to the present building, we will have to construct a new hospital."

It was brought up at the meeting that the cost would be excessive to reconstruct West Plains Memorial Hospital in order for it to meet fire and safety codes to meet present requirements.

By a show of hands, those present showed they were in favor of attempting to finance a new hospital here.

The 200 people present was a sign that there is a great deal of interest in keeping a hospital in Muleshoe.

Present at the meeting were Rick Dennis and Mike Postlethwaite who are representatives of Haney Associates, a fund raising firm based in Kansas

## around muleshoe

With The Journal Staff

Mrs. Corda Taylor and granddaughter, Karen Osborne, a freshman student at Wayland College, returned to Muleshoe Monday morning after spending five weeks in Milpitas, California with Karen's parents, Mr. and Mrs. Cecil Osborne. Mrs. Osborne is Mrs. Taylor's daughter.

Mrs. Ronnie Somers from Plainview spent Monday night with her grandmother, Mrs. Corda Taylor and she accompanied her sister, Karen Osborne to Plainview Tuesday where they both are attending college at Wayland.

Marshall Cook, administrator of West Plains Memorial Hospital here in Muleshoe, reports that the east wing of the hospital is being closed.

The closing of the wing will cut the capacity of the hospital from 30 beds to 14 beds. Cook said the reason they are closing the east wing is because of low occupancy and the cost savings factors involved in doing so. Cook stated that the closing will only be temporary and if the extra space is needed, it will be reopened.

A local girl, Tani Jill Murrach of Muleshoe, is playing on the Texas Tech University's Women's basketball team. The first games were played Wednesday at Tech against Clarendon College.

The Texas Tech women cagers went to Tarleton University for an invitational tournament Friday and Saturday, February 1-2 where they played University of Texas at Arlington.

The Tech women's team, sponsored by the Women's Intramural Department, will be

Cont. on Page 3, col. 1

## Central Plains MH/MR Center Will Have Meeting In Muleshoe

An organizational meeting of the Bailey County Advisory Committee of the Central Plains MH/MR Center will be held at 4:00 p.m. in the Muleshoe Outreach Center on Thursday, Feb. 14, according to Judge Glen Williams, member of the Central Plains MH/MR Center's Board of Trustees and chairman of the County Advisory Committee.

"This first meeting will be to organize our County Advisory Committee and firm up its membership in order that we may set goals, objectives, and pri-

City. These experts have made a feasibility survey of the Muleshoe area and their report indicates that it is feasible to have a 30 bed hospital in Muleshoe.

Several questions were put before the group for discussion. They were:

What is the present situation? (popular attitudes; questions Re: past and current plans).

Should Muleshoe have a hospital? (Area requirements for medical services and physicals; Tri-county hospital profile; national policies and priorities; and Texas status).

Alternatives, including financing considerations? (Close West Plains, use neighboring hospitals; close West Plains, organize new hospital group; reorganize West Plains --- publicly owned, private, not-for-profit, private, for profit).

Future course of action? After a general discussion on the above items, a show of hands indicated that those present were 100 per cent in favor of a private, not-for-profit hospital constructed by local financing and hospital revenue bonds.

The Board of Directors of the Muleshoe Chamber of Commerce and Agriculture were appointed to select nominees for a citizen's committee to look into ways probable to accomplish a hospital financing program.

The next public meeting will be announced by the Chamber of Commerce Board of Directors and the public will be invited to hear discussion of hospital financing proceedings.

## Highway Commission Approves City Project

District Five of the Texas Highway Department headquartered in Lubbock has announced the Highway Commission approval of the 1975-77 Consolidated Program of work for the district. This work is included in a three year, \$250 million statewide program.

District Engineer George C. Wall, Jr., said the District program covers 137.4 miles of highways at an estimated cost of \$12,800,000.

Statewide, the program provides for construction or reconstruction of a total of 2,036.1 miles of rural and urban highway facilities.

The program also includes \$15 million for the state's share of right of way costs for U.S. and State-numbered highways across the state. Included were needed projects in both urban and rural areas.

Projects were recommended for inclusion in the statewide program by the 25 Highway Department district offices and by the Houston Urban Project Office in Houston for the areas they serve, in cooperation with local governmental agencies.

The projects are included as a result of local governmental requests to the district engi-

neer, as a result of appearances by delegations of citizens before the Highway Commission and by the local district engineer's knowledge of the needs of the highway network in his area.

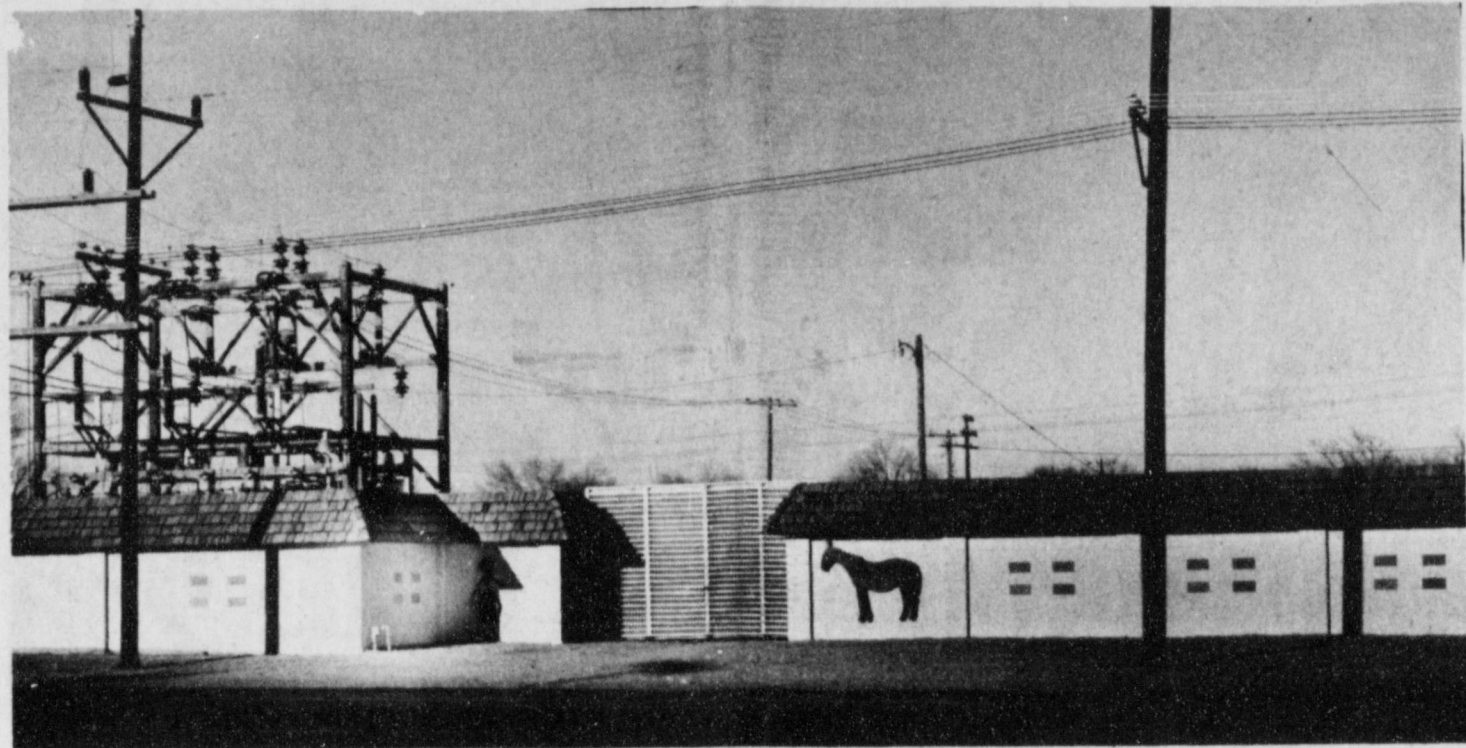
Also considered are the condition of existing facilities, existing and projected traffic, safety and planned area development.

Recommendations are reviewed by the Highway Department Administration in Austin and approved by the Highway Commission to insure the con-

Cont. on Page 3, col. 3

## Police Report

Arrests logged at the Bailey County Law Enforcement Center recently include the Sheriff's Office arresting one runaway, one on a Felony Warrant, one for jumping bond and one for child desertion. The Police Department arrested one for no driver's license, four for being drunk, one for carrying a prohibited weapon, and one for being drunk, using foul language and fleeing. The Highway Patrol arrested three for DWI this week.



NEW IMPROVEMENTS. . . . A fence is more than a fence at the Southwestern Public Service Company City Substation in Muleshoe. The fence is also a part of the beautification program along American Blvd. At night, the fence is further beautified with outdoor lighting while a Tom Warren sculpture of the Mule and Reddy Kilowatt adorn either side of the main gate.

## Local Improvements Made In Electrical Service

In mid-1970, the Southern Division and System Engineering groups of the Southwestern Public Service Company reached some definite conclusions on improvements to be made in the electrical service and facilities for the city of Muleshoe.

The improvements included new transmission facilities, a new substation, upgrading of existing distribution facilities and the installation of new distribution lines and equipment.

During the latter part of 1970, three major projects were completed. A transmission line serving Muleshoe from the Lamb County Interchange was re-routed from east of Muleshoe to the Bailey County Interchange and the transmission line on American Blvd. was removed. This improved the appearance of the facilities east of the City Substation along busy Highway 84. An unneeded 69 KV switch was removed and this, too, helped improve the appearance of the facilities.

The remaining two projects completed during 1970 involved the rebuilding of primary and secondary distribution facilities. Five blocks of distribution lines between Main Street and East Third required new poles, transformers, conductor and crossarms. Completion of this job improved clearances and voltage drop percentage.

A voltage drop improvement at the High School from 9.1 percent to 4.5 percent was the result of new conductor that was installed in the line in the alley between West 5th and West 6th Streets.

In November of 1971, the site for a new substation was purchased and preparations began for building the new substation. In 1972, approximately 1220 feet of 69,000 volt line was built to feed the new East Muleshoe Substation. This line also provided a backup source of power for the city. In September of 1972 SPS installed two blocks of 3-phase primary and four sets of solid blade disconnects to provide a second power source for the Muleshoe Hospital and to improve service to other city facilities.

This line will also become a part of a loop around Muleshoe planned for the future. Later in 1972, approximately four spans of 3-phase primary line was installed on Avenue G between 1st and East 4th Streets. This provided an alternate feed to the Muleshoe sewer lift and was also a part of the planned loop.

The new East Muleshoe Substation, located at 6th and Avenue B, was completed in January of 1973 and provided Muleshoe with an additional source of electric power. The new substation is capable of providing service for all customers in the event the City Substation is out of service due to transmission problems or maintenance. Normally the East Muleshoe Substation will carry about one-third of the customers in Muleshoe. The City Substation is also capable of providing service for all customers in the event the new East Muleshoe Substation is out of service.

In March of 1973 a south circuit from the new East Muleshoe Substation was built and a portion of line from Avenue E to Avenue J along Main Street was rebuilt. Both projects formed a portion of the future loop. With the completion of these circuits, the hospital and residential area in the South part of town received their electrical service from the new East Muleshoe Substation. The circuit formally used to serve the hospital and residential area, then became an alternate, or second method of furnishing

Cont. on Page 3, col. 2

## Candidates Must File By Monday

Monday, February 4, will be the last day to file for an office in Bailey County and have a name placed on the ballot in the May 4 Democratic Primary.

At this time those who have announced their candidacy are Hazel Gilbreath, County Clerk; Pauletta Crawford, District Clerk; Neida Merriott, District Clerk; Loyd Stephens, Commissioner, Precinct 2; Rudolph Moraw, Commissioner, Precinct 4; and Glen Williams, County Judge.

Only one office has an open position this year and that is the District Clerk's office for which both Neida Merriott and Pauletta Crawford are running.

There still has been no authorization for anyone seeking the Justice of the Peace office which is also to be voted on this election year.

Along with the county election this year there will also be a Muleshoe Independent School District Board of Trustees election.

## Bartley and McNatt Receive Conservation Farmer Awards

W.F. "Dub" Bartley and Ernest McNatt were named recipients of the Conservation Farmer of the Year awards at the annual Muleshoe Chamber of Commerce and Agriculture banquet held recently.

W.F. "Dub" Bartley and his wife, Mildred, moved to Bailey County from Tahoka in 1950. They bought their original 80 acres in 1949 because of irrigation water. A friend purchased 12 acres that join the 80 and sold it to them as they were able to buy it. When they bought the land, only about half of the land could be watered because of gullies and only one well.

Mr. and Mrs. Bartley have four children, William Clyde of Farwell, Mrs. Tommy Hall, Muleshoe, Mrs. Ronnie Elliott of Lazbuddie and Mrs. Ronald Patton of Abernathy. They have 11 grandchildren.

The Bartleys are affiliated with the Baptist Church, are active in the community and belong to the Farm Bureau and

Farmers Union.

"Dub" Bartley became a co-operator with the Blackwater Valley Soil and Water Conservation District in October 1954. He has continued to carry out a conservation program on his farm since that time. He entered into a Great Plains Conservation Program on August 13, 1971. Some of the practices completed to conserve the soil and water have been irrigation land leveling, irrigation pipeline, seeding of grass for soil improvement and mulching.

Ernest McNatt and his wife Jewel moved to Bailey County from Causey, New Mexico in 1954. McNatt, like Bartley, moved to Muleshoe in search of irrigation water during the drought of the fifties. They bought their "home" eighty and later added to it as they were able.

Mr. and Mrs. McNatt have two children, Mrs. Betty Seefeld of Odessa, Texas and Wayne McNatt of Carleton, Texas. They

also have three grandchildren.

Mr. and Mrs. McNatt are affiliated with the Baptist Church, are active in the community and belong to the Farm Bureau.

McNatt became a cooperator with the Blackwater Soil and Water Conservation District in February 1955. He has continued to carry out a conservation program on his farm since that time. He entered into a Great Plains Conservation Program on December 23, 1970. Some of the practices completed to conserve the soil and water have been irrigation land leveling, irrigation pipeline, seeding of grass for pasture, and seeding alfalfa for hay production.

The director of the Blackwater Valley Soil and Water Conservation District selected these men to receive the award of Conservation Farmer of the Year because of their similarity of beliefs and coopera-

Cont. on Page 3, col. 3

## Over 125 Receive Blood Pressure Checks

Approximately 130 blood pressures were checked and about 225 people viewed the "Open Heart Surgery" film narrated by Dr. Donald L. Bricker of Lubbock, Thursday night at the Muleshoe High School cafeteria.

The informative program also explained cardiovascular diseases, diseases of the heart and circulation, and stated that they are the leading cause of death and disability in the nation. They afflict more than 27 million children and adults and kill more than one million Americans annually, that's a city about the size of Dallas.

The major cardiovascular diseases are: Arteriosclerosis (hardening of the arteries), Hypertension (high blood pressure), Myocardial Infarction (heart attack), Cerebrovascular Accident (Stroke), Congestive Heart Failure (damage to the heart muscle that reduces the normal pumping power), Rheumatic Heart Disease (valves of the heart are scarred and deformed), Congenital Heart Defects (malformations of the heart of its major blood vessels at birth).

Cardiovascular diseases claim more American lives than all other causes of death combined.

Each year approximately 670,000 children and adults die from heart attack; 350,000 of these deaths occur before reaching the hospital. Studies show that the average person waits three hours at the onset of heart attack symptoms before he decides to act. The first few hours before the onset of symptoms suggestive of acute heart attack are critical. The high mortality during this time is presumably due to the preventable and treatable occurrence of irregular heart beat. If each person will respond immediately to their symptoms and place themselves under competent medical surveillance within one hour after the onset of symptoms, tens of thousands more could be saved with existing medical know-

ledge. So that people can get medical help earlier and improve their chance of survival, an additional purpose of our campaign is to alert everyone by distributing educational literature - to the early warning signs of heart attack.

Cont. on Page 3, col. 1

## County Judge Announces Election Plans

Bailey County Judge Glen Williams has authorized the Journal to announce that he is a candidate for re-election as County Judge.

"This is to announce that I am a candidate for re-election to the office of County Judge and Ex-Officio School Superintendent of Bailey County, subject to the action of the Democratic Primary.

"This decision has not been made hurriedly or lightly, but after long and careful consideration - and because of a sincere desire to serve the people of Bailey County. Your past support is deeply appreciated, and we do not hesitate to say that any degree of success we

Cont. on Page 3, col. 1



Judge Glen Williams

## Miss Ford Country To Present Program

Miss Ford Country, Sandy Lankford, will be in Muleshoe on February 5, 1974. She will present a program to the students at Muleshoe High School at 10:30 and to the Rotary Club at noon. During the afternoon, she will be at the showroom of Muleshoe Motor Company.

Sandy has been traveling the State of Texas wearing her specially designed Ford blue western outfit representing Ford Dealers at rodeos, civic events and personal appearances. In addition to her personal appearance schedule, Miss Ford Country has been featured in Ford Dealers' radio and tele-

vision commercials as well as newspaper advertisements and billboards throughout the state.

Besides her title of Miss Ford Country, Sandy has also held the title of Miss University of Texas at Arlington. A senior physical education major, she is also a member of the Tri Delta sorority. At the university she has been a varsity cheerleader, a school favorite and Reveille Beauty of 1970.

The daughter of Mr. and Mrs. L.L. Lankford of Graham, Texas, Miss Ford Country will make her tour of Texas rodeos and civic events in her official car, a 1973 blue LTD Ford.



SANDY LANKFORD

**GIBSON'S**  
**DISCOUNT CENTER**

**SAVE**  
**DURING DOLLAR DAYS**

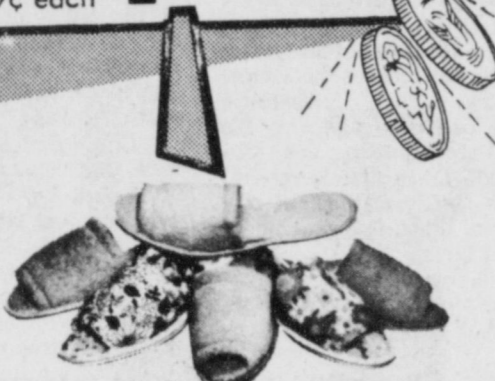
1723 WEST AMERICAN BLVD MULESHOE PRICES GOOD FEB 4 THRU 9 OPEN 9 am TO 8 pm

**BIKINI PANTIES**

reg. .59¢ **2** For Only **\$1**

**JAMAICA TEA TOWELS**

Bright Colors **4** only **\$1**  
 reg. .39¢ each



**TERRY CLOTH SCUFFS**

Soft, double pile washable terry cloth with molded sponge rubber matching sole and matching elastic gore. Assortment of pretty summer shades. Ladies sizes S, M, L, XL. **59¢**



**LADIES LONG GOWNS**

reg. \$3.39 **\$1.99**

**LADIES TRICOT FLOOR LENGTH PEGNOIR SET**

reg. \$6.19 **\$3.99**

**LADIES BRUSHED TRICOT PAJAMAS**

reg. \$5.19 **\$3.19**

**LADIES BRUSHED TRICOT LONG PAJAMAS**

reg. \$4.29 **\$2.69**

**TOG-A-LONGS JUMPERS and BLOUSES**

Cut **25%**

**DIAPER STACKERS**

Asst. Styles our reg. \$2.39 **\$1.69**

our reg. \$3.69 **\$2.49**

our reg. \$3.19 **\$2.09**

**YOUNG SET PATCHWORK BEDSPREADS**

Twin Size Reg. \$5.79 **\$3.99**

**DENIM SHOULDER BAGS**

reg. \$5.97 **\$3.88**

**DICKIES DRESS AND SPORT SLACKS**

our reg. \$11.97 **\$7.44**

our reg. \$9.97 **\$6.22**

our reg. \$10.97 **\$6.66**

our reg. \$12.97 **\$7.97**

our reg. \$8.97 **\$5.55**

our reg. 6.97 **\$4.44**



**One GROUP LADIES SHOES 1/2 PRICE**

MENS OFF WHITE **LONG SLEEVE SWEATERS** reg. \$9.79 **\$6.99**

MENS and BOYS **FELT WESTERN HATS** reg. \$12.47 **\$8.88** reg. \$3.29 **\$1.99**

D Ring Canvas **LADIES SHOES** reg. \$1.97 **\$1.19**

**MENS WINTER CAPS** bright orange reg. \$2.19 **\$1.49**

**MENS SWEAT SHIRTS** reg. \$3.99 & \$3.29 **1/3 OFF GIBSONS DISCOUNT PRICE**

**Stuart Boxed Stationery 2 for \$1** reg. .63¢

Reg. \$1.19 **2 Plastic ICE CUBE TRAYS with Storage Box** Only **\$1** for Dollar Days.



**WINDSOR MOCK CLOCK** Full Circuit Solid State with 9v. battery. reg. \$7.97 **\$2.99** **AM Transistor Radio**

**Remington B26 ELECTRIC SHAVERS** Our reg. \$26.97 **\$15.88** Extra set of Iektro blades and cutters included.

**MAN-MADE MARBLE Counter Savers** Reg. \$4.79 **\$3.99** **Hot Plates** Reg. \$2.19 **\$1.79** **Soap Dishes** Reg. \$1.79 **\$1.59**

**DRIPLESS ODORLESS SMOKELESS CANDLES** Tapers or Swirls. **29¢**

**2 Bushel Plastic LAUNDRY BASKETS** reg. \$1.83 **\$1.39**

**Eagle Claw Snelled Fish Hooks** our reg. .39¢ **4** pkgs for **\$1**

**B&B SPECIAL SPINNER JIG LURES** reg. .49¢ **2** FOR **\$1**

**Eagle Claw Loose Fish Hooks** our reg. .43¢ **3** pkgs for **\$1**

**CREME WORMS** reg. 67¢ **2** for **\$1** reg. 49¢ **3** for **\$1** reg. 39¢ **4** for **\$1**

**GIBSONS HIGH GLOSS ENAMEL PAINT** 1 pt. can reg. \$1.73 **now only \$1**

**Gering 3 Tube SPRINKLER HOSE** 25' Length **2** NOW ONLY **\$1**

**SAVE ENERGY AUTO FIX ANTI-SYPHON GUARD** reg. \$1.99 **\$1.59**

**14" SHOP PUSH BROOM** Now For Dollar Days **\$2** Reg. \$2.53

**NOTEBOOK PAPER** 300 sheets **2** pkgs. **\$1**

**JIFOAM OVEN CLEANER** reg. \$1.39 **79¢**

**MISS BREGK HAIR SPRAY** Limited Time Only **47¢** Your Choice 13-Oz. Can

**5-Day Aerosol Anti-Perspirant** reg. \$1.43 8 oz. can **79¢**

**gibsons DISPOSABLE DIAPERS** Daytimes 60's **\$2.69** reg. \$3.79 Toddler 40's **\$2.39** reg. \$3.29

**OJ'S BEAUTY LOTION** FOR BEAUTIFUL COMPLEXIONS reg. .87¢ **67¢**

**GIBSONS SKIN CARE LOTION** reg. .59¢ 16 oz. **3** for **\$1**

**GLADE AIR FRESHENER** YOUR CHOICE OF FRAGRANCES **3** for only **\$1** 7 oz. can

**CASCADE Dishwasher Soap** Giant 35oz. box our reg. .79¢ **68¢**

## John Tower United States Senate COMMITTEE ON ARMED SERVICES

Congress returned from a month-long midwinter break this week and the subject up-  
permost on everyone's mind was the energy crisis and its impact on our daily routines. But the thing that disturbs me the most is the growing talk

### Williams...

Cont. from Page 1

have had is due to your splendid cooperation. If re-elected, I will try to merit your continued confidence and will try to be the type official of which you may justly be proud.

"I am a married man with a family, a property owner, and a taxpayer and have lived in Bailey County for 45 years. I believe my years of experience, together with my knowledge of the county, and its people, will enable me to serve you better in the future than I have been able to do in the past. And to that end I pledge my best efforts.

"Opportunities exist for further progress and development in Bailey County. New programs are available from time to time. So I will stay abreast of these things, and will work for objective, creative, and economical governmental and ALWAYS for clean and honest government.

"I appreciate the other County Officials and employees, together with those of the city, schools, State Departments, and other agencies with whom we work. Harmony prevails, and this makes for pleasant working conditions. We will continue this good spirit of cooperation, and will constantly maintain the personal conduct of the office on a high and honorable plane. We will serve all people without regard to their race, creed, or national origin, and without respect to their financial or social status in life.

"Upon these principles I humbly invite your continued support and cooperation."

### Heart...

Cont. from Page 1

Prolonged, heavy pressure or squeezing pain in the center of the chest, behind the breastbone; pain may spread to the shoulder, arm, neck or jaw; pain or discomfort is often accompanied by sweating, nausea, vomiting or shortness of breath may also occur; symptoms may subside and then return.

Everyone should also be alerted to the early warning signs of stroke: sudden, temporary weakness or numbness of the face, arm or leg.

Sandy Bass, Bailey County Heart Association Chairman reports that the theme of the Heart Association this year is "Perform a Death Defying Act -- Check Your Blood Pressure."

### Muleshoe...

Cont. from Page 1

competing in several tournaments throughout the state and in six district contests at home. The season peaks with the Women's Collegiate District Basketball Tournament at Texas Tech in March.

Miss Murrah is a freshman majoring in Liberal Arts at Tech. She is the daughter of Mr. and Mrs. Gordon Murrah of Muleshoe.

about the shortages being contrived by the industry itself--contentions that there really is no world wide oil shortage.

Let me say at the outset that I personally am convinced that there is a real shortage, and that we need to get on with the job of doing something to make this country self-sufficient energy-wise as soon as humanly possible. A recent editorial in the Wall Street Journal demonstrates this point rather well. Let me quote for you a brief portion of that editorial:

"Conspiracy theories, too, have a marvelous capacity to embrace contradictory notions. Apparently the same individual who believes the oil companies are running roughshod over the environment to get the two-million barrels daily from the Alaskan oil fields can also believe they have contrived to boost prices by withholding two-million barrels a day from unknown sources. And at one time the companies are accused of keeping their prices predatorily low to destroy independent and at the same time hoisting the prices unreasonably high to gouge consumers.

### SWPS...

Cont. from Page 1

hospital and south area of Muleshoe in the event the principal source of power was lost.

To further improve electric service from the City Substation and the new East Muleshoe Substation, the circuit from American Blvd. to Avenue I between West Second and West Third Streets was completely rebuilt in October 1973 and this completed the originally planned loop.

During the latter part of 1973, a concrete block decorative fence was installed at the Muleshoe City Substation and made a major contribution to the beautification program along American Blvd. (Highway 84). The fence is lighted and is adorned with a Mule and Reddy Kilowatt sculptured by Tom Warren.

The final project completed during 1973 was the installation of a gang-operated air breaker switch at Avenue I and West 3rd. This new switch improves the operation of restoring service when an outage occurs at either the City or East Substation.

Plans for 1974 include the rebuilding of three blocks of line in the west part of Muleshoe to upgrade the facilities, alleviate area over-loads and improve voltage, and the building of a line to provide a second source of power for the Muleshoe school area.

In a recent announcement regarding a 5-year expansion program for Southwestern Public Service Company. Roy Tolk, chairman and president of the electric company said, "We have always planned for the future in order to meet our customers' needs. We are still planning - and we intend to see that our customers continue to have the kind of dependable electric service they have had in the past - even better."

The improvement program in Muleshoe that was started about four years ago - and is still going on - is a result of the planning that was done many years ago.

"From our perspective, finally, the hardest thing of all to believe is that oil executives would do anything so nicely designed to bring about what they fear most, which is the political destruction of their companies."

Once one accepts the fact that there is a genuine shortage the question that comes to mind next is, what caused the shortage? The answer is twofold. First, the demand for all forms of energy has shot up at an accelerated rate in recent years because of the growing world population, and the growing affluency of many countries outside the United States. On the other side is the declining supply of petroleum and natural gas, which comprise about 75 per cent of our total energy supply. This shrinking supply is attributable to declining domestic productivity and is compounded by the delay in the Alaskan pipeline bill and the present Arab oil boycott.

Yet despite what appears to be a clear picture that the world oil shortage is real, we have a growing number of high public officials crying not for measures to increase the supply, but for measures that would only compound the problem as it now exists.

The question that I am hearing more often now from my fellow Texans is, what are we doing to solve the problem, knowing that there is a real shortage. There are a variety of opinions of what to do, and of what is being done about the energy shortage. There are a variety of opinions of what to do, and of what is being done about the energy shortage. Some contend that the answer is to equitably spread the misery, through rationing. Others have a vigilante viewpoint because they know, as we have

### Awards...

Cont. from Page 1

tion with each other. They both came from dryland farming and have full appreciation for soil and water and what can be made to produce from them.

### Highway...

Cont. from Page 1

tinuity of highway designs and to insure the logical and orderly development of statewide highway systems.

Approval of a highway program means project planning can be started on the individual projects in the program.

In Muleshoe a project on US 70 and 84 will cost about \$281,000 to complete. The project will begin in Muleshoe at East Sixth Street and proceed to West Eighth Street.

The project will include reconstructing and graveling streets and redone the

known in Texas for some time that the problem should have been recognized the cured before it even grew to crisis proportions. The view of this group seems to be that they don't care who they hang, as long as they hang someone.

But there is a group that believes the answer lies in an increase of the supply of oil. I strongly support this plan, and have advocated methods designed to increase our own domestic supply of crude for many years. To demonstrate, let me quote from my position stated in an interview with World Oil in 1971. At that time I said we should restore the 27 and one-half percent depletion allowance and provide a significant investment tax credit... we should allow the wellhead price of oil and gas to rise to free-market levels and deregulate the wellhead

price of natural gas... we should accelerate the leasing of federal land for oil and gas exploration and development, and develop economical methods of extracting oil from shale.

There is universal agreement in the industry that these measures will lead to increased supplies. Already, limited implementation of incentives by the Federal Power Commission spurred increases in the drilling for gas this past year.

The Congress, however, is still dragging its feet. We need to quickly move with deregulation of natural gas prices with the establishment of an information system to facilitate long-range planning, but designed to protect the competitive structure of the industry.

There are increasing cries in Washington about windfall profits in the oil industry. Now,

I do not support any system that would let any industry gouge the public during a crisis period - a period of shortage - but we need to keep our perspective while talking about an industry that is so vital to our economic structure. Some increased profits will be necessary in the petroleum business as long as these profits are plowed back into the exploration and development of new energy sources, which we must have to keep our living standards at their present levels.

### AUDITS ON REFINERS

William E. Simon, the Federal Energy Chief, reports that investigators from his Federal Energy Office and the Internal Revenue Service would audit the price, profit and supply records of every

### J.P. Report

The following tickets were recorded in the Justice of the Peace office in the law enforcement center recently.

The city issued tickets to two persons for expired Motor Vehicle Inspection, one for failure to control speed, four for no driver's license, one for failure to comply with the leash law, one for parked on the roadway, six for being drunk, one for an improper start, two for disturbance with a motor vehicle and one for running a stop sign.

The county issued tickets to five persons for defective turn signals, 18 for speeding, one for defective brakes, five for expired motor vehicle inspection, two for defective brake-

lights, one for no passing zones, two for no driver's license, one for being parked without lights, one for no commercial license, three for operating an unregistered vehicle and three for overgross weight.

**AMERICANS SMOKE MORE**  
Exactly 10 years since the surgeon general issued the first government report warning of smoking hazards, statistics show that total consumption of cigarettes has increased although the average smoker is consuming less.

**ECONOMY SLOWS**  
The nation's economy, which started 1973 with a near record rate of growth, ended the year with the lowest growth rate in three years, 1.3 per cent, the government reports.

? COMPARE PRICE! ?

# WHY PAY MORE

? COMPARE QUALITY! ?

? SERVICE WITH A SMILE! ?

? TREMENDOUS SELECTION! ?

---

Chuck Wagon

## BACON

1 LB PKG

# 89¢

6 Btl. Ctn. KING SIZE

## COCA COLA

# 39¢

Fresh Firm Iceberg

## LETTUCE

LB

# 12¢

---

Farm-Fresh

## PRODUCE

# 19¢

Each

Shurfresh Boneless Canned

## HAMS

3 LB Can

# \$3.99

---

FROZEN FOODS	
Patio Frozen Beef or Cheese 8 oz. pkg.	
Enchiladas.....	69¢
Jenos ALL KINDS	
Pizzas.....	69¢
Gorton 1 lb. pkg.	
Ocean Perch.....	79¢
<b>Morton Frozen Dinners</b>	
Franks and Beans	
Spaghetti and Meatballs	
Macaroni and Beef	
Macaroni and Cheese	11oz. pkg. .... 39¢
Zee 4 roll pkg.	
Bathroom Tissue.....	39¢
Wilson's plain BIG 24 oz. can	
Chili.....	89¢
Delmonte 8 oz. can.	
Tomato Sauce.....	11¢
Gala Jumbo Roll	
Paper Towels.....	39¢

---

Imperial Pure Cane

## SUGAR

5 LB Bag

# 69¢

LB Can

# 99¢

---

Specials Good

Sunday Feb. 3 thru

Saturday February 9

## Jim's Pay N' Save

FRIENDLIEST STORE IN TOWN

Store Hours 8a.m. till 10 p.m. 7 days

---

QUALITY MERCHANDISE AT LOWEST PRICES

**201 S. 1st. Street**

**Bailey County Journal**  
Established March 31, 1965  
Published by Muleshoe Publishing Co., Inc.  
Every Sunday at 204 W. Second, Box 449  
Muleshoe, Texas 79448  
Second Class postage paid at Muleshoe, Texas  
Muleshoe, Texas 79448

**TEXAS PRESS ASSOCIATION**  
1973

L. H. Hall, President  
Joseph F. Hall, Sec. - Treas.  
L. H. Hall - Managing Editor  
Kolar Beckett, News Editor  
Tom Eadie, Sports Reporter  
Cathy McCannick, Advertising  
Polly Orvell, Office

**SUBSCRIPTIONS:**  
Zone 1 (Bailey-Parmer-Cochran-Lamb counties) \$4.00 per year; \$4.50 per year by carrier. With Thursday Muleshoe Journal, both papers \$5.50 per year; \$6.00 per year by carrier.  
Zone 2 (Mid-Territory):  
With Thursday Muleshoe Journal, both papers, \$4.25 per year.  
Monthly, by carrier-55¢; single copies-10¢  
Advertising rate card on application

## GENERAL STORE

### FURNITURE, NEW AND USED

### UPHOLSTERY

### PAINT

101 Pile Phone 762-0892  
CLOVIS, NEW MEXICO 88101

## ATTENTION MULESHOE AREA CATTLEMEN

.....In regard to dead stock removal.....  
If you have had a problem with service....whether in the feedyard or on the farm....please give us a chance! Thank You

**Your local used cow dealer is**  
**muleshoe-bi-products**

Phone-965-2903 Mobil Phone 965-2429



MRS. GARY MAC BROWN  
nee MISS JAMA MARITT

### Hobby Club Has Luncheon

The Muleshoe Hobby Club met Thursday January 31 at the Muleshoe State Bank for a workshop and luncheon. Everyone had something to work on. Mrs. Dora Phipps showed a needle

point tote bag and demonstrated dough art making vases, roses and pitchers. Allie Barbour helped Mrs. Levina Pitts make the waste paper baskets out of ice cream cartons and rolled paper. Those present were Mrs. Allie Barbour, Mrs. Effie Williams, Mrs. C. E. Briscoe, Barbara Burton, Mrs. Ruth Williams, Mrs. George Chambles,

Mabel Caldwell, Levina Pitts, Dora Phipps, Murtle Wells, Mrs. Bob Shafer and Mrs. Florene Mills. The ladies of the Hobby Club sent a petition to Representative Bill Clayton to keep God in the constitution. The club's next meeting will be held February 7 at the Muleshoe State Bank.

## Miss Jama Maritt Weds Gary Brown

Miss Jama Fayne Maritt became the bride of Gary Mac Brown in a double ring ceremony on Saturday, February 2nd, at 4:00 p.m., in a Candlelight Service at the First Assembly of God Church of Muleshoe. The Reverend H.D. Hunter, Jr., Pastor officiated. The bride is the daughter of Mr. and Mrs. J.W. Maritt of Muleshoe. Mr. and Mrs. Dee Brown, of Route 3, Muleshoe, are parents of the groom.

The bride walked the candlelighted white carpeted aisle on her father's arm. She was given in marriage by her father, as the bride sang "Wither Thou Goest." The vows were said as the couple stood before a square archway entwined with English ivy, purple grapes and shades of purple flowers. The archway was flanked by candelabras of purple candles and ivy with baskets of orchid gladiolas, iris and pompons on either side. A basket of love birds was centered in the archway. Following the vows, the bride sang "The Wedding Prayer", as the couple knelt before a decorated double prayer bench. Rev. Hunter gave the benediction and presented Mr. and Mrs. Mac Brown to the guests.

Musical selections including "Bless this House", "Reverie" by Debussy, and "Because" were presented by Mrs. W.T. Watson at the organ. Candelights, Daryl Spraberry, cousin of the bride and Randy Kelley lit the hurricane lamps along the bridal aisle and the candles in the windows which were decorated with greenery and English ivy.

The brides wedding ensemble consisted of an original gown by Priscilla of white satin, embroidered alencon lace defining the empire bodice, featuring an English net capelet collar enhanced with alencon lace appliques and scoop neckline. The long fitted sleeves were accented with lace cuffs.

The A-line silhouette swept back into an attached train unfolding from the back waist falling to chapel length. She wore a floor length layered veil of silk English illusion, topped with a layer of illusion framed with alencon lace attached to a salot of matching lace and pearls, and carried a floor length bouquet attached to her white satin covered bible of blue iris, purple statice, white stephanos and purple astors entwined with English ivy. For the traditional something old, the bride wore a strand of pearls belonging to her paternal grandmother and wedding rings belonging to her maternal grandmother; for something new, her wedding dress; for something borrowed, her mother's diamond earrings; and the traditional blue garter. She carried pennies minted in the years of the couples birth in each shoe.

Matron of honor, Mrs. Tom-

my Ryan of Abilene, wore a formal length light orchid gown of velvet fashioned with empire waist, scoop neckline and V-back, trimmed with white Maribou fur. Her head-dress was made of matching velvet bow, attached to a double layer of shoulder length tulle. Miss Dewayna Bostic of Spur, and Miss Judy Hunter of Monday were bridesmaids. They wore identical gowns of formal length dark purple velvet with empire waist, scoop neckline and V-back, trimmed with white Maribou fur. Their head-dresses were of matching velvet bows, attached to double layers of shoulder length tulle. The brides attendants carried bouquets of purple wax flowers, purple statice and orchid gladiolas.

Tina Annette Dunca, niece of the bride, was flower girl. She was dressed in a formal length dress of dark purple velvet identical to the bridesmaids, also trimmed with white Maribou fur. She wore a head-dress of matching velvet bow attached to double layers of shoulder length tulle, and carried a white basket filled with rose petals. James Brown of Muleshoe, served his brother as best man. Groomsman were Gary Glover and Joe Bob Stevenson both of Muleshoe. The groom's Tux was fashioned of purple brocade jacket with purple velvet trim over black trousers.

Ring bearer was John Thompson, of Farmington, New Mexico, cousin of the bride. Ushers were Daryl Spraberry, cousin of the bride, and Randy Kelley, both of Muleshoe. The ushers presented courtesy notes to the guests.

Guests were registered by Sharon Kelton of Muleshoe at a round table covered with a purple velvet cloth, which was a gift to the bride and groom from their parents.

The mother of the bride wore a formal length gown fashioned of orchid shirred batiste bodice with floral chiffon skirt accented with wide satin coral ribbon waist. A corsage of shades of purple completed her ensemble.

The groom's mother was attired in a formal length gown



JUNE WEDDING PLANNED . . . Mr. and Mrs. Alton Morris of Lazbuddie, announce the engagement and approaching marriage of their daughter, Jeannie Maire, to Jerry Jones, son of Mr. and Mrs. Harley Jones of Waverly, Iowa. Miss Morris will graduate from Lazbuddie High School in 1974. The prospective groom is a graduate of Waverly, Shell Rock, High School in 1972. He is now stationed at Cannon A.F.B. in Clovis, N.M. The couple will be married Friday, June 7 at the First Baptist Church of Lazbuddie.

of bright pink crocheted Bouclé crepe, accented by white crocheted beads and white accessories. A corsage of shades of pink completed her attire.

Following the exchange of the wedding vows, the couple was honored with a reception in the Fellowship Hall of the Church. The reception table was laid with a full skirted cloth of deep purple net over taffeta outlined in satin ribbon with pearlized pen trim, satin bows and streamers in shades of purple. The table was centered with a silver, four branched candelabra, holding purple candles and an arrangement in shades of purple flowers. The three tiered Rose Garden cake, separated by columns was decorated with shades of purple roses. The lower tier held a decorative book bearing the names, Jama and Mac, and the date of February 2, 1974. The center tier was topped by cupids and love birds, and the top tier was decorated with cupids, love birds and flowers. Grape slush punch was served from a silver punch service, coffee was served from a silver coffee ser-

vice. Crystal and silver appointments completed the table setting.

Serving at the table were Mrs. Nicky Nickels, Miss Mitzi Bass, Mrs. David Harris and Miss Joy Lynn Killough all of Muleshoe. Members of the houseparty were Mrs. Dean Spraberry, Mrs. James Brown both of Muleshoe, Mrs. Jim Hunt of Spur, Mrs. Roger Gobell of Greeley, Colorado, and Mrs. Bennie Dillard of Roaring Springs.

Miss Gayla Hooten presented piano selections during the reception which included "Come Live With Me", "Thru the years", "Somewhere my Love", "More", "Theme from Love Story", "Love Me Tender", "Love Means Never Having to Say You're Sorry" and "If".

Nieces of the groom, Courtney, Jana and Debbie Brown carried purple rice bags to the guests in white baskets.

For a wedding trip to Las Vegas, Nevada, the bride chose a long sleeved floor length purple polyester knit dress softly gathered at the center front U shaped neckline. White accessories and a corsage lifted from her bridal bouquet completed her attire.

The bride is a graduate of Muleshoe High School. She was "Miss Muleshoe" of 1972-73. She attended El Centro Junior College and was employed by National Bank of Commerce in Dallas.

The groom is a Lazbuddie High School graduate, and attended West Texas State University of Canyon and Eastern New Mexico University at Portales. He is currently engaged in farming in the Muleshoe area. The couple will reside at 1728 West Avenue C in Muleshoe. Special guests included Mrs. Anna Belle Smith, Las Vegas, Nevada, and Mrs. Edna Dillard of Roaring Springs, both grandmothers of the bride. Other out of town guests were: Mrs. W.T. Smith, Ozona; Mrs. P.L. Carmichael of Hereford; Mr. and Mrs. Roger Goveil and Brent Conrad of Greeley, Colorado, Mr. and Mrs. Bill Dillard, Toni and Shelly of Mustang, Oklahoma; Mr. and Mrs. Bennie Dillard, Don and Dana of Roaring Springs; Tippi Hately of Abilene; Mr. and Mrs. Bobby Porter and Lisa of Lubbock; Mr. and Mrs. J.E. Hunter of Monday; Mr. and Mrs. R.G. Bostic of Spur; Mr. and Mrs. Jim Hunt of Spur; Mr. and Mrs. Ira Sullivan of Afton; Otha Smith of Paducah; and Mrs. Beatrice Smith of Matador.

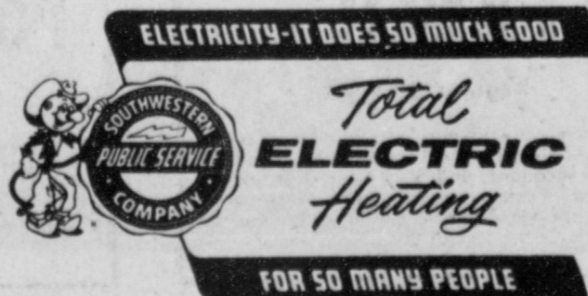
The grooms' parents, Mr. and Mrs. Dee Brown hosted a rehearsal dinner at the XIT Steak House, Friday evening, February 1st, at 7:00 p.m.



# electric heat

the myth of high cost doesn't have a leg to stand on.

Call us for a FREE Electric Heat cost estimate especially for your nest.



**perry's**

## Dollar Day Sale!

**100% POLYESTER DOUBLE KNIT**

New Spring Colors & Patterns. 60" Wide Dressmaker Lengths

**\$1.99** YARD

**GLASSWARE**

By Anchor Hocking

Candy Dishes  
Ash Trays  
Fruit Bowls  
Pickle Dishes  
Sherbet Dishes  
Measuring Cups

**43¢** EACH

**LADIES PANTIES**

100% ESTRON ACETATE SIZES 5-7

**49¢** PAIR

**LADIES NYLON PANTY HOSE**

Beige Glaze  
Brown Toast  
Taupe Smoke

**37¢** PAIR

**VELOUR Kitchen Towels**

Beautiful Colors & Patterns To Choose From

**77¢** EACH

**100% Cotton PINWALE CORDUROY**

45" Wide Assorted Colors

**99¢** yard

**LADIES BRAS**

VALUES TO \$3

**\$1.19**

**ROSE BUSHES**

Several Varieties To Choose From

**\$1.79** EACH

perry's

128 MAIN MULESHOE

**Henry Block**

has 17 reasons why you should come to us for income tax help.

Reason 1. We are income tax specialists. We ask the right questions. We dig for every honest deduction. We want to leave no stone unturned to make sure you pay the smallest legitimate tax.

**HENRY BLOCK**  
THE INCOME TAX PEOPLE  
306 WEST SECOND  
COME IN SOON PH. 3283

## Mrs. John Walker Honored At Gift Tea

Mrs. John Walker, nee Miss Louann McClagg, was honored with a gift tea Saturday, January 26 from 2:00 to 4:00 in the home of Mrs. Sherman Sweatman.

### Golf Association Officers Dinner

The Muleshoe Ladies Golf Association met January 16 at the Muleshoe Country Club. President, Sandi Chitwood, encouraged all member to rejoin. The association was fed by the officers.

Those attending were Paula Barnes, Karen Burt, Lynn Campbell, Sandy Chitwood, Nona Blake Douglas, Eunice Evans, Gayle Hawkins, Mary Francis Holt, Hattie Rty Janes, Mildred Lambert, Ruth Malone, Marlene Martin, Millie May, Becky Miller, Elsie Playent, Nicky Smith, Mary Sweatman, Janet Wagon, Louise Williams, Dorothy Wood, Jo Wood, Terri Young, and new members Gayle Green and Pat Angley.

\*\*\*\*  
People must learn to get along with less than perfect persons.

er of Odessa, Mrs. Roy McClung; his grandmother, Mrs. Byron Gwyn and her aunt, Mrs. Brigman of Farwell.

Mrs. Steve Black registered guests.

The serving table was covered with a silver metallic cloth overlaid with a white net cloth outlined with felt pong lilly appliques highlighted with silver glitter. Refreshments of yellow and green thumbprint cookies, nuts, spice tea and coffee were served from silver appointments. Mrs. Marilyn Black presided at the table.

Hostess gifts were a Sun-bear Waffle Iron and a Presto Cooker.

Hostesses for the tea were Mrs. Buck Wood, Mrs. T.N. Stemmmons, Mrs. Eugene Black, Mrs. Jimmy Presley and Mrs. Sherman Sweatman.

### NEW ARRIVALS



Alma Angelica

Hernandez

Mr. and Mrs. Jaime Quinons Hernandez of Muleshoe are the proud parents of a new baby girl born January 26 at 1:55 p.m. in the West Plains Memorial Hospital of Muleshoe. The baby weighed seven pounds

and five ounces and was named Alma Angelica. She is the couple's second child.

Christina Ann Duarte

Mr. and Mrs. Michael Martin Duarte of Goodland are the proud parents of a new baby girl born January 27 at 2:15 p.m. in the West Plains Memorial Hospital of Muleshoe. The baby weighed three pounds and was named Christina Ann. She is the couple's first child.

\*\*\*\*  
Simple things and simple people are often the great among us.

## Mrs. Don Martin TOPS Queen

TOPS Chapter No. 34 met Thursday evening, January 31, at 6:30 p.m. at the meeting room of Bailey County Electric with 27 members weighing in.

Mrs. Kenneth Don Martin was named weekly queen, First runner-up was Mrs. L.R. Hall. A three way tie for second runner-up was between Mrs. George Clambless, Mrs. Gary Skaggs and Mrs. Roy Miller. Next Thursday February 7 is awards night and everyone is asked to remember to bring fruit.

WORTHY ADVISOR . . Miss Jana Oyler, the 16 year old daughter of Mr. and Mrs. Milton R. Oyler, will be installed as Worthy Advisor of Muleshoe Rainbow Assembly No. 161 on Saturday, February 9, at 7:30 p.m. The ceremony is open to the public and will be held at the Muleshoe Masonic Hall.



MRS. JOHN WALKER

### WEST PLAINS HOSPITAL Hospital Briefs

Mrs. Nellie B. White, Mrs. Darrell Nowell, Jeryl M. Bel-lar, Julian Dominguez, Mrs. M.H. Carlisle, Mrs. Bernard

Valdez, Mrs. Jose Rodriguez, and Mrs. Bill Taylor.

#### DISMISSALS:

Mrs. Nellie White, James Harvey, Luis Rodriguez, Mrs. Blanche Cash, Christopher Dominguez, Julian Dominguez, Mrs. Mike Duarte, Jr., and Mrs. Bill Hall.



PROCLAMATION. . . . . Mayor Alex H. Williams proclaims the month of February as HERO-FHA Month and urges all citizens to acquaint themselves with the activities of the HERO Future Homemakers of America organization, to show interest in it and to give help and encouragement to the members who are working hard to achieve knowledge that will make outstanding homemakers and leaders in our communities. Shown with Mr. Williams is Kathy Burris, Bonnie Sain, Donna Burris and Faith Free.



GIVEN IN MEMORY OF . . . . . Recently a lovely wooden Boston rocker was purchased with memorial gifts for Mrs. Jane Beavers. On the chair is a small gold plaque which is engraved, "Given in Memory of Mrs. Jane Beavers." The rocker will be placed in the Day Room of the Muleshoe Nursing Home. Those friends and family of Mrs. Jane Beavers making memorial gifts were Dr. and Mrs. Charles Lewis, Mr. and Mrs. J.E. McVickers, Mrs. Fred Johnson, Nursing Home Staff, Mr. and Mrs. M.H. Laney, Ruth Colbert, Byron Phillips, Mr. and Mrs. Jerry Cantrell and boys, Mrs. Sherman Sweatman, Mr. and Mrs. Jimmy Presley and family, Mr. and Mrs. R.L. Hobbs, Mr. and Mrs. Albert Carroll, Mrs. Matilda Stemmmons, Mr. and Mrs. Spencer Beavers and Mr. and Mrs. Byron Gweyn.

# FABRIC SALE

## Spring

**45" 100% TEXTURED DACRON® CREPE**

**\$1. YD.**

Regular 1.39 yd.

Choose from prints and solids in 45" wide 100% textured Dacron® polyester dress crepe. Assorted spring patterns and colors to make your wardrobe complete.

**45" GROUP OF SPRING 1974 DRESS AND SPORT FABRICS**

**\$1. YD.**

Regular 1.19 yd.

Boutique prints, gingham, checks, Country Girl prints, cotton and polyester blends, broadcloth, sport fabrics and Jean Denim prints. Just perfect for this year's fashions.

**58/60" 100% POLYESTER DOUBLE KNIT**

**\$2. YD.**

Regular 2.88 yd.

The most popular fabric for any fashion! This large group of easy-care, easy-sew, double knit includes crepes, ribs, diagonals, jacquards, chevrons and more. They're machine washable and dryable, and need no ironing. Colors of white, navy, red royal, rose pink, soft blue, lilac, and purple.

WE HONOR CASH LAYAWAY

**60" 100% POLYESTER WOVEN FANCIES**

**\$3. YD.**

Regular 3.99 yd.

Completely washable, easy to care for are these polyester woven fancies. 50% Traversers jacquards and 50% yarn dyed jacquards. Perfect patterns for your outfits this spring. They last and keep their shape. Colors stay bright.

**58/60" 100% DACRON® POLYESTER DOUBLE KNIT**

**\$4. YD.**

The easy care fabric that looks great all the time. 58" x 60" 100% Dacron® polyester multi-color yarn dyed double knits. Coordinated with solid color crepe or rib knit. Start creating your spring look now!



Outstanding selection to choose from. Every yard first quality, and all new spring "74" colors and patterns. Sew and save now!

**Enjoy Fine Western Entertainment**

**Each Saturday Night**

**8 p.m. to 1 a.m.**

**Midway Dance Hall**

Between Clovis and Portales

**featuring two bands with 5 continuance hours of music and dancing**



# MULE'S TALE



Official Publication of Muleshoe High School Written and Edited by Students of the Muleshoe Schools

VOL. 9 NO. 8

EDITOR Gene Rogers

SUNDAY, FEBRUARY 3, 1974

## Brunns, Locker Homecoming Royalty

### \*\*\* Congratulations Contestants! \*\*\*


by Pam Vinson  
Local eliminations were held January 22-26 for the DECA Area Contest. This year, Area Contest is to be held in Wichita Falls on February 8 and 9. For the "Job Interview" contest, those students trying out were required to fill out a job application and then go to the Muleshoe State Bank where they were interviewed by Bob Finney. Those who placed were Pam Vinson, first, and Daniel Guzman, second.

In "Advertising" contestants constructed advertisements such as would be seen in a newspaper. These were judged by Polly Otwell at the Muleshoe Journal. Sheryl Bass will be representing Muleshoe in "Advertising" at Area.

For the "Display" contest, those trying out rated display windows of three of the local merchants. Judging this contest was Lyndal Murray and Jimmy Bruton, both of Anthony's. Roy Bara was chosen to go to Area in "Display". Sales Demonstration is another section of Area Contest, but local eliminations were not needed. Jim Ella Norman and Steve Reed will be entering this contest.

Beverly McCamish will also attend Area and try out for "Student of the Year". Congratulations and good luck to all contest winners!

**Coaches**  
**o**  
**m**  
**e**  
**n**  
**t**



This past week, Muleshoe played two district games, losing both, against Dumas. The Mules got into foul trouble and eventually all five starters fouled out. In that game, Muleshoe had the lead with less than two minutes remaining.

In the Dumas game, Muleshoe showed that it had a fine crop of younger players coming back next year. After all five players, fouled out, Dusty Davis, Larry Richardson, Jeff Skipworth, Gary White, and Carey Suddeth came in to play fine games before falling in the overtime period.

Last Tuesday, Muleshoe lost to a hot shooting Levelland team. That game was homecoming for the Mules, who never seemed to get untracked during the game.

Friday, the Mules played Perryton at Perryton.

The Mules have only one more home game. It will be played against Canyon on Friday, February 8. The Junior Varsity game will begin at 6:15 p.m.

When you cease to be envious of your competitors you give them reason to be envious of you.



### \*\*\* Holiday \*\*\*

Friday, February 1, was a holiday for most students of Muleshoe High School when the faculty met for an Inservice Day.

However the Mules Basketball team traveled to Perryton for a District basketball game. Another big event for a number of students was the Bailey County Junior Livestock Show which was held Thursday, January 31, and Friday, February 1, in the MHS Bus Barn.

The faculty met from 9:00 a.m. until 12:00 noon Friday, February 1, in the High School Auditorium. Dr. Nicholas J. Silveroli, Director of Reading Education for Arizona State University of Tempe, Arizona, was the consultant for the morning Inservice program.

The high school faculty met from 1:00 to 4:00 in the high school library. Marcus Gist presented "Educational Media" and "When Every High School Teacher is a Reading Teacher", followed by a high school faculty meeting.

### King, Queen Named During Homecoming

Tuesday night, January 29, 1974 was the annual Basketball Homecoming. The candidates for King and Queen were: Miss Brenda St. Clair, daughter of Mr. and Mrs. Bill Jim St. Clair, escorted by George Mitchell, son of Mr. and Mrs. George Mitchell; Miss Jana Brunns, daughter of Mr. and Mrs. George Mitchell; Miss Betty Locker, daughter of Mr. and Mrs. M.G. Killough, escorted by Perry Stockard, son of Mr. and Mrs. Sy Stockard.

During the half-time of the Muleshoe vs. Levelland game, Mr. Kerry Moore announced Jana Brunns and Fred Locker as the Basketball Homecoming King and Queen for 1974.

Glenda Harlin presented the crown, Pam Loyd presented the robes and Susie Cousatte presented the gifts for the Queen and her court.

sent the gifts for the Queen and her court.

### Sophs On The Go!

Monday, January 28, 1974, the Sophomore Class met in the cafeteria.

The main purpose of the meeting was to discuss the Snack Bar at the Bailey County Livestock Show. The Sophomores served sandwiches, brownies, Cokes, Dr. Peppers, and coffee. They set up the Snack Bar Thursday morning with the first work shift beginning at 1:00 p.m.

The class mothers were also present at the meeting. They discussed making brownies and the buying of supplies for the snack bar.

### Calendar Of Events

MONDAY, FEB. 4  
Rose and Rosebud meeting-Orientation  
Ag Meeting  
7:30 - 9th Girls -Levelland-Here  
7:30-9th Boys-Morton-There  
TUESDAY, FEB. 5  
10:30 -Miss Ford Country  
6:15 -Varsity A&B Boys -Ropes - There  
5:00 - Varsity A&B Girls-Canyon - Here  
WEDNESDAY, FEB. 6  
Student Council Film -"Fail Safe"  
FRIDAY, FEB. 8  
DECA Leadership Conference  
Wichita Falls  
San Antonio Fat Stock Show  
6:15 p.m. -Varsity A&B Boys Canyon - Here

### Honor Roll

SENIORS: David Wheat, 96; Cynthia Chandler, 96; Danita Throckmorton, 94; Sharon Wrinkle, 94; Terri Bryant, 93; Susan Head, 93; Donna Herring, 93; Clifton Meyers, 93; Glenda Harlin, 92; Gayla Hooten, 92; Lequice Herman, 92; Laticia Harris, 91; Larry Torres, 91; Donna Lambert, 91; Kelly St. Clair, 90; Richard Meyers, 90; and Brenda Weeks, 91.

JUNIORS: Jana Oylter, 98; Cindy Harvey, 96; Pam Vinson, 96; Lawren Hall, 94; Judy Dearling, 92; Jimmie Wislan, 92; Robbie Nesbitt, 92; Doug Crawford, 92; Susan Murray, 92; David Watson, 92; Freddie Flores, 91; Prisca Young, 91; Jan Harlin, 91; Andrew Ybarra, 91; Roy Bara, 91; Sharon Williams, 91; Belinda Throckmorton, 90; Lavern Carpenter, 90; Vicky Griffin, 90; and Ronnie Bullock, 90.

SOPHOMORES: Lucy Gutierrez, 98; Stephen Harvey, 96; Sherrell Rasco, 95; Lana Wagon, 94; Larry Mills, 93; Jack Barber, 92; Johnny Ramage, 91; Phyllis Ray, 91; Mark Gregory, 91; and Vicki Burt, 90.

FRESHMEN: Tom Pepper, 97; Darrell Rasco, 95; Patty Pena, 94; Kim Small, 93; George Elliott, 93; Tammy Brunns, 91; Fran Dunbar, 91; Tammy Hicks, 90; George Lucero, 90; and Jed Davis, 90.

### Spotlight On FFA Chapters

In each issue of the "Texas Future Farmers Magazine", one of the ten Areas of the Texas Association of Future Farmers of America is represented. A section of the magazine is devoted to the particular Area chosen for that issue. Each FFA Chapter in the Area chosen to be represented is encouraged to send in pictures and stories of the activities in which their Chapter is involved.

Area I FFA Chapters will be featured in the "Texas Future Farmers Magazine" in the near future. In preparation for this event the Muleshoe FFA Chapter will be taking pictures of the Junior Livestock and of various activities in which the Chapter is engaged.

### DDKG Plans Campaign

by Jana Oylter  
DDKG officers met in Room 18 on Monday, January 28. Among the items discussed was the Constitution, and suggestions were taken as to what should be included.

Concern was expressed over the future of the club and the German program at MHS. The officers decided to launch an intensive campaign shortly before re-registration. The campaign will include posters, leaflets, and personal contacts. Jana Oylter was placed in charge of this.

President Maribeth Dillman will check on a date for the next meeting.

### FHA Bake Sale Set

The Rose FHA Chapter will have a bake sale at Cashway and Piggy Wiggly on Saturday, February 2. The time will be from 9:00 a.m. to 5:00 p.m. or until the cakes run out.

Each girl needs to bring a cake or \$3.00 if possible. She will receive points for these. All members need to be sure and sign up to work and have their cakes at the stores on time.

Everyone be sure to come and buy a fresh homemade cake!

### Rosebud FHA Chapter Plans Activities

by Kim Small  
The Rosebud Chapter has been holding meetings during orientation since school started. The first meeting the officers discussed and decided not to join the Rose Chapter after meeting with them but to go in on certain projects. The Rose Chapter then voted to have a Sweetheart Banquet in February.

The next few meetings were to decide the motto for each month. They were as follows: September, "Discovering FHA"; October, "Seeking our Treasures"; November, "Stop, Look and Listen"; December, "Joy to the World"; January, "Beautifying"; February, "Love is"; March, "Getting it Together"; April, "You've come a Long Way"; and May, "Key to Opportunity".

The next meeting was to decide projects for December and to discuss a new point system. It was decided to take cakes to the teachers for their birthdays. Patty Pena and Nancy Ramm volunteered to make these. The projects for December were an FFA-FHA Decorating Party, having secret grandmothers and helping the Rose Chapter with the Christmas float. Kim Small was appointed to keep the amount of points each member has. Also discussed was whether or not to sell Tupperware instead of Stanley products this year.

The most recent meeting of the Rosebud Chapter was held Thursday, January 9. Those attending chose a secret grandmother and discussed the Sweetheart Banquet. The presidents met during orientation the next week to discuss the responsibilities of each Chapter for the banquet. The Sweetheart Banquet will be February 16. Refreshments were served and the meeting was adjourned.

### Mulette Maneuvers

The Mullettes have worked real hard this year. Though they have had many adversities, they have kept their hustle and desire.

The Varsity and Junior Varsity played Fresh here Tuesday night. The J.V. game ended with the Mullettes victorious. The Varsity lost their game 49-45, but everyone of the girls put out a very special effort to give 100 per cent.

During the weekend of the 26th, the Freshman girls won second in the Dimmit tournament losing to Lockney 55-57.

Friday night the Varsity team only played Olton there at 6:30 p.m. February 5, the Mullettes host Canyon for their final game for this season. This is also a very important district game for the Mullettes.

The Mullettes would like to thank everyone for their support and interest in our basketball teams!



HERO FHA MONTH. . .The month of February is national HERO Month the girls involved at M.H.S. are Back roll-Sylvia Ryles, Donna Burris (Historian), Kathy Burris (President), Roxanne Street (Treasurer), Nelda Vernon, Cindy Harvey, Debbie Palmer, Mrs. Wanda Gramling, Middle roll-Terina Whalin (Reporter), Faith Free (Student Council Representative), Vickie Kemp, Bonnie Sain (Vice-President), Front Roll- Donna Herring, Kim Cowen (Secretary), Vickie Stovall.

## Harris, Mitchell Class Favorites

The Senior Class met in the Library on January 25 to order their caps and gowns. Before they were measured, however, they took care of business for graduation.

First the class voted on their flower, and selected the rose. The class motto was voted on and the one selected was: "For the past is past and will never return, the future we know not, and only the present can be called our own."

Marie Corelli  
The pastor chosen to deliver the sermon at graduation was the Rev. H.D. Hunter, The Rev. Glenn Harlin and Father Timothy Schultez were chosen to bring the invocation and benediction.

Several suggestions were presented to the class on what to leave the school.

Class favorites were voted on, and chosen were Laticia Harris and George Mitchell. Escorts and Ushers were elected from the Junior Class. Those elected as Escorts were Terri Crane and Marshall Pool. Ushers for graduation will be Pam Loyd, Joice Killough, Jan Harlin, Susie Cousatte, Eddie Waggoner, John Saylor, Gene Rogers, and Mike Bland.

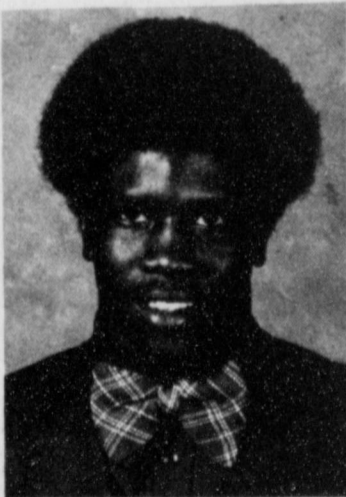
The deadline was set for Thursday, January 31, for members of the class who had not turned in the list of names of their family attending graduation.

The class was then called by alphabetical order and measured.

**Dumb-Bell!**  
He (calling from house)- Take a glance at the gas, will you Mabel?  
Mabel- The indicator says half but I don't know if it means half full or half empty.

ed for caps and gowns. Each paid a \$6.00 fee, and a big thanks go to Mrs. Smith, Mrs.

Gist, and Mrs. Harlin for all their help!  
At the next class meeting the class song will be chosen.



GEORGE MITCHELL



LATICIA HARRIS



SENIORS MEASURE FOR CAPS AND GOWNS. . .Mrs. Smith measures Darrell Fudge for his cap for graduation, Friday, January 25 was a big day for Seniors.

## February Proclaimed HEROMonth At MHS

The Vocational Act of 1963 and the Vocational Amendments of 1968 focused attention upon the need for more occupational education programs for students at the high school level. Educators have become increasingly concerned about students who graduate or leave school without the vocational preparation for earning a living and who therefore fail to become contributing members of society. The 1963 Act and Amendments of 1968 have provided opportunities for schools to offer additional educational programs which will help to meet the vocational needs of students in our competitive and technological society.

The Home Economics Cooperative Education program is a gainfully oriented program which helps students prepare for the world of work or for advanced education. Many students who participate in this program will continue their education in technical schools or colleges while others will become full-time employees upon graduation.

The gainful employment programs are not, in any sense, meant to replace the home-making. More and more women in our society are assuming

the dual role of homemaker and wage earner. Home economics thus has the responsibility for helping women meet the demands of both of these roles.

The various subject matter areas of home economics are relevant to a variety of occupations. There is a need in many occupations for employees who have had some training, but not necessarily a college degree or even college credit. During the past few years, an increasing number of people eat outside the home, stay in nursing homes, leave their children in childcare centers, desire alterations or repairs on their clothing, want help with decorating their homes, and travel and require clean pleasant surroundings at night. With the expanded demand for services, the need for food services, the need for food service employees, dietitian aides, and housekeeping management assistants is apparent. These are examples of only a few of the occupations to which home economics can make a contribution in terms of trained personnel. The purpose of the wage earning courses is not only to give high school students a job skill, but also to help them advance more rapidly and perform more efficiently.

In summary, some of the reasons education for employment is appropriate in home economics are that an increasing number of women are employed outside the home and need preparation for the dual role

they are assuming; there is an increasing need for personnel in the service occupations that are related to home economics; the number of jobs for unskilled workers is decreasing, and more and more jobs are requiring training of some kind; and career education programs must be added to the school curriculum.

We, as home economists, must meet our challenge to provide student with opportunities for gainful employment training while they are in high school and encourage them to consider advanced training after graduation.

The HERO Chapter of FHA has proclaimed February as Public Relations month. HERO is the working chapter of FHA. The activities for this month are Feb. 3 attend Church and have dinner together; Feb. 4-Bulletin Boards; Feb. 5-8 Teacher Appreciation; Feb. 5-Field trip to Hospital; Feb. 11-15-Morning Watch; Feb. 12-Present program to Rotary Club; Feb. 14-impact program: Valentine Party for Migrant Children; Feb. 18-Field trip to Beavers Flowerland; Feb. 19-Scrap Book; Feb. 20-Present program to Lions Club; Feb. 25-Area meeting preparations; Feb. 26-Field trip to Sewing Factory.

This relatively new organization is trying its best to grow into a very beneficial program for the store employer and the student worker as well as help the community. Watch for the HERO'S!

### Movie To Be Shown

The Student Council officers announced that all members, Senators and Representatives, will have a meeting Monday, February 4, 1974 during orientation. Numerous items were discussed with Mike Bland presiding over the regular Monday morning meeting.

Plans have been made to have the movie "Fail Safe", Wednesday, February 6, 1974. Admission will be 50¢.

## Rural Water Leaders Plan State Meeting

AUSTIN -- Leaders of rural water systems will gather in Dallas at the Baker Hotel, February 1-2 during the fifth annual meeting of the Texas Association of Rural Water Corporations.

Association President Bob Elder, Brock, announced that several state and national officials will highlight the meeting sessions.

Senator John Tower will be the featured speaker during the annual banquet on February 1. Tower will discuss the need for increased services in rural areas to insure growth and development.

During earlier February 1 sessions Land Commissioner Bob Armstrong will discuss the "Energy Crisis and Land Use

Planning" and the effects on rural Texas. Reagan Brown, Special Assistant to the Governor, will serve as the afternoon speaker covering the subject "Rural Texas, A Place to Grow".

Special workshops Friday afternoon are designed to aid directors and employees of rural water corporations in their responsibility to the membership. Featured on the workshops are Johnny Feagan, Texas A&M University; Preston Horton, Temple; Bill Farnell, Cleburne and Judge Jim Clawson, Temple.

The final session February 2 will feature Frank Elliott, Administrator of the Farmers Home Administration in Washington, D.C.

Jehovah's Witnesses. Burial was in the Lazbuddie Cemetery under the direction of Singleton-Ellis Funeral Home.

Survivors include the wife, Betty; three sons, Weldon, Delton and Eugene, all of the home; three daughters, Mrs. Vivian Davis of Farwell, Rena and Betty Lee Edwards, both of the home; his father, Guy Edwards of Muleshoe; two sisters, Mrs. Virginia Tandy, Muleshoe, and Mrs. Faye Campbell of Louisiana; four brothers, Guy Edwards, Jr. and Willie Edwards, both of Muleshoe, and Alfred and Cecil Osborne of Odessa; and one grandchild.

### RAIL MERGER

The Senate has given final congressional approval to a plan to merge seven bankrupt Eastern and Midwestern railroads, trim away unprofitable branches and rebuild the remaining rail system with government-backed financing.

## Services Held Saturday For H.W. Edwards

Hubert Weldon Edwards, 50, was dead on arrival at West Plains Memorial Hospital Thursday morning about 9:30 a.m. after suffering an apparent heart attack at his home five miles northeast of Muleshoe.

Edwards had been a Bailey County resident since 1968 moving from El Paso. He was born October 19, 1923 in Hereford and was a used car dealer.

He married Betty Jean Capron on July 29, 1954 in Las Vegas, Nevada.

Services were held Saturday, February 2, at 2:30 p.m. in the Singleton-Ellis Chapel of the Chimes. Officiating was Boyd Lowery of the Muleshoe

Cornbread - Butter  
Fruit Cups  
THURSDAY  
Milk  
Hamburger Patties & Sloppy Joes  
French Fries  
Leftover  
Pickles & Relishes  
Peanut Butter Cake  
FRIDAY  
Milk  
Fish with Tarter Sauce  
Scalloped Potatoes  
Green Beans  
Tossed Salad  
Rolls  
Butter - Jelly  
1/2 Orange  
1/2 oz. peanut butter with each serving

### BAN IMPOSED

WASHINGTON--Due to an apparent decline in highway deaths because of energy-saving measures, the Cost of Living Council has imposed a two-month ban on increases in auto insurance premiums.

## Lazbuddie School Menu

Lazbuddie Lunch Room Menus  
February 4 -- 8 -- 1974.  
MONDAY  
Milk  
Western Burgers  
Buttered Corn  
Wedged Lettuce  
Sweet Relish  
Chocolate Pudding  
TUESDAY  
Milk  
Chicken & Noodles  
English Peas  
Mixed Green Salad  
Cranberry Sauce  
Rolls  
Butter - Jelly  
Sliced Peaches  
WEDNESDAY  
Milk  
Tacos  
Hot Sauce  
Pinto Beans  
Spanish Rice

TEXAS DEPARTMENT OF AGRICULTURE

\$2.65

1 0 1/10 GAL.

2 6 1/2 PER 1/2 GAL.

53¢ Per Gal.

## Gas By Half-Gallon? It May Happen Here

AUSTIN--Buy gasoline by the half-gallon and multiply for the correct price?

It may happen in Texas if gasoline prices go over 50 cents a gallon.

State regulations issued in January will allow gasoline pumps unable to indicate a price over 49.9 cents a gallon to display the price per half-gallon. Sale price registered on the pump will be half the actual total which can be computed by multiplying by two.

The new regulations, which apply to retail dealers, will go into effect only if gasoline exceeds 50 cents a gallon.

They will be enforced by the weights and measures section of the Texas Department of Agriculture. Department inspectors are responsible for checking gasoline pumps to certify that meters are accurate.

According to Ed Whitesides, director of the Department's Consumer Services Division, pumps manufactured before 1965 do not have enough digits to register higher prices anticipated for automotive and truck fuels.

Later models are equipped with additional numerals for possible conversion to the metric system.

Only one company in the nation manufactures petroleum meters for retail pumps. A spokesman for the company, Veeder-Root, estimates it will be late 1975 before enough equipment can be produced to meet national demands.

Regulations require that dealers inform customers of the changes in large type affixed to the pumps. Labels must read "1/2 total price" and "per half gallon" by the unit price. Beneath the unit price another label must state the price per gallon.

A foot-square weatherproof sign must be placed on top of the dispenser to warn buyers of the changes.

Advertising petroleum fuel products will continue to be done in gallon values.

If the regulations go into effect, Whitesides warns consumers to be on the look-out for dealers whose advertising or labeling is misleading.

"Our inspection work will be intensified now that gasoline prices are going up," Whitesides said. "We can't control the price of gasoline but we can help to assure that the customer gets what he is paying for -- whether gas is 36 or 60 cents a gallon."

## You Are Invited To Attend Courses on Investing

Quinn & Co., Inc. to hold Lecture Series in the Muleshoe and Surrounding Areas.

Here's your chance to learn about investing in today's market. You'll get timely information and specific facts that you can use in realistically planning your investment moves.

FEB. 13 - UNDERSTANDING THE NEW YORK STOCK EXCHANGE  
The Exchange meets the need for a market place where shares of American business may be readily purchased and sold by the investing public.

FEB. 20 - WHY STOCK PRICES GO UP AND DOWN  
Supply and demand are the underlying forces in changing securities prices. Thus, what affects supply and demand for stocks can cause their prices to rise or fall.

The free lectures will be held on Wednesday evenings at 7:00 p.m. at

Muleshoe State Bank  
101 American Boulevard

Admission is free - but space is limited, so telephone 806-272-4561 for your reservation. Or mail in the coupon below.

Please reserve \_\_\_\_\_ (s) for your Advanced Course on Investing

Name \_\_\_\_\_

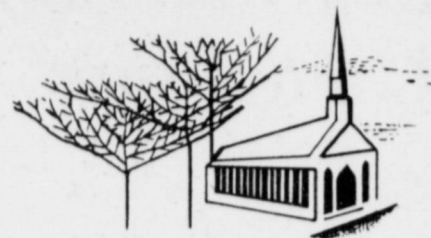
Address \_\_\_\_\_

City \_\_\_\_\_ State \_\_\_\_\_ Zip \_\_\_\_\_

Telephone \_\_\_\_\_ Business \_\_\_\_\_ Home \_\_\_\_\_

**Quinn & Company Inc.**  
119 EAST FOURTH STREET  
DALLAS, TEXAS 75201  
TELEPHONE 762-4521

# An investment in Your Future ATTEND CHURCH

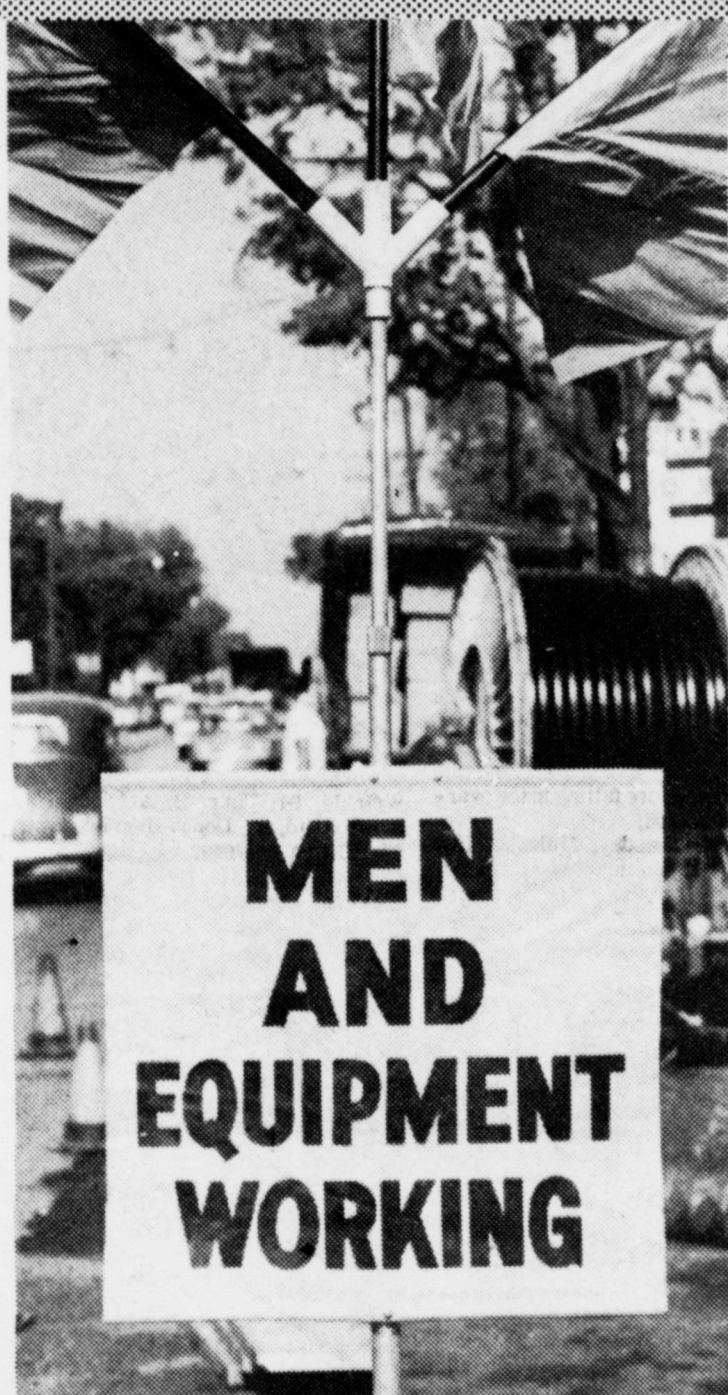


"For where your treasure is, there will your heart be also"

## MEN WORKING

This is the sign that should be lifted high in our beloved country -- "Men Working." Men working with all they have and are, for a country that must show the world how to live in brotherhood and love and peace under God.

Let us resolve to dedicate anew our lives and our talents to our country and our God when we attend church



The Church is God's appointed agency in this world for spreading the knowledge of His love for man and of His demand for man to respond to that love by loving his neighbor. Without this grounding in the love of God, no government or society or way of life will long persevere and the freedoms which we hold so dear will inevitably perish. Therefore, even from a selfish point of view, one should support the Church for the sake of the welfare of himself and his family. Beyond that, however, every person should uphold and participate in the Church because it tells the truth about man's life, death and destiny; the truth which alone will set him free to live as a child of God.



Coleman Adv. Ser.

Art Craft Printing Co.  
105 E. Avenue D.

San Francisco Cafe  
"Tortilla Factory"  
121 Main St. 272-3502

Chow-Tex Feed Lot  
"Complete Feed Program"  
Route 1, Box 134  
Muleshoe 965-2900

Bratcher Motor Supply  
107 E. Ave. B  
272-4288

White's Cashway Grocery  
"Where Friends Meet and Prices Talk"  
402 Main

Western Drug  
114 Main

Dairy Queen  
1201 West American  
272-3412

Gibson's Discount Center  
1723 West American Blvd.  
272-4306

Lambert Cleaners  
Steam Carpet Cleaning  
Drapery Cleaning  
123 Main St. 272-4726

St. Clair's  
110 Main

Decorators 216 Floral  
"Flowers Express The Handiwork of God"  
216 S. First 272-4340

Bailey County Memorial Park  
"Every Service A Sacred Trust"

Muleshoe State Bank  
304 W. Second

Dial 272-3737 for better turnouts, better samples with  
Progress Gin  
7 1/2 miles west of Muleshoe on Clovis Highway

Muleshoe Co-op Gins

Dari-Delite Drive-In  
210 N. First  
Take Out Orders 272-4482

Bob's Safety Center  
Wheel Aligning, Brakework & Automotive Air Conditioning

Homer Redwine Phillips 66  
715 West American 272-4424

Whitt-Watts & Rempe Implement Co.  
"John Deere Dealers"  
Muleshoe, Texas 272-4297

SPANISH BAPTIST MISSION  
E. 3rd and Ave. E  
John Jaquez, Pastor

PROGRESS SECOND BAPTIST CHURCH  
Arthur Hayes, Pastor  
1st and 3rd Sundays

MULESHOE BAPTIST CHURCH  
8th Street & Ave. G

ST. JOHN LUTHERAN  
Lariat, Texas  
Rev. Martin M. Platzer, Pastor

FIRST BAPTIST CHURCH  
220 W. Ave. E  
Douglas DuBose, Pastor

SPANISH ASSEMBLY OF GOD  
East 6th and Ave. F  
Rev. Hipolito Pecina

ST. MATTHEW BAPTIST CHURCH  
W. Third  
E. McRazier, Pastor

NORTHSIDE CHURCH OF CHRIST  
117 E. Birch Street

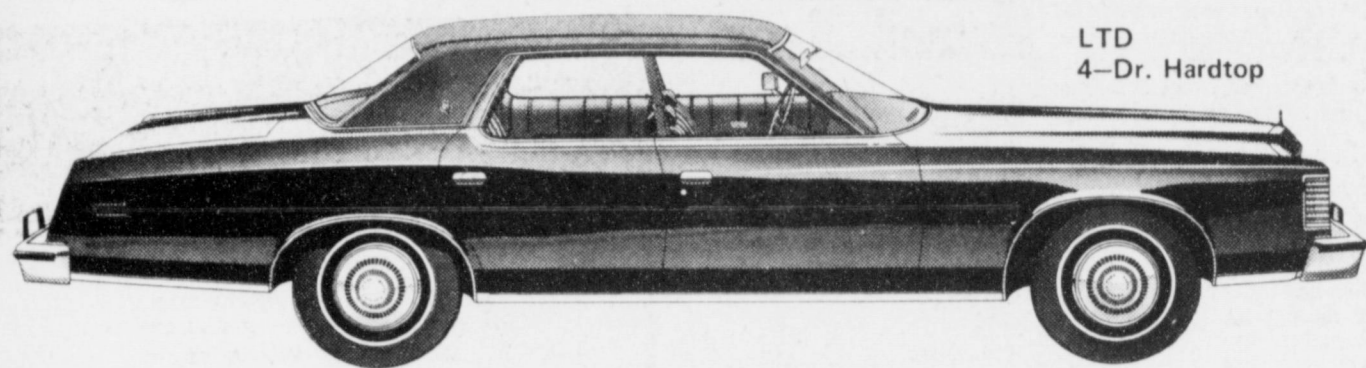
PROGRESS BAPTIST CHURCH  
Progress, Texas  
Murrell Johns, Pastor

SIXTEENTH & D CHURCH OF CHRIST  
Sunday - 10:30 a.m.  
Evening - 6 p.m.  
Wednesday - 8 p.m.  
Ivan Woodard, Minister

IMMACULATE CONCEPTION CATHOLIC CHURCH  
Father Timothy Schwertner  
Northeast of City in Morrison Edition

MULESHOE CHURCH OF CHRIST  
Clovis Highway  
Royce Clay, Minister

# COME HELP US CELEBRATE OUR **FIRST** ANNIVERSARY IN OUR NEW BUILDING



LTD  
4-Dr. Hardtop

*We have the biggest selection of  
new and used cars and pickups  
at the best prices for  
economy and comfort.*



**THANK YOU**

from the Robert Hooten family  
and the  
Muleshoe Motor Co. family of employees  
for a great year.

**FEBRUARY 1-9**

**FREE 1974 CAR TAGS  
WITH EACH NEW OR USED CAR  
OR PICKUP PURCHASED**



ROBERT HOOTEN  
Owner and Manager



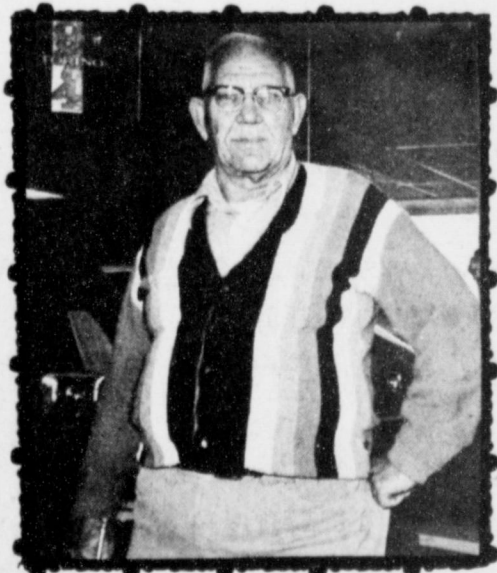
JO WOOD  
Accountant



WALTER MARIE BONESS  
Secretary



ALTON CARPENTER & BILL KINARD  
Parts Department



ED EDMISON  
Salesman



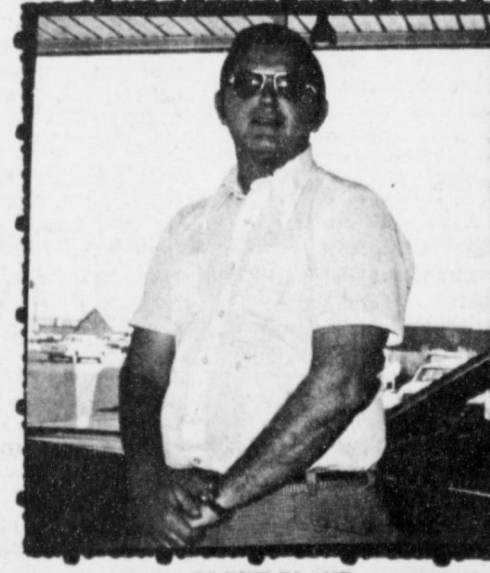
CAROL GOSS  
Salesman



GARY TOOMBS  
Salesman



CHARLES MAYHUGH  
Salesman



CLEVE BLAND  
Salesman

# MULESHOE MOTOR CO.

PHONE 272-4251

"CAR CAPITAL OF THE WEST PLAINS"  
MULESHOE

1225 West Am. Blvd.





# CLASSIFIED ADS

## THE PLACE TO LOOK



**OPEN RATES**  
 1st insertion, per word-9¢  
 2nd and add., per word-6¢  
**NATIONAL RATES**  
 1st insertion, per word-11¢  
 2nd and add., per word-7¢  
 Minimum Charge-50¢  
**CARD OF THANKS - \$2.00**  
 Classified Display-\$1.12 per column inch  
**Double Rate for Blind Ads-**  
 \$1.15 per col inch for Rev.  
**DEADLINE FOR INSERTION**  
 Noon Tuesday for Thursday  
 Noon Friday for Sunday

**WE RESERVE**  
 Right to classify, revise or  
 reject any ad.  
**NOT RESPONSIBLE**  
 For any error after ad  
 has run once.

**1. PERSONALS**

**\$300 REWARD:** Stolen Myers brand roping saddle, hackamore, bridle and saddle blanket. Stolen in front of La Vista Lounge, Saturday, 26 between 6:30 and 8 p.m. Your name will be held strictly confidential. Contact R.B. Boney, 985-5782, Clovis, collect.  
 1-5t-4tp

**3. HELP WANTED**

**WANTED:** Experienced welder and shop hand. Call 272-3145 or 272-4878 after 7.  
 3-2s-8tc

**WANTED:** Beautician needed at once, call 272-3448. Main Street Beauty Shop.  
 3-40t-tfc

**WANTED:** Experienced mechanic. Good pay scale. Good hours. Good working conditions. Apply in person, Town & Country Olds-Buick.  
 3-47s-tfc

**WANTED:** Farm hand for irrigated farm. House and utilities furnished. Top wages for top man. Phone 385-5916 or 385-3620, Littlefield, Tex.  
 3-2s-tfc

**WANTED:** Equipment set up man. Set up equipment, drive a truck, pick up and deliver equipment. Hospitalization, vacation, good pay for right man. Phone 272-5514. Wooley Hurst, Inc.  
 3-4s-6tc

**WANTED:** Diesel mechanic. Hospitalization, Vacation, Good pay. Phone 272-5514. Wooley Hurst, Inc.  
 3-4s-6tc

The Muleshoe Independent School District will take applications for qualified bus drivers. Average salary is \$6.50 per day. Average time is three hours per day. Applicants must have the following: current Texas chauffeurs license, pass physical examination, and driving record from the Texas Department of Public Safety. Applications may be picked up from Mr. Long at the bus garage or at the school business office.  
 3-5s-2tc

**5. APTS. FOR RENT**

**FOR RENT:** Furnished apartment. Bills paid. Call 272-3465.  
 5-51t-tfc

**FOR RENT:** 2 bedroom unfurnished apartment. Phone 272-4838. Smallwood Real Estate.  
 5-47s-tfc

**FRIONA APTS.** now have available 1, 2, & 3 bedrooms. Call 247-3666 or come by 1300 Walnut Street Friona.  
 5-29s-tfc

**7. WANTED TO RENT**

**WANTED TO RENT:** 2 bedroom unfurnished house. Town or Country. Contact Mrs. Alton Carpenter 272-4561 or 272-3901 after 4.  
 4-4t-tfc

**Want to rent or lease irrigated land.** Contact John Mitchell, 965-2160.  
 7-37t-tfc

**8. REAL ESTATE FOR SALE**

**FOR SALE:** 67 acres with good 8" well high pressure pipe line and side-roll sprinkler system. \$575 per acre with terms or will trade. Call 272-3819.  
 8-40t-tfc

**FOR SALE by owner:** Call Joan Gaston, 272-3232 or Evelyn Riley, 272-4775 or Bertie Nickels, 272-4669 for appointment to see house at 307 W. 6th. Guy Nickels residence.  
 8-42s-tfc

**FOR SALE by owner:** 3 bedroom house, fully carpeted, central heating, 1 3/4 bath, fenced yard. All electric, close to schools. Call 272-3484.  
 8-4t-tfc

**FOR SALE BY OWNER:** 3 bedroom house, 2 bath, den & living room, fully carpeted, fireplace, double garage with automatic door. Call 272-3121.  
 8-4s-tfc

**FOR SALE BY OWNER:** 3 bedroom house, fenced yard, fully plumbed. Call 272-3176 after 3 p.m.  
 8-3t-tfc

**FOR SALE:** 30 acres irrigated land, 5 miles from town. 3 bedroom house. Call 965-2893.  
 8-4t-tfc

**FOR SALE:** 640 acres, Section 7, Block C Melvin Blum & Blum Survey, Bailey County. 500 in cultivation, Balance native grass. 1-4" well. Call Lubbock, 792-7444 night 885-2108 in Heriwood.  
 8-49t-tfc

**FOR SALE:** 3 bedroom, 2 bath, den, kitchen, utility room, living room, repainted, new carpet. Shown by appointment only. Call 272-4210 or 272-4462.  
 8-3s-tfc

**FOR SALE:** 40 a. of land 4 1/2 miles on 1760 joining highway with 1/4 mile side roll. Call 272-4515 or 272-4709.  
 8-45s-tfc

**FOR SALE:** 1250 a., \$450.00 per acre, 10% down, 9 full 8" wells, 500 A alfalfa hay, 1800 head feed lot, tremendous depreciation, 7 sprinkler, 2 Butler buildings, 4 nice houses, excellent improvements, 2 miles west of Muleshoe on Highway 1790. Dial 806-763-5323 or 797-1716.  
 8-49s-tfc

Nice three bedroom brick, well located 1 1/2 bath see Lee Pool Woody Goforth Pool Real Estate.  
 8-46s-tfc

**JAMES GLAZE COMPANY**  
**REAL ESTATE AND FARM & RANCH LOANS**  
 Phone 272-4549 219 S. 1st. 42t-tfc

164 acre dryland \$150.00 per acre. 324 acres \$125.00 per acre. 22 miles southwest of Muleshoe. See Curtis Walker or call 272-3162.  
 8-38t-tfc

**KREBBS REAL ESTATE**  
**THIRTY YEARS IN BAILEY COUNTY**  
**2105. 1st PH 272-3191**

**FOR SALE:** 1230 Acres Grassland, 200 in Cultivation, 1 Round & Round sprinkler, 3 wells, One small acreage close in for sale  
 All Priced Right  
 1 - 160 acres, good buy Call after 7 p.m.  
 E.H. Hall Real Estate  
 Phone 806-272-4784  
 Muleshoe, Texas  
 8-3s-4tc

**9. AUTOMOBILES FOR SALE**

**FOR SALE:** 73 LTD Braugham 2 door hardtop, beautiful blue metallic with vinyl top; loaded with optional equipment. Mitchell Radial tires. Call 272-4203 or 272-4928.  
 9-41t-tfc

**FOR SALE:** 1970 Galaxie 500, 2 dr, hard top, power steering & brakes, Factory air and tape deck. Good condition inside and outside. Good gas mileage. 390 V-8, \$1250.00. Call 272-4375 for Anita or 272-3211 for Clois.  
 9-4s-3tc

**10. FARM EQUIP. FOR SALE**

PVC plastic underground pipe. A.V.I. Inc. Phone 272-3565.  
 10-48s-tfc

**VALLEY**  
**SELECT PROPELLED**  
**SPRINKLER SYSTEMS**  
 standard and reversing. Let us talk with you about our new 6-8-10 year lease. Programs which now include PVC plastic pipe. A.V.I. Inc. 1534 W. American Blvd. Muleshoe, Tex. Phone 806-272-3565.  
 10-33t-tfc

**Public Notice**

**NOTICE OF INTENT TO ENGAGE IN WEATHER MODIFICATION ACTIVITIES**

Notice is hereby given that Atmospherics Incorporated of 5652 East Dayton Avenue, Fresno, California, 93727, who holds License Number 2 of the State of Texas, intends to engage in a weather modification operation designed to increase a rainfall and decrease hailfall, for and on behalf of Better Weather Incorporated, Littlefield, Texas, and will conduct such a program by means of aerial application of artificial nuclei as follows:

1. The area over, or within which, equipment may be operated, shall include portions of the counties of Lamb, Parmer, Castro, Swisher, Bailey, Hale, Cochran, Hockley and Lubbock.

2. The target area, within which rainfall augmentation and WE PAY CASH for tractor and equipment of all kinds. Tom Flowers Auction, Inc. Day 272-4154 Night 10-2s-tfc

**SPRINKLER FOR SALE:** One 1/4 mile HUSKY side roll sprinkler with trail line sprinklers. Ira Parr 806-247-3744.  
 10-3t-8tc

**12. HOUSEHOLD GOODS**

**FOR SALE:** Color T.V. \$165, Copertone Refrigerator \$135, Copertone electric stove \$135. Phone 272-4632, evenings.  
 12-4t-tfc

**HANNAH'S** husband Hector hates hard work so he cleans the rugs with Blue Lustre. Rent our Blue Lustre electric shampoo machine. Higginbotham-Bartlett 215 Main

**13. PROPERTY FOR LEASE**

**FOR LEASE:** 1500 head feed lot. 2 miles west of Muleshoe. \$150.00 per month. Phone 806-763-5323.  
 13-2t-tfc

**15. MISCELLANEOUS**

**FOR SALE:** Alfalfa Hay. Call 946-2547.  
 15-5s-tfc

**FOR SALE:** Gopher Getter Bait, Gopher Getter Machines. Hand type or tractor type. 30,000 feet of PVC 2" 160 PSI plastic pipe. B&S Irrigation, 272-3307.  
 15-5s-4tc

**FOR SALE:** Five commercial type outside glass-aluminum doors, 3 ft. by 7 ft. and 41 inches by 7 feet. Phone John Clark, 806-272-4521 9am-4pm.  
 15-5s-4tc

**FOR SALE:** 8 foot Cabover Camper. Call 272-4485.  
 15-44s-tfc

Now available at Homer Redwine Phillips 66 Service Station. Perfect Circle Speedostat. Phone 272-4424.  
 15-2t-tfc

**Kirby Sales & Service**  
**NEW & REBUILT**  
 220 W. 10th Phone 4182

**Cess Pool Cleaning**  
 Cesspools: pumped with a MUD-PUMP & treated with bacteria & enzymes to liquefy solids & loosen sides for better drainage. Dipping vats drained and liquids hauled to your disposal pit. Grease pits drained & treated. Mollasses pits drained.  
 Phone 272-3677 or 272-3467  
 ELMER DAVIS

**\*Expert and Colorful Weddings**  
**\*Family Groups**  
 Anywhere, Anytime

**PHOTOGRAPHY by Oecia**  
 CALL 385-6083  
 Littlefield 409 W. 2nd

**16. LIVESTOCK**

**FOR SALE:** 1 young Charolais Bull. Extra nice. Call 925-3510, Lariat, Lelton Phillips.  
 16-3t-tfc

hailfall suppression is intended to occur, can be described as follows:

The boundary of the target area shall be a line beginning at a point of origin at Leveland, Hockley County, Texas, and running due north to a point on Road 54 approximately 4 miles west of Littlefield, Texas; thence due west on Road 54 to its intersection with Road 303; thence due north on Road 303 to Sudan; thence northwesterly on Hwy 84 to its first intersection with the Bailey County line; thence northerly to Black in Parmer County; thence northeasterly to the intersection of the Parmer and Castro County lines; thence easterly along the north boundary of Castro County to its intersection with Road 385; thence southerly along Road 385 to Dimmitt; thence 3 miles southeasterly along Road 194; thence due south to the north boundary of Lamb County; thence due south to the north intersection of Lamb and Hale Counties; thence due south along the eastern boundaries of Lamb and Hockley Counties to the intersection of Road 116; thence westerly to the point of origin at Leveland, Texas.

3. The equipment, materials and methods to be used in conducting an operation within this area of approximately 1400 square miles, include a 5 cm radar system, a 3 cm radar system, cloud seeding aircraft, and the aerial application of silver iodide or other nuclei considered appropriate to the artificial nucleation of clouds or weather systems.

4. The person in charge of this program shall be Thomas J. Henderson, Atmospherics Incorporated, Fresno, California.

5. The program may be operational at various times throughout the period from May 1, 1974 through October 30, 1974.

6. Any person who feels they may be affected in some adverse way by this program may file a formal complaint to the Texas Water Development Board, P.O. Box 13087 Capitol Station, Austin, Texas 78711.

Signed: Thomas J. Henderson, President Atmospherics, Incorporated  
 15-4s-3stc

**ONE MINUTE SPORTS QUIZ**

- Who won the Dean Martin-Tucson Open Golf Tournament?
- Who won the AFC-NFC Pro Bowl?
- The UCLA's winning record was broken by what team?
- Who were the latest two named to baseball's Hall of Fame?
- Name the AP Male Athlete of the year.

**Answers To Sports Quiz**

- Johnny Miller.
- AFC 15-NFC 13.
- Notre Dame broke an eighty-eight game winning streak.
- Micky Mantle and Whitey Ford.
- O.J. Simpson.

## West Plains Memorial Hospital Articles Of Incorporation

**ARTICLES OF INCORPORATION OF WEST PLAINS MEMORIAL HOSPITAL, INC.**

We, the undersigned natural persons of the age of twenty one (21) years or more, all of whom are citizens of the State of Texas, acting as incorporators of a corporation under the Texas Non-Profit Corporation Act, do hereby adopt the following Articles of Incorporation for such corporation:

**ARTICLE ONE:** The name of the corporation is West Plains Memorial Hospital, Inc.

**ARTICLE TWO:** The corporation is a charitable corporation, non-profit in nature.

**ARTICLE THREE:** The period of its duration is perpetual.

**ARTICLE FOUR:** The purpose or purposes for which the corporation is organized are to operate and maintain a hospital and nursing home together with related endeavors of rendering full and complete medical service without regard to the patient's ability to pay.

**ARTICLE FIVE:** The corporation will have no members, but all business of the corporation shall be carried out by and through its Board of Trustees.

**ARTICLE SIX:** The street address of the initial registered office of the corporation is 708 South First Street, Muleshoe, Texas, and the name of its initial registered agent is Donald W. Harmon whose address is 232 Main Street, Muleshoe, Texas.

**ARTICLE SEVEN:** The number of trustee constituting the initial Board of Trustees of the corporation is five (5), and the names and addresses of the person who are to serve as the initial trustees are: Johnny P. Shelton, 1711 West Avenue H, Muleshoe, Texas; Donald W. Harmon, 232 Main Street, Muleshoe, Texas; Olan Burrows, 303 East Cedar Avenue, Muleshoe, Texas; Harvey Bass, 1903 West Avenue D, Muleshoe, Texas; and Jack D. Young, 103 West Avenue D, Muleshoe, Texas.

**ARTICLE EIGHT:** The names and street address of each incorporator are: Johnny P. Shelton, 1711 West Avenue H, Muleshoe, Texas; Donald W. Harmon, 232 Main Street, Muleshoe, Texas; Olan Burrows, 303 East Cedar Avenue, Muleshoe, Texas; Harvey Bass, 1903 West Avenue D, Muleshoe, Texas; and Jack D. Young, 103 West Avenue D, Muleshoe, Texas.

**ARTICLE NINE:** It is the intent of this corporation, and it is so designated, that in the event that at some future date herefrom this corporation should be dissolved, then any assets of the said West Plains Memorial Hospital, Inc. shall and will be turned over to another qualified, charitable organization or institution, and in

**School Menu**

- Feb. 4--8--1974.  
**MONDAY**  
 Milk  
 Tamales  
 Spanish Rice  
 Green Beans  
 Corn Bread  
 Pineapple Tidbits  
**TUESDAY**  
 Milk  
 Hamburger  
 Lettuce and Tomato Salad  
 Pickles  
 Onions  
 French Fries  
 Purple Plum Cobbler  
**WEDNESDAY**  
 Milk  
 Macaroni and Cheese  
 Mixed Greens  
 Glazed Carrots  
 Jellied Cranberry Fruit Salad  
 Baked Custard  
 Whole Wheat Batter Bread  
**THURSDAY**  
 Milk  
 Corn on Cob  
 Blackeyed Peas  
 Hot Rolls  
 Lazy Daisy Cake  
**FRIDAY**  
 Macaroni and Cheese  
 Mixed Greens  
 Glazed Carrots  
 Jellied Cranberry Fruit Salad  
 Baked Custard  
 Whole Wheat Batter Bread

**TELEX.** **Hearing Aids**  
**Clovis Hearing Aid Center**  
**Batteries & Molds. Free Tests. Service All Makes.**  
**416 Mitchell Phone 763-6900**  
 Clovis, N.M.

**POPPING PILLS FOR HEADACHES??**  
 LET **CLASSIFIED CURE THEM!!**

**Ailing For Action??**  
 TRY OUR **"HELP WANTED"**  
 COLUMN, IF YOU'RE IN NEED OF OFFICE OR PLANT EMPLOYES MORE JOBS ARE FOUND - MORE PEOPLE PLACED THRU THE **CLASSIFIED DEPT.**  
 DIAL 272-4536  
**"THE JOURNAL"**

Shelton, Donald W. Harmon, Olan Burrows, Harvey Bass and Jack D. Young, who each being by me first duly sworn, severally declared that they are the persons who signed the foregoing document as incorporators, and that the statements therein contained are true.

**IN WITNESS WHEREOF,** I have hereunto set my hand and seal the day and year above written.  
 Alex H. Williams  
 Notary Public,  
 Bailey County, Texas  
 My Commission Expires June 1, 1969

**IN WITNESS WHEREOF,** we have hereunto set our hands this the 13th day of August, 1968.

Johnny P. Shelton  
 Donald W. Harmon  
 Olan Burrows  
 Harvey Bass  
 Jack D. Young  
**STATE OF TEXAS**  
**COUNTY OF BAILEY**  
 I, Alex H. Williams, A Notary Public, do hereby certify that on this the 13th day of August, 1968, personally appeared before me, Johnny P.

Chatter is a very expressive word when applied to some conversations.  
 Self-control is a great virtue but few individuals seek to attain it.

Composure is that state of being wherein you resist answering the telephone.

**Singleton-Ellis Funeral Home**  
**24 Hour Ambulance Service**  
**Ph. 272-4574 Muleshoe**

**Clinical Masseur**  
**THRESIA DAVIS, OWNER**  
 109 SOUTH FIRST PHONE 272-3677  
 MULESHOE, TEXAS 79347

**I TREAT**  
 Sore Muscles, Tension Headaches, Muscle Spasms, Strains, Pulled Muscles, Bursitis, and Charlie Horses.

**ALSO, I GIVE**  
 Physical Massages, Body Massages, Complete Body Relaxation, and Can Tone Muscles.  
 So come in and take a whirlpool and massage and feel good all over.

**The Muleshoe & Bailey County Journal**

Rate for listings in The Journals Political Column is \$35 for state, district, county and precinct offices and \$25 for city offices and school board positions. This fee includes a front page announcement article and a one-column photograph at the time the announcement is made, in addition to the listing in the Political Column from date of the announcement until the final election.

Charges for announcements are cash in advance, and this same policy applies to all political advertising carried in the columns of this newspaper.

Names for each office will be listed in the Political Column in the order they are received at the newspaper office. The Journal has been authorized to announce the following candidates for public office:

**FOR COUNTY TREASURER**  
**EDITH WILT**

**FOR COUNTY CLERK**  
**HAZEL GILBREATH (Re-election)**

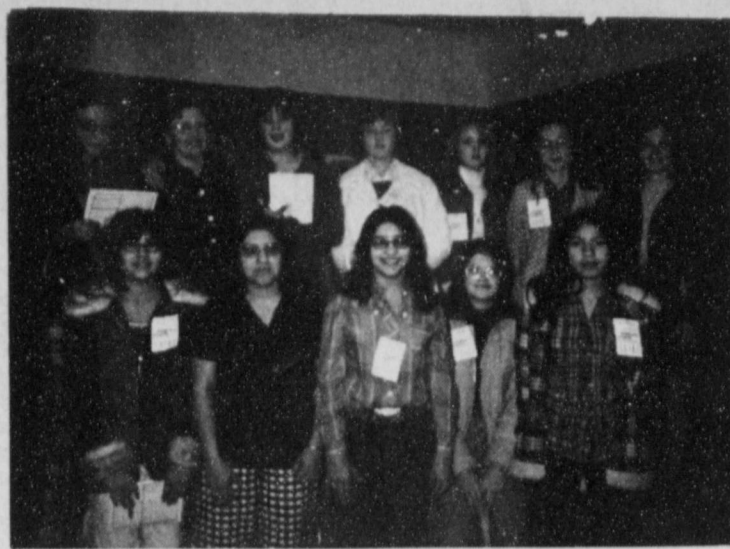
**FOR DISTRICT CLERK**  
**PAULETTA CRAWFORD**  
**NELDA MERRIOTT (Re-election)**

**COUNTY JUDGE & EX-OFFICIO COUNTY SCHOOL SUPERINTENDENT**  
**GLEN WILLIAMS (Re-election)**

**COMMISSIONER, Precinct No. 2**  
**LOYD STEPHENS (Re-election)**

**COMMISSIONER, Precinct No. 4**  
**RUDOLPH MORAW (Re-election)**

**JUSTICE OF THE PEACE, Precinct No. 1**



MOTHERS MARCH OF DIMES . . . . . Shown above are a group of girls and their advisors who helped in the Mothers March of Dimes January 29. The march lasted two hours and began at the Muleshoe High School.

Envy and jealousy eat out one's soul and warp one's personality.

## Epsilon Sigma Alpha Help Mothers March

The Epsilon Chi Chapter of Epsilon Sigma Alpha organized and provided transportation for the Mothers March of Dimes January 29. The chapter met at the Muleshoe High School where the students of Future Homemakers of America were ready to help in the march. The march started at 5:00 and continued until 7:00. ESA members that provided transportation were Mrs. Ronnie Barrett, Mrs. Jim Crawford, Mrs. Jack Rennels, Mrs. Bob Wilson, Mrs. Jerry Harrison, and Mrs. Don Golden.

The girls that helped were as follows: Doris Bartholf, Mrs. Harbin, instructor; Susan Puckett, Carol Brown, Cheryl Car-

tree, Carren Floyd, Miss Smith, instructor; Eva Gonzales, Adele Aeurre, Loretta Flores, Tonya James and Belinda Anguiano.

### Muleshoe Rebekahs Compile Scrapbook

Twenty two members answered roll call at the meeting of the Muleshoe Rebekah Lodge 114 Tuesday evening, January 29. Noble Grand, Mrs. E.H. Galin was in charge of the meeting.

Mrs. Ernest Bass, Lodge Deputy, acting on behalf of the district deputy president, installed Mrs. C.R. Black as vice grand. She was assisted by Mrs. Luskey Green, deputy-marshal, Mrs. Frank Snyder,

### Nursing Home News by Myrtle Guinn

Among those who have visited Mrs. Lewis these last few days are Mr. and Mrs. Edwards, Mrs. Smith, Mrs. Holt, Mrs. Jackson, Mrs. Moore, Mrs. Hansley, Mrs. Weeners, Mrs. Phew and her son Leon, Muriel and Kirk.

Mr. "Pop" Stovall isn't feeling well at all and was taken back to the Hospital. His wife, Mrs. Stovall was with him Tuesday.

Mr. and Mrs. Murry Hall of Dimmitt visited his mother, Mrs. Hall Sunday.

Miss Tressie Webb's sister, Mrs. Robinson came to see her on Monday.

Mr. Bruford and Mr. St. Clair came in the afternoon Tuesday to play "42".

Mrs. Goodin's daughter, Mrs. Whitford visited her Wednesday

morning. Mr. and Mrs. O.B. Whitford visited his mother, Mrs. Whitford and her mother, Mrs. Goodin on Friday afternoon.

Mrs. Emmauel's visitors Tuesday were her daughter, Cecrothy Brock and her daughter, Carolyn and little girl, Laurel and her sister, Laura and her husband, Mr. and Mrs. Northcutt.

Those who came to see their mother, Mrs. Whitford, were Mr. and Mrs. Boone, Mrs. Strue Carrie Strue and family, and Mr. Almon Whitford.

Visiting Mrs. Perry were Mr. and Mrs. Turner of Needmore, Mr. and Mrs. Lowe of Morton, her granddaughter, Dorothy St. Clair and her daughters, Mrs. Ora Martin and Mr. and Mrs. Timms.

Mr. and Mrs. Merley Stevenson came to see her mother, Mrs. Nicholson Tuesday afternoon.

I am trying to enjoy each day as it comes for I know God is ever mindful of us and he daily keeps us if we put our trust in him. This verse by Helen Steiner Rice is such a comfort to me. "If I can endure this minute whatever is happening to me, no matter how heavy my heart is or how dark the moment may be, if I can keep on believing what I know in my heart to be true, that "darkness" will fade with the morning and that this will pass away too. Nothing can ever disturb me or fill me with uncertain fear for as sure as the night brings the dawning, "My Morning" is bound to appear." I hope you will read it and think often of it's most sincere meaning.



**STORE HOURS**  
8AM-10PM DAILY  
9AM-9PM SUNDAYS

Golden Ripe  
**Bananas**  
Lb. **12<sup>c</sup>**

Fresh **Crisp Carrots** Lb. **23<sup>c</sup>**  
Tangy **Tangerines** Lb. **35<sup>c</sup>**  
Fresh **Juicy Pears** Lb. **39<sup>c</sup>**  
Delicious **Fresh Avocados** Ea. **29<sup>c</sup>**  
Delicious **Russet Potatoes** 10-Lb. Bag **\$1.29**

**HELP PIGGLY WIGGLY SAVE ENERGY**

Piggy Wiggly has taken many steps to help save energy including lowering our thermostats, reducing operating hours, using re-cycleable egg cartons and many more. We want you to help us with one more. Will you please bring back all your re-usable large grocery bags when you shop so we can use them again to bag your new order. Thank you for helping us.



USDA Inspected  
**Baking Hens**  
Lb. **69<sup>c</sup>**

USDA Inspected, Grade A, Split with Ribs All White Meat **98<sup>c</sup>**  
USDA Inspected, Grade A, Drumsticks & Fryer Thighs **89<sup>c</sup>**  
Plantation **Turkey** Lb. **67<sup>c</sup>**  
Glover's Fresh **Link Sausage** Lb. **98<sup>c</sup>**  
Peeled & Deveined **Sliced Beef Liver** Lb. **99<sup>c</sup>**



Farmer Jones, Tender & Juicy  
**Franks**  
12-oz. Pkg. **75<sup>c</sup>**

Oscar Mayer **Sliced Bologna** 8-oz. Pkg. **89<sup>c</sup>**  
Oscar Mayer, Sliced Pickle & **Pimento Loaf** 8-oz. Pkg. **97<sup>c</sup>**  
Slab **Sliced Bacon** Lb. **\$1.09**  
Farmer Jones **Sliced Bologna** 6-oz. Pkg. **59<sup>c</sup>**  
Dallas City Packing **Hot Links** Lb. **98<sup>c</sup>**



Patio, Enchilada, Combination, Cheese Enchilada, & Mexican, Frozen  
**Dinners**  
12-oz. Pkgs. **2 89<sup>c</sup>**

**Mix or Match**  
Piggy Wiggly, Frozen Vegetables  
Corn, French Cut Green Beans, Chopped Broccoli, Mixed Vegetables, & Green Peas.  
**4 10-oz. Pkgs. \$1**

Plus Deposit

**Pepsi Cola**  
32 OZ. Btls. **\$1.61**

Piggy Wiggly, Cola or **Root Beer** 64-oz. Btl. **49<sup>c</sup>**  
Piggy Wiggly **Tea Bags** 48-oz. Pkg. **53<sup>c</sup>**  
Carol Ann, Assorted Flavors **Crepe Cookies** 2 13-oz. Pkgs. **89<sup>c</sup>**  
Arrow, Long Grain **Fancy Rice** Lb. Bag **48<sup>c</sup>**  
Piggy Wiggly, Plain or **Iodized Salt** 26-oz. Box **11<sup>c</sup>**

Facial, Assorted Colors **Kleenex Tissue** 200-Ct. Box **29<sup>c</sup>**

**VAN CAMP'S CHUNK LIGHT TUNA**

Van Camp, Light  
**Chunk Tuna**  
6 1/2-oz. Can **45<sup>c</sup>**

Piggy Wiggly, Twin Pak **Potato Chips** 9-oz. Pkg. **53<sup>c</sup>**  
Van Camp's **Pork & Beans** 16-oz. Can **24<sup>c</sup>**  
Kobey's, Shoe-String **Potatoes** 1 1/2-oz. Can **13<sup>c</sup>**  
Del Monte, Whole **Sour Pickles** 22-oz. Jar **53<sup>c</sup>**  
Piggy Wiggly, Vegetable **Beef Soup** 10 1/2-oz. Can **24<sup>c</sup>**

Carol Ann **Salad Dressing** Qt. Jar **49<sup>c</sup>**

**PIGGLY WIGGLY 10 BISCUITS Buttermilk BISCUITS**

Piggy Wiggly Sweetmilk or Buttermilk  
**Biscuits**  
10-Ct. Cans **10<sup>c</sup>**

Piggy Wiggly, Regular Quarters **Margarine** Lb. Pkg. **42<sup>c</sup>**  
Pillsbury **Cinnamon Roll** 9-oz. Roll **45<sup>c</sup>**  
Welch's **Grape Jam** 10-oz. Jar **39<sup>c</sup>**  
Piggy Wiggly 6 Pack **Tomato Juice** 13-oz. Cans **59<sup>c</sup>**  
Piggy Wiggly, Non-Dairy **Coffee Lightener** 16-oz. Jar **79<sup>c</sup>**

Piggy Wiggly **All Grinds Coffee** Lb. Can **89<sup>c</sup>**

**Stokely's Assorted Flavors Fruit Drinks**

46-oz. Can **25<sup>c</sup>**

Piggy Wiggly **Fruit Cocktail** 16-oz. Can **37<sup>c</sup>**  
Piggy Wiggly, Bartlett **Pear Halves** 16-oz. Can **37<sup>c</sup>**  
Piggy Wiggly, Cut **Green Beans** 16-oz. Cans **22<sup>c</sup>**  
Piggy Wiggly **Cut Beets** 16-oz. Can **21<sup>c</sup>**  
Piggy Wiggly **Golden Corn** 16-oz. Can **24<sup>c</sup>**

Piggy Wiggly **Instant Potatoes** 15-oz. Box **49<sup>c</sup>**