

Lifestyles

Railroad changes life of Panhandle settlers

The Southern Kansas Railway Company of Texas, Santa Fe subsidiary and commonly known as the Santa Fe, constructed a roadbed from Miami to Panhandle City in 1887. The line did not operate trains, except for construction purposes, until Jan. 15, 1888.

On that date the only thing that resembled a structure of any kind at the station designated as Glasgow (now Pampa) was a boxcar intended to be used as an "open station." An open station is basically a station that is open for people to come in and take care of their business themselves.

Because of confusion with Glasgow, Kan., railroad officials changed the name of the station to "Sutton" before Aug. 15, 1888. Because freight shipments were mistakenly sent to Sutton County, Texas, railroad officials changed the name of the station to "Pampa" about February 1892.

Emily Case said that, in those early days, towns would have contests as to which town could catch the most snakes. The catchers would put the snakes on drying racks near the railroad so that the reptiles could be counted as the trains went by.

On May 26, 1898, George Tyng wrote: "The Southern Kansas Railway Company is having loaded here at Pampa, a steam engine, boiler and derrick for putting in a well and pumping station upon the success of which, it is said, other improvements will follow."

Only July 2, 1900, Tyng wrote: "The Southern Kansas RR has put in a second well at Pampa where it maintains a steam pump and the largest storage tank on the line. It also has the largest and best section house and one of its best stock yards with every facility for rapid dispatch of large herds." (The section house

at 315 W. Atchison was moved in from another location.)

In June, 1901, Tyng wrote: "The railway company now has at Pampa two wells, steam pump, an unusually large steel reservoir, boiler house, small station, small house for the pumper, tool house with fenced yard and planted trees, and Thomas Lane has built a tidy cottage (? at 221 E. Atchison) to replace the one that burned."

M.K. Brown came to Pampa in April 1903, the depot consisted of two boxcars situated west of the present underpass on Cuyler Street.

In 1905 the Santa Fe built the first



(White Deer Land Museum photo) The 85-foot coal chute near 417 W. Atchison was built in 1908 and torn down in 1938.

real depot in Pampa. According to Ed Langley of Amarillo, the building was 24 feet by 42 feet. Located near the cattle loading chute, the depot was between West Atchison

(about the 101 block) and the railroad - on the west side of Cuyler Street. The depot, which served the Wells Fargo Freight Company as well as the Santa Fe Railway Company, was destroyed by fire in 1914.

In 1908 the Santa Fe rebuilt its entire line to Panhandle and on into Amarillo. The White Deer Land Company had to give additional right-of-way for the part of that crossed the property of the land company. The Santa Fe then abandoned its tap line that had been constructed in 1888 to connect the Santa Fe at Panhandle with the Fort Worth and Denver at Washburn.

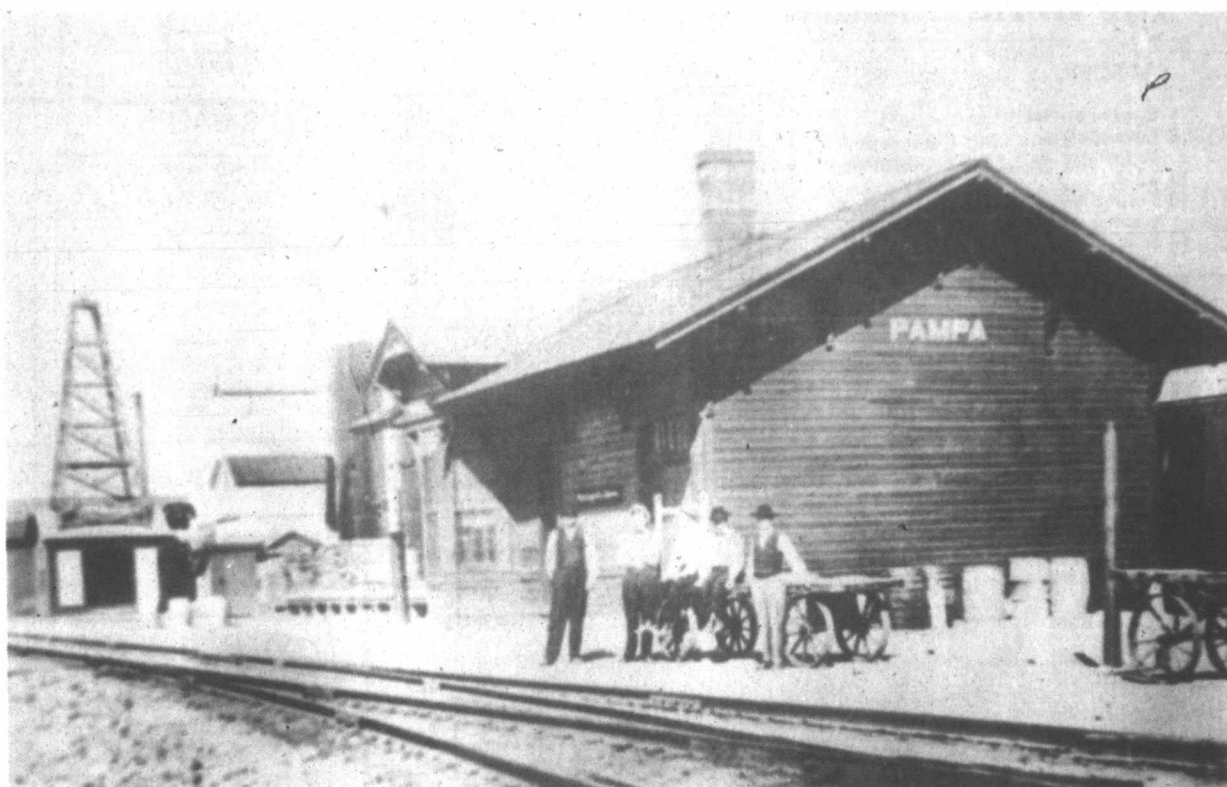
Also in 1908, the Santa Fe built a coal chute on the railroad near present 417 W. Atchison. The 85-foot black wooden structure was used to coal up many locomotives back in days when wheat was Pampa's principal resource.

When the railroad began using oil burning locomotives in the early 1920's, use of the coal chute was discontinued. It remained unused until 1938 when the structure was purchased by a private citizen who had the structure torn down.

The families of T.D. Hobart, J.E. Chapman and J.N. Duncan were among those who lived in the area of North Somerville and West Foster in early days. Wade Duncan and others (perhaps including Berton Doucette, Wilks Chapman and Paul Schneider) liked to climb to the top of the coal chute. They claimed they could see the town of White Deer from that vantage point.

A train wreck near the present Pampa News building at 403 W. Atchison, caused great excitement sometime in 1910. Wade Duncan joined nearly everyone in Pampa in picking up fruit that had spilled from the overturned cars.

Between the years 1886 and 1914,



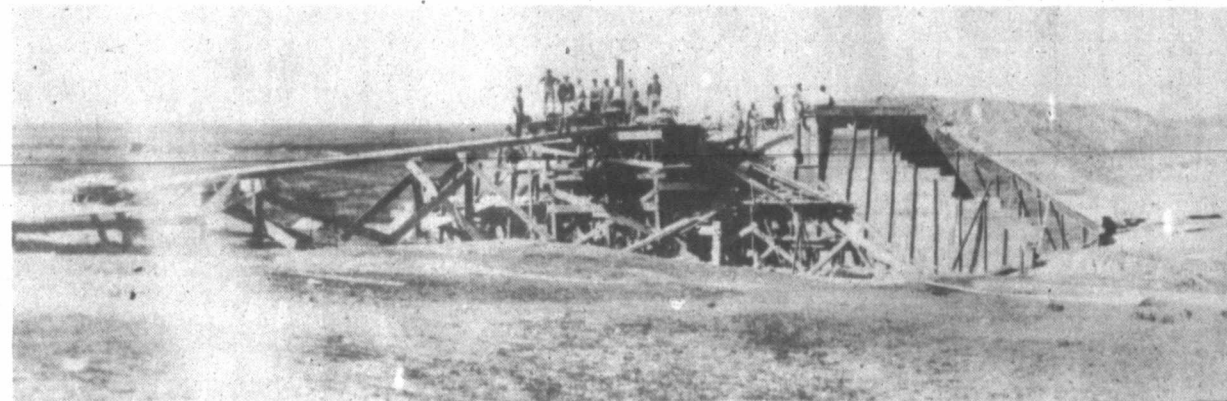
(White Deer Land Museum photo) The Santa Fe depot in Pampa, built in 1905 and destroyed by fire in 1914, was between the 101 block of West Atchison and the railroad. The first man on the left is Thomas H. Lane, district roadmaster from 1902 until 1907. The second man is Will Wilks and the third man is W.A. Crawford, Pampa postmaster from 1922 until 1926. During the U.S. Bicentennial in 1976, Richard Thomas used this photo as a model for a painting that hangs over the mantel in the office of the White Deer Land Museum.

the Santa Fe built a fabulous railroad empire in the Panhandle and South Plains of Texas. This was done by purchase, by piecemeal construction of segments of track, and by putting

together the segments as purchased and constructed.

In 1914, several Santa Fe lines of Texas were incorporated under one name - the Panhandle and Santa Fe

Railway Company. That spring the Santa Fe used an average of 15 steam locomotives to handle one transcontinental passenger train between Chicago and Los Angeles.



(White Deer Land Museum photo) A Santa Fe construction crew in 1908 when the line was rebuilt. Several people think that this is the trestle near Fire Guard Dam about two miles northeast of Pampa.

'Churchill: Man of the Century' planned Thursday

The Frank Phillips College Lyseum Committee and Phi Theta Kappa, national junior college honor society, will sponsor "Churchill: Man of the Century" at 7 p.m., Thursday in the Frank Phillips College Library.

The one-man play features Dale Johnson, a veteran professional actor who holds a degree in theatre arts and who has acted and directed in Hollywood. He is a member of the International Churchill Society, and his portrayal of the statesman has been

receiving critical acclaim for over four years.

Those in attendance are invited to a reception following the production. Admission is free; students and the public are encouraged to attend this biography of Churchill brought to life.

Betty Rusk featured artist at Lake Meredith Museum

Betty Rusk will be the featured artist at the Lake Meredith Aquatic and Wildlife Museum during the month of November.

At the museum, there is a wild-bird display that Rusk painted and designed. Her past accomplishments include a painting selected for the

souvenir program of the musical, TEXAS, in 1985. Two of her designs were selected for commemorative coins.



(White Deer Land Museum photo) Many Pampans went to the scene of the train wreck near 403 W. Atchison to pick up fruit that had spilled from the overturned cars.

Boy grieving for parakeet finds comfort

DEAR ABBY: I am a 9-year-old boy with a problem I can't ask anybody else about.

I had a pet parakeet who died last week. I had named him "Prettyboy." I cried when I found him lying at the bottom of his cage with his little feet sticking straight up in the air.

Everytime I tell somebody about losing Prettyboy, I start to cry. Then they laugh at me and say, "He was only a bird."

Abby, Prettyboy was not just any old bird. He was my best friend and I had him for nearly three years. He was one of a pair, but his mate died. Prettyboy was smart, too. He figured out how to pick the lock on his cage, but he never left his cage but one time after my mother scolded him for flying around the house and soiling everything in sight.

My mother told me if I wrote to you about Prettyboy's dying, I would feel better. She was right.

DAVID IN SCOTTSDALE

DEAR DAVID: Don't be ashamed of crying. Tears are healing. When a child loses a beloved pet, it is very much like a parent losing a child. That loss causes genuine heartache. But with time, the hurt heals.

Your mother is a wise woman. Sometimes just talking (or writing) about a problem — instead of keeping it bottled up inside of you — tends to heal your heart and make you feel better.



Dear Abby
Abigail Van Buren

whispered in my ear: "Your child came over here and said, 'Will you please call Louise Drelling on the loudspeaker?' She is my mother and she's lost."

LOUISE A. DRELLING,
FOUNTAIN VALLEY, CALIF.

P.S. Abby, "little" Kathy is now 19, and in her third year of college.

DEAR MRS. DRELLING: In her third year of college at 19? Not surprising. Thanks for sharing a delightful memory.

DEAR READERS: Today is Veterans Day — the day we honor the men and women who have served our country in the Armed Forces. Originally called Armistice Day, it marked the end of World War I on Nov. 11, 1918. It was declared a legal holiday in 1938, and in 1954, the name was changed to Veterans Day to honor all of America's veterans.

Our Canadian neighbors also celebrate Nov. 11, calling it Remembrance Day.

To order Abby's booklet, "What Every Teen Should Know," send a long, self-addressed envelope, plus check or money order for \$3.95 (\$4.50 in Canada) to: Dear Abby, Teen Booklet, P.O. Box 447, Mount Morris, Ill. 61064. (Postage is included.)

Holiday calendar set for Nov. 29

A holiday calendar will be printed on Nov. 29. Any school, church, or organization planning a program may submit information about the event to *The Pampa News*. The deadline for submissions is Nov. 25. Mail information to The Pampa News, P.O. Drawer 2198, Pampa, 79066-2198. Mark it to the attention of Cheryl Berzanskis, Lifestyles Editor.

...the Pageant you have been looking for

All-Star

BOYS & GIRLS

Babe ★ Beau

Sportswear ★ Special Event

0-11 months *12-23 months *24-35 months *36-47 months

Beauty ★ Talent

4-6 years * 7-9 years * 10-12 years *13-15 years *16-18 years

PHOTOGENIC COMPETITION FOR ALL AGE GROUPS

BORGER DEC. 6

FOR ENTRY FORM CALL: 806-274-4880 354-9411

NATIONAL HEADQUARTERS: (214) 272-3388



CORONADO HOSPITAL RENE P. GRABATO, MD Urology

- *Chief of Staff, Coronado Hospital
- *Doctor of Medicine, University of Santo Tomas, Manila, Philippines
- *Internship - Long Island College Hospital, Brooklyn
- *Residency - Urology - Long Island College Hospital, Brooklyn, NY and Methodist Hospital, New York

The medical specialty Urology is the science which deals with the genitourinary tract in males and the urinary tract in females. Dr. Grabato, who came to Pampa in 1978, treats prostate disease, impotence, male sexual dysfunction, urinary tract disorders, male infertility, kidney stones, urinary incontinence, and voiding dysfunction. His practice includes both adults and children. In addition to his practice in Pampa, he has office hours in Perryton on a regular basis.

"The technology and treatments for urology are changing so quickly that I attend several seminars each year to stay abreast of current developments," Dr. Grabato said. The Urology Clinic and Regional Prostate Center is one of the best equipped clinics of its kind in the Panhandle. "I've put state-of-the-art equipment in my office so that most many diagnostic tests can be performed here, conveniently for the patient," he said.

At Coronado Hospital Dr. Grabato has access to a lithotripter (using shock waves to dissolve kidney stones), ultrasound equipment, and a newly remodelled cystoscopy room in the surgical suite.

"With the combination of diagnostic equipment in my office and the diagnostic and treatment technology at Coronado Hospital, we are able to offer outstanding urological care to residents of Pampa and the eastern Panhandle.

Patients wishing to make an appointment with Dr. Grabato should call 665-6511.

CORONADO HOSPITAL
ONE MEDICAL PLAZA
PAMPA, TEXAS

The Pampa News

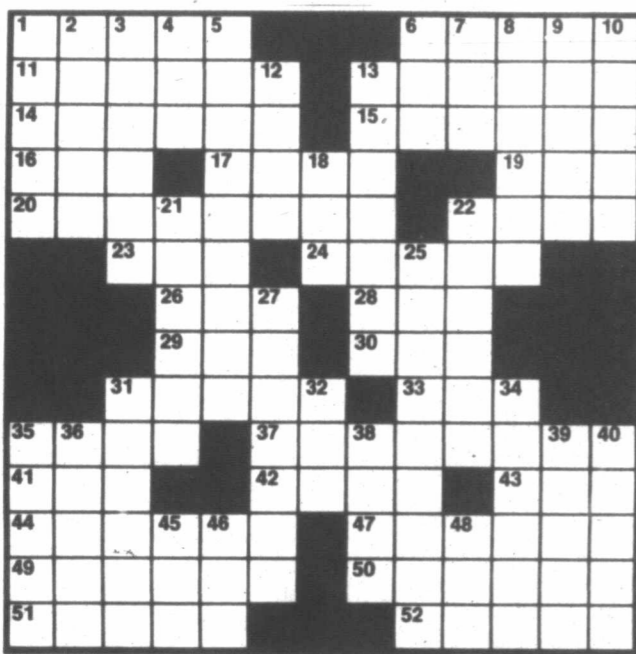
Comic Page

The World Almanac® Crossword Puzzle

- ACROSS**
- 1 Engine sound
 - 6 Susceptible to bribery
 - 11 Lots
 - 13 Poland's Lech —
 - 14 Walk childishly
 - 15 Passes (law)
 - 16 Chemical suffix
 - 17 Raw minerals
 - 19 Golf peg
 - 20 Inhabitant
 - 22 Type of fat
 - 23 Mai (cocktail)
 - 24 Quartet member
 - 26 Flightless bird
 - 28 Steal from
 - 29 Hot cross —
 - 30 Calligrapher's item
- DOWN**
- 31 Stale
 - 33 View
 - 35 Regrets
 - 37 Clearness
 - 41 Superlative suffix
 - 42 North Carolina college
 - 43 Govt. housing org.
 - 44 More overweight
 - 47 Sailor's jacket
 - 49 Eskimo homes
 - 50 At the back
 - 51 Adolescence
 - 52 Shoe parts

Answer to Previous Puzzle

PUSH	HEWN	MIN
RHEA	OSHA	OTO
OUTWITTED	NET	
SHAKO	AWESOME	
SLAT	REM	
MIL	ILEX	RAYE
AVIATE	EVENER	
DOGGER	BERING	
ERAL	TWEE	ASS
TEA	ECRU	
COUTURE	ESTOP	
HUR	DIVIDABLE	
APE	IBID	GALA
PHD	OSLO	ERAS



WALNUT COVE



ARLO & JANIS



ECK & MEEK



B.C.



Astro-Graph

by bernice bede osol

SCORPIO (Oct. 24-Nov. 22) You might have a special need today that can be fulfilled by a valued friend. It shouldn't take more than a subtle hint to get this individual to help you. Trying to patch up a broken romance? The Astro-Graph Matchmaker can help you understand what to do to make the relationship work. Mail \$2 plus a long, self-addressed, stamped envelope to Matchmaker, c/o this newspaper, P.O. Box 91428, Cleveland, OH 44101-3428.

SAGITTARIUS (Nov. 23-Dec. 21) If you're looking to escape today's boring routine, pick a perky partner who is of a similar spirit. Collectively, do something fun and different.

CAPRICORN (Dec. 22-Jan. 19) If you fail to spend your time productively today, you'll deprive yourself of a sense of fulfillment. Being of service to others is something that could lift you out of the doldrums.

AQUARIUS (Jan. 20-Feb. 19) People who meet you for the first time today will be favorably impressed. This is good, because you're in a beneficial cycle for establishing new relationships.

PISCES (Feb. 20-March 20) A pleasant surprise could be in the offing at this time. A situation that appeared to be destined for failure might take an about-face and become successful.

ARIES (March 21-April 19) Keep your channels of communication open today with individuals who are pertinent to your present plans. An exchange of ideas could prove beneficial.

TAURUS (April 20-May 20) Conditions that affect your material security look hopeful today. Don't let opportunities that could enhance your financial position slip by.

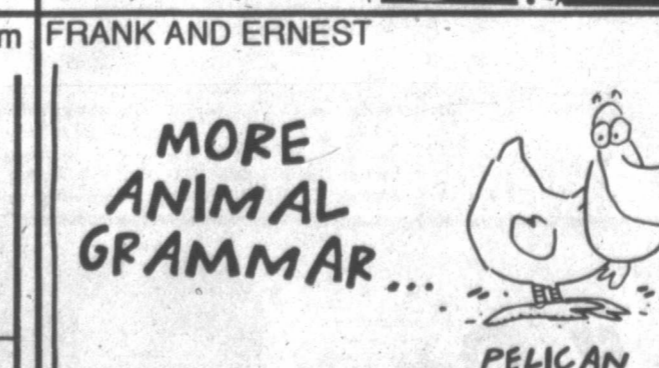
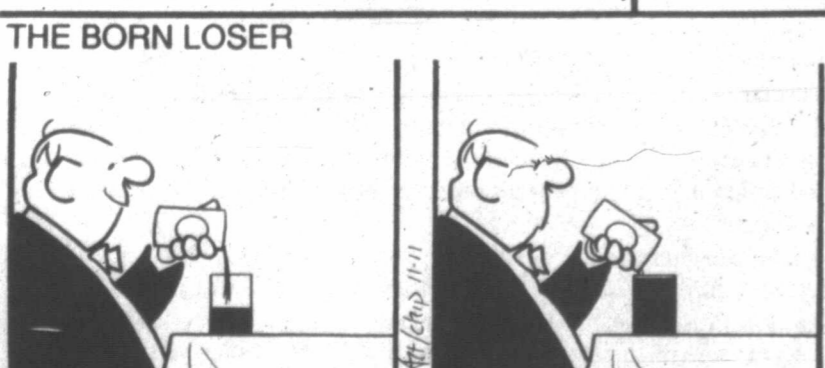
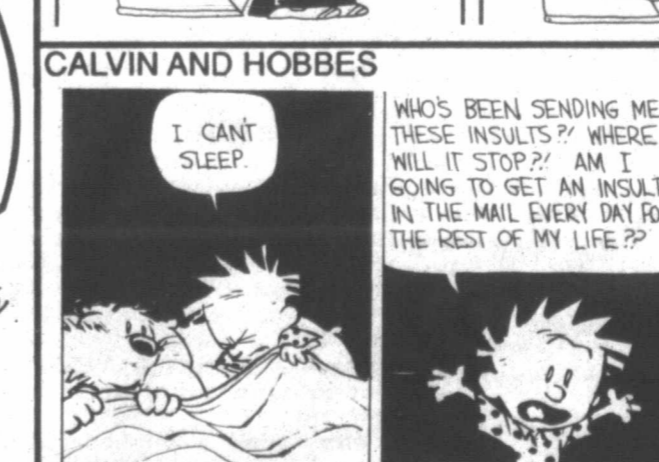
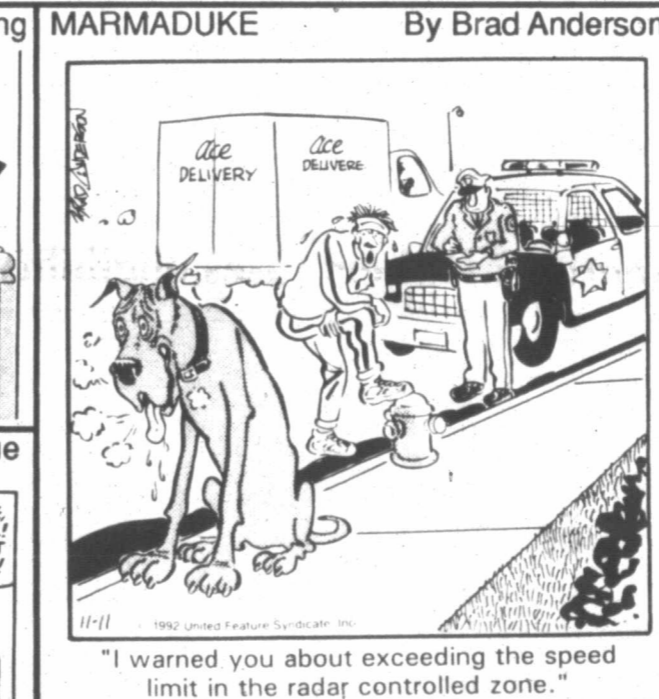
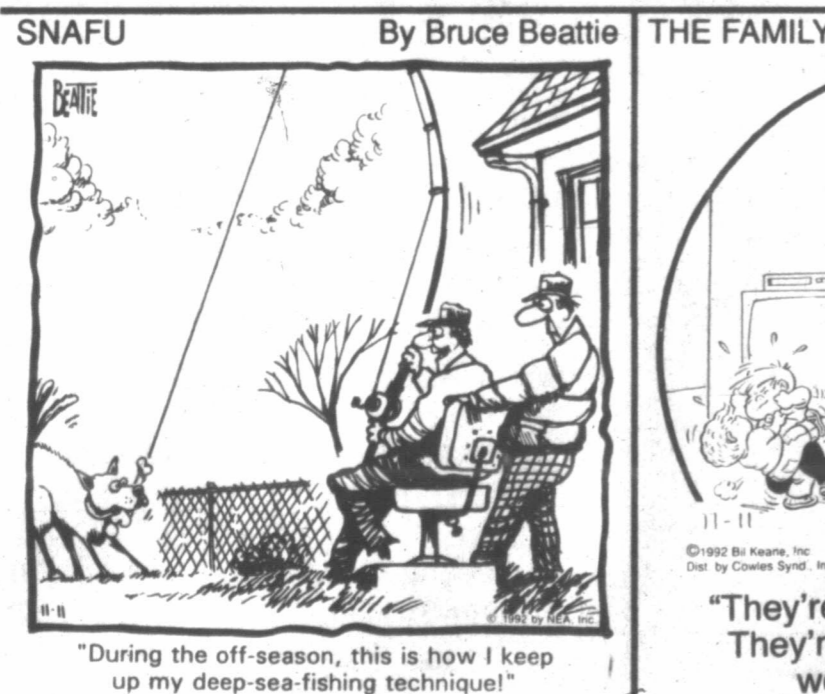
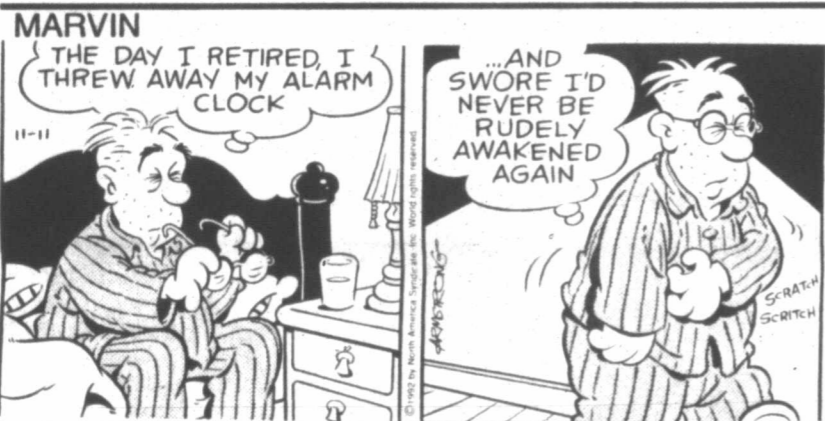
GEMINI (May 21-June 20) You'll function best today free from the restrictive influences of others, who might make demands on your time and talent. Avoid people who could slow you down.

CANCER (June 21-July 22) Keep current with events today, but don't try to personally direct them. You'll fare better keeping a low profile and staying in the background.

LEO (July 23-Aug. 22) Pretentious people could make you feel uncomfortable today. Restrict your social activities to pals who don't find it necessary to impress you.

VIRGO (Aug. 23-Sept. 22) Second place won't have much appeal for you today, especially if you're involved in some type of competitive development. Play to win, but do so with grace.

LIBRA (Sept. 23-Oct. 23) You may require a rather high level of activity today in order to gratify your restless urges. Don't wait on others to make things happen; start the ball rolling yourself.



Bush passes mantle of GOP leadership to Dole

By CHRISTOPHER CONNELL
Associated Press Writer

WASHINGTON (AP) — President Bush passed the mantle of Republican Party leadership to Senate Minority Leader Bob Dole and scoffed at the suggestion that last week's defeat sounded a death knell for the GOP.

Bush was headed to Boca Grande, Fla., today for a five-day fishing vacation to rest and "think about what has been and ... what's about to be."

Dole, his erstwhile enemy in a bitter 1988 primary fight for the Republican presidential nomination, delivered an emotional tribute Tuesday night to Bush's leadership.

"The best man didn't win on Election Day," said the Kansas senator, his voice choking.

Bush thanked Dole in advance for the role he will play "in the troubled and tough days that lie ahead" under the Clinton administration.

'Molecular knife' may treat AIDS, other viral diseases

LA JOLLA, Calif. (AP) — Scientists have developed a promising new weapon against AIDS and other diseases: a "molecular knife" that slices up the genetic information viruses need to reproduce and spread through the body.

So far, it has been used only in laboratory experiments on human cells.

It will be tested for safety on AIDS patients within a year, and later tests will determine if it can slow or halt the disease, Dr. Flossie Wong-Staal of the University of California at San Diego said Tuesday.

If it works in patients as well as it did in the lab, it could become available as an AIDS treatment in several years, said John Burke, a biochemist at the University of Vermont in Burlington.

"What's particularly exciting is that if it will work for HIV, it will work for any virus you're interested in," including herpes and hepatitis, he said by telephone. HIV is the AIDS virus.

Burke said the molecular knife has far more potential than a lot of other anti-AIDS agents because it can be modified to attack many strains of the virus, a rapidly mutating target that has been difficult to fight.

Wong-Staal, who rose to prominence as an AIDS researcher during her tenure at the National Cancer Institute, outlined her research at a conference for science writers.

The research, conducted with Northern Illinois University's Dr. Arthur Hampel, will be published Sunday in the Proceedings of the National Academy of Sciences.

The AIDS virus cripples the body's immune system by infecting disease-fighting white blood cells and hijacking their genetic instructions so the cells mass-produce more of the virus. The process kills the white blood cells.

New York judge resigns, agrees to house arrest

NEW YORK (AP) — Sol Wachtler stepped down as New York state's chief judge and agreed to house arrest with an electronic monitor on one ankle after being accused of blackmailing a former lover.

The 62-year-old judge, who before his downfall was mentioned as a possible gubernatorial candidate or U.S. Supreme Court justice, resigned hours after a bail hearing Tuesday in federal court.

"As much as possible, he wishes to prevent his situation from harming the institution he reveres and the extraordinary judges and staff who serve it," his attorney, Charles A. Stillman, said in a statement.

U.S. Magistrate Sharon E. Grubin ordered Wachtler to stay away from 45-year-old Joy Silverman, the Republican fund-raiser and socialite he allegedly harassed after she broke off an affair with the married judge.

Wachtler displayed little emotion,

but his eyes welled when Grubin commended him for "the wisdom you have shown on the bench."

Wachtler had been under a suicide watch at a hospital, one leg shackled to his bed, after FBI agents arrested him Saturday. But a psychiatrist told the court that Wachtler was not likely to harm himself or others, or to flee.

U.S. Attorney Michael Chertoff told the magistrate the ankle bracelet was necessary to protect "victims who have received rather strong threats."

Stillman countered, "The notion of his being a danger to another human being is simply nonexistent."

Wachtler, a liberal Republican, was appointed chief judge in 1985 by Gov. Mario Cuomo. Cuomo, a Democrat, will nominate a successor to the \$120,000-a-year post, who must then be confirmed by the Republican-controlled Senate.

He said Dole had avoided the mistake of trying to assign blame for "a defeat of this magnitude and of this hurtfulness and of this enormity."

"The idea that this party has seen its demise — and I love these little analysts, these media that I tried to annoy and failed — to hear them analyze it all, you'd think that this ... party is out of here," the president said. "I don't believe it for one single minute."

House Minority Leader Robert Michel, R-Ill., said Quayle "made us all proud" as vice president.

Quayle, in turn, told Bush, "You, sir, do not have to worry about your place in history. History is going to be very kind to you and your administration."

"It's been the best four years of my life," said Quayle.

"Don't worry about the Bushes; we are looking ahead now," Bush told the gathering as his wife, Barbara, sat nearby. "I didn't think we would about a week ago."

Bush went home with a bronze sculpture of a longhorn bull and Quayle with a collapsible fishing rod, gifts from their friends in the Senate.

He said Dole had avoided the mistake of trying to assign blame for "a defeat of this magnitude and of this hurtfulness and of this enormity."

"The idea that this party has seen its demise — and I love these little analysts, these media that I tried to annoy and failed — to hear them analyze it all, you'd think that this ... party is out of here," the president said. "I don't believe it for one single minute."

House Minority Leader Robert Michel, R-Ill., said Quayle "made us all proud" as vice president.

Quayle, in turn, told Bush, "You, sir, do not have to worry about your place in history. History is going to be very kind to you and your administration."

"It's been the best four years of my life," said Quayle.

"Don't worry about the Bushes; we are looking ahead now," Bush told the gathering as his wife, Barbara, sat nearby. "I didn't think we would about a week ago."

Bush went home with a bronze sculpture of a longhorn bull and Quayle with a collapsible fishing rod, gifts from their friends in the Senate.



President Bush holds a bronze statue of a longhorn bull, a gift from the Senate, after it was presented to him Tuesday night in Washington. (AP Photo)

To Make Money In The Stock Market, You Need A Little Skill. To Make Money From Lotto Texas, You Need A Little Pencil.

LOTTO Texas is a new game from the Texas Lottery, and you could make millions just by filling out a playslip and paying a dollar.

(We apologize to all those who have made their money through skill and savvy.)

The purpose of this is to instruct you on how to play.

OK. To play, just pick six numbers from one to fifty. If you happen to pick the same six numbers that come up at the drawings, then you could win millions of dollars.

OK. Step number one. Go to any of the LOTTO Texas retailers. You can only play where you see a red and yellow sign that says LOTTO Texas.

Step number two. While you're at the retailer, pick up a LOTTO Texas playslip and a pencil. There's a picture of the playslip on this page. You may find the playslips in a stand called a play station. If not, just ask for one.

Step number three. (My, we're moving right along now, aren't we?) Just choose SIX numbers from one to fifty. You can play up to five times on each playslip. Completely fill in the numbers that you choose on the playslip ONLY WITH A BLACK OR BLUE BALLPOINT PEN OR A PENCIL. The one featured here would work just fine.

Also, don't erase any mistakes you make. Just fill in the VOID box on that particular play and you will not be charged for it.

Step number four. (Past the halfway mark.) Take a dollar (that's how much it costs to play LOTTO Texas) and give it and the playslip to the retailer. It takes just a few seconds.

When you're done, you'll be handed a ticket which will verify which numbers you picked. Please remember to take the time to sign your name on the back of your ticket so no one else will be able to cash it in.

Step number five. Tune in the televised

drawings on Wednesday and Saturday nights at 9:58 p.m. CST to see how well you did.

If you picked all six of the numbers which are randomly chosen on the ball machine, then you could become a millionaire. If you missed the drawing,

the numbers will be posted the next day at all LOTTO Texas retailers and in your local newspaper. The jackpots are paid in 20 annual installments.

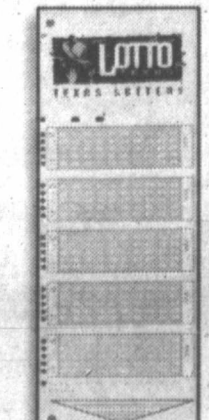
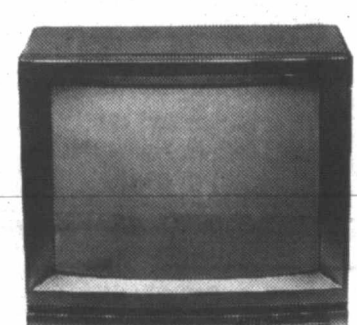
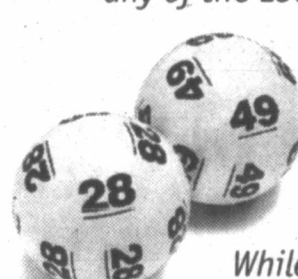
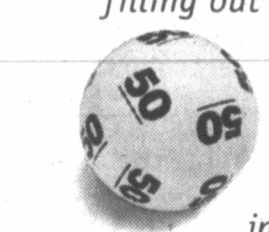
You can also win second and third prizes by matching five out of six or four out of six numbers. Match three out of six and you will win \$3 automatically.

Win up to \$599, and you can collect your prize at any LOTTO Texas retailer.

Winnings of \$600 or more can be claimed at any of the 24 Texas Lottery claim centers. You can also claim prizes through the mail using a claim form that you may pick up at any Texas Lottery retailer. Please be sure to make copies of the front and back of your ticket before you send it in. The Texas Lottery is not responsible for tickets lost in the mail. All prizes must be claimed within 180 days of the drawing.

Finally, LOTTO Texas can be played up to 10 drawings (that's five weeks) in advance. If you want to play those same numbers for several drawings in a row, fill in the multi-draw box on your playslip with however many drawings you would like to play.

One more thing. You must be 18 years or older to play. And when you watch the televised drawings, there's a chance that your heart may start to pound a little and your palms may begin to sweat. The most important thing for you to remember is to please have fun and enjoy playing the game of LOTTO Texas.



Parkway Package & Service Liquor
1824 N. Hobart & 800 W. Foster

SALE - Nov. 11-12-13-14 - SALE

Canadian Mist.....	1.75 Lt.	\$14.60 + Tax
Canadian Hunter.....	1.75 Lt.	\$14.60 + Tax
Canadian LTD.....	1.75 Lt.	\$12.56 + Tax
Canadian R-R.....	1.75 Lt.	\$14.32 + Tax
Skol Vodka.....	1.75 Lt.	\$9.93 + Tax
Highland Mist Scotch.....	1.75 Lt.	\$16.26 + Tax

We Appreciate Your Patronage
Jack - Doug