

The Pampa News

25¢

AUGUST 13, 1992

THURSDAY

Kingsmill residents file lawsuit; claim Celanese polluted water

By BETH MILLER
Senior Staff Writer

Kingsmill residents charge in a lawsuit against Hoechst Celanese that the company has polluted the air, water and ground, causing numerous health problems to residents.

The lawsuit was filed late Wednesday afternoon in 147th District Court in Austin.

Dave Phillips, human resources manager with Celanese, today said the company has not received formal notification of the lawsuit.

"We have not knowingly discharged anything into the environment. Allegations of that nature don't deserve a response," Phillips said.

The plaintiffs are seeking millions of dollars in compensatory and exemplary damages in their lawsuit, which names Hoechst Celanese and Underground Resources Management, a subsidiary of International Technologies Corp. The plaintiffs allege personal injuries and damages to personal and real property.

In late 1991, benzene contamination was discovered in the water well of the Kingsmill Community Water Supply Corp., which is also listed as a plaintiff. The plaintiffs allege that Celanese caused the pol-

lution, although Celanese has denied that charge.

Earlier this month, the Texas Water Commission began distributing bottled water, through state emergency funds, to Kingsmill residents, pending the outcome of attempts to determine the responsible party in the contamination.

The lawsuit, filed by Amarillo attorney Wayne Barfield, states that "most, if not all, of the chemicals," which the Pampa plant produces "carry a substantial risk of injury to persons who may be exposed to these chemicals in their environment." The lawsuit also states that many of the chemicals can cause forms of "cancer, birth defects and deformities."

Also, the lawsuit states, "Hoechst Celanese knew the advantages of locating their chemical plant near a small town (Pampa) which their plant managers and public relations personnel could mold into a 'company town' using their financial impact to the local economy as an intimidating and coercive 'hammer' to get whatever 'considerations or favors' the plant needed."

Celanese, located southwest of Pampa, was built in 1952 on a 650-acre tract of land, east of Kingsmill. The plant is directly above the Ogal-

lala Aquifer, according to the lawsuit and is located in "an air pathway whereby the prevailing winds from the south and southwest could carry the toxic air emissions" from the plant directly over the communities of Kingsmill and Pampa.

The lawsuit alleges that Hoechst Celanese has continually "dumped, spilled, released and/or otherwise discharged toxic and hazardous untreated liquid and/or solid waste into the solar evaporation and seepage pond creating a massive 'lake of contaminated water' beneath the plant in excess of 200 feet deep, 2 1/2 miles long and one mile wide radiating in all directions of the compass."

Kingsmill residents allege in the lawsuit that the "lake of contaminated water" has migrated into the ground underneath eight sections of land including Kingsmill and the area surrounding the plant and that it has contaminated the Ogallala Aquifer.

Phillips said he is convinced Kingsmill residents want "media exposure" because a number of members of the media have called Celanese and they all have copies of the lawsuit, he said, although the company does not.

Please see LAWSUIT, page 2

Pentagon announces closure of additional European bases

By W. DALE NELSON
Associated Press Writer

WASHINGTON (AP) — The Defense Department plans to end or reduce operations at an additional 69 sites in Europe and one in Korea as part of its program to scale down U.S. presence overseas, the Pentagon announced today.

It was the eighth round of reductions in Europe and brings to 628 the number of overseas installations at which operations will be ended, reduced or placed on standby. Of these, 592 are in Europe.

This makes a 38 percent reduction of U.S. overseas installations since January 1990.

Pentagon spokesman Bob Hall said more overseas reductions would be announced later. He said no decision had been made on whether there will be more reductions in the United States.

The European installations affected include one each in Belgium and the Netherlands, three in Turkey, six in Italy, nine in the United Kingdom, and 28 in Germany.

The Pentagon said operations at 21 petroleum tank farms and fuel pumping stations in France would also be ended.

Altogether, the realignment will affect more than 5,000 military personnel, 450 U.S. civilian employees and 2,300 local nationals. Since the drawdown began, more than 90,000 personnel authorizations have been eliminated.

Hall said military personnel affected, as well as some of the U.S. civilians, would be reassigned elsewhere abroad or in the United States. He said most of the local nationals would be terminated.

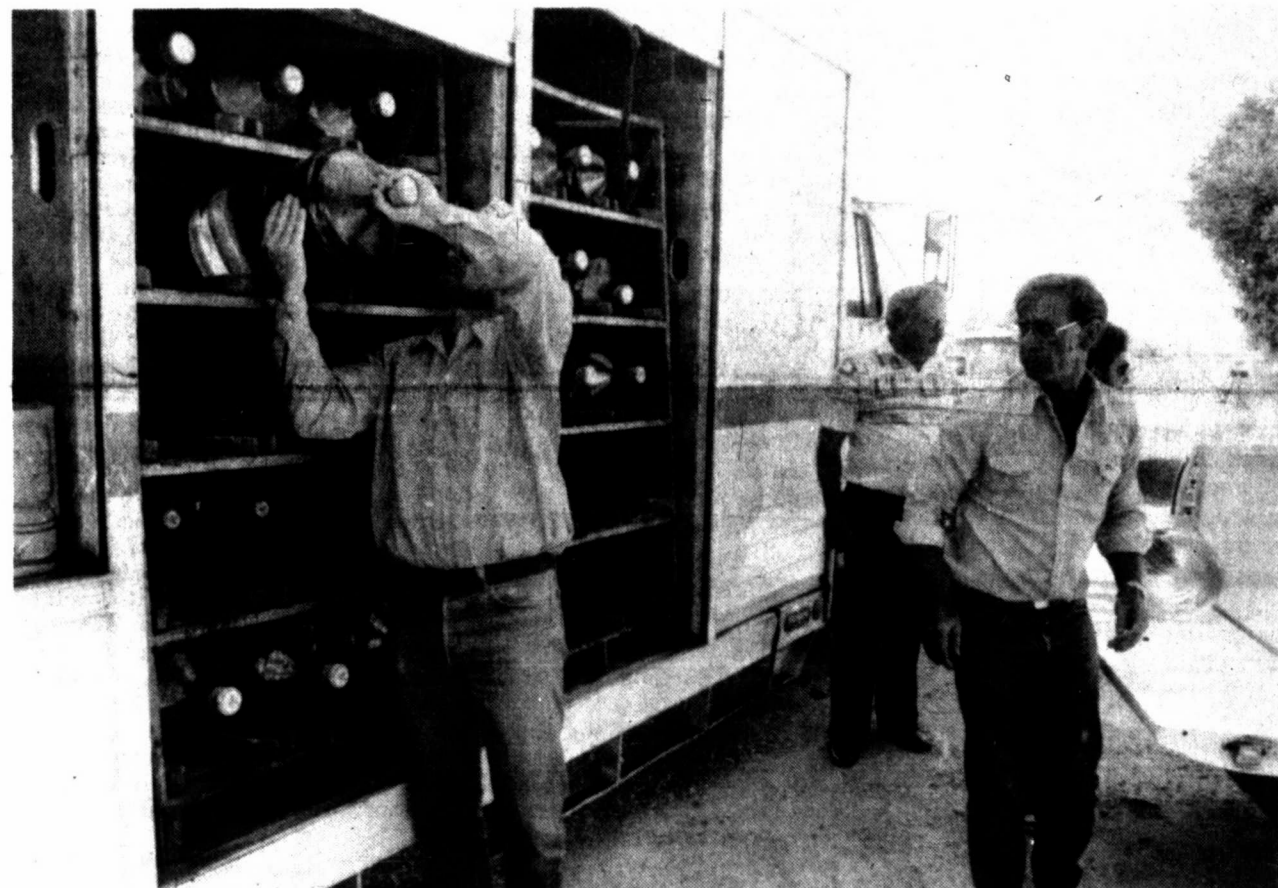
Large sites in Europe affected by the announcement include Dolan Barracks, Camp Pieri and Dragoon Kaserne in Germany, which

are being returned to those countries.

Other significant sites being partially returned include facilities in the Ankara, Turkey, area, leased facilities in the Izmir area of Turkey and Finthen Airfield in Germany.

U.S. forces in Korea will end operations at Camp Isbell, a small installation in Seoul. The announcements bring to 21 the number of U.S. facilities in Korea that have ended or reduced operations or are scheduled for return.

In London, the Ministry of Defense said U.S. military forces would leave five bases in Britain in September 1993, affecting nearly 200 British jobs. The most significant of the closures is the High Wycombe Air Station in Buckinghamshire, west of London, a U.S. military administrative center which includes a high school and bank for military personnel and their families.



Members of the Texas Water Commission unload bottled water for Kingsmill residents earlier this month. From left are Jimmy Walker, Don Manning, Mike Hull and Mike Baker.

Jury sentences couple to 99 years

GALVESTON (AP) — A suburban Fort Worth couple was sentenced today to 99 years in jail for injuring their teen-age son, who died last year of starvation.

Jurors, who began deliberations Wednesday, returned the verdict shortly after 11 a.m. today.

Jay Hill, 42, and his wife Linda, 38, of White Settlement were convicted Tuesday in connection with the death last November of their 13-year-old son, Stephen, who was

deprived of food and kept chained in the family's trailer.

The jury agreed with prosecutors' contention that the chain used to confine the boy was a deadly weapon, so the couple must serve at least 15 years of their sentences before they will be eligible for parole.

The Hills could have been sentenced to 5 years to life in prison, or to probation.

Jurors deliberated only about 45

minutes before convicting the Hills Tuesday of injury to a child.

They returned this morning from being sequestered overnight after their efforts Wednesday did not lead to a sentence. State District Judge Bill Burdick ordered the jury to a hotel for the night following several hours of work without a decision.

The case was moved to Galveston because of extensive pretrial publicity in Fort Worth.

Group plans emergency drill

By ANGELA LEGGETT
Staff Writer

Planning a functional exercise to test the efficiency of those involved in an emergency situation in Pampa was discussed at the Local Emergency Planning Committee meeting Wednesday.

"Ideally the state would like to see us start with a table top exercise," said Ken Hall, emergency management coordinator. "A functional exercise would be the next step, with more pressure, but without rolling the troops or equipment."

The group discussed preparing for an indoor mock exercise.

"I would like to have the county government involved," Hall said. "We need to decide the number of

players and who would act out the exercise. Preferably those in our departments who are not here."

Hall asked for ideas, people involved and the roles they would like to play.

He will use a computer program to make an evaluation sheet and after the simulation, there will be a discussion and evaluation.

The exercise should last a set amount of time. The last exercise took one hour. It should take place in the middle to end of September.

They plan to gather ideas from those present for a full-scale exercise.

McLean might even like to get involved, Hall said.

Old business included shelter manager training and advertising.

"We need to have two people manning each shelter every 12

hours," said Lynda Duncan, director of the Red Cross in Pampa.

They are hoping to get volunteers from the public to be trained as shelter managers.

"Local churches have been so gracious in donating their shelters," said Hall.

Duncan said, "It will take approximately eight hours in training. Four hours of Red Cross training and four hours of shelter management training, all of which could be completed in two evenings."

"If the shelter is open and run by the Red Cross guidelines," Hall said, "they will cover any damages. It is to our advantage to use the resources available to us."

Members approved the minutes from the meeting May 13. The next meeting is set for Oct. 14.

Carson officials discuss tornado cleanup

By ANGELA LEGGETT
Staff Writer

PANHANDLE — Carson County Commissioners Court, in a regular meeting this week, discussed an update on the cleanup from the June 27 tornadoes.

To date, approximately \$45,000 to \$55,000 has been spent from local funds on the effort. The obstacle being dealt with at the present time is the disposition of the burn pit. A grant will be applied for through the Texas Department of Community Affairs to have the debris disposed of in an appropriate manner.

Commissioner Mike Britten was granted a requested to sell a used bulldozer by bid.

For the upcoming year, a 15.8

percent increase in the premium of county health coverage with First Care Insurance was discussed.

Joe Chapel with the Texas Department of Transportation visited with the Court concerning the "maintenance and upkeep of bridges on county roads. Chapel explained a cost-share program available for counties to replace bridges which qualify. Members agreed the county could use other means to address the problem in a more economical and practical manner in most instances. The cost share called for 20 percent local funds and 80 percent federal funds.

Election judges for November elections appointed by the Commissioners Court are: Precinct 101, Nila Burgin; Precinct 102, R.W. Stand-

fer; Precinct 103, Debbie Hollis; Precinct 201, Joyce Hoffman; Precinct 202, Mary Ann Labus; Precinct 301, Omar Robinson; Precinct 302, Betty Jones; Precinct 401, Linda Kalka; Precinct 402, Sue Owens; absentee, Dorothy Broadway.

Alternate judges are: Precinct 101, Carl Looten; Precinct 102, Tam Terry or Shirley Kelly; Precinct 201, Glenna McLeod; Precinct 202, Frank M. Wink; Precinct 301, Jeri Osborne; Precinct 302, Thelma Dugan; Precinct 401, Risa Hardin; Precinct 402, Max Owens; and absentee, Gracie Garcia.

The 1992-93 fiscal year budget hearing will be held Aug. 24. The tax rate is also scheduled to be set at the meeting.

Pampa educators train in 'Total Quality Management'

By CHERYL BERZANSKIS
Lifestyles Editor

Improving quality of services delivered by Pampa Independent School District was the goal of a three-day seminar this week at Pampa Middle School.

The focus of the training effort, which was attended by principals, assistant principals and administrative staff of the district, centered on improving the quality of education through the use of management techniques developed for industry and adapted for use in education. The training was led by Scott Leek of Provost Consulting Group, Austin.

The concept called "total quality management" was developed by W. Edwards Deming. Total Quality Management (TQM) focuses on customer needs and the ability of the supplying institution to meet those needs quickly and correctly through efficient systems of delivery.

As applied to education, TQM sees the student as consumer of ser-

vices and the school district as supplier. The goal is to supply the students who may have different needs with high-quality educational opportunities where they can learn most efficiently.

"We need to learn to recognize within the district, we have customers," said schools superintendent Dawson Orr. "The public is the customer of education. At the level of the high school seniors, we have clear customers - colleges, the military, the job market."

Rather than working longer or harder, TQM looks at all the pieces or systems that make up the district. It is the system which must be changed or improved to deliver higher quality services, Orr continued.

Leadership provides support for the main providers of the services with customer satisfaction the final goal, he said.

Rather than costing the district more money, TQM aims to cut expenses.

"What we've seen throughout the industry, when you improve your

quality, costs go down. As a board member, we hope as we apply these principles to education, we see improved quality at reduced cost," said PISD board member James Fruge.

Orr and Pampa High School Principal Daniel Coward were invited by John Forister, Hoechst-Celanese quality manager, to a four-day, in-house seminar at the plant. Orr said that after attending the seminar, he felt TQM would meet the needs of PISD.

Hoechst-Celanese began using TQM in 1981, according to plant manager Jerry Moore, and continues training employees in the method.

Orr knows a "handful" of school districts who use TQM.

"I think we are in the vanguard of districts applying it. We want to do it well," Orr said.

Moore emphasized that TQM is not a quick fix for problems in any institution, nor is it a management fad, but an ongoing method to improve delivery of goods and services to customers.

After the initial training, follow up education is planned. Seven Celanese employees have been designated to provide extra support for the district. Orr said he plans monthly administrative meetings to include more TQM training.

The seminar expenses were divided among PISD, Celanese, and the M.K. Brown Foundation.

During the three days, 25 district employees tackled district concerns - absenteeism, readiness for first grade, high school and middle school failure, discipline management - with skills they were learning using TQM. Pat Farmer, assistant principal at PHS, said she was excited about the workshop because the exercises they did related to real problems local educators face.

Coward said that in the 1991-92 school year, he applied TQM to one problem area at Pampa High - that of the high correlation between students enrolled in basic level math courses and their failure to pass the Texas Assessment of Academic

Skills test. By analyzing data, high school staffers recommended to the school district board that fundamentals of math be dropped from the PHS curriculum. The board accepted that recommendation in the spring.

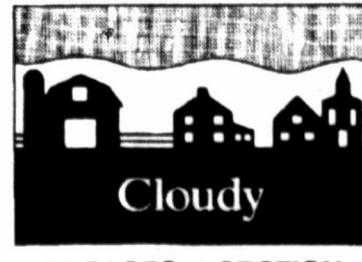
"As we learn to view what we do as a process, we can better self evaluate what we're doing and make substantive changes," Coward said. "In the past, change has been external. This process equips employees for internal change."

Because of the cooperative effort between PISD and Celanese, Orr and Fruge have been invited to submit a proposal about the partnership for consideration at the "Quality and Education: Critical Linkages" conference set for November. If the proposal is accepted, Orr and Fruge will present it at the meeting. The conference, sponsored by Gov. Ann Richards and the National Center for Manufacturing Sciences, will explore TQM and its role in meeting national education goals.

INSIDE TODAY

A FREEDOM NEWSPAPER

Classified12-13
Comics10
Daily Record2
Editorial4
Lifestyles9
Obituaries2
Sports11-12



VOL. 85, NO. 110

14 PAGES, 1 SECTION

Daily Record

Services tomorrow

HYATT, Stephen Mitchell — 10 a.m., graveside, Babyland Section of Resthaven Memorial Park, Lubbock.
NORRIS, LaVon — 10 a.m., Carmichael-Whately Colonial Chapel.

Obituaries

NEWTON ONNIE BRUTON

SHAMROCK — Newton Onnie Bruton, 81, died Wednesday, Aug. 12, 1992. Services are set for 1:30 p.m. today in Eleventh Street Baptist Church with the Rev. John Denton, pastor, officiating. Burial will be in Shamrock Cemetery by Wright Funeral Directors.
 Mr. Bruton was born in Whitt. He married Grace Edna Hiett in 1931 at Wellington; she preceded him in death in 1991. He had lived in Collingsworth and Wheeler counties. He worked as a farmer and a retired cotton ginners.

Survivors include two sons, James Bruton of Shamrock and Ike Bruton of Clute; four brothers, Vernon Bruton of Dallas, Carl Bruton of Mineral Wells, Bill Bruton of Shamrock and Simon Clyde Bruton of Perrin; three sisters, Verdean Kelsey of Oklahoma City, Eunice Anderson of Perrin and Georgia Lee Gruver of Mineral Wells; and four grandsons.

CARROLL CAMPBELL

LUBBOCK — Carroll Campbell, 85, father of a Pampa resident, died Tuesday, Aug. 11, 1992. Graveside services were held at 1 p.m. Wednesday in Fairmont Cemetery in Hollis, Okla., with Alan Ehlö officiating. Arrangements were by Franklin-Bartley Funeral Home of Lubbock.

Mr. Campbell was born in Hollis, Okla. He was a tailor in Salinas, Calif. He had lived in Lubbock for two years, moving from Clearlake Highlands, Calif. He was a Baptist.

Survivors include two daughters, Betty Sue Green of Lubbock and LouRee Lyle of Pampa; five grandchildren; and eight great-grandchildren.

THELMA GLASS GREEN

WHEELER — Thelma Glass Green, 82, died Tuesday, Aug. 11, 1992. Graveside services were at 10 a.m. today in Wheeler Cemetery with the Rev. Warren Schoenecker, pastor of First United Methodist Church, officiating. Arrangements are by Wright Funeral Home.

Mrs. Green was born in Collin County. She was a homemaker and had lived in Wheeler since 1952. She was a Methodist.

Survivors include two sons.

STEPHEN MITCHELL HYATT

LUBBOCK — Stephen Mitchell Hyatt, infant grandson of Wheeler residents, died Tuesday, Aug. 11, 1992. Graveside services are set for 10 a.m. Friday in Babyland Section of Resthaven Memorial Park with the Rev. Paul Jantzen, associate pastor of Trinity Church, officiating. Arrangements are by Resthaven Funeral Home in Lubbock.

Survivors include his parents, Ervin and Lisa Hyatt; a sister, Nettie Grace Hyatt of Lubbock; a brother, Timothy Roland Hyatt of Lubbock; his grandparents, the Rev. B.A. and Carlene Hyatt of Wheeler and Mr. and Mrs. A.F. "Buddy" Pochels of Elm Mott; his great-grandmothers, Nettie Hyatt of Lubbock, Maybelle Beaver of Eureka Springs, Ark., and Grace Anderson of Elm Mott.

AARON F. TRUEBLOOD

CANADIAN — Aaron F. Trueblood, 83, died Wednesday, Aug. 12, 1992. Graveside services are set for 10 a.m. Saturday in Canadian Cemetery. Arrangements are by Stuckley-Hill Funeral Home.

Mr. Trueblood was a longtime resident of Canadian. He was the owner of an automobile repair shop and was a veteran of the U.S. Navy, serving during World War II.

Survivors include two sisters, Etna Shafer of Monticello, Utah, and Lillie Hines of Arnett, Okla.

Hospital

CORONADO HOSPITAL Admissions

Jim Odell Sirmans, Miami
 Joseph Wheeler, White Deer
 Jeremy Keith Winkler, Pampa
 Charlie Hazel Boykin (extended care), Pampa
 Mildred Jackson Meador (extended care), Pampa

Dismissals

Mary H. Bennett, Pampa
 Duella Mann Beverly, McLean
 Charlie Hazel Boykin, Pampa
 Mildred Jackson Meador, Pampa
 Joseph Wheeler, White Deer
 Henry Withers Jr., Lefors
 Victoria Louise Yow and baby girl, Perryton

SHAMROCK HOSPITAL Admissions

No admissions were reported.

Dismissal

Clifford Bednorz, Shamrock

Calendar of events

BLOOD PRESSURE CHECK

A blood pressure check is offered from 10:30 a.m. to 1 p.m. each Friday in the Red Cross office, 108 N. Russell. Blood sugar tests are offered the first Friday of each month. A donation is accepted to cover expenses.

Police report

Pampa Police Department reported the following incidents during the 24-hour period ending at 7 a.m. today.

WEDNESDAY, Aug. 12

Texas Department of Public Safety issued a wanted outside agency report in the 800 block of South Faulkner.

Mark Fondoren, 2613 Rosewood, reported felony failure to stop and render aid and a hit and run in the 1400 block of North Sumner.

TODAY, Aug. 13

Ray Stapleton, 818 S. Gordon, reported criminal mischief causing damage of \$20-200.

Neal A. Gardner, 2535 Beech, reported criminal mischief to a 1986 Chevrolet in the 200 block of North Russell.

Shana D. Rutz, 1601 W. Somerville, reported criminal mischief, causing damage of \$20-200.

Rhonda C. Calloway, 2137 Williston, reported criminal mischief to a 1987 Chevrolet in the 1600 block of West Somerville.

Arrests

WEDNESDAY, Aug. 12

Garland D. Kysar, 46, 852 S. Faulkner, was arrested at the residence on DPS warrants.

TODAY, Aug. 13

Danny Gregg Tucker, 33, 1235 S. Sumner, was arrested in the 1100 block of McCullough on a charge of driving while intoxicated. He was booked directly into Gray County Jail.

Sheriff's Office

The Gray County Sheriff's Office reported the following incidents during the 24-hour period ending at 7 a.m. today.

TODAY, Aug. 13

Gray County Sheriff's Office reported no proof of liability insurance, no driver's license and three incidents of minor in possession of alcohol.

Arrests

TODAY, Aug. 13

Abel Rodriguez, 20, 417 N. Faulkner, was arrested in the 600 block of South Ballard on charges of minor in possession of alcohol, no proof of liability insurance and no driver's license.

Francisco Benavides, 19, Dalhart, was arrested in the 600 block of South Ballard on a charge of minor in possession of alcohol.

Ricardo Barboza Jr., 20, Dalhart, was arrested in the 600 block of South Ballard on a charge of minor in possession of alcohol.

Accidents

Pampa Police Department reported the following accident during the 24-hour period ending at 7 a.m. today.

WEDNESDAY, Aug. 12

2:40 p.m. — An unknown vehicle collided with bicyclist Mark Fondoren, 2613 Rosewood, in the 1400 block of North Sumner. The vehicle left the scene, according to the report. Fondoren received non-incapacitating injuries. No citations were reported.

DPS Accident

TUESDAY, Aug. 11

6:40 p.m. — A 1990 Chrysler driven by Dennis Rex Caldwell, 30, 2518 Duncan, and a 1988 Ford owned by United Parcel Service and driven by Willie Earl Nickelberry, 54, 1029 S. Somerville, collided 0.7 of a mile west of Pampa on Price Road. Citations were issued. No injuries were reported.

Fires

Pampa Fire Department reported the following call during the 24-hour period ending at 7 a.m. today.

WEDNESDAY, Aug. 12

11:32 a.m. — Two units and three firefighters responded to a grass fire four miles west on U.S. 60 in a vacant field.

Stocks

The following grain quotations are provided by Wheeler-Evans of Pampa.

Wheat	2.59
Milo	3.92
Com.	4.20

The following show the prices for which these securities could have traded at the time of compilation:

Ky. Cent. Life	8 7/8	dn 5/8
Serco	23 1/4	NC
Occidental	20 1/8	up 1/8

The following show the prices for which these mutual funds were bid at the time of compilation:

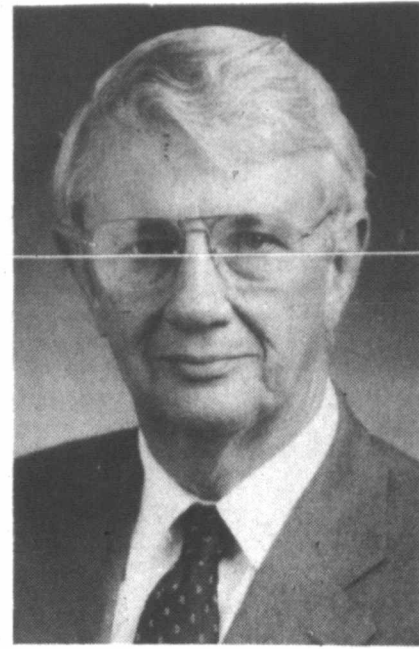
Magellan	64.84
Pursat	15.11

The following 9:30 a.m. N.Y. Stock Market quotations are furnished by Edward D. Jones & Co. of Pampa.

Amoco	51	up 5/8
Arco	114 1/2	up 1/8
Cabot	52	up 1/8
Cabot O&G	15 5/8	up 1/8
Chevron	72 7/8	up 5/8
Coca-Cola	43 1/4	up 1/4
Enron	47 1/4	dn 1/4
Halliburton	32 3/4	NC
HealthTrust Inc.	15 1/4	up 1/8
Ingersoll Rand	26 3/8	up 1/4
KNE	26 5/8	up 1/8
Kerr McGee	45 1/8	up 1/4
Limited	20	NC
Mopco	59 1/4	dn 3/8
Maxus	6 3/8	dn 1/8
McDonald's	43 1/4	up 3/8
Mobil	65 3/4	dn 1/8
New Atmos.	20 3/4	up 1/8
Parker & Parsley	14 3/8	NC
Pennsy's	68 3/4	dn 1/2
Phillips	28	NC
SLB	66 5/8	up 1/2
SPS	32 5/2	up 1/4
Tenneco	38 3/4	up 1/8
Texas	63 7/8	NC
Wal-Mart	53 7/8	up 1/2
New York Gold	337.20	NC
Silver	3.75	NC
West Texas Crude	21.09	NC

Judge to keynote PAAF banquet

By CHERYL BERZANSKIS
Lifestyles Editor



Jack Hightower

Texas Supreme Court Justice Jack Hightower will be keynote speaker at the Pampa Army Air Field Reunion Association's 50th anniversary banquet this weekend.

The banquet, set for 7 p.m. Saturday in the Starlite Room of Coronado Inn, will end the day-long celebration which will open with the 10 a.m. dedication of the commemorative marker in Memorial Park on Hobart Street.

The 50th anniversary recognizes the opening of the Pampa Army Air Field which served as an advanced flying school during World War II.

Tickets for the PAAF banquet and Friday's Panhandle Veterans Hall of Fame banquet are available from the Gray County Veterans Service Office or in the lobby of Coronado Inn.

Mike Porter and James Baird of the PAAF announced the formation of a new class of membership in the PAAF Reunion Association. The associate membership has been created for those related to or friends with those who served at PAAF.

Another organization, the National B-25 Preservation Association, is in the planning stages with the official creation of the association set for Friday. Mike Parker, Pampa, is scheduled to head the group, Porter said.

Supreme Court Historical Society since 1991.

Hightower served in the U.S. Navy 1944-1946.

The Memphis native holds membership in several historical societies such as the Panhandle-Plains Historical Society, the Texas State Historical Society and the Sons of the American Revolution.

The father of three daughters, Hightower served in many political offices. He was a member of the Texas House of Representatives in 1953-1954, and the district attorney of the 46th judicial district from 1955-1959. While working as district attorney, he served as president of the Texas District and County Attorneys Association and was the Outstanding District Attorney of Texas in 1959. The Baylor graduate was a member of the Texas Senate from 1965 through 1975, and became a U.S. congressman in 1975.

During his tenure in the U.S. Congress, Hightower served on the Agriculture Committee, Appropriations Committee, Select Committee on Hunger, Agriculture Subcommittee, Defense Subcommittee and the Legislative Branch Subcommittee.

He returned to Texas in 1985 to become the first assistant Attorney General of Texas.

CONTINUED FROM PAGE ONE

Lawsuit

"We've offered to fix and repair the well," Phillips said. "We think the well is very fixable and we have not been able to confirm in our testing that the aquifer is damaged underneath the well. The tragedy of this is the people of Kingsmill could have had clean water back in January."

Phillips added, "We think there are good people in Kingsmill who are interested in getting a well fixed and we're sorry they have to go through this. I don't see any resolution of this thing anytime soon."

He also said other wells in the area have been tested "a number of times continue to show clean."

"I think that's another clue the problem with that well is localized ... Lastly, if it were our problem, I don't know of any time we've ever shrunk from our responsibility ... I think the issue is, do they want clean useable water and eventually define who the source is or do they want to go to court and go through that matter and litigate issues in the media as well as court?"

Celanese has admitted to benzene contamination in a "perched water zone" underneath the plant, caused from seepage of untreated waste water from a solar evaporation and seepage pond, according to the lawsuit.

The lawsuit states Celanese considered closing the plant in 1983 and in 1985. "However, Hoechst Celanese chose to continue poisoning the environment rather than losing a highly profitable chemical plant," the lawsuit alleges.

It also alleges that Celanese, throughout the years, has disposed of 123 tons of chromium in the solar pond and the presence of chromium had been found as deep as 60 feet below the surface of the ponds.

Both benzene and chromium are recognized as human carcinogens.

"With regard to wildlife and animal life, plaintiffs allege that birds, rabbits, dogs and other animals have been poisoned, burned and destroyed by coming into contact with the toxic waste contained in the solar evaporation and seepage ponds," the lawsuit states.

Exposure to chemicals, which the plaintiffs allege the company has polluted the water and air with, have caused symptoms of "stinging and burning of the skin, dry skin, and the appearance of small sores, blisters, and rashes after taking a bath or shower. Several of the plaintiffs' family members have died of cancer. The plaintiff, Dillon Vane Slater, was born the 29th day of July, 1992, with multiple birth defects.

"Most of the younger plaintiffs suffer from recurring kidney problems, urinary tract infections and upper respiratory infections," the lawsuit alleges.

Along with compensatory and exemplary damages, the plaintiffs are seeking a \$5 million fund to be set up to provide 20 years of medical monitoring.

Following is the styling listed on the lawsuit as plaintiffs:

Kingsmill Community Water Supply Corp., a non-profit sanctioned public utility, Bill Anderton and wife, Nancy L. Anderton, Nancy L. Anderton as next

friend of Adam Shea Maul, a minor, Catherine P. Anthony, Jimmy Duane Burkes, Billy Clifton Burnett and wife, Athalee Margaret Burnett, individually and as next friends of Billy Ray Burnett, Brent Burnett, Stacy Burnett, Jesse Burns and wife, Sharon Kay Burns, individually and as next friends of Jesse Jake Burns, Jessie Lowrance Carlile, Raymond A. Christenson and wife, Elsie A. Christenson, Ronald G. Cooper and wife, Beverly G. Cooper, individually and as next friends of Audrey J. Cooper and Jacqueline Cooper, minors, Stephen W. Cox and wife, Maxine Cox, Clinton C. Nichols, Monia S. Costiloe, Valentina K. Dull, individually and as representative of the estate of Joseph A. Dull, deceased, Allen R. Dull, Irvin Floyd Hall and wife, Wanda Charlene Hall, Richard D. Hall and wife, Kelly Dawn Hall, individually and as next friends of Heather Nicole Hall, a minor, Jackie Hendricks and wife, Rosa Lee Hendricks, Frank Willard Hobson and wife, Becky Hobson, individually and as next friends of Jenny Jo Jean Hobson, a minor, M.D. Hood and wife, Carolyn Hood, Larry Don Hood, David DeWayne Irvin, Audie Kendrick, Lula Lard, Emory Dean Larue and wife, Phyllis Jean Larue, Johnnie Michael Love, Beulah McLean, John David McLean, Evelyn Jean Miller, Clinton C. Nichols, Dawn Lynette Pierce, Clifford Pulse and wife, Esther Joyce Pulse, Mark Ernest Pulse, Diana Joyce Pulse, Roy Reeves and wife, Minnie Reeves, individually and as next friends of Troyce Lee Reeves, J.C. Roberts and wife, Ann Malone Roberts, James Franklin Slater and wife, Bonnie Lynn Slater, individually and as next friends of Dillon Vane Slater, a minor, Bonnie Lynn Slater, as next friend of James Michael Irvin, a minor, Melvin W. Stephens and wife, Marie C. Stephens, Terry Pat Tolleson and wife, Cynthia Malone Tolleson, M.L. Turner and wife, Flora Bell Turner, and Doile Edwin Ward and wife, Peggy Ann Ward.

City briefs

ALLSTATE INSURANCE Co. Clois Robinson, 665-4410. Adv.

KNIGHT LITES Now Open for lunch 11 a.m.-2 p.m. Membership not necessary to dine. 618 W. Foster, 665-6482. Adv.

BASEBALL CARDS for sale. 1-6 p.m. 669-1326. Adv.

1960's DANCE and Classic Car Show! Bring your classic car to our 1960's dance and be judged in some unusual categories. August 22 from 8:00-11:00 Wal-Mart parking lot. For more information and registration call 665-0465 for Linda, Teresa or Dauna. Adv.

SWEET CORN \$1.75 Dozen, 669-7060. Adv.

GIANT GARAGE Sale, Friday 14th, Saturday 15th, located at the corner of Kingsmill and Somerville. Sponsored by the First United Methodist Church Fellowship. Proceeds will fund their Summer Mission Program. Adv.

TOTAL IMAGE Hair Salon has 2 openings for stylists. Booth rental only, 329 N. Hobart. Adv.

THE MARY Ellen and Harvester Church of Christ clothing room will be open Tuesday, August 18, from 9:00 to 11:00 a.m. The Clothing room will not be open again until January of 1993. If you need winter clothing you need to get it on August 18. Adv.

KNIGHT LITES: Supper Club: Friday August 14, 8 til 11 Jolee Hoff, live entertainment no cover. August 15, Panhandle Express and live band 8 til 1. Cover charge \$2. Enjoy dining and dancing. Adv.

ELSIE'S FLEA Market Summer Clearance Sale, 10 a.m. Wednesday through Sunday. 1246 S. Barnes. Adv.

BROGAN'S BOOZERY: Let us be your one stop beer, wine, and liquor store! 1001 E. Frederic. Adv.

MADIELINE GRAVES Dance & Gymnastics Center, registration August 20, 21 between 4-6 p.m. at new location, 1345 S. Hobart. Adv.

Weather focus

LOCAL FORECAST
 Tonight, mostly cloudy with a 40 percent chance of thunderstorms, a low in the 60s and southeasterly winds 5-15 mph. Friday, mostly cloudy with a 30 percent chance of thunderstorms, a high in the 80s and easterly winds 10-15 mph. Wednesday's high was 85 degrees; the overnight low was 62 degrees.

REGIONAL FORECAST
 West Texas - Partly to mostly cloudy through Friday with a chance of thunderstorms. Highs 80s except near 100 Big Bend. Lows 50s and 60s.

North Texas - Partly cloudy and mild tonight with lows 67 to 71. Partly cloudy with widely scattered showers and thunderstorms Friday. Highs Friday 86 to 90.

South Texas - Partly cloudy tonight with scattered showers and thunderstorms south and east, widely scattered showers and thunderstorms elsewhere. Lows in the 70s except near 80 coast to upper 60s Hill Country. Mostly cloudy Friday with scattered showers and

thunderstorms. Highs in the 90s except upper 80s coast.

EXTENDED FORECAST
Saturday through Monday
 West Texas - Panhandle, Saturday through Monday, partly cloudy with a chance of showers and thunderstorms Saturday. Decreasing cloudiness Sunday and fair Monday. Highs in the lower to mid 80s. Lows in the upper 50s. South Plains Saturday through Monday, partly cloudy with a chance of thunderstorms Saturday. Decreasing cloudiness Sunday and fair Monday. Highs in the upper 80s to around 90. Lows in the mid 60s. Concho Valley, Edwards Plateau, partly cloudy with a slight chance of thunderstorms Saturday. Decreasing cloudiness Sunday and fair Monday. Highs in the lower 90s. Lows in the upper 60s.

South Texas - Hill Country and South Central Texas, mostly cloudy with scattered showers and thunderstorms. Highs around 90. Lows

in the upper 60s and low 70s. Texas Coastal Bend, mostly cloudy with scattered showers and thunderstorms. Highs in the 80s beaches to the 90s inland. Lows near 80 beaches to the 70s inland. Texas Rio Grande Valley and plains, mostly cloudy with scattered showers and thunderstorms. Highs in the 80s coast to the 90s inland. Lows near 80 coast to the 70s inland. Southeast Texas and the upper Texas coast, mostly cloudy with scattered showers and thunderstorms. Highs in the 80s beaches to near 90 inland. Lows near 80 beaches to the 70s inland.

North Texas - Unseasonably mild with a chance of thunderstorms through the period. Highs in the mid 80s to near 90. Lows in the lower 60s to near 70.

BORDER STATES
 New Mexico - Scattered mainly afternoon and nighttime thunderstorms through Friday, least numerous in the southeast. Highs Friday 70s to mid-80s mountains and northeast with mid-80s to lower 90s elsewhere. Lows tonight 40s and 50s mountains with mostly 60s lower elevations.

County to consider handling PISD elections

Gray County Commissioners Court, on Friday, again will consider a request from the Pampa Independent School District to take over the administration of yearly school elections.

The PISD asked the county during an Aug. 3 meeting for permission to turn over the school elections, held each May, to the county clerk's office.

Jack Bailey with the school district said the district would pay for costs associated with the elections. He said the county clerk's office

had more expertise with handling elections and that absentee balloting at the courthouse would be a more convenient location for voters.

Action on the matter was continued until Friday's meeting to give county officials time to gather information on costs associated with holding the school district's elections.

Other items on Friday's agenda include consideration of a request from District Attorney John Mann regarding personnel changes, con-

sideration of changing two county maintenance personnel to permanent status and discussion of a requirement to relocate signs on state highways.

The Commissioners Court will also continue 1993 budget discussions and discuss the new jail. Routine items of payment of salaries and bills and consideration of transfers are also listed on the agenda.

The meeting begins at 9 a.m. in the second floor courtroom at the Gray County Courthouse.

—Beth Miller

Shop Pampa first — it's worth it



A firefighter helps Denissa Sainon, age 1, of Hampton, Va., who was a passenger of the southbound Amtrak train that derailed Wednesday night.

Amtrak derailment injures 70

By JOE TAYLOR
Associated Press Writer

NEWPORT NEWS, Va. (AP) — Federal investigators examined the wreckage of an Amtrak train today to learn why it jumped the tracks about 25 feet past a switch. Seventy people were reported hurt, none seriously.

Unidentified officials of CSX Transportation, which owns the track, were quoted today as saying vandalism of the switch caused the accident.

CSX spokesman Jay Westbrook said he could not confirm the reports, but said tampering was always a possibility.

"Vandalism is part of the investigation," Westbrook said today. "It is always the kind of thing we look at."

Passengers said the train — Amtrak's Colonial from New York to Newport News — was nearing the station when it started lurching and swaying shortly after 9 p.m. Wednesday. The train derailed about eight miles from the station.

"It was pretty damned scary," said David Yancey, a 20-year-old passenger from Newport News. He said the lights flashed and then everything went dark. He and another passenger held on to each

other until the train stopped rocking.

"It was done, it was over, just like that," he said, snapping his fingers. "But it felt as if it went on for two years."

The engine came to rest on its side against a hill. The five other cars jumped the tracks but remained upright and in contact with the roadbed.

Investigators from the National Transportation Safety Board, the FBI, CSX, Amtrak and the police department examined the wreckage this morning.

The train had just come out of a curve when it derailed about 25 feet past a switch that governs a rail spur leading off to a factory.

The *Richmond Times-Dispatch* and the *Daily Press* of Newport News reported that CSX officials, speaking on condition of anonymity, said the accident was caused by vandalism of the switch.

The *Richmond* paper quoted unidentified CSX workers as saying the lock on the switch had been broken. Normally, the switch is remotely controlled from CSX headquarters in Florida, but it can be changed manually at the site by someone who opens the locked box, the paper said.

The *Daily Press* quoted a passenger, Jim Jacobson, 26, of

Alexandria, as saying he heard the conductor muttering: "I didn't get a chance to radio the switch was open. I didn't get a chance to radio."

Westbrook said it wasn't known how fast the train was going. The posted limit is 79 mph.

Fire Department spokeswoman Lynn James said none of those hurt appeared to have life-threatening injuries. Officials said the most serious injuries appeared to be broken bones.

The accident occurred about 150 yards from where an Amtrak train slammed into a dump truck April 29, killing the driver and injuring 57 people. The driver had not heeded a crossing sign.

In response to that collision, Newport News officials asked CSX a few days ago to reduce the speed limit on that section of track to 50 mph, but the railroad refused.

"I think this is evidence that some adjustment needs to be made in the speed limit," Mayor Barry DuVal said after Wednesday's accident.

Crime Stoppers
669-2222

Quayle: Media 'desperate' to help Clinton

WASHINGTON (AP) — Vice President Dan Quayle charged some reporters were "desperate to help Bill Clinton" and cited as evidence the news media's rehashing of rumors that George Bush had an extramarital affair.

Quayle upbraided journalists at a news conference in Huntington Beach, Calif., on Wednesday, saying, "When you start talking about sleaze, I think some in the media ought to try looking in the mirror."

He appealed to editors, publishers and network news chiefs to "try to regain good journalism."

He later told a partisan crowd at the Lincoln Club of Orange County, Calif., "There are some in the media that are desperate to help Bill Clinton and to hurt President Bush."

In Houston, where the advance guard of the Republican party has gathered for next week's party convention, Rich Bond, the GOP chairman, aired his own grievances against the media.

"We've got a very, very tough row to hoe" in getting Bush's message fairly reported, Bond told the Republican National Committee.

But with the president down 20 points or more to Bill Clinton in national opinion-polls, Bond admitted, "Are they totally responsible for what is happening to George Bush? Heck, no."

The issue arose Tuesday after the *New York Post* published stories based on an allegation in a book, "The Power House" by Susan B. Trento, that Bush had an affair with longtime aide Jennifer Fitzgerald, now a State Department official.

The book says former disarmament negotiator Louis Fields, who died in 1988, had said he once arranged for Bush and Fitzgerald to use a guest house in Geneva.

"The very idea that a question like this could come up at a presidential news conference with the prime minister of Israel I find outrageous," said Quayle. "Furthermore, the question again comes up in the Oval Office."

"And look what you're talking about: a rumor, gossip, from a dead person," he said. "It has been investigated by the good journalists and yet the bad journalists seem to overwhelm the good journalists."

Quayle had been "fuming" since he watched the Bush interview Tuesday night on the NBC "Dateline" show, his press sec-

retary David Beckwith said. Interviewer Stone Phillips asked Bush about the infidelity rumors as well as how he would deal with a grandchild who was homosexual or sought an abortion. He also asked whether Quayle would stay on the ticket.

Quayle read aloud some of Phillips' questions to the Lincoln Club and said disapprovingly, "There was not one question about, 'Mr. President, what are you going to do for America for the next four years?'"

"Is responsible journalism going to be completely overtaken by shoddy journalism?" he said.

Public Notice

Southwestern Bell Telephone Company is asking the Public Utility Commission of Texas (PUC) for approval to begin charging \$3.00 per bill, for duplicate paper copies of a customer's bill up to 15 pages. If the customer's bill exceeds 15 pages, an additional five cents per page will apply. If the customer's bill is lost or mutilated for reasons other than negligence by the customer, no charge for a duplicate copy will apply if a customer notifies Southwestern Bell within 60 days of the billing date. The effective date of this application is December 4, 1992.

If approved by the PUC, this application will increase the Company's annual revenues by \$835,000, which is an increase of approximately two one-hundredths of 1 percent (.02 percent) in the Company's adjusted revenue for the 12-month period ending December 31, 1991. The application could affect all of the Company's approximately 4.6 million residence customers and all of its approximately 575,000 business customers should they choose to request duplicate copies of their bills.

Persons who wish to intervene or otherwise participate in these proceedings should notify the PUC as soon as possible. The deadline to intervene is August 7, 1992. A request to intervene, participate, or for further information should be mailed to the Public Utility Commission of Texas at 7800 Shoal Creek Blvd., Suite 400N, Austin, Texas 78757. Further information may also be obtained by calling the PUC Public Information Office at (512) 458-0256 or (512) 458-0221 teletypewriter for the deaf.

This matter has been assigned Docket No. 11223.

Southwestern Bell
Telephone

July 23, 30, August 6, 13, 1992

CINEMA 4
2 Complete Features Nightly

Buffy The Vampire Slayer (PG)
Sister Act (PG)
A League Of Their Own (PG)
Boomerang (R)
Sunday Matinee 2 p.m.
665-7141

1992 Property Tax Rates in City of Pampa

This notice concerns 1992 property tax rates for City of Pampa. It presents information about three tax rates. Last year's tax rate is the actual rate the taxing unit used to determine property taxes last year. This year's effective tax rate would impose the same total taxes as last year if you compare properties taxed in both years. This year's rollback tax rate is the highest tax rate the taxing unit can set before taxpayers can start tax rollback procedures. In each case these rates are found by dividing the total amount of taxes by the tax base (the total value of taxable property) with adjustments as required by state law. The rates are given per \$100 of property value.

Last year's tax rate:	
Last year's operating taxes	\$ 2,048,334.63
Last year's debt taxes	\$ 370,092.66
Last year's total taxes	\$ 2,418,427.29
Last year's tax base	\$ 366,428,378
Last year's total tax rate	\$.66 /\$100
This year's effective tax rate:	
Last year's adjusted taxes (after subtracting taxes on lost property)	\$ 2,407,383.91
+This year's adjusted taxes (after subtracting value of new property)	\$ 362,134.078
=This year's effective tax rate	\$.66477 /\$100

In the first year a hospital district or city collects the additional sales tax, it must insert the following lines unless its first adjustment was made last year.

-Sales tax adjustment rate	\$ 1,7658 /\$100
=Effective tax rate	\$ 48819 /\$100

x1.03=maximum rate unless unit publishes notices and holds hearing

This year's rollback tax rate:	\$ 50283 /\$100
Last year's adjusted operating taxes (after subtracting taxes on lost property)	\$ 2,038,981.22
+This year's adjusted tax base	\$ 362,134.078
=This year's effective operating rate	\$ 56304 /\$100
x1.08 (or add \$.08 for schools) = this year's maximum operating rate	\$ 60808 /\$100
+This year's debt rate	\$ 21815 /\$100

A school district must insert the following lines:

=This year's rollback rate before adjustment	\$ 82623 /\$100
+Rate to recoup lost revenue	\$ --- /\$100
=Adjusted rollback rate	\$ 82623 /\$100

=This year's rollback rate

A hospital district or city that collects the additional sales tax, including one that collects the tax for the first time this year, must insert the following lines:

-Sales tax adjustment rate	\$ 1,7658 /\$100
=Rollback tax rate	\$ 64965 /\$100

Schedule A Unencumbered Fund Balances

The following balances will probably be left in the unit's property tax account at the end of the fiscal year. These balances are not encumbered by a corresponding debt obligation.

Type of Property Tax Fund	Balance			
Maintenance & Operating	-0-			
Schedule B 1992 Debt Service				
The unit plans to pay the following amounts for long-term debts that are secured by property taxes. These amounts will be paid from property tax revenues (or additional sales tax revenues, if applicable).				
Description of Debt	Principal or Contract Payment to Be Paid	Interest to be Paid	Other Amounts To Be Paid	Total Payment
G.O. Bonds Series 1984	\$90,000.00	\$ 81,365.00	\$-0-	\$171,365.00
G.O. Bonds Series 1987	\$70,000.00	131,220.00	\$-0-	\$201,220.00
G.O. Bonds Series 1992	\$65,000.00	305,563.13	\$-0-	\$370,563.13
Total required for 1992 debt service			\$743,148.13	
-Amount (if any) paid from funds listed in Schedule A			\$ 0	
-Excess collections last year			\$ 0	
=Total to be paid from taxes in 1992			\$743,148.13	
+Amount added in anticipation that the unit will collect only 94% of its taxes in 1992			\$47,434.98	
=Total Debt Levy			\$790,583.11	

Schedule C Expected Revenue from Additional Sales Tax

(For hospital districts, cities and counties with additional 1/2 cent sales tax) In calculating its effective and rollback tax rates, the unit estimated that it will receive in additional sales and use tax revenues.

	\$673,593.81
--	--------------

Schedule D State Criminal Justice Mandate (For Counties)

The _____ County Auditor certifies that _____ County has spent \$ _____ in the previous 12 months beginning _____, 19____, for the maintenance and operations cost of keeping inmates sentenced to the Texas Department of Criminal Justice. _____ County Sheriff has provided information on these costs, minus the state revenues received for reimbursement of such costs.

This notice contains a summary of actual effective and rollback tax rates' calculations. You can inspect a copy of the full calculations at Gray County Appraisal District. Name of person preparing this notice: W. Pat Bagley. Title: Chief Appraiser/Tax A/C City of Pampa. Date Prepared: 7-28-92.

B-97

August 13, 1992

Where Friends Meet

618 W. Foster

Call For Reservations 665-6482

Knights Lites Supper Club

Presents

LIVE ENTERTAINMENT

★FRIDAY-AUG. 14-8 P.M.-11 P.M.-
JOLEE HOFF Sings The Sounds of Country

★SATURDAY-AUG. 15-Dance To PANHANDLE EXPRESS-Live From 8 p.m. to 1 A.M.

★TUESDAY-AUG. 18-Enjoy MARIE HOWARD'S LIVE MUSIC 7 P.M.-10 P.M.

NOW SERVING LUNCH FROM 11 A.M. TO 2 P.M. Monday-Friday DINNER 6 P.M. to 10 P.M. Monday-Saturday

MEMBERSHIP NOT NECESSARY TO DINE

Bill Hassell
New President

Accepting New Members

Viewpoints



The Pampa News

EVER STRIVING FOR THE TOP O' TEXAS
TO BE AN EVEN BETTER PLACE TO LIVE

Let Peace Begin With Me

This newspaper is dedicated to furnishing information to our readers so that they can better promote and preserve their own freedom and encourage others to see its blessings. Only when man understands freedom and is free to control himself and all he possesses can he develop to his utmost capabilities.

We believe that freedom is a gift from God and not a political grant from government, and that men have the right to take moral action to preserve their life and property for themselves and others.

Freedom is neither license nor anarchy. It is control and sovereignty of oneself, no more, no less. It is, thus, consistent with the coveting commandment.

Louise Fletcher
Publisher

J. Alan Brzys
Managing Editor

Opinion

Black progress is in need of a boost

We keep hearing that the 1980s were a "decade of greed" that helped only rich white people. But economic studies keep providing the opposite: President Reagan's tax-cut program "lifted all boats," as the saying went, by promoting economic growth for everyone.

A new Census Bureau study discovered that black households experienced a more rapid rate of increase in household incomes than did white households. In 1979, during the Carter administration's "malaise," blacks on average made 62 percent of whites made.

By 1989, the year of the last Reagan budget, black incomes had risen to 63 percent of white incomes. No, that's not a large rise, but progress takes time, and it is not without significance that the increased percentage was moreover of an expanding economy. Nor is it a widening of the gap, as Reagan-bashers would have you believe happened. Although the overall increase could have been greater, the decade found blacks much better off economically than ever before.

In the western sector of the United States, average black incomes shot up even faster, from 68 percent of white incomes in 1979 to 76 percent in 1989. Unfortunately, black incomes declined in the Midwest, from 68 percent of white incomes to 63 percent.

Interestingly, blacks in Arkansas under Gov. Bill Clinton missed the Reagan-era economic boom. From 1979 to 1989, white incomes rose 2 percent, while black incomes dropped 2.5 percent. The cause? For the white-income increase, probably an influx of white retirees. For the black decline, probably the 30 major tax increases imposed by Slick Willie.

Alas, though numbers aren't available yet, the black progress made during the tax-cutting 1980s almost certainly has suffered from the tax increases and economic stagnation of the past three years. Just as Reagan's rising tide raised all boats, black and white, so Bush's receding tide is beaching all boats on the shoals of an economy drained by high taxation, massive debt, and increased regulation.

Let's also look beyond the numbers. Black economic performance is hampered by specific government actions. Because black men's life expectancy is now 67, while white men's is 72, black male taxpayers (on average) are unable to collect an extra 5 years of Social Security to which they're entitled, but which white men do collect. This is a massive robbery from black taxpayers to white recipients. And because schooling usually increases income levels, especially in engineering, computers, and other technical fields, blacks suffer much more than whites from our crumbling public school system. One of the scandals of our time is that black politicians don't decry such inequities.

To advance black progress, three reforms are required. First, we need tax cuts to restore economic growth. Second, Social Security should be changed from a system that seizes wealth (from blacks, whites, and others), into a system that invests workers' wealth in private retirement funds. Finally, we should introduce choice in education, allowing schools to compete to give everyone, including blacks, the best education in the world.

The Pampa News
(USPS 781-540)

Serving the Top 'O Texas 83 Years
Pampa, Texas 79065
403 W. Atchison
PO Box 2198

Circulation Certified by ABC Audit

SUBSCRIPTION RATES

Subscription rates in Pampa by carrier and motor route are \$6.00 per month, \$18.00 per three months, \$36.00 per six months and \$72.00 per year. THE PAMPA NEWS is not responsible for advance payment of two or more months made to the carrier. Please pay directly to the News Office any payment that exceeds the current collection period.

Subscription rates by mail are: \$22.50 per three months, \$45.00 per six months and \$90.00 per year. No mail subscriptions are available within the city limits of Pampa. Military and students by mail \$6.66 per month. Mail subscriptions must be paid 3 months in advance.

Single copies are 25 cents daily and 75 cents Sunday.
The Pampa News is published daily except Saturdays and holidays by the Pampa News, 403 W. Atchison Street, Pampa, Texas 79065. Second-class postage paid at Pampa, Texas. POSTMASTER: Send address changes to the Pampa News, PO. Drawer 2198, Pampa, Texas 79066-2198.

Missing Your Daily News?
Dial 669-2525 Before 7 p.m. Weekdays,
Before 10 a.m. Sundays

Berry's World



NOT!

Silence would be smarter

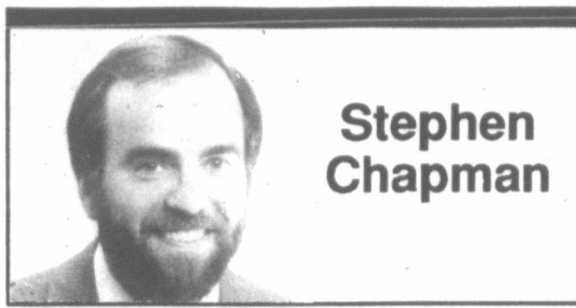
Bill Clinton and Al Gore, eager to show they can talk about something besides George Bush's pathetic failures in domestic policy, are now talking about George Bush's pathetic failures in foreign policy. They have begun by bringing up the Persian Gulf War. In boxing, this is known as leading with your chin.

Gore wonders why, if Bush and his team "are such whizzes" in foreign relations, "Saddam Hussein is thumbing his nose at the entire world." Clinton says of Bush, "I supported the Gulf War, and I support being firm with Saddam Hussein, but I don't think Iraq is a very good example of his foreign policy experience. I mean, he coddled Saddam Hussein right up until the war, and as soon as the war was over, he wanted him to stay in power, so he didn't help the Kurds, and he didn't help the Shiites."

Most Democrats had a sound position before the war, which was that Kuwait wasn't worth fighting for. When Congress authorized the president to use force against Iraq, 70 percent of the Democrats voted no. But most abandoned their opposition about 10 minutes after American bombs started falling, and neither Gore nor Clinton wants to remind anyone where their party originally stood.

Gore presumes that any half-wit could have organized a world coalition to liberate Kuwait, marshalled domestic support for sending half a million U.S. troops to fight a war on the other side of the globe, and held everything together during long months of preparation.

He counts it as a hollow victory that we demolished much of Saddam Hussein's military machine, crippled his nuclear and chemical weapons programs and removed the threat he posed to his neighbors and the West's oil supplies. All that mat-



Stephen Chapman

ters now is that Hussein is still in power, making mischief.

Gore may have forgotten that on Feb. 28, 1991, the day after Bush called off the ground war, he co-sponsored a resolution passed by the Senate, commending Bush and the armed forces for their "historic accomplishments." Sounds like he thought Bush was a whiz then. But at least Gore, who voted for the war resolution, can honestly say he supported Bush's gulf policy. His running mate claims hawkish credentials he didn't earn.

As far as anyone has been able to determine, Clinton didn't take a public position until two days (after) Congress voted. When he got his tongue untied, he expressed unwavering support for both sides. "I guess I would have voted for the majority if it was a close vote," he announced. "But I agree with the arguments the minority made."

Let's not waste the next three months trying to make sense of Clinton's position before the war began. What about after? Today, he says the outcome speaks poorly for Bush's foreign policy talents. When the war ended, though, the governor called it "a great victory" that "will help establish a more civilized and peaceful world in the post-Cold War era."

If Clinton had any thoughts about the sad plight

of the Kurds and the Shiites when they revolted shortly after the war's end, he apparently kept them to himself. He should have done likewise with his novel deduction that Bush didn't help them because he wanted the Iraqi dictator to stay in power.

The president's error was assuming, as almost everyone did, that a military defeat would guarantee Hussein's speedy departure. Bush declined to help the rebels for several reasons - fear of being drawn into an Iraqi civil war, lack of public support for such an effort and the need to accommodate Turkey and Saudi Arabia, which regarded the Kurds and Shiites as a threat to their own stability. He may have been right or wrong, but until now no one has ever accused him of acting out of a secret affection for Saddam Hussein - whom Bush expected to fall regardless.

Bush doubtless made mistakes, even assuming the war was worth fighting, but it's hard to believe Clinton would have done better. Five months after the invasion of Kuwait, he was still undecided about what the United States should do. As president, he would have been under heavy pressure from his own party not to fight at all. Given a President Clinton, Saddam Hussein would probably still be in sole possession of Kuwait, and he wouldn't be thumbing his nose at the world by harassing United Nations inspectors in Iraq because there would be no United Nations inspectors in Iraq to harass.

Anyone who thinks the war was foolish would think that's a price worth paying to keep the United States out of needless bloodshed. But supporters of the war who consider the record of the two candidates probably won't conclude that it was Bush who failed.

Today in history

By The Associated Press

Today is Thursday, Aug. 13, the 226th day of 1992. There are 140 days left in the year.

Today's Highlight in History:

On Aug. 13, 1961, Berlin was divided as East Germany sealed off the border between the city's eastern and western sectors in order to halt the flight of refugees. Two days later, work began on the Berlin Wall.

On this date:

In 1792, 200 years ago, French revolutionaries imprisoned the royal family.

In 1818, suffragist Lucy Stone was born in West Brookfield, Mass.

In 1846, the American flag was raised for the first time in Los Angeles.

In 1889, William Gray of Hartford, Conn., received a patent for a coin-operated telephone.



STAHLER
© THE CHICAGO TRIBUNE 1992

Why I'm down on upscale hotels

I'm not certain just how many hotel rooms I've stayed in, say, in the past 10 years, but occasionally I awaken in my own bed at home and try to call room service for coffee and a newspaper.

I've seen a lot of changes in hotel rooms during this period. One change has to do with showers.

They've become much more complicated. I still don't see what was wrong with the two knobs, one marked H, and the other C. Pretty simple to figure that out.

Now, however, hotel rooms have showers that usually feature only one knob, or bar, and one can scald one's hindparts trying to figure out whether to pull it, turn it or lift it in order to obtain the proper water temperature.

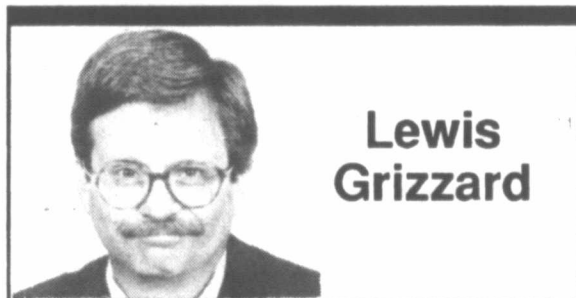
Something else that has changed: In a lot of hotel rooms, the remote control device for the television (a.k.a. the magic clicker) is bolted to the bedside table. People steal these things?

It further astonishes me that while the magic clicker is bolted to the bedside table, nothing is holding the television itself down.

The major change in hotel rooms, however, has to do with the bathroom toiletries provided guests.

It used to be that about all you got was a bar of soap. If you were in a really nice hotel, it didn't have a hair on it.

But somebody in the hotel business got the idea to provide not only soap, but also shampoo, hair



Lewis Grizzard

conditioner, bubble bath and moisturizing cream.

Suddenly there was a toiletry war going on amongst hotels, each trying to outdo the other with fancy-schmancy little bathroom items.

I spent the night in a hotel in Asheville, N.C., recently. It was a nice hotel. There was even a little television in the bathroom.

I went in to take a shower and tuned in Donahue, who was interviewing three men who wanted sex-change operations so they could hit from the ladies' tees at their golf clubs, one of the more normal Donahue topics.

I found the soap in a cute little box. On the box was written "French milled soap."

I didn't know you milled soap. The box also said the soap was "Almond oatmeal."

Almond oatmeal soap? I opened the box to see if anybody had taken a bite. Then, I thought to

myself, if I put hot water on this stuff, is is going to turn into something I should eat with a spoon?

Then I reached for the little bottle of shampoo. On the front of it it said, "Gentle, organic shampoo."

What sort of organ?

On the back it said contents included "Hops, Comfrey, Henna and Rosemary."

That sounded like a folk music group. I figured I'd better read the other vials provided me, too.

There was "mineralizing gelee." What is a "gelee"?

After that I found a container of hair conditioner, "a rich blend of tincture of chamomile and honey extract." Is that, I wondered, anything like Wild-root Creme Oil?

The moisturizing lotion was my favorite. The label said it was made from "extracts of Comfrey, Orange Peel, Althea, Yarrow, Fennel and Licorice Root."

That sounded like a London law firm.

Who are hotels trying to impress with all these exotic extracts, tinctures and potions?

Could I get a cheaper rate if I brought my own bar of Safeguard and Head & Shoulders?

I frankly don't need any conditioner or moisturizing cream and the last time I took a bubble bath, I was still learning my multiplication tables.

Just give me clean sheets, two towels, and leave the light on for me and I promise not to try to steal the TV.

How much do we love our children?

Recently, there was an anniversary of sorts, painfully capsuled by one of the all-time great lines from a movie.

In "Cool Hand Luke," Paul Newman keeps trying to escape from prison. After a second capture, the warden gathers the inmates around, points to a rain-drenched, debilitated Newman lying on the ground and laments: "What we have here is a failure to communicate."

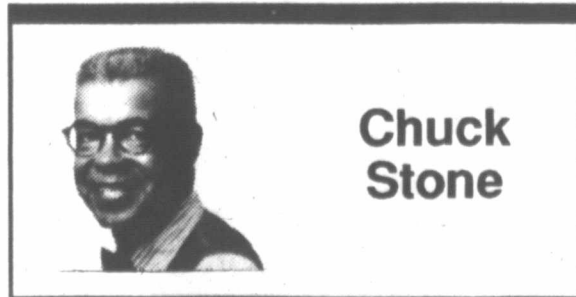
What we have in America today is a failure to communicate about the frightening decimation of our humanity by AIDS.

Most Americans don't care about AIDS for two reasons: Most don't come into contact with AIDS-infected persons, and the illness is regarded with the same bigotry that people in biblical times felt toward leprosy.

So widespread is the ill feeling toward those with AIDS that innocent children infected with AIDS are still being ostracized by adults.

What makes this a kind of seven-year anniversary of the AIDS tragedy is the recent cover story about AIDS in both Time and Newsweek, a coincidence that happens only about 25 percent of the time.

Exactly seven years ago, the covers of both magazines featured a first-time story about AIDS. The startling revelation from movie star Rock Hudson that he was suffering from AIDS and also was gay catapulted the disease from the back page of our minds to the front page of our consciousness.



Chuck Stone

In the past seven years, AIDS cases have geometrically shot up from 1.5 million to 10 million, but we are still as far from a medical solution as we are from mobilizing our compassion for fellow Americans who are infected with AIDS.

The two magazine cover stories were published in conjunction with the eighth international AIDS conference in Amsterdam. Their reporting was pessimistic and discouraging. Teen-agers are dying needlessly, and we are making no progress in finding a cure for AIDS.

Earlier, I mentioned Paul Newman. He has written the introduction for an emotion-searing book, "I Will Sing Life: Voices from the Hole in the Wall Gang." If you saw "Butch Cassidy and the Sundance Kid," you'll understand the name.

The book is a collection of seven short, brilliantly written autobiographies of kids afflicted with different life-threatening diseases.

These 8-, 10-, and 12-year-olds write inspirational poems that will make you cry, essays that will make your heart sing. One essay by 12-year-old Joe Lopez discusses AIDS, with which he was infected via his late mother.

"Back then, I didn't know what AIDS was. I thought it was 'Eggs.' The first time I heard about AIDS was when I was 6. I didn't know my mom was sick until she went into the hospital..."

"The last time I saw her my father picked me up because my mother was dying, and he wanted me to see her before she died. I wanted to tell her that I loved her, and she told my father that her last request was, 'Take care of my son.'"

"I think it sucks that you never hear on the news that a person lives with AIDS. You always hear that someone died last night. But HIV is nothing...It's just like being sick for a long time, for always."

Joe, who is fighting his disease with such intensity that he calls himself "Joe Louis Lopez," wrote a poem expressing his wish to find a cure for AIDS, and he adds, "Maybe something even more terrific: Just wake up one morning and not have it."

The Joe Lopezes, the thousands of unnamed children and the millions of adults infected with AIDS live and dream that one day this nation will no longer suffer from "a failure to communicate."

Our best hope for them is that seven years from now this column will not be necessary.

Symbol of trade pact bridges U.S., Mexico

By EDUARDO MONTES
Associated Press Writer

HARLINGEN (AP) — A half-finished bridge juts out over the Rio Grande just south of here, a fitting symbol of emerging trade links between the United States and its southern neighbor.

The aptly named "Free Trade Bridge," the first new span across the southernmost part of Texas and Mexico in four decades, promises to accelerate development for border towns on either side.

"This will be the biggest project in this generation that the Rio Grande Valley has had," said Ricardo Solis, executive vice president of the Harlingen Industrial Foundation.

Like many long awaited improvements in south Texas, the bridge got a boost when the United States and Mexico started talking about lowering trade barriers two years ago.

Wednesday's events further raised hopes for the span, the seventh in the region between the two countries. After 14 months of formal talks, trade representatives from the two countries and Canada finally reached an accord. Now legislators must approve it.

South Texas business leaders, frequent travelers to other parts of Texas and Washington in support of the pact, hope to reap its benefits.

They have won funding for many road and bridge improvements to support more trade. Most notably, the main artery to San Antonio about 200 miles north, U.S. Highway 281, is to be expanded from two to four lanes.

In Laredo, the city 140 miles

upstream where 325,000 trucks passed from Texas to Mexico last year, a new international bridge opened and the road to it is being expanded. New warehouses are also being built.

And in several Texas border cities, the U.S. Customs Service is expanding its stations.

Many business and civic leaders believe the growth would have happened without a free trade agreement because Mexico's expanding economy was naturally helping the border region.

"I guess the feeling is that you can't stop progress in Mexico," said Pablo Noriega, vice president of Brownsville's Economic Development Council. "Free trade is going to take effect whether you have a signed piece of paper or not."

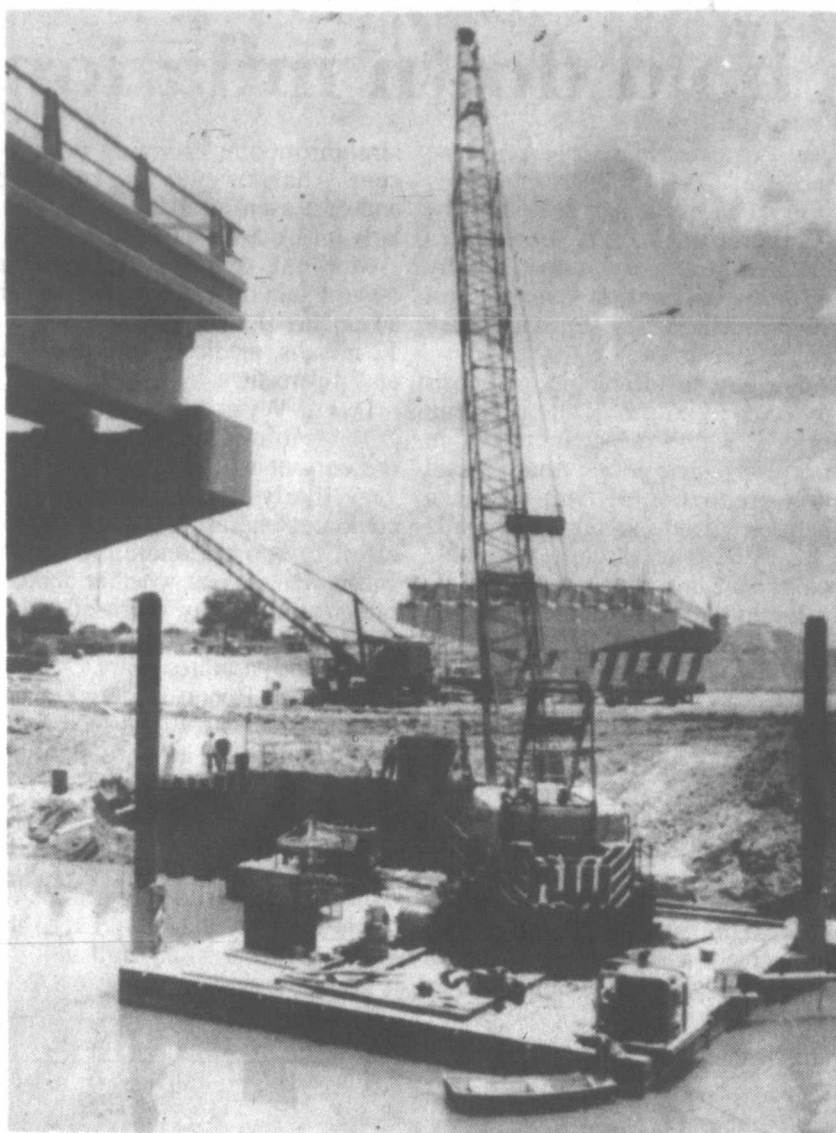
With the agreement, however, cross-border traffic is expected to increase about 10 percent to 15 percent annually, according to the Institute for International Trade at Laredo State University.

Michael Patrick, a University of Texas-Pan American economist specializing in border trade, said Mexico used to enforce policies to keep the number of border bridges low to limit trade.

"Now they're building roads and they're building bridges," Patrick said. "On this side we're responding to that. We've put our infrastructure in place to handle all this increased commerce."

He said it's possible to overbuild, but that planned improvements would help even if the free trade pact is never ratified.

"The (new) infrastructure could be utilized to the advantage of the



(AP Photo)

Work continues on the newest span linking the United States and Mexico over the Rio Grande at Los Indios.

regional economy to a considerable degree before it becomes a bad investment," Patrick said.

Retailers like Wal-Mart and Target have also seen promise from free trade, recently opening new stores in south Texas.

"These people are saying that with the increase in trade people (on

the border) are going to have more money," said Jorge Gonzalez, economist at Trinity University in San Antonio.

He said the agreement will cause more American retailers to also open stores in Mexico, which may cut into the fortune of some U.S. border retailers.

Dole continues battle of Wright Amendment

WASHINGTON (AP) — Senate Minority Leader Bob Dole is renewing his fight to overturn federal flight restrictions at Dallas' Love Field, calling the limitations a "tremendous inconvenience to the flying public."

As the Senate was poised Wednesday night to adjourn for three weeks, the Kansas Republican took to the floor to denounce the Wright Amendment and call for its repeal.

The measure, adopted by Congress in 1979, promotes Dallas-Fort Worth International Airport while restricting growth at Love Field. Named after former House Speaker Jim Wright, the amendment restricts Love Field flights to Texas and its four adjacent states.

It was enacted to protect the then-fledgling DFW. But Dole and other

opponents contend DFW, now the nation's second-busiest airport, no longer needs protection from competition.

Dole, who last September introduced legislation to repeal the measure, called it a "terrible amendment." "While we respect the needs of Dallas and Fort Worth, the time has come to make the U.S. traveling public ... our first priority," he said.

Dole cited a July Department of Transportation study that showed repeal or relaxation of the Love Field restrictions would save passengers \$183 million a year.

"In real term dollars, the Wright Amendment impacts travelers in every state," he said.

The Texas congressional delegation thus far has rebuffed attempts by Dole and other Kansas lawmakers to lift the restrictions.

Government may release assassination documents

By MATT YANCEY
Associated Press Writer

WASHINGTON (AP) — The House has voted to release to the public virtually all of the government's documents on the assassination of President Kennedy.

On a voice vote, lawmakers Wednesday approved a resolution opening stacks of sealed files on the 1963 shooting and disclosing them through the National Archives. The Senate passed similar legislation last month.

Both bills are a response to renewed public interest in the assassination created by Oliver Stone's 1991 film "JFK," which portrayed an elaborate conspiracy surrounding the shooting.

A commission chaired by the late Supreme Court Chief Justice Earl Warren concluded that the killing was the act of lone gunman Lee Harvey Oswald.

"After almost 30 years of mystery, the conspiracy theories can now be put to rest — or proven," said Rep. John Conyers, D-Mich. "We may never know the whole truth about what led up to the events of Nov. 22, 1963 in Dallas. But we can, perhaps, identify base-

less theories and put them to rest." The legislation would open up files previously unavailable to the public — including those of the Warren Commission, the FBI, the CIA, the House Assassination Committee and a Senate committee chaired by the late Sen. Frank Church, D-Idaho.

Also unsealed would be documents in the presidential libraries of Kennedy, Lyndon B. Johnson and Gerald R. Ford, including the

records of a commission chaired by the late Vice President Nelson Rockefeller that investigated links between the CIA, Oswald and Jack Ruby.

Documents that officials oppose releasing on grounds they might expose currently used intelligence sources or military defense secrets, or grossly violate someone's privacy would be reviewed by an independent five-member committee.

The panel — composed of histo-

rians, attorneys and other professionals — would make the final decision on whether to withhold the sensitive documents. Still to be worked out is a disagreement over who would appoint the panel.

The Bush administration favors the Senate bill, which would have the president select the panel members with the consent of the Senate. The House version would have the judiciary pick the panelists.

BACK - TO - SCHOOL SPÉCIALS

25% OFF

Thursday - Friday - Saturday
ENTIRE STOCK - ALL DEPARTMENTS
TOPS & BOTTOMS

• Mens, Ladies, Kids • Wrangler, Levi,
Pahandlo Slim, Rocky Mountain, Silver Lake, Roper
*Excludes Basic Blue Denim Jeans

WAYNES WESTERN WEAR, INC.

9-6 Daily, 9-8 Thursdays Closed Sunday
Wayne & Carol Strickling Owners - Operators
1504 N. Hobart 665-2925

**With
DWI,
nobody
wins**

Give Your "Texas Rose"
the Anniversary She'll Love



"THE TEXAN DOZEN"
\$19⁹⁵ -16 Red Roses
Arranged

Price Good Aug. 13-15 only
Delivery Available

Freeman's
Flowers & Greenhouses
410 E. Foster
669-3334

AMERICAN EXPRESS
DISCOVER
VISA
MasterCard

Mr. Gatti's PAMPA MALL **DAILY DEALS...**

Best Pizza ... Best Price In Town!!

SUNDAY Large Sampler or Vegetarian Sampler \$9⁹⁹ EACH AS MANY AS YOU WANT	MON/TUE Medium Three Topping \$5⁹⁹ EACH AS MANY AS YOU WANT	WEDNESDAY Large Two Topping \$6⁹⁹ EACH AS MANY AS YOU WANT
THURSDAY Medium Gatti's Favorite Gatti's Deluxe, Vegetarian, Superoni, or Meat Market. \$6⁹⁹ EACH AS MANY AS YOU WANT	FRIDAY Large Three Topping \$7⁹⁹ EACH AS MANY AS YOU WANT	SATURDAY Large Gatti's Favorite Gatti's Deluxe, Vegetarian, Superoni, or Meat Market. \$8⁹⁹ EACH AS MANY AS YOU WANT

PICKUP SPECIAL
3-4-5 DEAL

Small 1-Topping..... \$3 ⁰⁰	665-6566 The best pizza in town. 7/omest! We Now Accept Little Caesar's and Pizza Hut Coupons!
Medium 1-Topping..... \$4 ⁰⁰	
Large 1-Topping..... \$5 ⁰⁰	

Dan Perfect Pizza is now available in Large at many locations.

1992 Property Tax Rates in City of Lefors

This notice concerns 1992 property tax rates for City of Lefors. It presents information about three tax rates. Last year's tax rate is the actual rate the taxing unit used to determine property taxes last year. This year's effective tax rate would impose the same total taxes as last year if you compare properties taxed in both years. This year's rollback tax rate is the highest tax rate the taxing unit can set before taxpayers can start tax rollback procedures. In each case these rates are found by dividing the total amount of taxes by the tax base (the total value of taxable property) with adjustments as required by state law. The rates are given per \$100 of property value.

Last year's tax rate:	
Last year's operating taxes	\$ 24,891.51
Last year's debt taxes	234.80
Last year's total taxes	25,126.31
Last year's tax base	6,714,734
Last year's total tax rate	\$.3739 /\$100
This year's effective tax rate:	
Last year's adjusted taxes (after subtracting taxes on lost property)	\$ 25,050.30
+This year's adjusted taxes (after subtracting value of new property)	\$ 6,554.475
=This year's effective tax rate	\$.38218 /\$100

In the first year a hospital district or city collects the additional sales tax, it must insert the following lines unless its first adjustment was made last year.

- Sales tax adjustment rate	\$ 0 /\$100
=Effective tax rate	\$.38218 /\$100

x1.03=maximum rate unless unit publishes notices and holds hearing

This year's rollback tax rate:	
Last year's adjusted operating taxes (after subtracting taxes on lost property)	\$ 24,835.91
+This year's adjusted tax base	\$ 6,554.475
=This year's effective operating rate	\$.37891 /\$100
x1.08 (or add \$.08 for schools) = this year's maximum operating rate	\$.40922 /\$100
+This year's debt rate	\$ 0 /\$100

A school district must insert the following lines:

=This year's rollback rate before adjustment	\$ -- /\$100
+Rate to recoup lost revenue	\$ -- /\$100
=Adjusted rollback rate	\$ -- /\$100
=This year's rollback rate	\$.40922 /\$100

A hospital district or city that collects the additional sales tax, including one that collects the tax for the first time this year, must insert the following lines:

-Sales tax adjustment rate	\$ 0 /\$100
=Rollback tax rate	\$.40922 /\$100

Schedule A Unencumbered Fund Balances
The following balances will probably be left in the unit's property tax account at the end of the fiscal year. These balances are not encumbered by a corresponding debt obligation.

Type of Property Tax Fund	Balance
General Operating Fund	-

Schedule B 1992 Debt Service
The unit plans to pay the following amounts for long-term debts that are secured by property taxes. These amounts will be paid from property tax revenues (or additional sales tax revenues, if applicable).

Description of Debt	Principal or Contract Payment to be Paid \$-0-	Interest to be Paid 0%	Other Amounts To Be Paid \$-0-	Total Payment \$-0-
NONE				
Total required for 1992 debt service			\$ -0-	
-Amount (if any) paid from funds listed in Schedule A			\$	
-Excess collections last year			\$	
=Total to be paid from taxes in 1992			\$	
+Amount added in anticipation that the unit will collect only % of its taxes in 1992			\$	
=Total Debt Levy			\$ -0-	

Schedule C Expected Revenue from Additional Sales Tax
(For hospital districts, cities and counties with additional 1/2 cent sales tax)
In calculating its effective and rollback tax rates, the unit estimated that it will receive in additional sales and use tax revenues

	\$ -0-
--	--------

Schedule D State Criminal Justice Mandate (For Counties)
The County Auditor certifies that County has spent \$ in the previous 12 months beginning 19 for the maintenance and operations cost of keeping inmates sentenced to the Texas Department of Criminal Justice. County Sheriff has provided information on these costs, minus the state revenues received for reimbursement of such costs.

This notice contains a summary of actual effective and rollback tax rates' calculations. You can inspect a copy of the full calculations at Gray County Appraisal District
Name of person preparing this notice Pat Bagley
Title Chief Appraiser/Tax Assessor/Collector
Date Prepared July 27 1992
B-96

August 13, 1992

Weak economy helps hold down inflation

WASHINGTON (AP) - Consumer prices edged up by a minuscule 0.1 percent in July as the weak economy continued to keep a lid on inflation, the government said today.

Energy prices moderated following a big jump the previous month and food prices dropped for the third time this year.

The Labor Department said the barely perceptible rise in its Consumer Price Index was the best showing since a similar 0.1 percent advance in May. Prices had risen 0.3 percent in June.

For the first seven months of this year, prices are rising at an annual rate of 2.9 percent, even better than last year's 3.1 percent gain. Analysts said the United States is well on its way to the best back-to-back performance on inflation since the mid 1960s.

The weak economy with its accompanying high unemployment rates is keeping price pressures and wage demands well under control, analysts said.

In other economic news today, the Commerce Department said that retail sales rose 0.5 percent in July, reflecting stronger performance at department stores. But analysts said this gain was offset by a downward revision to June sales. The government's revised estimate

has sales falling 0.3 percent in June instead of posting a 0.5 percent increase.

Sales now have fallen in two months this year and the increases since February have been considered lackluster, reflecting consumers' reluctance to spend in a weak economy.

The government also reported today that weekly filings for unemployment benefits dropped by 66,000 in the week ending Aug. 1 after surging by 69,000 in the previous week. The wild swings were attributed to a company-wide shutdown at General Motors Corp. in late July which caused filings to surge temporarily.

In the latest week, total jobless claims fell to 403,000, but analysts said they are not looking for any significant long-term improvement in the labor market until claims break below the 400,000 mark.

The small increase in July consumer prices, the third time this year they have risen by just 0.1 percent, was attributed to moderation in energy costs.

Energy prices had surged by 2 percent in June, the biggest jump since October 1990, but in July the increase was just 0.3 percent. Gasoline pump prices were up 0.6 per-

cent, compared to a 3.2 percent June increase.

Food and beverage prices fell by 0.1 percent in July, with prices charged at grocery stores actually down by 0.2 percent. Over the past 12 months, grocery store prices are down 0.9 percent.

For July, the decline in food costs reflected a 3.6 percent drop in fruit prices, which offset increases in many vegetable prices. Analysts said that production of fruit has been helped by this year's unusually mild and wet summer, while vegetable crops have been hurt.

Excluding the volatile food and energy prices, the so-called core inflation rate was up a moderate 0.2 percent in July, the third straight month it has posted this type of increase.

Airline fares, which had declined nearly 10 percent in the previous two months because of fare wars, rose 3.2 percent in July.

New car prices were up 0.1 percent while used car prices were up 1.1 percent, their fourth consecutive big monthly advance. Since March, used car prices are up by 6.1 percent. Apparel prices fell for a second

straight month, dropping 0.2 percent. Analysts said this reflected end-of-season markdowns, particularly for women's clothing.

Medical care registered the biggest gain of all the major sectors, advancing 0.5 percent. For the last 12 months, medicare care costs are up 7.4 percent.

David Wyss, an economist at DRI-McGraw Hill Inc., said given the current weak economy, it was very likely the Federal Reserve could cut interest rates again in an effort to boost economic demand. But it was unclear whether another rate would be any more effective than 23 previous reductions have been in the past three years.

However, Robert Dederick, chief economist of the Boston Co., said the Fed might shy away from further reductions in light of the current downward pressure on the dollar. The Fed and other central banks intervened earlier this week in a concerted effort to buy dollars on world currency markets to keep the greenback from falling further.

The various changes left the Consumer Price Index, before seasonal adjustment, at 140.5 in July.

CDC suggests routine AIDS testing in hospitals

BOSTON (AP) - Government scientists today said routine AIDS testing at hospitals could identify up to 110,000 people a year who are infected with the virus but don't know it.

The goal of finding such people is to offer them early treatment, which can delay the onset of AIDS symptoms and perhaps prolong life, as well as help them prevent spreading the infection to others.

The study, written by Dr. Robert S. Janssen and colleagues from the Centers for Disease Control, was published in today's New England Journal of Medicine.

Dr. Timothy Dondero, a co-author of the report, said the analysis "is something less than outright recommendation" by the CDC, although "we would anticipate that some hospitals may be encouraged to consider this seriously."

Researchers estimated that in one year their plan would identify 11 percent of all Americans who carry the virus.

About 1 million Americans are thought to be infected, and about one-fifth of them are hospitalized annually. About two-thirds of those are treated for conditions unrelated to AIDS, and most probably don't know they are infected.

Some people oppose large-scale AIDS testing for reasons of privacy or cost-effectiveness.

The CDC report suggests routine, voluntary testing of all patients between 15 and 54 who are seen in hospitals with one or more newly diagnosed AIDS cases for each 1,000 discharges. This would mean testing about 3 million people nationwide.

In an accompanying editorial, Dr. Thomas C. Quinn of the National Institute of Allergy and Infectious Diseases said routine AIDS testing in hospitals makes sense.

However, he noted that such a program would carry costs and responsibilities: Hospitals would have to gear up their labs to handle the extra tests.

Pampa ISD wants to hear from you!

Public Hearing on Pampa ISD's District Site Based Decision Making Plan

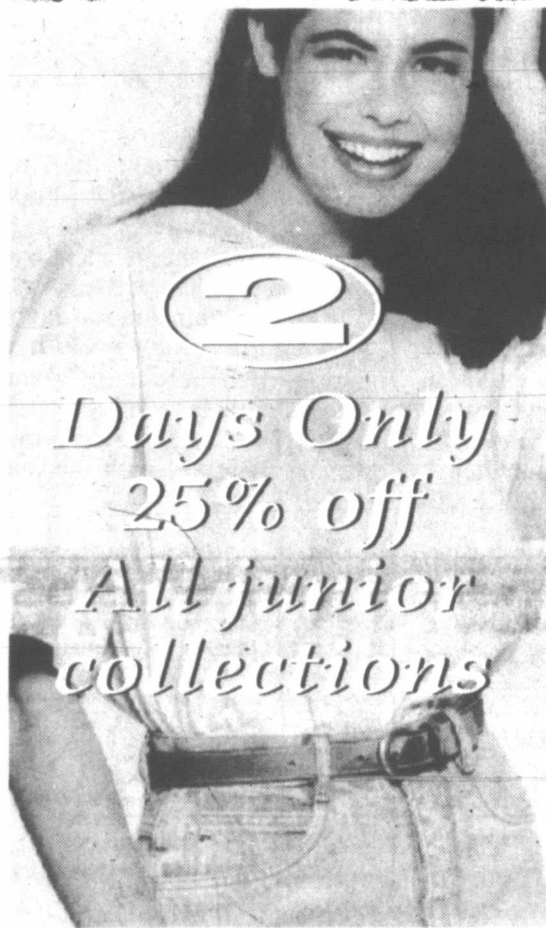
- Learn about the Site-Based Decision Making Process
- Learn how you can get involved
- Give suggestions for the District's Plan

Pampa ISD
321 W. Albert St.

August 18, 1992 6:30 p.m.

2 Day Sale

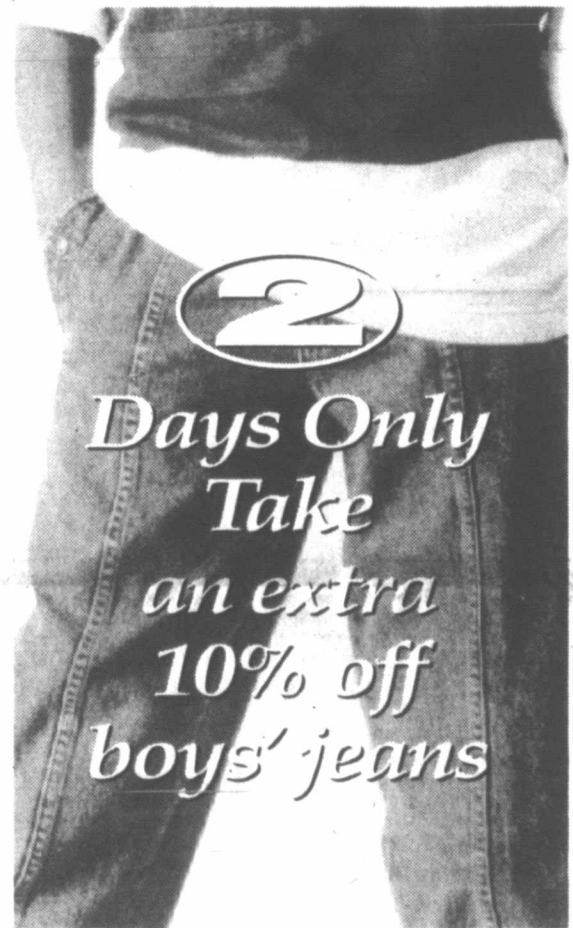
SAT. & SUN. ONLY!



2 Days Only
25% off
All junior
collections



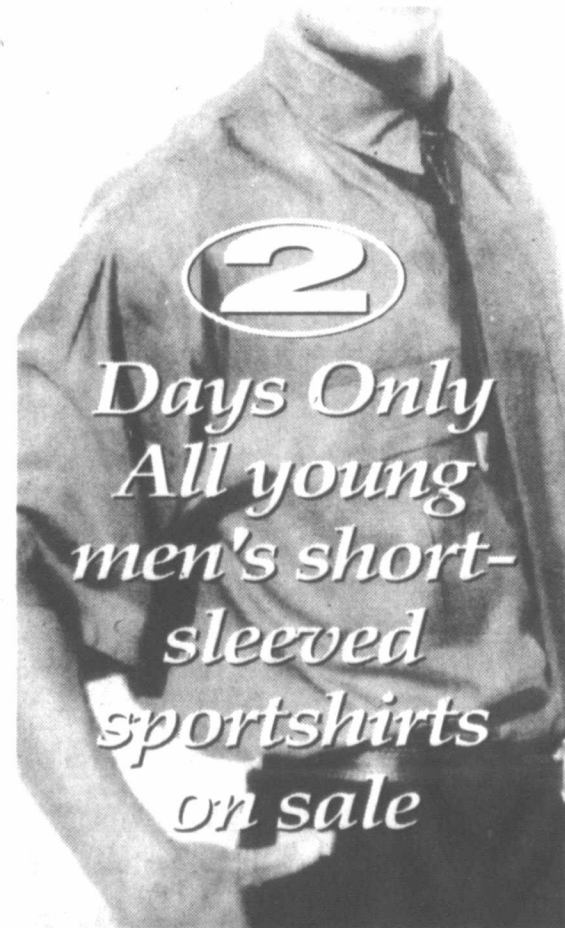
2 Days Only
All
young men's
slacks 12.99



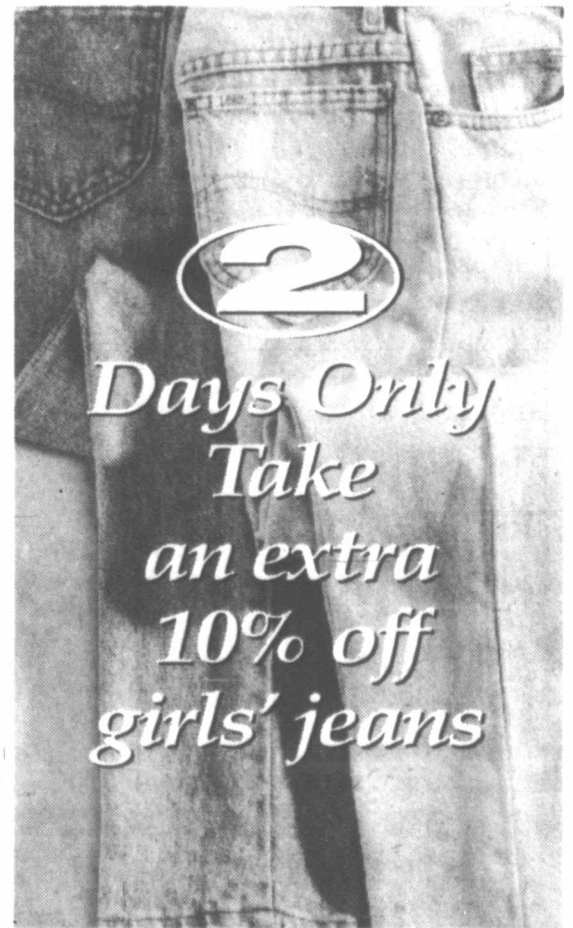
2 Days Only
Take
an extra
10% off
boys' jeans



2 Days Only
25% off
All
woven shirts
for boys



2 Days Only
All young
men's short-
sleeved
sportshirts
on sale



2 Days Only
Take
an extra
10% off
girls' jeans

Heard-Jones HEALTH MART
114 N. Cuyler - Open 8:00-6:00 - 669-7478
SAVE THURSDAY-FRIDAY-SATURDAY

CLASSIC COKE or DIET COKE
12/12 Oz. Cans
\$3.19

CHARMIN BATH TISSUE
4 Roll Pkg. **99¢**

BOUNTY PAPER TOWELS
Jumbo Roll **79¢**

FRIDAY ONLY
ENCHILIDA DINNER..... **\$3.99**
SATURDAY ONLY
HAMBURGER & CHIPS..... **99¢**

HEALTH MART
More Than 700 Stores Nationwide

HEALTH MART
The Sign That Says "We Care."

OUR PHARMACISTS
Bill Hite - Owner - Registered Pharmacist,
Dick Wilson - Registered Pharmacist
ARE COMMITTED TO YOU THE CUSTOMER
24 Hour Emergency Service • 10% Off All
Prescriptions For Senior Citizens • Free City Wide
Prescription Delivery • Heard-Jones Charge • We
Accept All 3rd Party Prescription Cards • Patient
Profiles • Computer Service For Prompt Record
Keeping. Generic Drugs On Request

SALE 10.99
JUNIOR CAMPSHIRT
Fall Fashion Patterns
Reg \$15.99

12.99 SALE
BUGLE BOY WOVEN
Sportshirts For Young Men
Reg. \$20

20% OFF
ALL CASUAL
Shoes For Boys
And Girls

25% OFF
OUR ENTIRE STOCK
Of Cabin Creek Casual
Tops For Misses

20% OFF
ALL ATHLETIC
Apparel For Men
And Women

SAVE \$5-\$12
ALL ATHLETIC
Shoes For Boys
And Girls

© 1992, JCPenney Company, Inc.
10-6 Monday-Saturday
10-8 Thursday
1-5 Sunday

JCPenney
Pampa Mall

EVERYTHING'S ON SALE! INCREDIBLE CREDIT OFFER!

100% REFUND SALE!*

INTENDED TO BE THEIR GREATEST SAVINGS EVENT OF THE YEAR!

SAVINGS NEWS!
TOMORROW!
9 TO 6
READ EVERY WORD!

Johnson
Home Furnishings
801 W. Francis 665-3361

SPECIAL CREDIT OFFER!
In Store Financing
Take Up To 24 months to pay*
New accounts welcome.
*With Approved Credit
BANK CARDS ACCEPTED! 

FINAL WEEKEND!

FOR ONE MAGIC DAY, EVERY BUYER GETS A 100% REFUND!

FINAL WEEKEND!

FAMOUS NAME BRANDS PARTICIPATING!
Ashley Universal
Benchcraft Whirlpool
Sealy Spring Air
Lane White Westinghouse

BRING A FRIEND AND BROWSE FOR HOURS!! IT'S AN INCREDIBLE SAVINGS OPPORTUNITY!

IT SIMPLY TOPS ANY SPECIAL OFFER IN Johnson's 33rd YEAR HISTORY! IT'S A \$500,000 SELECTION AT MAJOR SALE PRICES PLUS, A *TOTAL REFUND TO ALL BUYERS FOR ONE DAY!

33rd

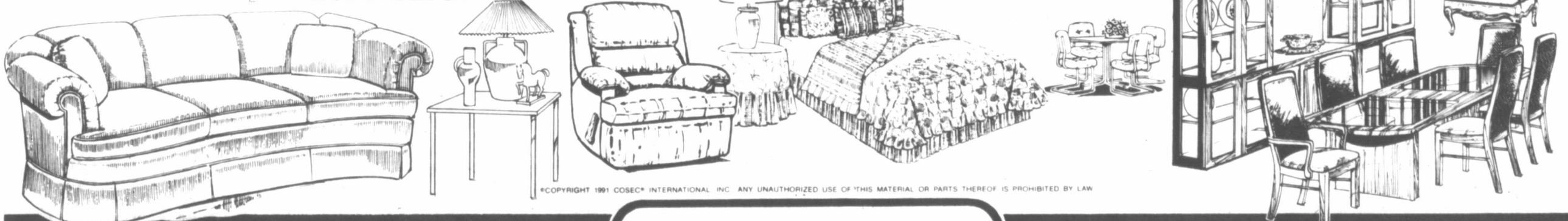
YES! THERE'LL BE MANY WHO RECEIVE FREE FURNITURE! TOTAL PURCHASE PRICE REFUNDED FOR EVERY BUYER ON ONE MAGIC DAY!

REDUCTIONS WILL BE PLAINLY TAGGED ON EVERY ITEM IN THE STORE!

EVERY ITEM WILL BE MARKED DOWN!

- LIVING ROOMS!
- FAMILY ROOMS!
- DAYBEDS!
- TABLES!
- SOFAS!
- DINING ROOMS!
- MATTRESS SETS!
- LAMPS!
- SLEEP SOFAS!
- DINETTES!
- CHESTS!
- DESKS!
- LOVESEATS!
- BEDROOMS!
- NIGHTSTANDS!
- WALL UNITS!
- PIT GROUPS!
- YOUTH BEDROOMS!
- CHAIRS!
- CURIOS!
- SECTIONALS!
- TRUNDLE BEDS!
- ROCKERS!
- PICTURES!
- RECLINERS!
- BUNK BEDS!
- ACCESSORIES!

PLUS MUCH, MUCH MORE!



* Yes! Shoppers, during one day of this incredible event, will receive all their money back!! A 100% refund!

Incredible, but true! Purchase anything and everything you need for your home at special sale prices. If your purchase is made on the day selected, you will receive the total purchase price refunded!

Yes!! It sounds too good to be true!! However, we will honor each and every purchase receipt with a 100% refund on one special day of this remarkable event!! This may very well be the best opportunity you'll ever have to own a houseful (or one piece) of furniture absolutely free!

EXTRA Salespeople, EXTRA Credit Personnel, EXTRA Office Staff, plus EXTRA Delivery People will be here to assist you!

IT'S THE FINAL COUNTDOWN!
Friday !
9 TO 6 !
Saturday !
9 TO 6 !
IT ENDS SOON!
DON'T MISS IT!

SALE RULES FOR THE EVENT!!

- *1. Each and every sale day is eligible for the 100% refund!
- *2. All purchases are final and may be purchased with approved bank cards, cash, check, or special credit arrangements through Johnson's.
- *3. All sales must be delivered, picked up, or declared bona fide by Johnson's on or before Monday, Aug. 17 to be eligible for the 100% refund day!
- *4. At the end of each day of the event (not to exceed (13) days) all sales will be totalled. At the end of the event the total sales will be divided by the number of days of the event. This is the "average daily sales".
- *5. The sale day that matches or comes closest (not to exceed) to the "average daily sales" figure is the 100% refund Day!
- *6. Each and everyone who made a bona fide purchase on that sale day (Average daily sales' day) will receive a 100% refund of their total purchase price!
- *7. Sorry, employees and their family members, plus finance people, are not eligible for the 100% refund.
- *8. PLUS, you can register for a chance to win free furniture! One lucky winner will receive a gift certificate equal to the average sale amount on the winning day! No purchase necessary...need not be present to win! Ask for all the details at the store.

THAT ENTIRE HOUSEFUL...

...of fine furniture you need can be yours...buy 3, 4, 5, or more roomfuls of new home furnishings and save hundreds and hundreds of dollars now!

Johnson
Home Furnishings
801 W. Francis 665-3361

SPECIAL CREDIT OFFER!

In Store Financing
Take Up To 24 months to pay*
New accounts welcome.
*With Approved Credit

BANK CARDS ACCEPTED! 

Force resolution to be approved as U.N. rights meeting opens

SARAJEVO, Bosnia-Herzegovina (AP) — Yugoslavia's premier came to this besieged city on a peace mission today just hours before the United Nations was to vote on using military force to protect aid shipments.

Milan Panic's arrival in the Bosnian capital came after Bosnia's Serbs, seeking to consolidate their territorial gains from five months of civil war, announced the establishment of an independent state.

The Serb hard line and mounting charges of Serb human rights violations are likely to strengthen calls for international action to aid Bosnia-Herzegovina's besieged Muslims and Croats, who are vastly outnumbered.

Panic arrived by plane from Belgrade and was at U.N. headquarters, local officials said. It was not immediately clear whom he would meet.

The premier, an American businessman, has been struggling to improve Serb-dominated Yugoslavia's image and promote conciliation.

He has said he wanted to discuss an exchange of prisoners and the possibility of opening a new route for humanitarian aid to Sarajevo.

On Wednesday, Panic declared that Yugoslavia, now comprised only of Serbia and Montenegro, would recognize Bosnia-Herzegovina within its present borders. But Panic has been opposed by more powerful Yugoslav officials, including President Dobrica Cosic, who suggested in a recent interview that Bosnian Serbs have the right to split from Bosnia.

The U.N. Security Council was expected this afternoon to approve the use of force to ensure humanitarian shipments.

It would be the United Nations' boldest action to date in the Balkan crisis. On May 30, it imposed economic sanctions on Yugoslavia for backing Serb fighters in Bosnia.

A second U.N. resolution being voted on today calls for an end to atrocities and for the collection of evidence that could set the stage for war crimes trials.

Bosnian Serbs have seized about two-thirds of the republic since its majority Muslims and Croats voted for independence on Feb. 29.

More than 8,000 people have died in the fighting and some 1 million people have been forced from their homes as a result of so-called "ethnic cleansing."

The U.N. threat of force may ensure that aid gets through; relief officials report a lack of Serb resistance to food and medicine shipments in recent days.

But many of the besieged supporters of Bosnia's government who would ostensibly benefit from opening of aid corridors are angry at the West for refusing to provide the military support they say they need to end the war.

They predict a flood of refugees will flee besieged areas once U.N.-secured supply routes are set up.

"If the road is open, I'm leaving," Anna Muftic, a 19-year-old waitress at The Broadway cafe near Sarajevo's front line, said Tuesday. "Why should I stay here to die? Five months of this is too much."

Serb forces, faced with growing world outrage over reports of atrocities at detention camps, the eviction of Muslims and Croats from Serb-controlled lands and the brutal shelling of Sarajevo, allowed more than 300 mothers and children to leave the Bosnian capital on Wednesday.

The first evacuation in 12 days was seen by some, however as a way for the Serbs to empty the city of civilians and make way for a final assault.

The United Nations today sent a convoy of three trucks with food, medicine and observers to the northwestern town of Banja Luka to try to

persuade terrified residents to stay put. On Wednesday, the U.N. High Commission for Refugees challenged Serbs on their plans to evict 28,000 Muslims from besieged towns in the area.

Serb forces were also accused of playing a shell game with Western investigators.

John Bolton, an assistant U.S. secretary of state, said in Geneva that Washington has received reports that Bosnian Serbs are trying to move prisoners before allowing the Red Cross to inspect detention camps.

Bolton attended an emergency session of the U.N. Human Rights Commission in Geneva today that was

called to examine atrocities in former Yugoslavia. "We want access to all of these supposed camps immediately and without impediment before these transfers of prisoners become more widespread," Bolton told reporters.

Most of the commission's 53 member countries support naming a special investigator who would start compiling evidence that could be used in any future war crimes trials. Supporting Bolton's allegations, the London newspaper *Today* reported that thousands of starving and

mutilated prisoners were being shifted around. Bosnian Serbs on Tuesday declared creation of a new state with its own national anthem and a flag bearing the red, blue and white colors of Serbia, the Belgrade-based *Tanjug* news agency said.

The announcement did not specify the borders but said the state would include all land inhabited by Serbs and regions where "genocide" was conducted against them by Muslims and Croats during World War II.



A Muslim refugee cries as she holds her baby near a detention camp Tuesday.

318 E. 17th 665-2502
Burgers and Shakes
 Prices Good Thru August
Burrito & Small Coke \$1.00
Burritos 2 for \$1.00
Chef Salad \$2.50
 Includes Bread Stick

AMERICAN NATIONAL STUDIOS PRESENTS
American Glamour
HIGH FASHION PHOTOGRAPHY AFFORDABLE FOR EVERYONE!
 \$100 value for only **\$12⁹⁵**
 Glamour Sitting Fee Includes:
 • Complete makeover and hairstyling
 • Wardrobe & accessory changes
 • Personal glamour photo session
 • View proofs in two hours
 BEFORE AFTER
 See Glamour Photo Representative
Thurs., Aug. 13-Sat., Aug. 22
 to make your appointment for your Glamour sitting
 at the
Pampa Mall
 2545 Perryton Parkway
 Charge Card Appointments only 1-800-825-5155

QUALITY TESTED!
 More than 1500 engineers and technicians evaluate and test our products to our exacting standards.

Radio Shack SINCE 1921
AMERICA'S TECHNOLOGY STORE

HOTTEST DEALS OF THE SUMMER SALE

0% INTEREST UNTIL 1993*
 On \$200 Minimum Purchase of Computer Products Beginning Aug. 13

729⁸⁸ **SAVE \$509**
 Low As \$25 Per Month • **Great Savings! We Have the Perfect PC for Your Home**

Includes 26 DeskMate® Home-Oriented Applications

- Tandy 1000 RLX-FD PC ■ VGM-220 VGA color monitor
- 2400-bps modem ■ DeskMate® Outliner
- DeskMate Thesaurus Companion

Reg. Separate Items 1239.75
 #25-1452/4044/1037/1364/1365

Save \$391—Tandy 1000 RLX-FD System with color VGA monitor, printer, paper, printer cable and 3-Pak 3½" diskettes
 Reg. Separate Items 1280.28. #25-1452/4044, #26-130/288/432/2866

888⁸⁸

Add a 40MB hard drive (#25-1048) to either system for only \$200
 Get Lotus 1-2-3 (#25-1918) for only 99.95

*0% interest until January 1993 on approved RSVP account with single-ticket purchases totaling \$200 or more of computer products only. Minimum monthly payment required. If a monthly payment is late or is missed during the 0% interest period, the account reverts to a regular account and interest will accrue as of the statement payment date. Following the 0% interest period or if a payment is late or missed, any remaining balance is subject to a finance charge of up to 21% APR, depending on your state of residence (the minimum monthly finance charge). Refer to your RSVP Account Agreement. Offer valid on qualifying purchases made between August 13-September 5, 1992.

1992 Property Tax Rates in Alanreed ISD

This notice concerns 1992 property tax rates for Alanreed ISD. It presents information about three tax rates. Last year's tax rate is the actual rate the taxing unit used to determine property taxes last year. This year's effective tax rate would impose the same total taxes as last year if you compare properties taxed in both years. This year's rollback tax rate is the highest tax rate the taxing unit can set before taxpayers can start tax rollback procedures. In each case these rates are found by dividing the total amount of taxes by the tax base (the total value of taxable property) with adjustments as required by state law. The rates are given per \$100 of property value.

Last year's tax rate:

Last year's operating taxes	\$ 49,843.42
Last year's debt taxes	\$ 0
Last year's total taxes	\$ 49,843.42
Last year's tax base	\$ 23,187,460
Last year's total tax rate	\$.2150 /\$100

This year's effective tax rate:

Last year's adjusted taxes (after subtracting taxes on lost property)	\$ 49,799.68
+This year's adjusted taxes (after subtracting value of new property)	\$ 22,482,940
=This year's effective tax rate	\$.22149 /\$100

In the first year a hospital district or city collects the additional sales tax, it must insert the following lines unless its first adjustment was made last year.

-Sales tax adjustment rate	\$ 0 /\$100
=Effective tax rate	\$.22149 /\$100

x1.03=maximum rate unless unit publishes notices and holds hearing

This year's rollback tax rate:

Last year's adjusted operating taxes (after subtracting taxes on lost property)	\$ 49,799.68
+This year's adjusted tax base	\$ 22,482,940
=This year's effective operating rate	\$.22149 /\$100
x1.08 (or add \$.08 for schools) = this year's maximum operating rate	\$.30149 /\$100
+This year's debt rate	\$ 0 /\$100

A school district must insert the following lines:

=This year's rollback rate before adjustment	\$.30149 /\$100
+Rate to recoup lost revenue	\$ 0 /\$100
=Adjusted rollback rate	\$.30149 /\$100

=This year's rollback rate

\$.30149 /\$100

A hospital district or city that collects the additional sales tax, including one that collects the tax for the first time this year, must insert the following lines:

-Sales tax adjustment rate	\$ 0 /\$100
=Rollback tax rate	\$.30149 /\$100

Schedule A Unencumbered Fund Balances
 The following balances will probably be left in the unit's property tax account at the end of the fiscal year. These balances are not encumbered by a corresponding debt obligation.

Type of Property Tax Fund	Balance
Maintenance & Operations	\$ -0-

Schedule B 1992 Debt Service
 The unit plans to pay the following amounts for long-term debts that are secured by property taxes. These amounts will be paid from property tax revenues (or additional sales tax revenues, if applicable).

Description of Debt	Principal or Contract Payment to be Paid	Interest to be Paid	Other Amounts To Be Paid	Total Payment
NONE (Expand as needed)	\$	\$	\$	\$
Total required for 1992 debt service	\$ -0-	\$	\$	\$
-Amount (if any) paid from funds listed in Schedule A	\$	\$	\$	\$
-Excess collections last year	\$	\$	\$	\$
=Total to be paid from taxes in 1992	\$	\$	\$	\$
+Amount added in anticipation that the unit will collect only % of its taxes in 1992	\$	\$	\$	\$
=Total Debt Levy	\$	\$	\$	\$

Schedule C Expected Revenue from Additional Sales Tax
 (For hospital districts, cities and counties with additional 1/2 cent sales tax)
 In calculating its effective and rollback tax rates, the unit estimated that it will receive \$NONE in additional sales and use tax revenues.

Schedule D State Criminal Justice Mandate (For Counties)
 The County Auditor certifies that County has spent \$ in the previous 12 months beginning 19 for the maintenance and operations cost of keeping inmates sentenced to the Texas Department of Criminal Justice. County Sheriff has provided information on these costs, minus the state revenues received for reimbursement of such costs.

This notice contains a summary of actual effective and rollback tax rates' calculations. You can inspect a copy of the full calculations at Gray County Appraisal District, 815 N. Sumner Pampa, Tx.
 Name of person preparing this notice W. Pat Bagley
 Title Chief Appraiser
 Date Prepared August 10, 1992
 B-94

The Best Selection of Telephones and Accessories at Over 6600 Locations

79⁹⁵* **LAST 3 DAYS!**
TANDY SAVE \$120 Cellular Telephone
 Low As \$15 Per Month •
 Reg. 199.95 #17-1077
 Sale Price Ends 8/15/92

69⁹⁵
DUOFONE SAVE \$30 Cordless Phone
 Low As \$15 Per Month •
 Reg. 99.95 #43-571
 Tone/pulse dialing

14⁸⁸ **LAST 3 DAYS!**
Radio Shack CUT 25% Personal Phone
 One-touch redial
 Reg. 19.95 #43-500
 Tone/pulse dialing
 Sale Price Ends 8/15/92

159⁹⁵
DUOFONE CUT 25% Phone Answerer
 Low As \$15 Per Month •
 Reg. 79.95 #43-700

Over 50 Powerful Calculators on Display at Over 6600 Locations

7⁹⁵ **LAST 3 DAYS!**
Radio Shack Data Organizer
 50 names/numbers
 Reg. 12.95 #65-944
 Sale Price Ends 8/15/92

14⁹⁵
Radio Shack GREAT BUY! Checkbook Calc
 Dual powered
 Everyday Low Price #65-570

18⁸⁸
Radio Shack CUT 48% Science Calculator
 23 built-in formulas
 Reg. 34.95 #65-991

4⁷⁷
Radio Shack CUT 40% Tilted-display Calculator
 Solar/battery powered
 Reg. 7.95 #65-560

America's First Choice for Quality Electronics — Nobody Compares

79⁹⁵ **LAST 3 DAYS!**
REALISTIC SAVE \$20 Car Cassette
 Low As \$15 Per Month •
 AM/FM ■ Digital tuner
 Reg. 99.95 #12-1947
 Sale Price Ends 8/15/92

39⁹⁵ **LAST 3 DAYS!**
REALISTIC CUT 20% Mini CB Radio
 Reg. 49.95 #21-1519
 Save 26% Mag. mount antenna.
 Reg. 26.95 #21-940. Sale 19.95
 Sale Price Ends 8/15/92

129⁹⁵
Chronosette CUT 25% Cassette Alarm
 Listen to AM, FM, CASS. Reg. 39.95 #12-1581

ENERCELL Alkaline Batteries
 Buy 2 Packs, get a 3rd for 1¢
 LAST 3 DAYS!

Size	Cat No	Reg.	3 packs
N	23-0023	1.59	3.19 (6 cells)
C	23-556	2.99	3.19 (6 cells)
D	23-551	2.99	3.19 (6 cells)
AA	23-552	2.89	5.79 (12 cells)
AAA	23-553	1.89	3.79 (12 cells)
AAA	23-555	1.59	3.19 (6 cells)

 Offer good on 3 packs of SAME SIZE only
 Sale Price Ends 8/15/92

Most battery-powered items exclude batteries. SWITCHABLE TOUCH-TONE/PULSE phones work on both tone and pulse lines. Therefore, it areas having only pulse (rotary-dial) lines, you can still use services requiring tones. FCC registered. Not for sale in certain states. We service what we sell. *Requires new activation and minimum service commitment with Radio Shack cellular phone carrier except where prohibited by state law (5/7/95 without activation). See store manager for details. Offer void in CA.

Radio Shack ValuePlus® Revolving Credit. Payment May Vary Depending Upon Your Purchases.

Most Major Credit Cards Welcome

PRICES APPLY AT PARTICIPATING STORES AND DEALERS Sale Prices End 9/5/92 Except Where Noted

Lifestyles



Dear Abby

Abigail Van Buren

Woman is losing sleep over her fear of the dark

DEAR ABBY: I am a perfectly normal 28-year-old woman in the daytime, but as soon as it gets dark outside, I change. I fear the dark! I don't go outside alone after dark unless it is absolutely necessary. I am afraid to be home alone at night and, when I am, I become so frightened that my heart pounds! I have had two "peeping Tom" incidents. If I go to bed before my husband does, I can fall asleep just fine. But if he goes to bed first, I have trouble. I can't stay up and watch television by myself. Sometimes I wake up in the middle of the night and think it had to be for a reason, so I listen to see if someone is trying to break into the house. If I hear a noise, my heart pounds and I cannot go back to sleep. We have an alarm system in our home, and I still don't feel safe. Please, can you tell me where I should seek help? All I want is to feel safe and normal again at night.

problems home with me. It worked for a while; then she went back to her old ways. I've tried changing the subject and dropping hints, but I can't seem to get her to stop. We were close friends years ago, and I got her this job, and now I regret it. I love my job and don't want to quit. What can I do?

SHAKY NERVES
DEAR SHAKY: Obviously, you can't avoid her, so explain that you want to help her, and need her cooperation: Tell her that she needs to be reminded to stop depressing people with her negative conversation, so from now on when she starts in with a "downer," you will walk away. Perhaps your friend needs professional help. Suggest it — it would be a kindness.

DEAR ABBY: I am the mother of a 12-year-old boy who is going into the seventh grade. He is a good student and has never been in trouble. We live on a quiet street with only two boys his age. Both boys just had their ears pierced, and now our son wants to have his ears pierced, too. I don't mind him having it done, but my husband says it is feminine, and the only reason he wants it done is because his friends have done it. What is your opinion?

MOM
DEAR MOM: Your husband is right when he says the only reason the boy wants to pierce his ears is because his friends have done it. But he's wrong to say it's "feminine" — in some circles, it's considered a symbol of "belonging."

SCARED
IN WEST PALM BEACH, FLA.
DEAR SCARED: Sometimes fears are triggered by "real" incidents — but instead of diminishing when the incident is over, they continue to grow. Therapy can help you overcome your anxiety. Seek help from a psychologist or psychiatrist who specializes in phobias.

DEAR ABBY: I work in a small office with a woman who never shuts up. What makes it worse is that 90 percent of what she says is negative. I have tried telling her that I can't tolerate any more of her complaining because I take her

Wives of politicians have ambition of their own

By GOOD HOUSEKEEPING For AP Special Features

Today's Washington wives have their own intellectual and professional pursuits — and they no longer make any bones about hiding their ambition.

The new look in wives can be seen in women such as Marilyn Quayle, Heather Foley, Georgette Mosbacher and Elizabeth Dole, according to an article by Carl Anthony in the current issue of Good Housekeeping.

Marilyn Quayle, a lawyer, pushed her husband, Vice President Dan Quayle, into position to try for the top spot in 1996.

The daughter of two doctors, Marilyn Quayle said:

"I was going to be a lawyer from the time I was little. And wasn't going to get married. Wasn't going to have children. I was going to be the superlawyer of my generation."

Now she says: "I'd like to dispel the myth that when you put a wedding ring on a woman, her brain stops."

She is chairman of the International Disaster Advisory Commission, part of the U.S. Agency for International Development, and she serves on the Federal Emergency Management Agency's advisory board, which coordinates global disaster relief.

Through the Susan Komen Foundation, she is spokesperson for breast cancer awareness, the disease that took her mother. She even influenced President Bush to authorize \$50 million in fiscal 1991 state grants to assist in breast and cervical cancer education, detection and prevention.

The ultimate ambition for Marilyn is the top prize — president's wife. She does not deny that Dan is going to run for president in 1996, confident of a Bush-Quayle victory in 1992.

Heather Foley, wife of Speaker of the House Thomas Foley, also is a lawyer as well as her husband's unsalaried chief of staff.

Employed in politics since Lyndon Johnson's 1964 campaign, she met Foley while working for Washington Sen. Henry Jackson. Heather Foley's father was a

senior official in the Agency for International Development, which gave her a global perspective — she lived in Greece, taught math in Pakistan, English in Egypt and, in 1968, married in Sri Lanka.

As the speaker's wife, she immediately began to computerize his office and make the flow efficient. As part of her job she can predict the exact amount of time necessary for a Democratic caucus vote, the number of ballots necessary to elect an assistant whip, and the head count needed for a vote. Part of her power comes in her anonymity.

"I don't have to see my name in print or my picture. It's not my thing," she said.

Georgette Mosbacher, wife of the House Thomas Foley, also is a lawyer as well as her husband's unsalaried chief of staff.

When she wanted to buy the Swiss company specializing in expensive skin-care products, she was relentless in pursuing the takeover bid. She got it in 1988 for

\$31 million and sold it in 1991 for about \$45 million.

Elizabeth "Liddy" Dole, wife of Sen. Robert Dole, currently is director of the Red Cross. A graduate of Harvard Law School, she planned the first national conference on education of the deaf under President Johnson. Under Nixon she served in the Office of Consumer Affairs. Under President Reagan she became the first woman secretary of transportation. Bush named her secretary of labor and she has been considered a potential vice presidential candidate.

In her current job as president of the American Red Cross, she oversees a staff of 23,000. Her first day on the job she declared she would "volunteer" without salary for her first year. Her husband was against her turning down the \$200,000 Red Cross salary — but she did.

She already is called "Mrs. President" at the Red Cross, and her official biography states that in a poll she "was chosen by a significant margin as the one most likely to be the first female President of the United States."

Home economics teachers attend Dallas conference

Gaylene Skaggs, Katie McDonald, Fran Stellman and Amber Killebrew, vocational home economics teachers at Pampa High School, attended a professional development conference coordinated by the Home Economics Division of the Texas Education Agency, Aug. 2-6, in Dallas.

The official conference opened Aug. 3 evening with speaker Emory Austin offering "Close Encounters of the Crucial Kind" on building self esteem, productivity, and survival in the midst of change.

On Aug. 4-5, home economics educators attended workshop sessions which covered topics ranging from marketing strategies, campus-based management, strategic planning, to other home economics specialty areas.

Karl Davidson, with twenty-two years experience in helping to reach the hard-to-teach, spoke on "Using Your Brain...for a Change" giving practical information and skills to enable teachers to make a difference.

According to Davidson, "It's time

to make learning fun again and to put what has been learned into action."

Dr. Blandina Cardenas Rameriz, vice-president of institutional advancement at Our Lady of the Lake University in San Antonio, closed the conference by addressing societal issues teachers must deal with such as the multi-cultural classroom, global society, stress on the

family unit, the high demands of the world of work and ways teachers can make significant differences in the lives of their students.

"Vocational home economics education is changing significantly as we prepare young men and women to meet the challenges of the twenty-first century," said Mary Mathieson, Abilene, president of VHETAT.

Tutor training set by literacy council

Pampa Area Literacy Council is offering a tutor training workshop 6 - 10 p.m., Aug. 21, and 8 a.m. - 4:30 p.m., Aug. 22, at Lovett Library. A light lunch will be served on Saturday.

This workshop will be a combined Laubach Way to Reading and Laubach Way to English. Upon completion, the new tutors will be certified in both areas, according to information from the council.

H&R BLOCK TAX COURSE TO BEGIN

H&R BLOCK is offering a Basic Income Tax Course starting on September 10th.

The 66-hour course is taught by experienced H&R BLOCK personnel and certificates are awarded to all graduates. Classes will be held at numerous locations in Amarillo. While thousands of

job opportunities are available, graduates are under no obligation to accept employment with H&R BLOCK. Courses are approved by the Texas Education Agency. Registration forms and brochures can be obtained from H&R BLOCK at 300 W. 10th, 373-0777 or 1-800-TAX-2000.

PHS courses eliminated

In July 1992, the Texas State Board of Education, headed by commission Skip Meno, removed certain high school courses from the list of courses approved for state graduation credit. This change is effective prior to the beginning of the 1992-93 school year.

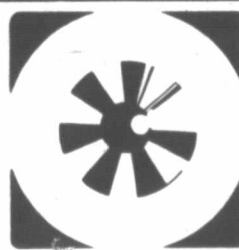
The courses deleted from the curriculum for 1992-93 are correlated language arts I, fundamentals of mathematics, consumer math, introductory physical science and applied biology. Beginning in the school year of 1993-94, correlated language arts II, correlated language arts III and correlated language arts IV will be deleted. After the 1995-96 school year, pre-algebra will not be offered.

Students who were enrolled in correlated language arts I are placed in English I. Students who were enrolled in fundamentals of math or consumer math are placed in pre-algebra. Students who were enrolled in introductory physical science are placed in physical science. Students who were enrolled in applied biology are placed in biology.

According to information from Pampa High School, the phase out is intended to raise performance standards for all students and to pre-

pare them for success in the real world.

Questions may be addressed to principal Daniel Coward or counselors Barbara Evans, JoAnne Jones or John Middlebrooks at Pampa High School.



REGIONAL EYE CENTER

Diseases And Surgery Of The Eye

Is Pleased To Announce The Association Of THOMAS L. BAKER, O.D., T.

With

GEORGE R. WALTERS, M.D.
MARK F. HOLLINGSWORTH, M.D.

107 W. 30th, PAMPA
1-800-322-3931

HARVY MART #2

Phone-In Orders Welcome 665-8521

1020 E. Frederic
Store Hours: 6 a.m. - 11 p.m.
Deli Hours: 6 a.m. - 10:30 p.m.
OPEN 7 DAYS A WEEK

Prices Good 8-13-92 8-16-92 665-8531

Deli Foods

- Big Beef Burger 1/2 Lb. Patty...\$2.29 with cheese..... \$2.49
- Bar-B-Q Sandwich..... 99¢
- Corn Dogs..... 2 for \$1.00
- Fresh Fried Chicken..10 pieces w/dinner rolls \$6.99

12 Pk. Cans
COCA-COLA
\$3.59

Plains Protein Plus
MILK
\$2.19 Gal.

Mrs. Bairds
BREAD
99¢ Loaf

Nolan's Delicious
FRIED PIES
2/99¢

Plains Red Ring
ICE CREAM
\$2.19 Gal.

Harvy's Fresh Daily
POTATO SALAD
99¢ Pint

12 Pk.-12 Oz. Cans
MILWAUKEE'S BEST
\$4.69

24-12 Oz. Cans
Suitcase
COORS
\$12.89

24-12-Oz. Cans
Suitcase
BUDWEISER
\$12.89

1992 Property Tax Rates in Pampa ISD

This notice concerns 1992 property tax rates for Pampa ISD. It presents information about three tax rates. Last year's tax rate is the actual rate the taxing unit used to determine property taxes last year. This year's effective tax rate would impose the same total taxes as last year if you compare properties taxed in both years. This year's rollback tax rate is the highest tax rate the taxing unit can set before taxpayers can start tax rollback procedures. In each case these rates are found by dividing the total amount of taxes by the tax base (the total value of taxable property) with adjustments as required by state law. The rates are given per \$100 of property value.

Last year's tax rate:	
Last year's operating taxes	\$ 3,640,051.84
Last year's debt taxes	\$ 0
Last year's total taxes	\$ 3,640,051.84
Last year's tax base	\$ 782,806,847
Last year's total tax rate	\$ 465 /\$100
This year's effective tax rate:	
Last year's adjusted taxes	\$ 3,462,673.98
(after subtracting taxes on lost property)	
+This year's adjusted taxes	\$ 747,000,244
(after subtracting value of new property)	
=This year's effective tax rate	\$ 46354 /\$100

In the first year a hospital district or city collects the additional sales tax, it must insert the following lines unless its first adjustment was made last year.

- Sales tax adjustment rate	\$ 0 /\$100
=Effective tax rate	\$ 46354 /\$100
x1.03=maximum rate unless unit publishes notices and holds hearing	
	\$ 47744 /\$100
This year's rollback tax rate:	
Last year's adjusted operating taxes	\$ 3,462,673.98
(after subtracting taxes on lost property)	
+This year's adjusted tax base	\$ 747,000,244
=This year's effective operating rate	\$ 46354 /\$100
x1.08 (or add \$.08 for schools) = this year's maximum operating rate	\$ 54354 /\$100
+This year's debt rate	\$ 0 /\$100

A school district must insert the following lines:	
=This year's rollback rate before adjustment	\$ 54354 /\$100
+Rate to recoup lost revenue	\$ 06808 /\$100
=Adjusted rollback rate	\$ 61162 /\$100
=This year's rollback rate	\$ 61162 /\$100

A hospital district or city that collects the additional sales tax, including one that collects the tax for the first time this year, must insert the following lines:	
-Sales tax adjustment rate	\$ 0 /\$100
=Rollback tax rate	\$ 61162 /\$100

Schedule A Unencumbered Fund Balances
The following balances will probably be left in the unit's property tax account at the end of the fiscal year. These balances are not encumbered by a corresponding debt obligation.

Type of Property Tax Fund	Balance
Maintenance & Operations	\$1,700,000.00

Schedule B 1992 Debt Service
The unit plans to pay the following amounts for long-term debts that are secured by property taxes. These amounts will be paid from property tax revenues (or additional sales tax revenues, if applicable).

Description of Debt	Principal or Contract Payment to be Paid \$	Interest to be Paid 0%	Other Amounts To Be Paid \$	Total Payment \$
NONE				
(Expand as needed)				
Total required for 1992 debt service	\$ -0-			
-Amount (if any) paid from funds listed in Schedule A	\$			
-Excess collections last year	\$			
=Total to be paid from taxes in 1992	\$			
+Amount added in anticipation that the unit will collect only % of its taxes in 1992	\$			
=Total Debt Levy	\$			

Schedule C Expected Revenue from Additional Sales Tax
(For hospital districts, cities and counties with additional 1/2 cent sales tax)
In calculating its effective and rollback tax rates, the unit estimated that it will receive in additional sales and use tax revenues.

Schedule D State Criminal Justice Mandate (For Counties)
The County Auditor certifies that County has spent \$ in the previous 12 months beginning 19 for the maintenance and operations cost of keeping inmates sentenced to the Texas Department of Criminal Justice. County Sheriff has provided information on these costs, minus the state revenues received for reimbursement of such costs.

This notice contains a summary of actual effective and rollback tax rates' calculations. You can inspect a copy of the full calculations at Gray County Appraisal District, 815 N. Sumner Pampa, Tx.
Name of person preparing this notice W. Pat Bagley
Title Assessor/Collector Pampa ISD
Date Prepared August 10, 1992
B-95

The Pampa News

Comic Page

The World Almanac® Crossword Puzzle

ACROSS

- Place
- Diving bird
- Monk's title
- Future
- LL.Bs.' exam
- Roof overhang
- Tin Tin (movie dog)
- Eugene O'Neill's daughter
- Adhering
- Highest note
- Seed covering
- Author of Picnic
- Goose group
- Horatio
- Repetition
- Bitter vetch
- Fiddling emperor
- Plant firmly: var.

DOWN

- Red liqueur (2 wds.)
- Seclude

Answer to Previous Puzzle

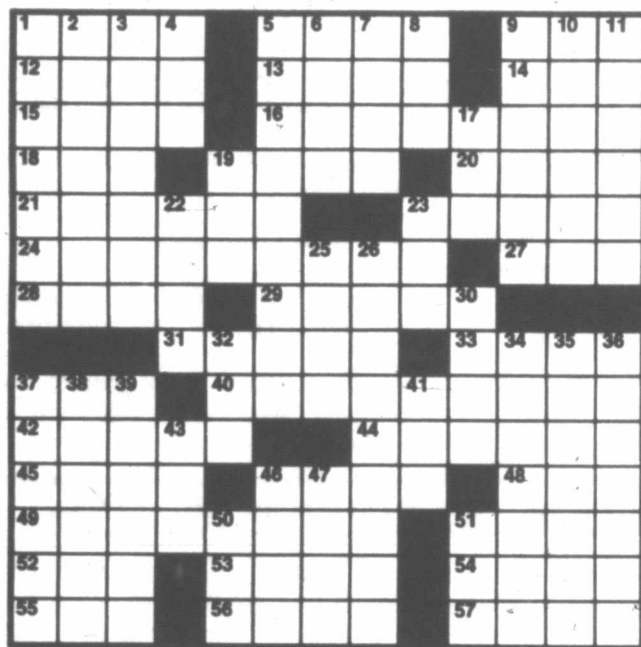
PEWS	MIA	PEGO
ROAN	ENS	ROAR
ONTO	AGA	YAWL
ASTRIDE	KINKY	
ENE	MAN	
KIOSK	HUNGARY	
ULU	PENS	MOE
NIT	PERI	MON
GESTURE	KNOTS	
ELK	TOA	
KRAAL	HOARDER	
ROBS	MOM	RULE
ITBE	MUM	ONAN
SHAD	CRY	WELD

ACROSS

- Edge
- Substitute
- Riles
- Baseballer
- Hodges
- Fast messages
- Afraid
- City in Oregon
- Pulls away
- Negative word
- Experienced person
- Tree fluids
- Cravats
- Spawn
- Song syllable

DOWN

- Scarlet songbird
- Airline info
- Exudation
- African land
- Sinister
- Skin problem



(c) 1992 by NEA, Inc.

WALNUT COVE

By Mark Cullum

A friend recommended this book to me... "Relaxation-The Key to Crisis Management."

Yeah, my wife read that.

She did?

She must have.

Every time I start to relax, she manages to have a crisis.

ARLO & JANIS

By Jimmy Johnson

GENE!!

RUN OUT AND SEE IF THE PAPER'S COME, OK?

YOU WANT IT? WHY DON'T YOU GO GET IT?

MOM, WHAT IS A "PECKING ORDER"?

ECK & MEEK

By Howie Schneider

MISS, CAN I TAKE THIS MEAL HOME WITH ME?

OF COURSE, SIR...

I DON'T SEE WHY NOT

WELL I TRIED LAST NIGHT AND DIDN'T MAKE IT

B.C.

By Johnny Hart

HOW DO YOU KNOW A GOOD KISS FROM A GREAT KISS?

A GOOD KISS PUTS A FLUSH IN YOUR CHEEKS.

A GREAT KISS MELTS THE WAX IN YOUR EARS.

Astro-Graph

by bernice bede osol

LEO (July 23-Aug. 22) Be mindful of the financial ramifications in your commercial dealings today. If you're not alert, or if you're indifferent, someone might do a number on you. Get a jump on life by understanding the influences governing you in the year ahead. Send for Leo's Astro-Graph predictions today by mailing \$1.25 plus a long, self-addressed, stamped envelope to Astro-Graph, c/o this newspaper, P.O. Box 91428, Cleveland, OH 44101-3428. Be sure to state your zodiac sign.

VIRGO (Aug. 23-Sept. 22) Regardless of how hard you try today, it will be impossible to please everyone. In fact, you might become closely involved with one who has a thorny attitude.

LIBRA (Sept. 23-Oct. 23) Use your best judgment today when partaking of the good things life has to offer. Overindulging in any manner could cause you to pay a penalty later on.

SCORPIO (Oct. 24-Nov. 22) An individual who is very fond of you won't appreciate it today if you devote too much time and attention to someone else.

SAGITTARIUS (Nov. 23-Dec. 21) Those you'll be involved with outside your home today will think you're pretty nifty. However, if a poll were taken of your family, you wouldn't come out the front-runner.

CAPRICORN (Dec. 22-Jan. 19) You might be a bit insecure today and badly in need of praise and acknowledgment. A manipulator who is aware of this might spin some flowery phrases to twist you around his finger.

AQUARIUS (Jan. 20-Feb. 19) Sales resistance isn't numbered among your strong suits today, so try to avoid high-powered sales representatives who are capable of talking you into buying something you really don't need.

PISCES (Feb. 20-March 20) In a one-to-one relationship today, give another the benefit of the doubt. There's a possibility you might jump to conclusions and misjudge the intentions of your companion.

ARIES (March 21-April 19) This might not be one of your more industrious days. If you choose to goof off, that's one thing, but if you induce co-workers to do likewise, the boss may come down on you.

TAURUS (April 20-May 20) Individuals who lack good taste or social graces aren't the types of people you'll feel comfortable with today. Poor manners will offend you.

GEMINI (May 21-June 20) Strive to be sincere when acknowledging the accomplishments of others today. Using flattery in hopes of having something done for you will produce the opposite effect.

CANCER (June 21-July 22) Unfortunately, not everyone you'll be involved with today will have your cheerful disposition and outlook. Don't let a negative thinker cast a cloud on your happy thoughts.

MARVIN

By Tom Armstrong

I'LL JUST CHECK YOUR BATH WATER'S TEMPERATURE BY STICKING MY ELBOW IN IT

GAG! I HOPE SHE DOESN'T TRY THAT ON ME THE NEXT TIME I'VE GOT A FEVER!

MARMADUKE

By Brad Anderson

"It's a new toothpaste for dogs... T-bone flavored."

KIT N' CARLYLE

By Larry Wright

THE DOG DAYS OF SUMMER SCARE ME!

ALLEY OOP

By Dave Graue

REIN IN AWA! LET'S GIVE TH' BOYS A CHANCE T' CATCH UP WITH US!

LISTEN, ALLEY! DID YOU HEAR THAT?

YEAH I SURE DID!

STAY ON YOUR TOES, FELLAS! TH' DRAGON ISN'T FAR AHEAD!

AS YOU ASKIN' 'OW LONG WILL WE 'AFTA STAND THIS WAY?

...BUT IF Y'DON'T MIND ME WISH M'LORD.

SNAFU

By Bruce Beattie

"How did you get athlete's foot? You haven't been in shape for years!"

WINTHROP

By Dick Cavalli

YOU KNOW, IF MY MOM AND DAD HADN'T GONE TO THE SAME SCHOOL...

AND IF THEY HADN'T GOTTEN MARRIED AND MOVED HERE TO HINSDALE...

YOU'D BE STANDING HERE TALKING TO YOURSELF.

THE FAMILY CIRCUS

By Bill Keane

"Don't you know anything, Jeffy? Phones don't have ZIP codes — they have AERIAL codes."

CALVIN AND HOBBS

By Bill Watterson

MAN, IT MUST BE 100 DEGREES TODAY!

ANIMALS SURE ARE DUMB TO HAVE ALL THAT FUR.

PEOPLE SURE ARE UGLY WITHOUT IT.

I'LL BET HE'S CRANKY BECAUSE HE'S SO HOT.

THE BORN LOSER

By Art and Chip Sansom

WHAT ARE YOU DOING?

I'M TALKIN' TO MY FRIEND, PHOEBE.

YOU HAVEN'T SAID A WORD FOR THE PAST TEN MINUTES!

I KNOW...

I'M HOLDIN' THE PHONE WHILE SHE TAKES HER BATH.

FRANK AND ERNEST

By Bob Thaves

WE'VE GONE FROM 100 DOO ECONOMICS TO 200 DOO ECONOMICS TO 300 HOO ECONOMICS!

PEANUTS

By Charles M. Schulz

PARDON ME, DO YOU KNOW WHERE THE COURTHOUSE IS?

HOW SHOULD I KNOW? I'M JUST A LITTLE KID! I DON'T KNOW WHERE ANYTHING IS!

WHY ASK ME? WHAT DO I KNOW? IF IT ISN'T ONE THING, IT'S ANOTHER!

WELL, THANK YOU ANYWAY.

HEY, NO PROBLEM.

GARFIELD

By Jim Davis

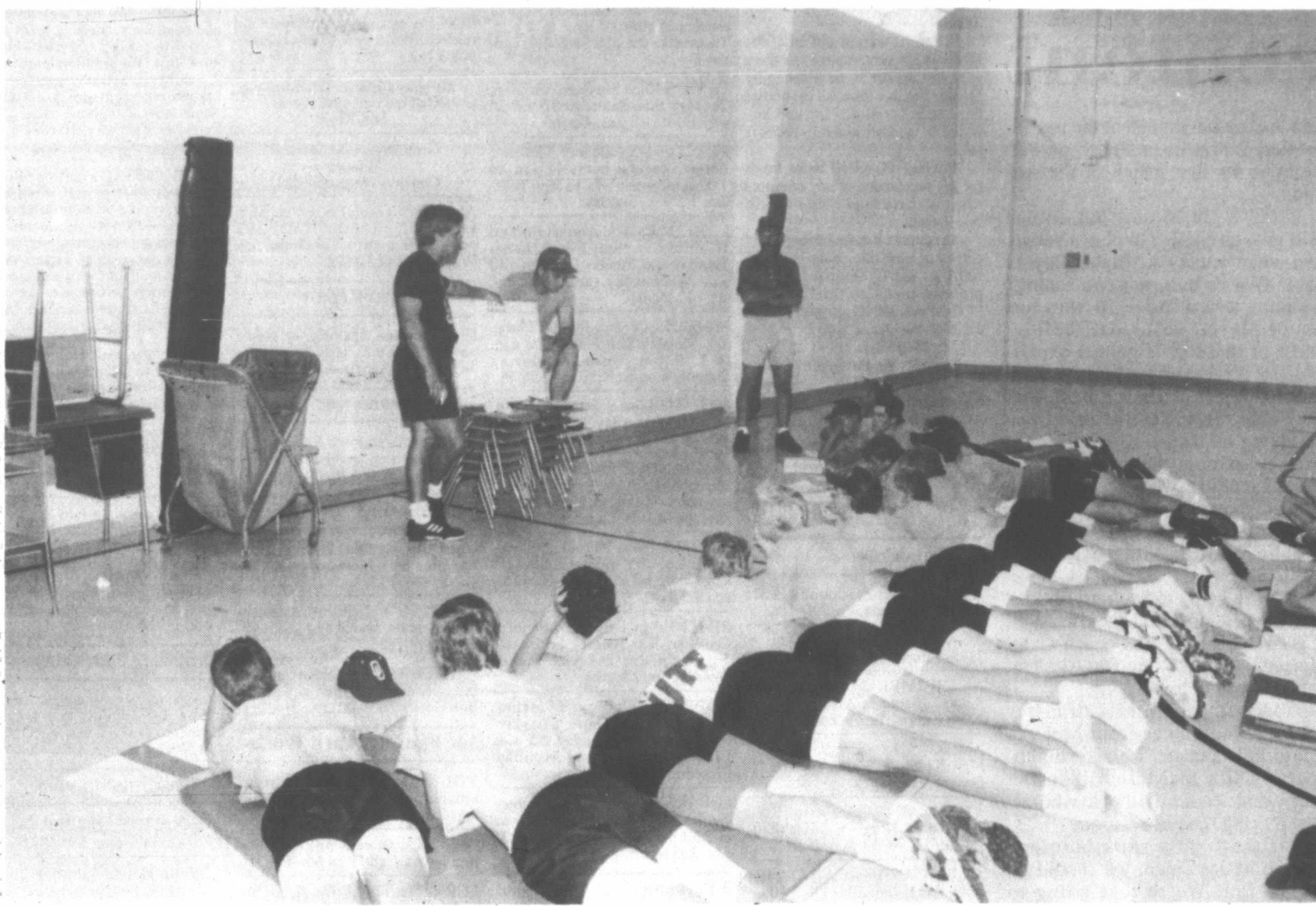
WATCH IT, CAT! I HAVE FIDO WITH ME TODAY!

WELL, BRING ON THIS FIDO

A HEERE, FIDO!

MAIL'S HERE

Sports



Groom assistant coaches Jay Lamb, from left, and Larry Reed instruct the Groom Tigers under the watchful eye of head coach Terry O'Dell, right, during a team meeting Wednesday at Groom High School.

Young talent dots Groom's roster

By L.D. STRATE
Sportswriter

An influx of young, but talented, athletes could be enough to send the Groom Tigers into the playoffs again this season.

Only time will tell. "We're just going to have to wait and see what happens," said second-year Tigers' coach Terry O'Dell. "We're going to be awfully young, but there's also a lot of talent. It's all going to depend on how well they respond to the pressure."

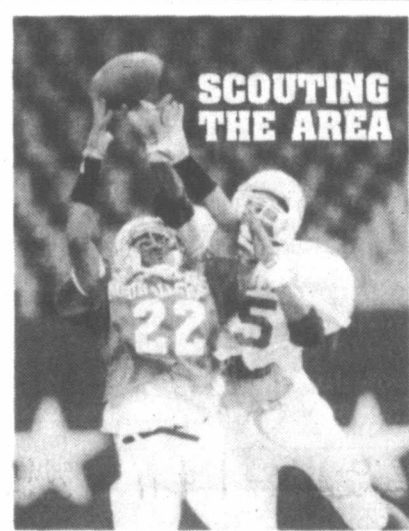
A handful of veterans should give Groom a solid foundation to build upon.

The Tigers return three starters, all-district performer Matt Fields (center-down lineman) and backs Paul McLaughlin and Corky Hickey. Rhett Patterson and Shannon Miller saw varsity action as juniors and could make the starting lineup this season.

"We're going to be awfully deep - deeper than we were last year - and we're going to have more speed," O'Dell said. "We've got a good sophomore class coming up, and seven or eight of those boys will be right in there bidding for playing time."

Junior receiver Wesley Hall, junior defensive back Bronte Britten and freshman back Harold Cave are among the brightest prospects.

"Hall is 6-foot-4, and he should



Editor's note: This is the third in a series of articles previewing this year's football teams from area high schools.

GROOM TIGERS

1992 Schedule	
Sept. 4	at Benjamin
Sept. 11	Vernon Northside
Sept. 18	Meadow
Sept. 25	open
Oct. 2	at Samnorwood
Oct. 9	at Higgins
Oct. 16	Follett
Oct. 23	at Lefors
Oct. 30	at McLean
Nov. 6	Miami

COACH: Terry O'Dell

1991 RECORD: 8-3 overall, (3-2 in district)

THE KEY: "We're going to be awfully young, but there's also a lot of talent. It's all going to depend on how well they respond to the pressure."
- Terry O'Dell

SCOREBOARD: The Tigers outscored their opponents a combined 423-276 in their games last season.

TOMORROW: The Lefors Pirates expect to have a good season as long as they can avoid a rash of injuries.

really help us at the end position. I look for Britten to step in and help us. Cave is probably our fastest player, and he's just a freshman," O'Dell said. "He won a bunch of events at junior high track meets last year."

Groom posted a 8-3 record in the six-man ranks last season and went to the playoffs after winning a three-way coin toss to determine District 1-A's No. 2 playoff seed. The Tigers were eliminated by Guthrie, 64-20, in bi-district.

"Right now, it looks like we're going to have 26 or 28 boys out and about 20 of them are going to be

neck-and-neck, talent-wise," added O'Dell. "That's one good point. The kids are probably even on talent and speed and that should help us this year."

The Tigers kick off the season Sept. 4 on the road against Benjamin. They have scrimmage dates with Valley Aug. 21 at home and at Follett Aug. 28.

Groom draws Higgins as its first district opponent on Oct. 9, and O'Dell doesn't see anything new about the district race this season.

It'll probably be McLean and Follett again as the teams to beat," he added.

However, the annual *Top O' Texas Football* magazine has Groom picked to finish second behind McLean in the district standings.

McLean won the district title a year ago and Follett downed Groom, 42-14, in the final week of the regular season to keep the Tigers from winning the No. 2 playoff spot outright.

Capturing the coin toss over Follett and Miami gave Groom its first playoff berth in 15 years. It was Groom's first playoff since becoming a six-man school.

Straight and narrow, not strong and long, has advantage at PGA

ST. LOUIS (AP) - Defending champion John Daly's cross-country drives draw the galleries, but straight-hitting Nick Faldo and Tom Kite were the players to watch in the 74th PGA Championship today at Bellerive Country Club.

"I don't care if you hit it 350 yards or 250 yards, you better hit the ball in the fairway or you are dead," said U.S. Open champion Kite.

"Driving is the key," said British Open champion Faldo. "If you drive well, you are off and running. If you hit the ball into the rough here, all you can hope is to wedge it out and try to make par. The rough is severe."

Gary Player won the 1965 U.S. Open at Bellerive by keeping the ball in play while the power hitters fell victim to the dangers off the fairway.

Four-inch high Kentucky bluegrass will claim errant drives over Bellerive's demanding 7,148 yards. Balls landing in the fairway will be greeted by forgiving zoysia grass, proclaimed a perfect hitting surface by the professionals.

"If you miss a fairway in the British Open, you can still move the ball forward," said Faldo. "You might chop it eight yards forward here."

Faldo is on a majors crusade. He's won three British Opens and two Masters. If he wins this week, he would be the first British golfer since Tommy Armour in 1930 to capture the PGA.

"It's become a very important

tournament to me," he said. "The PGA and U.S. Open are ones to try and win."

Daly said he wasn't afraid of the big, bad rough because he'll be using a new weapon.

His instrument of destruction last year at Crooked Stick Country Club was a white Cobra (Kevlar) driver. Daly will attack Bellerive with a Killer Whale featuring an oversized head.

"I don't hit it much farther, but I hit it a lot more straighter, a lot more solid," Daly said. "I started using it at the British Open and didn't miss many fairways over there and made the cut."

Daly said he will have to be straighter because the Bellerive fairways narrow the farther the ball travels.

"At Crooked Stick, they (the fairways) opened up the further you hit it," Daly said. "There's no telling where my drives will go here. I'll still hit my driver and see what happens."

There has never been a back-to-back champion in the PGA since it went to medal play in 1958.

Daly has practiced hard at his new home at Castle Pines, Colo.

How far did he hit the ball in the mountain air?

"Sometimes 400 yards," he said.

Daly leads the PGA Tour with an average of 283 yards per drive. He said he doesn't hit his driver just because it's a crowd-pleasing sideshow.

"I love to hit it," he said. "It's fun for me. If people want to call it a sideshow, let them."

UT's Hadnot does not regret discussions with Texas A&M

AUSTIN (AP) - Texas Longhorns running back Butch Mackovic says he does not regret asking Texas A&M officials about a possible transfer. But he is upset with the way his school reacted.

Texas coach John Mackovic indefinitely suspended Hadnot on Wednesday, the day after it was reported the junior discussed switching schools with Texas A&M coach R.C. Slocum.

"I'm really upset for something like this to happen to me, especially at such a crucial time," said Hadnot, who today takes the first of two final exams in his summer school classes. He must pass both to remain academically eligible.

"It's really messing with my mind. I think it was too harsh, but I'm a man and I'll accept anything that comes my way."

Hadnot, Texas' leading rusher last year with 501 yards, was the 1990 Southwest Conference newcomer of the year. But he is not expected to be

featured in the Longhorns' new offense under first-year coach Mackovic.

"I'm a running back and I want to go somewhere where I can show my ability the best, providing I can get through my academics," said Hadnot, adding that he has not considered transferring to any other schools.

Hadnot said he was called in to Mackovic's office Wednesday afternoon shortly after the varsity players returned to campus. He said he expected to be punished, but only thought "I'd have to stay after practice, running laps."

Mackovic, who refused to speak with reporters Wednesday, released a statement saying Hadnot was indefinitely suspended for displaying "conduct detrimental to the team."

"After meeting with Butch regarding his conversations with coach Slocum, I have a clear and accurate picture of the events as they occurred," Mackovic said.

Teaff ready for farewell tour

WACO (AP) - Grant Teaff will make his farewell tour of Southwest Conference football stadiums this fall.

Leaving the coaching ranks to become a fulltime athletic director, Teaff's final SWC season will fittingly end at Floyd Casey Stadium.

That's where Teaff once ate a worm to inspire his team to victory over the University of Texas.

On Nov. 21 at 1 p.m. the Longhorns will come calling again in Teaff's last regular season game.

"It will be an emotional moment for me," said Teaff. "Coaching has been my life. I guess it's only fitting that my last conference game will be against Texas. We've had tremendous games against them in my career."

Teaff agreed in the spring to become Baylor's fulltime athletic director with the stipulation he hang up his coaching whistle after the football season.

"It was the hardest decision I've ever made in my life," Teaff said. "I love teaching kids."

The Bears could be a difficult team to play in 1992 as they try to send Teaff out a big winner with a bowl game.

"We lack experience and size but that could come quickly," Teaff said of his last team. "This is the youngest offensive line we've had since the group that just graduated came in. But I believe this group is as talented as any we've started with. In fact, I feel like we might have the talent to play two offensive lines next fall and that's what I'd like to do."

The Bears also could be tough again on defense.



Baylor Coach Grant Teaff talks with freshman quarterback Adrian Robinson of Edna Wednesday in Waco.

"Last year we were a wall on defense and this year we'll be a machine gun," Teaff said. "We'll have people flying to the football, hitting hard and fast."

Teaff will have a quarterback who can get the job done. J.J. Joe enters his third Baylor season with an 11-4 record as a starting quarterback.

Joe makes the Bears option offense run smooth.

"For this team that is so young as so many positions to be competitive, J.J. has to have his best season ever," Teaff said.

David Mims, a senior, will provide Baylor a steady hand at running back.

"David had his best spring ever,"

Teaff said. "He tougher and quicker." Teaff said his offense could be a big surprise.

"Our quarterback, tailback, fullbacks and wide receivers all have the talent to be All-Conference," Teaff said. "We've got the veteran skill people who can win at this level."

The Bears will open with three straight home games and that should help Teaff's inexperienced players overcome some early jitters.

Louisiana Tech, Colorado, and Utah State come calling on consecutive weeks. Baylor's fourth non-conference game also is at home on Nov. 7 against the Georgia Tech Yellowjackets.

Harvesters to start contact drills

Tomorrow, it gets serious. The Pampa High School football team will don full pads for the first time this season and hold their first contact practice at 9 a.m. Friday.

Perhaps the best time to see the Harvesters hit, however, will be Friday night at 6 when they hold their annual "Pride Drill."

The drill puts six offensive players against five defensive players in a 10-yard square. The offense gets four downs to score in what has been in the past a highly emotional drill for the players and fans.

In conjunction with Friday night's drill, the Harvesters' Booster Club is sponsoring a membership drive and the rest of the Pampa High fall sports teams will be introduced.

This week, the Harvesters have been practicing in T-shirts, shorts and helmets in the evenings and lifting weights and attending team meetings in the mornings.

"They're trying really hard, and we're getting things done," Pampa Coach Dennis Cavalier said after practice Monday. "But we still have a long way to go."

In other Pampa High football news, freshman players are expected to report Monday at 10 a.m. to the school for team pictures. Any player who has yet to check out his equipment can do so then.

The freshmen team will work out at 7:30 a.m. and 4:30 p.m. on Tuesday and once at 4:30 p.m. on Wednesday. The team will practice Thursday, the first day of school, at 4 p.m.

-Mark Spencer



Pampa Coach Dennis Cavalier instructs the Harvesters quarterbacks and running backs during a drill Monday at the PHS practice fields.

HIGH SCHOOL VOLLEYBALL

Kelton volleyball team expects improvement

By L.D. STRATE
Sports writer

With the return of two experienced seniors, the Kelton High School volleyball team is expected to improve upon a 6-10 record of a year ago.

Seniors Julie Davidson and Misty Lewis have been starters since they were freshmen, giving coach Brad Slatton an optimistic feeling going into the 1992 season.

"Both of these players are really good leaders. They're going to do me a good job," Slatton said.

Five of the nine players on the roster are freshmen, but Slatton doesn't consider that much of a handicap.

"They are going to be kind of young, but they're all fairly talented. The four players besides the freshmen have a lot of experience," he said. "We lacked some leadership last year, but this year we've got the leaders and I believe we'll have more determination."

With McLean dropping its volleyball program, only Kelton, Lefors and Fort Elliott are left to battle for the district title.

Slatton said Fort Elliott (formerly Briscoe High School) should be Kelton's toughest foe in district play.

"Fort Elliott should be the team to beat. They're going to be loaded," Slatton added.

Kelton opens the season next Tuesday against West Texas High School of Amarillo.

The consolidation of Briscoe and Mobeetie high schools resulted in the name being changed officially this year to Fort Elliott Consolidated Independent School District. All future high school athletic events will continue to be played at Briscoe.

"We named the school after an old fort which was located near Mobeetie during Indian days," said Fort Elliott principal Bob Downs.

Downs said the school mascot's name was also changed, from Broncos to Cougars.

By any name, Fort Elliott will be as good or better than last year when the team, under coach Janet Tatyrek, posted a 17-3 record and won the bi-district title.

"I feel like we should be in the playoffs, but it's too early to tell right now," Tatyrek said. "I'll know more the closer district gets."

The Lady Cougars are young, but blessed with loads of talent.

Tatyrek returns four players who made the all-district team a year ago, and Mary Swigart is the only senior among them.

"Swigart is a good server and a good, all-around player," Tatyrek said. "When we get in a pinch, she usually comes through for us."

Fort Elliott has a two-set attack built around sophomores Shelly Hunt and Amanda May.

"They're both experienced setters and they do a good job of getting the ball up so we can attack it. Lindsey Fillingim is our power hitter. She's a good, all-around player

and is extremely tough at the net." Fort Elliott hosts Fritch on Saturday in its first match of the season.

"We've got 15 girls out, so that will give us enough to play a varsity and junior varsity schedule," Tatyrek said. "We've only got two seniors, Swigart and a move-in who has never played volleyball before. Most of these girls gained experience by playing on the junior varsity as sophomores. It's fortunate that they were able to get that experience as young as they are. When these girls start coming together as a team, I feel like we'll see some real positive things."

Lefors will be trying to rebuild around juniors Alta Joslyn and Jamie Shook.

"We're going to be pretty short. I lost three seniors and they were all big girls," said Lefors coach Carol Vincent. "I'm looking for Alta and Jamie to be my leaders."

Vincent said junior transfer Becka Winebrinner from McLean could help out, as well as sophomores Shila McMullen, Shawna Lock and Rena Gilbert, who all saw playing time last season.

"If these girls work hard and get the basics down, we should do pretty fair. We're just going to have an awfully young team," Vincent said.

Freshmen Heather Maples and Shelly Davenport could see some action before the season is over.

The Lady Pirates open the season Aug. 25 against San Jacinto.

PUBLIC NOTICE

NOTICE TO CREDITORS
VERNON A. KING, died on June 13, 1992. His Will was admitted to probate as a Muniment of Title on August 4, 1992, in Cause No. 7566, County Court, Gray County, Texas.

A formal administration of the Estate is not contemplated as there does not appear to be a necessity for same at this time; all properties have been accounted for and disposed of and all known creditors paid.

PEGGY G. KING holds funds for the satisfaction of any creditors who may have valid claims against this Estate.

Creditors, if any, having valid claims against the Estate of VERNON A. KING, Deceased, should present them at this time to PEGGY G. KING, Route 1, Box 25, McLean, Texas 79057.

Marshall Sherwood Attorney for the Estate of VERNON A. KING, Deceased
MARSHALL SHERWOOD Attorney at Law
State Bar No. 18255000
P.O. Box 947
Panhandle, Texas 79068

B-92 August 13, 1992

ic Memorials

ADULT Literacy Council, P.O. Box 2022, Pampa, Tx. 79066.

AGAPE Assistance, P. O. Box 2397, Pampa, Tx. 79066-2397.

ALZHEIMER'S Disease and Related Disorders Assn., P.O. Box 2234, Pampa, Tx. 79066.

AMERICAN Cancer Society, c/o Mrs. Kenneth Walters, 1418 N. Dwight, Pampa, Tx.

AMERICAN Diabetes Assn., 8140 N. MoPac Bldg. 1 Suite 130, Austin, TX 78759.

AMERICAN Heart Assn., 2404 W. Sawenth, Amarillo, TX 79106.

AMERICAN Liver Foundation, 1425 Pompton Ave., Cedar Grove, N.J. 07009-9990.

AMERICAN Lung Association, 3520 Executive Center Dr., Suite G-100, Austin, TX 78731-1606.

AMERICAN Red Cross, 108 N. Russell, Pampa.

ANIMAL Rights Assn., 4201 Canyon Dr., Amarillo, TX 79110.

BIG Brothers/Big Sisters, P.O. Box 1964, Pampa, Tx. 79065.

BOYS Ranch/Girls Town, P.O. Box 1890, Amarillo, Tx. 79174.

FRIENDS of The Library, P.O. Box 146, Pampa, Tx. 79066.

GENESIS House Inc., 615 W. Buckler, Pampa, TX 79065.

GOLDEN Spread Council Trust Fund for Boy Scouts of America, 401 Tascosa Rd., Amarillo, Tx. 79124.

GOOD Samaritan Christian Service, 309 N. Ward, Pampa, Tx. 79065.

GRAY County Retarded Citizens Assn., P.O. Box 885, Pampa, Tx. 79066-0885.

HIGH Plains Epilepsy Assn., 806 S. Brian, Room 213, Amarillo, TX 79106.

HOSPICE of the Panhandle, P.O. Box 2782, Pampa, Tx. 79066-2782.

MARCH of Dimes Birth Defects Foundation, 2316 Lakeview Dr., Amarillo, TX 79109.

MEALS on Wheels, P.O. Box 939, Pampa, TX 79066-0939.

MUSCULAR Dystrophy Assn., 3505 Olsen, Suite 203, Amarillo, TX 79109.

PAMPA Area Foundation for Outdoor Art, P.O. Box 6, Pampa, Tx. 79066.

PAMPA Fine Arts Assn. P.O. Box 818, Pampa, Tx. 79066.

PAMPA Sheltered Workshop, P.O. Box 2806, Pampa.

QUIVIRA Girl Scout Council, 836 W. Foster, Pampa, Tx. 79065.

RONALD McDonald House, 1501 Street, Amarillo, TX 79106.

SALVATION Army, 701 S. Cuyler St., Pampa, TX 79065.

SHEPARD'S Helping Hands, 422 Florida, Pampa, Tx. 79065.

ST. Jude Children's Research Hospital, Attn: Memorial/Honor Program FH, One St. Jude Place Bldg., P.O. Box 1000 Dept. 300, Memphis, Tenn. 38148-0552.

THE Don & Sybil Harrington Cancer Center, 1500 Wallace Blvd., Amarillo, TX 79106.

THE Opportunity Plan Inc., Box 1035, Canyon, Tx. 79015-1035.

TOP O' Texas Crisis Pregnancy Center, P.O. Box 2097, Pampa, Tx. 79066-2097.

TRALEE Crisis Center For Women Inc., P.O. Box 2880, Pampa.

WHITE Deer Land Museum in Pampa, P.O. Box 1556, Pampa, Tx. 79066.

2 Museums

WHITE Deer Land Museum: Pampa, Tuesday thru Sunday 1:30-4 p.m. Special tours by appointment.

ALANREED-McLean Area Historical Museum: McLean. Regular museum hours 10 a.m. to 4 p.m. Wednesday through Saturday, Sunday 1-4.

DEVIL'S Rope Museum, McLean, Tuesday thru Saturday 10 a.m.-4 p.m. Sunday 1 p.m.-4 p.m.

HUTCHINSON County Museum: Borger. Regular hours 11 a.m. to 4:00 p.m. weekdays except Tuesday, 1-5 p.m. Sunday.

LAKE Meredith Aquarium and Wildlife Museum: Fritch, hours Tuesday and Sunday 2-5 p.m., 10 a.m. Wednesday thru Saturday, closed Monday.

MUSEUM of The Plains: Perryton. Monday thru Friday, 10 a.m. to 5:30 p.m. Weekend during Summer months, 1:30 p.m.-5 p.m.

OLD Mobeetie Jail Museum. Monday-Saturday 10-5. Sunday 1-5. Closed Wednesday.

PANHANDLE Plains Historical Museum: Canyon. Regular museum hours 9 a.m. to 5 p.m. weekdays, weekends 2 p.m.-6 p.m.

PIONEER West Museum: Shamrock. Regular museum hours 9 a.m. to 5 p.m. weekdays, Saturday and Sunday.

RIVER Valley Pioneer Museum at Canadian, Tx. Tuesday-Friday 10-4 p.m. Sunday 2-4 p.m. Closed Saturday and Monday.

ROBERTS County Museum: Miami. Regular hours, Tuesday-Friday 10-5 p.m. Sunday 2-5 p.m. Closed Saturday and Monday. Closed Holidays.

SQUARE House Museum Panhandle. Regular Museum hours 9 a.m. to 5:30 p.m. weekdays and 1-5:30 p.m. Sundays.

3 Personal

MARY Kay Cosmetics. Supplies and deliveries. Call Dorothy Vaughn 665-4953, 665-5117.

MARY Kay Cosmetics and Skincare. Facials, supplies, call Theda Wallin 665-8336.

BEAUTICONTROL Cosmetics and skincare. Offering free complete color analysis, makeovers, deliveries and image updates. Call your local consultant, Lynn Allison 669-3848, 1304 Christine.

SHAKLEE. Vitamins, diet, skincare, household, job opportunity. Donna Turner, 665-6065.

H.E.A.R.T. Women's Support Group meets 2nd and 4th Monday 1-2:30 p.m. 119 N. Frost. Information 669-1131.

Alcoholics Anonymous 1425 Alcock 665-9702

If someone's drinking is causing you problems, try Al-Anon. 669-3564, 665-7921.

MARY Kay Cosmetics, Martha Porter consultant. Facials, supplies, deliveries. 669-9347.

Alcoholics Anonymous Back to Basics Study Group Meets at 1325 Mary Ellen Tuesday and Thursday 8 p.m. Saturday at 6:30 p.m. 665-5122 or 669-3564

5 Special Notices

ADVERTISING Material to be placed in the Pampa News, MUST be placed through the Pampa News Office Only.

PAMPA Lodge 966, Thursday, 7:30 p.m. E.A. Degree study and practice. Members please attend.

TOP O TEXAS Masonic Lodge 1381, 1705 W. Kentucky Regular meeting Tuesdays 7:30 p.m.

10 Lost and Found

LOST: Black long haired Peckin-gene, Poodle in vicinity of 2300 block of Chestnut. Anyone with information call 665-1385. Reward offered. Answers to the name of T.J. Family pet.

14b Appliance Repair

Appliance Air Conditioner Repair 665-8894

RENT TO RENT TO OWN

We have Rental Furniture and Appliances to suit your needs. Call for estimate. Johnson Home Furnishings 801 W. Francis

14d Carpentry

Ralph Baxter Contractor & Builder Custom Homes or Remodeling 665-8248

ADDITIONS, remodeling, roofing, cabinets, painting, all types repairs. No job too small. Mike Albus, 665-4774.

CABINETS, baths, refacing, tops any remodeling, paints, sundries, doors, Gray Decorating, 47 years service, 323 S. Starkweather.

CONCRETE work, driveways, patios, sidewalks, foundations. Free estimates. 835-2262

OVERHEAD Door Repair. Kidwell Construction. 669-6347.

ADDITIONS, remodeling, new cabinets, ceramic tile, acoustic ceilings, paneling, painting, patios. 18 years local experience. Jerry Reagan, Karl Parks 669-2648.

Panhandle Home Leveling Floors sagging, walls cracking, door dragging. Foundation and concrete work. We're not just excellent at Floor Leveling and Foundation work, we do a long line of Home Repairs. 669-0958.

14e Carpet Service

NU-WAY Cleaning service, carpet, upholstery, walls, ceilings. Quality doesn't cost! It pays! No steam used. Bob Marx owner-operator. 665-3541. Free estimates.

14c Carpet Service

RAINBOW International Carpet Dyeing and Cleaning Co. Free estimates. Call 665-1431.

14h General Services

COX Fence Company. Repair old fence or build new. Free estimate. 669-7769.

Laramore Master Locksmith Call me out to let you in 665-Keys

Commercial, Residential Mowing Chuck Morgan 669-0511

ALL types general home repairs, yard work, painting. "Handy as a pocket on a shirt." References, Wink Cross 665-4692.

14i General Repair

IF it's broken, leaking, or won't turn off, call the Fix It Shop, 669-3434. Lamps repaired.

14m Lawnmower Service

PAMPA Lawnmower Repair. Pick up and delivery service available. 501 S. Cuyler, 665-8843.

14n Painting

CALDER Painting: Interior, exterior, mud tape, blow acoustic. 665-4840, 669-2215.

PAINTING and sheetrock finishing. 35 years. David and Joe, 665-2903, 669-7885.

PAINTING Done Reasonable. Interior, exterior. Free estimates. Bob Gorson, 665-0033.

14r Plowing, Yard Work

YOUR Lawn & Garden. Mow, rototill, plow, tree trimming, hauling. Call 665-9609.

COLLEGE Student will mow and trim lawns. Call Jason 669-6397.

FOR professional tree trimming and removal, call the tree experts at Pampa Tree Care Company. Free estimates, 665-9267.

LAWNS, mowed, edged, trimmed. One time or all summer. Call Ron 665-8976.

MOWING and weed eating. \$15 and up. 669-3017.

QUALITY Lawncare & Landscaping. Let us take "quality" care of your lawn. \$10-up. 665-1633.

14s Plumbing & Heating

Builders Plumbing Supply 535 S. Cuyler 665-3711

LARRY BAKER PLUMBING Heating Air Conditioning Borger Highway 665-4392

JACK'S Plumbing Co. New construction, repair, remodeling, sewer and drain cleaning. Septic systems installed. 665-7115.

Sewer and Sinkline Cleaning \$30. 665-4307

Bullard Plumbing Service Electric Sewer Rooter Maintenance and repair 665-8603

Terry's Sewerline Cleaning 669-1041

14t Radio and Television

CURTIS MATHES We will now do service work on most Major Brands of TV's and VCR's. 2211 Perryton Pkwy. 665-0504. Wayne's T.V. Service Microwave oven repaired 665-3030

14u Roofing

COMPOSITION roofing, competitive rates. 20 years experience. 665-6298, 1-800-427-6298.

14z Siding

INSTALL Steel siding, storm windows, doors. Free Estimates. Pampa Home Improvement, 669-3600.

19 Situations

BABYSITTING in my home. Monday-Friday, hot meals. References. 665-6697.

DEPENDABLE Christian childcare in my home, for 8-5 parents. 669-6118.

REGISTERED Day Home Provider. Loving, Christian home. References. 665-7856.

21 Help Wanted

NOTICE Readers are urged to fully investigate advertisements which require payment in advance for information, services or goods.

PARK RANGERS Game wardens, security, maintenance, etc. No experience necessary. For information (fee \$44.95), call 219-769-6649 extension 9285, 8 a.m.-8 p.m. 7 days.

ASSEMBLERS: Excellent income to assemble products from your home. Information 504-646-1700 department P3140.

AVON representatives needed, full or part time, good earnings, no door to door required. Call Ina 665-5854.

CORONADO HOSPITAL is accepting applications for the following positions: Certified Aides OR Tech LVN's Full time positions provide extensive benefits including health insurance, retirement plan, competitive compensation. Apply at Personnel Office and schedule an interview, Monday-Friday. 669-0208.

Coronado Hospital One Medical Plaza Pampa, Tx. 79065 EOE

ELSIE'S Flea Market Sale: Baby bed, high chairs, car seat, music boxes, figurines, what-not shelves, picture frames, portable typewriters, sheets, curtains, pillow cases, towels, blankets, jeans, boots, shoes, Magnus electric organ, girls summer dresses 50 cents-up, jewelry. 10 a.m. Wednesday through Sunday. 1246 Barnes.

GARAGE Sale: 1112 Darby Friday and Saturday 8:30-7. Clothes, bedspreads, toys and lots of goods.

21 Help Wanted

HOUSEKEEPING position available. Apply in person between 9 a.m. - 3 p.m. Best Western Northgate Inn.

HOW To Ease Back Into The Labor Pool. Our thorough training and friendly supportive team will help your skills and confidence grow fast. Work full or part-time. All shifts, now taking applications for management positions also. Apply now. No phone calls. 2505 Perryton Parkway, Hardee's, an Equal Opportunity Employer.

SECRETARIAL Position: Lotus 1,2,3 and word perfect, word processing, typing 50 words a minute, 10 key and telephone skills. Accounting background preferred. 2 years secretarial experience. Salary negotiable with experience. Immediate hire. Contact: Environmental Service Office, 1440 Charles, 669-4990.

SINGLE parent looking for part time sitter to sit in my home. Contact Richard Ellis 669-9937, if no answer please call 665-7139.

TAKING applications August 13-14, 9-5:30, Mini lab assistant, retail sales. Foto Time, 107 N. Cuyler.

TAKING Applications for cook. Apply in person at 1500 N. Banks.

TECHNICAN Needed at Bob Johnson Motor Co., Borger Texas. Dealership experience helpful, transportation available. Call Wayne at 1-800-753-5370.

30 Sewing Machines

WE service all makes and models of sewing machines and vacuum cleaners. Sanders Sewing Center. 214 N. Cuyler, 665-2383.

50 Building Supplies

HOUSTON LUMBER CO. 420 W. Foster 669-6881

White House Lumber Co. 101 S. Ballard 669-3291

60 Household Goods

48 inch Mitsubishi big screen Tv, stereo, wood cabinet with closing doors. \$1750. 669-9333.

RENT TO RENT REnt TO OWN

We have Rental Furniture and Appliances to suit your needs. Call for estimate. Johnson Home Furnishings - 801 W. Francis 665-3361

SHOWCASE RENTALS Rent to own furnishings for your home. Rent by phone. 1700 N. Hobart 669-1234 No Credit Check. No deposit. Free delivery.

JOHNSON HOME FURNISHINGS Pampa's standard of excellence In Home Furnishings 801 W. Francis 665-3361

FOR sale Queen size waterbed with 6 underlayers. 665-1968.

FOR sale: Dryer, Upright freezer, Queen size bedroom suite with chest and dresser. Bunk beds, would like to trade these for or would buy super single waterbed. 669-7988.

FOR sale: King size waterbed. Headboard with 4 shelves and mirror, 12 drawers underneath and hibernation mattress. Call after 4 p.m. 665-7784.

KENMORE 30 inch, pilot-free, gas range, continuous clean oven. \$250. 665-2620 after 5:30 P.M.

OLDIE But A Goodie, heavy duty Lady Kenmore washer, top of the line, works wonderful, many new parts. \$175 or best offer. 665-4366.

USED appliances and furniture, some like new. Antiques, beauty supplies, beauty salon and restaurant. Abby's Country Store, 201 N. Cuyler

CLASSIFIED INDEX THE PAMPA NEWS 403 W. Atchison 669-2525

- 1 Card of Thanks 2 Museums 3 Personal 4 Not Responsible 5 Special Notices 7 Auctioneer 10 Lost and Found 11 Financial 12 Loans 13 Business Opportunities 14 Business Services 14a Air Conditioning 14b Appliance Repair 14c Auto-Body Repair 14d Carpentry 14e Carpet Service 14f Decorators - Interior 14g Electric Contracting 14h General Services 14i General Repair 14j Gun Smithing 14k Hauling - Moving 14l Insulation 14m Lawnmower Service 14n Painting 14o Paperhanging 14p Pest Control 14q Ditching 14r Plowing, Yard Work 14s Plumbing and Heating 14t Radio and Television 14u Roofing 14v Sewing 14w Spraying 14x Tax Service 14y Upholstery 15 Instruction 16 Cosmetics 17 Coins 18 Beauty Shops 19 Situations 21 Help Wanted 30 Sewing Machines 35 Vacuum Cleaners 48 Trees, Shrubbery, Plants 49 Pools and Hot Tubs 50 Building Supplies 53 Machinery and Tools 54 Farm Machinery 55 Landscaping 57 Good Things To Eat 58 Sporting Goods 59 Guns 60 Household Goods 67 Bicycles 68 Antiques 69 Miscellaneous 69a Garage Sales 70 Musical Instruments 71 Movies 75 Feeds and Seeds 76 Farm Animals 77 Livestock 80 Pets and Supplies 84 Office Store Equipment 89 Wanted To Buy 90 wanted to Rent 94 Will Share 95 Furnished Apartments 96 Unfurnished Apartments 97 Furnished Houses 98 Unfurnished Houses 99 Storage Buildings 100 Rent, Sale, Trade 101 Real Estate Wanted 102 Business Rental Property 103 Homes For Sale 104 Lots 105 Acreage 106 Commercial Property 110 Out of Town Property 111 Out of Town Rentals 112 Farms and Ranches 113 To Be Moved 114 Recreational Vehicles 115 Trailer Parks 116 Mobile Homes 117 Grasslands 118 Trailers 120 Autos For Sale 121 Trucks For Sale 122 Motorcycles 124 Tires and Accessories 125 Parts and Accessories 126 Boats and Accessories 127 Scrap Metal 128 Aircraft

69a Garage Sales

GARAGE Sale: 1529 Coffee. Friday 1 p.m. til 7. Saturday and Sunday all day til 7.

GARAGE Sale: 2119 Lea, Friday, Saturday, 9 a.m.-7 No checks. Lots of nice childrens clothes (girls), some adult clothes, some furniture, treadmill, console Tv.

GARAGE Sale: Friday 8-12. Table lamps, door rug and pad, baby items, firewood, Coleman stove. 2132 Mary Ellen.

GARAGE Sale: Friday only, 9 a.m.-4 p.m. Come see! 902 E. Scott.

GARAGE Sale: Friday, Saturday, 9-1, 507 N. Nelson. No early birds. No checks please.

GARAGE Sale: Friday, Saturday, 1825 Christine, Dishes, toys, boys clothes, bedding furniture. 8 til 5.

GARAGE Sale: Friday, Saturday, Furniture, dishwasher, microwave, baby items, miscellaneous. 2221 N. Zimmers.

GARAGE Sale: Friday, 610 N. West.

GARAGE Sale: Queen waterbed, bedroom suite, dishwasher, tons of boy's clothes. 309 Jean, 8:30 Friday only.

GARAGE Sale: Saturday only 1115 Harvester, Country Club Condo. Pots and pans, etc.

GARAGE Sale: Walnut Creek (Pheasant Lane) Friday and Saturday. Books, clothes, electronics, baby goods, exercise equipment, etc.

GIANT Garage Sale, Friday 14th, Saturday 15th, located at the corner of Kingsmill and Somerville. Sponsored by the First United Methodist Church Youth Fellowship. Proceeds will fund their Summer mission program.

SALE at Call's, all day Friday, Saturday, 618 W. Francis. Little of everything.

SALE: Come see our new chest of drawers, reconditioned bedding, tools, books, bunk beds, Watkins and 100 other things. J&J Flea Market, 409 W. Brown, 665-5721.

Sale, Friday, Saturday 9-5 125 N. Somerville South of Hughes Building

SALE: Lots of nice school clothes 4-12, books, bikes, Octa-gym, woman's tall size 12, toys, games, too numerous to mention. Friday, Saturday 9-6. 1124 Darby.

TRASH & Treasure Flea Market. Table and chairs, stereo with cabinet, Nolan Ryan baseball cards, coins, carpet, end tables. Lots of miscellaneous. 407 W. Foster.

YARD Sale: 2211 Dogwood. Friday only, 8 a.m.-1 p.m. Many miscellaneous items.

YARD Sale: Friday, Saturday 8 a.m.-5 p.m. No early birds. 1213 Garland.

YARD Sale: School clothes, desk, kitchen items, books, magazines, winter coats, much much more. Friday only, 9-3 p.m. 2143 N. Faulkner across from Walmart.

70 Musical Instruments

PIANOS FOR RENT New and used pianos. Starting at \$40 per month. Up to 6 months of rent will apply to purchase. It's all right here in Pampa at Tarpley Music. 665-1251.

FOR sale Yamaha Clarinet. Call 665-3924.

75 Feeds and Seeds

Wheeler Evans Feed Full line of Acco feeds We appreciate your business Hwy.60 Kingsmill 665-5881

ROUND bales, Old World Bluestem, watered, fertilized, \$26 each. 665-4142 or 663-6073.

77 Livestock

ROCKING Chair Saddle Shop, 115 S. Cuyler. Now supplying animal health care products. See us for all your needs.

80 Pets And Supplies

FREE KITTENS 669-1925 AKC toy Poodle puppies, wormed, shots, and 7 month old red male, show quality. 665-5806.

ALL small breeds of canine or feline Professional grooming. Alva Lee Fleming, 665-1230.

CANINE and Feline grooming. Also, boarding and Science diets. Roysie Animal Hospital, 665-2223.

CANINE Summer School: Puppy training and beginning obedience also grooming. Lynn, 665-5622.

GOLDEN M Grooming-Boarding. Free tip with grooming. Cocker and Schnauzers a specialty. Mona, 669-6357.

Grooming and Boarding Jo Ann's Pet Salon 1033 Terry Rd., 669-1410

GROOMING, exotic birds, pets, full line pet supplies. Iams and Science Diet dry and cat food. Pets Unique, 854 W. Foster. 665-5102.

80 Pets and Supplies

SUZI'S K-9 World, formerly K-9 Acres Boarding and Grooming. We now offer outside runs. Large/small dogs welcome. Still offering grooming/AKC puppies. Suzi Reed, 665-4184.

89 Wanted To Buy

MARBLES, sheriff, marshal badges, knives, old toys, collectibles, other items. 669-2605.

WILL Buy good used furniture, appliances or anything of value. Will pay cash. Call 669-9654 after 5 p.m.

90 Wanted To Rent

ROOM with private bath, allow pet. Call 669-7363 or 669-3524 ask for Darlene.

95 Furnished Apartments

ROOMS for rent. Showers, clean, quiet. \$35 a week. Davis Hotel. 1161/2 W. Foster. 669-9115, or 669-9137.

1 bedroom furnished apartment. 911 1/2 Somerville. 669-7885.

1 bedroom, bills paid. \$55 a week. 669-3743.

HERITAGE APARTMENTS Furnished, unfurnished 1 bedroom. 665-2903, 669-7885.

LARGE 1 bedroom, modern, central heat/air. Single or couple. 665-4345.

96 Unfurnished Apts.

1 or 2 bedrooms, furnished or unfurnished, covered parking. Gwendolen Plaza Apartments, 800 N. Nelson. 665-1875.

1 bedroom duplex apartment, partly furnished. 665-4842.

CLEAN 1 bedroom, stove, refrigerator. All bills paid. 669-3672, 665-5900.

DOGWOOD Apartment 1 or 2 bedroom. References and deposits required. 669-9817, 669-9952.

OUR pool is open-come spend the Summer or a lifetime at Caprock Apartments. 1,2 and 3 bedroom apartments. Beautiful lawns and tastefully decorated apartments just for you. 1601 W. Somerville, 665-7149.

97 Furnished Houses

NICE 1 bedroom house. \$175 plus deposit. 665-1193.

NICELY furnished 1 bedroom house with carpet. In quiet neighborhood. All utilities paid, \$250 month, \$100 deposit. 665-8319.

VERY nice 1 bedroom duplex, \$225. 421 N. Wynne. 665-8925.

98 Unfurnished Houses

1,2, and 3 bedroom houses for rent. 665-2383.

1 bedroom house. \$150 a month, \$75 deposit. 665-0110.

1039 Sierra, 3 bedroom, 2 bath, double garage. 665-1131, 669-7320.

2 bedroom, large living, dining, fenced, utility, Horace Mann district. 665-5436, 665-4180.

3 bedroom, large living room, 2 walk in closets, storage building, fenced. Wilson. 665-5436, 665-4180.

4 bedroom, 2 full bath mobile home on private lot with stove, refrigerator. 665-4842.

6 room house, 1 1/2 bath, single garage, corner lot, Austin school. \$350 month. 669-9858.

CLEAN 1 or 2 bedroom, furnished or unfurnished house. Deposit. Inquire 1116 Bond.

CLEAN 2 bedroom, fence, 1008 S. Banks, \$225. 665-8925.

CLEAN 3 bedroom, 2 bath, 2 car garage. Call 665-0392.

FOR sale or lease 4 bedroom home. Call 665-7117 day, 665-8773 evenings.

LARGE 2 bedroom duplex. Now available. East Fraser, kitchen appliances. Must see! 669-2961.

NICE 3 bedroom, garage, stove, refrigerator, carpet. 665-4842.

NICE small, 2 bedroom, central heat, cooktop and oven. 501 1/2 N. Ward. 665-4842.

99 Storage Buildings

MINI STORAGE You keep the key. 10x10 and 10x20 stalls. Call 665-3389.

CHUCK'S SELF STORAGE Some commercial units. 24 hour access. Security lights. 665-1150 or 669-7705.

GOLDEN M Grooming-Boarding. Free tip with grooming. Cocker and Schnauzers a specialty. Mona, 669-6357.

Grooming and Boarding Jo Ann's Pet Salon 1033 Terry Rd., 669-1410

GROOMING, exotic birds, pets, full line pet supplies. Iams and Science Diet dry and cat food. Pets Unique, 854 W. Foster. 665-5102.

GRIZZWELLS® by Bill Schorr

NO, NO, GUNTHER... A HIGH-CARBOHYDRATE DIET INCLUDES GRAINS, BREAD, PASTA AND NOODLES...



...NOT 'POODLES', 'NOODLES'.



99 Storage Buildings

TUMBLEWEED ACRES SELF STORAGE UNITS Various sizes 665-0079, 665-2450.

HWY 152 Industrial PARK MINI-MAXI STORAGE 5x10-10x10-10x15 10x20-20x40 Office Space For Rent 669-2142

Babb Portable Buildings Babb Construction 820 W. Kingsmill 669-3842.

ECONOSTOR 2 vacancies. 665-4842.

Action Storage 10x16 and 10x24 669-1221

102 Business Rental Prop.

OFFICE SPACE NBC Plaza. 665-4100.

RENT or LEASE: Retail, high traffic location. Reasonable rent. Will remodel for tenant, 116 W. Foster, 120 W. Foster. See Ted or John at 114 W. Foster. 669-9137.

103 Homes For Sale

PRICE T. SMITH INC. 665-5158 Custom Homes-Remodels Complete Design Service

TWILA FISHER REALTY 665-3560

BOBBIE NISBET REALTOR 665-7037...665-2946

3 bedroom, 1 3/4 baths, newly remodeled, new carpet, built-in appliances. 665-3396 days or 273-5923 evenings.

4 Bedroom, 2 bath, 1 car garage. Sell as is. 669-7988.

FOR SALE Custom Built-Tri-level house Well constructed. Beautifully decorated. Must see to appreciate. Walnut Creek Estates 665-8779, 669-7931

1726 Evergreen Buy equity. Assumable loan. 665-4772

Buy-Sell-Trade Jim Davidson First Landmark Realty 665-0717, 669-1863 Page 665-6121-486

Must Sell Real Estate 842 S. Sumner \$4000 1148 Neal Rd. \$4000 615 Albert \$2000 611 Albert \$7000. Call 665-0419, leave message.

BY owner, 3 bedroom, 1 3/4 bath, garage, lots of extras, Travis school district. \$49,500. 665-9300 or call Nita 665-8922 for appointment.

FIRST Listing. Comfortable 4 bedroom home with many extras. 1611 Fir. \$82,500. Call 665-6215 for appointment.

FOR SALE 1629 N. ZIMMERS New 3 bedroom, 2 bath, 2 car. Loaded. Beautiful. PRICE T. SMITH 665-5158

HOUSE for sale by owner. FHA assumable loan, 3 bedroom, 1 bath, garage, carpet and storage building. Real cute house on 1221 Charles. Beautiful location. 665-4207 after 5:30.

FOR sale or Lease 4 bedroom home. Call 665-7117 day, 665-8773 evenings.

HOUSE priced to Sell: On corner 1049 Cinderella at Primrose, 3 bedrooms, 1 3/4 baths, newly redecorated, water softer, and new roof. Close to Travis and Junior High schools. 665-7245 Weekdays to 3:00, after 665-0393

FRASHER Acres East-1 or more acres. Paved street, utilities. Balch Real Estate, 665-8075.

106 Commercial Property

2541 Milliron Road. Nice office building, approximately 2800 square feet, \$85,000. See to appreciate. Citizen's Bank & Trust, 665-2341 or 669-2142.

GREAT locations at 2115 and 2121 N. Hobart for sale or lease. Call 665-2336, 665-2832.

110 Out Of Town Prop.

TRAILER: 3 bedroom, 2 bath, central heat/air. Sand Spur Lake, McLean. 669-1763, 256-3656.

First Landmark Realty 665-0717 1600 N. Hobart

LARGE ROOMS Any very comfortable living. Large living room, separate dining room. Snack bar in kitchen. Lots of ceiling fans, window treatments. Metal storage building. Nice storm cellar. 24x36 detached garage. Corner lot. decontaminated very nicely. Priced below \$32,000.00. MLS 2409.

HOUSE for sale by owner. FHA assumable loan, 3 bedroom, 1 bath, garage, carpet and storage building. Real cute house on 1221 Charles. Beautiful location. 665-4207 after 5:30.

FOR sale or Lease 4 bedroom home. Call 665-7117 day, 665-8773 evenings.

HOUSE priced to Sell: On corner 1049 Cinderella at Primrose, 3 bedrooms, 1 3/4 baths, newly redecorated, water softer, and new roof. Close to Travis and Junior High schools. 665-7245 Weekdays to 3:00, after 665-0393

FRASHER Acres East-1 or more acres. Paved street, utilities. Balch Real Estate, 665-8075.

GREAT locations at 2115 and 2121 N. Hobart for sale or lease. Call 665-2336, 665-2832.

TRAILER: 3 bedroom, 2 bath, central heat/air. Sand Spur Lake, McLean. 669-1763, 256-3656.

103 Homes For Sale

LARGE 4 bedroom, 2 bath, family room with fireplace, garden room, 2 car garage, central heat/air, utility room, dining room, lots of extras. Call for appointment 665-4380.

N. CHRISTY. Enjoy the park and walking trail, when you invest in this 3 bedroom, 1 3/4 bath home. Central air and heat, garage. Great neighborhood. MLS 2397.

N. NELSON ST. Neat, attractive 3 bedroom, 1 bath, completely remodeled. New carpet, new vinyl floor covering. Located on large corner lot. MLS 2393. Shed Realty, Milly Sanders, 669-2671.

NEAT Clean 3 bedroom, 1 bath, large living area, dining room, utility room, large garage, carpet, with lots of extras, double driveway, extra lot, chain link fence. Nice house Great price \$19,500. Good Neighbors. 517 N. Dwight.

NICE 2 bedroom brick, double garage, fireplace, stove, refrigerator, central heat, air. Close in on Duncan. \$25,000. 669-7665 or 669-7663 after 6.

NICE 2 bedroom on Charles. Low down payment. Interest and closing. 669-2810, 665-3900.

CLOSED on used Travel Trailer. 3 to choose from. Will finance. Make offer. Doug Boyd, 821 W. Wilks, 669-6062.

CLOSED for vacation until August 17. Superior RV Center 1019 Alcock

Bill's Custom Campers 930 S. Hobart 665-4315 Pampa, Tx.

KNOWLES Used Cars 101 N. Hobart 665-7232

Doug Boyd Motor Co. We rent cars! 821 W. Wilks 669-6062

MR. INVESTOR. Here's a well developed Mobile Home Park with 14 hook-ups, underground utility lines and an all weather road, located at edge of city limits. MLS 2246-C.

CHOICE residential lots, north-east, Austin district. Call 665-2336, 665-2832 or 665-0079.

FRASHER Acres East-1 or more acres. Paved street, utilities. Balch Real Estate, 665-8075.

GREAT locations at 2115 and 2121 N. Hobart for sale or lease. Call 665-2336, 665-2832.

HOUSE for sale by owner. FHA assumable loan, 3 bedroom, 1 bath, garage, carpet and storage building. Real cute house on 1221 Charles. Beautiful location. 665-4207 after 5:30.

FOR sale or Lease 4 bedroom home. Call 665-7117 day, 665-8773 evenings.

HOUSE priced to Sell: On corner 1049 Cinderella at Primrose, 3 bedrooms, 1 3/4 baths, newly redecorated, water softer, and new roof. Close to Travis and Junior High schools. 665-7245 Weekdays to 3:00, after 665-0393

FRASHER Acres East-1 or more acres. Paved street, utilities. Balch Real Estate, 665-8075.

GREAT locations at 2115 and 2121 N. Hobart for sale or lease. Call 665-2336, 665-2832.

HOUSE for sale by owner. FHA assumable loan, 3 bedroom, 1 bath, garage, carpet and storage building. Real cute house on 1221 Charles. Beautiful location. 665-4207 after 5:30.

FOR sale or Lease 4 bedroom home. Call 665-7117 day, 665-8773 evenings.

HOUSE priced to Sell: On corner 1049 Cinderella at Primrose, 3 bedrooms, 1 3/4 baths, newly redecorated, water softer, and new roof. Close to Travis and Junior High schools. 665-7245 Weekdays to 3:00, after 665-0393

FRASHER Acres East-1 or more acres. Paved street, utilities. Balch Real Estate, 665-8075.

GREAT locations at 2115 and 2121 N. Hobart for sale or lease. Call 665-2336, 665-2832.

HOUSE for sale by owner. FHA assumable loan, 3 bedroom, 1 bath, garage, carpet and storage building. Real cute house on 1221 Charles. Beautiful location. 665-4207 after 5:30.

FOR sale or Lease 4 bedroom home. Call 665-7117 day, 665-8773 evenings.

HOUSE priced to Sell: On corner 1049 Cinderella at Primrose, 3 bedrooms, 1 3/4 baths, newly redecorated, water softer, and new roof. Close to Travis and Junior High schools. 665-7245 Weekdays to 3:00, after 665-0393

FRASHER Acres East-1 or more acres. Paved street, utilities. Balch Real Estate, 665-8075.

GREAT locations at 2115 and 2121 N. Hobart for sale or lease. Call 665-2336, 665-2832.

HOUSE for sale by owner. FHA assumable loan, 3 bedroom, 1 bath, garage, carpet and storage building. Real cute house on 1221 Charles. Beautiful location. 665-4207 after 5:30.

FOR sale or Lease 4 bedroom home. Call 665-7117 day, 665-8773 evenings.

HOUSE priced to Sell: On corner 1049 Cinderella at Primrose, 3 bedrooms, 1 3/4 baths, newly redecorated, water softer, and new roof. Close to Travis and Junior High schools. 665-7245 Weekdays to 3:00, after 665-0393

FRASHER Acres East-1 or more acres. Paved street, utilities. Balch Real Estate, 665-8075.

GREAT locations at 2115 and 2121 N. Hobart for sale or lease. Call 665-2336, 665-2832.

HOUSE for sale by owner. FHA assumable loan, 3 bedroom, 1 bath, garage, carpet and storage building. Real cute house on 1221 Charles. Beautiful location. 665-4207 after 5:30.

114 Recreational Vehicles

1973 Dodge (Red Dale) motorhome. Roof air, dash air, new tires, new interior. \$5995. Doug Boyd, 821W. Wilks, 669-6062.

1987 27 foot Coachman motorhome, fully equipped for sale. 874-2375 Clarendon.

1991 35 foot Electric slideout. Self contained, every option. 665-9222.

1992 35 foot Tip Out self contained. Washer/dryer. 669-2022.

20 foot travel Trailer with bath, sleeps 6. 665-4842.

26 1/2 Foot 1982 Winnebago. Clean, fully equipped, low mileage, bunk beds. 669-2602, after 5 and weekends 665-3298.

CLOSE OUT on used Travel Trailer. 3 to choose from. Will finance. Make offer. Doug Boyd, 821 W. Wilks, 669-6062.

CLOSED for vacation until August 17. Superior RV Center 1019 Alcock

Bill's Custom Campers 930 S. Hobart 665-4315 Pampa, Tx.

KNOWLES Used Cars 101 N. Hobart 665-7232

Doug Boyd Motor

World smoking less, but Third World still smoking more

WASHINGTON (AP) — Enough cigarettes are produced each year for every person on Earth to have about three smokes a day, but worldwide smoking is on the decline, a study shows.

Heavy taxes that have pushed the cost of a pack of 20 cigarettes to more than \$4 in some countries are contributing to lower smoking rates in industrialized nations, according to a Worldwatch Institute report released Wednesday.

Marketing by U.S. tobacco companies and increased buying power in some Third World countries have boosted sales figures, with smoking spreading rapidly in sub-Saharan Africa, China and Eastern Europe, the report said.

Worldwide, production has slipped about 1.5 percent since reaching a peak in 1988. Last year's sales totaled 5.45 trillion cigarettes, which is still a 300 percent total increase and a 50 percent per capita increase since 1950, the report says.

"My sense is that the world is where the United States was 20 or 25 years ago, and smoking is now going to decline," Lester Brown, president of Worldwatch, said at a news conference. Smoking has dropped sharply in the United States since a 1964 surgeon general's report linked smoking and lung cancer.

Since then, other diseases also have been blamed on smoking.

In Denmark, the tax alone is now \$4.06 a pack, while federal and local taxes in the United States average only 51 cents a pack, among the lowest in the industrialized world, said Brown, president of the research group.

Other countries' taxes include \$3.97 in Norway, \$3.24 in Britain, \$3.09 in Ireland, and on the low side, 95 cents in Japan, 90 cents in Greece and 46 cents in Spain, which Brown said has the lowest of all industrialized nations.

The report recommended higher taxes on tobacco products as a way of raising revenue, cutting health

costs and decreasing smoking, especially among teenagers.

The U.S. tobacco industry didn't like the idea.

"In this country, we don't punish adults for legal behavior of their own choosing," said Tom Lauria, spokesman for the Tobacco Institute, which received a copy of the Worldwatch report.

He said the industry has successful programs that discourage smoking by teen-agers. A big increase in the smoking tax in Canada, which the institute cited as proof of the effectiveness of tax increases, has only created a booming business for cigarettes at U.S. border points, Lauria said.

In Canada, per capita cigarette sales for adults decreased by one third from 1980 when the tax was 38 cents a pack to 1990 when it was \$3.25 a pack, the report said.

The report said heavy taxes also have reduced smok-

ing in Britain, New Zealand and other developed countries. It cited increasing restrictions on smoking in Japan and several other countries as cutting smoking but did not give statistics.

Developed countries where annual per capita cigarette smoking was the highest, in order, were Greece with 2,799 cigarettes per person, Japan with 2,533, the United States with 2,140, Spain with 2,138, Germany with 2,004 and South Korea with 1,940.

By comparison, per capita consumption in Zimbabwe was 219, Kenya 230 and Indonesia 764. The report listed figures for only selected Third World countries.

The U.S. Centers for Disease Control attributed more than 434,000 deaths in the United States to smoking in 1988, the latest year studied. And the American Heart Association estimated that another 53,000 non-smokers were killed by passively inhaling smoke from other people's cigarettes.

FINAL TWO DAYS

IT'S A FASHION STATEMENT...

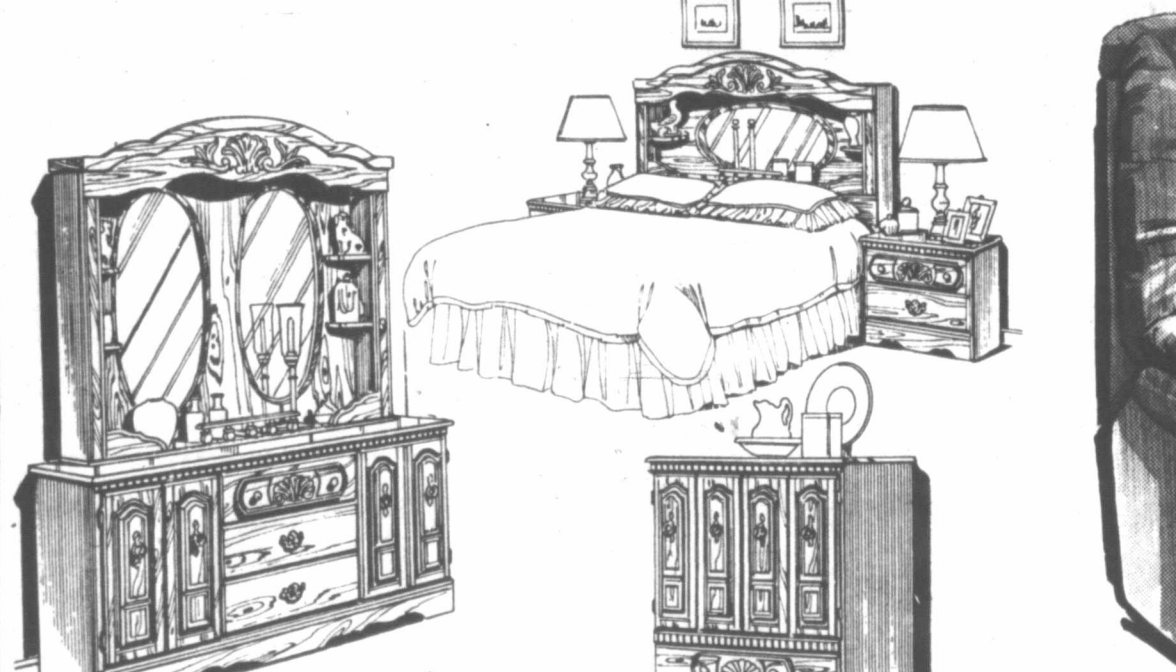
SOFA AND LOVESEAT \$399



Today's smart buyers are demanding beauty and quality, all at an affordable price. This grouping certainly meets all your smart buying requirements. Deep cushioning, beautiful and durable fabric along with solid construction will give your decor many years of comfort and beauty. Come by and see this wonderful group.

OF GRAHAMS WAREHOUSE LIQUIDATION SALE

A MESSAGE FROM TALL CLARA!
 We're starting the final two days of our warehouse liquidation sale this Friday. I CAN'T PROMISE YOU A BIG SELECTION! BUT I CAN PROMISE YOU SMALL PRICES!
 (Listed on this page is a few examples of Liquidation Prices.)
 Clara Graham



We only have seven bedroom suites left and here is one of them **FOR \$499**
 The Suite includes door dresser, mirror, door chest, bookcase bed.
 However we do have a 4 pc. suite that starts at only \$399.

Beautifully elegant but with the casual warmth of country styling. Finished in a rich burnished pine, the Stoney Creek III bedroom collection offers the most wanted decorative features with plenty of storage capacity. Highlighted by a large door dresser complemented by a hutch mirror with plenty of interior light, your room will be enhanced by some of the finest elements of cabinetry. Dental molding, shaped rails, graceful turnings and shell carvings give Stoney Creek III a romantic appeal that will be admired by family and guests. Additional storage in the three drawer armoire and two drawer night stand.


NEED A RECLINER?

We have 10 Berkline® Recliners and 2-People Lounger Recliners **MOST OF THEM WILL BE SOLD FOR \$199**

If your credit is good you can take up to 36 months to pay



LAST CHANCE TO BUY SERTA-BEDDING AT THESE PRICES



Very little bedding left bring your truck

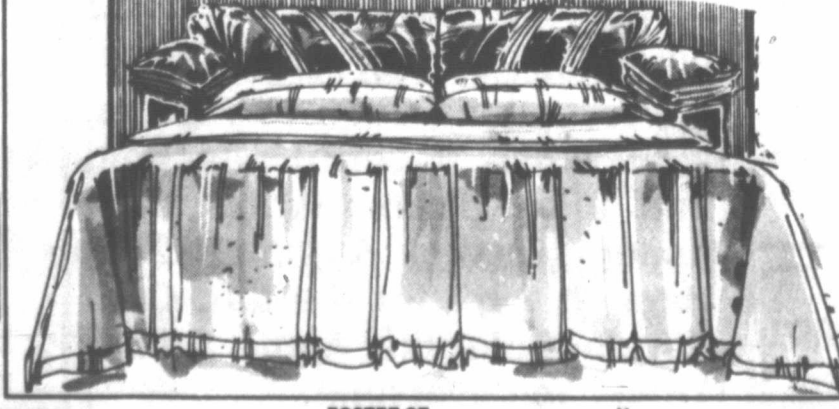
- 5-Serta Pedic Queen Size Sets Only \$168
- 3-Serta Perfect Sleeper Full size sets only \$199
- 3-Serta Perfect Sleeper Queen size sets Only \$259
- 3-Posture Beauty Coil on coil King Size Sets Only \$399

Use your good credit and take up to 36 months to pay!

3 PC. LIVING ROOM GROUP FOR \$599
 Sofa, loveseat and matching chair ottoman is \$42⁰⁰ extra.



We only have nine Queen size sleepers left! All with innerspring mattresses. **STARTING AT \$299 TO \$399**



523 W. Foster Pampa, Tx.

