

IT'S THE SAVING ON EVERY ITEM THAT COUNTS

STANDARD FOOD MARKETS

Wholesale "SELLS FOR LESS" Retail

No. 1—110 So. Cuyler, Phone 342 No. 3—LeFors, Phone No. 1
No. 2—304 So. Cuyler, Phone 727 No. 4—McLean, Phone No. 9

COCOANUT 1/4 Lb. Cello Long Shred **BAG 13c**

VIENNA SAUSAGE 4 Oz. Net **2 CANS FOR 15c**

SALT Table 10 Lb. **BAG 19c**

CATSUP Large 14-oz. Bottle Packed from Ripe Tomatoes **2 For 24c**

BUTTER
Standard Food Markets Supreme
Quarter Molds in Cartons, Lb. 35c
SOLID MOLDS IN CARTONS LB. 34c

APRICOT JUICE No. 1 Tall **CAN 14c**

ORANGE JUICE No. 1 Tall **CAN 14c**

PINEAPPLE Juice, No. 2 Size **CAN 14c**

GRAPEFRUIT Juice, No. 1 Size **2 CANS FOR 15c**

PINEAPPLE Juice, 12 1/2 oz. Size **2 CANS FOR 19c**

CANNED VEGETABLES
KRAUT, SPINACH OR MUSTARD GREENS, No. 2 Size **2 CANS FOR 19c**
BLACKEYED PEAS, Shelled and Snapped, 15 oz. Size **2 CANS FOR 21c**
CORN, Tender, Sweet, No. 2 Size **2 CANS FOR 23c**
PEAS—Early June, Not Soaked—No. 2 Size **2 CANS FOR 24c**

MACARONI Spaghetti Or Shells In the Bulk **BAG 17c**

TISSUE Standard Food Brand **3 ROLLS FOR 19c**

FLOUR KANSANA, Red Star Product
EVERY SACK GUARANTEED
Stocked at No. 2, 3 and No. 4 Stores Only **24 LB. BAG 79c**

Gallon Fruits
PRUNES Fresh Italian **GAL. 31c**
PEARS Fancy Bartlett **GAL. 41c**
APPLES Solid Pack **GAL. 41c**
PEACHES Selected Halves **GAL. 46c**
Blackberries Northwest Pack **GAL. 48c**
CHERRIES Red Sour Pitted **GAL. 58c**
APRICOTS Solid Pack **GAL. 48c**
BAKING POWDER K. C. 50 Oz. Size Can 5c **25 OZ. CAN 19c**
RICE Choice in the Bulk **BAG 19c**
RAISINS Thompson's Seedless 4 Lb. Bag 36c **2 LB. BAG 21c**
MATCHES 6 Box Carton Real Value **CARTON 23c**

LETTUCE
LARGE HEADS
Cool and Salady
Every Leaf Can Be Eaten
HEAD 6 1/2c

ORANGES
FOR JUICE
We suggest these 252 size
DOZ. 23c

TOMATOES
FANCY CALIFORNIA PINKS
LB. 12 1/2c

WATER-MELONS
PARKER COUNTY MEDIUM AVERAGE
LB. 1 3/4c

ONIONS
CRYSTAL WAX OR SPANISH SWEETS
Fine To Cream
LB. 3 1/2c

BREAD
SATURDAY ONLY — LIMIT
FLUFFY 16-OZ. LOAF
EACH 5c

OLEO
"RED ROSE"
A BUTTER SUBSTITUTE
2 LBS. FOR 33c

APPLES
NEW CROP GRAVENSTEINS
DOZ. 29c

BANANAS
LARGE GOLDEN RIPE
DOZ. 12c
Saturday Only

Meat and Produce
Prices Are For Friday
Afternoon, Saturday
And Monday

Shortening 8 LB. **89c**
"ARMOUR'S VEGETOLE" CTN.

DRIED BEANS
Small Navies—Fine to Bake
5 Lb. Bag 31c

PICKLES In Glass
WHOLE SOURS OR DILLS
QT. JAR 17c

BUTTER Armour's Cloverbloom
"Country Roll" **LB. 34c**

Quick Suds Rich and Lasting
LARGE PKG. 21c

PG 6 Large Bars **24c**

WHITE KING Granulated SOAP
CONDENSED SOAP
Large Pkg. . . . **33c**

SALAD DRESSING
A Real Brand
QUART JAR 24c

VINEGAR
COLORED DISTILLED
FLY SWATTERS
LONG HANDLE
EACH 5c

PINT BOTTLE 5c
BLACK PEPPER
CAGES 1 1/2 OZ.
BOX 5c

VEG - ALL Mixed Vegetables
REGULAR SIZE
2 Cans For 23c

PORK & HOMINY
ARMOUR'S STAR
Southern Style, Size 2 1/2
2 Cans For 23c

BLACKEYED PEAS
FRESH SHELLED AND SNAPPED
EL FOOD BRAND—CONTENTS 15 OZ.
2 Cans For 19c

CANNED PEAS
OTOE BRAND—GARDEN RUN
NO. 2 SIZE CAN
2 Cans For 29c

FLY - DED Insect Spray
KILLS FLIES, ANTS AND ROACHES
Pint Can **19c**
Quart Can **34c**

LIPTON'S TEA
ORANGE PEKOE
1 LB. 23c
1 LB. 44c

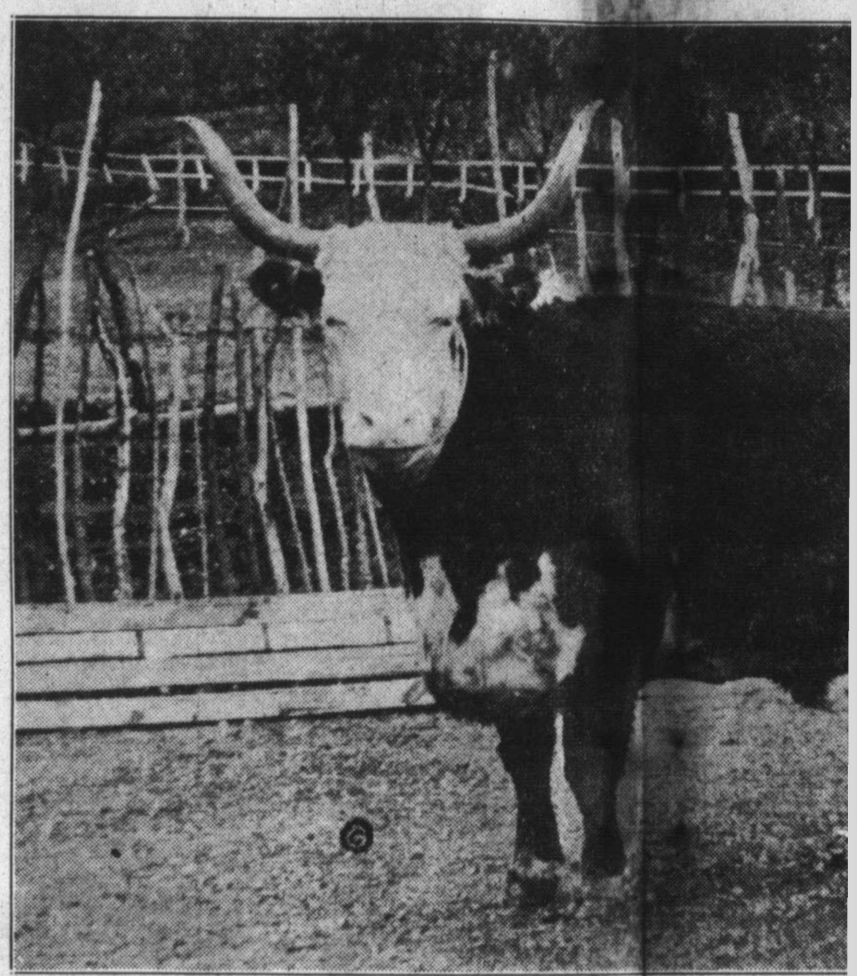
TOMATOES Solid Pack
NO. 1 SIZE
CAN 5c

PORK & BEANS
WHITE SWAN
CONTENTS 10 1/2 OZ. CAN
CAN 5c

WE RESERVE THE RIGHT TO LIMIT QUANTITIES
These Prices Are in Effect When the Paper Leaves the Press Friday

STEAKS Cut From Pinkney's And Wilson's Baby Beeves
1ST CUT CHUCK **LB. 10 3/4c**
CENTER CUT CHUCK **LB. 15 3/4c**
CHOICE ARM CENTER CUT **LB. 18 1/2c**
SHORT CUTS OR RIB **LB. 25 1/2c**
CHOICE ROUND LOIN OR T BONES **LB. 30 1/2c**

CHEESE
Northern Longhorn Full Cream
LB. 19 1/2c
Kraft's ass't package, each 20c



Will Rogers and his 3,300 Pound Pet Steer . . . And That's The Kind You Get at Standard Food

PURE LARD **LB. 10 1/2c**
Bring your own container

FRANKS Large And Juicy **LB. 15c**
BOLOGNA Large Sliced As You Like It **LB. 12 1/2c**
MINCED HAM Fresh 1st Grade **LB. 15c**
COTTAGE CHEESE Fine For Salads **LB. 15c**
PICNIC HAMS Small 1st Grade **LB. 22 1/2c**
SLICED BACON Armour's Star Cello **LB. 36c**
DRY SALT Squares For Seasoning **LB. 10 3/4c**

SLICED BACON
Cudahy Rival **LB. 25 1/2c**
Wilson's Laurel **LB. 28c**
Dold's Sterling **LB. 29 1/2c**
Korn King **LB. 32 1/2c**
Sunray or Banquet **LB. 35c**

HAMBURGER
Standard's better meats
POUND 12 1/2c

LUNCH LOAVES Large Assortment **LB. 27 1/2c**
FRESH HAMS Half or Whole **LB. 25 1/2c**
CURED HAMS Wilson Roll, No Bone **LB. 38 1/2c**
SLAB BACON Dry Salt Slab **LB. 17 1/2c**
DELICATESSEN Sold at No. 1 Market Only
CHICKEN SALAD **LB. 50c**
POTATO SALAD **LB. 17 1/2c**

PORK CUTS
Pork liver, not Frozen **LB. 15c**
Pork shoulder, shank Half **LB. 15 1/2c**
Pork ribs, fresh, Lean **LB. 16 1/2c**
Sausage, pure Pork **LB. 17 1/2c**

ONIONS SPAL WAX OR SPANISH SWEETS Fine To Cream LB. 3¹/₂^c	POTATOES NO. 1 RED TRIUMPH OR WHITE COBBLERS 10 LBS. 37^c FOR	CUCUMBERS Green—None too large LB. 6¹/₂^c We also have some Colorado Fresh Dill	CANTALOUPE SWEET AND MELLOW JUMBO SIZE EACH 10^c	GRAPES RED MALAGAS Fine For Jellies LB. 12¹/₂^c	RHUBARB CHERRY RED LB. 7¹/₂^c
--	---	---	---	--	---

FRESH CORN
Selected Ears
Very Sweet and Tender
3 EARS **10^c**
FOR

PEACHES Large Fancy
Elbertas
POUND **5^c** FULL
BUSHEL **\$1.89**

SEVEN DAY COFFEE
Tested and Approved by "Good Housekeeping"
Vacuum Packed — All Purpose Grind
LB. CAN. **19¹/₂^c**

LAYER CAKES Regular 15c
Seller
Baked by Burrow's Bakery
Assorted Flavors
Saturday Only
EACH **12^c**
NUCOA LB. **19^c**
The New Vegetable
Oleomargarine

CANNING NEEDS AND

Jar Rubbers U. S. Red, Dozen in Box	9c
Kerr-Mason Lids Regular, Dozen in Box	12c
TEXWAX Texaco, Lb. Pkg.	23c
Kerr-Mason Caps Regular—Dozen in Box	24c
Certo 8 Oz. Size—Recipe booklet attached, Bottle	25c
PEN-JELL OR Sure-Jell 3 Oz., 2 Pkgs. For	26c
Vinegar Apple Cider—In Your Container, Gal.	59c
Pint Jars Regular Kerr Mason—Dozen	74c
Quart Jars Regular Kerr Mason—Dozen	\$1.04
Half Gallon Jars Regular Kerr Mason—Dozen	

MIT QUANTITIES OF ALL PURCHASES
e Press Friday Afternoon. Grocery Prices Good For One Week

FLOUR High Patent
"GREAT WEST"
24 LB. BAG **87^c**

DOG FOOD No. 1 Tall Size
ARMOUR'S SANDY BRAND
2 Cans For **19c**
WHITE SHOE POLISH WIZARD BRAND
8 oz. Bottle **19c**

CRACKERS 2 LB. **17^c**
Salty, Crisp, Oven Fresh

CORN FLAKES KELLOGG'S
LARGE PACKAGE
EACH **10c**
CANNED PEAS Miss-Co
Brand
Prepared from Dry Peas—No. 2 Size
2 Cans For **15c**

SUGAR Powdered or Brown
in the Bulk
2 Lb. Bag **15c**
GRAIN SACKS
50 In Bundle—At No. 2 Store Only
BUNDLE **\$1**

EVAPORATED MILK
PET OR CARNATION
3 Tall
Or
6 Small
Cans **25c**
SUGAR
Fine Granulated in Kraft Bags
10 LB. BAG **53^c**
Saturday Only—Limit

APPLES Size 2 1/2
Fancy Quartered and Cored
CAN **12¹/₂^c**
K. C. BKNQ. POWDER
Double Tested—Double Acting
1 LB. CAN **12¹/₂^c**

TOMATOES NEW CROP
HAND PACKED
3 CANS **22^c**
FOR
CANNED APRICOTS
BRIMFUL BRAND
Size 2 1/2
CAN **17c**
CANNED PEARS
Green Tag Brand, Fancy Bartlett
In Heavy Syrup—No. 2 1/2 Size
CAN **17c**

SCHILLING'S COFFEE
PLAIN OR DRIP GRIND
1 LB. CAN **27^c**

GRAPE JUICE WHITE SWAN
Pint Bottle **17^c** Quart Bottle **32^c**
CANNED VEGETABLES
Scott County Brand
DRY LIMA BEANS
No. 2 Size
or
PEAS AND CARROTS
No. 2 Size
2 CANS **19^c**
FOR

ICE CREAM SALT 10-Lb. Bag 17c;
4-Lb. Box
EACH **9c**
PEA TALC Sweet,
Size
13 Oz. CAN **12¹/₂^c**
CANNED BEETS Brimful
Cut,
Size 2 1/2 CAN **14c**
APPLE JELLY Brimful
Brand
Pure 2 LBS. **24c**
JAR

ADMIRATION COFFEE
PLAIN OR DRIP GRIND
Ask Clerks How To
Secure Waterless
Cooker on Display
LB. **25^c**
PKG.

GREEN BEANS Tender
No. 2
Size 2 CANS **17c**
FOR
MARSHMALLOWS 1
Lb.
Cello BAG **19c**
KRAUT No. 2 3/4
Fancy
Pack 2 CANS **25c**
FOR
HOMINY No. 2 3/4
Large
Snow White 2 CANS **25c**
FOR
PINTO BEANS New
Crop
Recleaned 5 LB. **31c**
BAG

STALEY'S LAUNDRY STARCH
STARCH IN CUBES - NO GUESS WORK
NO WASTE - EASY IRONING
4 8 oz. **23^c**
Packages

POTTED MEAT 3 1-4
Oz.
Net 3 CANS **11c**
FOR
MACKEREL California
Quality
No. 1 Tall 2 CANS **17c**
FOR
SALMON Selected
Pink,
No. 1 Tall 2 CANS **26c**
FOR

PURE COCOA Peerless Brand,
Serve It Iced
2 LB. **16^c**
CAN

APRICOTS White Swan
In Heavy Syrup
Size 2 1/2 CAN **26c**
CHERRIES No. 2
Red
Pitted 2 CANS **29c**
FOR
PINEAPPLE Matched Slices
or Std. Cru.
No. 2 Size 2 CANS **31c**
FOR

EVAPORATED MILK
ARMOUR'S
3 Tall
Or
6 Small
Cans **23^c**
OVEN WARE 8-Piece
Set
Baking Kitchen Ware,
with one purchase of
merchandise amounting to
\$5.00 or more
SET **\$1.24**



Pet Steer . . . Will Knew GOOD BEEF. . .
t Standard Food Markets!

ROASTS Cut From Wilson's and
Pinkney's Corn Fed
Steers
1ST CUT CHUCK LB. **12¹/₂^c**
CENTER CUT CHUCK LB. **17¹/₂^c**
CHOICE ARM CENTER CUT LB. **19¹/₂^c**
ROLL, NO BONE LB. **16¹/₂^c**
BONELESS ROLL CHUCK LB. **19¹/₂^c**

LAMB Stamped genuine
Spring
CHOICE BREAST LB. **10¹/₂^c**
MEDIUM SHOULDER LB. **14¹/₂^c**
LEGS, PREPARED LB. **22¹/₂^c**
FANCY CHOPS LB. **35c**

PEANUT BUTTER In the bulk
Lots of pure peanut oil
2 LBS. **21^c**
For

SLAB BACON
Cudahy Smoked,
1/2 or Whole LB. **22¹/₂^c**
Cudahy Rex
1/2 or Whole LB. **27¹/₂^c**
Star, Deckers or Certified
1/2 or Whole LB. **33¹/₂^c**

HAM ENDS Fine
to
Bake LB. **15³/₄^c**
BACON SQUARES Lean
Medium
Average LB. **20¹/₂^c**
CORNER BEEF Fresh
Made in
Our Markets LB. **19¹/₂^c**
SALT JOWLS Use
These For
Economy LB. **13¹/₂^c**
BAR-B-Q SAUCE Net
Weight
7 1/2 Oz. BOT. **15c**
ROAST Fancy
Standing
Prime Rib LB. **20¹/₂^c**
CURED HAMS Deckers
Iowana
1/2 or Whole LB. **26¹/₂^c**

PORK CHOPS
Small lean end cuts
POUND **17¹/₂^c**

FISH AND POULTRY
Fresh Cat Fish, Lb. **29c**
Fresh Trout, Lb. **24c**
Fillet of Haddock, Lb. **23c**
Hens, Fancy, Lb. **18¹/₂^c**
Fryers, Extra Fancy, Lb. **19¹/₂^c**

BEEF HEARTS Medium
Size
To Bake LB. **10c**
LIVER Fresh
Baby
Beef LB. **19¹/₂^c**
PORK SHANK Sold as
Cut and
Displayed LB. **12¹/₂^c**
BAKED HAM Home
Style and
Seasoned LB. **65c**
DELICATESSEN Sold at No. 2
Market only
Bar-B-Q Short Ribs of Beef, Lb. **21c**
Hot Roast Beef, Lb. **25c**
Bar-B-Q Spare Ribs, Lb. **29c**

IT'S THE SAVING ON EVERY ITEM THAT COUNTS

STANDARD FOOD MARKETS

Wholesale "SELLS FOR LESS" Retail

No. 1—110 So. Cuyler, Phone 342 No. 2—304 So. Cuyler, Phone 727 No. 3—LeFors, Phone No. 1 No. 4—McLean, Phone No. 9

LETTUCE
LARGE HEADS
Cool and Salady
Every Leaf Can Be Eaten
HEAD 6¹/₂¢

ORANGES
FOR JUICE
We suggest these 252 size
DOZ. 23¢

TOMATOES
FANCY CALIFORNIA
PINKS
LB. 12¹/₂¢

WATER-MELONS
PARKER COUNTY
MEDIUM AVERAGE
LB. 1³/₄¢

ONIONS
CRYSTAL WAX OF
SPANISH SWEETS
Fine To Cream
LB. 3¹/₂¢

BREAD
SATURDAY ONLY — LIMIT
FLUFFY 16-OZ. LOAF
EACH 5¢

APPLES
NEW CROP
GRAVENSTEINS
DOZ. 29¢

OLEO
"RED ROSE"
A BUTTER SUBSTITUTE
2 LBS. 33¢

BANANAS
LARGE GOLDEN RIPE
DOZ. 12¢
Saturday Only

COCOANUT 1/2 Lb. Cello Long Shred **BAG 13¢**
VIENNA SAUSAGE 4 Oz. Net **2 CANS FOR 15¢**
SALT Table 10 Lb. **BAG 19¢**
CATSUP Large 14-oz. Bottle Packed from Ripe Tomatoes **2 Bottles For 24¢**

Meat and Produce
Prices Are For Friday
Afternoon, Saturday
And Monday

BUTTER
Standard Food Markets Supreme
Quarter Molds in Cartons, Lb. 35¢
SOLID MOLDS IN CARTONS LB. 34¢

Shortening 8 LB. **89¢**
"ARMOUR'S VEGETOLE"
CTN.

WE RESERVE THE RIGHT TO LIMIT QUANTITIES
These Prices Are in Effect When the Paper Leaves the Press

APRICOT JUICE No. 1 Tall **CAN 14¢**
ORANGE JUICE No. 1 Tall **CAN 14¢**
PINEAPPLE Juice, No. 2 Size **CAN 14¢**
GRAPEFRUIT Juice, No. 1 Size **2 CANS FOR 15¢**
PINEAPPLE Juice, 12 1/2 oz. Size **2 CANS FOR 19¢**

DRIED BEANS
Small Navies—Fine to Bake
5 Lb. Bag 31¢

PICKLES In Glass
WHOLE SOURS OR DILLS
QT. JAR 17¢

STEAKS Cut From Pinkney's And Wilson's Baby Beeves
1ST CUT CHUCK LB. 10³/₄¢
CENTER CUT CHUCK LB. 15³/₄¢
CHOICE ARM CENTER CUT LB. 18¹/₂¢
SHORT CUTS OR RIB LB. 25¹/₂¢
CHOICE ROUND LOIN OR T BONES LB. 30¹/₂¢



CANNED VEGETABLES
KRAUT, SPINACH OR MUSTARD GREENS, No. 2 Size **2 CANS FOR 19¢**
BLACKEYED PEAS, Shelled and Snapped, 15 oz. Size **2 CANS FOR 21¢**
CORN, Tender, Sweet, No. 2 Size **2 CANS FOR 23¢**
PEAS—Early June, Not Soaked—No. 2 Size **2 CANS FOR 24¢**

BUTTER Armour's Cloverbloom **LB. 34¢**
"Country Roll"

CHEESE
Northern Longhorn
Full Cream
LB. 19¹/₂¢
Kraft's ass't package, each 20¢

Will Rogers and his 3,300 Pound Pet Steer . . .
And That's The Kind You Get at Standard Food Markets

MACARONI Spaghetti Or Shells In the Bulk **BAG 17¢**
TISSUE Standard Food Brand **3 ROLLS FOR 19¢**

Quick Suds Rich and Lasting
LARGE PKG. . . 21¢

PG 6 Large Bars **24¢**

FLOUR KANSANA, Red Star Product
EVERY SACK GUARANTEED
Stocked at No. 2, 3 and No. 4 Stores Only
24 LB. BAG 79¢

WHITE KING Granulated SOAP
Granulated

SALAD DRESSING
A Real Brand
QUART JAR 24¢

PURE LARD
Bring your own container
LB. 10¹/₂¢

Gallon Fruits
PRUNES Fresh Italian **GAL. 31¢**
PEARS Fancy Bartlett **GAL. 41¢**
APPLES Solid Pack **GAL. 41¢**
PEACHES Selected Halves **GAL. 46¢**
Blackberries Northwest Pack **GAL. 48¢**
CHERRIES Red Sour Pitted **GAL. 58¢**
APRICOTS Solid Pack **GAL. 48¢**
BAKING POWDER K. C. 50 Oz. Size Can 51¢ **25 OZ. CAN 19¢**
RICE Choice in the Bulk **BAG 19¢**
RAISINS Thompson's Seedless 4 Lb. Bag 36¢ **2 LB. BAG 21¢**
MATCHES 6 Box Carton Real Value **CARTON 23¢**

CONDENSED SOAP
Large Pkg. . . . **33¢**

VINEGAR COLORED DISTILLED
PINT BOTTLE 5¢

FRANKS Large and Juicy **LB. 15¢**
BOLOGNA Large Sliced As You Like It **LB. 12¹/₂¢**
MINCED HAM Fresh 1st Grade **LB. 15¢**
COTTAGE CHEESE Fine For Salads **LB. 15¢**
PICNIC HAMS Small 1st Grade **LB. 22¹/₂¢**
SLICED BACON Armour's Star Cello **LB. 36¢**
DRY SALT Squares For Seasoning **LB. 10³/₄¢**

SLICED BACON
Cudahy Rival **LB. 25¹/₂¢**
Wilson's Laurel **LB. 28¢**
Dold's Sterling **LB. 29¹/₂¢**
Korn King **LB. 32¹/₂¢**
Sunray or Banquet **LB. 35¢**

FLY SWATTERS
LONG HANDLE
EACH 5¢

BLACK PEPPER
CAGES 1 1/2 OZ.
BOX 5¢

VEG - ALL Mixed Vegetables REGULAR SIZE
2 Cans For 23¢

PORK & HOMINY ARMOUR'S STAR Southern Style, Size 2 1/2
2 Cans For 23¢

BLACKEYED PEAS
FRESH SHELLED AND SNAPPED
EL FOOD BRAND—CONTENTS 15 OZ.
2 Cans For 19¢

CANNED PEAS
OTOE BRAND—GARDEN RUN
NO. 2 SIZE CAN
2 Cans For 29¢

FLY - DED Insect Spray
KILLS FLIES, ANTS AND ROACHES
Pint Can **19¢**
Quart Can **34¢**

LIPTON'S TEA ORANGE PEKOE
1 LB. 23¢
1/2 LB. 44¢

HAMBURGER
Standard's better meats
POUND 12¹/₂¢

TOMATOES Solid Pack
NO. 1 SIZE
CAN 5¢

PORK & BEANS WHITE SWAN
CONTENTS 10 1/2 OZ. CAN
CAN 5¢

LUNCH LOAVES Large Assortment **LB. 27¹/₂¢**
FRESH HAMS Half or Whole **LB. 25¹/₂¢**
CURED HAMS Wilson Roll, No Bone **LB. 38¹/₂¢**
SLAB BACON Dry Salt Slab **LB. 17¹/₂¢**
DELICATESSEN Sold at No. 1 Market Only
CHICKEN SALAD LB. 50¢
POTATO SALAD LB. 17¹/₂¢

PORK CUTS
Pork liver, not Frozen **LB. 15¢**
Pork shoulder, shank Half **LB. 15¹/₂¢**
Pork ribs, fresh, Lean **LB. 16¹/₂¢**
Sausage, pure Pork **LB. 17¹/₂¢**

ONIONS
CRYSTAL WAX OR SPANISH SWEETS
Fine To Cream
LB. **3¹/₂^c**

POTATOES
NO. 1 RED TRIUMPH OR WHITE COBBLERS
10 LBS. **37^c**
FOR

CUCUMBERS
Green—None too large
LB. **6¹/₂^c**
We also have some Colorado Fresh Dill

CANTALOUPE
SWEET AND MELLOW
JUMBO SIZE
EACH **10^c**

GRAPES
RED MALAGAS
Fine For Jellies
LB. **12¹/₂^c**

RHUBARB
CHERRY RED
LB. **7¹/₂^c**

CANNING NEEDS

- Jar Rubbers U. S. Red, Dozen in Box **5c**
- Kerr-Mason Lids Regular, Dozen in Box **10c**
- TEXWAX Texaco, Lb. Pkg. **12c**
- Kerr-Mason Caps Regular—Dozen in Box **23c**
- Certo 8 Oz. Size—Recipe booklet attached, Bottle **24c**
- PEN-JELL OR Sure-Jell 3 Oz., 2 Pkgs. For **25c**
- Vinegar Apple Cider—In Your Container, Gal. **26c**
- Pint Jars Regular Kerr Mason—Dozen **59c**
- Quart Jars Regular Kerr Mason—Dozen **74c**
- Half Gallon Jars Regular Kerr Mason—Dozen **\$1.04**

FRESH CORN
Selected Ears Very Sweet and Tender
3 EARS **10^c**
FOR

SEVEN DAY COFFEE
Tested and Approved by "Good Housekeeping"
Vacuum Packed — All Purpose Grind
LB. CAN. **19¹/₂^c**

LAYER CAKES Regular 15c Seller
Baked by Burrow's Bakery Assorted Flavors Saturday Only
EACH **12^c**

PEACHES Large Fancy Elbertas
POUND **5^c** FULL BUSHEL **\$1.89**

NUCOA The New Vegetable Oleomargarine
LB. **19^c**

LIMIT QUANTITIES OF ALL PURCHASES
as the Press Friday Afternoon. Grocery Prices Good For One Week



ound Pet Steer . . . Will Knew GOOD BEEF. . .
Get at Standard Food Markets!

ROASTS Cut From Wilson's and Pinkney's Corn Fed Steers

- 1ST CUT CHUCK LB. **12¹/₂^c**
- CENTER CUT CHUCK LB. **17¹/₂^c**
- CHOICE ARM CENTER CUT LB. **19¹/₂^c**
- ROLL, NO BONE LB. **16¹/₂^c**
- BONELESS ROLL CHUCK LB. **19¹/₂^c**

LAMB Stamped genuine Spring

- CHOICE BREAST LB. **10¹/₂^c**
- MEDIUM SHOULDER LB. **14¹/₂^c**
- LEGS, PREPARED LB. **22¹/₂^c**
- FANCY CHOPS LB. **35^c**

FLOUR High Patent "GREAT WEST"
24 LB. BAG **87^c**

DOG FOOD No. 1 Tall Size
ARMOUR'S SANDY BRAND
2 Cans For **19^c**

WHITE SHOE POLISH WIZARD BRAND
8 oz. Bottle **19^c**

CRACKERS Salty, Crisp, Oven Fresh
2 LB. BOX **17^c**

CORN FLAKES KELLOGG'S LARGE PACKAGE
EACH **10^c**

CANNED PEAS Miss-Co Brand
Prepared from Dry Peas—No. 2 Size
2 Cans For **15^c**

SUGAR Powdered or Brown in the Bulk
2 Lb. Bag **15^c**

GRAIN SACKS
50 In Bundle—At No. 2 Store Only
BUNDLE **\$1**

EVAPORATED MILK PET OR CARNATION
3 Tall Or 6 Small Cans **25^c**

SUGAR Fine Granulated in Kraft Bags
10 LB. BAG **53^c**
Saturday Only—Limit

APPLES Size 2 1/2
Fancy Quartered and Cored
CAN **12¹/₂^c**

K. C. BKNG. POWDER
Double Tested—Double Acting
1 LB. CAN **12¹/₂^c**

TOMATOES NEW CROP HAND PACKED
FULL NO. 2 SIZE CAN **3 CANS 22^c**

CANNED APRICOTS BRIMFUL BRAND Size 2 1/2
CAN **17^c**

CANNED PEARS Green Tag Brand, Fancy Bartlett In Heavy Syrup—No. 2 1/2 Size
CAN **17^c**

ICE CREAM SALT 10-Lb. Bag 17c; 4-Lb. Box **EACH 9c**

PEA TALC Sweet, Size 13 Oz. **CAN 12¹/₂^c**

CANNED BEETS Brimful Cut, Size 2 1/2 **CAN 14^c**

APPLE JELLY Brimful Brand Pure **2 LBS. 24^c**

ADMIRATION COFFEE PLAIN OR DRIP GRIND
Ask Clerks How To Secure Waterless Cooker on Display
LB. PKG. **25^c**

GREEN BEANS Tender No. 2 Size **2 CANS 17^c**

MARSHMALLOWS 1 Lb. Cello **BAG 19^c**

KRAUT No. 2 3/4 Fancy Pack **2 CANS 25^c**

HOMINY No. 2 3/4 Large Snow White **2 CANS 25^c**

PINTO BEANS New Crop Recleaned **5 LB. BAG 31^c**

STALEY'S LAUNDRY STARCH STARCH IN CUBES - NO GUESS WORK NO WASTE - EASY IRONING
4 8 OZ. Packages **23^c**

POTTED MEAT 3 1-4 Oz. Net **3 CANS 11^c**

MACKEREL California Quality No. 1 Tall **2 CANS 17^c**

SALMON Selected Pink, No. 1 Tall **2 CANS 26^c**

PURE COCOA Peerless Brand, Serve It Iced
2 LB. CAN **16^c**

APRICOTS White Swan In Heavy Syrup Size 2 1/2 **CAN 26^c**

CHERRIES No. 3 Red Pitted **2 CANS 29^c**

PINEAPPLE Matched Slices or Sid. Cut, No. 2 Size **2 CANS 31^c**

PEANUT BUTTER In the bulk
Lots of pure peanut oil
2 LBS. **21^c**

BACON

- 25¹/₂^c
- 28^c
- 29¹/₂^c
- 32¹/₂^c
- 35^c

SLAB BACON Cudahy Smoked,
1/2 or Whole **LB. 22¹/₂^c**
Cudahy Rex
1/2 or Whole **LB. 27¹/₂^c**
Star, Deckers or Certified
1/2 or Whole **LB. 33¹/₂^c**

HAM ENDS Fine to Bake **LB. 15³/₄^c**

BACON SQUARES Lean Medium Average **LB. 20¹/₂^c**

CORNED BEEF Fresh Made in Our Markets **LB. 19¹/₂^c**

SALT JOWLS Use These For Economy **LB. 13¹/₂^c**

BAR-B-Q SAUCE Net Weight 7 1/2 Oz. **BOT. 15^c**

ROAST Fancy Standing Prime Rib **LB. 20¹/₂^c**

CURED HAMS Deckers Iowa 1/2 or Whole **LB. 26¹/₂^c**

PORK CHOPS Small lean end cuts
POUND **17¹/₂^c**

FISH AND POULTRY

- Fresh Cat Fish, Lb. **29c**
- Fresh Trout, Lb. **24c**
- Fillet of Haddock, Lb. **23c**
- Hens, Fancy, Lb. **18¹/₂^c**
- Fryers, Extra Fancy, Lb. **19¹/₂^c**

BEEF HEARTS Medium Size To Bake **LB. 10^c**

LIVER Fresh Baby Beef **LB. 19¹/₂^c**

PORK SHANK Sold as Cut and Displayed **LB. 12¹/₂^c**

BAKED HAM Home Style and Seasoned **LB. 65^c**

DELICATESSEN Sold at No. 2 Market only

- Bar-B-Q Short Ribs of Beef, Lb. **21c**
- Hot Roast Beef, Lb. **25c**
- Bar-B-Q Spare Ribs, Lb. **29c**

SCHILLING'S COFFEE PLAIN OR DRIP GRIND
1 LB. CAN **27^c**

GRAPE JUICE WHITE SWAN
Pint Bottle **17^c** Quart Bottle **32^c**

CANNED VEGETABLES Scott County Brand
DRY LIMA BEANS No. 2 Size
or
PEAS AND CARROTS No. 2 Size
2 CANS **19^c**

EVAPORATED MILK ARMOUR'S
3 Tall Or 6 Small Cans **23^c**

OVEN WARE 8-Piece Set
Baking Kitchen Ware, with one purchase of merchandise amounting to \$5.00 or more
SET **\$1.24**

EX-HUSBAND MISTREATED CHILD, MARY ASTOR SOBS ON STAND

ILLEGIT LOVE AFFAIR HINTED IN AFFIDAVIT

'HE SHOOK HER UNTIL HER TEETH RATTLED,' CLAIMS

By REDMAN MORIN, Associated Press Staff Writer. LOS ANGELES, July 31 (AP)—Mary Astor's dramatic description of a joyous mother-and-child relationship was recorded today along with a picture of physical punishment and mental castigation which she said Dr. Franklin Thorpe inflicted on their baby girl.

The movie star and the surgeon, who divorced last year, are struggling for custody of Marylyn Thorpe, who just passed her fourth birthday.

"He shook her until her teeth rattled," the actress said. "Her lips were cut, and there were bruises on her little body."

Tears welled into Miss Astor's eyes, as she testified.

Dr. Thorpe sat directly in front of his ex-wife.

This was the high point of three nights of testimony, which has been adjourned now until Monday.

Attorney Joseph Anderson representing Dr. Thorpe, asked the nursemaid, Nellie Richardson, "Do you know George Kaufman?"

Immediately, Mary Astor's representative, Roland Rich Woolley, objected. "That's only an attempt to scandalize innocent persons," he cried. "It's immaterial and beside the point."

Judge Knight overruled him, and Miss Richardson said she had heard the name but was unable to recall whether a George Kaufman had ever visited Miss Astor at her home.

The man mentioned was not further identified.

The significance of this point lay in the fact that a "written statement" attributed to Miss Astor in an affidavit filed by Dr. Thorpe told of an illicit love affair with a man named "George."

"I love George and the least I can do is save him from a messy scandal," the affidavit read in one place. In another, it said "I wanted to be able to see George for the rest of his stay here without being upset—looking like hell—I want to have the last few times of completely enjoying him."

Miss Astor filled the room with electric tension when she took the stand.

Her shiny blue dress was open at the throat with a fluff of lace and a small jewel against the marble-white of her throat. A blue straw sampan-coolie's hat partly hid her red hair.

Woolley led her quickly over the months immediately after her divorce from Dr. Thorpe, in April, 1935. He had already admitted she paid the bills for Marylyn's support, and had the child at her home, although the court had awarded guardianship to him. Miss Astor corroborated this, but denied that her ex-husband had offered to pay any of the bills.

Then she was brought to the relationships she had and Dr. Thorpe had with the little girl.

"Between April 12 and October 10," Woolley asked, "did he ever try to discipline the baby?"

"Always," said Miss Astor, in a deep, throaty voice. "Always. It seemed to me that there was always something wrong to him in the way she acted."

"How did he discipline her?"

"He would jerk her roughly to her feet. He spanked her—he shook her until her teeth rattled—her lips were cut—her little body was covered with bruises."

She broke down and Woolley waited a moment.

"Didn't her father ever play with her?"

"He pretended to. He didn't seem to know how to play. Oh, I don't say he didn't try, but he just didn't know how."

"How was she with you?"

Miss Astor smiled.

"Marylyn is easy to get along with. We have toys. We play games together. She has a whole set of phonograph records—baby records, you know—and the whole set has to be played e-e-every night before she goes to bed. Oh, we have a lot of fun together."

"What was Dr. Thorpe's attitude toward all this affection between you and the child?"

"He has often accused me of spoiling Marylyn. He said I paid too much attention to her, and was turning the child away from him."

"Why did you give Dr. Thorpe the baby on October 12?"

"Because he told me he expected

me to give her up. I said I had hoped to have her longer, and he answered that if I displeased him any way, I wouldn't have her at all. I said, in words to that effect, that I'd be a good girl because I wanted my baby to stay with me."

Miss Astor said Dr. Thorpe threatened her again "in a terrible scene" on another occasion, demanding that a nurse be discharged because she assertedly was cooperating with the mother in "turning her away" from her father.

Read The News Want-Ads.

Coughlin Matter Not Discussed by Bishop and Pope

CASTEL GANDOLFO, Italy, July 31. (AP)—Bishop Michael Gallagher of Detroit said today the political activity of Father Charles E. Coughlin was not "brought up or discussed" during an audience with Pope Pius. The bishop made the statement

immediately after he had seen the holy father.

Pope Pius, the bishop said, sent his blessing to the clergy and people of Detroit and expressed hope that "amidst universal troubles, America may stand as a nation of peace and may decide controversial questions by ballot, not by bullets."

"The Father Coughlin matter did not come up during the audience," Bishop Gallagher added.

"That's what I have been trying to tell people would happen, but they wouldn't believe it."

Read The News Want-Ads.

Bovina Named for Bulls of Old XIT

BOVINA, July 31 (AP)—This town's name is traceable to the genus Bos because the XIT ranch in pioneer days parked its bulls here.

J. J. Dillard, who came to West Texas in the late 90's, said the ranch kept its bulls near the railroad track. "Warm days," he said, "the animals would lie down on the tracks and when trains approached engine crews had to drive them off before they could pass."

For many years Bovina was the

largest cattle shipping point on the Santa Fe system, Dillard said. As land agent he traveled extensively over northwest Texas.

The XIT ranch was owned by the Capitol Freehold Land and Development Co., builders of the Texas state capital.

LONG RANGE. SAN BERNARDINO, Calif. (AP)—Charles O. Brooks, 22, was killed by a rock as he sat eating lunch from a group of workers at Parker dam site. The rock came from a dynamite blast 1,600 feet away.

Teacher Depicts Mexico Holdup

MEXICO CITY, July 31 (AP)—Miss Gladys Serviss, principal of an elementary school in Aurora, Ill., was still shaky to day after the experience of being held up Monday on a highway near Taxco.

The bandits "were like villains you see in movies," she said. The highwaymen were "polite but silent" in

taking her watch, nine pesos, and \$120 in traveler's checks.

Leading the bandits was a man "nearly six feet tall, well set-up and good-looking but with a hard face," Miss Serviss declared.

In the same party with Miss Serviss was Miss Edna Horrocks of Cleveland who lost a few pesos, and Mrs. Marie Wolf, also of Cleveland, who saved her traveler's checks by thrusting them down the front of her dress.

Ambergis, used in perfumery, is a concretion formed in the intestines of whales.

These are Money Saving Bargains at Prices You Can't Afford to Miss

PRICES GOOD FRIDAY AND SATURDAY

WE RESERVE THE RIGHT TO LIMIT QUANTITIES

MAXWELL HOUSE COFFEE Drip or regular, limit 3 lbs., Pound Can	25c	SALAD DRESSING A good grade Full Quart	23c	Peaches Fancy, No. 2 1/2 syrup pack, PER CAN Limit, 3 cans	15c
APPLE BUTTER Qt. jar	19c	CRACKERS 2 lb. Box	15c	MIRACLE WHIP Salad Dressing, Qt. bottle	37c
GRAPE JUICE Qt. bottle	29c	OXYDOL Large Box	23c	APRICOTS Brimful, 2 tall cans	25c
MARSHMALLOWS Full pound	18c	CORN Little Chief whole kernel Vac. packed, 2 cans	29c	HONEY Bradshaws, strained, 1/2 gallon	65c
TOMATO JUICE No. 1 tall can	5c	BEANS Mexican style, Chuck Wagon, 3 tall cans	25c	COMPOUND Swifts Jewell, 8 Lb. carton	95c
JELLO Any flavor, 3 boxes	19c	PEAS No. 2 Sieve Full No. 2 can	11c	SPINACH Full No. 2 can	9c
GREEN BEANS 3 No. 2 cans	25c	PINEAPPLE Crushed or sliced. Flat can	9c	MEATS	
Potatoes U. S. No. 1, white or red	33c	SOAP CHIPS Clean-Quick 5 Lb. box	35c	FRYERS Large, colored, plenty fat EACH	43c
10 POUNDS		PINTO BEANS 10 Lb. Recleaned	49c	ROAST Choice beef, chuck, Lb.	19c
Piggly Wiggly THE Season's Choice FRUITS and VEGETABLES		MILK 3 Tall cans	24c	BACON SQUARES Deckers, Lb.	22 1/2c
TOMATOES Fancy, California, Lb.	9c	CORN FLAKES Jersey Brand Large Box	11c	STEAK Loin or T Bone, Lb.	23c
ONIONS Large bunches, 2 for	5c	PEAS El Food, fresh snapped, can	10c	ROLLED ROAST Lean and meaty, Lb.	18c
CARROTS Large bunches, 2 for	5c	RAISINS 2 Lbs. Thompson Seedless	19c	STEW MEAT Rib boil, Lb.	11c
ONIONS Spanish Sweet, Pound	4c	VANILLA Large 8-oz. Bottle	15c	OLEOMARGARINE Butter substitute, Lb.	18c
CABBAGE Firm and Green, Lb.	5 1/2c	SUGAR Pure cane, 10 Lb. cloth bag	55c	MEAT LOAF Beef and pork, Lb.	18c
BELL PEPPERS Fancy Fresh, Lb.	10c	Corn Fancy Sugar Corn, 303 size CAN	8c		
OKRA Nice and tender, Lb.	15c	Flour 12 Lb. Gold Chain	45c		
CUCUMBERS Fresh, nice for slicing, Lb.	5c				

PIGGLY WIGGLY

Ends Aching Sore Muscles

For longer lasting, quicker relief, use Ballard's Snow Liniment which contains active ingredients to give a more than local action, thus bringing a surge of warm blood to scatter congestion and more quickly soothe away the pain from aching muscles, sprains, strains, headache and lumbago. Ballard's Snow Liniment, 30c and 60c. CRETNEY DRUG STORE.— Adv.

Automobile Body and Fender Repairing and Painting General Repairing

Proper Equipment and Experienced Workmen in a good, clean shop.

Also Sign Painting

O. M. FOLLIS
219 East Francis Ave.

GIGANTIC FOOD SALE!

STOCK UP ON THE THINGS YOU NEED
AT THESE LOW PRICES



EGGS Guaranteed Fresh Saturday Only 19c
Dozen

PINK SALMON 11c
NO. 1 TALL CAN

JELLO All Flavors, Pkg.	5c	SANI-FLUSH Can	19c
MATCHES Full Count, 6 Box Carton	17c	PIMENTOS 2 Oz. Glass	7c

SHORTENING 99c
MRS. TUCKER'S 8 LB. CARTON

American Wonder PEAS Early June, No. 2 Can	10c	Red Pitted CHERRIES Good for pies, 2 No. 2 cans	27c	Swift's CORN BEEF Nice for sandwiches, 2 cans	39c
SHREDDED WHEAT N. B. C., 2 large pkgs. and 1 sample Pkg. FREE	23c	Choice Quality APRICOTS New Crop, Large Pkg.	25c	Bulk, colored and distilled VINEGAR Bring your container, gallon	23c

VANILLA WAFERS N. B. C., 1 Lb. Box	25c	POTTED MEAT LIBBY'S, 2 CANS	7c
1 1/2 Lb. Box	15c		

GRAPEFRUIT JUICE Curtis, No. 2 Can	10c	TISSUE Northern, 3 large rolls	19c	PRUNE JUICE Hearts Delight, 2 tall cans	19c
HY-PRO A good bleacher, Qt. Bottle	19c	TOMATOES Large cans, each	7 1/2c	COOKIES Assorted, 12 oz. pkg.	15c

SOAP CHIPS 35c
BLUE BARREL 5 LB. BOX

WHITE KING Granulated Soap, Large Pkg.	30c	BAKING POWDER K. C., 25 oz. Can	17c	GELATINE DESSERT Marvin, Pkg.	5c
SALT Lily, 2 Pkgs.	5c	SHINOLA All Colors, 2 Boxes	15c	CATSUP Glen Valley, Large Bottle	10c

BLUE RIBBON MALT 3 LB. CAN	59c	SANDWICH SPREAD GEBHARDT'S CAN	10c
-----------------------------------	------------	---------------------------------------	------------

Whole Wheat Flakes Kellogg's, Large Pkg.	9c	SALAD DRESSING Kraft's Miracle Whip, Qt.	39c	COFFEE Schilling or Folger's, 1-lb. Can	29c
ALL BRAN Kellogg's, Large Pkg.	19c	PEACHES Libby's, 2 1/2 size Can	19c	TEA Lipton's, 1/2 lb. 45c; 1/4-lb. can	23c

SUGAR 10 Lb. Kraft Bag, Sat. Only	53c	FLOUR Gold Medal, 24 Lb. Sack	89c
--	------------	--------------------------------------	------------



LUNCHEON LOAVES 24c
Assorted, Lb.

BOLOGNA OR FRANKS, Per Lb. 15c

STEAK Cut from baby beef, Lb. 16c

ROASTS Baby Beef or Veal, Lb. 12 1/2c

BACON SQUARES 19c
Sugar Cured, Lb.

SALT SQUARES 9 1/2c
Per Lb.

SLAB BACON 25c
Lean Streaked, Lb.

SLICED BACON 29c
1-Lb. Cello Pkgs., Lb.

PEANUT BUTTER 25c
Bulk, 2 Lbs.

CALF LIVER 17c
Fresh, Per Lb.

SIRLOIN STEAK CUT FROM CHOICE FED BEEF LB. 27c

ROUND STEAK CUT FROM BABY BEEF LB. 25c

MEAT AND PRODUCE PRICES GOOD FRI., SAT. & MON.



FRESH CORN Home Grown, Nice and Tender 3 FOR 10c

Mountain Grown GREEN BEANS Good to snap, Lb. 7 1/2c

Nice and Tender. Green Onions, CARROTS Large bunches, 3 for 10c

Home Grown BLACKEYED PEAS Nice to snap, Lb. 5 1/2c

Ice Cold WATERMELONS From 25 to 30 lb. average, Lb. 2c

Large Size FRESH LIMES Try these in iced tea, Doz. 12 1/2c

ORANGES Medium size, good for juice, Doz. 19c

CANTALOUPE Medium size, not too ripe, each 5c

GRAPEFRUIT California, Marsh Seedless, each 7 1/2c

POTATOES Red or White, Strictly No. 1, PER LB. 3 1/2c

LEMONS Sunkist, Large Size, DOZEN 33c

PRICES GOOD THRU THURSDAY AUGUST 6

Save at **FURR FOOD STORES!**

PRICES GOOD THRU THURSDAY AUGUST 6

Feminine Leader

HORIZONTAL

1 Newly appointed college president.

12 The cheek.

13 Bennett.

14 Molten rock.

15 Lively.

17 Patchwork map.

18 Kiln.

19 Sound of sorrow.

20 Leg joints.

21 To alienate.

22 Oriole.

23 Carmine.

25 To say.

29 Rough sea.

33 Conscience.

34 Hair ornament.

35 Persian money.

36 To make sorrowful.

37 3,1416.

38 Writing tables.

42 To chant.

ANSWER TO PREVIOUS PUZZLE

10 Roof's edge.

11 Ipecac source.

12 She was from college.

13 16 years ago.

15 Molestation.

22 Amphitheater centers.

24 To retard.

26 One and one.

27 Beret.

28 Age.

30 To help.

31 Soft mass.

32 Form of "be."

36 Bleached yarn.

39 Pitcher.

40 Courtesy title.

41 Recognized.

43 Neat.

44 Native metal.

45 Low tide.

47 Chum.

48 Every.

49 Pedal digit.

50 Being.

52 Mister.

55 Sun god.

VERTICAL

1 Dinner.

2 Indian.

3 Deposits.

4 Frameworks.

5 Makes level.

6 Huge dog.

7 Priest's headdress.

8 Shuts.

9 To stream.

58 Father.

59 Thin metal plate.

60 Indian.

61 Deposits.

62 Frameworks.

63 Makes level.

64 Huge dog.

65 Priest's headdress.

66 Shuts.

67 To stream.

1 2 3 4 5 6 7 8 9 10 11

12 13 14 15 16 17 18 19 20 21 22

23 24 25 26 27 28 29 30 31 32

33 34 35 36 37 38 39 40 41 42 43 44 45

46 47 48 49 50 51 52 53 54 55 56 57 58 59 60

61 62 63 64 65 66 67 68 69 70 71 72 73 74 75

76 77 78 79 80 81 82 83 84 85 86 87 88 89 90

91 92 93 94 95 96 97 98 99 100

Minute By Minute at Station KPND

- PHONE 1100
- FRIDAY AFTERNOON**
- 3:30—Borger Studios.
 - 3:45—Xavier Curat's Orchestra.
 - 4:00—This and That Presents.
 - 4:15—American Family Robinson.
 - 4:30—Dance Hour.
 - 4:45—Late Afternoon News.
 - 5:15—Dancing Discs.
 - 5:25—Service Program.
 - 5:30—Betty Bartel.
 - 5:35—Better Health.
 - 5:40—Mrs. Housewife.
 - 5:45—Dance With Us.
 - 6:00—Ford VS Revue.
 - 6:15—Borger Studios.
 - 6:30—John Stuber.
 - 6:45—Radio Varieties.
 - 7:00—Thoughts for You and Me.
 - 7:15—Baseball Scores.
 - 7:30—Stacey at Eagle.
 - 8:00—Sign Off.
- SATURDAY MORNING**
- 6:30—Sign On.
 - 6:45—Ureola Car Boys.
 - 7:00—Waker Uppers.
 - 7:15—Overnight News.
 - 7:30—Last and Found Bureau.
 - 7:45—It's Your Own Fault.
 - 8:00—Shopping With Sue.
 - 8:15—Singer of Blues Songs.
 - 8:30—Better Health.
 - 8:45—Frigid Facts.
 - 9:00—Borger Studios.
 - 9:15—Prestige Boys.
 - 9:30—Borger Studios.
 - 9:45—Interlude.
- 10:20—The Milkman.**
- 10:25—Waltzes.**
- 10:30—Mid-Morning News.**
- 10:45—The Royal Program.**
- 10:50—The Master Singers.**
- 10:55—Micro News.**
- 11:00—Texas Central.**
- 11:15—Borger Studios.**
- 11:30—Black Jackets.**
- 11:45—Lambert Tunes.**
- 12:00—Rotario Bourdon.**
- SATURDAY AFTERNOON**
- 12:15—Oran Rowlands.
 - 12:30—Miles of Smiles.
 - 12:45—Noon News.
 - 1:00—Miles of Smith (Cont.).
 - 1:30—Borger Studios.
 - 1:45—Paula Plans.
 - 2:00—Borger Studios.
 - 3:00—First Afternoon News.
 - 3:15—Borger Studios.
 - 3:45—Concert Hall of the Air.
 - 4:00—Harry Howls.
 - 4:15—Radio Round Up.
 - 4:30—Dance Hour.
 - 4:45—Texas Centennial.
 - 5:00—Late Afternoon News.
 - 5:15—Dancing Discs.
 - 5:35—Better Health.
 - 5:40—Dream Tango.
 - 5:45—Musical Moments With Rubinoff.
 - 6:00—Dance With Us.
 - 6:15—Borger Studios.
 - 6:30—John Stuber.
 - 6:45—Dinner Hour.
 - 7:00—Thoughts for You and Me.
 - 7:30—Sign Off.

International Sunday School Lesson

By DR. J. E. NUNN

International Sunday School Lesson for August 2, 1936.
General Topic: Philip's Missionary Labors.

Scripture Lesson: Acts 8:26-40.

26. And the angel of the Lord spake unto Philip, saying, Arise, and go down to the south unto the way that goeth down from Jerusalem unto Gaza, which is desert.

27. And he arose and went: and behold, a man of Ethiopia, an eunuch of great authority under Candace queen of the Ethiopians, who had the charge of all her treasure, and had come to Jerusalem for to worship.

28. Was returning, and sitting in his chariot read Esaias the prophet.

29. Then the Spirit said unto Philip, Go near, and join thyself to this chariot.

30. And Philip ran thither to him, and heard him read the prophet Esaias, and said, Understandest thou what thou readest?

31. And he said, How can I, except some man should guide me? And he desired Philip that he would come up, and sit with him.

32. The place of the scripture which he read this, He was led as a sheep to the slaughter; and like a lamb dumb before his shearer, so opened he not his mouth.

33. In his humiliation his judgment was taken away: and who shall declare his generation? for his life is taken from the earth.

34. And the eunuch answered Philip, and said, I pray thee, of whom speakest the prophet this? of himself, or of some other man?

35. Then Philip opened his mouth, and began at the same scripture, and preached unto him Jesus.

36. And as they went on their way, they came unto a certain water: and the eunuch said, See, here is water: what doth hinder me to be baptized?

37. And Philip said, If thou believest with all thine heart, thou mayest. And he answered and said, I believe that Jesus Christ is the Son of God.

38. And he commanded the chariot to stand still; and they went down both into the water, but Philip was baptized: and he was baptized: and he was baptized.

39. And when they were come up out of the water, the Spirit of the Lord caught away Philip, that the eunuch saw him no more; and he went on his way rejoicing.

40. But Philip was found at Azo-tus: and passing through he preached in all the cities, till he came to Caesarea.

Golden Text: Therefore they that

far enough away from Jerusalem so that he could understand them. He was ready. Philip took his seat in the chariot and the sermon began. The passage he was reading was Isaiah 53: 7-8. Philip had no hesitation whatever in beginning from that passage to preach Jesus, the Saviour of man—(Acts 8:32-33-35). It was a perfect text for the evangelist. Jesus in the Upper Room and Philip in the desert preach the gospel from Old Testament texts. Surely Christ is the very center of all Old Testament revelation. He is the Messiah of Isaiah. (The quotation that Luke gives is from the Septuagint.)

This is the passage from Isaiah 53:7: "He was oppressed, and he was afflicted, yet he opened not his mouth: he is brought as a lamb to the slaughter, and as a sheep before her shearers is dumb, so he openeth not his mouth."

The Eunuch's Response—Acts 8:37. The eunuch asked a simple question when that was read: "Of whom speaketh the prophet this? of himself or some other?" We may be sure that Philip not only interpreted prophecy but stated clearly the way of salvation to an honest

(See LESSON, Page 11)

"RIGHT DOWN THE GROOVE!"

WILLIS HUDLIN, Cleveland Hurler

THAT'S HOW I RATE HUSKIES!

"WHAT a flavor! That nut-like taste is a pennant-winner with me," enthuses WILLIS HUDLIN, Cleveland hurler. These new whole wheat flakes are packed with food-energy, help build muscle, too! Get a package at your grocer's. A Post Cereal—made by General Foods.

A SENSATIONAL NEW CEREAL!

OUT OUR WAY - - - - - By WILLIAMS

THERE! THERE'S YOUR IDEAL UTOPIAN -- HE WAS A LITTLE LATE GETTIN' HIS MACHINE STARTED THIS MORNIN', SO HE'S LETTIN' HIS MACHINE RUN TO MAKE UP FER IT, SO HE WONT CHEAT TH' COMPANY.

YEAH -- BUT HE'S CHEATIN' HIS NIGHT PARTNER OUT OF THAT MUCH LOAFIN', RUNNIN' THAT CUT-OFF! THERE CAN'T BE NO HEAVEN ON EARTH TILL TH' HAWK QUIT'S EATIN' TH' SPARRER, AN' TH' SPARRER QUIT'S EATIN' TH' WORM!

GEAR ROOM

THE OTHER GUYS TOES.

THIMBLE THEATRE Starring POPEYE

POPEYE HAS A FEELING THAT HIS FATHER IS STILL LIVING

REALLY!

IF ME POPPA SHOULD BE LIVIN' HE'D BE SOMEWHERE AROUND 'NINETY-SIX' YEARS OLD

YOU MEAN TO SAY THE JEEP DIDN'T LIE ABOUT WHO'D WIN THE FIGHT? -- HE BENT DOWN TO LOOK AT A BUG AND WE THOUGHT HE WAS SIGNALING 'YES'!

The Squaw's An Indian Giver

WELL, IN THAT CASE --

I WANT MY JEEP BACK! BUT YA GIVED HIM TO ME!

YES, BUT I'VE CHANGED MY MIND

AND A WOMAN'S GOT A RIGHT TO CHANGE HER MIND

PIPE DOWN! I'M THINKIN' ABOUT ME POPPA -- IF HE'S ALIVE I SUSPOSE HE'S CAREWORN AN' WEAK --

ALLY OOP

SO THIS IS TH' PLACE WHERE OOP DISAPPEARED! BY TH' LOOKS OF THINGS IT'S WORSEN I FEARED -- TRACKS EVERYWHERE AN' BUSHES MASHED DOWN, SIGNS OF A SCRAP ALL OVER TH' GROUND!

OL' DINNY BROUGHT US RIGHT, 'CAUSE THERE Y'SEE, ONE OF ALLEY'S FOOTPRINTS, PLAIN AS CAN BE!

WUG!

It'll Be Tougher Than He Guesses

OH, CARDY-LOOK HERE--I'VE DUG UP A CLUE! 'SA PIECE OF A GARMENT, BUT NOT FROM MOO! THIS TELLS ME WHAT I WANT TO KNOW -- BY STRANGERS HE WAS CAPTURED! NOW, WHERE DID THEY GO?

HERE'S WHERE THEY WENT OFF THRU TH' SLOUGH! FOLLOWIN' THIS TRAIL WON'T BE HARD TO DO!

FRECKLES AND HIS FRIENDS

THE KIDS ARE BEING PURSUED BY TWO MYSTERIOUS GENTS, RIDING A FAST OUTBOARD

NUTTY, WE CAN'T TAKE ANY CHANCES! THOSE MEN MAY NOT MEAN ANY HARM, BUT THEY'RE UP TO SOMETHING!

THEY'RE GAINING ON US! THAT'S A FAST CRATE THEY HAVE... HERE COMES THE BELLE OF STOCKTON... THAT GIVES ME AN IDEA!

Crafty Kids

WE'LL LEAD THOSE FELLAS RIGHT INTO THE WAKE OF THAT BOAT AND SWAMP THEM! THEY'RE BOUND TO SHIP WATER OVER THAT SHALLOW GUN'L!!

THEY'RE FALLING FOR IT, FRECK! WHEN ONE OF THOSE SMALL WAVES HITS THEM IT'LL SPRAY THEIR MOTOR WITH PLENTY OF WATER!!

TRY RUNNING THAT THROUGH YOUR CARBURETOR!!

MYRA NORTH, SPECIAL NURSE

JACK AND CAPTAIN KARNAK ARE DISCOURAGED AS THEY RETURN TO THE LITTLE CARAVAN, AFTER A THOROUGH SEARCH OF THE SURROUNDING DESERT FOR THE FUGITIVE MULE DRIVER

THE WAY THAT BIRD SLIPPED AWAY FROM US, I'D ALMOST SWEAR IT WAS HYSTER!

COME -- ALL THIS MUST BE REPORTED IN CAIRO, AT ONCE!

ILL?

Devries Has a Clever Scheme

ON A TINY STREET IN CAIRO

MY PLAN FOR LEAVING EGYPT IS SIMPLE, LEW WEN... WE ARE GOING TO APPEAR BEFORE THE EGYPTIAN OFFICIALS, HANDCUFFED -- ONLY, I AM SUPPOSED TO BE YOUR PRISONER!

THEN, SINCE YOU ARE A BONA FIDE SECRET AGENT OF YOUR GOVERNMENT, YOU ARE GOING TO REQUEST THAT I BE EXTRADITED, TOGETHER WITH THE TREASURES I HAVE STOLEN FROM YOUR COUNTRY -- GET IT? AND, REMEMBER, THIS GUN IS IN MY SIDE POCKET!!

BOOTS AND HER BUDDIES

TAKE IT EASY, NOW

BOY! OH BOY! OH BOY!

LISTEN, FELLA -- TAKE MY ADVICE AN' TOSS OUT THAT IDEA OF YOURN

HUH? NOT A CHANCE! WHY, IT'S A HONEY -- A NATURAL

Ferdy Won't Turn Back

I'M TIRED OF HAVIN' BOOTS PLAY THAT OL' BROKEN RECORD ABOUT TH' HE-MEN OF HISTORY! SHE THINKS TH' LADS, NOWADAYS, ARE JUST A BUNCH OF POP-UPS! WELL, I'M GONNA SHOW 'ER DIFF'RENT! I'M GONNA PROVE TO 'ER THAT I CAN TAKE IT

O.K.! BUT, DON'T BLAME ME IF YA COME APART! I'VE WARNED YA! DUCK TH' SPOTLIGHT AN' FORGET TH' HERO STUFF

AW, SCRAM! BEAT IT, YA DERN PESSI-MIST!

BLOOD-BREAK FUGITIVE IS HELD IN JAIL

KIDNAPED WIFE KNOCKS PISTOL FROM HIS HAND

PARIS, Texas, July 31 (AP)—Julius Bohannon was taken back to Oklahoma City today in the custody of McAlester penitentiary officials. He was calm about being caught but declared "it is death row for me anyway."

Bohannon, who led 25 other convicts in a desperate escape from McAlester prison last May 13, was the last of the fugitives to be retaken. He surrendered to a posse in a wooded area near Daingerfield late yesterday after abducting his pretty young wife and daughter. Asked what he had to say about his failure to keep free, Bohannon said: "No use saying anything. Nothing I could say would help me. It is death row for me anyway."

In a more talkative mood a few minutes later he said the officers did not "outsmart" him.

"I fixed it so my children will get the reward. The boy who tipped off the officers agreed to give the children the reward before he left me and my wife."

Bohannon, facing trial for his life because of the killing of guard C. D. Powell in the McAlester break, said he made a mistake in going back to the section where his relatives live. He said he would not have done it if he had not been drinking.

He said "guards on the wall killed the guard in the brick yard at the prison when the break occurred, but we will get death for it though."

Sheriff Ben B. Garrett of Morris county, the posse leader, said he learned Bohannon and a filling station operator named Manuel Cox went to a Naples boarding house yesterday afternoon. He said they forced Mrs. Bohannon, 29, and her daughter, Ferline, 9 into the car at pistol point.

The four drove to Cox's house Garrett related, where Cox and the girl left the car. Bohannon then drove his wife to a little-used country roadside and stopped to rest.

The desperado and Mrs. Bohannon were there when Garrett came up with his posse. Bohannon pointed a small caliber pistol at the officers but his wife struck his arm a sharp blow which sent the weapon spinning from his hand, Garrett said.

Then officers overpowered him quickly and brought him here for safekeeping overnight.

Jailer C. W. Lawrence said the captured convict talked freely, blaming prison tower guards for Powell's death and the critical wounding of another guard in the May break.

Lawrence said Bohannon asserted the guards' bullets ripped through the back of the getaway car, striking Powell and the other guard, who with two others were held as hostages.

Bohannon revealed the jailer said, that originally only five convicts were in on the escape plot. He said other convicts uninvitedly jumped on the car and had to be forced off as the original plotters made their dash for freedom.

Bohannon faces charges of murder and kidnaping in connection with the break. He was serving a life term for killing two officers at Idabel, Okla., in 1933.

Cox was arrested at his home. Sheriff Garrett said he would be charged with aiding a fugitive. Mrs. Bohannon reunited with her daughter, was expected to return to her father's home near Daingerfield.

Severe freezing during the winter months does not injure the fruit bud, even though it is frozen solid. But after the bud has begun to awaken, with the warm days of spring, a sudden cold snap freezes and ruptures the plump cells, and the fruit is ruined.

SCIENCE ADVISES AGAINST MEALS LOW IN NEEDED "BULK"

Reports ALL-BRAN Supplies This Dietary Adjunct

Scientific tests have shown that meals which miss the proper "bulk" tend to cause common constipation. This condition causes discomfort, and may lead to headaches, loss of appetite, even serious disease.

Avoid these faulty meals by adding Kellogg's ALL-BRAN to your menus. It supplies generous "bulk" in convenient form. This absorbs moisture, and gently exercises and cleanses the system. ALL-BRAN also furnishes vitamin B and contains iron.

The "bulk" in ALL-BRAN is often more effective than that found in fruits and vegetables as it does not break down within the body. Two tablespoonfuls daily are usually sufficient. If not relieved this way, consult your doctor.

Kellogg's ALL-BRAN may be served as a cereal with milk or cream. Sprinkle over soups, salads or other cereals. Or work into appetizing muffins, breads, waffles, etc. It adds a delicious nut-sweet flavor to your recipes.

How much better than taking patent medicines—sometimes harmful ALL-BRAN is sold by all grocers. Made by Kellogg in Battle Creek.

CAPITOL JIGSAW

By HOWARD C. MARSHALL

AUSTIN, July 31 (AP)—Opinion within the Capitol differed as to the effect of the first primary election on the outlook for a special session of the legislature, this fall.

One veteran observer said the overwhelming endorsement given Gov. Allred for a second term assured a "speedy and harmonious

session." Another facetiously suggested the "menace" of a session had been averted.

A former speaker of the House of Representatives said that with the election settled the governor would be able better to consider the real need for a session and if he were wise there would be none until the regular assembly beginning in January.

There was jubilation in the offices of Gov. Allred the Monday after the election. Employees there felt their chief obtaining a majority in the first primary almost was too good to be true.

Although the governor remained where he had received election re-

sults, his offices were deluged with telegrams of congratulations and many friends thinking he was in town, called to pay respects.

Among the latter were Secretary of State R. B. Stanford and Labor Commissioner Fred Nichols.

About all the average two persons meeting in Capitol corridors a week before the election could talk about was "who will win," and "will there be a runoff?" and so forth.

It wasn't much better the first day or so after the election for the interest in the outcome still was at fever heat.

The office of Bob Barker, secretary of the Senate, was crowded with persons seeking information on

results of contests for the upper legislative chamber.

Harris county elected Roy Hofheinz, 24 years old, as county judge, choosing the youthful member of the legislature over the incumbent, W. H. Ward.

Hofheinz, aggressive, in debate, will be one of the youngest men to serve as county judge. He will take office in January.

In Austin on personal business, Myron Blalock of Marshall, chairman of the state Democratic executive committee, said everything was set for a meeting of the committee Aug. 8 to canvass returns from the first primary and prepare a ballot for the runoff.

John Henry Lewis Whips Al Gainer

PITTSBURGH, July 31 (AP)—Light Heavyweight Champion John Henry Lewis won a unanimous decision over Al Gainer, Negro slugger from Hartford, Conn., in a 12-round non-title bout here last night.

Lewis closed with a rush to win the last four rounds to overcome an early lead piled up by Gainer. A crowd of 17,118 paid \$35,000 to see the battle.

Lewis' superior speed and effective use of short jabs gave him the victory. Gainer's most effective weapon was a hard left hook to the body.

LOOK AT YOUR HAT! EVERYONE ELSE DOES!

NOTICE GENTLEMEN... We are fully equipped to block and reline lightweight summer felts, both white and colored.

The Well Dressed Man is Using This Service!
Factory Finished

ROBERTS, The Hat Man
Located at DeLuxe Dry Cleaners

Read The Daily News Want Ads.

MEAT & PRODUCE PRICES ARE SATURDAY & MONDAY ONLY

PAMPA

FRUIT & VEGETABLE MARKET

"The Most of the Best for the Least"

Shop Our Store Daily and Save

204 North Cuyler

FOOD STORE

APPLES Solid Pack No. 2 1/2 Size CAN 9c PEACHES White Swan, No. 2 1/2 Size CAN 19c	CANTALOUPE VINE RIPENED NICE SIZE EACH 5c GRAPES WHITE OR RED Malaga, Calif., grown LB. 10c	BUTTER WAFERS The Perfect Taste POUND BOX 18c
CHERRIES Brimfull, 2 No. 2 CANS 29c JELLY Asst. Flavors, Full Qt. JAR 29c BLACKBERRIES 2 No. 2 CANS 25c	MILK ARMOUR'S VERIBEST 3 TALL OR 6 SMALL CANS 19c	PRUNES Oregon Packed Gal. Can 27c MATCHES Carton Of 6 Boxes Strike Anywhere 19c

SUGAR

10 LB. CLOTH BAG 49c

With \$3.00 Purchase

NEW SPUDS U. S. NO. 1 RED TRIUMPHS LB. 3 1/2c	ICE COLD WATER MELONS Parker County Grown LB. 2c	TEA White Swan or Tasty, 1/4 lb. BOX 15c GRAPE JUICE White Swan Full Quart 29c CATSUP Heinz 14 Oz. BOTTLE 19c PICKLES Sour or Dill Full Qt. JAR 15c BRAN FLAKES Jersey, Large Size BOX 11c CORN FLAKES Jersey, Large Size BOX 11c VANILLA Extract 1/2 Pint BOTTLE 15c STRING BEANS New Pack, 3 No. 2 CANS 29c SPINACH New Crop, 3 No. 2 Size CANS 29c
---	--	---

SHORTENING

8 LB. POUND CARTON 89c

Armour's Vegetole

FLOUR

24 LB. SACK 89c

GOLD MEDAL OR RED STAR

Quality Meats

FRYERS COLORED 1936 SPRINGS LB. 19 1/2c Plenty to pick from	BACON Lakeview, sliced, Lb. 27 1/2c Cerro, sliced, Lb. 25 1/2c Dexter, sliced, Lb. 28 1/2c
BACON Slab, 1/2 or Whole LB. 20 1/2c	CURED HAMS LB. 28 1/2c Armour's, Swift's, 1/2, whole
DRY SALT Fine for seasoning LB. 16 1/2c	P'NUT BUTTER POUND 9 1/2c
PORK Chops, Lb. 22 1/2c Shoulder, 1/2 or whole 17 1/2c Link Sausage, Lb. 23 1/2c	LAMB Chops, Lb. 23 1/2c Leg, Lb. 20 1/2c Shoulder, Lb. 10 1/2c
SWEET PICKLES DOZ. 15c	CHEESE Northern Longhorn Full Cream LB. 18 1/2c
SALT MACKEREL EACH 10c	PURE LARD In your own container LB. 9 1/2c
BACON Banquet Slab 1/2 or Whole LB. 27 1/2c	OLEO Red Rose, Lb. 16 1/2c
PICNIC HAMS 3 to 5 lb. Average LB. 20 1/2c	

JELL-O Famous Desert All flavors BOX 5 1/2c PINEAPPLE JUICE Del Monte Tall CAN 10c STARCH Staleys or Linit 3 Reg. size BOXES 13c PRUNES Fresh pack in Syrup, No. 2 1/2 CAN 9c PLUMS Del Monte No. 2 1/2, In heavy syrup CAN 19c PICKLES Heinz Fresh Cucumber. Full qt. JAR 19c	KRAUT Scott Co. 3 Med. CANS 19c BABY FOOD All Kinds 3 Reg. CANS 25c PUMPKIN Van Camp's Gal. CAN 39c CRISCO 3 LB. CAN 53c TURNIP GREENS No. 2 Size CAN 9c MUSTARD GREENS No. 2 Size CAN 9c	PEAS SWEET EARLY JUNE 3 NO. 2 CANS 19c WHITE KING Granulated Soap, 24-oz. BOX 19c SOAP Armour's Big Ben 5 Giant bars 17c PALMOLIVE Toilet Soap BAR 5c COCKTAIL SAUCE Tim-Ting 6 oz bottle 19c SAUCE Louisiana Red Hot 3 oz. Bottle 9c OLIVES Stuffed Pint JAR 29c
CORN SWEET TENDER 3 NO. 2 CANS 19c CERTO 8 oz. BOTTLE 19c WESSON OIL Armour's pint CAN 19c WESSON OIL Armour's quart CAN 37c COFFEE Shilling's Pound CAN 25c VINEGAR Heinz Full qt. QT. JAR 19c OLIVE OIL 6 ounce bottle 19c	SHOW BOAT By Maxwell House LB. CAN ... 19 1/2c	COFFEE