





# BORAH STUNNED AS LANDON WIRES VIEWS ON MAJOR PLANK

## KANSAN WINS GOP HONOR ON FIRST BALLOT

### DEMONSTRATION LASTS 27 MINUTES IN CONVENTION

BY EDWARD J. DUFFY, Associated Press Staff Writer.

CLEVELAND, June 12 (AP)—Still afire from the veritable explosion of acclaim with which it unannouncedly nominated Alf M. Landon for the presidency, the republican national convention moved today to choose a running mate for what the Kansas governor heralds as a mighty drive to unseat the new deal.

Two names—Vandenberg and Knox—sped from mouth to mouth through hotel corridors as leaders and delegates struggled through the dawn and beyond to attain accord in the vice presidential nominee so today's final session of the convention could complete the ticket and adjourn soon after convening at 9 a. m. (CST).

Both Senator Vandenberg of Michigan and Col. Frank Knox of Chicago had withdrawn from the presidential race to second Landon's nomination last night and call for unity in this great crisis. Talk of drafting one or the other of them for the second place hit a crescendo today, though Vandenberg had recently threatened to refuse the nomination from the convention platform, and Knox had not said whether he would accept.

There was slight hope of repeating at today's session last night's contribution to political history, when the Landon name was the only one even presented, and on the roll call he received 984 of the 1,003 votes. The taller announcement was drowned by the din of shouting and parading followers.

Of the 19 non-Landon votes, Wisconsin cast 18 for Senator William E. Borah of Idaho, while a single one from West Virginia's bloc also went to the "Lion of Idaho." Talk of drafting one or the other of them for the second place hit a crescendo today, though Vandenberg had recently threatened to refuse the nomination from the convention platform, and Knox had not said whether he would accept.

**Borah Watched.** Besides the vice presidential conundrum, another question hung fire. "What will Senator Borah do?" Many delegates wondered.

Speeding to Washington after losing the presidential race but winning recognition for his views in a compromise platform which the convention adopted with a whooping chorus of "ayes" Borah was reported stunned on hearing that Governor Landon had wired the convention reserving the right to place his personal interpretation on two major planks.

In calling for a "sound currency," the convention's program had omitted any mention of the "gold standard," and it advocated a wage and hour legislation by the states under the constitution as it now stands. These planks were widely regarded as Borah victories.

But soon after the platform went through, John Hamilton, Landon campaign manager, stepped to the speaker's rostrum with a telegram from Topeka. Governor Landon wired that he would unqualifiedly pledge himself to "be true to the principles and program" of the document.

**'Gold' View Explained.** "However," the governor added, "with that candor which you and the country are entitled to expect of me, I feel compelled before you proceed with consideration of my name to submit my interpretation of certain planks in the platform so that you may be advised as to my views."

He went on to declare that if it should prove impossible for states to regulate women's and children's wages and hours without a constitutional amendment "I shall favor a constitutional amendment."

Then he went on to speak the word "gold," assiduously avoided by the platform committee. He said that one requisite for a "sound currency" is a balanced budget and another a currency "expressed in terms of gold and convertible into gold."

Borah, who has declared against a constitutional amendment and denounced any move to return to the gold standard, was told of this as he sped by train from Cleveland toward Washington.

Passing his hand several times over his face, Borah said: "Well, that's his business. Why didn't he send it (the telegram) sooner?"

**Knox Thrilled.** However, other men, including Herbert Hoover and Colonel Frank Knox, expressed much satisfaction over the Landon message. Knox, in seconding the Landon nomination in the unprecedented scenes last night, said:

"I was thrilled to the bottom of my heart by the language of that telegram. That was filled with

courage, sincerity, and frankness." The attitude of Vandenberg and Knox last night, in appealing for unity in what they called a "crisis" in government, led some Landon organizers to contend a refusal to run for vice president, if nominated, was out of the question.

Much has happened since Vandenberg said he would refuse from the rostrum. Knox was understood in some quarters to take the position that he would not seek the nomination, but would serve if drafted. Vandenberg, asked what he would do if

drafted said in the early morning hours that the question would have to await action by the convention itself.

After working day and night for over 48 hours, the platform committee finally presented the result of its labors to the convention just before the nomination. Herman Langworthy of Missouri read the 2,000-word document laboriously—showing the strain he had been under.

**Currency Plank Approved.** In general, the final draft agreed with predictions. The phrase of the

1932 democratic platform—"sound currency to be preserved at all hazards"—was picked up bodily as a way out of difficulty. It was to this that Landon took exception, standing for a dollar convertible into gold when conditions permit.

Repeal of the reciprocal tariff, return of relief administration to the states, interstate regulation of public utilities and the right of collective bargaining were among the principal planks.

There being no minority report, Chairman Snell put the question on the report to the convention and it

stant that Langworthy finished. In a shout of "ayes" it was adopted. No attempt for a floor struggle which some of the leaders had feared was made.

All through the overflowing auditorium signs were appearing, noise-making devices were brought out, and a general restlessness prevailed. The reason soon was plain.

Snell called for nominations. The early states "passed," until—by prearrangement—the right of way was given to Kansas.

Former Enemy Nominate. It fell to the lot of a former

political enemy of Landon to name him for the party's highest honor, to Hamilton. He had the crowd with him from the start.

Waving down the shouts and applause that greeted him, there on the rostrum, he invoked republican traditions and said the party had to make a choice "for itself and America."

"Let us make certain of a mightier future by meeting our obligations for that choice, with the one man who can rally to a glorious cause the

See BORAH, Page 6.



# LET 'EM RANT AND RAVE!

## We Make Money Yet UNDERSELL!

PRICES GOOD FRIDAY AFTERNOON AND THROUGH SATURDAY AND MONDAY

**EXTRA SPECIAL** 19-piece dinner set for 85c with purchase of \$5.00 groceries. Good until next Thursday only.

**Coffee** Maxwell House Pound Can For **25c**

**Flour** Gold Chain, made by the largest independent Mill in the South-west. 48 LB. SACK **\$1.65**

**Milk** Armour's, High Grade **20c**  
3 TALL CANS FOR

### PRODUCE

FRIDAY AFTERNOON AND SATURDAY ONLY

<b>GREEN BEANS</b> They are really good, Pound	<b>2c</b>	<b>SQUASH</b> White or Yellow, per pound	<b>4c</b>
<b>RADISHES</b> Fresh, large bunches, Each	<b>2c</b>	<b>ASPARAGUS</b> Fresh, large bunches, Each	<b>9c</b>
<b>GREEN ONIONS</b> Fresh, Large Bunches, Each	<b>2c</b>	<b>LEAF LETTUCE</b> Fresh large bunches	<b>4c</b>
<b>MUSTARD</b> Large bunches, nice and fresh	<b>3c</b>	<b>APPLES</b> Fancy Winesaps, per dozen	<b>15c</b>
<b>CUCUMBERS</b> Fresh from the garden, Lb.	<b>4c</b>	<b>ORANGES</b> Full of juice, per dozen	<b>19c</b>

### QUALITY MEATS

SATURDAY ONLY

<b>500 FRYERS</b> Large size chickens, Each	<b>45c</b>	<b>PURE LARD</b> Genuine Hog, Bulk, 2 Lbs.	<b>25c</b>
<b>FISH</b> Fresh water cat fish, pound	<b>30c</b>	<b>SHORT RIBS</b> of Beef, meaty and fresh, Lb.	<b>11c</b>
<b>BACON</b> Deckers Slab, per pound	<b>23c</b>	<b>ROAST</b> Cut from Sunray beef chuck, Lb.	<b>19c</b>
<b>OLEO</b> Red Rose or Good Luck, pound	<b>18c</b>	<b>BUTTER</b> Fresh Creamery, per pound	<b>27½c</b>
<b>CHEESE</b> Cloverbloom Longhorn, pound	<b>18c</b>	<b>SANDWICH SPREAD</b> Ham and cheese, loaf, Lb.	<b>33c</b>

**Pinto Beans** 2 Lb. Sack **12½c**, 5 Lb. Sack **29c**, Recleaned 10 lb. bag **49c**

**Salad Dressing** **23c**  
Or Sandwich Spread, Full Quart Jar for

## FINDS ALL-BRAN BETTER THAN PILLS, SALTS, AND OILS

This Natural Food Relieved His Constipation\*

"I quote from his letter: "... So I decided to make a fair trial (of Kellogg's ALL-BRAN), with the result that I felt much improved. I have quit all laxatives since 1929.

"For 34 years, I had to take pills, salts, oils, teas, or other fluids, which did more harm than good. ALL-BRAN now is our breakfast cereal for the whole family."

Meals low in "bulk" often lead to constipation. Kellogg's ALL-BRAN provides generous "bulk" in effective form. This "bulk" absorbs moisture, forms a soft mass, and gently exercises and cleanses the system. ALL-BRAN also furnishes vitamin B and iron.

Two tablespoonfuls daily are usually sufficient. How much better to use this natural food in place of patent medicines.

Use as a cereal with milk or cream, or in cooking. ALL-BRAN is much more effective than part-bran products. It is sold by all grocers. Made by Kellogg in Battle Creek.

\*Constipation due to insufficient "bulk" in meals.

<b>TOMATO JUICE</b> Phillips regular can	<b>5c</b>
<b>TOMATOES</b> Regular No. 1 size can	<b>5c</b>
<b>PINEAPPLE JUICE</b> Del Monte, No. 1 can	<b>9c</b>
<b>SPINACH</b> Fancy No. 2 size can, each	<b>9c</b>
<b>GRAPE JUICE</b> Pure, pint size bottle	<b>17½c</b>
<b>PICKLES</b> Sour or dill, quart jar	<b>15c</b>
<b>PRUNES</b> Solid pack, gallon can for	<b>25c</b>

<b>VANILLA</b> Full 8 oz. bottle for	<b>15c</b>
<b>TALCUM POWDER</b> Sweet Pea, large size	<b>11c</b>
<b>SYRUP</b> Penick's Golden, Gallon Can	<b>57c</b>
<b>COFFEE</b> Brimfull, 3 pound jar for	<b>75c</b>
<b>PEAS</b> Brimfull, No. 2 size can for	<b>14½c</b>
<b>MARSHMALLOWS</b> New fresh stock, pound	<b>17½c</b>
<b>GREEN BEANS</b> Cut stringless, No. 2 can	<b>8½c</b>

<b>CORN</b> Good and sweet, No. 2 size can	<b>8½c</b>
<b>COFFEE</b> Arbuckles Arosia, pound for	<b>14c</b>
<b>SOAP</b> Crystal White, Giant Bars, Each	<b>4c</b>
<b>HY-PRO</b> High quality, quart bottle	<b>19c</b>
<b>FREE</b> LARGE 18" x 36" CANNON Turkish Towel with 10 wrappers from <b>CRYSTAL WHITE SOAP</b> ASK US FOR DETAILS	<b>5c</b>
<b>SOAP</b> Palmolive, Reg. Bar	<b>5c</b>
<b>SUPER SUDS</b> Giant Size	<b>19c</b>

# PIGGLY WIGGLY

IT'S THE SAVING ON EVERY ITEM THAT COUNTS

# STANDARD

## FOOD MARKETS

"SELLS FOR LESS"

No. 1—110 So. Cuyler, Phone 342  
No. 2—304 So. Cuyler, Phone 727  
No. 3—LeFors, Phone No. 1  
No. 4—McLean, Phone No. 9

### CANNED VEGETABLES

Scott County Brand

MIXED VEGETABLES  
TOMATO SOUP  
VEGETABLE SOUP  
PEA SOUP  
PORK & BEANS  
RED BEANS  
LIMA BEANS  
MAYFIELD PEAS  
PEAS & CARROTS  
CARROTS

ALL ABOVE NO. 1 SIZE CANS

Your Choice  
**EACH . . . 5c**

WE RESERVE THE RIGHT TO LIMIT QUANTITIES

These Prices Are in Effect When the Paper Leaves the Press

<b>BANANAS</b> SATURDAY ONLY	Large Golden Ripe	DOZ. <b>12c</b>	Green Radish LARGE
<b>APPLES</b> Fancy Winesaps		DOZ. <b>21c</b>	LETTUCE California—Large, Firm
<b>ONIONS</b> Crystal Wax, or Spanish Sweets		LB. <b>3 1/2c</b>	<b>CELERY</b> Well Bleached

# SHORTENING

Armour's Vegetole

**4 LB. 46c**  
CTN.

# BREAD

Fluffy 16 Oz. Loaf

Saturday Only — Limit

**EACH 5c**

### BARTLETT PEARS

IN HEAVY SYRUP  
GREEN TAG BRANDS  
SIZE 2 1/2

**CAN 17c**

### MACARONI

Spaghetti Or Shells In the Bulk

**BAG 17c**

### GREEN BEANS

Tender No. 2 Size

**2 CANS FOR 17c**

### MONARCH FINER FOODS

Golden Bantam Corn No. 2 Size **CAN 15c**  
Sweet Corn, Whole Kernel. No. 2 Size **CAN 16c**  
BEAN SPROUTS No. 2 Size **CAN 19c**  
SWEET PEAS Extra small, No. 2 size **CAN 23c**

### WATERMELONS

MEDIUM AVERAGE

LB. **2 1/2c**

### FRESH CORN

LARGE, FRESH, TENDER EARS

**3c**

### CEDAR OIL POLISH

CAGE'S HIGHEST QUALITY  
Cleans and Polishes

12 Oz. Bottle **18c** 16 oz. Bottle **31c**

### BUTTER

Standard Food Markets Supreme  
Quarter Molds in Cartons, Lb. 29 1/2c

SOLID MOLDS IN CARTONS

LB. **28 1/2c**

### Maxwell House Coffee

PLAIN OR DRIP GRIND

LB. **27c**  
CAN

### TOMATOES

Firm and Pink

LB. **7c**

### POTATOES

NEW—Fancy No. 1's

LB. **5 1/2c**

### EVAPORATED MILK

"Armour's"

3 Tall Or 6 Small Cans **21c**

### SWEET PEA TALC

Size 13 Oz.

**CAN 12 1/2c**

### CERTO

FOR MAKING JAM AND JELLIES  
Recipe Booklet attached to every bottle

**8 OZ. BOTTLE 23c**

Meat and Produce Prices Are for Friday Afternoon, Saturday and Monday

**These A**

LAM

Genuine

CHOICE BREAST

MEDIUM SHOULDERS

LEGS PREPARED AS YOU LIKE

FANCY CHOPS

### CANNED VEGETABLES

KRAUT, SPINACH OR MUSTARD GREEN NO. 2 SIZE **2 CANS FOR 19c**  
BLACKKEYED PEAS Shelled and Snapped 15 Oz. Size **2 CANS FOR 21c**  
CORN, TENDER **2 CANS FOR 21c**  
SWEET, NO. 2 SIZE **2 CANS FOR 21c**  
TOMATOES NO. 2 SIZE **3 FOR 22c**  
VEG-ALL, MIXED VEGETABLES **2 CANS FOR 23c**  
REGULAR SIZE **2 CANS FOR 24c**  
PEAS—Early June, not Soaked—No. 2 Size **2 FOR 24c**

### MUSTARD

Prepared No. 2 Lb. Net

**JAR 17c**

### MACKEREL

California Quality No. 1 Tall

**2 CANS FOR 17c**

### SALAD DRESSING

A Real Brand

PACKED FOR STANDARD FOOD MARKETS

**QT. JAR . . . 24c**

### WHITE SHOE POLISH

"WIZARD" WILL NOT DUST OFF

**8 OZ. BOTTLE 19c**

### KRAUT

No. 2 1/2 Fancy Pack

**2 CANS FOR 25c**

### HOMINY

No. 2 1/2 Large Snow White

**2 CANS FOR 25c**

### PINTO BEANS

New Crop Reddressed

**5LB. 31c**

### TOWELING

White Sugar Sacks

**DOZ. 90c**

### DOG FOOD

ARMOUR'S SANDY BRAND NO. 1 TALL SIZE

**2 CANS FOR 19c**

# FLOUR

Great West

**24 LB. 87c**  
BAG

### SLICED BACON

PINKNEY'S ECONOMY **LB. 22 1/2c**  
CUDAHY'S RIVAL OR TALL KORN **LB. 26 1/2c**  
ARMOUR'S CLIMAX **LB. 27 1/2c**  
DOLD'S STERLING **LB. 29 1/2c**  
SUNRAY, BANQUET OR ARMOUR'S STAR **LB. 33 1/2c**

### HAMBURG

STANDARD'S BETTER MEATS

CHEESE Northern Longhorn Full Cream

PORK LIVER Fresh Not Frozen

PORK CHOPS Small End Cuts

HEARTS Or Tongues Med. Size

SPARE RIBS Small Lots Of Meat

### OVEN WARE

8 PIECE SET

Baking Kitchen Ware  
With One Purchase of Merchandise Amounting to \$5.00 or More

**FOR \$1.24**

### PEACHES

Sliced 8 Ounces

**CAN 9c**

### STARCH

Limit 12 Oz.

**BOX 9c**

### SALMON

Selected Pink No. 1 Tall

**2 CANS FOR 26c**

### OLEO

A BUTTER SUBSTITUTE

Red Rose

**2 LBS. 33c**  
FOR

### SALT

In 50-Lb. Blocks

PLAIN . . . **39c**  
SULPHUR **49c**

### SALTED PEANUTS

Cello 1/2 Lb.

**BAG 9c**

### POTTED MEAT

3 1-4 Oz. Net

**3 CANS FOR 11c**

### MEAL

Great West

**5 LB. BAG 16c**

### PEANUT BUTTER

Marco Brand

**QUART 27c**  
JAR

### FOLGER'S COFFEE

Plain or Drip Grind

**LB. 29c**  
CAN

### LUNCH LOAVES

BOLOGNA LARGE SLICED **LB. 12 1/2c**  
MINCED HAMS OR LARGE FRANKS **LB. 15c**  
LUNCH MEAT Large Assortment **LB. 25 1/2c**  
CHICKEN LOAF **LB. 35c**  
HOME BAKED HAM **LB. 65c**

### CURED HAMS

Armour's Small Average 1/2 or Whole **LB.**

PORK SHOULDER Shank Half or Whole

PORK HAMS Half or Whole

SLAB BACON Rex or Buffak 1/2 or Whole

PURE LARD Armour's Star, In your own container

PEANUT BUTTER Fresh Plenty of Oil

### DELICATESSEN

SOLD AT NO. 2 MARKET ONLY

Potato Salad, Lb. **15c**  
Baked Short Ribs, Lb. **19c**  
Bar-B-Q Beef, Boneless, Lb. **28c**  
Pie-Ham Spread, Lb. **30c**

### SAUSAGES

STANDARD'S PURE PORK

**LIMIT QUANTITIES OF ALL PURCHASES**  
 at the Press Friday Afternoon. Grocery Prices For One Week

**12c** Green Onions  
 Radishes or Carrots  
 LARGE ORIGINAL BUNCHES **3 Bunches 10c**  
 For . . . . .

**ICE** HEAD **5c**  
**CUCUMBERS** NONE TOO LARGE **LB. 4 1/2c**

**RY** STALK **14c**  
**RHUBARB** Cherry Red **LB. 7 1/2c**

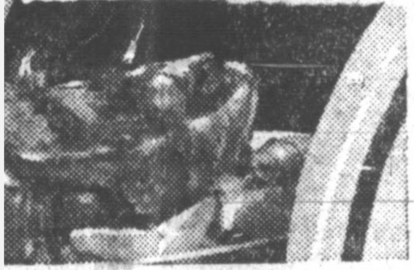
**5c** **SUGAR** Fine Granulated In Kraft Bags **10 LB. 51c**  
 SATURDAY ONLY—LIMIT

**CORN** 3 Ears For **10c**  
 SH, TENDER EARS  
**GREEN BEANS** Fresh and Tender **LB. 4 1/2c**

**5 1/2c** **CANTALOUPE** EACH **14c** **ORANGES** California—Uniform Size **DOZ. 23c**  
 JUMBO CALIFORNIAS

**These Are Outstanding Meat Values**

**LAMB**  
 Genuine Spring  
 CHOICE BREAST **LB. 8 1/2c**  
 MEDIUM SHOULDERS **LB. 14 1/2c**  
 LEGS PREPARED AS YOU LIKE **LB. 20 1/2c**  
 FANCY CHOPS **LB. 30c**



**BURGER** BETTER MEATS **LB. 13 1/2c**

**MEAT** Northern Longhorn Full Cream **LB. 15 3/4c**  
 Fresh Not Frozen **LB. 15c**  
 Small End Cuts **LB. 19 1/2c**

Or Tongues Med. Size **LB. 13 1/2c**  
 Small Lots Of Meat **LB. 15 3/4c**

**HAMS** Small Average **LB. 23 1/2c**

**POULDER** Shank Half of Whole **LB. 15 3/4c**  
 Half or Whole **LB. 20 1/2c**

**CON** Rex or Buffalo 1/2 or Whole **LB. 27 1/2c**  
 Armour's Star, In your own container **LB. 10 1/2c**

**BUTTER** Fresh Plenty of Oil **2 LBS. 23c**

**USAGE** PURE PORK **LB. 13 1/2c**

**SWEET BREADS** Genuine Calf **LB. 35c**

**POULTRY AND FISH**  
 STEWERS Young And Tender **LB. 13 1/2c**  
 DUCKS Fancy Full Feather Choice Colored Type **LB. 17 1/2c**  
 HENS Young No. 1 Birds **LB. 20 1/2c**  
 TURKEYS Fancy Young Tender Colored Fancy Spring Fillets No Bones **LB. 23 1/2c**  
 SQUABS EA. **20c**  
 FRYERS **LB. 26 1/2c**  
 HADDOCK **LB. 21 1/2c**  
 CHANNEL CAT Fresh Water **LB. 29c**  
 SPECKLED TROUT Fine To Fry **LB. 29c**  
 HALIBUT Sliced To Order **LB. 29c**

**STEAKS** Cut From Dold's and Sunray Baby Beeves  
 1ST CUT CHUCK **LB. 12 1/2c**  
 CENTER CUT CHUCK **LB. 18 1/2c**  
 CHOICE ARM CENTER CUT **LB. 20 1/2c**  
 CLUB OR SHORT CUTS **LB. 25 1/2c**  
 SIRLOIN OR FANCY ROUND **LB. 30 1/2c**

**ROASTS** Cut From Fancy Heavy Beeves  
 1ST CUT CHUCK **LB. 14 1/2c**  
 ROLL, NO BONE **LB. 17 1/2c**  
 CHUCK, CENTER CUT **LB. 18 1/2c**  
 CHOICE ARM, CENTER CUT **LB. 19 1/2c**  
 BONELESS CHUCK **LB. 22 1/2c**

**LAYER CAKES** ASSORTED FLAVORS REGULAR 15c SELLER  
**EACH 12c**  
 Baked for Standard Food Markets By Burrows Bakery  
 Saturday Only

**CORNER BEEF** ARMOUR'S STAR, 12 OZ.  
**CAN 17c**

**GRAPE JAM** 4 LB. **49c** **PRESERVES** 4 LB. **49c**  
 MA BROWN JAR Banner Brand—Assorted Flavors JAR

**NUTS** In The Shell  
 FANCY BRAZILS **LB. 16c**  
 NO. 1 EMERALD WALNUTS **LB. 18c**  
 NO. 1 DRAKE ALMONDS **LB. 20c**  
 PAPER SHELL PECANS **LB. 20c**

**COFFEE** ARBUCKLE'S ARIOSA  
**1 LB. 14c** PKG.

**SUGAR** POWDERED OR BROWN  
 In the Bulk **2 LB. 15c** BAG

**BRIMFUL PEAS** EXTRA SIFTED NO. 2 SIZE  
**CAN 16c**

**PICKLES** Whole Sours Or Dills IN GLASS  
 Full Quart **17c**

**RELISH SPREAD** A'REAL BRAND  
**QT. JAR 29c**

**FLOUR** Stocked at No. 2, No. 3 and No. 4 Stores Only. Kansana Red Star Product Every Sack Guaranteed **24 LB. 79c** BAG

**SOAP CHIPS** ARMOUR'S BALLOON WHITE  
**5 LB. 33c** BOX

**SYRUP** WHITE SWAN RIBBON SANE  
 Pint Can **12c** Quart Can **18c**

**GRAPE JUICE** Richelieu Brand Made From Choice New York Grapes  
 Pint Bottle **17c** Quart Bottle **32c**

**APRICOT JUICE** No. 1 Tall Can **CAN 14c**  
**ORANGE JUICE** No. 1 Tall Can **CAN 14c**

**NUCOA** The new vegetable Oleomargarine  
**LB. 19c**

**PINEAPPLE** Juice No. 2 Size **CAN 14c**  
**GRAPEFRUIT** Juice No. 1 One **2 CANS 15c**  
**PINEAPPLE** Juice 12 1/2 Oz. Size **2 FOR 19c**

**GALLON FRUITS**  
 PRUNES Fresh Italian **GAL. 29c**  
 PEARS Fancy Bartlett **GAL. 41c**  
 APPLES Solid Pack **GAL. 41c**  
 PEACHES Selected Halves **GAL. 46c**  
 Blackberries Northwest Pack **GAL. 48c**  
 CHERRIES Red Sour Pitted **GAL. 48c**  
 APRICOTS Solid Pack **GAL. 48c**

**MARSHMALLOWS** 1 Lb. Cello **BAG 19c**  
**SALT** Table, 10 Lb. **BAG 19c**

**TOMATOES** SOLID PACK No. 1 Size Can **5c**

**BUTTER** Armour's Cloverbloom Country Roll  
**LB. 28 1/2c**

**DOG FOOD** ACE BRAND Regular Size Can **5c**

**BAKING POWDER** K. C. 25 OZ. Size Can 31c **19c**

**RICE** Choice In the Bulk **BAG 19c**

**SEVEN DAY COFFEE** Vacuum Packed Guaranteed to Your Satisfaction or Your Money Gladly Refunded  
**LB. 24c** CAN

**TISSUE** Standard Food Brand 3 ROLLS FOR **19c**

**RAISINS** Thompson's Seedless 4 Lb. Bag 36c **2 LB. 21c** BAG

**MATCHES** 6 Box Carton Real Value **CARTON 23c**

**PINEAPPLE** No. 3 Crushed or Matched Slices **2 CANS 31c** FOR

**WHITE KING** Granulated Condensed SOAP  
 Large PACKAGE **33c**

**ADMIRATION COFFEE** Plain or Drip Grind  
**LB. 25c** PKG.  
 Save coupons on Bag for Free Package. Also ask Clerks how you may secure Pressure Cooker on Display.

**EVAPORATED MILK** PET OR CARNATION  
 3 TALL OR 6 SMALL CANS **23c**

**BEECH-NUT OFFERS**  
 COOKED SPAGHETTI 1 Lb. Size **CAN 10c**  
 PEANUT BUTTER Large Size **GLASS 17c**  
 Tomato Catsup Pure, 14 oz. **BOTTLE 19c**  
 GRAPE JELLY Concord, 13 oz. **GLASS 24c**

**CATSUP** Large 14-oz. Bottle Packed from Ripe Tomatoes **2 Bottles 24c** For

**APRICOTS** White Swan In Heavy Syrup Size 2 1/2 **CAN 26c**

**CHERRIES** No. 3 Red Pitted **2 CANS 29c** FOR

**FLY-DED** INSECT SPRAY KILLS FLIES, ANTS, ROACHES, BED BUGS  
 Pint Can **19c** Quart Can **34c**

**DATE PUDDING** Morton Brand, 4 Oz. **CAN 10c**  
**COCOANUT** 1/2 Lb. Cello Long Shred **BAG 13c**  
**VIENNA SAUSAGE** 1 Oz. Net **2 CANS 15c** FOR

**KELLOGG'S CEREALS**  
**FREE** 1 Pkg. Pep  
 With Purchase of **2 PKG. CORN FLAKES** **1 PKG. WHEAT KRISPIES**  
**ALL FOR 32c**

Shop the CLASSIFIED COLUMNS and Save

Classified Advertising Rates Information. All want ads are strictly cash and are accepted over the phone with the positive understanding that the account is to be paid when our collector calls.

The Pampa Daily NEWS For Sale. FOR SALE—Sweet milk 25c per gallon. C. C. Dodd, 1 mile southeast of city.

FOR SALE A. K. C. Black Cocker Spaniel Puppies. Natural Retriever. End East Campbell Street. Mrs. Elkins P. O. Box 831.

SEED Texas State Certified Seed Of All Kinds for Better Crops Also Ordinary State Tested and Tagged Seed ZEB'S FEED STORE

For Sale properties belong to Panhandle Building & Loan Association who are in a position to sell on good terms and with small down payments.

Automotive USED CAR VALUES. 1935 Chev. Master DeLuxe Coach \$525. 1935 Standard Chev Sedan 450. 1934 Standard Chev Coach 375.

Washing, Lubrication, Polishing and Waxing, Tire Repairing SINCLAIR SERVICE STATION. End of West Foster Street. PAUL V. CLIFFORD PHONE 1122.

Beauty Parlors FIRST 100 LADIES, for hair shaping, 40c by Mr. White. Milady Beauty Shop. 26c-84.

For Rent FOR RENT—Two room furnished house with bills paid. 212 N. Nelson. Mrs. Roscoe Pirtle. 3c-61.

Used Cars 1936 Plymouth Sedan \$200 Discount. 1935 Ford Sedan 495. 1935 Ford Coupe, 15,000 mi. new tires... 480.

Wanted WANTED—To reduce our stock of used furniture. Our prices will do it, too. Texas Furniture Company. 1c-59.

Room and Board BOARD AND ROOM—First class. On pavement. 121 N. Warren. Phone 798-J. 3p-59.

For Rent FOR RENT—Three room furnished house. Bills paid. See Harold Coffee. 813 E. Campbell. 1c-59.

Loans SALARY LOANS For Your VACATION! No endorsers or security required. \$5 to \$50. Lowest Rates. Loans made in a few minutes.

Help Wanted HELP WANTED—Competent house-keeper. Phone 9032F3. 3c-61.

Personal MENI GET VIGOR AT ONCE! New Ostrex Tonic Tablets contain raw oyster ingredients and other stimulants.

BEDLAM REIGNS IN TOPEKA AS NEWS ARRIVES Old Fashioned Parade Ends at Mansion Of Governor.

Miscellaneous Notice To The Public Now, You Can EAT IN COMFORT! Courthouse Cafe AIR CONDITIONED.

Wanted to Rent WANTED TO RENT—Nice 5 or 6 room unfurnished house in good location.

Poultry BABY CHICKS Popular breeds, day old and started. Hatch off each Monday and Tuesday.

Gypsy Weather BY MARGARET BELL HOUSTON Chapter 31—DIFFICULT CASE Dirk got quickly into a dressing gown, and went down.

Dirk got quickly into a dressing gown, and went down. The Rev. Silas Devine stood in the hall. Beside him on the table lay his overcoat and dark gray hat. Dirk received an impression of height, of iron-gray hair, of a strongly hewn face with dominant nose and high cheekbones.

BORAH (Continued from page 3)

rank and file of all America, and that man is Alfred Mossman Landon," Hamilton shouted. Bedlam broke. The first mention of the governor's name, coming early in the speech, was the signal for the Kansas cowbells to swing into action.

An Up-To-The-Minute Directory of BUSINESS AND PROFESSIONAL

Accountants J. E. ROBY 412 Combs-Warley, E. 980W, Ct. 757. Bakeries PAMPA BAKERY Fred Schaffner, 115 W. Foster, Ph. 81.

THIMBLE THEATRE Starring POPEYE YOUR SIGNING UP TO FIGHT JAMES J. JAB IS LIKE SIGNING YOUR OWN DEATH WARRANT.

"Doors Were Made For Sissies" WHERE THE HECK ARE YOU GOING? ARE YOU BLIND?

GOOD HEAVENS! WALKER RIGHT THROUGH THE WALL! LOOK OUT! YOU'LL RUN INTO THE WALL!

Printing PAMPA DAILY NEWS Phone 608. Schools Elker, East Tule, Phone 931. High School, 123 W. Francis, Ph. 78.



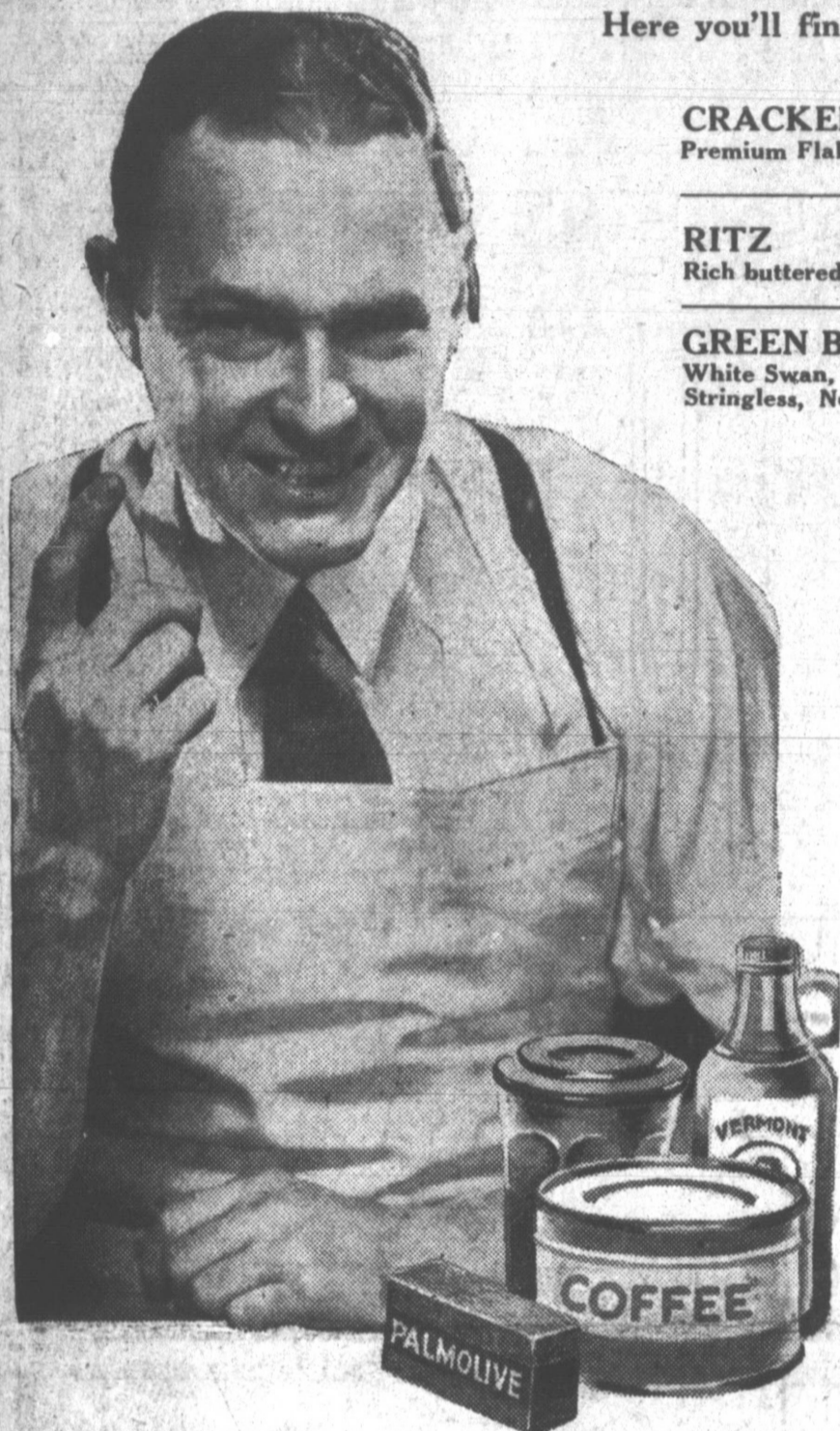




# FOOD SPECIALS

JUST THE THINGS YOU NEED AT MONEY-SAVING PRICES

Here you'll find summer foods to stimulate lagging appetites — things easy to prepare and appetizing to serve.



**CRACKERS**  
Premium Flakes, 2 Lb. Pkg. **29c**

**RITZ**  
Rich buttered wafers, 1 Lb. Pkg. **21c**

**GREEN BEANS**  
White Swan, Small, whole Stringless, No. 2 Can **15c**

**TEA**  
Lipton's Yellow Label, Orange Pekoe,  
**1/4 LB. CAN 21c**  
**1/2 LB. CAN 39c**  
1 Large Ice Tea Glass FREE with each 1/4 Lb.

Libby's **PEACHES**  
Sliced or Halves, No. 1 Can **10c**

**HYPRO**  
Quart Bottle **19c**

**PRUNES**  
Dried, 2 lb. Cello Pkg. **15c**

## FLOUR 77c

GOLD MEDAL OR RED STAR  
24 LB. SACK

**TUNA**  
Wave Kist, Can **14c**

**PIMENTOS**  
7 Oz. Can **12c**

Grapefruit Juice  
No. 2 Can **10c**

**JELLO**  
Assorted Flavors  
Package  
**5c**

**PICKLES**  
Whole Sour or Dill, Qt. Jar **15c**

**SALMON**  
Alaska Pink, Tall Can **11c**

**MATCHES**  
6 Box Carton **15c**

## SHORTENING 87c

MRS. TUCKER'S  
8 POUND CARTON

**VINEGAR**  
Apple Cider, Qt. Battle **15c**

**MARSHMALLOWS**  
Angelus, 1 Lb. Cello Pkg. **19c**

**TOILET TISSUE**  
Charmin, 4 Roll Box **23c**

**SUNBRITE**  
Cleaner, 3 Cans **14c**

**GRAPE JUICE**  
Church's, Quart Bottle **31c**

**BAKING POWDER**  
Dr. Price's, 12 oz. Jar **19c**

**TOMATOES**  
Sun-Pack Calif. 2 Lrg. Cans **15c**

**PEACHES**  
Hillsdale, No. 10 Cans **39c**

**WHITE KING**  
Granulated Soap  
Large Box **30c**

**WHITE KING**  
Toilet Soap or A-Plus Health Soap  
3 BARS **13c**

**WHITE KING**  
COCO SOAP  
3 BARS **13c**

**PALMOLIVE**  
Toilet Soap, 3 Bars **14c**

**SUPER SUDS**  
2 Pkgs. **17c**

**CRYSTAL WHITE SOAP**  
5 Giant Bars **18c**

## COFFEE

**SCHILLING'S**  
1 LB. CAN **27c**

Red Pitted, Imperial Crown  
**CHERRIES**  
3 oz. Bottle **10c**

**PUFFED WHEAT**  
Quaker, Pkg. **9c**

**SARDINES**  
Large Oval Can, In Mustard or tomato sauce, 3 Cans **25c**

**SHINOLA**  
Shoe Polish, all colors, 2 cans **15c**

## SUGAR

**PURE CANE**  
10 LB. CLOTH BAG **53c**

**SHREDDED WHEAT**  
Kellogg's, Pkg. **10c**

**PORK & BEANS**  
Van Camps, No. 1 Tall Can **5c**

**OXYDOL**  
Large Box **21c**

**COFFEE**  
Golden Light, 1 Lb. Can **23c**

**CATSUP**  
BEECH-NUT, LARGE BOTTLE **19c**

**CRISCO**  
3 LB. CAN **55c**

**SPINACH**  
Libby's, No. 1 Can **10c**

**OLIVES**  
Libby's, Qt. Jar **37c**

**LIBBY'S FINE FOODS**  
**VIENNA SAUSAGE**  
Libby's, Can **9c**

**ASPARAGUS**  
Libby's, All Green, Picnic Can **15c**

**POTTED MEAT**  
Libby's, Can **4c**

**BABY FOOD**  
Libby's, 3 Cans **25c**

**PINEAPPLE JUICE**  
Libby's, No. 1 Can, 3 cans **25c**

**CORNED BEEF HASH**  
Libby's, No. 2 Can **15c**

THE MARKET'S FINEST  
*Fresh*  
**PRODUCE**



PRICES GOOD FRIDAY, SATURDAY AND MONDAY

**POTATOES**  
Red or White, New Crop, Per Lb. **4c**

**ORANGES**  
California, Medium Size, Doz. **19c**

**APPLES**  
Winesaps, Extra Fancy, Each **1c**

**GRAPEFRUIT**  
Marsh Seedless, Large Size, Each **5c**

**LEMONS**  
Sunkist, Large Size, Dozen **29c**

**ONIONS**  
White, Medium Size, Lb. **3 1/2c**

**SQUASH**  
Summer, White or Yellow, Lb. **5c**

**LETTUCE**  
Large Firm Heads, Each **5c**

**TOMATOES**  
Fresh, Home Grown, Lb. **7 1/2c**

PRICES GOOD FRIDAY, SATURDAY AND MONDAY

We sell only  
**DEPENDABLE**  
meats!



**ROASTS**  
Lean, Meaty cuts, from choice Baby Beef, Lb. **12c**

**HAMBURGER**  
No Cereal or Water, 2 Lbs. **25c**

**SALT JOWLS**  
For Boiling, Per Lb. **12c**

**STEAK**  
Sirloin or T-Bone, from grain fed beef, Lb. **25c**

**SHORT RIBS OF BEEF**  
Per Pound **15c**

**DOG FOOD**  
Ideal, Sandy or Pard, 3 for **25c**

**FRESH FISH**  
Cat, Trout or Haddock, Lb. **24c**

**BACON SQUARES**  
Sugar cured, Per Lb. **19c**

**SLICED BACON**  
Wilson's Lakeview, 1 Lb. Cello Pkg. **23 1/2c**

**STEAK**  
Choice, Tender Forequarter Cuts, Lb. **14c**

PRICES GOOD THROUGH THURS., JUNE 18

Save at **FURR FOOD STORES!**

PRICES GOOD THROUGH THURS., JUNE 18



# 'I SHALL NEVER SURRENDER,' IS GOOD WATCHWORD, SAYS FDR

## VISITS ALAMO THEN AUSTIN ON THURSDAY

VALUE OF PEACE IS MENTIONED THIRD TIME IN TEXAS

ABOARD ROOSEVELT TRAIN en route to Dallas, Tex., June 12 (AP)—President Roosevelt swung toward birth day—celebrating Dallas today to deliver the second major address of his wide swing through the west, happy memory of his elaborate preliminary receptions at Houston, San Jacinto, San Antonio and Austin.

Fort Worth, the home of his son, Elliott, also was on the itinerary for his second day in Texas. First at San Jacinto battlefield near Houston, and then at the historic Alamo at San Antonio, the president yesterday praised Texas heroes who made it possible for the Lone Star State to become a republic 100 years ago and then a state under the stars and stripes. Thousands greeted the traveling chief executive. Another great crowd met his train at Austin, the state capital, last night where from the rear platform the president paid tribute to Vice-President Garner and for the third time in as many speeches mentioned the value of peace.

At the Alamo, where he placed a wreath, he also repeated a theme in his Little Rock speech—freedom for the individual against license by special privilege.

He said he hoped the "brave men who died" at the Alamo "know that we have not discarded or lost the virility and the ideals of the pioneer."

"I hope they know," he said from his open car from in front of the Alamo, "that the overwhelming majority of the Americans of 1936 are once more meeting new problems with new courage; that we, too are ready and willing to stand up and fight for the truth against falsehood, for freedom of the individual against license by the few."

"Travis' message: 'I shall never surrender,' is a good watchword for each and every one of today," he said.

The presidential special was taken to a siding near Austin for a few hours before leaving for Dallas.

In brief extemporaneous remarks after his prepared address at Austin last night, the president said he was "sorry indeed" that "only because of very important business in Washington Jack Garner and Senator Tom Connally cannot be at my side tonight."

The president of the University of Texas, Dr. Harry Yandell Benedict, then handed the president a button. The president pressed it, setting off an explosion a mile and a half away formally opening the University of Texas memorial museum project.

**LANDS SURF TARPON**  
BROWNSVILLE, June 12. (AP)—Jimmy George of this city has won the distinction of being the only person in recent years to hook and land a tarpon in the surf near here. A number of tarpon are caught regularly around the jetties from boats and occasionally from the jetty, but one seldom is landed in the surf.

**NOTICE!**  
CHINA CUP AND SAUCER  
OF LOVELY CLASSIC DESIGN  
IN EVERY PACKAGE OF

**MOTHER'S OATS**  
Order today from your grocer

All makes Typewriters and Other Office Machines Cleaned and Repaired.  
—All Work Guaranteed—  
Call **JIMMIE TICE**  
PAMPA OFFICE SUPPLY COMPANY, Phone 232

**AUTO LOANS**  
See Us for Ready Cash to Refinance.  
Buy a new car.  
Reduce payments.  
Raise money to meet bills.  
Prompt and Courteous Attention given all applications.  
**PANHANDLE INSURANCE AGENCY**  
Combs-Worley Bldg. Ph. 604

MEAT & PRODUCE PRICES ARE SATURDAY & MONDAY ONLY

# PAMPA

## FRUIT & VEGETABLE MARKET

204 North Cuyler

"The Most of the Best for the Least"

# FOOD STORE

<b>NEW SPUDS</b> South Texas Grown No. 1 Reds <b>LB. 5c</b>	<b>APPLES</b> GOOD EATING Extra Fancy Winesaps <b>EACH 1c</b>	<b>LETTUCE</b> LARGE, CRISP Firm Heads <b>EACH 5½c</b>	<b>SQUASH and CUCUMBERS</b> <b>LB. 5½c</b>
<b>TOMATOES</b> Fresh From South Texas <b>LB. 7½c</b>	<b>BEANS</b> Fresh from East Texas These Will Snap <b>LB. 3½c</b>	<b>ONIONS</b> White Bermuda <b>LB. 3½c</b>	<b>LEMONS</b> SUN-KIST Large Size <b>DOZ. 29c</b>

**PRUNES**  
OREGON PACKED  
GALLON ..... **24c**

**POST TOASTIES**  
BOX ... **11c**

**PEAS**  
NOT DRY SOAKED  
2 NO. 2 CANS .. **17c**

**COFFEE**  
WHITE SWAN  
"America's Finest"  
1 LB. JAR ... **29c**

**APPLES**  
SOLID PACK  
2 NO. 2½ CANS . **25c**

**KRAUT**  
2 TALL CANS ..... **15c**

<b>SPAGHETTI</b>	Sultana Brand	CAN
<b>KIDNEY BEANS</b>	No. 1 Can	CAN
<b>SUNNY FIELD</b>	Sultana	CAN
<b>CLEANSER</b>	Corn No. 1 Can	CAN
<b>HOMINY</b>	Sunbrite Regular Can.	CAN
<b>HERSHEYS</b>	Finest Brand	CAN
<b>PORK &amp; BEANS</b>	9 oz.	CAN
<b>SOAP</b>	Chocolate Syrup Small Size	CAN
<b>MACARONI</b>	White Swan, 11 oz.	CAN
<b>TEA</b>	White King Toilet	BAR
<b>TOMATOES</b>	Or Spaghetti Paramount	BOX
	General Foods Red-Box	CAN
	No. 1 Standard Pack	CAN

**YOUR CHOICE 5c**

**Texturated FOR BETTER BAKING**  
Armour's Vegetable  
8 LB. CARTON .. **79c**

**Meal GREAT WEST**  
5 LB. SACK **12½c**

**Flour**  
GOLD MEDAL KITCHEN TESTED  
24 LB. SACK .. **79c**

**Quality Meats**  
**FRYERS**  
COLORED 1936 SPRINGS  
1,000 to Pick From  
**LB. 23½c**

**OLEO** Red Rose **LB. 17½c** | **BUTTER** Solid Molds **LB. 27c**

**LOIN STEAK** Center Cuts **LB. 25½c**

<b>ROAST</b>	<b>FISH</b>
FIRST CUT CHUCK <b>LB. 13½c</b>	CATFISH <b>LB. 30c</b>
CENTER CUT CHUCK <b>LB. 17½c</b>	HALIBUT <b>LB. 30c</b>
ROLL ROAST <b>LB. 15½c</b>	HADDOCK <b>LB. 25c</b>

**BOLOGNA** Large or Small **LB. 12½c**

**PEANUT BUTTER** **LB. 12½c**

**SALT JOWLS** FINE TO FRY OR BOIL **12½c**

**SLICED BACON** **PORK**

TALL CORN <b>LB. 24c</b>	PORK CHOPS <b>LB. 28½c</b>
CLIMAX <b>LB. 27½c</b>	ROAST <b>LB. 22½c</b>
DOLD Sterling <b>LB. 30c</b>	PORK STEAK <b>LB. 21½c</b>

**ASSORTED LUNCH MEAT** **LB. 26½c**

**MILK**  
Armour's Veribest  
6 Small or 3 Large Cans **21c**

**MATCHES**  
Strike Anywhere  
CARTON 6 BOXES . **19c**

**SOAP CHIPS**  
BALLOON, WHITE  
5 LB. BOX .... **34c**

**SOAP P. & G.**  
5 GIANT BARS .. **19c**

**BAKING POWDER**  
CLABBER GIRL  
2 LB. CAN ... **19c**

**SURE-JELL**  
THE BEST JELLY MAKER  
2 BOXES ..... **25c**

<b>SPINACH</b>	NO. 2 STANDARD PACKED	CAN
<b>PEAS</b>	NO. 1 CAN	CAN
<b>PINEAPPLE</b>	All Gold Sliced or Crushed Flat	CAN
<b>KRAUT</b>	NO. 2 BRIM-FULL BRAND	CAN
<b>VIENNA SAUSAGE</b>	Old Dutch	CAN
<b>CLEANSER</b>	White Swan	BOX
<b>MINCE MEAT</b>	9 OZ. SIZE	BOX
<b>MACKEREL</b>	NO. 1 TALL SELECTED	CAN
<b>BEANS</b>	Mexican Ranch Style IN CHILI SAUCE	CAN
<b>TOMATO JUICE</b>	California Home Brand No. 1 Tall	CAN

**YOUR CHOICE 9c**

