

PAMPA AND VICINITY — Fair through Friday. Warmer this afternoon. Cooler tonight and Friday. Low tonight middle 20's. High Friday, middle 50's. Winds northerly 10-20 mph and gusty this afternoon. Thursday's high 66. Overnight low 36.

# The Pampa Daily News

Serving The Top O' Texas 63 Years

VOL. 63 — NO. 249

Circulation Certified by ABC Audit

THE PAMPA DAILY NEWS, THURSDAY, FEBRUARY 11, 1971

(14 PAGES TODAY)

Week Days 30¢  
Sundays 15¢

## ROTARY STUDY EXCHANGE

### Chileans Will Visit Five Days In Pampa

Seven Chileans are scheduled to arrive in Pampa Feb. 22 for a five-day visit as part of the Rotary Foundation's Group Study Exchange, an educational activity of Rotary International for promotion of better understanding among peoples of the world.

The Pampa Rotary Club, at its luncheon in Coronado Inn yesterday began preliminary preparations to house and entertain the visitors.

The Pampa club's participation in the Group Study Exchange is a part of District 573 West Texas Rotary clubs which currently are hosting the visiting Chileans on a tour of the district which started Feb. 1 in Odessa and Midland where they remained six days.

At yesterday's Pampa Rotary Club luncheon Don Nelson, who last year was a member of the District 573 Study Exchange Group that visited Chile, spoke of the Chilean trip and the Chilean people.

Rev. Sam Hulsey, member of the local club, is in charge of working up a schedule for the Chilean visitors when they come to Pampa.

Their itinerary and activities will include arrival in Pampa and a dinner at the Pampa Club on Feb. 22, followed by attendance that night at a theater production of "The Diary of Adam and Eve."

They will attend a Chamber of Commerce directors' meeting on Feb. 23, visit community cultural agencies and be guests at a Shrove Tuesday Pancake Supper at St. Matthews Episcopal parish.

The seven visiting tour members will visit Pampa schools on Feb. 24. February 25 will be a free day, with the group attending the annual Rotary Ladies Night banquet in Coronado Inn.

Guest homes for the exchange group while in Pampa were assigned yesterday. One of the seven visitors will be housed in homes of the following Rotarians while in Pampa: Mr. and Mrs. Don Nelson, Dr. and Mrs. E. S. Williams, Mr. and Mrs. Al Bassett, Mr. and Mrs. Lee Fraser, Mr. and Mrs. David Tucker, Mayor and Mrs. Milo Carlson, and Mr. and Mrs. Kay Fancher.

### Reds Charge U.S. Prepared To Raid North Vietnam

PARIS (UPI)—The North Vietnamese accused the United States today of massing troops on the border and preparing to launch "new military adventures against North Vietnam."

The charge came in a midnight statement from the Hanoi delegation to the Paris Vietnam talks and apparently outlined what the Communists would say in the 102nd session of the talks today.

"With the concentration of an important force in the proximity of the 17th parallel and the invasion of regions situated near North Vietnamese frontiers, the United States is preparing to undertake new military adventures against North Vietnam," the statement said.

The North Vietnamese called it "a new escalation of the war by the United States that is extremely serious, creating a situation very dangerous in Southeast Asia and in the world."

Thousands of young Parisians marched through the streets Wednesday night in a protest against the Allied incursions into Laos. The demonstration was called by 41 French Communist and socialist organizations and various pacifist groups.

The Hanoi statement issued prior to today's talks said the Nixon administration was "playing a farce" by maintaining that South Vietnamese troops were conducting the operations in Laos.

The communique said North Vietnam wants "a truly peaceful and neutral Laos." United States Ambassador David K. E. Bruce, told delegates today they had made "a mockery" of the Vietnam peace talks by refusing to seek a negotiated settlement.

In a four-paragraph formal statement, Bruce made only a brief reference to current operations in Laos, describing them as "designed to make your forces less able to mount offensives and to strengthen South Vietnam's ability to defend itself as U.S. forces continue to be withdrawn."

"The fighting and killing in Indochina go on because you still refuse to seek a negotiated settlement of this conflict," Bruce said in the 102nd session of the conference.

"In effect, you have made a mockery of these negotiations and of the worldwide desire for a lasting peace in that tortured region."

### More S. Viets Enter Laos

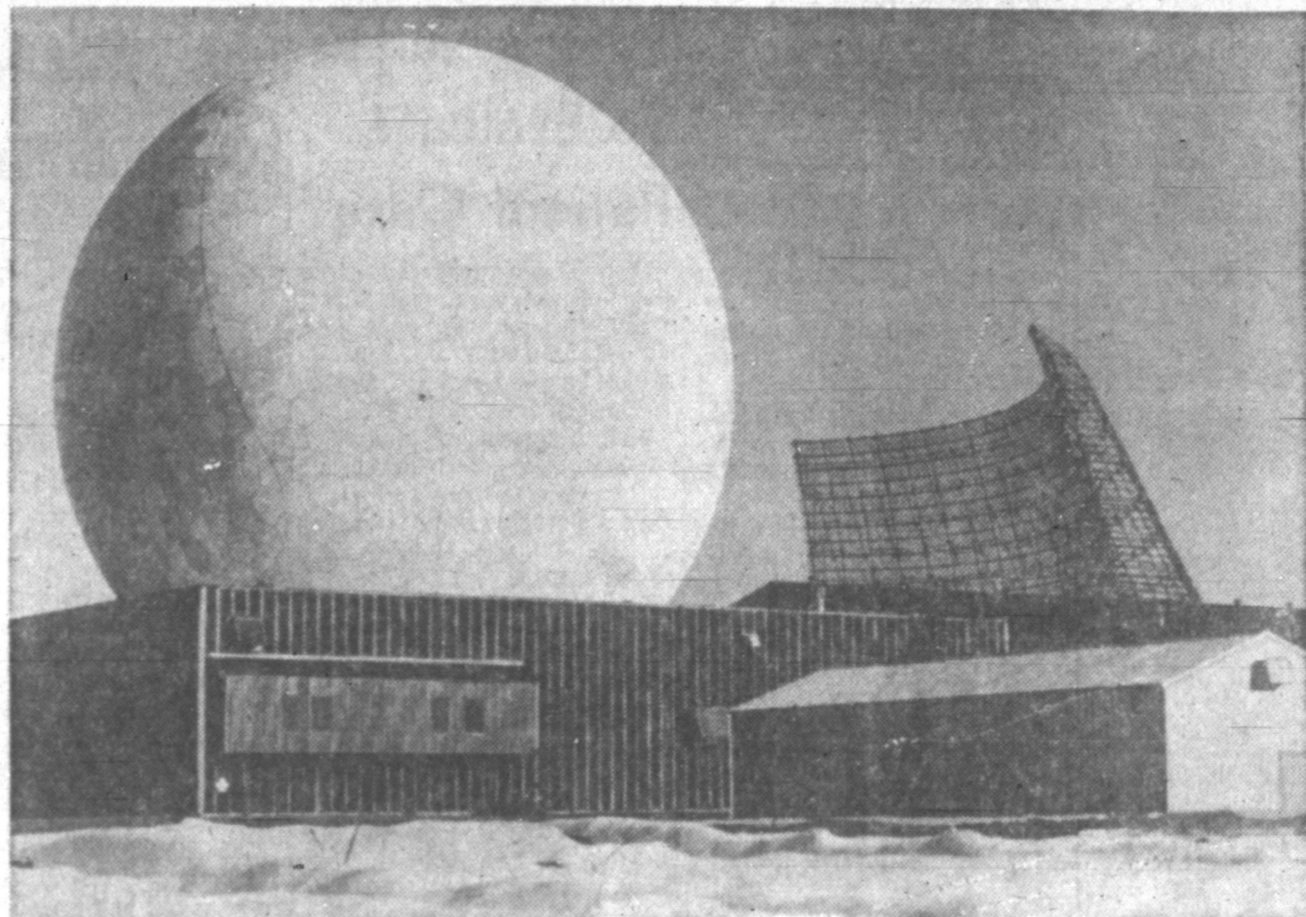
SAIGON (UPI)—U.S. helicopters flew another 1,000 South Vietnamese troops into Laos today to join the drive against the Ho Chi Minh Trail and hauled in heavy artillery in slings beneath the choppers. Little fighting was reported in this area but it broke out with new intensity in northern Laos and in Cambodia.

There was an increase in Communist activity just below the Demilitarized Zone (DMZ) paralleling the allies' Highway 9 supply line. The Communists shelled fire support base Vandergrift and near Lang Vei on the border, but they did little or no damage.

Informed sources in Saigon said a U.S. 7th Fleet Marine landing team of about 1,500 men was aboard the aircraft carrier USS Iowa Jima off the DMZ but stressed it was a routine contingency measure and that the same force had been deployed to the Gulf of Thailand during operations to clear Route 4 in Cambodia.

Military sources in Saigon said South Vietnamese attempting to cut the Ho Chi Minh Trail at its narrowest point in Laos were nearing their objective, the Communist base area to Sepone tonight. One column was just to the north and another to the south but neither has entered the town, the sources said.

# Possible After-Shock Threat In Quake Zone



TENNIS ANYONE? "Tennis Ball" in reality is enclosure for tracking radar at Clear Air Force Station in Alaska, where the Aerospace Defense Command maintains 24-hour guard against possible hostile missiles. ADC has three such early warning sites: Alaska, Greenland and England.

### 120,000 Persons Homeless; Death Toll Rises To 53

LOS ANGELES (UPI)—A warning that the city might have another severe shock kept 120,000 persons from their homes and more than 100 schools closed today as hope was all but abandoned that anyone else would be found alive in a crushed hospital.

Residents of a suburban area below a battered earthfill dam were ordered by Mayor Sam Yorty not to return to their homes until Friday afternoon lest the aftershock cause a break loosing three billion gallons of water in a reservoir.

The death toll stood at 53. At least a half dozen persons were missing and believed buried in the rubble of a veterans hospital at San Fernando where workmen had been toiling for more than 48 hours.

As the dawn of another sunny day broke with temperatures predicted to go into the 90s, giant cranes were lifting pieces of wreckage like giant match sticks with extreme care on the chance, hospital workers or patients might still be below.

Doctors said they held virtually no hope that any of those buried were still alive unless they were in the basement of the building and had somehow found an air pocket.

Crane operator Sam Thompson said the workmen "can never go on the assumption that no one is left down there alive."

"We must assume that there are people alive and that's why we are working so desperately."

Another massive traffic jam developed in the San Fernando Valley area at rush hour Thursday morning where stretches of freeway were still closed by fallen bridges. The California Highway patrol forecast one of the worst snarls in Southern California history this evening when Angelenos head out for the start of a four-day holiday weekend.

The majority of the city and county public schools reopened for the first time in three days but more than 100 in the San Fernando area remained closed while engineers checked structural damage. A number of them also were in the evacuated dam area.

Residents and owners of business establishments in the danger zone were issued passes to go into the section briefly to attend to any emergency.

In the city of San Fernando, 17,000 residents were without water because of damage to wells. Nine tanker trucks provided supplies for "basic needs" and 200 portable toilets were set up. Crews hoped to have the wells repaired by Friday.

The cost of the quake was still being tallied. County engineer John A. Lambie said "a quick estimate would be that it will be in the billions."

City officials said structural damage in Los Angeles alone was estimated at \$180 million. Yorty extended the mandatory evacuation of an 18-square-mile section of the suburban valley after Dr. Charles Richter warned that most quakes were usually followed by an aftershock which approached the severity of the original earthquake.

The earthen levee, shored up by sandbags while city crews drained its three billion gallons of water, was not considered in danger unless it is hit by a second big temblor.

### Four Photographers Missing In Laos After Helicopter Downed By Reds

SAIGON (UPI)—Four photographers aboard a South Vietnamese air force helicopter shot down over Laos were missing today. Field reports said there were no survivors in the crash but there was no official confirmation they were dead.

The photographers were Kent Potter of United Press International, Henri Huet of Associated Press, Larry Burrows, Life magazine, and Keizaburo Shimamoto, Newsweek. Among them, the men have won a number of photographic awards.

The four boarded the helicopter Wednesday at the Khe Sanh outpost in northwestern South Vietnam to fly over Laos photographing the South Vietnamese move into the country to try to cut the Ho Chi Minh trail. Their chopper was in a group of four helicopters which came under heavy groundfire by B40 rocket-propelled grenades.

One of the helicopters exploded in flight, while another was damaged and crashed. It was not clear which of the two downed helicopters the photographers were aboard.

A Vietnamese army cameraman also was aboard the helicopter, but military officials did not identify him.

Potter, 23, was a native of Philadelphia and a former UPI news pictures manager for Vietnam. He had served as news pictures manager in Bangkok since September and was on assignment in Vietnam covering the South Vietnamese drive into Laos. In 1967 he won three awards of the Pennsylvania Photographers Association, including the first prize in the spot news category for photographing a bank robbery suspect being shot by a policeman.

Huet, 43, had covered the Indochina conflict for nearly two decades. He began as a combat photographer with the French army during the French Indochina war and also worked for UPI in Vietnam. He won the 1967 Robert Capa award of the Overseas Press Club for "superlative still photography requiring exceptional courage and enterprise."

Burrows, 46, first went to Vietnam in 1962 and with occasional breaks had been covering the Indochina war since then. In 1966, he was named Magazine Photographer of the Year by the University of Missouri School of Journalism and twice won the Robert Capa Award.

Shimamoto was a free-lance photographer working in Vietnam on assignment for Newsweek.

### Susan Atkins Tells Jury She Feels No Remorse For Killing

LOS ANGELES (UPI)—Susan Atkins said Wednesday she felt no remorse for killing Sharon Tate because it felt good.

"It was death and life in one motion," the 22-year-old convicted murderess told the jury in the penalty phase of the Tate-LaBianca trial. "It felt good. How could it not be right if it's done out of love?"

The willowy brunette said she and other "Manson family" women conceived the death plot because they wanted to convince police to free "family" member Robert Beausoleil, who had been jailed for the earlier slaying of musician Gary Hinman.

Miss Atkins said it was she who fatally stabbed Hinman. She said she had once seen a television movie where police realized they had the wrong man after eight more murders were committed, so the "Manson family" decided to commit "copycat" murders.

"I did it because I believed it was the right thing to do," Miss Atkins said.

"I would do anything to get my brother out of jail, and I still believe it was right."

"Did you feel remorse, Susan?" defense attorney Paul Fitzgerald asked.

"Remorse? Why would I feel remorse about doing something out of love?"

"Did you feel sorry?"

"Sorry for doing something out of love? The only time I felt remorse was when I lied," she replied.

Miss Atkins said the only motive for the seven savage slayings "was to release my brother from your system."

"My excuses, which I played around with in my mind to justify it were revolution, which seemed like a good idea, and another excuse was Charlie. I used Charlie Manson as an excuse because I wanted everyone to know about him."

She said Manson knew nothing of the slayings.

"You could say I saturated myself in acid," she said.

### City Employees' Insurance Runs Into New Snag

A study session on group life and hospitalization insurance for city employees bogged down at City Hall this forenoon and officials said further examination of recent bids will be made before a contract is awarded by the City Commission.

Involved in today's meeting were Mayor Milo Carlson and City Commissioners Arthur J. Rohde and Leo Braswell along with Personnel Director George Campbell and Charles Smith, engineering technician, representing a city employees' committee, and City Manager Mack Wofford.

The city manager and the employees' committee submitted a recommendation to the commission that the contract be given to one of the 12 bidders they thought best met the needs of employees.

Since it was not the low bid, Mayor Carlson asked that additional study be given to the proposal.

City Manager Wofford said the committee would go into further study of the matter and report back to the commission later. He added that the insurance contract award would not be on the agenda at the Feb. 16 meeting of the commission.

Meanwhile the current insurance contract which ran out Jan. 1 will be continued on an extension basis.

### INSIDE TODAY'S NEWS

	Pages
Abby	4
Classified	13
Comics	10
Crossword	6
Editorial	6
On the Record	6
Jeanne Dixon	10
Sports	11
Women's News	4

### FREIGHTER FIRE

CADIZ, Spain (UPI)—Four sailors were missing and two others seriously injured Wednesday following a fire which swept a cargo ship docked in this southern port, police said. The all-Spanish crew of the 25,000-ton bulk carrier Leyre abandoned the ship when the blaze erupted.

### President Makes Public Proposal To Reshuffle Federal Agencies

WASHINGTON (UPI)—President Nixon today made public a proposal to shake up the federal agencies that regulate transportation, power, trade practices and financial securities. It looked like the fuel for a good hot fight.

Unlike earlier recommendations for reshuffling cabinet-level departments offered by the President's Advisory Council on Executive Reorganization, the proposal to change both the form and operations of the so-called "independent agencies" did not have Nixon's general endorsement. It also had the open opposition of one of the council's six members.

In releasing the 200-page report of the council, headed by industrialist Roy Ash, the President said he hoped to "stimulate a vigorous public discussion." He said his own proposals would be along later in the year.

The Ash council recommended establishing one-man rule over regulation in the four areas and a new court system to oversee the decisions. It said this would speed things up and make the regulatory agencies more answerable to the White House and Congress.

The plan would:

—Merge the Interstate Commerce Commission (ICC), Civil Aeronautics Board (CAB) and Federal Maritime Commission (FMC) into a single transportation regulatory agency.

—Break up the present Federal Trade Commission (FTC) into two agencies: a federal trade practices agency dealing with consumer protection and a federal antitrust board assuming FTC's responsibility for enforcing part of the federal antimonopoly laws.

—Replace the present Federal Power Commission (FPC) with a federal power agency and the present Securities Exchange Commission (SEC) with a new securities and exchange agency.

—Abolish the present bipartisan multiple membership of the transportation, trade, power and securities agencies and put single administrators in charge of each.

—Speed up decisions of the agencies and refer appeals from the administrators' rulings to a new federal administrative court instead of the present system of appealing to the regular federal courts. There would be up to 15 judges with 15-year terms of office.

The council also studied the Federal Communications Commission (FCC), but recommended that it be continued much the same as at present except for a reduction from seven to five members with five-year instead of seven-year terms.

The report was opposed by council member Frederick R. Kappel, former chairman of the American Telephone and Telegraph Co., and a veteran of high-level federal advisory committees. Kappel said the council had failed to consult the industries regulated by the affected agencies and in any case "there is no certainty that the proposals will lead to more effective administration."

Another likely source of objection was Congress, which has traditionally regarded the agencies as its "creatures" established independent of the White House to carry out the details of regulating Interstate Commerce vested in Congress by the Constitution.

### Jordanian Troops Attack Guerrillas

AMMAN (UPI)—Palestinian guerrillas said 600 Jordan army troops supported by tanks launched a dawn attack on the Jabal Himilan area of Amman today and killed and wounded a number of civilians.

Commando sources said it was the biggest outbreak of fighting in Jordan in nearly four weeks.

A government statement said security forces moved into the area, arrested persistent violators of cease-fire agreements and confiscated weapons.

It said the detainees would go on trial. The statement, on official Amman radio, made no mention of fighting.

The official spokesman of the ranking Central Committee of guerrilla groups, Ibrahim Bakr, said Palestinian leaders opened up arms caches in the latest truce and handed out guns to militiamen.

### Earthquake Foretold Earlier By Experts

PASADENA, Calif. (UPI)—For two years, Californians have heard predictions from both soothsayers and experts that a "great" earthquake was due to hit the state.

An assortment of astrologers, religious fanatics and hippies predicted it would snap the state like a stale cookie and drop most of it into the Pacific.

The "more" sober earthquake experts scoffed at that picture—but warned that the 600-mile-long San Andreas fault was due for one of its periodic movements similar to the one that caused the San Francisco quake of 1906.

"Not A Great Earthquake" To the 10 million residents of the Los Angeles area who were jolted awake by Tuesday's devastating temblor, the predictions seemed to have come true as the quake killed more than 50 persons and caused damage

that will run into the billions of dollars.

They're wrong, according to Dr. Clarence R. Allen, professor of geology and geophysics at the California Institute of Technology.

"It is certainly not a great earthquake in the sense of the San Francisco quake," he told a news conference Wednesday.

Allen echoed the predictions of other geologists that a great quake—one with a Richter reading of 8 or higher—would hit along the San Andreas fault in Southern California sometime within the next century.

Prediction Not Definite However, he said, knowledge of quakes and their causes is not sufficient to allow a prediction any closer than that.

Allen said Tuesday's quake, which measured 6.5 on the Richter scale, did not occur along the San Andreas or any known fault system.

Allen said Tuesday's quake, which measured 6.5 on the Richter scale, did not occur along the San Andreas or any known fault system.

Allen said Tuesday's quake, which measured 6.5 on the Richter scale, did not occur along the San Andreas or any known fault system.

Allen said Tuesday's quake, which measured 6.5 on the Richter scale, did not occur along the San Andreas or any known fault system.

Allen said Tuesday's quake, which measured 6.5 on the Richter scale, did not occur along the San Andreas or any known fault system.

Allen said Tuesday's quake, which measured 6.5 on the Richter scale, did not occur along the San Andreas or any known fault system.

# Judge Finds No Evidence Carr Conspired To Manipulate Stock

DALLAS (UPI) — U. S. District Judge Sarah T. Hughes Wednesday found "no conclusive evidence" former Texas Attorney General Waggoner Carr knowingly conspired to manipulate stocks, although she said he was "intimately involved" with those who did.

Judge Hughes ruled Carr's former law partner John Osorio — along with oil promoter David Hoover and two firms, Nashwood and FLAP, Inc. — violated federal securities law both by the sale of unregistered stock and by employing "a scheme and device by manipulating the common stock of National Bankers Life, Olympic Life, Master Control and RIC."

The judge also ruled South Atlantic Co. schemed to manipulate stock, and H. E. McCain violated sections of the Securities Act prohibiting the sale of unregistered stock.

McCain is an employe of Dallas broker Michael F. Ling, whom the judge found "responsible for the violation" of the Securities Act because of the activities of his subordinates.

Except for Carr, all the above defendants including Ling were issued temporary injunctions curtailing further stock dealings.

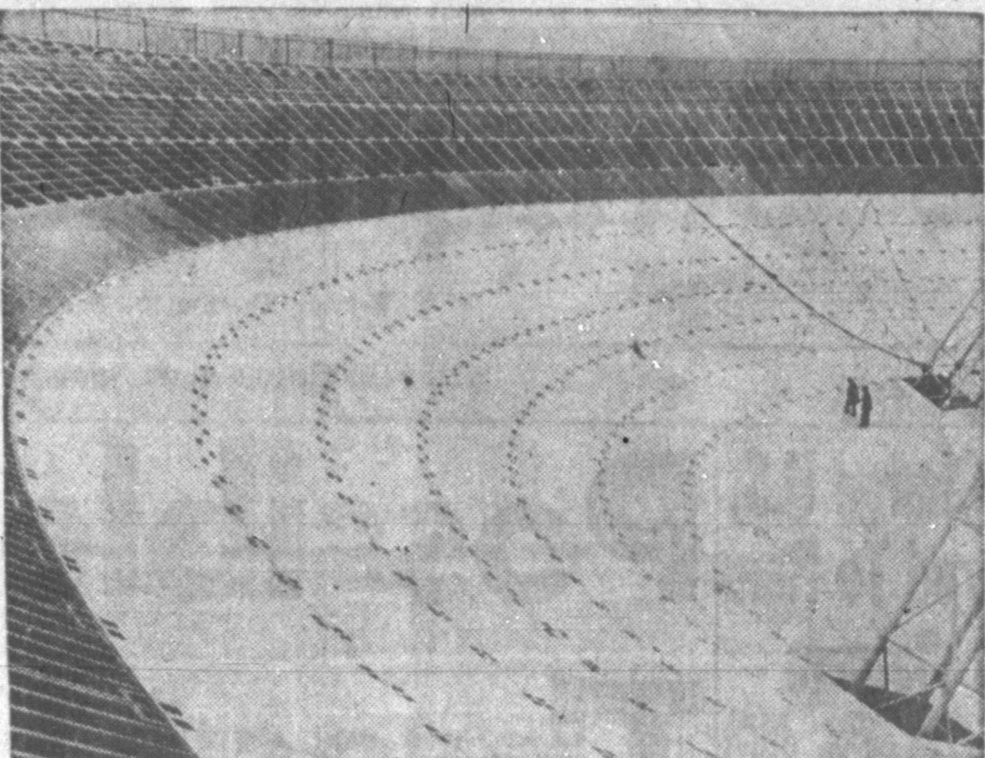
Of the 13 corporations and 15 individuals charged in the Securities and Exchange Commission's stock fraud suit, Carr and the four men and three companies enjoined Wednesday were the only ones who chose to contest the SEC's request for temporary injunctions.

Dallas Bank and Trust, City Bank and Trust of Dallas and Joseph P. Novotny, former president of Sharpstown State Bank of Houston, agreed prior to the hearing to accept a permanent injunction without, however, admitting guilt in the suit.

The remaining defendants agreed to accept temporary injunctions without admitting guilt.

All 28 defendants, including Carr, must appear as defendants at an Aug. 30 trial on an SEC request for a permanent injunction.

"I always felt that if I could get the facts known... the decision would be favorable for me," Carr said after Wednesday's ruling.



LITERALLY A SUPERBOWL, what looks like a giant stadium is actually the antenna mirror base of the world's largest radio telescope at Muensterfeld, West Germany. Measuring nearly 330 feet in diameter, the parabolic mirror can be turned and tilted in all directions and at all angles.

## Events In State Legislature

AUSTIN, Tex. (UPI) — Events in the Texas Legislature Wednesday:

**DEFICIT** — The legislature, in two separate bills, voted to accept deficit financing, which they rejected last week when Gov. Preston Smith presented it in his plan.

**WOMAN** — A Senate committee approved a bill to establish a permanent nine-member commission on the status of women which will go on for Senate debate.

**MARIJUANA** — A Greenville legislator's bill to allow teen-age marijuana offenders to wipe their slate clean was passed on to a House subcommittee "for further study."

**MUTSCHER** — Last week Rep. Curtis Graves, D-Houston, introduced a resolution asking Speaker Gus Mutscher to step down from his post for his connections with an alleged stock fraud suit. Wednesday Graves asked the House in a resolution to take down Mutscher's name and picture from a new hearing room to be dedicated in his honor until after an investigation of the stock fraud suit.

**TAX** — A San Antonio lawmaker — Rep. Frank Lombardino — asked a House committee to approve a proposal that would authorize Texas cities to pass an additional one-fourth per cent city sales tax to help pay pensions for firemen and policemen.

## AT HIGH SCHOOL

### Student Suspended In Assault Probe

Police investigation into an incident allegedly involving Pampa teenagers and an Amarillo Caprock High School teacher Tuesday night following a Harvester-Longhorn ballgame, has resulted in the matter being turned over to school authorities for action.

Police reports indicate that a 15-year-old girl student, of Pampa High School, readily admitted hitting the teacher who had filed a complaint of aggravated assault with local police.

The student contended Mrs. Gwen Ware, Caprock teacher making the complaint, "swung her around" and tore her blouse after which the girl hit her in the eye with her fist. The student said that at no time did a male student touch the teacher who told police that a male student had held her permitting the girl to strike and kick her.

High School Principal Cameron Marsh, said this morning that the involved student had been suspended for three days, and a full investigation into the incident is being conducted.

## BUSH IS U.N. ENVOY

WASHINGTON (UPI) — The Senate has unanimously confirmed President Nixon's nomination of George Bush as U.S. Ambassador to the United Nations.

Bush, a former member of the House from Texas, was defeated last year as a GOP Senate candidate from that state.

**Carmichael-Whitley**  
Pampa's Leading  
FUNERAL DIRECTORS  
**665-2323**

### Pampa Nurses To Evaluate Patient Care

Pampa area registered nurses and licensed vocational nurses will attend a continuing educational program in Highland General Hospital Conference Room Feb. 17.

The program on assessing, implementing and evaluating patient care is sponsored by the Texas Nurses Association District 23 and Health Manpower Project.

Registration will start at 8:30 a.m. and will continue to 3:45 p.m., with a lunch break in the hospital cafeteria.

To register for the course, "Nursing Process," which is offered without charge, contact the Health Manpower Project, Texas Nurses Association, 434 S. Main 206 San Antonio, Tex., 78204.

### Mrs. Lyndon Johnson In Senate For Confirmation Of UT Post

AUSTIN (UPI) — Mrs. Lyndon B. Johnson, named by Gov. Preston Smith to the board of regents of the University of Texas System, appears today before the Senate Nominations Committee in the first step toward confirmation of her appointment.

The former first lady is one of three regent appointees who have yet to be confirmed by the Senate. All three had been invited to appear before the nominations committee, and the panel's chairman, Sen. Joe Christie, D-El Paso, said "all of them graciously accepted."

The other two regent nominees are Dr. Joe Nelson Thomas of Weatherford and Houston banker A. G. McNeese Jr.

The appearance of Mrs. Johnson before the nominations panel switched the spotlight away from the legislature's complex financial problems, which Wednesday moved a step closer toward a temporary solution.

The Senate approved 25-3 and sent to the House a bill that would pump new life into the financially troubled Welfare Department by "borrowing" \$35 million from the teacher retirement fund and putting it in the welfare account.

At the same time, the House approved 134-12 and sent to the Senate a plan by Rep. Richard Slack, D-Pecos, to authorize the University of Texas System and the Texas Tech University System to issue up to \$185 million in tuition-backed revenue bonds to finance construction of eight new institutions authorized by the legislature in 1969.

The bonds would be paid off by tuition taken at the two schools, and the state would then have to reimburse the schools from its general revenue fund.

Mrs. Frances Farenthold, D-Corpus Christi, one of the 12 House members who voted against the measure, said it is "no more than another device to postpone a responsible tax bill."

Slack called the measure "the only practical and sensible way to go about" financing the new construction.

### Man Jailed As Accident Result

A Floydada man was in Gray County Jail in lieu of bond late this forenoon after being arraigned on charges of driving while intoxicated, and driving while license suspended. Justice of the Peace E. L. "Ed" Anderson set a bond of \$1000 on the first charge and a \$500 on the second.

Willie Foy Holt, 24, was arrested last night by local police after a call from an unidentified person advised the dispatcher that an old model roa was being driven erratically on Brown St.

When officers checked the area they found the described vehicle stopped in the driveway of Hardin-Roth Truck Stop, 805 W. Brown.

The vehicle had collided with a gasoline pump causing an estimated \$100 damage.

### Garage Sale Friday, 1022 E. Jordan, miscellaneous, tool box.

### Garage sale: Thursday — Saturday, 9 to 6 P.M., baby bed, mowers, miscellaneous. 2300 Comanche.

### Tonight is Family Night at the Moose Lodge. Ladies will bring a covered dish, the Lodge will furnish meat.

### Coin Collection Theft Reported To Police

Roy Wederbrook filed a complaint with the Pampa Police Department yesterday stating that someone had entered his residence at 401 E. Foster and stolen \$2 worth of "wheat" pennies and \$97 in half dollar coins. The theft allegedly occurred sometime between Feb. 8 and Feb. 10.

### IT IS National Cable TV Week Feb. 7-13

ALSO IT IS OUR 4th Anniversary

To Celebrate These Two Occasions We Are Offering You This Special

**SAVE \$13.46**

On Cable TV Installation

You Get Free Installation and 1 Month Free Service for Only **\$1.99**

**PAMPA CABLE TV, Inc.**  
1425 N. Hobart 665-2381

When you go decimal shopping remember

10¢ = 50p  
2¢ = 10p  
1¢ = 5p

sixpence e 2 1/2p

D-DAY is not about to slip up on Britons unannounced. The switch to a decimal currency system from the old pounds, shillings and pence is being explained via billboards and every other means of public information.

## Obituaries

**MRS. DOROTHY BRILEY**  
Funeral services for Mrs. Dorothy Southard Briley, 54, formerly of Pampa, are pending with Carmichael-Whitley Funeral Directors.

A resident of Gunnison, Colo., Mrs. Briley was killed in a two-car accident near Enid, Okla., Wednesday afternoon.

She and her husband George were enroute to a sportsmen's show in Tulsa, Okla. He is hospitalized in Enid and was listed today in serious condition.

She was born Oct. 2, 1916, in Miami, and lived here several years before moving to Gunnison. She was a member of a Baptist church in Gunnison, where she and her husband operated a motel and steak house.

Survivors are her husband, George; her father, William Southard of Pampa; five brothers, E. W. Southard, and E. R. Southard, both of Pampa, Dale Southard of Tulsa, Don Southard of Cedar Rapids, Iowa, Lawrence Southard of

Porterville, Calif.; three sisters, Mrs. Ray Cacy of Monahans, Mrs. John Harrison of Oklahoma City, and Miss Beth Southard of Tulsa.

**H. D. BLACKWELL**  
Funeral services for Harley D. Blackwell, 60, will be held at 2 p.m. Friday in Calvary Baptist Church with the Rev. Edwin Boyte, pastor, officiating, assisted by the Rev. Nelson Frenchman, of the United Pentecostal Church. Burial will be in Memory Gardens Cemetery directed by Duenkel Funeral Home.

Mr. Blackwell died Tuesday in Veterans Hospital in Albuquerque, N.M.

**CHARLES HICKMAN**  
MIDDLEBOURNE W. Va. (Staff)—Funeral services for Charles L. Hickman, 84, formerly of Pampa, will be held at 2 p.m. Friday in Goodwin Funeral Home in Middlebourne, with burial in Greenwood Cemetery in Sistersville, W. Va. Mr. Hickman died Wednesday in Middlebourne after a lengthy illness.

He lived in Pampa before moving to Middlebourne in 1963. He was a retired oil producer and was a member of the Pampa Elks Lodge.

Survivors are one son, Charles Hickman Jr., of New Martinsville, W. Va.; three sisters, Mrs. Hazel Spencer, and Mrs. Bessie Gregory, both of Middlebourne, and Mrs. Dessie Snider of Oklahoma City, and two granddaughters.

**FRIDAY SPECIALS**

Luncheon — 11:30 a.m. til 2 p.m.

**SHRIMP CURRY**

with Rice Two Vegetables  
Choice of Appetizer Coffee or Tea

**\$1.30**

Dinner — 5 p.m. til 10 p.m.

Individual Freshwater Catfish  
Tartar Sauce — Lemon Wedge — Cole Slaw  
French Fried Potatoes — Veg. DuJour

**\$1.95**

Mon. Thru Fri. — Dinner Served in The Terrace Room

**CORONADO INN**  
1101 N. Hobart 668-2506

## Stock Market Quotations

The following 11 a.m. Chicago Exchange Live Beef Cattle Futures are furnished by Amortillo office of Merrill Lynch, Pierce, Fenner and Smith, Inc.

Month	Close	Open	High	Low	Last
Feb.	34.07	34.20	34.45	34.20	34.37
April	32.73	32.80	32.90	32.72	32.80
June	32.12	32.10	32.12	32.05	32.07
Aug.	31.22	31.20	31.22	31.12	31.15
Oct.	30.50	30.50	30.50	30.40	30.40
Dec.	30.05	30.10	30.15	30.10	30.15

The following 11 a.m. grain quotations are furnished by Wheeler.

Grain	Price
Wheat	\$2.12 1/2
Barley	1.14
Oats	1.00
Flour	1.00

The following quotations show the range within which these securities could have been traded at the time of compilation.

Symbol	Price
AMARILLO	21 1/2
BMA	22 1/2
BAC	14 1/2
Bank of America	20 1/2
Bank of New York	20 1/2
Bank of Montreal	20 1/2
Bank of Toronto	20 1/2
Bank of the West	20 1/2
Bank of the South	20 1/2
Bank of the North	20 1/2
Bank of the East	20 1/2
Bank of the Middle	20 1/2
Bank of the West	20 1/2
Bank of the South	20 1/2
Bank of the North	20 1/2
Bank of the East	20 1/2
Bank of the Middle	20 1/2
Bank of the West	20 1/2
Bank of the South	20 1/2
Bank of the North	20 1/2
Bank of the East	20 1/2
Bank of the Middle	20 1/2
Bank of the West	20 1/2
Bank of the South	20 1/2
Bank of the North	20 1/2
Bank of the East	20 1/2
Bank of the Middle	20 1/2
Bank of the West	20 1/2
Bank of the South	20 1/2
Bank of the North	20 1/2
Bank of the East	20 1/2
Bank of the Middle	20 1/2
Bank of the West	20 1/2
Bank of the South	20 1/2
Bank of the North	20 1/2
Bank of the East	20 1/2
Bank of the Middle	20 1/2
Bank of the West	20 1/2
Bank of the South	20 1/2
Bank of the North	20 1/2
Bank of the East	20 1/2
Bank of the Middle	20 1/2
Bank of the West	20 1/2
Bank of the South	20 1/2
Bank of the North	20 1/2
Bank of the East	20 1/2
Bank of the Middle	20 1/2
Bank of the West	20 1/2
Bank of the South	20 1/2
Bank of the North	20 1/2
Bank of the East	20 1/2
Bank of the Middle	20 1/2
Bank of the West	20 1/2
Bank of the South	20 1/2
Bank of the North	20 1/2
Bank of the East	20 1/2
Bank of the Middle	20 1/2
Bank of the West	20 1/2
Bank of the South	20 1/2
Bank of the North	20 1/2
Bank of the East	20 1/2
Bank of the Middle	20 1/2
Bank of the West	20 1/2
Bank of the South	20 1/2
Bank of the North	20 1/2
Bank of the East	20 1/2
Bank of the Middle	20 1/2
Bank of the West	20 1/2
Bank of the South	20 1/2
Bank of the North	20 1/2
Bank of the East	20 1/2
Bank of the Middle	20 1/2
Bank of the West	20 1/2
Bank of the South	20 1/2
Bank of the North	20 1/2
Bank of the East	20 1/2
Bank of the Middle	20 1/2
Bank of the West	20 1/2
Bank of the South	20 1/2
Bank of the North	20 1/2
Bank of the East	20 1/2
Bank of the Middle	20 1/2
Bank of the West	20 1/2
Bank of the South	20 1/2
Bank of the North	20 1/2
Bank of the East	20 1/2
Bank of the Middle	20 1/2
Bank of the West	20 1/2
Bank of the South	20 1/2
Bank of the North	20 1/2
Bank of the East	20 1/2
Bank of the Middle	20 1/2
Bank of the West	20 1/2
Bank of the South	20 1/2
Bank of the North	20 1/2
Bank of the East	20 1/2
Bank of the Middle	20 1/2
Bank of the West	20 1/2
Bank of the South	20 1/2
Bank of the North	20 1/2
Bank of the East	20 1/2
Bank of the Middle	20 1/2
Bank of the West	20 1/2
Bank of the South	20 1/2
Bank of the North	20 1/2
Bank of the East	20 1/2
Bank of the Middle	20 1/2
Bank of the West	20 1/2
Bank of the South	20 1/2
Bank of the North	20 1/2
Bank of the East	20 1/2
Bank of the Middle	20 1/2
Bank of the West	20 1/2
Bank of the South	20 1/2
Bank of the North	20 1/2
Bank of the East	20 1/2
Bank of the Middle	20 1/2
Bank of the West	20 1/2
Bank of the South	20 1/2
Bank of the North	20 1/2
Bank of the East	20 1/2
Bank of the Middle	20 1/2
Bank of the West	20 1/2
Bank of the South	20 1/2
Bank of the North	20 1/2
Bank of the East	20 1/2
Bank of the Middle	20 1/2
Bank of the West	20 1/2
Bank of the South	20 1/2
Bank of the North	20 1/2
Bank of the East	20 1/2
Bank of the Middle	20 1/2
Bank of the West	20 1/2
Bank of the South	20 1/2
Bank of the North	20 1/2
Bank of the East	20 1/2
Bank of the Middle	20 1/2
Bank of the West	20 1/2
Bank of the South	20 1/2
Bank of the North	20 1/2
Bank of the East	20 1/2
Bank of the Middle	20 1/2
Bank of the West	20 1/2
Bank of the South	20 1/2
Bank of the North	20 1/2
Bank of the East	20 1/2
Bank of the Middle	20 1/2
Bank of the West	20 1/2
Bank of the South	20 1/2
Bank of the North	20 1/2
Bank of the East	20 1/2
Bank of the Middle	20 1/2
Bank of the West	20 1/2
Bank of the South	20 1/2
Bank of the North	20 1/2
Bank of the East	20 1/2
Bank of the Middle	20 1/2
Bank of the West	20 1/2
Bank of the South	20 1/2
Bank of the North	20 1/2
Bank of the East	20 1/2
Bank of the Middle	20 1/2
Bank of the West	20 1/2
Bank of the South	20 1/2
Bank of the North	20 1/2
Bank of the East	20 1/2
Bank of the Middle	20 1/2
Bank of the West	20 1/2
Bank of the South	20 1/2
Bank of the North	20 1/2
Bank of the East	20 1/2
Bank of the Middle	20 1/2
Bank of the West	20 1/2
Bank of the South	20 1/2
Bank of the North	20 1/2
Bank of the East	20 1/2
Bank of the Middle	20 1/2
Bank of the West	20 1/2
Bank of the South	20 1/2
Bank of the North	20 1/2
Bank of the East	20 1/2
Bank of the Middle	20 1/2
Bank of the West	20 1/2
Bank of the South	20 1/2
Bank of the North	20 1/2
Bank of the East	20 1/2
Bank of the Middle	20 1/2
Bank of the West	20 1/2
Bank of the South	20 1/2
Bank of the North	20 1/2
Bank of the East	20 1/2
Bank of the Middle	20 1/2
Bank of the West	20 1/2
Bank of the South	20 1/2
Bank of the North	20 1/2
Bank of the East	20 1/2
Bank of the Middle	20 1/2
Bank of the West	20 1/2
Bank of the South	20 1/2
Bank of the North	20 1/2
Bank of the East	20 1/2
Bank of the Middle	20 1/2
Bank of the West	20 1/2
Bank of the South	20 1/2
Bank of the North	20 1/2
Bank of the East	20 1/2
Bank of the Middle	20 1/2
Bank of the West	20 1/2
Bank of the South	20 1/2
Bank of the North	20 1/2
Bank of the East	20 1/2
Bank of the Middle	20 1/2
Bank of the West	20 1/2
Bank of the South	20 1/2
Bank of the North	20 1/2
Bank of the East	20 1/2
Bank of the Middle	20 1/2
Bank of the West	20 1/2
Bank of the South	20 1/2
Bank of the North	20 1/2
Bank of the East	20 1/2
Bank of the Middle	20 1/2
Bank of the West	20 1/2
Bank of the South	20 1/2
Bank of the North	20 1/2
Bank of the East	20 1/2
Bank of the Middle	20 1/2
Bank of the West	20 1/2
Bank of the South	20 1/2
Bank of the North	20 1/2
Bank of the East	20 1/2
Bank of the Middle	20 1/2
Bank of the West	20 1/2
Bank of the South	20 1/2
Bank of the North	20 1/2
Bank of the East	20 1/2
Bank of the Middle	20 1/2
Bank of the West	20 1/2
Bank of the South	20 1/2
Bank of the North	20 1/2
Bank of the East	20 1/2
Bank of the Middle	20 1/2
Bank of the West	20 1/2



How Sweet it is!

VALENTINE SAVINGS



Club Steak Furr's Proten Lb. 1.09  
 Chuck Steak Furr's Proten Lb. 67c  
 Ranch Steak Furr's Proten Lb. 79c  
 Shoulder Roast Furr's Proten Lb. 75c  
 Stew Meat Boneless Lb. 79c

T-Bone \$1.09

Steak Furr's Proten, Lb.

Farm-Pac Fully Cooked

HAM

Shank Port. Lb. 43c  
 Butt Portion Lb. 49c

43c  
49c



Whole Longhorn Hickory Smoked HAM-Lb. 59c

Rolled Roast Bone Rolled Tied Lb. 79c  
 Short Ribs Meaty Lb. 35c  
 Ground Beef 3 Lbs. or More Lb. 48c  
 London Broil Lb. 1.19  
 Roast Heel of Round Boneless Lb. 87c  
 Game Chicken Checker Board ea. 89c  
 Chopped Sirloin fine for broiling lb 89c  
 Steaks Cube no waste lb. 1.29  
 Bacon Frontier Lb. 65c  
 Franks Frontier 12 oz. pkg. 49c  
 Bologna Frontier 12 oz. pkg. 49c  
 Fish Cakes Heat & Eat 16 for \$1

Delicatessen  
 Fried Chicken Lb. 59c  
 B-B-Q Chicken Each 69c  
 Meat Loaf Lb. 89c  
 Cole Slaw Pt. 39c  
 Pinto Beans Pt. 19c

Fountain  
 TACO PLATE 3 Beef Tacos, Pinto Beans, Salad, Hot Sauce Only 89c  
 ENCHILADAS 3 Cheese, Pinto Beans, Salad Only 89c  
 Coffee Time 2:00 - 4:00  
 Coffe and Roll or Donut 20c

Asparagus Food Club No. 300 Can 3.51

Gaylord SWEET POTATOES No. 2 1/2 can 3.51  
 Gaylord BROWNIE MIX 22 1/2 oz. pkg. 39c  
 Food Club MIXED NUTS 13 oz. can 59c  
 Dog Club Assorted DOG FOOD No. 300 Can 10c  
 Hamburger Dill Chips Food Club PICKLES qt. 49c

VEGETABLE JUICE Cocktail Food Club 46 oz. can 3.10

HAIR SPRAY Sudden Beauty 16.2 oz. 49c

CAKE MIX Duncan Hines Ass't. Pkg. 3.10

BLACK PEPPER Food Club 4 oz. can 29c

PINEAPPLE Libby's Crushed 20 oz. can 3.10

CREAM PIES Morton's Fresh Frozen Ass't. each 25c

HOMINY Elna White or Gaylord Golden No. 300 Can 10c

PEAS Food Club Sweet, No. 303 5.10

CORN Food Club Cream or Whole Kernel No. 303 Can 5.10

EGGS Farm Pac Grade 'A' Medium dozen 39c

INSTANT POTATOES 13 oz. pkg. 39c  
 COCOA lb. pkg. 69c  
 SPAGHETTI 2 lb. pkg. 49c  
 TACO SAUCE 29c  
 HONEY 16 oz. jar 39c  
 PLUM JAM 18 oz. 39c  
 NAPKINS 200 ct. pkg. 28c

Lama Special Heavy Duty 1/2 Bushel Laundry Basket Reg. \$3.99 \$2

Tamales Ellis No. 2 1/2 can 3.10

INSTANT RICE 14 oz. pkg. 39c  
 CHERRY PEPPERS 11 oz. 32c  
 FOIL 25 ft. roll 25c  
 PAPER PLATES 100 ct. pkg. 79c  
 SPECIAL K CEREAL 11 oz. pkg. 59c  
 BREAKFAST FOOD 6 ct. pkg. 59c  
 FLOUR 25 lb. bag \$2

Sausage Owens 2 Lb. Bag 1.39  
 Fryers Fresh Dressed Whole 27c/lb  
 Tomatoes  
 Mellorine Dressing

Food Club No. 303 Can 5.10  
 Farm Pac Ass't. Flavors 1/2 gal. 39c  
 Food Club Russian, Italian, Green Goddess or Cole Slaw, 8 oz. 29c

WE GIVE GOLD BOND STAMPS

Free Gold Bond Stamps at Furr's. Redeem your mailed coupons at Furr's. Receive 100 Free Gold Bond Stamps with Coupon, plus 100 free stamps with \$5 purchase or more and coupon. Coupons good thru Feb. 17

Shampoo Head & Shoulder 5 Oz. Jar \$1.09

Children's Aspirin St. Joseph 36's 29c

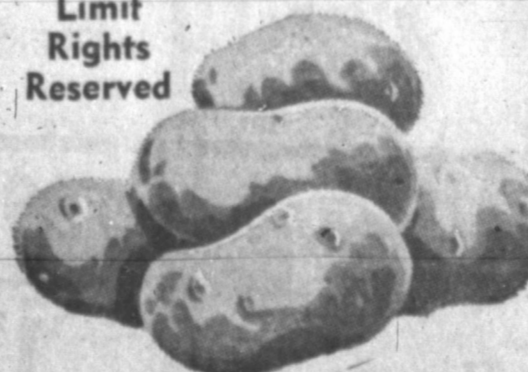
Rubber Gloves Topped Lined Reg. 98c 77c

PIES 39c  
 Dinners 39c  
 GREEN BEANS 20 oz. pkg. 49c  
 GRAPE JUICE 6 oz. can 25c  
 COFFEE CREAMER qt. 25c  
 ORANGE JUICE 6 oz. can 5.10

ALKA-SELTZER 25's 43c  
 BUBBLE BATH Capri Floral, Lilac, Spice 32 oz. 53c  
 COLOR FILM 79c  
 HAIR THICKENER 4 oz. 93c

O-Cel-O Pure Cellulose Sponges 1/2 off Retail Price  
 2-PACK Medium Size  
 4-PACK Handy Size

GRAPEFRUIT Ruby Red, lb. 10c  
 CABBAGE Fancy Texas Green, lb. 10c  
 POTATOES Russet All Purpose 10 lb. bag 58c



Lettuce Large Firm Heads Lb. 23c  
 Carrots 1-Lb. Top Fresh Cello Pkg. Ea. 14c  
 Egg Plant Fancy Lb. 29c  
 Lettuce Red Leaf, Calif., Large Bun. Ea. 25c  
 Onions Green Fine For Salad Bunch 3 for 29c  
 Bananas Golden Ripe Lb. 10c  
 Onions Yellow Colo. Spanish Sweet Lb. 7c  
 Cucumbers Long Green Lb. 25c  
 Limes Florida Fancy Lb. 29c  
 Romaine Lettuce, Calif Lg. Bunch Ea. 25c  
 Turnips Calif. Purple Clip Top Lb. 19c  
 Radishes Florida 6 oz. Cello Pkg. 15c

Scotties White or Ass't. Colors Facial Tissue 200 Ct box 4.10

10 1/2" SQUARE GRIDDLE Wear-Ever Hard Coat Avocado, Poppy, Harvest Blue, Ea. \$4.99

Charcoal Royal Oak Hardwood 10 lb 69c  
 Wig Heads 33c

SHOP Furr's MIRACLE PRICES

## Rosebuds Study Planting Methods

Pampa Rosebuds met in the Pioneer Natural Gas Co. Flame Room for a demonstration by Mrs. Milo Carlson on the methods of planting bulbs.

Each member of the junior garden club planted several bulbs. Mrs. James Malone, president of the Pampa Garden Club, assisting. Kathy White served refreshments.

Members attending were Dana Kindie, Carol Sparkman, Kathy Arledge, Brenda Johnson, Pam Mills, Kim Chittenden, Brenda Cox, Terry Richardson and Kathy White.

The group will meet again March 2 in the Flame Room.

## FRIDAY SCHOOL MENUS

**PAMPA SCHOOLS**  
Meat Loaf-Catsup  
Buttered Corn  
Jello Salad  
Hot Rols-Butter  
Banana Pudding  
Milk

**ST. VINCENT'S**  
Salmon Croquettes  
Tartar Sauce  
French Fries  
Green Beans  
Bread-Butter  
Cookies  
Milk



**FLOWER SENTIMENTS** — Each blossom has its own particular meaning. For that special someone on Valentine's, a floral bouquet expresses the traditional sentiments of the day. In the arrangement above, lavender orchids say "beautiful lady," the white roses "you're heavenly" and the blue violets, "I'll be true always."

## Valentine Bouquets Change Traditions

NEW YORK, N.Y.—Although its origin is uncertain, Valentine's has become one of the most traditional days on the calendar. And, traditionally, the popular way of saying "I love you" on Feb. 14 has called for the expansive use of the color red, the all-too familiar hearts and cherubs complete with bows and arrows, greeting cards, and of course red roses.

For those who are advocates of custom, following the formula is always the safest of tried roads. However, this is the decade of change, of breaking with tradition and the ways of the establishment, of the individualist who looks for something other than the social norm.

So, too, in expressing sentiments to friends and loved ones on Valentine's Day, why stick to the usual red hearts and roses? Instead, stray from the routine and try a bit of creative individualism in keeping with the times.

If you are one of those people looking for a different way to deliver your Valentine message, the romantic "language of flowers" provides the perfect

vehicle. Each of the many flowers with its own special meaning, offers endearing terms to express the emotions of love and friendship.

For example, blue violets say, "I'll be true, always;" the pink carnations, "I'll never forget you;" the chrysanthemum, "you're a wonderful friend;" the white gardenia, "you're lovely;" the iris, "your friendship means much to me;" the orchid, "beautiful lady;" pansies, "thinking of you;" and the white (not red) rose, "you're heavenly."

So, in recommending a departure from tradition, designers note that a unique and meaningful Valentine's message can be conveyed by giving a specially created floral arrangement of any one of these flowers, or a mixed combination.

Needless to say, the romantic aura of this "language of flowers" Valentine will be long remembered by the recipient, as will the thought that went into making it something more than the expected.

## Woman's Page

Wanda Mae Huff, Women's Editor

PAMPA DAILY NEWS PAMPA, TEXAS 83rd YEAR Thursday, February 11, 1971

## City Panhellenic Recognizes Pledges

Pampa City Panhellenic met in the home of the President, Mrs. Fred Neslage, Monday evening to discuss a Panhellenic workshop, which will be held Feb. 25 at Lubbock Women's Club in Lubbock.

Registration is at 10 a.m. with workshops scheduled from 10:30 until noon followed by a luncheon. To make registrations contact Mrs. Neslage by Feb. 20.

New pledges at West Texas State University were recognized. They include Mary Beth Watson, daughter of Mr. and Mrs. Floyd Watson, who pledged Chi Omega and Margie Jo Forsha, daughter of Mr. and Mrs. W.D. Forsha, and Johnnie Norris, daughter of Mr. and Mrs. John Norris, who pledged Alpha Delta Pi.

Plans for the annual Informational Tea to be held at 3 p.m. April 18, in the Hospitality Room of Citizens Bank and Trust Co were

completed. All senior girls and their mothers are invited to attend.

Each senior girl is required to bring 14 billfold size pictures of herself, her four-year grade point average, her rank in class, her honors and activities, and her SAT and ACT scores, Mrs. Neslage said.

"It is imperative that each college-bound senior girl attend the Informational Tea to complete a recommendation card and meet members of Panhellenic. Pampa Panhellenic Council cannot recommend a girl to a National sorority unless she has a recommendation card in our file," Mrs. Neslage said.

If a girl cannot come to the tea, she should contact Mrs. Jack W. White, Panhellenic vice president, 2364 Aspen, who will have the recommendation cards and Panhellenic file in her home," Mrs. Neslage added.



## Dear Abby

By Abigail Van Buren

DEAR ABBY: Please say something about married men on the prowl who lie about their marital status.

Speaking for myself and half a dozen of my friends (all widows, divorcees and un-marrieds, fairly attractive and under 40) we don't want to get involved with married men. But what can we do when coworkers, customers, salesmen, etc. introduce us to a "nice, eligible man," only to find out after three or four dates that this rat has a wife and family in the suburbs?

Does an unmarried woman have to turn into a private investigator before accepting a date with a man who poses as a nice, eligible bachelor?

So what should we do about these rats? HOODWINKED DEAR HOODWINKED: Which rats? The ones who introduce married men as "nice, eligible bachelors"? Or the married men who try to pull a fast one? The only protection a girl has against being "hood-winked," is to be a little more fussy about whom she dates.

A good rule to follow: Never accept a fixed up date unless you know you can trust the fixer-upper.

DEAR ABBY: I could love you for your answer to "In Need of Sympathy," the woman who was worn out from having nursed a sick husband for so many months. She resented being asked constantly, "How is your husband?" She wrote to you saying she wishes someone would ask her how she was. So you asked her how she was.

That reminds me of the two old friends, Manny and Max, who hadn't seen each other for 20 years. When they met again, the first thing Manny asked Max was, "How's business?"

Max replied, "Is that the way to greet an old friend after 20 years? Why don't you ask me how my health is?"

Manny said, "I'm sorry, Max. How's your health?"

Max answered, "Don't ask." CORDIALLY, SOL

DEAR SOL: You bring back memories. My father used to tell that story 35 years ago.

DEAR ABBY: We were interested in the letter from the waitress in Dover, Del., who complained that customers sometimes under tip. She mentioned that her regular wage was 75 cents per hour. Perhaps she would be interested to know that employees of

restaurants with sales of \$250,000 or more a year are protected by federal minimum wage law.

The law requires that restaurant employees, including tipped employees, receive a minimum hourly wage of \$1.60. The \$1.60 minimum may be a combination of both wages and tips. However, not less than 50 per cent must be regular wages paid by the employer. If tips don't amount to half the minimum wage, the employer must make up the difference.

The Wage and Hour Division in Dover will be happy to provide her with further information about "minimum wage provisions that concern hotel, motel, restaurant and service employees."

Please tell your readers that there are Wage and Hour Divisions in 350 cities, including Alaska, Hawaii and Puerto Rico, to answer questions and provide information on minimum wage, equal pay, overtime pay, child labor, wage garnishment and the Age Discrimination in Employment Act.

ROBERT D. MORAN  
U.S. DEPT.-OF LABOR  
DEAR MORAN: Thank you for your very informative letter.

## NEW WAY TO BE SUDDENLY SLIM

Los Angeles—Are you a woman whose figure is on the good side but might look perfect? You'll be thrilled by the new easy way science has discovered for you to become Suddenly Slim and yet completely comfortable. If you're more than 15 pounds overweight, or your waistline is larger than 32 inches, then this idea is not for you. If your weight problem falls within this range, then you can realize a new, smoother figure today, without diet or exercise.



Suddenly Slim is an all-new kind of 4-oz. girdle constructed of science fibers. One startling innovation is the sheer nylon front panel. This is permanently stiffened by a science process and cannot give or sag. It's surrounded by a slimming action border. A featherstitched panel down each side of this girdle will contour your hips if they are a problem.

The girdle itself is of a "wonder" Lycra spandex blend. It's a new power net consisting of nylon, acetate and spandex. It is so comfortable, but has such slimming strength, it gives your figure everything that's possible with a foundation.

"Suddenly Slim" in both girdle and panty versions, is the peak achievement of the California designer-genius, Olga. They are available at Wright FASHIONS.

Wright FASHIONS

## A Special Invitation

10 a.m. to 4 p.m. Fri., Feb. 12, 1971

Dunlap's invites you to a special showing of Herbert Levy Dresses, Pant Suits and Suits. Mr. Martin Sarns will be here to assist you with his latest half size Fashions. And...the Herbert Levy Spring Styles are the best ever.

Dunlap's

**Heard-Jones DRUG**  
114 N. CUYLER 669-7478  
Specials Good Thru Saturday

Reg. \$159.95 Model 350  
**Polaroid Camera \$99**  
\$49.95 Kodak X-35  
**Camera Outfit \$33**  
\$6.98 8-Track Stereo  
**TAPES \$4**  
\$2.40 Sylvania M-3  
**Flash Bulbs \$1**

**Family Scott Bath Tissue**  
4 Roll Pkg. **29¢**

Large Selection Perfume & Colognes for Your Valentine  
**Free Gift Wrapping**

Presto Electric  
**Hair Setter**  
20 Roller  
Reg. 29.95  
**\$16.88**

CARDS  
CANDY  
and  
**VALENTINE GIFTS FOR ALL!**

**Coty Cologne Spray**  
Reg. 3.95 **\$2.50**

Gillette Antiperspirant  
**Right Guard Spray Deodorant**  
Reg. \$1.19 **66¢**

Feb 14th  
**All 10c Hershey Candy Bars 3 for 19¢**

**Style Hair Spray**  
Reg. 99¢ **2 for 99¢**

Cepacol  
**Mouthwash 14 Ounces**  
Reg. 1.19 **69¢**

Lysol Spray Disinfectant  
7 Ounce Size  
Reg. 98¢ **67¢**

Modess Feminine Napkins  
12's  
Reg. 49¢ **36¢**

Head & Shoulders  
Reg. 95¢  
**Shampoo 59¢**

\$1.39 Decongestant 24's  
**Dristan Tablets 89¢**

\$2.25 Breck Basic  
**Conditioner \$1.29**

\$1.09 Ultra Brite Family  
**Toothpaste 59¢**

\$1.59 Alka-Seltzer Plus  
**Cold Tablets 99¢**

\$3.45 100 Capsules  
**Vitamin A \$1.99**

Gillette The Dry Look  
**Hair Spray 87¢**  
Reg. \$1.49

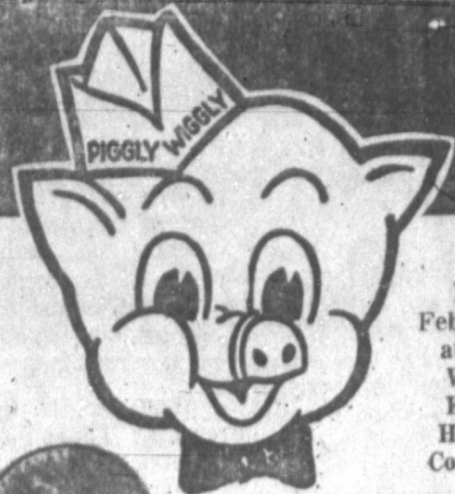
SAVE 10¢  
**Geritol Tablets or Liquid \$1.79**  
Reg. \$2.98

Day In...Day Out Heard-Jones Drug Stores Maintain  
**LOW PRICES ON PRESCRIPTIONS**

Resulting In Meaningful Savings To You Everyday  
We Never Compromise Service Or Quality

BILL HITE 669-3107  
JOHNNY BAKER 665-5697

# PENNY PINCHIN' PRICES!



Prices Good Feb. 11, 12, 13, 14 at your Piggy Wiggle Store, Kentucky and Hobart Streets, Coronado Center

Farmer Jones,  
**BISCUITS**  
Sweetmilk or Buttermilk  
Count Can  
**7¢**  
PENNY PINCHIN' PRICE

**FOLGERS COFFEE**  
Del Monte  
14-Ounce Bottle  
**19¢**  
PENNY PINCHIN' PRICE  
Limit 1, Thereafter 93c

**HUNTS CATSUP**  
Kern's California  
46-Ounce Can  
**25¢**  
PENNY PINCHIN' PRICE

**TOMATO JUICE**  
Hickory Smoked, Shank Portion, 6 to 7 Pound Average  
**39¢**  
PENNY PINCHIN' PRICE

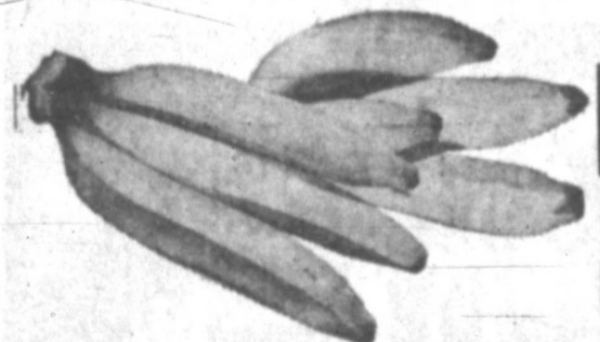
**Paper Towels** Northern, Ass't. Jumbo Roll **29¢**  
**Ice Milk** 1/2-Gallon Carton **59¢**  
**Liquid Bleach** Bonne, 3c Off Label **25¢**  
**Baby Food** Heinz, Strained Fruits and Vegetables 4 1/2-Ounce Jar **11¢**

**HAM**  
Butt Portion, 4 to 6 Pound Average, **49¢**  
Whole Hams, 16 to 20 Pound Average, **49¢**  
Ham Roast, 8 Pound **89¢**  
Ground Chuck, Family Package **79¢**  
Pork Chops, 80% Lean, 1b. **59¢**  
Ground Beef, 1b. **48¢**  
Short Ribs, 3 Pound **38¢**  
Fish Sticks, 8 oz. pkg. 3 for **1**  
Flounder Fillets, 14-Ounce Package **89¢**

- Suzan, Creamy Rich Salad Dressing, Quart Jar **39¢**
- Aurora, White or Colors Toilet Tissue, 2-Roll Package **29¢**
- Cheer Detergent, King Size Box **1.24**
- Crisco Shortening, 3-Pound Can **87¢**
- Beef-O-Geoff, 15-Ounce Can **39¢**
- Beefaroni, 15-Ounce Can **42¢**

Mix or Match  
**4 FOR \$16 FOR 1**  
Unbeatable Produce Values!

- USDA Grade A, CUT-UP FRYERS, 35c Pound **28¢**
- CHICKEN FRIED, Tender-Made **89¢**
- Beef Patties, 1 Pound **89¢**
- FRANKS, 12-Ounce Package **49¢**



**BANANAS** Golden Ripe **10¢**  
**CABBAGE** Fresh Crisp Heads **7 1/2¢**

- Fresh From the Dairy!
- Low Fat Milk, 1 Gallon **99¢**
  - Margarine, Southern Roll Paddle, 8-Ounce Package **11¢**
  - Kraft Velveeta, Cheese Food, 2-Pound Box **1.19**
  - Cinnamon Rolls, Pillsbury, Paper Fresh, 9-Ounce Can **33¢**
  - Ceddar Cheese, Kraft's, Cracker Barrel, Mild, 10-Ounce Stick **65¢**
  - Ceddar Cheese, Kraft's, Cracker Barrel, Sharp, 10-Ounce Stick **79¢**
  - Cream Cheese, Kraft's, Philadelphia, 3-Ounce Package **14¢**
  - Cheese Dips, Kraft's, Onion, Bacon or Horseradish or Dill, 8-Oz. Package **55¢**

**90 EXTRA STAMPS**  
AT YOUR FRIENDLY PIGGY WIGGLE STORE (No Purchase Required)  
Coupon Expires February 13, 1971

**25 EXTRA STAMPS**  
WITH THIS COUPON AND PURCHASE OF ONE (1) 1/2-Gallon PLAINS SHERBERT  
Coupon Expires Feb. 13, 1971

**50 EXTRA STAMPS**  
WITH THIS COUPON AND PURCHASE OF ONE (1) 1/4-Gallon BORDEN'S ICE CREAM  
Coupon Expires Feb. 13, 1971

**60 EXTRA STAMPS**  
WITH THIS COUPON AND PURCHASE OF ONE (1) 22-Ounce Bottle CHIFFON LIQUID DETERGENT  
Coupon Expires Feb. 13, 1971

**25 EXTRA STAMPS**  
WITH THIS COUPON AND PURCHASE OF ONE (1) 16-Ounce Carton PLAINS COTTAGE CHEESE  
Coupon Expires Feb. 13, 1971

**50 EXTRA STAMPS**  
WITH THIS COUPON AND PURCHASE OF ONE (1) 16-Ounce BORDEN'S CREMORA  
Coupon Expires Feb. 13, 1971

**50 EXTRA STAMPS**  
WITH THIS COUPON AND PURCHASE OF TWO (2) No. 2 1/4 Cans GERHARDT'S TAMALES  
Coupon Expires Feb. 13, 1971

**100 EXTRA STAMPS**  
WITH THIS COUPON AND PURCHASE OF ONE (1) 9-Ounce ARRID EXTRA DRY AEROSOL DEODORANT  
Coupon Expires Feb. 13, 1971

**100 EXTRA STAMPS**  
WITH THIS COUPON AND PURCHASE OF ONE (1) 36-Count Package ALKA SELTZER PLUS COLD TABLETS  
Coupon Expires Feb. 13, 1971

**50 EXTRA STAMPS**  
WITH THIS COUPON AND PURCHASE OF ONE (1) 15-Pound Bag RUSSET POTATOES  
Coupon Expires Feb. 13, 1971

**100 EXTRA STAMPS**  
WITH THIS COUPON AND PURCHASE OF ONE (1) 3 Lb. or Larger Package 9 to 12 Chop FAMILY PAK PORK CHOPS  
Coupon Expires Feb. 13, 1971

**25 EXTRA STAMPS**  
WITH THIS COUPON AND PURCHASE OF ONE (1) Pound Package RATH BLACK HAWK SLICED BACON  
Coupon Expires Feb. 13, 1971

**50 EXTRA STAMPS**  
WITH THIS COUPON AND PURCHASE OF ONE (1) 5-Pound Bag ORANGES  
Coupon Expires Feb. 13, 1971

**50 EXTRA STAMPS**  
WITH THIS COUPON AND PURCHASE OF TWO (2) 12-Ounce Cans WELCH'S GRAPE JUICE  
Coupon Expires Feb. 13, 1971

**100 EXTRA STAMPS**  
WITH THIS COUPON AND PURCHASE OF ONE (1) 10-Lb. and Up USDA, Grade A TURKEY "YOUR CHOICE OF BRAND"  
Coupon Expires Feb. 13, 1971

**25 EXTRA STAMPS**  
WITH THIS COUPON AND PURCHASE OF TWO (2) 12-Oz. Packages CORN KING ALL MEAT FRANKS  
Coupon Expires Feb. 13, 1971

Unbeatable Frozen Foods

- MORTON POT PIES, Beef, Chicken or Turkey, 8-Ounce Package **17¢**
- STRAW-BERRIES, SLICED, Trophy, 10-Ounce Packages **5 \$1**

Non-Food Specials!

- Close Up Toothpaste, 12c Off Label, Mig. Suggested Price \$1.09, Family Size Tube **93c**
- Edge Protective Shave Cream, Mig. Suggested Price \$1.19, 6 1/2-Ounce **88c**
- Shampoo, Twice As Nice, Normal, Dry, Oily Formula, Manufacturer's Suggested Price \$1.29, 7-Ounce **97c**

Piggy Wiggle is Open From 8:30 a.m. to 8:00 p.m. Daily and on Sunday 10:00 a.m. to 6:00 p.m. for your Shopping Convenience

**PIGGY WIGGLE**

1st in Savings!

### Travelogue

ACROSS

- 1 Canadian city on the Ottawa
- 5 Arab garment
- 8 Spanish province
- 12 Arrow poison
- 23 Cookery gadget
- 24 Military force
- 15 Row
- 16 Costume food
- 17 Dirk
- 18 Japanese city
- 20 Pallid
- 22 Bellow
- 25 Mexican state
- 29 Gernon
- 34 Greek god of love
- 35 Bitter vetch
- 37 Feminine appellation
- 38 Facility
- 39 Greek letter
- 40 Malaysian courtesy title
- 41 Argue at the bar
- 43 Georgia's capital
- 45 Or else (music)
- 47 Egyptian herb
- 50 Venezuelan state
- 55 Nights before events
- 56 City in Yugoslavia
- 59 Black substance
- 60 Pause
- 61 Female saint (ab.)
- 62 Feminine name
- 63 Crafts
- 64 Organ of hearing
- 65 Transaction

DOWN

- 1 Hawaiian seaport city
- 2 Distinct part
- 3 Russian river
- 4 Sily lock
- 5 African primate
- 6 Feathered scarf
- 7 Rose perfume
- 8 Scourge
- 9 Irish tree
- 10 State lake
- 11 Pressage
- 11 American humorist
- 19 Footed vase
- 21 Mariner's direction
- 23 Curved molding
- 24 Arterial trunks (anat.)
- 25 Profound
- 26 Soviet stream
- 27 Flower
- 28 On the briny
- 29 Caterpillar
- 30 hair
- 31 Stupefy
- 32 State (Fr.)
- 33 British nursemaid
- 36 Egyptian queen of the gods
- 42 Dower property
- 44 Vegas
- Nevada
- 47 Asseverate
- 48 Bird's home
- 49 Devotees
- 51 Employed
- 52 Apple center
- 53 Capital city of an Italian
- 54 And others (Latin ab.)
- 55 Epoch
- 57 Greenland Eskimo
- 58 Indian weight

## Price Asks Tax Credits To Set Up Rural Jobs

Industrial companies would be given income tax credits, to relocate their plants or build new plants in rural areas under the terms of a House bill introduced by Congressman Bob Price of Pampa.

"This proposal is designed to create new rural job opportunities for young people as well as for older persons interested in bettering themselves," Price said.

The Panhandle Congressman pointed out that many problems of today are a result of a decrease in agriculture-oriented jobs, due to technological advances. This has resulted in migration of rural residents to already overcrowded cities.

"We have all talked about rural development and thousands of dollars have been spent on studies but the solution is very simple — jobs are needed. You can build houses and put in sewer and water systems all over the country but people will be unable to take advantage of them unless there are jobs," Price added.

"In my mind, the interests of progress would be best served by the Federal Government encouraging private enterprise to take the lead in attacking rural problems at their roots. The achievement of this goal could be facilitated if private enterprise were given tax and other incentives to relocate in rural areas."

"I should point out that although it appears on the surface that this plan would reduce government income through taxes, it would actually increase because of increases in payrolls, increases in consumption of goods and services, and decreases in welfare costs," Price said.

"This bill constitutes a first step toward drawing together the vast capabilities of free enterprise and focusing them upon the needs of rural America," he added.

## Washington Window

By LOUIS CASSELS  
UPI Senior Editor

WASHINGTON (UPI) — To charge more for less would be a disastrous policy for a business firm that had to compete for customers.

The U.S. Postal Service can get away with it, however, because it has a monopoly in the business of carrying mail.

It has initiated action to raise the price of a first class letter from six to eight cents, a postcard from five to seven cents, and airmail from ten to eleven cents. The increases are expected to take effect around May 15.

Postal authorities frankly acknowledge that the higher charges won't be accompanied by any immediate improvement in service.

"This increase in rates is to catch up with costs incurred over the past and not to pay for improvements in the future," says Assistant Postmaster General James W. Hargrove.

"The higher rates will have no direct effect on the efficiency of the mails."

In fact to save money, the postal service plans to make certain "adjustments" in existing mail service. One of them is elimination of Saturday mail service in downtown areas of big cities and other places where postal officials decide it is not really necessary.

Another plan calls for sharply reducing postal staffs over the weekend, allowing mail to pile up for sorting on Sunday night.

In some parts of the country, at least, mail service already is slow and erratic. The nation's capital, Washington, and its chief business center, New York, are among the cities where mail users are apt to encounter bizarre and inexplicable delays.

It happens even to high government officials whose mail might be expected to receive special handling. A few weeks ago, President Nixon mailed an important letter to former Gov. William W. Scranton of Pennsylvania. The letter left the White House at 4:30 p.m. Thursday, as registered, special delivery airmail. Three days later, the President called to discuss the matter — and learned that the letter still had not been delivered to Scranton, Pa.

Another letter mailed from the White House on Nov. 8 was delivered to the UPI Washington bureau — barely two blocks away — on Nov. 12.

These are glaring examples to be sure. But it has become routine — the rule rather than the exception — for mail to spend two or three days in transit from New York to Washington or vice versa. And this in an age when the two cities are linked by an air shuttle that requires under an hour's flying time.

## Wall Street Chatter

NEW YORK (UPI)—It's far too soon to be skeptical of the current bull market's prospects, Abraham & Co. says, adding that the market is strong and its driving power seems capable of flattening all opposition. Never-the-less, over the short-term, the financial markets may have "to subside as either leaner fare or more imagination" than in the recent past, until the economy responds to the Nixon administration's efforts to restore confidence and stimulate consumer buying.

There are signs of temporary overheating in the market and a consolidation phase or some correction of recent gains would come as no surprise, according to Standard & Poor. This would be a healthy development, and would represent no more than an interruption of a basic uptrend, the company adds.

A stalemate seems to be developing between heavy profit taking and still heavy buying by those who either missed the advance or have large cash positions, E. F. Hutton notes. Thus, while volume is running at record high levels, both early session setbacks and the advances that follow are limited in scope, it adds.

## The Lighter Side

By DICK WEST

WASHINGTON (UPI) — For years I plodded gamely alone, straining my adenoids on "The Star-Spangled Banner" and never suspecting what the real trouble was.

I simply assumed my vocal equipment was incapable of coping with our National Anthem and that I was destined to go through life dropping down an octave when I reached the rockets' red glare.

But now I realize I was going about it the wrong way. It was George London, the former opera star, who made me see my mistake.

After taking up new duties here as artistic director of the Kennedy Center for the Performing Arts, London suggested that "America, The Beautiful" would make a better national anthem because it was more singable.

He pointed out that the music to which Francis Scott Key set his immortal poem was originally an English drinking song.

Impossible When Sober

"It's impossible to sing if you're sober," he said.

Most people figured London was being facetious, but I have since discovered there was a lot of truth in his remark.

I made that discovery in an experiment I conducted, using as a "control group" the guests at a cocktail party my wife and I gave this week to celebrate the fact that February is the only month in which the letter "R" appears twice.

Before serving any drinks, I turned on a tape recorder and asked the guests to join in singing the National Anthem. Only 2.1 per cent of them got past the bombs bursting in air without developing a nose-bleed or turning blue.

Then, for the balance of the evening, I had them repeat the number after each round of drinks. Meanwhile, I noted down the types of intoxicants being consumed.

Remarkable Improvement

After a good hour of steady boozing, the improvement in the choral work was remarkable.

For the group as a whole, the percentage rose to 78.6. In other words, more than three-fourths of the guests could, after three or four drinks, hit the high notes in "The Star-Spangled Banner" without flinching or buckling at the knees.

(For comparative purposes, the maximum percentage able to scale the heights of "When Irish Eyes Are Smiling" never got above 57.6.)

Among beer drinkers, the figure was an amazing 94.3 per cent. The least improvement (36.4 per cent) was shown by the scotch-and-soda group.

## On The Record

WEDNESDAY

Admissions

Mrs. Floy Morton, Lefors.

Mrs. Nellye Hilbun, 317 N. Starkeweather.

Mrs. Lee Nora Shrum, 126 S. Nelson.

Henry C. McGee, Pampa.

Jeffrey Wiel Haas, 104 A. North Wells.

Miss Judy Ann Tuzman, Amarillo.

Mrs. Glenda Jenelle Gray, 314 N. Wynne.

Mrs. Jorene B. Hunsaker, 2127 N. Nelson.

Everett Huffhines, Skellytown.

Ricky Duane Beckham, 1120 S. Christy.

Joe Dempsey Hathaway, 1501 Williston.

Alan Clark Fletcher, 1237 N. Russell.

Mrs. Betty Lou Vick.

Panhandle.

Mrs. Zadie Mae Tollerson, 1001 Varmon Dr.

Stephanie Renae Tollerson, 1001 Varmon Dr.

Dismissals

R.J. Linder, 2107 Dutcan.

Mrs. Manilla Twigg, 600 N. Zimmers.

Mrs. Carolyn Coleman, 2700 Rosewood.

Ottice Kidwell Jr., 1137 Starkeweather.

J.T. Wylie, 1712 N. Hobart.

Mrs. Lena Creel, 1332 Charles.

Mrs. Johnnie H. Handley, 1133 Duncan.

CLASSIFIED ADS  
GET RESULTS  
Phone 669-2527

FACTORY-SPONSORED

# Magnavox

## ANNUAL SALE

SAVE \$50 on each of these ASTRO-SONIC STEREO FM/AM RADIO-PHONOGRAPHS

... that bring you the full beauty of music—from your favorite records, stereo FM, noise-free and drift-free monaural FM, powerful AM radio, or optional tape equipment! Each has 30-Watts EIA music power, two High-Efficiency 10" Bass Woofers, two 1,000 cycle Exponential Horns, plus exclusive Micromatic Player that lets your records last a lifetime. And—each authentically styled model exemplifies the artistry of master fine-furniture craftsmanship! Astro-Sonic Stereo—thrilling to hear, magnificent to see!

Your choice of three authentic styles

NOW ONLY \$329<sup>50</sup>

Mediterranean styling—model 3863, on concealed swivel casters. Also beautiful in Modern and Early American styling.

**B&R MAGNAVOX**  
Home Entertainment Center  
1415 N. Hobart 669-3288

# Levines

fashion up where price is down

Women's POLYESTER PANT SUITS \$12.99

Girls' KNIT TOPS and FLARE JEANS \$1.99

Boys' FLARE JEANS and NYLON JACKET \$2.99

Men's Short Sleeve NO IRON DRESS SHIRT \$1.77

Famous Dickie® NO-IRON WORK SHIRTS - PANTS \$2.97 \$3.97

---

# LUCKY BIG WEEKENDERS

Big Reduction! POLYESTER KNIT Dresses Originally \$8.99 \$5

great selection Men's ALL SEASON Single Breasted Suits Orig. \$39.99 to \$59.99 \$35

Men's LEATHER Wellington Boot Reg. \$13.99 \$10.88

Nurses' Career Set® WHITE LEATHER OXFORDS Reg. \$6.99 \$4.88

Women's PERMANENT PRESS dusters and shifts \$2.99

Women's Lady Godiva PRE-SET WIGS with Carrying Case Dyne® or Kaneka® Reg. \$16.99 \$12.88

OVER 150 STORE BUYING POWER TO SERVE YOU  
STORE HOURS 9:30 A.M. TIL 9:00 P.M.  
2207 PERRYTON PARKWAY

Like It! Charge It! or Lay-It-Away!

**Levines**  
your friendly family department store



# IDEAL HAS A LOVELY WAY OF SAVING YOU MONEY WITH Heart-Winning Thrif-T Prices!



U.S.D.A. GRADE A  
**Whole Fryers** lb. **28¢**

RIBS ATTACHED  
PLUMP JUICY  
Fryer Legs.....lb. 55c  
Fryer Thighs.....lb. 59c



Prices Effective thru Sat., Feb. 13, 1971. Limit Rights Reserved.

None Sold To Dealers

## SHEFFIELD IMPORTED CONTINENTAL PORCELAIN CHINA MUGS & CAKE PLATES

Eight Exquisite Patterns To Choose From  
Reg. \$1.29 EACH ONLY **99¢** With Every \$3.00 Purchase

## REGULAR \$12.50-COSCO FOLDING CARD TABLE

**99¢** ONLY  
When you have purchased a total of 4 folding chairs at \$5.99 each. See them at Ideal today.

### THRIF-T SAVINGS!

Cane or Beet  
**Sugar** 5 lb. bag **44¢**  
With \$5 or More Purchase

## IDEAL'S THRIF-T LOW PRICE!



MEADOWDALE HICKORY SMOKED  
**Boneless Hams** WHOLE 7 TO 9-LB. AVERAGE LB. **89¢**

Meadowdale 2-lb. pkg. **98¢** Sliced Bacon  
MEADOWDALE 1-lb. PKG. **49¢** Sliced Bacon  
BAR-S 1-lb. PKG. **69¢** Skinless Franks

BY THE PIECE, IMITATION Ohse Bologna.....LB. **39¢**  
BAR-S BY THE PIECE Braunschweiger.....LB. **49¢**  
SAUSAGE, HAMBURGER OR PEPPERONI Camelot Pizza.....16-OZ. PKG. **79¢**

### THRIF-T SAVINGS!

U.S.D.A. CHOICE, BLADE CUT  
**Chuck Steak** lb. **59¢**



### THRIF-T SAVINGS!

QUARTER SLICED 9 To 11 Chops  
**Pork Loin** lb. **69¢**

## COMPARE & DISCOVER DAIRY FOOD SAVINGS

IDEAL LARGE OR SMALL CURD  
**Cottage Cheese** 24-OZ. CTN. **43¢**  
IDEAL Chocolate Milk.....QT. **29¢**  
KRAFT PHILADELPHIA Cream Cheese 2 3-OZ. PKGS. **27¢**  
KRAFT TWIN PACK SLICED American Cheese 1 1/2-LB. PKG. **\$1.29**  
PARKAY SOFT Corn Oil Oleo.....1-LB. CTN. **39¢**

JUMBO ROLL Viva Towels.....EA. **35¢**  
WHITE OR COLORS  
Scott Towels.....JUMBO ROLL **35¢**

## CHUN KING CHINESE FOODS

CHUN KING 43-OZ. CAN **Turkey 99¢**  
**Chow Mein 99¢**  
Fried Rice.....13-OZ. CAN **33¢**  
Brown Sauce.....4-OZ. JAR **29¢**  
Soy Sauce.....5-OZ. STL. **19¢**  
Chow Mein Noodles 5-OZ. CAN **29¢**

### THRIF-T SAVINGS!

Grade A Large **Eggs** 38¢ doz.

## NATIONAL CHERRY PIE WEEK

CELEBRATE WASHINGTON'S BIRTHDAY WITH... WILDERNESS  
**Cherry Pie Filling 39¢**  
NO. 2 CAN  
MORTON'S FROZEN 9-IN. **Pie Shells** PKG. OF 2 **39¢**

### THRIF-T SAVINGS!

MEADOWDALE HALF-GALLON **Ice Cream** **59¢**

## THRIF-T LOW PRICE! FROZEN FOODS AT LOW DISCOUNT PRICES

SARA LEE 13-OZ. PKG. **Spice Cake 79¢**  
SARA LEE 13-OZ. PKG. **Cocanut Cake 79¢**  
BANQUET Cherry Pies.....20-OZ. PKG. **29¢**  
RHODES, TWIN LOAF Frozen Bread.....PKG. **29¢**  
BIRDSEY Orange Plus.....9-OZ. CAN **47¢**  
SKINNER'S Egg Noodles.....3 8-OZ. PKGS. **\$1.00**

### THRIF-T SAVINGS!

ICE CREAM NOVELTY PKG. OF 8 **Fairmont Hoop-La's** **39¢**

## THRIF-T LOW PRICE! Deli & Bakery AT LOW THRIF-T PRICES

FUDGE **Nut Brownies**.....DOZ. **69¢**

### THRIF-T SAVINGS!

FREE PINT OF HAM & BEANS WITH **Bar-B-Q Beef** LB. **\$1.19**

## THRIF-T LOW PRICE! Health & Beauty Aids AT LOW DISCOUNT PRICES

REG. \$1.09 FAMILY SIZE **Gleem Toothpaste** **58¢**  
REG. \$1.49 CAPRI Bath Oil.....1/2-GAL. STL. **88¢**

### VALENTINE SPECIAL!

LADY CAMELOT 2-PAIR GIFT BOX **Panty Hose** REG. \$2.39 **\$1.66**

## HEARTY FOODS FROM HUNT'S

HUNT'S 26-OZ. BTL. **Tomato Catsup 28¢**  
HUNT'S 46-OZ. CANS **Tomato Juice 3 \$1.00**  
HUNT'S STEWED OR WHOLE **Peeled Tomatoes**... 4 15-OZ. CANS **89¢**  
HUNT'S SLICED OR HALVED **Cling Peaches**..... 3 30-OZ. CANS **89¢**  
HUNT'S FANCY 8-OZ. CANS **Tomato Sauce**... 6 **69¢**  
HUNT'S REG. OR BARBECUE 15-OZ. CANS **Manwich Sauce**... 2 **69¢**  
HUNT'S, ALL VARIETIES 5-OZ. CANS SALADS OR COOKING 24-OZ. BTL. **Wesson Oil**..... **56¢**  
HUNT'S CHEESE, ONION, MUSHROOM 8-OZ. CANS **Tomato Sauce**... 2 **31¢**  
HUNT'S TOMATO PASTE... 6-OZ. CAN **18¢**

PINWHEELS OR PEANUTS BARS Nabisco Cookies...PKG. **55¢**  
SKINNER'S 24-OZ. PKG. **Macaroni**..... **49¢**  
CHICKEN OF THE SEA 10-OZ. CAN **Oyster Stew**..... **39¢**  
EVAPORATED TALL CAN **Carnation Milk**..... **19¢**

## LEVER BROS. CLEANING SALE!

With exclusive hand-care formula

**Lux Liquid** 22-OZ. BTL. **49¢**

FREE CANNON TOWEL IN EACH BOX

**Breeze Detergent** KING SIZE **\$1.19**

POWDERED DETERGENT

**Active All** 10-LB. BOX **\$1.99**

Can Get Your Whole Wash So Clean It's Spotless!

**Drive Detergent** FAMILY SIZE **\$2.39**

COLORADO RUSSET **Potatoes** 20-LB. BAG **79¢**

TEXAS JUICE 5-LB. BAG **Oranges**..... **49¢**  
CALIFORNIA 4 FOR **\$1** **Avocados**...  
CALIF. ZIPPER SKIN **Tangerines** 4 LBS. **\$1**  
CAMELOT FRESH ORANGE **Juice**.....QT. BTL. **39¢**

For Your Valentine  
Remember your Sweetheart with beautiful fresh Mums, Tulips, or Hyacinths... now at your nearby Ideal Store.



## A Pink Tea Punch For Valentine's Day



If you're a romantic at heart, Valentine's Day provides a heaven-sent opportunity to give a sentimental party dedicated to the proposition that all the world loves a lover. This day of sweethearts and sentiment is the perfect time for an engagement party or a shower to honor a spring bride-to-be.

Refreshments for such a party need not be elaborate but should be in keeping with the hearts and flowers mood of the day. Rolled tea sandwiches and thin slices of pound cake are always appropriate. Plus a pretty pink punch. This one is a delightfully refreshing combination of fruit juices and tea. The cranberry juice contributes the rosy color; the tea gives it body and character without masking the flavors of the other ingredients.

### Pink Tea Punch

- 1 quart of water
- 3/4 cup loose tea or 15 teabags
- 1 quart cold water
- 2 (6 oz.) cans frozen concentrated lemonade
- 2 (6 oz.) cans frozen concentrated limeade
- 2 cups cranberry juice cocktail
- 2 (28 oz.) bottles ginger ale

Bring 1 quart of water to a boil in a saucepan. Remove from heat. Immediately add tea. Cover and let stand 5 minutes. Stir, then strain into punch bowl containing 1 quart cold water. Stir in concentrates and cranberry juice. Place a block of ice or ice cubes in punch. Add ginger ale just before serving. Garnish with clove-studded lemon slices. Makes about 5 quarts or 40 punch cup servings. Note: If using instant tea, combine 4 rounded tablespoons of powder with 2 quarts cold water. Stir, add other ingredients.

## Ham Mold Makes Valentine Party

A pretty idea for your Valentine party is this Heavenly Ham Mold formed into a heart-shaped main dish and served on a bed of crisp lettuce leaves.

**HEAVENLY HAM MOLD**  
Yield: 8 servings  
2 cans (12 oz. each) Chopped ham  
3 lbs. unflavored gelatin  
4 c. cold water  
4 c. chicken bouillon  
1 c. shredded carrot  
1/2 c. chopped celery  
1/2 c. lemon juice  
1/4 c. finely chopped parsley

Cut ham into 1/2 by 1-inch cubes. Soften gelatin in water. Add to bouillon in saucepan and heat slowly about 5 minutes. Cool until mixture begins to thicken. Stir in ham, carrots,

celery, lemon juice, and parsley. Pour into 1 1/2 quart mold; chill to set. Turn onto serving tray. Surround with Creamy Mustard Dressing.

**Creamy Mustard Dressing:**  
Whip 1 cup heavy cream. Fold 1 cup mayonnaise and 1 tablespoon prepared mustard into cream. Spoon around ham mold and sprinkle with chopped nuts. Yield: 3 cups.

Post offices at Kissimmee, Fla., Romance, Ark., Darling, Pa., and Love, Miss., are getting ready for their annual influx and efflux of Valentine mail, according to a card company research expert. Each year, as Feb. 14 approaches, sweethearts, lovers and spouses all over the U.S. send in valentines to romantically named postal stations for franking and forwarding. Among other popular mailing spots are Valentines, Va., Loveland, Colo., Eros, La., Heartwell, Neb., Lovelady, Tex., and no fewer than five communities named Valentine—in Arizona, Indiana, Texas, Montana and Nebraska.

**50% OFF!**  
Heavyweight  
50-PIECE STAINLESS  
Flatware by International

Complete Service for \$**19.97**  
Regular \$39.95

Highly polished, heavyweight stainless flatware with serrated knives. Dishwasher safe.

50 pc. Service Includes:  
• 8 dinner knives  
• 8 dinner forks  
• 8 salad forks  
• 8 soup spoons  
• 16 teaspoons  
• 2 serving spoons

Use one of our convenient payment plans

**ZALES**  
JEWELERS

Spanish Rose Nonmetal Legend

Downtown 107 N. Cuyler Coronado Center

## Student Contributes New Recipes For Cherry Dessert Season

By BECKY GRIFFIN  
Guest Feature Writer

What is the compelling force that would make the Father of Our Country chop down the legendary cherry tree and that would compel a present day U.S. Congressman to trace down a tasty cherry ice cream recipe personally?

I can't imagine why Rep. Bob Price would call me, a mere student, for my Cherry-Pineapple Ice Cream recipe.

But if a Washington Congressman or your favorite Valentine has a fancy for cherry desserts—take heed ladies and fix your man a cherry dessert that is as beautiful as it is taste tempting. Maybe it will make you famous!

I don't even know why he was there—I think it was a public relations attempt to sell himself to the younger generation—but

Rep. Bob Price, white hat and all, was at the yearbook picnic celebrating the completion of the book and a year's work.



BECKY GRIFFIN  
Pampa writer

He happened to taste the cherry-pineapple ice cream and later asked my yearbook advisor who made the dessert. Two days later he called me. And here it is.

**Cherry Pineapple Ice Cream** (for 1 1/2 gallon ice cream freezer)  
3 c. sugar  
8 eggs (beaten well)  
dash of salt  
1 can condensed milk  
1 tsp. vanilla

Mix together and add:  
2 medium sized cans crushed pineapple, 1 medium sized jar of diced cherries and juice.

Place in ice cream freezer can and fill can within two inches of top with homogenized milk.

An alcoholic great aunt of mine happened to be a terrific cook, although frequently more alcohol got in what she was preparing than went in her mouth. One accident and now she's my famous alcoholic aunt. This is the delicious result.

**CHERRY RUM COOKIES** (for any festive occasion)  
1 1/2 c. brown sugar  
1 c. butter  
2 c. flour  
1 tsp. baking soda (dissolved in 1 c. hot water)  
1 tsp. cinnamon  
1 tsp. ground cloves  
1 c. white raisins  
1 c. candied cherries, diced  
1 c. candied pineapple, diced  
1 lb. pkg. dates, diced  
1/2 c. rum

Mix by hand. Drop by teaspoon on greased cookie sheet. Preheat oven to 350 degrees and bake 12-15 minutes. Remove with spatula.

Granny, my great-grandmother, was a collector of recipes, but she didn't go by them as our measuring standards today. She used a dab of that, a dash of this or a little bit of something. Not until her death when her personal things were put away did we know about this recipe written on a piece of wallpaper.

**CHERRY NUT CAKE**  
1 c. butter  
2 c. sugar  
4 eggs, separate  
1/2 tsp. salt  
1/2 c. cherry juice (maraschino)  
16 diced cherries (maraschino)  
1 c. buttermilk  
1 tsp. soda  
1 tsp. almond flavoring  
1 tsp. vanilla  
2 two-thirds c. flour  
two-thirds c. nuts (pecans)  
Combine butter and sugar—

cream. Add yolks and beat one minute. Mix soda, buttermilk, cherry juice; add with flour and dredge cherries and nuts. Beat whites of eggs stiff, fold in. Take 1/4 cup flour and dredge cherries and nuts. Bake in 9" pans (3 layers) at 350 degrees for 35 minutes.

**FILLING**  
1 c. sugar  
3 tbs. flour  
2 eggs  
1/4 tsp. salt  
1 tsp. almond flavoring  
1 c. milk

Shape ground beef into heart-shaped burgers to delight the children on Valentine's Day. Serve them openface, providing bun tops on the side. Or, arrange hearts cut out from luncheon meat on top of a meaty casserole, Pepperoni or salami, trimmed to form hearts, can garnish and flavor plates of spaghetti.

Esther Howland of Worcester, Mass., is credited with introducing valentine cards into the United States. After receiving a valentine card from a friend in England she made several designs of her own, and in 1840—a leap year—put them on sale in her father's stationery shop. Miss Howland designed and sold thousands of valentines in her lifetime. Many are now in a historical collection in Kansas City. In 1904, at the age of 78, Esther Howland died a spinster.

Two giant marshmallow cushions on a frame make up a new chair. The "conversation piece" is ideal for sitting too. It features two 33-by-17-inch polyurethane foam cylindrical cushions covered with soft, white,

Cook until thick. Cool. Spread between layers, sprinkle with nuts and cherries.

**FROSTING**  
1 box powdered sugar  
1/4 c. butter  
3 tbs. cream filling (from above)  
add enough milk to spread easily  
1 tsp. almond flavoring  
Frost top and sides. Sprinkle with nuts and cherries.

This is from Mother's recipe

shaggy synthetic fleece mounted on a "unimold" laminated wood frame in oiled walnut.

Household bills, sales records, charge receipts go in a new file cube, designed for instant retrieval. The new file box can be assembled in seconds, the manufacturer says. Interlocking design eliminates the need for fasteners. A slideback lid prevents misplacement and protects papers.

A new idea in calendars offers something for the cook, the gardener and children. The 1971 culinary almanac is filled with recipes and dining tips; the children's, with riddles and games; the gardener's, with lore to delight any gardening enthusiast.

The new girl in town is a peace mouse, making her debut on wrist watches, clocks, sweat shirts and T-shirts.

Because permanent press garments stay fresh looking, it's tempting to delay laundering. Avoid this such delaying. Body oil stains may build up and be difficult to remove.

collection—and if you've ever seen her collection, you can understand why I haven't the slightest idea on this recipe's origin. Try it—it's really very good.

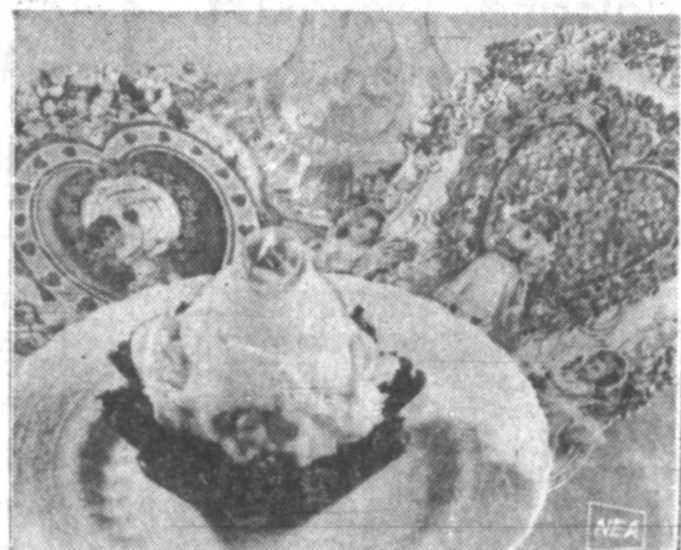
**CHERRY COKE SALAD**  
2 boxes cherry jello  
1 No. 2 can pineapple chunks  
1 No. 2 can Bing cherries  
1 c. pecans, chopped  
1 large pkg. cream cheese  
2 small bottles Coke  
Drain fruit and heat 2 cups juice. Dissolve jello in heated juice. Add Coke with enough juice to make 2 more cups of cold liquid. Add cherries and pineapple. Cream cheese with a little warm juice. Add pecans and chill in mold. Serves 16.

The night before surgery Mother found this cherry dessert in the country-styled kitchen of a hospital. The cherry dessert was so good she asked for the recipe before she left the hospital.

**FESTIVE CHERRY DESSERT**  
2 c. graham cracker crumbs  
1/4 lb. oleo  
2 tbs. powdered sugar

Mix and pack in large pan and bake 15 minutes at 350 degrees. Mix 8 oz. cream cheese with 1/4 c. powdered sugar. Add 2 tbs. milk and place on graham cracker crust. Whip 1 pkg. dessert topping and put on cheese mixture. Add 1/2 c. chopped nuts. Finish off with 1 can of prepared cherry pie filling.

## Dessert Whispers 'Sweet Nothings'



Sweet Nothing tart shells make special Valentine messages.

Pint-sized femme fatales score even more points with dad and any other favorite male with a special Valentine dessert offering.

**Sweet Nothing tart shells** are easy to make with breakfast cereal, melted semisweet chocolate and butter, flaked coconut. Once baked and chilled, fill tart shells with scoops of ice cream and top with candy flowers.

**SWEET NOTHING TART SHELLS**  
4 squares semisweet chocolate  
1/4 cup butter  
or margarine  
One and one-third cups (about) flaked coconut

1/4 cup honey-flavored puffed wheat or sugar-coated crisp rice cereal  
Ice Cream  
Candy flowers (optional)

Partially melt chocolate with butter over hot water. Remove from water; stir rapidly until chocolate is entirely melted. Add coconut; mix well. Stir in cereal. Firmly press over bottom and sides of 6 greased 4-inch tart pans. Chill until firm. Carefully run a knife around edge of tarts to loosen from pans. Remove from pans. Fill each shell with a scoop of ice cream and top with a candy flower. Makes 6 tarts.

Today Through Sat., Feb. 13

**8 99**

KING SIZE WALLLET CREATIVE COLOR PORTRAITS FOR ONLY

PHOTO HOURS 9 A.M. TO CLOSING

NO LIMIT

GET PICTURES MADE BY GRANDPA, GRANDMA, DAD, MOM AND ALL THE LITTLE ONES AT THESE SAME LOW PRICES

**SHUGART COLOR PHOTOS**

**GIBSON'S DISCOUNT STORE**

<b>Shurfine Grade A EGGS</b> Med. Doz. <b>39¢</b>	<b>HEARTS DELIGHT</b> Tall Can Fat Free Pet Milk can <b>10¢</b>	<b>Pure Cane SUGAR</b> Shurfine 5 lb. bag <b>49¢</b>
<b>Turkeys</b> Honey Suckle, Lb. <b>49¢</b> Swift's Butter Ball, Lb. <b>49¢</b>	<b>Ground Beef 3 lb.</b> \$1.35 Choice Beef <b>Chuck Roast lb.</b> <b>59¢</b> Choice Beef <b>Arm Roast lb.</b> <b>69¢</b> Choice Beef <b>Rib Steak lb.</b> <b>79¢</b> Choice Beef <b>T-Bone Steak</b> <b>\$1.09</b>	<b>Coke or 7-Up King Size 3 ctns.</b> <b>\$1.00</b> Plus Dep.
<b>Round Steak</b> Choice Beef lb. <b>89¢</b>	<b>Smoked Rite Bacon</b> 2 lbs <b>98¢</b> <b>All Meat Franks</b> 2 lbs. <b>\$1.19</b>	<b>Shurfresh Biscuits</b> 13 for <b>\$1.00</b> <b>Shurfine Red Sockeye Salmon</b> 16 oz. <b>89¢</b> <b>Northern Big Roll Paper Towels</b> <b>3\$1</b> <b>Shurfine Coffee</b> lb. can <b>69¢</b> 8 oz. box <b>Dream Whip</b> <b>79¢</b> <b>Renown Cut 303 Can Green Beans</b> <b>6\$1</b>
<b>CRISCO OIL</b> 24 oz. bottle <b>19¢</b>	<b>Shurfresh lb. box Crackers</b> <b>19¢</b>	<b>DOG FOOD 7\$1</b> Ideal Tall Cans
<b>PRODUCE</b> Fresh <b>Lettuce lb.</b> <b>19¢</b> Calif. <b>Turnips lb.</b> <b>12¢</b> Wash. Red Rome <b>Apples lb.</b> <b>19¢</b>	<b>OLEO</b> Food King Solid <b>15¢/lb</b> Shurfine wk or 303 Can <b>Golden Corn</b> <b>5\$1</b> Shurfine Chicken <b>Noodle Soup</b> <b>6\$1</b> Heinz <b>Baby Food jar</b> <b>8¢</b> Shurfine <b>Flour 5 lb. bag</b> <b>39¢</b> Shurfine 8 oz. can <b>Tomato Sauce</b> <b>10\$1</b> Big Top 18 oz. jar <b>Peanut Butter</b> <b>59¢</b>	<b>Save Shurfresh &amp; Tender Crust Coupons</b> Ask Your Grocer For Prize List
		<b>Morton TV DINNER</b> <b>3\$1</b> Morton 9 oz. box <b>Honey Buns</b> <b>4\$1</b> Shurfine 6 oz. can <b>Orange Juice</b> <b>6\$1</b>

**HOM'S FOODS**  
We Give Buccaneer — Double Wed. With \$2.50 or More Purchase  
421 E. Frederic—Open 7 Days 665-8531 Limit Rights Reserved



**ROUND STEAK**  
Aged Beef  
Save 25%  
Lb. **85<sup>c</sup>**

**SIRLOIN STEAK**  
Aged Beef  
Save 25%  
Lb. **87<sup>c</sup>**

**T-BONE STEAK**  
Aged Beef  
Save 21%  
Lb. **98<sup>c</sup>**

**WHOLE FRYERS**  
Lb. **27<sup>c</sup>**

Join the  
**FOODWAY**

**PRICE REBELLION**

**Franks or Bologna**  
Glover's All Meat **29<sup>5</sup>/<sub>10</sub>**  
12 oz. Pkg. Mix or Match

**GLOVER'S ASSORTED 6 OZ. PKG. Lunch Meat** Each **29<sup>c</sup>**

**3 LB. PKG. Lean Ground Beef** Lb. **43<sup>c</sup>**

**COKE**  
10 oz. King Size  
6 Pack Plus Deposit **29<sup>c</sup>**  
First 2 Cartons — Thereafter 47<sup>c</sup>



**FOODWAY**  
FRESH MEAT PROTECTION POLICY  
**DOUBLE YOUR MONEY BACK GUARANTEE**  
FOODWAY FRESH BEEF, PORK & POULTRY IS UNCONDITIONALLY GUARANTEED TO PLEASE OR DOUBLE YOUR MONEY BACK

You'll Save More Either Way  
"Compar 'N Save" at Foodway

**Kimbell Quality Guaranteed KALEX 1/2 GAL. BLEACH** **25<sup>c</sup>**  
Save 12%

**1/2 Gal. CLOROX BLEACH** **37<sup>c</sup>**

**Kimbell-Quality Guaranteed 300 CAN Pork & Beans** **8<sup>5</sup>/<sub>10</sub>**  
SAVE 3c PER CAN

**Van Camp 300 Can PORK & BEANS** **7<sup>5</sup>/<sub>10</sub>**

**Kimbell-Quality Guaranteed PINEAPPLE Juice** **39<sup>c</sup>**  
SAVE 2c

**Del Monte 46 oz. PINEAPPLE JUICE** **41<sup>c</sup>**

**Green Giant-Save 23% Peas** **5<sup>5</sup>/<sub>10</sub>**  
303 Can

**CAMPBELL SAVE 10% Vegetable Soup** **7<sup>5</sup>/<sub>10</sub>**  
TALL CAN

**VIVA SAVE 25% Towels** **29<sup>c</sup>**  
Big Roll

**Mt. Pass Whole or Chop Chili** **15<sup>c</sup>**  
4 Oz.

**Kimbell Strawberry Preserves** **59<sup>c</sup>**  
18 Oz.

**Peter Pan 18 oz. SMOOTH OR CRUNCHY Peanut Butter** **65<sup>c</sup>**

**Kimbell 20 oz. Ketchup** **3<sup>5</sup>/<sub>10</sub>**

**Kimbell Qt. Salad Dressing** **29<sup>c</sup>**



**MEDIUM GRADE A EGGS**  
Save 26%  
Doz. **37<sup>c</sup>**  
First 2 Dozen — Thereafter 46<sup>c</sup>



**Washington Golden Delicious APPLES**  
Save 24%  
Lb. **22<sup>c</sup>**

**Cabbage** **5<sup>c</sup>**  
Lb.  
SAVE 50%

IF YOU AREN'T SHOPPING FOODWAY YOU'RE PAYING TOO MUCH!

We allocate quantities only to give all our customers an equal opportunity to buy at these low prices

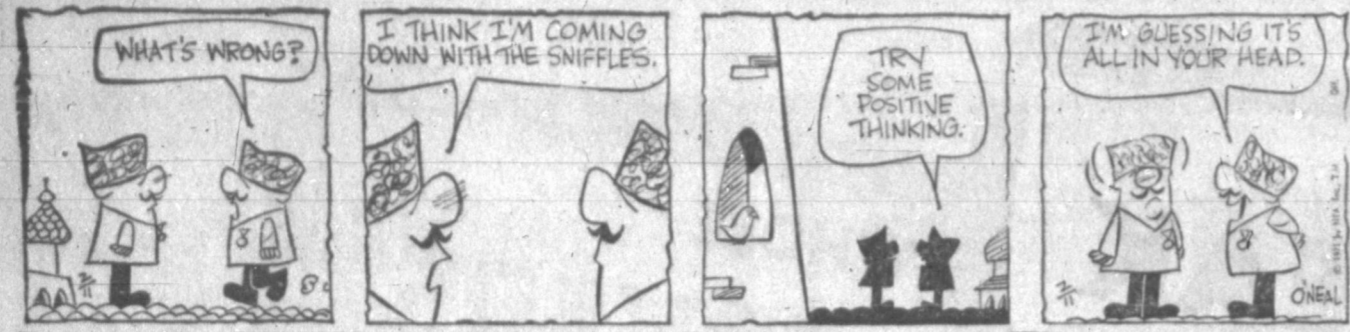
Join the **Inflation Fighters...**

shop **FOODWAY**  
—it's just like getting a raise

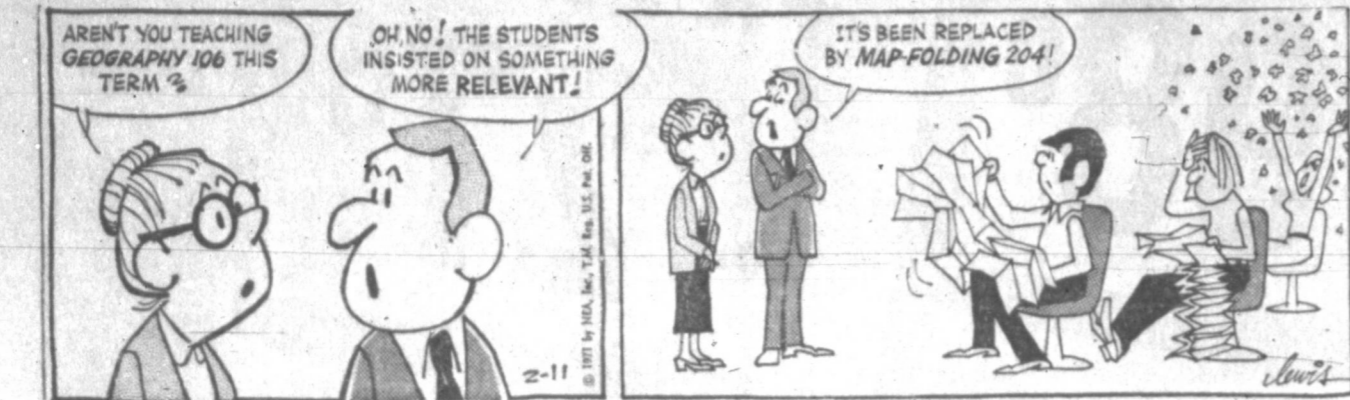
Prices Effective Thurs. Feb. 11 Thru Sat. Feb. 13  
Store Hours: 8 to 8 Daily — Sundays 10 to 6

**IN PAMPA**  
900 N. DUNCAN

SHORT RIBS



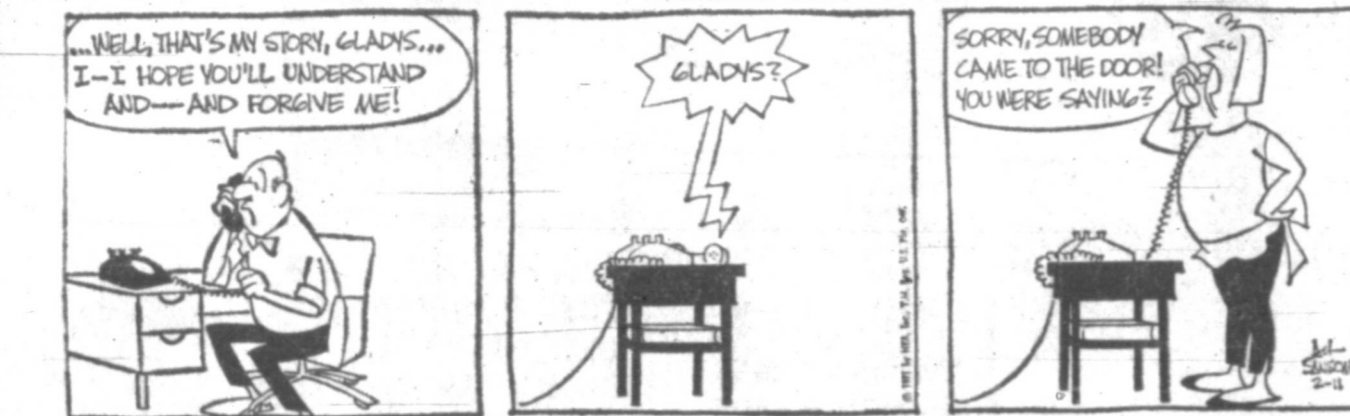
CAWNS CLATTER



WINTHROP



BORN LOSER



BUGS BUNNY



FRISCILLA'S POP



ALLEY OOP



LANCELOT



FRECKLES



10 - PAMPA DAILY NEWS

PAMPA, TEXAS 5380 Year Thursday, February 11, 1971

JEANE DIXON

Your Horoscope

FEB. 12, 1971  
YOUR BIRTHDAY, FRIDAY: Your coming year is more or less an active search for fundamental truth. Material interests decline. Friday's natives seek original ideas and "useless intellectual endeavors" once again.  
ARIES (March 21-April 19): Close the workweek with a minimum of fuss. Your money has wings and takes off around any shopping area. Handle taxes with care.  
TAURUS (April 20-May 20): You begin planning more efficient use of your working place and equipment now. Include time for study, prayer in your home life.  
GEMINI (May 21-June 20): Impatience now is prevalent. Hold your comments. Routine is about all that should be expected in your work.  
CANCER (June 21-July 22): Disregard gossip, and be sure that you don't start a story that leads to the Pursue established projects. The evening promises discussion.  
LEO (July 23-Aug. 22): Nothing comes easily Friday, and your impulses aren't much help. Avoid both complex schemes and shortcuts. Turn in early for extra rest.  
VIRGO (Aug. 23-Sept. 22): Sensible answers are rare. Your own comments have a second impact later. Be direct, if you drive or travel, caution is advised.  
LIBRA (Sept. 23-Oct. 22): This is not the day to settle business deals. If you drive or travel, caution is advised. Personal consideration includes self-discipline and meditation.  
SCORPIO (Oct. 23-Nov. 21): Inquire what old ideas think about Friday's problems. An extra demand is made on your ready cash and some misunderstanding is likely. Be nonchalant. Impassioned strangers, grateful to those who know you.  
SAGITTARIUS (Nov. 22-Dec. 21): Put things together methodically; check the minor points. Where money is owed you make an effort to collect it.  
CAPRICORN (Dec. 22-Jan. 19): You are not able to manage all you'd staked out to achieve, but what you do will be constructive. Have a festive evening.  
AQUARIUS (Jan. 20-Feb. 18): There are enough people of opinion at present; you needn't seek extra ones. Investments in equipment, property, land are favored.  
PISCES (Feb. 19-March 20): Benefits come unexpectedly from past efforts. Old friends return from journeys with comical and dramatic stories. Intuition helps you.

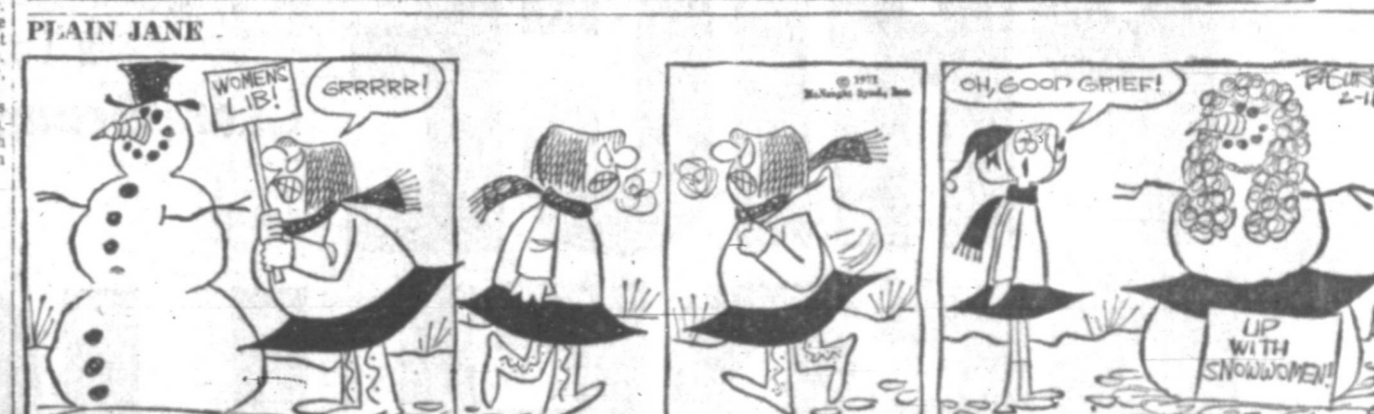
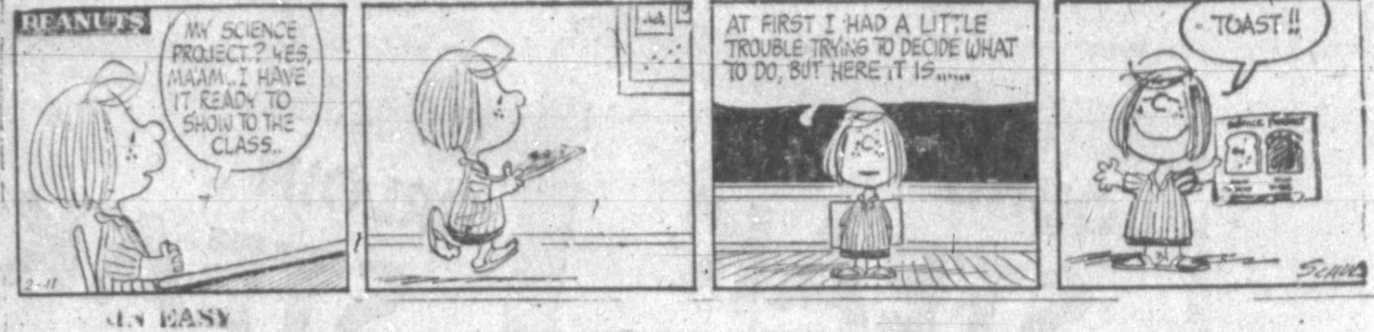
Thursday Television Schedule

- 6:00 4-7-10 News, Weather & Sports
- 6:30 4-Flip Wilson
- 7-4-Flip Smith and Jones
- 10-Family Affair
- 7:00 10-Jim Nabors
- 7:30 4-Ironside
- 7-Bewitched
- 8:00 7-Make Room for Granddaddy
- 10-Movie "The Cincinnati Kid"
- 8:30 4-Adam 12
- 7-Dan August
- 9:00 4-Dean Martin
- 9:30 7-Dragnet
- 10:00 4-7-News, Weather, & Sports
- 10:30 4-Johnny Carson
- 10:40 7-Rona Barrett
- 10-Paul Harvey
- 10:45 7-Perry Mason
- 10-"Decision Before Dawn"
- 11:30 4-Guy Lombardo

GIFT AND ANNOUNCEMENT WASHINGTON (UPI)—President Nixon received a gift Tuesday—two bottles of Irish whiskey—the mayor of Limerick—and announced plans for an "Irish evening at the White House" March 16 to celebrate his wife's 59th birthday.  
Mayor J. P. Liddy of the Irish city gave Nixon the gift as a memento of the President's visit to Limerick last October. The White House said the St. Patrick's Day eve celebration at the White House would feature an Irish singing group which performed for the Nixons in Ireland.

White Space Increases Readership!

today's FUNNY  
A SECOND-STORY MAN IS ONE WHOSE WIFE DIDN'T BELIEVE HIS FIRST ONE  
Thanks to E. M. Erickson, St. Paul, Minn.  
© 1971 by NEA, Inc.  
Today's FUNNY will pay \$1.00 for each original "funny" and \$500 for Today's FUNNY, 1200 West Third St., Cleveland, Ohio 44112.



Follow Your Favorite Comics In The Pampa Daily News... IN COLOR ON SUNDAYS

Ha To  
The I  
vestors  
against  
tomorrow  
Harveste  
d o w n  
Longho  
night  
Harveste  
Two J  
the top  
T u e s d  
Buntion  
in the k  
had 18  
Longhor  
Pampa  
up Rebe  
defeated  
Tuesday  
Rebels  
Fle  
Al  
PALM  
(UPI)—  
few illu  
As pl  
round c  
Desert  
man, 2  
stroke  
Robert  
Joe Ca  
Fleck  
scene i  
the Caj  
he had  
Cup to  
Open fr  
"I v  
then,"  
I knew  
expect  
a pro,"  
But I  
worse i  
the bo  
won o  
120th o  
So the  
Arthur  
Nelson  
worked  
\$1.2  
To I  
DAY  
(UPI)—  
awake  
pair of  
to de  
behind  
Isaac  
Foyt  
by t  
already  
pole p  
speed  
in hi  
Dayto  
way, f  
first c  
Isaa  
pole  
500 w  
in his  
leader  
race.  
The  
qualif  
The  
qualif  
behin  
500. 7  
Ze  
A:  
By 1  
The  
game  
their  
der  
tually  
Colon  
court  
Zel  
with  
Frida  
on 5  
goal  
rebu  
loped  
victor  
retain  
Bol  
Hi  
DA  
(UPI)  
ba,  
n a t  
\$38.8  
night  
ship  
Asso  
Raci  
Isa  
ries  
of 3,  
The  
purs

# Harvester-Rebel Clash Tomorrow In Amarillo

The hustling Pampa Harvesters will be on the road against the Tascosa Plainsmen tomorrow night at 8 p.m. The Harvesters will be looking for another district win after downing the Caprock Longhorns 75 to 57 Tuesday night in a game played at Harvester Fieldhouse.

Two Pampa players shared the top scoring honors in Tuesday's game. Richard Bunton and Mike Edgar both in the leagues top 20 of scorers had 18 points against the Longhorns.

Pampa will be playing a fired up Rebel team after they were defeated by the Palo Duro Dons Tuesday night. At one time the Rebels were tied for first place along with the Harvesters, Palo Duro and Borger. This tie moved down between Pampa and Palo Duro after the Golden Sandstorm from Amarillo High School defeated the Bulldogs and the Dons knocked Tascosa out of contention.

Coach Robert McPherson has been highly successful thus far this season keeping the Pampa team in title contention ever since the start of district play. According to the Amarillo Daily News Tascosa is rated higher than Pampa on the power poll but the Harvesters disagree after having defeated the Sandies 100 to 74 a week ago Tuesday.

Support is coming from all directions for the Harvesters as

# Fleckman Has Few Illusions But A Lot Of Hope In Desert Classic

PALM SPRINGS, Calif. (UPI)—Marty Fleckman has few illusions but a lot of hope.

As play goes into the second round of the \$140,000 Bob Hope Desert Classic today, Fleckman, 26, is the leader by a stroke over Arnold Palmer, Robert Bernardini, Bill Brask, Joe Cary and Larry Wood.

Fleckman burst into the pro scene in late 1967 by winning the Cajun Classic, shortly after he had started on the Walker Cup team and had led the U.S. Open for two rounds.

"I was riding pretty high then," Fleckman recalled, "but I knew I had to play along if I expected to win any money as a pro."

But the harder he played the worse his game became. He hit the bottom last year when he won only \$12,053 and finished 120th on the money winning list. So the youngster from Port Arthur, Tex., turned to Byron Nelson and the former star worked on Marty's swing.

"I had gotten into some bad habits," said Fleckman, "and I wasn't consistent enough off the tee. Now I'm thinking better and my play seems to have improved."

Fleckman's play in the opening round of the Hope was almost impeccable as he made his way around the La Quinta Country Club course Wednesday in six under 33-33-66. Along the way he bagged seven birds and nary a bogey.

"I don't recall ever shooting a 66 on the tour before," said Fleckman.

Palmer, putting better over the flat desert courses than he did at Hawaii last week, also played La Quinta, one of four courses used in the 90-hole Hope classic. He used a new center-shafted putter.

Palmer, who hasn't had a tour victory since late 1969, eagled two par five holes and that seemed to perk him up a bit. But he missed two putts of three feet for bogeys and that depressed him.

# \$1,200 Prize Money Will Be Given To Daytona Qualifying Race Winner

DAYTONA BEACH, Fla. (UPI)—A top prize of \$1,200 awaited each winner today in a pair of 125 mile qualifying races to determine who will start behind A. J. Foyt and Bobby Isaac in Sunday's Daytona 500.

Foyt—selected as the favorite by his fellow drivers—has already nailed down the inside pole position for the 500 with a speed of 182.744 miles per hour in his 1971 Mercury at the Daytona International Speedway. He will compete in the first qualifying race today.

Isaac, who took the outside pole for the \$200,000 Daytona 500 with a time of 1:40.050 mph in his 1971 Dodge, will be inside leader in the second qualifying race.

The total purse of each qualifying race is \$9,300.

The top 14 cars in each qualifying race will be entered behind Foyt and Isaac in the 500. Timed runs in practice this week will determine the remaining 10 starters in the 40-car field.

The two qualifying races will have a total of 61 cars entered, each of which earned the spot in timed runs this week.

Pedro Rodriguez, winner of the Daytona 24-hour endurance race Jan. 30-31, failed to get in a timed run but will be permitted to start at the back of the field for today's race.

Charlie Grotzbach was the last of the 61 drivers to earn a spot. Grotzbach, driving the lone Pontiac in the field, qualified with a time of 1:70.567 mph, just 15 minutes before the end of the time tests Wednesday.

Tiny Lund is the only driver entered in all four races in the next four days of Daytona speed week, a total of 1,175 miles. He had the third best time in the final day of time trials with 168.538 mph in his 1969 Dodge.

# Zelmo Beaty Is Sidelined As Utah Defeats Kentucky

By United Press International

The Utah Stars played a key game without the services of their leading scorer and rebounder Wednesday night—and virtually chased the Kentucky Colonels off the Salt Lake City court.

Zelmo Beaty was sidelined with a leg injury suffered last Friday night but the Stars hit on 50.4 per cent of their field goal tries and held a 62-58 rebounding lead as they walloped the Colonels, 149-127. The victory enabled the Stars to retain their 1 1/2-game lead over Indiana in the American Division.

Merv Jackson hit on 16 of 22 from the field and scored 40 points for Utah while George Stone, starting for the first time this season, made 13 of 18 from the field and tallied 29 points. The 149 points set a single-game club record for the Stars.

Met Daniels scored 11 of Indiana's final 16 points to spark the Pacers to a 115-104 win over the Texas Chapas. Daniels scored 24 points while Gene Moore led the Chaps with 24.

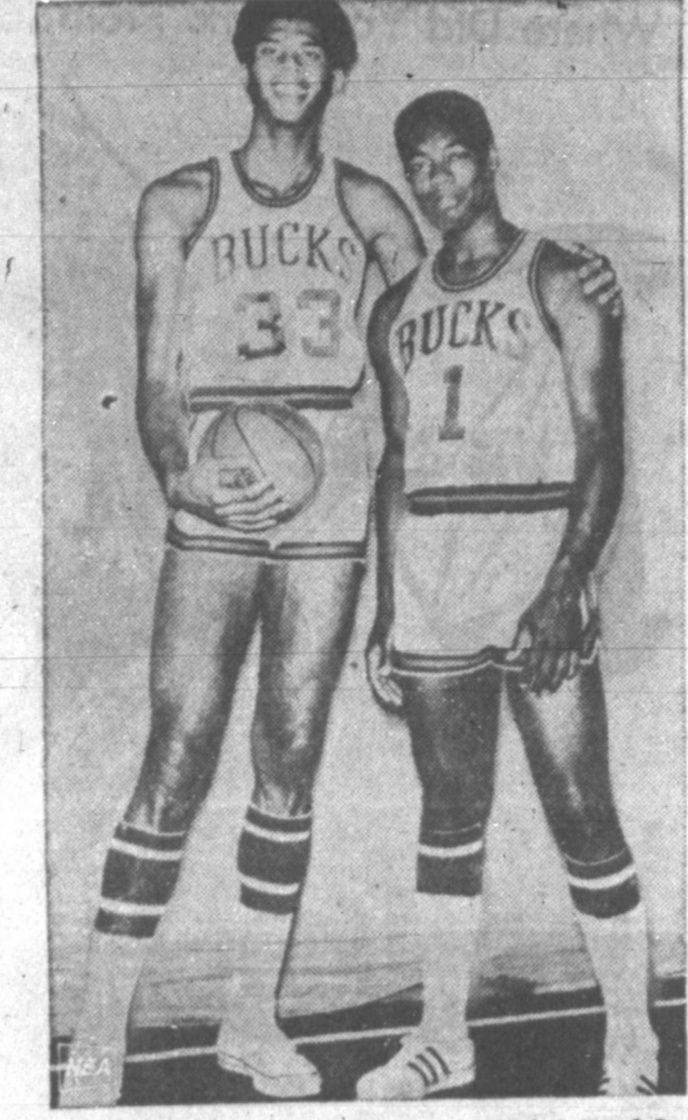
Steve Jones scored 27 points. Jim Jones 25 and Wilbert Jones 15 as the Memphis Pros defeated the Denver Rockets 123-106 at Denver. The loss snapped the Rockets' three-game winning streak. Julius Keye led Denver with 19 points.

Larry Jones scored 27 points and rookie Ron Nelson added 24 to lead the Floridians to a 115-104 triumph over the Pittsburgh Condors in the only other ABA game. The win lifted the Floridians out of the East Division cellar. George Thompson led the Condors with 24 points.

# Bobby Isaac Has Highest Winnings

DAYTONA BEACH, Fla. (UPI)—Bobby Isaac of Catawba, N.C., this year's grand national winner, received \$38,865 and a trophy Wednesday night at the annual championship dinner of the National Association for Stock Car Racing.

Isaac, 35, compiled 11 victories and 33 finishes for a total of \$911 points to win the title. The award was in addition to the total of \$121,470 he won in purse money in the races,



TWO-FIFTHS of a dream team, Lew Alcindor and Oscar Robertson of the Milwaukee Bucks.

# SPORTS

The Pampa Daily News

PAMPA, TEXAS 63rd YEAR PAMPA DAILY NEWS 11

# White Deer To Host District I-A Tourney

The White Deer girls and boys basketball teams will be playing host to the District I-A Tournament today and tomorrow.

Boys action will continue noon Friday with Fritch meeting the winner of the Gruver-Stratford game. White Deer will be entering the courts against the winner of the Sunray-Canadian game at 1:30 p.m.

Championship games will start at 7:30 p.m. Friday for the girls and the boys will play their championship bout at 9 p.m.

According to principal David Grayson of White Deer all patrons are requested to leave the gym after every playing session.

# Youth Center Announces It's Annual Independent Tourney

The Pampa Youth and Community Center is having its eighth annual Top O' Texas Independent Basketball Tournament on February 22-March 4, 1971. Teams from everywhere are invited to enter including church, independent, industrial club, etc.

The tourney will be played at the Youth Center, 1005 W. Harvester. Times of the games will be established after the total number of entries are received. Teams from out of town will be given preference for late games and if two out of town teams should play the one traveling the furthest will play the later game.

All teams entered are guaranteed a minimum of two games and teams from the same town will not be matched together in the first round of play. This will allow as many teams from one city to enter as wants to do so.

The entry fee is \$20.00 per team and is due with your entry. Entry deadline is Thursday, Feb. 18 at noon.

Each team is limited to a maximum of 12 players and rosters will be turned in prior to play. Team members cannot be switched.

All games will be played under the 1970-71 NCAA official basketball rules.

Trophies will be awarded for first, second and consolation winners.

# Basketball Standings

NBA Standings			(Only games scheduled)		
By United Press International			By United Press International		
Atlantic Division			ABA Standings		
W.	L.	Pct.' GB	By United Press International		
New York	40	23 .635	East		
Philadelphia	37	25 .597 2 1/2	Virginia	40	19 .678
Boston	33	29 .532 6 1/2	Kentucky	33	28 .541 8
Buffalo	17	46 .270 23	New York	26	32 .448 13 1/2
Central Division			Carolina	27	34 .443 14
W.	L.	Pct.' GB	Floridians	26	38 .406 16 1/2
Baltimore	34	25 .576	Pittsburgh	25	37 .403 16 1/2
Cincinnati	24	35 .407 10	West		
Atlanta	23	39 .371 12 1/2	Utah	39	19 .672
Cleveland	11	53 .172 25 1/2	Indiana	37	20 .649 1 1/2
Midwest Division			Memphis	35	26 .574 5 1/2
W.	L.	Pct.' GB	Denver	22	37 .373 17 1/2
Milwaukee	48	11 .814	Texas	19	39 .328 20
Detroit	37	22 .624 11	Wednesday's Results		
Chicago	36	24 .600 12 1/2	Floridians	115	Pittsburgh 104
Phoenix	36	25 .590 13	Utah	149	Kentucky 127
Pacific Division			Memphis	123	Denver 106
W.	L.	Pct.' GB	Indiana	115	Texas 104
Los Angeles	36	22 .621	(Only games scheduled)		
San Francisco	33	29 .532 5	Thursday's Games		
Seattle	26	35 .426 11 1/2	New York	at	Pittsburgh
San Diego	27	37 .422 12	Virginia	at	Floridians
Portland	21	39 .350 16	(Only games scheduled)		
Wednesday's Results			WRIGHT REPAIRED		
Buffalo	106	New York 99	KANSAS CITY, Mo. (UPI)—		
Atlanta	114	Boston 102	Elmo Wright, the Kansas City		
San Francisco	133	Seattle 122	Chiefs' No. 1 draft choice,		
(Only games scheduled)			underwent surgery Wednesday		
Thursday's Games			to repair torn cartilage in his		
Los Angeles	at	Milwaukee	left knee.		
San Francisco	at	San Diego			
Cincinnati	at	Seattle			

# Orr Gives Up Privacy For Community Project

By MILTON RICHMAN  
UPI Sports Writer

NEW YORK (UPI)—Bobby Orr can't go to the corner for a loaf of bread without drawing a crowd.

He gave up any idea of personal privacy long ago.

But this was one thing the Boston Bruins' boyish-looking superstar wanted to do all by himself. He didn't want it to be a big deal because he likes kids and because he happens to be... well... a little chicken-hearted.

Bobby Orr belongs to a group of Boston athletes who call themselves Pro Speakout.

Fellows like Phil Esposito and Gerry Cheevers of the Bruins also belong. So do Gino Cappelletti, Joe Kapp and Jim Hunt of the Patriots, John Havlicek, Jojo White and Tom Sanders of the Celtics and Reggie Smith and Jim Lonborg of the Red Sox.

Talking About Drugs

What they do is visit the various high schools in and around Boston and talk to kids and what they talk about mostly is drugs.

"We're concerned," says Cappelletti, the father of three young girls. "We're concerned not as athletes, but as human beings and parents ourselves."

That same concern motivated Bobby Orr to become uncommonly involved not too long ago. He had heard of a gang of eight boys, all between the ages of 15 and 18 and all on dope, who had gone on a particularly wild rampage one night.

When caught, they battled the police like wild tigers and when finally taken to jail they tore up the place before being brought under control.

Personal Advice

Orr, who's only 21 and thus isn't much removed from being a kid himself, felt that instead of addressing these kids through Pro Speakout he'd like to talk with them personally. He invited them to his beautiful penthouse apartment in Boston.

They listened to Bobby Orr talk a little while and a couple of them became fidgety. One of the kids, looking for something to do, spied one of the hockey player's stereo tapes and slipped it inside his shirt. Orr with that extraordinary peripheral vision of his, noticed what was happening and immediately jumped up from his chair.

"Here," he said scooping up all his other stereo tapes and handing them to the kid. "Don't waste your time stealing 'em. I'll give 'em to you. All of 'em. You don't have to steal 'em from anybody."

The incident never made any of the papers. Orr has continued working with Pro Speakout as have all the others, Esposito, Smith, Havlicek, Sanders and the rest.

A Better 'High'

"As athletes we don't try to tell the kids what's good and what's bad," Cappelletti says. "You can't tell kids that anymore. We tell them we get our 'highs' in other areas—on the field. By accomplishing something there we feel we are doing something meaningful. We tell the youngsters they can find something meaningful in life also."

Why does Gino Cappelletti worry?

"I live in Wellesley, Mass.," he says, "and the thing I want to make plain is the high school in my neighborhood is no different than any other. It's the same. A couple of weeks ago they found a boy nearly dead in the lavatory. He was shooting heroin. Not in his arm, mind you. In his groin. I think the boy was 12 years old."

# Hawks And Knickerbockers In NBA Life And Death Struggle

By JOE CARNICELLI  
UPI Sports Writer

The National Basketball Association is going through a life and death struggle—new life for the Atlanta Hawks and slow death for the New York Knickerbockers.

Atlanta, stirring to life after a horrendous start this season, surged to its sixth victory in the last eight games Wednesday night, beating the Boston Celtics 114-102.

The Knicks, the defending league champions, saw their losing streak extended to five games when they bowed to the expansion Buffalo Braves 106-99.

San Francisco downed Seattle 133-122 in the only other action.

Hawks Chasing the Royals

Pete Maravich had 28 points and 11 rebounds to lead the Atlanta attack. The Hawks have closed to within 2 1/2 games of second-place Cincinnati in the Central Division in the race for the playoff slot behind front-runner Baltimore.

The Hawks wrapped the game up with a torrid three-minute stretch near the end of the third period when they stole the ball five times and outscored the Celtics 13-0 to run their lead to 89-73.

"We're finally playing the kind of ball we're capable of," said Atlanta coach Richie Guerin. "Our team has finally gotten together and I think we can look forward to a good stretch run. There's still a lot of time and a lot of games left. We're not that far behind Baltimore."

Don May scored 16 of his 29 points in the first quarter to help Buffalo beat the Knicks for the second time in four games.

# Matson Wins Top Athlete Award

LOS ALTOS, Calif. (UPI)—Track and Field News has named shot putter Randy Matson its world track and field athlete for 1970.

The influential publication saluted the 25-year-old Texas giant for "completely dominating his event and exhibiting a remarkably high level of performance throughout."

Matson, who was victorious in his 10th competitive meets in 1970, hit 71' 4 1/2" in the May 30 Kennedy Games to blast the world mark. His average winning performance during the year of '68' was more than a foot further than anybody else hit with a single put all year.

# College Scores

By United Press International

East		South	
LaSalle 92	Canisius 55	Virginia 78	Maryland 63
Syracuse 57	Army 46	Duke 83	Wake Forest 78
Duquesne 85	Providence 80	S. Carolina 70	Davidson 62
Navy 65	Va. Military 47	LSU 86	Florida 74
Marshall 88	Toledo 66	Tenn. St. 95	Kentucky St. 94
St. Bona 64	LIU 60	Miss 94	Vanderbilt 88
St. Peter's 87	Mahattan 65	Midwest	
Conn 94	Colgate 76	E. Mich 81	Wittenberg 59
Temple 61	Penn St 58	Steubenville 92	St. Vincent 68
Pitt 62	Westminster (Pa.) 41	Oberlin 97	Mt Union 91
Southwest		West	
Pan American 76	Middle Tenn 75	Colo Mines 93	Regis 91
West		Denver 58	Air Force 52

**Woolworth**  
THE FUN PLACE TO SHOP FOR THE ENTIRE FAMILY

**MEMORABLE VALENTINE DAY GIFTS**

**SWEET GIFTS FOR VALENTINES**

Deluxe 2 lb. ...

**BOXED CHOCOLATES**

**4.99**

A memorable gift for that very special someone! Heart shaped box with light and dark chocolates.

1 lb. gift box ...

**FANCY HEART BOXED CANDY**

**1.99**

An array of fine quality chocolates with rich fillings. A sweet way to remember your Valentine!

1 lb. gift box of ...

**FINE CHOCOLATES**

**1.44**

Sweets for the sweet! Hand-some box of quality chocolates with luscious center fillings.

1/2 lb. heart of ...

**VALENTINE SWEETS**

**89¢**

Deluxe quality chocolates to cover your sweet thoughts. Fine chocolates, rich centers.

SATISFACTION GUARANTEED REFUND OR MONEY RETURNED

Get relief reliable!

**Penlin**

PENETRATING LINIMENT

Quick Relief—hours of relief from pains of arthritis, strains, sprains, bruises, muscular aches

Acts fast to replace pain with soothing warmth

Available at your favorite Drug Store!

# The Pampa Daily News

A Watchful Newspaper  
EVER STRIVING FOR THE TOP O' TEXAS  
TO BE AN EVEN BETTER PLACE TO LIVE  
Our Capsule Policy

The Pampa News is dedicated to furnishing information to our readers so that they can better promote and preserve their own freedom and encourage others to see its blessing. Only when man is free to control himself and all he produces, can he develop to his utmost capability.

## Full Employment Budget

"The full employment budget idea is in the nature of a self-fulfilling prophecy: By operating as if we were at full employment, we will help to bring about that full employment."

—President Nixon in his budget message to Congress.

Full Employment Budget promises to be one of the most successful coinages of the present administration, rivaling Silent Majority and Vietnamization as terms that mean different things to different people.

As the President defines it, under a full employment budget the government may spend up to the limit of the income it would have if everybody (technically 96 per cent of the total work force) was employed and paying taxes.

Using this formula, he has told Congress that the nation may with good conscience go into the hole in the tune of \$11.6 billion for fiscal 1972 (July 1, 1971, to June 30, 1972). Up to that point the budget will be "expansionary": anything beyond that point would be "inflationary."

(How does he know that the employable unemployed would be paying \$11.6 billion in taxes if they were employed? Don't ask.)

But what's this? Without even planning it—in fact, he had hoped for a slight surplus (an overfull employment budget!)

The President will rack up a deficit of \$18.6 billion for the current fiscal year ending June 30.

Will this budget have been inflationary or expansionary?

It can hardly be the former because more people will have been unemployed during fiscal 1971 than fiscal 1972, according to the self-fulfilling prophecy of 1972's full employment budget. That is, with more people unemployed at the beginning of fiscal 1971, there was even greater justification for a full employment budget (or deficit, if you insist on being old-fashioned about it).

But it can hardly be the latter, either, for then there would be less need for another whopping deficit in 1972. That is, we should be feeling the effects of 1971's full employment budget (which wasn't called that because nobody had invented it at that time) in terms of rising employment and expanding business.

Actually, there is really nothing so new about the full employment budget idea.

For years the Joneses next door have been spending money as if they had the income they would have if Mr. Jones was being paid what he thought he ought to be paid.

It's been getting harder and harder to keep up with them—almost as hard as understanding government economists.

## New Voters Aren't All Students

By LEE MUELLER  
NEA Staff Writer  
WASHINGTON (NEA)—Sen. J. William Fulbright was talking recently about the effect newly eligible 18-to-21-year-old voters will have on the 1972 presidential election. "No doubt about it," the senator declared, "the student vote will play an important role."

Thus Fulbright joins the multitudes who somehow assume that everyone in this country between 18 and 21 is a student. At best, this is an uneducated assumption.

"The fact," said Rosalyn Hester, "is that of the anticipated 11.5 million persons between 18 and 21 in 1972, only about 45 per cent will be attending a school of any kind."

Miss Hester is chairman of the Youth Franchise Coalition in Washington, a group which conducted a nationwide campaign for the 18-year-old vote. Despite the fact she graduated from Lyndon Johnson's alma mater, Southwest Texas State, she feels she understands the mood of the 55 per cent who do not—or will not—attend college.

"I was able to work with a lot of young people who were not in learning situations," she said, "and most of them felt they had more at stake in the 18-year-old vote than students. A lot of people in this age group were earning a living, paying taxes and were still unable to vote for—or against—decision-makers who were setting the taxes."

This overlooked majority consists mostly of military personnel, blue-collar workers, working girls, young wives and business trainees. To win their votes, says Miss Hester, politicians must vary the approach they use with college kids.

"The issues are the important thing here, too," she said, "but emphasis probably will have to be changed some. The peace issue, for example, will not be as volatile with them as it is with students. Unemployment certainly will be a big issue, since their group is harder hit than any other segment of the population."

Department of Labor statistics show that the 1970 national unemployment rate for persons over 20 was 4.0 per cent—an unusually high figure that caused great wails from the country's leading economists. Consider, however, the plight of the nonstudent youth seeking work. The unemployment rate for persons 20-and-under was 17.3. Naturally, the kids don't like it.

"It has been surprising to me," said Manhattan lawyer Jasper A. Stuart, "that the noncollege kids haven't revolted. If there is anybody in the country who has something to gripe about, it's the young, unskilled man who can't find a job."

"College kids demonstrate and burn down ROTC buildings because they want a teacher reformed or because they disagree with an administration policy on dormitory hours. Big deal."

"The kids who didn't go to college—black and white—are coming to grips with the problems of real life. It's a tougher school and I think they should demand tougher answers from candidates before they vote for them."

Miss Hester adds: "People have to remember: It's the 18-year-old vote, not the student vote."

## Wit And Whimsy

An old-timer is a fellow who can recall when a horror movie wasn't most any one you walked in to see.

Those inclined to feelings of superiority should have a cat for a pet.

Social security is being known as the best cook in your crowd.

Tipping your hat can cost you the price of a new one in just a couple weeks.

A pessimist is a fellow who won't invest in an all-day sucker.

One look at the newstands, and you'll know that, these days, you can't tell a cover by its book.

## Where Did You Come From, Baby Dear?



## WASHINGTON

### Nixon Heeding Lessons Learned In '70 Elections

WASHINGTON (NEA)—A number of President Nixon's political opponents (Republican, Democratic and Independent) have told us Nixon paid little attention to the lessons of the 1970 elections.

They could not be more wrong. A detailed study of his 1972 budget, State of the Union Message and Economic Report to Congress and plans his staff have in the making shows Nixon read November, 1970, very carefully indeed.

A history of elections, national and local indicates quite strongly that if there are no great burning issues an incumbent is almost impossible to beat most of the time.

But a hot issue can topple almost any man. In great measure, therefore, a sizable share of the Nixon strategy is aimed at defusing issues.

The 1972 budget makes important shifts in research on the college campus, a major issue of student riots. The shift is to social issues and away from military and space research. This won't win votes for Nixon among the radicals. But the President's men calculate that quieter campuses will mean greater satisfaction with the Nixon presidency among the moderates.

Nixon has put considerable sums in law and order, which pleases the men and women who want to crack down on crime. But he has dedicated an important portion of his crime budget to reforms which a good many liberals can espouse.

Nixon has seemed to talk a go-slow and cautious policy on desegregation and has encouraged holding back while the courts take action, which makes him few enemies in certain sections of the population.

But the plain and simple fact is—however accomplished—the Nixon administration has made perhaps the most radical shifts toward real school desegregation since the original Supreme Court decision.

Nixon's strategists don't expect these steps to win him black votes. But they do hope to defuse the race issue sufficiently to prevent a rash of violence over race in the cities and on the college campuses.

Nixon talks tough fiscal measures, argues his revenue sharing plans can hold taxes down and talks a balanced (full employment) budget, all aimed at pleasing conservatives. But he plunges into deficit spending and an easier money program to provide funds for a host of expanding welfare and social programs and to spark a quick upswing in the economy aimed at increasing jobs, wages and business profits. If this policy is successful, even in part, it will be very difficult to make unemployment an issue in 1972.

Nixon is timing troop withdrawals from Vietnam, according to a timetable that will leave very few Americans in that country in November, 1972. This will make it very difficult, of course, for opposition candidates to rally voters on that issue.

Nixon asks for an increase in defense, to be sure. But

there's a hooker that may catch those opponents who attempt to use this as an issue.

The military increase is more than accounted for by higher pay, better quarters and other improvements in military life—aimed toward a volunteer army. Few liberals and few conservatives can fight this shift with much conviction. Military aid is being strengthened—but aimed at lowering the chances of a Vietnam-type U.S. involvement. It is a difficult argument to beat.

## Your Health

By Dr. Lawrence Lamb

### Eating Odd Things Is Case for Doctor

Dear Dr. Lamb—what would cause one to have a craving for charcoal, chalk, soft stones? Would consuming such be harmful?

Dear Reader—It depends on the age of the person. A child will eat almost anything, ONCE. Some children even pick odd bits of the walls and eat it. If the patient has led in it, this can cause lead poisoning.

An adult eating the items you mention may have some deficiency in the body. More often it is a psychological problem and should be reviewed in person with a physician.

Some people develop the habit of eating clay. It has no nutritive value. If carried to extremes, these people will develop anemia and signs of dietary deficiency.

Dear Dr. Lamb—Is it true that certain foods such as milk and bread, eaten together, are injurious to a person's health? Are refined cereals, spaghetti, polished rice, white sugar, bread and mashed potatoes disease builders? I was always under the impression that the stomach could safely stand any combination of food. Can mixing foods cause slow poisoning?

Dear Reader—There are a lot of mistaken ideas on this subject, like not eating fish and milk together. That is poppycock. You are right. Any food you can eat alone you can also eat safely with other foods. If you can't eat onions, then you can't eat them in a combination with their foods as a rule. Now you can build up too high a level of certain things. For example, if you eat one food enriched with iron, then a couple more enriched with iron and finally take vitamins with iron added you can be getting too much iron (more often people don't get enough). But note that these are additives to normal food, not combinations of what nature intended man to eat.

The problem with polished rice and other grains that have had the husk removed is that they have lost a large amount of natural vitamins, particularly the B complex group, including thiamine. A diet exclusively of these products can result in diseases caused by vitamin deficiencies. This is why white flour is enriched—to restore the natural vitamins. The same thing applies to most vegetables to some degree. They have a lot of their vitamins under the surface and peeling them removes part of their food value. Potatoes are good food and have a lot of vitamins. They also contain lots of calories.

The problem with white sugar and foods consisting almost solely of carbohydrates is that they provide lots of calories but (as in white sugar) there are no other essential nutrients (vitamins and minerals.) This is why they're sometimes called "empty calories." They are not poisonous. They just provide too many calories without providing essential nutrients for the body.

This is why nutrition experts recommend using whole cereals, and getting a goodly

## With Some Reservation

By INJUN WOODY

I suppose every state legislature has its share of leeches. They come up with some Bills that would make a statue of O. Wendell Holmes squint.

Lately, it seems as though a lot of them have been strolling in the goofy grass together. Why, in Colorado alone they have these things going right now—

A bill to protect the Grizzly Bear. The proposer of this pouter admires there ain't any Grizzlies in Colorado. But just in case one should decide to vacation here from Wyoming sometime he should be fully protected.

Another recent bill has to do with protecting the wild horses. That didn't seem too bad—until the addendum was tacked on to also protect jackasses. This shows the lawmakers are still looking out for themselves.

Another bill would allow kids to work after school. They shouldn't have had a bill that wouldn't let them work in the first place. But one knucklehead objected to this bill because he said all the kids would be taking men's jobs!

Another bill wants to tighten up the loose abortion law. (No comment.)

Zbut the lawmaker who should receive the Dingleberry Award is the one who has got up a Bill to make door salesmen and telephone salesmen spit out their spittle within 30 seconds or the housewife can call the police.

Now there is a duzy. I guess when the doorbell rings the house wife must take her stopwatch to the door. If the salesman is a slow talker, or stutters, or happens to have a caramel in his chops, he is sunk.

Now I don't for the life of me see how can prosecute this fellow without a witness. In which case the wife must call a neighbor or some outsider. Otherwise it will be her word against his that he didn't tell all about his company and his business in 30 seconds.

Ah, we could fill a library with these silly proposals and never go over the same ground twice. The sad part is—about half of them get thru, to further add to the frustrating stupidity of our daily lives.

## Inside Washington



John Goldsmith



Robert Allen

WASHINGTON—The Palestine liberation movement, so menacing when its guerrillas were burning airliners on the desert, is in all but total disarray.

That is the word in intelligence circles here. It is a point worth remembering as world attention focuses on the volatile Middle East once again.

King Hussein's government in Jordan, which appeared to be seriously threatened by such guerrillas only a few months ago, has strongly re-established itself, according to the experts here. The threat has been removed.

Some experts here say that there are probably not more than 1,500 guerrillas being mopped up now in central Jordan. There are reports that bands of guerrillas, surrounded, have been allowed to surrender and disperse.

The unity, which comes so difficultly among the groups seeking a Palestinian state seems to have been thoroughly destroyed. Yasser Arafat, the leader of Al Fatah, and Dr. George Habbash, of the more militant Popular Front for liberation of Palestine, are trading insults once again.

In sum, the menace of the burning aircraft with their hostages passengers and of September's 11-day civil war in Jordan, has given way to in-fighting and to pleas of protection for the Palestinian Arabs against Hussein's army and the Israelis.

SYRIA NEXT CENTER? — So complete has been the reassertion of control by the Jordanian Army that experts here doubt that there will be a guerrilla resurgence within Jordan's borders. If the guerrilla forces are to be reorganized, experts here believe it will probably be in Syria.

That does not mean that there will not be sporadic fighting with units described as guerrillas. Middle East experts say that, with the amount of small arms now loose in the Middle East, it will always be easy to form a band which can be described as a guerrilla unit, but such units may have no ideological purpose.

All this is somewhat reassuring in the eyes of the analysts here, but it offers no

long-term hope for reduced Middle-East tensions. No one expects that the drive for a Palestinian state will go away simply because militant guerrilla forces have suffered a setback.

Nor is there any real hope here that an Arab-Israeli peace—or official avoidance of War—can, somehow, solve the Palestinian problem in any long-term sense.

Even if a Palestinian state could be created by such a peace agreement, on the Jordan's West bank, the experts here think it would be unacceptable to militant Palestinians because it had been fostered by the Israelis and not wrested from them by some retributive Armageddon.

BUDGET OMISSION—Maneuvering by the Arab states in the wake of the civil war in Jordan has given some strategic advantage to Israel. Iraq, for example, appears to be withdrawing most of its force from Jordan.

Even before the February 5 cease fire expiration date, now extended, the Iraqi contingent in Jordan was reportedly down to some 6,000 troops. That of course, weakens the so-called Eastern Front alignment against Israel made up of Jordanian, Syrian and Iraqi units.

There was some disquieting news for the Israeli government in President Nixon's new budget last week. The budget document did not provide for a second round of credit sales to Israel under the emergency authorization approved by Congress last year.

No new request for Israel was contained in the new budget document under the special authorization, and Israel was included for an unspecified sum of assistance under the regular military sales program.

The omission was promptly criticized by Sen. Henry M. Jackson, D-Wash., who had sponsored the emergency authorization. At a press conference in the American Embassy in Tel Aviv last November, Jackson had noted that further credit—beyond an initial \$500 million—would be possible under the emergency program which he sponsored.

We expect to be reporting, in a few days, with respect to the situation in Israel, on the basis of an on-the-spot survey trip.

## MARKET OUTLOOK GOOD

### Happy 1971 Is Forecast For The Stock Investor

By CARLTON SMITH  
NEA Staff Writer

One of the best crystal balls on Wall Street is owned, apparently, by a seer named George Lindsay.

We are quite skeptical about crystal balls in general, and especially those that purport to foretell the antics of the stock market. So when Lindsay, last December, issued his forecast for 1971, we filed it away for awhile to see how it matched up with what actually happened.

He was so right about January, it is now possible to report that it's almost eerie. In his equally right about the rest of the year, it's time to get the money out of the mattress.

Going on past performance, the odds are that Lindsay won't be far wrong. He has been doing this sort of thing since 1951. His predictions appear in a market letter he publishes, "George Lindsay's Opinion."

We've just checked his annual forecasts, from 1958 through 1970, against what the market did. He was never very far off. The few times that Lindsay came out with a bear miss—three, as we score it—was off only on the timing, or the extent of the swing in the market. This is an unusual performance, since Lindsay doesn't hand out mere glib generalizations. He gets quite specific.

For example, his 1971 forecast began this way: "An irregular phase as the year opens, and renewed selling should be apparent within a very few days. A rebound will get under way by January 14-15."

A minor sell-off started on the fifth trading day of the year. portion of your carbohydrate from good healthy vegetables, as opposed to refined sugar.

The rebound started on Jan. 14. Lindsay's forecasts not only offer specific dates on which market moves will occur, but predict the extent of the movements in terms of Dow-Jones numbers. And he comes close, remarkably often. How does he do it? He's a student, cum laude, of market history and its technical behavior. He consults, not a crystal ball, but charts and trend lines.

Getting back to 1971: The last time the market rose throughout the year, without any major interruption, was 1964. — Said Lindsay, in December: "The coming year, 1971, will be the first one since then."

He foresees a series of steps—advance followed by decline, but moving up each time to higher levels—with the strongest advance running from early July to early October. He sees a Dow reading of 900 to 920 by the end of the year—a gain of around 75 points from his level at the close of '70. There's a possibility of it hitting 960, but he thinks we'll probably have to wait till 1972 for that level.

Since Lindsay has been impressively right about bear and bull trends over the past 13 years, investors may be wearing smiles again by the time this year's over.

And if you're still feeling mistrustful, after what happened in '69 and '70, you might ponder this one of his observations:

"Traditionally, the typical investor doesn't turn bearish until a bear market is two-thirds over, and he doesn't regain his confidence until the following bull market is half over. This has never prevented stocks from rising, and it won't in 1971."

## Recollections Of WPA

Vetoing the \$9.5 billion manpower training bill passed by the last Congress, under which the national government would have paid 80 per cent of the salaries of new workers hired by cities, counties and states for employment in such public service areas as sanitation and pollution control, President Nixon stated that "WPA-type jobs are not the answer."

The program, he said, would only set up "dead-end" public jobs and "relegate large numbers of workers to permanent subsidized employment."

Upholding the Army's right to spy on civilians, a federal judge in Chicago went on to ridicule the Army's intelligence operations as a "WPA boondoggle" that amounted to little more than "leaf raking, shovel wielding and paper shuffling presided over by too many Colonel Throtlebottoms."

Criticizing what they consider the misuse of technology in this country, two scientists blasted the space program and the supersonic transport project by claiming in an article in Environmental Action Bulletin that the one "is nothing more than a meaningless WPA and the other 'promises to be a disastrous WPA project.'"

Judging from these three opinions alone, anyone who has no personal memory of the Great Depression (and maybe some who do) can only conclude that the WPA must have been the biggest, most wasteful, if not downright disastrous, boondoggle this nation ever engaged in, rivaling the pyramid-building projects of the pharaohs in misuse of national resources.

In a way, it was. What the WPA set in motion was the destruction of the moral fibre of the nation, and that continues to gain in momentum.

Between 1935 and 1943, the WPA had 8½ million persons (with 30 million dependents) on its payroll. Getting the unemployed on a payroll was its principal objective; what they did—if anything—was secondary.

Some things were accomplished—a great many things, in fact, were constructed: roads, bridges, airports, water lines, sewers, military bases, public buildings

There were a number of reasons for the WPA's becoming a symbol for something bad: Many of the projects were impractical, wasteful, make-work jobs. Two men or more frequently were employed to do the work of one or less. Its insignia, in cartoon and joke, was a man leaning on a shovel which he never used.

An illustration of the popular attitude toward the WPA is a ditty about the four men hired to cut the grass in a small park in which there was a public restroom. It took four men to cut the grass, according to the ditty, because there always was: One a-corning, One a-going, One a-sitting, and One a-mowing.

The morally bad aspect of the WPA, however, was the result of so many turning to government for sustenance—and it must be said for those who turned to the government in those days, that most of them would not have done so had there appeared to be any other way.

But once the shame of accepting what amounted to a dole was overcome, attitudes underwent a subtle change until it became, first acceptable and then right that government should assume the responsibility not only for those who could not provide for themselves but also for those who could not provide so well for themselves as others and even for those who could but for a variety of excuses would not accept responsibility for their own welfare.

The WPA—still ridiculed in a time when we are surrounded by far worse—was the forerunner of the present welfare program. Millions take it as a matter of course, theoretically gave something in least the man "on WPA" return.

## Cuban 'Paradise' News

Not many years back Fidel Castro's regime took over in Cuba, and the world was told that "slavery" would be ended for the working people. It would be a "people's paradise."

This week we read from the Wall Street Journal, the following 'cuban note': "A new Cuban law attacks

labor absenteeism, considered a major economic problem. Able-bodied males of working age, except students, face up to two years of forced labor if they refuse to take jobs. A 15-day absence from work draws a similar penalty. "We will uproot idleness," vows the Communist Party newspaper."

A pessimist is a fellow who won't invest in an all-day sucker.

# "PUZZLED" ABOUT A NEW HOME?

## Let One of Pampa's REALTORS Help You Unscramble The Puzzle. "SUPPORT Pampa-It Supports You!"



### Legal Publication

**NOTICE AFFORDING OPPORTUNITY FOR PUBLIC HEARING**  
The Texas Highway Department is planning the construction of proposed P.M. Highway 214 from U.S. Highway 66 at Main Street in McLean County, Texas to the Collingsworth County line in Gray and Donley Counties, a distance of approximately 14 miles.

**EXCELLENT BUSINESS LOT** with 20x30 canopy, 2 bedroom house, 4 stall garage, office building, 2 sets of lights. Will sell with real money making business or will lease building. Call for appointment. 665-4115

**14 Business Services**  
**B - Appliance Repair**  
REPAIR SERVICE on freezers, refrigerators, air conditioners. Call for appointment. 665-8584

**Circle 'S' Appliance Repair**  
ELECTRIC SHAVERS REPAIR 213 N. Faulkner. 665-2027

**D - Carpentry**  
DO YOU need carpenter work? Cabinets and furniture tops. Call for estimate. 665-2027

**PRICE T. SMITH, INC.**  
BUILDER. 665-8158

**H - General Service**  
GARDEN EXTERIOR PAINTING AND LIGHT HAULING. 665-7248

**JOE JOHNSON FENCING**  
"Material & Labor Guaranteed" 665-3479

**FREE TRIMMING AND REMOVAL**  
Service on lawns, shrubs, trees, yard fertilizing. 665-3479

**J - General Repair**  
REPAIRS on typewriters, adding machines, small electrical appliances. Call for estimate. 665-1882

**WEST TEXAS Electric Shaver Repair**  
Dealer 2132 N. Christy, All makes. 665-0957

**N - Painting**  
DAVID HUNTER PAINTING AND DECORATING  
Interior, Exterior, Air Tint MUD-TAPE. 665-5471

**T - Radio & Television**  
GENE & DON'S TV  
Sales and Service. 665-6481

**SALES AND SERVICE**  
RCA WHIRLPOOL  
FLEMING APPLIANCE  
665-3111

**JOHNSON RADIO & TV**  
Motorola - Norge - Westinghouse  
665-3581

**HAWKINS & EDGINS Appliances**  
General cleaning for all kinds of vacuum cleaners. 665-3287

**X - Post Service**  
INCOME TAX SERVICE  
811 N. West Street. 665-6443

**Y - Upholstery**  
BRUMMETT'S UPHOLSTERY  
1918 Alton. 665-7581

**13 Business Opportunities**  
FOR SALE: LEASE or trade due to health. Hi Plains Cafe in White River, Texas. Will lease to people. (Mobile Home Cade). Phone: 665-9251

**ALL SERVICE STATION** Equipment for sale. 1960 Chevrolet 1/2 ton pickup. 665-2488 or 665-2221

**WANTED** operator for well located Shaprock Service Station. Requires small investment. Good equipment. Phone: 665-0241

**FOR RENT or SALE:** Barber Shop at 411 E. Franklin. Contact: Homer McNeil. 665-7221 between 8 a.m. and 4 p.m. week days.

### 13 Business Opportunities

I AM LOOKING for people (males or females) who have been successful in any of these type businesses: Amway, Nutra-Lite, Cosmetics or other multi-level marketing. For appointment call L. M. Cannon in Amarillo. Phone 214-411 Monday thru Friday, 8 a.m. to 5 p.m.

**EXCELLENT BUSINESS LOT** with 20x30 canopy, 2 bedroom house, 4 stall garage, office building, 2 sets of lights. Will sell with real money making business or will lease building. Call for appointment. 665-4115

**14 Business Services**  
**B - Appliance Repair**  
REPAIR SERVICE on freezers, refrigerators, air conditioners. Call for appointment. 665-8584

**Circle 'S' Appliance Repair**  
ELECTRIC SHAVERS REPAIR 213 N. Faulkner. 665-2027

**D - Carpentry**  
DO YOU need carpenter work? Cabinets and furniture tops. Call for estimate. 665-2027

**PRICE T. SMITH, INC.**  
BUILDER. 665-8158

**H - General Service**  
GARDEN EXTERIOR PAINTING AND LIGHT HAULING. 665-7248

**JOE JOHNSON FENCING**  
"Material & Labor Guaranteed" 665-3479

**FREE TRIMMING AND REMOVAL**  
Service on lawns, shrubs, trees, yard fertilizing. 665-3479

**J - General Repair**  
REPAIRS on typewriters, adding machines, small electrical appliances. Call for estimate. 665-1882

**WEST TEXAS Electric Shaver Repair**  
Dealer 2132 N. Christy, All makes. 665-0957

**N - Painting**  
DAVID HUNTER PAINTING AND DECORATING  
Interior, Exterior, Air Tint MUD-TAPE. 665-5471

**T - Radio & Television**  
GENE & DON'S TV  
Sales and Service. 665-6481

**SALES AND SERVICE**  
RCA WHIRLPOOL  
FLEMING APPLIANCE  
665-3111

**JOHNSON RADIO & TV**  
Motorola - Norge - Westinghouse  
665-3581

**HAWKINS & EDGINS Appliances**  
General cleaning for all kinds of vacuum cleaners. 665-3287

**X - Post Service**  
INCOME TAX SERVICE  
811 N. West Street. 665-6443

**Y - Upholstery**  
BRUMMETT'S UPHOLSTERY  
1918 Alton. 665-7581

**19 Situations Wanted**  
SEWING Machine operators needed. Marie Foundations, 80 E. Kingsmill, Pampa. An equal Opportunity Employer.

**WANTED:** RELIABLE babysitter in my home. Must have car. 665-6186

**SEMI DRIVERS**  
We have an urgent need for men and women to drive semi's. Man 1800 hrs. Women 1200 hrs. Experience helpful but not necessary. We train. Earning potential of \$12,000. For more information call: NISBO, Inc. P. O. Box 4211, Amarillo, Texas 79105. Phone 665-2512

### 21 Help Wanted

TEXAS OIL COMPANY needs good men over 40 for short trips surrounding Pampa. Contact Customer. We train. Air mail W. G. Dickerson, P.O. Box 200, Pampa, Texas. Petroleum Corp., Ft. Worth, Texas.

**30 Sewing Machines**  
NELOCO, Necchi, Elna, Dressmaker, New, Used, sewing machines, Vacuum cleaners, Parts, repairs on all makes.

**NOBILITY SEWING CENTER**  
719 W. Foster, Pampa 665-3211

**48 Trees, Shrubby, Plants**  
FRUIT, Walnut, Pecans and shade trees, also Grape vines now at Rice's Feed Store, 522 S. Cuyler, 665-5851.

**FRUIT trees, grapes, shrubs.** Order your stock nursery, guaranteed 3 weeks. See Leroy Thornburg at Farm and Home Supply. Price Red.

**FREE TRIMMING, REMOVAL, SHRUB PRUNING, FREE ESTIMATE, SPRAYING, ALSO TREE DISPOSAL.** J. E. Davis. 665-2653

**BUTLER NURSERY**  
Perryton Hi-Way & 28th 669-9681

**BRUCE NURSERIES**  
Alamogordo, Texas. Phone 773-3177 to plant fruit trees. Large variety of bearing sizes. Suitable to this locality.

**ARCHIE'S ALUMINUM FAB**  
401 E. Craven 665-8766

**PAMPA LUMBER CO.**  
1301 S. Hobart 665-5781

**White House Lumber Co.**  
101 S. Ballard 669-3291

**HOUSTON LUMBER CO.**  
120 W. Foster 669-6881

**54 Farm Machinery**  
FOR SALE: John Deere tractor, Deere drill, Crown tractor, others. A. Hancock Cultivator, Hay Rake, Crown Tractor, John Deere, Case, New, Used, All makes. 216, White Deer, Texas.

**57 Good Things to Eat**  
CHOICE (RAIN-FED) FRESH BEEF. 1/2 lb. plus 6c lb. for processing.

**59 Guns**  
WESTERN MOTEL  
Gun Store now open. Hours 8 a.m. to 9 p.m. 665-3287

**60 Household Goods**  
TEXAS FURNITURE CO.  
210 N. Cuyler 665-1623

**JESS GRAHAM FURNITURE**  
110 N. Cuyler 665-2232

**SHELBY J. RUFF FURNITURE**  
2111 N. Hobart 665-1548

**B & R FURNITURE**  
YOUR MAGAZINE HOME ENTERTAINMENT CENTER  
1413 N. Hobart 665-2228

**WRIGHTS FURNITURE AND MACDONALD PLUMBING**  
101 S. Cuyler 665-3521

**TEXAS FURNITURE ANNEX**  
210 N. Cuyler 665-1623

**JOHNSON RADIO & TV**  
Complete line of furniture and appliances. 665-3541

**LINDSEY FURNITURE MART**  
108 S. Cuyler 665-3121

**69 Miscellaneous For Sale**  
NEW HERITAGE HOUSE  
"Antiques of distinction" 2204 Outlets 662-3684

**CARPET DISCOUNT**  
413 Jupiter 665-2267

**FOR SALE:** Firewood 24' and 18' length Oak and Pine. See M. D. Snider, Price Rd.

**FOR SALE:** 5 sets 16" tubing tongs. All trades. 665-7152. Each. Call 915-352-1342, Odessa.

**DISCOUNT** on new all metal adding machines. Jerry Perry, 949 S. Hobart. Phone 665-2501

### 69 Miscellaneous For Sale

**SLIM-GYM GYM**  
VERLA LONG 665-4153  
TAKE UP payments on 1970 repossessed Kirby and attachments. KIRBY SALES AND SERVICE 512 1/2 S. Cuyler 665-2290

**INCH MASTER**  
Home Exercisers... \$69.90 to \$119.90  
New Slim Gym \$79.95  
Norman Hamilton 665-5641

**GERT'S** a gay girl - ready for a whirl after cleaning carpets with Blue Lighter. Rent electric shampooer. H. Pampa Glass & Paint. 665-21

**70 Musical Instruments**  
FOR SALE: AMP with 6 - 10 inch speakers, rmp and trim. Call 665-5851

**New & Used Band Instruments**  
Rental Purchase Plan  
**Tarpley Music Co.**  
117 S. Cuyler 665-1251

**75 Feeds and Seeds**  
**MASTER FEEDS INC.**  
FEEDS FOR EVERY PURPOSE. 665-4031

**77 Livestock**  
NEW DELUXE 2 horse trailer, new 1/2 top stock trailer, will haul horses and horse truck trailer. Henry Ross 665-8062

**80 Pets and Supplies**  
REGISTERED female Airedale dog 8001 papers, 18 months old. \$78. Call 665-2154 before 10:30 a.m.

**THE AQUARIUM**  
2214 Alton 665-1122

**EWECHERAMI KENNELS**  
Bedington Terriers, Chihuahuas, 429 N. Wells 665-1261

**GROOMING**  
Professional Pet Quality Clips. 605 N. Somerville Ph. 665-3846

**84 Office Store Equipment**  
RENT late model typewriters, adding machines or calculators by the day, week or month. TRI-CITY OFFICE SUPPLY INC. 113 W. Kingsmill 665-5555

**92 Sleeping Rooms**  
New Color TV in Rooms  
WESTERN MOTEL 665-1669

**MURPHY'S DOWNTOWN MOTEL**  
FOR SALE: 113 N. Gillespie MO 9-1126

**95 Furnished Apartments**  
1 LARGER room garage apartment. Carpet, apt. water, paid. \$50 month. Call 665-3258 after noon.

**THREE ROOM furnished apartment.** Hills paid. Call 665-2634

**NEWLY redecorated large 2 room** apartment. Call 665-3258 after noon. See at 415 Hill St.

**THREE large rooms, newly redecorated.** antenna, rear down town. Disposal place others. A. Hancock Cultivator, Hay Rake, Crown Tractor, John Deere, Case, New, Used, All makes. 216, White Deer, Texas.

**PURE, THREE and TWO room** apartments, vented heat. Inquire 665-3055

**96 Unfurnished Apartments**  
GARAGE APARTMENT, 2 Rooms, 2 Bath, garage, 1615 S. Lincoln Ave. Phone 669-2712 or 668-2329

**COUNTRY CLUB TERRACE APARTMENTS**  
1145 E. Harvester

**97 Furnished Houses**  
A WIFE, FURNISHED house with washing machine. Call 665-3705, inquire 519 N. Starkweather.

**TWO bedroom, hills paid, fenced** yard, garage, 1615 S. Lincoln Ave. Phone 669-2712 or 668-2329

**FURNISHED and unfurnished houses** for rent. \$35 month. Phone 665-2915, Lefors, Texas.

**2 BEDROOM** with garage. Carpeted throughout. \$115.00 monthly. Hills paid. Phone 665-5905 or 669-7394

**2 BEDROOM, clean, close-in, store** and bath, like new. No pet. Couple. \$15. Phone 665-2342.

**NICE clean, 2 bedrooms, 2 1/2** W.C. 1415 W. Kingsmill. Inquire 1116 Bond.

**ONE BEDROOM furnished house.** Call 665-3224 or 669-6668.

**1 BEDROOM furnished modern house.** 2 1/2 baths, 2 car garage. Call 665-3224 or 669-6668.

**98 Unfurnished Houses**  
2 BEDROOM, 1 1/2 baths, 2217 N. Somerville. Call 665-3224 or 669-6668.

**2 BEDROOM** garage, redecorated, fenced yard, 2 1/2 baths, plumbed for washer and dryer. \$125 per month. 2299 N. Somerville. Call 665-3224 or 669-6668.

**2 BEDROOM** central heat, carpeted, fenced yard 1012 S. Christy. \$65 month. Genevieve H. 665-2523 or 665-1209

**2 BEDROOM unfurnished house.** 725 Lefors. \$45 month. 665-2217.

**2 BEDROOM** plumbed for washer and dryer, attached garage. close-in. 665-5185

**VERY NEAT 2 bedroom house.** North Pampa. \$100 month. Call 665-3472.

### 98 Unfurnished Houses

**2 BEDROOM** carpeted, fenced and garage. wired. Call 665-1206

**2 BEDROOM** with garage, fenced yard, plumbed for washer and dryer. TV antenna, 2129 Hamilton, 665-7322 or 665-2252

**2 BEDROOM, fenced yard, TV antenna,** plumbed for washer. 609 Doucette. Call 669-2524

**SMALL 2 BEDROOM house.** \$50.00 monthly. 217 S. Houston. Phone 665-8766 or 665-2129

**TWO bedroom** with garage, fenced yard. \$70 month. 505 Doucette, 665-6521.

**100 Rent, Sale or Trade**  
Two 1/2 bedrooms. Several 2 bedrooms. Fenced yards, washer, dryer connections. Call 669-9817 or 669-2357.

**102 Bus. Rental Property**  
FURNISHED OFFICE 211 N. Ballard. Deluxe suites and singles, apply B & B Pharmacy.

**OFFICE SPACE** for rent at 827 W. Harvester. For packing, central heat and air. 669-6962.

**103 Homes For Sale**  
NEWLY FINISHED 3 and 3 bed room FHA houses. total move-in. Call MANDA DUNHAM, FHA-VA Sales Broker. 669-2129.

**KRIP TRIN-AGERS HAPPY** with a beautiful green room. You love having A.L.D. the space in this 2 story colonial style home. 3 bedrooms, den-kitchen and bathroom. stucco living room. MLS 362

**NICE COUNTRY** just moved in living room and all 3 bedrooms of this older home. Owner also painted inside and put new cabinet, floor covering in kitchen. Just 1/2 mile from school. Call 665-2129

**TRY US** on these modest 2 and 2 1/2 bedroom homes. MLS 154 412 Crest Street MLS 454 1137 W. Kingsmill MLS 352 COMMERCIAL BRICK BUILDING size 25'x50' with 125x125 addition on back side. Lowest priced. Owner will carry paper for good buyer. MLS 514C.

**Hugh Peoples Realtors**  
FHA AREA BROKER

For Hagaman... 665-2130  
O. K. Oyster... 665-3533  
Ruth Paecher... 665-7111  
FOR SALE... 665-2124  
Norma Ward... 665-3545  
Ala Breakeale... 665-7523  
219 W. Francis Office... 669-3246

**REDUCED EQUITY** on attractive 3 bedroom home with 2 1/2 baths. Assume owner's original loan of 5 1/2% or take new FHA loan with low back side. Lowest priced. Owner will carry paper for good buyer. MLS 514C.

**GIVE THAT CAR AWAY!** You won't need it living in this 2 bedroom home. Call 665-2129

**RENTAL NICE 1 room apartment.** carpeted, all utilities paid, off street parking, no children or pets. Inquire 665-3258

**PURE, THREE and TWO room** apartments, vented heat. Inquire 665-3055

**96 Unfurnished Apartments**  
GARAGE APARTMENT, 2 Rooms, 2 Bath, garage, 1615 S. Lincoln Ave. Phone 669-2712 or 668-2329

**COUNTRY CLUB TERRACE APARTMENTS**  
1145 E. Harvester

**97 Furnished Houses**  
A WIFE, FURNISHED house with washing machine. Call 665-3705, inquire 519 N. Starkweather.

**TWO bedroom, hills paid, fenced** yard, garage, 1615 S. Lincoln Ave. Phone 669-2712 or 668-2329

**FURNISHED and unfurnished houses** for rent. \$35 month. Phone 665-2915, Lefors, Texas.

**2 BEDROOM** with garage. Carpeted throughout. \$115.00 monthly. Hills paid. Phone 665-5905 or 669-7394

**2 BEDROOM, clean, close-in, store** and bath, like new. No pet. Couple. \$15. Phone 665-2342.

**NICE clean, 2 bedrooms, 2 1/2** W.C. 1415 W. Kingsmill. Inquire 1116 Bond.

**ONE BEDROOM furnished house.** Call 665-3224 or 669-6668.

**1 BEDROOM furnished modern house.** 2 1/2 baths, 2 car garage. Call 665-3224 or 669-6668.

**98 Unfurnished Houses**  
2 BEDROOM, 1 1/2 baths, 2217 N. Somerville. Call 665-3224 or 669-6668.

**2 BEDROOM** garage, redecorated, fenced yard, 2 1/2 baths, plumbed for washer and dryer. \$125 per month. 2299 N. Somerville. Call 665-3224 or 669-6668.

**2 BEDROOM** central heat, carpeted, fenced yard 1012 S. Christy. \$65 month. Genevieve H. 665-2523 or 665-1209

**2 BEDROOM unfurnished house.** 725 Lefors. \$45 month. 665-2217.

**2 BEDROOM** plumbed for washer and dryer, attached garage. close-in. 665-5185

**VERY NEAT 2 bedroom house.** North Pampa. \$100 month. Call 665-3472.

### 103 Homes For Sale

**LUTHER GISE**  
VA-FHA SALES BROKER 669-3564  
215 Hughes Bldg.

**J. E. RICE Real Estate**  
712 N. Somerville  
Phone 662-2301

**MALCOLM DENSON REALTOR**  
MEMBER OF MLS  
Office 665-8325 - Res. 669-6443  
Joe Shelton 669-2265  
Carl Sexton 669-2776

**FLASHER ADDITION:** Equity in 2 bedroom brick, 5 1/2 bath, carpeted, electric kitchen, 1254 sq. ft. living area. Redwood total price \$53,988. Payments \$116. Will take boat, motorcycle, or camping trailer on trade. 2211 Louwood, 669-6821

**EAST FRASER ADDITION**  
Attractive tri-level 3 bedroom home. 2 1/2 baths, air conditioned, fireplace, electric kitchen. Excellent condition. \$21,999 with low trade. 2211 Louwood, 669-6821

**CHRISTINE STREET**  
Custom built 2 bedroom and den. Has everything, brick fireplace, electric kitchen and many other features. Very reasonably priced.

**NEAR WILSON SCHOOL**  
Extra, large 3 bedroom and den, garage, and storage building. Good condition. \$11,500. MLS 352

**NEAR HIGH SCHOOL**  
3 bedroom furnished home with 1 1/2 baths. This is a bargain at \$12,900. MLS 388  
FHA & VA Sales Brokers

**WILLIAMS REALTORS**  
Al Schneider 669-7857  
Francis Terrett 669-2375  
Margen Brantley 669-2448  
665-2902  
Marge Followell 665-5666  
Betty Gutter 665-3229  
669-8866  
Bonny Walker 669-6244  
C. Henderson 669-1986  
771-A Hughes, 669-2822

**FOR SALAR BY OWNERS:** 2 bedroom, 2 1/2 bath, fenced back yard. Call 669-7252 for appointment.

**H. W. WATERS REALTOR**  
MEMBER OF MLS  
Office 665-2331  
L. W. Waters Res. 669-6616

**DUPLEX** with partially finished garage apartment. Fenced yard. Fully furnished. North Gray. \$1250. Call 665-3252.

**NICE 2 and 3 bedroom homes,** carpeted, garage, central air conditioning. E. R. SMITH REALTY

"WHERE YOU ALWAYS BUY THE BEST FOR LESS"

# GIBSON'S DISCOUNT CENTER

Open Daily 9 AM to 9 PM — Closed SUNDAY

Sausage Flavorite **2<sup>LBS</sup> 59<sup>c</sup>**



Bar-S Bacon **59<sup>c</sup>** lb.

**BEETS**  
 Richelieu 303 Can **13<sup>c</sup>**

**Bar-S WIENERS**  
 All Meat WIENERS **55<sup>c</sup>** Lb.

Wright's Bologna **59<sup>c</sup>** lb

Spanish Peanuts Keeling **\$2<sup>21</sup>** 5 1/2 lb. Can

Miracle White Bleach 16 oz. **29<sup>c</sup>**



Richelieu Raggedy Ann PEACHES 303 Can **2<sup>5</sup> 47<sup>c</sup>** FOR

Texize Fluff Laundry Rinse gal. **81<sup>c</sup>**

GIBSON'S **R<sub>x</sub> pharmacy**  
 SAVE ON PRESCRIPTIONS  
 PHONE 669-6896

Corn Popper **\$3<sup>99</sup>**  
 Presto Model CP4W

Sunbeam Model ATI-HS **2 Slice Toaster \$14<sup>99</sup>**

Professional Hair Dryer **\$16<sup>99</sup>**  
 PRESTO Model HD-P2

Rally Liquid Wax 18 oz. **\$1<sup>39</sup>**

Car Handi-Bin **79<sup>c</sup>**

Eagle Claw No. EC88B Spin Casting Reel **\$14<sup>99</sup>**

Ray-O-Vac "Night Hawk" Lantern **\$2<sup>99</sup>**  
 NO 1 L400

Men's Remington Lectro 6 Electric Shaver **\$19<sup>97</sup>**  
 Reg. \$29.95

Westclox Conductor Pocket Watch **\$7.97**  
 Reg. 12.95

Ronson Comet Butane Lighter **\$3.97**  
 Reg. \$6.95

17 Jewel Waltham Man's Watch **\$15<sup>97</sup>**  
 Retail \$40.00

## HONESTABLE VALUES SPECIAL BORDEN'S ICE CREAM

IN THE NEW ROUND CARTON

Time - Release **BAYER ASPIRIN \$1<sup>19</sup>** 72's

**Pertussin PLUS** Night Time Cold Medicine **\$1<sup>19</sup>** 8 Oz.

**TONI** Home Permanent Regular or Gentle **\$1<sup>39</sup>**

Toothpaste **59<sup>c</sup>**  
 Macleans Family Size



These Prices Good Thurs., Fri., & Sat.

**Moroline** White Petroleum Jelly **41<sup>c</sup>** lb

**NOXZEMA** Skin Cream 16 oz. **\$1<sup>29</sup>**

**Dristan Tablets** 24's **87<sup>c</sup>**

**DERMA FRESH** Medicated Skin & Body Conditioner Hand Conditioner **59<sup>c</sup>** 6 Oz.

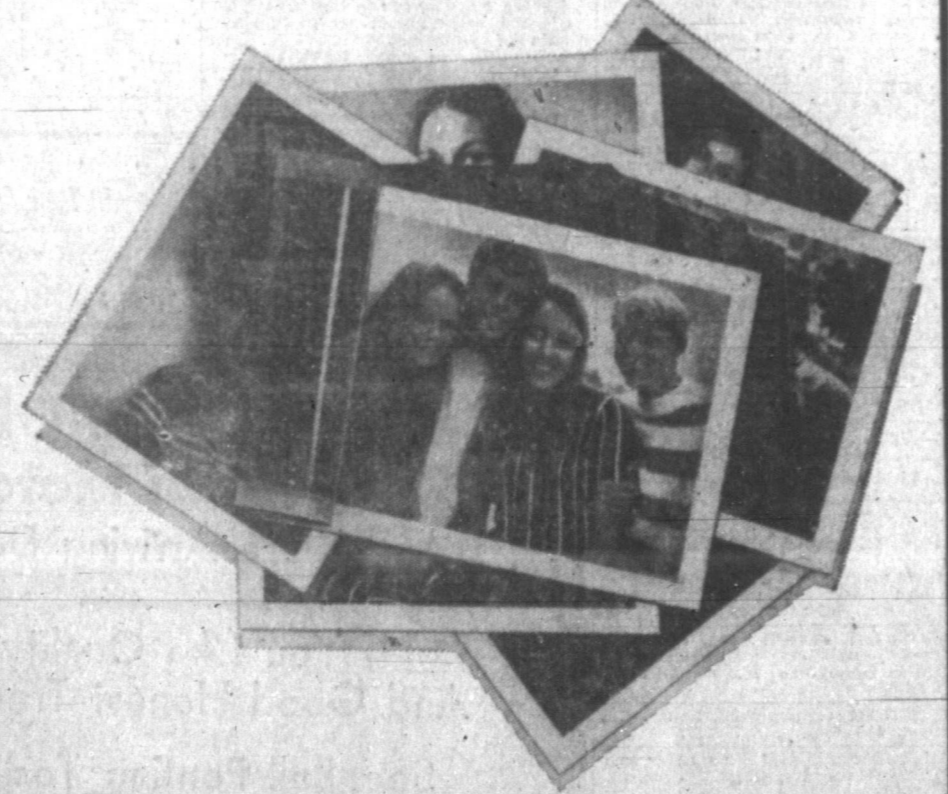
**Polident Powder** 11c off Label **77<sup>c</sup>**

**Miss Clairol Shampoo Formula** **\$1<sup>49</sup>** Hair Coloring

**Breck Shampoo Concentrate** 4 oz. Tube **43<sup>c</sup>**

**Mennen Baby Magic** 16 Oz. **\$1<sup>19</sup>**

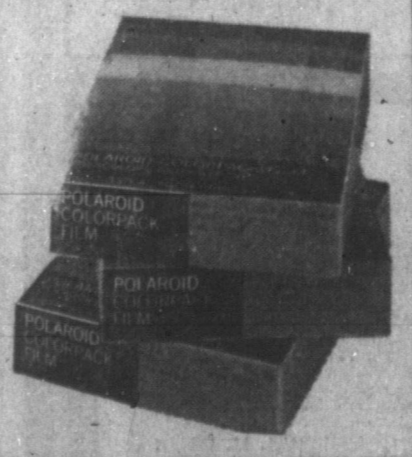
**8 Free Polaroid instant pictures on us.**



Buy 3 packs of Colorpack Land film. \$3.97 per pack. Get a free pack of Polaroid Type 107 B&W film.

During this special offer you can take eight extra black and white shots absolutely free — when you buy 3 packs of Polaroid's Type 108 color film. Get your free pack when you buy your Polaroid color film. And have some free fun soon.

Offer Ends Sat. Feb. 13, 1971



VOL. 3  
 2  
 W  
 Lik  
 TEHR  
 10 big  
 tries of  
 west's  
 called i  
 What  
 sides m  
 describ  
 session  
 Apol  
 Hom  
 SPAC  
 (UPI)—  
 moon pi  
 boistero  
 families  
 gave a  
 flight of  
 the as  
 nagging  
 "It's  
 back b  
 many  
 pened o  
 weren't  
 have be  
 B. Shepa  
 der of a  
 ful luna  
 Shepa  
 Edgar  
 in a qu  
 big jet  
 nearby  
 Base at  
 glass  
 barrier  
 enthusia  
 The  
 broad g  
 was un  
 and mo  
 stand c  
 children  
 All t  
 husband  
 lous, v  
 Roosa.  
 said  
 Louise  
 band "  
 he left  
 Jan. 31  
 The  
 remain  
 million  
 tory he  
 because  
 might  
 organis  
 They e  
 quarant  
 a.m.  
 In  
 laborat  
 prepar  
 rocks  
 Mor  
 To C  
 A s  
 gomery  
 Federat  
 accusat  
 retailin  
 d e c e  
 violated  
 law, w  
 its Chic  
 Jim S  
 P a m p  
 retail o  
 telegra  
 Ashley  
 presid  
 Montgo