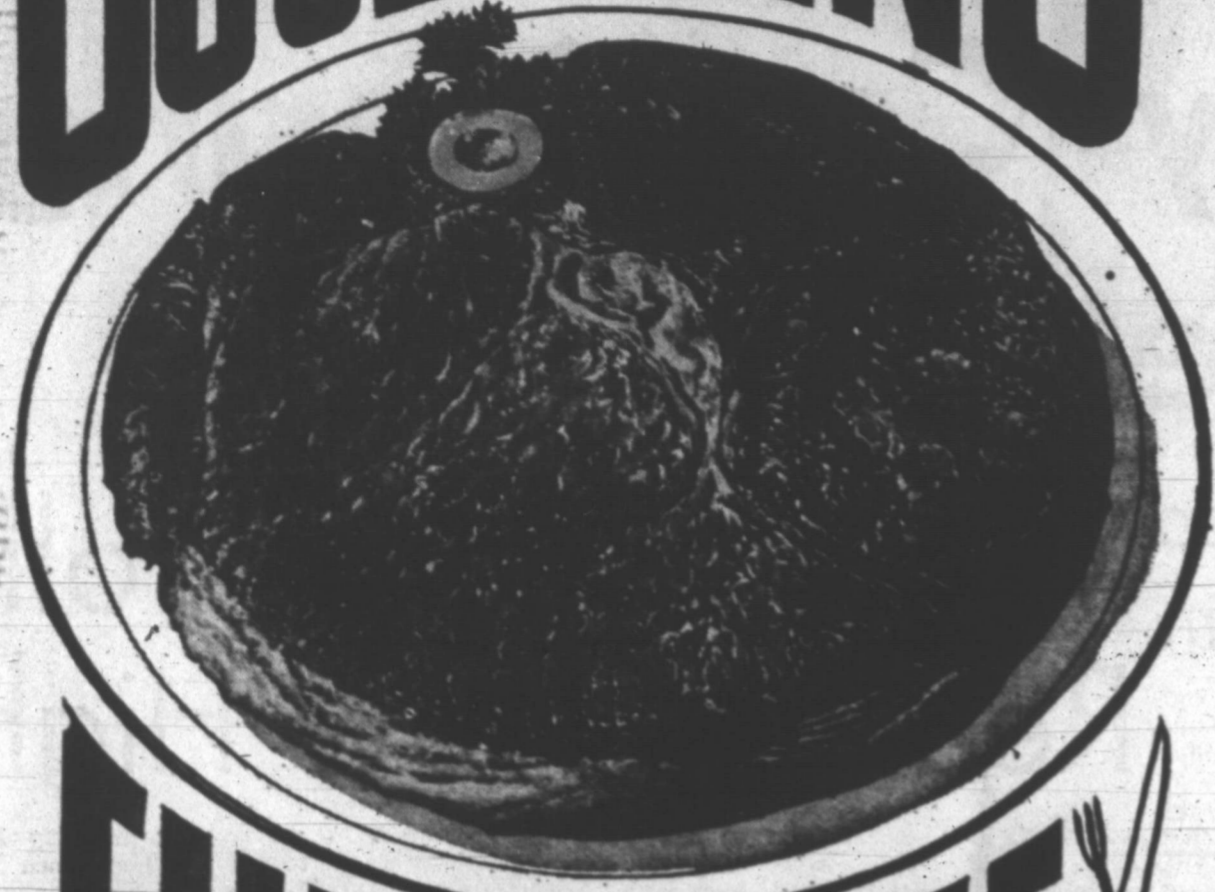


GOOD EATING



FURR'S BEEF

CHUCK ROAST USDA Choice Beef 49¢ lb.

CHUCK ROAST
Boneless
USDA Choice
Beef lb. **79¢**

SLICED BACON
Roth Black
Hawk or
Farm Pac lb. **69¢**

USDA Choice Beef, No Waste
CUTLETS lb. **\$1.19**

Farm Pac
BISCUITS **3 FOR 25¢**

HONEY SUCKLE SLICED TURKEY
And Gravy 2 Lb. **\$1.89**
Pkg.
Honey Suckle **2 1/2** Lb. **\$2.98**
TURKEY ROAST Roll

WIENERS
2 lb. pkg. **69¢**
Picnic Pack

Family Pac, or Top o' Texas Quality
BACON **2** lbs. **\$1.39**

Virginia Reel
SAUSAGE **2** lbs. **\$1.49**

We Reserve The Right To Limit Quantities



DOG FOOD ALERT

6¢ tall can

TISSUE

39¢ Delsey 4 Roll Pkg.



GUM Wrigleys Assorted 3 for 10¢

COFFEE Maryland Club or Chase and Sanborn lb. **69¢**

COFFEE Food Club lb. **67¢**

EGGS Farm Pac Grade A Medium dozen **45¢**

TIDE

Giant Size **69¢**
Includes off Label

"FURR'S FRESH FROZEN FOODS"

PIES 12 1/2¢
Pot Pies, Chicken
Beef or Turkey
Spare Time
Pkg.

Minute Maid Orange Juice 4 Oz. Can **19¢** 12 Oz. Can **37¢**

OLEO Blue Bonnet 2c Off Label lb. **29¢**

Mortons Cream Pies Fresh Frozen Assorted Flavors pkg 3 for 1.00
Libbys Assorted Drinks Fresh Frozen 6 oz can 11c
Pizza Dining In Fresh Frozen 12 1/2 pkg 49c
Broccoli Spears Top Frost Fresh Frozen 10 oz pkg 23c



BEGINNING SUNDAY, JANUARY 29, 1967

FURR'S WILL BE CLOSED ON SUNDAYS

"FURR'S FRESH PRODUCE PLEASERS"

TANGERINES CALIF. SUNKIST lb. **19¢**

GRAPEFRUIT Texas Ruby Red 5 Lb. Bag **39¢**

SOUP Campbells

Meat Varieties	2 No. 1 Cans	33c
Vegetables Tomato Varieties	2 No. 1 Cans	25c
	No. 1 Can	10c

MARGARINE Blue Bonnet Soft lb. **39¢**
38 oz bottle

CRISCO OIL Includes 8c Off **79¢**

"FURR'S GENERAL MERCHANDISE"

TOWEL 3 Piece Printed Terry Kitchen Set by Morgan Jones **99¢**

DISH CLOTHS **99¢**

CANNON KNITTED, 15 IN A PKG. **99¢**

Disdrainer & Drainboard asst. colors **99¢**

Shower Valet 98c value **59¢**

Economical Buys AT **FURR'S**

Wash Cloth Morgan Jones, 2 in a pkg **29¢**

- Snacks Daisies, Bugles or Whistles box choice 3 for \$1
- Chili, Wilsons with Beans No. 300 can 29c
 - Prune Juice, Sunsweet qt. 2 for 89c
 - Cake Mix Swansdown, Ass't. Layer pkg. 29c
 - Tomato Juice Hunts No. 300 can 10c
 - Seven Up Reg. or King size 6 btl. ct. plus dep. 39c
 - Black Pepper Food Club 4 oz. can 35c
 - Aluminum Foil Diamond 25 ft. roll 23c



Col
Spe
Rot
Count
explain
tions o
sion Se
Pampa
group's
ing yes
Inn.
He sa
vice ca
more b
and pr
al serv
agricu
Whale
that th
er farm
these
less m
there v
therefo
tion."
"Only
survive
cluded.
Pami
Inst
Pami
new of
held a
mans'
New
Shrine
VanSh
Blake

133
USD
Fite'
Feed
P
Fres
Lea
Ten
P
Fres
Ten
BE
• Fu
chi
L
Gru
Nest
Reg
Di
Del
Chu
Reg.
TI
N
Shu
5
Sho
3
Del
C
U.S.
1
Sar
C
Reg

COOK'S TOUR

By JEANNE LESEM
UPI Food Editor

HOUSTON — "Diamond Jim" Brady would have loved it. The grand scale of the restaurants at the Astrodome sports stadium here compares with those patronized by Brady and other big spenders of the Gay Nineties.

The decor of the three public and two private restaurants in the huge stadium reflects periods from 500 B.C. through the 19th century and into the space age.

The menus are somewhat less comprehensive, although they do range from old-fashioned southern and western favorites like fried pork chops, turnip greens, black-eyed peas, sweet potato pie, barbecue and ranch-style beans to breast of pheasant prepared Japanese-style or modern electric hibachi grill.

These foods are on regular menus. Special orders that call for such ingredients as fresh black truffles and Italian lentils take a little longer — three days, by air from Europe.

James C. Volpe, the Philadelphia-born executive chef who doubles as catering, club and restaurant manager, wouldn't say how many of the Astrodome Club and Skydome Club mem-

bers bypass his steak, game, barbecue and seafood specialties for fancier European fare. But he expressed willingness to fix any meal in any language, given enough time to import the necessary ingredients.

Interviewing Volpe was a little like running a four-minute mile over a steeplechase course. We began at the 2,000-seat - Domeskeller, under the centerfield pavilion. The largest restaurant in the stadium, it's one block short of a mile in length. The Domeskeller is used for private parties of 100 and up, and can serve as many as 10,000 at a time for a stand-up party, says Volpe.

The menu features mainly German, picnic and barbecue foods, including knockwurst and sauerkraut, sandwiches, pizza and corn dogs, which are skewered hot dog fried in corn meal batter.

Southern and ranch-style fare dominates the menu of the Countdown Cafeteria, the only restaurant open daily. The remainder and the 49 concession stands in the stadium proper operate only during sports events.

Specialties of the Trailblazer Restaurant, also open to the public, include shrimp creole, ranch-style beans, Cajun rice (saffron rice), sour dough bread and son-of-a-gun stew made with beef and buffalo meat.

The regular menus of the private clubs feature, not surprisingly, a wide choice of steaks; rainbow trout; lobster tails; boned, stuffed Cornish game (See COOK'S, Page 5)

Make Cake With Fresh Orange Flavor



"NOTHIN' TO IT ORANGE CAKE" — This delicate cake topped with "You Can Do It Orange Icing" — both featuring the delightful fruit flavor of fresh oranges, should be served to your family often.

Lamb, Combined With Vegetables Stars in Savory Refined Stew

There was a time when stew consisted of large, uneven pieces of meat and whatever vegetables you happened to have on hand.

But lamb stew has become refined. The meat in this particular lamb stew, is cut by the retailer in even-sized boneless cubes measuring about one and one-half inches square, says Reba Staggs, meat expert.

Vegetables number five and they're chosen carefully for flavor, color and texture interest. Just imagine the lovely combination which uses tomatoes to combine with the rich brown of autumn lamb, pale green zucchini circles, green pepper strips, green beans and golden carrots.

LAMB STEW
2 pounds boneless lamb for stew, cut into 1-inch cubes
3 tablespoons lard or drippings

1 can (11 pound 13 ounces) tomatoes or 6 medium-sized fresh tomatoes, cut in wedges
1 cup coarsely chopped onion
2 teaspoons salt
1/4 teaspoon pepper
1/4 teaspoon thyme
1 teaspoon paprika
2 bay leaves
2 carrots, cut into 1-inch pieces
1 green pepper, cut into 1/2-inch strips
1/2 pound green beans, cut into 1-inch slices

3 small zucchini squash, cut into 1-inch slices

Flour for gravy
Brown meat in lard or drippings. Pour off drippings. Add tomatoes, onion, salt, pepper, thyme, paprika and bay leaves. Cover tightly and cook slowly 1 hour. Add carrots, cover and continue cooking 30 minutes. Add green pepper, green beans and zucchini and continue cooking about 30 minutes or until meat and vegetables are done. Discard bay leaves. Thicken cooking liquid with flour for gravy, if desired. 6 to 8 servings.

Cook artichokes in boiling salted water to which you've added some lemon juice or vinegar to preserve the 'chokes color and a little oil to make the leaves glossy. For 4 artichokes use 2 tablespoons of oil.

Read The News Classified Ads

FAT OVERWEIGHT

Available to you without a doctor's prescription, our product called Odrinex. You must lose ugly fat or your money back. Odrinex is a tiny tablet and easily swallowed. Get rid of excess fat and live longer. Odrinex costs \$1.00 and is sold on this guarantee: If not satisfied for any reason, just return the package to your druggist and get your full money back. No questions asked. Odrinex is sold with this guarantee by: Richard Drug, 111 N. Caylor, MAIL ORDERS FILLED

Ellis
CORNED BEEF HASH

B&B SPECIALS

Coupon

Welcome Door
Mat All Rubber **39¢**

Coupon

Reg. 1.29 H.P.V. Red Arrow
VITAMIN "C" 250 mg. **79¢**

Coupon

Reg. 1.49 B&B Pharmacy
HAIR SPRAY **49¢**

Coupon

8¢ Cough Syrup
FORMULA "44" **57¢**

Co

Reg. 1.00 Nose Drop
Privine **59¢**

B&B PHARMACY
MO 5-5788
Ballard of Browning
S&H GREEN STAMPS
Mail Order Redemption Service

"Nothin' To It Orange Cake" is the tasty outcome of a modern new consumer packaging concept just unveiled by the Fast Milling Co., Sherman, makers of Gladiola Flour.

Color is the keynote, and flavor is the result. . . while professional designers created colorful new package designs, a staff of culinary experts developed a new series of "Nothin' To It" recipes.

There's no doubt about it, until now, flour packages have been rather dull and uninteresting. But now, with gay pastel-colored packages and a delightful collection of new recipes, the makers of Gladiola have added an imaginative touch to flour packages which they feel will add sparkle and zest to meal planning.

"NOTHIN' TO IT ORANGE CAKE"
2 cups sugar
1 cup butter or shortening
4 eggs
1 tablespoon grated orange rind
1 cup buttermilk
1 teaspoon soda
3 cups sifted flour

Cream shortening and sugar. Add eggs, one at a time, beating after each addition. Add grated orange rind and soda to milk, and blend. Add alternately with flour to creamed mixture. Bake in greased loaf or 9" x 5" pan at 350 degrees until well done (Abt. 45-43 minutes).

"YOU CAN DO IT ORANGE ICING"
1/2 cup butter or margarine
1 tablespoon white corn syrup
1 (1 lb.) box powdered sugar, sifted
1 tablespoon grated orange rind
2 tablespoons orange juice

Blend ingredients until smooth. Add additional orange juice if necessary to maintain desired consistency.

Food Buying Guide
EDITORS: The following guide as the nation's food shopping buys for the coming weekend was prepared by the U.S. Department of Agriculture and Interior for United Press-International.

WASHINGTON (UPI)—Shoppers will probably find in most areas, meat supplies: pork, beef and lamb, are in good supply and reasonably priced. Specifically, rib and chuck roasts are in good supply. Also ground beef, pork bacon, chops, loin roasts and smoked picnic are plentiful.

Lamb, either legs or chops, is available in most sections of the country.

All the meat and poultry you buy should carry USDA inspection and grading marks—to show that the products are wholesome and of the quality you expect. Experts in USDA's consumer and marketing service perform these services.

Reports show that eggs are holding steady in price as well as in quantity. Look for them at your local market. The USDA grade shield is your best guide to size and quality.

Fruits available in plenty are: Apples, grapefruit, grapes, oranges and pears.

Vegetables in good supply are: Carrots, celery, peaches and tomatoes.

Your family deserves the BEST

GET IT HERE!

Shurfine Salad Dressing Qt. 39¢	Choice Beef ROUND STEAK 89¢
Chicken SOUP 33¢	FRESH GROUND BEEF 3 Lbs. \$1.00
Noodle or Rice	FOOD KING Sliced BACON lb. 49¢
Hi-C 46 or can	Market Made LEAN CHILI lb. 69¢
Fruit Drink 3 FOR 89¢	Lean Tenderized Steak 98¢ lb
BAKE-RITE Shortening 3 lb. Can 59¢	Fresh PORK STEAK 45¢ lb
Wolf, No Beans	Grade A Whole FRYERS lb 29¢
CHILI 59¢	Choice Beef Chuck Roast .. lb 49¢
SHURFINE COFFEE 67¢	Flavor Wright BACON 2 lbs \$1.19
SHURFRESH EGGS Grade A Med. Doz. 49¢	Fresh PORK ROAST lb 39¢
Shurfresh OLEO 5 lbs 1.00	Flavor Wright Pork Sausage 2 lb. Bag 79¢
Shurfresh BISCUITS 12 cans 1.00	
PREM Swift 12 Oz. Can 49¢	
FOIL Viking 25 Ft. 2 For 49¢	
* PRODUCE *	
Red Potatoes 10 lbs 49¢	
Cello CARROTS 2: 19¢	
Calif. LETTUCE lb 25¢	
Vine Ripe TOMATOES basket 29¢	
AVOCADOS ... 2 for 19¢	
Frozen Food	
Patio Mexican Style DINNER ea. 39¢	
Morton MEAT POT PIES ea. 17¢	
Milme Maid 12 oz can ORANGE JUICE ea. 39¢	
Tender Crust Bread 1 1/2 lb Loaf 19¢	Northern Tissue 4 roll pak 33¢
Shurfresh 303 can MACARONI 49¢	Purex 1/2 Gal. 29¢
Shurfine 303 can Sauer Kraut 2 for 33¢	
Shurfine 8 oz cans Tomato Sauce 4 for 49¢	
Hints 46 or can Tomato Juice 29¢	
Gladiola Flour 5 lb. Bag with coupon on page 49¢	
Van Camp VIENNA SAUSAGE 5:51	
Bama 18 oz jar PEANUT BUTTER 49¢	
Shurfine 18 oz jar Strawberry Preserves 49¢	
Holly or Imperial SUGAR 5 lbs 49¢	
Roxey tall cans DOG FOOD 6 for 49¢	
Arrow PINTO BEANS 4 lb bag 47¢	

HOM'S FOODS
We Give Buccaneer Stamps—Double Wed. With \$2.50 or More Purchase
421 E. FREDERIC OPEN 7 DAYS A WEEK MO 4-8531
LIMIT RIGHTS RESERVED

Onio
Mak
For V
Contra
texture
in the
tions.
There
this in
onion s
flavor b
served
hydrated
definite
quite pr
Only
constitu
braising
out me
Staggs. V
2 pou
cut
1-3 cup
1 teas
1/4 tea
1/4 cup
1 pac
2 cup
2 Comp
per. Dr
soned f
maining
steaks.
Pour of
ion sou
add
tightly
or until
from fr
Add re
ring co
Gre
For
By
News
Sweet
everyon
call the
pepper
"bull-n
pepper
Middle
Some
pepper
In th
ure, t
ored pe
refrige
50 deg
bag, s
drops
ing.
HEA
green
vides
day, 1
too, 1
minera
per m
be use
1 po
1 tea
1/4 tea
1/4 tea
2 tab
2 tab
4 du
4 du
1 cu
2 cu
1 fl
2 tab
Com
per. C
Shape
in flo
Add
rings
boulle
until
about
ing fl
smooth
til gra
ness.
Four
● (Co
bens,
en.
Fou
course
dome
and
room
club
their
on ec
the 53
per ri
Chi
and
Hot
Let
brush
soap
Wh
patte
water
stick
Rea

Onion Soup Mix Makes the Gravy For Veal Steak

Contrast in both flavor and texture plays an important role in the choice of food combinations.

There's a good example of this in these veal steaks with onion sauce. The veal is mild in flavor but firm in texture. It is served with onions from a dehydrated soup mix which are definitely soft in texture but quite pronounced in flavor.

Only one-half cup of the reconstituted soup is used for braising the veal steaks, points out meat authority, Reba Staggs.

VEAL STEAKS IN ONION SAUCE

- 2 pounds veal round steak, cut 3/4-inch thick
 - 1-3 cup enriched flour
 - 1 teaspoon salt
 - 1/4 teaspoon pepper
 - 1/4 cup lard or drippings
 - 1 package (1 1/2 ounces) dehydrated onion soup
 - 2 cups boiling water
- Combine flour, salt and pepper. Dredge veal steaks in seasoned flour. Reserve any remaining flour for gravy. Brown steaks in lard or drippings. Pour off drippings. Dissolve onion soup in boiling water and add cup to steaks. Cover tightly and simmer 1 1/2 hours, or until tender. Remove steaks from frying-pan. Stir in flour. Add remaining soup. Cook, stirring constantly, until thickened. Serve with steaks. 6 servings.

Green Peppers For Zesty Dish

By GAYNOR MADDOX
Newspaper Enterprise Assn

Sweet green peppers appeal to everyone, no matter what you call them. They are called "bell peppers," "green peppers," "bull-nose peppers," "pimento peppers," and in parts of the Middle West "mango peppers." Some think of them as "salad peppers" or "stuffing peppers."

In the market look for mature, thick-fleshed, brightly colored peppers. Store them in the refrigerator at between 40 and 50 degrees. Keep in a plastic bag, sprinkled with just a few drops of water to prevent wilting.

HEALTH NOTE: One medium green pepper, eaten raw, provides enough vitamin C for one day. They have vitamin A, too, and other vitamins and minerals, and only 14 calories per medium pepper. They can be used in low-sodium diets, too.

GREEN PEPPERS with BEEF BALLS

- 1 pound ground lean beef
- 1 teaspoon salt
- 1/4 teaspoon ground black pepper
- 1/2 teaspoon celery salt
- 1/2 teaspoon minced garlic
- 2 tablespoons all-purpose flour
- 2 tablespoons shortening
- 4 cups sliced green peppers
- 1 cup onion rings
- 2 cups beef bouillon
- 1 tablespoon all-purpose flour
- 2 tablespoons cold water.

Combine beef with salt, pepper, celery salt and garlic. Shape into 12-inch balls. Roll in flour and brown in shortening. Add green peppers and onion rings and brown lightly. Add bouillon. Cover and cook slowly until beef balls are tender, about 15 minutes. Mix remaining flour with cold water to a smooth paste. Add and cook until gravy is of medium thickness. Serve hot with potatoes. Four servings.

COOK'S (Continued From Page 4)

hens, and southern fried chicken.

Four Japanese-style main courses are served in the Skydome Club's hibachi grill room and a special hors d'oeuvre room service is available for club members who prefer to do their eating and game-watching on closed circuit television from the 53 private boxes at the upper rim of the stadium.

Chili sauce stains? Sponge and cleanse with cold water. Hot water will set the stain. Let mud stains dry. Then brush off before washing with soap and water.

When preparing hamburger patties moisten hands with cold water to prevent the meat from sticking to hands.

IDEAL FOOD STORES

Better Food For Less
Prices Effective Thru Sat., Jan. 21, 1967. Limit Rights Reserved.

NOW! ... ADD THE CASUAL CHARM OF Town'n Country STONEWARE

DINNERWARE

ON IDEAL'S "PIECE-A-WEEK" PLAN



SPECIAL THIS WEEK - REGULAR 69c
COFFEE MUG ONLY 19c With Each 7.50 Purchase
2 FOR 38c WITH A \$15.00 PURCHASE, ETC.

YOUR CHOICE OF 17 LOVELY COMPLETE PIECES, EACH AT LOW DISCOUNT PRICES. SEE THEM ON DISPLAY TODAY AT IDEAL.

FREE!

HAND PAINTED FIGURE OF OUR 6TH PRESIDENT...

JOHN QUINCY ADAMS

With 2nd week coupon from your Ideal Mailer and \$5.00 or more purchase.

You may also purchase figures of Presidents Jackson, Van Buren, W. Harrison, Tyler and all earlier Presidents for only 19c each.

- ENRICHED Gold Medal Flour 25-Lb. Bag \$2.49
- IMITATION MAPLE Karo Syrup 24-Oz. Btl. 49c
- JELLO PUDDINGS AND Pie Fillings 3 3-Oz. Pkgs. 29c
- FOREMOST Instant Breakfast 1 Pkg. Of 8 69c
- ALLEN'S CUT OR WHOLE Sweet Potatoes 2 303 Cans 29c
- DOG FOOD Gaines Prime 36-Oz. Pkg. 39c
- SPECIAL LABEL Ad Detergent Giant Pkg. 79c
- SPECIAL LABEL Fab Detergent Giant Size 79c
- SPECIAL LABEL Vel Liquid 22-Oz. Plastic 52c
- SPECIAL LABEL DETERGENT Cold Power Liquid 64-Oz. Plastic \$1.49
- SPECIAL LABEL Action Bleach Giant Size 79c
- FOR THE KIDDIES Soaky Fun Bath Large Size 69c
- POWDERED Vel Detergent Giant Size 33c
- AJAX Liquid Cleaner 28-Oz. Btl. 59c
- LARGE Ajax Cleanser 2 Cans 35c
- FLORIENT Air Freshener Can 59c
- AJAX Laundry Detergent Giant Size 79c

SAVE ON THE "BIG BRANDS" AT IDEAL!



WE GIVE GUNN BROS. STAMPS

- MOUNTAIN GROWN COFFEE FOLGER'S 2-Lb. Can \$1.37 1-Lb. Can 69c
- HIGHLY UNSATURATED SHORTENING CRISCO 3-Lb. Can 79c
- ORE IDA FROZEN HASH BROWN POTATOES 2 lb. Bag 29c
- LIGHT MEAT CHUNK TUNA STAR-KIST 3 No. 1/2 Cans \$1.00
- BANQUET BEEF, CHICKEN, TURKEY, TUNA POT PIES 6 8-Oz. Pkgs. \$1.00
- KOUNTY KIST WHOLE KERNEL GOLDEN CORN 3 12-Oz. Cans 49c
- LINDY SWEET PEAS 3 303 Cans 49c
- MILE HIGH CUT GREEN BEANS 6 303 Cans \$1.00
- QUICK 3-MINUTE OATS 46-Oz. Box 43c
- MINUTE MAID FROZEN ORANGE JUICE 2 12-Oz. Cans 89c
- IDEAL'S TASTY ICE CREAM 1/2-Gal. Ctn. 49c
- GAYLA-4 FLAVORS FRUIT DRINK 3 46-Oz. Cans 79c
- MEADOWDALE PINEAPPLE JUICE 3 46-Oz. Cans \$1.00



SWIFT'S PRO-TEN BEEF

CHUCK ROASTS

Tender Juicy 1st. Cuts 49c Plus Gunn Bros. Stamps

Center Arm Roast Cuts 65c Plus Gunn Bros. Stamps

- FRESH GROUND BEEF LB. 39c
- BONELESS BEEF STEW BITE-SIZE LB. 69c
- BEEF SHORT RIBS LEAN AND MEATY LB. 29c
- EXTRA LEAN GROUND CHUCK LB. 69c
- BAR-S PURE Pork Sausage 1-Lb. Roll 39c
- SWIFT'S PREMIUM Skinless Franks 1-Lb. Pkg. 59c
- COUNTRY KITCHEN SLICED Lunch Meats 6-Oz. Pkg. 35c
- COUNTRY KITCHEN Baked Beans Pint Ctn. 39c

U.S.D.A. Grade A BAKING HENS 4 To 6-Lb. Average Lb. 39c

Chuck Wagon SLICED BACON 1-Lb. Pkg. 59c

IDEAL COTTAGE CHEESE Large or Small Curd 2-Lb. Ctn. 49c

KRAFT HALF MOON, CHUNK OR SLICED Longhorn Cheese 10-Oz. Pkg. 59c

KRAFT MILD, MELLOW OR SHARP Cracker Barrel Cheese 10-Oz. Stick 59c

IDEAL RANDOM WEIGHT Sharp Cheddar Cheese Lb. 93c

PILLSBURY Cinnamon Rolls 4 Pkgs. Of 8 \$1.00

SAVE ONLY AT IDEAL FOOD STORES SAVE

Duncan Hines 2 lb. Pancake Mix 39c with this coupon

Without Coupon 49c

VOID AFTER SATURDAY, JANUARY 21, 1967

SAVE Limit one coupon per package purchased SAVE

CALIFORNIA AVOCADOS 3 for 25c

CRISP TENDER Carrots 2 1-LB. BAGS 19c

CALIFORNIA NEW RED Potatoes 3 LBS. 29c

OVEN-FRESH FROM IDEAL

- IDEAL HOLLAND DUTCH BREAD 1-Lb. Loaf 23c
- IDEAL HAMBURGER BUNS Pkg. Of 8 25c
- ASSORTED FRUIT PIES Family Size 59c
- IDEAL RASPBERRY TWISTS Breakfast Rolls Pkg. Of 6 36c

Closed Sundays So Our Employees May Attend The Church of Their Choice

Dear Abby... Resting Won't Help Melt Away Pounds

DEAR ABBY: I am 16 and I am ready to run away from home. My problem is my mother. To begin with I am overweight, which I know I am, but my mother doesn't let me forget it for a minute. I've been on several diets but none of them has been any good for me.

RESTING DEAR RESTING: All right. I printed your letter for your mother to see. Now, a word to you. Don't "rest" too long because the more weight you pile on while you're "resting," the more difficult it will be to lose.

DEAR ABBY: My husband is very generous about money matters, but he thinks everything I buy for the house, large or small, should have his approval. He wants to be consulted about paint color, drapery fabric, every little inexpensive light fixture, ash tray, etc.

How has the world been treating you? Unload your problems on Dear Abby, Box 69700, Los Angeles, Calif., 90069.

Read The News Classified Ad

not a matter of taste, because he admits that mine is better. His father was a tyrant who had his mother completely cowed and took the spirit out of her. This situation is getting on my nerves. How would you handle it?

DEAR CALIFORNIAN: Definitely consult your husband about each item you wish to buy for your home. Then buy what you want.

DEAR ABBY: I hope you will not think I'm some kind of a nut, but I want to share this with someone and you are elected: I work for a real estate company, and whenever business is bad, I wear an old green skirt that has been cut off at the bottom with a pinking shears, and business picks up immediately!

DEAR ABBY: I wonder if there are other people who have a good luck charm that works for them like mine does for me?

CONFIDENTIAL TO "ASHAMED" IN VIET NAM: You have nothing to be ashamed of. In the face of real danger, the man who isn't afraid is the one who isn't normal.

San Juan: Where Fashion Turns On



PEEK-A-BOO beach cover-ups cut like little doll dresses cover teeny-weeny bikinis this resort season at Condado Beach, Puerto Rico. These are harbingers of things to come here for summer.

By HELEN HENNESSY

Newspaper Enterprise Assn.

SAN JUAN (NEA) — Puerto Rico, the darling of on-the-move, restless Americans, is emerging as the fashion laboratory of the late '60s. Here today we find all the "in" looks we'll see for spring and summer '67 around our own pools and local watering places.

A trip to this pearl of the Caribbean can be a real fashion eye-opener. And here's the news:

PEEK-A-BOOS

Around the pool area of such plush places as the Americana Hotel, the El San Juan or the Condado Beach it is peek-a-boo time. Beach cover-ups, fashioned in see-through, openwork knits and cut like little doll dresses, add a whimsical touch of modesty and vanity try to conceal the postage-stamp bikini beneath. There are also high-high jersey shifts of bold, bold print. Did you ever see a psychedelic dream walking? Well, I did!

Lace also makes the beach scene in a matching swimsuit (a modest one-piece this time) under its own frilly little jacket cut like an artist's smock. It's a costume that will appeal to the less daring and still keep

TALL AND SHORT OF IT

Height is of no consequence. Short or tall, if you're with it you will wear the longest, flattest shoe possible. It's the rage in gold or silver here. But in this shape the gilt complex never. By the widest stretch of the imagination you could never call these shoes pretty. There are some who will call them downright ugly. But they do look "in."

FEATHERHEADS

Counting heads when island-hopping from San Juan to St. Thomas or St. Croix, you find several innovations in tropical headgear. They all seem like fun to wear, yet prove practical, too, in these isles where humidity can wreak havoc with a hairdo.

There are the "featherhead" — domelike berets that cover a head full of rollers. The lightweight stretch knit base fits all head sizes and it is completely covered with feather. Look like the baby chicks you see in pet shops at Easter. Some are in solid shades of white, turquoise, yellow, hot pink or lime. Others combine these colors in shocking contrasts.

There are also little chiffon cappers. Cut exactly like wigs these are masses of chiffon, stitched and draped. From a distance they resemble a formal hairdo.

What little straw to be seen is not the classic, traditional straw hat of the Caribbean but a "Straw Kelly" worked in series of rough loops on loosely crocheted stretch nylon. They are very airy and most comfortable for sightseeing or pool lolling.

CHIFFON FLOATERS

Evenings, when the ladies go all out, floating chiffons create just the right atmosphere in the romantic, tropical clime. Chiffons are given a newer look when reworked as sheer abstractions worn over opaque twin-prints.

Did Paris say skirts would go longer? Forget it. The women decree (especially the ones with great legs) that if anything, summer '67 will see even shorter skirts. Not just miniskirts, but mini-mini-skirts — so short that they barely cover the der-

'Parliamentary Procedure' Is 4-H Club Topic

A program on "Parliamentary Procedure" was presented by Mrs. F. T. Pepper and Jenny Lee at Monday evening's meeting of Lucky Star 4-H Club.

Twenty-two members of the club met in Gray County Court-house Annex.

Terri Daniels led the 4-H Pledge and Gail Cooper gave the prayer. The flag ceremony was conducted by Marsha Waters. Jenny Lee presented the coming class on the "Wonders of Food. Those present voted to have a Valentine party at the next meeting to be held in the courthouse annex at 7:15 p.m., Feb. 6.

Following the business session and program, recreation was enjoyed and led by Gail Cooper.

Those present were Cheryl Hilton, Linda Ford, Jan Pepper, Carolyn Ford, Gail Cooper, Bart Gooch, Jim Pepper, Dave Butts, Larry Edwards, Philip Pought, Sharon Newman, Brenda Richter, Jenny Lee, Marva Rowan, Mary Holman, Della Holman and Mrs. F. T. Pepper, Marvin Rowan, O. A. Butts Jr., and Lacy Lee.

Want to pretty up a cake? Stick short pieces of macaroni into icing. Use as vases for tiny flowers.

Pre-Nuptial Event Fetes Bride-Elect

Miss Karen Sue Mathews, bride-elect of Jimmy Horner, was honored Monday evening in Fellowship Hall of Skellytown First Baptist Church with a bridal shower.

Hostesses were Meses. Ed Kliebrink, Bobbie Tatum, Walt Barnett, J. C. Jarvis, Gary Gortmaker, A. R. Baker, Neill McBroom, E. W. Meadows, Ralph Fox, Leroy Allen, Gwen Tidwell, Jackie Cooper, J. D. Herd, Tina Hutchen, Johnnie Willson, Leona Coday, Edna Dunivin, Marie Parks, Leola Schneider, Irvin Brown, Tom Spence and Mary Johnson.

White carnation corsages with deep red velvet leaves and ribbons were presented to the honoree, her mother, Mrs. Paul Mathews, and Mrs. Clyde Horner by Mrs. Walt Barnett.

Miss Donna Boyd presided at the guest register table which was appointed with a lace runner with two red roses in a crystal bud vase.

Miss Mathews was assisted by Mrs. Gary Gortmaker who recorded the gifts and names in the bride's book.

The serving table, covered with a white full gathered floor length skirt with white nylon net over skirt, was centered with a pink and white floral arrangement with red grapes hanging from the edge of the bowl, fashioned by Mrs. Jackie Cooper.

Miss Reva Gail Barnett served cake and Miss Gaye Allen presided at the crystal punch bowl. One-hundred-eighty guests participated.

Brilliant suits in combinations of robin's egg blue and yellow, shrimp and tobacco, purple-beige and chartreuse are offered for spring by Tifley & Busch. Meanwhile, long sleeved suits with jersey blouses picked up the strongest colors in tweeds. Short sleeved suits in the collection had back vents. Longer jacketed suits had short pleated skirts.

Contest Started By TOPS Club

Lots of Pounds Off TOPS Club met Monday evening for a regular meeting with Mrs. Sunny Rhinestone, leader, in charge. Minutes were read and roll call answered with pounds lost or gained. Mrs. Gene Leigh was awarded the weekly fruit bowl. Mrs. Robert Schroeder took the pig home.

A contest was started with a printing system on being present, bringing a new member, pounds lost, wearing the TOPS emblem, and being the weekly queen. Gaining will take points away.

The club recently crowned Mrs. Barbara Horton the yearly queen and Mrs. Wayne Brooks was awarded a check for being the runner-up. Mrs. Horton had lost 36 pounds and Mrs. Brooks lost 19 to reach her KOPS goal for the year. Mrs. Fran Darnell was awarded a free hair style for winning a contest on losing the most times in three months. Mrs. Darnell was also crowned for the month of December for being the best loser.

Brownie Troop Officers Named

MOBEETIE — Officers, to serve for three month terms, were elected at the recent meeting of Brownie Troop 190.

Twelve members of the troop met in the Lions Hut with Mrs. Melba Burch as leader and Mrs. Becky King as assistant leader.

Officers elected included Renae Bradley, president; Kimberly Hathaway, vice president; Sallie Shelton, secretary; Cendie Shelton, treasurer; and Melinda Morgan, song leader.

After the Brownie Song and Brownie Promise were repeated in unison, Mrs. King presented a program on "Juliette Lowe World Friendship Fund."

When a piece of glassware becomes nicked, smooth the nick with a piece of fine sandpaper.

Advertisement for Malone Pharmacy featuring various products like Vicks, Geritol, Metamucil, Contac, Vapo Rub, Reef Mouth Wash, Preparation H, Groom & Clean, and Ladies' Handbags. Includes text: 'Check Your NEEDS SALE' and 'CUT-PRICE SHORT-CUTS'.

Advertisement for Blake's Food Market featuring various food items like Bologna, Spare Ribs, Chuck Roast, Bacon, Tuna, Coffee, Catsup, Fruit Drink, Corn, Carrots, and Lemons. Includes text: 'BLAKE'S FOOD MARKET' and 'FREE DELIVERY'.

Astrological Forecast by Carroll Righter. Text: 'Astrological Forecast By CARROLL RIGHTER'.

FOR FRIDAY, JAN. 20 GENERAL TENDENCIES: An excellent day and evening to make those long-term practical plans that are important to you and which require you to use accepted modes of procedure but to which you do add some new and modern up-to-date improvements that can bring you more money and prosperity.

Advertisement for Kyle's Fine Shoes featuring various shoe styles like Women's Shoes, Men's Shoes, Children's Shoes, Ladies' Handbags, and Ladies' Hosiery. Includes text: 'AWAY THEY GO! JANUARY CLEARANCE SALE' and 'KYLE'S FINE SHOES'.

d.e.w. tell!

CONDITION report of the Christmas tree, which is trying to stick around until next Christmas... at last report, it was still growing... putting out new needles and stems... and the new needles and stems are growing... it is being kept warm and humid and fed plant food every day... in the living room of the Kaler home, 1220 S. Finley... Everett E. Janne, landscape horticulturist at College Station has become interested in the unusual tree... and while he cannot evaluate why the tree is acting the way it is... he has called it to the attention of an extension forestry specialist... but neither are holding out much hope that anything can be done to insure the permanent growth of the tree... but the Kalers are determined.

ALL MOTORISTS, confused by all the white and yellow lines on North Hobart, must continue to resist the urge to draw horizontal lines across and sit down for a game of tick-tack-toe... City Manager Jim White is asking that everyone please bear with the city street department until the old white lines can be sandblasted off and new ones painted in their place... it's a strange thing about traffic lines... when you want them there, they are so faint and wear off so easily... but when you want them to disappear, they have to be sandblasted off... in the meantime, ignore that center white dash line in between the double yellow lines and the new white dash lines... ignore it that is, until you leave the double yellow lines. It picks up its original importance there as to traffic flow.

THE GOLD Coats are coming... going, that is, to chamber of commerce dinners all over the Panhandle... this week and next the ambassadors of goodwill will represent Pampa at the chamber meetings in Dumas... Perryton... and Panhandle.

THIS CLUB is for the birds... but that's because it was planned that way... there is a Racing Pigeon Club in Pampa... and there seems to be quite a bit of interest in the tri-city club composed of pigeon fanciers from Pampa, Borger and White Deer... Jim Cantrell tells us Basil Pettit of White Deer serves as president... A. J. Tipton of Borger is vice-president... Gordon Miller is secretary-treasurer... and Jim is race-secretary... and there's an exciting event on the pigeon calendar in March... birds from Pampa, Borger, and White Deer will be shipped by truck or air to Liberal, Garden City, Kansas, Denver, Colo.; Laramie, Wyo. and Casper, Wyo... banded... anyone interested in the pigeon club can contact Jim Cantrell for additional information MO 4-4207.

THE JUNIOR SERVICE LEAGUE... completing the election of its provisional members... invaded the courthouse Wednesday... for a tour of the sheriff's office... county district courts... all 17 members and the sheriff made the trip from floor to floor in the small county jail elevator.

Sign on the back of a pickup truck... London's Bridge is falling down... After Mrs. Richard L. Kennedy, 1000 Terry, had her furniture transferred to an upholstery company for refurbishing, she remembered she had a group of nine 4H girls coming to her home that evening for a photography class... but the instructor, Ken Leach, had a Japanese camera... so they all sat around on the floor for the lesson... sans shoes?

LAST FRIDAY, the 13th was all that the day portends for Foster Whaley, Gray County Agent... he was awakened that morning by a telephone informing him one of his calves on his farm in Armstrong County had broken a leg coming down the chute... so now there's a bit of unexpected beef in the Whaley locker... which is the bright side of the sad Friday 13th story.

TAINT FAIR... but it was nice... a box of luscious chocolates made its appearance on the Chamber of Commerce counter Friday... it was a box that chamber manager Red Wedgeworth had put back during Christmas when it was so plentiful... out it came Wednesday... and with everyone on a diet, too! It is nice to see Lois Steward back at her desk... at Rodeo Headquarters in the chamber this week... made us do a double-take at the calendar... but she said she's back to help out with the

Master Keys Make Car Thefts Easy

WASHINGTON (UPI)—The president of the National Automobile Theft Bureau said today car thieves are using master keys easily purchased through the mails. Michael J. Murphy, in testimony prepared for delivery before the Senate juvenile delinquency subcommittee called for a federal law prohibiting "the indiscriminate sale of master keys in interstate commerce." Murphy said, "In unrelated federal and state laws making it illegal to sell, possess, or receive master keys unless they are for legitimate users is the key to halting the growing master key problem."

Junior Livestock Show scheduled for March 6-8... There was a peppy PEP (Panhandle Economic Progress) meeting Wednesday at the County Ag building... committees were organized to form guidelines for Gray County to reach its full potential in agribusiness... and there should be some interesting and worthwhile accomplishments... if enthusiasm of this group is any indication. See you, d. e. w.

On The Record

- Highland General Hospital WEDNESDAY Admissions**
 J. M. Horn, 402 N. Wells.
 Mrs. Lavelya Baggerman, 928 S. Wilcox.
 Baby Girl Pollet, 1523 N. Faulkner.
 Mrs. Grace Dart, Panhandle. Uial T. Lamb, Skellytown.
 Mrs. Theda M. Wallin, 521 Lowry.
 Paul R. Montgomery, Borger.
 Mrs. Donna Lee Lingg, Canadian.
 Mrs. Bessie Jane Payne, 441 Hughes.
 Mrs. Mary Kathryn Christner, 904 Terry Rd.
 Billy Norris Buckler, 515 Elm.
 Mrs. Sharon L. Erwine, 1133 Juniper Drive.
 Walter A. Spoonmore, 1200 Hamilton.
 Gina Kay Diddle, 1121 Willow Rd.
 Wilson C. Puryear, 2219 Dogwood.
 Mrs. Jettie Lou Johnson, 1113 Sierra Dr.
 Charles Weaver, 307 E. Browning.
- Dismissals**
 Mrs. Judith Griffin, Borger.
 Mrs. Martha Snider, 513 N. Ward.
 Dallas Bowsher, 1541 Williston.
 Mrs. Georgia Hayes, 1919 Chestnut.
 T. E. Mathis, 1106 Juniper Dr.
 Mark Jipp, 1943 Grape.
 Mary Hassell, 638 N. Sumner.
 Leroy Snodgrass, Skellytown.
 Mrs. Audine Glazier, 1000 S. Snider.
 Mrs. Cleo Downs, 914 Christine.
 Elmo Taylor, 533 N. Christy.
 Mrs. Flora Scribner, Fritch.
 Mrs. Erma Winsett, 533 Lefors.
 Baby Boy Winsett, 533 Lefors.
 Mrs. Lula Johnston, 2144 Beech.
 Mrs. Peggy Dunn, Mobeetie.
 Mrs. Mary Van Kluyve, 2239 Duncan.
 Mrs. Linda Huntly, 1912 Coffee.
 Baby Girl Huntly, 1912 Coffee.
 Mrs. Lorene Garrison, 208 N. Faulkner.
 Mrs. Mary Lee, 917 E. Campbell.

Names of All Sorts

ACROSS
 1 Antia
 7 Doubling
 13 Horn
 14 Dystuff (var.)
 25 Western cattle
 16 Builder,
 17 Hosen (ab.)
 18 Paid notices in
 20 Reverential
 21 Holds in regard
 22 Adore
 28 Afternoon
 32 Pertaining to a
 30 Lampey
 34 Vegetable
 36 Pertaining to
 38 Minus (math.)
 39 Skillful
 40 Country (obs.)
 41 Machinery parts
 42 Mail lever
 44 Exclamations of
 46 Cheesecake
 48 Noisy player
 51 Archetype
 54 Kind of music
 55 Fancy
 56 Island
 57 Conductor,
 58 Eddie

DOWN
 1 Source
 2 Proposition
 3 Shushonant
 4 Island (Fr.)
 5 Hindu weight
 6 Substitution

Answer to Previous Puzzle
 37 Doctor of
 39 Theology (ab.)
 38 Odiours (mod.)
 40 Brother of
 41 Carrey and
 42 Haron room
 43 Feminine name
 44 Singing voice
 47 Belgian stream
 49 Carroll
 50 Summer (Fr.)
 52 Haron room
 53 Low hunt

MEAT CITY
 400 S. Russell MO 9-9471

Fresh - Picnic Cut
Pork Roast 33¢

Fresh - Lean
Pork Steak 49¢

Pure Pork Homemade
Sausage 39¢

Panhandle Quality
Bacon 2 LBS 1.19

SAVE BIG ON QUALITY FOODS SHOP HERE!

CHUCK ROAST Swift Prem. Heavy Beef **49¢**

CLUB STEAK Swift Prem. Heavy Beef **79¢**

GROUND BEEF Fresh **2 1/2 lbs. 97¢**

SWISS STEAK Swift Prem. Heavy Beef **69¢**

ICE CREAM or SHERBERT Lanes Pint **10¢**

GRAPEFRUIT JUICE Texsun 46 Oz. Can **35¢**

ELBO MACARONI 16 oz. **25¢**

SEA STAR FISH STICKS 8 oz. pkg. **19¢**

300 Size CHUCK WAGON BEANS **12¢**

Kimbell's assorted flavors PRESERVES 3-18 oz. jars **93¢**

Blackburn WAFFLE SYRUP qt. **33¢**

Mrs. Tuckers SHORTENING 3 lb. tin **69¢**

Folger's COFFEE 1 lb. tin **69¢**

Kraft MACARONI DINNER reg. box **19¢**

Libby or Del Monte tall can PINK SALMON **69¢**

Kimbell's BEEF STEW 24 oz. can **49¢**

Kimbell's CHILI no. 2 can **59¢**

Scott FACIAL TISSUE 400 count **25¢**

EGGS Elmers Doz. **47¢**

SUGAR Holly 5 Lb. Bag **49¢**

TISSUE SCOTT 4 ROLLS **39¢**

FLOUR Gold Medal with \$5.00 or more purchase excluding cigarettes 5 Lb. Bag **39¢**

2 lb Cello Bag PINTO BEANS **25¢**

Kimbell's FRUIT COCKTAIL 303 Can **19¢**

Barbecue Pork Ribs 98¢

Pineapple Upside Down CAKE 59¢

1/2 Fried Chicken 89¢

1/2 Pint Chicken Gravy

1/2 Pint Potato Salad

All for 89¢

We Give Buccaneer Stamps
 DOUBLE STAMPS EVERY WEDNESDAY
 WITH \$2.50 OR MORE PURCHASE

WARD'S GROCERY

502 W. FRANCIS OPEN DAILY 7:30 TO 8:00 - SUNDAY 8-7 MO 9-9641
 WE RESERVE THE RIGHT TO LIMIT QUANTITIES

TOMATOES 25¢
 Cello Pack

Sunkist ORANGES 2 lbs 25¢

APPLES 4 lbs 45¢

It's the Chili Season!



CHILI
Ellis ... With Beans
39¢
Big 24-Oz. Can

"Save More-Throughout the Store"

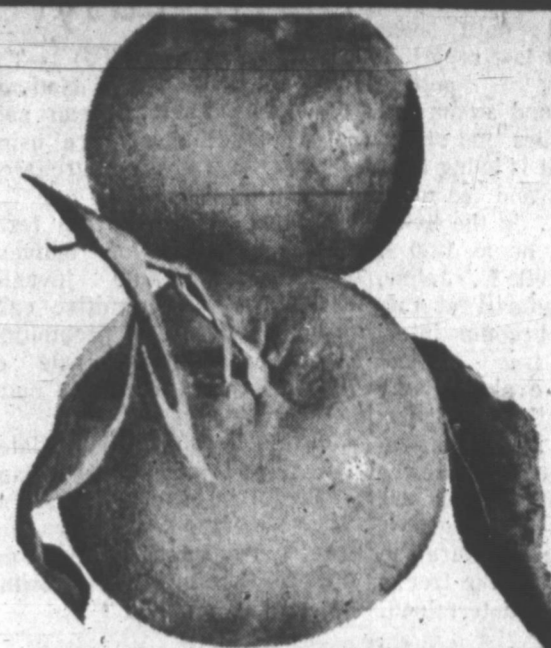
- Fruit Drinks** Hi-C, All Flavors... 3 46-Oz. Cans **95¢**
- Tuna** Star Kit, Chunk Style No. 1/2 Can... **39¢**
- Cookies** Nabisco, Oreo's 1-Lb. Pkg... **49¢**
- Kotex** Regular or Super 12-Ct. Box... **39¢**
- Bubble Bath** Joy Suds 16-Oz. Can... **29¢**
- Facial Soap** Lux, Assorted Colors... 3 Regular Bars **37¢**
- Bar Soap** Lifebuoy, Assorted Colors... 2 Bath Bars **41¢**
- Ivory Soap** Personal Size, 3¢ Off Label... 4 Bars **29¢**

SHOP & SAVE

PIGGLY WIGGLY
WILL BE
CLOSED SUNDAY
EFFECTIVE JAN. 29, 1967

- Filler Paper** Hytone, Wide Rule, Poly Wrap, Reg. 63¢ Value, 300-Ct. Pkg... **49¢**
- Shampoo** Lanolin Plus Egg, Reg. 99¢ Retail, 16-Oz. Bottle... **49¢**
- Deodorant** Dryed, Reg. 89¢ Retail 4-Oz. Aerosol Can... **59¢**
- Razor Blades** Schick Double Edge... **\$1.39**
Stainless Steel, Reg. \$1.78 Retail, 15 Blades per Pkg.

PRODUCE FAVORITES



TANGERINES

California Zipper Skin... Pound **19¢**

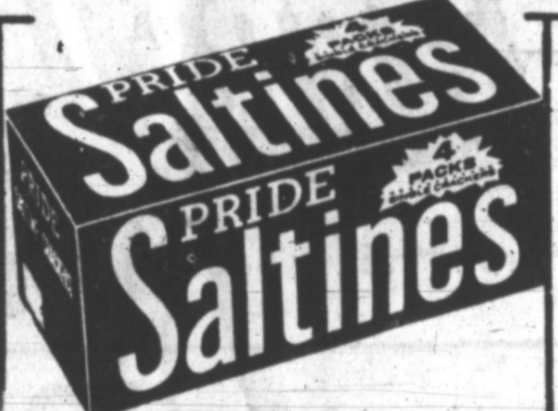
Bell Peppers California Wonders... **70¢**

Apples Washington State Winesaps... Pound **19¢**
Carrots Texas Poly Bag... 1 Pound pkg. **10¢**

WE GIVE GREEN STAMPS



PRESERVES
Bama, Grape Jam, Red Plum Jam or Grape Jelly... 18-Oz. Jar **35¢**



CRACKERS
Pride, Saltine... Pound Box **19¢**



TAMALES
Gebhardt, Beef... 4 Cans **\$1**



RICE
Arrow, Medium Grain... 2 Pound Bag **25¢**

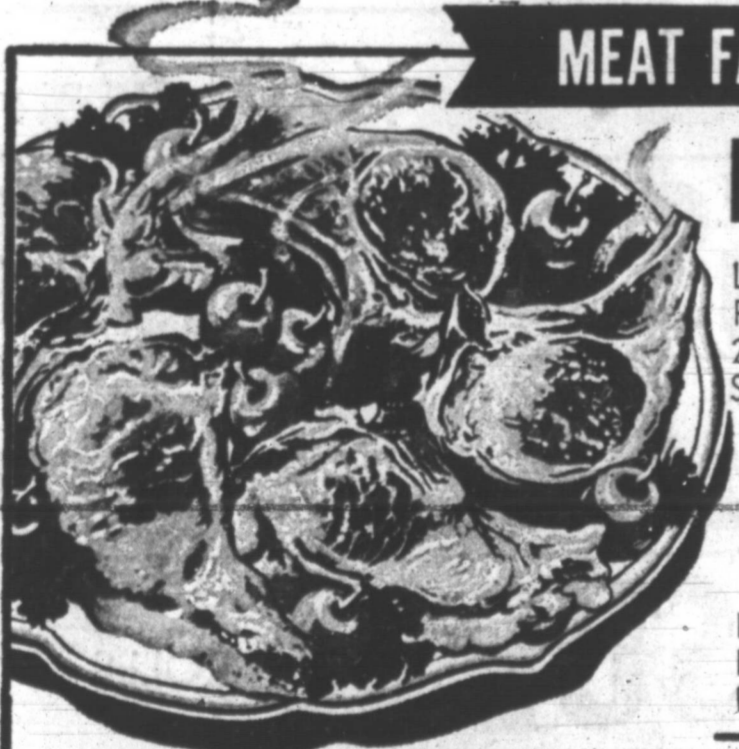


BEANS
Chef's Pride... 2 Pound Bag **23¢**

Store Manager's Special!

- SUGAR** HOLLY 5 POUND BAG **49¢**
- CLOROX** 1/2 GAL. BLEACH **29¢**

MEAT FAVORITES



PORK LOIN ROAST
Lean Northern Pork, Large 2 1/2 to 3 1/2-Lb. Size Roasts... Pound **59¢**

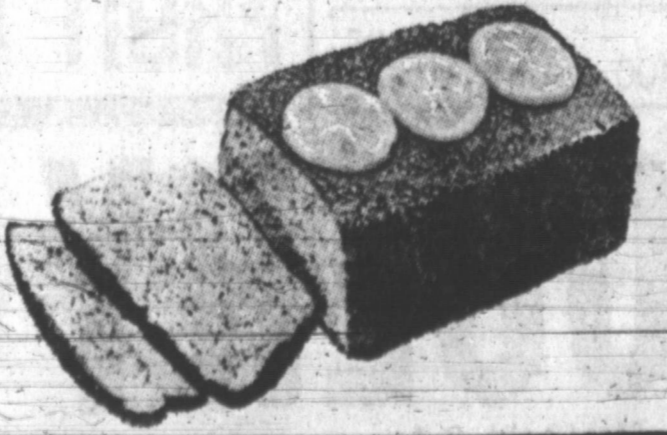
PORK STEAKS
Lean Northern Pork, Cut from Boston Butts... Pound **49¢**

Pork Chops Lean Northern Pork, Family Style Pack, Full 1/4 Pork Loin... Pound **69¢**

- Pork Roast** Lean Northern Pork, Fresh Picnic Style... Pound **39¢**
- Pork Neck Bones** Fresh, Meaty, Fine for Seasoning... Pound **23¢**
- Pork Sausage**... Pound **C**
- Beef Steaks** Blue Morrow, Chuck Wagon... 1 Pound **79¢**
- Longhorn Cheese** Mild, Cheddar, Block Style... Pound **79¢**

SLICED BACON
Farmer Jones... 1 Pound **59¢**

GROUND BEEF
Lean, Fresh Dated... 1 Pound **39¢**



Salad Dressing SuZan... Quart Jar **29¢**

Green Beans Kounty Kist, Diagonal Cut... 2 No. 303 Cans **35¢**

Pineapple Juice Santa Rosa... 46-Oz. Can **25¢**

Prune Juice Lady Betty... 2 Quart Bottles **88¢**

Nestle's Quik Chocolate Flavors... 1 Pound **39¢**

Tide Heavy Duty Detergent, (7¢ Off Label)... Giant Box **69¢**

FROZEN FOOD BUYS



DINNERS
Patio, Mexican Style... 12-Oz. Pkg. **39¢**

- Broccoli Spears** Libby's 10-Oz. Pkg... **27¢**
- Butter Beans** Libby's... 2 10-Oz. Pkg. **45¢**
- K-So Dip** Ashley's 5-Oz. Can... **35¢**
- Green Chili Sauce** La Posta 7-Oz. Can... **33¢**
- Onion Rings** Ore Ida 7-Oz. Pkg... **35¢**

Tacos
Cocktail Beef... 24-Ct. Pkg. **57¢**

THESE PRICES GOOD... YOUR PIGGLY WIGGLY PAMPA... WE RESERVE THE RIGHT TO LIMIT QUANTITIES.
Lowest Prices... Greatest Variety... always at... **Piggly Wiggly**

Highlights and Sidelights From the State Capitol

By VERN SANFORD
Texas Press Association
AUSTIN, Tex. — Texas House of Representative is operating under far-reaching new rules. And a cooling-off period has been called in a controversy over whether both houses should revise joint procedures.

House of Representatives voted 145-0 for a modernized rule-book.

Key changes reduce the number of House committees from 43 to 25, after this session; inaugurate a modified seniority system; and set up a calendar system to determine the priority rights of bills ready for consideration.

Three days deep in the 60th Legislative session the House also approved 145-0 a proposed set of joint rules to govern matters involving both houses. This included Speaker Ben Barnes' proposal to limit conference committees to adjusting differences in bills passed by the two houses, rather than writing new

Television Program

Channel 4 KQNC-TV, THURSDAY ABE

8:00 The Match Game	8:15 Weather	10:00 News
8:25 NBC News	8:25 Sports	10:15 Weather
8:30 Mike Douglas	8:30 Painted Boons	10:30 Let's Make a Deal
8:40 Cheyenne	7:00 Star Trek	10:30 Tonight show
8:30 Hustley-Brinkley	8:30 Dragnet	
8:00 News	8:00 Dean Martin	

CHANNEL 4 FRIDAY

8:00 Amarillo College	10:00 Pat Boone Show	12:05 Weather
7:00 Today Show	10:30 Hollywood Squares	12:15 Ruth Brent Show
7:00 Beach Party	8:00 Jeopardy	12:30 Let's Make a Deal
8:00 News	11:00 Eye Guess	12:55 NBC News
8:25 NBC News	11:55 NBC News	1:00 Days of Our Lives
9:30 Concentration	12:00 News	1:25 The Doctors
		2:00 Another World
		2:30 You Don't Say

Channel 7 KVJL-TV THURSDAY AEC

2:30 Nurses	5:25 Claco Kid	8:30 That Girl
3:00 Dark Shadows	5:00 Have Gun, Will	8:00 Special
3:30 Matinee Today	7:00 Travel	10:00 News
4:00 News	7:30 Batman	10:15 Weather
4:15 News	7:30 E-Troop	10:15 Comment
	7:30 Bewitched	10:30 McKenzie Show
	8:00 Love On-A	10:55 Movie
	Roof Top	

CHANNEL 7 FRIDAY

5:30 Jack LaLanne	10:00 Supermarket	11:30 Father Knows Best
8:00 Ben Casey	10:30 The Dating Game	12:00 News
	11:00 Donna Reed	12:30 Country Caravan
		1:00 Newsworld Games
		1:30 Dream Girl Of '67
		1:55 News
		2:00 General Hospital

Channel 10 KFDD-TV, THURSDAY CBS

8:00 The Secret Storm	4:30 News	10:00 News-Jim Pate
8:30 Candid Camera	6:30 Weather	10:15 Weather Report
9:00 Mr. Mimkins	6:30 Jerry	10:25 Background
9:00 Woody Woodpecker	7:30 My Three Sons	10:30 Flicker
9:30 CBS News	8:00 Movie	10:55 News
		11:00 Big Flicker

CHANNEL 10 FRIDAY

6:30 Amarillo College	10:00 Andy Of	12:30 Farm And Ranch
7:00 Jack Tompkins	10:30 Mayberry	News
7:00 News Report	10:30 Dick Van Dyke	12:30 As The World
7:30 Weather-Sports	11:00 Love Of Life	Turns
Local Events	11:25 CBS News	1:00 Password
8:00 Capt. Kangaroo	11:30 Search For	1:30 House Party
8:00 Roomer Room	Tomorrow	2:00 To Tell the Truth
8:30 Beverly Hillsbillies	11:45 The Guiding Light	2:25 CBS News
	12:00 News	2:30 Edge Of Night
	12:15 Weather	2:30 The McCovey

TOP SHOE STYLES... JANUARY CLEARANCE

All Fall and Winter Shoes are drastically reduced during our annual January Clearance. Shop now for tremendous savings. Sale starts Friday at 9 a.m.

PIXIES \$1⁹⁹ Pr.
One Group
Regularly priced to \$5, now

BOOTS \$9⁹⁰ Pr.
For the cold winter ahead — Boots in white leather, black patent and beige Suedes. Reg. to \$16

DRESS FLATS
Our complete stock of green, brown, plum and black suede Dress Flats. Also black leathers. Reg. to \$10.
Now \$4⁹⁹ to \$6⁹⁹ Pr.

LOAFERS \$7⁹⁹ Pr.
Group of "Trampers" loafers in black leather, black alligator leather, green and black suedes. Reg. to \$12. Now only

MR. SNEEKERS \$1⁹⁹ Pr.
Big group of Mr. Sneekers Tennis Oxfords, in black, white, red and blue Now only

DRESS SHOES
Tremendous selection of little heels, mid heels and hi heels. Choose from many styles and colors. Reg. \$12 to \$17.
Now \$5⁹⁹ to \$10⁹⁹ pr.

HANDBAGS \$2⁹⁹
Group of Fall and Winter Handbags. Reg. \$4 to \$7. Now

All Sales Cash — No Layaways — No Refunds on Sale Items

Hub's Booterie
Latest in Women's Shoe Fashions
109 W. Kingsmill MO 9-9291

legislation.

Another major provision calls for joint committees to hear budget requests and perform some housekeeping functions.

Still another would require conference committee meetings be open to the press and the public.

Lt. Gov. Preston Smith turned a cold shoulder to the conference committee restriction, long advocated by Barnes. Smith said the Legislature has too many more important things to do than squabble over rules.

According to some House lieutenants, Barnes feels that a majority of the Senators favor his proposals. Smith pointed out that rules can be approved or amended only by a two-thirds vote.

So, the House version on joint rules is expected to spend an extended cooling-off period in a Senate committee.

If the House recommendations are not accepted, Barnes made it clear that he will regard his own conference committee appointments as duty bound to adjust differences only. If Senate conferees are not so restricted, he readily admitted an impasse may be reached when the first controversial piece of legislation goes to a conference committee.

LEGISLATIVE MEASURES READY — Major legislation now in the hopper includes:

—A constitutional amendment by Rep. Travis Peeler of Corpus Christi to permit revision of the state constitution by sections, on submission by the Legislature.

—Authority for cities to levy local option one-per-cent sales taxes by Rep. John Treager of Sequin.

—A minimum wage bill (\$1.25 an hour) with Sen. Joe Bernal of San Antonio and Rep. Lauro Cruz of Houston as main sponsors.

—Legalization of mixed drinks by Rep. Jake Johnson of San Antonio.

—Abolishing the death penalty for crimes by Rep. Ronald Bridges of Corpus Christi.

SENATE TERMS DECIDED — In a drawing to determine the length of terms of members of the Texas Senate, required by legislative reapportionment, these Senators will serve four-year terms:

Joe Bernal and V. E. (Red) Berry of San Antonio; Wayne Connally of Floresville; H. J. Blanchard of Lubbock; Chet Brooks and Criss Cole of Houston; Tom Creighton of Mineral Wells; Roy Harrington of Port Arthur; Grady Hazelwood of Amarillo; Jack Hightower of Vernon; Don Kennard of Fort Worth; Oscar Mauzy of Dallas; Dave Ratliff of Stamford; Jack Strong of Longview; Murray Watson of Waco; and J. P. Word of Meridian.

Those drawing two-year terms include:

A. M. Aikiri of Paris; Jim Bates of Edinburg; Joe Christie of El Paso; Hank Grover (Republican) and Barbara Jordan of Houston; Ralph Hall of Rockwall; Dorsey Hardeman of San Angelo; Charles Herring of Austin; Bill Moore of Bryan; George Parkhouse (who says he won't run again) and Jim Wade of Dallas; Bill Patman of Galveston; Bruce Reagan of Corpus Christi; A. R. Schwartz of Galveston; and Charles Wilson of Diboll.

COMMITTEES NAMED — House veterans were selected by Speaker Barnes to head major standing committees.

Reps. Bill Heatly of Paducah and Maurice Pipkin of Brownsville again will be chairman and vice-chairman of the budget-writing appropriations committee.

Reps. Ben Atwell of Dallas and Hudson Moyer of Amarillo will serve another term as chairman and vice-chairman of the tax-drafting revenue and

taxation committee.

Reps. R. H. (Dick) Cory of Victoria and Charles H. Jungmichel of La Grange are No. 1 and No. 2 on the workhorse state affairs committee.

Head of the powerful new House rules committee, which determines the order in which bills will be brought to the floor for consideration, is Rep. Randy Pendleton of Andrews. Vice-Chairman is Rep. Honore Ligarde of Laredo.

AMENDMENT VOIDED — Austin District Judge Herman Jones had held invalid the Nov. 8 vote on a constitutional amendment to require annual voter registration.

Jones said the amendment's purpose was not properly described on the ballot which carried only the proposition to or not to "repeal the poll tax as a voting requirement." It was misleading, according to Judge Jones, because it failed to say that approval of the amendment would institute annual registration.

He pointed out that bills are unconstitutional if the Legislature does not give a clear statement in the title indicating what the bill does rule and this also applies to constitutional amendments.

Opponents of the amendment, the AFL-CIO, wanted to replace

the poll tax with permanent voter registration.

Jones' ruling will be appealed to a higher court, says Atty. Gen. Crawford Martin.

INSPECTION DEADLINE — Col. Homer Garrison Jr., director of the Department of Public Safety, has warned Texas motorists that the 1967 vehicle inspection period is two-thirds over and only about one-third of the vehicles have been inspected.

"This means that during the 12 weeks remaining before the April 15 deadline for inspections, more than twice as many persons each week must have their car inspected to avoid long lines forming at the end of the period," Garrison said.

Garrison also got in a recruiting plug for the department, pointing out that accepted applicants for the Highway Patrol may enter employment immediately without waiting until the next patrol-training school begins, as has been his practice.

There are jobs available immediately for men 20 to 25 yrs. old. Applicants may sign up for written exams at any of the regional, district or sub-district DPS offices.

APPOINTMENTS ANNOUNCED — Trueman O'Quinn of Austin and Fred V. Klingeman of

Karnes City have been named by Gov. John Connally to vacancies on the Third and Fourth Courts of Civil Appeals at Austin and San Antonio.

Other appointments include: Anees A. Semaan of San Antonio as judge of the 175 District Court in Bexar County, succeeding Judge John F. Olson, now a member of the Court of Criminal Appeals; Edward R. Paynter of Abilene as 42nd District Attorney, to fill the unexpired term of Bradley C. Miles;

Former State Rep. John Mobley of Kilgore as an administrative assistant to the governor; and

Henry Lauderdale of Merced to succeed the late Lewis Boggs of Harlingen on the Tuberculosis Advisory Committee.

ATTORNEY GENERAL RULES — Texas Water Development Fund can be used to help finance recreational facilities connected with the municipal dam and reservoir at Clyde (Callahan County), says Attorney General Martin.

In another opinion Martin ruled that tank bottom oil chargeable back to a lease "as part of the producers' allowable is taxable under the crude oil production tax."

GOVERNMENT CATALOG — A Catalog of State Services to

Local Governments has been printed and is ready for distribution, says Gov. Connally.

Book is being sent to all state legislators, all Texas mayors and all county judges in the state.

Catalog lists 148 programs of services to city and county governments, 86 of which the state finances entirely with state funds. Twenty-seven of them are federal-state programs administered by the state with dual funding, and 35 of them are substantially or wholly financed by the federal government through the state.

SHORT SNORTS — Governor

Connally, lambasting William Manchester's "Death of A President" as a propaganda instrument, announced he will compile his own version of President Kennedy's tragic 1963 visit to Texas. . . Col. Homer Garrison, veteran Department of Public Safety Director, has been named to the national motor vehicle safety advisory council formed by President Johnson. . . Speaker Ben Barnes recommended Senate confirmation of Edward A. Stumpf III of Houston to the State Employees Retirement System Commission.

Freezer Beef Sale

Choice Grain Fed Beef

Unconditionally Guaranteed

Investigate Our Monthly Pay Plan

This Meat Is Cut To Your Specifications. DOUBLE WRAPPED AND QUICK FROZEN TO INSURE TENDERNESS AND FLAVOR.

HIND QUARTER lb. 53¢	Front Quarter 39¢
1/2 BEEF lb. 43¢	ALL PLUS 6¢ LB. PROCESSING

CLINTS FOODS

Phone 883-4691 White Deer, Texas



So? What else is new?

Nothing. And that's the point. The flour inside this bright, new orange package is the same fine flour you have always baked with so successfully. The package, however, now looks as pretty as it ought to. That's all. So, if you've never tried Texas' favorite flour, there's no excuse now ... you can't miss it on the flour shelf at your grocer's. And try this coupon, too—it will save you 10¢.

Nothin' to it, you can do it, you and Gladiola!

Save 10¢

STORE COUPON

Gladiola
FLOUR

on 5-lb. or larger bag of Gladiola Flour

MR. GROCER: Gladiola will reduce this coupon for 10¢ plus 2¢ handling when it is used for purchase of 5-lb. or larger bag of Gladiola Flour. Payment redeemable only in Gladiola's authorized stores or by check when presented to Gladiola, Sherman, Texas. Payment to be made by Grocer only. Invoices proving purchase within the last ninety days of reduced stock to cover coupons presented for redemption must be made available upon request. Coupon void after July 31, 1967.

STORE COUPON

HI-POCKETS

Always PLAY IT SAFE

YOUR NEW PAPERBOY or COLLECTION DAY!

COLLECTION DAY, TODAY

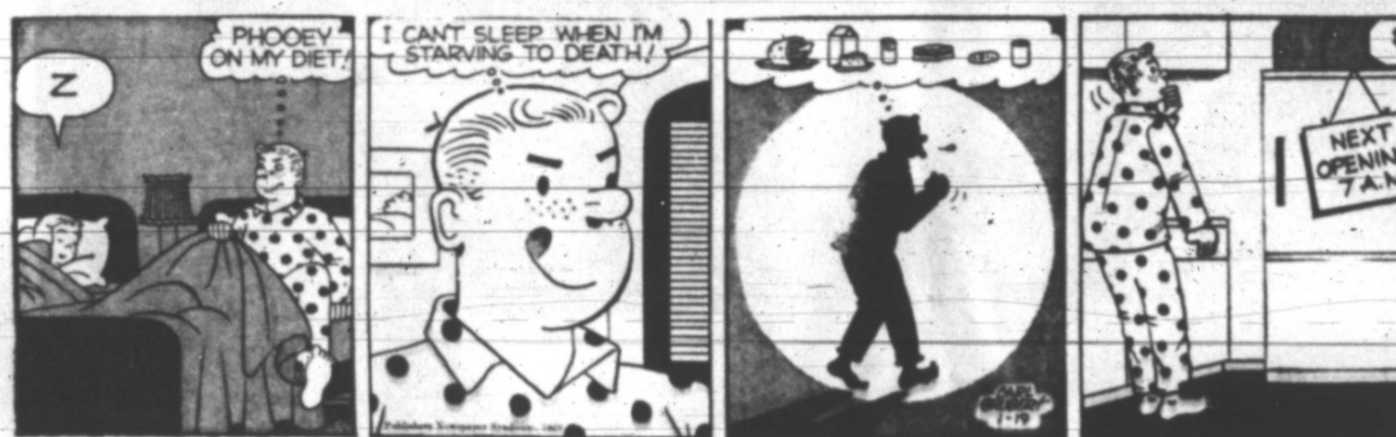
Freckles



The Born Loser



The Berrys



Bugs Bunny



Eek and Meeks



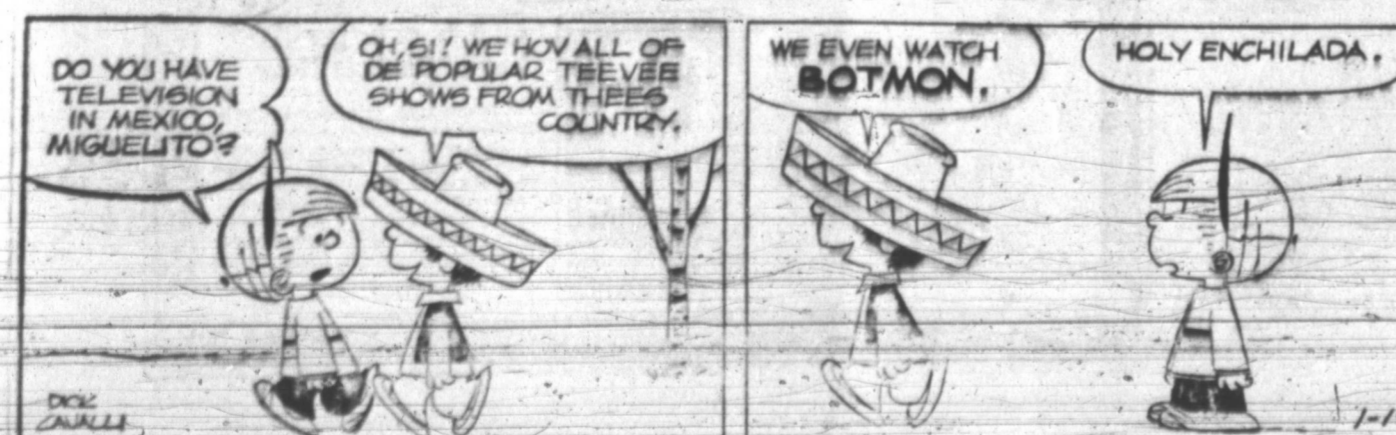
Captain Easy



The Willies



WINTHROP



OUR BOARDING HOUSE With Major Hoople Short Ribs



Blondie



Alley Oop



The Flintstones



Twins



Mickey Finn



Psycho's Pop



Debbie Deere



Joe Palooka



Clo Of Die

EL Goose keep atop l... After ball fr a re Wedne "clowr died u Tatu of the ters, h ailmen Char planni the H schedu tum I day n Road when I Globet Tatu disobe six m people are ev laugh. "I c down said. "The as a Mar billed dribble teamn Globet game Johnso old fri Hay off fr Harle Dallas game. Fun diled privat Bliss l served 1945. Mrs at the "It's she s Instea donate that s someo throug De In OAK The s today the Ar East but t chanc contes fifth t Coac East West practi would some install notice But remai Oakla With Clem would Holov confer And lineup dotted six cham start chosen playen back Bobby Carle Stew Shaw. Will In F Pan met meeti come Hawk In neth with Carot born, Mick In ti Willia Jess fired

WHERE YOU ALWAYS BUY THE BEST FOR LESS
GIBSON'S
 DISCOUNT CENTERS

ENTER... **THE MARDI GRAS SWEEPSTAKES**

WIN \$5,000 AND A TRIP FOR EIGHT TO THE 1968 MARDI GRAS IN YOUR OWN PRIVATE PULLMAN CAR
 OVER 1,000 OTHER EXCITING PRIZES
 SEE OUR DISPLAY FEATURING
GLEEM • Hidden Magic • *Head & Shoulders* • **SCOPE**

FOR COMPLETE DETAILS!



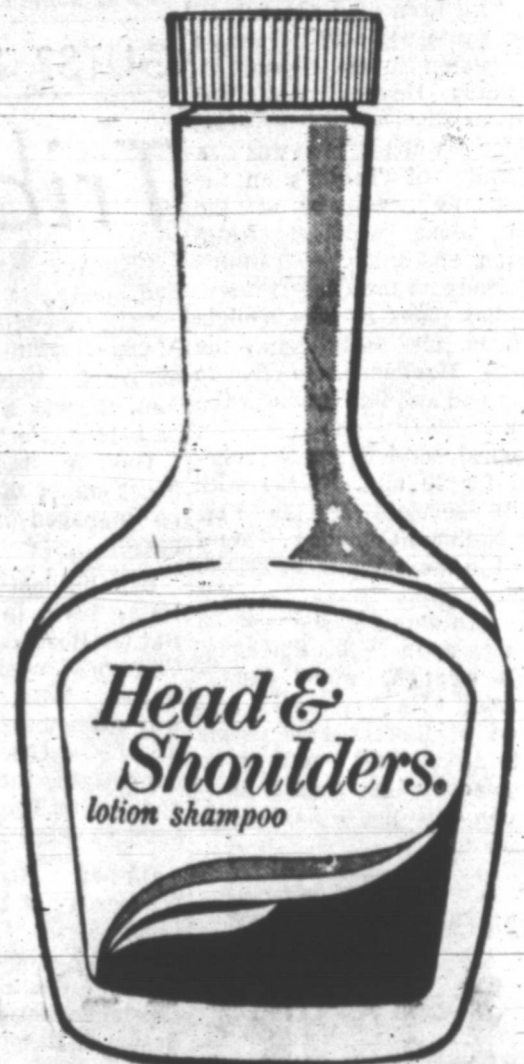
LARGE TUBE
 REG. \$1.00

→ **59¢**



FAMILY SIZE
 REG. 95c

→ **49¢**



LARGE LOTION
 REG. \$1.55

→ **79¢**

FREE REFILLABLE PURSE DISPENSER



A BONUS \$1.00 COMPARABLE VALUE—FREE!!! WHEN YOU BUY **Hidden Magic** GIANT SIZE YOU PAY ONLY
 REG. \$1.99

→ **99¢**



NEW **SCOPE** MOUTHWASH

FRESHER BREATH plus... EXCITING TASTE...

FAMILY SIZE
 REG. 1.39
59¢

SECRET SPRAY

FAMILY SIZE
 REG. \$1.49

→ **88¢**

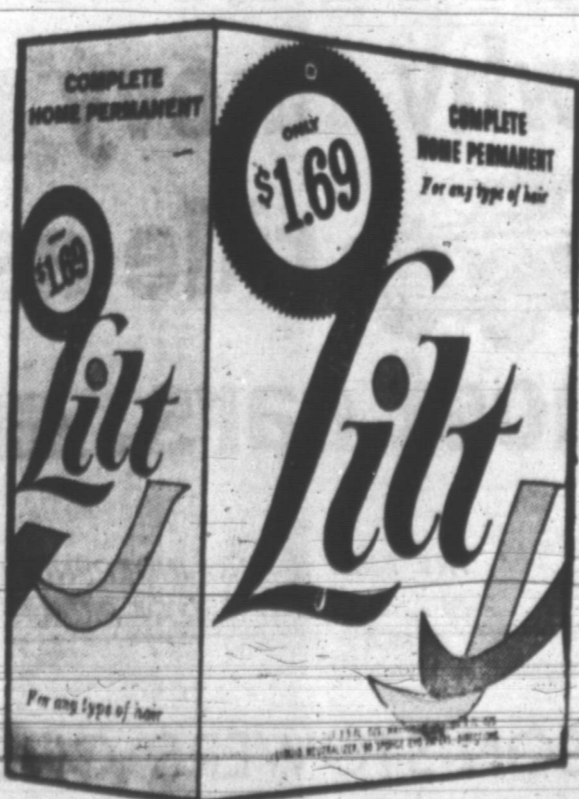


LARGE JAR

REG. \$1.85

→ **94¢**

LILT
 REG. \$1.69

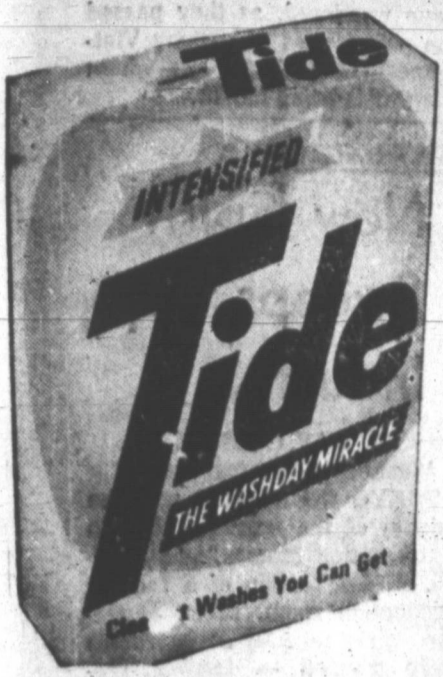


→ **86¢**



LILT
 PUSH BUTTON
 REG. \$2.60

→ **\$1.49**



King Size
TIDE
\$1.17



SCOTT
TOWELS
29c

CASCADE

GIANT SIZE

64c



ANSCO
Chrome 8mm
MOVIE FILM

\$1.87

Swing Out Chrome
TISSUE
DISPENSER

Reg. \$2.87

\$1.77

All Prices Good Thur-Fri-And Sat...!

SAVE during
THRIFT WEEK



GIBSON'S

Adjustable
Swivel Out Door
or Indoor

LIGHTS
Reg. 5.95
\$2.99



CHARM
BRACELET

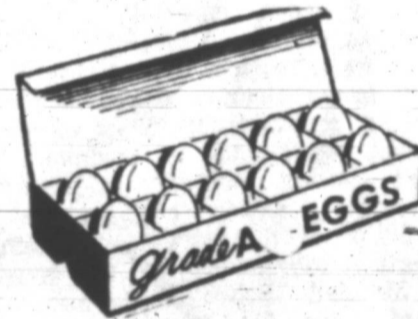
reg. \$8.47

\$4.99

ALL
CERAMICS

1/2 off

GIBSON DISCOUNT
PRICE



GRADE A LARGE

EGGS



49c
Doz.



GIBSON
SPARK PLUGS

Made By
AUTO LITE
Specially For
Gibson

35c EACH



TUNG-SOL
SEAL BEAM
Head Lamps

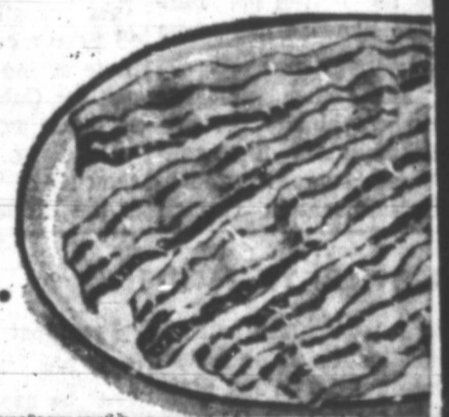
Bright and Dim

reg. \$1.09

79c

BACON
63c Lb.

Swift
Premium



INSTANT CREDIT

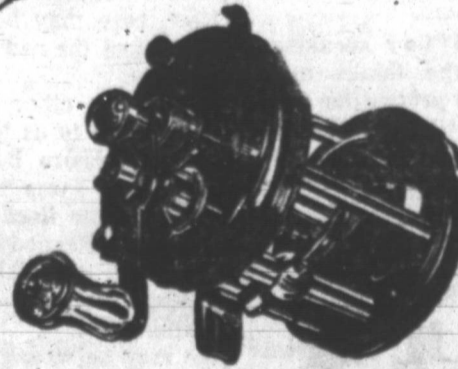
Use Gibson's Instant Credit. No down payment, no carrying charges from amounts of \$10 to \$150. All you need is a major company credit card. Limit to a 150 mile radius of Pampa.

Rubbercor

SINKERS

reg. 25c each

225c



RE-SPOOL YOUR REEL

GIBSON NOW HAS A MACHINE TO RE-SPOOL YOUR REEL! YOUR CHOICE OF 6-8-10-12-15 or 20 pound test line for the low, low price of

\$1.99
per 100 yards

Get Your
Texas and
Oklahoma
Fishing Licenses
At Gibson's
Now!!!

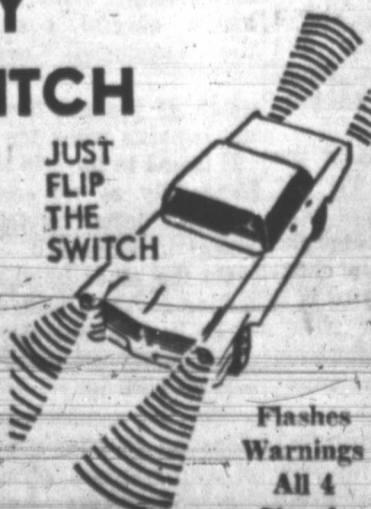
EMERGENCY
WARNING SWITCH

Protect Your Car
EASY TO INSTALL

reg. \$4.27

\$1.99

JUST
FLIP
THE
SWITCH



Flashes
Warnings
All 4
Signals

"WHERE YOU ALWAYS BUY THE BEST FOR LESS"
GIBSON'S
DISCOUNT CENTER

Open Daily 9 a.m. to 9 p.m. Closed Sundays

The Pampa Daily News

A Watchful Newspaper

EVER STRIVING FOR THE TOP O' TEXAS TO BE AN EVEN BETTER PLACE TO LIVE

The Pampa News is dedicated to furnishing information to our readers so that they can better promote and preserve their own freedom and encourage others to see its blessing. Only when man is free to control himself and all he produces, can he develop to his utmost capabilities.

1968 or 1972?

"The question to be decided," announced Ted, rapping his water glass with a spoon for attention, "is whether brother should go in 1968, or wait until 1972. Suppose we start with you, Ethel."

Hitler in Havana

Fidel Castro has now completed his eighth year as caretaker and jailer of Cuba for the USSR. The economy of the island is sputtering badly. There are shortages of just about everything, harvests continue to disappoint, and medicines are scarce, food rationed. It's reliably reported that the USSR is investing a million dollars a day in keeping Castro in power.

There are many parallels between Adolf Hitler and Fidel Castro. Not the least of these is the fact that each sought to expand Hitler sought to control all of Europe. Castro daily exports agents and saboteurs throughout Latin America.

A Farewell to Arms?

We were particularly struck by the lengths to which President Johnson went in his State of the Union message (and it was lengthy, wasn't it?) to demonstrate that the United States is truly interested in peace and an end to the Cold War.

The President listed several steps we have taken, and will take, to reduce tension: a UN agreement regarding the peaceful uses of outer space; the removal of more than 400 non-strategic items from export control; extension of a cultural agreement with the USSR for another two year; a series of discussions with international agencies on ways to increase contact with Communist countries.

The President urged Congress to pass an East-West Trade Bill and to approve a consular treaty with the USSR which would increase several-fold the number of legations and embassies—and spies—in this country.

HOW TO ADDRESS OUR LAWMAKERS

You may wish to write your senators and representatives in Washington and Austin. Here are their addresses:

Pull Up A Chair

By FRANK JAY MARKEY

Research in the cosmetic field shows that in the past decade greater interest has been shown in hair growth than in any other area. Maybe that's the reason for the popularity of wigs for men and women.

Today's smile: A teacher asked her class: "What two documents have contributed the most to our government?" The son of an Internal Revenue employee answered: "Forms 1040 and 1040a."

The recent death of Frankie Genaro recalled for us the great days of boxing when there were class performers in every weight class. Genaro was fly-weight champion back in the 1920's and in that long-gone era there were such master boxers as Pancho Villa, Fidel LaBarba, Jimmy Wilde and a host of other little men.

Cannel At Bay

Not What to View but Whether NEW YORK (NEA)—On our first venture into television some years ago, we were hired by a network executive whose job, it turned out, was to revolutionize television programming without making too many changes.

Thoughts while shaving: The next thing you'll be seeing in the smart shops will be plastic-coated paper raincoats. They have already hit the market in London and you can expect them in this country in time for the April showers.

We're glad there is a private organization to prepare and distribute such radio and TV materials in this hemisphere. We have seen no such output coming from Washington.

President Johnson asserted that his "first responsibility" was to assure that no fraction could ever "use its nuclear power as a credible threat against us or our allies."

Country Editor speaking: "Any fellow who thinks marriage is a 50-50 proposition never learned fractions or percentages when he was in school."

WORLD ALMANAC FACTS

Each year the U.S. Government Printing Office turns out a vast number of books, pamphlets, reports, and studies. According to The World Almanac, about 60 million publications are sold every year and many more are given away to libraries. Receipts amount to about \$12.5 million annually.

"May We Join the Party?"



Cannel At Bay By Ward Cannel

The Doctor Says: By DR. WAYNE BRANDSTADT

Baby's Refusal to Nurse May Be Tipoff on Cancer

Question Box

Breast cancer in a nursing mother is not common but, when a baby calls attention to one by refusing the involved breast, it may be helping to save the mother's life.

Q — What is the cause of Paget's disease? How long can you live with it? Is there any cure?

A — The cause of osteitis deformans or Paget's disease is unknown but aging is a factor as most cases occur in persons over 40.

Q — Would a girl who is an X-Ray technician be in danger of having an abnormal child due to exposure to X-rays?

A — X-ray technicians should wear film badges or other devices to check the amount of exposure to which they are subjected.

As to the panel and talk shows — well we do not think that Johnny Carson, William Buckley and David Susskind are particularly visual.

So, as we said, the basic fact about an evening with the television is not what to watch but whether to watch at all. Inas-

Whose War Is It?

(Chicago Tribune) South Vietnamese stevedores have paralyzed the vital port of Saigon with a dock strike. The stevedores struck the day after Christmas when American officials refused the union demand to rehire 600 Vietnamese workers laid off at a new American military port two miles upstream from Saigon.

WASHINGTON

New Spirit Sweeps Jap Industry

By RAY CROMLEY Washington Correspondent TOKYO (NEA) — It was the middle of the morning shift in a transistor factory near Tokyo. In one section of a factory production room, seven Japanese girls recently rom farmers were grouped — talking, giggling, asking questions. Their work tables stood idle.

They weren't talking about boys, or clothes or make-up. They were getting an explanation of new company policies and discussing them.

Another group of four girls in the next room was discussing a new production technique the company was putting into effect. Other groups of girls were working at their benches as though these discussions were not going on.

These scenes were at the big Sony plant in a suburb near Tokyo. Sony is the Japanese company that has made a worldwide reputation with small precision-made television and radio sets, tape recorders and other electronic products.

This idea of getting the worker in on things — making him feel a part of the operation — is one of Sony's major secrets.

Sony takes girls from poor farm areas, gives them jobs in clean, efficient plants. Girl supervisors, up from the ranks themselves, take particular pains to build the confidence of the girls.

The girl are given food and lodging above the average they have been used to at home at very inexpensive rates. They've offered low-cost vacation trips.

But most of all, Sony makes these young girls, many of whom are with Sony by the time they're 16, feel a part of this famous enterprise.

Sony's reputation, Sony's precision and Sony's research for improving its products are their reputation, their precision and their research.

The discussion technique does not begin and end at the bottom of the ladder. It goes on at all levels through the Sony organization.

Sony lives on new ideas. Its founders were a group of young scientists headed by Maoru Iwuka and Akio Morita. They had \$1,600 in capital. From the beginning, they've emphasized new products or old products with unusual qualities. Six cents out of every dollar earned goes into research.

Sony is one example of the new spirit that has been growing in some major Japanese manufacturing circles — a broadening of management to bring in new ideas, an emphasis on precision and quality.

This Japanese emphasis on precision and quality is going to mean increasing competition in the quality American market, for these firms are counting heavily on sales to the U.S. consumer and businessman.

Japan must step up its export over the next decade to afford the capital imports it needs to expand its factories and import the food it needs.

Because Japan's grain production cost are exceedingly high, Japan must move many of its people off the farms into factories where they can earn more, then turn the land to other uses. Japan must then import more U.S., Canadian and other low-cost foodstuffs as farm output declines. Japan must import more advanced American machinery, equipment and know-how to build and equip the new factories.

A thought for the day by British Prime Minister Churchill said: "The only guide to a man is his conscience — the only shield to his memory is the rectitude and sincerity of his actions."

Hunt for Truth BY H. L. HUNT

TRUSTING THE U.N.

To the surprise of no highly informed person, U. N. Secretary-General U Thant, in a ringing statement, challenged the right of the free world to defend itself against communist aggression.

U Thant conducts the U. N., an organization which by its erratic policies, has fostered, indirectly, tribal wars in Africa, internal conflicts in South America, border clashes in Asia and civil strife inside otherwise peaceful, independent nations.

In 1961, the CIA, State and Defense Departments, probably by oversight, permitted information to get through to President John F. Kennedy that the Soviets had placed missiles in Cuba which could destroy the cities of the United States.

Secretary U Thant entered the situation, going to Cuba. In negotiations he nullified the agreement which President Kennedy had exacted, and agreed to take the word of the communists that the missiles were gone.

100 such invisible levies; a man's suit 116, a woman's hat 150, a house 600.

According to the Tax Foundation in New York, there are at least 151 taxes hidden in one loaf of bread. An egg carries

School... de v... through... prep... comp... invol... along... A... the... terms... build... books... other... opera... A... one... needs... relation... super... exten... ation... budge... Board... mem... mend... the... balac... the... philo... advis... appoi... usual... budge... chang... discus... tion... This... the... for... a... govern... count... the... Rep... appr... an... every... ty... for... ways... educ... budg... gram... Ho... prop... the... Ne... Ad...

LONDON (UPI) — A member of the staff of the London Times said Tuesday he had found documents relating to U.S. guided missiles scattered on the sidewalk in the London suburb. The Times carried a report on the find in Wednesday's editions.

It said the documents, some of which were marked "secret," were carried as if an attempt had been made to burn them. They referred to the U.S. Corporal, Hawk and Honest John missiles.

The Times said it turned the papers over to the British Ministry of Defense. A ministry spokesman said an investigation would be made.

16 THE PAMPA DAILY NEWS THURSDAY, JANUARY 19, 1967 50TH YEAR

Social Studies Workshop For Teachers Scheduled

A social studies workshop for elementary teachers will be conducted in Sam Houston School cafeteria Friday beginning at 9 a.m., according to an announcement by Mrs. Marjorie Gaut, elementary consultant.

Jack Shelton, coordinator with the Panhandle Educational Services Organization of West Texas State University, will be in charge. Shelton has had wide experience in the educational field as an elementary principal and has conducted many work-

shops in methods and techniques for social studies instruction for elementary teachers.

Mrs. Gaut said Shelton will discuss new trend in elementary social studies and will demonstrate technique for developing the problem-solving approach to learning.

"The social studies workshop is part of the training elementary teachers are receiving in the in-service programs that are being conducted this year," Mrs. Gaut said. "A reading consultant worked with the teachers in October. An art workshop will be conducted by an art specialist in February. There is a possibility of other workshops before the end of the year."

In order for elementary schools of Pampa to continue to serve the children in the best manner possible, a program of continuous study and revision is carried on. Major emphasis for study this year is the "new social studies." Teachers meet regularly after school hours to work on the study. At the end of the year a tentative curriculum guide for social studies that will provide for a sequential, logical, and cumulative program based on major concepts in all the social science areas for grades one through six will be written for use into the elementary schools.

Grade-level chairmen are: Miss Pearl Spaugb, first grade; Mrs. Helen Warner, second grade; Mrs. Everal Paukes, third grade; Mrs. Carol Mackey, fourth grade; Mrs. Theresa Nabors, fifth grade; and Kenneth King, sixth grade.

In 1963, President Sylvanus Olympio of the West African nation of Togo was assassinated.

Foreign Commentary

By K. C. THALER
United Press International

LONDON (UPI) — Whatever the outcome of the Red Chinese revolution, one of its immediate effects will be a temporary withdrawal from the world, behind the Great Wall.

Once the fate of the revolution is decided a prolonged period of recovery and consolidation will be required. This effort will at first be largely concerned with the internal situation, with political and party life reorganized on new lines, under a modified system, regardless of which way the revolution goes.

Red China's withdrawal from the world is in effect already underway with a large number of Peking's envoys abroad already recalled or about to be recalled.

There is doubt whether they will be replaced for some time to come.

New and trusted representatives will have to be found and given a new policy line in accordance with what emerges ultimately as Peking's political and ideological concept.

Foreign Policy

Significantly, little has been said in the recent battle of words about Red China's designs abroad.

Peking's foreign policy of the past is a shamble, having led Red China to near total isolation from the rest of the world, including its old ally, the Soviet Union. It has lost the friendship of Indonesia and virtually all its support in Africa.

A victory by Mao Tse-tung will mean increased isolationism, a further hardening of Red China's foreign policy line towards the United States and an ever tougher posture towards Russia.

Whether his opponents have different ideas remains to be seen. So far there have been no signs of any major division between them on foreign policy, although some elements are known to favor a rapprochement with Russia.

If the present upheaval results in a prolonged period of political isolationism, it will certainly require years to repair the damage done to the country's economy, which has already been dislocated to some degree.

There have been strikes, interruption of production, transport troubles and intervention in factories between rival

groups, and all the signs point to a further deterioration of the economy.

There already is talk of a "New Leap" forward in the economic sphere. The "Great Leap" of 1958 brought Red China close to collapse and semi-starvation.

It will be a long time before Peking will be able to settle down to "normal" business, politically and economically.

Wall Street Chatter

NEW YORK (UPI) — Wright Advisory Reports says the stock market's thrust last week was so powerful that there should be "little doubt" 1967 will see the Dow Jones industrial average rise to around the 970 level. The company says it does not expect penetration of the 800-850 zone until the second half of the year.

Standard & Poor's says the prospect of further improvement in the money and credit situation has unleashed impres-

sive latent strength in the stock market and promises to remain the dominant investment factor in the period ahead. The company advises adding to commitments in selected stocks.

Goodbody & Co. says the penetration on heavy volume of the 820 area on the Dow Jones industrial average has put investors in a more optimistic frame of mind although a resting period may be in order, the analyst says, a more

In 1733, James Oglethorpe and some 120 British colonists arrived at Charleston, S.C., with a charter to form a settlement which is now Georgia.

encouraged view of the market can be taken than has been the case for some time.

DAIRY QUEEN

2 CONVENIENT LOCATIONS
No. 1 117 Alcock MO 4-4781
No. 2 1700 N. Hobart MO 5-3188



14' Philco
Frostless
Unheard Of Price Now Only

Model 14RD6A \$199.00 W.T.

102-104 S. Cuyler
Pampa, Texas, MO 4-7488
Open Thursdays
Till 9 P.M.

Western Auto
...the family store
and CATALOG ORDER SERVICE
As Close as Your Telephone

Heard-Jones DRUG

THESE PRICES GOOD Thurs Fri & Sat.

114 N. Cuyler MO 4-7478

100 Aspirin by McKesson 49c Val. 5c	TEK Deluxe Tooth Brush Hard or Medium Reg. 19c 69c	No 2 Lead Pencil 1c Each
--	---	-----------------------------

CEPACOL Mouth Wash 59c	CORICIDIN Cough Formula 79c	Toni Home Permanent 1.09
------------------------	-----------------------------	--------------------------

Contac 10's Hay Fever and Cold Caps 97c

PERTUSSIN Medicated Vapor Reg \$1.19 47c

REXAL BRITE SET HAIR SPRAY 39c

APPEARANCES CAN BE DECEIVING
This is especially true where your health is concerned. Some early symptoms of illness or disease are apparent only to a knowledgeable professional... your family doctor. So, no matter how fit you feel, have regular check-ups. Be safe, never sorry.

When you have a prescription to be filled, another professional you can rely on is our Registered Retail Pharmacist.

Your Rexal Pharmacy

WALL FLOWERS
LAS VEGAS, Nev. (UPI) — A college professor told wool growers meeting here that they should find out what it takes to make a ram more appealing to the opposite sex.

According to Dr. T. Donald Bell of the University of Idaho's College of Agriculture, some rams simply lack sex appeal and, as a result, ewes refuse to associate with them.

LAST TIMES TODAY
CAPRI
MO 4-2569
OPENS 1:45


SHIRLEY MACLAINE
MICHAEL CAINE
GAMBIT
TECHNICOLOR

STARTS FRIDAY
CAPRI
9 BIG DAYS
Extraordinary Entertainment!

WALT DISNEY
Follow Me Boys!
FRED MACMURRAY
VERA MILES
TECHNICOLOR

DOWNTOWN PAMPA Penneys ALWAYS FIRST QUALITY

JANUARY clearance



PENN-PREST
NEVER IRON AGAIN
"THE TONNE DRESS"

NEW LOW PRICE
Finet Quality
No-Iron
Towncraft
DRESS SHIRTS
3.98

Now only orig. \$5

A tremendous buy at their old price - now a really remarkable value! That Penn-Prest label means they'll never need ironing to look crisp and smooth-as-new. They go non-stop from dryer to hanger to you. Stay wrinkle-free all day long. Polyester-cotton broadcloth weaves, white. Kingdor. Stock up now, at our extra-low price!

Our all-American shirtwaist blooming now in fresh spring colors! Classic tailoring in easy-weave, easy-care Dacron® polyester-and-cotton that requires the least upkeep. Spins through countless machine washings effortlessly... never needs more than a touchup. Neat notched collar, short sleeves, softly pleated skirt. Now, black, mint, light blue, or pink Pastel colors.
*Du Pont's reg. T.M. Misses' sizes jr & half sizes 5"

Men's Continental Pants Penn-Prest Hopsacking - Slimster Originally 5.98. Now 2.99	Women's Sleepwear Reduced Soft cotton challis and flannelette pajamas, full and watz gowns orig. 2.98 Now \$2
Men's Velour Shirts Combed cotton velour short sleeve, originally 6.98 - now 3.88	Women's Dresses All better dresses reduced Orig. 6.98 to 24.98 - now \$4.16
Men's Dress Shirts Company close out, Save Originally 2.98 and 3.98 1.99	Women's Printed Jeans Sizes 5 to 11 - petite Shop and save 1.22
Men's "Mod' Pants Wide wale corduroy originally 6.98 NOW 4.44	Women's Hip Hugger Pants Prints and solid colors Orig. 5.98 to 7.98 Now \$4
Boys Western Jeans Heavy duty cotton denim, Wash'n Wear Sanforized, 6 to 18 - now 1.77	Girls' Dresses Reduced Cotton and cotton blends Sizes 4 to 14 - Reduced. \$3 and \$4
Boys' Sweaters Reduced Button front cardigan & Pullovers. Originally 6.98 and 7.98 3.88	Girls' Winter Sleepwear Flannel and knit styles Orig. 2.98 and 3.98 1.22
Toddler Time Sleepers Knit sleeper with feet size 6 and 8 originally 2.49 Now 1.88	Toddler Corduroy Play Suits Sizes 1 1/2 to 3 limited quantity Originally 2.98 1.88
Toddler Pant Sets Corduroy and lace trim Orig. 3.98 - Now \$2	3 Only - Nursery Chairs Fold up style Save Now. Orig. 4.98 Now 3.44
Toddler Girl Dresses Sizes 2, 3, and 4 All Cotton. Orig. 3.98 - Now 2.88	Corduroy Piece Goods Machine washable. Narrow and wide wale. Orig. 89c and 1.29 66¢ yd.

Charge It Shop downtown for greater selection