



(Daily News Staff Photo)

N. SOMERVILLE OPENED — Mayor Jim Nation, right, flips the switch that activated a traffic light and opened N. Somerville St. to traffic at mid-forenoon today.

March of Dimes Deemed Success

The 1967 March of Dimes Campaign topped its total contributions to \$6,643.35 as compared to the 1966 drive, which netted \$6,471.44, according to Jim Morris, Gray County campaign chairman.

Airport Bill Passage Is Expected Today

AUSTIN (UPI) — The legislature's two-year bout with the airport troubles of Dallas and Fort Worth is expected to end today with House passage of a bill creating a regional airport authority.

V.C. Down 13 'Copters

SAIGON (UPI) — U.S. and Allied troops killed 575 Communists in three battles but they were bitter sweet victories marked by the downing of 13 American helicopters, spokesmen said today.

V.C. Down 13 'Copters

SAIGON (UPI) — U.S. and Allied troops killed 575 Communists in three battles but they were bitter sweet victories marked by the downing of 13 American helicopters, spokesmen said today.

Affair Denounced By Sen. Mansfield

WASHINGTON (UPI) — The Central Intelligence Agency's secret involvement in student affairs—target of a White House-ordered investigation—was denounced today as a "move toward big brotherism" by Sen. Mike Mansfield.

Affair Denounced By Sen. Mansfield

WASHINGTON (UPI) — The Central Intelligence Agency's secret involvement in student affairs—target of a White House-ordered investigation—was denounced today as a "move toward big brotherism" by Sen. Mike Mansfield.

Ordnance Plant Shell Explosion Fatal to Eleven

TEXARKANA, Tex. (UPI) — A 105mm artillery shell exploded in the hands of an assembly line worker at a government ordnance plant Wednesday night, touching off a chain reaction blast. Eleven persons were killed and a dozen others were injured.

Congress Puts LBJ Civil Rights Message on Ice

WASHINGTON (UPI) — Members of Congress, burned by last year's "open housing" battle, put President Johnson's new civil rights proposals on ice today for an indefinite time.

Civil rights champions said they would make a drive—some day—for passage of the proposals, largely reshaped from 1966, that Johnson sent to Congress in a message Wednesday.

But for the moment prospects looked even worse than last year when the 1966 bill squeaked through the House after a blood-letting battle over banning discrimination in housing only to die by filibuster in the Senate.

Chairman Emanuel Celler, D-N.Y., of the House Judiciary Committee, who maneuvered the 1966 bill through the House, said his committee would take up the rights legislation after it finished with the President's bulky anti-crime package, a job which could take months.

House Republican leader Gerald R. Ford, Mich., made it clear that "open housing" faced new troubles from the enlarged GOP minority in the House (which can always count on substantial southern Democratic opposition to any civil rights bills).

"On constitutional and other grounds, I still have serious reservations about federal open housing legislation," Ford said. At the heart of his message, Johnson again urged legislation to ban racial discrimination in sales and rentals of houses and apartments, but this time he offered a three-year timetable.

The prohibition would apply immediately to federally financed or insured housing. In 1968, discrimination would be banned in all dwellings sold or rented by someone other than the occupant, and in dwellings of five or more families.

In 1969, the prohibition would cover all housing. Congressman Bob Price has announced a Pampa High School senior is one of six Panhandle youths named to compete for an appointment to the United States Air Force Academy at Colorado Springs, Colo.

Price said the six will take college board entrance examinations this spring and the one with the highest score will enter the academy in June. Those competing include Myron Joseph Porter Jr., 18, 1616 N. Hobart, who will graduate from Pampa High School in May. He has participated in football, track, student council, Boy Scouts and is a member of the National Honor Society. He is the son of Mr. and Mrs. M. H. Porter.

Other area competitors are Gary Wendell, 18, of Phillips; Robert H. Lindsey Jr., 19, of Dimmitt; Robert E. Bradford, 19, of Dimmitt; Ramsey Allen Hughes, 18, of Silverton, and William Benny Freeman, 18, of Sunray.

All of the nominees graduated or will graduate in the upper 10 per cent of their high school classes. The principal candidate, as nominated by the previous congressman, Walter Rogers, is Joe Calvin Shields of Stinnett. First alternate is Jose Jesus Gutierrez of Canadian, now serving in Vietnam; second alternate, Robert Haines Matthews of Amarillo; third alternate, Gregory Alan Marshall of Amarillo.

Price has added two alternates from the district to the list nominated by the previous congressman. Thomas Boyer Zener of Higgins will be fourth alternate and Charles Michael Weeks of Amarillo will be fifth alternate.

Ordnance Plant Shell Explosion Fatal to Eleven

TEXARKANA, Tex. (UPI) — A 105mm artillery shell exploded in the hands of an assembly line worker at a government ordnance plant Wednesday night, touching off a chain reaction blast. Eleven persons were killed and a dozen others were injured.

LBJ Wants Consumer Protection

WASHINGTON (UPI) — President Johnson today sent Congress a 10-point legislative program to protect the American consumer from such things as "slippery" mail order deals and hidden interest rates.

McNamara Points Finger At Delinquent Reservists

WASHINGTON (UPI) — The Pentagon is preparing to call about 30,000 delinquent reservists to active duty. Thousands of others will be kicked out of the reserves and reported to their draft boards.

A Defense Department spokesman said Wednesday an estimated 75,000 reservists who have been "unwilling or unable" to attend drills will be "screened" for possible reclassification. The Pentagon said the man will either be: —Called to active duty for service in the regular armed forces for two years, less the period of active duty they have already served.

WEATHER

PAMPA AND VICINITY—Mostly cloudy with occasional rain tonight. High today mid-40s. Low tonight lower-30s. High tomorrow mid-50s. Southerly winds 10-20 mph. Twenty per cent probability of rain tonight. Outlook for Saturday: Partly cloudy and warmer.

INSIDE TODAY'S NEWS

Table with 2 columns: News Item, Page. Includes items like Abby, Classified, Comics, Crossword, etc.

Continuation of Texas Drought Could Cause Major Problems

AUSTIN, Tex. (UPI) — A drought facing Texas agriculture could cause international problems if it continues the next two to three weeks, Texas Agriculture Commissioner John C. White said today.

White said the U. S. Department of Agriculture recently reported that the nation would be able to meet its foreign commitment for wheat, "but I think they were estimated on a normal crop."

Churchill of San Angelo said, "Now it's dry again." "It's the worst drought in longevity since 1929," a Crosbyton farmer said. "We haven't had any rain since mid-September. The only thing that has kept us going is that we had 12 to 15 inches in August. But that was it."



(Daily News Staff Photo)

LEFORS MAYOR A. C. Hammer, center, holds a \$2,000 check, gift of the Pampa-Gray Foundation, presented to the City of Lefors at its council meeting this week as a contribution for construction of the Lefors Civic Center and City Hall.

Car Expert Has Love Affair With Bugatti Type 35 Racer

By BOB COCHNAR and DAVE BURGIN
Newspaper Enterprise Assn.
NEW YORK (NEA) — There is a small but very select category of people known in and out of the trade as car nuts. These folks — men, mostly — spend years tracking down crumbling old relics and spend more years restoring them.

Wheeling it

It's a neat hobby but fantastically expensive. One of the most famous nuts is Bill Harrah, owner of a gambling establishment in Reno, Nev. He owns several hundred mint-condition classics. The net worth is almost incalculable.

And then there's John Lane, an artist friend of ours who works for NEA in Cleveland. He owns a 1964 Chevy (he calls it his "town car") and a 1966 Mercedes 190SL sports car kept, naturally, in perfect shape.

But John has this insatiable desire to own a Bugatti Type 35

racing car. He goes on and on about it, knowing well that he will never have one — there are few left and they just aren't for sale — so instead he has become one of the country's handful of Bugatti experts.

We asked him about his love affair with the Bugatti the other day and this is his report:

"While Ettore Bugatti made magnificent passenger cars selling for as much as \$40,000, his racers are his legacy. The Type 35, designed in 1924, is considered by many the greatest racing car ever built. "It gave an unbelievably hard ride. It spewed oil from every possible hole. The clutch was either in or out and, when shifting gears, it was usually a gamble whether or not the clutch would disengage.

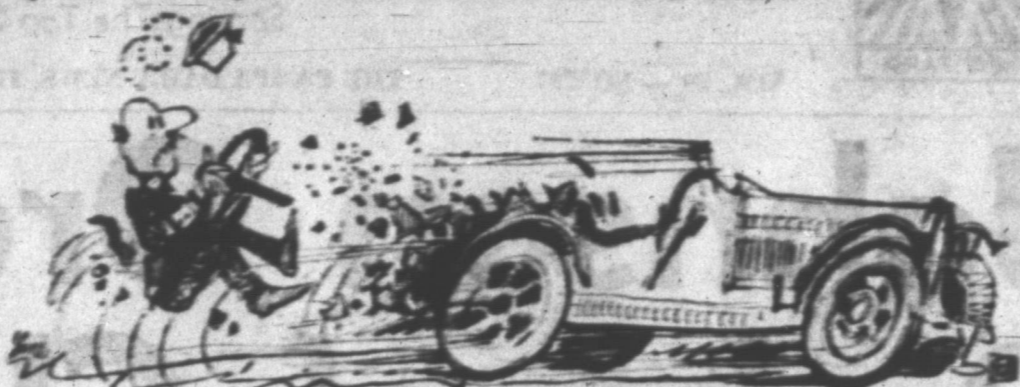
"If the temperature dropped below 30 degrees, the oil and water had to be drained, heated and poured back in. In fact, Bugatti casually advised his customers to invest in a heated garage.

"The brakes were excellent, practically fade-proof. They

were cable-operated but had an extremely hard pedal. When asked why this wasn't improved

SPINOFFS: Poor Ford. This

theme: "If you're not in racing, you're not in the automobile business."



Due to the eccentricities of the multiplate clutch, the Bugattis have a tendency toward spirited take-offs!

ed, Bugatti replied that he made cars to go, not to stop.

"What do you suppose Ralph Nadar would say about that?" "Bugatti wasn't interested in track races. He felt that road races were a far better test for an automobile. And, in this environment, his cars were supreme.

"The Bugattis saw the checkered flag 1,045 times in 1925 and 1926. The following year, 806 first places were taken by the 35s. The machines were powered with a straight eight, 120-cubic inch displacement.

"The firing up of the engine was not the pleasant, throaty explosion one expects over today. It is reputed to have so ed more like a little boy running down a picket fence with a stick. But the steering and chassis were incomparable.

"The Bugatti was simply a beautifully designed, exceptionally efficient car that won.

"It sounds pretty uncomfortable and unsafe, but I'd sure love to own one. Add, furthermore . . ."

Well, Ford is still very much in racing (a good thing, too) but

the recent debacle at the Daytona 24-Hour Continental did not help the company's image much. Ferrari P4s finished one-two-three. Of the six Ford Mk IIIs entered, only one finished, 73 laps behind the leader.

Says a Ford spokesman: "All cars initially went out with transmission failures, due to broken output shafts between third and fourth gear. Each of the shafts was replaced at a time penalty of an hour a unit. Three more output shafts were broken and the cars were retired. Two other cars quit with engine failures. The output shafts were made by an outside manufacturer.

"Ford still expects to win at Sebring and Le Mans."

Not if Enzo Ferrari has anything to say about it.

Memory Gardens of Pampa, Inc.

P.O. Box 1972, Pampa, Texas
STATEMENT OF CONDITION OF PERPETUAL AND IRREVOCABLE FUNDS IN TRUST AS OF DECEMBER 31, 1966

ASSETS		
	Book Value	Market Value
Cash	\$2,716.57	\$2,716.57
Bonds (Corporate)	7,571.06	7,720.00
Corporate Stocks	13,840.10	12,807.50
Real Estate Mortgages	14,271.11	14,271.11
Total	\$38,398.84	\$37,515.18
LIABILITIES		
Principal in Trust	\$37,899.00	\$36,715.41
Undisbursed Income	799.77	799.77
Total	\$38,698.77	\$37,515.18

I hereby certify that the foregoing statement is true and correct to the best of my knowledge and belief.

/s/ Kenneth N. Sloan
Vice President and Trust Officer
The First National Bank of Amarillo, Tex.
Trustee For Memory Gardens of Pampa, Inc.—Perpetual Care Trust

Freezer Beef Sale

Choice Grain Fed Beef
Unconditionally Guaranteed
Investigate Our Monthly Pay Plan

This Meat is Cut To Your Specifications. DOUBLE WRAPPED AND QUICK FROZEN TO INSURE TENDERNESS AND FLAVOR.

HIND QUARTER lb. 53¢ Front Quarter 39¢
1/2 BEEF lb. 43¢

ALL PLUS 6¢ LB. PROCESSING

CLINTS FOODS

White Deer, Texas
Phone 832-4031

GOOD FRUITS & VEGETABLES GET TOGETHER

Bringing You Freshness is My Business.

PRODUCE MANAGER

Furnia SUPER MARKETS

MORTON'S DINNERS 39¢
Beef, Turkey, Chicken

SPINACH 12 1/2¢
Top Frost, chopped or leaf, fresh frozen, 10 oz. pkg.

Farm Pac, Assorted Flavors
MELLORINE 1/2 Gal. 39¢

GRAPEFRUIT Texas Ruby Red 9¢
Hawaiian - Large Size PINEAPPLE Each 39¢
TOMATOES Firm Ripe Slicers 19¢
Golden Ripe Fruit BANANAS Lb. 12 1/2¢
CALIF. Sunkist Navels ORANGES Lb. 13¢
U.S. No. 1 Russetts POTATOES 10-Lb. Bag 59¢

Avocados CALIF. 4 for 29¢

Lettuce CALIF. FIRM GREEN SOLID HEADS. LB. 13¢

Celery CALIF. GREEN PASCALS, STACK 13¢

Apples CALIF. GREEN NEWTON, LB. 13¢

CHILI Austex Plain No. 2 Can 59¢

SALAD DRESSING Elna, Qt. 29¢

SUGAR Holly 5-Lb. Bag 49¢

PEACHES Hunts, Yellow Clings sliced or halves, No. 2 1/2 can 25¢

Pork and Beans Van Camps No. 300 can 12 1/2¢

TISSUE Northern 4 Roll Pkg. 39¢

EGGS 39¢ 1 1/2 lb. Loaf Fresh Daily

BREAD 19¢

CHUCK ROAST USDA Choice Beef lb. 49¢

GROUND BEEF Extra Lean Choice quality lb. 59¢

ORANGE JUICE Excellent for Broiling 29¢
CHOPPED SIRLOIN lb. 89¢
Family Pac Sliced Bacon 2lb. pkg. 1.29

Farm Pac All Meat - Full Pound FRANKS 59¢
Cheese Delight Cheese Spread 2lb. box 59¢

We Reserve the Right To Limit Quantities

Furnia SUPER MARKETS

"General Merchandise"

SEGO PANS 6 for \$1.49
Tumblers 6 for 29¢

Diet Food Assorted Flavors 6 for 99¢
Sauce Pans Set Of 3 99¢
Plastic 10-oz. Assorted Colors 6 for 29¢

2 THE PAMPA DAILY NEWS THURSDAY, FEBRUARY 16, 1967 30TH YEAR

Point Barrow, Alaska, is the northernmost town in the United States since the admission of that state into the Union.

Africa is responsible for 95 per cent of the world's yearly production of diamonds.

The natural gas industry is the sixth largest industry in the United States.

Statistics reveal that more than 30 per cent of U.S. drivers involved in fatal accidents in 1965 were under 25 years of age.

NOW THRU SATURDAY **CAPRI** MO 4 7509 ADULTS 85¢ Today Till 6 CHILD 35¢

WOULD YOU BELIEVE HE'S AN UNBELIEVABLE SECRET AGENT!

THE LIQUIDATOR GOES FROM ONE HOT-BED OF INTRIGUE TO ANOTHER!

THE LIQUIDATOR

ROD TAYLOR-TREVOR HOWARD-JILL S. JOHN

Obituaries

Mrs. Mary Alice English. Funeral services for Mrs. Mary Alice English, 75, of 420 E. Foster, will be at 2 p.m. tomorrow in Harrah Methodist Church...

Mrs. Gussie A. Archibald. Mrs. Gussie A. Archibald, 84, of 612 Bradley Dr., died at 11:25 p.m. yesterday in Worley Hospital...

Pampans Hear West Texas 'Infocade'

Area business men and women, as well as high school and college students who attended the third annual "Infocade" yesterday in Amarillo...

Pampans attending the affair, which was sponsored by the West Texas Chamber of Commerce, included Harold Barrett, Gordon Lyons, W. A. Morgan, Bill Power, R. D. Wilkerson and E. O. Wedgeworth...

Leading group discussions were Dr. Joe T. Nelson vice-president of W.T.C.C., and Mrs. B. L. Seay, president of the Texas Federation of Women's Clubs...

One group included George W. McCleskey, Lubbock, who spoke on "The West Texas Economic Picture," Weldon Harts of Austin, who spoke on the state legislative picture, and Thomas A. Martin, who talked on federal legislation as it relates to the Texas area...

Speakers for the second group included Mrs. John J. Kirchoff, Plainview, Miss Linda Loutherbach, Hardin-Simmons University, Abilene; and J. C. Nickens, Odessa Permian High School, Odessa. Question and answer periods followed both group talks...

Cattle Breeders' Banquet Slated

Big things are in the making for the annual Top O' Texas Hereford Breeders Banquet at 7:30 p.m. Tuesday, March 7, according to Gordon Whitener of Wheeler, association president...

A buffet will be served in the Coronado Inn's Starlight Room with an excellent program to follow, Whitener said.

Reservations may be made at the chamber of commerce office in the Hughes Building, E. O. Wedgeworth, chamber manager, urged that reservations be made early as a sell out crowd is anticipated.

Wedgeworth said 60 head of cattle is consigned for the show and sale, including 53 bulls and seven females.

"This is the best offering we have had in many years," Wedgeworth said. Judging this year's show will be Doyle Ponder of the Pied Piper Ranch in Hamlin, Col. Walter Britten will be the auctioneer.

Survivors include three daughters Mrs. Mabel Johnson of Pampa, Mrs. Irene Boynton of Vernon and Mrs. Florence Francis of Timpan; a brother, S. A. Conelley of Timpan; a sister, Mrs. Mattie Collins of Oklahoma City, Okla., 16 grandchildren, 25 great-grandchildren, and seven great-great-grandchildren.

W. E. (Ed Skinner) Walker. W. E. (Ed Skinner) Walker, 59, of Borger, former long-time resident of Pampa, died at 7 p.m. yesterday in North Plains Hospital, Borger, where he was taken following a heart attack suffered a short time earlier in Stinnett.

Mr. Walker, born May 30, 1907, at Ardmore, Okla., moved to Pampa from Wilson, Okla., in 1929. He moved to Borger in August, 1965, where he was sales manager for West Lawn Memorial Park Cemetery.

Funeral services will be at 3:30 p.m. tomorrow in Barrett Baptist Church with Rev. R. L. Hillier, pastor of Borger, East Side Baptist Church officiating. Burial will be in Memory Gardens under direction of Carmichael-Whitley Funeral Directors.

Surviving are his wife, Mrs. Alma Walker of the home; one son, Lawrence Walker of Dallas; one brother, Wayne Walker of Houston; two sisters, Mrs. Viola Williams of Alma, Okla., and Mrs. Frances Kimbell of Wichita Falls; two nephews, Duward and Howard Williams of Pampa, and two grandsons.

Pallbearers will be E. M. Culbertson, W. T. Broxson, Gene McClendon, Travis White, Gene Rogers and Wayne Cobb.

Mainly About People

The Pampa Council of United Church Women requests persons who wish to contribute used clothing to Church World Service to take the clothes cleaned, mended and boxed securely to Bruce and Son Van Lines by Monday, Feb. 20, for pick-up. Infants and childrens clothing and blankets are urgently needed.

Garage sale: antiques, glass ware, camping gear, jewelry, many other items. Everything must go. 509 N. Starkweather. Friday, Saturday, Sunday.

Garage sale: 1907 Hamilton, Saturday. Pampa Judo Club will meet as scheduled Friday evening, Alvin Brewer, instructor, is attending the State Judo Championship Tournament at Denton.

S & H Mail order service now located in B & B Pharmacy. Youth of Lefors Baptist Church will be honored at a Sweetheart Banquet at 7 p.m. tomorrow in the fellowship hall of the church.

Hunting and fishing license. Pampa Tent and Awning, 317 E. Brown, MO 4-8541. Basketball games to be played tomorrow night in Lefors High School Gym include a girls Pee Wee, a boys Pee Wee and a man's tilt. Transwestern Pipeline of Pampa vs. Transwestern Pipeline of Lefors. Games will start at 7 p.m.

Keeshond puppies for sale. 1125 Crane Road, MO 5-4135. Garage sale: 964 Terry Road. Friday 9-5. Garage sale. Clothing, drop

Oil, Gas Producers Hear Briefing On New Report Forms. Approximately 100 oil and gas producers or their representatives attended the briefing session held in the Texas Railroad Commission offices here yesterday to bring the industry up to date on new forms recently adopted for reporting production.

Jack O. Miller, Panhandle District supervisor for the Railroad Commission, said the attendance at the symposium in City Hall exceeded expectations. Producers attended from over the Panhandle and as far away as Tulsa, Okla., and Colorado Springs, Colo., Miller said.

The meeting was conducted by Mrs. Helen Danner, chief clerk, and Bob Blakeney, chief inspector, in the Pampa office.



Sanders Elected To Music Post

Hugh Sanders, Pampa High School choral director, was elected vice president of the Texas Music Educators Association, for a two-year term during their recent clinic-convention in Houston. He was also elected for a second term as state vocal chairman, which breaks a state precedent that no vocal chairman serve for a second term.

More than 500 choral directors attended the state meeting.

Top Area Engineer Award to be Made At Society Banquet

The Panhandle chapter of the Texas Society of Professional Engineers will hold a banquet at 6:30 p.m. Monday at Holiday Inn West in Amarillo in conjunction with National Engineers' Week, Feb. 19-25.

At the banquet, the Engineer of the Year award will be made to a chapter member. Hector P. Boncher, vice president of public relations of Dresser Industries, Dallas, will be the featured speaker.

Vessels May Get Brain Examination

Gray County Sheriff Rufe Jordan said today that there is a possibility that convicted Pampa rapist Tom R. Vessels, now in Potter County jail in Amarillo, would undergo a brain examination.

Jordan said though that at this time the examination was still "just a possibility."

"Vessels had a blackout at one of the trials here and has since been examined by three Pampa doctors," Jordan said, adding, "They could find nothing wrong with him, except nervousness but he said he still felt bad."

Vessels, along with three other inmates, was believed involved in an attempted jail break and was taken with another prisoner to the Amarillo jail while two other inmates were taken to Carson County jail in Panhandle.

Jordan said the jail is nearly repaired and the prisoners might be returned here as early as Monday.

"As long as Vessels is in Amarillo we might just have him looked over if he can be seen while there," Jordan said.

Stock Market Quotations

Table with columns for stock names and prices. Includes items like American Can, American Tel and Tel, Anaconda, Bethlehem Steel, Chrysler, etc.

Table with columns for stock names and prices. Includes items like Cabot Corp., Duff Development, Franklin Life, Gibraltar Corp., etc.

The following 11 a.m. Chicago Exchange Live Beef Cattle futures are furnished by the Amarillo office of Merrill, Lynch, Pierce, Fenner and Smith, Inc. Prev. Open High Low Last.

Table with columns for month and price. Includes Feb, June, Aug, Oct, Dec.

Comments on the recently completed drive, Clyde Carruth, president of the Gray County Chapter for the March of Dimes, said all the efforts of people working on the drive were greatly appreciated.

"They all did their jobs and carried out their responsibilities, which accounts for the success of the campaign," he said.

DAIRY QUEEN

2 CONVENIENT LOCATIONS No. 1 No. 2 1117 Alcock MO 4-6761 1700 N. Hobart MO 9-9148

Grand Opening NOW UNDER NEW MANAGEMENT. Bill Gray, Western Auto's new owner-manager, invites you to come in and see the ALL NEW store. GRAND PRIZES: Wizard Imperial Toaster for Mom, Electric Drill for Dad, Truetone Transistor Radio for a Child. You Need Not Be Present To Win. Just Come In and Register.

CARPET-SELL-A-THON 4 DAYS ONLY C & M SAVINGS \$\$\$\$ TO YOU! ALL NYLON CARPET. Blue and Green Perfect bedroom carpet. Only \$2.98 yd. HEAVY DUTY BLUE LABEL 501 DUPONT NYLON. Perfect for the complete home or anyplace. Reg. \$7.95. Now Only \$5.38 yd.

The Women's Page

PEGGY JO GIBSON
Editor

4 THE PANAMA DAILY NEWS THURSDAY, FEBRUARY 26, 1967 30TH YEAR

Dear Abby... Weekend Invite Not For 'New Talent'

DEAR ABBY: My husband's business associate Mr. G. recently left his wife after a marriage of nearly 40 years, so we telephoned him the lives in Indiana and invited him to our little winter home in Florida to rest up and get over his grief. Mr. G. said he would love to come for a few weeks.

"About 10 minutes after he called us back asking if he could bring his 'girlfriend' Abby, we were shocked!" My husband said, "But we have only one guest room." Mr. G. said, "That's all right. I want to see how this girl looks in the morning before she puts her face on."

With that he hung up, so now we are trapped. We certainly don't want that kind of act up here, but what can we do?

TRAPPED IN FLA.

DEAR TRAPPED: If you can catch Mr. G. before he heads south, call him and tell him that the invitation was for him, alone. And if he has in mind substituting "new talent" while he recovers from his grief, he'll have to find friends with a larger home.

DEAR ABBY: We belong to a women's church group. One of the older members happens to be a very nice lady who is well-liked by everyone and for many years has been a devoted work-

Glamor-Eyes at Any Age

By PATRICIA KING
Newspaper Enterprise Assn.
NEW YORK (NEA) — Eyes were made to flirt with, we'll all agree — even under framed lenses.

And to help those eyes misbehave are flattering and fun-type eyeglasses.

If you're with it, under the frames a subtle sweeping of eye make-up discreetly peeks through.

Whether you're 16 or 60, the woman who wears glasses needs eye make-up to make her shine. The lens that helps you see better also enlarges your eyes.

Without eye make-up, your magnified eyes look tired and dull but with it they can become real dazzlers.

Shadow is the first step in the application of eye make-up. After a little practice with a soft sable brush or stick, you'll find that a subtle color will crease the lids. Aside from the colors, pearl white shadow can be used for dramatic highlights under your brows and at the outer corners.

The second step in eye make-



GROW MORE DAZZLING with the years. The mature face (left) finds flattery in glasses that sparkle and bring out the lovely sheen of silver hair. Under the frames their natural loveliness is emphasized with eye shadow, eyebrow color, eye liner and lash-lengthening mascara. Young eyes (right) dance above granny frames of gold. Their brightness is emphasized with subtle eye make-up.

Banquet Plans Completed by Rebekah Lodge

Plans were made for the Officers' Installation Banquet by Pampa Rebekah Lodge No. 45 at a recent meeting held in 100F Hall.

Mrs. Hazel Callen, noble grand, and Mrs. Alta May McElrath, vice grand, presided.

Mrs. Robert Hollis, team captain, announced that team practice would be held at the next meeting and announcement was made that Mr. Bobbie Brummett, district deputy, would conduct a school of instructions on Feb. 22.

Twenty-eight members attended the meeting.

up is to line your eyes. Whether you use the cake style with a brush or the fluid with its own brush in the bottle is strictly a matter of preference. For a sleep effect lower your lid and begin at the inner corner, drawing a thin line along the base of your upper lash proceeding to the outer eye, allowing the line to thicken.

Now you're ready to bring out the beauty of your brows by darkening them with a brush-on eyebrow color. Use the wide straight side to fill in. Accent and arch, using the pointed tip to extend and taper to that ideal quarter-inch beyond the outer corners of your eyes.

Final and most important step is applying mascara to your lashes. Mascara will actually make your lashes appear longer and thicker. Swab the mascara from the base of your lashes to their tips, then brush it on top of the lashes. Now go back and repeat the procedure two or three times.

Now look at the sparkling you. Your glasses haven't obscured your eyes, in fact they've enlarged their loveliness and you look prettier than ever.

Cameron Marsh Presents Wilson -TA Program

Cameron Marsh, retaining "The Midnight Ride of Paul Revere," presented the program at Thursday afternoon's meeting of Woodrow Wilson P-TA. Special guests honored at the event were past presidents of the unit.

Mrs. Jerry Davis, president, presided over the meeting. Boy Scout Troop 34 presented the flag ceremony.

A nominating committee including Bob Parks, chairman, Mrs. Bill Harris and Mrs. Calvin Higgs was elected.

An executive board meeting was held prior to the general session.

Refreshments were served during the social hour by Mrs. James Sison and Mrs. Russell Seely, hospitality committee members.

Room count was won by Kenneth King's sixth grade class.

Mrs. Daniel Johnson's sixth grade room and Miss Pearl Spough's first grade room tied for second place.

Mrs. Hassler Is Crowned Queen of Skellytown TOPS

CANADIAN (Sgt) — Tops Skellytown Summers met recently in the city hall for a regular meeting with Mrs. Mary McClure, leader in charge. Minutes were read by the secretary, Mrs. Freddie Brown and roll call was answered with pounds lost or gained during the past week.

A contest was started this week with two leaders, Mrs. Cecile Grange and Mrs. Evelyn Brobst. The side that loses the most pounds during the month of February will be served a salad supper by the winners.

A line of 2 1/2 pounds and a gain of 7 pounds were reported by the weight recorder, Mrs. Ernestine Campbell.

Mrs. Naomi Fox led the group in the singing of TOPS songs.

Two new members were welcomed into the club, Mrs. Norma Hutchinson and Miss Sue Lovingsgood.

All the members are asked to bring a piece of fruit Tuesday evening to the meeting, Mrs.

Covered-Dish Meat Held by TEL Class

SKELLYTOWN (Sgt) — TEL Sunday School Class of Skellytown First Baptist Church met recently in the home of Mr. and Mrs. Walt Shair for a regular monthly meeting and covered dish supper.

Invocation was given by Walt Shair.

A business meeting was conducted by Mrs. L. E. Jordan. Minutes of the last meeting were read and approved.

Mrs. Oscar Gould gave the devotional taken from 115 Psalms. Each guest attending presented the hostess with a small gift.

Attending were Meses. M. L. Mills, Cecil Pierce, L. E. Jordan, W. A. Thompson, Emma Gores, Oscar Gould, J. C. Jarvis, Bill Price and Mr. and Mrs. Walt Shair.

Ernestine Campbell gave the inspirational thought.

Coffee was served to one visitor, Mrs. Howard Pugh, and members Meses. Mary McClure, Freddie Brown, Gladys Simmons, Fannie Coleman, Zelma Woods, Mary McKisick, Dorothy Horner, Evelyn Brobst, Lavone Robinson, Geraldine Lovingsgood, Cecile Grange, Sue Lovingsgood, Odell Hassler, Sadie Lane, Naomi Fox, Vina Moore, Ernestine Campbell and Norma Hutchinson.

FITE FOOD

We Give PANAMA PROGRESS STAMPS
DOUBLE STAMPS
Wednesday With \$2.50 Purchase or More
1333 N. Hobart MO 4-4092 or MO 4-8842

RIB STEAK USDA Choice Fites Own Feed Lot Beef 89¢ lb	ARM ROAST USDA Choice Fite's Own Feed Lot Beef 55¢ lb
SWISS STEAK USDA Choice Fites Own Feed Lot Beef 79¢ lb	CHUCK ROAST USDA Choice Fite's Own Feed Lot Beef 49¢ lb
PORK CHOPS Center Cut Lean, Tender 79¢ lb	CALF LIVER Fresh Tender 45¢ lb

USDA Choice Fite's Own Fed, Feed Lot Beef
● Cut ● Wrapped ● Frozen

BEEF For Your Freezer ● 130 Days in Feed Lot ● Fed 24 Hours a Day ● Half Beef 43¢ Hind Quarter 53¢

Regular or King Size
COCA-COLA 6 Cts. 39c Plus Dep. 1/2 Gal. 29c

Borden's MELLORINE 1/2 Gal. 29c

LARGE EGGS Doz. 43¢

Grade A Nest Fresh

Shurfine Vienna Sausage Reg. Can 19c	Roxey DOG FOOD Reg. Cans 25c
CATSUP Heinz 24-Oz. Bottle 35c	
COFFEE Maryland Club 1-Lb. Can 69c	
OLEO Shurfresh 5 Lbs. \$1.	
PREMIUM CRACKERS 1 lb. box 33¢	
SHORTENING Shurfine 3 Lb. Can 79c	
SUGAR C & H Pure Cane 10 Lbs. 98¢	

Fancy, Delicious, Washington APPLES 2 Lbs. 25c

U.S. No. 1 Red POTATOES 10 Lbs. 59c

Shurfine Frozen Orange Juice 6-Oz. Cans 2 for 29c

Morton's Frozen Honey Buns Reg. Pkg. 29c

NEW WAY TO BE SUDDENLY SLIM, COMFORTABLE, TOO

Los Angeles—Are you a woman whose figure is on the good side but might look perfect? You'll be thrilled by the new easy way science has discovered for you to become Suddenly Slim and yet completely comfortable. If you're more than 15 pounds overweight, then this idea is not for you. If your weight problem falls within this range, then you can realize a new, smoother figure today, without diet or exercise.

Suddenly Slim is an all-new kind of 4-oz. girdle constructed of science fibers. One starting innovation is the sheer nylon front panel. This is permanently stiffened by a science process and cannot give or sag. It's surrounded by a slimming action border. A featherstitched panel down each side of this girdle will contour your hips if they are a problem.

The girdle itself is of a "wooden" Lycra spandex blend. It's a new power net consisting of nylon, acetate and spandex. It is so comfortable, but has such slimming strength, it gives you figure everything that's possible with a foundation.

"Suddenly Slim" in both girdle and panty versions, is the peak achievement of the California designer-genius, Olga. They are available in our area at Wright Fashions 222 N. Cuyler MO 4-4633

B&B SPECIALS THURS.-FRI.-SAT.

Reg. \$2.98 - 40 Tablets GERITOL VITAMINS \$1.43 OFFER EXPIRES FEB. 19
Professional Revlon, Reg. 1.15 HAIR SPRAY 48¢ OFFER EXPIRES FEB. 19
Reg. 67c, 25 Tablets ALKA SELTZER 33¢ OFFER EXPIRES FEB. 19
Reg. 2.00 Clairol NICE 'n EASY 98¢ OFFER EXPIRES FEB. 19
Reg. 89c Prophylactic PROFILE TOOTH BRUSH 29¢ OFFER EXPIRES FEB. 19

B&B PHARMACY MO 5-5788
Ballard at Browning
S&H GREEN STAMPS
Mail Order Redemption Service

SAVINGS FOR SURE on all your food needs!

Roxey - Tall Can

DOG FOOD 12 FOR \$1	50 FREE BUCCANEER STAMPS With Purchase Of 2 lb. cans Shurfine or Folger's COFFEE
MIRACLE WHIP 49¢ Qt.	50 FREE BUCCANEER STAMPS With Purchase Of 12 cans Shurfresh BISCUITS
Ideal tall can DOG FOOD 6 FOR \$1.00	50 FREE BUCCANEER STAMPS With Purchase Of 2 cartons King or Reg. COKES
Van Camp VIENNA SAUSAGE 5 FOR \$1.00	50 FREE BUCCANEER STAMPS With Purchase Of 2 - No. 2 Cans Wolf CHILI
PRODUCE Florida	50 FREE BUCCANEER STAMPS With Purchase Of 4 Cans Shurfine or Folger's PEACHES
ORANGES 5 lbs. 49c	50 FREE BUCCANEER STAMPS With Purchase Of 6 cans Campbell's SOUP
POTATOES 20 lbs. 69c	50 FREE BUCCANEER STAMPS With Purchase Of 3 lb. can CRISCO
NAPKINS 10c	50 FREE BUCCANEER STAMPS With Purchase Of 1/2 Gal. PUREX
SOFT TISSUE 10 Pkgs. 79c	50 FREE BUCCANEER STAMPS With Purchase Of 2 lb. pkg. Shurfresh BACON
10c Off Label BOLD 69c	Hunt's 300 Size Tomato Juice 10¢
	Fresh Maryland OYSTERS, Louisiana SHRIMP & BUFFALO, Washington HALIBUT STEAK
	Round Steak 89¢ lb
	Chuck Roast 49¢ lb
	Shurfresh BACON 2 lbs. \$1.39
	Pork Steak lb. 45c
	Salt Pork lb. 39c
	Pork Roast lb. 39c

MITCHELL'S Grocery

638 S. CUYLER

We Give Buccaneer Stamps
Double on Wednesday on Purchase of \$2.50 or More

Juvenile Delinquency Is Program Topic of LeFors FHA Club

LEFORS (Sp) — Members of LeFors FHA met recently for a monthly meeting in the Home Ec. Room with Bennie White, president, calling the meeting to order.

After the ritual, Elaine Nichols, secretary, called the roll and read the minute. The club elected Janice James to fill the office of fourth vice president vacated by Nancy Dunlap.

Members voted to raise money by having a "Slave Day." After working all day the girls will then have a party and bring their dates.

"Juvenile Delinquency" was the program given by Lea Ann Timmons, Denise Keith and Ann Garrett.

After the meeting was adjourned the members were served refreshments by Marsha Close.

Pampa Public Schools Menu

FRIDAY
PAMPA SENIOR HIGH
 Fish with Tartar Sauce, Tomatoes, Potato Salad, Green Beans, Lemon-Cake, Bread, Butter, Milk

ROBERT E. LEE JUNIOR HIGH
 Fish Steaks-Tartar Sauce, Macaroni and Cheese, Carrots-Cheeray, Sweet Rolls, Bread, Milk

PAMPA JUNIOR HIGH
 Fish or Chicken, Packaged Peas, Macaroni and Cheese, Cake, Bread

STEPHEN F. ASTIN
 Baked Ham, Candied Yams, Tossed Salad, Milk, Cherry Cabinet, Bread

R. M. BAKER
 Fish Steaks, English Peas, Lettuce Salad, Corn, Pear Halves, Rolls, Milk

CARVER
 Fish Steaks, Catfish, Green Peas, Macaroni and Tomatoes, Apple Sauce, Hot Rolls, Milk

SAM HOUSTON
 Hot Togs, Buttered Corn, Candy Socks, Apple Crisp, Milk

LAMAR
 Fish Steaks, Catfish, Green Peas, Macaroni and Tomatoes, Apple Sauce, Hot Rolls, Milk

HORACE MANN
 Fish Steaks, Buttered Potatoes, Carrots, Milk

WILLIAM B. TRAVIS
 Fish Steaks, Tartar Sauce, Butter, Polkies, Salad, Fresh Peas, Peanut Butter Cookies, Chocolate Milk, Hot Rolls

WOODROW WILSON
 Pizzaburger, Potato Chips, Corn, Pineapple Whip, Milk

Astrological Forecast

By CARROLL RIGHTER

FOR FRIDAY, FEB. 17
GENERAL OBSERVATIONS: If you think any problem facing you through in its natural and logical conclusion, you will be able to make a decision on your own and avoid depending on official. You can get much done by utilizing any interesting combination of ideas together with some extra manual manipulation. Fine for inventors.

ARIES (Mar. 21 to Apr. 19) — Talk over with associates how to improve on daily routine so they become more successful. Brilliant ideas occur to you so that you make your hobbies more satisfactory and more lucrative. Be happy.

Taurus (Apr. 20 to May 20) — Try to have more faith in advisors who are most practical, although you cannot appreciate this as yet. Be ingenious in planning how to increase abundance, also. Make this a day and evening for advancement.

GEMINI (May 21 to June 21) — Make sure that whatever you are doing in the outside world leaves you satisfied inwardly, as well. Gain the approval of one who is a social leader. Out in the social whirl tonight, but don't be critical of one who rubs you the wrong way.

MOON CHILDREN (June 22 to July 21) — A day to really enjoy some quiet recreation, so be out socially in a dignified way, show friendliness to all. Make the most of present aspects, conditions. Don't make any radical changes.

LEO (July 22 to Aug. 23) — Forget all those unimportant personal matters and get into some civic work that will bring prestige. Be sure to clarify something of an intimate nature. Then you get right results.

VIRGO (Aug. 24 to Sept. 23) — Forget the selfish and attend to business or creative matters or something civic that will bring you greater success. You can get into whatever is recreational in p.m., provided higher-ups approve of what you are doing.

LIBRA (Sept. 24 to Oct. 23) — You make far better progress now if you contact different sources than heretofore. Impress some new personality you have met with your finest talents. This can lead to something rather wonderful.

SCORPIO (Oct. 24 to Nov. 21) — Being sure to keep your word with others is vital, but you must do so cheerfully. Then you get backing from some bigwig that you need so much. Make plans to get your argument and business matter amelio-rated.

SAGITTARIUS (Nov. 22 to Dec. 21) — Some friend may have a persecution complex and it is up to you to give a right advice that will set him or her out of it. Get at the root of the matter. Then off to a very good time with congenials.

CAPRICORN (Dec. 22 to Jan. 20) — You have many duties ahead of you, but if you get to get done but if you rush into the one you like best, you make real progress. Speak diplomatically to co-workers. Show that you are an enthusiastic person.

AQUARIUS (Jan. 21 to Feb. 19) — Avoid making any disagreements at home because you may be feeling frustrated and go out with some charming person who puts you in a good mood. Invite friends in tonight who are of a cheerful nature. Then harmony reigns.

PISCES (Feb. 20 to Mar. 20) — Keep busy getting your surroundings in better order and lend a quiet ear to what a friend has to say who is quite upset. Don't be vindictive. Follow that course that is sure to give you a greater abundance. Don't take chances.

IF YOUR CHILD IS BORN TODAY — he, or she, will be one of those clever young ones who should not be spoiled a great deal; in their life there is to be a loss of the natural drive that is in this most interesting nature. If you start teaching him whatever has once been started, you will see that the wonderful promise in this chart will be gradually realized and there can even be fame here. There could be an excellent author or speaker in the unfolding.

Member Welcomed By Amuse You Club
CANADIAN (Sp) — Mrs. Ben Jordan was welcomed as a new member of the Amuse You Club when the group met recently with Mrs. Paul Bryant. Guests were Mrs. Everett South, Mrs. F. A. Blue and Mrs. Toy Hobdy.

Members present were Mmes. J. L. Cleveland, George Tubb, Bessie Caudle, P. D. Mosseley, P. E. Hill, Charles Teas, A. J. Longhofer and Pleta Studer.

Try A Little Tenderness!
IDEAL OFFERS YOU BEEF AT IT'S BEST



"Better Food For Less"
IDEAL FOOD STORES

SWIFT'S PRO-TEN BEEF
STEAK SALE
 Full Slices Round **89¢** lb.
 Center Cuts Sirloin **98¢** lb.



BEANS'n WIENERS TIME

VAN CAMP'S PORK & BEANS 7 300 Cans **\$1.00**

BAR-S SKINLESS FRANKS 1-Lb. Pkg. **59¢**

Swift's Pro-Ten Beef
T-BONE STEAK lb. **\$1.09**
 Fresh **GROUND BEEF** lb. **39¢**
 Extra Lean **FRESH GROUND CHUCK** lb. **69¢**
 U.S.D.A. Grade A, Whole **FRESH DRESSED FRYERS** lb. **29¢**

CUDAHY COOKED HAMS SHANK PORTION **55¢** BUTT PORTION **59¢**

VIRGINIA REAL PORK SAUSAGE 2-Lb. Pkg. \$1.49	OSCAR MAYER SANDWICH SPREAD OR BRAUN-SCHWEIGER 2 8-Oz. Pkgs. 69¢	SWIFT'S PREMIUM SLICED BACON 1-Lb. Pkg. 69¢	COUNTRY KITCHEN SLICED LUNCHEON MEATS 6-Oz. Pkgs. 35¢	COUNTRY KITCHEN WHIPPED DESSERTS Pint Ctn. 39¢
--	--	---	---	--

NOW! ... ADD THE CASUAL CHARM OF Town'n'Country STONWARE DINNERWARE

ON IDEAL'S "PIECE-A-WEEK" PLAN



SPECIAL THIS WEEK — REGULAR 69¢
COFFEE MUG Only **19¢** With Each \$7.50 Purchase
2 FOR 38¢ WITH A \$15.00 PURCHASE, ETC.

FREE! HAND PRINTED FIGURE OF OUR 27TH PRESIDENT, WILLIAM HOWARD TAFT
 With 6th Week Coupon from your Ideal Mailer and \$5.00 or more Purchase.
 You may also purchase figures of Presidents 1-26, 28, 29, 30 and 31 for only 19¢ Each.
ADD TO YOUR SET TODAY AT IDEAL.

Prices Effective Thru Sat., Feb. 18, 1967. Limit Rights Reserved.

CHEF DELIGHT
CHEESE FOOD 2-Lb. Loaf **59¢**

All Grinds... Mountain Grown
FOLGER'S COFFEE 1-Lb. Can **69¢**

SKYLAND CHERRY PIE FILLING 2 22-Oz. Cans **89¢**

APPLE OR PEACH **PIE FILLINGS** 22-Oz. Can **39¢**

SAVORY MARGARINE 5 1-Lb. Qtrs. **\$1.00**

GREEN GIANT SLICED GREEN BEANS 5 303 Cans **\$1.00**

ICE MILK 1/2-Gal. Ctn. **43¢**

COOKIE SALE Four Varieties 2 Bags **85¢**

PURINA DOG CHOW 10-Lb. Bag **\$1.39**

BEEF CHICKEN, TURKEY, TUNA BANQUET POT PIES 2 8-Oz. Pkgs. **35¢**

KRAFT GRATED PARMESAN CHEESE 8-Oz. Can **89¢**

MIDGET LONGHORN CHEESE 16-Oz. Pkg. **89¢**

IDEAL HALF AND HALF Ranch Style 1 1/2 lb. Loaf **29¢**

IDEAL ENRICHED CONEY BUNS Pkg. of 8 **25¢**

IDEAL'S DELICIOUS APPLE PIES Large Size **59¢**

IDEAL'S BUTTERMILK DINNER ROLLS Pkg. Of 12 **35¢**

TOM SCOTT MIXED NUTS 14-Oz. Can **59¢**

FAMOUS KRAFT CARAMELS 14-Oz. Bag **39¢**

NESTLE'S CANDY \$100,000 BARS 1-Lb. Bag **39¢**

GOLDEN WHOLE KERNEL NIBLET'S CORN 2 12-Oz. Cans **45¢**

GREEN GIANT CUT ASPARAGUS Picnic Can **33¢**

COLORADO RED POTATOES 20 -lb. Bag **69¢**

CALIFORNIA PASCAL CELERY HEARTS LARGE PKG. **25¢**

PURPLE TOP TURNIPS 2 LBS. **25¢**



FREE WIZARD OF OZ PUPPETS

WHEN YOU BUY DOWNY • TOP JOB • ZEST Collect a Set of Seven

EVAPORATED PET MILK 3 Tall Cans **49¢**

RECONSTITUTED REALEMON JUICE 12-Oz. Btl. **35¢**

ALUMINUM ALCOA FOIL 12-In. Roll **35¢**

JOHNSON'S KLEAR WAX 27-Oz. Can **98¢**

FABRIC SOFTENER 17-Oz. PLASTIC BOTTLE **49¢**

LIQUID CLEANER 28-Oz. PLASTIC BOTTLE **69¢**

BATH SOAP FOUR BATH BARS **89¢**

WITH AMMONIA ONLY 69¢

Closed Sundays So Our Employees May Attend The Church of Their Choice

Fruit Picking in Texas Can Bring Sentence of 10 Years in the 'Pen'

Picking an orange or a grapefruit in the Lower Rio Grande Valley from an orchard that does not belong to you is something akin to robbing a bank or stealing a car in the Old West.

There are laws which provide for a person who snatched a fruit or a nut from the citrus which grows along the roadside throughout the Valley.

A small theft will bring a fine of \$200. A large theft—more than five bushels—could bring a maximum sentence of 10 years in the state penitentiary.

Not for Show These laws are not on the books just for show. Three men were accused of stealing fruit three years ago and thinking they could escape severe punishment, escaped a jury trial. They got it.

Wichita County Dist. Atty. Oscar Mellichamp pointed out that those men were planning to sell the fruit for a profit, and he said he had never prosecuted a case against a tourist. But a power-by is just as susceptible to the law as the professional fruit thief.

The tourist climbed to his car and demanded the farmer put the items back. The farmer pointed out that he was no more of a thief than the tourist was.

The tourist rounded up his family, and they quickly drove away, leaving the citrus behind.

New Bonus Savings Bond Due Soon

WASHINGTON (UPI)—The government plans next week to unveil a new bonus savings bond that will pay interest of about 4 1/2 per cent.

Regular series E savings bonds will continue to pay 4 1/2 per cent when held to maturity, which is seven years.

Other features of the new bonus bonds are: —They will be available only to people who buy E bonds under a payroll savings, one-month or some other regular purchase plan.

—The bond will have to be held for at least a year before its owner can get any money back at all. As with E bonds, bonus bonds carried in after one year but before full maturity will earn less than the top rate.

Television Programs

Channel 4 MON-THU, THURSDAY A-B-C

6:00 The World News	6:30 News	7:00 News
7:30 News	8:00 News	8:30 News
9:00 News	9:30 News	10:00 News
10:30 News	11:00 News	11:30 News

CHANNEL 4 FRIDAY

6:00 The World News	6:30 News	7:00 News
7:30 News	8:00 News	8:30 News
9:00 News	9:30 News	10:00 News
10:30 News	11:00 News	11:30 News

Channel 7 KVS-TV THURSDAY A-B-C

6:00 News	6:30 News	7:00 News
7:30 News	8:00 News	8:30 News
9:00 News	9:30 News	10:00 News
10:30 News	11:00 News	11:30 News

CHANNEL 7 FRIDAY

6:00 The World News	6:30 News	7:00 News
7:30 News	8:00 News	8:30 News
9:00 News	9:30 News	10:00 News
10:30 News	11:00 News	11:30 News

Channel 10 KFTA-TV, THURSDAY CBS

6:00 The World News	6:30 News	7:00 News
7:30 News	8:00 News	8:30 News
9:00 News	9:30 News	10:00 News
10:30 News	11:00 News	11:30 News

CHANNEL 10 FRIDAY

6:00 The World News	6:30 News	7:00 News
7:30 News	8:00 News	8:30 News
9:00 News	9:30 News	10:00 News
10:30 News	11:00 News	11:30 News

Channel 10 KFTA-TV, THURSDAY CBS

6:00 The World News	6:30 News	7:00 News
7:30 News	8:00 News	8:30 News
9:00 News	9:30 News	10:00 News
10:30 News	11:00 News	11:30 News

CHANNEL 10 FRIDAY

6:00 The World News	6:30 News	7:00 News
7:30 News	8:00 News	8:30 News
9:00 News	9:30 News	10:00 News
10:30 News	11:00 News	11:30 News

You, Your Child and School

By DAVID NYDECK UPI Education Specialist Special programs are often required in order to educate children with serious mental or physical handicaps. This may involve placement in special classes or schools. It may mean supplementary instruction if the students are in the normal classroom.

The public schools may face some difficulties in providing a proper program. Although the schools are ordinarily responsible for the education of all youngsters, small school systems have limited facilities and often have difficulties obtaining trained teachers. The variety of handicaps and ages also presents problems. There is also the problem of not being able to obtain an adequate diagnosis and recommendations as to the proper procedures.

Is it better to place the handicapped child in a normal classroom or in a special class or school? The answer seems to depend upon the severity of the handicap and the level of development which the child has reached.

As examples of what might be done, let's look at two different cases of deaf children. Never Learned Alan is a second grade student who has some hearing but for practical purposes he is deaf. He hears sounds but cannot distinguish words. He has never learned the special skills which are helpful to deaf people to any usable extent.

The child was placed in a regular classroom. He has been given individual instruction in the special skills, speech and the academic areas in order to supplement the classroom program.

Alan has progressed very slowly. The classroom teacher and other students have great difficulty communicating with him. The tutoring sessions are not adequate to really help him. He has been falling further and further behind in his development.

Probably this child should have been placed in a special class or school for deaf children. He could then have developed the necessary skills to communicate with other individuals.

Texas Historical Association Feels Winds of Change

AUSTIN (SpI)—The winds of change, though not exactly gusting, are beginning to waft through the Texas State Historical Association, the oldest learned society in Texas.

The 1,500-member association, which celebrates its 70th birthday on March 1, is beginning to face a few muscles, put on a new face and extend its range of responsibilities.

The result of the self-improvement program, it is hoped, will be a greater historical service to the state.

Long located at the University of Texas, with which it is closely identified through activities of UT's Research in Texas History, the TSHA decided it was not his job to change its ways — at least some of them.

For example, the association traditionally has met in Austin on the last weekend in April. Now, the site and date for the annual meeting will be kept flexible "as a service to our members, many of whom cannot attend often because of distances involved," said TSHA director Dr. Joe B. Frantz.

Another change in prospect is a sprucing up the Southwestern Historical Quarterly, TSHA publication.

"I don't think the Quarterly has changed much graphically in 30 years," Dr. Frantz said. The "new look" will appear in the July 1963 issue with a format designed by graphics expert Carl Hartung, director of the Texas Western College Press, El Paso.

The July issue also will mark another Quarterly innovation — the occasional publication of an entire issue devoted to a single theme or area. The July focus will be on the Southwestern cattle industry.

BRINCLAD WILL DENVER (UPI)—Denver Probate Court officials said they aren't afraid of losing the last will and testament of George J. Green of Denver; their only problem is termite.

The will was written and carved on a 28-inch long wooden plank that apparently was torn from a crate or board fence.

Andean mines in Bolivia produce more than 15 per cent of the world's tin supply.

FOR FRIENDS ONLY LONDON (UPI)—Bernard Hannon, 26, was acquitted Wednesday on charges of carrying an offensive weapon—a can of meringue powder.

He told the court he carried the powder only for practical jokes.

Camels are used as beasts of burden in the Canary Islands. The white trillium is the provincial flower of Ontario.

BLAKE'S FOOD MARKET

1345 N. Hobart MO 4-7471

FREE DELIVERY

STORE HOURS: Weekdays 8 to 8 Sunday 9 to 7

Double Stamps Wednesday on \$2.50 Purchases or More

Bacon	49c
BOLOGNA	39c
HAMS	49c
WIENERS	69c
Half Beef	49c
MELLORINE	\$1.00
COFFEE	69c
Pork & Beans	49c
Tomato Sauce	21c
Energy Detergent	59c
Strawberry Preserves	2.89
BANANAS	2 lbs. 29c
TOMATOES	cello pkg. 27c
RED McCLURE POTATOES	10 Lb. Bag 55c

OUTWITTED

RAINFHAM, Eng. (UPI)—It happened again. Thieves stole a truck carrying 11,000 shoes worth \$20,000 Wednesday, then abandoned it when they found the shoes fitted only left feet.

The company sends right and left footed shoes separately to fit hoppers.

Arabis is the name of a town in Kentucky.

Heard-Jones DRUG

114 N. Cuyler MO 4-7478

Gillette, Reg. \$1.29	Excedrin	REVLON HAIR SPRAY	Reg. 89c
HEADS UP	100 EXCEDERIN TABLETS	67c	Barbasol Shave Cream
and Italian Sun Glasses	Reg. \$1.49		39c
BOTH ONLY			
PRESTO Electric Can Opener	PRESTO Steam & DRY IRON	DeVilbiss VAPORIZER	Reg. \$6.95
Reg. \$14.88	\$9.50	\$8.95	Model No. 145 One Gal. Capacity \$3.50
PHOTO SUPPLIES	AUTO Seat Belts RETRACTORS	Reg. \$4.99 Clear Vinyl CAR MATS	
BROWNIE SUPER 27 CAMERA \$7.00	FIESTA 126 CAMERA \$3.00	Reg. \$1.47 99c	\$2.95
Bell & Howell Projector \$2.00	Sylvania Sun-Gun II Movie Light \$6.00	Reg. \$10.88 No. 625 \$7.95	STAINLESS STEEL SPIRAL SLICER 39c
REX 35 M.M. FILM 50c			
SYLVANIA Flash Bulbs M-38 \$1.49	SYLVANIA Flash Bulbs M-28 \$1.29	SYLVANIA Flash Bulbs AG-1 \$1.19	
Reg. \$1.89	Reg. \$1.89	Reg. \$1.56	
Camera Carrying CASE \$5.95	Polaroid Land Camera \$57.50		

Kyle's Shoe

Big Group of Boys' and Girls' Shoes Most Sizes, Reg. \$6.99 and \$7.99

HOUSE SHOES | HOUSE SHOES

Ladies' \$2 Pr | Children's \$1 Pr

MEN'S FINE DRESS SHOES \$9.97 Pr

ALL MEN'S FLORSHEIM SHOES

Choose from Our Many Styles, Favorite Colors 10% Reg. Price

SEE OUR MANY NEW STYLES IN SPRING AND SUMMER SHOES!

Kyle's Fine Shoes

The Home of Florsheim and City Club Shoes

109 N. Cuyler MO 9-9442

SHOP DOWNTOWN FOR GREATER SELECTIONS

d.e.w. tell!

MISSED SEEING Ruby Capps Fatheree at the Career Clinic yesterday . . . she's the high school counselor, who worked so diligently with Marion Jameson of the Altrusa Club and E d d Rountree of the Jaycees in making arrangements for the clinic . . . in introductions yesterday morning in the field house, Cameron Marsh, high school principal, remarked "she was out of town . . . she was . . . far out . . . in fact, she was in Maryland with a group of Panhandle high school counselors visiting the United States Naval Academy . . . they had been invited by academy officials to learn firsthand the qualifications a young man must have for entrance to the academy . . . in order to be more authoritative in their counseling sessions . . . Later in the day, Ruby with a group of other West Texans from the 18th District stopped by Bob Price's office in Washington, D.C. . . . where they were conducted on a tour of capitol buildings and taken on an automobile tour of the scenic spots in Washington before boarding the navy plane for the trip back to Amarillo . . . Bob Price in a conference call to The News late yesterday afternoon releasing another news item remarked "it was nice to see some of the folks from home."

THE SCHOOL Board race is shaping up into an interesting campaign and election with four candidates signing on the dotted line their intent to campaign for one of the two trusteeships open . . . John Gikas, local restaurant owner, who is seeking a third term of service to the community . . . Mrs. Ben (Pernie) Fallon, a wife, a mother, and a clubwoman . . . John R. Spearman, a native Panaman, who is also a farmer and rancher . . . and Dr. Howard Greenlee, a dentist and civic minded citizen . . . something new and attractive has been added to the paneled conference room in the school superintendent's office where school board meetings are held the second Thursday of each month . . . something besides Gene Steel, the successor to Joe Reid's vacated post . . . The "something" is a new conference table of simulated walnut appointed with amber-encased massized ashtrays and eight new apricot-colored, leather upholstered chairs . . . for those 1-0-n-g school board meetings . . . it isn't that the fellas dillydally and engage in idle chit chat . . . board meetings move along at a fast clip thanks in part to the in-depth agenda portfolio the superintendent Dr. John Damron and Homer Craig, business manager provide to board members and the news media two or three days before a meeting . . . but the meetings are often 1-0-n-g because there is a lot involved in taking care of 11 schools in the district.

SWINGING ON the grapevine . . . sometimes you hear the most interesting things while thus engaged . . . it seems the County Commissioners finally got around to "doing right" by Ola Gregory . . . she's the county treasurer who was bypassed when raises were given to other elected county officials over a year ago . . . the situation was imposed by a former county judge, who is no longer in the community . . . the commissioners, spearheaded by County Judge Sherm Lenning, just recently okayed the pay increase for Ola, who has served as county treasurer for a number of years.

THE AUDIENCE who so attentively listened to the ancient, but ageless, lines of "Hamlet" presented by The National Shakespeare Co. of New York Monday night was comprised of about 65 per cent students and 35 per cent adults . . . spotted among those making up the minority group were Don and Marion George . . . our esteemed City Manager Jim White with a couple of male companions . . . Jewel and Elbert Walk-

LAUGHABLE LISP
LANSING, Mich. (UPI)—Howls of laughter greeted a reading Wednesday of a prayer offered at a session and printed in the legislature's journal.

According to the journal, the Rev. Elvin Fuller prayed in part: "We ask thee, Lord, to help our house of representatives and its leader, Lord, for the things that they dissipate in

Red-faced clerks said the statement would be corrected to read as delivered . . . "that they participate in . . ."

"Dieu a mon droit" literally meaning "God and my right" is the royal motto of the kings of England.

On The Record

VISITING HOURS MEDICAL AND SURGICAL FLOORS
Afternoons 3-4
Evenings 7-8:30
OB FLOOR
Afternoons 3-4
Evenings 7-8

Highland General Hospital does not have a house physician. All patients, except severe accident victims, are requested to call their family physician before going to the hospital for treatment. Please help us to help our patients by observing visiting hours.

WEDNESDAY Admissions
Donald Wood, 1117 Varnon Dr. Richard Dale Foran, 601 E. Harvester.
Mrs. Eula Wilkerson, 2136 N. Banks.
Laurie Kay Bruce, 1824 Garland.
Donnie Shipley, 416 Doyle. Miss Charlene Lisenbee, Le.
Mrs. Rosene Mason, 1108 Garland.
Mrs. Janie E. Jackson, 544 Oklahoma St.
Mrs. Shirley J. Watson, Pampa.

pa. Marvin A. Snapp, 1806 N. Sumner.
Mrs. Marjorie Juanita Redd, 917 Barnard.
Sam D. Allen, Pampa.
Mrs. Eloora Haynes, 620 N. Dwight.
Mrs. Cynthia Elizabeth Worthington, Panhandle.
Eddie L. Brunson, 2137 N. Banks.
D^hmissals
Mrs. Jaynette Cates, Lefors.
Mrs. Leora Gray, 2236 N. Russell.
Mrs. Hazel Sutton, 1048 Huff Rd.
Mrs. Helen Lain, 1048 Varnon Dr.
Keith Knight, 1145 Varnon Dr. Mrs. Sami Sue Luedecke, 931 E. Francis.
Baby Boy Luedecke, 931 E. Francis.
Mrs. Wilda Irene Smith, 1013 Neel Rd.
Mrs. Elise Waters, 1224 Christine.
Mrs. Billie Flake, 2717 Navajo Rd.
Susan Deann Uzman, 2901 Rosewood Lane.
Jerry Dean Hollon, 428 Hugh-

Rivers

ACROSS
1 Sacred river of India
7 World's largest river
13 Oleic acid ester
14 Cylindrical
15 Stationary part in machinery
16 Handles
17 — skip and jump
18 Symbol for sodium
19 Roman "two"
20 Land parcel
21 Exposures
24 Ineffective actors
27 Abstract being
28 Feminine name
29 Notary roll
33 Street (ab.)
34 Rodents
35 Regulation
36 Rupees (ab.)
38 Fruits
39 One who (suffix)
40 English stream
41 Royal Italian family name
42 Sea nymphs
45 Girl's name
46 Yes (Sp.)
49 Maxima's direction
80 Address for G's mail (ab.)
83 Handled
85 Eludes
87 Bed canopy
88 Most mature
89 Vows
90 Slopes

DOWN
1 Bird's oath
2 Singing voice
3 Kind of tide
4 Natural channel
5 Short jackets

Answer to Previous Puzzle
SHIPS CLEAN
STONES RAMPED
EUCHRE CRIBS
AIRBUS CRISTO
SALE UNRESTED
LEA VIVES ABE
ORI KNOT ROB
CICERONE FEINT
DINERO
AGUA MEAVE
SMAHE ANTER
KETONE RASTIN
REBAN TREAT

31 South African hartbeest
37 Users of large fishing nets
38 Distance measure
39 Varnish ingredient (pl.)
40 Let it stand
41 Demon
45 Entanglements
46 Fresh
47 Essential being
50 Arabian gulf
51 Nuisance
52 Hope's kins
54 Indonesian of Mindanao
56 Brazilian waltz

NEWSPAPER ENTERPRISE ASSN.

Wall Street Chatter

NEW YORK (UPI)—Wright Investor's Service says the market has completed the first stage of an advance which it feels will continue for several years with only minor interruption. The company believes that for the near-term, a period of consolidation would be in order. It suggests that any pause in the advance be regarded as a buying opportunity by those who missed the first stage.

Goodbody & Co. says increasing talk of peace in Vietnam has prolonged the lateral market movement with many traders staying on the sidelines. The company says an abrupt end of the war probably would

cause a market reaction that would last only until investors realized the many benefits a genuine peace holds for the economy.

Bache & Co. says the market tendency to ignore unfavorable news and respond sharply to favorable developments still is further evidence that traders are concentrating more on a vintail lroeh ftinup swing Ho are concentrating more on a the year than with the current disappointing announcements. The company believes the near-term outlook is constructive, squalls in a market as overbought as this one would not be surprising.

GOSPEL QUARTET
Appearing Now Thru Fri. Feb. 17 at
Hi-Land Pentecostal Holiness Church
Gospel Harmonettes, Radio and Recording Artists
Appearing Nightly With A Program of Songs
Rev. J. B. Caldwell, Pastor, Invites the Public To Attend

aisles and aisles of
FABULOUS FOOD SAVINGS
.... cases and cases of complete satisfaction

Swift Premium Heavy Beef
CHUCK STEAK 63^c lb

Swift Premium Heavy Beef
CLUB STEAK 79^c lb

Top O Texas
SAUSAGE 69^c 2 lbs.

Swift Premium Heavy Beef
SWISS STEAK 69^c lb

Fresh Dressed
FRYERS 29^c lb

BEEF FRESH LIVER 29^c lb

GROUND BEEF FRESH 2 1/2 lbs. 97^c

Chuck Roast 49^c Pound

coupon
Bring This Coupon To Our Store
100 FREE BUCCANEER STAMPS
With Purchase of 2 Packages of **KLEENEX NAPKINS**

coupon
Bring This Coupon To Our Store
100 FREE BUCCANEER STAMPS
With \$5.00 or More Purchase Excluding Cigarettes

coupon
Bring This Coupon To Our Store
100 FREE BUCCANEER STAMPS
With Purchase of 2 — 46 oz. Cans Diamond **PINEAPPLE JUICE**

TIDE DETERGENT 49^c
With \$5.00 or More Purchase excluding cigarettes

Lanes Big Size Full Gallon Assorted Flavors
ICE CREAM ONLY 99^c Gallon

PINTO BEANS 2 lb. Bag 25^c

BISCUITS Kimbell's 3 for 19^c
Sunshine HYDROX or ORBIT COOKIES 1 lb. pkg. 43^c
CRACKERS Cracker Barrel 1 lb. box 21^c
Mrs. Tuckers **SHORTENING** 3 lb. tin 65^c
COFFEE Maryland-Club 1 lb. 69^c
Campbell's **PORK & BEANS** 303 can 2:27^c
CORN Del Monte, Cream Style 303 Can 20^c
Libby's or Del Monte **SALMON, pink, tall can** 69^c
COCA-COLA King Size crt. 39^c
Kimbell's **FRUIT COCKTAIL** 303 can 19^c
SUGAR Holly 5 lb. bag 49^c
Kimbell's **SLICED BEETS** 303 can 2:25^c
TISSUE Dalsey 4 rolls 49^c
Sa'ad Bowl **SALAD DRESSING** qt. 39^c
OLEO Diamond, Solid lb. 15^c
GREEN BEANS 303 can 19^c

Del Monte 46 Oz. Can **Orange or Grape Drink 2:49^c**

KIMBELLS FLOUR 5 lb. Bag 39^c

DELICATESSEN SPECIAL
1 lb. Meat Loaf
Pt. Pinto Beans
Pt. Cole Slaw
All for **\$1.29**
Try Our Delicious Pies And Cakes Fresh Daily

CARROTS Collo lb. Bag 10^c

Vine-Ripe **Tomatoes** 15^c Pound
Large Head **Lettuce** 15^c Each
Fresh Green **Cabbage** 7^c Pound

WARD'S GROCERY
502 W. FRANCIS
OPEN DAILY 7:30 TO 8:00 - SUNDAY 8-7
WE RESERVE THE RIGHT TO LIMIT QUANTITIES
MO 9-9641

Chili Hoedown Dinner Is Ideal For Those Slowed-Down Days



With even the best cook, there will be times when she is at a loss for just the right menu idea. For girls at home with their children and for those who add office work to their home-making duties, there are also days when everything seems to go wrong — from broken-down washers to chicken-poxed youngsters to late-running meetings. These are the days when you should depend totally on canned and packaged foods that have been at least partially prepared for you. Convenience foods, such as canned meats, have been designed with just such hectic times in mind.

Take this Hoedown Dinner, for instance. It's nutritious and filling, a real treat for the family that is easy for you to dish up quickly. It uses several packaged foods — corn muffin mix and canned corn plus a can of chili. The muffin mix and corn are used to make pancakes delicious enough to be served again some Sunday morning with crisp bacon and maple syrup. For this dinner, however, the trick is to team them with the meat-rich canned chili.

The chili goes inside each rolled pancake and on top, too, and the whole is finished off with a sprinkling of shredded Cheddar. We've used three cans of chili for six servings here, but you may wish to vary this depending upon family appetites. Extra pancakes may also be baked, then wrapped and frozen to be heated and served later. This is an inexpensive supper to make and needs only to be partnered with crisp relishes and perhaps frosty glasses of tomato juice to be complete.

Meals — in-a-can, such as chili, are perfect for emergencies and everyday menus as well. They

are low-budget items of which every spoonful is tasty and usable with absolutely no waste. Canned hash, beef stew, tamales and meat balls are all items you might like to try if you don't use them regularly already. They're dandy heated and served as is and can be used as the starting point for

more creative dishes, too. Bring a few cans home with you next time you go shopping. Serving canned meats is such a simple way to add important protein to your family's diet.

HOEDOWN DINNER
1 package (9-ounce) corn muffin mix
1 egg

COOK'S TOUR

By JEANNE LESEM
NEW YORK (UPI) — A trial shipment of kosher meals, pre-cooked and frozen in Brooklyn, is to be flown to Vietnam for American Jewish servicemen on duty there.

In Englewood and Elizabeth, N.J., a Scandinavian couple and Chinese housewife stock up on kosher stuffed cabbage at local supermarkets.

In Manhattan's garment district, Japanese businessmen return for dinner at a well-known kosher restaurant after lunching there with Jewish business associates.

These seemingly unrelated events demonstrate what's happening today with kosher foods, which are foods that conform to Jewish dietary laws relating to methods and service.

The use of kosher foods by families of various faiths, and national heritages is part of the integration picture, says Sidney M. Siegel, whose family founded the Lou G. Siegel Restaurant here 50 years ago.

He speculated that an interchange of food and eating habits began when Jewish and non-Jewish families became neighbors and started entertaining one another with home-cooked meals that included such typically Jewish foods as gefunte fish or chicken soup with matzo balls. Gefunte fish are fish dumplings in aspic. Matzo balls are dumplings made with meal from unleavened bread called matzo.

Siegel also said that conventions at Jewish resort hotels in New York state's Catskill Mountain area introduce many non-Jews to kosher cookery.

The wide market that consequently developed led Siegel to expand his restaurant's catering division, which serves airlines, steamships, hospitals, hotels and institutions as well as individuals. The new retail division produces frozen pre-cooked kosher main dishes and side dishes for sale in supermarkets, groceries and delicatessens. In a few northeastern test markets now, they are to begin national distribution next

month. The first products in the line will be stuffed cabbage, stuffed peppers, chicken soup with matzo balls, muchroom and barley soup, potato pudding and kasha varnishkes. The latter is a side dish of buckwheat groats and elbow macaroni cooked with onion and vegetable shortening.

The stuffed cabbage is among the main dishes scheduled for the Vietnam shipment, which Siegel said will be made around the end of March as a trial run.

If it is successful, he added, the National Jewish Welfare Board and the U.S. Armed Forces will undertake a joint program to provide kosher meals for Jewish servicemen there during the Passover festival in April.

Kosher Cabbage
Stuffed cabbage is made from a recipe developed by Sidney Siegel's American grandmother, who added cranberry juice to its traditional sweet and sour tomato sauce.

Mix 1 pound of ground beef with cup of water and ½ cup of cooked rice. Boil 1 whole cabbage (about 1½ pounds) 30 minutes in water to cover. Drain. Remove 8 to 10 outer leaves and reserve. Chop remaining cabbage.

Divide meat mixture among reserved leaves and roll each into a tight cylinder, tucking in ends. Place close together, ends of leaves down, in single layer in lighted greased ovenproof casserole.

Cover with sauce made by mixing the chopped cabbage with ¼ cup of tomato puree and 1 cup of bottled cranberry juice, ¾ cups of water, 1 medium apple, peeled, cored and sliced, ¼ cup of white raisins, 2 tablespoons of sugar, 1 teaspoon of salt, ¼ teaspoon of freshly ground black pepper and 1½ teaspoons of monosodium glutamate. Cover casserole; bake 2 hours in preheated 350-degree oven. Remove cover and bake ½ hour more. Makes 4 servings.

Lenten Meals Can Be Brightened by Novel Tuna Ring

Serve a novel tuna ring for a Lenten dinner. Combine 3 (1-ounce) cans of tuna, drained and flaked, 1 cup of rolled oats (quick or old fashioned, uncooked), ½ cup of cooked peas, 2 tablespoons of chopped onion, 2 teaspoons of salt, ¼ teaspoon of pepper, 2 beaten eggs and 1¼ cups of milk.

Place in greased aluminum foil-lined 8-inch ring mold. Bake in preheated 350-degree oven about 50 minutes, or until set. Invert onto platter. Makes 6 servings.

In buying bread, check for weight rather than size of the loaf, or you may spend money for air. Also check the date to determine freshness.

1½ cups milk
1 cup drained whole kernel corn
3 cans (15 or 15½ ounce) chili without beans
½ cup shredded Cheddar cheese

Combine corn muffin mix, egg, milk and whole kernel corn. Stir until dry ingredients are moistened. Bake 12 4½-inch pancakes on hot, lightly greased griddle until golden brown. Heat chili. Spoon about ¼ cup chili on each pancake; roll up. For each serving top 2 pancake rolls with more chili; sprinkle with cheese. Makes 6 servings.

Food Page

THE PAMPA DAILY NEWS
THURSDAY, FEBRUARY 16, 1967

A Cake for Washington's Birthday



MOCHA POUND CAKE topped with cherries.

By GAYNOR MADDOX
Newspaper Enterprise Assn.
A good dessert to celebrate a birthday in George Washington's day was usually a pound cake. One recipe of the time called for 16 eggs with four additional yolks and pounds of sugar, flour and butter.

But times have changed and so have recipes. This 1967 Washington Birthday cake is a mocha pound cake flavored with coffee and cocoa and with cherry preserves and Coffee Whipped Cream frosting.

Washington's Birthday Cake
2 cups sifted all-purpose flour
½ cup breakfast cocoa (not instant)
3 tablespoons instant coffee powder
½ teaspoon salt
1 cup (½-lb.) soft butter or margarine
1¼ cups sugar
1 cup eggs (4 or 5), depending on size
1 teaspoon vanilla
Coffee Preserves
Coffee Whipped Cream

Mix and sift flour, cocoa, instant coffee powder and salt. Cream butter of margarine to consistency of mayonnaise. Beat in sugar gradually. Continue to beat until light and fluffy. Add eggs gradually, beating well after each addi-

Tuna-Stuffed Baked Potatoes

Potato Bake
Tuna-stuffed baked potatoes make a delectable main dish. Bake 6 potatoes until tender. Scoop pulp into large bowl; reserve shells.

Add to potato pulp 3 (7-ounce) cans of tuna, drained and flaked, ½ cup each of dairy sour cream and milk, 3 tablespoons of butter of margarine, 2 teaspoons of instant minced onion, 1 teaspoon of salt and ¼ teaspoon of pepper.

With electric beater, whip on low speed until fluffy. Divide among potato shells. Top with sour cream, using total of ½ cup. Dust with paprika and bake 15 minutes, or until hot, in preheated 425-degree oven. Makes 6 servings.

(Mixture may curdle slightly.) Add vanilla. Stir in flour mixture. Mix just until smooth. Spoon into greased, waxpaper-lined loaf pan, 13x4½x2½ inches. Bake at 325 degrees about 1 hour, or until cake tests done. Cool in pan 10 minutes. Remove cake to rack, peel off waxed paper. Finish cooling. Cut loaf in thirds lengthwise. Put together again with cherry preserves. Frost top and sides with Coffee Whipped Cream. Chill. To serve, slice on the diagonal. 12 servings.

COFFEE WHIPPED CREAM
1 cup whipping cream
4 tablespoons sugar
3 tablespoons instant coffee powder
Combine and chill. Whip until mixture holds its shape.

Food Buying Guide

The following guide to the nation's food buys for the weekend was prepared by the U.S. Departments of Agriculture and Interior for United Press International.

WASHINGTON (UPI) — A varied assortment of meat, poultry and fresh produce awaits food shoppers on this mid-winter weekend.

Meat counters in many parts of the country will feature beef roasts and steaks, hams and pork roasts and various cuts of lamb. In the poultry department, watch for generous table and Lenten main dishes. Generally, canned salmon is the leading fish buy across the country.

To be sure that the meat, poultry and eggs you buy are the quality you expect, watch for the USDA-grade shield, your guarantee that the product has been checked for quality by graders of the consumer and marketing service. The round mark of federal inspection assures you the product is safe to eat.

Fresh vegetable selections for the weekend include cabbage, carrots, celery, lettuce, potatoes, and radishes. Fruit bins will feature a colorful array of apples, avocados, bananas, grapefruit and oranges.



QUALITY AND PRICES



PUREX BLEACH ½ Gal. 29¢	CHILI Wolf 19 oz. can 59¢	FOLGER'S Lb. Can 69¢	COFFEE 69¢	FLOUR SHURFINE 10 lb. Bag 89¢
--	--	---------------------------------------	-----------------------------	--

Gerber's Strained **Baby Food** **10¢**

MIRACLE WHIP Qt. **49¢**

Shurfine 300 Can **PORK and BEANS** **8 FOR \$1**

Campbell's **Chicken with Rice SOUP** 6 CANS **\$1**

Shurfresh **BISCUITS** 12 Cans **\$1.00**

OLEO Shurfresh 5 lbs. **\$1.00**

BREAD Tender Crust, 1½ lb. Loaf **19¢**

Del Monte Y. C. No. 2½ Can **4 For \$1**

PEACHES Hunts 20 oz. bot. 3 **89¢**

CATSUP Borden's Mellorine ½ Gallon **29¢**

Mortens Meat **POT PIES** 19¢

Patio Mexican Style **DINNER** 39¢

Patio, Beef, 22 oz. **ENCHILADA** 59¢

Shurfine cut **OKRA** 20 oz. pkg. **49¢**

FRESH PRODUCE SPECIALS

Rome **APPLES** **15¢**

BANANAS **15¢**

Oranges **15¢**

Russet **POTATOES** 20 lb. Bag **\$1.19**

Grade A Medium **EGGS** 2 Doz. **79¢**

HOLLY SUGAR 5 lb. Bag **49¢**

Round Steak Choice Beef Lb. **89¢**

Pork Steak Fresh Lb. **45¢**

Pork Roast Fresh Lb. **39¢**

No Waste **TENDERIZED STEAK** 1 lb. **98¢**

Flavor Wright **BACON** 2 lbs. **\$1.09**

U.S.D.A. Good Heavy, Mature, Grain Fed **Half Beef** Quick Frozen, Double Wrapped. Cut-to-Your Specifications Complete Price **49¢ lb.**

HIND QUARTER 59¢ lb.

CAKE MIX Shurfine 3 Boxes **79¢**

Shurfine 32 oz. **WAFFLE SYRUP** **39¢**

Shurfine 12 oz. can **LUNCHEON MEAT** **49¢**

Shurfine 46 oz. can **TOMATO JUICE** 3 **\$1**

Shurfine, cut, 303 can **GREEN BEANS** 5 **\$1**

Shurfine 300 cans **BLACK EYE PEAS** 7 **\$1**

Wagners **Breakfast Drink** qt. 3 **89¢**



HOM'S FOODS

We Give Buccaneer Stamps—Double Wed. With \$2.50 or More Purchase
421 E. FREDERIC OPEN 7 DAYS A WEEK MO 4-8531
LIMIT RIGHTS RESERVED.

Freckles



The Born Loser



The Berrys



Bugs Bunny



Eek and Meeks



Captain Easy



The Willets



WINTHROP



OUR BOARDING HOUSE With Major Hoople Short Ribs



Blondie



Alley Oop



The Flintstones



Oackson Twins



Mickey Finn



Priscilla's Pap



Dabbie Deere



Joe Palooke



New York Honors Surprise Muhammad Clay

By MILTON RICHMAN
NEW YORK (UPI) — The same people who once gave Cassius Clay the back of their hand did everything now but give him the key to the city. They made flowery statements about him, fussed over him and fawned over him until it became a little hard to take. Even Clay was startled and leaned back in his guest-of-honor chair to get a better look when Edwin B. Dooley, the chairman of the New York State Athletic Commission, got up on his feet and said how he always had been "an admirer" of him. A distinct change also was

evident in the general attitude of Harry Markson, managing director of boxing at Madison Square Garden. He always referred to the heavyweight champion as Cassius Clay before. This time he was careful to call him Muhammad Ali. The occasion for this sudden turnabout was Wednesday's formal announcement of Clay's first appearance at Madison Square Garden since he outpointed Doug Jones there on March 15, 1963. Clay had been persona non grata with local boxing interests since he won the title three years ago and the prevailing

attitude around here had been who-needs-him. But it turned out they needed him more than he needed them. So on this March 22, he will defend his title for the first time here against Zora Folley in a 15-rounder at the Garden. One thing about this fight, it won't be a "grudge" match like Clay's last one. That was established early. "What's his name?" inquired a neepler, sitting between the champion and Folley. "Muhammad Ali," replied Folley, a mild-mannered, 34-year old father of eight from Chandler, Ariz. "Thank you, brother," said

Clay. "He is a quiet, dignified man. I respect him for respecting me." Folley had said earlier he liked Clay. "Why not?" asked the challenger. "He's a likeable guy." What about his gimmicks though? "I can't speak for him," said Folley. "I don't know what he may do. I won't start anything." The most Folley ever received for any fight before was \$40,000. That was for his bout with Sonny Liston, who decked him three times and stopped him in the third round. "I tried to slug with him,"

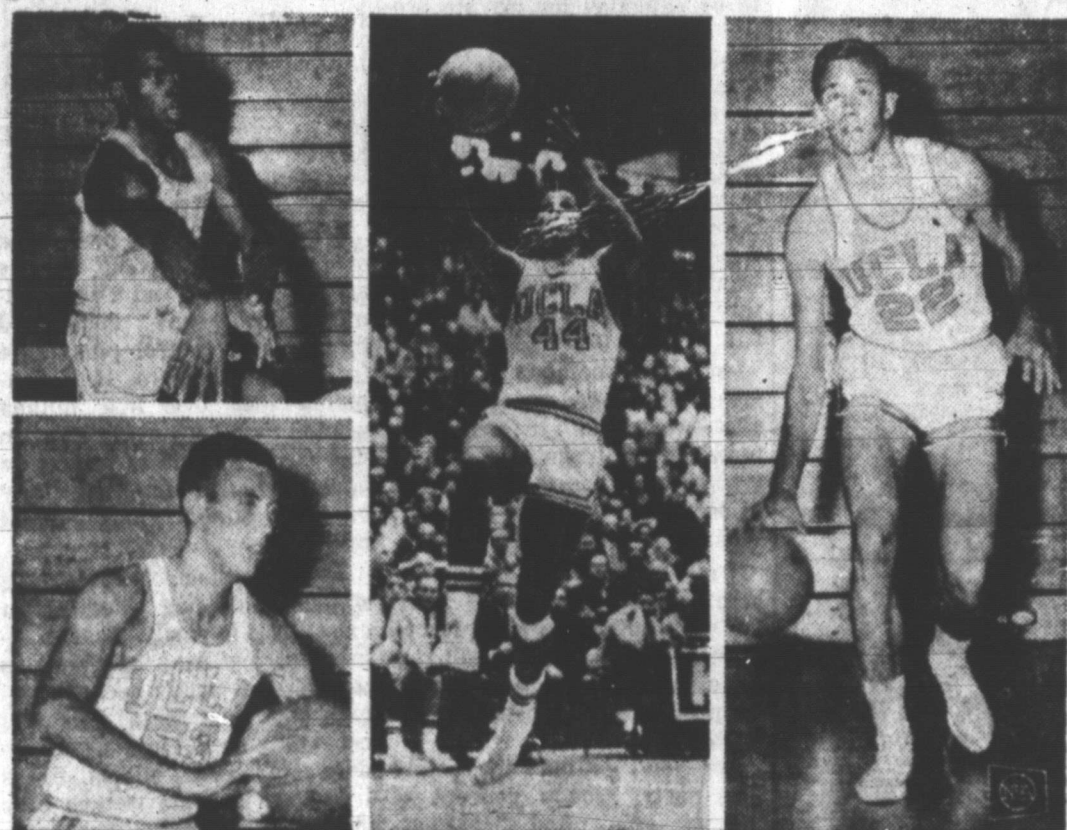
Folley recalled ruefully. The challenger bridled only once and that was when he was asked what he thought about the prospect that most people would hold him so lightly. "I don't think they'll hold me lightly at all," he shot back. "I think I'll win the fight. I can box and punch with two hands. I'm not taking this fight for the money. . . . I'm taking it for that too, I wouldn't fight him free . . . but I'm taking the fight because I think I can beat him." Later on, Dooley stood up and made his speech. He called Clay "an arrogant figure, but a great figure in

boxing because of the frequency with which he defends his title. "I think the fight is going to be good for boxing in New York," Dooley went on. "We considered his (Clay's) application to fight here a long time and the fact that he is a Muslim and his present draft status had no bearing on whether we should allow him to box." Then they asked Dooley if he believed Clay was a Muslim minister. "If he says he is, I believe him," was the reply. "That's the kind of day it was. Muhammad Ali couldn't do anything wrong."

Scores

By United Press International
East
St. Bonaventure 92 Fairfield 89
LaSalle 77 Duquesne 66
Lehigh 60 Lafayette 37
Bates 62 Colby 57
Shampton 55 Adelphi Strik 41
Tufts 89 Worcester Tech, 67
Kings Point 76 Yeshiva 73
Cheyney 85 Kutztown 49
Villanova 47 Canisius 44
Holy Cross 64 Massachusetts 54
N.Y.U. 76 Manhattan 63
Wagner 80 Drexel Tech. 66
Otterbein 77 Wittenberg 68
N.Y. A.C. 96 NY Tech. 91
E. Strdsbrg 83 Shppsbrg 61
Scranton 95 Moravian 68
Susquehanna 90 Juniata 73
C.W. Post 91 Frigh Dcknsn 79
Syracuse 100 Colgate 86
St. Anselm's 77 Norwich 75
Catholic Univ. 90 Hofstra 57
Westchester 65 Mansfield 63
Hobart 73 Clarkson 67
New Hampshire 99 Bostn U.92
St. Peter's 80 Stonehill 73
South
Florida A&M 102 Alabama St 96
American Univ. 112 Clark 83
Va. Tech 78 Geo Washington 66
Georgia Tech. 87 Georgia 79
Washington Col 98 Gallaudet 66
Loyola (Md) 66 R. Macon 61
Fla Prsbtrn Col 97 Tampa 92
Wmnrst 85 Carnegie Tech 50
Allegheny 59 Thiel 57
Gannon 79 Alliance 67
W.Va. Tech. 63 Glensville 61
W. Liberty 72 W.Va. Wslyn 44
W.Va St 98 Concord 93
Midwest
Toledo 103 Bowling Green 83
Loyola (Ill) 85 Mich. 84
Butler 68 Evansville 65
Miami (Ohio) 80 Plio 56
Marquette 71 Xavier (Ohio) 69
Geneva 81 Wooster (Ohio) 67
Detroit Tech 81 W. Ontario 50
Ind St U 91 St Jsp'h (Ind) 71
Ill. St. 105 Ill. Wesleyan 103
Superior (Wis) 95 Nrhnd 85
Sou. Ill. 79 Washington (Mo) 68
Calvin 106 Olivet 88
Hillsdale 92 Mich. Lutheran 63
Northwood 104 Davenport 85
Ill. Tchrs S. 104 Ill at Chgo 94
Elmhurst 80 Rockford 61
North Park 83 Lake Forest 49
St. Precipus 85 Cncrdia (Ill) 75
Alma 82 Adrian 69
Kalamazoo 75 Hope 63
Denver 75 Air Force 73
Southwest
Houston 122 St. Mary's (Tex) 58
Tex. Coll 118 Houston Coll 115
N.Mex. St 64 Tex. Western 33

QUARTERBACK SIGNS
ST. LOUIS (UPI) — Iowa State quarterback Tim Van Galder Wednesday signed with the St. Louis Cardinals of the National Football League. Van Galder, the Cardinals' sixth draft choice as a future last year, had also been drafted by Houston of the American Football League.



SUPPORTING ROLES: Lew Alcindor is a devastating weapon for UCLA because the opposition cannot relax one moment against the other starters, who would be stars on any other team. They include, from left, Lucius Allen (top), Lynn Shackelford (bottom), Mike Warren and Kenny Heitz.

Orioles Having Trouble Signing Top Pitchers

By United Press International
The Baltimore Orioles are having trouble with their pitchers again even though the first ball of spring training has yet to be thrown. With only six days left before the start of the Orioles' spring camp for pitchers and catchers, no fewer than nine Baltimore hurlers are unsigned. And at least one — Steve Barber — indicates he and the club may be in for a long salary argument. "I'm asking for what I'd call a moderate raise," said Barber Wednesday. "The ball club hasn't changed its position except to offer me a contingency contract based on my performance." "I don't want to have to worry about clauses in my contract every time I walk on the field," he added. "There are enough things to worry about without that." Barber had a 10-2 record in July but then developed tendonitis and finished the season with a 10-5 mark. Pitcher Wade Blasingame, who slipped from 16 victories in 1955 to three in 1966, signed with the Atlanta Braves to bring their contended list to 29. Among the unsigned are Hank Aaron and Joe Torre, who are asking an estimated \$100,000 and \$70,000, respectively. Ron Swoboda, a disappointment despite a league-leading 421 pinch-hitting average, reached agreement with the New York Mets along with 22-year-old outfielder Billy Murphy. Neither is expected to break into the starting outfield combination of Tommy Davis, Don Bosch and Cleon Jones. The St. Louis Cardinals signed Mike Shannon, who probably will be shifted from the outfield to third base to make room for Roger Maris. Shannon hit .288 with 16 homers last season. Outfielders Ted Savage and Bobby Tolan and pitchers Nelson Briles and Wayne Granger also signed with the Cardinals.



JIM PALMER, right, 21-year-old pitcher for the Baltimore Orioles, has one big claim to fame. Palmer beat Sandy Koufax, left, the Dodger great, in Sandy's last official appearance as a major league pitcher in the second game of the 1966 World Series.

Wilkinson Rumored in Line for LSU Athletic Job

BATON ROUGE, La. (UPI) — Gov. J. McKeithen was expected to announce at a news conference today that a meeting Friday with former University of Oklahoma football coach Charles (Bud) Wilkinson is not connected with naming an athletic director of Louisiana State University. However, rumors persisted in Baton Rouge that Wilkinson is being considered for the job. Wilkinson, 50, is president of Lifetime Sports Foundation, Inc. a group promoting sports and physical fitness for all ages. A spokesman for the governor said the program will be the topic of discussion. LSU coach Charles McClendon, whose Tigers stamped to a 5-4-1 record this year, has been mentioned as a candidate for athletic director. He was invited to the meeting Friday. McKeithen said Tuesday he is disturbed by reports he is using his influence to keep McClendon from getting the job. "I have never interfered and I do not propose to," he said. The position became vacant last month when James J. (Jim) Corbett, LSU's athletic director for 10 years, died of a heart attack in New Orleans.

WEST POINT, N.Y. (UPI) — Ithaca football Coach Richard Lyon Wednesday was named defensive coach at Army. Lyon, who amassed a 49-16 record in nine seasons at Ithaca including an undefeated season in 1965, will join Army Coach Tom Cahill's staff before spring training.

SPORTS

The Tampa Bay News
59TH YEAR THURSDAY, FEBRUARY 16, 1967

Press Continues To Work for N. M. Aggies

By United Press International
That permanent press Lou Henson has woven into New Mexico State's basketball strategy this season has produced nothing but wrinkles at Texas Western. For the second time in a month, the seventh-ranked Miners came apart at the seams when confronted by State's harrowing full court zone press and once again the defending NCAA champions were upset by the Aggies, 64-53, Wednesday night.

New Mexico State, rebounding from a disastrous 4-22 season during which it yielded an average of 96.5 points per game, stunned Oklahoma City, New Mexico and Rutgers with its fierce defense in the first half of the season and then confounded the experts by whipping Texas Western 66-55 on the Miners' home court two weeks ago.

State so pestered Texas Western in their second encounter that Don Hoskins' once invincible crew made only two field goals in the entire first astounding 29-11 margin. Eighth-ranked Houston, the International to see action, was in command all the way in crushing St. Mary's (Tex.) 122-58 in its most productive night of the season.

The Orangemen ripped Colgate 100-86 and the Rockets flashed past Bowling Green 108-63. The outstanding individual performance of the evening, however, was turned in by Mal Graham of New York University, who has surpassed UCLA's Lew Alcindor and Jimmy Walker of Providence in the national scoring derby. Graham scored 45 points to push the Violets past Manhattan 76-63.

Elsewhere, St. Bonaventure nudged Fairfield 92-90 on a last-second basket by sub Jeff Hazard. Villanova survived a late rally by Canisius for a 47-44 win. Georgia Tech continued its stretch drive toward a tournament with an 87-79 triumph over Georgia. Virginia Tech topped George Washington 78-66. Loyola (Ill.) slipped past Western Michigan 85-64. Marquette edged Xavier 71-69. Denver defeated Air Force 75-73 and Southern Illinois, the No. 1 small college quintet, victimized Washington (Mo.) 79-66.

LETTERS OF INTENT

Tech, Aggies Gain in Signing

By United Press International
Texas Tech and Texas A&M gained momentum Thursday in the rush to sign high school football players. The Aggies released the names of 14 new youngsters who had signed letters of intent, bringing their total to 31 for two days. Texas Tech picked up 12 new players. The University of Texas, which pulled in a giant haul on Tuesday, slowed down slightly, and it appeared the Longhorns would not run off with the vast majority of players. The Longhorns signed Allen Avant of Port Neches-Groves, a tackle, and Gene Salmon, a Del Rio quarterback. New A&M players were Alan Henson, a League City end; Mark Fulton, a Fort Worth Arlington Heights tackle; Jack Kemp, a tackle from Sweeny; Wayne Froeschl, a tackle from Texas City; and tackles Jerry Minyard of Port Neches, Jim Parker of Gonzales and Andy Philly of Temple. Other signees from A&M were centers Ted Davis of Bryan and Ronny Rickman of Vernon; and backs Bill Hodge of Bryan, Gary Petty of Austin, Lee Hitt of Arlington Heights, Larry Chandler of Sweeny and Larry Kelly of League City. Arkansas landed a top quarterback in Bill Montgomery of R. L. Turner High, who had also considered Alabama. The annual Southwest Conference recruiting roundup saw Baylor's list rise to 21 in two days with the addition of three ends, quarterback Mike Beane of Marshall and tackle Bobby Henderson of Tyler. The ends are Rollin Hunter of Brown-

Palmer Favored In Tucson Open

TUCSON, Ariz. (UPI) — Arnold Palmer, Bob Charles and dark-horse Bill Johnston led a field of 144 golfers today into the first round of the 72-hole \$60,000 Tucson Open. Johnston, a graying-haired pro at the Arizona County Club in Phoenix, emerged from obscurity as a potential winner of the \$12,000 top prize when he shot a seven-under-par-65 Wednesday in a pro-amateur pro round at the Tucson National Golf Club. Charles, the quiet New Zealander who is the world's best left-handed golfer, shot a 66 in the pro-am. Charles won this tournament in 1965 with a 72 hole score of 271, 17 under par. Palmer, always a big factor in any tournament he enters, had a 70 in what he called a "hot good and not bad" round. He returned to the pro tour after skipping the Phoenix Open last week. The biggest factor of all may be the wind, which sometimes whips across this wide open course. The few trees lining the fairways are young and provide little protection. The layout is a long one — 7,000 yards — with broad and undulating greens. Par is 36-36-72.

Read The News Classified Ads

Oscar Leading Cincy in NBA

By United Press International
Not even a face mask can hinder the sharp shooting eye of Oscar Robertson. The big O, wearing a specially designed contraption to protect a cut lip, had no trouble with his vision Wednesday night as he pumped in 46 points to lead Cincinnati to a 127-118 victory over the New York Knicks and lift the Royals to within two games of third place in the National Basketball Association's Eastern Division. Robertson also found time to collect 14 assists and he was particularly accurate from the free throw line, sinking 16 of his 17 attempts. The 46 points fell two short of the season high for Robertson, who stands second in the NBA in scoring and fourth in foul shooting. In the only other scheduled games, the Philadelphia 76 ers increased their lead to 7½ games in the Eastern Division by beating the Detroit Pistons 127-121 while the runnerup Boston Celtics lost 124-114 to Los Angeles. Cincinnati, leading 29-24 at the close of the first quarter, outscored the Knicks 11-1 in a two-minute stretch of the second period to take a 66-52 halftime margin. The Royals led by as many as 19 points in the third stanza and when New York rallied three times in the final period, Robertson eased the pressure with timely field goals.

On the prowl for persnickety prospects



If you're a fussy truck buyer, try this '67 Chevy pickup! Your Chevrolet dealer has a demonstrator waiting to show you its sleek new look, burly new build and bright new cab. (Not to mention the smooth ride and easy handling.) It's the latest in pickups—try it and see for yourself!



Try the brand new breed of Chevy trucks at your Chevrolet dealer's.

CULBERSON-STOWERS CHEVROLET INC.

206 N. Hobart

PAMPA, TEXAS

MO 4-4685

STAG NIGHT
MOOSE LODGE
THURSDAY NIGHT
MEMBERS AND GUESTS
7:30 P.M.

The Pampa Daily News

A Watchful Newspaper
EVER STRIVING FOR THE TOP O' TEXAS
TO BE AN EVEN BETTER PLACE TO LIVE.

The Pampa News is dedicated to furnishing information to our readers so that they can better promote and preserve their own freedom and encourage others to see its blessing. Only when man is free to control himself and all he produces, can he develop to his utmost capabilities.

We believe that freedom is a gift from God and not a political grant from government. Freedom is neither license, nor anarchy. It is control and sovereignty of oneself no more, no less. It is thus consistent with the Human Relations Commandments, the Golden Rule and the Declaration of Independence.

Worthy Organization

That most worthy organization, the Future Farmers of America, will receive well-deserved recognition during the week of February 18 to 23. Writers, commentators, officials and others in all walks of life will pay tribute to one of the most important groups of young people who in the years to come will bear the heavy responsibility of providing the food and fiber so sorely needed by a world confronted with the achievement in food production.

Each year the significance of Future Farmers of America Week grows. The message that the young farmers of tomorrow endeavor to impart to the nation during their "Week" is simple. They seek to "inform" (the) public of the importance of agriculture to America, (the) value of good citizenship development, and (the) role of Future Farmers of America in this effort.

Job Corps 'Facts' at Variance

"Facts Parents Should Know About The Job Corps" is the heading on a form letter put out by the Office of Economic Opportunity (OEO) and issued from the "Executive Office of The President, Washington, D.C."

The complete text of "facts" presented follows: The Job Corps is a training program for young people who have dropped out of school and can't find a job. Youths from all races, religions and national origins are eligible to join.

The centers are located all over the United States and Puerto Rico. Some of them are in national parks and for six; others are in cities and towns. Since young men and women who are enrolled in the Job Corps may be sent to centers which are far away from home, some of them will be homesick. This is only natural. You can help by encouraging your child to remain in the Job Corps. A corpsman may spend as long as two years in the program, although most will complete their training in less than a year.

The corpsmen live and learn at the centers. They get comfortable living quarters, good food, clothing, medical and dental care. Recreational activities such as sports, hobbies, movies, libraries and entertainment are available at the centers, and also in nearby towns. Transportation is provided for corpsmen to attend religious services of their own choice. Men and women live in separate centers.

The Salvation Army Needs You!

The Salvation Army has a big job to do. The Salvation Army in Pampa has never had a major campaign for building funds. Since 1929 The Army has served people in the Pampa Area, providing food, clothing and shelter for those in need — men, women and children.

An even greater service has been provided in the form of spiritual help, counseling and guidance. Now, The Salvation Army is at the crossroads. Unless new facilities are provided, this dedicated band of men and women cannot continue their humanitarian program.

HOW TO ADDRESS OUR LAWMAKERS
You may wish to write your senators and representatives in Washington and Austin. Here are their addresses:
(FEDERAL)
Rep. Bob Price, 1325 Longworth Bldg., Washington 20, D.C.
Sen. Ron Yarborough, Senate Bldg., Washington 20, D.C.
Sen. John Tower, Senate Office Bldg., Washington 25, D.C.
(STATE)
Rep. Malouf Abraham, House Bldg., Austin, Texas
Sen. Gady Hazzelwood, Senate Bldg., Austin, Texas

Pull Up A Chair

By FRANK JAY MARKEY

Clean, honest American humor, many editors say, is as hard to find these days as a good five-cent cigar. No replacements for the Mark Twains, the Robert Benchleys of yesteryear? But for some months now we've been enjoying a contemporary humorist who fills the bill admirably. His name is Ralph Reppert of the Baltimore SUN, and his column is syndicated. Reppert's charm is in his simplicity. He writes of everyday doings and everyday people, including his wife, Harriet, in a whimsical manner that gives a shine to the most commonplace. His fan clubs include groups of teen-agers, nuns at a Catholic hospital in his home town, and an undergraduate group at Dartmouth. Reppert is frequently reprinted in Reader's Digest. He's as refreshing as a taste of mint.

Today's smile: A traffic cop yelled at a sweet young thing jaywalking across a busy intersection: "Hey, you! Didn't you hear me whistle?" "Of course," she said, "but it won't do you any good. I'm already engaged."

It must seem incredible to modern Americans that the famous Whiskey Rebellion of 1794, which required 15,000 soldiers to quell, was caused by a government tax of only seven cents on a gallon of hard liquor. The federal tax bite on a gallon of bottled lightning today runs to about \$10.50 and no one puts up a single squawk about paying it. Of course, state taxes are added, too.

Thoughts while shaving: In some of the posh food shops we have seen chocolate-covered ants and grasshoppers offered as delicacies, but we have never had the nerve or courage to try them. Another choice bit that we have no trouble in avoiding is a swank cocktail party is rattlesnake meat on crackers. However, there are those who can take such foods and they might be surprised to learn they have company in the natives of Colombia, who take the thoraxes of big, black ants, fry them and then salt and eat them like nuts. We'll stick to peanuts with our cocktails, thank you. . . Water accounts for nearly 80 per cent of the bodily weight during infancy, but it drops to an average of 60 per cent in the ages from one to nine, then there's a slight increase up to 16 years. How do we know? A physician friend told us. . . Every now and then we hear about someone being picked up by the FBI who was on that famous bureau's "10 Most Wanted List." Makes us wonder how the FBI selects these characters, and also why they put some accused gent in the No. 10 place and not in No. 11, which would take him out of the running temporarily. . . Although we've never been able to detect them in our hamburgers, it is said to be a fact that onions grown late in the summer have a stronger odor and are supposed to make you weep more than those grown at any other time. . . The Albany (N.Y.) TIMES UNION headlined a story: "Language Gets Wirtz and Wirtz." It certainly does.

Country Editor speaking: "Some Hollywood brides, after saying 'I do' at their weddings, immediately start looking around to see if they can do better."

Country Editor speaking: "Some Hollywood brides, after saying 'I do' at their weddings, immediately start looking around to see if they can do better."

Country Editor speaking: "Some Hollywood brides, after saying 'I do' at their weddings, immediately start looking around to see if they can do better."

Country Editor speaking: "Some Hollywood brides, after saying 'I do' at their weddings, immediately start looking around to see if they can do better."

Country Editor speaking: "Some Hollywood brides, after saying 'I do' at their weddings, immediately start looking around to see if they can do better."

Country Editor speaking: "Some Hollywood brides, after saying 'I do' at their weddings, immediately start looking around to see if they can do better."

Country Editor speaking: "Some Hollywood brides, after saying 'I do' at their weddings, immediately start looking around to see if they can do better."

Country Editor speaking: "Some Hollywood brides, after saying 'I do' at their weddings, immediately start looking around to see if they can do better."

Country Editor speaking: "Some Hollywood brides, after saying 'I do' at their weddings, immediately start looking around to see if they can do better."

Country Editor speaking: "Some Hollywood brides, after saying 'I do' at their weddings, immediately start looking around to see if they can do better."

Country Editor speaking: "Some Hollywood brides, after saying 'I do' at their weddings, immediately start looking around to see if they can do better."

Country Editor speaking: "Some Hollywood brides, after saying 'I do' at their weddings, immediately start looking around to see if they can do better."

Country Editor speaking: "Some Hollywood brides, after saying 'I do' at their weddings, immediately start looking around to see if they can do better."

Country Editor speaking: "Some Hollywood brides, after saying 'I do' at their weddings, immediately start looking around to see if they can do better."

Country Editor speaking: "Some Hollywood brides, after saying 'I do' at their weddings, immediately start looking around to see if they can do better."

Country Editor speaking: "Some Hollywood brides, after saying 'I do' at their weddings, immediately start looking around to see if they can do better."

Country Editor speaking: "Some Hollywood brides, after saying 'I do' at their weddings, immediately start looking around to see if they can do better."

Country Editor speaking: "Some Hollywood brides, after saying 'I do' at their weddings, immediately start looking around to see if they can do better."

Country Editor speaking: "Some Hollywood brides, after saying 'I do' at their weddings, immediately start looking around to see if they can do better."

Country Editor speaking: "Some Hollywood brides, after saying 'I do' at their weddings, immediately start looking around to see if they can do better."

Country Editor speaking: "Some Hollywood brides, after saying 'I do' at their weddings, immediately start looking around to see if they can do better."

Country Editor speaking: "Some Hollywood brides, after saying 'I do' at their weddings, immediately start looking around to see if they can do better."

Country Editor speaking: "Some Hollywood brides, after saying 'I do' at their weddings, immediately start looking around to see if they can do better."

Country Editor speaking: "Some Hollywood brides, after saying 'I do' at their weddings, immediately start looking around to see if they can do better."

Country Editor speaking: "Some Hollywood brides, after saying 'I do' at their weddings, immediately start looking around to see if they can do better."

Country Editor speaking: "Some Hollywood brides, after saying 'I do' at their weddings, immediately start looking around to see if they can do better."

Country Editor speaking: "Some Hollywood brides, after saying 'I do' at their weddings, immediately start looking around to see if they can do better."

Country Editor speaking: "Some Hollywood brides, after saying 'I do' at their weddings, immediately start looking around to see if they can do better."

Country Editor speaking: "Some Hollywood brides, after saying 'I do' at their weddings, immediately start looking around to see if they can do better."

Country Editor speaking: "Some Hollywood brides, after saying 'I do' at their weddings, immediately start looking around to see if they can do better."

Country Editor speaking: "Some Hollywood brides, after saying 'I do' at their weddings, immediately start looking around to see if they can do better."

Country Editor speaking: "Some Hollywood brides, after saying 'I do' at their weddings, immediately start looking around to see if they can do better."

Country Editor speaking: "Some Hollywood brides, after saying 'I do' at their weddings, immediately start looking around to see if they can do better."

Parting Is Such Sweet Sorrow



U.S. Offices Infiltrated By the Cong

By RAY CROMLEY, Washington Correspondent

WASHINGTON (NEA) — An American official writes me from south Vietnam: "You will be surprised to hear that I have discovered a (Viet Cong) cell operating right within our USAID (United States Agency for International Development) office."

"Yesterday, I fired all the (Vietnamese who work in the office) who were members of the cell."

"As a result, I have only Mr. D. . . and Miss B. . . left. Neither of them was willing to cooperate with Mr. L. . . the cell leader."

"I am confident that this situation is present in many offices here — but we Americans aren't here to discover it."

"I got my tip from a Saigon part-Chinese girl, who is a secretary (in one of the other USAID offices). The information cost me 2,000 piasters (only \$17 but equivalent to more than a month's wages for many officials) and promises of family assistance."

"One cell member had confided in the girl on a trip . . . and described some of their . . . activities."

"When I found documents missing from my desk I should have known what was happening."

"A major reason for Ho Chi Minh's victory over the French lay in his ability to infiltrate French military, political and economic bureaus, departments and headquarters."

"One former Ho general told me some years ago, 'Our information did not come from the shoeless boys, those who did the laundry or cleaned the rooms. We had men in high places in the French establishments, both French and Vietnamese. We exploited the rivalries between different factions. Each was eager to give us information to get back at the others.'"

"There is considerable evidence that the Viet Cong have penetrated the Vietnamese staffs of a good many — perhaps most — of the American offices in South Vietnam and most offices of the Vietnamese government, including the police, army and air force."

"As in the French days, some of these Viet Cong exploit the rivalries between the factions. Some of these infiltrators keep their VC identity completely hidden. No one knows who they are or what they're up to except their contacts outside."

"Some, however, are assigned to organizing cells within the U.S. and South Vietnamese government offices. These organizers count on the Vietnamese they contact not to expose them for fear of retribution."

"These infiltrators collect intelligence for the Communists, enabling the VC to counter U.S. and Vietnamese economic and political programs in the hamlets, and they enable the VC to stir up factional fights within the offices, weakening the programs and the government in the provinces."

"But this war against Communist agents and the cells they form is difficult for most Americans to fight. We are naturally trusting. We take what people say at face value. We find it difficult to realize this is a major part of a guerrilla war."

"But this war against Communist agents and the cells they form is difficult for most Americans to fight. We are naturally trusting. We take what people say at face value. We find it difficult to realize this is a major part of a guerrilla war."

"But this war against Communist agents and the cells they form is difficult for most Americans to fight. We are naturally trusting. We take what people say at face value. We find it difficult to realize this is a major part of a guerrilla war."

"But this war against Communist agents and the cells they form is difficult for most Americans to fight. We are naturally trusting. We take what people say at face value. We find it difficult to realize this is a major part of a guerrilla war."

"But this war against Communist agents and the cells they form is difficult for most Americans to fight. We are naturally trusting. We take what people say at face value. We find it difficult to realize this is a major part of a guerrilla war."

"But this war against Communist agents and the cells they form is difficult for most Americans to fight. We are naturally trusting. We take what people say at face value. We find it difficult to realize this is a major part of a guerrilla war."

"But this war against Communist agents and the cells they form is difficult for most Americans to fight. We are naturally trusting. We take what people say at face value. We find it difficult to realize this is a major part of a guerrilla war."

"But this war against Communist agents and the cells they form is difficult for most Americans to fight. We are naturally trusting. We take what people say at face value. We find it difficult to realize this is a major part of a guerrilla war."

"But this war against Communist agents and the cells they form is difficult for most Americans to fight. We are naturally trusting. We take what people say at face value. We find it difficult to realize this is a major part of a guerrilla war."

"But this war against Communist agents and the cells they form is difficult for most Americans to fight. We are naturally trusting. We take what people say at face value. We find it difficult to realize this is a major part of a guerrilla war."

"But this war against Communist agents and the cells they form is difficult for most Americans to fight. We are naturally trusting. We take what people say at face value. We find it difficult to realize this is a major part of a guerrilla war."

"But this war against Communist agents and the cells they form is difficult for most Americans to fight. We are naturally trusting. We take what people say at face value. We find it difficult to realize this is a major part of a guerrilla war."

"But this war against Communist agents and the cells they form is difficult for most Americans to fight. We are naturally trusting. We take what people say at face value. We find it difficult to realize this is a major part of a guerrilla war."

"But this war against Communist agents and the cells they form is difficult for most Americans to fight. We are naturally trusting. We take what people say at face value. We find it difficult to realize this is a major part of a guerrilla war."

"But this war against Communist agents and the cells they form is difficult for most Americans to fight. We are naturally trusting. We take what people say at face value. We find it difficult to realize this is a major part of a guerrilla war."

"But this war against Communist agents and the cells they form is difficult for most Americans to fight. We are naturally trusting. We take what people say at face value. We find it difficult to realize this is a major part of a guerrilla war."

"But this war against Communist agents and the cells they form is difficult for most Americans to fight. We are naturally trusting. We take what people say at face value. We find it difficult to realize this is a major part of a guerrilla war."

"But this war against Communist agents and the cells they form is difficult for most Americans to fight. We are naturally trusting. We take what people say at face value. We find it difficult to realize this is a major part of a guerrilla war."

"But this war against Communist agents and the cells they form is difficult for most Americans to fight. We are naturally trusting. We take what people say at face value. We find it difficult to realize this is a major part of a guerrilla war."

Backstage Washington

U.S. Working Through Swiss and Mexican Diplomats For Weather Flights Over Cuba

WASHINGTON — The U. S. has quietly broadened the area of negotiations with Communist Cuba through "third party" nations. On the State Department's request, Mexican and Swiss diplomats in Havana are sounding out Castro on a weather information exchange deal.

The secret talks are in addition to those being conducted by these diplomats for the release of 3,600 U.S. nationals whose departure Castro is holding up. Under the proposal submitted to Havana, the U.S. is offering to provide Cuba with advance weather and storm warning reports in exchange for permission to fly hurricane hunter planes over the island. The weather-gathering aircraft now are under White House orders to stay at least 12 miles off the Cuban coast as U.S. reconnaissance planes are required to do during their intelligence-gathering missions.

While indicating a definite interest in the exchange deal, Castro has temporarily thrown a monkey wrench into the talks by demanding that a ban on all U.S. reconnaissance flights be included in any agreement.

BENEFITS FOR CUBA—U.S. authorities, who flatly refuse to agree to the ban, are still confident that an agreement eventually will be worked out — because of Cuba's need for advance storm warnings to protect her economy. Had Cuba been alerted to the approaching hurricane that battered the island for five days last year, protective measures could have been taken that would have avoided much of the multi-million dollar property damage that disrupted the island's economy for weeks.

The on-again-off-again negotiations to get Castro to allow U.S. nationals to leave Cuba are again snagged. After permitting 16 Americans to depart via Mexico, Castro shut down the airlift after agreeing to the departure of 600 more.

U.S. officials aren't exactly sure what happened. The U.S. citizens, who had paid the Cuban government for their passage, were waiting for planes to take them to Mexico when Castro ordered the flights stopped.

In contrast, Castro is permitting the airlift of Cuban refugees to continue with flights that bring 200 daily to the U.S. Under this program, more than 55,000 Cubans have come to this country during the past 14 months. Of those seeking admission via the airlift, 50 have been refused or returned to Cuba on the ground they were Castro agents.

SEEKING DEFECTION—Republican congressional leaders are trying an unusual experiment in raising campaign contributions for the 1968 elections. Members of the Democrats' President's Club, with its \$1,000-a-year membership, are being solicited to purchase tickets for the Republican victory gala here March 1.

With an eye toward recruiting defectors, Senate Republican Leader Everett Dirksen, Ill., and House Republican Leader Gerald Ford, Mich., have written the Club's 5,000 members, stating:

"You may think it presumptuous that we would write a member of the President's Club extending an invitation to our Republican Victory Gala.

"However, it was those additional votes from Democrats that made our recent victory possible. We also believe that the philosophy of the Republican party is at this time perhaps more closely aligned to the views of you and your associates than that of our opposition."

In closing, the two GOP legislative leaders urged the Club members to make contributions even though they cannot attend the Republican fund-raising event, as follows:

"We would be delighted to have you or one of your associates attend our gala, or if that is not possible, we would be most grateful for any financial assistance you may give toward further strengthening our two party system of government."

"Doubtless, it will be disclosed that you have been asked to participate. We suggest you be proud of it — it is your opportunity to invest in good government."

Names and addresses of members of the exclusive President's Club were obtained by the Republicans from a list the organization filed with the Clerk of the House.

IN THE OFFING — Clifford Jones, former Democratic Lieutenant Governor of Nevada, will be the next target of Justice Department prosecutors who got a verdict against "Bobby" Baker, Jones, a casino and hotel operator and friend of Baker, is charged with perjury for allegedly telling a false story before the federal grand jury that investigated the Baker case. Although Jones was initially scheduled for trial last May, he won delay until after the Baker trial. Attorney William Bittman and members of the Justice Department team that successfully prosecuted Baker plan to go into federal court here next week to seek a March trial.

"But this war against Communist agents and the cells they form is difficult for most Americans to fight. We are naturally trusting. We take what people say at face value. We find it difficult to realize this is a major part of a guerrilla war."

"But this war against Communist agents and the cells they form is difficult for most Americans to fight. We are naturally trusting. We take what people say at face value. We find it difficult to realize this is a major part of a guerrilla war."

"But this war against Communist agents and the cells they form is difficult for most Americans to fight. We are naturally trusting. We take what people say at face value. We find it difficult to realize this is a major part of a guerrilla war."

"But this war against Communist agents and the cells they form is difficult for most Americans to fight. We are naturally trusting. We take what people say at face value. We find it difficult to realize this is a major part of a guerrilla war."

"But this war against Communist agents and the cells they form is difficult for most Americans to fight. We are naturally trusting. We take what people say at face value. We find it difficult to realize this is a major part of a guerrilla war."

"But this war against Communist agents and the cells they form is difficult for most Americans to fight. We are naturally trusting. We take what people say at face value. We find it difficult to realize this is a major part of a guerrilla war."

"But this war against Communist agents and the cells they form is difficult for most Americans to fight. We are naturally trusting. We take what people say at face value. We find it difficult to realize this is a major part of a guerrilla war."

"But this war against Communist agents and the cells they form is difficult for most Americans to fight. We are naturally trusting. We take what people say at face value. We find it difficult to realize this is a major part of a guerrilla war."

"But this war against Communist agents and the cells they form is difficult for most Americans to fight. We are naturally trusting. We take what people say at face value. We find it difficult to realize this is a major part of a guerrilla war."

"But this war against Communist agents and the cells they form is difficult for most Americans to fight. We are naturally trusting. We take what people say at face value. We find it difficult to realize this is a major part of a guerrilla war."

"But this war against Communist agents and the cells they form is difficult for most Americans to fight. We are naturally trusting. We take what people say at face value. We find it difficult to realize this is a major part of a guerrilla war."

"But this war against Communist agents and the cells they form is difficult for most Americans to fight. We are naturally trusting. We take what people say at face value. We find it difficult to realize this is a major part of a guerrilla war."

"But this war against Communist agents and the cells they form is difficult for most Americans to fight. We are naturally trusting. We take what people say at face value. We find it difficult to realize this is a major part of a guerrilla war."

"But this war against Communist agents and the cells they form is difficult for most Americans to fight. We are naturally trusting. We take what people say at face value. We find it difficult to realize this is a major part of a guerrilla war."

"But this war against Communist agents and the cells they form is difficult for most Americans to fight. We are naturally trusting. We take what people say at face value. We find it difficult to realize this is a major part of a guerrilla war."

"But this war against Communist agents and the cells they form is difficult for most Americans to fight. We are naturally trusting. We take what people say at face value. We find it difficult to realize this is a major part of a guerrilla war."

The American Way

By HARRY BROWNE
Ever wonder what is meant by the words "commercialism" or "mass market" or "private profit"?

Actually, those words are synonyms for one important word: **youth!**

When you hear a "thought leader" make a remark like "Christmas is getting too commercial," what he really means is: "I don't believe merchants should offer so many things to you to help make Christmas an enjoyable experience for you."

Or consider the platitude: "This innovation should be employed for the public interest; it is too important to be allowed to be exploited for private profit." What does that mean? Translated, it means: "This idea should be the sole property of the government, to be used only as politicians or bureaucrats think best; if it is allowed to be handled by private enterprise, it will be offered to the public in the way the public wants it — since that's the only way a profit-seeking business can make a profit."

Let's take another one: "Television has degenerated into a vast wasteland. It should be more closely regulated so that it won't continue to be a means of exploiting the mass market." What does that mean?

It means "We don't like the kind of shows the public likes. We want our tastes to be forced upon the people; so we will regulate the networks and require them to satisfy us instead of the public."

Are you getting the point? This nasty, greedy concept of "private gain" and "commercialism" that they speak of — that's you they're talking about!

They don't want you to get what you want but they won't come right out and say so. Instead, they scream that some wonderful new innovation should become "public property" (meaning property of the government bureaucrats) rather than allowed to be exploited by "private enterprise."

But what does "private enterprise do with a product? Sit on it! Hide it! Keep it from the public? Of course not — there's no profit in that; and profit is the object of private enterprise. How do you make a profit? Well, you make it by getting people to pay you money. But why would anyone pay you money? Only because you're offering him something he wants more than the money he has to pay. And that means that to make a profit, a private company has to give the public what it wants.

To make something "public property" is to relegate it to the private use of bureaucrats who do not have to offer anything to the public to make a profit. They don't have to make a profit because they get their money through taxes, not voluntary exchange.

So the next time someone mentions those "greedy-commercial interests" or the "private profiteers," remember: he is talking about the guys who have to satisfy you to make a living.

The freemarket is where you are king. The "public domain" is where you're nothing but a serf.
Which one do you choose?

Why is it, then, that rumors of their damaging potentialities exist? This is partly because rumors of any kind are hard to squelch and partly because women who take these pills are constantly on the lookout for undesirable side effects. It is true that in some women the pills cause nausea, headache, tenderness or heaviness in the breasts or a gain in weight but these symptoms can usually be relieved by adjusting the dosage or changing to a different but closely related drug.

It is also true that some women who are taking these pills develop high blood pressure or varicose veins, but all efforts to establish any causative relationship between these conditions and the pill have failed. These conditions occur equally in women who take and do not take the pills. More important, there has been no evidence that the pill causes cancer or any very harmful effect on any baby a woman may later choose to have.

Q — What harmful effects does the drinking of tea have? Will it thin the blood?
A — Tea will thin the blood only to the extent that any fluid taken in an excessive amount might do so. It will not weaken the kidneys, although an excessive fluid intake does put an added burden on them. This would be significant only if the kidneys were already diseased. Tea is a healthful drink that is preferred by many persons to coffee. Excessive amounts of caffeine from this or any other source may cause insomnia, headache, nervous tension, palpitation and nausea.

Q — When I break the glass getting the cover off a jelly jar, would it be fatal if I accidentally ate a tiny piece of glass?
A — Chewing and eating electric light bulbs was once a popular exhibit in freak shows and circus side shows. Although there is no food value in glass, careful investigation has failed to show that it does any harm. The delicate mucous lining of the digestive tract has a special way of avoiding injury in the handling of such foreign bodies. But don't eat any glass if you can avoid it.

Mr. Jones — Don't despair! The next day the man stopped him and handed over \$18.
Mr. Jones — What's the meaning of this?
Joe — It means that 'Don't Despair' won the 4th and paid \$ to 1.

Waitress — I have calves' brains, spare ribs, fried liver, cooked tongue and . . .
Customer — Listen, Babe, I haven't time to listen to your troubles — just bring me a hamburger and coffee.

New Stenographer — Where do you keep the round envelopes, sir?
Boss — What in the world do you want with round envelopes?
New Stenographer — You said I was to mail circulars; sir.

TO 301 E.

WORLD ALMANAC FACTS



The Maginot Line, built on the eastern border of France after World War I, was once thought to be the strongest military defense system in Europe. Running from Switzerland to Belgium, the complex consisted of bunkers and superfortresses equipped with quarters for troops and storage for supplies and ammunition, says 'The World Almanac.' The forts, some of which were connected by railway tunnels, had heavy artillery, machine guns and antiaircraft guns, all protected by tank traps and barbed wire.

Legal notices including Virginia, Florida, and Texas court notices and a 'Hunt for Truth' advertisement by M.L. Hunt.

READ USE

FOR FAST RESULTS

MO 4-2523
CLASSIFIED ADV.

Hato's They'll Do It Every Time



63A Rug Cleaning 63A
FOR SERVICE on wall to wall carpet. Keep it new with Blue Lustr, Rent electric shampooer \$1. Sherwin Williams.

68 Household Goods 68
TAXES FURNITURE REFRIG. MO 4-6623
SHELBY J. RUFF FURNITURE
1312 N. Hobart MO 5-3546
MACDONALD PLUMBING AND
WRIGHT'S FURNITURE
619 S. Cuyler MO 4-6823
W. Buy, Sell and Refurbish Bargains.
JESS GRAHAM FURNITURE
"We Buy Used Furniture"
208 N. Cuyler MO 4-6823
209 N. Cuyler MO 4-2242
TEXAS FURNITURE CO.
210 North Cuyler MO 4-6823
WHITTINGTON'S FURNITURE-MART
105 S. Cuyler MO 5-3121
"Quality Home Furniture"
408 S. Cuyler MO 4-6901

69 Miscellaneous for Sale 69
Air Conditioner Covers
We Measure and Install
PAMPA TENT AND AWNING
517 E. Brown MO 4-6841
FURNITURE See Buddy Johnson on
114 S. Cuyler MO 4-6823
SEE THE selection of typewriters,
waterproof pens, ballpoint pens,
calculators in stock at Sears. MO 4-3261.

EVAPORATIVE COOLERS, 4.300
Lowest CPM reduced pre-season
prices. Sears. MO 4-2361.

1 1/2 CUBIC FOOT all Frigolite
refrigerator with ice maker, adjustable
shelves, white or copper. In-
stalled \$34.95. Sears. MO 4-2361.

INSTANT NES THERM 30 month
whitewall tires, tubless. Installed
\$2.50 each. Sears. MO 4-2361.

LOW EQUITY in nice 2 bedroom
house. Attached garage. \$1200.
\$174; also 14 foot fiberglass boat. 25
horse motor, nice ski rig. \$44
Lowry. MO 4-6823

Choice Bala Oak
and Other Hays
Call MO 4-6919 after 5 p.m.
ALPHA HAY
1222 E. Kingsmill
Call MO 9-9773

GALAXIE SALE! Choice rock cutter,
mattress and springs, recliner, table,
etc. \$12.50. 15 yards of new upholstery.
See Red Deer after 5 pm and Satur-
day.

KEITH'S "ROCK SHOP" Mounting
supplies. Call at store and
shop. 1309 S. Faulkner.

FOR SALE: 1967 Volkswagen beetle with
sunroof, 222 cc engine, 4 speed
Duda trailer. Good for skiing and
fishing. Call MO 5-3292.

FREE INTERCOM with the pur-
chase of a Pampa Daily News Camper
during February. Epperson Camper
Sales, 222 E. Kingsmill. MO 4-2842.

LIFTO LIABILITY Insurance,
monthly, Sentry
Insurance. See 227. MO 4-6776. Pampa
CLEARNEST carpet. You
never need so many. Get Blue
Lustr, Rent electric shampooer \$1.
Pampa Glass and Mirror. 341
Market. Sears your tire and battery
center. In stock for immediate in-
stallation.

LOFTY SALE: Free from soil in the carpet
cleaned with Blue Lustr. Rent
electric shampooer \$1. (Pampa Glass
& Mirror.)

HUNTSMAN-DREAMERS: Campers,
BHPs. 520 S. Hobart. \$100 given
with each new cab-over-sold.
FOR SALE: 1967 "411" motor
cycle, excellent condition. See at
1524 Hamilton. MO 4-6291.

89 Wanted To Buy 89
WILL BUY used furniture, appli-
ances or carpet. MO 5-3124.

WANT TO BUY late model Chevrolet
of International truck. Long wheel-
base. Call Walter Price. MO 5-3228.

WOULD LIKE TO BUY good Singer
sewing machine. Will pay cash.
Contact 1105 Neel Road after
5 p.m.

90 Wanted To Rent 90
TECHNICAL MAN, quiet habits
wishes comfortable furnished apart-
ment or house. Good location. Write
box A-6 c/o Pampa News.

92 Sleeping Rooms 92
ROOMS for rent. Daily, weekly or
monthly. Delicious food served.
Downtown Pampa. MO 4-6823

95 Furnished Apartments 95
1 ROOM furnished apartment,
private bath, bills paid.
See for Details.
2 SMALL-ROOMS, antennas,
hills paid. 416 Texas
MO 4-6823

FOUR ROOMS nicely furnished, anten-
na, air conditioned, garage. 122
E. Browning. MO 4-6823.

Modern furnished apartments
for rental. Pampa Hotel
Service.
NICE clean
furnished apartment.
Call MO 4-6823

3 ROOMS North Somerville, 2
bathrooms, 2nd floor, 1200 sq. ft.
1 room North Kingsmill. Inquire
616 N. Somerville. Inquire
609 E. Foster. MO 4-6823.

3 ROOMS, antennas, utilities paid,
garage. Connelly Apartments, 122 W.
Kingsmill. MO 4-6823.

3 ROOM duplex, extra clean,
nice home. MO 4-6823.

APARTMENT for rent for working
women, large kitchen with sink and
to children. Call MO 5-2227.

FOUR ROOMS, nicely furnished, anten-
na, air conditioned, to couple.
Call MO 4-6823.

SMALL WELL FURNISHED house
with television, refrigerator, player
combination. 1222 E. Kingsmill. In-
quire 519 N. Starkweather.

103 Real Estate for Sale 103
1 bedroom on commercial lot
sell or lease equity for
equal value MO 5-2636.

OWNER OFFERS 3 BEDROOM, 2
bath, oversized double garage, all
building. Meditation home, fireplace,
central air and heat, fenced, corner
lot. 2 1/2 acres. 2000 square
feet, many extras. REDUCED.
MO 5-2255 by appointment.

**H. W. WATERS
REALTOR**
Days MO 5-2321 Nights MO 5-2318

R. E. FERRELL AGENCY
MO 4-4111 or MO 4-7558

W. M. LANE REALTY
MO 4-3441 Res. MO 9-5891

BUY THE CHEAP WAY: buy the
equity and assume 5 1/2% loan on
this very nice, clean 3 bedroom
home. No chimney. Central heat,
evaporative air, living room, hall
and one bedroom carpeted. Nice
fridge. MO 4-6823.

1 1/2 BATHS on 8 1/2 Acre Tract. New
aluminum siding, new paint inside,
104 rooms, floor, big double garage.
MO 4-6823

VERY NICE 3 bedroom home in
White Deer on Poplar street,
close to schools, formal dining room,
large lot, swimming pool, 3 car
and size home, finished. ISH.
MO 4-6823

103 Real Estate for Sale 103
1 BEDROOM, carpeted, fenced, car-
port. sold by owner, low equity.
1016 Terry Road, MO 4-2524 or
MO 4-4911.

1 BEDROOM, fenced backyard,
12700 and owner will carry
for equity. 317 Miami. MO 5-2701.

Buy-Sell-Rent-We Serve You. Call
W. G. HARVEY
REALTOR MO 4-2341

LOW equity, one year old, 1 bedroom,
carpeted, cooktop and fenced yard.
1200 square feet. MO 5-2571 after
5 p.m. 804 N. Wells.

FOR Sale: Clean 2 bedroom, 1500
Terrace, low move-in. About \$49
per month payments. MO 5-5332

1 BEDROOM, carpeted, antenna,
fenced back yard, hobby room, cen-
tral heating, ducted air conditioning,
5 1/2% loan. 1111 Beech. MO 4-6823

1 BEDROOM, 3 bath, garage, built,
in brick bookcase and storage in
living room, built-in gun case in
pantry, large kitchen. \$12,500.
2019 Hamilton. MO 5-2567.

1 BEDROOM house, newly refin-
ished, low move-in, no monthly pay-
ment. \$1,000. 4829 Wanda Drive.

E. K. SMITH REALTY
Approved FHA & VA Sales Brokers
1013 North Cuyler, Pampa. MO 4-6823

LUTHER GISE
BY OWNER: 1813 Grape, 3 bedroom,
3 bath, large living room, hard-
wood, carpet, central air, built-in
fridge, great porch, 1750
square feet plus basement, \$26,500.
MO 4-6823

NO DOWN PAYMENT, 2 and 1 bed
room homes. Reconditioned, low
monthly payments.

120 Automobiles for Sale 120
1965 CHEVY II 4 door, radio and
heater, will sell reasonably. Call
MO 5-2701.

NEADS Used Cars and Garage. We
buy, sell and service all makes.
Pickups - Nationwide. Trailers and
tow bars for rent local or one way.

JOHN PARKER MOTORS
DOGE AND CHRYSLER
201 S. Cuyler MO 4-2541

INTERNATIONAL HARVESTER CO.
Motor trucks and Farm Equipment
Price Road MO 4-2748.

JOHN MCGUIRE MOTORS
"Mythom Valley Barracuda"
211 Wells MO 5-2701

HAROLD BARRETT FORD CO.
"Before You Buy, Give Us A Try"
701 W. Brown MO 4-8104

CULBERSON STOWERS
CHRYSLER INC. MO 4-6823

**1965 CHEVY II 4 door, 4 wheel
drive. 4000 miles. 4 p.m.
tires. Approximately 19,000 miles.
Will trade for good 1960-61 car.**

FOR SALE: 1964 OLDSMOBILE "38"
4 door hardtop, all power, extra
sharp. \$1,700. MO 4-2719.

1955 CHEVROLET, 2 door, V8
engine, standard shift. \$115. Call
MO 5-4374.

**1967 BUICK 1967 Ford Galaxie, 3 door,
V6 engine, air conditioned, priced
to sell. MO 4-6148.**

**1966-1967 Pontiac Ventura 3 door hard-
top, motor, radio, extra, interior,
455 engine, standard shift. \$225. MO
4-7101.**

Legal Publication 21

NOTICE TO ALL PERSONS HAVING CLAIMS AGAINST ESTATE OF VIRGINIA SUE BALLARD, A MINOR
Notice is hereby given that original letters of guardianship of the person and estate of Virginia Sue Ballard, a minor, were granted to me, the undersigned, on the 12th day of February, 1967, in the proceeding initiated below by the state of Texas. Any person having a claim against the estate of Virginia Sue Ballard, a minor, who is not being administered in the county herein named, are hereby required to present the same to me respectively, at the same address below given, before said upon same is barred by the general statute of limitations, before such estate is closed, and within the time prescribed by law. My residence and post office address are 2224 North Summer Street, Pampa, Gray County, Texas. Dated this 12th day of February, 1967.

David W. Wilson,
Guardian of the Person and
Estate of Virginia Sue Bar-
llard, a Minor. No. 2224 in
the County Court of Gray
County, Texas.

Feb. 16, 1967

NOTICE TO CREDITORS
OF THE
ESTATE OF THE LATE HERBERT
ROBINSON, DECEASED

Notice is hereby given that the undersigned has been appointed Independent Executor of the Estate of Herbert Robinson, deceased, on February 12, 1967, by the County Court of Gray County, Texas and qualified as such on said date. All persons having claims against said estate are hereby required to present the same to Beatrice Lillian Robinson, Independent Executive of the Estate of Herbert Robinson, deceased, at 414 East Browning, Pampa, Texas, within the time prescribed by law.

Beatrice Lillian Robinson,
Independent Executive of the
Estate of Herbert Robinson,
deceased. 414 East Browning,
Pampa, Texas.

Feb. 16, 1967

2A Monuments 2A
MARKERS-monuments. Best material,
repairs, phone. Fort. MO 5-6222
123 S. Faulkner.

21 Help Wanted 21

NEED 7 WOMEN
to train as IBM key punch opera-
tors. No experience necessary. Must
relocate. Up to \$1500 month while
training. Up to \$1600 upon completion.
Call Mr. Burgess, Thursday and
Friday, Coronado Inn. MO 4-2566.

LIZIERI Cosmetics (A Bristol Myers
Subsidiary) offers franchise as district
distributor or consultant. Free
training for a business of your own!
Get the facts! 275 E. 44th, 10th Fl.,
Amarillo.

NEED EXTRA MONEY? If you are a
proud working youth love being a
Beauty Counselor. Call MO 4-6062

**SELL the outstanding GLOBE HOS-
PITALIZATION PLAN.** Call Pearce
MO 9-2317. 4 pm to 8 pm.

SIX experienced telemarketing instru-
ment crew helpers. Contact Mo
Analytic, Petty Geophysical Engineer-
ing Company. 547 Huff Road.

NEED 5 MEN
to train as electricians or plumbers.
No experience necessary. Must
relocate. Up to \$2.75 per hour while
training. Up to \$4.00 per hour after
training. For interview call Mr.
Burgess, Thursday and Friday
Coronado Inn. MO 4-2566.

TWO unembarrassed waitresses
for out town. Food wages and tips.
Call MG 4-2870 for interview.

29 Painting 39

FOR PAINTING
TEXTURE, sand blasting, all types
work. Call BOB KIRKPATRICK. MO
4-2366.

42 Painting, Paper Hng. 42
PAINTING, papering, tape and ver-
te work. G. E. Nichols. 1445 Huff
MO 9-9425.

Paints, textures, mud - tape
hering. Check by
James Bolin. MO 5-7171

47 Plowing, Yard Work 47
DIRTWAY gravel top soil, fill sand,
fertilizers, Dump Trucks and load-
er for hire. Yarda seeded, sodded or
renovated. 314 S. Gray. MO 4-9869.

48 Trees & Shrubs 48

TREE TRIMMING and removing
tree stumps. G. E. Nichols. MO 9-9425.

Tree Saws and Trimmed
FREE ESTIMATES CHAIN SAWS
MO 9-2222 Dennis Sawmill

All Fall bulbs \$1.00
JAMES FRED STORE
422 S. Cuyler MO 5-5851

TREE TRIMMING & REMOVAL.
FREE ESTIMATE - CHAIN SAWS
J. R. DAVIS MO 5-5859

EVERGREEN shrub rosebushes
Call for price list.
BUTLER NURSERY
Pampa, HI-Way 98th MO 9-9821

BRUCE NURSERIES
"Trees of Reputation"
If it's beautiful landscaping you
need, the place is Bruce Nurseries.
Highway 29, 7 miles Northwest of
Alamogordo, Texas. GR 9-2177.

50 Building Supplies 50

PAMPA LUMBER CO.
1301 S. Hobart MO 5-5751

WHITE HOUSE LUMBER CO.
301 S. Hobart MO 5-5751

HOUSTON LUMBER CO.
130 W. Foster MO 4-6823

50-B Builders 50-B

ROBERT R. JONES
CONTRACTOR AND BUILDER
1329 N. Christy MO 4-6823

JIM JOHNSON - BUILDER
Let me be your builder - MO 4-7789
NEW show home at 2207 Lyan, 3 bed-
room brick, large family room,
kitchen with all built-ins, 3 baths,
carpeted, poured Terrazzo floor,
large double garage. 3403, 25th.
Builders MO 5-6106

RALPH H. BAXTER
CONTRACTOR AND BUILDER
ADDITIONS, REMODELING
PHONE MO 4-6244

HALL CONSTRUCTION
1908 Evergreen MO 4-2130

51 Storm Doors, Windows 51
ARCHIE'S ALUMINUM FAB
"Custom Made and Repaired"
601 E. Craven MO 4-6786

57 Good Things to Eat 57

A-1 JANITORIAL SERVICE
Office/Home/Industrial
Repairs. Commercial and Residential
cleaning. Call BR 6-3122. Berger, collect.

FOR RENT by hour or day, 8 yd
froneted lot. 14 foot back-
hoe. With or without operators. 625
S. Cuyler.

PAMPA JANITOR SERVICE
Commercial and Residential
cleaning. Call MO 5-4446

PHR best building maintenance
Phillips Janitorial Service. Com-
mercial and residential. 414 N.
Summer MO 4-6827.

CALL MO 5-2112
for Pickup and Delivery Service
E & J EXPRESS

34 Radio & Television 34

B&R TV & APPLIANCE
MAGNAVOX & RCA VICTOR
MO 4-6823

1458 N. Hobart MO 5-5150

JOE HAWKINS Appliances. Dis-
posable bags for all makes of vacuum
cleaners. MO 4-2027

854 W. Foster MO 4-6823

JOHNSON RADIO & TV
MOTOROLA - NORGE
307 W. Foster MO 5-5851

GENE & DON'S T.V.
GE SALES & SERVICE
544 W. Foster MO 4-6823

36 Appliances 36

Air Conditioning - Payne High
800 W. Kingsmill Phone MO 5-1071

FOR SALE
Well established seasonal busi-
ness. Putt-Putt golf course. Write
or call Bill Lackey, 3301 Lometa
or PL 4-3254. Amarillo, Texas.

63A Rug Cleaning 63A
FOR SERVICE on wall to wall carpet. Keep it new with Blue Lustr, Rent electric shampooer \$1. Sherwin Williams.

68 Household Goods 68
TAXES FURNITURE REFRIG. MO 4-6623
SHELBY J. RUFF FURNITURE
1312 N. Hobart MO 5-3546
MACDONALD PLUMBING AND
WRIGHT'S FURNITURE
619 S. Cuyler MO 4-6823
W. Buy, Sell and Refurbish Bargains.
JESS GRAHAM FURNITURE
"We Buy Used Furniture"
208 N. Cuyler MO 4-6823
209 N. Cuyler MO 4-2242
TEXAS FURNITURE CO.
210 North Cuyler MO 4-6823
WHITTINGTON'S FURNITURE-MART
105 S. Cuyler MO 5-3121
"Quality Home Furniture"
408 S. Cuyler MO 4-6901

69 Miscellaneous for Sale 69
Air Conditioner Covers
We Measure and Install
PAMPA TENT AND AWNING
517 E. Brown MO 4-6841
FURNITURE See Buddy Johnson on
114 S. Cuyler MO 4-6823
SEE THE selection of typewriters,
waterproof pens, ballpoint pens,
calculators in stock at Sears. MO 4-3261.

EVAPORATIVE COOLERS, 4.300
Lowest CPM reduced pre-season
prices. Sears. MO 4-2361.

1 1/2 CUBIC FOOT all Frigolite
refrigerator with ice maker, adjustable
shelves, white or copper. In-
stalled \$34.95. Sears. MO 4-2361.

INSTANT NES THERM 30 month
whitewall tires, tubless. Installed
\$2.50 each. Sears. MO 4-2361.

LOW EQUITY in nice 2 bedroom
house. Attached garage. \$1200.
\$174; also 14 foot fiberglass boat. 25
horse motor, nice ski rig. \$44
Lowry. MO 4-6823

Choice Bala Oak
and Other Hays
Call MO 4-6919 after 5 p.m.
ALPHA HAY
1222 E. Kingsmill
Call MO 9-9773

GALAXIE SALE! Choice rock cutter,
mattress and springs, recliner, table,
etc. \$12.50. 15 yards of new upholstery.
See Red Deer after 5 pm and Satur-
day.

KEITH'S "ROCK SHOP" Mounting
supplies. Call at store and
shop. 1309 S. Faulkner.

FOR SALE: 1967 Volkswagen beetle with
sunroof, 222 cc engine, 4 speed
Duda trailer. Good for skiing and
fishing. Call MO 5-3292.

FREE INTERCOM with the pur-
chase of a Pampa Daily News Camper
during February. Epperson Camper
Sales, 222 E. Kingsmill. MO 4-2842.

LIFTO LIABILITY Insurance,
monthly, Sentry
Insurance. See 227. MO 4-6776. Pampa
CLEARNEST carpet. You
never need so many. Get Blue
Lustr, Rent electric shampooer \$1.
Pampa Glass and Mirror. 341
Market. Sears your tire and battery
center. In stock for immediate in-
stallation.

LOFTY SALE: Free from soil in the carpet
cleaned with Blue Lustr. Rent
electric shampooer \$1. (Pampa Glass
& Mirror.)

HUNTSMAN-DREAMERS: Campers,
BHPs. 520 S. Hobart. \$100 given
with each new cab-over-sold.
FOR SALE: 1967 "411" motor
cycle, excellent condition. See at
1524 Hamilton. MO 4-6291.

89 Wanted To Buy 89
WILL BUY used furniture, appli-
ances or carpet. MO 5-3124.

WANT TO BUY late model Chevrolet
of International truck. Long wheel-
base. Call Walter Price. MO 5-3228.

WOULD LIKE TO BUY good Singer
sewing machine. Will pay cash.
Contact 1105 Neel Road after
5 p.m.

90 Wanted To Rent 90
TECHNICAL MAN, quiet habits
wishes comfortable furnished apart-
ment or house. Good location. Write
box A-6 c/o Pampa News.

92 Sleeping Rooms 92
ROOMS for rent. Daily, weekly or
monthly. Delicious food served.
Downtown Pampa. MO 4-6823

95 Furnished Apartments 95
1 ROOM furnished apartment,
private bath, bills paid.
See for Details.
2 SMALL-ROOMS, antennas,
hills paid. 416 Texas
MO 4-6823

FOUR ROOMS nicely furnished, anten-
na, air conditioned, garage. 122
E. Browning. MO 4-6823.

Modern furnished apartments
for rental. Pampa Hotel
Service.
NICE clean
furnished apartment.
Call MO 4-6823

3 ROOMS North Somerville, 2
bathrooms, 2nd floor, 1200 sq. ft.
1 room North Kingsmill. Inquire
616 N. Somerville. Inquire
609 E. Foster. MO 4-6823.

3 ROOMS, antennas, utilities paid,
garage. Connelly Apartments, 122 W.
Kingsmill. MO 4-6823.

3 ROOM duplex, extra clean,
nice home. MO 4-6823.

APARTMENT for rent for working
women, large kitchen with sink and
to children. Call MO 5-2227.

FOUR ROOMS, nicely furnished, anten-
na, air conditioned, to couple.
Call MO 4-6823.

SMALL WELL FURNISHED house
with television, refrigerator, player
combination. 1222 E. Kingsmill. In-
quire 519 N. Starkweather.

103 Real Estate for Sale 103
1 bedroom on commercial lot
sell or lease equity for
equal value MO 5-2636.

OWNER OFFERS 3 BEDROOM, 2
bath, oversized double garage, all
building. Meditation home, fireplace,
central air and heat, fenced, corner
lot. 2 1/2 acres. 2000 square
feet, many extras. REDUCED.
MO 5-2255 by appointment.

**H. W. WATERS
REALTOR**
Days MO 5-2321 Nights MO 5-2318

R. E. FERRELL AGENCY
MO 4-4111 or MO 4-7558

W. M. LANE REALTY
MO 4-3441 Res. MO 9-5891

BUY THE CHEAP WAY: buy the
equity and assume 5 1/2% loan on
this very nice, clean 3 bedroom
home. No chimney. Central heat,
evaporative air, living room, hall
and one bedroom carpeted. Nice
fridge. MO 4-6823.

1 1/2 BATHS on 8 1/2 Acre Tract. New
aluminum siding, new paint inside,
104 rooms, floor, big double garage.
MO 4-6823

VERY NICE 3 bedroom home in
White Deer on Poplar street,
close to schools, formal dining room,
large lot, swimming pool, 3 car
and size home, finished. ISH.
MO 4-6823

103 Real Estate for Sale 103
1 BEDROOM, carpeted, fenced, car-
port. sold by owner, low equity.
1016 Terry Road, MO 4-2524 or
MO 4-4911.

1 BEDROOM, fenced backyard,
12700 and owner will carry
for equity. 317 Miami. MO 5-2701.

Buy-Sell-Rent-We Serve You. Call
W. G. HARVEY
REALTOR MO 4-2341

LOW equity, one year old, 1 bedroom,
carpeted, cooktop and fenced yard.
1200 square feet. MO 5-2571 after
5 p.m. 804 N. Wells.

FOR Sale: Clean 2 bedroom, 1500
Terrace, low move-in. About \$49
per month payments. MO 5-5332

1 BEDROOM, carpeted, antenna,
fenced back yard, hobby room, cen-
tral heating, ducted air conditioning,
5 1/2% loan. 1111 Beech. MO 4-6823

1 BEDROOM, 3 bath, garage, built,
in brick bookcase and storage in
living room, built-in gun case in
pantry, large kitchen. \$12,500.
2019 Hamilton. MO 5-2567.

1 BEDROOM house, newly refin-
ished, low move-in, no monthly pay-
ment. \$1,000. 4829 Wanda Drive.

E. K. SMITH REALTY
Approved FHA & VA Sales Brokers
1013 North Cuyler, Pampa. MO 4-6823

LUTHER GISE
BY OWNER: 1813 Grape, 3 bedroom,
3 bath, large living room, hard-
wood, carpet, central air, built-in
fridge, great porch, 1750
square feet plus basement, \$26,500.
MO 4-6823

NO DOWN PAYMENT, 2 and 1 bed
room homes. Reconditioned, low
monthly payments.

120 Automobiles for Sale 120
1965 CHEVY II 4 door, radio and
heater, will sell reasonably. Call
MO 5-2701.

NEADS Used Cars and Garage. We
buy, sell and service all makes.
Pickups - Nationwide. Trailers and
tow bars for rent local or one way.

JOHN PARKER MOTORS
DOGE AND CHRYSLER
201 S. Cuyler MO 4-2541

INTERNATIONAL HARVESTER CO.
Motor trucks and Farm Equipment
Price Road MO 4-2748.

JOHN MCGUIRE MOTORS
"Mythom Valley Barracuda"
211 Wells MO 5-2701

HAROLD BARRETT FORD CO.
"Before You Buy, Give Us A Try"
701 W. Brown MO 4-8104

CULBERSON STOWERS
CHRYSLER INC. MO 4-6823

**1965 CHEVY II 4 door, 4 wheel
drive. 4000 miles. 4 p.m.
tires. Approximately 19,000 miles.
Will trade for good 1960-61 car.**

FOR SALE: 1964 OLDSMOBILE "38"
4 door hardtop, all power, extra
sharp. \$1,700. MO 4-2719.

1955 CHEVROLET, 2 door, V8
engine, standard shift. \$115. Call
MO 5-4374.

**1967 BUICK 1967 Ford Galaxie, 3 door,
V6 engine, air conditioned, priced
to sell. MO 4-6148.**

**1966-1967 Pontiac Ventura 3 door hard-
top, motor, radio, extra, interior,
455 engine, standard shift. \$225. MO
4-7101.**

5 Special Notices 5

Pampa Lodge 966, 420 West
Kingsmill, Thurs. 8 p.m. 30
Degrees. Buffet dinner. 8:30
p.m. Fri. study and practices
7:30 p.m.

AUCTION CAPE opening under new
management. Jewel Gubin owner,
Thursday morning at 11.

10 Lost & Found 10

FOR SALE: 1967 Cadillac
bottle. Texas. Doing good busi-
ness. Selling due to illness.

FOR LEASE: Major company ser-
vice station. Located on Highway 29.
doing good business. Wonderful
opportunity for right person. Call
MO 4-6823.

13A Business Opportunities 13A

INCOME TAX SERVICE
1000 Duane MO 4-4750

15 Instruction 15

HIGH SCHOOL classes in open-
ing. New texts furnished, diplo-
ma awarded. Low cost! In-
AMARILLO, TEXAS.

17 Cosmetics 17

STUDIO Girl Cosmetics-Buy or Sell.
Maude Hankins. 718 N. Banks. MO
4-6827.

18 Beauty Shops 18

LOUISE'S Beauty Shop has reopen-
ed. Permanent wave special \$6.50
and up. Plain shampoo and set \$2.00.
1025 N. Banks. MO 9-2367.

PERMANENT WAVES in plain
shampoo and set \$2. Ann Beau-
ty Salon. 812 Cuyler. MO 4-6823.

19 Situations Wanted 19

Ironing in My Home
879 Barnard
MO 4-6991

WILL do ironing
in my home. 155 W. High-
way. MO 9-3971. 1081 Varion Drive

21 Help Wanted 21

RELIABLE PERSON to supply
customers with Rawleigh Products
in Gray Co. or Donley Co. Products
sold here over 40 years. Car neces-
sary. See H.C. Wilson, 125 W. High-
way St. Pampa or write Rawleigh
TXA-140-127 Memphis, Tenn.

25 Salesman Wanted 25

SALES OPPORTUNITY

Leading company in its field, writing
group and individual insurance.
Advisers seeking a Field Rep-
resentative. No prospecting. Ex-
clusive territory. Previous insur-
ance experience desirable. Salary
essential. Age 25-40. Some college
desirable. Salary, commission,
prizes, sharing in financial success.
Minimum first year income
\$10,000-12,000. For personal
interview call R. M. Adams at
MO 4-6402.

GOOD MAN OVER 40 for short trips
surrounding Pampa. Man we want
to work up to \$15,000 in year, plus
car as a bonus. Air mail M. N.
Dickson, Pampa, 1101 South-
western Petroleum Corporation, 534 N.
Main street, Ft. Worth, Texas
76101

25 Appliance Repair 31

WE Specialize In
SALES AND SERVICE
On Washers, Dryers
and Refrigerators. 10 years ex-
perience with Sears. Call Lowell
Stevens. MO 4-6823.

NORGE
We Specialize In
SALES AND SERVICE
On Washers, Dryers
and Refrigerators. 10 years ex-
perience with Sears. Call Lowell
Stevens. MO 4-6823.

307 W. Foster MO 5-5351

32 Carpet Service 32

CARPET

**QUALITY CARPETS
LOWEST PRICES
G&M TV
AND FURNITURE**

32A General Service 32A

A-1 JANITORIAL SERVICE
Office/Home/Industrial
Repairs. Commercial and Residential
cleaning. Call BR 6-3122. Berger, collect.

FOR RENT by hour or day, 8 yd
froneted lot. 14 foot back-
hoe. With or without operators. 625
S. Cuyler.

PAMPA JANITOR SERVICE
Commercial and Residential
cleaning. Call MO 5-4446

PHR best building maintenance
Phillips Janitorial Service. Com-
mercial and residential.

GIBSON'S Discount SALE

CALL OR SEE
Gibson's Professional
Prescription Pharmacy
for all your drug and
vitamin needs . . .

MO 4-6896

GILLETT
SUN-UP
**AFTER
SHAVE**



Reg. \$1.59



83^c

SUNBEAM
Model 777
MEN'S
SHAVER

Reg. \$29.95

GIBSON'S DISCOUNT PRICE

\$18⁹⁷

It's
Easy to
Use Your
Credit
Here

LILT HOME



PERMANENT

REGULAR Reg. 2.00
GENTLE
SUPER



99^c



COLGATE

100

MOUTH WASH

Reg. 1.29



89^c

SHOP GIBSON'S FIRST AND
SAVE . . . EVERY ITEM
DISCOUNTED!

CAPRI **BATH
OIL**



Reg. \$1.50 Size



89^c

Schick
New Improved
**LATHER
SHAVE
CREAM**



With Schick's
Injector Blades
Reg. 1.49

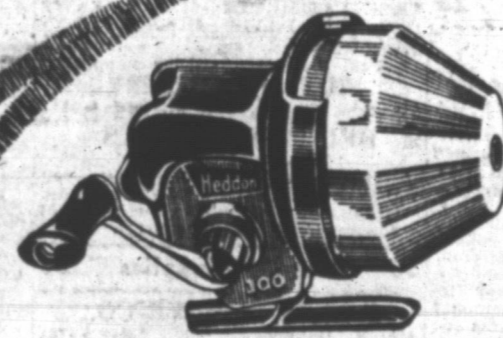


89^c

Reg. 1.39 FISHING

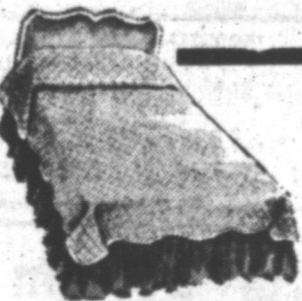
CREELS 99^c

PRICES
GOOD
THURSDAY
FRIDAY
&
SATURDAY



Heddon Spin-
Pal

100 REEL
Regular Retail \$32.50
\$12⁹⁹



BEDSPREADS

Acetate Quilt
Full & Twin
All Colors
\$6⁹⁹

STERLING SILVER & GOLD FILLED
CHARM BRACELETS

reg. 12.95
\$5⁴⁷



Men's Short Sleeve Triline
SHIRTS \$2⁴⁹

Gibson's Discount Price

Welmaid
LAUNDRY BAGS \$1³⁷



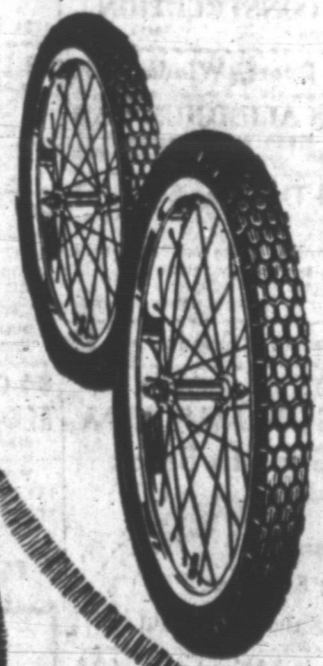
Men's Long Sleeve Triline
SHIRTS \$3⁴⁹

Gibson's Discount Price

Empire
SQUEEZE MOPS \$2³⁷



**ALL
BICYCLE
TIRES**



1/4 OFF

USE OUR
"INSTANT" EASY
CREDIT!

**ALL
SWAG
LIGHTS**



1/3 OFF
Gibson's
Discount
Price

**EMCO
HAIRPEN
LEGS**

Ideal for Tables
Regular 7.47



\$3⁹⁹
Set

Champlin
Outboard Motor
OIL



SAE 30
GIBSON'S DISCOUNT
PRICE

31^c

WHERE YOU ALWAYS BUY THE BEST FOR LESS!
**GIBSON'S
DISCOUNT CENTER**

Open Daily 9 a.m. to 9 p.m. Closed Sundays