

Leaders Announce Auto Price Boost

DETROIT (UPI)—The 1968 auto buying public got an expected kick in the wallet Monday. Auto industry leaders, who have tried to soften the blow for months, announced a sharp boost in car prices.

Chrysler Corp. led the way with an announcement that prices on Plymouth, Dodge and Chrysler products for 1968 were boosted an average of \$133 over 1967 models with standard equipment.

Direct model for model price comparisons are difficult, because of the many changes and additions required by new federal safety requirements.

New federally required safety items this year included a number of design changes in instrument panels, shoulder harness anchorages, padded windshield pillars, redesigned door levers and window lifts, increased padding on the back of the front seat for protection

Union, Ford Bargain Meet Planned Friday

DETROIT (UPI)—Picketing continued today at almost all of the 93 Ford Motor Co. plants in 25 states today as bargainers from Ford and the striking United Auto Workers Union planned strategy for bargaining sessions that resume Friday.

Nearly 160,000 Ford workers have been on strike since midnight last Wednesday when the contract between Ford and the UAW expired. They failed to agree on a new pact.

General Motors Corp., the giant of the auto industry and Chrysler Corp. continued operating without contracts. The UAW's contract with American Motors Corp. expires in mid-October.

Negotiators met Monday, but only to outline plans for future meetings. The first was set for 2 p.m. Friday. Local subcom-

HAITI SLOWS FORCES

Beulah Veering Toward Jamaica

MIAMI (UPI)—"Sick" Hurricane Beulah shifted its 75-mile-an-hour winds slightly southward today and was expected to brush Jamaica, but spare the jet-set tourist town of Kingston a direct blow.

"Beulah got sick after its encounter with the mountainous southwestern coast of Haiti yesterday and it almost quit on us," said forecaster Robert Simpson.

"But Beulah can't be written off yet. The conditions are ideal for reintensification and it's just a matter of time before Beulah regains its strength, and when it does, it will probably come back even stronger," Simpson warned.

Beulah had killed 18 Caribbean islanders—most of them on the French island of

Sikkim Border Spat Enters Second Day

GANGTOK, Sikkim (UPI)—In a second day of battle on the roof of the world, Indian forces defending this Himalayan kingdom today exchanged fire with Chinese Communist troops on a foggy mountain pass.

Indian sources reported the tempo of battle slowing down with the Chinese using "lighter" arms than the 76mm artillery and mortars they fired Monday and through the night. They said both sides were staying on their own side of the border so far in the combat on the 14,000-foot-high Nathula pass 15 miles northeast of here.

Indian sources said four Indians had been killed, four seriously wounded and 80 "lightly" wounded. Peking Radio said 47 Chinese soldiers had

INSIDE TODAY'S NEWS

Abby	6
Classified	11
Comics	8
Crossword	10
Editorial	10
Horoscopes	6
On the Record	4
Sports	9
TV	8
Woman's Share	6



New York Schools In Second Day of Strike

Four Killed As Blast Destroys Aluminum Unit

MUSCLE SHOALS, Ala. (UPI)—An explosion burst a 1,000-foot-long Metal Casting building "like a tin can" late Monday night, killing four workers and injuring at least 40 other workers at the huge Reynolds Metals Aluminum plant.

The mighty blast blew out a 200-foot concrete section of the "cast house" wall, snapping and twisting steel beams and shaking the ground beneath the surrounding towns of Muscle Shoals, Tusculumbia, Sheffield and Florence.

Three of the workers died on the spot, burned beyond recognition or torn apart by the explosion. The fourth died in a hospital early today. One of six persons hospitalized was on the critical list.



REPATRIATED during a recent exchange of prisoners between Jews and Arabs, Israeli pilot Nahum Merchavi right, is greeted by Chief of the Israel Air Force Gen. Mordecia Hod, left, after the former crossed the Lebanon-Israel border.

Gains in Retail Sales Trigger Tax Rise Talk

WASHINGTON (UPI)—Retail sales scored record gains across the nation in August, giving President Johnson more ammunition in his battle for a 10-per-cent tax increase.

Commerce Department figures, made public Monday, showed that August sales totaled a record \$27 billion, seasonally adjusted, about 1 per cent more than July's \$26.6 billion and 6 per cent above the \$25.4 billion of August, 1966.

Council Meets To Decide on Water Filtration Plant

Pampa city commission scheduled a study session for 5:30 p.m. today aimed at a decision on what type filtration plant should be used when the city begins taking water from the Canadian River Municipal Water Authority two or three years from now.

City Manager Jim White said the commission would meet with William London, representative of Forrest and Cotton, Dallas, consultant engineers.

London was expected to give the commission a report on engineering plans and specifications drawn so far.

The principal decision sought at today's meeting was whether to go to the conventional type of filter system or into a newly developed synthetic rock-

Park Land Accepted By City Commission

City commissioners today approved acceptance of additional property contributed by the Gray-Pampa Foundation for park purposes along Red Deer Creek and south of Coronado Inn.

The approximately 4-acre strip of land 200 feet wide and a half-mile long extends east from N. Sumner to N. Hobart and north to a point near the Coronado Inn sign at Hobart and Coronado Dr.

Commissioner Elmer Radcliff voted against the acceptance. Commissioners M. McDaniel, Joe Taylor, Hugh Burdette and Mayor Jim Nation voted for it.

Radcliff, in casting his nay vote, indicated he did not believe acceptance by the city would benefit the people of Pampa as a whole. Radcliff also indicated he did not believe the city should maintain the land just for the benefit of a few.

Other Cities Suffer Same Work Stoppage

As a crippling work stoppage in New York City entered its second day today, teachers in East St. Louis, Ill., headed back to their classrooms, and those in Baltimore were expected to accept a city wage proposal to avert a strike that dents were reported "not too far away from settlement."

In Detroit, the nation's fifth largest city, a walkout that has extended summer vacations for more than 300,000 students had been threatened for Wednesday.

But in Paducah, Ky., and Fort Lauderdale, Fla., the outlook was bleak for early settlement of prolonged work stoppages by disgruntled teachers.

In New York, 46,000 of the city's 58,000 teachers stayed home or strolled picket lines in protest for higher wages and a greater responsibility for education policy. Some 400,000 of the city's 1.1 million public school students stayed away from the first day of classes.

Commissioners Give Terminal Priority Spot

Gray County Commissioners approved a motion today to employ an engineering firm and advertise for bids for construction of a new terminal building at Perry-Lefors Airport, northwest of Pampa.

Gray County Judge Sherman Lenning, County Attorney Doa Cain, Wynne Veal and George Cree, representing the aviation board of the Chamber of Commerce and Merriman and Barber, consulting engineers, met with E. I. Williams and Roy Biscamp of the Federal Aviation Agency before county commissioners held their regular meeting this morning in the Judge's chamber. Gene Barber, of the engineering firm, gave a brief summary of the proposal.

Stu Youngblood, chairman of the county airport board, told commissioners new terminal facilities were badly needed and

U.S. Bombers Stage All-Out On Haphong

SAIGON (UPI)—U.S. bombers staged their most massive raid of the war against Haphong in an attempt to seal North Vietnam's largest port and block the movement of the mountains of war supplies stacked on the docks, American spokesmen said today. They said Navy jets struck a record eight-tenths of a mile from the city's center.

The 7th Fleet pilots attacked a railroad yard, warehouse complex and two bridges all inside Haphong, North Vietnam's second largest city, in Monday's raiding, the spokesmen said.

Communist defenders trying to save their main import funnel, fired Surface to Air Missiles (SAMS) that missed the Navy jets and exploded near three freighters in the harbor.

U.S. spokesmen said the pilots did not attack the sprawling dock area itself, one of the most tempting targets banned to American bombers by orders from Washington.

But the Navy pilots dived-bombed the storehouses, the rail lines and the bridges that move the supplies imported into Haphong, which handles the majority of war goods flowing by sea into North Vietnam.

U.S. officials frankly labeled Monday's massive air assault an attempt to "seal off" Haphong.

In other action America's largest bombers today smashed at a Communist buildup threatening U.S. Marine forts on South Vietnam's northern border.

U.S. Air Force B52 Stratofortresses rained hundreds of tons of bombs in two raids against units of 35,000 North Vietnamese troops poised for invasion in or near the North-South Vietnam border Demilitarized Zone (DMZ), American spokesmen said.

The B52s followed up pinpoint dive bombing by smaller U.S. jets after a vain attempt by about 3,000 North Vietnamese troops to seize the Marine fort of Con Thien. The battle area lay in the zone U.S. Defense Secretary Robert S. McNamara has ordered a defensive barrier constructed.

U.S. pilots in the attack on Haphong said the North Vietnamese missiles aimed at them exploded near an Italian and a Polish and a third and unidentified freighter.

One exploded 1,800 feet above three freighters, and the second missile exploded when it hit the water 2,000 feet from the three cargo ships.

The Italian and Polish ships yanked up their anchors and sailed speedily away, spokesmen said.

If it comes from a hardware store we have it. Louis Edson.



GETTING READY for the Noon Lions Club broom sale, Arville Hayes, left, and Ken Peoples unload brooms from the Caravan Sales for the Blind truck. Lions Clubs buys the brooms from Caravan Sales and then sell them to other buyers. Money from the sale will go for the Lions Club Scholarship Fund. Members will sell the brooms today and tomorrow in door-to-door sales and at 217 N. Cuyler.

One Killed Near Sunray When Car Strikes Fence

SUNRAY, Tex. (UPI)—A car left Farm Road 1573 eight miles northeast of Sunray Monday, struck a fence and turned over three times, killing one person and injuring another.

Lloyd Ashley, who was pinned in the wreckage was pronounced dead at the scene, a Department of Public Safety spokesman said.

The other occupant of the car, Carol Kirkpatrick, 25, was in critical condition in a Dumas, Tex., hospital.

WEATHER

Clear to partly cloudy this afternoon, turning cooler tonight, with scattered thundershowers. High will be near 90, low tonight in the mid-50s. Winds will be out of the southwest at 15-25 mph this afternoon, shifting northerly tonight. Shower probability will be 30 per cent today, 60 per cent Wednesday.

YESTERDAY'S HIGH ... 98
YESTERDAY'S LOW ... 68

Spotlighting Servicemen

THE PAMPA DAILY NEWS
TUESDAY, SEPTEMBER 12, 1967



Barbara Jean Vance
Gets Naval Training

Barbara Jean Vance, daughter of Mr. and Mrs. G. W. Vance, 310 E. Browning has completed ten weeks of basic training at Recruit Training Command (Women), United States Naval Training Center, Bainbridge, Maryland, and was graduated during a military review held Aug. 22.

The local Wave graduate of Pampa High school will spend a 14-day leave with her family before reporting to Andrews Air Force Base, Washington, D. C. for general duty Administration.

The Pampa Wave enlisted at the U. S. Navy Recruiting Station in Pampa for 3 years and was sworn in at the U. S. NAVY Recruiting Station, Albuquerque, New Mexico.

Airman Apprentice Vance's brother, Aviation Fire Control Technician 3rd Class William T. Vance, U. S. Navy, is stationed at NAS Lemore, California.

Pfc. Don Dinkins Is Home on Leave

Marine PFC Don Dinkins, 20, of 537 Elm Street, is home on leave for 30 days. He recently completed a nine-week aviation supply course at the Naval Air Station in Memphis, Tenn.

The young leatherneck will be reassigned to Camp Pendleton, California for a month of screening before reporting to Okinawa for jungle orientation training. From there he will be assigned to Vietnam.

Dinkins is a former employee of the Pampa Daily News and the son of Mrs. Dorothy Dinkins of 537 Elm. The marine's wife, Geretha, and daughter, Denise, will remain in Pampa while he is overseas.

STAGE DEMONSTRATION

MACO (UPI) — Communist students demonstrated Saturday outside St. Joseph's College, one of this Portuguese enclave's most prominent Roman Catholic schools, to demand the "thoughts of Mao Tse-tung" be taught in class.

Cletus Farmer Is Assigned To Viet

U.S. ARMY, VIETNAM — Army Warrant Officer Cletus H. Farmer, son of Mr. and Mrs. Marion C. Farmer, 113 N. Dwight, Pampa, has been assigned to the 145th Combat Aviation Battalion in Vietnam.

WO Farmer, a pilot in the battalion's 190th Assault Helicopter Co., entered the Army in March 1963, completed basic training at Ft. Polk, La., and was last stationed at Ft. Campbell, Ky. He is a 1958 graduate of Pampa High School. His wife, Toni, lives at 109 N. Hobart, Pampa.

Capt. Nolan Is AAFB Graduate

AMARILLO — Capt. Harold E. Nolan, son of Mr. and Mrs. Ernest A. Nolan of Wellborn, has been graduated from the U. S. Air Force supply staff officers course at Amarillo AFB.

Capt. Nolan, who was trained in the management of the Air Force supply program, is returning to Maxwell AFB, Ala., for duty.

He was commissioned in 1962 upon completion of Officers Training School at Lackland AFB.

A graduate of A&M Consolidated School at College Station the captain received his A. A. degree in 1960 from Allen Military Academy, Bryan. He also holds a B. A. degree from Texas A&M University is a member of Chi Alpha.

Captain Nolan's wife, Virginia is the daughter of Mr. and Mrs. Herman L. Taylor of 1142 S. Dwight, Pampa.



Don Dinkins

Amarillo AFB Team Tri-City Bowlers

Amarillo AFB's bowling team has been selected after stiff competition from bowlers all over the base to represent Amarillo AFB in the Tri-City Traveling League, which is composed of Amarillo, Borger and Pampa.

Team members and their winning scores are: George Stepnick-5681, Arby Holm-5591, Dale Altman-5474, Art Barajas-5473, D. C. Flanary-5464, Edward Adams-5437 and Alvin Ward-5424. These scores are based on 30 games played during the elimination.

Ronnie Smith Is Awarded Second Viet Air Medal

SAN DIEGO, Calif. — Aviation Electronics Technician 3rd Class Ronnie L. Smith, USN, son of Mrs. R. E. Smith of 2217 N. Dwight, has been presented his second Air Medal for his performance in Vietnam. The award was presented at a ceremony at North Island Naval Air Station in San Diego where he is a member of Air Anti-Submarine Squadron 38.

When in the Vietnam combat zone his squadron was based aboard the anti-submarine warfare support aircraft carrier USS Bennington. The squadron functioned as a unit of Carrier Anti-Submarine Air Group 59 and Anti-Submarine Warfare Group One.

The Air Medal, the ninth highest award given by the United States, is awarded for meritorious achievement in aerial flight.



Ronald O. Biggerstaff

Biggerstaff Takes Flight Training

PENSACOLA, Fla. — Navy Reserve Ensign Ronald O. Biggerstaff, son of Mr. and Mrs. E. L. Biggerstaff of 1025 N. Charles, is in Pensacola, Fla., where he is undergoing flight training at the home Auxiliary Air Station at Sauley Field.

A student of training squadron one, he has flown his first solo flight in the training plane T-34 "Mentor," marking the end of his first phase of flight training.

He will now undergo 13 months of advanced flight training before receiving his pilots "wings of gold."

BEACHES SAFE — WASHINGTON (UPI) — Coast Guard divers checking four sunken tankers off New Jersey say they pose no oil pollution threat to East Coast beaches.

Three of the tankers, which were torpedoed and sunk during World War II, contained no oil. The fourth was leaking oil at the rate of about "a cupful an hour," Transportation Secretary Alan S. Boyd said Friday.

The diving operation is part of a campaign to determine whether more than 100 tankers littering the ocean floor off the Atlantic Coast are breaking up.

TAX RACKETS — JAKARTA (UPI) — The news paper Suluh Marhaen said Saturday city authorities will legalize and levy taxes on gambling and prostitution to pay for the cost of building new schools.

TODAY IS Furr's Day
Your Day to Save

1¢ SALE of Valiant

Only ONE PENNY buys you the second item of many VALIANT brand health items today at Furr's! Stock up now for Cold Weather Seasons!

ASPRIN VALIANT 100 COUNT 1¢
5 GR. BUY ONE FOR 29c GET SECOND FOR 1¢

PEROXIDE VALIANT, BUY ONE FOR 23c. GET SECOND FOR 1¢

Cosmetic Puffs VALIANT 300 CT. BUY ONE FOR 69c GET SECOND FOR 1¢

EPSOM SALTS VALIANT, 1-lb. CTN. BUY ONE FOR 19c GET SECOND FOR 1¢

Petroleum Jelly VALIANT, 16 oz. BUY ONE FOR 49c GET SECOND FOR 1¢

Tooth Brushes VALIANT, HARD, MED. OR SOFT, BUY ONE FOR 49c, GET SECOND FOR 1¢

Tooth Paste VALIANT, FAMILY SIZE TUBE. BUY ONE FOR 43c, GET SECOND FOR 1¢

Alcohol VALIANT 16 OZ. ONE FOR 19c, GET SECOND FOR 1¢

Vitamin C Valiant 100 Ct. Buy one for 69c Get Second for 1¢

SHORTENING
BAKE-RITE 3 Lb. Can 48¢

MARYLAND CLUB, ALL GRINDS,
COFFEE Lb. Can 68¢

KRAFTS
MIRACLE WHIP Qt. ... 48¢

ASSORTED VARIETIES
SWEET ROLLS ... 3 pkgs \$1

FARM PAC USDA GRADE A LARGE
EGGS Dozen 37¢

NYLONS 4 for \$1
Seamless Micro Mesh

PINTO BEANS 4 lb. pkg. Gaylord 49¢

TISSUE Northern 4 Roll Pkg. 33¢

Depend on Furr's Quality Meats

Chuck Steak
USDA CHOICE FARM PAC BEEF, LB. 59¢

Swiss Steak
ROUND BONE ARM USDA CHOICE & FARM PAC BEEF, LB. 69¢

ROAST
BONELESS, SHOULDER USDA CHOICE & FARM PAC BEEF, LB. 79¢

BACON
FARM PAC THICK SLICED 2 LB. PKG. \$1.29

ROAST
STANDING RIB ROAST, USDA CHOICE & FARM PAC BEEF LB. 89¢



DOUBLE FRONTIER STAMPS ON WEDNESDAY

BAR-B-QUE SAUCE
KRAFT'S HOT OR SMOKY BOTTLE
3 FOR \$1.00

PIES
FRUIT, MORTON'S FRESH FROZEN
APPLE, PEACH, OR CHERRY.
EACH 29¢

CLIP THIS COUPON



A "FINGER-LICKING" SALE

1/2 PRICE
Tuesday and Wednesday only!

Regular \$1.10 Boxes of ...
KENTUCKY FRIED CHICKEN
3 Pieces of Kentucky Fried Chicken Potatoes and Gravy Hot Biscuit
only 55¢

Under The Personal Management of Jack Ward
COLONEL SANDERS' RECIPE
WARD'S Kentucky Fried Chicken Perryton Parkway
Call MO 4-2902 For Sudden Service
Open 11 A.M. to 10 P.M.

Fresh Fruits & Vegetables
GRAPES 17¢
SEEDLESS, LARGE CLUSTERS, LB. THOMPSON

Local Grown
CABBAGE L.B. 5c
Full Pods, Large Size
BELL PEPPERS 3 for 10c
N.S. No. 1 Russet Bakers
POTATOES L.B. 7 1/2c
Straight Neck Yellow
SQUASH L.B. 15c
Slices
CUCUMBERS L.B. 10c

Furr's SUPER MARKETS

N. HOBART & DECATUR

On The Record

HIGHLAND GENERAL HOSPITAL
MONDAY Admissions
David Luedicke, 329 N. Dwight.
Mrs. Evangeline Turner, 629 N. Nelson.
Baby Girl Turner, 629 N. Nelson.
James E. Kerr, 1001 E. Fisher.
Mrs. Margaret Walborn, 225 Hamilton.
Minnie Rich, 401 Crest.
Willie McAninch, Letors.
Mrs. Norma Hayter, Pampa.
Mrs. Vivian Estelle Holeman, 215 N. Huston.
Robert W. Curry, 1126 Charles.
Mrs. Jimmie L. Jordan, 200

Please help us to help our patients by observing visiting hours.
Highland General Hospital does not have a house physician. All patients except severe accident victims, are requested to call their family physician before going to the hospital for treatment.

Hodgepodge

ACROSS
1 One of 50 states
8 Its capital is
11 Parts of churches
12 False gods
13 Earnest
14 Bridge holding
18 New Guinea
17 Pronoun
19 Dressed
20 French verb
22 White
23 Bitter vetch
24 East Indian herb (pl.)
27 Undue celebrity
29 Automobile group (ab.)
30 Dressed edge
31 Norse goddess
32 Son of God (Bib.)
33 Sacred song
36 Farmer
40 Possessive pronoun
41 Symbol for tantalum
42 Otherwise
43 Burmese wood spirit
44 High note in Gaido's scale
45 Peer Gynt's mother
47 Surgical saw
50 Changed direction
53 Woody plants
54 Feminine name
55 Trap
56 Slip

DOWN
1 Native
2 Instruments for stamping dates

Answer to Previous Puzzle

ACROSS
1 Hail
4 Domestic fowl
5 Hippo's kind
6 Lacustrine with the teeth
7 Poem
8 Charged atom
9 Hillside (dia.)
10 Convey
13 Islands (Pl.)
15 Gaelic
18 Possesses
21 Artist's frame
23 Disable
24 (Always) poet.
27 Olympic
28 Chemical compound
30 Belonging to that female
33 Liquid measure
34 Regins
35 Nautical term
36 Girl (dia.)
37 Shone brightly (comb. form)
38 Hebrew ascetic
39 Organ part
41 Rigid
45 Class of vertebrates
48 Vegetable
49 Air (comb. form)
51 Cloth measure
52 High priest of Israel (Bib.)

N. Faulkner.
Horace Haight, 1008 Denver.
Mrs. Iva B. Fitch, Mobeetie.
Cranvil Roland, 512 Elm.
Charles Price, 638 S. Somerville.
Frank Carter, 1324 E. Fredrick.
Dismissals
Mrs. Phyllis Culberson, 112 Terrace.
Mrs. Myrtle Shafer, 609 N. Hazel.
Mrs. Etta Stahl, 1605 W. Browning.
Baby Girl Stahl, 1605 W. Browning.
Mrs. Lillian Carter, 911 Duncan.
Baby Boy Carter, 911 Duncan.
Mrs. Martha Warminski, White Deer.
Mrs. Patsy Greenwood, 1935 Grape.
Charles Chafin, 316 N. Wells.
Mrs. Maxine W. Cox, Skellytown.
Forrest B. Cloyd, 808 N. Dwight.
Bert Jones, 1720 Evergreen.
Mrs. Cassandra Bottoms, White Deer.
Baby Boy Bottoms, White Deer.

CONGRATULATIONS:
To Mr. and Mrs. Davie C. Turner, 629 N. Nelson on the birth of a girl at 1:30 a.m., weighing 7 lbs.

Income Tax Questions, Answers

EDITOR'S NOTE — This column of questions and answers on federal tax matters is provided by the Pampa Office of the U. S. Internal Revenue Service and is published by the Pampa News as a public service to taxpayers. The column answers questions most frequently asked.

Q — I worked on a farm this summer and the foreman said I would have to pay an estimated tax this fall. Is this right?
A — Farm wages are not subject to income tax withholding and you may have to file an estimate tax return to put you on a pay-as-you-go basis. The next deadline for filing an estimated tax declaration or an amended declaration is Sept. 15. A declaration must be filed if your estimated tax exceeds your expected withholding by \$40 or more and certain other conditions are met. More details on estimated tax and the forms needed to file a declaration may be obtained by calling your local IRS office.

Q — The exemption I claimed for my uncle last year is being questioned. What records do I need to show I am entitled to claim him?
A — You should be prepared to show that you provided more than one-half his support for the year, that his gross income was under \$600, and that he did not file a joint return with another taxpayer for the year in question.

Q — I just got a letter from my stock broker asking for my social security number. He said if I don't give it I will be subject to a penalty. What is the penalty he's talking about?
A — The law that requires payments of dividends and interest amounting to \$10 or more to be identified by the social security number of the recipient also imposes a penalty of \$5 for failure to comply. This penalty can apply each time a payment is not identified on the report banks, corporations and savings institutions are required to make to IRS.

Q — I don't understand the letter you sent me about my return. What should I do?
A — You will have to wait until the end of the year to file about the letter. When you do, have the letter handy for reference purposes. If the letter was sent from the service center, the requested information should be sent there unless other instructions are given.

Q — Can I get a refund now on the tax withheld on my earnings this summer? I'm going back to school and don't expect to earn any more this year.
A — You will have to wait until the end of the year to file for your refund. When you leave be sure to ask your employer for a statement of wages paid and taxes withheld, a W-2 form. This statement must accompany your return when you file next year.

In 1940, the Nazis began the London air blitz. Hitler thought would soften the island for an invasion. It failed.

Get In On the Food Savings EARLY IN THE WEEK

Swift Prem. Heavy Beef

SIRLOIN STEAK 89¢ lb.

Swift Prem. Heavy Beef

T-BONE STEAK 98¢ lb.

Swift Prem. Heavy Beef

ROUND STEAK 89¢ lb.

Fresh

GROUND BEEF 2 lbs. 89¢

FRYERS Fresh Dressed **27¢** lb.

Swifts Assorted 6 oz. pkg.

LUNCH MEAT 3 FOR 98¢

PICNICS Smoked **SUGAR CURED 39¢** lb.

Pound Meat Loaf
Pint Pinto Beans
Pint Potato Salad

All For **\$1.19**

Chicken Lunch
2-VEGETABLES 69¢
2-HOT ROLLS 79¢

All White Meat 79¢

2 Layer
German Chocolate Cake 1.25 ea

Fresh, Pint
Blackberry Cobbler 59¢

Large Vine Ripe
Tomatoes 19¢ 1/2 lb.

Fresh Cucumbers 10¢ 1/2 lb.

U.S. No. 1 10 Lb. Bag White
Potatoes 55¢

COUPON DISCOUNT STAMPS
Bring This Coupon To Our Store
100 FREE BUCCANEER STAMPS
WITH \$5.00 OR MORE PURCHASE EXCLUDING CIGARETTES

COUPON DISCOUNT STAMPS
Bring This Coupon To Our Store
100 FREE BUCCANEER STAMPS
With Purchase of 2 BOXES KIM FACIAL TISSUE

COUPON DISCOUNT STAMPS
Bring This Coupon To Our Store
100 FREE BUCCANEER STAMPS
2 - 24 oz. cans RANCH STYLE BEANS

BLAKE'S FOOD MARKET
1945 N. Hobart MO 4-7471
FREE DELIVERY

STORE HOURS
Weekdays 8 to 8 Sunday 9 to 8
We Give Buccaneer Stamps
Double Stamps Wednesday on \$2.50 Purchase or More
Home Owned & Home Operated Keep Your Grocery Money in Pampa

Chuck Roast 49¢ lb.
U.S.D.A. Good or Choice

BACON 59¢ Slab or Sliced
BOLOGNA 39¢ Top O' Texas All Meat

Pork Chops 59¢ lb.
Center Cut Fresh Lean

For Your Freezer —
U.S.D.A. GOOD OR CHOICE
Half Beef 45¢ lb.
Plus 6¢ lb. Processing
BUY ON YOUR GASOLINE CREDIT CARD
Buy on your Major Oil Company Credit Card — Finance up to \$100.00 in Frozen Beef Purchases for only \$1.00 Carrying Charge.

MILK 47¢ Shurfresh 1/2 Gal
EGGS 89¢ Fresh Country 2 Doz.

Roxye
DOG FOOD 12 Cans \$1
Creamy RICH IN FLAVOR Good For Health

Soflin
Facial Tissues 5¢ 1 Box

COFFEE 69¢ Maryland Club 1-Lb Can
SHORTENING 63¢ Bake-Rite 3 lb. Can
TOMATOES 19¢ Fresh Firm
CARROTS 25¢ Fresh Tender 2 Cello Pkgs.

Cracker Barrel
Crackers 19¢ 1 Lb.
Bread 23¢ 1/2 Lb. Loaf
Folgers 1 Lb. Can
Coffee 69¢
Libby's 303 Can
FRUIT COCKTAIL 2.47¢ 3 FOR
Del Monte 303 Can Cut
Green Beans 23¢
Kimbells Tall Can
Milk 39¢ 3 FOR
Lipton's
Tea 39¢ 1/4 Lb. Box
Instant 7 Oz. Box Kimbells
Potatoes 19¢
Mile High Whole Kernel
Corn 19¢ 303 Can
Libby's 6 Oz. Can Lemon Or
ORANGEAID 10¢ Frozen

EGGS 3 doz. For \$1.00 Elmers
NORTHERN
TISSUE 15¢ 2 Rolls
CRISCO 59¢ 3 Lb. Tin
With \$5 Purchase or More Excluding Cigarettes
LANES "MADI GRAS"
ICE CREAM 39¢ 1/2 gal.
BISCUITS 417¢ 3 CANS
With \$5 Purchase or More Excluding Cigarettes

Blackburn Waffle Syrup 35¢
Salad Bowl Salad Dressing qt 39¢
Van Camp Tuna reg. can 20¢

Kimbell's Pork & Beans 2.35¢
King Size, 6 Btl. Ctn. Coca-Cola 39¢
Arrow, 4 oz. can Pepper 25¢

WARD'S SUPER MARKET
OPEN DAILY 7.30 to 8.00
SUNDAY 8 to 7
502 W. FRANCIS
PHONE MO 9-9641

Selective Service Answers

EDITOR'S NOTE — Below are questions now being asked at draft boards. The answers are by Col. Morris S. Schwartz, State Selective Service Director, 702 Colorado St. Austin, Texas 78701. They are published by the Pampa News as a public service.

Q — Last year I attended college part time, but will attend full time, beginning in September. Will I qualify for student deferment?

A — Ordinarily, a student who attended part time last year would not qualify for Class II-S this year because he was not then full time. Your board's consideration of circumstances might, however, result in deferment in II-S.

Q — My sick friend won't be able to complete high school until he is nearly 20. Will he be

BACK HOME
SEOUL (UPI) — Premier Chung Il-kwon returned Saturday from a four-day official visit to Thailand.

NEW SMASHER
MOSCOW (UPI) — The news agency Tass said Saturday the Soviet Union has inaugurated its biggest atom smasher at Yerevan, capital of Armenia.

drafted before he gets out?

A — A young man who is a high school student and satisfactorily pursuing a full-time course shall be deferred in Class I-S for high school study until (1) he is graduated, (2) reaches age 20, or (3) drops out of school, whichever occurs first.

Q — I was 24 years old in July. If I become an undergraduate student this fall, will I qualify for the II-S student deferment?

A — No, because you're 24. You will qualify for classification in Class I-S for an academic year if you're ordered for induction while you're a full-time, satisfactory student.

Television In Review

By VERNON SCOTT
UPI Hollywood Correspondent
HOLLYWOOD (UPI) — John McIntire is a one-man bull pen for Universal Studios, available and willing to relieve the starting pitchers in television series.

It was McIntire who replaced Ward Bond when the latter died in 1961. He took over as wagonmaster of "Wagon Train" and cracked the whip for 4 1-2 years.

This summer he was waded in again to replace ailing Charles Bickford as the manager of the Shiloh ranch in "The Virginian."

McIntire is contracted to do five episodes of the 90-minute NBC series with options for 15 a year in six months time should Bickford be slow in regaining his health.

Curiously, McIntire neither needs the work or is especially elated at finding himself back in Hollywood. The reason is clear. He owns and lives on a 640-acre ranch of virgin timber and magnificent meadows in northwestern Montana.

Tough To Find
When his agent tried to contact McIntire to replace Bickford it was tougher than getting a message to Garcia.

His nearest neighbor is nine miles away; the nearest mail box 10 miles; the closest telephone 30 miles. McIntire's spread is as isolated as it was 32 years ago when he first bought it.

"We haven't telephones or electricity," McIntire explained. "I shoot most of the meat we eat up there and my wife Jeanette cans fruits and vegetables herself from our garden. We love the isolation and plan to keep it that way."

"My agent reached me by sending a telegram to the railroad station in Troy, Mont., and it was left in my mail box. They wanted Jeanette to do the show, too, so we decided to come down here together."

Off To Denver
McIntire will play Bickford's younger brother from Texas. Viewers will be told in the course of McIntire's first episode that the big daddy of the Shiloh ranch is off to Denver on business, and that his brother will be in charge until his return.

If McIntire's performance is perfect, credit it to the man's own background and feel for range country, horses and the rugged life.

He is genuinely a man among men. When three grisley bears threatened to tear apart his cabin in the mountains he coolly dispatched them with a rifle. The glamor and attractions of Hollywood leave him unmoved. He's more at home with his 50 head of cattle—down from a high of 500 head—and the simplicity of Montana life.

"I've tried to simplify my life as much as possible," McIntire said. "The peace, beauty and tranquility of Montana is worth more to me than all the starrng roles and excitement of show business put together."

"My contract allows me to spend at least six months a year up there on the ranch. There is a spiritual worth in Montana that I can't find anywhere else."

Youth Center Calendar

WEDNESDAY
4:00—Open: Polywogs Swim Lessons
5:00—Beginners Swim Lessons
7:00—All Ages Swim
10:00—Close

THURSDAY
4:00—Open: Polywogs Swim Lessons
5:00—Beginners Swim Lessons
7:00—All Ages Swim
8:00—Volleyball Meeting
10:00—Close

FRIDAY
4:00—Open: Polywogs Swim Lessons
5:00—Beginners Swim Lessons
7:00—Close for Football Game
—Reopen for Teen Dance after game

SATURDAY
1:00—Open: All Ages Swim and Trampoline
4:30—Pool Closes
5:00—Close

SUNDAY
2:00—Open: All Ages Swim and Trampoline
4:30—Pool Closes
5:00—Close

SIX KILLED
SEOUL (UPI) — A cave-in killed six coal miners Friday night in the Toke area, 110 miles south of Seoul. The disaster occurred only two days after miner Kim Chang-sun was rescued from an epic 15-day entrapment underground following a similar cave-in.



FAMOUS FIVESOME — The Fisher quintuplets join hands and run a pre-birthday party from their Aberdeen, S.D., farm. Seen in this Curtis Publishing Co. photo are, from S.D. Farm, four-year-olds Jimmy, Maggie, Mary Ann, Cathy and Maggie, all born Sept. 14, 1963.

First Moon Visitors Will Be Selected From Six Possibles

By EDWARD K. DELONG
UPI Space Writer
SPACE CENTER, Houston (UPI) — The first Americans on the moon may be chosen from the ranks of six astronauts who now appear to be in line for a pair of key Apollo space flight crew assignments, it was learned today.

These astronauts will make up the prime and backup crews for the first manned flight in earth orbit of the mighty Saturn 5 rocket, the free world's most powerful space launcher.

Informed sources said the astronauts now considered most likely to get these posts—and later a crack at the moon landing flight—are James McDivitt, David Scott and Russell Schweickart on the prime crew and James Lovell, Edwin (Buzz) Aldrin and Neil Armstrong as their backup crewmen.

Sources also said the manned spacecraft center is considering sending a manned mission to circle the moon and come back without landing as early as 1968. This would be the second flight of the Saturn 5 rocket with astronauts aboard.

The Saturn has made its maiden unmanned flight this month and space officials expect success. A second unmanned, earth-orbiting, test of the 7.6 million-pound thrust rocket is set for early next year.

Current plans for manned Apollo flights hinge on the success of these two unmanned missions. If all goes well, plans call for the third Saturn 5 to carry three astronauts on the initial earth-orbiting dress rehearsal of the real moon mission, informed sources said.

Then might come the flight around the moon without a landing, sources said. Such plans have been considered before, but have never won full approval.

The new, more serious consideration is based on the delay of more than a year in Apollo manned flight resulting

from the Jan. 27 fire which killed three astronauts at Cape Kennedy, sources said.

Space agency planners always have intended for the first manned flight on a Saturn 5 to run through a realistic rehearsal of the moon mission while orbiting the earth.

Just before this flight, however, they originally planned to run another dress rehearsal of the lunar mission using two Saturn 1 rockets.

Save Shurfresh & Tender Crust Coupons

MILLER GROC & MARKET

We Give Buccaneer Stamps. Double Stamps on Wed. with \$2.50 Purchase or More.

2000 Alcock MO 4-2761

Ask Your Grocer For Prize List

We Feature Pinkney Sunray Fancy Beef

FITE FOOD MKT.

1333 N. Hobart WE GIVE PAMPA PROGRESS THRIFT STAMPS

MO 4-4092 or MO 4-8842

DOUBLE STAMPS Wednesday With \$2.50 Purchase or More

NEW STORE HOURS 8 a.m. Till 7 p.m. Mon. Thru Sat. **CLOSED SUNDAY**

Barbecued Beef Fite's Own Home Style 1-lb. Ctn. 69¢	Luncheon Meal Armour's Spiced 3 Lb. Can \$1.79	CHUCK ROAST USDA Choice Fite's Own Feed Lot Beef 49¢/lb
BACON Rodeo, 1st Grade 2 Lb. Pkg. \$1.29	FRYERS Grade A Whole Fresh Dressed 29¢/lb	GROUND BEEF Fresh Lean 45¢/lb
BEEF USDA Choice Fite's Own Feed Lot Beef • Cut • Wrapped • Quick Frozen Half Beef For Your Freezer 48¢/lb	ICE CREAM Lady Borden Hind 39¢	COFFEE Maryland Club 1-lb. Can 67¢
Large Eggs Grade A Nest Fresh Doz. 39¢	TUNA Starkist Chunk Style Reg. Can 29¢	BREAD Tender 1 Lb. Bag 22¢
COFFEE Purina Dog Chow 25 Lb. Bag \$2.98	Instant COFFEE Folger's 6 Oz. Jar 89¢	BREAD Good For Health
BREAD Italian Prunes 1 Lb. 15¢	TOMATOES Cello Pkg. Patio Frozen Enchilada Dinners Reg. Size 19¢	CRACKERS Shurfresh 1 Lb. Box 19¢
STRAWBERRIES Food King Frozen 10 Oz. Pkg. 23¢	POTATOES U.S. No. 1 Russet 10 Lb. Bag 55¢	OLEO Shurfresh 2 Lb. 39¢
	COOL WHIP Birds Eye Frozen Beef Reg. Size 29¢	FLOUR Gold Medal 5 Lb. Bag 51¢
		BISCUITS 3 Reg. Cans 25¢
		Hydrox COOKIES 1 Lb. Bag 43¢
		Cream of Mushroom Soup Campbell's, Reg. Cans 29¢
		Bar-B-Q Sauce Heinz, 16 oz. Bottle 29¢

"Better Food For Less"

IDEAL FOOD STORES

Call MO 4-8930 For Delicatessen or Bakery

FRESH BAKED **WHITE BREAD** HOT FROM THE OVEN 1 lb. loaf **2 FOR 35¢**

8 INCH-SIZE SINGLE LAYER CAKE BANANA, CARROT, APPLESAUCE OR FUDGE NUT, EACH **69¢**

CATER TO YOUR FAMILY WITH FINE FOODS FROM IDEAL'S COUNTRY KITCHEN!

Delicious — Serves two, complete dinner

Bar-B-Q German Sausage 1-lb. BAR-B-Q GERMAN SAUSAGE **\$1.29**

1-pint Cole Slaw
1-Pint Baked Beans

WHOLE CHICKEN FRIED CHICKEN EACH \$1.09

COLE SLAW PINT CARTON 39¢

Country Kitchen

PRICES EFFECTIVE THRU SAT. SEPTEMBER 16 - 1967



OCEAN CHALLENGE is drawing another solo sailor on a risky voyage in a small sailing craft. Fifty-year-old Thomas Robert Harrison, who has been sailing on one long adventure since leaving his native Australia five years ago, now plans to sail around the tempestuous Cape Horn.

WE GIVE

WE GIVE

WE GIVE

WE GIVE

WE GIVE

WE GIVE

WE GIVE

WE GIVE

WE GIVE

WE GIVE

WE GIVE

WE GIVE

WE GIVE

WE GIVE

WE GIVE

WE GIVE

WE GIVE

WE GIVE

WE GIVE

WE GIVE

WE GIVE

WE GIVE

WE GIVE

WE GIVE

WE GIVE

WE GIVE

WE GIVE

WE GIVE

WE GIVE

WE GIVE

WE GIVE

WE GIVE

WE GIVE

WE GIVE

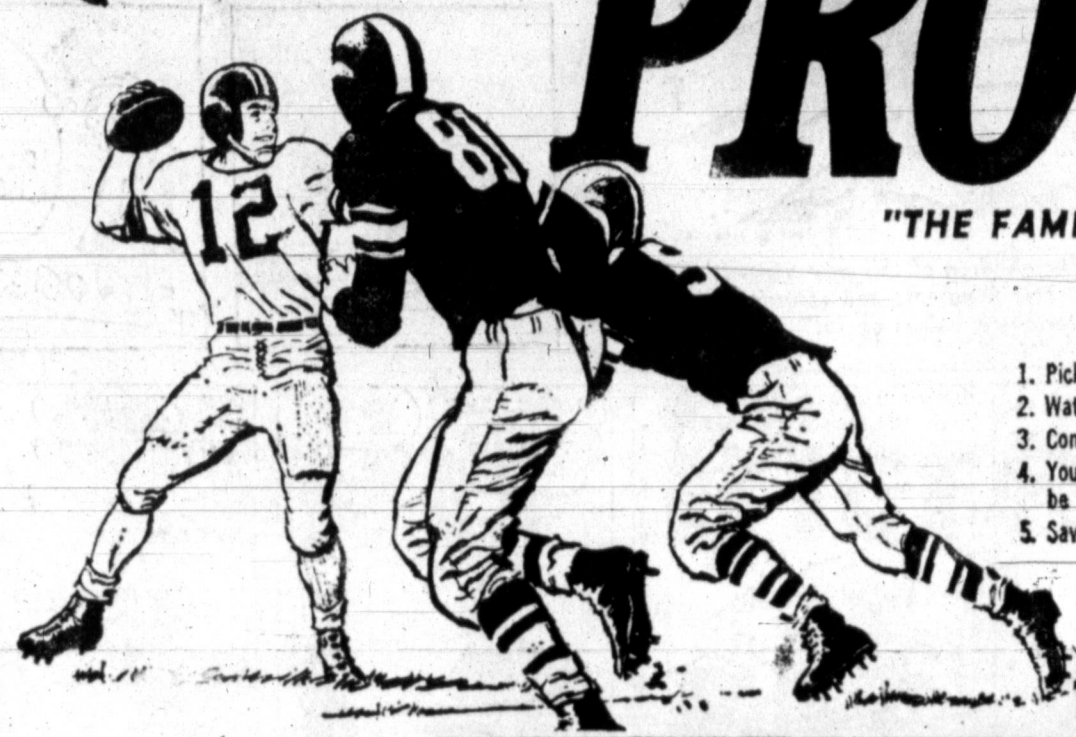
WE GIVE

WE GIVE

Win! \$100.00 with Piggly Wiggly's...

PRO-SCORES

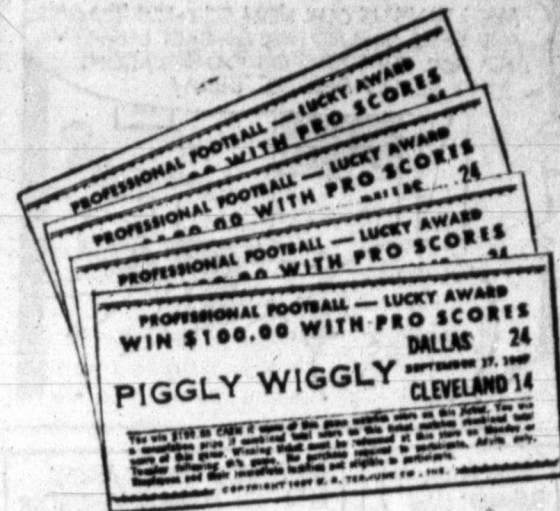
"THE FAMILY FUN GAME! . . . NO PURCHASE NECESSARY!"



"HOW TO WIN!"

1. Pick up your free pro-score ticket each time you visit Piggly Wiggly.
2. Watch National TV Pro-Score-board for score of game each week.
3. Compare scores on your tickets.
4. You win \$100.00 cash if score on your ticket matches score of the game. Winning tickets may be redeemed only on Monday or Tuesday following the game.
5. Save all your tickets for each game — You may have more than one winner.

**GET YOUR TICKETS
AT PIGGLY WIGGLY TODAY**
1st GAME DALLAS vs. CLEVELAND SEPT. 17th



"BONUS WINNERS!"

A \$2.00 Eversharp Jotter Pen!

You May Win One of the Many Bonus Prizes of a \$2.00 Eversharp-Parker Jotter Dallas Cowboy Fan Club Pen. If the Combined Total Score on your ticket Matches Combined Total Score of Game!



**Official
Dallas Cowboy
Fan Club Pen!**

**DOUBLE
S&H GREEN STAMP**
WEDNESDAY
WITH A \$2.50 PURCHASE
OR MORE

QUALITY, VARIETY and SAVINGS!



<p>FAMILY STEAK U.S.D.A. Choice Aged, Heavy Beef, Valu- trimmed Cut from Chuck Pound 69¢</p> <p>Farm Fresh Whole Fryers Pound 29¢ U.S.D.A. Choice, Heavy, Aged Beef Short Ribs Fine for Braising Lb. 29¢ Blue Morrow's, Boneless, No Waste Beef Steaks 10 Steaks per Package \$1</p>	<p>SIRLOIN U.S.D.A. Choice, Aged, Heavy Beef, Valu- trimmed Pound 98¢</p>	<p>ROUND U.S.D.A. Choice, Aged, Heavy Beef, Valu- trimmed Full Cuts Pound 89¢</p>	<p>BONELESS ROAST CHUCK, U.S.D.A. Choice, Aged, Heavy Beef, Valu- trimmed Pound 79¢</p> <p>Farmer Jones, All Meat Franks First Grade, Fine Flavor 12-Ounce Package 49¢ Sau-Sea Brand Shrimp Cocktail 3 4-Oz. Jars \$1 U.S.D.A. Choice, Heavy, Aged Beef Rump Roast Valu Trimmed Boneless Lb. 98¢</p>
---	---	---	--

<p>Mountain Pass TOMATO SAUCE Excellent flavor 3 8-Ounce Cans 27¢</p>	<p>Borden's All Flavors ICE MILK A perfect dessert — so easy to serve. 1/2-Gallon 47¢</p>
---	---

<p>Bakerite or Vegetole SHORTENING Pound Can 57¢</p>	<p>Hunt's Fancy TOMATO CATSUP Delightful mappy flavor. 20-Ounce Bottle 27¢</p>
--	--

<p>Green Peas 22¢ Stokely, Honey Pod, No. 303 Cans</p>	<p>Del Monte, Cut Green Beans 22¢ No. 303 Can</p>	<p>Mountain Pass Tomatoes 17¢ No. 303 Cans</p>	<p>Ht Plains New, White Potatoes 27¢ No. 300 Cans</p>	<p>Jumbo Gebhardt's or Ellis Tamales 37¢ No. 2 1/2 Cans</p>
---	--	---	--	--

FEATURE OF THE WEEK!

THERMO DISH
only **11¢** ea.
with every \$2.00 purchase.

NO COUPONS! NO LIMIT!

Frozen Selections for Your Freezer!

TOMATOES Red, Ripe, Pound **19¢**

Golden Ripe, Large Fruit **BANANAS** Pound 15¢

SWEET **POTATOES** New Crop Pound 15¢

Large Clusters **TOKAY GRAPES** Lb. 29¢

CELERY Large Crisp Green Stalks Pound 15¢

CHILI & BEANS 24-Ounce Cans 67¢
Campfire in Sauce

PORK & BEANS 3 No. 300 Cans 27¢

Arrow **WHITE RICE** 2 2-Pkg 27¢

M.G.A. Stems & Pieces
MUSHROOMS 4 Ounce Cans 27¢

Frozen Selections for Your Freezer!

Mexican Dinners

Patie No cooking, no fussing just heat and serve. 15-Oz. Plate **39¢**

Cut Corn Libby 5 10-Ounce Cans \$1

Potatoes Simplot 20-Ounce Package 29¢

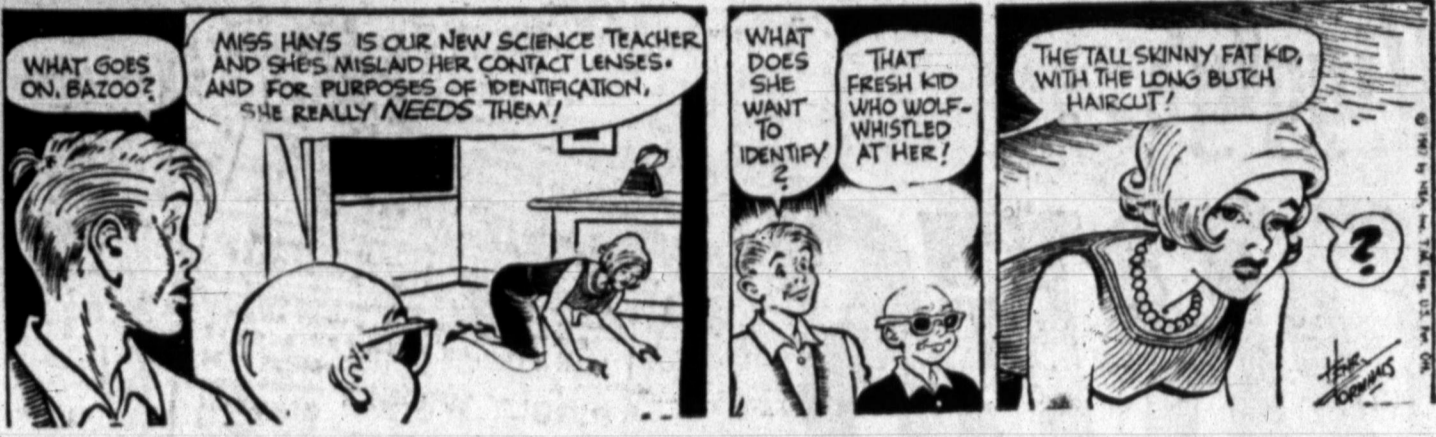
Grape Juice Seneca 3 12-Ounce Cans \$1

These Prices Good In Pampa Sept. 12-13 We Reserve the Right to Limit Quantities.

More food for LESS... always at... PIGGLY WIGGLY

<p>Health and Beauty Buy RAZOR BLADES Personne, Stainless Steel Double Edge Reg. 79c Retail 59¢</p>	<p>Houseware Buy SAUCE PAN SET Aluminum, Containing 4 ea. each 1/2-Quart, 1-Quart, & 2-Quart size Reg. \$1.59 Value 3-Piece Set 99¢</p>
--	--

Freckles



Blanus



The Born Loser



Robin Malone



Bugs Bunny



Eek and Meeks



Captain Easy



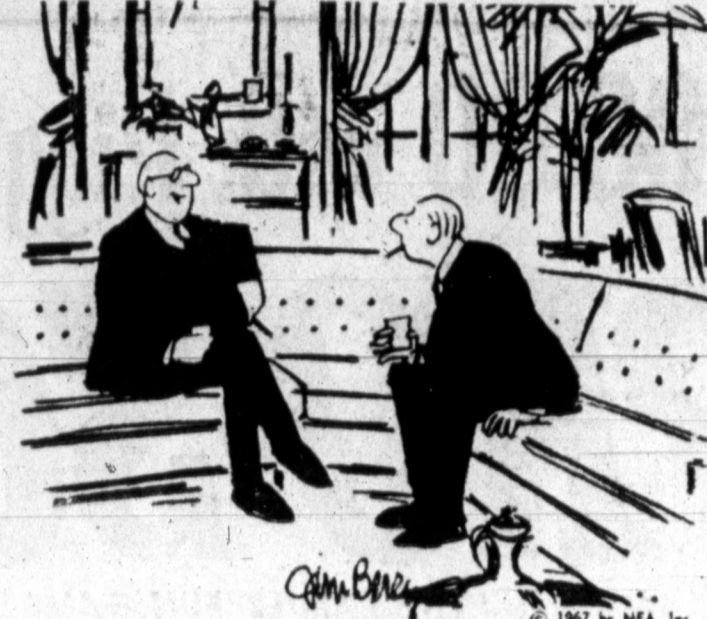
The Willets



WINTHROP



BERRY'S WORLD



Short Ribs



Blondie



Alley Oop



The Flintstones



Jackson Twins



Mickey Finn



Priscilla's Pop



Debbie Deers



Joe Palooka



By Uni
Presi
last m
"needs
than a
Americ
season.
When
the m
Sam M

By Uni

Minnes
Boston
Detroit
Califo
Washing
Clevela
Baltimo
New Yo
Kansas

Baltimo
Minnes
(Only
Toda
Califo
Wright
(Stotler
6-13)

Baltim
Detroit
Clevel
McDowe
(John 9
Kansa
Boston
Minne
Washing
W
Califor
Baltimo
Clevelan
Kansas
Minneso

St. Loui
San Fra
Cincinna
Chicago
Philadelph
Atlanta
Pittsbu
Los Ang
Houston
New Yo

Cincinna
Houston
St. Loui
San Fra
(Only 1
Today
Atlanta
Pittsbu
Cincinna
Chicago
Houston

USE THE MASSIVE AD FOR YOUR PROFIT

Hatlo's They'll Do It Every Time. I SAID, I THINK I'LL GO TO A MOVIE... NO, LEFTY... WE'RE GOING TO THAT PANTHER CLUB DINNER... TOUGH ENOUGH LEFTY HAD A BAD DAY... PINKY THE PRESS AGENT ONLY BOOKS LOSERS... BEFORE HE GOES HE MIGHT BE TRADED...

48 Trees & Shrubbery 48 BRUCE NURSERIES 'Trees of Reputation'... 49-A Pest Control 49-A GUARANTY TRAILER CONTROL... 50 Building Supplies 50 PAMPA LUMBER CO. WHITE HOUSE LUMBER CO. HOUSTON LUMBER CO.

69 Miscellaneous for Sale 69 LADY Kenmore washer, 3 speed... 97 Furnished Houses 97 1 room modern house, furnished... 103 Real Estate for Sale 103 1 BEDROOM brick fireplace, fully carpeted...

112 Farms, Ranches 112 FOR LEASE To acre irrigated farm... 113 Property to be Moved 113 FOR SALE to be moved 60x100 foot... 114 Trailer Houses 114 FOR SALE 1965 1 bedroom trailer...

120 Automobiles for Sale 120 Doug Boyd Motor Co. TOM BOSE MOTORS SUPERIOR AUTO SALES JOHN PARKER MOTORS BELL PONTIAC INC. JOHN MCGUIRE MOTORS

The Lighter Side WASHINGTON (UPI)—When President Johnson appointed a U.S. team to observe the Vietnam election...

9 A.M. Classified Ads. Saturday for Sunday edition... 21 Help Wanted 21 Parts Assistant Experience Necessary... 22 Monuments 22 Pampa Lodge 966, 420 W. Kingsmill Street...

51 Storm Doors, Windows 51 ARCHIE'S ALUMINUM FAB... 57 Good Things to Eat 57 NOW BUY YOUR BEEF AT CLINT'S WITH YOUR CREDIT CARD... 80 Pets 80 LOVELY Calm Terrier and Poodle puppies...

RENTAL PLAN Rental fee applied toward purchase FOR SCHOOL CHILDREN TARPLEY MUSIC CO. 117 N. Cuyler MO 4-2551

102 Bus, Rental Property 102 BUILDING Dining room, fully furnished... 103 Real Estate for Sale 103 1 BEDROOM brick house, low mortgage...

105 Lots 105 HORSE lots for sale or rent... 108 For Sale or Lease 108 HORSE lots for sale or rent...

Place Your Classified Ads By Phone Mo 4-2525 In 1846, Elias Howe received a patent for the sewing machine.

31 Appliance Repair 31 NORGE SALES AND SERVICE JOHNSON RADIO & TV... 32A General Service 32A FOR ALL types of concrete work... 32B Upholstering 32B BRUMMETT'S UPHOLSTERING 'Serving the Pampa Area 30 Years'...

B&R Furniture 404 S. Cuyler MO 4-4801 Drexel Globe Sprague Mohawk Pullman and Carlton Carpet Weiman Cambridge Fairfield Magnavox Rembrandt

95 Furnished Apartments 95 1 ROOM duplex, carpeted, lots of closet space... 96 Unfurnished Apartments 96 Extra storage, Gas and water paid...

108 For Sale or Lease 108 HORSE lots for sale or rent... 111 Out-of-Town Property 111 GOOD 100 acre irrigated farm...

122 Motorcycles 122 See America's finest, the 1967 Harley Davidson motorcycles... 124 Tires, Accessories 124 FIRESTONE STORES MONTGOMERY WARD

FOR ALL YOUR HOME NEEDS... SEE Price T. Smith Col. Bayless—MO 4-8848

SIZZLING VALUES

Cudahy BAR S
BACON 2 lb. PKG. **\$1.29**
Reg. \$1.49

"WHERE YOU ALWAYS BUY THE BEST FOR LESS"
GIBSON'S
DISCOUNT CENTER

Open Week Days 9:00 to 9:00 — CLOSED SUNDAYS

DeLuxe
**Ironing Board
Pad & Cover** **59¢**

Cudahy BAS-S
SPICED Luncheon 3 lb. can
Reg. \$1.87 **\$1.47**

Cudahy Bars
All Meat
Franks **45¢**
Reg. 59¢

Maryland Club
Coffee 1 lb. can
All Grinds **59¢**

Crisco Oil 48 oz. bot. **99¢**
Reg. 1.27

Peter Pan
FLOUR 5 lb. bag **39¢**
Reg. 57¢

TEXSUN No. 2 Can
Grapefruit **14¢**

Pineapple Juice **25¢**

Del Monte 46 oz. Can Reg. 39¢

Sunbeam Spray, Steam or
DRY IRON

\$10.88

Groom & Clean
Hair Groom For Men
Retail \$1.09 **69¢**

SOFT
LOTION **39¢**
REG. 59¢

REEF MOUTH WASH
Retail \$1.39 **79¢**

200 FT.
HANDI WRAP
59¢

J/WAX KIT
CLEANER/WAX
PRE-SOFTENED PASTE FOR EASY APPLICATION
SPECIAL APPLIER INSIDE
Reg. 1.37 **99¢**
Gibson's Discount Price

WHITERAIN
HAIR SPRAY Retail \$1.50 **69¢**

GLEEM Family Size
TOOTH PASTE REG. 95¢ **57¢**

ALL CAR DELUXE
Freeze Meter **77¢**
Guaranteed Accurate
Test Your Own Antifreeze

300 Count
Notebook Paper **43¢**

GILLETTE
FOAMY Retail \$1.29 **79¢**

Curity
Baby Bottles REG. 45¢ **19¢**

Timing Light **\$1.99**

150 COUNT Reg. 98¢
Typing Paper **49¢**

PENCILS
BOX **47¢**

G66 Water Proof
Dry Flies & Feathers **67¢**

GIBSON'S Has Just Received New Shipment of
Composition Books 12x18 Manila Paper

DYNACHROME
8mm, 35mm or 126 Slide Film
Complete With Processing
Reg. \$4.50 **\$1.97**

Solar 9 volt
Batteries 2 For **39¢**

YOUR SAVINGS ARE GREAT AT GIBSON'S PHARMACY
SAVE ON PRESCRIPTIONS
GIBSON'S DISCOUNT PHARMACY MO 4-6896

YOUR SAVINGS ARE GREAT AT GIBSON'S PHARMACY
CREW
Bath Room Cleaner Reg. 89¢ **49¢**

Prices Good Tue., Wed., Thur.