



# The Pampa Daily News

Serving The Top O' Texas 59 Years

VOL. 59 - NO. 197

THE PAMPA DAILY NEWS, MONDAY, NOVEMBER 21, 1966

(14 PAGES TODAY)

Week Days 40  
Sundays 13c



(Daily News Photo)

**THE TEACHING** process is being reversed this week with teachers going to school to learn the mechanics involved in maintaining school libraries. Mrs. Angela Kammlak, left, library consultant from Texas Education Agency in Austin, pictured with Mrs. Frances Walls, elementary library consultant for Pampa schools, is conducting a three-day workshop, beginning today and continuing through Wednesday in Sam Houston School for Pampa and area teachers.

## Neo-Nazi Gains Worry Germans

MUNICH (UPI) — West German leaders expressed mounting concern today over the new election success of the Neo-Nazi National Democratic Party (NDP) and vowed to overcome the popular discontent that has won it representation in the state legislatures.

Drawing strong support in a region that was the springboard of Adolf Hitler's rise to power, the NDP polled 7.4 per cent of the vote in elections Sunday for the Bavarian state legislature (Landtag.)

A 12.2 per cent showing in the rural central Franconia—in and around the city of Nuernberg—was instrumental in winning 15 of the 201 Landtag seats for the NDP under Bavaria's system of proportional representation.

Overall winner in the election was the Christian Social Union, led by former Defense Minister Franz Josef Strauss, whose views on foreign policy are similar to those of French President Charles de Gaulle. The party drew 48.2 per cent of the vote—enough to take 110 seats in the new Landtag and retain its majority.

Strauss immediately termed

## Westmoreland Calls For Troop Increase

WASHINGTON (UPI)—Gen. William C. Westmoreland, U.S. military commander in Viet Nam, said today that still more American troops and equipment are needed to fight the war there.

In calling for more men, Westmoreland did not say just how many would be needed. At present there are about 350,000 U.S. troops of all services in Viet Nam.

The four-star general also disclosed in a copyrighted interview in U.S. News & World Report, that the infiltration of Communist troops from North to South Viet Nam was greater—7,900 a month—than previously reported. Pentagon estimates have ranged from 4,500 to 5,000 a month.

In order to continue to hunt the enemy, hold territory and help provide security for the "pacification" program, Westmoreland said:

"We will need more troops. We will need more helicopters and means of giving these troops mobility. Now it is impractical to have sufficient helicopters or aircraft to transport all of our troops simultaneously. We will have the ability to transport only a fraction of these troops. Therefore, through necessity, a certain number of troops will have to be utilized in a less mobile role, to secure areas and people."

"During the coming year, we

## US Advisers Aid In Red Trackdown

BANGKOK (UPI) — American military advisers stalk thick Asian jungles with local army units tracking down a fast-growing Communist guerrilla army.

American helicopters — unmarked with the U.S. star — ferry men and supplies into battle for which U.S. combat engineers have laid the groundwork.

## Freight Train Smashes Car; Kills Five

By United Press International

A freight train killed five occupants of a car in the South Plains and a car-truck collision in South Texas took five more lives Sunday in a tragic, hours-apart boost in the state's week-end violent death toll.

A United Press International survey for the period between 6 p.m. Friday and 12 midnight Sunday showed at least 34 violent deaths, including 24 highway fatalities.

A Santa Fe freight train struck a carload of teen-agers at Lockney, northeast of Lubbock, Sunday night. It killed Norma Cruz, three months old, Lidia Cruz, 11, and Angelina Cruz, 13, all of Shallowater. Mrs. Emma Herrera, 17, of Lockney and Teresa Islas, 15, of Floydada.

Two persons were injured. In a collision between a car and a pickup truck six miles east of Giddings, three servicemen on leave from Ft. Hood and a couple from Ledbetter, Tex., were killed.

The dead were Mr. and Mrs. Milton Jones McClellan and Pvt. James M. Henry, 17, of El Dorado, Ark.; Ned Allan Becker, 21, of Searcy, Ark. and Robert E. Chauvin Jr., 18, of Abbeville, La.

Charles W. Pirkey, 37, a Dallas geologist, was killed Sunday when his car overturned on Farm Road 2478 inside the city limits of Plano, north of Dallas.

## TV Artists Reach Settlement In Strike Threat

NEW YORK (UPI) — The American Federation of Radio and Television Artists (AFTRA) Sunday night reached a tentative contract settlement with the four major television and radio networks, averting a threatened nationwide strike.

Virtual agreement was reported in separate talks between television networks and a motion picture union.

The AFTRA-network agreement came only three hours before the walkout deadline last night. A strike would have restricted network programming to motion pictures and taped re-runs. The terms of the settlement were not announced, but a federal mediator said AFTRA's negotiating committee was ready to recommend approval of the plan to the union's national board and the membership.

Negotiations on local issues were continuing between the union and individual stations in New York, Chicago, Los Angeles and Washington. AFTRA represents virtually every performer who appears before a microphone—newsmen, dancers, comedians, singers and many others.

A spokesman said that separate talks with the Screen Actors Guild, which represents performers who appear in filmed commercials, had produced agreement on most major points.

The networks involved are the American Broadcasting Co., Columbia Broadcasting System, National Broadcasting Co., and Mutual Broadcasting System.

The old contract expired last Tuesday and AFTRA agreed not to strike so long as the networks did not try to tape shows ahead. When AFTRA could not get such an agreement from NBC's "Tonight Show," it ordered host Johnny Carson not to show up at the taping for Thursday's show.

Carson and other members of the show stayed away and NBC ran a tape of an October show.

The informants reported that American soldiers are patrolling the wilderness of northeast Thailand with combat battalions of the royal Thai army, advising them in anti-guerrilla operations.

U.S. military engineers are laying logistical groundwork to back up major land operations by the Thais against the guerrillas.

American pilots flying Thai helicopters are flying Thai troops into battle.

Nearly everyone in this Thai capital admit progress against guerrilla insurgency during the first 10 months of 1966 has been nil. Key U.S. guerrilla warfare experts are being sent here from South Viet Nam where they are still sorely needed.

No Figures Available

It is impossible to pin down how many of the 33,000 U.S. servicemen in Thailand are being used as advisers to Thai combat units. The sources said the number is probably in the hundreds.

The majority of Americans here are Air Force personnel participating in the aerial side of the Viet Nam war. Combat missions against North Viet Nam are flown from Thai bases. The United States maintains a major helicopter base at Nakorn Phanom and the choppers have recently been used to ferry Thai troops into ground action against the Communists.

The helicopters, from the 606th Air Commando Squadron, are reported to be piloted by Thai airmen. The truth is, however, that no Thai pilots are presently available. The United States has begun a training program for Thai helicopter pilots but the first trainees will not graduate until next spring.

Cage Game Dropped

Pampa High School's scheduled game with Vernon Saturday night has been canceled, according to Assistant Principal Weldon Trice.

Trice said the Harvesters would play Wichita Falls High School at Wichita Falls instead of Vernon.

Teachers Go On Strike

YOUNGSTOWN, Ohio (UPI) — Nearly 300 public school teachers went on strike today here and at suburban Hubbard, Ohio, in disputes over union recognition and pay. Classes in Youngstown were suspended.

Picket lines were established at 32 Youngstown schools and a school bus garage and at the Hubbard school system.

Custodial and maintenance employees here, who recently won recognition for their own union, the Northeast Ohio Public Employees Association, refused to cross the teachers' picket lines.

An official of the Youngstown Board of Education advised students, "do not report to school today."

About 37,000 students are enrolled here, while about 3,700 attend Hubbard schools.

About 250 of Youngstown's 970 teachers were involved in the dispute.

| INSIDE TODAY'S NEWS |       |
|---------------------|-------|
|                     | Pages |
| Abby                | 8     |
| Classified          | 13    |
| Comics              | 10    |
| Crossword           | 6     |
| Editorial           | 12    |
| Horoscope           | 8     |
| Menu                | 8     |
| On the Record       | 6     |
| Society             | 8     |
| Sports              | 11    |
| TV                  | 7     |

## Troops Stop Red Attacks

SAIGON (UPI) — An outnumbered and surrounded platoon of American Cavalrymen turned back successive attacks by North Vietnamese troops today in a valiant jungle stand that killed 102 of the Communists, U.S. spokesmen said tonight.

The 1st Air Cavalry platoon—about 44 men—suffered heavy casualties in beating back the Communists trying to overrun the American positions about 220 miles north of Saigon in the battleground of the major U.S. Operation Paul Revere IV.

Artillery support and air strikes were rushed to the aid of the beleaguered company as the fighting raged into the night.

U.S. spokesmen had few details on the day-long fight but American military observers said the fact the Communist bodies had been counted indicated the platoon had won its bloody battle for survival.

The battle began this morning when the North Vietnamese attacked the platoon as the Americans patrolled in South Viet Nam's strategic Central Highlands about 15 miles south of the jungle cemetery where U.S. Infantrymen killed 170 Communists in a pitched battle during the weekend.

The Communists swept in on the Americans from all four sides and charged so close the platoon—usually about 44 men—fought back with hand grenades. The Americans cut down the Communists as they

charged and called in air strikes.

Paul Revere was one of three major American drives to thwart expected Communist monsoon offensives. Two major engagements in three days in the area near the Cambodian border aroused speculation the Communists were attempting to mount a major push despite the beating they have taken since Paul Revere began Oct. 18.

The new fighting raised the Communist death toll in the operation to at least 615.

More than 1,000 Communists have died in the second American drive—Operation Attleboro, in war zone C near the Cambodian border about 60 miles northwest of Saigon.

The Communists have suffered another 2,000 casualties in the third operation, the U.S. Marines' Operation Prairie, just south of the demilitarized zone separating North and South Viet Nam.

Today's fighting broke out on the northern fringe of the Ia Drang Valley, where a year ago the U.S. 1st Air Cavalry Division killed more than 2,000 Communists in a landmark campaign that halted a tide of allied military reversals.

American casualties in today's fight in the rugged jungles along the border with Cambodia were reported light. Overall casualties in Paul Revere, Attleboro and Prairie have been reported light.

## Rebellion Attempted in West Africa's Togo Against Democratic Leader

ACCRA, Ghana (UPI) — Dissident army elements attempted to overthrow the democratic government in the tiny West African Republic of Togo today but President Nicolas Grunitzky claimed the rebellion had been crushed.

Grunitzky, who came to power in a 1963 army coup, went on the radio in Lome, the capital of Togo, to tell Togolese that "troublemakers" had tried to seize the government and depose him as leader of the 1.5 million persons in this West African country.

His broadcast was monitored in West African capitals.

"Energetic measures have been taken to put an end to the disorders," Grunitzky said. "I invite you all to remain calm and continue working."

Grunitzky spoke from the Togolese capital only a few hours after an unidentified voice announced over Lome radio that the army had seized power and was deposing Grunitzky and calling new elections.

The voice said the government "is oppressing the people."

The rebel message was repeated for three hours before Lome radio fell silent. It resumed one hour later with Grunitzky's message.

The original rebel broadcast said the Grunitzky regime was being deposed because it "oppressed the people." But fragmentary diplomatic reports which began trickling in from Lome to neighboring Ghana and Dahomey contradicted the rebels' claim of having staged a successful coup.

The reports said not all of Togo's 1,450 soldiers, 1,000 paramilitary gendarmes and 300 policemen appeared to have joined in the revolt. There were no reports of fighting. Reports

reaching Contonou in Dahomey said Grunitzky was "negotiating" with the dissidents.

The attempted coup was the second in Togo's six years of independence.

Togo, a former French colony, is sandwiched between Ghana and Dahomey of the Gulf of Guinea on the steamy West African coast, known in colonial days as the "whiteman's grave."

As French Togoland it was a haven for slave traders and had a long and stormy history which did not end when independence was secured in April, 1960.

Grunitzky was once before ousted as the country's leader when he tried to declare the then colonial independents from France. He returned to power in January 1963, when Togo's first president, Sylvanus Olympio, was assassinated during an army coup.

Chess Game Gets Electronic Boost

MOSCOW (UPI)—An electronic chess game between the Soviet Union and the United States opened today—and may be the best machine win.

The Soviet news agency Tass reported that electronic computers were playing four simultaneous games. One set of computers was programmed by the Moscow Institute of Experimental and Theoretical Physics and the other by scientists at California's Stanford University.

Tass hastened to point out "this is not so much a competition between machines as between scientists who laid down programs for them."

If it comes from a hardware store we have it. Lewis Hdw. (Adv.)

## Catholic Bishops Morally Support Viet Nam War

WASHINGTON (UPI) — The Catholic bishops of the United States today voiced moral support of America's basic position in the Viet Nam war, but said "it is the duty of everyone to search for other alternatives."

"And everyone—government leaders and citizens alike—must be prepared to change our course whenever a change in circumstances warrants it," they declared in a joint statement.

The statement was adopted by a vote of 189 to 6 at the closing session of the U.S. hierarchy's annual meeting here Friday. It was held back for release to newsmen today.

Drafted by Lawrence Cardinal Shehan of Baltimore, and amended during several hours of warm debate, the 1,250-word document amounted to a qualified vote of confidence in the Johnson administration's policy in Viet Nam.

"Americans can have confidence in the sincerity of their leaders as long as they work for a just peace in Viet Nam," the bishops said.

"We realize that citizens of all faiths . . . honestly differ among themselves over the moral issues involved in this tragic conflict. While we do not claim to be able to resolve these issues authoritatively, in the light of the facts as they are known to us, it is reasonable to argue that our presence in Viet Nam is justified."

But the bishops went on to say, "We are also bound always to make sure that our government does, in fact, pursue every possibility that offers even the slightest hope of a peaceful settlement."

"And we must clearly protest whenever there is a danger that the conflict will be escalated beyond morally acceptable limits."

New Salvation Army Board To Take Reins

J. Kirk Duncan will be installed as chairman of the Salvation Army's board of directors at an installation banquet at 7:30 tonight in the Terrace Room of the Coronado Inn.

Others taking office will be Don P. Lane, vice president, Sam Begert, secretary and Paul Crossman, treasurer.

New board members are Mrs. Raymond Harrah, J. E. Leverich, Frank D. Smith, Paul Crossman, Gene W. Lewis, H. Raeburn Thompson, Floyd E. Imel, Charles B. Cook, George B. Cree Jr., E. L. Green Jr., Don R. Lane, Dr. Julian Key, Aubrey Steele, John Lee Bell and John Damron.

Maj. Rodolph Lanier of Dallas, general secretary for the Salvation Army in Texas will install officers and be guest speaker.

The Pampa Salvation Army post is under command of Capt. and Mrs. Robert J. Tritton.

Shooting Victim In Fair Condition

Earnest Lee Mathis, 23, of 533 Harlem was listed in fair condition at Highland General Hospital Monday after being shot late Saturday night in front of the Pepermen Lounge.

Police have made no arrests but said they do have a suspect and an arrest is expected shortly.

Chess Game Gets Electronic Boost

MOSCOW (UPI)—An electronic chess game between the Soviet Union and the United States opened today—and may be the best machine win.

The Soviet news agency Tass reported that electronic computers were playing four simultaneous games. One set of computers was programmed by the Moscow Institute of Experimental and Theoretical Physics and the other by scientists at California's Stanford University.

Tass hastened to point out "this is not so much a competition between machines as between scientists who laid down programs for them."

If it comes from a hardware store we have it. Lewis Hdw. (Adv.)

Francois Villon, French lyric poet, was known as the "vagabond poet."

Special delivery mail service in the United States was inaugurated in 1885.

Native chiefs of the Pacific islands, to guard against famine, set family size by decree.

Giraffes sleep only a few hours each night, usually with heads held erect.

### Medicare Questions And Answers

EDITOR'S NOTE—This column of questions and answers on Medicare is provided by the Pampa Social Security Office and is published by the Pampa News as a public service.

Q—I have signed up for the supplemental medical insurance. My question is this: If I need a doctor will this insurance take care of his bill or would I have to pay that first \$50? If the visits to the doctor consisted only of a couple of trips each year I'd be better off without his insurance.

A—I won't argue with you on that point. If you can guarantee me that you will need to have the services of a doctor only twice a year for the rest of your life, then I would say, without hesitating, that you do not need the supplementary insurance. Since no one ever knows when a costly illness will strike, I believe this insurance is a necessity. For example, if a serious sickness in a year caused \$1,000 worth of doctor bill expenses, you would, without the medical insurance, have to pay \$1,000. If you had elected the medical insurance, then your cost would only be \$240, a savings of \$760.

FIRE PROTECTION? — AMPFIELD, England (UPI) — The Ampfield Fire Brigade's annual dinner won't be held this year. The restaurant burned to the ground Friday.

NO BABYSITTING — DOWHAM MARKET, England (UPI) — The only movie house here will not admit children in the future unless they're accompanied by adults. Manager John Browne said he was tired of serving as a cut rate baby sitter while parents

## MILLER GRO. & MARKET

WE GIVE BUCCANEER STAMPS  
DOUBLE STAMPS ON WED. WITH  
\$2.50 PURCHASE OR MORE

2000 Alcock MO 4-2761

CLOSED THANKSGIVING

16 to 18 lb. TOM TURKEY Pound 39¢

GROUND BEEF 3 lbs. \$1.00

Sun Ray Cured HAMS Half or Whole Pound 65¢

Surefresh LONGHORN CHEESE Pound 69¢

Marshmallow Creme Kraft Pt. 19c

Hershey Dainties 12 Oz. Pkg. 39c

Sweet Potatoes lb. 9c

Celery Hearts pkg. 25c

CRANBERRIES lb. 29c

PUMPKIN Shurfine 303 Can 10c

Brach CANDIES Mix or Match Choc., Brittles Bon Bons, and Jellies 59¢ lb

## SHOP HERE FOR YOUR FAVORITE FOODS

We Will Be Closed Thanksgiving Day

T-BONE STEAK Swift Prem. Heavy Beef 95¢ lb

Fresh Ground Beef 2 1/2 LBS 97¢

Fresh Dressed FRYERS 27¢ lb.

HENS 4 to 6 Pound Average 39¢

TURKEY TOMS Norbest Grade A 16 to 20 pound Avg. 39¢

TURKEY HENS Norbest Grade A 12 to 16 Pound Avg. 43¢

OLEO POUND 15¢

Pecans Del Cero 8 oz. Package 59¢

ICE CREAM Lanes Mardi Gras 1/2 Gal. 39¢

SUGAR Imperial Powdered or Brown 15¢

BISCUITS Kimbell's 3 FOR 19¢

NAPKINS 60 Count 8¢

Fresh Cakes and Pies Everyday

We Will Cook Your Turkey Or Ham For Thanksgiving

|   |               |
|---|---------------|
| Libby's Whole Kernel COCA COLA, King size | 43c           |
| Kimbell's CRANBERRY SAUCE                 | 303 can 23c   |
| Kimbell's Whole GREEN BEANS               | 303 can 19c   |
| Diamond SWEET POTATOES                    | 2 1/2 can 27c |
| Day Drop ASPARAGUS                        | 300 size 29c  |
| Libby's Whole Kernel CORN                 | 303 can 19c   |
| Rick whip TOPPING                         | 10 oz. 35c    |
| Libby's Del Monte PUMPKINS                | 303 can 13c   |
| Hip-O-Lite or Kraft MARSHMALLOW CREME     | pt. 19c       |
| Campbell TOMATO SOUP                      | 2 cans 25c    |
| Maryland Club COFFEE                      | lb. 69c       |
| Mrs. Tucker's SHORTENING                  | 3 lb. can 69c |
| White or Yellow CORN MEAL                 | 2 lbs. 21c    |
| Kimbell's FLOUR                           | 5 lbs. 39c    |

Swift Prem. Heavy Beef



SIRLOIN STEAK 85¢ pound

**coupon**

Bring This Coupon To Our Store  
100 FREE BUCCANEER STAMPS  
With Purchase of 2 Pkgs. of COOKIES

**coupon**

Bring This Coupon To Our Store  
100 FREE BUCCANEER STAMPS  
With \$5.00 or More Purchase Excluding Cigarettes

**coupon**

Bring This Coupon To Our Store  
100 FREE BUCCANEER STAMPS  
With Purchase of 3 Cans HI-C ORANGE DRINK

RECLOSEABLE twist-top package keeps brown sugar

Soft!



Recloseable Easy to open. Easy to close — just twist the band.

Won't Dry Out Imperial Pure Cane Brown Sugar stays refinery-fresh to the last spoonful! Won't dry out after reclosing. Close tightly after using.

Airtight Keeps natural moisture and softness in. Keeps dry air out.

Compact Stands upright on pantry shelf. Holds 2 pounds Imperial Pure Cane Brown Sugar.

Open Daily 7:30 a.m. to 8 p.m., Sundays 8 a.m. to 7 p.m.

# WARD'S GROCERY

502 W. FRANCIS

WE RESERVE THE RIGHT TO LIMIT QUANTITIES

MO 9-9641

WE GIVE BUCCANEER STAMPS  
DOUBLE STAMPS EVERY WEDNESDAY  
WITH \$2.50 OR MORE PURCHASE

# Mainly About People

Mrs. N. Dudley Steele will present a talk on "Current Fashion" to member of Beta Sigma Phi Epsilon Chapter at 8 p.m. today in Citizens Bank Hospital Room. During the talk Mrs. Steele will model an after-five costume while Mrs. Calvin Dittmore, Mrs. Jack Stafford and Mrs. Johnny Costner will model sports fashions.

Air conditioner covers, free estimates, Pampa Tent and Awning, 317 E. Brown, MO 4-8541.

Town House Cafe will be open Thanksgiving 7 a.m. till 4 p.m. For sale, overhead heater, 100, 000-BTU \$100. MO 4-6161.

Garage Sale, Antiques, jewelry, furniture, Good winter clothing, etc. 1109 Charles, Monday through Wednesday.

Mr. and Mrs. Calvin Chisum of Battle Mountain, Nev., are the parents of a son, John Lee, born Nov. 13, weighing 8 pounds, 2 1/2 ounces. The infant is also welcomed by a brother, Walter, and grandparents, Mr. and Mrs. A. W. Chisum of White Deer and Mr. and Mrs. C. C. Battreall of Pampa.

1959 Ford 4 door Ranch wagon, extra clean, good condition, good tires. Fordomatic transmission, radio and heater. MO 4-3734.

For sale, two lots in Memory Gardens MO 4-4333.

## DBA Membership Drive Nears End

Final check-in of the current membership drive of the Downtown Business Association is scheduled for 10 a.m. Wednesday in the Hospitality Room of the Citizens Bank & Trust Co.

Second check-in was held this forenoon and Bill Monroe, general drive chairman, said the campaign was progressing in good shape.

"We hope all directors will make their calls and attend the check-in with their final reports on Wednesday," Monroe said.

Antiques for sale, 910 S. Osborne. Auction, Tuesday night, 7:30 p.m., furniture, guns, appliances, etc. Auction Barn, Price Road.

Two tickets to Dallas Cowboys game, November 24th, MO 5-2024.

## Pampans To Attend Miami's CoC Banquet

David Tucker, president of the Top of Texans Club and E. O. Wedgeworth, chamber manager, with their wives, will represent Pampa at Miami's Chamber of Commerce installation banquet tonight in Miami High School cafeteria.

Wedgeworth will install new officers and directors. The banquet address will be given by the Rev. Harry Vanderpool, minister of Pampa's First Methodist Church.

Newton Cox will be installed as president, according to Ed Daugherty, retiring president.

## Post Office To Get New Rank

MIAMI — The Miami post office will be promoted to second class effective July 1, 1967. The post office is now rated as third class.

Total receipts for the Miami post office for the fiscal year 1966 amounted to \$12,238.13. Each year the Post Office Department ranks its offices in classes according to the amount of receipts in the past fiscal year. The Miami postal receipts this year rates it second class.

The only differences that will occur other than special recognition of the promotion, will be an increase in salary for clerks and the filing of additional reports during the year.

## Lawyer Institute Set in Spearman

SPEARMAN — Water rights will be under study here Saturday, Dec. 3, at an institute for lawyers of 16 area counties.

The one-day study, to open with 9 a.m. registration at the Spearman High School Library, is being sponsored jointly by the Northeast Panhandle Bar Association and the State Bar of Texas.

Lecturers will include former State Bar president Maurice R. Bullock of Midland, Frank Booth, executive director of the Texas Water Rights Commission, Austin; District Judge James H. Starley of Pecos and Ralph Shank of Dallas.

District bar president James Linn of Spearman will deliver welcoming remarks. Requests for reservations are being received by institute chairman Richard Countiss, also of Spearman.

Subjects to be covered include: adjudication of water rights, rights of a landowner not in a water district to produce and use water from his land and depletion, proration and other potentials in water problems. One oil and gas topic, pooling problems, will be discussed.

## Thanksgiving Turkey Winners Listed

The Downtown Business Association listed the 25 winners of Thanksgiving turkeys. Their names were drawn Saturday.

They are: Mrs. D. E. Brawford, Fay Byrum, J. B. Dumas, Bettie Mackie, Jimmie Wasson, Mrs. Hunter Baughman, Mrs. Whitehead, Alan Tidwell, Fanny Greenhouse, Jessie Johnston, L. P. Clarke, Dorothy Brown, I. W. Bowers, D. W. Moose, A. McClendon, Wm. B. Nail, Pat Ritt-haver, Jack McKay, K. L. McDaniel, Alicia Heil, Arville Hayes, Wanetta Bayless, Mary Coulter, Mrs. Jack Moore, and Mickie Miller.

# Obituaries

Mrs. Addie S. Cartwright, 70, of 1900 Alcock, Pampa resident since 1933, died at 2:45 a.m. yesterday in Highland General Hospital following a lengthy illness.

Funeral services will be at 2 p.m. tomorrow in Duenkel Funeral Home Chapel with Rev. Melvin Adkins, pastor of Friends Church, officiating. Burial will be in Fairview Cemetery under direction of Duenkel Funeral Home.

Mrs. Cartwright was born Jan. 16, 1896, in Davis, Okla. She moved to Pampa from Borger in 1933.

Surviving are her husband, George Cartwright of the home; one son, Russell Cartwright of Austin; one daughter, Mrs. Era Jones of Nowata, Okla.; five sisters, Mrs. Fannie Smith of Mercede, Calif., Mrs. Florence McLaugherty of San Antonio, Mrs. Grace Collier of Bakersfield, Calif., Mrs. Lenora Cottle of Tulsa, Okla., and Mrs. Tenie Adams of Tulsa, Calif.; three brothers, Roy Ellis of Venita, Okla., Thomas Ellis of Fort Worth and Charles Ellis of Fresno, Calif.; five grandchildren and 11 great-grandchildren.

Pallbearers will be Fred Williams, Bill Floyd, Ray Williams, Burl Williams, D. L. Clary and Noah Goodwin.

Memorial Park Cemetery, Dallas. Mrs. Long died yesterday in Dallas Presbyterian Hospital following a lengthy illness.

Survivors include two sisters, Mrs. Albert Olsen of Pampa and Mrs. Bell Halmer of Dallas, and two brothers, John Milling of Celburne and Herbert Milling of Phoenix, Ariz.

Mrs. Nazaria Melendez Soto, 59, of 415 N. Christy, died at 7:30 a.m. today in Highland General Hospital.

Funeral arrangements are incomplete at Duenkel Funeral Home.

Mrs. Soto was born July 27, 1907, in Monterrey, N. Lion, Mexico. She moved to Pampa from Fort Luton, Colo., in 1955. Mrs. Soto was a member of St. Vincent de Paul Catholic Church and the Guadalupanas. Surviving are her husband, Librado Soto of the home; two daughters, Mrs. Luis Rodriguez and Mrs. Alejandro Munoz, both of Pampa; four sons, Thomas Soto of Amarillo, Juan Soto of Salma, Calif., Ramon Soto of Pampa and Eufemio Soto of Fort Lupton, Colo.; one sister, Mrs. Apolinar Morado of Greeley, Colo.; two brothers, Cezilio and Mauro Melendez, both of Laredo, and 20 grandchildren.

## Magazine Urges Further Inquiry Of Assassination

NEW YORK (UPI) — Concluding there was a "reasonable doubt" that the same bullet hit President John F. Kennedy and Texas Gov. John Connally, Life Magazine today urged that a new investigating body be set up to determine whether Lee Harvey Oswald had a co-conspirator.

The question of the number of bullets is significant, for if different bullets struck Kennedy's neck and Connally's back, then, it is reasoned, there must have been another assassin. "The case should be reopened," concluded Life, which based its doubts on a recent interview with Connally after the governor had painstakingly examined, frame by frame, a motion picture film of the assassination.

## Change Taken From Vending Machine

Approximately \$3 in change was taken from a vending machine at Ogden & Son Service Station sometime Sunday. Pampa police said entry to

## Police Investigate Burglary of Cafe

Members of the Gray County Sheriff's Office were investigating a burglary at the Silver Spur Cafe, east of Pampa, today.

Deputy D. L. Day said the burglary occurred sometime between 11:30 p.m. Saturday and 7 a.m. Sunday and entrance was gained by breaking out the glass in a rear window. Day said a vending machine was pried open and approximately \$50 in cigarettes was taken.

## Arson Reported To Pampa Police

The Pampa Fire Department reported a case of arson to Pampa police today.

Upon investigation police found that gasoline had been poured on a log bridge in Central Park, then set afire. The bridge was a total loss. The incident occurred sometime around 2:30 a.m. today.

The building was gained by breaking glass out of a door. Jack rabbits can run at a speed of 45 miles per hour.

## Woman Hurt In Collision

A Pampa woman was taken to Highland General Hospital Sunday morning after her car was struck from behind by a pickup truck.

Mrs. Bertha Hill Warren, 68, was admitted at the hospital shortly after 9:30 a.m. She had stopped her 1962 Chevrolet to pick up a friend to accompany her to church when a 1966 Ford pickup truck driven by Ray Fitch, 31, struck her rear right fender and radiator.

Fitch, whose pickup was equipped with citizen band radio, called an ambulance. Patrolman John Thomas of the Pampa police investigated the collision and estimated \$300 damage to the pickup and \$250 damage to Warren car.

Fitch was cited by city police with following too closely.

Mrs. Warren was reported in good condition this morning.

## Pellet Shot Damages Laundry Truck Glass

Your Laundry and Dry Cleaners reported to Pampa police Sunday that a glass in one of their trucks had been broken out.

Police said a shot from a pellet gun had caused the damage.

## FITE FOOD MKT.

1333 N. Hobart MO 4-4092 or MO 4-8842

**WE GIVE PAMPA PROGRESS THRIFT STAMPS** → **DOUBLE STAMPS** ← Wednesday With \$2.50 Purchase or More

|  |  |  |
|--|--|--|
| <ul style="list-style-type: none"> <li>● Turkeys</li> <li>● Fresh Oysters</li> </ul>   | <ul style="list-style-type: none"> <li>● Hams</li> <li>● Ducks</li> </ul>                                    | <ul style="list-style-type: none"> <li>● Hens</li> <li>● Fryers</li> </ul>               |
| <b>LET US BAKE YOUR THANKSGIVING HAM</b>   |  |  |
| <p><b>CHILI</b><br/>Fite's Home Style 1 lb. ctn. <b>69¢</b></p>  | <p><b>Hamburger Patties</b><br/>Lean 5 Lb. Roll <b>\$2.25</b><br/>Frozen</p>                                 | <p><b>SIRLOIN STEAK</b><br/>USDA Choice Fite's Own Feed Lot Beef <b>89¢ lb</b></p>       |
| <p>USDA Choice Fite's Own Fed, Feed Lot Beef ● Cut ● Wrapper ● Quick Frozen</p> <p><b>BEEF</b> For Your Freezer <b>43¢ lb</b> Plus 6¢ lb. Processing</p> <p>● 130 Days in Feed Lot ● Fed 24 Hours a Day ●</p> <p>● Finance Frozen Beef Purchases ● Pampa Progress Stamps Given on All Cash Up To 4 Months To Pay ● Home Freezer Beef Purchases</p> |  |  |
| <p><b>SUGAR</b><br/>Pure Cane<br/>5 Lb. Bag <b>49¢</b></p>   | <p><b>CORN</b> 5 303 Can <b>\$1.</b><br/>Del Monte, Whole Kernel or Cream Style, Golden Myco, 11 oz. can</p> | <p><b>MANDARIN ORANGES</b> ..... <b>25¢</b><br/>Kraft's Miniature, 10 1/2 oz. pkg.</p>   |
| <p><b>Large Eggs</b><br/>Grade A Nest Fresh Doz. <b>53¢</b></p>  | <p><b>MARSHMALLOWS</b> ..... <b>25¢</b></p>  | <p><b>OLEO</b> 2 Lbs. <b>39¢</b><br/>Shurfresh</p>                                       |
| <p><b>CRISCO</b><br/>3 Lb. Can <b>89¢</b></p>  | <p><b>SALMON</b> Shurfine, Red Tall Can <b>85¢</b></p>   | <p><b>Sweet Potatoes</b> Shurfine Reg. Cans <b>29¢</b></p>                               |
| <p><b>GREEN BEANS</b><br/>Del Monte Whole 303 can <b>25¢</b></p>   | <p><b>OLIVES</b> 2 7-Oz. Jars <b>\$1</b></p>   | <p><b>Bama</b>, 2 lb. jar <b>49¢</b><br/><b>Strawberry Preserves</b> .... <b>49¢</b></p> |
| <p><b>CRANBERRIES</b><br/>Ocean Spray 1-Lb. Bag <b>29¢</b></p>   | <p><b>Sweet Potatoes</b> Maryland Lb. <b>10¢</b></p>   | <p><b>POTATOES</b> US No. 1 Russet 10 Lb. Bag <b>59¢</b></p>                             |
| <p><b>PUMPKIN and MINCE PIES</b></p> <p>Johnston's Frozen Reg. 79¢ Now Only <b>59¢</b></p>   |  |  |
| <p><b>Morton's Frozen HONEY BUNS</b> Reg. Pkg. <b>29¢</b></p>  |  |  |

John B. Lovingsgood, 69, of 128 S. Faulkner, suffered a heart attack and was dead on arrival at Highland General Hospital at 9 a.m. yesterday.

Born Jan. 8, 1897, in Thornton, Mr. Lovingsgood moved to Pampa from Borger in 1941. A retired driller for Evans-Kirchman Drilling Co., Mr. Lovingsgood was a veteran of World War I, serving in France.

Survivors include his wife, Mrs. Heath Lovingsgood of the home; two sons, Jerry Lovingsgood of Skellytown and DeWayne Lovingsgood of Bay City; four daughters, Mrs. W. D. Warren of Clyde, Mrs. N. R. Rogers of Pampa, Mrs. B. L. Comings of Dallas and Mrs. David Sims of Hartley; two brothers, Grady Lovingsgood of Lehigh, Okla., and Thurmon Lovingsgood of Breckenridge; two sisters, Miss Lenna Lovingsgood of Lehigh, Okla., and Mrs. Nellie Calvert of Dallas, 21 grandchildren and one great-grandchild.

Funeral services will be at 10 a.m. tomorrow in Central Church of Christ with R. J. Stevens, minister, officiating. Burial will be in Fairview Cemetery under direction of Duenkel Funeral Home.

Pallbearers will be Charlie Spence, Aubrey Tillery, Lee Roberts, Canara Carruth, Frank Morrison, John Claunch, Otto Reimer and Jim King.

Mrs. Mark Long, 434 N. Carr, will be conducted tomorrow in Hillcrest.

### Stock Market Quotations

The following quotations show the range within which these securities could have been traded at the time of compilation.

|                             |         |         |
|-----------------------------|---------|---------|
| American Corp.              | 34 1/2  | 40      |
| DPA, Inc.                   | 3 1/2   | 4 1/4   |
| Franklin Life               | 27 1/2  | 31      |
| Gibraltar Life              | 9 1/2   | 10 1/2  |
| Git. Amer. Corp.            | 14 1/2  | 14 3/4  |
| Gulf Life Ins.              | 24 1/2  | 25      |
| Jefferson Stan.             | 4 1/4   | 4 1/2   |
| Ky. Cent. Life              | 9 1/4   | 9 3/4   |
| Nat. Fed. Life              | 13 1/2  | 14      |
| Nat. Old Line               | 8 1/2   | 9 1/2   |
| Nat. Prod. Life             | 17 1/2  | 18      |
| Pioneer Nat. Gas            | 13 1/2  | 14 1/4  |
| Repub. Nat. Life            | 28 1/2  | 29 1/2  |
| Southland Life              | 96      | 96 1/2  |
| So. West. Life              | 42 1/2  | 43 1/2  |
| So. West. Invest.           | 9 1/2   | 10 1/2  |
| W. Va. Life                 | 24 1/2  | 25      |
| American Can                | 48 1/2  | 49 1/2  |
| American Tel. and Tel.      | 32 1/2  | 33 1/2  |
| American Tobacco            | 32      | 32 1/2  |
| Anacostia                   | 80      | 80 1/2  |
| Bethlehem Steel             | 28 1/2  | 29 1/2  |
| Chrysler                    | 31      | 31 1/2  |
| Celanese                    | 43 1/2  | 44 1/2  |
| Dupont                      | 120 1/2 | 121 1/2 |
| Eastman-Kodak               | 120 1/2 | 121 1/2 |
| Ford                        | 33 1/2  | 34 1/2  |
| General Electric            | 96 1/2  | 97 1/2  |
| General Motors              | 88 1/2  | 89 1/2  |
| Gulf Oil                    | 44 1/2  | 45 1/2  |
| Goodyear                    | 44 1/2  | 45 1/2  |
| IBM                         | 249 1/2 | 250 1/2 |
| Montgomery Ward             | 22 1/2  | 23 1/2  |
| Penney's                    | 27 1/2  | 28 1/2  |
| Phillips                    | 30 1/2  | 31 1/2  |
| St. J. Reynolds             | 25 1/2  | 26 1/2  |
| Sears-Roebuck               | 49 1/2  | 50 1/2  |
| Standard Oil of Indiana     | 53 1/2  | 54 1/2  |
| Standard Oil of New Jersey  | 67 1/2  | 68 1/2  |
| Sinclair Oil                | 85 1/2  | 86 1/2  |
| Shamrock Oil                | 38 1/2  | 39 1/2  |
| Southwestern Public Service | 15 1/2  | 16 1/2  |
| Texas                       | 72 1/2  | 73 1/2  |
| U. S. Steel                 | 27 1/2  | 28 1/2  |
| Westinghouse                | 30 1/2  | 31 1/2  |
| TWP                         | 12 1/2  | 13 1/2  |

Being taxed is a status symbol among some New Guinea tribesmen.

**The Pampa Daily News**  
YOUR FREE PAMPA NEWS  
SUBSCRIPTION RATES  
By carrier to homes, 4¢ cents per week.  
\$2.00 per 3 months, \$10.00 per 6 months,  
\$20.00 per year. By motor route to Gray  
County \$1.75 per month. By mail in RTZ  
\$10.00 per year. By mail outside RTZ \$12.00  
per year. Single copy 3¢ cents daily 15  
cents Sunday. Published daily except  
Satur-ay by the Pampa Daily News,  
Archives, 408 S. Commercial, Pampa, Texas.  
Phone MO 4-2523, all departments. Enter-  
ed as second class matter under the act  
of March 3, 1879.

Missing your Pampa Daily News? Dial MO 4-2525 before 7 p.m. weekdays, 10 a.m. Sundays.

## THANKSGIVING SPECIALS

### GROUND BEEF 3 LBS \$1

12 to 14 lb. Avg. **43¢** Lb.

Norbest

**GOOD BATTER BETTER QUALITY BEST FLAVOR TRY SOME NOW**

**ARM ROAST** 59¢ lb.

**PORK STEAK** 49¢ lb.

**SIRLOIN STEAK** 79¢ Lb.

THANKSGIVING TURKEYS

Wilson Thrift

**45¢** lb

TENDER JUICY TURKEYS

SHREDDED BACON 2 lbs. **98¢**

Complete Selection of Sizes of Turkey Hens & Ducks

Pork Roast **45¢** lb

Shurfine Shortening 3 Lb. Can **69¢**

Maryland Club Coffee **69¢** lb

Betty Crocker CAKE MIX 3 Boxes **1.69**

Shurfine CRANBERRY SAUCE **19¢**

Shurfine SWEET POTATOES 3 5oz. Pkgs. **35¢**

Philadelphia 3 oz. pkg. CREAM CHEESE **13¢**

Lipton's TEA 1/4 lb. Box **35¢**

Shurfine FLOUR 5 lbs. **45¢**

Solfin 20 count Napkins **29¢**

Shurfine Qt. Salad Dressing **39¢**

Shurfine Corn Meal 5 lbs. **43¢**

Shurfine Canned MILK **6 CANS \$1**

PRODUCE SPECIALS FOR YOUR HOLIDAY FEAST

Celery Hearts pkg. **29¢**

Cranberries lb. **29¢**

SWEET POTATOES lb. **10¢**

Food King Oleo 2 lbs. **35¢**

PUMPKIN Shurfine No. 2 1/2 Can **19¢**

Brown & Serve ROLLS **29¢**

Tender Crust Shurfine W-K or Cream CORN **\$1.00**

5-300 Cans COCONUT Bakers 7 Oz. Can Angel Flake **39¢**

## MITCHELL'S

Grocery

638 S. CUYLER

We Give Buccaneer Stamps Double on Wednesday on Purchase of \$2.50 or More

# Report Shows Feathers are 'Strategic and Critical Material'

By DICK WEST  
 United Press International  
 WASHINGTON (UPI) — The first several times I called the Joint Congressional Committee on Reduction of Nonessential Federal Expenditures, I got no answer.  
 I was beginning to fear that the committee may have abolished itself.

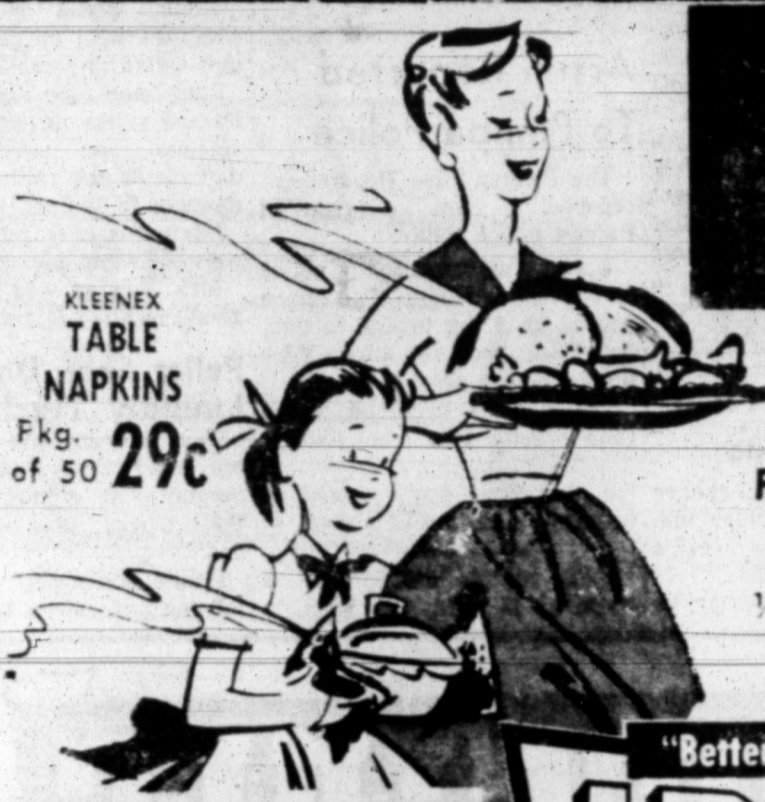
On the next try, however, the phone was answered by a nice lady who obligingly took the time to explain to me now the government happened to have 2,491,675 pounds of those feathers.  
 As of that same date the stockpile actually contained 2,491,675 pounds.  
 Lots of Excess  
 If you run that through a computer it comes out 2,491,675

helluva lot o' excess eathers. I don't know how many feathers there are in a pound, but 2,491,675 pounds is a helluva lot of anything.  
 Even if these happened to be fat feathers, it still would appear that someone in the feather buying department was a real eager beaver.  
 Okay, Question No. 1 — how come the government has classified feathers as "strategic and critical?"  
 It was my guess in case of all-out war the Pentagon was planning to mobilize the Cheerokees and other Indian tribes. The feathers would be needed for their headdresses and

Europe.  
 Therefore, we need to have a stockpile on hand in event of an emergency.  
 Second Question  
 Okay, Question No. 2—how come the stockpile has two and a half times more feathers than we might need?  
 The committee lady explained that when the stockpiling program first started, the goal for feathers and down was set at 8,800,000 pounds.  
 So the government went out and bought 10,500,000 pounds. Just to be on the safe side. One never knows when one might need a few extra feathers.

AS USUAL ... YOU CAN COUNT ON IDEAL HAVING EVERYTHING YOU NEED

## HEADQUARTERS FOR



KLEENEX TABLE NAPKINS  
 Fkg. of 50 **29c**

IDEAL FLAVOR RICH ICE CREAM  
 Assorted Flavors  
 1/2-Gal. **79c**  
 Ctn.

NOW ... ADD A TONE OF ELEGANCE!  
 EXQUISITE EARLY AMERICAN DESIGN

PRESCUT

*Crystal Chimes*

CRYSTAL GLASSWARE

SPECIAL THIS WEEK ...

FOOTED CANDY DISH Only **9c**

WITH EACH \$7.50 PURCHASE 2 FOR 18c WITH \$15.00 PURCHASE ETC.



33 1/3% DISCOUNT PRICE ON THIS LOVELY COMPLETER PIECE!

Double Stamps Tues. & Wed. With \$2.50 or More Purchase

"Better Food For Less"  
**IDEAL FOOD STORES**

VALUABLE COUPON  
 3 lb. CAN CRISCO **69c** WITH THIS COUPON  
 79c  
 REDEEMABLE ONLY AT IDEAL FOOD STORES  
 OFFER NOV. 23 EXPIRES ON  
 LIMIT ONE COUPON PER PERSON PURCHASED



2-PIECE EARLY AMERICAN PRESCUT "CRYSTAL CHIMES" CHIP 'N DIP SET  
 REGULAR \$1.89 VALUE ONLY **\$1.25**

NO OTHER PURCHASE REQUIRED

SHOP AHEAD FOR THE HOLIDAY ... IDEAL WILL BE CLOSED THANKSGIVING DAY THURSDAY NOV. 24TH

PRICES EFFECTIVE THRU WED., NOV. 23, 1966—LIMIT RIGHTS RESERVED.

- HUNT'S Spiced Peaches No. 2 1/2 Can **29c**
- Kraft Miniature Marshmallows 30 1/2 oz. pkg. **23c**
- SMUCKER'S STRAWBERRY Preserves 12-Oz. Jar **49c**
- CINCH Cornbread Mix 15-Oz. Pkg. **29c**
- BOND Stuffing Mix 1-Lb. Pkg. **29c**
- FOR SALADS OR COOKING Wesson Oil 48-Oz. Btl. **99c**
- SHILLING'S PURE Vanilla Extract 4-Oz. Btl. **87c**
- SHILLING'S PURE GROUND Cinnamon 4-Oz. Cans **75c**
- SHILLING'S Ground Nutmeg 1 1/2-Oz. Pkg. **57c**
- SHILLING'S Pumpkin Pie Spice 1 1/4-Oz. Pkg. **39c**
- SHILLING'S ASSORTED Food Color Kit Pkg. **39c**
- SHILLING'S Poultry Seasoning 4-Oz. Pkg. **19c**
- WHOLE CUT Allens Yams 2 303 Cans **29c**
- MY CO Cove Oysters 3 8-Oz. Cans **\$1.00**
- SWANSON'S Chicken Broth 13-Oz. Can **19c**
- TOWIE Salad Cherries 10 1/2-Oz. Jar **33c**
- SWANSDOWN Angel Food Mix 15-Oz. Pkg. **49c**



FOR YOUR HOLIDAY BAKING ENRICHED, KITCHEN TESTED  
**GOLD MEDAL FLOUR** 5-Lb. BAG **55c**

Dairy Fresh from Ideal

- FOR CEREAL OR COFFEE  
**IDEAL HALF & HALF** PINT CTN. **29c**
- PILLSBURY BUTTERFLAKE Dinner Rolls 4 8-Oz. Cans **\$1.00**
  - MILD, MELLOW, SHARP Cracker Barrel Cheese 10-Oz. 8-oz. **59c**
  - KRAFT PHILADELPHIA Cream Cheese 8-Oz. Pkg. **29c**
  - FARMONT Whipping Cream 1/2 Pint Bottle **29c**
  - IDEAL Egg Nog Mix 6-Oz. Cn. **49c**
  - KRAFT MIRACLE Margarine 1-Lb. Cn. **31c**

Bakery Fresh from Ideal

- |   |   |  |   |
|---|---|--|---|
| Meyer's Bro. & Serve<br><b>DINNER ROLLS</b><br>Two Pkgs. <b>49c</b> | IDEAL<br><b>STUFFING BREAD</b><br>1-Lb. Loaf <b>19c</b> | IDEAL GERMAN<br><b>CHOCOLATE CAKE</b><br>Large Size <b>89c</b> | IDEAL TEM TEE<br><b>DINNER ROLLS</b><br>Pkg. Of 12 <b>25c</b> |
|---|---|--|---|
- OCEAN SPRAY STRAINED OR WHOLE  
**Cranberry Sauce** 300 Can **23c**
- FOOD CLUB  
**Fancy Pumpkin** 2 303 Cans **25c**

SWANSDOWN—6 VARIETIES  
**Cake Mixes** 4 Pkgs. **\$1.00**

Ellis Shelled, New Crop  
**PECANS** 10-Oz. Pkg. **69c**

- NABISCO Honey Maid Grahams 1-Lb. Box **39c**
- NONE SUCH Mince Meat 28-Oz. Size **59c**
- NONE SUCH Mince Meat 9-Oz. Size **29c**
- BATH SOAP Cashmere Bouquet 4 Bath Size **54c**
- SPECIAL PACK Palmolive Soap 3 Reg. Size **35c**
- SPECIAL LABEL Ad Detergent 10-Lb. Box **\$1.89**
- GIANT SIZE Fab Detergent Box **79c**
- SOAKY Fun Bath FOR THE KIDDIES Large Size **69c**
- BATH SIZE Vel Beauty Bar 2 For **49c**
- FOR DISHWASHING Liquid Vel 22-Oz. Plastic **65c**
- POWDERED Vel Detergent Giant Size **79c**
- AJAX Liquid Cleaner 28-Oz. Btl. **59c**
- SPECIAL LABEL Ajax Cleanser 2 Large Cans **35c**
- FLORIENT Air Freshener Can **59c**
- AJAX SPECIAL LABEL Laundry Detergent King Size **\$1.09**
- LIQUID DETERGENT Cold Power 64-oz. Size **\$1.59**
- POWDERED Action Bleach Giant Size **89c**
- AJAX AEROSOL Window Cleaner 15-Oz. Can **59c**

# Pro-Nazi Incidents On the Rise; Increasing Plague West Germany

RY  
By PHIL NEWSOM  
UPI Foreign News Analyst  
In Munich, famous for its beer halls, there was one that lay in dust and decay. In its courtyard, the only vehicle was a broken down cart, one wheel missing and the axle resting on the cobble stones. Inside, only a dust-covered table or two remained, proof of long disuse.

This was the beer hall from which Adolf Hitler launched his first, unsuccessful "beer hall putsch." In Hitler's time it became a shrine until his own ignominious death in a Berlin bunker at the end of World War II.  
The last time this correspondent saw the old beer hall, the dead past indeed seemed dead. Last March, a report by West

German Interior Minister Paul Lucht, note a sharp rise in neo-Nazi, anti-semitic and other extreme right activity in the last year.  
He reported 521 confirmed cases of pro-Nazi and anti-semitic incidents in 1965, compared with 171 the year before.  
Memberships in organizations identified as extreme right wing

jumped from 6,000 to 26,000. Circulation of right-wing periodicals went up from 43,000 to 227,000.  
It seemed no longer possible to dismiss all the painted swastikas on walls and buildings or the desecration of Jewish cemeteries as the work of drunks or the mentally disturbed.

enough to remember the disintegration of the old Weimar Republic, the run-away inflation that destroyed the German mark and the terrorism inspired by the then-new German Communist Party that made it impossible for peaceful peasants to visit from one nearby village to another.  
Hitler must be remembered for his attempt to exterminate

the Jews and the evil that he exemplified.  
But among small businessmen and lower paid workers he gained much of his strength at the beginning of his promise to restore to Germany prosperity and stability.  
Same Level  
Today's rightwing groups are said to draw strength from the same economic level as did

Hitler, from those too young to remember Nazism, or as one politician put it, from older "men who have forgotten nothing and learned nothing."  
Singed out for special attention in the interior ministry report was the National Democratic Party, founded on Nov. 28, 1964, from a combination of rightwing splinter groups.

A U. S. dollar bill has an average life expectancy of 18 months in circulation.  
Read The News Classified Ads  
**WOMEN OFTEN HAVE BLADDER IRRITATION**  
After 21, common kidney or bladder irritations affect twice as many women as men and may make you tense and nervous from too frequent, burning or itching urination both day and night. Specially, you may lose sleep and suffer from headaches, backaches and feel old from depressed. In such irritation, CRYSTEX usually brings fast, relaxing comfort by eradicating irritating germs in urine, acid urine and by analgesic pain relief. Get CRYSTEX at drugstore. Postcard form.

## YOU CAN DEPEND ON IDEAL FOR IMPORTANT CASH SAVINGS TOO! **THANKSGIVING FOODS!** **IDEAL** FOOD STORES "Better Food For Less"

TOP FROST U.S.D.A. GRADE "A" FRESH FROZEN  
**TOM TURKEYS**  
OVEN-READY  
20 to 24-Lb.  
AVERAGE  
Lb. **37<sup>c</sup>**



HEAVY DUTY  
ALCOA  
FOIL  
8-IN. ROLL **59<sup>c</sup>**

TOP FROST U.S.D.A. GRADE "A"  
**TOM TURKEYS**  
16 TO 18-Lb.  
Avg. Lb. **39<sup>c</sup>**

TOP FROST U.S.D.A. GRADE "A"  
**HEN TURKEYS**  
12 TO 14-Lb.  
Avg. Lb. **43<sup>c</sup>**



DOUBLE STAMPS  
WEDNESDAY  
With \$2.50 or More Purchase

Double Stamps  
Tues. & Wed.  
With \$2.50 or More Purchase

- U.S.D.A. GRADE "A" 6 TO 9-LB. AVERAGE **BELTSVILLE TURKEY** Lb. **40<sup>c</sup>**
- SWIFT'S PREMIUM - U.S.D.A. GRADE "A" **BAKING HENS** 4 to 6-Lb. Average Lb. **45<sup>c</sup>**
- TOP FROST U.S.D.A. - GRADE "A" **LONG ISLAND DUCKS** 3 to 5-Lb. Average Lb. **49<sup>c</sup>**
- ARMOUR STAR - FANCY YOUNG **JUNIOR GEESE** 6 to 8-Lb. AVERAGE Lb. **69<sup>c</sup>**
- FANCY U.S.D.A. - GRADE "A" TURKEYS **HONEYSUCKLE WHITES** Lb. **53<sup>c</sup>**
- HONEY SUCKLE BONELESS **TURKEY ROAST** 2 1/2-Lb. Ctn. **\$3<sup>39</sup>**

BAR-S BRAND FULLY COOKED **BONELESS HAMS**  
Lb. **99<sup>c</sup>**



- CUDAHY **Virginia Reel Brand PORK SAUSAGE**  
VIRGINIA REEL, FINE FOR STUFFING  
**PORK SAUSAGE** 2-Lb. Bag **\$1<sup>49</sup>**
- MEADOWDALE **Sliced Bacon** 1-Lb. Pkg. **59<sup>c</sup>**
- IDEAL COUNTRY KITCHEN SALAD **Cranberry-Apple** Pint Ctn. **39<sup>c</sup>**
- CLEARFIELD **Longhorn Cheese** Lb. **69<sup>c</sup>**

- KRAFT SALAD DRESSING **MIRACLE WHIP** Quart Jar **49<sup>c</sup>**
- GOLDEN CREAM OR KERNEL **DEL MONTE CORN** 303 Cans **\$1<sup>00</sup>**

OCEAN SPRAY FRESH **CRANBERRIES** 7-Lb. Pkg. **23<sup>c</sup>**

- Folger's COFFEE** Lb. **69<sup>c</sup>**
- MINCE MEAT OR PUMPKIN **BANQUET PIES** 20-Oz Pkgs. **3<sup>79<sup>c</sup></sup>**

- FRESH, CRISP, PASCAL CELERY Lb. **7<sup>c</sup>**
- U.S. No. 1 **CANDY YAMS** 2 Lbs. **25<sup>c</sup>**
- FANCY RED **ROME APPLES** 4 Lbs. **59<sup>c</sup>**
- UNPITTED **CALIF. DATES** 1 1/2-Lb. Cup **69<sup>c</sup>**
- IN THE SHELL **BABY WALNUTS** Lb. **39<sup>c</sup>**



DOUBLE GUNN BROS. STAMPS WEDNESDAY With \$2.50 or More Purchase



### New Books on Shelves At Public Library

"The Boston Strangler" — dilapidated Victorian theatre name. The Dolphin and revolving around a glove reputedly belonging to Shakespeare's son and a mysterious Greek millionaire.

"This Is My Life" — Thyra Bjorn; a partial autobiography in that it concerns only the highlights of the author's life from the year that "Papa's Wife" was accepted for publication to the present.

"The Man Who Was Magic" — Paul Gallico; an old-world-like character called Adam, possessing supernatural powers, and his dog Mopsy have some unusual affects on the lives of the young and old in the mythical land of Mageia.

"Come Back, Georgie" — David Walker; tells how the former young Georgie has achieved a steered maturity and how the problems of youth and romance have now become the concerns of his son, Charlie.

"Killer Dolphin" — Ngaio Marsh; a murder story set in a

"Ess, Ess Mein Kindt"—ary Golden; a new medley of commonsense wit and philosophy, reminiscences of the Jewish East Side, and comments on such contemporary concerns and issues as Cassius Clay, flying saucers, race riots, etc.

"Christmas Is Everywhere, Including Asia Minor" — Morton Fineman; real human understanding and warmth in this novel that centers on Toby Barish, who (being young) wants a Christmas tree very much and who (being Jewish) can't have one.

There are 54 mountains more than 4,000 feet high in Texas.

### Entertainment

Answer to Previous Puzzle

|   |   |   |   |   |   |   |   |   |    |    |    |    |    |    |    |    |    |    |    |    |    |    |    |    |    |    |    |    |    |    |    |    |    |    |    |    |    |    |    |    |    |    |    |    |    |    |    |    |    |    |    |    |    |    |    |    |    |    |    |    |    |    |    |    |    |    |    |    |    |    |    |    |    |    |    |    |    |    |    |    |    |    |    |    |    |    |    |    |    |    |    |    |    |    |    |    |    |    |     |
|---|---|---|---|---|---|---|---|---|----|----|----|----|----|----|----|----|----|----|----|----|----|----|----|----|----|----|----|----|----|----|----|----|----|----|----|----|----|----|----|----|----|----|----|----|----|----|----|----|----|----|----|----|----|----|----|----|----|----|----|----|----|----|----|----|----|----|----|----|----|----|----|----|----|----|----|----|----|----|----|----|----|----|----|----|----|----|----|----|----|----|----|----|----|----|----|----|----|----|-----|
| 1 | 2 | 3 | 4 | 5 | 6 | 7 | 8 | 9 | 10 | 11 | 12 | 13 | 14 | 15 | 16 | 17 | 18 | 19 | 20 | 21 | 22 | 23 | 24 | 25 | 26 | 27 | 28 | 29 | 30 | 31 | 32 | 33 | 34 | 35 | 36 | 37 | 38 | 39 | 40 | 41 | 42 | 43 | 44 | 45 | 46 | 47 | 48 | 49 | 50 | 51 | 52 | 53 | 54 | 55 | 56 | 57 | 58 | 59 | 60 | 61 | 62 | 63 | 64 | 65 | 66 | 67 | 68 | 69 | 70 | 71 | 72 | 73 | 74 | 75 | 76 | 77 | 78 | 79 | 80 | 81 | 82 | 83 | 84 | 85 | 86 | 87 | 88 | 89 | 90 | 91 | 92 | 93 | 94 | 95 | 96 | 97 | 98 | 99 | 100 |
|---|---|---|---|---|---|---|---|---|----|----|----|----|----|----|----|----|----|----|----|----|----|----|----|----|----|----|----|----|----|----|----|----|----|----|----|----|----|----|----|----|----|----|----|----|----|----|----|----|----|----|----|----|----|----|----|----|----|----|----|----|----|----|----|----|----|----|----|----|----|----|----|----|----|----|----|----|----|----|----|----|----|----|----|----|----|----|----|----|----|----|----|----|----|----|----|----|----|----|-----|

### On The Record

**VISITING HOURS  
MEDICAL AND  
SURGICAL FLOORS**  
Afternoons 3-4  
Evenings 7-8:30  
**OB FLOOR**  
Afternoons 2-4  
Evenings 7-8

Highland General Hospital does not have a house physician. All patients, except severe accident victims, are requested to call their family physician before going to the hospital for treatment.

Please help us to help our patients — by observing visiting hours.

**SATURDAY  
Admissions**  
Baby Boy Roland, 617 Dou-

celle.  
Tracey Biggers, 934 S. Wells.  
Tamra Biggers, 934 S. Wells.  
Valerie June Butler, 1101 S. Sumner.

Mrs. Beulah Pyleatt, 1919 N. Nelson.  
Mrs. Olive Abernathy, 1519 N. Sumner.  
Miss Bonnie Kathryn Woods, 529 S. Nelson.

**Dismissals**  
Mrs. Tressa Duncan, 516 S. Somerville.  
Georg Dooley, 1617 N. Faulk-

ner.  
Mrs. Flo Lockett, 2227 N. Russell.

John Mark Noland, Stinnett.  
Margaret Melton, Panhandle.  
Paul Melton, Panhandle.

Mrs. Florence Hooker, Wheeler.  
Mrs. Kenneth Radabaugh, Lefors.

Mrs. Louise Gunter, Phillips.  
Virgie Messey, Wellington.  
Jessie Bailey, Wellington.  
James Alexander, Lefors.  
Mrs. Betty Read, Lefors.  
Arthur C. Cummins, White Deer.

**CONGRATULATIONS:**  
To Mr. and Mrs. Jimmie Roland, 617 Doucette, on the birth of a boy at 1:14 a.m., weighing 7 lbs. 2 ozs.

**SUNDAY  
Admissions**  
Mrs. Barbara Shoup, Pampa.  
Ernest Mathis, 533 Harlem.  
Mrs. Bertha Warren, 420 Dou-

celle.  
Baby Girl Shoup, Pampa.  
Mrs. Marlene Wyant, 629 N. Wells.

Baby Boy Wyant (Twin) 629 N. Wells.  
Baby Boy Wyant (Twin) 629 N. Wells.

Mrs. Joann O'Conner, Pampa.  
Baby Boy O'Conner, Pampa.  
Mrs. Letha Peters, Berger.  
Charles Ross, 936 S. Sumner.  
Mrs. Joann Reeves, 1120 Dar-

by.  
Mrs. Rebecca Cargill, 712 N. Sumner.  
Billy Lee Miller, 1816 Alcock.  
Mrs. Ellen Caskey, 1103 Sand-

lewood.  
Percy Calloway, 516 N. Christy.  
John Mark Zinn, 1041 Cinder-

ella.  
Bill J. Harris, 944 Terry.  
Mrs. Catherine Hill, 829 E. Browning.  
Steven Gray Johnson, 913 Rhan.  
Mrs. Nazaria Soto, 415 N. Christy.

**Dismissals**  
Baby Boy Lyons, Perryton.  
Mrs. Lela Tempin, 2229 Ham-

ilton.  
Mrs. Lucinda Pool, Pampa.  
Edward Allen Waters Jr., 961 Terry Rd.  
Mrs. Brenda Panches & Girl, 109 N. Nelson.  
Mrs. Alice Corbitt & Girl, 909 S. Schneider.  
Baby Woody Robertson, 1605 W. Browning.  
Dean Linder, 1910 Hamilton.  
Lynna Matthews, 1108 Sand-

lewood.  
Valorie Butler, 1101 S. Sum-

ner.  
Tracey & Tamra Biggers, 934 S. Wells.  
Mrs. Myrtle Helmick, 800 E.

### OPEN MIND

LONDON (UPI) —The Sun said today it received a press release from Conservative party headquarters entitled "Our Policy." The paper was blank.

Carven.  
Mrs. Ruth L. McQueary, 704 Dean Dr.

Mrs. Dorothy Hall, McLean.

**CONGRATULATIONS:**  
To Mr. and Mrs. Dale E. Shoup, Pampa, on the birth of a girl at 11:27 a.m., weighing 8 lbs. 4 ozs.

To Mr. and Mrs. Bennie W. ant, 629 N. W. lls, on the birth of twin boys at 5:02 p.m., weighing 3 lbs 10 ozs. and 5:13 p.m., weighing 4 lbs. 5 ozs.

To Mr. and Mrs. James J. O'Conner, Pampa, on the birth of a boy at 7:07 p.m., weighing 9 lbs. 6 ozs.

Read The News Classified Ads

### MALCOLM HINKLE, Inc.

MECHANICAL CONTRACTORS  
1925 N. Hobart  
Air Conditioning Sales and Service  
Sheet Metal Work  
Plumbing Sales and Service  
Heating Sales and Service  
● Budget Terms  
● Guaranteed Work and Materials  
● 24 Hour Service



### RIOTERS INJURED

HONG KONG (UPI) —At least 27 persons were injured in Portuguese Macao Tuesday when police clashed with students and laborers in two separate riots triggered by an impending demolition of a building.

The first incident occurred when police tried to stop workers from demolishing the house to make way for construction of a school. The police said the workers needed government permission to pull down the house. The second incident came when the workers defied a police ban and returned to the construction site later in

**Furr's  
SUPER  
MARKETS**

# FURR'S NEW LOW PRICE

**DOUBLE  
FRONTIER SAVING  
STAMPS**  
TUESDAY & WEDNESDAY WITH  
\$2.50 PURCHASE OR MORE, NOV. 22, 23, 1966

**SUGAR**  
ALL BRANDS  
**5 49<sup>c</sup>**  
lb. bag

**CRANBERRY SAUCE** FOOD CLUB NO. 300 CAN **19<sup>c</sup>**

**FRUIT COCKTAIL** Stokely's Heavy Syrup, No. 303 Can **19<sup>c</sup>**

**BREAD**  
**19<sup>c</sup>**  
1/2 lb. loaf

**PUMPKIN** FOOD CLUB No. 303 Can **12 1/2<sup>c</sup>**

**ROLLS**  
Brown & Serve **2 pkgs. 49<sup>c</sup>**

Maraschino, Towie **29<sup>c</sup>**  
Cherries 10 1/2 oz. btl.  
Comstock, No. 303 can **19<sup>c</sup>**  
PUMPKIN PIE MIX  
Pillsbury, Asst. 2 layer pkg. **3 1/2<sup>c</sup>**  
CAKE MIX  
Kraft Jet Puffed, 10 oz. pkg. **19<sup>c</sup>**  
MARSHMALLOWS  
Swanson 14 oz. can **21<sup>c</sup>**  
CHICKEN BROTH  
Eagle Brand, Borden's 15 oz. can **37<sup>c</sup>**  
MILK 15 oz. can  
1/2c off Label **79<sup>c</sup>**  
DREAM WHIP 8 oz.

Red Label Karo **29<sup>c</sup>** pt. || Food Club, 11 oz. can **25<sup>c</sup>** Oranges Mandarins

Kounty Kist  
**CORN**  
Whole Kernel **2 29<sup>c</sup>**  
12 Oz. Can

**PECANS** NEW CROP FRESH SHELLED ELLIS HALF OR 10 OZ PKG. PIECES **69<sup>c</sup>**

BLACK PEPPER Food Club 4 oz. can **35<sup>c</sup>**

YOU ALWAYS SAVE WITH FURR'S FROZEN FOODS

**Furr's  
SUPER  
MARKETS**

**PIES**  
PUMPKIN or MINCE  
MORTON FRESH FROZEN CHOICE **3 89<sup>c</sup>**

PECANS PIES Mortons Fresh Frozen ea. **59<sup>c</sup>**  
RICH WHIP TOPPING Fresh Frozen 10 oz. **39<sup>c</sup>**  
ROLLS Cleverleaf or Parkerhouse, Fresh Frozen 2 24 Ct. Pkg. **25<sup>c</sup>**  
CHOPPED ONIONS Ore Ida Fresh Frozen 12 oz. pkg. **17<sup>c</sup>**  
SARA LEE CAKES Fresh Frozen Choice, ea. **79<sup>c</sup>**

### Television in Review

By RICK DU BROW  
 United Press International  
 HOLLYWOOD (UPI) — "High Button Shoes," presented Sunday night as a special hour edition of CBS-TV's Garry Moore Show, was a 1947 musical that ran nearly two years on Broadway and won over its audiences with simple nostalgic charm.

Hacked to ribbons in order to fit into the relatively brief television slot, and demolished further by time-consuming and mood-destroying commercials, the fragile old-fashioned piece found the going rough on video despite some catchy popular tunes.

The show, in fact, resembled theatre very little, and looked frankly like a television variety show that was trying desperately to exploit the songs and atmosphere, and merely tossed in a few lines here and there to string them—and us—along.

No one, thus, could possibly have cared for any of the characters in this tale of two swindlers in New Brunswick, N.J., in 1913. However, Miss Carol Lawrence, one of our most charming and talented stage stars, almost-achieved the impossible, through sheer force of professionalism, her singing, dancing, acting and proper perspective were a pleasure; and made one hope that she gets more than just guest shots on television in the future. She

is a dream for video book musicals. "High Button Shoes" was her show all the way.

It was hardly anybody else's, though, unless one were paying tribute to Jule Styne and Sammy Cahn, who wrote the music, which included "Poppa, Won't You Dance With Me?" "Sunday by the Sea," "You're my Gal and 'I Still Get Jealous." And the final "Castle Walk" number was enjoyable enough, chiefly because of Miss Lawrence's loose-limbed, vigorous hoofing.

Moore was the narrator as well as the real estate fellow in New Brunswick with whom the swindlers get involved, and I'm afraid he was barely adequate, and not even that in his singing. I'm sure he is a nice fellow, but his stage presence, or rather, his occasional lack of it, makes one nervous in a production that requires precise timing and effect, as opposed to the introductory chores of a host.

**PRISONERS FREED**  
 ACCRA, Ghana (UPI) — Ghana's military government today released 127 former ministers, pro-Nkrumah politician and parliamentarians held in prison since a coup ousted President Kwame Nkrumah nine months ago.

In religious allusions, the circle is the emblem of eternity and the eternal God.

### Television Programs

| Channel 4 KGNC-TV, MONDAY NBC |                         |                              |
|-------------------------------|-------------------------|------------------------------|
| 8:00 The Motor Game           | 8:35 Sports             | 9:00 Road West               |
| 8:25 News                     | 8:50 The Monkees        | 9:00 The Aviation Revolution |
| 8:30 Mike Douglas             | 9:00 I Dream Of Jeannie | 10:00 Weather                |
| 8:35 CBS News                 | 9:30 Roger Miller Show  | 10:30 Sports                 |
| 8:50 Hustler-Brinkley         | 10:00 Jeannie           | 10:30 Tonight Show           |
| 8:55 News                     |                         |                              |

| Channel 4, TUESDAY    |                         |                         |
|-----------------------|-------------------------|-------------------------|
| 8:30 Amarillo College | 10:30 Hollywood Squares | 12:15 Ruth Brent Show   |
| 8:50 Today Show       | 11:00 Jeopardy          | 12:30 Let's Make a Deal |
| 9:00 Today Show       | 11:30 Swingin' Country  | 12:30 NBC News          |
| 9:25 Social Security  | 12:00 News              | 1:00 Days of Our Lives  |
| 9:30 Today Show       | 12:15 Weather           | 1:30 The Doctors        |
| 9:50 Eye Guess        |                         | 2:00 Another World      |
| 9:55 NBC News         |                         | 3:00 You Don't Say      |
| 10:00 Pat Boone Show  |                         |                         |

| Channel 7 KVB-TV, MONDAY ABC |                                 |                                  |
|------------------------------|---------------------------------|----------------------------------|
| 8:00 Never Too Young         | 8:35 News                       | 9:30 Peyton Place                |
| 8:25 Aileen Dabbs            | 8:50 Weather                    | 9:30 Avenge                      |
| 8:30 Beauty Spot             | 9:00 Cisco Kid                  | 10:00 News                       |
| 8:30 Highway Patrol          | 9:00 Hava Gun, Will Travel      | 10:10 Weather                    |
| 8:30 Pat Matlock             | 9:30 The World of Agri-Business | 10:15 The World of Agri-Business |
| 8:30 Where The Action Is     | 9:30 Iron Horse                 | 10:30 Jim McKeelza               |
| 8:40 News                    | 10:00 Pat Patrol                | 11:00 Movie                      |
| 8:40 News                    | 9:30 Felony Squad               |                                  |

| Channel 7, TUESDAY  |                         |                         |
|---------------------|-------------------------|-------------------------|
| 8:35 Grand Old Opry | 10:00 Supermarket Sweep | 11:00 Father Knows Best |
| 8:35 Just For Today | 10:30 The Dating Game   | 12:00 Ben Casey         |
| 8:30 Jack La Laine  | 11:00 Panna Reed        | 12:30 New York Game     |
|                     |                         | 1:30 A Time For Us      |
|                     |                         | 1:52 Women's News       |
|                     |                         | 2:30 General Hospital   |
|                     |                         | 2:30 Nurses             |

| Channel 10 KFDA-TV, MONDAY CBS |                        |                       |
|--------------------------------|------------------------|-----------------------|
| 8:00 Secret Storm              | 8:30 Weather           | 9:00 Jean Arthur      |
| 8:30 The Waterbury             | 8:30 Gilligan's Island | 9:00 I Got A Secret   |
| 8:30 Science Fiction           | 9:00 Bus Buddy Run     | 10:00 News            |
| 8:30 Sister Miriam             | 9:30 The Lucy Show     | 10:10 Weather Report  |
| 8:30 Fog Bear                  | 9:30 Ardy Griffin      | 10:25 Background      |
| 8:30 News                      | 9:30 Family Affair     | 10:30 Joe Kerbel Show |
|                                |                        | 10:45 News            |
|                                |                        | 11:00 Big Flicker     |

| Channel 10, TUESDAY   |                           |                          |
|-----------------------|---------------------------|--------------------------|
| 8:37 Religion         | 8:30 The McCord           | 9:00 Password            |
| 8:30 Amarillo College | 10:00 Andy Of Mayberry    | 9:30 Art Linkletter      |
| 8:30 Jack Tompkins    | 10:30 Dick Van Dyke       | 9:30 To Tell the Truth   |
| 8:30 CBS Morning News | 11:00 Love of Life        | 10:00 The Edge of Night  |
| 8:30 Capt. Kangaroo   | 11:30 CBS News            | 10:30 CBS News           |
| 9:00 Bomper Boom      | 12:00 Search for Tomorrow | 11:30 Jack Tompkins      |
| 9:30 News Report      | 12:15 Guiding Light       | 12:30 As the World Turns |
| 9:30 Weather-Sports   | 12:00 News                | 12:30 Weather            |
|                       | 12:00 Local Events        |                          |

### Safety Officials Call for Caution

AUSTIN — The Texas Safety Association today called on drivers for added caution in traffic, especially during the coming Thanksgiving holidays.

"Each day brings more death, disabling injuries and property destruction on our state's highways," J. O. Musick, TSA General Manager, said.

"The Texas death toll has reached an alarming rate. Over 2,700 persons have been killed in traffic since the beginning of the year. This is about 14 percent increase over a comparable period in 1965.

"I urge every driver to be extra cautious in traffic, and especially so during the Thanksgiving holidays as travel increases on our streets and highways."

The safety director advised drivers to be prepared for heavy traffic in and around cities where there will be annual "Turkey Day" football games.

He further advised all travelers to make sure motor vehicles are in top condition before going on the road; get plenty of rest before driving; stay alert at night; reduce speed to suit existing conditions; and obey all traffic rules and regulations.

"Remember, it takes the effort of every driver to keep our streets and highway safe for travel," he concluded.

### BUSINESS BOOMS

PORTSMOUTH, England (UPI) — When Sheila Wallis' own marriage failed, she decided to go into business. She opened a marriage bureau.

On opening day, customer Peter Wood convinced her to close up shop to marry him.

"I never dreamed I'd become my own first customer," said Mrs. Wallis. For Wood, it was something of a surprise, too. He where there will be annual "Turkey Day" football games.

### SINUS Sufferers

Here's good news for you! Exclusive new "hard core" SYNACLEAR Decongestant Tablets act instantly and continuously to drain and clear all nasal sinus cavities. One "hard core" tablet gives up to 8 hours relief from pain and pressure of congestion. Allows you to breathe easily—stop watery eyes and runny nose. You can buy SYNACLEAR at your favorite drug counter, without need for a prescription. Satisfaction guaranteed by maker. Try it today.

Introductory Offer Worth 1.50

Out out this ad—take to a drug store. Purchase one pack of SYNACLEAR 12's and receive one more SYNACLEAR 12 Pack free.

111 N. Cuyler **RICHARD DRUG** MO 5-5747  
 Joe Tooley, Tom Beard — Pampa's Synonym for Drugs

### This Week's SPECIAL

Good Tues. Wed. Nov. 22-23 Closed All Day Thanksgiving

## Pop's Big Burger

SERVED IN A BASKET

1/4 lb. fresh Ground Beef  
 Lettuce  
 Mustard, Onions  
 Pickles, Tomato

# 29c

Rochester Root Beer ..... pt. 9c

## Caldwell's Drive Inn

Carl E. Lawrence, Owner  
 220 North Hobart MO 4-2601

# POLICY BRINGS DOWN THE COST OF YOUR THANKSGIVING

Thanks to Furr's exciting policy of reducing costs . . . you and your family can enjoy a greater Thanksgiving feast because PRICES ARE DOWN RIGHT now at Furr's. When Furr's reduced certain expenses . . . such as cutting out costly promotions, cutting store hours and others . . . EVERY BIT OF THESE SAVINGS were passed on to you, the customer, in the form of Reduced prices! Furr's is the PLACE TO SHOP . . . because Furr's consistently leads in bringing YOU the kind of store you want.

|                                |            |        |
|--------------------------------|------------|--------|
| Boneless HAMS                  | lb.        | 98c    |
| Fresh Selects                  |            |        |
| OYSTERS                        | 12 oz. can | 98c    |
| Fresh Picnic Style Cut         |            |        |
| PORK ROAST                     | lb.        | 39c    |
| Virginia Reel                  |            |        |
| SAUSAGE                        | 2 lb. pkg. | \$1.49 |
| Fresh Young Pork Shoulder Cuts |            |        |
| PORK STEAK                     | lb.        | 59c    |
| Salt Free Fresh Side Sliced    |            |        |
| FRESH BACON                    | lb.        | 69c    |
| Tall Korn Hickory Smoked       |            |        |
| SLICED BACON                   | lb.        | 59c    |
| Swift's Premium, 3 lb. can     |            |        |
| CANNED HAMS                    |            | \$2.98 |

## DUCKS

TOP FROST FRESH FROZEN 4 LB. AVG.

# 49c

## CREAM CHEESE

PHILADELPHIA BRAND 8 OZ. PKG.

# 33c

"FRESH PRODUCE"

CALIF. GREEN PASCAL

## Celery

lb. **7 1/2c**

EAST TEXAS

## YAMS

lb. **12 1/2c**

OCEAN SPRAY

## Cranberries

lb. pkg. **29c**

Red Ripe

## TOMATOES

lb. **29c**

## NUTS

All Kinds **59c**



## TURKEY TOMS

USDA GRADE A FRESH FROZEN RIVERSIDE BRAND 12-14-lb. AVG.

# 37c

## TURKEY HENS

USDA GRADE "A" FRESH FROZEN 18 lb. AVG.

# 39c

PORK CHOPS Center Cut lb. 79c

Beige or Blush Ambassador SEAMLESS SHEER

# 2 FOR 66c

Hair Dressing Vaseline 59c | Place Sets Scott Family Asst. colors 29c

# The Women's Page

PEGGY JO ORMONS  
Editor

8 THE PAMPA DAILY NEWS MONDAY, NOVEMBER 21, 1966 59TH YEAR



Dear Abby...

## Kicking Husband Should Be Fed Hay

DEAR ABBY: Last week a friend and his wife came over to visit us. My husband was discussing sports with the man, and I was helping the wife with some stitches she was having difficulty crocheting. Out of the wide blue sky my husband got up out of his chair, walked over to where I was sitting, and kicked me! I was so shocked my dentures nearly fell out. I was too stunned to say anything, and of course, our guests didn't

know what to say or think, so they pretended they didn't see anything. Later on, when our guests left, I asked my husband what his idea was in kicking me. He said, "You were sitting badly, your dress was hiked up over your knees." For crying out loud, is this any way for a husband to act when there are guests around?

KICKED IN K.C. DEAR KICKED: Certainly not. Nor is it any way for a husband to behave when there are no guests around. He needs to be taught a lesson. Serve him hay. It's a fitting diet for the kind of animal who doesn't speak — but kicks.

Myrt Feels Pert after cleaning her carpets with famous Blue Lustre and the \$1-a-day electric rental shampooer. Now you can clean wall-to-wall, or just spots and traffic paths. Forgotten colors are restored in a jiffy. Do it yourself and get professional results at a big saving. Available at Pampa Hardware Company, 120 N. Cuyler, MO 4-2451.

DEAR ABBY: Someone signed worried wrote expressing concern because her birth certificate carried her mother's maiden name. She assumed that her mother had had her before she was married. Abby, in most states (and perhaps in all of them, for all I

## Astrological Forecast

By CARROLL RIGHTER

FOR TUESDAY, NOV. 21  
GENERAL TENDENCIES: After a slow start you have a great opportunity as time passes to put into effect some really increasing new plan that really excites you and gives you the opportunity to achieve far more than you have been able to for some time. Nations as well as people are pioneering as they wish.

ARIES (Mar. 21 to Apr. 19) — Express your finest aims to the right persons and they help you to attain them. Be they of a personal or business nature. Dress in the style. Keep social appointments on time and be charming.

TAURUS (Apr. 20 to May 20) — You are very fond of the horses and feed lots, and this is a good day to get them in greater abundance. Taking some time to gather the information you need will bring further benefits your way. Be courteous and feel better, too.

GEMINI (May 21 to June 21) — Being from geographies can now give the right associates within the limits of your arms, and this is a good day to get them in greater abundance. Taking some time to gather the information you need will bring further benefits your way. Be courteous and feel better, too.

## Scouting Scoops



By MRS. G. J. BOYD  
Junior Troop 1 recently celebrated their troop birthday, completing four years in Scouting. This busy troop is working toward their Sign of the Star. This Sign has seven requirements including three badges, attending day camp or a Girl Scout camp, taking trips, taking part in a program, being a hostess and taking part in a service project. Junior Girl Scouts can be justifiably proud of wearing either the Sign of the Star or the Sign of the Arrow. Many troop members earn both Signs during their three years as Junior Girl Scouts. The Sign of the Arrow has nine requirements, also requiring separate badge work.

Troop 1, Mrs. W. J. Felter, leader, is one of many active Pampa troops. This troop is in charge of the nursery during P-TA meetings at Austin School. They also presented the flag ceremony observing Veterans Day. Tireless efforts of leaders are responsible for the many troop activities. Troop ease and confidence develop from practice requiring time and energy from the leader, Mrs. Felter and her troop are to be congratulated on this impressive ceremony.

Two troops and members of a third participated in the flag ceremony held on Veterans Day at Woodrow Wilson School. Mrs. E. B. Jackson, leader, and Mrs. Philip McCarter, leader, stood proudly at attention while their troops along with members of Troop 219 conducted the ceremony.

Leaders of Junior Troops met last week for the Junior Workshop held at the Girl Scout Little House, worked on the patrol system, with leaders forming patrols and planning work to be done while earning Signs and badges. Games and songs were learned and Crafts were presented by Mrs. J. R. Newman, leader of Junior Troop 219. This training was presented by Mrs.

## Pampa Public Schools Menu

|                           |                     |                        |                     |                    |
|---------------------------|---------------------|------------------------|---------------------|--------------------|
| Ham                       | Buttered Corn       | Carrot, Pineapple Cake | Green Cabbage Salad | Cocunut Pudding    |
| Meat Pie with Gravy       | Whipped Potatoes    | Whole Buttered Corn    | Bread               | Pickles and Onions |
| ROBERT E. LEE JUNIOR HIGH | Hot Dogs with Chili | Pickles and Onions     | Milk                |                    |
| PAMPA JUNIOR HIGH SCHOOL  | Fried Chicken       | Creamed Potatoes       | Green Cabbage Salad | Cocunut Pudding    |
| STEPHEN F. AUSTIN         | Corn Dishes         | Potato Chips           | Milk                |                    |
| Red Beans with Ham Bits   | Buttered Spinach    | Green Cabbage Salad    | Cocunut Pudding     |                    |
| English Peas              | Meat Loaf           | Worcester Sauce        | English Peas        |                    |
| Worcester Sauce           | Meat Loaf           | Worcester Sauce        | English Peas        |                    |

## SO-SOFT FABRIC SOFTENER



Best Quality Product of the Panhandle  
At All Complete Laundry Needs Sections  
**SAVE UP TO 30c PER QT.**  
Gusler Products Co.  
Tulsa, Texas

FEATURED AT All Three Ideal Stores This Week

## BLAKE'S FOOD MARKET

1945 N. Hobart MO 4-7471  
FREE DELIVERY  
STORE HOURS: Weekdays 8 to 8 Sunday 9 to 7  
We Give Buccaneer Stamps  
Double Stamps Wednesday on \$2.50 Purchase or More  
Home Owned & Home Operated - Keep Your Grocery Money in Pampa

**SIRLOIN STEAK** 59¢ lb  
USDA Good Beef

**T-BONE STEAK** 89¢ lb  
USDA Good Beef

We Have Plenty of  
● Turkeys ● Ducks ● Hens  
**BOLOGNA** All Meat 39¢ lb

**Half Beef** 49¢ lb  
USDA Good Beef  
● Cut ● Wrapped ● Frozen ● Financing Available

**Hind Quarter** 59¢ lb  
USDA Good Beef  
● Cut ● Wrapped ● Frozen ● Financing Available

Shop Blake's Today, Tuesday, Wednesday  
We Will Be  
**CLOSED THANKSGIVING**

Del Monte Cling, Slices or Halves  
**PEACHES** 4 2 1/2 Can \$1.

Shurfine  
**CAKE MIXES** 4 Keg. Pkgs. \$1.

**ICE CREAM** Borden's 1/2 Gal. 69¢  
**COFFEE** Shurfine 1-Lb. Can 69¢

Del Monte Cream Style or Whole Kernel  
**CORN** 4 303 Cans \$1  
Del Monte Sweet  
**PEAS** 4 303 Cans \$1.

Fresh Cranberries 1-Lb. Pkg. 31¢  
Calif. Pascal Celery 2 Stalks 25¢  
**YELLOW ONIONS** 2 lbs. 21¢

**COFFEE** Folgers lb. can 69¢

**PUMPKIN** Shurfine No. 2 1/2 can 19¢

**CRANBERRY SAUCE** Shurfine 303 can 19¢

**MIRACLE WHIP** KRAFT 49¢ Qt.

**ROAST RITE TURKEYS** 49¢ lb  
Swift's Premium Roasting Hens 45¢ lb  
Fresh PORK ROAST 39¢ lb

**WHOLE HAMS** 16-20 lb. 59¢  
12-14 lb. 69¢

**EGGS** Shurfine Grade A Med. DOZ. 49¢

**CRISCO** 3 lb. Can 79¢

**FLOUR** Gold Medal 5 lb. Bag 55¢

**BREAD** Tender Crust 1 1/2 lb. Loaf 19¢

**Lucky Whip** 4 Oz. Box 39¢

**ORANGE JUICE** Shurfine 6oz. 5 Cans \$1.00

**PUMPKIN PIES** Morton 20 oz. Mince MEAT or 3 For 89¢

**PECAN PIES** Morton 16 oz. 59¢

**ICE CREAM** Borden's Pure sq. ctn. 1/2 Gal. 69¢

**BOLD Detergent** 69¢

**SHURFINE BISCUITS** 12: \$1  
Shurfine OLEO 5: \$1  
Shurfine 14 oz. CATSUP 5: \$1

**PEACHES** Shurfine 303 cans 4: \$1  
Shurfine 303 cans APRICOTS 4: \$1  
Shurfine Tall Cans MILK 6: 99¢

**PRODUCE** Ocean Spray CRANBERRIES Lb. Pkg. 25¢  
CELERY lb. 10¢  
Yellow Onions 3 lbs. 25¢  
U.S. No. 1 Russet POTATOES 10 Lbs. 59¢  
Sweet Potatoes 2 lbs. 25¢

**SHURFINE MILK** 5 No. 2 1/2 Cans \$1.00

**HOW'S FOODS**  
We Give Buccaneer Stamps—Double Wed. With \$2.50 or More Purchase  
LIMIT RIGHTS RESERVED  
421 E. FREDERIC OPEN 7 DAYS A WEEK MO 4-8531

Now Through Wed.  
**CARDRA** MO 4-7509  
Opens 1:45 Adults 85¢ Till 6 pm Child 35¢  
AUBREY HEPBURN AND PETER OTOOLE IN WILLIAM WYLER'S HOW TO STEAL A MILLION  
Last Times Tonight  
**TOPOLIXAS** MO 4-8531  
Opens 6:30 Adults 75¢ Child Free  
TONY ADAMS "2nd BEST SECRET AGENT IN THE WHOLE WIDE WORLD"  
—In Color—

H TUR U.S.D 10 to 12 Fairview Brand pound Haines Fresh OYSTERS Hormel's AI PORK SA Hormel's B CURE #1 Honeysuckle TURKEY RO PI WHI BRE PEC COR MEL BRO PUN CRA Doumak Mi MARS Paw Paw Apple KAISEF Heavy Duty Broiling Fo



# HEN TURKEYS

U.S.D.A. Grade A  
10 to 12 pound average  
Fairview Brand  
**39¢**  
pound

# TOM TURKEYS

U.S.D.A. Grade A  
18 to 20 lb. Average  
Fairview Brand  
**37¢**  
pound

# COOKED HAMS

Swift's Premium  
Dry Cure Shank Portion  
**49¢**  
pound

# GRADE A DUCKS

U.S.D.A. Grade A  
Maple Leaf  
**49¢**  
pound

# RIB ROAST

U.S.D.A. Choice  
Aged Heavy Beef  
Value-Trimmed  
Semi-Boneless  
**79¢**  
pound

Load your Thanksgiving Table  
with good foods from....  
**PIGGLY WIGGLY!**

Haines Fresh, 8 oz. can  
**OYSTERS** 8 oz. can **79c**  
Hormel's All Pork  
**PORK SAUSAGE** pound pkg. **59c**  
Hormel's Fully Cooked, Boneless \* lb. or  
**CURE 81 HAMS** pound **\$1.39**  
Honeysuckle White, 10 to 20 pound, average  
**TURKEYS** pound **49c**

Swift's Butterball, 10 to 20 pound average  
**TURKEYS** pound **49c**  
Sliced for easy serving, 2 1/2 to 3 1/2 pound  
**PORK LOIN ROAST** pound **69c**  
Butcher Boy or Farmer Jones  
**SLICED BACON** pound **59c**

**CLOSED**  
Thanksgiving  
Day

**FROZEN FOOD**  
**ROLLS** Food Mart Parkerhouse, 24 count bag **25¢**  
**PIES** Banquet, Family Size Pumpkin & Mince **29¢**



**WHIPPING CREAM** All Brands 1/2 Pt. **23¢**  
**BREAD** Mead, Freshe, Cookbook 1 1/2 Pound Loaf **19¢**  
**PECANS** Azar, Halves and Pieces 10 Oz. Pkg. **59¢**  
**CORN** Libby, Whole Kernel or Cream Style Golden 5 No. 303 Cans **\$1**  
**MEDIUM EGGS** Grade A Doz. **49¢**  
**BROWN N SERVE ROLLS** Meads 12 Ct. Pkg. **25¢**  
**PUMPKIN** Libby's, Solid Pack 2 No. 303 Cans **25¢**  
**CRANBERRY SAUCE** Strained or Whole 16 oz. can **23¢**

**Thanksgiving Bargains**  
Del Monte, No. 208 Cans  
**Sweet Peas** 4 for \$1  
Del Monte, No. 30, No. 203 Cans  
**Green Bean** 4 for \$1  
Del Monte, Mary Washington, No. 200 Cans  
**Asparagus** 2 for \$1  
Gold Medal, Kitchen Tested  
**Flour** 5 pound bag **55c**  
Del Monte, Fancy, No. 201 Cans  
**Fruit Cocktail** 4 for \$1  
Pillsbury, Layer Cakes, Assorted Flavors  
**Cake Mixes** 3 for \$1  
Tropic, Salad, 10 1/2 Oz.  
**Maraschino Cherries** 35c  
Early California, Giant, No. 1 Can  
**Ripe Olives** 35c  
Tropic, Salad, 10 Oz. Jar  
**Green Olives** 49c  
Avant-Jemina, White or Yellow, 4-Off Label  
**Corn Meal** 5 pound bag **45c**  
Mrs. Cubbison, Plain or Cornbread, 13 Oz. Pkg.  
**Stuffing Mix** 57c  
Betty Crocker, 14-Off Label, 20 Oz. Pkg.  
**Pie Crust Mix** 35c  
Del Monte, Whole, 12 Oz. Jar  
**Sweet Pickles** 43c  
Gardhope, 11 Oz. Can  
**Mandarin Oranges** 23c  
Gold Coast White, No. 25 Cans  
**Spiced Peaches** 4 for \$1  
Crown Spray, 48 Oz. Bottle  
**Cranberry Juice** 85c  
Purity Baker, Fitted, 16 Oz. Pkg.  
**Dates** 49c  
Schilling's, 13 Oz. Can  
**Pumpkin Pie Spice** 39c  
Nestle's, Morsels, 2-Off Label  
**Chocolate Chips** 39c  
Behlman's, Ground, 1 Oz. Can  
**Sage** 19c  
Behlman's, Ground, 4 Oz. Can  
**Black Pepper** 43c  
Orleans, Cove, 5 Oz. Can  
**Oysters** 55c  
Kraft, 7 Oz. Jar  
**Marshmallow Creme** 23c  
Lucky Leaf, No. 303 Can  
**Crabapples** 35c  
None Such, 9 Oz. Pkg.  
**Mince Meat** 33c  
Harkbush's, Crystal White, 48 Oz. Bottle  
**Syrup** 39c  
**Wax Paper** 21c  
Pure Vegetable, 48 Oz. Bottle  
**Wesson Oil** 98c

**Produce for Thanksgiving**  
Chiquita, Golden Ripe  
**BANANAS** pound **12 1/2¢**  
California Geen Pascal  
**CELERY** pound **7¢**  
Fresh Ocean Spray, 1 pound package  
**CRANBERRIES** 1 pound pkg. **18¢**

**DOULBE S & H GREEN STAMPS**  
**TUES. & WED.** With \$2.50 Purchase or More

**Health & Beauty Aids**  
**Roaster Pan**  
Columbian Blue Enamel  
Holds 4 to 6 pound fowl  
Reg. 98c  
Retail **69¢**

**CHRISTMAS CARDS**  
Hawthorne, Prestige Assortment, Regular \$1.39 Value  
25 Cards per box 75c

**Christmas Wrapping Paper**  
Clea, 12 Ft. Long by 26 Inches Wide, Bright Assorted Colors and Designs in every pack  
See Box \$1.50 Value  
6 roll Foil Pak 75c

**TURKEY PLATTER**  
Earthenware, Decorated Designs Regular \$1.50 Value  
18 inch oval \$1.39

**Cake Plate and Cover**  
Fibro, Large Size Plate with Clear Plastic Cover, Reg. 1.50  
\$1.49

Doumak, Miniature, 5 oz. package  
**MARSHMALLOWS** 9c  
Dorkee's, Angel Flake, 14 oz. pkg.  
**COCONUT** 39c  
Paw Paw  
Apple Cider 1/2 gal. 49c gal. 79c  
Surgery Sam, No. 3 squat can  
**YAMS** 23c

Standard, 38 off label  
**KAISER** 25 ft. roll 25c  
Heavy Duty 25 ft. roll 59c  
Broiling Foil 20 ft. roll 39c

**CRISCO** 3 pounds with Coupon **69¢**

**SAMSONITE FOLDNIG CHAIRS** With \$15 Worth of Reg. Tapes Only **\$3.99**

Lowest Prices... Greatest Variety... always at...  
**Piggly Wiggly**

OUT OUR WAY

J. R. Williams



The Born Loser



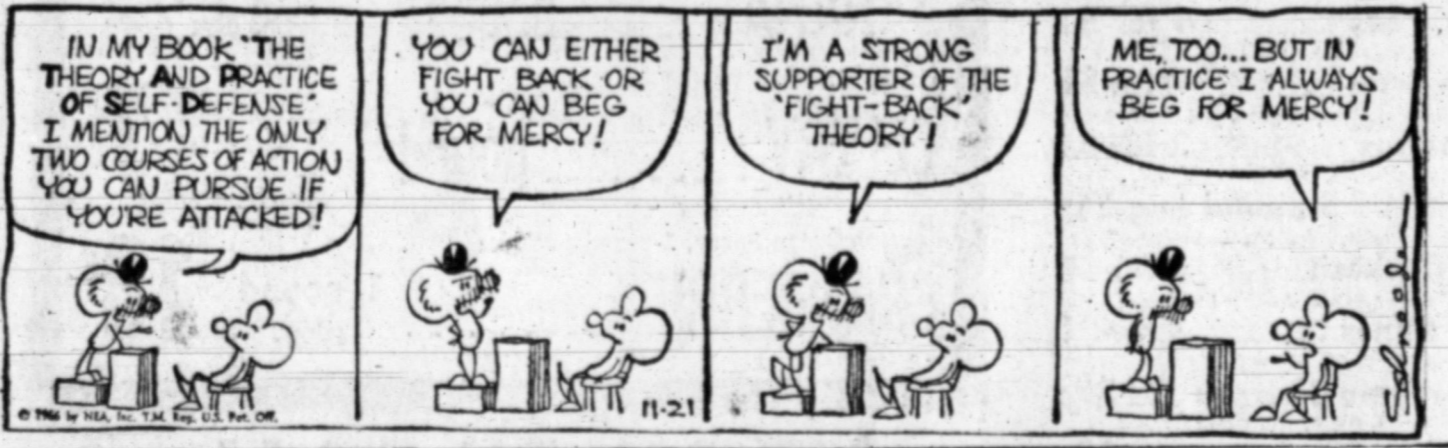
The Berrys



Bugs Bunny



Eek and Meeks



Captain Easy



Jackson Twins



WINTHROP



OUR BOARDING HOUSE

With Major Hoople Short Ribs



Blondie



Alley Oop



The Flintstones



The Willets



Mickey Finn



Priscilla's Pop



Debbie Deere



Joe Palooka



TIE S  
W  
By Unit  
Notre  
State pi  
East I  
decide t  
powerho  
60 minu  
football  
unsettled  
Who is  
Notre  
ranked  
Michiga  
No. 2 te  
the bef  
Stadium  
audience  
largest e  
season f  
pro.  
Michig  
match b  
the cer  
surpris  
more fu  
subbing  
Apisa, b  
four an  
Spartans  
from Ha  
field go  
The l  
thems  
moment  
first hal  
tutes C



GALE SAYERS' many movements in the football wars of the Chicago Bears take him "over the top" (upper left) and around the flank (upper right). He really gets military (bottom) following blockers in what resembles the Marine Corps charge to plant Old Glory atop Two Jims.

# Western Division Tightens

**By United Press International**  
The Baltimore Colts have long boasted they own the best No. 2 quarterback in pro football. Nobody would have argued with them Sunday—the quarterback sitting on the bench was a guy named Johnny Unitas.

Unitas, the greatest passer in the history of the National Football League, was pulled by coach Don Shula after the fired-up Detroit Lions came up with their fifth Unitas pass interception early in the third period en route to a stunning 20-14 upset that knocked the Colts out of a tie for first place in the NFL's Western Division.

Shula benched Unitas in favor of Gary Cuozzo, the player the Colts claim is football's best bench-riding quarterback, and Cuozzo led the Colts to two final-period touchdowns after Detroit had taken a 17-0 lead. But the Lions choked off the Colts the rest of the way and Baltimore fell to second with a 7-3 mark compared to defending champion Green Bay's 8-2 record.

**New Momentum**  
Explaining his decision to bench the player usually rated as the finest quarterback ever to play the position, Shula said, "Johnny wasn't hurt and there was nothing wrong with him but we had to get something going to change the momentum of the game and Gary has come through for us before."

Green Bay posted a 13-6 victory over Chicago while Dallas tied idle St. Louis for the top spot in the East at 7-2-1 by stopping Pittsburgh, 20-7. Cleveland remained in the chase in the East and set up a showdown with Dallas on Thanksgiving night by spilling Washington, 14-3. Cleveland is now 7-3.

In the other games, Atlanta beat New York 27-16 for its first victory, Philadelphia upset San Francisco, 5-34 and Los Angeles defeated Minnesota, 21-6.

About a month ago the only thing anybody in Detroit wanted to give Lion coach Harry

Gilmer was a one-way ticket out of town—but Sunday to the cheers of the entire team, Gilmer was presented with the game ball.

**Lion Defense Strong**  
The Lion defense played like it did when it used to be the Lion trademark and young quarterback Karl Sweetan was excellent again, tossing a 49-yard pass to Pat Studstill for the deciding touchdown. Bobby Felt ran for the first Lion TD and Garo Yepremian kicked two field goals.

Zeke Bratkowski, subbing for

injured Bart Starr, threw touchdown passes to Carroll Dale of six and 33 yards to give Green Bay its triumph over Chicago.

Dallas jumped on Jim (Cannonball) Butler's misfortunes to pick up 10 points in the second period and that sealed the victory over Pittsburgh. Pittsburgh was lining up for a punt when it was discovered they only had 10 players on the field. As Butler came running out to round out the squad the snap from center hit his leg and Dallas took over on the 30 and drove in for the TD.

The touchdown was on a three-yard run by Meredith when the Steelers had just 10 men on the field. Later in the period, Butler fumbled to set up a Cowboy field goal.

Leroy Kelly's 56-yard touchdown run and an alert defense gave Cleveland its triumph over Washington. Kelly's touchdown run came early in the second half to give the Browns a 14-0 lead and the Redskins were held to Charley Gogolak's 20-yard field goal the rest of the way. Randy Johnson threw three touchdown passes, two to former Giant Ernie Wheelwright, as the Falcons recorded their first NFL triumph with New York the victim. Johnson also ran three yards for a touchdown in the final period to put the game out of reach.

Los Angeles' victory over Minnesota was achieved on Bruce Gossett's four field goals and Bill Truax' fumble recovery in the end zone for a touchdown.

Trailing 20-7 at halftime, Philadelphia exploded for four touchdowns in the second half—three on King Hill's touchdown passes—to edge San Francisco.

# Tie Keeps Patriots Alive In AFL Race

**By United Press International**  
Mike Holovak doesn't view ties with scorn the way some others do.

While the fans echo their discontent another day over Notre Dame's decision to settle for a 10-10 tie with Michigan State in college football's "dream game" last Saturday, the Boston Patriots remain alive in the American Football League's Eastern Division because they made a similar choice.

Trailing the Kansas City Chiefs 27-24 Sunday with just 24 seconds remaining, Gino Cappelletti booted a 19-yard field goal to give the Patriots a tie and keep their title hopes flickering.

While Notre Dame's failure to try for a victory in the last minute may have cost the Irish a No. 1 ranking, the Patriots' failure to even tie would have practically eliminated them from contention.

**Hold Second Place**  
Since ties do not count in the standings, the Patriots remained in second place in the Eastern Division just one game behind the Buffalo Bills, who defeated the Houston Oilers 42-20. Oakland beat Denver 17-3 and New York whipped Miami 30-13 in other action.

Nick Buoniconti's interception

of a Len Dawson pass in the end zone with less than three minutes remaining set up the drive that resulted in Cappelletti's three-pointer.

Prior to Buoniconti's interception, Dawson had picked the Patriots' defense apart with his passing as he completed 25 of 38 passes for 324 yards while bringing the Chiefs back from a 17-10 halftime deficit to what looked like a sure victory.

of a Len Dawson pass in the end zone with less than three minutes remaining set up the drive that resulted in Cappelletti's three-pointer.

Prior to Buoniconti's interception, Dawson had picked the Patriots' defense apart with his passing as he completed 25 of 38 passes for 324 yards while bringing the Chiefs back from a 17-10 halftime deficit to what looked like a sure victory.

## TIE SETTLES NOTHING

# Who Really Is No. 1?

**By United Press International**  
Notre Dame and Michigan State played "the game" at East Lansing Saturday to decide the foremost collegiate powerhouse in the nation; after 60 minutes of bone crunching football, the question remains unsettled.

**Who is number one?**  
Notre Dame's Fighting Irish, ranked first nationally, and Michigan State, the country's No. 2 team, battled to a 10-10 tie before 80,000 at Spartan Stadium and a television audience of over 33 million, the largest ever to watch a regular season football game, college or pro.

Michigan State, hosting the match billed as the "game of the century," bolted to a surprising 10-0 lead with sophomore fullback Regis Cavender, subbing for the injured Bob Apisa, bursting over r from the four and Dick Kenney, the Spartans' barefoot placekicker from Hawaii, booming a 47-yard field goal in the second period.

The Irish, unable to untrack themselves in the early moments, hit paydirt late in the first half as sophomore substitutes Coley O'Brien and Bob

Gladioux hooked up on a 34-yard touchdown pass.

**Misses Chance**  
Joe Azzaro tied the score in the fourth period with a 28-yard field goal but missed the opportunity to make his 21st birthday a milestone by failing on a 41-yard attempt in the game.

Notre Dame threatened in the closing moments as safetyman Tom Schoen picked off two passes by Spartan quarterback Jimmy Rave, but the Irish were unable to capitalize.

With the ball near midfield and a minute to go, Notre Dame Coach Ara Parseghian decided to play for the tie by letting O'Brien run out the clock.

The Spartans went through the contest without the services of fullback Bob Apisa, out with an injured right knee, while Notre Dame was without Nick Eddy, an All America halfback candidate, and quarterback Terry Hanratty, knocked out of action in the first quarter with a shoulder separation.

In other games involving the top 10, Texas Tech upset sixth ranked Arkansas 21-16, and UCLA (No. 8) downed seventh

ranked Southern California 14-7.

**Five Idle**  
Alabama (No. 3), Nebraska (No. 4) (Georgia Tech No. 5), Georgia (No. 9) and Florida (No. 10) were idle.

UCLA, forced to go without star quarterback Gary Beban, out with a broken bone in his foot, took on crosstown rival Southern California and came out smelling like roses.

Senior Norman Dow, subbing for Beban, scored one touchdown and marched the Bruins to another in leading the underdog Uclans to an upset victory and prime position for their second straight Rose Bowl bid.

Gene Darr intercepted a third-quarter pass by Arkansas quarterback Jon Brittenum and rambled 20 yards for a score to lead Texas Tech to an upset victory over the Razorbacks. Quarterback John Seovell ran for one score and passed for another as the Red Raiders dropped Arkansas out of contention for the Sugar Bowl and into second place behind Southern Methodist in Southwest Conference standings.

UCLA (No. 8) downed seventh

## Palmer's 275 Wins Tournament

**HOUSTON (UPI)**—Arnold Palmer, whose diversified enterprises will gross about \$25 million this year, could add crystal ball gazing and maybe raise it to \$30 million.

Palmer, the soothsayer, predicted after the first round that a score of 275 would win the \$110,000 Houston Champions International. Palmer, the golfer, made sure the prediction came true by shooting a 275.

The nine under-par score gave Palmer the tournament title by one stroke over slender Gardner Dickinson. Palmer charged home in normal fashion with a two-under-par 69 to go with rounds of 70, 68, and 68.

His 12-foot birdie putt on No. 18 gave him the \$21,000 jackpot and left the 130-pound Dickinson with the \$13,000 second prize.

George Archer took the \$8,000 third money with 277 and Lionel Hebert and Julius Boros split fourth place with 278. Doug Sanders was fifth at 279 and sixth was a tie between Bert Yancey, Al Geiberger and Jackie Cupit.

Palmer, whose 52 tournament victories are the most of any golfer in history, set up the victory with birdie putts on the fifth and sixth holes. Then he ran off nine straight pars before bogeying No. 15 by missing a three-foot putt.

Arnie, the favorite of a gallery of 30,000, saved the round by knocking in a 25-footer for a par on No. 13.

The victory was Palmer's third in four weeks in as many countries. He and Jack Nicklaus won the Canada Cup in Japan last week and three weeks ago Arnie won the Australia Open.

## Nichols Paces Staff Selections

A woman has won the Pampa News Staff Selections for the first time, outguessing the staff "experts."

Circulation Manager Tommie Nichols, who has been on the staff selection team only five weeks, posted her best week ever with a 19-5 mark, with one of the 25 games ending in a tie.

Tommie missed on the Arkansas, Air Force, Clemson, Ohio St. and Iowa State games. In the season race General Manager Bill Power pulled ahead of Chico Rameriz by one game with Power missing only seven games.

The Staff picks this week will close out the season.

# "Even the Everglades couldn't make my test Jeep' Wagoneer say uncle."



Mechanix Illustrated's Tom McCallill goes on a turkey shoot with 'Jeep' Wagoneer.

During my road test of the new 4-wheel drive 'Jeep' Wagoneer for Mechanix Illustrated, I took it on a turkey shoot in the Florida Everglades. Getting there was half the fun. The Wagoneer cruised effortlessly as fast as the law allowed. Its power steering is smooth and easy; the ride soft as silk. But when I got there, I flipped it into 4-wheel drive and plunged into the muck of the swampland. This comfort-

able, cushy car plowed through like an assault vehicle. It was uncanny that a handsome, luxury station wagon like the Wagoneer could perform in the boon-docks with the same easy-going attitude it had on the highway. It's just about the perfect all-around car—good looking, comfortable and, in 'Jeep' 4-wheel drive, it'll go just about anywhere you've got a mind to take it. What more could you ask for?

You've got to drive it to believe it. See your 'Jeep' dealer. Check the Yellow Pages.

Hurry... Quantities Limited  
... Buy Yours Today

## Firestone Christmas Record Album

All NEW Volume 5  
Starring **JULIE ANDREWS**  
and **ANDRÉ PREVIN**

Choice of Hi-Fi or Stereo

# \$100

LIMIT ONE PER CUSTOMER

Additional Records...  
75-71 \$3.95 ea.  
Stereo \$4.95 ea.

Your choice of 2 fine quality Firestone NYLON CORD TIRES

## ANY SIZE ONE LOW PRICE!

NO MONEY DOWN

**Firestone NYLONAIRE**

• Long-wearing Firestone 577-9-777 rubber for extra mileage  
• Rugged nylon cord body for extra puncture resistant support  
• ANY SIZE LISTED

**TUBELESS BLACKWALLS**

|                     |                     |
|---------------------|---------------------|
| 7-10-14 (7-75-14)   | 8-10-14 (8-75-14)   |
| 8-10-14 (8-75-14)   | 9-10-14 (9-75-14)   |
| 9-10-14 (9-75-14)   | 10-10-14 (10-75-14) |
| 10-10-14 (10-75-14) | 11-10-14 (11-75-14) |

**\$12**

TUBELESS WHITEWALLS \$15  
Plus \$1.88 to \$2.09 per tire  
Fed. excise tax, depending on size, sales tax, and trade-in tire off your car

**Firestone SAFETY CHAMPION**

• High performance wrap-around tread for superior handling and greater stability at turnpike speeds  
• Same 4-ply-to-date sidewall styling  
• ANY SIZE LISTED

**TUBELESS BLACKWALLS**

|                     |                     |
|---------------------|---------------------|
| 8-20-15 (8-75-15)   | 9-20-15 (9-75-15)   |
| 9-20-15 (9-75-15)   | 10-20-15 (10-75-15) |
| 10-20-15 (10-75-15) | 11-20-15 (11-75-15) |
| 11-20-15 (11-75-15) | 12-20-15 (12-75-15) |

**\$20**

TUBELESS WHITEWALLS \$23  
Plus \$1.36 to \$2.57 per tire  
Fed. excise tax, depending on size, sales tax, and trade-in tire off your car

Priced as shown at Firestone Stores; competitively priced at Firestone Dealers and at all service stations displaying the Firestone sign.

**FRONT FLOOR MAT**

**\$144 Each**

**DOOR-TO-DOOR**

• Heavy duty molded rubber  
• Fits most cars—full contour  
• Black, white, red, blue, green

Limit 2 per customer  
Additional \$2.50 ea.

**FRONT END SPECIAL**

- Front Wheels Balanced
- Front Wheels Alignment
- Lubricate Brake Adjusters
- Inspect Grease Seals
- Brake Adjustment
- Repack Wheel Bearings

# \$9.95

Parts Extra if Needed Most American Cars

Shop Daily From 8 A.M. Till 6 P.M. 120 N. Gray

# Firestone

MO 4-8419



Is the Daily Deadline

For Classified Ads Saturday for Sunday edition 12 noon. This is also the deadline for a cancellation. Mainly About People Ads will be taken up to 11 a.m. daily and 2 p.m. Saturday for Sunday's edition.

ALL LINE ADS NOT RUN IN SUCCESSION WILL BE CHARGED BY THE DAY

We will be responsible for only 1 insertion. Should error appear in advertisement, please notify immediately.

CLASSIFIED RATES

1 line minimum 28c

1 day, per line 28c

2 days, per line per day 27c

3 days, per line per day 26c

4 days, per line per day 25c

5 days, per line per day 24c

6 days, per line per day 23c

7 days, per line per day 22c

14 days, per line per day 19c

30 days, per line per day 17c

10% Discount for Cash

Monthly Line Rate

No Copy Change

Per line per month \$3.50

Classified Display

Open Rate, net, per inch \$1.68

PRICES SUBJECT TO NO COPY CHANGE

2A Monuments 2A

MARKET MONUMENTS. Best material, lowest prices, phone Fort. MO 5-5622, 129 S. Faulkner.

ED FORAN representative for Osgood Monument Company has granite monuments. Prices below anyone's quoted price. 601 E. Harvester, Fairview Cemetery.

Special Notices 5

Pampa Lodge, 965, 430 W. Kingsmill, Thurs. 7:30 pm. P. Education reading No. one, 7:30 pm.

Notices to Bidders

NOTICE TO BIDDERS

Proposals addressed to the City Commission of the City of Pampa, Texas, received at the office of the City Secretary, City Hall, Pampa, Texas, until 3:30 o'clock, p.m. on the 13th day of December, 1956, and then publicly opened, read and considered at the City Commission of said City, the furnishing of all necessary materials, machinery, equipment, labor and things required for the construction of certain street improvements of the City of Pampa.

The proposed work is divided into two divisions. Division 1 covers curbs and gutters, valley gutters and paving to be done under the assessment program. Division 2 covers drainage structures and other miscellaneous work that must be done to complete the project but which is not an integral part of the work to be done under the assessment program. Bidders must submit a bid on both divisions. Since Division 1 and Division 2 are to be awarded to the same contractor, the low bid will be determined by comparing the total bids on both divisions. Bidders are requested under Division 1 to submit a bid on each of these alternatives. However, no bid will be required for future bids on these alternatives.

Under Alternative 1, the bidder shall submit a bid for the assessment program. Under Alternative 2, the bidder shall submit a bid for the assessment program and the Special Provisions of the Agreement. Under Alternative 3, the bidder shall submit a bid for the assessment program and the Special Provisions of the Agreement and the contract documents.

The City reserves the right to award contracts on the basis of the lowest bid which appears most advantageous to the City, to reject any and all bids, to waive any irregularities and to allow the correction of errors in the bids.

Bidders for the construction work must submit a satisfactory cashier's check or certified check, or a bid bond payable without recourse to the order of J. M. NATION, JR., Mayor, in the amount not less than five (5%) percent of the total bid based on Alternative 1 or Alternative 2, or ten (10%) percent of the total bid based on Alternative 3, depending on which of said alternatives the bidder proposes to use. The check or bond shall be submitted to the City Secretary at the time the bid is opened. The check or bond shall be returned to the bidder if the bid is rejected. The check or bond shall be retained by the City if the bid is accepted. The check or bond shall be returned to the bidder if the bid is rejected. The check or bond shall be retained by the City if the bid is accepted.

Special Notices

WHEELER School District Board of Education will accept bids on the following buildings on the Wheeler School Campus, said buildings to be completely removed from the premises within 30 days after the bid is accepted, with all debris moved off school premises.

BRUCE NURSERIES

Special: Featuring our new shade tree for our locality. Fall is the best time to plant. Come down and see our trees.

HOUSTON LUMBER CO.

WHITE HOUSE LUMBER CO.

ROBERT R. JONES CONTRACTOR AND BUILDER

PRICE T. SMITH, INC.

RALPH H. BAXTER CONTRACTOR AND BUILDER

HALL CONSTRUCTION

ARCHIE'S ALUMINUM FAB

57 Good Things to Eat

NEED HELP ONCE

REGISTERED NURSE WANTED

WASHER man wanted in the laundry room

FULLER BRUSH COMPANY

44 Cleaning & Pressing

64 Free Pick-up and Delivery

68 Household Goods

TEXAS FURNITURE Annex

B&R Quality Home Furniture

MACDONALD PLUMBING AND WRIGHT'S FURNITURE

47 Plowing, Yard Work 47

DRIVEWAY gravel, top soil, fill sand, fertilizers, Dump trucks and loaders for hire. J. E. McCORMACK, Jr. 214 S. Gray, MO 4-2955.

48 Trees & Shrubbery 48

EVERGREENS shrubs, rosebushes, etc. BUTLER NURSERY

BRUCE NURSERIES

THREE TRIMMING & REMOVAL

Trees Sawn and Trimmed

HOUSTON LUMBER CO.

PAMPA LUMBER CO.

WHITE HOUSE LUMBER CO.

50-B Builders 50-B

ROBERT R. JONES CONTRACTOR AND BUILDER

PRICE T. SMITH, INC.

RALPH H. BAXTER CONTRACTOR AND BUILDER

HALL CONSTRUCTION

51 Storm Doors, Windows 51

ARCHIE'S ALUMINUM FAB

57 Good Things to Eat

HIND Quarter 50c pound, 7/8 beef

NEED HELP ONCE

REGISTERED NURSE WANTED

WASHER man wanted in the laundry room

FULLER BRUSH COMPANY

44 Cleaning & Pressing

64 Free Pick-up and Delivery

68 Household Goods

TEXAS FURNITURE Annex

B&R Quality Home Furniture

70 Musical Instruments 70

MUSICAL INSTRUMENT RENTAL PLAN

WURLITZER PIANOS

71 Bicycles 71

78 Livestock 78

80 Pets 80

84 Office, Store Equip. 84

89 Wanted To Buy 89

92 Sleeping Rooms 92

95 Furnished Apartments 95

97 Furnished Houses 97

98 Unfurnished Houses 98

99 Unfurnished Houses 99

103 Real Estate For Sale 103

111 Out-of-Town Property 111

114 Trailer Houses 114

120 Automobiles for Sale 120

122 Motorcycles 122

124 Tires, Accessories 124

125 Boats & Accessories 125

126 Scrap Metal 126A

2 New Homes Open Daily

Stuck for Gift Ideas?

Do You Need a Larger Home?

2544 Aspen 2717 Aspen

By Powers Const. Co.

Men - Women - Couples Motel Careers Available

Men - Women - Couples Motel Careers Available

103 Real Estate For Sale 103

FOR SALE: 4 bedroom electric kitchen, carpeted, East Fraser. Call MO 5-5154 after 5 pm.

W. M. LANE REALTY

111 Out-of-Town Property 111

114 Trailer Houses 114

120 Automobiles for Sale 120

122 Motorcycles 122

124 Tires, Accessories 124

125 Boats & Accessories 125

126 Scrap Metal 126A

2 New Homes Open Daily

Stuck for Gift Ideas?

Do You Need a Larger Home?

2544 Aspen 2717 Aspen

By Powers Const. Co.

Men - Women - Couples Motel Careers Available

Men - Women - Couples Motel Careers Available

THE PAMPA DAILY NEWS

MONDAY, NOVEMBER 21, 1956

103 Real Estate For Sale 103

111 Out-of-Town Property 111

114 Trailer Houses 114

120 Automobiles for Sale 120

122 Motorcycles 122

124 Tires, Accessories 124

125 Boats & Accessories 125

126 Scrap Metal 126A

2 New Homes Open Daily

Stuck for Gift Ideas?

Do You Need a Larger Home?

2544 Aspen 2717 Aspen

By Powers Const. Co.

Men - Women - Couples Motel Careers Available

Men - Women - Couples Motel Careers Available

103 Real Estate For Sale 103

FOR SALE: 4 bedroom electric kitchen, carpeted, East Fraser. Call MO 5-5154 after 5 pm.

W. M. LANE REALTY

111 Out-of-Town Property 111

114 Trailer Houses 114

120 Automobiles for Sale 120

122 Motorcycles 122

124 Tires, Accessories 124

125 Boats & Accessories 125

126 Scrap Metal 126A

2 New Homes Open Daily

Stuck for Gift Ideas?

Do You Need a Larger Home?

2544 Aspen 2717 Aspen

By Powers Const. Co.

Men - Women - Couples Motel Careers Available

Men - Women - Couples Motel Careers Available

103 Real Estate For Sale 103

FOR SALE: 4 bedroom electric kitchen, carpeted, East Fraser. Call MO 5-5154 after 5 pm.

W. M. LANE REALTY

111 Out-of-Town Property 111

114 Trailer Houses 114

120 Automobiles for Sale 120

122 Motorcycles 122

124 Tires, Accessories 124

125 Boats & Accessories 125

126 Scrap Metal 126A

2 New Homes Open Daily

Stuck for Gift Ideas?

Do You Need a Larger Home?

2544 Aspen 2717 Aspen

By Powers Const. Co.

Men - Women - Couples Motel Careers Available

Men - Women - Couples Motel Careers Available

WONDER WHERE TO FIND... a buyer for your car, or a sewing machine to buy, or someone to clean your home? Just read and use our...

DAILY NEWS CLASSIFIED ADS Phone 4-2525

CARPET QUALITY CARPETS LOWEST PRICES CAM TV AND FURNITURE

32B Upholstering 32B BRUMMETT'S UPHOLSTERY

34 Radio & Television 34 UNITED TV SERVICE

35 Plumbing & Heating 35 MONTGOMERY WARD

36 Appliances 36 DES MOINES SHOP

39 Painting 39 FOR PAINTING

HAVE YOU TRIED A CLASSIFIED AD? CALL MO 4-2525

35 Plumbing & Heating 35 MONTGOMERY WARD

36 Appliances 36 DES MOINES SHOP

39 Painting 39 FOR PAINTING

44 Concrete Work 44

32B Upholstering 32B BRUMMETT'S UPHOLSTERY

34 Radio & Television 34 UNITED TV SERVICE

35 Plumbing & Heating 35 MONTGOMERY WARD

36 Appliances 36 DES MOINES SHOP

39 Painting 39 FOR PAINTING

32B Upholstering 32B BRUMMETT'S UPHOLSTERY

34 Radio & Television 34 UNITED TV SERVICE

35 Plumbing & Heating 35 MONTGOMERY WARD

36 Appliances 36 DES MOINES SHOP

39 Painting 39 FOR PAINTING

32B Upholstering 32B BRUMMETT'S UPHOLSTERY

34 Radio & Television 34 UNITED TV SERVICE

35 Plumbing & Heating 35 MONTGOMERY WARD

36 Appliances 36 DES MOINES SHOP

39 Painting 39 FOR PAINTING

32B Upholstering 32B BRUMMETT'S UPHOLSTERY

34 Radio & Television 34 UNITED TV SERVICE

35 Plumbing & Heating 35 MONTGOMERY WARD

36 Appliances 36 DES MOINES SHOP

39 Painting 39 FOR PAINTING

32B Upholstering 32B BRUMMETT'S UPHOLSTERY

34 Radio & Television 34 UNITED TV SERVICE

35 Plumbing & Heating 35 MONTGOMERY WARD

36 Appliances 36 DES MOINES SHOP

39 Painting 39 FOR PAINTING

32B Upholstering 32B BRUMMETT'S UPHOLSTERY

34 Radio & Television 34 UNITED TV SERVICE

35 Plumbing & Heating 35 MONTGOMERY WARD

36 Appliances 36 DES MOINES SHOP

39 Painting 39 FOR PAINTING

CLASSIFIED ADVERTISING HEADLINES WEEK DAYS 8:00 A.M. TO 9:00 A.M. SATURDAY FOR SUNDAY 8:00 A.M. TO 12 NOON

CLASSIFIED ADVERTISING HEADLINES WEEK DAYS 8:00 A.M. TO 9:00 A.M. SATURDAY FOR SUNDAY 8:00 A.M. TO 12 NOON

CLASSIFIED ADVERTISING HEADLINES WEEK DAYS 8:00 A.M. TO 9:00 A.M. SATURDAY FOR SUNDAY 8:00 A.M. TO 12 NOON

CLASSIFIED ADVERTISING HEADLINES WEEK DAYS 8:00 A.M. TO 9:00 A.M. SATURDAY FOR SUNDAY 8:00 A.M. TO 12 NOON

CLASSIFIED ADVERTISING HEADLINES WEEK DAYS 8:00 A.M. TO 9:00 A.M. SATURDAY FOR SUNDAY 8:00 A.M. TO 12 NOON

CLASSIFIED ADVERTISING HEADLINES WEEK DAYS 8:00 A.M. TO 9:00 A.M. SATURDAY FOR SUNDAY 8:00 A.M. TO 12 NOON

CLASSIFIED ADVERTISING HEADLINES WEEK DAYS 8:00 A.M. TO 9:00 A.M. SATURDAY FOR SUNDAY 8:00 A.M. TO 12 NOON

CLASSIFIED ADVERTISING HEADLINES WEEK DAYS 8:00 A.M. TO 9:00 A.M. SATURDAY FOR SUNDAY 8:00 A.M. TO 12 NOON

CLASSIFIED ADVERTISING HEADLINES WEEK DAYS 8:00 A.M. TO 9:00 A.M. SATURDAY FOR SUNDAY 8:00 A.M. TO 12 NOON

CLASSIFIED ADVERTISING HEADLINES WEEK DAYS 8:00 A.M. TO 9:00 A.M. SATURDAY FOR SUNDAY 8:00 A.M. TO 12 NOON

CLASSIFIED ADVERTISING HEADLINES WEEK DAYS 8:00 A.M. TO 9:00 A.M. SATURDAY FOR SUNDAY 8:00 A.M. TO 12 NOON

CLASSIFIED ADVERTISING HEADLINES WEEK DAYS 8:00 A.M. TO 9:00 A.M. SATURDAY FOR SUNDAY 8:00 A.M. TO 12 NOON

CLASSIFIED ADVERTISING HEADLINES WEEK DAYS 8:00 A.M. TO 9:00 A.M. SATURDAY FOR SUNDAY 8:00 A.M. TO 12 NOON

CLASSIFIED ADVERTISING HEADLINES WEEK DAYS 8:00 A.M. TO 9:00 A.M. SATURDAY FOR SUNDAY 8:00 A.M. TO 12 NOON

CLASSIFIED ADVERTISING HEADLINES WEEK DAYS 8:00 A.M. TO 9:00 A.M. SATURDAY FOR SUNDAY 8:00 A.M. TO 12 NOON

CLASSIFIED ADVERTISING HEADLINES WEEK DAYS 8:00 A.M. TO 9:00 A.M. SATURDAY FOR SUNDAY 8:00 A.M. TO 12 NOON

# Artist Captures Kennedy's Warmth



Daily News Photo

**NEW YORKER** by birth, but a Texan at heart, Elaine deKooning, commissioned to do portraits of the late John F. Kennedy for the Truman Museum and the Kennedy Library, has been in the Panhandle this past week doing portraits and landscapes. While in Pampa, she is a houseguest of Mr. and Mrs. George B. Cree Jr.

By DORIS E. WILSON  
News Staff Writer  
"I always thought of John F. Kennedy in bright colors with his light auburn hair and deep violet eyes... such a brilliant person, so I painted him that way," said attractive artist, auburn-haired Elaine de Kooning of New York City, whose heart really belongs to Texas.  
"And he always seemed so free... so I always drew him in free strokes."  
Mrs. de Kooning is not sure why she was commissioned to do a portrait of the late John F. Kennedy. She had a one-man showing of portraits in New York City, which Mrs. Kennedy attended. She bought several charcoal drawings of the late president for herself and her

children. "One she particularly liked," Mrs. de Kooning said, "was of the president looking down at some papers in his lap."  
"But someone else in Washington must have attended the showing and liked what they saw. They wanted someone with an avant garde touch rather than the usual stilted portraiture work."  
Though this writer has not seen the portraits chosen for the Truman Museum and the Kennedy Library, we did see other portrait work by de Kooning and can attest to the warmth of her work and the ability to capture the personality of the person she is painting.  
After being asked to do the Kennedy portrait, Mrs. de Kooning studied him and did

several sketches during a Christmas vacation in Palm Beach, Fla. in December, 1962 and January, 1963. For the next several months, she did hundreds of various types of paintings from memory trying to capture the spirit and personality of the man who is known universally. She felt the accepted portrait must have the qualities that people all over the world saw in him.  
For eight months, she did nothing but work on Kennedy sketches. In August 1963, she felt she had lost his image, so she went to Washington to see him again and refresh her memory. The visit crystallized the Kennedy ideal for her. She finished the portraits finally selected by the Truman and Kennedy Libraries.

From the hundreds of Kennedy sketches and painting, there is one with which Mrs. de Kooning will not part. It's a life-size portrait of the late president dressed in tee-shirt, sailing pants and sneakers. "Perhaps sometime, I will sell it, but not just now."  
When news came of the president's assassination, the artist put her brushes away for six months. "I had been working on the Kennedy studies for almost a year." Instead, she turned to sculpting and did a

bronze bust of the slain president.  
For the past week, she has been painting "Texas" wearing an orange sweat-shirt imprinted with the name "Texas." As a guest of Mr. and Mrs. George B. Cree Jr., she has been staying at their ranch in Oklahoma painting the red-clay canyons dotted with evergreens and blue lakes.  
Sometime this week, she plans to return to her home on Shelter Island near Manhattan Island, N.Y.

GET BETTER GAS MILEAGE  
By adding Motor Formula 9 to your oil  
HALL TIRE CO.—Distributor  
700 W. Foster  
MO 8-5768

Ants have been living in miniature cities for more than 80 million years.

Today's average American lives 22 years longer than in 1900.

## This Week In Business

**NEW YORK (UPI)**—The American people got the official word this week that the economy now has "cooled off" satisfactorily.  
The word came from Treasury Secretary Henry Fowler, but he still had no verdict on whether the Johnson administration will ask for a federal tax increase in the new year. President Johnson's economic advisers were reported to have asked him to make a decision on the matter by Dec. 10 but Fowler said he personally didn't think a decision by then was absolutely necessary.  
The week's business news contained a number of items to support Fowler's view that the economy really has cooled down. The stock market lost the buoyancy of the previous two weeks and slipped badly in the closing days of this week. Indeed, the electronics and glamor stocks were under heavy pressure on Thursday that brought big price breaks.

**CALL MO 4-6771**  
**KENTUCKY FRIED CHICKEN**  
For Your Thanksgiving Day Pies  
Largest Variety In Town

|             |                 |
|-------------|-----------------|
| Dutch Apple | Chocolate Cream |
| Apple       | Cherry Cream    |
| Mincemeat   | Coconut Cream   |
| Pumpkin     | Lemon Cream     |
| Cherry      | Pineapple Cream |
| Pecan       |                 |
| Lemon Chess |                 |

Order Now — We Will Be Closed Thanksgiving  
**Kentucky Fried Chicken**  
2100 N. Hobart MO 4-6771

Read The News Classified Ads

**GOOD YEAR**  
**LAST TWO WEEKS**  
**OGDEN & SON**  
**STOCK REDUCTION**  
**SALE**

**RESPONSE HAS BEEN GOOD, BUT**  
**GOOD SELECTION STILL AVAILABLE**

**Boy's Bicycle** \$25.00  
Regular \$43.95  
**FEW LEFT**  
Comparable Savings Other Bikes & Trikes

**PIONEER INDUSTRY**  
**A.R.A.**  
**Car Air Conditioners**  
**DEALER'S COST**

**TIRES**  
**TIRES**  
**TIRES**  
**TIRES**  
**TIRES**  
**TIRES**

Original Equipment Type  
**MUFFLERS**  
\$6.95  
1960-65 FORDS  
1955-64 CHEV.

**BOATS** **MOTORS**  
**Marine Supplies**  
**Shop Now For Christmas**  
**PRE-WINTER SPECIAL**

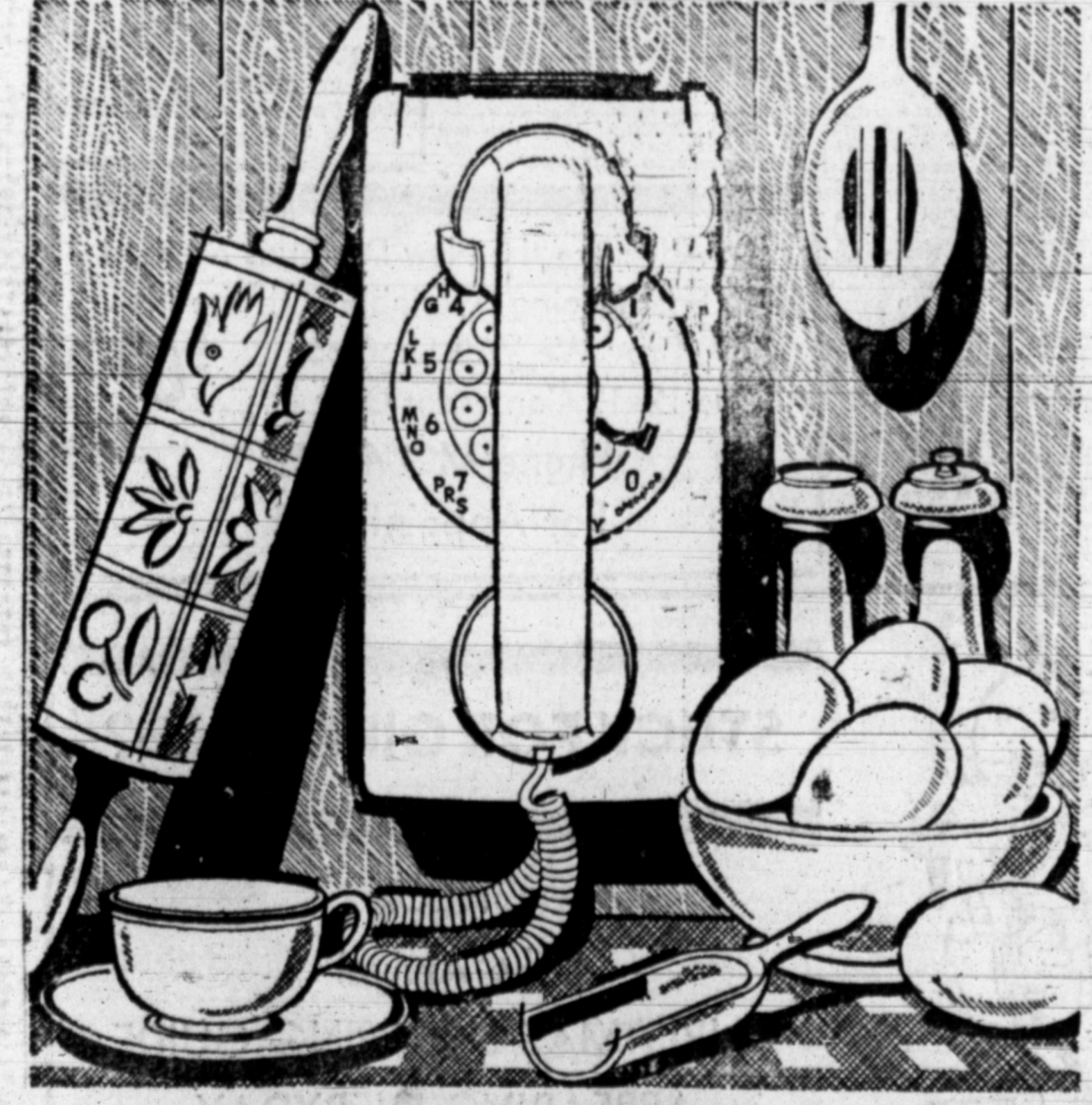
- Pack Front Wheel Bearings
- Complete Chassis Lubrication
- Check All Hoses
- Check Radiator Pressure Cap
- Check Antifreeze
- Check Fan Belts
- Check Exhaust System
- Check Air Filter
- Check Washer Fluid

All This for Only... **\$3.99**

**GOODYEAR**  
**Christmas Record** \$1.00  
ALBUM NO. 6

**GOODYEAR**  
**LIFETIME GUARANTEE**  
Slightly Higher

**OGDEN & SON**  
**501 W. FOSTER**



## handy

In the kitchen, workshop or anywhere. Wall-mounted extension telephones are great space-savers (save you time and steps, too). And they come in beautiful colors to compliment any decor. Cost a lot? No. Nowadays you have two phones for just a fraction more than one.

**SOUTHWESTERN BELL**