

istry
ed
The nar-
olling at
and has
outout of
last June,
reports
car and
s were
showroom
odels and
reaction
statistical
assembly
ck plants
urday to
id. Total
calendar
running
Ward's
on was
d 33,397
for this
s 168,975
in Yel-
ark has
since it
fied Ads
SAVE
MONEY
SHOP
LUES
TV
TV
L.S.3361
cial
ING
Com-
New-
ment
- No
er
75
R
RS
DM
M
K
CO.
5-5755
Z
ER
RS
5-5533



(Daily News Staff Photo)
PEDESTRIAN SAFETY—A Pedestrian Safety Citation for 1965 was presented to Chief of Police Jim Conner by Charlie Burton of the Panhandle Plains Auto Club yesterday afternoon in recognition of Pampa's record for no pedestrian deaths for the past seven years.

Forces Tighten Fighting Ring

SAIGON (UPI)—American, South Korean and South Vietnamese forces tightened a giant ring today around battered remnants of a North Vietnamese force fighting with its back to the South China Sea. While the allies closed the noose, U.S. ships patrolled offshore and cut off possible escape in junks. Their guns ripped into the enemy positions. U.S. officials said the new action boosted to 353 the number of enemy killed in three days of bitter fighting that frustrated a Communist offensive in the strategically important Central Highlands 290 miles northeast of Saigon. The fighting raged two weeks of scattered skirmishes against the North Vietnamese regulars—elements of Hanoi's 601 division—during which 744 Communists have been killed. In addition, 386 prisoners have been captured.

Mansfield Attacks Eisenhowers 'Any Action' Statement

WASHINGTON (UPI)—Senate Democratic Leader Mike Mansfield and former President Eisenhower are at odds over Eisenhower's call for "any action to win" in Viet Nam, perhaps even atomic weapons. The "win" statement came under Mansfield's attack in the Senate Monday, about the time Eisenhower was speaking to a news conference in downtown Washington. Mansfield's hair was raised by Eisenhower's saying he would not "automatically preclude anything," including the use of nuclear arms, to shorten them Viet Nam war. Of all people, Mansfield said, Eisenhower should not be adding to President Johnson's burdens when the President "needs and deserves" the trust and confidence of all Americans. He said in an interview that he thought Eisenhower's statement was unnecessary adding to Johnson's headaches. "No one should understand what those burdens and responsibilities entail more than President Eisenhower, who occupied that position for eight years," Mansfield said. "Furthermore, he has been kept very well advised by (See MANSFIELD, Page 3)

Soviets Denounce Red Chinese Split

MOSCOW (UPI)—A key Soviet newspaper today published a call for a world Communist summit meeting to deliver a "resolute rebuff" and open condemnation of Communist China's maverick policies. The appeal for a united Communist front against Peking's "splitting activities" appeared in the Soviet Communist party newspaper Pravda in an article authored by the relatively obscure Communist party of Sudan. But the fact that it was published in Pravda, the official voice of the Kremlin, was seen as a renewed Soviet interest in convening such a conclave. Previous Soviet efforts in 1964 and 1965 to organize a summit meeting to condemn Communist China failed due to the hesitancy of other Communist parties to make an open break with China. A preparatory meeting of 19 Communist parties out of the 24 invited in March, 1965 approved the principle of more Communist consultations, but ad-



The Pampa Daily News

Serving The Top O' Texas 59 Years

VOL. 59 NO. 157

THE PAMPA DAILY NEWS, TUESDAY, OCTOBER 4, 1966

(14 PAGES TODAY)

Week Days 4c
Sundays 15c

Administration To Give GE Negotiators 'Viet Course'

Company's Role May Impress Bargainers

WASHINGTON (UPI)—The Johnson administration planned a cram course on Viet Nam today for negotiators in the General Electric dispute before sending them back to the bargaining table in search of a contract agreement. If that fails to impress both sides of the "vital importance of continued production at General Electric," the administration will consider invoking the Taft-Hartley Act to fend off a threatened nationwide strike. GE is the sole producer of jet engines used in Navy, Marine and Air Force F4 Phantom fighters and RF4 reconnaissance planes, as well as the T58 turbine engines for four service helicopters. It also produces machine guns and battlefield radar equipment.

Gray County To Get \$189,000 On Improved Roads

The Texas Highway Commission today approved the spending of \$189,000 for improvement of the farm to market road system in Gray County during 1967. District Engineer Charles W. Smith of Amarillo said. He stated a total of 6.5 highway miles in the county will be involved. Work will be under the supervision of G. K. Reading, supervising resident engineer. The work is part of the Highway Commission's combined 1967 Farm to Market Road Improvement and State Highway Safety and Betterment Program. This farm-to-market road improvement project is on FM 749, from State 273 South of Pampa to Bowers City, a distance of 6.5 miles - widening, additional base and resurfacing. Statewide, the program calls for the improvement of 5,587 miles at an estimated construction cost of \$39.9 million and right of way cost of \$161.5 thousand. Work will include 912 projects in 215 of Texas' 254 counties. Three hundred and ninety projects are on State and U.S. highways in 170 counties and 322 projects are on farm to market roads in 179 counties. Herbert C. Peary, Jr., chairman of the Highway Commission. (See ROADS, Page 3)

Temperature Drops to 38

By United Press International
The temperature dropped to 38 degrees today at the top of the Texas Panhandle. The cold front that brought the chilliest temperatures of the season pushed on into North Central Texas toward the middle of the state. As the front pushed on southward, it set off showers and thundershowers from extreme Northeast Texas westward over most of North Central Texas and southwestward into the Pecos Valley. Southeast Texas reported fog. While weather was chilly north of the front, it was warm and humid south of it. Waco, for instance, had an overnight low of 78 degrees—40 degrees warmer overnight than it was in Dalhart, which had a low of 38 degrees. The front was due to push slowly south and reach the upper Texas coast Wednesday, with the rain moving on north-eastward and skies clearing in Northwest and North Central Texas Wednesday. Rain was expected to continue in southern sections of the state into Wednesday.

Weather

PAMPA AND VICINITY—Partly cloudy through Wednesday. Cooler tonight with warmer trend Wednesday afternoon. Low tonight near 40. High Wednesday near 70. Winds from east 18-20 mph. Outlook for Thursday, partly cloudy and mild.

Cabot Exec Returns To Former Hometown For Chamber Luncheon

One of Pampa's well-known former residents was guest speaker at the chamber of commerce membership luncheon Monday noon in the Starlight Room of the Coronado Inn. Louis Cabot, now of Boston, Mass., made his home in Pampa in 1948 before ascending the ladder leading to the presidency of the Cabot Corporation. He said he always enjoys returning to Pampa and that 1948 was one of the "happiest years for me and my wife, Mary Lou." "Pampa today," he said, "still has many of the same things it had then. Texas climate... Texas hospitality... prairie and oil fields... the Harvesters... Colonel C. P. Buckler and Buck Burdette," Cabot explained. "Of course, it has lost the Oilers Baseball team... M. K. Brown... the Schneider Hotel. But it has added many new things... the Coronado... lots of lovely new homes... Celanese... the new hospital... and it still has its wonderful people and wonderful friends." "At Cabot," he continued, "much is the same, too, but much that has also changed. In 1948, we had eight channel plants in the Southwest and four furnace plants. Now we have only one channel plant, but still four furnace plants." "The Southwest capacity then was about 290 million pounds of carbon black; today we have 730 million pounds; about two and half times as much," Cabot said. "This is a healthy growth by anyone's yardstick. Cabot has gone from number three spot number one as producers of carbon black." In concluding remarks, Cabot pointed out that the corporation has a total employment in the Panhandle of 1,047 people with a \$9½ million payroll. Cabot introduced L. C. Peters, Cabot's newest addition to its executive staff in the Boston office. In a special presentation, Norman Henry, chamber president, made an award for outstanding community service to the Citizens National Bank for providing time and temperature service to the citizens of Pampa for the past five years. Approximately 2,500,000 calls have been answered up to July 23, 1966, so read the plaque inscription. Accepting the plaque for the bank, Max Hiatt, vice president said that since school has started between 2200 and 2500 calls per day are answered by dialing 5-5701. (See Related Picture, Page 3)

Southeast Florida In Path of Inez

MIAMI (UPI)—Killer hurricane Inez shifted course suddenly before dawn today to throw its 85-mph-an-hour winds into populous southeast Florida. The elliptical-shaped center of the storm was aimed on a westerly track toward Key Largo, largest of the Florida Keys. The 1.5 million residents of the greater Miami area were in the path of the storm's strong northeast side. Caught in the vortex of the hurricane before it hit land was a disabled tanker with 38 men aboard. A Coast Guard cutter fought through 35 foot waves and the center of the hurricane in the Gulf Stream to reach the 628 foot boat. Hurricane warnings went up at 3 a.m. CST from Fort Lauderdale southward to Marathon in the Keys and at Flamingo on the extreme southern tip of the peninsula. At 6 a.m. CST the hurricane was centered about 45 miles southeast of Miami near latitude 25.3 north, longitude 79.6 west. It was moving on a path slightly south of west at about 7 to 8 m.p.h. The before-dawn hurricane warnings caught most south Floridians by surprise because they went to bed while the hurricane was 100 miles offshore and drifting toward the north. But they sprang into action immediately with well prepared disaster plans. All school sessions were cancelled and many of the buildings turned into emergency shelters by the Red Cross which already had disaster teams in the area. Six major airlines cancelled flight operations in south Florida and the huge Miami International Airport began ordering planes northward and battered down its installations. Homestead Air Force Base,

Selective Service May Tap Men in 26-34 Bracket

WASHINGTON (UPI)—The Selective Service, apparently feeling a manpower pinch, may draft men in the 26-through-34 age bracket. About 70,000 have been ordered to take physicals. A service spokesman said Monday those affected were single men and married men without children who had been deferred at age 26, and then had their liability extended to age 35. At the end of August, the spokesman said, there were 69,933 men in this category. They are already classified '1A' but so far it has not been necessary to draft them. "It might be necessary to call some now and we want to know how many are available," the spokesman said. The addition of some 70,000 men in this category would bring to about 110,000 the men added to the manpower pool for the draft recently. Under Defense Secretary Robert S. McNamara's plan announced in August, to accept men who previously failed the military physical or mental tests, the pool was enlarged for this year by 40,000. Instructions to have physicals run on the 26-34 age group were sent to state Selective Service directors a week ago, the spokesman said. He estimated that at least half the men in the group probably would be rejected after taking the medical exams. That is the current rejection rate for men under 26, he said. The 70,000 to be examined now are men who were deferred, for example, to attend college, and when reaching the age of 26 had their liability for the draft continued to 35. This was provided for in the Selective Service Act but men in this category have stood next to the bottom in the draft system's order of call. The spokesman said there are 14.3 million men who are over the age of liability for the draft under the present act.

Gray County To Get \$189,000 On Improved Roads

The Texas Highway Commission today approved the spending of \$189,000 for improvement of the farm to market road system in Gray County during 1967. District Engineer Charles W. Smith of Amarillo said. He stated a total of 6.5 highway miles in the county will be involved. Work will be under the supervision of G. K. Reading, supervising resident engineer. The work is part of the Highway Commission's combined 1967 Farm to Market Road Improvement and State Highway Safety and Betterment Program. This farm-to-market road improvement project is on FM 749, from State 273 South of Pampa to Bowers City, a distance of 6.5 miles - widening, additional base and resurfacing. Statewide, the program calls for the improvement of 5,587 miles at an estimated construction cost of \$39.9 million and right of way cost of \$161.5 thousand. Work will include 912 projects in 215 of Texas' 254 counties. Three hundred and ninety projects are on State and U.S. highways in 170 counties and 322 projects are on farm to market roads in 179 counties. Herbert C. Peary, Jr., chairman of the Highway Commission. (See ROADS, Page 3)

Junior College Plans Reactivated by Board

Steps toward reactivating the Pampa Junior College District were taken by the board of trustees of the Pampa Independent School District at a meeting held this morning in the Emerald Room of Coronado Inn. The board approved a resolution of reactivation for the purpose of immediately commencing adult night school classes and to immediately make application for a vocational and technical institute. The board designated Dr. John Damron, president; Cameron Marsh, dean and Mrs. Dona Cornutt as director of admissions of the Pampa Junior College District. Dr. Damron said the long-range plan will enable the development of academic as well as vocational classes. "It is to be realized," he said "that students will not be allowed to transfer credits at the present time. However, it is hoped that this can soon be done. The adult night classes will be offered for self-improvement, advanced placement or other junior or senior colleges." The resolution approved by the board this morning reads: Be it resolved that the Board of Trustees of the Pampa Independent School District and of the Pampa Junior College District, hereby activate the Pampa Junior College District (as legally constituted in an election by qualified voters of the Pampa Independent School District in the 1944 election) as the Pampa Independent School District.

Georgia Negro Eyes Congress

ATLANTA (UPI)—Georgia's first Negro state senator in modern times was among the possible candidates today for the congressional seat being vacated by Rep. Charles Longstreet Welter rather than support segregationist Lester Maddox, the Democratic nominee for governor. "I am seriously considering making this race," said Sen. Leroy Johnson, who said 33 percent of the people in Welter's Fifth (Atlanta) District are Negroes. Johnson was elected to the Georgia Senate four years ago. Also mentioned as potential candidates were former Atlanta Mayor William B. Hartsfield and Wyman C. Lowe, Welter's closest challenger in the Democratic primary. The Fulton (Atlanta) County Democratic Executive Committee is expected to meet this week to choose a nominee to oppose Republican candidate Fletcher Thompson in the general election. Welter, a soft-spoken descendant of Confederate Gen. James Longstreet, withdrew as a candidate for a third term in Congress Monday with the statement he could not "violate my principles" by supporting Maddox.



SPECIAL RECOGNITION was given Mrs. Richard Kastein, center, 710 N. Russell, at Highland General Hospital by the U.S. Army Recruiting Service Monday. Making a presentation for outstanding support of the Army recruiting program is Master Sergeant Avery Sechrest, area zone commander, and Sergeant First Class Jaunita Roberts, area Women's Corps counselor. (Daily News Staff Photo)

Television Programs

Channel 4 KGNO-TV, WEDNESDAY

8:00 The Match Game 8:15 Weather 10:00 News
 8:30 Mike Douglas 8:30 Lamp at Midnight 10:15 Sports
 8:30 Hueyenne 8:30 Lardo 10:30 Tonight Show
 8:30 Huxley Brinkley 8:30 Hope Show
 8:30 News 8:30 I Spy

CHANNEL 4 THURSDAY

8:30 Amarillo College 8:30 Concentration 11:15 Ruth Brent
 9:00 Today Show 10:00 Chain Letter 11:30 Let's Make A Deal
 9:00 News 10:30 Showdown 11:35 NBC News
 9:00 Today Show 11:00 Jeopardy 1:00 Days of Our Lives
 9:15 Social Security 11:30 Swinging Country 1:30 The Doctors
 9:30 Today Show 11:35 TV NEWS 2 1:35 Another World
 1:00 Eye Guess 12:00 News 2:30 You Don't Say
 1:25 NBC News 12:10 Weather

Channel 7 KVII-TV, WEDNESDAY

7:00 Nurse Hospitals 4:00 News 8:00 The Man Who
 7:00 Never Too Young 5:15 News 8:30 Never Was
 7:25 Arizona Family 8:25 Weather 9:00 ABC Stage 47
 7:30 Beauty Spot 8:30 Cisco Kid 10:00 News
 8:30 Highway Patrol 8:00 Rifleman 10:10 Weather
 8:40 Mr. Western 8:30 Batman 10:15 The World of Agr
 8:50 Where The 7:00 The Monroe Business

CHANNEL 7 THURSDAY

8:55 Grand Ole Opry 10:00 Supermarket 11:30 Father Knows Best
 9:25 Just For Today 11:00 Sweep 12:00 Ben Casey
 9:30 Jack La Lane 10:30 The Dating Game 1:00 Confidential for
 11:00 Donna Reed 1:10 A Time For Us
 1:55 Lisa Howard Women's News

Channel 10 KFDA-TV, WEDNESDAY

8:00 The Secret Storm 8:00 News 9:00 Danny Kaye
 8:30 The Westwinds 8:30 Weather 9:00 News
 8:30 Mr. Jimikin 8:30 Lost In Space 10:10 Weather Report
 8:30 Wood 7:30 Beverly Hillsbillies 10:25 Background
 8:30 Woodpecker 8:00 Green Acres 10:30 Big Flicker
 8:30 Wells Fargo 8:30 Gomer Pyle 10:55 News
 9:30 CBS News 11:00 Gomer Pyle 11:00 Big Flicker

CHANNEL 10 THURSDAY

8:27 Religion 8:00 Capt. Kangaroo 11:45 Guiding Light
 8:30 Amarillo College 9:25 Jack Lalanne 11:55 News
 9:00 Jack Tompkins 9:30 The Rat Patrol 12:10 Dan True
 9:00 News 10:00 News 12:10 News
 9:00 Weather-News 10:30 Dick Van Dyke 12:30 As World Turns
 9:00 Local Events 10:30 Love of Life 1:00 Pass Word
 9:00 CBS Morning News 11:30 Search for Tomorrow 1:30 To Tell The Truth
 1:30 CBS News 2:15 CBS News 2:30 Edge of Night

Television in Review

By RICK DU BROW

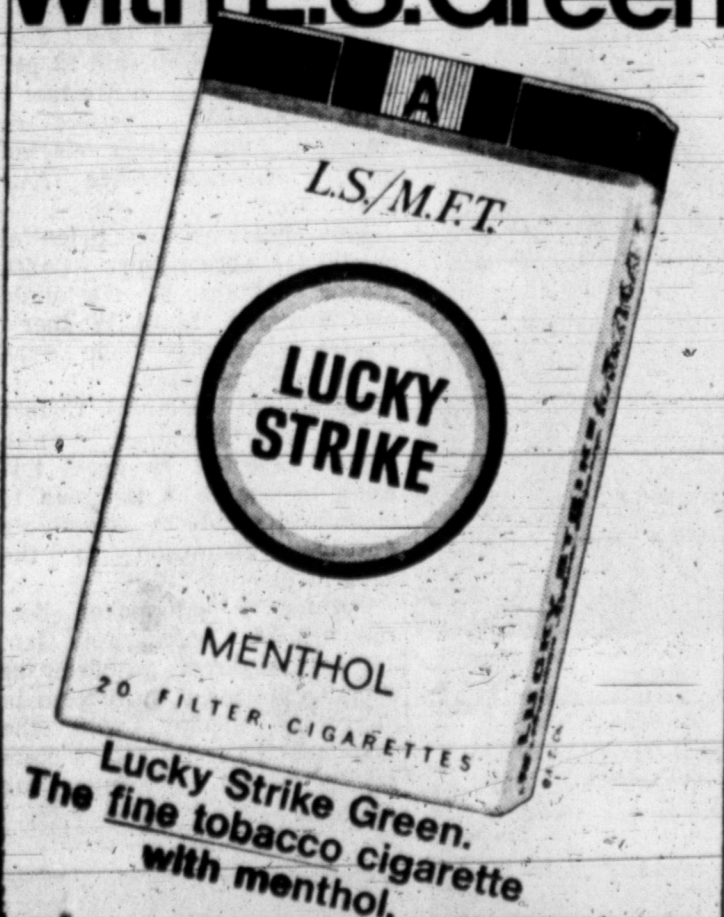
Marlon Brando stars in "One-Eyed Jacks" on CBS-TV's Friday night movie Oct. 21... The Programs: A spokesman for NBC-TV's "Telephone Hour" says public response to the program's new policy on commercials—none until the end of each show—has been so favorable that the series will keep up this procedure for the least six or seven more broadcasts over a period of several months. At that point, it will be decided whether surveys indicate that viewers either watch the commercials in sufficient numbers, or turn out at that time, and this decision will determine the policy on future shows.

Insiders say that one of the byproducts of television's new craze for blockbuster movies is that producers of regular video drama series feel they must place strongest emphasis from now on in getting big names in place to compete. This is a strong probability that name value, more than ever, will dominate talent requirements in many future television outings—at least until the craze wears off a bit. Bob Hope, who long has espoused the policy of big name guests in keeping with his general video theory that quantity equals quality, will have 15 comedians on his Oct. 19 NBC-TV hour, including Milton Berle, Bill Jimmy Curante.

Marlon Brando stars in "One-Eyed Jacks" on CBS-TV's Friday night movie Oct. 21... NBC-TV's "Telephone Hour" says public response to the program's new policy on commercials—none until the end of each show—has been so favorable that the series will keep up this procedure for the least six or seven more broadcasts over a period of several months. At that point, it will be decided whether surveys indicate that viewers either watch the commercials in sufficient numbers, or turn out at that time, and this decision will determine the policy on future shows.

Insiders say that one of the byproducts of television's new craze for blockbuster movies is that producers of regular video drama series feel they must place strongest emphasis from now on in getting big names in place to compete. This is a strong probability that name value, more than ever, will dominate talent requirements in many future television outings—at least until the craze wears off a bit. Bob Hope, who long has espoused the policy of big name guests in keeping with his general video theory that quantity equals quality, will have 15 comedians on his Oct. 19 NBC-TV hour, including Milton Berle, Bill Jimmy Curante.

Shake hands with L.S. Green

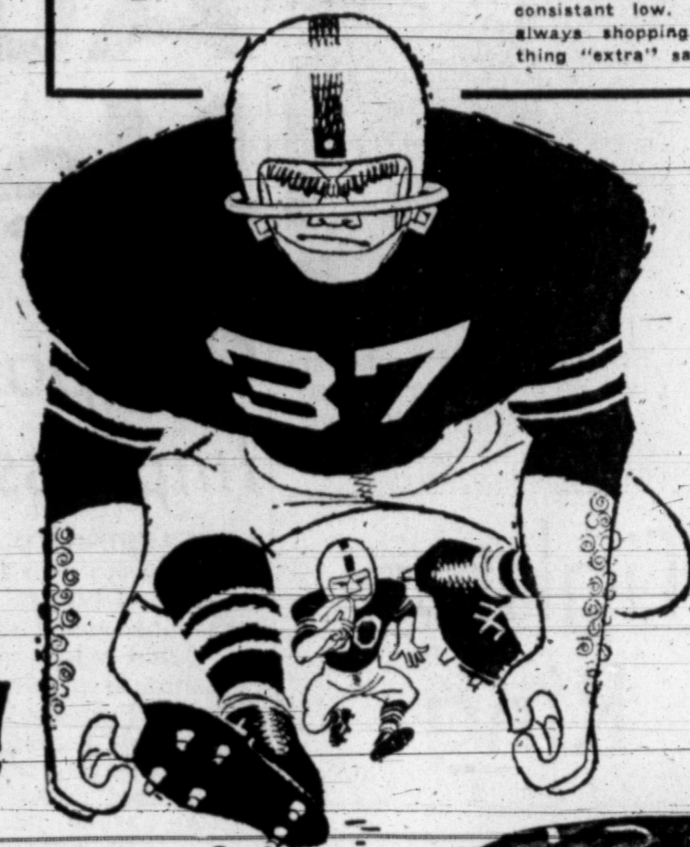


FURR'S BLOCKS HIGH PRICES

and saves you more on your total food bill!

Win Up To \$250 Cash
 PLAY FURR'S EXCITING
 'Let's Go to the Races'
 THURSDAY-KVII-TV
 7:30 P.M.

You should be sticking Frontier Stamps every time you shop and you will be if you are a regular Furr's shopper. That's because Frontier Stamps are yours with every purchase and yet Furr's prices are consistent low. Get the saving habit by always shopping Furr's and have something "extra" saved up in "the book."



CORN 2 lb. bag **229¢**

PINTO BEANS 2 lb. bag **19¢**

COFFEE Folgers 1-lb. can **69¢**

PEACHES No. 2 1/2 can **19¢**

TOMATO JUICE Stokely 46 oz. can **25¢**

SHORTENING Jewel 3 Lb. Can **59¢**

Cake Mix Pkg. **25¢**

Strawberry Preserves 39¢

Asparagus 25¢

Fab 65¢

Marshmallow Creme 29¢

Bleach Gal. **49¢**

Margarine 29¢

Graham Crackers lb. **39¢**



HAMS

Farm Pac Fully Cooked, Hickory Smoked Shank End Portion **49¢**

WIENERS

Picnic Pack 2-Lb. Bag **69¢**

SLICED BACON

Hormel or Farm Pac Hickory Smoked **89¢**

Pork Chops Center Cut fresh young lb. **79¢**
 Pork Roast Boneless Boston Butts lb. **69¢**
 Sausage Fresh Market Made 2 lb. roll **98¢**
 Pork Cutlets Tenderized no waste lb. **89¢**
 Breaded Shrimp Dartmouth 10 oz. **69¢**
 Spread Cheese, Chef's Delight 2 lb. Box **69¢**

Fresh Young Pork
Spare Ribs Lb. **59¢**

PEOPLE PLEASING GENERAL MERCHANDISE

GLEEM TOOTHPASTE King Size **59¢**

EXCEDRIN 36 Count Bottle **49¢**

HAND LOTION Sue Pree Honey and Almond **29¢**

Calif Snow Ball Heads **BROCCOLI** Each **39¢**

Calif Fresh Large Bunch **CAULIFLOWER** Each **39¢**

Fall Planting **BULBS** **69¢**

FRESH FROZEN FOODS

Combination Patio Fresh Frozen 12 oz. pkg. **Cheese Enchilada Dinner** 39¢
 Food-Club Quarters **Corn Oil Oleo lb.** 4 for \$1.00
 Fresh Frozen 24 or 6 count pkg. **Patio Tacos** 49¢
 Top Frost Fresh Frozen 10 oz. pkg. **Blackeye Peas** 5 for \$1.00
 Top Frost Fresh Frozen 10 oz. pkg. **Okra** 6 for \$1.00
 Ore Ida Fresh Frozen **Tater Tots** 2 lb. pkg. 39¢
 Ashley's Avo Fresh Frozen 6 oz. can **Avocado Dip** 39¢
 Ashley's ESA Fresh Frozen 6 oz. can **Cheese Dips** 33¢
 Larry's Fresh Frozen **Poor Boys Sandwich** 89¢



Dear Abby...

Wife Gives Hubby
The 'Royal Chase'

DEAR ABBY: I am 29 and am married to a pretty little 22-year-old girl from West Virginia. A few weeks after our marriage I got transferred up to Buffalo, N. Y. My wife lived with me for 29 days, and then she packed up and went to West Virginia because she was lonesome for her mother.

ing company with a fine gentleman for two years. He is also divorced. We have marvelous times together, taking in shows, going boating, fishing, swimming, motoring (All very discreetly.) He would marry me if I wanted it that way, but I believe that when two people live together they grow tired of each other. We love and respect each other, but there are times when we like to go our separate ways.

I don't recommend this way of life for the young, or for those with children, but ours are grown and we are in our fifties, and are quite set in our ways.

LONESOME

DEAR LONESOME: You r bride is behaving like a spoiled child, and your spinelessness is getting you nothing but solitude. Be a man.

This woman is your wife, so quit sending her money and tell her to shuffle off to Buffalo where she belongs. (And be sure she doesn't bring her mother with her.)

Now the problem: Many of our friends, and especially our children, believe we ought to get married. Why should we marry just to please people? I like my freedom and so does he, and there are times when you don't want anyone around. Not even the one you love. I would appreciate your opinion on this. Also anyone else's.

SATISFIED

DEAR SATISFIED: If you are satisfied, and he is satis-

DEAR ABBY: My problem is one of my best girl friends. She is a wonderful kid in many ways, but she has one big fault. A couple of times when the two of us were talking to a boy we both like, she has come right out and said to me, "Would you mind taking a walk. I want to say something to him in private." This is very embarrassing. What should I do if this happens again?

EMBARRASSED

DEAR EMBARRASSED: Watch for the boy's reaction. If he doesn't say, "No, please stay," take a walk.

DEAR ABBY: I have been divorced and have no desire to marry again. I have been keep-

Astrological
Forecast

By CARROLL RIGHTER

FOR WEDNESDAY, OCT. 5. GENERAL TENDENCIES: A very adverse day and until mid-evening for what we are concerned, has to do with showing any tendencies to leave any duties of any nature incomplete and if you are engaged in the greatest industry to you, it is just the day to get it out of the way so that you will be able to use the good days ahead without those worries.

Table Settings Reflect East-West Rivalry

By AILEEN SNOODY
Newspaper Enterprise Assn.
NEW YORK (NEA)—There is much borrowing going on in home furnishings. Unlike books, however, the mistakes come home to roost.

This is why it is essential to know which region of the country you want to draw upon when decorating.

The major design rivalry continues to rage between the East Coast and West Coast. Diehards feel that television, the great American homogenizer, is far from being all-powerful in blending regional home furnishings into one, American style. For this we're happy.

Our ancestors were regional mavericks and put an early stamp to their area's sense of style. It is warning that many faithfully cling to certain decorating elements they can trace to the family.

In a sense, electric decorating so popular now encourages a family to take some of its regional "heirlooms" along when it criss-crosses the continent as dad changes jobs.

In today's decoration, though, there is much borrowing from coast to coast.

Many interior designers feel the West Coast is proving the most influential with its refreshing approach to home furnishings designs. There is great warmth of color and texture in fabrics to reflect and complement the terrain and climate.

Confidential to J. M.: Training should start early. It's almost impossible to carve rotational influence. This finds a



TABLE SETTINGS reflect the coastal influences on home decorating. Traditional English setting features (left) a coupe-shaped china pattern with gold and black border. Centerpiece is of natural dried flowers, miniature black grapes and gold velvet ribbons. The tablecloth is accented by an undercloth of gold. Michael Love, N.S.I.D., who designed the setting, switches to ranch-style dining with a centerpiece of eggplant, artichokes and avocados (right). A grass-green runner and Bristol blue napkins set off an eastern Engagement china pattern with fluted gold-banded edge. Designer Love used a Fostoria Remembrance pattern for the eastern setting and Berkeley for his western arrangement.

With the return to more elegance in living, the eastern influence with its European overtones inserts itself, too. The dining room is a perfect example of what is happening because of the mix-matching of design trends of each coast.

From the West Coast a hostess draws from an easy-going look based upon indoor-outdoor living. The table arrangements draw from frontier simplicity combined with an Oriental influence. This finds a

place even in such traditional redouts as New England while East Coast traditional elegance finds a home in an air-conditioned western ranch.

Proof of this is a recent survey on china buying by Syracuse China. The firm discovered that such buying, once regionally predictable, definitely shows the influence of one coast on the other. Fine China patterns with classic lines and decorated with traditional motifs no longer belong solely to the East. Coupe-

shaped contemporary fine china patterns, often with elegant decoration, find their way from a home in the West into a New Englander's china cupboard.

The most important trend to come from this coastal mix-match is beautiful table settings with china, sparkling crystal and well-designed silver.

It seems the whole family is outgrowing daily TV dinners on TV trays and finds it can "sit at the table" again with pleasure.

'Deterents to Good Reading' Program Presented at Wilson P-TA Meeting

Robert Holman presented the program at W odrow Wilson School's open house sponsored by the P-TA Thursday evening. His topic was "Deterents to Good Reading."

The executive board met prior to the P-TA meeting and discussed plans for "Fun Night" to be held Friday, Oct. 21, from 6:30 p.m. to 9 p.m. in the school auditorium. The cafeteria will serve cake, pie, coffee and milk. Fun night will feature an "Old Style Carnival."

Mrs. Gifford Kerksleck, vice president, presided over the general meeting held in the school auditorium. Teachers were recognized by Bob Parks, principal.

A Study Course report was given and announcement was made

that the first course will be held at Stephen F. Austin school Oct. 6 from 9:30 to 11:30 a.m. The topic will be "Understanding your Local School District." Room count was won by Mrs. Best's fourth grade; second place, Mrs. White's second grade, and third place, Miss Spangh's first grade.

NEW WAY TO BE SUDDENLY SLIM, COMFORTABLE, TOO

Los Angeles:—Are you a woman whose figure is on the good side but might look perfect? You'll be thrilled by the new easy way science has discovered for you to become Suddenly Slim and yet completely comfortable. If you're more than 15 pounds overweight, then this idea is not for you. If your weight problem falls within this range, then you can realize a new, smoother figure today, without diet or exercise.

Suddenly Slim is an all-new kind of 4-oz. girdle-constructed of science fibers. One startling innovation is the sheer nylon front panel. This is permanently stiffened by a science process and cannot give or sag. It's surrounded by a slimming action border. A featherstitched panel down each side of this girdle will contour your hips if they are a problem.

The girdle itself is of a "wonder" Lycra spandex blend. It's a new power net consisting of nylon, acetate and spandex. It is so comfortable, but has such slimming strength, it gives your figure everything that's possible with a foundation.

"Suddenly Slim," in both girdle and panty versions, is the peak achievement of the California designer-genius, Olga. They are available in our area at

ODORS AWAY
One Drop Air Deodorant
Kills household odors instantly
One drop per room gives twenty-four hour odor control. There are 240 drops in the 1/2-oz. bottle, an adequate supply for many months of spring-time freshness.
\$1.59
Pampa Hardware Co.
120 N. Cuyler MO 4-2451

Fur

Sale



See Our
Magnificent Collection
of
Beautiful Furs

- All Priced Special For This Event
featuring:
● Stoles ● Coats ● Jackets ● Boas
● Bubble Capes ● Shrugs

CONVENIENT
PAYMENT
PLANS
&
Use Our Layaway

*Fur products labeled to show country of origin of imported furs.

TWO DAYS ONLY

Tomorrow
and
Thursday



Mr. C. Howard Baumann of Spivey Baumann, Dallas and New York Will be in our store to personally help you with your selection.



Coronado Shopping Center
Phone MO 4-7417



gram
ig
will be held
school Oct.
0 a.m. The
understanding
District. If
on by Mrs.
e: second
e's second
place, Miss

Senior Center Corner

By MRS. O. A. WAGNER
Garage man to a woman driver: "We just wash cars, not wash them."

Frank Mitchell, a former Senior Citizens Center member, is confined in Memorial Hospital at Ardmore, Okla. A card was signed by the members and sent to him.
Frank Cullum underwent surgery Wednesday in Highland General Hospital.
Uncle Billy Frost had a fall and injured his back a few days ago, and is in Highland Hospital. We hope for a speedy recovery. Uncle Billy, who will be 104 years young Jan. 10, is beloved by all Pampans.

We missed Mrs. P. H. Gates. Understand she was ill. Mrs. Verda Adair is still confined to her home and it is hoped both will soon be able to be back at the Center meetings.

Mrs. Mattie Dodson has returned from a visit with her daughter, Hester, in Wisconsin, and enjoyed a fishing trip while there.

House guests of Mrs. Ruff Hill are her daughter, Mrs. Emma Burton of Melrose, N. M., and grand daughter, Mrs. Carol Vinson of Pasadena.

Was good to see Mr. and Mrs. H. M. Norris at Thursday's meeting. Has been some time since they were out. The Rev. White, minister of Harrah Methodist Church brought them and visited briefly. The Norris had a wonderful trip and visit with Mrs. Norris son, Howard Richardson and family in Laurel, Miss. this summer. They went home with Mr. Richardson and another son, T. R. Richardson came down and brought them home. While there their son took them on a fishing trip in the Gulf of Mexico.

Mrs. Gertrude Shaw has returned from Santa Fe, N. M., where she visited her daughter, Mrs. Inez Martin and family and got acquainted with her new great grandson, the son of Mr. and Mrs. Wendel Bartholomew.

Turk Freeman from Perryton was in town Wednesday and called on old friends the Hethcocks, and Mrs. Sadie Osloff was a dinner guest Wednesday. Mr. and Mrs. Arthur Smith have returned to their home in Corpus Christi after a visit with his mother, Mrs. E. B. Smith and sister, Mrs. Corinne Bell, and other relatives. While here they all went to the mountains up around Creed, Colo., and spent several days at Red River, N. M.

Mr. and Mrs. Sandy Cook of Fresno, Calif., came last Friday and visited until Monday with her brother and wife, Mr. and Mrs. Jay Evans. They all went to Sentinel, Okla., Monday to visit two other brothers, John Evans and Mr. and Mrs. Odus Evans. The Cooks remained for a longer visit and Mr. and Mrs. Evans returned home Wednesday.

Hostess group this week was the Opti-Mrs. Club. Serving cake, coffee and mints during the refreshment period were Mrs. R. L. Parsley, chairman, Sandy Houck, W. E. Epperson and "Dub" Brown.

Mrs. E. P. Marlin and daughter, Oleta, went to White Deer Sunday afternoon to visit Mrs. Mary Catherine Diggs and children, Frank Edward, Larry and Melinda. Mrs. Diggs is a teacher and a granddaughter of Mrs. Marlin.

Gray Ladies providing transportation included Mrs. A. D. Hills, Mrs. Jess Hatcher, and Miss Margaret Nash.

Winners of the door prizes were Mrs. Myrtle Kidwell and Mr. C. L. Sublet.

Next meeting will be the monthly birthday party hosted by the Altrusa Club.

Pampa Public Schools Menu

WEDNESDAY
WOODROW WILSON

Poppy Joke	Pork & Beans
Potato Chips	Pudding
Candy Bar	Milk
STEPHEN F. AUSTIN	
Turkey Pie	Green Beans
Lettuce Salad	Fruit Cakes
Bread	Milk
BAKER	
Turkey Noodles	Sweet Potatoes
Blackhead Tuna	Lettuce Salad
Peas	Butter
Carrots	Chocolate Milk
CARVER	
Corn Dogs	French Fries
Tossed Salad	Spice Cake
Bread	Butter
SAM HOUSTON	
Turkey Pie	Green Beans
Congee	Orange Cake
Bread	Milk
LAMAR	
Corn Dogs	French Fries
Tossed Salad	Spice Cake
Bread	Butter
BIORACE MEANS	
Patilla Pinto Beans with Ham Chunks	Carrots
Chocolate Pudding	Cornbread
Fruit or Chocolate Milk	Butter
ROBERT E. LEW	
Fried Chicken and Gravy	Hot Rolls
Mashed Potatoes	Buttered Corn
Pickled Beets	Butter
Fruit	Milk
JUNIOR HIGH	
Hamburgers	Sliced Pickles
Potato Chips	Baked Beans
Ice Cream	Milk
SENIOR HIGH	
Chicken Spaghetti	Mashed Potatoes
Fruit Cakes	Carrots
Combination Salad	Fruit Pie
Bread	Butter
WILLIAM B. TRAVIS	
Fried Chicken	English Peas
Mashed Potatoes and Gravy	Jello Salad
Hot Rolls and Butter	Oatmeal Cake

EVERYBODY'S PLAYING IDEAL'S EXCITING FUN GAME...

LUCKY BINGO

TRY YOUR LUCK...WIN UP TO \$1000 COLD CASH!

Extra Savings At Ideal...

DOUBLE GUNN STAMPS

EVERY WED... WITH \$2.50
OR MORE PURCHASE.

"Better Food For Less"



ALWAYS FRESH...

GROUND BEEF

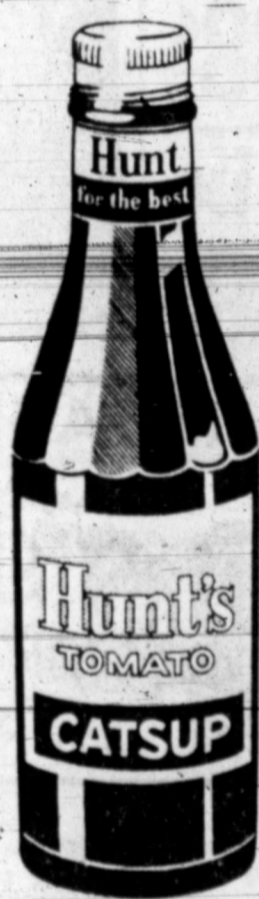
GROUND FRESH DAILY

Lb. **39¢**

SWIFT'S TENDER PRO-TEN BEEF	ROUND STEAK	Lb.	89¢
SWIFT'S TENDER PRO-TEN BEEF	SIRLOIN STEAK	Lb.	98¢
SWIFT'S PREMIUM	SLICED BACON	Lb.	79¢

PRICES EFFECTIVE
THRU WED. OCT. 5,
1966

LIMIT RIGHTS
RESERVED.



HUNT'S CATSUP

4 20 OZ. BLS. \$1.00

FOOD CLUB
FANCY FRUIT
COCKTAIL

NO. 2 1/2 CAN 37¢

IDEAL'S TASTY

ICE CREAM 1/2 gal. 49¢

DELICIOUS
RANCH STYLE
BEANS

2 300 Cans 29¢



MARYLAND CLUB

REGULAR, DRIP-OR FINE GRIND

1-lb. Can 69¢
2-lb. Can \$1.37

CARNATION
INSTANT
BREAKFAST

69¢



U.S. No. 1 COLORADO RED

POTATOES

1-LB. BAG

20 59¢



IDAHO RED DELICIOUS

APPLES 4 49¢

LBS.

SPICY-DELICIOUS
WOLF CHILI

WITH BEANS NO. 300 CAN 39¢

ALL MEAT CHILI NO. 2 CAN 69¢

IDEAL WHITE OF CARM CAMEL ICED

CINNAMON ROLLS

PKG. of 6 33¢

CLOSED SUNDAYS SO OUR EMPLOYEES MAY ATTEND THE CHURCH OF THEIR CHOICE

Investigation Shows Workers In Texas Due \$8 Million Wages

DALLAS — Workers in Texas were underpaid some \$8 million during the fiscal year ended June 30, it was reported here today on the basis of 6,296 Wage-Hour investigations made in the state during that period.

Wm. J. Rogers, Regional Director of the U. S. Department of Labor's Wage and Hour and Public Contracts Divisions, said here, said his eight Texas field offices found \$2,818,421 due under minimum-wage provisions, \$4,967,649 due for overtime compensation, and \$161,579 due under the equal pay provisions of the law. Employees concerned totaled 22,309.

Texas field offices are located in Corpus Christi, Dallas, El Paso, Fort Worth, Houston (2), San Antonio and Waco. Many of the investigations they conducted resulted from specific complaints of employers violating the Fair Labor Standards Act.

"Prevention of violations through education is the basic principle of the Department's Wage and Hour enforcement program," Rogers said. The Divisions make every attempt to show employers how to comply with the law and how to avoid making underpayments to workers. We also make investigations of business concerns to see that the law is properly observed.

He said his investigators found 2,048 minors illegally employed in Texas during the year. The law prohibits "oppressive child labor."

Uptasy Lies . . . etc. WASHINGTON (UPI) — Life is no bed of roses for a chief of the Anauk tribe in East Africa.

An Anauk headman, called Father of the Land, is one of countless African chiefs who are specifically responsible for maintaining good relations with the life-giving earth, says the National Geographic Society. So, if crops fail, these leaders may be put to death.

The Lighter Side

By DICK WEST
United Press International
WASHINGTON (UPI) — All year long, while the rest of the economy has been going up-up, up, the stock market has been going down, down, down.



THIS MAY NOT be the best way to insure that baby gets his afternoon bottle, but it seems to have worked in this case. The unidentified child got the loving care treatment from a monkey that was on the bill at the Vermont State Fair in Rutland.

On the Record

VISITING HOURS
MEDICAL AND
SURGICAL FLOORS
Afternoon 5-8
Evenings 7-8:30
OB FLOOR
Afternoon 5-8
Evenings 7-9

Highland General Hospital does not have a house physician. All patients, except severe accident victims, are requested to call their family physician before going to the hospital for treatment.

Please help us to help our patients, by observing visiting hours.

- MONDAY Admissions
- Mrs. Jeanne Mae Allen, Panhandle
 - Ross Cornelius, 638 N. Wells
 - Mrs. Vivian Bichel, White Deer
 - Charles Wesley Matson, Jr., 861 Lefors St.
 - Baby Girl Allen, Panhandle
 - Mrs. Ruth Shorter, 1215 S. Finley
 - Billy Ray Milligan, 316 Henderson
 - Walter Baker, 413 Graham
 - Eliert M. Gilbert, Canadian
 - Mrs. Wanda Irene Smith, 1109 Neal Rd.
 - Baby Boy Shorter, 1215 S. Finley
 - Thomas O. Ford, 801 N. Neil
 - Mrs. Lottie M. Burton, 811 N. Russell
 - Mrs. Elise D. Stewart, 823 Lefors St.
 - Mrs. Agnes Hall, 1906 Evergreen
 - Rayburn Hall, 1906 Evergreen
 - David M. Covey, 1205 Garland
 - Mrs. Ora Lee Blakemore, 732 Locust St.
 - Dismissals
 - Mrs. Stella Sloan, Pampa
 - Mrs. Helen White, White Deer
 - Mrs. Dorothy Hampton, 1035 Fisher
 - David Mullins, 504 Lefors St.
 - Jewell Stone, 317 W. Tuke
 - Mrs. Wilma Griffin, 1715 Aspen
 - Rolla J. Sailor Jr., White Deer
 - Elton Jernigan, 820 E. Frederic
 - Mrs. Juanita Williams, Borger
 - Mrs. Dorothy I. Smith, Lefors

CONGRATULATIONS:
To Mr. and Mrs. Boyd Allen, Panhandle, on the birth of a girl at 12:21 p.m., weighing 5

Foreign News Commentary

By MURRAY J. BROWN
United Press International
The outlook from the foreign news desk:

Peace Probe:
Expect a new British Viet Nam peace probe when Britain's Foreign Minister George Brown meets with Russia's Andrei Gromyko in New York early next month at the U.N. General Assembly. Britain and Russia are co-chairmen of the 1954 Geneva conference which settled the Indochina war.

Dates Barred:
Officials in Paris say France will continue to refuse even emergency standby use of some of the NATO bases being evacuated by the United States as demanded by President Charles de Gaulle. They believe, however, the French will allow continued use of the oil pipeline from the Atlantic to Germany with French civilian contractors continuing to handle maintenance and pumping operations.

Conference Headaches:
Filipino officials face monumental problems in preparing for the seven-nation summit meeting on Viet Nam in mid-October. The biggest headache is setting up security arrangements for President Johnson and the five other visiting chiefs of state coming to Manila.

New Member:
Common market officials in Brussels expect Israel to apply for associate membership in the six-nation European trading bloc shortly. It currently has a trade agreement, but this expires in mid-1967. Associate membership entails the economic responsibilities and advantages without the political ties of full membership.

Canada Visit:
Sources in Paris say President Charles de Gaulle is considering paying an official visit to Canada in 1967. But officials are studying the pros and cons of such a trip without also dropping in on Washington.

Europe Next Spring:
President Johnson visits Europe next spring, officials believe. De Gaulle would be willing to see him in Paris.

To Mr. and Mrs. Donald Shorter, 1215 S. Finley, on the birth of a boy at 7:09 p.m., weighing 7 lbs. 2 ozs.

As a shareholder in the Capitol Press Investment Club, a group of \$10-a-month market plungers, I have lost a lot of sleep over this.

I fear that if the boom continues, the club will be wiped out entirely. The worst part is now knowing why.

Just about everyone who can tell the difference between debentures and dentures has taken a crack at explaining the market's paradoxical behavior. But none has sounded very convincing.

Prosperity is Bad
Some say stockholders are psychotic. That is, they believe prosperity is bad for business.

Other say stockholders are neurotic. They realize prosperity is good for business but it makes them nervous.

Still others say the markets behavior isn't peculiar at all: it is the rest of the economy that is acting funny.

Needless to say, I have been thoroughly confused by these conflicting theories. Which is why I got in touch with David Head, senior vice-president of Putnam Fund Distributors, Inc. of Boston.

Head travels about the country conducting investment seminars and putting on clambakes. I figured he would be just the fellow to set me straight.

How he came to be an expert on both the market and the mollusk is a long story. He has found, however, that they seem to complement each other.

"I once prepared a position paper for a national meeting of financial planners," Head said. "As I was going over the final draft it slipped out of my hand and landed in a pot of clam broth."

Several people told me later it was the best clam broth they ever tasted.

It is Head's position that attention currently being given to stock market declines may divert the American public from the true picture.

"The records prove that, given time, investment in a well-selected cross-section of stocks has always produced desirable results," he said. "The secret to investment success is time, not timing."

"What is the secret to clambake success?" I asked.

"The secret is thyme," he said. "The records prove that, given thyme, a well-selected cross-section of seafood has always produced desirable results."

Apparently, there is nothing my investment club can do but wait it out. With maybe a little more bay leaf on the blue chips.

WELL READ
SALINA, Kans. (UPI) — Charles Francis and his bride don't know it yet, but their "friends have re-decorated their apartment as a welcome home surprise.

While the couple was honeymooning, friends filled the bedroom with 12,000 pounds of newspapers. A lipstick smudge on the bedroom mirror reads: "with friends like these, who needs enemies?"

TV Documentary
NEW YORK (UPI) — Two special television programs produced by the Lutheran Church—Missouri Synod are scheduled for nationwide showing on Sunday, Oct. 2.

NBC will feature the "Prince of Peace Volunteers" on its "I Believe" series. The half-hour episode is a documentary on the daily activities of a typical team of church volunteers assigned to Trinity Lutheran Church on Manhattan's lower east side.

King Hiram of Tyre assisted King Solomon in the building of the temple.

ONE HOUR "MARTINIZING" THE MOST IN DRY CLEANING

Try our 5 Hour Executive 3 Day Service, Monday Thru Sat.

824 W. Francis
1807 N. Hobart

Rodeo to Feature Two Entertainers

HUNTSVILLE — Two of the nation's best known entertainment personalities, both of whom are members of the Lawrence Welk weekly television series, will co-star at the second Sunday performance of the Texas Prison Rodeo here Oct. 9.

Jo Ann Castle, Welk's honky-tonk pianist, and Norma Zimmer, his Champagne Lady, will offer beauty and talent during the "Wildest Rodeo in Texas" in the prison's \$1 million stadium.

Along with these two performers, the management will present Justin Wilson, Cajun humorist, and Candy Barr, self-styled singer during the two-hour show which begins at 2 p.m.

Miss Castle, who holds numerous musical degrees, has been a regular on the Welk show each week since Aug., 1959.

Miss Zimmer, a native of Larson, Idaho, joined the Welk television show in 1960. She is noted as a high-quality soprano and "sight reader" of rare ability.

Another special headliner will be Leon Adams, known as "Rodeo's Professional Showman." Adams specializes in Brahman bull and horse riding, "Roman Style."

And just to make sure that everyone attending the rodeo goes away feeling that they got their money's worth, convict riders and entertainers say they will be in the arena with one thing in mind: to make the 35th Annual Texas Prison Rodeo "the best" since the beginning of this thrilling and unusual entertainment spectacle.

Although advance ticket sales are brisk, Prison Rodeo officials also said that no one would be turned away.

Week Proclaimed Hire-Handicapped By Gov. Connally

Governor John Connally this week proclaimed the week of Oct. 2-8 as National Employment The Handicapped Week in Texas and called upon Texas employers to consider the handicapped for employment and promotion consistent with their capacities.

"It is essential that Texas make full use of its manpower resources, and it is consistent with the democratic belief in the individual's right to fully develop his skills and abilities that we enable the handicapped to work on the basis of ability alone," the Governor declared.

On Sept. 23, secretary of state John Hill announced, on behalf of Governor Connally and the Governor's Committee for Employment of the Handicapped the selection of Carolyn Osborn, 21-year-old Amarillo artist totally paralyzed by polio at age 6, as 1966 Handicapped Texan of the Year.

Miss Osborn, who graduated fifth in her class at Palo Duro High School in Amarillo, paints with the brush in her teeth. Her work is of professional quality. Hill called her "an outstanding example of courage, ingenuity, and achievement."

"The handicapped citizens of Texas have the ability and the desire to make their own way as full partners in the world of work," Gov. Connally pointed out in his proclamation.

Mitchell's Big VIENNA SAUSAGE 88c SALE

Van Camp 4 CANS 88c

Tender Crust Brown 'N Serve ROLLS 3 FOR 88c

COLONIAL CAKES

Chocolate, Banana, Chocolate Each 88c

SHURFINE Coffee 65c

Shurfine Yellow Cakes

Cake Mix 3 for 88c

Shurfine

LAYER CAKE PAN SPECIAL THIS WEEK 99c with \$5.00 Purchase

Colorado, 2 1/2 Lb. Can HONEY 69c

300 Size Ranch Style Beans 5 for 88c

Food King 2 Lb. Jar Red Plum Preservers 2 for 88c

Big Top 28 Oz. Jar PEANUT BUTTER 88c

Kraft Macaroni & Cheese 2 for 88c

Hershey's Instant Cocoa Mix 88c

Hi-C 46 Oz. Can ORANGE DRINK 3 FOR 88c

Stillwell Cut 303 Can GREEN BEANS 7 FOR 88c

Shurfine MILK Tall Cans 688c

Santa Rosa 46 Oz. Can Pineapple 3 FOR 88c

Shurfine TOMATO SAUCE 8 FOR 88c

Maxwell House 10 Oz. Jar INSTANT COFFEE 88c

Shurfine Dec. WAFFLE SYRUP 2 FOR 88c

Pork Roast ... lb. 49c

Pork Hocks ... lb. 29c

Fresh GROUND BEEF 3 Lbs. \$1

Fryers Whole, lb. 33c

Pork Steak lb. 55c

Fresh Ground Beef 3 Lbs. \$1.00

Bell Peppers Home Grown 19c lb

Tokay Grapes 2 lbs. 33c

SALT PORK 49c lb

SHURFRESH MILK

Food King 10 Oz. STRAWBERRIES 3 FOR 88c

MITCHELL'S Grocery

638 S. CUYLER

We Give Buccaneer Stamps
Double on Wednesday on Purchase of \$2.50 or More

BLAKE'S FOOD MARKET

1945 N. Hobart MO 4-7471

FREE DELIVERY

STORE HOURS
Weekdays 8 to 8 Sunday 9 to 7
We Give Buccaneer Stamps
Double Stamps Wednesday on \$2.50 Purchase or More
Home Owned & Home Operated Keep Your Grocery Money in Pampa

BACON Sleb or Sliced lb. 59c

SIRLOIN STEAK USDA Good lb. 69c

T-BONE STEAK USDA Good lb. 89c

BOLOGNA Wright's All Meat lb. 39c

HALF BEEF Cut, Wrapped & Frozen FROZEN FOOD LOCKERS 49c lb

PEACHES Shurfine No. 2 1/2 Can 3 FOR 89c

Aluminum Foil Viking Reg. Pkg. 23c

COFFEE Shurfine Lb. Can. 69c

Ice Cream Borden's Round Ctn. 1/2 Gal. 69c

Detergent Roxey 13 cans \$1

DOG FOOD Energy Giant Size 59c

BANANAS Green Tip 2 lbs. 49c

POTATOES White 10 lb. bag 29c

Shurfresh Milk Has That NATURAL GOODNESS

Hom's Foods

5 BIG DAYS
Oct. 4-8

Anniversary Sale

RINSO
GIANT BOX
59¢

Once Again Our Anniversary Rolls Around. May We Extend To You Our Sincere Thanks and Appreciation For The Wonderful Patronage You Have Given Us During Our 18 Years In Pampa. As a Small Token of Our Appreciation We Present This Sale for You — Is It Our Hope and Desire To Continue Serving You In The Future As We Have In The Past.

Again We Say **THANKS!** **Hom's Foods**

50,000

BUCCANEER STAMPS FREE!

coupon

50 Buccaneer Stamps
FREE With This Coupon

NO PURCHASE NECESSARY
NO CHILDREN ELEGIBLE

Name _____
Address _____

Offer Expires Oct. 8
Limit 1 Coupon To Family Please

Hom's Foods
PRESENTS—

Jigsaw CASH



100's of DOLLARS
1,000's OF STAMPS

Complete the PICTURE
and win the PRIZE!



12 Oz. Can
TREET 49¢

SHURFRESH HOMO
MILK
1/2 Gal.
49¢

Shurfresh
Crackers
Lb. Box **19¢**

Crisco Oil
24 Oz. Bottle **49¢**

ICE CREAM Borden's Round Ctn. Pure 1/2 Gal. **79¢**

ICE CREAM CONE Double Dip Ea. **5¢**

BISCUITS Shurfresh 12 cans **\$1**

OLEO Food King Solid 3 lbs. **59¢**

CATSUP Del Monte 14 Oz., 5 for **\$1**

PUMPKIN Del Monte 2 1/2 Cans **19¢**

KLEENEX 200 2 ply 4 Boxes **98¢**

WAGNERS

Breakfast Drink 32 oz. **4 CANS \$1.00**

BAKE-RITE SHORTENING 3 L B C A N **59¢**

KRAFT'S Miracle Whip QT. **49¢**

FOLGER'S COFFEE Lb. Can **69¢**

Del Monte 303 Can
SPINACH 6 cans **\$1**
Del Monte 303 Can
PEARS 3 cans **\$1**
Kleenex
TOWELS 2 roll pak **39¢**
Del Monte
TUNA 3 cans **\$1**
Assorted Flavors
JELL-O 6 pkgs. **69¢**

Holly or Imperial
SUGAR 5 lb. Bag **49¢**

My-T-Fine
PUDDING 3 Pkgs. **29¢**

Van Camp
VIENNA SAUSAGE 5 Cans **\$1**

Faultless 22 Oz.
SPRAY ON STARCH **59¢**

Del Monte w/k or cream-303 can
GOLDEN CORN 5 Cans **\$1**

Shurfine B. L. Cut 303 Can
GREEN BEANS 5 **59¢**

Roxy Tall Can
DOG FOOD 7 Cans **53¢**

Van Camp 300 Can
PORK & BEANS 7 Cans **\$1.00**

Bama or Big To. 18 Oz.
PEANUT BUTTER **49¢**

Purex Gal. **49¢**

Shurfine
MILK
Tall Cans **7 for \$1**

STOCK UP ON FROZEN FOODS

Morton
Honey Buns 4 **89¢**
Patio Beef ENCHILADA
Dinners 3 **59¢**
Morton
Meat Pot Pies 6 **89¢**
Morton
Cream Pies 4 **89¢**

Northern
Tissue 4 Roll Pak **29¢**
Gold Medal
Flour 5-lb. Bag **55¢**

Val Vita, Yellow Cling, No. 2 1/2 Can
PEACHES 5 for **\$1**

Steak Sale! SIRLOIN, ROUND, T-BONE and CLUB lb. **89¢**

Boneless Center Slices
Cured HAM 99¢ lb

Fresh GROUND
Beef 3 Lbs. **\$1.00**
Fresh
Pork Steak Lb. **49¢**
Choice Beef
Chuck Roast Lb. **49¢**

Top O' Texas
Sausage 2 Lbs. **89¢**
Picnic Cut
Pork Roast Fresh Lb. **39¢**
Grade A Whole
Fryers 33¢ lb

U.S.D.A. Good, Heavy, Mature, Grain Fed Beef
HALF BEEF 49¢ lb

FLAVOR-WRIGHT
BACON Sliced **\$1.29**
2 Lb. Pkg.

Candy From Mar. 10 Oz. **39¢** 16 Oz. **59¢**
FREE 12 oz. Bottle Syrup with Aunt Jemima 2 lb. Box
PANCAKE FLOUR both **39¢**
Ellis
Tamales No. 2 1/2 Can **3 for \$1**
Ellis
CHILI No Beans 1 1/2 lb. Can **59¢**
Batman-Take Home Pak
POPCICLES **12 for 59¢**

FRESH PRODUCE SPECIALS
PASCAL
Celery Stalk **29¢**
Stinkist
Lemons Doz. **29¢**
Calif. Basket
TOMATOES **29¢**
Washington
Apples Delicious Lb. **29¢**
Calif.
Lettuce Lb. **29¢**

HOM'S FOODS
We Give Buccaneer Stamps—Double Wed. With \$2.50 or More Purchase
421 E. FREDERIC OPEN 7 DAYS A WEEK MO 4-8531
LIMIT RIGHTS RESERVED

College Student Of The '60's Is Different In Many Ways

the moderator campus report

By J. MARK LONO
Newspaper Enterprise Ass'n.
NEW YORK (NEA) — He is found in Selma, Ala. and Sprout Hall, Berkeley. He sits in ad speaks out. He is undaunted and underestimated, but not understood. He is committed to the present and future, while the past struggles to keep up with him.

He is the Student of the '60s. It all started in February, 1960. A small group of Negro college students entered a department store in Greensboro, N. C., and were refused service at a lunch counter because they were black. Unlike past generations, they did not accept the badge of inferiority. They sat down—and they stayed.

Those Negro students aroused support throughout the nation. On the campus, student concern in the problems of today was triggered and organized.

One of the first groups born in the '60s was the Student Non-violent Coordinating Committee (SNCC), a loosely organized state-by-state clearinghouse for protest information and projects. The structure was shaky at best, and still is, but the esprit-de-corps of SNCC is strong and the organization appears to thrive on the conflict of continual confrontation with the white, segregationist power structure.

The National Student Association saw the potential for student involvement and sponsorship.

That fall, the Northern Student Association saw the potential for student involvement and sponsorship and sponsored a "Human Relations Seminar" that took place in Atlanta through the summer of 1961. The struggle to maintain human dignity was clearly becoming a chief concern of the student.

That fall, the Northern Student Movement (NSM) was founded and soon had projects going in Boston, New York, Chicago, Hartford, Philadelphia, Baltimore, Detroit and Washington. In each city at least 100 full-time students were tutoring Negro public school students in subjects inadequately taught in the formal curriculum. NSM has since broadened its program to include the organization of depressed masses into movements of their own leadership.

Study has turned to action in the '60s. Students for a Democratic Society (SDS) paused in their discussions to find ways to put ideas into practice. Formerly the Inter-collegiate Socialist Society (Upton Sinclair, Clarence Darrow, Sinclair Lewis), SDS was re-formed in 1962, at which time the Port Huron Statement defined its purposes. In August, 1963, it set up the Economic Research and Action Project (ERAP), both to debate economic issues and to experiment with the use of students as organizers among the white poor.

Action erupted also in the West, where CALATE, a University of California at Berkeley student political party, sprang to national prominence via its involvement in protest demonstrations against the House Committee on Un-American Activities hearings in San Francisco.

At the same time, campus

groups were organizing to express themselves about the arms race. The College Peace Union joined the Student Peace Union (SPU) in 1960 to form a stronger voice for peace. Harvard and Radcliffe, finding the national Student Committee for a Sane Nuclear Policy (Student SANE) too limiting, formed its peace voice, TOCSIN.

The year 1960 also saw the political right organized, a direct result of which was the strong student support for Barry Goldwater's 1964 campaign. The Young Americans for Freedom (YAF), now 30,000 members strong, grew out of a Sept. 1960 meeting of law students and college politicians at National Review editor William Buckley's estate in Sharon, Conn. Conservative politicians latched onto YAF as their "farm club," and gave it the support that has made it a strong force on many campuses.

These conflicting student political interests clashed in ways that could only result in greater political awareness in the college community. In 1960, the Association Congress, where liberals tried to turn NSA attention from campus parking and dining problems to more universal political and economic issues.

Since 1960, the areas for student involvement have more clearly defined themselves. Civil rights is now an American institution, and students are a part of it. They have moved into the political wars with an impact that will not allow them to be ignored. They are deeply involved in tutorials and community action.

Most recently, they have triggered national debate on the Viet Nam war. The student organizations of the '60s make this possible. And, too, this decade has seen a second dramatic use of the young to provide both an outlet and an example for the student—the Peace Corps.

Strengthened with two wholly original uses of the young American—the fight for justice at home and the battle for better lives aboard—people both within and without the college community began to fuse the concept of the Peace Corps with pressing social problems in America. The ideas were brilliantly simple: Put the concerned student to work on those areas which captured his concern.

Summers do end, though, and students do go back to the campus. When they do, they are not yet ready to forsake their ideals, ignore injustice, knuckle under to an authoritarian power structure. They find at college the same plodding system that they found elsewhere, and they are impatient.

They are impatient with administrators who fire exciting teachers whose interests are clearly more with teaching than with "publishing." They are impatient with schools which claim to be academic communities but limit the books

to be read, the topics to be discussed and the speakers to be heard.

Like the students at Berkeley, they are impatient with the punch-card student shuffling that destroys identity, dialogue and initiative. Everyone has read enough about Berkeley to last him a lifetime, but few have done anything about it.

Indeed riots and sit-ins may be wrong, but they're the only effective means by which students are heard. Students have been heard, not only at Berkeley. Last year they were also heard, defending good teachers who were not writers, at Yale and Wayne State and the University of Oregon and Santa Clara University.

But are the issues wrong? Higher education in this country is in serious danger of losing its relevance to what's happening in the world students face. Improvement is not coming from the educational philosophers who ask questions; it is coming from the students, who answer them.

Students and their professors form the major group of citizens who are regularly studying the march of history and its relevance to what's happening today, so it is natural that they are the leaders in actively expressing opinion on national policies.

They were in War on Poverty projects long before the government, they were the leaders in the civil rights movements, and they were the first to encourage debate about Viet Nam.

Students finally are not that much unlike those of 25 years ago. Today's protesters probably would not have urged a Get-Out-of-Europe policy if they were in college in the early '40s. The accelerated tension of world politics and the dynamic national influence of John Kennedy and Barry Goldwater have combined to awaken the student of the '60s to a world that he wants to say something about.

His basic opinions haven't changed radically from one decade to another. What has changed is the degree of apathy or activism, the volume of the student concern.

The difference is that the Silent '50s have become the Noisy '60s.

Wall Street In Review

NEW YORK (UPI)—The Alexander Hamilton Institute says it regards the present situation as a trader's market "likely to prove an intermediate recovery in a major trend that is still downward."

Leslie M. Pollack of Reynolds & Co. says he continues to favor the positive side and believes that a successful test of the 760 level in the Dow Jones industrial average would go a long way toward clearing the air and restoring investor confidence.

The dragon symbolizes sin and paganism in Christian art.

Olio

ACROSS
1 Mama (corrupt)
4 Glut
8 Apple center
12 Malt brew
13 At all times
14 Arabian gulf
15 Edge
16 Wrote poetry
18 Native of Oklahoma
20 Dispatches
21 Small rivulet
22 God of love
24 Black (Fr.)
26 Nomad
27 Boy's nickname
30 Expunger
32 Principal one of lead
34 State without proof
35 Bears
36 Legal point
37 Rodents
38 Writer of verse
40 Flat-topped hill
41 Boy's nickname
42 Rail birds
43 Ohio town
49 Moved over, as a canal
51 Snares
52 Weapons
53 Grow weary
54 Color
55 Open-mouthed stare
56 Servitude
57 Affirmative reply

DOWN
1 Planes
2 Hedgepodge
3 Monuments, for instance
4 Number
5 Answer
6 Filler

ANSWER TO PREVIOUS PUZZLE
ACROSS
1 MAMA
4 GLUT
8 APPLE
12 MALT
13 ALWAYS
14 GULF
15 EDGE
16 POET
18 OKLAHOMA
20 DISPATCH
21 RIVULET
22 CUPID
24 NEGRO
26 NOMAD
27 BOB
30 EXPELLER
32 LEAD
34 ALABAMA
35 BEARS
36 POINT
37 RATS
38 VERSE
40 MOUNTAIN
41 BOB
42 RAILS
43 OHIO
49 CANAL
51 TRAPS
52 GUNS
53 TIRED
54 RED
55 MOUTH
56 SLAVES
57 YES

DOWN
1 PLANE
2 HEDGEHOG
3 MONUMENT
4 NUMBER
5 ANSWER
6 FILLER

Shop Ward's - Lowest Prices On Swift Premium Beef

- STEAK ROUND** 89¢ lb. Swift Prem. Heavy Beef.
- T-BONE STEAK** 98¢ lb. Swift Prem. Heavy Beef.
- SIRLOIN STEAK** 85¢ lb. Swift Prem. Heavy Beef.
- BACON** 79¢ lb. Swift Prem.

- BEEF** 2 1/2 lbs. 97¢ Fresh Ground.
- FRYERS** 33¢ lb. Fresh Dressed.

YOU CAN'T BUY BETTER QUALITY... why pay more

- Van Camp **PORK & BEANS** 300 Size 12 1/2¢
- Libby's **TOMATO JUICE** 46 oz. Can 27¢
- Mission **GREEN BEANS** 303 Can 13¢
- Libby's, Whole Kernel or Cream-Style **CORN** 303 Size 19¢
- My-T-Fine **PUDDING** Assorted Flavors 2 1/2¢
- Wyrob Polish Dill **PICKLES** qt. 39¢
- Kimbell's **BISCUITS** 3 Cans 3 1/2¢
- Bama, Red Plum or Grape **JAM** 18 oz. 2 1/2¢
- Gladiol **FLOUR** 5 lb. Bag 49¢
- Jergens **HAND SOAP** Bath Size 10¢
- Cracker Barrel **CRACKERS** 1 lb. Box 19¢
- Mrs. Tuckers **SHORTENING** 3 lbs. 69¢

- COCA COLA** King Size Carton 43¢

- PEACHES** Hunts 2 1/2 Can 25¢

- COFFEE** FOLGERS 1 Lb. Can 59¢ With \$5.00 or More Purchase Excluding Cigarettes

- EGGS** Elmers Doz. 45¢

- PINTO BEANS** 2 Lb. Cello 25¢

- ORANGE DRINK** Wagoner Qt. 19¢

- SALAD DRESSING** Salad Bowl Qt. 39¢

MELLORINE LANE'S 1/2 gal. 33¢

Open Daily 7:30 a.m. to 7:30 p.m., Sundays 8 a.m. to 7 p.m. WE GIVE BUCCANEER STAMPS DOUBLE STAMPS EVERY WEDNESDAY WITH \$2.50 OR MORE PURCHASE

WARD'S GROCERY

502 W. FRANCIS WE RESERVE THE RIGHT TO LIMIT QUANTITIES MO 9-9641

coupon
Bring This Coupon To Our Store
100 FREE BUCCANEER STAMPS
With Purchase of 6 Roll Pkg. DELSEY TISSUE

coupon
Bring This Coupon To Our Store
100 FREE BUCCANEER STAMPS
With \$5.00 or More Purchase Excluding Cigarettes

coupon
Bring This Coupon To Our Store
100 FREE BUCCANEER STAMPS
With Purchase of 2 Boxes 2 Ply KLEENEX

WARD'S SPECIAL PACKAGE DEAL

- 5 lbs. Round Steak Swift Prem.
- 5 lbs. Chuck Roast Swift Prem.
- 5 lbs. Fresh Dressed Fryers
- 5 lbs. Ground Beef
- 4 lbs Club Steak Swift Prem.
- 3 lbs. Pork Steak
- 3 lbs Boneless Stew

30 lbs. only \$16⁹⁵

Washington Extra Fancy Red Delicious **APPLES** 5 lbs. \$1

Fresh **CABBAGE** 7¢ lb

Vine Ripe **TOMATOES** 15¢ lb

WARD'S DELICATESSEN SPECIALS

- Cake** 39¢ doz.
- Donuts** 39¢ doz.
- CINNAMON ROLLS** Large Size 6 FOR 49¢
- STEW BEEF** 59¢ lb

FOR ALL YOUR INSURANCE NEEDS... SEE

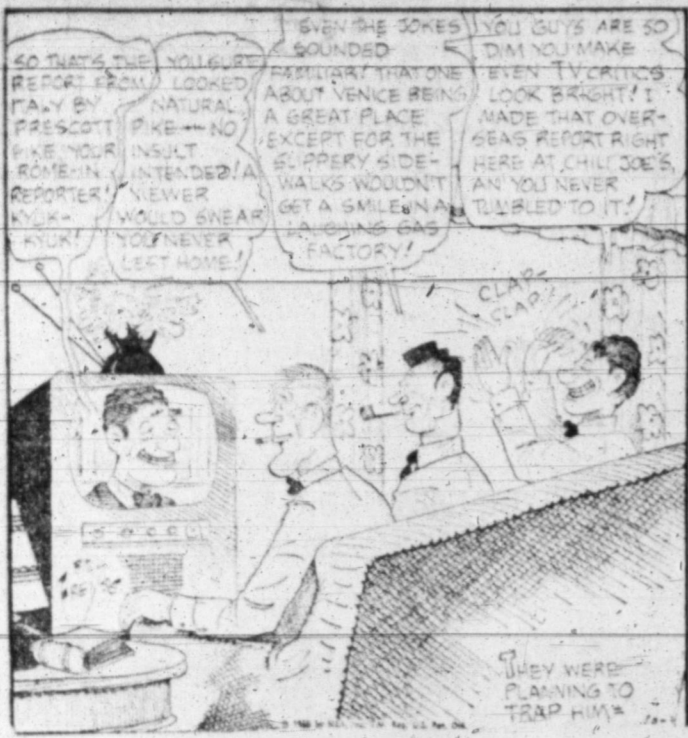


JOHN R. ELLIS
1905 Chestnut
MO 5-4670

SENTRY INSURANCE
The Hardware Mutuals Organization

OUT OUR WAY

J. R. Williams



OUR BOARDING HOUSE

With Major Hoople

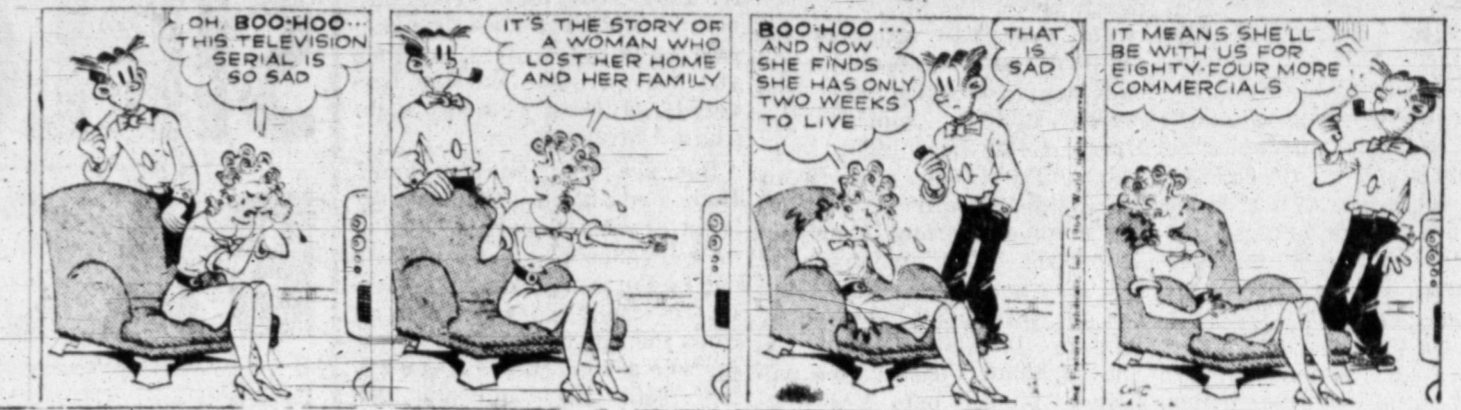
Short Ribs



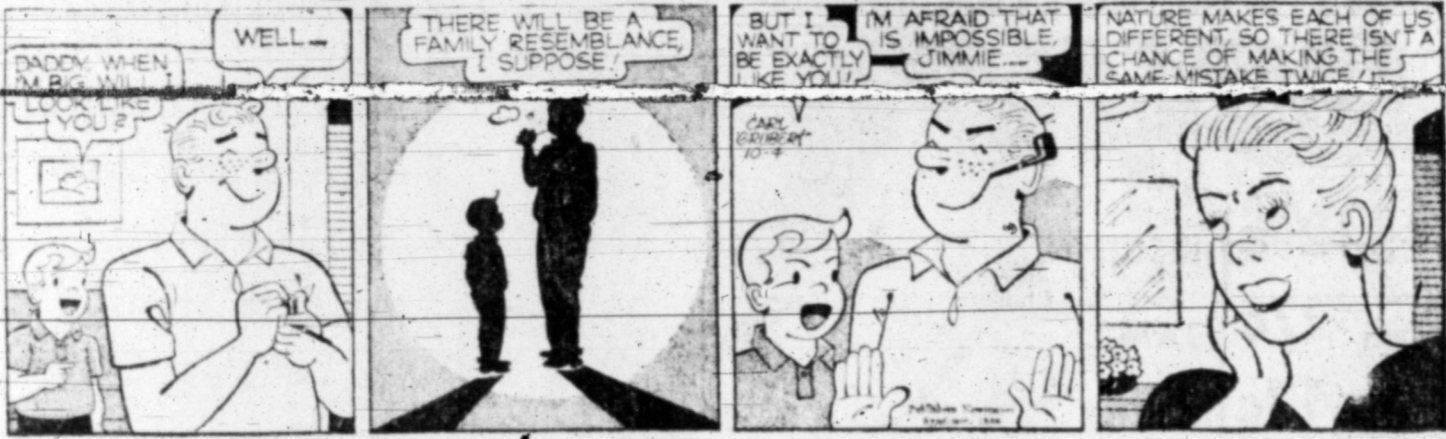
The Born Loser



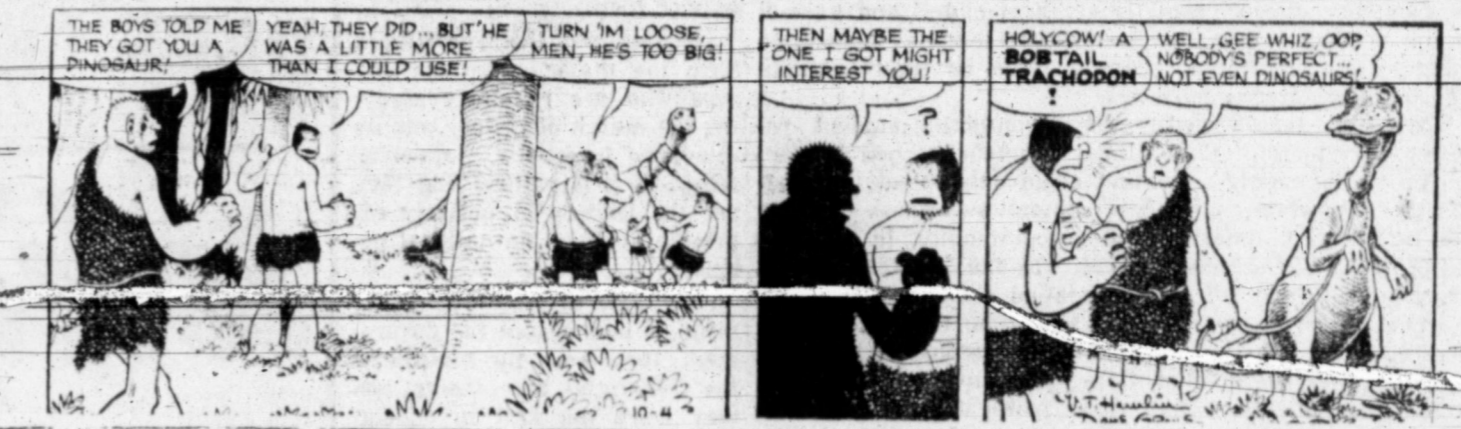
Blondie



The Berrys



Alley Oop



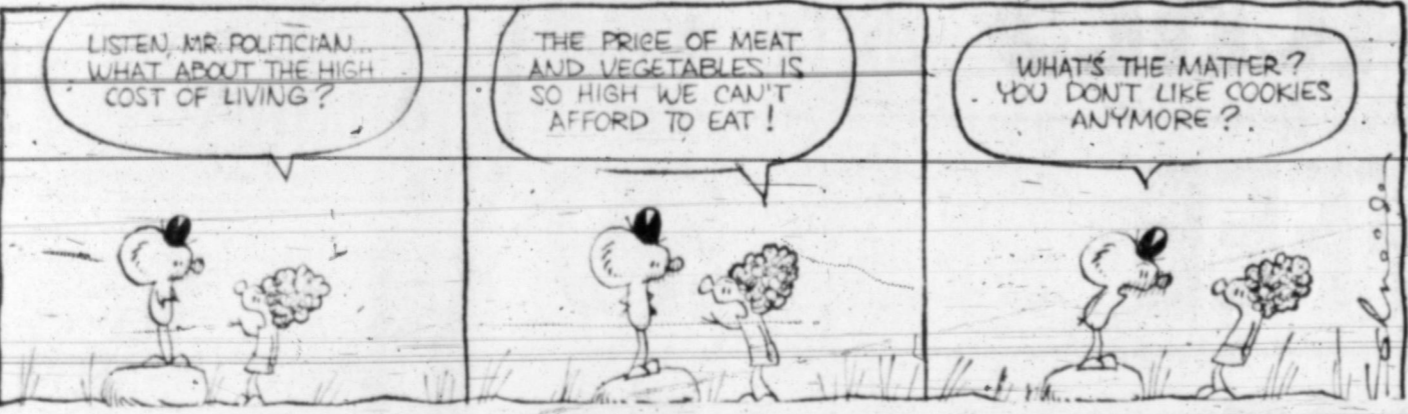
Bugs Bunny



The Flintstones



Eek and Meeks



The Willets



Captain Easy



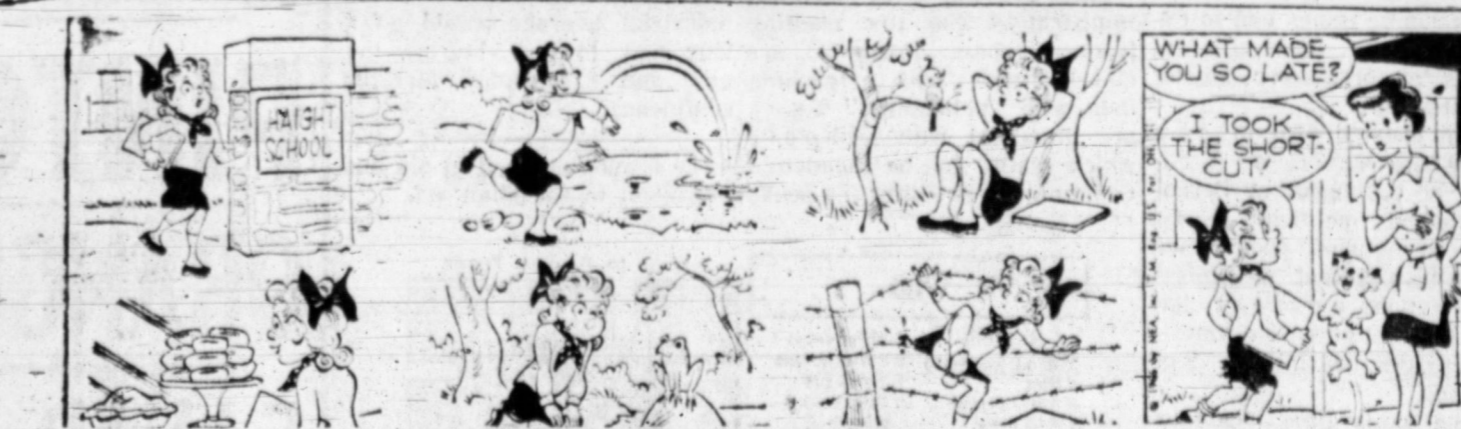
Mickey Finn



Jackson Twins



Priscilla's Pop



WINTHROP



Debbie Deere



Joe Palooka



JOH...
H...
Pam...
back...
by Ha...
as Ha...
brother...
Heisk...
setting...
record...
last...
The...
19...
tin...
good...
twice...
son...
For...
has...
pla...
can...
276...
year...
carry...
ception...
Player...
Lester...
Hyatt...
Channe...
Kirksey...
Alston...
Gaiser...
McCarr...
Etherd...
Alexan...
Tech...
Lead...
By Un...
Mike...
losing...
A&M...
Texas...
of the...
Confere...
Leina...
yards...
place...
Bas...
wh...
Chris...
at 193...
SMU...
Richard...
with...
16...
Delee...
those...
y...
State...
1...
same...
time...
es...
for...
the...
bes...
ances...
o...
Sou...
Terry...
leads...
th...
vell...
of...
but...
Te...
is...
room...
ing...
pos...
of...
91...
touch...
seven...
i...
Score...
for...
48...
down...
while...
H...
for...
466...
down...
South...
lead...
in...
yards...
for...
Har...
Larry...
managed...
the...
Ag...
perform...
son...
and...
with...
26...
Camp...
for...
17...
Chesir...
yards...
IN...
A...
HU...

The Pampa Daily News

A Watchful Newspaper

EVER STRIVING FOR THE TOP O' TEXAS

TO BE AN EVEN BETTER PLACE TO LIVE

The Pampa News is dedicated to furnishing information to our readers so that they can better promote and preserve their own freedom and encourage others to see its blessing. Only when man is free to control himself and all he produces, can he develop to his utmost capabilities.

We believe that freedom is a gift from God and not a political grant from government. Freedom is neither license nor anarchy. It is control and sovereignty of oneself no more, no less. It is thus consistent with the Human Relations Commandments, the Golden Rule and the Declaration of Independence.

Cameras in Congress

It is time to call a halt to the practice of allowing movie and television cameras in Congressional committee rooms during the conduct of hearings or other legislative business. A review of "news" clips actually shown from any one of several hearings which were covered by cameras can demonstrate that these do not provide the public with any appreciable amount of objective information on the issues. Moreover, it is evident that the presence of cameras does interfere with the proper purpose of Congressional hearings, as some committee members and also some witnesses become more interested in politicking or propagandizing than they are in objective discussion of the business at hand.

Nor do we blame the TV film editors that they used few if any clips on the same hearings when respectable witnesses and sensible testimony were subsequently presented. After an exciting brawl between the good guys and the bad guys, who wants to watch the workaday ranch hands patching up the bunkhouse?

Thunder on the Left

Senator Joe McCarthy has been dead for almost a decade, but periodically the "liberals" go through a frenzied ritual of denouncing the late Senator and attacking the liberal news media. The reason for each anti-McCarthying, which is why we were interested in an amusing repeat performance just given.

munist Party. While Schlesinger and Lampell merely sounded warnings, Red Herbert, as a public-spirited citizen, announced that he was going to run for Congress from New York's 12th District. His opponent will be opposition to anti-McCarthyism, Vietnam and racism.

Nothing In Common

It has often been said, and can bear repeating, that every dollar spent by government, federal, state or local, must eventually come from individuals and businesses. It is still true. A heavy taxpayer should be looked upon as a valuable asset to the community. An example of what such a taxpayer means to local governments can be seen in tax payment figures cited by a leading electric company in the Pacific Northwest.

the same to build. One is investor-owned, and one is publicly-owned. The private project pays the county almost \$600,000 in taxes, and the other project pays nothing.

Safety Sam Says: A pedestrian must move, whenever possible, upon the right half of cross-walk.

Cannel At Bay By Ward Cannel

Shed a Tear for the Philosopher NEW YORK (NEA) — As regular readers know, it is the aim of this column to do what it can toward making some order out of the chaos brought on by human achievement and progress. And we take great pride in pointing out that no event has ever been too complex for us to explain completely.

Consequently, it is with considerable reluctance that we must concede our first defeat. But there is no way out of it. If we are keeping our diary accurately, then we have to admit that this has been a very hard week for philosophers.

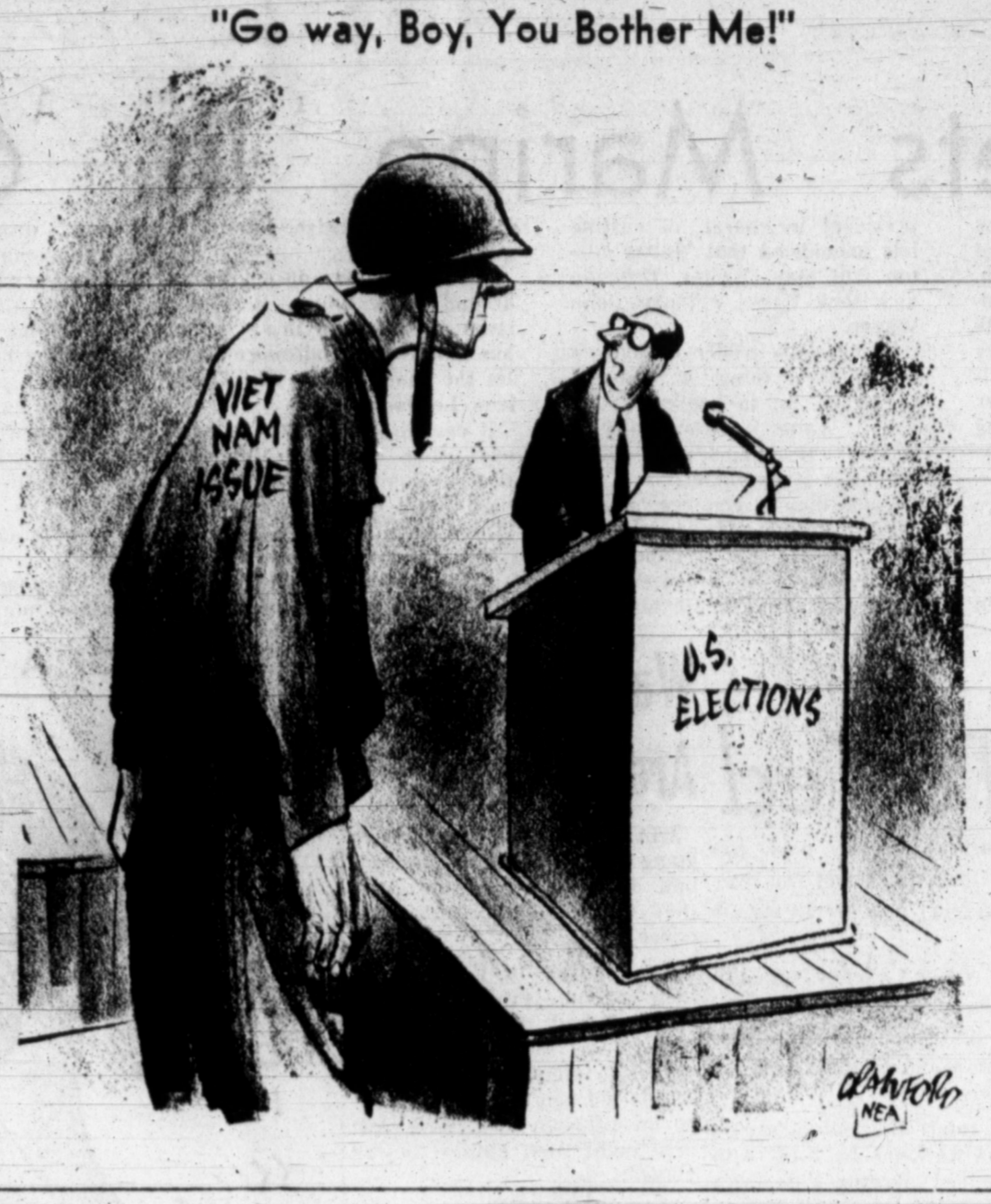
Backstage Washington

Despite Law, Food-for-Peace Feeding Red Nations Indirectly Greening Charges; State Dept., Other Agencies Aiding by Secrecy

Nothing In Common

It has often been said, and can bear repeating, that every dollar spent by government, federal, state or local, must eventually come from individuals and businesses. It is still true. A heavy taxpayer should be looked upon as a valuable asset to the community. An example of what such a taxpayer means to local governments can be seen in tax payment figures cited by a leading electric company in the Pacific Northwest.

Safety Sam Says: A pedestrian must move, whenever possible, upon the right half of cross-walk.



Backstage Washington

Despite Law, Food-for-Peace Feeding Red Nations Indirectly Greening Charges; State Dept., Other Agencies Aiding by Secrecy

WASHINGTON — While Congress, under White House spurring, is in the process of enacting a two-year \$5 billion continuation of Food-for-Peace, leading beneficiary countries are making a sucker of this humanitarian program.

Not only are they deliberately flouting specific U. S. laws to which they agreed in writing, but they are doing so to aid Communist nations.

Latest of these violators is Brazil in giving a helping hand to dictator Fidel Castro—whose gross mismanagement, waste and incompetence has resulted in severe shortages and stringing rationing in once sufficient Cuba.

In 1965 and this year Brazil has received more than \$61 million in U. S. grain and other food. An emergency gift of \$2 million of corn was rushed there to avert famine among starving Indians and peasants.

At the very same time the U. S. was donating this desperately-needed succor, Brazil was selling 8,000 tons of corn to Communist-ruled Cuba.

Another extraordinary aspect of this deal is that it was arranged by Russia, which provided a freighter to transport the grain. Brazil is one of the biggest Latin American beneficiaries of U. S. economic and military aid — totaling more than \$3 billion. Since 1955 it has also received \$665.5 million in food supplies.

Birth Control Is Vital Part Of U.S. Aid

WASHINGTON (NEA) — One day in the late 1930s in her sitting room in the old Tokyo Imperial Hotel, the late Margaret Sanger, veteran apostle of birth control, was telling some of us how she was accomplishing her ends against heavy opposition.

Backstage Washington

Despite Law, Food-for-Peace Feeding Red Nations Indirectly Greening Charges; State Dept., Other Agencies Aiding by Secrecy

WASHINGTON — While Congress, under White House spurring, is in the process of enacting a two-year \$5 billion continuation of Food-for-Peace, leading beneficiary countries are making a sucker of this humanitarian program.

Candor Is The Best Policy

(Tulsa Tribune) "cold war" decisions a newsman has to face is what to do when government insists a particular item of news, if published, "would not be in the public interest." What becomes then of the tradition of freedom of the press? How do you equate patriotism and professional duty?

Backstage Washington

Despite Law, Food-for-Peace Feeding Red Nations Indirectly Greening Charges; State Dept., Other Agencies Aiding by Secrecy

WASHINGTON — While Congress, under White House spurring, is in the process of enacting a two-year \$5 billion continuation of Food-for-Peace, leading beneficiary countries are making a sucker of this humanitarian program.

Backstage Washington

Despite Law, Food-for-Peace Feeding Red Nations Indirectly Greening Charges; State Dept., Other Agencies Aiding by Secrecy

WASHINGTON — While Congress, under White House spurring, is in the process of enacting a two-year \$5 billion continuation of Food-for-Peace, leading beneficiary countries are making a sucker of this humanitarian program.

Backstage Washington

Despite Law, Food-for-Peace Feeding Red Nations Indirectly Greening Charges; State Dept., Other Agencies Aiding by Secrecy

WASHINGTON — While Congress, under White House spurring, is in the process of enacting a two-year \$5 billion continuation of Food-for-Peace, leading beneficiary countries are making a sucker of this humanitarian program.

Advertisement for 'You Can't Take It With You' featuring a list of names and contact information for a law firm.

Rockefeller's Re-Election Bid Forces Kennedy-Javits Alliance

ALBANY, N.Y. (UPI) — Gov. Rockefeller's re-election bid this fall has forced prominent politicians in New York like Sens. Robert Kennedy and Jacob Javits to form alliances they would have preferred to avoid. Javits decided earlier this year that his drive for a place on the GOP's 1968 national ticket would best be served by his being elected governor of New York in November. But Rockefeller's grip on the state organization was too strong for any successful challenge, and Javits is now the governor's campaign manager. Kennedy wanted someone close to his progressive, young circle of followers to be the Democratic gubernatorial candidate. But the party regulars stood fast by one of their own — City Council President Frank D. O'Connor, and Kennedy, for the sake of unity, ended up as honorary campaign chairman. Franklin D. Roosevelt Jr. pursued the Democratic gubernatorial post also.

see how YOU save here

YOU SAVE EVERYDAY ON EVERY PURCHASE!

PEPSODENT TOOTHPASTE

59c
BIG 95c VALUE FAMILY SIZE TUBE

NEW DETERGENT SURF
Giant Size 85c Value
COLD or HOT WATER WASHES
59c

NEW SUPER STRIPE TOOTHPASTE

49c
King Size Tube 79c Value

LIFELINE ADULT TOOTHBRUSH

47c
YOUR CHOICE OF HARD, OR MEDIUM TEXTURE! 89c VALUE

GIBSON NOW HAS Lite Fluff BISCUITS G.D.P. 3 for 24c

PEPSODENT ADULT TOOTHBRUSH

39c
Available In Hard, Medium, and Soft Texture. 69c Retail Value

ST. MARY'S FIELD CREST BEDSPREADS
KING SIZE REG. \$29.97 **\$17.97**

SHELL CHEMICAL NO PEST STRIP INSECTICIDE
A Resin Vaporizer Strip That Fells Flying Insects.
Reg. \$2.95 **\$1.99** Buy at this Low price!

5 Qt. PUREX BLEACH
Reg. 99c **59c**

SUNBEAM ELECTRIC BLANKET
No. 021 Double Bed Single Control, Assorted Colors
Reg. \$22.98 **\$16.29**

SO SOFT HAND LOTION 39c

SHOE STRINGS 3c Pkg.
Assorted Lengths & Colors
Gibson's Discount Price

GIBSON'S DISCOUNT CENTER
"WHERE YOU ALWAYS BUY THE BEST FOR LESS"
OPEN DAILY 9 A.M. TO 9 P.M. CLOSED SUNDAYS

Prices Good Tuesday, Wednesday, and Thursday