

HUMPHREY IN SAIGON

US Begins Viet Economic War

SAIGON (UPI) — Vice President Hubert H. Humphrey arrived in Saigon today with a pledge to wage "a vigorous war" against social and economic ills in Viet Nam. He was shielded by thousands of troops and police protecting him from Communist terrorists.

The vice president's White House jetliner touched down at suburban Tan Son Nhut Airport at 4 a. m., EST after a flight across the Pacific from Honolulu. Arriving with Humphrey were South Vietnamese Premier Nguyen Cao Ky, chief of state Nguyen Van Thieu, U. S. Secretary of Agriculture Orville Freeman and others who attended the Honolulu conference with President Johnson earlier this week.

Humphrey received the most elaborate welcome to Saigon in the memory of longtime Western residents, including a 21-gun salute from four 155mm howitzers.

"My mission is not military," he told reporters during a 3,800-mile flight from Honolulu. "I'm here as a representative of the 'Great Society.'"

A multi-service Vietnamese military guard stood in two ranks stretching more than 100 yards from the vice president's plane to the airport's VIP lounge. The ramp also was decorated with four highly polished tanks.

About 1,000 Vietnamese schoolgirls clad in traditional white tunics and translucent

pantalons stood nearby waving tiny U. S. and Vietnamese flags. Streets throughout Saigon itself were decked with banners proclaiming Vietnamese determination to resist communism.

Much history and many changing circumstances brought Humphrey to Saigon with Ky and Thieu.

Those circumstances included the deepening U. S. involvement in South Viet Nam in the past year, the changing military situation, political upheavals in Saigon and the peace offensive that failed.

THREE HURT IN HOUSTON

Tornadoes Rip South Texas Coastal Area

By United Press International

Violent winter thunderstorms lashed southern Texas Wednesday night and today with tornadoes, 100-mile-an-hour winds, hail, torrential rain and destructive lightning. Damage was heavy in southwest Houston where a tornado ripped into the southwestern section.

The storm was the worst in Houston in two years and at least three persons were injured. They were identified as Linda Parker, 19, Beryl Deer, 50, and Lawrence Henry, 19.

The U. S. Weather Bureau said Houston was pounded by slightly more than five inches of rain in the last 24 hours.

Hailstones piled up eight inches deep in some sections of the state. Marble-sized hail peppered Austin breaking tree limbs and causing slight roof damage.

The U. S. Weather Bureau said a few showers were still occurring over Southeast Texas by 7 a. m. Rain was expected to end over most sections today, but possible snow was forecast for West Texas Friday.

Overnight readings today ranged from 23 degrees at Daltart to a high of 62 at Broville.

The storm in Houston led directly to the capture of three

burglars. Deputy Sheriff Don Shonefeldt said he couldn't drive because of the blinding rain, pulled into a service station and caught three men burglarizing it.

Hundreds of miles to the north Denison recorded 7.25 inches of rain Wednesday.

The storm was blamed for at least eight deaths across Texas.

More thunderstorms were expected in the south and east sections of the state by nightfall.

At Gainesville, where flooding Pecan Creek drove hundreds of persons from their homes Wednesday, damage was conservatively estimated at "many thousands of dollars."

Winds estimated at 90 miles an hour picked up an automobile north of Victoria late Wednesday night and tossed it into a ditch, injuring two women. Several other cars were swept off the road by the wind and hail storm. Winds ripped down 25 power poles near Victoria.

City Accidents Up in January

With icy and snow-packed roads a major factor, Pampans were involved in 63 auto accidents during January, according to Police Chief Jim Conner.

This total is a considerable increase from the 52 accidents in January 1965, but in those 52 accidents last year there were 18 injuries compared to only 14 in this year's larger number of collisions.

A good many of this January's accidents were of the "fender-bender" and "bumper-thumper" types as motorists lost control of their vehicles on slippery roadways. Total property damage estimated for the 63 accidents was \$14,210.

The slippery roads figured in 45 accidents, with the remainder on dry pavement. Daylight prevailed in 48 accidents while only 12 occurred at night. Only three crashes occurred during the normally dangerous dawn and dusk hours.

As has been Pampa accident history, the men outnumbered the women 2 to 1 in accidents. Seventy-seven male drivers were involved in crashes compared to 37 women.

And the younger set again accounted for more than its share of the collisions. While there are fewer drivers in the age group, 23 of those under 20 years were involved in collisions.

Of the 114 drivers involved in the 63 accidents reported, 99 were Pampans, 11 other Texans and only four from out-of-state.

Speed remains the biggest ingredient in accidents as far as driving factors are concerned. Of the 63 accidents, 23 involved excess speed. Failure to yield caused 16 others and other improper driving, including disregarding traffic signals, following too close, and improper turns, accounted for 23 others.

Group Of LSU Students For Cong Victory

BATON ROUGE, La. (UPI) — A group of Louisiana State University students which the mayor of Baton Rouge wants investigated has gone on record in favor of a Viet Cong victory in Viet Nam.

Mayor W. W. Dumas telegraphed President Johnson, Vice President Humphrey and three Louisiana Congressmen asking an investigation of the Student Liberal Federation.

Dumas said Albert Nelson, 29, "went beyond free speech" in a speech in which he advocated overthrow of the U. S. government in favor of a Communist state.

Paul E. Jensen, president of the group, said McDonough No. 9, a Negro school in New Orleans, had invited members of the organization to talk to the student body.

The Pampa Daily News

Serving The Top O' Texas 58 Years

THE PAMPA DAILY NEWS, THURSDAY, FEBRUARY 10, 1966

(16 PAGES TODAY)

Week Days 36 Sundays 16c

Federal Court Rules Texas Poll Tax Unconstitutional

State Appeal Certain As Little Effect Seen For 1966 Balloting

AUSTIN (UPI) — Texas' poll tax does not "seriously" discriminate against Negroes, but it is, nonetheless, unconstitutional, a three-judge federal court ruled Wednesday.

The poll tax is an "invalid charge on one of our most precious rights—the right to vote," the judges said in a unanimous opinion.

The United Political Organization, a predominantly Negro group hailed the decision.

"I don't know if there will be more voting," said T. D. Armstrong of Galveston, vice president of the UPO. "But there will certainly be more qualified to vote. You would be surprised how much that \$1.50 keeps people from voting."

Most counties add 25 cents tax to the \$1.50 poll tax, making the total \$1.75.

The federal court issued an injunction, effective immediately, prohibiting Texas from denying anyone the right to vote because of failure to pay the \$1.75 tax.

The court still left appeal routes open, raising a possibility the poll tax could still be a requirement of this year's elections if the appeals are not exhausted by balloting time.

A legal source said the decision apparently will be left to the U. S. Supreme Court.

The decision was the first issued under a section of the 1965 voting rights act that directed the U. S. Justice Department to challenge the constitutionality of the poll tax in Alabama, Texas, Virginia and Mississippi, the states that still require it for voting.

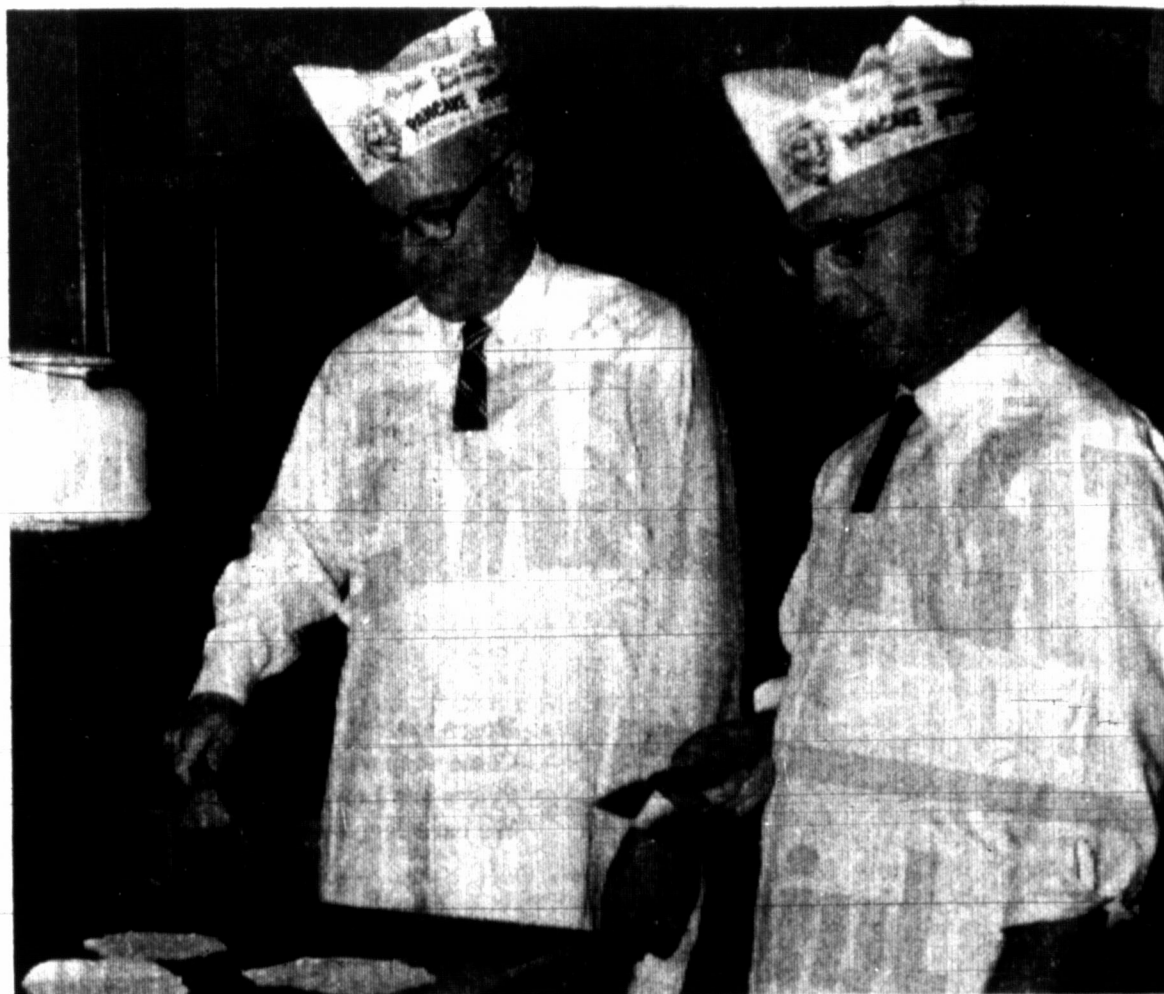
"The evidence does not establish that the poll tax in Texas discriminates against Negroes in violation of the 15th Amendment," wrote U. S. Circuit Judge Homer Thornberry of Austin.

That had been the Justice Department's charge—that Texas used the poll tax, to keep Negroes from voting.

Gov. John B. Connally and Atty. Gen. Waggoner Carr declined comment until they could see the opinion.

But Judge Thornberry said the poll tax "infringes on the concept of liberty as protected by the due process clause (of the 14th Amendment) and constitutes an invalid charge on the exercise of one of our most precious rights—the right to vote."

(See BALLOTING, Page 3)



FANCY FLAPJACK FLIPPING — Eying their sizzling culinary prey, Bill Take (left) and Bob Fugate practice their skills in preparation for the 11th Annual Shrove Tuesday Pancake Supper at St. Matthew's Episcopal Parish House. With more grills and added seating capacity the supper, scheduled Feb. 22 from 5:30 to 7:30 p.m., is expected to draw the largest crowd in the history of the event. (See Story, Page 3)

School Board Accepts Another Federal Grant

The Pampa Independent School Board today accepted another federal aid to education grant under Title II of the Elementary and Secondary Education Act of 1965.

The grant accepted today on motion of Board Member E. E. Shelhamer, seconded by John Gikas, will give the local school system \$12,396.35 in federal money to be spent for public school libraries for books, films, tapes, records, slides, etc. The vote was unanimous.

Board Member Joe Reid was a bit skeptical about accepting the money and wondered why the needs for the library fund hadn't been worked out before on a local basis.

"I would feel much better about voting for this," Reid said, "if the superintendent would come out and say that this has been needed for a long time but we couldn't afford it and now we have found a Santa Claus."

The board also voted today to make application for state funds to supplement beginning teachers' salaries under a bill passed in the 59th Texas Legislature.

If the application is approved it would make beginning teachers' salaries increase from the present minimum of \$4,704 to \$4,919 this year and to \$5,019 in 1967.

Pampa schools already are operating under a \$100,000 federal grant being administered under the Panhandle Educational Services Organization with headquarters at West Texas State University.

The program here is taken up with remedial reading courses and class equipment. The classes are being conducted in Robert E. Lee, Woodrow Wilson, Pampa High School, Pampa Junior High, Baker and Carver schools.

Supt. Jack Edmondson reported to the board that PESO has been well received in Pampa schools and that the coordinator and school principals all are well pleased with progress being made.

Teachers assigned to the PESO program conduct five classes daily with approximately 12 to 15 pupils in a class.

The board today accepted resignations of six teachers: Jamie Candace, Powers, and Rita Mills.

(See GRANT, Page 3)

22 Members of Elite 'Special Forces' Slain

SAIGON (UPI) — At least 22 members of the elite U. S. Special Forces may have been killed or captured during an advance patrol in the An Lao Viet region this week, it was learned today. The Communist stronghold later was occupied by Allied troops without a fight.

There were only two known survivors from among three teams of the hand-picked green beret troops attached to the top secret Project Delta group. A Special Forces team has eight to 12 members and sometimes 15 to 20.

Disclosure of the incident was made at An Lao, 310 miles northeast of Saigon, where almost 20,000 Allied troops this week chased three Communist regiments without success.

Hundreds of Viet Cong and North Vietnamese regulars were killed earlier in the fighting to the south.

U. S. officials declined to discuss the Special Forces disaster in detail because Project Delta is classified.

It was learned that one of the survivors, seriously wounded and hospitalized in the Philippines with 16 bullet and shrapnel wounds, was Maj. Charles Beckwith of Atlanta, Ga.

State President To Install Pampa Postal Officers

New officers will be installed this evening by Pampa Branch 3094, National Association of Letter Carriers.

Auxiliary 1286 officers will also be installed at the meeting to be held at 7:30 p.m. in the Citizens Bank hospitality room.

Douglas Meador of Borger, state president of the Texas State Association of Letter Carriers, will be the installing officer.

R. W. McPhillips, Jr. will be installed as president of Branch 3094. Other new officers are Billy J. Hagerman, vice president; Marion H. Brown, recording secretary; and Thomas H. Manning, financial secretary.

Mrs. Margaret McPhillips is the new Auxiliary president. She will be assisted in the coming year by Betty Peeler, vice president; Leslie Parks, secretary-treasurer; and Rita Mills, reporter.

Death Takes Sophie Tucker, Last of 'Red Hot Mammams'

NEW YORK (UPI) — Since the turn of the century millions have heard the words rise from her bosom at the close of her song.

In glittering costume, she would bend her huge figure, point toward her audience and say:

"You're gonna miss your big, fat, red-hot mamma . . . some of these days!"

Today, the generations who have heard her sing those lyrics will agree.

Sophie Tucker, the "last of the red-hot mammals" died Wednesday night. It ended a 62-year era in which audiences the world over heard her tart remarks and colorful songs.

The leathery voice songstress, who celebrated her 79th birthday last month, died at her apartment of a chronic lung condition and kidney failure.

Until last fall, Miss Tucker was active in her career. Then, after two performances at New York's Latin Quarter, she was hospitalized several weeks with a virus infection.

She was born while her Russian parents were traveling across Europe en route to the United States. Her real name was Sophie Kalish, and as a child she worked in her father's restaurant in Hartford, Conn.

It was there that she began to sing for nickels and dimes, while serving 25-cent gettue fish dinners. At age 18, after a brief, unsuccessful marriage, she went to New York to sing in blackface for \$15 a week.

Light Snow Due This Weekend

Pampans who were beginning to think the groundhog had goosed Feb. 2 when he foresaw another six weeks of winter, will possibly find he knows what he's talking about this weekend.

In the midst of a strong cooling trend, the weatherman sees a 40 per cent chance of light rain or snow tomorrow. The mercury will dip to the low 20s tonight after a high this afternoon in the 40s.

But tomorrow the temperature is not expected to rise much, if any, above the freezing point at 32 degrees.

Along with the cooler temperatures, there will be Northeastern winds at 10 to 20 mph.

Yesterday the thermometer registered a high of 53 degrees. Overnight, Pampa cooled off to 27 degrees.

For Saturday, the weatherman sees considerable cloudiness with occasional light snow.



SNOW

Candace, Powers Seen Kissing

MIAMI (UPI) — A former Houston, Tex., landlady testified today that the year before wealthy Jacques Mossler was murdered, Melvin Lane Powers introduced Mossler's wife, Candace, as his fiancée and moved her into a "secluded" apartment.

The witness, Mrs. Dina Thompson, a pale woman with a reddish mop of hair, said she later observed them in Mrs. Mossler's cream-colored Lincoln Continental "being very affectionate—kissing and had their arms around each other."

Mrs. Thompson was the 35th state witness in the first degree murder trial of Powers and Mrs. Mossler, who is his aunt. The state charges they conspired to do away with the financial wizard because he was interfering with their inheritance.

(See POWERS, Page 3)

PAMPA SYSTEM DIRECTLY AFFECTED

FCC Commences Investigation Into CATV

The fate of community antenna television (CATV) for Pampa may hang in the balance as the Federal Communications Commission today meets to begin a study of the issues involved.

Some aspects of the system have already been ruled on by the commission. It said in April, 1958, that CATV did not fall under a common carrier classification of FCC regulations. The agency ruled more recently, however, that it had jurisdiction over cable systems that used microwave units and asked Congress to enact legislation giving it jurisdiction as well over systems using cables.

The first cable system started in Pennsylvania in 1950 to bring television signals to remote mountain areas but it has since mushroomed into centers of population.

It is this which has touched off the controversy.

The FCC has indicated it will be reluctant in its consideration of CATV to make hard and fast rules. The commission commented in its 1965 annual report that it had "no intention of bypassing congressional action."

FCC Chairman E. William Henry was undecided when he would issue a statement on today's meeting.

The commission is expected to decide to continue its rule that it controls systems using microwave units, that CATV cannot be used for pay-television programming and that there is a limit to the distance from which a TV signal can be imported into a community over CATV.

These decisions, however, probably will take into account congressional reaction.

The principal antagonists in the matter are the National Association of Broadcasters and the National Community Television Association, the latter representing CATV operators.

Broadcasters contend that widespread success of CATV would enable it to outbid competitors for advertising for (See CATV, Page 3)

INSIDE TODAY'S NEWS

Category	Pages
Classified	15
Comics	12
Crossword	7
Dear Abby	11
Editorial	14
Food	4
Horoscope	11
On the Record	2
Menu	10
Society	10.11
Sports	13
Theater	13
TV	6

On the Record

Highland General Hospital does not have a house physician. All patients, except severe accident victims, are requested to call their family physician before going to the hospital for treatment.

Please help us to help our patients by observing visiting hours.

VISITING HOURS
MEDICAL AND SURGICAL FLOORS
Afternoons 2-4
Evenings 7-8:30
OB FLOOR
Afternoons 3-4
Evenings 7-9

WEDNESDAY Admissions

- J. B. Austin, 625 N. Frost.
Mrs. Lawanna Thornton, 601 Red Deer.
Mrs. Susan Murrell, Mobeetie.
Frank Reeves, McLean.
Mrs. Lily Meek, Hedley, Tex.
Orlando Meaker, Panhandle.
Mrs. Billie Y. Johnson, 1104 Sirroco Rd.
Mrs. Matilda B. Horton, 1130 S. Hobart.
George M. Ford, Pampa.
Mrs. Doris Mae Lovelace, Pampa.
Mrs. Evelyn J. Adams, White Deer.
Mrs. Ruth Blakley Powers, Borger.
Dismissals
Mrs. Minnie Howard, White Deer.
Billy Walton, Phillips.
Mrs. Inez Hood, 628 N. Somerville.
Alvin Johnson, 1044 Prairie Dr.
Mrs. Lynell Jarvis, 501 Lowry.
Mrs. Allie Cleek, Panhandle.
Stephen Tierney, 721 W. Francis.
Mrs. Barbara Dobbin, 1909 Mary Ellen.
Mrs. Carole Clay, 2006 Hamilton.
Baby Boy Clay, 2006 Hamilton.
Geneva Wortham, 852 S. Somerville.
Richard F. Hankins, Pampa.
Pietra Harris, 811 1/2 S. Gray.
Mrs. Barbara Sackett, Pampa.
Mrs. Naomi Ray, Pampa.
Mrs. Letitia Hassell, 306 N. Somerville.
Mrs. Alta Faye Eaton, 1601 Mary Ellen.
Mrs. Deanna F. Sartwell, Pampa.

Santo Domingo Mob Kills 7

SANTO DOMINGO (UPI) — Murderous anti-American mobs roamed the streets here Wednesday night after a day of savage rioting in which at least 7 persons were killed and 48 wounded.

Victims of the outbreak of violence included one policeman drenched with gasoline and burned to death and another shot and killed by the rioters.

Although the mobs shouted repeatedly, "Kill all Yankees," almost all of the casualties were Dominican. The one known exception was a Brazilian officer of the inter-American peace force who was wounded when a terrorist threw a hand grenade into his jeep.

The rioters severely damaged an unmarked U.N. automobile after beating up its driver. They tried to set fire to two Canadian embassy cars but were driven off by a U.S. patrol.

STYLE CONTEST NEW YORK (UPI) — The City Parks Department is offering a \$2,000 prize to the architect who can design the most stylish hot dog stand for Central Park.

Parks Commissioner Thomas P. F. Hoving announced the competition Wednesday. He said Horn and Hardart Co. put up the money and promised to build the first stand.

HI-POCKETS
I BETTER NOT BE THAT FLAT ON CASH WHEN MY NEWSPAPER BOY COLLECTS.....
COLLECTION DAY, TODAY

Won't you be our Valentine?



WE "EXTRA CARE" FOR YOU!



FURR'S FRESH FROZEN FOODS

- BABY LIMAS TOP FROST FRESH FROZEN 10 OZ. PKG. **19c**
- MORTON'S DONUTS FRESH FROZEN 7c OFF PKG. **3 for 1.00**
- PET RITZ PIE SHELL FRESH FROZEN 2 PIECE 9" **39c**

Rosearita Fresh Frozen **Combination Plate 3 for 1**

Mortons Fresh Frozen, Apple, Peach, Cherry, Coconut, Pkg. **FRUIT PIES 29c**

EXTRA CARE GENERAL MERCHANDISE

NYLON HOSE

SEAMLESS PAIR **89c**

After Shave --- Old Spice **\$1.50**
Lime

REVLON Hair Spray **OGILVIE**
Intimate **\$2.00** Caddy **99c** Hair **\$2.25**
Spray 2 Oz. Each 20 Oz.

FRESH PRODUCE FOOD BUYS

BANANAS

CENTRAL AMERICAN FRUIT, Lb. **9c**

Fresh Florida Pure **ORANGE JUICE** ... qt. **29c**

CAULIFLOWER each **19c**

EGG PLANT Calif. Glossy **19c**
Black, each

LETTUCE Romaine bunch **19c**
LETTUCE Red Leaf bunch **19c**
PECANS Paper Shell Lb. **29c**

Tomato Juice
HUNTS 46 OZ. CAN **25c**

Roses are red, violets are blue, Come shop at Furr's, where there's more for you. Prices are Low, service Sublime. We care for you "Extra", all of the time.



SHORTENING BAKERITE 3 LB. CAN **59c**

PORK & BEANS HUNTS NO. 303 CAN **2 FOR 23c**

TISSUE WALDORF 4 Roll Pkg. **29c**

OLEO WESTERN RANCH 2 Lbs. **29c**

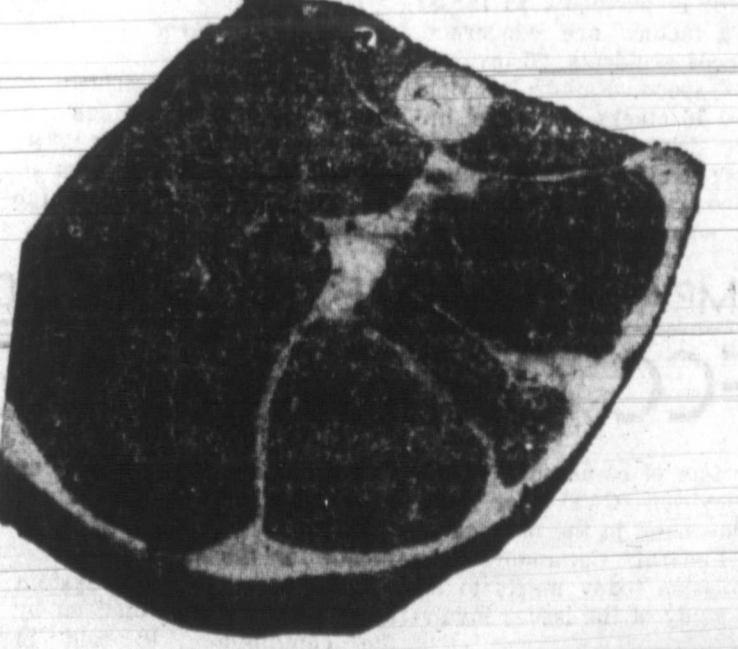
Reg. or King **COCA-COLA** 6 btl. ctn. **39c** Plus Dep.

Chase & Sanborn, 7c Off **COFFEE** Lb. **73c**

Chase & Sanborn, 10c Off **INSTANT COFFEE** 7 oz. **79c**

- All Brands **SUGAR** 5 lb. bag **49c**
- Farm Pac Grade A Medium **EGGS** 2 dozen **89c**
- Del Monte, no. 303 can **SWEET PEAS** **5 for 1**
- Bremner **CRACKERS** lb. **23c**
- Blue Bonnet, 2c Off **MARGARINE** lb. **29c**
- Food Club, 18 oz. jar **PEANUT BUTTER** **49c**
- Ranch Style no. 300 can **BLACK EYE PEAS** **12 1/2c**
- Seven Seas Creamy 8 oz. jar **ITALIAN DRESSING** **3 for 1**
- Purina Chow **DOG FOOD** 5 lb. bag **69c**
- Circus Ass't. flavors 46 oz. can **FRUIT DRINKS** **4 for 1**
- Gold Medal **FLOUR** 25 lb. bag **1.29**
- Dartmouth **MELLORINE** 1/2 gal. **39c**

Chuck Roast
USDA Inspected Farm Pac Blue Ribbon or Choice LB. **59c**



BONELESS BEEF ROAST lb. **79c**

SIRLOIN STEAK USDA Inspected Farm Pac Blue Ribbon or Choice, lb. **98c**

GROUND BEEF All Fresh Beef Lb. **39c**

SLICED BACON HICKORY SWEET SMOKED, Lb. **79c**

Furr's SUPER MARKETS
EXTRA CARE SERVICE

Sausage
FARM PAC ALL MEAT
2 Lb. **\$1.49**
Bag

Obituaries

George W. Miller Funeral services for George W. Miller, 47, of 859 S. Summer, who died at 12:55 a.m. today, will be at 2 p.m. tomorrow in Carmichael-Whitley Colonial Chapel...

Mainly - - About People - -

A Valentine Dinner for husbands will be held at 6:30 p.m. Saturday at Jim's Steak House by the Petroleum Engineers' Wives...

Pampa Jaycees To Participate In Heart Telethon

The Pampa Junior Chamber of Commerce will participate in the Heart Telethon to be conducted on Amarillo Channel 10 this weekend.

Committees Named For Stock Show

The Chamber of Commerce Agriculture Committee yesterday finalized plans for the Junior Livestock Show, March 7, 8 and 9.

Grant

(Continued From Page 1) Cates, Peter Colville, Claudine Ellison, Mary McGeath, Ruth Robertson and Fred Stockdale.

Pampa Employees Included in New SWBT Contract

A contract agreement was reached at 2:30 a.m. today between Southwestern Bell Telephone Co. and District 6 of the Communications Workers of America. It covers 47,000 employees in six states including those employed in the Pampa area.

Shrove Tuesday Pancake Supper Set for Feb. 22

The Eleventh Annual Shrove Tuesday Pancake Supper will be held Feb. 22, in St. Matthew's Parish House, 727 W. Browning, according to Mr. and Mrs. Clem Followell and Mr. and Mrs. James Hart, co-chairmen for the event.

Rotarians Near Aviation Talk

The rapid growth of general aviation throughout the United States was discussed by Rolla Hill at the Pampa Rotary Club's luncheon meeting yesterday in the Coronado Inn.

New Boy Scout Troop Charter Slated Tomorrow

A new Pampa Boy Scout unit, Troop 34, will be chartered tomorrow at First Christian Church which is sponsoring the troop.

Hunting and fishing licenses, Pampa Tent and Awning, 317 E. Brown, MO 4-9541.

John J. Engle, son of Mrs. Norma B. Engle of McLean, has been promoted to airman second class in the U.S. Air Force.

Balloting (Continued From Page 1) precious rights—the right to vote.

"It is, in effect, a penalty imposed on those who wish to exercise their right to vote." Connally said on Jan. 26 a special session of the legislature would be "almost mandatory" if the poll tax were invalidated.

Committees for the Junior Livestock Show include:

Building and grounds: W. A. Greene, Paul Bowers, Rex McAnelly, Raymond Maddox, Bob Richardson, J. M. Morse; Weighing and records: Ralph Thomas, Arthur Rankin, and Ted Alexander; Decorations: Bob Skaggs, E. O. Wedgeworth; Tagging Details: Foster Whaley, W. A. Greene, Raymond Maddox; Report on Scales: Foster Whaley, Ralph Thomas; Trucking Details: Paul Crouch, Frank Carter, Jake Osborne, Jennie Reynolds; Clerking Sale Details: Mrs. Marguerite McLeod, Max Pressnell, Arthur Rankin; Cleaning Grounds after Show: Bob Skaggs, Foster Whaley, Clyde Carruth; Straw and Bedding Details: Clyde Carruth, Fred Vandenburg, J. D. Skaggs; Tractor at Barn: J. B. Morse; Exhibitors' Cards and Judging Cards: Foster Whaley and Ralph Thomas; Special Prizes: Clyde Carruth, Mrs. McLeod.

Barbecue and Prize Award Program: Bill Tidwell, Buddy Price, Frank Carter, Rex McAnelly, Billy B. Davis; Concessions: Foster Whaley; Night Watchman: Clyde Carruth; PA System and Other Properties: Foster Whaley; Frank Gramham; Phones and Signs: Foster Whaley, E. O. Wedgeworth; Tables and Chairs for Luncheon: Bill Craig; Parking: A. B. Carruth, Jim Bailey.

CATV (Continued From Page 1) major television events and thus would result in pay television.

They also fear the effects of cable competition which they said will force several small local television stations out of business. Backers of CATV have flooded Congress with letters protesting that the FCC proposes to dictate what they can and cannot view on television and to restrict availability of programs.

All tickets are \$1 each with pre-school children admitted free with accompanied by an adult. Tickets may be secured from members of the Parish, Youth Groups, Church office, Richard's Drug or at the door. Prizes will be awarded to the four persons selling the most tickets.

A King and Queen will be selected from the two selling the most tickets and two attendants for the next highest ticket sellers with the coronation taking place between 6:15 p.m. and 6:30 p.m. that evening.

The history of the traditional pancake supper, which is held locally each year, goes back many centuries, when it was designated as a time to use up all the leaven in the house before the meatless Lenten season began. The custom of meeting in the church for a pancake supper grew with everyone attending services afterward.

Bicycle Stolen Buddy Thornton, 1048 Cindrella, reported to police Wednesday that a bicycle, valued at \$50, was taken from the lawn at his home sometime Tuesday. The bicycle was a 20-inch Texas Ranger Star Flite.

He said that in 1965 there were 88,742 aircraft registered in the United States and 9,463 airports. Texas led all states in number of airports with 512, and was second in number of aircraft. Last year general aircraft used 267 million gallons of gasoline.

Hill also stressed the closer link between prospective and existing industries and general aviation. Proper aircraft facilities are becoming more important to industry, he added.

The speaker was introduced by Milo Carlson.

Legal Publication

NOTICE TO CREDITORS OF THE ESTATE OF EDGAR EUGENE ETHRIDGE, DECEASED. Notice is hereby given that the undersigned has been appointed independent executor of the Estate of Edgar Eugene Ethridge on the 25th day of January, 1966, by the County Court of Tarrant County, Texas, and qualified as such on February 7, 1966. All persons having claims against said estate are hereby notified to present the same to me within the time prescribed by law.

SEARS CATALOG SALES OFFICE 1623 N. Hobart MO 4-3381

Stock Market Quotations

Table with columns for stock names and prices. Includes items like American Can, American Tel and Tel, American Tobacco, Anacosta, Bethlehem Steel, Chrysler, Calumet, Dupont, Eastman-Kodak, Ford, General Electric, General Motors, Gulf Oil, Goodyear, IBM, Montgomery Ward, Penney's, Phillips, R. J. Reynolds, Sears Roebuck, Standard Oil of Indiana, Standard Oil of New Jersey, Sinclair Oil, Shamrock Oil, Southwestern Public Serv., Texaco, U. S. Steel, Westinghouse.

Beauty - Pleat draperies MO 5-3490 or MO 5-5840.

Sam Houston P-TA will hold its annual Fathers' Night at 7:30 p.m. Thursday in the school auditorium. Dr. Ed Williams will preside. A panel discussion on "American Heritage" will be moderated by Rev. Donald Hauck with Dr. Williams and Travis Lively Sr. serving as panel members. The school band will present several selections.

Dr. T. J. Wright will be out of his office until February 21. Need business partner for service garage, MO 4-6728.

Seaman Recruit John H. Williams, USN, son of Mr. and Mrs. Jack Williams of Pampa, is undergoing seven weeks of basic training at the Naval Training Center, San Diego, Calif.

Used Spinet piano, MO 4-6571.

Becky Bird is now associated with Sylvia's Beauty Shop, 2108 N. Dwight, MO 9-9324. Valentine Special \$10 permanents, \$7.50.

Veterans of WWI, Barracks 1952, and Auxiliary will meet at 7:30 p.m. tomorrow in American Legion Hall.

The Church World Service CROP truck will be through Pampa next week to pick up packages of clothing and soap to be sent overseas. Pick-up station will be Bruce and Son. Each contribution should be accompanied by eight cents per pound for processing. The processing fee should be taken to Rev. J. W. Doke, local CROP treasurer.

The term "megalopolis" is applied to the urban eastern seaboard area extending from north of Boston to south of Washington, D.C.

Powers (Continued From Page 1) incestuous love affair and to get his wealth.

Mrs. Thompson testified that on about the second or third of October 1963, when she was managing the River Rock Apartment, Powers came and asked for a secluded apartment, if possible, because: "He was engaged and his fiancée was getting a divorce and she was not fully divorced at that time more."

Read The News Classified Ads

For the guy who'd rather drive than fly: Chevelle SS 396



POTENT THE CHEVROLET WAY. This is about a very special Chevelle. A Chevelle that wears a bulging hood, a black grille and red stripe nylon tires on wide-base wheels. Start it up and you've tuned in on 396 cubic inches of Turbo-Jet V8. Get it moving and suddenly you're a driver again, with things to do. With gears to shift. A clutch to work. Self-adjusting brakes to slow you down. Even a set of gauges to read, if you specify them. Now take a curve and discover a smooth-riding car that isn't a mouse in the corners. This Chevelle utterly delights in crooked roads. This, you see, is a Chevelle SS 396. A Chevelle, most assuredly. But what a Chevelle! It also features a floor-mounted shift, fully synchronized 3-speed transmission and a choice of rear axle ratios. Stiffer coil springs and shock absorbers come as standard equipment on the SS 396. The force that drives is Chevrolet's 396-cu-in Turbo-Jet V8, which generates 325 hp in standard form; 360 hp on your order. Eight features now standard for your added safety: Seat belts front and rear - Padded instrument panel - Padded sun visors - Outside mirror (use it always before passing) - Shatter-resistant inside mirror - Two-speed electric wipers for better visibility in a downpour - Windshield washers - Back-up lights. ALL kinds of cars, all in one place... at your Chevrolet dealer's: Chevrolet - Chevelle - Chevy II - Corvair - Corvette. CULBERSON-STOWERS CHEVROLET INC. 805 N. HOBART PAMPA, TEXAS MO 4-4665

DOWNTOWN PAMPA Kenneys ALWAYS FIRST QUALITY THURSDAY NIGHT SPECIAL—SHOP FROM 6 TO 8 P.M. A SAVINGS EVENT SO SPECIAL YOU CAN'T AFFORD TO MISS IT! \$5 dress event. HUNDREDS AND HUNDREDS OF SPRING-SUMMER STYLES! FAMOUS NAME FABRICS FROM THE COUNTRY'S TOP MILLS! SLIMLINERS! SHIRTDRESSES! A-LINERS! TWO-PARTERS! PLEATS! ZESTY PRINTS! NEAT PLAIDS! PALE PASTELS! VIVID TONES! SIZES FOR JUNIOR PETITES, JUNIORS, MISSES, HALF SIZES! A bright new world of fashion excitement right here! It's our spectacular \$5 dress event! We've styles for every fashion preference... sizes for every fashion figure! All in easy-care fabrics that dip-and-drip-dry in a flash, hardly need ironing! Scoop them up! SLIPPERS REDUCED Only A Few Pair Left - Shop and Save, Thursday Night. Women's and Children's Warm, Lined Bedroom Slippers - \$1.44 CHARGE IT! Shop Downtown for Greater Selections

Food Page

THE PAMPA DAILY NEWS
THURSDAY, FEBRUARY 10, 1966

58TH
YEAR

Corned Beef and Kidney Beans Are Palate-Pleasing, Nourishment Packed

FRESH CARROT AND CORNED BEEF
2 medium (2 cups sliced) carrots
1/2-inch boiling water
1/2 teaspoon salt
1/2 cup small white onion rings
1 tablespoon butter or margarine
12-ounce can corned beef
2 tablespoons water
1-16 teaspoon ground black pepper
1 tablespoon chopped green pepper.

Peel and dice carrots. Add boiling water and salt. Cover and cook 12 minutes, or until crisp-tender. Drain if necessary. Add onion rings and butter or margarine. Cook slowly until onions are tender. Break corn-

ed beef into pieces and add along with the 2 tablespoons water, black pepper and green pepper. Mix lightly. Cook only until hot. Yield: 4 servings.

CHILI KIDNEY BEAN CHOWDER
1 pound ground lean beef
1 tablespoon beef suet or shortening
1/4 cup onion flakes
1/4 cup sweet pepper flakes
1/4 cup celery flakes
No. 2 1/2 can (3 1/2 cups) tomatoes
2 cans (1 pound each, 4 cups) red kidney beans
2 1/2 teaspoons salt
3 teaspoons chili powder
3/4 teaspoon garlic powder
1/4 teaspoon ground black pepper.

Brown meat in beef suet or shortening. Add remaining ingredients and cook 30 minutes or until chowder consistency. Serve hot. Yield: 10 cups.



Read The News Classified Ads

Valentine's Cupcakes Get a Pink Tint

By GAYNOR MADDOX
Newspaper Enterprise Assn.
When hearts are young and gay, very young and very gay, then a Valentine's party should offer pink-tinted cakes. Definitely. Of course, this loving celebration for the young set calls for pink butter frosting on the cupcakes, too, and probably pink milk punch.



VALENTINE CUPCAKES—party fare.

VALENTINE CUPCAKES
2 cups sifted cake flour
2 1/4 teaspoons double-acting baking powder
1/2 teaspoon salt
1/2 cup butter or margarine
1 cup sugar
2 eggs
1 cup minus 2 tablespoons milk
1 teaspoon vanilla
Pink butter frosting
Candy sprinkles, red cin. namon candies, or other Valentine candies.

Sift flour with baking powder and salt. Cream the butter.

Gradually add sugar, creaming until light and fluffy. Add eggs and beat thoroughly. Add flour mixture alternately with milk, a small amount at a time, beginning and ending with flour. Mix just until blended. Add vanilla.

Spoon batter into paper baking cups that have been set in muffin pans, filling each half-full. Bake at 375 degrees for 20 to 25 minutes, or until cake tester inserted into centers comes out clean. Cool thoroughly; then frost and decorate with

candies as desired. Makes about 2 1/2 doz. cupcakes.

PINK BUTTER FROSTING
1-tablespoon raspberry, strawberry, or cherry instant soft drink mix
1/4 cup hot water
1/2 cup butter or margarine
2 pounds confectioners' sugar, sifted.

Dissolve soft drink mix in hot water. Cream butter until soft. Add sugar alternately with the soft drink mixture, beating well after each addition. If necessary, add a little more hot water to make frosting soft enough to spread. Makes about 3 1/2 cups frosting, or enough to frost tops of 2 1/2 to 3 dozen cupcakes or tops and sides of two 8- or 9-inch cake layers.

Food Buying Guide

The following guide to the nation's food shopping buys for this weekend was prepared by the U. S. Departments of Agriculture and Interior for United Press International.

WASHINGTON (UPI) — Fresh fruits and vegetables are still being shipped in from the South and Southwest. Prices might start easing upward in response to the cold snap of last week. Many fruit and vegetable-producing areas in the South and Southwest were hit. California's production still remains high.

Storage vegetables, and vegetables which were already harvested remain reasonably priced. Cabbage, cauliflower, celery, lettuce, onions, parsley, potatoes, radishes, and sweet potatoes are examples. In the fruit section, apples and bananas take the plentiful lead. Otherwise, avocados, grapefruit, oranges and tangerines are in good supply and generally good buys. Ground meat, roasts and steaks are good beef buys. On the pork counter, check for specials on hams, roasts, smoked picnics, and chops. Veal is in short supply in some areas, but in others it is a good buy. Canned tuna, canned red salmon, fish sticks and portions continue as the plentiful in fish.

Valentine Sweet

Make chocolate-covered cherries for St. Valentine's Day. Over low heat, melt 1 (6-ounce) package of semi-sweet chocolate pieces. Meanwhile, drain thoroughly a 1-pound jar of stemmed red maraschino cherries. Twirl each cherry in melted chocolate to coat; place on waxed paper and chill until set. Serve on platter with white or gold paper doily. Makes about 3 dozen.

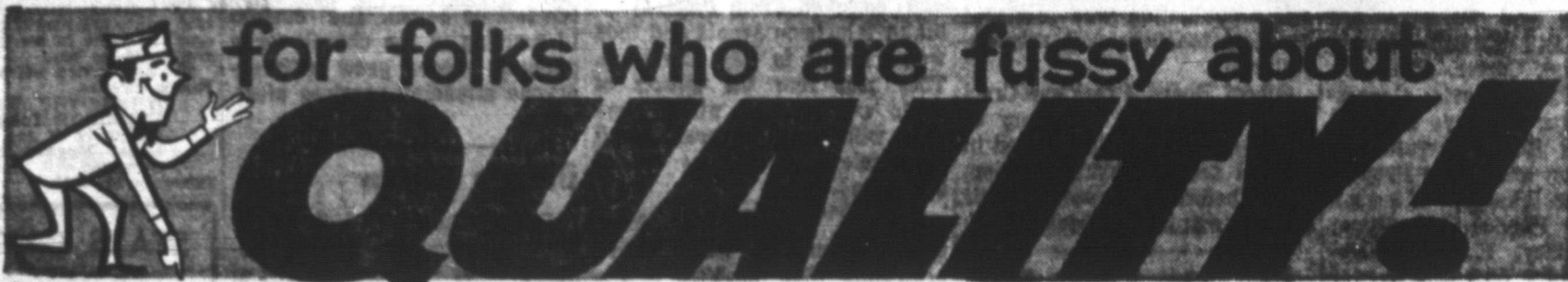
Instant Apple Flakes Now Available

By GAYNOR MADDOX
Newspaper Enterprise Assn.
Q—My daughter's home economics teacher told her about a new instant applesauce on the market. Where can I find any?
A—Just keep a lookout at your grocery store for apple flakes that mix instantly in water to make sauce, advises

the U. S. Dept. of Agriculture. These new uses for apples are made possible by a process developed by the department's scientists. The flakes have already been tried commercially in dessert and cake mixes. They may later be used in apple butter, confections and baked goods. They help keep cakes moist as well as give a deli-

cious apple flavor.
Q—Are shrimp sold according to size?
A—Yes. These are the different counts, that is, the number of shrimp per pound:
15 and under per pound
16 to 20 per pound
21 to 25 per pound
26 to 30 per pound
31 to 42 per pound.

Read The News Classified Ads



GENTLE Liquid Detergent QT. 39¢
Toilet Tissue Soffin 4 Roll Pak 29¢

BUCCANEER COUPONS
FREE BONUS STAMPS

Shurfresh Cheese Spread 2 lb. box 89¢
Peter Pan, 28 Oz. Jar 98¢
Peanut Butter 98¢

Grade A Whole Fryers 35¢
Fresh Pork Steak lb 59¢
Fresh Pork Roast lb 55¢

Shurfine Assorted **CAKE MIX 3 FOR 89¢**

Grade A Nest Fresh **LARGE EGGS Doz. 49¢**

Shurfine MILK 7 tall cans \$1.00
HOLLY SUGAR 5 Lb. Bag 49¢
PRODUCE
SWEET Potatoes 2 lbs. 29¢
Sunkist LEMONS 6 for 19¢
Yellow ONIONS 2 lbs. 15¢
US No. 1 RED POTATOES 10 lb. Bag 49¢
CRISCO 3 lb. Can 79¢
Shurfine FLOUR 5 Lb. Bag 39¢

Quality or Harvest Time BACON 2 lbs. \$1.59
Choice Beef Chuck Roast lb. 59¢
First Cut Pork Chops lb. 59¢
Sirloin or T-Bone STEAK lb. 89¢
Choice Beef PORK CHOPS lb. 89¢

KRAFTS **Miracle Whip Qt. 49¢**

Shurfine, 303 Can Solid Pak Tomatoes 5¢ \$1.00
Shurfine, 303 Can Sauer Kraut 3 cans 49¢

Shurfresh Biscuits 12 cans \$1
Food King Oleo 6 lbs. \$1
Giant Box Blue Cheer 69¢
Shurfine, 303 Can Apricots 4 cans \$1

FROZEN FOODS
Morton Meat Pot Pies 7 for 79¢
Morton TV Dinners 39¢
Patio BEEF Enchilada Dinners 39¢

Shurfine **ELBO 2 FOR 35¢**
12 oz. Pkg.

Grade A Medium **EGGS Doz. 49¢**

HOM'S FOODS
We Give Buccaneer Stamps—Double Wed With \$2.50 or More Purchase
421 E. FREDERIC OPEN 7 DAYS A WEEK MO 4-8531

BLAKE'S FOOD MARKET
1945 N. Hobart MO 4-7471
FREE DELIVERY
STORE HOURS: Weekdays 8 to 8, Sunday 9 to 7
We Give Buccaneer Stamps
Double Stamps Wednesday on \$2.50 Purchase or More
Home Owned & Home Operated Keep Your Grocery Money in Pampa

HAM Half or Whole 59¢
Center Cut PORK CHOPS 69¢
Bologna All Meat Top O' Texas 39¢

Shurfine Salad Dressing 39¢
Bremner's Jumbo Pies 12 in Box 39¢

Shurfine SHORTENING 3 Lb. Can 69¢
Borden's Glacier Club ICE CREAM 1/2 gal. 49¢

King Size COCA-COLA 6 Bot. Ctn. 39¢ Plus Dep.
Cozy Kitchen, Chocolate, Banana, German Chocolate Frozen Layer Cakes Reg. Size 79¢
9 Cup Mirro Electric Percolator \$6.95
Sunkist LEMONS 19¢
Russet POTATOES 10 lbs. 59¢
Yellow ONIONS 2 lbs. 15¢

One medium-sized raw tomato will give nearly one-half of a day's requirement of vitamin C and generous amounts of vitamin A.
Slices of raw peaches, apple or banana won't brown if dipped in orange or lemon juice.
Read The News Classified Ads

FITE FOOD
We Give PAMPA PROGRESS STAMPS DOUBLE STAMPS
Wednesday With \$2.50 Purchase or More
1333 N. Hobart MO 4-4092 or 4-8842

T-BONE STEAK Fite's Own \$1.05 lb.
Feed Lot Beef 1 lb.
ROUND STEAK Fite's Own 89¢ lb.
Feed Lot Beef 89¢ lb.
Backbone & Ribs Fresh Pork 69¢ lb.
Lean, Meaty 69¢ lb.

ARM ROAST Fite's Own 65¢ lb.
Feed Lot Beef 65¢ lb.
CHUCK ROAST Fite's Own 59¢ lb.
Feed Lot Beef 59¢ lb.
Barbecued Beef Fite's Home Style 1-Lb. Ctn. 69¢

Shurfresh BISCUITS 3 Reg. Cans 21¢
Shurfresh OLEO 2 Lbs. 39¢
Shurfine COFFEE 1 Lb. Can 69¢

King or Regular Size Coca-Cola 6 Bot. Ctns. 37¢ Plus Dep.

Glazier Club ICE CREAM 1/2 Gal. 45¢
Northern NAPKINS 2 80 Ct. Pkgs. 23¢

Friskies DOG FOOD 2 Reg. Cans 27¢
Fulvita Multiple VITAMINS 100 Tablets \$1.29

Grade A, Nest Fresh LARGE EGGS Doz. 49¢

U.S. No. 1 Russet POTATOES 10 Lbs. 53¢
Fancy AVOCADOS Each 10¢

Gorton's Frozen Breaded SHRIMP 8 Oz. Pkg. 49¢
Shurfine Frozen Orange Juice 12-oz. Can 25¢

SAVE CASH Plus STAMPS An IDEAL!

ENJOY THE EXTRA SAVINGS YOU GET EVERY DAY

WITH VALUABLE FREE

Gunn Bros. Stamps!

...DOUBLE STAMPS EVERY WEDNESDAY

With \$2.50 Or More Purchase



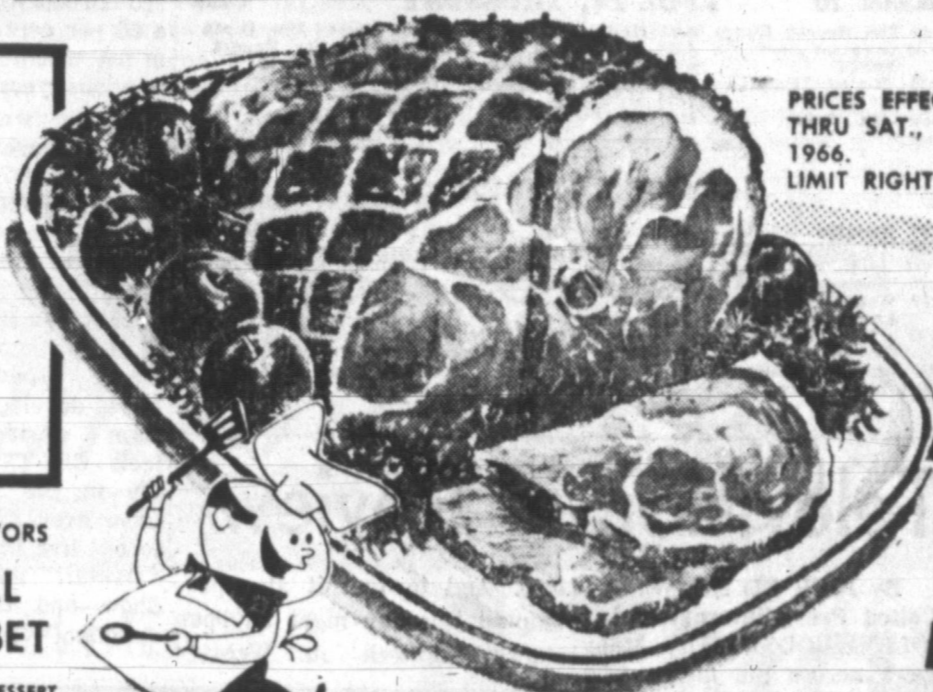
Better Food For Less

IDEAL

FOOD STORES

Chun King Chinese Foods

- Chicken Chow Mein DIVIDER PACK 99c
- Beef Chop Suey DIVIDER PACK 99c
- Chow Mein Noodles No. 2 1/2 CAN 27c



PRICES EFFECTIVE THRU SAT., FEB. 12, 1966. LIMIT RIGHTS RESERVED.

NABISCO
FLING CURLS

CHICKEN, SWISS 'N' HAM, CHEESE

2 5-oz. Pkgs. **69c**

OCEAN SPRAY
CRANAPPLE JUICE

CRANBERRY-APPLE DRINK

Qt. **39c**

ALL FLAVORS
IDEAL SHERBET

REFRESHING DESSERT

1/2-Gal. Ctn. **49c**

LIGHT MEAT CHUNK STYLE TUNA
CHICKEN OF THE SEA



3 6 1/2-oz. Cans **\$1.00**

9 1/2-oz. Can **49c**

12 1/2-oz. Can **69c**

ARMOUR'S
Dash Dog Food

6 1-Lb. Cans **95c**

WHITE, GOLDEN, AQUA OR PINK
Dial Soap

2 Bath Bars **47c**

WHITE OR GOLDE
Dial Soap

2 Reg. Bars **37c**

AQUA
Liquid Chiffon

22-oz. Plastic **49c**

FOR DISHWASHING
Liquid Chiffon

32-oz. Plastic **69c**

FRESH DAIRY FOODS

KRAFT
TASTY LOAF CHEESE

2-Lb. Loaf **49c**

KRAFT SHARP
Cracker Barrel Cheese

16-oz. Stick **89c**

KRAFT GRATED
Parmesan Cheese

1 1/4-oz. Pkg. **23c**

IDEAL AMERICAN OR PIMENTO
Sliced Cheese

3 8-oz. Pkgs. **\$1.00**

OVEN FRESH FROM IDEAL

IDEAL REGULAR OR THIN SLICED
Sandwich Bread

3 1 1/2-Lb. Loaves **79c**

IDEAL
Raspberry Twirls

Pkg. of 6 **31c**

LOW DISCOUNT PRICES!

REGULAR \$1.49 - FOR COLDS
Contac Capsules

Pkg. **97c**

REGULAR 98c VICKS 44
Cough Syrup

Btl. **66c**

REGULAR 99c HAIR SPRAY
Sudden Beauty

10 1/2-oz. Can **69c**

STALEY SPECIAL LABEL
STA PUFF RINSE

Gallon **99c**

White or Colors
WALDORF TISSUE

4-Roll Roll **29c**

WHITE, YELLOW OR PINK
Scott Towels

3 JUMBO ROLLS **\$1.00**

CUDAHY PURITAN

FULLY COOKED HAMS

Shank Portion

lb. **59c**

SELECTED BUTT PORTION lb. 65c

Ideal's or Wilson Corn King
SLICED BACON

1-Lb. Pkg. **89c**

Tender Beef
FREEZER BOX

- * Delicious Steaks!
- * Tender Beef Roasts!
- * Boneless Beef Stew!
- * Lean Short Ribs!
- * Lean Ground Beef!

BIG 25-Lb. BOX Only **\$18.95**

Corn-Fed Pork
FREEZER BOX

- Chock Full of . . .
- * Tender Pork Roasts
 - * Lean Pork Steaks
 - * Savory Pork Chops
 - * Country Spareribs

BIG 20-Lb. BOX Only **\$15.95**

SWIFT'S PREMIUM
Sliced Bologna

1-Lb. Pkg. **69c**

COUNTRY KITCHEN
Baked Beans

Pint Ctn. **39c**

ICELANDIC DEEP SEA

Fish Portions

12-oz. Pkg. **49c**

ELLIS
CHILI WITH BEANS

4 300 Cans **\$7.00**

Deliciously Spicy!

MORE IDEAL SAVINGS!

PINEAPPLE-GRAPEFRUIT
Del Monte Drink

3 46-oz. Cans **\$1.00**

FOOD CLUB
Apple Juice

24-oz. Btl. **25c**

DEL MONTE VACUUM PACKED
Golden Corn

5 12-oz. Cans **\$1.00**

FOOD CLUB
Cut Green Beans

5 303 Cans **\$1.00**

ELNA
Solid Pack Tomatoes

6 303 Cans **\$1.00**

TENDER
Green Giant Peas

4 303 Cans **\$1.00**

SPECIAL LABEL
Purex Bleach

1/2-Gal. Plastic **33c**

DOG FOOD
Vets Nuggets

5-Lb. Bag **69c**



U.S. NO. 1 COLD RED
POTATOES

10 Bags **39c**

Calif. New Red
POTATOES

3 lbs. **29c**

Fancy Hot House
RHUBARB

lb. **39c**

Wash. Fancy Delicious
APPLES

4 lb. Bags **49c**

Wall Street Chatter

NEW YORK (UPI) — Kenneth Ward of Hayden, Stone Inc. says a discriminating policy of buying the most attractive under-priced issues during all interim reactionary periods while temporarily avoiding or switching out of those that seem temporarily overvalued appears to be prudent at this time.

Bache & Co. says that while it does not rule out the possibility of corrections from time to time, it believes the trend in the months ahead points upward.

Sylvan Epstein of Thomson & McKinnon says he believes the market will make another attempt to get over the 1,000 mark in the Dow-Jones Industrial average very shortly and could most to about 1,000 before losing momentum.

Read The News Classified Ads

Freezer Beef Sale

Choice Grain Fed Beef
Unconditionally Guaranteed
Investigate Our Monthly Pay Plan
This Meat Is Cut To Your Specifications. DOUBLE WRAPPED AND QUICK FROZEN TO INSURE TENDERNESS AND FLAVOR.

Half **BEEF** -- 43¢ Plus 6¢ Processing

CLINTS FOODS

Phone 583-4691 White Deer, Texas

Youth Center Calendar

THURSDAY
6:00—Swim Team Workout.
4:00—Open; Gym Open Actv.
7:00—All Ages Swim; Utility Oil vs. Cock O' Walk.
8:30—Borger vs. Richard Drg.
10:00—Close.

FRIDAY
4:00—Open; Gym Open Actv.
6:00—Swim Team Workout.
7:00—Jaycees vs. Webco; All Ages Swim.
8:30—Vaughn Oil vs. Celanese.
10:00—Close.

SATURDAY
9:00—Open; Gym Open Activity.
10:00—Swim Team Workout; Mann vs. St. Vincent.
12:00—Closed for Lunch.

1:00—Open; All Ages Swim and Trampoline.
5:00—Close.
8:00—Calico Capers Sq. Dnc.; TruTeens Charity Ball.

SUNDAY
2:00—Open; All Ages Swim and Trampoline.
5:00—Close.

No justice of the United States Supreme Court is permitted to engage in the private practice of law.

Television Programs

Channel 4 KGNC-TV, THURSDAY ABC

3:30 The Match Game 6:15 Weather 9:00 Dean Martin News
3:35 NBC News 6:25 Sports 10:00 News
4:30 Sheriff Bull 6:50 Daniel Boone 10:15 Weather
4:35 Laramie 7:30 Laredo
4:30 Huntley Brinkley 8:30 Mona McCluskey
4:30 News 10:30 Tonight Show

CHANNEL 4 FRIDAY

6:30 Amarillo College 10:30 Paradise Bay 12:05 Weather
6:50 Today Show 11:00 Jeopardy 12:15 Ruth Brent Show
7:00 Social Security 11:30 Let's Play 12:30 Let's Make A Deal
8:30 Today Show 11:45 NBC News 1:00 Days of Our Lives
9:30 The Glenn 12:00 News 1:30 The Doctors
9:35 NBC News 12:00 News 2:00 Another World
9:50 Concentration 12:00 News 2:30 You Don't Say
10:00 Morning Star

Channel 7 KVH-TV THURSDAY ABC

2:00 Never Too Young 5:25 Weather 8:30 Peyton Place
3:00 Highway Patrol 6:30 Willie Fargo 9:00 The Baron
4:00 Bat Masterson 6:50 Rifleman 10:00 Untouchable
4:30 Where The 7:30 Gidget 11:00 News
5:00 News 7:30 Henry Phye 11:30 Crop And Stock
5:15 News 8:00 Bewitched 11:30 Movie

CHANNEL 7 FRIDAY

6:25 Featurette 8:00 Movie 11:30 Father Knows Best
6:30 Crop And Stock 10:00 Supermarket 12:00 Ben Casey
6:45 Weather 10:30 Supermarket 12:00 Ben Casey
6:50 News 10:30 The Dating Game
7:00 Modern Education 11:00 Donna Hood
7:30 Exercise With Gloria

Channel 10 KFDA-TV, THURSDAY CBS

8:00 The Secret Storm 6:00 News 10:00 News-Jim Prusa
2:30 Greatest Show On 6:30 Weather 10:15 Weather Report
4:30 Mister Minkus 7:00 Gilligan's Island 10:25 Background
5:00 Everglades 7:30 My Three Sons 10:35 News
5:30 CBS News 8:00 Movie 11:00 Big Flicker

CHANNEL 10 FRIDAY

6:57 Religion 10:00 Andy Of 12:30 Farm And Ranch
6:30 Amarillo College 10:30 Mayberry News
7:00 Jack Tompkins 10:30 Dick Van Dyke 12:30 As The World
7:00 News Report 11:00 Love Of Life Turns
7:30 Weather-Sports- 11:35 City News 1:00 Passover
Local Events 11:30 Search For 1:30 House Party
7:50 CBS Morning 11:30 Tomorrow 2:00 To Tell The Truth
8:00 News 11:45 The Guiding Light 2:30 CBS News
8:15 Captain Kangaroo 12:00 News 3:30 Edge Of Night
8:30 I Love Lucy 12:10 Weather 3:30 The McCoys

Business Highlights

By United Press International
DETROIT (UPI) — General Motors has increased its quarterly dividend on common stock to 85 cents a share from 75 cents. Last year, counting extras, General Motors paid \$5.25 a share in all on common.

NEW YORK—An unidentified group of investors made an offer through two New York investment houses to buy about 18 per cent of Studebaker Corp. or 500,000 shares at \$30 a share.

NEW YORK—The President's program of voluntary curbs on overseas investments has been threatened indirectly by a stockholders' suit against Standard Oil Co. (Indiana). The suit seeks to enjoin the company from borrowing abroad on the grounds that foreign interest charges are excessive.

NEW YORK—Scripps Howard Broadcasting Co. reported a 26 per cent increase Tuesday in net income for 1965 over the previous year.

Profits were \$4,488,234 or \$1.73 a share on net operating income of \$17,384,362, compared to 1964 profits of \$3,549,269 or \$1.37 a share on operating income of \$15,296,987.

Groves'—about teen-agers in a St. Louis suburb—to present a taped broadcast about the latest developments in the Viet Nam crisis. But this viewer feels CBS-TV acted questionably in Los Angeles (and the other areas) Tuesday by failing to cut live into such outings as "Daktari" and the Red Skelton Show—and the full "Peticoat Junction" opus.

BE A HERO!



TAKE HOME A TREAT!
Operated Year 'Round For Your Convenience
If you like our food tell your friends. If not tell us!

CALL YOUR ORDER IN MO 5-3050 Pick It Up At Your Convenience—Piping Hot!

Open Daily 10 a.m. to 10 p.m.
Friday and Saturday Till 11:30 p.m.
A & W DRIVE INN
for a refreshing drink or a taste snack
1216 Alcock (On The Borger Hwy.)

BALANCE YOUR FOOD BUDGET Thrift-Priced Quality Buys

400 Count
SHORTENING 73¢
Shurfine 3 Lb. Can
Kleenex 4 \$1.00
Boxes

PEACHES \$1.49
FOOD KING No. 2 1/2 Can
Coca-Cola 6 Bottle Ctn. 39¢
Plus Deposit

PET MILK 2 Tall Cans 27¢
Shurfine, Corn Oil
Margarine lb. 33¢
25 Ft. Roll
Reynolds Wrap 37¢
Shurfine
Mayonnaise pt. 33¢

Shurfine apricot, peach, cherry 18 Oz. Jar
Preserves 2 for 79¢
Giant Box **ENERGY SOAP** 2 for \$1
Ranch Style BEANS 6 300 Cans \$1.00
Arrow Brand **Large LIMAS** 45¢
Shurfine, Squat Can **SWEET POTATOES** 3 for \$1.00
Stillwell, 300 Size, Cut **GREEN BEANS** 7 for \$1.00

We will have salt water trout, red fish, drum, flounder and fresh jumbo shrimp, oysters, Florida pompanos and shethead this week-end... also fresh water Catfish and Buffalo from Louisiana.

Pork Steak Lb. 55¢
Swiss Steak Lb. 79¢
Bananas 2 lbs. 25¢
RED Potatoes 20 lb. bag 69¢

Country Style **Back Bone** lb. 49¢
Country Style **Spare Ribs** lb. 49¢
Chuck Steak lb. 69¢
CHEESE Shurfine 6 Oz. Pkg. 29¢
Beef **Bar-B-Q** lb. 69¢

MITCHELL'S Grocery
638 S. Cuyler
Phone MO 5-5451
BUCCANEER Saving Stamps
DOUBLE ON WEDNESDAY

Television in Review

By RICK DU BROW
United Press International
HOLLYWOOD (UPI) — Many viewers across the nation who watched television cover President Johnson's return Tuesday night from the Hawaii conference on Viet Nam got a memorable sample of the networks' occasional New York-oriented provincialism.

The President's plane landed in Los Angeles at a reasonably early hour during television's prime time on the West Coast—which meant that the chief viewing hours for video watchers in much of the country still were available.

Furthermore, there was a good deal of natural television drama in the rendezvous nature of the arrival—since the Chief Executive not only was to make a speech, but was also to meet Vice President Humphrey, who was heading on to Asia to carry on the diplomatic task.

Now, it is a simple fact that television executives, like anybody else, like to look good before their home town friends and business associates, not to mention their local critics, who are read by these acquaintances. So can there be much doubt that if the President had landed in New York, the home base of most of those in charge of network television, all three major broadcasting organizations would have busted right into prime-time with all-out coverage?

But this side of the Hudson River is sometimes a distant world psychologically for those whose offices are on the other side. So here is what happened: Only one of the networks, NBC-TV, saw fit to hit the Johnson-Humphrey rendezvous story with extended live coverage here in Los Angeles (and therefore in many areas throughout the nation), from the Chief Executive's landing to his speed.

Possibly NBC-TV found itself trapped—for it expected the lengthy private meeting between Johnson and Humphrey aboard the President's plane to be much shorter than it was—but the network stuck it out, anchored by solid, fluent background commentary by Herb Kaplow.

Because of its blanket live coverage of the meeting, NBC-TV, at least here, pre-empted several of its series, "Please Don't Eat the Daisies" and "Dr. Kildare," and part of its Tuesday night movie—with adjustments in other areas of the country depending on the clock.

CBS-TV at least as seen here in Los Angeles (which means some other areas were similarly affected), obviously acted according to its recently enforced view that coverage should be edited pretty much strictly for essentials. Therefore, all this viewer saw on that network during the live coverage was a brief interruption of the "Peticoat Junction" series for the President's short speech—and then a return to the hillbilly opus.

CBS-TV has been an admirable leader in forcing video discussion of Viet Nam to the

THRIFTY BUYS
for your **VALENTINE**

GERITOL
IRON TONIC TABLETS
\$2.29
40's

BUFFERIN
PAIN TABLETS
77¢
60's

LAVORIS
1 1/2 oz.
67¢

PERFECT FOR HER
CHANEL
Spray Cologne \$5.00
BELOVED
Cologne Parfume Prince Matchabelli \$2.00

BABY MAGIC
skin lotion
77¢
9 oz.

POLI-GRIP
Denture Adhesive
79¢

PANGBURN'S HEART BOX CHOCOLATES 69¢ to \$7.50

Timex Ladies Wristwatch	\$11.95
Coty Bath Powder	\$2.00
Papermate Mark IV Pen	\$2.95
Buxton Leather Billfolds	\$3.95
Bentley Butane Lighter	\$4.95
Norelco Speedshaver	\$29.95

GIBSON Valentine Cards

TONI
HOME PERMANENT
\$7.27

Vicks SINEX
Nasal Spray
89¢

Pertussin
COUGH SYRIP
59¢

A Veil of My Sin by Lanvin \$3.50
RIGHT FOR HIM
OO7 Mens Cologne \$2.00
English Leather COLOGNE \$2.00
Black Watch SHAVE LOTION \$1.50

Crepe de Chine Bubble Bath with Spray Cologne \$3.50
Chantilly Powder Sachet \$2.25
Golden Woods Spray Mist Cologne \$3.25

HEALTH IS INCOME

Prompt PRESCRIPTION Service

MALONE PHARMACY
HUGHES BLDG. KINGSMILL & SOMEVILLE PH 604-4971

Your health is your best money-maker. Keep free from ailment confinement and lost time by seeing your doctor quickly. We'll match his attention by prompt, careful filling of his prescription at fairest prices.

Appellations

ACROSS
1 Actor, Robert
7 "Doubting"
13 Form a notion
14 Warren
15 Disembarked
16 Dinner course
17 Bitter vetch
18 Grain brittle
19 Shooter marble
21 Dirksen, for instance
25 "Prince of Darkness" (Bib.)
28 Ollivander
32 African antelope
33 Strike (slang)
34 Unsuspected
35 Verb form
36 Renters
40 Aquatic mammal
41 Three-legged stands
43 Water at roulette
46 "Duryea"
47 Louise egg
50 Tempt
53 Dispassionate
54 One who lends
57 Absconded
58 Tags
59 Domesticators

DOWN
1 Ceramic piece
2 Jewish month
3 Longings (slang)
4 Stirring
5 Native (suffix)
6 Fortification
7 Thirty (Fr.)
8 Fowl
9 Choose
10 — Sahl

Answer to Previous Puzzle
LAUGHTER JOY
DIABLO COVALE
APPROPRIATE
PROMISE
SERIOUSLY
MARTIN
DOVER
JAMES CANTATA
OPEN DADA NOW
KIND AGITATOR
GET SERENITY

42 Assault
43 Telephone
44 Wild ox of Celebes
45 Wound with a dagger
47 Back of neck
48 Brain passage
49 Mack and Williams
51 Feminine suffix
52 Celebrated (adj.)
54 Guido's note
55 Nickname for Dominic

Foreign Commentary

By PHIL NEWSOM
UPI Foreign News Analyst

When South Korea dispatched some 20,000 combat troops to South Viet Nam last fall, Premier Chung Il Kwon explained that it was in recognition of South Korea's obligations to nations that helped it turn back Communist aggression 15 years ago.

The Koreans since have seen hard-fought action and the United States would like to have more. But the negotiations have found rough sailing.

Chief stumbling block is South Korean dissatisfaction with the way it says the United States has carried out previous promises.

First, the Koreans say, a U.S. promise to arm three Korean reserve divisions to strengthen South Korea's own defenses has not been carried out.

Expectations Fall

Second, South Korean expectations of substantially increased Korean exports to South Viet Nam have not been realized.

The first of these will be done, the Americans say, explaining that some of the delay was caused by the long supply pipeline between the United States and Korea.

The second is more difficult. In South Viet Nam, as elsewhere, the United States pursues a buy-American policy. This policy directs that American aid money be spent wherever possible on American goods to help stem the outward flow of U.S. gold.

The United States has been reluctant to ease this policy but the expectation is that the Koreans will get at least part of what they demand.

New Attitude Forming

The South Korean stand is reflective of a new attitude taking shape in Seoul, the nation's capital.

Even before the dispatch of troops, Korean engineers were at work on South Viet Nam's roads. Other South Korean technicians were at work on other development projects elsewhere in Southeast Asia.

Korean salesmen throughout the world push the quality of Korean exports. Increasingly confidence grows that at the end of another five years South Korea can become self-sustaining. There also is a growing belief that South Korea has a place to play in world, and particularly Asiatic, affairs.

But there also is a belief that

HOMES DESTROYED

SAIGON (UPI) — Fire destroyed a block of Vietnamese homes in Saigon's crowded Chinese district Tuesday night, within sight of several large American military billets.

At least one hundred Vietnamese families spilled into the streets carrying their belongings, as the flames whipped through the flimsy, wooden dwellings.

In dispatching troops to South Viet Nam, South Korea runs an obvious risk. Red Chinese threats already have held out the possibility that the war between North and South Korea may be renewed.

Must Stand Ready

Therefore, South Korea cannot deplete the troops that for 15 years have stood guard at the cease-fire line.

Already the Koreans note a sharp rise in terrorism and subversion directed from the North.

The South Korean Central Intelligence Agency says that Communist agents have been dispatched from North Korea with instructions to assassinate President Park Chun Hee. Communist agents are held responsible for the murder of South Korean farmers.

Other Red agents are said to have been instructed to determine capabilities of the South Korean army in the event the war in Viet Nam should spread.

Quotes From The News

AUSTIN, Tex.—T. D. Armstrong, vice president of a predominately Negro political organization, hailing a court decision that Texas' poll taxes are unconstitutional:

"I don't know if there will be more voting, but there will certainly be more qualified to vote. You would be surprised how much that \$1.50 keeps people from voting."

Read The News Classified Ads

Symptoms of Distress Arising from **STOMACH ULCERS DUE TO EXCESS ACID QUICK RELIEF OR NO COST**

Ask About 15-Day Trial Offer!

Over five million packages of the **WILLARD TREATMENT** have been sold for relief of symptoms of distress arising from Stomach and Duodenal Ulcers due to Excess Acid—Poor Digestion, Sour or Upset Stomach, Gasiness, Heartburn, Sleeplessness, etc., due to Excess Acid. Ask for "Willard's Message" which fully explains this home treatment—free—at

HI-LAND PHARMACY
KEYES PHARMACY
MALONE PHARMACY
MILLER-HOOD PHARMACY
RICHARD DRUGS
WILSON-BELL DRUGS
B. & B. PHARMACY
GIBSON
PRESCRIPTION PHARMACY
HEARD & JONES DRUGS

FOR YOUR SUPPORT IN THE PAST
APPRECIATION STAMP
BONUS
DOUBLE BUCCANEER STAMPS
(TRIPLE ON WEDNESDAY)
Everyday Now Thru Feb. 20th
NO COUPONS TO REDEEM.
JUST BUY YOUR CHOICE OF ANYTHING IN OUR STORE.
\$2.50 PURCHASE REQUIRED

Miller Gro. & Mkt.
2000 ALCOCK MO 4-2761

The Lighter Side

By DICK WEST

United Press International WASHINGTON (UPI) — I had a dream the other night when everything was still.

There I was at 20,000 feet over North Viet Nam, my bomb bay filled with milk cartons. I was making what World War II pilots used to call a "milk run."

"Only instead of milk, the cartons contained yellow dye. Some were quart size for light dyeing and some were half gallons for heavy dyeing.

Suddenly, at 12 o'clock high, three MIG fighters came out of the sun and opened fire with squirt guns. They polka-dotted my plane with short bursts of purple nail polish, and I woke up screaming.

This is what comes, I guess, of eating pickled pig knuckles just before bedtime and reading the war plans of Rep. Craig Hosmer, R-Calif.

Hosmer leaped out in front of other military strategists earlier this week by proposing that U.S. warplanes bomb the North Vietnamese with plastic dolls, playing cards and other trinkets that superstitions Vietnamese regard as symbols of bad luck.

Some observers thought he should have quit while he was ahead.

It turned out, however, that he was just getting warmed up. In a speech prepared for House delivery today he unveiled the second stage of his strategy.

Part two called for bombing the Viet Cong with wax-paper milk cartons filled with "long-lasting bright yellow dye."

Hosmer pointed out that in Viet Nam it is pretty difficult to tell the bad guys from the good guys because both types wear civilian clothing.

During the day the Viet Cong mingle with friendly Vietnamese. Then at night they emerge from the shadows to carry on guerrilla activities.

Dropping dye bombs on suspected Viet Cong concentrations would make identification easier, Hosmer reasoned. I am not certain why he proposed using yellow dye. Since the Viet Cong are Communists, red dye might be more appropriate.

Anyway, Hosmer said that "dyeing the Viet Cong could, in the end, prove more effective than killing them." He conceded, however, that some innocent bystanders might be splattered in the process.

As much as I admire his creative thinking, it seems to me that a better plan would be to drop black and white hats.

The bad guys would instinctively pick out the blacker ones and the identification problem would be solved.

NAME CHANGE
OKLAHOMA CITY (UPI) — Mrs. Shirley Madeline Fink, a 60-year-old widowed school teacher, wants her maiden name restored because she does not like to be referred to as "a Fink."

Mrs. Fink said in a district court petition that her name has become a "source of consternation and aggravation" because the word is now used by teen-agers to indicate a person who is "square" or "not in the know."

Buffalo skins, which now would probably sell for more than \$500, cost \$12 to \$25 when

The cocktail was not accepted as a "before-dinner" drink in America until the 1880's.

Buy Quality Foods and Save!

EGGS ELMER'S DOZ. **47c**

CORN Kounty Kist Vac. Pack 12 oz. Can **3 FOR 49c**

Betty Crocker, Asst. Reg. Size
CAKE MIX 2 FOR **\$1.00**

FLOUR KIMBELL'S 5 Lb. Bag **39c**

CRISCO 3 LB. TIN **79c**

SALMON Honey Boy Tall Can **59c**

CHUCK ROAST Swift Prem. Heavy Beef **49c** lb

CHUCK STEAK Swift Prem. Heavy Beef **65c** lb

CLUB STEAK Swift Prem. Heavy Beef **79c** lb

BEEF RIBS **33c** lb

FRYERS Fresh Dressed **35c** lb

BEEF Fresh Ground **2 1/2 LBS 97c**

FRANKS SWIFT PREM. 12 Oz. Cello Package **49c**

KING SIZE COKE Carton of 6 **39c** Plus Dep.

PINEAPPLE JUICE 46 Oz. Can **27c**

BLACK EYE PEAS 300 Size **2:15c**

Holly **SUGAR** 5 Lb. Bag **49c**

Ellis **TAMALES** 2 1/2 Can **29c**

Comet **CLEANSER** reg size can **2 FOR 29c**

Meads **BISCUITS** **3 FOR 19c**

Kuners **SAUERKRAUT** 303 can **2:29c**

Del Monte, Crushed **PINEAPPLE** 1 1/2 size can **21c**

Del Monte **SPINACH** 303 can **15c**

24 Oz. Jar **APPLE BUTTER** **25c**

Salad Bowl **SALAD DRESSING** qt. **39c**

My-T-Fine **PUDDING** asst. flavors **2:17c**

Austex, 24 oz. Can **Spaghetti and Meat Balls** **37c**

WARD'S GROCERY
OPEN DAILY 8 TO 8 WE RESERVE THE RIGHT TO LIMIT QUANTITIES MO 9-9641

WE GIVE BUCCANEER STAMPS
DOUBLE STAMPS EVERY WEDNESDAY
WITH \$2.50 OR MORE PURCHASE

502 W. FRANCIS

Bring your BUCCANEER Bonus COUPONS TO OUR STORE, & DURING THE NEXT 4 WEEKS, ACCUMULATE UP TO 5,000 FREE BONUS STAMPS

Bring Your Valuable BUCCANEER BONUS BOOK TO WARD'S GROCERY. This valuable book worth 5,000 stamps.

A PIGGLY WIGGLY CUSTOMER DESERVES NOTHING BUT THE BEST!



We Reserve The Right To Limit Quantities!

These Prices Good Feb. 10, 11, 12 In Pampa.

SAVE! WITH THESE VALENTINE VALUES!



- Chef Boy-Ar-Dee, with Mushrooms Spaghetti Dinner 18 1/2 Oz. can **47c**
- Chase & Sanborn, All Grinds 7c off Label Coffee 1 Lb. **73c**
- Klear Floor Wax 27 oz. Can **98c**
- Johnson's Black. Paste or Liquid Shoe Polish 49c size **47c**

BAKERITE SHORTENING ... 3 ... 59c

SUZAN SALAD DRESSING ... 29c

RED DART CUT GREEN BEANS ... 10c

Goodhope, Evaporated Milk 2 Tall Cans **27c** Hawaiian Red PUNCH 46 Oz. Can **35c**

LOTUS, SLICED APPLES NO. 2 CAN ... 19c

- Detergent** Vim, Tablets. 10c Off Label 38 Ct. Box **63c**
- Liquid Detergent** Swan, 13c Off Label 22 Oz. Btl. **56c**
- Cleanser** Comet, Powdered. 3c Off Label Giant Can **23c**



"PICK PIGGLY WIGGLY FOR THE BEST BEEF VALUES!!!"
 USDA, GRADE A, CUT UP **FRYERS Pound 43c**
 HORMEL'S BLACK LABEL, SLICED **BACON Pound Pkg. 89c**

- Hormel's, All Meat Franks 12 Oz. Pkg. **55c**
- Swift's Premium, Aged, Heavy Beef, ValuTrimmed Short Ribs Pound **39c**
- Swift's Premium, Aged, Heavy Beef, ValuTrimmed, Arm Cut **SWISS STEAK Pound 89c**
- Swift's Premium, Aged, Heavy Beef, ValuTrimmed, Boneless, No Fat **K. C. STEAKS Pound \$1.39**
- Armour Star, Thin or Thin SLICED BOLONA 12 Oz. Pkg. **59c**
- Swift's Premium, Lean Choice Beef Cubes **Boneless Stew Meat Pound 79c**
- Swift's Premium, Bologna, Olive Pickle **LUNCHEON MEATS 3 6 oz. pkgs. \$1.00**

DU RITE, PLASTIC BLEACH 1/2 gallon ... 27c

REDEEM ALL COUPONS FOR FREE STAMPS AT PIGGLY WIGGLY

Bacon	Armour's Campfire	1 lb.	89c
Flour	Golden West	10 lb.	93c
Ice Cream	Swift's Premium	1/2 gal.	89c
Tomatoes	Hunt's Solid Pack	3/300 cans	69c
Pickles	Del Monte Whole Sweet	22 oz. jar	59c
Corn	Libby's Golden Cr. or Wh.	4/303 cans	92c
Franks	Swift's Premium	2 lb. pkg.	\$1.18
Salmon	Libby's Red	2 lb. cans	\$2.14
Beans	Pinto	4 lb. bag	69c
Mouth Wash	Listerine	14 oz.	77c
Pork Steak	Northern Fed	3 lb.	\$2.37
Shave Bomb	Gillette Foamy	98c	87c
Fabric Softner	Downy	6 1/2 Size	89c
Pop Corn	3 Min. Yellow or White	2 lb. bag	33c
Sweet Milk	Borden's	2 1/2 gal.	\$1.02

SPAM Luncheon Meat 7 Oz. Can ... 39c

- Chef Delight **CHEESE FOOD 2 Pound Box 59c**
- Del Monte, Sweet **GREEN PEAS 4 303 Cans \$1.00**
- Old Fashion **APPLESAUCE 2 300 Cans 25c**
- All Brands **BUTTERMILK 1/2 Gallon 39c**

- Hair Spray 14 oz. Can 39c** (Tip Top, REG. 99c)
- Ipana, Reg. 75c **TOOTHPASTE King Size Tube 79c**
- Regular 98c **EXCEDRIN 60 Ct. Btl. 81c**
- Regular 75c **VITALIS Med. Size Btl. 69c**
- Hytone, Wide Rule, Poly Wrapped, Regular 63c **FILLER PAPER 300 Ct. Pkg. 49c**

- DETERGENT** Rinsol Blue, 10c Off Label Giant Box **73c**
- DOG FOOD** HI-VI 50 No. 1 Cans **2 21c**
- TOWELS** Kleenex, Assorted Colors Jumbo Roll **35c**
- DRINKS** Libby's All Varieties 6 6 Oz. Cans **69c**
- CORN** Seabrook, Whole Kernel 5 10 Oz. Pkgs. **\$1.00**

DR. PEPPER or Coca-Cola 6 Bottle Carton 39c

"PICK PIGGLY WIGGLY PRODUCE!! LOW IN PRICE!!"
 RUSSET, U.S. NO. 1 **POTATOES 10 Pound Poly Bag 49c**

CALIFORNIA, NAVEL **ORANGES ... 2 ... 25c**
 Farm Fresh **Mustard Greens 2 Large Bunches 29c** Yellow, Sweet Spanish **Onions Pound 5c**



Lowest Prices ... Greatest Variety ... always at ... **Piggly Wiggly**

Highlights and Sidelights From the State Capital

By VERN SANFORD
Texas Press Association
 AUSTIN, Tex. — Floritorial districts! You'll hear these two words used often between now and the November election. And probably a long time thereafter. What are floritorial districts? They are voting areas created by combining counties, or parts thereof, to comply with the Supreme Court's edict that all states must have districts of equal population. In Texas, this has resulted in

rural counties sharing representatives with metropolitan counties, or vice versa. A three-judge federal court at Houston has just upheld the 1965 Reapportionment Act of the House of Representatives, with the exception of 11 floritorial districts. These floritorial districts are areas around Austin, Brownsville, Corpus Christi, Tyler, Waco, Sherman-Denison, Lubbock, Abilene, Temple, Odessa and Angleton.

Court gave the Legislature until August 1, 1967, to correct the floritorial flaw. So, this November, voters will select representatives on the basis of the original reapportionment draft. Texas' four largest counties — Bexar, Dallas, Harris and Tarrant — will gain a total of 16 seats in the House for a total of 51 representatives. Under the new redistricting plan, 12 out of Texas' 254 counties will have a majority of House votes. Although their power on paper is enormous, as a practical matter representatives of metropolitan areas seldom if ever vote as a bloc. So rural interests aren't likely to be ground under the heel of big city lawmakers. State senatorial reapportionment never was subject to change. Congressional redistricting was upheld earlier. MORE TOURIST FUNDS asked — Governor Connally will ask the 1967 Legislature for a bigger budget for tourist advertising. "Considering the magnitude of the market," he said, "we still are going after an elephant with a peashooter." Connally cited a 14 per cent increase in tourists last year — totaling 14,200,000. He reported that advertising by the state

produced more than 57,000 direct replies. Although visitors spend more than \$680,000,000 a year in Texas, the governor feels the state has barely been scratched. Tourists in Florida spend three times as much. He called for further development of natural and man-made attractions, and predicted HemisFair 1968 in San Antonio will have a "strong impact" on progress of the tourist program. Current biennial budget of the state is \$32,000,000. It was \$292,000 in 1963-64.

EDUCATION COMMITTEE MEETS — Governor's Committee on Public School Education held its first meeting here for a look at school needs and began preparation of a master plan for future development. This 15-member committee is charged with a "pervasive inquiry" into all aspects of the school system. Its report is due to be made to the governor and Legislature in August of 1968. First session dealt largely with employing a staff for the big job ahead. BUSINESS RECORDS SEEN — February is the 60th month of business upswing, in Texas. It's an all-time record for peacetime business, according to the UT Bureau of Business Research. A "high level" of business ac-

tivity is predicted for 1966. However, curbing inflation "is going to be very difficult," reports the Bureau. Additional military expenditures projected for the year will make the state's economy much like that during the Korean War. Medicare is seen as signaling a big increase in demand for medical services and as setting off a boom in hospital and nursing-home construction. APPOINTMENTS ANNOUNCED — Governor Connally named Robert C. Sneed of Austin to the Texas School Land Board. Tom Miller, Jr. and William Petri of Austin, Thomas C. Ferguson of Johnson City and E. A. Arnim of Flatonia were named by the governor as new members of the board of the Lower Colorado River Authority. Connally designated a 25-member advisory committee to implement planning for the first Texas Governor's Conference on Libraries, to be held here on March 23. Speaker Ben Barnes appointed the following to the interim study committee on water safety: Reps. Ben Atwell of Dallas, Otha Birker of Bay City, James D. Cole of Greenville, Henry Fletcher of Lockhart and Leroy J. Wieting of Portland. AG REPORTS — Atty. Gen.

Waggoner Carr says members of the Texas Association of Home Builders may be appointed as State Executive Reservists and Advisors to the State Highway Engineer, in his position as Director of Construction and Housing in the Emergency Resources Management Plan. Carr also said fraternal benefit societies, burial associations, mutual aid associations and local mutual assessment companies are exempt from general insurance laws. However, they aren't exempt from laws governing recheate and are required to report abandoned property. A brief has been filed by Carr with the Tenth Circuit Court of Appeals in Denver, attacking the Federal Power Commission's order setting the well-head price of gas in the Permian Basin of Texas. Carr said both the economy of Texas and the state school system would be adversely affected by the order. According to the attorney general, a defendant in a misdemeanor case tried in county court can elect to have the judge or jury fix punishment — just as in felony trials. VEHICLE LAWS BOOK — A new 262-page book detailing Texas Motor Vehicle Laws is available for 50 cents by writing the Texas Highway Department, Motor Vehicle Division, 40th and Jackson Ave., Austin, 78703. Books are offered without charge to U.S., State, County and City governments and to school districts. TEXAS VS. U.S.A. — The U.S. Army and Texas met head-on over plans of the U.S. Army Corps of Engineers to build channels and levees on a stream where the state plans to construct a reservoir. State opposed the Sulphur River project, estimated to cost \$700,000, because the state master water plan calls for a reservoir covering the channel work and levees the Corps is planning to build. BANK CLOSES — Blanket State Bank has been closed and placed in the hands of the State Banking Commissioner for liquidation, according to Commissioner J. M. Falkner. However, its assets have been sold and its deposit liabilities assumed by the bank, so every depositor will be paid in full, Falkner stated. SHORT SNORTS Cigarette tax collections increased more than \$2,000,000 during January, over the first month of 1965, to reach a total of \$9,600,000. A Texas Legislative Council committee seeking ways to modernize county government, will hold hearings over the state. Department of Public Safety reports it has more than 100 job openings in uniformed services for men 21-35 years of age. Sixth annual meeting of Texas Civil Defense directors will be held here Feb. 21-22, with Gen. Earl G. Wheeler, chairman of U. S. joint chiefs of staff, as principal speaker. Conference on the Older Americans Act and Medicare as applied in Texas is slated here March 4. A person who refuses to surrender his suspended license within 10 days of date of suspension is subject to a fine up to \$200, DPS warns. Texas Industrial Commission conducted an economic development clinic at Lamesa. Third Court of Civil Appeals instructed State Savings and Loan Commissioner James O. Gerst to reconsider an application of the Livingston Savings & Loan, rejected in 1964. Utah's Pioneer Day (July 24) commemorates the date Brigham Young and his Mormon followers arrived at Great Salt Lake valley in 1847.

You, Your Child and School

By DAVID NYDICK
UPI Education Specialist
 Some hearing and vision defects have been particularly difficult to detect. Such defects are often the cause for many other problems in children's academic, emotional and social development. What symptoms might lead a parent to suspect the possibility of a hearing or vision deficiency? A child who is having trouble with school work should receive a thorough examination. Many schools have regular screening programs to find children who may have hearing or visual handicaps. Remember that screening methods are not meant to be thorough examinations. School equipment is not usually capable of uncovering all kinds of defects. The answer is to obtain a complete checkup by a specialist who is equipped and trained to diagnose and treat all types of hearing or vision problems. Unusual Habits A Clue Naturally, there are some specific symptoms of which you should be aware. Children with visual defects often develop unusual reading habits such as holding written material particularly close or far from their eyes and perhaps tilting their heads. Other indications might be headaches from movies, inability to judge distances or catch a ball, various types of eye irritations, and squinting. Although many of these symptoms may be a result of faulty eyesight, they may also be due to a variety of other causes. If there is any doubt you should seek professional advice.

Hearing losses are often more difficult to recognize. They may only exist in specific types of listening situations. Be suspicious when a child needs constant repetition of spoken words, is more aware of movements than sounds, shows a strain when listening, turns one ear towards the sound, is inattentive to speech, has poor pronunciation, has speech problems, has a peculiar quality to his voice, watches a speaker very carefully and speaks too loudly or softly. Problems in either of these areas will limit academic progress. They will lead to emotional and social difficulties. Early detection is very important. Guidance and correction when a child is young can avoid the development of many of the connected problems. Delay Often Costly Parents sometimes hesitate to face the existence of these problems. Do not jump to conclusions but be realistic and recognize the truth. If you have any reason to be suspicious, do not delay in obtaining a full evaluation. In some cases, the treatment presents hardships. It may be expensive and could mean travelling to a clinic or special school. Parents who resist treatment are not being fair to their child. A great deal of help and guidance is available. Your doctor or school can put you in contact with the proper agencies. Periodic checkups are advisable. These are part of a good health program. Teach your child to protect and care for his eyes and ears. Remember, it is easier and better to prevent a problem than to cure it.

EDUCATION COMMITTEE MEETS — Governor's Committee on Public School Education held its first meeting here for a look at school needs and began preparation of a master plan for future development. This 15-member committee is charged with a "pervasive inquiry" into all aspects of the school system. Its report is due to be made to the governor and Legislature in August of 1968. First session dealt largely with employing a staff for the big job ahead. BUSINESS RECORDS SEEN — February is the 60th month of business upswing, in Texas. It's an all-time record for peacetime business, according to the UT Bureau of Business Research. A "high level" of business ac-

Waggoner Carr says members of the Texas Association of Home Builders may be appointed as State Executive Reservists and Advisors to the State Highway Engineer, in his position as Director of Construction and Housing in the Emergency Resources Management Plan. Carr also said fraternal benefit societies, burial associations, mutual aid associations and local mutual assessment companies are exempt from general insurance laws. However, they aren't exempt from laws governing recheate and are required to report abandoned property. A brief has been filed by Carr with the Tenth Circuit Court of Appeals in Denver, attacking the Federal Power Commission's order setting the well-head price of gas in the Permian Basin of Texas. Carr said both the economy of Texas and the state school system would be adversely affected by the order. According to the attorney general, a defendant in a misdemeanor case tried in county court can elect to have the judge or jury fix punishment — just as in felony trials. VEHICLE LAWS BOOK — A new 262-page book detailing Texas Motor Vehicle Laws is available for 50 cents by writing the Texas Highway Department, Motor Vehicle Division, 40th and Jackson Ave., Austin, 78703. Books are offered without charge to U.S., State, County and City governments and to school districts. TEXAS VS. U.S.A. — The U.S. Army and Texas met head-on over plans of the U.S. Army Corps of Engineers to build channels and levees on a stream where the state plans to construct a reservoir. State opposed the Sulphur River project, estimated to cost \$700,000, because the state master water plan calls for a reservoir covering the channel work and levees the Corps is planning to build. BANK CLOSES — Blanket State Bank has been closed and placed in the hands of the State Banking Commissioner for liquidation, according to Commissioner J. M. Falkner. However, its assets have been sold and its deposit liabilities assumed by the bank, so every depositor will be paid in full, Falkner stated. SHORT SNORTS Cigarette tax collections increased more than \$2,000,000 during January, over the first month of 1965, to reach a total of \$9,600,000. A Texas Legislative Council

Utah's Pioneer Day (July 24) commemorates the date Brigham Young and his Mormon followers arrived at Great Salt Lake valley in 1847.

SPECIAL
 REG. \$1.07 Sudden Beauty
HAIR SPRAY 59¢
 REG. \$1.00
JERGENS LOTION 63¢

SPECIAL
 REG. \$2.75 Ogilvie Highlights Shampoo **\$1.75**
 REG. \$1.19 Preparation II Ointment **79¢**

SPECIAL
 REG. 97¢ CEPACOL ANTISEPTIC Mouth Wash **59¢**
B & B PHARMACY
 MO 5-5788
 Ballard at Browning
 S&H GREEN STAMPS

WHY WAIT? USE YOUR CREDIT TO SAVE NOW—JUST SAY "CHARGE IT!"

MONTGOMERY WARD

RED HOT SALE ENDS SATURDAY

HURRY TO WARDS—SCOOP UP THE BARGAINS WHILE THESE LOW RED HOT PRICES ARE STILL IN EFFECT!

LAST DAYS!

- Exceptional value! Fine tricot briefs. Soft acetate with elastic leg. Misses' 32-40. **59¢**
- 100% cotton terry assorted washcloths. Absorbent. 12 assorted colors per-package. **99¢**
- Fabulous special on girls' panties. 100% cotton. 4 pack. Band leg style. White. 7 to 14. **88¢**
- Little boys' reg. \$5.99 black dress oxfords. Smooth leather uppers. Composition soles. **\$4**
- Antique it yourself with a Wards kit. Includes base, coat, glue, instructions. **\$2.99**
- Reg. \$69.95 deluxe deep-quilt mattress! 6" polyurethane foam, or 6 1/2 coils! **\$48.88**
- \$7.99 steam-dry iron with quality features. All-fabric dial, 9 steam vents, 29-sq. in. sole. **\$5.99**
- Automatic washer at an exceptional low price **\$139**. NO MONEY DOWN. Giant 15-lb. capacity—cut your wash time by 1/2. 3 custom cycles for washing delicates to denims. Wash 'n wear cool-down cycle reduces wrinkles. Safety brake stops spin action if lid is raised. Slant-vane agitator, heavy-duty motor.
- \$1.21 off! Super Latex flat paint. Dries odor-free in minutes. 20 colors, white. **\$3.77 PER GAL.**
- Porcelain-white enamel—\$1.02 off! Easy to apply. Non-yellowing, covers easily. **\$1.77 PER GAL.**
- 2 flashlights for the price of one! 1 standard, 1 with magnet. 2-cell lights. **99¢**
- Riverside rubber mats. Front or rear mats for most cars at Wards! Pair **\$1.88**
- Propane fuel tank—reg. 98¢. Fits all standard propane torches, stoves. **77¢**
- Keep bait alive for days in this bucket! Thick-walled polystyrene 8-qt. bucket! **77¢**
- Anglers! Assorted budget-priced lures. All popular fish catchers. Assorted styles. **77¢**

...you'll like Wards

CORONADO CENTER MONDAY thru SATURDAY 9:30 A.M. TILL 6 P.M. EXCEPT THURSDAY TILL 9 P.M.

Coats Swing Into Spring

By HELEN HENNESSY
Women's Editor
Newspaper Enterprise Assn.
NEW YORK (NEA) — Today's mood is fast and young. And fashion is keeping pace with it. Even coat silhouettes which usually change more slowly than suit and dress shapes are varied and new for spring.

"With the current emphasis on widening horizons," said a spokesman for the National Board of the Coat and Suit Industry, "one coat shape won't do." Designers now present many silhouettes because there are more places to go."

There is news this spring in the swing of the A-line. Close shoulders and mobility at the hem emphasize the new breezy, young mood.

There is softer shaping in skinny coats. Hard tailoring is out but back belts, subtle seam-



SPRING SILHOUETTES — The costume look is shown (left) in a coat of large checks over a heather dress of simple lines. The slim coat with small collar and set-in sleeves is trimmed on the pockets with heather fabric and the collar is held in place by a heather bow. It is a Carnival Jr. design. White collar cuffs and buttons create a spring mood on solid color straight-line coat (right) by Lottie Jr. Closing is double breasted and sleeves are raglan cut.

lightly indented waistlines and concealed closings are very much in. And bias fullness makes a surprise appearance at the hem of many skinny coats.

The shorter-than-long coat this season swings out like a trapeze and is especially chic when the fashion beneath is ensemble. Sweater coats are important, too, with a narrowness under the arms and discernible body contours.

Waistlines wander high and low and they are suggested rather than actually there.

Colors team up to make news — a black band on white, gray on mauve, off-white on spice. Favorite fabrics are hard-finished worsteds, gabardines, twills, Shetlands and boucles.

Shoes have such a different look this season that last year's number can't be palmed off as new. It may be a costly change in fashion but we have had a free ride for the past few springs. And change is, after all, what makes fashion fun.

Ruth Millett
It's How You Listen
That Really Counts
Newspaper Enterprise Assn.

By RUTH MILLETT
Wives are forever complaining that their husbands are Silent Sams who won't talk to them. And men are forever complaining that women talk all the time.

Now along comes an anthropologist whose careful measurements of speech prove it's just not true that men don't talk enough and women talk too much. According to his findings the average person actually spends only 10 or 11 minutes a day talking. And that goes for both men and women.

If that seems incredible, the researcher reminds us that the standard, spoken sentence takes only 2½ seconds, and that most of us do more communication with body movements (eyes and eyebrows, facial expressions, hands and shoulders) than with spoken words. Also, he points out that we often let our silences speak for us—and that they can say a great deal, too.

So when women complain that their husbands never talk to them, what they are really complaining about is that their husbands don't communicate in other ways. They don't glance up from the evening paper to look at their wives when they are spoken to.

They look irritated instead of interested when told a bit of neighborhood gossip. They look annoyed instead of sympathetic when a wife begins to talk about what an awful day she has had.

And when a man claims that his wife or some other woman talks all the time, what he probably means is that her talk is of trivialities that don't interest him and that when he talks she doesn't make the proper responses or give him her undivided and flattering attention.

Pampa Public Schools Menu

- PAMPA FRYDAY SCHOOL**
Fish Filets Tartar Sauce
Macaroni and Cheese Fruit Salad
Carrot and Bean Lemon Cake
Hot Rolls Butter—MILK
- PAMPA JUNIOR HIGH**
Fish or Ham Spinach
Buttered Potatoes Cakes
Bread Butter—MILK
- ROBERT E. LEE JR. HIGH**
Tuna Fish Salad Squash
Macaroni & Cheese Bananas Pudding
Carrot & Celery Sticks Bread Butter
- STEPHEN F. AUSTIN**
Turkey and Noodles English Peas
Orange and Apricot Jello Salad Milk
Cranberry Salad Hot Rolls Butter
- B. M. BAKER**
Barbecued Hamburgers Hominy
Cabbage Slaw English Peas Milk
Fishes
- CARVER**
Fish Sticks French Fries Catsup
Garden Peas Cherry Pie
Carrot and Raisin Salad Bread
Butter
- SAM HOUSTON**
Wetters Buttered Potatoes
Carrots Salad Cherry Cobbler
Bread Butter—MILK
- LAMAR**
Fish Sticks French Fries Catsup
Garden Peas Cherry Pie
Carrot and Raisin Salad Bread
Butter
- WILLIAM B. TRAVIS**
Corn Dogs Buttered Beans
Apple-Celery Salad Cherry Cobbler
Bread Butter—MILK
- WOODROW WILSON**
Cheese Macaroni and Tomatoes
Mixed Vegetables Jello Salad Cakes
Bread Butter

The Women's Page

PEGGY JO ORMSON
Editor

10 THE PAMPA DAILY NEWS THURSDAY, FEBRUARY 10, 1966 58TH YEAR



POLLY'S POINTERS

Baby's Diary Made
By Marking Calendar
By POLLY CRAMER

Newspaper Enterprise Assn.
DEAR POLLY — My baby is that age where one watches for the first tooth, when she first begins to crawl and so on. Whenever she does one of her "firsts" I run to my calendar and make a notation under that date. At the end of the month I tear off the sheet, get out the baby book and enter those "firsts" in the designated places. In this way I have an exact record as to when each event happened and never forget to put them down.

—GWEN

DEAR POLLY — In the short space of five hours I have made four pairs of cafe curtains. Here is my secret. First, I tear the fabric into the desired lengths. Then I mark on the ironing board the length of the hem allowances. Press edges under and then the whole hem, using these markings as a guide. Sew and hang. This is a sure-fire way to aid in speedy decorating.

—VIRGINIA

DEAR POLLY — I would greatly appreciate it if one of the readers could advise me on how to make a rug from stockings. What a boon to us girls who go through a pair of holes in one wearing.

—BEA

How about this, girls? I know you will not let Bea down.

—POLLY



Perhaps some other workers-in-white will find this hint has merit. Time is so scarce lately or is it because I am getting older or are we all in such a big hurry?

—VIOLET

VIOLET — It is both of the last two for many of us. Don't worry, you have plenty of company.

—POLLY

Share your favorite homemaking ideas... send them to Polly in care of Pampa News. You'll receive a dollar if Polly uses your idea in Polly's Pointers.

Quilt Club Enjoys Barbecue Dinner

A barbecue dinner, followed by an afternoon of quilting, was enjoyed by members of Metropolitan Quilting Club when the group met recently in the home of Mrs. Orval Johnson at 817 N. Christy.

During the business session, conducted by Mrs. George Hamlin, president, the secretary's report was given by Mrs. J. B. Jones and those present voted to make a gift for exchange when secret pals are revealed. Those attending included Mmes. J. B. Jones, J. C. Longan, Lucky Snider, Earl O'Neal, George Hamlin, Forrest Cloyd, C. H. Smiley, Wayne Neff and Willie Harless.

Mrs. Bill Algeo Hosts Gabbette Club Meeting

Groom (Spi) — Gabbette Club met in the home of Mrs. Bill Algeo recently.

Resignations from Mrs. Bill Algeo and Mrs. George Britten were accepted. Mrs. Charles McSpadden was welcomed into the club as a new member.

Refreshments were served to nine members and one guest. The next meeting will be on Feb. 24, in the home of Mrs. Billy Fields.

First Woman to Become Member of AA Now Leads Organization on Alcoholism

By PATRICIA McCORMACK
United Press International
NEW YORK (UPI) — You don't hiss at a neighbor sick with diabetes.

You don't poke fun at a person stricken with tuberculosis.

By the same token, you should not make jokes out of a falling drunk of your acquaintance—male or female.

Trouble with bottled spirits has in common with TB, diabetes and other ailments this: It is an illness, a health problem.

Alcoholics Anonymous, now in its thirtieth year, makes this point in a report—"AA for the Woman."

The first woman who joined AA got there the hard way. First she climbed the spiral staircase to success. Then, she skidded down once she started leaning on the bottle.

She lost her friends, her job. She went from the fancy cocktail lounges to the cheap

saloons. Eventually she was a character strictly out of the gutter-crawling part of Skid Row.

These many years later, after making history by becoming the first female to join AA, the former alcoholic now leads an organization that helps find and spread facts about alcoholism.

Thousands of women, meanwhile, have turned to AA for help. Each bore the scars from the physical, mental and spiritual torture that accompany uncontrolled drinking.

They drank and got drunk when they didn't want to. They lied to themselves and others about their drinking. They lost hold of their responsibilities—home, community, office.

They always said they just needed a drink in the morning to quiet their nerves. They leaned on alcohol the way a lame person leans on crutches.

"Alcoholism," the AA reports, "is not only an illness, but a progressive illness."

The report on "AA for the

Feminine Advantage
NEW YORK (UPI) — Want to live to 100? Be born a girl. The longer life span of females is proved by figures from the New York Life Insurance Co., which reveals that it has 10 persons owning annuities who will be 100 years old or older in 1966. Nine of them are women.

The company adds that women purchasers of annuities, which guarantee income for life, outnumber men two to one.

"Woman" is a collection of case histories of female members how have made the switch to sobriety—a battle that never ends.

"If you are an alcoholic," the AA said, "you will find thousands of other women like yourself in AA."

"They come from many and varied backgrounds—but they are all alcoholics—and always will be. The important thing is that they are sober alcoholics, happy in their newfound way of living and ready to share it with any one who needs help."

Remember your
VALENTINE
CANDY CARDS GIFTS
Shop at our
REXALL Drug Store
Monday, Feb. 14th

Presto Portable Professional
Hair Dryer
Professional Size Hood fits Any Hair Style, adjusts to desired position
Thermostat Heat Control with 5 settings. Folds for Storage. No. HDPI.
\$24.97

Casserole Server Sets
Pyrex Casserole Cover & Walnut Tray
Reg. \$6.95 **\$3.47**
Reg. \$7.95 **\$3.97**
Reg. \$1.53 Coricidin D Relief of Sinus Congestion Hay Fever and Colds **72¢**
Reg. \$1.29, Family Size **82¢**

St. Joseph Softies
Reg. 39c, Cotton Swabs, 54 dbl. tips **21c**

ACCENT ON HEALTH
As registered Pharmacists, we are proud of the part we play in serving this community's health needs. By dispensing the most modern pharmaceuticals as directed by your Doctor, we help you and your family maintain good health. The next time you have a prescription to be filled, rely on us to fill it promptly from our fresh stock of pharmaceuticals.
Your **REXALL** Pharmacy

NEW! PRESTO MANICURE SET
Gives you professional manicure and pedicure care—at home. Easy, enjoyable! Operates on standard "D" size batteries. Includes fingertip Off-On Control, self-storing cord, and tray of nail care accessories.
No. MS3 **\$5.97**

VALENTINE SPECIAL
Wide Selection **PRINCESS CHINA**
30% Off Reg. Price

Smell'n Goods For Your Sweetie
COLOGNES and BATH POWDERS
Select from Coty, Faberge, Cars Nome, DuBarry, Max Factor and Dana.
Wide Selection of **GLASS WARE 20% Off**
Vases, Ash Trays, Goblets Candy Dishes, Knick Knacks.

VALENTINE SPECIAL
Wide Selection Ladies and Mens Elgin and Bulova **WATCHES**
30% Off Reg. Price

VALENTINE SPECIAL
Ladie Sunbeam **ELECTRIC SHAVERS**
Built in Light **\$16.95**

Glamourette Bouffant Coiffure Bonnet **68c**
Reg. \$1.25
Brach's Valentine Candy At Discount Prices

VALENTINE SPECIAL
Wide Selection of Hallmark **Valentine Cards**

Heard-Jones DRUG
114 N. Your New REXALL Store Hours Prices Good
Cuyler SUPER DRUG STORE 7:30 a.m.-7 p.m. Thurs.-Fri.-Sat.

Russell Stover CANDIES
FOR YOUR VALENTINE...

RED FOIL HEARTS
5 1/2 oz. 80c
1 lb. \$2.10
1 3/4 lb. 3.40

FANCY SATIN HEARTS
\$3.35 to \$10.00

ASSORTED CHOCOLATES
1 lb. box \$1.60
2 lb. box 3.15

VALENTINE'S DAY IS MONDAY FEBRUARY 14
Heard-Jones DRUG

Kyle's Fine Shoes
109 N. Cuyler MO 9-9442
CLEARANCE

Shop Thursday Till 8 p.m.

Ladies' Dress Shoes
By Vitality and Rhythm Step **\$8 Pr.**
Reg. \$14.99 to \$16.99
Reg. \$14.99
Suedes in Gold or Black **\$5 Pr.**

LADIES' BOOTS \$3 pr. *
Leather, Ankle High.
Blacks, Suedes, Gold. Reg. \$7.99-\$9.99

SCARVES Only \$1 Ea.

HANDBAGS Ladies' \$2.99 Big Rack \$2 Ea.

Ladies' First Quality **HOSIERY 2 Prs. \$1.00**

Ladies' Run-Resist **HOSIERY 3 Prs. \$2.65**
Reg. \$1.29 Pr.

MEN'S SHOES \$8.97 pr.
Group. Widths A-B-C-D

Give Thirsty Skin a Milk Bath



FOR THIRSTY SKIN — Even youths born in the 1940s are familiar with milk baths popularized by such film stars as Pola Negri and Claudette Colbert. Now the milk bath comes into the home, but not via a late, late movie on television. A special milk bath contains ingredients found in milk, plus emollients and lubricants to soothe thirsty skins. Dump a tablespoon or two (left) into a tub of water for a fragrant blue foam. After the bath, smooth on an enriched body cream (center) containing additional lubricants. Massage on legs and feet, especially susceptible to drying wintery elements. For a final fragrant touch dust on (right) an after-bath dusting powder with a special applicator.

For a hurry-up dinner, remember that meat loaf will bake in half the time if it is pressed into muffin pans instead of shaped into one large loaf.

For Feet's Sake
NEW YORK (UPI) — House slippers or run down old shoes may seem the most comfortable footwear for doing housework, but they can cause many symptoms of "housewife fatigue," says the New York State Podiatry Society.

Don't cut out milk when on a diet. The U.S. Department of Agriculture points out that skim milk pays its own way by contributing generous amounts of protein, calcium and other nutrients with only a moderate amount of calories.

The society says that slippers or so called "comfortable" shoes just don't have the necessary support to prevent weariness or even serious foot defects. The ideal shoe for housework, it says, is a laced oxford with a Cuban heel.

Carpet Paths and Spots Easily Removed
or clean carpet wall-to-wall. Safe Blue Lustré rebrighens colors, leaves nap fluffy. Rent easy-to-use electric shampooer for 11¢ a day at Pampa Hardware Co., 120 N. Cuyler MO 4-2451.

Dear Abby... Bachelor Brother Has A Fool's Paradise

DEAR ABBY: Shortly after we were married, my husband's brother came to live with us. It's been five years now and I am a nervous wreck. He's a bachelor with a good job, money in the bank, a new car, yet he has no interest in sports, women, church or anything. He spends hours in the bathroom getting ready to go nowhere. He's an authority on every subject and has his nose in everything that goes on in this house. We have absolutely no privacy. When I suggest he find some nice girl and get married, he says only fools get married. My husband says we can't ask him to leave because he has no place to go. What do you say?

SICK OF HIM
DEAR SICK: I say you should tell Bachelor Brother that the two "fools" who have provided a home for him have had it. And if he's not "foolish" enough to take a wife, he should take a bachelor apartment.

DEAR ABBY: I am 22 and am going with a fine young man who is 28. I have the feeling he is going to ask me to marry him, and I hope he does because he would make a wonderful husband. But, Abby, he has one very bad fault. When he talks he barely opens his mouth. People are always asking him to repeat himself because they can't understand what he says. Also, he won't let himself smile or laugh very much and I'm sure I know why. He has very bad teeth and he's probably self-conscious about them. Is there a tactful way to tell him to have his teeth taken care of? He is so kind and sensitive, I wouldn't hurt him for the world.

RELUCTANT
DEAR ABBY: Do this fine young man a tremendous favor, and tell him! A good dentist can do wonders for him — improving his appearance and adding to his self-confidence. He may then need help from a speech therapist to correct some of the bad speaking habits he formed while attempting to hide his unattractive teeth.

DEAR ABBY: I need your opinion. My husband and I were invited to the home of another couple for coffee. After we had been there for about an hour, the lady started glancing at her watch. I took this as a hint that we should leave, and I had to drag my husband out of his chair. My husband still insists that we left too early, and the lady could have been looking at

her watch without wanting us to go home. What do you think?
MINNETTE
DEAR MINNETTE: When the hostess starts "glancing" at her watch, it's a pretty safe bet that it's time to leave. Better to leave a little too early than a little too late.

CONFIDENTIAL TO "CHECKING UP" IN BALTIMORE: Your friend is correct. White does not necessarily indicate "purity." Traditionally, the bride wore white to indicate that her father was too poor to give her future husband a dowry and, therefore, he was not to be held liable for her debts. White has nothing to do with virginity. If any color were to represent that, it would be green, not white.

Troubled? Write to Abby, Box 69700, Los Angeles, Calif. For a personal reply, enclose a stamped, self-addressed envelope.

Read the News Classified Ads

Kenneth Butler Speaks to Pampa Credit Women

Pampa Credit Women's Club met Friday evening in Citizen's Bank Hospitality Room. Mrs. Ruby Crocker, president opened the meeting and minutes were read by Mrs. Elizabeth Lewis. Mrs. Mary Ellen Elliott gave the treasurer's report. Mrs. Virginia McDonald gave the report on Council of Clubs, and Mrs. Laverne Boyd responded on the club correspondence.

Mrs. Edna Day introduced the guest speaker, Kenneth Butler, from Butlers Studio. Mr. Butler spoke on "Photography," giving hints on what makes a good picture. He said "It is very important to plan a picture, get a good nights sleep before having a picture made, and try to choose a day when you are not too busy and hurried. These precautions will make for a more realistic picture. It is important in business or clubs to use up to date pictures when photographs are called for."

The next meeting will be Feb. 18, with John Warner as guest speaker.

Eight members and one guest were present.
Cellophane tape (used sticky side down) often removes crayon marks from carpeting.

YOU CAN START LOSING WEIGHT THIS WEEK!

IT'S EASY WITH SLENDER-X® by P.D.A.

This amazing electrolytic formula, available with no prescription, can help you become the slim and trim person you want to be! Simply take a small Slender-X tablet before each meal. Slender-X goes to work immediately to put an end to your excessive food intake. As Slender-X helps you stop your extra food intake, it starts you on the way to a more attractive you... And, if you do it without giving up that "laid up," nervous-looking you get with other diets!

IT REALLY WORKS!

How many pounds do you want to lose... 10, 20, even 45 pounds... or more? You can do it with Slender-X! Just like people are discovering all over the country, you have nothing to lose except those unwanted pounds. And, if you aren't completely satisfied, you'll get your money back. So, get on the road to a better-looking you this week! GET IT TODAY AT YOUR DRUG COUNTER

SLENDER-X® by P.D.A.

Or Just Mail This Coupon To: HEARD-JONES PAMPA, TEXAS

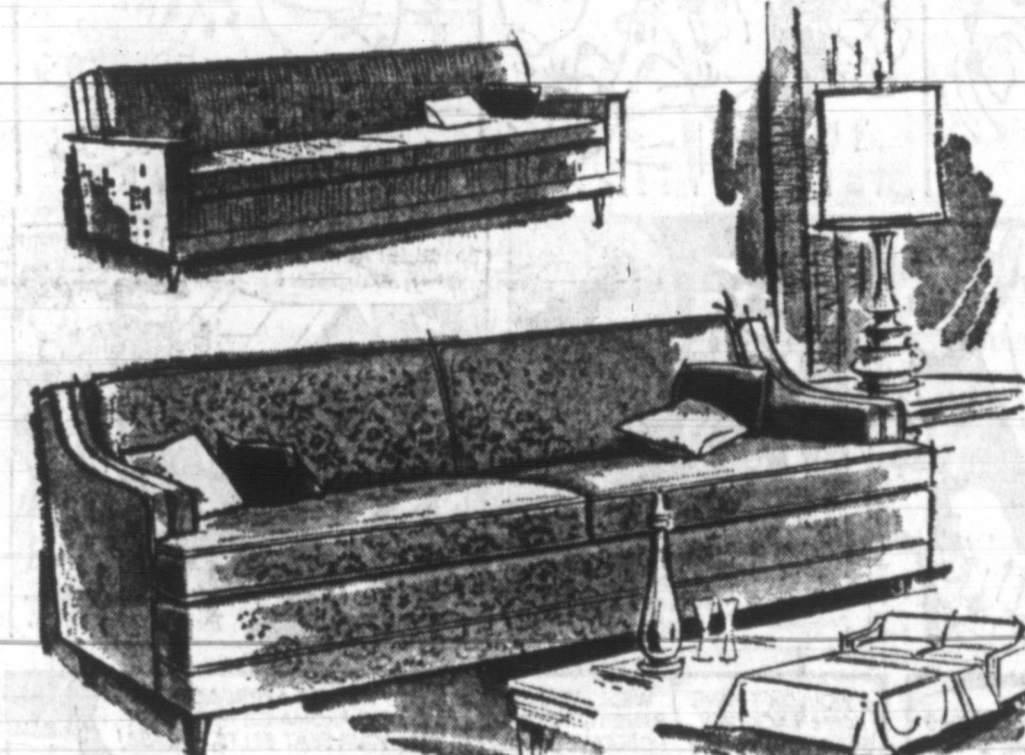
I want to start losing weight...

30-day supply of Slender-X for just \$2.95	60-day supply of Slender-X for just \$4.95	90-day supply of Slender-X for just \$6.95
--	--	--

 NAME _____ ADDRESS _____ CITY _____ STATE _____
 Charge G.O.D. Payment Enclosed



FEBRUARY VALUES



We are proud to present one of the largest selections of Simmons Hide-A-Beds and Kroehler Sleepers or Lounge sofas. Many styles and fabrics from which to choose.

FIRST SOFA Kroehler modern in green plastic with wood capped arms. **\$239.50**

SECOND SOFA Simmons traditional in green tone on tone. Beautyrest cushions. **\$379.50**

THIRD SOFA Simmons Wing Back Colonial in your choice of several tweed covers. Innerspring mattress. **\$289.50**

FOURTH SOFA Simmons Hide-A-Bed sofa in lawson styling. Has heavy solid cover in your choice of Green, Gold or Coral. This sofa regular \$279.50, Now Only **\$239.50.**

DUPONT 501 NYLON CARPET INSTALLED WITH FOAM PAD \$8.95 Sq. Yd.
In Stock — Gold—Green—Parchment—Beige

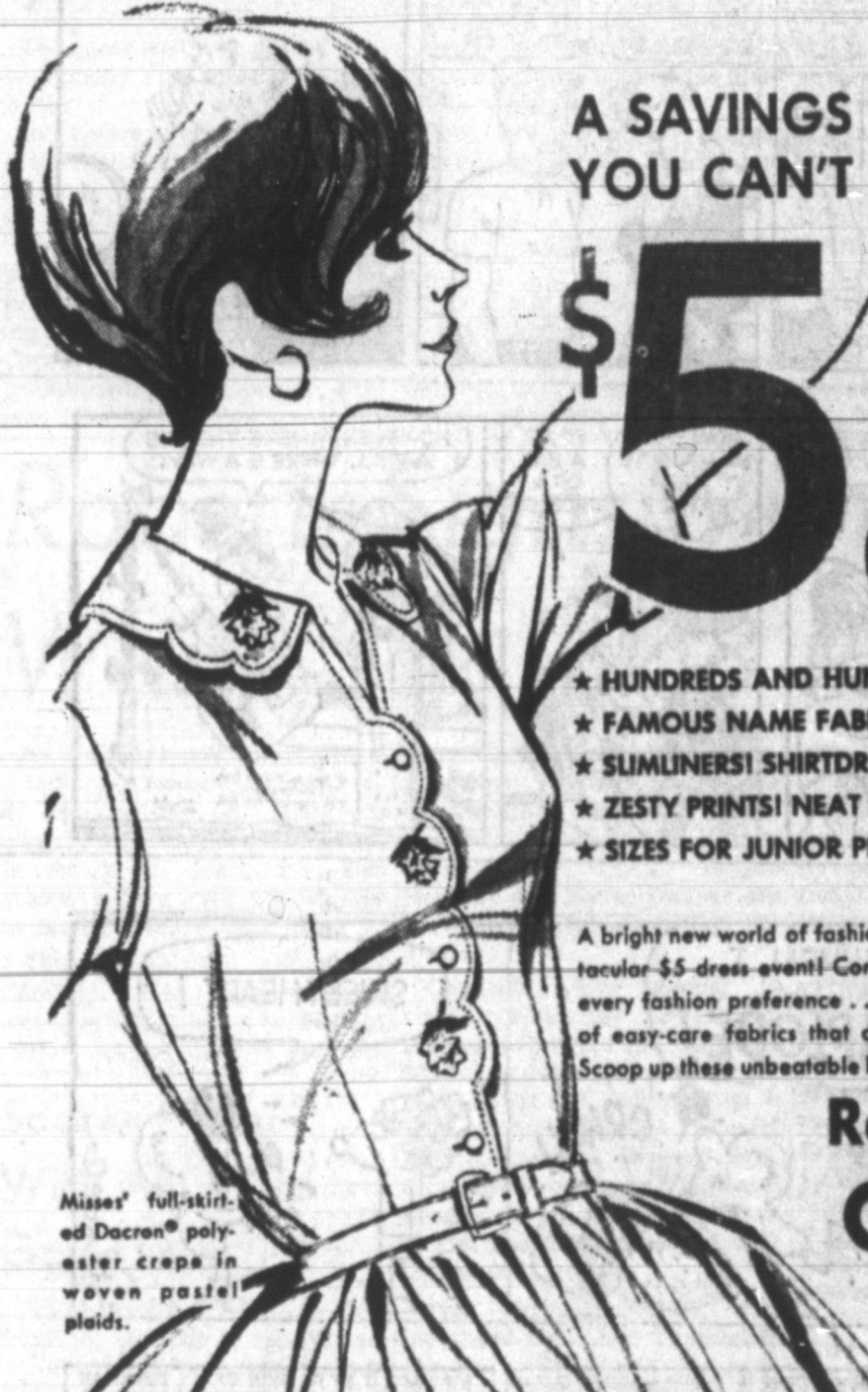
CONVENIENT TERMS TAKE MONTHS TO PAY

Texas Furniture Company

210 N. Cuyler Quality Home Furnishings MO 4-4623

Penneys ALWAYS FIRST QUALITY

Open Daily 9 a.m. to 5:30 p.m.
Thursday 9 a.m. to 8 p.m.
Saturday 9 a.m. to 6 p.m.



A SAVINGS EVENT SO SPECIAL YOU CAN'T AFFORD TO MISS IT!

\$5 dress event

- * HUNDREDS AND HUNDREDS OF SPRING-SUMMER STYLES!
- * FAMOUS NAME FABRICS FROM THE COUNTRY'S TOP MILLS!
- * SLEEVES! SHIRTDRESSES! A-LINERS! TWO-PARTERS! PLEATS!
- * ZESTY PRINTS! NEAT PLAIDS! PALE PASTELS! VIVID TONES!
- * SIZES FOR JUNIOR PETITES, JUNIORS, MISSES, HALF SIZES!

A bright new world of fashion excitement right here at Penney's! It's our spectacular \$5 dress event! Come... see all your favorites... we've styles for every fashion preference... sizes for every fashion figure! All in a collection of easy-care fabrics that dip-and-drip-dry in a flash, hardly need ironing! Scoop up these unbeatable bargains today!

Remember You Can **CHARGE IT!**



- Acetate-and-cotton puff and in soft spring pastels for misses, half sizes.
- Acetate-and-nylon rib tuck classic for misses in spring-minded pastel tones.
- Kodal® polyester-cotton "Avanti" shirtdress for misses, half sizes.
- Dacron® polyester crepe two-part ensemble for misses and half sizes.
- Flower-printed Arnel® haccioteen crepe with pleated shirt. Misses'.
- Kodal® polyester-cotton "Potenti" shirtdress shirtdress, half sizes.

Shop Downtown For Greater Selections

Astrological Forecast

By CARROLL RIGHTER

FOR FRIDAY, FEB. 11
GENERAL TENDENCIES: A day and evening to drive deeply into whatever has to do with the specific information you need that can round out your present knowledge or that can give you a better understanding of the ways and means by which to handle conditions and persons that have been a mystery to you. Keep above jealousy.
ARIES (Mar. 21 to Apr. 19) — Now is the time to get busy with paying bills and making collections that you have been procrastinating about. See that taxes, interest, etc. are all in order. Please your mate and get those chores done, etc.
TAURUS (Apr. 20 to May 20) — Concentrating upon how to come to better understanding with associates is imperative today. Remember that it's a matter of mutual dependence. Come right out with any particular skills that you have kept hidden. Expand, be more successful in business.
GEMINI (May 21 to June 21) — Hurry up and finish all those small duties that have been worrying you so that you can then be out for pleasure. Co-workers gladly give you ideas that are very good. They are interested in your welfare.
MOON CHILDREN (June 22 to July 21) — Getting your finest skills before the persons who can help you to commercialize or them will bring fine results. Then you find that mate will be more appreciative of you. Be devoted.
LEO (July 22 to Aug. 23) — Concentrating upon how to become more successful will bring the right ideas; persons within your orbit. Show devotion to those who live with you. Certain changes are very vital to your basic structure throughout.
VIRGO (Aug. 24 to Sept. 23) — By studying into many outlets, you have a better understanding of your position with others and gain greater prestige. Be with congenials after you have completed day's work. Enjoy pleasure that is spiritually uplifting.
LIBRA (Sept. 24 to Oct. 23) — Put aside wishful thinking and get busy on monetary affairs that will improve your financial status. Show that you are a practical person. Every problematical affair can be handled with wisdom.
SCORPIO (Oct. 24 to Nov. 21) — Self-analysis will reveal how best to gain your goals and make proper plans for the future. Those you know socially can do much to aid your advancement. Evening can be especially fruitful.
SAGITTARIUS (Nov. 22 to Dec. 21) — Do some research work that will give you the answer to many perplexing matters and then everything will work out more in your favor with everyone. Assist those in need. Make the time if necessary toward that end.
CAPRICORN (Dec. 22 to Jan. 19) — A good deal is in the mood now to assist you to acquire whatever is most necessary for your success and happiness. State your aims. Social affairs are looming that will be your cup of tea. Accept.
AQUARIUS (Jan. 20 to Feb. 18) — You can improve your status in the community by showing uncommon intelligence and being steady having affairs in good structural order. Strive to please those around you in your daily occupation.
PISCES (Feb. 19 to Mar. 20) — New outlets are excellent now and you can impress others with your ability and fine mind so that you expand really. Show more idealism however. Correspond with those at a distance for greater benefits.

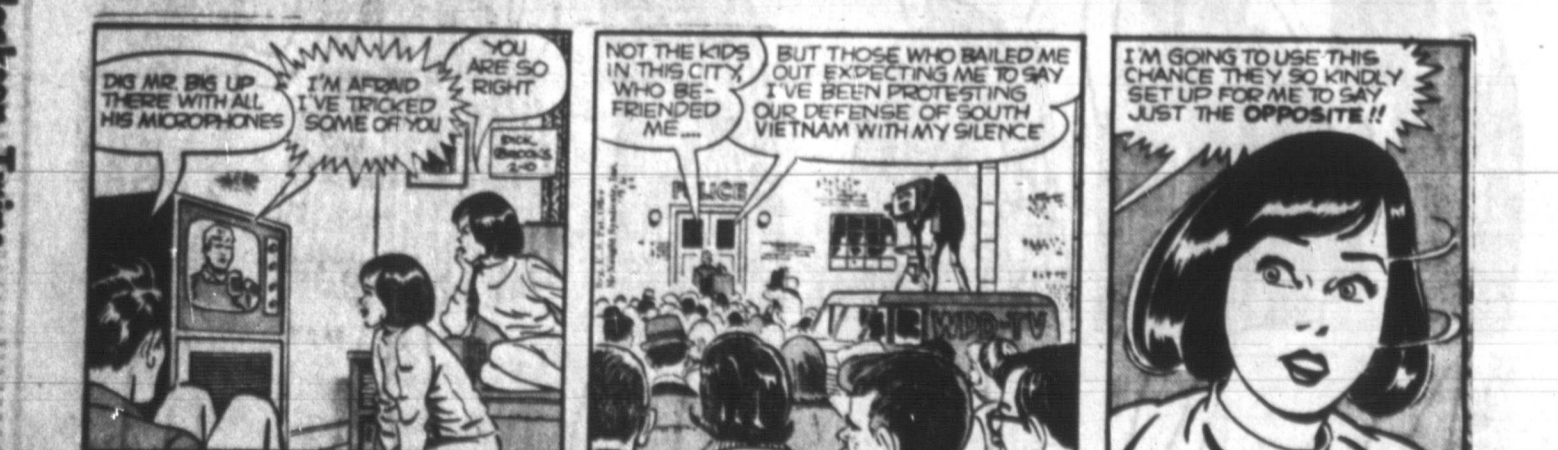
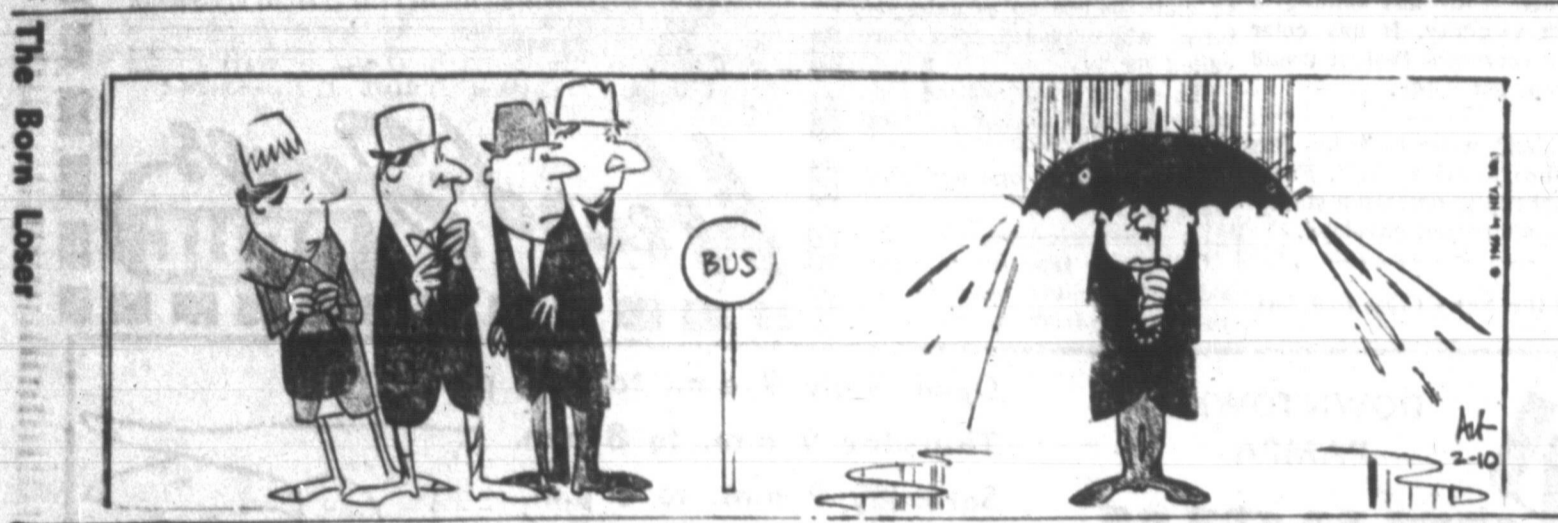
OUT OUR WAY

J. B. Williams



OUR BOARDING HOUSE

With Major Hooper Short Ribs





REG. 98c
Large Size
PRELL

**LIQUID
SHAMPOO**
56¢

REG. \$2.33
BOTTLE OF 200

ANACIN
\$1.47

REG. 89c JAR
**MENTHOLATUM
OINTMENT**
57¢



REG. 75c
EXTRA LARGE

Toothpaste 47¢

REG. 69c GILLETTE
SUPER BLUE

Razor Blades
43¢



REG. \$1.59
BY TONI

**TAME HAIR
RINSE 98¢**

Reg. \$1.79 1 lb. Jar

**Pond's
Cold Cream**
88¢

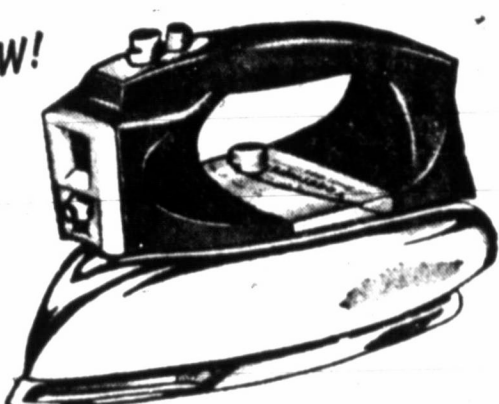
REG. \$2.00

**Aqua Net
HAIR
SPRAY**
2 FOR 99¢



TOASTMASTER
SPRAY · STEAM and DRY IRON

NEW!



REG. \$12.95 MODEL B420

**STEAM & DRY
IRON**

\$7.77

**Ceramic
&
Glassware**

1/2 OFF Gibson Discount Price

REG. \$2.50

**PENDANT
ON A FINE
CHAIN**
97¢

**DISCOUNT
RECORD CENTER**

2 RECORDS FOR THE
RETAIL PRICE OF 1

Reg. \$19.97 Pink, Gold or
Blue

LADY REMINGTON
Electric Shaver

\$11.97

Reg. \$19.95 No. T65

**SUNBEAM
Automatic Electric
TOASTER**

\$11.88

REG. \$3.97

**Wire Mesh
FISH
BASKET**

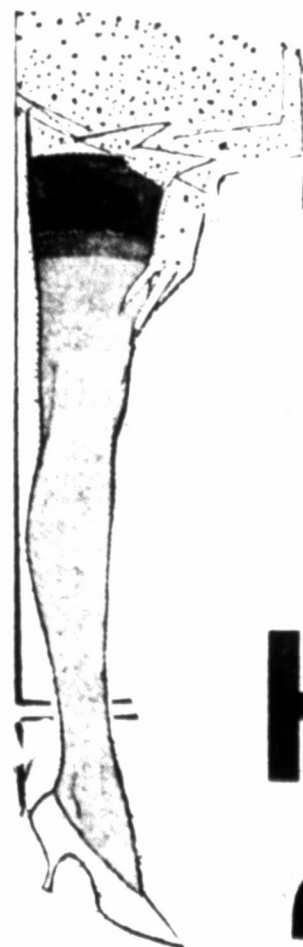
\$2.67



REG. \$9.95 Deluxe
Dominion Imperial
4 Quart

**POPCORN
POPPER**

\$5.88



REG. 87c
REINFORCED
TOE & HEEL
LADIES
SHEER

HOSE
39¢ Pr.

REG. \$1.89
RUST PROOF

**RAIN
GUAGE**
99¢

CLOSE OUT
ON ALL

TIRE CHAINS **1/2 Off**
Gibson Discount Price

Reg. \$3.00
Deluxe Chrome

**CAR
TISSUE
DISPENSER**
\$1.77

Reg. \$2.25

M-3 Auto
**RADIO
ANTENNA**
\$1.33

VALENTINE
CANDY
AT
GIBSON'S
WITH
SAVINGS
UP TO
25%
GIFT
WRAPPED



Gibson Discount Pharmacy

Reg. \$1.75 24 Ct.

Triaminicin
99¢

REG. 75c

SEMET
**THROAT
TROCHES**
53¢

ALL FUTURO
ELASTIC
SUPPORTS

20% Off Gibson Discount Price

REG. \$3.00

**DELFIN
FOAM** WITH APPLICATOR
\$1.77

If We're Not Filling Your Prescriptions...
You're Paying Too Much!

LADIES

**SATINETTE
PANTIES**
67¢

NO. 425

BEAUTIFUL LACE

BRA
WITH STRETCH STRAPS
\$1.29

LADIES LACE

**GOWNS
AND
BABY DOLL
PAJAMAS**
\$1.87

PRICES GOOD THURSDAY, FRIDAY AND SATURDAY



OPEN DAILY 9 A.M. TO 9 P.M. CLOSED SUNDAY