



"Nothing is easier than the expenditure of public money. It does not appear to belong to anybody. The temptation is overwhelming to bestow it on somebody."

-Calvin Coolidge

The Pampa Daily News

Serving The Top O' Texas 57 Years

WEATHER

PAMPA AND VICINITY - Generally fair today through tomorrow. Cooler today and tonight. Little change in daytime temperatures. Low tonight near 30, high tomorrow mid 60s. Winds westerly today at 15-25 m.p.h., changing by tonight to northerly at 5-8 m.p.h.

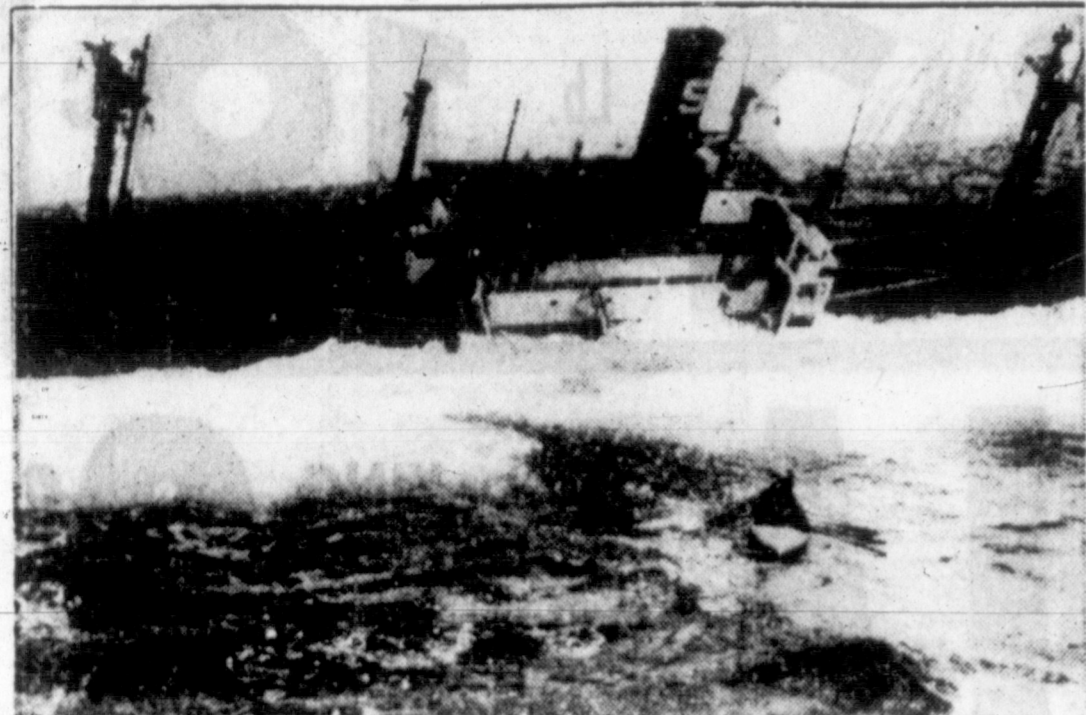
VOL. 57 - NO. 233

Circulation Certified by ABC Audit

THE PAMPA DAILY NEWS, TUESDAY, DECEMBER 29, 1964

(14 PAGES TODAY)

Week Days 6c Sundays 15c



FREIGHTER SINKS - A long boat from the Coast Guard cutter Rockaway pulls away from the listing S.S. Smith Voyager after rescuing the ship's captain and three crewmen from the settling ship. Four crew members were killed when the ship's grain cargo shifted in a storm and all but four abandoned ship. The captain and remaining crewmen were removed from the ship as it was being battered by 15-foot waves and 30-knot winds. The Smith Voyager sank as it was being towed to Bermuda. (NEA Telephoto)

\$223,000 Loot Taken In Latest Brink's Job

Pampa Officers Continue Search For Escaped Pair

Gray County police officers telephoned South Viet Nam today to search for two men, one a jail escapee from Marshalltown, Iowa, who were reportedly headed for Pampa.

Political Breakthrough May Be Near in Viet Nam

SAIGON (UPI) - Vietnamese generals huddled in the seaside resort of Vung Tau today amid indications of a breakthrough in the political crisis that has placed the military leaders at odds with the United States.

2 Priests Taped and Locked Up

BULLETIN
BUFFALO, N. Y. (UPI) - Two nattily dressed men held up the treasurer's office at city hall today and escaped with cash and checks unofficially estimated at \$200,000, police said. The city treasurer was struck by one of the thieves.

WEATHER BREAK NEEDED

New Flooding Feared in West

SAN FRANCISCO (UPI) - but they can't get down into the canyons. Warnings of new flood dangers in Washington were issued by the Bureau of Reclamation because of two large ice jams - including one three miles long - in the Yakima River above the Ropa Dam.

Contract Let for Purchase Of Three City Police Cars

Contract for purchase of three new city police patrol cars was let today to John Parker Motors. In a letter addressed to the mayor and city commissioners, former Mayor E. C. Sidwell reminded the councilmen that the previous city commission recommended rewriting and junking most of the ordinances of record and installing in the tax department a system of common sense and fair play to all taxpayers.

Strike Called Against Rails

WASHINGTON (UPI) - The Brotherhood of Locomotive Firemen and Engineers called a strike today against the Southern Railway. The walkout was ordered at 5 a.m. CST against the 8100 mile railroad.

Texas Beauty Nervous With Finals Nearing in Maid of Cotton Contest

MEMPHIS, Tenn. (UPI) - Lorann Mays of El Paso, Tex., is no stranger to Memphis but today she shares the nervous tension of 19 others seeking the 1965 Maid of Cotton title in the cotton capital.

Prince Has Pop Party

WINDSOR, England (UPI) - The beat of the latest hit songs echoed over ancient battlements Monday night when teen-age Prince Charles and Princess Anne threw Windsor Castle's first pop party.

School Count Starts Friday

School enumerators will start Friday calling at homes in the Pampa Independent School District for the annual school population count.

INSIDE TODAY'S NEWS

Page	Topic
13	Classified
9	Crossword
10	Comics
6	Dear Abby
12	Editorial
7	On the Record
11	Sports
11	Theater
7	TV Schedule
6	Women's News

A MAN AMONG MEN

The Kid Comes Home a Hero

SAUGERTIES, N.Y. (UPI) - The kid came home a man among men. He stood straight and tall. His beret had a jaunty tilt. He rode down the street in an open car, a shy smile playing about his lips.

Cooke To Be Named Acting City Manager

Public Works Director R. B. Cooke will serve as acting city manager until a new manager is selected by the Pampa City Commission.

School Count Starts Friday

School enumerators will start Friday calling at homes in the Pampa Independent School District for the annual school population count.

Prince Has Pop Party

WINDSOR, England (UPI) - The beat of the latest hit songs echoed over ancient battlements Monday night when teen-age Prince Charles and Princess Anne threw Windsor Castle's first pop party.

School Count Starts Friday

INSIDE TODAY'S NEWS

Page	Topic
13	Classified
9	Crossword
10	Comics
6	Dear Abby
12	Editorial
7	On the Record
11	Sports
11	Theater
7	TV Schedule
6	Women's News

2 Priests Taped and Locked Up

BULLETIN
BUFFALO, N. Y. (UPI) - Two nattily dressed men held up the treasurer's office at city hall today and escaped with cash and checks unofficially estimated at \$200,000, police said.

Prince Has Pop Party

WINDSOR, England (UPI) - The beat of the latest hit songs echoed over ancient battlements Monday night when teen-age Prince Charles and Princess Anne threw Windsor Castle's first pop party.

School Count Starts Friday

School enumerators will start Friday calling at homes in the Pampa Independent School District for the annual school population count.

INSIDE TODAY'S NEWS

Page	Topic
13	Classified
9	Crossword
10	Comics
6	Dear Abby
12	Editorial
7	On the Record
11	Sports
11	Theater
7	TV Schedule
6	Women's News



R. B. COOKE

Cooke said today he would be glad to serve as acting manager until a city manager is selected, but stated he does not want the job on a permanent basis.

"I will be glad to fill in on the job in order to help out until a manager can be appointed," Cooke said. City Manager Schmitzer attended his final meeting of the city commission today after which commission members said goodbye and wished him well.

INSIDE TODAY'S NEWS

Page	Topic
13	Classified
9	Crossword
10	Comics
6	Dear Abby
12	Editorial
7	On the Record
11	Sports
11	Theater
7	TV Schedule
6	Women's News

A MAN AMONG MEN

The Kid Comes Home a Hero

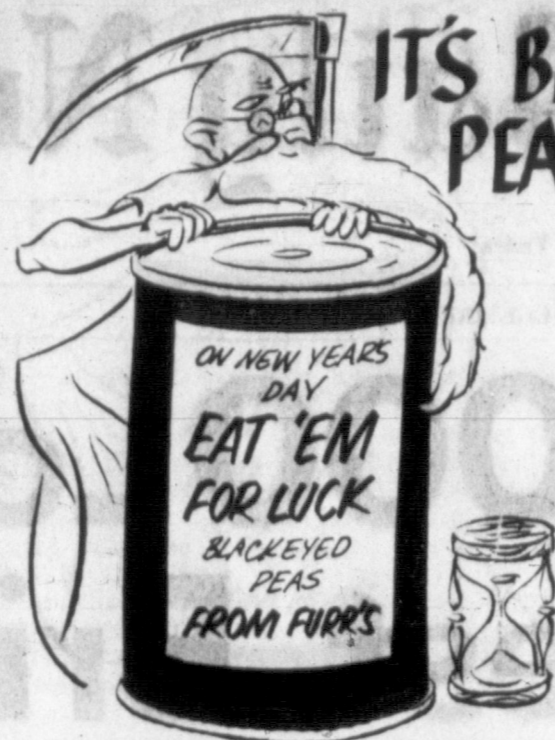
SAUGERTIES, N.Y. (UPI) - The kid came home a man among men. He stood straight and tall. His beret had a jaunty tilt. He rode down the street in an open car, a shy smile playing about his lips.

their... 57TH YEAR

Things

- ACROSS
- 1 Book
- 4 Andie device
- 9 Primate
- 12 Thoroughfare
- 13 Constellation
- 14 Deranged
- 15 African worm
- 16 Accumulate
- 17 Anger
- 18 Frenzied
- 20 Arab chieftain
- 22 Viper
- 24 Indolence of
- 25 Genus of a
- 26 Small glass
- 27 Tasty
- 28 Cover
- 29 Winklike part
- 30 Narrow inlet
- 37 Bouncer
- 38 Blight
- 39 Table scrap
- 40 Exclamation
- 42 Folding bed
- 43 Female sheep
- 44 Pastry
- 45 Female insect
- 46 Portable chair
- 51 Command
- 55 Egg (comb. form)
- 56 Golf club
- 60 Hawaiian pepper
- 61 Noise
- 62 Flute with success
- 63 Permit
- 64 Milk brew
- 65 Novices
- 66 Bitter witch
- DOWN
- 1 Robust
- 2 Shakespearean stream
- 3 Fish food

Answer to Previous Puzzle



IT'S BLACKEYED PEAS TIME

Prices Effective Dec. 29, 30, 1964

Fresh Hog Jowls lb 15¢

Blackeye Peas Ena No. 300 Can 9¢

PINTO BEANS 2 Lb. Bag 19¢

COCA-COLA REG. or KING 9¢

REG. or KING

With 5.00 Purchase Or More Excluding Cigarettes - Plus Dep.

MELLORINE 25¢
Dartmouth Assorted Flavor 1/2 Gal.

TOMATOES 10¢
Standard No. 303 Can

JELLO 3 OR 25¢
Assorted Flavors 3-oz. Pkg.

Mixed Nuts 49¢
Tom Scott 12-oz. can

Orange Juice 19¢
Dartmouth 6 Oz. Can
Fresh Frozen
GROUND BEEF 29¢
Ground Fresh Daily Lb.
BACON 49¢
SWIFTS PREMIUM SLICED Lb.

Cheese 49¢
Longhorn Mild Full Cream Lb.

LIVER 39¢
Fresh Baby Beef Lb.

CUTLETS 98¢
Farm Pack Blue Ribbon Beef Quick & Easy Lb.

Bologna 49¢
All Meat Lb.

DIPS 49¢
Sealtest 1/2 pt. Ctn.
PET MILK 25¢
Tall Can 2 For



CARROTS 10¢
California Bulk Lb.
TURNIPS 10¢
Purple Top Bulk lb.
Egg Plant 19¢
California For Stewing or Frying lb.

GLEEM TOOTHPASTE 59¢
89c Value

We Reserve The Right To Limit Quantity



California Priest Goes Into Self-Imposed Exile

LOS ANGELES (UPI) — The Rev. John V. Coffield left Monday for Chicago and a self-imposed exile because of "an impasse" between him and James Francis Cardinal McIntyre.

"A Buddhist monk could use self cremation as the strongest form of protest," said the 49-year-old priest in a statement issued Sunday. "It isn't open to me."

Nearly 1,000 parishioners and well-wishers attended a reception honoring the priest Sunday preparatory to his going to Chicago to undertake urban mission for a Roman Catholic organization.

Father Coffield has been pastor of the Ascension Catholic church for the last three years.

A spokesman for the priest said Father Coffield had been repeatedly reprimanded by the cardinal for his outspoken positions on racial and other civil rights matters.

In the farewell statement to the parishioners Father Coffield said:

"I go into self-imposed exile as the strongest protest I can make."

He said he did not want to "disobey the cardinal, but racism is the great national sin and scandal," and he felt he could not remain silent.

Read the News Classified Ads

Colonel Sanders Recipes Are Insured for A MILLION DOLLARS!



WARD'S
Kentucky Fried Chicken
KEEPS THEM TASTIN' LIKE A MILLION
CALL 4-6771 NOW - YOUR CHICKEN IS READY
Come N' Get It!

AT WARD'S
Kentucky Fried Chicken
It's Finger-Lickin' Good
2100 N. Hobart MO 4-6771
Look for the Candy Striped Building

Co...
CORPO...
Tarry...
ami, no...
ty, time...
Charles...
Jo, illeg...
\$14.
...well...
failure to...
noo conc...
Joseph...
Sumner...
ty, fined...
Alvin...
rie, driv...
ty, fined...
Clyde...
Banks, la...
way, guil...
James...
operating...
wrong lic...
fined \$25...
Thomas...
Frederic...
guilty, fin...
Ray A...
Cait., int...
\$25.
Floyd H...
ler, intor...
\$25.
Lon C...
cation, g...
Burg...
Vend...
An und...
change w...
ing mach...
early ye...
Abies' Te...
420 W. B...
Lennie...
to city p...
someone...
chines fr...
and carri...
he had n...
ey was i...
This is...
the type...
A simi...
ped from...
the Hud...
miles we...
way 60...
Mats...
At Q...
Randy...
put s...
Pampa...
speaker...
the Lion...
in Quan...
Mats...
Athlene...
public s...
West Tex...
TO DIVI...
MOSCO...
viet cell...
vich and...
against...
bringing...
against...
shoi Th...
Vishnev...
The J...
lished no...
vorce it...
Moscow...
law.

Italy President Sworn in Today
ROME (UPI)—Giuseppe Saragat, a pro-Western Socialist, was inaugurated today as fifth president of Italy. He pledged "the defense of peace and security."

Mainly - - About People
The News invites readers to phone in or mail items about the comings and goings of themselves or friends for inclusion in this column.

Warm Weather Due to Remain
Clear skies and warm weather dominate the weather picture in Pampa today and the weatherman says it's here to stay for at least for the next few days.

Obituaries
Tommy Joe Nash
Funeral services for Tommy Joe Nash, 57, 113 S. Summer, were conducted at 10 a.m. Monday in Corley Funeral Home.

Residence Heavily Damaged by Fire
Heavy damage to the kitchen and smoke damage to the remainder of the house resulted yesterday from a fire at the home of T. H. Tarrant, 1000 Huff Road.

Letter Writing Clinic Set Jan. 14
How to write better letters and save money, time, and effort in doing so will be the theme of the business letter clinic set Jan. 14, in Pampa.

Matson Speaker At Quanah Clubs
Randy Matson, Olympic shot put silver medal winner, of Pampa will be the principal speaker at a joint meeting of the Lions, Rotary and Jaycees in Quanah Jan. 6.

Contract
City Manager Schmitzer read a letter from Frest and Cotton, Dallas consulting engineers, stating that plans and specifications for Pampa's new sewage treatment plant and renovation of the existing plant have been sent to the State Health Department for approval.

Stock Market Quotations
The following quotations show the range within which three securities could have been traded at the time of completion.

Stock Market Quotations (continued)
Franklin Life 33 3/4
Gulf Life 35 1/4
Grt. Amer. Corp. 39 1/4

Stock Market Quotations (continued)
American Can 42 1/4
American Tel. and Tel. 67 1/4
American Tobacco 32 1/4

Stock Market Quotations (continued)
Philly 41 1/4
R. J. Reynolds 32 1/4
Sinclair Oil 35 1/4

Stock Market Quotations (continued)
U. S. Steel 31 1/4
Westinghouse 43 1/4

Stock Market Quotations (continued)
IBM 111 1/4
Penny 45 1/4
Phillips 32 1/4

Stock Market Quotations (continued)
Ford 33 1/4
General Electric 30 1/4
General Motors 35 1/4

Stock Market Quotations (continued)
Goodyear 44 1/4
IRM 41 1/4
Montgomery Ward 41 1/4

Stock Market Quotations (continued)
Penny 45 1/4
Phillips 32 1/4
R. J. Reynolds 32 1/4

Stock Market Quotations (continued)
Sinclair Oil 35 1/4
Southwestern Public Service 38 1/4
Texas 87 1/4

Stock Market Quotations (continued)
U. S. Steel 31 1/4
Westinghouse 43 1/4

Stock Market Quotations (continued)
IBM 111 1/4
Penny 45 1/4
Phillips 32 1/4

Stock Market Quotations (continued)
Ford 33 1/4
General Electric 30 1/4
General Motors 35 1/4

Ski Lessons for Jackie; John Jr. Has Sleigh Ride
ASPEN, Colo. (UPI)—It was "back to the slopes" today for Mrs. John F. Kennedy as the former First Lady pressed ahead with skiing instruction at this plush mountain resort community.

Continues Activities
Mrs. Kennedy, however, continued her whirlwind of activities here apparently unaware of a more serious "open war" between her Secret Service agents and newsmen.

Covered Camera
The youth, Steve Gunther, 16, of Northridge, Calif., was standing about 25 feet from Mrs. Kennedy when he tried to take the pictures. The Secret Service agents grabbed him and covered his camera.

Obituaries (continued)
Mrs. Doyle E. Rogers and daughters, Rebecca and Cassandra, of St. Louis, Mo., are visiting with Mrs. Rogers mother, Mrs. Verna Drake, 858 S. Faulkner, who is a patient in Worley Hospital, her sister and family, Mr. and Mrs. Leo Moore, 825 N. Wells, and in the home of Mr. and Mrs. A. N. Rogers, 717 N. Christy.

Obituaries (continued)
Mr. Nash was born March 6, 1907. He died early Friday morning in a local hospital following a five month illness. Mr. Nash had been employed by Pan American Petroleum Corp. 22 years and had been a Pampa resident 30 years.

Obituaries (continued)
Survivors include his wife of the home; three sons, Bob Nash of Phoenix, Ariz., Tom Nash and Pat Nash, both of Pampa; one daughter, Mrs. J. T. Lambright of Pampa; four brothers, A. M. Nash and B. R. Nash, both of Pampa, E. B. Nash of Bermuda City, Ariz., and R. W. Nash of Meridian, Miss.; two sisters, Mrs. E. J. Ormsby of Waco and Mrs. G. W. Guilford of Kilgore and six grandchildren.

Obituaries (continued)
Pallbearers were Earl Watkins, Billy Watkins, Albert Watkins, Jimmy Watkins, Robert Watkins and Derwood Watkins.

Obituaries (continued)
Pallbearers were Earl Watkins, Billy Watkins, Albert Watkins, Jimmy Watkins, Robert Watkins and Derwood Watkins.

Obituaries (continued)
Pallbearers were Earl Watkins, Billy Watkins, Albert Watkins, Jimmy Watkins, Robert Watkins and Derwood Watkins.

Obituaries (continued)
Pallbearers were Earl Watkins, Billy Watkins, Albert Watkins, Jimmy Watkins, Robert Watkins and Derwood Watkins.

Obituaries (continued)
Pallbearers were Earl Watkins, Billy Watkins, Albert Watkins, Jimmy Watkins, Robert Watkins and Derwood Watkins.

Obituaries (continued)
Pallbearers were Earl Watkins, Billy Watkins, Albert Watkins, Jimmy Watkins, Robert Watkins and Derwood Watkins.

Obituaries (continued)
Pallbearers were Earl Watkins, Billy Watkins, Albert Watkins, Jimmy Watkins, Robert Watkins and Derwood Watkins.

Obituaries (continued)
Pallbearers were Earl Watkins, Billy Watkins, Albert Watkins, Jimmy Watkins, Robert Watkins and Derwood Watkins.

Obituaries (continued)
Pallbearers were Earl Watkins, Billy Watkins, Albert Watkins, Jimmy Watkins, Robert Watkins and Derwood Watkins.

Obituaries (continued)
Pallbearers were Earl Watkins, Billy Watkins, Albert Watkins, Jimmy Watkins, Robert Watkins and Derwood Watkins.

Obituaries (continued)
Pallbearers were Earl Watkins, Billy Watkins, Albert Watkins, Jimmy Watkins, Robert Watkins and Derwood Watkins.

Obituaries (continued)
Pallbearers were Earl Watkins, Billy Watkins, Albert Watkins, Jimmy Watkins, Robert Watkins and Derwood Watkins.

Obituaries (continued)
Pallbearers were Earl Watkins, Billy Watkins, Albert Watkins, Jimmy Watkins, Robert Watkins and Derwood Watkins.

Obituaries (continued)
Pallbearers were Earl Watkins, Billy Watkins, Albert Watkins, Jimmy Watkins, Robert Watkins and Derwood Watkins.

Obituaries (continued)
Pallbearers were Earl Watkins, Billy Watkins, Albert Watkins, Jimmy Watkins, Robert Watkins and Derwood Watkins.

Dunlap's Coronado Center
Penny Loafers
● Black Suede
● By Dion Corrini
● New Shipment of Sizes
Only \$3.88 PAIR
For That Second Semester

Have you tried POMMAC
the soft drink from the Continent?
You're in for a treat when you try Pommac. The new soft drink from the Continent. It has a new taste—a crystal taste—with the sparkle of champagne.
Of course Pommac is a low calorie drink. With meals, alone or at parties, Pommac should always be served iceberg cold. Try Pommac, the particularly appropriate soft drink.

SHelf AFTER SHelf of QUALITY at a SAVING!
SHURFINE Shortening 3 L C A N 59c
Northern Tissue 3 1/2 R 19c
Shurfine 300 Can 3 R 55c
Peas 3 R 49c
Catsup 3 R 49c
Georgie Porgie Pop Corn 4 lb. bag 49c
Shurfine 46 oz. Can Tomato Juice 4 R 1.00
Shurfine Vienna Sausage 5 cans 1.00
BISCUITS Shurfresh 13 Cans \$1.00
PUDDING My-T-Fine Chocolate, Vanilla Box 10c
EGGS 2 Doz. 89c
KRAFT Miracle Whip Ot. Jar 49c
Shurfine 12 cz. Jar PEANUT BUTTER 39c
COFFEE Shurfine Lb. 65c
Energy Bleach at 2 FOR 29c
Arrow 4 Oz. Can BLACK PEPPER 29c
Lean Shoulder PORK STEAK 39c lb
Grade A, Whole FRYERS lb 29c
Round Steak BACON 89c lb Affiliated 59c Sliced Lb.
Beef Short Ribs 25c
Salt Jowls BACON 19c lb
KRAFT'S VELVEETA 2 lb. box 89c
Frozen Food
20 oz. Box Thrift-T-Steak 79c
Frieron Fish Sticks 3 R \$1.
Shurfine ORANGE JUICE 4 6-oz. Cans \$1.00
MITCHELL'S Grocery
We Give Buccaneer Stamps
Double on Wednesday on Purchase of \$2.50 or More
Quantity Rights Reserved

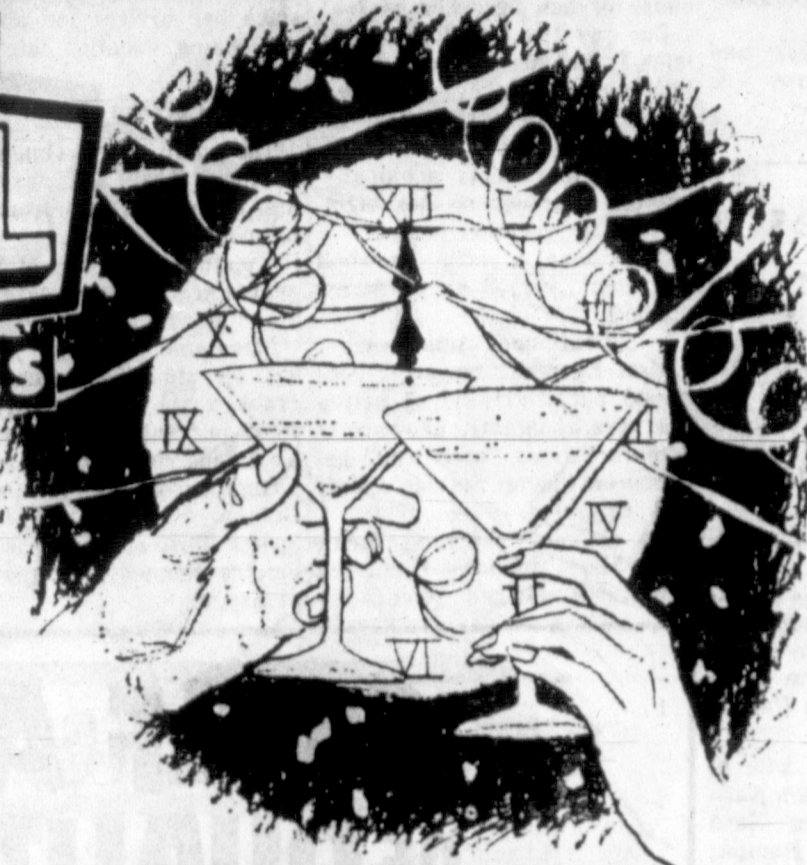
United States At Disadvantage in World Markets

By HENRY KEYS
WASHINGTON (UPI)—U. S. joint Economic Committee de- ferences of which they are, been investigating the interna- But, it said, the United States vestigate the industry. conferences, the committee plicable American law, con- travening all the precedents of Britain's own internationa conduct. . . British courts have co- sistently ruled that their orders for the production of foreign documents must be obeyed.

The committee, in a long re- port, laid the blame for dis- against U.S. exports and put crimi- natory high rates on U.S. the United States at a competi- tive disadvantage in world markets, the congressional in rate-fixing steamship con- ferences which refuse either to justify or re-equalize their im- port and export freight rates. The committee, which has since May, 1963, recommended an international conference, to be attended by the major mari- time nations, armed at multi- lateral agreements for regula- tion of the shipping industry. The report is highly critical of the Japanese and 10 Euro- pean governments for their re- sistance to U.S. efforts to in- vestigate the industry. The Federal Maritime Com- mission (FMC) "met with al- most unbelievable opposition from maritime powers" in its attempt to secure information regarding the freight rate fix- ing procedures of steamship

"Better Food For Less"
IDEAL
FOOD STORES

Prices Effective thru Wed., Dec. 30, 1964—Limit Rights Reserved



It's Party Time!

... time to stock up on those delightful special treats that add so much to your happy holiday entertaining. Ideal has taken special care to stock extra quantities of the party foods you'll need. Shop today for the big, big selection ... Save a pretty penny too!



IDEAL HAS A LARGE SUPPLY OF CRYSTAL CLEAR CRUSHED ICE FOR YOUR NEW YEAR'S PARTY



Ideal
Egg Nog
Quart 49c

ASSORTED
HI-C BEVERAGES
3 46-oz. Cans 89c

ELLIS DRY PACK
BLACKEYE PEAS
4 300 Cans 29c

KUNER'S
BLACKEYE PEAS
2 300 Cans 25c

TOM SCOTT
MIXED NUTS
14-oz. Can 49c

FROM IDEAL'S BAKERY OVENS
IDEAL'S HOLLAND
Dutch Style Bread 1-lb. Loaf 19c

WHITE OR CARAMEL
Cinnamon Rolls Pkg. of 8 33c

Pizza For The Party!
JENO'S
Pizza with Cheese 15 1/2-oz. Pkg. 49c

APPIAN WAY
Pizza with Cheese 14-oz. Pkg. 49c

APPIAN WAY
Plain Pizza 12 1/2-oz. Pkg. 39c

CHEF BOY AR DEE
Pizza with Cheese 15 1/2-oz. Pkg. 49c

CHEF BOY AR DEE
Pizza with Sausage 17-oz. Pkg. 59c

U.S. NO. 1 CALIFORNIA RED

POTATOES

NO PAK I Y IS COMPLETE WITH- OUT DELICIOUS FRESH POTATO SALAD!

5 49

lbs.

GREEN TOP
RADISHES or
GREEN ONIONS 3 BOXS 25c

CALIF.
SUNKIST LEMONS 2 lbs. 29c



New Year's Close-out Special!

PARISIENNE IMPORTED

STEMWARE

YOUR CHOICE OF ANY AND ALL STYLES INCLUDING GOBLET WINE, COCKTAIL, CHAMPAGNE AND CORDIAL STEMWARE

REGULAR 69c Value

EACH ONLY

29

JUST IN TIME FOR YOUR NEW YEAR ENTERTAINING! STOCK UP WHILE SUPPLIES LAST.

PATIO FROZEN

MEXICAN DINNERS

16-oz. Pkg. 49c

Thin Crisp 1-lb. Box
Supreme Saltines 29c

FROZEN BEEF, CHICKEN OR TURKEY

BANQUET POT PIES

Mix Or Match 6 8-oz. Pkgs. \$1.00

18-oz. Cans Ballard or
Pillsbury Biscuits 3 FOR 29c

- KRAFT SHREDDED **Mozzarella Cheese** 4-oz. Pkg. 29c
- KRAFT CHUNKS **Mozzarella Cheese** 8-oz. Pkg. 49c
- FOOD CLUB PIECES & STEMS **Mushrooms** 4-oz. Can 29c
- NABISCO VERRI THIN **Pretzel Stix** 10-oz. Pkg. 33c
- TOWIE **Salad Olives** 10-oz. Jar 39c
- TOWIE THROWN MANZANILLA **Stuffed Olives** 6-oz. Jar 39c
- FOR SALADS OR COOKING **Kraft Oil** Quart 55c
- CHUNK STYLE **Star-Kist Tuna** 3 No. 15 Cans \$1.00
- SKINNERS **Raisin Bran** 15-oz. Pkg. 37c
- FOR THE PARTY **Dixie Cup Refills** Pkg. of 50 39c
- WAX TEX **Sandwich Bags** Pkg. of 75 25c
- WAX TEX **Wax Paper** 100 Ft. Roll 25c
- ASSORTED COLORS **Northern Towels** Twin Pack 39c
- Assorted Colors **Northern Napkins** Pkg. of 80 15c

MIX OR MATCH
CEREAL SALE

Choice of 9-oz. Ralson Rice or Corn Chex and 7-oz. Cherrios

Mix'em Or Match 'em 4 Pkgs. \$1.00

FOR QUICK RELIEF **Anahist Tablets** Pkg. of 12 52c

SOOTHING **Pepto Bismol** 8-oz. Btl. 79c

FAMOUS **Bayer Aspirin** Pkg. of 50 39c

Signs Uncertain For Better Business Next Year

(EDITOR'S NOTE: The recent slackness in the stock market and similar signs of business uncertainty have raised the question of what is ahead for the economy in 1965. The following appraisal by UPI's chief Washington

business writer is based on interviews with top economists both in and out of government).

By JOHN PIERSON
WASHINGTON (UPI) — "A good year, but not so good as

1962." That in a nutshell is how President Johnson's top advisers see the economy in 1965.

This kind of an outlook, they hasten to add, makes it doubtful that unemployment will be reduced much during

the coming year.

Their assessment is popular among government analysts outside the White House too, although some do not rule out the possibility of either a boom or a recession.

Overall, there is less certain-

ty about the business picture than there was a year ago when the chief question was how far and how fast the economy would advance after the tax cut.

Johnson's Council of Economic Advisers is making its plans

on the assumption that U.S. production will grow about 4 per cent in 1965 compared to about 5 per cent in 1964.

Chairman Gardner Ackley described this rate of expansion as "excellent . . . but not one that has us jumping for joy."

He said a 4 per cent growth is not enough to reduce unemployment, eat into unused plant capacity or expand business profits.

Why The Slowdown
Why the expected slowdown in 1965?

"We've just about had it (the lift) from the tax cut," was how one highly-placed analyst put it. Although the tax cut's final installment goes into effect in 1965, the withholding rate on wage earners fell the full distance last spring.

Better Food For Less
IDEAL
FOOD STORES

SUPPER CLUB CRISP, TASTY

POTATO CHIPS

Full 1-Lb. Bag **39^C**

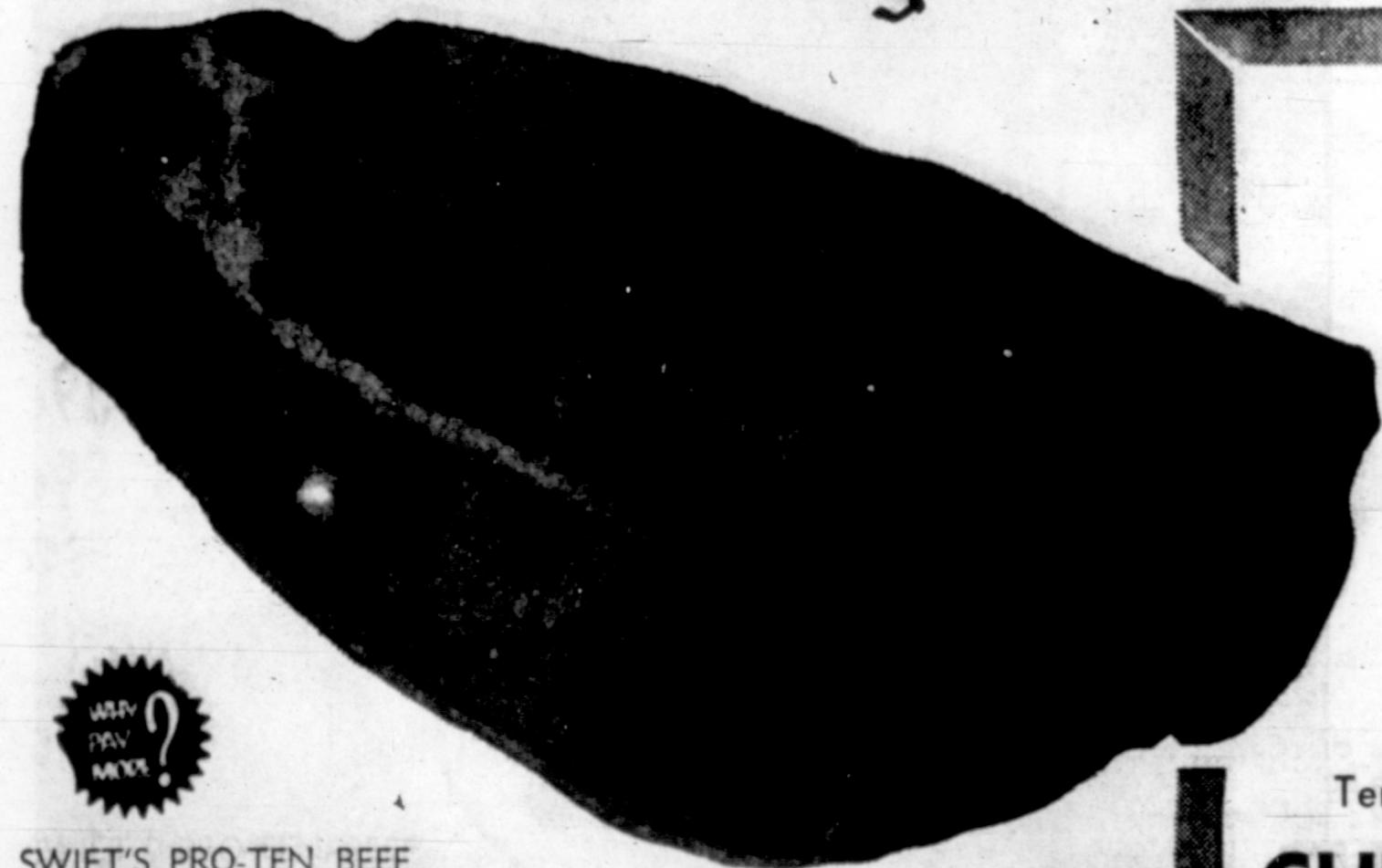


For Your "Happy New Year" Party...

PAR-T-PAK BEVERAGES

CHOICE OF COLA, UPPER TEN, GINGER ALE, TOM COLLINS, SPARKLING WATER AND QUININE WATER

QUART BOTTLE **10^C** PLUS DEP.



- SWIFT'S PRO-TEN BEEF **SHORT RIBS** Lb. **29^C**
- BONELESS—EXTRA LEAN **BEEF STEW** Lb. **69^C**
- FRESH GROUND BEEF **HAMBURGER** 3-lb. Pkg. **89^C**
- YOUNG, TENDER, OVEN READY **FANCY TURKEYS** 6 to 8-lb. Avg. **49^C**
- TOP FROST PEELED **DEVEILED SHRIMP** 1 1/2-lb. bag **\$2²⁹**
- CHUCK WAGON BRAND **SLICED BACON** 1-lb. pkg. **49^C**
- PRO-TEN BEEF **T-BONE STEAK** Lb. **98^C**
- U.S.D.A. **FRYERS** Grade A Whole lb. **29^C**

Swift's Premium Pro-Ten

CHUCK ROASTS

Tender Juicy First Cut

Practically Boneless

CHUCK ROAST	ARM ROAST
45^C	59^C
lb.	lb.



For Yours Truly

Extra Savings!

In Addition to Money-Saving Values, We Give You Gunn Bros. Stamps as an EXTRA BONUS!

DOUBLE GUNN BROS. Stamps Every Wed. With \$2⁵⁰ Or More Purchase

The Doctor Says:

By WAYNE G. BRANDSTADT, Newspaper Enterprise Assn.

There is a great deal of confusion in the popular mind about nearsightedness. We know that this condition is caused by the eyeball losing its almost spherical shape and becoming elongated. What causes this change in shape is not so easily determined. Two types of nearsightedness are recognized.

The commoner form, simple nearsightedness, may be in part hereditary. In this form, the condition usually starts in childhood or the early teens, gradually increases until the mid 20s, then remains fairly stationary.

Some observers have believed that too much close work or starting to read at too early an age is the cause, but careful studies have revealed that it occurs just as frequently in the nomads of the Arabian desert as among avid readers. It is more likely that close work under conditions of insufficient or improperly placed lighting is a contributory cause.

The other type, progressive nearsightedness, also starts in adolescence but advances more rapidly. If not checked it can require the wearing of very thick lenses. This condition is a real threat to sight because it predisposes the victim to detachment of the retina and glau-

coma. Even without these serious complications, vision is poor.

With both types it is important to have the child's vision checked by an eye doctor once a year and to wear corrective lenses. This is not enough, however, to save the sight of the victim of progressive nearsightedness. A ray of hope has appeared in the form of new improved methods of examination for the early recognition of progressive nearsightedness.

An operation has been devised to halt the progress of this disease. This consists of reinforcing the tough membrane at the back of the eyeball by a tissue transplant. This work is being done with great success at the Sprague Clinic for Myopia Research, a part of the Manhattan Eye, Ear and Throat Hospital.

Q.—My daughter had a retinoblastoma removed. This has left her completely blind. Is there any operation whereby I could give her one of my eyes?

A.—Unfortunately a whole eye cannot be transplanted from one person to another. Only with a corneal transplant is there hope of survival of the donor tissue.

Tassels won't become matted if tied together with a string when washed.



Dear Abby.... Tone Down Your Hate and Bitterness, Young Lady

DEAR ABBY: I am a girl of 15. I love my parents but I hate my grandmother on my father's side, and I mean I really hate her. She has lived with us ever since my grandfather died. This woman gets on my nerves so much that I could just scream. I try to ignore her as much as possible, but her slightest faults disturb the living daylights out of me. We aren't on speaking terms right now, but it's best this way because I despise the sound of her voice. I don't feel like being friends with her because that would be worse, believe me. What should I do?

BUBBY TROUBLE
DEAR TROUBLE: You "hate" too intensely for a 15-year-old. The chances are that you are taking out all your frustrations and hostilities on the one who is least able to fight back. Tone down your bitterness, young lady, and get this out of your

system by having a frank discussion with your parents.

DEAR ABBY: Our baby was born last March. My mother, who lives in another state, wrote and asked me if the baby had been baptized and I replied no. Then she suggested that I make arrangements to have the baby baptized in the city where she lives, which is my home town. The reason I'm writing you is because I'm sure the priest who will baptize our baby will want to have the birth certificate, which may put me in an embarrassing spot. You see, I told my mother the baby was born in June because I didn't want her to know that I was pregnant when I got married, and I'd rather she didn't find out the truth. Please tell me where I can get a birth certificate stating the baby was born in June.

—ON THE SPOT
DEAR ON: Don't risk embar-

The Women's Page

PEGGY JO ORMSON
Women's Editor

6 THE PAMPA DAILY NEWS 57TH YEAR
TUESDAY, DECEMBER 29, 1964

DEAR ABBY: I am a girl of 15. I love my parents but I hate my grandmother on my father's side, and I mean I really hate her. She has lived with us ever since my grandfather died. This woman gets on my nerves so much that I could just scream. I try to ignore her as much as possible, but her slightest faults disturb the living daylights out of me. We aren't on speaking terms right now, but it's best this way because I despise the sound of her voice. I don't feel like being friends with her because that would be worse, believe me. What should I do?

DEAR ABBY: My daughter is a beauty operator and when she comes home from work she is usually dog tired. We have some relatives who make a practice of telephoning me during the day to ask if Susan is "doing anything" special that evening, which means, "If we come over will Susan give us a free hair-do?"

I never know how to handle this. If I say that Susan has no special plans that I know of, over they come and poor Susan is stuck. She's such a sweet, big-hearted girl, she would never refuse to do their hair no matter how exhausted she was. I've seen her stand on her feet until midnight giving those cheap cousins free permanents when they could easily afford to go to her shop and pay like

everybody else. If I lie and say that Susan has plans for the evening when I know she hasn't, I have to go to confession. Can you help me?

SUSAN'S MOTHER
DEAR MOTHER: Why lie? Simply tell those who inquire to call Susan after work. Then tell Susan that unless she enjoys giving free hairdos after hours she had better gather the gump-ton to say no. The meek sometimes inherit varicose veins.

CONFIDENTIAL TO "LOVE-STUCK BELLE": Break a bad break clean. Any other course will spell disaster to six innocent children.

Problems? Write to ABBY, Box 69700, Los Angeles, Calif. For a personal reply, enclose a stamped, self-addressed envelope.

Hate to write letters? Send one dollar to Abby, Box 69700, Los Angeles, Calif., for Abby's booklet, "How to Write Letters For All Occasions."

Plastic shower curtains, toaster and mixing bowl covers are freshened and cleaned quickly by swishing them around in a solution of 3 tablespoons of sal soda concentrated to 1 gallon of warm water.

The grey flannel influence has filtered down to grammar school. Jumpers for the girls of eight and nine, at any rate, are of grey flannel — with straight pleats falling from a yoke. The accent? A Norfolk belt trimmed with big pearl buttons.

SPECIAL EVERY WEDNESDAY IS FAMILY DAY AT THE DAIRY QUEENS. YOU CAN GET

4 Hamburgers \$1.98
4 Thick Malts

AND A GOB OF FRIES
GET YOUR ORDER AT EITHER
DAIRY QUEEN

NO. 1 1117 Alcock
NO. 2 1700 N. Hobart

Freezer Beef Sale

Choice Grain Fed Beef
Unconditionally Guaranteed
If Notified Within 10 Days

This Meat Is Cut To Your Specifications. DOUBLE WRAPPED AND QUICK FROZEN TO INSURE TENDERNESS AND FLAVOR.

1/2 BEEF, PLUS PROCESSING 39¢/lb
1/2 Freezer HOG plus processing 29¢/lb
Phone 883-4691 WHITE DEER, TEXAS

CLINTS FOODS

Heed Skin's Winter SOS to Combat Parching, Chapping and Aging Signs

By ALICIA HART, Beauty Editor, Newspaper Enterprise Assn.

Is it neglect or wrong care that causes the most damage to a woman's skin? Both play a leading role in speeding up the signs of aging — dry skin, clogged pores and wrinkles.

A leading cosmetologist says that many women think they are cleaning their skin properly when they wash it quickly with soap and water. This, however, is only one step toward cleansing the skin so it can breathe and refresh itself.

How often have you tumbled

into bed at night without removing your make-up thoroughly? More often than you can remember. Make-up does offer certain protective qualities against the elements. But if it is not completely removed each day, it can cause skin blemishes.

There are many women with lovely complexions who use only



SKIN CARE — Regular facial massages with a rich lubricating cream help keep the young promise of a smooth complexion. Step up daily care during winter months to combat parched, chapped skin. Cleanse thoroughly first, then massage cream into neck and face with upward, circular motion.

cleansing creams, never soap and water. However, others never feel quite clean until they've had a good soaping. So combine the two. Wash your face first and then remove additional grime and soap film with a cleanser. Follow this with an astringent or a dash of cold water. Do not use any creams on your face while sleeping. They prevent the skin from breathing.

During the harsh winter months, treat yourself to a daily facial massage using a rich lubricating cream. Select one that is formulated to restore needed polyunsaturates and Vitamins A, D and E to soothe and smoothe dry skin.

Start with clean face and throat. Apply the cream to the throat with your fingertips and work in an upward, circular motion. Using two fingers of each hand, massage the chewing muscles. These often are the first to "go" and massage helps keep them elastic and strong. Continue your massage onto the laugh-lines and work upward around the nostrils. Massage the forehead with tiny circular motions. Circle the eyes, but gently, since this area is the most delicate. Finish by massaging with both hands, fingers spread apart, in a downward motion on the throat. This particular motion brings the circulation back to the heart.

Such daily care along with proper diet, sleep and exercise will help you keep a youthful complexion.

Wash belts, aprons, handkerchiefs or any items with long ties by putting them together in a mesh bag in the same laundry load.

FITE FOOD MKT.

1333 N. Hobart MO 4-4092 or MO 4-8842
We Give Pampa Progress Thrift Stamps

WE WILL BE CLOSED
NEW YEAR'S DAY

DOUBLE STAMPS
Wednesday With \$2.50 Purchase or More

ROUND STEAK Fite's Own 89¢/lb Feed Lot Beef	GROUND BEEF Fresh Lean 39¢/lb	ARM ROAST Fite's Own 53¢/lb Feed Lot Beef
---	----------------------------------	---

STEW BEEF Lean, Boneless 49¢/lb	BEEF RIBS Lean Lot of Meat 29¢/lb	Chuck Roast Fite's Own 49¢/lb Feed Lot Beef
------------------------------------	--------------------------------------	---

Fite's Own Fed, Feed Lot Beef • Cut • Wrapped • Quick Frozen

BEEF	Half For Your Freezer 44¢/lb	Hind Quarter plus 5¢ lb processing 54¢/lb
------	------------------------------	---

• 130 Days in Feed Lot • Fed 24 Hours a Day • Check Our 3 Month Pay Plan

Homefolk Blackeye Peas 300 Cans 2 for 29¢	Shurfresh BISCUITS 3 Reg. 19¢ Cans
--	---------------------------------------

ICE CREAM Borden's 1/2 gal. 59¢	CRISCO 3 lb. can 75¢
---------------------------------------	----------------------

Maryland Club COFFEE 1 lb. can 75¢	Shurfresh OLEO 2 Lbs. 29¢
---------------------------------------	------------------------------

Del Cerro PECANS 12-oz. pkg. 79¢	Reynold's ALUMINUM FOIL Reg. Roll 25¢
-------------------------------------	--

Extra Fancy APPLES 19¢/lb	Sunkist Navel ORANGES 2 Lbs. 29¢	Fresh, Tender CARROTS Cello Pkg. 9¢
------------------------------	-------------------------------------	--

Pepparidge Farm, Frozen HEARTH ROLLS 12-Ct. Box 29¢	Morton's Frozen Pumpkin Pies Family Size 29¢	Ole South Frozen PIE SHELLS Reg. Size 2.49¢
--	---	--



this cockeyed phone can't ring

BUT IT WILL SIGNAL TO LET YOU KNOW THE RECEIVER IS OFF THE HOOK... SO YOU WON'T MISS CALLS

When your telephone receiver is off the hook, your phone can't ring. It's closed to incoming calls. This kind of trouble we can't prevent.

But when it happens, a signal is sent over the line to attract your attention. All you do is replace the receiver properly on the cradle. Now your phone can ring.

We hope this will make your telephone even more useful and of greater personal value.

SOUTHWESTERN BELL

Making telephone service better to serve you better

Television Programs

Channel 4 KGNU-TV, TUESDAY NBC
8:00 The Match Game
8:30 Sheriff Bill
9:00 NBC News
9:30 Sports
10:00 News
10:30 Tonight Show
11:00 News
11:30 Tonight Show
12:00 News
12:30 Tonight Show
1:30 Arrest & Trial

CHANNEL 4 WEDNESDAY

8:30 Cont. Classroom
9:00 Today Show
9:30 News
10:00 News
10:30 News
11:00 News
11:30 News
12:00 News
12:30 News

CHANNEL 7 WEDNESDAY

10:00 Modern Education
10:30 News
11:00 News
11:30 News
12:00 News
12:30 News
1:00 News
1:30 News

Channel 10 KFDA-TV, TUESDAY CBS
8:00 The Secret Storm
8:30 News
9:00 News
9:30 News
10:00 News
10:30 News
11:00 News
11:30 News

CHANNEL 10 WEDNESDAY

8:30 Religion
9:00 Mr. Ed
9:30 Jack Tompkins
10:00 News
10:30 News
11:00 News
11:30 News
12:00 News
12:30 News

Texas Legislature Faces Many Problems

Editor's note: The federal courts have ordered redistricting for Texas. It will be a major issue in the new session of the Texas Legislature. UPI Capitol correspondent David Anderson examines redistricting in this, the first of five pre-legislative dispatches.
By DAVID ANDERSON AUSTIN (UPI) — Redistricting — congressional, legislative and judicial — is the most important issue facing the Texas Legislature next month, and a special session will be required to deal with it.

That is the overwhelming consensus of state senators and representatives who responded to a United Press International survey of problems confronting the 59th Legislature. The state is under federal court orders to redistrict its 23 congressional seats by Aug. 1, 1965, and its legislative districts by Aug. 2, 1965, in keeping with the U.S. Supreme Court's "one man, one vote" rule. Forty-eight of the legislators responding to the survey said redistricting will be the most important issue. Education, the second most-frequently mentioned problem, got 16 votes.
Expect Special Session
Only a handful of the solons believe the question will be handled in the regular session; more than 80 per cent expect to be back in Austin next summer for a special session.
If the legislative leadership were as opposed to delay as I am, we would have no special session," said Rep. Dick Cherry of Waco. "However, they (Lt. Gov. Preston Smith and House Speaker Byron Tunnell) and the governor seem committed to procrastination."

Rep. Carl A. Parker of Port Arthur predicted redistricting will be "used as a weapon to force votes on other bills. I predict that for this reason redistricting will be held until late or after the regular session."
The survey brought to light several novel plans for dealing with redistricting.
Larger Membership
Cherry said he will introduce a constitutional amendment to increase the Senate to 40 members and the House to 170 as a means of cushioning the effect of legislative redistricting. There are now 150 representatives and 31 senators.
Rep. Walter Knapp Jr. of Amarillo said he has a plan that would keep state Senate districts about as they are now but would give big-city senators more voting power on the senate floor.
Knapp did not say exactly how his plan would work, nor was he sure he would introduce it.

Rep. Terry Townsend of Brady said he has a partial legislative redistricting plan for West Texas, and Rep. George Hinson of Mineola said he will offer a partial plan for East and Northeast Texas, excluding Harris and Dallas counties.
Few Solutions
On the subject of congressional redistricting, the legislators seemed to have fewer solutions and more fears.
"It will be a colonial blood-letting," said Rep. J. E. (Jake) Johnson of Houston.
Sen. Walter Richter of Gonzales said he supports the congressional redistricting plan offered by Rep. John Traeger of Seguin. Traeger's plan would trim the east and west sides of Bexar County and give them to adjoining rural districts. Other metropolitan areas would be treated similarly. A new seat would be created in Traeger's area.
Rep. Don Hefton of Sherman suggests "76 House members and 16 senators." Before the session — or sessions — are over, legislative leaders may be looking for some of Hefton's magic to trim down the size of the problem.

Wall Street In Review

NEW YORK (UPI)—Winslow Cohn & Stetson comments that the mild profit taking in recent stock market sessions and the "evident reviving of speculative interest in a number of relatively depressed issues suggests that the 'traditional year-end rally' may take place after a...
If such a rally develops, the brokerage firm says, it could well provide the basis for a further short-term rise, when and if the expected new year investment demand appears.
International Statistical Bureau predicts that "irrespective of the nearby trend, the 1964 (Dow-Jones) high will be exceeded next year."
The bureau says that investment decisions should be based more on "fundamentals" such as earnings and dividends than on "formulas and charts."

Bache & Co. says that although an air of uncertainty prevails in the market, it looks for a rally in the first part of 1965 based on favorable corporate forecasts. In addition, Bache says, many issues have reached levels where they have become "fundamentally attractive."
E. F. Hutton & Co. comments that since there has been little in the way of heavy selling volume, "it might be best to withhold judgment on the near term outlook until the year-end adjustment season is over."

FIREWORKS EXPLODE
MANILA (UPI)—A big box filled with firecrackers being brought here for the New Year's Eve celebration exploded inside a bus early Monday, killing one woman and injuring 26 other passengers.

On the Record

Right-and General Hospital does not have a house physician. All patients, except severe accident victims, are requested to call their family physician before going to the hospital for treatment.
Please help us to help our patients by observing visiting hours.
VISITING HOURS
MEDICAL AND SURGERY FLOOR
Afternoons 2-4
Evenings 7-8:30
MATERNITY FLOOR
Afternoons 3-4
MONDAY
Admissions
Mrs. Darlene Drinnon, 1121 Sierra
Baby Boy Drinnon, 1121 Sierra
Deborah Ann Cox, 913 Schneider
Donnie Bennett, 501 Doucette
Mrs. Mary Exa Crossman, 601 N. Sumner
Herman A. Parks, Lefors
Rob Anders, 724 Deane Drive
Mrs. Billie Dyer, Memphis
William O. Kirby Jr., Clayton, N.M.
Mrs. Penelope Nichols, 2237 Chestnut
Doty Warner, 1137 Terrace
Mrs. Joy Rice, 2129 N. Christy
Mrs. Jane Lee Hughes, Pampa
Mrs. Maxie M. Ware, Amarillo
Miss Denise Terrill, 1426 Hamilton
Ila Faye Grayson, White Deer
Mrs. Hazel I. Jernigan, Lefors
Carolyn Mathis, 533 Harlem
Mrs. Shirley Bowerman, Miami
Donna Lynn Keel, 1139 S. Banks
Baby Girl Nichols, 2237 Chestnut
Gerald Elliff, Borger
Dismissals
Charles E. Eaton, 1020 Terry Road
C. B. Craddock, 628 N. Frost
CONGRATULATIONS
To Mr. and Mrs. T. C. Drinnon, 1121 Sierra, on the birth of a boy at 3:31 a.m., weighing 9 lbs. 4 ozs.
To Mr. and Mrs. William H. Nichols, 2237 Chestnut, on the birth of a girl at 9:26 p.m., weighing 8 lbs. 1 1/2 ozs.

Steel Increase Gets USW OK
PITTSBURGH (UPI) — The current round of steel price increases has received a left-handed endorsement from United Steelworkers (USW) President David J. McDonald.
The price increases should put the industry in an even better position to meet the urgent needs of steelworkers," McDonald said Monday.
"Even before the price increases were announced, the industry was in an excellent position to meet the needs of its employees as well as reward them for their increased productivity," he said.
The latest firms to announce increases were National and Armco, who said Monday they were doing so to remain competitive. Inland Steel started the ball rolling last week by instituting a \$6 per ton hike in the price of carbon and high strength galvanized steel, both used widely in the automobile, construction and air-conditioning industries.
U. S. Steel, Republic and Granite City followed suit last Friday. Other manufacturers were expected to fall in line.
President Johnson said recently he would look with disfavor on any steel price increase. He has not commented on the current developments, but it has been learned he hopes the steelmakers will think twice before making the raises, regardless of their "selective" nature.
Johnson also hopes the contract negotiations between the industry and the USW, now in recess until Jan. 5, will result in a non-inflationary accord.
The policy of "creeping selectivity" in price increases began in the industry about three months ago, with major emphasis on pipe and galvanized products. If all producers follow the current trend, prices on about 12 per cent of the nation's steel production will have been raised.
The last selective increase came in April, 1963, a year after an abortive attempt at a \$6 per ton across-the-board hike which was rescinded under pressure from the late President Kennedy.

Read the News Classified Ads

WARD'S GROCERY
BUDGET-STRETCHING
FOOD BUYS

U.S.D.A. Good Beef
ROUND STEAK
Lb. 79c

DOUBLE BUCCANEER STAMPS
WEDNESDAY on \$2.50 PURCHASE OR MORE

- FRYERS Fresh Dressed lb. 25c
Sausage Top O' Texas, Pound Sack lb. 23c
Pork Steak Extra Lean lb. 39c
Ground Beef Fresh 3 lbs. 89c

U.S.D.A. Good Beef
Club Steak
69c lb

EGGS
Elmer's Doz. 35c

TUNA
Van Camp's Flat Can 15c

CORN
2 303 Cans 29c

COFFEE
Maryland Club 1 LB. CAN 69c

CRISCO
3 LB. CAN 59c
With \$5.00 Purchase Or More

COCA-COLA
King Size 6 Btl. Ctn. 35c Plus Dep.

ORANGE DRINK
Hi-C 46-oz. Can 25c

Grapefruit
Ruby Red Fresh lb. 15c
Texas Sweet
ORANGES
5 lb. Bag 49c
TOMATOES
Fresh, Firm For Salads Cello Pkg. 19c

TOMATO SOUP
Campbell's Reg. Can 10c

PEACHES
Cal-Top 2 1/2 Can 19c

SALAD DRESSING
Salad Bowl Quart Kim 39c

TISSUE
10 Rolls 59c

BISCUITS
Del Monte, 29-Oz. Cans 3 Reg. Cans 19c
P-apple-Orange Juice 29c

PORK & BEANS
300 Can 7c
DOG FOOD
303 Can 6c

WARD'S GROCERY



A BIRTHDAY FOR RED CHINA'S MAO—Communist party chairman Mao Tse-tung congratulates members of a visiting Cuban ballet company in Peking following a performance. Mao observed his 76th birthday.

Insults, Inkpots Fly During Masked Ball Opera in Italy

PARMA, Italy (UPI)—Insults and inkpots flew across the footlights Sunday night at the opening performance of Verdi's opera "Masked Ball." American baritone Cornell MacNeill stalked from the stage in the middle of the third act.

"Basta, cretini" (enough, you cretins) MacNeill shouted to his audience. Moments later the American singer scuffled with the opera house director backstage.

"The furor was set off by the operagoers—the most vocal and critical audience in all of Italy. Their imprecations reached the ears of the performers for the first note of the opera.

At the beginning of the third act, a chorus of "the orchestra is bad" came from the audience. The first clarinetist promptly walked out.

Shortly afterward, MacNeill departed.

"It was like singing in the Colosseum," he said today.

"I am not sure to whom I addressed the phrase 'enough, you cretins'—to one part of the

audience or to the entire audience that was, by its passivity, favoring the conduct of those who were creating a disturbance."

Accounts Vary

Varying accounts emerged of what happened backstage. MacNeill announced that he was considering filing suit against Giuseppe Negri, the opera house director, for "hitting me in the face while my son Walter was holding me by the arms."

"Negri then fled to my dressing room and locked himself in," MacNeill added.

Negri said he went to the baritone's dressing room after hearing the disturbance on stage.

"The door was closed and he did not answer," Negri said.

"I was alarmed when the leader of the orchestra arrived carrying a large inkpot which, because of a fit of pique of the cause of a fit of pique of the baritone had flown off the stage and into the orchestra pit."

The director said he approached MacNeill and "asked him repeatedly to stay, and tried to keep him there in a friendly way, but the singer's son hit me on the arm to make me let his father go."

Pushed Into Room

"MacNeill," Negri continued, "in the throes of anger, began kicking and punching, even his son was trying to calm him without success. At that point one of those present pushed me into the baritone's dressing room, urging me not to insist any more, given the tone and attitude assumed by MacNeill."

As fellow townsmen of the late Arturo Toscanini, the opera lovers of Parma take their entertainment seriously. They have aroused the tears, rage and despair of generations of singers.

Shoddy Articles Bring Red Fine

MOSCOW (UPI)—Soviet factory managers have been fined a total of \$17,322 for turning out a variety of shoddy merchandise, from overalls to fur hats, the official press reported Monday.

The fines appeared to be part of the new Soviet leadership's drive to give the long-suffering consumer a better deal. The campaign includes:

—The cautious introduction of profits as a gauge of efficiency.

—Warnings to managers that fulfilling the state plan no longer is the only criterion of success.

—Government-ordered price cuts on stockpiled goods that consumers have rejected.

The action against the plant managers took place in the central Asian republic of Kazakhstan and was reported in the newspaper Kazakhstan Pravda. Criminal proceedings also have been started against the same officials.

The managers of a jacket, pants, and overalls factory had to pay \$6,222 for producing defective merchandise. Officials of a fur plant were assessed \$11,100 when the government found that almost one-fifth of the fur hats and coats they produced were no good.

Criminal action also has started against other Kazakhstani officials charged with producing poor quality candy, bad chess sets, and faulty musical instruments.

Widow of Slain Congo Missionary to Return

ALHAMBRA, Calif. (UPI)—The widow and children of slain Congo missionary Dr. Paul Carlson may return to the United States next month, according to his brother, Dr. Dwight Carlson.

"We've had a number of letters from my brother's widow and she is contemplating coming back to the United States, possibly next month," Dwight said Monday.

STARS OF CONCERT

WASHINGTON (UPI)—Pianist Van Cliburn and violinist Isaac Stern were announced Monday as the stars of a concert at President Johnson's inauguration celebration.

Sharp Mynah Bird Is Dead

DETROIT (UPI)—Blackie the mynah bird, whose crackling blue phrases often turned officials of the Detroit Zoo an embarrassing shade of pink, is dead at the age of 15.

Blackie, a handsome bird of ebony plumage, orange bill and orange markings, was found dead in his cage Sunday, victim of a respiratory ailment.

In his 12 years at the zoo, Blackie's career included two kidnappings, banishment until he forgot the blue phrases learned from a construction crew and designation as the official greeter at the children's zoo on Belle Isle.

Zoo Director Frank McInnis said Blackie was a quick learner and a great talker, whose shrill whistles and phrases of greeting delighted both children and adults alike.

Russian Version Of My Fair Lady Looks Like Hit

MOSCOW (UPI)—A Russian version of "My Fair Lady" opened here Monday night to a response so warm that one member of the cast said "this production will live a long time."

The cast got nine curtain calls from an enthusiastic audience.

Yuri Savelyev, alternate "Alfred Doolittle," told reporters backstage that the production was "marvelous" and that the first night audience "really appreciate it."

Meat Imports Up

WASHINGTON (UPI)—Agriculture Secretary Orville L. Freeman estimated Monday that U.S. meat imports next year will total about 733 million pounds. This compares with imports of about 718 million pounds for this year and 1.05 billion pounds in 1963.

Read the News Classified Ads

KLEE-KO QUALITY QUARTS

CLICQUOT CLUB

● FULL QUARTS ● QUALITY SOFT DRINKS

SINCE 1881

● NOW AT YOUR FAVORITE GROCERY STORE

BOTTLED BY
PAMPA COCA COLA BOTTLING CO. PAMPA, TEXAS

BLAKE'S FOOD MKT.
1945 N. Hobart MO 4-7471
FREE DELIVERY

Double Buccaneer Stamps Wed. With \$2.50 Purchase Or More
Home Owned & Home Operated Keep Your Grocery Money In Pampa

Slab Bacon 49¢ lb	Broasted Chicken Gizzards 49¢ lb
Broasted Chicken \$1.50	Broasted Shrimp With Free Potatoes \$1.50 lb.

Shurfine 46 Oz. Tomato Juice 29¢

Shurfine SHORTENING 3 lb. 65¢

CHILI Fritos No Beans 2 FOR 89¢	CHILI Frito With Beans 2 FOR 69¢
FRITO TAMALES 2 FOR 69¢	ICE CREAM Borden's 1/2 Gal. Glazier Club 39¢
MILK Shurfine Homo 1/2 Gal. 49¢	Borden's Canned EGG NOG qt. 49¢

Maryland Sweeties SWEET POTATOES 2 Lb. 25¢	Idaho WHITE POTATOES 10 Lb. 89¢
--	---------------------------------

our Specialty Values for You

Ground Beef Fresh 4 lbs. \$1.00	Fresh Pork Steak or First Cut 39¢ lb	Choice Beef ROUND STEAK 79¢ lb	HAM HOCKS White They Last 15¢ lb
FRYERS Grade A Whole lb. 29¢	Pork Chops 39¢ lb	Sirloin or T-Bone 89¢ lb	BACON Quality 2 lbs. 89¢
HAM Center Slices Lb. 79¢			

our Specialty Values for You

Ellis CHILI No Beans 24 Oz. Can 49¢	Shurfine Oleo 6 lbs. \$1.00	Shurfine Biscuits 12 Cans \$1.00	Campbell's Meat Variety Soups 6 for \$1.00	Crackers Shurfine Lb. Box 19¢
Shurfine Tall Can Milk 7 for \$1.00	Shurfine Sliced or Halves Peaches no. 2 1/2 can 4 FOR \$1.00	Shurfine 303 Can Sauer Kraut 2 FOR 29¢	Shurfine 303 Can Pie Cherries 3 FOR 49¢	Imperial BROWN or POWDERED SUGAR 1-lb. Boxes 2 FOR 29¢
Shurfine Waffle Syrup qt. 39¢	Austex 24 Oz. Can Spaghetti & Meatballs 35¢	Shurfine 300 Can BLACK EYE PEAS 2 FOR 25¢	Shurfine 46 Oz. Can TOMATO JUICE 25¢	KRAFT VELVEETA CHEESE 2 lb. box 79¢

HOM'S FOODS

We Give Buccaneer Stamps—Double Wed With \$2.50 or More Purchase
421 E. FREDERIC OPEN 7 DAYS A WEEK MO 4-8531

National Window

By LYLE WILSON

United Press International
The political news from New York state points the way for Senator-elect Robert F. Kennedy. The way is onward and upward. There has been no need since election day to hedge bets that the oldest surviving Kennedy brother is heading toward the White House.

If Kennedy isn't heading that way on his own, fate is likely to point him in that direction. The political news from New York is that Mayor Robert F. Wagner seems to be losing the contest for control of the Democratic state legislature which will convene in Albany Jan. 6.

A pair of anti-Wagner Democrats are front runners as of now to become leaders of the 1965 legislature. They are assemblyman Stanley Steingut of Brooklyn and state Sen. Julian B. Erway of Albany. Kennedy relates to this situation because the key local leaders who spark the anti-Wagner effort now are the so-called political bosses who obtained Kennedy's nomination as a candidate for the U.S. Senate this year.

Deals Setback

Wagner did not desire Kennedy's nomination, apparently believing that some Democratic residents of New York state could be found to accept the honor. Back of Wagner appeared the awesome shadow of Lyndon Baines Johnson. LBJ was not about to boost another Kennedy into a seat of national political power.

Moreover, Johnson already had dealt adequately with Robert Kennedy when he forebade him to aspire to this year's Democratic vice presidential nomination. A lesser man than Kennedy would have been down for the count after a blow such as that from the boss. Not Bobby! He landed on his feet and running for New York's senatorial nomination.

Supporting Kennedy were local Democratic leaders scorned by reform Democrats as bosses. One of these was Charles A. Buckley of New York City who was one of the original Jack Kennedy-for-President leaders. Wagner helped spark a reform movement this year which will cost Buckley his seat in the 89th Congress covering Jan. 4. A reform Democrat licked Buckley in the congressional primary. Buckley has been and no doubt continues to be in good standing with the Johnson administration but that may not last. The President may discover himself to be in one of those conflict of political interest situations. Wagner is LBJ's natural political ally in New York.

Wagner-Kennedy Fight

Buckley of course, opposes Mayor Wagner who has been pretty well established as Democratic party leader in New York state. Buckley's commitment to defeat Wagner's legislative leadership candidate easily could develop into a contest for party leadership between Wagner and Kennedy. Buckley is not alone among the local bosses who helped Kennedy into the Senate to Wagner's dismay and now seek to put their own men in the legislative leadership.

The situation thus created practically invites Kennedy to reach for the state Democratic leadership. Beyond would lie the governorship perhaps and ultimately the White House. It all would take time, of course, but Bobby Kennedy is only 39. He will be 47 in 1972 when LBJ will be stepping down and—it is assumed—promoting Hubert Horatio Humphrey for the Democratic presidential nomination. A Kennedy and Humphrey battling again for the Democratic nomination! Just like in 1960.

New Goals May Lose

President Popularity

WASHINGTON (UPI) — The National Committee for an Effective Congress says President Johnson will have to risk his popularity and offend some supporters if he is to move the nation toward new goals.

The committee, a non-partisan group with liberal leanings, made the statement in a staff report Sunday night. The committee endorsed both Republicans and Democrats in the November election on the basis of whether they would help "in reducing Goldwaterism" in politics.

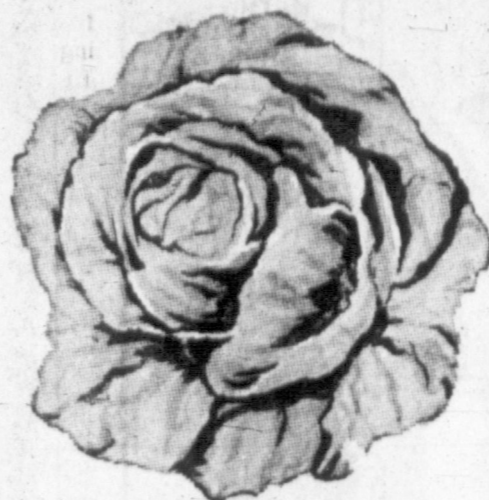
The atmosphere is 75 times as deep as the deepest ocean.

PIGGLY WIGGLY PRODUCE

SOLID GREEN HEADS

CABBAGE... 5^c
lb

ONIONS Yellow, Very Mild lb. **5**



Snappy, Kentucky Wonders **23^c**

GREEN BEANS

Fancy, Washington State, Winesap **19^c**
lb

APPLES

Snowball, Fresh Trimmed **19^c**
lb

CAULIFLOWER

Zipper Skin **2** lbs. **29^c**

TANGERINES

CRACKERS Worts - Salted 1 lb. box **15^c**

MELLORINE Lanes 1/2 Gal. **4^o \$1^R**

MEADS POTATO CHIPS Reg. 59^c **49^c**

EGG NOG Borden's Qt. Can **49^c**

PEAS BLACKEYED Campfire No. 300 Can **7 1/2^c**

TIDE DETERGENT Giant Box **57^c**

SODA POP
3 FOR \$1
Cokes, Dr. Pepper or 7-Up
6 Bottle Ctn. Plus Dep.

GRAPE DRINKS
Welch's Welchade, Fiesta, Or Grape Apple
3 Qt. Cans for \$1

PIGGLY WIGGLY TASTE-TEMPTIN FROZEN FOODS!

DINNERS
BANQUET BEEF CHICKEN TURKEY 11-oz. pkg. **29^c**

PIZZA Fox Deluxe Hamburger Pepperoni & Sausage 22 Oz. **98^c**

BLACKEYED PEAS Hills O' Home 10 Oz. Packages **4^o \$1^R**

POTATO SOUP Campbell's No. 1 Can **23^c**

HEALTH & BEAUTY AIDS

ANACIN 100 Count Bottle Reg. \$1.25 **89^c**

Colgate, Regular 69c
TOOTHPASTE King Size Tube **54c**

Regular 9c
BUFFERIN 60 Count Bottle **69c**

Mennen, Push Button, Tax 8
DEODORANT Regular 98c **83c**

Head & Shoulders, Regular 89c
DANDRUFF SHAMPOO Medium Size **69c**

ENJOY PIGGLY WIGGLY TENDER MEATS!

CHUCK ROAST Baby Beef, Blade Cut **39^c** Pound

First Cut, Northern Pork
PORK CHOPS.. 43^c lb

Dated For Freshness
GROUND BEEF **29^c** lb

Swift's, Sweet, Rasher **Bacon** **39^c** lb

Pinkney, Jumbo Pak **Wieners** **3 lbs. 98c**

Pinkney, Sun Ray
Sliced Bologna **49^c** lb

DOUBLE EVERY WED.
With \$2.50 Purchase Or More

WE GIVE S&W GREEN STAMPS

Wesson **Mayonnaise** Qt. **43^c**

Early California Select **Ripe Olives** No. 1 Can **33^c**

Red or Yellow **Hawaiian Punch** 46 Oz. **37^c**

Carnation Chunk **Tuna** No. 1/2 Can **31^c**

3 Minute **Popcorn** 2 Lb. Bag **27^c**

Liquid Detergent **LUX** 22-oz. Btl. **50^c**

Buster **Mixed Nuts** 14 Oz. **77^c**

Armours Vegetole
With \$5.00 Purchase or More

SHORTENING **3** Lb. Can **38^c**

These Values Good In Pampa December 29-30, 1964.

Lowest Prices... Greatest Variety... always

Piggly Wiggly

WE RESERVE THE RIGHT TO LIMIT QUANTITIES.

OUR ANCESTORS by Quincy

OUR BOARDING HOUSE With Major Hooper

BLITZ BROTHERS by SAKREN

OUT OUR WAY J. R. Williams



"What a fight it was! There's Happlewhite and Chippendale hittin' each other over the head with chairs!"



Freckles



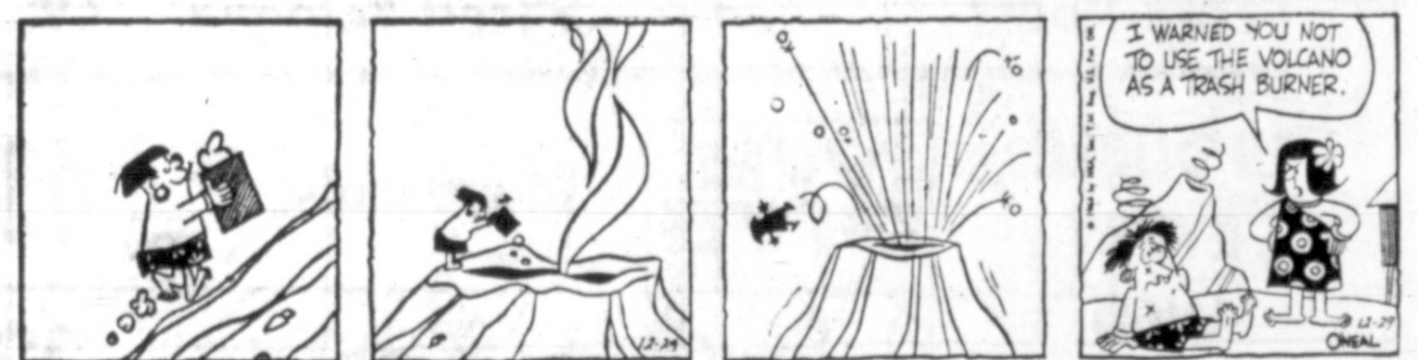
The Boy's



Bugs Bunny



Short Ribs



Captain Easy



Jackson Twins



Morty Meekle



Blondie



Alley Oop



Bonnie



Ben Casey



Mickey Finn



Priscilla's Pop



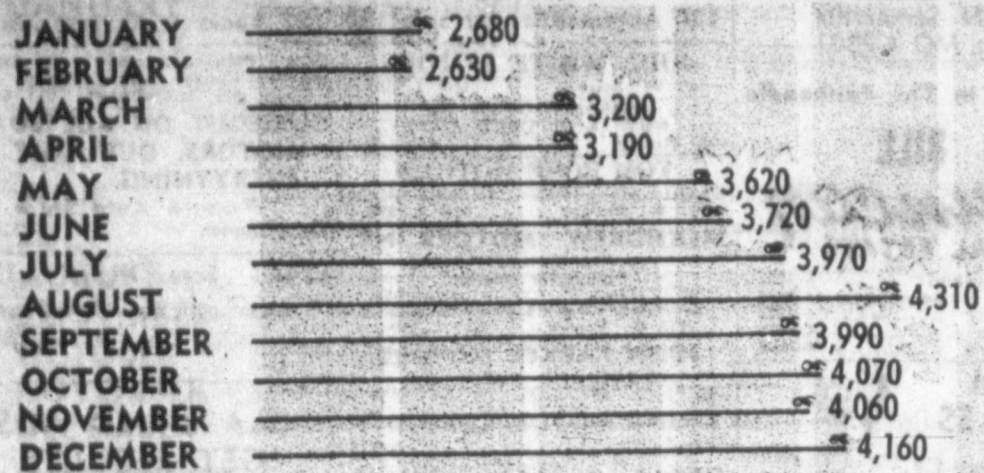
Dixie Dugan



Joe Palooka



AUGUST is the DANGER MONTH



TOTAL
43,600

What month is most dangerous on the highway? August, with December running neck and neck. Why? Vacation travel in August, seasonal conviviality and rush, plus fog, ice, rain and snow in December. But every month is dangerous without careful driving.

AUTOS --- BIGGEST ACCIDENTAL KILLER

Mode of Transport	Passenger Miles	Passenger Deaths	Death rate per 100 million passenger miles
Autos and taxis	1,240 trillion	28,900	2.2
autos on turnpikes	29 billion	330	1.1
Buses	57.7 billion	130	0.17
Trains	18.5 billion	13	0.10
Commercial airplanes	40.3 billion	50	0.27

Which form of public transportation is most dangerous? The automobile—by far. This chart shows relative accident rate.

THE FASTER YOU DRIVE, THE FASTER YOU'LL DIE



Figures in squares show number of accidents that are fatal out of every 1,000 accidents.

New Version of Old Play Big Television Hit

By RICK DU BROW
HOLLYWOOD (UPI) — ABC-TV Monday night presented the frankest and probably most uniquely controversial public relations effort in the history of television: A 90-minute fantasy dramatizing the work of the United Nations. It was a modern play using the framework of Dickens' "A Christmas Carol," and was the first of five network drama series concerning the United Nations. In other circumstances, a special television effort that employed such an all-star cast and production lineup, and that came out against war and hunger—and for—brotherhood and children, certainly would have caused no flurry except as a theatrical event. But in some quarters, of course, the United Nations remains a center of controversy, and the producer of the five specials is Telsun Foundation Inc. — With Telsun standing for Television Series for the United Nations.

Foreign News Commentary

By PHIL NEWSOM
UPI Foreign News Analyst
A basic tenet of the Marxist-Leninist philosophy is that each member of a Communist state shall produce according to his ability and receive according to his need.

And while no Soviet leader would dare admit it, it is this theory basic to communism that now is undergoing a serious overhaul by Communist leaders who see their own national growth rates declining as the United States economy, already the world's largest, becomes one of the world's fastest growing.

The Soviets' forced departure from accepted theory is one of the reasons for Red Chinese charges that the Russians are betraying communism.

It is interesting that many students of the Royal Institute of International Affairs in London agree with the Red Chinese and see European communism inevitably moving toward capitalism.

Production Jumps Sharply
It currently is estimated that U.S. production of goods and services jumped \$40 billion in the last year, bringing the total for the year to about \$624 billion. The total is more than twice the comparative figure for the Soviet Union, and the one-year U.S. growth rate is believed to be more than that achieved by the Soviet Union in the last two years combined, and possibly in the last three years.

As they see the United States economy increase its lead, Soviet leaders are striving desperately to pinpoint their failings.

The more glaring ones have not been hard to find. The Communist party newspaper Pravda, for example, recently reported 10,000 complaints in a single year against poor workmanship in Leningrad industrial plants. Specifically, it cited the fact that 28 large generators manufactured by one of the Soviet Union's largest plants "had gone out of commission."

Cities Inferior Goods
Premier Nikita Khrushchev, in the closing months before his ouster, disclosed that inferior consumer goods had accumulated on warehouse shelves to the tune of \$2.75 billion.

Loose flooring in the railroad cars of the creaky Soviet transportation system, left a golden trail behind them as they moved grain from the collective to the processing centers.

And on the collectives, too often the man who plowed saw no connection between himself and the man who planted and the man who later harvested.

Private plots granted to the peasants for their own use already have been increased in size and there is the further likelihood that unprofitable collectives also will be broken up. These would be reduced to acreages about the size of an Iowa farm and, hopefully, be worked in the same manner by individuals following through on each phase—a further affront to the Red Chinese Marxist-Leninist purists.

President Likes Bourbon and Water

WASHINGTON (UPI)—President Johnson plans to propose a high-speed transportation program that could lead to Americans rocketing between cities on cushions of air, through tubes or on electronically guided cars within 15 years.

High administration sources said an immediate result could be the fastest East Coast rail service in history in 1965.

These sources said Johnson probably will unveil the three-year research and test program in his State of the Union message to Congress next Monday.

The long-range program will call for an initial \$20 million outlay in the first year, a figure reported to have been approved by Johnson in his forthcoming budget.

If Congress approves that amount, \$10 million would be spent for research and development of new ground transportation systems, \$8 million for demonstration projects and \$2 million for statistical studies.

BIRTHS DEFY ODDS

ALNWICK, England (UPI)—Mrs. Carol Sergeant, born on Christmas Day in 1941 to a father who was born on Christmas Day in 1912, gave birth to a seven-pound son on Christmas Day 1964. A gynecologist said the odds on three generations of the same family being born on the same date must be five or six million to one.

No Letup in Sight in Shortage of Silver Dollars

WASHINGTON (UPI) — It may as well be a while yet before Americans who like to spend silver dollars have more of the cartwheels to jingle in the pockets of their jeans. Treasury Department officials said Monday they have no more plans to mint more of the coins, which are still in de-

WASHINGTON (UPI) — We're not about to start making silver dollars while we still got a coin shortage on our hands," one official said. Many observers feel that minting new dollars would not help—the shortage because most lectors items.

CAIRO (UPI) — The weekly BEASTS U.S. Mint permission last summer to make 45 million large size supplement Monday help the shortage because most lectors items.

Read the News Classified Ads

Penneys
ALWAYS FIRST QUALITY

ANNUAL YEAR-END bargain days!

WAIT!!

Check your linen shelves!
All Penney sheets reduced!
Terrific storewide values!

don't miss this Big January white goods event!
STARTS SAT. JAN. 2nd

WOMEN'S COATS
REDUCED \$20 and \$30

WOMEN'S SLEEPWEAR
30 pieces Assorted Styles
Reg. 2.99 **Now 1.99**

Women's Better Dresses
60 Dresses, Reduced
\$4 - \$6 & \$8

WOOL JUMPERS
15 Only Misses Sizes
Reg. \$6.95 **Now \$4**

2 PC, TRIM SETS
10 Only Wool and Orlon
Reg. 9.98 **Now \$7**

WOMENS SKIRTS
30 Only, Reg. 6.98 **Now \$3**

WOMENS BLOUSES
Assorted fabrics cotton and acetate blend.
Reg. 2.98 **Now \$2**

Womens Stretch Pants
20 Only, Reg. 9.98 **Now \$5.99**

Womens Tapered Pants
30 Only acetate.
Reg. 5.99 **Now \$4**

MATERNITY PANTS
25 pieces better Maternity wear. Reduced
\$3 & \$5

WONDER WOOLEN
400 Yards, Reg. 2.98 **Now \$1.88 yd.**

Plush Foot Scatter Rugs
10 Only 27" x 48"
Reg. 5.98 **Now 4.44**

10 Only 24" x 36"
Reg. 3.98 **Now 2.88**

JUST SAY CHARGE IT AT PENNEYS

SHOP DOWNTOWN FOR GREATER SELECTIONS

GIRLS ROBES
10 Only quilted nylon
Reg. 5.95 **Now 3.99**

GIRLS PANTIES
60 Only special buy.
Now 4.95

GIRLS SLIPS
30 Only bouffant fall and half slips. Reg. 2.98. **Now 50¢**

GIRLS WINTER CAPS
40 Only assorted styles.
Reg. 1.98 **Now \$1**

Dresses and Playwear
30 Only toddler sizes.
Reg. 2.98 **Now \$2**

TODDLER GIRL COATS
4 Only, Reg. 9.98 **Now \$5**

Boys Suits & Ski Jackets
10 Only Jr. Boy sizes.
Reg. 7.98 **Now \$5**

Boys Sport Shirts
25 Only short sleeve oxford cloth broken sizes.
Reg. 1.98 **Now 50¢**

MENS PANTS
46 Only froffel and cotton oxford cloth.
Reg. 5.95 **Now \$4**

MENS DRESS SHOES
20 Pair better shoes. Reduced to **\$7**

Curtains and Drapes
One table asst. styles. Reduced **Now 1/2**

IRIDESCENT SUITING
200 Yards, Reg. 1.98 **Now \$1.44 yd.**

CURTAIN RODS
Two way draw—
7 Only Traverse and plain rod set 48 to 84 extension, Reg. 5.98 **Now \$3**
8 Only Traverse and plain rod set 84 to 150 extension, Reg. 8.50 **Now \$4**
1 Only Traverse rod 84 to 150, Reg. 6.50 **Now \$3**
1 Only Traverse rod with valance 30 to 48 extension, Reg. 3.49 **Now 1.50**

KYLE'S FINE SHOES

SHOE SALE

Men! — Look! Florsheim Shoes 10% off.
Example Reg. \$19.95 Pr. 10% Off 2.00 Pay Only \$17.95 Pr.

Ladies' Dress Shoes
One Big Group of Vitality and Styling. Step Shoes. Heels Brown. Reg. in finest patents. Perfect for year-round wear.
Reg. \$14.95 and \$16.95 **11.80 Pr.**
2 prs. \$22

Big Selection — Men's and School Boys' Lace Ties, Loafers
Sizes To Big 12
Widths **8.80**
A, B, C, D **2 prs. \$16**

Big Group Ladies' Furry Slide House Shoe
In Blue, Pink, Black
Reg. 3.99 **2.39 pr.**

Big Group Children's Boys'-Girls' Shoes
By Weatherbird, Happy Hiker
Values **\$4**
to 6.95

LADIES' HOSIERY
Our Finest Run Resist in all new shades of white, grey mist, taupe mist, rhapsody, sun glow
Reg. \$1.29 — Save \$1.22 **3 pairs \$2.65**

First Quality Micro Mesh... Select from our big Stock. And new shades.
Reg. 89c Pr. **2 pairs \$1.00**

Kyle's Fine Shoes
121 N. Cuyler **MO 9-9442**
SHOP DOWNTOWN FOR GREATER SELECTIONS

Read the News Classified Ads

YOUR FR... NEWS... VOL. 57... DEMO... SAN F... Federal... The pi... changing... complete... day to... 1,300 pe... Ru... Co... WASH... Richard... today it... than a t... ment to... the Unit... in the C... Nam... The c... ful Sena... mittie b... is any... haven't... Congo... Russel... "a half... rope th... in the C... torical... we do... "If we... us, we l... statesm... Russel... that P... not mal... ever, h... people... 1964... A