

Bailey County Journal

"The Community of Opportunity — Where Water Makes the Difference"
Published every Sunday at Muleshoe, Bailey County, Texas — 79347

VOL. 6 NO. 45

16 PAGES

NEWS STAND PRICE 10¢

SUNDAY, NOVEMBER 10, 1968

Muleshoe Received Blue Ribbon City Award Friday

Area Schools to Observe Education Week

Muleshoe Schools To Hold Open House

Centered around the theme for 1968-69 "America Has A Good Thing Going - Its Schools", Muleshoe schools will join other schools nationwide to observe National Education Week.

Each year, at a designated time, schools, their personnel and their students are honored. Special programs are planned and open houses are held to better acquaint parents and individuals with what their schools are doing to educate the youth of our communities.

Neal Dillman, Superintendent of the Muleshoe Schools announces that American Education Week will be observed by each of the four schools during the week of November 10-16.

DECA Students To Be Honored This Week

Distributive Education Club had its start in 1947 with 800 students in 17 chapter states. Since that time (DECA) has grown to approximately 88,000 members in 49 states, the District of Columbia and Puerto Rico.

Although the name of Distributive Education Clubs of America was adopted at the second National Leadership Conference held in St. Louis, Mo., in 1940, DE Chapters were being formed a decade earlier. Cooperative programs in DE were created between 1937 and 1942. It was during this period that student clubs were started throughout this country.

From this early beginning, local Chapters were springing up all over the nation. These early clubs adopted many names such as Future Retailers, Distributive Distributors, Distributors, etc., on Page 3, Col. 5

"All parents and interested citizens are invited to 'Look In On Your Schools'", says Dillman.

Tom Jinks, Muleshoe High School Principal, has arranged the following program for the week:

Monday, November 11, 10:30 a.m.; Assembly Program, High School Auditorium, Speaker: Bob Wear, Minister of the Church of Christ, Littlefield, Con't. on Page 2, Col. 4

Glen Watkins New Member Bushel Club

Glen Watkins of Muleshoe, with an outstanding yield of 147 bushels of corn per acre, has been elected in the 1968 DeKalb 200 Bushel Club.

Watkins' yield came from a field of DeKalb XL-45. His entry was mechanically harvested and verified by an impartial third party.

To attain his excellent yield, Watkins used such progressive Con't. on Page 2, Col. 5

Breakfast To Be Held At Legion Hall

Commander Jerrell Ottwell of Ben Richardson Post 403, Muleshoe American Legion, said the annual Veterans Breakfast will be held at the Muleshoe American Legion Hall Monday, November 11, beginning at 6 a.m.

W.D. "Bill" Moore will bring the devotional and County Judge Don Chikak will be keynote speaker at the breakfast.

Ottwell said area veterans, including those from Arizona, Earth, Sudan, Lazbuddie, Farwell, Bovina, Needmore, Morton and throughout this area, are invited to attend the breakfast.

Eligible veterans are from World War I, World War II, Korean War and Vietnam War.

Local Man Serving In Helicopter Unit

Sp/4 Carl W. Calhoun, son of Mr. and Mrs. C.W. Calhoun, visited in the Journal office several days ago. Calhoun said that he will be in the Muleshoe area recently by area citizens to obtain useable refrigerators for 'C' Company, 159th Assault Support Helicopter Battalion from Fort Sill, Okla., had been highly successful in this area.

More than 15 refrigerators were contributed to the unit to be used in southeast Asia by 'C' Company. The unit was to have gone overseas in the near future, however, they received rush orders and were deployed Tuesday for their new overseas base.

The helicopter group visited Muleshoe twice in the recent past picking up contributed items and were pictured on their first visit three weeks ago.

Original plans were for the helicopter company to return to Muleshoe and present a local

air show. However, the unit received early orders for overseas deployment and were unable to complete their plans before leaving.

Con't. on Page 2, Col. 6

Weather

Soft, fluffy white snow fell in the Muleshoe and Bailey County area Thursday night and Friday morning. This first snow of the year was melting almost as fast as it was hitting the ground, but early in the morning enough snow stuck to yards and blankets to leave a temporary white blanket in the area.

Rain preceded the snow and we received 10.0 rain Thursday night before the snow deposited an additional .14 of moisture in the area.

High	Low
November 6	46 34
November 7	45 32
November 8	38 32



MULESHOE, TEXAS (Blue Ribbon City). Several representatives of the Muleshoe Chamber of Commerce and businessmen went to Lubbock Friday to receive the West Texas Chamber of Commerce Blue Ribbon City Award for Muleshoe. Pictured with the award are from left, Albert Field, M.D. Gunstream, Wilber LeVeque, Beverly King, president of the West Texas Chamber of Commerce, who made the presentation, Frank Ellis, Joe Harbin, Robert Hooten and Derrell Oliver.

50 Years Ago...

Armistice

"The leaves had fallen from the trees of Compiegne Forest at Rheims, where two railway trains waited in the dawn mist. It was close to 5 a.m. on November 11, 1918. In a car of one of the trains sat a tired group of men, about to sign a document over which they had haggled through the night. There was no riding up of generals on spirited steeds, no surrendering of swords, but soon, at 11 a.m., the greatest war in history would be over. The Germans, who had plunged into the struggle with heady optimism, were beaten, and Matthias Erzberger, leader of their delegation, knew he must yield to Foch's demands. "I saw Erzberger brandish his pen and grind his teeth," Foch later wrote. "I was then glad that I had exerted my will. . . for the business was settled." History was to prove sadly that the business was not settled, but both German and Allied soldiers along the lines felt an unforgettable joy and relief that, at last, all was quiet on the Western Front."

Texas Legion News recalled the above as the entire "Free Nation" is on the eve of Veterans Day. For some years, November 11, was celebrated as Armistice Day, however, since the end of the Korean War, it was changed to Veterans Day, to include honoring the veterans of all wars.

Since the end of the "Great War" in 1918, the United States has been engaged in other great conflicts. World War I was

Ditty Bags Are Prepared For Mailing

Each year representatives of local clubs and organizations and individuals, in conjunction with the Muleshoe Chapter of the American Red Cross, prepares ditty bags to be sent to Southeast Asia to area servicemen.

The ditty bags this year were prepared by the Progress Home Demonstration Club; Mr. and Mrs. H.A. Gore and Mr. and Mrs. Billy Gore, all of Circleback; Wesleyan Service Guild of the First Methodist Church in Muleshoe and Shavnda Turner, daughter of Mr. and Mrs. Richard Turner.

Ten packages were mailed Thursday and 13 more will be prepared for mailing, containing a total of 69 ditty bags. Inside the ditty bags are such varied items as salted nuts, canned meats, writing materials, white socks, nail clippers, deodorant soaps, soap containers, hard candies, various toilet articles, pre-wetted Kool-Aid, sugar packets and other items.

Last year numerous letters were received by the clubs and individuals who prepared and mailed the ditty bags to overseas servicemen.

Research on County History Led to San Antonio, Austin

A highlight of the 1968 annual meeting of the Texas State Historical Survey Committee (TSHSC) and its private affiliate, Texas Historical Foundation, to which Bailey County was represented, was an address by Governor John Connally in which he stressed the importance of appreciation and preservation of Texas heritage.

"I think we've reached a time in our (Texas) cultural maturity when we must focus on where we have been, from where we came and where we will be," Connally told the 350 persons present. The Institute of Texas Cultures on the Hemisphere grounds was the site of Friday's dinner program. Institute director R. Henderson Shuffler was in charge of tour of the Institute following the program.

Bailey County Historical Survey Committee member Mrs. Larry B. Hall attended the two-day meeting held in San Antonio November 1-2. She continued her research-motivated trip into Austin for several days, returning home Wednesday. Mrs. Hall (Jessica) and her husband of Muleshoe Publishing Company, publishers of both Journals, are continuing work toward forthcoming publication, in book form, of a history of Bailey County.

In referring to the purpose of the publication, Mrs. Hall echoed Mrs. Connally's Friday statement that "We want to preserve, restore, or 'anything' so that everybody will appreciate it."

Collecting a reasonable amount of first-hand and accurate information and preserving in story and picture in a hardback book form, as well as in newspaper articles, is our goal, she added.

Hereford By Mules

It was another series in the loss column that has plagued the Muleshoe Mules all year, Friday night, the Mules fell before the onslaught of the Hereford Whitefaces 29-0.

First half of the game was really a defensive battle marked

by neither team being able to penetrate more than the 20-yard line of their opponent's end of the field which would have led to the all-important touchdown.

Bobby Burge, 140-pound fullback, made two outstanding pass receptions in the first quarter, however, his team was unable to go on into the end zone.

Muleshoe's Charles Beamon, running back, recovered a Hereford fumble on the 28-yard line and ran it to the end, but the TD was called back to be

by neither team being able to penetrate more than the 20-yard line of their opponent's end of the field which would have led to the all-important touchdown.

Bobby Burge, 140-pound fullback, made two outstanding pass receptions in the first quarter, however, his team was unable to go on into the end zone.

Muleshoe's Charles Beamon, running back, recovered a Hereford fumble on the 28-yard line and ran it to the end, but the TD was called back to be

by neither team being able to penetrate more than the 20-yard line of their opponent's end of the field which would have led to the all-important touchdown.

Bobby Burge, 140-pound fullback, made two outstanding pass receptions in the first quarter, however, his team was unable to go on into the end zone.

Muleshoe's Charles Beamon, running back, recovered a Hereford fumble on the 28-yard line and ran it to the end, but the TD was called back to be

Longhorns Tangle; Hart Loses Battle

When the Longhorns locked horns with the Longhorns, the Longhorns lost. . . the Hart Longhorns, that is. Lazbuddie's high-flying, winning Longhorns put the Hart team down 26-6 Friday night.

Lazbuddie is the only undefeated 'B' team in southwest Texas and it looks now as if they will finish the season. . . big winners and undefeated.

The team, under the direction of Coaches Pat Casey and Mike Flankin, has had consistent wins since the beginning of the season.

Friday night, Steve Foster put the first Lazbuddie TD on the scoreboard on a five-yard run with Frank Hinkson making two extra points.

Hart followed up with their

Six Areas Improved To Achieve Award

During an early August meeting of the Board of Directors of the Muleshoe Chamber of Commerce, members voted to enter Muleshoe in the West Texas Chamber of Commerce's Blue Ribbon City Awards Program.

Early division submitted to the West Texas Chamber of Commerce for approval were Industrial Development, Education and Local Government. Those submitted later for approval were Tourist Development, Beautification and Parks and Recreation.

Committees determined that the basic purpose of this program was to achieve these basic goals: community development, community growth, community involvement and making Muleshoe a better place in which to live and transact business.

Initial inspection for the Blue Ribbon City Award was made by Harry Clark of Midland, member of the West Texas Chamber of Commerce.

Con't. on Page 2, Col. 4

Bailey County Fire Volunteers Plan Auction

Emphasizing safety and the reduction of fire hazards, the Bailey County Volunteer Fire Department plans to conduct an auction in the near future.

They are in need of any item you might have to donate the department for the sale. Fire Chief Earl Ladd urges everyone to clean out your garage, attic or store room of items for the sale.

Chief Ladd said all proceeds from the auction will be used to purchase needed equipment for the fire department.

Call 272-3308 for pickup of your donated items. Ladd said "No item is too large or too small for our boys to pick up."

Brokers Slate Seminar Here

For those interested in the investment, Tuesday night, November 12, at 8 p.m., Doug Parker and David Walker, stock brokers with Dempsey-Tegeier & Company in Lubbock will be the first National Bank in Muleshoe to present a two hour investment seminar.

The public seminar will include such presentations as inflation, long term investing, short term trading, and the Keogh Act of self-employed individuals.

For those interested in the investment, Tuesday night, November 12, at 8 p.m., Doug Parker and David Walker, stock brokers with Dempsey-Tegeier & Company in Lubbock will be the first National Bank in Muleshoe to present a two hour investment seminar.

The public seminar will include such presentations as inflation, long term investing, short term trading, and the Keogh Act of self-employed individuals.

Hereford By Mules

It was another series in the loss column that has plagued the Muleshoe Mules all year, Friday night, the Mules fell before the onslaught of the Hereford Whitefaces 29-0.

First half of the game was really a defensive battle marked

Longhorns Tangle; Hart Loses Battle

When the Longhorns locked horns with the Longhorns, the Longhorns lost. . . the Hart Longhorns, that is. Lazbuddie's high-flying, winning Longhorns put the Hart team down 26-6 Friday night.

Lazbuddie is the only undefeated 'B' team in southwest Texas and it looks now as if they will finish the season. . . big winners and undefeated.

The team, under the direction of Coaches Pat Casey and Mike Flankin, has had consistent wins since the beginning of the season.

Friday night, Steve Foster put the first Lazbuddie TD on the scoreboard on a five-yard run with Frank Hinkson making two extra points.

Hart followed up with their

SANTA CLAUS SPECIAL--Packages on this table are marked "Santa Claus Special" as they are mail for servicemen in Southeast Asia. This represents only a few of the many packages being prepared to be mailed to servicemen for Christmas this year. Area clubs and individuals have been busy preparing ditty bags to be sent overseas. Shown after completing packaging chores are from left, Dorothy Turner, secretary of the County Judge, County Clerk Hazel Gilbreth and County Judge Don Chikak.

GOOD NEWS FOR IRRIGATORS-

All new Valley Self-Propelleds are

Calvin Jordan Area Representative
Office SW-5-5947, Lubbock
Mobile 385-5825, Littlefield
Home: Sudan 227-5601



GALVANIZED

Pat. No. 260439



Now Rust and Corrosion Protection that Means EXTRA Years of Life

Almost totally galvanized inside and out

It was necessary to build one of the nation's largest hot dip galvanizing plants to bring you maximum protection at minimum cost — far less costly than the added life and performance.

All unprotected pipe and components are susceptible to corrosion from water, air, and agricultural chemicals — fertilizer, pesticides and herbicides. Galvanizing, inside and out, on all new Valley Self-Propelleds prevents rusting longer than any other method.

Here's something else about Valley Self-Propelled: FULL YEAR WARRANTY

All Valley Self-Propelleds carry a full year factory warranty against defects in materials and workmanship.

SERVICE IS RIGHT HERE!

We carry a complete parts stock. We maintain a full service organization. If and when you need repairs or maintenance, we're readily available. You don't have to take a chance, waiting days or weeks, during the crucial planting and growing seasons.

THOUSANDS NOW IN USE

Valley Self-Propelleds are tried and proven throughout the country, under every conceivable land and climate condition, with more than fourteen years of actual use. Constant product improvements, like the new galvanizing, mean you can buy with confidence for successful operation now and for many years ahead.

SAVE WATER, SAVE LABOR, MAKE MONEY

Valley Self-Propelled sprinkler irrigation gives you the means to save half your water with less labor than even furrow-ditch methods. You can automatically irrigate 500 to 1,000 acres without costly extra help. No expensive land leveling. Valley Self-Propelled operates on grades up to 5%. It is also ideal on new land developments, where you can achieve top yields on low cost land.

The idea that's changing a 6,000 year old irrigation habit

Shur Gro IRRIGATION CO., INC.
5623 Brownfield Hwy.
Lubbock, Texas
Offices Also in Clovis, N.M.



WORLD'S OLDEST AND LARGEST DISTRIBUTORS OF

Schools...

Con't. from Page 1

Veterans' Day Program, 7:00 p.m., Open House, 7:00-7:30 p.m. - "A Debt to the Past" - Auditorium, 7:30 - 9:00, Room Visitation.

Wednesday, November 13, 2:45 p.m., Assembly - Auditorium, Speaker: "The Vietnam War", Robert Watts, Warrent Officer. Officer Watts was a helicopter pilot, Vietnam War veteran, winner of the Oak Leaf Cluster, winner of the Purple Heart and numerous other citations and medals.

The faculty and administration of the Muleshoe High School invite all parents to visit any time during this special week and to eat lunch at the cafeteria.

MULESHOE JUNIOR HIGH - Fred Mardis, Junior High Principal, has planned a special Veterans' Day Program and open house.

Award...

Con't. from Page 1

Friday, November 8, several representatives from the City of Muleshoe and Muleshoe Chamber of Commerce went to Lubbock where they were presented the Blue Ribbon City Award by Beverly King, president of the West Texas Chamber of Commerce.

This award is presented to cities with population of less than 12,000 that achieves a certain standard of excellence in the six categories of community development.

Derrill Oliver, Chamber of Commerce manager, commented on the presentation Friday afternoon.

"The achievement of this award indicates that the citizens of Muleshoe have the foresight, desire, and ability to make their community a better place in which to live and do business," said Oliver. "The success of the project was based on the fact that through the years, community leaders had virtually completed all categories and instigate some projects that had not been implemented in the past."

"The Muleshoe Chamber of Commerce hopes that when industry and citizens are trying to decide whether or not to locate in Muleshoe, they will consider the fact that Muleshoe is a Blue Ribbon City and its citizens are sincerely interested in improving Muleshoe in all areas of community development."

"The Chamber of Commerce wishes to express their appreciation to all persons who helped with the project directly or indirectly," concluded Oliver, "and that these persons will continue to work for a better Muleshoe."

Chairman for the project was Robert Alford, who now lives in Breckenridge. Individual chairmen and the category in which they worked were: Industrial Development, Harmon Elliott; Education, Neal Dillman; Local Government, Wilber LeVeque; Parks and Recreation, Joe King; Tourist Development, Dr. Jerry Gleason and Beautification, Muleshoe Area Service, chairman, Jeri Nell Wagon.

Monday, November 11, 1:35 p.m. - High School Auditorium, Veterans' Day Program, Color Guard - Student Council Members, Pledge to Flag - Led by Student Council, Prayer, "America" - Led by Brian Maconi, "The American Flag" - David Harris, Sonya Newsom, Terry Burchel, Patti Nickels, Kenny Taylor, Jeanne Putman, Tracy Cowan, Kathleen Jennings, and Kathy Pena.

Patriotic Songs - Junior High Chorus, "I Hear America Singing" - Linda Mason, Taps - Danny Blaylock.

7:00 - 9:00 p.m., Openhouse. Mardis says, "This is an excellent time for parents to meet the teachers and to become acquainted with the Junior High schedule."

ELEMENTARY SCHOOLS

Milton Oyer, Principal of Richland Hills Elementary, and Bill Taylor, Principal of Mary Deshazo Elementary invite parents and patrons to attend Open House on Tuesday, November 12 from 7:00 until 9:00 p.m. on each of the campuses. Both principals encourage visitation anytime during the week but a special invitation is extended for this Open House on Tuesday, evening.

The Theme for this week is "America Has a Good Thing Going - Its Schools". "All Eyes Are On Education" is the theme of the Texas State Teachers Association for 1968-69.

President Johnson has proclaimed November 10 through November 16 American Education Week, calling upon "every American to work toward an even better educational system in America - a system which will truly deepen and enrich American thought, and truly enable life for every man." This week is sponsored by the National Education Association, the American Legion, the U.S. Office of Education, and the National Congress of Parents and Teachers.

Watkins...

Con't. from Page 1

management practices as early and thick planting, good weed and insect control, heavy fertilization and high population hybrids.

He planted in 40 inch rows at a seeding rate of 33,000 plants per acre. His estimated harvest stand was 31,000 plants.

His fertilizer application included 220 pounds of nitrogen and 60 pounds of phosphate. Weeds were controlled with Atrazine and two cultivations. The DeKalb 200 Bushel Club was begun in 1961. Its purpose is to promote friendly competition as well as discussion and idea exchange among the nation's leading corn farmers. The program attempts to encourage practices which will help farmers gain the maximum amount of net profit from each acre of corn.

Those Tested
Conservative—So you believe in dividing up everything, do you?

Socialist—Yes.
Conservative—Would you be willing to give me half your cows?

Socialist—Yes, most certainly.

Conservative—Would you give me half your chickens?

Socialist—No, that's different.

Conservative—What's the difference?

Socialist—Why, I have chickens but I ain't got no cows.



LOCAL MAN SERVES WITH HELICOPTER GROUP—Carl Calhoun, shown in the doorway of the helicopter at the left, was a member of the helicopter crew that visited in Muleshoe recently. Greeting the helicopter at the Muleshoe Airport was his father, C.W. Calhoun, pictured with him in the doorway. The crew had planned to return to Muleshoe to present an air show, however, received early orders to go to Southeast Asia.

Local...

Con't. from Page 1

'C' Company, 159th Assault Support Helicopter Battalion, is the newest addition to Fort Sill (Okla.) and the Artillery Aviation Command. It was activated on July 24, 1968 and is commanded by Major Merrill T. Adamcik. The unit was developed from the 233rd Aviation Company which was activated on May 1, 1968. 'C' Company is a medium helicopter company equipped with the latest model Boeing Chinook aircraft and has attached its own aircraft maintenance unit, the 327th TC Detachment.

Since its activation, 'C' Company has been engaged in an extensive training program, according to Major Adamcik. Its initial concern was aviator and crew training. However, said Major Adamcik, all personnel have received specialized types of classroom instruction and have been cross trained in other areas to obtain a broad overall experience level within the unit.

Sp/4 Calhoun is a crew member in 'C' Company. When the crew members are not learning to maintain, crew fly an aircraft, they are undergoing specialized training to meet individual requirements, such as weapons and CBR qualification, door - gunner training, specialized maintenance and care of weapons and personal equipment.

At the present time, the aircraft used by the company are equipped by T55-L-7C engines. However, they are scheduled to be replaced in the near future with the new AVCO-Lycoming T55-L-11 turbine engines. When installed, these engines will provide greater horse-power which will result in a lift capability of approximately 18,000 pounds and an airspeed of 190 MPH.

The only way to protect yourself against the fast-talker is calm thinking and slow action.

Muleshoe...

Con't. from Page 1

Mrs. Phipps' first trip to California and friends report that she is quite excited about the trip.

Mr. and Mrs. Jimmy Ray White, life time residents of the Muleshoe area, will move to Henderson next week where White will be head engineer for Rusk County Electric Cooperative.

In Muleshoe, he was office engineer for Bailey County Electric Cooperative.

The Whites are members of the Richland Hills Baptist Church.

By order of the Commissioner's Court, the Bailey County courthouse will be closed on Monday, November 11, 1968 in observance of Veterans Day, 1968.

"Please take time on this day to remember the service that our many veterans have given so that this country and it's people may remain free," reminds County Judge Don Cihak.

Mrs. C.B. Landers of Hart, the mother of Boyd Landers, suffered a slight stroke Sunday morning and was a patient in a Dimmitt hospital. She is reported to be recovering satisfactorily and is visiting in the home of her son and daughter-in-law, Mr. and Mrs. Boyd Landers.

Rev. Clarence Stephens, former pastor of First United Methodist Church, visited briefly in Muleshoe Tuesday.

Mrs. Ray Quisenberry, who recently underwent heart surgery in a Denver hospital, returned to Muleshoe Friday. She is reported to be convalescing satisfactorily.

Bailey County Ministerial Alliance is to meet Monday, November 11th at 7:00 a.m.

Mrs. Phyllis Beavers, Mrs. Beth Boren and Mrs. Mar Farley attended the Friend ship Night at Petersburg Chapter of OES November 4 an enjoyed a delicious meal and the program. They were accompanied by Chester Cla Beavers and Cathy Boren, who visited with relatives while the ladies attended the meeting.

Goodwill Center served approximately 15 dozen cookies to the kindergarten children each week. Anyone wishing to help provide some of the cookies may bring them to the office of First Baptist Church. Bought cookies are especially good as they keep well and any amount would be appreciated.

Mr. George Hawkins of Portales visited in the home of his daughter and son-in-law, Mr. and Mrs. Raleigh Mason.

Among the out-of-town persons attending the funeral of Mrs. L.W. Haney Tuesday were Mr. and Mrs. William J. Pierson, Wm., Teresa and Weldon, Mr. and Mrs. Jim S. Denison Jr. and Jim S. Denison III, all of Lubbock; Mr. and Mrs. Arch Pool of Clarendon; Mrs. Henry Edmonds of Littlefield; Mr. and Mrs. Bert Castleberry of Duncan, Oklahoma; Mrs. Cora Galloway of Elk City, Oklahoma; Mrs. Noel Woodley and Mr. and Mrs. Leroy Durham of Plainview; Mrs. Carl Harrington of Anton; and from Earth, Mrs. Sam Cearley, Mrs. L.C. Anglin, Mrs. Floyd Burgess, Mrs. Crill Bulls, Mrs. Beedie Welch, Mrs. Minnie Parish and Mrs. R.L. Drake.

ESPECIALLY Glasses have an amazing effect on vision—especially after they have been filled and emptied several times.

The Zephyr, San Juan, Puerto, Puerto Rico.

SO WE HEAR It takes hard work to make easy living. -Enterprise, Hubbard, Ore.

FREE WIRING

From Southwestern Public Service And Bailey County Electric Co-operative Association

ON ALL ELECTRIC RANGES

Purchased During October And November, 1968

From Your Muleshoe Appliance Dealer Listed Here:

- * HARVEY BASS APPLIANCE
- * GORDON WILSON APPLIANCE
- * POYNOR'S WHITE STORES, INC.
- * Sear's Roebuck & Co., Catalog Sales Office
- * Anderson's Montgomery Ward Sales Agency



Brenda Harrison

'HONORS' TO OUR D.E. STUDENT

Plains Auto Supply

Soybean Irrigation Timing Are Stressed

ETTER. . . Irrigation research at the North Plains Research Field here shows a close relationship between soybean yields and the timings and amounts of irrigation water applied at the bloom and pod set stages of plant growth.

"With this in mind, now is a good time for producers to evaluate the past season's irrigation practices on soybeans," points out Leon New, irrigation specialist with the Texas Agricultural Extension Service.

"Irrigation water management is a vital link in the chain of production," says New. "Water use efficiency is especially important, and with soybean yield records still handy, irrigation practices should be evaluated with an eye on next year's production."

Irrigation timings for the different research plots were based on the plant's growth cycle. Four stages of growth occurring during the critical moisture requirement period were used as timing guides, explains New. These were pre-bloom (7-10 days before bloom), bloom and pod set growth stages as well as the timings of these irrigations. Water use efficiency was highest where soybeans received 22.1 inches of total water, including a three-inch irrigation at bloom and none at pod set.

*Total water includes 10.1 inches of rainfall (7.4 inches between planting and bloom), a five-inch pre-plant irrigation and a four-inch irrigation on August 30 at pod fill.

All plots received the same amount of water at pre-bloom and pod fill. Irrigation amounts at bloom on July 26 and at pod set on August 15 were varied from 19.1 to 31.1 inches. Included in each of these totals were 10.1 inches of rainfall during the growing season, a five-inch pre-plant irrigation and a four-inch irrigation applied on August 30 at the pod fill stage. No pre-bloom irrigation was applied because of sufficient rainfall.

The plots receiving 19.1 inches of total water yielded 23.5 bushels per acre while the plot receiving the most water, 31.1 inches, yielded 48.2 bushels, points out the specialist.

The high-yielding plot received two 6-inch irrigations, one at bloom (July 26) and the other at pod set (August 15) in addition to the 19.1 inches of water received by all plots. The low-yielding plot did not receive a bloom or pod set irrigation.

One plot received no irrigation on July 26 at bloom but received a three-inch irrigation on August 30 at pod set and yielded 34.8 bushels. Another plot receiving a three-inch irrigation on July 26 at bloom and no irrigation on August 15 yielded 38.6 bushels. Total water in both cases was 22.1 inches.

Another plot receiving two three-inch irrigations, one on July 26 and another on August 15, yielded 39.4 bushels. Total water amounted to 25.1 inches.

There was little difference in yields with a six-inch and a three-inch irrigation alternated between bloom and pod set, explains New. Yields totaled 43.6 bushels with a six-inch irrigation at bloom on July 26 and a three-inch application at pod set on August 15. Reversing the irrigation, with the six-inch application coming at pod set and the three-inch at bloom 44 bushels were produced. Total water for both plots was 29.1 inches.

In discussing water efficiency, New says that the most efficient water use occurred with the three-inch irrigation

on July 26 at bloom and no irrigation on August 15 at pod set. Yield was 38.6 bushels from 22.1 inches of total water, an efficiency of 1.75 bushels per acre inch of water.

The lowest water use efficiency came with no irrigation at either the bloom or pod set stage. Yield here was 28.5 bushels from 19.1 inches of water, an efficiency of only 1.49 bushels per acre inch of water. On the plot receiving the most water, 31.1 inches, water use efficiency was 1.55 bushels per acre inch of water.

The research plots were planted with Clark 63 soybeans on May 19 at a rate of 60 pounds per acre. Planting was double-row on 40-inch beds.

IRRIGATION TIMINGS, AMOUNTS AFFECT SOYBEAN YIELDS -- Soybean yields are closely related to the total amount of water received at bloom and pod set growth stages as well as the timings of these irrigations. Water use efficiency was highest where soybeans received 22.1 inches of total water, including a three-inch irrigation at bloom and none at pod set.

*Total water includes 10.1 inches of rainfall (7.4 inches between planting and bloom), a five-inch pre-plant irrigation and a four-inch irrigation on August 30 at pod fill.

Police School To Start Soon At Texas A&M

COLLEGE STATION--Texas A&M officials have endorsed a four-month police training school to start February 1, and designed to meet educational needs of city and county law enforcement officers.

"There seems to be a need for a continuing educational program to cover training in special areas," Ira E. Scott said.

Scott is chief of A&M's Texas Engineering Extension Service's Police Training Division. He previously served as Lubbock chief of police.

A&M police schools have been limited in the past to four and six week periods, and primarily, basic in nature, Scott added.

"Just like any other training, however, you run out of time," he said. The pilot school will include both basic and advance police training.

"We'll wait and see what the response is going to be, before we think about a second school," Scott noted. "And if it looks like it's a success and meets the need, then we'll probably operate two schools a year."

Armistice...

Con't. from Page 1
followed by World War II, then the Korean War and presently the unresolved Vietnam conflict.

To honor all the veterans this Veterans Day, 1968, County Judge Don Chihak has issued the following proclamation:

PROCLAMATION
WHEREAS, The men and women who have served in our Nation's armed forces have made a major contribution to the preservation of America's freedom; and

WHEREAS, The gallant Americans serving in today's armed forces continue to demonstrate the unselfish willingness of our Nation to meet the challenge of those forces seeking world domination through armed conflict; and

WHEREAS, The Nation and the free world are eternally grateful for the contributions of American veterans to the advancement of the cause of an honorable world peace; and

WHEREAS, The Congress of the United States has declared the eleventh day of November of each year to be a legal holiday and designated it as Veterans Day in honor of our veterans and as a day dedicated to the cause of world peace with honor;

NOW, THEREFORE, I, Don W. Chihak, County Judge of Bailey County, Texas, do hereby call upon all citizens to observe Monday, November 11, 1968, as VETERANS DAY, and ask that the day be observed with appropriate ceremonies in honor of those who have borne the burden in defense of our freedom.

I further call upon all citizens and business firms to mark this day with the proud display of the flag of the United States as a reaffirmation of our national unity and a rededication of our support to our Nation in her defense of the cause of freedom.

IN WITNESS WHEREOF, I have hereunto set my hand and caused to be affixed the official seal of the County of Bailey, State of Texas, this 22nd day of October, 1968.

(s) Don W. Chihak
County Judge
Bailey County, Texas

History...

Con't. from Page 1
Pioneer settlers and their descendants are continuing additional family history submissions to be included in the publication and should telephone the Halls at 272-4749 or 272-4536 or write 1812 West Avenue H, Muleshoe - 73347.

Other speakers at the San Antonio meeting included Mrs. Deolee Parmelee, TSHSC Director of Research, who presented a most informative program of suggestions on "How to Write a County History". Dr. Dorman Winfrey, executive director of the Texas State Library, presided over a lecture seminar describing procedures for "Setting Up a History Collection in a Local Library". Tom Taylor, director of Travel-Information Division, Texas Highway Department, conducted a "Hospitality Seminar" giving guidelines for development of local personal services personnel in promoting community and regional points of interest. Emil Huber, director of Program Field Services, Department of Housing and Urban Development, spoke regarding ways and means of acquiring Federal grants for historical preservation projects from HUD. Truett Lattimer, Executive Director of the state historical committee, presided over the RAMPS "Wrap-Up" prior to the awards luncheon held at the Hotel Gunter ballroom Saturday noon.

On her Austin trip, county historical data was researched and obtained from files in both the Texas State Library and University of Texas Archives with assistance from respective officials including State Archives Director Charles W. Corkran; UT Archives Director Chester V. Kiehlman; TSHSC Research Director, Mrs. Parmelee; Executive Director Texas State Library, Dr. Winfrey; Fred Folmer, Director of UT Main Library; Baker Texas Collection, UT, Librarian; and others.

"Their assistance was most generous and cordial," Mrs. Hall commented. "Of course, the State Historical committee office continues to be of much help."

Mrs. Hall was a guest in the homes of friends in San Antonio, the Lee Holder family who will visit the Halls in Mule-

shoe this weekend, and in Austin with the Hardie Bownans and Mrs. Bowman's mother, Mrs. Lucie Price.

DECA...

Con't. from Page 1
tore, Future Merchants and Distributive Education Clubs, State-wide meetings were held between 1941 and 1944 as the local Chapters grew and felt the need to communicate with each other. By 1945, state conferences and associations were organized. About this time, the idea of a national organization was born.

In 1946, the U.S. Office of Education called a meeting of state DE supervisors to develop plans for a national organization. The first conference that led to the adoption of a resolution to form a national organization was held in Memphis, Tenn., in 1948.

The 17 charter member states were Arkansas, Georgia, Indiana, Kansas, Kentucky, Michigan, Missouri, North Carolina, Ohio, Oklahoma, South Carolina, Tennessee, Texas, Utah, Virginia and Washington. There are presently 25 DECA students in the Muleshoe School System under the sponsorship of Randy Denson, DE teacher and advisor. They are: Priscilla McCaig, Gibson's; Brenda Harrison, Plains Auto Parts; John Henderson, Harvey Bass Appliance; Debbie Reed, Dr. Pummill; Rena Lackey, Jack Young, Tony Perez, Piggy Wigley, Vicky Henexson, Bob Stovall Printing; Keigh Griffin, Gibson's; Donna Locke, Muleshoe Publishing Co.; Charlotte Davis, Dr. Lewis; Peggy Williams, Johnson Furniture; Jan Creamer, Hazel's Styette; Daryl Sprayberry, First National Bank.

Also Pam Swint, Western Drug; Larry Meason, Muleshoe Motor Co.; Logan Pugh, Muleshoe Auto Parts; Jimmy Rowland, White's Cashway; Merced Puente, Anthony's; Irene Madrid, West Plains Hospital Nursing Home; Lex Quinn, West Plains Memorial Hospital Nursing Home; Johnny Raney, Muleshoe Publishing Co.; Judy Anderson, Montgomery Ward; Chester Beavers, RMUL; Glenda Calhoun, Johnson-Pool Tire Co.; and Jim Mardis, Muleshoe State Bank.

Mules...

Con't. from Page 1
At half-time, the score still stood at 7-0.

Early in the third, the Mules threatened, but Jim Scott intercepted an attempted Ronnie Barrett-Bobby Burge pass right in the end zone to end the scoring threat by the Mules. Quarterback Cole made it a 13-0 score for Hereford with 4:05 on the clock in the third. The play was set up after the "Faces Jim Head blocked a Muleshoe punt at the 15-yard line. Attempt for PAT failed. Fumbles and a loose defensive line that let the White-faces break through almost at will became the lot of the Mules point into the fourth. Two Hereford TD's were called back with penalties before Loerwald hit on a 40-yard field goal to make the score 16-0.

A Barrett-Burge again saved the day for a short time for the Mules but the ball was lost to Hereford a short time later on a Mule fumble.

Elgin Williams, who proved to be hard to stop all night, really turned on with 40 seconds on the clock in the fourth and plunged over on one-yard drive following a 38 yard drive downfield. PAT failed. The score was 22-0.

With 14 seconds on the clock in the game, Hereford intercepted a Muleshoe pass on the 30 and on the next play a Cole to Boyer pass in the end zone made it 28-0. Loerwald's kick ended the scoring at 29-0.

Several outstanding plays were noted by Burge, Beamon, Larry Kitchens and Roger Swint

throughout the entire game. Next Friday night, the Mules will meet the Canyon Eagles in Benny Douglass stadium at 7:30 p.m.

GAME STATISTICS	
Muleshoe Hereford	
First Downs	12 19
Passes	7-12 3-7
Interceptions	0 2
Field Goals	0 1
Fumbles	3 2
Recovery	2 3
Penalties	5-65 11-77

WHO KNOWS?

1. Who was Neptune?
2. From what does the word Nevada derive?
3. What is an addax?
4. Name the highest waterfall in North America.
5. Where is the highest waterfall in the world?
6. Who was the first Secretary of Agriculture?
7. What was the name of the ship on which the surrender of the Japanese army was signed?
8. Who wrote "Song of Hiawatha"?
9. When were the first sound-on-film pictures shown?
10. By whom were they shown?

Answers To Who Knows

1. The Roman God of the Sea.
2. From a Spanish word meaning snow-clad.
3. An antelope which lives in the deserts of North Africa.
4. Ribbon Falls in California, 1,612.
5. Angel Falls in Venezuela, 3,212.
6. Norman J. Colman.
7. USS Missouri.
8. Henry W. Longfellow.
9. In April, 1923.
10. Lee de Forest, at Rivoli Theatre in New York.

WE WILL BE
CLOSED
Monday, November 11
VETERANS DAY
Muleshoe State Bank

BAILEY COUNTY JOURNAL
Established March 30, 1963
Published by Muleshoe Publishing Co., Inc.
Every Sunday at 304 West Second
Muleshoe, Texas
L.R. Hall, President
Doris Baker, Secretary-Treasurer
Doris Baker, News Reporter
Chick Creamer, Circulation Reporter

TERMS: CASH IN ADVANCE

DESCRIPTIONS:
Zone 1 (Single Partner-Contrib-Limit) counties: \$4.00 per year; \$4.50 per year by mail; with Thursday-Maturday Journal, both papers: \$5.50 per year; \$6.00 per year by mail.
Zone 2 (Single Partner-Contrib-Limit) counties: \$3.00 per year; \$3.50 per year by mail; with Thursday-Maturday Journal, both papers: \$4.00 per year; \$4.50 per year by mail.
Monthly by carrier - 15¢; single copies 10¢.
Advertising rates listed on application.

AMERICAN EDUCATION WEEK
NOVEMBER 10 - 16
EDUCATION PAYS DIVIDENDS
An Investment in Education Pays The Highest Dividends Of Any Investment In The World.
SEVEN OF THESE DIVIDENDS ARE:

1. Better Human Relations.
2. Improved Earning Power.
3. Personal Fulfillment.
4. Good Citizenship.
5. National Economic Growth.
6. Better Communities.
7. International Relations.

BAILEY COUNTY GRADUATES STRENGTHEN OUR COMMUNITIES IN THE PROFESSIONS, INDUSTRY, BUSINESS AND HOME.

This Year's Theme...
"America Has a Good Thing Going...Its Schools."

MULESHOE STATE BANK
Member FDIC



From The Chief's Desk

The Friday morning snow serves as a reminder that winter will soon be here. And, with winter, is winter driving with all the hazards of ice and snow.

Ice and snow driving does not have to be hazardous with a few simple safety precautions. Do not try to take off quickly from a parked position on icy streets. Ease out into the line of traffic.

Should you go into a skid tear the car in the direction of the skid, but do not touch the brake. To stop, slow down and touch your brake lightly to get the feel of the street beneath the wheels. Do not slam on your brake suddenly, or you will likely go into a skid which could be dangerous, not only to yourself, but any oncoming traffic or vehicles behind you.

Slow down and live!

Merit Tests For College To Be Given

Muleshoe High School students who expect to complete their secondary school requirements and to enter college in 1970 can register now to participate in the 1969-70 National Merit Scholarship Program, Principal Tom Jinks announced today.

The first step for all students who wish to enter the nationwide competition is to take the National Merit Scholarship Qualifying Test (NMQST). The test will be given in the school at 9:00 a.m., Tuesday, February 19, 1969.

When his NMQST scores are reported, each participating student will receive a handbook to help him evaluate his scores and compare his performance with that of other high school students across the country. The handbook also contains information about choosing a college and financing college education. The handbook and other interpretive materials are furnished as a part of reporting the test results.

The highest-scoring students in each state will be named Semifinalists and will be eligible for Merit Scholarship consideration. In addition to the National Merit Scholarships financed by NMSC, more than 370 business corporations, foundations, colleges, professional associations, unions, trusts, other organizations, and individuals offer scholarships through the Merit Program.



Vicky Henexson

PRESENTING OUR
D. E. STUDENT
Bob Stovall Printing

FREE!
An Investment Seminar on The Stock Market

Inflation
Long Term Investing
Short Term Trading
Keogh Act

Presented by
Dempsey-Tegeler & Co.
Members
New York Stock Exchange

TUESDAY, NOV. 12
8:00 P.M.
The First National Bank
MULESHOE, TEXAS



Mrs. Vise

Lazbuddie Welcomes Mrs. Vise

Mrs. Dale Vise was named honoree at a bridal shower held Thursday afternoon in Muleshoe State Bank community room. Guests were registered in the bride's book by Mrs. Jimmy Dale Seaton.

The serving table was laid with white lace over blue and centered with a tall floral arrangement in white, gold and green. Crystal and silver appointments were used. Serving cookies, punch and coffee were Mrs. John Agee and Mrs. Jerry Don Haley.

Hostesses for the occasion were Mrs. Leon Smith, Mrs. Dee Chitwood, Mrs. Dee Brown, Mrs. John Agee, Mrs. John Neil Agee, Mrs. Jimmie Dale Seaton, Mrs. C.A. Watson, Mrs. H.A. Douglass Jr. and Mrs. Jimmie Seaton.

The hostess gift was a coffee-maker.

Mr. and Mrs. Vise have just returned to the Lazbuddie community after being released from Service and he will be engaged in farming with his father. Mrs. Vise is a native of Oregon.

He that bestows his goods upon the poor Shall have as much again, and ten times more.

-John Bunyan.

Holiday Decorations To Be Theme

Muleshoe Art Association will meet November 13 at 9:30 a.m. in the community room of Muleshoe State Bank.

Hostesses for the meeting will be Mrs. Horace Blackburn and Mrs. T.M. Stemmoms.

Mrs. Gid Howell of Decorators 216 will speak on holiday decorations.

Lane, Seagler Vows Said

Miss Nelda Kay Seagler, daughter of Mr. and Mrs. C.H. Seagler of Route 2, Morton, and Royce George Lane, son of Mr. and Mrs. C.R. Berry of Sweetwater, exchanged wedding vows at 8:00 p.m. October 18, in the home of the groom's parents.

The Rev. Neal Rogers, pastor of Lamar Street Baptist Church, Sweetwater, officiated for the ceremony.

Mr. and Mrs. Kenneth Kirley of Abilene served as attendants.

Mrs. Lane is a 1966 graduate of Bula high school and is presently employed in Lubbock. Lane is a 1962 graduate of Sweetwater high school and is now serving in the U.S. Army at Fort Bliss, El Paso, Texas.

Society News

Bernice Douglas

Society Reporter

Phone-373-4536

Blackburn; Allen Exchange Vows

St. Paul's Episcopal Church in Lubbock was the scene of a double ring ceremony November 2 at 10:30 a.m. which united in marriage Miss Lila Janice Blackburn and Robert F. Allen, both of Lubbock.

Officiating was the Rev. Ralph Macy, of Lubbock.

Parents of the couple are Mr. and Mrs. Troy Blackburn

of Earth and Mr. and Mrs. Robert C. Allen of Comanche, Texas.

Given in marriage by her father, the bride wore a white imported wool knit A-line dress, with full length coat featuring bell sleeves with tiny white button trim. Her accessories were white and she wore a veil of white mantilla lace and carried a white bible topped with a white catterpillar orchid corsage. For her "something old" she borrowed a pearl ring from her mother; she ter and carried a six-pence in her shoe.

Miss Jan Alexander of Lubbock, maid of honor, chose a blue silk suit and carried a blue and white corsage of spider mums.

The bride's mother wore a red knit suit and a corsage of white gardenias. The groom's mother was attired in a blue knit suit with white cymbidium orchid corsage.

Jerry Todd of Lubbock served as best man.

Following the ceremony the wedding party attended a dinner party at Zeider Zee restaurant. The couple will reside at 409 University Avenue, Apt. 209 S. Lubbock.

The bride is employed as a caseworker for the Texas State Dept. of Public Welfare in Lubbock. She is a graduate of Hardin-Simmons University where she was a member of Phi Phi Phi woman's social club; Alpha Mu Gamma, honor language society; Sigma Delta Pi, Spanish honor Society; ROTC Sponsor; Student Senate, Sec. of Senate Senior year; Anderson Hall Sweetheart and Campus Princess.

The bridegroom is a senior at Texas Tech where he is majoring in Geo. sciences and minoring in anthropology. He is secretary of Pi Kappa Alpha men's social fraternity, Gamma Theta Upsilon geography honorary; Eta Sigma Phi, classical languages honorary; Association of American Geographers Professional organization and was listed on the Dean's list his second, third and fourth years.

Mrs. Wood Hosts Hobby Club

Muleshoe Hobby Club met November 7 in the home of Nell Wood, Jean Landers drew the hostess gift, a covered candy dish.

Ma Givens resigned as reporter and Mable Candwell was nominated as reporter for 1969. Bernice Amerson will serve as her assistant.

Mrs. Gillis and Mrs. Oswalt were nominated as Sunshine community.

The club presented Mrs. Chambliss with a Golden Wedding Anniversary gift, a gold blanket and throw rug, \$25.00

Successful living, which few of us acquire, depends upon simple things.

ESA Pledges Recite Vows



NEW PLEDGES OF ESA SORORITY-- From left to right are Mrs. Jimmy Harvey, Mrs. Jim Young, Mrs. Roy Ward, Mrs. Roberta Coleman, Mrs. Charles King and Mrs. Tommy Gunstream.

Epsilon Chi Chapter of ESA sorority met in the home of Mrs. Joe Pat Wagon Tuesday evening, November 5. Mrs. Don Seales served as co-hostess.

A pledge ceremony began the activities for the evening, when six pledges said their vows in a candlelight room. The pledges include Mrs. Roberta Coleman, Mrs. Jim Young, Mrs. Charles King, Mrs. Roy Ward, Mrs. Tommy Gunstream and Mrs. Jimmy Harvey.

Mrs. Henry Stoneham was recognized for having achieved her First Pearl award.

She was presented a pearl charm by Mrs. Don Seales, awards chairman.

Following the pledge ceremony and the presentation of the First Pearl award, a business meeting was held. Plans for a bake sale November 20 were discussed. Also, a theme for a Christmas float was decided upon for the Christmas parade December 7.

Since the theme for sorority this year is "Our America" the election returns on television were given special attention while refreshments were enjoyed.

Members attending were Mrs. H.A. Douglas, Mrs. John Gentry, Mrs. 'Hoot' Gibson, Mrs. Eugene Howard, Mrs. Roald Johnson, Mrs. Joe King, Mrs. Ernest Martin, Mrs. Johnny Ohlenburg, Mrs. Jack Rennels, Mrs. Don Seales, Mrs. Henry Stoneham, Mrs. Willard Tibbets, Mrs. Joe Pat Wagon, Mrs. Chester Yerby, Mrs. Hugh Young, Mrs. John Young and Mrs. Billy Robertson.

The next meeting will be a Thanksgiving social for couples November 19.

Art Showing Honors Marie Lenau

The Art Loft will hold open house Saturday and Sunday November 9 and 10 from two to five for a one-man showing of the paintings of Marie Lenau, Muleshoe resident well known in the area for her work in acrylics and watercolor.

Mrs. Lenau paints in all mediums but finds acrylics and watercolor most suited to the subtle shadings her pictures reflect.

Painting is a compulsion with Marie and satisfies a deep feeling for capturing the beauty of the local environment and sharing it with other sensitive

Winner of many awards, her most recent honor was being selected for first place honors at a showing in the "Tri-State and Mexico Watercolor Show, 1968 at Roswell, Judged by Peter Hurd.

She has studied under Dr. Emilio Caballero, FRSA, West Texas State University, Ramon Roman, Dallas, Gerry Pierce, Tuscon, and Paul Hanna, Lubbock.

Mrs. Lenau's paintings will hang at the Art Loft until November 19.

Girl Scouts Attend Happening

Thirty Four Junior Girl Scouts from Muleshoe were among the some 800 area girls attending the Junior Happening Saturday, November 2 at Camp Rio Blanco near Crosbyton. The day's activities included several workshops. This was to acquaint the girls with the camp and its routine to be carried out in summer sessions.

Attending from Muleshoe were: Troop 288, Donann Har-

mon, Doris Bartholf, Tammy Webb, Debbie Kenemer, Sherrell Rasco, Susan Cardwell, Carol Brown, Lydia Hernandez, Mary Perez, Janet Hopper, Pam Clevenger, Mrs. Walter Bartholf, Mrs. Glen Cardwell and Glenda.

Also: Troop 89, Judy and Janice Dearing, Sharron Harris, Mrs. Evelyn Harris and Mrs. Betty Estep.

Friona Club Fetes Local Women

Two Muleshoe women were among seven mothers or mothers-in-law of New Horizons Study Club members honored October 31 in Friona Federated Club House.

A "This is Your Life" program narrated by Mrs. Jimmy Maynard presented events from the lives of the seven women, one of whom said, "I did not know I had been into so many things."

Mrs. Ross Goodwin and Mrs. Charlie Phipps of Muleshoe, mothers of two of the club members, were selected for the tribute. The club president, Mrs. Gerald Flord, formerly Jana Goodwin of Muleshoe, presided at the meeting. Each of the women honored was presented with a long stemmed red rose.

...that wonderful



ELECTRIC RANGE!

... and now it's easier than ever to own one. During October and November, participating electric appliance dealers will give you free wiring and guaranteed satisfaction. If, within 60 days from the date of purchase, you are not happy with your new electric range, your dealer will take it back and refund the money you have paid... you still keep the free wiring. You need only live in a 1 or 2 family home and receive your electric service from us. Act now... offer expires November 30th.

Gift Tea Honors Mrs. Royce Lane

Mrs. Royce George Lane was named honoree at a bridal shower given November 2 at 2:00 p.m. at the Bula school lunchroom.

Twenty guests were registered by Mrs. Sammie Nichols. Out of town guests were Mrs. Graham Seigler of Plainview, Mrs. Sharon Seigler of Muleshoe, Miss Patricia Hicks of Lubbock, Mrs. Hubert

Nichols and Mrs. W.M. Bryant, Greener and Mrs. Sarah Ann Jones.

The serving table was covered with white lace over pale green and centered with a brown ironstone coffee pot, salt and pepper shakers.

Serving refreshments of punch and cake which carried out the bride's colors of green and white were Mrs. Quinton

Hostess gift was a set of brown ironstone dishes.

The hostesses were Mes-ames W.M. Bryant, E.N. McCall, Quinton Nichols, R.P. McCall, L.E. Nichols, Harold Layton, Dale Nichols, Rusty Rowden, Jack Tharp, Ralph Beasley, Chester Petree, Glyn Price, Bennie Hall and Harold Dean Nichols.



Jan Creamer



Daryl Sprayberry

OUR D.E. STUDENT IS TOPS WITH US

Hazel's Stylette Beauty Shop

WE'RE HAPPY TO PRESENT OUR D.E. STUDENT

First National Bank

Member FDIC



FREE WIRING

Guaranteed Satisfaction

OFFER EXPIRES NOVEMBER 30

*** AT YOUR PARTICIPATING ELECTRIC APPLIANCE DEALER**

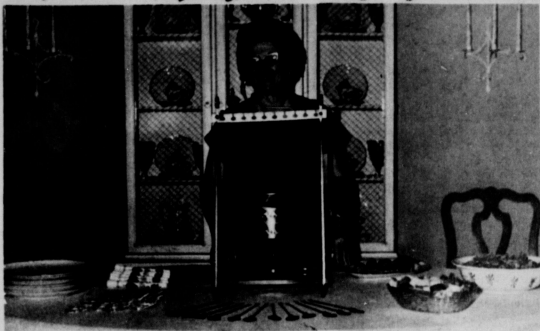


Clean
ELECTRIC
Cooking

Bailey County
Electric Cooperative



Cook of Week



Mrs. Jim Cox

Mrs. Jim Cox, modest and retiring wife of a Muleshoe implement dealer and known affectionately to her friends as "Ruby", tests out table settings using her copper fondue pot and plans for a party she will have for her son, Edwin, when he is mustered out of the Service "in time for Christmas."

Edwin, who has been stationed fifteen months in Germany, sent the unusual pot and accessories to his mother from Germany after becoming interested in this form of cooking. He became acquainted with two American couples stationed there who invited him to fondue parties.

Choosing from a number of recipes sent by her son, Mrs. Cox gives the recipe for Swiss Cheese Fondue as typical and the most practical for Americans to try. With it are served the French bread or hard rolls, torn in hunks, steamed sausages, a green salad and wine.

SWISS CHEESE FONDUE
3/4 # natural Swiss Cheese, cut in Julienne strips (about 3 cups)

1 Tbl. all-purpose flour
1 clove garlic, halved
1 1/4 c. cooking Sauterne
dash fresh ground pepper
dash nutmeg
French bread or hard rolls, torn or cut into bite-size pieces, each with at least one side of crust.

Toss cheese with flour to coat, rub inside of fondue cooker vigorously with cut surface of garlic; pour in Sauterne, warm just till has melted (keep stirring before tossing another handful. After all the cheese has been blended in and mixture is bubbling gently, stir in seasonings and sherry. (Omit salt as cooking cheese contains it.)

If fondue becomes too thick, pour in a little warmed Sauterne. Makes five or six servings.

Mrs. Cox came to Muleshoe as a bride thirty-four years ago and her husband has lived here since 1927, graduating from Muleshoe high school. They are members of First United Methodist. Ruby belongs to Eastern Star and Women's Society of Christian Ser-

vice. Her husband is a 32nd degree Mason and a Shriner. Sharing the same hobbies, they often go on fishing trips and are avid travelers. It was on a trip to Europe made two years ago that Mrs. Cox first tasted fondue, in a Swiss restaurant. It is a tradition, she said, that the first lady to drop bread into a pot of fondue gets a kiss from the gentleman sitting next to her. "I dropped mine on purpose," Ruby said. In the summer of 1958 the Coxes toured the Scandinavian countries, including a trip to the Land of the Midnight Sun. Edwin had three weeks of accumulated leave from the Army and was with them most of the time there. After leaving him they went to Germany, Ireland and England.

"We try to get something for the house from everywhere we go," Mrs. Cox said, and her souvenirs always include, if possible, something typical of

TOPS Queen Crowned

Aurora Macha was crowned Queen of the Month at the regular meeting of the Tops Club Thursday evening in Bailey County Electric Co-op meeting room. Ruth Clements was runner-up for the honor and Rose Sain second runner-up. Miss Macha was presented with a basket of fruit as a gift from the club. The club began a contest in weight losing eight months ago, with each member given four points. Gaining weight or failing to be present for meetings would cost points. At the end of eight months Thursday night, Ruth Clements was declared winner and Mrs. Edmonson presented her with 21 books of stamps, which had been in escrow for this purpose.

Gertie Kirk was Queen of the Week, with the most weight lost and Polly Otwell was runner-up. The twenty-five members attended played an exercise game. A total gain of 24 1/2 pounds was reported and a loss of 181 1/2 pounds. The club will invite a speaker for the next meeting.

Friendship Club Meets in Griffiths Home

Friendship Club met in the home of Mrs. Ray Griffith Thursday evening for a social and salad supper.

Mrs. E.W. Johnson presented a devotional on Friendship and Thanksgiving, after which Mrs. Wilson Witherspoon quoted from an anonymous prayer, as follows: "Father, I'm not satisfied with what I did yesterday. Too many times I was thoughtless and selfish. Help me this day to be a true friend wherever I find myself. Help me to see the worth of everyone and draw me closer to Thee."

Mrs. Bert Mathis read the minutes, and thank-you notes from Girlstown USA and others. The president, Mrs. Witherspoon, reported on progress of the proposed new park planning committee.

The Committees were appointed for the Christmas party to be held December 12 at Fellowship Hall of First Methodist Church, as follows: Decorations - Blanche Johnson, Adelyn Swafford, Jackie Tate and Audie King; Menu - Mildred Anderson, Gladys Darsey and Rob Damron; Program - Mary Young, Hattie Griffiths and Inez Kennedy.

Aid to needy families will be the club's Thanksgiving project.

A delicious salad plate, pumpkin pie topped with whipped cream and spiced tea was served at tables covered by white cloths and centered by various-colored glass candleholders.

OES Holds Regular Meeting

The regular meeting of Muleshoe Chapter No. 792, Order of the Eastern Star was held Tuesday Evening, November 5th, with Mrs. Phyllis Beavers, Worthy Matron, presiding.

Tom Smith filled the office of Worthy Patron, as the regular officer, Spencer Beavers, was one of the beauties in the Miss America pageant. Routine business was transacted, and plans made for attending the P.E.S. School to be held in Herford, November 20th. Grand Cross of Color members were reminded of the banquet at Tode's Steak House, in Plainview, November 14th at 7:30 p.m.

A contribution was sent to the O.E.S. Home, as a Memorial to Ruby Morton's husband, Eugene, who passed away November 3rd in San Antonio. The Altar was draped in memory of Past Grand Matron, Mrs. Jennie Randolph, of the Grand Chapter of Texas.

Worthy Matron gave the Grand Chapter report and presented Mrs. Mary Farley, a member of the Time and Talent Committee of Grand Chapter. At the next regular meeting of Muleshoe Chapter, December 3rd, the Deputy Grand Matron, Mrs. Cortez Dowlen of Canyon, will make her official visit, and will be honored with a salad supper.

A practice has been called for the officers of Muleshoe Chapter, November 21, at 7:00 p.m.

each holding a lighted candle. Plate favors were miniature booklets of "The Legend of the Christmas Rose."

The evening was closed with a dismissal prayer by Sammie Moore. Attending were Lois

Witherspoon, Adelyn Swafford, Ruth Shafer, Gladys Darsey, Sybil Johnson, Mary Young, Jackie Tate, Sammie Moore, Mae Busbice, Billye Mathis, Rob Damron, Mildred Andrews, Audie King, Inez Kennedy and the hostess, Hattie Griffiths.

MHS Grad Earns Honors

Miss Zona Jane Branscum daughter of Mr. and Mrs. Thurlio Branscum, Muleshoe, will join professional actors in the cast of the musical, "Oklahoma," when it is presented at Stephens College here on Friday and Saturday, November 22 and 23. She will be a member of the girls' chorus.

The Stephens production of "Oklahoma" will star Bill Hayes, popular stage, television and movie personality, as Curly, supporting him will be

a cast of Stephens actors-in-residence, students and guest artists. The musical will be the first presentation on the 1968-69 Stephens Arts Series.

Miss Branscum was also chosen after auditioning as one of the ten girls representing Stephens College in the group known as "Campus Sing". The group recently entertained at Parents Weekend and at a banquet for town donors to Stephens College.

November 1 the Campus Sing group sang at a dinner in honor of the Governor of Missouri, of membership.



THANK YOU-Shown receiving her First Pearl award in ESA sorority is Mrs. Henry Stoneham, left, from Mrs. Don Seales, awards chairman. The First Pearl Award is a new honor which focuses special recognition on new members who participate in a wide range of chapter activities during their first 12 months of membership.



Jane Branscum



Brownies Present Skit

The Friday meeting of Brownie Troop 75 in the home of Mrs. H.E. Reeder was well attended and of special interest because two new members were invested, Sally Rodriguez and Sharla Farmer. Mrs. Fele Pena is troop leader and she is assisted by Mrs. Reeder.

The program for the meeting was a skit presented by troop members in costume. Games were played and refreshments served. Brownies attending other than

BROWNIE CEREMONY-Showing their 'great big Brownie smile' are Front row, Belinda Magby, Denise Reeder, Stephanie Brantley, Rhonda King, and Morgan Pena. Back row, Rosalinda Gonzales, Jowanna Hawkins, Rosalinda Toscano, Sharla Farmer, Sally Rodriguez, Elizabeth Isaac and Gloria Malouf.

the new members were Gloria Malouf, Belinda Magby, Elizabeth Isaac, Rhonda King, Morgan Pena, Rosalinda Gonzales, Jowanna Hawkins, Rosalinda

Toscano, Stephanie Brantley and Denise Reeder. Visitors were Shawnee and Kelly Pena, Mrs. Charles Farmer, Mrs. Salvador Toscano, Mrs. Curby Brantley, Mrs. Doyle King and Robert, Eugene Reeder, Dick Pena and Mrs. Boyd Bagby.

YOU ARE INVITED TO St. Clair's STYLE SHOW

Tuesday, November 19, 7:30 P.M.
Muleshoe High School Auditorium

NO ADMISSION CHARGE

This will be a sewing fashion show with garments made from fabrics selected from St. Clair's. Local seamstresses will present their costumes. Some will model their own creations.



VALUABLE DOOR PRIZES PLUS A SEWING MACHINE VALUED AT \$249.95

You may register for this sewing machine until Saturday, Nov. 16. No purchase necessary. Be sure to attend the Style Show...you may be the winner.

Anyone interested in modeling or entering their home made garment, contact St. Clair's...and select materials from their fabric department.



Jimmy Rowland

WE WISH OUR D.E. STUDENT A SUCCESSFUL FUTURE
White's Cashway



Pam Swint

PRESENTING OUR 'D.E. STUDENT'
Western Drug

Sudan Exes Hosted at Homecoming

The 16th annual Homecoming of Sudan ex-students was held November 2 in the Sudan cafeteria. Jerry Ray was president for the year, with Robert Deloach vice-president and Kay Gentry Wiseman secretary-treasurer.

A reception was held during registration for the ex-students and teachers, sponsored by Future Teachers of America. Band parents served the meal. Honor classes were 1927 and 1947. Jewel Hammock Pool was spokesman for the 1927 class and Mary Vereen Olds for the 1947 class. Sharon Rice, Sharon Wilson, Clinton Homecoming Sweetheart, Waymon Bellar spoke for the class of 1947 and Sue Graves Whitaker

was Homecoming Queen. A gift was presented to Anitha Bronson Easterling for coming the longest distance, from Pea-ridge, Arkansas. Mrs. Clifford Jenkins was presented a gift as representative of the first class of 1925 and to Vickie Bartlett for being the youngest ex-student. Entertainment was provided by local singing groups. The first group was Lynda Lane, Jenine Pierce and Pam Nix. Entertaining with songs of 1927-1947. Nita Whitaker, Kathy Rice, Sharon Wilson, Clinton Homecoming Sweetheart, Waymon Bellar spoke for the class of 1947 and Sue Graves Whitaker a skit and sang songs of today.

Committees responsible for this year's Homecoming were: Decoration, Mrs. Wanda Swart, chairman; Shirley Dunn, Vern Mungler, Quinell Pickrell, Ethel Beale, Edith Williams, Martha Markham, Mary Cowart, Mary Lee Powell. Reception: Mr. and Mrs. Frank Lane, chairman; Mr. and Mrs. Calvin Wiseman, Mr. and Mrs. Gene Bartley, Mr. and Mrs. Buddy Wiseman and Mr. and Mrs. Skinny Jenkins; Gifts, Olean Watts and Jenna Nichols; Registration, Ida Deloach, chairman, Mutt Hanna, Zanelle Martin, Cynthia Parrish, Susan Jones, Donna Masten, and Lucy Rent; Food, Chairman Richard Black and Wanda Williams; Publicity, Chairman Joe Bayles, Mildred Lance.

1969 officers were Robert DeLoach, president; Pud Wiseman, vice-president, and Mary Cowart, secretary-treasurer. Honor classes for next year are 1928-1948.

Journalist To Speak At ENMU

PORTALES (Special) -- A leading authority on African drama and literature and African affairs will lecture and meet with several classes on November 15 at Eastern New Mexico University.

Mrs. Delphine Sisy, journalist, broadcaster, and television producer from Sierra Leone, Africa, will lecture on "Contemporary African Drama" at 10 a.m. November 15 in the University Theatre. The lecture is open to the public. Her appearance at Eastern is sponsored by the Cultural Affairs Committee and the School of Speech and Drama. Mrs. Sisy is author of several poems and numerous newspaper columns, has served as French-English interpreter and holds degrees from Nottingham University, and from L'Alliance Francaise, France.



Judy Anderson

'MEET OUR D.E. STUDENT'
Anderson's
Montgomery Ward
Sales Agency

Ask Amy

BY AMY ADAMS



HER LADYFRIEND SELLS EVERYTHING!

Dear Amy:
Is it proper to pester your friends every time you see them to buy household items, etc. You name it... she'll be selling it. Every time she visits, she has some sort of book or catalog which she wants you to look through and order something. To top that, she is a home demonstrator of clothing wherein you invite some of your friends to a party and she brings her wares and sells them.

Dear Amy:
I have a friend who is always selling something: cards, cosmetics, household items, etc. You name it... she'll be selling it. Every time she visits, she has some sort of book or catalog which she wants you to look through and order something. To top that, she is a home demonstrator of clothing wherein you invite some of your friends to a party and she brings her wares and sells them.

Dear Amy:
I have a friend who is always selling something: cards, cosmetics, household items, etc. You name it... she'll be selling it. Every time she visits, she has some sort of book or catalog which she wants you to look through and order something. To top that, she is a home demonstrator of clothing wherein you invite some of your friends to a party and she brings her wares and sells them.

Dear Amy:
I have a friend who is always selling something: cards, cosmetics, household items, etc. You name it... she'll be selling it. Every time she visits, she has some sort of book or catalog which she wants you to look through and order something. To top that, she is a home demonstrator of clothing wherein you invite some of your friends to a party and she brings her wares and sells them.

Dear Amy:
I have a friend who is always selling something: cards, cosmetics, household items, etc. You name it... she'll be selling it. Every time she visits, she has some sort of book or catalog which she wants you to look through and order something. To top that, she is a home demonstrator of clothing wherein you invite some of your friends to a party and she brings her wares and sells them.

Dear Amy:
I have a friend who is always selling something: cards, cosmetics, household items, etc. You name it... she'll be selling it. Every time she visits, she has some sort of book or catalog which she wants you to look through and order something. To top that, she is a home demonstrator of clothing wherein you invite some of your friends to a party and she brings her wares and sells them.

Dear Amy:
I have a friend who is always selling something: cards, cosmetics, household items, etc. You name it... she'll be selling it. Every time she visits, she has some sort of book or catalog which she wants you to look through and order something. To top that, she is a home demonstrator of clothing wherein you invite some of your friends to a party and she brings her wares and sells them.

Dear Amy:
I have a friend who is always selling something: cards, cosmetics, household items, etc. You name it... she'll be selling it. Every time she visits, she has some sort of book or catalog which she wants you to look through and order something. To top that, she is a home demonstrator of clothing wherein you invite some of your friends to a party and she brings her wares and sells them.

Dear Amy:
I have a friend who is always selling something: cards, cosmetics, household items, etc. You name it... she'll be selling it. Every time she visits, she has some sort of book or catalog which she wants you to look through and order something. To top that, she is a home demonstrator of clothing wherein you invite some of your friends to a party and she brings her wares and sells them.

Dear Amy:
I have a friend who is always selling something: cards, cosmetics, household items, etc. You name it... she'll be selling it. Every time she visits, she has some sort of book or catalog which she wants you to look through and order something. To top that, she is a home demonstrator of clothing wherein you invite some of your friends to a party and she brings her wares and sells them.

Dear Amy:
I have a friend who is always selling something: cards, cosmetics, household items, etc. You name it... she'll be selling it. Every time she visits, she has some sort of book or catalog which she wants you to look through and order something. To top that, she is a home demonstrator of clothing wherein you invite some of your friends to a party and she brings her wares and sells them.

Dear Amy:
I have a friend who is always selling something: cards, cosmetics, household items, etc. You name it... she'll be selling it. Every time she visits, she has some sort of book or catalog which she wants you to look through and order something. To top that, she is a home demonstrator of clothing wherein you invite some of your friends to a party and she brings her wares and sells them.

Dear Amy:
I have a friend who is always selling something: cards, cosmetics, household items, etc. You name it... she'll be selling it. Every time she visits, she has some sort of book or catalog which she wants you to look through and order something. To top that, she is a home demonstrator of clothing wherein you invite some of your friends to a party and she brings her wares and sells them.

Dear Amy:
I have a friend who is always selling something: cards, cosmetics, household items, etc. You name it... she'll be selling it. Every time she visits, she has some sort of book or catalog which she wants you to look through and order something. To top that, she is a home demonstrator of clothing wherein you invite some of your friends to a party and she brings her wares and sells them.

Dear Amy:
I have a friend who is always selling something: cards, cosmetics, household items, etc. You name it... she'll be selling it. Every time she visits, she has some sort of book or catalog which she wants you to look through and order something. To top that, she is a home demonstrator of clothing wherein you invite some of your friends to a party and she brings her wares and sells them.

Dear Amy:
I have a friend who is always selling something: cards, cosmetics, household items, etc. You name it... she'll be selling it. Every time she visits, she has some sort of book or catalog which she wants you to look through and order something. To top that, she is a home demonstrator of clothing wherein you invite some of your friends to a party and she brings her wares and sells them.

Dear Amy:
I have a friend who is always selling something: cards, cosmetics, household items, etc. You name it... she'll be selling it. Every time she visits, she has some sort of book or catalog which she wants you to look through and order something. To top that, she is a home demonstrator of clothing wherein you invite some of your friends to a party and she brings her wares and sells them.

Dear Amy:
I have a friend who is always selling something: cards, cosmetics, household items, etc. You name it... she'll be selling it. Every time she visits, she has some sort of book or catalog which she wants you to look through and order something. To top that, she is a home demonstrator of clothing wherein you invite some of your friends to a party and she brings her wares and sells them.

Dear Amy:
I have a friend who is always selling something: cards, cosmetics, household items, etc. You name it... she'll be selling it. Every time she visits, she has some sort of book or catalog which she wants you to look through and order something. To top that, she is a home demonstrator of clothing wherein you invite some of your friends to a party and she brings her wares and sells them.

Dear Amy:
I have a friend who is always selling something: cards, cosmetics, household items, etc. You name it... she'll be selling it. Every time she visits, she has some sort of book or catalog which she wants you to look through and order something. To top that, she is a home demonstrator of clothing wherein you invite some of your friends to a party and she brings her wares and sells them.

Dear Amy:
I have a friend who is always selling something: cards, cosmetics, household items, etc. You name it... she'll be selling it. Every time she visits, she has some sort of book or catalog which she wants you to look through and order something. To top that, she is a home demonstrator of clothing wherein you invite some of your friends to a party and she brings her wares and sells them.

Dear Amy:
I have a friend who is always selling something: cards, cosmetics, household items, etc. You name it... she'll be selling it. Every time she visits, she has some sort of book or catalog which she wants you to look through and order something. To top that, she is a home demonstrator of clothing wherein you invite some of your friends to a party and she brings her wares and sells them.

Dear Amy:
I have a friend who is always selling something: cards, cosmetics, household items, etc. You name it... she'll be selling it. Every time she visits, she has some sort of book or catalog which she wants you to look through and order something. To top that, she is a home demonstrator of clothing wherein you invite some of your friends to a party and she brings her wares and sells them.

Dear Amy:
I have a friend who is always selling something: cards, cosmetics, household items, etc. You name it... she'll be selling it. Every time she visits, she has some sort of book or catalog which she wants you to look through and order something. To top that, she is a home demonstrator of clothing wherein you invite some of your friends to a party and she brings her wares and sells them.

Dear Amy:
I have a friend who is always selling something: cards, cosmetics, household items, etc. You name it... she'll be selling it. Every time she visits, she has some sort of book or catalog which she wants you to look through and order something. To top that, she is a home demonstrator of clothing wherein you invite some of your friends to a party and she brings her wares and sells them.

Dear Amy:
I have a friend who is always selling something: cards, cosmetics, household items, etc. You name it... she'll be selling it. Every time she visits, she has some sort of book or catalog which she wants you to look through and order something. To top that, she is a home demonstrator of clothing wherein you invite some of your friends to a party and she brings her wares and sells them.

THDA Wins National Award

COLLEGE STATION, -- The Texas Home Demonstration Association has won the Youth Award at the National Extension

"Instant Homes" Next

New York -- The list of instant items in our fast-moving society is constantly growing-- from coffee and tea, to milk shakes and pie crusts. But the ultimate may be achieved with the advent of the "instant home."

Some of the more imaginative architectural designers foresee homes made of inflatable plastic materials -- that can be blown up or deflated at will, according to an article in "Petroleum Today", published by the American Petroleum Institute.

While "instant homes" might seem a bit far-fetched right now, so did predictions in the 1930's about future uses of plastics as building materials -- many of which are realities today. These include the use of plastics in siding, window frames, pipes, paints, plumbing fixtures, shingles, gutters, doors, floors, and even in the glue that might hold these items together.

Because of their great flexibility and durability, plastics are being used more and more by builders and architects in the basic structure of the home itself. Already there are numerous examples of this architectural avant garde -- from the acrylic-paneled geodesic dome that thrilled visitors at Montreal's Expo, to graceful, all-plastic ski chalets perched on the snowy Alps.

According to "Petroleum Today," more than 250 companies currently manufacture petroleum-based chemicals, which, in turn, are used to make everything from insecticides to detergents, synthetic rubber to textile fibers -- and of course plastics. Out of every 100 barrels of oil consumed in this country, approximately four barrels go into the production of petroleum chemicals, and 30 per cent of these petrochemicals end up as plastics.

In Fashion

There is a distinctly feminine look about peignoir sets this season. They have a gossamer look and some have matching panties. Ruffles decorate necklines and hemlines. A curly hairdo is most appropriate in connection with such garments.

The tall girl always looks well in clothes with a Russian influence. One such coat of fur or leather goes in at the waistline and buttons down the front. A square cut hat of fur completes the costume.

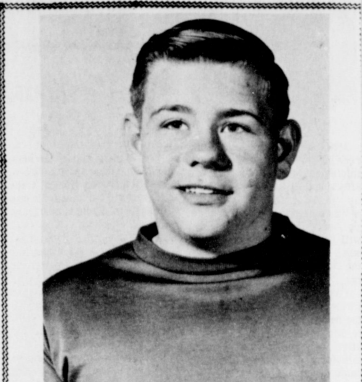
Coats are some longer this season and the cape is a very popular item.

A few tips to European travelers, leaving for the Old World in July or August, might serve a useful purpose for tourists and interest readers in general. And most of us are potential tourists.

fulfillment of each American.

Arraras called the population explosion "perhaps the most crucial problem."

Increasing population will cause problems with cities and schools, he said. "As people crowd into cities, the problems of housing, water supplies, sewage disposal, electricity, police and fire protection intensify. Food, employment, education, medical services and recreational facilities will become critical. "Rural-urban migrants quite often are poorly prepared for the emotional stresses of urban living, the decline of family importance and other economic, social and political changes," Arraras said. More educational institutions will be needed. Their challenge will be to maintain quality, the Chancellor said.



Jim Mardis
INTRODUCING OUR D.E. STUDENT
Mulshoe State Bank
Member FDIC



Merced Puent
WE PROUDLY PRESENT OUR D.E. STUDENT
Anthony's
CR ANTHONY, CO

Dine Out

Announcing

The OPENING of Ranch House Cafe

Monday, November 11

J.B. Hawk, Lou McDaniel, New owners & Managers.

1112 W. Am. Blvd. Ph. 272-3132

WE SPECIALIZE IN:

- *Steaks
- *American and
- *Mexican Food

COME BY AND GET ACQUAINTED!

Her special interests are African affairs, and African art and culture.

Mrs. Sisy has traveled extensively in Africa, and in Europe and the Middle East.

EXPLAINED
A moderate income is one which comes within a moderate distance of covering moderate expenses.

—Globe, Boston.

AUCTION
50 Acres
Property of Nora Blair & Wagon Wheel, FRIENA, TEXAS

Auction **Directions**
450 Acres property of Nora Blair & Wagon Wheel selling Friday, Nov. 15, 10:00 A.M.

Follow The Auction Signal 9 Miles West & 2 North of Friena, Texas on Hwy 1711

THE BEST WATER IN THE AREA

6 Wells:

- 2 0"
- 2 1"
- 2 On Electric Pump
- 2 On Motor Pump
- Well Depth 250' To Red Bed.
- Water Level 225' Over 1/2 Mile of 15" Underground Tib.

Drainage Equipment:

- 10 8" Joints
- 10 7" Lined Joints
- 3 Irrigation Motors
- 1 Pump
- 2 7 1/2" Pipes
- 1 1/2" & 2" Pipes

Government Check \$11,000

Get Brochure Showing Photos To Be Offered In Tractal Let Your Needs Be Known Opportunity Is Knocking! Call For Brochure

MARK YOUR CALENDAR & ATTEND THIS FINE SALE!

If You Have Property To Sell, call or write AMERICAN AUCTION COMPANY OF TEXAS, INC. 2202 Kemp Road, Wichita Falls, Texas Ph. 761-723-8421 Licensed Bonded Auctioneer, Bill Hewitt, Broker

TWO THINGS

Hold Home Trade AT HOME

Advance Ce
Forms Nov

With modern transportation what it is, no merchant can sit back and think of any customer as HIS--now and forever.

TWO THINGS

... and only two things ... bring Hometown buying to Hometown stores!

FIRST, it's well selected merchandise, of good quality.

SECOND, it's informing the potential buyer through attractive NEWSPAPER advertising.

TELL ... AND SELL ... THROUGH

Your Hometown Newspaper

THE BASIC MEDIUM

1716 SAN ANTONIO STREET
AUSTIN, TEXAS

TEXAS PRESS ASSOCIATION

HELP WANTED!

Missouri Beef Packers, Inc., is now accepting applications for permanent full time openings at our plant in Friena, Texas.

Steady year 'round employment. No experience necessary. We will train. Base wages \$2.40 to \$3.15 per hour after short qualifying period. Daily and weekly overtime. Company paid health and medical insurance. Paid vacation & holidays.

Many other fringe benefits.

Apply personnel office,
Missouri Beef Packers, Inc., Friena, Texas.
Ph. Area Code 806-295-3201



MULE'S TALE



Official Publication of Muleshoe High School Written and Edited by Students of the Muleshoe Schools

VOL. 3 NO. 10

CO-EDITORS John Elliott John Woodard

NOVEMBER 10, 1968

Muleshoe School Students to Observe Veterans Day



The Thespians Plan Beauty Pageant For November 16

The Thespian National Honor Society, Troop 714, met Wednesday, October 30, 1968, Joe Duke was high pointer of the pledges. Discussion of Beauty Pageant plans continued. November 16, 1968 will be the date of the Pageant at 8:00 p.m. The pageant to be held November 16, will be the setting for naming the most beautiful girl and most handsome boy of the school. The event will begin at 8 o'clock in Muleshoe High School Auditorium. Admission is \$1.00 for adults and 75¢ for students.

Robert Garlington, a Muleshoe High School graduate, who now resides in Canyon, will be the Master of Ceremonies. A panel of three judges will make the selection from 32 students. Four boys and four girls have been chosen from each class, and they will be judged on poise, beauty, and talent. Proceeds will be spent to further Fine Arts in Muleshoe High School.

It was a very good feeling to win that first one. We had a good team effort. Charles Beaman made 168 yards rushing and an offensive grade of 90% which is quite outstanding. Roger Swint also played a good offensive game. Defensively they were nearly all outstanding. Our two linebackers, Dennis Beene and Rober Swint and our two defensive halves Ronnie Barrett and Bobby Burge in particular stood out. I feel that we have gained a little momentum with our play of late. I hope that this momentum and this recent victory will enable us to beat Hereford this Friday night.



Gano Wilson

Teacher Profile

Muleshoe High School would like to welcome Mr. Gano Wilson, our new Industrial Arts teacher. Wilson is a graduate of West Texas State University. After graduation Mr. Wilson taught two years at Farwell and one year at Quintaque, and then moved to Muleshoe. Wilson is now living at 719 West Ave B. He enjoys hunting, house and photography. We wish Mr. Wilson a long and memorable stay in Muleshoe.



PROUDLY IT WAVES--The American flag and the Texas flag wave gently in the breeze to remind all of the freedoms enjoyed by the American people. This flag is displayed in the front at Muleshoe High School.

Veterans Honored This Special Day

We gather on Veterans Day to pay tribute to the veterans of America's wars, and to honor the fighting men now serving on foreign battlefronts. It is a time to pause and remember and pay respect to these men and women who served, and are now serving, our great nation in time of peril. This is the 50th year of a national observance in honor of veterans. Every American should reflect on the principles which 26 million living veterans and their dead comrades have defended. . . . principles of freedom for all men.

Troops are fighting in Vietnam, and by our very observance we acknowledge their brave deeds. In this quiet way we honor them and the heroes of past wars, and we let them know that we await that wonderful day when they will return. The 26 million living war veterans represent six wartime periods of our country, from the two remaining old Indian fighters to the young men now on the battlefields of Vietnam. Our nation's veterans and their families comprise about fifty percent of the country's population. Approximately 35.7 million persons have served in the United States Armed Forces. More than one-half of these veterans served in World War II.

answered the country's call to arms. With this kind of spirit, it is no small wonder that our great nation has progressed and prospered and stands as one of the greatest nations on earth today. With men such as our veterans contributing their many talents to the betterment of mankind, such as doctors healing the sick, scientists exploring outer space, school teachers molding the lives of our children, statesmen and law makers leading our country, we are in good hands--the hands of our nation's veterans. For these and many more reasons we wish to pay tribute to our veterans. We salute them for their achievements in civilian life. These citizens have given their best as citizen-service man and citizen-civilian. Our veterans, those who made the supreme sacrifice in years gone by, those alive and serving in the military today, and those who bear the scars of past wars are stirring examples of our high ideals and aims in America. We are deeply inspired by the spirit of our veterans, and because of this, America will always have strength and unity of purpose as a great nation of the world.

HS Girls Basketball

MULETTES DEFEAT FARWELL
Muleshoe High School's girls' basketball season opened last Saturday, November 2nd here in Muleshoe against the Farwell girls. This was a scrimmage game for both teams to enable the players and coaches to analyze weaknesses and strengths of each team. Muleshoe's "B" team defeated Farwell's "B" team 51-22. Janice Head scored 25 points, Gay Gable 18 points, and Charlotte Wagon, 8 points. The "B" guards played a very good game. The entire team committed only 9 fouls. The "B" team was nervous and looked slow and undecided at times. All and all the team played a fine game. In the varsity game the Mullettes won 34-26. The Muleshoe "A" team played a very poor and discouraging game. The only strong point was the defense provided by the guards. Ann Douglass scored 18 points to lead the offense. The offense failed to set up their patterns and error after error occurred. After the game the Mullettes realized work was needed in order to win. **MULETTES BREEZE PAST BOVINA**

The Mullettes Varsity and "B" teams coasted to easy victories over the Bovina teams this past Tuesday in Bovina. At times the game became extremely rough for basketball, but the Mullettes refused to become nervous and lose their game poise. In the opening game, the Mullettes "B" team rolled past the Bovina "B" team by the score of 30-8. Janice Head led the Mullettes "B" team with 50 points, Gay Gable 26, and Charlotte Wagon 14. Again the guards played superb defense. The entire team committed only 6 fouls. The Mullettes Varsity looking and playing much better than their first game easily subdued Bovina's "A" team 48-8. The entire team committed only 8 fouls. Muleshoe's guards displayed sensational ability on the defense. On the forward end, the forwards continued to look a little rusty, but improvement was evident. Ann Douglass led the Varsity forwards with 29 points, Debra Hayes, Karen St. Clair, Annette Williams, and Vicki Julian accounted for an additional 19 points.

HOME GAME

Mullettes - "A" - "B"
vs
Bovina - "A" - "B"
Tuesday, Nov. 12
at 6:30 P.M.

DECA Students Honored During Education Week

Muleshoe schools will observe American Education Week November 10 - 16. High school and Junior High school will have open house Monday evening from 7 to 9 p.m. A film will be shown in the high school auditorium from 7 to 7:30 p.m., dealing with education and school children. After the film, parents are urged to visit either the high school or Jr. High building to visit with respective teachers and to get acquainted with teachers and other school personnel. Mr. Tom Jinks, high school principal, and Mr. Fred Mardis, Jr., high principal wish to invite all parents to open house Monday night--to see the film at 7:00 p.m., then to visit schools from 7:30 until 9 p.m.

Kangaroo Court Held

Kangaroo Court was opened for 1968 at 10:45 on Friday, October 25 by "Judge" Trevor Ford. Acting as prosecuting attorney was Sam Feagley, and as bailiff was Betty Harbin. Unfortunately (at least for the defendants but not for the enjoyment of the audience) no defense was provided, forcing the accused to defend themselves. Among the charges was bigamy, committed by Bobby Burge. For his punishment Jo Ann Dobbins and Cynthia Puckett chauffeured him around the auditorium in a wheelbarrow. Others being punished were Randy Field, Lee Clodfelter, Donna Locke, Tanya Cherry, Bucky Taylor, Martha Jane Chapman, J.C. Slaughter, Marilyn Pool, David Williams, Cynthia Gable, Sheryl Mason and Steve Woodard.

Punishments included a potato sack race, a blind-folded make-up job, and a question and answer session. Then the jury (which consisted of S.C. members) turned the tables on the Judge and prosecuted Trevor Ford and Janet Ellis.

Senior Rings Now on Sale At High School

Senior rings will be ordered November 14! The rings have a gold body and a red setting stone. The ring also has the year the Senior will graduate. The prices for the rings are: light-weight, \$24.00; Medium-weight, 25.00; and the heavy-weight, \$27.50. They will be ordered November 14 and payment must be in full. All Juniors anxiously wait until they can get their rings.

Student Council To Attend District Meet

Saturday, November 9, 1968, at 6:00 a.m., approximately 13 officers and members of the Muleshoe High School Student Council will leave for the district convention in Brownfield. The council plans to run for Parliamentarian of the SPASC (South Plains Association of Student Councils). Sudan High School will make the nomination speech and Denver City High School will second the nomination. In addition to the elections, the students will attend various discussion sessions in which they will obtain material and ideas for bettering their council.

These are just a few of the reasons that we honor our veterans. He still serves his country even though he has laid down his arms. This dedication to his country has carried over into the veteran's peacetime pursuits. He is an outstanding citizen taking part in worthwhile activities in his community.

We are thankful for the many veterans who have repeatedly risked their lives in their country's defense.

Presto Chango Mark Evans, Shows Magic

Mark Evans is an amazing young man. This man presents "Magic" as you have never seen it before. His smooth perfection in manipulation, together with superb showmanship, puts him in a class by himself. He presented rapid-fire miracles in an Ultra-Modern manner that enchanted the whole M.H.S. audience. The entire student body as well as the faculty of M.H.S. enjoyed this misdirected fantasy very much. This program was presented by "The Southern School Assemblies Agency."

These are just a few of the reasons that we honor our veterans. He still serves his country even though he has laid down his arms. This dedication to his country has carried over into the veteran's peacetime pursuits. He is an outstanding citizen taking part in worthwhile activities in his community.

Senior Rings Now on Sale At High School

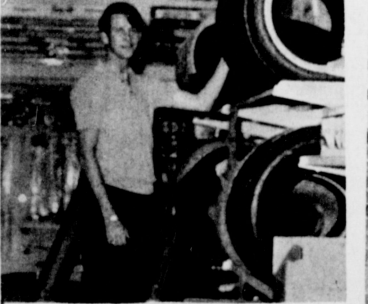
Senior rings will be ordered November 14! The rings have a gold body and a red setting stone. The ring also has the year the Senior will graduate. The prices for the rings are: light-weight, \$24.00; Medium-weight, 25.00; and the heavy-weight, \$27.50. They will be ordered November 14 and payment must be in full. All Juniors anxiously wait until they can get their rings.

High School Honor Roll

- SENIORS**
Renee Dyer, Lindy Kerr, Doris Horsley, Trevor Ford, Donnie Edler, Vickie Street, Mart Francis, Suzi Tanner, Annette Burrows, Joe Riley, Nancy Hopper, Rena Lackey and Marilyn Barnett.
- Also Karen Dobbins, Tommy Little, John Pitts, Vicki Kellogg, Karla Lowndy, Annette Williams, Charlotte Davis, Kathy Williams, Sue Pyant, Vina Bass, Ricky Hudson, Peggy Williams and Carla Ellington.
- JUNIORS**
Darla Kendall, David Henderson, Elizabeth Seales, Nelda Finley, Melanie Freurey, Leland Ferris, Devona Bropley, Tanya Cherry, Ann Douglass, Kathy Seymore, Trenea Bryant, Debra Hayes, Sam Feagley and Betty Harbin.
- FRESHMEN**
Cecil Duke, Linda Lambert, Monica Griffiths, Brenda Kimbrough, Jam Jinks, Karen Lockner, Jolene Rempe, Marilyn Pool, Sue Darsey, Johnny Hayes and Martha Jane Chapman.
- Also Peggy Carter, Greta Bamert, Sharon Harris, Patty Murray, Lou Ann Cole, Helen Lucero, Geraldine Gray, Cynthia Gable, Gary King, Connie Redwine and Ruby Page.



MULESHOE HIGH SCHOOL BEAUTIES--Faculty members who participated in the Miss America Comedy Hour Pageant were 'Miss' George Washington, 'Miss' Hoot Gibson, 'Mr' Elizabeth Watson, 'Miss' Dick Stafford, 'Miss' Charlie Beaman, 'Miss' Wayland Ethridge, 'Mr.' Dorothy Beddingfield and 'Miss' Royce Barnes. Shown in front is Thumper Gibson, small son of Hoot Gibson.



DE STUDENT OF THE MONTH--Chosen as DE student of the month is Keith Griffin who works at Gibson's.



GIRL'S CHOIR MEMBERS--Call Cody, Gayla Barker, treasurer; Karen Signallide, Francis Gutierrez; Cathy Wilson; Adella Delon, vice president and Sherri Minckler, president.



PUT GREEN in

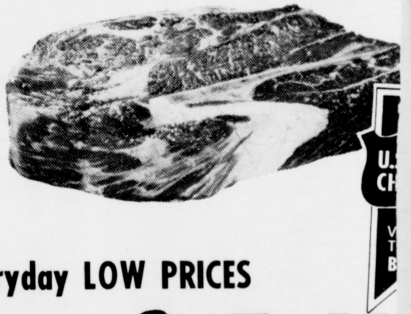
PIGGLY WIGGLY BEEF IS NATURALLY TENDER!
 USDA Choice beef is grain-fed flavor and naturally aged for tenderness. 90% of the home-makers today prefer USDA Choice Grade Beef...the only beef sold at Piggly Wiggly!

PIGGLY WIGGLY BEEF IS VALU-TRIMMED!
 All beef sold at Piggly Wiggly is 'val-trimmed' to give you more meat for your money. All excess fat and bone is removed before packaging. No tenderizers added... you pay for only, lean, naturally tender beef...

PIGGLY WIGGLY BEEF IS ECONOMICAL!
 We invite you to compare Piggly Wiggly Prices! Our policy is to sell quality beef at the lowest possible price...always! You save money...plus added bonus of valuable S&H Green Stamps with your purchases!

COMPARE THESE PRICES!	Piggly Wiggly	Super Market 1	Super Market 2	Discount Store A	Discount Store B	Discount Store C	COMPARE THESE PRICES!	Piggly Wiggly	Super Market 1	Super Market 2	Discount Store A	Discount Store B
USDA Choice, Valu Trim Beef							Cornish, Swift's 22 oz					
ARM ROAST lb.	69¢	89¢	79¢	69¢	79¢	69¢	GAME HENS Ea.	79¢	98¢	89¢	89¢	89¢
USDA Choice, Valu Trim Beef							Breaded, Singleton's Tidbits					
ROUND STEAK lb.	89¢	98¢	98¢	98¢	95¢	\$1.09	SHRIMP Lb., Pkg.	79¢	\$1.09	89¢	98¢	—
USDA Choice Valu Trim Beef							Cocktail, Singleton's 4 oz.					
T-BONE STEAK lb.	\$1.09	\$1.19	\$1.19	\$1.09	\$1.19	\$1.39	SHRIMP 3 for	\$1.00	\$1.05	\$1.00	\$1.17	\$1.11
USDA Choice Valu Trim Beef							Perch, Trade Winds					
SHORT RIBS lb.	29¢	39¢	39¢	39¢	39¢	39¢	FISH FILLETS lb.	49¢	59¢	59¢	57¢	49¢
USDA Choice Valu Trim Beef							Tom, Sunco, USDA Grade A, 16 lb. and up					
SIRLOIN STEAK lb.	93¢	98¢	98¢	93¢	95¢	\$1.15	TURKEYS lb.	39¢	39¢	39¢	39¢	39¢
USDA Choice Valu Trim Beef							Cream, Tulip Brand					
CHUCK ROAST lb.	49¢	73¢	59¢	49¢	53¢	49¢	CHEESE 3 oz. Pkg.	2/25¢	15¢	2/33¢	17¢	14¢
Boneless, USDA Choice, Valu							8 oz. Pkg.	29¢	35¢	43¢	39¢	35¢
BEEF STEW lb.	79¢	89¢	89¢	89¢	89¢	89¢	Seastar					
Wilson Certified							FISH STICKS lb.	49¢	53¢	69¢	—	65¢
SLICED BACON lb.	73¢	83¢	79¢	79¢	79¢	79¢	Fresh, Picnic Cut					
Rath's All Fork							PORK ROAST lb.	39¢	43¢	49¢	39¢	—
SAUSAGE lb.	39¢	45¢	45¢	49¢	—	45¢	Family Pak					
Farmer Jones							PORK CHOPS lb.	69¢	79¢	79¢	79¢	79¢
SLICED BACON lb.	65¢	79¢	69¢	—	69¢	69¢	USDA Graded Whole					
Sliced, Farmer Jones, All Meat							FRESH FRYERS lb.	31¢	39¢	39¢	—	35¢
BOLOGNA 12 Oz. Pkg.	49¢	65¢	—	55¢	—	59¢	Smoked, Decker's Whole					
Sliced, Farmer Jones, All Meat							PICNICS lb.	39¢	49¢	49¢	39¢	49¢
BOLOGNA lb.	55¢	75¢	69¢	59¢	59¢	69¢	Farmer Jones, Block Style					
Farmer Jones, Bologna, Olive, Spiced Luncheon, Pickle or Liver							LONGHORN CHEESE lb.	79¢	89¢	90¢	93¢	79¢
LUNCHEON MEAT 6 Oz. Pkg.	3-89¢	33¢	35¢	35¢	35¢	33¢	Farmer Jones, American or Pimento					
Rath's All Meat							SLICED CHEESE 6 oz. Pkg.	35¢	37¢	39¢	39¢	39¢
FRANKS 12 Oz. Pkg.	49¢	57¢	53¢	49¢	49¢	49¢	8 oz. Pkg.	43¢	—	—	—	—
Farmer Jones All Meat							12 oz. Pkg.	65¢	69¢	69¢	69¢	65¢
FRANKS 12 Oz. Pkg.	47¢	53¢	—	49¢	49¢	—						
Lady Bird, 5 to 6 Lb. Avg.												
BAKING HENS lb.	39¢	49¢	59¢	49¢	49¢	49¢						

Compare These Everyday Low Prices! PUT GREEN IN YOUR POCCKET



RIB STEAK
 USDA Choice Valu-Trim Beef
79¢
 POUND

SWISS STEAK
 USDA Choice Valu-Trim Beef
79¢
 POUND

FAMILY STEAK
 USDA Choice Valu-Trim Beef
59¢
 POUND

Piggly Wiggly GUARANTEE
 Piggly Wiggly has ALWAYS had a double-your-money-back guarantee on all our beef. You must be completely satisfied with all purchases in our meat department or double your money back!

USDA CHOICE
SHOULDER Roast
 USDA Choice Valu-Trim Beef
59¢
 POUND

A NEW PIECE EACH WEEK
 this week
2 1/2 QUART Casserole
\$4.49
only \$6.20 Value

YOUR POCKET



COMPARE THESE PRICES!	Piggly Wiggly	Super Market 1	Super Market 2	Discount Store A	Discount Store B	Discount Store C	COMPARE THESE PRICES!	Piggly Wiggly	Super Market 1	Super Market 2	Discount Store A	Discount Store B	Discount Store C
8 Oz. Box POST TOASTIES Sunlight 5 lb. Bag	22¢	29¢	29¢	25¢	25¢	22¢	Gelatin JELLO 3 Oz. Pkg. 24 Oz. Btl.	10¢	2-25¢	2-25¢	10¢	9¢	10¢
FLOUR Stokely Fruit #303 Can	45¢	49¢	49¢	39¢	45¢	45¢	CRISCO OIL Family Scott Toilet	53¢	59¢	59¢	55¢	53¢	53¢
COCKTAIL Stokely Golden	26¢	29¢	29¢	25¢	26¢	28¢	TISSUE 4 Roll Kleenex Facial	38¢	45¢	45¢	39¢	38¢	39¢
CORN #303 Can Del Monte #303 Can	22¢	25¢	25¢	22¢	22¢	21¢	TISSUE 125 Ct. Box	21¢	25¢	25¢	19¢	21¢	21¢
SWEET PEAS Hi-C Fruit	23¢	25¢	27¢	23¢	25¢	24¢	DRESSING Del Monte	39¢	39¢	43¢	39¢	39¢	38¢
DRINK 46 Oz. Can Libby Pineapple	28¢	39¢	3-\$1	25¢	29¢	29¢	CATSUP 14 Oz. Btl.	25¢	29¢	29¢	25¢	25¢	25¢
JUICE 46 Oz. Can Carnation	29¢	39¢	39¢	35¢	29¢	29¢	BLEACH Gallon Parkay 1 lb. Pkg.	54¢	65¢	69¢	59¢	54¢	54¢
TUNA # 1/2 Can Van Camp #300 Can	35¢	39¢	39¢	37¢	35¢	35¢	MARGARINE Imperial Powdered	30¢	33¢	33¢	30¢	29¢	30¢
PORK & BEANS Wolf Plain	16¢	2-39¢	2-39¢	15¢	17¢	16¢	SUGAR 1 lb. Box Crest	17¢	19¢	2/39¢	18¢	17¢	17¢
CHILI 18 Oz. Can	75¢	79¢	79¢	73¢	75¢	75¢	TOOTH PASTE Lge. Size	53¢	59¢	59¢	53¢	48¢	55¢

AT PIGGLY WIGGLY YOU GET LOW, LOW, PRICES

PLUS! S & H GREEN STAMPS!
PLUS! FAST FRIENDLY SERVICE!
PLUS! SPEEDY CHECKOUT SERVICE!
PLUS! EXCITING WEEKLY AD SPECIALS TO SERVE YOU!
PLUS! CONVENIENT LOCATIONS TO SERVE YOU!
PLUS! FAST COURTEOUS CARRY OUT SERVICE
PLUS! HUNDREDS OF EVERYDAY LOW SHELF PRICES!
PLUS! DOUBLE YOUR GREEN EVERY WEDNESDAY WITH \$2.50 PURCHASE OR MORE!

"ULTRA FRESH FRUITS & VEGETABLES at PIGGLY WIGGLY!"
 TEXAS RUBY RED
GRAPEFRUIT 5 Lb. Bag **49¢**

Tokay
GRAPES Large Clusters Pound **29¢**

D'Anjou, Fall Favorite
PEARS Pound **39¢**

Red, Adds Color to Your Salads
CABBAGE Pound **19¢**

Large, Crisp Bunches
GREEN ONIONS Each **12¢**

APPLES ROME BEAUTY **15¢**
 Fine For Baking POUND

Campfire
PORK & BEANS Number 300 Can **11¢**

Sugary Sam
YAMS Number 3 Squat Can **29¢**

Stokely's Cut
GREEN BEANS Number 303 Can **20¢**

KRAFT MARSHMALLOW CREAM **19¢**

Baker's
CHOCOLATE CHIPS 5¢ Off Label 12 oz. Pkg. **35¢**

Scott, Asst.
TOILET TISSUE 1000 Sheet Roll **9¢**

"FRUIT CAKE INGREDIENTS"

Mor, Poly Bag
FRUIT CAKE MIX 16 Ounce **49¢**

Paradise, Natural
PINEAPPLE WEDGES 4 Ounce Cup **35¢**

Old English
FRUIT & PEELS 8 Ounce Cup **35¢**

Paradise
ORANGE PEEL 4 Ounce Cup **29¢**

Paradise
DICED CITRON 4 Ounce Cup **29¢**

Paradise, Whole, Red
CHERRIES 4 Ounce Cup **39¢**

IDEAL GRADE A MEDIUM
EGGS **39¢**
 DOZ.

Grade A
SMALL EGGS Dozen **37¢**

SUNLIGHT FULLY GUARANTEED
FLOUR **29¢**
 5 LB. BAG

Golden West
FLOUR 5 Pound Bag **45¢**

SALAD DRESSING **25¢**
 SUZAN QT. JAR

Morton
SALAD DRESSING Quart Jar **49¢**

C & H HOLLY OR IMPERIAL
SUGAR **47¢**
 5 Lb. Bag

PURE CANE granulated
 Liquid Sweetener
SWEET 10 6 Ounce Bottle **79¢**

HEALTH & BEAUTY BUY OF THE WEEK
 REGULAR \$1.09
PEPTO BISMOL 8 oz. Btl. **73¢**

'HEALTH BUY OF THE WEEK'
 REGULAR 69¢
ALKA SELTZER 25 Ct. Btl. **49¢**

MGA, Stems and Pieces
MUSHROOMS 4 Ounce Can **33¢**

Frito Brand
BEAN DIP 10 1/2 Ounce Can **27¢**

Sunshine, Hydrox
COOKIES 16 Ounce Package **49¢**

Del Monte, Sweet
CHERRY PEPPERS 14 1/2 Ounce Jar **43¢**

Del Monte, Fancy
SPINACH Number 2 1/2 **33¢**

Hunt's Fancy
CATSUP 20 Ounce Bottle **33¢**

Hunt's
TOMATO SAUCE # 303 can **25¢**

Lightning White
CLEANER Quart Bottle **75¢**

SEC NOW ON SALE 99¢

THE RANDOM HOUSE AMERICAN DICTIONARY

Sections 2 through 12—only 99¢ each
 One piece Cloth Binder—only \$1.99

FRESH FROZEN FOODS!

French Fries Cal Ida
POTATOES **29¢**
 2 Lb. Pkg.

Jeno's All Varieties
PIZZA ROLLS 6 Ounce Package **69¢**

Morton's
PIE CRUST 10 Ounce Package **39¢**

Morton's
HONEY BUNS 9 oz. Pkg. **25¢**

PIGGLY WIGGLY

1st in Savings!

Bula News

by Mrs. John Blackman.

Several cotton farms in the community were hit by a rain and hail storm Friday night that did much damage to the open cotton.

Mr. and Mrs. J.E. Layton attended the Miss South Plains Beauty Pageant, Saturday evening held in the Levelland High School Auditorium. Mrs. Layton's niece Teresa Burris, daughter of Mr. and Mrs. Bill Burris of Wellman and a student at South Plains College was one of the contestants.

Mr. and Mrs. R.E. Jones were spending a few days with home by a free ride. Their mother Mrs. W.D. Jones of Quail. Mrs. Jones has been a patient in the Medical Arts Hospital for the past week, but she is much improved.

Mr. and Mrs. John Blackman visited Sunday at the Muleshoe Nursing Home with his mother Mrs. Nettie Blackman.

Company for the Tom Bogards over the weekend were Mr. and Mrs. Gordon Billingsley of Springer, N.M. spent Saturday night and Sunday, Saturday afternoon Mr. and Mrs. Jim Gibson of Farmington, N.M. and Mrs. Lura Rhodes of the Muleshoe Nursing Home, also Mrs. Jake Bogard and children Brad and Shell of Littlefield visited.

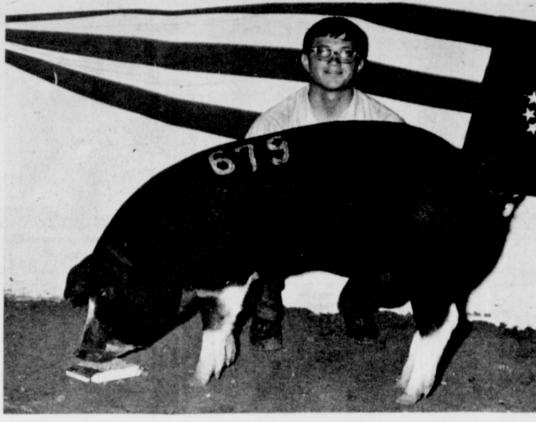
Seven RA of the Bula Baptist Church and their counselors enjoyed a picnic Sunday afternoon at Bull Lake. The group met in the early afternoon at the Baptist Church and rode their bicycles to the lake, played games and had their lunch, then returned to the church.

Mr. and Mrs. R.E. Jones were picked up for the return by a free ride. Their mother Mrs. W.D. Jones of Quail. Mrs. Jones has been a patient in the Medical Arts Hospital for the past week, but she is much improved.

Sowder and counselors, Eddie Wallace and Larry McCain, Mr. and Mrs. G.B. Salyer attended a sinner Saturday evening at the home of her sister Mrs. A.L. Robertson in Sudan. They also got to visit with other relatives among them Mr. and Mrs. Earnest Allen Kendrick of Perryton and Mr. and Mrs. Steve Bassel of Venice, Calif.

Mr. and Mrs. J.W. Layton enjoyed having as dinner guests several of their children. They were Mr. and Mrs. Earnest Ellison of Lubbock, Mr. and Mrs. Eldrid Mize of Crosbyton, Mr. and Mrs. Zane Ellison and Troy Dale of Muleshoe, Also Mr. and Mrs. J.E. Layton and boys and Mr. and Mrs. Harold Layton and children. Mrs. Gene Bryan and Mrs. L.L. Walden visited Monday afternoon with Mrs. S.A. Williams at the Morton Nursing Home.

Mr. and Mrs. J.D. Rowland visited Saturday and Sunday in Abilene with his parents Mr. and Mrs. J.F. Rowland and son Mike and also a sister and family, Mr. and Mrs. F.A. Donnelly.



CHAMPION POLAND--Wayne Kahlich, Lazbuddie FFA, is handler of the champion Poland China Barrow of the junior show at the State Fair of Texas. Mike Windham, Lazbuddie Future Farmer of America is the owner.

Tigers Downed By Mules, 42-12

Whoa, now! -- could have been the call of the Freshship Tigers Thursday night, as the Muleshoe Freshmen Mules romped and rambled all over the field to down the Tigers, 42-12.

Randy Field was the first Mule to go scampering down the field on a 57 yard run with only one minute and forty-eight seconds gone by in the first quarter. Bobby Hayes punched over the line to make two extra points and a score of 8-0.

Field also scored the second TD when he received a pass in the end zone, in 4:04 of the first. An attempted pass for extra points failed and the score was 14-0.

Jimmy Harold Steptoe recovered a Freshship fumble to help set up the next TD. It was a quarterback sneak from the three yard line. Hayes ran the extra points and with 57 seconds in the first quarter it was a 22-0 game.

Freshship hit the scoreboard with 9:42 left in the second and the try for extra point failed.

An attempted pass for the next score was intercepted by the Tigers right on the goal line, however, Riley intercepted a few minutes later to put the ball back in control of Muleshoe once again.

At halftime the score stood at 22-6.

In the third quarter Lee Clodfelter standing over through the middle punched up for a TD with 7:45 on the clock. The kick for extra points failed. Riley scored again in the third, with 5:51 on the clock. He made a 60-yard punt return, romping down the field for the TD. A Clodfelter to Field pass was good for two points to make it a 36-6 game.

Clodfelter made the last TD for the Mules on a 48 yard run to end the scoring at 42 for



THE DIFFICULTY
Our politicians are perfectly familiar with all the questions of the day. The difficulty is that they don't know the answers. -Democrat, Davenport, Ia.

Fighting Bulldogs

By Bula Junior Class

Patricia Grusendorf, president of the B.H.S. student body, brought the morning devotional October 28. Her theme was "Today."

The Bula Jr. High football team was defeated by the Three-Way Eagles, on Three-Way ground October 29. The final score was 36-22.

Thursday night, the Harvest Festival, sponsored by the Student Council, took place at the Bula High School. The climax of the evening came when Nanette Hall and Ronald Beasley of the 3rd grade were crowned Elementary Queen and King. Freda Layton and Ron Rinsinger of the Freshman class were crowned as the High School Royalty.

The money made by each class will be deposited in the various class treasuries.

The Bula High School football team traveled to Loop, November 1, and tangled with the Longhorns for their Homecoming. Loop slipped by the Bulldogs, 16-6. Tom Newton scored Bula's single TD.

The Bula Junior High Girls Basketball team went to White-Haral Monday, November 4.

W. M. Sherley Will Receive Alumni Award

The final score was 31-22, Lisa Rinsinger was high pointer for Bula.

The following night the Bula High School girls walloped Nazareth in two games.

The B team clobbered the Swits with a 50-30 final score. Pam Layton was Bula's top shot with 22 points. Margaret Richards and Iva Clawson both ripped the chords for 14 points each. The A team also belted the Nazareth girls with a final tally of 70-15.

Bookmobile Schedule

Day	Location	Time
Wednesday	Circleback	8:45 - 9:45
	Bula #1	10:15 - 11:15
	Bula #11	12:00 - 1:00
Thursday	Amherst #1	9:15 - 9:45
	Amherst #11	9:45 - 10:15
	Springlake #1	11:00 - 11:45
	Springlake #11	12:00 - 1:00
	Earh	1:15 - 3:45
Friday	Pleasant Valley	10:00 - 11:00
	Sudan #1	12:00 - 1:00
	Sudan #11	1:00 - 4:00
Saturday	Morton	9:30 - 12:00

W. M. Sherley Will Receive Alumni Award

W.M. Sherley of Lazbuddie will be one of three men to receive awards at the 1968 Homecoming at Texas Christian University on November 16.

Sherley, who established the community of Lazbuddie is a member of a pioneer West Texas family. He was graduated from TCU in 1924 and both his wife and son hold degrees from the University. As a student, the award recipient was president of a campus literary society, business manager for the yearbook and football team manager.

He has been recognized for his activities in farming, ranching and soil conservation, as well as his interests in athletics and education. He is owner of the Sherley Grain Co. of Anna and serves as president of the Sherley-Anderson Laz-

buddie Elevator in Bovina. He is former chairman of the TCU Board of trustees athletic committee and now serves as an honorary board member.

Dr. W.L. Parker of Wichita Falls and TCU Athletic Director Othol 'Abe' Martin of Fort Worth.

The trio will be presented awards during ceremonies on November 16 with Dr. J.M. Moudy, TCU chancellor and Charles Floyd, national president of the TCU alumni association, participating. The event will be a highlight of the annual alumni organization meeting, to be held in Daniel-Meyer Coliseum in conjunction with a barbecue buffet for alumni and their families beginning at 11 a.m.

Tax Man Sam Sez:

"LOST TAXPAYERS"

The Internal Revenue Service prides itself on being a highly professional and competent organization. Part of the professionals are engaged in finding taxpayers, and naturally these well-trained men and women are capable--and probably have more ways of finding you than any other group. On top of this, Internal Revenue has everybody's number. The fact that thousands of taxpayers get lost every year is not a criticism of these fine "finders of lost taxpayers." Nevertheless, every year Internal Revenue spends time looking for millions of taxpayers who move and forget to change their address. The tax folks find most of these in a few weeks or a few months. But there are always a few thousand that get so lost that even IRS can't find them. At one time, these people would have "donated" their refund to the Treasury of the United States--and thousands did. But since the computer age, IRS has a mark on the taxpayer's tape record to show that Internal Revenue owes him money (as well as a mark for those owing Internal Revenue money). It's our guess that they will eventually find 99.9%. In the meantime, if you are lost from your refund check, go to Internal Revenue and find yourself.

Beep Beep..

AUSTIN--Although the pace was hectic for all of the 66 men who helped with the Texas Parks and Wildlife Department's Wildlife Exhibit at the Dallas State Fair, it is generally conceded that the men who had the most mind-shattering duty were those who stood by the roadrunner cage.

They were almost driven crazy by the "beep beep" from the visitors.

Tom Abbot, the exhibit supervisor, says the roadrunners don't really go "beep beep," but few of the visitors could resist "beeping" at the bird.

Abbot said there was one time exhibit personnel hoped they would get a reprieve from the incessant "beep." This was the time a middle-aged, dignified looking man, graying at the temples and of swarthy complexion, approached the roadrunner cage with an air of scrutiny. After standing before the cage for a moment, he furrowed his brow, took a short puff on his cigar, and said with great basso profundo, "beep beep."



John Henderson

'SALUTING OUR D.E. STUDENT' Harvey Bass Appliance

Your next car is unbeatable.



Newport 4-Door Hardtop

Your next car can have a fuselage instead of just a body bolted to a frame.
Your next car can have a cockpit instead of just a seat and a dashboard.
Your next car can be any one of 15 new Chryslers for 1969.

And where to find it:

AUTHORIZED DEALERS CHRYSLER MOTORS CORPORATION

Most THE unbeatables



B M G MOTORS, INC.

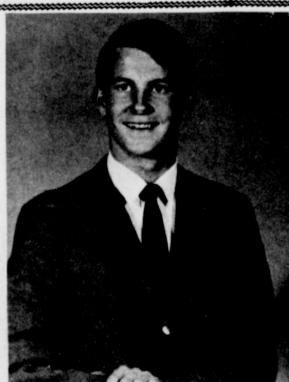
1701 W. American Blvd. Muleshoe, Texas

The Great New '69 Chrysler.



Rena Lackey

HONORING THE D.E. STUDENTS Jack Young



Keith Griffin



Priscilla McCaig

HONORING THE D.E. STUDENTS DURING AMERICAN EDUCATION WEEK Gibson's Discount Center

STATE CAPITAL Highlights AND Sidelights

by Norm Sanford

AUSTIN, Tex. -- Texas' first bilingual education plan designed to curb the school dropout rate and provide better teaching for 500,000 children as been cleared for action. Fifteen - member advisory committee approved a plan as drawn by the Texas Education Agency task force.

Dr. Severo Gomez, director of TEA International and Bilingual programs, said the high dropout rate among Spanish-speaking pupils is largely due to traditional instruction methods.

New statewide plan would enable young pupils to learn their lessons in Spanish until they get through grounding in English. At the same time, it seeks to teach English-speaking children to be fluent in Spanish as well.

Federal government has allocated \$7.5 million for bilingual education programs, and Texas is due to get a substantial share early next year.

REGIONAL PLANNING -- U.S. Department of Housing and Urban Development has given Gov.

John Connally's office its National Award for Outstanding Contributions to Inter-governmental Relations.

HUD Secretary Robert C. Weaver commended Connally, saying his regional-planning programs are "indicative of how initiative, cooperation and sound program execution can improve the living environment of our citizens and meet the challenge of urban growth."

Connally released a directory of councils of governments and regional-planning commissions, revealing that assistance by the state for regional-planning in the fiscal year was in excess of \$1.7 million to voluntary associations of local governments which serve three - fourths of the state's population.

Currently, there are 20 active COGs in the state, and they cover 101 counties, 277 cities, 72 school districts and 55 special districts.

LIQUOR IMPORTATION -- Texas Liquor Control Board is launching a new program of public information, figuring that

if the average citizen is well informed, he'll stay out of trouble more.

One new area is educating persons heading for Mexico. This will be in the form of letters handed out at all likely spots, telling the visitor that, when he returns, he can bring back only one quart of liquor every 30 days, and Texas law requires a tax of 42 cents per quart.

Emphasized will be the state law against importation or even possession of any liquor container of less than one-half pint. This prohibits the mini-bottles which many tourists try to bring back as souvenirs.

NEW BOTTLE CLUB PLAN DRAWN -- Liquor Control Board staff has drawn another new set of rules for conducting private bottle club business which soon will be subjected to public hearing.

While rules of last February sought to tighten guest card distribution and eliminate cash sales of mixed drinks, this latest revision is not so strict. It does not deal with controversial guest card distribution issues which are still under court challenge.

Rules would require a minimum of 25 members to form a club and provide that new members be approved by a membership committee.

COURTS SPEAK -- In a key labor case, Texas Supreme Court reversed the Beaumont Court of Civil Appeals and dissolved a temporary injunction which had halted picketing by the millwrights' union at Owens-Illinois' plant in Orange.

High Court denied a rehearing sought by a Waco man who unsuccessfully filed a defamation case when Sears, Roebuck posted his name on a hot check list.

In line with the U.S. Supreme Court Witherspoon decision prohibiting automatic exclusion from capital case juries of those who object to the death penalty, Court of Criminal Appeals reversed two Texas death penalty cases and affirmed two others.

Conviction of an Abilene man for violating the state securities act was reversed by Court of Criminal Appeals which earlier had upheld the trial court finding.

POLICE TRAINING PUSH ON -- War on crime efforts is proceeding on many fronts. Many center around improvement of police training.

Sam Houston State College at Huntsville is pushing for recognition as the site of a statewide police academy.

Unless a statewide academy is created, says Sam Houston College President A.B. Templeton, 30 to 40 local academies soon will be started with federal funds. He proposes to build facilities between Sam Houston and the penitentiary at Huntsville with convict labor and materials produced at the prison at a cost of about \$2 million. Federal government would be expected to pay half that cost.

BAIL BOND REFORM -- State Bar of Texas and the State Junior Bar will ask the Legislature in January to change the state's system of making bonds for release while persons accused of crimes are awaiting trial.

Idea behind the new plan is to let judges release people, when possible, without making bond at all. But when the judge feels a bond necessary, the prisoner could deposit up to



RESERVE CHAMPION--Theresa Seaton shows the reserve champion Berkshire barrow of the junior show at the State Fair in Dallas. The barrow was raised by her brother, Ricky Seaton, Lubbock Future Farmer.

10 per cent of the bond himself. As it is now, the accused generally has to pay the 10 per cent to a professional bondsman, and the money is a fee for services rendered and is not returned. In the proposed system, the man would get his deposit back when he showed up in court.

COLLEGE ENROLLMENT UP -- Enrollment in Texas' senior colleges and universities has grown by more than 88,000 students -- 47 per cent -- since 1963, the Coordinating Board, Texas College and University system reports.

Almost 274,000 students enrolled this fall, compared to about 135,000 in 1963. An increase of 59 per cent was recorded by the 22 public senior institutions, and private schools numbering 37 grew by 20 per cent.

No public senior institution has declined in enrollment.

APPOINTMENTS -- Liquor Control Board unanimously named O.N. (Newt) Humphreys Jr. its full-fledged administrator. Humphreys, ex-Department of Public Safety investigations chief, has been serving as acting administrator since last March following the resignation of Coke Stevenson Jr.

Governor Connally appointed R.E. McGowan Jr. of Pecos to the Pecos River Compact Commission, succeeding the late J.C. Wilson of Pecos.

HIGHWAY DELAY POSSIBLE -- Texas highway projects may be stalled and their price advanced by federal policies just invoked, according to a state highway commissioner.

Garrett Morris of Fort Worth said the Commission is concerned that the federal policies may further force the state to take over right-of-way buying now done by counties.

Morris said the state will be required to get appraisals and make money offers to land owners before any property is acquired for road building.

ATTORNEY GENERAL RULES -- Harris County auditor cannot take over county clerk's duties of issuing paychecks to his own employees, Atty. Gen. Crawford C. Martin has held.

In another recent opinion, the Martin concluded that expenses of a district judge (including

such incidentals as laundry) while attending a National College of State Trial Judges can be paid out of appropriations of the legislature for the general purpose of reimbursing those who enrolled.

WATER RESEARCH -- The University of Texas at Austin has set aside \$375,000 for a 63,000-square-foot building to house facilities for its Center for Research in Water Resources.

Pointing to Texas' gigantic water problems, Dr. Earnest Gloyna, director of the center, said the facility will be dedicated to solving those problems. "In establishing this research capability," he said, "we expect to attract top-flight students and researchers from all over the U.S. and other parts of the world."

Unit will include such sophisticated equipment as special environmental control chambers, hydraulic model facilities, tanks for study of wave actions, flumes to pilot plants for water and waste water treatment studies and a materials test capability.

PENAL CODE REVISION AIDED -- State penal code revision has been aided by a \$5,000 grant to the State Bar

of Texas committee on revision. Committee, assisted by the Texas Legislative Council, expects to have the proposed code ready for submission to the 62nd Legislature in 1971. A law enforcement advisory committee, headed by Dean W. Page Keeton of the University of Texas Law School, is comprised of metropolitan chiefs of police, representatives of the Texas Sheriffs' Association and the Department of Public Safety.

SHORT SNOOTZ -- Governor Connally proclaimed November 17 "Safety Sunday." . . . Texas traffic accident toll is 2,577 this year compared with 2,566 for same time in 1967, Department of Public Safety reports. . . . State Building Commission will open bids on November 14 on constructor of the new veterinary medical diagnostic laboratory authorized by the Legislature in 1967. . . . Texas construction activity declined six per cent from August to September, but index remained 35 per cent higher than September a year ago.

POST OFFICE CENSORSHIP -- Postal officials are now making an all-out effort to detect dealers who mail pornography to people who complain.

Chief Postal Inspector Harry B. Montague said the main goal of this new strategy is to keep advertisements of smut out of the hands of children and young people.

LCC Awarded A Permanent Shrine Exhibit

The Freedom Shrine, a permanent exhibit of 28 authentic reproductions of historically famous American documents ranging chronologically from The Mayflower Compact to the Instrument of Surrender in the Pacific, World War II, will be formally dedicated November 11, 9:40, at Lubbock Christian College, where the display will be housed. This was announced today by Max Rutledge, president of the Exchange Club of Lubbock, which is presenting the exhibit to the college.

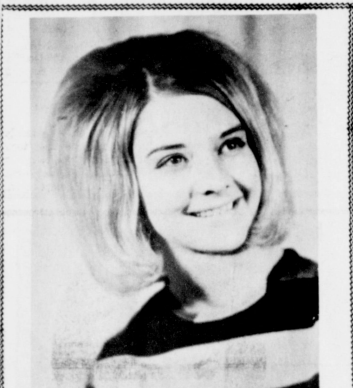
The Honorable H.J. "Doc" Blanchard, will deliver the dedicatory address. Presentation will be made by Max Rutledge on behalf of the Exchange Club. This gift will be acknowledged by John Rhodes, President of the Student Senate, and John Scoggin will lead the pledge of allegiance.

All of the historical papers

in the collection are exact photographic reproductions of the priceless originals. Each document is permanently mounted on an individual wood-grained plaque and protected against all forms of deterioration by the newest methods of plastic lamination.

The Freedom Shrine is exclusively and an important part of the Americanism Program of The National Exchange Club. "The Ideals and precepts set forth in its documents," said Mr. Rutledge, "constitute a precious heritage, not only for Americans but for freedom loving people everywhere. The Freedom Shrine is the Exchange Club's positive rebuttal to Communism and all other un-American ideologies."

SIGNS GUN CONTROL LAW -- President Johnson has signed into law a gun control bill that has received mixed emotions as to its effectiveness. The new bill restricts sales of guns and ammunition. Law enforcement officials feel that these controls will make a contribution to the nation's war against crime.

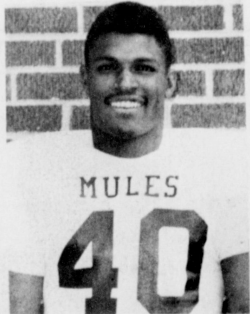


Charlotte Davis

HONORING
THE
D.E. STUDENTS
Dental Auxiliary

"Muleshoe Mules" PLAYER OF THE WEEK

MULESHOE VS. TULIA



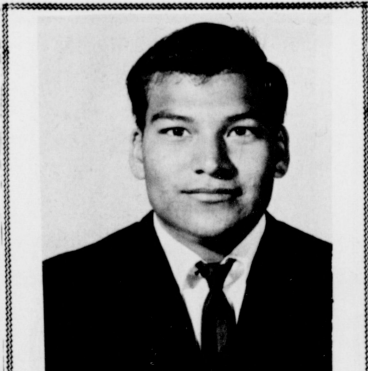
Charles Beamon

Charles Beamon, number 40, was chosen by the coaches as "Player of the Week" for the Muleshoe-Tulia game. He made 168 yds. rushing and was outstanding at blocking. Beamon scored both touchdowns.

THIS RECOGNITION COURTESY OF:

MULESHOE
STATE BANK

Member FDIC



Tony Perez

HONORING
OUR
D.E. STUDENT
Piggly Wiggly
Muleshoe

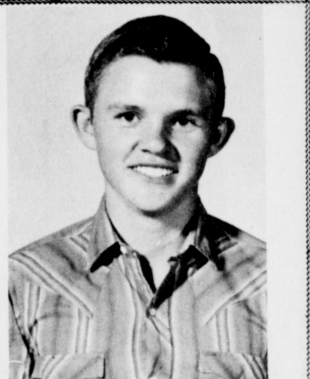
Nursery
LANDSCAPING BY A.L. Woodburn
GARDEN CENTER NURSERY
Cloviss, N.M.

With the political situation well in hand for maybe two more years we can get back to the business of making next years garden. The garden that has to catch up is the one that really runs into hard work. There are steps that can be taken now to help nature help us in the enjoyment of the garden.

We touched lightly on the business of compost and left out a lot of the important steps. With the leaves that are blowing every where and all the other source of humus that we have, the time to start a compost is not as important as to get it started. The first thing to look for is a place where you can build a pit or box above ground if you had rather pile the raw materials of the compost. It should be a size suitable to the amount of material you have and expect to use. Preferably the compost should be divided in two sections so that you may use out of one while you are filling the other. The construction need not be elaborate, but should be sturdy and durable. It is somewhat better to construct the pit or pile to accommodate the filling and removal in such a manner to be less work.

The sides should be such that will hold water yet should be open enough to allow some drainage and be able to air some. The bacteria seem to work better under moist conditions but not soggy. The bottom can be just the soil or can be nearly any material that will not rot and hinder removal. The contents of the compost are the primary thing to consider. It should be applied in layers from six to eight inches deep, adding more layers as the pile settles. The better material you put in the better material you will take out. A layer of barnyard manure every so often and a little well balanced commercial fertilizer will furnish considerable food for the bacteria to work on. Do not hesitate to put in the fertilizer with a lot of humus as the straw, or other parts of the material will absorb the nutrients and they will be retained for future use and in much better form.

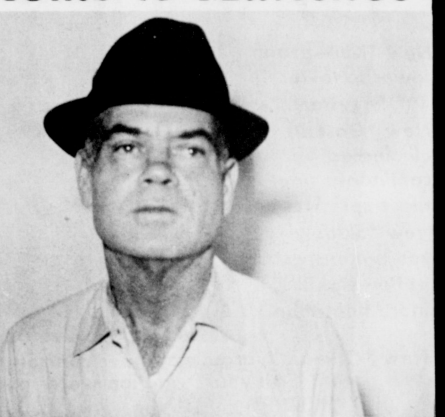
Adv.



Larry Meason

'HONORS' TO OUR
D.E. STUDENT
Muleshoe
Motor Company

Welcome to Muleshoe



J.B. Hawk

We welcome J.B. Hawk, new owner and manager of Ranch House Cafe, to Muleshoe. He is a former Snyder resident and was associated with Rip Griffin Restaurant there. Hawk lives in the Briscoe Apartments and attends the Church of Christ. He has a son, James Rayland, Pueblo, Colorado.

The following firms extend a cordial welcome to J.B. Hawk:

CASHWAY
GROCERY

402 MAIN

Ph. 272-4244

DAMRON
DRUG CO.

REXALL

308 MAIN

Ph. 272-4210

JAMES GLAZE CO.
INSURANCE
REAL ESTATE
LOANS



MULESHOE
STATE BANK

MEMBER FDIC



YOUTH TAKES TO AIR--Jim Watson, right, a Baileyboro youth who graduated from Muleshoe High School, is a "high-flyer" at South Plains College, Levelland. Jin flew back and forth when he was attending high school and now continues his flying as a freshman at the Levelland college.

Former MHS Student Plans Flying Career

(The Plainsman Press, of- has written a story about the ficial newspaper from South flying ability of a MHS graduate Plains College at Levelland, from near Baileyboro, Jim Wat-

son. Below, the story is re- produced.

By Leona Harms
"Up with me! Up with me into the clouds!"
This quote is typical of Jim Watson, South Plains College freshman from Muleshoe. The reason -- a Piper Tri-Pacer airplane and a private pilot's license.

Jim received his student license and training under the instruction of Morgan Locker, Federal Aeronautics Association examiner, at age 16, his private pilot's license at age 17, and he hopes to obtain his commercial license by the end of this school term. These are the minimum ages before anyone may acquire a license to pilot an airplane.

Jim is not the only one in his family to take up the art of flying. His parents, Mr. and Mrs. Delbert Watson, and brother, Tom, are all aviators. Mr. Watson has his private pilot's license and he operates a four-passenger Beechcraft Debonair. This he uses to inspect the 3200 acres of farm land he owns in Muleshoe and Friona. The plane is also used to take family vacations to points of interest in the western states. "It is economical as well as time saving. Flying cuts driving time in half plus saving money on car expense," Jim stated.

Jim's plane, hangared here in Levelland, is a four-passenger Piper Tri-Pacer which he

Major King Is Presented Merit Award

VUNG TAU, VIETNAM (AHTNC) -- Army Major Robert N. King (right), whose parents, Mr. and Mrs. H.H. Potter, live in Sudan, receives the Legion of Merit October 6 near here. Presenting the award is Lieutenant Colonel Richard E. Leonard, commander of the 36th Engineer Battalion.

Major King received the award for meritorious service as operations officer of Headquarters Company, 36th Engineer Battalion, Vung Tau. The major entered the Army in November 1960 and was last stationed with the Headquarters, U.S. Army Security Agency, Pacific, in Thailand.

used to fly home on weekends and to make quick trips home during the week.

Never having had to make a forced landing, Jim flew two high school students and their agriculture teacher to attend a swine auction in Arkansas City, Kan., while he was still in high school.

Jim plans to enter the rewarding but dangerous field of crop dusting. The danger involved comes from the result of having to fly low to spray and hitting high line wires in the process. The reward comes from the financial end as the pay is high for persons entering this position.

Jim's uncle, Chuck Stallings from Bovina is a crop duster spraying around the Bovina and Hereford area. Jim hopes to be able to get his start in a Pawnee aircraft which is a custom built monoplane fashioned for this type of work.

Jim's hobbies range from flying to water skiing. At Muleshoe High School, he ran the 880 in track, took art for two years and received an art certificate from the Amarillo Art Show, and he also participated in tennis.

"I recommend flying for a hobby, but it is quite expensive unless you have your own plane," Jim commented.

And so the story goes for Jim Watson. A far reaching horizon, determination, and a never ending goal to be reached by him.

James Johnson In Training At Great Lakes

SAN DIEGO (FHTNC) Nov. 5--Seaman Recruit James E. Johnson, USN, 20, of Farwell, Tex., is undergoing nine weeks of basic training at the Naval Training Center here.

He is receiving instructions in Naval customs, courtesies and organization, ordnance and gunnery, seamanship, damage control, first aid, swimming and survival, shipboard drills and sentry duty.

A program of physical fitness, military drill and inspections keeps the recruits mentally and physically alert during their training.

His Navy Classification tests will determine whether he will be assigned to a school, shore station or ship after his graduation.

COMMENTS BY:
CALVIN & LILLIE MAE
After the political campaign, Jo Jo doesn't know which party he represented!



NOT THE ZOO, I WANNA GO TO
CALVERT'S DRIVE-IN GROCERY
OPEN 7 AM Till 9 PM
BEST SERVICE IN TOWN
1902 CLOVIS ROAD
MULESHOE

Schools' Menus

MONDAY

Milk
Chicken Fried Steak
Gravy
Mashed Potatoes
Blackeyed Peas
Sliced Tomatoes
Sweet Pickles
Hot Rolls
Peach Crisp

TUESDAY

Milk
Hamburgers
Pickles
Onions
Lettuce and Tomato Salad
Mustard and Salad Dressing
French Fries
Buns
Apple Cobbler

WEDNESDAY

Milk
Chicken Patties
Gravy
Kreamed Kernal Corn
Buttered English Peas
Sliced Tomatoes
Hot Rolls
Strawberry Shortcake

THURSDAY

Milk
Corn Dogs
Mustard
Au* Gratin Potatoes
Pork and Beans
Carrot Sticks
Hot Rolls
Jello Fruit Salad
FRIDAY
Milk
Chili Beans
Buttered Spinach
Cabbage Relish Salad
Buttered Whole New Pot
Corn Bread
Lazy Daisy Cake

Hi, World!

CONGRATULATIONS TO

Mr. and Mrs. Adelado Valdez, Friona, Girl (Maria Lynn) 11-1-68, 8:05, 6 lbs and 11 oz.

Mr. and Mrs. David Hernandez, Muleshoe, Boy (Robert) 11-1-68, 8:31 p.m., 5 lbs, 8 oz.

Mr. and Mrs. Roy McCormick, Muleshoe, Boy (James Albert) 11-4-68, 6:38 a.m., 8 lbs and 4 oz.

Mr. and Mrs. Charles Coomer, Girl (Lora Daisy) 11-6-68, 2:28 p.m., 8 lbs. and 10 oz.

Mr. and Mrs. Edward Blankenship, Maple, Boy (James Gregory) 11-7-68, 2:54 p.m., 7 lbs and 4 oz.

A MOTHER ON DRAFT

San Jose, Cal.--Enik Whitehorn, 18, refused to sign for the draft because he didn't have his mother's permission. The mother said the law would not let her son own property as a minor, couldn't vote, and couldn't get married without her permission. She claimed anyone unable to do these things was not capable of signing a draft contract.

HOSPITAL BRIEFS

WEST PLAINS MEMORIAL HOSPITAL

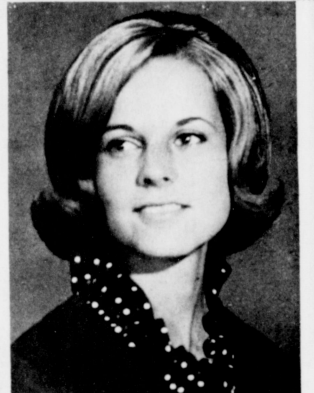
Admissions: Le Roy Flores, Mrs. Ida Valdez, Cecil Shelton, John Laing, Mrs. Donna McCormick, Mrs. Kay Enos, Mrs. Sharon Howard, Mrs. Ona Berry, Adam Zamora, Jose Duarte, Mrs. Hazel Ball, Mrs. May Childress, Mylinda Graves, Mrs. Ruby Garner, Lewis Sanders, Aaren Robinson, Edd Ary, Bill Sanchez, Mrs. Elma Alacon, Mrs. Peggie Blankenship, Randy Williams, Mrs. Ann Camp and Mrs. Justa Flores.

Dismissals: Ralph Culbert, E.K. Angeley, Mrs. Melissa Bass and Baby, Marissa Newsom, Mrs. Kathrine Haskins and Baby, Lisa Mason, Enrique Chavez, Willie Ellis, Mrs. Willie Burford, Mrs. Ruby Lambert, Mrs. Janie Hernandez, Mrs. Ida Valdez and baby, Ted Millsap, Mrs. Mildred McDaniel, Cecil Shelton, Mrs. Sharon Howard, Mrs. Carrie Wilhite, Le Roy Flores, Elwin Julian, Mrs. Gladys Terry, Mrs. Mamie Miller, Mrs. Audie Wood and Adam Zamora.



Logan Puckett

SPECIAL PRAISE FOR OUR 'D.E. STUDENT' Muleshoe Auto Parts



Glenda Calhoun

"HATS OFF" TO OUR D.E. STUDENT Johnson-Pool Tire Company

NEW CONCEPT IN SPRINKLER IRRIGATION ..THE FARMHAND WALKING WATER SYSTEM.

- New *Kink-proof tower to tower safety system.
- New *Gaskets eliminated by continuous one-piece sprinkler line.
- New *Skids give you better traction, better stability, more floatation.



- New *One oil hydraulic cylinder controls movement - All your irrigation water goes for your crops.
- New *Patented, positive in-line control. System won't buckle, tangle or go down.
- New *You control both rate of travel AND water flow according to your needs.
- New *Tall towers put the sprinkler line above crops
- New *Annual lubrication cuts maintenance time to a minimum.



I started ditch irrigation in 1948. I went from ditch to canvas pipe to hand move sprinkler line, then to wheel move. The Dowd Farmhand is, by far, superior to any system I have used. I like the single oil hydraulic cylinder located at the pivot point and the self alignment feature. The Dowd Farmhand has been the most trouble free system that I have ever operated.

The Farmhand sprinkler saves roughly 30 hours of labor per week over the other type systems I have now in operation.

E.H. Farrah
Brownfield, Texas

Sprink-L-Rite Corporation

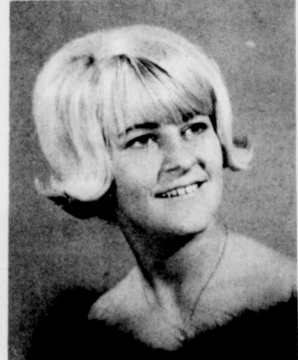
For more information on Farmhand Walking Water Irrigation Systems stop in and see us or call collect **FARMHAND MECHANIZED MUSCLE**

4th and Sycamore - Clovis, N. Mex.

Ph. AC 505/762-4503

They're here again!

THE BEST CROP EVER!
NORTH DAKOTA SEED POTATOES
Phone Your Dealer
SHIPPER OR GROWER SOON
State Seed Department, University Station, Fargo, N. Dak.



Donna Locke



Johnny Raney

OUR D.E. STUDENTS HAVE OUR "MARK OF APPROVAL"
Muleshoe Publishing Co.
THE MULESHOE & BAILEY COUNTY JOURNALS

Obituaries

Billie Mitchell

Billie J. Mitchell, 41, of the Lazbuddie community died at 7:50 a.m. Friday, November 8, in Methodist Hospital in Lubbock. She had lived in the Lazbuddie community for 12 years, moving there from Olton.

Mrs. Mitchell was born March 19, 1927 in Lynn County, Tex. and was a member of the Lazbuddie Baptist Church.

Funeral services are scheduled for 3 p.m. today (Sunday) in the Lazbuddie Baptist Church with the Rev. Johnny Tims, pastor, officiating. He will be assisted by Rev. Bill Curry of the Goutaque First Baptist Church and Rev. Bob Hall of the First Baptist Church of Littlefield. Interment will be in Bailey County Memorial Park under direction of Singleton Funeral Home.

Survivors include her husband, Euel L. Mitchell; one son, John L., with the U.S. Army at Fort Benning, Ga., one daughter Mrs. James Ray Phipps, Muleshoe; her mother, Mrs. J.J. Williams, Littlefield; three sisters, Mrs. Clayton Graef, Lazbuddie; Mrs. Artie Beavers, Lazbuddie and Mrs. Efton Graham, Littlefield.

Darlene Coomer

Elizabeth Darlene Coomer, 30, died at 7 p.m. Wednesday, November 6, in West Plains Memorial Hospital, shortly after giving birth to a baby girl.

She was a member of the Muleshoe Calvary Baptist Church. She was born October 27, 1938 in Evansville, Ind. and had lived in Muleshoe at 610 South First the past five months after moving here from Shawnee, Okla.

Survivors include her husband, Charles; six sons, Carl, Danny, Billy, Doug, Jimmy and David, all of the home; two daughters, Diane and the infant girl; her parents, Mr. and Mrs. Paul Horsman, Tenio, Wash.; three sisters, Mrs. Wilma Dunn, Folseneve, West Va.; Mrs. Sarah Salley, Olympia, Wash. and Mrs. Mary Duggett, Wellsburg, West Va.; and one brother, Stan Horsman, Oklahoma City.

Her body was taken by rail to Pomeroy, Wash. for services and burial. Local arrangements were by Singleton Funeral Home.

ON DISCARDED NEEDLES
Oyster Bay, N.Y.—The Town Board has approved a law that would make doctors subject to fines or imprisonment for failing to destroy discarded hypodermic needles. The sanitation department found more than 500 discarded needles in trash cans in a two-day period. The needles can be reused by narcotic addicts.

RUSSIA'S SEVENTH HEAVEN
Moscow—Russia has opened a new rotating restaurant called Seventh Heaven. It is one of the world's highest restaurants and patrons say the prices match the height of the building. The better features are speedy service, foreign whiskies and foreign music.

SINGLETON FUNERAL HOME
24 Hour Ambulance Service
Ph. 272-4574 Muleshoe



Debbie Reed
HONORING THE D.E. STUDENTS Dr. Pummill MULESHOE



Irene Madrid

Area Farmer To Tour Europe For USDA Grain

A.W. Anthony, Jr., President of the Grain Sorghum Producers Association, a Farmer County farmer north of Friona, has been named to 10-member "feed grain and soy bean mission to Europe" by Secretary of Agriculture Orville Freeman.

The joint USDA-grain industry mission will visit importing countries using United States corn, grain sorghum and soy beans in an attempt to find ways in which U.S. exports might be strengthened and to define problems which may be limiting current exports. The group will visit Spain, Italy, Belgium, West Germany, and England. They will be working with the Agricultural Attache attached to the American Embassy in each of the countries. In addition to Anthony who will represent the Grain Sorghum Producers Association on the mission, other producers are Fred Ludwig of Iowa, representing the National Corn Growers Association, and George Tredwell of South Carolina, representing the American Soy Bean Growers Association. Other team members will be selected from USDA and the grain merchandising industry.

After a briefing in Washington, D.C. the group is expected to depart November 8 for Europe and will return November 27. Bill Nelson, Executive Vice President of the Grain Sorghum Producers Association in Amarillo, said that this is a similar mission, studying exports, to the ones on which Elbert Harp, past GSPA president, went to Europe and Melvin Barton, GSPA director, went to Asia last year. He said that both of these past missions have been credited with providing the Secretary of Agriculture with important information on which to make major grain export policy decisions. Nelson indicated that even though GSPA, the American Embassy and other groups had worked for 10 years toward the removal of a 14 per cent duty on grain sorghum in Italy, it was the push from the mission last year which finally resulted in the total removal of the duty. Nelson also indicated that when the Association's cooperation with the Foreign Agricultural Service in USDA began 12 years ago, 22 million bushels of grain year sorghum was being exported annually, but since missions are promised you something for participating in were begun "No, she said I'd get something along with other market development activities, exports

have climbed to a high of 260 million bushels annually. Even this year with grain sorghum consistently being priced for export 10 cents a hundred over corn, the volume still remains at 150 million bushels.



FARM BUREAU DIRECTORS--David Stovall, left, Chester Emery and Doyce Turner were chosen as Farm Bureau directors for the coming year, along with Darwin McBee, not pictured. Voting delegates who will attend the state convention beginning Sunday at the Baker Hotel in Dallas are James Warren, Ernest Ramm, Freddy Parkman, Jimmy Dale Black, Ben Roming, Jack Schuster and Ed Little. Others attending from Bailey County include Ben Cockrell, Russell Bryant, Mr. and Mrs. Bill Millen and Mr. and Mrs. Lester Howard.



NEW FARM BUREAU OFFICERS--From left, Ernest Ramm, president; Ben Roming, vice president and Reuel Kirby, secretary, were chosen new officers of the Bailey County Farm Bureau in a meeting this week.

They Do Teacher—Now, can any boy make a sentence using the word "diadem"?

Proof "Mummy, the pants you made me are tighter than my skin." "Nonsense, my boy, don't say silly things like that." "But they are. I can bend in my skin and I can't in my pants," he replied.

Football Schedules

MULESHOE			
MULESHOE MULES	-- Nov. 15-	Canyon	H 7:30 p.m.
FRESHMEN	-- Nov. 14-	Olton	H 6:00
8th GRADE	-- Nov. 12-	Morton	T 5:00
7th GRADE	-- Nov. 12-	Morton	T 5:00
LAZBUDDIE			
LONGHORNS	-- Nov. 15-	Alamo Catholic, Amarillo	T 7:30 p.m.
THREE WAY			
EAGLES	-- Nov. 15-	Whitharral	H 7:30 p.m.
BULA			
BULLDOGS	-- Nov. 15-	Cotton Center	H
EARTH-SPRINGLAKE			
WOLVERINES	-- Nov. 15-	Kress	H

REPORT OF CONDITION OF MULESHOE STATE BANK

of Muleshoe, in the State of Texas, at the close of business on October 30, 1968.

ASSETS	
Cash, balances with other banks, and cash items	1,457,944.95
In process of collection	536,400.00
United States Government obligations	88,450.21
Obligations of States and political subdivisions	1,500,000.00
Securities of Federal agencies and corporations	600.00
Other securities	3,822,169.33
Other loans and discounts	157,498.88
Bank premises, furniture and fixtures, and other assets representing bank premises	2,000.00
Real estate owned other than bank premises	8,370,948.54
Other assets	2.00
TOTAL ASSETS	8,370,948.54
LIABILITIES	
Demand deposits of individuals, partnerships, and corporations	4,093,417.10
Time and savings deposits of individuals, partnerships, and corporations	2,930,573.77
Deposits of United States Government	28,956.07
Deposits of States and political subdivisions	665,231.62
Deposits of commercial banks	10,000.00
Certified and officers' checks, etc.	60,527.08
TOTAL DEPOSITS	7,788,705.64
(a) Total demand deposits	4,635,172.75
(b) Total time and savings deposits	3,153,532.89
Other liabilities	200.00
TOTAL LIABILITIES	7,788,905.64
CAPITAL ACCOUNTS	
Capital: (c) Common stock-total par value	200,000.00
No. shares authorized	10,000
No. shares outstanding	10,000
Surplus	200,000.00
Undivided profits	185,042.90
TOTAL CAPITAL ACCOUNTS	585,042.90
TOTAL LIABILITIES AND CAPITAL ACCOUNTS	8,370,948.54

I, Jimmie Crawford, Cashier, of the above named bank, do solemnly affirm that this report of condition is true and correct to the best of my knowledge and belief.

CORRECT-ATTEST:

DIRECTORS

W. Q. Casey
Sam Dameron
Sam Aldridge

I am not an officer or director of this bank.

Sharon Gilliland (SEAL) Notary Public
My commission expires June 1, 1969.

Farmers - Ranchers Increase Bank Loans

Texas banks were providing more credit and other financial services than any other lenders at the beginning of this year, according to Tommie Stuart, Chairman of the Texas Bankers Association Agricultural Committee and Vice President of The First National Bank, Fort Worth.

Based on the 27th annual financial summary of the Agricultural Committee of the American Bankers Association, quoted in the October issue of the Texas Bankers Record, Stuart said that at the beginning of the year, Texas banks were helping Texas farmers and ranchers with \$78 million in loans, seven per cent more than a year previous. This total included \$65 million in production loans and \$14 million farm mortgages. At the same time, \$587 million in farm loans was held by life insurance companies; \$439 million by the Federal Land Bank; \$195 million by Production Credit Association; and \$31 million in non-real estate loans, plus \$15 million in real estate loans by the Farmers Home Administration.

About 77 per cent of the production credit extended to Texas farmers and ranchers came from banks. Stuart said that "bankers in Texas are conscious of the large capital investments required in agriculture today and are making a concerted effort through improved lending programs to meet these changing credit demands of the state's farmers and ranchers."

W. L. Welch Is Re-elected

W.L. "Willie" Welch of Maple has been re-elected Supervisor for Zone Five of the Blackwater Valley Soil and Water Conservation District. He and his wife, Mildred, own and operate an 83-acre dryland, livestock farm three miles west of Enochs. Welch has farmed in Bailey County for the past 22 years.

During his years with the Blackwater Valley Soil Conservation District, he has been a very active member of the board. Welch has represented the board four out of the five years he has been a board member at the State Convention of District Supervisors.

Medical Fallacies Set Forth

COLLEGE STATION.—Coincidence often affects the reputed results of traditional remedies in medical folklore, according to Minnie Fell, family life specialist with the Texas Agricultural Extension Service, in agriculture, representing 82 per cent of the total capital requirements of the agricultural community.

Stuart stressed the importance of farmers and bankers working closely together to improve farm financial arrangements. He reported that nine out of ten insured banks throughout the country had agricultural loans outstanding, with nearly 88 per cent of the banks extending credit to farm and ranch people.

London—An Italian museum recently bought a 1914 Rolls-Royce complete with World War I bullet holes at an auction for \$22,800. The open touring model originally sold for between \$5,000 and \$6,000. It will be placed in the Italian motor industry museum in Turin.

Miss Bell, specialist for aging, reports these facts about some of the most common misconceptions:

1. No medicine exists that can be taken by mouth to dissolve gallstones.
2. Insulin does not cure diabetes. It substitutes insulin which the body is unable to produce.
3. Heart disease is not necessarily a valid reason for a denial of an operation or taking an anesthetic.
4. Flowers may use a little oxygen in a sick room, but the chief reason for removal is to benefit the flowers. They keep better in an open, more airy place.
5. Baldness is not caused by wearing hats. No one really knows the cause.



Peggy Williams
WE'RE PROUD OF OUR D.E. STUDENT Johnson Furniture Company

Report of Condition of the FIRST NATIONAL BANK of Muleshoe

County of Bailey
In The State of Texas

at the close of business on Oct. 30, 1968. Published in Response to call made by comptroller of the currency, under section 5211, U. S. Revised Statutes

ASSETS	
Cash, balances with other banks, and cash items	1,321,784.97
In process of collection	3,310,674.46
Obligations of States and political subdivisions	19,500.00
Loans and discounts	3,364,234.52
Bank premises, furniture and fixtures, and other assets representing bank premises	91,845.35
Other assets	10,626.18
TOTAL ASSETS	8,118,665.48
LIABILITIES	
Demand deposits of individuals, partnerships, and corporations	3,364,747.84
Time and savings deposits of individuals, partnerships, and corporations	2,699,798.79
Deposits of United States Government	30,433.21
Deposits of States and political subdivisions	790,736.16
Certified and officers' checks, etc.	54,708.08
TOTAL DEPOSITS	6,940,424.08
(a) Total demand deposits	3,804,885.32
(b) Total time and savings deposits	3,135,538.76
Liabilities for borrowed money	300,000.00
Other liabilities	144,241.51
TOTAL LIABILITIES	7,384,665.59
CAPITAL ACCOUNTS	
Capital: (c) Common stock-total par value	300,000.00
No. shares authorized	15,000
No. shares outstanding	15,000
Surplus	350,000.00
Undivided profits	46,085.33
Reserves	37,913.96
TOTAL CAPITAL ACCOUNTS	733,999.89
TOTAL LIABILITIES AND CAPITAL ACCOUNTS	8,118,665.48

MEMORANDA

Loans as shown above are after deduction of valuation reserves of 135,195.95

I, Tommy Gunstream, Cashier, of the above-named bank do hereby declare that this report of condition is true and correct to the best of my knowledge and belief.

DIRECTORS: M. D. Gunstream, Harmon Elliott, W. M. Pool, Jr.

PAYING TRIBUTE TO OUR D.E. STUDENTS DURING AMERICAN EDUCATION WEEK West Plains Memorial Hospital

Sudan News

By Evelyn M. Scott

R.L. Gunn, pioneer of Lamb County and long-time Sudan resident, was honored on his 83rd birthday Sunday when members of the Gunn family and friends gathered at the home of Mr. and Mrs. Hurschel Gunn in Dimmitt.

Among those present to honor him on the occasion were Mr. and Mrs. R.L. Gunn, Mr. and Mrs. Dail Burnett, Mr. and

Mrs. E.W. Farmer, Mr. and Mrs. Darwin Reid, Sudan; Mr. and Mrs. H.L. Grantham of Lockney; Mr. and Mrs. Sam Smith, Draig and Carolyn, Lubbock; Mr. and Mrs. H.P. Taylor of Canyon; Mr. and Mrs. Leon Gunn, Mrs. R.E. Bradshaw, Lynette Wathall, Dimmitt; Mrs. Donnie Fressley and Karla of Pampa.

120 attended the sixteenth annual Homecoming held Saturday evening in the school cafeteria.

A Homecoming Queen was chosen from each of the honor classes and was introduced at the Springlake-Earth vs. Sudan football game Friday night.

Mary Vereen Olds was named queen of the class of '27 and Sue Graves Whiteaker was queen from the class of '47. Highlight of the meeting was the display of mementoes of past school days.

Jerry Ray, president, introduced Jewel Hammock Pool, speaker for the class of '27; and Waymon Bellar for the class of '47.

Also present from the 1927 group was Velma Findley Robertson; from the 1947 class were Sue and Wayne Whiteaker, T.C. and Jean Wiseman and Wanda Olds Fields, Mrs. Waymon Bellar and Louis Fields were class guests.

Special recognitions were made and Mrs. Clifford Shaffer Jenkins of Leveland was presented a gift representing the earliest class of 1925. Mrs. Jenkins was a 1925 graduate which was also the first graduate class of Sudan Schools.

Mrs. Inetha Brandon Eastland from Peardige, Ark. received a gift for traveling the greatest distance; Miss Vickie Bartley was recognized as the youngest Ex-student to attend.

During the business meeting an election of officers was held when Robert DeLoach was named president; Pudd Wiseman, vice president; secretary treasurer, Mary Masten Covert.

Mr. and Mrs. Melvin Campbell and Mr. and Mrs. Charles Heffington of Littlefield were among those from out-of-town to attend Homecoming Activities Saturday night.

Mrs. Wayne Roberts and children were in Wheeler during the weekend to visit her father, J.Z. Baird, on the occasion of his birthday. Mrs. C.A. Daniell of Graham visited during the weekend in

the home of Mr. and Mrs. Joe Rone.

Mr. and Mrs. Joe Shuttlesworth of Lubbock were here Saturday to attend the Homecoming activities. They also visited her sister and family, Mr. and Mrs. Audrey West, and with her mother, Mrs. Birdie Shuttlesworth.

E.A. Harris, Jr. of Slaton visited Sunday in the home of his sister, Mrs. Audrey West and family.

MODERNIZED
Nowadays, when a man discovers his wife sewing on tiny garments, his reactions is "My gosh! You're not going to wear that on the beach!"
-Coronet.

UT Constructing Water Facilities

Development plans for a unique water research facility at The University of Texas at Austin have been disclosed by Dr. Earnest Gloyna, director of UT's Center for Research in Water Resources.

He said the facility will be dedicated to solving Texas water problems, which many authorities regard as one of the biggest obstacles facing the state's future development.

Practical approaches to water pollution, Dr. Gloyna said, will be built on a firm academic base to serve students, academicians and representatives of the various state water regulatory agencies.

"In establishing this research capability we expect to attract top-flight students and researchers from all over the U.S. and other parts of the world," Dr. Gloyna said.

As a first step, the director said the University had appropriated \$375,000 to initiate the construction of additional research facilities at US's Balcones Research Center northwest of Austin.

Architects now are completing the design for a research and office building with floor space of about 35,000 square feet.

In announcing plans for the facility, Dr. Gloyna pointed out that the Center for Research in Water Resources, established about three years ago, now has numerous experimental water and pollution studies in progress.

The new research unit will make it possible to greatly enlarge those studies. Research tools for experiments will include special environmental control chambers, hydraulic model facilities, tanks for study of wave actions, flumes to evaluate selected streamflows, models for measuring mixing and dispersion patterns, pilot plants for water and waste water treatment studies, and a materials test capability.

Dr. Gloyna also stressed the enormous complexity of the Texas water problem, not only from the standpoint of the wide variation in water resources but also in the light of educational, political, economic and social forces.

He reiterated his conviction that the University must bring to bear its special talents in water research to help the state solve its water problems.

"This can best be done," he added, "by training the individuals who will be tomorrow's leaders, and assisting those leaders who today must cope with extremely complex problems."

He pointed out that Texas has all the usual water problems of other states but because of its size and geographical position it has additional problems not found elsewhere.

"This makes the state a unique laboratory for the solution of water problems," he said.

In addition to the questions of coastal water, ground water depletion and distribution, Texas has to cope with a high rate of industrial and population growth, he said.

This extra stress on water resources is accompanied by an extreme shortage of water management people, he added.

Through its new facility, which will be available to qualified researchers from other institutions of higher learning as well as state water agencies, the University expects to train qualified personnel while it forges answers to water problems through research.

Farm Bureau Has Doubled In Membership

WACO--For the first time in the history of the Texas Farm Bureau, the state's largest general farm organization has more than 110,000 member families.

Final 1968 membership tabulation shows TFB now has 110,689 member families, according to Wayne Little, TFB organization field services director.

Farm Bureau gained 5,036 member families during the past membership year which ended October 31. The organization has more than doubled its membership in the last 16 years, having gained each of the 16 years.

Nine of every ten Texas farmers and ranchers who belong to a general farm organization are members of Texas Farm Bureau, Little said.

There are 203 organized counties in the Texas Farm Bureau. The organization is supported by voluntary dues-paying members.

NOT CHEAP
"In times like these, it is best to live only one day at a time," asserts an editor. Yes, indeed. And some of us can hardly afford that.
-Enquirer, Cincinnati.


THESE SPECIALS GOOD THROUGH WEDNESDAY NIGHT

WHERE YOU ALWAYS BUY THE BEST FOR LESS

GIBSON'S DISCOUNT CENTER

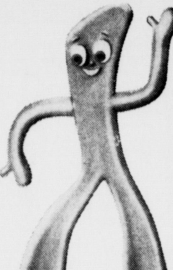
MULESHOE, TEXAS OPEN 9a.m. to 8p.m. WEEKDAYS

"BOZO" The Dancing Clown #8612



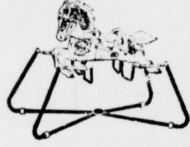
57¢

8101 GUMBY 1947 Lakeside Industries



67¢ 1.20 Value Ea.

Blazon Navajo Soft Bodied HORSE #720 Saddle Height 26"



\$11.88

BABY FIRST STEP SHE WALKS AND SKATES!

Beautiful New Face! #3024

Roller Skates Included! **\$9.33**

Rooted Hair! Moving Eyes! #3358-9 IDEAL'S

TOYLAND NOW OPEN

Wolverine REFRIGERATOR 15" High **\$7.84**

Wolverine PLAY SINK 12" High **\$7.84**

Wolverine PLAY STOVE 12" High **\$7.84**

SKYSCRAPER CONSTRUCTION SET **\$6.97**



King Size ELECTRIC BLANKET Fully Automatic 2 Year Replacement Guarantee

Dual Control Our Reg. 29.87 **\$24.97**

Men's Short Sleeve Sweet Shirt No. 1 seconds of 31/8 quality **83¢ Ea.**

STAINLESS STEEL 12 CUP COFFEEMAKER #CM7 **\$9.97**



Lady Vanity SUNBEAM Double Coated Teflon MULTI COOKER FRY PAN #TLB **\$13.97**



100% Nylon Popular Colors \$3.98 Val. **\$2.87** ea.

2 pc. Bath Mat Set

Thick N Thirsty - 24X44 \$1.98 Value **\$1.04**

BATH TOWELS To Match \$1.00 Val. **68¢**

HAND TOWELS To Match 59¢ Val. **33¢**

WASH CLOTHS To Match 59¢ Val. **33¢**

Men's CARDIGAN JACKETS Laminated Popular Colors Our Reg. 10.87 **\$7.99**

Similar To Illustration



Presto 2 Slice Automatic TOASTER #T02 \$16.95 Val. **\$9.97**



Teflon Coated Sandwich Toaster-Waffle Iron **\$15.97**



HEALTH and BEAUTY AIDS

Scope Family Size MOUTHWASH.....71¢

Powder \$1.09 Value POLIDENT.....66¢

100's \$1.59 Value EXCEDRIN.....99¢

Miss Breck HAIR SPRAY.....57¢

Pond's Dreamflower 98¢ Value DUSTING POWDER.....59¢

Colgate 79¢ Value INSTANT SHAVE.....43¢

Woodbury 99¢ Value LOTION.....59¢

Mennen 4 Oz. Size SKIN BRACER.....47¢

Royal 16 Oz. Size WOOLYN.....56¢

Johnson's 7 Oz. Size PLEDGE.....66¢

Men's Thermal UNDERWEAR Shirts or Drawers Our Reg. \$1.13 **87¢ ea.**

MEN'S WESTERN WELLINGTON BOOTS Oil retan leather upper, neoprene cork sole, sizes 6 1/2 to 12 **\$10.87**



PRESTO STAINLESS STEEL PRESSURE COOKER The ultimate in high speed cooking

Gleaming stainless steel gives a lifetime of cooking enjoyment, lasting beauty, easy cleaning. Cooks any food faster, better! Saves you money, too! Inexpensive meats become tender and delicious. Lets you serve healthier meals--foods retain natural flavors, vitamins, minerals. Free recipe book.

- 3-Ply laminated steel core assures uniform heat
- Exclusive Pressure Regulator maintains correct temperature.
- Automatic air vent.
- Handy Menu Guide on handle

PCS4 4 Qt. 23.95 Value **\$11.99**

PCS6 - 6 Quart 27.95 Value **\$13.99**



LAYAWAY NOW FOR CHRISTMAS



TRADE CLASSIFIED SELL BUY ADS LEASE

WANT ADS PH. 272-4536
CLASSIFIED RATES
OPEN RATES
 First insertion, per word - 6¢
 Second and additional insertions - 4¢
NATIONAL RATES
 First insertion per word - 8¢
 Second and additional insertion - 5¢
 Minimum charge - 65¢
 Card of Thanks - \$1.00 Double rate for blind ads
 Classified Display - 85¢ per col inch
 95¢ col. inch for reverses
DEADLINE FOR INSERTION
 Thursday's Muleshoe Journal - Noon Tuesday
 Sunday's Bailey County Journal - Noon Friday
 The Journals reserve the right to classify, revise or reject any classified ad.
 Check advertisement and report any error immediately
 Journals are not responsible for error after ad has already run once.

WANTED: Year around farm hand. See R.B. Seaton 6 East and 6 North of Muleshoe, or call 365-2772.
 3-44s-8tc

4. HOUSES FOR RENT
FOR RENT: 2 - bedroom house. Fully carpeted, fenced back yard, patio and storage house. Call 4936 after 6 and on weekends.
 4-44s-3tc

FOR RENT: 2 and 3 bedroom brick houses. Furnished 1 bedroom apartment. Call D. L. Morrison Jr., 272-3421 or 272-3697.
 4-21t-1tc

FOR RENT: 2 bedroom house. \$60 a month. Unfurnished 2 bedroom apartment \$80 a month house. Real Estate 925 American Blvd. 272-4838.
 4-42t-8tc

FOR SALE OR RENT: 2 bedroom home. W.Q. Casey - Phone Day 272-4571 - Night 272-4351.
 4-45s-1tc

5. APTS. FOR RENT
FOR RENT: Unfurnished 2 bedroom apartment. Carpeted and draped with built-in furniture. Contact Bob Hucksby after 6:00 p.m. at 305 W. 20th, Apt. 13.
 5-36s-1tc

Furnished apts., large or small. Nice trailer space. Ph. 272-3465.
 5-44t-1tc

FOR RENT: Furnished Apartment, 714 Ave. E. Call 673-5701. Clovis.
 5-43s-1tc

FOR QUICK SALE: 3 bedroom house, carpeted, 2 baths, paneled den and kitchen combination with built in dishwasher, range and disposal, utility room, office or sewing room, living room and garage. Richard Hills area. Call Clark Polson. 272-3406.
 4-43s-1tc

FOR SALE: Two labors of dry land at Bula. See Mrs. Lloyd Robinson at Sudan. Ph. 227-3961.
 8-40s-1tc

80 A. 8" well-Trade
 320 A. 2-8" wells, cheap
 163 A. 3" well-Trade
 for dry land
 Lease cotton
 354 A. Dry land
 330 A. too cheap-irrigated.

KREBS REAL ESTATE
 Day 3191 Night 3685
 8-44t-1tc

FOR QUICK SALE: 1/2 block city property. See Pool Insurance Agency.
 8-39t-1tc

FOR SALE: 2 lots, corner of 16th and D. J.W. Thomas, Day ph 272-4588. Night ph, 925-3248.
 9-25t-2tp

FOR SALE OR LEASE: Business location, 30' x 100' Good location. Call Brock Motor Co. Phone 272-4588.
 8-37t-1tc

9. AUTOMOBILES FOR SALE
NEW 1968
PICKUP
LADD PONTIAC
 4-44t-1tc

10. FARM EQUIPMENT
 64 IHC 2 T with grain bed, like new. \$1988.00
 62 Chev. 1-1/2 T. new engine, good tires, \$1188.00
 31 Ford F-600 with grain bed \$1188.00
 66 F-600 with grain bed & lift \$2298.00
 63 F-600 V-8, 2 Speed \$1288.00
 66 Ford 1/2 T, long wide box, V-8, one owner \$1388.00
 66 Chev. 1/2T, V-8, Power glide, Radio & Heater \$1288.00

POLLARD TRUCK CENTER
 703 Slaton Road
 Route 6, Box 515
 SHT-501
 Lubbock, Texas 79401
 10-42t-8tc

Those who extend liberal support to the churches seldom worry about what they get in return.

11. FOR SALE OR TRADE
 Want to trade my equity in 40 acres close to town for a 2 bedroom house in Muleshoe. Call 272-4969.
 11-42t-1tc

12. HOUSEHOLD GOODS
 DON'T merely brighten your carpets. Blue lastrate them, eliminate rapid resoiling. Rent electric shampooer St. Higginbotham Bartlett.
 12-45s-1tc

Am interested in making loans and buying first or second lien notes secured with farm or ranch lands. J.J. Steele, Citizens Bank Building, Clovis, N.M. Dial 763-4396 or 763-6455.
 15-44s-4tc

FOR SALE: A 14" saddle and blanket. New condition, \$75. Ph. 925-3390.
 15-44s-3tc

FOR SALE: New and used tires, almost all sizes, Finn's L.P. Gas, phone 272-4676.
 15-33t-1tc

"Repossessed 1968 model Singer sewing machine in walnut cabinet. Will zig-zag, buttonhole, blind, etc. Balance \$27.85 on five payments at \$6.40. Write credit manager, 1114 19th Street, Lubbock, Texas. 13-40s-1tc

GARAGE SALE: Toys, clothes, luggage, household items, lawn mower, records, record players, rugs, bedding, and many other items. Thursday, Friday, Saturday 9 to 7 and Sunday afternoon. Mrs. Charles Lewis - Mrs. Dub Finn 1836 W. Ave D.
 15-45t-2tp

FOR LEASE: Lamb County Irrigated Farm. James A. Littleton Jr. Earth, Texas. 13-43s-6tp

1. PERSONALS
 meets every Tuesday at 12:00
FELLOWSHIP
 Methodist Church
Muleshoe Rotary Club
 John Shelton, Pres.

BRAS & GIRDLES BY PENNYRICH AT MAIN STREET BEAUTY SALON
 1-19s-1tc

FOR RENT: 15 and 16 foot campers. By week. Call 272-3153.
 1-35s-1tc

WANTED: 8 or 9 N Ford Tractor. Call 272-3052. Homer Millsp Motors.
 1-42s-1tc

LIKE CORRESPONDENCE - small lady between age 40-52, matrimony later. Write Be Graves 104 N. Cedar, Plainview, Texas 79072.
 1-45t-17p

WANTED: Sewing. Phone 272-4706.
 3-45s-4tc

3. HELP WANTED
HELP WANTED: Experienced mechanic Crow Chevy, Muleshoe, Texas.
 3-35t-1tc

WANTED: Beautician, Main Street Beauty Salon, Ph. 272-3448.
 3-25s-1tc

WANTED: Typist over 20. Must type 50 words per minute. Apply to L. B. Hall at Muleshoe Journal.
 3-26s-1tc

HELP WANTED PART TIME
 Housewife or anyone interested in earning \$75 per week. Pleasant work, working with families with children. Must be willing to work three evenings per week. For interview write: Area Supervisor Box 465 Littlefield, Texas 3-45s-1tc

I hate nobody: I am in charity with the world.
 -Jonathan Swift.

FOR SALE: Business Building, 28' x 140', \$10,000. \$500 down, balance \$100 month plus 6% interest or will rent \$25 month, 221 E. Ave. B. Phone 272-4443. Ruby Willman.
 8-43t-1tc

For a good buy on all types of real estate, 2 and 3 bedroom homes, some V. A. Repossessions, see Pool Insurance.
 8-22s-1tc

Choice 470 acres
 3 eight inch wells, some underground pipe, all allotted 37 1/2 cows. Owner will carry balance.
 *Small tracts and 80's
 *2 and 3 bedroom homes

HOLLAND REAL ESTATE
 121 American Blvd.
 Ph. 272-3293
 8-42s-1tc

FOR SALE: 3 bedroom house, carpeted, 2 baths, paneled den and kitchen, double garage. Call D. L. Morrison Jr., 272-3421 or 272-3697.
 8-21t-1tc

FOR SALE: 2 bedroom house, located 806 W. Ave. D. No down payment, take up FHA loan, payments \$42.00 a month. Call 272-3140.
 8-45t-17p

SENATE PASSES \$3.1-BILLION EDUCATION BILL

FOR RENT
 Hospital Beds
 Also Storage
 Space
SWAP SHOP
 Call 272-3074
 Muleshoe, Texas

Jaycoes
 meets every Monday, 12 Noon

Clarence Christian, Pres.

Lions Club
 meets each Wednesday, 12 Noon
FELLOWSHIP HALL
 Methodist Church
 W. E. Young, Pres.

ODDFELLOWS
 Muleshoe Lodge No. 58
 Meets 8:00 p.m. every Thursday. Address 308 W. 2nd St., Muleshoe, Texas. Zip 79347. Noble Grand, Jerrell Ottwell, Vice Grand, H.H. Show, Recording Secretary, Perry Lynskey, Financial Secretary, Tom Berry, Treasurer, M.C. Street, Jr.
 1-44s-1tc

TELEVISION SCHEDULE FOR THE MULESHOE AREA

WESTERN DRUG	KGNC-TV (4)	KVH-TV (7)	KFDA-TV (10)	KCBD-TV (11)	KLBC-TV (13)
DAYTIME	Amarillo Muleshoe Cable 4	Amarillo Muleshoe Cable 5	Amarillo Muleshoe Cable 6	Lubbock Muleshoe Cable 2	Lubbock Muleshoe Cable 3
7:00-Today Show	7:00-Today Show	6:30-Tuggle	6:30-Film Feature	7:00-Headlines	5:58-Sign-On
7:25-News	7:25-News	7:00-Tuggle	7:00-Farm/Ranch	7:05-Farm/Ranch	6:00-Sunrise
7:30-Today Show	7:30-Today Show	8:15-Exercising	7:20-N/W/Harvey	7:25-Weather	6:30-IN FARM ation
8:25-News	8:25-News	8:30-Dream House	7:30-CBS News	7:30-Today Show	6:30-Morning News
8:30-Today Show	8:30-Today Show	9:00-Life to Live	8:00-Capt. Kangaroo	8:25-Report	7:55-Local News
9:00-Snap Judge.	9:30-Cavett Show	9:30-Hillbillies	9:00-Ramp Room	8:30-Today	9:00-Capt. Kangaroo
9:25-NBC News	11:00-Bewitched	10:00-Arly Griffith	9:30-Hillbillies	9:00-Snap Judge.	9:00-Lucy Show
9:30-Concentration	11:30-Treasure Is	10:30-Coffee Time	9:30-Concentration	9:30-Concentration	9:30-Hillbillies
10:00-Personality	12:00 Reports	11:00-Love of Life	10:00-Personality	10:00-Personality	10:00-Arly Griffith
10:30-H-W3, Sq.	12:30 Ruth Brent	11:25-CBS News	10:30-H'Wd, Squares	10:30-H'Wd, Squares	10:30-Dick VanDyke
11:00-Jeopardy	12:55 Childrens Dr	1:00-Newlywed Eq	11:00-Jeopardy	11:00-Jeopardy	11:00-Love of Life
11:30-Eye Guess	1:00-Newlywed Eq	1:30-Dating Ga.	11:25-CBS News	11:25-News	11:25-News
11:55-News	2:00-Gen. Hospital	2:30-Password	11:30-Search for T.	11:30-Search for T.	11:30-Search for T.
12:05-NBC News	12:10-Weather	3:00-Run for Life	12:00-N/W/F/R	11:55-News	12:00-National News
12:10-Guest Book	12:30-Make a Deal	4:00-D, Shadows	12:30-World Turns	12:00-News	12:05-Local News
12:30-Make a Deal	1:00-Days of Lives	4:00-Tuggle	1:00-Splendor	12:15-Comm. nity	12:12-Farm/Ranch
1:00-Doors	2:00-Another World	5:00-Flintstones	1:30-Guiding Light	12:30-Make Deal	12:22-South Plains
2:00-Another World	2:30-You Don't Say	5:30-Gilligans Is.	2:00-Secret Storm	1:00-Days of Lives	12:30-World Turns
3:00-Match Game	3:25-NBC News		2:30-Edge of Night	1:00-Doctors	1:00-Splendor
3:25-NBC News	3:30-Mike Douglas		3:00-Huse Party	2:00-Another World	1:30-Guiding Light
4:30-Perry M'son	5:30-Report		3:25-Paul Harvey	2:30-You Don't Say	2:00-Secret Storm
6:00-N/W/S	6:00-N/W/S		3:30-Lucy Show	3:00-Match Game	2:30-Edge of Night
			4:00-Mr. Mimkin	3:25-News	3:00-House Party
			5:00-McHale's Navy	3:30-Dating Game	3:30-Gen. Hospital
			6:00-N/W/S	4:00-Hazel	4:00-D, Shadows
				4:30-Bewitched	4:30-Funny
				5:00-Walls Fargo	4:55-Childrens Dr.
				5:30-Report	5:00-Local N/W/S
				6:00-N/W/S	6:10-Weather
					6:20 Sports

BUSINESS SERVICES DIRECTORY

Shop With These Firms Who Solicit Your Business
PROTECTION IS OUR BUSINESS

EXPERT T.V. REPAIR and ANTENNA INSTALLATION
Gordon Wilson Appliance
 ZENITH
 MAYTAG
 TAPPAN
 KELVINATOR
 202 Main Ph. 272-3138

W. Q. Casey
 GENERAL INSURANCE
 Let Our Complete Coverage Take Care of All Your Insurance Problems
 Muleshoe State Bank Bldg. Ph. 272-4571

NEVER MIND SMITH & REGAN OF THE FIRE DEPARTMENT! GET THE FIRE SALE SIGNS-MAN! THE FIRE SALE SIGNS!

THE MONEY YOU SPEND AT HOME STAYS AT HOME!

Save Money On Auto Parts! BRATCHER MOTOR SUPPLY
 107 E. Ave. B - Dial 272-4288
CHARLES BRATCHER, Owner

Insurance Agency
 114 E. Ave. C.
 Ph. 272-4531

SEPTIC TANKS & CESSPOOL SERVICE
 DRILLED - REPAIRED - INSTALLED
 Cesspools - Pier Holes
 Boot Pits - Storm Cellars
 Concrete Covers & Turnkey
 Jobs Available
 Pump Bases & Spillways
WILSON DRILLING CO.
 Dial 272-4180
 Mobil Ph. 965-2359
 CLOVIS HWY. MULESHOE

BERRY ELECTRIC CO.
 ELECTRIC WIRING and REPAIRS
 REFRIGERATION SERVICE
 104 E. AVE. B
 Phone 272-3375

Keep up with your HOMETOWN NEWS

TUESDAY EVENING

6:30-Wagon Train
 8:00-Movie
 10:00-N/W/S
 10:30-T-Night
 12:00-Sign Off

TUESDAY EVENING

6:30-Mod Squad
 7:30-Takes a Thief
 8:30-NYPD
 9:00-That's Life
 10:00-N/W/S
 11:00-Joey Bishop
 12:00-Untouchables

WEDNESDAY EVENING

6:30-Virginian
 8:00-Kraft Special
 9:00-Outsider
 10:00-N/W/S
 10:30-T-Night
 12:00-Sign Off

WEDNESDAY EVENING

6:30 Special
 7:30-Peyton Pl.
 8:00-Special
 10:30-N/W/S
 11:00-Royal Show
 11:15-Joey Bishop
 12:00-Untouchables

WEDNESDAY EVENING

6:30-Daktari
 7:30-Good Guys
 8:00-Hillbillies
 8:30-Green Acres
 9:00-Walters Show
 10:00-N/W/S
 10:45-Medic
 11:15-News
 11:45-Movie

WEDNESDAY EVENING

6:30-Virginian
 8:00-Special
 9:00-Outsider
 10:00-N/W/S
 10:30-T-Night
 12:00-N.M. Report
 12:15 Sign Off

WEDNESDAY EVENING

6:30-Special
 6:30-Bewitched
 8:00-Hillbillies
 8:30-Green Acres
 9:00 Take a Thief
 10:00-N/W/S
 10:30-Winters Show
 11:30-Peter Gunn
 12:00-Sign Off

MISS YOUR PAPER?
 CALL CIRCULATION DEPARTMENT.
 Phone 272-4536

BATTERIES-USED TIRES-FAST, EFFICIENT SERVICE

GOOD YEAR

Johnson-Pool Tire Co.
 MULESHOE Ph. 272-4594

VULCANIZING FLATS - ANY SIZE NEW TIRES



VETERANS DAY



NOVEMBER 11

A Day Dedicated To World Peace

1918 - Veterans Day - 1968



Fifty years have passed since the original Armistice Day or Veterans Day (as it is now called) . . . fifty years and many wars since the day in 1918 when "the war to end all wars" ended. We commemorate the anniversary of this day with the belief that peace will prevail and wars will end; with the hope for mutual understanding between nations and good will among all peoples; and with a sincere tribute to those who have valiantly fought for our country.

Sponsored by the following civic minded firms who urge you to observe Veterans Day:

Cobb's

Anthony's

Brock Motor Co.

Plains Auto Parts

First National Bank

Muleshoe Motor Co.

Muleshoe State Bank

Muleshoe Co-op Gins

Ray Griffiths & Sons

White's Cashway Gro.

Bratcher Motor Supply

Mohawk Auto Parts Co.

Farley Insurance Agency

Muleshoe Publishing Co.

Dunham Appliance Service

Dari-Delite

Swap Shop

BMG Motors

Ladd Pontiac

King Grain Co.

Central Texaco

Fry & Cox. Inc.

Knowles Auction

Jones Farm Store

Ready Mix Concrete

Morris Nowlin Studio

Black Insurance Agency

Higginbotham-Bartlett Co.

Muleshoe Ford Tractor, Inc.

Bailey County Electric Cooperative Association



Let Us Once Again Celebrate An Observance Of Significance To All Americans And Honor The Memory Of Veterans Of All Wars.



Main Street Beauty Salon

Morris Douglass Implement

Baker's Maytag Laundrette

Union Compress & Warehouse

Western Auto Associate Store