

Hitler's Nazi Juggernaut Slams Into Poland

At 5:45 a. m. on Sept. 1, 1939—25 years ago—the wehrmacht of the Third German Reich smashed across the borders of neighboring Poland. Thus began the costliest, bloodiest, largest war in the history of man. Before the conflict ended, almost

all of Europe was enslaved and the war had touched every nation in the world. Wars red markers were up when Japan invaded Manchuria in 1931. Italy crushed Ethiopia in 1935 and Spain was torn by a fascist-fomented civil war in

1936. But Europe's policy of "appeasement" numbed the senses. When the Sudetenland area of Czechoslovakia was sacrificed to Germany in September 1938, Neville Chamberlain, Britain's prime minister, could announce that Adolf Hitler had "no further

territorial ambitions in Europe." The faint light of hope was extinguished when the Soviet-German nonaggression pact was signed Aug. 23, 1939, assuring the safety of Germany's eastern front.

After a week of intensification of demands on Poland, the German juggernaut moved across the Polish border. Two days later, on Sept. 3, Britain and France declared war. And all of Europe was in flames. The Polish campaign demon-

strated for the first time the lethal effectiveness of the Nazi "blitzkrieg" and the extent of Hitler's military strength. Thirty-five days after the opening gun was fired, Polish resistance was demolished. The Western front then settled into a period

of strange, unbroken quiet—the "phony war" or "Sitzkrieg"—and last-ditch peace efforts saved Europe. On April 9, 1940, Germany invaded Scandinavia. The "phony war" was over and the world braced for the inevitable. (Related Story on Page 4.)



BLITZ—In a lightning attack, the Nazi war machines rumbled over the Polish border on Sept. 1, 1939, and world War II began.



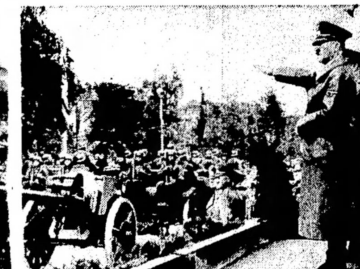
DEFENDERS—Although hopelessly outclassed, Polish units, some in armored cars, valiantly kept the Nazis from Warsaw until Sept. 23.



ENTRENCHMENT—Uniformed Polish girls, members of a patriotic society, helped dig air raid trenches in Warsaw during the heavy German bombardment of the city. There were similar scenes in London and Paris as Europe braced for the blitz.



ADVANCE—Nazi infantrymen advance around streetcars in the outskirts of Warsaw as the Germans began their siege of the city. On Sept. 27, Warsaw surrendered unconditionally to its conquerors.



TRUMP—With the Polish campaign a quick and devastating success, Adolf Hitler triumphantly entered Warsaw on Oct. 5. His arm extended in the Nazi salute, Hitler is shown reviewing his troops.



1964 SEPTEMBER 1964						
S	M	T	W	T	F	S
		1	2	3	4	5
6	7	8	9	10	11	12
13	14	15	16	17	18	19
20	21	22	23	24	25	26
27	28	29	30			

MISS SEPTEMBER—Seventeen-year-old Linda Cox, selected as the Pampa Daily News' Miss September, is the daughter of Mr. and Mrs. Preston Cox, 509 Powell St. Linda is pictured carrying her school books as she begins her final year at Pampa High School where she is a member of the school's student council. She is also a cheerleader and a member of the Kilt Kat Club.

City Commission OKs Plan For Employee Hospitalization

Pampa's City Commission today gave unanimous approval to a plan for group hospitalization for the city's 200 employees. The program, the contract for which is to be drawn and approved later, provides that the city's share of the monthly premium will be \$9.07 which includes hospitalization and a net-of-the-cost of the first \$1,000 of life insurance. The total monthly premium on the city employee is \$10.32 of which the employee would pay \$1.05. This includes hospitalization and \$1,500 life insurance. The employee has an optional choice of covering all family dependents at a cost of \$12.31 a month, paid totally by the employee. City Engineer Harold Foreman, chairman of a five-man committee which studied Pampa's plan, said today. (See COMMISSION, Page 3)

WEATHER
PAMPA AND VICINITY—Fair to partly cloudy and continued warm through Wednesdays. Low tonight upper 60s, high tomorrow mid 90s. Winds southerly at 10-20 m.p.h.



VOL. 57 — NO. 132

The Pampa Daily News

Serving The Top O' Texas 56 Years

THE PAMPA DAILY NEWS, TUESDAY, SEPTEMBER 1, 1964

(14 PAGES TODAY) Week Days 16 Sundays 14

City Budget Cut \$31,934

Titan Roars Off With 3,750-Pound Payload

CAPE KENNEDY (UPI)—An Air Force Titan-3A rocket first of a new breed of big military space boosters, passed at least 95 per cent of its objectives on its maiden flight today. The preliminary tracking reports indicated the 124-foot Titan had groveled its third stage and 3,750 pound payload of lead into orbit but project chief Brig. Gen. Joseph S. Bleimauer said the orbit could not be immediately confirmed. The major said at least 95 per cent of the shot's objectives had been achieved, including perfect operation of the rocket's first two stages and at least a near perfect function of the third stage. However, he said the low stage may have cut a few seconds early and this premature shutdown could interfere with an orbit. The flight opened a 17-shot program to develop a powerful new workhorse for manned military space missions. Today's launch of the black and white rocket followed a seven hour bout with technical troubles which forced a postponement of the shot. The booster climbed slowly into the skies atop a transparent col-

Porter Really Goes All Out for Shine

LITTLE ROCK, Ark. (UPI)—High Taylor, 46, wished today he had let a barber shop porter, Adolph Reynor, 40, shine his shoes. Because when he refused Monday, saying he no longer had time for it, Reynor whipped out a .22 pistol and shot him in the leg. Doctors said his wound was not serious. Reynor was charged with assault with intent to kill and ordered to undergo a mental examination.

Titan-3C, set to fly in April, packs a million more pounds of thrust than the 1.5 million pound thrust Saturn-1 super rocket, now the world's most powerful known booster.

The Titan-3C, set to fly in April, packs a million more pounds of thrust than the 1.5 million pound thrust Saturn-1 super rocket, now the world's most powerful known booster. The launch, postponed from Monday because of a seven-hour bout with technical troubles, followed a flawless countdown today. Star performer of the debut was the maneuverable top stage and its sophisticated guidance system, although the shot was a test of the whole Titan-3A system.

Suspect Held in Philly Outbreaks

PHILADELPHIA (UPI)—A slightly built Negro who bills himself as Shakhk Muhammad, leader of the "Black Nationalists" was arrested and held in a \$10,000 bail Monday night as police delved into the causes of a three-day riot which devastated the "black belt" of North Philadelphia. Muhammad was identified by police as Abyssinian Hayes, 35, who had been thrown out of the Black Muslims because he was "too militant." Deputy Police Commissioner Frank Rizzo said Muhammad formed his own black supremacy group which he called "the only true freedom fighters."

Safety Plan Viewed For City Employees

Pampa city employees who drive city-owned motor vehicles each begins the program with 10 points in his credit. Then the driver can lose points for each accident while driving a city-owned vehicle. For example, a first offense case that involves minor damage of less than \$100, which does not involve another moving vehicle or which may be a minor infraction of law or safety rules, would result in the loss of at least one point and a reprimand from the department head or possibly from the city manager. Loss of all ten points by any driver within one year would result in mandatory discharge. Any driver having lost part of his points can build back to the original 10 points by driving for one entire year without a chargeable accident or infraction of the law. Complete files will be kept on each driver of a city vehicle and will be reviewed once a month. This, the city manager stated, will result in driver improvement action where drivers lose too many of their points. "The point system," Schmitz said. (See SAFETY, Page 3)

Tax Rate To Be Hiked by 2 Cents

Pampa's annual city budget for fiscal 1964-65 in the sum of \$1,493,766 was submitted to the city commission today by City Manager Harold Schmitz. The 1964 estimated assumption shows an increase of \$231,000 over the 1963 valuation of \$1,262,766. The budget figure for the coming year, starting Oct. 1, is \$31,934 less than the \$1,325,610 budget approved by the commission last year. However, the municipal tax rate recommended by the city property. The 1964 estimated assumption shows an increase of \$231,000 over the 1963 valuation of \$1,262,766. The budget figure for the coming year, starting Oct. 1, is \$31,934 less than the \$1,325,610 budget approved by the commission last year. However, the municipal tax rate recommended by the city property. The 1964 estimated assumption shows an increase of \$231,000 over the 1963 valuation of \$1,262,766. The budget figure for the coming year, starting Oct. 1, is \$31,934 less than the \$1,325,610 budget approved by the commission last year. However, the municipal tax rate recommended by the city property. The 1964 estimated assumption shows an increase of \$231,000 over the 1963 valuation of \$1,262,766. The budget figure for the coming year, starting Oct. 1, is \$31,934 less than the \$1,325,610 budget approved by the commission last year. However, the municipal tax rate recommended by the city property. The 1964 estimated assumption shows an increase of \$231,000 over the 1963 valuation of \$1,262,766. The budget figure for the coming year, starting Oct. 1, is \$31,934 less than the \$1,325,610 budget approved by the commission last year. However, the municipal tax rate recommended by the city property. The 1964 estimated assumption shows an increase of \$231,000 over the 1963 valuation of \$1,262,766. The budget figure for the coming year, starting Oct. 1, is \$31,934 less than the \$1,325,610 budget approved by the commission last year. However, the municipal tax rate recommended by the city property. The 1964 estimated assumption shows an increase of \$231,000 over the 1963 valuation of \$1,262,766. The budget figure for the coming year, starting Oct. 1, is \$31,934 less than the \$1,325,610 budget approved by the commission last year. However, the municipal tax rate recommended by the city property. The 1964 estimated assumption shows an increase of \$231,000 over the 1963 valuation of \$1,262,766. The budget figure for the coming year, starting Oct. 1, is \$31,934 less than the \$1,325,610 budget approved by the commission last year. However, the municipal tax rate recommended by the city property. The 1964 estimated assumption shows an increase of \$231,000 over the 1963 valuation of \$1,262,766. The budget figure for the coming year, starting Oct. 1, is \$31,934 less than the \$1,325,610 budget approved by the commission last year. However, the municipal tax rate recommended by the city property. The 1964 estimated assumption shows an increase of \$231,000 over the 1963 valuation of \$1,262,766. The budget figure for the coming year, starting Oct. 1, is \$31,934 less than the \$1,325,610 budget approved by the commission last year. However, the municipal tax rate recommended by the city property. The 1964 estimated assumption shows an increase of \$231,000 over the 1963 valuation of \$1,262,766. The budget figure for the coming year, starting Oct. 1, is \$31,934 less than the \$1,325,610 budget approved by the commission last year. However, the municipal tax rate recommended by the city property. The 1964 estimated assumption shows an increase of \$231,000 over the 1963 valuation of \$1,262,766. The budget figure for the coming year, starting Oct. 1, is \$31,934 less than the \$1,325,610 budget approved by the commission last year. However, the municipal tax rate recommended by the city property. The 1964 estimated assumption shows an increase of \$231,000 over the 1963 valuation of \$1,262,766. The budget figure for the coming year, starting Oct. 1, is \$31,934 less than the \$1,325,610 budget approved by the commission last year. However, the municipal tax rate recommended by the city property. The 1964 estimated assumption shows an increase of \$231,000 over the 1963 valuation of \$1,262,766. The budget figure for the coming year, starting Oct. 1, is \$31,934 less than the \$1,325,610 budget approved by the commission last year. However, the municipal tax rate recommended by the city property. The 1964 estimated assumption shows an increase of \$231,000 over the 1963 valuation of \$1,262,766. The budget figure for the coming year, starting Oct. 1, is \$31,934 less than the \$1,325,610 budget approved by the commission last year. However, the municipal tax rate recommended by the city property. The 1964 estimated assumption shows an increase of \$231,000 over the 1963 valuation of \$1,262,766. The budget figure for the coming year, starting Oct. 1, is \$31,934 less than the \$1,325,610 budget approved by the commission last year. However, the municipal tax rate recommended by the city property. The 1964 estimated assumption shows an increase of \$231,000 over the 1963 valuation of \$1,262,766. The budget figure for the coming year, starting Oct. 1, is \$31,934 less than the \$1,325,610 budget approved by the commission last year. However, the municipal tax rate recommended by the city property. The 1964 estimated assumption shows an increase of \$231,000 over the 1963 valuation of \$1,262,766. The budget figure for the coming year, starting Oct. 1, is \$31,934 less than the \$1,325,610 budget approved by the commission last year. However, the municipal tax rate recommended by the city property. The 1964 estimated assumption shows an increase of \$231,000 over the 1963 valuation of \$1,262,766. The budget figure for the coming year, starting Oct. 1, is \$31,934 less than the \$1,325,610 budget approved by the commission last year. However, the municipal tax rate recommended by the city property. The 1964 estimated assumption shows an increase of \$231,000 over the 1963 valuation of \$1,262,766. The budget figure for the coming year, starting Oct. 1, is \$31,934 less than the \$1,325,610 budget approved by the commission last year. However, the municipal tax rate recommended by the city property. The 1964 estimated assumption shows an increase of \$231,000 over the 1963 valuation of \$1,262,766. The budget figure for the coming year, starting Oct. 1, is \$31,934 less than the \$1,325,610 budget approved by the commission last year. However, the municipal tax rate recommended by the city property. The 1964 estimated assumption shows an increase of \$231,000 over the 1963 valuation of \$1,262,766. The budget figure for the coming year, starting Oct. 1, is \$31,934 less than the \$1,325,610 budget approved by the commission last year. However, the municipal tax rate recommended by the city property. The 1964 estimated assumption shows an increase of \$231,000 over the 1963 valuation of \$1,262,766. The budget figure for the coming year, starting Oct. 1, is \$31,934 less than the \$1,325,610 budget approved by the commission last year. However, the municipal tax rate recommended by the city property. The 1964 estimated assumption shows an increase of \$231,000 over the 1963 valuation of \$1,262,766. The budget figure for the coming year, starting Oct. 1, is \$31,934 less than the \$1,325,610 budget approved by the commission last year. However, the municipal tax rate recommended by the city property. The 1964 estimated assumption shows an increase of \$231,000 over the 1963 valuation of \$1,262,766. The budget figure for the coming year, starting Oct. 1, is \$31,934 less than the \$1,325,610 budget approved by the commission last year. However, the municipal tax rate recommended by the city property. The 1964 estimated assumption shows an increase of \$231,000 over the 1963 valuation of \$1,262,766. The budget figure for the coming year, starting Oct. 1, is \$31,934 less than the \$1,325,610 budget approved by the commission last year. However, the municipal tax rate recommended by the city property. The 1964 estimated assumption shows an increase of \$231,000 over the 1963 valuation of \$1,262,766. The budget figure for the coming year, starting Oct. 1, is \$31,934 less than the \$1,325,610 budget approved by the commission last year. However, the municipal tax rate recommended by the city property. The 1964 estimated assumption shows an increase of \$231,000 over the 1963 valuation of \$1,262,766. The budget figure for the coming year, starting Oct. 1, is \$31,934 less than the \$1,325,610 budget approved by the commission last year. However, the municipal tax rate recommended by the city property. The 1964 estimated assumption shows an increase of \$231,000 over the 1963 valuation of \$1,262,766. The budget figure for the coming year, starting Oct. 1, is \$31,934 less than the \$1,325,610 budget approved by the commission last year. However, the municipal tax rate recommended by the city property. The 1964 estimated assumption shows an increase of \$231,000 over the 1963 valuation of \$1,262,766. The budget figure for the coming year, starting Oct. 1, is \$31,934 less than the \$1,325,610 budget approved by the commission last year. However, the municipal tax rate recommended by the city property. The 1964 estimated assumption shows an increase of \$231,000 over the 1963 valuation of \$1,262,766. The budget figure for the coming year, starting Oct. 1, is \$31,934 less than the \$1,325,610 budget approved by the commission last year. However, the municipal tax rate recommended by the city property. The 1964 estimated assumption shows an increase of \$231,000 over the 1963 valuation of \$1,262,766. The budget figure for the coming year, starting Oct. 1, is \$31,934 less than the \$1,325,610 budget approved by the commission last year. However, the municipal tax rate recommended by the city property. The 1964 estimated assumption shows an increase of \$231,000 over the 1963 valuation of \$1,262,766. The budget figure for the coming year, starting Oct. 1, is \$31,934 less than the \$1,325,610 budget approved by the commission last year. However, the municipal tax rate recommended by the city property. The 1964 estimated assumption shows an increase of \$231,000 over the 1963 valuation of \$1,262,766. The budget figure for the coming year, starting Oct. 1, is \$31,934 less than the \$1,325,610 budget approved by the commission last year. However, the municipal tax rate recommended by the city property. The 1964 estimated assumption shows an increase of \$231,000 over the 1963 valuation of \$1,262,766. The budget figure for the coming year, starting Oct. 1, is \$31,934 less than the \$1,325,610 budget approved by the commission last year. However, the municipal tax rate recommended by the city property. The 1964 estimated assumption shows an increase of \$231,000 over the 1963 valuation of \$1,262,766. The budget figure for the coming year, starting Oct. 1, is \$31,934 less than the \$1,325,610 budget approved by the commission last year. However, the municipal tax rate recommended by the city property. The 1964 estimated assumption shows an increase of \$231,000 over the 1963 valuation of \$1,262,766. The budget figure for the coming year, starting Oct. 1, is \$31,934 less than the \$1,325,610 budget approved by the commission last year. However, the municipal tax rate recommended by the city property. The 1964 estimated assumption shows an increase of \$231,000 over the 1963 valuation of \$1,262,766. The budget figure for the coming year, starting Oct. 1, is \$31,934 less than the \$1,325,610 budget approved by the commission last year. However, the municipal tax rate recommended by the city property. The 1964 estimated assumption shows an increase of \$231,000 over the 1963 valuation of \$1,262,766. The budget figure for the coming year, starting Oct. 1, is \$31,934 less than the \$1,325,610 budget approved by the commission last year. However, the municipal tax rate recommended by the city property. The 1964 estimated assumption shows an increase of \$231,000 over the 1963 valuation of \$1,262,766. The budget figure for the coming year, starting Oct. 1, is \$31,934 less than the \$1,325,610 budget approved by the commission last year. However, the municipal tax rate recommended by the city property. The 1964 estimated assumption shows an increase of \$231,000 over the 1963 valuation of \$1,262,766. The budget figure for the coming year, starting Oct. 1, is \$31,934 less than the \$1,325,610 budget approved by the commission last year. However, the municipal tax rate recommended by the city property. The 1964 estimated assumption shows an increase of \$231,000 over the 1963 valuation of \$1,262,766. The budget figure for the coming year, starting Oct. 1, is \$31,934 less than the \$1,325,610 budget approved by the commission last year. However, the municipal tax rate recommended by the city property. The 1964 estimated assumption shows an increase of \$231,000 over the 1963 valuation of \$1,262,766. The budget figure for the coming year, starting Oct. 1, is \$31,934 less than the \$1,325,610 budget approved by the commission last year. However, the municipal tax rate recommended by the city property. The 1964 estimated assumption shows an increase of \$231,000 over the 1963 valuation of \$1,262,766. The budget figure for the coming year, starting Oct. 1, is \$31,934 less than the \$1,325,610 budget approved by the commission last year. However, the municipal tax rate recommended by the city property. The 1964 estimated assumption shows an increase of \$231,000 over the 1963 valuation of \$1,262,766. The budget figure for the coming year, starting Oct. 1, is \$31,934 less than the \$1,325,610 budget approved by the commission last year. However, the municipal tax rate recommended by the city property. The 1964 estimated assumption shows an increase of \$231,000 over the 1963 valuation of \$1,262,766. The budget figure for the coming year, starting Oct. 1, is \$31,934 less than the \$1,325,610 budget approved by the commission last year. However, the municipal tax rate recommended by the city property. The 1964 estimated assumption shows an increase of \$231,000 over the 1963 valuation of \$1,262,766. The budget figure for the coming year, starting Oct. 1, is \$31,934 less than the \$1,325,610 budget approved by the commission last year. However, the municipal tax rate recommended by the city property. The 1964 estimated assumption shows an increase of \$231,000 over the 1963 valuation of \$1,262,766. The budget figure for the coming year, starting Oct. 1, is \$31,934 less than the \$1,325,610 budget approved by the commission last year. However, the municipal tax rate recommended by the city property. The 1964 estimated assumption shows an increase of \$231,000 over the 1963 valuation of \$1,262,766. The budget figure for the coming year, starting Oct. 1, is \$31,934 less than the \$1,325,610 budget approved by the commission last year. However, the municipal tax rate recommended by the city property. The 1964 estimated assumption shows an increase of \$231,000 over the 1963 valuation of \$1,262,766. The budget figure for the coming year, starting Oct. 1, is \$31,934 less than the \$1,325,610 budget approved by the commission last year. However, the municipal tax rate recommended by the city property. The 1964 estimated assumption shows an increase of \$231,000 over the 1963 valuation of \$1,262,766. The budget figure for the coming year, starting Oct. 1, is \$31,934 less than the \$1,325,610 budget approved by the commission last year. However, the municipal tax rate recommended by the city property. The 1964 estimated assumption shows an increase of \$231,000 over the 1963 valuation of \$1,262,766. The budget figure for the coming year, starting Oct. 1, is \$31,934 less than the \$1,325,610 budget approved by the commission last year. However, the municipal tax rate recommended by the city property. The 1964 estimated assumption shows an increase of \$231,000 over the 1963 valuation of \$1,262,766. The budget figure for the coming year, starting Oct. 1, is \$31,934 less than the \$1,325,610 budget approved by the commission last year. However, the municipal tax rate recommended by the city property. The 1964 estimated assumption shows an increase of \$231,000 over the 1963 valuation of \$1,262,766. The budget figure for the coming year, starting Oct. 1, is \$31,934 less than the \$1,325,610 budget approved by the commission last year. However, the municipal tax rate recommended by the city property. The 1964 estimated assumption shows an increase of \$231,000 over the 1963 valuation of \$1,262,766. The budget figure for the coming year, starting Oct. 1, is \$31,934 less than the \$1,325,610 budget approved by the commission last year. However, the municipal tax rate recommended by the city property. The 1964 estimated assumption shows an increase of \$231,000 over the 1963 valuation of \$1,262,766. The budget figure for the coming year, starting Oct. 1, is \$31,934 less than the \$1,325,610 budget approved by the commission last year. However, the municipal tax rate recommended by the city property. The 1964 estimated assumption shows an increase of \$231,000 over the 1963 valuation of \$1,262,766. The budget figure for the coming year, starting Oct. 1, is \$31,934 less than the \$1,325,610 budget approved by the commission last year. However, the municipal tax rate recommended by the city property. The 1964 estimated assumption shows an increase of \$231,000 over the 1963 valuation of \$1,262,766. The budget figure for the coming year, starting Oct. 1, is \$31,934 less than the \$1,325,610 budget approved by the commission last year. However, the municipal tax rate recommended by the city property. The 1964 estimated assumption shows an increase of \$231,000 over the 1963 valuation of \$1,262,766. The budget figure for the coming year, starting Oct. 1, is \$31,934 less than the \$1,325,610 budget approved by the commission last year. However, the municipal tax rate recommended by the city property. The 1964 estimated assumption shows an increase of \$231,000 over the 1963 valuation of \$1,262,766. The budget figure for the coming year, starting Oct. 1, is \$31,934 less than the \$1,325,610 budget approved by the commission last year. However, the municipal tax rate recommended by the city property. The 1964 estimated assumption shows an increase of \$231,000 over the 1963 valuation of \$1,262,766. The budget figure for the coming year, starting Oct. 1, is \$31,934 less than the \$1,325,610 budget approved by the commission last year. However, the municipal tax rate recommended by the city property. The 1964 estimated assumption shows an increase of \$231,000 over the 1963 valuation of \$1,262,766. The budget figure for the coming year, starting Oct. 1, is \$31,934 less than the \$1,325,610 budget approved by the commission last year. However, the municipal tax rate recommended by the city property. The 1964 estimated assumption shows an increase of \$231,000 over the 1963 valuation of \$1,262,766. The budget figure for the coming year, starting Oct. 1, is \$31,934 less than the \$1,325,610 budget approved by the commission last year. However, the municipal tax rate recommended by the city property. The 1964 estimated assumption shows an increase of \$231,000 over the 1963 valuation of \$1,262,766. The budget figure for the coming year, starting Oct. 1, is \$31,934 less than the \$1,325,610 budget approved by the commission last year. However, the municipal tax rate recommended by the city property. The 1964 estimated assumption shows an increase of \$231,000 over the 1963 valuation of \$1,262,766. The budget figure for the coming year, starting Oct. 1, is \$31,934 less than the \$1,325,610 budget approved by the commission last year. However, the municipal tax rate recommended by the city property. The 1964 estimated assumption shows an increase of \$231,000 over the 1963 valuation of \$1,262,766. The budget figure for the coming year, starting Oct. 1, is \$31,934 less than the \$1,325,610 budget approved by the commission last year. However, the municipal tax rate recommended by the city property. The 1964 estimated assumption shows an increase of \$231,000 over the 1963 valuation of \$1,262,766. The budget figure for the coming year, starting Oct. 1, is \$31,934 less than the \$1,325,610 budget approved by the commission last year. However, the municipal tax rate recommended by the city property. The 1964 estimated assumption shows an increase of \$231,000 over the 1963 valuation of \$1,262,766. The budget figure for the coming year, starting Oct. 1, is \$31,934 less than the \$1,325,610 budget approved by the commission last year. However, the municipal tax rate recommended by the city property. The 1964 estimated assumption shows an increase of \$231,000 over the 1963 valuation of \$1,262,766. The budget figure for the coming year, starting Oct. 1, is \$31,934 less than the \$1,325,610 budget approved by the commission last year. However, the municipal tax rate recommended by the city property. The 1964 estimated assumption shows an increase of \$231,000 over the 1963 valuation of \$1,262,766. The budget figure for the coming year, starting Oct. 1, is \$31,934 less than the \$1,325,610 budget approved by the commission last year. However, the municipal tax rate recommended by the city property. The 1964 estimated assumption shows an increase of \$231,000 over the 1963 valuation of \$1,262,766. The budget figure for the coming year, starting Oct. 1, is \$31,934 less than the \$1,325,610 budget approved by the commission last year. However, the municipal tax rate recommended by the city property. The 1964 estimated assumption shows an increase of \$231,000 over the 1963 valuation of \$1,262,766. The budget figure for the coming year, starting Oct. 1, is \$31,934 less than the \$1,325,610 budget approved by the commission last year. However, the municipal tax rate recommended by the city property. The 1964 estimated assumption shows an increase of \$231,000 over the 1963 valuation of \$1,262,766. The budget figure for the coming year, starting Oct. 1, is \$31,934 less than the \$1,325,610 budget approved by the commission last year. However, the municipal tax rate recommended by the city property. The 1964 estimated assumption shows an increase of \$231,000 over the 1963 valuation of \$1,262,766. The budget figure for the coming year, starting Oct. 1, is \$31,934 less than the \$1,325,610 budget approved by the commission last year. However, the municipal tax rate recommended by the city property. The 1964 estimated assumption shows an increase of \$231,000 over the 1963 valuation of \$1,262,766. The budget figure for the coming year, starting Oct. 1, is \$31,934 less than the \$1,325,610 budget approved by the commission last year. However, the municipal tax rate recommended by the city property. The 1964 estimated assumption shows an increase of \$231,000 over the 1963 valuation of \$1,262,766. The budget figure for the coming year, starting Oct. 1, is \$31,934 less than the \$1,325,610 budget approved by the commission last year. However, the municipal tax rate recommended by the city property. The 1964 estimated assumption shows an increase of \$231,000 over the 1963 valuation of \$1,262,766. The budget figure for the coming year, starting Oct. 1, is \$31,934 less than the \$1,325,610 budget approved by the commission last year. However, the municipal tax rate recommended by the city property. The 1964 estimated assumption shows an increase of \$231,000 over the 1963 valuation of \$1,262,766. The budget figure for the coming year, starting Oct. 1, is \$31,934 less than the \$1,325,610 budget approved by the commission last year. However, the municipal tax rate recommended by the city property. The 1964 estimated assumption shows an increase of \$231,000 over the 1963 valuation of \$1,262,766. The budget figure for the coming year, starting Oct. 1, is \$31,934 less than the \$1,325,610 budget approved by the commission last year. However, the municipal tax rate recommended by the city property. The 1964 estimated assumption shows an increase of \$231,000 over the 1963 valuation of \$1,262,766. The budget figure for the coming year, starting Oct. 1, is \$31,934 less than the \$1,325,610 budget approved by the commission last year. However, the municipal tax rate recommended by the city property. The 1964 estimated assumption shows an increase of \$231,000 over the 1963 valuation of \$1,262,766. The budget figure for the coming year, starting Oct. 1, is \$31,934 less than the \$1,325,610 budget approved by the commission last year. However, the municipal tax rate recommended by the city property. The 1964 estimated assumption shows an increase of \$231,000 over the 1963 valuation of \$1,262,766. The budget figure for the coming year, starting Oct. 1, is \$31,934 less than the \$1,325,610 budget approved by the commission last year. However, the municipal tax rate recommended by the city property. The 1964 estimated assumption shows an increase of \$231,000 over the 1963 valuation of \$1,262,766. The budget figure for the coming year, starting Oct. 1, is \$31,934 less than the \$1,325,610 budget approved by the commission last year. However, the municipal tax rate recommended by the city property. The 1964 estimated assumption shows an increase of \$231,000 over the 1963 valuation of \$1,262,766. The budget figure for the coming year, starting Oct. 1, is \$31,934 less than the \$1,325,610 budget approved by the commission last year. However, the municipal tax rate recommended by the city property. The 1964 estimated assumption shows an increase of \$231,000 over the 1963 valuation of \$1,262,766. The budget figure for the coming year, starting Oct. 1, is \$31,934 less than the \$1,325,610 budget approved by the commission last year. However, the municipal tax rate recommended by the city property. The 1964 estimated assumption shows an increase of \$231,000 over the 1963 valuation of \$1,262,766. The budget figure for the coming year, starting Oct. 1, is \$31,934 less than the \$1,325,610 budget approved by the commission last year. However, the municipal tax rate recommended by the city property. The 1964 estimated assumption shows an increase of \$231,000 over the 1963 valuation of \$1,262,766. The budget figure for the coming year, starting Oct. 1, is \$31,934 less than the \$1,325,610 budget approved by the commission last year. However, the municipal tax rate recommended by the city property. The 1964 estimated assumption shows an increase of \$231,000 over the 1963 valuation of \$1,262,766. The budget figure for the coming year, starting Oct. 1, is \$31,934 less than the \$1,325,610 budget approved by the commission last year. However, the municipal tax rate recommended by the city property. The 1964 estimated assumption shows an increase of \$231,000 over the 1963 valuation of \$1,262,766. The budget figure for the coming year, starting Oct. 1, is \$31,934 less than the \$1,325,610 budget approved by the commission last year. However, the municipal tax rate recommended by the city property

Foreign News Commentary

By JOSEPH W. GRIGG
PARIS (UPI) — President Charles de Gaulle of France is in the position of being able to say "I told you so."

is even more gratifying for him to be able to say so to the United States.

What put him in this mood was the latest upheaval in South Viet Nam, climaxed by resignation of Maj. Gen. Nguyen Khanh from the presidency.

For De Gaulle this confirmed what he has been saying for a year—that the Vietnamese situation is in a hopeless mess, that there is not the remotest prospect of military victory and that the United States would do well to get out.

The way out proposed by De Gaulle is a new Geneva conference attended by the major powers, including Communist China, and by the states of former Indochina. Its aim would be neutralization of Southeast Asia.

Repeated Regularly
De Gaulle first proposed this in August, 1963. He has been repeating it at intervals ever since.

He argues that the United States can not hope to win a guerrilla-type war against Communists in Southeast Asia. The fact France failed to do so 10 years ago with an army of 400,000 men in Indochina is conclusive proof for him.

Continuation of the present war in South Viet Nam, De Gaulle argues, constitutes a chronic risk to peace between the great powers. He points to the recent Gulf of Tonkin crisis involving United States warships as a case in point.

In these circumstances, De Gaulle asserts, neutralization is the only answer—that is, complete removal of Southeast Asia from the East-West power struggle.

Hazy On Details
Just how this could be achieved De Gaulle was not explained. French officials are hazy about details of how an agreement could be reached after a conference is called.

But the French were far from impressed by the arguments of former U.S. Ambassador Henry Cabot Lodge on his mission to explain American policy in Southeast Asia to the Europeans.

Lodge agreed with the French that the ultimate solution must be political. But he insisted it would be fatal to call a conference with the Communists now. He argued this could only result in abject surrender by the West, followed by the swift loss of all Southeast Asia to communism.

Adv for Tuesday PMs 9-1-64

Youth Center Calendar

WEDNESDAY
4:00—Open; Gym Activity
7:00—All Ages Swim
10:00—Close

THURSDAY
4:00—Open; Gym Activity
7:00—All Ages Swim
10:00—Close

FRIDAY
4:00—Open
7:00—All Ages Swim
10:00—Close

SATURDAY
9:00—Open; Gym Activity
12:00—Close for lunch
1:00—Open; All Ages Swim
5:00—Close
7:30—Calico Capers Dancers

SUNDAY
2:00—Open; All Ages Swim
5:00—Close

FIRST VISIT
BELGRADE, Yugoslavia (UPI)—East German Communist Leader Walter Ulbricht will make his first visit to Yugoslavia in mid-September, reliable diplomatic sources said Friday.

The Pampa Daily News
YOUR FREEDOM NEWSPAPER
SUBSCRIPTION RATES
By carrier in Pampa, 35 cents per week; \$1.50 per 3 months; \$18 per year. By mail paid in advance in office, \$18 per year in retail trading zone; \$15 per year, \$12 per month, outside retail zone. Single copies 5 cents. Published every Sunday by the Pampa Daily News, 200 S. Broadway, Pampa, Texas 79553. Second-class postage paid at Pampa, Texas. Postmaster: Please send address changes under the name of March 8, 1972.

Monday your Pampa Daily News? Dial MO 4-3225 before 5 p.m. weekdays, 10 a.m. Sun.

FRESH FROZEN FOODS

ORANGE JUICE
FRESH FROZEN DARTMOUTH 6 OZ. CAN **25¢**

Mexican Dinners
Patio **39¢**

FLOUR
GLADIOLA 5-LB. BAG **39¢**

SUGAR
IMPERIAL PURE CANE 5-LB. BAG **19¢**
With A \$5.00 Purchase or More Excluding Cigarettes

COFFEE
FOLGERS ALL GRINDS LB. **39¢**
With A \$5.00 Purchase or More Excluding Cigarettes

BREAD 1 1/2 Lb. Loaf **29¢**
BUTTERNUT

TISSUE 10 Roll Pkg. **59¢**
LYDIA GREY

BAKE-RITE 3-Lb. Can **39¢**

MELLORINE DARTMOUTH ASSORTED FLAVORS 1/2 GALLON **25¢**

CIGARETTES All Brands Carton **\$2.58**

GENERAL MERCHANDISE VALUES

Alka Seltzer 25's 34¢
REG. 83c

HAIR DRESSING Code 10 **69¢**

HOT ICE LIPSTICK TUSSY \$1.35

RHINALL NOSE DROPS 69¢

TAKE HOME Cash! FROM FURR'S

FIRST OF MONTH \$1.00 SALE at FURR'S



FREE TRI-STATE FAIR TICKETS AT FURR'S

ONE 75c VALUE Adult General Admission Ticket with each 25.00 purchase or

ONE 15c VALUE Childrens Ticket with each 5.00 purchase

All tickets issued by Furr's have no cash value and are accepted at Amarillo, Texas, General Admission Tri-State Fair Gates only.

Good September 21 thru September 28, 1964

CUCUMBERS Texas Fresh Lb. **9¢**

BELL PEPPERS Large for Stuffing **22¢**

Lettuce Romaine 19¢ bunch

KY Beans 19¢ lb

Yams New Crop 19¢ lb

Grapes Thompson Seedless 29¢

Peaches Ark. Freestone 2 lbs. 25¢

Nectarines Calif. Grown 29¢



SPARE RIBS
TENDER, MEATY FINE FOR BAR-B-Q LB. **39¢**

PORK ROAST
FRESH PICNIC STYLE CUTS HALF OR WHOLE LB. **29¢**

PORK STEAK
LEAN TENDER YOUNG PORK LB. **49¢**

this is good fresh pork — seasoned

Sausage lb. **39¢**

Center Cut Rib

PORK CHOPS lb. **69¢**

German Style Smoked

Sausage lb. **79¢**

Farm Pac Hickory Smoked

Bacon lb. **59¢**

Ma

An advi will meet Cross offi ard first attend th

Season sale, Sch asement 9 per bo

Wide regularly Planning yard. S tic Cente

Highlan will meet Royal Se a m. Wee Members small ite supplies, ticles, to Mission i

Moving thing. M

Clarine ner.*

Our in teen was \$2.98, no time, \$2. Fabric C

Call M Friday o for hom 44215 *

Top O meet in p.m. Thu Hospitali

Found

Town l ler is no ed for v welcome old *

Housej

F

133:

RO

Fite's Feed

GR

Fresh Lean

BE

Bor 1/2

Gio Siz Det

C

Be Re

Bo

Hu 2 1/ w Dar C

U.

We C

Mainly About People

* Indicates Paid Advertising

An advanced first aid class will meet tonight in the Red Cross office. Anyone with a standard first aid card is asked to attend the meeting.

Season football tickets now on sale. School Business Office, Pampa Junior High, 50 per book, MO 4-2531.

Wide wale corduroy has been regularly priced at \$1.39 a yard. This week for 99 cents a yard. Singer Sewing and Fabric Center, 214 N. Cuyler.

Highland Baptist Church WMS will meet for the September Royal Service program at 9:30 a.m. Wednesday at the church. Members are asked to bring small items such as first aid supplies, crayons and toilet articles, to be sent to the Indian Mission at Taos, N.M.

Moving, need to sell everything. MO 5-2753, 309 Sunset.

Clarinet for sale. 325 N. Sumner.

Our imported Italian Velveteen was an excellent buy at \$2.98, now on special, limited time, \$2.66. Singer Sewing and Fabric Center, 214 N. Cuyler.

Call Mrs. Holt, Monday and Friday or 8:30 A.M. other days for homemade pastries. MO 4-4215.

Top O' Texas Club will meet in regular session at 7:30 p.m. Thursday in Citizen's Bank Hospitality Room.

Found toy poodle. MO 4-6623.

Town House Cafe, 306 N. Cuyler is now open after being closed for vacation. Mrs. Prescott welcomes all customers new and old.

Houseguests of Mrs. O. E.

Tidwell, 1037 S. Schneider, for the wedding of her granddaughter, Dianne Tidwell, were Mr. and Mrs. Bob Tidwell, Sally and Bobby Wayne of Cushing, Okla., and Mrs. May Reynolds of Dallas, Mrs. Tidwell's sister.

Court News

CORPORATION COURT
Willie J. Wilson, 527 Elm, expired driver's license, guilty, fined \$21.

James H. Sells, 844 E. Campbell, intoxication, guilty, fined \$50.

Erle B. Palmer, Austin, intoxication, dismissed.

Two Cases Heard In County Court

A bond of \$1,000 was set on a Pampa woman, Mrs. Hazel E. Killbrev, 1130 Christine, after she pleaded not guilty to a charge of driving while intoxicated yesterday in Gray County Court.

Mrs. Killbrev was arrested by city police Sunday night after she was involved in an automobile accident.

Also in county court, Curtis Irving of 613 S. Gray was fined \$25 and costs after pleading guilty to a charge of aggravated assault.

Shamrock

(Continued From Page 1)
They were taken to the Wheeler County Jail at Wheeler and charged with armed robbery this morning.
The \$120 was found in the auto.
The robbery occurred at 10:35 p.m. and the arrest came just 30 minutes later at 11:05 p.m.

Commission

(Continued From Page 1)
Pampa and Amarillo plans, told the commission that the Pampa plan offers more coverage than Amarillo where the city pays only \$6.30 of the monthly premium.

Foreman said the Pampa plan gives 24-hour coverage whereas Amarillo does not cover while on the job. The Pampa plan also has three additional benefits, Foreman said. It provides \$5 a day for chiropractic calls up to \$50, maternity benefits are broader in that they provide \$225 for multiple birth and the room benefit is \$4 more a day.

Principal provisions of the Pampa city employe group hospitalization plan include: \$16 a day basic room and board and hospital services up to a maximum of \$320; surgical benefits up to \$300; \$5 a day for doctors call at hospital up to \$155 and an expense up to \$300 and major medical expense benefits of 80 per cent of expense incurred during a calendar year which exceeds any basic benefit payable and a cash deductible of \$100 per disability. The maximum amount payable is \$10,000.

In other business today the commission:
Engaged in a discussion of possible foreclosures to collect delinquent taxes. Records at the city tax office reveal that Pampa has approximately \$210,000 in delinquent taxes on the books as of today.

This unpaid tax total dates back to the beginning of tax collections in Pampa.

Commissioner L. P. Fort brought up the question of putting water consumers on a summer rate for only specified months instead of the year around as at present.

The commission decided to make a study of the water rate situation and take action at a later date.

Most sounds in the English language are formed by breathing out, only a very few by an in-drawn breath.

Obituaries

Mrs. G. E. Bailey
CANADIAN (Spl) - Funeral services were held at 10 a.m. today in First Baptist Church here for Mrs. G. E. Bailey, 93, who died Sunday in an Amarillo rest home.

Mrs. Bailey, a longtime Canadian resident, is survived by four daughters, Mrs. Frank Hutton and Mrs. Ethel Wilmoth of Canadian, Mrs. Sylvia Shomber of Eldorado, Kan. and Mrs. Vera Roberts of Enid, Okla.; a brother, Joseph F. Lewis of Amarillo, seven grandchildren and eight great-grandchildren.

Rev. Troy Noland officiated at the services and pallbearers were Frank Shaller, R. M. Hobby, Carl Studer, Tom Conatser, Claude Cook and Elton Miller. Burial was in Canadian Cemetery.

George William Contner II
Funeral services for George William Contner II, infant son of Mr. and Mrs. George William Contner, 721 E. Malone, will be conducted at 4 p.m. today in Baby Gardens of Fairview Cemetery under direction of Duencel Carmichael Funeral Home. Father William V. Brennan of St. Vincent de Paul Catholic Church will officiate.

The infant died early this morning in a local hospital 15 hours after birth.

Surviving are his parents; two sisters, Anita Marie and Debra Sue Contner of the home; grandparents, Mr. and Mrs. Pedro Martinez of Pampa and George W. Contner of Las Vegas, Nev.

C.C. Membership To Hear Noted Texas Humorist

Dr. Charles Jarvis, noted humorist from San Marcos, will be the principal speaker at the annual membership banquet of the Pampa Chamber of Commerce.

The banquet has been scheduled for Oct. 27 in the Coronado Inn.

Seven new Chamber directors, who will be elected sometime this month, will officially take office at the banquet.

The directors will serve for three year terms and will replace directors whose term expires this month.

Budget

(Continued From Page 1)
94.6 per cent of the 1963 tax roll retained.

Tax Assessor - Collector Aubrey Jones reported to the city manager that up to last Wednesday his office had collected 94.6 per cent of the 1963 tax roll for a total of \$616,180.37.

The budget lists the following summary of operating costs broken down under various departments. The 1964-65 estimated figure is first. The second figure under each department is for the current year:

Executive Department - \$62,597 and \$57,993; Tax Department - \$39,021 and \$35,152; City Hall - \$20,421 and \$24,870; Fire Department - \$174,465 and \$170,067; Police Department - \$172,572 and \$16,384.

Corporation Court - \$13,892 and \$13,283; Health Department - \$16,302 and \$15,658; Public Works and Inspection - \$46,244 and \$29,382; Street Department - \$236,947 and \$248,535; Sanitation Department - \$159,294 and \$165,157.

Park Department - \$45,440 and \$44,148; Swimming Pools - \$13,805 and \$17,745; Shops - 0 and \$4,602; Warehouse - \$9,067 and \$13,413; General Maintenance - \$12,377 and \$6,924; Water Office - \$74,148 and \$60,313; Water & Sewer - \$323,771 and \$383,216 and Library Transfers - \$15,225 and \$19,279.

The proposed 1964-65 operating expenditures total \$1,435,588 compared to the current year's total of \$1,471,121.

In the Interest & Sinking Fund Department under general obligation tax bonds, estimated revenues are set forth in the budget as \$191,403 from current taxes, \$5,500 from delinquent taxes and \$5,000 in interest on investments for a total of \$201,903.

Estimated Interest & Sinking requirements for 1964-65 show a total of \$221,215. This includes \$150,000 for principal on bonds, \$70,805.26 for interest on bonds and \$401 for exchange fees.

INSUFFICIENT ROBBERY
TEXARKANA, Tex. (UPI) - A spokesman for Memorial Gardens Cemetery told police he was not too worried about the loss in a burglary.
The only thing taken was a cash box filled with checks which had been returned marked "insufficient funds."

Safety

(Continued From Page 1)
zer said, "is designed to locate drivers responsible for traffic accidents and violations."
The 10-point driver evaluation program is broken down into three classes of penalties for violations. They are:

Class I (Minor damage of less than \$100 which does not involve another moving vehicle) - First offense, one point lost and a letter of warning from department head; second offense, two points lost and a letter; third offense, three points lost and grounding for one week, or one-day layoff without pay.

Class II (Major damage of more than \$100, or accident involving another moving vehicle or major violation of laws or safety rules including driving while intoxicated) - first offense, four points lost, grounding for one week, temporary reassignment, or one-day layoff without pay; second offense, four points lost, grounding for three months, temporary reassignment or three days-layoff without pay; third offense, five points lost, grounding for six months, temporary reassignment, or five days layoff without pay.

Class III (Flagrant violations of law or safety rules or exceptional situations deemed by the Accident Review Board to warrant special review including voluntary manslaughter, accident while intoxicated, or belligerent attitude) - First offense, one week layoff without pay or discharge; second offense, 10 points lost, permanent grounding, demotion and two weeks layoff without pay or discharge; third offense, 10 points lost, permanent grounding, demotion and three weeks layoff without pay or discharge.

The loss of all 10 points through an accumulation of accidents may result in permanent grounding or discharge of the guilty employe.

Employes who drive city cars must also pass all operator's tests and tests for physical fitness.

Schmitzer said there are approximately 115 of the city's 200 city employes who are eligible to drive city-owned vehicles.

"We have established the program to promote safe driving among city employes," Schmitzer said.

57TH YEAR THE PAMPA DAILY NEWS TUESDAY, SEPTEMBER 1, 1964 3

Stock Market Quotations

The following quotations show the range within which these securities could have been traded at the time of compilation.

Franklin Life	55 1/2	56 1/2
Gulf Life Ins.	53	54 1/2
Gen. Amer. Corp.	11 1/2	12
Gibraltar Life	23	23 1/2
Ky. Cont. Life	21	21 1/2
Nat. Old Line	20 1/2	20 3/4
Natl. Fdn. Life	28 1/2	29 1/2
Jefferson Star	79	80
Repub. Nat. Life	32 1/2	33 1/2
Southern Life	17 1/2	17 3/4
So. West. Life	164	166
Cabot Corp.	35	35 1/2
Nat. Nat. Life	22	22 1/2
Phoen. Nat. Gaa.	40 1/2	41 1/2
So. West. Invest.	14 1/2	15 1/2
Producers Life	5	5 1/2

The following 10:30 N. Y. stock market quotations are furnished by the Pampa office of Schneider, Bernet, Hickman, Inc.

American Can.	43 1/2
American Tel. and Tel.	69 1/2
American Tobacco	27
Anacosta	46 1/2
Det. Steel	37 1/2
Chrysler	80
Celanese	69
Dupont	25 1/2
Eastman - Kodak	128 1/2
Ford	37 1/2
General Electric	50 1/2
General Motors	97 1/2
Gulf Oil	36 1/2
Goodyear	36 1/2
IBM	41 1/2
Montgomery Ward	37 1/2
Phillips	54 1/2
R. J. Reynolds	48 1/2
Sears - Roebuck	118 1/2
Standard Oil of New Jersey	84 1/2
Standard Oil of Ind.	45 1/2
Shamrock Oil	35

Stock Market Quotations

The following quotations show the range within which these securities could have been traded at the time of compilation.

Southwestern Public Service	41 1/2
Texasco	81
U. S. Steel	58 1/2
Westinghouse	37

'Fast Sale' Made On Transmission

Theft of an automobile transmission was reported to Pampa police yesterday by Ralph Vandover, 317 N. Dwight.
Vandover told officers the transmission was lying in his front yard with a "for sale" sign on it and sometime last night someone carried it off.
Vandover said the transmission fitted a '58 model Ford.

Now Many Wear FALSE TEETH With Little Worry

Don't talk, laugh or sneeze without fear of insecure false teeth dropping, slipping or wobbling. PASTETEX holds plates firmer and more comfortably. This pleasant powder has no gummy, gooey, sticky taste or feeling. Doesn't cause chafes. It's alkaline (non-acid). Checks "plate odor" (denture breath). Get PASTETEX at drug counters everywhere.

FITE FOOD MKT.

1333 N. Hobart MO 4-4092 or MO 4-8842

We Give Pampa Progress Thrift Stamps

OPEN SUNDAY DOUBLE STAMPS
Wednesday With \$2.50 Purchase or More

ROUND STEAK Fite's Own 85¢ lb Feed Lot Beef	CHUCK ROAST Fite's Own 49¢ lb Feed Lot Beef	FRYERS Grade A, Whole 29¢ lb
GROUND BEEF Fresh 39¢ lb Lean	BEEF RIBS Lean 29¢ lb Lots of Meat	ARM ROAST Fite's Own 55¢ lb Feed Lot Beef

Fite's Own Fed, Feed Lot Beef • Cut • Wrapped • Quick Frozen

BEEF Half 44¢ lb For Your Freezer • 130 Days in Feed Lot • Fed 24 Hours a Day • Check Our 3 Month Pay Plan	COFFEE 1-Lb. Can 69¢ 15 Assorted Flavors	JELL-O 2 Reg. Pkgs. 15¢
ICE CREAM Borden's 59¢ 1/2 Gal.	SUGAR 5 Lb. Bag 49¢ Pure Cane	TEA 1/4 Lb. Pkg. 35¢ Sunshine
TIDE Giant Size Detergent 67¢	CRACKERS 1-Lb. Box 25¢ Grade A Large	EGGS Dozen 49¢ Shurfresh
Cake Mixes Betty Crocker or Pillsbury Reg. Box 25¢	BISCUITS 3 Reg. Cons. 21¢ Shurfresh	OLEO 2 Lbs. 29¢ Shurfresh
PEACHES Hunt's 2 1/2 Can 10¢ With \$7. Purchase or More	CARROTS 9¢ Cello Pkg.	TOMATOES 19¢ Cello Pkg.
POTATOES 10 Lb. Bag 49¢ U. S. No. 1 Russet	CREAM PIES 4 Reg. Size \$1	Breaded Shrimp 10 Oz. Pkg. 31¢ Ocean Breeze Frozen
GRAPE JUICE 12 Oz. Can 33¢ Welch's Frozen		

BACON Decker's 2 LBS 69¢ Korn-Kist	CHEESE SPREAD Veri-Best 2 Lb. Box 49¢
---	---

FOOD CENTER 400 S. RUSSELL OPEN

DAILY 8 A.M. to 10 P.M.
SUNDAY 8 A.M. to 10 P.M.

Where You Save More On Quality Foods By
Buying At Discount Prices Every Day!
WE RESERVE THE RIGHT TO LIMIT QUANTITIES

SHRIMP 10-Oz. Pkg. 39¢ Sealightful Frozen, Breaded	CHUCK ROAST 39¢ LB. USDA Good Beef	CRACKERS 19¢ Cracker Barrel 1-lb. Box
CHERRIES 19¢ Kimbell's Red, Sour, Pitted For Pies 303 Can	COFFEE 69¢ Maxwell House 1-lb. Can	SHORTENING 3 Lb. Can 49¢ Jewel
SUPER SUDS 49¢ Detergent, Giant Size, Reg. 59c	TOMATO SOUP 10¢ Campbells Reg. Can	PICKLES 29¢ Best Maid Quart
POTATO CHIPS 49¢ Meads, Reg. 59c Bag	POT PIES 10¢ Morton's Reg. Size Beef, Turkey Chicken	TEA 39¢ Lipton's 1/4 lb. Pkg.
RED POTATOES 10 Lbs. 29¢	TOMATOES 12¢ Vine Ripened Fresh Lb.	APPLES 12¢ Red Delicious Lb.
LETTUCE 19¢ Fresh, Crisp California Head	SQUASH 10¢ Yellow Fresh, Firm Lb.	

Hollywood

Actors 'Reunited' in Weekly TV Stints

(EDITOR'S NOTE: Raymond Massey has met many an old friend as a regular in a new medium—television)

By RAYMOND MASSEY
Written for UPI
HOLLYWOOD (UPI)—Working in a weekly television series, as I've discovered during the past three years, is like being in the waiting room of a big metropolitan airport.

You see so many interesting people go through. In many instances, a meeting in the series has meant for me a reunion recalling the fond memory of a previous experience.

In one "Dr. Kildare" show during the past season, for example, our guest star was Douglas Fairbanks Jr. Doug and I last had worked together in 1937—in "The Prisoner of Zenda." It was a good feeling to meet him in front of a camera again.

During our first year in the series, Mary Astor joined Richard Chamberlain and me in one of our favorite shows. Mary as well as Doug had had been in the same "Prisoner of Zenda" motion picture exactly 25 years earlier. Mary also had played my wife in Samuel Goldwyn's "Hurricane."

Beatrice Straight appeared with us in another episode of the series. In 1946, she was the producer of "Pygmalion" on the New York stage. She was not only a very able producer but a beautiful one as well.

In one episode of our second year on NBC, Dina Merrill, a lovely woman and fine actress, was introduced in the series as

Dr. Gillespie's daughter. In 1917, her father-in-law, then Major Stanley Rumbrough, and I served with each other in World War I for several months.

Cathleen Nesbitt, that ever-beautiful lady, visited us for one of our teleplays which she graced with a glowing performance. I had first met her when she had appeared in 1920 with the Oxford University Dramatic Society in "Anthony and Cleopatra."

Forty years ago I managed a little suburban theatre in London. Among the established actors from the "West End" who played in the "Everyman" production we presented was Claude Rains. It was such a delight to welcome him to "Blair General" four decades later.

Yet, with all the wonderful experiences of the past that "Dr. Kildare" has recalled for me, equally exhilarating are the new young players in television and motion pictures with whom we continually cross paths during the course of a season.

Business Highlights

By United Press International Business Highlights
WASHINGTON: The U. S. total gold stock rose \$6 million in July and has gained \$33 million on the year, the Federal Reserve Bulletin disclosed. This includes gold in the Treasury's exchange stabilization fund. The monetary gold stock, reported on weekly by the Federal Reserve Bank of New York has declined \$50 million this year but has been stationary for months.

WASHINGTON: Machine tool orders rose 46 per cent in July over a year ago to a total \$107.45 million, the industry's trade association reported. For the first seven months of the year, orders were up 66 per cent.

WASHINGTON: Although the

When the Lights Went Out in Europe

EDITOR'S NOTE: The writer of the following dispatch was a United Press correspondent in Berlin at the outbreak of World War II.

By JOSEPH W. GRIGG
PARIS (UPI)—Twenty-five years ago today, Hitler's Stuka

diver bombers swooped out of the gray skies over Poland to begin the five and one-half years of death and destruction that was World War II.

Before dawn that morning, Sept. 1, 1939, German panzer divisions, carrying out the first

blitzkrieg in history, chewed their way across the Polish frontier.

An hour before noon, this correspondent watched from the gallery as Hitler brought an obedient Reichstag to its feet with his screaming, hysterical declaration of war against Poland.

That night, the lights went out all over Europe. By the time they went on again on May 7, 1945, more than 20 million people were dead. Cities from Rotterdam to Salerno lay in rubble—including Hitler's Berlin. And the Soviet Union had extended its contract and puppet governments more than 600 miles to the West.

Brink Of War
Twenty-five years ago, Europe had been poised on the brink of war for a week. In London, they were digging trenches in the parks, issuing gas masks, and evacuating children to the country.

In Paris, mobilization orders were bringing millions of young Frenchmen to their regiments. In Berlin, mobilization already had been completed, and Hitler's vast armies stood poised to strike against Poland.

But no one dared to believe that war could happen.

British Prime Minister Neville Chamberlain had signed the Munich agreement dismembering Czechoslovakia less than a year before. He had left his meeting with Hitler genuinely believing in "peace in our time."

Now, he made last, desperate attempts to dissuade Hitler from plunging the world into its second major war in 25 years. But Hitler, the little corporal in Germany's defeated World War I army, was bent on avenging that loss. Nothing would stop him.

Sought German Withdrawal
For two days after he struck at Poland, Britain and France kept up their efforts to get him to withdraw. Then, on Sept. 3, they declared war.

It was a hot, sunny Sunday. The Nazi-controlled radio interrupted its programs to announce Chamberlain's declaration of war.

Berliners continued their Sunday strolls on Unter Den Linden. "The British don't really mean it," they told me.

In the United States, many Americans believed that this

Cousin Oriole Hurt—Can't Ballot for Cousin Lyndon

JOHNSON CITY, Tex. (UPI)—It pains cousin Oriole, but cousin Lyndon won't get her vote this year.

Nobody will, Oriole Bailey, President Johnson's cousin and one of the first people he hurries off to see whenever he returns to the LBJ ranch, belongs to the Christadelphians, a religious sect that does not allow its members to vote.

She is one of the President's favorite relatives, and has a home of her own on the LBJ ranch. The President hiked over and knocked on her door at 10:30 after arriving from the Democratic convention last Friday night.

As a house guest, she had another Johnson cousin, Aunt

Jesse from San Saba, Tex. Aunt Jesse is also a member of the Christadelphians.

When the President asked Aunt Jesse whether she'd vote for him this year, she replied: "No sir, I only vote for the Lord."

Her religion's bar on voting pains cousin Oriole. She adores the President—and the feeling is mutual.

In the same spot for a different reason is the President's older daughter, Lynda Bird. She is still only 20, one year too young to vote in Texas.

"I was born a year too late," she says. "That's the story of my life."

Post Office Will Stay in Alanreed

Congressman Walter Rogers of Pampa announced from Washington today that there will be no change in the status of the Alanreed post office.

Rogers said he protested earlier this year a tentative plan by the Post Office Department to redesignate the Alanreed post office as a rural station or to furnish service to Alanreed post patrons by rural carrier.

The congressman said the Post Office Department now has dropped the plan to make a change.

Residents of the Alanreed area will continue to receive proper postal service," Rogers stated.

Alanreed is about 30 miles south of Pampa on U.S. Highway 66.

cost of living rose 0.3 per cent in July to a record high 108.3 per cent of the 1957-59 average, the federal government expects this August figures to show no change. High prices for fresh foods were the big factor in the July rise.

New York to Help Smokers Trying to Quit

NEW YORK (UPI)—The city Health Department is going to do all it can to help cigarette smokers give up the habit.

The department plans to begin a mass therapy program, including tobacco withdrawal clinics, early in October. The program, in preparation since December, will be under the direction of Assistant Health Commissioner Dr. Catherine Hess.

"We expect the program to be a complete success," Dr. Hess said Monday.

She said the program will begin with mass meetings, using a mass therapy approach, and then, for the hard core smoker, a tobacco withdrawal clinic will be put into operation.

She said the clinic will include the use of lobeline, a herb derivative that produces body responses similar to tobacco but is not habit-forming and has no harmful side-effects.

Dr. Hess said the program, which will be free, is expected to reach about 15,000 during the first year.

BLAKE'S FOOD MARKET

1945 N. HOBART FREE DELIVERY MO 4-7471

Double Buccaneer Stamps on Wed. With \$2.50 Purchase or More

FREE THIS WEEK WITH \$7.00 or More Purchase: **LUNCH PLATE**

With The Beautiful 22K "Gold Crown" Design

SIRLOIN or ROUND STEAK

USDA **79¢** lb.

USDA **ROAST RUMP or PIKES PEAK** Lb **59¢**

DOLD All Meat **BOLOGNA CHUNK OR SLICED** Lb **39¢**

SHURFRESH **MARGARINE** 2 Lbs. **29¢**

SHURFINE **LUNCHEON MEAT** 12-OZ. CANS **279¢**

SHURFINE **ASPARAGUS SPEARS** 4 303 Cans **\$1.00**

MELLORINE Borden's 1/2 Gal. **29¢**

SOFLIN **Napkins** 200 Count **25¢**

SHURFINE **Pork N Beans** 303 CAN **10¢**

COLO RED POTATOES 25 Lb. Bag **89¢**

SANTA ROSA **PLUMS** OR THOMPSON SEEDLESS **GRAPES** 2 LBS **29¢**

Shop MITCHELL'S for—

COFFEE

Shurfine **67¢** Lb. Can

Imperial **Sugar** 5 Lb. Bag **49¢**

Lipton's **Tea** 3 1/4 Lb. Boxes **\$1.00**

Hunts No. 2 1/2 Can **Peaches** 3 FOR **79¢**

Ideal **DOG FOOD** 2 can for **27¢**

Circus 46 oz. Can **ORANGE DRINK** 3 **79¢**

Shurfresh **Cheese Spread** 2lb. box **69¢**

Goldsmith **COTTAGE CHEESE** 2 lbs **39¢**

Shurfine 12 oz. Can **PEANUT BUTTER** 2 FOR **\$1**

Shurfine 12 oz. Can **Frozen Lemonade** **25¢**

Shurfine 12 oz. Can **Lunch Meat** **3 for \$1**

Pure Pork Sausage 3 Lbs. **98¢**

—Tender Aged Beef
—Shurfine Canned Foods
—Shurfresh Perishable Products
—Tender Crust Bakery Products
—Pick-O-Morn Vegetables

JOIN THE SAVINGS PARTY

\$45,000.00 IN PRIZES

GET FREE ENTRY SLIP HERE

EVERYBODY WINS YOU GET 2 HISTORICAL DOCUMENTS JUST FOR ENTERING

EVERYBODY SAVES REDEEM YOUR COUPONS HERE

We are proud to have served Pampa Housewives for twenty seven years with Quality Foods. If you have never visited our store, please drop in for a visit.

FREE Lunch Plate with \$7.00 Purchase for Week Ending Sept. 5. Remember, bring in your Coupon you received through the mail for FREE Dinner Plate

Reg or King **Dr. Pepper** 6 Btl Ctn. **9¢**

With \$5.00 Purchase **Shurfine Whole Kernel or Cream Style Corn** 3 303 Cans **49¢**

PINTO BEANS 5lbs **45¢**

Pure **CORN OIL** lb. **25¢**

KOOL AID pkg. **3¢**

Shurfresh **BISCUITS** **12¢/\$1**

15 oz. Can **WOLF CHILI** **2¢/\$1**

Ranch Style Beans **2¢45¢**

Delicious **APPLES** lb. **19¢**

Cabbage Colo Lb. **7¢**

Potatoes 10 lb. Bag **49¢**

FRYERS Grade A Whole Lb. **29¢**

Tender Aged Beef **ROUND STEAK** **79¢**

Lean Pork **Cutlets** 69¢ lb / Hot Boneless **Bar-B-Q** 59¢ lb

Sliced **BACON** Windsor by Oscar Mayer 2 Lbs. **59¢**

MITCHELL'S

Grocery

638 S. CUYLER

We Give Buccaneer Stamps Double on Wednesday on Purchase of \$2.50 or More

Quantity Rights Reserved

BURCH NAMES AIDE
WASHINGTON (UPI)—GOP national Chairman Dean Burch has appointed Mrs. Laddie F. (Pat) Hutar of Chicago as assistant chairman of the Republican National Committee.

In announcing the appointment, Burch said Mrs. Hutar will be in charge of activities for the party's women's division. She succeeds Mrs. Elly Peterson of Charlotte, Mich., who is seeking the Republican nomination for U.S. senator from her home state.

CLASSIFIED ADS
GET RESULTS

Freezer Beef Sale

Choice Grain Fed Beef
Unconditionally Guaranteed

1/2 BEEF, PLUS PROCESSING **39¢** lb

1/2 Freezer HOG plus processing **29¢** lb

This Meat Is Cut To Your Specifications. DOUBLE WRAPPED AND QUICK FROZEN TO INSURE TENDERNESS AND FLAVOR.

CLINTS FOODS

Phone 883-4691 WHITE DEER, TEXAS



Better Food For Less

IDEAL FOOD STORES

WHEN YOU SHOP IDEAL . . . YOU STEP INTO A

Wonderful World of Food!

Yes, Ideal gathers the best foods from the four corners of the growing world and offers them to you in the abundance so typical of modern America. At your fingertips are all the good basic foods so necessary to your family's health . . . the delicious extra tid bits that add so much to your special occasions. They're all here . . . at prices well within the busiest budget. Shop today . . . you'll be glad you chose Ideal Foods!



Cudahy Bar-S Fully Cooked
BONELESS HAMS

Half or Whole Lb. **89¢**

The Incomparable Cacklebird - 4 to 5-Lb. Avg.
Roasting Chickens Lb. 49¢

GUNN BROS. STAMPS
DOUBLE STAMPS EVERY WED. WITH
\$2.50 PURCHASE OR MORE

BONELESS ROASTS



All Meat!
No Waste!

Easy to Carve!
Easy to Serve!

BONELESS CHUCK
ROAST
L B **69¢**

This Coupon Good For
100 FREE
Gunn Bros. Stamps
ONE PER FAMILY
Ideal Food Stores In Pampa. Expires Sept. 2

COFFEE Folgers 1-Lb. Can **39¢**
With \$5 Purchase Or More Excluding Cigarettes

REFRESHING **WELCHADE** GRAPE DRINK **3** QT. Cans **1.00**

HUNT'S YELLOW CLING **PEACHES** Sliced or Halves **4** 2 1/2 Cans **1.00**

HUNT'S **CATSUP** With That Big Tomato Flavor **2** 14-oz. Btls. **29¢**



U. S. No. 1 Red

POTATOES
10 -lbs. **39¢**



California Thompson
SEEDLESS GRAPES
2 Lbs. **29¢**

Fresh, Crisp
GOLDEN CARROTS
2 1-Lb. Bags **17¢**

VAN CAMP'S **PORK & BEANS**

9 300 Cans **1.00**

HUNT'S **TOMATO SAUCE**

11 8-oz. Cans **1.00**

NINE LIVES **CAT FOOD** **2** 46-oz. Cans **29¢**



IDEAL IN QUARTERS
Margarine 2 1-Lb. Ctns. **25¢**

- FANCY FRESH CHICKEN BREASTS lb. 59¢
- BREASTS, LEGS AND THIGHS
- PICK OF THE CHICK lb. 59¢
- FRESH, PLUMP CHICKEN LEGS lb. 49¢
- FRESH, MEATY CHICKEN THIGHS lb. 55¢
- CHUCK WAGON SLICED BACON 1-lb. PKG. 55¢
- SWIFT'S PREMIUM BY THE PIECE
- LARGE BOLOGNA lb. 39¢
- SWIFT'S PREMIUM SKINLESS LINK SAUSAGE lb. 59¢
- CUDAHY BAR-S SKINLESS FRANKS Pkg. 49¢
- VIRGINIA REEL SLAB BACON lb. 69¢
- D.A.K. CANNED PICNICS 2-lb. CAN \$1.79
- D.A.K. CANNED HAMS 1/2-lb. CAN \$1.79
- GORTON'S FISH STICKS 1-lb. Pkg. 59¢

HUNT'S **TOMATO JUICE**

4 46-oz. Cans **1.00**

NINE LIVES **CAT FOOD** **2** 46-oz. Cans **29¢**



Strange Maneuvers of Those Fashion Gremlins for 1964

By HELEN HENNESSY
Newspaper Enterprise
Women's Editor

NEW YORK (NEA)—A flashback to last fall in Paris makes one wonder which little gremlin tells the designers how a woman should look.

He must be capricious. After all, women don't change much in appearance in a year, give or take a pound or two. Yet the same designers see us differently each time around.

Take Jacques-Heim. He is warm, courtly, bespectacled and gray-haired. He looks like anyone's uncle. You wouldn't think he would move an inch from the position that women should look

distinguished and elegant. Last fall, deciding that knees were unsightly, he covered them all the way down to about four inches below.

Yet this fall, he made knees the focal point. Not only are his skirts an inch or two above the knee, but he has pinpointed that unbecoming area with breeches which just top the knee, trimmed in fur for daytime and ostrich feathers or lace for evening!

Young Yves St. Laurent, devotee of the sportive look, offered us last fall Robin Hood jerkins, cocked feathered hats and slim pants tucked into thigh-high boots.

But we must have been a disappointment to him in that garb, for his current fall gremlin has given him the message that ladies must look like ladies. This time around he didn't even show one pair of pants. His collection was so genteel that it was reminiscent of Chanel's spring line—tiered and wrap-around skirts and long chain necklaces.

Marc Bohan for Dior, who last year believed we should all look like soldiers in military coats, has changed his mind. This fall, he would make us Russian peasants in tight-waisted bodices, flared skirts and sabbled hems.

Plunging necklines at Dior and Cardin were the shockers last fall. This time most necklines were high or slightly off the shoulders.

In fall '63, waistlines had an as-you-like-it approach. They turned up everywhere from under the bosom to below the hips.

This year the trend is toward lightly emphasizing the natural waist. And belts are back again on everything from dresses to coats.

Gone, it seems, are the drastic changes in fashion into which we were bulldozed once a year between the two World Wars. New ideas stay mainly within the confines of cutting, trimming, buttons and sleeve lengths, all of which can give a new look to an old silhouette. And in every collection there are basic bread-and-butter models to which the comforting reaction can be, "Ah! I can still wear last year's dress."

Modern Bride magazine reports that the average newlyweds receive a minimum of 100 gifts or checks and the average gift for all brackets range from \$10 to \$15.



1963 FROM PANTS TO SKIRT—Once a devotee of the sportive, Yves St. Laurent had women thigh-high in boots with tucked-in pants. A Robin Hood-hat completed the picture. This year he shows the elegant woman in this town suit of gray and blue plaid with pleated flounce under the tunic dress, above. Not one pair of pants was in his collection.



1964



1964

1963 PEEKING KNEES—Jacques Heim, completely unoccupied with knees last fall, dropped the hemline of his daytime clothes to nearly four inches below that point. Currently he has knees peeking out from short pants as in the bottle green chiffon costume, above, with wide gathered skirt. Pants are edged in a wide band of glittering green poillettes.

Paris Designers Release New Styles

PARIS (UPI)—Paris designers have released photographs of their recent showings for fall and winter. They confirmed that the latest look in fashion combines long, loose suit jackets, fuller skirts, a close-fitting coiffure and a heavy accent on trousers.

Jacket lengths range from mid-hip to three-quarter length. Many are belted. Longer suit jackets have narrow belts. Daytime dresses have wide leather belts.

Hair will be bobbed in near-flapper or gamin style. Long hair, if any, will be coiled tightly.

Suit skirts may flare out like the dirndls at the House of Dior, designed by Marc Bohan. One of Bohan's hits was a purple tweed suit with a full skirt and a long, bulky jacket that said "non" to the slim, stringy silhouette that Paris has favored for years.



Dear Abby
By Abigail Van Buren

DEAR ABBY: We have always avoided political arguments with our friends, but in recent weeks my husband and I have been drawn into several. The last was at our home. When my husband learned that our out-of-town house guest who had been his lifelong friend, was on the other side of the fence politically, he was astounded. A hot argument took place, which ended a friendship of many years. I say a person's political belief, like his religion, is his own business, and should not interfere with friendship. My husband says I am wrong—a person's political belief is an index to his character, and reveals his compassion (or lack of it) for his fellow man. He says he wants no part of friends who support the line of thinking that one political party is now supporting. I would like your opinion.

ART'S WIFE: If the matter of compassion is clearly evident in one side or the other, your husband is right. And where can one better practice compassion than with a friend? I say, stay in contact, talk it out, be sure of your facts, and don't become emotional. To end the friendship would also end all hope of educating a probably well-intentioned, but misguided, citizen.

DEAR ABBY: I was going steady with a boy I thought a lot of, but whenever we were alone he would try to get fresh with me. I always managed to keep him in his place for a while, but not for very long. I finally asked him if he was going with me because he thought he might be able to break down my will power. He said, no, that he really loved me. He never called after that. Do you think he is angry because I doubted his love? Or do you think I was right about him in the first place? What should I do now?

WONDERING: You were right about him in the first place. Forget him.

DEAR ABBY: After putting up with an impossible man for nine years, I finally got a divorce. We separated several times, but I always went back to him because of the children, who are now four and seven. I agreed to let him pick-up the children at ten Sunday mornings and bring them back at seven. Now I would like to put a stop to it for the following reasons: It seems that my former husband has several girl friends and each Sunday he takes the children to one of their homes. One Sunday the children reported that "Daddy was acting lovey-dovey with a red-headed lady." Another Sunday they said, "Daddy was acting lovey-dovey with a yellow-haired lady." Need I say more? Also, he has brought them home as late as ten. I don't think this is the proper atmosphere for young children. What can be done?

THEIR MOTHER: DEAR MOTHER: A call to your lawyer is in order. Daddy is out of line.

Read The News Classified Ads

The Women's Page

PEGGY JO ORMONSON
Women's Editor

Pampa Public Schools Menu

WEDNESDAY	LAMAR
PAMPA HIGH	Empanados
Sauerkraut and Wieners	Buttered Corn Tossed Salad
Potatoes Corn	Strawberry Short Cake
Salad Dessert	Bread Butter Milk
Bread Butter Milk	HORACE MANN
ROBERT E. LEE JR. HIGH	Roast Beef and Gravy
Barbecue Beef on Bun	Buttered Potatoes
Potato Chips Pinto Beans	Glazed Carrots Fresh Grapes
Pickles and Onions	Whole Wheat Rolls
Apricot Cobbler	Butter and Syrup
Milk Bread	Plain or Chocolate Milk
PAMPA JUNIOR HIGH	WILLIAM B. TRAVIS
Hamburgers Sliced Cheese	Fried Chicken
Potato Chips Baked Beans	Whipped Potatoes
Salad Ice Cream	Green Beans Cantaloupe
Milk	Hot Rolls Butter Milk
STEPHEN F. AUSTIN	WOODROW WILSON
Goulash with Hamburger	Macaroni with Tomatoes
Meat	Cheese Green Beans
Spinach Onion Rings	Jello Salad Cake
Carrot Sticks	Chocolate or Plain Milk
Lemon Pudding	Bread Butter
Cornbread Butter Milk	TANGY TUNA SPREAD
B. M. BAKER	Tuna spread for sandwiches
Barbecue Wieners	Wheat roll when you
Pinto Beans Mixed Greens	add 1/4 cup chopped parsley,
Fruit Jello Cornbread	2 tablespoons sweet pickle relish,
Butter Milk	2 tablespoons lemon or lime
SAM HOUSTON	juice, and 3 tablespoons mayonnaise.
Beef Roast	Combine these with 1
Potatoes and Gravy	can (5 1/2 oz.) tuna, drained.
English Peas Cole Slaw	Serve on buttered pumpernickel.
Mackey-Cake	Serves 4.
Bread Milk	

WILL YOUR CHILD... JOIN THE BAND?



It's fun to belong to a band!

BEGINNER CLASSES START THIS WEEK FOR ALL CHILDREN IN THE 5TH AND 6TH GRADES IN PAMPA SCHOOLS

Love those youngsters of yours? Want to give them every advantage that strengthens their character? Then, by all means, encourage them to play a musical instrument.

MUSICAL INSTRUMENT Rental Plan

FOR SCHOOL CHILDREN
Rental Fee Applied Toward Purchase

- Saxophones
- Cornets
- Clarinets
- Flutes
- Trombones
- Baritones
- Drums



Band Instrument Display TONIGHT

7 p.m. to 9 p.m.
Sam Houston - B. M. Baker Schools

Tarpley MUSIC COMPANY
115 N. Cuyler
MO 4-4251

HOM'S FOODS

PENNY-WISE Food Buys

Prime Rib Roast - lb. 59c	PORK STEAK ... Lb. 39c
Choice Beef RIB STEAK LB. 65c	Fresh Ground Beef 4 lbs. \$1.00
Bacon Quality 2 lbs. 89c	Choice Beef Round Steak 79¢ lb
Fryers Grade A Whole Lb. 29c	SIRLOIN OR T-BONE Well Trimmed Lb. 89c
	Choice Beef Chuck Roast ... 49¢ lb
	Beef BRISKET or Short Ribs 19¢ lb
	Chuck Steak Lean Tender, Lb 55c

Grade A Small EGGS Doz. 29¢	Shurfresh Crackers lb. Box 19¢	Pure Cane SUGAR 5 lb. Bag 49¢
-----------------------------	--------------------------------	-------------------------------

ROXEY DOG FOOD 4 CANS 29¢	FROZEN FOODS
Bordens Glacier Club ICE CREAM 1/2 gal 39c	Patio Beef Enchilada Dinner ... ea. 39c
Shurfresh BISCUITS 12 cans \$1.00	Frionor 10 oz. Pkg. Fish Sticks 3 FOR \$1.00
Shurfine 20 oz. Bottle CATSUP 4 1/2 \$1	Shurfine SHORTENING 3lb. can 59c
Kraft 18 oz. Jar Grape or APPLE JELLY 3 1/2 \$1	Schilling Pure Vanilla Extract 1 oz. 23c
Hormel VIENNA SAUSAGE 5 1/2 \$1	Del Monte 303 Can FRUIT COCKTAIL 4 1/2 \$1
Milk Shurfine Tall Can 7 For \$1.00	Northern 4 Roll Pkg. TISSUE 33c
OLEO Food King Solid 8 lbs. \$1	Flour Shurfine 5 Lbs. 39c
	Hunts No. 2 1/2 Can Peaches 4 CANS \$1

FREE CAMPBELL'S TOMATO SOUP 10¢

HOM'S FOODS

We Give Buccaneer Stamps-Double Wed With \$2.50 or More Purchase
421 E. FREDERICK OPEN 7 DAYS A WEEK MO 4-8531

ELEGANT 22-K GOLD DINNERWARE with purchase of \$7.00 or more

This Week We Are Giving A LUNCH PLATE

Spotlighting Servicemen



LT. JOHN AYERS
... in training

Pampa Airman To Receive Special Navigator Course

WACO, Tex. (Sp1) — Second Lieutenant John D. Ayres, son of Mr. and Mrs. John B. Ayres of 923 E. Browning, has entered the U. S. Air Force navigator training at James Connally AFB, Tex.

Lieutenant Ayres will receive radar and celestial navigation training leading to the award of silver navigator wings upon graduation. The year-long course is conducted by the Air Training Command which trains officers and airmen in the diverse skills required by the nation's aerospace force.

A member of Phi Gamma Delta, the lieutenant earned his B. B. A. degree from Texas Technological College and was commissioned there through the Air Force Reserve Officer Training Corps program.

Ronald D. Sweet

USS HIGBEE (Sp1) — Ronald D. Sweet, seaman USN, son of Mrs. Mildred Sweet of 106 South Sumner, Pampa, is a crew member of the destroyer USS HIGBEE operating out of Yokosuka, Japan.

As a unit of the Seventh Fleet in the Far East, HIGBEE periodically participates in training operations designed to increase her combat readiness.

Her crewmembers will have an opportunity to visit ports in the Philippines, Taiwan and Hong Kong.

Milton L. Saltzman

BIG SPRING, (Sp1) — Cadet Milton L. Saltzman, son of Mr. and Mrs. James M. Saltzman of 1112 N. Starkweather, Pampa, is participating in the U.S. Air Force Reserve Officer Training Corps (AFROTC) summer encampment at Webb AFB, Tex.

Cadet Saltzman is observing and taking an active part in flying and support phases of operations at the Air Training Command base during the month-long encampment.

A member of the AFROTC unit at Texas Technological College, he will be eligible for a commission as an Air Force second lieutenant upon completion of AFROTC training and graduation from college.

The cadet is a graduate of Pampa Senior High School. His wife, Nancy, is the daughter of Mr. and Mrs. Bill J. Lam of 606 Lefors St.

Sammie L. North

SAN DIEGO, Calif. (Sp1) — Sammie L. North, USN, son of Mr. and Mrs. L. S. North of 1901 North Sumner, Pampa, is undergoing recruit training at the Naval Training Center, San Diego, Calif.

He is learning basic military law, customs and etiquette, seamanship, and a basic knowledge of shipboard routine. Also included in the training is extensive military drill, first aid, swimming, water survival tactics and physical fitness.

Upon completion, he will be granted a 14-day leave before reporting to his new duty station or a service school.

Frank D. Williams

FORT HOOD, Tex. (Sp1) — Army Pvt. Frank D. Williams, 22, son of Mr. and Mrs. Clarence O. Williams, Canadian, Tex., was assigned to the 1st Armored Division at Fort Hood, Aug. 20.

Williams entered the Army last March, completed basic training at Fort Polk, La., and is a military policeman in the division's 501st Military Police Company.

He attended Canadian High School and was employed by Willingham in Graham, before entering the Army.

Wheeler Man Named Outstanding Airman

AGANA, Guam (Sp1) — Airman First Class Lawrence E. Williams, son of George M. Williams of Wheeler, has been selected Outstanding Airman of the Quarter in his Strategic Air

Command (SAC) unit at Anderson AFB, Guam.

Airman Williams, a vehicle dispatcher, was chosen for the honor in recognition of his exemplary conduct and duty performance. He is assigned to the 3960th Transportation Squadron, which supports the SAC mission of keeping the nation's intercontinental missiles and jet bombers on constant alert.

The airman is married to the former Jean E. Vines, daughter of Mr. and Mrs. A. B. Vines of 4819 Pike Ave., North Little Rock, Ark.

Seaman Departs For Duty Aboard Missile Cruiser

USS COLUMBUS (Sp1) — David L. Pearson, hospital corpsman third class USN, son of Mr. and Mrs. William M. Pearson of Skellytown, Tex., has departed for duty in the Western Pacific aboard the guided missile cruiser USS Columbus. Operating as a unit of the U.S.S. Seventh Fleet, this 673 foot fighting ship is capable of independent or combined defense against air, surface or sub-surface attacks.

Fully equipped for battle, the Columbus carries a complement of 1700 men. Conversion from a heavy cruiser brought aboard the "Talos" and "Tartar" missiles, replacing her main gun mounts. These surface-to-air missiles, along with anti-submarine warfare gear and new improved sonar equipment for submarine detection, complete her present armament. Allowances were made during conversion for the placement of a "Polaris" launching system capable of firing eight missiles.

During her tour with the Seventh Fleet, Columbus will operate in the vicinity of Japan, Taiwan and the Philippine Islands. She is homeported in San Diego, Calif.

Harold E. Richardson

ANGELES, Philippines (Sp1) — Technical Sergeant Harold E. Richardson, son of Mr. and Mrs. T. G. Richardson of McLean, has arrived for duty with an Air Force Communications Service (AFCS) unit at Clark AB, Philippines.

Sergeant Richardson, an air traffic controller, previously served at Langley AFB, Va. His new unit supports the AFCS mission of maintaining communications for control of global Air Force operations.

The sergeant's wife, Minnie, is the daughter of Minco Green of Vernon, Tex.

Ronald G. Hamilton

SAN DIEGO, Calif. (Sp1) — Ronald G. Hamilton, son of Mr. and Mrs. Hugh W. Hamilton of 2131 North Russell St., Pampa, completed recruit training at the Naval Training Center, San Diego, Calif.

The nine-week training includes naval orientation, history and organization, seamanship, ordnance and gunnery, military drill, first aid and survival.

During the training recruits receive tests and interviews which determine their future assignments in the Navy. Upon completing the program they are assigned to service schools for technical training or to ships and stations for on-the-job training in a Navy rating specialty.

Naval training produces the power in seapower by supplying personnel to man the ships, planes and shore stations of today's Navy.

Alvin York Still 'Gravely Ill'

NASHVILLE, Tenn. (UPI) — Sgt. Alvin York, who won fame during World War I, was reported "gravely ill and in a coma" Monday night at Veterans Hospital.

York, 76, a Congressional Medal of Honor winner, was suffering from an acute infection of the urinary tract which was spreading slowly throughout his bloodstream. Mrs. Gracie York, his wife, and five of his six children remained at his bedside.

York was brought here Saturday from his home at Fall Mall. He had been in and out of hospitals since 1964 when he suffered a stroke that left him paralyzed and almost blind.

York won fame when he killed 25 Germans and captured 132 others in the battle of the Argonne forest in October, 1918 in France.

Frank E. Maddox

USS MIDWAY (Sp1) — Frank E. Maddox, airman USN, son of Mr. and Mrs. Earl C. Maddox of 712 North Somerville, Pampa, participated in an operation called "Exercise Bird Dog" off the Coast of California while aboard the attack aircraft carrier USS Midway.

The operation is designed to test the Pacific Fleet's combat readiness in strike, anti-aircraft and anti-submarine missions.

Both "friendly" forces and "opposing" forces will have carrier striking forces as well as support forces.

Operations of this type are conducted periodically to increase the combat readiness of Pacific Fleet units.

Richard G. Hopkins

GREAT LAKES, Ill. (Sp1) — Richard G. Hopkins, age 20, son of Mr. and Mrs. James William Hopkins of 421 Zimmers, Pampa, has begun basic training at the Naval Training Center, Great Lakes, Ill.

The nine-week training includes naval orientation, history and organization, seamanship, ordnance and gunnery, military drill, first aid and survival.

During the training recruits receive tests and interviews which determine their future assignments in the Navy. Upon completing the program they are assigned to service schools for technical training or to ships and stations for on-the-job training in a Navy rating specialty.

Naval training produces the power in seapower by supplying qualified personnel to man the ships, planes and shore stations of today's Navy.

Kenneth O. Butler

USS CONSTELLATION (Sp1) — Kenneth O. Butler, Jr., fireman apprentice USN, son of Mr. and Mrs. Kenneth O. Butler of 410 North Gray, Pampa, is a crew member of the attack aircraft carrier USS Constellation operating off the coast of Southeastern Asia.

The Constellation, one of the Navy's mobile floating airbases, provides fuel, maintenance and supplies for more than 80 airplanes of assorted types and sizes.

Aircraft include the propeller-driven "Skyraider" which is used for close ground support of infantry troops; This plane is capable of carrying enough bombs and rockets equal to its own weight. Along with this old workhorse are the "Phantom", "Skyhawk" and "Crusader", sleek, modern jets. The Phantom and Crusader are fighter-interceptor planes capable of reaching speeds twice as fast as sound. The Skyhawk, sometimes referred to as the bantam bomber is the smallest carrier-operated plane capable of carrying nuclear weapons. It is equipped with four 20mm cannons plus the deadly heat-seeking air-to-air missile, Sidewinder.

The Constellation is operated by more than 4,000 men. She can operate continuously for months at a time, covering more than 600 miles a day with speeds up to 40 miles an hour. Four propellers, each equal in size to a two-story house, give her this speed.


Her flight deck is longer than three football fields laid end to end. The widest point of the deck is approximately 252 feet, large enough to hold the luxury liners Queen Elizabeth and Queen Mary, side by side.

Ronald E. Stafford

USS ABNAKI (Sp1) — Ronald E. Stafford, electronics technician second class USN, son of Mr. and Mrs. Elgas M. Stafford of Pampa, Tex., is a crew member of the ocean going tug USS Abnaki, operating out of Pearl Harbor, Hawaii.

Abnaki provides towing services to Pacific Fleet units operating in Hawaiian waters.

EARLY-IN-THE-WEEK FOOD BUYS

	GROUND Fresh BEEF 3 Lb. Pkg.	87¢
	CALF LIVER	Lb. 29¢
	ROUND STEAK USDA Good Heavy Beef	Lb. 79¢
	T-BONE USDA Good Heavy Beef	Lb. 89¢
	SIRLOIN USDA Good Heavy Beef	Lb. 75¢
	LIVERS Fresh Chicken	Lb. 59¢
	GIZZARDS Fresh Chicken	Lb. 39¢
	NECKS Fresh Chicken	Lb. 10¢

EVERY ITEM IN OUR STORE UNCONDITIONALLY GUARANTEED

CAMBELL'S	
TOMATO SOUP	10¢
Imperial Cane SUGAR 10 Lbs.	98¢
Van Camp TUNA Reg. Can	15¢
2-lb. Cello Bag Pinto BEANS	15¢
Kimbell's Tall Can MILK	10¢
TOMATO JUICE Del Monte 46-oz.	2 FOR 49¢

LANES
MELLORINE 1/2 Gallon 9¢
With \$5.00 or More Purchase — Excluding Cigarettes

Chuck Wagon BEANS 300 Size	9¢
3 lb. Tin CRISCO	69¢
Pillsbury Assorted CAKE MIX box	27¢
CABBAGE	Lb. 7c
YELLOW SQUASH	lb. 10¢

Morton's Canned Meats


- BEEF AND GRAVY
- PORK AND GRAVY
- SALISBURY STEAK
- MACARONI AND BEEF
- MEAT BALLS AND GRAVY

LARGE CANS 2 FOR 69¢

COKES King Size with \$5.00 or more purchase excluding cigarettes 9¢
Carton of 6

HUNT'S 300 SIZE FRUIT COCKTAIL With \$5.00 or More Purchase Excluding Cigarettes 2 CANS 9¢

\$5.00 worth of FREE BUCCANEER STAMPS with purchase of 10 Roll Pkg Tissue
\$5.00 worth of FREE BUCCANEER STAMPS with purchase of 1 lb. Bologna



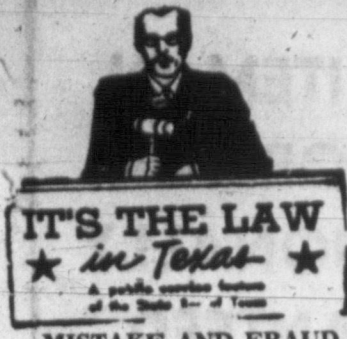
Colorado White Rose POTATOES 10 LBS. 49¢

HYDROX COOKIES	1 Lb. Pkg. 39¢
PRINCESS COOKIES	2 Lb. Bag 39¢
BIG K FLOUR	5 Lbs. 39¢

WARD'S GROCERY

WE GIVE BUCCANEER STAMPS
DOUBLE STAMPS EVERY WED.
With \$2.50 or More Purchase

502 W. Francis OPEN 8 to 8 Daily We Reserve The Right To Limit Quantities MO 9-9641



IT'S THE LAW in Texas
A public service feature of the State Bar of Texas

MISTAKE AND FRAUD
When you get the short end of a deal you may feel inclined to claim mistake or fraud to get out of the contract.

But courts are not inclined to correct your business mistakes unless they also find serious injustices. For to charge the other party with fraud is serious since fraud is a crime as well as a civil cause of action.

Our courts, therefore, demand more proof than usual in civil cases where one sues to get out of a contract on the grounds of fraud.

Suppose Smith and Black well agree to do something in clear language, but Smith does not grasp the terms of a plain contract. This failure of Smith will not void the contract and our courts will enforce its terms.

But suppose instead Black well knew that Smith had made a mistake, and he still didn't explain it to Smith. Then if this can be proved, Black may have trouble enforcing his contract.

Both parties often make a mistake which may void the deal. In one case Raffles agreed to buy and Smith to sell goods arriving on a ship named the "Peerless." But it just so happened that two steamers had the same name. Raffles and Smith had in mind different steamers. No contract. Why? No meeting of the minds.

But to end such a contract both parties must make a mistake about something in the contract.

People often make oral agreements, and later write the terms down. Suppose they make a mistake in doing this. When they find such a mistake they can go into court and have the contract reformed.

To induce the other party to agree through fraud makes the contract void. For a court to act in a fraud case one must prove five things:

- 1) A false representation;
- 2) The speaker's knowledge of its falsity;
- 3) His intention to mislead the other party;
- 4) The other's innocent reliance on the statement; and
- 5) Damage resulting from the deception.

Unless every one of these elements are proved, there is no legal fraud.

Except for guardians and others in positions of great trust, the law assumes that persons deal at arms length and have equal ability to protect themselves. The law, in short, expects you to use your head in checking out claims and facts. This goes to the ancient Roman principle: Caveat Emptor (let the buyer beware). The law expects you to look into the claims of the other party, and not to agree to any old paper shoved under your nose as a "standard" contract.

This newsfeature, prepared by the State Bar of Texas, is written to inform — not to advise. No person should ever apply or interpret any law without the aid of an attorney who is fully advised concerning the facts involved, because a slight variance in facts may change the application of the law.)

LONG, HOT SUMMER
MOSCOW (UPI)—It has been a long, hot summer at the North Pole, relatively speaking. The Soviet news agency Tass reported that temperatures have been "well above zero" in the arctic basin.

AERIAL FARMING
DAVIS, Calif. (UPI) — A new type of agricultural airplane that shoots fertilizer, seed or pesticide out of its wings has been developed by University of California engineers.



FEATHERY HEAD—Newest for evening wear is a coil made of bright cerise-dyed ostrich feathers simulating a wig. The Paris designer has two diamond bows to hold back feathers on either side.

An Apple for the Teacher... Piggly Wiggly has the Best!

APPLES
Gravenstein Cook & Eat
2 LBS 25¢

CABBAGE GREEN SOLID HEADS POUND **6¢**

COCONUT NEW CROP HONDUROS EACH **19¢**

FLOUR LIGHTCRUST With \$5.00 Purchase or More ENRICHED **5 LB. BOX 19¢**

COFFEE FOLGERS ALL GRINDS **POUND CAN 53¢**

MIRACLE WHIP Qt. Jar **37¢**

Piggly Wiggly Meats Guaranteed 101%

FRYERS

GRADE 'A' WHOLE 29¢ lb.

Swifts Premium, Smoked **PICNICS 29¢ lb.**

Dated for Freshness **GROUND BEEF 29¢ lb.**

Baby Beef Value Trimmed **SIRLOIN STEAK 59¢ lb.**

Baby Beef Full Cut **ROUND STEAK 69¢ lb.**

Baby Beef For Stew or Brazing **SHORT RIBS 23¢ lb.**

Swifts Oriole **BACON 49¢ lb.**

Lowest Prices... Greatest Variety... always at...
Piggly Wiggly

These Values Good in Pampa September 1-2
We Reserve the Right to Limit Quantities

Lowest Prices... Greatest Variety... always at...
Piggly Wiggly

EVERYONE WINS
Thousands of Pairs of Nylons
Every Week! Win This \$1.98 Value, PLUS Your Chance to...
WIN Up To \$100.00 cash

JOIN THE PIGGLY WIGGLY DOUBLE DIVIDEND CLUB TODAY
EXPIRES SEPT. 19, 1964

SCHOOL SUPPLIES!
Hytone, 1st Quality, 300 Count, Cello Wrapped
PAPER 29¢ With Free 25c Composition Theme Book, Regular 88c

Hytone, Spiral
THEME BOOKS reg. 25c 9¢

Pure Vegetable Shortening
CRISCO 3 Pound Can 45¢

Nabisco Premium
CRACKERS 1 Pound Box 15¢

Country Boy, Grade A Medium
EGGS 3 Dozen \$1.00

Scotties, Hanki Pak 150 Count Boxes
FACIAL TISSUE 2 FOR 15¢

Bessie Lee
COOKING OIL 48-Oz. Bottles 49¢

Kelly's 2 Pound Carton
COTTAGE CHEESE 39¢

All Brands, Regular 25c
BREAD 2 Loaves 29¢

Good N Rich, All Flavors
CAKE MIXES 5 19-oz. Boxes \$1.00

Carnation
EVAP. MILK 2 Tall Cans 15¢

Belle Non Fat
INSTANT MILK 14 Qt. 75¢

Piggly Wiggly Fresh Frozen Foods!

Drinks 10¢ JUICE TIP TOP ORANGE OR GRAPE 6 OZ. CAN

Chicken, Roast, Turkey, and Swiss Steak
Swanson Dinners 49¢

Johnson, Apple, Peach, and Cherry
Fruit Pies 34 oz. 59¢

Channel
8:00 The
8:15 News
8:30 Cart
8:40 Frac
ers

7:00 Tod
8:00 Tod
9:00 Mak
9:00 Dadd
9:30 Wor
9:35 NBC
10:00 Con

Channel
8:00 Maj
Tra
4:00 Zan
4:30 Sea
5:00 Lan
8:30 Rifi

8:30 The
9:00 Get
10:30 Mis
11:00 Par
11:30 Ten

Channel
8:00 The
8:30 Sold
Fur
4:00 Cart
4:30 Sup
5:00 Lon
8:30 CBS

By Unite
John J
only per

Regul
Watch
Time

Water
Watch

Television Programs

Channel 4 KGNC-TV, TUESDAY NBO

8:00 The Match Game
8:30 News
9:00 Fractured Filmmakers
9:30 News
10:00 Sports
10:30 Mr. Novak
11:00 Battle Line
11:30 Richard Boone
9:00 Grant & Lee
10:00 News
10:15 Weather
10:30 Sports
10:30 Tonight Show

CHANNEL 4 WEDNESDAY

7:00 Today Show
8:00 Today Show
9:00 Make Room for Daddy
9:30 Word For Word
9:55 NBC News
10:00 Concentration
10:30 Jeopardy NBC-L
11:00 Ray When
11:30 Truth or Consequences
11:55 CBS News
12:00 News
12:10 Weather
12:20 Ruth Brent
12:30 Let's Make A Deal
12:55 NBC News
1:00 Loretta Young
1:30 The Doctors
2:00 Another World
2:30 You Don't Say

Channel 7 KVII-TV, TUESDAY ABO

8:00 Major Adams
8:30 News
9:00 News
9:30 News
10:00 News
10:30 News
8:00 Greatest Show on Earth
9:00 The Fugitive
10:00 Local News
10:15 Weather
10:30 Movie

CHANNEL 7 WEDNESDAY

8:30 The Price is Right
9:00 Get the Message
9:30 Missing Links
10:00 Father Knows Best
10:30 Tennessee Ernie
10:30 Texas News
11:00 Weather
11:30 Topper
12:00 Ray Milland Show
12:30 Day In Court
1:55 Lisa Howard
2:00 General Hospital
2:30 Queen for a Day

Channel 10 KFDD-TV, TUESDAY CBS

8:00 The Secret Storm
8:30 News
9:00 News
9:30 News
10:00 News
10:30 News
9:00 Hotel Paradise
9:30 News-Jim Pratt
10:15 Weather Report
10:25 Background
10:30 The Big Flicker
10:58 News Report
11:00 The Big Flicker

CHANNEL 10 WEDNESDAY

6:57 Religion
7:30 US Navy Program
7:50 Jack Tompkins
8:30 News Report
8:50 Weather-Sports
9:00 CBS Morning News
8:30 Love Lucy
8:50 Pete And Gladys
9:00 Love of Life
9:30 CBS News
10:00 Search For Tomorrow
10:30 The Giding Light
10:58 Electronic News Report
12:10 Weather Report
12:30 As the World Turns
1:00 Passover
1:30 House Party
2:00 To Tell the Truth
2:30 CBS News
2:50 Edge of Night Report

Now You Know to hold the rank of "general of the armies" that was originated by John J. Pershing was the first person in the U.S. Army to be promoted to the rank of general of the armies in 1799, according to the World Almanac.

Imperial Jewelers

Jewelry, Radios, Spidel Bands, Diamond Rings
110 E. Foster MO 5-3372

WATCH REPAIR

Regular Ladies or Men's Watch — Cleaned, Case Polished, Timed Electronically **ONLY 4.50**

One Year Guarantee

Water-Proof Watches \$5 Automatic Watches \$6.50

WE BUY OLD GOLD

On The Record

Highland General Hospital does not have a house physician. All patients, except severe accident victims, are requested to call their family physician before going to the hospital for treatment. Please help us to help our patients by observing visiting hours.

VISITING HOURS MEDICAL AND SURGERY FLOOR

Afternoons 2-4
Evenings 7-8:30
MATERNITY FLOOR
Afternoons 3-4
Evenings 7-8

MONDAY Admissions

Dick Walker, 2208 Beech
Mrs. Catharine Conter, 721 E. Malone

Mrs. Jo Anne Fenno, Lefors
Mrs. Patricia Stroud, 936 S. Sumner

B. F. Woodfin, 435 N. Ballard
William H. Walters, Pampa
Mrs. Estelle Tillery, 2104 N. Banks

Robert Tabor, Borger
Glen V. Bailey, 705 Bradley Dr.
Mrs. Mary E. Holland, 937 E. Murphy

Baby Girl Kotara, White Deer
Miss Glenna V. Hefley, Shamrock

Mrs. Addie Mae Whitefield, 1939 N. Banks
Douglas Shawn Brewer, 803 Lefors St.

Mrs. Josephine Margaret Steuben, Bartlesville, Okla.
P. R. Britton, 2501 Charles
Mrs. Mary Gertrude Clay, 428

Pampan Attends Toastmaster Meet

Club President Jim Morling represented the Pampa Toastmasters Club last week at Denver at the 33rd annual convention.

Moring was among more than 1,300 delegates from every state in the United States and from several other countries including Canada, India and Australia who met Thursday, Friday and Saturday at the Denver Hilton Hotel, Denver, to discuss the art of public speaking and the program development and expansion of the worldwide speech organization.

Hughes
Mrs. Sue Silcott, Pampa
Mrs. Beula Adele Huff, 1116 Christine

Mrs. Modesta Irne Moore, Borger
Mrs. Martha Kay Harvey, 1005 Murphy

Mrs. Carolyn Sue Harrison, Miami

Dismissals
Mrs. Minnie Maness, 521 W. Montague

Mrs. Gladys E. Clarke, Auburn, Neb.

Wentworth Terry, Borger
Mrs. Mattie Back, McLean
Mrs. Bessie Dirickson, 328 Miami St.

Mrs. Lou Dean Scott, Pampa
Mrs. Patricia Stroud, 936 S. Sumner

Edwin Lee Hardin, Stinnett
Mack Granville Spear, 722 S. Brunow

Mrs. Jane Cagle, Borger
Paul Appleton, Pampa
Ray Dean Conner, 1141 Juniper

B. F. Woodfin, 435 N. Ballard
CONGRATULATIONS

To Mr. and Mrs. John A. Kotara, White Deer, on the birth of a baby girl at 3:53 p.m., weighing 7 lbs 14 oz

ANNOUNCE PURCHASE

RICHMOND, Va. (UPI) — Robertshaw Controls Co. Monday announced the purchase of the magnificient division of Cherry-Burrell Corp. Terms were not disclosed.

The Cedar Rapids, Iowa unit's manufacturing equipment will be transferred to Robertshaw's Fulton syphon division in Knoxville, Tenn., and some key employees will also be moved.

NEW COMMANDER

BERLIN (UPI) — Maj. Gen. John F. Franklin Jr., Monday took over as U. S. commander in Berlin at a review held in honor of Maj. Gen. James H. Polk, departing commander. Polk is being promoted to Lieutenant general and will become commander of the U. S. V Corps in West Germany.

Read The News Classified Ads

Quotes In The News

By United Press International
WASHINGTON — Sen. Hugh Scott, R-Pa., addressing Senate Democrats who killed a bill which would have allowed televised debates between the presidential candidates:

"If you have a rooster as your emblem, as you do in some states, you had better substitute a chicken because you won't fight."

LEOPOLDVILLE, The Congo — Assistant U. S. Secretary of State for African Affairs G. Mennen Williams seconding Premier Moise Tshombe's decision to seek aid against rebels from friendly African countries:

"The United States feels that in problems of this sort, recourse to an African solution is the best way."

WASHINGTON — President Johnson's evaluation of the 88th Congress:

"This was one of the best Congresses in history. Out of 50 bills I submitted, they passed

most of them."

Peking: The Communist Chinese government, rejecting for the second time a Soviet invitation to a meeting of world Communist parties to discuss the Sino-Soviet policy split:

"The day you call a schismatic meeting will be the day you step into your grave."

PHILADELPHIA: Bud Outlaw, Negro newsman, explaining how he escaped a gang of knife-wielding teen-agers who had trapped him in a telephone booth during continued rioting:

"I forced my way through presidential candidate Barry Goldwater, accusing the Johnson administration of not including U.S. allies in communications between Washington and Moscow."

"Our hot line to Moscow... suggests secret conversations, deals, unilateral negotiations in matters that concern and should involve all our partners in freedom."

Feminine Bit

- ACROSS
- 1 Miss Lockhart
- 2 Miss Lupina
- 3 Miss
- 4 River in Africa
- 5 Penetrates
- 6 Rie
- 7 Scottish stream
- 8 Distinctive instrument
- 9 Carnivore
- 10 Buri
- 11 Ancient Greek community
- 12 Anatomical duct
- 13 Persia
- 14 Rebounds
- 15 Turnout
- 16 Girl's name
- 17 Solar disk
- 18 British school
- 19 Assistant
- 20 Winter vehicle
- 21 Flowers
- 22 River islet
- 23 Swedish weight
- 24 Same
- 25 Cooking utensil
- 26 Sheep
- 27 Peem
- 28 Depot
- 29 Modified
- 30 High in pitch (musical)
- 31 Courtesy title
- 32 Savoy
- 33 Foot levers
- 34 Masculine appellation
- 35 Niece in Ovid's scale
- 36 Charles Lamb
- 37 Cotton fabric
- 38 Disenchantment
- 39 Pealed
- 40 One who (suffix)
- 41 Observe
- 42 Perches
- DOWN
- 1 Falconry term
- 2 Soviet stream

Answer to Previous Puzzle

ACROSS

1 MISS LOCKHART
2 MISS LUPINA
3 MISS
4 RIVER IN AFRICA
5 PENETRATES
6 RIE
7 SCOTTISH STREAM
8 DISTINCTIVE INSTRUMENT
9 CARNIVORE
10 BURU
11 ANCIENT GREEK COMMUNITY
12 ANATOMICAL DUCT
13 PERSIA
14 REBOUNDS
15 TURNOUT
16 GIRL'S NAME
17 SOLAR DISK
18 BRITISH SCHOOL
19 ASSISTANT
20 WINTER VEHICLE
21 FLOWERS
22 RIVER ISLET
23 SWEDISH WEIGHT
24 SAME
25 COOKING UTENSIL
26 SHEEP
27 PEEM
28 DEPOT
29 MODIFIED
30 HIGH IN PITCH (MUSICAL)
31 COURTESY TITLE
32 SAVOY
33 FOOT LEVERS
34 MASCULINE APPELLATION
35 NIECE IN OVID'S SCALE
36 CHARLES LAMB
37 COTTON FABRIC
38 DISENCHANTMENT
39 PEALD
40 ONE WHO (SUFFIX)
41 OBSERVE
42 PERCHES

DOWN

1 FALCONRY TERM
2 SOVIET STREAM

57TH YEAR THE PAMPA DAILY NEWS TUESDAY, SEPTEMBER 1, 1964

UPI Gets New Capital Chief

NEW YORK (UPI) — Julius Frandsen succeeded Lyle Wilson as general Washington manager of United Press International this week.

Wilson retired as general manager and vice president, but will continue to write his popular "National Window" column three times a week. Frandsen went to the nation's capital for the UP (now UPI) in 1931 as a reporter.

Before going to Washington, Frandsen was on the New York staff of United Press for two years as a reporter and rewrite man. He was born in Idaho and was graduated from the University of Nebraska in 1927.

Lyle Wilson gave up his administrative responsibilities Sunday at the age of 65. He succeeded the late Raymond Clapper as Washington manager of UP in 1933, and became a vice president in 1954.

Before moving to Washington in the 1920's he had worked for the UP in London and New York.

SHOULD HAVE KNOWN
CHICO, Calif. (UPI) — Door-to-door salesman James L. Gettys and Bonnie E. Foster were free on bail today following their arrest for failure to have solicitors' permits.

Their product: The Western States Law Enforcement Association magazine.

UNPLEASANT MIXTURE
BRISTOL, England (UPI) — The Bristol City Soccer Club refused permission today for Sir Oswald Moseley's far Right-wing Union movement to hold a rally in its stadium on the grounds that "sports and politics don't mix."

Read The News Classified Ads

SEIDLITZ PAINT SALE

SEIDLITZ HOUSE PAINT \$5.98
SEIDLITZ PORCH & FLOOR ENAMEL \$1.89
SEIDLITZ SATINTONE LATEX HOUSE PAINT & LATEX FINISH \$5.98
SEIDLITZ SATINTONE LATEX FLOOR ENAMEL \$1.89

Over 400 Colors at the Price of White

PAMPA GLASS & PAINT
1431 N. Hobart MO 4-3295

WORLD SERIES VALUE DAYS!

Sensational Savings - at Joe Hawkins

FREE! FREE!

\$12.95 VALUE

MOBILE CART

With purchase of this **ZENITH**

19" HANDCRAFTED PORTABLE TV

19" overall diag. picture. 172 sq. in. reca. picture area

World's Top Quality Portable TV **LOW, LOW \$159.95**

W. T. HANDCRAFTED No Printed Circuits No Production Shortcuts **Limited Offer!**

BIG SCREEN 23" PORTABLE TV

FREE! \$16.95 Value

Custom MOBILE CART WHEN YOU BUY THIS **ZENITH**

23" PORTABLE

The MARINE Model M2706U

ONLY \$239.95 WT

Don't miss TV's Greatest Golf Show **LIVE IN COLOR**

The **"WORLD SERIES OF GOLF"** ON NBC-TV NETWORK

Telecast Co-Sponsored by **ZENITH**

SEPT. 12th & 13th CHANNEL

OUR GREATEST COLOR VALUE!

BRAND NEW **1965 ZENITH HANDCRAFTED**

for the world's Finest Performance

AS LOW AS \$450 WEEK WT

JOE HAWKINS

APPLIANCES & TELEVISION

854 W. Foster MO 4-3207

PORTABLE STEREO SPECIAL

ONLY \$7.95

FOR \$36.95 VALUE

5 RECORD STEREO ALBUMS & DELUXE STEREO CART

With The Purchase Of This Zenith Stereo Record Player **ONLY \$69.95**

The **CHESTERTON** Model SA2034 U

Distinctive Contemporary styled boy console in genuine veneers and select hardwood solids. Your choice of Mahogany veneers or Walnut veneers.

LOW LOW \$279.95 WT

DELUXE 23" LOW BOY CONSOLE

SPECIALLY DEVELOPED! SPECIALLY DESIGNED! SENSATIONALLY PRICED!

for the **WORLD SERIES OF GOLF**

Zenith Full Performance FEATURE!

HANDCRAFTED

No Printed Circuits for Greater Dependability

- Zenith's New Super Video Range 82-Channel Tuning System for Longer TV Life and Greater Picture Stability
- Automatic "Fringe-Lock" Circuit
- Two Zenith Quality 7" x 5" Front Mounted Speakers

OUT OUR WAY

J. R. Williams



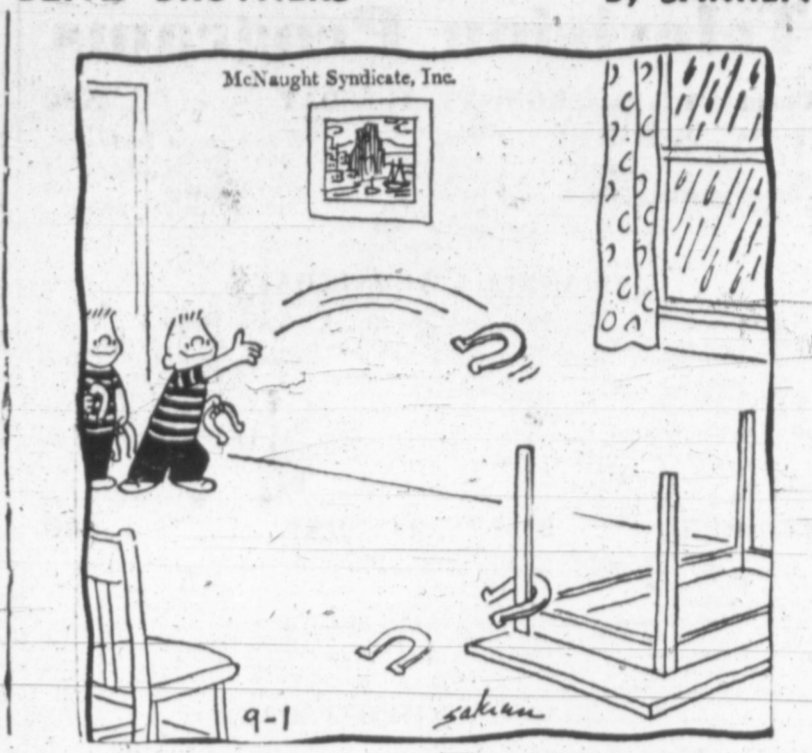
HEROES ARE MADE - NOT BORN



"Ruth, get the table scraps! Here comes ol' Mother Hubbard's dog again! Why doesn't she ever feed him?"



MY WORD, MARTHA, IT'S A CITY YOU WEREN'T A WRITER - YOU HAVE SUCH A DROLL IMAGINATION! - HAK-KAFF - BUT BE OF GOOD CHEER - THOUGH WE'LL MISS YOUR STEADY HAND AT THE HELM, WE'LL KEEP THE SHIP STEADY ON COURSE!



I WONDER WHAT WOMEN MEAN BY THAT WORD EEEEEEE

Freckles



The Berrys



Bugs Bunny



Short Ribs



Captain Easy



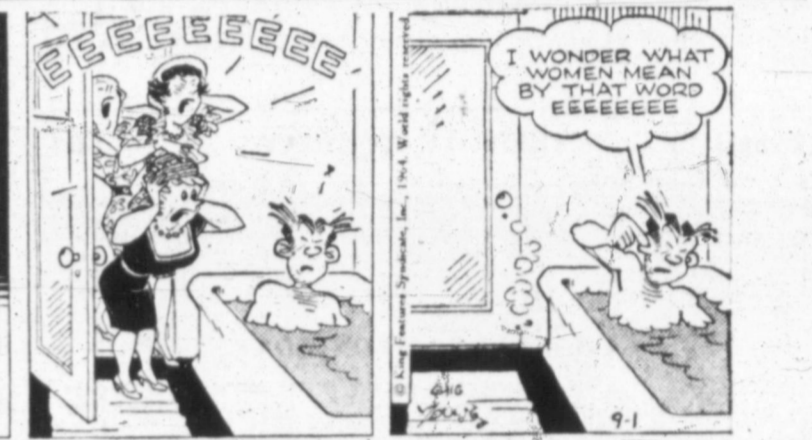
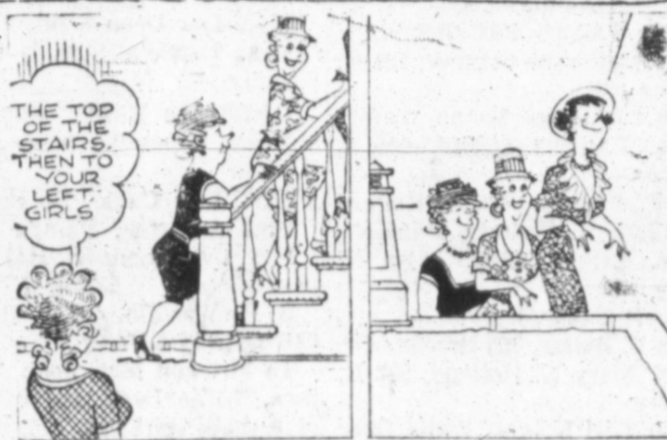
Jackson Twins



Merry Meekle



Blondie



Alley Oop



Bonnie



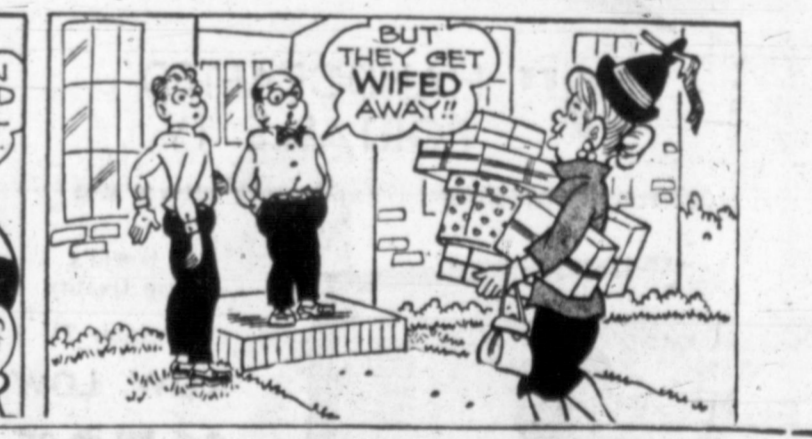
Ben Casey



Mickey Finn



Priscilla's Pop



Dixie Dugan



Joe Palooka



SW Beg Pro By United The Sou golden ann under way with the practice fo at the eigh The 50th the earma like the the Univer horns lead it is it will any team shared th ships in su There w including the flood schools but more lette for lists or Two All eigh day work first two pleted pre and phy prior to t An exce which w through p day night workouts like Baylo initial ga will have which to Rice against L Baylor p Seattle on The othn Sept Methodist Christian games an Texas A& State at kansas me at Little l The co eight co with Jess ing his (25th) car Abe Ma In seniari hind him. Royal at Frank (6), John (5), J. T. (3) and and Han and A&M (2 Rice fi threat t Texas w with Ar SMU bu and Tex Texas A second d Texas lars amq squad of had 13 t termen pected; ers. 24 pects; lars. 23 candida regulars. 70-75 pro NOW THE TON ADI 10 75 "T

SWC Begins Practice

By United Press International
The Southwest Conference's golden anniversary year gets underway today with the start of football practice for some 600 prospects at the eight member schools.

The 50th campaign has all the earmarks of being much like the preceding four—with the University of Texas Longhorns leading the pack, but if it is it will mark the first time any team has ever won or shared that many championships in succession.

There will be 179 lettermen, including 45 starters, among the flood of athletes with all schools but Baylor having 20 or more lettermen on hand. Baylor lists only 18 lettermen.

Two a Day Drills
All eight clubs plan two-day workouts for about the first two weeks of drills and most of them will have completed preliminary organization and physical examinations prior to the Tuesday start.

An exception will be Rice which will put its athletes through physical testing Tuesday night following shorts-clad workouts that day. The Owls, like Baylor, will not play their initial game until Sept. 26 and will have an extra week in which to get ready.

Rice opens in Houston against Louisiana State, while Baylor plays Washington at Seattle on that date.

The other six swing into action Sept. 19 with Southern Methodist at Florida and Texas Christian at Kansas in day games and Tulane at Texas A&M at LSU, Mississippi State at Texas Tech and Arkansas meeting at Oklahoma State at Little Rock in night games.

25 For Jess
The conference returns all eight coaches from last year with Jess Neely at Rice starting his silver anniversary (25th) campaign there.

Abe Martin at TCU is next in seniority with 11 years behind him, followed by Darrell Royal at Texas (7 years), Frank Broyles at Arkansas (6), John Bridgers at Baylor (5), J. T. King at Texas Tech (3) and Hayden Fry of SMU and Hank Faldry at Texas A&M (2 each).

Rice figures to be the chief threat to national champion Texas within the conference with Arkansas, Baylor and SMU bunched as contenders and Texas Tech, TCU and Texas A&M bracketed in the second division.

Texas will have three regulars among 27 lettermen in a squad of 65 or more; Baylor had 13 regulars among 18 lettermen with 75 candidates expected; Rice has seven starters, 24 lettermen and 75 prospects; Arkansas seven regulars, 21 lettermen and 84 candidates; TCU has three regulars, 20 lettermen and 70-75 prospects.

SPORTS

The Pampa Daily News

57TH YEAR KARL O'QUINN — Sports Editor TUESDAY, SEPTEMBER 1, 1964 11

Panhandle Panthers Due For Another Losing Year

By KARL O'QUINN
PANHANDLE — Unbounded pessimism prevails in Panhandle three days before the Panthers' opening game with Sanford-Fritch.

Head coach Ed Lehnick describes his team as small, slow and inexperienced and looks for his team to finish at least fourth in five-team District 1-A.

Possibly fifth, since he lost five men who would have helped him since the end of the past season. One of the five would have started at end and another, Lehnick says, was his best lineman.

The heaviest back at Lehnick's disposal is senior halfback Bill Purvines, one of the seven lettermen returning from last season's 3-7 club.

Two other lettermen return in the backfield to give the Panthers an experienced crew there that will be needed.

Junior fullback Mike Roberts, 140, and junior quarterback Bobby Elder hold down those positions again this year.

Junior wingback Darrel Ogletree is the lone non-letterwinner in the backfield.

The youngest lineman is sophomore center Kenneth Tabor, who was listed as a tackle on Lehnick's roster at the end of last season.

Billy Don Gray, a letterman, is the only other non-letterwinner. He's a tackle and weighs 180 pounds.

Tight end Johnny Stone and split end Leon Choate are both senior lettermen. Stone weighs 155, Choate 175.

Senior Jerry Griffith, a 175-pounder, joins Billy Don Gray at the tackle post.

Seniors Donald Webber and Bill T. Gray occupy the guard holes. Both weigh 150 pounds. Gray lettered last year.

Sophomore Dan Gray moves into the line on defense for the Panthers and junior Gary Beddingfield takes a corner back post in the backfield. Except for Tabor and Ogletree, the offensive starters go both ways.

Experience, present at almost every position on the first unit, drops off sharply on the second and is almost non-existent after that.

Currently listed on the red, or second team, are ends John Dauer, sophomore, and Lanny Garner, sophomore; tackles Calvin Robinson, senior, and James Bunch, junior; guards Dan Gray and James Downs, senior; and center Mike Caldwell, a sophomore.

In the red backfield at the moment are senior quarterback

Wayne Hood, sophomore halfback Bob Bulla, senior fullback Jerry Biggs and junior wingback Shawn O'Neal.

After that come 1 junior, 6 sophomores and 11 freshmen on the next units.

Lehnick will be facing one of his former assistants a week from Friday when the Panthers take on McLean, now coached by Fred Hedgecock. Both Lehnick and Hedgecock appear to feel he should stay home that night.

Actually, Lehnick's schedule is enough to make any coach pessimistic, but the opinion seeps through that Panhandle is not as weak as the coach would like his opponents to think.

Beating out Stratford, Sunray or Claude in the district race appears to be beyond the Panthers, however, for all three are loaded.

The Schedule
(x denotes District 1-A game)
Sept. 4—Sanford-Fritch, away
Sept. 11—McLean, away
Sept. 18—Clarendon, home
Sept. 25—Groom, home
Oct. 2—White Deer, away
Oct. 9—Canadian, home
Oct. 16—Claude, away x
Oct. 23—Sunray, away x
Nov. 6—Stratford, home x
Nov. 13—Gruver, home x

Giants Call Up Japanese Hurler

NEW YORK (UPI)—Masanori Murakami, a relief artist from Japan, dons a San Francisco Giant uniform tonight to become the first Japanese player to appear with a major league baseball team.

The Giants purchased Murakami Monday from their Fresno farm club in the class A California League to bolster their sagging relief corps. The 20-year-old southpaw is expected to be in the bullpen tonight when the Giants open a three-game series against the New York Mets.

Murakami, who formerly played with the Tokyo Giants, was one of three Japanese players San Francisco brought to spring training this year. He was first sent to Tacoma of the Pacific Coast League and then assigned to Fresno where he compiled an 11-7 record, all in relief.

The six-foot, 180-pound hurler worked in 49 games for Fresno. He was credited with 11 saves to go with his 11 victories. In 106 innings he struck out 157 batters, walked 48 and gave up only 64 hits.

In his last appearance with Fresno, Murakami struck out 10 of 12 batters he faced in four innings to preserve a 6-3 victory over Reno.

9 Swimmers Make Squad

NEW YORK (UPI)—Nine more berths were filled on the U.S. Olympic swimming team Monday but one performer stood out above all others.

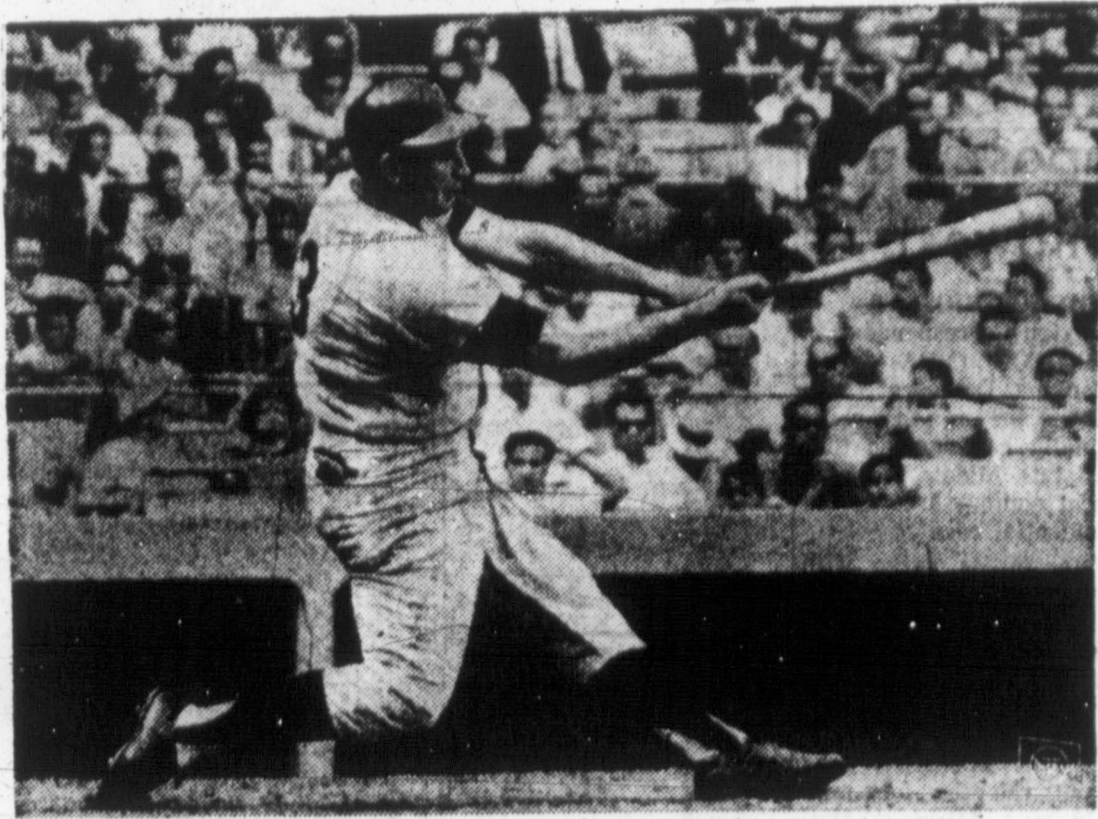
She is Marilyn Ramenofsky of Phoenix, Ariz., who astounded spectators at the Astoria pool, where the Olympic swimming trials are being held, by slicing five seconds from the women's 400 meter freestyle world record with a clocking of 4:39.5.

Fred Schmidt of Chicago established an American mark in the men's 200 meter butterfly with a time of 2:08 and thereby secured his ticket to the Far East.

The day's biggest surprise occurred in the first event, the women's 200 meter breaststroke, where 14-year-old Claudia Kolb of Santa Clara, Calif., edged Sammy Hazelton of Arlington, Va., by about a yard while Cynthia Goyette of Detroit, the national indoor champion, faded and did not qualify for the Olympic team.

Today's program includes the men's 200 and 1,500 meter freestyle and women's 100 meter backstroke.

Toughest Call
NEW YORK (UPI)—Quarterback Y. A. Tittle of the New York Football Giants says the toughest call in football is the third down call with long yardage required.



THE WHAMMY—Harmon Killebrew has been putting the whammy on opposing pitchers with his big bat all season. The Minnesota Twins' leftfielder boasts a substantial lead over all other hitters in both leagues for home run honors.



By United Press International

American League		
	W. L. Pct. GB	
Baltimore	79 52 .603	..
Chicago	80 54 .597	1/2
New York	75 54 .581	3
Detroit	70 65 .519	11
Los Angeles	68 68 .500	13 1/2
Minnesota	66 66 .500	13 1/2
Cleveland	65 67 .492	14 1/2
Washington	53 81 .396	27 1/2
Kansas City	49 83 .371	30 1/2

National League		
	W. L. Pct. GB	
Philadelphia	78 51 .605	..
Cincinnati	73 57 .562	5 1/2
San Francisco	73 59 .553	6 1/2
St. Louis	71 59 .546	7 1/2
Milwaukee	66 64 .508	12 1/2
Pittsburgh	66 64 .508	12 1/2
Los Angeles	63 66 .488	15
Chicago	60 70 .462	18 1/2
Houston	57 75 .432	22 1/2
New York	44 86 .338	34 1/2

Monday's Results
Los Angeles 12 St. Louis 3, night
(Only game scheduled)
Tuesday's Probable Pitchers
San Francisco at New York, night — Hendley (10-9) vs. Jackson (8-13)
Milwaukee at St. Louis, night — Lemaster (13-9) vs. Sadecki (16-9)
Houston at Philadelphia, night — Brown (2-13) vs. Bunning (14-4)
Los Angeles at Pittsburgh, night — Ortega (6-6) vs. Friend (10-15)
Chicago at Cincinnati, night — Broglio (8-10) vs. Maloney (11-9)

Texas League
W. L. Pct. GB
San Antonio 82 51 .617
Tulsa 73 60 .549 9
Albuquerque 72 61 .541 10
El Paso 65 68 .489 17
Austin 59 73 .447 22 1/2
Fort Worth 48 85 .361 34

Monday's Results
Albuquerque 7-1, Tulsa 5-8
Austin 7, Fort Worth 1
San Antonio 13, El Paso 6

Tuesday's Schedule
Tulsa at Albuquerque
San Antonio at El Paso
Fort Worth at Austin

Dallas Cowboys Sign John Roach
DALLAS (UPI)—John Roach stepped out of retirement as an insurance broker today to lend a hand to the Dallas Cowboys.

Roach, former quarterback for the St. Louis Cardinals, and the Green Bay Packers, was talked into donning his shoulderpads again to replace injured Dallas quarterback Don Meredith.

Meredith's knee was injured in last Saturday's 35-3 defeat at the hands of the Packers. Doctors say it will be at least a week before they can tell how serious the injury is, but in the meantime Meredith is considered out of action indefinitely.

Prospects Poor for 20-Game Winners

By GEORGE C. LANGFORD
NEW YORK (UPI)—Could this be the first year in modern baseball history that the major leagues fail to produce a 20-game winner?

With Sandy Koufax probably sidelined for the rest of the season, it is possible.

Using last season as a criterion when 10 pitchers won 20 or more games, none of the pitchers in either league, excluding 19-game winner Koufax, are setting a pace currently which would lead to 20 victories.

Entering the September stretch run in 1963, Koufax of the Los Angeles Dodgers and Whitey Ford of the New York Yankees already had reached the coveted mark. Four hurlers—Jim Bouton of the Yankees, Juan Marichal of the San Francisco Giants, Dick Ellsworth of the Chicago Cubs and Jim Maloney of the Cincinnati Reds—had 19 triumphs.

Four Had 18 Wins
The other four pitchers destined to reach 20 victories had 18 wins by Sept. 1. They were Steve Barber of the Baltimore Orioles, Camilo Pascual of the Minnesota Twins, Bill Monbouquette of the Boston Red Sox and Warren Spahn of the Milwaukee Braves.

Today, there are no 18-game winners in either circuit and two pitchers—Juan Pizarro of the Chicago White Sox and Larry Jackson of the Cubs—who have won 17. Thus, if a prospective 20-game winner must have 18 victories by Sept. 1, as was the case last year, none qualify in 1964.

Only two of the 10 big winners last season seems to have any chance to repeat. They are Marichal and Bouton, each with 15 victories. But Marichal has been fighting a pinched nerve in his back which has sidelined him since July 29 and only Monday was pronounced fit to pitch.

Within Striking Distance
Others within striking distance of the milestone are Ray Sadecki (16-9) of St. Louis and Don Drysdale (15-13) of Los Angeles. In the National League and Dean Chance (16-6) of the Los Angeles Angels, Pizarro (17-7) and Gary Peters (15-7) of the White Sox and Dave Wickersham (16-10) of the Detroit Tigers in the American.

Of these, only Pizarro, Jackson and Chance appear to be major threats to reach 20 victories.

Collectively, it has been a miserable year for the 1963 winners. With the exceptions of Koufax, Marichal and Bouton, none of them has won more than 14 games and three of them have losing records.

The current records include: Ford (14-5), Bouton (15-11), Pascual (13-9), Barber (9-10), Monbouquette (9-11), Spahn (6-12), Marichal (15-6), Ellsworth (13-14), Maloney (11-9) and Koufax (19-5).

Fan Envisions League of Future
CHICAGO (UPI)—An irate fan, writing to the owner of the Kansas City Athletics, foresees purchase of the New York Yankees by the Columbia Broadcasting System as the first step toward domination of major league baseball by corporate giants.

A's owner Charles O. Finley said the letter from William T. Hogan, Cincinnati, Ohio, was the "most amusing" of many he has received from fans who support Finley's opposition to CBS ownership of the Yankees.

Hogan said corporate giants might be enticed into buying into the big leagues "in the interest of creating a nationwide public image or some other obscure reason."

Hogan said teams owned by big industrial firms "will have no ties to any one city and no real need to make money... they can move from city to city yearly or whenever."

He forecast a major league with such entries as the "CBS Eves, General Motors Chevilles, Standard Oil Gasohouse Gang, AT&T Operators, General Electric Jets, International Business Machines Cards, Dupont Exploders, Ford Mustangs, U.S. Steel Hardhats."

Hogan indicated the eventual outcome might be a government entry called the "U.S. Reds."

"What corporation would wish to create displeasure in Washington by beating the public's 'home team'?"

After Finley and Arthur C. Allyn, owner of the Chicago White Sox, objected to sale of the Yankees to CBS, which American League President Joe Cronin said was approved by a telephone poll of club owners, Cronin called a league meeting for Sept. 9 to discuss the sale.

San Antonio TL Champion
By United Press International
It was all over but the shouting today in the Texas League with San Antonio carrying the pennant in its pocket.

The Bullets had only to whip El Paso Monday night to clinch the pennant and that they did 13-6.

Tulsa, in second place, tried to keep its hopes alive in a doubleheader at Albuquerque, but split with the Dukes, dropping the first one 5-7 and winning the second 8-1.

In other action, it was Austin 7 Fort Worth 1.

San Antonio gave El Paso a slight edge in its game when the Sun Kings' Larry Stubing got a one run homer in the second, but it was short lived.

The Bullets came back for four runs in the third, then added two in the fifth, three in the fourth, one in the seventh and three in the ninth, including a three run homer by Leo Posada and single runner tripped by Aaron Pointer.

Tonight's action has Tulsa at Albuquerque, San Antonio at El Paso and Fort Worth at Austin.

Palmer Takes Lead
DUNEDIN, Fla. (UPI)—Bob Nichols has moved from 10th place to fourth and Arnold Palmer has taken over the lead in the professional golfers money-winning standings by virtue of their one-two finish in the Carling Open. Palmer has earned \$110,743.37 this year while Nichols boosted his total to \$72,087.26 with his \$35,000 Carling prize.

Knicks Sign Two
NEW YORK (UPI)—The New York Knickerbockers have signed veterans Tom Gola and John Rudometkin to contracts for the 1964-65 National Basketball Association season.

WRESTLING

Thurs. Sept. 3 8:30 P.M.

DORY	VS	ART
FUNK JR.	VS	NELSON
LOUIE	VS	JERRY
TILLET	VS	LONDON
LARRY	VS	NICK
HENNING	VS	ROBERTS

PAMPA, TEXAS
TOP-O-TEXAS SPORTSMAN'S CLUB

Drysdale Breaks Strikeout Record

By GEORGE C. LANGFORD
UPI Sports Writer
If Don Drysdale isn't bubbling with joy today over his new strikeout record, it's understandable.

Lonesome Don, the only healthy member of the Los Angeles Dodgers' "big three" pitching staff, struck out 12 St. Louis Cardinals Monday night in hurling a 12-3 victory, his 15th.

His strikeouts boosted his season total to 201, the fifth season he has passed the 200 mark, thus breaking Christy Mathewson's National League record of four 200-plus strikeout years for a career.

But the record was tempered by the news at game time that his strikeout sidekick, Sandy Koufax, has been advised by doctors not to pitch again this season.

No Surgery Required
Dr. Robert Kerlan, the Dodgers' team doctor, said X-rays showed that Koufax would not require surgery for his left arm, injured while sliding at Milwaukee Aug. 8 but Dr. Kerlan told Koufax not to pick up a baseball for two weeks.

With Koufax sidelined along with Johnny Podres, Drysdale is the only remaining starter from the Trio which pitched the Dodgers to the world championship last season.

The prognosis on Koufax rushed Drysdale into position to lead the major leagues in strikeouts for the fourth year. He is only 21 behind the idle Koufax. Don led the majors in 1959, '60 and '62 with totals of 242, 246 and 232.

Drysdale started the Dodgers' rout Monday night with a two-run single in the fifth inning off loser Mike Cuellar (5-4), snapping the Cardinal's winning streak at six games.

Johnny Roseboro doubled home three runs, Wes Parker collected three hits, including a homer, for Los Angeles and

Twins Stop Senators
The Minnesota Twins, who open a three-game series with the American League leading Baltimore Orioles tonight, defeated the Washington Senators 2-1 in the only other major league contest Monday.

Reliever Bill Pleis rescued Jim Grant in the eighth inning to preserve Grant's 11th victory against 10 losses. Grant had a three-hitter until he issued two walks and Don Blasingame's single scored one run and left runners at second and third.

Pleis entered the game and struck out pinchhitter Fred Valentine to end the threat and he set the Senators down in the ninth. Zoilo Versalles homered in the third and Jimmie Hall doubled home a run in the fourth off loser Buster Narum (9-11).

The American League's three-team pennant battle swings to the Midwest and West tonight, in addition to the Orioles' game at Minnesota, second-place Chicago hosts Detroit and the third place New York Yankees will be at Los Angeles.

Aussies Blank Swedish Team
BAASTAD, Sweden (UPI)—A confident Australian Davis Cup team left for the United States today to challenge the Yanks for the coveted tennis trophy at Cleveland, Ohio, Sept. 25-27.

The revitalized Aussies were confident of regaining the cup after completing a 5-0 sweep over Sweden Monday in the interzone finals. Wimbledon champion Roy Emerson beat Ulf Schmidt, 3-6, 6-4, 6-3, 6-2; and Fred Stolle wound up the series by stopping Jan Erik Lundquist, 5-7, 6-4, 6-0, 6-3.

Not even outspoken team captain Harry Hopman had expected a sweep and the result left all in the Australian camp in a jubilant mood.

When asked if Australia would beat the United States in the challenge round, Emerson said, "Yes, I feel we'll beat them. I know that Dennis Ralston and Chuck McKinley are tough on their home court, but after what I've seen here I think we'll go home from Cleveland with the bowl."

McKinley, the top-ranked amateur in the United States, and second-ranked Ralston won the cup in Australia last December.

Overtrick Withdraws
WESTBURY, N.Y. (UPI)—New Zealand-bred Cardigan Bay stood out as the outstanding entry today for the \$50,000 National Pacing Derby at Roosevelt Raceway Sept. 5 following the withdrawal of Overtrick.

Business Drops
ATLANTIC CITY, N.J. (UPI)—The Atlantic City Race Track suffered a decline in attendance, revenue and tax receipts during the four days of the Democratic National Convention.

San Antonio TL Champion (continued)
... The Bullets had only to whip El Paso Monday night to clinch the pennant and that they did 13-6. Tulsa, in second place, tried to keep its hopes alive in a doubleheader at Albuquerque, but split with the Dukes, dropping the first one 5-7 and winning the second 8-1. In other action, it was Austin 7 Fort Worth 1. San Antonio gave El Paso a slight edge in its game when the Sun Kings' Larry Stubing got a one run homer in the second, but it was short lived. The Bullets came back for four runs in the third, then added two in the fifth, three in the fourth, one in the seventh and three in the ninth, including a three run homer by Leo Posada and single runner tripped by Aaron Pointer. Tonight's action has Tulsa at Albuquerque, San Antonio at El Paso and Fort Worth at Austin.

WE ARE MOVING!

We have Not Finished Remodeling BUT

We Are Open For Business

At
115 N. WEST STREET

● ● ● ● ●

JOE FISCHER INSURANCE
JOE FISCHER REALTY

Your Independent Insurance Agent

- Joe Fisher - Partner MO 9-9491
- Lindy Houck - Partner MO 9-9411
- Newt Secret - Life Insurance MO 4-4604

NOW THRU WEDNESDAY
CAPRI
OPENING 4:30

THE NEW INTERNS
...and their new loves!
STARRING
MICHAEL CALLAN
BARBARA EDEN
DEAN JONES

TONITE AND TUESDAY
LAVISTA
OPENS 6:30 P.M.
ADULTS 70c CHILD 25c

TONITE ONLY
TOP OF TEXAS
75c A CAR-NITE!
WESTERN ACTION
"THE BIG LAND"
IN COLOR
ALAN LADD
VIRGINIA MAYO

The Pampa Daily News

A Watchful Newspaper
EVER STRIVING FOR THE TOP O' TEXAS
TO BE AN EVEN BETTER PLACE TO LIVE

The Pampa News is dedicated to furnishing information to our readers so that they can better promote and preserve their own freedom and encourage others to see its blessing. Only when man is free to control himself and all he produces, can he develop to his utmost capabilities. We believe that freedom is a gift from God and not a political grant from government. Freedom is neither license nor anarchy. It is control and sovereignty of oneself no more, no less. It is consistent with the Human relations Commandments, the Golden Rule and the Declaration of Independence.

To the Slide Rule

We Americans are great ones to honor people. We hold special days and nights and dinners in tribute to them. We erect fountains and statues and monuments in memory of them. We name bridges and highways and dams and theaters and zoos and hospitals and museums to keep ever in memory. We create parks and malls and bridge paths and wooded vales as living memorials to them. We even name automobiles and ships after them. Almost everyone of distinction has been recognized. Everyone, this is a strange oversight indeed, in view of the fact that we couldn't maintain our amazing level of miscellaneous knowledge for five minutes if the statistical whizzes weren't constantly breaking down everything into little bitsy facts or fragments thereof. Including the oddest things. Do you need to know, for example, how much lint is included in all the dust, dirt and refuse accumulated in New York City in a year? Some statistician has it for you. Why, no one

knows. But he has it. The statistician reaches his peak in baseball. It's not enough for the fan to know a player's batting or fielding average. The figure fiends can tell you exactly what any left-handed hitter you may name is hitting against any right-handed pitcher, or any combination of vice versa. They know to a split second how long it takes a right-handed or left-handed batter to get to first base if (a) he has been out late the night before or (b) if he has gone to bed real early. (It makes a difference, they say.) No matter what bit of odd-ball information you may want, you can bet that some foresighted, painstaking statistical genius has dug it up for you — even before you ever dreamed you would ever want it. Or even if you don't want it. So how about everybody chipping in to erect the biggest doggone slide rule anyone has ever seen as a national shrine to the unsung hero who provides all the impressive facts and percentages we toss around as though we invented them? It figures, doesn't it?

He Disagrees? Then He's Nuts!

Have you read the Democratic and the Republican platforms? Are you, then, completely enlightened on the big issues of the day? Or are you wondering if the two parties are talking about the same country? It is to be expected, of course, that the ins will point with pride and that the outs will be wary with alarm. But how is it possible to be this proud and this alarmed over the same set of what each side righteously regards as "the facts"? And here's a safety tip: If you have a faint suspicion that either platform is just a bit wishy-washy or inaccurate or unfair or possibly tinged with partisan prejudice, be sure you know to whom you're talking — or you're in for a hot time.

brother, and no fooling. There is no surer or quicker way to get into an argument or lose a friend than to express a political opinion to some other impartial patriot who happens to be violently on the other side. And did you ever know of any political argument that actually influenced a vote? So why not play it cozy, disdain to descend to political invective, let the other guy or gal stumble along in his or her unfortunate views, and be smugly content in the knowledge that you, thank heaven, have sense enough to know what's what and that the other person is a misguided sap. In this country, everyone is entitled to his opinion. That's the Democratic — and Republican — way. Long may the true view — your view — wave!

Barry's Looking Better

Walter Reuther and Norman Thomas say the election of Barry Goldwater would be a disaster. Reuther is the magneto of the auto workers union and Norman Thomas is the gent who has led the Socialist party forever and ever. After Lyndon sold out Joe Kilgore so that Reuther could have Yarborough in the Senate there was no doubt our Leader would get the support of organized Labor, possible excepting that of Jimmy Hoffa who is sore at Bobby Kennedy. Poor old Norman Thomas is a fellow who has been the head of a political party that never got enough to elect a dog catcher but, as he once said, lived to see both major political parties elect a President on a so-

cialist ticket every four years regularly. Well, with Norm Thomas Walter-Reuther, Castro and all the socialists of Europe deploring the nomination of Barry Goldwater, he begins to look better and better to us. We are not true Goldwater people. In the sense that the True Believers would put their arm in the fire for him up to there. But he's about the best shot that's come out of the gun far as long as most of us can remember; and if he gets more and more knocks from Reuther, Thomas, Castro and the Europeans, he might make a better show against Lyndon than we suspected.

BERRY'S WORLD



"Something's wrong when you're embarrassed to watch a dance floor!"

Combat Area Shapes Up In Midwest

By BRUCE BLOSSAT
Washington Correspondent
WASHINGTON (NEA) — A high-ranking Democrat who puzzled over the matter for weeks finally has decided that the eight-state Middle West is the critical combat area in the 1964 presidential race.

Goldwater forces agree with this judgment in part, since they have said the Republican nominee needs Illinois, Ohio, Indiana and Wisconsin as prime building stones toward a Nov. 3 victory.

The top Democrat, one of President Johnson's good friends, puts the other four midwestern states — Michigan, Minnesota, Iowa and Missouri — in the same crucial category. Together, the eight comprise 129 of the 270 electoral votes required for election.

Samplings among Democrats in this convention setting, and earlier among leading Republican and independent sources, produce this first reading of candidate prospects in the critical zone.

OHIO (26 votes). Goldwater appears to have the lead. The state supplied Republican Richard Nixon with his greatest big-state margin — 273,000 votes — in 1960.

The GOP is even stronger today, holding the statehouse under Gov. James Rhodes, plus a heavy majority of elective offices at all levels. Rep. Robert Taft, bidding for U. S. Sen. Stephen Young's seat, may have some lift value for Goldwater.

Ohio Democrats still lack effective leadership and quarrel among themselves, though an administration man says: "They're not mad at Lyndon." In Cleveland, always basic to Democratic hopes, organization weakness is most pronounced. White backlash seems a real threat. No big flow of Ohio Republicans to Johnson is yet observed.

ILLINOIS (26 votes). A trustworthy appraiser gives Johnson a present edge. Republicans in Chicago's suburbs are reported drifting to Johnson. A poor voter turnout in Republican "downstate" is feared.

Yet Goldwater has a huge, ardent Illinois following, whose leaders know the vital necessity of his taking the state. They have money.

Goldwater could gain, too, if Chicago's "ethnic Democrats," aroused over Negro stirrings, move to his side in force. A Democratic Mayor Richard Daley's fabled organization was a sharp in its most recent trial a year ago.

MICHIGAN (21 votes). Consensus of experts in both parties gives it to Johnson today, by varying margins up to a large. Fresh polls are lacking.

Goldwater's managers do not claim Michigan. Moderate-leaning Gov. George Romney, running again, damps down the Goldwater drive with his studied coolness. Democrats, their 1963 rift healed, are organized to the hilt.

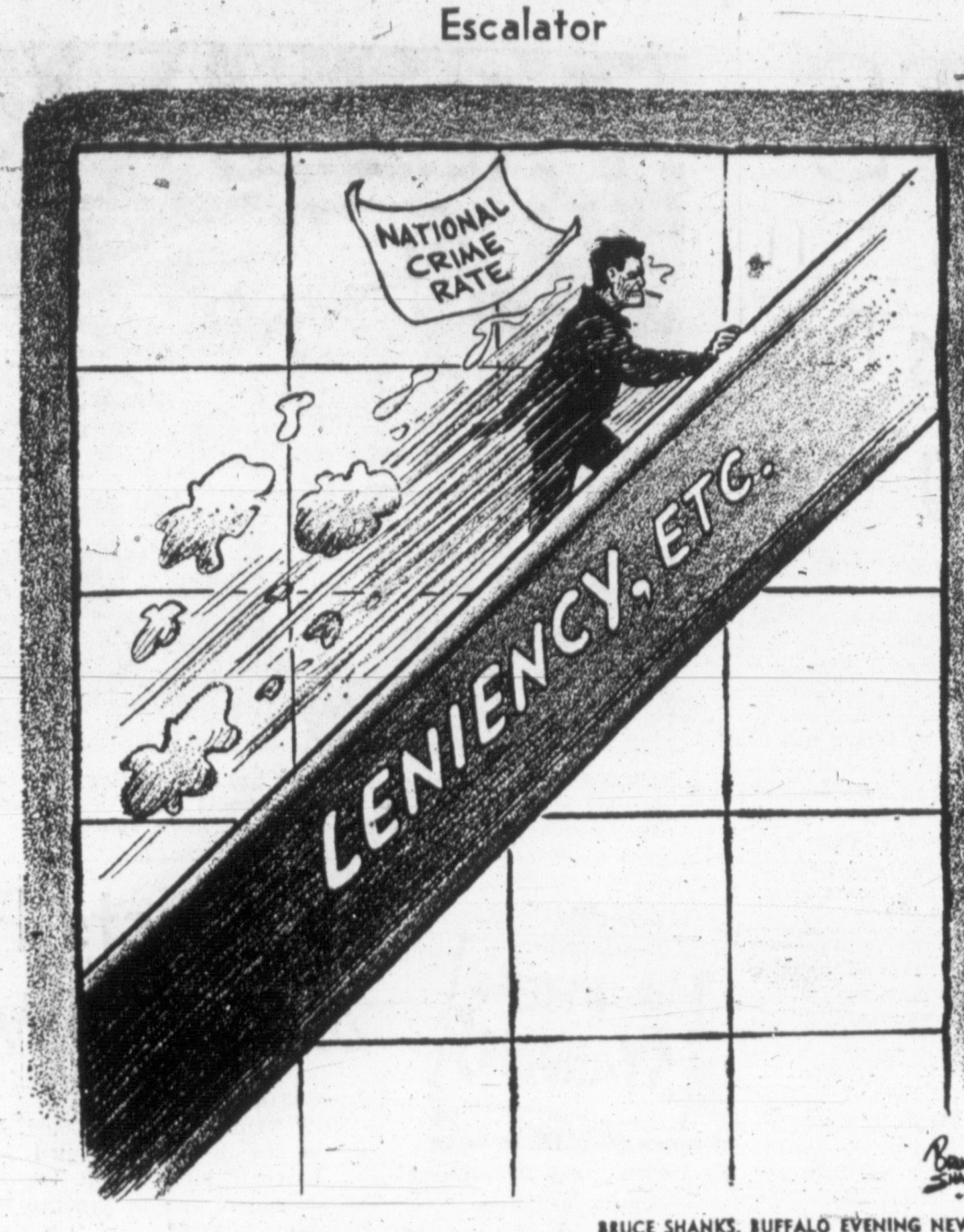
INDIANA (13 votes). Best judgment is Goldwater ahead. The state has gone Democratic in only three presidential battles since 1900 — and not since 1936. Nixon won it in 1960 by more than 200,000. Backlash could hurt Johnson in industrial Gary, won by Alabama's Gov. George Wallace in last spring's primary. But a pre-primary Johnson curbed a similar switch there. Democrats now want the President to speak in Gary this fall.

WISCONSIN (12 votes). Goldwater has party history on his side. Last Democrat to win was Harry Truman in his 1948 upset. Nixon's margin over the late John F. Kennedy was around 60,000. Backlash in Milwaukee, however, appears overrated despite potent Wallace howling last April. Annnd some private statewide polls show Johnson out front 60 to 40.

MISSOURI (12 votes). A narrow squeak for Kennedy four years ago, but now placed in Johnson's camp by margins up to 100,000 or more. Goldwater forces never have claimed the state, despite its conservative leanings. Democratic tradition is strong.

MINNESOTA (10 votes). Divided Republican forces help Johnson to a present lead. But the state is a mixture, and Kennedy won it by a mere 20,000. The Democrat Vice Presidential candidate is from Minnesota. Democrats exhibit more confidence than the GOP.

IOWA (9 votes). Again, history rides with Goldwater. Truman was the last Democratic winner. Nixon won in 1960 by 175,000. But here, too, Republicans are split. Iowa's many



BRUCE SHANKS, BUFFALO EVENING NEWS



ROBERT ALLEN

Backstage Washington

Tidal Wave of Federal Funds Poured into Economy To Be Democrats Weapon in Ballot Battle



PAUL SCOTT

WASHINGTON — "You ain't heard nothing yet" is Democratic campaign crowing over what they have put through Congress to keep the domestic economy at a high boil.

That \$947.5 million politics-loaded anti-poverty program President Johnson is doing so much proud tooting about is a whooper in itself, but actually it's a small part of the stupendous economic expenditures voted this session — and it isn't over yet.

Appropriations running into the hundreds of millions are still pending, foremost a \$1.2 billion in increased Social Security benefits and the \$237 million Appalachia development program.

The tidal wave of federal funds that will pour into every aspect of the national economy in the current fiscal year, ending next June 30, will exceed the fantastic total of \$33 billion.

Democratic chiefs are making no bones they are counting on this having tremendous electioneering impact. It has in the past, and they see no reason why it shouldn't this time. They are preparing to make the most of it throughout the ballot battle.

This astounding spending record — whose size and range is little comprehended by the general public — is spelled out in vivid detail in the House minority report on the anti-poverty bill. Following are the striking over-all totals:

Department of Health, Education and Welfare, \$22,567,684,000; Labor Department, 4,200,929,000; Housing & Home Finance Agency, 1,987,034,000; Department of Agriculture, 1,829,035,000; Interior Department, 1,051,663,000; Commerce Department, 145,000,000; and Funds appropriated to the president, 30,000,000. These totals are \$31,811,345,000.

AND STILL MORE — Gigantic as this total is, it still isn't the whole story. Not included are:

\$1 billion in increased Social Security benefits — passed by the House and certain to be voted by the Senate before adjournment in late September.

\$550 million in pay increases for 1.7 million government employees, retroactive to July 1. Big voting centers particularly benefiting from this bonanza are Chicago, St. Louis, Baltimore, San Francisco, Washington.

\$200 million pay increase for 1.8 million military personnel, effective Sept. 1. States benefiting most from this pre-election windfall are Texas, California, Illinois, Florida, Pennsylvania, Georgia, Virginia, North Carolina.

Oldsters worry over Goldwater's social security views. Some Republicans talk of defecting. The outcome could be extremely close.

Sensing The News

By THURMAN SENSING

The Friends of Fidel While one group of young Americans was aboard destroyers in Tonkin Gulf, under fire from communist PT boats, or taking off from aircraft carriers on dangerous missions in defense of their country, another group of young Americans was returning to these shores to condemn their country.

The return of 84 students from Red Cuba, where they were guests of the Castro Communist government, was a shameful spectacle. It is sad to think that "the land of the free and the home of the brave" should produce a set of political beatniks that would foug their own nests. Nevertheless, this is what they have done. And it is important for good Americans to know about the admirers of Castro's revolution in their midst. By understanding the depth of their disloyalty to American concepts, it should be possible in the years ahead for this republic to learn how to handle such divisive, hurtful elements.

Five of Fidel's friends were interviewed recently in the New York City press. These five characterized themselves as "socialist leaning" and "everything from liberals to communists." If they had been members of Fidel Castro's most militant Cuban cadres, they could not have gone farther in attacking the United States — their homeland.

One of the five, a 32-year-old Negro woman typist from Philadelphia, said that "the one thing I did not like about Cuba was the presence of the Guantanamo base owned by Yankee imperialism and the fact that American soldiers insult, murder and humiliate Cuban workers daily." The idea of an American citizen, enjoying the freedoms of this country, smearing in this manner the servicemen of her own nation should shock the U.S. public into an awareness of the cancer that has been allowed within the body of the United States through a wrong-headed notion of tolerance.

The Fidelista five also came back to the United States using the language employed by Cuba's communists. One of the five, a 20-year-old New Yorker, referred to Cuban opponents of Castro as gusanos, which means worms. These "worms" spoke of are the brave men, women and children who hold their hearts against the atheistic communist tyranny gripping their land or who take terrible risks in small boats to cross over to Florida and freedom.

A 24-year-old apprentice printer from Chicago told interviewers that the United States was acquiring "the reputation of fascist Germany" by following a compulsion to defend Western civilization against communism. All five of the American friends of Fidel Castro also condemned U.S. efforts to prevent South Viet Nam from falling to the communists.

Disgusting as are the disloyal sentiments of these five and

Hypocrisy lies not in what you say to a person but in what you think of him.

ConVENTION POSTSCRIPTS — Mrs. Jacqueline Kennedy is being credited by close friends with contemplating establishing voting residence in Rhode Island, where her mother — a stepfather have a big estate. Whether the former First Lady is considering a political career there is not indicated. But the friends deem it significant that she is talking about setting up a voting base in Rhode Island, which has a preponderant Catholic population. Former Senator Theodore Green, D-R.I., now 97, has written President Johnson offering to campaign for him in the state. Green is still active, taking an auto ride every morning and walking a mile or more in the afternoon. He was the oldest man ever to sit in the Senate when he voluntarily retired in 1960. Before Attorney General Robert Kennedy finally decided to seek the New York Democratic senatorial nomination, he held several secret meetings with Rhode Island leaders on establishing a residence there with the view of running for office in 1966.

Escalator

EVERYBODY'S BUSINESS

Vending Machine Can Only Dispense; Salesman Sells

By SAM CAMPBELL
If the human element were not an important element in sales, the world's goods could be dispensed by vending machines.

But a machine can't call a man by name, it can't gain his confidence, it can't call his attention to goods on the back shelf, it can't draw his interest to values unseen.

The economy turns less for the reason that men have needs than for the fact that salesmen sell. For needs are nothing more than the requirements for survival whereas the salesman deals in those additives that contribute to comfort, to efficiency, and to personal preference.

Creating For Exchange
The human economy consists of creating things for exchange with one another. The role of the salesman is that of a teacher; that is, he shows one person that he can benefit by purchasing the goods of another.

The effect of the sale on the buyer is that he is thus stimulated to create exchangeable goods or services of his own in order that he shall be able to repeat that buying experience from which he derives benefit.

The more that the salesman sells, the more that the economy grows. Which is just another way of saying that selling creates more jobs and higher real wages.

We started a tour of typical stores in order to provide a series of word pictures as to how well retail salesmen are living up to their potential.

One stop was at a furniture store that has a reputation for both outstanding merchandise and service. Two gentlemen were behind the counter when I entered. I didn't know either one of them.

But to my surprise, one of them called me by name. It turned out we had indeed met momentarily some months previously. As our conversation was going on, I overheard the other salesman say to a visitor: "Well, I've known about you for years, but this is the first opportunity I've had to shake your hand."

You may suppose these to be extraordinary coincidences. I can only assure you that the prospective customers did regard them to be extraordinary, and just that reaction multiplied many times may account for the wide reputation of a local furniture store.

On down the line in another city, I entered an establishment that once had been "the place." The pioneer charm of

others like them, even more shocking is the inaction of the U.S. Justice Department and the entire Johnson administration in dealing with these types returning from Red Cuba.

Those who went to Cuba took a journey that was in violation of the law. But Atty. Gen. Robert Kennedy, who wants to be a United States Senator, has done nothing effective to bring the law-breakers to the bar of justice. Nor has the Justice Department initiated a strong investigation into the Fidelista groups in the United States and their relationship to insurrectionary movements taking place in the country this summer.

Good citizens have cause to ask: Why have Atty. Gen. Kennedy and other high-ranking Johnson administration officials failed to investigate, expose and prosecute the left-wing extremists who condemn the United States and heap praise on a Soviet satellite in the Caribbean? The public is left with no conclusion other than that Mr. Kennedy and other administration types are unwilling to take any action that will cost them left-wing political support in the elections this fall.

In the case of Mr. Kennedy, who wants to be Senator from New York State, Manhattan is the headquarters of all the radical groups. Moreover, the Castro sympathizers have close political ties with the powers that be in Harlem, where Mr. Kennedy hopes to gain his margin of victory in November.

It will be remembered that in 1940 the late President Roosevelt refused to say that he didn't want the votes of communists. The signs are mounting in number that the Johnson forces also intend to take no action on the domestic front that will antagonize or alienate the hard core leftwingers that represent a cancerous condition in our body politic. This in itself is a legitimate political issue for the public to consider.

the building still was present. But again the prospective customer's presence went unnoticed, until I arrived in the rear of the building.

Success Amid Failure
There an elderly saleswoman smiled, she asked if she could be of service, she spoke a quiet word on behalf of the store. It reminded me of "back home." If every sales person there had been as friendly, I have a feeling "the place" still would be living up to its former reputation.

In still another city, I entered a clothing store situated in a block where at least three other establishments had closed down recently, and where two others had gone bankrupt. However, this little 25-foot-front has prospered through the years.

I told the salesman I had just dropped in to visit a friend. He chatted briefly with the friend. As I turned to leave, the salesman called my attention to a new line of shirts. The cloth is of a kind that doesn't get that uncomfortable wrinkle around the beltline as most other shirts do.

It so happened I was well supplied with shirts, but now I know that better shirts are on the market. Furthermore, I know exactly where they are available.

The purpose of these comments is not to tell sales people how to sell, but rather to give them a customer's-eye view of current retail sales practices. The tour was thoroughly enjoyable. I was able to recognize points that could be applied to my own occupation as a newsman. For all of us are salesmen of one kind or another.

To conclude, it seems to me that the slogan "all we have to sell is service" is erroneous. Rather the salesman builds the customer's confidence that he is getting full information on the product, that he is personally respected, and that the terms are within his means. From the customer's view, a trustworthy salesman is the best advance evidence of a good buy.

Question Box

(We invite questions on economic and the proper functions of government which will not be answered.)

Question: "Why do so few people fail to see that owners of property have to distribute it in order to get satisfaction from having owned it?"

Answer: The unseen things are much more difficult to comprehend than those which are seen. Most people only comprehend the seen things to some degree.

Probably the reason is that most people do not read the close reasoners on economics. We have never found a text book in government or non government schools or colleges that explains clearly that property in order to benefit its owner must be distributed.

As an illustration, a man's home is of no value to him unless he lives in it, wears it out, repairs it, or gives it away, or sells it, or rents it.

The same thing is true with a factory, store or farm. They have got to render a service that people will want, or sell, rent or give them away.

People get great satisfaction and happiness out of making gifts. It is a psychic profit — that which is not seen. It's a profit that can be transferred, to others like material profit.

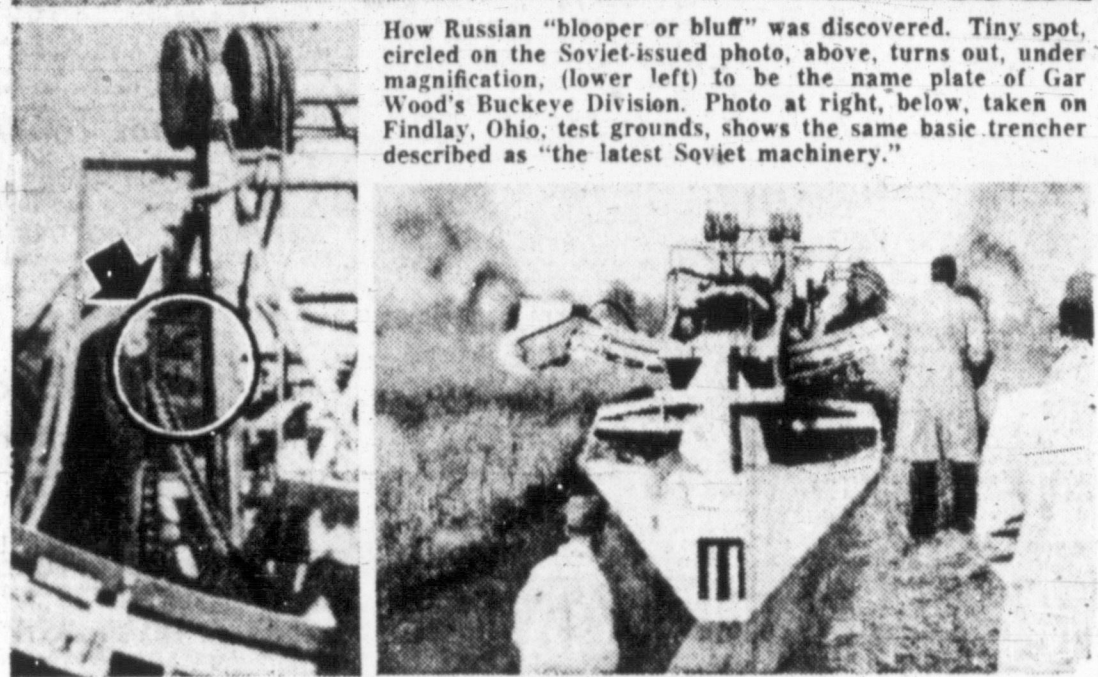
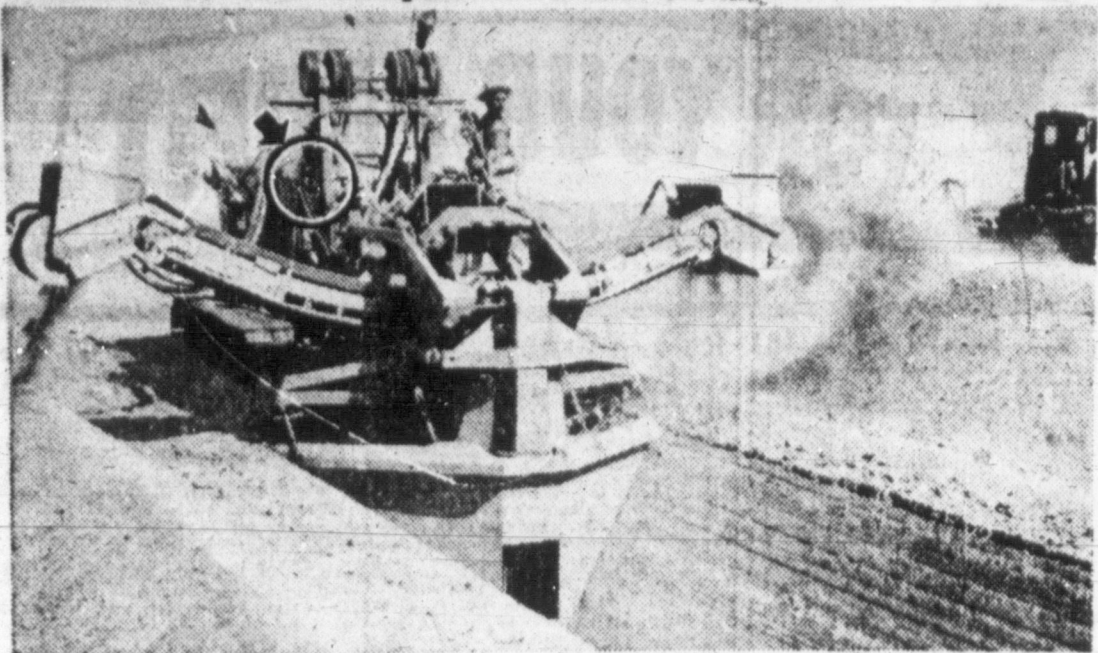
The writer first learned this by reading John Ruskind, a Swede. He explained very clearly why property had to be distributed and why people did not need to worry about a man having too much wealth because he has to distribute it, or his heirs have to distribute it, in order to benefit the owners.

Even if he does not distribute it by exchanging it for other things he does no harm to others. This is true because then there will be less demand for the comforts of life and prices will be lower and others can buy more.

If people understood this they wouldn't be afraid of anyone having too much wealth. The real observers of economics realize, as did Frederic Bastiat, that in producing wealth, the gain of one is the gain of all. The loss of wealth is the loss of all.

Probably there would be a lot more property accumulated if more people understood this truism. The politicians will follow what the voters believe in and vote for in order to get elected.

Here's the Scoop on "Soviet-Made" Scooper



How Russian "blooper or bluff" was discovered. Tiny spot, circled on the Soviet-issued photo, above, turns out, under magnification, (lower left) to be the name plate of Gar Wood's Buckeye Division. Photo at right, below, taken on Findlay, Ohio, test grounds, shows the same basic trencher described as "the latest Soviet machinery."

There are several hundred species of cactus native to Texas. Hours were longer in summer than in winter as measured by primitive sun-clocks. The beaver can cut down a willow tree five inches thick in three minutes. radar speed zone down the road.

Top Scientist Disagrees With Experts on Moon

LA JOLLA, Calif. (UPI) — Nobel Prize-winner Harold Urey this week was in disagreement with scientists who believe Ranger 7's historic moon photos prove the lunar surface is strong enough to support a manned spacecraft.

"I don't see that the pictures show the depth of the dust on the moon's surface," said the chemist Saturday. "As of now its thickness is a matter of guess."

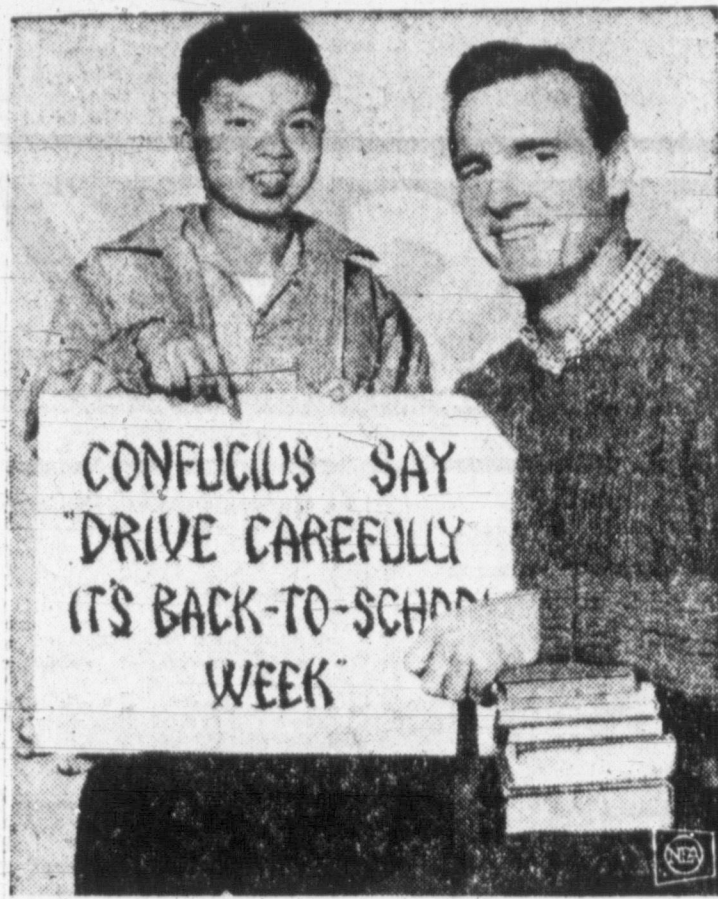
Urey, a professor at the University of California at San Diego, was the first moon expert to dispute the opinions of astronomer Gerald Kuiper of the University of Arizona and geologist Eugene Shoemaker of the U.S. Geological Survey.

At a July 31 news conference in Pasadena, Calif., Kuiper and Shoemaker said Ranger 7's television pictures revealed a hard, lava-like moon surface covered with dust only several inches deep.

Urey said the photos were "interesting, a marvelous engineering success," but "I believe nothing except tests of the strength of the moon's surface will answer these important questions about its sturdiness."

SUGGESTS NEW DEED

CROYDON, England (UPI) — Surrey Cub Scout chief Edgar Lea said he told two of his Wolf Cubs today to find a new "good deed" to perform after he caught them warning drivers to watch out for a police radar speed zone down the road.



SIGN OF THE TIME—Confucius may or may not have said it, but it's good advice anyway. Back-to-school admonition is displayed by Dennis Weaver and 11-year-old Ricky Der. They star in the new NBC-TV series "Kentucky Jones."

Bonham Publisher Named by Magazine

LONGVIEW, Tex. (UPI) — Aubrey McAlister, publisher of the Bonham Daily Favorite and president of the Texas Press Association (TPA), has been named the East Texas Magazine's Man of the Month.

McAlister is a native of Walters, Okla., and worked on newspapers in Stillwater and Anadarko, Okla., before going to Bonham nine years ago.

He is described in the magazine, published by the East Texas Chamber of Commerce, as a civic leader who has had a hand in "promoting every-

Barbecue to Spice Boys Ranch Rodeo

A real ranch-style barbecue will be added to the rodeo fare at Cal Farley's Boys Ranch this weekend when the more than 300 boys now being cared for put on their 20th annual Boys Ranch Rodeo.

For the first time in many years, the boys of the Ranch will select a steer from the beef herd, dress it for cooking, and barbecue it over an open fire. One of the busiest concessions at the rodeo is expected to be the barbecue sandwich booth where the boys will be selling king-size sandwiches with all the trimmings.

"We are inviting our friends not only to watch the kids put on their rodeo, this year, but also to enjoy a bar-be-que picnic in the picnic grounds of the Ranch," Cal Farley, Ranch founder, said.

Practice sessions have been held for the past six weeks, with elimination rides on Brahma bulls, bucking broncos, steers, and calves, being made by the boys. Nearly 100 boys will ride the professional rodeo stock that is being donated for the rodeo, and all of the boys and members of the Ranch's adult staff will participate in the production of the event.

Rodeo days are Sunday and Monday, with afternoon performances both days beginning at 2:30 p.m. Reservations for box seats are being taken at the Boys Ranch office in Amarillo. Box seats are \$2.50, general admission for adults, \$1.50, and 75 cents for children and servicemen in uniform.

Ample parking space is provided for rodeo visitors, and they will view the action from the large, modern rodeo arena, and enjoy a picnic under the shaded picnic grounds of the Ranch.

Bank Teller Got Tired of Looking At All That Cash

OCALA, Fla. (UPI) — "I got tired of looking at all that money at the bank and making \$90 a week."

That was the explanation Monroe McKinney Knowles, 29, a Miami bank teller, gave police Monday after they found \$62,978 in his car.

Knowles said he took \$72,472 from the First National Bank of South Miami where he was head teller, and went on a spree around the nation.

Arrested near here by a state trooper as he slept in the third car bought during his flight, Knowles waived a preliminary hearing and was held on \$10,000 bond on charges of embezzlement.

The warrant for Knowles arrest was issued in Miami Aug. 11 after he and the cash disappeared.

BALBOA, Calif. — Sen. Barry Goldwater, commenting on a report that Defense Secretary Robert McNamara said the War in Viet Nam would be a long one.

"He put us into (the) war in 1961. If he says it's going to last five years, I'd say he's being optimistic."

Read The News Classified Ads

ATTENTION GROCERY SHOPPERS

FOLGERS COFFEE

Wed. Only Lb. Can **49c**

SPORTING GOODS

- IN Monoscope Reg. 29.95
HI-POWER RIFLE
Gibson's Discount Price **\$14.97**
- G 66 Reg. 98c
LIQUID GUN BLUE
Gibson's Discount Price **47c**

JEWELRY

- A. T. C. Reg. 1.00
Windproof Lighter Discount Gibson's Pirec **47c**
- 9 Volt Reg. 49c
TRANSISTOR BATTERY
Gibson's Discount Price **19c**

HOUSEWARES

- ALL LAMPS And PLASTIC FRUIT**
1/2 PRICE
- New Shipment of **HASSOCKS**
AT DISCOUNT PRICES

SOFTGOODS

- Men's Grey-Tan Canvas
HATS and CAPS Gibson's Discount Price **97c**
- NYLONS** Ladies Seamless **2 PAIR \$1.00**
- Full or Twin Asst. Colors
BED SPREADS Gibson's Discount Price **\$3.97**
- HARDWARE**

- No. 2102 — 34 X 34 X 40 Reg. 5.95
To Fit Most Coolers
COOLER COVERS Gibson's Discount Price **\$3.97**
- Chime — Transformer — Button
25 feet of Wire Reg. 19.95
DOOR BELL Gibson's Discount Price **\$5.97**

Open Daily 9 a.m.—9 p.m.—1 p.m. to 6 p.m. Sun.

GIBSON'S DISCOUNT CENTER

And DISCOUNT PHARMACY

"Where you Always Buy The Best For Less"
2211 Perryton Parkway, Pampa, Texas

HEALTH & Beauty Aids

- 4.2 oz. Reg. 82c
DENTU-CREME Gibson's Discount Price **39c**
- Listerine 1 pt. 4 oz. Reg. 1.29
MOUTHWASH Gibson's Discount Price **93c**
- Veto 2.1 oz. Reg. 50c
CREAM DEODORANT Gibson's Discount Price **29c**
- Coronet Reg. 60c
PAPER TOWELS Gibson's Discount Price **2 Rolls 43c**
- 100's Reg. 49c
NORWICH ASPIRIN Gibson's Discount Price **19c**
- Palmolive Reg. 47c
FACIAL SOAP Gibson's Discount Price **4 Bars 33c**
- Shick 6 1/4 oz. Reg. 79c
SHAVING CREAM Gibson's Discount Price **37c**
- 2 lbs. Reg. 49c
BORAX Gibson's Discount Price **27c**
- Softex 200's Reg. 49c
TABLE NAPKINS Gibson's Discount Price **29c**