



# The Pampa Daily News

Serving The Top O' Texas 57 Years

(20 PAGES TODAY)

VOL. 57 — NO. 145

THE PAMPA DAILY NEWS, WEDNESDAY, SEPTEMBER 16, 1964

Week Days 10c  
Sunday 15c

## Cut-and-Dried Parley Indicates Demo Unity

DALLAS (UPI)—A swift, cut-and-dried state convention dominated by Gov. John Connally wrapped the quilt of election-year unity Tuesday around the traditionally antagonistic bedfellows who make up the

### 5,000 Faithful Hear Candidate At GOP Meeting

AUSTIN, Tex. (UPI)—Five thousand of the Texas Republican faithful jammed an Austin hall Tuesday to hear Sen. Barry Goldwater praised as America's hope and President Lyndon Johnson condemned as a prejudiced vote-grabber.

Chief speaker at the Republican state convention was vice presidential candidate, William Miller, who said President and Mrs. Johnson once sold Austin land with a deed that restricted Negroes from occupying it.

The anti-Negro clause inserted in the sale from Johnson to the late Austin mayor Tom Miller is the first in the history of this property," Miller said. "Any way you analyze it, this is hypocrisy at its worst."

#### Ex-FBI Man Talks

And Kellis Dibrell, a former FBI agent, made reference to Johnson in warning citizens to watch out for dishonesty at the polls. Dibrell was an investigator for former Gov. Coke Stevenson in a heated battle that stemmed from Johnson's 87-vote victory over Stevenson in the 1948 senate race.

"We ask only that there be an end to the shame of election procedure in America," Miller said, "so that if our votes are cast in Texas on election day, we'd like to have them counted on election night."

Criticizing Democratic foreign efforts, Miller said the party in power now "took this country into war four times in this century."

"They talk about Barry Goldwater and war... there isn't a man on the face of this earth who hates or detests war more than Barry Goldwater," Miller said. He also predicted "the dawn of a whole new era of law enforcement" with Goldwater in the White House.

#### O'Donnell Re-elected

Oratory done, the delegates re-elected state chairman Peter O'Donnell Jr. of Dallas and vice chairman Mrs. George N. McDaniel of Borger. The convention named 25 presidential electors without debate.

They also wrote a 3,500-word state platform which advocated federal laws to protect oil, beef and lumber industries and called for repeal of public accommodations and fair employment sections of the Civil Rights Act.

Sen. Tower rapped the 313-word platform Texas Democrats approved Tuesday in Dallas.

Holding it up as he spoke, Tower said, "Here it is—a page and a half with lots of white space in it."

"The Democrats have come out squarely for motherhood and Sunday school this year," the junior senator said.

## Gray County Commissioners Adopt \$1,104,773 Budget

Gray County Commissioners shortly before noon today adopted Gray County's \$1,104,773 budget filed this morning by County Judge William J. Craig.

The budget is \$13,991.70 less than the 1964 budget, however includes a 5 per cent salary increase for precinct officers and employees, and a 3 per cent increase for all other county employees.

Immediately following today's budget hearing, commissioners approved the tax rate for Gray County.

The county tax rate is \$1.34 per \$100 valuation. This is based on a property valuation of \$54,562,648. This is slightly higher than last year's \$53,812,648 valuation.

The \$1.34 tax rate would be the same rate as last year. County expenditures are broken down as follows:

Democratic party in Texas. The convention slid through its business in two hours, 44 minutes, with Connally calling for a Democratic sweep in November "from courthouse to White House."

It adopted a one-page 313-word platform apparently written by Connally. The often-noisy liberal faction maintained a discreet silence.

Sidestepping state party quarrels in his convention address, Connally called for unity, warning the delegates:

"Don't make the mistake of underestimating our Republican opponents. They are organized—well organized—especially in the larger cities."

The Republican party has been growing in traditionally Democratic Texas, which now has a Republican senator, John Tower, and two GOP congressmen, Bruce Alger of Dallas, and Ed Foreman of Odessa.

The "courthouse to White House" victory slogan—used by both Connally and Atty. Gen. Waggoner Carr in their speeches—apparently came from a party leader who was boycotting the convention.

The phrase was used the day before in a telegram from the dissident Bexar County (San Antonio) Democratic coalition, a liberal group with Negro, Mexican, American and labor union backing.

The message from Maury Maverick of San Antonio and committeewoman Sarah McClure said their group would boycott the convention, but urged the electing of all Democrats "from courthouse to White House."

#### Tables Addition

The platform committee tabled by a 23-8 vote two proposed additions to the platform—one of which would have pledged delegates to "work for and support the party's nominee."

The governor drew a distinction between the state convention and the national convention. He said Texans had already been to the national convention and were under no compulsion to echo the national platform in their state platform.

The platform dealt mostly with generalities, urging better education, help for the aged, more employment opportunities and conservation of natural resources. It contrasted with the platform he ran on two years ago, which contained 71 specific proposals.

The governor denied he wrote all the platform but said he had "quite a bit to do with it."

#### Balloon Pops

During Connally's speech, a balloon burst with a bang. Connally, who was wounded while riding with the late President Kennedy last Nov. 22, went on speaking without pause. Some of the delegates were startled. The balloon was one of three supporting a huge sign that read, "Dallas Loves Connally."

The hall was swarming with 95 county, city and state policemen. Asked why, Dallas county Sheriff Bill Decker, known for his dry sense of humor, grinned and replied:

"We're all Democrats attending the convention."

#### Watson Elected

Marvin Watson of Daingerfield was unanimously elected

state party chairman. Other officers and members of the state Democratic executive committee also won approval by voice vote without a single dissident.

Watson, 40, an executive of the Lone Star Steel Co., succeeded Frank Erwin Jr., of Austin, who steps up to the post of national committeeman for Texas.

Re-elected Vice Chairman was Mrs. Alfred Negley of San Antonio. Austin attorney Will Davis was chosen party secretary and will run the state headquarters in Austin.



**LIGHTING PAMPA** — Members of the Pampa Evening Lions club will be covering Pampa on a door to door basis tonight if the weather permits with their annual light bulb sale which provides funds for civic projects. Packaging the bulbs for sale from left are B. G. Gordon, chairman of the drive, and Gene Lewis Jr. The bulbs are packaged with four bulbs selling for \$1. The organization is trying to sell 4,800 bulbs of an assorted wattage. (See Story Page 20)

## LBJ Heads West to Talk in 4 States

WASHINGTON (UPI)—President Johnson headed West today for two packed days of exposure to voters in four states. He also will leave the country for the first time since becoming President when he crosses the border into Canada today with Prime Minister Lester Pearson.

Officially, the trip was labeled as non-political. But the President will wind up Thursday in California whose bloc of 43 electoral votes is the second biggest plum of the election campaign.

The electoral prizes in the three other states on the agenda—Montana, Washington and Oregon—are much smaller but the President, of course, would like to lasso those, too.

The big presidential jet, Air Force 1, took off from nearby Andrews Air Force Base, Md., at 8:50 a.m. EDT for a four-hour, 15-minute flight to Malmstrom Air Force Base at Great Falls, Mont.

Pearson and governors of six Western states awaited Johnson at Great Falls for a two-hour aerial tour of the Columbia River basin.

There was advance word that the flight might be in a Canadian air force jetstar. This would break precedent for presidential travel. American chief executives, for safety and communications reasons, have always flown in U.S. Air Force planes.

The rest of today's agenda included:

—Vancouver, British Columbia, to begin a 30-mile motorcade to the International Peace Arch at Blaine, Wash., on the U.S.-Canadian border. A ceremony there will mark proclamation of the Columbia River treaty between the two nations.

—Back to Vancouver, to board his Air Force transport for a 35-minute flight to Seattle, where he will speak at a dinner sponsored by the local Chamber of Commerce and three area universities. He will remain overnight in Seattle.

Thursday, Johnson plans to fly to Portland, Ore., to address a breakfast sponsored by public and private power groups participating in an 11-state system tying together hydroelectric facilities of the Columbia and Colorado River basins.

# Mediators Strive to Avert Railway Strike

### Robbery of Bank (Piggy, That Is) Nets Cool \$1.30

A burglary of a Pampa residence yesterday afternoon netted the thief only \$1.30 — taken from a piggy bank.

The incident occurred between 2:30 and 5:30 p.m. at the home of Roy Webb, 2500 Duncan.

Police said the thief entered through an unlocked front door to get into the home. The pig didn't squeal.

## Most of Nation's Roads Threatened

WASHINGTON (UPI)—Federal mediators pressed efforts today to avert a threatened strike by six rail unions against most of the nation's railroads.

The National Mediation Board arranged meetings here in a drive for a settlement.

Michael Fox, president of the AFL-CIO Railway Employees Department, said no strike date has been set by the six organizations.

"We've advised our union members that we'll give the National Mediation Board 72 hours notice before a strike," Fox said in an interview.

"No notice has been given."

We still hope to get an agreement," Fox and other union officials issued a strike warning last week to indicate their intention to trigger a walkout by 150,000 rail shop workers unless a settlement was reached.

The government has exhausted its procedures for forcing a delay in a walkout in the dispute. But the mediation board might ask for more time to try to work out an agreement.

The dispute centers on union demands for greater job stability and a union veto on subcontracting of work usually performed in railroad shops.

Jurisdiction over specific jobs — such as coupling of air hoses — also is involved.

Besides Fox's group, unions threatening to strike were the Boilermakers, Machinists, Sheetmetal Workers, Electrical Workers and Railway Carmen.

A presidential emergency board recommended a settlement containing protective benefits for railworkers displaced by new machinery or organizational changes.

The board also proposed limitations in subcontracting. Negotiations began in Chicago and were shifted to Washington this week after the unions issued their strike threat.

The dispute does not involve wages and work rules. Fox said members of the six unions have been instructed not to strike unless they get the word from the union negotiating team.

## Pampa, Area Happy With Heavy Rains

Pampans rejoiced today with other Panhandle residents over the rains that fell yesterday and last night.

The rainfall spread over much of the High Plains states and deep into the south of Texas.

Pampa received 1.07 inches between 7 a.m. yesterday until 7 a.m. today. Other nearby areas received much more.

Farmers and ranchers placed the rainfall in the "million dollar" category.

Up to 4 and 5 inches of rainfall were reported to have drenched thirsty farm and ranchlands of across the Texas Panhandle.

Panhandle, 27 miles west of Pampa, received 4 inches from 11 p.m. Monday until 7 a.m. today.

Unite' Press International reported late this forenoon that a cloudburst dumped 11 inches of rain on parts of Dimmit County in Southwest Texas today, closing four highways and forcing at least ten families from their homes. Water three feet deep surged through streets in Asherton, Texas, and the ten families were taken from their homes there in rowboats.

Here in the Panhandle, nothing but good came from the rainfall. It was a boon to winter wheat prospects with farmers, who have been waiting for the moisture, now ready to start planting. Pasture lands on ranches were stimulated. The prospect for all crops were better and city residents welcomed the rains on their lawns.

The electrical storm that accompanied the rains—in some areas played havoc yesterday with Panhandle telephone communications.

Service was interrupted in Pampa, Borger, Canadian, Dumas, Stinnett and other cities when lightning struck a cable and caused underground trouble near the Bell Telephone relay station. George Newberry, Pampa SWB manager, said workers at first thought all the trouble had been caused by a hunter's blast which had damaged the cable. When this was repaired early yesterday afternoon, service still was out. Instruments finally located the underground trouble caused by lightning.

Service was 95 per cent restored by 8:30 last night. Newberry said there still was trouble on four circuits into Stinnett this morning but it was expected to be cleared up by noon.

The average rainfall over the Texas Panhandle was more than an inch. Skies were expected to clear this afternoon.

The noonday forecast calls for

clear to partly cloudy late today and clear and warmer Thursday. Low temperature tonight in the mid-50s. High Thursday in the low-60s. Surface winds northerly at 10-15 mph.

## CofC Announces Results in Vote For Directors

Seven new board members to serve for three-year terms were elected by the membership of the Pampa Chamber of Commerce as ballots were counted today in the Chamber offices by the election committee.

These directors were elected and will be installed in October:

B. M. Behrman, Behrman's Shoppe; Lee Fraser, William T. Fraser and Co., Ins.; Don Lane, Lane and Douglass, attorneys; Luke McClelland, Motor Inn Auto Supply; A. A. Schuneman, chairman of board, First National Bank; E. E. Shelhamer, Southwestern Life Ins. Co.; Jack Vaughn, Vaughn Oil Co.

The new directors will take office officially after the annual banquet Oct. 27.

These holdover directors will serve for one more year:

Paul Crossman, Bill Duncan; E. L. Green, Jr., George Newberry, J. C. Roberts, George Scott and Tom Snow.

Directors who will serve for two more years on the board are Billy B. Davis, L. J. Edmondson, Gene Imel, Norman Henry, W. G. McComas and Wiley Reynolds.

The election committee is composed of Jerald Sims, J. C. Roberts and Richard Hankins.

## INSIDE TODAY'S NEWS

Business Review	13
Classified	19
Comics	12
Crossword	20
Dear Abby	14
Editorial	18
On the Record	2
School Menu	14
TV Schedule	2
Sports	16
Women's News	14, 15

If it comes from a hardware store we have it. Lewis Hdw. Adv.

## Baby Products Company Sued

WASHINGTON (UPI)—The government today accused the firm of Johnson & Johnson of monopolizing sale of baby and first aid products through food stores.

Acting Atty. Gen. Nicholas Katzenbach announced here that the charge was filed in a civil suit in Newark, N.J. It seeks to end the company's alleged monopolistic position.

The suit charged that Johnson & Johnson granted special discounts to induce food chains and wholesale grocers to purchase and display only its products.

The company was accused of refusing to deal with food stores that insisted on handling other lines as well.

## STEP-UP STARTED ON LITTER LAWS

Pampa Police Chief Jim Conner announced today that the police department has stepped up enforcement of the city's anti-littering ordinance.

Conner reminded residents that it's a violation of city ordinances to throw or allow paper or refuse matter to blow onto public streets.

He said he is asking the people of Pampa to cooperate with the police department in removing litter from Pampa's streets.

Conviction of the littering ordinance carries a fine of not more than \$50 nor less than \$5.

## 1964 Traffic Count

Deaths—1  
Injuries—96  
Accidents—443

## Quotes In The News

**By United Press International**  
**CAPE KENNEDY** — President Johnson, vowing to maintain U.S. leadership in the space race:

"We can't be second in space and first in the world. As long as I am permitted to lead this country, I will never accept a place second to any other nation in this field."

**ST. PETERSBURG, Fla.** — Republican presidential nominee Barry Goldwater, charging that the "share-of-top-national leadership has contributed to crime and public disorder:

"We are headed toward the law of the jungle where they shall take who have the power,

and they shall keep who can."

**MOSCOW** — Premier Nikita S. Khrushchev, praising the postwar recovery of West Germany and Japan while criticizing Communist Chinese leader Mao Tze-tung:

"Mao said Japan is too small and too populous. That was the general theory of Hitler. There are other solutions — the federal republic of Germany, even though it was destroyed 20 years ago, is now in the first ranks of the prosperous countries. Japan with its talented people can also develop itself."

Read The News Classified Ads

## Television Programs

**Channel 4 KGNC-TV, WEDNESDAY NBC**

7:00 The Match Game	7:30 Huntley-Brinkley	8:00 News	8:30 Sports
8:55 NBC News	9:15 Weather	9:25 Sports	9:50 Tonight Show
10:00 Sheriff Bill			
10:15 Huckleberry			

**CHANNEL 4 THURSDAY**

4:30 Cont. Classroom	10:30 Jeopardy NBC-L	11:30 Ruth Brent Show
7:00 Today Show	11:30 Say When	11:35 Let's Make A Deal
8:00 Today Show	11:30 Truth or Consequences	12:30 NBC News
8:30 Make Room for Daddy	11:55 NBC News	1:00 Loretta Young
9:30 Word For Word	12:00 News	1:50 The Doctors
9:55 NBC News	12:10 Weather	2:00 Another World
10:00 Concentration		2:30 You Don't Say

**Channel 7 KVH-TV, WEDNESDAY ABC**

8:00 Major Adams	6:10 Weather	7:30 Shindig
Trailmaster	6:15 Ron Cochrane	8:00 Micky
4:30 Zane Grey	6:30 With the News	8:30 Burke's Law
4:50 Sea Hunt	6:30 Ozzie & Harriet	9:30 Trails West
5:00 Leave it to Beaver	7:00 The Paty Duke Show	10:00 Local News
5:30 Rifleman		10:10 Weather
5:40 Local News		10:20 Movie

**CHANNEL 7 THURSDAY**

8:55 Morning News	11:30 Father Knows Best	1:30 Day in Court
9:00 Romper Room	11:30 Tennessee Ernie Ford	1:50 Lisa Howard
9:30 The Price is Right	12:00 Texas News	2:00 Women's News
10:00 Get the Message	12:15 Weather	2:00 General Hospital
10:30 Missing Links	12:30 Topper	2:30 Guess for a Day
	1:00 Ray Milland Show	

**Channel 16 KFPA-TV, WEDNESDAY CBS**

8:00 The Secret Storm	6:30 Weather	10:00 News-Jim Pratt
8:30 Soldiers of Fortune	6:30 Fantastic Flicker	10:10 Weather Report
4:00 Chief Fred Eagle	8:30 Dick Van Dyke	10:30 Local News
4:30 Superman	9:00 On Broadway	10:50 The Big Flicker
5:00 Lone Ranger	Tonight	10:55 News
5:30 CBS News		11:00 Use Flicker Cost'g
5:00 News		

**CHANNEL 16 THURSDAY**

6:27 Religion	9:30 Love Lucy	12:10 Weather
6:30 Pub. Ser. Features	10:00 The McCoy's	12:20 Farm & Ranch News & Markets
7:00 Jack Tompkins	10:30 Pete And Gladys	11:30 As The World Turns
7:30 News Report	11:00 Love Of Life	1:00 Passport
7:50 Weather-Sports	11:35 NEWS-CBS Live	1:30 Art Linkletter's House Party
Local Events	11:50 Search for Tomorrow	1:30 To Tell The Truth
8:00 CBS Kangaroo	12:00 CBS News	2:15 CBS News
8:30 CBS Morn. News	11:45 Guiding Light	2:30 Edge of Night
9:00 News		

## On the Record

**Highland General Hospital** does not have a house physician. All patients, except severe accident victims, are requested to call their family physician before going to the hospital for treatment.

Please help us to help our patients by observing visiting hours.

**VISITING HOURS MEDICAL AND SURGERY FLOOR**  
Afternoons 2-4  
Evenings 7-8:30

**MATERNITY FLOOR**  
Afternoons 3-4  
Evenings 7-8

**TUESDAY Admissions**  
Mrs. Edith Parsley, 424 Graham

Baby Boy Parsley, 424 Graham

Mrs. Tressa Davis, 721 N. Hobart

Francis Webb, 428 N. Wells

Mrs. Lorene Heiton, Clarendon

Mrs. Martha Stenbridge, 1065 Prairie Dr.

Mrs. Barbara Wariner, Lefors

Mrs. Lessie Holt, 523 N. Wynne

Mrs. Beatrice Lunsford, 1317 E. Kingsmill

Mrs. Vera Pryor, 633 Reed

Mrs. Donna Jean Hood, Pampa

Morris Powell, 2318 Charles

Mrs. Marie Boyd, 504 S. Henry

Max Fuld Jr. & Kenneth Max Fuld, 629 N. Hobart

Melinda Chandler, 415 N. Warren

Mrs. Beverly Kotara, Panhandle

Baby Girl Kotara, Panhandle

Lanita Ballard, White Deer

Mrs. Pearl Clark, 416 N. Frost

Mrs. Hester Studebaker, Sunray

Jerry Roden, 825 W. Kingsmill

Robert Baird, 600 E. 17th

Mrs. Frances Reading, Pampa

William Schumacher, Pampa

Mrs. Pauline Hooker, Mobetle

Richard Alewine, Pampa

Mrs. Floy Henderson, Amarillo

CONGRATULATIONS:

To Mr. and Mrs. Sidney Parsley, 424 Graham, on the birth of a baby boy at 3:36 a.m., weighing 9 lbs. 5 ozs.

## Business Highlights

**By United Press International PITTSBURGH (UPI)** — Some shortages are reported developing in the steel market. Mills and warehouses report some difficulty in supplying the demand for both hot and cold rolled sheet. Buying by the automobile makers, who seem determined to build up substantial inventories lest prices go up, is considered responsible.

**WASHINGTON:** John E. Horne, an Alabama Democrat member of the Federal Home Loan Bank Board is being proposed to succeed Chairman Joseph P. McMurray, who has resigned to accept the presidency of Queens College in New York. However, Horne tentatively has agreed to accept a bank presidency in San Francisco.

**SAN FRANCISCO:** Subscription Television, Inc. has laid off a majority of its clerical employees and says the reason is that the broadcasters and theater owners have forced it to spend heavily on an election campaign. Californians are to vote Nov. 3 on a proposal to ban pay TV in California.

**PIG REPORT LONDON (UPI)** — The Pig Industry Development Authority has released a pig population report. The authority said the number of pigs going for bacon and pork in England and Wales has risen from 5,231,000 in June, 1963, to 5,762,000 this past June.

**The Pampa Daily News**  
YOUR FREEDOM NEWSPAPER  
SUBSCRIPTION RATES  
By carrier in Pampa, 35 cents per week; \$4.50 per 3 months; \$18 per year. By mail paid in advance in office, \$18 per year in retail trading zone, \$15 per year, \$12.50 per month, outside retail trading zone. Price per single copy 5 cents daily; 15 cents Sunday. Published daily, except Saturday by the Pampa Daily News, Atchison at Somerville, Pampa, Texas. Phone MO 4-2528, all departments. Entered as second class matter under the act of March 3, 1879.

Missing your Pampa Daily News? Dial MO 4-2525 before 7 p.m. weekdays, 10 a.m. Sundays.

## 'U.S. of Europe' Predicted by Speaker

By RAY RODGERS

"Without fanfare, without publicity, the most important development, which will affect our world for generations to come, is now taking place... the emerging of a United States in Western Europe."

Dr. Robert Kazmayer, world traveler, from Rochester, N. Y., told this to members of the Pampa Knife and Fork Club in the first meeting of the season last night.

Kazmayer, who was introduced as a man who has been around the world more times than Echo I, said by the mid-1970's the world will see a new Europe.

He explained that in 1957, six important countries of Western Europe banded together to form the common market. The object of the market was to lower tariffs between the countries year by year until they were finally abolished by 1970.

Today, the tariffs have been cut almost 66 per cent and the result is a new standard of living for Europe. He said a typewriter that five years ago sold for \$20, now sells for \$12. A raincoat that sold for \$15, now sells for \$7 and a \$5 shirt then, now sells for \$2.

The lowering of tariffs has also brought about a constant flow of goods among the six countries.

This has resulted in a free flow of labor among the countries, Kazmayer said, which has brought about the migration of skilled workers among the countries.

"The common market nations are now becoming what the United States used to be... a melting pot for all six nations," the speaker said.

Before World War II, there were seven great powers in the world; the United States, Japan, Italy, France, England, Russia and Germany. Following the war, two super powers emerged; the United States and Russia.

For over 20 years, these two countries have been the decision makers of world history. Now a new power is beginning to emerge... Western Europe, or the common market nations, Kazmayer said.

Touching on other subjects, the speaker said that when the chips are down, France is a true ally of the United States. He said, "The only support we got in the Cuban crisis, was when DeGaulle, president of France, said that if the United States went to war against Cuba or Russia, so would France."

He also said that Russia does not start trouble spots in the world, but after they're started, capitalizes on them. He also told the members that the racial problem is not the United States problem alone, but one of the entire world. "In any country," he said, "where there are two races of people, there is racial trouble."



More than 1,300 men will soon be at work in 14 camps in the West, Southwest and East as part of President Johnson's War on Poverty program. The camps will be administered by the Interior Department. Men will be involved in a wide variety of conservation projects at the national parks, wildlife refuges, reclamation projects and Indian reservations where the camps are located. Newsmap spots the locations.

## NEEDS NEW FEET

**WASHINGTON (UPI)** — Campaigning is "terribly exciting," but Mrs. Barry M. Goldwater says she is beginning to need another pair of feet.

The wife of the GOP presidential candidate stood in a receiving line with the wife of her husband's running mate, Mrs. William E. Miller, at a tea here Monday in their honor.

Mrs. Goldwater told reporters she enjoyed the traveling and the politicking but admitted it also was tiring to be on one's feet most of the time. Mrs. Miller was equally enthusiastic. "It's been a marvelous experience for me and my family," she said.

The huisache is one of the earliest spring-flowering trees native to Texas.

**IN PAMPA ONLY**  
see  
**tv 10**  
ON CHANNEL  
**6**

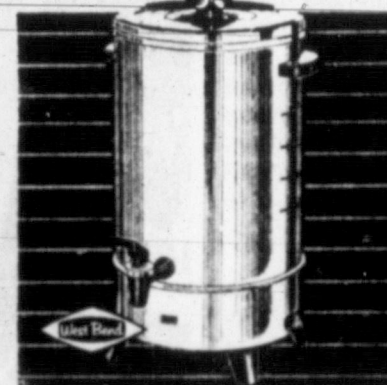
## A PURCHASE FROM ZALE'S IS A VOTE FOR VALUE!



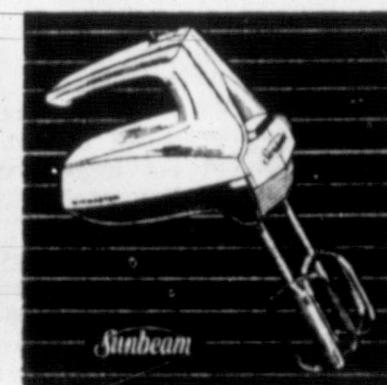
**PORTABLE WESTINGHOUSE BEAUTY SALON**  
Fabulous hair dryer with perlator, nail dryer, 4-temperature dial, adjustable bouffant hood, and luggage-type carrying case. PLUS a lovely 3-piece vanity set!  
All for one low price! **\$1988**



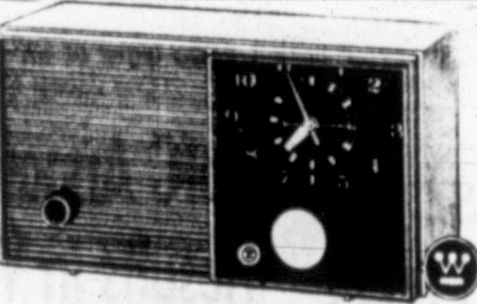
**WEST BEND STAINLESS FLAVO-MATIC**  
Handsome stainless steel automatic coffee maker brews 6 to 9 cups of delicious coffee.  
just **\$1588**



**WEST BEND 30-CUP PARTY URN**  
Coffee from an urn tastes better. Prove it with this West Bend jumbo coffee maker! Up to thirty flavorful cups.  
just **\$988**



**SUNBEAM MIXMASTER HAND-MIXER**  
Mixer features large full-mix beaters, thumb-up speed control, built-in mixing chart.  
For a low price! **\$989**



**WESTINGHOUSE CLOCK-RADIO**  
High performance clock radio with an easy-to-read clock face and contrasting two-tone cabinet. Wide range front speaker brings you music automatically at the exact time you indicate. Precision-etched chassis.  
only **\$1588**



**PHONOLA STEREO PHONOGRAPH**  
Enjoy living stereo with this 4-speed Phonola "Astronaut." Richly designed cabinet with modern decorator styling.  
FEATURES:  
• No 4" speakers  
• dual channel amplifier  
• dual tone control  
• automatic changer for all 4 speeds  
NO MONEY DOWN  
\$5 Monthly  
amazingly low price! **\$5995**

## 107-PC. HOMEMAKER'S COMBINATION

**45-PC. MELMAC 50-PC. STAINLESS 12-PC. CANISTER SET complete \$2777**  
\$1 weekly

**45-PC. MELMAC**  
... enchanting Spring Leaf design... service for 8... withstands high temperatures... non-breakable. Includes:  
• 8 decorated dinner plates • vegetable dish  
• 8 salad plates • 2 platters  
• 8 cups • 8 saucers  
• 8 soup bowls • creamer  
• covered sugar bowl

**12-PC. CANISTER SET**  
... beautiful addition to any kitchen... easy to clean... sturdy polyethylene. Added extra: 4 scoops!

**50-PC. STAINLESS FLATWARE**  
... dainty "Straight" pattern... stays shiny and new-looking from meal to meal. Service for 8 includes:  
• 8 knives • 8 soup spoons  
• 16 teaspoons • 8 salad forks  
• 8 forks • 2 tablespoons

**SPECIAL OFFER**

**8-PC. TEFLON COOKWARE**

DUTCH OVEN w/cover — lid also covers 10" frypan

7 1/2" Skillet

3-qt. Saucepan w/cover

10" Frypan

2-qt. Saucepan w/cover

Plus — 3 BONUS P-ECES: COOKBOOK, SPECIAL NYLON SPOON AND SPATULA

**MIRACULOUS TEFLON® 8-PC. COOKWARE complete \$1988**

Waterless, no-stick, no-scour cookware! This extra-heavy polished aluminum 8-PC. cookware set with DuPont's Teflon finish makes all foods easy to cook without sticking, and remaining particles actually float away at cleanup time. Handles have protective heat guards and eyelets for easy storage.

NO MONEY DOWN  
CONVENIENT TERMS

3-QT. SAUCEPAN W/COVER 10" FRYPAN  
2-QT. SAUCEPAN W/COVER 7 1/2" SKILLET  
5-QT. DUTCH OVEN W/COVER COVER TO FIT FRYPAN OR DUTCH OVEN

**ZALE'S JEWELERS**

**WOOLWORTH'S**

COMBINATION  
**LAMP**  
AND  
**TABLE**  
**1995**

People will look twice at this extraordinary creation... its ceramic pedestal lamp base. Use as an end, cigarette, or lamp table; 41" high three-way lamp in antique white and brown with orange, or turquoise and goldtone accents. No matter how you use it, it's sure to become a topic of conversation.

**WOOLWORTH'S**  
YOUR MONEY'S WORTH MORE AT  
**WOOLWORTH'S**

OPEN THURS TILL 9 P.M.

107 N. Cuyler

MO 4-3377



**BICYCLE BUILT FOR FOUR**—Togetherness is a "Beavin-cycle" for this Evansville, Ind., family. John (Pat) Beavin (front seat) designed and built it for family cycling excursions. Riding it with him are, from left, Mrs. Beavin, Dennis, 7, and Bonnie, 12.

## Mainly About People

\* Indicates Paid Advertising

William B. Travis P-TA will meet at 2:15 p.m. Thursday in the school auditorium for a tea honoring faculty members followed by room visitation. Executive board will meet at 1:30 p.m. Thursday in the principal's office.

**Found: Female airedale.** MO 4-7541 or MO 4-8901 after 5:30 p.m.

**Top O' Texas Coin Club** will meet at 7:30 p.m. Thursday in Citizen's Bank Hospitality Room.

**Stedie Girl Cosmetics,** MO 5-5440, MO 4-2957.

**Thursday Specials. B a k e d** Chicken and Dressing. Town House Cafe, 306 N. Cuyler.

**Houseguests of Mr. and Mrs. Ralph Palmer,** 2332 N. Sumner, are Mrs. Palmer's niece, Mrs. Joseph Beauvais, and Miss Pauline Brodeur of Paw-

**MARTIN TURNER INSURANCE**  
Fire, Auto, Comprehensive Liability and Bonds.  
107 N. Frost — Ph. 4-3428

## Red Cross Chapters Conduct Fall Meeting

The Association of Chapters of the American Red Cross met at the Frank Phillips Junior College in Borger Tuesday for its fall meeting. The Gray Ladies of Borger served coffee and doughnuts to the group.

The welcome address was given by Paul Biggs, chapter chairman, and J. W. Dillard, president of the College.

Terry Thomas, president of the Association recognized Mrs. Jack Foster, of Pampa as the newly elected vice president of the association and recognized each of the chapters and their representatives. Chapters present were: Ochiltree, Moore, Hansford, Potter, Hale, Carson, Shamrock, Gray and Hutchinson.

Attending from Pampa were: Mr. and Mrs. Wes Langham, Mr. and Mrs. O. F. Kreimeyer, Mrs. Jack Foster, Mrs. V. J. Drew, Mrs. Elizabeth Taylor and Mrs. Libby Shotwell.

Mrs. Leoti Deaton, Volunteer Field Consultant, from Wichita Falls was guest speaker and urged all volunteers to be oriented before they go to work for Red Cross.

Dick Strayer, field representative for the Panhandle, of Texas and Oklahoma spoke on the Panhandle Combined Territory Service. He said each paid worker in Red Cross will assume additional territory to assist and help with Red Cross work.

Gray County will assist Donley, Hemphill, Roberts, and Wheeler Counties as well as Gray.

Lyle Heide, Field Director for the AAFB, Amarillo requested continuation of the Re-Training Center Parties. The Christmas and Thanksgiving parties were set up for the hospital at the Base. Each chapter was to assist with supplies.

## Court News

**CORPORATION COURT**  
Joel D. McElrath, 1217 Garland, racing, guilty, fined \$15.  
Norman A. McElrath, 1217 Garland, racing, guilty, fined \$15.  
David L. Hale, 615 E. Campbell, speeding, guilty, fined \$25.  
Leon Nixon, Thomas Apts., no driver's license, guilty, fined \$25.  
Virginia Presnell, 2119 N. Sumner, failure to stop and exchange information after traffic accident, guilty, fined \$10.

## Dogs Scheduled For Gas Unless Claimed or Sold

Unless they were bailed out by owners or sold at auction, eleven dogs were scheduled to die this afternoon in the gas chamber at the city dog pound.

Sale of three female and eight male dogs was scheduled for 1 p.m. at the pound.

The dogs included nine curs, a Collie and a Dachshund.

Police Chief Jim Connors said the dogs had been picked up running at large on city streets and had not been reclaimed by their owners.

Read The News Classified Ads

**A TRUE NATURAL SHOULDER SUIT WITHOUT ALL THE DRAMATICS**



**Conference Natural Suit By Griffon**

We don't believe you have to ham it up to produce a fine Natural shoulder suit.

That's why our Conference Natural Suits by GRIFFON are tailored without exaggeration. They don't have that over-dramatized look. They're perfectly proportioned. Come in, try one on and applaud our selection!

**Heath's Men's Wear**  
PAMPA'S OWN QUALITY MENS STORE  
MR. WORLEY BLDG. PH. MO. 214 PAMPA, TEXAS  
SHOP DOWNTOWN FOR GREATER SELECTIONS

**DAVID CALDWELL APPLIANCES**  
Can Now Give You **COLOR** at NO EXTRA COST

# COPPERTONE

Choice OF 30" OR 36" MODELS for the SAME PRICE AS WHITE!

**TAPPAN GAS RANGES**

Plus... **CHROME OVEN...** with removable liners for easy cleaning

Now you just carry your oven to the sink for cleaning. Eliminates bending and stretching.

**\$219<sup>95</sup> WT**

**EASY TERMS**

**DAVID CALDWELL APPLIANCES & TELEVISION**  
112 E. Francis MO 5-2912

## Obituaries

**Mrs. Marshall (Mary) King PANHANDLE (Spl)** — Funeral services will be held at 10 a.m. Thursday in Hereford at First Presbyterian Church for Mrs. Marshall (Mary) King, 73, of Hereford. Rev. Russell Winger, pastor, will officiate. Burial will be in Panhandle Cemetery at 2:30 p.m. Thursday under direction of Gilliland Funeral Home of Hereford.

Mrs. King was born in 1891 in Lockhart and moved to Hereford with her parents in 1900. She moved to Panhandle in 1913, where she was a piano teacher. Following her marriage she moved to a ranch west of Panhandle and to Hereford in 1955 following the death of her husband in 1954.

Mrs. King died Tuesday morning in Deaf Smith Hospital at Hereford.

Mrs. King was past president of Carson County Federation of Women's Clubs, a charter member of the Liberty and King Home Demonstration Club, a member of the Order of Eastern Star, a member of the first library board of Carson County Free Library, member of West Hereford Home Demonstration Club and Hereford First Presbyterian Church.

Survivors include four sisters, Mrs. Irene Sweet of Fort Worth, Mrs. Ethel Huxley of Nome, Alaska, Mrs. Leila Wilmet of Fort Sumner, N. M., and Mrs. Edna Lee Collier of Redland, Calif.; five brothers, J. H. Williams of El Paso, Ray Williams of Nevada, Bill Williams of Canada, Jake Williams of Littleton, Colo., and Finis Williams of Ft. Banks, Alaska.

## Goldwater

(Continued From Page 1) and posture regarding Cuba," Goldwater said.

(UPI White House reporters said that, in addition to the statements on Cuba, statements critical of Goldwater and the domestic policies of the Eisenhower administration also were ordered deleted from Johnson's prepared text. Presidential aides explained that certain material in the speech had not been fully cleared.)

**Wound Up Tour**  
Goldwater flew to Knoxville from Tampa, where he wound up a tour of North Carolina, Georgia and Florida Tuesday, hailing the doctrine of states' rights and appealing for Democratic votes.

He was enthusiastically welcomed by large crowds. An estimated 100,000 persons greeted him in Atlanta.

In his various talks, Goldwater took jibes at President Johnson's "southern drawl," said Hubert Humphrey, the Democratic vice presidential candidate, doesn't "believe the South is a part of the United States," and said many of the South's military installations will be closed down if Johnson is reelected.

But the Arizona conservative fired his heaviest ammunition at the Supreme Court, which he accused of contributing to the breakdown of law and order with its "obsessive concern for the rights of the criminal defendant."

**Minard Ray Anderson PANHANDLE (Spl)** — Funeral services for Minard Ray Anderson, 74, of Panhandle, will be conducted at 3 p.m. Thursday in First Baptist Church. Rev. L. E. Godwin of Amarillo will officiate assisted by Rev. Maurice Garner of Panhandle. Burial will be in Panhandle Cemetery under direction of Blackburn - Shaw Funeral Home of Amarillo.

Mr. Anderson died Monday evening in St. Anthony's Hospital, Amarillo.

Mr. Anderson was born Oct. 8, 1889, in Zanzora, Canada. He moved to Akron, Ohio in 1894 and moved to Panhandle in 1910. He married the former Phoebe Gray Dec. 22, 1917.

Mr. Anderson was a farmer and rancher. He was a member of the Presbyterian Church and the Golden Age Fellowship.

Surviving are his wife; three sons, Rev. Don Anderson of Littleton, Colo., Douglas Anderson of Panhandle, and Robert Anderson of Bartlesville, Okla.; one daughter, Mrs. Harold Eakes of Happy; an uncle, Addison McDonald of San Diego, Calif., and seven grandchildren and one great-grandchild.

## Price Hits LBJ On Appointing Lobbyist on Sugar

**FRIONA (Spl)** — At the Parmer County Kick-off Rally in Friona, Tuesday evening Bob Price, Republican candidate for congress, blasted President Johnson for appointing a high-paid lobbyist for the cane sugar industry to coordinate his campaign in the 11 Western States.

Price identified the lobbyist as Irvin A. Hoff, executive director of the United States Cane Sugar Refiners Association. The GOP candidate said Hoff, in speeches around the country, has called beet growers "greedy" although the cane industry has 70 per cent of the U.S. sugar market. He said Hoff has "worked consistently to get cutbacks in beet sugar acreage."

Hoff has said beet growers are "heavily subsidized." Price noted, although cane producers get the same protection under the same act. According to Price, Hoff has also noted beet sugar is "high cost" although it frequently underprices cane sugar at the supermarket.

The GOP aspirant said Hoff works full-time to keep Congress from amending the Sugar Act to give beet growers a larger share of the market and that the Democrats under Agriculture Committee Chairman Harold Cooley (D. of N.C.), have kept 30 per cent of the U.S. market open to foreign production — a share which beet growers could fill if the Government would allow full beet production.

"It is obvious," Price declared, "that a GOP administration in Washington — the Presidency and the House — is a vital need for beet growers if they are ever going to get a just share of the market." He said Hoff is a fund-raiser for the Democrats in the East, where the cane industry is headquartered.

"I say, let's raise a little Cain with the sugar industry — a little less cane and a lot more beets," Price stated.

## Stock Market Quotations

The following quotations show the range within which these securities could have been traded at the time of compilation.

Franklin Life	50 1/2	50 1/2
Gulf Life Ins.	50	50 1/2
Gen. Amer. Corp.	13 1/2	13 1/2
Gilbraltar Life	22 1/2	23 1/2
Gen. Cont. Life	19 1/2	20 1/2
Nat. Old Line	20 1/2	20 1/2
Natl. Fid. Life	28 1/2	29 1/2
Jefferson Stan.	79	79 1/2
Republic Nat. Life	81 1/2	82 1/2
Southland Life	170	170 1/2
So. West. Life	171	173
Canot Corp.	35 1/2	35 1/2
National Tank	22 1/2	22 1/2
Pioneer Nat. Gas	41 1/2	41 1/2
So. West. Invest.	14	14 1/2
Producers Life	4 1/2	4 1/2

The following 10:30 N.Y. stock market quotations are furnished by the Parmer office of Schneider Bernhart Hickman, Inc.

American Can	44 1/2
American Tel. and Tel.	58 1/2
American Tobacco	35 1/2
Anacosta	28 1/2
Bethlehem Steel	41 1/2
Chrysler	65 1/2
Celanese	66 1/2
Dupont	209 1/2
Eastman-Kodak	129
Ford	37 1/2
General Electric	87 1/2
General Motors	99 1/2
Gulf Oil	49 1/2
Goodyear	49 1/2
IBM	168 1/2
Montgomery Ward	46 1/2
Penney's	50 1/2
Phillips	34 1/2
R. J. Reynolds	44 1/2
Sears-Roebuck	122
Standard Oil of New Jersey	66 1/2
Sinclair Oil	45 1/2
Shamrock Oil	28 1/2
Southeastern Public Service	40 1/2
Texasaco	80 1/2
U.S. Steel	40 1/2
Westinghouse	37 1/2

## Vandalism Reported By Pampa Resident

Pampa police are investigating a case of vandalism today. J. H. King, 1116 E. Kingsmill, reported yesterday that someone smashed an outside rear-view mirror on his automobile Saturday night while it was parked at Highland General Hospital.

**"SCOTCH MIST"**  
HAVERHILL, England (UPI) — A firm of aerosol manufacturers here is bringing out a plastic spray container filled with pressurized whisky. It will be called "Scotch Mist."

**Pampa Office Supply Co.**  
"EVERYTHING FOR THE OFFICE"  
211 N. Cuyler — MO 4-3353

## Have You Tried... Kentucky Fried Chicken?

Nearly Everyone Has... It's Finger Lickin' Good

Kentucky Fried Chicken is NOT pre-cooked, par-boiled or french fried for convenience or speed in serving. Fresh locally grown, plump broilers are dipped in milk and egg, rolled in flour seasoned with 11 different spices and herbs and served only minutes after being cooked with special equipment designed to seal in all the natural juices and goodness of chicken.

Try our Home-Made Pies and Sweet Rolls. Made fresh and mouth-watering sweet daily. Pick one up today.

**You'll Love 'Em**

Here's A Real Taste - Tempter

Kentucky Baked Honey Glazed Smoked Ham ----- Only \$1.50 LB.

**FAMILY BUCKET**  
(Satisfies 5-7 People)  
15 Big Husky Pieces of Kentucky Fried Chicken, 1 pint Country Gravy and 8 home made hot rolls.  
**\$3.50**

**THRIFT BOX**  
(Satisfies 3-4 People)  
9 pieces Kentucky Fried Chicken.  
**\$2.25**

**WARD'S**

# Kentucky Fried Chicken

2100 N. Hobart MO 4-6771

Look for the Candy Striped Building

### Rogers Praises Hereford Plant As 'Milestone'

WASHINGTON (SpI) — Congressman Walter Rogers of Pampa today hailed as a "milestone in the agricultural and industrial development of the Texas Panhandle" the new Holly Sugar Corporation beet sugar refinery to be dedicated Saturday at Hereford.

"The entire area is benefitting from the economic stimulus provided by the construction of the \$21.5 million plant," Congressman Rogers said.

"Our farmers now are able to produce an important new crop," he said. "Many new jobs have been created — not only in the sugar plant itself but in other new enterprises which are coming to the Hereford area under the direct stimulus of the sugar plant's location."

Congressman Rogers will participate in the Saturday ceremonies during which Gov. John Connally will be principal speaker in dedicating the "Merrill E. Shoup Plant." The plant is named in honor of the late chairman of the board of the Holly Corporation, Mr. Merrill E. Shoup, who died July 15 at his home in Colorado Springs.

Earlier this year, Congressman Rogers addressed the House of Representatives on the important economic gains to be made in local communities by encouraging expansion of domestic sugar beet production. He cited the Hereford sugar beet story as a "stellar example" of the gains that could thus be made elsewhere in the United States.

A long-held objective of Congressman Rogers is enactment of legislation to permit American sugar beet farmers to produce a greater share of the sugar consumed by their fellow citizens.

In 1962, Congressman Rogers led the fight for enactment of sugar act amendments encouraging increased domestic sugar beet production, providing investment opportunities in new plant facilities as well as authorizing new major areas in which American farmers could undertake to grow and market sugar beets. The congressman is continuing his efforts to provide ever-larger opportunities for sugar beet producers and processors.

On June 8, in addressing the House, Rogers listed economic gains made in the Hereford area following the announcement that Holly's new plant would be constructed:

1. Hereford bank clearings in May of 1964 were up more than 33 per cent over a year ago — \$18,812,358 in May, 1964, as compared to \$12,375,046 in May, 1963.

2. Deposits in Hereford's two banks and two savings associations during the 13-month period between March 15, 1963, and April 15, 1964, climbed from \$28,868,714 to \$30,954,870.

3. Forty-six new businesses and professional and service establishments came to Hereford after January 1963, which was about three months after plans for building the new sugar plant were announced.

4. Other new enterprises which have come or are coming to Hereford include: a new feedlot on the edge of the city with a capacity of 15,000 head of cattle, a similar new feedyard at Friona; a molasses feed industry at Hereford, which includes a \$150,000 installation; a plant for Dolly Textiles, Inc., a sewing center making children's dresses; three fertilizer companies—Cyanamid, Monsanto, and Armour & Co.—have been reported seeking plant sites at Hereford; Allen Packing Co. of California has acquired a site for a \$1,250,000 packing plant; other projects by other companies are in the planning stage for other important developments.

"The policy under which the Hereford sugar plant was constructed is not only important to local community and area economies, but it is also important from a national standpoint," Congressman Rogers said. This policy of sugar beet expansion assures adequate and reasonably priced sugar supplies to U.S. consumers; it materially increases U.S. employment opportunities; it relieves the surplus farm commodity problem by keeping more dollars at home.

Congressman Rogers added, "An observer has only to study the facts in the Hereford story to know of the great advances possible by expanding domestic sugar beet production. We will observe the dedication of the new Holly plant Saturday as a 'milestone in the agricultural and industrial development of the Texas Panhandle.'"



# 1st birthday Sale

Register In Our Appliance Dept. For \$520 Worth of FREE Diamonds and Valuables Gifts

Help Us Celebrate Our 1st Birthday In The Coronado Shopping Center



"Charge It" On Wards Convenient Charge-All Credit Plan

## SPECIAL! Luxurious wool coats

EXCITING AT WARDS LOW, LOW PRICE!

# \$28

MISSIE'S SIZES

- Richly toned multicolor wool tweeds.
- Forstmann's textured wool worsteds.
- Beautiful wool meltons, bound in silk.

All that's newest in coat fashions for winter 1964! Polished dressy styles trimly edged in all silk; chic double-breasted models, and dashing versions with their own fling of scarf. Tweeds in rich multicolors; also coats in black and taupe. A wonderful selection, in sizes 8-18.

## fall fashion wool suits

# \$24<sup>88</sup>

- Double knit woelens • Wool bouclies
- Textured woelens • Loopy woelens
- Two-piece and three-piece styles
- Casual and dressy suits

All the new shapes and shades of Fall Your fashion dollars do wonders at Wards. Here you'll find pace-setting shapings in thoroughbred woelens usually tagged at higher prices. Come see how much excitement, variety and value is in store for you. Choose yours now from blue, red, green, black in sizes from 8 to 18.

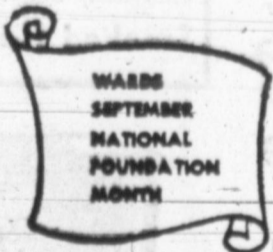
## NOW SALE PRICED! Luxurious mink and suede sampan coat

# \$68

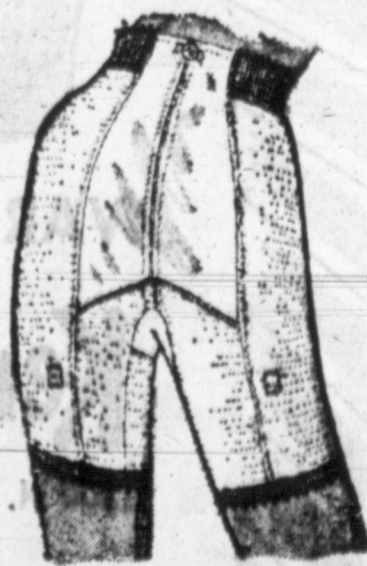
REG. TO 95.00

It's the coat rage from here to Hawaii, at a smash sale price. Slim, straight, side-slit styling. Luxuriously soft suede leather with a wedding-band collar of natural mink. Rayon satin lined. Fashiony seven-eighths length in sand beige, antelope, brown. Misses' sizes 8 to 18.

For products labeled to show country of origin of imported furs.

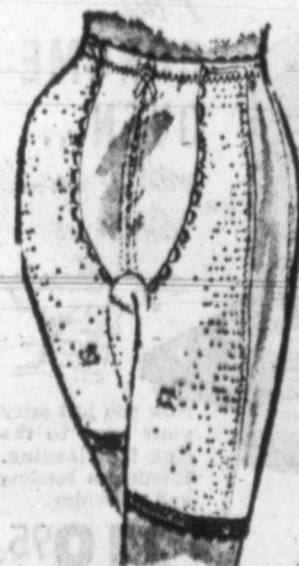


Here it is... the girdle that shapes so mysteriously... no panels, only one seam... And pretty petal flowers of screened flocking in all the right places to trim you smoothly. It feels great, looks lovely and slims to perfection! Easy-care nylon-Lycra Spandex. Small, medium, large.



### PAY SO LITTLE FOR LONG LEG SLIMMER

Carol Brent panty girdle of rayon-Lycra Spandex power net trims thighs Regularly 3.99 **2.88**



### SAVE 1.02 ON LYCRA LONG LEG

Carol Brent 4-section panty of nylon acetate-Lycra Spandex slims you! Regularly 7.99 **6.88**



### THRIFTY LOW PRICE ON PANTY SHAPER

Carol Brent long leg thigh slimmer of rayon-nylon with downstretch panels. Regularly 6.99 **5.88**

## Carol Brent "Petal Myst" long leg panty

# \$6<sup>88</sup>

REG. 7.99



# Law Enforcement Parley Opens in Austin Tomorrow

AUSTIN (Sp1)—Attorney General Waggoner Carr announced today that the 14th Annual Attorney General's Law Enforcement Conference will open tomorrow in Austin.

Attending the conference from Pampa will be County Attorney Don Cain, District Attorney Bill Waters, and County Judge Bill Craig.

Jack Cook, county attorney of Kleberg County and president of the District and County Attorneys Association of Texas, will call the meeting to order Friday at 9 a.m. Principal speakers during the day will be Frank E. Hancock, attorney general of the State of Maine and president of the National Association of Attorneys General, and Attorney General Waggoner Carr. Gov. John Connally will be the principal speaker Friday evening.

Friday afternoon's activities will be separated with prosecutors attending one session and county judges and sheriffs taking part in another.

Bill Water will preside at the prosecutor's session.

Carr said that more than 300 officials from a majority of Texas' 254 counties are expected to participate in the conference which is sponsored by the attorney general's office. Last year there was an attendance of over 400 registered participants.

The delegates to the conference will hear the state's law enforcement officials discuss such topics as: "Recent Court Decisions" by States Attorney Leon Douglas of Austin; "Today's Challenge in Law Enforcement" by Col. Wilson E. Speir, first assistant, Department of Public Safety of Austin; "Collection and Preservation of Criminal Evidence" by Criminal District Attorney Ralph Prince of Longview; "Arrests, Searches and Seizures" by A.D. (Jim) Bowie, assistant district attorney of Dallas; "The Record in a Criminal Case" by District Attorney Stanley Kirk of Wichita Falls; and "Prosecution of a Criminal Case" by District Attorney Alton Griffin of Lubbock.

In commenting upon the conference, Carr said: "The number of crimes in Texas has increased 88.6 per cent in 10 years. In order to reverse this trend, citizens from every walk of life must give positive support to our law enforcement officials." Attorney General Carr continued: "I feel the Attorney General's Law Enforcement Conference is a vital part of our efforts to halt this alarming crime increase. Today the continued education and training of our peace officers is essential."

The conference will conclude Saturday morning with business meetings of the District and County Attorneys Association, the Sheriffs Association of Texas, the Texas Law Enforcement Legislative Council and the County Judges Association of Texas.

**TO SUPPLY EQUIPMENT.**  
BETHPAGE, N.Y. (UPI)—Grumman Aircraft Engineering Corp. has obtained a \$402 million follow-on contract from the National Aeronautics and Space Administration for equipment for the White Sands, N.M. proving grounds.



**FAIR GAME**—Myrna Cohn demonstrates a new attraction at the Transportation and Travel Pavilion of the New York World's Fair. The game is called "Ski 'n' Shore." By "skiing" with the aid of hand grips and pedals, the player guides a tiny skier through 80 gates while dials clock time and accuracy.

**MONTGOMERY  
WARD**

# 1st birthday Sale

CORONADO  
CENTER

Shop  
Thursday  
and  
Saturday  
Till  
9 P.M.

**FREE!! \$520 Worth of Diamonds and Prizes**  
Register and Draw In Our Appliance Department



**MEN! SAVE 1.52**  
FINE-QUALITY BRENT FELT HATS  
Made by one of America's best known makers! Luxury felts in narrow brims, wide brims... in medium dark gray, dark brown, jade olive REGULARLY 8.50  
**\$6.98**



**SANFORIZED PLUS\*** ALL WEATHER COATS  
BRENT REG. 2.98 COMBED COTTON SHIRTS FOR MEN.  
**2.50**  
SIZES 14-17  
Sanforized Plus\* treatment guarantees wash 'n wearability that has been performance tested five different ways. High-count combed cotton. Broadcloth with snap-tab or spread collar. Oxford weave in button-down style. 2-way cuffs. Save!



**BRENT 'V' STRIPE**  
MEN'S DEEP 'V' PULLOVERS OF 100% ORLON®  
**\$9.98**  
Plush, deep Orlon\* acrylic in a smart pull-over style... at a terrific Wards low price! Choose yours in neat color combinations but hurry! At this price, they'll sell fast! All are machine washable and dryable for easy care! Sizes S-M-L-XL. Get them now, shop Wards!



**MEN SAVE! NEW STRIPES, PLAIDS... ZIP LINED!**  
**\$19.98**  
The coat with the double personality! Great as a topcoat... or, as a good-looking raincoat! The pile liner of Orlon\* acrylic zips in and out for wonderful versatility! Cotton-acetate iridescent, in plaids, stripes or solids! Split shoulder, Bal "stand-up" collar!



**SELLOUT PRICE**  
MEN'S SPORT SHIRTS IN NEW IVY OR CLASSIC MODELS  
**2 for \$5**  
An exciting assortment of styles, colors! Choose novelties! Embroideries! Solids! Wovens! Get Premium Dacron\* polyester-cottons and 100% cottons! All in up-to-the-minute styled ivy and classic models. The price is right.

the Warranted Suit

## WOOL WORSTED BRENT SUITS

Regular \$45 To \$55  
**LIMITED TIME ONLY \$34.88 BIRTHDAY SALE PRICE**

Warranted by Wards! That means FREE REPLACEMENT if your suit shrinks or is moth-damaged within 1 year! Silicone\* finish repels rain, stains! All in sharkskin—famous for rich lustrous looks... exceptional long wear. Get it now at Wards low price! Shop today!



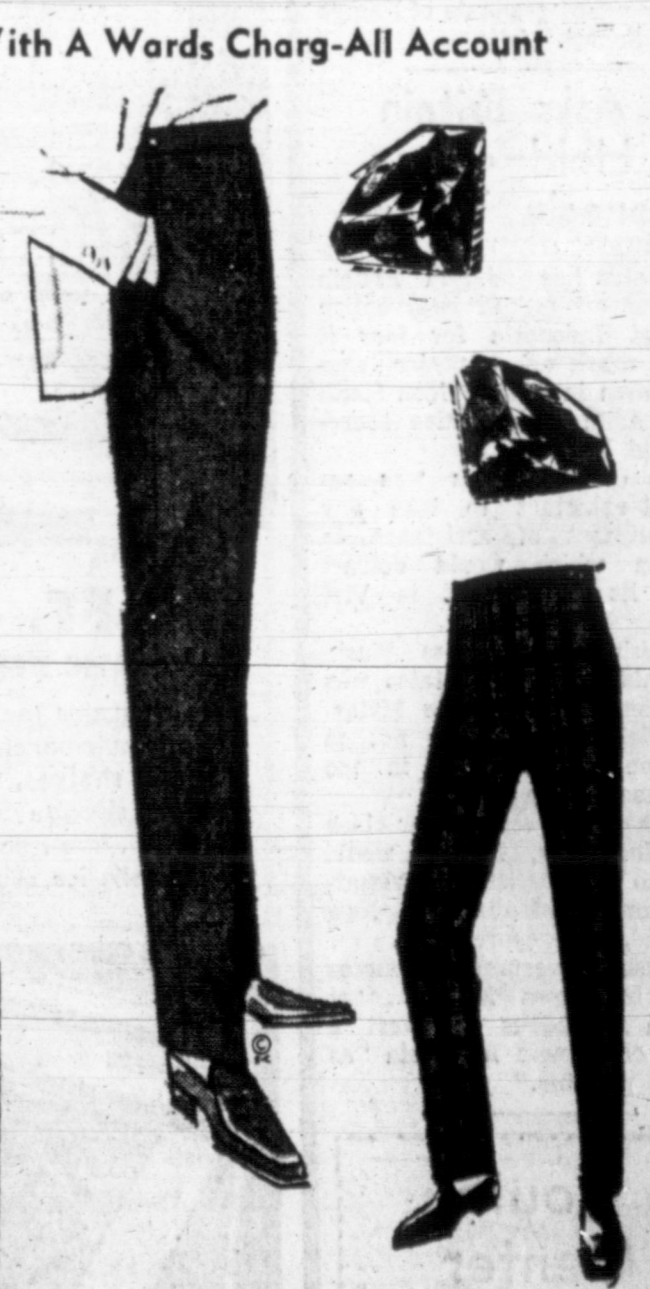
**WARD-GUARANTEED**  
LITTLE BOYS' OXFORDS, SLIP-ONS  
Neolite composition soles and heels are guaranteed to outlast leather uppers or return for a new pair free! In black. Sizes 8 1/2 to 3 D. Big boys' 0.00; 3 1/2-7. 0.00  
**\$4.99**



**MEN! SAVE 2.11**  
BRENT STRONG ARCH SHOES IN HUGE RANGE OF SIZES, WIDTHS  
**\$10.88**  
REGULAR 12.99  
Reverse seam oxfords, tops in comfort, have sturdy arch supports, quality leather uppers and soles. Goodyear welt construction and cushioned insoles. Black. Sizes 7 to 12, 13 and 14; widths from A to EEE in the group.



**BRENT PREP WOVEN OXFORD STRIPED SHIRTS**  
**\$1.99**  
REGULAR 2.98  
Neat stripes—the most important look in ivy shirts today... and now you can get Wards finest "Gold Label" quality at super savings! Authentic tapered 'n tails ivy styling with button-down collar, back box pleat and hang loop. 100% cotton. Sizes 8 to 18.



**TOP VALUE**  
BOYS' BRENT WASH 'N WEAR BETLESS CONTENTENALS  
**\$1.77** REG. \$3.98

**SUPER VALUE!**  
BOYS' BRENT WHITE DRESS SHIRTS  
100% wash 'n wear combed cotton dress shirts with medium spread collar. Convertible 2-way cuffs... wear buttoned or with links. 6 to 18.  
**\$1.47**  
REGULAR 1.98

What a selection! Extra-tapered slacks with besom pockets... hidden pockets and side tabs... more! Plus-tailored in Sanforized-Plus\*; heavyweight cotton sateens and cotton twills. Deep-toned solids, new solids, 10-20.  
\*6.5 Way tested for Wash 'N Wear Wearability



HARRY MITCHELL  
... toastmaster president

### Slate of Officers Announced by Toastmaster Club

Harry J. Mitchell has been elected president of the Pampa Toastmasters Club. The election of Mitchell was announced Monday at the club's weekly meeting at Coronado Inn.

Mitchell joined the Pampa Toastmasters in 1962. He has previously served the club as sergeant at arms and administrative vice president.

Other officers serving with Mitchell are: educational vice president, Phil Truak, administrative vice president, Calvin Hill, secretary, Paul Murphey; treasurer, Ray Hudson, and sergeant at arms, Bob Lee.

Also announced was the induction of new members Doyle Munkres and Earl Mattes.

### Miss Dwight to Attend School In St. Louis

ST. LOUIS (Sp) — Miss Barbara Dwight, daughter of Mr. and Mrs. Clyde Dwight Jr., of Pampa, has enrolled in the Gradwohl School of Laboratory Technique in St. Louis, Mo.

She is registered for a one-year course of training in medical laboratory procedures, to be followed by a six months' internship in a hospital laboratory, and will be then a qualified medical laboratory technologist. She is a 1964 graduate of Pampa High School.

### US Asks Britain To Hold off in Indonesia Tiff

LONDON (UPI) — The United States has advised Britain to hold off armed intervention against Indonesia for fear it could spark off a major conflagration in crisis ridden South East Asia, authoritative sources said Monday.

The United States was reported reluctant to take any commitment of assistance to Britain which would detract from its own effort in Vietnam.

British reports from Washington said the United States was apprehensive about the Malaysia crisis and anxious not to take on further tasks in the Southeast Asian area.

In the event of a major clash with Indonesia, Britain would have to seek assistance primarily from Australia and New Zealand, the reports said.

British government sources let it be known Monday that Britain is anxious to avert a direct clash with Indonesia "as far as possible."

### Youth Center Calendar

#### THURSDAY

4:00—Open. Polywog Swim Les  
5:00—Beginners Swim Lesson  
7:00—Family Swim Time  
8:00—All Ages Swim  
10:00—Close

#### FRIDAY

4:00—Open. Polywog Swim Les  
5:00—Beginners Swim Lessons  
7:00—Close for Football Game  
SATURDAY

9:00—Open. Polywog Swim Les  
12:00—Close for lunch  
1:00—Open. All Ages Swim  
5:00—Close  
7:30—Calico Capers Dancers

#### SUNDAY

2:00—Open. All Ages Swim  
Judo Lessons  
5:00—Close



# 1st birthday sale

We're really celebrating!  
Don't miss these savings!

# FREE DIAMONDS AND \$520 Worth of GIFTS

## 3 BIG DAYS

THURS. FRI. AND SAT.

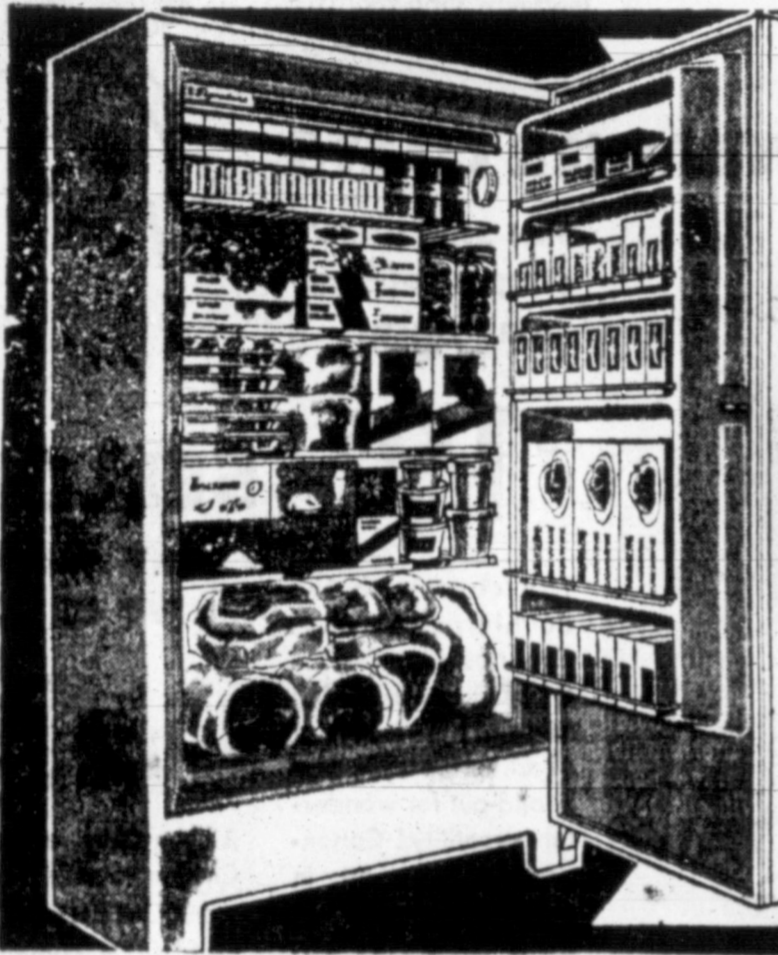
REGISTER FOR A FREE SIGNATURE PORTABLE  
DISHWASHER AND DRAW FOR DIAMONDS  
AND OTHER VALUABLE GIFTS FROM OUR  
"SIGNATURE TREASURE CHEST"



DRAWING  
SATURDAY  
AT  
8 P.M.  
NEED NOT  
BE PRESENT

NOTHING TO BUY—NO OBLIGATION  
ONE DRAWING PER PERSON—MUST BE 18 YRS. OR OLDER

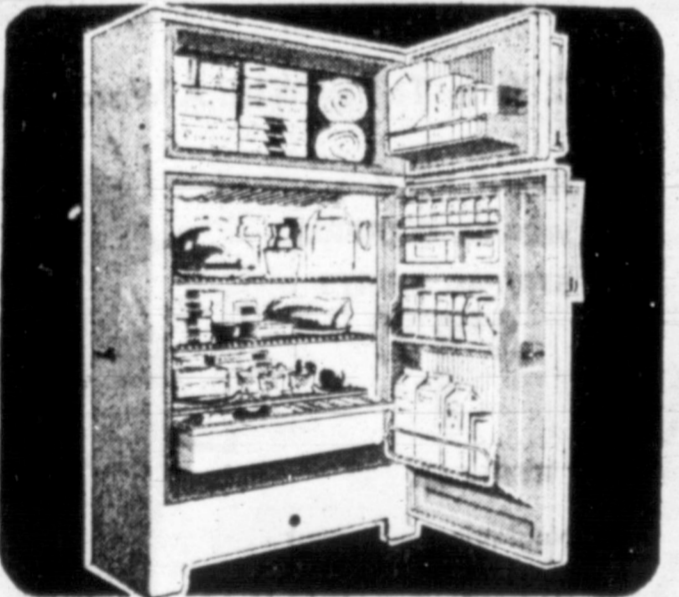
RANGE DEMONSTRATION  
SATURDAY SEPT. 19  
BY MRS. MILDRED PRINCE  
SOUTHWESTERN PUBLIC SERVICE CO.



CHEST OR UPRIGHT  
15 CU. FT. FREEZERS  
reduced \$35 and \$45

**\$174**  
NO MONEY DOWN  
17 Cu. Ft. FREEZERS **\$197**  
YOUR CHOICE  
21 Cu. Ft. **\$227**

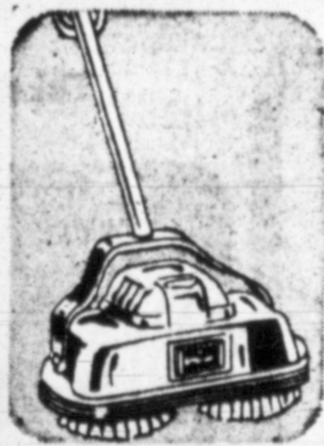
CHEST OR UPRIGHT



11.5-FT. SIGNATURE  
AUTOMATIC DEFROST REFRIGERATOR

• Refrigerator section defrosts automatically  
• Wide shelves, crisper, extra storage in doors  
• 105-lb. true freezer with 2 plastic ice cube trays

**\$177**  
NO MONEY DOWN



BIRTHDAY  
SALE  
SPECIAL  
WARDS SIGNATURE  
FLOOR POLISHER

**\$17**

Scrubs and spreads wax, polishes to a gleaming finish. Lightweight... with cord storage, attractive blue color. Rug shampoo kit extra.

NO monthly  
payments  
until  
February 1965

on Home Furnishings  
and Major Appliances

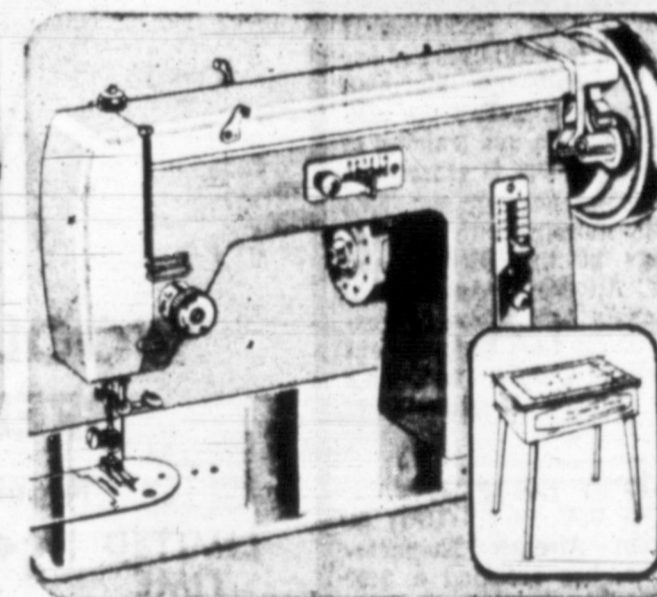
NO MONEY DOWN  
TAKE UP TO 36 MONTHS TO PAY



BIRTHDAY  
SALE  
SPECIAL  
LIGHT, POWERFUL  
VACUUM CLEANER

**\$17**

So versatile! Hand vac for cleaning draperies, lamps, upholstery, carpeted corners, autos. Carries easily; sturdy metal construction.



ZIG-ZAG CONSOLE  
MODERN SEWING MACHINE, CABINET

• Mend, darn, make button holes, sew on buttons  
• Zig-zag stitching so you can create fancy designs  
• Flawless straight stitch work... smart cabinet.

**\$67**  
NO MONEY DOWN



AUTOMATIC  
WASHER

SINGLE DIAL  
OPERATION

**\$127**



SIGNATURE DRYER  
BIG CAPACITY AUTOMATIC ELECTRIC

• Gets all your wash sunshine fresh, clean, dry  
• Heat setting... Air-Fluff settings; two-hour timer  
• 14x18" lint screen; 5-way venting; Acrylac finish

SAVE  
\$42  
NOW

**\$87**  
NO MONEY DOWN



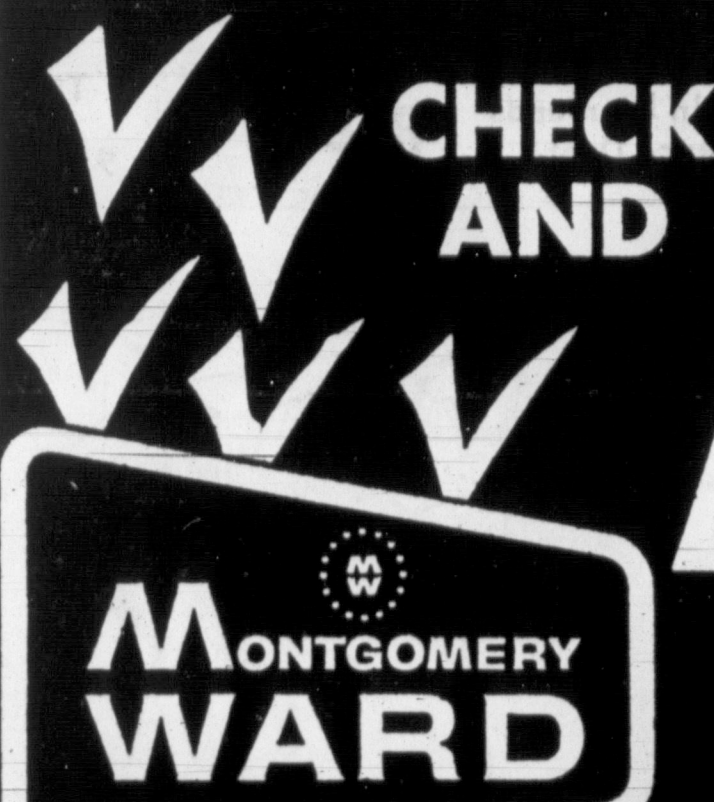
30-Inch Range  
GAS  
or  
ELECTRIC  
RANGE

Looks Built In  
SAVE \$32

**\$127**

Pay In Feb. '65  
No Money Down

FREE! FREE! FREE! \$520 WORTH OF DIAMONDS AND GIFTS!!



CHECK AND

# COMPARE ANYWHERE

Wards Signature gives you more ...the BEST costs LESS at Wards!

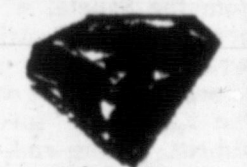
WE'RE CELEBRATING OUR

1<sup>st</sup>

Birthday in Coronado Center by Offering Big Savings Throughout The Store



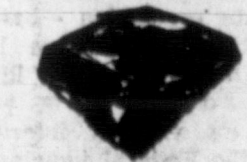
OPEN TILL 9P.M. THURSDAY AND SATURDAY



PLENTY OF FREE PARKING



FREE DELIVERY



Register For FREE SIGNATURE Dishwasher To Be Given Away 8 P.M. Saturday



FROSTLESS TOP TO BOTTOM!



giant 18<sup>cu. ft.</sup>

refrigerator-freezer...

FITS INTO A NORMAL REFRIGERATOR SPACE\*

\$ now only 299

WARDS SIGNATURE IS YOUR VERY BEST BUY! SIGNATURE HAS ALL THE MOST-POPULAR FEATURES AT A MUCH-LOWER PRICE! COMPARE:

BRAND	Price	Thin-wall insulation	Frostless refrigerator	Frostless freezer	Normal 66-in. Compact Height
<b>SIGNATURE</b> Wards Model #1824	\$299	✓	✓	✓	✓
<b>BRAND G</b> Mo. No. TC-479Y	799.00	✓	✓	✓	no
<b>BRAND F</b> Model #FPI-19B-64	799.00	✓	✓	✓	no
<b>BRAND C</b> Mo.No. 4670N	399.95	✓	✓	✓	no

## PLUS features

- All frostless ... never needs defrosting, frost never forms!
  - 2 roomy crispers, plus a total of 27.8 sq. ft. of shelf space
  - Shelved storage door with dairy bar, removable egg rack
  - 185-lb. freezer with shelf, pull-out basket, storage door
- \*Space-age technology brings you thin-wall foamed insulation for greater storage capacity within the same outside dimensions of an old-fashioned refrigerator cabinet.



SERVICE

Wards has nationwide facilities for parts, service. Prompt help when you need it... always low in cost.



CALL MO 4-7401

Phone Wards at any time for complete information on the Signature appliance of your choice.

NEW TERMS NO

NO MONEY DOWN take up to 36 months to pay



**TALLY CUE FOR LYNDON**—Actress Bette Davis was unable to get away from the set of "Hush... Hush, Sweet Charlotte" to register for the November elections. So director Robert Aldrich brought in Los Angeles Registrar Irma Green, left, who set up the registration. Bette's Nov. 3 choice? Lyndon B. Johnson.

**Walter Rogers Reports**

**Congress Faces 3 Major Measures**

Three major issues remain to be decided before this history-making 88th Congress can adjourn. No one can predict accurately at this stage when the House and Senate will wind up the business of this session. Intense controversy surrounds provisions of the three major legislative proposals not yet settled. The three measures are:

(1) The "medicare" amendment added by the Senate to the House-passed "Social Security Amendments of 1964." This bill, as it left the House, provided adjustments in social security benefits and extended coverage. But it was put in an entirely new light when the Senate amended the bill by adding a provision calling for health insurance for older citizens under the social security program. When the House receives the bill from the Senate, which it will next week, the parliamentary wrangle will begin on whether to accept or reject or modify the Senate "medicare" amendment. In the end, House members will be recorded for or against adding this long-controversial amendment to the social security program.

(2) State legislative reapportionment. The House has passed the so-called Tuck bill to limit the jurisdiction of federal courts in legislative reapportionment cases. Meanwhile, the Senate was locked in a filibuster over the so-called "Dirksen-Mansfield" amendment tacked on to the foreign aid authorization bill. On Thursday, the filibuster was given new life when the Senate voted 63 to 30 against imposing an end to the debate through the "cloture" process. The Dirksen-Mansfield proposal, not as far-reaching as the House-passed Tuck bill, would authorize temporary stays of execution of court orders for immediate population-based reapportionment of state legislatures. The basic issue in this controversy is whether States, without interference from the Federal Judiciary, are to be permitted to structure representation in State legislatures as they deem best, recognizing factors other than population; or whether the "one-man-one-vote" theory advanced in the recent Supreme Court decision is to prevail, thus requiring that each House of a State

legislature be established strictly on a population basis.

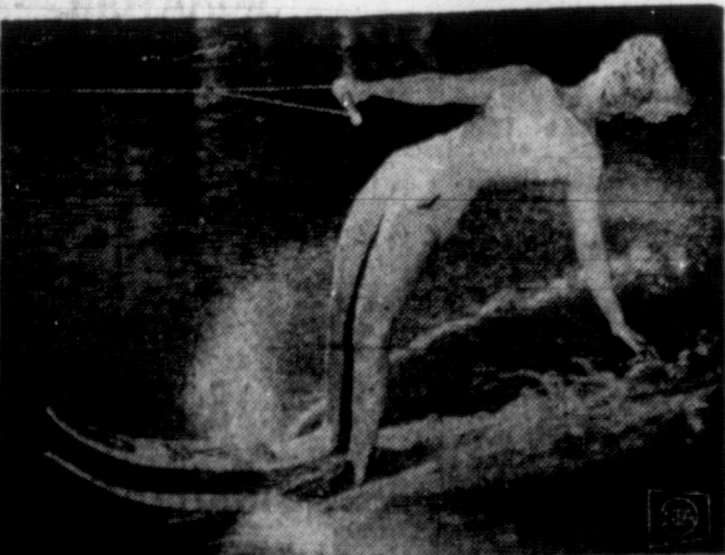
(3) The so-called Appalachia bill. Debate on this measure, to provide public works and economic development programs in the 10-State area of the Appalachia Region, has begun in the Senate. The House has yet to begin its floor deliberations on the matter. Like the "anti-poverty program," with which it is allied, the Appalachia proposal has stirred heated argument in the halls of Congress and throughout the country, and a final decision will be some days in coming.

Knocked out of the Appalachia bill early in the Senate debate was a section providing what amounted to a subsidy for further pastureland in the Appalachia region. This section, if permitted to remain in the bill, would have boosted the number of cattle in the Appalachian region and would have served to compound the difficulties facing our domestic livestock industry. It would have given a subsidy, in effect, for farmers in Appalachia to compete with Americans now producing beef. On the one hand, Congress had enacted legislation to provide quota restrictions on imported beef to help take care of the severe slump in beef prices, had encouraged development of foreign markets, increased the purchase of beef for the school lunch program — had responded affirmatively to the request for assistance from the domestic cattle industry. On the other hand, in the Appalachia bill, it was proposed that Congress further stimulate beef production. I am encouraged by the Senate action in eliminating this provision and I will be among House members doing our best to see that the House follows suit.

When Congress will adjourn still remains a question. I do not favor hasty action merely to bring the session to a close; Congress should remain in Washington, disposing of its business in a regular and orderly way, until the work is done.

Recent visitors: Asa Willis of Texline with his daughters, Mrs. Othella Sherrell and Mrs. Neva Tirey of Texline and Mrs. Elizabeth Angel of Dalhart; Emigdio Jr. of Tullia.

WALTER ROGERS  
MEMBER OF CONGRESS  
18TH DISTRICT OF TEXAS



**BEAUTY BENT**—Curvesome grace is displayed by Barbara Clack, during vacation at Cypress Gardens, Fla. And no wonder. Barbara is National Women's Water Ski Champion.

CORONADO CENTER

**MONTGOMERY WARD**

# 1st birthday Sale

**FREE** Register and Draw for \$520 In Diamonds **FREE**  
And Prizes In The Appliance Dept.

Open  
Thursday  
and  
Saturday  
Till  
9 P.M.



**9 PIECES, SAVE \$10.46**

**WARDS "WATERLESS" TRI-PLY STAINLESS STEEL COOKWARE SET**

**\$19.88**

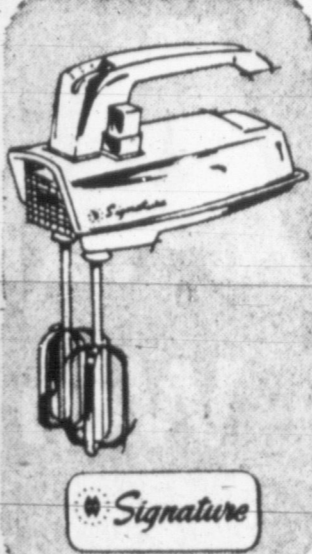
Reg. \$30.30 in open stock

**NO MONEY DOWN**

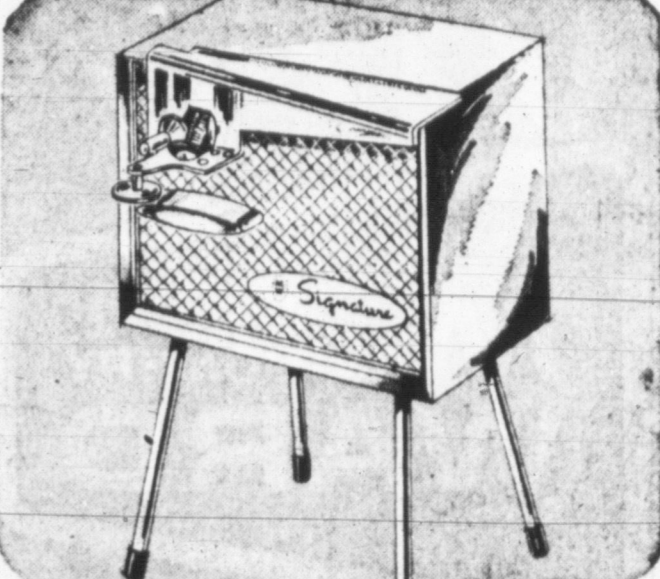
**WARDS TRI-PLY CONSTRUCTION**  
Carbon steel layer between stainless permits low-heat, "waterless" cooking.

Toss out your time-worn pans and buy this set—get \$10 off and a free teakettle! It's worth every cent! Food cooks faster, tastes better; clean-up is a breeze! Carbon steel between layers of easy-care stainless steel distributes heat evenly; Bakelite knobs, handles. 1- and 3-qt. saucepans, 10 1/2-inch skillet, 2-qt. double boiler, 4 covers.

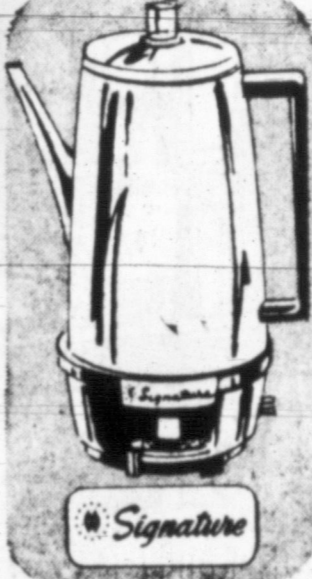
**FREE!**  
Reg. 3.95 2 1/2-qt. copper-bottom whistling teakettle to easy-to-clean stainless steel.



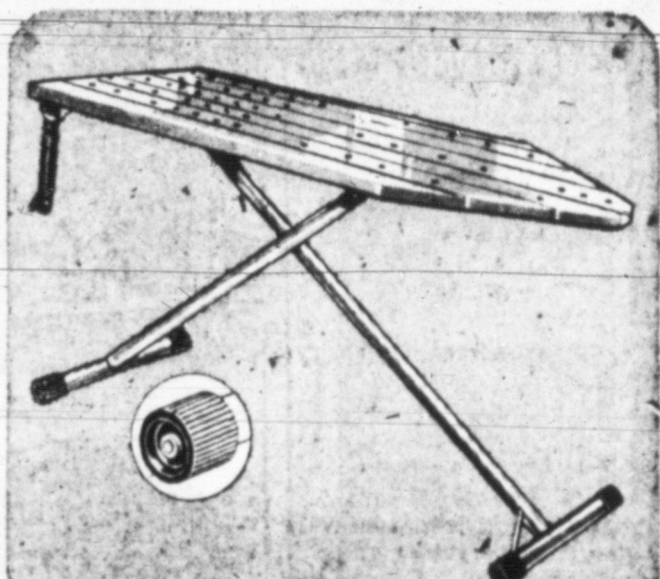
**HANDY 3-SPEED PORTABLE MIXER**  
**8.88** Reg. 13.95  
Powerful motor, extra-large beaters, thumb-tip ejector. Hangs on wall, stands on heel. Built-in mixing guide.



**OPENER, 3.07 OFF!**  
**SIGNATURE AUTOMATIC WITH STAND**  
Save time and effort opening cans! Powerful magnet grips lid, holds it. Rotary cutter removes for cleaning. Sturdy metal body. Remove legs for counter-top use.  
**\$6.88**



**STAINLESS STEEL SIGNATURE PERK**  
**11.88** Reg. 16.95  
Brew 3 to 10 cups of perfect coffee, dial the strength you want. Black plastic handle and base. Signal light.



**PRICE CUT 1.07**  
**6.95 SIGNATURE IRONING TABLE**  
Table adjusts for stand-up or sit-down ironing. 24" to 36" high. Offset legs give you more knee room. With rubber wheels, ventilated top and attached cordset.  
**\$5.88**  
CHARGE IT!



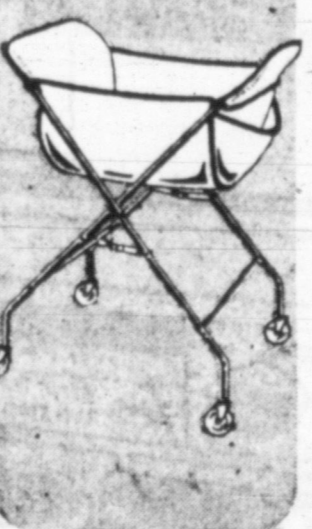
**SIGNATURE 3-IN-ONE IRON**

**WARDS FINEST—FOR DRY, STEAM, SPRAY IRONING**

Reg. \$17.95 **\$10.88**

**NO MONEY DOWN**

17 steam vents, 32 sq. in. soleplate, and full-view heel make ironing faster than ever! Automatic touch-and-spray button, color-keyed fabric dial (including wash 'n wear settings), plus extra-broad steam range for safer wash 'n wear ironing. Chromed finish.

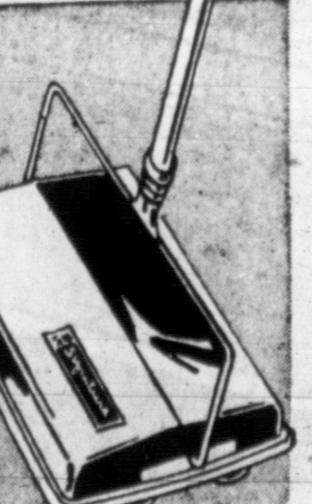


**EASY-TO-ROLL WASH-DAY CART**  
**2.44** Reg. 3.49  
Oversize polyethylene casters roll easily. Bag of sanforized cotton. Heavy-gauge frame. 32x24x19"

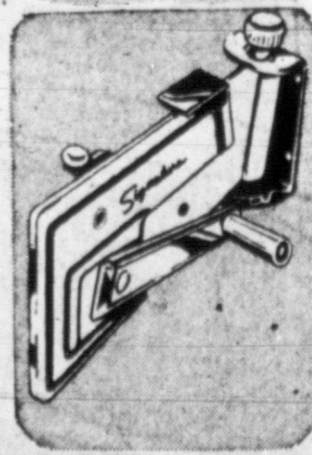


**REG. 1.79 PLASTIC WASTE BASKET**  
**88c**  
Color-keyed to kitchens, bedrooms, baths. Heavy-duty roll rim, embossed metallic gold leaf decoration. 17" high, 14" diam. Yellow, turquoise.

**1.59 ALUMINUM BAKE-N-TAKE PAN**  
**92c**  
Carry your food to picnics or potlucks; store in it, too! Pan is approx. 13x9 1/2x3 inches, with high-dome, slide-on cover of clear styrene.



**2.98 SIGNATURE WALL CAN OPENER**  
**\$1.88**  
Good lasting quality! White enameled steel frame, chromed handle. Spring lever holds can, magnet lifts lid. Three-position bracket, screws.



**8.98 CHROMED BREAD BOX**  
**\$7.88**  
Large ventilated box with built-in wood slicing board, removable shelf. Easy to keep as shiny as new! 17 1/2" wide, 10 3/4" high.



**SAVE 5.07 ON MELLAMINE!**

**STYLE HOUSE PATTERNS, 45-PC. SERVICE FOR 8**

Reg. \$16.95 **\$11.88**

**NO MONEY DOWN**

"Pink-A-Petal" and "Pecos Rose"—two colorful, detergent-proof patterns with molded-in color... a welcome addition to any table. Set includes 8 each: cups, saucers, cereal-soup bowls, bread-and-butter and dinner plates. Also: platter, vegetable dish, creamer and sugar.

**USE WARDS CHARGE-ALL CREDIT PLAN**

**WARDS QUALITY CARPET SWEEPER**  
**6.88** 10 1/4" size Charge lit  
Automatically adjusts to the thickness of any rug—moving combs keep brushes clean. All-around bumper.



## Expert Marksmanship Rating Given Pampan

VII CORPS, GERMANY (Spl) — Army Cpl. Joe D. Cash, 20, son of Mr. and Mrs. Leonard E. Cash, 505 Oklahoma, Pampa, qualified as expert in firing the M-14 rifle in Germany Aug. 31. The versatility of this light-weight rifle allows the individual soldier to fire it automatically, mount a bayonet for hand-to-hand combat, or to launch a rifle grenade against enemy ar-



WENDELL D. RIDGWAY completes training

## Pampa Navy Man Finishes 3-Month Recruit Training

SAN DIEGO, Calif. (Spl) — Marine Private Wendell D. Ridgway, son of Mr. and Mrs. William P. Ridgway of 824 Beryl, Pampa, completed recruit training at the Marine Corps Recruit Depot, San Diego, Calif.

Marine recruits undergo more than 100 hours of physical conditioning, spend more than 80 hours learning how to drill, and devote three weeks to rifle and pistol marksmanship in their 11-week training program. Several hours are devoted to spiritual and character-building courses. Production of good basic Marines and responsible patriotic citizens are the two primary objectives of the program.

In the physical fitness training, the recruits run, lift logs, climb ropes, conquer three different obstacle courses, progress through a variety of body building exercises, swim and participate in organized games. To measure their progress they take four strength-measuring tests.

Esprit de corps, teamwork and discipline are products of drill instruction.

Following graduation, he reported to Camp Pendleton, California for advanced infantry training.

### Dennie R. Hamlin

SAN DIEGO, Calif. (Spl) — Danie R. Hamlin, son of Mrs. Doretha F. Hamlin of 431 Crest St., Pampa, will graduate Sept. 4 from basic training at the Recruit Training Command, U. S. Naval Training Center, San Diego, Calif.

The nine-week recruit training period covers physical fitness, basic military law, military drill, customs and etiquette of the Naval service, swimming and survival, first aid and a basic knowledge of shipboard routine.

In most cases graduating recruits are granted a two-week leave period before reporting to their new duty stations.

### Roy L. Bonner

BEEVILLE, Texas (Spl) — Roy L. Bonner, III, aviation storekeeper third class, USN, son of Mr. and Mrs. Roy L. Bonner, Jr. of 1101 South Nelson, Pampa, has reported for duty at the Naval Auxiliary Air Station, Chase Field, Tex.

A link in the Naval Air Advanced Training Command, the station trains pilots for duty with fleet squadrons.

**KOREAN SOLDIERS PROTEST** SEUL (UPI) — Sixty Korean soldiers attached to a U.S. Army unit near Seoul were arrested Monday while staging a protest march against alleged mistreatment by Americans, a Korean general reported.

**ROK Provost Marshal Brig. Gen. Lee Kwang Sun** said the soldiers marched out of the 60th U.S. Army Transportation Company near Uijongbu north of Seoul. They headed for battalion headquarters at Bupyeong 30 miles south of their unit to present their protests to the battalion commander, Lee said. Lee said the leaders would be punished as soon as an investigation is completed.

mor or personnel in fortified positions.

Corporal Cash is a cannoner in Battery A of the 75th Artillery's 1st Howitzer Battalion stationed near Bamberg, Germany. He entered the Army in June 1962 and was stationed at Fort Hood, Tex., before arriving overseas in Aug. 1963. Cash was graduated in 1962 from Carver High School.

### Harold W. Pitcock

8TH INFANTRY DIV., GERMANY (Spl) — Army PFC Harold W. Pitcock, 18, son of Mr. and Mrs. Johnny F. Pitcock, 829 E. Gordon, Pampa, and other members of the 8th Medical Battalion, participated in a field training exercise in Germany, which ended Aug. 27.

The field training exercise was a rigorous and thorough assessment of the unit's combat readiness under the most realistic combat conditions possible in peacetime.

Pitcock entered the Army in June 1963, completed basic training at Fort Polk, La., and arrived overseas the following November. He is a medical corpsman in the battalion's Co. C. He attended Pampa High School.

### Lee O. Hassler

USS PROVIDENCE (Spl) — Lee O. Hassler, seaman, USN, son of Mr. and Mrs. O. R. Hassler of Skellytown, was one of 802 crewmen aboard the guided missile cruiser USS Providence to arrive in Long Beach, Calif., following an extended tour of duty in the Western Pacific.

Providence arrived at her new homeport of Long Beach on Aug. 25, following a two-year, two-month employment in the Western Pacific, serving as flagship for Commander Seventh Fleet.

During her employment in the Seventh Fleet, Providence steamed more than 90,000 miles and visited 24 ports in 12 countries including all major ports in the Western Pacific and hosted more than 150,000 visitors.

Relieved as flagship by the guided missile cruiser USS Oklahoma City, Providence departed Yokosuka, Japan on July 5, signifying the end of an event-filled cruise.

In addition to maintaining the high degree of readiness expected and required of Seventh Fleet ships, Providence participated fully in the People-to-People program in furthering the promotion of goodwill and understanding between the United States and other nations.

### Donald M. Jones

SEVENTH ARMY, GERMANY (Spl) — Army Specialist Five Donald M. Jones, son of Mr. and Mrs. Luke H. Jones, 1125 E. Darby, Pampa, was graduated from the Seventh Army Non-Commissioned Officer (NCO) Academy in Bad Tolz, Germany, Aug. 28.

Specialist Jones received four weeks of rigorous training of weapons and military teaching methods.

The 26-year-old soldier, a member of Headquarters Battery, 2d Battalion of the 5th Artillery near Babenhausen, Germany, entered the Army in February 1961 and was last stationed at Fort Sill, Okla.

He attended White Deer High School.

### Howard H. Bond

EIGHTH U.S. ARMY, KOREA (Spl) — Army Specialist Four Howard H. Bond, 22, son of John A. Bond Sr., 322 N. Missouri St., Shamrock, was assigned to the 5671st Eighth U.S. Army Signal Co., in Korea Aug. 18.

Specialist Bond is a radio operator in the company in Korea. He entered the Army in February 1961 and was stationed at Fort Bliss, Tex., before arriving overseas on this tour of duty.

Bond, son of Mrs. Pauline Bond, 622 N. Main St., Borger, was graduated in 1960 from Shamrock High School and attended Texas Technological College in Lubbock.

### TRIBUTE TO JFK

LONDON (UPI) — A white porcelain American eagle was dedicated at the U.S. Embassy Monday in memory of the late President John F. Kennedy.

U.S. Ambassador David Bruce accepted the 18-inch-high eagle, a replica of one presented to Kennedy on his birthday in 1961. The replica was given to the Embassy by its sculptor, Edward Marshall Boehm, 52, of Titusville, N.J.

CORONADO CENTER

# MONTGOMERY WARD

## 1st birthday Sale

FREE REGISTER AND DRAW FOR \$520 IN DIAMONDS AND PRIZES IN OUR APPLIANCE DEPARTMENT FREE

### NOW WARDS RIVERSIDE WHITEWALLS

# \$1

MORE THAN SALE PRICED BLACKWALLS shown below

\*Plus excise tax. No trade-in required.

**EVERY BLACKWALL AT LOW SALE PRICES**

18 Month Guarantee	21 Month Guarantee	27 Month Guarantee
<b>AIR CUSHION</b> Good Quality! Built with RIV-SYN, nylon cord for reliable service, and mileage.	<b>SAFETY NYLON</b> Better quality! 10% more RIV-SYN than Air Cushion for extra strength, mileage.	<b>ST-107 NYLON</b> Best quality! Twice the RIV-SYN, stronger nylon cord for top mileage, service.
SALE PRICE <b>\$13*</b> BLACKWALL SET ALLOWANCE \$2	SALE PRICE <b>\$15*</b> BLACKWALL SET ALLOWANCE \$3	SALE PRICE <b>\$18*</b> BLACKWALL SET ALLOWANCE \$5
WHITEWALLS ONLY <b>\$1*</b>	WHITEWALLS ONLY <b>\$1*</b>	WHITEWALLS ONLY <b>\$1*</b>

LOOK HOW YOU SAVE ON POPULAR 7.50-14 TUBELESS

**WARDS Riverside 4-SQUARE GUARANTEE**  
Wards Riverside passenger tires are guaranteed:

- For the quality of material and workmanship for the life of the original tread. Adjustments will be granted on the tread wear based on sale price when returned.
- Against road hazards (except repairable puncture) for the period specified. Adjustments will be granted on months used and based on sale price when returned.
- For tread wear for the period specified. Adjustments will be based on exchange price less a specific dollar allowance. (Tread wear allowance not applicable to some tires or tires used commercially).
- Notwithstanding service and satisfaction guaranteed at all Ward branches.

Auto Service Open 8 a.m. Till 9 p.m. Thursday and Saturday

ARM YOUR TRUCKS WITH THRIFTY RIVERSIDE TRUCK TIRES

SPECIAL BIRTHDAY SALE TRUCK TIRE VALUES

Hi-Way COMMERCIAL NYLON

8:25 X 20 **\$47<sup>26</sup>**

9:00 X 20 **\$58<sup>97</sup>**

10:00 X 20 **\$75<sup>83</sup>**

10:00 X 22 **\$80<sup>43</sup>**

\*PLUS TAX

### ALL SEASON OIL

RIVERSIDE OIL EXCEEDS CAR-MAKER'S 5 TESTS!

**\$1<sup>66</sup>** 5-qt. can

REGULARLY 1.98

Save now, keep on saving with Wards finest quality oil Blended with safest detergents for top lubrication at all engine temperatures. Meets API Serv. Class MS, DG. 10W-20W-30.

ALSO SAVE ON 10 QT. CAN **\$3.22**

### WARDS MUFFLERS

PROTECT FROM CARBON MONOXIDE!

Zinc galvanized shells and end caps for rust resistant protection, extra service life and quiet tone. Some models slightly higher, all are sale-priced!

LOW AS **\$5<sup>88</sup>**

Must be-65 Ford, Chevy "CHARGE IT"

### CUT GARAGE COSTS

CHARGES YOUR BATTERY—YOU SAVE!

Brings batteries to full charge in 10 to 12 hours! Tapering charge rate protects against overload. Easy-to-read dial, heavy-duty toggle switch. UL listed!

**\$11<sup>44</sup>**

4 AMP 6-12 VOLT Regularly \$13.95

### WARDS FINEST NYLON BELTS

**3.33** Set Reg. 5.49

Wide, pebble weave webbing for comfort, security. Exceeds all SAE requirements. Easy to install brackets.

### OUTLASTS RUBBER!

CLEAR VINYL FLOOR MAT SET

**\$8<sup>88</sup>**

Outlasts rubber 2 to 1. Protects car carpet from dirt and wear, lets its beauty show. Lasts for years; easy to clean. Fits most cars. Front..\$5.44 Rear. \$3.88 "CHARGE IT"

### DIPSTICK HEATER

Warms crankcase oil for easier winter starting. Plug into any AC-DC outlet. Reg. 2.69 ... **1.99**

### BIRTHDAY SALE PRICED

WARDS ECONOMY 24-MO. BATTERY

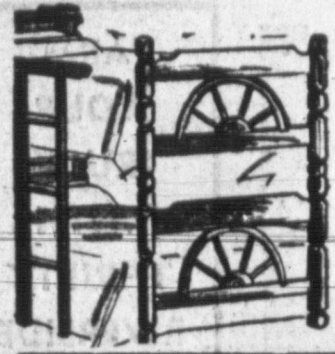
**\$8<sup>88</sup>** 6-V with trade Reg. \$9.95

Good, thrifty power to meet the demands of normal driving. Silver cobalt protection. 12-V. with trade **\$10.88**

# JESS GRAHAMS 9<sup>TH</sup> ANNIVERSARY SALE

COME AND CELEBRATE WITH US—FREE COFFEE—COKES—DOUGHNUTS—ALSO BALLOONS AND SUCKERS FOR THE KIDS—ONCE EACH YEAR—GRAHAM'S FURNITURE OFFERS FABULOUS SAVINGS ON TV'S FURNITURE AND APPLIANCES IN APPRECIATION OF OUR 9 YEARS OF CONTINUOUS SUCCESS—THANKS TO ALL—COME SAVE AND CELEBRATE WITH US.

SALE — CONTINUES 4 DAYS ONLY — HURRY IN AND SAVE — OPEN EVERY NIGHT UNTIL 9 DURING SALE



## BUNK BEDS

Complete with bunkie mattress or mattress and springs, solid maple, wagon wheel or spindle style.

REG. \$139.95 **79.95**

YOUR CHOICE EXCH.

## LIVING ROOM

2 Only **8 Pc. Living Room Groups** \$119<sup>95</sup>

Sofa, rocker, club chair, 2 step tables, coffee table and ottoman, choice of colors. ONLY Reg. \$219.95

1 Only **4 Pc. Sectional** \$159<sup>95</sup> Ex.

Modern style. Brown, gold and orange. Tweed Reg. \$269.95

1 Only **5 Pc. Ranch Style Group** \$149<sup>95</sup>

Sofa, rocker, 2 step tables, 1 coffee table, solid oak trim, orange, vinyl cover. ONLY Reg. \$249.95

2 Only **4 Pc. Modern Groups** \$169<sup>95</sup> Ex.

Sofa, rocker, club chair and ottoman, choice of colors. ONLY Reg. \$269.95

2 Only **2 Pc. Early American** \$179<sup>95</sup>

Wing back style suitcases, choice of colors. ONLY Reg. \$239.95

1 Only **2 Pc. Modern Style** \$159<sup>95</sup> Ex.

100% nylon cover. Reg. \$329.95

1 Only **2 Pc. French Provincial Style** \$219<sup>95</sup> Ex.

Hone white color. Fruit wood trim. ONLY Reg. \$329.95

## TV AND APPLIANCES

Entire stock reduced for this event. Gas and Electric ranges, washers and dryers, hot water heaters, refrigerators, freezers and TV's.

## TABLES

All Styles Reduced \$19<sup>95</sup> ea

Solid rock maple group, choice of styles. ONLY

3 Modern Style Tables \$16<sup>95</sup>

1 Step end table and one coffee table, choice of walnut or mahogany. ALL 3 ONLY

Discovery in  
Color TV:  
the Westinghouse look!

Everything about this new Westinghouse Color TV is extraordinary: its beautiful lowboy furniture styling, its sweeping guarantee (one full year on all tubes and parts!), and its advanced engineering. New Westinghouse Color TV gives you locked-in 21-inch\* pictures that hold absolutely steady, vertically and horizontally... automatic Memory Fine Tuning for color, for black and white, for every channel... two high fidelity speakers and variable tone control give you superb FM sound... new color-keyed controls make tuning simple and accurate—rarely need readjusting. For true to life Color TV (and brilliantly clear black and white TV, as well), WESTINGHOUSE is the big buy.

\*diagonal measure  
You can be sure...if it's Westinghouse



\$509<sup>00</sup> With Trade

## CHAIRS AND ROCKERS

2 ONLY **Early American Swivel Rockers** \$59.95 ex.

Reg. \$59.95 ONLY

3 ONLY **SWIVEL ROCKERS** \$59.95 ex.

Modern Style Reg. \$59.95 ONLY

1 ONLY **SWIVEL ROCKERS** \$49.95 ex.

Early American Style Reg. \$79.95 NOW

1 ONLY **SWIVEL ROCKERS** \$49.95 ex.

Early American Style Reg. \$59.95 ONLY

1 ONLY **CRICKET ROCKER** \$19.95 ex.

Early American Style Reg. \$34.95 ONLY

5 ONLY **BOSTON ROCKER** \$15.95 ex.

Early American Style Maple Reg. \$39.95 ONLY

2 ONLY **TUB CHAIR** \$59.95 ex.

Titanium Provincial, Gold. Reg. \$99.95 ONLY

1 ONLY **BOSTON ROCKER** \$27.95 ex.

Early American Style, Green, Reg. \$39.95 ONLY

1 ONLY **Swivel Rocker and Ottoman** \$79.95 ex.

Danish Modern, Tan Vinyl Reg. \$129.95 ONLY

2 ONLY **CLUB CHAIRS** \$79.95 ex.

Early American Style Choice of Colors Reg. \$119.95 ONLY

4 ONLY **PLATFORM ROCKERS** \$29.95 ex.

Modern Style, choice of colors. Reg. 49.95 ONLY

1 ONLY **PLATFORM ROCKER** \$19.95 ex.

Modern Style Reg. \$34.95 ONLY

1 ONLY **Lounge Chair and Ottoman** \$99.95 ex.

King Size, Reg. 169.95 ONLY

1 ONLY **CLUB CHAIR** \$49.95 ex.

Early American Style Reg. \$119.95 ONLY

## CARPETS AND RUGS

100% CONTINUOUS \$4<sup>37</sup> sq. yd.

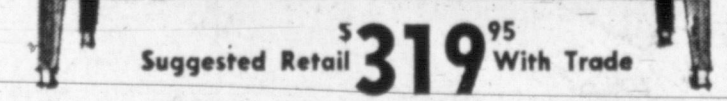
Filament Nylon. Loop scroll pattern with a dimensional effect ONLY

100% ACRYLIC \$5<sup>64</sup> sq. yd.

Loop Pile. Sculptured design with that luxury look. Styled to fit any decor. ONLY

8 FT. X 11 FT. \$14<sup>95</sup> ea.

Foam backed Rugs. Choice of Colors ONLY



Suggested Retail \$319<sup>95</sup> With Trade

ALL CHANNEL UHF INCLUDED  
**THE HILLSDALE MODEL AH 223**  
This Early American design Home Entertainment Center of genuine Maple veneers and selected hardwood solids has all channel UHF, and features the CM Special 32 chassis with AM/FM radio, stereo phono... CM Special Record-Changer with sapphire stylus... handwired CM Custom 18 Chassis with 23,000 volts of picture power and power transformer and 23" TV picture tube. Two 8" woofers and two 6" x 4" tweeters. 52 1/4" wide, 28 1/2" high, 17 1/2" deep.



Suggested Retail \$299<sup>95</sup> With Trade

ALL CHANNEL UHF INCLUDED  
**THE GREENSBORO MODEL AG 223**  
This is an outstanding Home Entertainment Center in a modern cabinet of genuine Walnut veneers and selected hardwood solids featuring all channel UHF tuner, the CM special 32 Chassis with AM/FM radio and stereo phono, CM Special Record Changer with sapphire stylus, 23" TV picture tube and handwired CM Custom 18 Chassis with 23,000 volts of picture power and power transformer. Two 8" woofers and two 4" tweeters. 52 1/4" wide, 27 1/4" high and 17 1/2" deep.

## DOOR BUSTERS

Large Size Bed Pillows 2 For Only \$1.50

Colorful Sofa Pillows Only 79c ea.

Decorative Kerosene Lamps Only \$1.00 ea.

30 Inches or 24 Inches High.

Upholstered Seat Maple Bar Stools \$1.00 ea.

Choice of Colors

8 Ft. x 11 Ft. Foam Backed Rugs \$14.95 ea.

Early American

Vanity Lamps 2 For \$5.95 and up

Decorative Wall Plaques only \$1.00 ea. an up

Choice of Colors

9 x 12 Linoleum Rugs Only \$5.95 ea.

## BED ROOM

3 Pc. Modern Style \$89<sup>95</sup> Ex.

Dresser, Mirror and full size bed. Reg. 149.95, ONLY

3 Pc. Solid Oak \$129<sup>95</sup> Ex.

Dresser, Mirror, Chest and Full Size Bed. Reg. 199.95, ONLY

4 Pc. Danish Modern \$199<sup>95</sup> Ex.

Walnut Dresser, Mirror, Chest, Full Size bed and Night Table. Reg. \$339.95, ONLY

3 Pc. French Provincial \$239<sup>95</sup> Ex.

White Dressers, Mirror, Chest and full size bed. Reg. \$379.95, ONLY

6 Pc. Solid Oak Bedroom Group \$199<sup>95</sup> Ex.

Ideal for boy's room. 2 twin beds, dresser, mirror, Chest, Desk and Chair. Reg. \$299.95, ONLY

## BEDDING

Mattress and Box Spring Combination \$49.00 Ex.

10 year unconditional guarantee. Reg. \$99.00. Twin or full size NOW BOTH ONLY

Mattress and Box Spring Combination \$79.00 Ex.

15 year unconditional guarantee. Reg. 139.95. Twin or full size NOW BOTH ONLY

King Size Mattress and Box Springs \$139.90 Ex.

Choice of foam or Innerspring. 20 year unconditional guarantee. Reg. \$298.50. NOW COMPLETE SET ONLY

Mattress and Box Spring Combination \$99.00 Ex.

Twin or full. 20 year unconditional guarantee. Heavy duty, extra firm sets for those who have back trouble. Reg. \$159.00. NOW BOTH ONLY

## DINING ROOM SUPER SPECIALS

Early American Style Harvest Table with Formica top and 6 solid Maple Windsor Chairs. Reg. \$309.65. ONLY \$189.95 ex.

1 Only. Early American Style Round Table with extra leaf. Formica top with 4 mismatched chairs. ONLY \$99.95 ex.

1 Only. Solid Maple Hutch and Buffet. Reg. \$139.95 ONLY \$89.95 ex.

## SUPER-CAPACITY DRYER



**NORGE** gives you ALL 4 WAYS OF DRYING

- 1. Tumble-dry with heat
- 2. Tumble-dry with air-Plus Exclusive No-Tumble Cycles
- 3. Air-dry, no tumbling
- 4. Heat-dry, no tumbling

(For delicate things you dare not tumble dry)

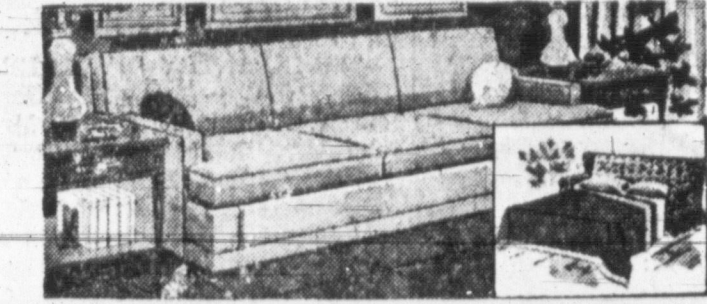
\$137 With Trade

Once In A Lifetime Price

2 Cycle Norgé Large Capacity Washer \$189<sup>95</sup> ex.

WHILE THEY LAST

- Washes Large Capacity
- Fully Automatic Cycles
- Temp Water Selector
- Lint Filter
- Biggest Tub — Biggest Agitator



## SLEEPER SOFAS ONLY

Sleeper Sofa Early American \$199<sup>95</sup> Ex.

1 Only. Reg. \$219.95 ONLY

Early American King Size \$229<sup>95</sup> Ex.

2 Only. Heavy Cover, Choice of Colors. Reg. \$249.95

Modern Style \$169<sup>95</sup> Ex.

1 Only. Reg. \$189.95 Heavy Vinyl Cover. Reg. \$249.95

Modern Style \$129<sup>95</sup> Ex.

3 Only. Heavy Nylon Cover. Reg. \$232.95 ONLY

Contemporary Style \$169<sup>95</sup> Ex.

1 Only. Full Size. Nylon Cover. Reg. \$269.95 ONLY

## RECLINERS

2 Only Modern style reg \$69.95, now \$39<sup>95</sup> Ex.

1 Only Modern style reg \$89.95, now \$59<sup>95</sup> Ex.

2 Only Early American reg \$129.95 \$89<sup>95</sup> Ex.

2 Only Modern style reg 139.95, now \$99<sup>95</sup> Ex.

1 Only Early Am. reg 139.95 (as is) \$79<sup>95</sup> Ex.

## DINETTES

Close out on 10 Dinette suites. All styles and colors. Some damaged, some mismatched. Others OK. But all drastically reduced. You must come in and see these values.

## LAMPS

FABULOUS SAVINGS ON ENTIRE LAMP STOCK.

EARLY AMERICAN STYLE

POLE LAMPS ONLY \$14.95

Entire Table Lamp Stock... 2 FOR 1

Buy one and get the mate FREE!

All Chain Lamps Reduced. Choice of Modern or Early-American Style. Reg. \$27.95 ONLY \$17.95

## EARLY AMERICAN STYLING... FINE STEREO PERFORMANCE



Coffee Table Stereo Console

- Multi-Channel Amplifier with 3 Output Transformers
- 3 Separate Speaker Systems
- Super-Quiet Automatic Record Changer

\$149.95

FINISHED ON ALL 4 SIDES FOR USE ANYWHERE

## Dual Speaker TABLE RADIO

ONLY \$17<sup>95</sup>

Model A27, white, blue, beige, pink

Enjoy the full, rich sound of two Golden Voice® speakers

# JESS GRAHAM-TELEVISION-APPLIANCE AND FURNITURE



John Payne, Lisa Kirk and Laurence Naismith head the Broadway cast of "Here's Love," coming to Dallas as the State Fair show at the Music Hall for 24 performances, Oct. 9-25. This delightful musical of Meredith Willson's is based on the movie, "Miracle on 34th Street," in which John Payne also starred. It is a heart-warming story about the reality of Santa Claus, with Laurence Naismith playing the Kris Kringle role he created on Broadway.

## Dallas Fair to Get Jump on Christmas

DALLAS (Sp) — The State Fair of Texas has put an advance hold on Christmas by bringing the entire New York musical, "Here's Love," to the Dallas State Fair Music Hall on Friday, Oct. 9 for a 17-day engagement.

This newest Broadway success of Meredith Willson stars John Payne, Lisa Kirk and Laurence Naismith. The complete Broadway production with costumes by Alvin Colt, settings by William and Jean Eckart, lighting by Tharon Musser, and the full New York company,

makes Dallas the third stop in a national tour, preceded by engagements in Los Angeles and Denver.

John Payne played the role of Fred Gaily in the movie, "The Miracle on 34th Street," on which "Here's Love" is based. Since that time he has been seen often on television and in some 60 films, including "Remember the Day," "Sentimental Journey," "Tin Pan Alley" and "The Razor's Edge." His first Broadway appearance was with Beatrice Lillie, Eleanor Powell and Ethel Waters in a musical "At Home Abroad," and he has made many musical films.

Lisa Kirk achieved fame via Richard Rodgers' "Allegro," and has been seen on Broadway in "Kiss Me Kate," and with the touring company of "Say Darling," "Panama Hattie" and "Show Boat." She has been a frequent guest on TV and has made record-breaking engagements at plush night clubs throughout the country. In "Here's Love" she plays a harried public relations girl at Macy's.

Laurence Naismith created the role of Kris Kringle on Broadway and has played it ever since. He is the man hired to be the Macy department store Santa Claus, which completely disrupts the PR department because of his unshakable belief that he really is the jolly man from the North Pole. A well-known British actor of the London stage and films, Naismith first appeared on Broadway two years ago in the British import, "School for Scandal."

"Here's Love" is the third Broadway hit from the pen of Meredith Willson. His "Music Man" and "The Unsinkable Molly Brown" both had long tenures on Broadway, on tour and have been made into movies. "Here's Love," opened on Broadway with a million dollars in advance sales, and played there for 334 performances. Box office reaction in Los Angeles on tour has also been extremely good.

The show was directed in New York (and for the tour) by the 31-year old producer, Stuart Ostrow. Dances and musical numbers were staged by Michael Kidd, known for his earlier choreography for "Finian's Rainbow," "Guys and Dolls" and "Can Can."

Twenty-four performances of "Here's Love" are scheduled for the State Fair in Dallas, nightly at 8:30 p.m. with matinee at 2:30 p.m. on Wednesdays, Saturdays and Sundays, beginning Oct. 2 through the matinee on Oct. 25. Tickets are available at the State Fair box office, 1924 Elm St., Dallas.

**AGREEMENT REACHED**  
CAIRO (UPI) — Prince Faisal, Saudi Arabian head of government, announced Monday he has reached an "understanding and complete cooperation" with U.A.R. President Gamal Abdel Nasser to solve their differences over the Yemen.

His announcement at a news conference was considered the most hopeful indication yet that an end may be in sight to the bitter two-year old civil war in the Yemen, which has cost thousands of lives and split the Arab world.

**CLASSIFIED ADS GET RESULTS**

### SHIP BIDS STUDIES

for American President Lines. PASCAGOULA, Miss. (UPI) The contract will not be awarded until Nov. 30 after review of the bids by the Federal Maritime Administration.

### SINGER IS MARRIED

HOLLYWOOD (UPI) — Singer Anna Maria Alberghetti, 28, and television and stage director Claudio Guzman, 32, were married Saturday at St. Victor's Roman Catholic Church.

### 57TH YEAR

THE PAMPA DAILY NEWS WEDNESDAY, SEPTEMBER 16, 1964

Sabine National Forest with 183,862 acres is the largest national forest in Texas. Sin oak is a true oak growing high on the sandy high plains of Texas.



SHOP THURSDAY TILL 9 P. M.

**YOU SAVE-**  
During Our  
**REMODELING**

**SALE**

Men's Short Sleeve  
**DRESS SHIRTS**  
White or Colors. Tab or Regular Collar  
Sizes 14 1/2 to 16 **\$2**

Boy's Short Sleeve  
**SPORT SHIRTS**  
Sizes 6-18 Button Down Collars. Jac. Shirts  
Sizes 1 To 6X **\$1**  
Values to 1.98

Men's Short Sleeve  
**SPORT SHIRTS**  
S-M-L-XL, Solids, Plaids  
**\$1**

Boy's and Girl's  
**DRESS SHOES**  
Values Odds Lots  
Sizes 2-8 8 1/2-3 **\$2.44** pr.

Suede Leather  
**Penny Loafers**  
Red, Black. Sizes 4-10, S-M  
**\$4.66** pr. **2** prs. **\$9**

Children's  
**Seersucker Shorts**  
Sizes 3-6X  
**3** Prs. **\$1**

Ladies' Rayon  
**Hollywood Briefs**  
6 Colors. Sizes 5 to 10  
**4** Prs. **\$1**

Ladies' Seamless  
**NYLON HOSE**  
First Quality, sizes 8 1/2 to 11  
**2** Prs. **88¢**

Terry Cloth  
**BATH MATS**  
Non-Skid Back **88¢**

Ladies' Nylon-Dacron-Cotton  
**Baby Doll Pajamas**  
S-M-L **\$1.22** Pr.

Ladies' & Children's  
**Wear**  
**1/2 PRICE**

**MEN'S & BOYS' PANTS**  
FINE COMBED COTTON TWILL

Here is top quality and style at a real money saving price. Men's Youngmen's and boys' handsome combed cotton satin finish twill, tailored 100% like dress pants. Matching inside trim, neatly cuffed. Ivy model with seven belt loops. Choose from popular colors of black or taupe. A pant you can wear almost everywhere. Special sale priced for back-to-school.

**MEN'S SIZES 28-38 \$2.66** PAIR

**BOYS' SIZES 6-18 \$1.66** PAIR

**NEW FALL COTTONS**

8 wonderful fabrics in a great collection of prints or solid colors. Princess Combed Sateens, Tip Top and Square Drape prints. Capri, Valencia and Fallstripe Drip Dry Prints, Sanforized suede flannel and solid color broadcloth. Ideal for ever so many uses.

- Full Bolt Pieces
- 36 Inches Wide
- All First Quality

**4** Yards **\$1**

**NEW FALL COTTONS**

Choose from 10 big fabric buys. Doubled and rolled, 10 to 20 yard pieces. 36 45 inch Miracle Blend, Wash and Wear Satone, Penn & Ink, Deluxe, Florentine Drip Dry, Famous Mill Blaze and Textured Casual wear prints or Radiant solid color sportswear and Silkstone combed sateens. Thrifty priced.

- 8 Types of Fabrics
- Full Bolt Pieces
- All First Quality

**2** Yards **\$1**

Men's-Young Mens  
**Automatic Wash-N-Wear DRESS SLACKS**

**\$4.00**

**2 FOR \$7**

Men's Short Sleeve **SPORT SHIRTS**

Expertly tailored of fine quality cottons in stripes checks or solids. Popular colors and combinations. Two pockets, convertible collar. Size small medium and large thrifty priced.

**\$2** Sale Priced

Shop Downtown for Greater Values

Ladies' Nylon  
**HALF SLIPS**  
S-M-L 6 Colors **\$1.88**

Entire Stock  
**SUMMER BAGS**  
White Pastel  
Many Styles **\$1**

Ladies' Corduroy  
**CAPRI PANTS**  
Fancy or Solid Colors  
Sizes 8-10 **\$2.66** Pr.

Ladies' Knit  
**Shorty Pajamas**  
Colorful Stripes Sizes S-M-L  
Reg. \$3.98 **\$2**

Ladies' and Girls'  
**SUMMER SHOES**  
Broken Sizes **\$1** Pr.

Spring and Summer  
**Costume Jewelry**  
Large Selection  
**4** For **\$1**

20" X 40" Solids-Stripes  
**BATH TOWELS**  
**2** For **88¢**

Boys' Sizes 2 to 6  
**PLAY SHORTS**  
Solid Colors **5** Prs. **\$1**

Ladies' Plastic  
**RAIN COATS**  
Ideal for Vacation  
S-M-L **88¢**

Ladies' and Girls' - Large Group  
**Jamaica Shorts**  
Sizes: 7-14-10-18 **88¢**

Ladies' Cotton Muslin  
**Slips and Half Slips**  
Sizes 32 to 52 S-M-L-XL **88¢**

Toddler's  
● Corduroy Biball  
● Boxer Longie  
Solid Colors  
Sizes: 9-18 Months 1-4 Years **88¢**

**LAST TIMES TODAY**  
**CAPRI**  
MO 4 260  
OPENS 1:45  
ADULTS 85c CHILD 25c  
Frank Sinatra  
**SINATRA MARTIN BANS JR.**  
**ROBIN AND THE 7 HOODS**  
AND **CROSBY**  
AS ALLEN A DALE  
TECHNICOLOR PANAVISION FROM WARNER BROS.  
ALSO STARTS THURSDAY  
**TOPOTEXAS**  
DIAL NO 4 2701

**NOW THRU SATURDAY**  
**LAVISTA**  
MO 4 401  
OPENS 6:00  
ADULTS 70c CHILD 25c  
**ATTACK ATTACK**  
NOW THE SCREEN EXPLORES THE MOST IMPORTANT MISSION OF THE WAR!  
THE WARNER CORPORATION PRESENTS CLIFF ROBERTSON GEORGE CHAKIRIS  
**633**  
The World's Legend of World War II  
COLOR BY DE LUXE - PANAVISION

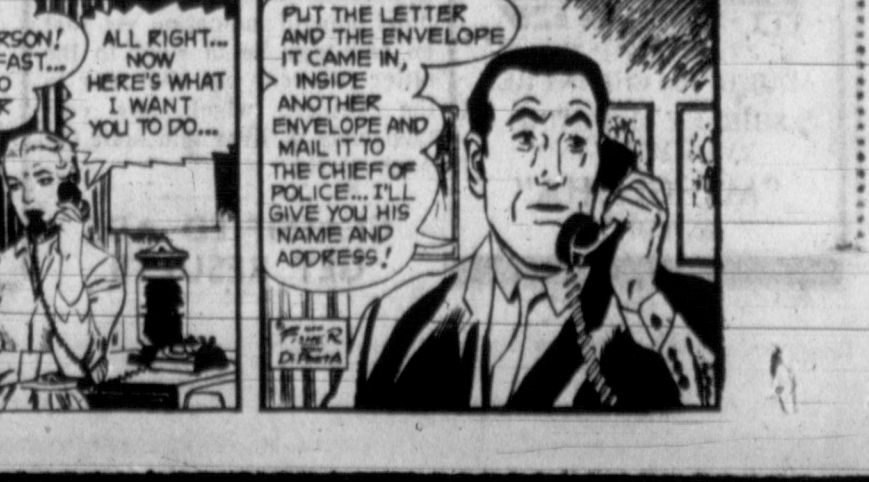
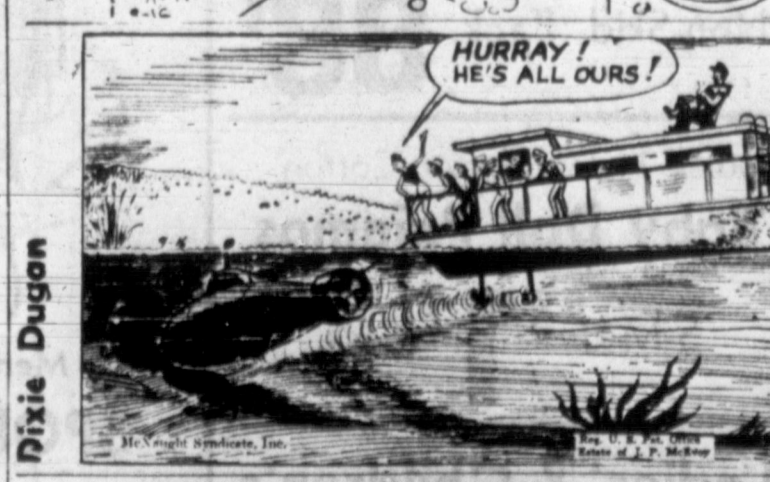
**LAST TIMES TONITE**  
**TOPOTEXAS**  
DINE IN  
OPENS 7 P.M.  
ADULTS 75c CHILD FREE  
SHIRLEY MACLAINE  
YVES MONTAND  
**"MY GEISHA"**  
IN COLOR

OUR ANCESTORS by Quincy

OUR BOARDING HOUSE With Major Hoople

BLITZ BROTHERS by SAKREN

OUT OF WAY J. R. Witama

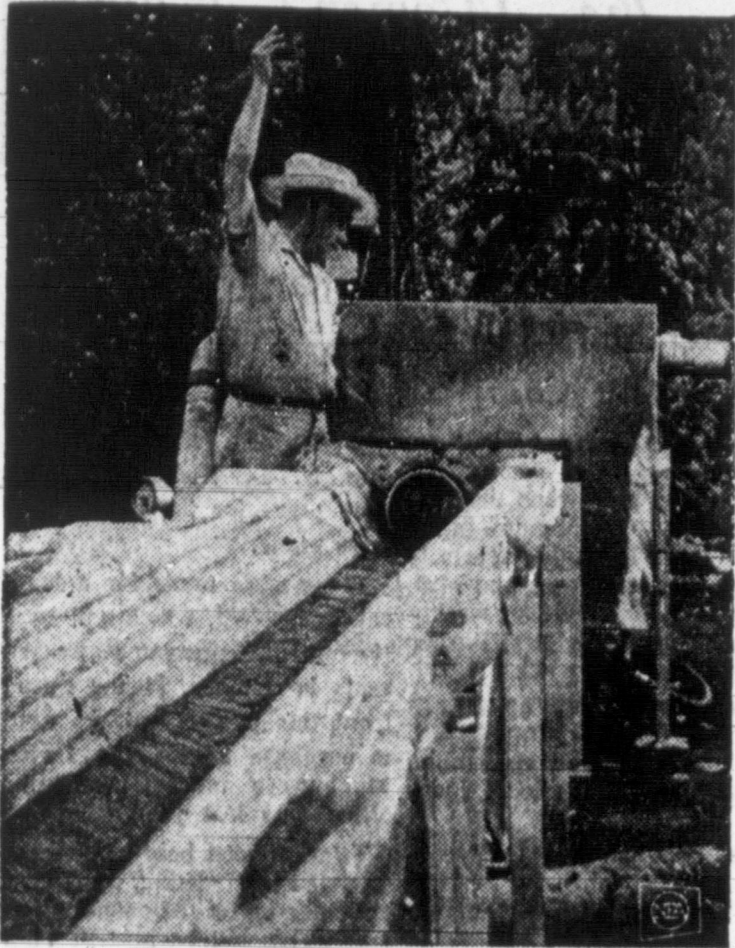


FIGHT long art of Mich mind: cl school's measure built of most co of slime produce

Toy Qu ABER The Fisc old toda of Aber breath o For M mother ( giving q again... Most f prairie... in the p ago tod Luke's burned realized made. There. James wife of clerk an giving b of life.

First, tiniest a -Mary cession, at 2:03 James and fin biggest. Life same f Fischer the na 'hub c tall the babies Gifts poured parents publish exclusi the qui

Tru J T 3 Se Ed I J U A



**FIGHTING BACK WITH LITTLE RIVERS**—This 200-foot-long artificial river set up a few miles from the University of Michigan in Ann Arbor was constructed with a goal in mind: cleaner rivers. Jackson R. Pelton, researcher for the school's health department, mixes in a red dye used to measure the flow-rate of the artificial stream. The river is built of aluminum sections which can be moved to re-create most conditions of natural streams, including the growth of slime-forming bacteria. It is hoped useful data will be produced by the study in fighting this bacteria.

## Town Holds Breath as Quints' Mom Waits

ABERDEEN, S.D. (UPI) — The Fischer quint is one year old today and the good people of Aberdeen are holding their breath once more.

For Mrs. Mary Ann Fischer, mother of the nation's first surviving quintuplets, is expecting again.

Most folks in this wind-swept prairie city were sound asleep in the pre-dawn hours one year ago today. But down at St. Luke's Hospital, bright lights burned through the night. Few realized history was being made.

There, under the care of Dr. James Berbos, the red-haired wife of an \$80-a-week grocery clerk and part-time farmer was giving birth to five tiny bundles of life.

And the people of Aberdeen made plans to build the Fischer a new home, replacing their old stucco farmhouse on the edge of town.

**Quints Gain Fame**  
The quint, who gained weight quickly and soon were out of their special incubators, fell heir to the mantle of fame previously worn by the Dionne quintuplets.

Most of the people of Aberdeen have gone back to the normal paths of living.

But any day now, Mrs. Fischer is expected to give birth again. Speculation is that she is expecting another multiple birth. And people are wondering, will history repeat itself?

### NEW COMMUNICATIONS

**DUBLIN, Ireland (UPI)**—Andrew G. Haley, a Washington, D. C. lawyer, told a conference on aviation and space medicine Monday that scientists are developing techniques under which men will be able to communicate through mental telepathy.

He said the techniques would involve sensitizing the body's receiving apparatus and amplifying signals sent by the body, which he said has unexplained capabilities as a magnetic-electronic unit.

### TO VISIT BULGARIA

**SOFIA, Bulgaria (UPI)**—Ethiopian Emperor Haile Selassie will visit Bulgaria between Sept. 23-25 at the invitation of Bulgarian President Georgi Traykov, it was announced Monday.



**WANTED**—William Hutton Coble, convicted bank robber who made a daring prison escape, is now on the FBI's list of "10 Most Wanted Fugitives." Coble was born May 8, 1923. He is 5'10" to 5'11" tall, weighs 165 to 178 pounds, has medium build, ruddy complexion, brown eyes and brown hair. If seen, notify your nearest FBI office.

Appearing in person  
**LOU WALKER** And His Western Playboys  
AT THE  
**OASIS CLUB**  
Thursday Sept. 17 \$1.20 Per Person  
Dance from 8:30 'til Midnight

## Hall Tire Co. Offers Top Pickup Services

New life for the pickup. You get the extra service by having Hall Tire Company rebuild the seat, repair broken springs, add foam rubber pads, recover the seat — fix it up like new to give you extra comfort as well as extra service.

Leymond Hall, owner and operator of Hall Tire Company, 700 W. Foster, MO 5-5755, takes special pride in the fine workmanship and quality materials in his truck seat rebuilding.

Custom work at Hall Tire Company goes far beyond seat rebuilding: to include seat covers, custom - tailored door panels, arm rests, floor mats for all makes and models of automobiles and trucks.

If the door panel is getting worn near the bottom or the front, Hall Tire can put in two or more matching door panels for a much lower price than you would imagine. And think how the improvement will add to the beauty of your car.

Floor mats getting unsightly? Hall Tire can put a beautiful new carpet in your car at a reasonable price.

Hall Tire carries the largest selection of seat covers in the Top O' Texas area. There are covers to fit every make and model of car, and to fit every budget. These covers are in all the latest patterns and color schemes, in favorite materials:

Nycar, plastics, Lum-Puff, Combo-Weave and others.

Seat Covers are the most widely recognized beauty spot in your car. Hall Tire Company can custom-tailor your seat covers exactly to your taste.

Or you may choose any one of the many patterns in seat covers made by Howard Sink, or Arthur Fulmer. Selections by these manufacturers include a wide range of styles, colors, materials.

Hall Tire Company is the complete auto service center: lubrication, washing, favorite oils, quality Mobil gasoline.

Tire Service features Dayton, Mobil and National Tires—used and retreads to fit all cars and all at budget saving prices.

To pep up your car, truck or industrial engine, Hall Tire Company recommends Motor Formula 9, the motor oil supplement that boosts engine power, gives better gas mileage, reduces engine wear and helps cut oil consumption.

Come in and talk over your problems concerning tires, truck seats, seat covers and all motoring needs with Leymond Hall. His favorite saying is: "We can save you money, just the way we have saved money for hundreds of others."

Let him prove that statement at Hall Tire Company, 700 W. Foster.

## Local Manufacturer Boasts Top Products

Lone Star Products Co., Pampa manufacturer, has been well accepted by families in a five-state area, C. A. Carruth, owner of the firm, said at a recent interview.

Lone Star Products include dye shampoo concentrate, heavy duty shampoo for upholstery and rugs, a complete line of car polishes and many other similar products.

The young company is looking forward to national distribution sometime in the future. Presently many retail outlets already carry Lone Star products and they are available locally.

The Lone Star heavy duty shampoo for upholstery and rugs comes in a gallon container. Four ounces of this concentrate is used per gallon of water to give a fine, heavy-duty shampoo for upholstery and rugs. It is shampoo that really does a good job of getting things cleaner and with less work.

The Red Devil Dye Shampoo Concentrate for upholstery and rugs is very easy and economical to use. A gallon of this dye shampoo concentrate will make

14 gallons of excellent dye. Unlike other dyes that have unpleasant odors, the Lone Star dye leaves the fabrics smelling clean and fresh.

After mixing the concentrate with water it is a simple operation to dye fabrics. It is applied with a brush to give a better, cleaner and faster job.

Lone Star products are all safe and easy to use. Each carry an unconditional guarantee when used as directed. The all-purpose shampoo is easy on the hands. It contains no harmful alkalis. This product has hundreds of uses: dishes, glassware, fine fabrics, floors, walls, windows, mirrors, rugs and upholstery, car washing, oven cleaning, refrigerators and appliances, sinks and bathroom fixtures and almost other unlimited uses.

The products are stocked in most grocery stores, drug stores or variety stores, and can also be found at 220 N. Somerville at Carruth's Kar-Redi and Muffler Station. If your favorite store does not presently carry the Lone Star Products, ask them to stock it for you.

## Canadian Credit Unit To Attend Convention

**CANADIAN (SpI)**—Seven executives of the Canadian Production Credit Association will attend a regional group conference of directors and general managers of the agricultural financing institutions, to be held in Lubbock Thursday and Friday.

Representatives of the six PCAs, a 51-county area of West Texas and the Panhandle, will attend the meeting. It is sponsored by the Federal Intermediate Credit Bank of Houston, discount and supervisory agency for the 36 associations in Texas.

Attending from the Canadian PCA will be President H. H. Keane of White Deer, Vice President Wallace N. Hamker of Booker, Directors M. Lawrence Elizey of Perryton, C. B. Henderson of Wheeler, Dale Nix and Hugh F. Parsell of Canadian and General Manager Erbin Crowell of Canadian.

Farmer and rancher owned and operated, the Canadian Production Credit Association provides more than \$6,000,000 annually in low-cost agricultural credit in Gray, Hemphill, Lipscomb, Ochiltree, Roberts

and Wheeler counties. Offices are operated in Canadian, Pampa, Perryton, and Wheeler.

W. B. Mansfield of the Engineering Extension Service, Texas A&M University, will lead a discussion on the role of directors in PCAs. Other speakers, who will discuss operational and organizational procedures and problems, will include President W. N. Stokes Jr., Vice President W. H. Calkins, Secretary Ellis Lanier and Assistant Vice President Alton B. Cook, all with the Intermediate Credit Bank.

Other associations to be represented at the conference include Amarillo, Lubbock, Memphis, Plainview and Stamford. Loan volume for the six Production Credit Associations totaled more than \$95,000,000 to farmers and ranchers in 1963 in their 51-county area.

### TICKET FOR GOLDWATER

**WASHINGTON (UPI)**—Republican presidential nominee Barry M. Goldwater got a parking ticket Monday.

He was at a local television studio taking part in the filming of his life story. His shiny black limousine was parked in a loading zone in front of the building.

About 30 minutes after he entered the studio, a policeman ticketed his car. One of the senator's security guards then drove it away from the no parking zone.

**CLASSIFIED ADS GET RESULTS**

## Pampa Business News...



**(Daily News Staff Photo)**  
**SERVICE, COMFORT** — Leymond Hall, owner and operator of Hall Tire Company, 700 W. Foster, MO 5-5755, rebuilds a pickup seat to give the owner longer wear, added comfort and to save money. Rebuilding pickup seats is a specialty at Hall Tire, where Hall personally guarantees the workmanship and quality of materials. Hall Tire features the largest selection of seat covers in stock in the entire Top O' Texas area: covers in the latest styles, colors, all materials. Come in and let Hall show you how you can increase the service you get from your truck or car, add to the beauty and save money—all at the same time!

### ONE SHARE HOLDER

**SUNDERLAND, England (UPI)** — The Duxford and Sunderland shipbuilding and engineering board of directors met Tuesday and invited all shareholders to attend.

Dr. J. Andree proposed a vote of thanks at the end of the meeting, saying he was sure that he spoke for his fellow shareholders, even though none was there to second his resolution. He was the only one who bothered to show up.

### BILKING PUBLIC

**CARACAS, Venezuela (UPI)**—Public Health Director Lisandro Lattuff charged today that half the butter being sold in bulk in Venezuela is water and the other half is mixed with margarine and animal fats.

"In this way, the producers obtain high economic benefits," he said.

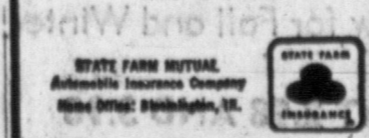


**WORLD'S LARGEST CAR INSURER!**

*Largest in Texas Too!*

State Farm now insures more Texas cars than any other company (over 300,000 of them!). It's easy to reason why. Texas policyholders have historically saved with State Farm (more than \$40,000,000 over the past 25 years on expiring 8 month policies). And, eligible policyholders are currently enjoying a 25% dividend. Special discount savings like the 5-Car (or more) and Working Farmer discounts, plus Home-town Service coast-to-coast make State Farm's "good deal" on car insurance even better. Why not check with your State Farm agent for details!

**Glen Courtney**  
1534 N. Hobart  
MO 4-8611



## Guaranteed Service Is Radcliff Feature

Guaranteed, reliable and trustworthy service is featured at Radcliff Brothers Electric Co. Glenn Radcliff, who has been doing business in Pampa for 30 years says, "When it comes to fixing and servicing magnetos and engines, we fully guarantee all of our repair work."

Radcliff Brothers Electric is authorized to sell and service all makes of Briggs and Stratton, Wisconsin, Clinton, Lawson, power products, Onan and Kohler air-cooled engines.

In addition to selling, repairing, and taking care of all magneto and motor problems, Radcliff Brothers Electric has Roper pumps and Fomax centrifugal pumps for oil field work. They also sell and service American Bosch diesel injection

pumps and Rosamaster diesel injection pumps.

"If you need a pump for oil or water or just about any purpose, we have it, or we can get it for you," says Radcliff. "If you're not interested in pumps or magnetos, but are the kind of man who likes to do it yourself or tinker around the house we carry a complete line of Dayton power tools. If you are a home shop enthusiast we supply or can get tools to build practically anything — and if you have a tool that isn't working properly, drop in or call to day for repair service."

Remember . . . We service everything that we sell. So, just drop in today and let us help you.

## Bush Officially Opens Campaign This Week

**HOUSTON (SpI)** — U.S. Senate Candidate George Bush will officially kick-off his Senate campaign with a rally and a statewide telecast live from the Music Hall in Houston at 8:30 p.m., Thursday.

Bush, 40, a Houston oil businessman, commented:

"This will be the kick-off to the most aggressive, far-reaching campaign the voters of the State of Texas have ever seen. I pledge all my efforts to a hard-working campaign because I believe the voters of Texas deserve to know they have a responsible conservative that opposes the left-wing policies of radical Ralph Yarborough.

"It will be a hard-fought campaign because it is difficult to un-seat a man already in office, but I believe the people want a U.S. Senator who thinks and votes like a Texan. And I

pledge to give my best to give Texans this voice."

His campaign officially begins Thursday, but Bush has already hit a hot campaign trail. Since the primary runoff June 6, he has visited most sections of the state. From Sept. 3-11, Bush campaigned in a "Bandwagon for Bush," hitting about 40 cities and towns throughout Central and North Texas and the South Plains. With him then was his wife, Barbara, and son, George. "Bush Bluebonnet Belles," and a country music band called "The Black Mountain Boys."

Read The News Classified Ads

**KILL ROACHES ANTS**  
JOHNSTON'S BRUSH ON NO-ROACH SAFE TO USE EFFECTIVE FOR MONTHS

**Office Furniture and Supplies**  
SEE US FOR ALL YOUR OFFICE SUPPLY NEEDS  
**FUGATE PRINTING CO.**  
210 N. Ward MO 5-3431

**ACME MATTRESS Co.**  
817 W. Foster MO 4-6621

**Phone 4-8112**  
Let Us Show You A  
**NEW ROYAL ELECTRIC**  
**BILL THOMPSON**  
Royal Sales & Service  
P. O. Box 762 Pampa, Texas

**MAGNETO REPAIRING**  
All Makes And Models  
ALSO  
WISCONSIN ENGINES  
BRIGGS & STRATTON ENGINES  
KOHLER ENGINES  
CLINTON ENGINES  
**ROPER PUMPS**  
Parts & Service  
**RADCLIFF BROS. ELECTRIC CO.**  
519 S. Cuyler MO 4-3395

**YOUR HEADQUARTERS FOR FISHING SUPPLIES**  
THE WORKING MAN'S FRIEND  
**SURPLUS CITY**  
403 South Cuyler MO 5-4433

**You Can Depend on B & B Pharmacist's Accuracy**  
Next time bring your prescription to us for careful compounding or have your doctor phone and we will deliver free of charge.  
We Give S & H Green Stamps  
**B & B PHARMACY**  
BALLARD AT BROWNING MO 5-5785

**GUNS BUY SELL TRADE**  
**Antique Guns**  
**Western Motel**  
Gun Collection In Lobby  
821 E. Frederic MO 4-466

• Guar. Radio, T.V. Appl. Repair  
• Gibson Appliances  
• Packard Bell  
• RCA Whirlpool  
• RCA Victor  
• Speed Queen

**B & R TV & APPLIANCES**  
1425 N. Hobart MO 4-3288 MO 5-541

**SEAT COVER HEADQUARTERS**  
CUSTOM WORK TRIM  
• Pick-Up Truck Seats Rebuilt  
• Floor Mats  
**HALL TIRE CO.**  
700 W. Foster MO 5-573

Specializing In:  
• Body Repair  
• Auto Painting  
• Glass Installation  
Free Estimates  
**FORD'S BODY SHOP**  
In Our New Location  
111 N. FROST - Ph. MO 4-4616

**Pampa Monday Sept. 14 Rodeo Grounds**  
**BARNEYS BAILEY**  
**BIG 3 RING CIRCUS**  
and Wild Animal Menagerie  
Trained Horses, Elephants, Monkeys, Seals, Lions, Ponies, Dogs, Bears, Trampoline, Jugglers, Tight Wire Artists and Clowns  
2 Daily Performances  
See the Only Male Hippo Exhibited with any circus ALIVE  
Largest Circus Coming This Year  
A SHOW THE WHOLE FAMILY WILL ENJOY  
Under Canvas 1 Day Only Adm. 75c & \$1.50 Available Standee Chair 50c if Desired  
Free Parking 6 & 8 P.M.

## Dear Abby....

### Money Needed to Care For 'Gifts From Heaven'

By ABIGAIL VAN BUREN

DEAR ABBY: I am 31, have been married for 12 years and have ten children. The baby is just three months old and I just found out I am pregnant again. I love children and so does my husband. We always said we wanted a large family, but we didn't really want this many. My mother helps me out when she can, but she isn't too strong and the children make her nervous. My husband's mother is dead so she's no help at all. My husband is good to me, but he has to hold two jobs to make ends meet, so he isn't home much, and when he is he's awfully tired. There's a lot of work around here, Abby, and I never seem to get done. My doctor says that children are a gift from heaven, and a woman who's able to have them should accept as many as she is blessed with but I think we have enough. What am I to do?

write to their national headquarters: Planned Parenthood Federation of America, 315 Madison Avenue, New York 22, New York, and ask where the one nearest you is located. Pay them a visit. You'll be glad you did. Good luck.

DEAR ABBY: We are a young couple who have been married eight years. We recently bought a home and are now wondering if we made a good choice. Our house is in a very nice neighborhood (we thought) inhabited mostly by retired couples. The day after we moved in we found a note which said, "The neighborhood welcomes you, but we would appreciate it if the Mister would put a shirt on when he works in the yard." It was unsigned. My husband said he would dress as he pleased. We live in Florida and think it is our right to enjoy the sunshine. How should we handle this note?

DEAR FLORIDIANS: The same way I recommend ALL unsigned notes should be handled. Ignore it.

DEAR ABBY: Do you think a boy respects a girl less if she smokes?

DEAR CURIOUS: Yes. And I'll bet if she quits, he kisses her more.

CONFIDENTIAL TO M.G.C.: Don't put your trust in money. Put your money in trust.

For Abby's booklet, "How To Have A Lovely Wedding," send 50 cents to Abby, Box 69700, Los Angeles, Calif.

Manners Make Friends



Knitting helps keep fidgety hands of a former smoker quiet.

## Pampa Public Schools Menu

THURSDAY

PAMPA HIGH SCHOOL  
Chicken Fried Steak  
Creamed Potatoes Gravy  
Fresh Blackeyed Peas  
Garden Salad  
Fruit or Ice Cream  
Hot Rolls Butter Milk

PAMPA JUNIOR HIGH

Corny Dogs Mustard  
Sliced Pickles  
Potato Chips  
Baked Beans  
Muffins Milk  
ROBERT E. LEE JR. HIGH  
Swiss Steak Rice  
Green Beans  
Cabbage Slaw  
Rolled Wheat Cake  
Bread Milk

STEPHEN F. AUSTIN

Corn Dogs  
Pork and Beans  
Tossed Salad  
Peanut Butter Sandwiches  
Pineapple Slice with Marshmallow Topping Milk

B. M. BAKER

Chicken Pie Beets  
Cream Peas  
Peach  
Cheese Biscuit  
Butter Milk

CARVER

Fried Chicken  
Fluffy Potatoes  
Garden Peas  
Fresh Tomatoes

SAM HOUSTON

Meat and Noodles  
Green Beans  
Cabbage Salad  
Lemon Pudding  
Hot Rolls Butter Syrup  
Plain or Chocolate Milk

LAMAR

Fried Chicken  
Fluffy Potatoes  
Garden Peas  
Fresh Tomatoes

HORACE MANN

Meat Loaf with Tomato Sauce  
Buttered Potatoes Spinach  
Harvard Beets  
Chocolate Cake

WILLIAM B. TRAVIS

Corn Dogs Potato Salad  
Potato Chips  
Pineapple Nut Cake  
Bread Butter Milk

WOODROW WILSON

Roast Beef Gravy  
Rice Green Peas  
Cranberry Sauce  
Cake Butter  
Bread Milk

CLASSIFIED ADS GET RESULTS

## Let's Chit-Chat

By PEGGY JO ORMSON

(EDITOR'S NOTE: This is the last in a four-part series of articles written to assist public city chairmen in covering news of their organizations.)

From the preceding articles, you have learned about timeliness, deadlines, information needed in your stories, the use of names, the style in which a story should be submitted and the length of stories. These facts will help you in writing your organization's meeting after it is held.

To obtain announcements in advance of your club's meeting or other activities, the woman's page editor has two columns in which to place these announcements, the Mainly About People Column, found daily on the inside page of The News, and the Social Calendar, which will appear in the Women's page section of each Sunday issue.

Items for "Mainly About People" may be phoned in to the women's editor because they are brief and take little time to write. In addition to making announcements of your organization, we invite you to call us about your out-of-town guests or trips or vacations you have taken. These items may be phoned in by 11 a.m. on the day they are to appear in the paper. "The Mainly About People" column is a personal news item space, but due to its popularity, advertisers often request that their ads be placed in that spot, so you will be sure to see them. These items are usually recognized by an asterisk following the ad.

The Social Calendar is a column consisting of the date, time and place of your organization's forthcoming meeting or activity. To obtain a listing for your organization in this column, for which there is no charge, you must phone the woman's editor, in order that she can make an index card for your organization to be placed in a permanent file. Club yearbooks are a great help in compiling this column and if your organization has one, please give one to the woman's editor.

About Pictures: From time to time, during the year you will want pictures. Appointments should be made at least one day in advance, and sooner, if possible. Appointments for women's page pictures should be made

with the woman's editor. The time you want a picture taken may conflict with a previous appointment, so she will appreciate your cooperation in trying to set up a picture at an earlier or later time. Whether or not we are always able to meet your request for a picture, we do want a story of the meeting.

Should the woman's page editor be invited to your social gatherings? If you would like to have her attend, yes. But remember when extending the invitation, that due to running her department, writing stories and tying up a thousand tag ends, she can not always accept. It is not that she is ungrateful or that she just doesn't want to attend. She's like you, she just can't stretch time beyond 24 hours in any given day.

This ends your brief course in journalism. No doubt, there are still some questions left unanswered and some points that need clarifying. Any information you may need is no farther away than your telephone and the woman's editor will be happy to assist you in any way she can. Happy news - story writing.

### Surprise Breakfast

#### For Lefors Club

LEFORS (Spl) - Lefors Art and Civic Club began their new fall season with a "surprise-kidnap-come as you are" breakfast Saturday. Members of the new social committee dragged unsuspecting ladies from their beds about 5:30 a.m. and to the Civic Center for a breakfast of rolls, juice, ham and coffee.

Those present were Mmes. Keith Geisler, Edythe Watson, Ray Chastain, R. H. Barron, Ted Gustin, Alex Swann, James Gatlin, Paul Walden, Joe Watson, Al Corcoran, Fred Blackwell, G. N. Mounger, Jack Thacker, Carl Hall, Bob Fish and Miss Mickey Johnson and Miss Norma Lantz; two new members, Mrs. Tony Timmons, and Mrs. Norris Samuelson.

One certain way for a man to know that a color is definitely wrong for him is to have a woman tell him he looks "cute" in it, says Ron Postal, director of the National Council of Men's Fashions.

Read The News Classified Ads

## DKG Beta Delta Chapter Meets

Reports on state and international conventions of Delta Kappa Gamma were heard by members of Beta Delta Chapter at their first meeting of the year Saturday in Lovett Memorial Library.

Miss Mary Reeve, immediate past president, reported and showed film slides on the state convention held in Dallas in June. Mrs. Roy Sullivan spoke briefly on the international convention she attended in San Francisco in August.

As chairman of the orientation committee, Miss Claudia Everly was in charge of the program. Projects for the year were explained by members of a committee introduced by Mrs. J. R. McMurray, chairman.

Mrs. Quentin Williams, president, and Mrs. Sullivan, chairman of the personal growth and service committee, urged members to attend the regional meeting in Amarillo Oct. 10.

### Austin P-TA Sets

#### Orientation Night

Austin P-TA will start the year with an Orientation night at 7:30 p.m. Thursday.

This meeting is for mothers and fathers of Austin students, and is planned to explain the curriculum for the coming year. Teachers and parents will discuss plans for each grade.

An Abbot and Costello film will be shown in the film room for children at a cost of 15 cents. A nursery will be provided for infants.

Austin has an enrollment of 444 students with 244 parents joining P-TA on the opening day of school. Membership chairman, Mary Hyatt, had 22 workers at school on opening day helping enroll P-TA members.

Parents who have not joined Austin P-TA will be given the opportunity to do so at the meeting Thursday night.

The trend in handbags is to small, more compact looks, moderate sizes - replacing the huge carry-alls of former seasons. In part, this change is due to the overall fashion trend to the casual look. Young women, for instance, won't be carrying around so many cans of hairspray as teasing and bouffant coiffures give way to the sleek, casual cuts.

## The Women's Page

PEGGY JO ORMSON  
Women's Editor

14 THE PAMPA DAILY NEWS  
WEDNESDAY, SEPTEMBER 16, 1964 5TH YEAR

### Application for Charter Made by Local TOPS Club

Top O' Texas Taper TOPS reported a loss of 10 pounds and a one pound gain when the club met at 1:30 p.m. Monday in Citizen's Bank Hospitality Room. Mrs. Gladys Burger and Mrs. Gayle McLain tied for weekly queen honors, with Mrs. Burger winning the fruit bowl.

Mrs. Martha McVay, president, read a letter from TOPS, Inc., concerning the application of a charter for the local chapter.

A game, "on-the-ball," concerning attendance at club meetings, was explained to the seven members present.

The challenge of the two local chapters, the Top O' Texas Taper TOPS and the Pampa Pound Pirates, was discussed.

Next meeting for the organization will be at 1:30 p.m. Sept. 21 in Citizen's Bank Hospitality Room.

### Lamar P-TA Board Meets

Lamar P-TA executive board met recently in the home of Mrs. N. L. Nichol, at which time plans for the school year were made.

Plans were made for a fundraising project, which will be a Hootenanny presented by parents in October. Money raised from this project will be used to purchase stands for fairs which were placed in Lamar classrooms last year.

Twenty-one board members attended the meeting. First general meeting of the year for Lamar P-TA will be held at the school at 2:15 p.m. Oct. 8.

Next meeting for the organization will be at 1:30 p.m. Sept. 21 in Citizen's Bank Hospitality Room.

THURSDAY 6-9 P.M.

# SPECIALS!

KNIT SHIRTS Entire Stock 1/2 Price

Play Clothes Summer Boys'-Girls' Values To \$5.98

Boys' Pants 1/2 Price

One Group - Cordis, Flannel, Etc.

Lad & Lassie Children's Shop

"FROM HEAVEN TO SEVEN"  
115 W. Kingsmill MO 4-8888

# Dunlap's SPECTACULAR SALE OF FABRICS

100% Cotton  
Pinwale Corduroy

Usually 99c Yd.  
**68c** Yd.

100% cotton machine washable in a wide range of fashion colors. Save dollars in Dunlap's big fabric department.

Dan River  
Woven Cottons

\$1 Value  
**69c** Yd.

Here's a fine value in a terrific group of Dan Rivers, Ship Ahoy Sail Cloth, and Bates' Disciplined Prints. Buy now and save.

### Famous Name Brand Cottons Specials

We can't mention the name, but you will see it on every fabric board in this collection. 100% pima cottons, 45" Dacron broadcloth, 45" Estron prints, printed cotton satens.

Values to \$1.49

**79c** Yd.

### 54 Inch Upholstery Fabrics

**\$1.99** Yd.

The finest value we have ever offered... lavish range of colors and ultra modern designs. See this wonderful group today... see how you can make your furniture look like new for so little money.

Dunlap's

Coronado Center

### Sale of Fine Woolens

56 to 60 inch wide. Solid color flannels, 100% wool herringbones, 100% wool plaids and checks. Sew now for Fall and Winter.

**\$1.99** yard

COMPARE AT 2.98 AND 3.98

### Over 2,000 Yards Cotton Fabrics

Values To \$1 Yd.  
**50c** Yd.

Fine combed cotton plaids, 45" sportswear fabrics, 36" printed pima cottons. Beautiful wash and wear prints. Many new fine fabrics added to this group.

## Gardening News

By THELMA BRAY

Members of the Pampa Garden Club and Top O' Texas Garden Club worked together Thursday morning assisted by Park Superintendent Carl Wright. Work was done in the Yeager and Starkweather Park and the small rock garden at the intersection of Duncan, Starkweather and Louisiana.

Many things have been planted in the rock garden, but for several reasons not many of the plants survived. Therefore, the Top O' Texas Garden Club has decided to plant a variety of succulents and other hardy plants. Planted Thursday morning were clumps of sedum, a gray-colored succulent and several other ground covers that I can not identify by name.

Contributing to the beautification of Pampa's parks Thursday morning were Mrs. Al Kouri, who furnished the plants, Mrs. Kenneth Osborn, president of the Council of Garden Clubs and a past president of the Top O' Texas Garden Club, Mrs. Joe Rutledge, park chairman for the Top O' Texas Garden Club, Lena Mitchell, Irene Moore, Maybelle Carlton, Gladys Osborn and your columnist.

We won't promise blueberry muffins again, but coffee will be served to anyone who comes out to work at the Ward and Hobart Park Thursday morning, 8:30 a.m.

### THIS WEEK'S GARDENING TIPS

Talked with D. A. Caldwell this week about his method of misting (the word was misspelled last week) roses. He says this can be a very expensive process, but he does it the in-

expensive way. He forms a round dome shape about 20 inches high with heavy wire and covers it with a light weight plastic, places this over his rose cuttings which are inserted in sand; then he places the sprayer (his cost 68 cents) so that it produces a fine mist of water inside the dome to keep the area humid and cool. His time and effort pays off because he can root cuttings in less than 14 days.

Caldwell starts his cuttings "anytime he feels like it", and says to use cuttings that are not too tender nor too old. After the cuttings have rooted transplant them to soil and keep them shaded. As to when to transplant, Caldwell says the experts say when the roots are about an inch long, but sometimes he waits until they are four or five inches long.

Caldwell is raising tobacco plants also and is very proud of them.

The silver lace vines and the clematis paniculata vines (sweet autumn clematis) are beautiful around Pampa now. The althaea shrub or rose of sharon is very showy right now also. This is one shrub we highly recommend for the Pampa area. It is hardy and one of the best flowering shrubs of late summer. When well developed and cared for, it blooms very freely and provides a display at a time when few other shrubs are in flower.

Don't forget to get ajuga at Maybelle Carlton's, 331 N. Faulkner, Sept. 15. According to moon signs Sept. 19 and 20 will be good planting days.

## AL Chapter, PSA, Adopts Constitution

Alpha Lambda Chapter of Phi Sigma Alpha met in the home of the chapter's president, Mrs. J. B. Woodington, 700 E. Francis, at 7:30 p.m. Sept. 10.

Mrs. James R. Braxton, charter member of the chapter, was formally initiated in a candle-light ceremony. Blue and white, sorority colors, were used in the decorations.

The president called the meeting to order and the opening pledge was repeated in unison. Mrs. Woodington then read the club constitution and by-laws, after which the chapter voted and accepted the constitution and by-laws.

Members attending were Mrs. Wayne Couch, John Hutchison, Marvin Jones, Hugh Peoples, N. E. Turnbo, W. T. Wilborne, C. C. Wilson and J. B. Woodington.

Next meeting for the chapter will be Oct. 22 in the home of Mrs. James R. Braxton, 1117 E. Darby.

The green leaves on the outside of the lettuce head contain more vitamins than the inside ones. Throw away as few of the outer leaves as possible.

## Manners Make Friends



Does the constant complainer really enjoy spoiling everyone's fun?

## Pampa's Working Gals



(Daily News Staff Photo)

REPRESENTATIVE — Today's subject of a picture feature series of Pampa's working women and girls is Mrs. Ann Steede, registered representative in charge of Schneider, Berner and Hickman, Inc. Mrs. Steede, registered with the N.Y. Stock Exchange, NASD and American Stock Exchange, has been employed by the firm since it's opening in June, 1963. She makes her home at 1001 N. Sumner with her husband, Joseph W. Steede Jr., an engineer for Bovay Engineers, Inc., and two sons, Kevin, 5, and Craig, 4. Her family and cooking are her favorite hobbies.

**Penneys**  
ALWAYS FIRST QUALITY

it's our birthday

SHOP THURSDAY TILL 9 P.M.

STORE HOURS:

Daily 9 A.M. — 5:30 P.M. Thursday 9 A.M.-9 P.M. Saturday 9 A.M.-6 P.M.

LIMITED TIME!

our entire stock of 95¢ Gaymode<sup>®</sup> nylons now reduced to only

76¢

Save 58c when you buy 3 pair for only 2.27

COMPARE! Here's why Gaymodes, America's best-selling hosiery, are your best buy . . . . at any price!

- Plain knits, micro mesh, double loop sheers, cotton-soled service weights!
- Proportioned to your leg length! For short, average or long 8½ to 11!
- Tremendous selection of subtly flattering shades!

COMPARE THE SAVINGS ON GAYMODE SUPPORT HOSIERY!

Compare them for comfort, quality, good-looks — and our special low price!  
All Nylon Seamless . . . Reg. 2.98

1.77 PAIR

JUST SAY "CHARGE IT!"

SHOP DOWNTOWN FOR GREATER SELECTIONS



bentley's

shop downtown  
thursday  
till 9!



mink-trimmed  
coat sale!

100% cashmeres—100% fine wools

values to \$99  
139.95

don't miss this opportunity to choose a fur-trimmed coat you have always wanted — we planned this event many months in advance — made commitments with fine makers such as a fashionbilt — elegants' and others to bring you luxurious fur trims found only in higher-priced coats — select yours now from our beautiful collection at prices you would expect to pay at end-of-the-season when stocks are all picked over —

all other fur-trims sale priced for this event!

129.95 mink-trim swedes, only \$99.

100% fine cashmere coats

regularly \$89.95

regularly \$119.95

\$55

\$69

choose from either 'grand prix' or finest golden quality' cashmere — in a choice of button or clutch styles — sized for the petite or miss — from 4 to 18 — in black, beige, taupe, sable, green, navy or red.

a small deposit will hold your coat in layaway!  
open an option charge account — take up to 6 months to pay

# Eyes of Texas Look for Title

NEW YORK (UPI) — The eyes of Texas begin searching for another national college football championship when the Longhorns open their 1964 season against Tulane Saturday as overwhelming 26-point favorites.

Despite the graduation of All-America tackle Scott Appleton, Coach Darrell Royal figures to have sufficient line replacements plus the offensive punch of fullback Ernie Koy to make it 12 in a row Saturday night.

Heisman Trophy winner Roger Staubach quarterbacks Navy against Penn State in an early jump for Eastern honors and the Middles are four-point favorites over Rip Engle's Nittany Lions.

## SW Conference Hones Up for Season Opener

By United Press International

Southwest Conference football teams got down to the fine points of the game Tuesday in preparation for weekend season openers.

Coach Darrell Royal of the Texas Longhorns ran his team through a light 45-minute scrimmage and announced all of his injured players except Tom Curry were back in action.

The Longhorns take on Tulane at Austin this weekend.

Owl Hurts Hand

The Baylor Bears looked at movies of last Saturday's scrimmage and on the basis of them, Coach John Bradders said sophomore Roger Mike Marshall and junior Ronnie Wilson would divide time for the Greens in Thursday's intrasquad game.

Rice Owl tailback Paul Piper suffered a broken hand bone in a freak accident at Houston. The 196-pound senior apparently lost his balance and fell on the hand.

The team doctor said it was too early to determine the extent of the injury but Coach Jess Neely said he hoped a special bandage would enable Piper to start against Louisiana State Sept. 26.

Tech Eyes Mississippi

Stopping Mississippi state fullback Doyle Granger was a topic of much discussion at a Texas Tech workout. The Red Raiders open against Mississippi this weekend at Lubbock.

The raiders polished up goal line and passing defense.

Coach Frank Broyles of Arkansas put his squad through a night hour-and-a-half workout and said sessions would continue to taper off until Friday, when the Razorbacks travel to Little Rock to take on Oklahoma State.

Texas Christian and Southern Methodist also had light workouts in preparation for games at Kansas and Florida, respectively.

## Performance Distracts From 'AL' Flag Race

By FRED DOWN  
UPI Sports Writer

It takes a dazzling performance to distract attention from that American League pennant race but that's the word for Dean Chance—DAZZLING.

A 23-year-old "baby" by big league standards and an 18-game loser only a year ago, the 6-foot, 3-inch, 200-pound Los Angeles Angel righthander is a cinch to win the Cy Young major league pitcher of the year award by acclamation. In some respects he can even be called "the pitcher of the live-ball era."

Because Chance's 1964 performance stamps him as a throwback to an almost-forgotten era when pitchers dominated hitters like the seven-footers dominate modern basketball.

With a 1.49 earned run average, following his 7-0, two-hit victory over the New York Yankees Tuesday night, Chance is likely to surpass the lively-ball ERA record of 1.64 set by Spud Chandler in 1943. And, with 10 shutouts to go with his 19-7 record, he has equaled the AL live-ball-era mark previously shared by Bob Feller and Bob Lemon.

Johnson Had 1.28 ERA

To find a pitcher who compiled a lower ERA, it is necessary to go back to 1918 when Walter Johnson had a 1.28 mark. And to find an AL pitcher who hurled more shutouts in a season you must go back to 1913 when Johnson pitched 12 and then to 1910 when Jack Coombs established the league mark of 13.

Chance turned in another of his patented overpowering jobs against the Yankees, whom he has beaten four times this season and against whom he has allowed just one earned run in his last 50 innings. Joe Adcock singled home Jimmy Piersall in the sixth inning to give Chance the only run he needed but the Angels rubbed it in with a burst of six in the ninth with Adcock's 21st homer and Willie Smith's three-run triple the big blows.

The loss prevented the Yankees from gaining ground on the Baltimore Orioles, who dropped a 2-1 decision to the Minnesota Twins but the Chicago White Sox moved to within one game of the lead when they beat the Detroit Tigers 3-2 in 10 innings. The Boston Red Sox downed the Kansas City Athletics 8-0 in the only other AL action.



... get ready ... take aim ... he's on fire!

GAME OF CHANCE—The hottest pitcher in the major leagues is Dean Chance, the young righthander of the Los Angeles Angels. He is leading both leagues in shutouts on the way to his greatest season since coming up in late 1961.

## Phillies Expect Mail Deluge For World Series Tickets

PHILADELPHIA (UPI) — A deluge of mail will hit post office Box 6925 here starting next Wednesday.

That's when the National League leading Philadelphia Phillies begin accepting applications for World Series tickets.

The Phils announced Tuesday night that sale of the tickets will be limited to sets of two tickets each, with no one allowed to buy more than two sets, because of Connie Mack Stadium's limited seating capacity of 33,608.

The sets will be split between games one and seven, or games two and six. Under this plan, a fan can buy a maximum of two tickets each for the first and seventh games, or two tickets each for the second and sixth games. The sets will be allotted at the discretion of the Phils.

The first two games are scheduled for the National League city, Oct. 7-8. The next three games are set for the American League city, with the sixth, and seventh, if necessary, in the National League city.

Applications must be accompanied by certified checks, cashier's or bank treasurer's checks, or postal money orders in the following amounts, which include \$1 for mailing charges: The cost of one set would be \$28 for box seats; \$17 for reserved seats and \$9 for bleacher seats. For two sets, the cost would be \$49 for box; \$33 for reserved and \$17 for bleacher.

Checks should be made payable to the Philadelphia National League club. Applications should be addressed to: Phillies, Post Office Box 6925, Philadelphia, Pa., 19132. A return address must be on the envelope and also on the application.

Applications received before 12:01 a.m. of Sept. 23, or those which do not conform to the instructions, will not be accepted.

## Shockers Meet Berger Here Tomorrow Night

Pampa High School Shockers will renew an ancient rivalry tomorrow when they meet the Borger B-Team at 7:30 p.m. in Harvester Stadium for the first home game of the season.

The grid contest will be the opening game of the season for Borger while Shockers will be seeking their second win of the new season. The Shockers dropped Perryton by an impressive 28-6 margin in their opener last Saturday night at Perryton.

Pampa coaches expect Borger to rely mainly on a ground attack for the game as past experience has shown Borger to favor ground rushing over the airways. The soaked field will slow both teams down somewhat and should prove a sure stopper for the Shockers passing attack which accounted for a touchdown against Perryton last week.

The contest between the two grid rivals may prove to be one of the toughest of the year because of the rivalry that exists between the two towns. Shockers defeated Borger by two touchdowns last year on the Borger field.

## John Crow Returns To Cardinal String

ST. LOUIS (UPI) — Football Coach Wally Lemm said Tuesday the Cleveland offensive attack is more dangerous this year but added he has an offensive surprise of his own with the probable return of John David Crow to a starting role.

The Browns and the Cardinals meet Sunday in Cleveland and Crow is expected to start at running halfback for the first time since 1962. He is the third leading ground gainer in Big Red history with more than 2,900 yards gained from scrimmage but he missed nearly the entire season last year with a knee injury.

## Loud Arguments Arise Easily Over National Sport Question

CLEVELAND, Ohio (UPI) — A guy can't go into his neighborhood bar for a quiet, peaceful drink anymore.

Soon as he tries someone at the other end invariably provokes a loud argument by insisting pro football, and not baseball, now ranks as the nation's No. 1 pastime.

Art Modell, the able 39-year-old owner of the Cleveland Browns, says there isn't the slightest possible doubt in his mind.

"Pro football," declares Modell, "is the No. 1 spectator sport in the United States and Canada, and the greatest spectator sport ever created by man."

Attendance Miracle

That's quite a mouthful, but if anyone is in a position to back it up, Modell is on the basis of the attendance miracle he's performed since taking over the Browns in 1961. Although his club has failed to win a single title since then, it has drawn more fans through the turnstiles than any other in the National Football League during the past three years.

One of the prime reasons for the Browns' amazing attendance boom has been Modell's favorite brainchild, a pre-season doubleheader at Municipal Stadium, which drew over 83,000 earlier this month. Even that total was held down because the fire marshals would not permit the Browns to sell any more standing room tickets.

"The pre-season doubleheader was strictly my own idea," Modell says, "and now some ular season because of the high costs you have then that you don't ordinarily have during the

## American Cup Shapes Up As British Loss

NEWPORT, R. I. (UPI) — Another defeat for heartbroken Britain on the yachting seas.

That's the way the 1964 America's Cup race shaped up today — and after only one race.

There was evidence that the down-trodden Britons were not the most optimistic people in the sailing world. For they did not ask for a "lay day" — a 24-hour postponement of the second race.

That means that Constellation, the sleek U. S. defender in this 20th match in a series that started 113 years ago — and has yet to see the British win back their Cup — goes against blue-bullied Sovereign again today in the second of this best four out of seven.

Nowhere on the Newport waterfront could you find a bloke ready to bet a shilling on Peter's Scott's chances with Sovereign against Robert Bavier, Jr., and Eric Ridder on the Connie.

Constellation trounced Sovereign Tuesday by almost a mile and a time margin of five minutes, 34 seconds in the race around a six-leg, 24-mile course that took the winner three hours, 20 minutes and 27 seconds to complete.

## John Crow Returns To Cardinal String

ST. LOUIS (UPI) — Football Coach Wally Lemm said Tuesday the Cleveland offensive attack is more dangerous this year but added he has an offensive surprise of his own with the probable return of John David Crow to a starting role.

The Browns and the Cardinals meet Sunday in Cleveland and Crow is expected to start at running halfback for the first time since 1962. He is the third leading ground gainer in Big Red history with more than 2,900 yards gained from scrimmage but he missed nearly the entire season last year with a knee injury.

**MEN WANTED**

FOR CLAIM ADJUSTING TRAINING

Earn \$450 to \$1000 Monthly

Est. 25 Men Needed in Texas

Prepare now to investigate all types of insurance claims. Adjusters needed in every state. Work for large companies or open your own office. No selling of any kind. Cars furnished, expenses paid.

We train you at home in your spare time. Excellent placement assistance. For personal interview, write "Claim Adjusting School", 1468 So. Federal, Denver, Colorado 80219.

## Record-Setter

NEW YORK (UPI) — In 1920 Man O'War set five records — 1:35 4-5 for the mile in the Withers Stakes; 1:49 1-5 for 1 1/4 miles in the Dwyer Stakes; 2:14 1-5 for 1 1/2 miles in the Belmont Stakes; 2:28 4-5 for 1 3/4 miles in the Jockey Club Stakes; and 2:40 4-5 for 1 3/4 miles in the Lawrence Realization Stakes. His 1 1/4 mile time still is the world record.

# SPORTS

The Pampa Daily News  
16 WEDNESDAY, SEPTEMBER 16, 1964 57TH YEAR

## Phillies' Chances Rest on Callison

By FRED DOWN  
UPI Sports Writer

"When he hits, they win."

That's the tribute rival National League managers play Johnny Callison and it sums up in a nutshell why the Philadelphia Phillies are driving hard once again to capture their first pennant since 1930.

The Phillies have won three straight games and it's no coincidence that the 25-year old All-Star game hero is hitting like a guy who can virtually taste his share of the World Series melon.

Callison was Johnny-on-the-spot again Tuesday night when he singled home Richie Allen in the sixth inning to give the Phillies a 1-0 victory over the Houston Colts. Callison has gone 6-for-12 in the Phillies' current string of three straight wins but what's more significant is the fact that he has driven in four of the nine runs scored by the team.

Along those same lines, the last game in which Johnny failed to make a hit was lost by the Phillies.

Baldschun Saves Win

Dennis Bennett tired after pitching six innings of three-hit ball and Jack Baldschun completed the shutout to earn Bennett his 12th win against 12 losses. The Colts threatened in the seventh and ninth innings but a misfiring squeeze play stopped them in the seventh and Baldschun struck out Joe Gaines with two on for the final out in the ninth.

The St. Louis Cardinals, continuing their gallant but forlorn pursuit of the Phillies, swept a doubleheader from the Milwaukee Braves 11-6 and 3-1, the Chicago Cubs defeated the Cincinnati Reds 6-1, the San

## Shockers Meet Berger Here Tomorrow Night

Pampa High School Shockers will renew an ancient rivalry tomorrow when they meet the Borger B-Team at 7:30 p.m. in Harvester Stadium for the first home game of the season.

The grid contest will be the opening game of the season for Borger while Shockers will be seeking their second win of the new season. The Shockers dropped Perryton by an impressive 28-6 margin in their opener last Saturday night at Perryton.

Pampa coaches expect Borger to rely mainly on a ground attack for the game as past experience has shown Borger to favor ground rushing over the airways. The soaked field will slow both teams down somewhat and should prove a sure stopper for the Shockers passing attack which accounted for a touchdown against Perryton last week.

The contest between the two grid rivals may prove to be one of the toughest of the year because of the rivalry that exists between the two towns. Shockers defeated Borger by two touchdowns last year on the Borger field.



By United Press International  
American League

	W.	L.	Pct.	GB
Baltimore	88	60	.595	—
Chicago	87	61	.588	1
New York	84	59	.587	1 1/2
Detroit	77	70	.524	10 1/2
Los Angeles	76	72	.514	12
Cleveland	72	72	.500	14
Minnesota	73	74	.497	14 1/2
Boston	65	83	.439	23
Washington	57	90	.388	30 1/2
Kansas City	54	92	.370	33

Tuesday's Results  
Washington at Clev. Ppd. rain  
Los Ang. 7 N. Y. 0, night  
Chicago 3 Det. 2, night, 10 ins.  
Boston 8 Kan. City 0, night  
Minnesota 2 Baltimore 1, night  
Today's Probable Pitchers  
Chicago at Detroit — Peters (17-8) vs. Lolic (16-7).  
Washington at Cleveland (night) — Narum (9-13) and Stenhouse (2-7) vs. Siebert (6-6) and McDowell (8-6).  
Minnesota at Baltimore (night) — Pascual (13-11) vs. Bunker (16-4).  
Los Angeles at New York — Brunet (2-1) vs. Bouton (15-13).  
Kansas City at Boston — Odum (1-0) vs. Monbouquette (10-13).

Thursday's Games  
Los Ang. at N.Y., twilight (Only games scheduled)

National League

	W.	L.	Pct.	GB
Philadelphia	88	57	.607	—
St. Louis	82	63	.566	6
San Francisco	81	66	.555	7 1/2
Cincinnati	79	66	.545	9
Pittsburgh	74	70	.514	13 1/2
Milwaukee	74	71	.510	14
Los Angeles	73	72	.503	15
Chicago	67	78	.462	21
Houston	59	88	.401	30
New York	49	96	.338	39

Tuesday's Results  
Chicago 6 Cincinnati 1  
St. Louis 11 Milw. 6, 1st, tw  
St. Louis 3 Milw. 1, 2nd, night  
San Fran. 3 N.Y. 1, night  
Philadelphia 1 Houston 0, night  
Los Ang. 5 Pittsburgh 3, night  
Today's Probable Pitchers  
Cincinnati at Chicago — Maloney (13-10) vs. Buhl (13-11).  
St. Louis at Milwaukee — Craig (6-8) vs. LeMaster (14-11).  
Philadelphia at Houston night — McHaffey (12-8) vs. Nottebart (6-11).  
Pittsburgh at Los Angeles night — Law (11-12) vs. Ortega (6-8).  
New York at San Francisco — Cisco (5-16) vs. Perry (11-9).  
Thursday's Games  
Cincinnati at Chicago  
Philadelphia at Los Ang., night  
Only games scheduled

**STAG NIGHT MOOSE LODGE THURSDAY NIGHT MEMBERS AND GUESTS 7:30 P.M.**

DON'T ENVY A WELL DRESSED MAN

BE ONE!

A well dressed man stands head and shoulders above the crowd. Chances are he bought his clothes at a store where price alone was not the object... a store where experienced and qualified people advised him of what would look best. Busy men are not always "up" on style... they leave that to their clothier. When you buy at Brown - Freeman you are assured of being a well dressed man.

HOLLYWOOD CLOTHES... \$125.00 and up

KINGSRIDGE 59.50 and up

WE INVITE CHARGE ACCOUNTS

DRPSS RIGHT... You Can't Afford Not To

**Brown-Freeman**

MEN'S WEAR

"Where quality and hospitality meet"

220 N. Cuyler MO-5-4561



# LET'S GO!

## HARVESTERS vs. YSLETA

# FOOTBALL GAME



1964 HARVESTER FOOTBALL SCHEDULE			
Sept. 11	Harvesters 19,	Perryton 8	
Sept. 18	Ysleta (El Paso) Home	7:30	
Sept. 25	Palo Duro Home	7:30	
Oct. 2	Tascosa There	7:30	
Oct. 9	Caprock Home	7:30	
Oct. 16	Monterey There	7:30	
Oct. 23	Plainview Home	7:30	
Oct. 30	Lubbock Home	7:30	
Nov. 6	Amarillo There	7:30	
Nov. 13	OPEN		
Nov. 21 (Sat)	Borger There	2:00	

**FRIDAY SEPT. 18**  
**HARVESTER**  
**STADIUM 7:30**

THIS MESSAGE SPONSORED BY THE FOLLOWING CIVIC MINDED BUSINESS FIRMS

<b>WHITE STORES INC.</b> The Home Of Greater Values 106 S. Cuyler MO 4-3298	<b>RICHARD DRUG</b> "Joe Tooley, Pampa's Synonym for Drugs" 111 N. Cuyler MO 4-8747	<b>DES MOORE TIN SHOP</b> for your heating and air conditioning 226 W. Kingsmill MO 4-3671	<b>C &amp; M TV, FURNITURE AND APPLIANCES</b> Across the street from the Hughes building 125 N. Somerville MO 4-3511
<b>FISHER PANHANDLE GRAIN</b> 800 S. West MO 4-2541	<b>BEE BEE OIL AND SERVICE CO.</b> Price St. MO 4-6845	<b>BEARS, ROEBUCK AND CO.</b> Try our mail-order service 104 S. Cuyler MO 4-3801	<b>FOUR R INDUSTRIAL SUPPLY CO.</b> 719 S. Cuyler MO 4-3588
<b>CORONADO INN</b> Pampa's Most Exclusive Restaurant 1101 N. Hobart MO 4-2596	<b>TOP O' TEXAS BUILDERS</b> If You Need A New Home See Us 228 W. Francis MO 4-3543	<b>CLAYTON FLORAL CO.</b> Say It With Flowers 616 E. Foster MO 4-3884	<b>EV-NOR CEMENT PRODUCTS COMPANY</b> Lightweight blocks Dur-O-Wall reinforcing Patios, walks, drives Complete Cement Service 118 Price MO 4-2381
<b>SHELBY J. RUFF FURNITURE</b> 815 S. Cuyler MO 4-3648	<b>Jerry Bruce's CORONADO BEAUTY SALON</b> Located in the Coronado Inn 1101 N. Hobart MO 4-4522	<b>BENTLEY'S</b> 118 N. Cuyler MO 4-3718	<b>THE PARTY SHOPPE</b> Hallmark Cards, Bridge Supplies, Coins and Coin Supplies 1425 N. Hobart MO 4-4541
<b>GIBSON'S DISCOUNT CENTER</b> Where You Always Buy The Best For Less 2110 Perryton Highway MO 4-6874	<b>HARDIN &amp; ROTH</b> Truck Terminal Phillips Products 201 W. Brown MO 4-3941	<b>FLEETWOOD'S CAFE</b> Ann Fleetwood... Open 24 hours 7 days a week Amarillo Highway and Price Rd. MO 4-7509	<b>THE PARTY SHOPPE</b> Hallmark Cards, Bridge Supplies, Coins and Coin Supplies 1425 N. Hobart MO 4-4541
<b>LEWIS BUFFETERIA</b> For A Delicious Meal 2014 N. Hobart MO 4-5631	<b>MOODY FARMS FEED LOT</b> Capacity 7,000 Head 12 miles East of Pampa On Highway 182 MO 4-3683 or MO 4-3286	<b>MILLER-HOOD PHARMACY</b> 1122 Alcock MO 4-4448	<b>DUCKWALLS 5c - 10c &amp; \$1.00</b> Open 9:30 a.m. to 9 p.m. daily, closed Sunday Coronado Center MO 4-3986
<b>IMOGENE YORK'S LAFONDA BEAUTY SALON</b> For The Latest In Beauty Care 1308 Wilks MO 4-7821	<b>K-TEX OIL &amp; SUPPLY</b> Texaco Oils & Gasolines 426 W. Brown MO 4-3321	<b>RAY'S GULF SERVICE</b> Open 8 A.M. To Midnight Everyday 210 E. Brown MO 4-4012	<b>BROOK'S ELECTRIC</b> Electrical Contractors-Lighting Fixtures 1101 Alcock MO 4-7363
<b>FIELD'S MEN AND BOYS WEAR</b> If your credit is good - We want it 122 W. Kingsmill MO 4-4581	<b>S. B. HARALSON</b> Commission Agent, Humble Oil and Refining Products Go with ENCO 348 S. West St., Pampa MO 4-4686	<b>WARDS GROCERY</b> Everyday, Low Low Prices 363 Foster MO 4-3641	<b>PAMPA MOBIL SERVICE STATION</b> 900 W. Wilks MO 4-2188
<b>TEXAS FURNITURE COMPANY</b> Quality Home Furnishings 218 N. Cuyler MO 4-4923	<b>WILEY PETTIT SERVICE STATION</b> "Always The Lowest on Gas" East of Rodeo Grounds MO 4-9031	<b>TOWN HOUSE CAFE</b> Breakfast, Lunch, Dinner Specializing in Home Made Pies - Open 8 A.M. - 2:30 P.M. MO 4-8113	<b>TOP O' TEXAS CONOCO</b> "See us for all your Auto Service needs" 845 W. Wilks MO 4-3128
<b>IDEAL FOOD STORES</b> No. 1: 401 N. Ballard No. 2: 366 E. Brown No. 3: 201 W. Francis	<b>ROBERTA'S FLOWERS</b> Say It With Flowers, Let Them Be Ours 217 N. Ballard MO 4-3388	<b>GLEN COURTNEY INSURANCE AGENCY</b> Representing State Farm Mutual World's Largest Auto Insurer 1534 N. Hobart MO 4-9611	<b>PUBLIC FINANCE CORPORATION</b> "Everyday loans, to everyday people, for everyday needs" 117 E. Kingsmill MO 4-2577
<b>Red McDonald Furniture &amp; Plumbing Co.</b> 815 S. Cuyler MO 4-4621	<b>HARVESTER BOWL</b> Pampa's Most Modern Bowling Lanes 1401 S. Hobart MO 4-3648	<b>AIRLINE HAIR FASHIONS</b> Open early and late by appointment 220 W. FOSTER MO 4-3444	<b>H. R. THOMPSON PARTS AND SUPPLY</b> The best in Automotive 513 W. Kingsmill MO 4-4648
<b>FANNON BUTANE SUPPLY</b> Butane and Propane gas 600 W. Brown MO 4-3611	<b>HENDERSON-WILSON SERVICE STATIONS</b> Phillips 66 Products No. 1-301 W. Kingsmill - No. 2-1405 N. Hobart	<b>MALCOLM KINKLE INCORPORATED</b> Heating and Air Conditioning Contractors 1205 N. Hobart MO 4-7421	<b>SURPLUS CITY</b> "You can pay more, but you can't buy better" 403 S. Cuyler MO 4-4438
<b>YOUR LAUNDRY &amp; DRY CLEANERS</b> Sanitize Dry Cleaning 201 E. Francis MO 4-3626	<b>JOHNSON'S CAFE</b> MO 4-3811	<b>diak exams, inc.</b> Chemical Wood Control Borger Highway MO 4-3788	<b>PAMPA MILK COMPANY INC.</b> Independent Distributor of Borden's Milk Products 803 S. Cuyler MO 4-3738
			<b>MAYFARE BEAUTY SALON</b> Loveliness is Our Business 1615 N. Hobart MO 4-7797



# SEE THE GAINS YOU CAN MAKE FOR YOUR PROFIT

## Legal Publication

**CITATION BY PUBLICATION**

THE STATE OF TEXAS TO ALL PERSONS INTERESTED IN THE ESTATE OF Joseph Arthur Meloch, Jr., Minor, No. 1604, County Court, Gray County, Texas: Joseph Arthur Meloch, Jr., Administrator of the Estate of Joseph Arthur Meloch, Jr., former Guardian of the person and estate above mentioned in the above numbered and entitled estate, filed on the 14th day of September, 1964, a verified account for final settlement of said estate and request that said estate be settled and closed, and said applicant be discharged from the trust.

Said application will be heard and read on the 14th day of October, 1964, at 10 o'clock A.M. on the first Monday next after the expiration of ten days from date of publication of this citation, the same being the 14th day of September, 1964, at the County Court House in Pampa, Texas.

All persons interested in said estate are hereby cited to appear before said Honorable Court at said above mentioned time and place by filing a written answer contesting such application should they desire to do so.

The officer executing this writ shall promptly serve the same according to the requirements of the law, and the facts hereof and make due return as the law directs.

GIVEN UNDER MY HAND AND THE SEAL OF SAID COURT at the office in Pampa, Texas, this 14th day of September, 1964.

W. J. RICHARDSON, County Clerk of Gray County, Texas.

## 21 Male Help Wanted 21

WANTED - Experienced mechanic. Contact Dave Hamlin, International Harvester Company, Price Road, An Equal Opportunity Employer.

## 31A Elec. Contracting 31A

EXPERIENCED Automatic transmission mechanic in General Motors and Chrysler Products. Apply in person to J. A. McClure, Service Manager, McAndrew Motors.

## 32B Upholstery 32B

BRUMMETT'S UPHOLSTERY 1915 Alcock MO 4-7581

## 34 Radio & Television 34

HAWKINS RADIO LAB 3-Way Radio Service MO 4-4803

## ADMIRAL

SALES & SERVICE JOHNSON RADIO & TV 307 W. Foster MO 5-3281

## UNITED TELEVISION

TV - Radio - Stereo - Antennas 101 N. Hobart Phone MO 4-4803

## 35 Plumbing & Heating 35

LEHMANN PLUMBING REPAIR WORK & CONTRACT MO 4-4803

## 36 Appliances 36

DEE MOORE TINS SHOP 80 W. Kingmill Phone MO 5-3071

## 40-A Hauling Moving 40-A

MOVING AND HAULING Pick-up and Delivery MO 4-2178

## 42 Painting, Paper Hng. 42

PAINTING PAPER-HANGING AND TEXTURE WORK O. B. Nichols, 1145 S. 1st St. MO 4-4803

## 43A Carpet Service 43A

MARK DAVIS CARPETS Now has Pampa Representative. For free estimates and samples call MO 4-6664

## 46 Dirt, Sand, Gravel 46

SPECIAL THIS MONTH FREE Application when you buy 2 sacks of fertilizer. G. E. McConnell Jr. 414 S. Gray MO 4-2988

## 47 Plowing, Yard Work 47

ROYAL TILLING, seeding and fertilizing. Sidewalks, curbing, patios, storm cellars and exterior house painting. A. Summers, MO 4-2214

## 48 Trees & Shrubbery 48

FALTS Bulbs arrived. Canned roses in bloom. \$1.50 each. Evergreen shrubs \$1 each. James G. Summers, 412 S. Cuyler, MO 4-2214

## 49 Cess Pools, Tanks 49

SEPTIC tanks cleaned. C. L. Casteel, Box 451, MO 4-6039

## 50 Building Supplies 50

HOUSTON LUMBER CO. 480 W. Foster MO 4-6881

## 51 I. W. TINNEY LUMBER AND SUPPLY

Price Road MO 4-3208

## 50 Building Supplies 50

WHITE HOUSE LUMBER CO. 101 S. Ballard MO 4-3208

## 50-B Builders 50-B

HALL & JONES BUILDERS MO 4-3190

## 57 Good Things to Eat 57

SEED WHEAT: Super Triumph, Kaw Concho, Iya seed. Alfalfa seed. PAMPA CENTRAL SUPPLY MO 5-9229

## 61-A Rabbits 61-A

RABBITS For sale. MO 4-7382

## 64 Office, Store Equip. 64

RENT a late model typewriter and machine or calculator by the day, week or month. TRI-CITY OFFICE SUPPLY INC. MO 4-6558

## 63 Laundry 63

WOULD LIKE TO DO IRONING in my home. \$1.25 per dozen. MO 4-4803

## 67 Household Goods 67

MATTRESS and Springs, good condition. \$12.50. MO 4-3774

## MACDONALD PLUMBING AND WRIGHT'S FURNITURE

513 S. Cuyler MO 4-4821

## TEXAS FURNITURE ANNEX

211 N. Ballard MO 4-4828

## TEXAS FURNITURE CO.

210 North Cuyler MO 4-4828

## GRAHAMS

226 S. Cuyler MO 4-4748

## WILLIAMS FURNITURE

1218 W. Wilke MO 5-3551

## SHELBY J. RUFF

Furniture Bought and sold 613 S. Cuyler MO 4-8448

## 69 Miscellaneous For Sale 69

DISHWASHER for sale cheap. MO 4-6214

## WHITTINGTON'S FURNITURE MART

Take up payments on 2 room group of furniture. MO 4-8128

## PRICE ROAD AUCTION

Every Tuesday 10:30 AM MO 4-6409

## VACATION RENTAL

NIMROD Camp trailer, motor, sleeping bags, stoves, lanterns, fishing floats. MO 4-4841

## 71 Bicycles 71

LAWN Mowers sharpened. Complete engine service. Free pick-up and delivery. VIRGIL'S BIKE SHOP MO 4-3420

## 75 Feeds & Seeds 75

SEED WHEAT: Super Triumph, Kaw Concho, Iya seed. Alfalfa seed. PAMPA CENTRAL SUPPLY MO 5-9229

## 80 Pets 80

EXTENSIVE small white toy poodle puppies. Dachshund and German Shepherd puppies. Visit the Apartment, 2214 Alcock.

## 81-A Rabbits 81-A

RABBITS For sale. MO 4-7382

## 92 Sleeping Rooms 92

CLEAN ROOM, adjoining bath, outside entrance. \$7.00 per week. 225 N. Nelson. MO 4-4864

## 95 Furnished Apartments 95

2 ROOM furnished apartment, carpeted, central heat, double garage. 3 room guest house, 100 ft. lot on Asper. For \$25,500. Call Betty at MO 4-3228

## 32 Years in the Penhandle

3 BEDROOM BRICK, 2 ceramic baths, carpeted, fireplace, double garage. 3 room guest house, 100 ft. lot on Asper. For \$25,500. Call Betty at MO 4-3228

## 1 BEDROOM on Duncan, utility room.

Move in about \$220 on new FHA loan, payments \$57.00.

## 2 BEDROOM, formal dining area, garage and carport on Summer Street.

Buy equity for about \$1700 with 4 1/2% interest. \$52.00 payments or move in on new FHA loan for about \$1000. Call Mary at MO 4-7859.

## 1 BEDROOM, laundry room, garage, storm cellar, fenced, very clean, in Horace Mann area. Move-in for about \$425 on new FHA loan. \$49.00 payment. See or call MO 4-7859.

## 2 BEDROOMS, attached garage. One 4 room, plumbed for washer. One 3 room. One 6 room on 75' lot, \$2,900.

## Ready Built homes for your lot or acreage.

## COME BY, lets discuss your real estate needs.

## YOUR LISTINGS APPRECIATED

## OLIVER JONAS REAL ESTATE BROKER

Office MO 9-9751 Residence 5-5417

## Highland Homes

pampa's leading quality home builder

## Model Homes & Sales Office

1506 N. Sumner MO 5-5410 Home Phone 4-8543

## FOR SALE LADIES STORE FIXTURES

Wall cases - sliding drawers - triple mirrors - all walnut finished - VERY CHEAP. Call MO 4-3256 Or Write Box 1618, Pampa

## 98 Unfurnished Houses 98

2-BEDROOM unfurnished house, \$75 per month. MO 4-7421

## 101 Wanted to Buy 101

WILL BUY used furniture, appliances or carpet. MO 5-5124

## 102 Bus. Rental Property 102

REFRIGERATED Air conditioner. Bills paid. \$25 W. Francis - Charlie Whittington. MO 4-3131 or MO 4-3171.

## 103 Real Estate For Sale 103

FOR SALE, 3 bedroom brick, carpet, built-in oven, dishwasher, disposal, redwood floors, patio, barbeque pit, swimming pool, 2700 Navajo Road Pampa, Texas. MO 4-9413

## MUST SELL, 3 BEDROOM WITH NEW PLUMBING AND FIXTURES, NEW WIRING, NEW IN-LAID AND NEWLY REDECORATED, F E N C E AND CONCRETE DRIVE. 620 N. CHRISTY, \$3250. MO 4-8777.

## PANHANDLE INS. AGENCY

We Need Real Estate Listings 700 W. Francis MO 5-5737

## 32 Years in the Penhandle

3 BEDROOM BRICK, 2 ceramic baths, carpeted, fireplace, double garage. 3 room guest house, 100 ft. lot on Asper. For \$25,500. Call Betty at MO 4-3228

## 1 BEDROOM on Duncan, utility room.

Move in about \$220 on new FHA loan, payments \$57.00.

## 2 BEDROOM, formal dining area, garage and carport on Summer Street.

Buy equity for about \$1700 with 4 1/2% interest. \$52.00 payments or move in on new FHA loan for about \$1000. Call Mary at MO 4-7859.

## 1 BEDROOM, laundry room, garage, storm cellar, fenced, very clean, in Horace Mann area. Move-in for about \$425 on new FHA loan. \$49.00 payment. See or call MO 4-7859.

## 2 BEDROOMS, attached garage. One 4 room, plumbed for washer. One 3 room. One 6 room on 75' lot, \$2,900.

## Ready Built homes for your lot or acreage.

## COME BY, lets discuss your real estate needs.

## YOUR LISTINGS APPRECIATED

## OLIVER JONAS REAL ESTATE BROKER

Office MO 9-9751 Residence 5-5417

## Highland Homes

pampa's leading quality home builder

## Model Homes & Sales Office

1506 N. Sumner MO 5-5410 Home Phone 4-8543

## FOR SALE LADIES STORE FIXTURES

Wall cases - sliding drawers - triple mirrors - all walnut finished - VERY CHEAP. Call MO 4-3256 Or Write Box 1618, Pampa

## 103 Real Estate For Sale 103

1 BEDROOM, dining room wired for electric stove, garage with ceiling below and extra room and bath on back of garage. Small equity and take up payments. 1108 Garland, MO 4-8440.

## HUGHES DEVELOPMENT CO.

107 N. West MO 4-7623 Lou Ann Blakemore MO 5-5680

## Hugh Peoples

"THE PEOPLE'S REALTOR" 107 N. West MO 4-7623

## W. M. LANE REALTY

MO 4-1641 Res. MO 9-9504

## H. W. WATERS

REAL ESTATE BROKERS AND INSURANCE AGENTS 133 E. Kincaid MO 4-4083

## JOHN LEE BELL REALTOR

MLS SERVICE MO 5-5657

## NEW HOMES

Price Road MO 4-3242

## B. E. FERRELL AGENCY

FOR SALE OR LEASE, 3-Bedroom home, 1 1/2 baths, 1500 square feet, corner lot, electric kitchen, hardwood floors, fenced back yard, pool and shopping. 1227 N. Russell. MO 5-2390

## 104 Trailer Houses 104

VACATION TRAILERS FOR RENT EWING MOTOR CO. MO 5-3743

## 116 Auto Repair Garages 116

Brakes retimed (Ford-Chevrolet-Plymouth) \$14.95. Minor Tune-Up, new points and plugs and complete. Installed. 4 cylinder car \$11.95. 6 cylinder car \$12.95. OGDEN & SON MO 4-8444

## 120 Automobiles for Sale 120

1962 CHEVROLET 88 cash. See at 1127 Chandler after 6 p.m.

## 1962 RAMBLER 7700, 4 door, radio and heater, air conditioned, curved seats, tinted windshield, bucket seats, whitewall, rear seat speaker, 35,000 miles - perfect condition. MO 4-8226

## 1962 RAMBLER 7700, 4 door, radio and heater, air conditioned, bucket seats, tinted windshield, curved seats, whitewall, rear seat speaker, 35,000 miles - perfect condition. MO 4-8226

## 1962 RAMBLER 7700, 4 door, radio and heater, air conditioned, bucket seats, tinted windshield, curved seats, whitewall, rear seat speaker, 35,000 miles - perfect condition. MO 4-8226

## 1962 RAMBLER 7700, 4 door, radio and heater, air conditioned, bucket seats, tinted windshield, curved seats, whitewall, rear seat speaker, 35,000 miles - perfect condition. MO 4-8226

## 1962 RAMBLER 7700, 4 door, radio and heater, air conditioned, bucket seats, tinted windshield, curved seats, whitewall, rear seat speaker, 35,000 miles - perfect condition. MO 4-8226

## 1962 RAMBLER 7700, 4 door, radio and heater, air conditioned, bucket seats, tinted windshield, curved seats, whitewall, rear seat speaker, 35,000 miles - perfect condition. MO 4-8226

## 1962 RAMBLER 7700, 4 door, radio and heater, air conditioned, bucket seats, tinted windshield, curved seats, whitewall, rear seat speaker, 35,000 miles - perfect condition. MO 4-8226

## 1962 RAMBLER 7700, 4 door, radio and heater, air conditioned, bucket seats, tinted windshield, curved seats, whitewall, rear seat speaker, 35,000 miles - perfect condition. MO 4-8226

## 1962 RAMBLER 7700, 4 door, radio and heater, air conditioned, bucket seats, tinted windshield, curved seats, whitewall, rear seat speaker, 35,000 miles - perfect condition. MO 4-8226

## 1962 RAMBLER 7700, 4 door, radio and heater, air conditioned, bucket seats, tinted windshield, curved seats, whitewall, rear seat speaker, 35,000 miles - perfect condition. MO 4-8226

## 1962 RAMBLER 7700, 4 door, radio and heater, air conditioned, bucket seats, tinted windshield, curved seats, whitewall, rear seat speaker, 35,000 miles - perfect condition. MO 4-8226

## 105 Lots 105

LOT: Choice corner lot, Martindale addition, 123 front feet. Call MO 5-4643.

## 107A Sale or Trade 107A

GOOD INCOME property, 100% occupied, \$100 income per month. Will sell equity or trade for farm land. Write Box X-4 c/o Pampa News.

## 111 Out-of-Town Property 111

FOR SALE: 20 Acres of land located near Wheeler, Texas. MO 4-2296

## 113 Property to be Moved 113

25 Years experience, free estimates. MO 5-5670

## 114 Trailer Houses 114

VACATION TRAILERS FOR RENT EWING MOTOR CO. MO 5-3743

## 116 Auto Repair Garages 116

Brakes retimed (Ford-Chevrolet-Plymouth) \$14.95. Minor Tune-Up, new points and plugs and complete. Installed. 4 cylinder car \$11.95. 6 cylinder car \$12.95. OGDEN & SON MO 4-8444

## 120 Automobiles for Sale 120

1962 CHEVROLET 88 cash. See at 1127 Chandler after 6 p.m.

## 1962 RAMBLER 7700, 4 door, radio and heater, air conditioned, curved seats, tinted windshield, bucket seats, whitewall, rear seat speaker, 35,000 miles - perfect condition. MO 4-8226

## 1962 RAMBLER 7700, 4 door, radio and heater, air conditioned, bucket seats, tinted windshield, curved seats, whitewall, rear seat speaker, 35,000 miles - perfect condition. MO 4-8226

## 1962 RAMBLER 7700, 4 door, radio and heater, air conditioned, bucket seats, tinted windshield, curved seats, whitewall, rear seat speaker, 35,000 miles - perfect condition. MO 4-8226

## 1962 RAMBLER 7700, 4 door, radio and heater, air conditioned, bucket seats, tinted windshield, curved seats, whitewall, rear seat speaker, 35,000 miles - perfect condition. MO 4-8226

## 1962 RAMBLER 7700, 4 door, radio and heater, air conditioned, bucket seats, tinted windshield, curved seats, whitewall, rear seat speaker, 35,000 miles - perfect condition. MO 4-8226

## 1962 RAMBLER 7700, 4 door, radio and heater, air conditioned, bucket seats, tinted windshield, curved seats, whitewall, rear seat speaker, 35,000 miles - perfect condition. MO 4-8226

## 1962 RAMBLER 7700, 4 door, radio and heater, air conditioned, bucket seats, tinted windshield, curved seats, whitewall, rear seat speaker, 35,000 miles - perfect condition. MO 4-8226

## 1962 RAMBLER 7700, 4 door, radio and heater, air conditioned, bucket seats, tinted windshield, curved seats, whitewall, rear seat speaker, 35,000 miles - perfect condition. MO 4-8226

## 1962 RAMBLER 7700, 4 door, radio and heater, air conditioned, bucket seats, tinted windshield, curved seats, whitewall, rear seat speaker, 35,000 miles - perfect condition. MO 4-8226

## 1962 RAMBLER 7700, 4 door, radio and heater, air conditioned, bucket seats, tinted windshield, curved seats, whitewall, rear seat speaker, 35,000 miles - perfect condition. MO 4-8226

## 1962 RAMBLER 7700, 4 door, radio and heater, air conditioned, bucket seats, tinted windshield, curved seats, whitewall, rear seat speaker, 35,000 miles - perfect condition. MO 4-8226

## 1962 RAMBLER 7700, 4 door, radio and heater, air conditioned, bucket seats, tinted windshield, curved seats, whitewall, rear seat speaker, 35,000 miles - perfect condition. MO 4-8226

## 1962 RAMBLER 7700, 4 door, radio and heater, air conditioned, bucket seats, tinted windshield, curved seats, whitewall, rear seat speaker, 35,000 miles - perfect condition. MO 4-8226

## 1962 RAMBLER 7700, 4 door, radio and heater, air conditioned, bucket seats, tinted windshield, curved seats, whitewall, rear seat speaker, 35,000 miles - perfect condition. MO 4-8226

